

# MINISTRY OF TRANSPORTATION

**Policy and Program for Public Works and  
Road Concession Project Portfolio**

**National Secretariat  
for Road Transport**

**November 08, 2023**



# ROAD INVESTMENTS

## Highways

R\$

**185,8**  
billion

Public: **73 billion**

Private: **112,8 billion**

### PUBLIC WORKS

**280**  
Projects in total

**167** Works

**113** Projects

Maintenance of **100%** of the  
**road network** in the  
27 federal units.

### PRIVATE INVESTMENTS

### OBRAS

**53**  
Construction

**72**  
Capacity Expansion,  
Duplication

**18**  
Large bridges  
and viaducts

**24**  
Restoration  
works

**24** \*  
Existing  
concessions

**35**  
Auctions

# PRIVATE INVESTMENTS

**24**

Concessions  
awarded

R\$

**217** bi

investment

**13.023 km**

R\$

**161** bi

To be invested

**35**

Studies  
commissioned

**20.268 km**

**16**

Works delivered

R\$

**199** bi

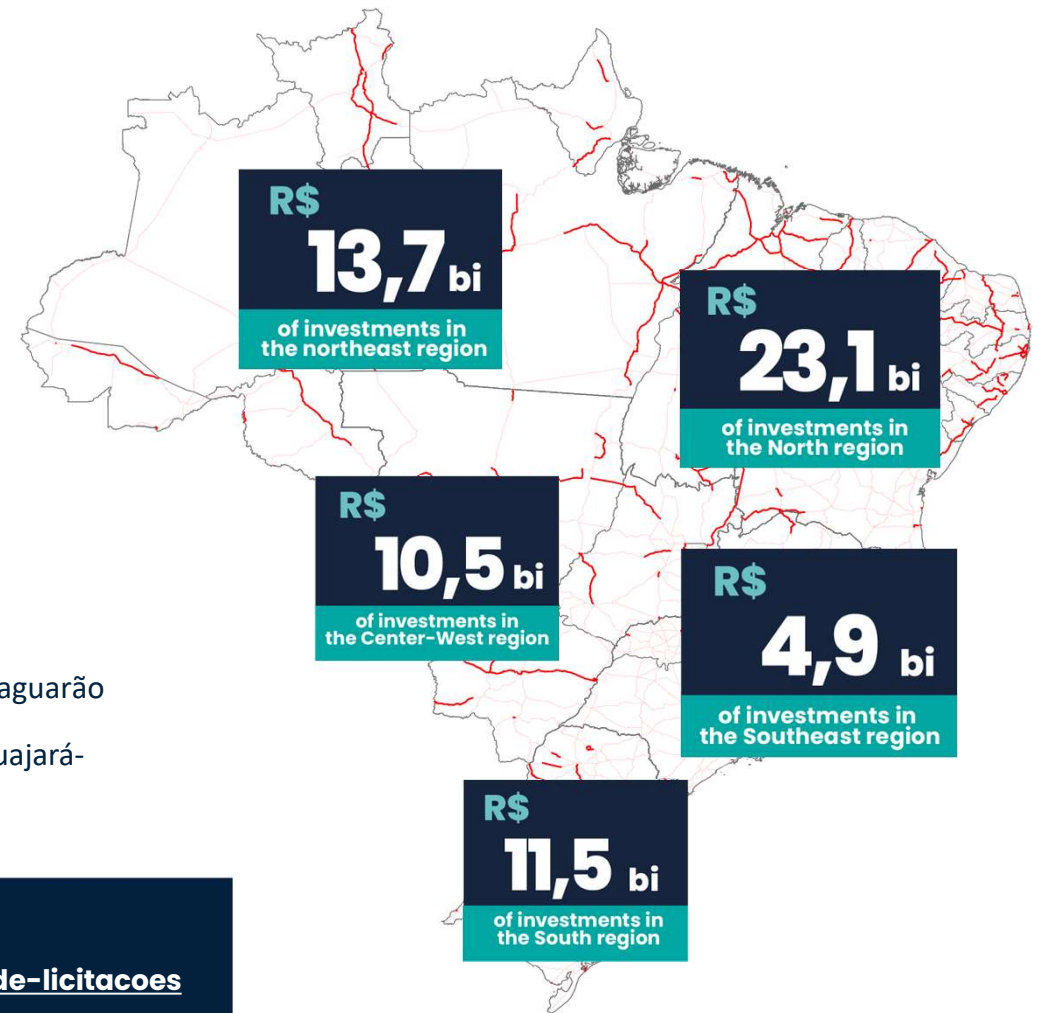
To be invested



# PUBLIC INVESTMENTS

## MAJOR WORKS STARTING IN 2024/2025:

- Paving of 183 km on BR-156/AP
- Paving of 116 km on BR-308/PA
- Duplication of 100 km on BR-116/CE
- Duplication of 53 km of BR-101/SE
- Duplication of 81 km on BR-010/MA
- Restoration of 277 km on BR-158/GO
- Timber Bridge Replacement Program
- Construction of the Maceió Metropolitan Arch
- Construction of the João Pessoa Metropolitan Arch
- Construction of a bridge on the border with Uruguay, on BR-116/RS in Jaguarão
- Construction of a bridge on the border with Bolivia, on BR-425/RO in Guajará-Mirim



## INVITATION TO BID FOR PUBLIC WORKS:

<https://www.gov.br/dnit/pt-br/assuntos/licitacoes/sede/editais-de-licitacoes>

# New Public Works Policy



Highways

# STRUCTURING AXES

- **Public Investments**
- **Contract Modernization and Legal Security**
- **Innovations in Management and Research**
- **Sustainable Infrastructure**
- **Transparency and Social Participation**
- **Governance**



**BR-153/TO**

# NEW PUBLIC WORKS POLICY

## MAIN GUIDELINES

- **Restructuring the levels of direct public investment** in order to guarantee the continuity of works and services on the federal transport network
- Using **criteria to prioritize projects and investments**;
- **Promoting performance-based contracting** in order to modernize and optimize contract management and offer standardized levels of service to users;
- **Developing alternative models for innovation programs** in the management and financing of federal road transport infrastructure;
- Incorporating **innovation into public procurement**, as provided for in Law 14133, 2021, and promoting technological innovation in engineering solutions (RDCi).
- Pursuing **sustainable contracts**, from an economic and financial point of view, with a focus on consensual conflict resolution and legal certainty - **revising regulations**
- Adopting **sustainability and resilience practices in infrastructure**
- **Transparency** and Social Participation in the drafting of transport regulations and policies

# NEW PUBLIC WORKS POLICY - KEY POINTS

## PUBLIC INVESTMENTS

- Re-establishing the quality levels of the federal transport network  
- raising the level of the ICM - Maintenance Conservation Index
- Increasing the % of structuring solutions (CREMA / Restoration)
- Adopting intelligent and modern management mechanisms for the federal highway network → Partnerships/Concessions
- Using technology to optimize projects - BIM
- Modernizing the construction management model - DNIT
- Benchmarking practices in Brazil and abroad



# NEW PUBLIC WORKS POLICY - KEY POINTS

## Contract Modernization and Legal Security

- Adopting appropriate methods of conflict resolution in administrative contracts - innovation of Law 14133, 2021
- Revising regulations in order to reduce judicialization and induce the proper fulfillment of contracts - insurance, contractual guarantees and liabilities
- Incorporating the modalities and auxiliary procedures of the new Public Procurement Law
- Institutional alignment for understanding and promoting the RDCi - an instrument for the development of national engineering
  - Revising DNIT's risk allocation methodology



# NEW PUBLIC WORKS POLICY - KEY POINTS

## Innovations in Management and Research

### Infrastructure Investment Data Management

- Developing **Infrastructure Works Data Guidelines** in order to guide related entities
- Incorporating advanced technological resources for managing road projects
- Adopting an integrated database at the Ministry of Transportation for standardizing and publicizing information

### Government School – ENINFRA/DNIT

- Promoting DNIT's role as a center of excellence in road engineering

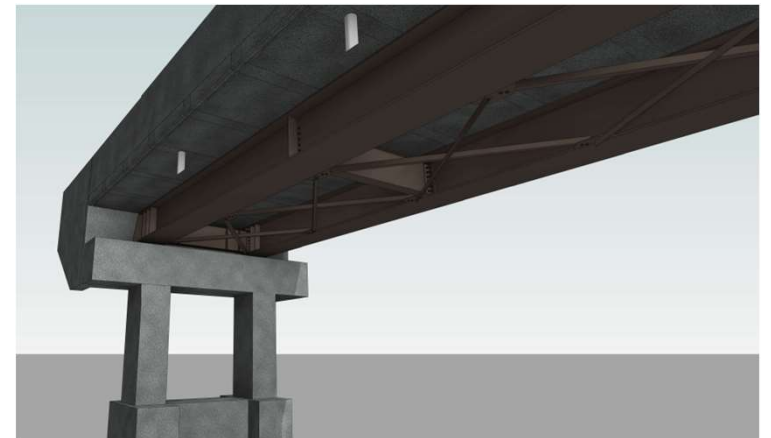


# NEW PUBLIC WORKS POLICY - KEY POINTS

## Sustainable Infrastructure

- Implementation of the **Semi-Permanent Bridges** project to enable the responsible use of timber for bridge construction
- Development of studies and adoption of **climate resilience practices in infrastructure** - reducing emergency contracts
- Pursuing measures to **decarbonize the public works production chain**

Benchmarking ITF – International Transport Forum



# NEW PUBLIC WORKS POLICY - KEY POINTS

## Transparency and Social Participation

- Publicizing the infrastructure project portfolio
- Implementation of **the public works consultation platform.**
  - Open and simplified data
- Technical cooperation agreements with the sector in order to **improve regulations**
  - **SICRO** discussion forum
  - Regulations of **the SNV - National Transport System**

## Governance

- *Spending Review* - Adoption of mechanisms to review public spending and the effectiveness of investments in road infrastructure

# NEW LICENSING POLICY



Highways

# NEW MODEL OF HIGHWAY CONCESSIONS MAIN REGULATORY DEVELOPMENTS

## 5th Stage of Concessions

- Tariff affordability
- Standardization of projects in the same Stage
- Possibility of public contributions when large or complex investments are planned
- Forecast of Public-Private Partnerships – PPP
- Resilient and environmentally sustainable infrastructure
- Risk sharing
- Resuming investment in infrastructure with efficiency and transparency



**FREE FLOW RIO SÃO PAULO HIGHWAY**

# SPENDING REVIEW

## History of Contractual Breaches

More than 5000 km of roads with reduced performance  
(total length 13,000 km)

Over R\$ 20 billion in stagnant investments

5 (five) contracts in re-bidding processes and 2 judicialized  
(24 contracts)



## **ADMINISTRATIVE RULE 848, 2023**

Viability of consensual solutions that would allow investments to resume immediately.

Forecast for evaluation by the External Control Secretariat for Consensual Resolution and Conflict Prevention (SecexConsenso) of the Federal Court of Accounts (TCU).

- (i) defending the public interest;
- (ii) technical, economic and legal viability;
- (iii) Implementation, in the short term, of investments aimed at guaranteeing the safe trafficability and fluidity of the highway, with improved service level capacity; and
- (iv) Affordability.

# CONTRACTUAL OPTIMIZATION

## ADMINISTRATIVE RULE 848, 2023

### PUBLIC POLICY PREMISES

- Standardization of contracts
  - Updating contracts to current public policy
  - Tariff fairness
  - Immediate start of capacity expansion works - in 2024
  - Advancing the execution schedule for capacity expansion and sidewalk restoration works by at least 3 years
- 
- Prioritization of the execution, over the next 3 years, of licensed works with projects or at an advanced stage of analysis in the respective agencies
  - Waiver of all existing judicial, administrative and arbitration proceedings



# CONTRACTUAL OPTIMIZATION

## ORDINANCE 848, 2023

### PUBLIC POLICY PREMISES

- Contract extension of a maximum of fifteen years;
- Tariff reclassification mechanism linked to the execution of works;
- Guarantee of execution of works;
- Objective rules in the event of non-compliance;
- Differentiated monitoring and oversight with:
  - ✓ less frequency and
  - ✓ independent verifiers for:
    - I - traffic and revenue auditing;
    - II - assessing compliance with performance standards; and
    - III - technical assessment of the work in progress



# CONTRACTUAL OPTIMIZATION

## PHASE 1

4 Working  
Groups  
Concluded

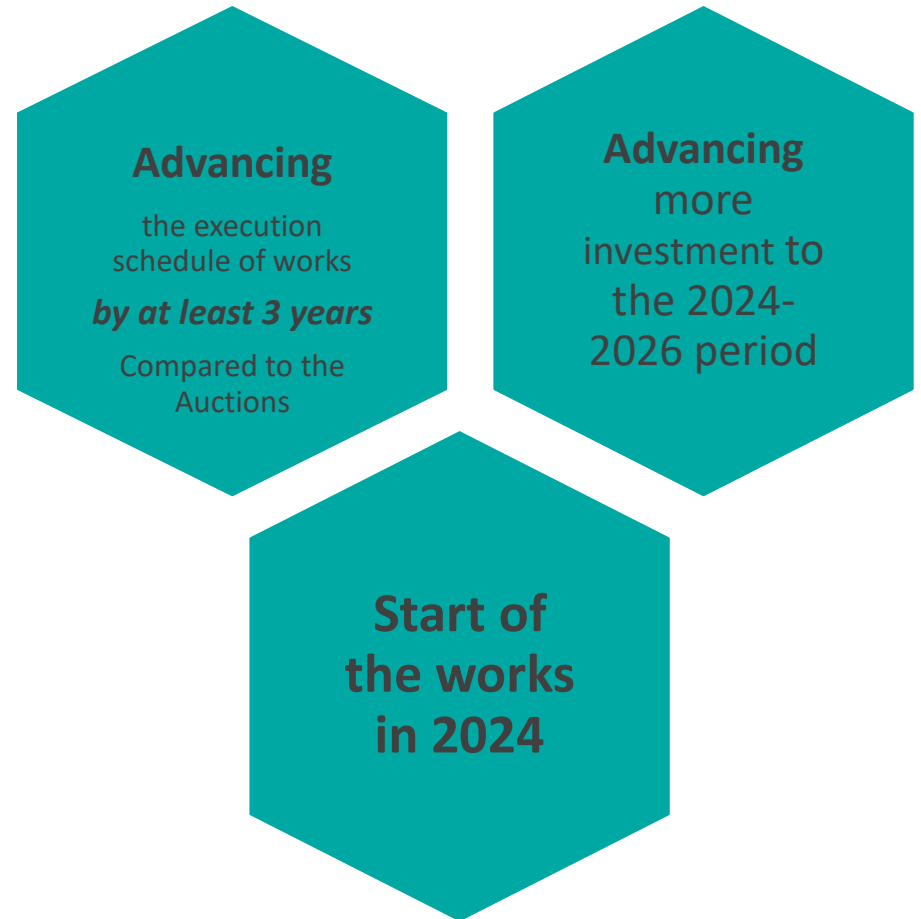
*BR-163/MS - Msvia  
BR -Rodovia BR-101/ES/BA – Eco101  
BR-101/RJ – Autopista Fluminense  
BR 116/324/BA & BA-526/528 - Viabahia\**



## PHASE 2

**ORDINANCE  
848**

*6 concessionaires have expressed their  
intention to file the application*



# NEW MODEL OF ROAD CONCESSIONS MAIN GUIDELINES - Regulatory Evolution

## Smart Concessions

- Study of an alternative solution to conventional public management (direct execution by DNIT);
- New service concession model with a focus on the quality of the pavement and signs, prioritizing user safety;
- Regional in scope to serve segments with lower traffic volumes (feeder of transport corridor logistics) and taking affordability into account;
- Use of technology to reduce operating costs and increase effectiveness;
- *Benchmarking* practices in Brazil and abroad



# Highway Concession Project Portfolio

2023 and 2024 Schedule



# Next projects

7000 km

2023

BR-277/373/376/476/PR, PR-418/423/427 - Lote 1      Auctioned

BR-153/277/369/PR, PR-092/151/239/407 e PR-408/411/508/804/855 - Lote 2      Auctioned

BR-381/MG      24 de Novembro

BR-040/MG      A definir

2024

BR-040/GO/MG

BR-153/262/GO/MG

BR-262/MG

BR-040/495/RJ

BR-060/424/GO - CN 1

BR-364/RO - CN 5

BR-060/364/GO/MT - CN 2

BR-163/277/PR e PR-158/180/182/280/483 - Lote 6

BR-369/373/376/PR e PR-170/323/445/090 - Lote 3

BR-070/174/364/MT/RO - CN 3

R\$

41 bi

3 Auctions  
2023

R\$

112 bi

12 Auctions  
2024



# SCHEDULE 2023 / 2024 - FORECAST

	Projetos	2º Semestre 2023		1º Semestre 2024		2º Semestre 2024	
1/2023	Rodovias Integradas do Paraná – Lote 1	Auction: 25/08/2023					
2/2023	Rodovias Integradas do Paraná – Lote 2	Auction:: 29/09/2023					
3/2023	BR-381/MG (Belo Horizonte/MG – Governador Valadares/MG)	Auction:: 24/11/2023					
1/2024	BR-040/MG (Juiz de Fora/MG – Belo Horizonte/MG)	TCU	Invitation to bid	Auction			
2/2024	BR-040/GO/MG (Belo Horizonte/MG – Cristalina/GO) - Cristais	TCU	Invitation to bid	Auction			
3/2024	BR-040/495/RJ/MG (Juiz de Fora/MG – Rio de Janeiro/RJ)	TCU		Invitation to bid	Auction		
4/2024	BR-262/MG (Uberaba/MG – Betim/MG) - Zebu	TCU		Invitation to bid	Auction		
5/2024	BR-153/262/GO/MG (Hidrolândia/GO – Div. MG/SP – Uberaba/MG) – Sertaneja	TCU		Invitation to bid	Auction		
6/2024	BR-060/452/GO (Rio Verde – Goiânia – Itumbiara) - Rota Verde	TCU		Invitation to bid	Auction		
7/2024	BR-364/RO (Porto Velho – Vilhena) - Rota Agro Norte	TCU		Invitation to bid		Auction	
8/2024	Rodovias Integradas do Paraná - Lote 6	TCU		Invitation to bid		Auction	
9/2024	Rodovias Integradas do Paraná - Lote 3	TCU				Invitation to bid	Auction
10/2024	BR-060/364/GO/MT (Rio Verde – Rondonópolis) - Rota Agro			TCU		Invitation to bid	Auction
11/2024	GO-020/060/070/080/GO – Polo Goiânia			TCU		Invitation to bid	Auction
12/2024	BR-070/174/364/MT/RO – (Vilhena – Cuiabá) - Rota Agro Central			TCU		Invitation to bid	Auction

2023

# 3 Auctions

## invitation to bid

# R\$ 60 bi

## In investments



Highways: BR-277/373/376/476/PR  
PR-418/423/427 – Lt1

Extension: **473 km**  
CAPEX: **R\$ 7.9 Bi**  
OPEX: **R\$ 5.2 Bi**  
Simple TKM: **0.1067**  
Duplication: **344 km**  
Stage: **Auctioned**  
Term: **30 years**    **DISCOUNT OF 18.25%**

Highways: BR-153/277/369/PR  
PR-092/151/239/407 and  
PR-408/411/508/804/855 – Lt2

Extension: **604 km**  
CAPEX: **R\$ 10.8 Bi**  
OPEX: **R\$ 6.5 Bi**  
Simple TKM: **0.1192 / km**  
Duplication: **350 km**  
Stage: **Auctioned**  
Term: **30 years**    **DISCOUNT OF 0.08%**

Highway: BR-381/MG  
Belo Horizonte/MG to  
Governador Valadares/MG

Extension: **304 km**  
CAPEX: **R\$ 6.0 Bi**  
OPEX: **R\$ 4.0 Bi**  
Simple TKM: **0.19119/km**  
Duplication: **132 km**  
Phase: Invitation to bid **published**  
Term: **30 years**    **Auctions 24/11/2023**

Highway: BR-040/GO/MG  
Ring Road from Belo Horizonte/MG  
to Cristalina/GO

Extension: **595 km**  
CAPEX: **R\$ 6.1 Bi**  
OPEX: **R\$ 4.5 Bi**  
Simple TKM: **0.1277**  
Duplication: **10 km**  
Phase: **TCU**  
Term: **30 years**    **Invitation to bid soon**

Highway: BR-040/MG  
Belo Horizonte/MG to  
Juiz de Fora/MG

Extension: **232.1 km**  
CAPEX: **R\$ 5 Bi**  
OPEX: **R\$ 3.8 Bi**  
Double TKM: **0.1830**  
Phase: **TCU**  
Term: **30 years**    **Invitation to bid soon**

# R\$ 10 bi

## To be invested between 2024 and 2026

# BR-381/MG – GENERAL INFORMATION

**INVITATION TO BID  
PUBLISHED**

**AUCTION: November  
24, 2023**



## General characteristics:



**TIR:**  
9.88%



**Extension:**  
304 km



**Term:**  
30 years



**Tariff (Single Carriage Way):**  
R\$ 0.19119/km



**Capex:**  
R\$ 6.0 bi



**Tariff (Dual Carriage Way):**  
R\$ 0.26767/km



**Opex:**  
R\$ 4.0 bi

**5 toll stations**

**Stretch:** Belo Horizonte/MG to Governador Valadares/MG

*Amounts Invitation to bid published. Database: jan/23*

**R\$ 10<sub>bi</sub>**  
**In investments**

Highway	(km)
Duplication	134
Additional Lanes	138

2024

# 12 Auctions

R\$

# 112 Billions

**BR-262/MG** 2024

Trecho: Uberaba/MG a Betim/MG  
Extensão: 438,9 km  
Capex: R\$ 4,3 bi  
Opex: R\$ 3,6 bi  
Prazo: 30 anos

Phase: TCU  
Phase: TCU

**BR-040/MG/RJ** 2024

Trecho: Juiz de Fora/MG a Rio de Janeiro/RJ  
Extensão: 217,6 km  
Capex: R\$ 5,0 bi  
Opex: R\$ 4,0 bi  
Prazo: 30 anos

**BR-040/MG/GO** 2024

Trecho: Anel Viário de Belo Horizonte/MG a Cristalina/GO  
Extensão: 595,0 km  
Capex: R\$ 6,1 bi  
Opex: R\$ 4,5 bi  
Prazo: 30 anos

Phase: TCU

**BR-369/373/376/PR e PR-170/323/445/090** 2024

Trecho: Rodovias Integradas do Paraná - Lote 3  
Extensão: 569,2 km  
Capex: R\$ 8,1 bi  
Opex: R\$ 5,4 bi  
Prazo: 30 anos

**BR-153/262/GO/MG** 2024

Trecho: BR-153/GO/MG (Hidrolândia/GO - Div. MG/SP) BR-262/MG (Comendador Gomes/MG a Uberaba/MG)  
Extensão: 530,6 km  
Capex: R\$ 5,3 bi  
Opex: R\$ 4,1 bi  
Prazo: 30 anos

Phase: TCU

**BR-163/277/PR e PR-158/180/182/280/483** 2024

Trecho: Rodovias Integradas do Paraná - Lote 6  
Extensão: 646,3 km  
Capex: R\$ 8,5 bi  
Opex: R\$ 6,3 bi  
Prazo: 30 anos

**BR-364/GO/MT** 2024

Trecho: CN 2 - Rio Verde a Rondonópolis  
Extensão: 502,8 km  
Capex: R\$ 2,7 bi  
Opex: R\$ 2,8 bi  
Prazo: 30 anos

**BR-070/174/364/MT/RO** 2024

Trecho: CN 3 - Vilhena a Cuiabá  
Extensão: 887,6 km  
Capex: R\$ 3,8 bi  
Opex: R\$ 3,9 bi  
Prazo: 30 anos

**BR-364/RO** 2024

Trecho: CN 5 - Porto Velho a Vilhena  
Extensão: 729 km  
Capex: R\$ 4,1 bi  
Opex: R\$ 4,1 bi  
Prazo: 30 anos

**BR-060/452/GO** 2024

Trecho: CN 1 - Rio Verde a Goiânia a Itumbiara  
Extensão: 452,7 km  
Capex: R\$ 3,1 bi  
Opex: R\$ 3,2 bi  
Prazo: 30 anos



**Auctions  
1st semester  
2024**



# BR-040/MG (BH – JF) - GENERAL INFORMATION

INVITATION TO BID  
SOON



R\$

**9 bi**

in investments

**164 km**  
in duplications

**43 km**  
of additional lanes

## General characteristics:



**TIR:**  
8.83%



**Extension:**  
232.1 km



**Term:**  
30 years



**Tariff (Dual Carriage Way):**  
R\$ 0.1830/km



**Capex:**  
R\$ 5 bi

**3** toll stations



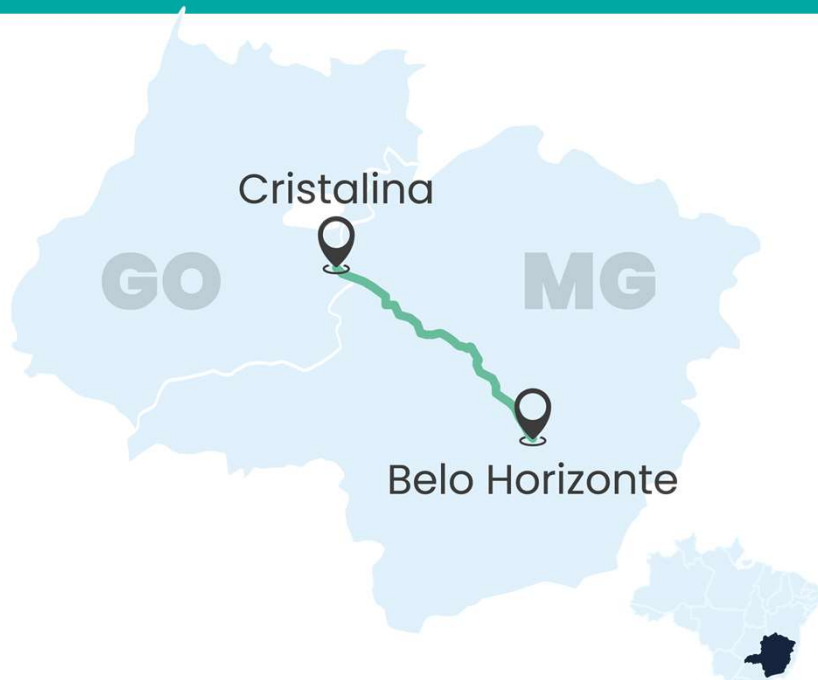
**Opex:**  
R\$ 3.8 bi

**Stretch:** Belo Horizonte/MG to Juiz de Fora/MG

*Database: jan/23*  
Amounts sent to the TCU

# BR-040/MG/GO - CRISTAIS - GENERAL INFORMATION

INVITATION TO BID  
SOON



R\$  
**11 bi**  
in investments

**10 km**  
in duplications

**343 km**  
of additional lanes

## General characteristics:



**TIR:**  
9.21%



**Extension:**  
595 km



**Term:**  
30 years



**Tariff (Single Carriage Way):**  
R\$ 0.1277/km



**Capex:**  
R\$ 6.1 bi



**Tariff (Dual Carriage Way):**  
R\$ 0.1660/km



**Opex:**  
R\$ 4.5 bi

**7** toll stations

Stretch: Belo Horizonte/MG to Cristalina/GO

Database: jan/22  
Amounts sent to the TCU

# BR-040/495/MG/RJ (JF-RIO) - GENERAL INFORMATION

**INVITATION TO BID  
SOON**



R\$

**8 bi**

in investments

**13 km**  
in duplications

**82 km**  
of additional lanes

## General characteristics:



**TIR:**  
8.83%



**Extension:**  
218.8 km



**Term:**  
30 years



**Tariff (multilanes):**  
R\$ 0.24660/km



**Capex:**  
R\$ 4.83 bi



**Opex:**  
R\$ 3.48 bi

**3** toll stations

Stretch: Juiz de Fora/MG - Rio de Janeiro/RJ

Database: jan/23  
In adjustments for filing with the TCU

# BR-153/262/GO/MG – SERTANEJA – GENERAL INFORMATION



R\$

**9,4 bi**

in investments

**43 km**

in duplications

**31 km**

of additional lanes

## General characteristics:



**TIR:**  
9.21%



**Extension:**  
530.6 km



**Term:**  
30 years



**Tariff (Single Carriage Way):**  
R\$ 0.10831/km



**Capex:**  
R\$ 5.33 bi



**Tariff (Dual Carriage Way):**  
R\$ 0.14080/km



**Opex:**  
R\$ 4.10 bi

**5** toll stations

Stretch: Hidrolândia/GO - Uberaba/MG

Database: jan/22  
Amounts sent to the TCU

# BR-262/MG – ZEBU – GENERAL INFORMATION



R\$  
**8** bi  
in investments

**44** km  
in duplications

**168** km  
of additional lanes

## General characteristics:



**TIR:**  
9.21%



**Extension:**  
438.9 km



**Term:**  
30 years



**Tariff (Single Carriage Way):**  
R\$ 0.12341/km



**Capex:**  
R\$ 4.3 bi



**Tariff (Dual Carriage Way):**  
R\$ 0.16044/km



**Opex:**  
R\$ 3.6 bi

**6** toll stations

**Stretch:** Betim/MG to Uberaba/MG

*Database: jan/22  
Amounts sent to the TCU*

# BR-060/452/GO – ROTA VERDE – GENERAL INFORMATION



R\$

**6,3 bi**

in investments

**13 km**

in duplications

**138 km**

of additional lanes

## General characteristics:



**TIR:**  
8.47%



**Extension:**  
452.7 km



**Term:**  
30 years



**Tariff (Single Carriage Way):**  
R\$ 0.10865/km



**Capex:**  
R\$ 3.12 bi



**Tariff (Dual Carriage Way):**  
R\$ 0.15211/km



**Opex:**  
R\$ 3.16 bi

**6** toll stations

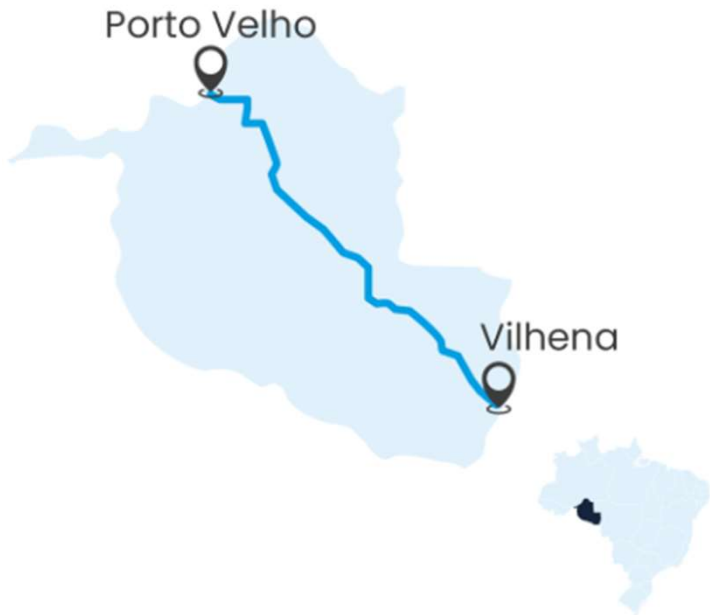
Stretch: Goiânia/GO to Rio Verde/GO; Rio Verde/GO to Itumbiara/GO

Database: oct/20  
Public hearing data

**Auctions  
2nd semester  
2024**



# BR-364/RO – ROTA AGRO NORTE – GENERAL INFORMATION



**8 bi**  
in investments

**113 km**  
in duplications

**195 km**  
of additional lanes

## General characteristics:



**TIR:**  
8.47%



**Extension:**  
729 km



**Term:**  
30 years



**Tariff (Single Carriage Way):**  
R\$ 0.11403/km



**Capex:**  
R\$ 4.08 bi



**Tariff (Dual Carriage Way):**  
R\$ 0.15964/km



**Opex:**  
R\$ 3.99 bi

**7** toll stations

Stretch: Vilhena/RO to Porto Velho/RO

Database: oct/20  
Public hearing data

# PR VIAS L6 – GENERAL INFORMATION



BR-163/277/PR  
PR 158/180/182/280/483

**R\$**  
**15bi**  
in investments

**442 km**  
in duplications  
**31 km**  
of additional lanes

## General characteristics:



**TIR:**  
8.47%



**Extension:**  
646.33 km



**Term:**  
30 years



**Tariff (Single Carriage Way):**  
R\$ 0.11419/km



**Capex:**  
R\$ 8.50 bi



**Tariff (Dual Carriage Way):**



**Opex:**  
R\$ 6.26 bi

R\$ 0.15986/km

**9** toll stations

Stretches: BR-163/PR - Junction PR-182 in Realeza to Junction BR-277 (to Cascavel)  
BR-277/PR - Junction BR-373/PR-452 (Relógio) to the end of Ponte da Amizade  
PR-158 - Junction PR-280(A) in Pato Branco to Junction PR-280 (B)  
PR-180 - Junction PR-483/892 in Francisco Beltrão to Junction PR-180 in Marmeleiro  
PR-182 - Junction BR-163 in Marmelândia to Junction PR-483 in Jacutinga;  
PR-280 - Junction BR-158(B) (P/S. Lourenço do Oeste) to Junction  
BR- 280 (Marmeleiro)  
PR-483 - Junction PR-180/892 in Francisco Beltrão to Junction PR-182 in Jacutinga

Database: jan/21  
In adjustments for  
filing with the TCU

# PR VIAS L3 – GENERAL INFORMATION



BR-369/373/376/PR  
PR 090/170/323/445

**R\$**  
**13bi**  
in investments

**200 km**  
in duplications  
**24 km**  
of additional lanes

## General characteristics:



**TIR:**  
8.47 %



**Extension:**  
569.2 km



**Term:**  
30 years



**Tariff (Single Carriage Way):**  
R\$ 0.10302/km



**Capex:**  
R\$ 8.10 bi



**Tariff (Dual Carriage Way):**  
R\$ 0.14422/km



**Opex:**  
R\$ 5.39 bi

**7** toll stations

Stretches: BR-369/PR – Junction PR-444 to Junction BR 376 (B) (Jandaia do Sul)  
BR-373/PR – Junction BR-487(A)/PR-151 (Ponta Grossa) to Junction BR-376(A)  
BR-376/PR – Junction Acesso I Mandaguari to Junction BR-277(A)-428 (São Luís do Purunã)  
PR-090 – Junction PR-862(B)(Contorno de Ibiporã) to Junction PR-323(A)(Sertanópolis)  
PR-170 – Junction BR-369(B)(Apucarana) to Junction BR-376(A)(Apucarana)  
PR-323 – Divisa PR/SP (Porto Charles Nauffal) to Junction PR 445/545 (WARTA)  
PR-445 – Junction PRC 272/BR-376/272) to Junction PR 323/545 (WARTA)

*Database: jan/21  
In adjustments for  
filing with the TCU*

# BR-060/364/GO/MT- ROTA AGRO - GENERAL INFORMATION



## General characteristics:



**TIR:**  
8.47%



**Extension:**  
502.8 km



**Term:**  
30 years



**Tariff (Single Carriage Way):**  
R\$ 0.09442/km



**Capex:**  
R\$ 2.70 bi



**Tariff (Dual Carriage Way):**  
R\$ 0.13218/km



**Opex:**  
R\$ 2.75 bi

**5** toll stations

**Stretch:** Rio Verde/GO to Jataí/GO; Jataí/GO to the GO/MT border; GO/MT border to Rondonópolis/MT

**6 bi**  
in investments

**138 km**  
of additional lanes

# BR-070/174/364/MT/RO – ROTA AGRO CENTRAL – GENERAL INFORMATION



**6 bi**  
in investments

**39 km**  
in duplications

**280 km**  
of additional lanes

## General characteristics:



**TIR:**  
8.47%



**Extension:**  
887.6 km



**Term:**  
30 years



**Tariff (Single Carriage Way):**  
R\$ 0.12415/km



**Capex:**  
R\$ 3.81 bi



**Tariff (Dual Carriage Way):**  
R\$ 0.17381/km



**Opex:**  
R\$ 3.94 bi

**7** toll stations

**Stretch:** Vilhena/RO to RO/MT border; RO/MT border to Sapezal/MT; Comodoro/MT to Cáceres/MT; Cáceres/MT to Cuiabá/MT

*Database: out/20  
Public hearing data*

**THANK YOU!**

