



FEATURES

- All in one machine for Bending, Cutting, Lipping, Bridging, Perforating, Broaching and Nicking
- Internationally patented "Bend First, Cut Last" technology ensures accurate processing with no waste
- Quick changing tooling
- Software imports industry standard CAD file formats (DWG, DXF, NC, CFF2, DDES2)
- Multi Language Operations (Korean, English, Japanese, Chinese, etc)

TECHNICAL SPECIFICATIONS

	AD240-B/BB	AD320-B/BB	AD520-B
Thickness	1, 1.5, 2 & 3 PT Rule / Crease 1, 1.5, 2, 3 & 4 PT Rule / Crease 1, 1.5, 2, 3 & 4 PT Rule / Crease		
Height	up to 24mm(0.94")	up to 32mm(1.25")	up to 52mm(2.04")
Min. Bend Length	2mm(0.078")	2mm(0.078")	2mm(0.078")
Min. Cut Length	1mm(0.039")	1mm(0.039")	1mm(0.039")
Computer	Window based PC / with Color LED monitor		
Dimensions	3,500mm W x 1,150mm D x 1,500mm H / 137" X 45" X 59"		
Power Requirements	3Phase 220V / 380V, 15A, 5KVA, 50-60Hz		
Air	1CFM at 6bars		
Weight	700kg		

All specifications subject to change without notice

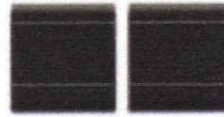
BASIC FUNCTIONS



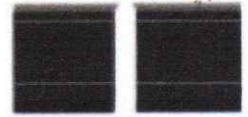
Bending



Multi Bridge



Straight Cut



Lipping Cut

OPTIONAL FUNCTIONS



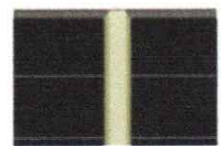
Perforating



Nicking

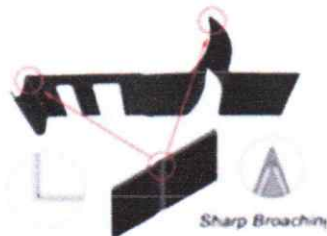


Sharp Broaching

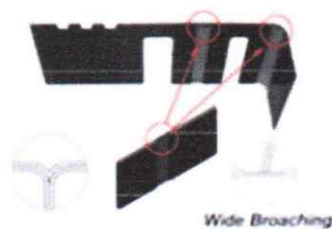


Wide Broaching

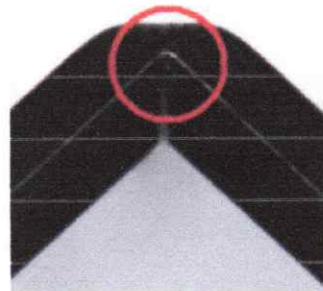
BROACHING SYSTEM



Sharp Broaching for bending angle



Wide Broaching for perfect lipping joint

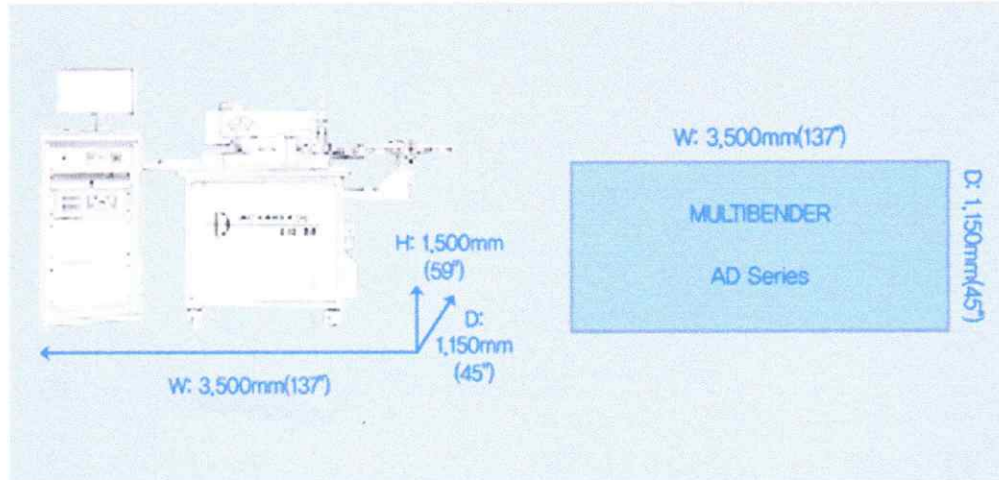


Min. arc radius for 0.7mm thickness rule 90 bending : 0.05mm



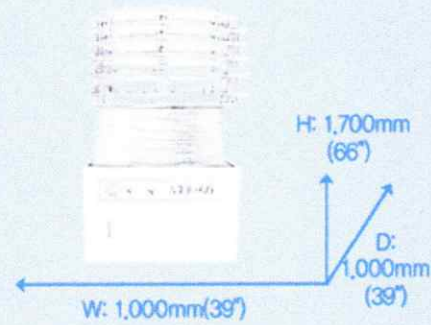
Arc bending after broaching with wide broaching

Overall Dimension



ATR60(Auto Rule Cassette: 6 lines)

- Possible to install max.6 different types of rule and crease
- Easy operation with one touch button type
- Separate from machine body and easy to move



Tradução do Catálogo da Máquina

Características (Features)

- Tudo em um para Dobra, Corte, Alisamento, Conexão, Perfuração, Usinagem e Incisões.
- Tecnologia patenteada internacionalmente 'Dobra Primeiro, Corte Por Ultimo' assegura um processamento preciso sem desperdício.
- Ferramentas de troca rápida.
- O software importa formatos de arquivos CAD padrão da indústria (DWG, DXF, NC, CFF2, DDES2).
- Operação multilíngue (Coreano, Inglês, Japones, Chines, etc.).

Especificações Técnicas (Technical Specifications)

Especificação	AD240-B/BB	AD320-B/BB	AD520-B
Espessura	1, 1,5, 2 & 3 PT Regra / Vinco 1, 1,5, 2, 3 & 4 PT Regra / Vinco		
Altura	até 24mm (0.94')	até 32mm (1.25')	até 52mm (2.04')
Min. Comprimento de Dobra	2mm (0.078')	2mm (0.078')	2mm (0.078')
Min. Comprimento de Corte	1mm (0.039')	1mm (0.039')	1mm (0.039')
Computador	PC com Windows e monitor LED colorido		
Dimensões	3.500mm L x 1.150mm P x 1.500mm A / 137' x 45' x 59'		
Requisitos de Energia	Trifásico 220V / 380V, 15A, 5KVA, 50-60Hz		
Ar	1 CFM a 6 bars		
Peso	700kg		

Observação: Todas as especificações estão sujeitas a alterações sem aviso prévio.

Funções Básicas (Basic Functions)

- Dobra (Bending)
- Conexão Múltipla (Multi Bridge)
- Corte Reto (Straight Cut)
- Corte de Alisamento (Lipping Cut)

Funções Opcionais (Optional Functions)

- Perfuração (Perforating)
- Incisão (Nicking)
- Usinagem Afiada (Sharp Broaching)
- Usinagem Larga (Wide Broaching)

Sistema de Usinagem (Broaching System)

- Usinagem Afiada para ângulo de dobra.
- Usinagem Larga para junção de alisamento perfeita.

- Raio minimo de arco para regra de espessura de 0.7mm com dobra de 90 graus: 0.05mm.
- Dobra de arco apos usinagem com usinagem larga.

Dimensões Gerais (Overall Dimension)

- Multibender Serie AD: Largura de 3.500mm, Profundidade de 1.150mm, Altura de 1.500mm.
- Cassete de Regra Automatico (ATR60): Capacidade para ate 6 tipos diferentes de regras e vincos, operacao facil com botao c