

RATE OF WORKFORCE RE-ENTRY FOR REHABILITATED INSS BENEFICIARIES IS LOW

Evaluation of the Vocational Rehabilitation Service finds structural and operational challenges that limit policy effectiveness



About 9% of Brazilians have some form of disability. This subset exhibits significantly worse indicators of educational attainment and labor force participation compared to the rest of the population. One of the policies aimed at mitigating this problem is the INSS’s Vocational Rehabilitation Service. A CMAP assessment found that less than half of those who undergo rehabilitation return to the labor market. Furthermore, there are deficiencies regarding monitoring and communication with beneficiaries. These and other problems compromise the policy’s effectiveness and result in prolonged disability benefit periods, low labor market re-entry, and increased frustration among insured individuals.

POLICY EVALUATED

Vocational Rehabilitation Service

RESOURCES INVOLVED

R\$ 68 MILLION

(2024)

EVALUATION CYCLE

2024-2025

KEY FINDINGS



Available training programs have little connection to the participants’ health conditions and to the local labor market’s demands



Weaknesses in policy monitoring hinder the improvement of evidence-based and agile decision-making



Communication with beneficiaries is not very accessible and lacks effective channels for social participation

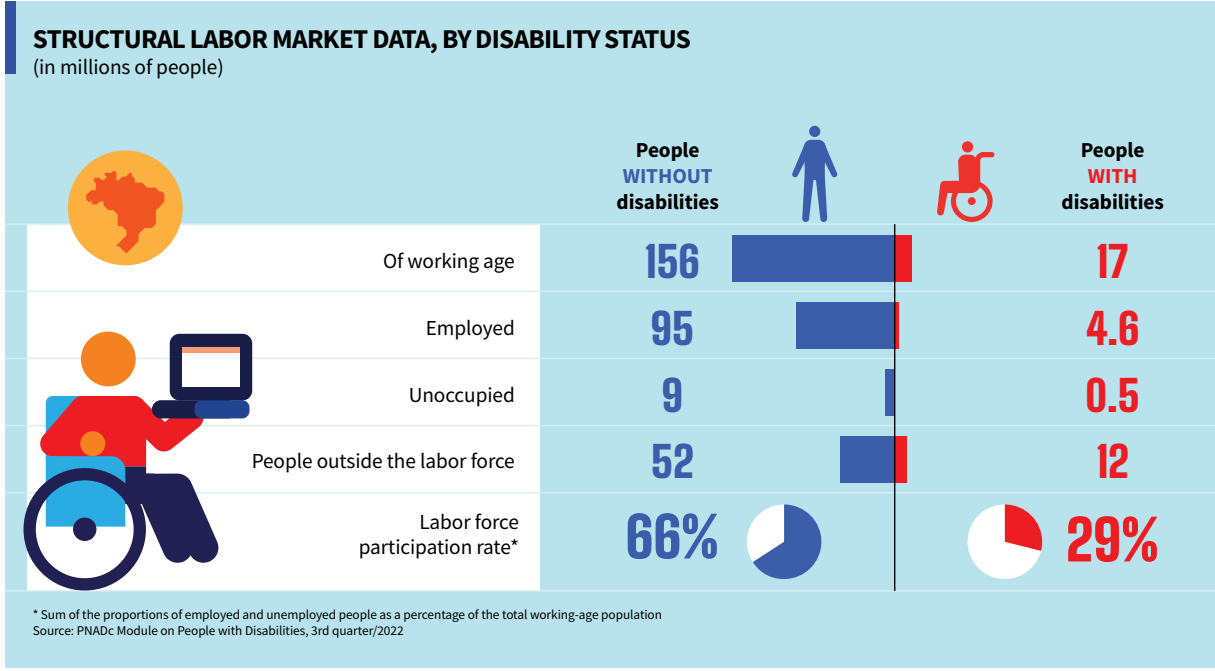
About 9% of Brazilians have some form of disability, and their rates of schooling and access to the labor market are significantly worse than the rest of the population. The Constitution guarantees people with disabilities the right to protection from any kind of discrimination including those related to wages and hiring criteria. It also guarantees their right to integration into community life promoted by social assistance services. One way of doing this is through vocational rehabilitation, a right guaranteed by the 2015 Statute of Persons with Disabilities, and accounted for by Convention No. 159 of the International Labour Organization, ratified by Brazil in 1991.

The service is provided by the National Social Security Institute (INSS) and aims to equip people with disabilities with the necessary knowledge, skills, and abilities to practice a profession or occupation, allowing for a sufficient level of professional development to re-enter the workforce. It also provides prosthetics, orthotics and mobility aids, when necessary for reintegration.

An assessment by the Council for the Monitoring and Evaluation of Public Policies (CMAP) found, however, that the reintegration of this population into the labor market remains low. Studies identified in a review of the academic literature show that the return of rehabilitated individuals to the labor market ranges between 30% and 50%. They also point to structural and operational challenges that limit the policy's effectiveness. A noteworthy finding, for example, is how the training offered is in poor alignment with the recipients' health conditions, their work potential, and the demands of the local labor market.

Another weakness is that the indicators currently used by the INSS to monitor the implementation and results of the Professional Rehabilitation Service (SRP) do not allow for a robust and effective evaluation. Although metrics such as rehabilitation duration, completion rate, and return to the labor market exist, the data demonstrate low resolution, slow processing times, and institutional weakness in translating these measurements into improvements.

Monitoring mechanisms such as the Statistical Bulletin on Vocational Rehabilitation and Technical Supervisions are insufficient to ensure the achievement of



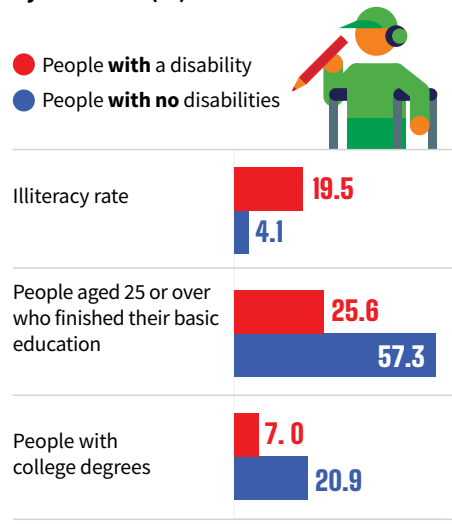
In 2022, the labor force participation rate for people with disabilities was less than half of that of people without disabilities

vocational rehabilitation objectives, whether due to insufficient resources, poor institutionalization of routines, or the disconnect between the data produced and the decision-making process. This compromises the policy's effectiveness and leads to consequences such as prolonged disability benefit periods, low re-entry into the labor market, and increased frustration among insured individuals.

The evaluation also found that another relevant monitoring tool, the Retention Survey, is not administered to most of those who have completed rehabilitation. The tool seeks to measure adaptation to the labor market and the effectiveness of rehabilitation, 14 months after the completion of the program. Even when it is applied, a high number of fields are left blank, which compromises the assessment of the program's outcomes.

It was found that the management of eligibility for the service is centered on the medical assessment process, without adequately considering social and geographic inequalities. Communication with beneficiaries remains largely inaccessible, and lacks effective channels for public participation.

Instruction level by condition (%)



A significant institutional advancement was observed in the area of governance: the re-establishment of the Management Committee of the Intersectoral Network for Comprehensive Rehabilitation in 2025. The initiative strengthens the integration and coordination of policies aimed at addressing the challenges faced by people with functional limitations, workers in vocational rehabilitation, and, especially, people with disabilities.

Based on the evaluation findings, improvement proposals were presented focusing on inter-institutional coordination between the INSS and partner agencies, the reformulation of SRP information management, the expansion of the Service's service capacity, and the strengthening of results-oriented supervision and monitoring.



[CLICK HERE](#) or scan the QR code to read the evaluation reports for this policy