

4ª Reunião Técnica sobre perspectivas climáticas para 2026 e o risco de incêndios florestais - MMA

Dr. Leydson Dantas - INMET

leydson.dantas@inmet.gov.br



16 de Junho de 2026

MINISTÉRIO DA
CIÊNCIA, TECNOLOGIA
E INOVAÇÃO

MINISTÉRIO DA
AGRICULTURA E
PECUÁRIA

GOVERNO DO
BRASIL
DO LADO DO POVO BRASILEIRO

DIAGNÓSTICO E PREVISÃO CLIMÁTICA

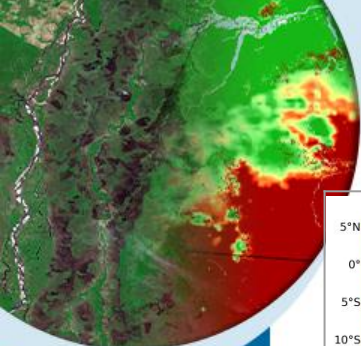


MINISTÉRIO DA
CIÊNCIA, TECNOLOGIA
E INOVAÇÃO

MINISTÉRIO DA
AGRICULTURA E
PECUÁRIA

GOVERNO DO
BRASIL
DO LADO DO POVO BRASILEIRO

Precipitação e Anomalias – MAM/2026

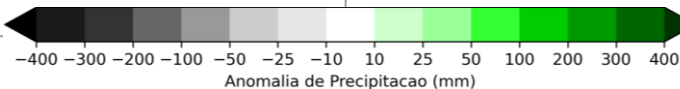
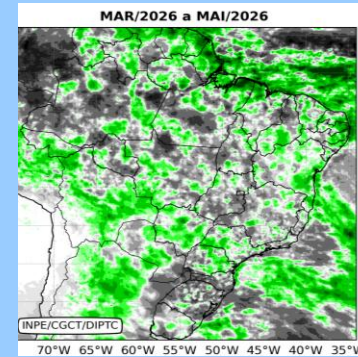
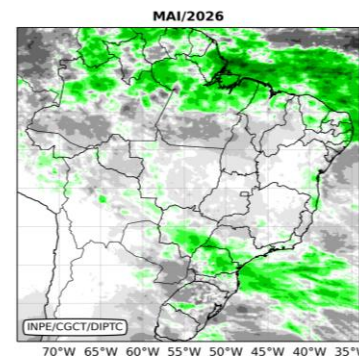
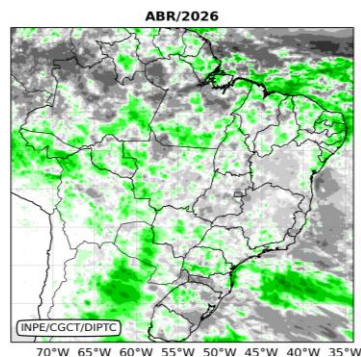
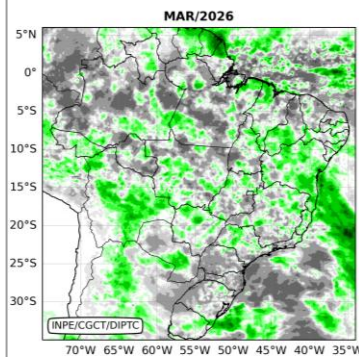
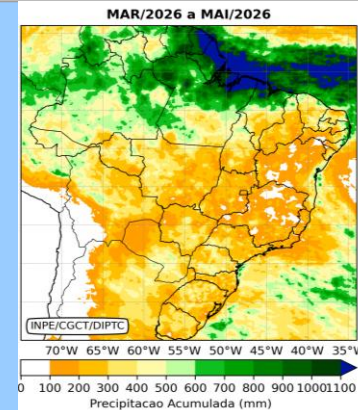
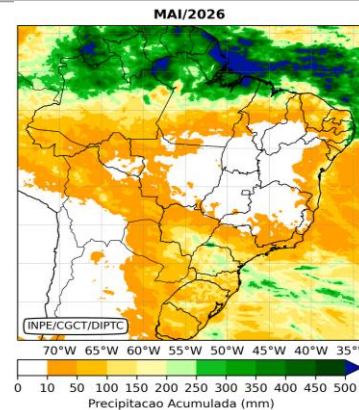
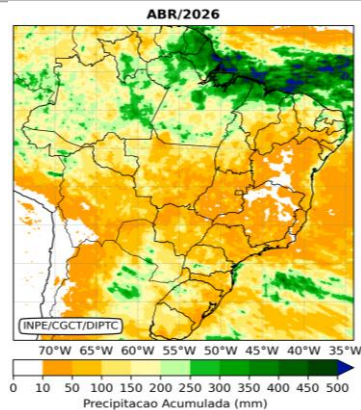
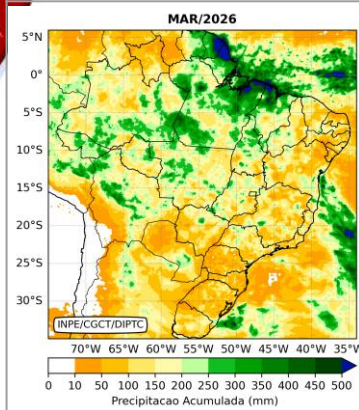


MAR

ABR

MAI

MAR-ABR-MAI



MINISTÉRIO DA
CIÊNCIA, TECNOLOGIA
E INOVAÇÃO

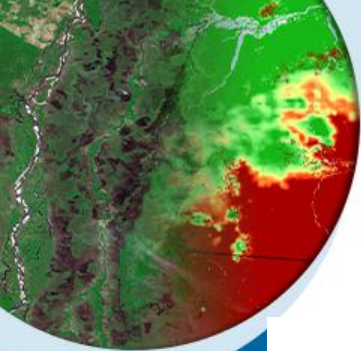
MINISTÉRIO DA
AGRICULTURA E
PECUÁRIA

GOVERNO DO

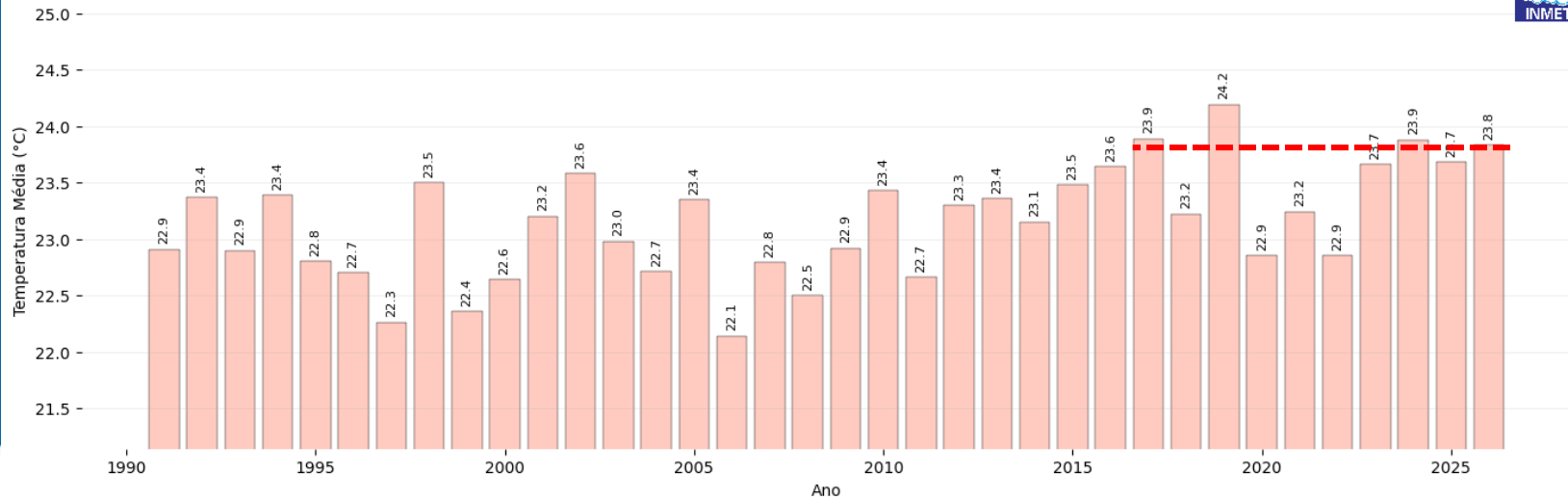


DO LADO DO POVO BRASILEIRO

4° Maio Mais Quente Desde 1961



Temperatura Média de Maio no Brasil (1991-2025)

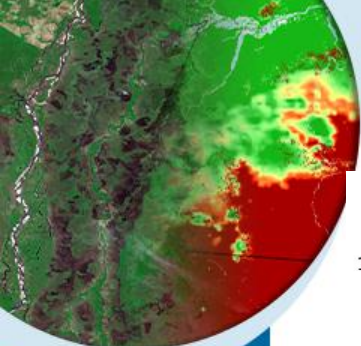


MINISTÉRIO DA
CIÊNCIA, TECNOLOGIA
E INOVAÇÃO

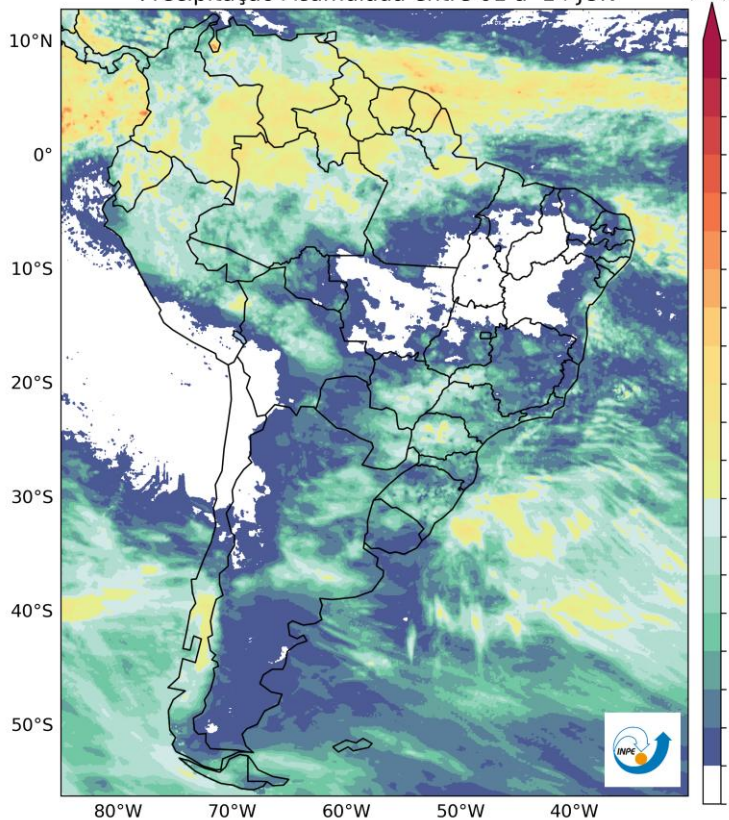
MINISTÉRIO DA
AGRICULTURA E
PECUÁRIA

GOVERNO FEDERAL
BRASIL
UNIÃO E RECONSTRUÇÃO

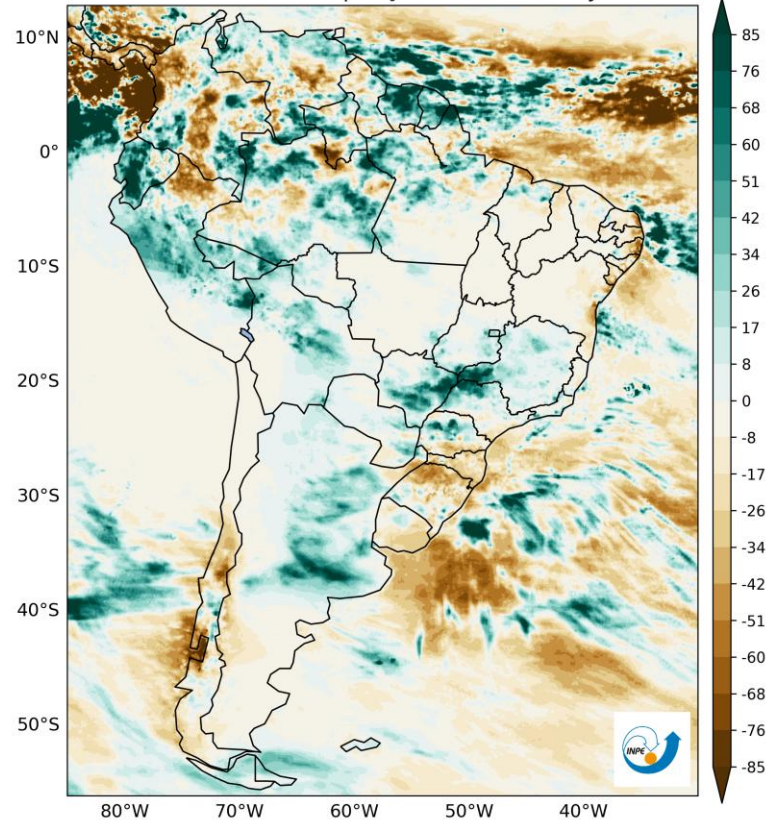
Precipitação – Junho (Parcial) de 2026



MERGE
Precipitação Acumulada entre 01 a 14 JUN (mm)



MERGE
Anomalia de Precipitação entre 01 a 14 JUN (mm)

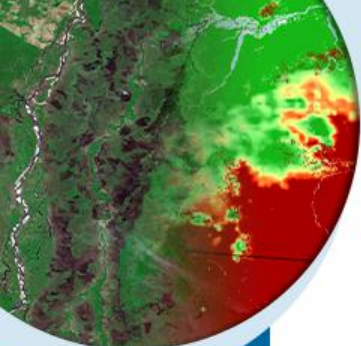


MINISTÉRIO DA
CIÊNCIA, TECNOLOGIA
E INOVAÇÃO

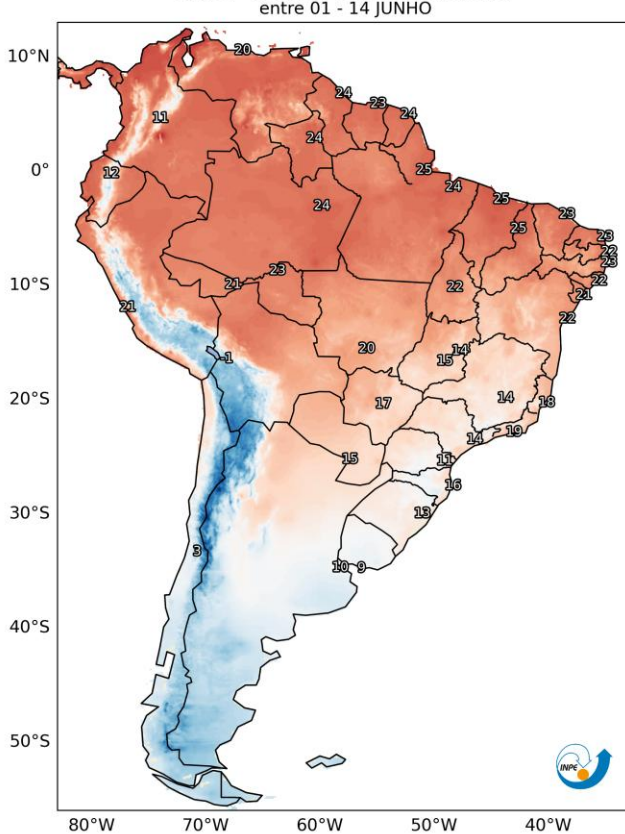
MINISTÉRIO DA
AGRICULTURA E
PECUÁRIA

GOVERNO FEDERAL
BRASIL
UNIÃO E RECONSTRUÇÃO

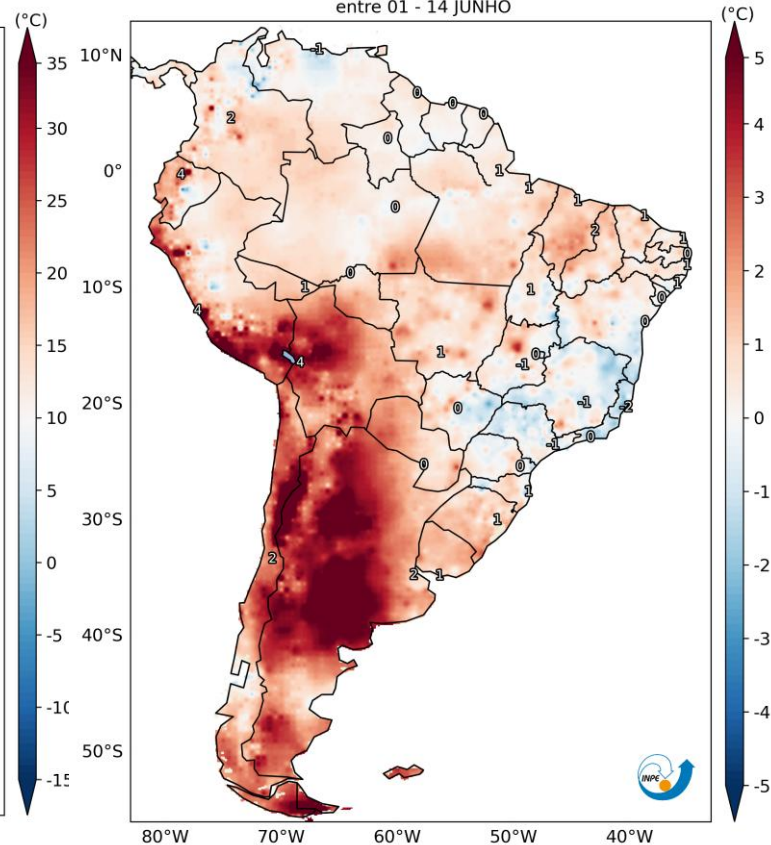
Temperatura Mínima – Junho (Parcial) de 2026



SAMeT - Média da Temperatura Mínima entre 01 - 14 JUNHO



SAMeT - Anomalia da Temperatura Mínima entre 01 - 14 JUNHO

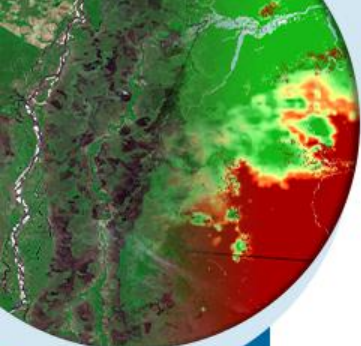


MINISTÉRIO DA
CIÊNCIA, TECNOLOGIA
E INOVAÇÃO

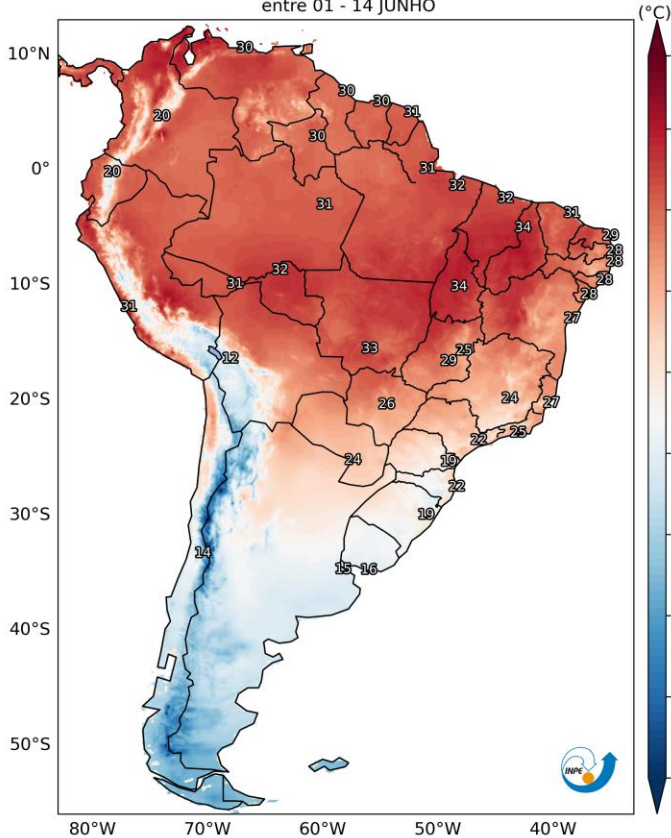
MINISTÉRIO DA
AGRICULTURA E
PECUÁRIA

GOVERNO FEDERAL
BRASIL
UNIÃO E RECONSTRUÇÃO

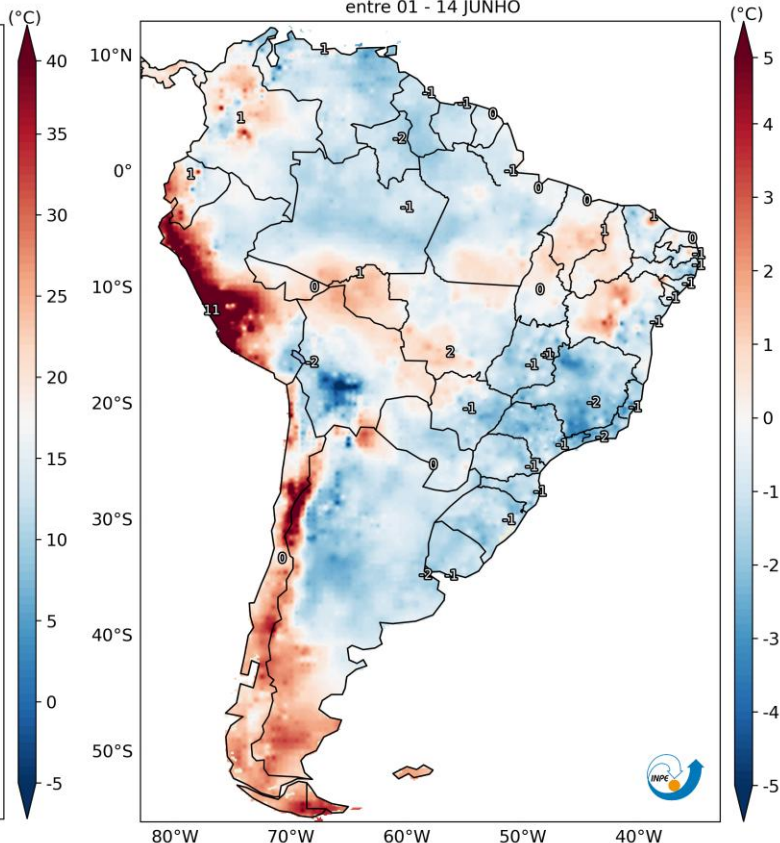
Temperatura Máxima – Junho (Parcial) de 2026



SAMeT - Média da Temperatura Máxima
entre 01 - 14 JUNHO



SAMeT - Anomalia da Temperatura Máxima
entre 01 - 14 JUNHO



INMET



INPE

MINISTÉRIO DA
CIÊNCIA, TECNOLOGIA
E INOVAÇÃO

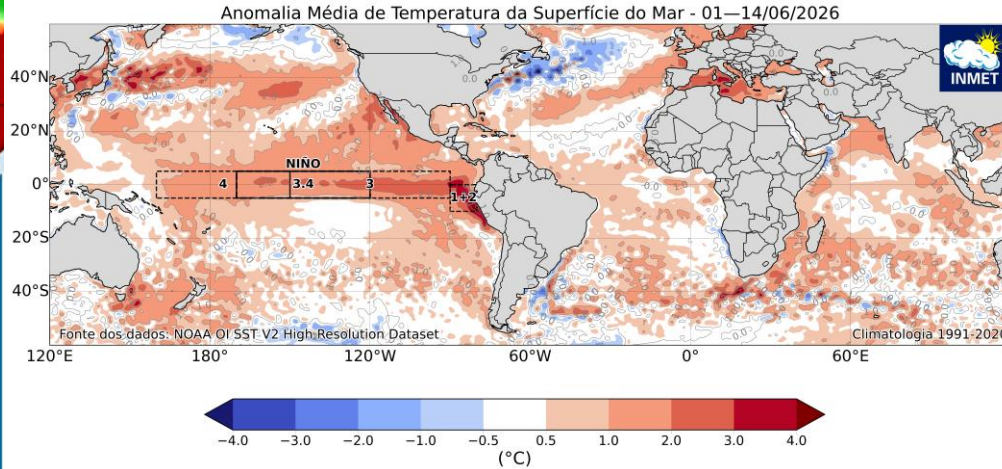
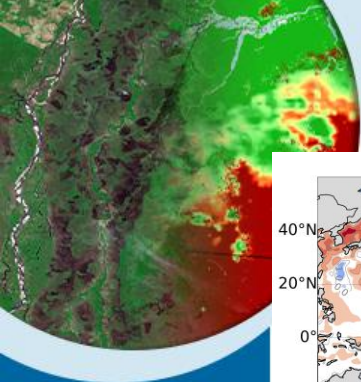
MINISTÉRIO DA
AGRICULTURA E
PECUÁRIA



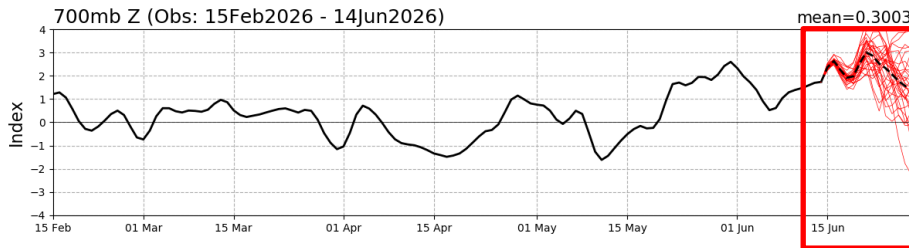
GOVERNO FEDERAL

BRASIL
UNIÃO E RECONSTRUÇÃO

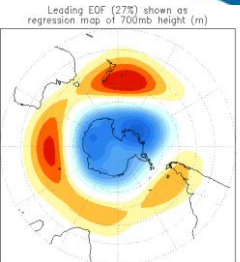
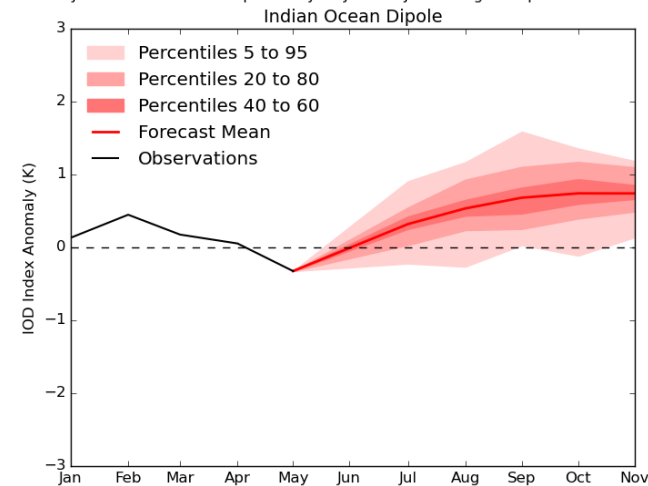
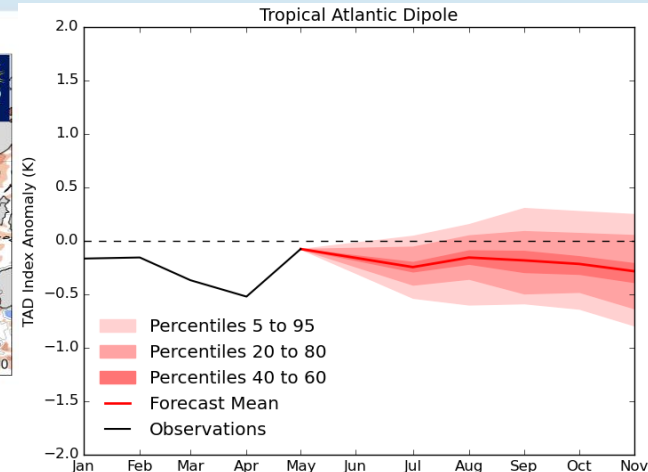
TSM e Variabilidade Intrasazonal



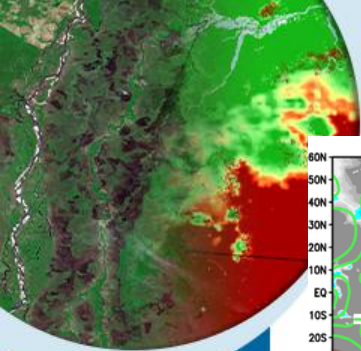
AAO Index: Observed & GEFS Forecasts



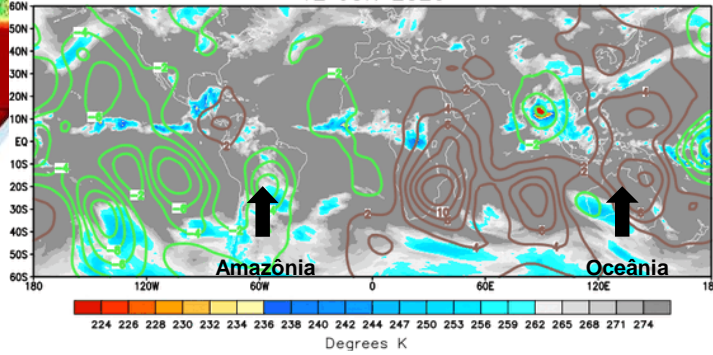
Fonte: CPC/NOAA e Met Office.



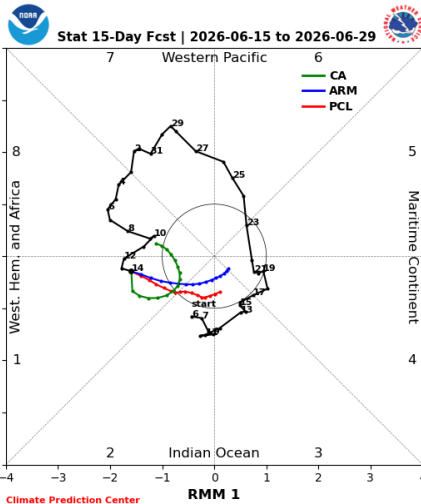
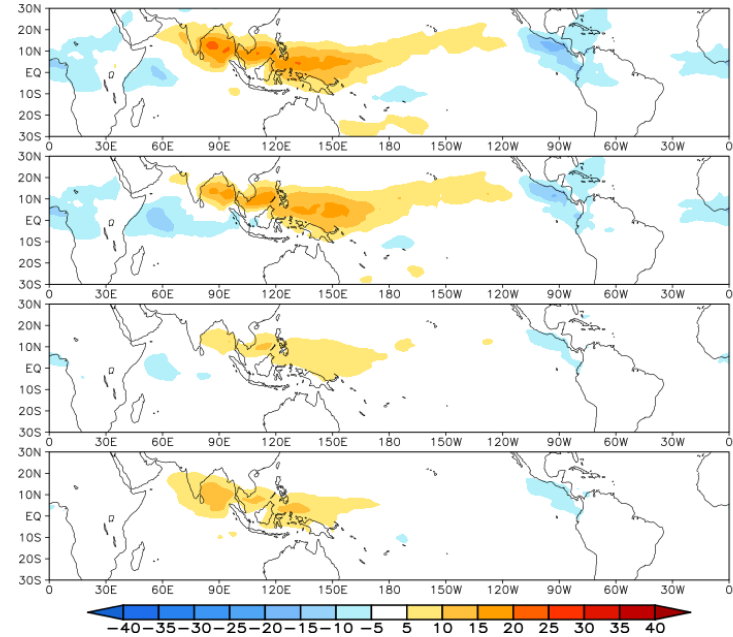
Oscilação Madden-Julian



12 JUN 2026



OLR prediction of MJO-related anomalies using CA model reconstruction by RMM1 & RMM2 (14Jun2026)



MINISTÉRIO DA
CIÊNCIA, TECNOLOGIA
E INOVAÇÃO

MINISTÉRIO DA
AGRICULTURA E
PECUÁRIA



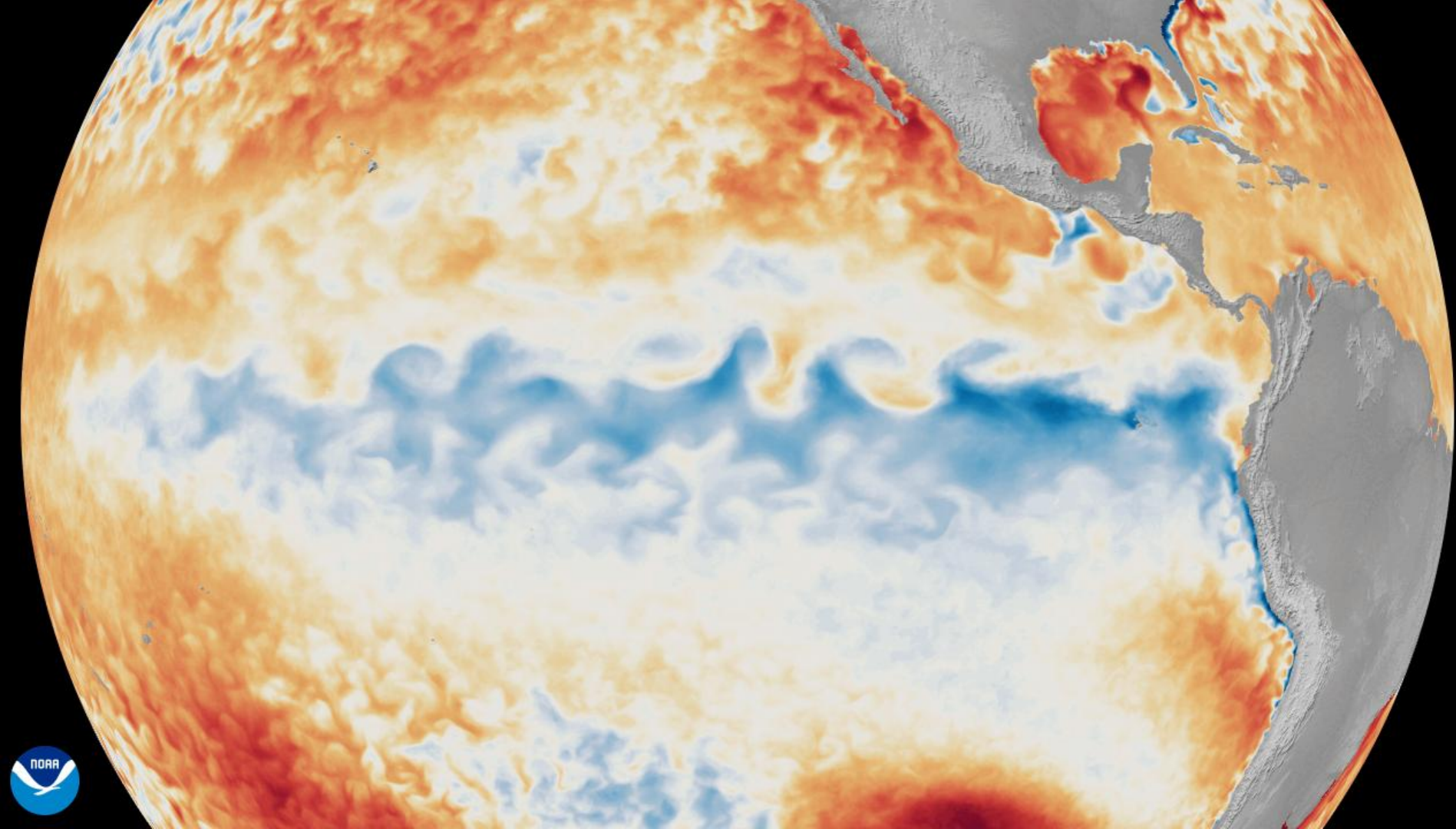
Condições Atuais da TSM



MINISTÉRIO DA
CIÊNCIA, TECNOLOGIA
E INOVAÇÃO

MINISTÉRIO DA
AGRICULTURA E
PECUÁRIA

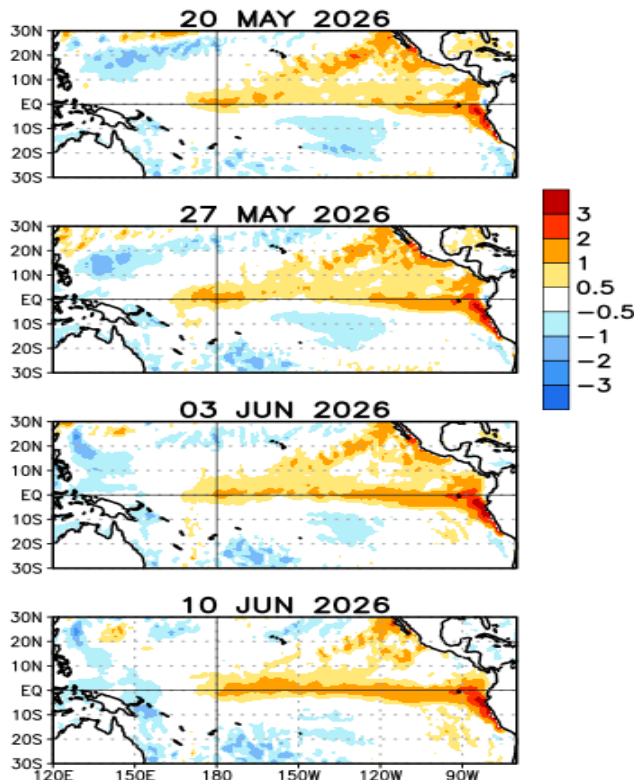
GOVERNO FEDERAL
BRASIL
UNIÃO E RECONSTRUÇÃO



Anomalia de Temperatura da Superfície do Mar

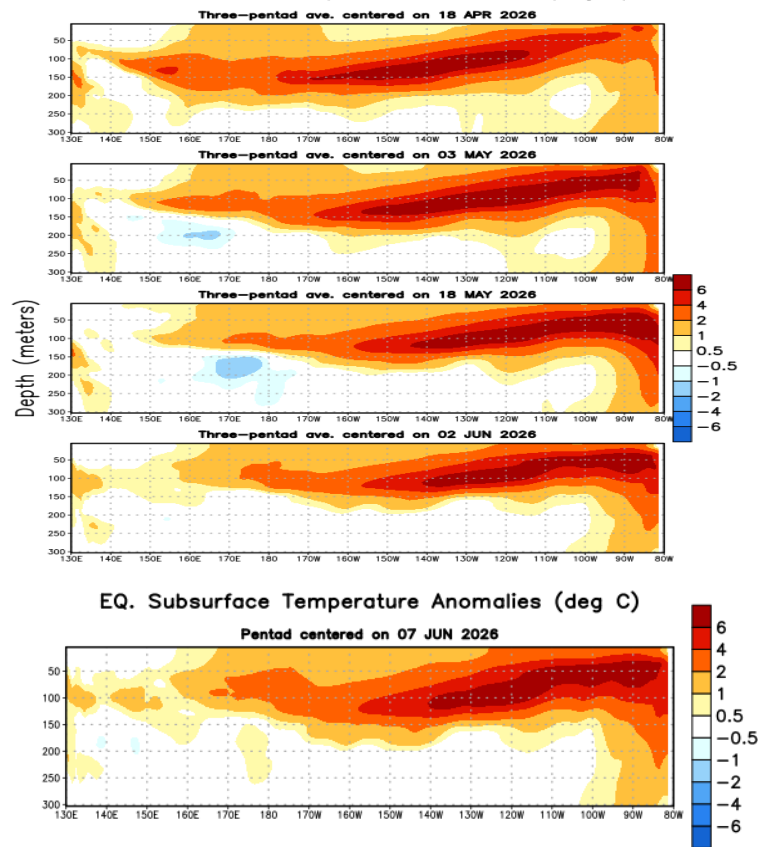
Superficiais

Weekly Relative SST Anomalies (DEG C)

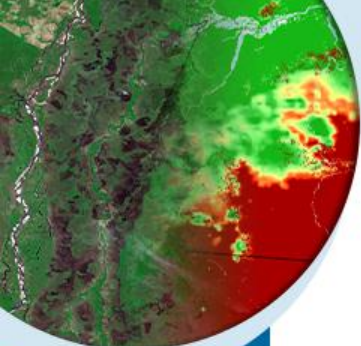


Subsuperficiais

EQ. Subsurface Temperature Anomalies (deg C)



Fonte: CPC/NOAA

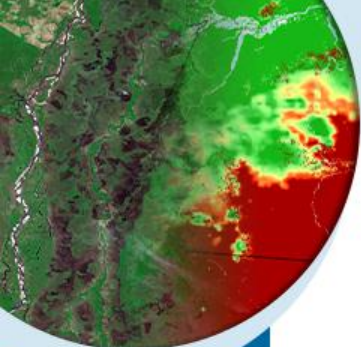


MINISTÉRIO DA
CIÊNCIA, TECNOLOGIA
E INOVAÇÃO

MINISTÉRIO DA
AGRICULTURA E
PECUÁRIA

GOVERNO DO
BRASIL
DO LADO DO POVO BRASILEIRO

ENSO



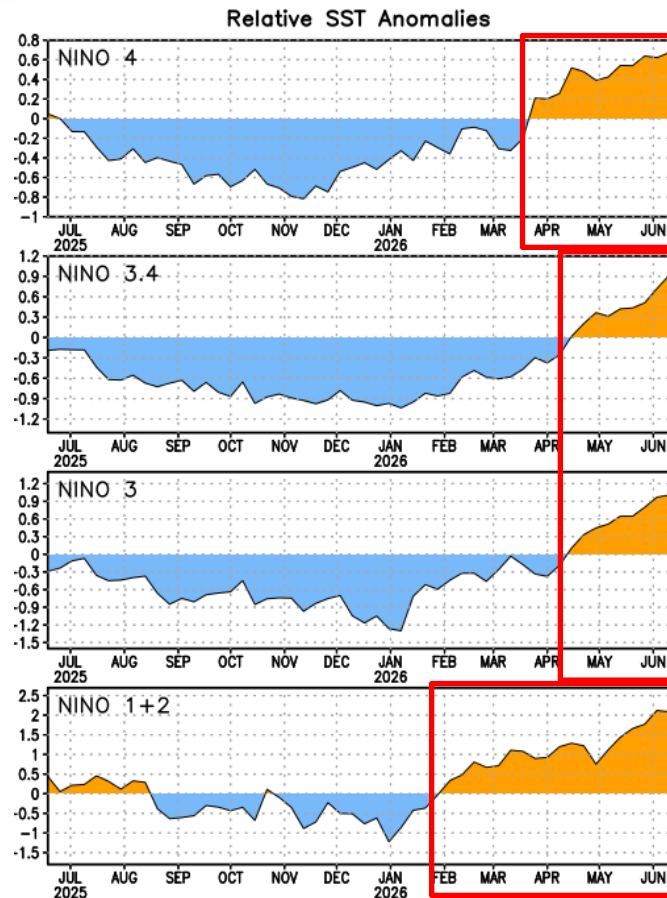
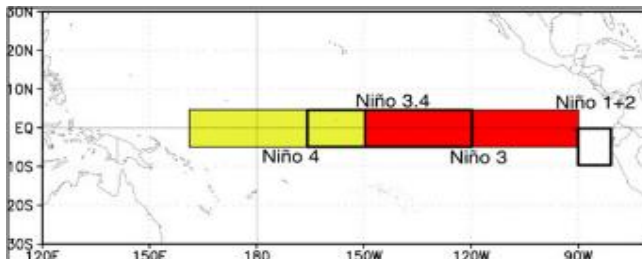
Médias de TSM na última semana:

Niño 4: 0,7°C

Niño 3.4: 0,9°C

Niño 3: 1,0°C

Niño 1+2: 2,1°C



Fonte: CPC/NOAA

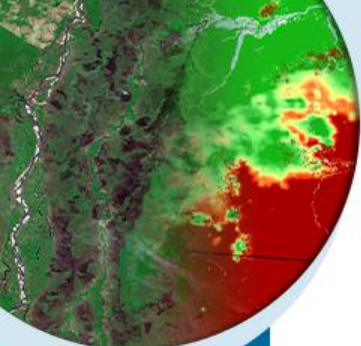


MINISTÉRIO DA
CIÊNCIA, TECNOLOGIA
E INOVAÇÃO

MINISTÉRIO DA
AGRICULTURA E
PECUÁRIA

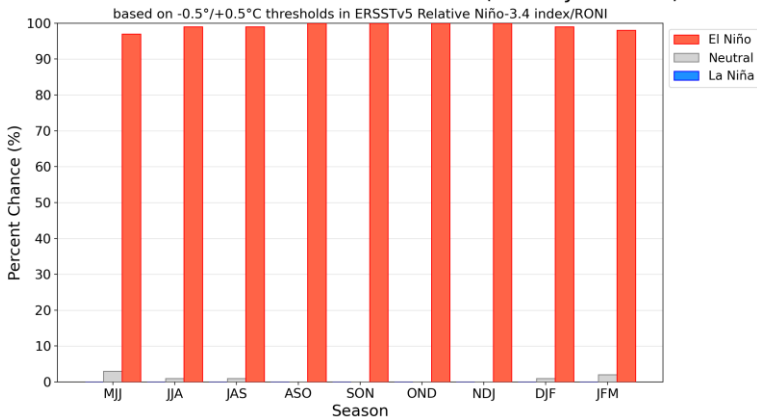
GOVERNO DO
BRASIL
DO LADO DO POVO BRASILEIRO

ENSO - Próximos Meses



Início de junho

Official NOAA CPC ENSO Probabilities (issued June 2026)

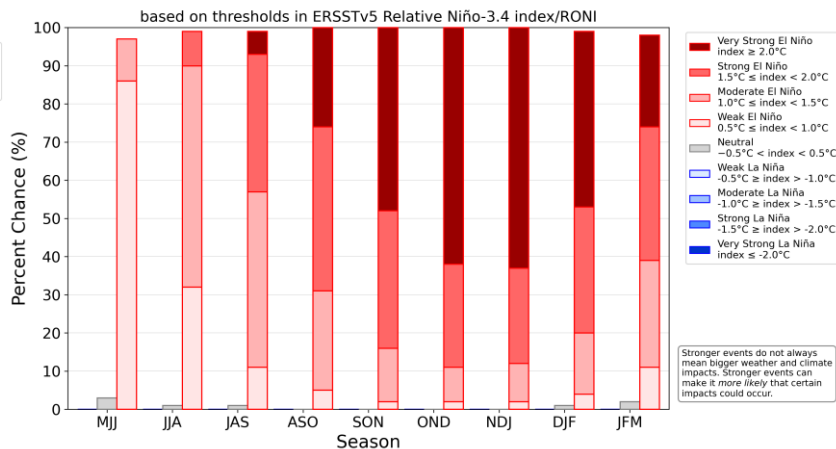


↑
JJA

~99%

Meio de Maio

NOAA CPC ENSO Strength Probabilities (issued June 2026)



↑
JJA

~96%

Stronger events do not always mean bigger weather and climate impacts. Stronger events can make it more likely that certain impacts could occur.

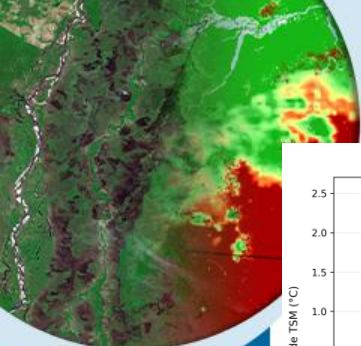


MINISTÉRIO DA
CIÊNCIA, TECNOLOGIA
E INOVAÇÃO

MINISTÉRIO DA
AGRICULTURA E
PECUÁRIA

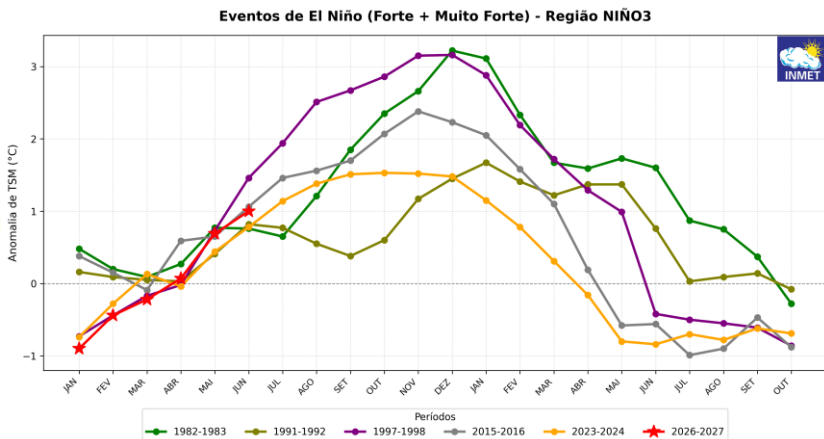
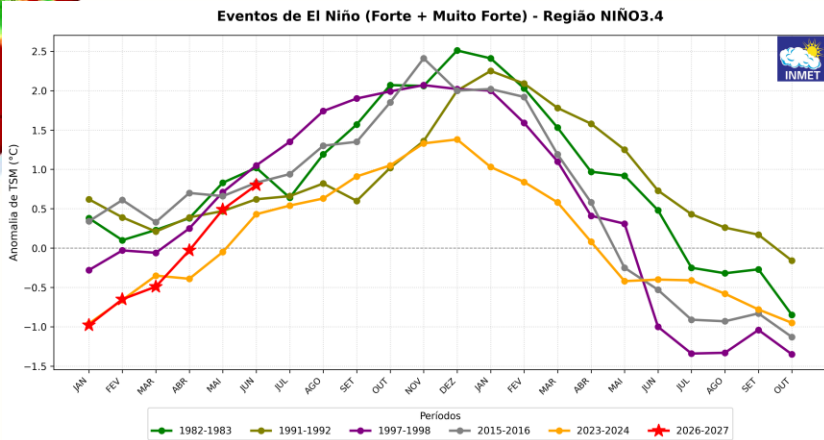
GOVERNO DO
BRASIL
DO LADO DO POVO BRASILEIRO

Ranking e Previsão do El Niño

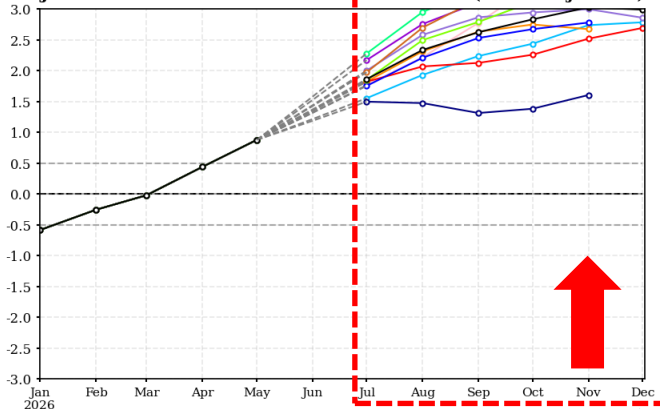


MINISTÉRIO DA
CIÊNCIA, TECNOLOGIA
E INOVAÇÃO

MINISTÉRIO DA
AGRICULTURA E
PECUÁRIA

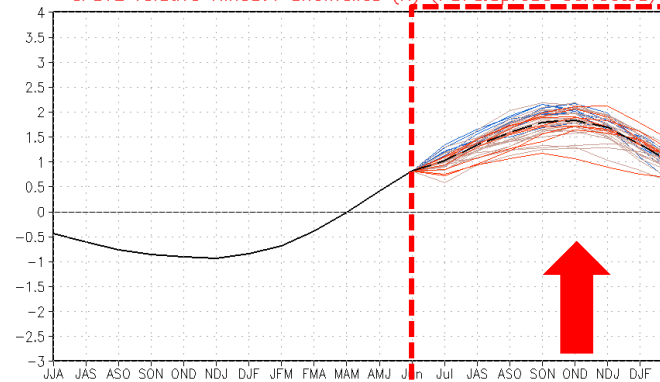


Forecast of Niño3.4 Jul2026 to Dec2026



Beijing CMCC ECMWF Exeter Melbourne Montreal

CFSv2 relative Niño3.4 anomalies (K) (PDF&Spread corrected)



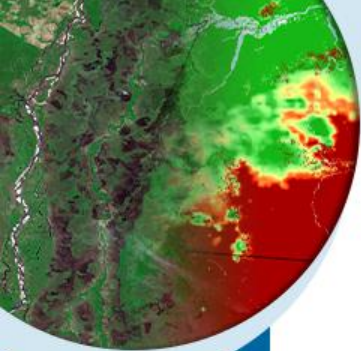
Latest 8 forecast members
Earliest 8 forecast members
Other forecast members

Forecast ensemble mean
NCCEI OIv2.1 daily analysis

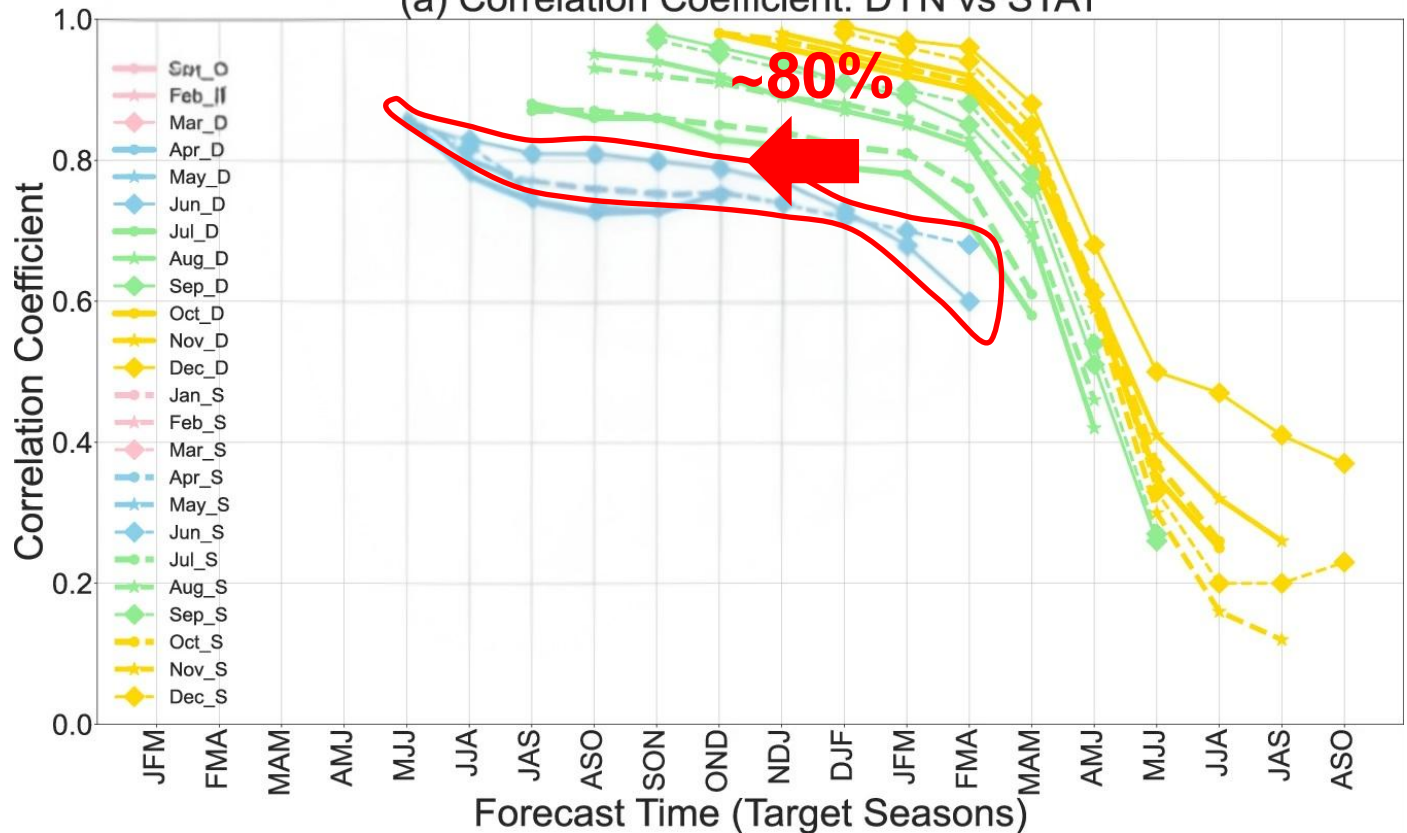
(Climatology base period: 1991-2020)

Publicado em 15/06 (NOAA)

BARREIRA DE PREVISIBILIDADE



(a) Correlation Coefficient: DYN vs STAT

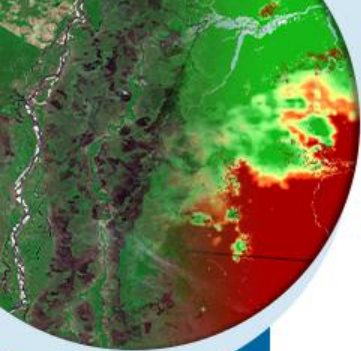


MINISTÉRIO DA
CIÊNCIA, TECNOLOGIA
E INOVAÇÃO

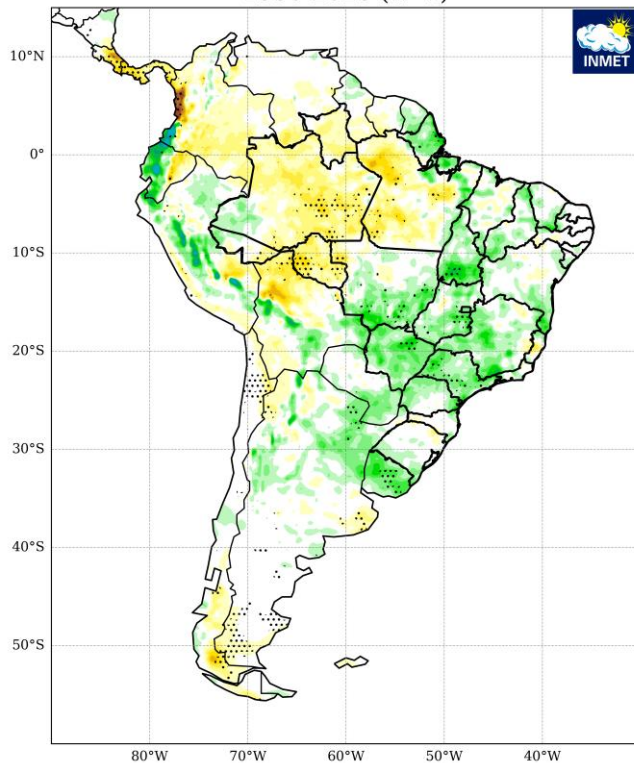
MINISTÉRIO DA
AGRICULTURA E
PECUÁRIA



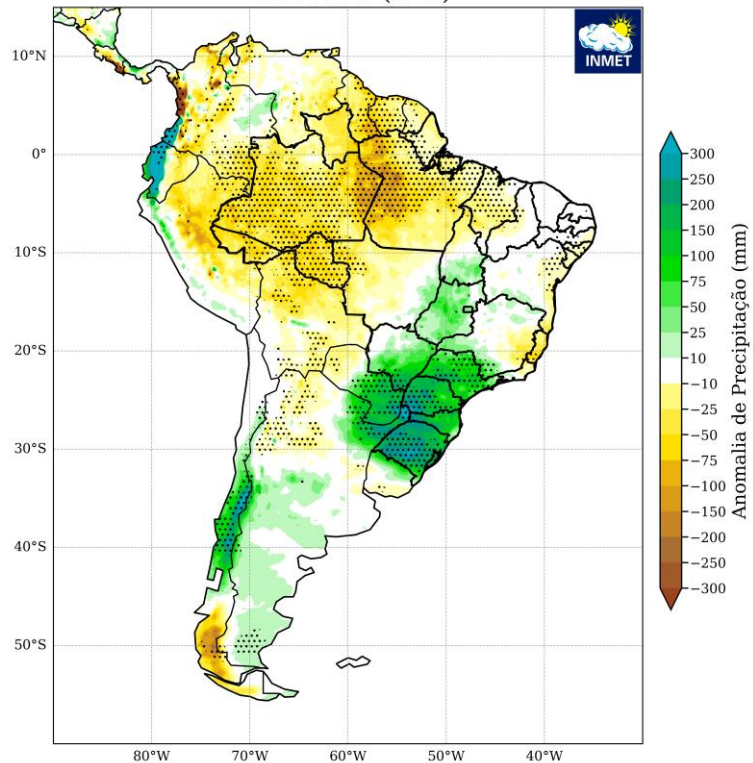
Desvio Médio da Precipitação no Brasil Durante El Niño



JAS - El Niño Moderado
1950-2025 (n=4)



SON - El Niño Muito Forte
1950-2025 (n=5)

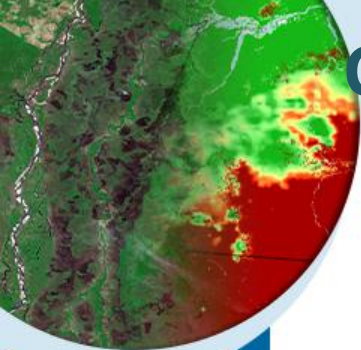


MINISTÉRIO DA
CIÊNCIA, TECNOLOGIA
E INOVAÇÃO

MINISTÉRIO DA
AGRICULTURA E
PECUÁRIA

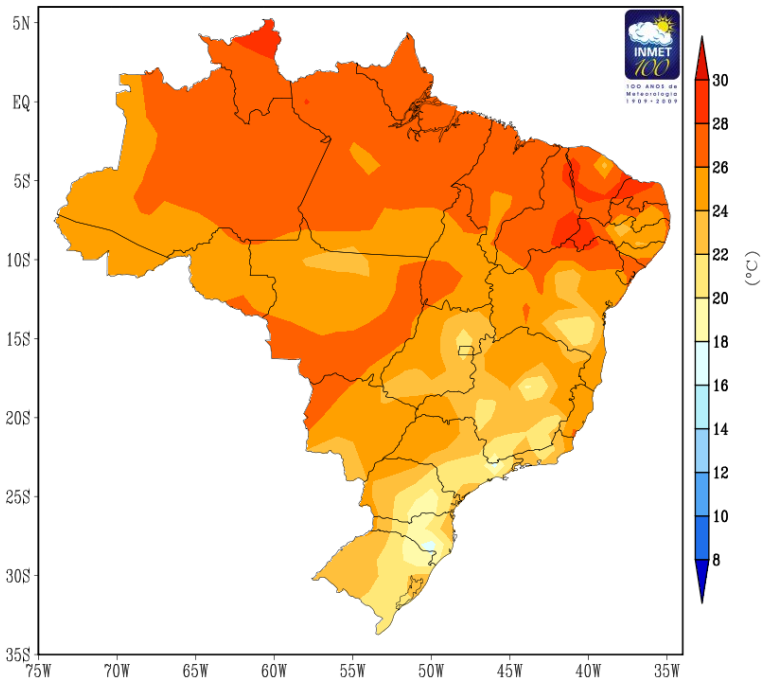
GOVERNO FEDERAL
BRASIL
UNIÃO E RECONSTRUÇÃO

Climatologia - Precipitação e Temperatura - JAS



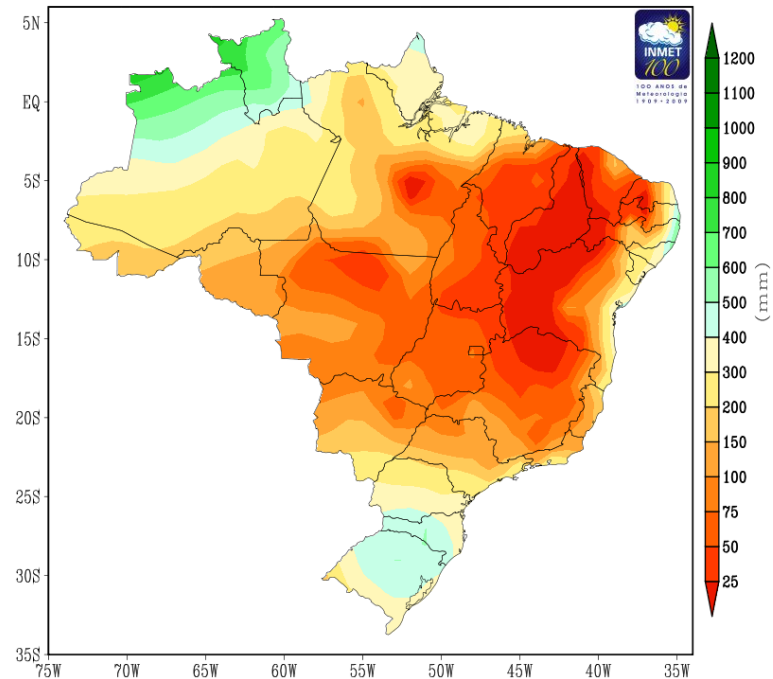
Temperatura

NORMAL CLIMATOLÓGICA DA TEMPERATURA MÉDIA
TRIMESTRE JULHO-AGOSTO-SETEMBRO
PERÍODO DE REFERÊNCIA : 1981-2010



Precipitação

NORMAL CLIMATOLÓGICA DA PRECIPITAÇÃO
TRIMESTRE JULHO-AGOSTO-SETEMBRO
PERÍODO DE REFERÊNCIA : 1981-2010



MINISTÉRIO DA
CIÊNCIA, TECNOLOGIA
E INOVAÇÃO

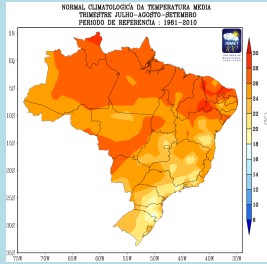
MINISTÉRIO DA
AGRICULTURA E
PECUÁRIA

GOVERNO DO
BRASIL
DO LADO DO POVO BRASILEIRO

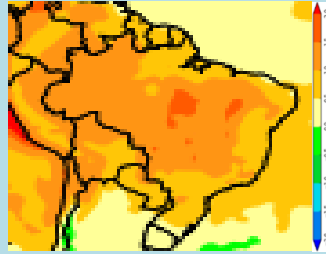
Previsão de Anomalias de Temperatura

JAS/26

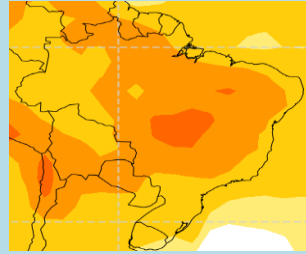
CLIMATOLOGIA



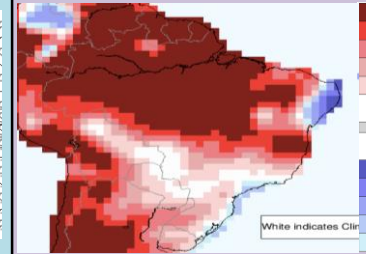
UKMO*



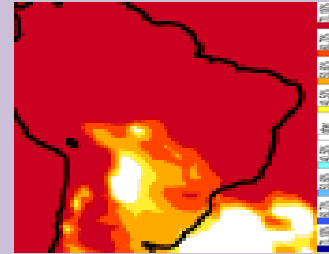
WMO*



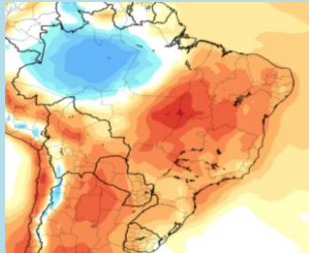
IRI*



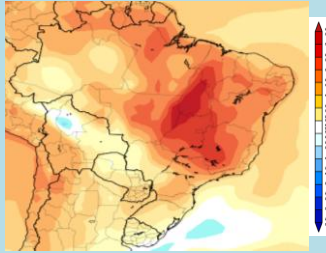
ECMWF*



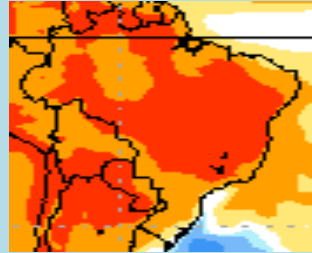
CanSIPS



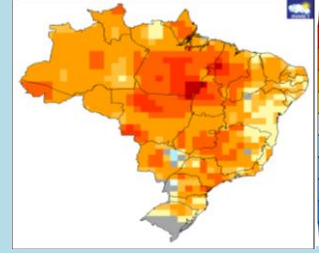
CFSv2



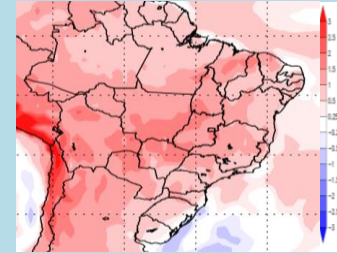
NMME*



INMET



INPE

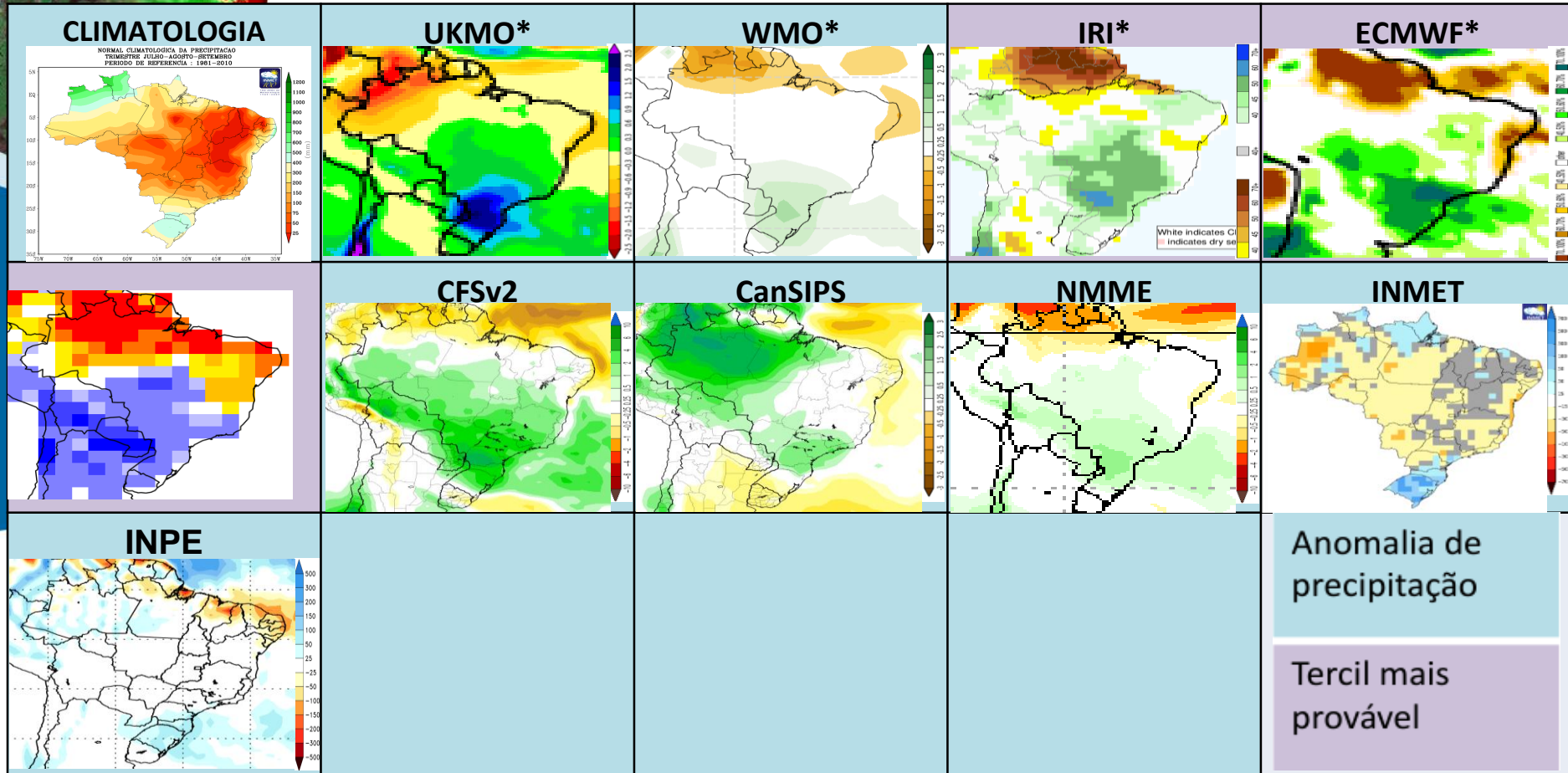


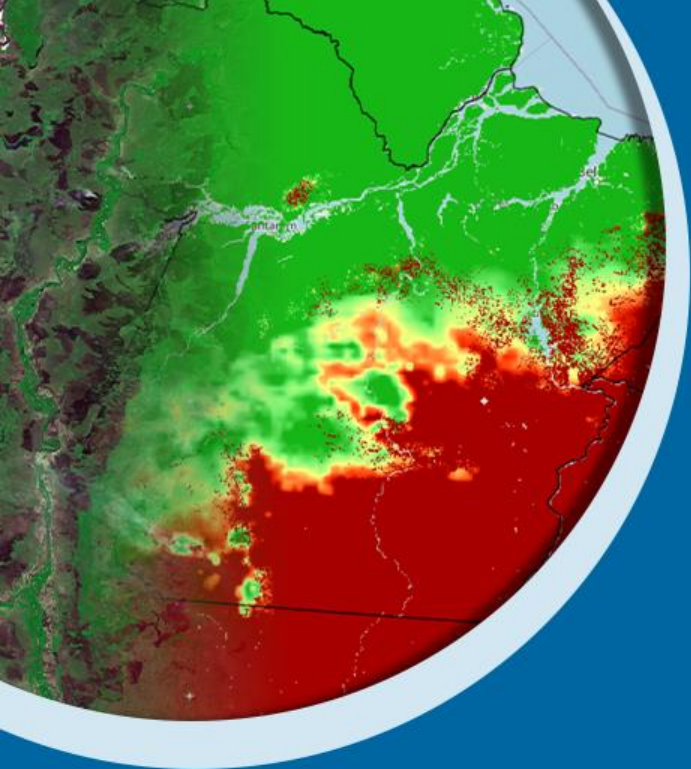
Anomalia de temperatura

Tercil mais provável

Previsão de Anomalias de Precipitação

JAS/26





Obrigado pela atenção!



Dr. Leydson Galvêncio Dantas
leydson.dantas@inmet.gov.br

MINISTÉRIO DA
CIÊNCIA, TECNOLOGIA
E INOVAÇÃO

MINISTÉRIO DA
AGRICULTURA E
PECUÁRIA

GOVERNO DO
BRASIL
DO LADO DO POVO BRASILEIRO