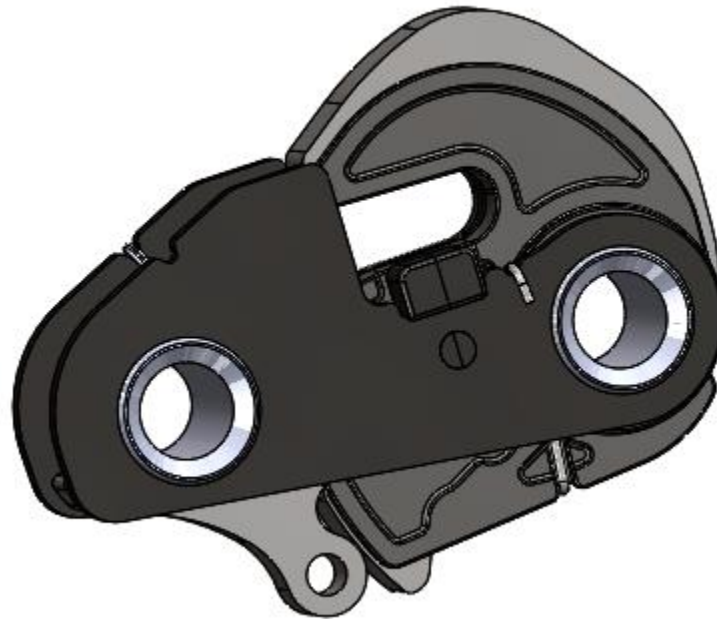
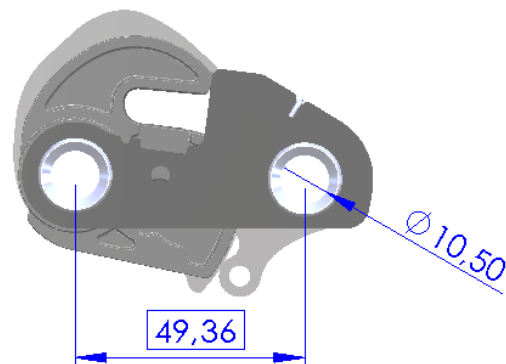
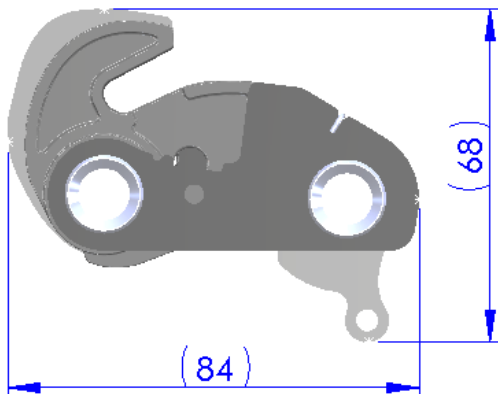
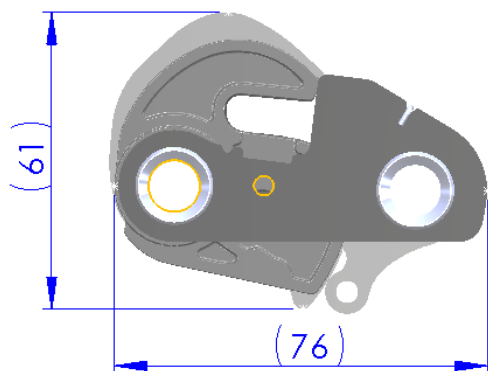
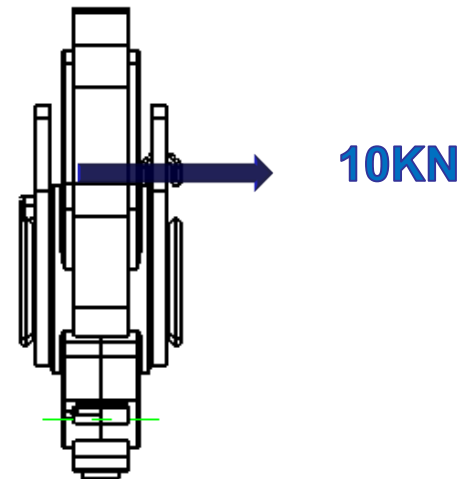
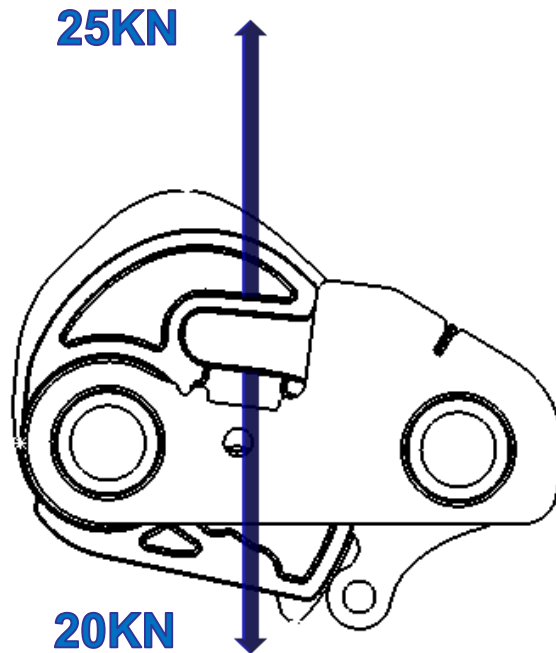

***Mecanismo para Trava de Banco Traseiro
Automotivo – Projeto Feeder***



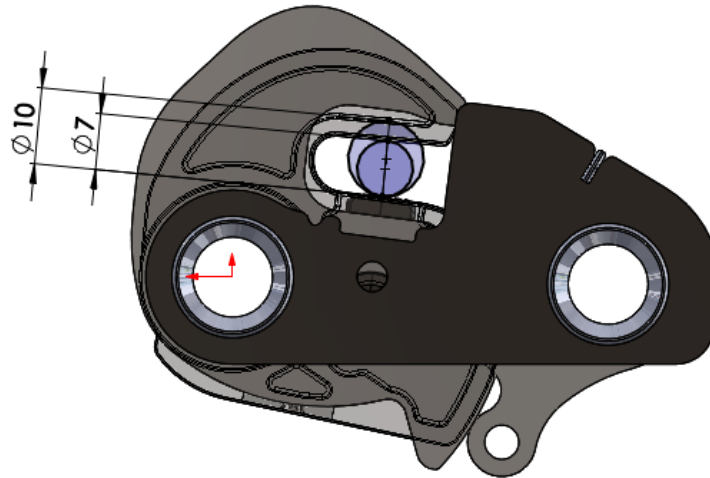
Dimensões Gerais



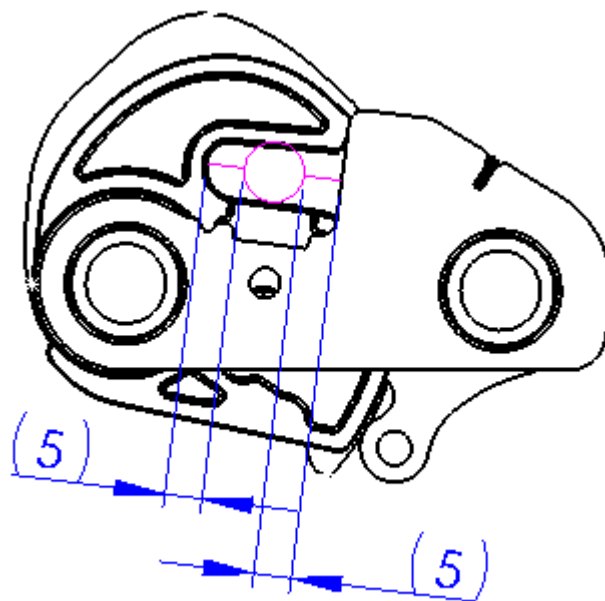


Interface com pino trava de 7 a 10mm

Mesmo projeto para pino trava de
 $\varnothing 7\text{mm}$ a $\varnothing 10\text{mm}$



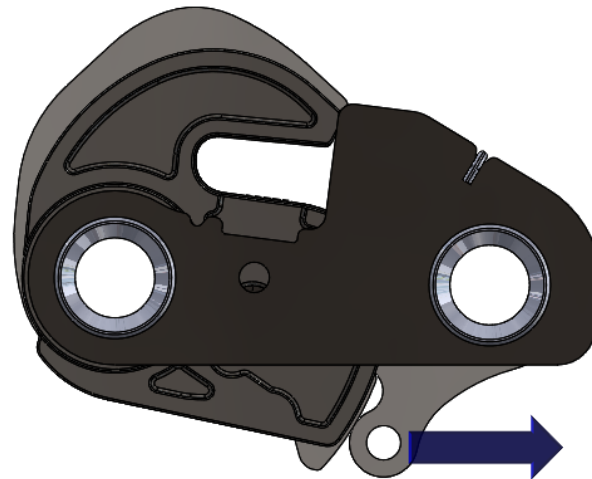
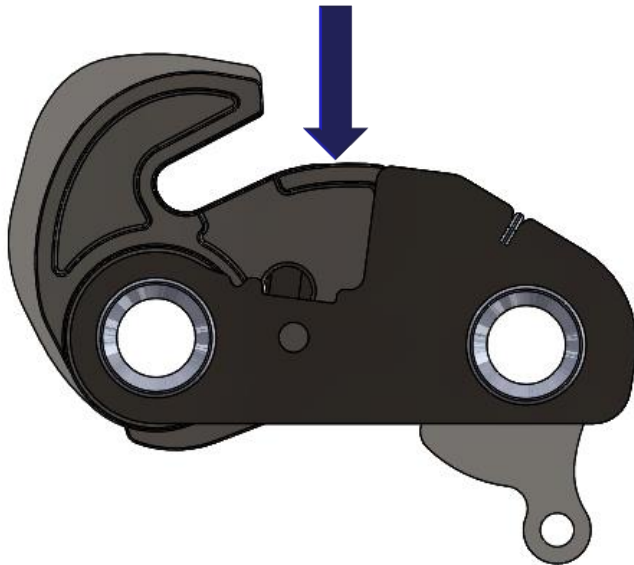
Absorção de Tolerância



* Considerando pino de 8mm

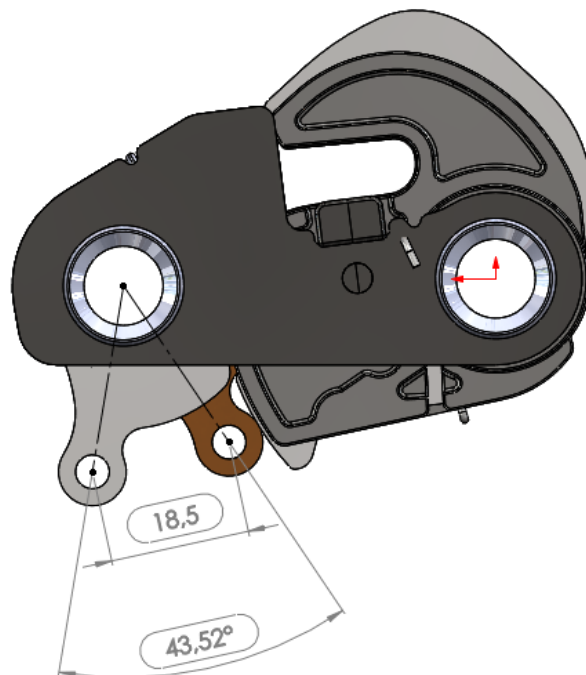
Força para travamento e destravamento

LOCK FORCE 25 ± 15 N

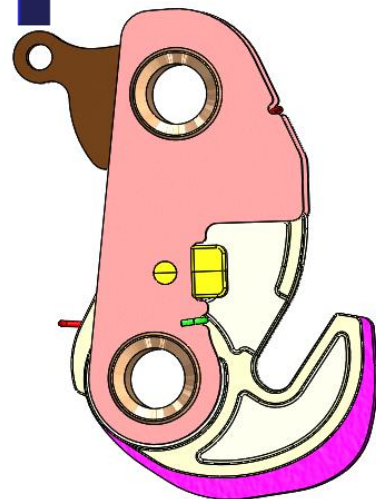


RELEASE FORCE 15 ± 5 N

Poisção de deslocamento

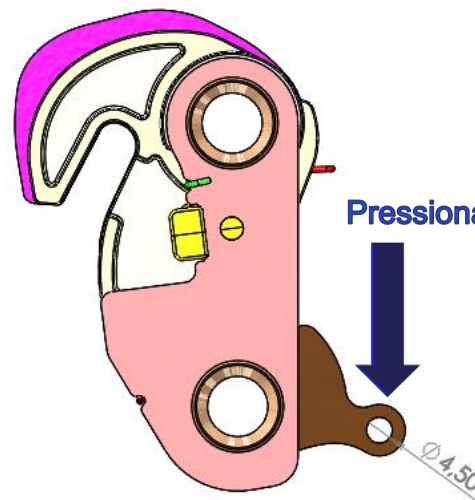


Puxar

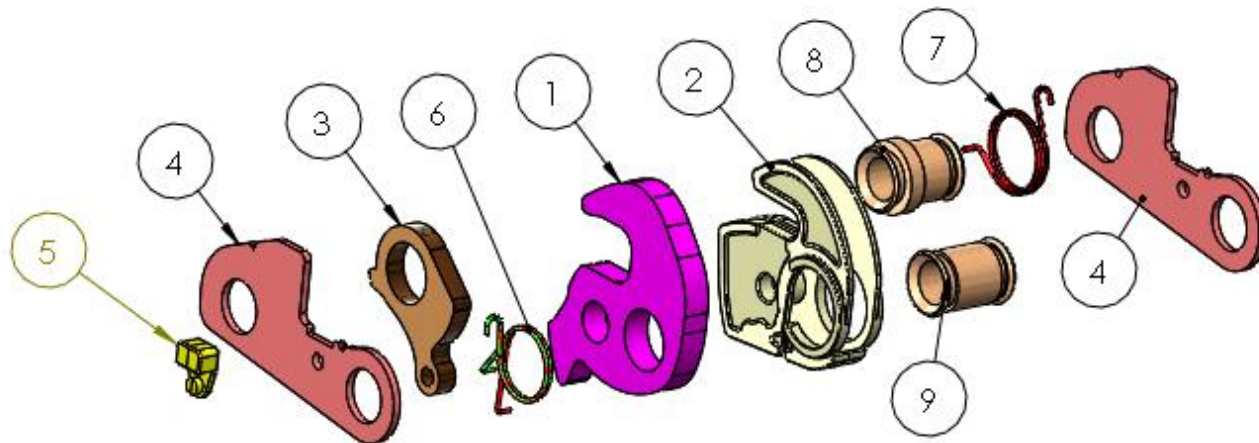


Ou

Pressionar

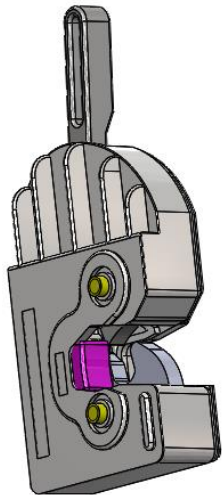


Vista explodida dos componentes

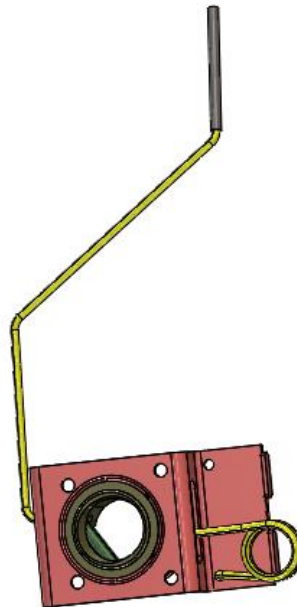


Outros Mecanismos de Trava desenvolvidos pela Feeder

Projetos Ford e Fiat desde 2006



Projetos GM até 2014



Mecanismo de trava de
assoalho para projeto Ford
até 2017

