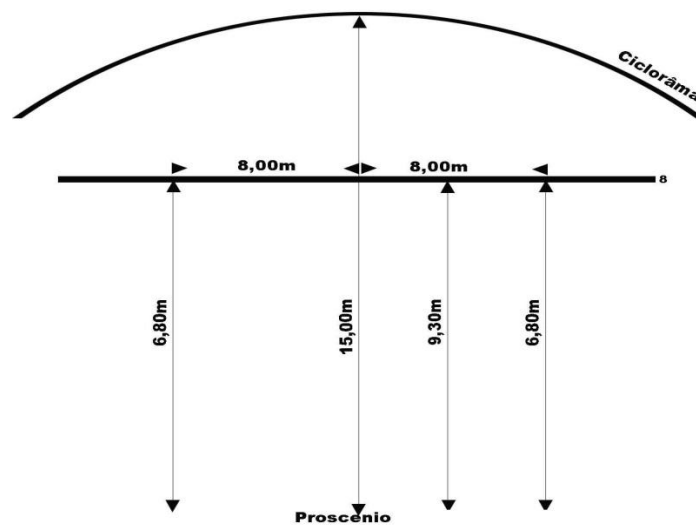
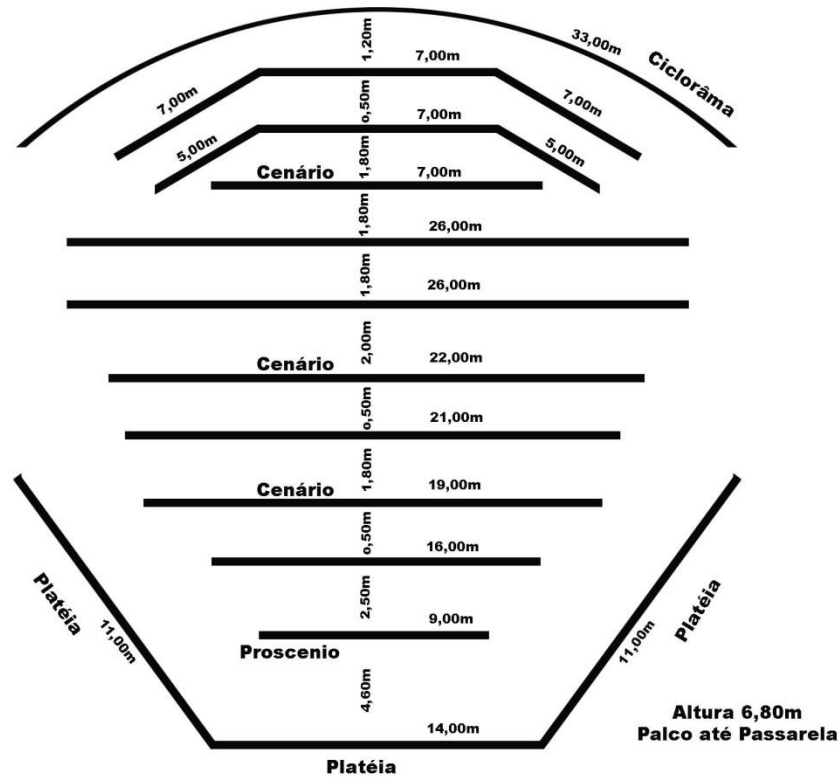


TEATRO PLÍNIO MARCOS - Especificações técnicas -







Lotação: 512 Lugares

Camarim: 02 de 29m²

Palco:





Iluminação:


	32 Elipsoidal Telem 40º 1000w
	20 Fresnel Telem 1000w com Bandor
	14 par 64 foco 2
	20 par 64 foco 5
	26 Plano-Convexos Telem 1000w
	01 mesa Smart Fader 24/96 com Softer com computador
	02 Canhões Seguidor Follow 1.200HMI

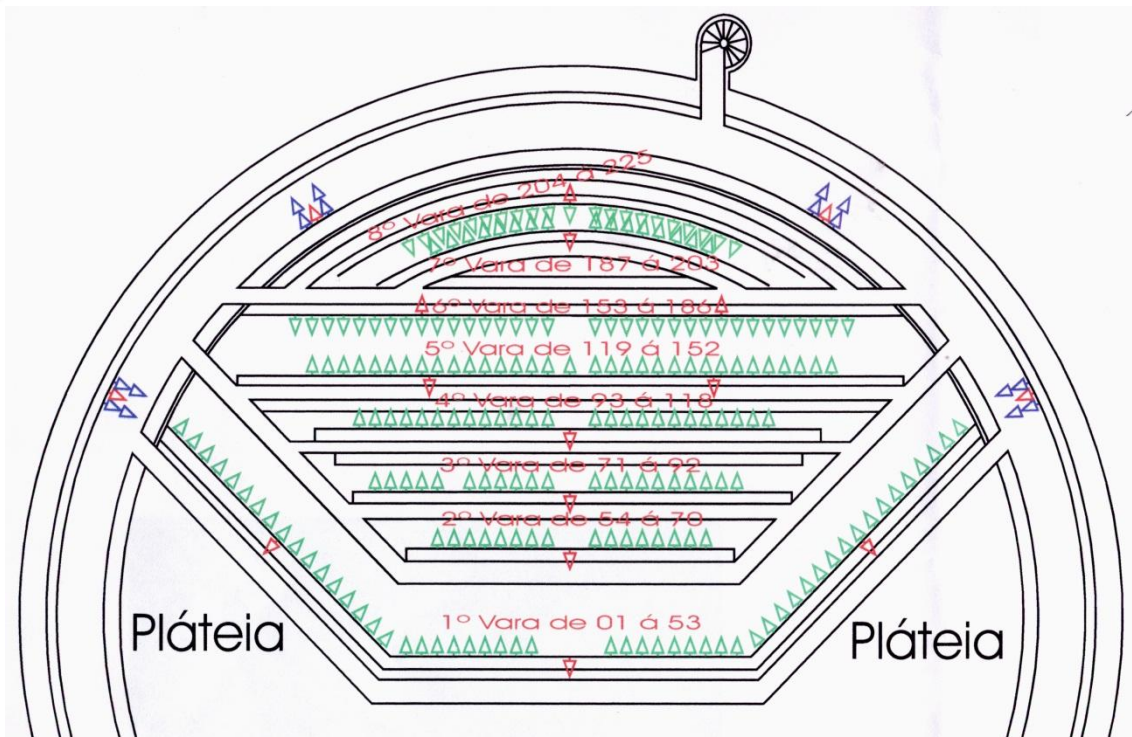
Tomadas de energia 220v (stecks) nas varas e no chão.

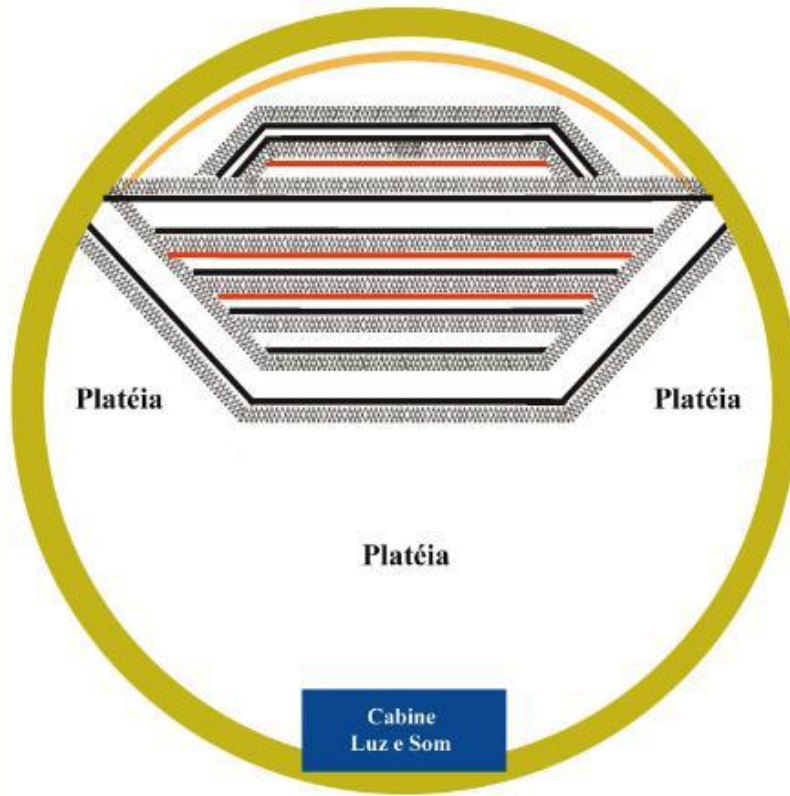
Não dispomos de extensões, maquina de fumaça e sistema de áudio.

 001 a 203 Tomadas Luz Cênicas (Varas)

 204 a 225 Tomadas Luz Cênicas (Varas)

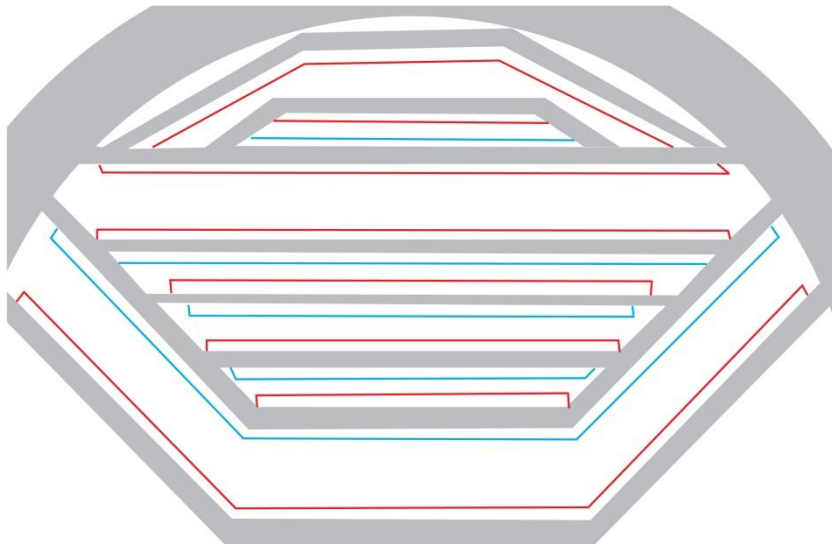
 226 a 242 Tomadas Luz Cênicas (Chão)

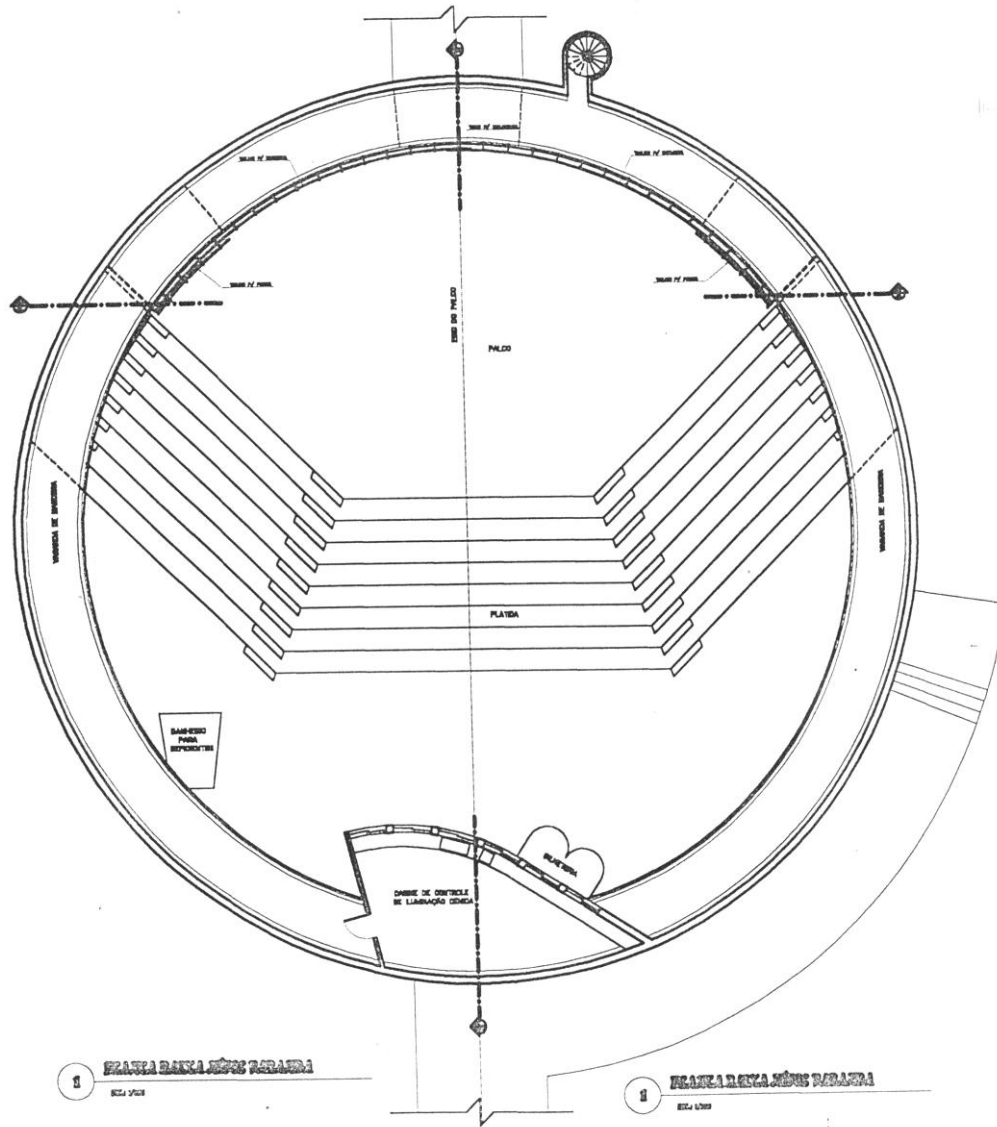


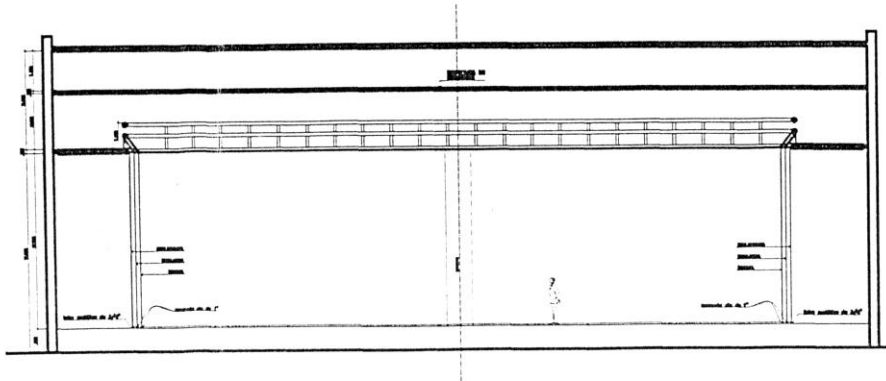


Legendas:

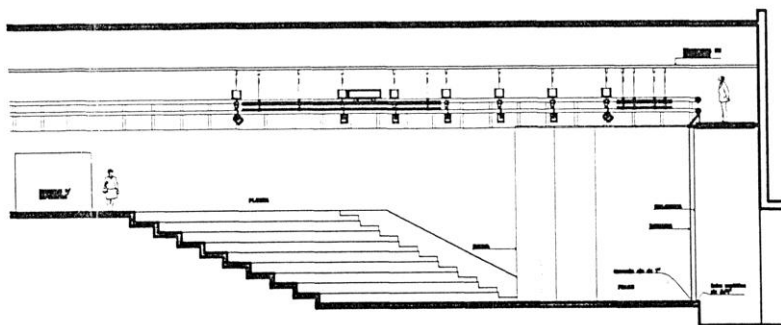
-  Passarelas
-  Varas de Luz
-  Varas de Cenário



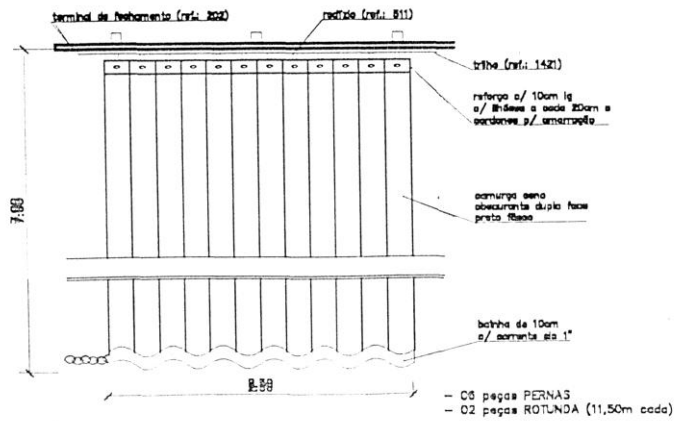




3 **SECCOES 03-01**
Escala 1/200



3 **SECCOES 03-02**
Escala 1/200



4 **DETALHE DO RODÍZIO E BORDAS**
Escala 1/50

- 06 peças PERNAS
- 02 peças ROTUNDA (11,50m cada)