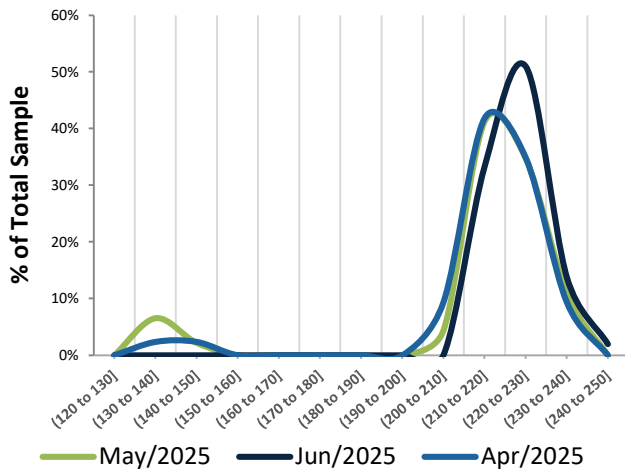


## Frequency Distribution - Forecasts for: June-25

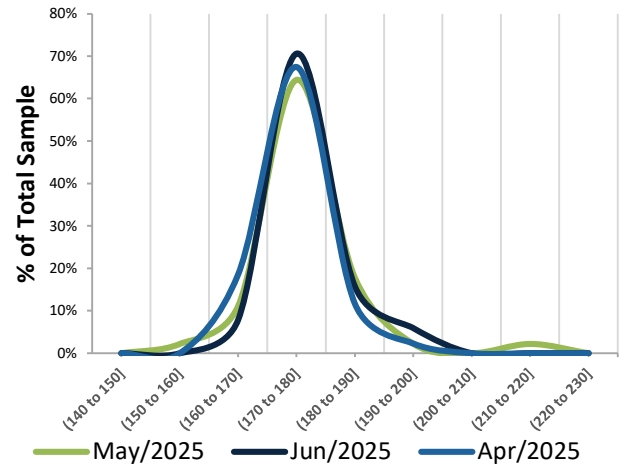
### Total Federal Tax Revenue

BRL billion



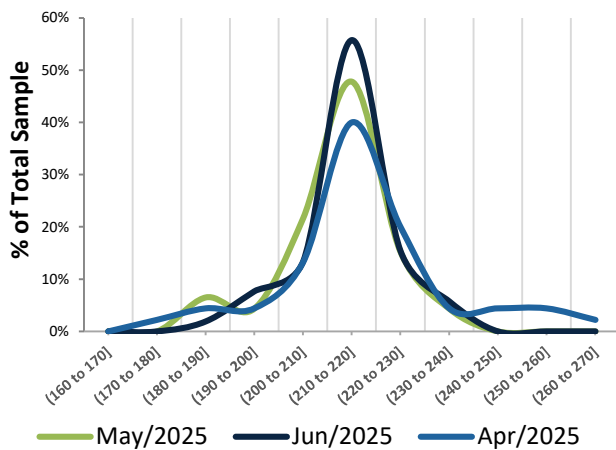
### Central Govt Net Revenue

BRL billion



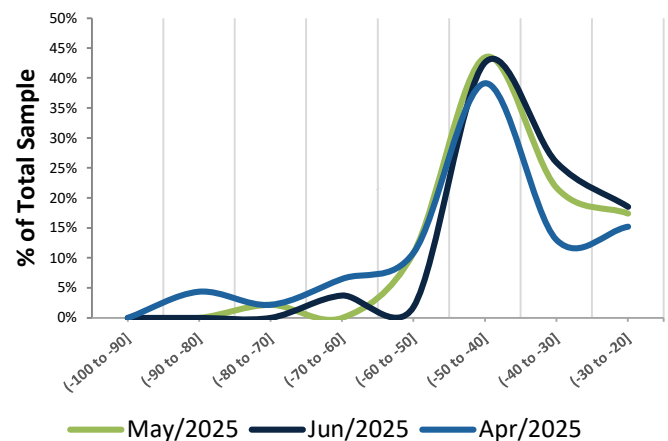
### Central Govt Total Expenditure

BRL billion



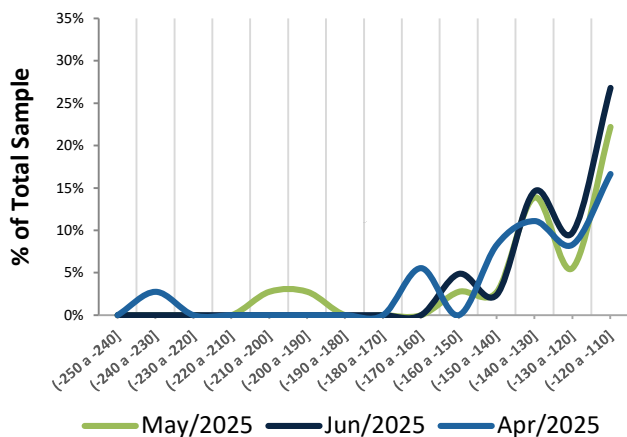
### Central Govt Primary Balance

BRL billion



### Central Govt Fiscal Balance

BRL billion



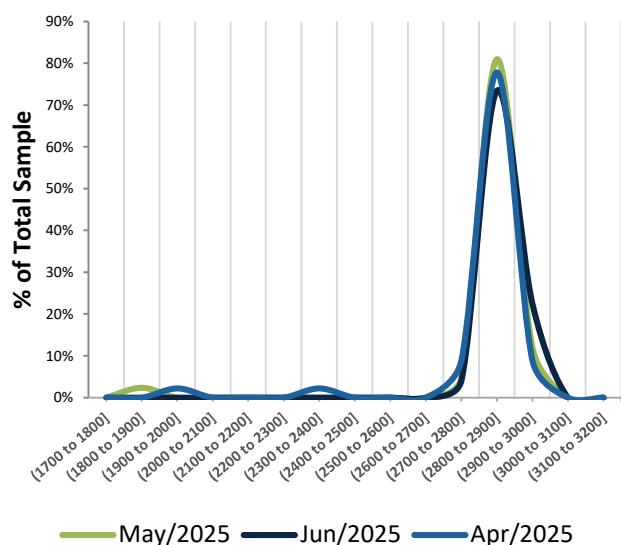
\*The surveys are conducted in a monthly basis and the market forecasters must post their estimates up to the 5th work day of the month.

\*\* The character "(" means that the value does not belong to the interval, while the character "]" means the value does belong to the interval.

## Frequency Distribution - Forecasts for 2025

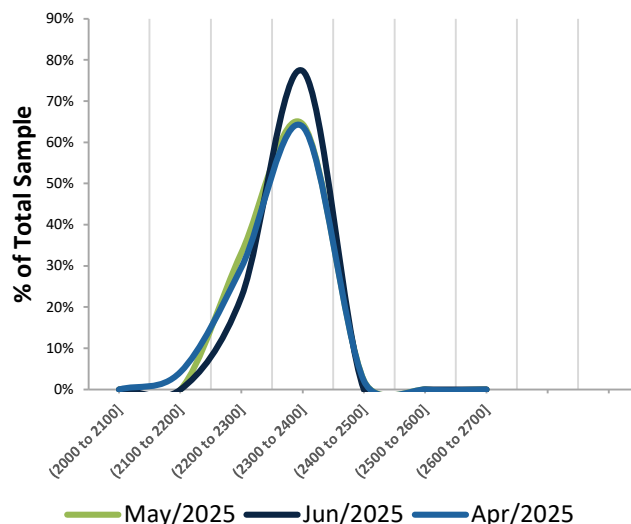
### Total Federal Tax Revenue

BRL billion



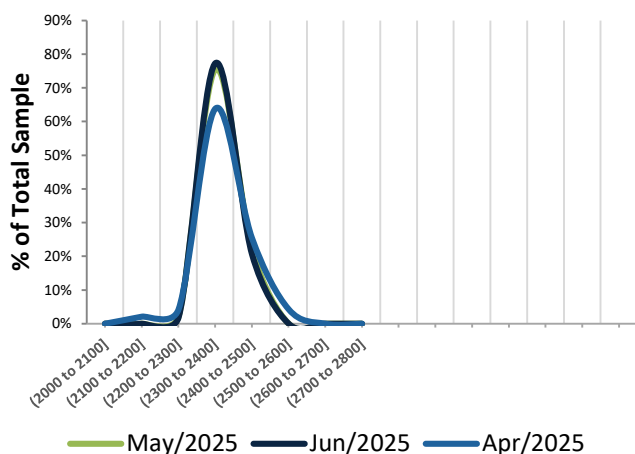
### Central Govt Net Revenue

BRL billion



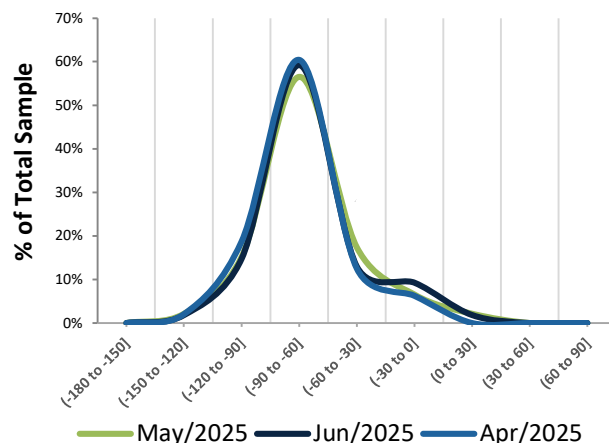
### Central Govt Total Expenditure

BRL billion



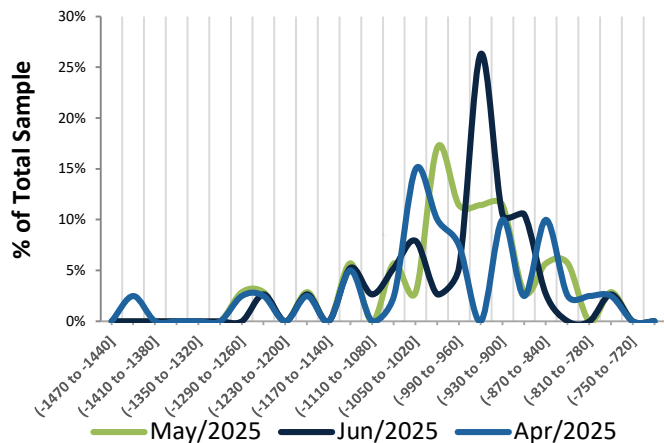
### Central Govt Primary Balance

BRL billion



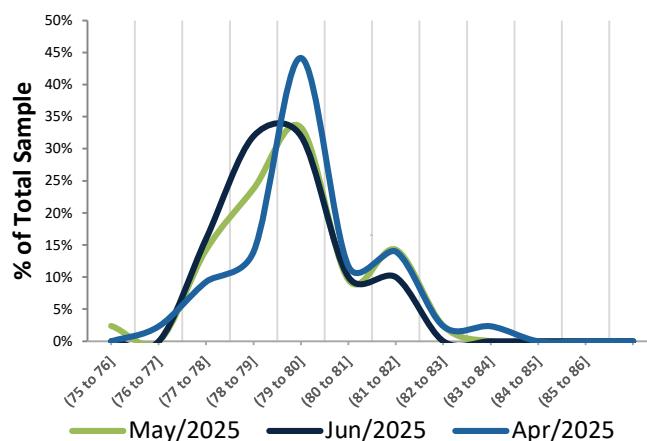
### Central Govt Fiscal Balance

BRL billion



### General Govt Gross Debt

% GDP



\*The surveys are conducted in a monthly basis and the market forecasters must post their estimates up to the 5th work day of the month.

\*\* The character "(" means that the value does not belong to the interval, while the character "]" means the value does belong to the interval.