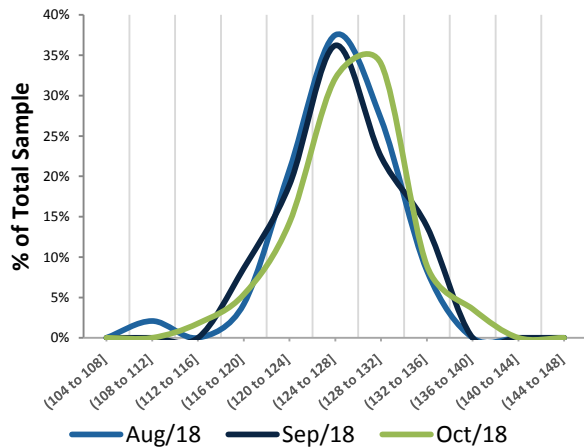


## Frequency Distribution - Forecasts for: October-18

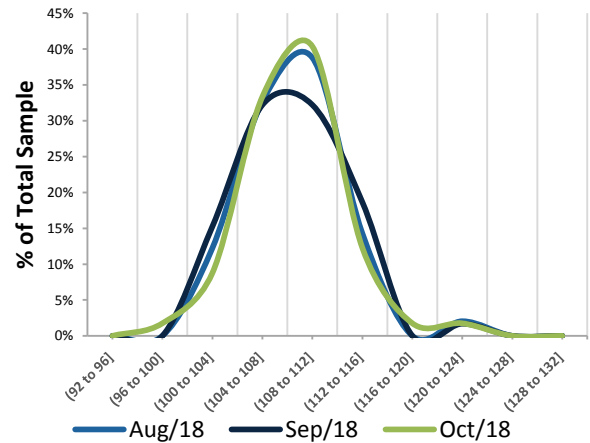
### Total Federal Tax Revenue

BRL billion



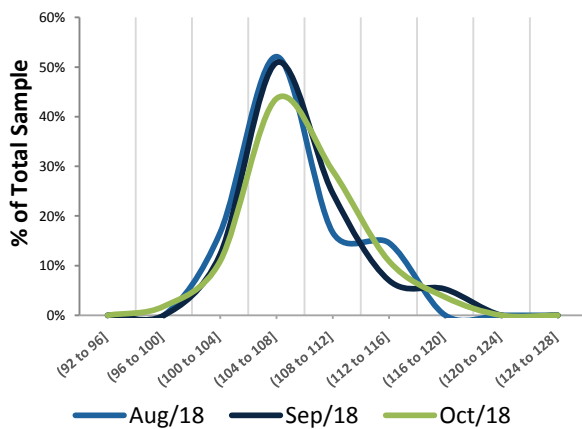
### Central Govt Net Revenue

BRL billion



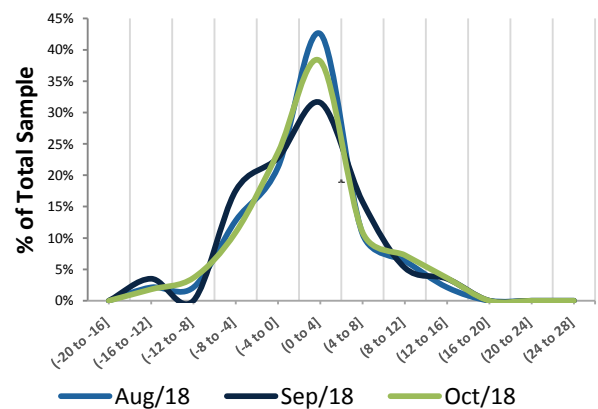
### Central Govt Total Expenditure

BRL billion



### Central Govt Primary Balance

BRL billion



\*The surveys are conducted in a monthly basis and the market forecasters must post their estimates up to the 5th work day of the month.

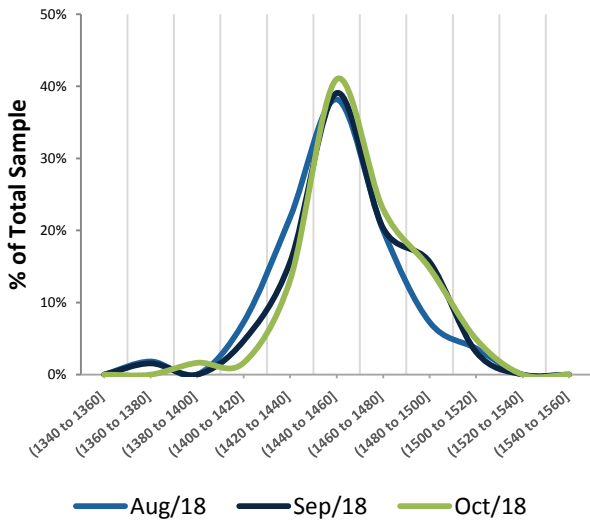
\*\* The character "[" means that the value does not belong to the interval, while the character "]" means the value does belong to the interval.

\*\*\* Revised and updated on 11/20/2018

## Frequency Distribution - Forecasts for 2018

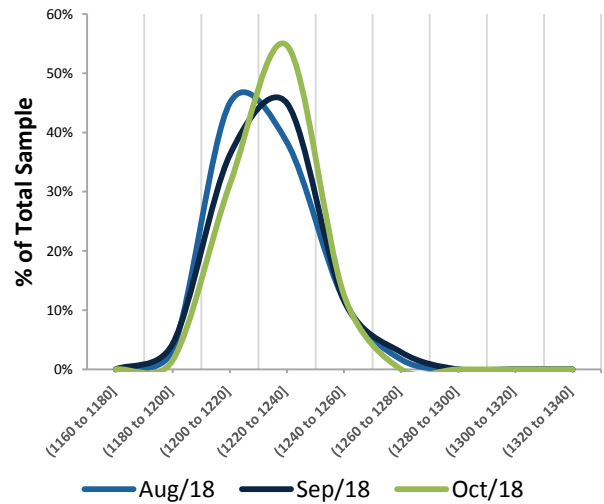
### Total Federal Tax Revenue

BRL billion



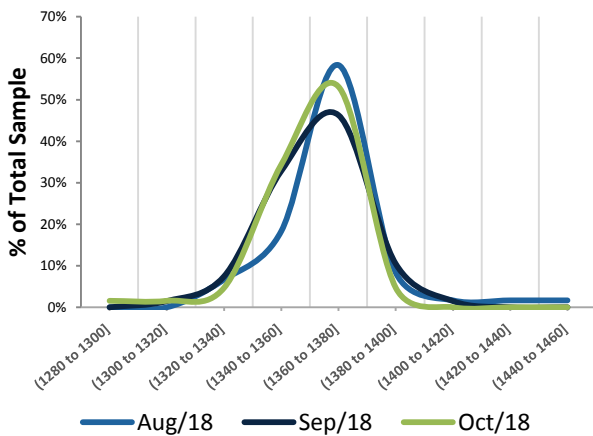
### Central Govt Net Revenue

BRL billion



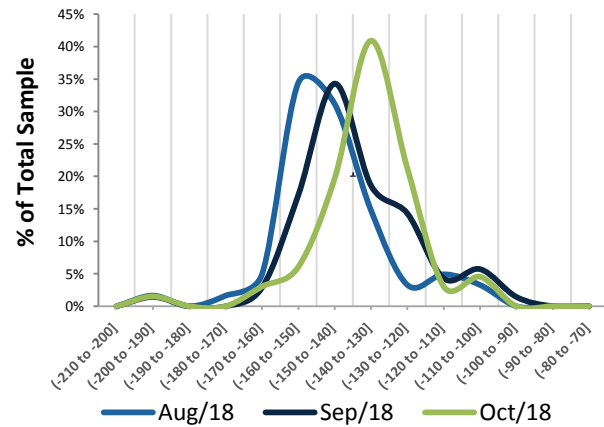
### Central Govt Total Expenditure

BRL billion



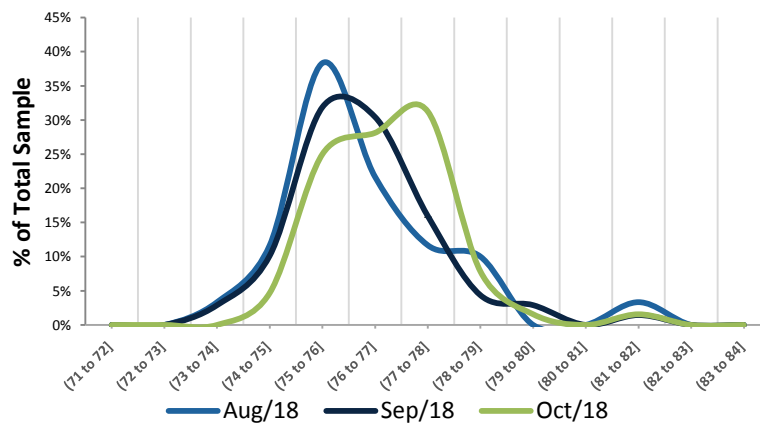
### Central Govt Primary Balance

BRL billion



### General Govt Gross Debt

% GDP



\*The surveys are conducted in a monthly basis and the market forecasters must post their estimates up to the 5th work day of the month.

\*\* The character "(" means that the value does not belong to the interval, while the character "]" means the value does belong to the interval.

\*\*\* Revised and updated on 11/20/2018