

Scenario

In comparison to the June Edition, our Risk Maps in the July Edition show a decline in all risk indicators, except for that of liquidity risk, which remained stable, whereas the indicator of risk appetite showed a rise.

The context in which these indicators performed during the month should especially stress the supply chock and uncertainty caused by the global economic scenario, in which Brazil and several other jurisdictions developed measures of social distancing to fight the COVID 19 pandemic. Despite the reduction in the risk level shown by the indicators above, in this month the economic scenario in Brazil showed a combination of depreciating exchange rate (Graph 1.1), downward trend in nominal interest rates (Graph 1.2) and rising sovereign CDS (Graph 1.3).

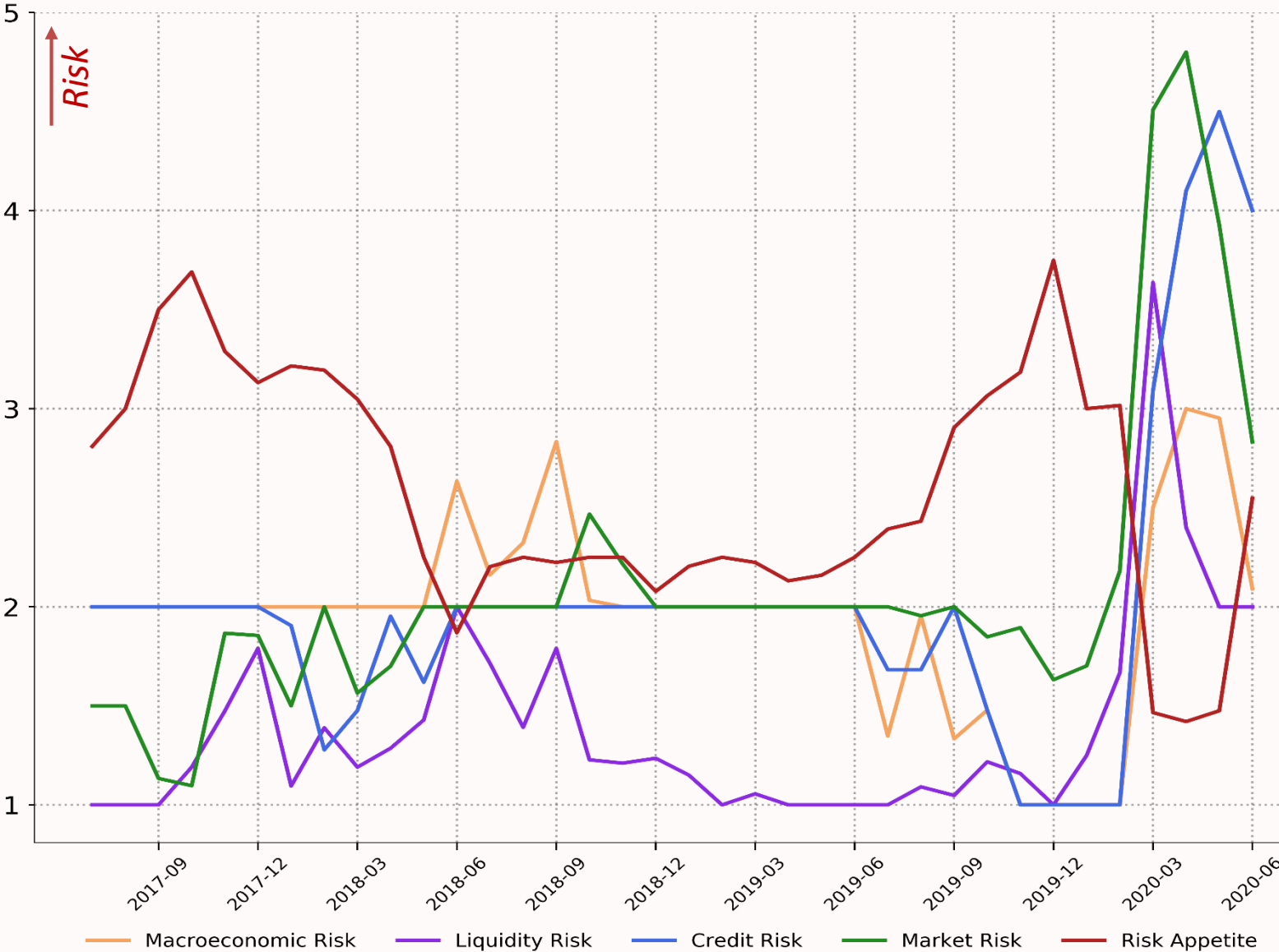
Throughout the month and in line with the fall in the market risk indicator, one was able to observe the continuity in the recovery of the performance indicators and the fall of the peak in volatility for most of the common indicators which

represent national and international risky assets (Graphs 2.1 to 2.6), signaling that the volatility chock inflicted by the pandemic in financial markets has been mitigated, at least the moment.

In line with the above observations, one can see a plateau in the falling movement of traded volume by foreign investors in the secondary market of domestic equities (Graph 3.3), in line with the movement of rising liquidity of the traded stocks, as shown in the spread indicator (Graph 3.1).

Lastly, the detachment of Brazil in relation to other emerging countries stands out, at least with respect to its spread in relation to US Treasuries (Graph 4.2), signaling that specific issues regarding Brazilian politics and economy are still having a negative influence on the risk indicators.

Risk Map - last 36 months (Jun/2020)



Note: Data as of 2020-06-30 and does not reflect any future changes that may have occurred after.

# 1. Macroeconomic Risk

1.1. USD FX Rates - Emerging Markets (Jun/2020)



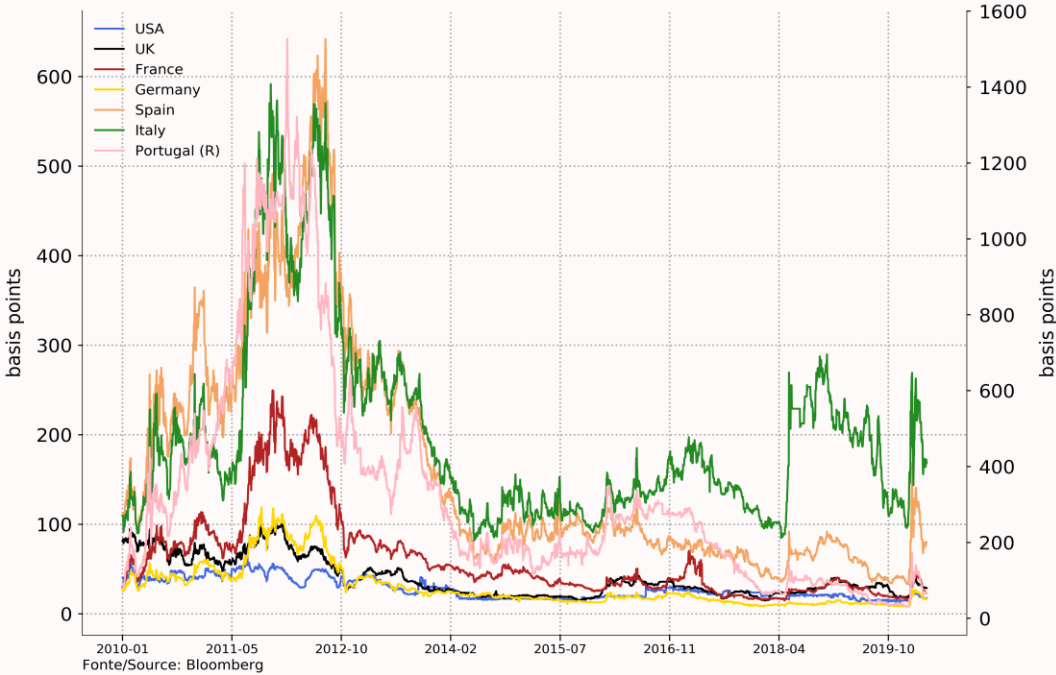
1.3. Sovereign CDS - Emerging Markets (Jun/2020)



1.2. 10-Year Sovereign Interest Rates - EM vs USA (Jun/2020)



1.4. Sovereign CDS - Developed Markets (Jun/2020)

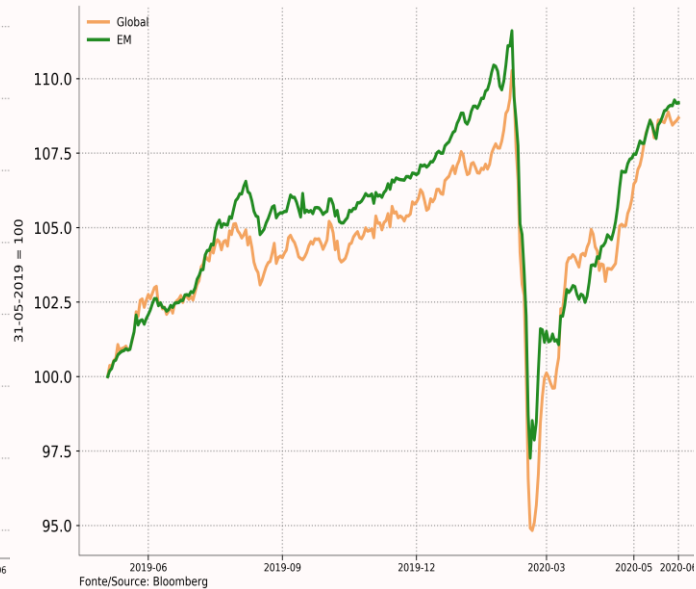


## 2. Market Risk

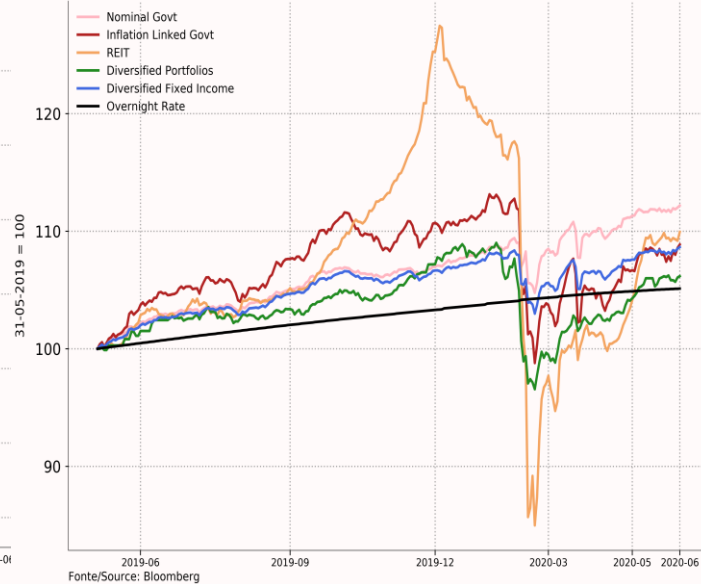
2.1. USD MSCI Equity Indexes - trailing 12 months (Jun/2020)



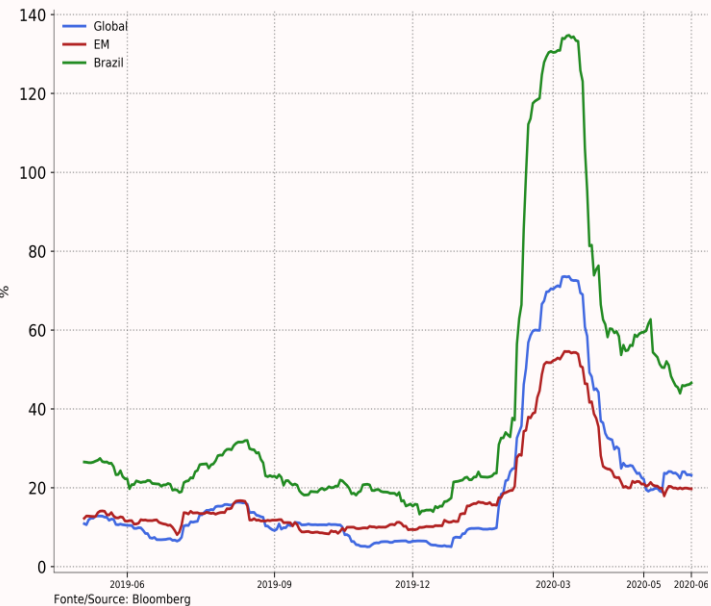
2.3. Corporate Bond Indexes - trailing 12 months (Jun/2020)



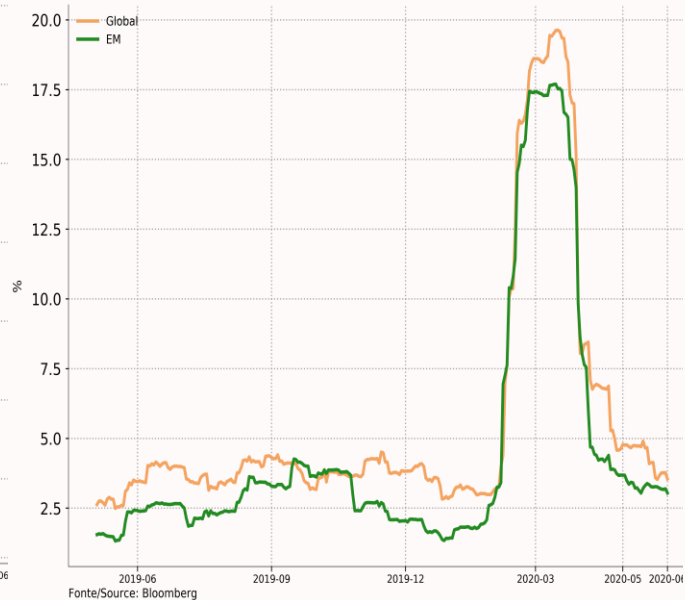
2.5. Brazilian Capital Markets Indexes - trailing 12 months (Jun/2020)



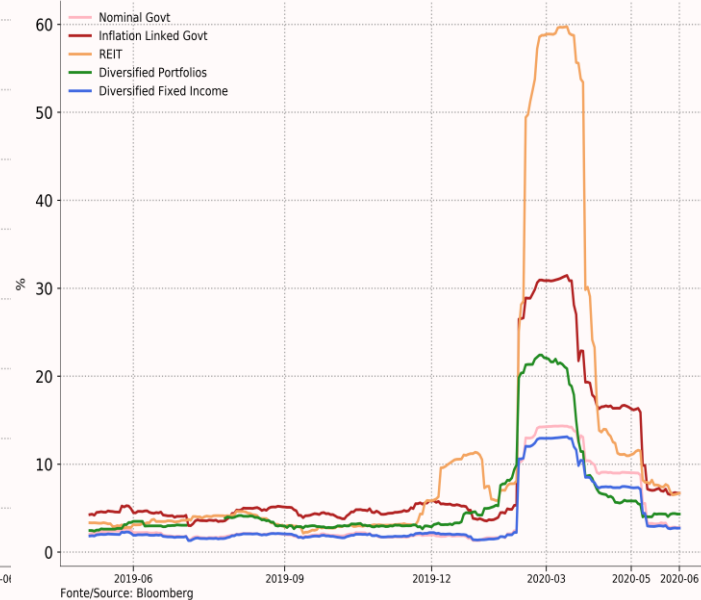
2.2. USD MSCI Equity Indexes - 30-day historic annualized vol (Jun/2020)



2.4. Corporate Bond Indexes - 30-day historic annualized vol (Jun/2020)

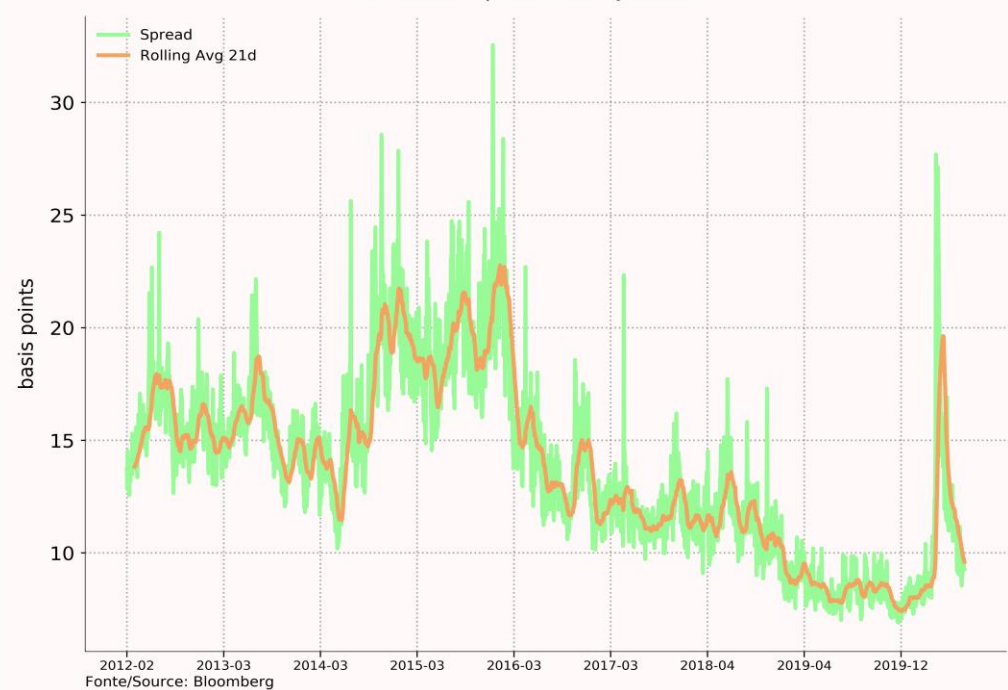


2.6. Brazilian Capital Markets Indexes - 30-day historic annualized vol (Jun/2020)

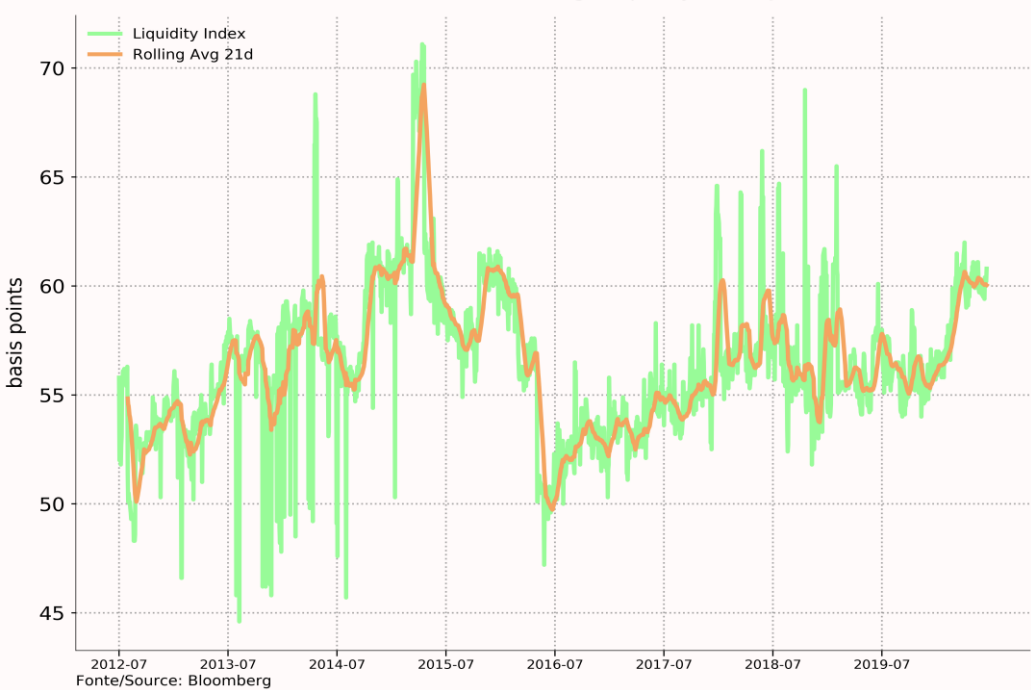


# 3. Liquidity Risk

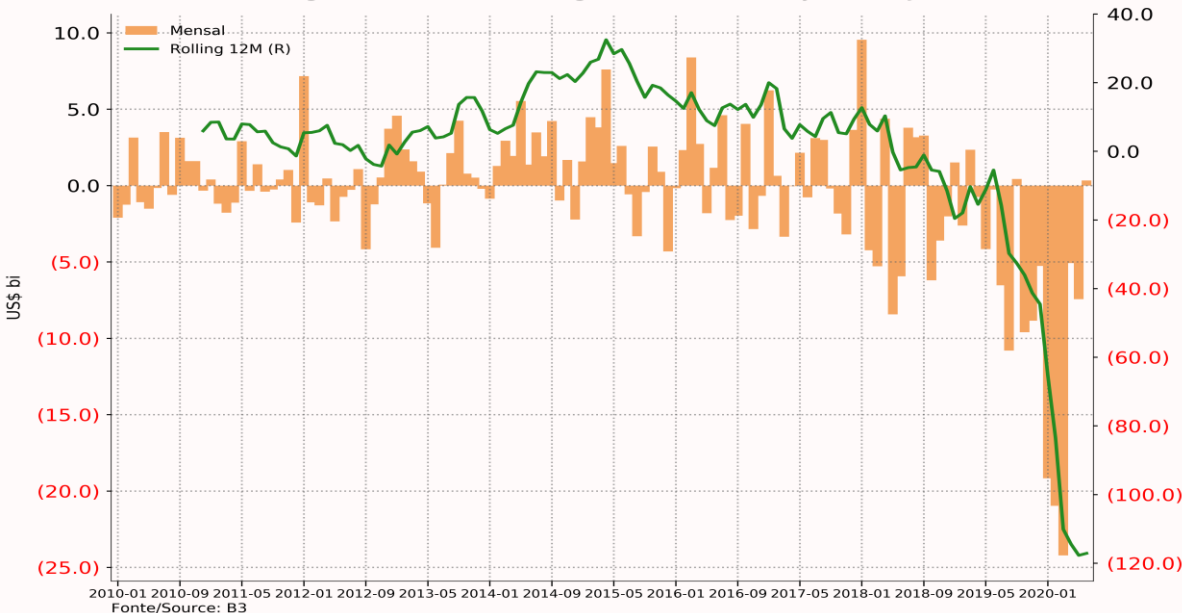
3.1. Bid-Ask Spread Index (Jun/2020)



3.2. ICVM 555 Mutual Funds - Average Liquidity Index (Jun/2020)



3.3. Net Foreign Investor Stock Exchange Inflows - Secondary Market (Jun/2020)



# 4. Appetite for Risk

4.1. Adjusted Estimated PE Ratio - MSCI Indexes (Jun/2020)



4.2. Spreads vs US Treasuries (Jun/2020)



# 5. Credit Risk

5.1. Weighted Average Default Probability Index (Jun/2020)



**Risk Map**

*Macroeconomic Risk:* simple monthly average of the daily Z-score (2500 day rolling window) of the 5YR Brazilian sovereign CDS (graph 1.3). Z-score Intervals and corresponding Risk Scale: above 2sd => 5; between 1,5 e 2sd => 4; between 0,5 e 1,5sd => 3; between -1 e 0,5sd=> 2; below -1sd => 1.

*Market Risk:* arithmetic average of two composites, respectively the arithmetic monthly average of the daily Z-score (1250 day rolling window) of the 30 day realized annualized volatility of the MSCI Brasil Index (equities, see below) and the Anbima IMA-G Index (fixed income, see below). Z-score Intervals and corresponding Risk Scale: above 2sd => 5; between 1,5 e 2sd => 4; between 0,5 e 1,5sd => 3; between -1 e 0,5sd=> 2; below -1sd => 1.

*Liquidity Risk:* simple monthly average of the daily Z-score (1250 day rolling window) of the Bid-Ask Spread Index (see below) . Z-score Intervals and corresponding Risk Scale: above 2sd => 5; between 1,5 e 2sd => 4; between 0,5 e 1,5sd => 3; between -1 e 0,5sd=> 2; below -1sd => 1.

*Risk Appetite:* weighted average of three composites: first, the arithmetic average of the Adjusted Estimated PE Ratio, with a 0.5 weight; second, the arithmetic monthly average of the daily Z-score (1250 day rolling window) of the other two series that compose the Risk Appetite section (see below), each series with a weight equal to 0.25. Z-score Intervals and corresponding Risk Scale for the Adjusted Estimated PE Ratio: above 2sd => 5 between 1,5 e 2sd => 4; Entre 0,5 e 1,5sd => 3; Between -1 e 0,5sd => 2; Below -1sd => 1. Z-score Intervals and corresponding Risk Scale for remaining series: below -2sd => 5; between -1,5 e -0,5sd => 4; between -0,5 e 1sd => 3; between 1 e 2sd => 2; above 2sd => 1.

*Credit Risk:* simple monthly average of the daily Z-score (1250 day rolling window) of the Weighted Average Default Probability Index (see below). Z-score Intervals and corresponding Risk Scale: above 2sd => 5; between 1,5 e 2sd => 4; between 0,5 e 1,5sd => 3; between -1 e 0,5sd=> 2; below -1sd => 1.

**Macroeconomic Risk**

*Selected FX return (USD pairs):* aaily trend of the local currencies of some emerging markets usually considered peers to Brazil against the USD.

*Interest Rates.* aaily trend of yearly interest rates for local currency sovereign bonds, calculated based on Bloomberg bond indexes for the US and for some emerging markets usually considered peers to Brazil.

*CDS (Credit Default Swap):* derivative in which the long transfers a series of payments (known as “spread” or “premium”) for the short in exchange for protection against a credit event impacting the reference entity. The graphs depict the daily trend of the closing price (in b.p.) of the 5YR sovereign CDS spreads of some emerging markets usually considered peers to Brazil, and of some European countries.

**Market Risk**

*Equity Indexes:* the MSCI World Index (denominated in this report as “Global”) reflects the performance of the equity markets of several global markets. The MSCI Emerging Markets Index (denominated in this report as “Emerging”) reflects the performance of the equity markets of several emerging markets. The MSCI Indexes also reflect single markets, such as the case of the MSCI Brazil Index.

*Corporate Bond Indexes:* indexes developed by Barclays/Bloomberg to measure the performance of investment grade bonds, converted to USD when appropriate. The BEHGTRUU Index (denominated in this report as “Emerging”) refers to bonds in emerging markets, while the LGCPTRUU Index (denominated in this report as “Global”) does the same for the global markets. In Bloomberg methodology, the bonds are weighted by market value, unhedged.

*Reference indexes:* IRF-M = index composed by a basket of sovereign fixed-rate bonds (LTN and NTN-F). IMA-B = fixed income index that depicts the trend, at market prices, of a basket of retail price inflation-linked sovereign bonds (called NTN-B). IHFA = index for the mutual fund industry in Brazil, whose value reflects, in local currency, the performance of a hypothetical portfolio of mutual funds selected according to a methodology developed by ANBIMA. IFIX = main index for the Brazilian REIT industry. IMA-G = weighted average of the daily returns of IMA-B, IMA-C (wholesale price inflation linked sovereign bond index), IMA-S (floating rate sovereign bonds index) e IRF-M indexes. CDI = index for the main bank overnight rate in Brazil, widely used as benchmark.

*Volatility.* Dispersion measure for the realized returns of an index or of a security. The 30 day realized volatility refers to the annualized standard deviation of the closing price returns in the last 30 trading days, expressed in percentage terms.

**Liquidity Risk**

*Bid/Ask Spread Index:* difference of bid and ask prices of a security divided by its midprice, frequently used as a gauge for market liquidity. The lower this ratio, the more liquid the security tends to be. The graph refers to the daily trend of the median spread calculated based on a sample comprised by half of the Ibovespa Index members with the lowest turnover volume for a given month.

*Liquidity Index –ICVM 555 Funds:* estimated daily trend of the ratio between the total reported Liquid Assets less Estimated Cash Outflows (according to ICVM 512) and the total reported NAV. Excludes FoFs, funds with a single shareholder and funds with NAV below BRL5MM. Data is being continuously cleansed of outliers and reporting errors.

*Foreign Investment in Stocks:* Monthly foreign investor net inflows in the B3 secondary market for equities and equities derivatives.

**Risk Appetite**

*Adjusted Estimated PE Ratio:* ratio between the current price of an index or security and its estimated positive earnings for the following accumulated 12 months, according to the consensus of market analysts, excluding companies with negative EPS projections. The PE ratio can be understood as the payback time estimated to recover through its profits the capital investment in a given company. A high PE ratio indicates that the security might be overvalued relative to its recent profit potential. Inversely, a low PE ratio points that the security might be undervalued relative to its profit potential. In this report, the country/region analysis is done using the daily ratio for the corresponding MSCI Indexes as a reference. The calculated indicators refer to the Z-score (1250 trading day rolling window) of such ratios.

*Emerging IG vs Treasuries Spread:* spread between a USD investment grade mixed corporate/sovereign bond index for emerging markets and the a US treasuries index, expressed as an annual percentage yield. Calculations use the BEHGTRUU Index and the BUSY Index, both available through Bloomberg.

*10YR USD Sovereign Bond Spread – Brazil x US Treasuries:* difference between the yields of a generic 10YR USD-denominated sovereign Brazilian bond and an analogous *treasury*, both calculated by Bloomberg.

**Credit Risk**

*Weighted Average Default Probability Index:* grasps the average default probability of non-holding non-financial corporates traded in the B3 exchange. Its calculation proceeds as follows: for each trading day and for the whole available sample of eligible companies in that day, the weighted average (by market cap) of the 1YR default probabilities is calculated (“BB\_1YR\_DEFAULT\_PROB”), as made available by Bloomberg.