



# Conab

Companhia Nacional de Abastecimento



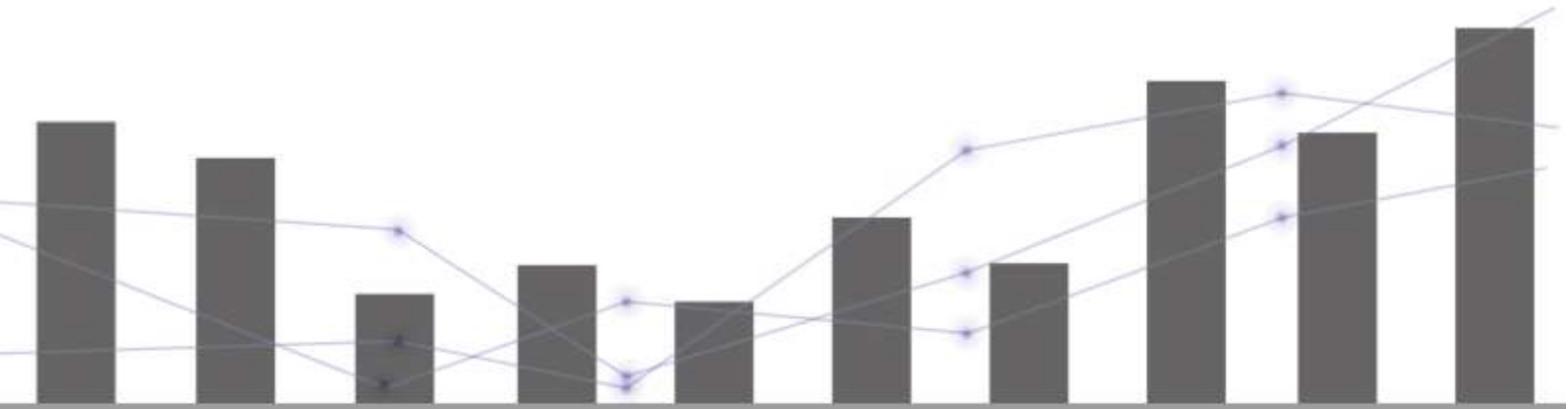
## Série Histórica de Estoques Públicos

**AGOSTO/2025**



# Conab

Companhia Nacional de Abastecimento



# Série Histórica de Estoques Públicos

AGOSTO/2025

Diretoria de Operações e Abastecimento – DIRAB

Superintendência de Logística Operacional – SULOG

Gerência de Formação e Controle de Estoque – GEFOC

Copyright © 2025 - Companhia Nacional de Abastecimento - Conab  
Qualquer parte desta publicação pode ser reproduzida, desde que citada a fonte.  
Depósito Legal junto à Biblioteca Josué de Castro  
Disponível em: [www.conab.gov.br](http://www.conab.gov.br)

**Supervisão:**  
Thomé Luiz Freire Guth

**Coordenação Técnica:**  
Veronice Bernardes da Silva França

**Responsável Técnico:**  
Jeferson Alves de Aguiar

**Editoração e layout:**  
Superintendência de Marketing e Comunicação - Sumac / Gerência de Eventos e Promoção  
Institucional - Gepin

**Normalização:**  
Thelma Das Graças Fernandes Sousa CRB-1/1843

Como citar a obra:  
CONAB - COMPANHIA NACIONAL DE ABASTECIMENTO. **Série histórica de Estoques  
Públicos - Produto**, Brasília, DF, Agosto 2025.

Dados Internacionais de Catalogação (CIP)

C737s Companhia Nacional de Abastecimento.  
Série histórica de Estoques Públicos / Companhia Nacional de Abastecimento.  
(2025). - Brasília : Conab, 2025

Mensal

Disponível em: [www.conab.gov.br](http://www.conab.gov.br).

1. Estoque público. 2. Estoque regulador. I. Título.

CDU 338.439.6

# Sumário

---

<b>5</b>	Introdução
<b>6</b>	Estoque de Arroz
<b>9</b>	Estoque de Milho
<b>12</b>	Estoque de Açúcar
<b>13</b>	Estoque de Algodão
<b>15</b>	Estoque de Café
<b>17</b>	Estoque de Farinha de Mandioca
<b>19</b>	Estoque de Feijão
<b>21</b>	Estoque de Trigo
<b>24</b>	Estoque de Outras Culturas
<b>31</b>	Estoque de Sacaria

# Introdução

As Séries Históricas de Estoques Públicos são publicações da Conab com o objetivo de fornecer dados e informações estratégicas, tanto para o setor público como para o setor privado. As informações dos estoques públicos, constantes nas Séries Históricas, estão disponibilizadas tanto por produto, quanto por Unidade da Federação, e englobam os estoques de todas as culturas que já estiveram, ou estão, em poder da União. Neste relatório é apresentado o Estoque por Produto.

As consultas às Séries Históricas englobam os estoques públicos adquiridos e amparados pela Política de Garantia de Preços Mínimos (PGPM), instituída pela [Lei nº 8.171 de 17/01/1991](#), com recursos das Operações Oficiais de Crédito (OOC), assim como os estoques estratégicos de apoio aos programas sociais, nos seguintes instrumentos e operações: Aquisição do Governo Federal (AGF); Contrato de Opção de Venda efetivamente exercido (COV); compra de produtos para atendimento a programas sociais ou de abastecimento.

Os dados são apresentados em tabelas e gráficos, e estão divididos de acordo com o tipo de programa utilizado em sua aquisição. Em todas as tabelas e gráficos, o estoque refere-se ao último dia do mês/ano correspondente. Os estoques são atualizados mensalmente.

# Série Histórica Arroz

**Tabela 1 – Estoque de Arroz - AGF – em tonelada**

ANO	JAN	FEV	MAR	ABR	MAI	JUN	JUL	AGO	SET	OUT	NOV	DEZ
1987	1.793.555	1.815.345	1.902.339	2.533.746	3.493.350	4.305.688	4.493.635	4.427.959	4.196.228	3.922.274	3.717.260	3.545.209
1988	3.486.477	3.524.153	3.571.511	3.783.533	4.254.412	4.945.594	5.247.136	5.271.979	5.227.607	5.099.689	4.906.121	4.491.986
1989	4.360.965	4.162.057	3.858.324	3.826.495	3.896.860	3.865.250	4.149.640	4.473.669	4.505.139	4.501.030	4.285.954	4.364.845
1990	4.189.266	4.116.938	4.068.645	4.073.187	4.074.097	3.968.565	3.866.445	3.779.689	3.677.490	3.492.724	3.245.284	2.878.757
1991	2.565.819	2.359.814	2.305.489	2.293.442	2.270.626	2.249.443	2.247.671	2.198.855	2.136.359	1.956.521	1.797.528	1.729.824
1992	1.526.426	1.477.822	1.426.877	1.419.193	1.312.396	1.342.396	1.323.680	1.319.930	1.241.846	1.143.118	1.043.637	964.034
1993	895.628	809.781	804.776	800.108	802.611	824.965	824.865	754.152	651.107	587.260	599.939	492.909
1994	626.813	757.517	917.953	977.266	995.946	1.246.501	1.307.347	1.344.332	1.400.452	1.382.471	1.264.306	1.150.704
1995	1.016.560	920.739	957.450	987.688	1.329.244	1.647.006	1.792.179	1.881.132	1.864.894	1.860.845	1.993.146	2.028.984
1996	1.951.553	1.831.881	1.745.162	1.755.015	1.805.686	1.838.796	1.791.047	1.840.976	1.824.884	1.748.537	1.650.232	1.587.246
1997	1.351.449	1.251.972	1.221.464	1.186.380	1.153.390	1.143.187	1.092.288	1.048.182	981.174	902.083	759.328	687.688
1998	552.675	449.108	419.645	387.393	395.379	397.573	357.081	305.395	288.815	253.145	217.627	170.253
1999	135.375	99.496	158.125	199.798	291.588	356.286	389.867	424.911	603.420	621.442	833.582	863.070
2000	857.005	867.087	925.014	1.001.971	1.164.264	816.113	944.793	950.962	963.122	962.335	957.319	1.052.611
2001	1.055.998	1.046.165	1.132.547	1.189.220	1.296.365	1.287.903	1.268.581	1.243.750	1.149.471	1.017.880	923.056	833.906
2002	766.060	767.812	772.557	784.213	772.426	758.597	725.815	689.236	584.691	536.840	346.432	245.686
2003	120.366	71.809	59.990	59.990	46.715	50.045	43.719	9.099	5.443	1.460	1.424	1.320
2004	1.320	1.317	1.761	1.761	1.759	1.701	1.644	1.603	1.570	1.850	1.867	1.867
2005	2.382	2.382	2.382	9.825	54.875	70.948	86.211	183.306	233.898	461.357	478.319	501.991
2006	504.899	504.899	504.960	508.271	509.550	690.904	784.558	805.848	812.935	780.505	696.376	648.930
2007	619.126	607.464	621.248	637.331	647.725	662.981	660.080	662.277	627.148	596.857	587.836	585.748
2008	579.615	505.160	501.589	501.487	482.146	415.741	405.153	386.902	342.869	193.365	145.007	144.385
2009	146.513	63.826	64.341	64.331	64.573	64.904	65.335	67.747	67.600	67.600	67.600	67.600
2010	67.600	67.600	67.600	67.600	67.538	67.538	67.538	67.446	67.446	67.504	68.148	68.148
2011	68.148	67.888	71.984	87.437	144.161	236.679	377.243	454.101	444.746	464.199	463.425	463.269
2012	463.491	461.360	460.238	460.238	451.935	450.745	450.745	446.068	436.845	393.899	390.772	374.975
2013	390.772	372.911	369.243	369.248	367.214	365.125	365.317	363.858	358.373	358.373	357.441	346.235
2014	252.111	218.302	210.470	211.520	211.230	211.202	211.202	211.201	211.201	194.313	166.604	148.050
2015	102.519	53.193	52.213	52.213	52.213	52.213	52.213	52.213	52.213	51.349	49.586	49.586
2016	49.586	40.381	40.397	36.601	36.505	36.389	36.385	36.385	29.855	5.952	6.152	6.152
2017	6.152	6.152	6.152	6.152	6.152	6.152	6.152	6.152	6.152	6.152	6.152	6.152
2018	6.152	6.152	6.152	6.152	6.152	23.691	26.817	26.817	26.817	25.232	24.336	23.148
2019	23.148	20.834	20.834	20.834	20.834	20.834	20.834	20.834	20.834	20.834	20.834	20.834
2020	20.834	20.834	20.834	20.834	20.834	20.834	20.834	20.834	20.834	20.834	20.834	20.834
2021	20.834	20.834	20.834	20.834	20.834	20.834	20.834	20.834	20.834	20.834	8.426	5.179
2022	1.763	1.763	1.763	1.763	1.759	1.759	1.759	1.759	1.759	1.759	1.759	1.759
2023	0	0	0	0	0	0	0	0	0	0	0	0
2024	0	0	0	0	0	0	0	0	0	0	0	0
2025	0	0	0	0	0	519	956	956	0	0	0	0

Fonte: GEFOC - CONAB

**Tabela 2 – Estoque de Arroz - Mercado de Opções – em tonelada**

ANO	JAN	FEV	MAR	ABR	MAI	JUN	JUL	AGO	SET	OUT	NOV	DEZ
2000	0	0	0	0	0	0	0	0	1.142.775	1.142.775	1.142.764	1.138.140
2001	892.955	887.235	879.211	886.856	887.202	886.996	886.660	884.090	855.753	746.945	635.033	587.536
2002	558.230	552.691	551.770	551.583	555.928	554.820	552.035	547.594	410.215	407.001	34.586	25.959
2003	19.060	7.886	7.688	7.688	6.474	6.474	6.474	1.936	502	502	502	502
2004	502	502	502	802	802	802	1.054	1.524	1.524	1.524	1.812	1.812
2005	1.812	1.812	1.812	1.812	2.195	2.195	2.195	2.369	115.402	344.777	424.901	424.901
2006	424.631	424.496	424.171	424.171	424.281	428.138	429.386	429.504	429.910	433.466	424.484	423.864
2007	423.143	421.921	421.920	421.920	420.931	466.724	497.391	578.499	664.582	765.304	903.239	907.030
2008	906.602	880.713	878.574	878.485	826.992	709.594	674.917	629.589	589.686	487.400	468.359	465.327
2009	449.639	438.826	453.436	453.401	434.706	464.041	502.651	530.281	593.471	693.544	908.059	909.600
2010	914.141	914.141	911.975	914.081	913.957	914.335	913.471	914.332	913.684	914.041	914.041	913.122
2011	908.892	899.605	899.308	899.357	894.551	894.551	880.637	849.911	848.298	912.043	893.714	1.014.961
2012	1.163.506	1.253.503	1.248.477	1.246.557	1.168.595	1.129.866	1.109.145	1.115.394	1.042.694	857.514	822.102	736.581
2013	822.102	677.865	676.080	672.369	671.904	671.904	672.049	646.431	593.935	594.258	593.996	554.379
2014	417.361	361.050	346.028	346.128	342.502	329.164	327.688	326.607	326.607	299.621	244.253	202.861
2015	137.089	81.671	81.570	81.570	75.732	75.732	72.558	72.558	72.558	69.683	68.658	65.540
2016	60.802	51.879	51.879	49.133	48.160	48.160	48.160	48.160	38.556	23.128	23.328	23.328
2017	23.328	16.208	16.208	16.208	16.208	16.208	16.208	16.208	16.208	16.208	16.208	16.208
2018	16.208	16.208	16.208	16.208	16.208	16.208	16.208	16.208	16.208	12.397	10.089	1.749
2019	1.748	758	758	758	758	758	758	758	758	758	758	758
2020	758	758	758	758	758	758	758	758	758	758	758	722
2021	722	722	722	722	722	722	722	722	722	722	722	42
2022	6	6	6	6	0	0	0	0	0	0	0	0
2023	0	0	0	0	0	0	0	0	0	0	0	0
2024	0	0	0	0	0	0	0	0	0	0	0	0
2025	0	0	0	0	0	7.173	10.260	12.690	0	0	0	0

Fonte: GEFOC - CONAB

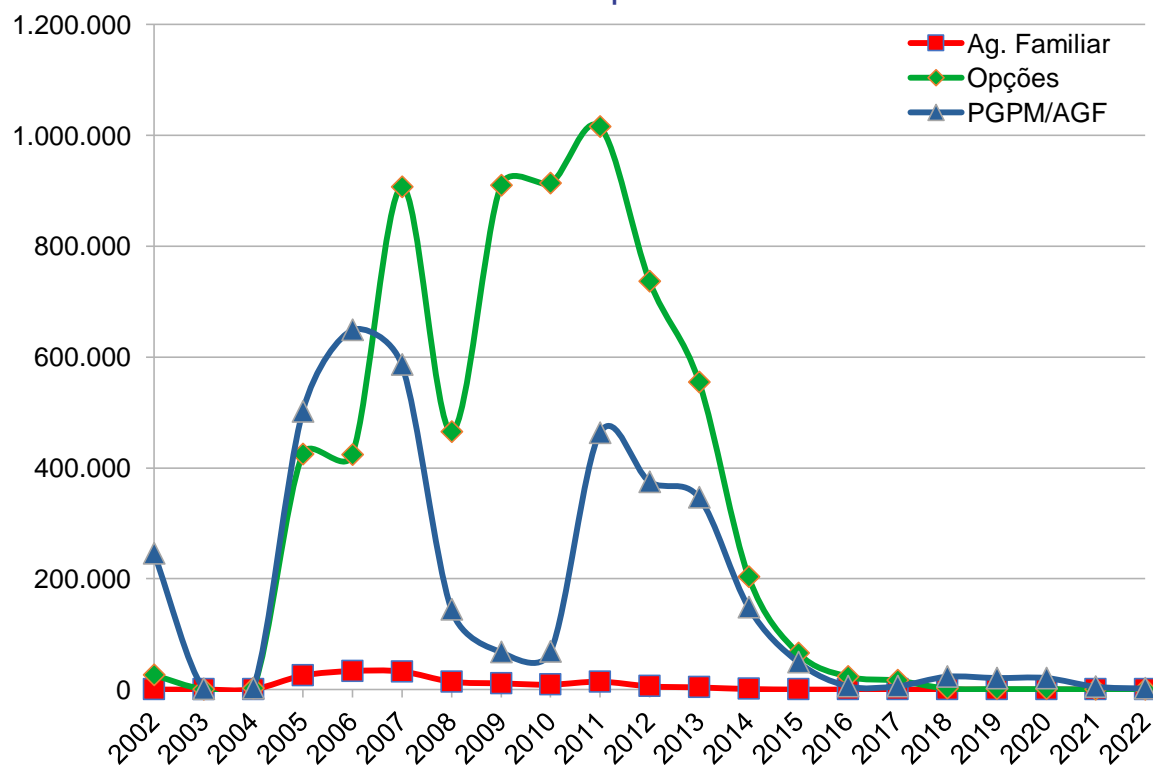
# Série Histórica Arroz

**Tabela 3 – Estoque de Arroz - Agricultura Familiar – em tonelada**

ANO	JAN	FEV	MAR	ABR	MAI	JUN	JUL	AGO	SET	OUT	NOV	DEZ
2003	0	0	0	0	0	0	0	0	0	0	3	3
2004	3	3	3	3	165	165	226	264	342	391	618	479
2005	452	441	441	1.159	1.420	3.730	7.876	13.236	15.065	16.510	18.062	25.017
2006	25.765	27.298	27.008	26.194	24.912	26.193	34.062	36.090	36.131	36.107	35.022	33.104
2007	31.220	31.033	30.147	28.686	27.210	26.365	28.280	34.572	36.354	33.465	33.704	32.293
2008	29.215	27.223	26.784	26.178	25.822	15.916	16.122	15.832	15.804	15.728	14.326	14.085
2009	12.303	12.652	13.174	12.750	12.623	12.572	12.248	11.982	11.247	11.571	10.814	11.073
2010	11.053	10.850	10.227	10.004	9.403	9.294	9.195	9.255	9.269	9.323	9.369	8.814
2011	8.941	9.064	9.569	10.151	10.417	11.442	11.585	14.495	15.352	14.236	7.187	14.114
2012	11.621	11.450	9.135	8.407	5.704	4.877	4.153	4.022	4.301	5.219	6.415	5.770
2013	6.415	6.101	4.990	4.764	4.486	3.942	3.311	3.486	3.114	5.875	4.073	3.809
2014	3.579	2.946	2.192	1.385	822	595	841	939	1.026	405	1.090	942
2015	936	853	472	343	175	25	14	6	6	6	6	0
2016	0	0	0	0	0	0	0	0	0	0	0	0
2017	0	0	0	0	0	0	0	0	0	0	0	0
2018	0	0	0	0	0	0	0	0	0	0	0	0
2019	0	0	0	0	0	0	0	0	0	0	0	0
2020	0	0	0	0	0	0	0	0	0	0	0	0
2021	0	0	0	0	0	0	0	0	0	0	0	0
2022	0	0	0	0	0	0	0	0	0	0	0	0
2023	0	0	0	0	0	0	0	0	0	0	0	0
2024	0	0	0	0	0	0	0	0	0	60	490	416
2025	499	448	247	201	166	116	156	243				

Fonte: GEFOC - CONAB

**Gráfico 1 – Série histórica de Arroz por Vínculo - 2002-2022 em tonelada**



Fonte: GEFOC - CONAB

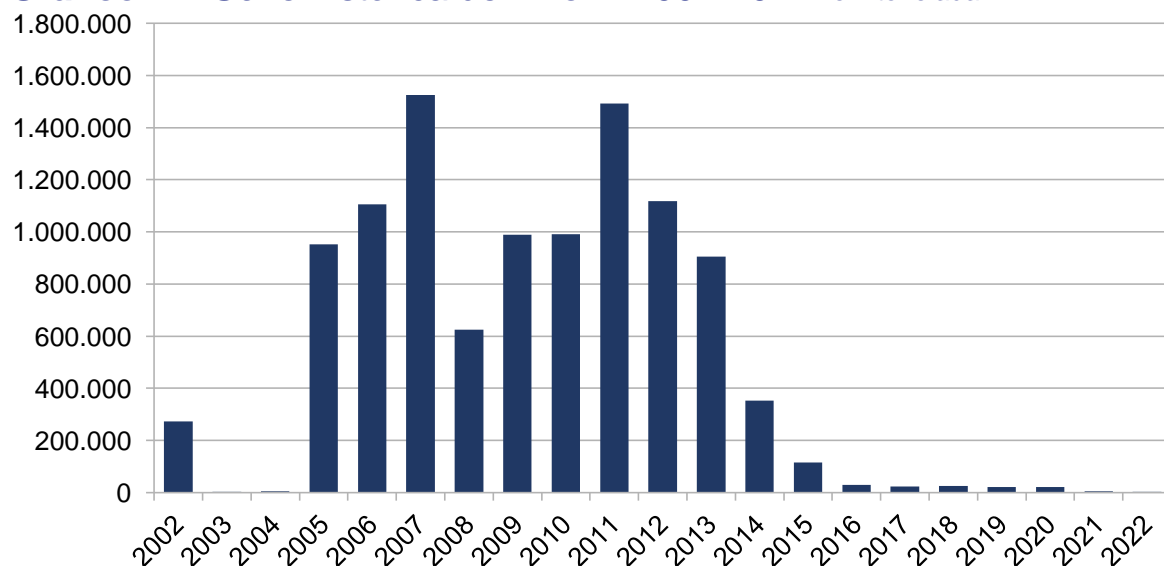
# Série Histórica Arroz

**Tabela 4 - Estoque Total de Arroz - Brasil - em tonelada**

ANO	JAN	FEV	MAR	ABR	MAI	JUN	JUL	AGO	SET	OUT	NOV	DEZ
1987	1.793.555	1.815.345	1.902.339	2.533.746	3.493.350	4.305.688	4.493.635	4.427.959	4.196.228	3.922.274	3.717.260	3.545.209
1988	3.486.477	3.524.153	3.571.511	3.783.533	4.254.412	4.945.594	5.247.136	5.271.979	5.227.607	5.099.689	4.906.121	4.491.986
1989	4.360.965	4.162.057	3.858.324	3.826.495	3.896.860	3.865.250	4.149.640	4.473.669	4.505.139	4.501.030	4.285.954	4.364.845
1990	4.189.266	4.116.938	4.068.645	4.073.187	4.074.097	3.968.565	3.866.445	3.779.689	3.677.490	3.492.724	3.245.284	2.878.757
1991	2.565.819	2.359.814	2.305.489	2.293.442	2.270.626	2.249.443	2.247.671	2.198.855	2.136.359	1.956.521	1.797.528	1.729.824
1992	1.526.426	1.477.822	1.426.877	1.419.193	1.312.396	1.342.396	1.323.680	1.319.930	1.241.846	1.143.118	1.043.637	964.034
1993	895.628	809.781	804.776	800.108	802.611	824.965	824.865	754.152	651.107	587.260	599.939	492.909
1994	626.813	757.517	917.953	977.266	995.946	1.246.501	1.307.347	1.344.332	1.400.452	1.382.471	1.264.306	1.150.704
1995	1.016.560	920.739	957.450	987.688	1.329.244	1.647.006	1.792.179	1.881.132	1.864.894	1.860.845	1.993.146	2.028.984
1996	1.951.553	1.831.881	1.745.162	1.755.015	1.805.686	1.838.796	1.791.047	1.840.976	1.824.884	1.748.537	1.650.232	1.587.246
1997	1.351.449	1.251.972	1.221.464	1.186.380	1.153.390	1.143.187	1.092.288	1.048.182	981.174	902.083	759.328	687.688
1998	552.675	449.108	419.645	387.393	395.379	397.573	357.081	305.395	288.815	253.145	217.627	170.253
1999	135.375	99.496	158.125	199.798	291.588	356.286	389.867	424.911	603.420	621.442	833.582	863.070
2000	857.005	867.087	925.014	1.001.971	1.164.264	816.113	944.793	950.962	2.105.897	2.105.110	2.100.083	2.190.751
2001	1.948.953	1.933.400	2.011.758	2.076.076	2.183.567	2.174.899	2.155.241	2.127.840	2.005.224	1.764.825	1.558.089	1.421.442
2002	1.324.290	1.320.503	1.324.327	1.335.796	1.328.354	1.313.417	1.277.850	1.236.830	994.906	943.841	381.018	271.645
2003	139.426	79.695	67.678	67.678	53.189	56.519	50.193	11.035	5.945	1.962	1.929	1.825
2004	1.825	1.822	2.266	2.566	2.726	2.668	2.924	3.391	3.436	3.765	4.297	4.158
2005	4.646	4.635	4.635	12.796	58.490	76.873	96.282	198.911	364.365	822.644	921.282	951.909
2006	955.295	956.693	956.139	958.636	958.743	1.145.235	1.248.006	1.271.442	1.278.976	1.250.078	1.155.882	1.105.898
2007	1.073.489	1.060.418	1.073.315	1.087.937	1.095.866	1.156.070	1.185.751	1.275.348	1.328.084	1.395.626	1.524.779	1.525.071
2008	1.515.432	1.413.096	1.406.947	1.406.150	1.334.960	1.141.251	1.096.192	1.032.323	948.359	696.493	627.692	623.797
2009	608.455	515.304	530.951	530.482	511.902	541.517	580.234	610.010	672.318	772.715	986.473	988.273
2010	992.794	992.591	989.802	991.685	990.898	991.167	990.204	991.033	990.399	990.868	991.558	990.084
2011	985.981	976.557	980.861	996.945	1.049.129	1.142.672	1.269.465	1.318.507	1.308.396	1.390.478	1.364.326	1.492.344
2012	1.638.618	1.726.313	1.717.850	1.715.201	1.626.234	1.585.488	1.564.043	1.565.484	1.483.840	1.256.632	1.219.289	1.117.325
2013	1.219.289	1.056.877	1.050.313	1.046.381	1.043.603	1.040.971	1.040.677	1.013.774	955.422	958.506	955.511	904.423
2014	673.051	582.298	558.690	559.033	554.554	540.961	539.731	538.747	538.834	494.339	411.947	351.860
2015	240.544	135.717	134.255	134.126	128.120	127.970	124.785	124.777	124.777	121.038	118.250	115.126
2016	110.388	92.260	92.276	85.734	84.665	84.549	84.545	84.545	68.411	29.080	29.480	29.480
2017	29.480	22.360	22.360	22.360	22.360	22.360	22.360	22.360	22.360	22.360	22.360	22.360
2018	22.360	22.360	22.360	22.360	22.360	39.899	43.025	43.025	43.025	37.629	34.425	24.897
2019	24.896	21.592	21.592	21.592	21.592	21.592	21.592	21.592	21.592	21.592	21.592	21.592
2020	21.592	21.592	21.592	21.592	21.592	21.592	21.592	21.592	21.592	21.592	21.592	21.592
2021	21.556	21.556	21.556	21.556	21.556	21.556	21.556	21.556	21.556	21.556	9.148	5.221
2022	1.770	1.770	1.770	1.770	1.759	1.759	1.759	1.759	1.759	1.759	1.759	1.759
2023	0	0	0	0	0	0	0	0	0	0	0	0
2024	0	0	0	0	0	0	0	0	0	60	490	416
2025	499	448	247	201	166	8.006	11.372	13.890				

Fonte: GEFOC - CONAB

**Gráfico 2 – Série histórica de Arroz - 2002-2022- em tonelada**



Fonte: GEFOC - CONAB

# Série Histórica Milho

**Tabela 5 – Estoque de Milho - AGF – em tonelada**

ANO	JAN	FEV	MAR	ABR	MAI	JUN	JUL	AGO	SET	OUT	NOV	DEZ
1987	1.077.235	840.187	1.737.737	3.657.452	5.166.582	6.683.868	7.354.540	7.277.714	6.761.765	5.844.891	4.872.531	3.758.247
1988	3.403.197	2.929.205	2.534.630	2.689.725	2.701.000	2.878.810	3.188.234	3.498.691	3.611.057	3.618.669	3.504.332	3.057.380
1989	2.935.875	2.564.332	2.263.102	2.259.282	2.510.032	2.548.242	2.627.205	2.899.314	2.923.049	2.940.229	2.881.602	2.763.564
1990	2.634.453	2.567.178	2.499.660	2.541.639	2.618.273	2.750.236	2.790.998	2.720.206	2.588.296	2.423.732	2.201.087	1.877.867
1991	1.508.467	1.349.912	1.339.689	1.324.858	1.323.865	1.311.151	1.307.908	1.295.801	1.288.459	1.264.310	1.131.136	1.027.848
1992	981.059	874.131	831.676	872.227	948.312	1.104.726	1.117.231	1.126.228	1.125.094	998.810	841.914	733.842
1993	673.811	549.946	547.707	547.751	548.412	538.511	521.227	478.730	391.409	409.944	581.939	509.727
1994	952.318	1.200.682	1.343.359	1.494.911	1.503.010	1.798.435	2.002.613	2.178.369	2.162.893	1.946.069	1.574.227	1.211.315
1995	1.047.555	1.010.671	1.043.802	1.063.116	1.205.210	1.354.780	1.329.506	1.321.958	1.416.443	1.500.873	1.407.690	1.327.186
1996	1.269.844	1.241.211	1.234.765	1.181.469	1.094.818	1.058.476	1.030.936	1.078.148	1.041.631	964.414	865.329	840.347
1997	843.059	1.005.599	1.362.996	2.142.648	2.591.051	3.108.216	3.514.054	3.568.661	3.503.643	3.536.028	3.488.811	3.592.622
1998	3.255.410	2.905.019	2.759.595	2.627.145	2.468.530	2.380.254	2.503.560	2.444.181	2.442.343	2.466.330	2.518.110	2.835.104
1999	2.368.986	1.921.348	1.733.177	1.645.730	1.575.692	1.508.047	1.462.699	1.458.350	1.366.958	1.256.522	880.967	721.298
2000	578.159	421.145	358.634	354.205	365.613	226.344	208.569	198.885	198.419	194.771	189.082	186.550
2001	185.339	535.293	966.845	1.214.058	1.468.723	1.666.329	1.776.137	1.791.468	1.739.568	1.644.961	1.517.695	1.398.392
2002	1.227.523	1.068.648	937.736	815.596	701.176	597.608	499.302	426.173	321.441	189.835	123.125	97.507
2003	62.752	51.875	50.956	50.956	48.710	49.592	50.741	52.836	52.838	52.076	51.145	50.309
2004	47.117	48.612	41.974	41.974	41.974	42.104	43.079	62.845	71.318	91.696	101.165	127.155
2005	143.664	143.445	147.877	138.429	121.109	117.935	115.702	103.288	105.908	107.609	121.886	735.569
2006	736.033	734.919	698.291	697.034	713.704	1.161.637	1.881.620	2.258.823	2.536.153	2.745.356	2.684.700	2.417.044
2007	2.173.312	1.924.981	1.887.633	1.865.083	1.838.838	1.924.664	2.103.313	2.074.924	1.916.038	1.696.174	1.054.350	686.347
2008	407.992	314.824	244.952	198.473	165.925	139.071	151.050	149.522	166.957	281.508	288.363	288.948
2009	281.871	262.434	258.121	263.434	264.438	291.822	415.313	723.935	820.948	806.729	812.026	1.070.006
2010	1.046.744	1.054.047	1.099.986	1.244.971	1.290.283	1.295.120	1.291.984	1.299.956	1.301.199	1.310.212	1.300.549	1.195.967
2011	1.026.468	778.006	687.500	638.745	617.455	590.317	585.212	567.209	548.124	523.204	502.849	494.495
2012	449.964	476.925	388.874	369.812	359.394	342.086	329.893	313.243	289.610	213.067	204.799	202.028
2013	204.799	167.699	150.914	131.155	134.057	126.120	133.613	203.215	352.867	390.538	395.838	393.371
2014	385.598	379.085	376.267	362.591	357.564	355.319	357.003	342.523	324.379	339.705	337.614	333.684
2015	324.792	329.374	324.998	321.371	317.823	314.688	305.620	302.240	299.928	294.361	290.887	291.009
2016	283.808	240.361	155.650	145.721	129.073	137.542	134.599	129.884	120.113	116.735	114.453	112.818
2017	111.700	110.689	109.693	101.699	98.807	95.081	93.621	87.606	82.623	75.701	73.143	68.651
2018	66.082	63.977	61.636	59.483	49.482	30.000	29.425	26.839	24.399	23.953	21.644	21.914
2019	19.672	17.978	15.609	12.992	5.880	5.016	4.407	4.107	3.606	3.206	2.037	1.522
2020	991	1.151	1.087	868	704	615	589	215	149	41	30	30
2021	30	30	30	0	0	0	0	0	0	0	1.067	6.471
2022	8.900	15.465	49.674	49.493	49.084	49.668	47.378	43.479	40.309	36.156	32.815	45.689
2023	46.284	52.426	52.818	51.196	46.578	44.040	39.670	74.401	140.642	195.790	314.104	348.313
2024	348.447	326.343	321.465	312.954	308.197	298.820	284.133	277.497	260.044	251.193	230.021	228.199
2025	206.262	198.740	197.936	182.668	173.737	164.449	150.624	133.785				

Fonte: GEFOC - CONAB

**Tabela 6 – Estoque de Milho - Mercado de Opções – em tonelada**

ANO	JAN	FEV	MAR	ABR	MAI	JUN	JUL	AGO	SET	OUT	NOV	DEZ
2000	0	0	0	0	0	0	0	0	135.282	130.302	125.032	120.106
2001	106.806	108.800	104.356	103.082	108.517	134.701	138.497	150.047	142.096	284.845	348.426	344.171
2002	281.119	239.223	551.770	246.860	227.636	207.866	189.445	175.630	121.810	109.226	103.460	26.964
2003	35.869	44.106	44.133	44.133	43.335	43.107	304.038	713.655	1.150.967	1.410.418	1.409.671	1.409.671
2004	1.294.229	1.257.950	1.263.434	1.203.904	1.167.720	1.142.206	1.143.852	1.112.060	1.066.303	1.028.287	1.395.904	1.679.267
2005	1.738.948	1.737.870	1.721.735	1.681.772	1.595.214	1.462.855	1.381.606	1.300.329	1.279.081	1.275.189	1.269.898	1.256.095
2006	1.245.415	1.179.842	1.145.856	1.144.957	1.135.940	1.131.549	1.124.784	1.115.090	1.107.540	1.079.345	925.380	742.612
2007	619.977	563.647	546.529	519.317	513.632	508.009	501.472	465.185	374.925	219.573	117.629	67.426
2008	48.211	30.228	33.256	42.010	40.034	39.194	35.847	43.249	4.312	165.168	537.109	783.402
2009	1.171.425	1.294.066	1.354.081	1.350.530	1.304.064	1.274.660	1.204.791	2.120.825	3.436.442	4.295.979	4.303.917	4.302.818
2010	4.247.700	4.276.114	4.237.802	4.224.921	4.215.971	4.239.464	4.218.359	4.193.844	4.179.696	4.123.989	3.992.179	3.496.830
2011	3.080.272	2.252.574	1.829.537	1.704.206	1.559.621	1.505.737	1.491.364	1.452.758	1.444.061	1.414.188	1.388.813	1.358.639
2012	1.283.672	1.206.124	1.134.941	1.083.706	1.059.380	998.720	919.247	858.035	762.064	590.847	555.882	513.426
2013	555.655	420.356	382.152	344.461	312.527	291.106	276.757	266.122	232.535	217.395	172.244	1.508.150
2014	1.486.397	1.455.030	1.443.909	1.415.005	1.385.941	1.369.780	1.369.648	1.331.929	1.337.230	1.327.162	1.312.174	1.306.802
2015	1.291.918	1.284.540	1.278.353	1.269.984	1.264.194	1.257.773	1.251.600	1.240.143	1.224.525	1.210.929	1.198.445	1.199.468
2016	1.182.803	1.062.621	830.167	791.726	769.453	753.661	737.498	689.325	648.776	606.905	598.851	591.157
2017	579.610	570.646	555.699	540.137	527.444	511.617	504.455	710.095	697.245	1.317.211	1.297.300	1.289.266
2018	1.270.902	1.240.951	1.238.322	1.215.376	1.133.610	912.958	870.342	821.663	799.701	795.510	779.028	776.352
2019	761.278	757.106	743.567	722.216	672.843	664.815	657.203	651.590	645.744	560.963	474.808	358.147
2020	310.641	299.798	238.810	229.201	217.734	212.086	195.661	183.477	161.579	153.353	131.443	129.109
2021	111.238	104.080	91.945	73.509	59.711	56.171	46.947	38.925	35.832	34.770	31.777	28.620
2022	24.998	22.548	20.197	20.094	17.940	13.560	12.052	9.922	8.449	6.025	5.721	5.189
2023	4.628	4.153	3.798	3.564	3.407	3.151	2.615	2.441	2.292	2.101	1.908	1.754
2024	1.754	1.619	1.566	1.530	1.476	1.462	1.447	1.433	1.433	1.419	1.391	1.344
2025	1.344	1.344	1.344	1.344	1.344	548	2	2				

Fonte: GEFOC - CONAB

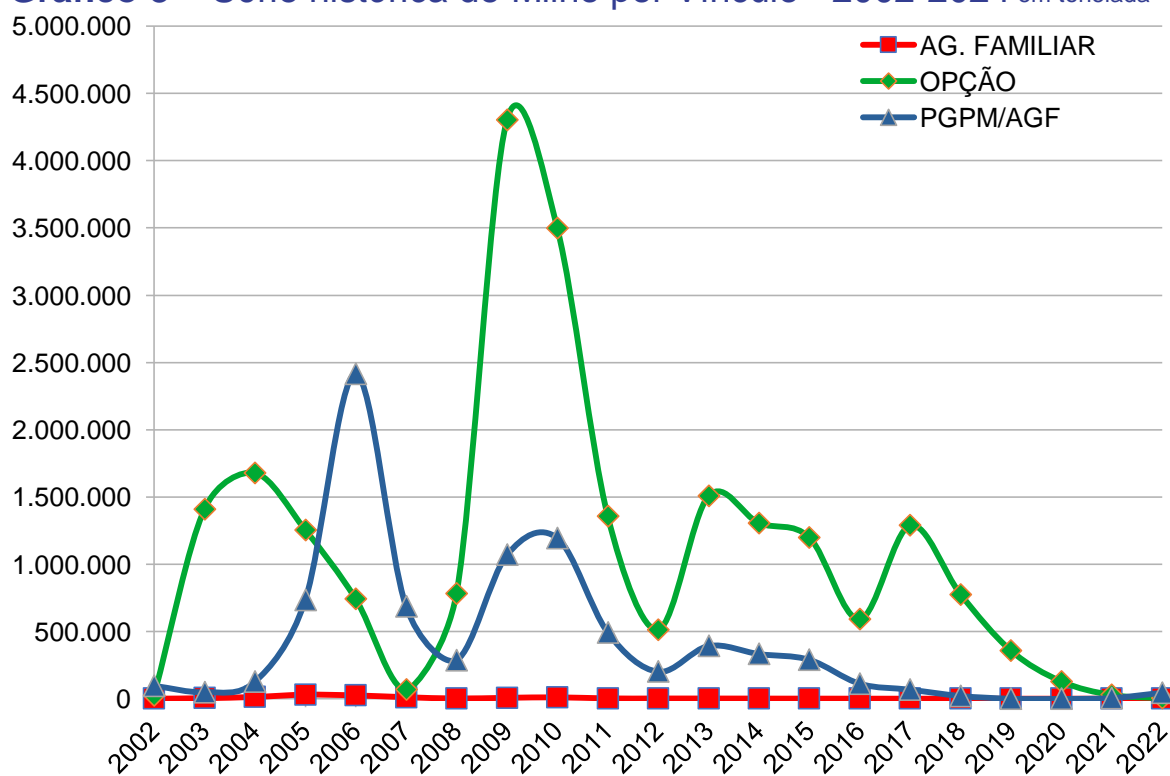
# Série Histórica Milho

**Tabela 7 – Estoque de Milho - Agricultura Familiar - em tonelada**

ANO	JAN	FEV	MAR	ABR	MAI	JUN	JUL	AGO	SET	OUT	NOV	DEZ
2003	0	0	0	0	0	0	0	0	0	0	2.755	3.765
2004	4.169	4.520	3.886	4.421	4.425	4.198	4.302	6.908	8.494	9.683	9.876	13.490
2005	13.769	14.962	14.940	14.892	14.822	15.970	14.506	23.453	25.860	28.370	29.564	30.641
2006	30.675	23.915	17.703	16.525	9.178	14.927	17.808	20.251	21.605	26.000	26.113	25.161
2007	22.790	19.166	15.023	11.950	11.253	11.078	11.441	14.203	13.889	12.802	12.421	11.220
2008	11.003	7.760	3.385	3.168	2.436	2.286	2.239	2.169	492	568	1.781	1.580
2009	1.563	1.510	1.501	1.458	1.419	1.359	1.165	4.861	3.530	5.679	6.491	6.724
2010	6.100	6.014	6.062	6.023	5.796	5.577	5.990	9.658	11.875	10.796	10.605	10.457
2011	10.335	10.335	10.317	6.126	5.830	2.596	2.587	2.428	2.285	2.220	2.166	2.152
2012	2.152	2.152	2.152	2.152	2.152	2.152	2.152	2.014	2.014	1.511	1.511	1.511
2013	1.511	1.511	1.511	1.511	1.511	1.511	1.511	1.511	1.511	1.511	1.486	1.410
2014	1.301	1.201	1.201	888	887	887	887	887	887	887	887	887
2015	887	887	887	879	823	768	604	585	544	522	506	498
2016	481	481	481	481	481	466	423	302	240	210	199	193
2017	193	193	192	88	0	0	0	0	0	0	0	0
2018	0	0	0	0	0	0	0	0	0	0	0	0
2019	0	0	0	0	0	0	0	0	0	0	0	0
2020	0	0	0	0	0	0	0	0	0	0	0	0
2021	0	0	0	0	0	0	0	0	0	0	0	0
2022	0	0	0	0	0	0	0	0	0	0	0	0
2023	0	0	0	0	0	0	0	0	0	0	0	0
2024	0	0	0	0	0	0	0	0	0	0	0	0
2025	0	0	0	0	0	0	0	0	0	0	0	0

Fonte: Fonte: GEFOC - CONAB

**Gráfico 3 – Série histórica de Milho por Vínculo - 2002-2024 em tonelada**



Fonte: GEFOC - CONAB

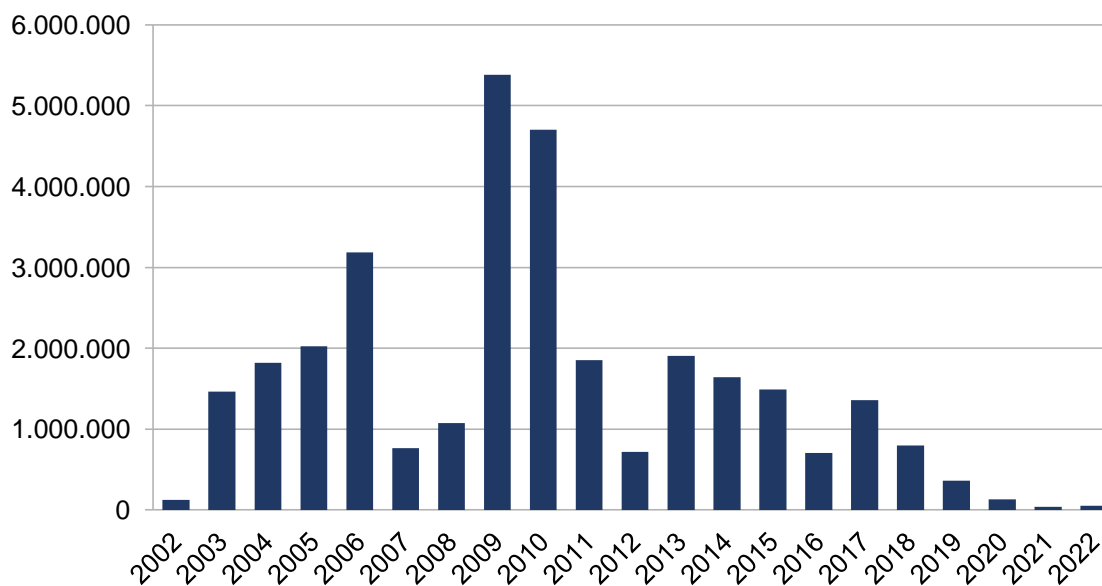
# Série Histórica Milho

**Tabela 8 - Estoque Total de Milho - em tonelada**

ANO	JAN	FEV	MAR	ABR	MAI	JUN	JUL	AGO	SET	OUT	NOV	DEZ
1987	1.077.235	840.187	1.737.737	3.657.452	5.166.582	6.683.868	7.354.540	7.277.714	6.761.765	5.844.891	4.872.531	3.758.247
1988	3.403.197	2.929.205	2.534.630	2.689.725	2.701.000	2.878.810	3.188.234	3.498.691	3.611.057	3.618.669	3.504.332	3.057.380
1989	2.935.875	2.564.332	2.263.102	2.259.282	2.510.032	2.548.242	2.627.205	2.899.314	2.923.049	2.940.229	2.881.602	2.763.564
1990	2.634.453	2.567.178	2.499.660	2.541.639	2.618.273	2.750.236	2.790.998	2.720.206	2.588.296	2.423.732	2.201.087	1.877.867
1991	1.508.467	1.349.912	1.339.689	1.324.858	1.323.865	1.311.151	1.307.908	1.295.801	1.288.459	1.264.310	1.131.136	1.027.848
1992	981.059	874.131	831.676	872.227	948.312	1.104.726	1.117.231	1.126.228	1.125.094	998.810	841.914	733.842
1993	673.811	549.946	547.707	547.751	548.412	538.511	521.227	478.730	391.409	409.944	581.939	509.727
1994	952.318	1.200.682	1.343.359	1.494.911	1.503.010	1.798.435	2.002.613	2.178.369	2.162.893	1.946.069	1.574.227	1.211.315
1995	1.047.555	1.010.671	1.043.802	1.063.116	1.205.210	1.354.780	1.329.506	1.321.958	1.416.443	1.500.873	1.407.690	1.327.186
1996	1.269.844	1.241.211	1.234.765	1.181.469	1.094.818	1.058.476	1.030.936	1.078.148	1.041.631	964.414	865.329	840.347
1997	843.059	1.005.599	1.362.996	2.142.648	2.591.051	3.108.216	3.514.054	3.568.661	3.503.643	3.536.028	3.488.811	3.592.622
1998	3.255.410	2.905.019	2.759.595	2.627.145	2.468.530	2.380.254	2.503.560	2.444.181	2.442.343	2.466.330	2.518.110	2.835.104
1999	2.368.986	1.921.348	1.733.177	1.645.730	1.575.692	1.508.047	1.462.699	1.458.350	1.366.958	1.256.522	880.967	721.298
2000	578.159	421.145	358.634	354.205	365.613	226.344	208.569	198.885	333.701	325.073	314.114	306.656
2001	292.145	644.093	1.071.201	1.317.140	1.577.240	1.801.030	1.914.634	1.941.515	1.881.664	1.929.806	1.866.121	1.742.563
2002	1.508.642	1.307.871	1.489.506	1.062.456	928.812	805.474	688.747	601.803	443.251	299.061	226.585	124.471
2003	98.621	95.981	95.089	95.089	92.045	92.699	354.779	766.491	1.203.805	1.462.494	1.463.571	1.463.745
2004	1.345.515	1.311.082	1.309.294	1.250.299	1.214.119	1.188.508	1.191.233	1.181.813	1.146.115	1.129.666	1.506.945	1.819.912
2005	1.896.381	1.896.277	1.884.552	1.835.093	1.731.145	1.596.760	1.511.814	1.427.070	1.410.849	1.411.168	1.421.348	2.022.305
2006	2.012.123	1.938.676	1.861.850	1.858.516	1.858.822	2.308.113	3.024.212	3.394.164	3.665.298	3.850.701	3.636.193	3.184.817
2007	2.816.079	2.507.794	2.449.185	2.396.350	2.363.723	2.443.751	2.616.226	2.554.312	2.304.852	1.928.549	1.184.400	764.993
2008	467.206	352.812	281.593	243.651	208.395	180.551	189.136	194.940	171.761	447.244	827.253	1.073.930
2009	1.454.859	1.558.010	1.613.703	1.615.422	1.569.921	1.567.841	1.621.269	2.849.621	4.260.920	5.108.387	5.122.434	5.379.548
2010	5.300.544	5.336.175	5.343.850	5.475.915	5.512.050	5.540.161	5.516.333	5.503.458	5.492.770	5.444.997	5.303.333	4.703.254
2011	4.117.075	3.040.915	2.527.354	2.349.077	2.182.906	2.098.650	2.079.163	2.022.395	1.994.470	1.939.612	1.893.828	1.855.286
2012	1.735.788	1.685.201	1.525.968	1.455.670	1.420.926	1.342.958	1.251.292	1.173.292	1.053.688	805.424	762.192	716.964
2013	761.965	589.566	534.576	477.126	448.095	418.737	411.881	470.848	586.913	609.444	569.567	1.902.930
2014	1.873.296	1.835.316	1.821.377	1.778.484	1.744.392	1.725.986	1.727.538	1.675.339	1.662.496	1.667.754	1.650.675	1.641.373
2015	1.617.597	1.614.801	1.604.238	1.592.234	1.582.840	1.573.229	1.557.824	1.542.968	1.524.997	1.505.812	1.489.838	1.490.975
2016	1.467.092	1.303.463	986.298	937.928	899.007	891.669	872.520	819.511	769.129	723.850	713.503	704.168
2017	691.503	681.528	665.584	641.924	626.251	606.698	598.076	797.701	779.868	1.392.912	1.370.443	1.357.917
2018	1.336.984	1.304.928	1.299.958	1.274.859	1.183.092	942.958	899.767	848.502	824.100	819.463	800.672	798.266
2019	780.950	775.084	759.176	735.208	678.723	669.831	661.610	655.697	649.350	564.169	476.845	359.669
2020	311.632	300.949	239.897	230.069	218.438	212.701	196.250	183.692	161.727	153.394	131.473	129.139
2021	111.268	104.110	91.975	73.509	59.711	56.171	46.947	38.925	35.832	34.770	32.845	35.091
2022	33.898	38.013	69.872	69.587	67.024	63.228	59.430	53.401	48.758	43.081	38.535	50.878
2023	50.912	56.579	56.616	54.760	49.985	47.191	42.285	76.842	142.934	197.892	316.012	350.067
2024	350.201	327.962	323.031	314.484	309.673	300.282	285.579	278.930	261.477	252.612	231.412	229.543
2025	207.606	200.084	199.280	184.012	175.081	163.997	150.624	133.785				

Fonte: GEFOC - CONAB

**Gráfico 4 – Série histórica de Milho - 2002-2024- em tonelada**



Fonte: GEFOC - CONAB

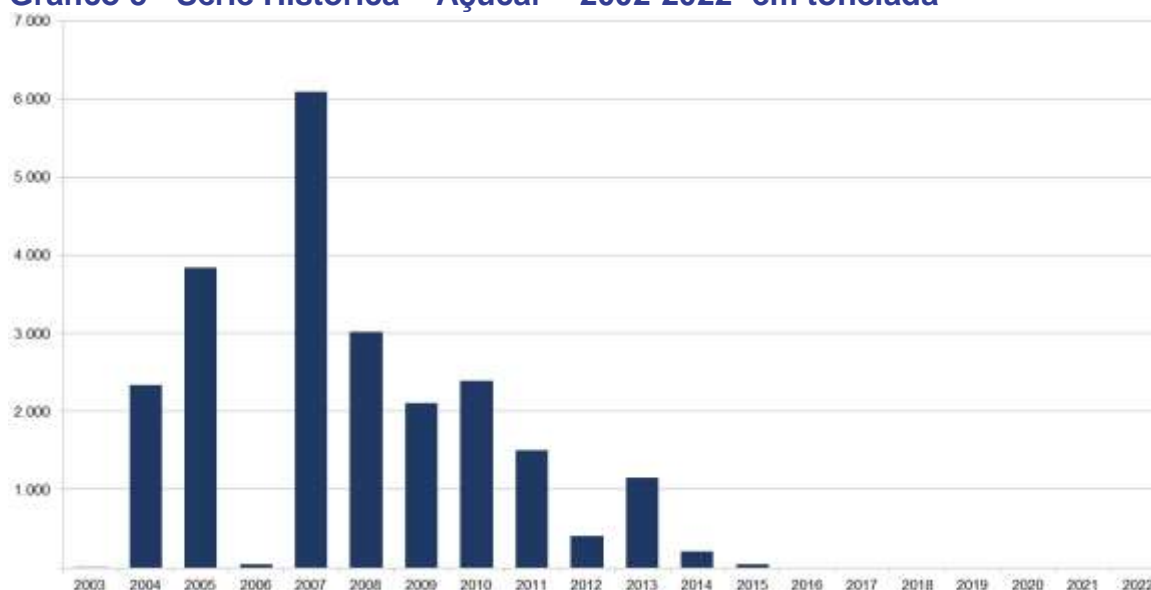
# Série Histórica Açúcar

Tabela 9 – Estoque de Açúcar - Agricultura Familiar - em tonelada

ANO	JAN	FEV	MAR	ABR	MAI	JUN	JUL	AGO	SET	OUT	NOV	DEZ
2004	0	0	0	0	0	0	0	0	0	275	149	249
2005	1.272	2.815	3.231	2.338	1.998	1.800	1.795	1.537	952	851	0	1.604
2006	1.766	1.665	1.580	3.837	3.760	3.734	3.129	1.973	1.622	1.554	1.011	439
2007	941	34	33	43	33	390	27	390	19	481	457	5.754
2008	6.270	6.332	6.293	6.085	5.982	5.866	5.390	4.426	4.252	3.937	3.841	3.966
2009	3.860	3.921	3.302	3.019	1.838	982	770	261	159	121	577	496
2010	1.033	1.451	2.128	2.111	2.111	2.084	2.096	2.127	2.157	1.794	2.310	2.291
2011	2.229	2.396	2.440	2.388	2.055	1.870	1.492	1.001	819	633	858	603
2012	1.455	1.544	1.403	1.503	1.462	1.452	1.428	1.428	1.428	1.219	1.149	988
2013	1.149	794	531	402	308	150	116	112	88	28	410	873
2014	1.131	1.263	1.210	1.153	1.160	1.180	753	874	758	586	415	253
2015	241	281	225	210	193	162	161	161	153	139	139	132
2016	86	59	59	45	29	29	29	29	29	29	19	0
2017	0	0	0	0	0	0	0	0	0	0	0	0
2018	0	0	0	0	0	0	0	0	0	0	0	0
2019	0	0	0	0	0	0	0	0	0	0	0	0
2020	0	0	0	0	0	0	0	0	0	0	0	0
2021	0	0	0	0	0	0	0	0	0	0	0	0
2022	0	0	0	0	0	0	0	0	0	0	0	0
2023	0	0	0	0	0	0	0	0	0	0	0	0
2024	0	37	37	0	0	26	22	14	8	0	0	0
2025	0	0	0	0	0	0	0	0	0	0	0	0

Fonte: GEFOC - CONAB

Gráfico 5 - Série Histórica – Açúcar – 2002-2022- em tonelada



Fonte: GEFOC - CONAB

# Série Histórica Algodão

**Tabela 10 – Estoque de Algodão - AGF – em tonelada**

ANO	JAN	FEV	MAR	ABR	MAI	JUN	JUL	AGO	SET	OUT	NOV	DEZ
1987	141.746	141.895	166.490	153.518	153.837	153.472	152.077	149.453	147.310	119.952	94.846	87.494
1988	78.529	67.042	62.501	60.840	55.487	54.778	54.775	54.699	55.151	55.204	57.388	73.018
1989	73.638	73.669	72.541	74.499	75.265	75.318	75.401	74.955	72.018	68.470	64.128	58.950
1990	57.021	51.610	24.785	24.485	24.441	22.872	13.169	7.778	7.570	7.479	7.556	289
1991	257	254	254	302	264	264	264	124	62	62	62	56
1992	56	3	3	938	5.013	10.506	10.514	10.514	10.514	10.515	10.519	10.519
1993	10.497	10.497	5.827	5.213	3.464	3.289	2.577	1.585	1.550	1.538	5.406	2.585
1994	3.351	3.480	3.480	3.483	4.039	4.216	4.216	4.279	4.279	4.279	4.279	4.279
1995	4.223	3.564	1.446	1.446	1.446	1.446	1.446	1.446	5.636	5.636	5.636	5.418
1996	4.765	4.070	3.659	3.659	3.670	3.670	3.612	3.651	3.650	4.104	3.930	2.297
1997	945	770	770	770	842	842	842	842	842	752	783	783
1998	783	783	783	1.370	7.983	20.614	30.261	33.247	50.108	55.644	56.684	70.891
1999	69.926	57.926	52.158	49.233	47.556	45.380	45.513	45.512	47.344	59.654	78.403	85.616
2000	82.982	67.996	57.464	25.498	22.303	6.680	10.796	10.872	11.579	11.845	11.853	11.907
2001	2.408	2.379	2.379	2.411	2.459	2.488	2.814	6.215	12.557	25.727	35.765	51.073
2002	51.023	53.769	53.243	54.783	54.178	54.211	53.696	55.926	54.927	54.051	53.606	51.554
2003	35.733	34.313	24.499	24.499	11.127	11.127	11.127	11.127	11.130	11.130	11.130	11.130
2004	7.793	2.889	1.952	49	51	76	76	76	76	76	76	76
2005	76	76	76	76	76	76	76	76	1.555	2.294	5.539	4.558
2006	4.558	4.558	4.558	4.558	4.558	4.558	4.605	4.945	4.945	4.945	4.945	4.945
2007	4.945	4.909	2.112	687	521	930	930	930	1.092	1.092	1.428	1.571
2008	1.571	1.571	1.571	1.571	1.571	1.571	1.571	1.571	1.571	1.571	1.571	1.571
2009	1.571	1.571	1.571	1.571	1.571	1.571	1.571	1.571	1.571	1.571	1.571	1.571
2010	1.571	1.571	1.571	1.571	1.571	1.571	1.571	1.580	773	773	37	37
2011	37	37	37	37	37	37	37	37	37	37	37	37
2012	37	37	37	37	37	37	37	37	37	37	37	37
2013	37	37	37	37	37	37	37	37	37	37	37	37
2014	37	37	37	37	37	37	37	37	37	37	37	37
2015	37	37	37	37	37	27	27	27	27	27	27	27
2016	27	27	27	27	27	27	27	27	27	27	27	0
2017	0	0	0	0	0	0	0	0	0	0	0	0
2018	0	0	0	0	0	0	0	0	0	0	0	0
2019	0	0	0	0	0	0	0	0	0	0	0	0
2020	0	0	0	0	0	0	0	0	0	0	0	0
2021	0	0	0	0	0	0	0	0	0	0	0	0
2022	0	0	0	0	0	0	0	0	0	0	0	0
2023	0	0	0	0	0	0	0	0	0	0	0	0
2024	0	0	0	0	0	0	0	0	0	0	0	0
2025	0	0	0	0	0	0	0	0	0	0	0	0

Fonte: GEFOC - CONAB

**Tabela 11 – Estoque de Algodão - Mercado de Opções – em tonelada**

ANO	JAN	FEV	MAR	ABR	MAI	JUN	JUL	AGO	SET	OUT	NOV	DEZ
1987	141.746	141.895	166.490	153.518	153.837	153.472	152.077	149.453	147.310	119.952	94.846	87.494
1988	78.529	67.042	62.501	60.840	55.487	54.778	54.775	54.699	55.151	55.204	57.388	73.018
1989	73.638	73.669	72.541	74.499	75.265	75.318	75.401	74.955	72.018	68.470	64.128	58.950
1990	57.021	51.610	24.785	24.485	24.441	22.872	13.169	7.778	7.570	7.479	7.556	289
1991	257	254	254	302	264	264	264	124	62	62	62	56
1992	56	3	3	938	5.013	10.506	10.514	10.514	10.514	10.515	10.519	10.519
1993	10.497	10.497	5.827	5.213	3.464	3.289	2.577	1.585	1.550	1.538	5.406	2.585
1994	3.351	3.480	3.480	3.483	4.039	4.216	4.216	4.279	4.279	4.279	4.279	4.279
1995	4.223	3.564	1.446	1.446	1.446	1.446	1.446	1.446	5.636	5.636	5.636	5.418
1996	4.765	4.070	3.659	3.659	3.670	3.670	3.612	3.651	3.650	4.104	3.930	2.297
1997	945	770	770	770	842	842	842	842	842	752	783	783
1998	783	783	783	1.370	7.983	20.614	30.261	33.247	50.108	55.644	56.684	70.891
1999	69.926	57.926	52.158	49.233	47.556	45.380	45.513	45.512	47.344	59.654	78.403	85.616
2000	82.982	67.996	57.464	25.498	22.303	6.680	10.796	10.872	11.579	11.845	11.853	11.907
2001	39.418	38.303	38.303	38.335	38.383	38.412	38.755	42.160	48.503	61.716	71.711	87.019
2002	86.969	89.708	89.179	90.740	88.738	89.136	89.408	91.808	90.809	87.176	89.162	65.377
2003	46.244	42.103	25.914	25.879	12.088	12.088	12.012	12.012	12.015	12.015	12.015	12.015
2004	8.280	2.900	1.963	56	62	87	87	87	87	87	88	88
2005	88	88	88	88	88	88	88	88	1.567	2.306	2.551	4.570
2006	4.570	4.570	4.570	4.570	4.570	4.570	4.617	4.957	4.957	4.957	4.957	4.957
2007	4.957	4.921	2.124	687	521	930	930	930	1.092	1.092	1.428	1.571
2008	1.571	1.571	1.571	1.571	1.571	1.571	1.571	1.571	1.571	1.571	1.571	1.571
2009	1.571	1.571	1.571	1.571	1.571	1.571	1.571	1.571	1.571	1.571	1.571	1.571
2010	1.571	1.571	1.571	1.571	1.571	1.571	1.571	1.580	773	773	37	37
2011	37	37	37	37	37	37	37	37	37	37	37	37
2012	37	37	37	37	37	37	37	37	37	37	37	37
2013	37	37	37	37	37	37	37	37	37	37	37	37
2014	37	37	37	37	37	37	37	37	37	37	37	37
2015	37	37	37	37	37	27	27	27	27	27	27	27
2016	27	27	27	27	27	27	27	27	27	27	27	0
2017	0	0	0	0	0	0	0	0	0	0	0	0
2018	0	0	0	0	0	0	0	0	0	0	0	0
2019	0	0	0	0	0	0	0	0	0	0	0	0
2020	0	0	0	0	0	0	0	0	0	0	0	0
2021	0	0	0	0	0	0	0	0	0	0	0	0
2022	0	0	0	0	0	0	0	0	0	0	0	0
2023	0	0	0	0	0	0	0	0	0	0	0	0
2024	0	0	0	0	0	0	0	0	0	0	0	0
2025	0	0	0	0	0	0	0	0	0	0	0	0

Fonte: GEFOC - CONAB

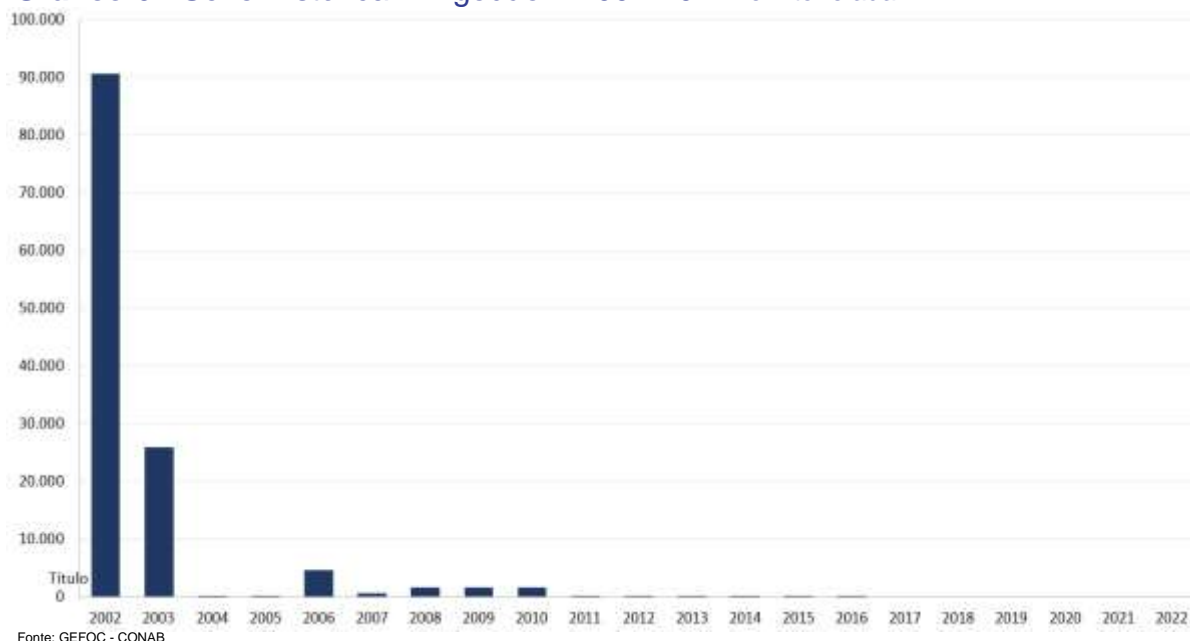
# Série Histórica Algodão

Tabela 12 – Estoque Total de Algodão – em tonelada

ANO	JAN	FEV	MAR	ABR	MAI	JUN	JUL	AGO	SET	OUT	NOV	DEZ
1987	141.746	141.895	166.490	153.518	153.837	153.472	152.077	149.453	147.310	119.952	94.846	87.494
1988	78.529	67.042	62.501	60.840	55.487	54.778	54.775	54.699	55.151	55.204	57.388	73.018
1989	73.638	73.669	72.541	74.499	75.265	75.318	75.401	74.955	72.018	68.470	64.128	58.950
1990	57.021	51.610	24.785	24.485	24.441	22.872	13.169	7.778	7.570	7.479	7.556	289
1991	257	254	254	302	264	264	264	124	62	62	62	56
1992	56	3	3	938	5.013	10.506	10.514	10.514	10.514	10.515	10.519	10.519
1993	10.497	10.497	5.827	5.213	3.464	3.289	2.577	1.585	1.550	1.538	5.406	2.585
1994	3.351	3.480	3.480	3.483	4.039	4.216	4.216	4.279	4.279	4.279	4.279	4.279
1995	4.223	3.564	1.446	1.446	1.446	1.446	1.446	1.446	5.636	5.636	5.636	5.418
1996	4.765	4.070	3.659	3.659	3.670	3.670	3.612	3.651	3.650	4.104	3.930	2.297
1997	945	770	770	770	842	842	842	842	842	752	783	783
1998	783	783	783	1.370	7.983	20.614	30.261	33.247	50.108	55.644	56.684	70.891
1999	69.926	57.926	52.158	49.233	47.556	45.380	45.513	45.512	47.344	59.654	78.403	85.616
2000	82.982	67.996	57.464	25.498	22.303	6.680	10.796	10.872	37.838	46.757	49.182	52.833
2001	39.418	38.303	38.303	38.335	38.383	38.412	38.755	42.160	48.503	61.716	71.711	87.019
2002	86.969	89.708	89.179	90.740	88.738	89.136	89.408	91.808	90.809	87.176	89.162	65.377
2003	46.244	42.103	25.914	25.879	12.088	12.088	12.012	12.012	12.015	12.015	12.015	12.015
2004	8.280	2.900	1.963	56	62	87	87	87	87	87	88	88
2005	88	88	88	88	88	88	88	88	1.567	2.306	2.551	4.570
2006	4.570	4.570	4.570	4.570	4.570	4.570	4.617	4.957	4.957	4.957	4.957	4.957
2007	4.957	4.921	2.124	687	521	930	930	930	1.092	1.092	1.428	1.571
2008	1.571	1.571	1.571	1.571	1.571	1.571	1.571	1.571	1.571	1.571	1.571	1.571
2009	1.571	1.571	1.571	1.571	1.571	1.571	1.571	1.571	1.571	1.571	1.571	1.571
2010	1.571	1.571	1.571	1.571	1.571	1.571	1.571	1.580	773	773	37	37
2011	37	37	37	37	37	37	37	37	37	37	37	37
2012	37	37	37	37	37	37	37	37	37	37	37	37
2013	37	37	37	37	37	37	37	37	37	37	37	37
2014	37	37	37	37	37	37	37	37	37	37	37	37
2015	37	37	37	37	37	27	27	27	27	27	27	27
2016	27	27	27	27	27	27	27	27	27	27	27	0
2017	0	0	0	0	0	0	0	0	0	0	0	0
2018	0	0	0	0	0	0	0	0	0	0	0	0
2019	0	0	0	0	0	0	0	0	0	0	0	0
2020	0	0	0	0	0	0	0	0	0	0	0	0
2021	0	0	0	0	0	0	0	0	0	0	0	0
2022	0	0	0	0	0	0	0	0	0	0	0	0
2023	0	0	0	0	0	0	0	0	0	0	0	0
2024	0	0	0	0	0	0	0	0	0	0	0	0
2025	0	0	0	0	0	0	0	0	0	0	0	0

Fonte: GEFOC - CONAB

Gráfico 6 - Série Histórica – Algodão – 2002-2022- em tonelada



Fonte: GEFOC - CONAB

## Série Histórica Café

**Tabela 13 – Estoque de Café - AGF – em tonelada**

ANO	JAN	FEV	MAR	ABR	MAI	JUN	JUL	AGO	SET	OUT	NOV	DEZ
2010	134	134	284	284	284	284	284	284	284	284	284	284
2011	284	284	284	284	284	284	284	284	284	284	284	284
2012	284	284	284	284	284	284	284	284	284	284	284	284
2013	284	284	284	284	284	284	284	284	284	284	284	524
2014	542	542	542	542	542	542	542	542	542	542	542	542
2015	542	542	542	542	482	368	319	318	318	318	318	318
2016	238	201	200	200	200	200	200	200	200	200	200	200
2017	200	200	200	0	0	0	0	0	0	0	0	0
2018	0	0	0	0	0	0	0	0	0	0	0	0
2019	0	0	0	0	0	0	0	0	0	0	0	0
2020	0	0	0	0	0	0	0	0	0	0	0	0
2021	0	0	0	0	0	0	0	0	0	0	0	0
2022	0	0	0	0	0	0	0	0	0	0	0	0
2023	0	0	0	0	0	0	0	0	0	0	0	0
2024	0	0	0	0	0	0	0	0	0	0	0	0
2025	0	0	0	0	0	0	0	0	0	0	0	0

Fonte: GEFOC - CONAB

**Tabela 14 – Estoque de Café - Mercado de Opções – em tonelada**

ANO	JAN	FEV	MAR	ABR	MAI	JUN	JUL	AGO	SET	OUT	NOV	DEZ
2003	0	0	0	0	0	0	0	0	0	17.503	17.522	55.032
2004	60.332	60.332	60.334	60.334	32.771	27.116	27.116	27.116	27.116	27.236	27.236	27.236
2005	27.236	27.236	27.236	17.900	12.253	9.875	10.770	10.770	10.845	10.845	10.845	10.917
2006	10.917	10.917	10.917	10.917	10.917	10.917	10.917	10.917	10.917	10.917	10.917	10.917
2007	10.917	10.917	10.917	10.917	10.917	10.917	10.917	10.917	10.917	10.917	10.917	10.930
2008	10.930	10.930	10.930	10.930	10.930	10.930	10.682	10.682	10.682	10.682	10.191	10.191
2009	10.191	10.191	5.957	6.003	6.471	5.957	5.957	5.957	5.957	5.957	5.957	24.600
2010	39.370	58.517	81.100	98.074	98.206	98.206	98.587	98.587	98.587	98.587	98.587	98.587
2011	98.587	98.563	98.563	98.408	98.408	98.253	98.005	97.710	97.282	96.614	96.614	96.621
2012	96.614	96.591	96.591	96.591	96.592	96.592	96.592	96.592	96.592	96.592	96.592	96.592
2013	96.592	96.592	96.592	96.592	96.592	96.592	96.587	96.587	96.586	96.587	96.589	96.592
2014	96.592	96.592	96.592	96.592	96.592	96.592	96.592	96.592	96.592	96.592	96.592	96.592
2015	96.592	96.592	96.592	96.592	94.882	94.166	94.076	94.065	94.065	94.065	94.065	94.065
2016	92.571	90.399	89.198	82.079	82.117	82.142	82.142	75.165	68.446	59.890	46.010	40.574
2017	40.869	33.761	15.074	1.540	353	263	377	17	3	3	3	3
2018	2	2	2	5	5	6	3	31	31	31	31	31
2019	31	31	31	31	31	31	31	31	31	31	31	31
2020	31	31	31	31	31	31	31	31	31	31	31	31
2022	1	1	1	1	1	1	1	1	1	1	1	1
2023	1	0	0	0	0	0	0	0	0	0	0	0
2024	0	0	0	0	0	0	0	0	0	0	0	0
2025	0	0	0	0	0	0	0	0	0	0	0	0

Fonte: GEFOC - CONAB

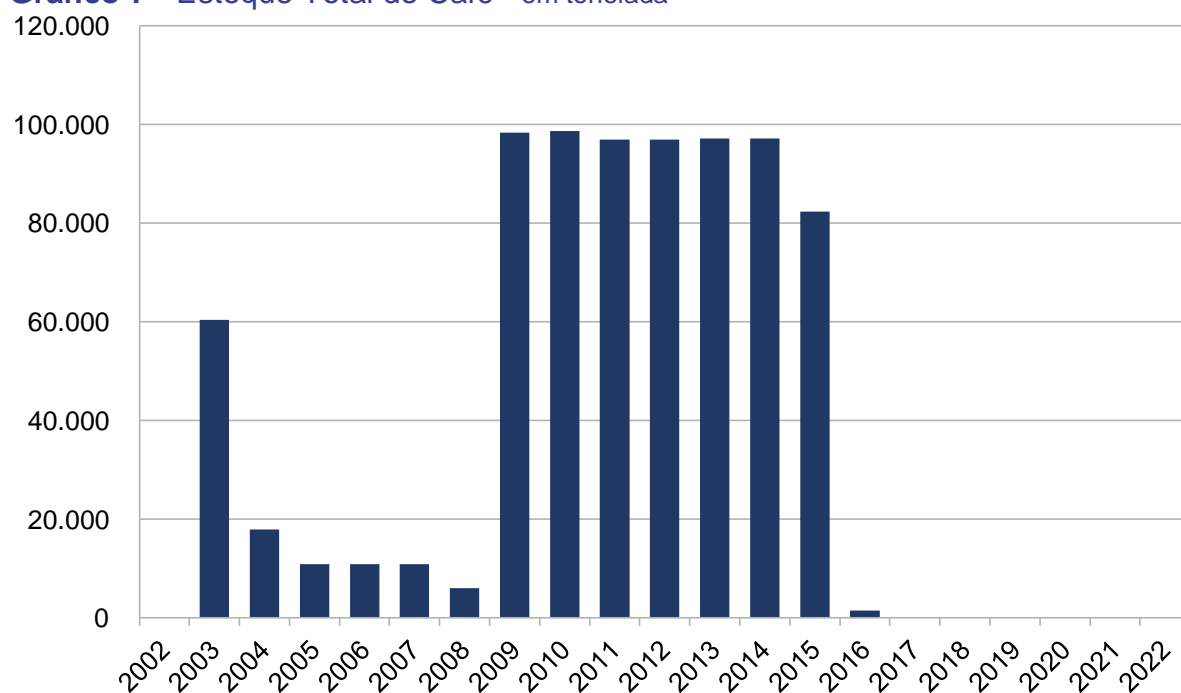
## Série Histórica Café

**Tabela 15 – Estoque Total de Café - em tonelada**

ANO	JAN	FEV	MAR	ABR	MAI	JUN	JUL	AGO	SET	OUT	NOV	DEZ
2003	0	0	0	0	0	0	0	0	0	17.503	17.522	55.032
2004	60.332	60.332	60.334	60.334	32.771	27.116	27.116	27.116	27.116	27.236	27.236	27.236
2005	27.236	27.236	27.236	17.900	12.253	9.875	10.770	10.770	10.845	10.845	10.845	10.917
2006	10.917	10.917	10.917	10.917	10.917	10.917	10.917	10.917	10.917	10.917	10.917	10.917
2007	10.917	10.917	10.917	10.917	10.917	10.917	10.917	10.917	10.917	10.917	10.917	10.930
2008	10.930	10.930	10.930	10.930	10.930	10.930	10.682	10.682	10.682	10.682	10.191	10.191
2009	10.191	10.191	5.957	6.003	6.471	5.957	5.957	5.957	5.957	5.957	5.957	24.600
2010	39.504	58.651	81.384	98.358	98.490	98.490	98.871	98.871	98.871	98.871	98.871	98.871
2011	98.871	98.847	98.847	98.692	98.692	98.537	98.289	97.994	97.566	96.898	96.898	96.905
2012	96.898	96.875	96.875	96.875	96.876	96.876	96.876	96.876	96.876	96.876	96.876	96.876
2013	96.876	96.876	96.876	96.876	96.876	96.876	96.871	96.871	96.870	96.871	96.873	97.116
2014	97.134	97.134	97.134	97.134	97.134	97.134	97.134	97.134	97.134	97.134	97.134	97.134
2015	97.134	97.134	97.134	97.134	95.364	94.534	94.395	94.383	94.383	94.383	94.383	94.383
2016	92.809	90.600	89.398	82.279	82.317	82.342	82.342	75.365	68.646	60.090	46.210	40.774
2017	41.069	33.961	15.274	1.540	353	263	377	17	3	3	3	3
2018	2	2	2	5	5	6	3	31	31	31	31	31
2019	31	31	31	31	31	31	31	31	31	31	31	31
2020	31	31	31	31	31	31	31	31	31	31	31	31
2021	1	1	1	1	1	1	1	1	1	1	1	1
2022	1	1	1	1	1	1	1	1	1	1	1	1
2023	1	0	0	0	0	0	0	0	0	0	0	0
2024	0	0	0	0	0	0	0	0	0	0	0	0
2025	0	0	0	0	0	0	0	0	0	0	0	0

Fonte: GEFOC - CONAB

**Gráfico 7 - Estoque Total de Café - em tonelada**



Fonte: GEFOC - CONAB

# Série Histórica Farinha de Mandioca

**Tabela 16 – Estoque de F. de Mandioca - AGF – em tonelada**

ANO	JAN	FEV	MAR	ABR	MAI	JUN	JUL	AGO	SET	OUT	NOV	DEZ
1987	109.517	101.907	147.394	148.475	144.592	142.973	136.047	98.091	66.185	45.270	43.869	42.934
1988	36.978	31.329	26.302	24.548	19.057	18.437	18.423	17.859	17.225	17.046	5.411	2.270
1989	2.815	2.295	1.559	1.244	1.243	1.243	1.264	2.209	4.174	4.591	7.815	13.284
1990	14.248	14.615	15.624	20.447	31.770	44.602	46.707	57.214	83.525	98.033	117.593	127.756
1991	137.226	140.257	140.671	149.991	150.850	149.747	144.992	143.757	141.083	125.546	110.400	104.295
1992	105.295	104.426	100.249	97.170	86.094	84.663	82.620	82.614	81.061	66.966	56.624	46.556
1993	41.261	35.894	32.037	30.306	30.384	28.111	27.710	16.641	14.498	14.032	12.125	7.794
1994	4.317	3.519	3.817	4.852	6.413	8.115	8.156	8.156	8.156	8.096	9.052	10.012
1995	9.984	9.806	9.867	9.866	9.323	8.858	6.499	6.711	13.767	33.837	106.323	118.776
1996	138.163	132.366	128.551	120.713	117.112	120.370	103.438	87.097	74.990	58.798	53.298	47.997
1997	45.914	29.582	19.999	27.774	27.222	26.704	52.977	38.922	33.812	33.058	25.655	25.664
1998	15.495	14.859	13.471	12.779	13.076	9.600	9.112	8.453	8.433	7.858	6.794	7.885
1999	7.736	444	444	388	361	436	6.160	6.160	5.372	5.372	5.372	5.302
2000	5.242	2.974	2.974	2.974	2.974	500	0	0	0	0	0	0
2001	0	0	0	866	3.674	11.864	19.783	27.610	45.888	56.725	62.941	64.847
2002	63.964	62.940	64.794	63.206	59.204	57.479	55.869	53.744	53.750	53.254	40.820	0
2003	3.403	772	714	110	95	0	0	0	0	0	0	0
2004	0	0	0	0	0	0	0	0	0	0	0	0
2005	0	0	0	0	0	0	0	0	0	0	0	0
2006	0	0	0	0	0	0	0	0	0	0	0	0
2007	0	0	0	0	0	0	0	0	0	0	0	0
2008	0	0	0	0	0	0	0	0	0	0	0	0
2009	0	0	0	0	0	0	0	0	0	0	0	0
2010	0	0	0	0	0	0	0	0	0	0	0	0
2011	0	0	0	0	0	0	0	0	0	0	0	0
2012	0	0	0	0	0	0	0	0	0	0	0	0
2013	0	0	0	0	0	0	0	0	0	0	0	0
2014	0	0	0	0	0	0	0	0	0	0	0	0
2015	0	0	0	0	0	0	0	2.339	7.615	13.363	15.542	15.601
2016	15.601	15.601	15.601	15.601	15.601	15.601	14.549	14.549	14.616	10.710	8.166	7.853
2017	5.403	3.114	1.950	766	683	683	683	683	577	8	0	28
2018	0	0	0	0	0	0	0	0	0	0	21	28
2019	28	28	28	28	28	28	28	28	28	28	28	28
2020	28	28	28	28	28	28	28	28	28	28	28	28
2021	28	0	0	0	0	0	0	0	0	0	0	0
2022	0	0	0	0	0	0	0	0	0	0	0	0
2023	0	0	0	0	0	0	0	0	0	0	0	0
2024	0	0	0	0	0	0	0	0	0	0	0	0
2025	0	0	0	0	0	0	0	0	0	0	0	0

Fonte: GEFOC – CONAB

**Tabela 17 – Estoque de F. de Mandioca - Agricultura Familiar – em tonelada**

ANO	JAN	FEV	MAR	ABR	MAI	JUN	JUL	AGO	SET	OUT	NOV	DEZ
2003	0	0	0	0	0	0	0	0	0	0	2	8
2004	46	46	46	50	157	198	374	586	1.141	1.409	1.866	3.798
2005	3.841	3.802	3.791	3.506	2.571	2.626	3.035	3.436	4.152	4.811	5.209	9.924
2006	10.055	9.840	9.549	9.067	7.285	7.959	8.907	10.830	12.501	15.641	15.847	17.034
2007	17.116	16.041	14.909	14.364	13.670	12.604	11.959	11.692	11.097	10.451	10.869	9.988
2008	9.804	9.156	8.530	7.609	7.468	6.619	5.998	5.669	4.562	4.184	4.493	4.940
2009	4.942	4.987	4.233	3.660	2.974	2.658	5.512	6.930	9.129	9.383	10.611	10.663
2010	10.663	8.130	6.833	5.679	4.494	3.478	3.530	3.243	3.213	2.933	3.928	2.626
2011	2.432	2.361	2.370	2.264	4.759	3.879	3.410	2.758	2.772	2.443	2.246	2.878
2012	2.619	2.453	2.071	2.009	1.527	1.336	487	361	415	253	262	156
2013	262	132	103	60	42	32	3	1	0	0	0	0
2014	45	45	45	45	0	0	45	45	45	45	6	67
2015	67	67	48	45	28	1	0	0	0	0	0	0
2016	0	0	0	0	0	0	0	0	0	0	0	0
2017	0	0	0	0	0	0	0	0	0	0	0	0
2018	0	0	0	0	0	0	0	0	0	0	0	0
2019	0	0	0	0	0	0	0	0	0	0	0	0
2020	0	0	0	0	0	0	0	0	0	0	0	0
2021	0	0	0	0	0	0	0	0	0	0	0	0
2022	0	0	0	0	0	0	0	0	0	0	0	0
2023	0	0	0	0	0	0	0	0	0	0	0	0
2024	0	0	0	0	0	48	171	119	169	55	47	62
2025	118	0	58	118	132	231	272	293				

Fonte: GEFOC – CONAB

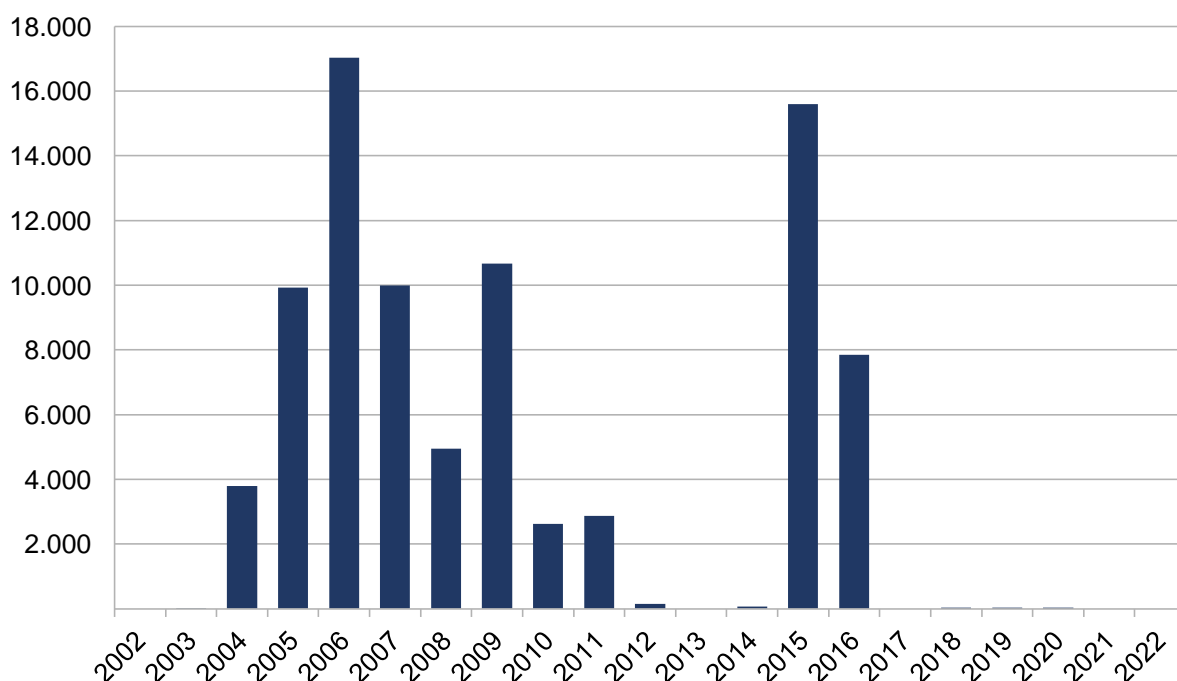
# Série Histórica Farinha de Mandioca

**Tabela 18 – Estoque Total de Farinha de Mandioca – em tonelada**

ANO	JAN	FEV	MAR	ABR	MAI	JUN	JUL	AGO	SET	OUT	NOV	DEZ
1987	109.517	101.907	147.394	148.475	144.592	142.973	136.047	98.091	66.185	45.270	43.869	42.934
1988	36.978	31.329	26.302	24.548	19.057	18.437	18.423	17.859	17.225	17.046	5.411	2.270
1989	2.815	2.295	1.559	1.244	1.243	1.243	1.264	2.209	4.174	4.591	7.815	13.284
1990	14.248	14.615	15.624	20.447	31.770	44.602	46.707	57.214	83.525	98.033	117.593	127.756
1991	137.226	140.257	140.671	149.991	150.850	149.747	144.992	143.757	141.083	125.546	110.400	104.295
1992	105.295	104.426	100.249	97.170	86.094	84.663	82.620	82.614	81.061	66.966	56.624	46.556
1993	41.261	35.894	32.037	30.306	30.384	28.111	27.710	16.641	14.498	14.032	12.125	7.794
1994	4.317	3.519	3.817	4.852	6.413	8.115	8.156	8.156	8.156	8.096	9.052	10.012
1995	9.984	9.806	9.867	9.866	9.323	8.858	6.499	6.711	13.767	33.837	106.323	118.776
1996	138.163	132.366	128.551	120.713	117.112	120.370	103.438	87.097	74.990	58.798	53.298	47.997
1997	45.914	29.582	19.999	27.774	27.222	26.704	52.977	38.922	33.812	33.058	25.655	25.664
1998	15.495	14.859	13.471	12.779	13.076	9.600	9.112	8.453	8.433	7.858	6.794	7.885
1999	7.736	444	444	388	361	436	6.160	6.160	5.372	5.372	5.372	5.302
2000	5.242	2.974	2.974	2.974	2.974	500	0	0	0	0	0	0
2001	0	0	0	866	3.674	11.864	19.783	27.610	45.888	56.725	62.941	64.847
2002	63.964	62.940	64.794	63.206	59.204	57.479	55.869	53.744	53.750	53.254	40.820	0
2003	3.403	772	714	110	95	0	0	0	0	0	2	8
2004	46	46	46	50	157	198	374	586	1.141	1.409	1.866	3.798
2005	3.841	3.802	3.791	3.506	2.571	2.626	3.035	3.436	4.152	4.811	5.209	9.924
2006	10.055	9.840	9.549	9.067	7.285	7.959	8.907	10.830	12.501	15.641	15.847	17.034
2007	17.116	16.041	14.909	14.364	13.670	12.604	11.959	11.692	11.097	10.451	10.869	9.988
2008	9.804	9.156	8.530	7.609	7.468	6.619	5.998	5.669	4.562	4.184	4.493	4.940
2009	4.942	4.987	4.233	3.660	2.974	2.658	5.512	6.930	9.129	9.383	10.611	10.663
2010	10.663	8.130	6.833	5.679	4.494	3.478	3.530	3.243	3.213	2.933	3.928	2.626
2011	2.432	2.361	2.370	2.264	4.759	3.879	3.410	2.758	2.772	2.443	2.246	2.878
2012	2.619	2.453	2.071	2.009	1.527	1.336	487	361	415	253	262	156
2013	262	132	103	60	42	32	3	1	0	0	0	0
2014	45	45	45	45	0	0	45	45	45	45	6	67
2015	67	67	48	45	28	1	0	2.339	7.615	13.363	15.542	15.601
2016	15.601	15.601	15.601	15.601	15.601	15.601	14.549	14.549	14.616	10.710	8.166	7.853
2017	5.403	3.114	1.950	766	683	683	683	683	577	8	0	0
2018	0	0	0	0	0	0	0	0	0	0	21	28
2019	28	28	28	28	28	28	28	28	28	28	28	28
2020	28	28	28	28	28	28	28	28	28	28	28	28
2021	28	0	0	0	0	0	0	0	0	0	0	0
2022	0	0	0	0	0	0	0	0	0	0	0	0
2023	0	0	0	0	0	0	0	0	0	0	0	0
2024	0	0	0	0	0	0	0	0	169	55	47	62
2025	118	0	58	118	132	231	272	293				

GEFOC - CONAB

**Gráfico 8 - Série Histórica – Farinha de Mandioca – 2002-2022 - em tonelada**



Fonte: GEFOC - CONAB

# Série Histórica de Feijão

**Tabela 19 – Estoque de Feijão - AGF – em tonelada**

ANO	JAN	FEV	MAR	ABR	MAI	JUN	JUL	AGO	SET	OUT	NOV	DEZ
1987	113.695	104.754	110.259	122.089	122.685	119.575	124.245	117.702	99.350	77.902	67.507	67.727
1988	72.455	78.170	78.766	80.350	93.222	110.682	144.472	178.761	182.381	162.895	150.840	131.102
1989	126.963	112.726	93.435	71.529	24.739	21.356	18.107	15.014	9.510	7.889	6.565	6.279
1990	6.228	6.123	6.139	6.132	2.826	2.553	1.852	1.736	1.676	1.898	1.864	6.819
1991	14.739	11.889	10.838	9.944	6.122	4.797	4.818	4.914	4.656	4.589	3.423	6.815
1992	7.006	13.274	11.192	16.844	21.858	37.179	81.426	97.377	120.083	112.697	112.273	103.247
1993	98.023	119.534	103.238	74.680	58.050	76.115	66.693	103.904	101.666	81.067	60.363	46.157
1994	31.315	27.083	16.631	11.851	8.348	6.615	7.387	9.327	9.665	6.538	6.149	6.112
1995	6.119	5.649	5.579	6.177	30.900	49.303	68.666	85.477	84.418	93.189	95.660	96.733
1996	89.028	87.115	90.371	87.728	89.738	86.234	68.353	53.285	43.485	35.471	34.607	30.164
1997	28.284	26.384	24.625	15.785	12.846	10.959	11.238	15.883	21.508	33.514	45.644	74.583
1998	74.159	74.553	48.902	47.105	44.961	44.570	15.523	2.687	611	374	830	1.266
1999	973	636	203	148	70	1.751	17.897	21.572	21.896	5.453	5.503	52
2000	52	20.118	50.721	71.402	86.707	78.529	74.002	62.653	50.400	34.521	27.535	420
2001	307	428	201	4	4	13	8	0	0	0	0	2
2002	0	0	0	0	0	0	0	0	0	0	0	0
2003	0	0	0	0	0	0	0	0	0	0	0	0
2004	0	0	0	0	0	0	0	3.701	11.145	11.711	11.711	11.715
2005	11.378	9.966	9.966	7.303	3.688	2.589	1.900	1.770	1.431	1.356	1.277	1.277
2006	1.277	1.277	1.234	1.234	1.234	1.781	2.276	2.558	2.905	2.905	2.905	3.766
2007	3.737	4.684	14.001	23.382	33.323	37.306	38.441	39.087	33.331	13.807	1.858	332
2008	332	93	46	46	46	46	46	13	13	5	5	5
2009	5	5	12.615	40.137	62.368	85.274	130.211	138.982	149.191	154.407	156.786	156.889
2010	137.471	142.958	166.603	173.793	172.216	164.031	158.762	156.929	155.256	141.064	136.854	129.002
2011	128.046	127.274	129.457	135.604	143.827	144.336	137.640	123.702	114.711	112.955	98.294	78.320
2012	69.404	59.909	0	41.084	30.490	25.098	23.092	21.677	19.753	18.429	15.300	11.430
2013	15.291	3.520	3.195	2.817	2.697	2.421	1.870	1.824	1.763	452	422	395
2014	385	385	357	357	2.934	4.096	19.345	30.692	39.127	56.559	63.731	64.166
2015	64.166	64.166	63.723	58.706	55.369	44.306	34.548	30.245	23.557	18.744	12.596	10.023
2016	9.908	5.862	2.490	1.163	1.037	222	18	3	0	0	0	0
2017	0	0	0	0	0	0	0	0	0	0	0	0
2018	0	0	0	0	0	0	0	0	0	0	0	0
2019	0	0	0	0	0	0	0	0	0	0	0	0
2020	0	0	0	0	0	0	0	0	0	0	0	0
2021	0	0	0	0	0	0	0	0	0	0	0	0
2022	0	0	0	0	0	0	0	0	0	0	0	0
2023	0	0	0	0	0	0	0	0	0	0	0	0
2024	0	0	0	0	0	0	0	0	0	0	0	0
2025	0	0	0	0	0	0	0	0	0	0	0	0

onte: GEFOC - CONAB

**Tabela 20 – Estoque de Feijão - Agricultura Familiar – em tonelada**

ANO	JAN	FEV	MAR	ABR	MAI	JUN	JUL	AGO	SET	OUT	NOV	DEZ
2003	0	0	0	0	0	0	0	0	0	0	1.726	1.911
2004	1.950	1.483	1.223	1.140	294	628	8.369	15.361	14.022	17.060	15.452	11.359
2005	9.532	7.347	5.679	4.221	1.638	1.120	928	379	535	1.347	1.715	4.073
2006	3.670	2.939	2.416	2.036	1.965	2.378	7.993	15.247	21.170	24.452	27.713	29.707
2007	32.006	32.766	33.535	34.186	39.457	43.823	55.304	55.022	48.412	38.550	18.457	10.420
2008	8.689	8.169	6.786	5.925	5.417	4.057	3.774	3.597	2.848	2.668	2.608	1.350
2009	1.339	1.227	917	887	734	2.054	9.270	12.535	18.778	18.137	30.000	34.979
2010	35.393	31.230	29.342	27.847	26.485	23.814	22.172	21.080	21.188	19.708	18.164	17.072
2011	16.868	16.850	16.223	16.136	15.814	15.505	14.815	13.207	12.913	11.829	7.556	9.475
2012	7.968	7.127	5.761	5.328	3.755	1.968	1.711	1.474	1.369	1.215	1.178	847
2013	1.178	648	599	429	348	341	309	297	200	262	202	165
2014	139	126	137	137	34	34	0	0	0	384	371	62
2015	72	8	5	8	8	52	83	95	67	41	28	23
2016	23	11	0	0	0	0	0	0	0	0	0	0
2017	0	0	0	0	0	0	0	0	0	0	0	0
2018	0	0	0	0	0	0	0	0	0	0	0	0
2019	0	0	0	0	0	0	0	0	0	0	0	0
2020	0	0	0	0	0	0	0	0	0	0	0	0
2021	0	0	0	0	0	0	0	0	0	0	0	0
2022	0	0	0	0	0	0	0	0	0	0	0	0
2023	0	0	0	0	0	0	0	0	0	0	0	45.000
2024	45.000	0	0	0	0	142	136	125	108	66	65	67
2025	38	71	110	112	237	180	278	350				

LEGENDA: - sem estoque do produto na data de referência Fonte - Gerência de Formação e Controle de Estoque - GEFOC Em toneladas

Fonte: GEFOC - CONAB

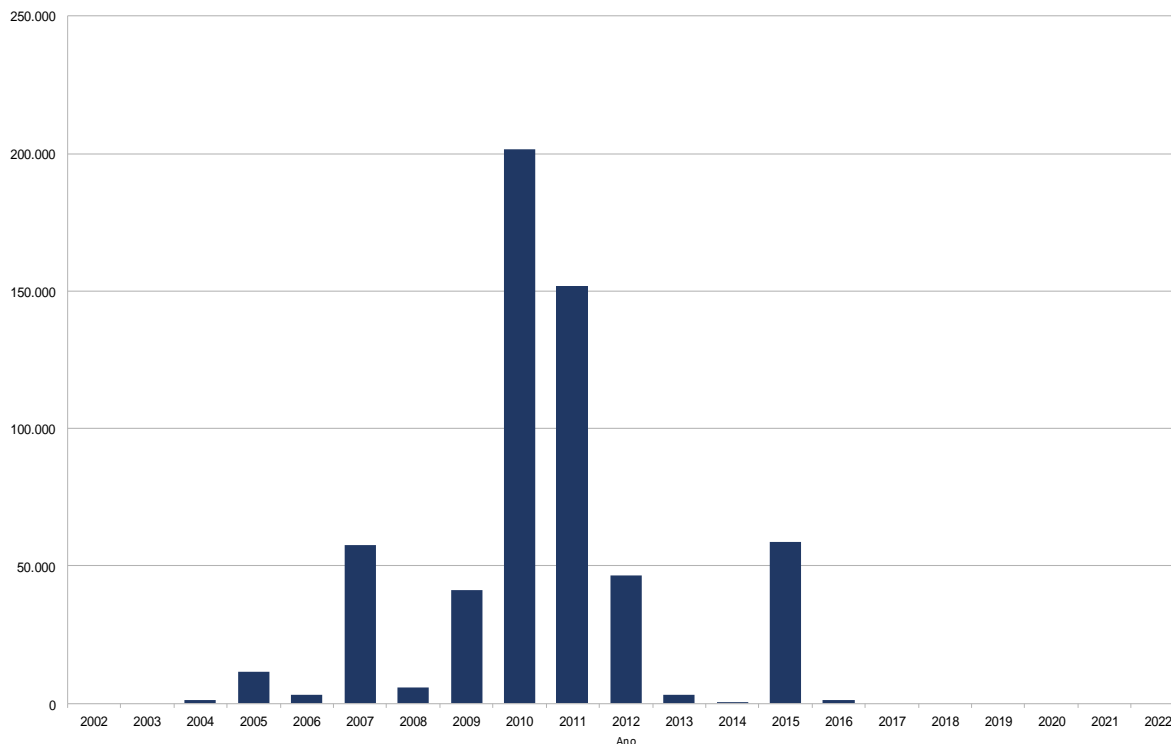
# Série Histórica de Feijão

**Tabela 21 – Estoque Total de Feijão – em tonelada**

1987	113.695	104.754	110.259	122.089	122.685	119.575	124.245	117.702	99.350	77.902	67.507	67.727
1988	72.455	78.170	78.766	80.350	93.222	110.682	144.472	178.761	182.381	162.895	150.840	131.102
1989	126.963	112.726	93.435	71.529	24.739	21.356	18.107	15.014	9.510	7.889	6.565	6.279
1990	6.228	6.123	6.139	6.132	2.826	2.553	1.852	1.736	1.676	1.898	1.864	6.819
1991	14.739	11.889	10.838	9.944	6.122	4.797	4.818	4.914	4.656	4.589	3.423	6.815
1992	7.006	13.274	11.192	16.844	21.858	37.179	81.426	97.377	120.083	112.697	112.273	103.247
1993	98.023	119.534	103.238	74.680	58.050	76.115	66.693	103.904	101.666	81.067	60.363	46.157
1994	31.315	27.083	16.631	11.851	8.348	6.615	7.387	9.327	9.665	6.538	6.149	6.112
1995	6.119	5.649	5.579	6.177	30.900	49.303	68.666	85.477	84.418	93.189	95.660	96.733
1996	89.028	87.115	90.371	87.728	89.738	86.234	68.353	53.285	43.485	35.471	34.607	30.164
1997	28.284	26.384	24.625	15.785	12.846	10.959	11.238	15.883	21.508	33.514	45.644	74.583
1998	74.159	74.553	48.902	47.105	44.961	44.570	15.523	2.687	611	374	830	1.266
1999	973	636	203	148	70	1.751	17.897	21.572	21.896	5.453	5.503	52
2000	52	20.118	50.721	71.402	86.707	78.529	74.002	62.653	50.400	34.521	27.535	420
2001	307	428	201	4	4	13	8	0	0	0	0	2
2002	0	0	0	0	0	0	0	0	0	0	0	0
2003	0	0	0	0	0	0	0	0	0	0	1.726	1.911
2004	1.950	1.483	1.223	1.140	294	628	8.369	19.062	25.167	28.771	27.163	23.074
2005	20.910	17.313	15.645	11.524	5.326	3.709	2.828	2.149	1.966	2.703	2.992	5.350
2006	4.947	4.216	3.650	3.270	3.199	4.159	10.269	17.805	24.075	27.357	30.618	33.473
2007	35.743	37.450	47.536	57.568	72.780	81.129	93.745	94.109	81.743	52.357	20.315	10.752
2008	9.021	8.262	6.832	5.971	5.463	4.103	3.820	3.610	2.861	2.673	2.613	1.355
2009	1.344	1.232	13.532	41.024	63.102	87.328	139.481	151.517	167.969	172.544	186.786	191.868
2010	172.864	174.188	195.945	201.640	198.701	187.845	180.934	178.009	176.444	160.772	155.019	146.074
2011	144.914	144.124	145.680	151.740	159.641	159.841	152.455	136.909	127.624	124.784	105.850	87.795
2012	77.372	67.036	5.761	46.412	34.245	27.067	24.803	23.150	21.122	19.644	16.478	12.277
2013	16.469	4.168	3.794	3.246	3.045	2.762	2.178	2.121	1.963	715	624	560
2014	524	511	494	494	2.969	4.130	19.345	30.692	39.127	56.943	64.102	64.228
2015	64.238	64.174	63.728	58.714	55.377	44.358	34.631	30.340	23.624	18.785	12.624	10.046
2016	9.931	5.873	2.490	1.163	1.037	222	18	3	0	0	0	0
2017	0	0	0	0	0	0	0	0	0	0	0	0
2018	0	0	0	0	0	0	0	0	0	0	0	0
2019	0	0	0	0	0	0	0	0	0	0	0	0
2020	0	0	0	0	0	0	0	0	0	0	0	0
2021	0	0	0	0	0	0	0	0	0	0	0	0
2022	0	0	0	0	0	0	0	0	0	0	0	0
2023	0	0	0	0	0	0	0	0	0	0	0	45.000
2024	45.000	0	100	0	0	0	0	0	108	66	65	67
2025	38	71	110	112	237	180	278	350				

onte: GEFOC - CONAB

**Gráfico 9 - Série Histórica – Feijão – 2002-2022 - em tonelada**



Fonte: GEFOC - CONAB

# Série Histórica de Trigo

**Tabela 22 – Estoque de Trigo - AGF em tonelada**

ANO	JAN	FEV	MAR	ABR	MAI	JUN	JUL	AGO	SET	OUT	NOV	DEZ
1987	0	0	0	39	39	39	39	39	39	39	39	0
1991	0	0	0	0	0	0	0	0	0	0	0	411
1992	391.961	391.961	388.439	337.358	286.756	272.180	198.874	134.468	97.967	55.383	34.268	30.251
1993	29.316	14.575	12.029	9.227	7.590	8.504	5.924	45.934	67.359	96.644	176.615	182.206
1994	189.845	183.716	164.099	780.973	1.063.022	1.042.194	934.616	847.008	767.095	743.236	751.824	801.815
1995	781.660	813.705	839.400	754.978	611.326	517.878	424.152	282.748	192.322	147.751	145.032	158.549
1996	158.368	158.055	113.085	46.616	39.416	31.114	30.037	28.010	27.557	23.218	23.143	22.093
1997	23.650	135.548	135.791	135.870	93.154	71.571	63.777	38.624	30.483	24.769	24.009	54.100
1998	101.121	108.064	107.912	108.068	103.710	67.064	32.641	32.120	29.676	29.289	29.155	22.061
1999	12.254	11.426	7.820	6.992	6.144	2.726	1.706	57	0	0	0	0
2000	0	0	0	0	0	0	0	0	0	0	0	0
2001	0	0	0	0	0	0	0	0	0	0	0	0
2002	0	0	0	0	0	0	0	0	0	0	0	0
2003	0	0	0	0	0	0	0	0	0	0	0	0
2004	0	0	0	0	0	0	0	0	0	0	26.643	137.997
2005	182.563	211.247	269.700	262.833	161.471	161.073	161.073	161.177	146.357	146.083	14.617	491.762
2006	540.260	540.260	540.260	540.170	511.712	430.722	282.823	42.210	5.947	1	0	0
2007	0	0	0	0	0	0	0	0	0	0	0	0
2008	0	0	0	0	0	0	0	0	0	31.624	90.916	226.075
2009	238.500	250.764	252.449	243.393	243.652	254.254	246.104	227.676	227.676	236.151	233.868	244.920
2010	287.715	407.842	497.407	700.290	717.298	722.390	718.470	721.645	721.559	721.052	717.330	772.940
2011	748.967	772.859	772.859	755.612	696.379	632.344	531.153	502.826	456.466	452.980	455.630	616.419
2012	682.411	812.126	891.576	902.930	904.916	876.202	692.164	538.197	461.484	451.256	450.320	450.330
2013	450.320	449.350	448.756	407.800	288.368	174.798	1.600	150	57	57	0	0
2014	0	0	0	0	0	0	0	0	0	0	0	15.000
2015	15.000	15.000	15.000	15.000	15.000	15.000	15.000	15.000	15.000	15.000	15.000	15.000
2016	15.000	15.000	15.000	15.000	15.000	15.000	15.000	15.000	15.000	15.000	15.000	15.000
2017	15.000	15.000	15.000	15.000	15.000	15.000	15.000	15.000	15.000	15.517	16.200	16.200
2018	14.642	11.757	13.407	13.407	13.407	13.407	13.407	13.407	13.407	13.407	2.850	2.850
2019	2.850	2.850	2.850	2.850	2.850	2.850	2.850	2.850	2.850	2.850	2.850	2.850
2020	2.849	1.649	1.649	1.649	1.649	1.649	1.649	1.649	1.649	1.649	1.649	1.649
2021	1.649	1.649	1.649	1.649	1.649	1.649	1.649	1.649	1.649	1.649	1.649	0
2022	0	0	0	0	0	0	0	0	0	0	0	0
2023	0	0	0	0	0	0	0	0	0	0	0	0
2024	0	0	0	0	0	0	0	0	0	0	0	0
2025	0	4.793	6.582	6.582	6.582	6.582	6.582	0				

Fonte: GEFOC - CONAB

**Tabela 23 – Estoque de Trigo - Mercado de Opções em tonelada**

ANO	JAN	FEV	MAR	ABR	MAI	JUN	JUL	AGO	SET	OUT	NOV	DEZ
2000	0	0	0	0	0	0	0	0	0	0	0	4.752
2001	21.930	21.465	1.582	0	0	0	0	0	0	0	0	0
2002	0	0	0	0	0	0	0	0	0	0	0	0
2003	0	0	0	0	0	0	0	0	0	0	0	0
2004	24.732	144.045	151.740	151.740	151.739	151.737	149.102	145.742	144.742	144.742	144.742	144.742
2005	144.742	356.422	548.115	716.917	816.242	800.230	734.344	616.743	560.150	558.895	558.431	558.782
2006	558.782	558.782	558.782	554.782	478.073	187.565	42.702	11.319	14.111	5.640	5.664	5.664
2007	5.640	5.640	5.640	5.640	5.640	5.640	5.640	5.640	5.640	5.640	5.640	5.640
2008	5.640	5.640	5.640	5.640	5.640	5.640	5.640	5.640	5.640	5.640	5.640	5.640
2009	5.640	131.733	184.691	371.671	412.090	465.468	464.131	431.209	431.830	431.830	431.830	431.830
2010	431.830	431.830	431.830	431.830	431.830	431.830	431.464	431.464	432.463	431.356	431.356	430.357
2011	430.357	430.206	430.206	394.056	330.771	323.801	311.918	300.966	212.466	207.459	207.222	207.222
2012	207.187	207.188	207.188	207.188	207.188	195.365	142.020	43.459	43.452	38.055	38.055	38.055
2013	38.055	38.055	38.025	13.125	3.361	361	352	352	352	352	352	8
2014	8	8	0	0	0	0	0	0	0	0	0	0
2015	0	0	0	0	0	0	0	0	0	0	0	0
2016	0	0	0	0	0	0	0	0	0	0	0	0
2017	0	0	0	0	0	0	0	0	0	0	0	0
2018	0	0	0	0	0	0	0	0	0	0	0	0
2019	0	0	0	0	0	0	0	0	0	0	0	0
2020	0	0	0	0	0	0	0	0	0	0	0	0
2021	0	0	0	0	0	0	0	0	0	0	0	0
2022	0	0	0	0	0	0	0	0	0	0	0	0
2023	0	0	0	0	0	0	0	0	0	0	0	0
2024	0	0	0	0	0	0	0	0	0	0	0	0
2025	0	0	0	0	0	0	0	0				

Fonte: GEFOC - CONAB

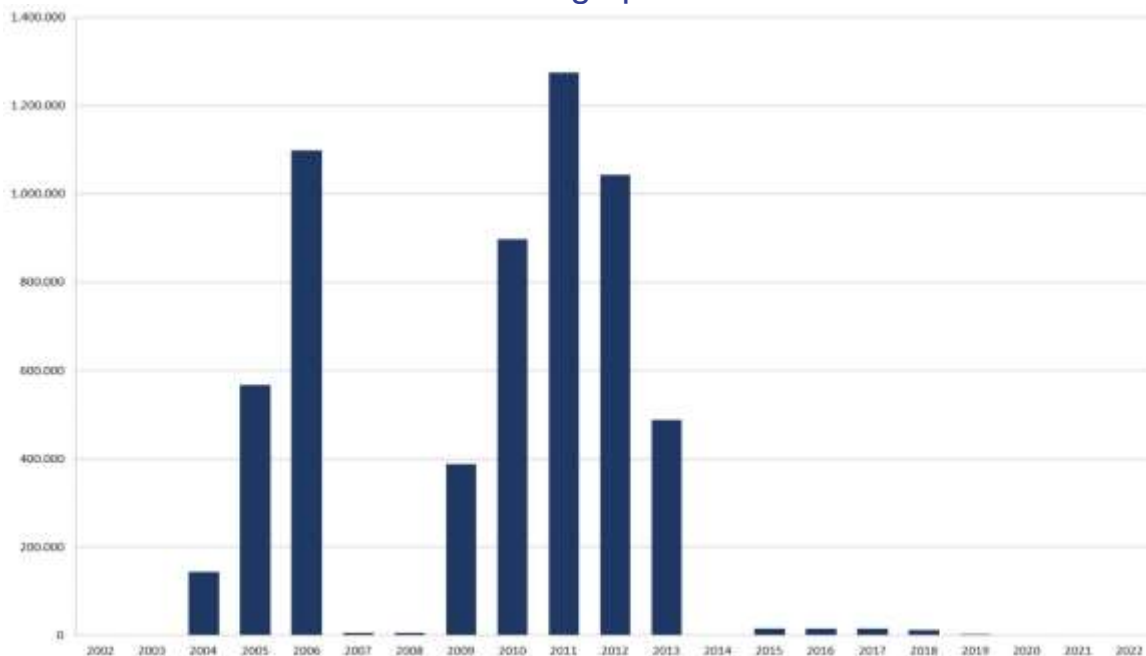
# Série Histórica de Trigo

**Tabela 24 – Estoque de Trigo - Agricultura Familiar - em tonelada**

ANO	JAN	FEV	MAR	ABR	MAI	JUN	JUL	AGO	SET	OUT	NOV	DEZ
2008	0	0	0	0	0	0	0	0	0	0	116	233
2009	5.711	5.711	5.711	5.711	5.711	5.666	5.666	5.666	5.666	5.666	5.666	19.680
2010	19.865	58.511	61.829	62.960	63.653	60.108	62.215	68.823	68.823	70.076	70.076	72.667
2011	72.667	72.667	67.385	67.540	57.687	35.401	31.186	32.787	24.963	24.712	24.712	24.712
2012	24.712	24.712	24.713	24.713	24.713	18.612	15.602	2.930	1.377	680	680	680
2013	680	680	680	0	0	0	0	0	0	0	0	0
2014	0	0	0	0	0	0	0	0	0	0	0	0
2015	0	0	0	0	0	0	0	0	0	0	0	0
2016	0	0	0	0	0	0	0	0	0	0	0	0
2017	0	0	0	0	0	0	0	0	0	0	0	0
2018	0	0	0	0	0	0	0	0	0	0	0	0
2019	0	0	0	0	0	0	0	0	0	0	0	0
2020	0	0	0	0	0	0	0	0	0	0	0	0
2021	0	0	0	0	0	0	0	0	0	0	0	0
2022	0	0	0	0	0	0	0	0	0	0	0	0
2023	0	0	0	0	0	0	0	0	0	0	0	0
2024	0	0	0	0	0	0	0	0	0	0	0	0
2025	0	0	0	0	0	0	0	0	0	0	0	0

Fonte: GEFOC - CONAB

**Gráfico 10 – Série histórica de Trigo por Vínculo - 2002-2022 em tonelada**



Fonte: GEFOC - CONAB

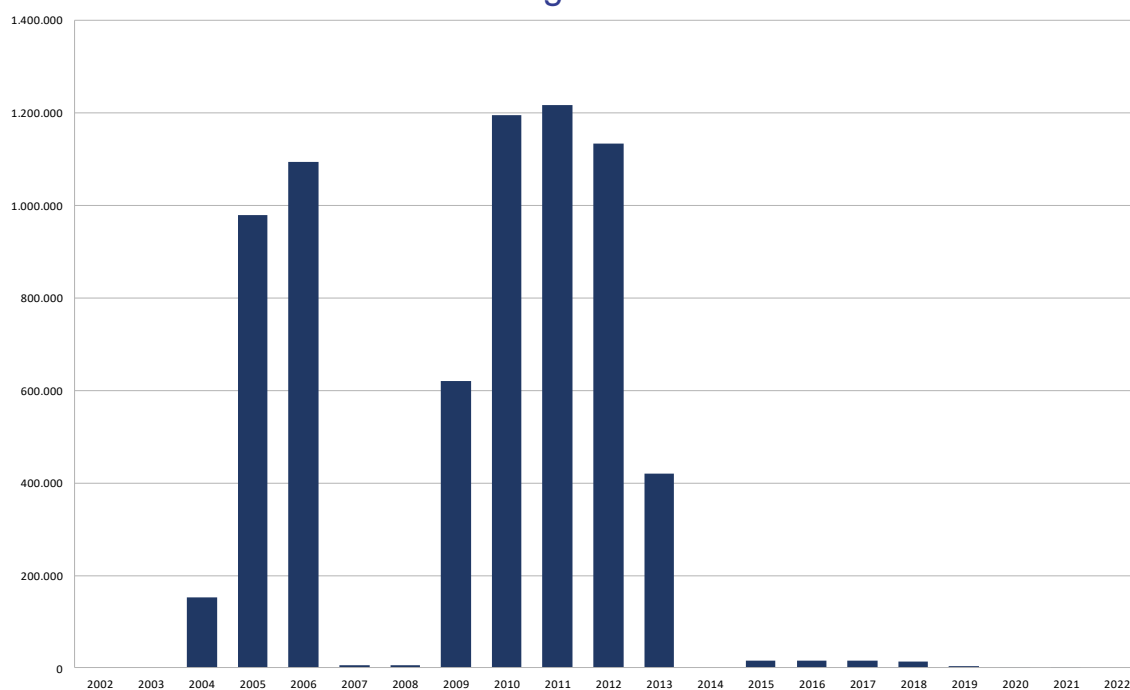
# Série Histórica de Trigo

Tabela 25 – Estoque Total de Trigo - em tonelada

ANO	JAN	FEV	MAR	ABR	MAI	JUN	JUL	AGO	SET	OUT	NOV	DEZ
1987	0	0	0	39	39	39	39	39	39	39	39	0
1991	0	0	0	0	0	0	0	0	0	0	0	411
1992	391.961	391.961	388.439	337.358	286.756	272.180	198.874	134.468	97.967	55.383	34.268	30.251
1993	29.316	14.575	12.029	9.227	7.590	8.504	5.924	45.934	67.359	96.644	176.615	182.206
1994	189.845	183.716	164.099	780.973	1.063.022	1.042.194	934.616	847.008	767.095	743.236	751.824	801.815
1995	781.660	813.705	839.400	754.978	611.326	517.878	424.152	282.748	192.322	147.751	145.032	158.549
1996	158.368	158.055	113.085	46.616	39.416	31.114	30.037	28.010	27.557	23.218	23.143	22.093
1997	23.650	135.548	135.791	135.870	93.154	71.571	63.777	38.624	30.483	24.769	24.009	54.100
1998	101.121	108.064	107.912	108.068	103.710	67.064	32.641	32.120	29.676	29.289	29.155	22.061
1999	12.254	11.426	7.820	6.992	6.144	2.726	1.706	57	0	0	0	0
2000	0	0	0	0	0	0	0	0	0	0	0	4.752
2001	21.930	21.465	1.582	0	0	0	0	0	0	0	0	0
2002	0	0	0	0	0	0	0	0	0	0	0	0
2003	0	0	0	0	0	0	0	0	0	0	0	0
2004	24.732	144.045	151.740	151.740	151.739	151.737	149.102	145.742	144.742	144.742	171.385	282.739
2005	327.305	567.669	817.815	979.750	977.713	961.303	895.417	777.920	706.507	704.978	573.048	1.050.544
2006	1.099.042	1.099.042	1.099.042	1.094.952	989.785	618.287	325.525	53.529	20.058	5.641	5.664	5.664
2007	5.640	5.640	5.640	5.640	5.640	5.640	5.640	5.640	5.640	5.640	5.640	5.640
2008	5.640	5.640	5.640	5.640	5.640	5.640	5.640	5.640	5.640	37.264	96.672	231.948
2009	249.851	388.208	442.851	620.775	661.453	725.388	715.901	664.551	665.172	673.647	671.364	696.430
2010	739.410	898.183	991.066	1.195.080	1.212.781	1.214.328	1.212.149	1.221.932	1.222.845	1.222.484	1.218.762	1.275.964
2011	1.251.991	1.275.732	1.270.450	1.217.208	1.084.837	991.546	874.257	836.579	693.895	685.151	687.564	848.353
2012	914.310	1.044.026	1.123.477	1.134.830	1.136.816	1.090.179	849.786	584.586	506.312	489.991	489.055	489.065
2013	489.055	488.085	487.461	420.925	291.729	175.159	1.952	502	408	408	352	8
2014	8	8	0	0	0	0	0	0	0	0	0	15.000
2015	15.000	15.000	15.000	15.000	15.000	15.000	15.000	15.000	15.000	15.000	15.000	15.000
2016	15.000	15.000	15.000	15.000	15.000	15.000	15.000	15.000	15.000	15.000	15.000	15.000
2017	15.000	15.000	15.000	15.000	15.000	15.000	15.000	15.000	15.000	15.517	16.200	16.200
2018	14.642	11.757	13.407	13.407	13.407	13.407	13.407	13.407	13.407	13.407	2.850	2.850
2019	2.850	2.850	2.850	2.850	2.850	2.850	2.850	2.850	2.850	2.850	2.850	2.850
2020	2.849	1.649	1.649	1.649	1.649	1.649	1.649	1.649	1.649	1.649	1.649	1.649
2021	1.649	1.649	1.649	1.649	1.649	1.649	1.649	1.649	1.649	1.649	1.649	0
2022	0	0	0	0	0	0	0	0	0	0	0	0
2023	0	0	0	0	0	0	0	0	0	0	0	0
2024	0	0	0	0	0	0	0	0	0	0	0	0
2025	0	4.793	6.582	6.582	6.582	6.582	6.582	0				

Fonte:GEFOC - CONAB

Gráfico 11 - Série Histórica – Trigo 2002-2022 - em tonelada



Fonte: GEFOC - CONAB

## Série Histórica - Outras Culturas

**Tabela 26 – Estoque de Amendoim - AGF - em tonelada**

ANO	JAN	FEV	MAR	ABR	MAI	JUN	JUL	AGO	SET	OUT	NOV	DEZ
1987	35	35	45	65	692	695	695	695	695	695	695	695
1988	695	35	35	35	35	35	35	35	35	35	35	35
1989	35	35	35	35	35	35	35	35	35	35	35	35
1990	35	35	35	35	35	35	35	35	35	35	35	35
1991	35	35	35	35	35	35	35	35	35	0	0	0
1992	0	0	0	0	0	0	0	0	0	0	0	0
1993	0	0	0	0	0	0	0	0	0	0	0	0
1994	0	0	0	0	0	0	0	0	0	0	0	0
1995	0	0	0	0	0	0	0	0	0	0	0	0
1996	0	0	0	0	0	0	0	0	0	0	0	0
1997	0	0	0	0	0	0	0	0	0	0	0	0
1998	0	0	0	0	0	0	0	0	0	0	0	0
1999	0	0	0	0	0	0	0	0	0	0	0	0
2000	0	0	0	0	0	0	0	0	0	0	0	0
2001	0	0	0	0	0	0	0	0	0	0	0	0
2002	0	0	0	0	0	0	0	0	0	0	0	0
2003	0	0	0	0	0	0	0	0	0	0	0	0
2004	0	0	0	0	0	0	0	0	0	0	0	0
2005	0	0	0	0	0	0	0	0	0	0	0	0
2006	0	0	0	0	0	0	0	0	0	0	0	0
2007	0	0	0	0	0	0	0	0	0	0	0	0
2008	0	0	0	0	0	0	0	0	0	0	0	0
2009	0	0	0	0	0	0	0	0	0	0	0	0
2010	0	0	0	0	0	0	0	0	0	0	0	0
2011	0	0	0	0	0	0	0	0	0	0	0	0
2012	0	0	0	0	0	0	0	0	0	0	0	0
2013	0	0	0	0	0	0	0	0	0	0	0	0
2014	0	0	0	0	0	0	0	0	0	0	0	0
2015	0	0	0	0	0	0	0	0	0	0	0	0
2016	0	0	0	0	0	0	0	0	0	0	0	0
2017	0	0	0	0	0	0	0	0	0	0	0	0
2018	0	0	0	0	0	0	0	0	0	0	0	0
2019	0	0	0	0	0	0	0	0	0	0	0	0
2020	0	0	0	0	0	0	0	0	0	0	0	0
2021	0	0	0	0	0	0	0	0	0	0	0	0
2022	0	0	0	0	0	0	0	0	0	0	0	0
2023	0	0	0	0	0	0	0	0	0	0	0	0
2024	0	0	0	0	0	0	0	0	0	0	0	0
2025	0	0	0	0	0	0	0	0	0	0	0	0

Fonte:GEFOC - CONAB

**Tabela 27 – Estoque de Castanha - Agricultura Familiar - em tonelada**

ANO	JAN	FEV	MAR	ABR	MAI	JUN	JUL	AGO	SET	OUT	NOV	DEZ
2009	0	0	0	0	0	0	0	0	377	242	187	187
2010	86	86	86	86	86	86	152	50	38	26	15	12
2011	0	0	0	0	0	0	0	0	0	0	0	0
2012	0	0	0	0	0	0	0	0	0	0	0	0
2013	0	0	0	0	0	0	0	0	0	0	0	0
2014	0	0	0	0	0	0	0	0	0	0	0	0
2015	0	0	0	0	0	0	0	0	0	0	0	0
2016	0	0	0	0	0	0	0	0	0	0	0	0
2017	0	0	0	0	0	0	0	0	0	0	0	0
2018	0	0	0	0	0	0	0	0	0	0	0	0
2019	0	0	0	0	0	0	0	0	0	0	0	0
2020	0	0	0	0	0	0	0	0	0	0	0	0
2021	0	0	0	0	0	0	0	0	0	0	0	0
2022	0	0	0	0	0	0	0	0	0	0	0	0
2023	0	0	0	0	0	0	0	0	0	0	0	0
2024	0	0	0	0	0	0	0	0	0	0	0	0
2025	0	1.079	55	55	55	0	0	0	0	0	0	0

Fonte: GEFOC - CONAB

# Série Histórica - Outras Culturas

**Tabela 28 – Estoque de Fécula de Mandioca - AGF - em tonelada**

ANO	JAN	FEV	MAR	ABR	MAI	JUN	JUL	AGO	SET	OUT	NOV	DEZ
1987	0	0	0	0	0	0	0	85	85	85	85	85
1992	85	83	83	83	83	83	83	83	83	83	83	83
1993	83	83	83	83	83	168	0	0	0	0	0	0
2001	0	0	0	0	0	1.214	2.198	3.580	6.240	8.863	9.608	9.774
2002	9.774	9.774	9.774	9.774	9.774	9.774	9.774	9.985	9.985	9.985	6.119	30
2003	30	0	0	0	0	0	0	0	0	0	0	0
2006	0	0	0	0	0	0	0	0	968	968	968	968
2007	968	968	968	968	968	968	968	968	968	968	968	968
2008	968	968	968	0	0	0	0	0	0	0	0	0
2009	0	0	0	0	0	0	1.088	1.541	1.088	1.088	1.088	1.088
2010	1.088	0	0	0	0	0	0	0	0	0	0	0
2015	0	0	0	0	0	0	0	894	1.954	5.712	6.263	6.263
2016	6.263	6.263	6.263	6.263	6.263	6.263	5.495	5.495	5.195	1.861	933	933
2017	918	13	0	0	0	0	0	0	0	0	0	0
2018	0	0	0	0	0	0	0	0	0	0	0	0
2019	0	0	0	0	0	0	0	0	0	0	0	0
2020	0	0	0	0	0	0	0	0	0	0	0	0
2021	0	0	0	0	0	0	0	0	0	0	0	0
2022	0	0	0	0	0	0	0	0	0	0	0	0
2023	0	0	0	0	0	0	0	0	0	0	0	0
2024	0	0	0	0	0	0	0	0	0	0	0	0
2025	0	0	0	0	0	0	0	0	0	0	0	0

Fonte: GEFOC - CONAB

**Tabela 29 – Estoque de Juta - AGF - em tonelada**

ANO	JAN	FEV	MAR	ABR	MAI	JUN	JUL	AGO	SET	OUT	NOV	DEZ
1987	82	82	82	82	82	82	82	17	7	7	6	6
1988	6	6	6	6	6	4	6	111	192	405	631	697
1989	697	697	698	2.351	5.243	5.403	5.426	5.320	5.309	5.365	5.377	5.379
1990	5.029	5.029	4.656	4.775	4.949	5.575	5.648	5.709	5.163	4.562	4.118	4.357
1991	4.363	3.396	2.817	3.369	3.383	3.159	3.120	2.567	2.567	2.567	2.292	2.015
1992	1.987	1.590	1.445	1.432	1.420	1.420	1.398	1.398	1.398	1.398	1.398	1.390
1993	1.390	1.395	1.295	1.290	1.345	1.685	1.819	1.821	1.821	1.788	1.788	1.762
1994	958	946	906	921	934	949	951	951	951	951	534	259
1995	266	11	11	11	43	65	65	65	78	112	112	112
1996	112	106	106	106	126	126	126	126	58	58	3	3
1997	3	3	3	3	5	17	17	70	84	83	83	83
1998	83	83	101	112	72	87	165	250	298	310	311	309
1999	309	309	309	309	133	136	50	46	46	2	2	2
2000	2	2	2	2	1	0	0	0	0	0	0	0
2004	0	0	0	0	0	0	0	3	3	4	4	4
2005	4	4	3	3	3	3	0	0	0	0	0	0
2006	0	0	0	0	0	0	0	0	0	0	0	0
2007	0	0	0	0	0	0	0	0	0	0	0	0
2008	0	0	0	0	0	0	0	0	0	0	0	0
2009	0	0	0	0	0	0	0	0	0	0	0	0
2010	0	0	0	0	0	0	0	0	0	0	0	0
2011	0	0	0	0	0	0	0	0	0	0	0	0
2012	0	0	0	0	0	0	0	0	0	0	0	0
2013	0	0	0	0	0	0	0	0	0	0	0	0
2014	0	0	0	0	0	0	0	0	0	0	0	0
2015	0	0	0	0	0	0	0	0	0	0	0	0
2016	0	0	0	0	0	0	0	0	0	0	0	0
2017	0	0	0	0	0	0	0	0	0	0	0	0
2018	0	0	0	0	0	0	0	0	0	0	0	0
2019	0	0	0	0	0	0	0	0	0	0	2	2
2020	0	0	0	0	0	0	0	0	0	0	0	0
2021	0	0	0	0	0	0	0	0	0	0	0	0
2022	0	0	0	0	0	0	0	0	0	0	0	0
2023	0	0	0	0	0	0	0	0	0	0	0	0
2024	0	0	0	0	0	0	0	0	0	0	0	0
2025	0	0	0	0	0	0	0	0	0	0	0	0

Fonte: GEFOC - CONAB

# Série Histórica - Outras Culturas

**Tabela 30 – Estoque de Leite - Agricultura Familiar - em tonelada**

ANO	JAN	FEV	MAR	ABR	MAI	JUN	JUL	AGO	SET	OUT	NOV	DEZ
2005	586	586	586	586	586	586	586	586	586	700	0	0
2006	198	306	670	827	1.278	1.176	1.176	443	132	132	801	1.061
2007	156	154	124	85	59	55	49	49	49	14		
2008	0	0	0	0	0	0	0	0	86	259	206	1.473
2009	2.352	2.365	2.337	769	1.041	927	1.601	1.645	1.805	1.200	2.195	2.622
2010	3.765	3.571	3.456	3.361	3.057	2.948	2.349	3.794	3.204	3.558	3.415	2.921
2011	2.803	2.900	2.471	2.284	2.083	1.837	1.368	1.364	1.158	808	611	626
2012	519	774	590	518	375	225	126	98	247	398	863	652
2013	863	819	834	1.312	955	694	454	216	125	726	634	874
2014	833	690	470	423	505	581	519	710	489	361	199	123
2015	115	56	195	430	1.138	771	770	741	530	610	586	401
2016	351	185	115	85	38	24	36	31	31	0	17	9
2017	3	0	0	0	0	0	0	0	0	0	0	0
2018	0	54	135	224	467	284	252	246	245	217	200	143
2019	25	1	0	0	0	0	0	0	0	0	0	0
2020	0	0	0	0	0	0	0	0	0	0	0	0
2021	0	0	0	0	0	0	0	0	0	0	0	0
2022	0	0	0	0	0	0	0	0	0	0	0	0
2023	0	0	0	0	0	0	0	0	0	0	0	0
2024	0	0	0	0	0	111	68	64	45	50	32	65
2025	163	179	179	167	116	81	61	54				

Fonte: GEFOC - CONAB

**Tabela 31 – Estoque de Malva - AGF - em tonelada**

ANO	JAN	FEV	MAR	ABR	MAI	JUN	JUL	AGO	SET	OUT	NOV	DEZ
1988						50	641	1.817	4.900	6.698	9.165	11.933
1989	12.010	12.026	11.956	16.039	18.653	19.421	19.282	18.747	19.440	18.163	18.163	18.163
1990	17.281	17.061	16.995	17.191	17.532	17.971	18.607	18.956	18.981	18.561	18.153	17.674
1991	19.539	18.035	16.041	15.844	15.855	14.969	14.046	14.046	14.046	14.046	13.212	11.564
1992	10.078	6.448	6.003	4.351	4.257	4.257	4.257	4.563	4.872	4.872	4.872	4.872
1993	4.872	4.782	4.671	4.671	4.915	5.463	5.914	6.234	6.888	6.888	6.888	6.407
1994	4.893	4.416	4.589	4.713	5.270	5.714	5.837	6.240	6.340	6.340	6.046	4.914
1995	2.963	1.824	837	874	724	802	1.208	2.023	2.964	3.401	3.401	3.401
1996	3.401	3.337	3.285	3.285	3.332	3.332	3.332	2.902	2.462	2.462	2.461	2.461
1997	2.459	2.459	2.459	2.459	2.490	2.490	2.490	3.034	3.722	4.221	4.265	4.265
1998	4.106	4.056	4.018	4.051	4.184	4.278	4.658	5.421	5.927	6.254	6.222	6.403
1999	6.493	6.420	6.266	6.281	5.942	4.441	3.411	2.406	1.460	557	43	43
2000	43	43	43	43	42	2	0	0	0	0	0	0
2004	0	0	0	0	0	0	477	830	980	1.057	1.057	1.044
2005	984	782	4	4	4	4	4	0	0	0	0	0
2006	0	0	0	0	0	0	0	0	0	0	0	0
2007	0	0	0	0	0	0	0	0	0	0	0	0
2008	0	0	0	0	0	0	0	0	0	0	0	0
2009	0	0	0	0	0	0	0	0	0	0	0	0
2010	0	0	0	0	0	0	0	0	0	0	0	0
2011	0	0	0	0	0	0	0	0	0	0	0	0
2012	0	0	0	0	0	0	0	0	0	0	0	0
2013	0	0	0	0	0	0	0	0	0	0	0	0
2014	0	0	0	0	0	0	0	0	0	0	0	0
2015	0	0	0	0	0	0	0	0	0	0	0	0
2016	0	0	0	0	0	0	0	0	0	0	0	0
2017	0	0	0	0	0	0	0	0	0	0	0	0
2018	0	0	0	0	0	0	0	0	0	0	0	0
2019	0	0	0	0	0	0	0	0	0	0	0	0
2020	0	0	0	0	0	0	0	0	0	0	0	0
2021	0	0	0	0	0	0	0	0	0	0	0	0
2022	0	0	0	0	0	0	0	0	0	0	0	0
2023	0	0	0	0	0	0	0	0	0	0	0	0
2024	0	0	0	0	0	0	0	0	0	0	0	0
2025	0	0	0	0	0	0	0	0				

Fonte: GEFOC - CONAB

# Série Histórica - Outras Culturas

**Tabela 32 – Estoque de Mamona - AGF - em tonelada**

ANO	JAN	FEV	MAR	ABR	MAI	JUN	JUL	AGO	SET	OUT	NOV	DEZ
1987	42.277	37.980	37.411	36.565	36.751	29.875	27.488	30.067	29.991	30.049	30.049	29.562
1988	29.385	27.808	27.127	23.177	22.433	22.433	22.433	22.433	22.424	18.422	15.510	15.510
1989	13.848	12.209	9.735	9.734	9.734	9.731	9.731	8.165	8.165	8.165	8.164	1.531
1990	924	924	924	924	924	924	898	898	898	898	898	898
1991	898	898	898	898	898	898	897	897	1	1	1	1
1992	1	1	1	1	1	1	1	1	1	1	1	1
1993	1	1	1	1	1	1	1	1	1	1	1	1
1994	1	1	1	1	1	1	1	1	1	0	0	0
1995	0	0	0	0	0	0	0	0	0	0	0	0
1996	0	0	0	0	0	0	0	0	0	0	0	0
1997	0	0	0	0	0	0	0	0	0	0	0	0
1998	0	0	0	0	0	0	0	0	0	0	0	0
1999	0	0	0	0	0	0	0	0	0	0	0	0
2000	0	0	0	0	0	0	0	0	0	0	0	0
2001	0	0	0	0	0	0	0	0	0	0	0	0
2002	0	0	0	0	0	0	0	0	0	0	0	0
2003	0	0	0	0	0	0	0	0	0	0	0	0
2004	0	0	0	0	0	0	0	0	0	0	0	0
2005	0	0	0	0	0	0	0	0	0	0	0	0
2006	0	0	0	0	0	0	0	0	0	0	0	0
2007	0	0	0	0	0	0	0	0	0	0	0	0
2008	0	0	0	0	0	0	0	0	0	0	0	0
2009	0	0	0	0	0	0	0	0	0	0	0	0
2010	0	0	0	0	0	0	0	0	0	0	0	0
2011	0	0	0	0	0	0	0	0	0	0	0	0
2012	0	0	0	0	0	0	0	0	0	0	0	0
2013	0	0	0	0	0	0	0	0	0	0	0	0
2014	0	0	0	0	0	0	0	0	0	0	0	0
2015	0	0	0	0	0	0	0	0	0	0	0	0
2016	0	0	0	0	0	0	0	0	0	0	0	0
2017	0	0	0	0	0	0	0	0	0	0	0	0
2018	0	0	0	0	0	0	0	0	0	0	0	0
2019	0	0	0	0	0	0	0	0	0	0	0	0
2020	0	0	0	0	0	0	0	0	0	0	0	0
2021	0	0	0	0	0	0	0	0	0	0	0	0
2022	0	0	0	0	0	0	0	0	0	0	0	0
2023	0	0	0	0	0	0	0	0	0	0	0	0
2024	0	0	0	0	0	0	0	0	0	0	0	0
2025	0	0	0	0	0	0	0	0	0	0	0	0

Fonte:GEFOC CONAB

**Tabela 33 – Estoque de Sisal - AGF - em tonelada**

ANO	JAN	FEV	MAR	ABR	MAI	JUN	JUL	AGO	SET	OUT	NOV	DEZ
1987	283	283	283	283	283	283	1.811	4.483	6.913	10.210	13.105	12.595
1988	14.022	15.069	15.948	14.046	12.321	11.944	10.941	8.577	8.577	8.585	9.858	10.604
1989	10.053	7.703	6.774	6.180	4.602	454	32	5	5	5	5	5
1990	5	5	5	5	429	1.093	2.018	3.563	4.807	10.529	15.359	19.171
1991	21.535	22.879	25.305	25.714	25.113	25.113	25.113	27.764	29.554	35.058	37.897	41.086
1992	43.496	45.534	46.263	46.263	45.532	47.963	52.812	58.865	58.864	62.944	67.517	67.517
1993	62.064	62.064	61.037	52.612	44.608	39.762	38.459	39.324	40.046	40.626	40.635	39.527
1994	36.212	33.984	30.654	29.004	27.273	26.168	27.126	27.126	27.124	27.124	27.124	22.747
1995	21.438	21.438	19.444	16.932	16.932	16.932	16.932	16.932	16.932	16.932	16.013	15.173
1996	15.551	15.173	15.147	15.147	12.975	12.975	12.833	12.833	13.099	13.391	13.391	13.082
1997	12.869	12.043	11.523	10.779	9.706	9.556	9.106	7.152	5.088	2.760	2.760	2.010
1998	1.888	1.740	2.343	2.741	2.882	2.957	2.765	2.857	2.918	2.928	2.928	2.904
1999	2.904	2.904	2.904	2.335	2.219	2.219	2.219	2.219	2.219	1.911	2.018	2.087
2000	2.253	3.051	3.794	4.203	4.438	4.825	5.124	5.124	5.124	5.124	5.124	5.124
2001	4.563	4.563	4.563	4.563	4.563	4.563	4.563	4.563	4.563	4.846	5.692	6.863
2002	6.863	7.629	8.778	9.787	10.422	10.733	10.765	10.765	10.765	10.765	4.393	0
2006	0	0	0	0	0	0	88	247	382	382	382	382
2007	382	382	382	382	382	727	1.112	1.475	1.922	2.749	4.126	4.932
2008	4.932	4.932	4.932	6.146	8.600	11.295	11.687	12.107	12.206	12.323	12.380	12.392
2009	12.392	12.392	12.925	13.628	14.783	16.348	16.443	18.725	20.571	22.009	22.102	23.149
2010	23.149	24.014	24.492	24.490	24.491	24.491	24.491	24.491	24.491	24.491	24.491	24.491
2011	24.491	24.491	24.491	24.491	24.491	24.491	24.491	24.491	24.491	24.491	24.491	24.491
2012	24.491	24.491	24.491	24.491	17.143	11.124	6.936	4.156	4.156	4.156	4.156	4.156
2013	4.156	4.156	4.156	4.156	4.156	4.156	4.156	4.156	4.156	4.156	4.156	2.751
2014	1.881	0	0	0	0	0	0	0	0	0	0	0
2015	0	0	0	0	0	0	0	0	0	0	0	0
2016	0	0	0	0	0	0	0	0	0	0	0	0
2017	0	0	0	0	0	0	0	0	0	0	0	0
2018	0	0	0	0	0	0	0	0	0	0	0	0
2019	0	0	0	0	0	0	0	0	0	0	0	0
2020	0	0	0	0	0	0	0	0	0	0	0	0
2021	0	0	0	0	0	0	0	0	0	0	0	0
2022	0	0	0	0	0	0	0	0	0	0	0	0
2023	0	0	0	0	0	0	0	0	0	0	0	0
2024	0	0	0	0	0	0	0	0	0	0	0	0
2025	0	0	0	0	0	0	0	0	0	0	0	0

Fonte: GEFOC - CONAB

# Série Histórica - Outras Culturas

**Tabela 34 – Estoque de Soja - AGF - em tonelada**

ANO	JAN	FEV	MAR	ABR	MAI	JUN	JUL	AGO	SET	OUT	NOV	DEZ
1987	298.452	114.431	119.478	834.897	871.498	859.505	827.875	768.861	648.204	572.045	487.326	383.058
1988	236.375	111.119	63.616	60.260	50.609	40.486	42.049	40.146	40.197	37.164	35.521	32.560
1989	30.496	26.585	25.902	25.908	26.454	27.006	26.050	26.806	27.768	27.843	11.255	11.814
1990	11.689	11.721	11.430	11.447	11.448	9.805	8.560	5.514	5.480	5.756	5.756	5.674
1991	5.666	5.666	5.665	5.666	5.664	5.345	5.311	485	168	168	168	24
1992	24	24	24	24	13	13	13	13	13	13	13	36
1993	36	36	13	13	13	13	1	1	0	0	0	0
1994	0	0	0	7	7	7	7	7	7	7	7	7
1995	7	7	7	58	58	176	176	176	176	887	887	911
1996	911	911	191	59	44	44	44	43	43	43	44	53
1997	53	120	120	115	169	133	396	390	559	6	187	187
1998	187	180	180	180	180	180	180	180	180	180	2.249	2.619
1999	371	194	897	1.251	1.057	141	0	0	0	0	0	0
2006	0	0	0	0	0	0	0	0	0	0	14.542	5.674
2007	60	60	60	60	73	73	73	73	73	73	73	73
2008	73	73	73	73	73	73	38	38	38	38	38	38
2009	38	38	38	38	38	38	38	38	38	38	38	38
2010	38	38	38	38	38	38	38	38	38	38	38	38
2011	38	38	38	38	38	38	38	38	38	38	38	38
2012	38	38	38	38	38	38	38	38	38	38	38	38
2013	38	38	38	38	38	38	38	0	0	0	0	0
2014	0	0	0	0	0	0	0	0	0	0	0	0
2015	0	0	0	0	0	0	0	0	0	0	0	0
2016	0	0	0	0	0	0	0	0	0	0	0	0
2017	0	0	0	0	0	0	0	0	0	0	0	0
2018	0	0	0	0	0	0	0	0	0	0	0	0
2019	0	0	0	0	0	0	0	0	0	0	0	0
2020	0	0	0	0	0	0	0	0	0	0	0	0
2021	0	0	0	0	0	0	0	0	0	0	0	0
2022	0	0	0	0	0	0	0	0	0	0	0	0
2023	0	0	0	0	0	0	0	0	0	0	0	0
2024	0	0	0	0	0	0	0	0	0	0	0	0
2025	0	0	0	0	0	0	0	0	0	0	0	0

Fonte: GEFOC - CONAB

**Tabela 35 – Estoque de Sorgo - AGF - em tonelada**

ANO	JAN	FEV	MAR	ABR	MAI	JUN	JUL	AGO	SET	OUT	NOV	DEZ
1987	27.477	26.933	35.706	55.034	66.011	74.643	88.085	91.596	88.121	78.912	73.314	59.038
1988	51.193	51.254	50.507	43.548	43.521	32.890	41.153	46.791	45.901	45.905	38.463	28.353
1989	26.985	26.753	20.010	18.497	21.526	22.796	23.035	26.546	27.830	29.134	27.071	29.841
1990	29.499	29.330	29.353	29.512	30.009	29.427	20.846	17.954	11.069	5.591	4.891	3.995
1991	3.161	3.054	2.501	1.943	1.520	775	472	527	490	409	387	379
1992	342	335	293	202	176	267	208	208	208	208	208	208
1993	208	208	208	208	208	117	114	114	114	114	114	110
1994	40	40	40	40	14	14	14	14	14	7	7	7
1995	7	7	7	7	7	7	7	7	0	0	0	0
2003	0	0	0	0	0	0	0	0	0	0	0	0
2004	0	0	0	0	0	0	0	0	0	0	0	1.247
2005	1.247	1.247	1.247	1.247	1.247	1.247	1.247	1.247	0	0	0	0
2006	0	0	26	26	26	26	26	2.924	16.837	16.837	16.837	17.173
2007	17.173	15.493	14.140	12.339	10.665	10.019	6.775	1.318	818	0	0	0
2008	0	0	0	0	0	0	0	0	0	0	0	0
2009	0	0	0	0	0	0	0	0	0	3.045	3.045	3.045
2010	3.045	3.045	3.045	3.045	3.045	3.045	3.045	3.045	3.045	3.045	3.045	150
2011	150	150	150	150	150	0	0	0	0	0	0	0
2012	0	0	0	0	0	0	0	0	0	0	0	0
2013	0	0	0	0	0	0	0	0	0	0	0	0
2014	0	0	0	0	0	0	0	0	0	0	0	0
2015	0	0	0	0	0	0	0	0	0	0	0	0
2016	0	0	0	0	0	0	0	0	0	0	0	0
2017	0	0	0	0	0	0	0	0	0	0	0	0
2018	0	0	0	0	0	0	0	0	0	0	0	0
2019	0	0	0	0	0	0	0	0	0	0	0	0
2020	0	0	0	0	0	0	0	0	0	0	0	0
2021	0	0	0	0	0	0	0	0	0	0	0	0
2022	0	0	0	0	0	0	0	0	0	0	0	0
2023	0	0	0	0	0	0	0	0	0	0	0	0
2024	0	0	0	0	0	0	0	0	0	0	0	0
2025	0	0	0	0	0	0	0	0	0	0	0	0

Fonte: GEFOC - CONAB

## Série Histórica - Outras Culturas

**Tabela 36 – Estoque de Sorgo – Mercado de Opções - em tonelada**

ANO	JAN	FEV	MAR	ABR	MAI	JUN	JUL	AGO	SET	OUT	NOV	DEZ
2003	0	0	0	0	0	0	0	162	37.800	38.455	15.180	901
2004	901	878	698	184	0	0	50	0	0	0	0	0
2005	0	0	0	0	0	0	0	0	0	0	0	0
2010	0	0	0	0	0	0	0	0	0	0	0	0
2011	0	0	0	0	0	0	0	0	0	0	0	0
2012	0	0	0	0	0	0	0	0	0	0	0	0
2013	0	0	0	0	0	0	0	0	0	0	0	0
2014	0	0	0	0	0	0	0	0	0	0	0	0
2015	0	0	0	0	0	0	0	0	0	0	0	0
2016	0	0	0	0	0	0	0	0	0	0	0	0
2017	0	0	0	0	0	0	0	0	0	0	0	0
2018	0	0	0	0	0	0	0	0	0	0	0	0
2019	0	0	0	0	0	0	0	0	0	0	0	0
2020	0	0	0	0	0	0	0	0	0	0	0	0
2021	0	0	0	0	0	0	0	0	0	0	0	0
2022	0	0	0	0	0	0	0	0	0	0	0	0
2023	0	0	0	0	0	0	0	0	0	0	0	0
2024	0	0	0	0	0	0	0	0	0	0	0	0
2025	0	0	0	0	0	0	0	0	0	0	0	0

Fonte:GEFOC - CONAB

**Tabela 37 – Estoque Total de Sorgo - em tonelada**

ANO	JAN	FEV	MAR	ABR	MAI	JUN	JUL	AGO	SET	OUT	NOV	DEZ
1987	27.477	26.933	35.706	55.034	66.011	74.643	88.085	91.596	88.121	78.912	73.314	59.038
1988	51.193	51.254	50.507	43.548	43.521	32.890	41.153	46.791	45.901	45.905	38.463	28.353
1989	26.985	26.753	20.010	18.497	21.526	22.796	23.035	26.546	27.830	29.134	27.071	29.841
1990	29.499	29.330	29.353	29.512	30.009	29.427	20.846	17.954	11.069	5.591	4.891	3.995
1991	3.161	3.054	2.501	1.943	1.520	775	472	527	490	409	387	379
1992	342	335	293	202	176	267	208	208	208	208	208	208
1993	208	208	208	208	208	117	114	114	114	114	114	110
1994	40	40	40	40	14	14	14	14	14	7	7	7
1995	7	7	7	7	7	7	7	7	0	0	0	0
2003	0	0	0	0	0	0	0	162	37.800	38.455	15.180	901
2004	901	878	698	184	0	0	50	0	0	0	0	1.247
2005	1.247	1.247	1.247	1.247	1.247	1.247	1.247	1.247	0	0	0	0
2006	0	0	26	26	26	26	26	2.924	16.837	16.837	16.837	17.173
2007	17.173	15.493	14.140	12.339	10.665	10.019	6.775	1.318	818	0	0	0
2008	0	0	0	0	0	0	0	0	0	0	0	0
2009	0	0	0	0	0	0	0	0	0	3.045	3.045	3.045
2010	3.045	3.045	3.045	3.045	3.045	3.045	3.045	3.045	3.045	3.045	3.045	150
2011	150	150	150	150	150	0	0	0	0	0	0	0
2012	0	0	0	0	0	0	0	0	0	0	0	0
2013	0	0	0	0	0	0	0	0	0	0	0	0
2014	0	0	0	0	0	0	0	0	0	0	0	0
2015	0	0	0	0	0	0	0	0	0	0	0	0
2016	0	0	0	0	0	0	0	0	0	0	0	0
2017	0	0	0	0	0	0	0	0	0	0	0	0
2018	0	0	0	0	0	0	0	0	0	0	0	0
2019	0	0	0	0	0	0	0	0	0	0	0	0
2020	0	0	0	0	0	0	0	0	0	0	0	0
2021	0	0	0	0	0	0	0	0	0	0	0	0
2022	0	0	0	0	0	0	0	0	0	0	0	0
2023	0	0	0	0	0	0	0	0	0	0	0	0
2024	0	0	0	0	0	0	0	0	0	0	0	0
2025	0	0	0	0	0	0	0	0	0	0	0	0

Fonte:GEFOC - CONAB

## Série Histórica - Outras Culturas

**Tabela 38 – Estoque de Farinha de Milho - Agricultura Familiar – em tonelada**

ANO	JAN	FEV	MAR	ABR	MAI	JUN	JUL	AGO	SET	OUT	NOV	DEZ
2024	0	63	73	0	0	116	78	66	57	57	58	44
2025	28	27	24	65	56	59	54	56				

**Tabela 39 – Estoque de Fubá de Milho - Agricultura Familiar – em tonelada**

ANO	JAN	FEV	MAR	ABR	MAI	JUN	JUL	AGO	SET	OUT	NOV	DEZ
2024	0	62	74	0	0	227	170	133	115	31	13	13
2025	13	8	8	3	41	41	41	54				

**Tabela 40 – Estoque de Macarrão - Agricultura Familiar – em tonelada**

ANO	JAN	FEV	MAR	ABR	MAI	JUN	JUL	AGO	SET	OUT	NOV	DEZ
2024	0	0	0	0	0	0	0	0	0	0	0	0
2025	28	27	24	20	17	3	992	131				

**Tabela 41 – Estoque de Melado - Agricultura Familiar – em tonelada**

ANO	JAN	FEV	MAR	ABR	MAI	JUN	JUL	AGO	SET	OUT	NOV	DEZ
2024	0	0	0	0	0	0	0	0	0	0	0	0
2025	21	20	12	8	4	2	3	41				

**Tabela 42 – Estoque de Extrato de Tomate - Agricultura Familiar – em tonelada**

ANO	JAN	FEV	MAR	ABR	MAI	JUN	JUL	AGO	SET	OUT	NOV	DEZ
2025	0	0	0	0	1	1	1	0				

## Série Histórica – Sacaria

**Tabela 43 – Estoque de Sacaria de Polipropileno - AGF - em unidades**

ANO	JAN	FEV	MAR	ABR	MAI	JUN	JUL	AGO	SET	OUT	NOV	DEZ
2008	434.003	392.860	342.337	359.582	342.721	1.102.902	875.812	781.879	492.451	567.725	398.643	359.433
2009	364.005	354.694	372.370	394.371	416.189	520.986	2.191.328	1.207.562	1.291.292	1.228.984	1.848.566	2.246.798
2010	2.157.714	2.339.184	1.745.258	1.601.101	1.902.829	1.822.261	1.873.906	1.630.638	1.762.488	2.976.919	2.488.216	1.900.633
2011	1.815.539	1.713.007	1.711.094	1.668.828	1.818.354	3.299.542	3.532.602	3.641.700	3.195.270	2.981.186	2.274.141	3.177.534
2012	2.657.425	2.458.019	24.490.900	3.311.800	4.228.200	5.174.400	6.277.700	5.948.900	6.773.500	7.195.100	6.437.200	5.591.500
2013	6.437.200	4.458.800	4.078.900	3.264.100	2.778.600	3.913.500	4.182.600	150.000	4.009.700	3.715.000	3.817.800	3.774.700
2014	3.485.050	3.211.304	3.174.676	2.934.009	2.796.912	2.815.898	2.629.050	2.016.382	2.756.502	2.559.326	2.288.750	2.092.671
2015	1.484.166	1.349.465	1.174.169	1.135.212	1.182.787	1.227.238	1.601.237	1.364.028	1.307.750	1.210.952	1.351.259	1.215.164
2016	1.181.125	1.189.184	1.710.184	1.565.304	1.550.466	1.676.246	1.478.000	1.298.558	1.455.056	1.330.374	1.075.003	1.135.885
2017	1.127.144	1.114.509	1.234.621	985.379	1.916.014	1.777.516	1.404.716	1.423.419	1.192.195	1.093.499	1.131.562	1.153.411
2018	1.291.910	1.341.701	1.855.460	1.710.835	1.206.236	1.328.618	1.184.676	1.431.079	1.209.003	1.259.819	1.127.076	1.051.042
2019	905.374	728.419	703.221	639.478	585.312	581.062	575.211	592.231	1.450.053	781.701	638.165	591.389
2020	466.116	816.879	1.198.615	740.657	645.670	538.741	565.492	564.610	486.973	567.492	549.085	309.099
2021	237.097	389.824	637.349	606.404	654.051	309.577	301.131	343.131	278.131	241.354	241.354	560.130
2022	1.168.330	1.193.830	1.196.251	1.193.830	1.131.955	948.501	891.604	843.974	769.881	700.835	720.306	813.122
2023	813.540	818.354	807.097	745.413	645.984	606.981	766.372	746.687	782.731	603.202	822.126	1.062.786
2024	1.118.129	1.149.727	993.362	2.141.275	2.020.427	1.993.392	1.827.122	1.793.118	3.775.429	3.775.429	3.563.441	3.390.672
2025	3.243.159	3.369.376	3.519.728	3.404.479	3.103.261	2.877.869	2.612.254	2.459.523				

Fonte: GEFOC - CONAB

**Tabela 44 – Estoque de Sacaria de Polipropileno – Mercado Opções - em unidades**

ANO	JAN	FEV	MAR	ABR	MAI	JUN	JUL	AGO	SET	OUT	NOV	DEZ
2008	1.269.904	1.189.639	1.207.932	1.046.145	1.389.982	1.073.590	958.472	958.472	942.222	892.916	1.007.916	797.112
2009	797.112	809.629	857.687	877.618	925.612	925.612	267.289	1.657.929	1.409.157	1.322.617	1.266.943	533.356
2010	1.586.865	1.683.132	1.699.411	1.482.314	1.409.385	1.542.362	1.658.083	1.785.700	1.748.292	1.796.756	2.114.179	2.279.635
2011	2.147.627	1.979.712	1.671.320	1.604.715	1.602.872	1.581.359	1.687.896	1.809.205	1.897.628	1.820.858	1.773.944	1.639.643
2012	1.709.388	1.712.834	1.732.800	1.732.800	2.205.900	2.133.000	2.363.900	2.615.800	2.712.400	2.968.900	3.460.200	2.983.400
2013	3.460.200	2.103.000	2.119.500	1.912.800	1.578.600	1.516.900	1.478.500	351.600	797.100	1.261.100	1.259.900	1.290.700
2014	1.414.714	1.386.511	1.272.239	1.155.444	871.371	761.994	776.059	901.349	936.233	889.303	887.600	942.319
2015	1.282.050	1.065.576	1.015.512	963.291	943.091	887.549	1.273.630	1.234.769	1.038.721	899.392	870.246	785.583
2016	766.364	601.437	612.360	620.711	517.623	478.090	492.476	583.701	483.776	566.920	553.762	459.674
2017	464.292	439.845	723.661	661.301	391.858	744.297	643.911	476.966	550.804	479.793	901.334	655.666
2018	601.010	693.731	602.145	718.212	924.947	768.037	759.844	1.018.454	831.123	801.895	681.378	669.134
2019	646.145	548.321	546.906	460.094	441.188	431.487	421.281	408.325	486.068	798.930	530.104	346.781
2020	468.761	417.357	591.392	883.579	861.307	802.373	741.394	798.014	671.602	501.811	540.194	556.466
2021	464.711	428.979	719.278	776.203	460.808	590.253	499.429	458.936	444.370	407.693	407.693	450.258
2022	411.630	411.630	413.174	409.802	402.175	383.401	383.401	367.593	360.193	359.592	311.605	309.114
2023	309.113	299.712	245.989	242.923	236.850	238.394	221.225	219.294	165.731	127.658	101.853	101.853
2024	101.853	98.287	88.973	88.973	99.973	45.744	45.653	45.653	45.653	44.849	45.653	45.653
2025	44.849	44.849	44.849	44.849	44.849	44.849	44.849	44.849				

Fonte: GEFOC - CONAB

## Série Histórica – Sacaria

**Tabela 45 – Estoque de Sacaria de Polipropileno - Agricultura Familiar - em unidades**

ANO	JAN	FEV	MAR	ABR	MAI	JUN	JUL	AGO	SET	OUT	NOV	DEZ
2008	268.374	233.686	233.686	266.706	265.798	268.127	284.627	287.457	287.066	290.068	288.538	287.748
2009	287.748	287.800	287.800	279.041	278.927	304.927	279.248	300.952	555.511	520.160	540.494	1.434.708
2010	833.215	832.470	821.311	707.424	688.805	713.527	715.304	705.385	697.591	555.704	542.632	233.300
2011	535.407	533.061	525.132	251.162	253.592	239.437	237.824	237.879	237.773	239.611	238.265	247.070
2012	236.087	236.394	236.400	236.400	236.200	236.200	236.200	236.200	234.200	233.700	242.300	241.300
2013	242.300	240.600	242.600	242.600	242.300	242.400	235.200	235.200	197.700	197.700	197.700	196.400
2014	181.951	181.951	181.951	181.951	181.951	170.327	181.951	170.327	170.327	170.327	164.935	163.465
2015	162.405	162.405	162.405	162.405	160.979	138.717	139.717	138.717	138.201	136.306	136.306	136.306
2016	134.140	134.140	134.140	154.829	153.716	149.212	140.423	122.957	122.957	122.957	122.957	122.957
2017	120.425	120.425	120.425	112.091	108.161	81.991	81.991	81.991	81.991	81.991	68.035	64.283
2018	58.283	48.283	48.283	48.283	48.823	43.567	43.567	31.553	31.553	31.553	31.553	22.553
2019	22.553	18.053	22.313	20.250	20.250	17.464	14.218	11.358	10.554	7.614	7.614	7.614
2020	7.614	7.614	7.614	7.614	7.614	7.614	7.614	7.614	7.614	7.614	7.614	7.614
2021	7.614	7.614	7.614	7.614	7.614	7.614	7.614	7.614	7.614	7.614	7.614	7.614
2022	7.614	7.614	7.614	5.389	5.389	7.614	7.614	5.389	7.614	7.614	7.614	5.389
2023	5.389	5.389	6.544	6.544	4.319	4.319	6.544	6.544	6.544	4.319	4.319	4.319
2024	4.319	0	6.544	6.544	2.225	2.225	2.225	2.225	2.225	19.241	15.763	69.207
2025	66.846	66.846	51.528	47.779	2.225	31.539	29.064	2.225				

Fonte: GEFOC – CONAB

**Tabela 46 – Estoque Total de Sacaria de Polipropileno - em unidades**

ANO	JAN	MAR	ABR	MAI	JUN	JUL	AGO	SET	OUT	NOV	DEZ	
2008	1.972.281	1.816.185	1.783.955	1.672.433	1.998.501	2.444.619	2.118.911	2.027.808	1.721.739	1.750.709	1.695.097	1.444.293
2009	1.448.865	1.452.123	1.517.857	1.551.030	1.620.728	1.751.525	2.737.865	3.166.443	3.255.960	3.071.761	3.656.003	4.214.862
2010	4.577.794	4.854.786	4.265.980	3.790.839	4.001.019	4.078.150	4.247.293	4.121.723	4.208.371	5.329.379	5.145.027	4.413.568
2011	4.498.573	4.225.780	3.907.546	3.524.705	3.674.818	5.120.338	5.458.322	5.688.784	5.330.671	5.041.655	4.286.350	5.064.247
2012	4.602.900	4.407.247	26.460.100	5.281.000	6.670.300	7.543.600	8.877.800	8.800.900	9.720.100	10.397.700	10.139.700	8.816.200
2013	10.139.700	6.802.400	6.441.000	5.419.500	4.599.500	5.672.800	5.896.300	736.800	5.004.500	5.173.800	5.275.400	5.261.800
2014	5.081.715	4.779.766	4.628.866	4.271.404	3.850.234	3.748.219	3.587.060	3.088.058	3.863.062	3.618.956	3.341.285	3.198.455
2015	2.928.621	2.577.446	2.352.086	2.260.908	2.286.857	2.253.504	3.014.584	2.737.514	2.484.672	2.246.650	2.357.811	2.137.053
2016	2.081.629	1.924.761	2.456.684	2.340.844	2.221.805	2.303.548	2.110.899	2.005.216	2.061.789	2.020.251	1.751.722	1.718.516
2017	1.711.861	1.674.779	2.078.707	1.758.771	2.416.033	2.603.804	2.130.618	1.982.376	1.824.990	1.655.283	2.100.931	1.873.360
2018	1.951.203	2.083.715	2.505.888	2.477.330	2.180.006	2.140.222	1.988.087	2.481.086	2.071.679	2.093.267	1.840.007	1.742.729
2019	1.574.072	1.294.793	1.272.440	1.119.822	1.046.750	1.030.013	1.010.710	1.011.914	1.946.675	1.588.245	1.175.883	945.784
2020	942.491	1.241.850	1.797.621	1.631.850	1.514.591	1.348.728	1.314.500	1.370.238	1.166.189	1.076.917	1.096.893	873.179
2021	709.422	826.417	1.364.241	1.390.221	1.122.473	907.444	808.174	809.681	730.115	656.661	656.661	1.018.002
2022	1.587.574	1.610.849	1.617.039	1.609.021	1.539.519	1.339.516	1.284.785	1.216.956	1.137.688	1.068.041	1.039.525	1.127.625
2023	1.128.042	1.123.455	1.059.630	994.880	887.153	849.694	994.141	972.525	955.006	735.179	928.298	1.168.958
2024	1.224.301	1.248.014	1.088.879	2.236.792	2.111.624	2.041.361	1.875.000	1.840.996	3.823.307	3.789.589	3.624.857	3.505.532
2025	3.290.233	3.481.071	3.616.105	3.497.107	3.150.335	2.954.257	2.686.167	2.506.597				

Fonte: GEFOC - CONAB