



INTERNALIZAÇÃO DE NORMAS

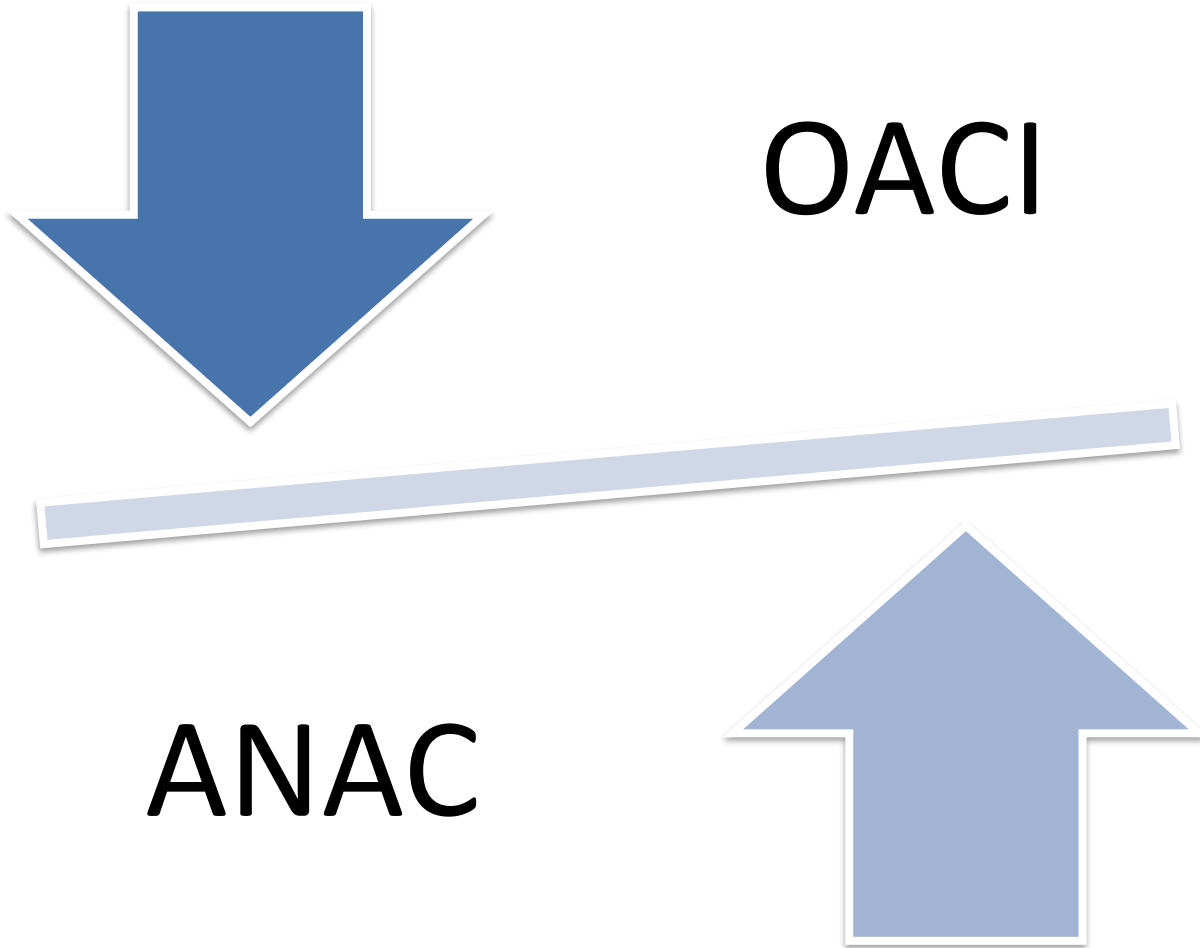
USOAP-CMA

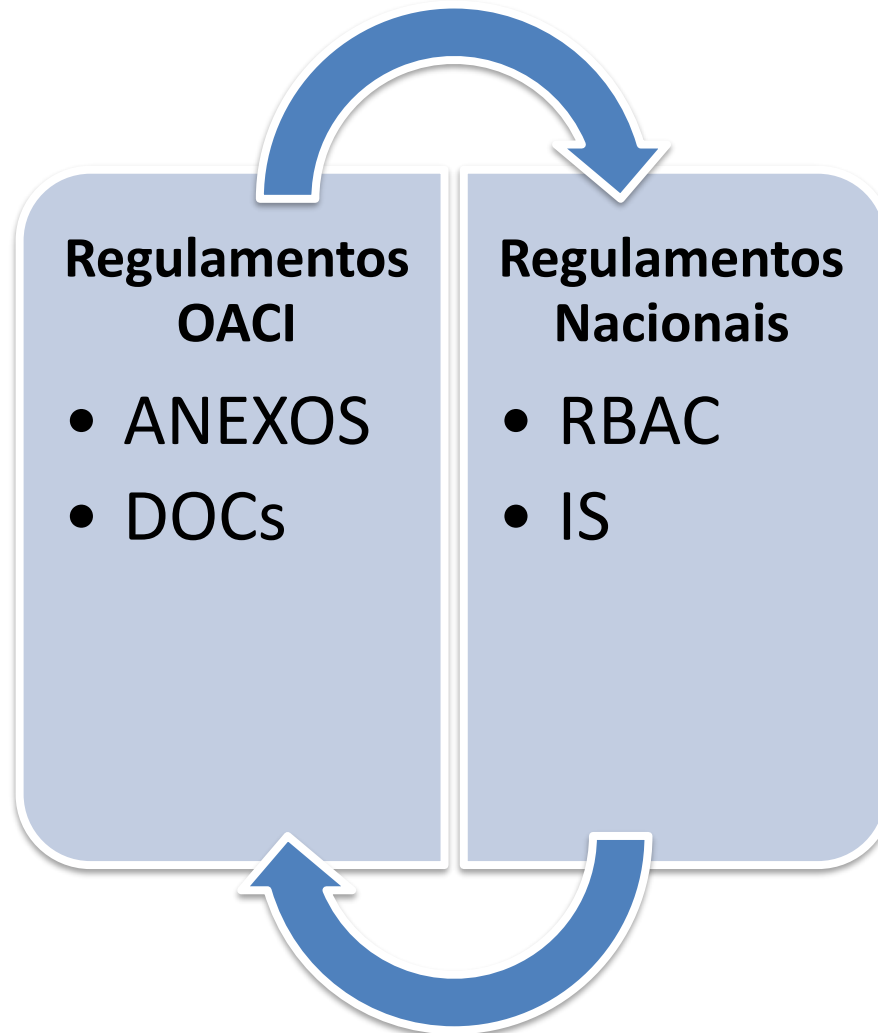
- O sistema de aviação civil
- Interesse OACI x ANAC
- USOAP - Universal Safety Oversight Audit Programme
- Desempenho do Brasil no USOAP
- Internalização das normas da OACI no âmbito da ANAC
 - Programa de Prontidão para USOAP
 - Processo de internalização de normas
 - Processo de auto avaliação

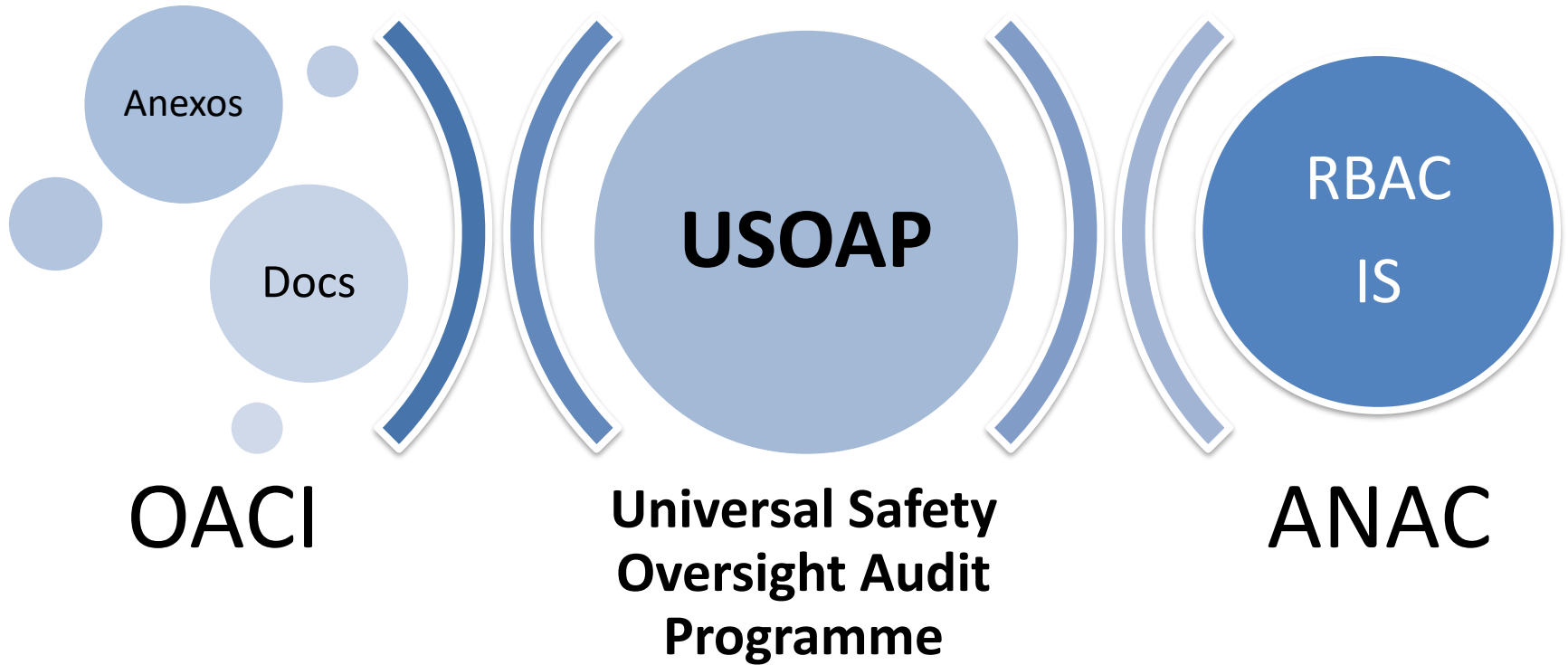
Aviação Civil





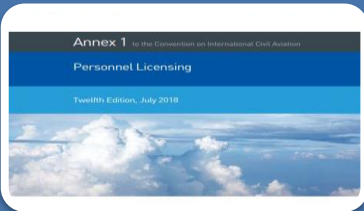








- Aferir a **capacidade** de um Estado em fornecer supervisão de segurança
- Avaliando se o Estado **implementou de forma efetiva e consistente** os elementos críticos (ECs)
- Que visam permitir ao Estado garantir a **implementação** das Normas e Práticas Recomendadas



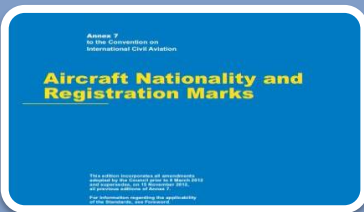
Anexo 1 - Personnel Licensing

- Protocolo PEL



Anexo 6 - Operation of Aircraft

- Protocolo OPS



Anexo 7 - Aircraft Nationality and Registration Marks

- Protocolo OPS



Anexo 8 - Airworthiness of Aircraft

- Protocolo AIR



Anexo 9 – Facilitation

- Protocolo OPS



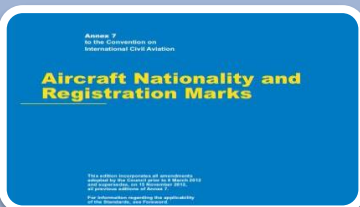
Anexo 14 - Aerodromes

- Protocolo AGA



Anexo 16 - Environmental Protection

- Protocolo OPS



Anexo 18 - The Safe Transport of Dangerous Goods by Air

- Protocolo OPS

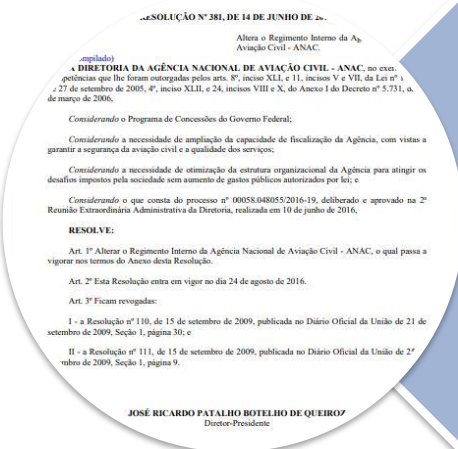


Safety Management



Protocolo LEG

- Primary aviation legislation and specific operating regulations



Protocolo ORG

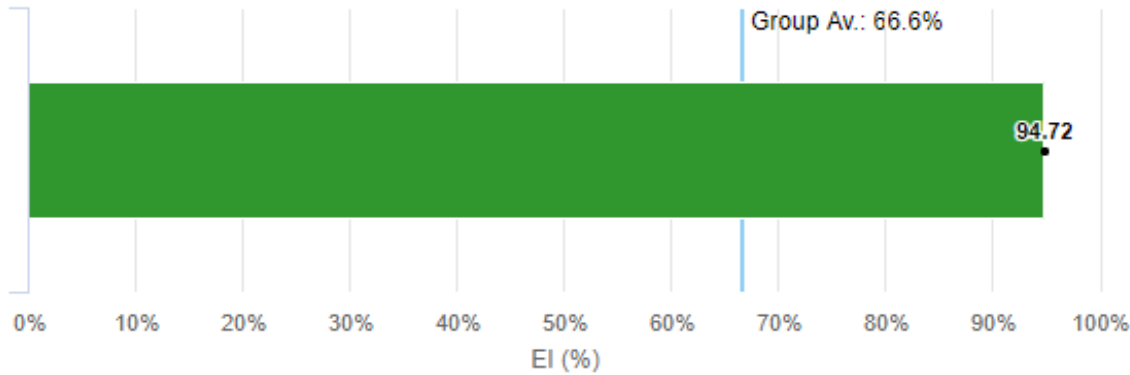
- Civil aviation organization

USOAP

IE: Índice de
Implementação
Efetiva

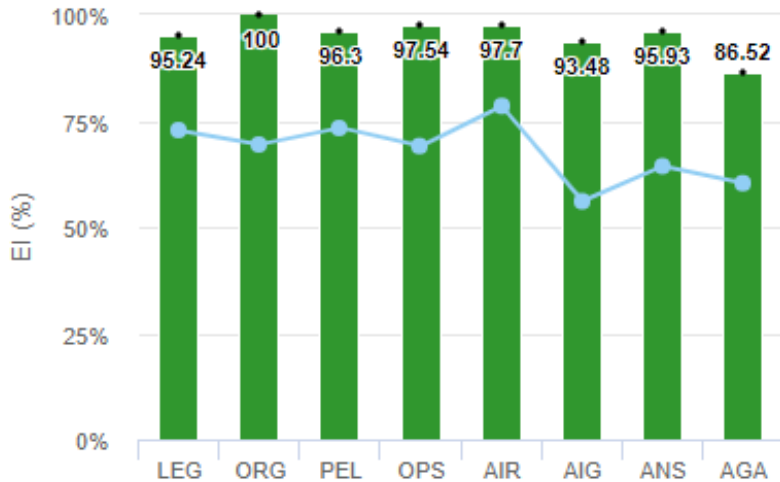
Overall EI

Brazil versus World



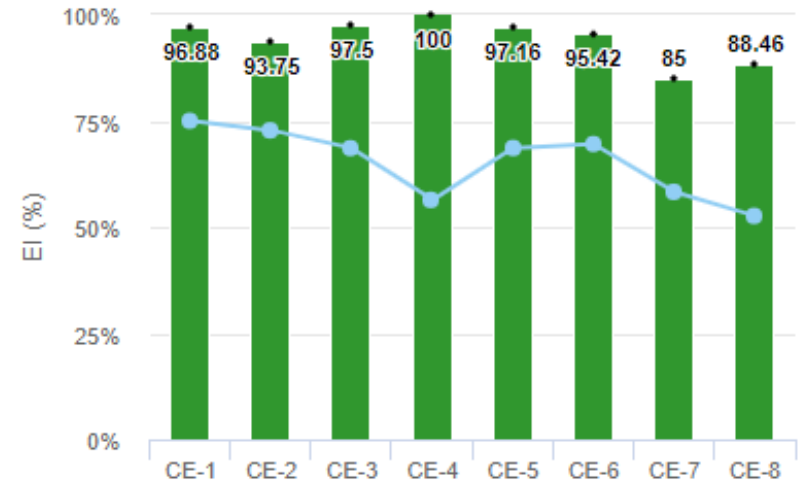
EI by Area

Brazil versus World



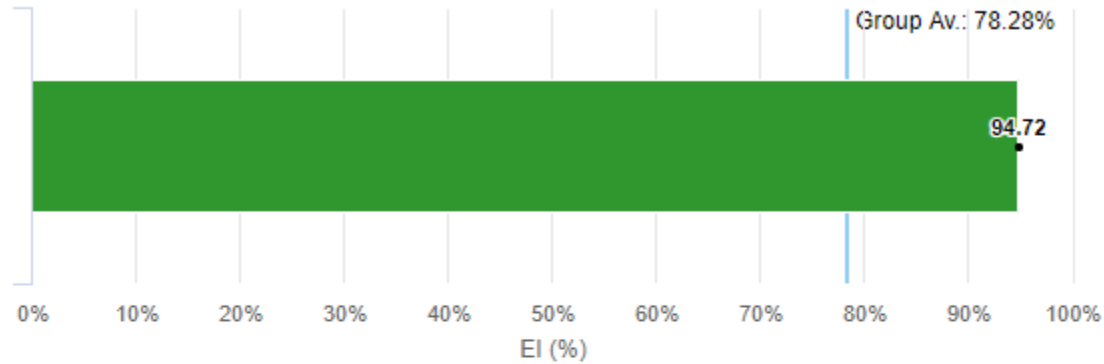
EI by CE

Brazil versus World



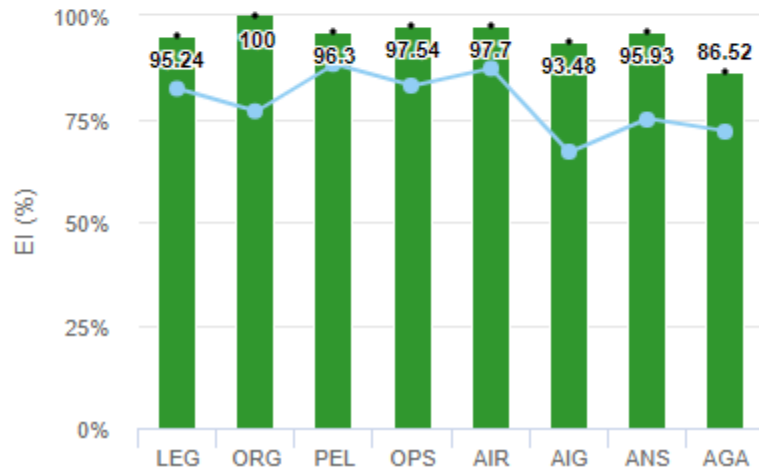
Overall EI

Brazil versus SAM



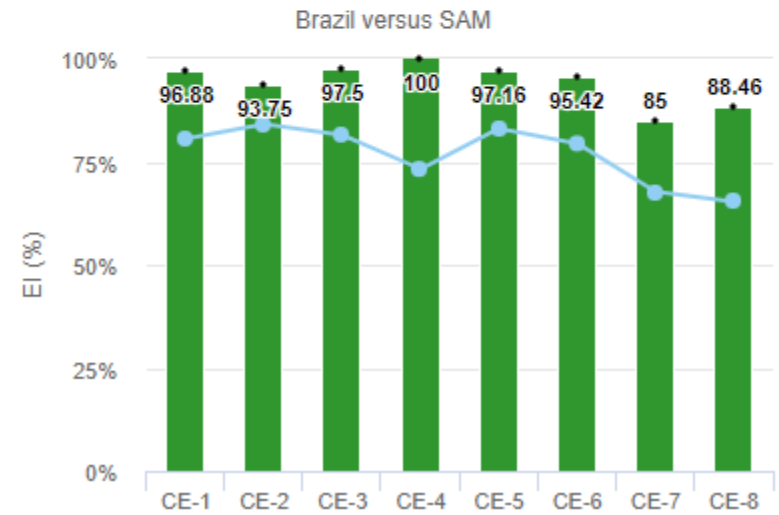
EI by Area

Brazil versus SAM



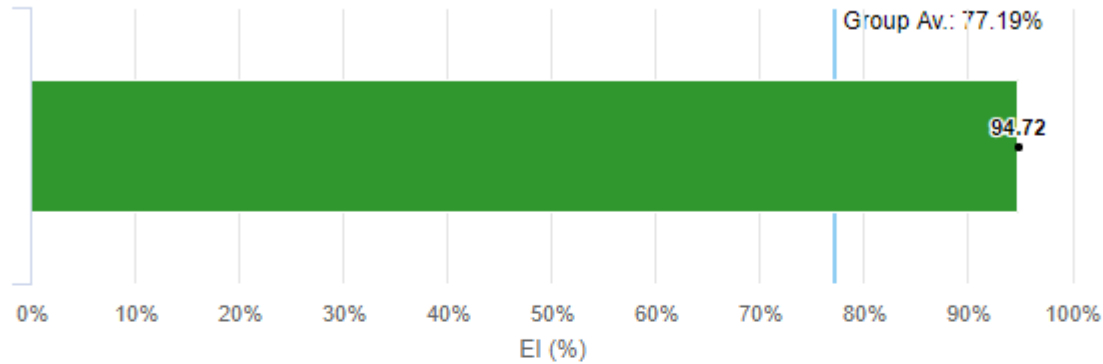
EI by CE

Brazil versus SAM



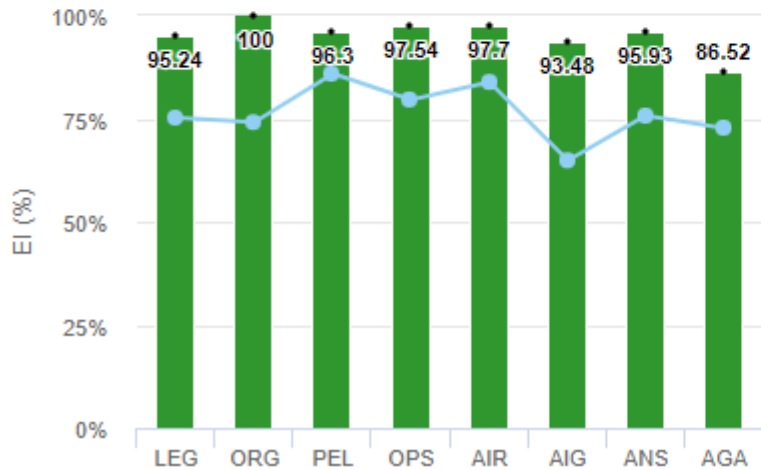
Overall EI

Brazil versus Europe



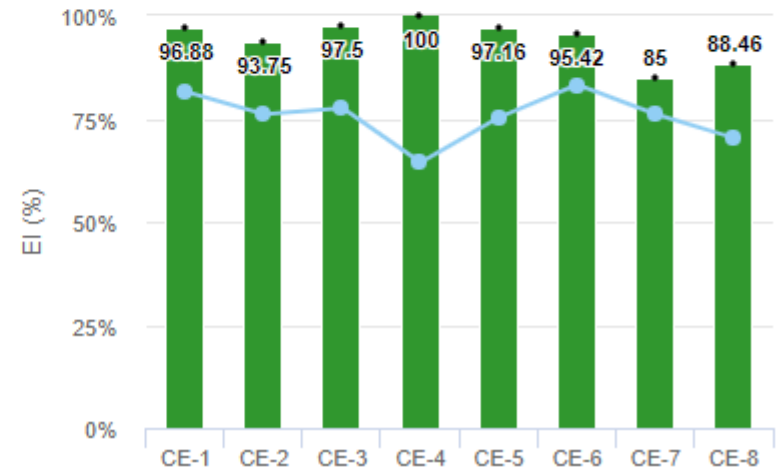
EI by Area

Brazil versus Europe



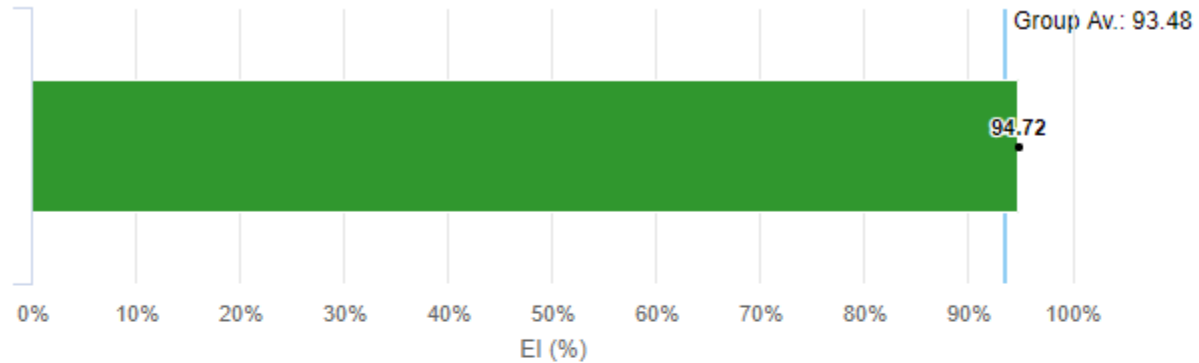
EI by CE

Brazil versus Europe



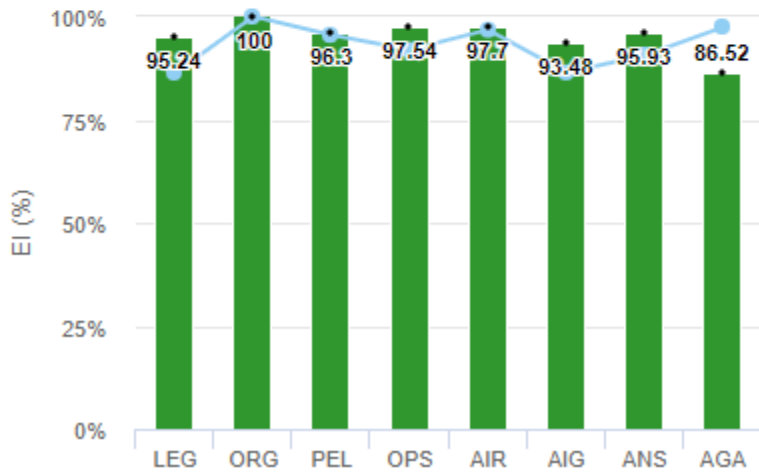
Overall EI

Brazil versus Northern America



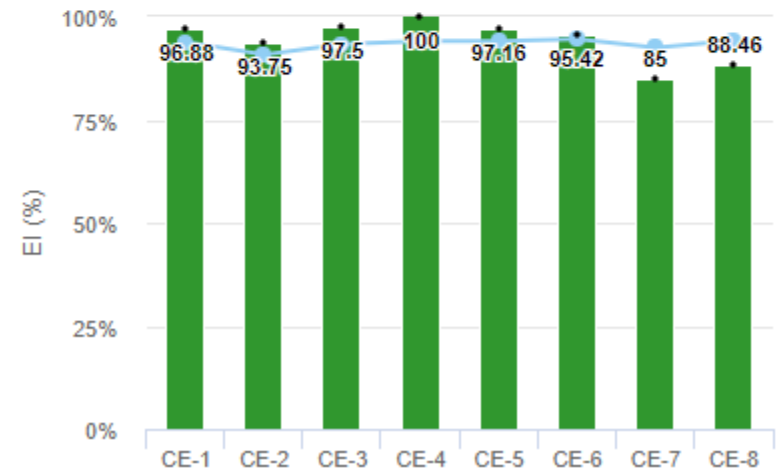
EI by Area

Brazil versus Northern America



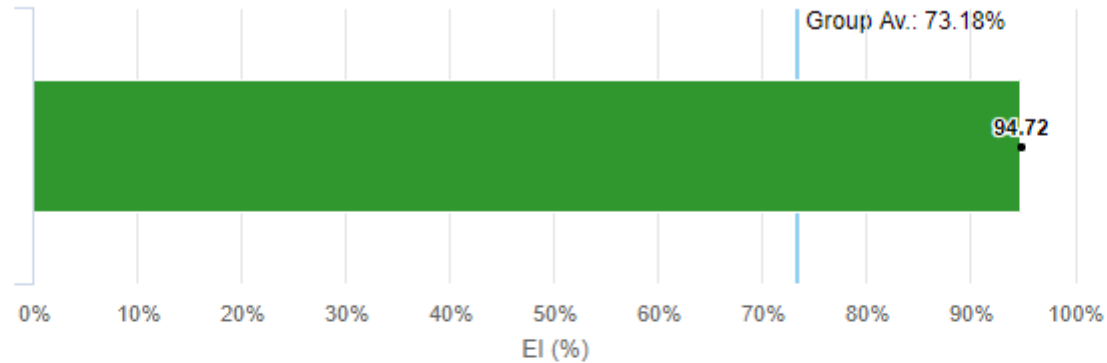
EI by CE

Brazil versus Northern America



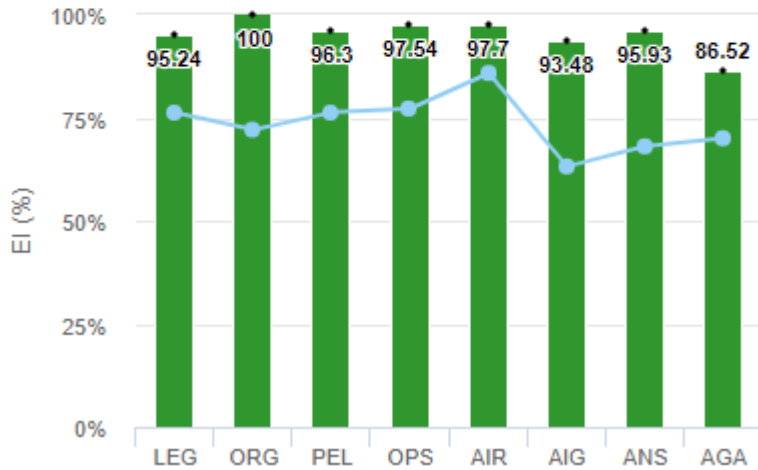
Overall EI

Brazil versus Asia



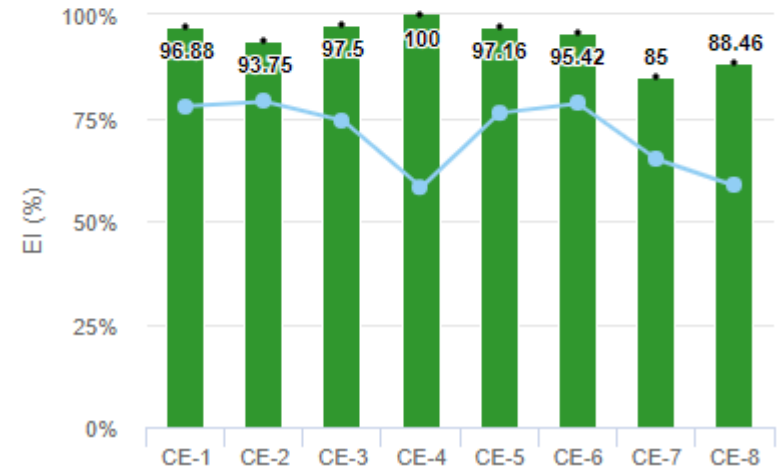
EI by Area

Brazil versus Asia



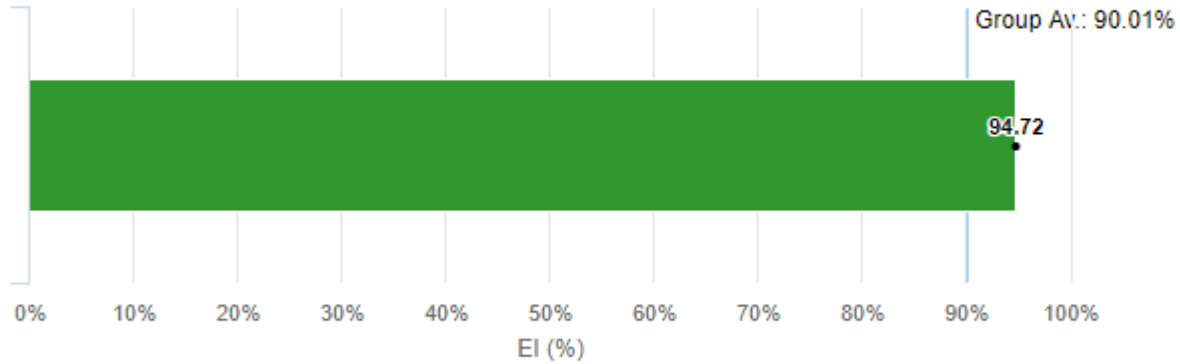
EI by CE

Brazil versus Asia



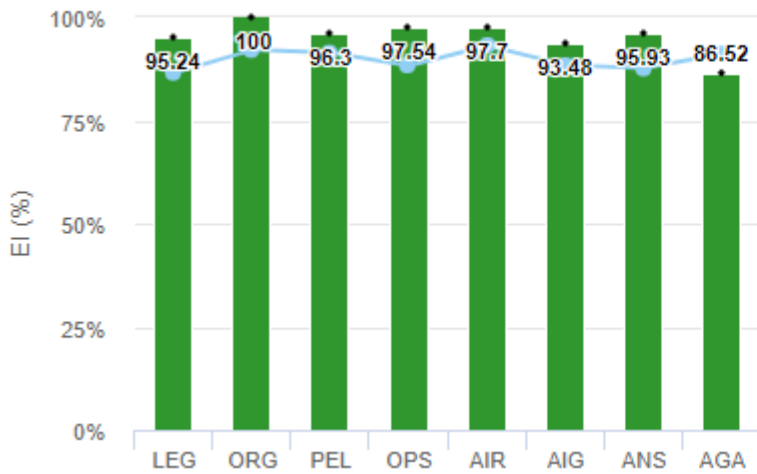
Overall EI

Brazil versus Category 1 of Council



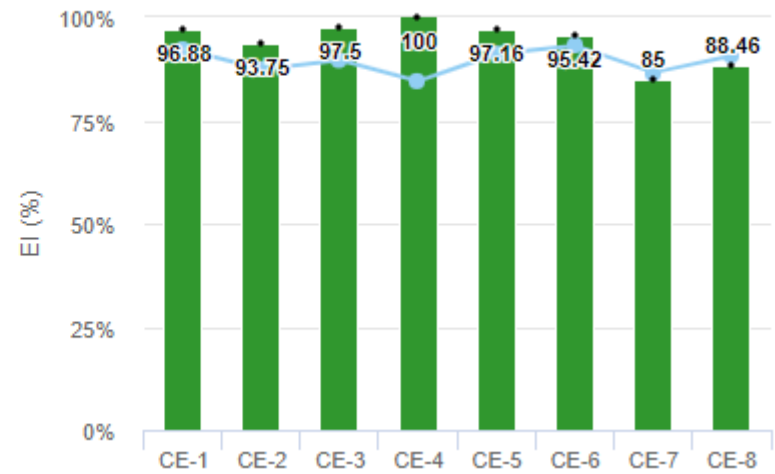
EI by Area

Brazil versus Category 1 of Council



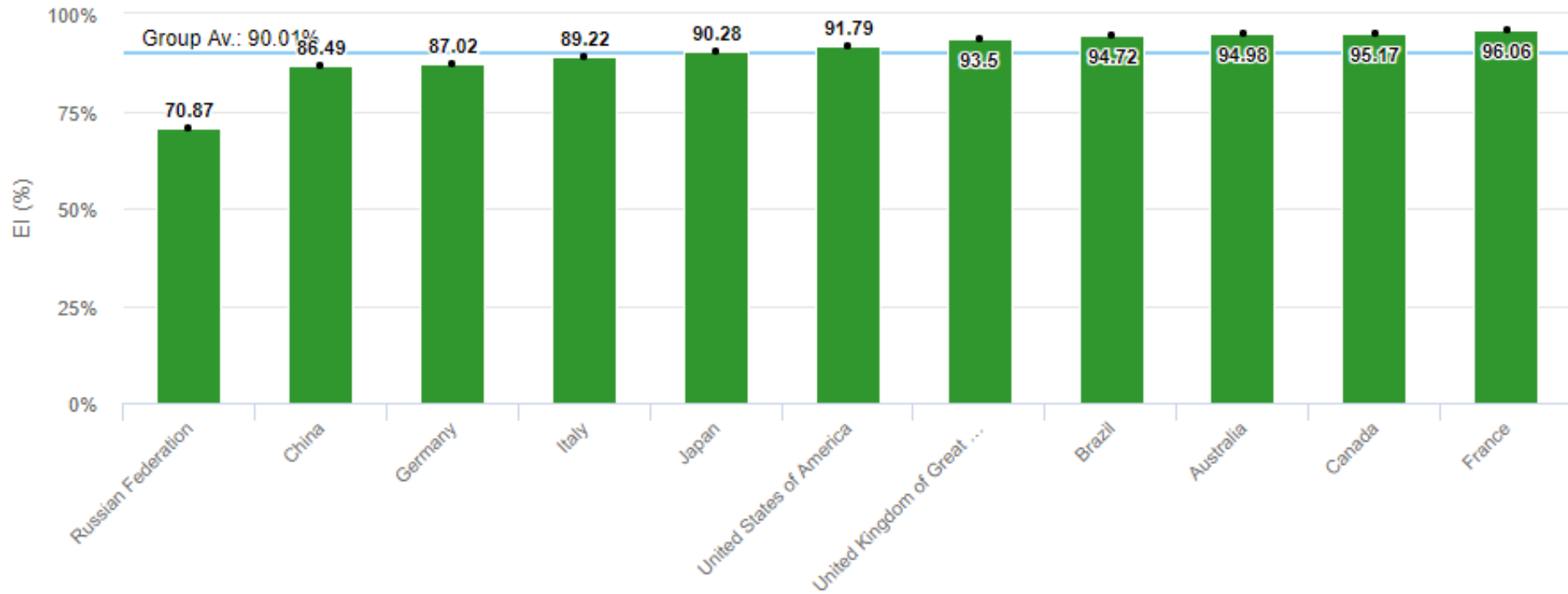
EI by CE

Brazil versus Category 1 of Council



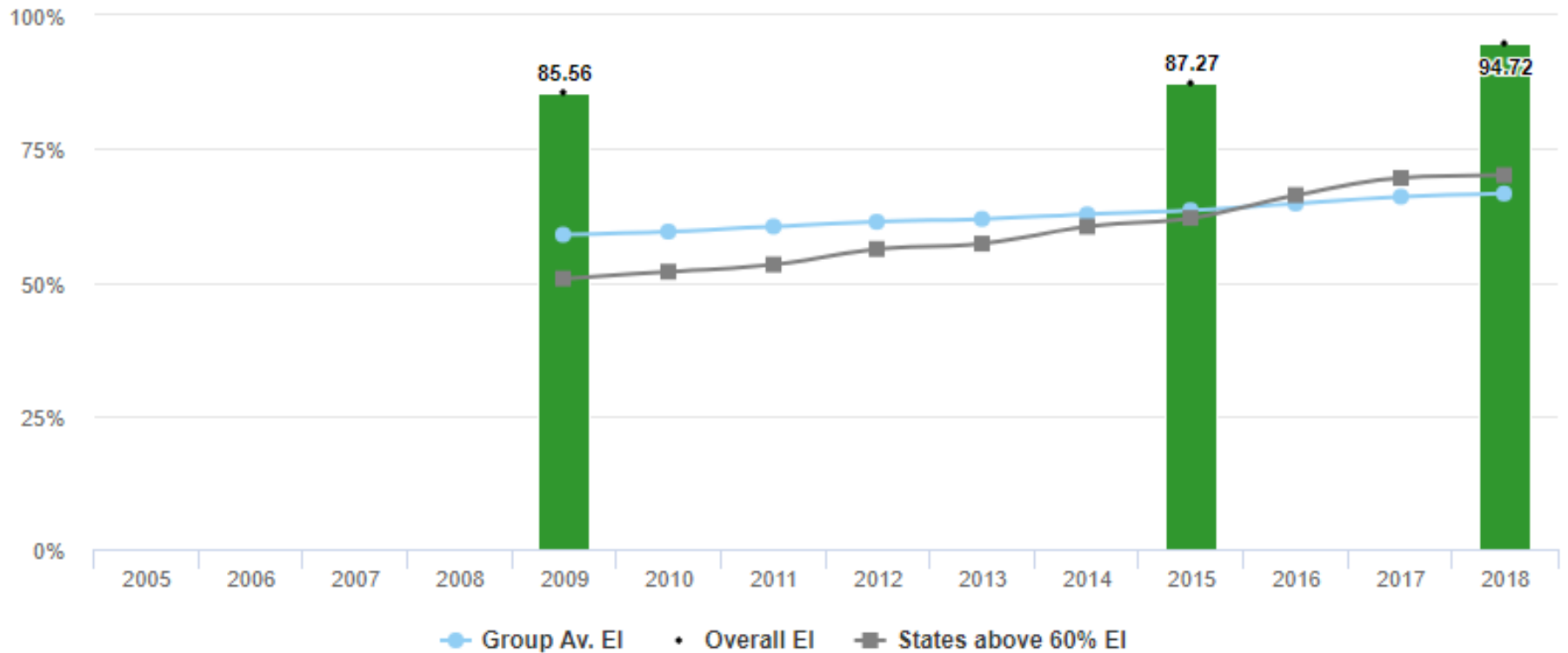
Overall EI by State

Category 1 of Council

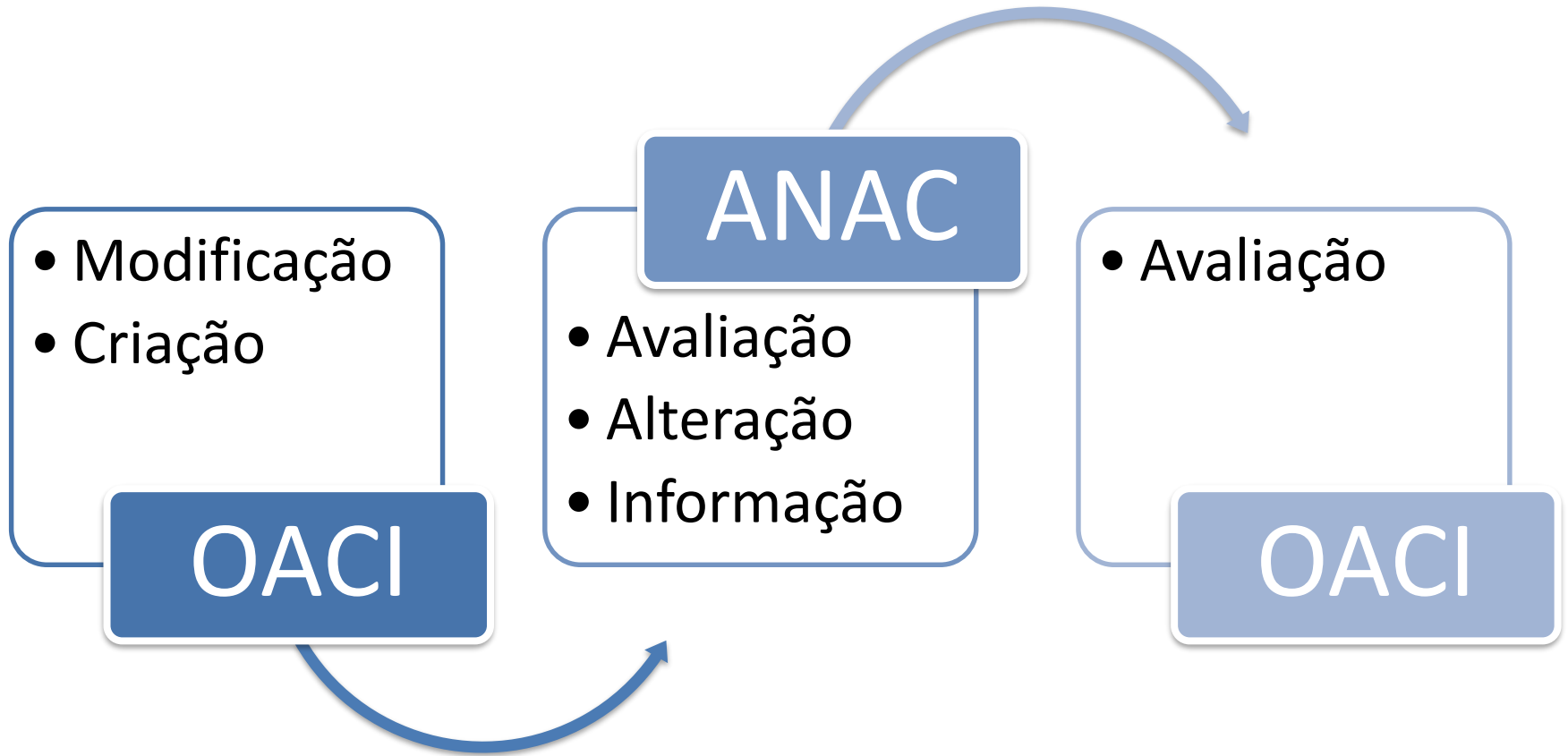


Year-end Trends

Brazil versus World







OACI

ANEXOS

DOCs

ANAC

RBAC

Resoluções

IS

Portarias

BRASIL

Leis

Decretos

ASINT: Informação sobre alterações nos Anexos e DOCs

Envio das modificações para análise das **áreas técnicas**.

ÁREAS TÉCNICAS

Análise e envio à **ASINT**.

ASINT

Recebimento da análise das **áreas técnicas**

Encaminhamento para **publicação no AIP e a OACI**

Encaminhamento para **USOAP/SPI**

USOAP/SPI

Avaliação qualitativa das respostas e **monitoramento** das datas de entrada em vigor das alterações e

Encaminhamento para **publicação no OLF**

Áreas Técnicas: Modificação nos Regulamentos Brasileiros

Análise **sob demanda****Análise de impacto** das áreas técnicas (PQs e CC/EFOD)**Atualização** das informações no OLF (*Draft*)

USOAP/SPI

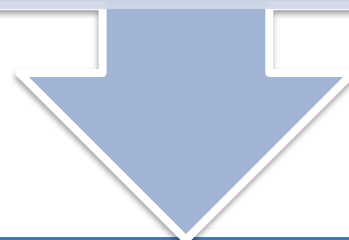
Avaliação qualitativa das respostas e **monitoramento** das datas de entrada em vigor das alterações eEncaminhamento para **publicação no OLF**

Áreas Técnicas: Modificação nos próprios regulamentos

Análise **impacto regulatório**

Ao fim do processo normativo: **Análise de impacto USOAP**

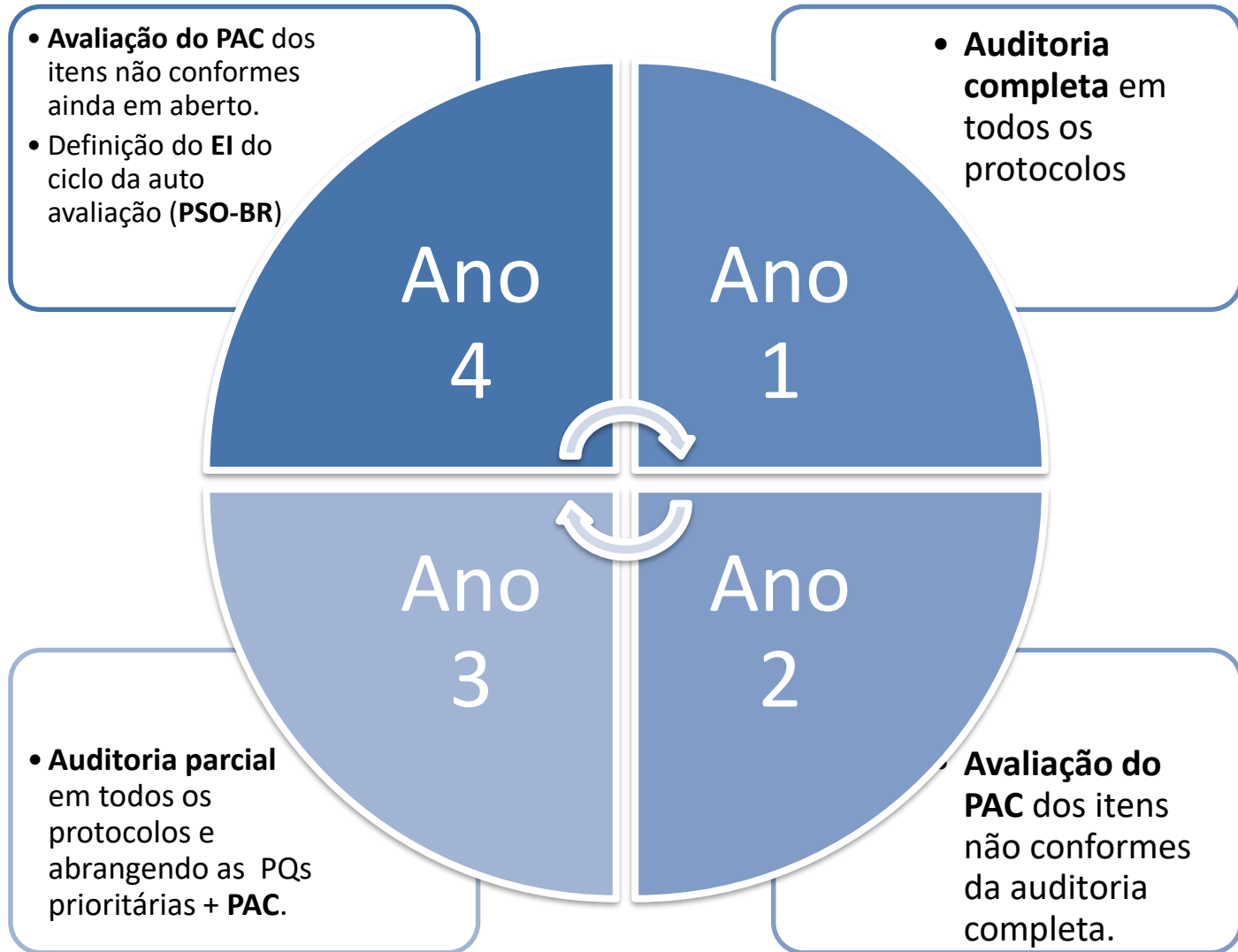
Atualização das informações no OLF (*Draft*)



USOAP/SPI

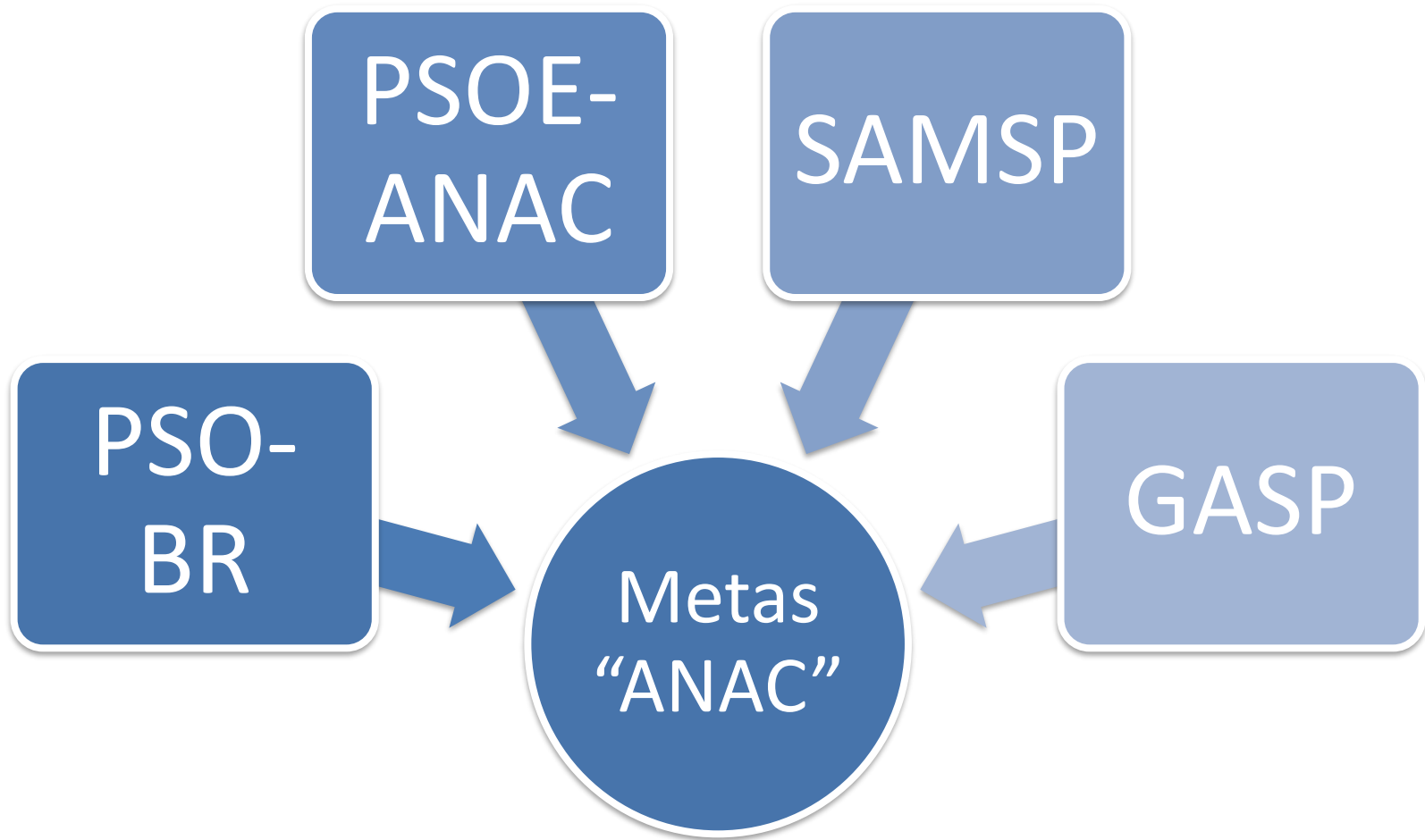
Avaliação qualitativa das respostas e **monitoramento** das datas de entrada em vigor das alterações e

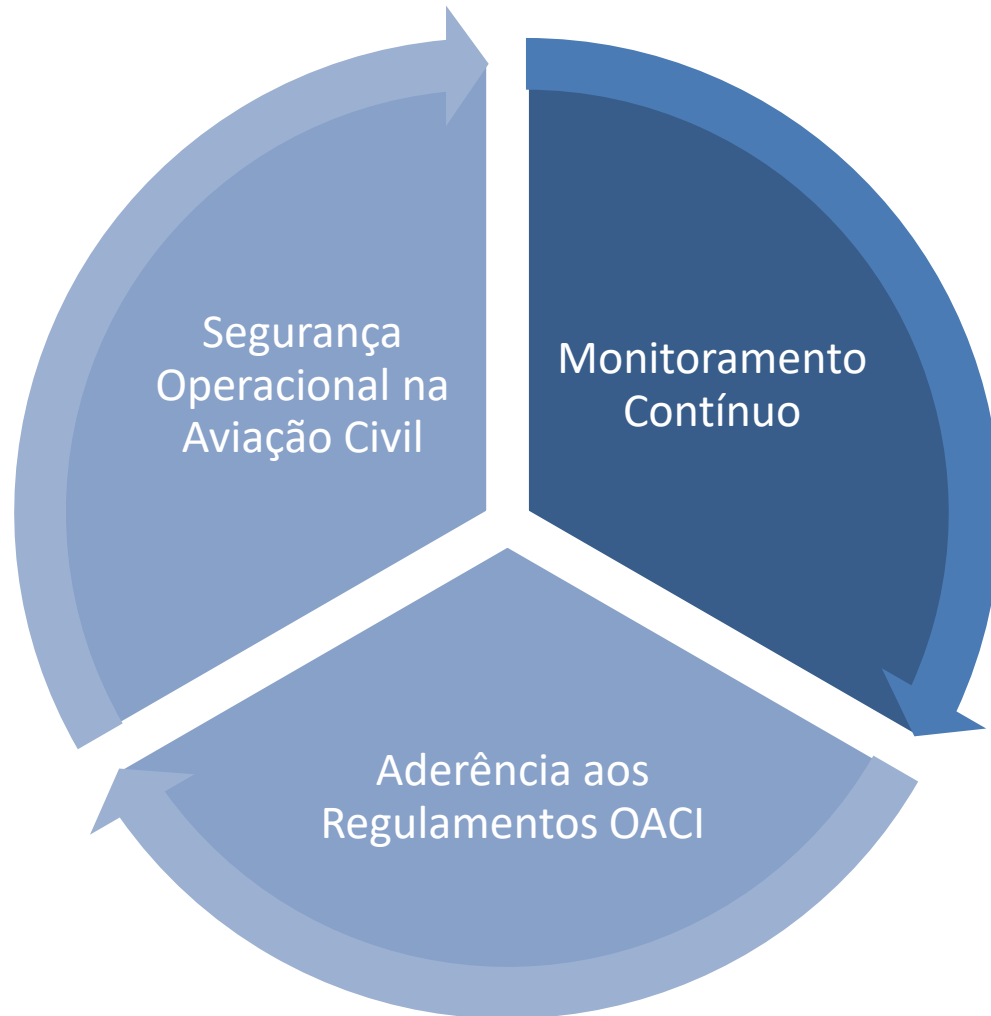
Encaminhamento para **publicação no OLF**



- ✓ % de mejora de la EI
- ✓ Margen de Vigilancia de la Seguridad Operacional (SOM)

Estados con implementación efectiva (EI):	2020	2022	2024	2026	2028	2030
menor a 65% Grupo 1	EI = 70 % Mejora del SOM	EI = 75 % SOM+	EI = 80 % SOM+	EI = 85 % SOM+	EI = 90 % SOM+	EI = 95 % SOM+
entre 65 y 74.99% Grupo 2	EI = 75 % Mejora del SOM	EI = 80 % SOM+	EI = 85 % SOM+	EI = 90 % SOM+	EI = 95 % SOM+	EI = 95 % SOM+
entre 75 y 79.99 % Grupo 3	EI = 80 % Mejora del SOM	EI = 85 % SOM+	EI = 90 % SOM+	EI = 95 % SOM+	EI = 95 % SOM+	EI = 95 % SOM+
más de 80 % Grupo 4	EI = 85 % Mejora del SOM	EI = 90 % SOM+	EI = 95 % SOM+	EI = 95 % SOM+	EI = 95 % SOM+	EI = 95 % SOM+







Obrigado

Gérson Floriz Costa Júnior
geron.costa@anac.gov.br
(61) 3314-4226