

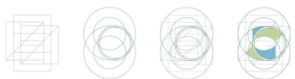
Projeto Sorrir

Resultados parciais (Jan-Fev- Mar-Abr)

Rio de Janeiro, 07 de junho de 2017.

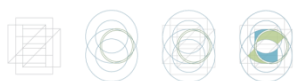
Situação atual do Projeto

- Inicialmente: 41 OPS
- Exclusões: 6 OPS
 - 5 solicitaram desligamento
 - 1 não respondeu aos contatos
- Atualmente: 35 OPS



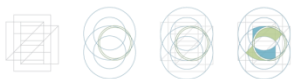
Situação atual do Projeto – Total de envios

- Envio dos indicadores de janeiro: 28
- Envio dos indicadores de fevereiro: 28
- Envio dos indicadores de março: 22
- Envio da proposta de remuneração diferenciada: 20
- Envio dos indicadores de abril: 25

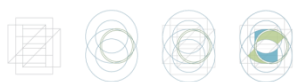
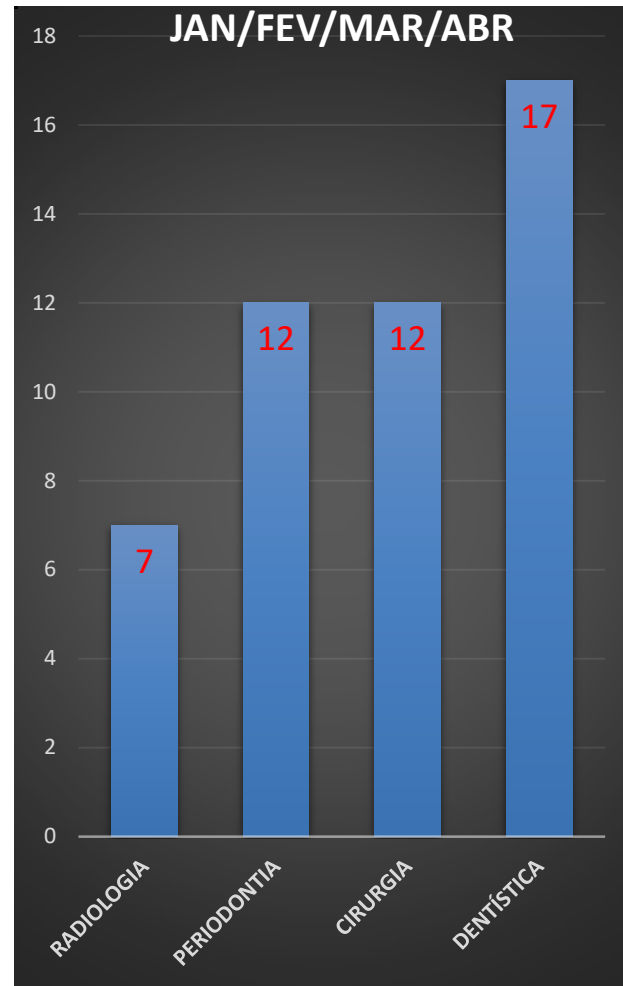
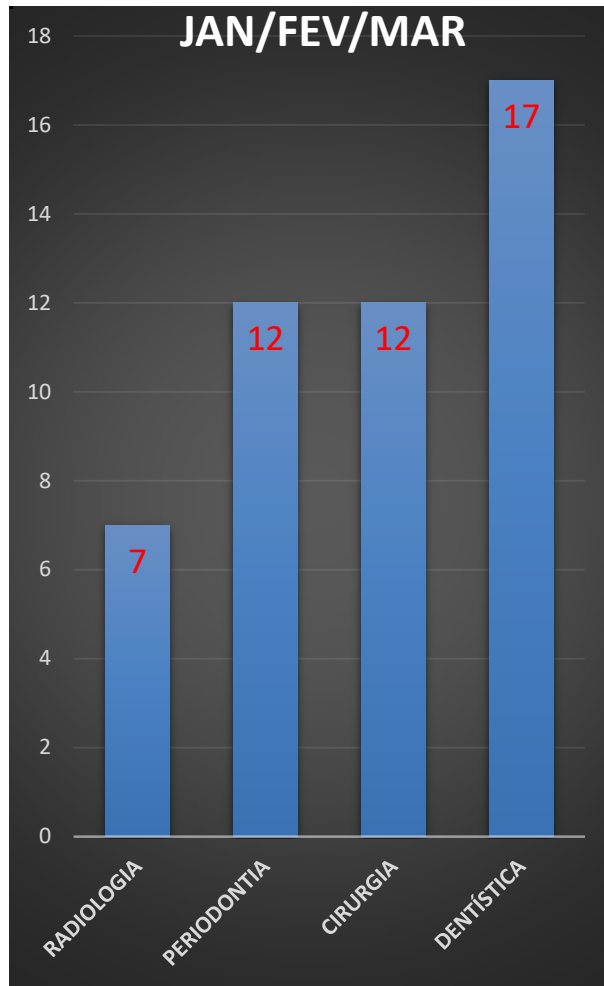
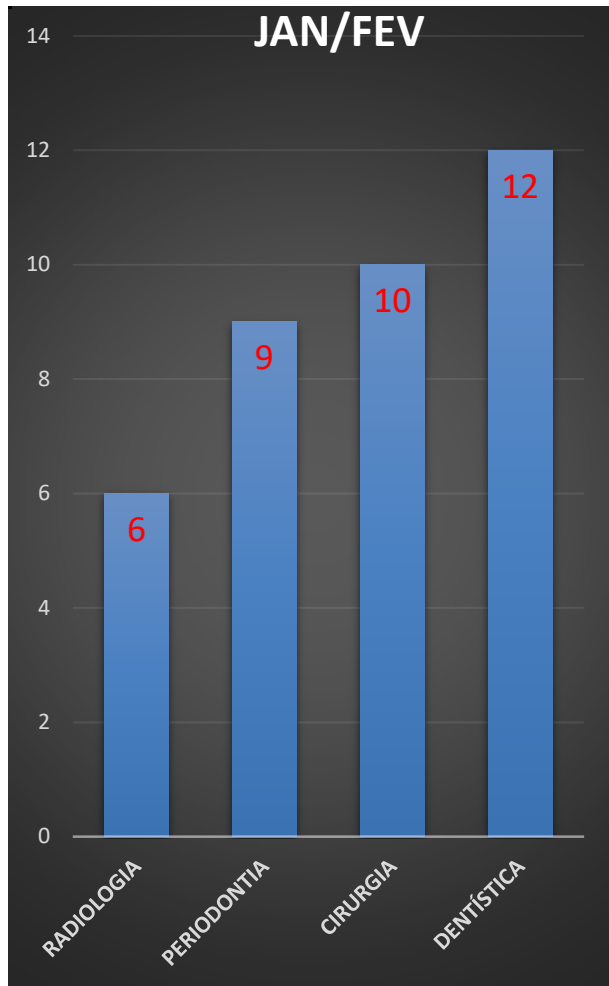


Amostra

- Foram consideradas apenas os resultados enviados até 25 de maio.
- Das 25 que enviaram resultados, apenas 1 foi retirada da amostra por ainda necessitar de ajuste.
- Total de Operadoras na amostra: 24
- Nos indicadores 2 e 3, foram retirados valores que estavam acima de 2 desvios padrão.



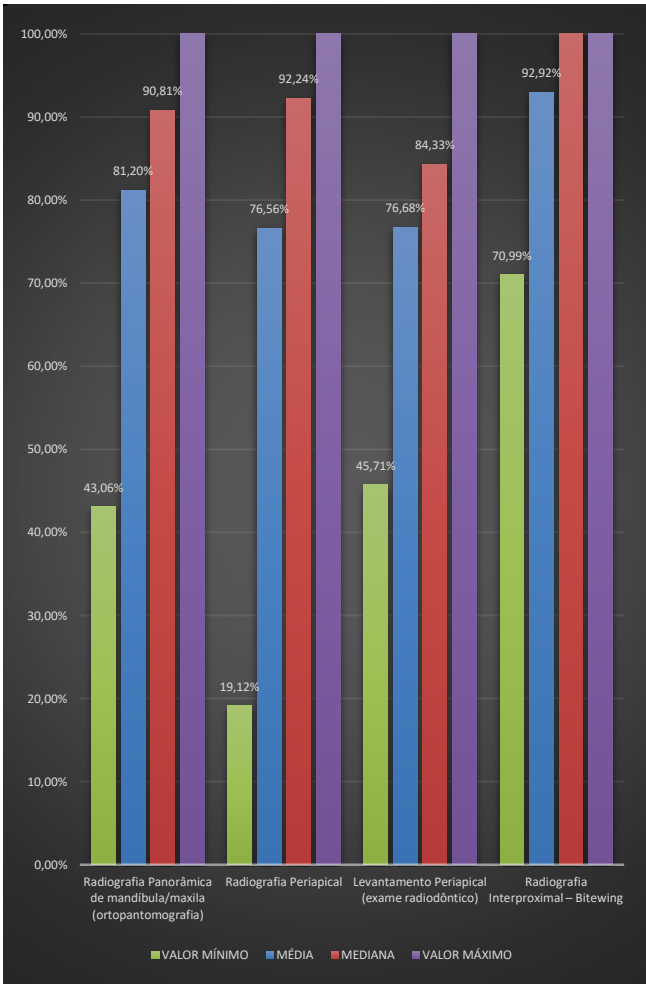
Amostra – Operadoras por módulo



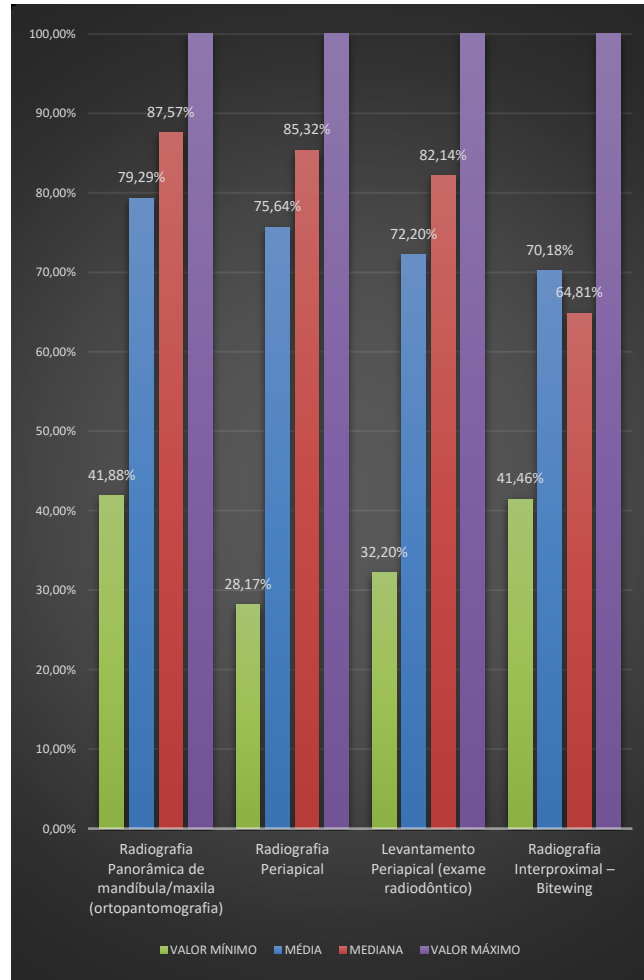
RESULTADO INDICADOR 1

ADESÃO AO PROTOCOLO - RADIOLOGIA

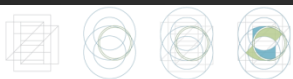
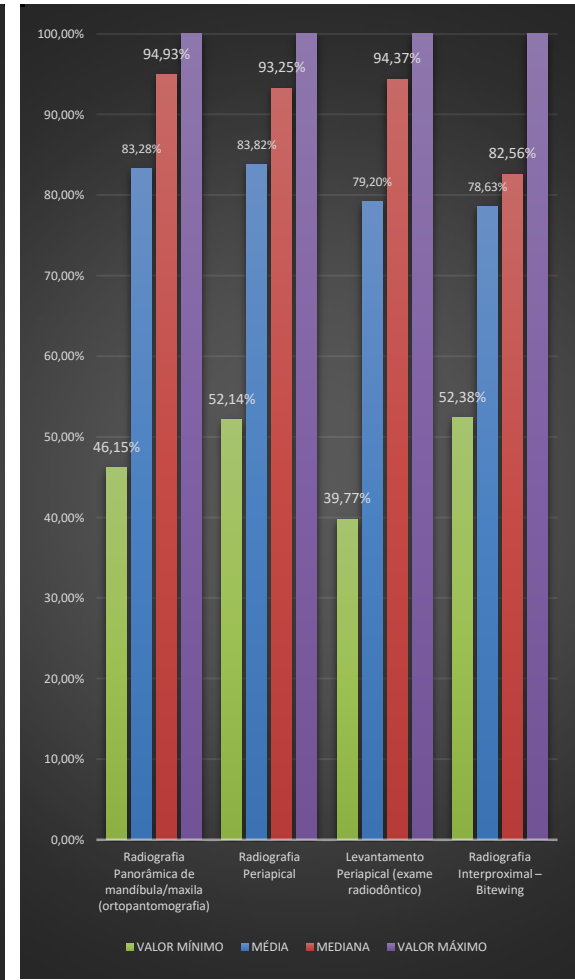
JAN/FEV



JAN/FEV/MAR



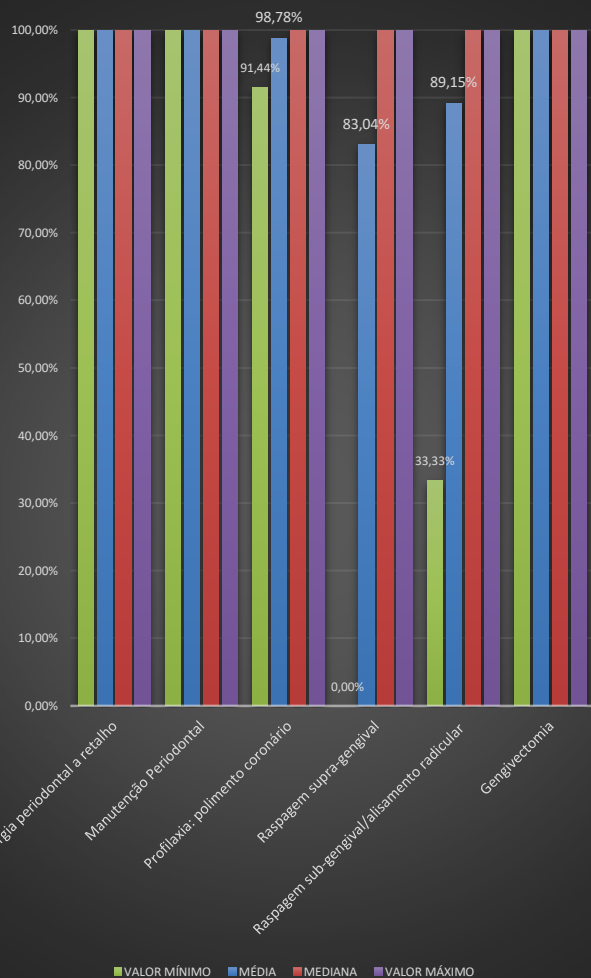
JAN/FEV/MAR/ABR



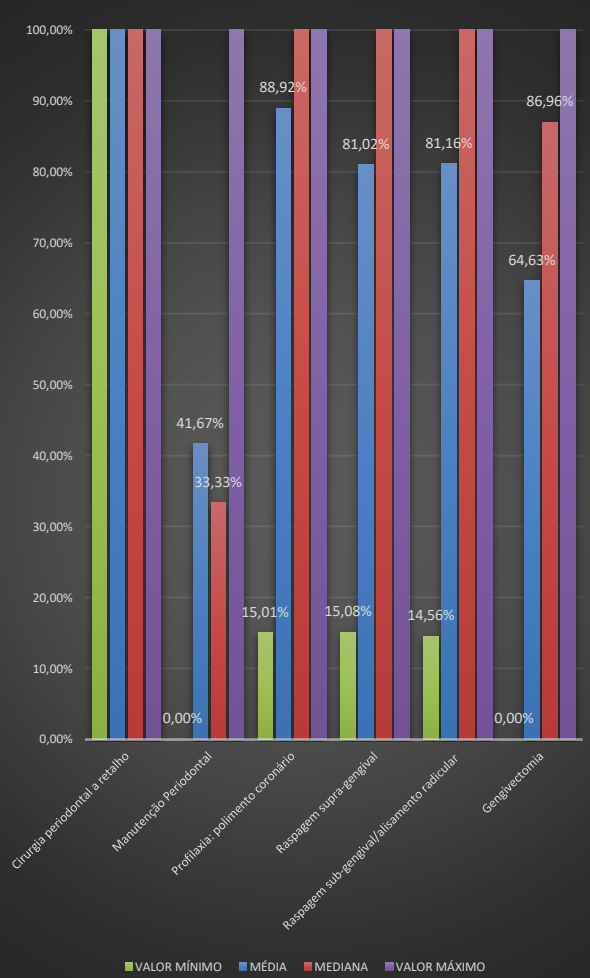
RESULTADO INDICADOR 1

ADESÃO AO PROTOCOLO - PERIODONTIA

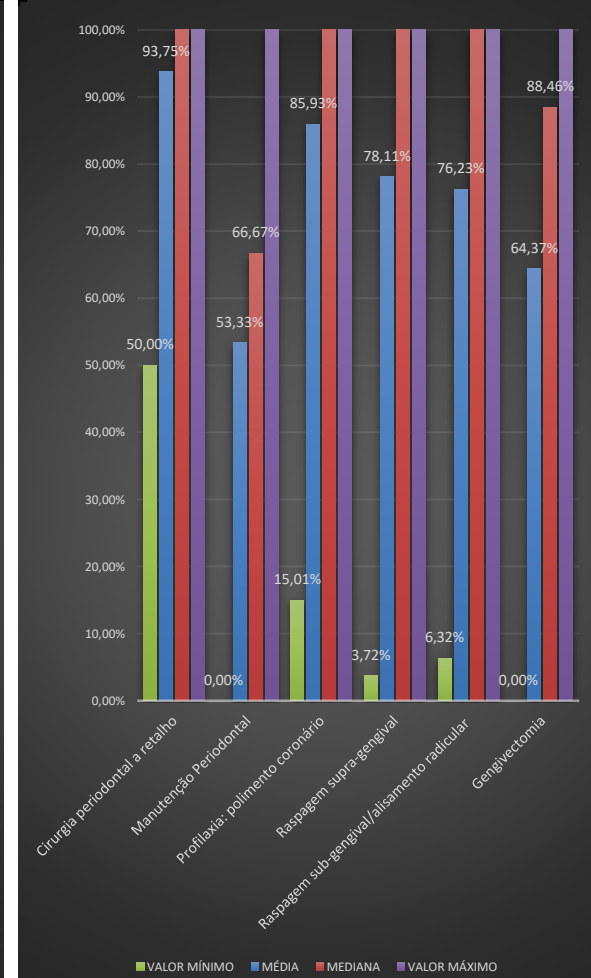
JAN/FEV



JAN/FEV/MAR



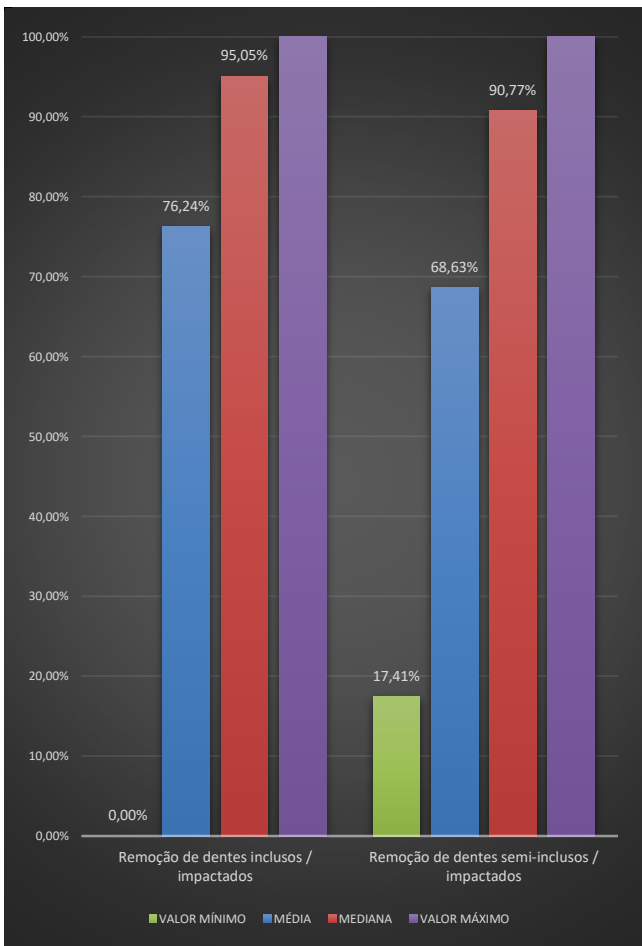
JAN/FEV/MAR/ABR



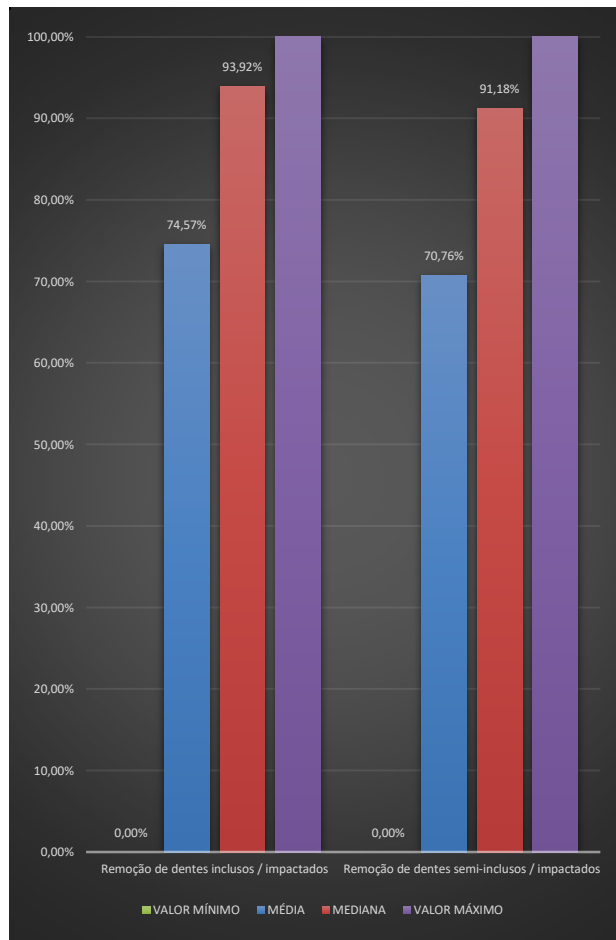
RESULTADO INDICADOR 1

ADESÃO AO PROTOCOLO - CIRURGIA

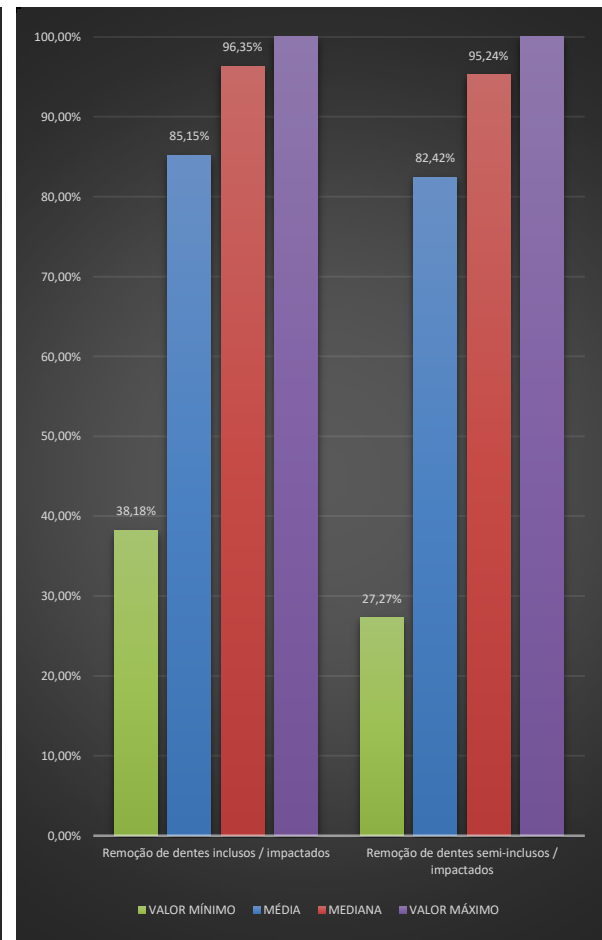
JAN/FEV



JAN/FEV/MAR



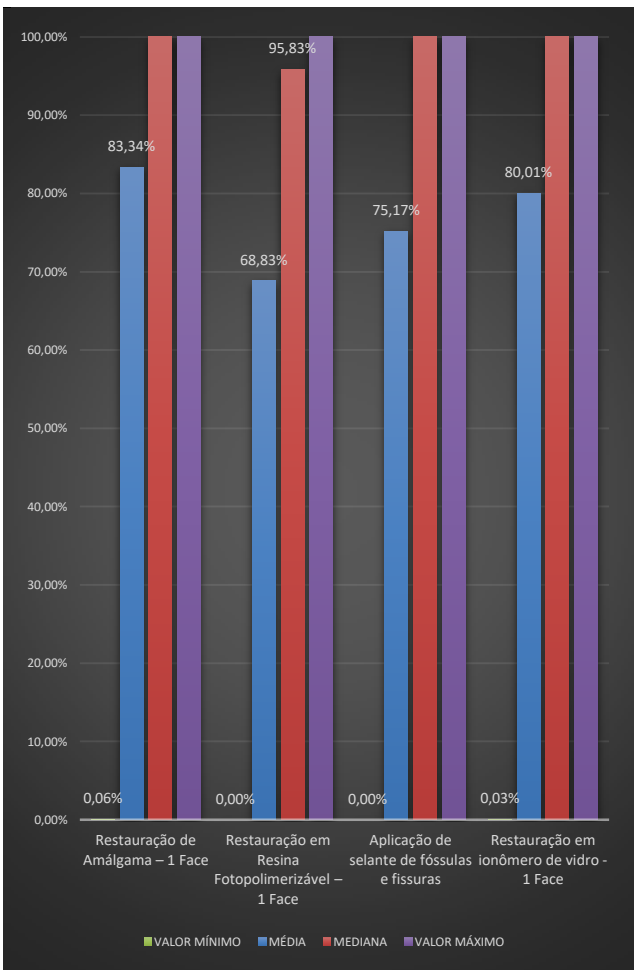
JAN/FEV/MAR/ABR



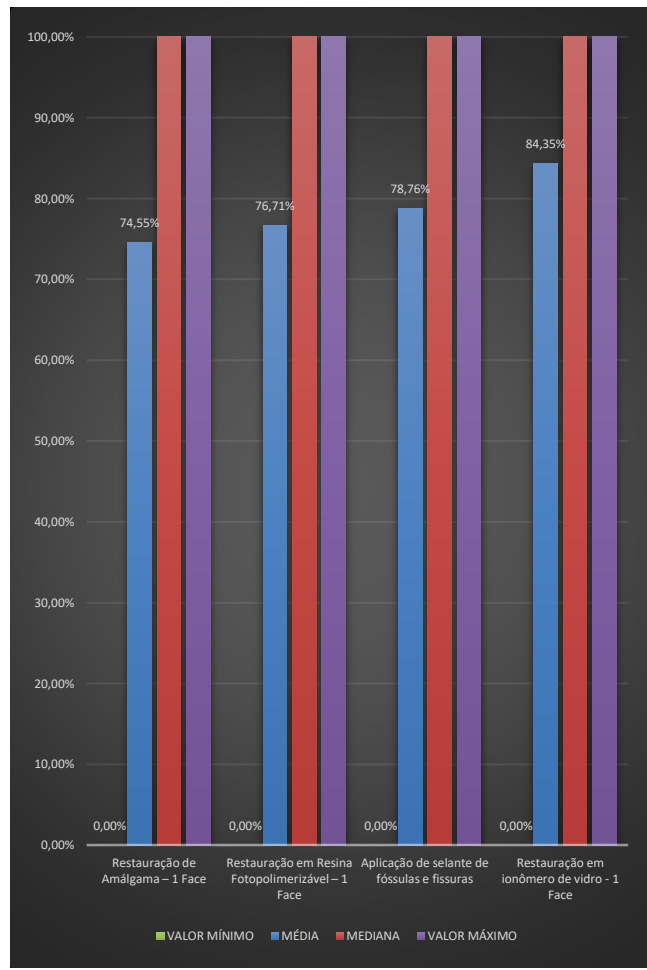
RESULTADO INDICADOR 1

ADESÃO AO PROTOCOLO - DENTÍSTICA

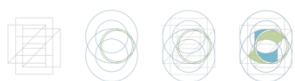
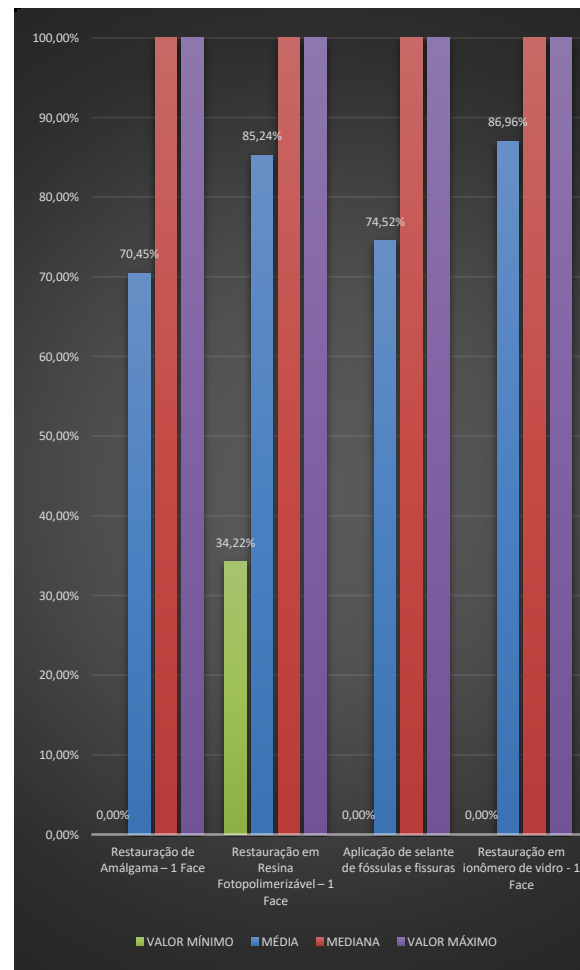
JAN/FEV



JAN/FEV/MAR



JAN/FEV/MAR/ABR



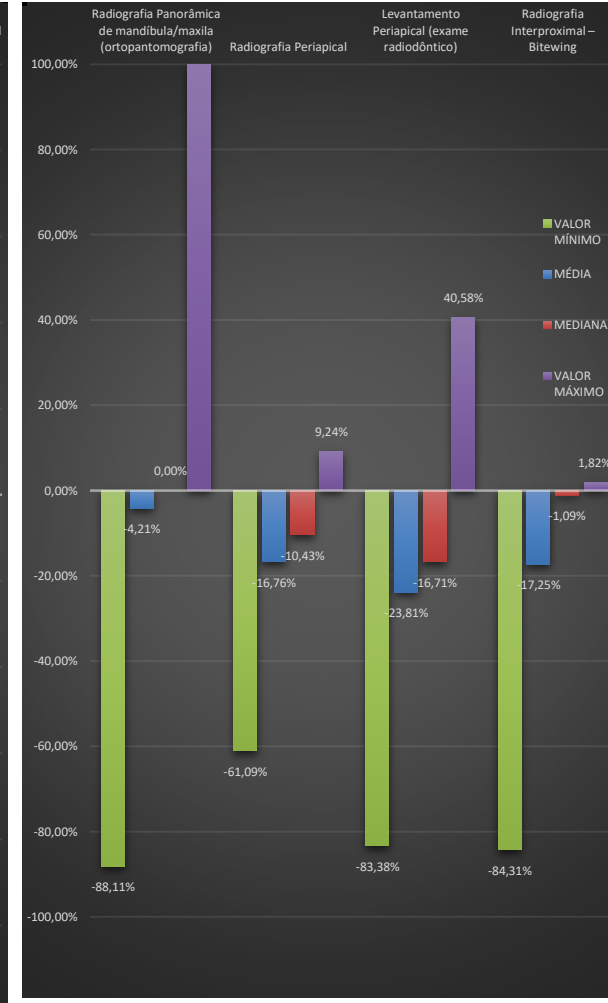
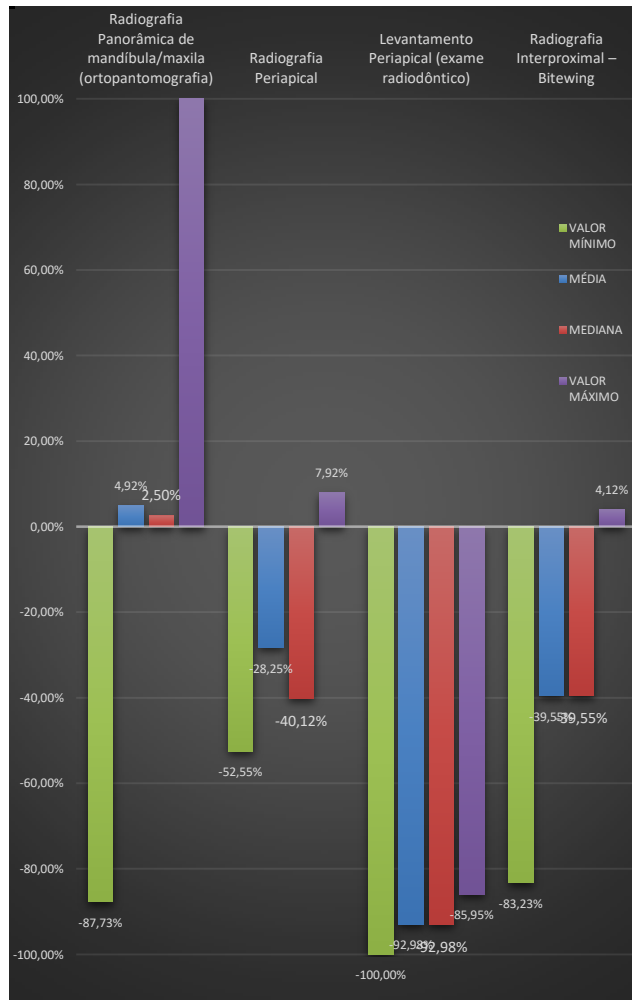
RESULTADO INDICADOR 2

COMPARAÇÃO 2016/2017 - RADIOLOGIA

JAN/FEV

JAN/FEV/MAR

JAN/FEV/MAR/ABR



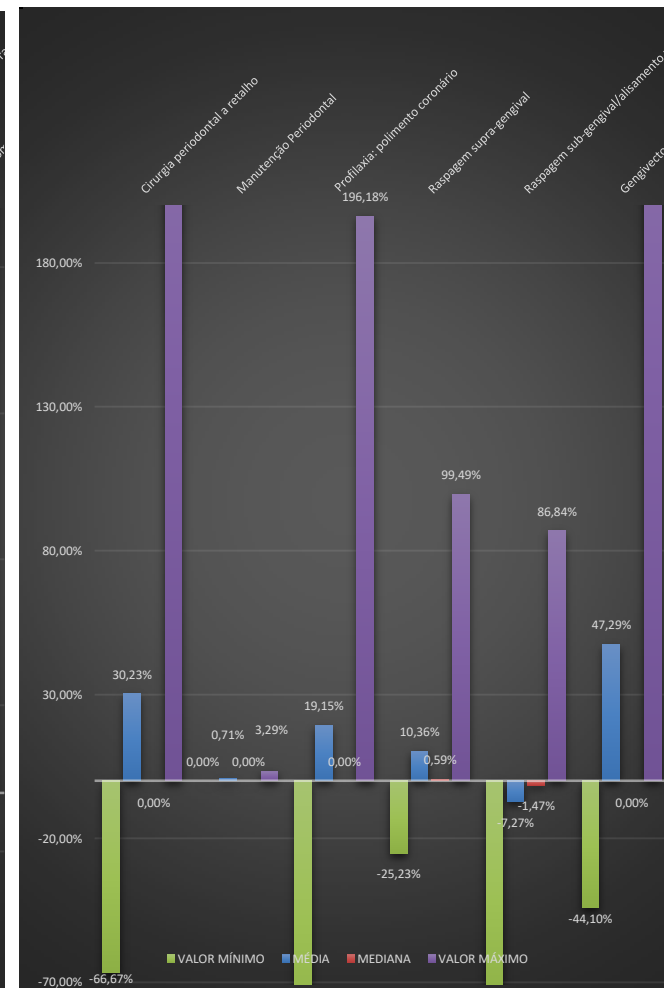
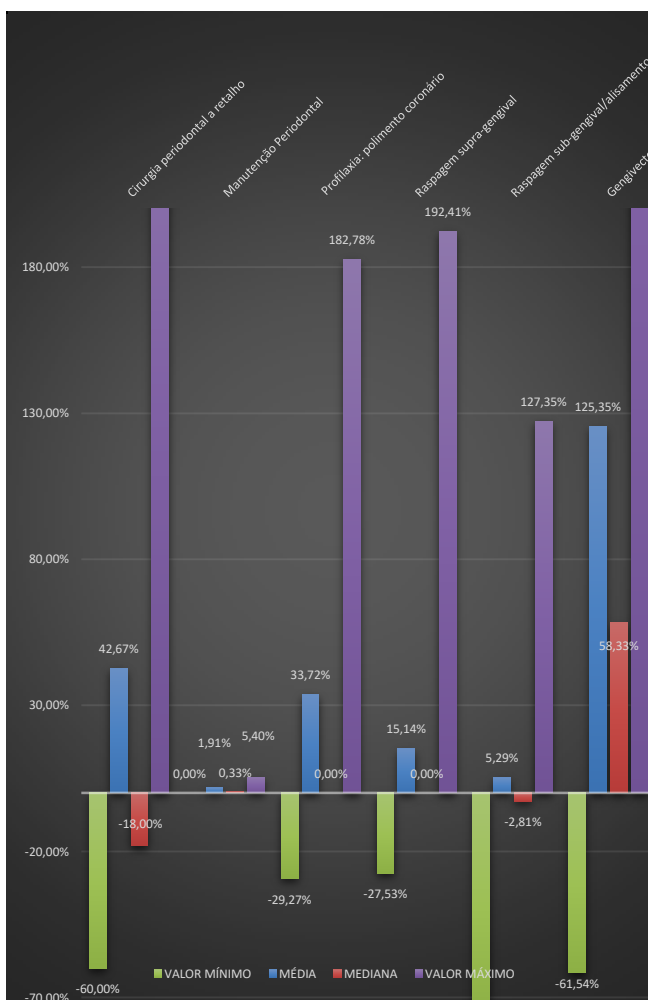
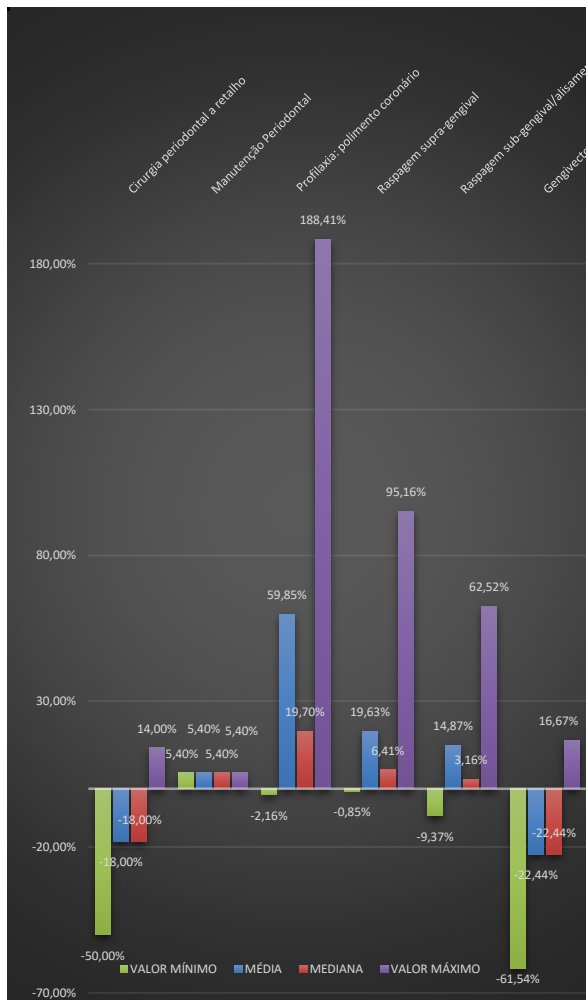
RESULTADO INDICADOR 2

COMPARAÇÃO 2016/2017 - PERIODONTIA

JAN/FEV

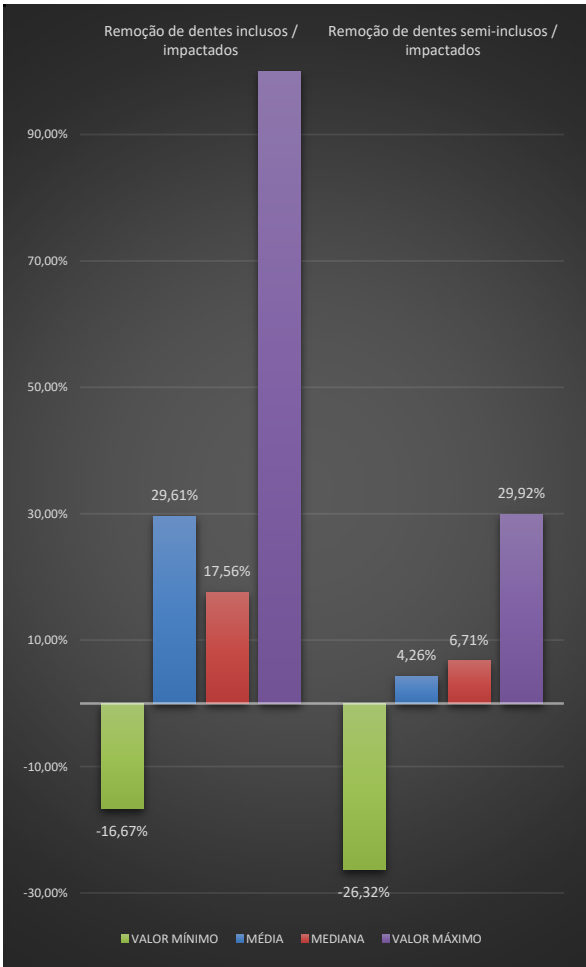
JAN/FEV/MAR

JAN/FEV/MAR/ABR

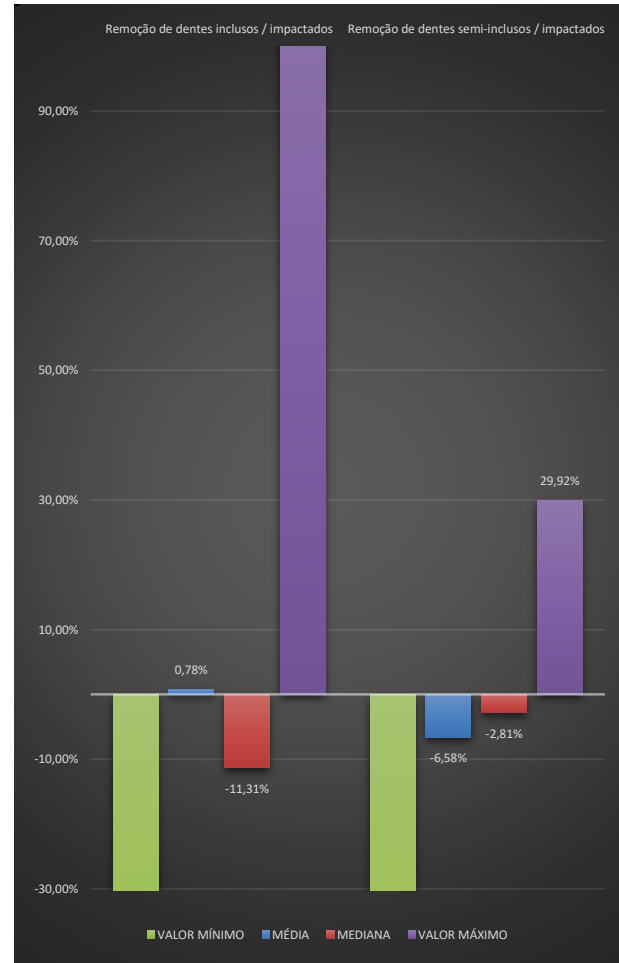


RESULTADO INDICADOR 2 COMPARAÇÃO 2016/2017 - CIRURGIA

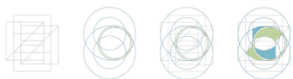
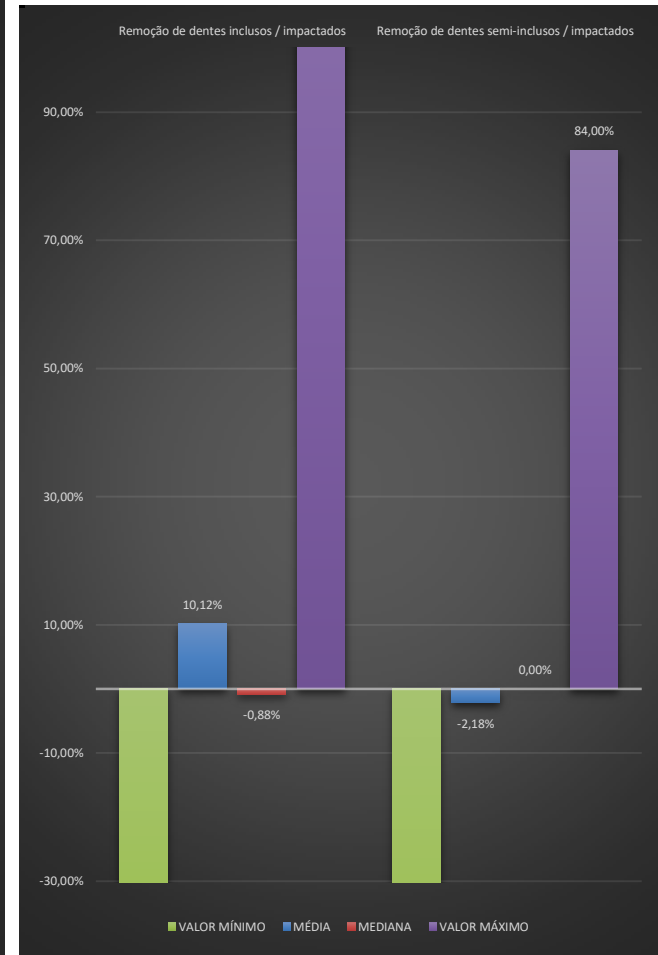
JAN/FEV



JAN/FEV/MAR

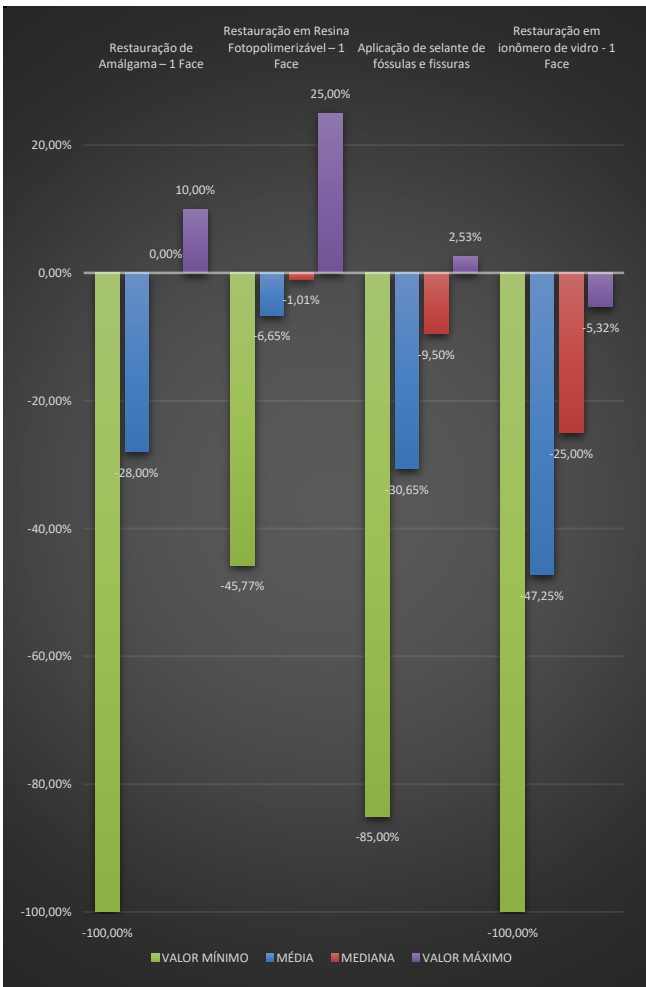


JAN/FEV/MAR/ABR

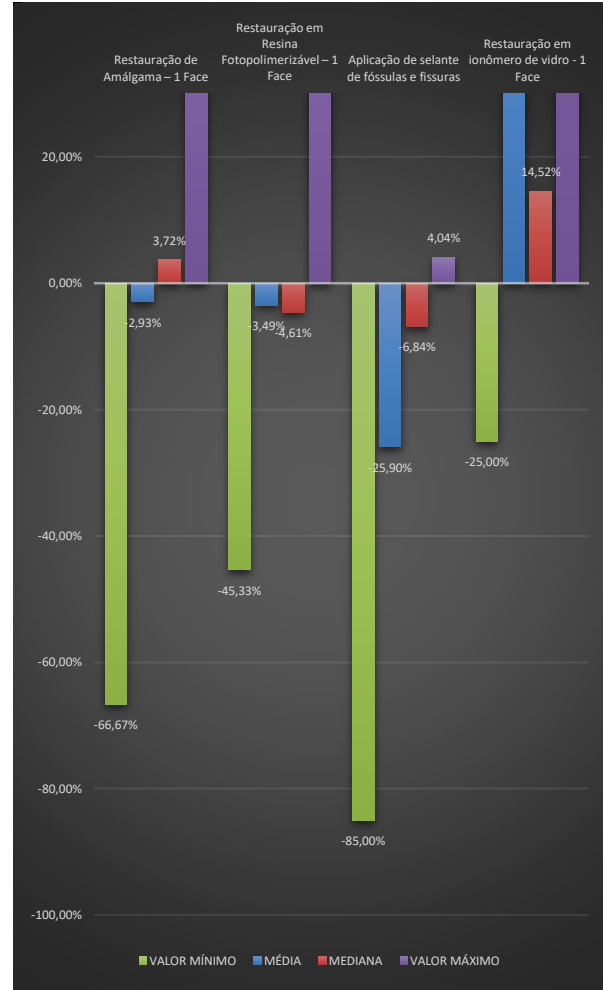


RESULTADO INDICADOR 2 COMPARAÇÃO 2016/2017 - DENTÍSTICA

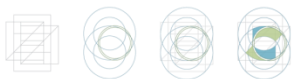
JAN/FEV



JAN/FEV/MAR



JAN/FEV/MAR/ABR



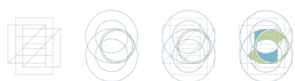
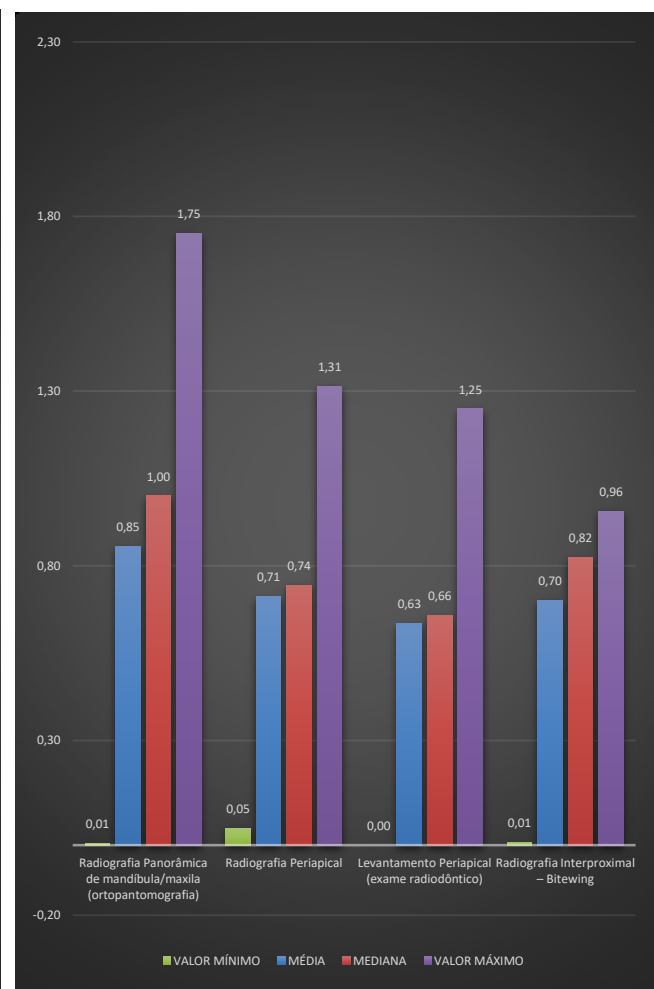
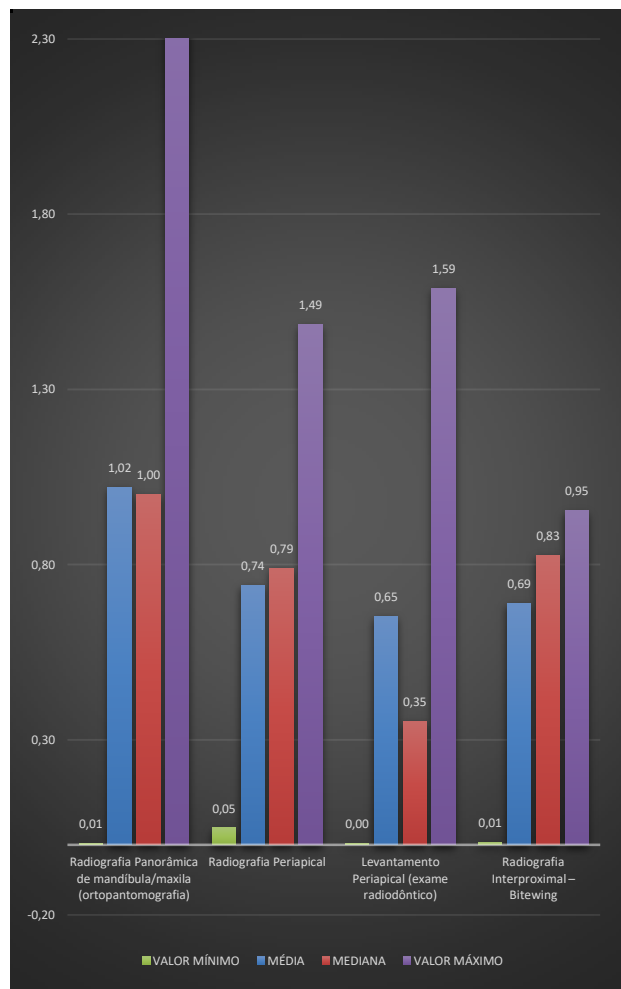
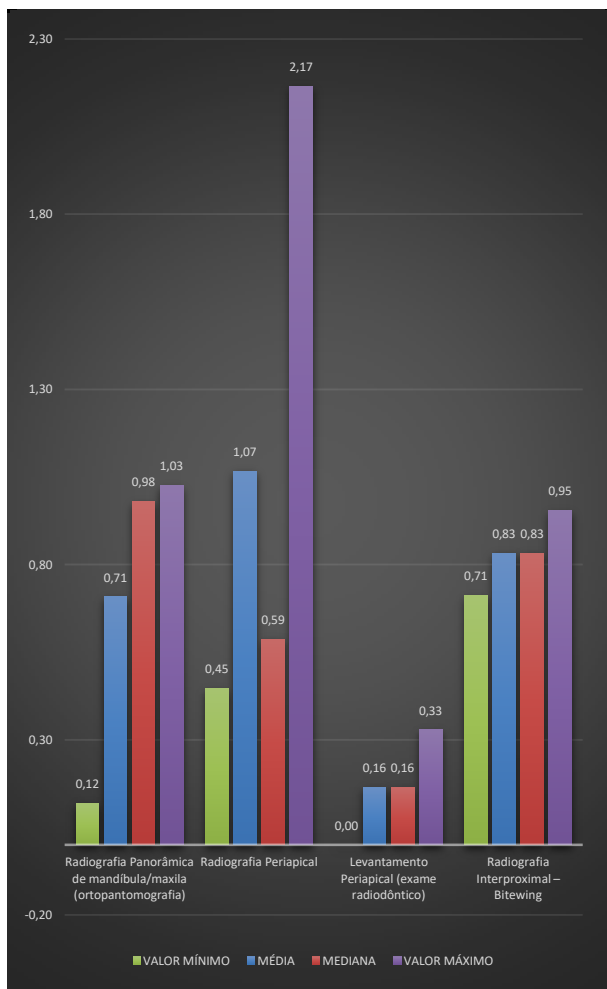
RESULTADO INDICADOR 3

COMPARAÇÃO SORRIR x NÃO SORRIR - RADIOLOGIA

JAN/FEV

JAN/FEV/MAR

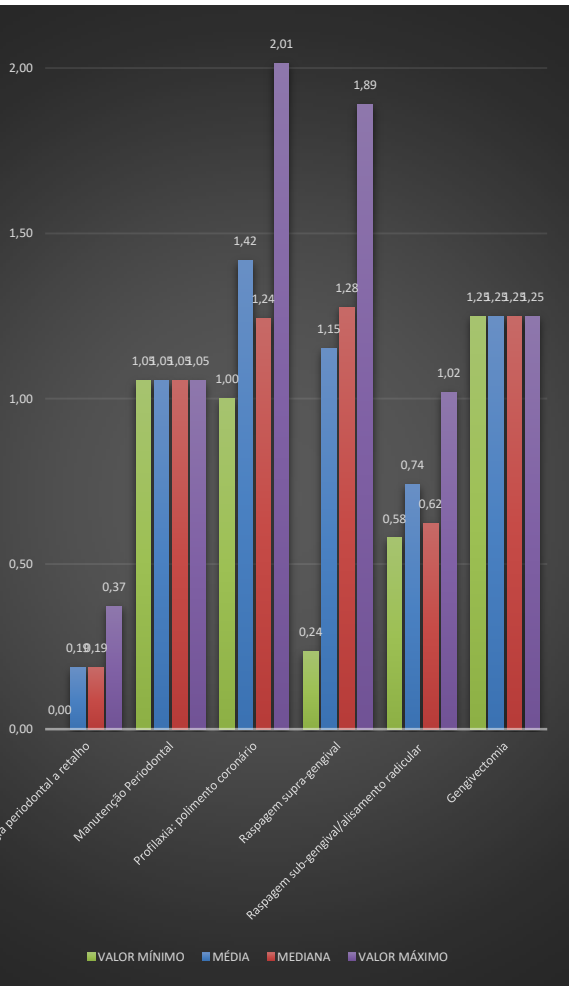
JAN/FEV/MAR/ABR



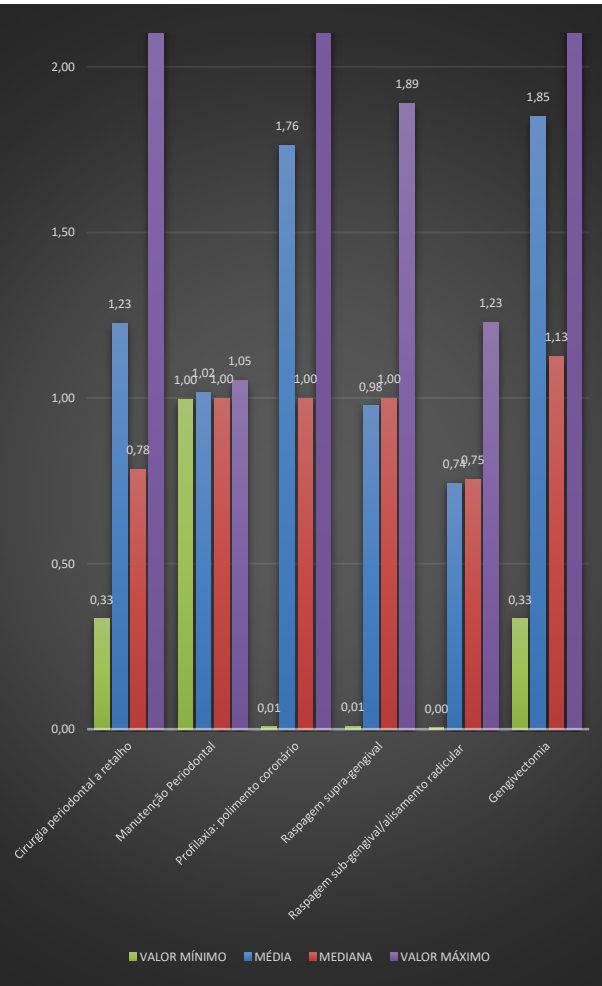
RESULTADO INDICADOR 3

COMPARAÇÃO SORRIR x NÃO SORRIR - PERIODONTIA

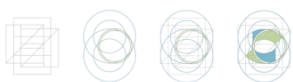
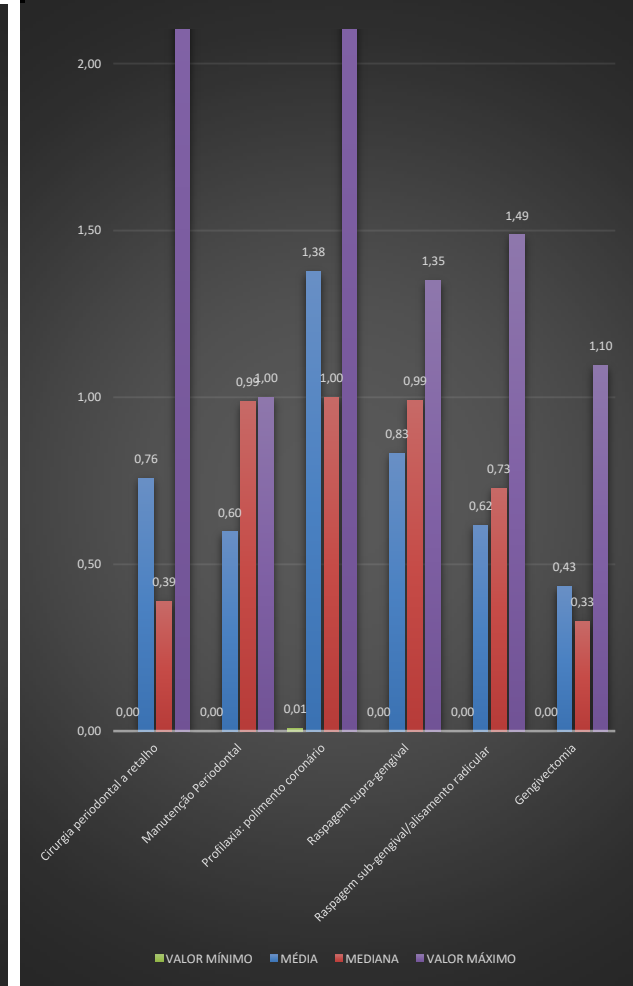
JAN/FEV



JAN/FEV/MAR



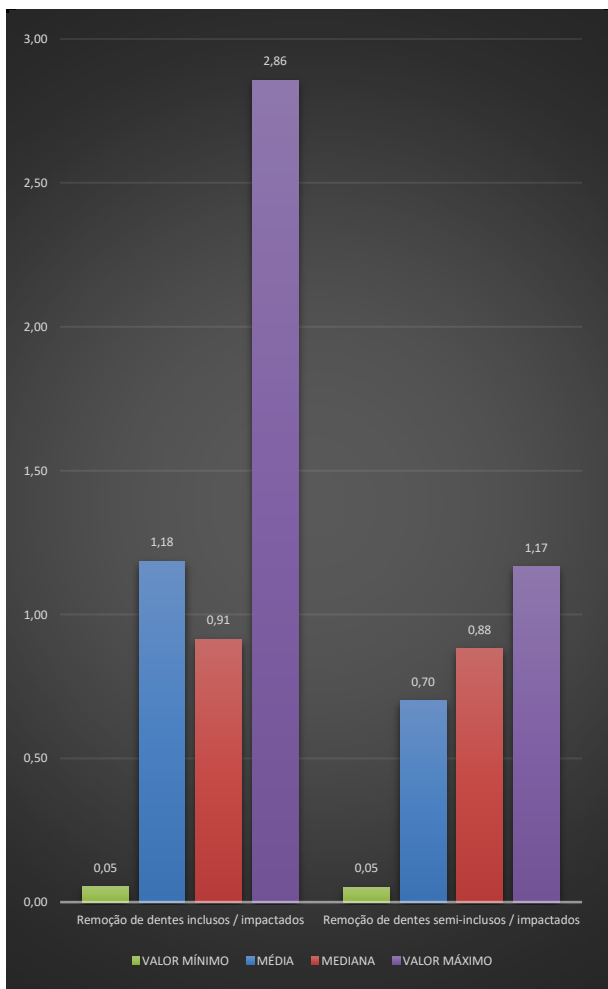
JAN/FEV/MAR/ABR



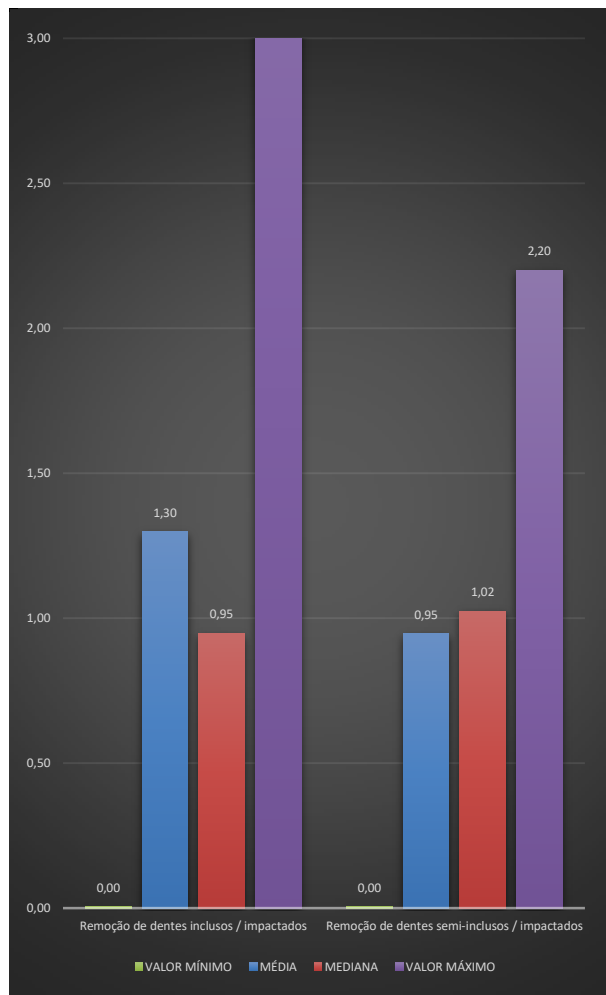
RESULTADO INDICADOR 3

COMPARAÇÃO SORRIR x NÃO SORRIR - CIRURGIA

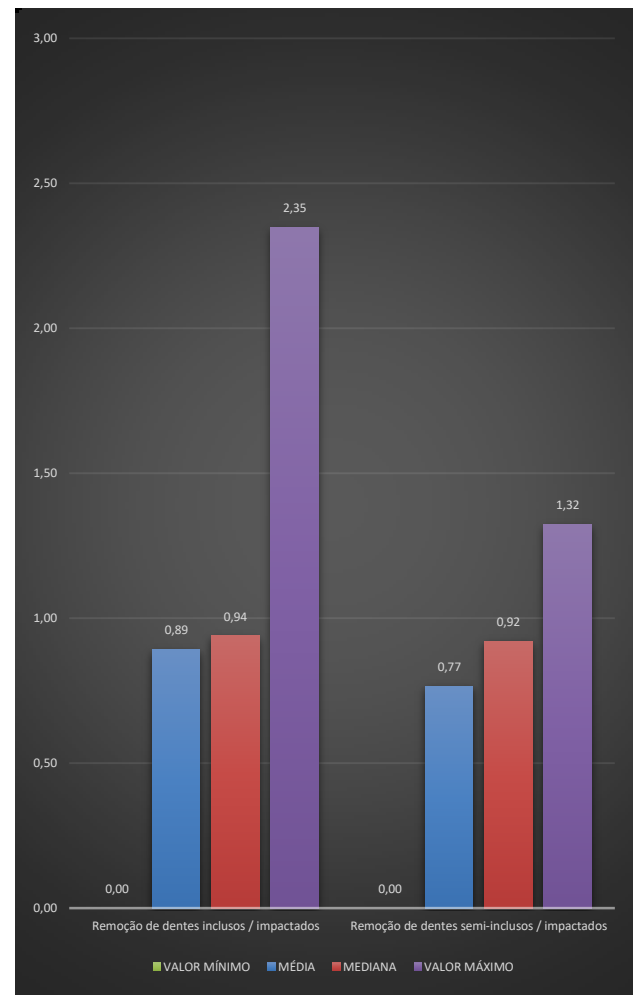
JAN/FEV



JAN/FEV/MAR



JAN/FEV/MAR/ABR



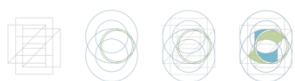
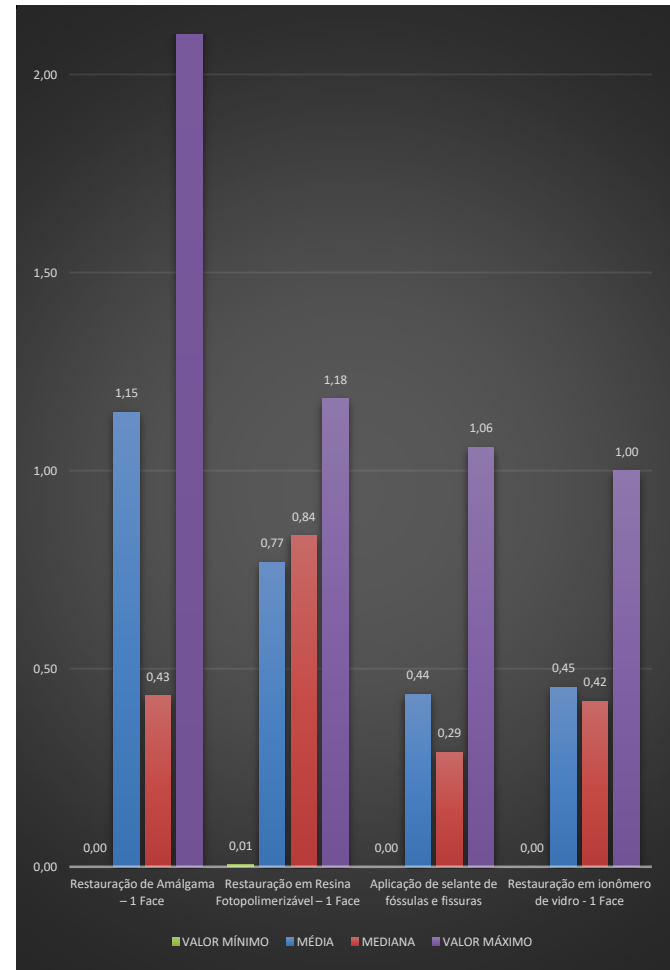
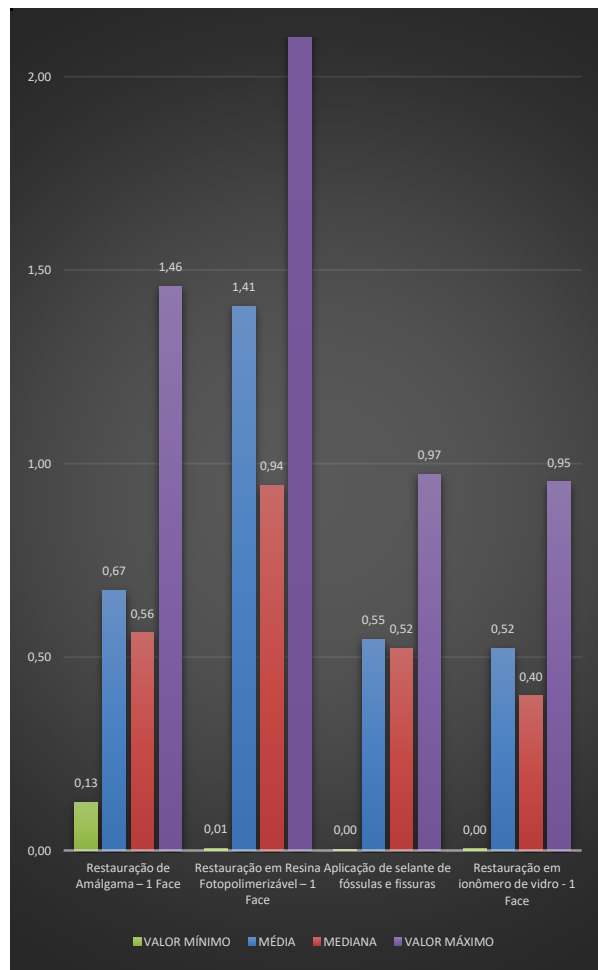
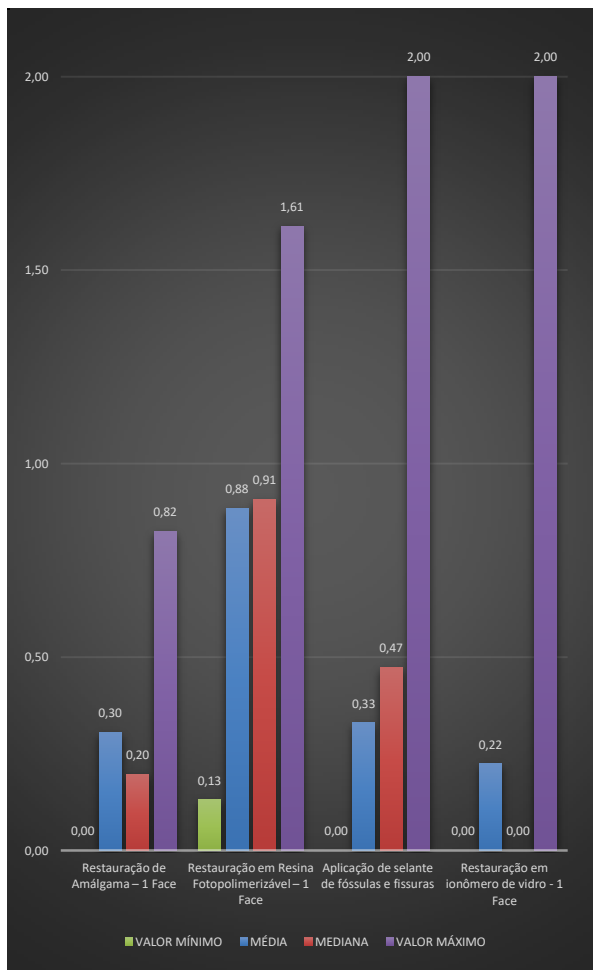
RESULTADO INDICADOR 3

COMPARAÇÃO SORRIR x NÃO SORRIR - DENTÍSTICA

JAN/FEV

JAN/FEV/MAR

JAN/FEV/MAR/ABR



Obrigada!

DIRETORIA DE DESENVOLVIMENTO SETORIAL

www.ans.gov.br | Disque ANS: 0800 701 9656



ans.reguladora



@ANS_reguladora



ansreguladora
oficial



ans_reguladora



Ministério da
Saúde

