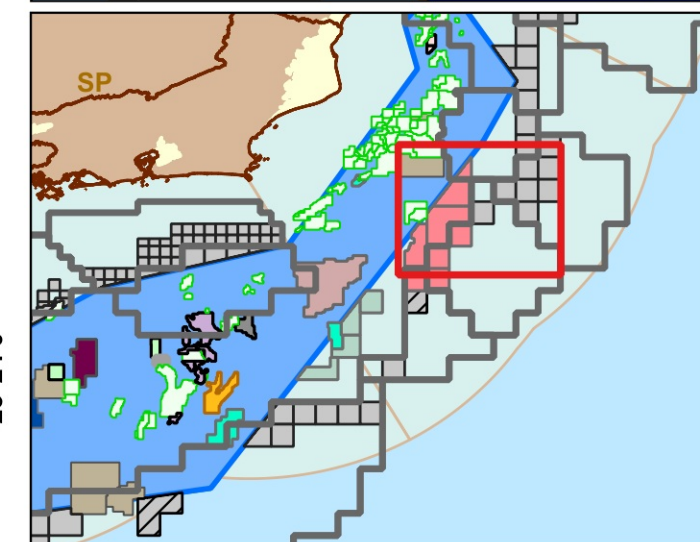
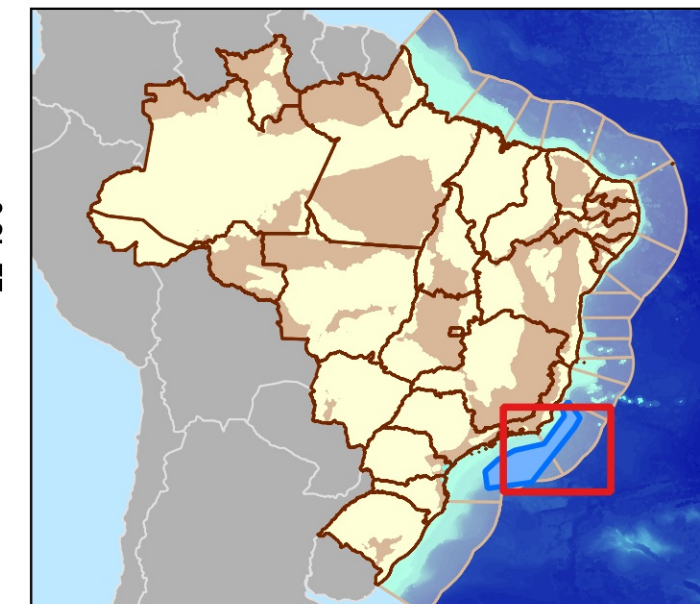
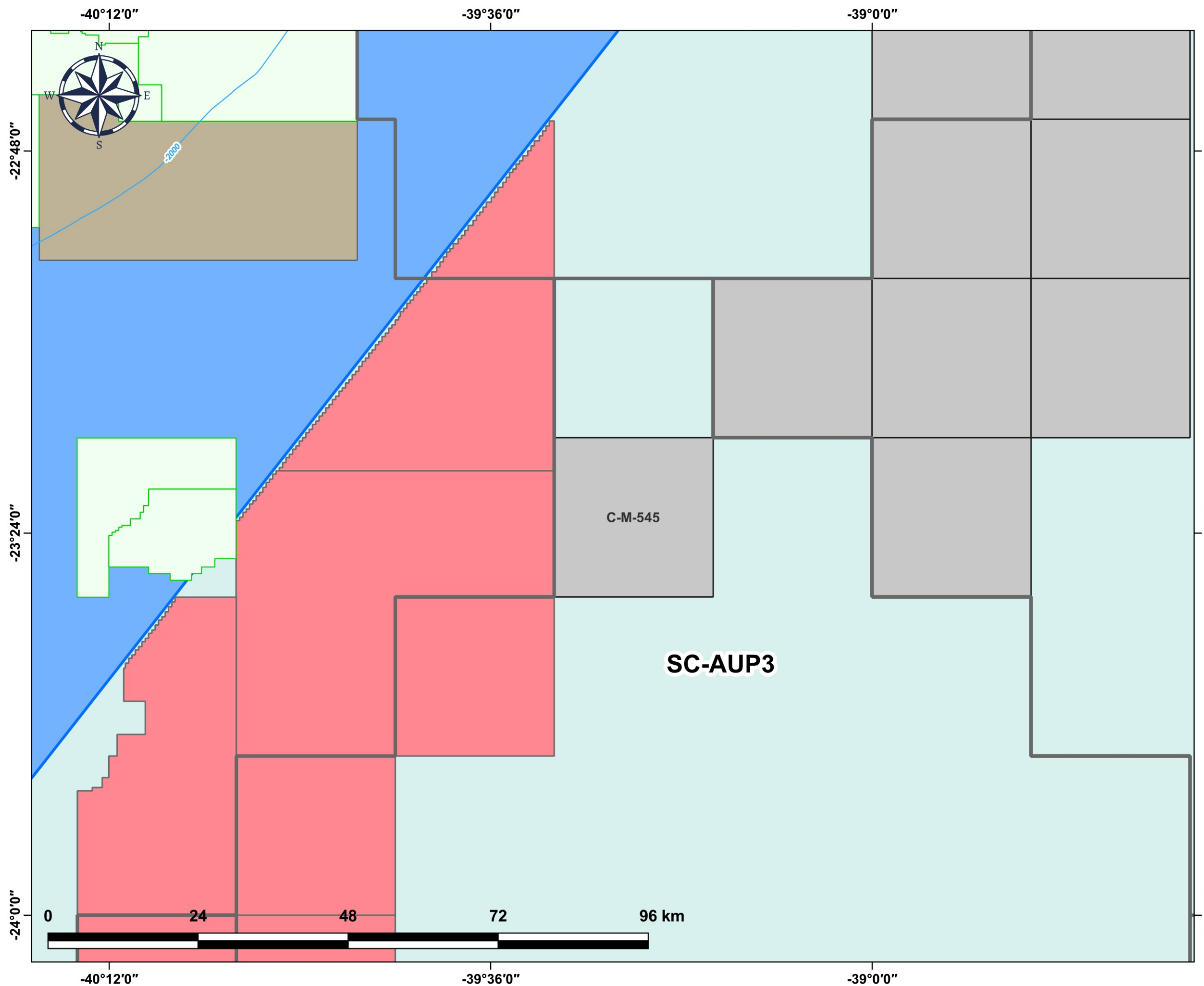








# Blocos Exploratórios - Setor SC-AUP3 - Bacia de Santos

## Exploratory Blocks - SC-AUP3 Sector - Santos Basin



### Legenda / Legend

-  Setores OPC / OA Sectors
-  Blocos OPC / OA Blocks
-  Rodada 16 / Round 16
-  Oferta Permanente - Partilha de Produção
-  Open Acreage - PSA
-  Campos de Produção / Production Fields
-  Linhas Batimétricas / Bathymetric Lines
-  Área do Pré-sal / Pre-salt Area
-  Bacias Sedimentares Marítimas
-  Offshore Sedimentary Basins

Data de Criação: 19/08/2025  
DATUM: SIRGAS 2000  
Escala: 1:600.000  
ANP/SDT