


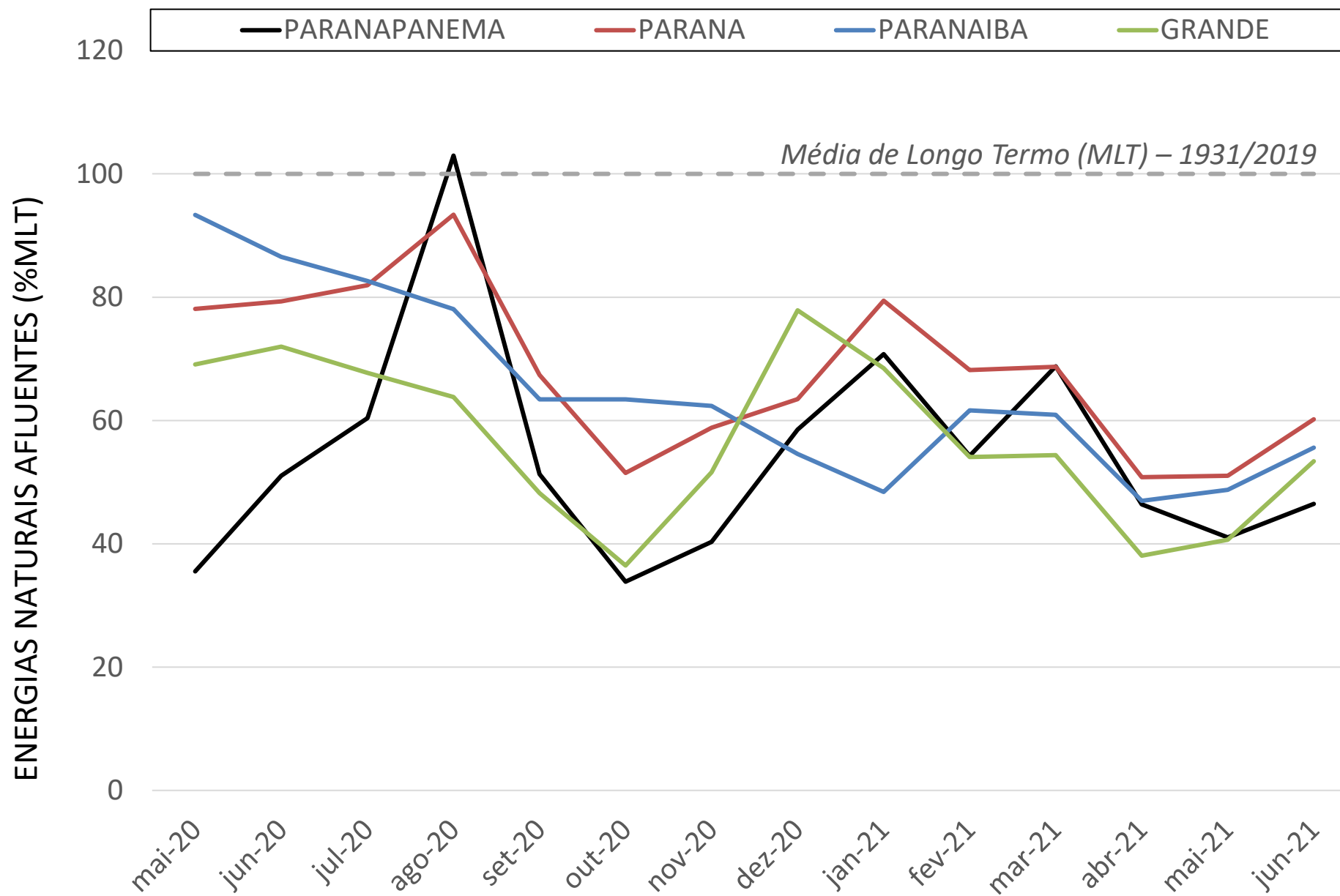
# AVALIAÇÃO DAS CONDIÇÕES HIDROLÓGICAS E DE ARMAZENAMENTO DOS RESERVATÓRIOS DO SUBSISTEMA SUL

6ª Reunião da Sala de Crise da Região Sul  
17 de junho de 2021

- 1** Contextualização da situação energética do SIN
- 2** Condições hidrológicas e armazenamentos observados no subsistema Sul
- 3** Operação dos principais reservatórios
- 4** Resultados das simulações hidráulicas

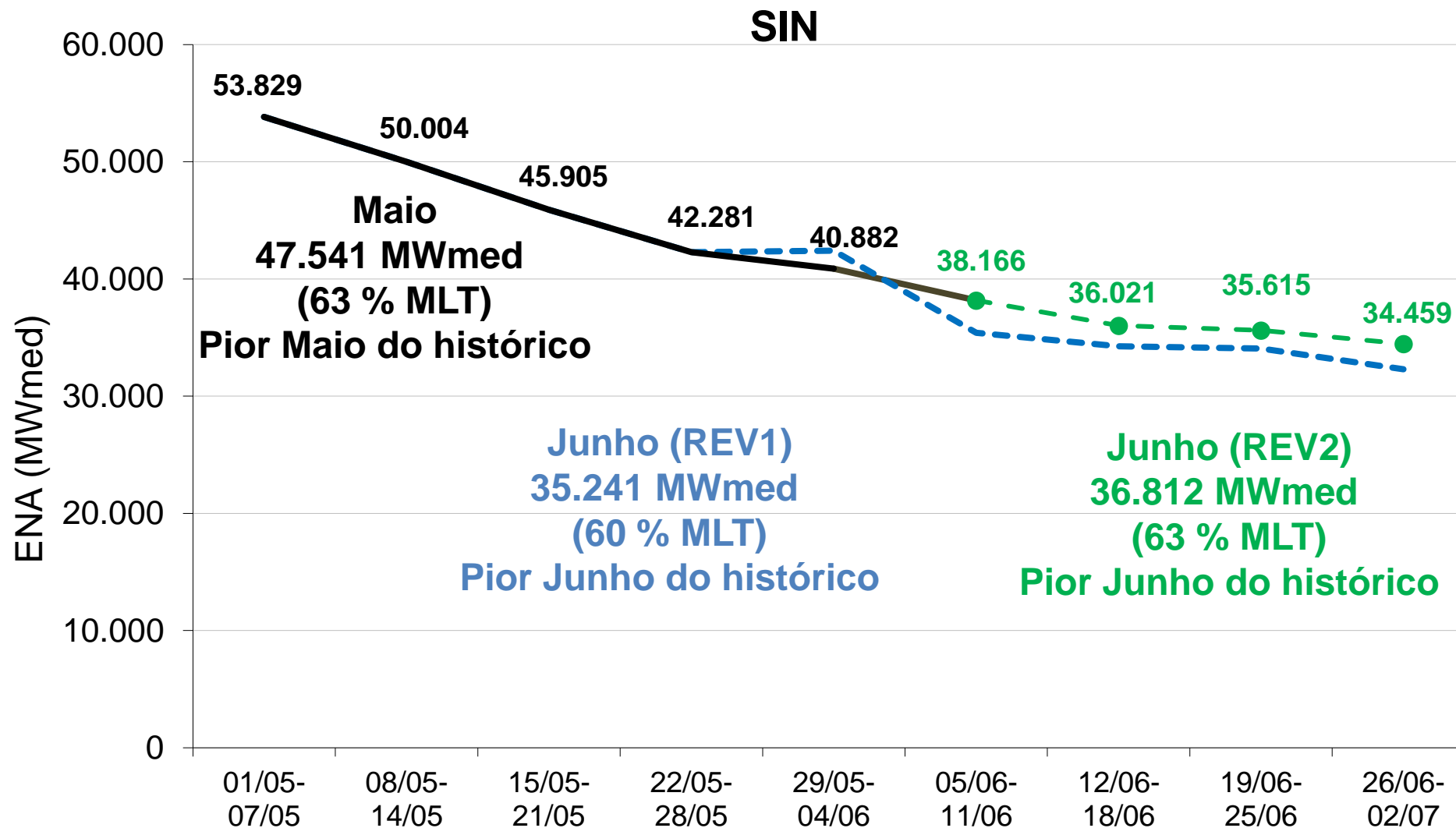


# CONTEXTUALIZAÇÃO DA SITUAÇÃO ENERGÉTICA DO SIN



**Nota:** (1) Dados até 15/06/2021.

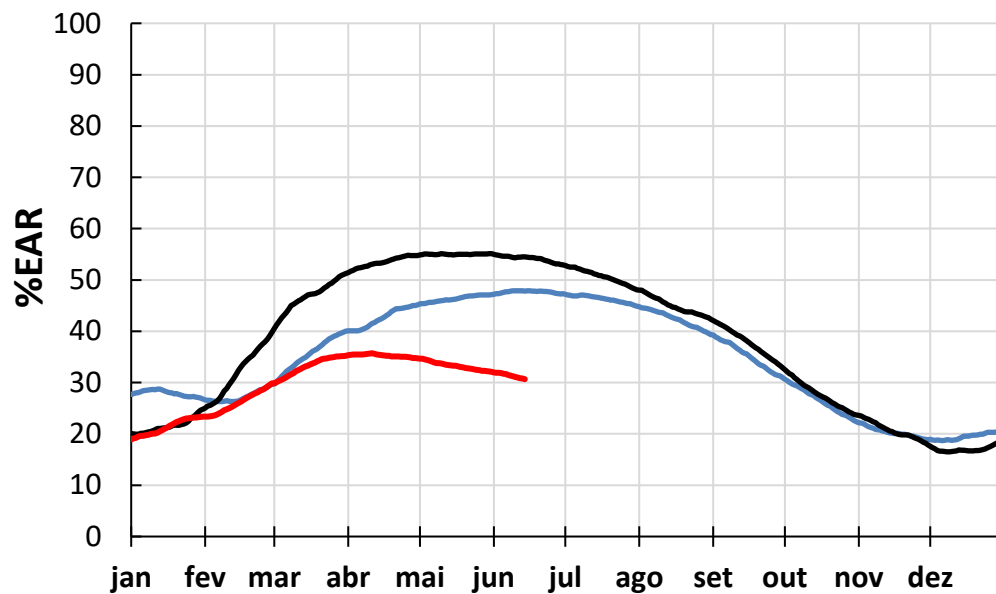




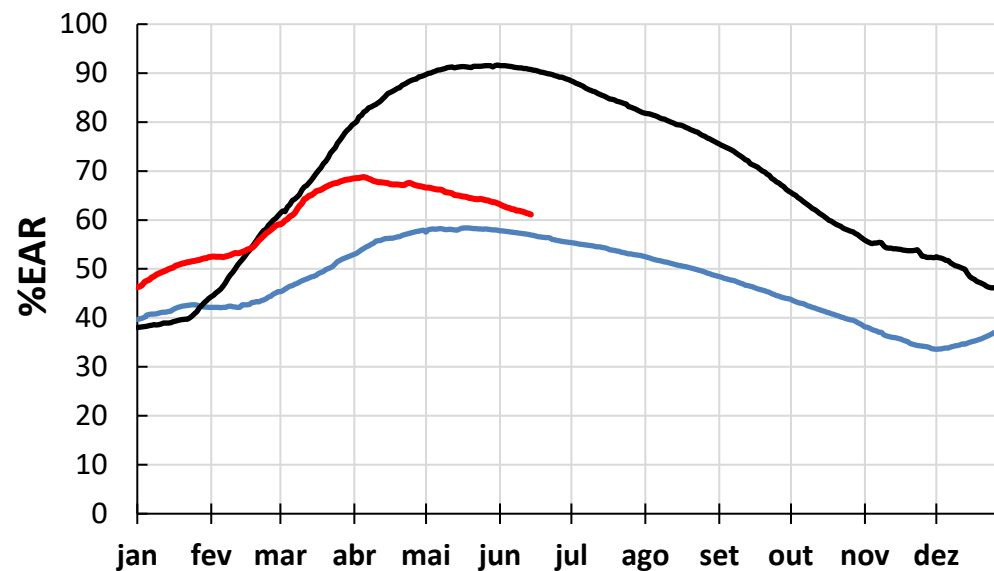
SIN: set/20-mai/21 - 66% MLT – pior do histórico  
 dez/20-mai/21 - 70% MLT - 2º pior do histórico

# EVOLUÇÃO DOS ARMAZENAMENTOS EM 2021 EM RELAÇÃO A 2019 E 2020

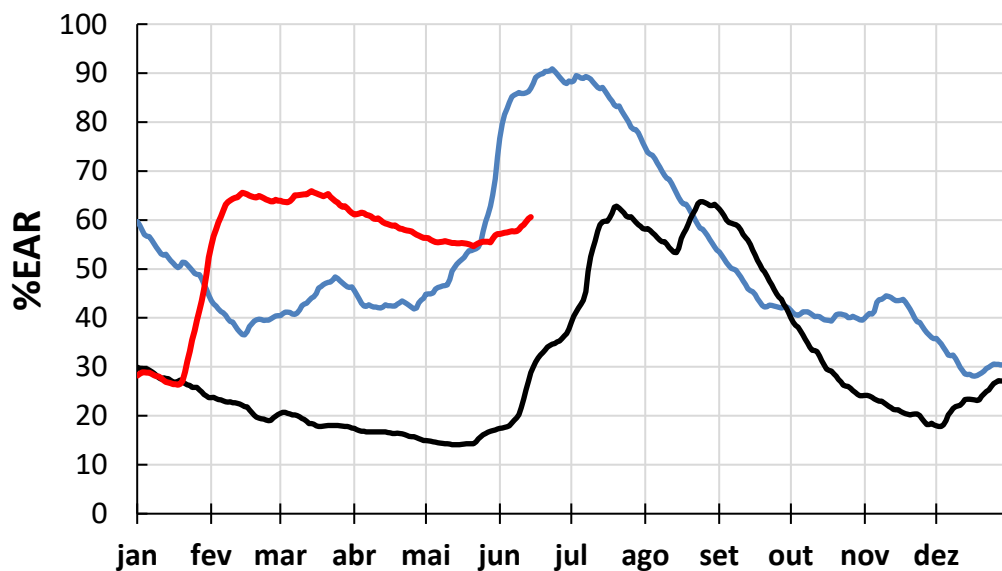
## SUDESTE / CENTRO-OESTE



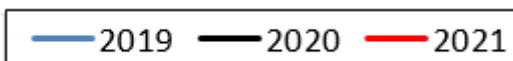
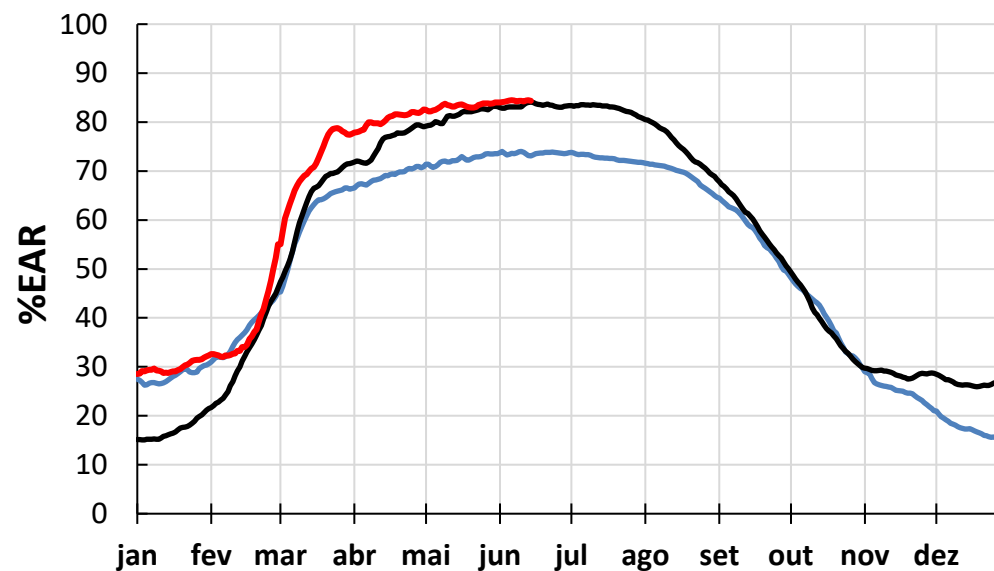
## NORDESTE



## SUL

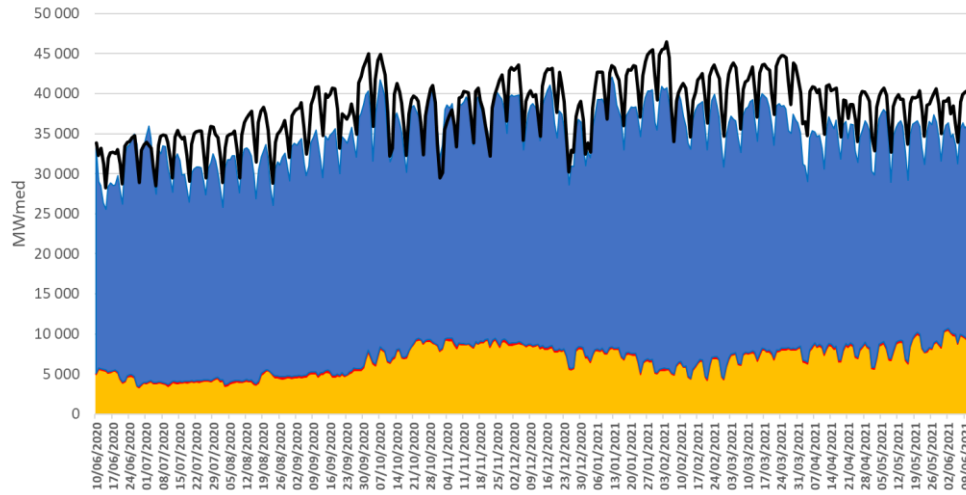


## NORTE

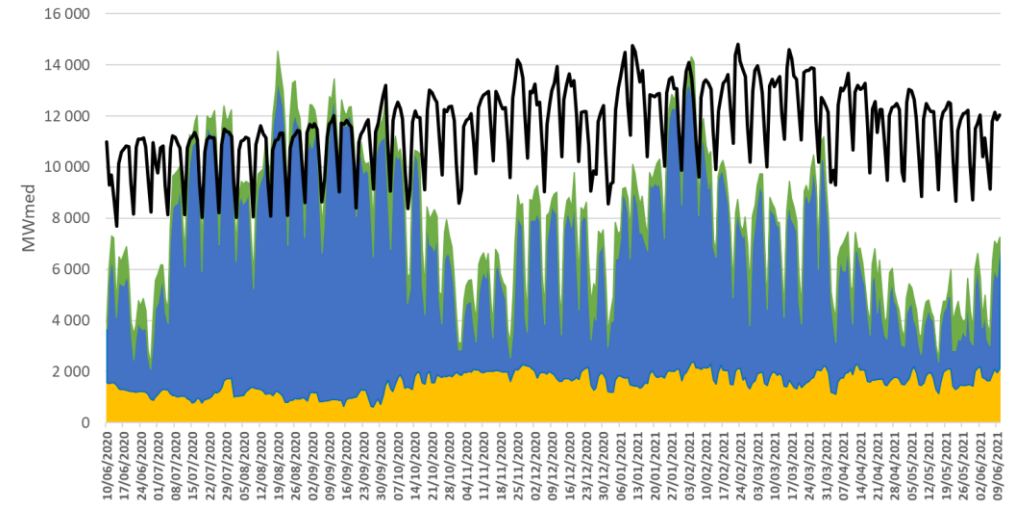


# Atendimento à Carga (em MWmed)

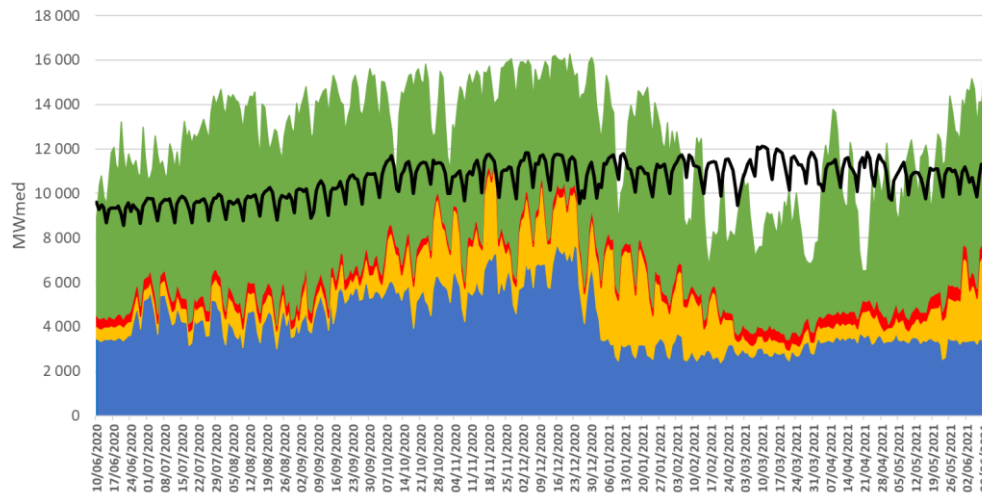
Balanço Energético Subsistema Sudeste - Centro-Oeste  
2020/2021



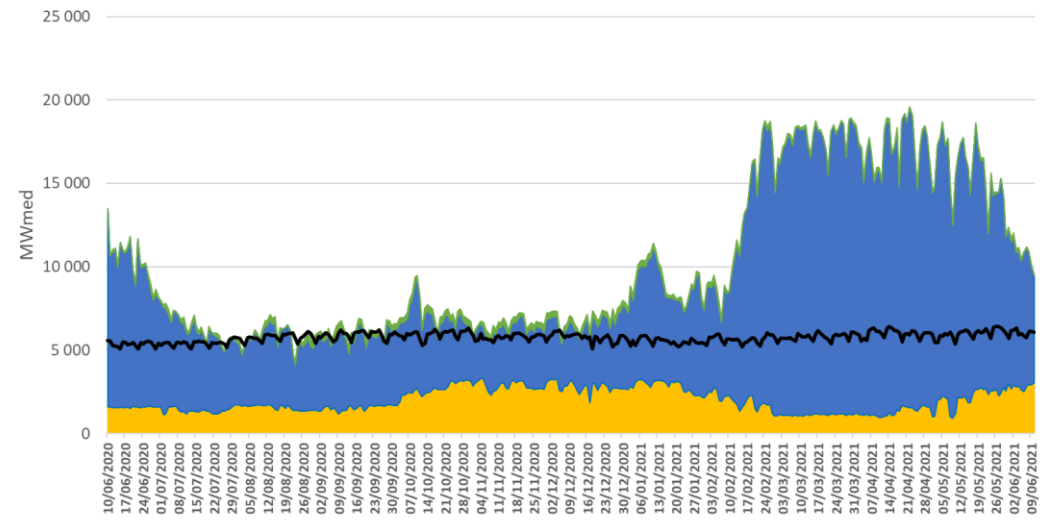
Balanço Energético Subsistema Sul  
2020/2021



Balanço Energético Subsistema Nordeste  
2020/2021



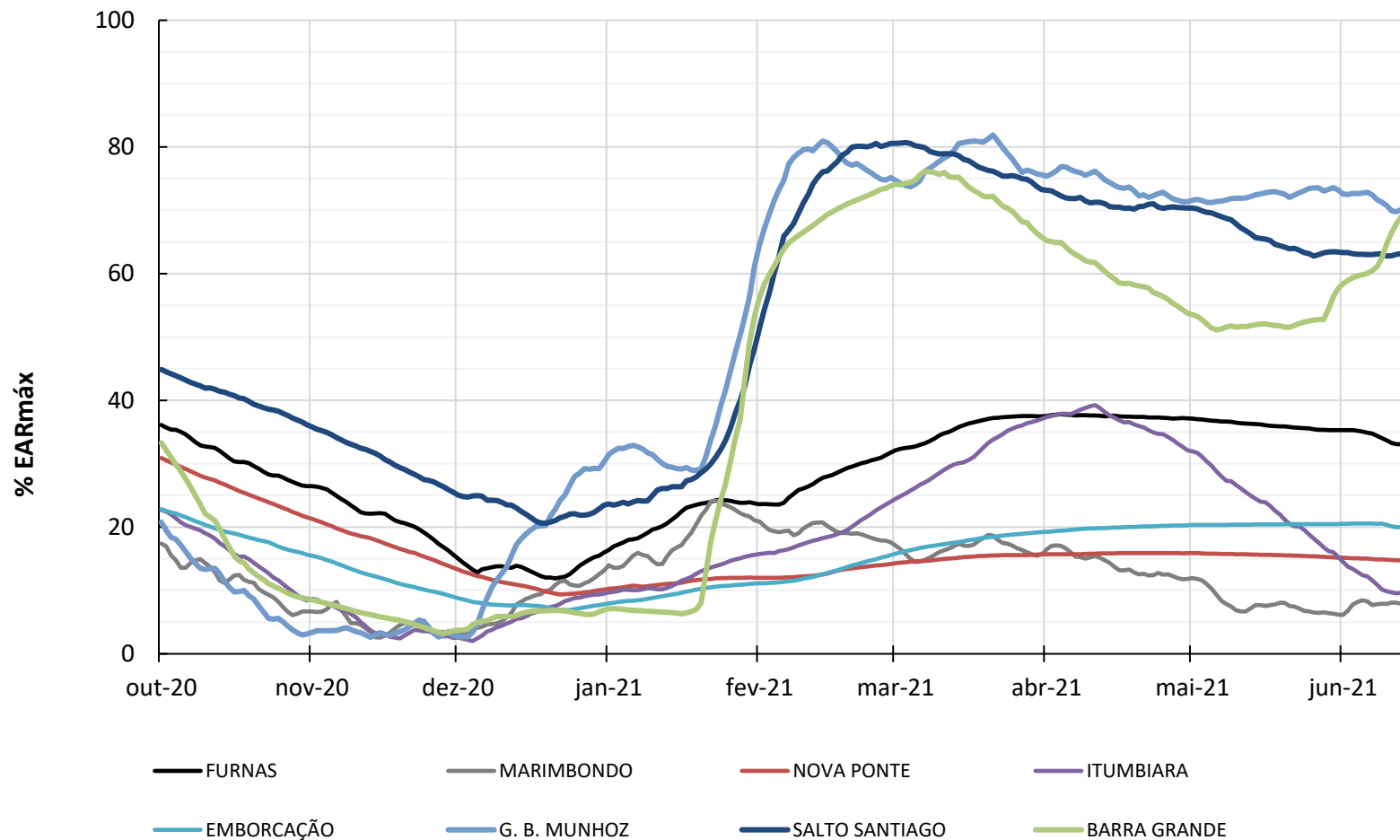
Balanço Energético Subsistema Norte  
2020/2021




■ Hidro 
 ■ Térmica 
 ■ Solar 
 ■ Eólica 
 — Carga



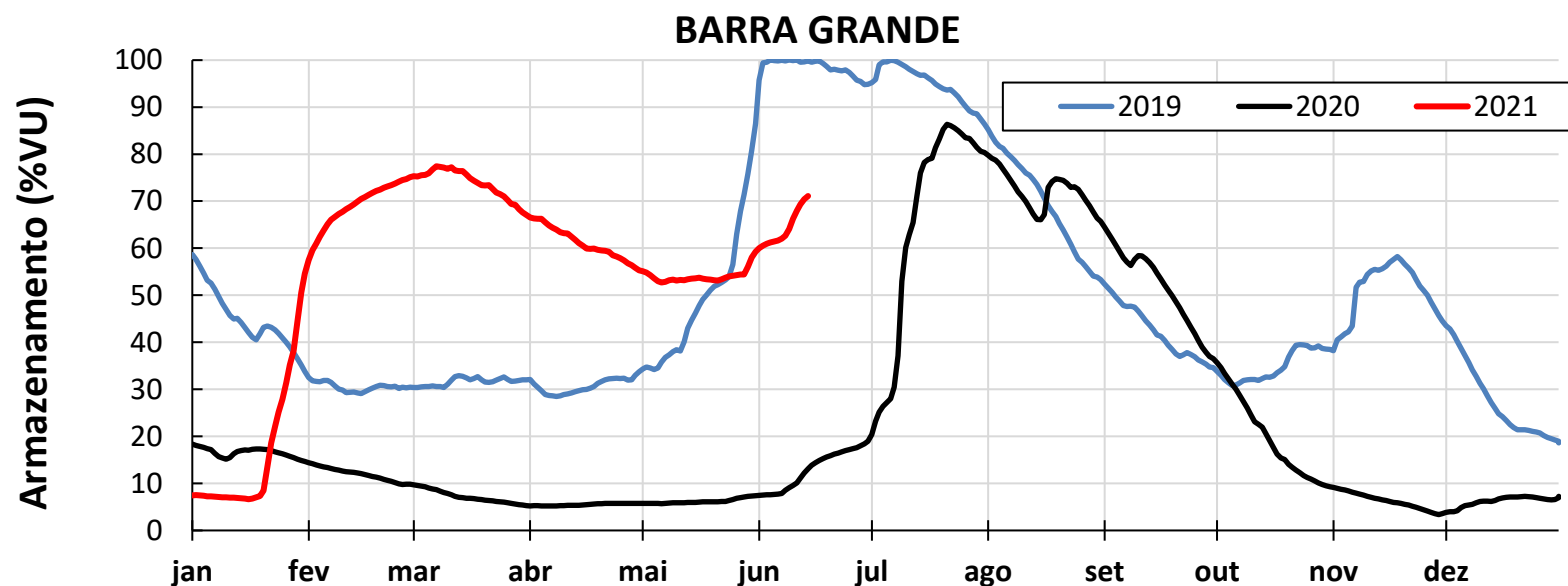
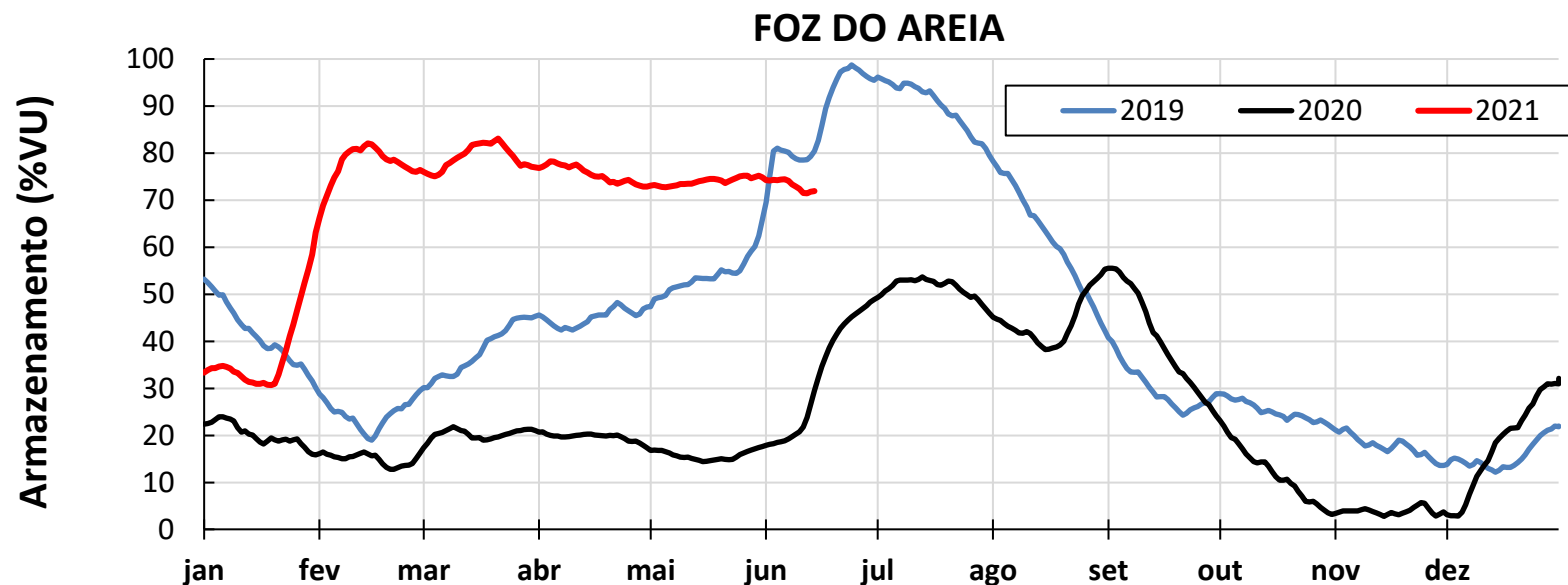
**Situação de armazenamento dos principais reservatórios dos subsistemas Sul e Sudeste/Centro-Oeste**








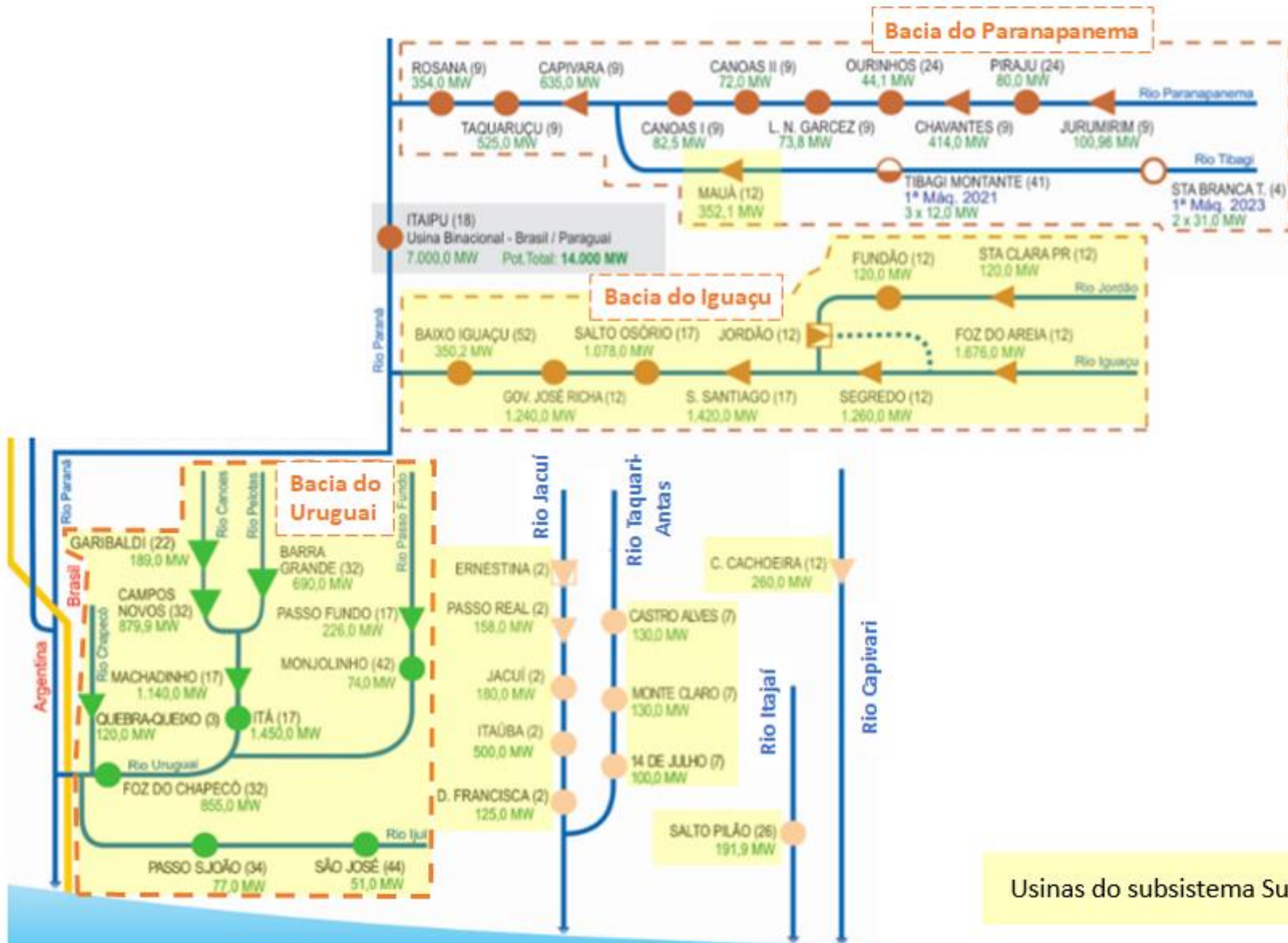
Situação de armazenamento dos principais reservatórios das bacias dos rios Iguaçu e Uruguai entre 2019 e 2021





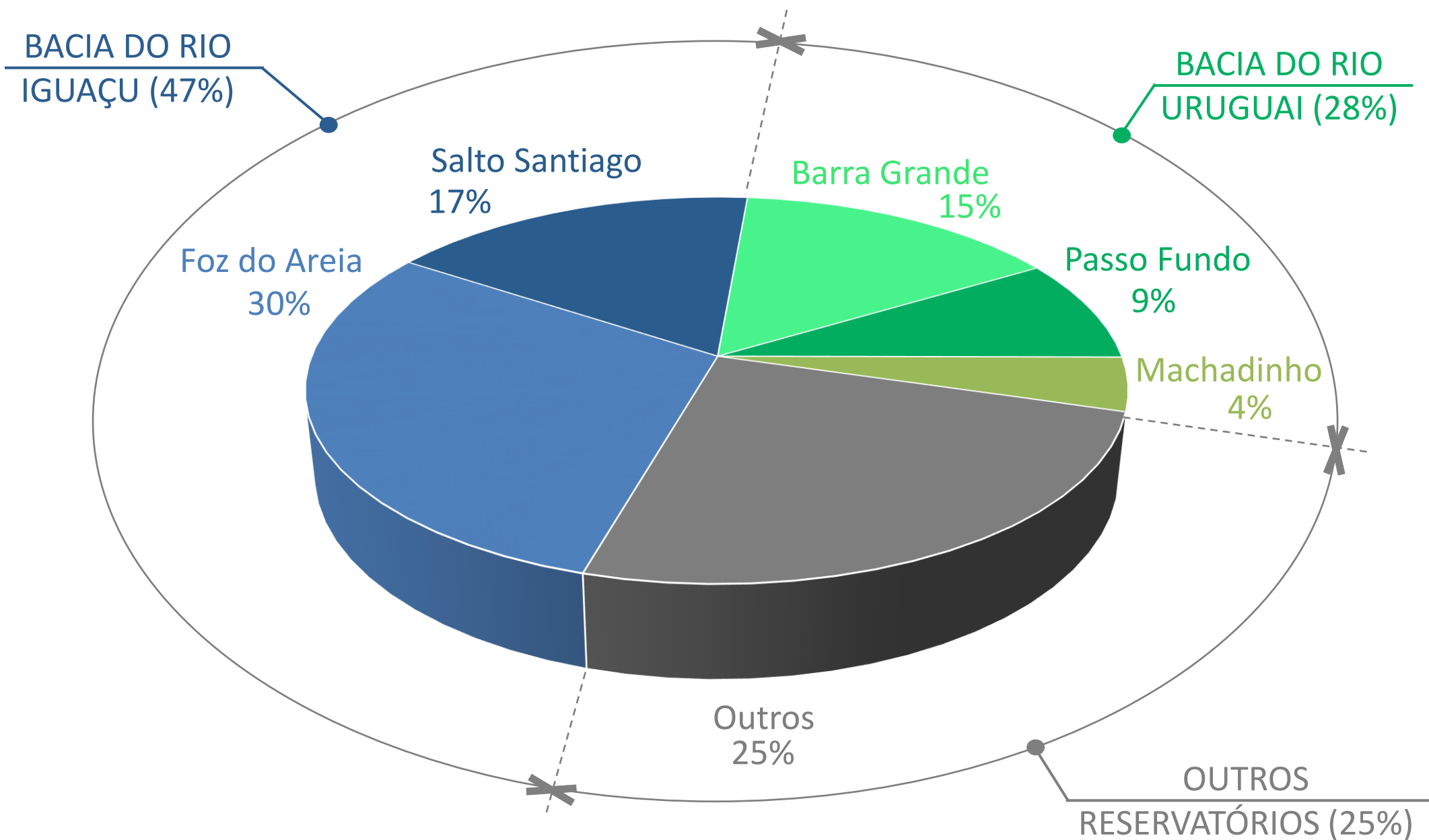
# CONDIÇÕES HIDROLÓGICAS E ARMAZENAMENTOS OBSERVADOS NO SUBSISTEMA SUL

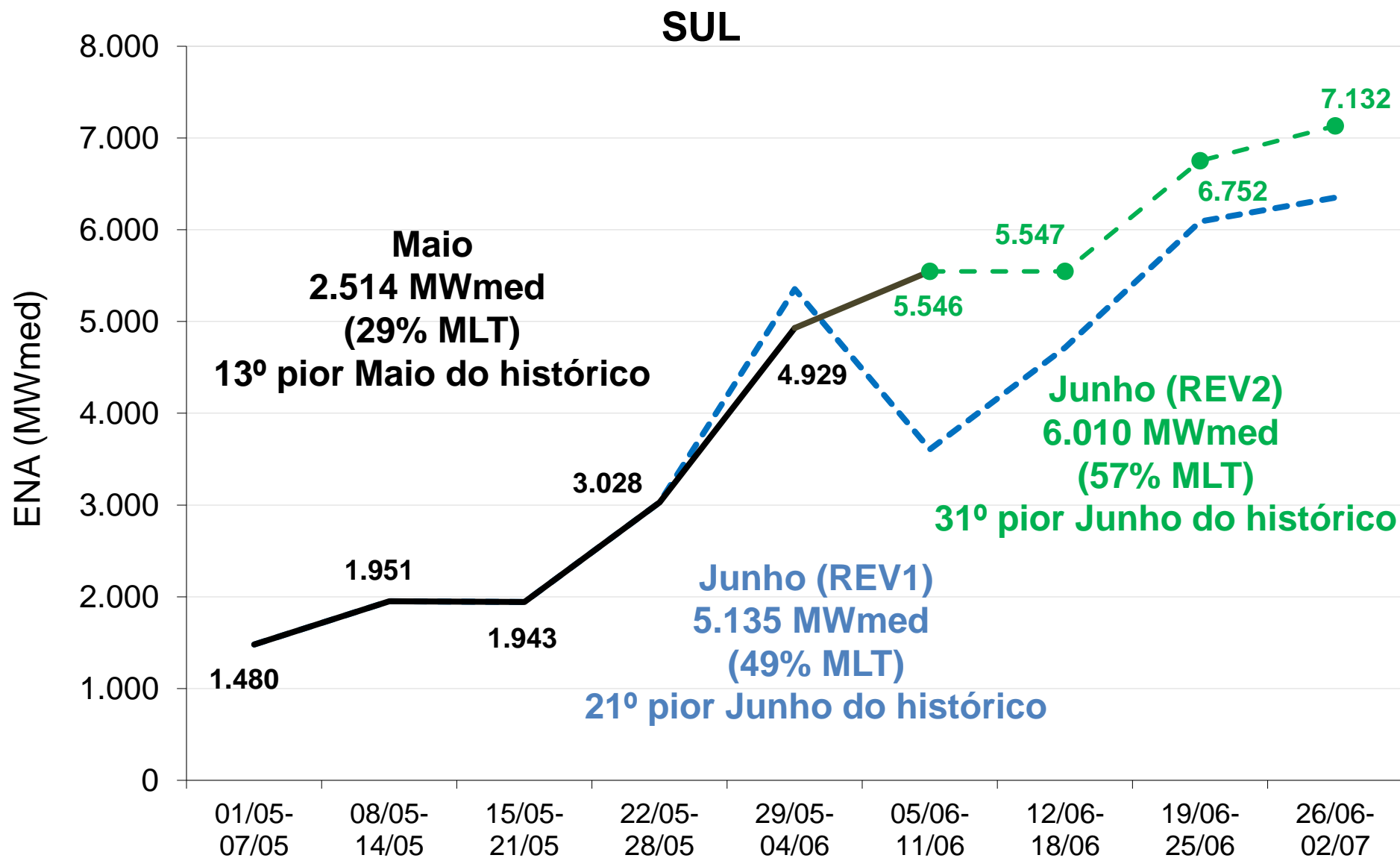
# DIAGRAMA ESQUEMÁTICO DAS USINAS HIDROELÉTRICAS



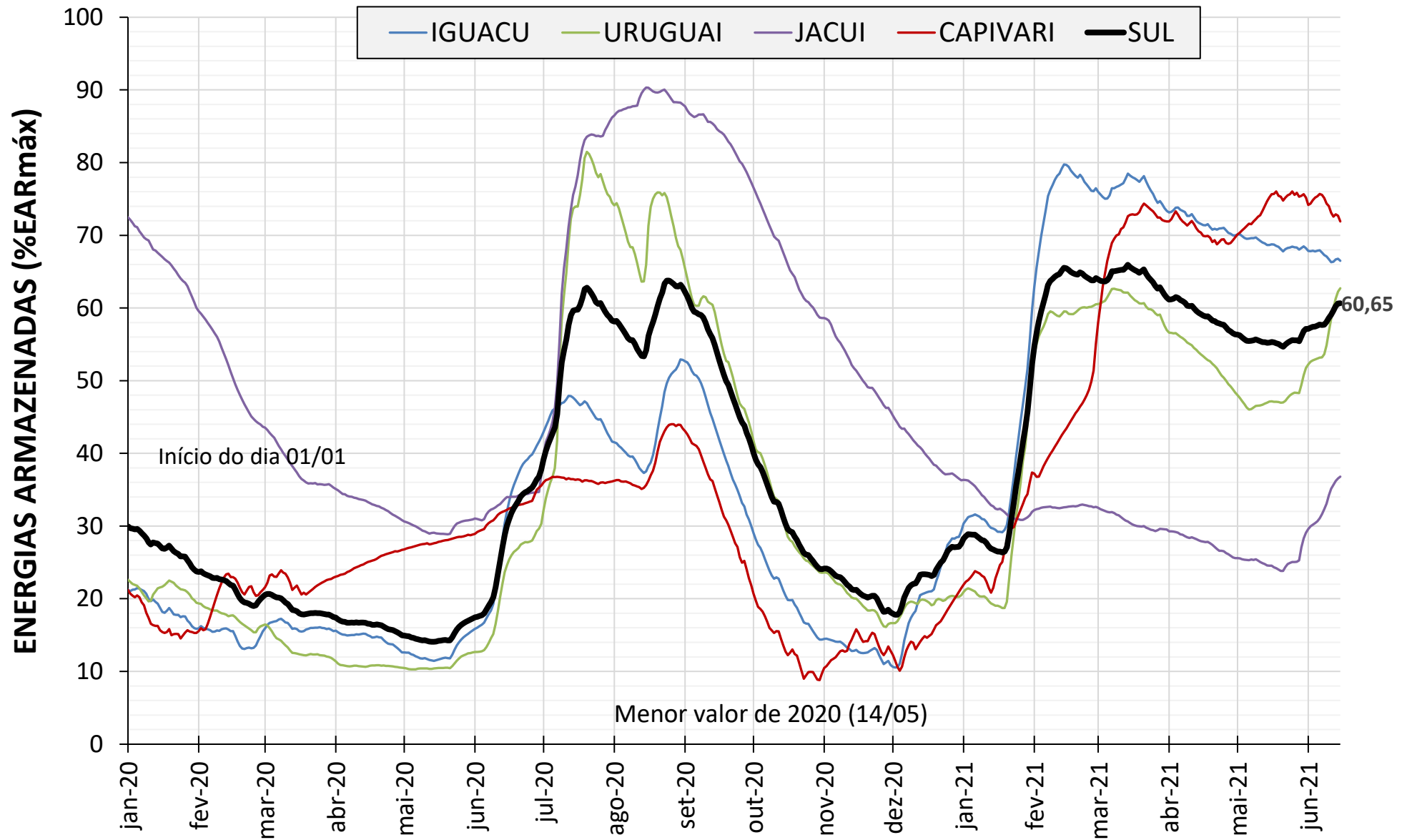
## PARTICIPAÇÃO DOS PRINCIPAIS RESERVATÓRIOS NA EAR<sub>máx</sub> DO SUBSISTEMA SUL

EAR<sub>máx</sub> DO SUBSISTEMA SUL = 19.897MWmed (7% da EAR<sub>máx</sub> do SIN)





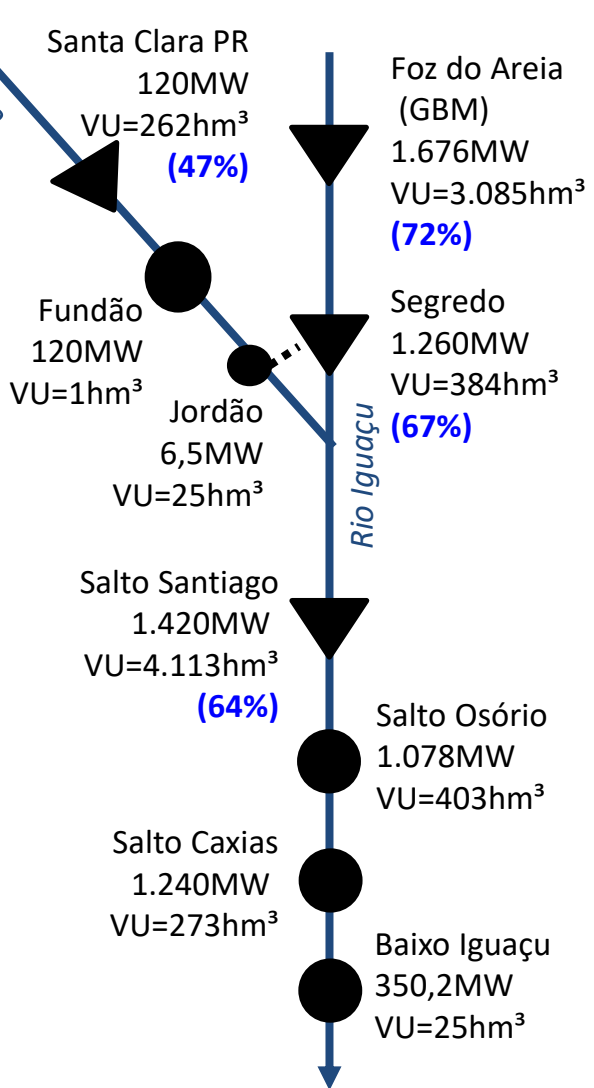
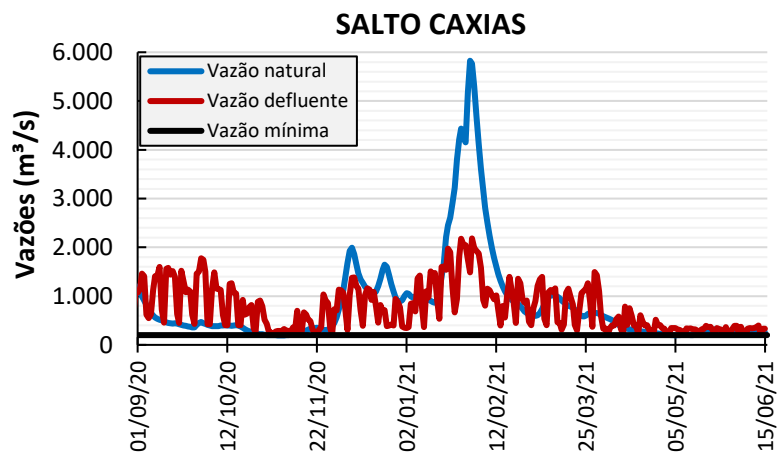
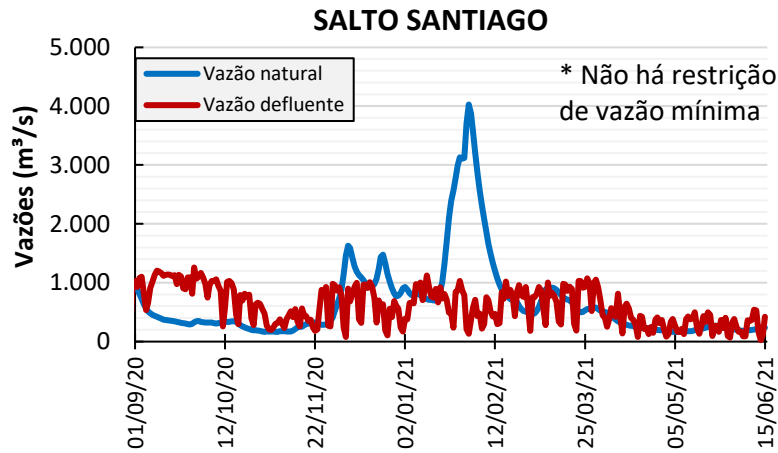
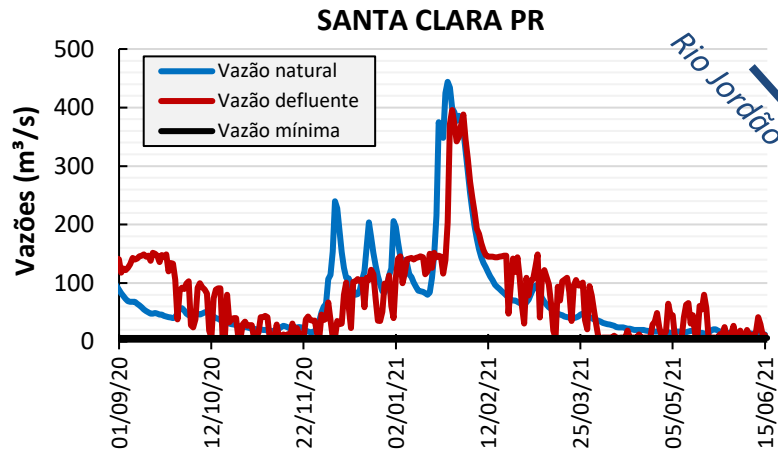




**Nota:** (1) Valores consolidados pelo ONS; (2) Período do gráfico: 01/01/2020 a 15/06/2021.

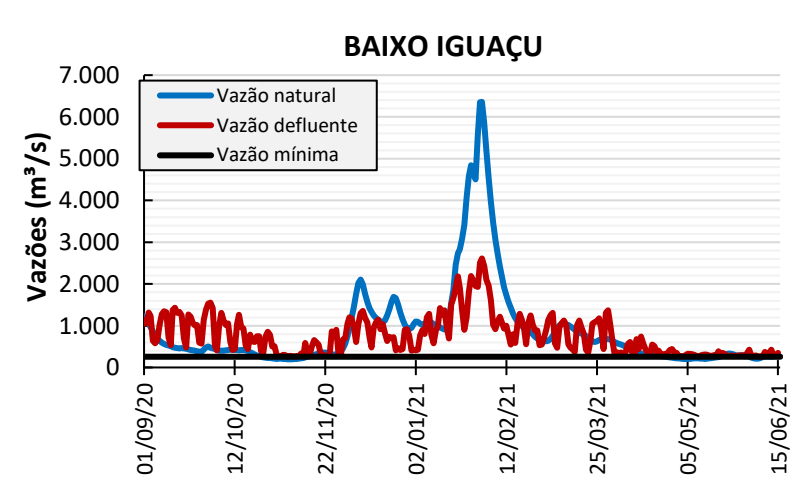
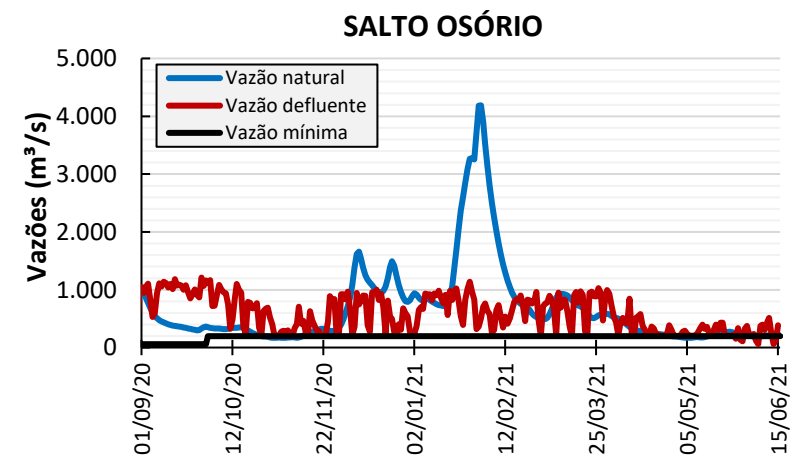
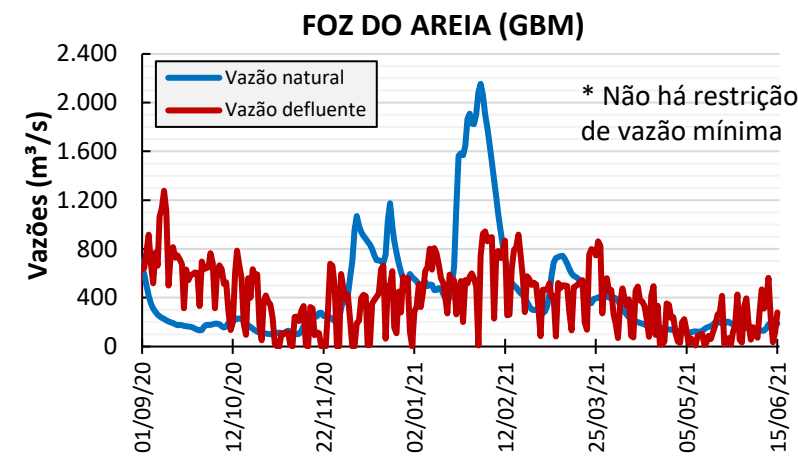


# OPERAÇÃO DOS PRINCIPAIS RESERVATÓRIOS

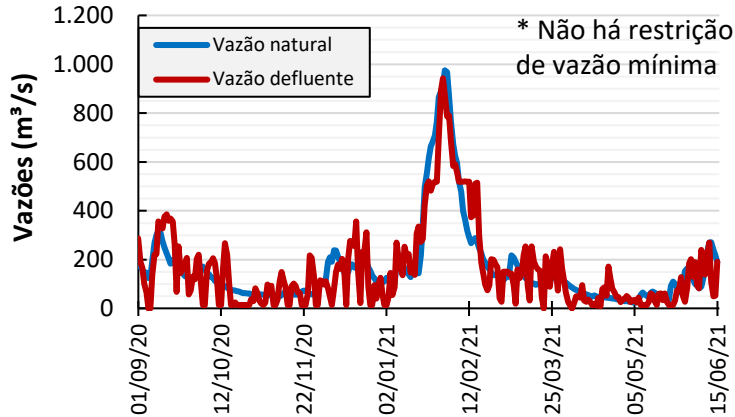


▼ UHEs com reservatório  
 ● UHEs a fio d'água

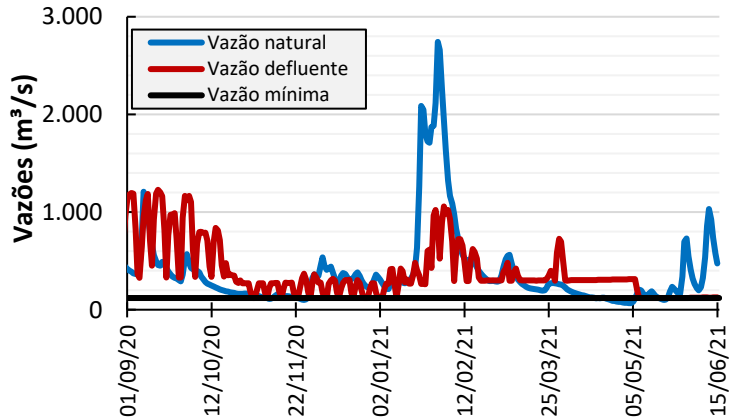
**Observações:** 1) Gráficos até dia 15/06; e 2) % VUs do IPDO de 15/06/2021.



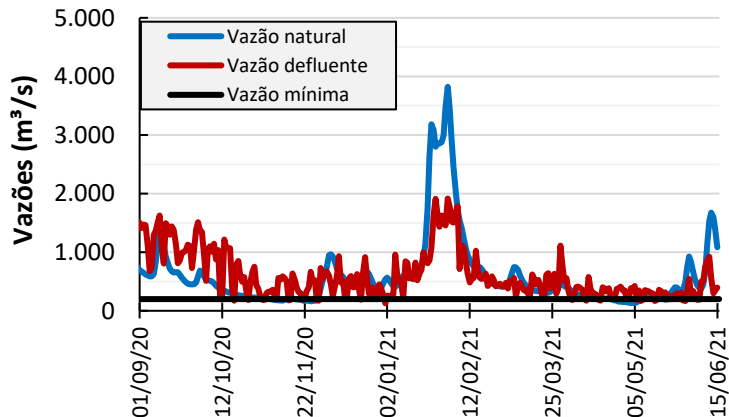
### CAMPOS NOVOS



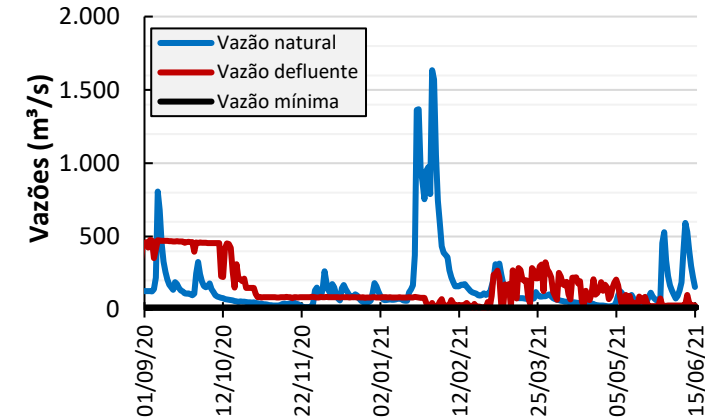
### MACHADINHO



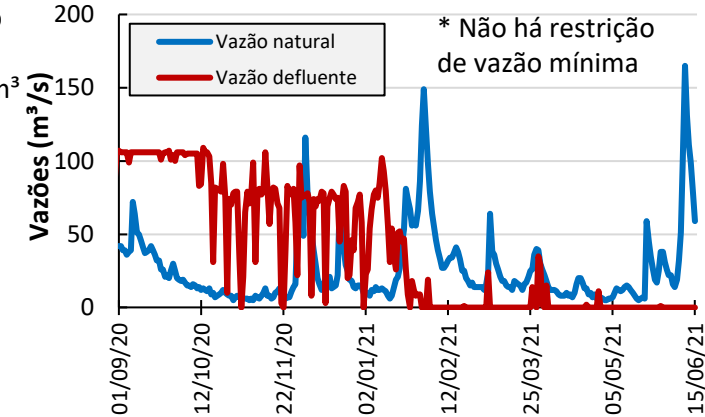
### FOZ DO CHAPECÓ



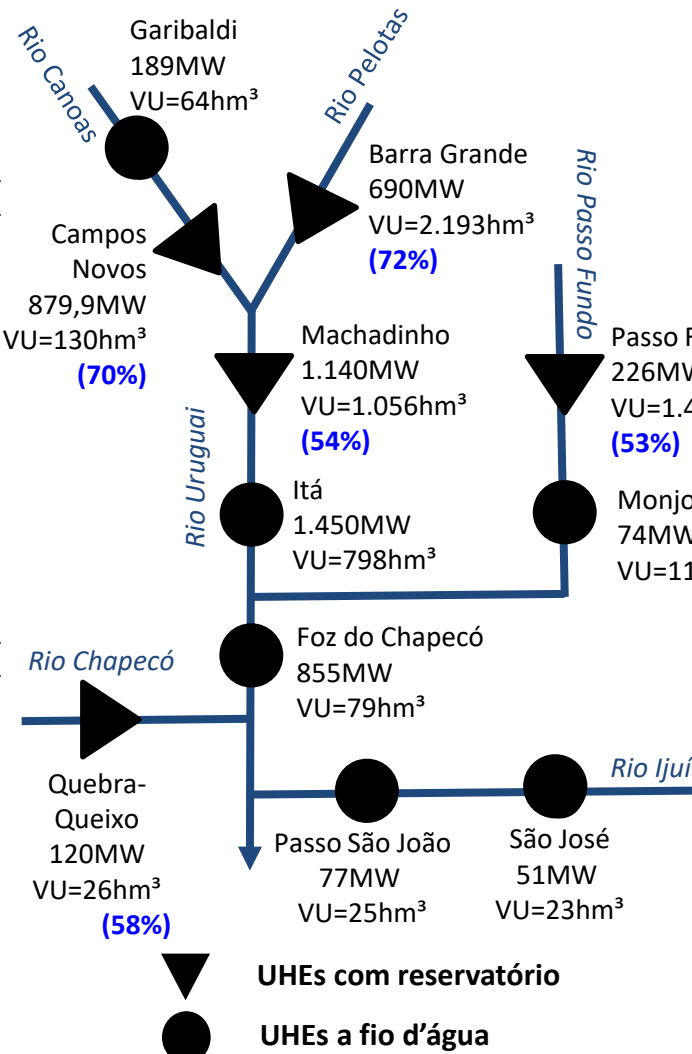
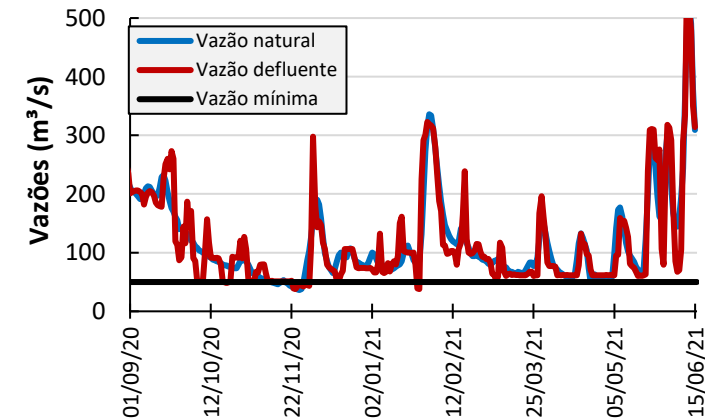
### BARRA GRANDE



### PASSO FUNDO



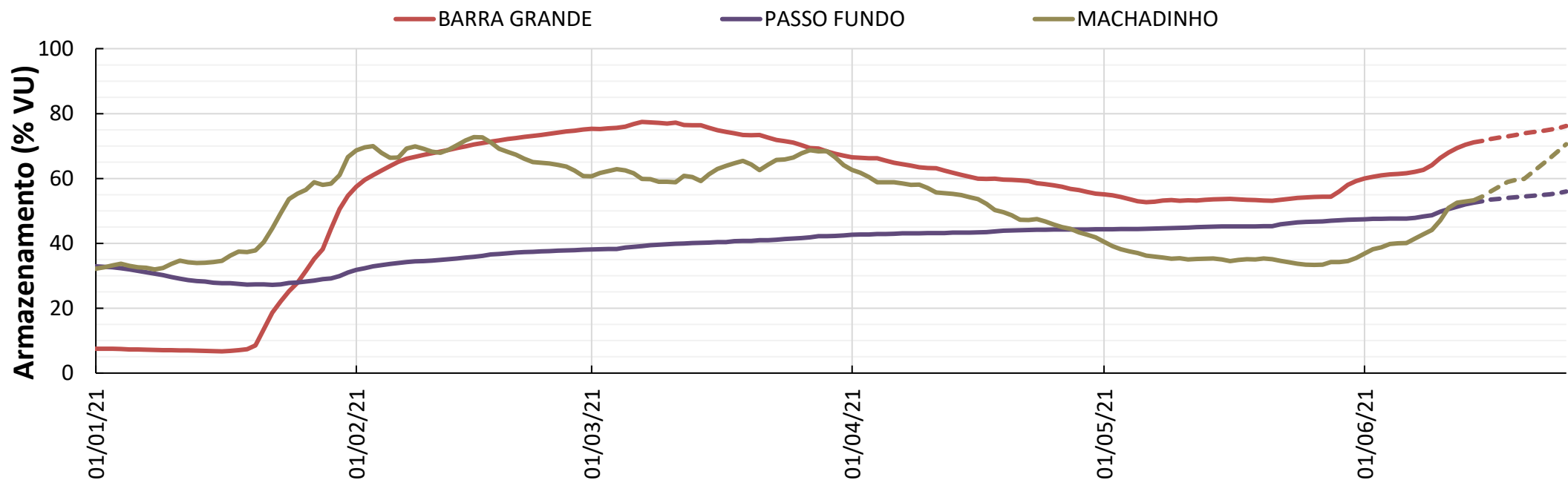
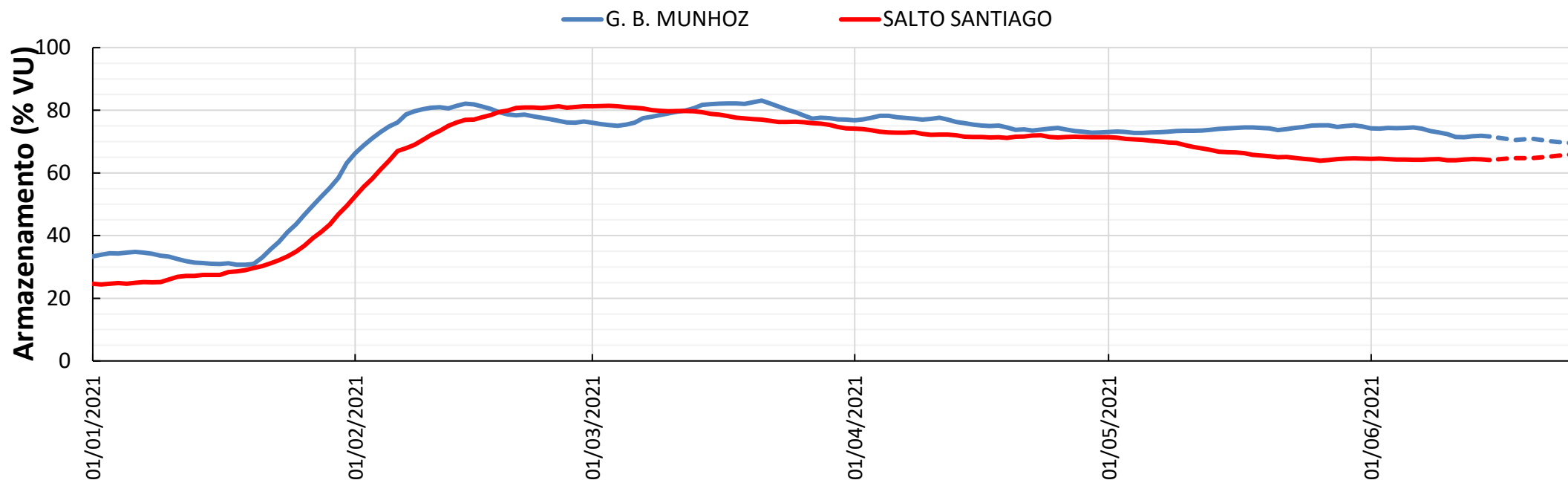
### PASSO SÃO JOÃO



**Observações:** 1) Gráficos até dia 15/06; e 2) % VUs do IPDO de 15/06/2021.

# RESULTADOS DAS SIMULAÇÕES HIDRÁULICAS





**Obs.** 1) Linha cheia – Dados observados; Linha tracejada – Simulação com previsão de vazões  
 2) Regras operativas definidas a partir das afluências, atendendo às restrições operativas declaradas e necessidades energéticas do SIN.

# AVALIAÇÃO DAS CONDIÇÕES HIDROLÓGICAS E DE ARMAZENAMENTO DOS RESERVATÓRIOS DO SUBSISTEMA SUL

6ª Reunião da Sala de Crise da Região Sul  
17 de junho de 2021