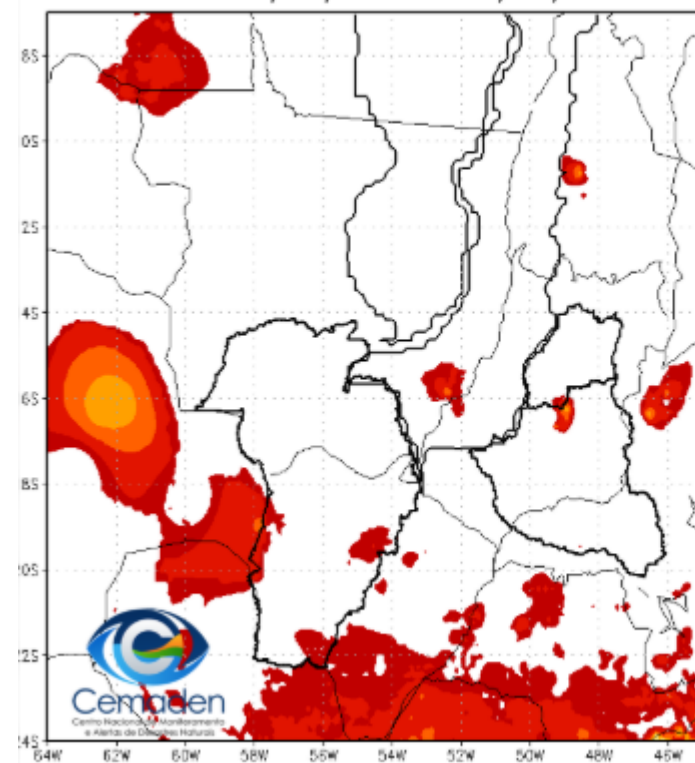


Monitoramento, previsões e impactos da situação de seca no Alto Paraguai

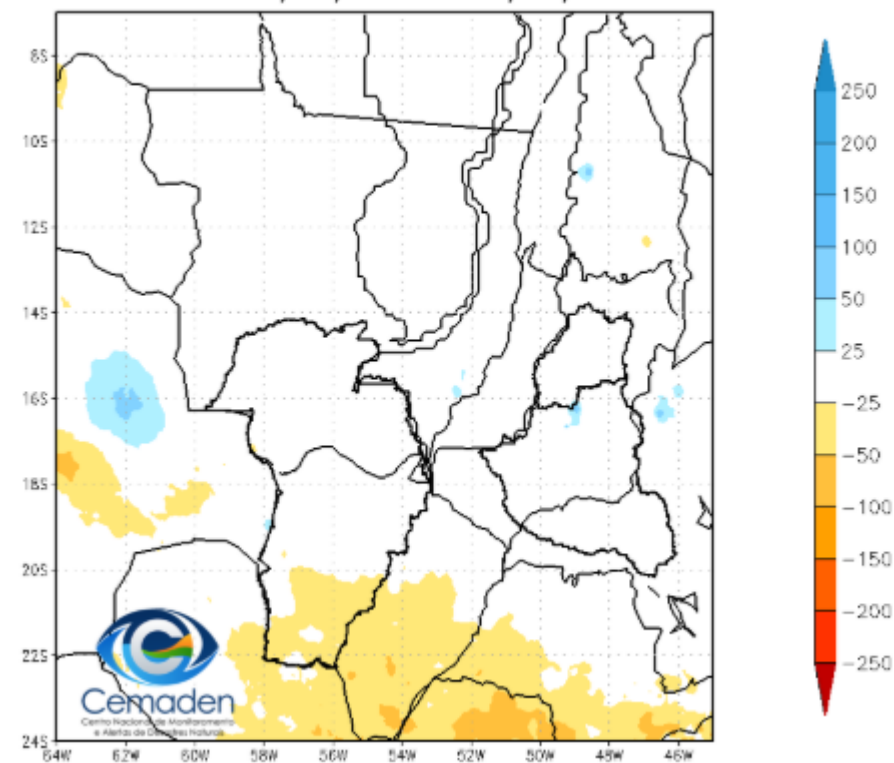
31 de Julho de 2025

Precipitação nos últimos 30 dias

Precipitação Acumulada (mm) A.S.
Período: 30/06/2025 a 30/07/2025

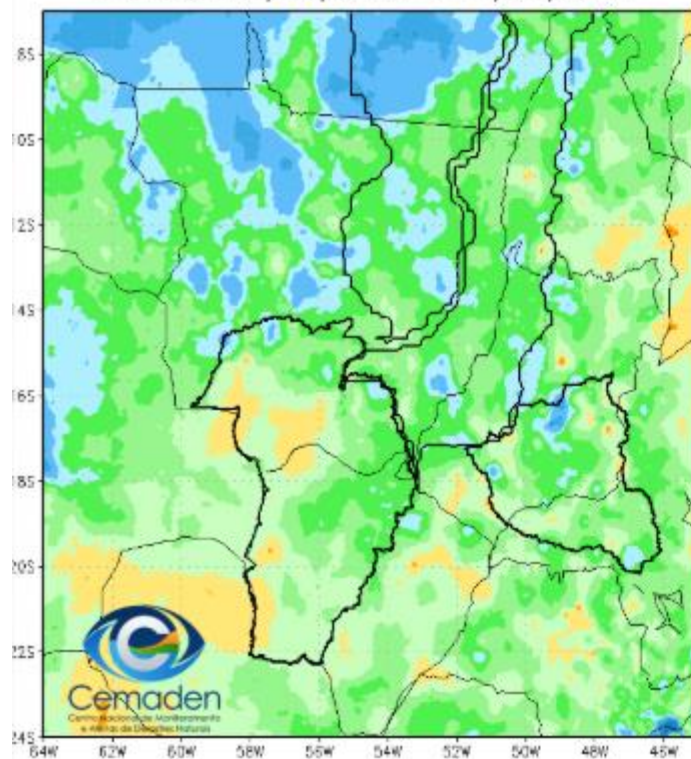


Anomalia de Precipitação (mm) A.S.
Período: 30/06/2025 a 30/07/2025

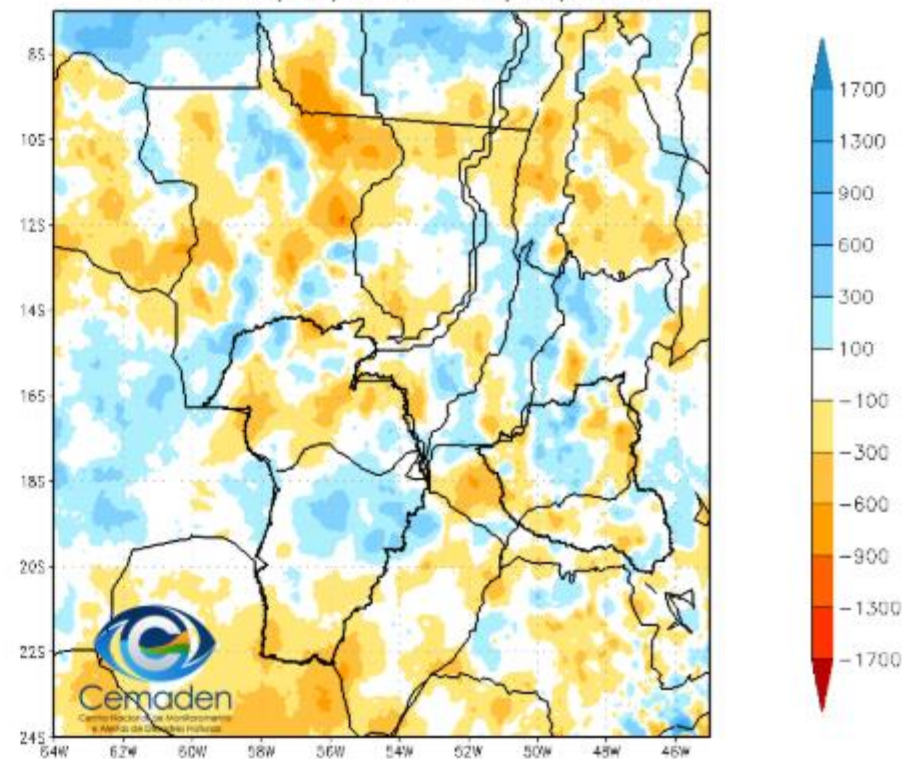


Precipitação no Ano Hidrológico

Precipitação Acumulada (mm) A.S.
Período: 01/10/2024 a 30/07/2025

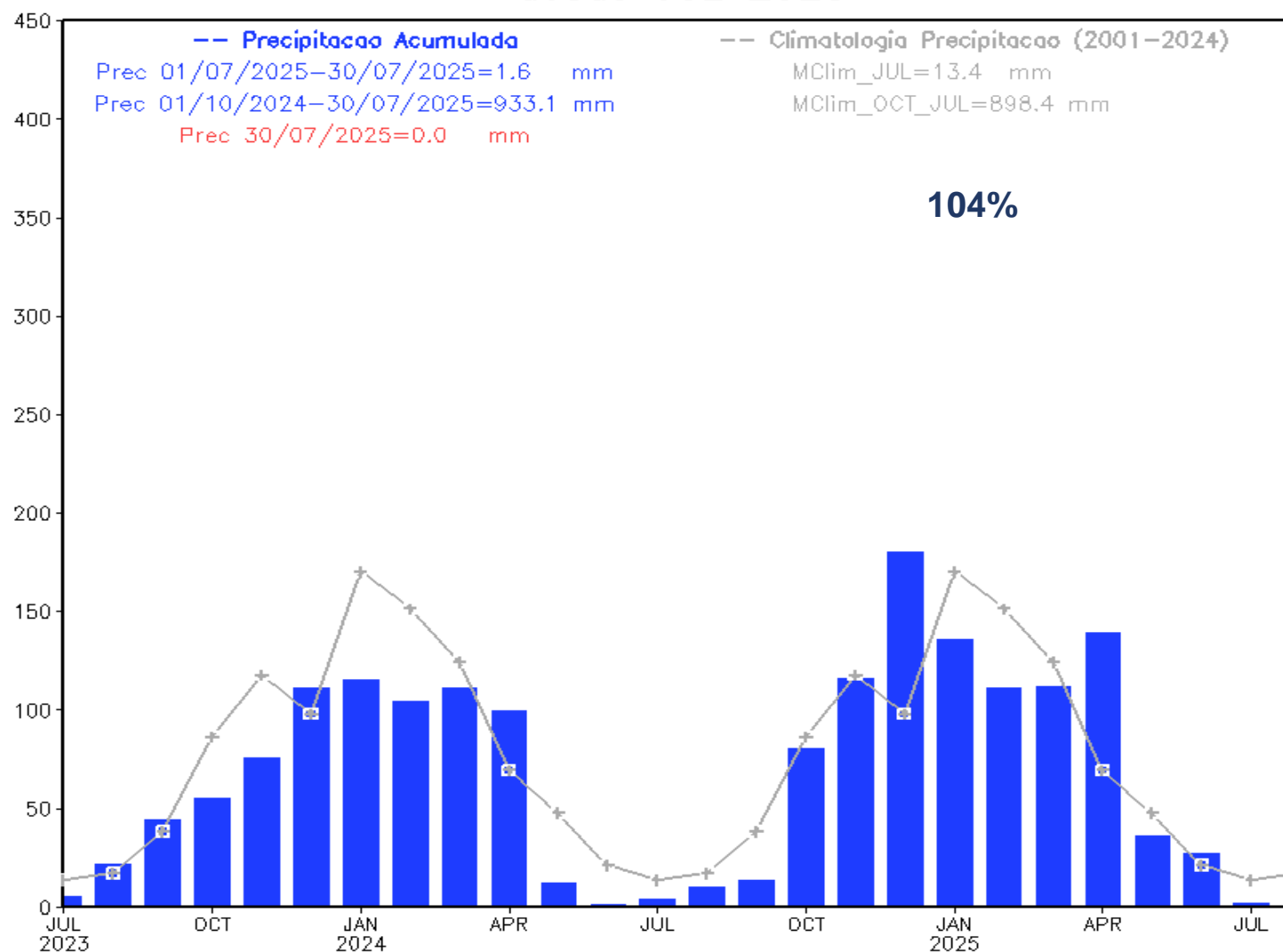


Anomalia de Precipitação (mm) A.S.
Período: 01/10/2024 a 30/07/2025



Precipitação nos últimos dois anos

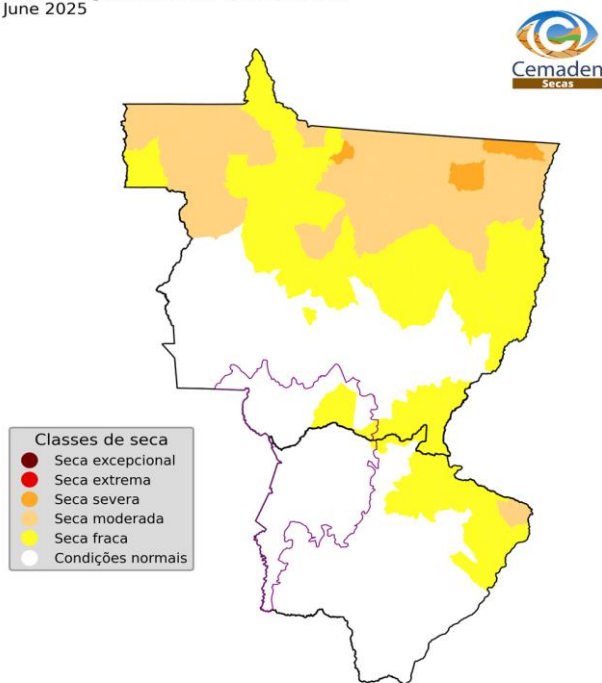
Precipitação Bacia do Rio Paraguai
desde JUL 2023



ÍNDICE INTEGRADO DE SECA: ANÁLISE POR **MUNICÍPIOS**

IIS-03 OBSERVADO

Índice Integrado de Seca - 3 meses (IIS3)
June 2025



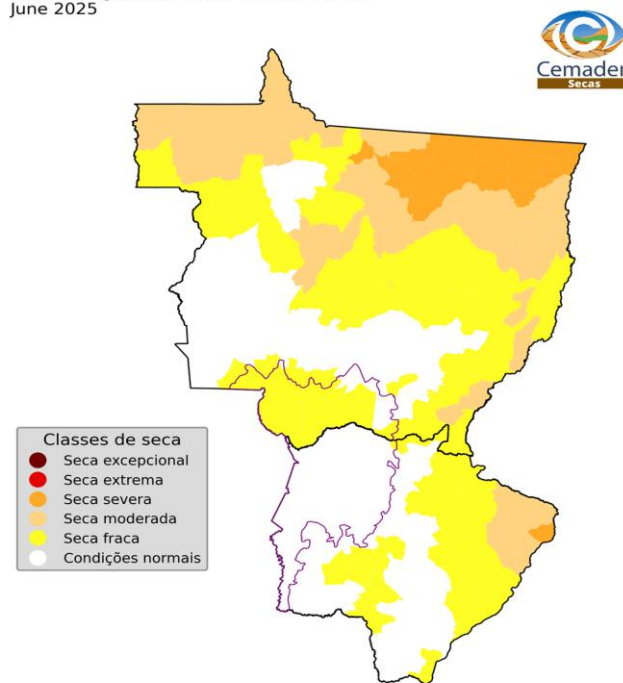
Número de municípios
por classes de seca:

Seca excepcional:	0 (0.0%)
Seca extrema:	0 (0.0%)
Seca severa:	0 (0.0%)
Seca moderada:	0 (0.0%)
Seca fraca:	3 (10.7%)
Condições normais:	25 (89.3%)

Fonte: Cemaden/MCTI

IIS-06 OBSERVADO

Índice Integrado de Seca - 6 meses (IIS6)
June 2025



Número de municípios
por classes de seca:

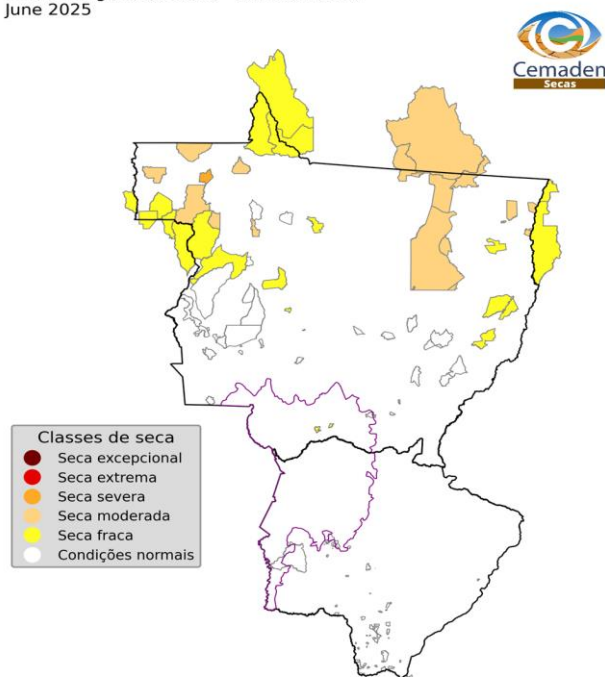
Seca excepcional:	0 (0.0%)
Seca extrema:	0 (0.0%)
Seca severa:	0 (0.0%)
Seca moderada:	0 (0.0%)
Seca fraca:	10 (35.7%)
Condições normais:	18 (64.3%)

Fonte: Cemaden/MCTI

ÍNDICE INTEGRADO DE SECA (IIS-03)

TERRAS INDÍGENAS

Índice Integrado de Seca - 3 meses (IIS3)
June 2025



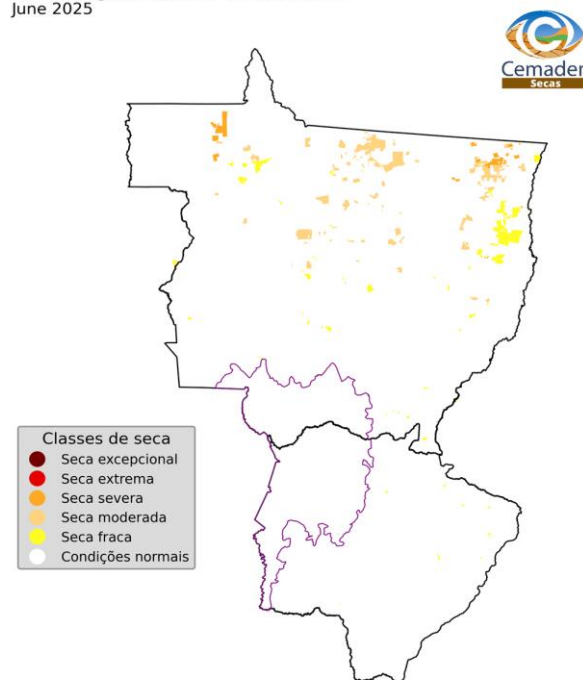
Número de Terras Indígenas
por classes de seca:

Seca excepcional:	0 (0.0%)
Seca extrema:	0 (0.0%)
Seca severa:	0 (0.0%)
Seca moderada:	0 (0.0%)
Seca fraca:	2 (25.0%)
Condições normais:	6 (75.0%)

Fonte: Cemaden/MCTI

ASSENTAMENTOS

Índice Integrado de Seca - 3 meses (IIS3)
June 2025



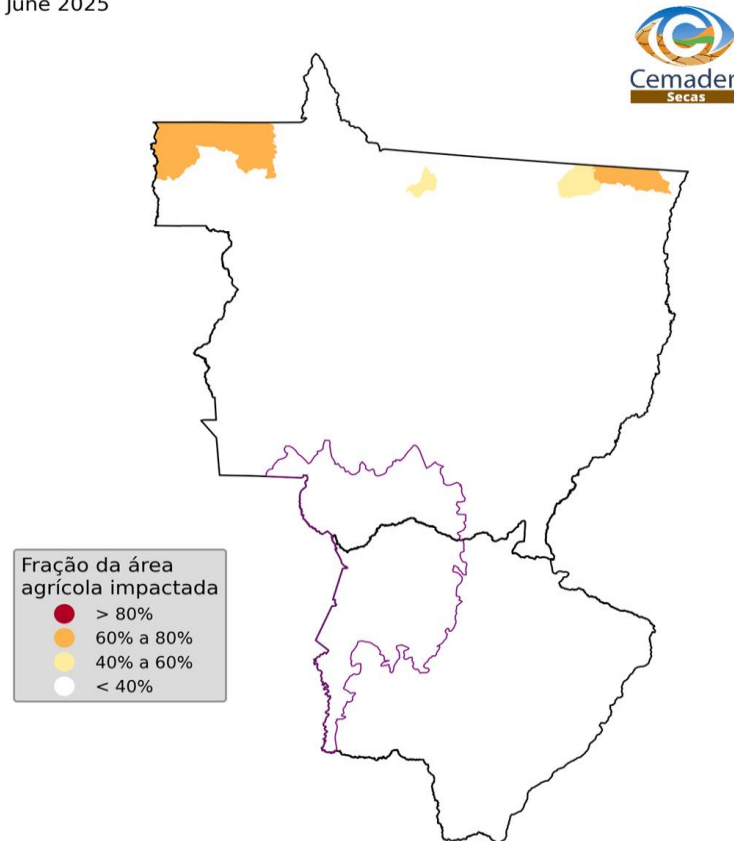
Número de Assentamentos
por classes de seca:

Seca excepcional:	0 (0.0%)
Seca extrema:	0 (0.0%)
Seca severa:	0 (0.0%)
Seca moderada:	0 (0.0%)
Seca fraca:	1 (2.9%)
Condições normais:	34 (97.1%)

Fonte: Cemaden/MCTI

ÁREAS DE PASTAGENS E AGRÍCOLAS AFETADAS PELA SECA

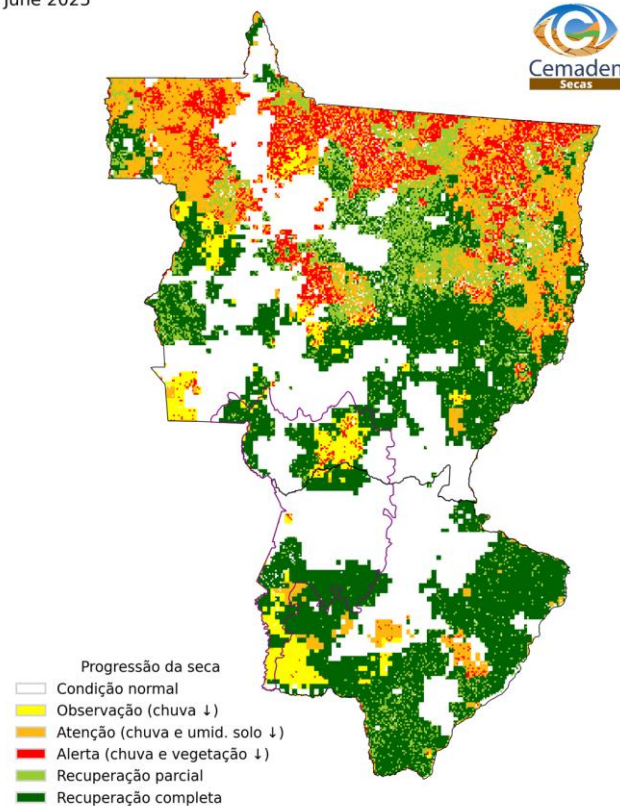
Área agro-pastoril municipal afetada pela seca
June 2025



Fonte: Cemaden/MCTI

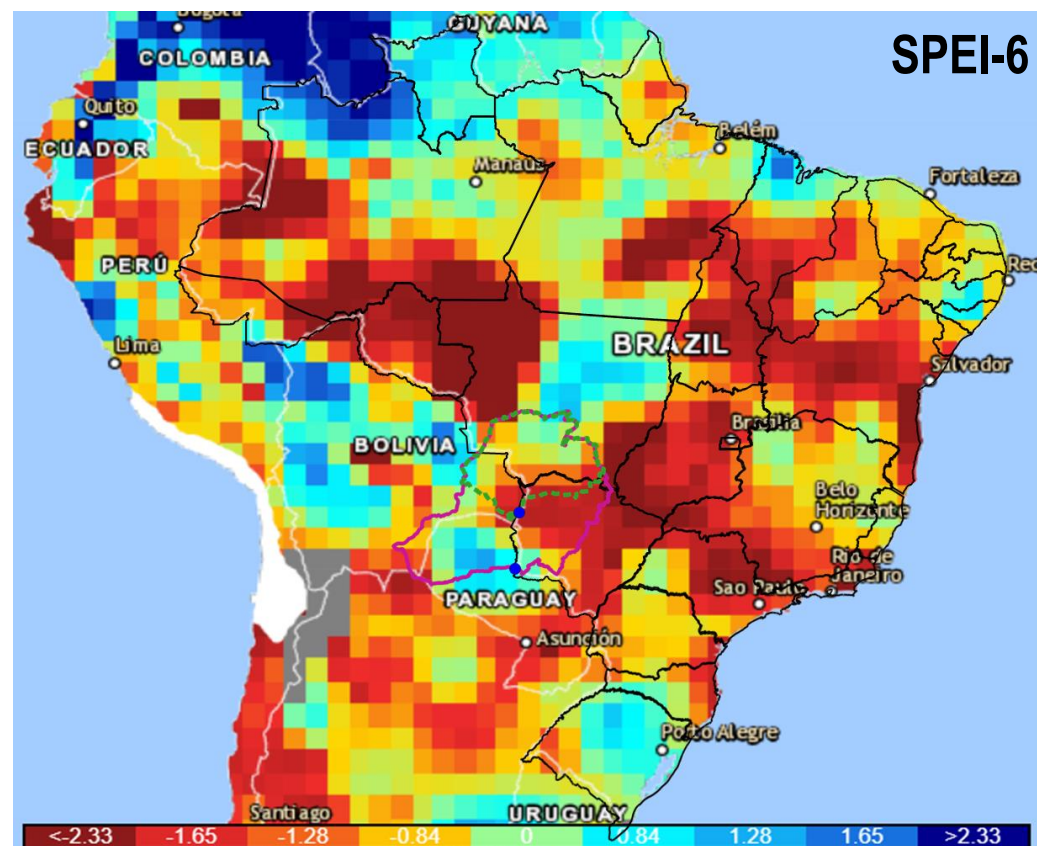
PROPAGAÇÃO INCREMENTAL DAS CONDIÇÕES DE SECA (PICS)

June 2025

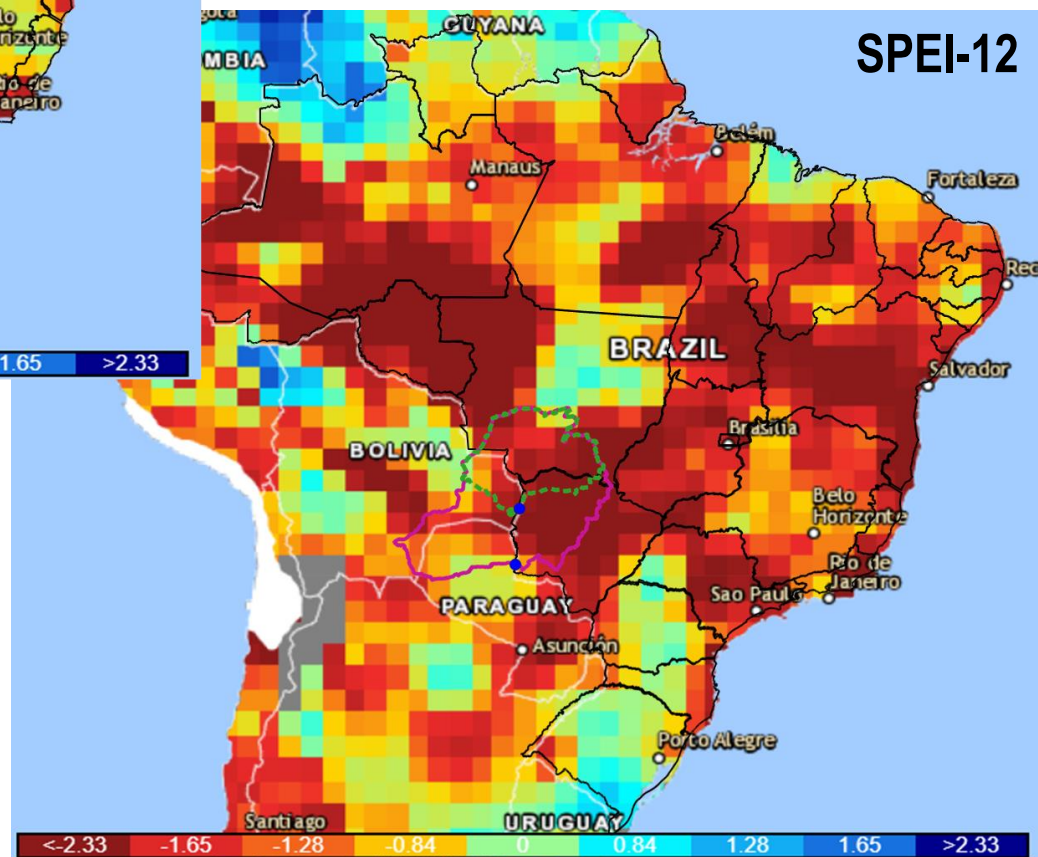


Índice Padronizado de Precipitação – Evapotranspiração Potencial – SPEI

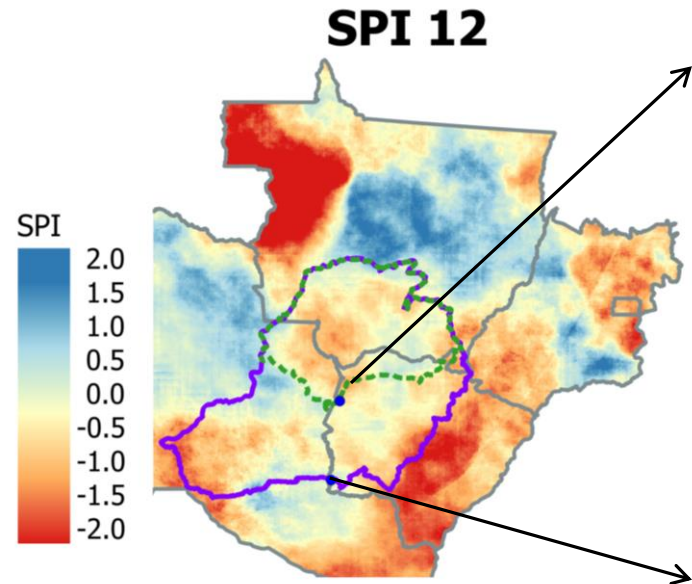
SPEI-6



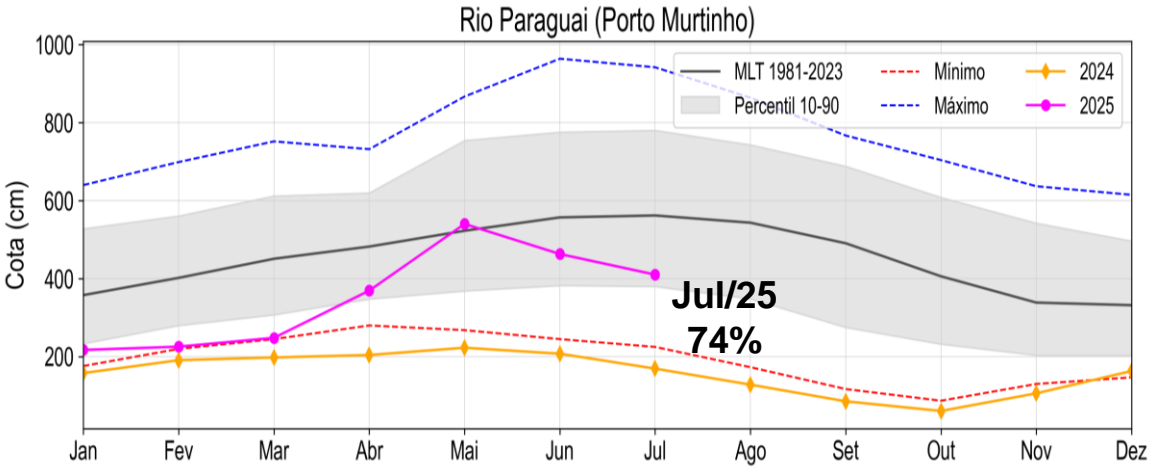
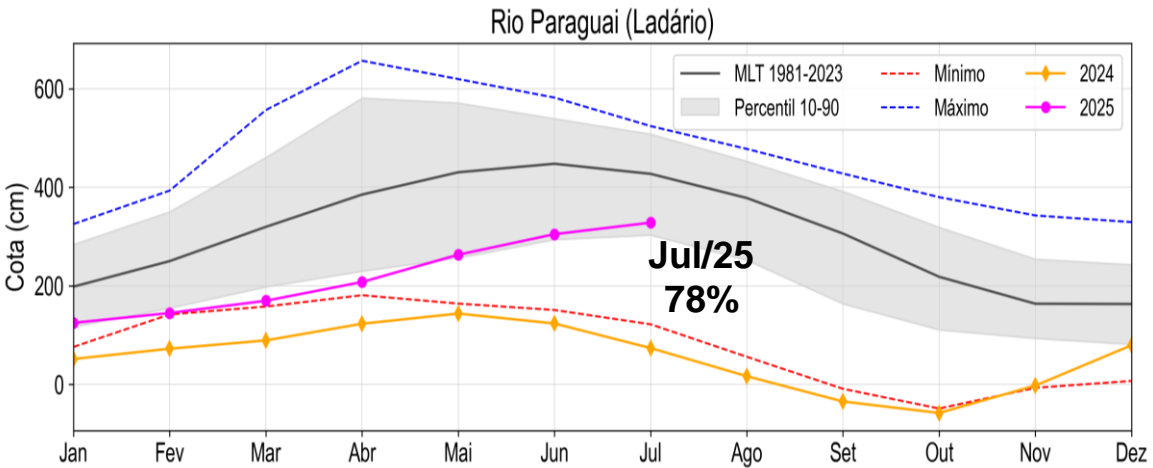
SPEI-12



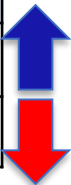
Evolução dos Níveis do Rio Paraguai



SPI-12 Junho

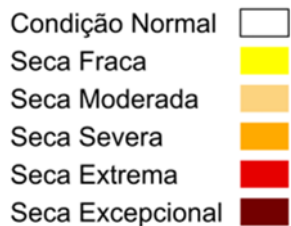


Estação	Cota 30/Junho	Cota 30/Julho
Ladário	321 cm	329 cm
P. Murtinho	431 cm	392 cm

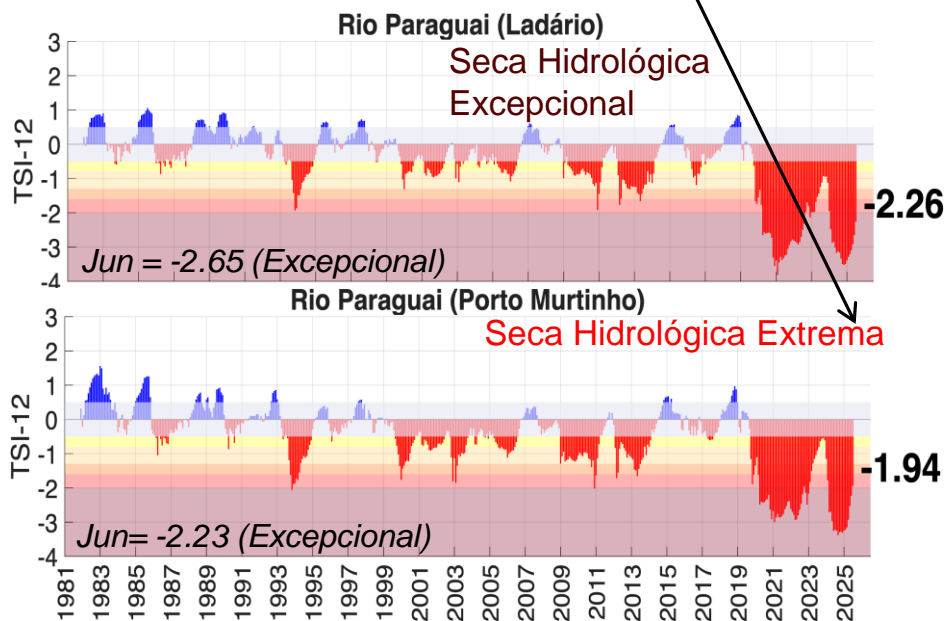


Fonte dos dados: CHIRPS (Precipitação) e Marinha do Brasil e ANA (Cotas)/ Estimativa SPI e gráficos: CEMADEN

Índice Bivariado de Seca (Precipitação-Cota) - TSI

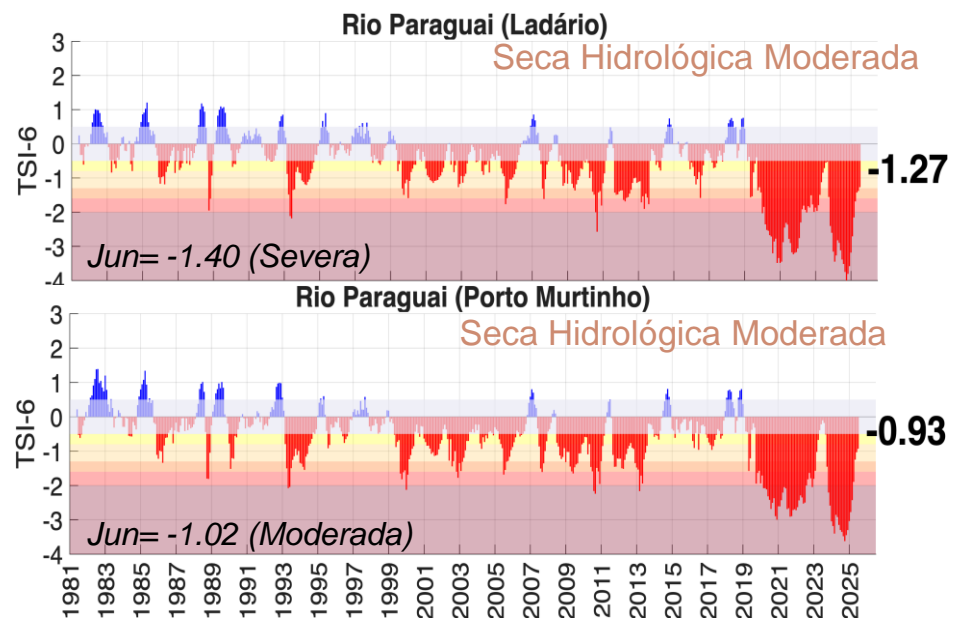


TSI-12 Julho

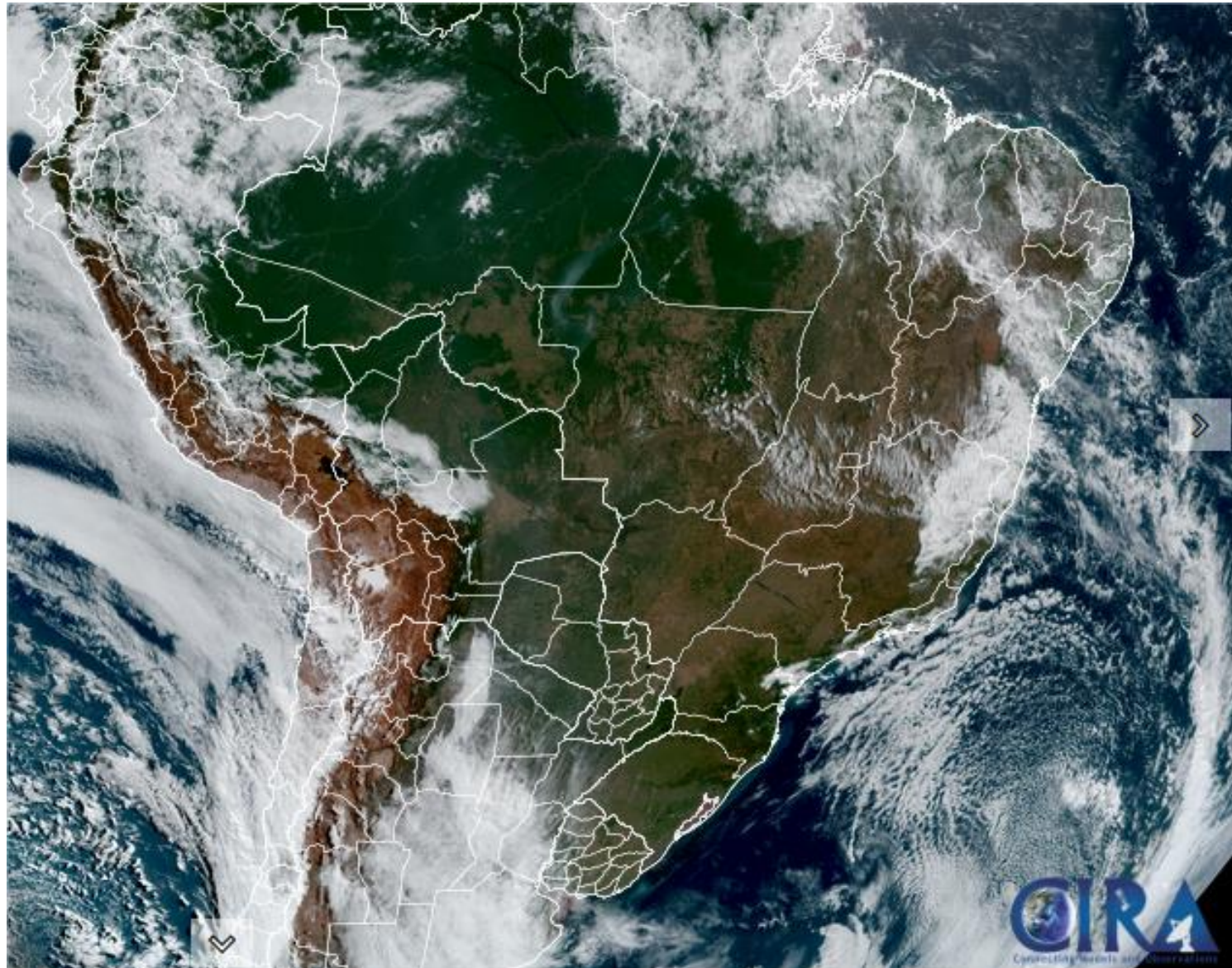


Em uma escala de curto prazo, as chuvas já contribuíram para mitigar a seca hidrológica na bacia, indicando sinais de recuperação parcial dos recursos hídricos!

TSI-6 Julho

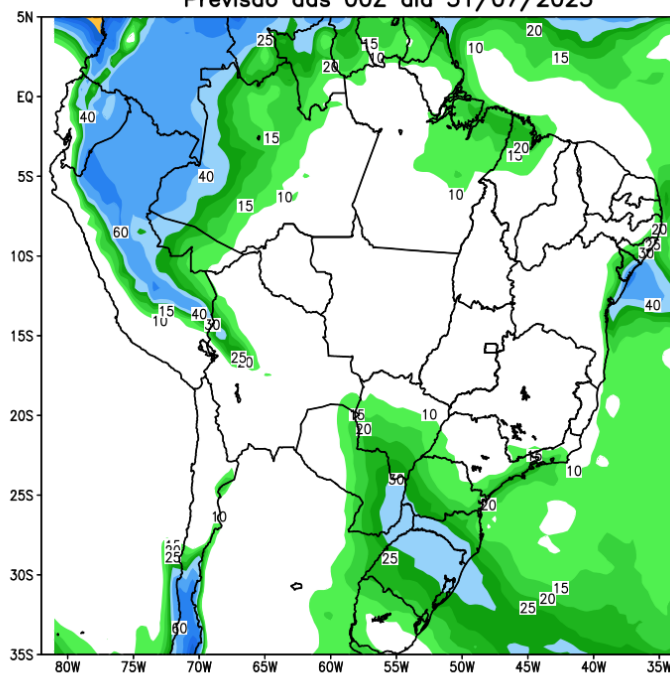


Situação meteorológica atual

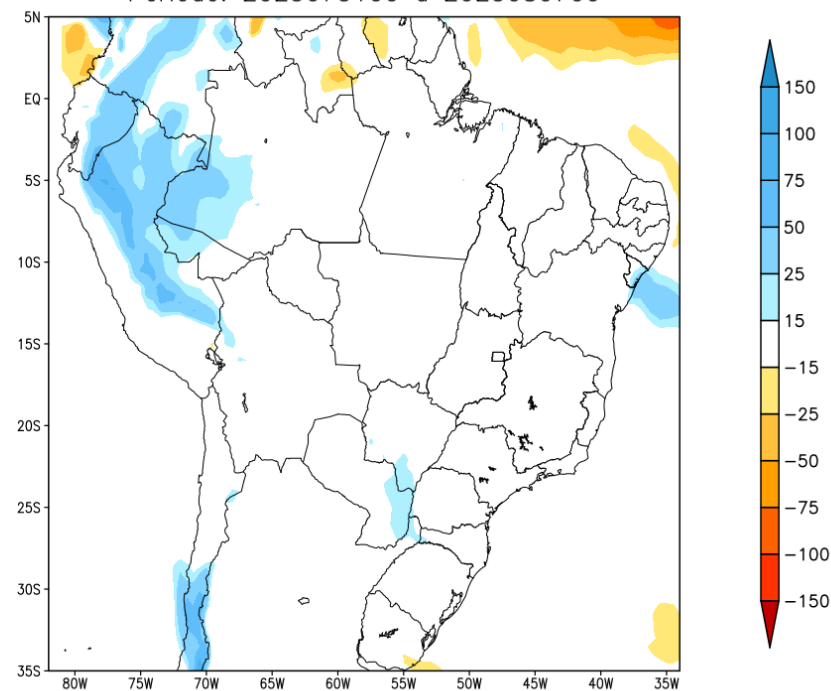


Previsão para as próxima semana

GEFS / BRASIL
Precipitação acumulada 1aSem (mm)
Previsão das 00Z dia 31/07/2025

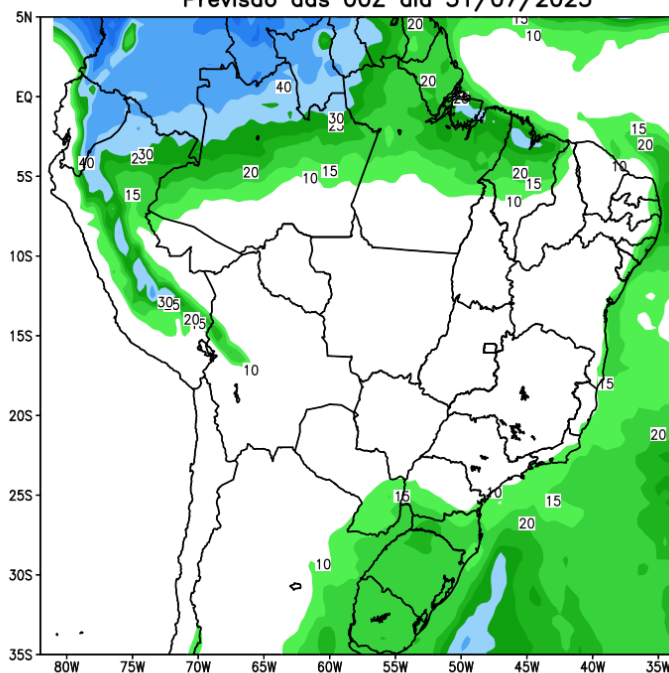


Anomalia de Precipitação BR (mm)
Período: 2025073100 a 2025080700

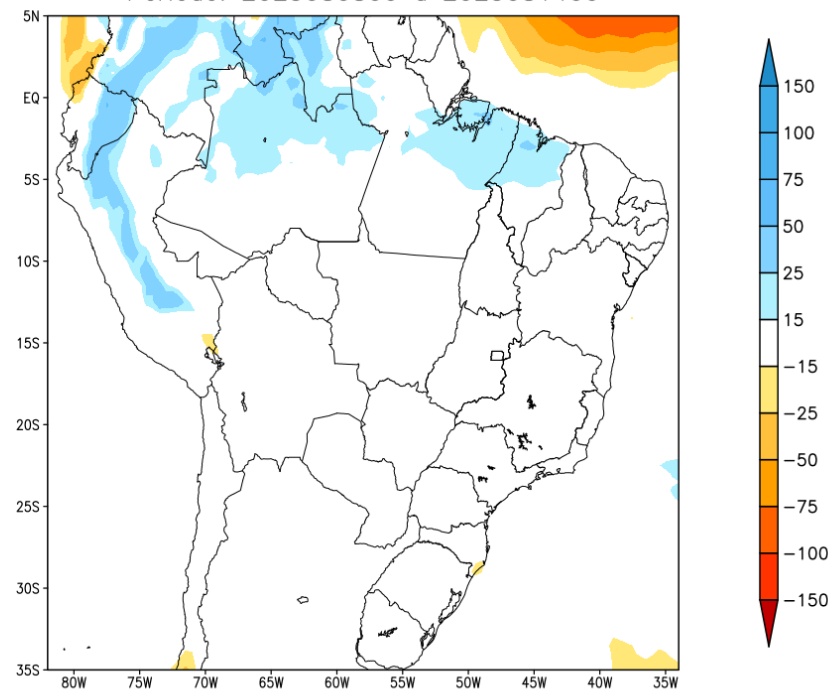


Tendência para a segunda semana

GEFS / BRASIL
Precipitação acumulada 2aSem (mm)
Previsão das 00Z dia 31/07/2025

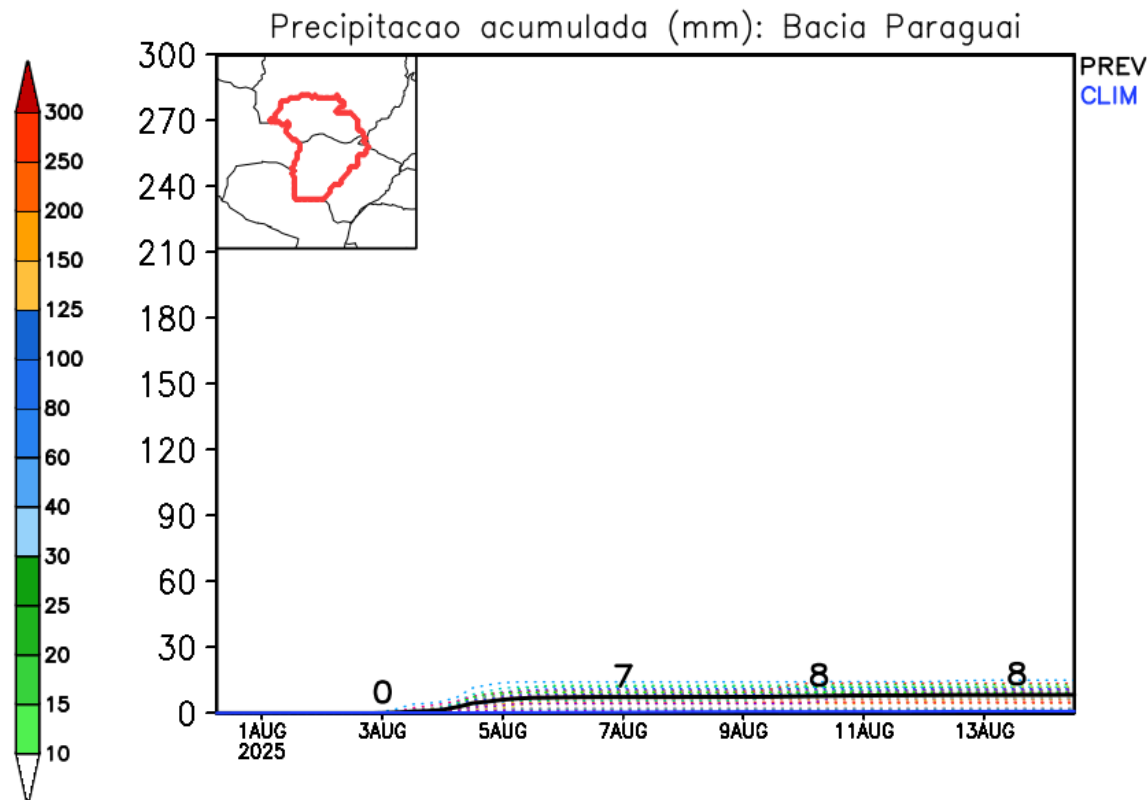
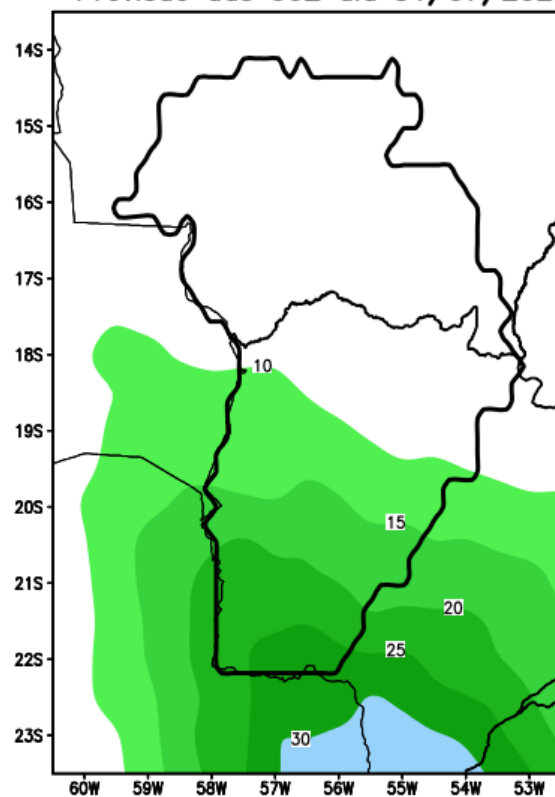


Anomalia de Precipitação BR (mm)
Período: 2025080800 a 2025081400



Previsão de chuva Bacia do Alto Paraguai

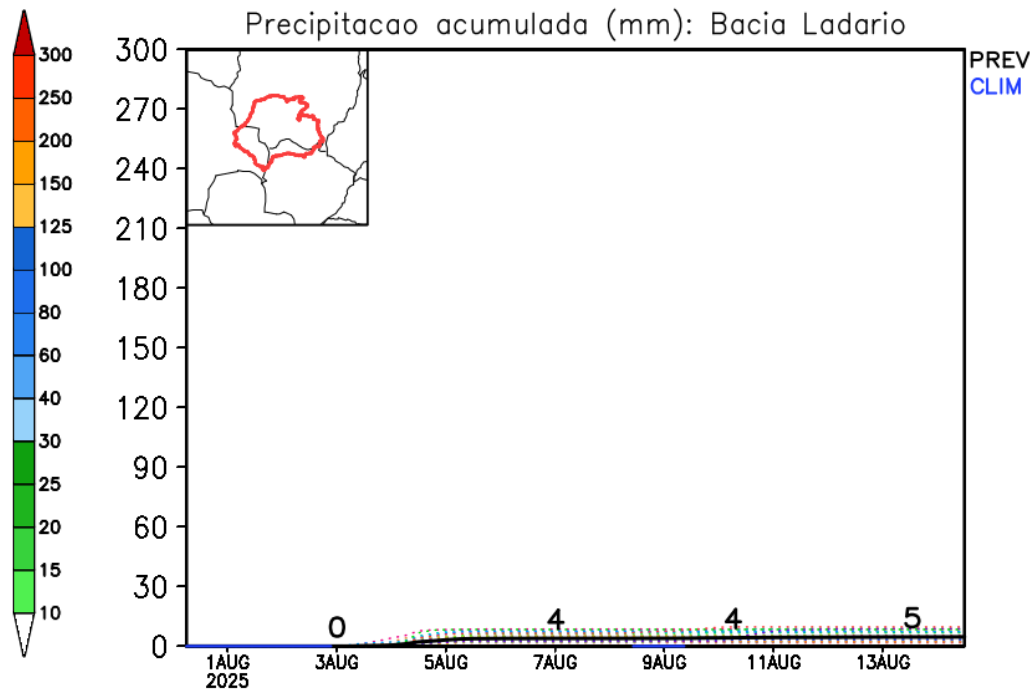
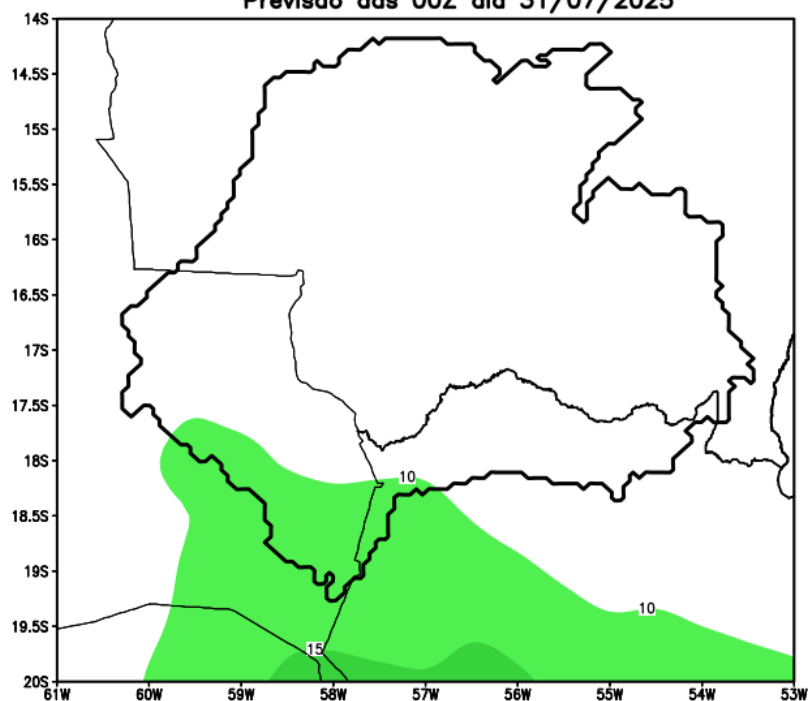
GEFS / Bacia do Rio Paraguai
Precipitação acumulada em 15 dias (mm)
Previsão das 00Z dia 31/07/2025



Fonte: GEFS/NOAA

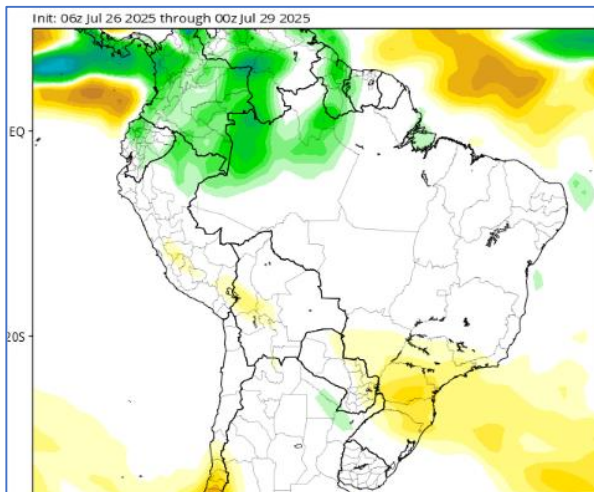
Previsão de chuva sub Bacia de Ladário

GEFS / Bacia Ladario
Precipitação acumulada em 14 dias (mm)
Previsão das 00Z dia 31/07/2025

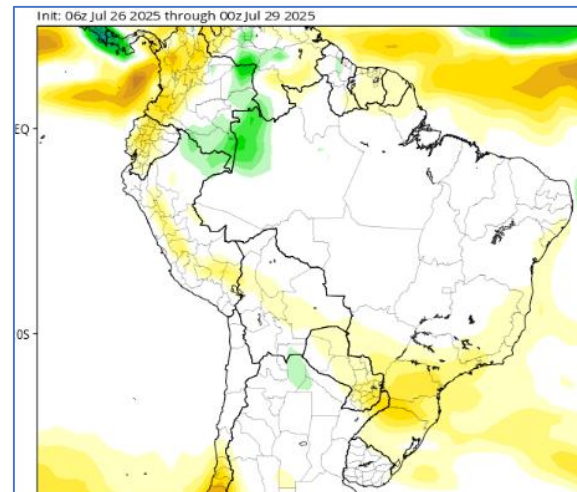


Tendência 3a e 4a semanas

12-19 Ago

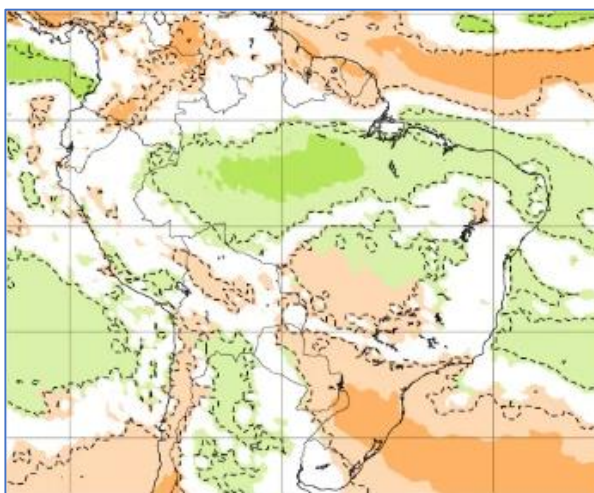


19-26 Ago

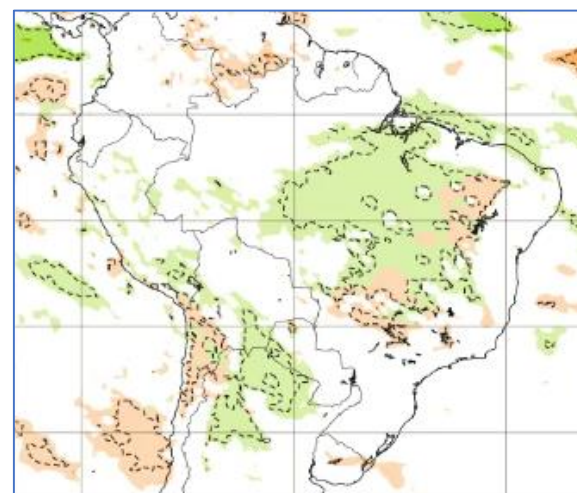


CFS/NOAA

11-18 Ago



18-25 Ago

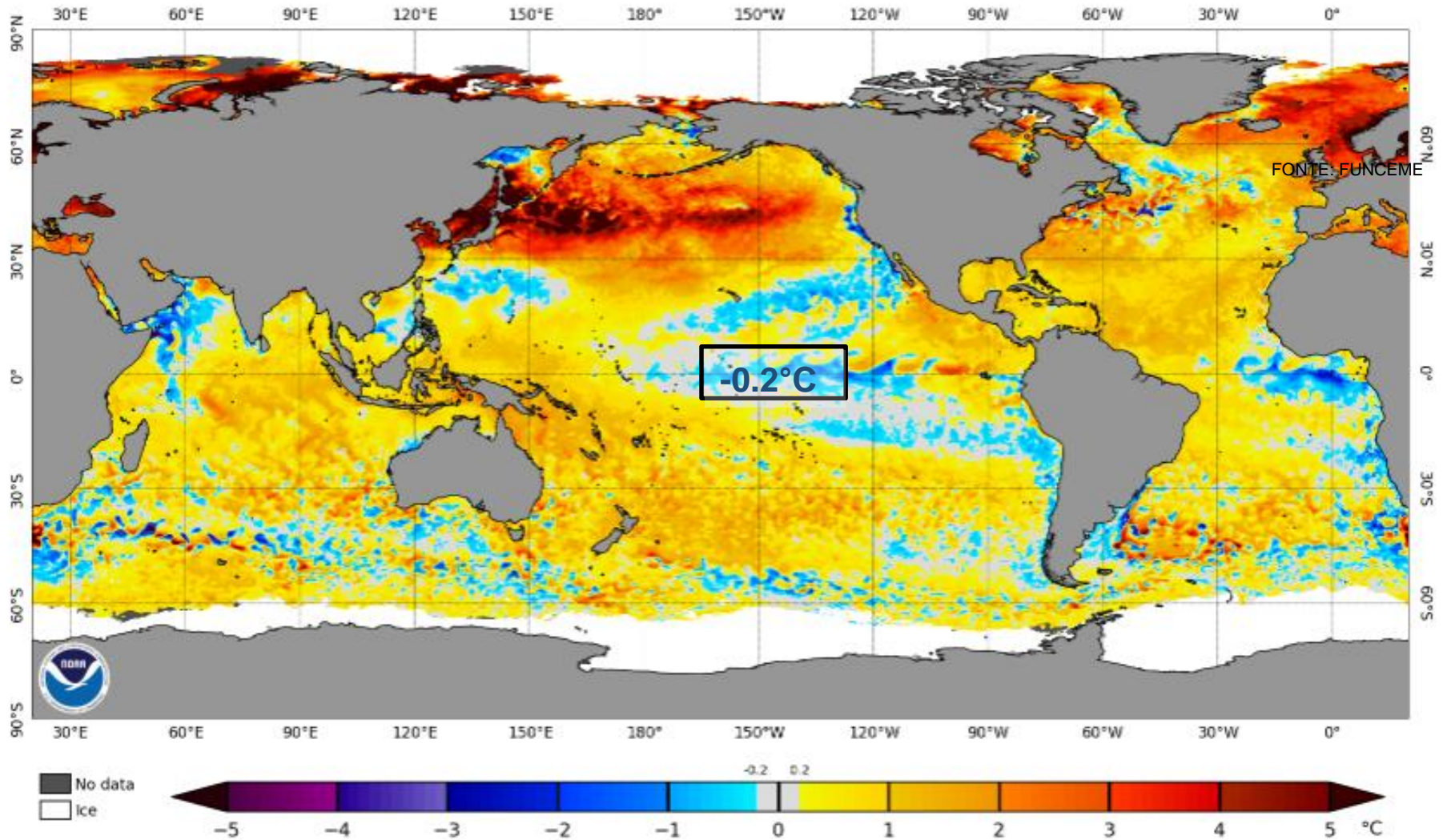


ECMWF



Status Atual: **Neutralidade**

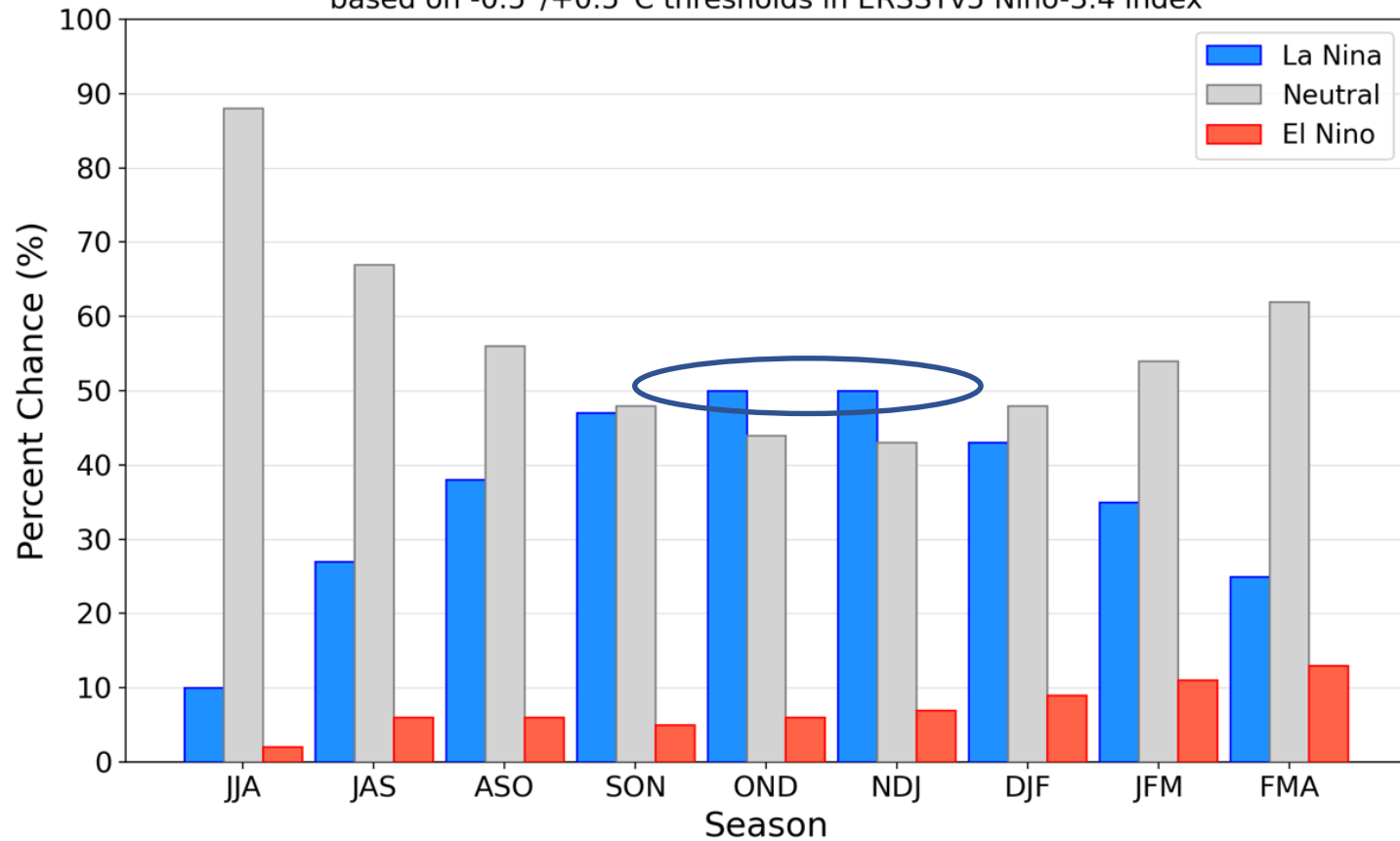
NOAA Coral Reef Watch Daily 5km SST Anomalies (v3.1) 27 Jul 2025



Previsão do “ENSO”

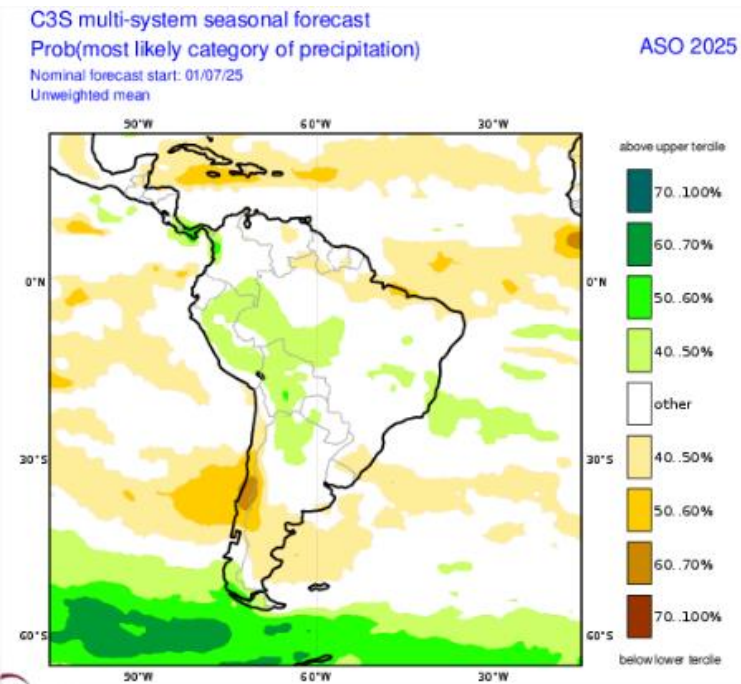
Official NOAA CPC ENSO Probabilities (issued July 2025)

based on $-0.5^{\circ}/+0.5^{\circ}\text{C}$ thresholds in ERSSTv5 Niño-3.4 index

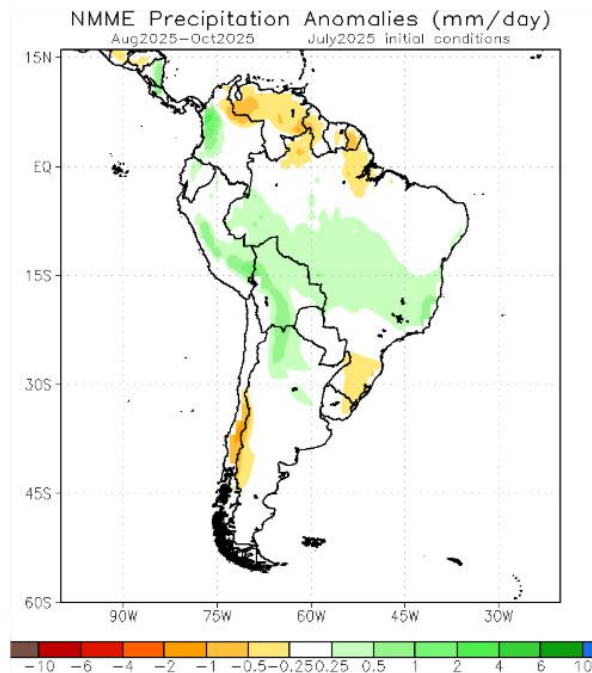


Previsão Sazonal de Chuva Multi-Modelo

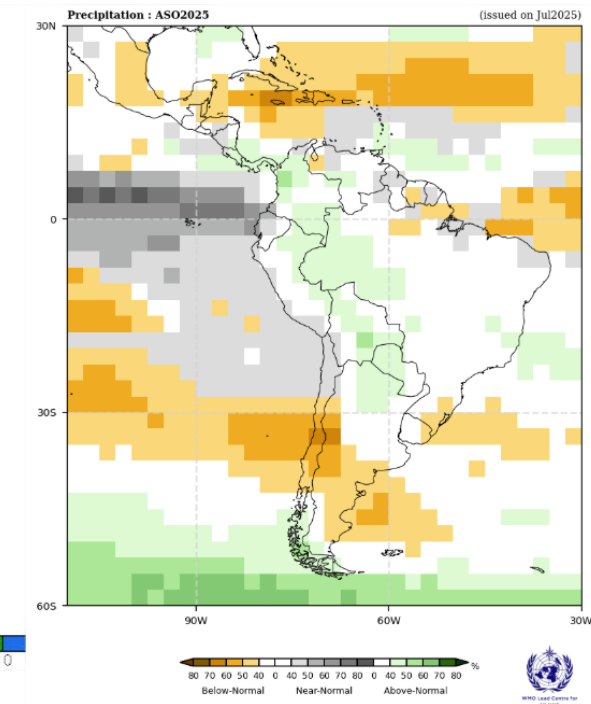
Agosto-Setembro-Outubro



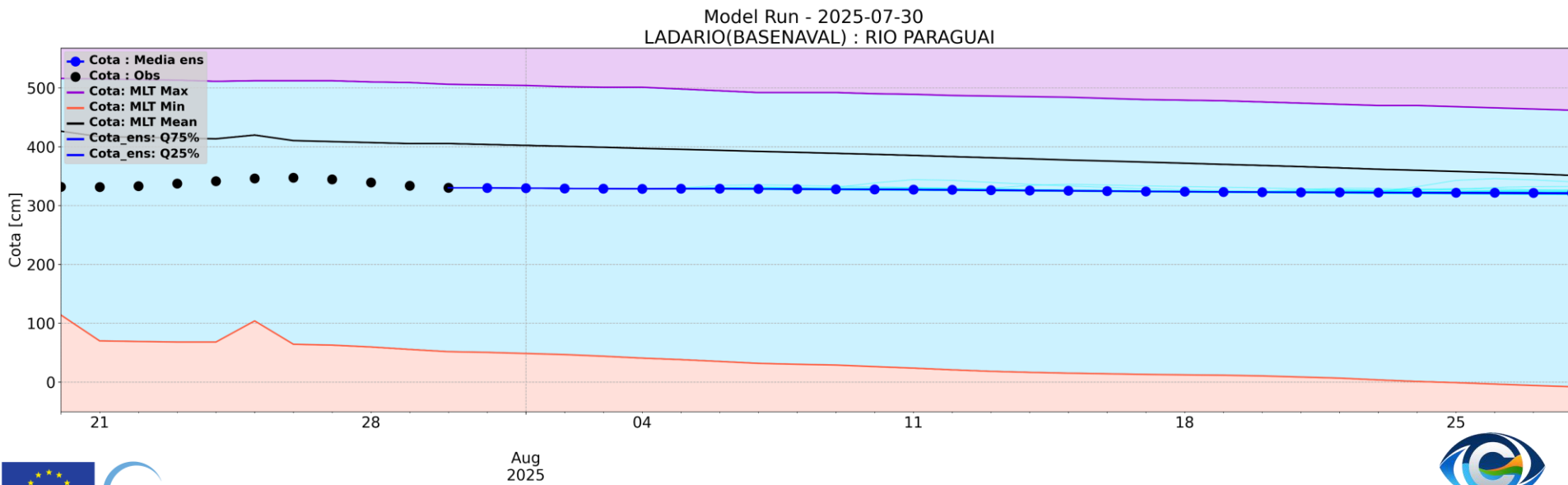
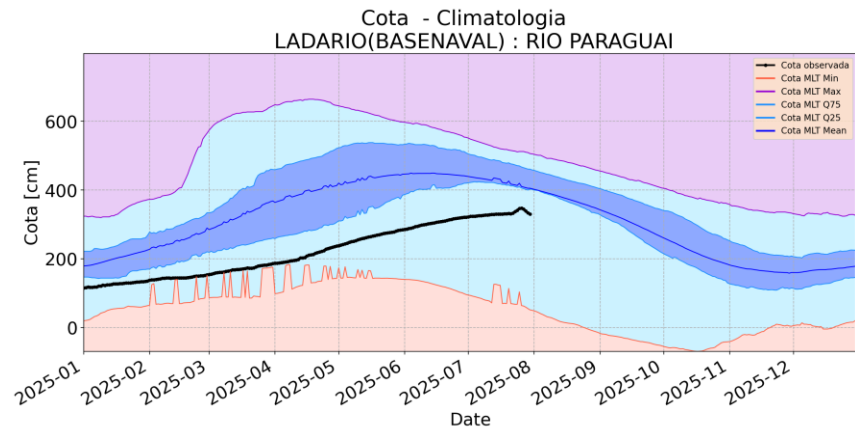
Modelos “Europeus”



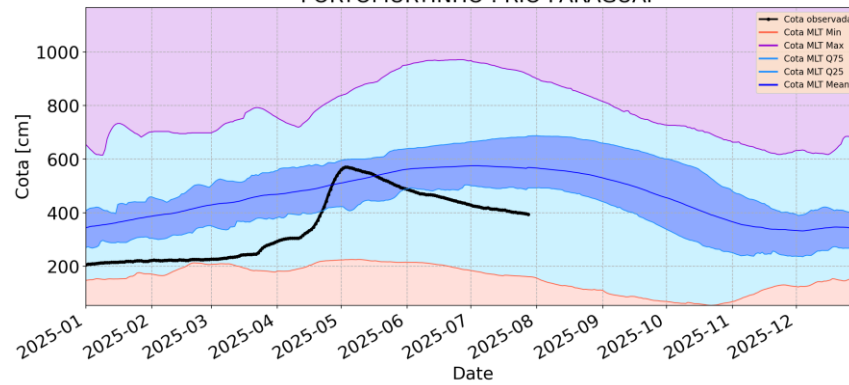
Modelos Norte Americanos



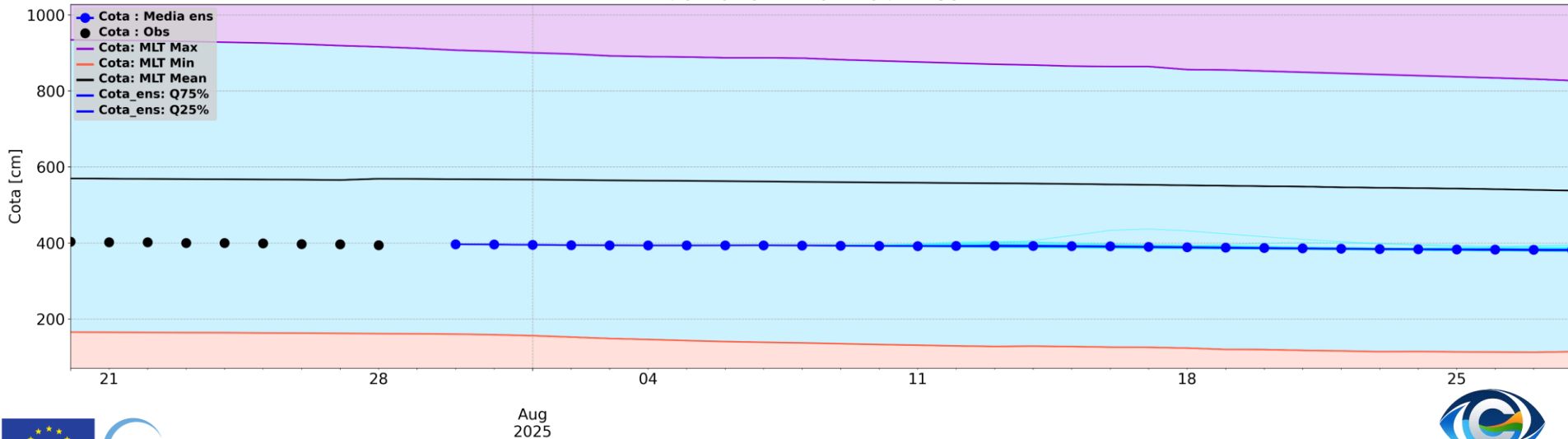
Modelos da WMO



Cota - Climatologia PORTOMURTINHO : RIO PARAGUAI



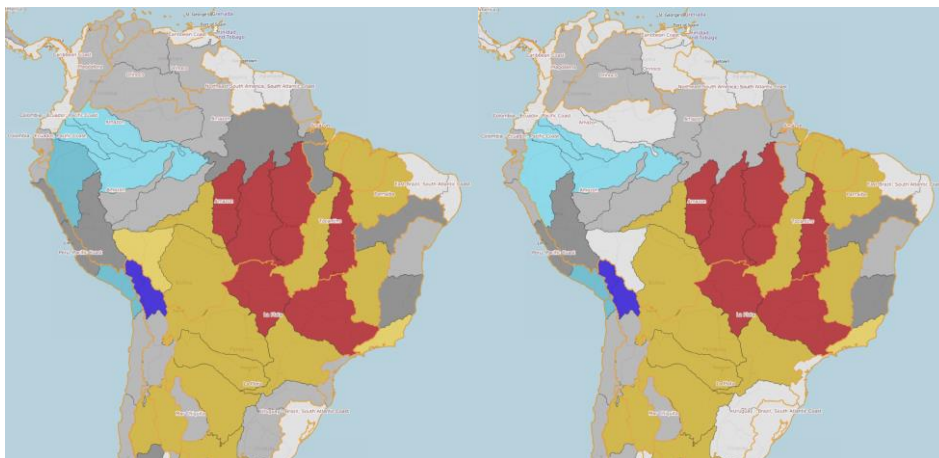
Model Run - 2025-07-30 PORTOMURTINHO : RIO PARAGUAI



Previsão Sazonal

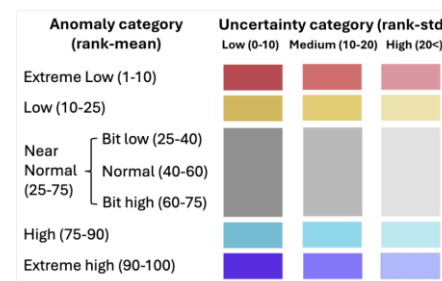
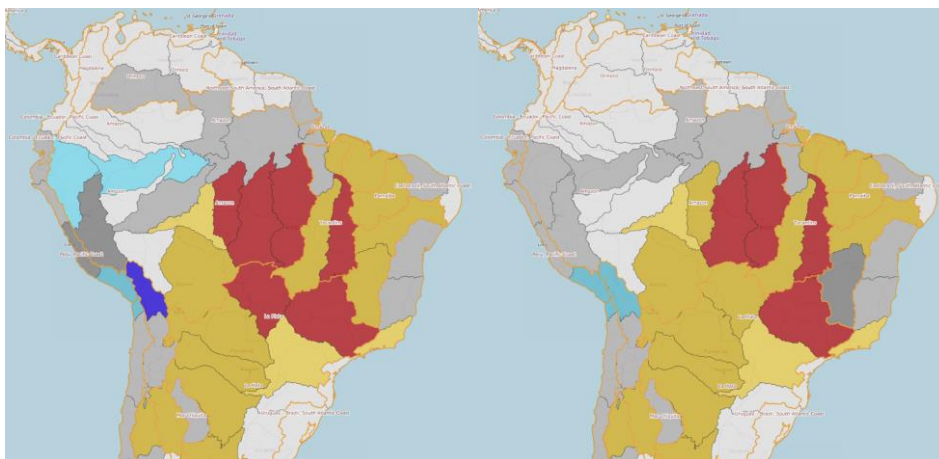
Agosto

Setembro



Outubro

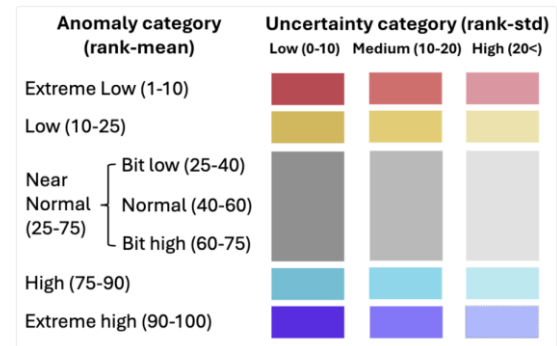
Novembro



Previsão Sazonal

Agosto

Setembro



Outubro

Novembro