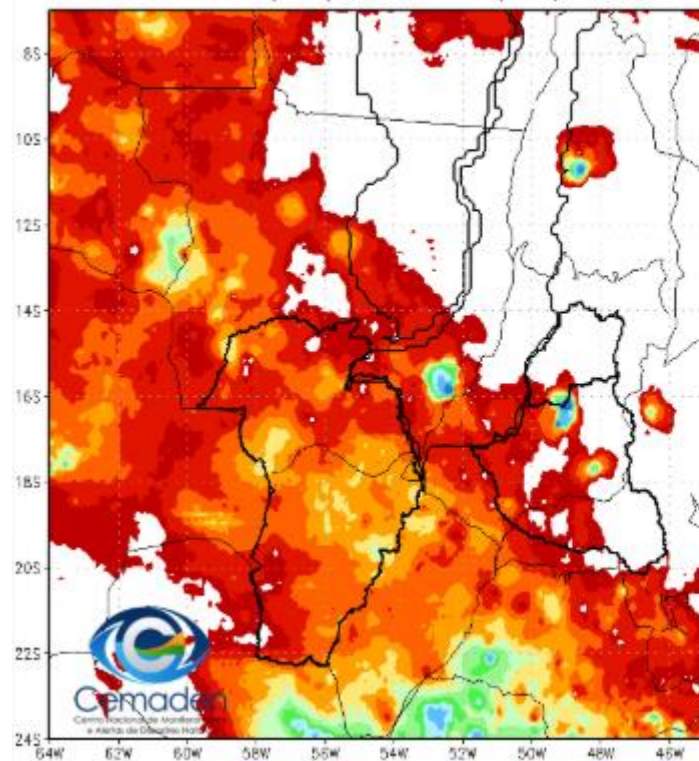


# Monitoramento, previsões e impactos da situação de seca no Alto Paraguai

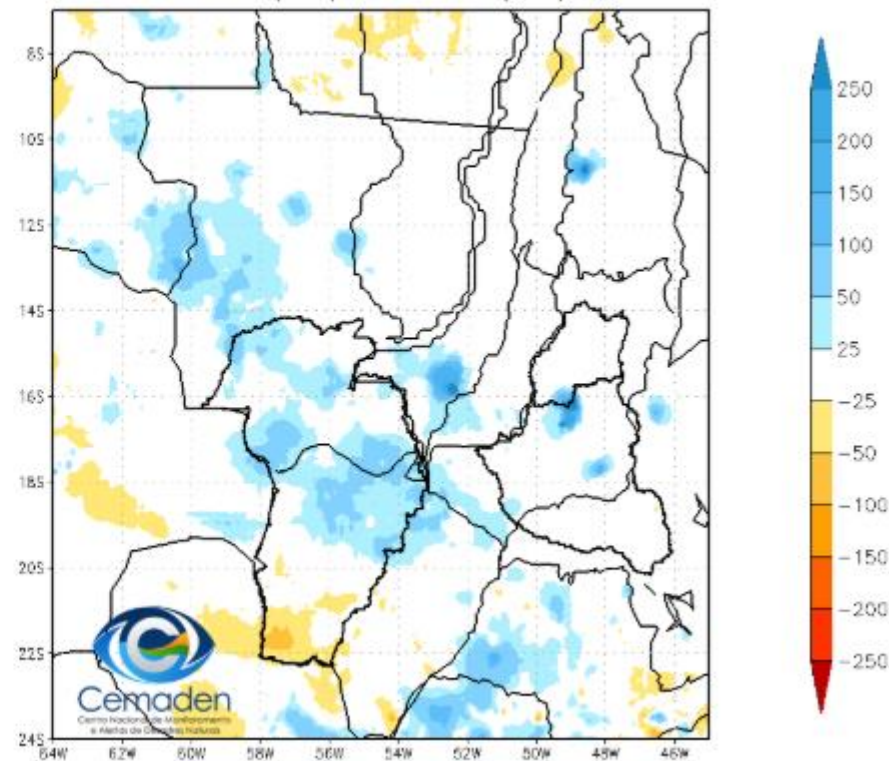
26 de Junho de 2025

## Precipitação nos últimos 30 dias

Precipitação Acumulada (mm) A.S.  
Período: 26/05/2025 a 25/06/2025



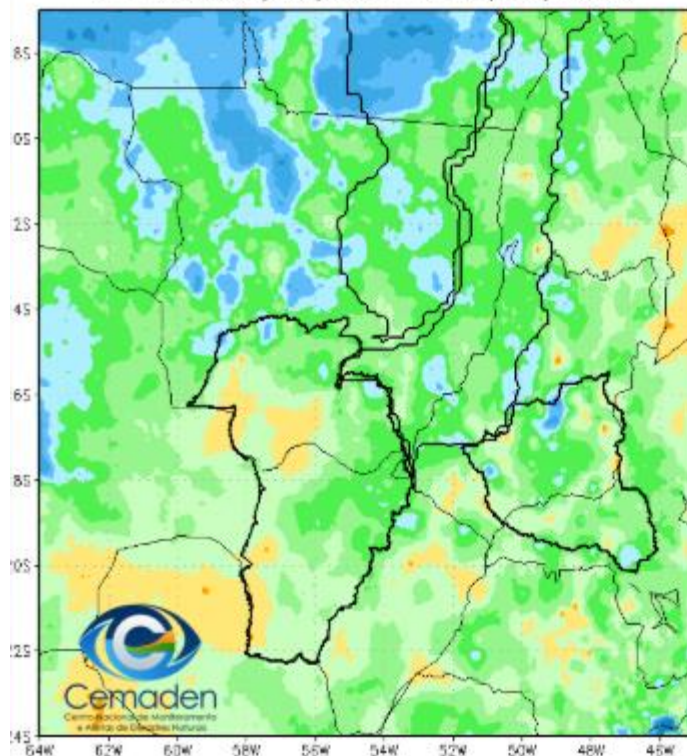
Anomalia de Precipitação (mm) A.S.  
Período: 26/05/2025 a 25/06/2025



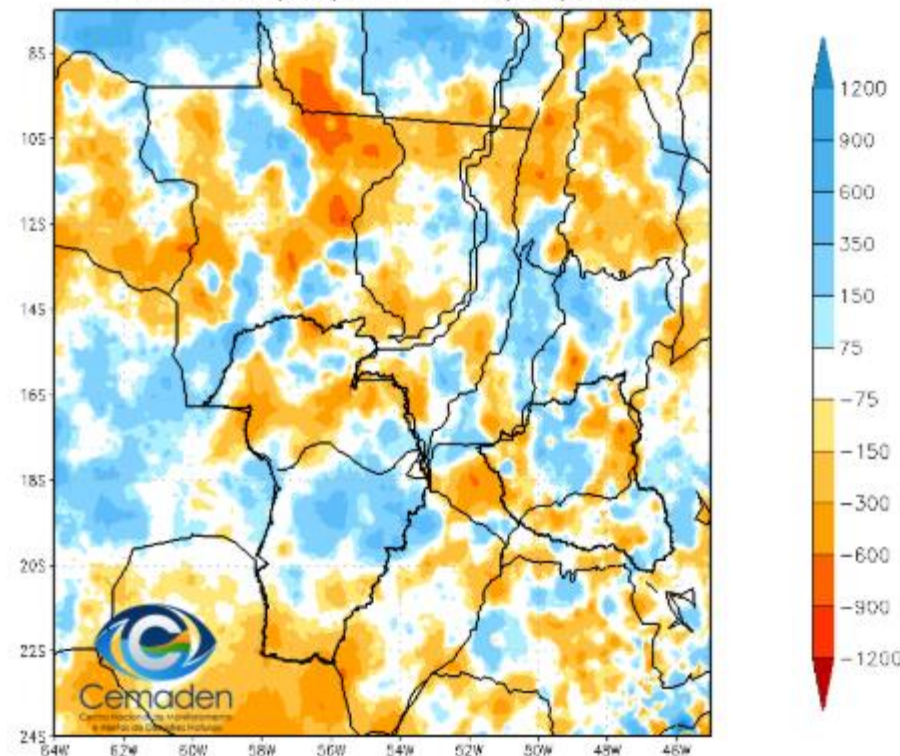


## Precipitação no Ano Hidrológico

Precipitação Acumulada (mm) A.S.  
Período: 01/10/2024 a 25/06/2025

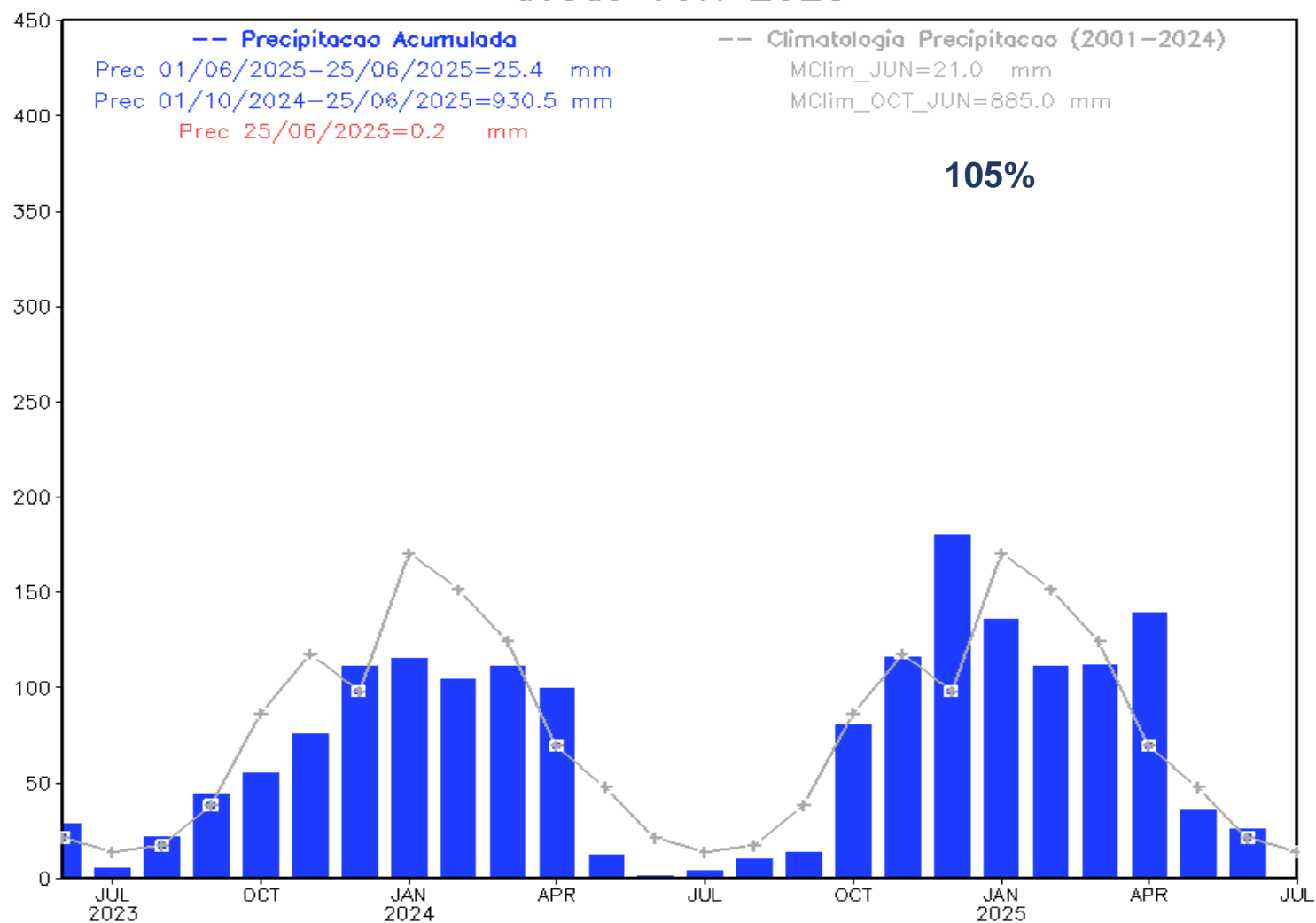


Anomalia de Precipitação (mm) A.S.  
Período: 01/10/2024 a 25/06/2025



## Precipitação nos últimos dois anos

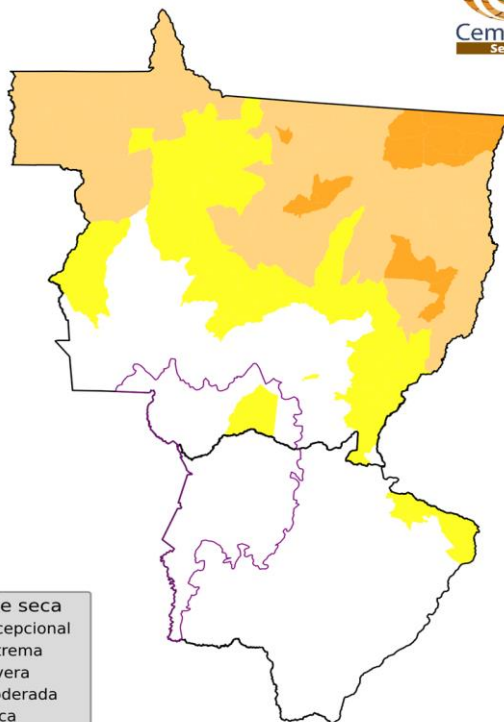
### Precipitação Bacia do Rio Paraguai desde JUN 2023



## ÍNDICE INTEGRADO DE SECA: ANÁLISE POR MUNICÍPIOS

### IIS-03

Índice Integrado de Seca - 3 meses (IIS3)  
Maio 2025



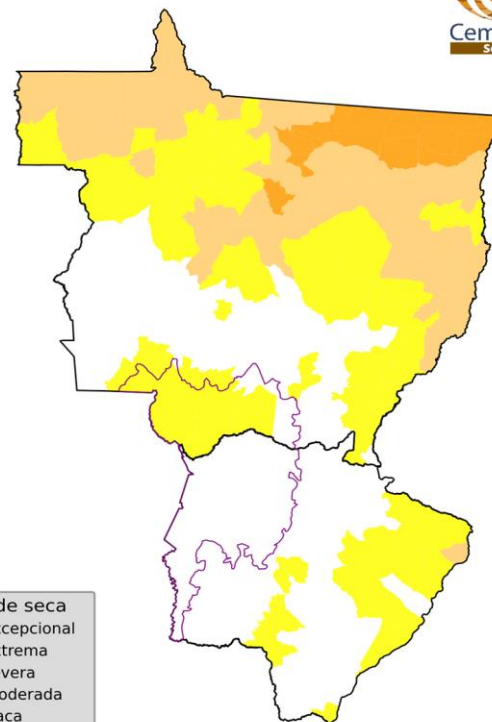
Classes de seca	
●	Seca excepcional
●	Seca extrema
●	Seca severa
●	Seca moderada
●	Seca fraca
●	Condições normais

Número de municípios por classes de seca:	
Seca excepcional:	0 (0.0%)
Seca extrema:	0 (0.0%)
Seca severa:	0 (0.0%)
Seca moderada:	0 (0.0%)
Seca fraca:	1 (3.6%)
Condições normais:	27 (96.4%)

Fonte: Cemaden/MCTI

### IIS-06

Índice Integrado de Seca - 6 meses (IIS6)  
Maio 2025



Classes de seca	
●	Seca excepcional
●	Seca extrema
●	Seca severa
●	Seca moderada
●	Seca fraca
●	Condições normais

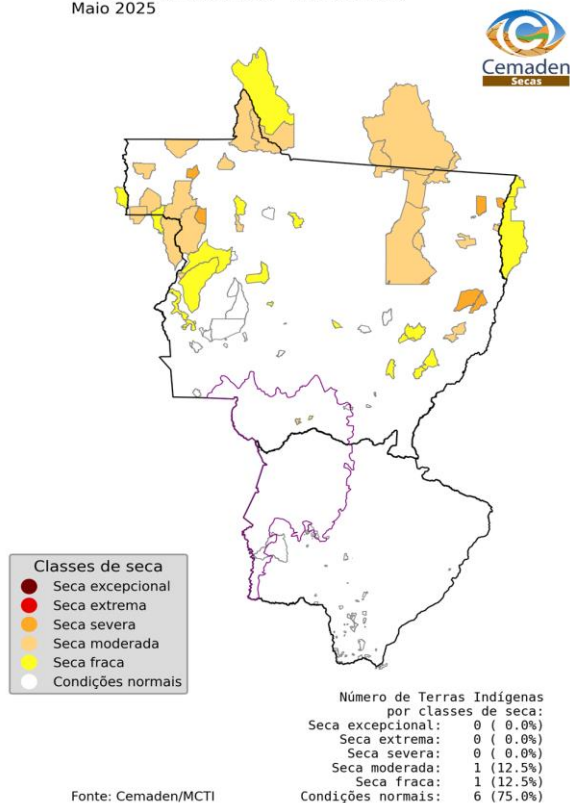
Número de municípios por classes de seca:	
Seca excepcional:	0 (0.0%)
Seca extrema:	0 (0.0%)
Seca severa:	0 (0.0%)
Seca moderada:	0 (0.0%)
Seca fraca:	8 (28.6%)
Condições normais:	20 (71.4%)

Fonte: Cemaden/MCTI

## ÍNDICE INTEGRADO DE SECA (IIS-03)

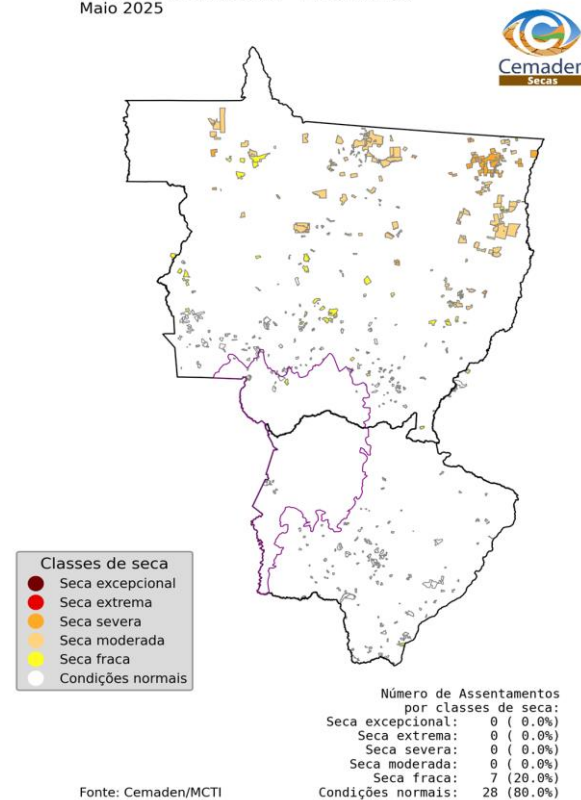
### TERRAS INDÍGENAS

Índice Integrado de Seca - 3 meses (IIS3)  
Maio 2025



### ASSENTAMENTOS

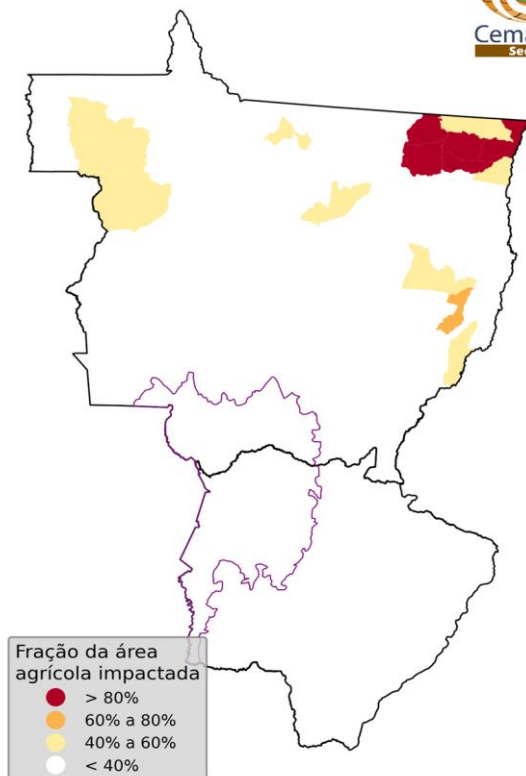
Índice Integrado de Seca - 3 meses (IIS3)  
Maio 2025





## ÁREAS DE PASTAGENS E AGRÍCOLAS AFETADAS PELA SECA

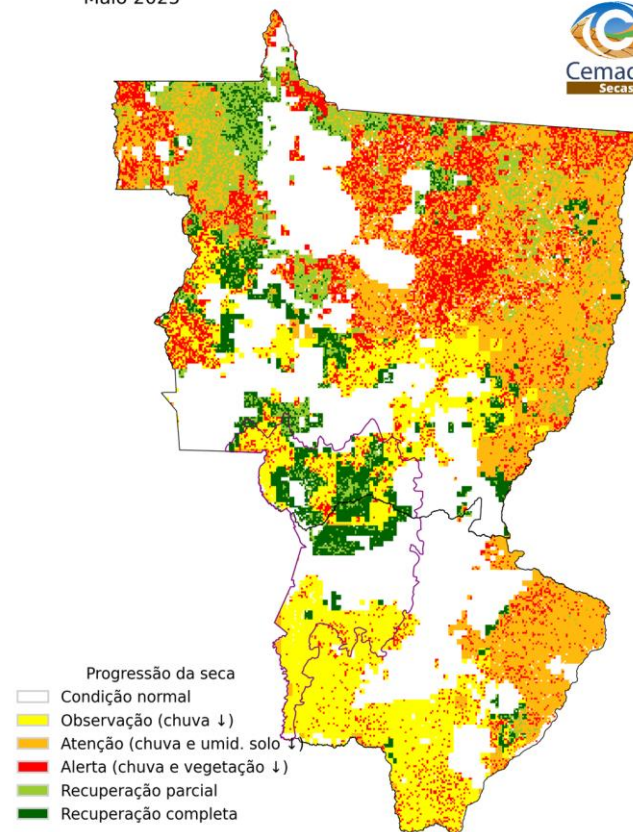
Área agro-pastoril municipal afetada pela seca  
Maio 2025



Fonte: Cemaden/MCTI

## PROPAGAÇÃO INCREMENTAL DAS CONDIÇÕES DE SECA (PICS)

Progressão e Intensificação das Condições de Seca (PICS)  
Maio 2025



Fonte: Cemaden/MCTI

# Índice Padronizado de Precipitação – Evapotranspiração Potencial – SPEI

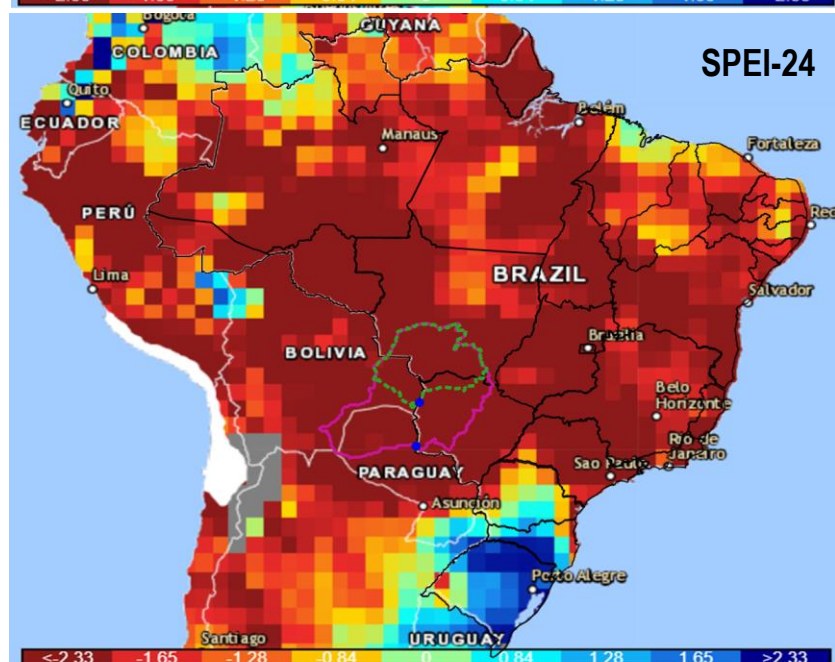
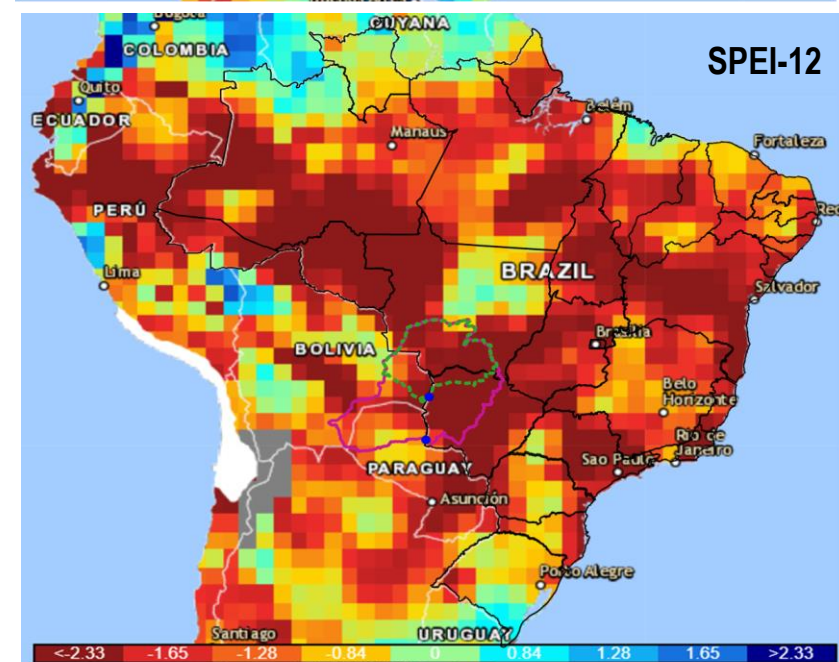
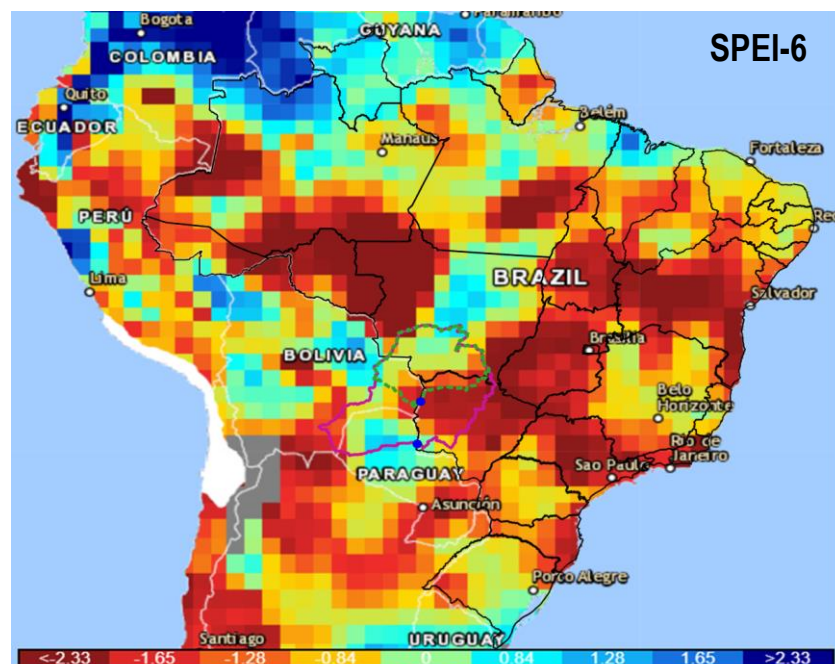
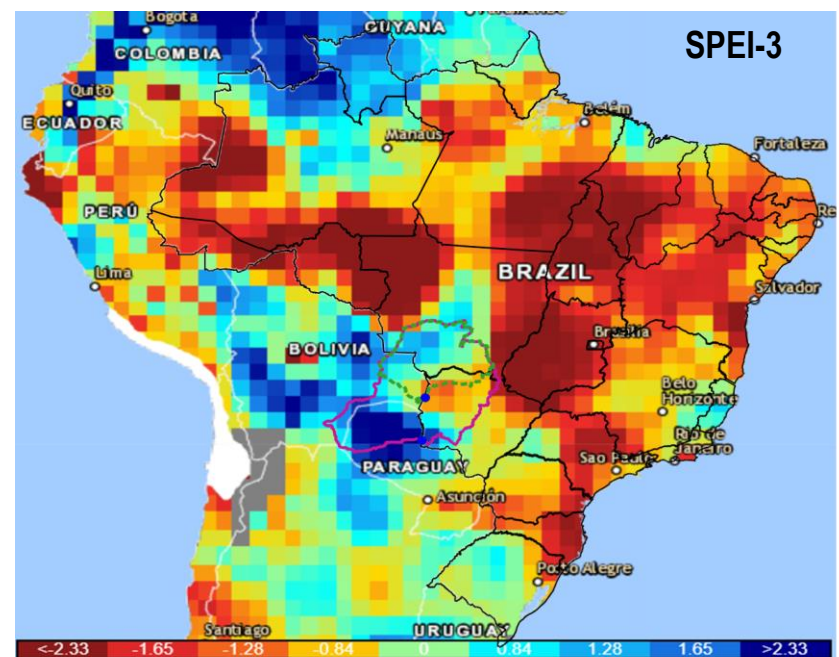
Maio/2025

SPEI-3

SPEI-6

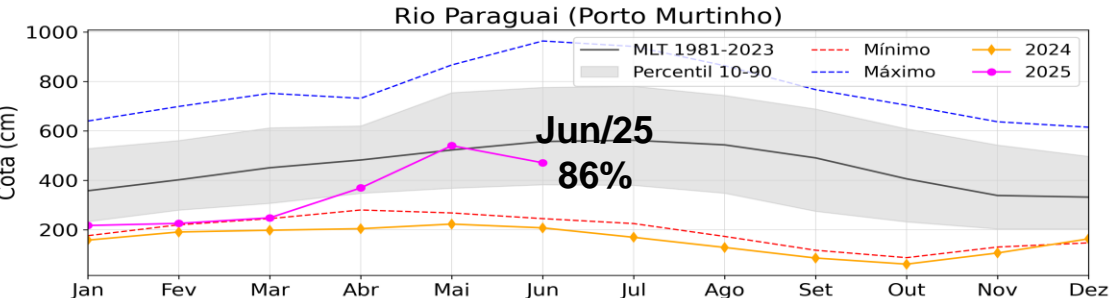
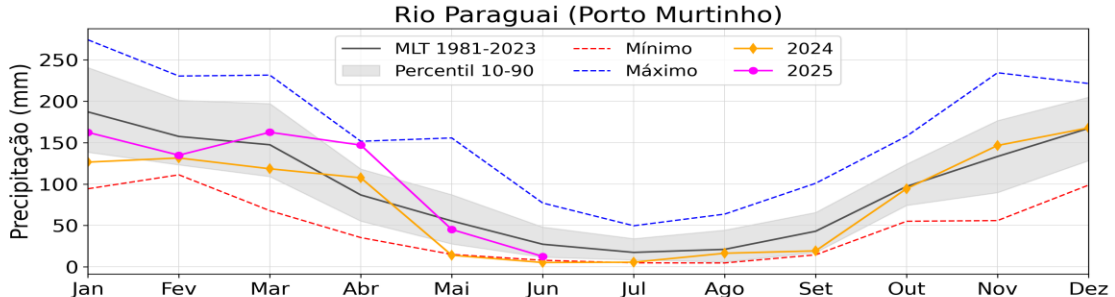
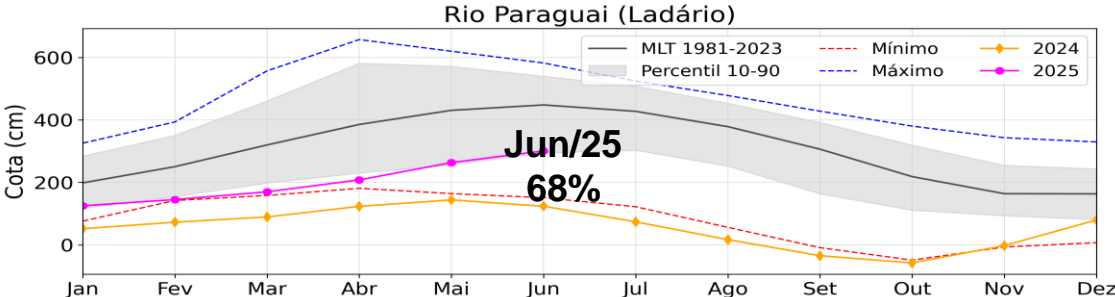
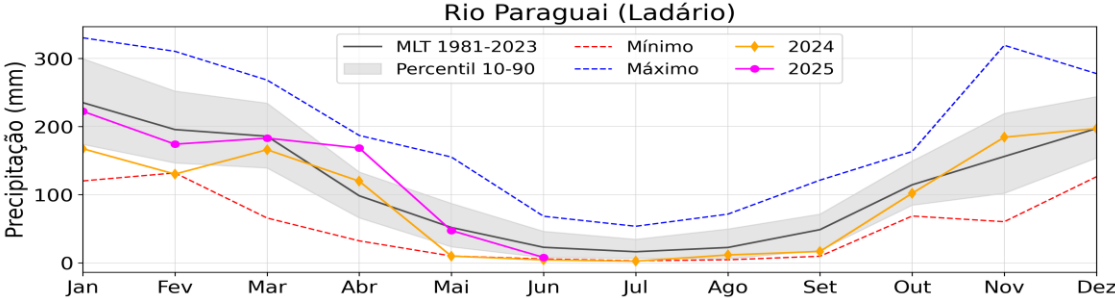
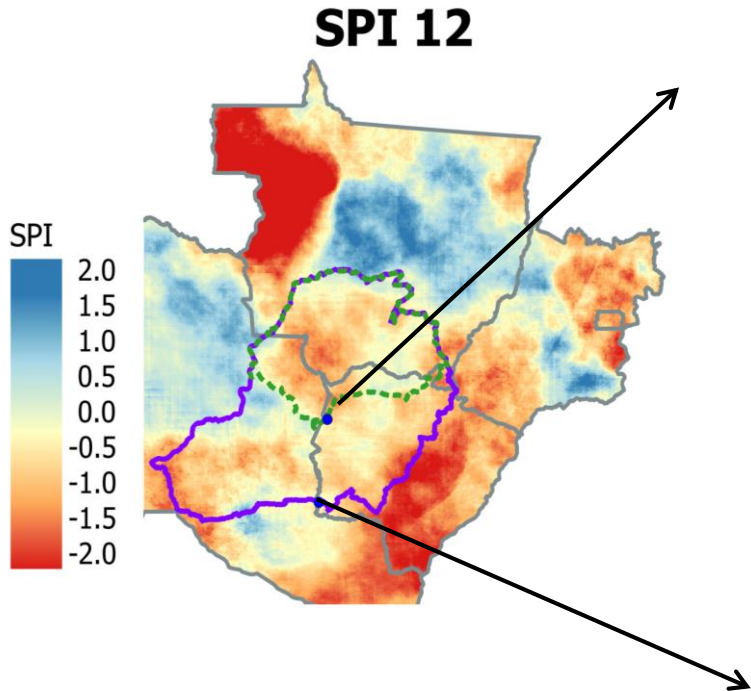
SPEI-12

SPEI-24





# Evolução dos Níveis do Rio Paraguai

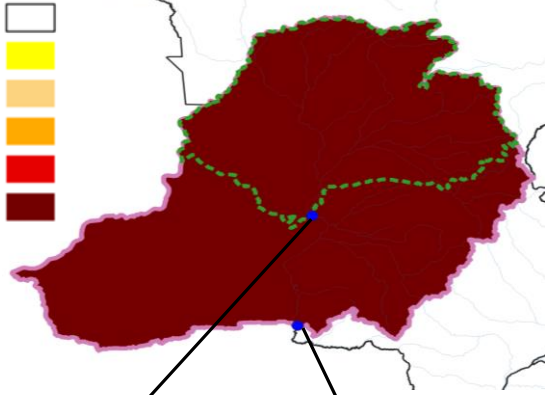


Estação	Cota 31/Maio	Cota 24/Junho
Ladário	287 cm	316 cm
P. Murtinho	499 cm	444 cm

Fonte dos dados: CHIRPS (Precipitação) e Marinha do Brasil e ANA (Cotas)/ Estimativa SPI e gráficos: CEMADEN

# Índice Bivariado de Seca (Precipitação-Cota) - TSI

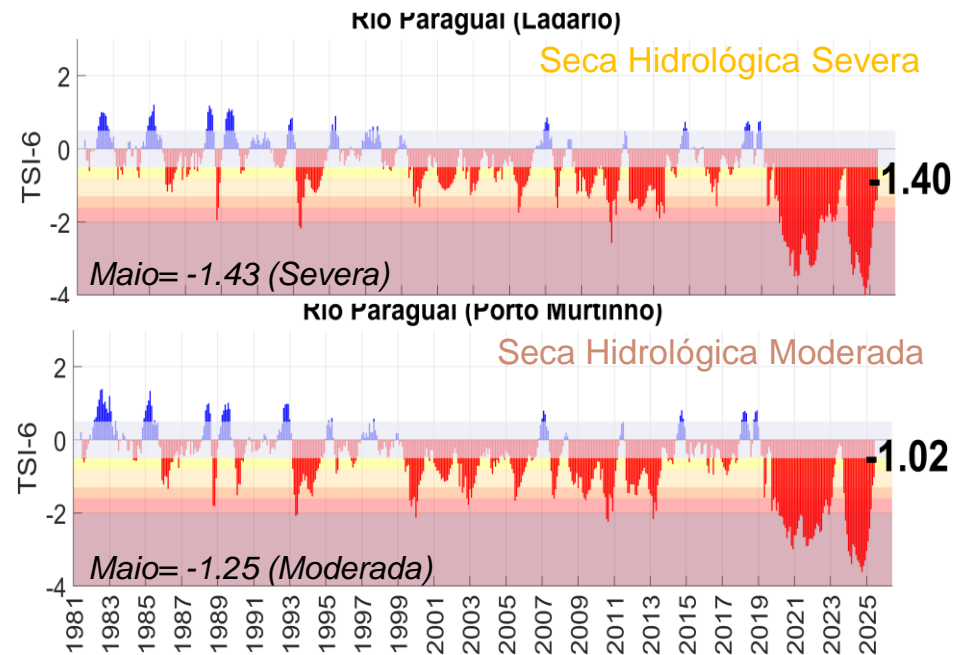
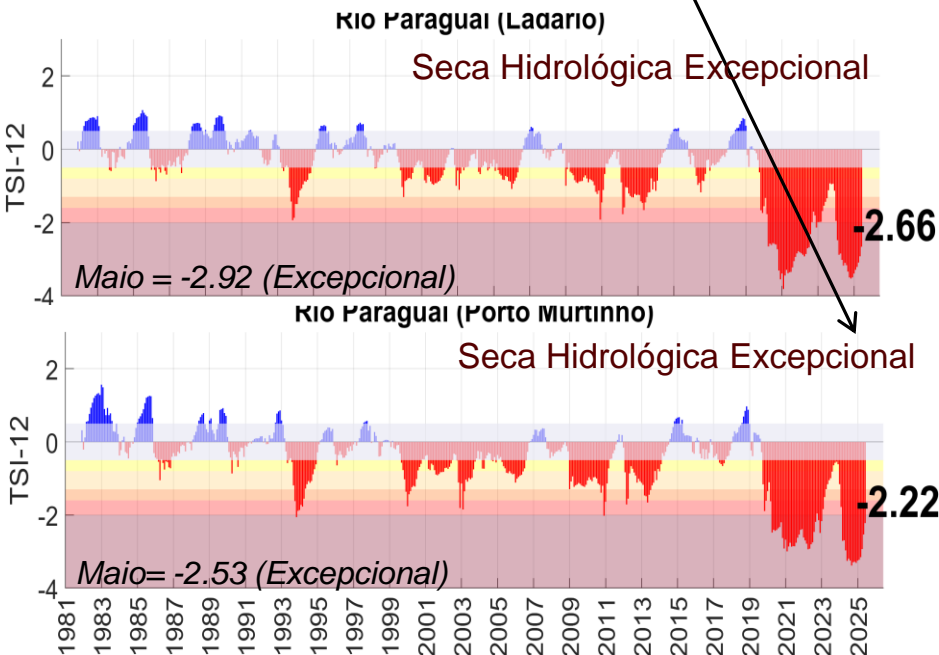
Condição Normal  
Seca Fraca  
Seca Moderada  
Seca Severa  
Seca Extrema  
Seca Excepcional



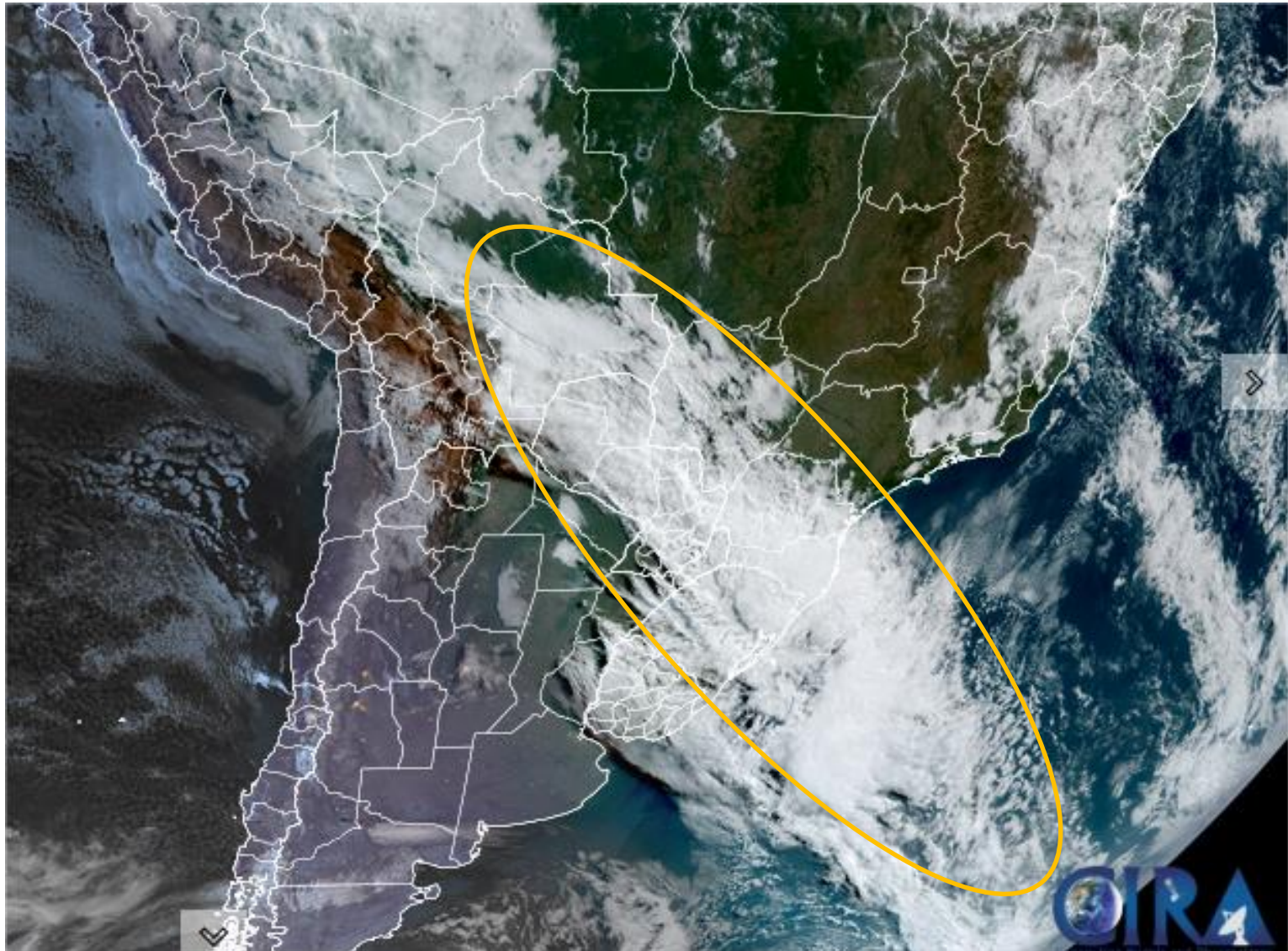
**Em uma escala de curto prazo, as chuvas já contribuíram para mitigar a seca hidrológica na bacia, indicando sinais de recuperação parcial dos recursos hídricos!**

**TSI-6 Junho**

**TSI-12 Junho**



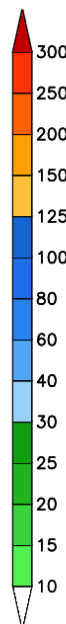
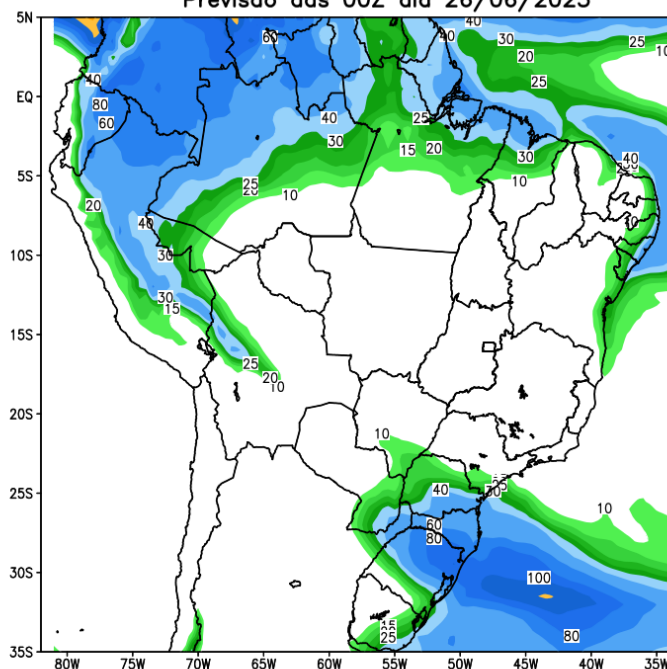
## Situação meteorológica atual



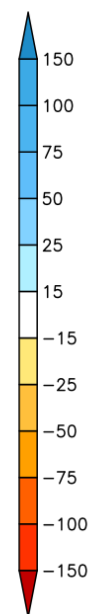
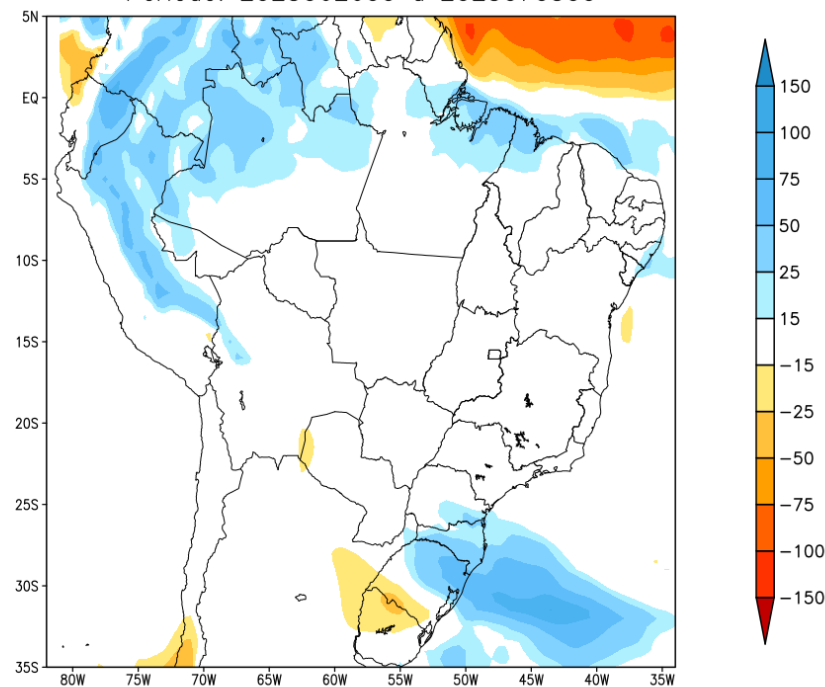


## Previsão para as próxima semana

GEFS / BRASIL  
Precipitação acumulada 1aSem (mm)  
Previsão das 00Z dia 26/06/2025

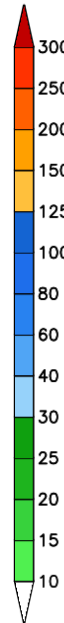
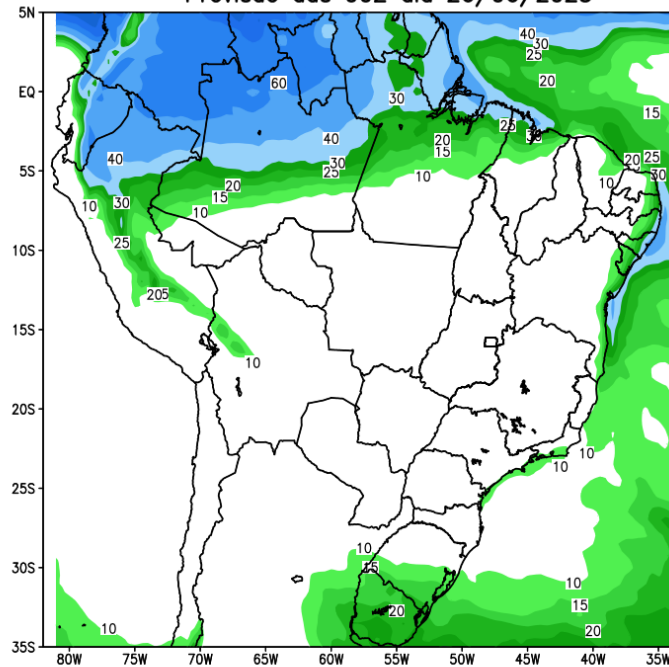


Anomalia de Precipitação BR (mm)  
Período: 2025062600 a 2025070300

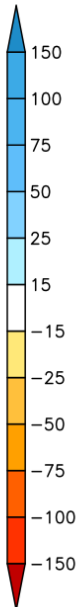
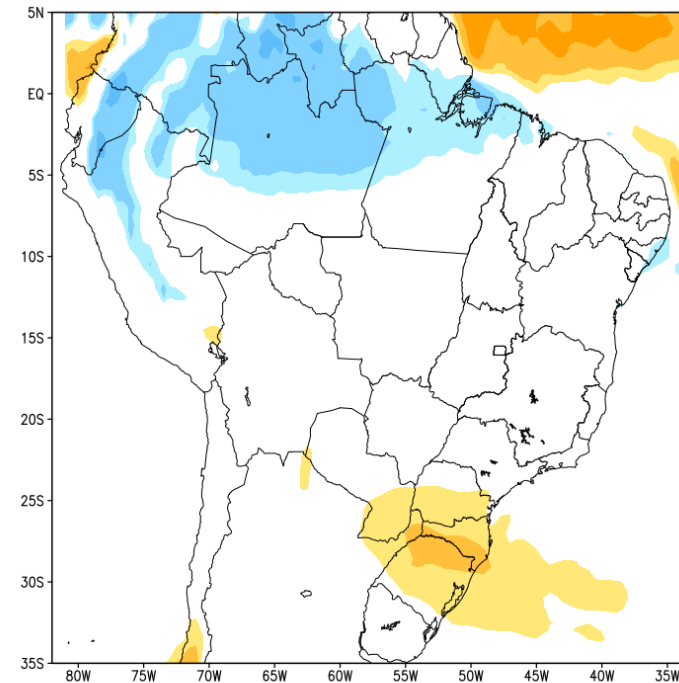


## Tendência para a segunda semana

GEFS / BRASIL  
Precipitação acumulada 2aSem (mm)  
Previsão das 00Z dia 26/06/2025

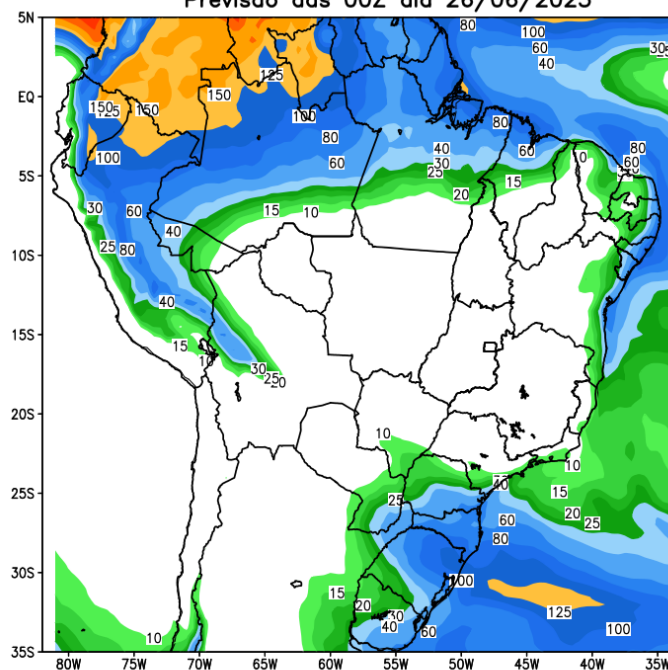


Anomalia de Precipitação BR (mm)  
Período: 2025070400 a 2025071000

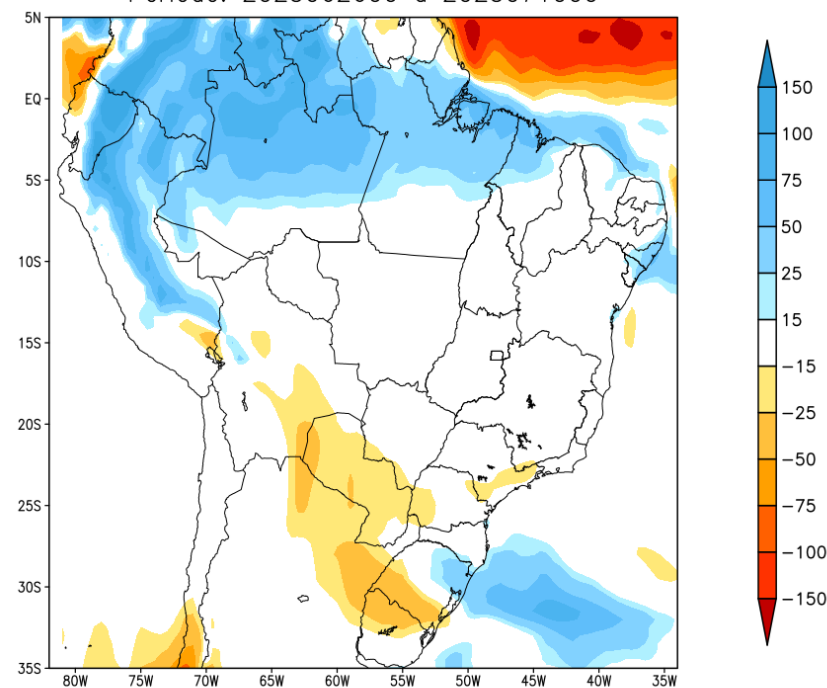


## Tendência para as próximas duas semanas

GEFS / BRASIL  
Precipitação acumulada 14 dias (mm)  
Previsão das 00Z dia 26/06/2025



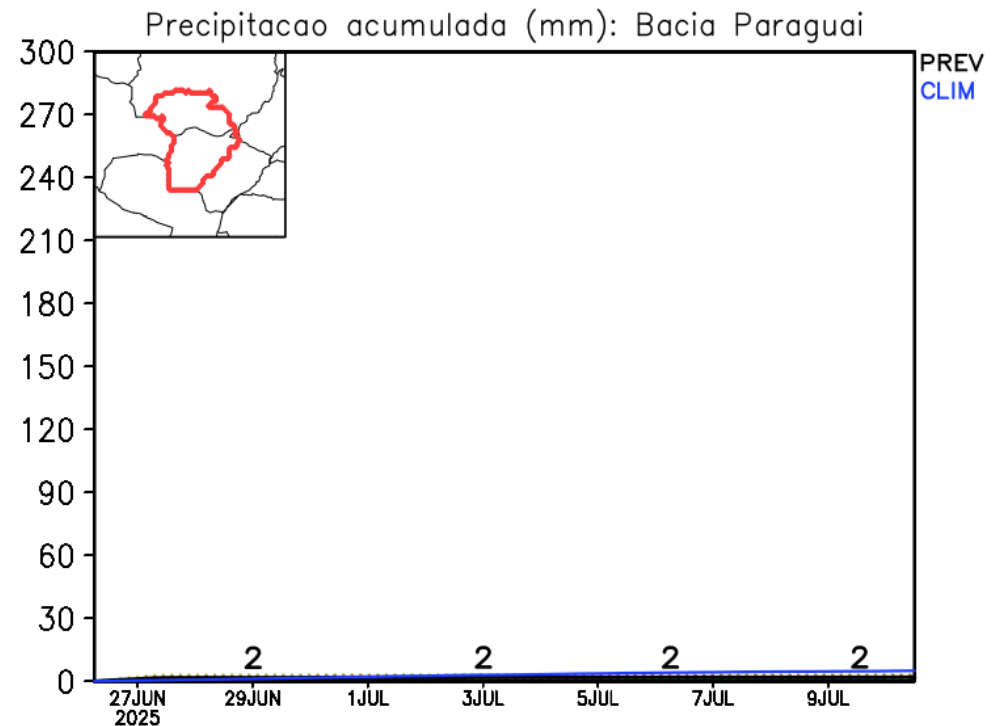
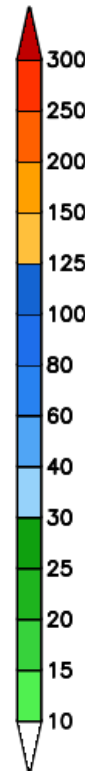
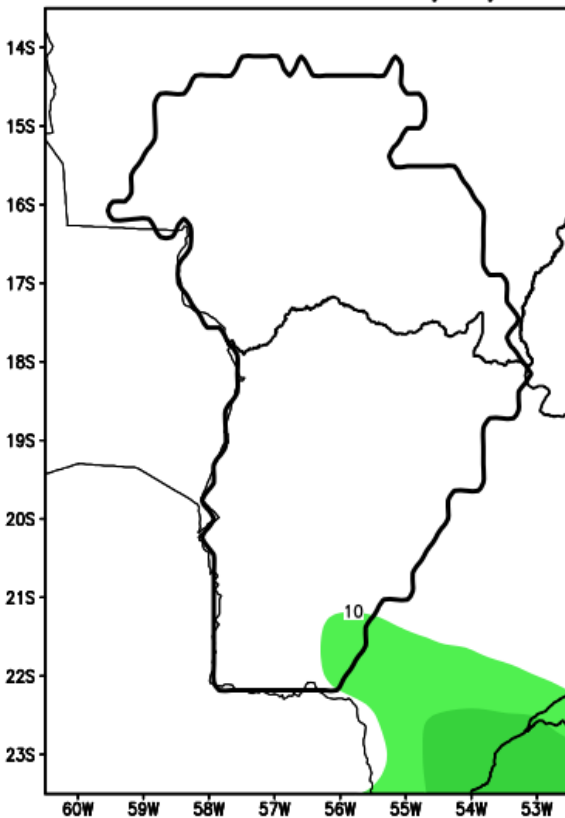
Anomalia de Precipitação BR (mm)  
Período: 2025062600 a 2025071000





## Previsão de chuva Bacia do Alto Paraguai

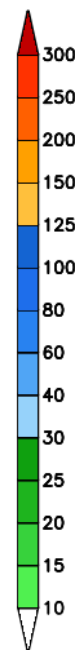
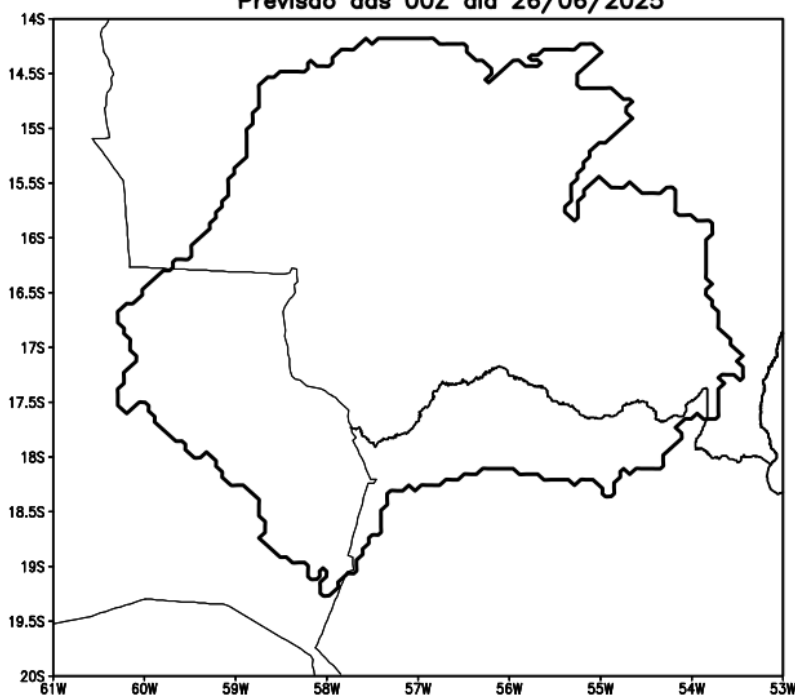
GEFS / Bacia do Rio Paraguai  
Precipitação acumulada em 15 dias (mm)  
Previsão das 00Z dia 26/06/2025



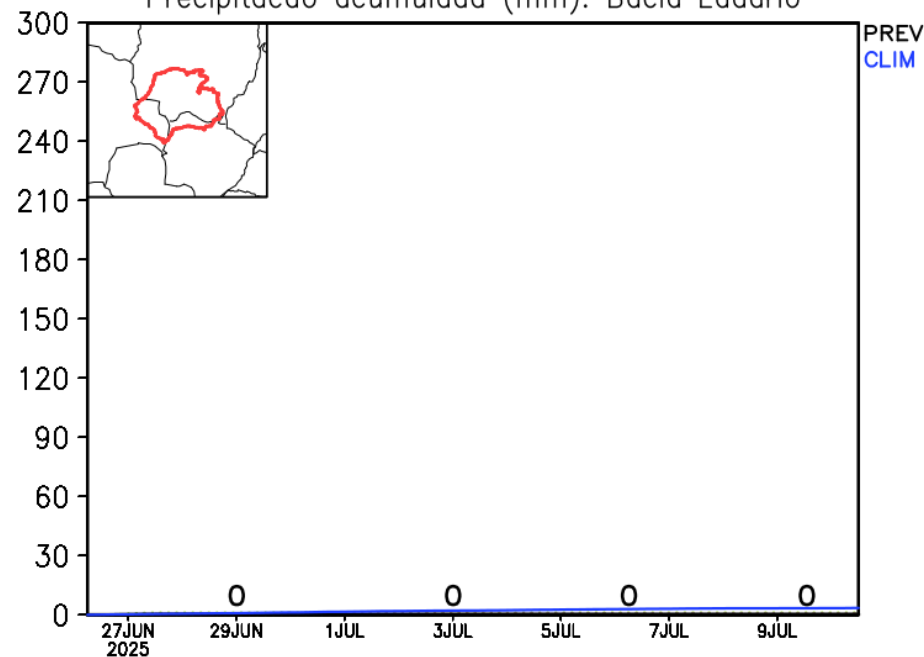
Fonte: GEFS/NOAA

## Previsão de chuva sub Bacia de Ladário

GEFS / Bacia Ladario  
Precipitação acumulada em 14 dias (mm)  
Previsão das 00Z dia 26/06/2025



Precipitação acumulada (mm): Bacia Ladario

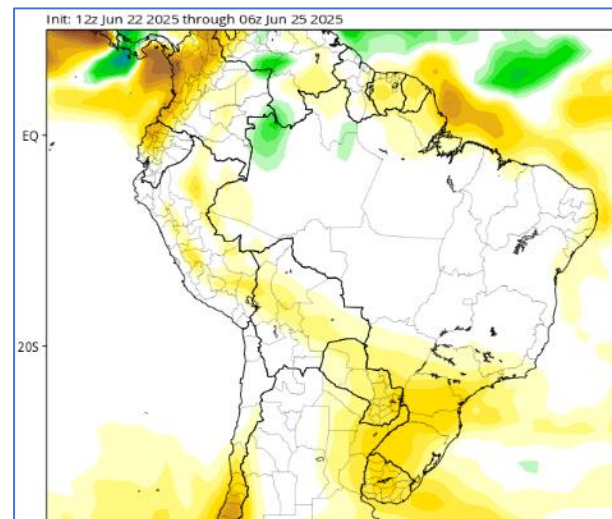
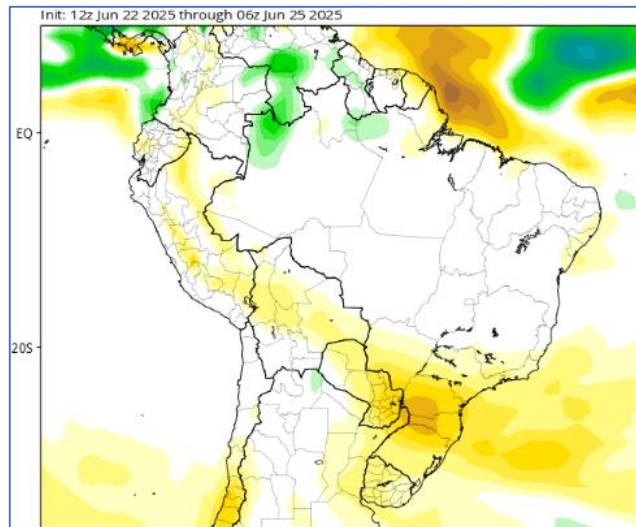


# Tendência 3a e 4a semanas

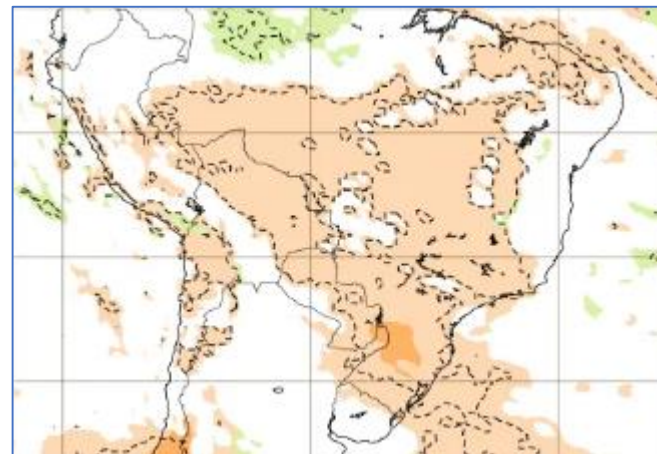
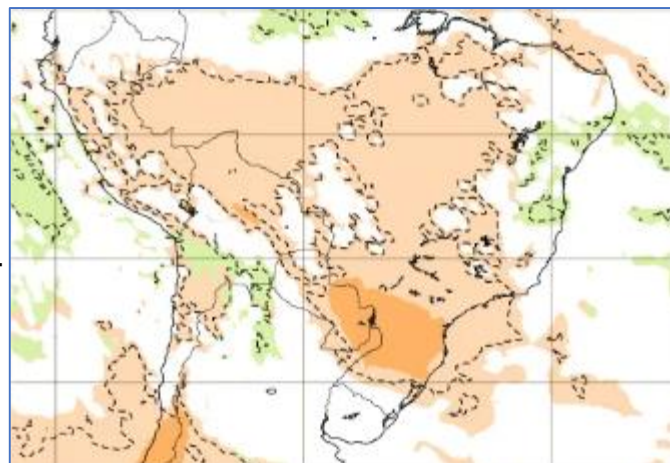
16-23 Jul

23-30 Jul

CFS/NOAA



ECMWF



14-21 Jul

21-28 Jul

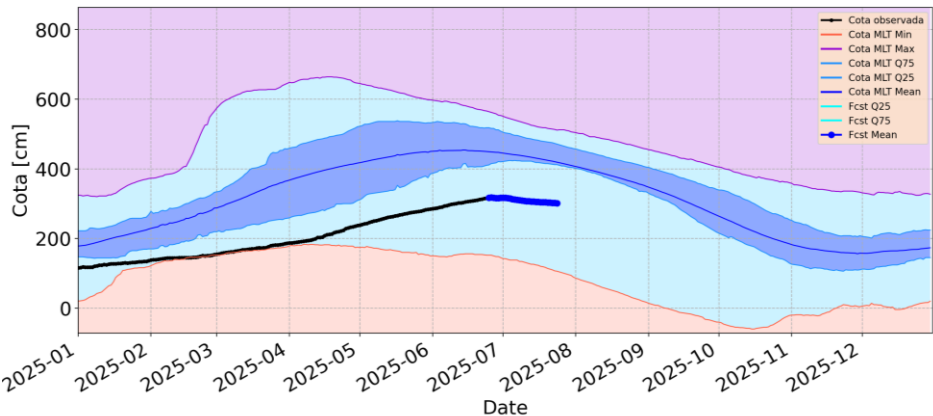




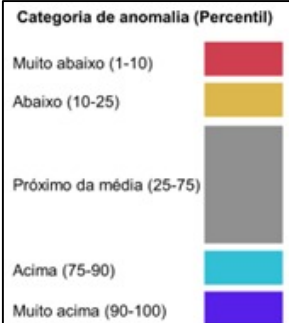
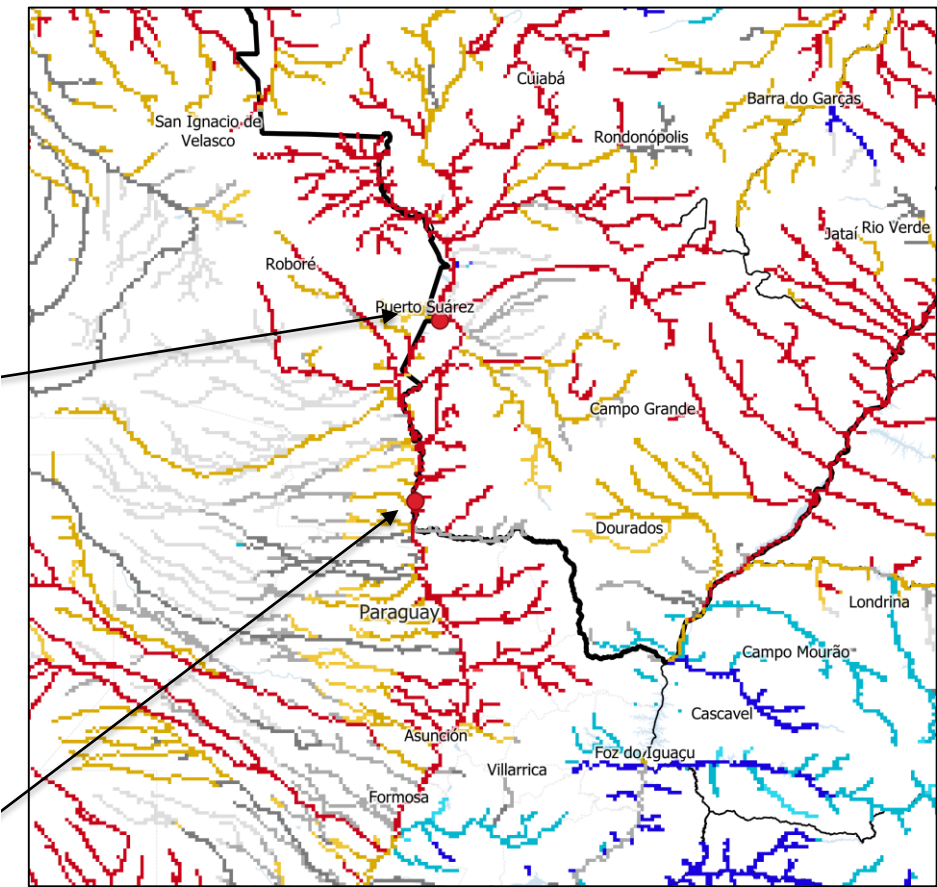
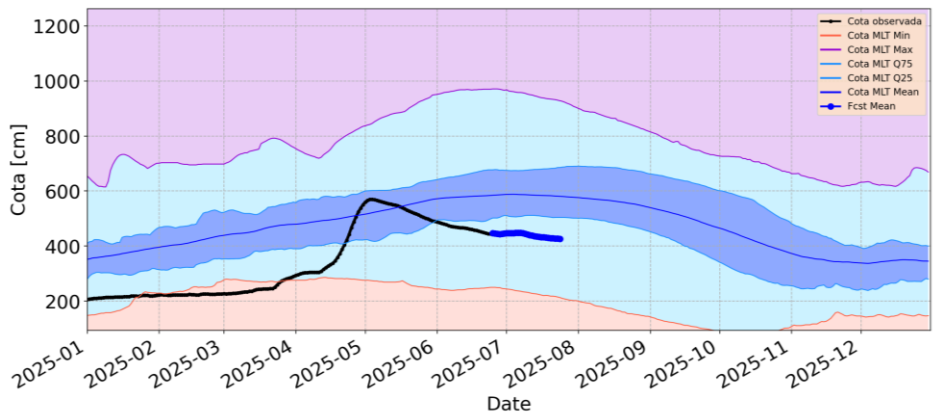
Previsão Sub-sazonal de cotas para o Rio Paraguai para os próximos 30 dias (Sistema Global de Previsão de Vazão - GLOFAS)

Previsão: 25/06/2025 – 25/07/2025

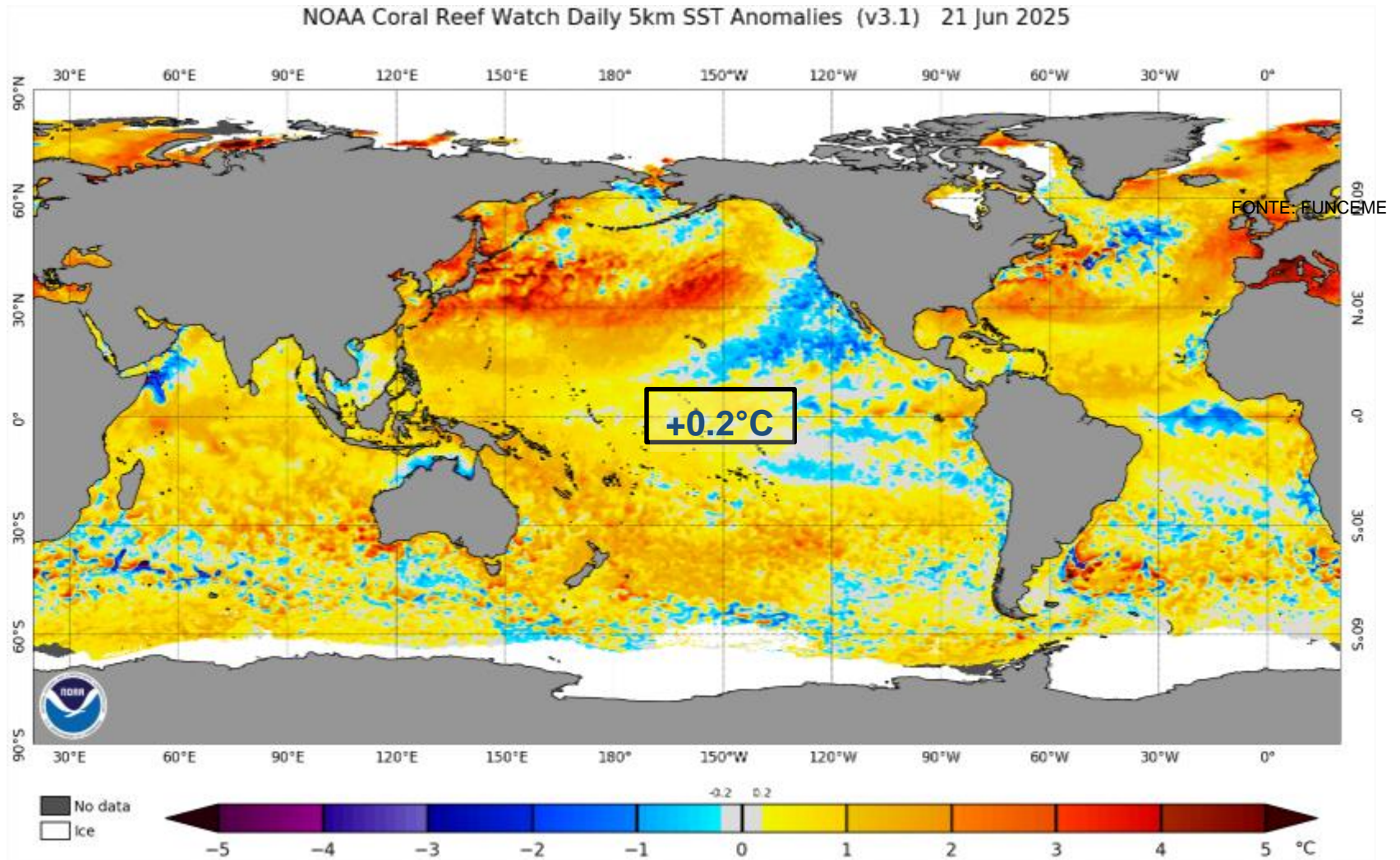
Previsão de cota – Climatologia  
Rio Paraguai-Ladário-MS



Previsão de cota – Climatologia  
Rio Paraguai-Porto Murtinho-MS



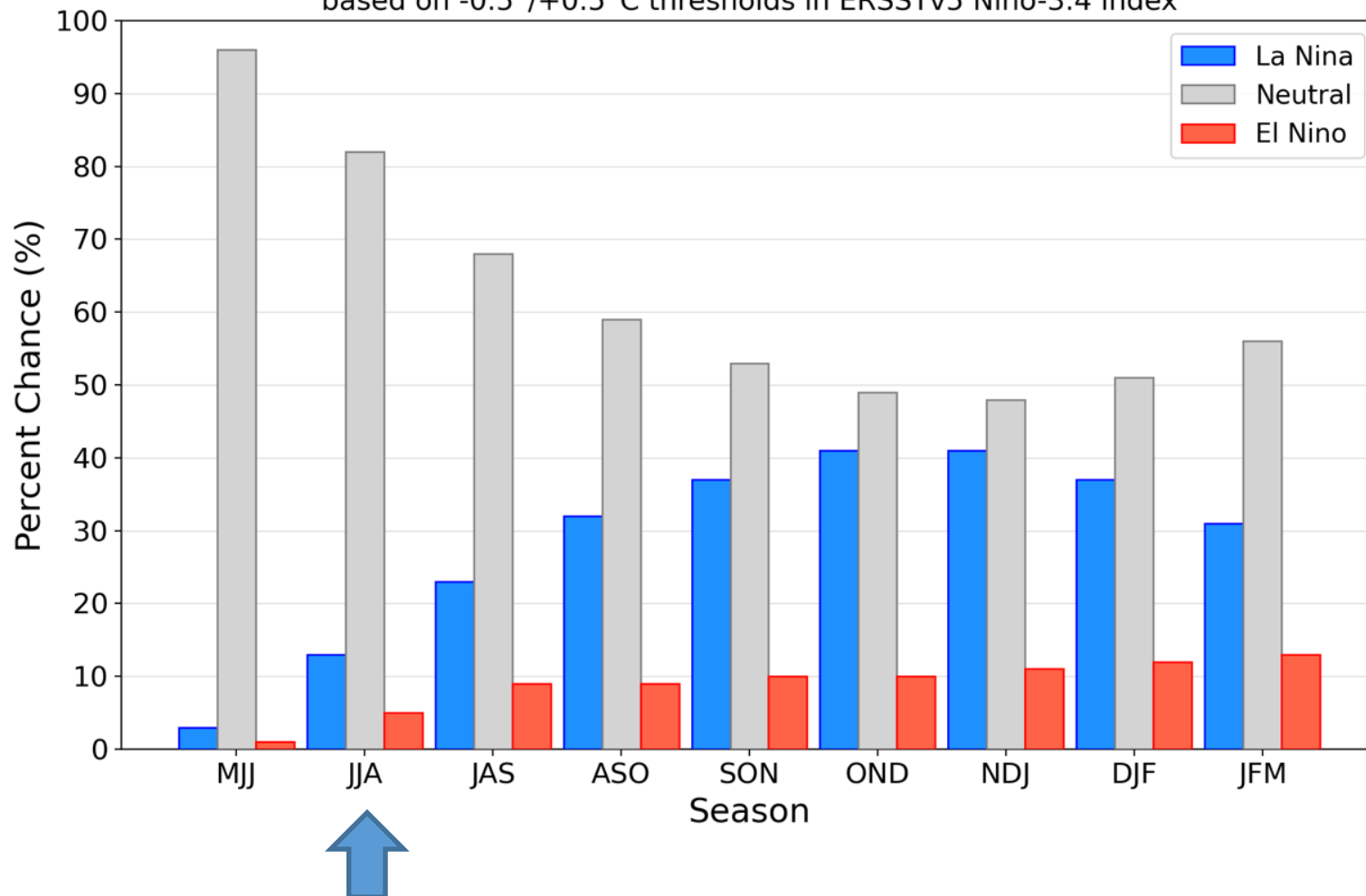
## Status Atual: **Neutralidade**



# Previsão do “ENSO”

## Official NOAA CPC ENSO Probabilities (issued June 2025)

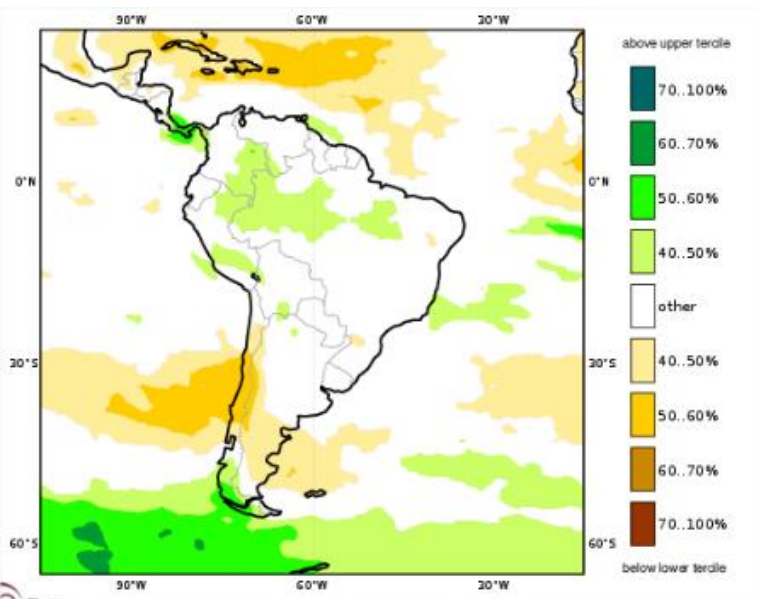
based on  $-0.5^{\circ}/+0.5^{\circ}\text{C}$  thresholds in ERSSTv5 Niño-3.4 index



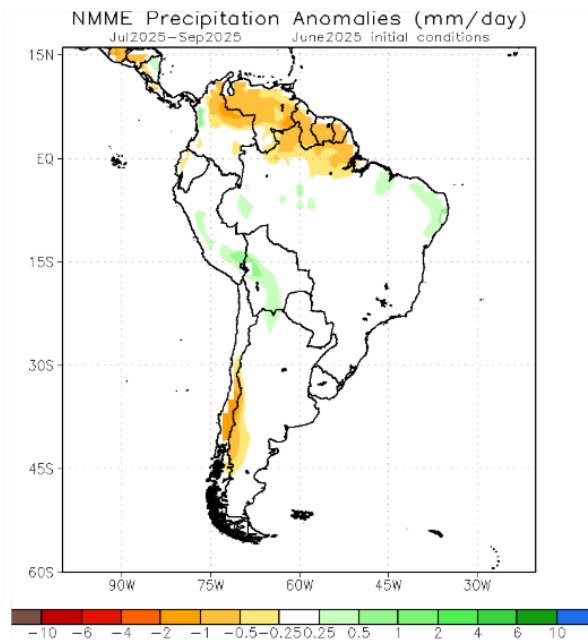


# Previsão Sazonal de Chuva Multi-Modelo

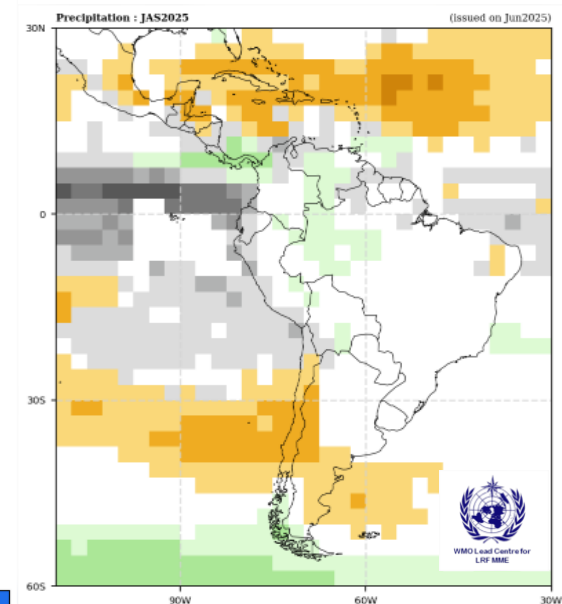
Julho-Agosto-Setembro



Modelos Europeus



Modelos Norte Americanos



Modelos da WMO