

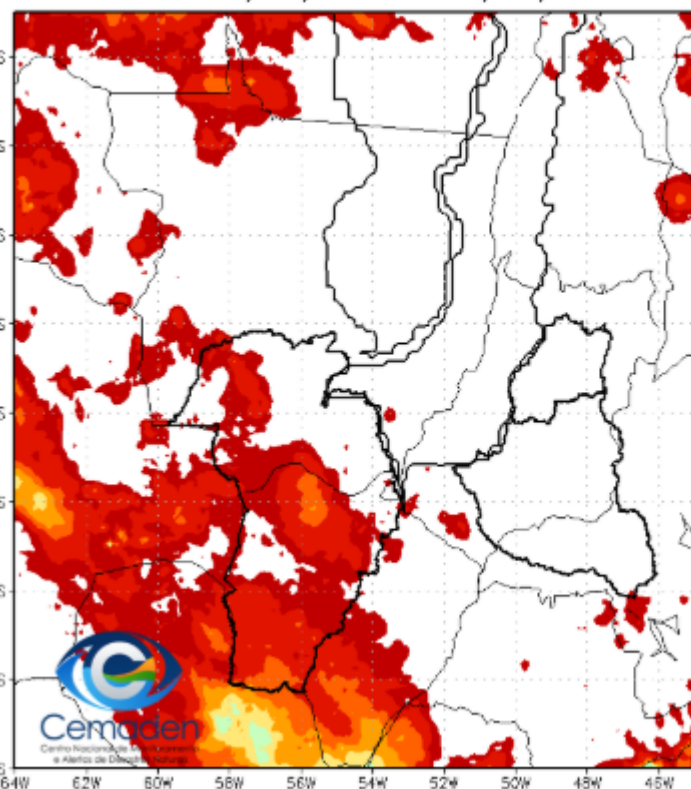


# Monitoramento, previsões e impactos da situação de seca no Alto Paraguai

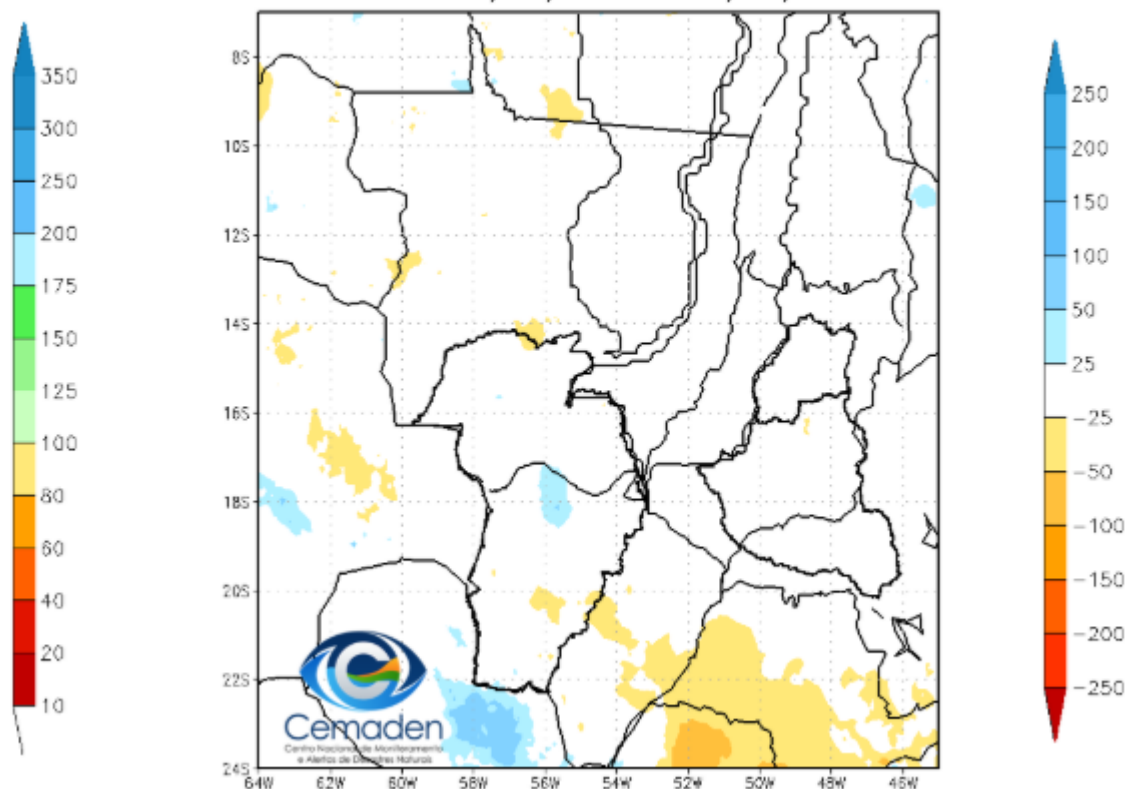
04 de Setembro de 2025

# Precipitação nos últimos 30 dias

Precipitação Acumulada (mm) A.S.  
Período: 04/08/2025 a 03/09/2025

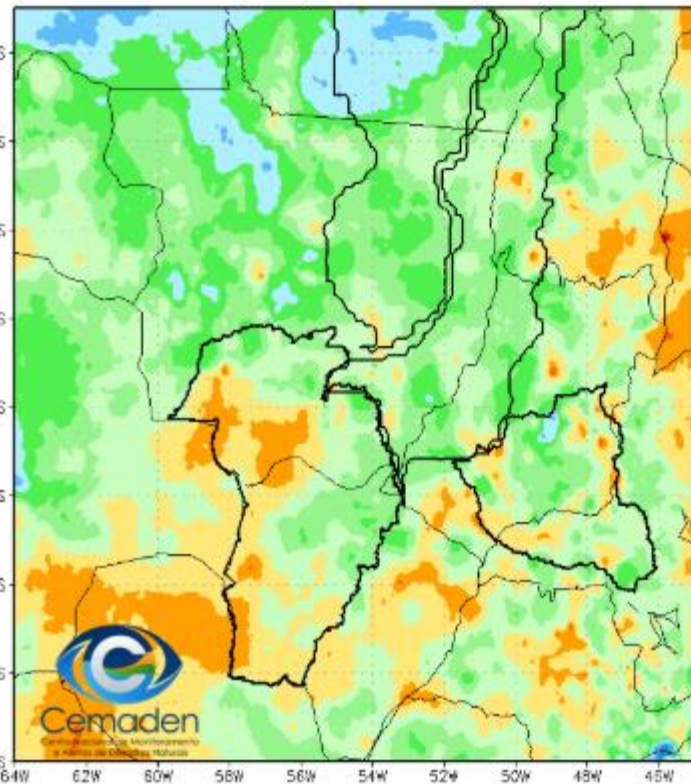


Anomalia de Precipitação (mm) A.S.  
Período: 04/08/2025 a 03/09/2025

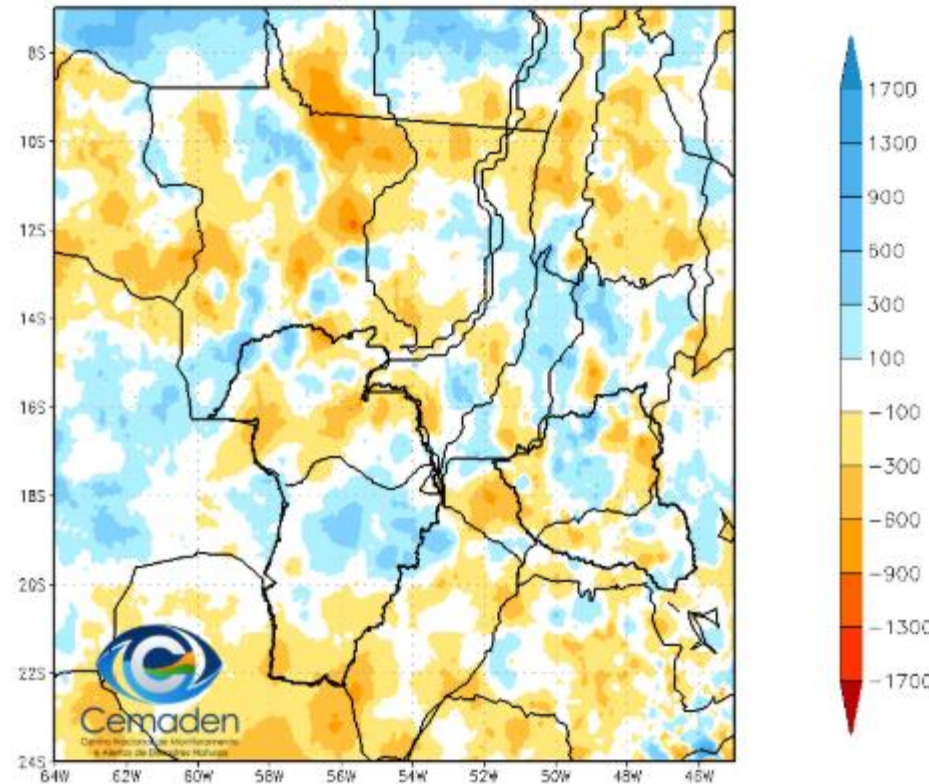


# Precipitação no Ano Hidrológico

Precipitação Acumulada (mm) A.S.  
Período: 01/10/2024 a 03/09/2025

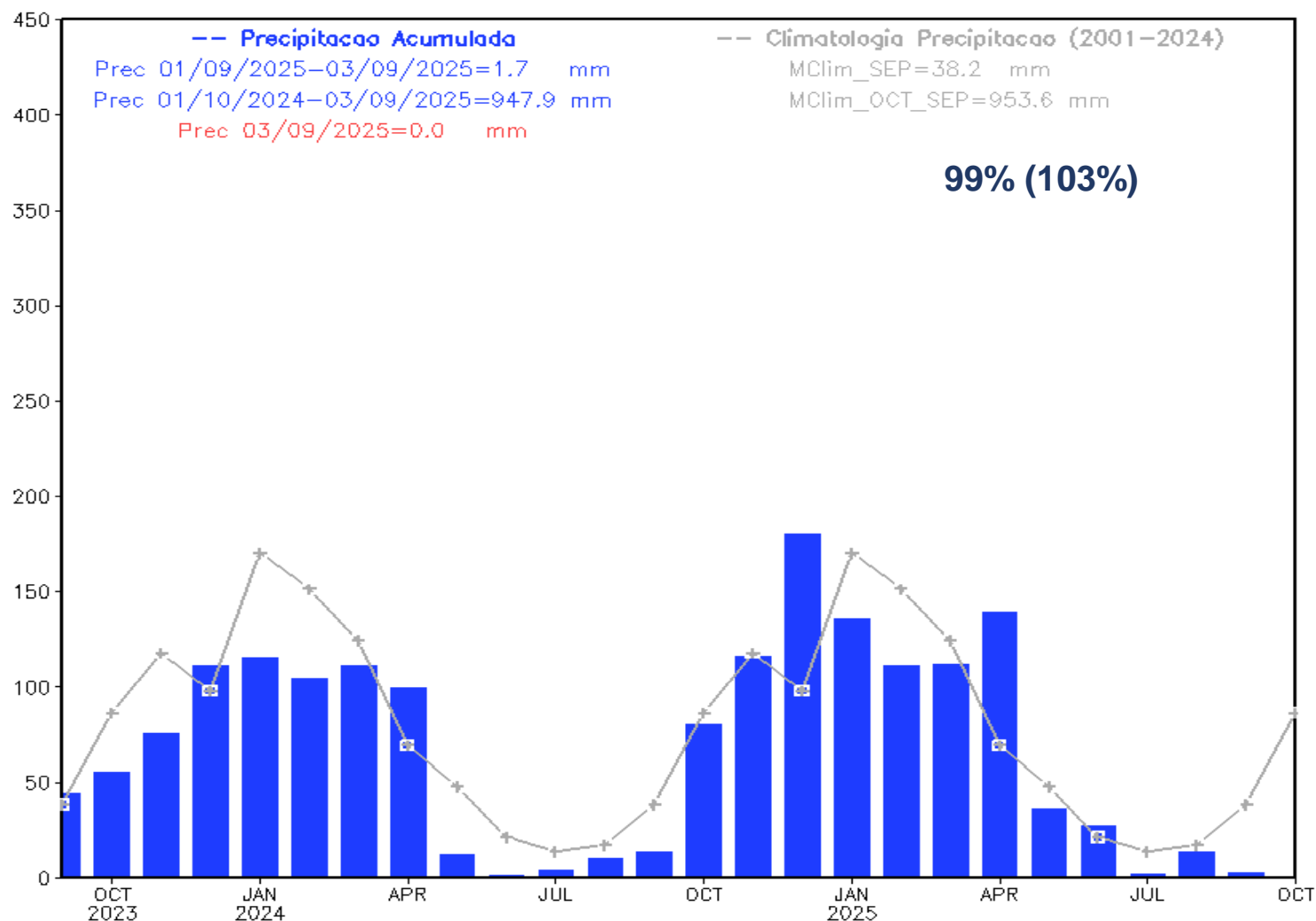


Anomalia de Precipitação (mm) A.S.  
Período: 01/10/2024 a 03/09/2025



# Precipitação nos últimos dois anos

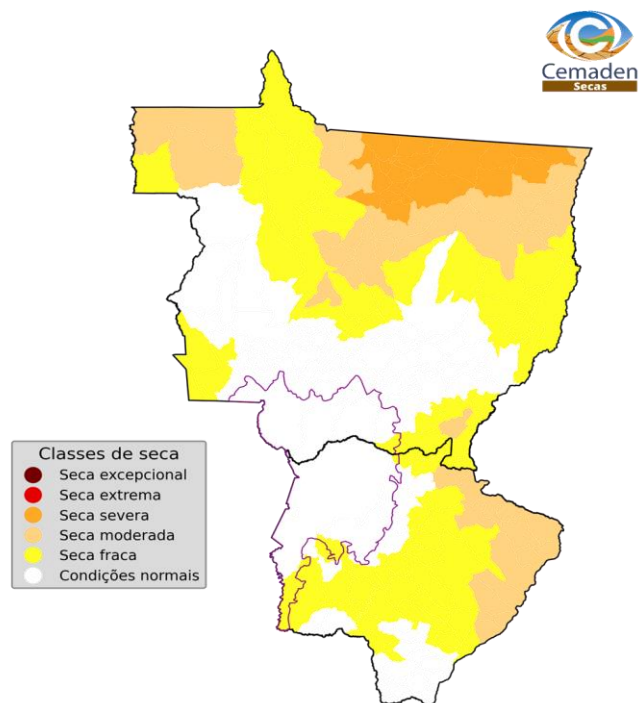
Precipitacao Bacia do Rio Paraguai  
desde SEP 2023





## ÍNDICE INTEGRADO DE SECA: ANÁLISE POR **MUNICÍPIOS**

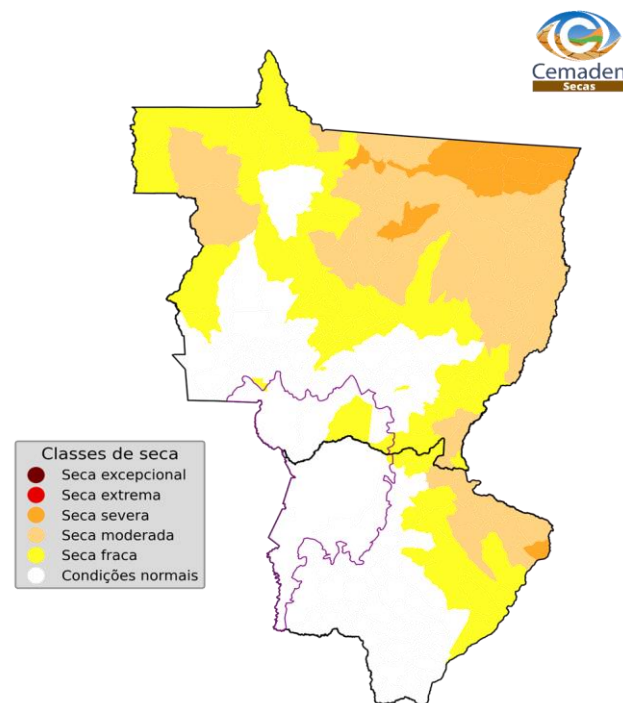
### IIS-03 OBSERVADO



Número de municípios  
por classes de seca:  
Seca excepcional: 0 (0.0%)  
Seca extrema: 0 (0.0%)  
Seca severa: 0 (0.0%)  
Seca moderada: 0 (0.0%)  
Seca fraca: 5 (17.9%)  
Condições normais: 23 (82.1%)

Índice Integrado de Seca - 3 meses (IIS3)  
August 2025  
Fonte: Cemaden/MCTI

### IIS-06 OBSERVADO

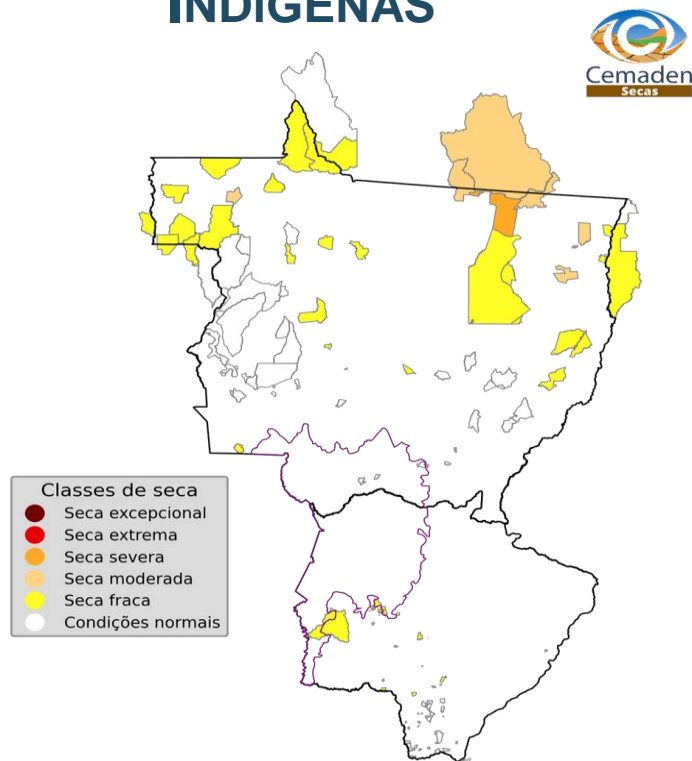


Número de municípios  
por classes de seca:  
Seca excepcional: 0 (0.0%)  
Seca extrema: 0 (0.0%)  
Seca severa: 0 (0.0%)  
Seca moderada: 0 (0.0%)  
Seca fraca: 4 (14.3%)  
Condições normais: 24 (85.7%)

Índice Integrado de Seca - 6 meses (IIS6)  
August 2025  
Fonte: Cemaden/MCTI

## ÍNDICE INTEGRADO DE SECA (IIS-03)

### TERRAS INDÍGENAS

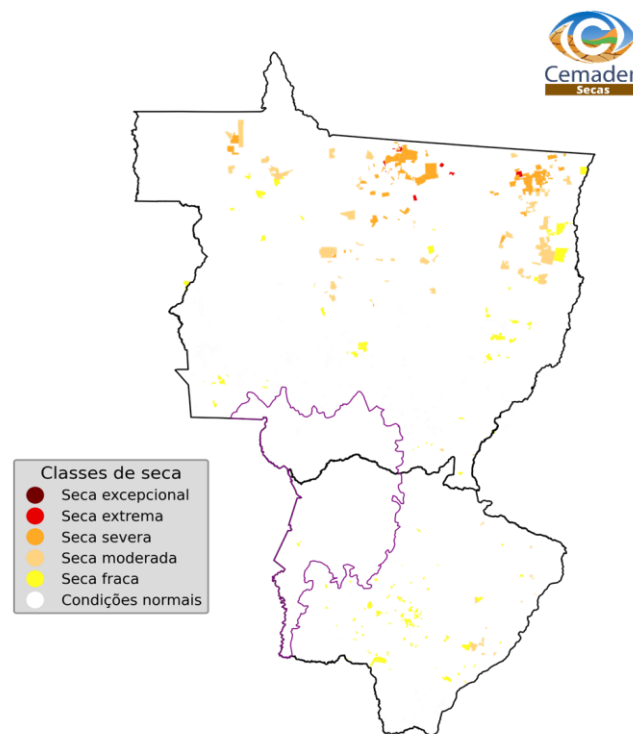


Número de Terras Indígenas  
por classes de seca:

Seca excepcional:	0 (0.0%)
Seca extrema:	0 (0.0%)
Seca severa:	0 (0.0%)
Seca moderada:	0 (0.0%)
Seca fraca:	4 (50.0%)
Condições normais:	4 (50.0%)

Índice Integrado de Seca - 3 meses (IIS3)  
August 2025  
Fonte: Cemaden/MCTI

### ASSENTAMENTOS



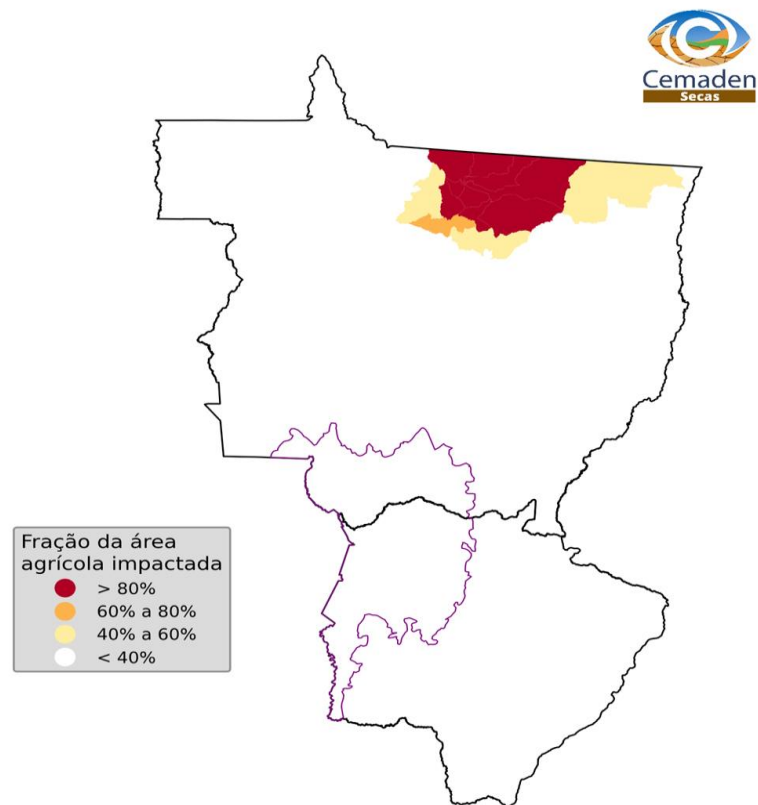
Número de Assentamentos  
por classes de seca:

Seca excepcional:	0 (0.0%)
Seca extrema:	0 (0.0%)
Seca severa:	0 (0.0%)
Seca moderada:	0 (0.0%)
Seca fraca:	2 (5.7%)
Condições normais:	33 (94.3%)

Índice Integrado de Seca - 3 meses (IIS3)  
August 2025  
Fonte: Cemaden/MCTI

## ÁREAS DE PASTAGENS E AGRÍCOLAS AFETADAS PELA SECA

OBSERVADO

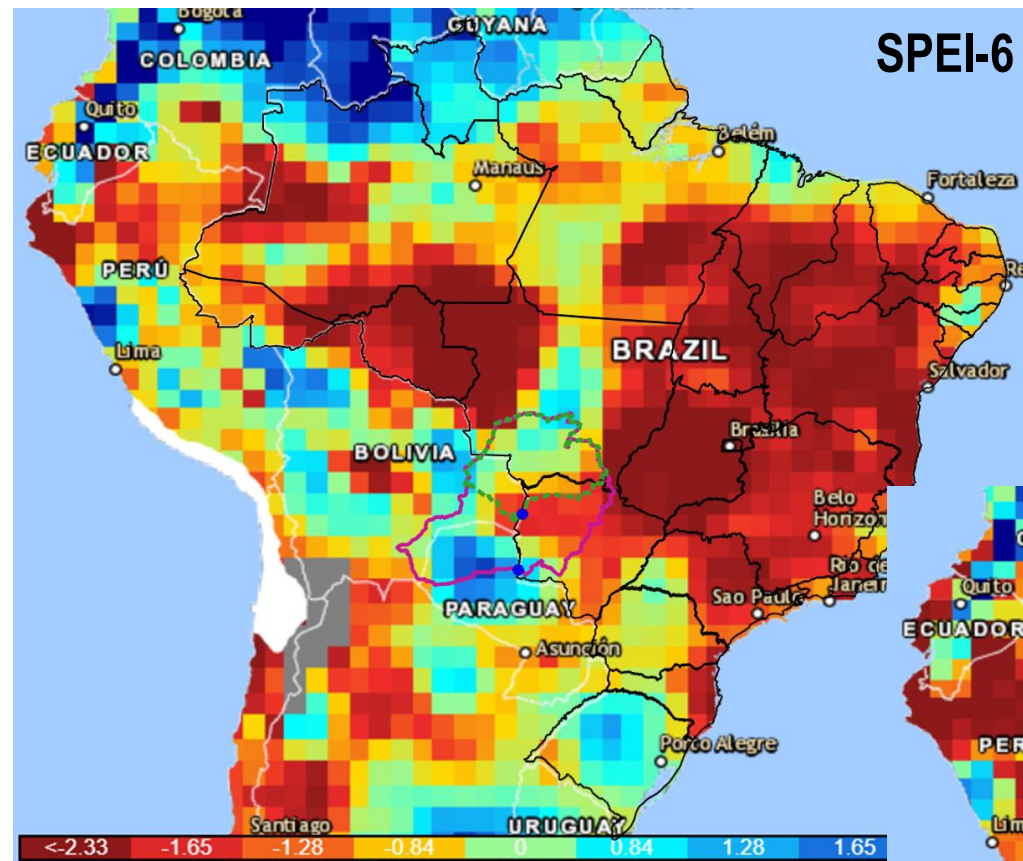


Área agro-pastoril municipal afetada pela seca  
August 2025  
Fonte: Cemaden/MCTI

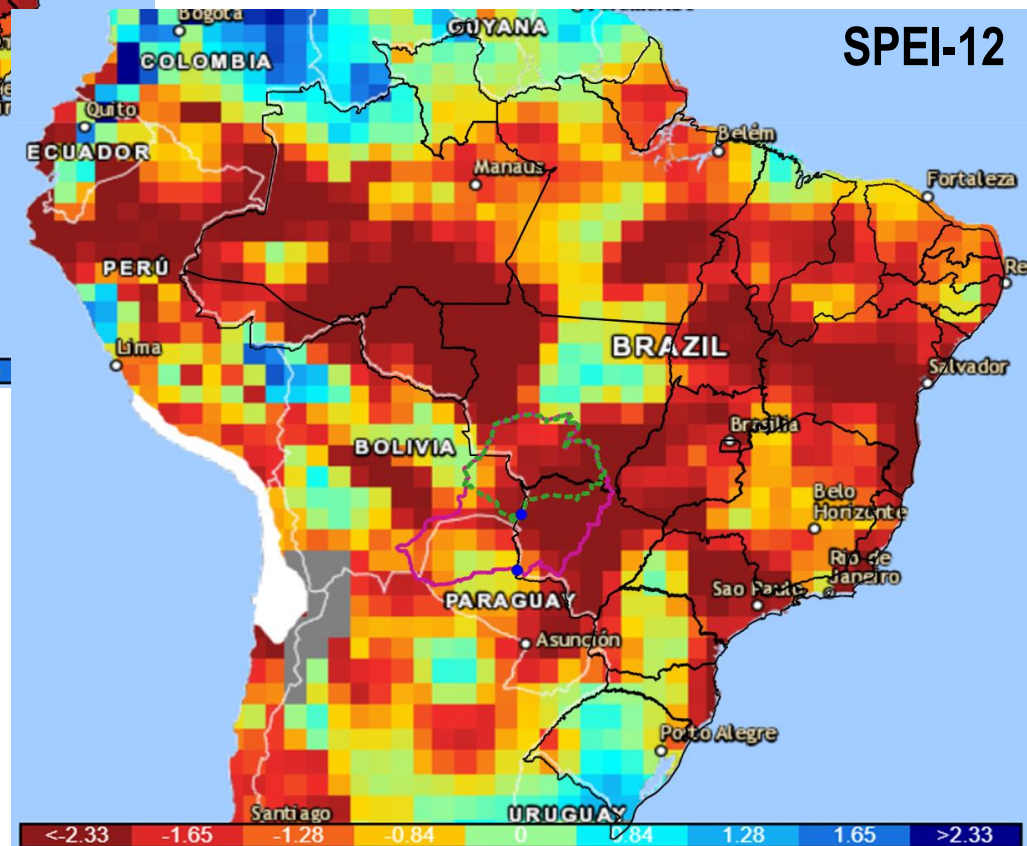
# Índice Padronizado de Precipitação – Evapotranspiração Potencial – SPEI

Agosto/2025

SPEI-6



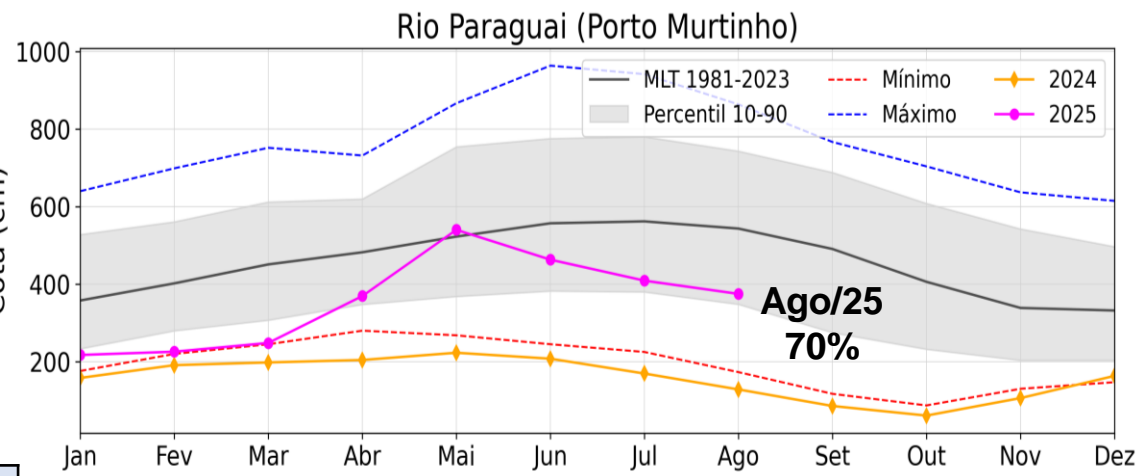
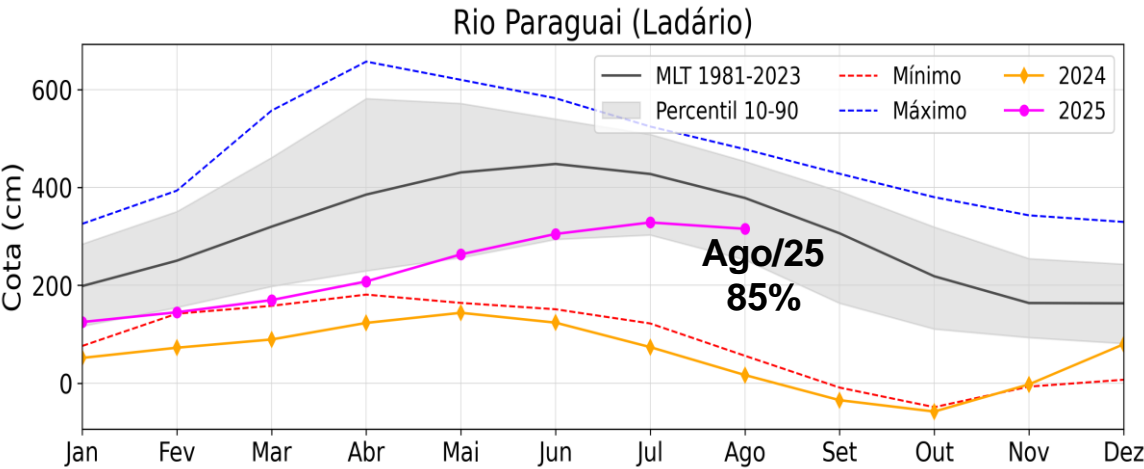
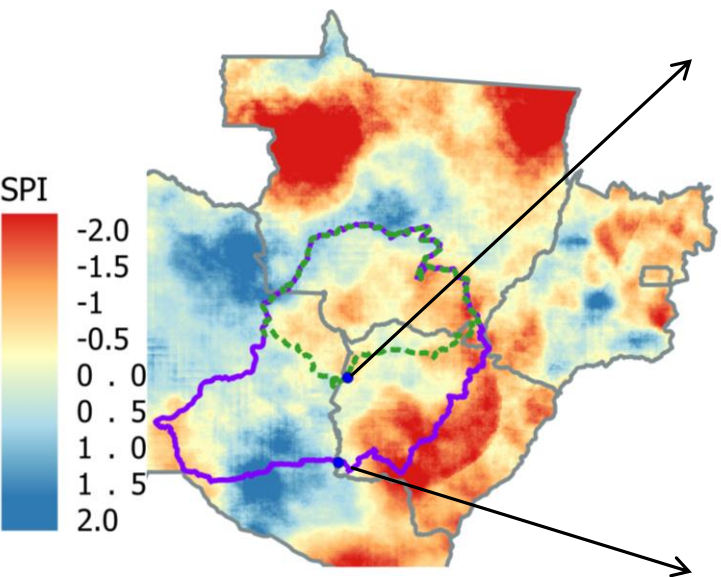
SPEI-12





# Evolução dos Níveis do Rio Paraguai

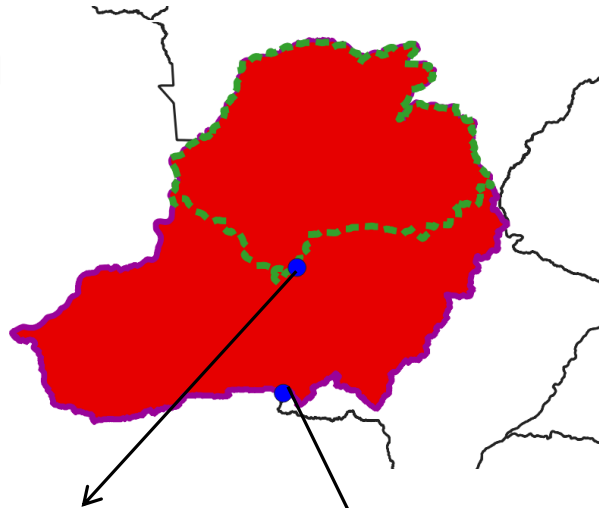
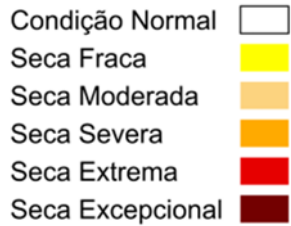
SPI-12 Agosto 2025



Estação	Cota 31/Julho	Cota 31/Agosto
Ladário	330 cm	296 cm
P. Murtinho	390 cm	358 cm

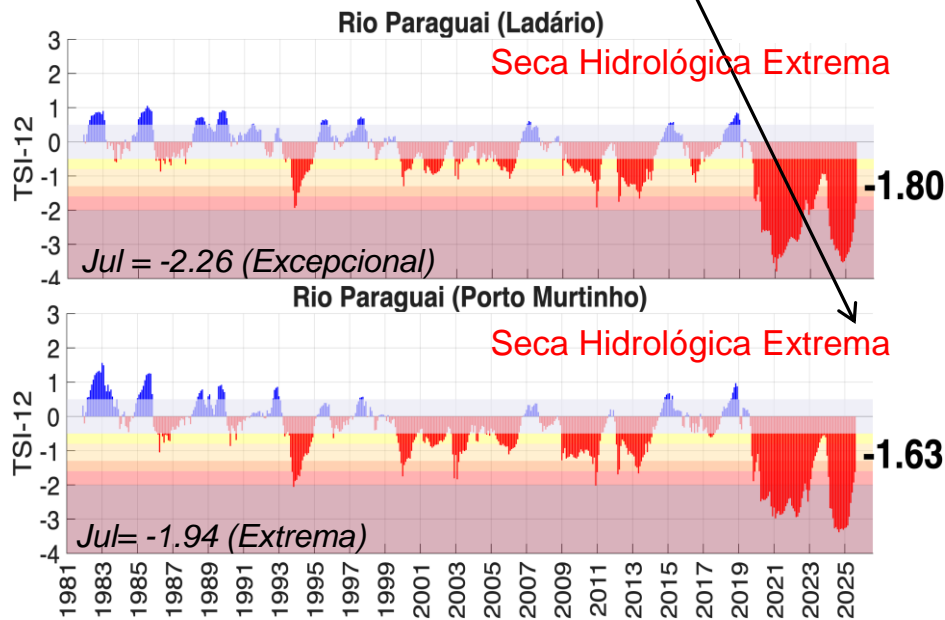


# Índice Bivariado de Seca (Precipitação-Cota) - TSI

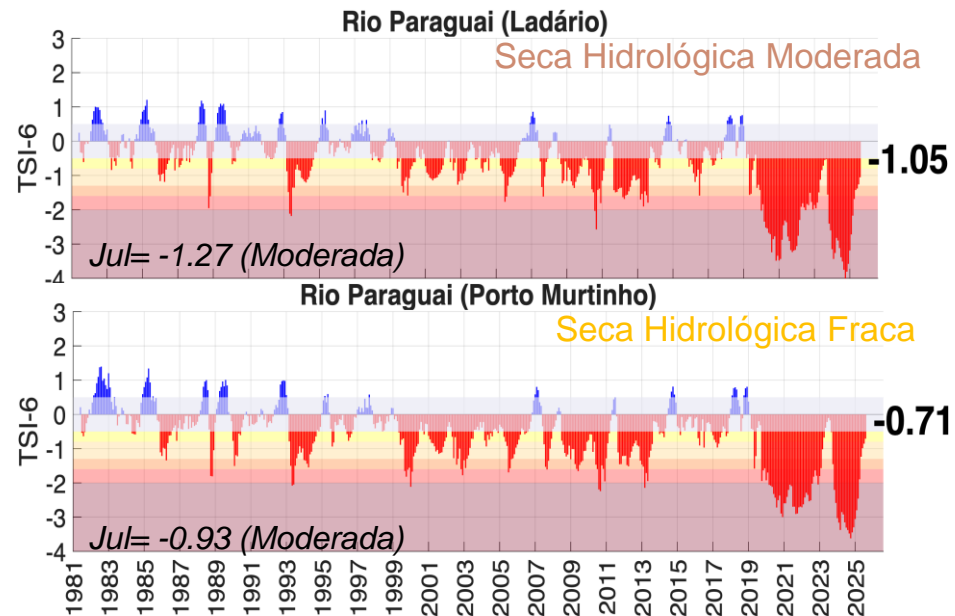


Em uma escala de curto prazo, as chuvas já contribuíram para mitigar a seca hidrológica na bacia, indicando sinais de recuperação parcial dos recursos hídricos!

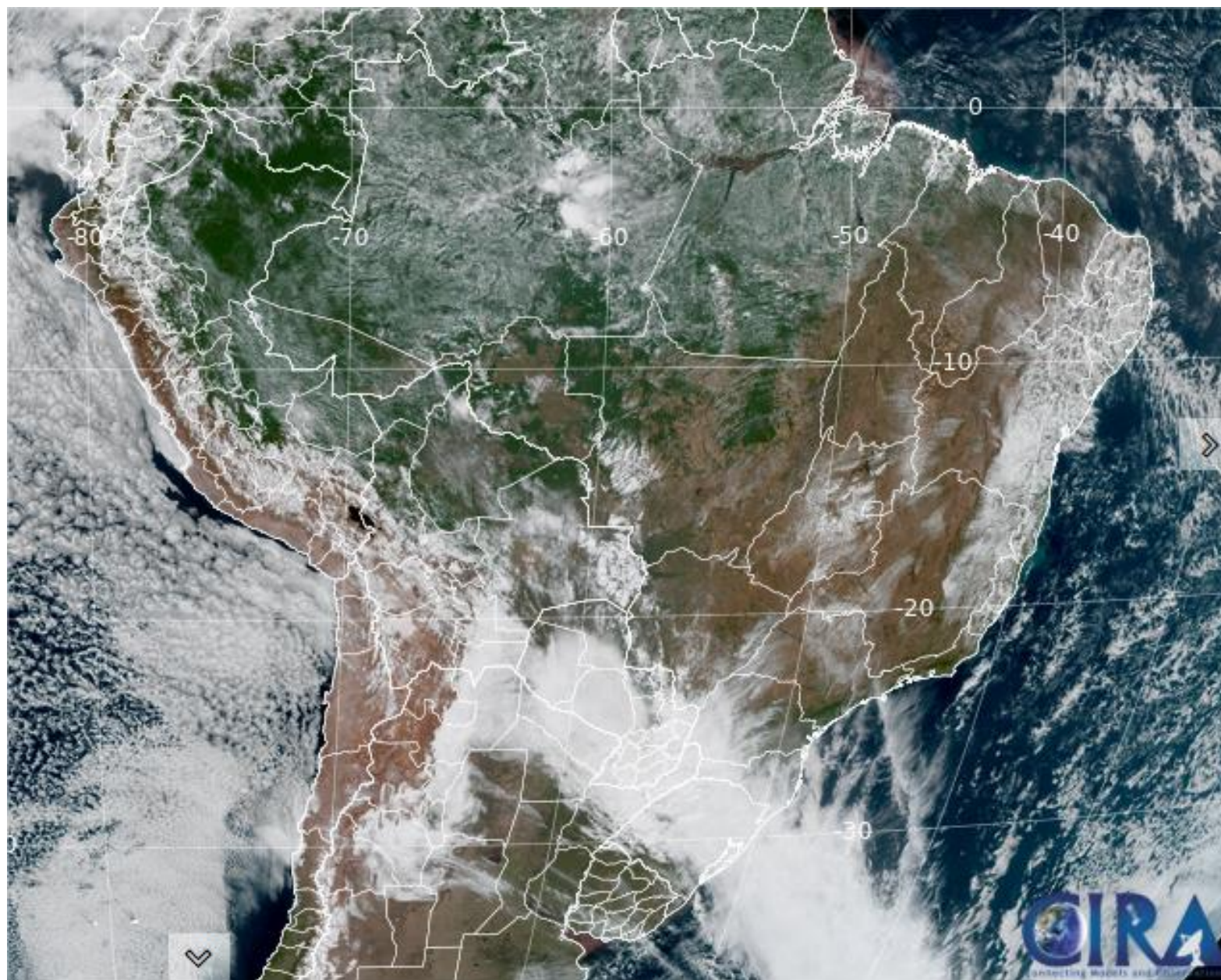
TSI-12 Agosto



TSI-6 Agosto



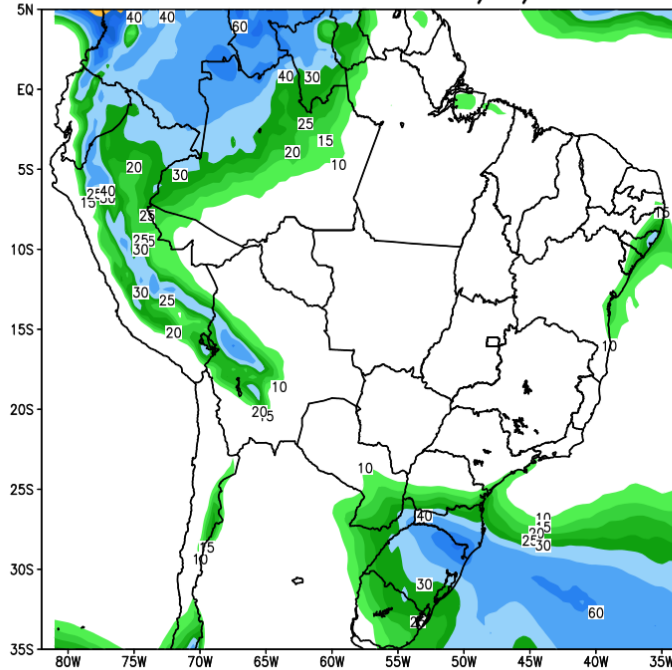
# Situação meteorológica atual



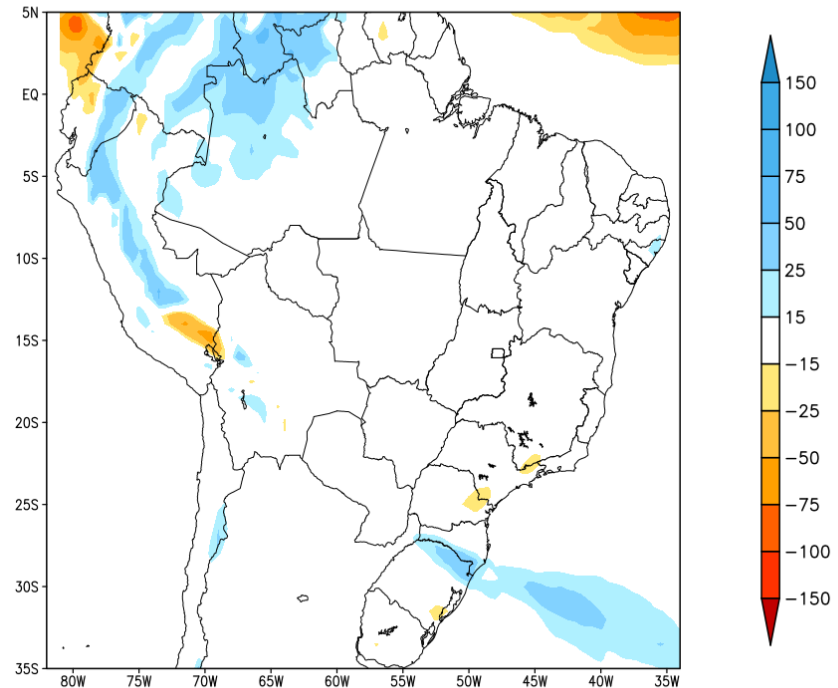


## Previsão para as próxima semana

GEFS / BRASIL  
Precipitacao acumulada 1aSem (mm)  
Previsao das 00Z dia 04/09/2025



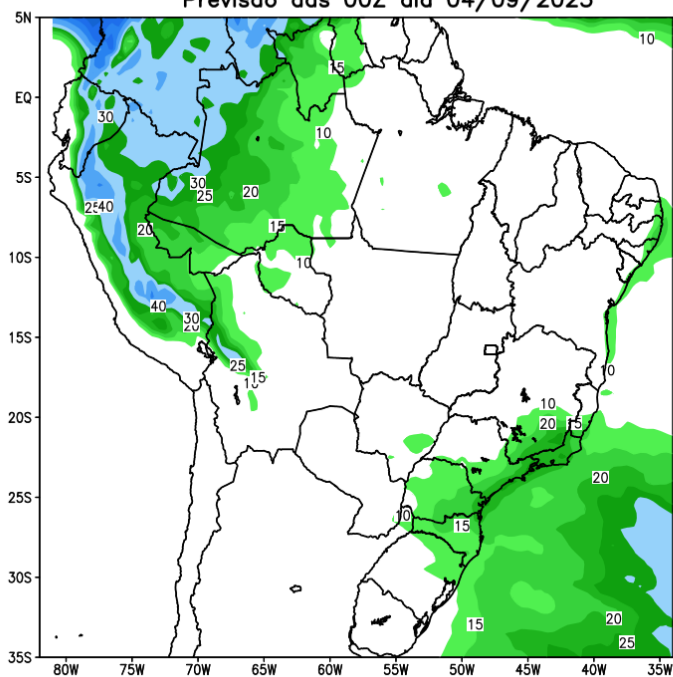
Anomalia de Precipitacao BR (mm)  
Periodo: 2025090400 a 2025091100



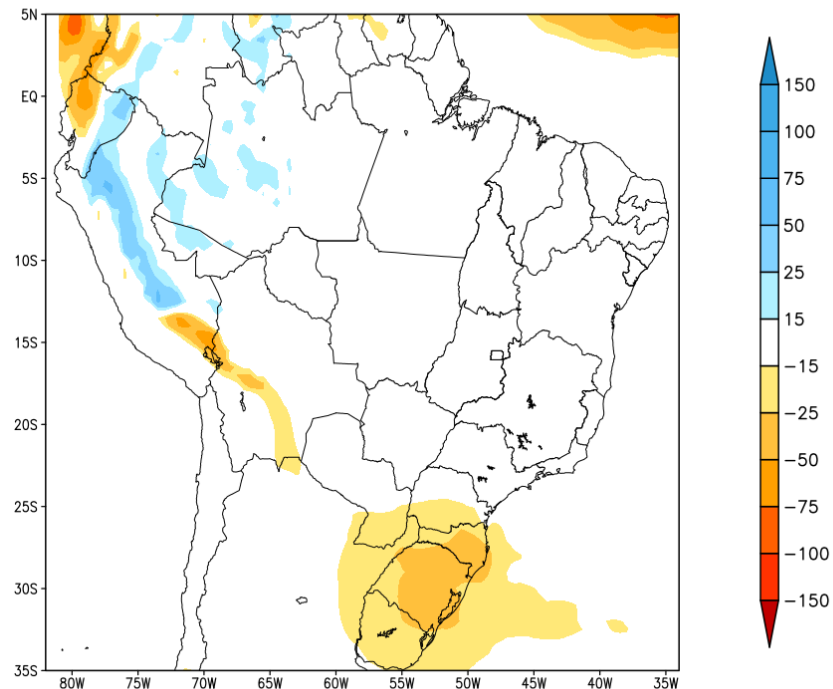


## Tendência para a segunda semana

GEFS / BRASIL  
Precipitacao acumulada 2aSem (mm)  
Previsao das 00Z dia 04/09/2025

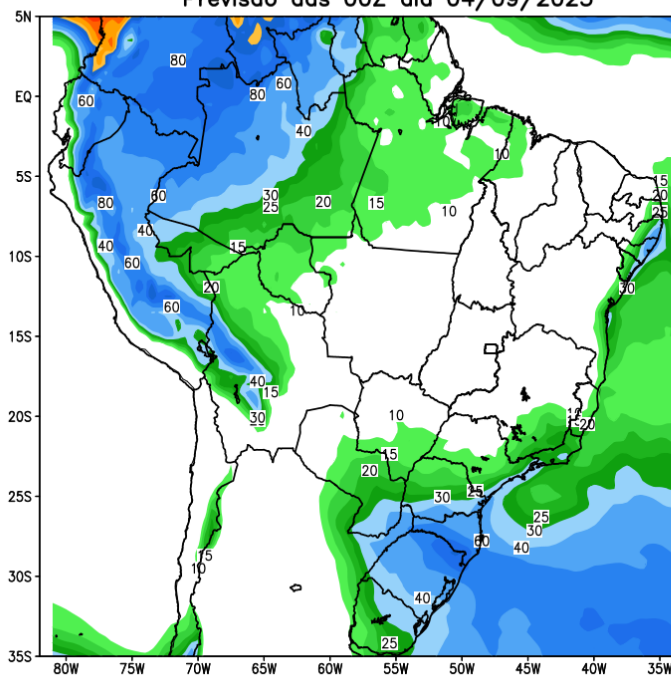


Anomalia de Precipitacao BR (mm)  
Periodo: 2025091200 a 2025091800

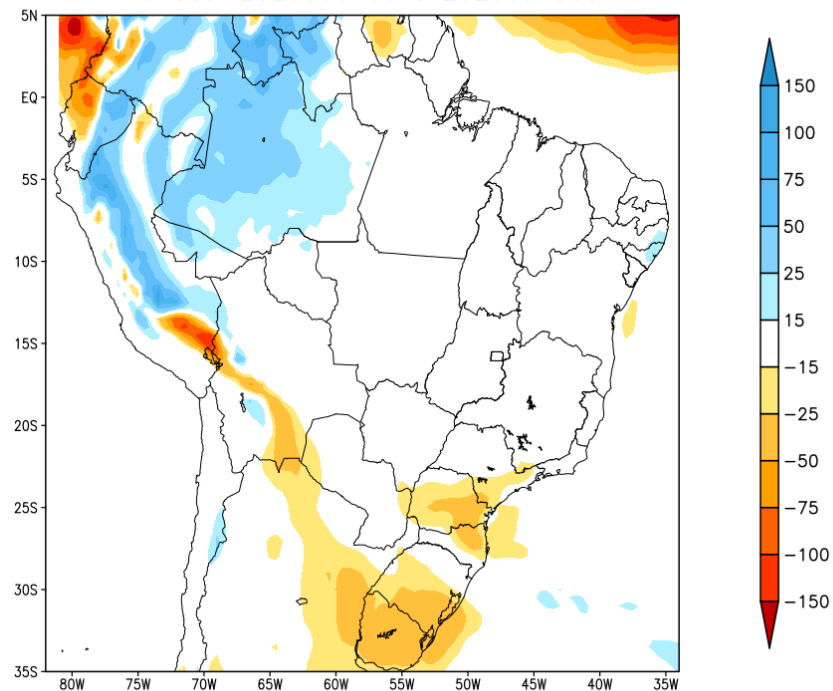


## Tendência para as próximas duas semanas

GEFS / BRASIL  
Precipitacao acumulada 14dias (mm)  
Previsao das 00Z dia 04/09/2025

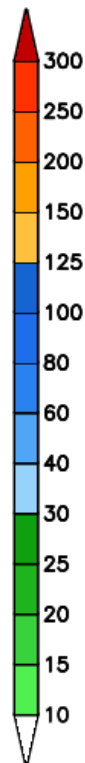
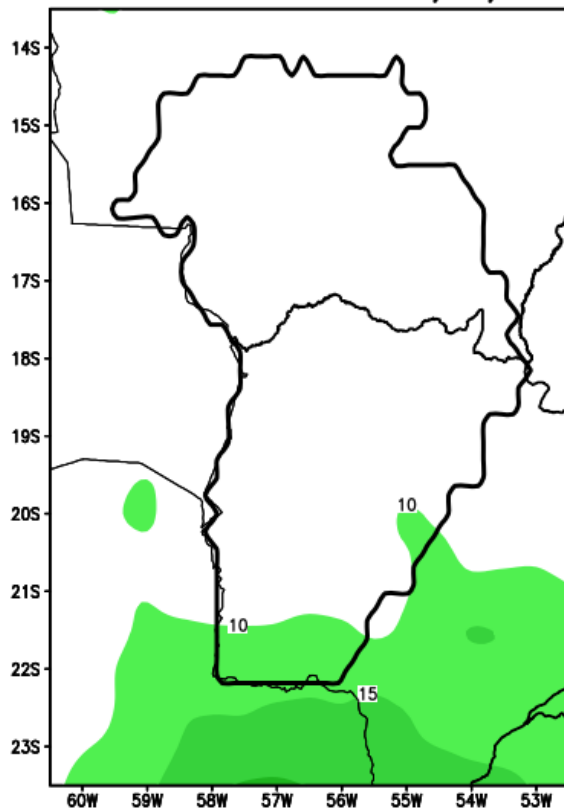


Anomalia de Precipitacao BR (mm)  
Periodo: 2025090400 a 2025091800

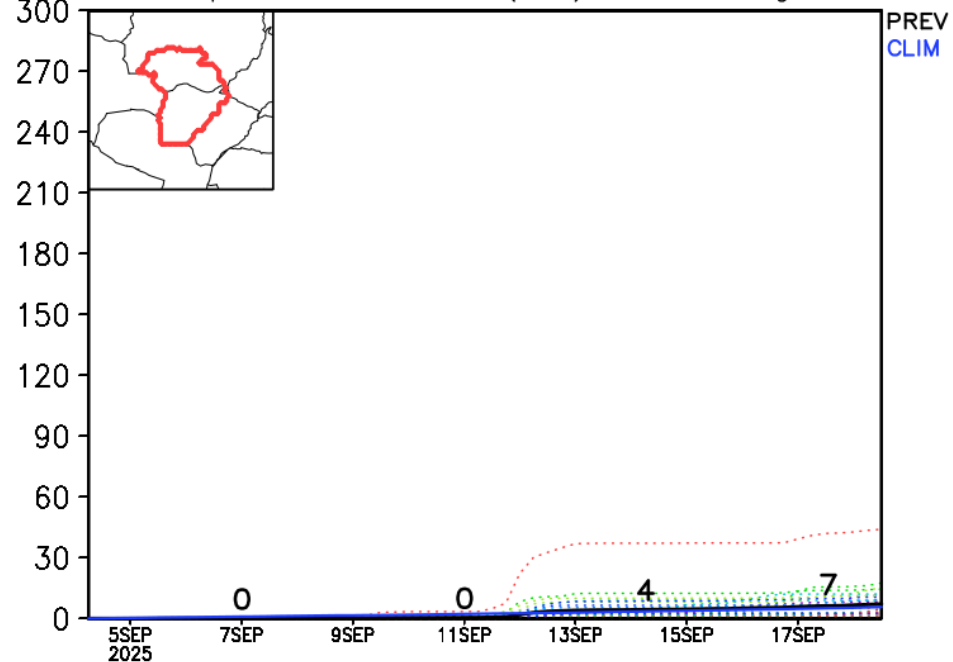


## Previsão de chuva Bacia do Alto Paraguai

GEFS / Bacia do Rio Paraguai  
Precipitação acumulada em 15 dias (mm)  
Previsão das 00Z dia 04/09/2025

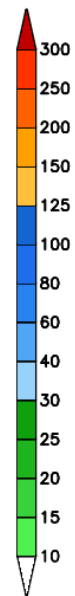
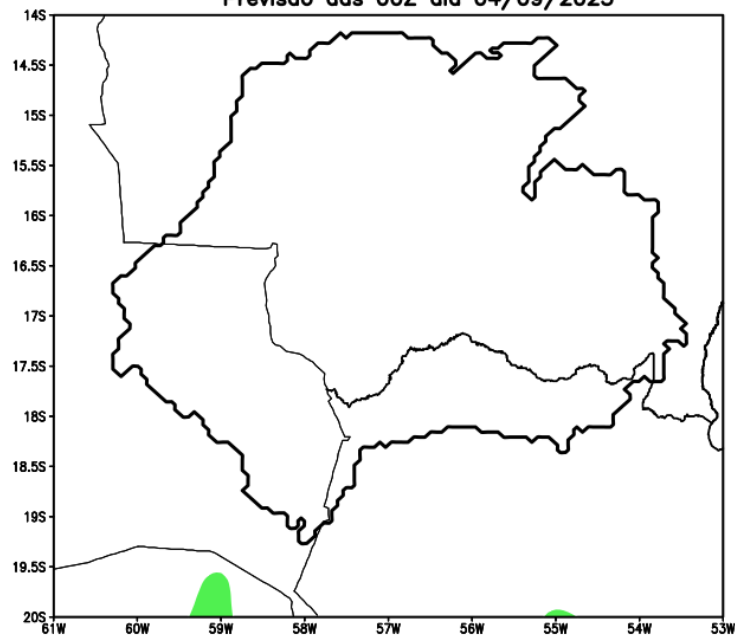


Precipitação acumulada (mm): Bacia Paraguai

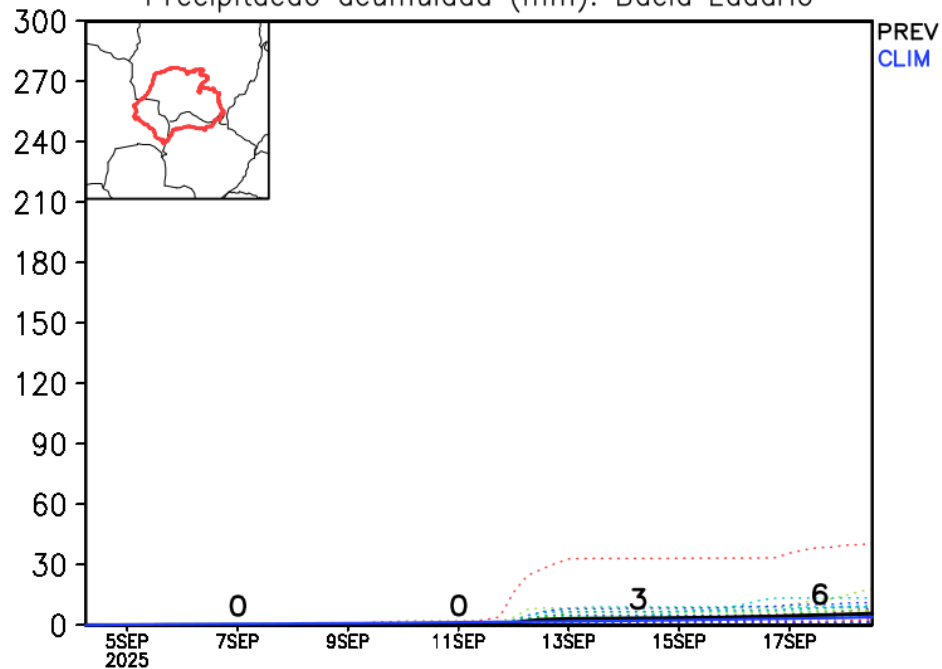


## Previsão de chuva sub Bacia de Ladário

GEFS / Bacia Ladario  
Precipitacao acumulada em 14 dias (mm)  
Previsao das 00Z dia 04/09/2025



Precipitacao acumulada (mm): Bacia Ladario



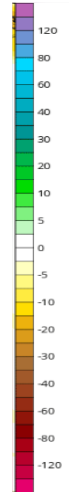
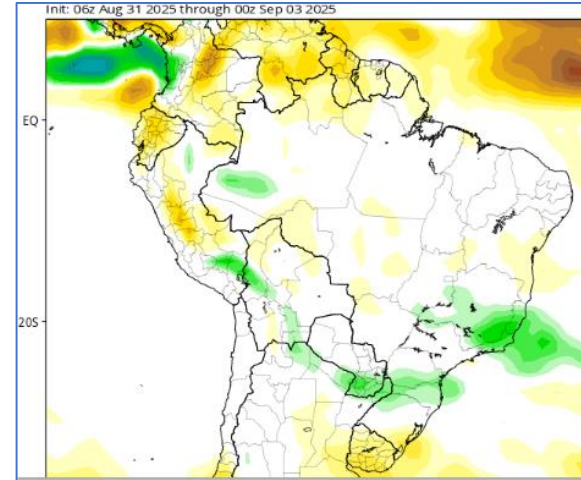
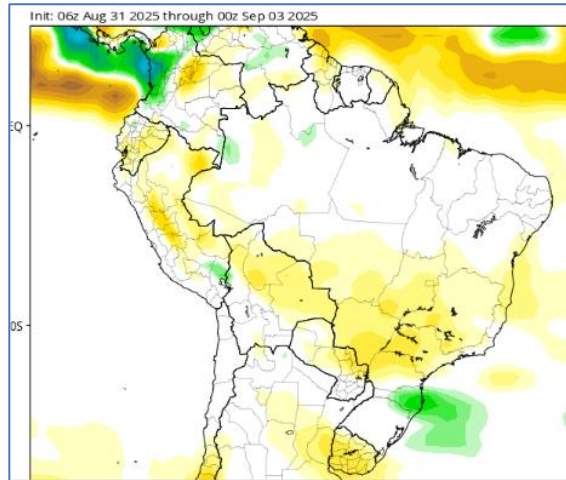


# Anomalia de Chuva 3a e 4a semanas

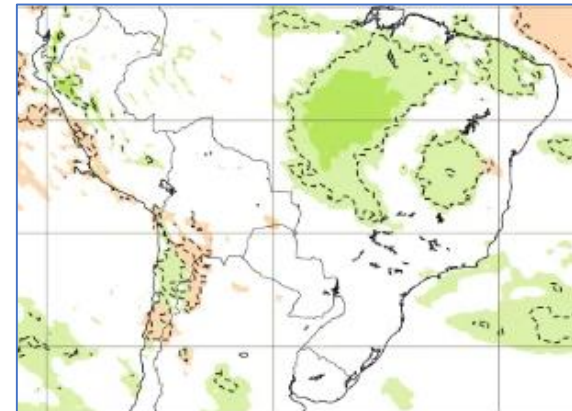
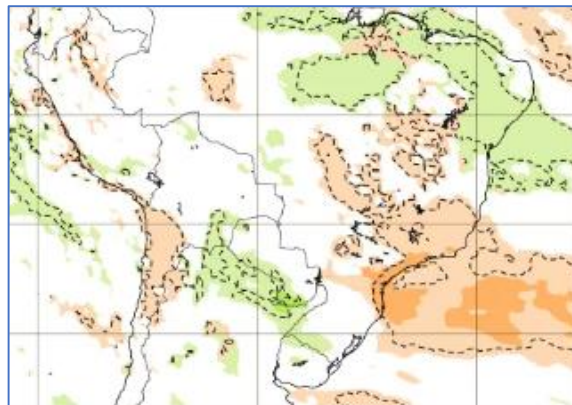
17-24 Set

24 Set -01 Out

CFS/NOAA

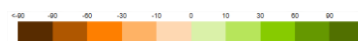


ECMWF



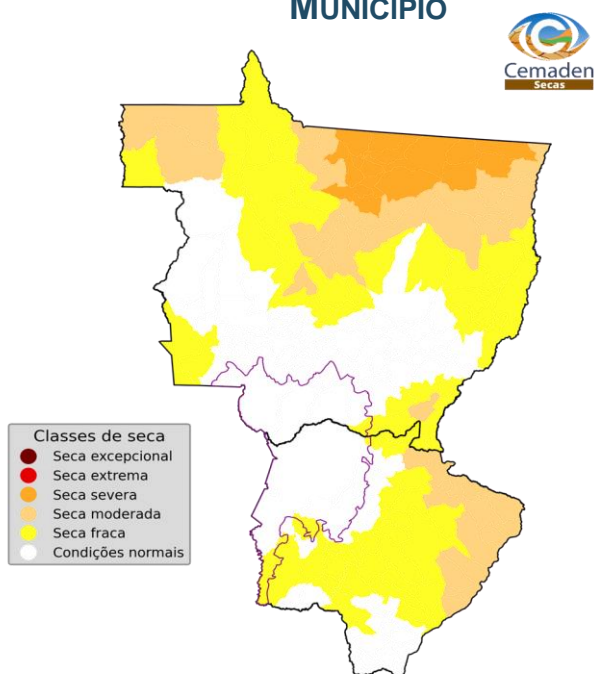
15-22 Set

22-29 Set



## ÍNDICE INTEGRADO DE SECA (3 MESES) **PREVISÃO SETEMBRO**

**IIS-03 OBSERVADO  
MUNICÍPIO**

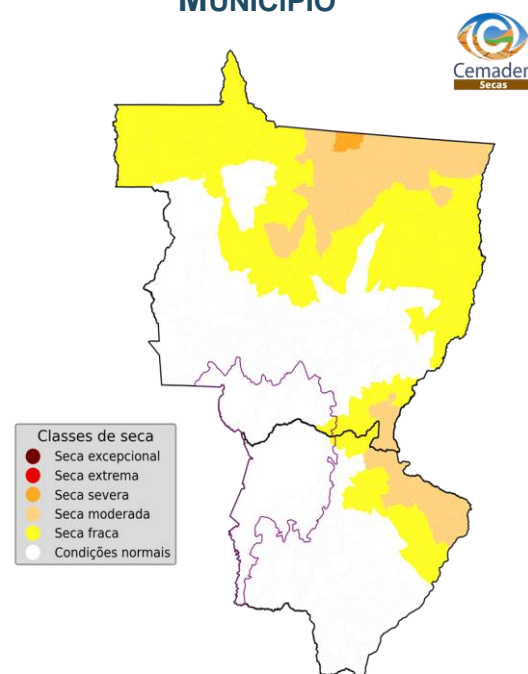


Número de municípios  
por classes de seca:

Seca excepcional:	0 (0.0%)
Seca extrema:	0 (0.0%)
Seca severa:	0 (0.0%)
Seca moderada:	0 (0.0%)
Seca fraca:	5 (17.9%)
Condições normais:	23 (82.1%)

Índice Integrado de Seca - 3 meses (IIS3)  
August 2025  
Fonte: Cemaden/MCTI

**IIS-03 PREVISÃO  
MUNICÍPIO**

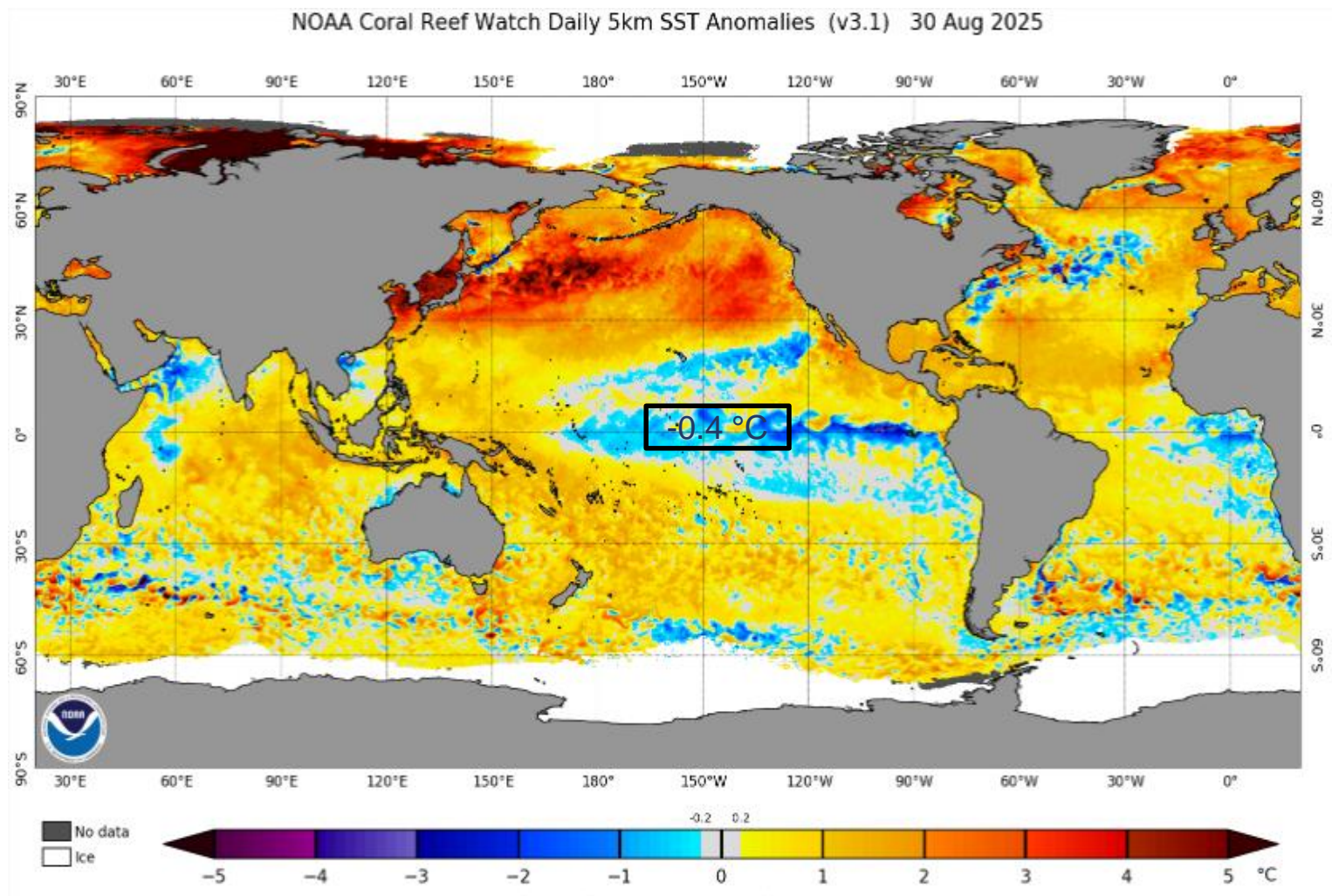


Número de municípios  
por classes de seca:

Seca excepcional:	0 (0.0%)
Seca extrema:	0 (0.0%)
Seca severa:	0 (0.0%)
Seca moderada:	0 (0.0%)
Seca fraca:	2 (7.1%)
Condições normais:	26 (92.9%)

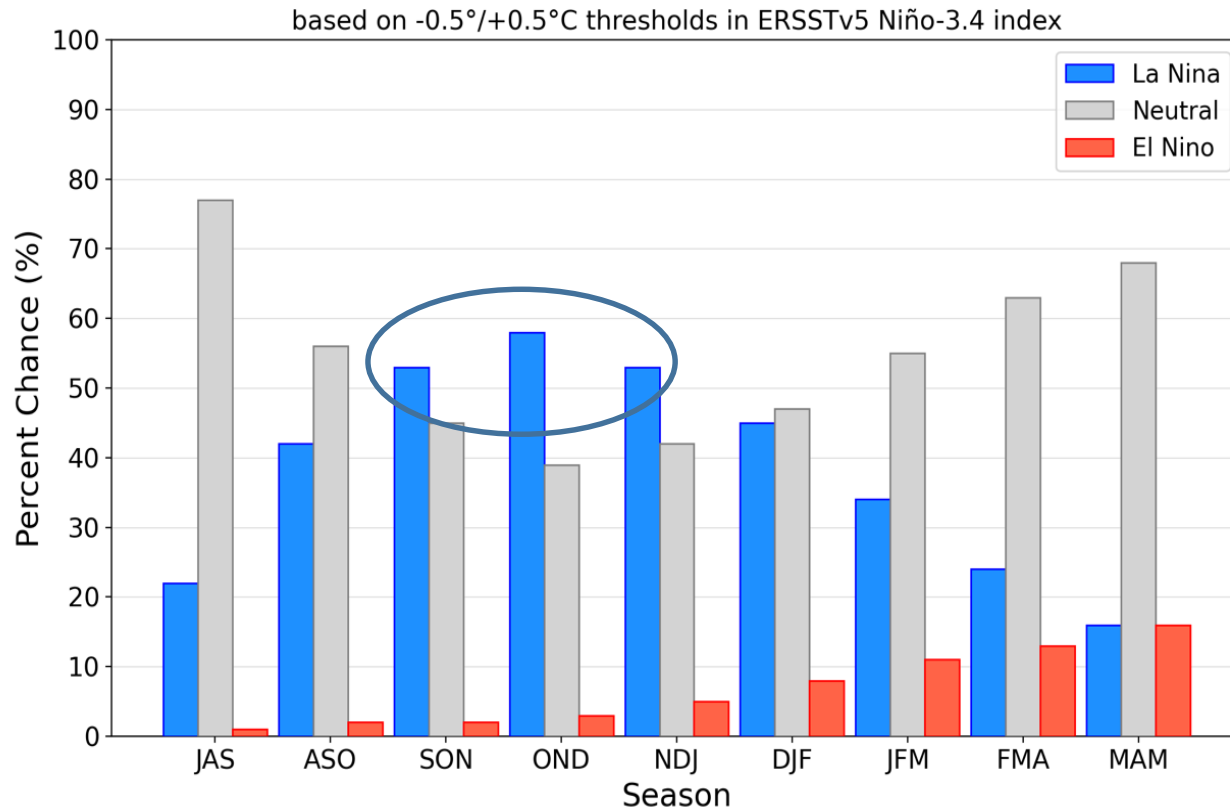
Índice Integrado de Seca - 3 meses, previsão (IIS3p)  
September 2025  
Fonte: Cemaden/MCTI

## Status Atual: **La Niña Watch**



# Previsão do “ENSO”

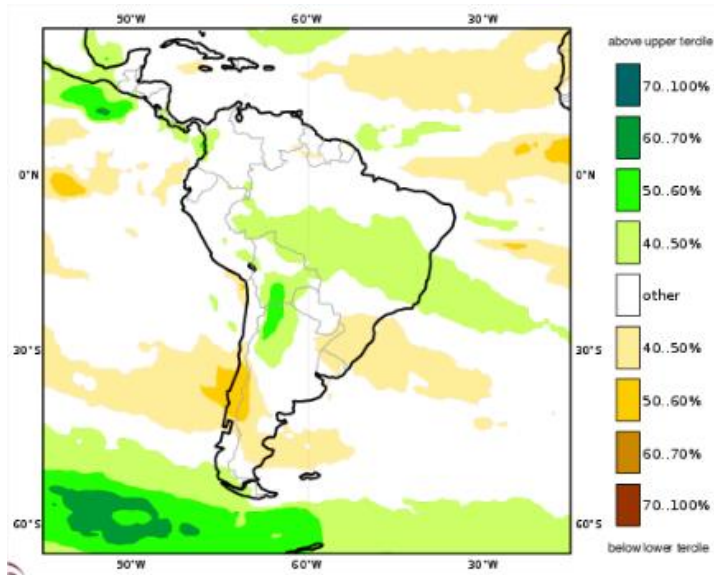
## Official NOAA CPC ENSO Probabilities (issued August 2025)



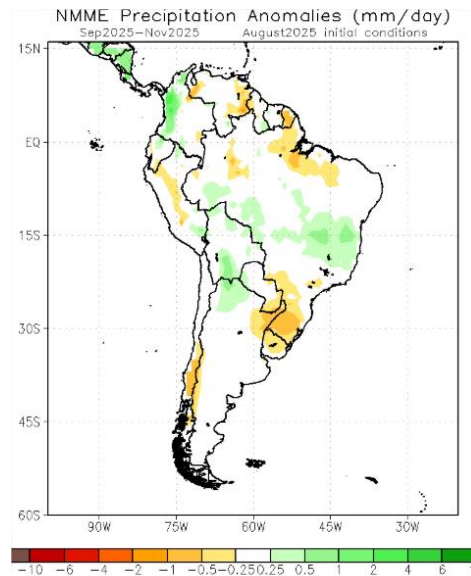


# Previsão Sazonal de Chuva Multi-Modelo

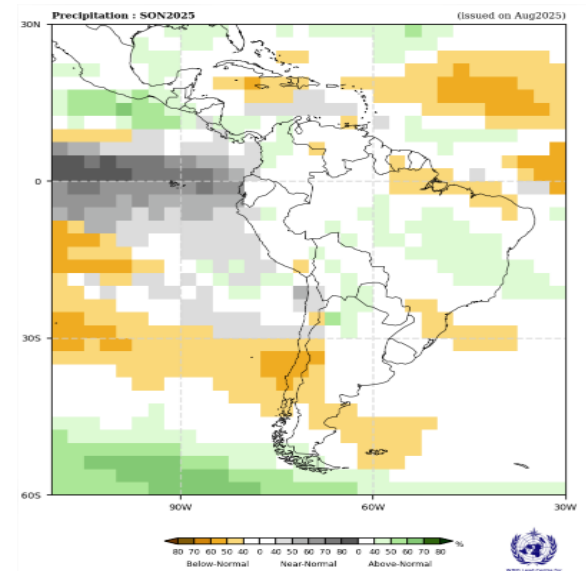
Setembro-Outubro-Novembro



Modelos “Europeus”



Modelos Norte Americanos



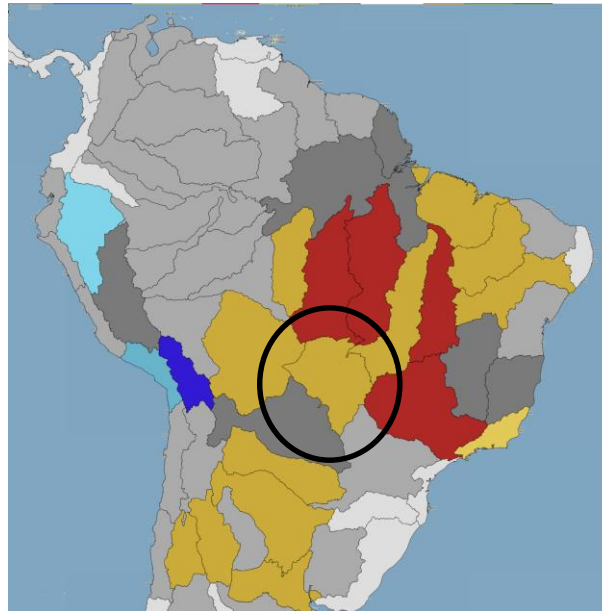
Modelos da WMO

# Previsão Sazonal de vazão

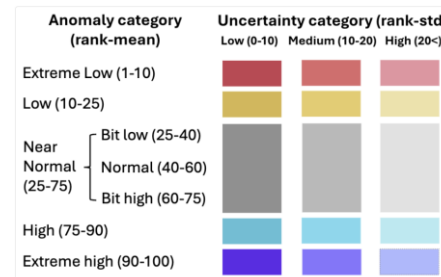
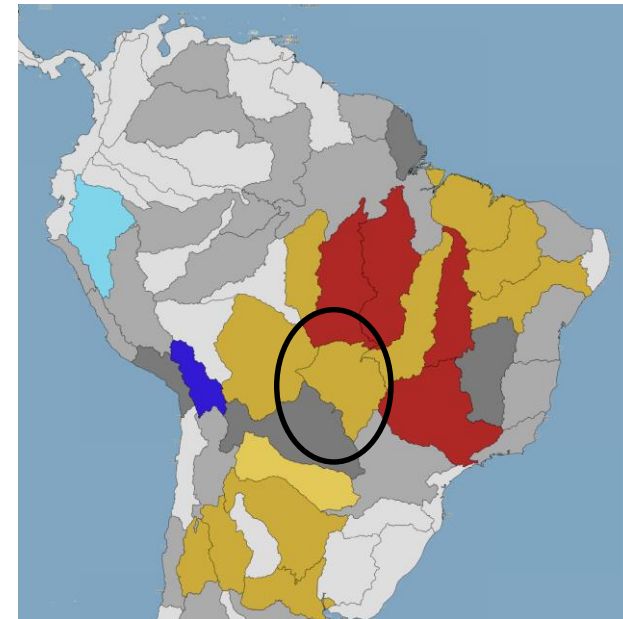
Setembro



Outubro

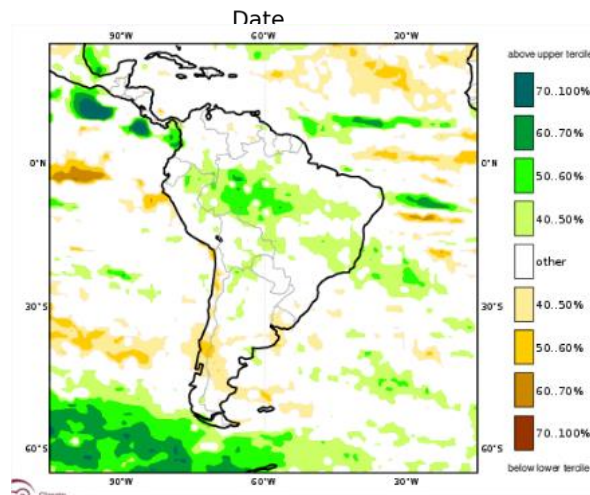
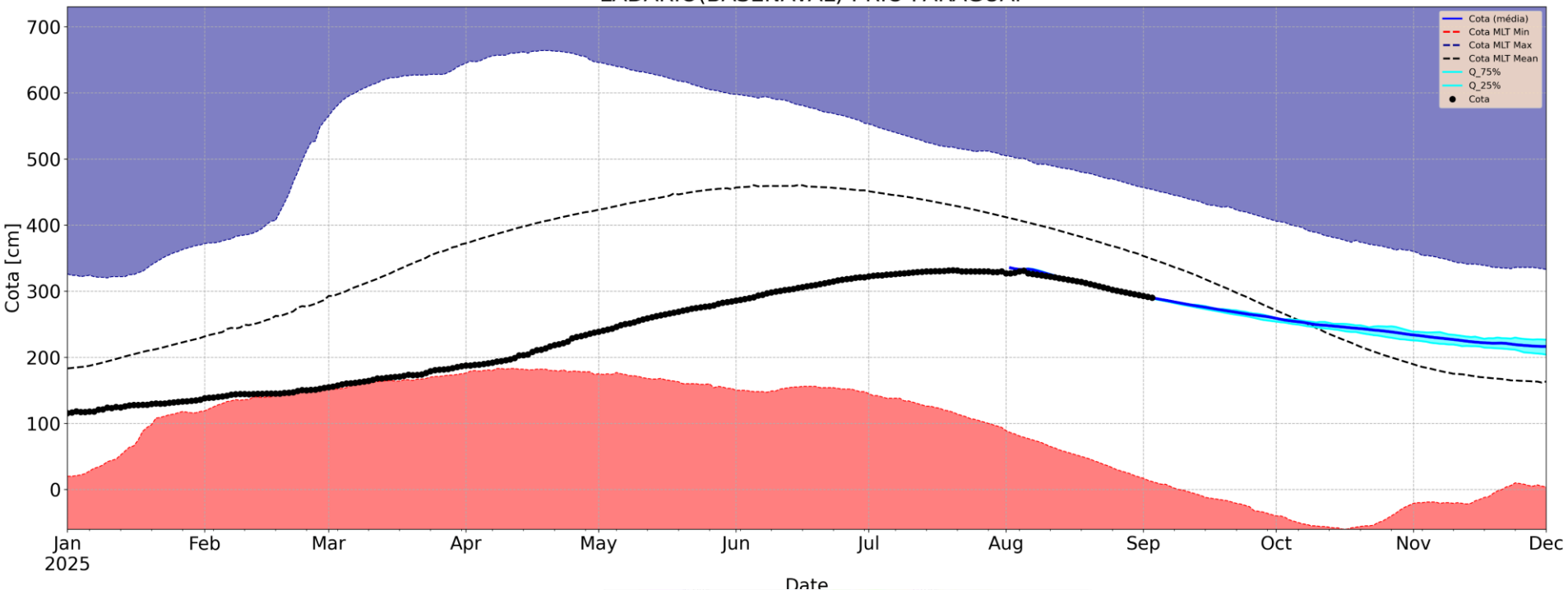


Novembro



# Previsão Sazonal de Cota

Previsão Sazonal :2025-09  
LADARIO(BASENAVAL) : RIO PARAGUAI



# Previsão Sazonal de Cota

Previsão Sazonal :2025-09  
PORTOMURTINHO : RIO PARAGUAI

