

CEMADEN

**Centro Nacional de Monitoramento e
Alertas de Desastres Naturais**



Monitoramento e Previsões da situação hidrometeorológica na Região Sul

AGOSTO 2025

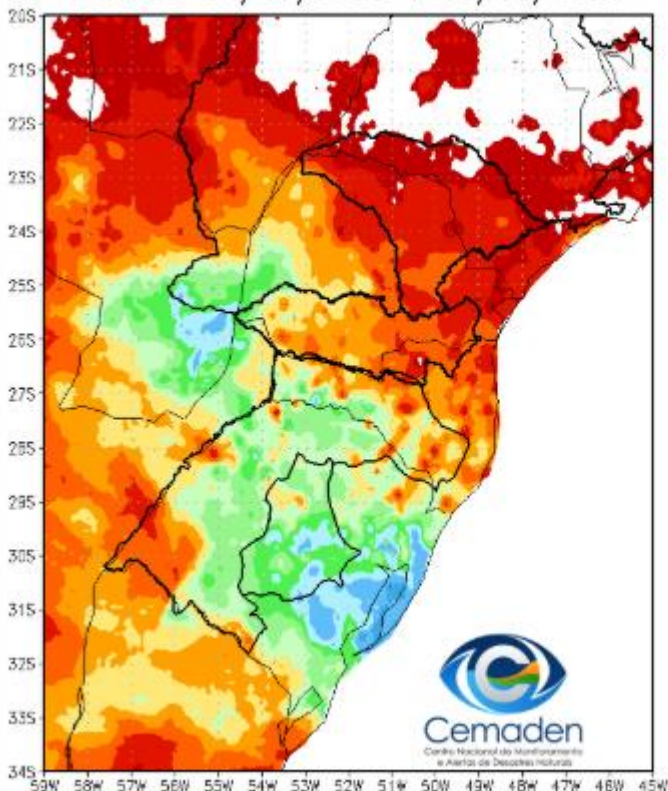


**MINISTÉRIO DA
CIÊNCIA, TECNOLOGIA
E INOVAÇÃO**

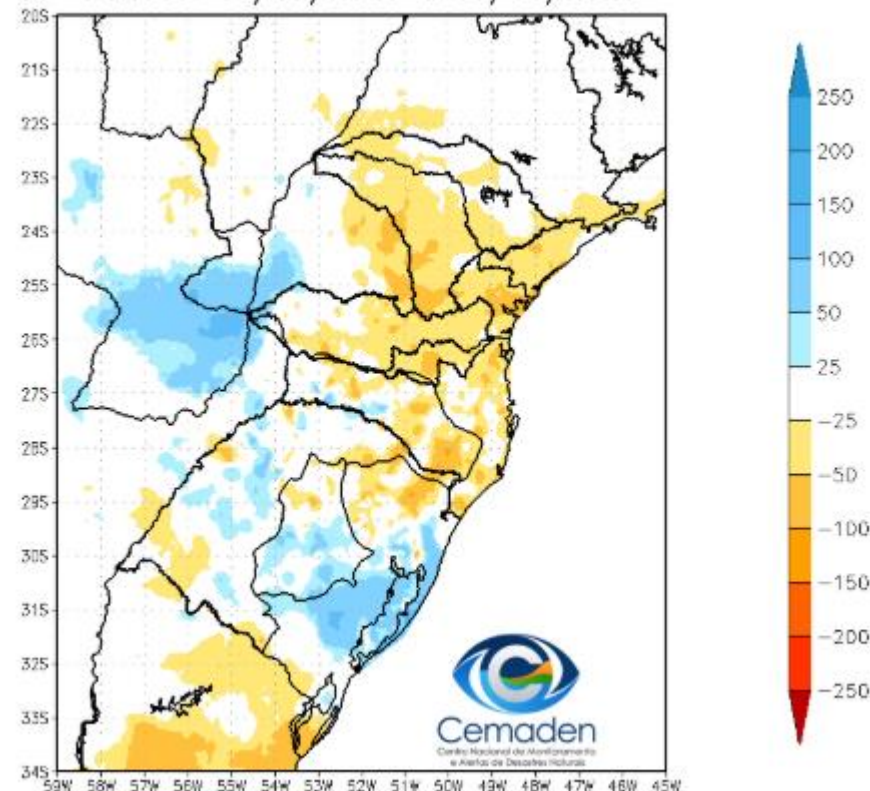


Precipitação nos últimos 30 dias

Precipitação Acumulada (mm) A.S.
Período: 14/07/2025 a 13/08/2025

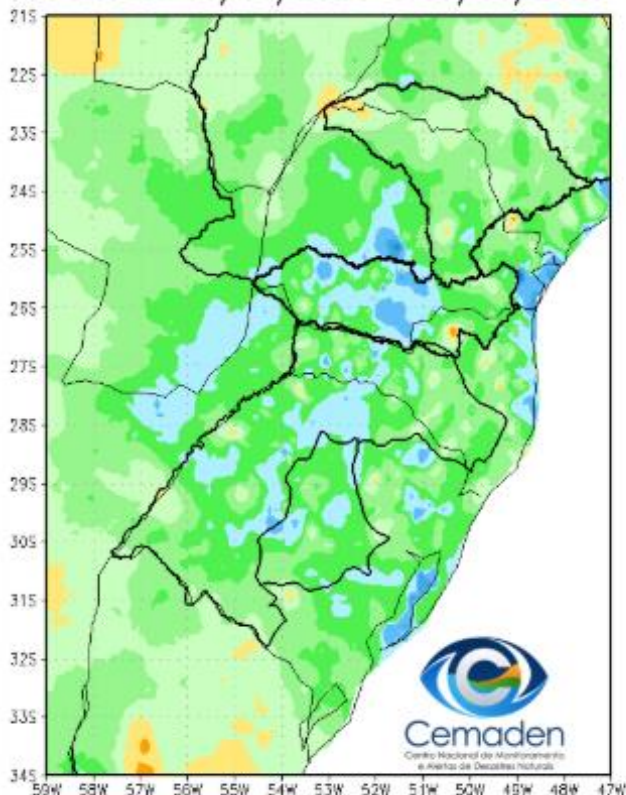


Anomalia de Precipitação (mm) A.S.
Período: 14/07/2025 a 13/08/2025

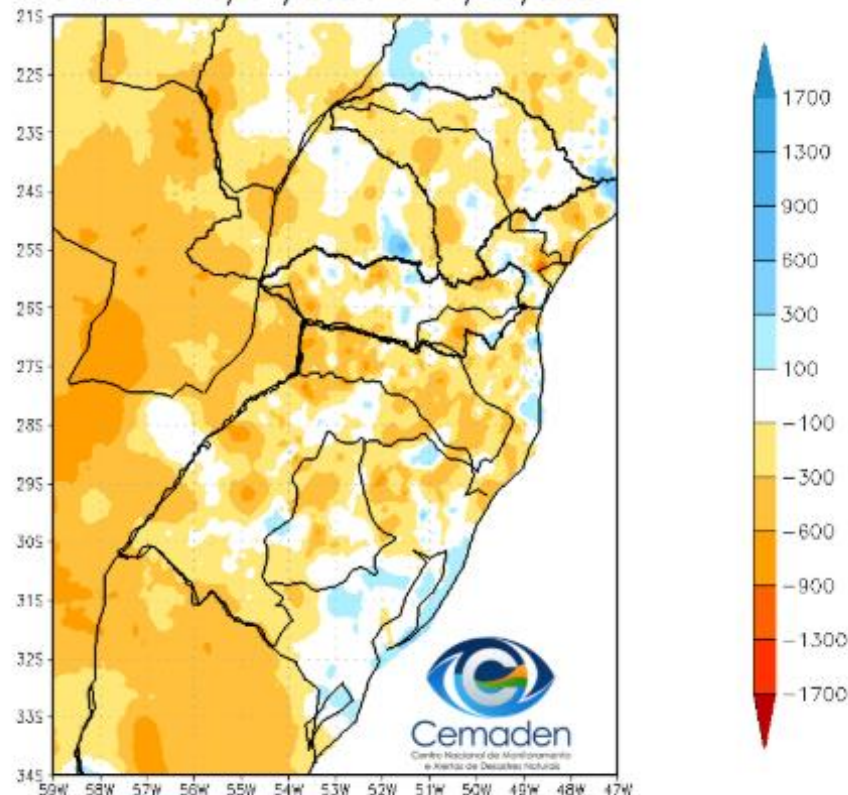


Precipitação no Ano Hidrológico

Precipitação Acumulada (mm) A.S.
Período: 01/10/2024 a 13/08/2025

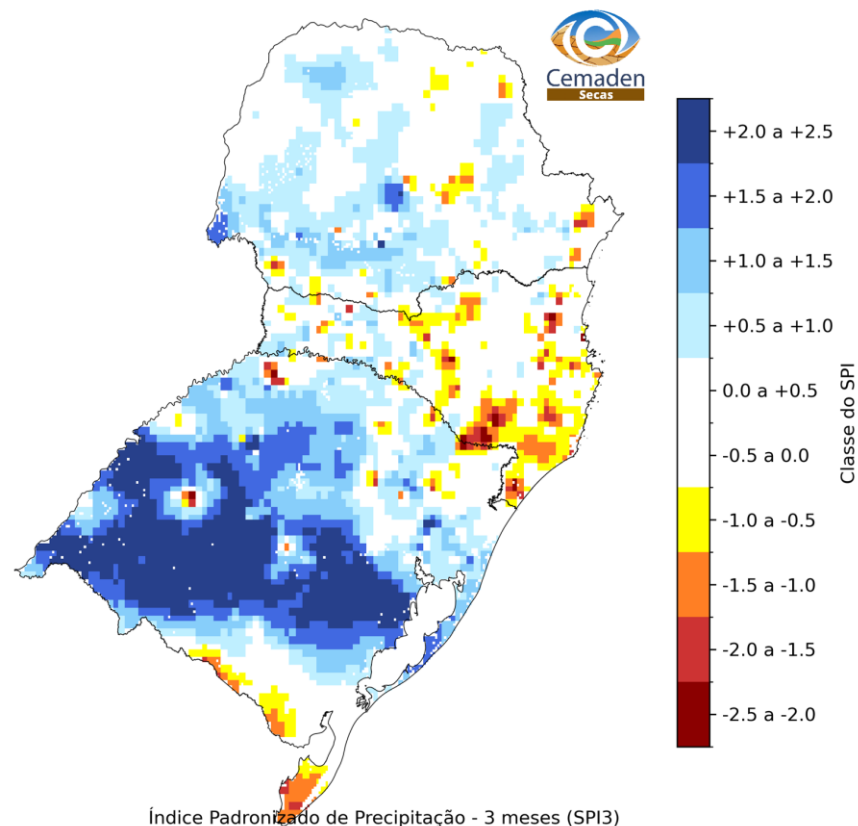


Anomalia de Precipitação (mm) A.S.
Período: 01/10/2024 a 13/08/2025



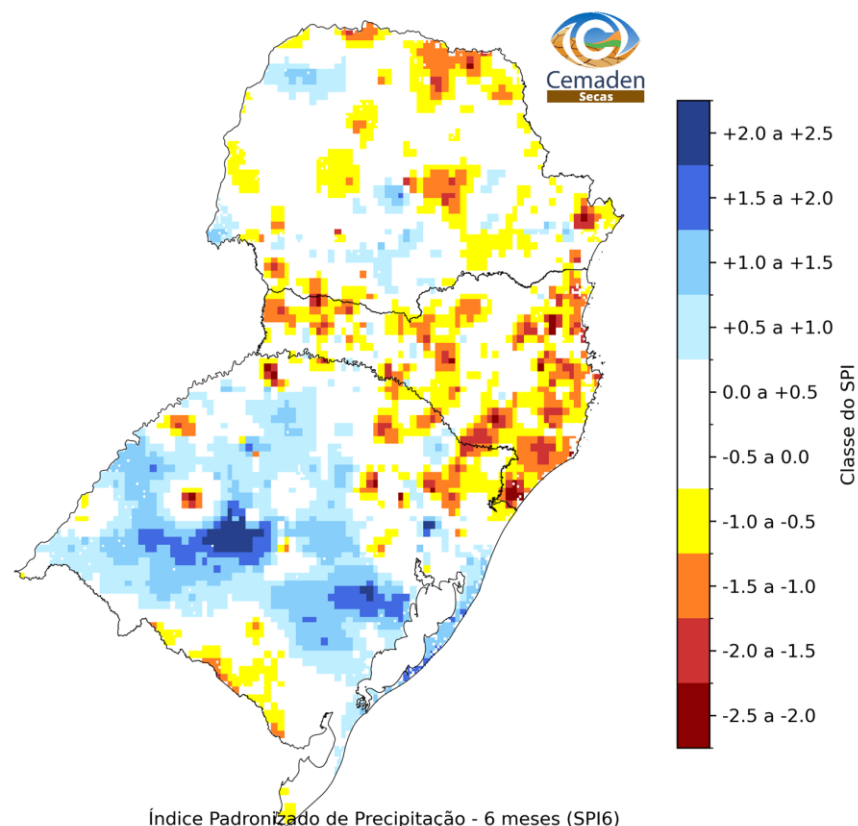
SPI: JULHO 2025

SPI-03



Índice Padronizado de Precipitação - 3 meses (SPI3)
Julho 2025
Fonte: Cemaden/MCTI

SPI-06



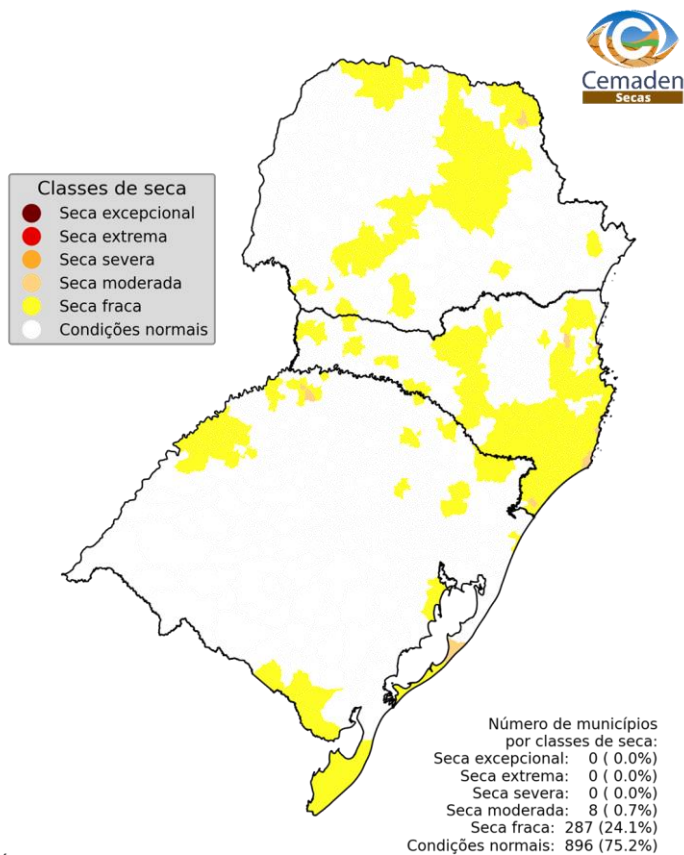
Índice Padronizado de Precipitação - 6 meses (SPI6)
Julho 2025
Fonte: Cemaden/MCTI

ÍNDICE INTEGRADO DE SECA: ANÁLISE POR

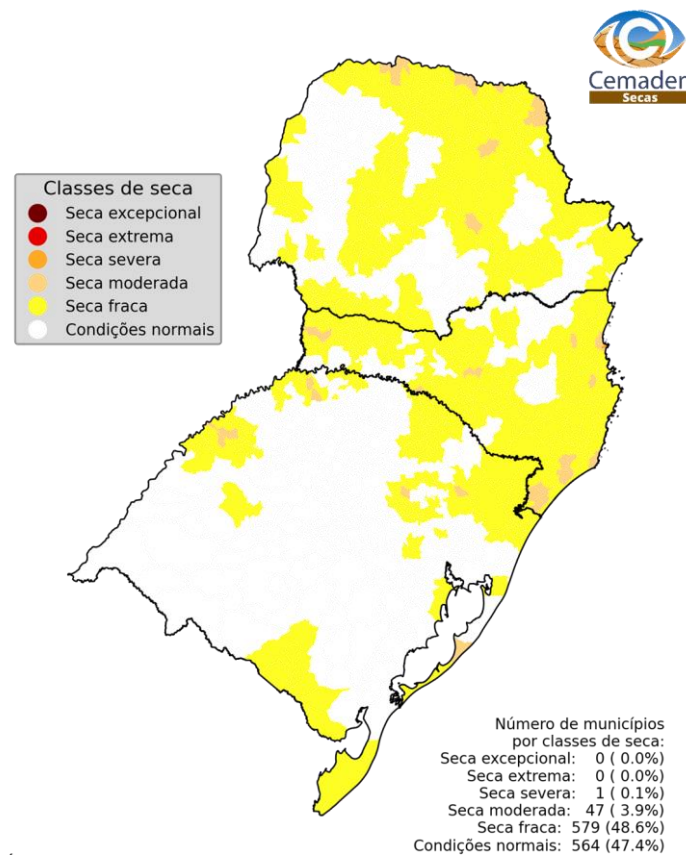
IIS-03
OBSERVADO

MUNICÍPIOS

IIS-06
OBSERVADO

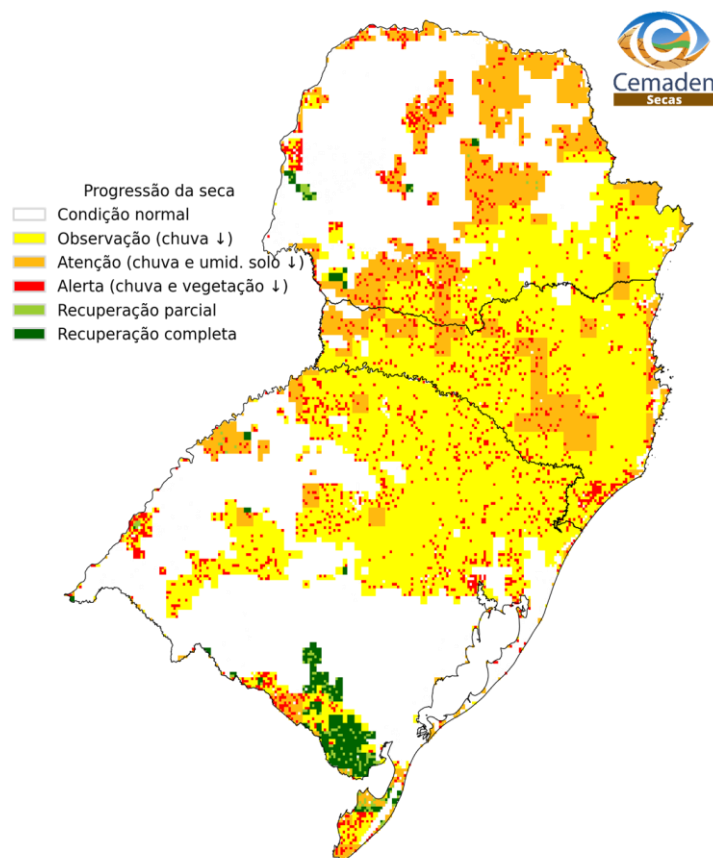


Índice Integrado de Seca - 3 meses (IIS3)
Julho 2025
Fonte: Cemaden/MCTI



Índice Integrado de Seca - 6 meses (IIS6)
Julho 2025
Fonte: Cemaden/MCTI

PROPAGAÇÃO INCREMENTAL DAS CONDIÇÕES DE SECA (PICS)

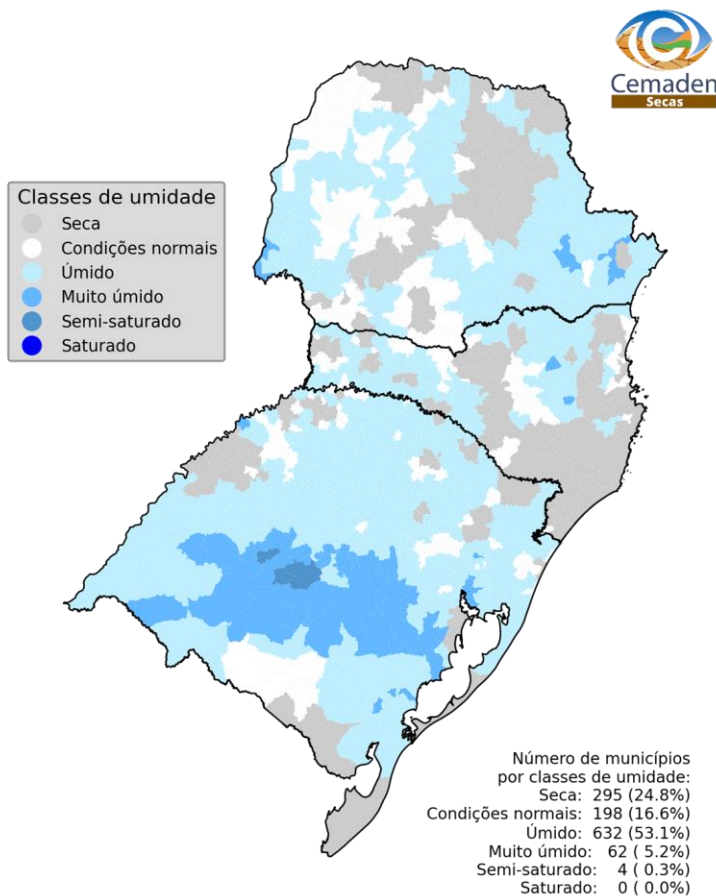


Progressão e Intensificação das Condições de Seca (PICS)
Julho 2025
Fonte: Cemaden/MCTI

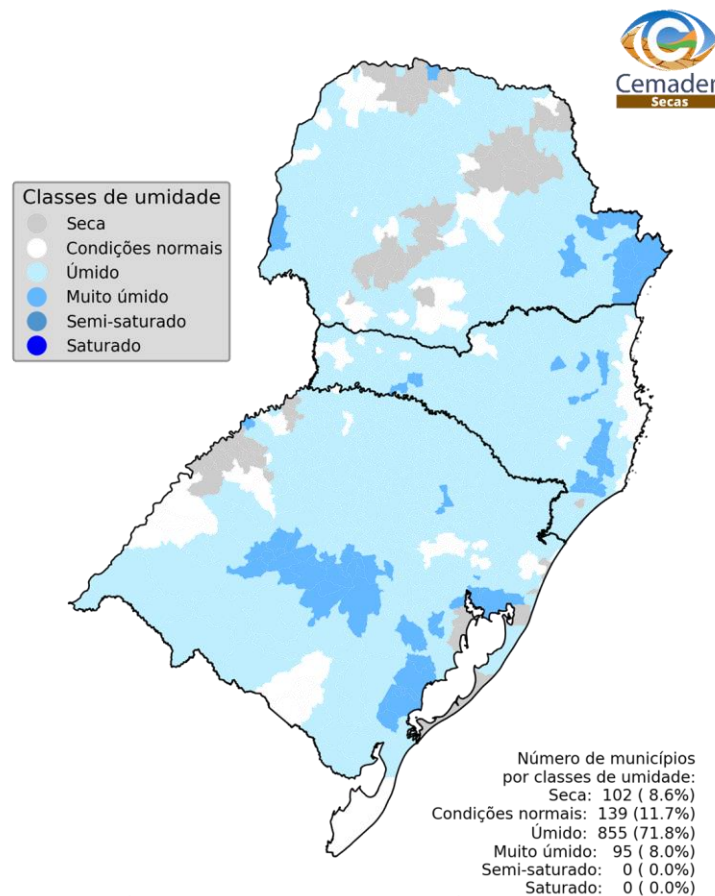
ÍNDICE AGREGADO DE RECURSOS DE ÁGUA (IARA)

JULHO/25

AGOSTO/25



Índice Agregado de Recursos de Água (IARA)
 Julho 2025
 Fonte: Cemaden/MCTI

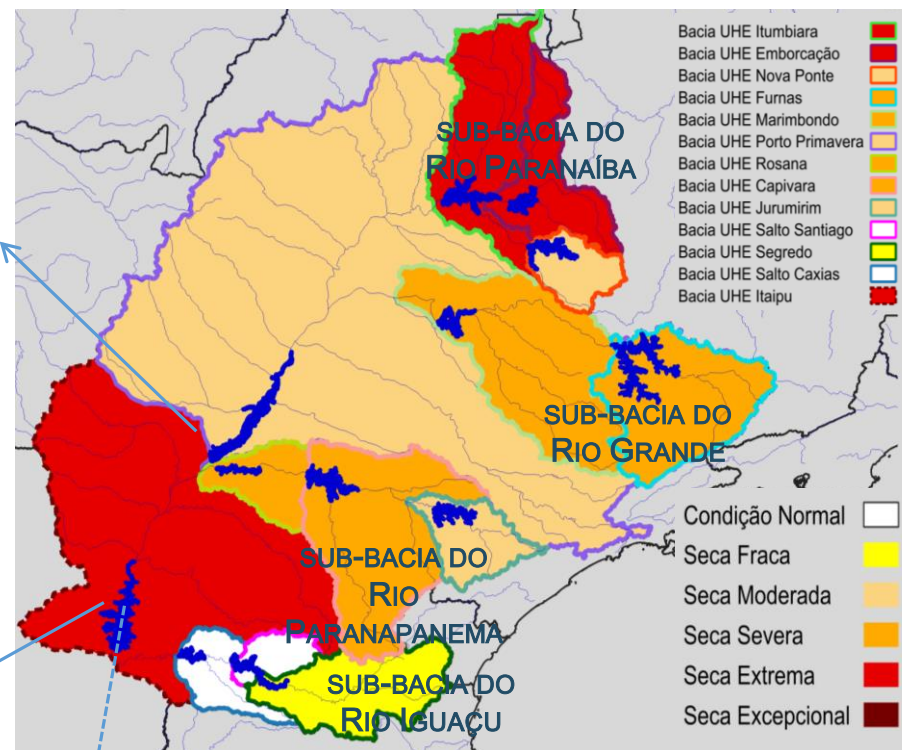
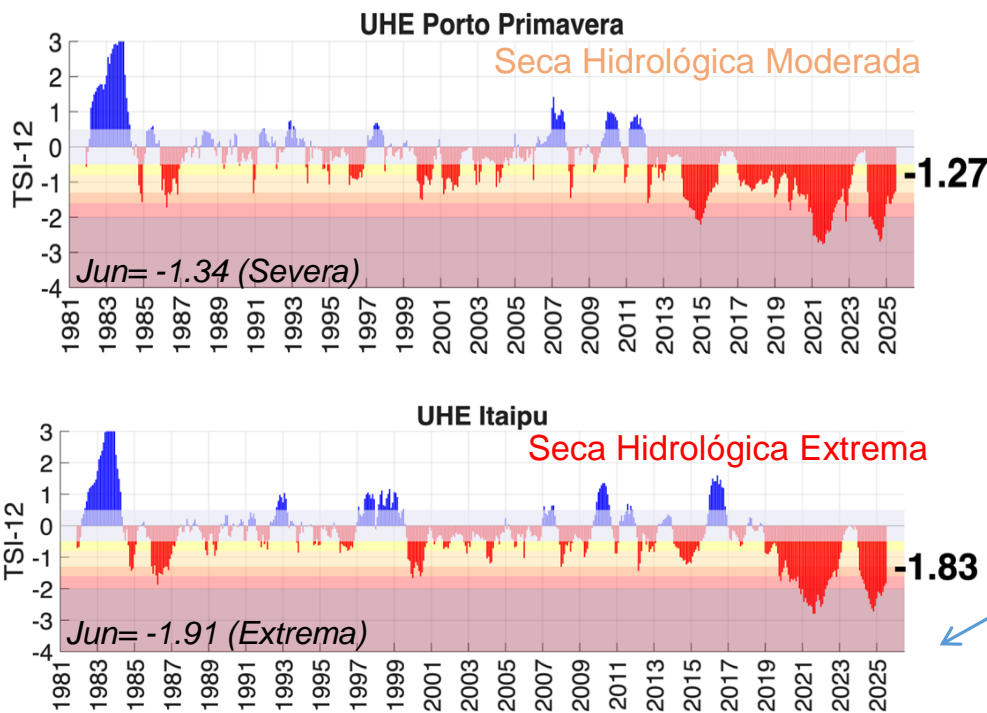


Previsão do Índice Agregado de Recursos de Água (IARAp)
 Agosto 2025
 Fonte: Cemaden/MCTI

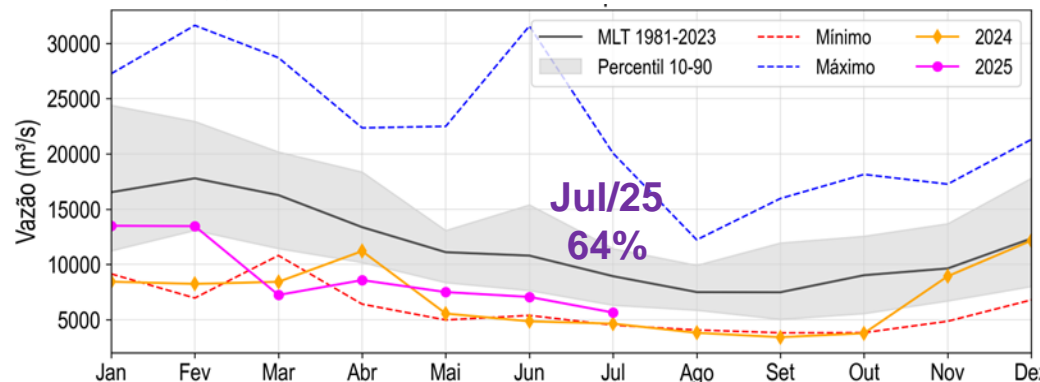
BACIA DO RIO PARANÁ

Índice de Seca Bivariado (Chuva-Vazão) – TSI 12

Jul/2025



VAZÃO NATURAL - ITAIPU



Fonte: CEMADEN/MCTI

Dados: Precipitação (CHIRPS) e Vazão (ONS e ANA) Período: Jan/1981 – Jul/2025

BACIA DO RIO PARANAPANEMA

Jul/2025

Condição Normal
Seca Fraca
Seca Moderada
Seca Severa
Seca Extrema
Seca Excepcional

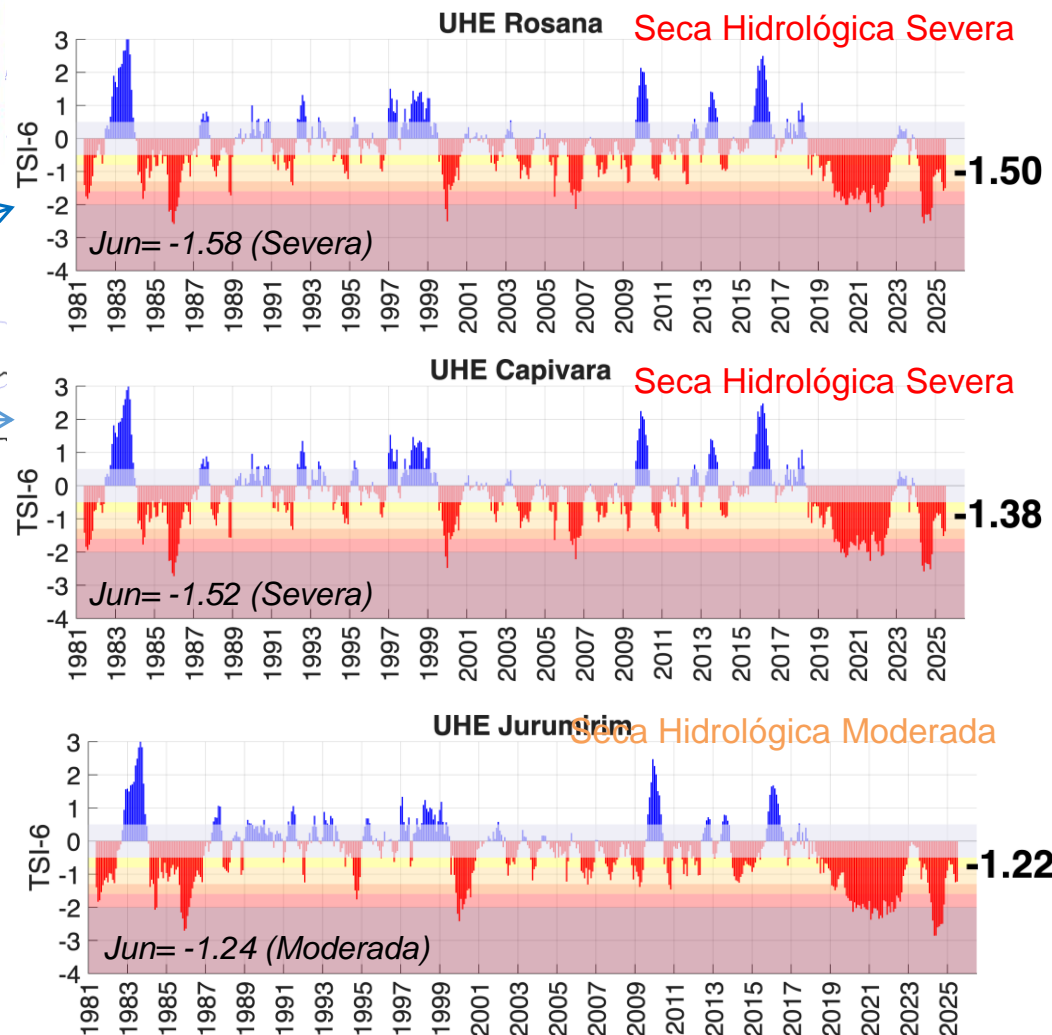


Reservatórios
Hidrografia

Bacia UHE Rosana
Bacia UHE Capivara
Bacia UHE Jurumirim
Bacia Rio Paraná



Índice de Seca Bivariado (Chuva-Vazão) – TSI 6



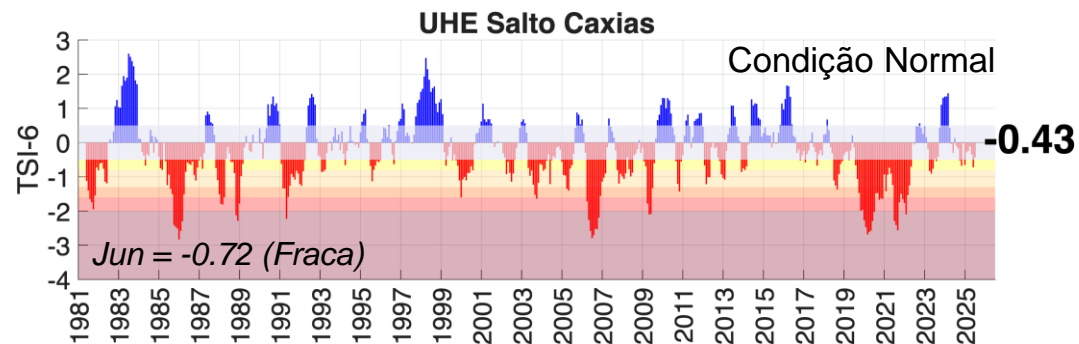
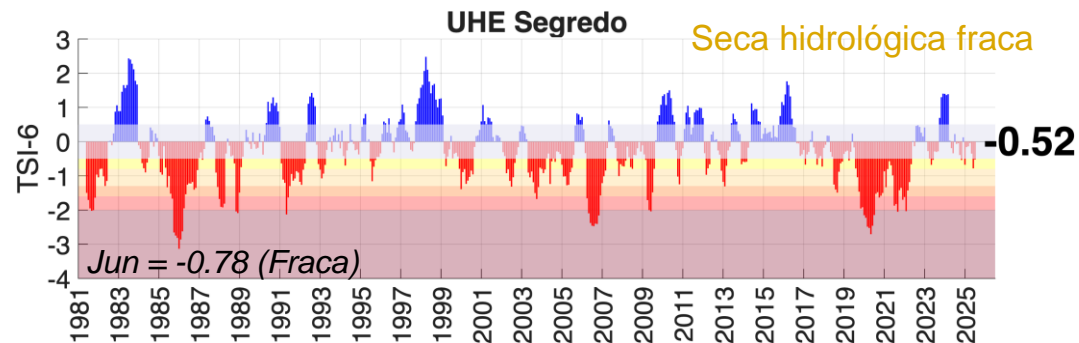
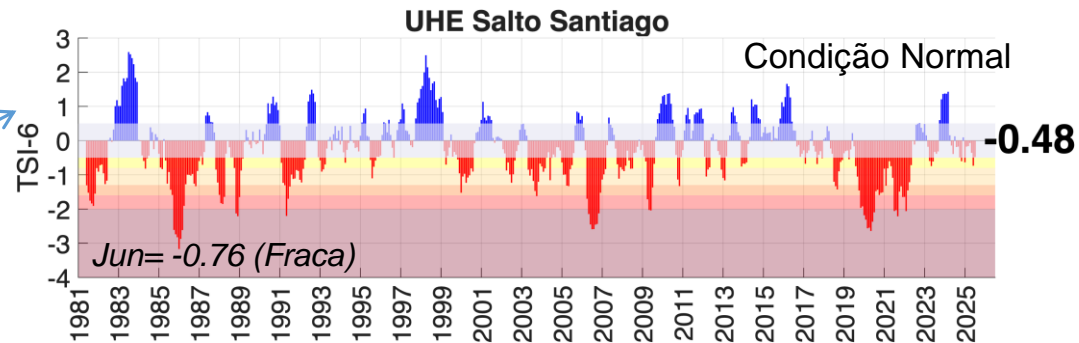
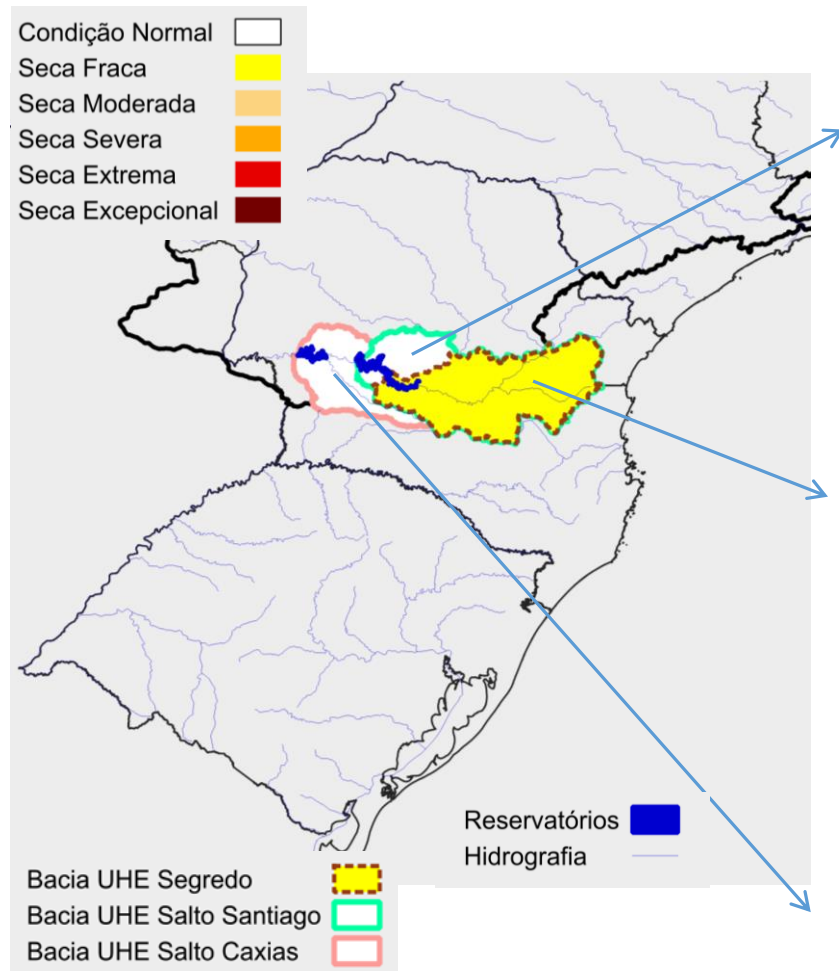
Fonte: CEMADEN/MCTI

Dados: Precipitação (CHIRPS) e Vazão (ONS e ANA) Período: Jan/1981 – Jul/2025

BACIA DO RIO IGUAÇU

Jul/2025

Índice de Seca Bivariado (Chuva-Vazão) – TSI 6



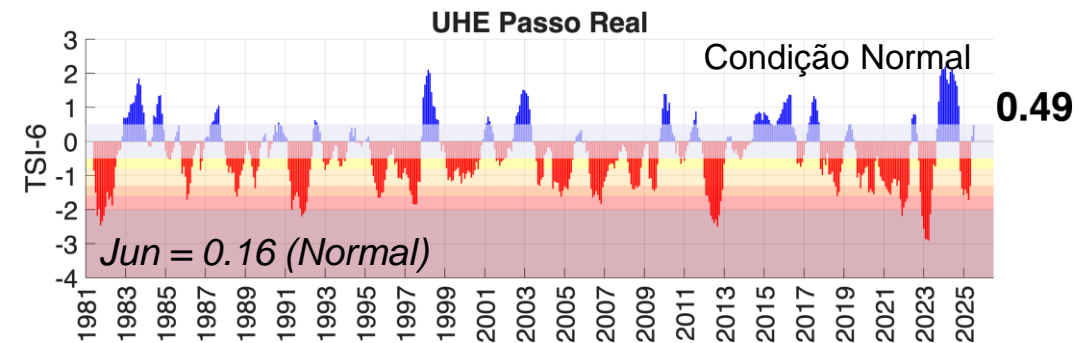
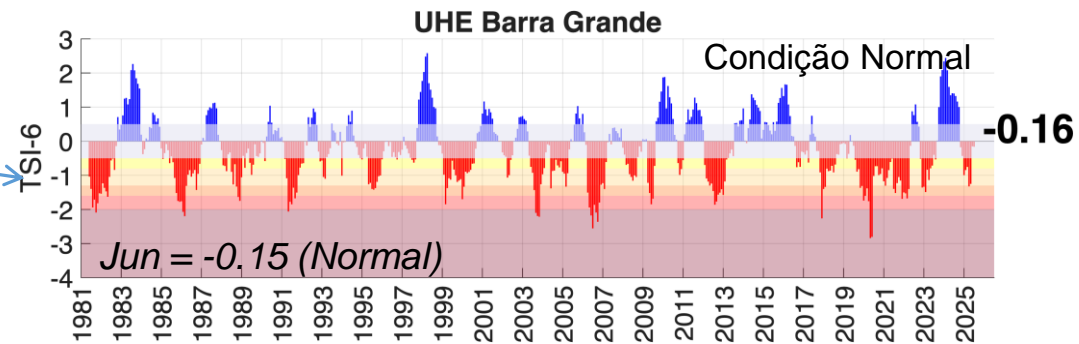
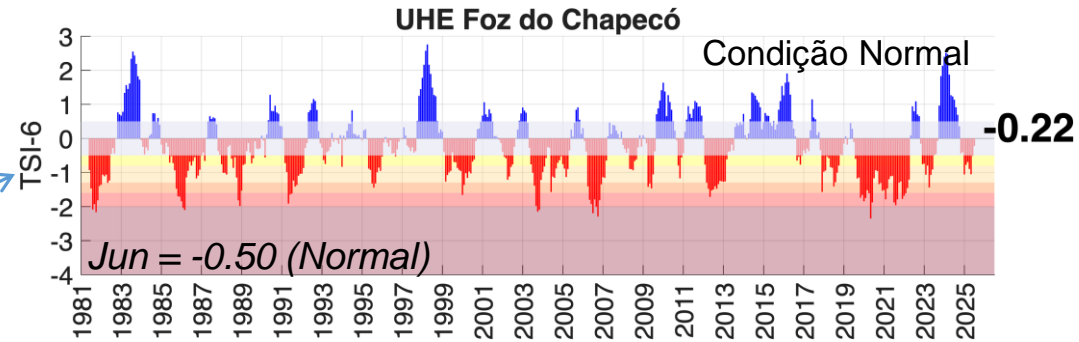
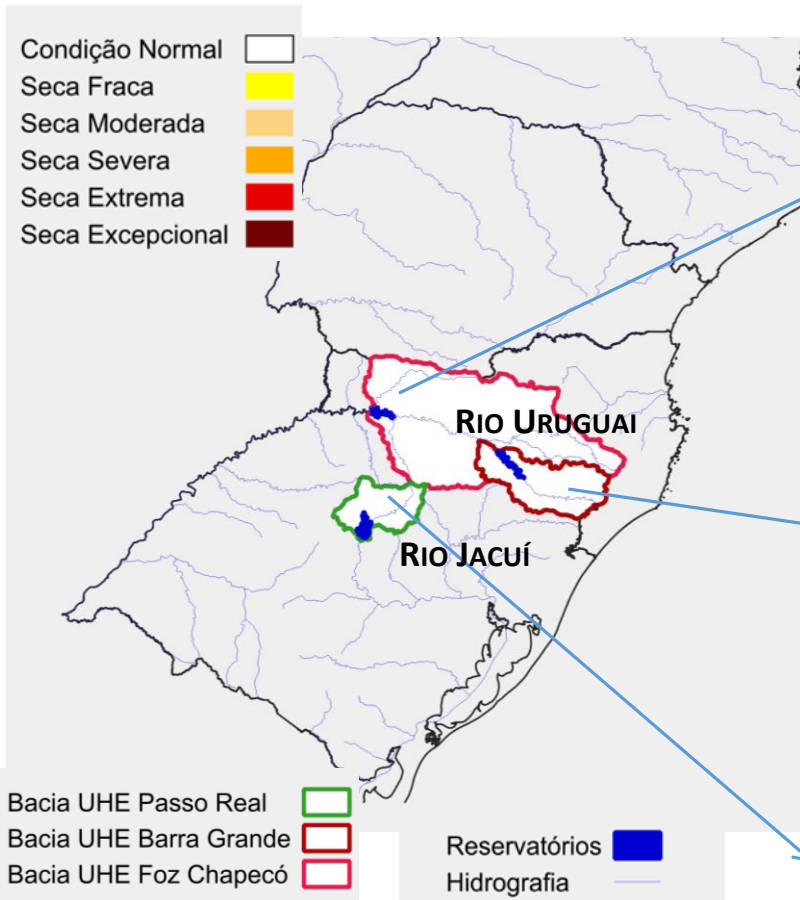
Fonte: CEMADEN/MCTI

Dados: Precipitação (CHIRPS) e Vazão (ONS e ANA) Período: Jan/1981 – Jul/2025

BACIAS HIDROGRÁFICAS: ESTADOS SC-RS

Jul/2025

Índice de Seca Bivariado (Chuva-Vazão) – TSI-6

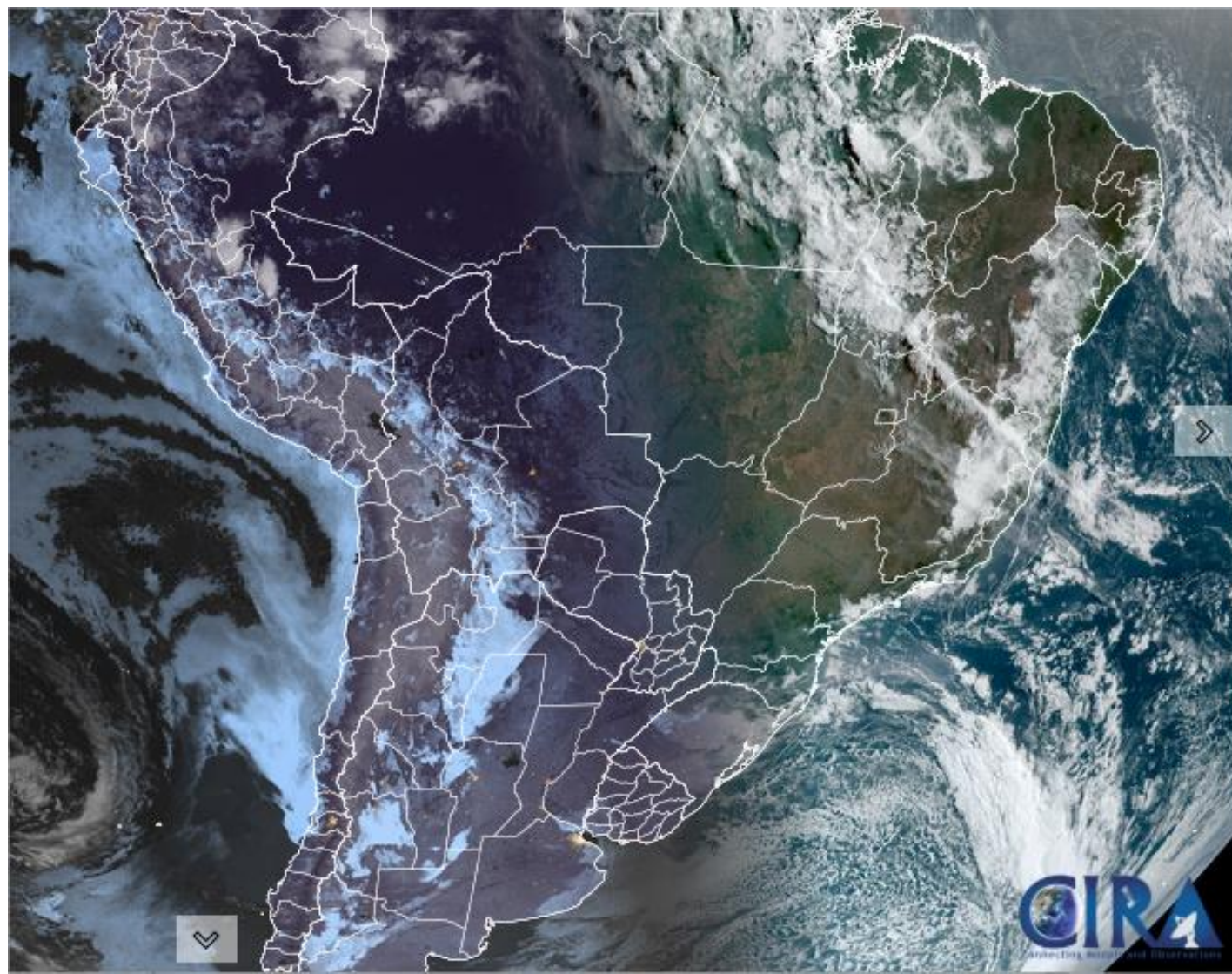


Fonte: CEMADEN/MCTI

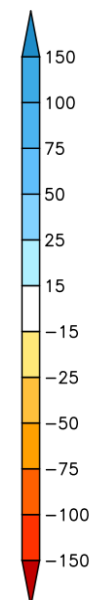
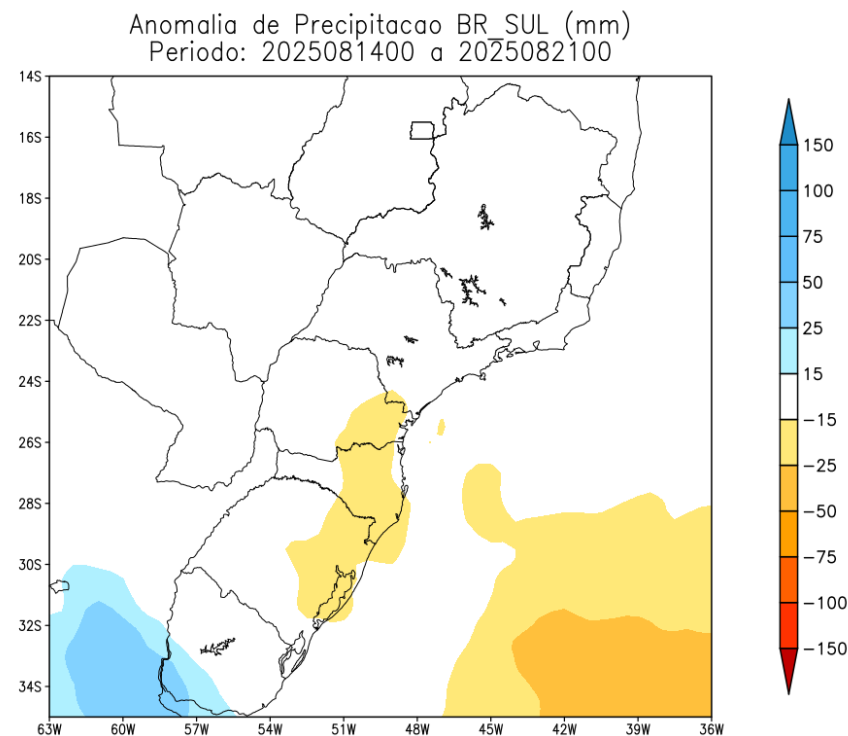
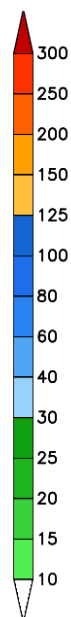
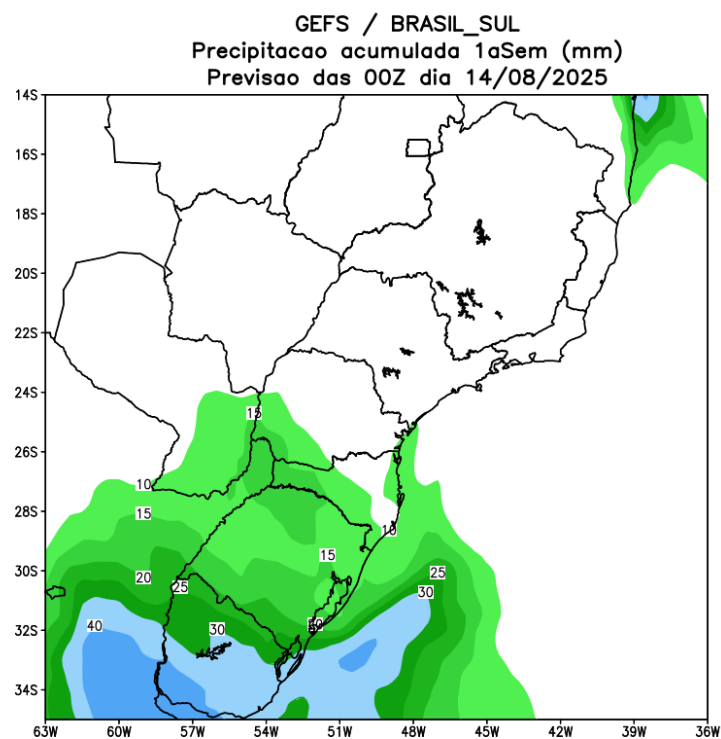
Dados: Precipitação (CHIRPS) e Vazão (ONS e

ANA) Período: Jan/1981 – Jul/2025

Situação meteorológica atual



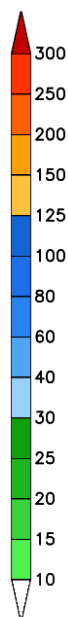
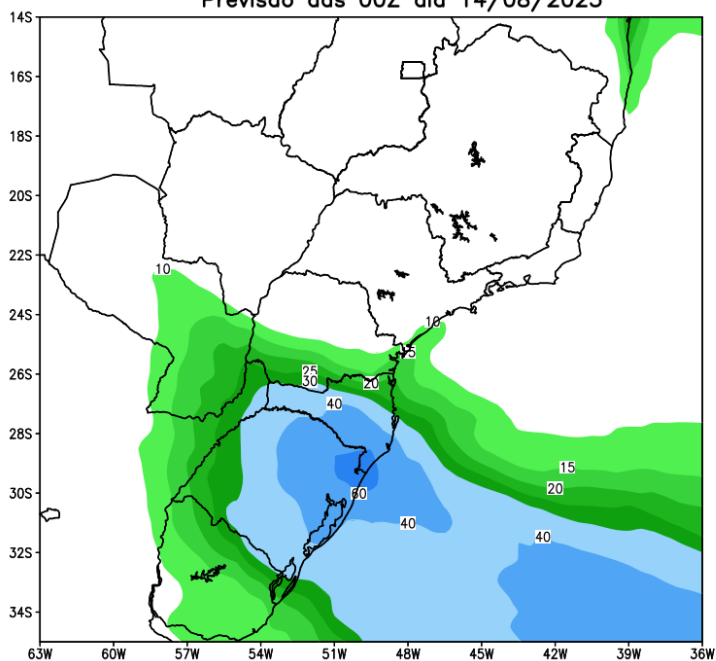
Previsão de chuva próximos 7 dias



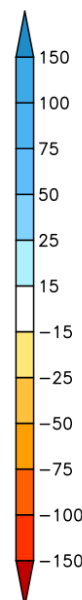
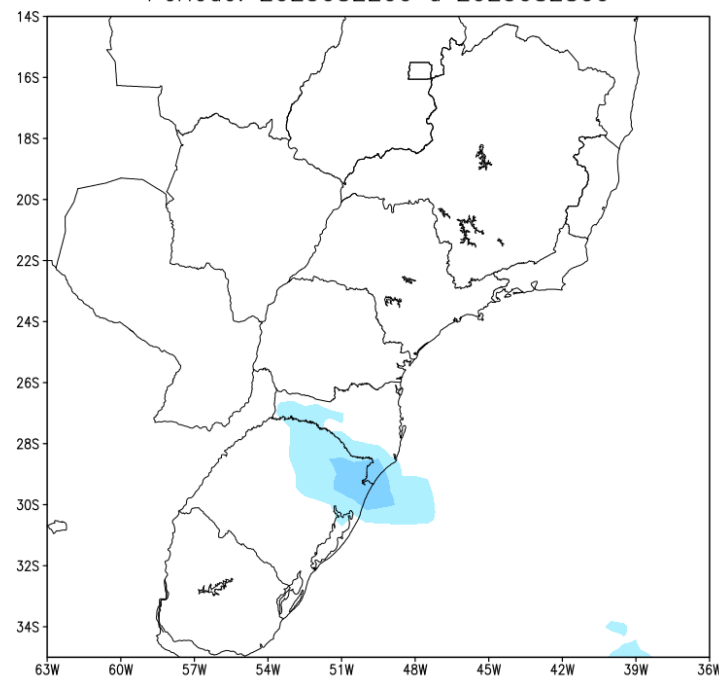
MODELO GEFS

Tendência para a segunda semana

GEFS / BRASIL_SUL
Precipitação acumulada 2aSem (mm)
Previsão das 00Z dia 14/08/2025



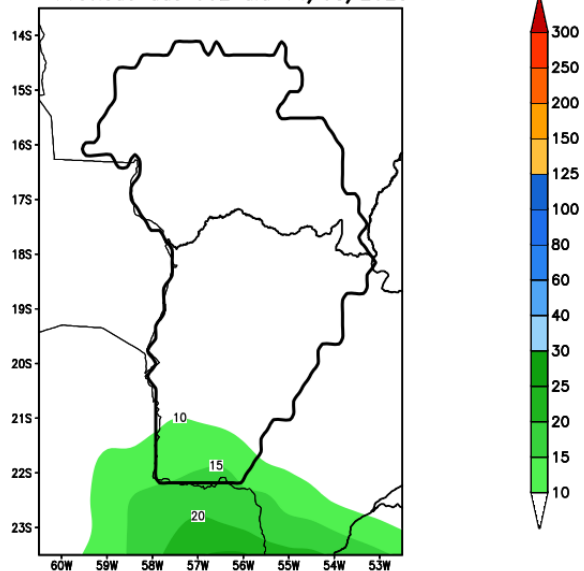
Anomalia de Precipitação BR_SUL (mm)
Período: 2025082200 a 2025082800



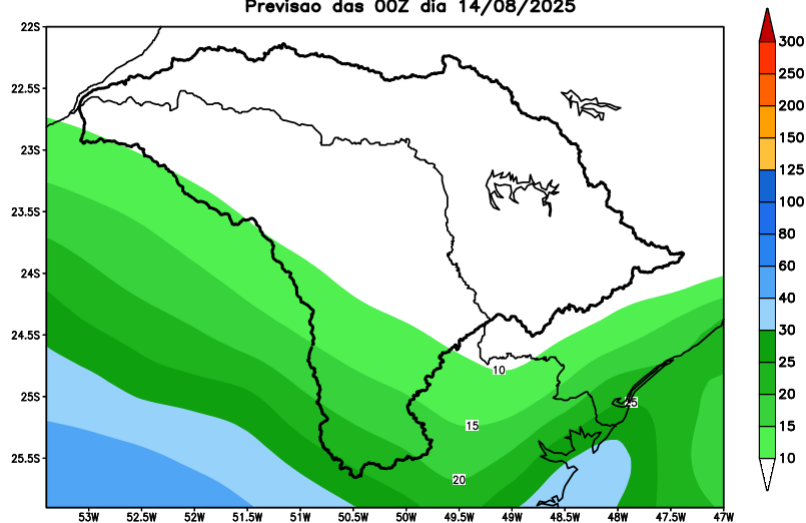
MODELO GEFS

Previsão para as principais bacias

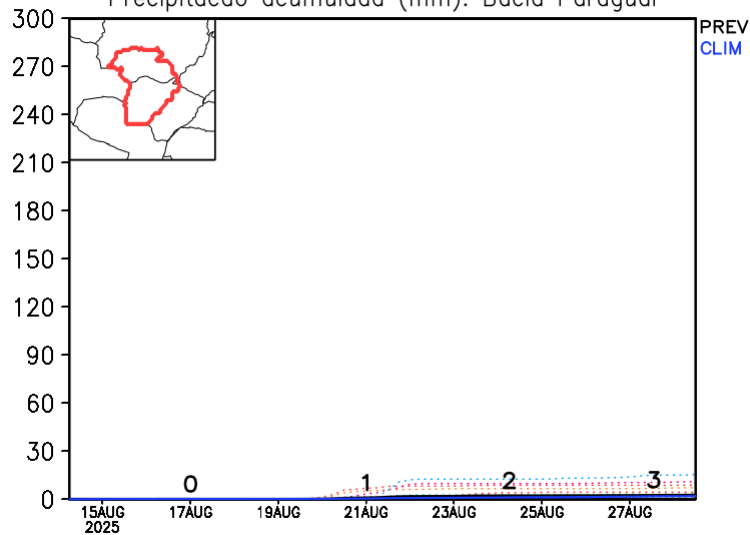
GEFS / Bacia do Rio Paraguai
Precipitação acumulada em 15 dias (mm)
Previsão das 00Z dia 14/08/2025



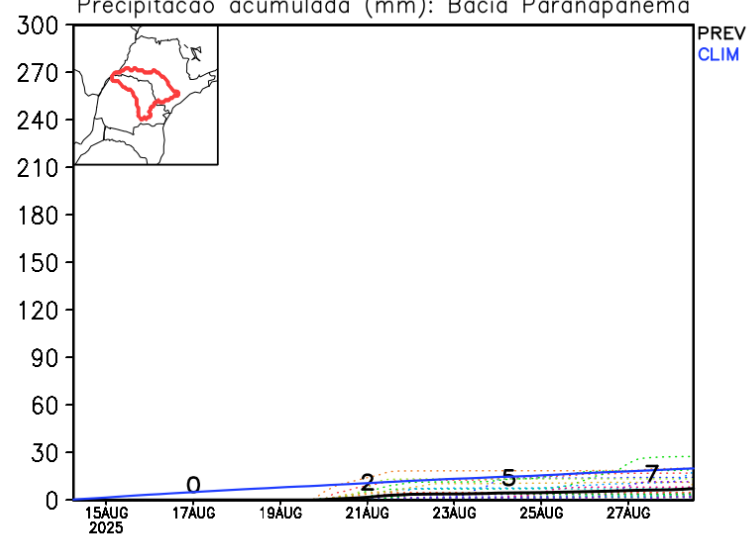
GEFS / Bacia do Rio Paranapanema
Precipitação acumulada em 14 dias (mm)
Previsão das 00Z dia 14/08/2025



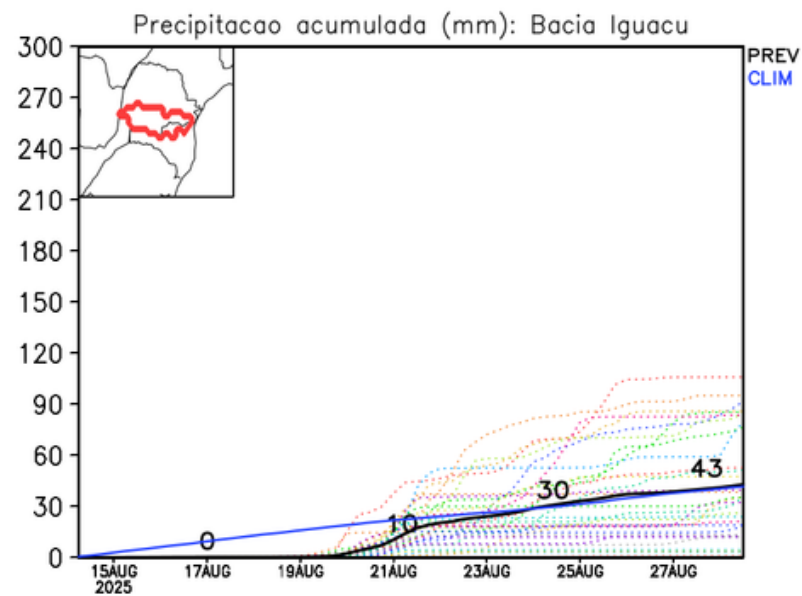
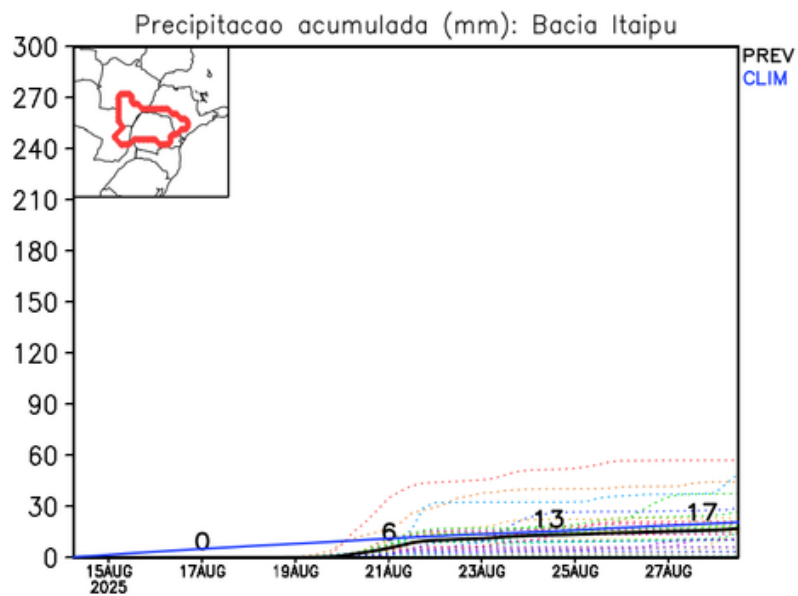
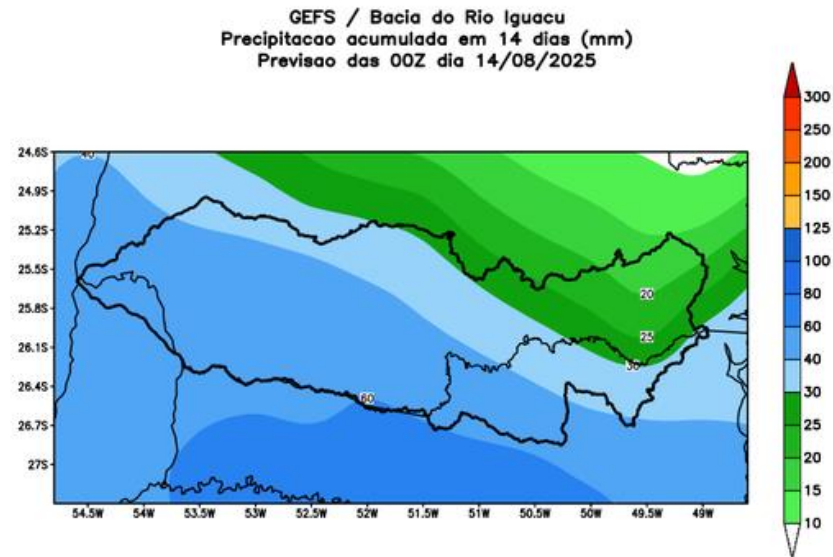
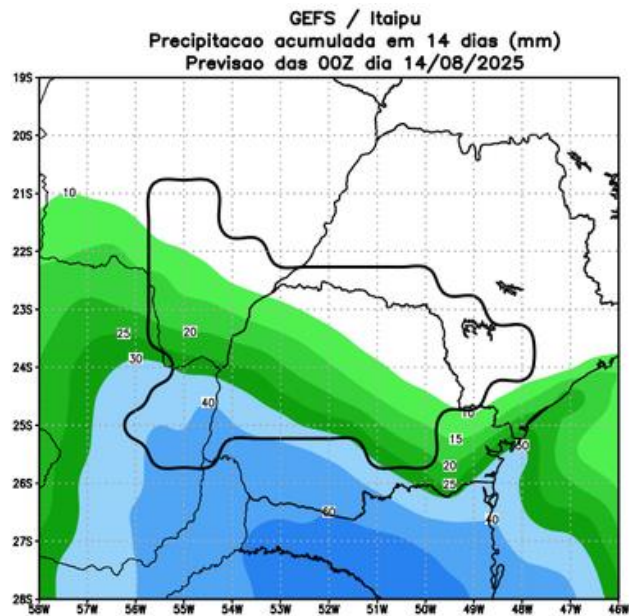
Precipitação acumulada (mm): Bacia Paraguai



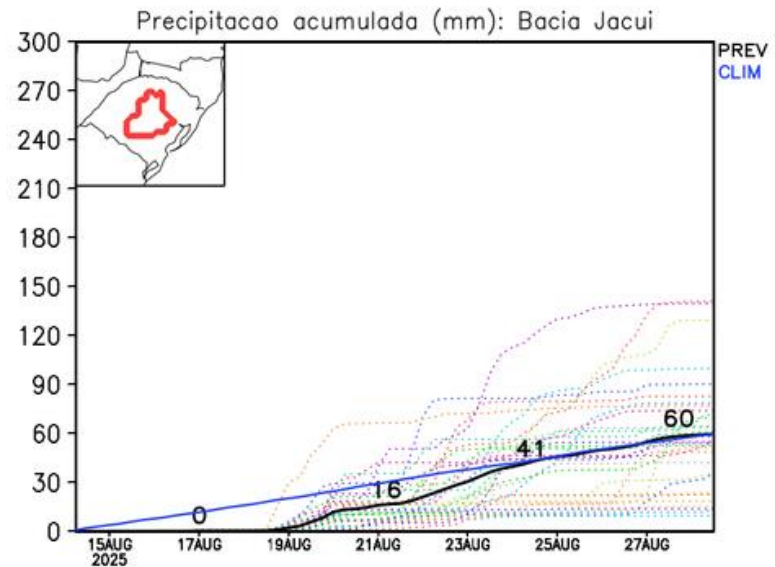
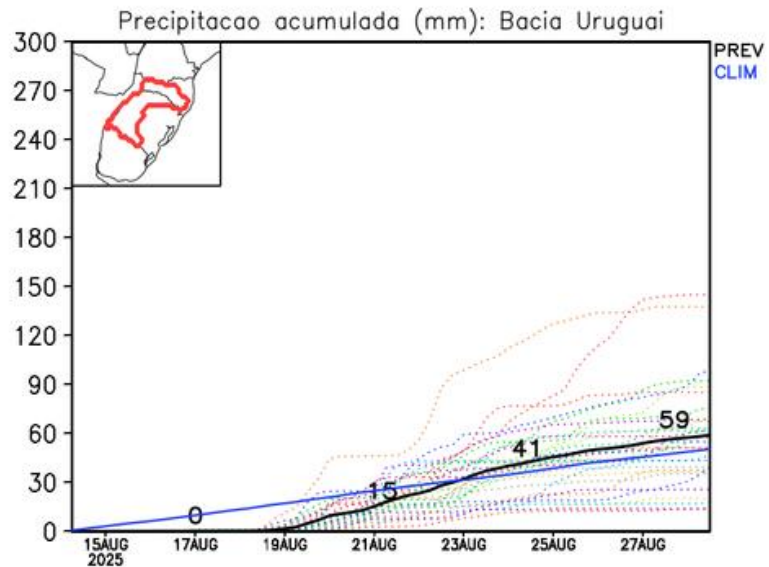
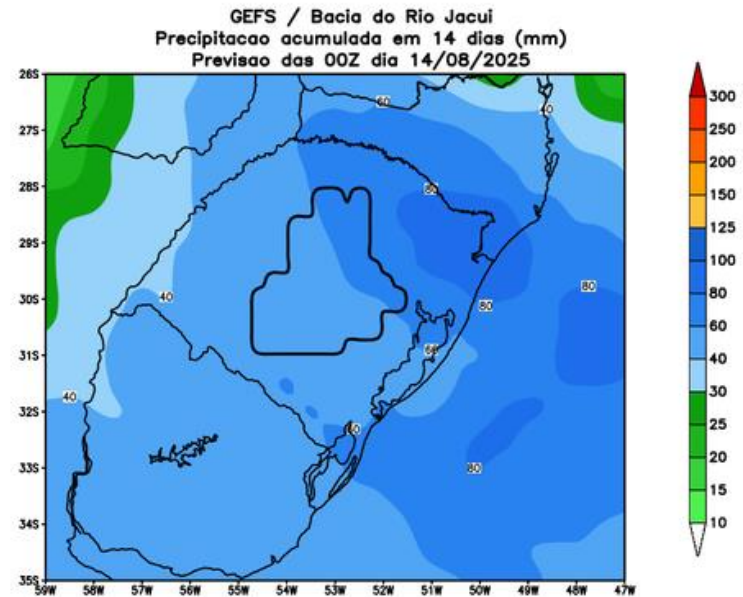
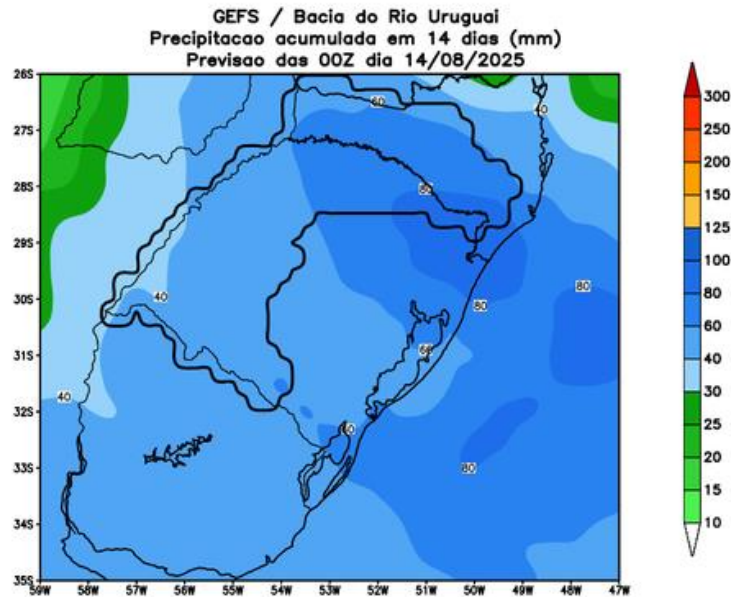
Precipitação acumulada (mm): Bacia Paranapanema



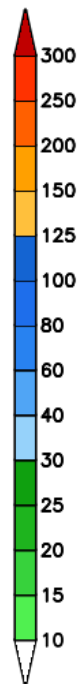
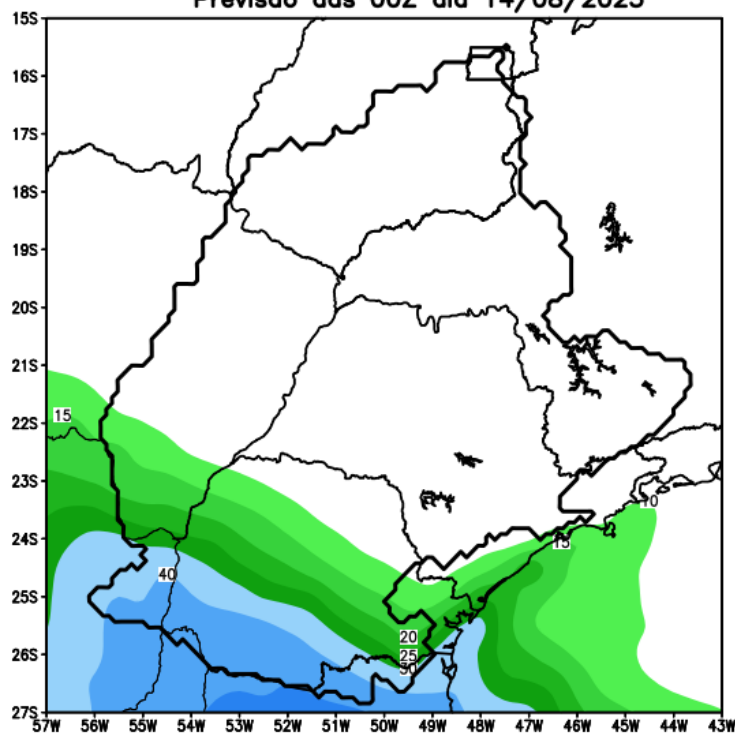
Previsão para as principais bacias



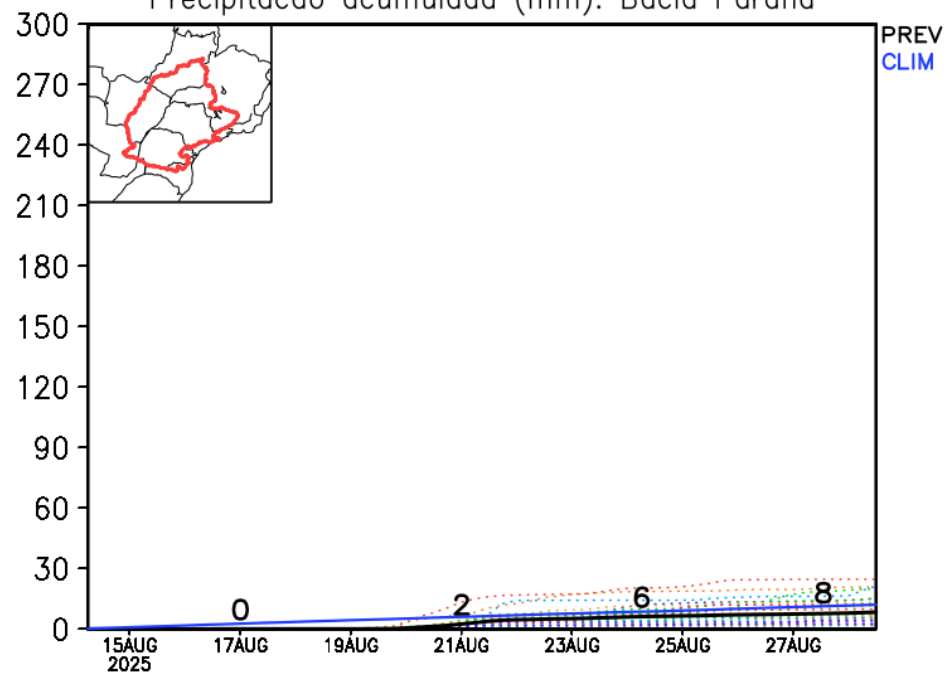
Previsão para as principais bacias



GEFS / Bacia do Parana
Precipitacao acumulada em 14 dias (mm)
Previsao das 00Z dia 14/08/2025

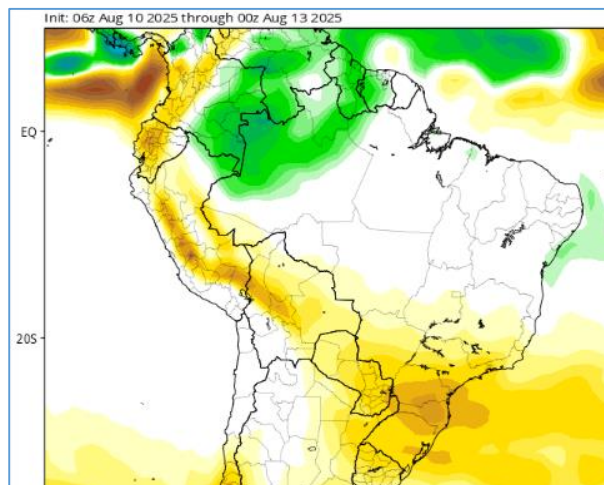


Precipitacao acumulada (mm): Bacia Parana



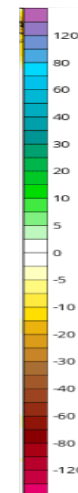
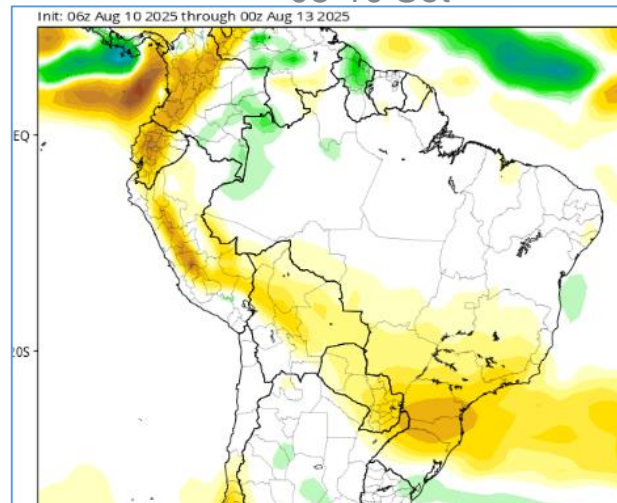
Anomalia de Chuva 3a e 4a semanas

27 Ago – 03 Set

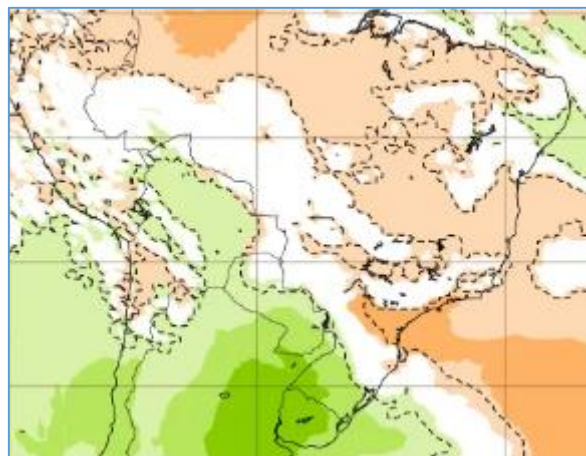


Modelo
Americano
CFS/NOAA

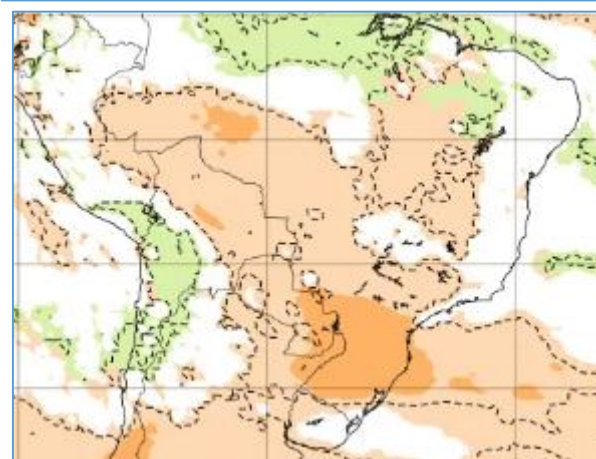
03-10 Set



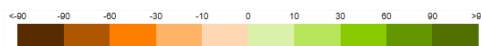
Modelo Europeu
ECMWF



25 Ago – 01 Set

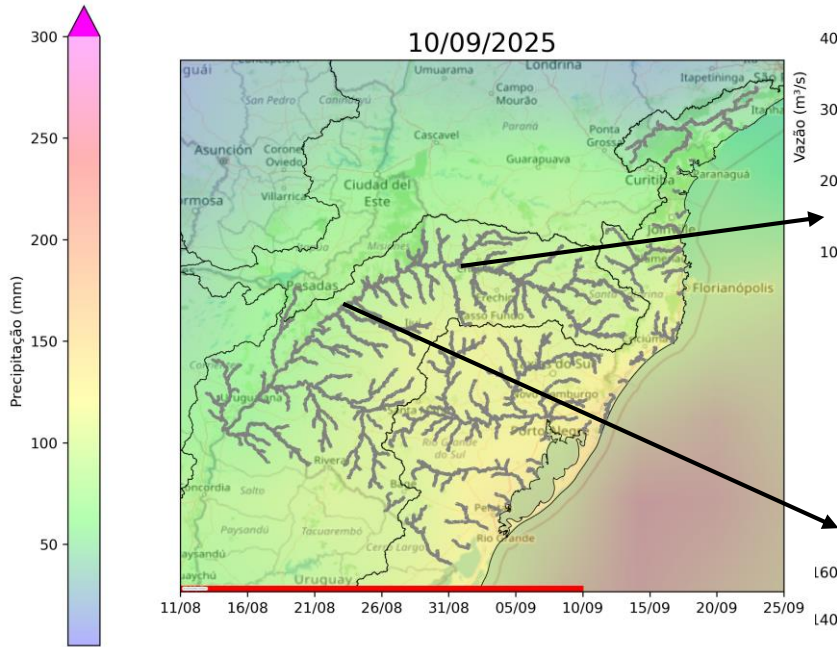


01-08 Set

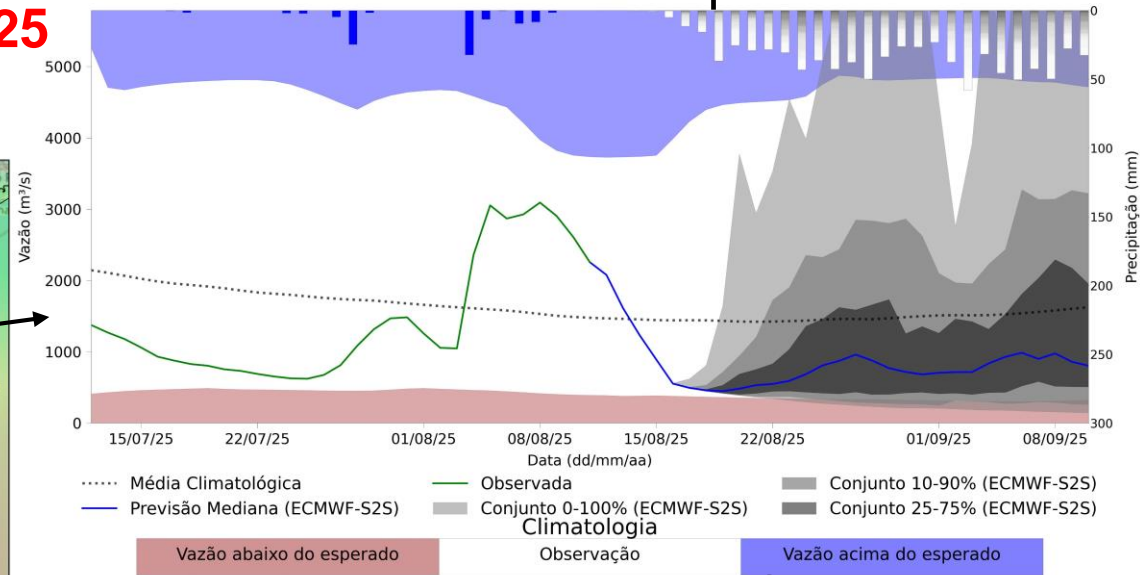


Previsão de vazão natural na Região Sul 30 dias (Modelo hidrológico MHD)

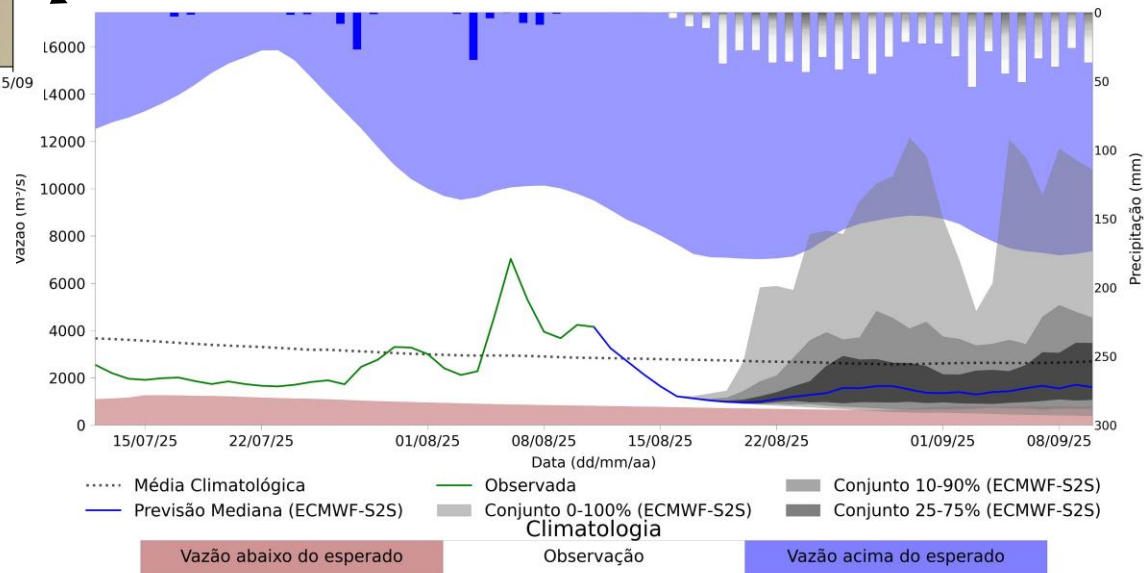
PREVISÃO: 11/08/25 a 10/09/25



UHE Foz do Chapecó



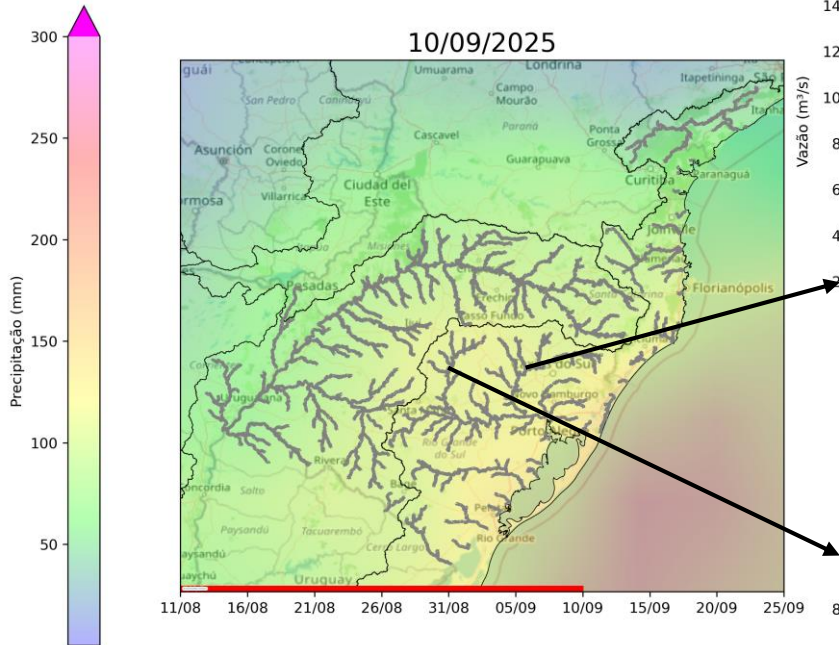
Porto Lucena - RS



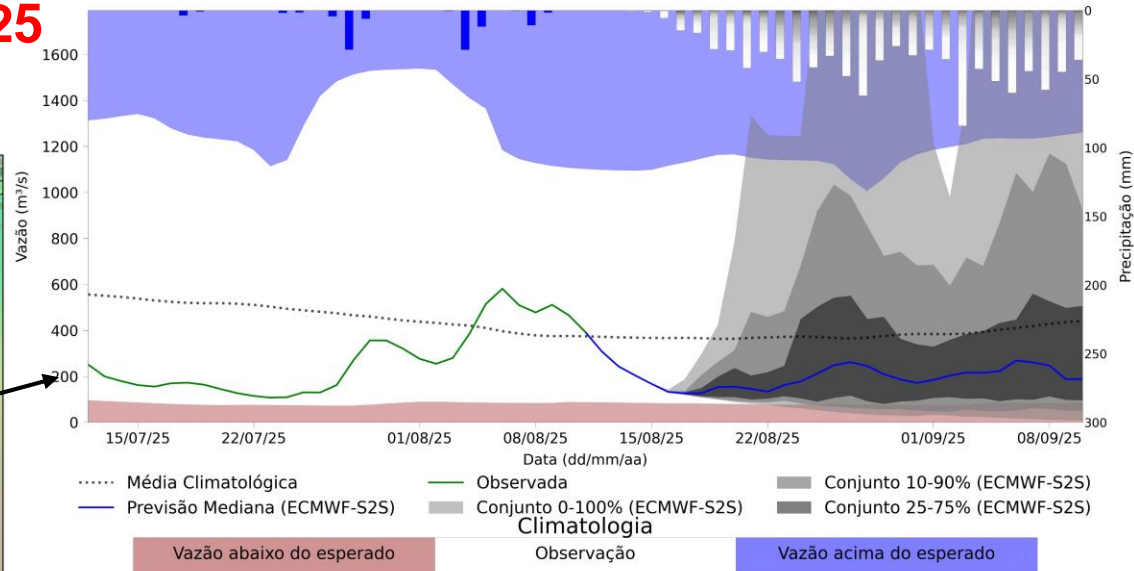
Fonte: Meteorologia (INMET/MERGE);
Vazão (ANA/ONS)
MLT: 2003-2024
Previsão Meteorológica: ECMWF

Previsão de vazão natural na Região Sul 30 dias (Modelo hidrológico MHD)

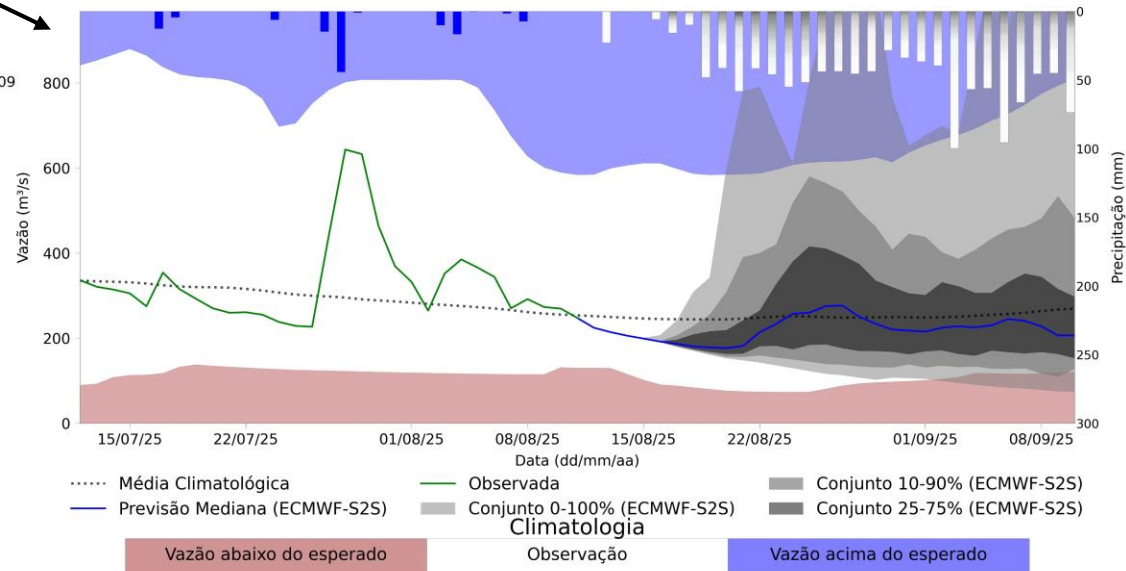
PREVISÃO: 11/08/25 a 10/09/25



UHE 14 de Julho

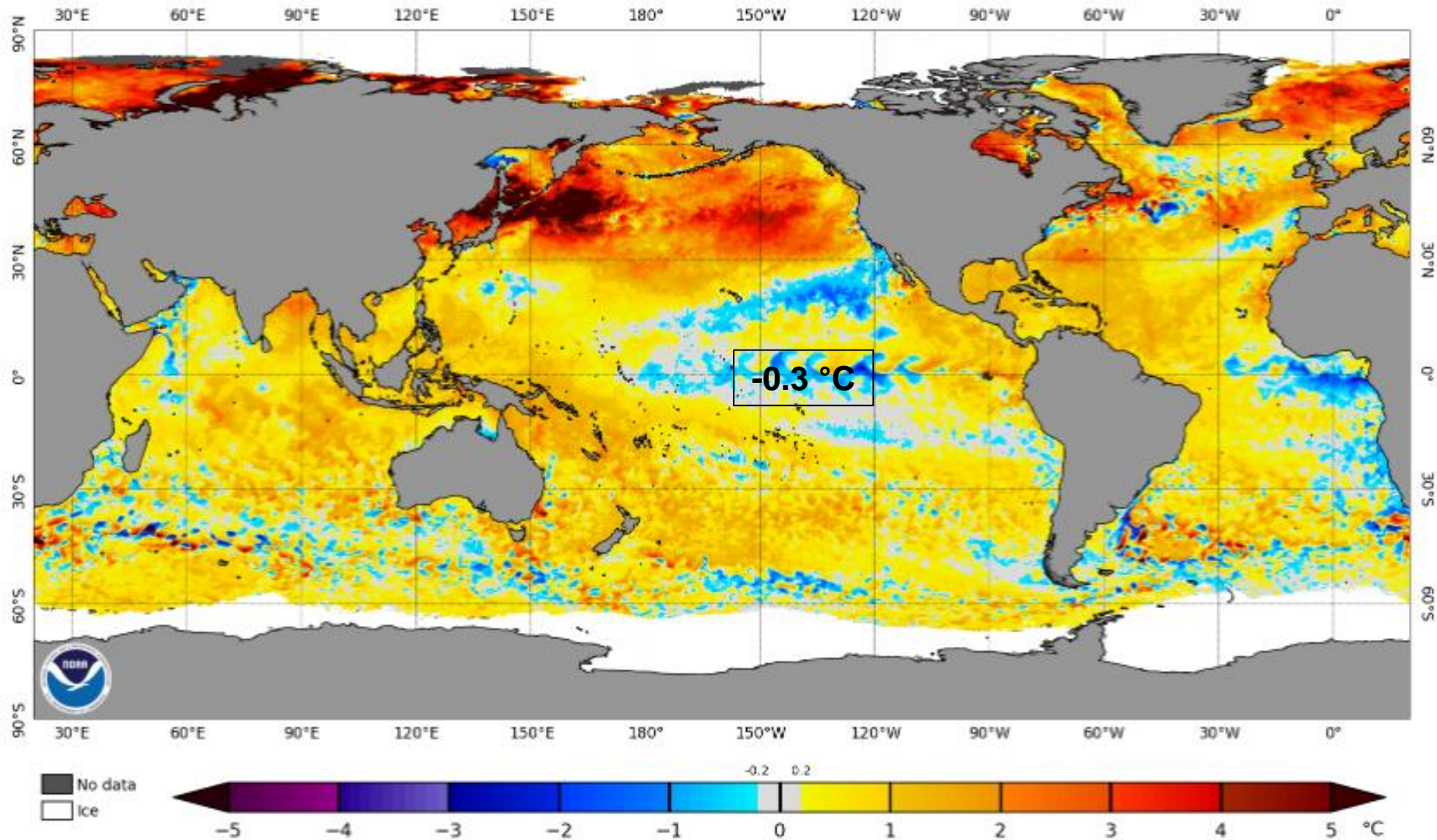


UHE Passo Real



Fonte: Meteorologia (INMET/MERGE);
Vazão (ANA/ONS)
MLT: 2003-2024
Previsão Meteorológica: ECMWF

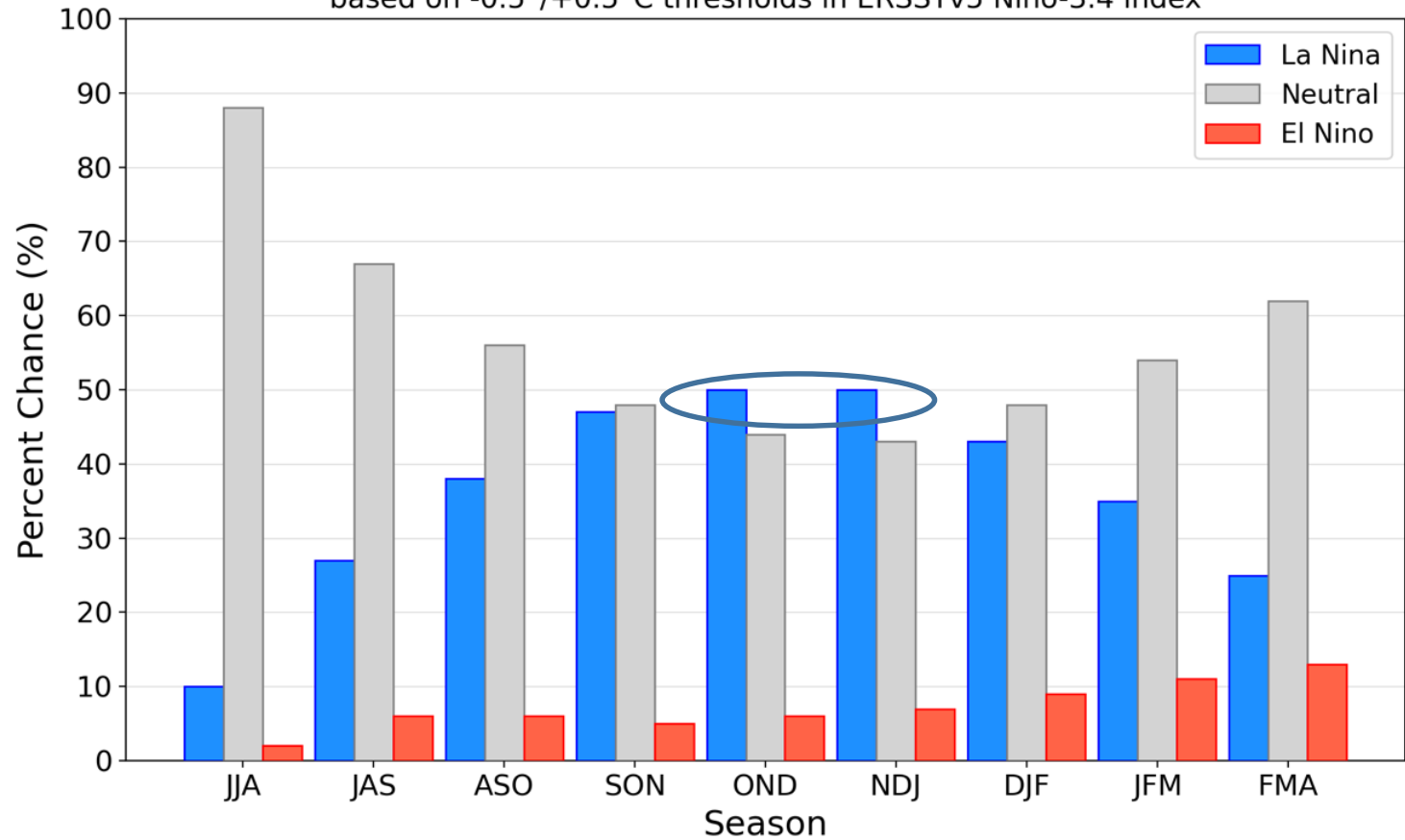
Situação Oceânica



Previsão do “ENSO”

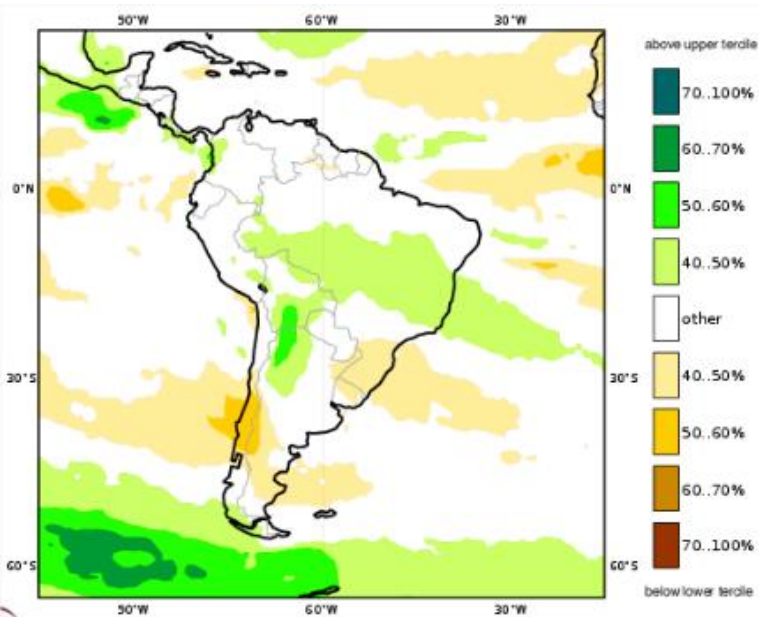
Official NOAA CPC ENSO Probabilities (issued July 2025)

based on $-0.5^{\circ}/+0.5^{\circ}\text{C}$ thresholds in ERSSTv5 Niño-3.4 index

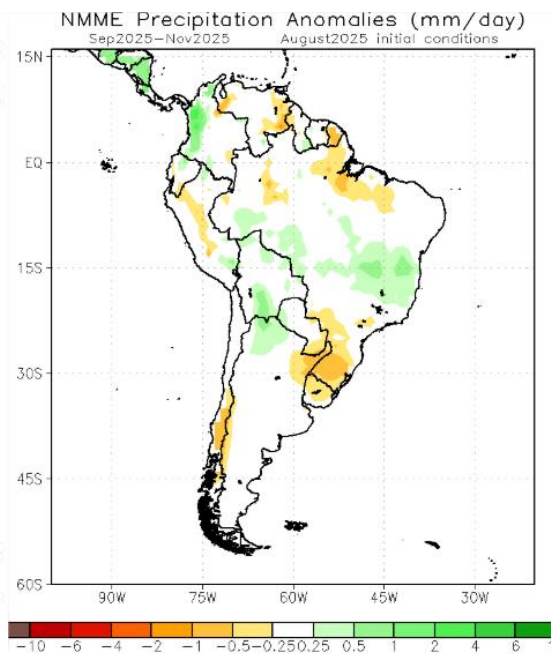


Previsão Sazonal de Chuva Multi-Modelo

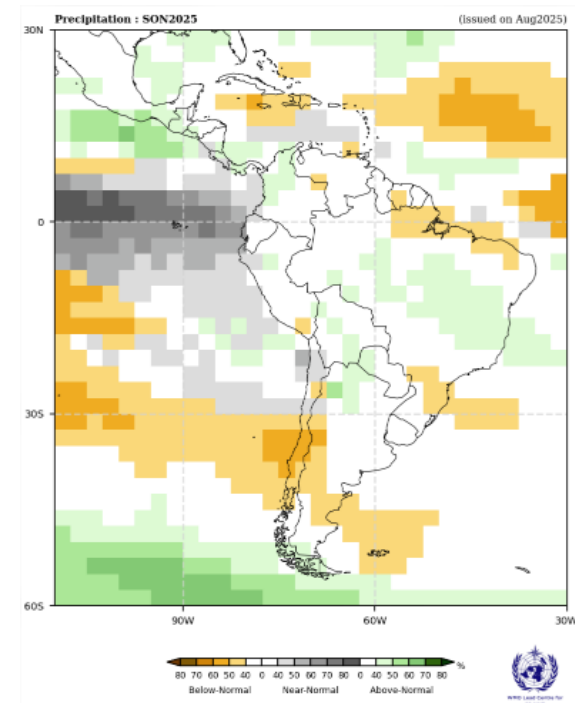
Setembro-Outubro-Novembro



Modelos “Europeus”



Modelos Norte Americanos



Modelos da WMO