

CEMADEN

Centro Nacional de Monitoramento e
Alertas de Desastres Naturais



Monitoramento e Previsões da situação hidrometeorológica na Região Sul

JUNHO 2025

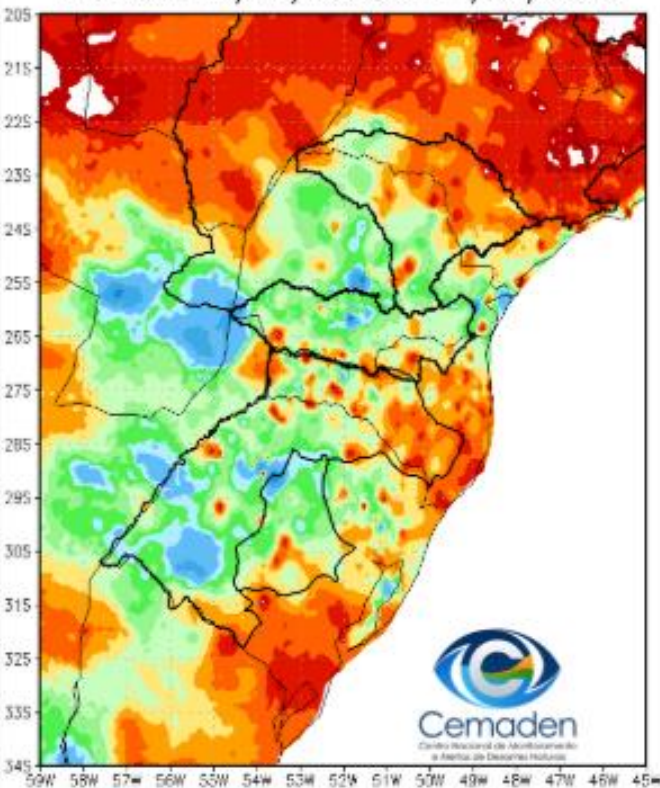


MINISTÉRIO DA
CIÊNCIA, TECNOLOGIA
E INOVAÇÃO

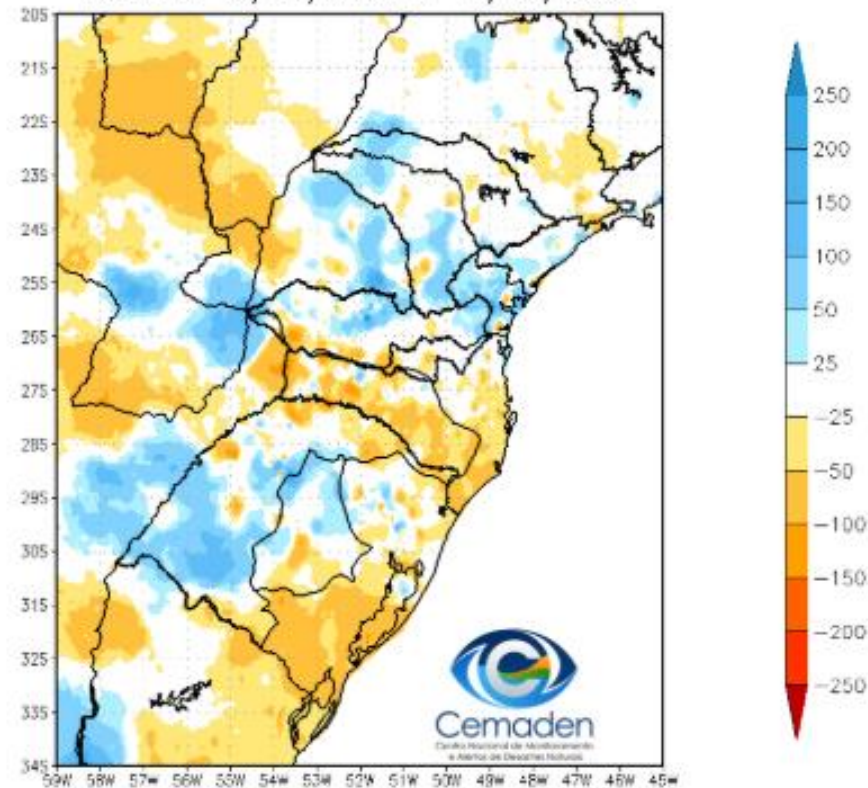


Precipitação nos últimos 30 dias

Precipitação Acumulada (mm) A.S.
Período: 12/05/2025 a 11/06/2025

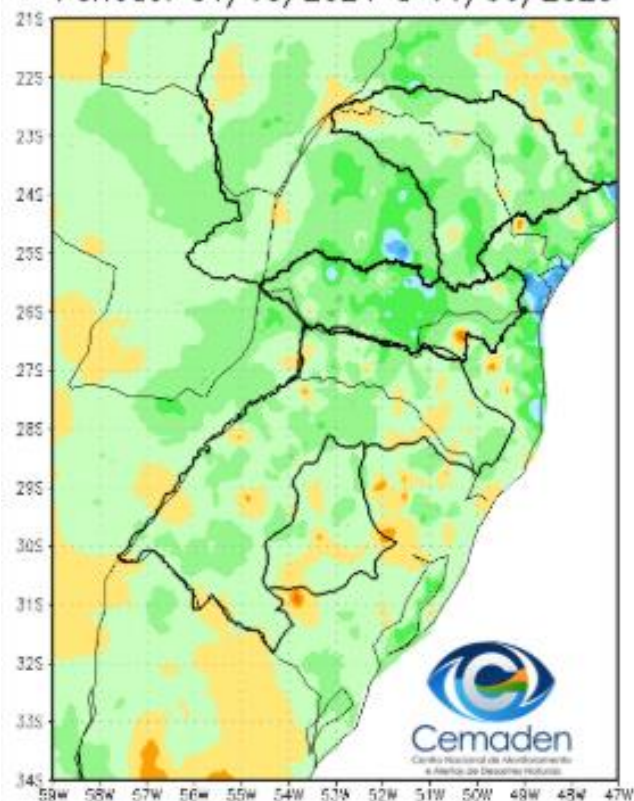


Anomalia de Precipitação (mm) A.S.
Período: 12/05/2025 a 11/06/2025

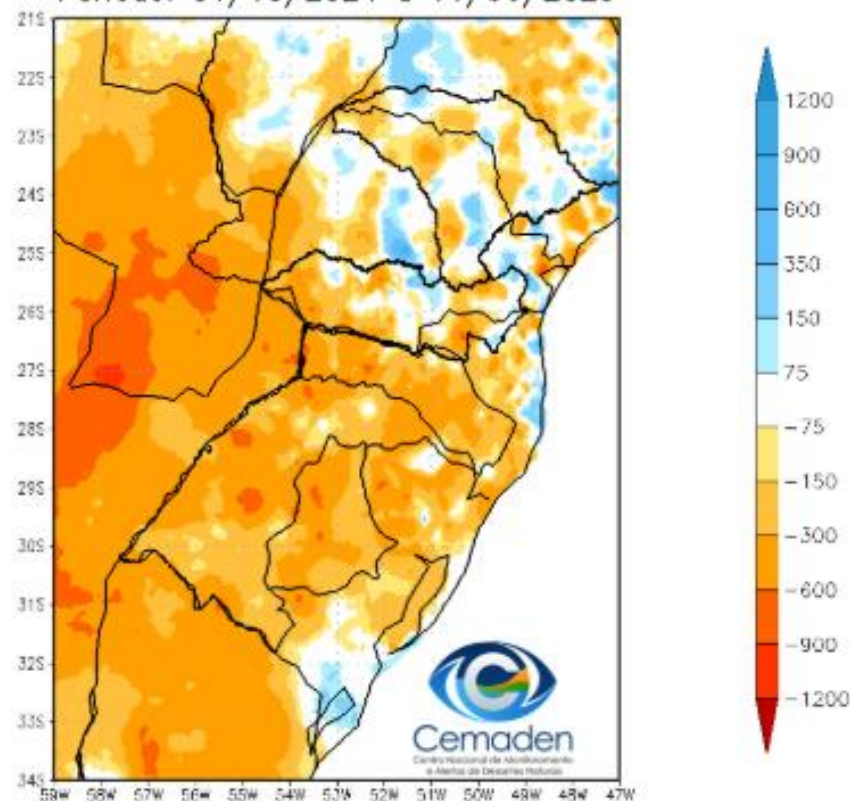


Precipitação no Ano Hidrológico

Precipitação Acumulada (mm) A.S.
Período: 01/10/2024 a 11/06/2025

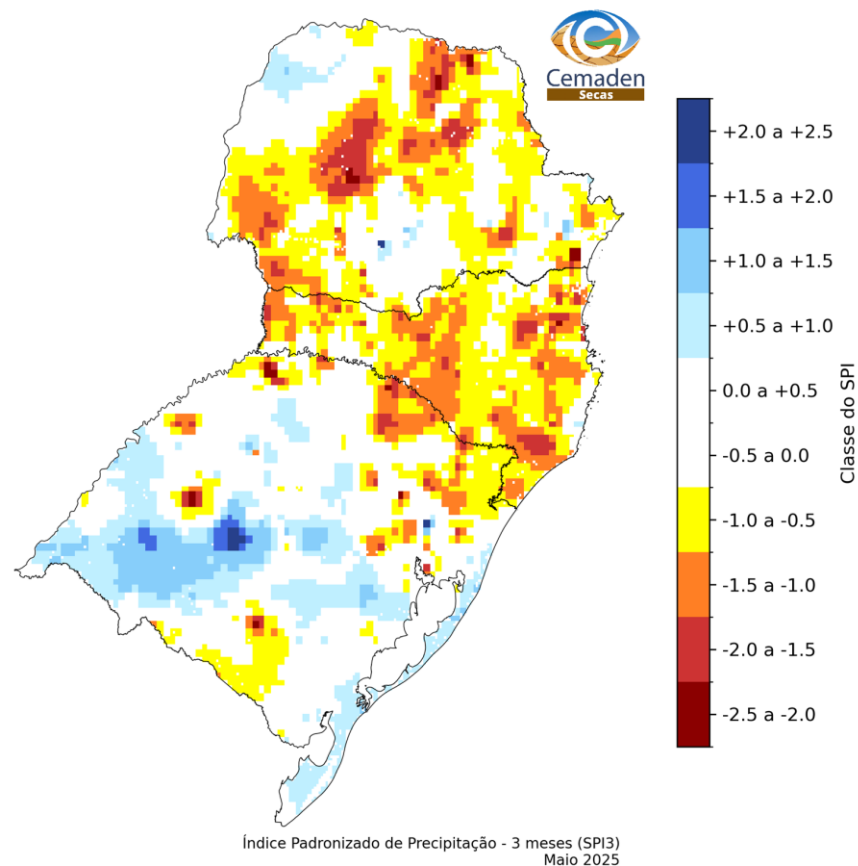


Anomalia de Precipitação (mm) A.S.
Período: 01/10/2024 a 11/06/2025

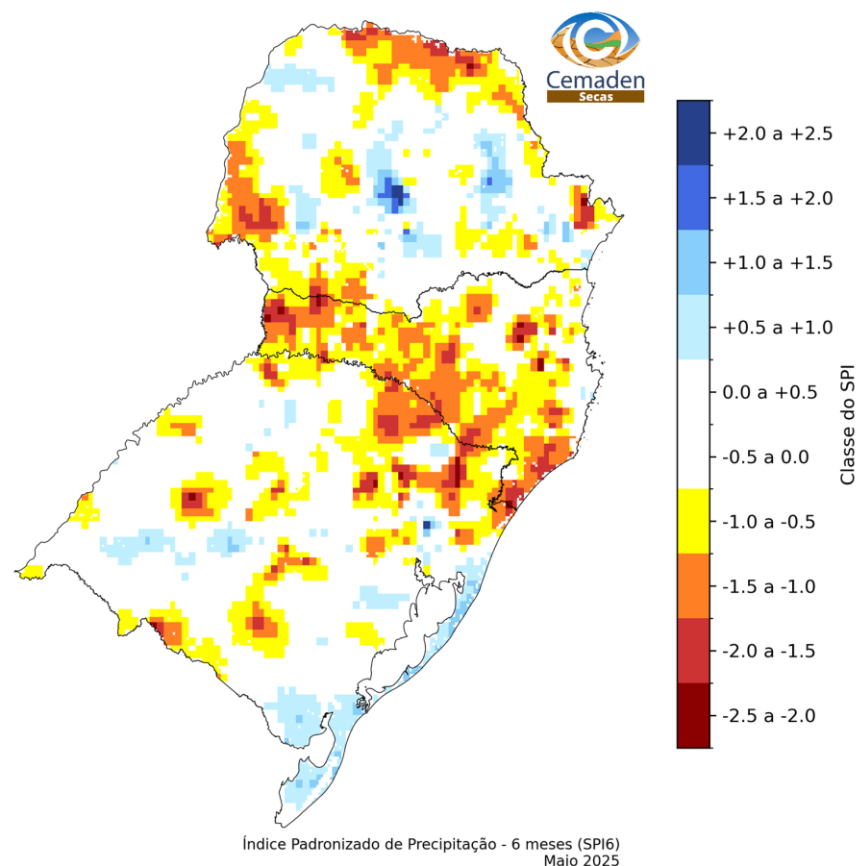


SPI: MAIO 2025

SPI-03



SPI-06

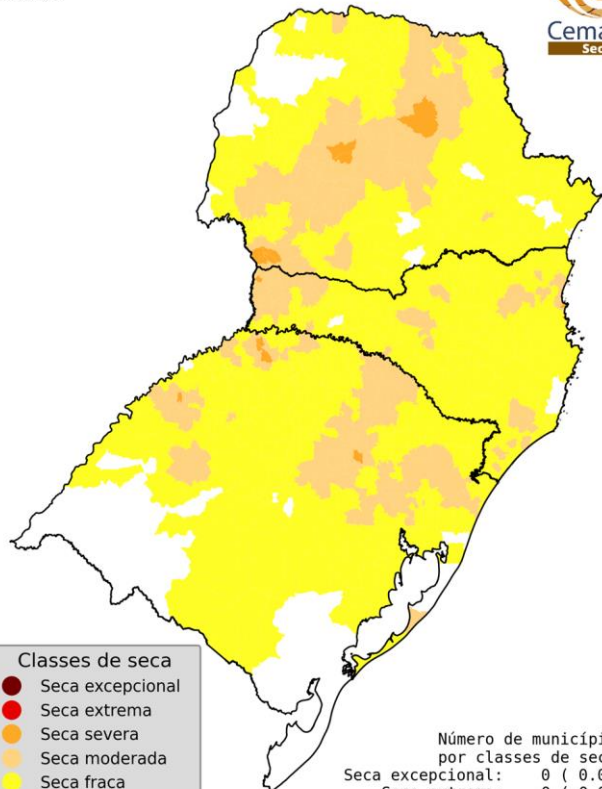


ÍNDICE INTEGRADO DE SECA: ANÁLISE POR MUNICÍPIOS

**IIS-03
OBSERVADO**

**IIS-06
OBSERVADO**

Índice Integrado de Seca - 3 meses (IIS3: SPI3, US3 VHI3)
Maio 2025



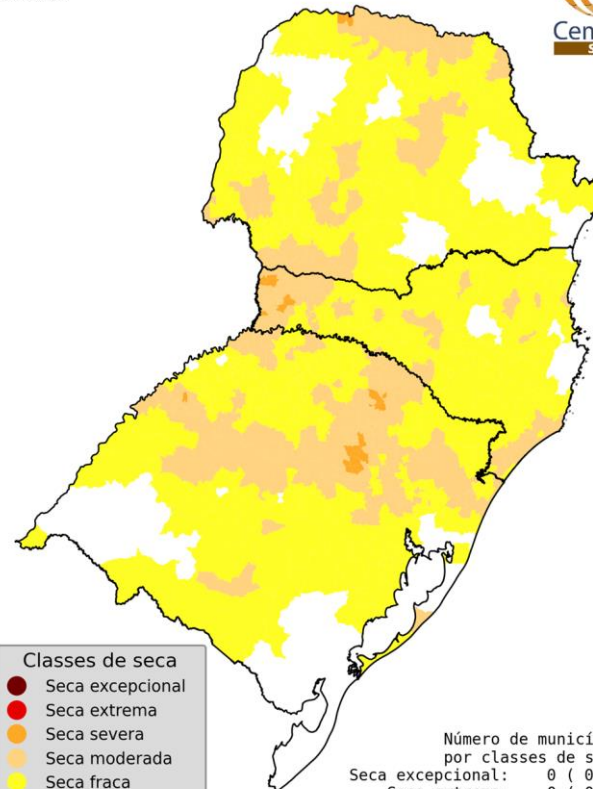
Classes de seca	
●	Seca excepcional
●	Seca extrema
●	Seca severa
●	Seca moderada
●	Seca fraca
●	Condições normais

Número de municípios por classes de seca:

Seca excepcional:	0 (0.0%)
Seca extrema:	0 (0.0%)
Seca severa:	15 (1.3%)
Seca moderada:	347 (29.1%)
Seca fraca:	745 (62.6%)
Condições normais:	84 (7.1%)

Fonte: Cemaden/MCTI

Índice Integrado de Seca - 6 meses (IIS6: SPI6, US3, VHI3)
Maio 2025



Classes de seca	
●	Seca excepcional
●	Seca extrema
●	Seca severa
●	Seca moderada
●	Seca fraca
●	Condições normais

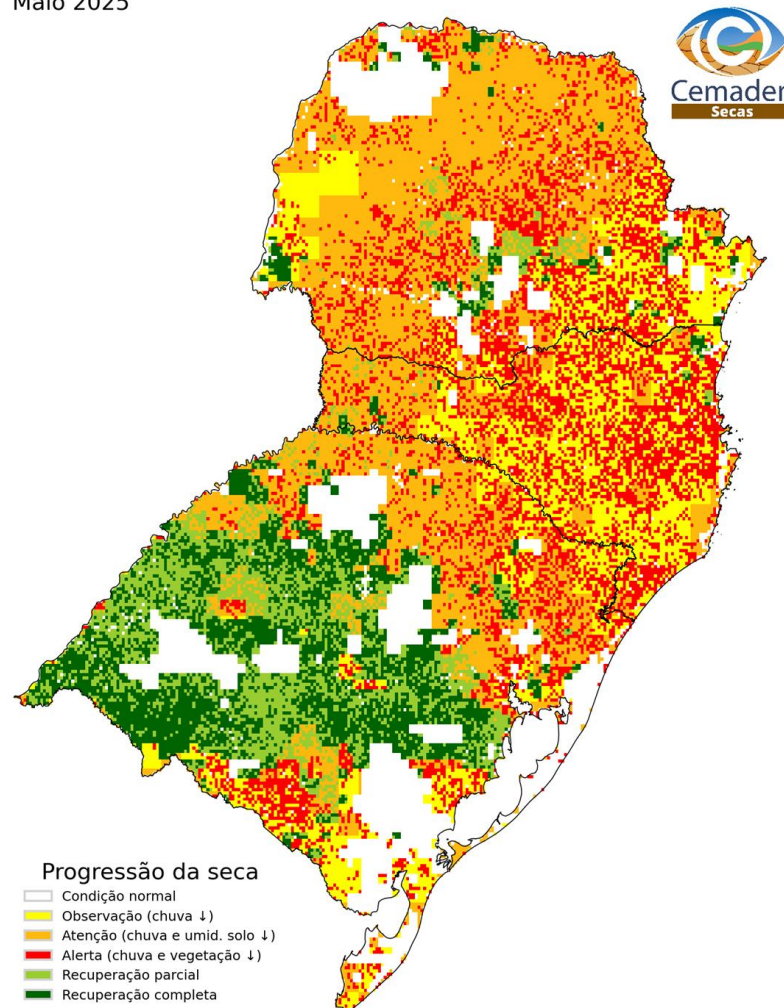
Número de municípios por classes de seca:

Seca excepcional:	0 (0.0%)
Seca extrema:	0 (0.0%)
Seca severa:	22 (1.8%)
Seca moderada:	379 (31.8%)
Seca fraca:	663 (55.7%)
Condições normais:	127 (10.7%)

Fonte: Cemaden/MCTI

PROPAGAÇÃO INCREMENTAL DAS CONDIÇÕES DE SECA (PICS)

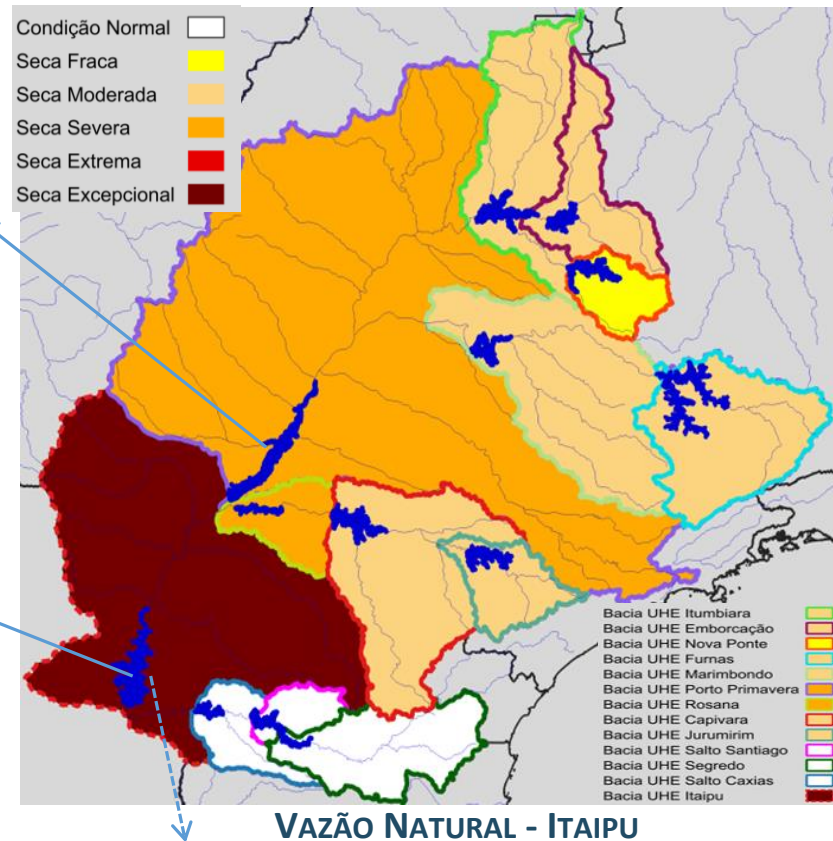
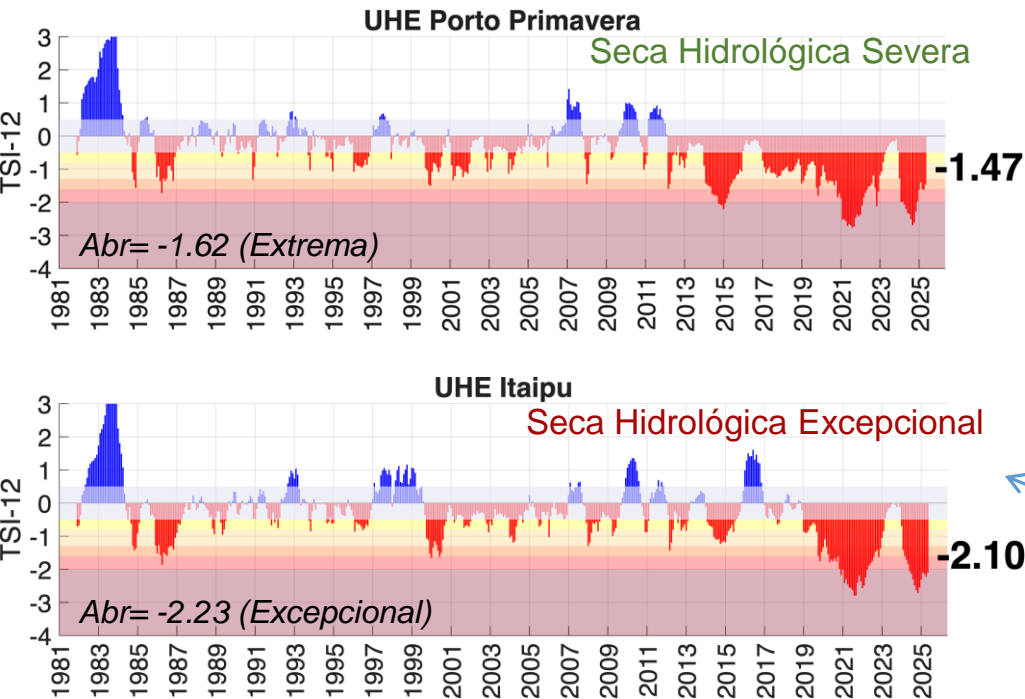
Propagação Incremental das Condições de Seca (PICS)
Maio 2025



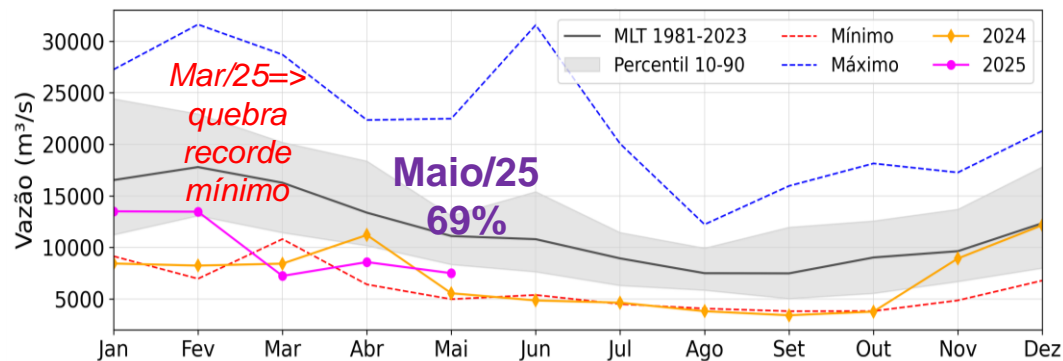
BACIA DO RIO PARANÁ

Maio/2025

Índice de Seca Bivariado (Chuva-Vazão) – TSI 12



Série de dados = Jan/1981- Maio/2025



BACIA DO RIO PARANAPANEMA

Maio/2025

Condição Normal
Seca Fraca
Seca Moderada
Seca Severa
Seca Extrema
Seca Excepcional

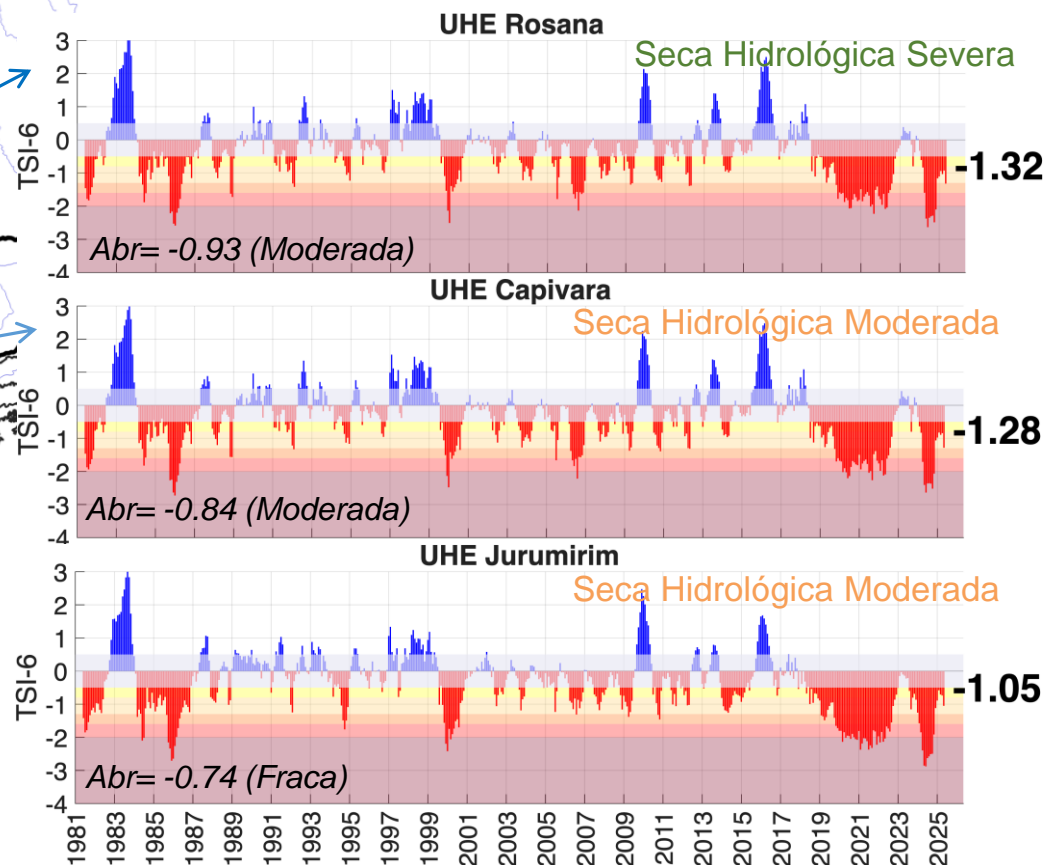


Reservatórios
Hidrografia

Bacia UHE Rosana
Bacia UHE Capivara
Bacia UHE Jurumirim
Bacia Rio Paraná



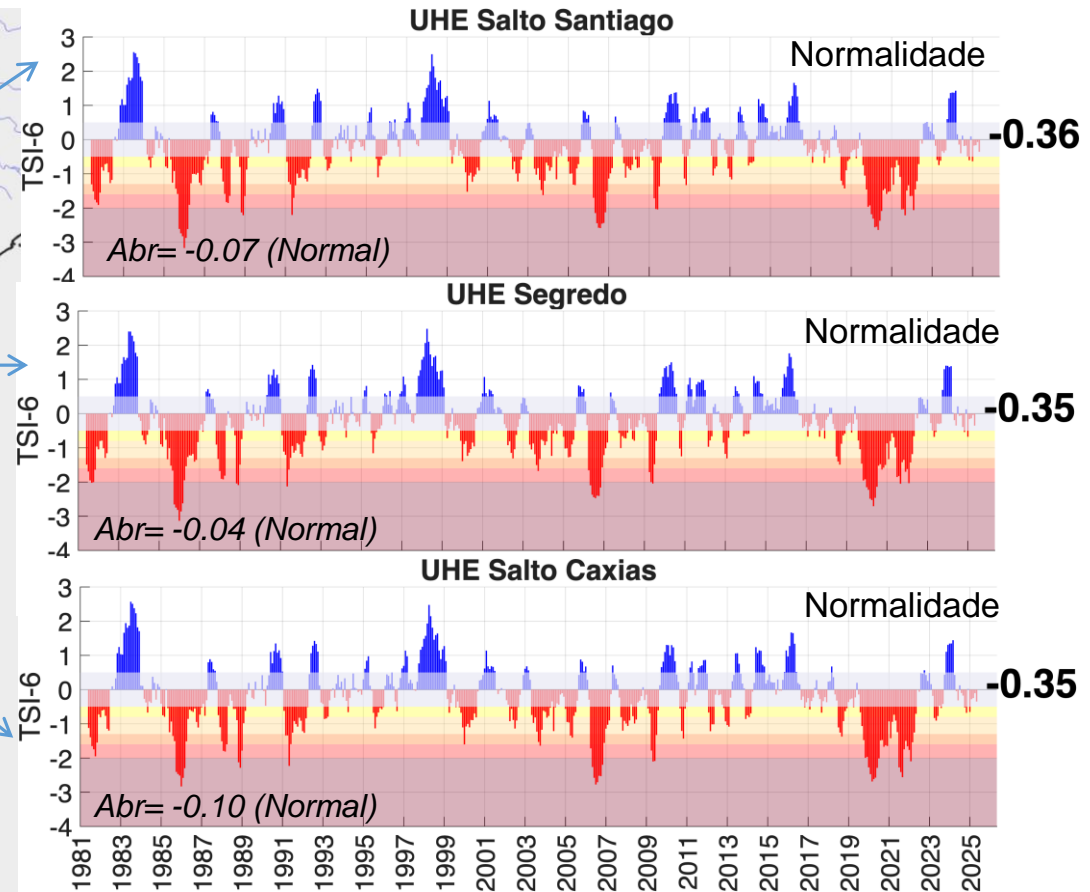
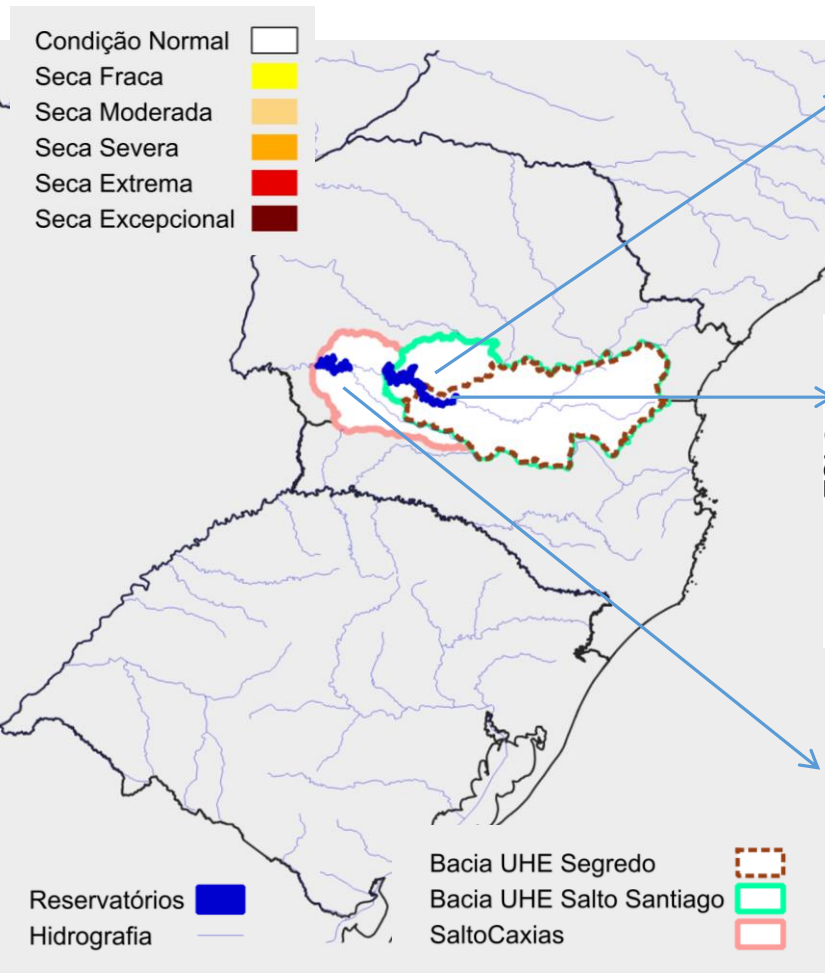
Índice de Seca Bivariado (Chuva-Vazão) – TSI 6



BACIA DO RIO IGUAÇU

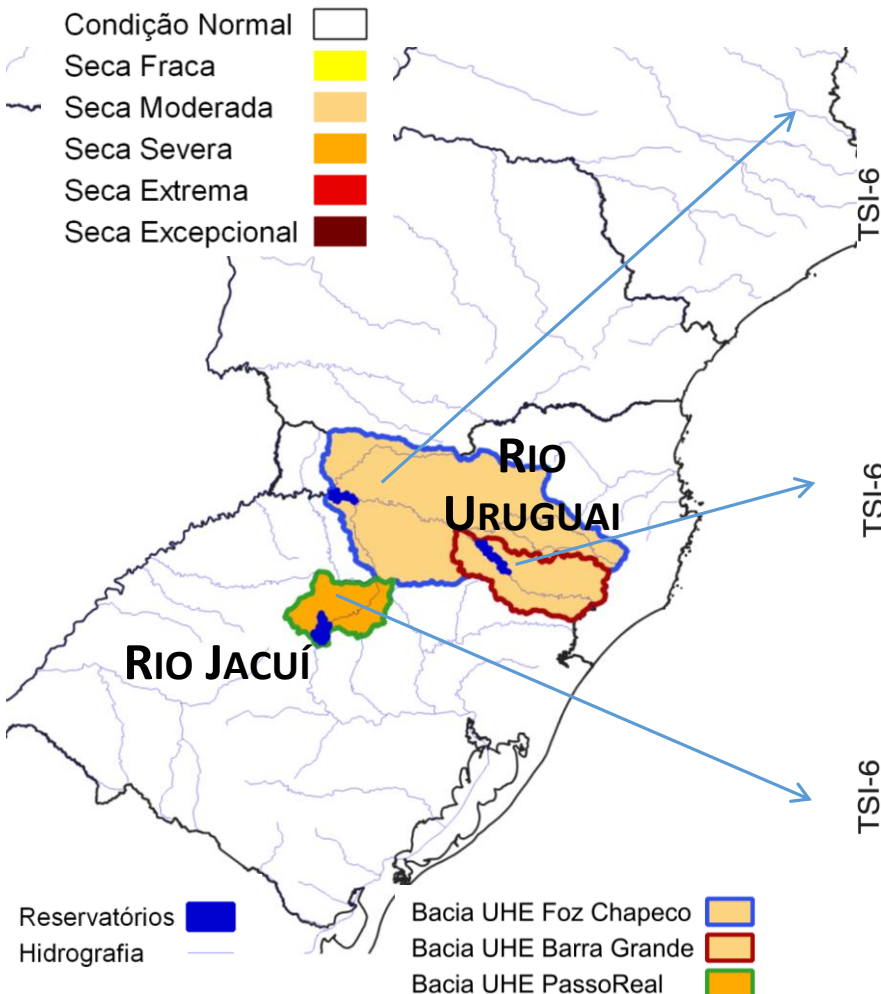
Maio/2025

Índice de Seca Bivariado (**Chuva-Vazão**) – TSI 6

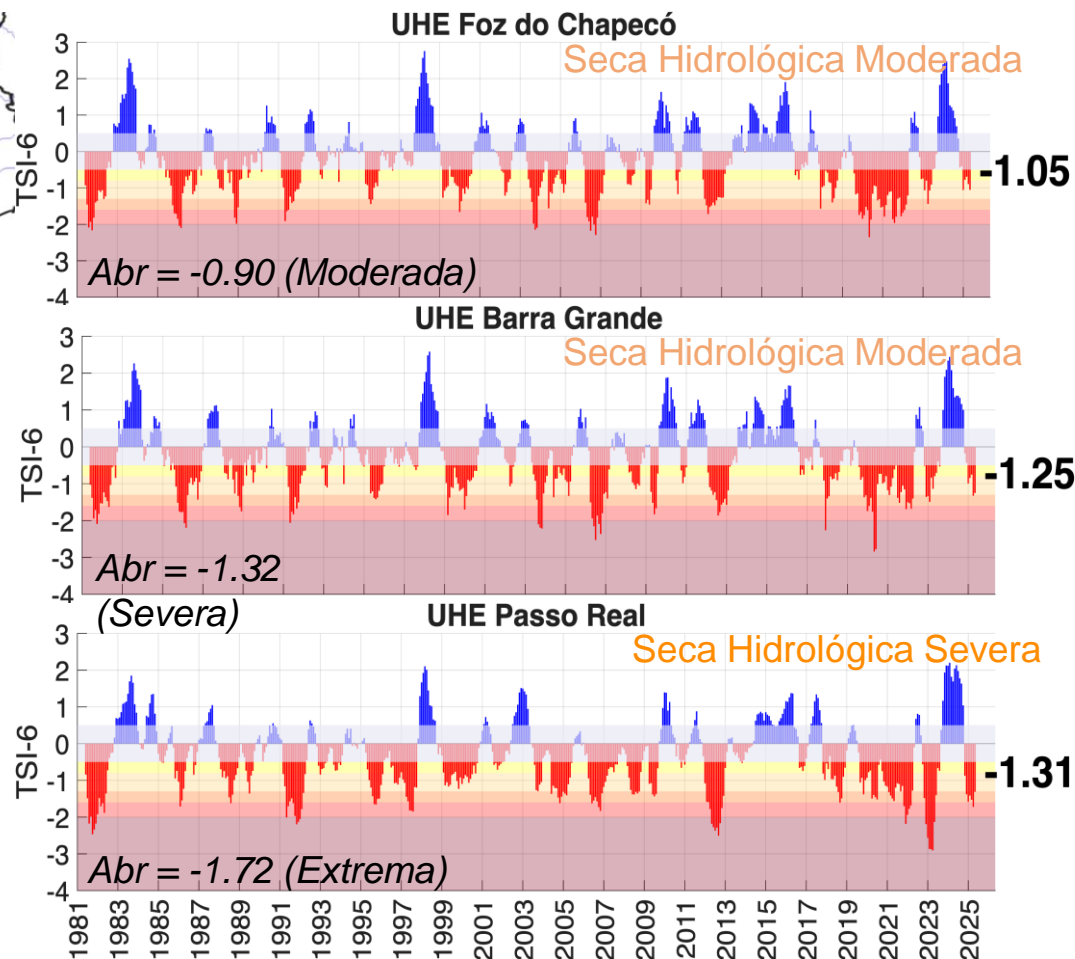


BACIAS HIDROGRÁFICAS: ESTADOS SC-RS

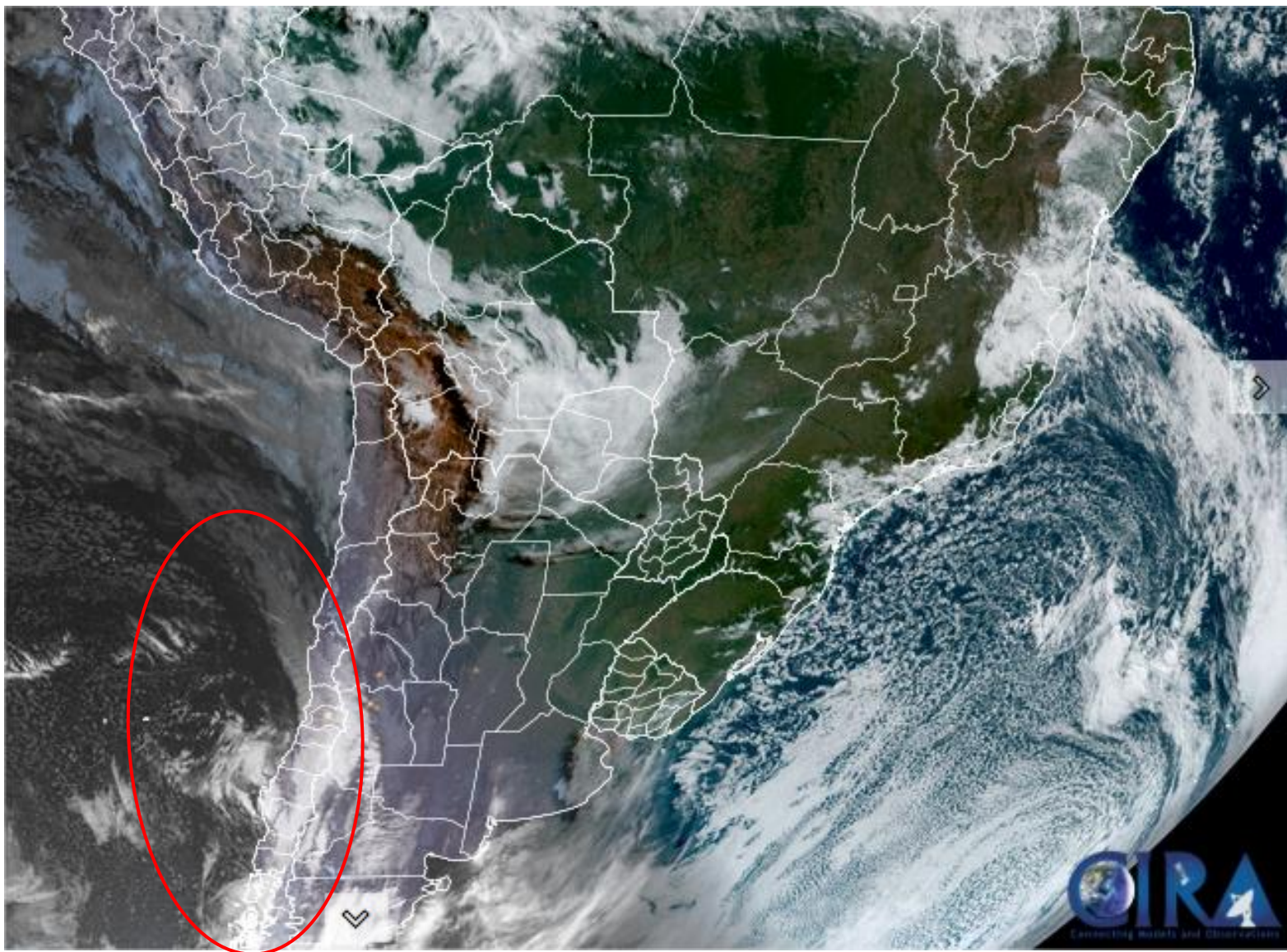
Maio/2025



Índice de Seca Bivariado (Chuva-Vazão) – TSI-6

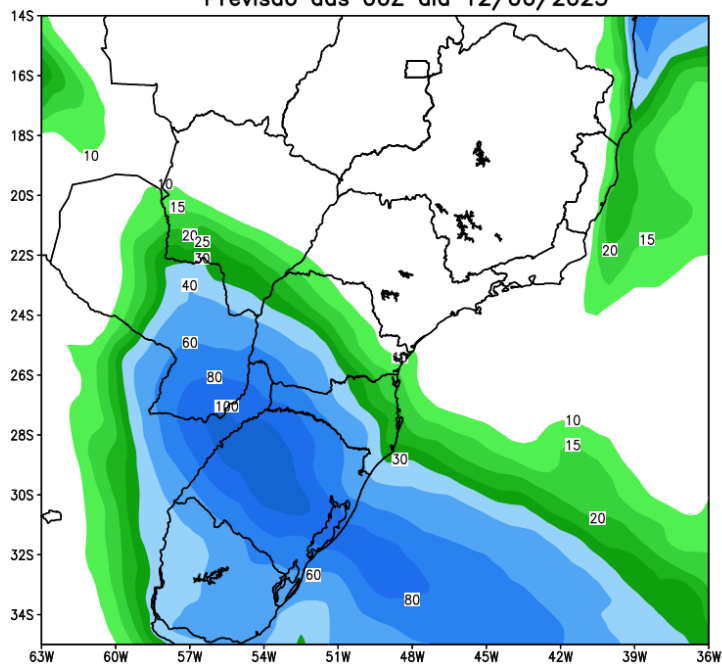


Situação meteorológica atual

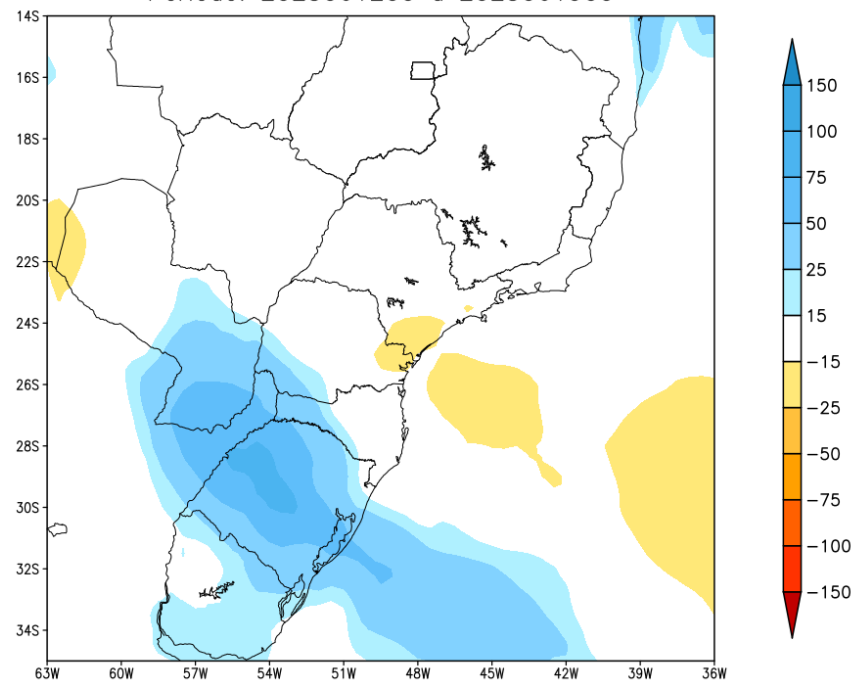


Previsão de chuva próximos 7 dias

GEFS / BRASIL_SUL
Precipitação acumulada 1aSem (mm)
Previsão das 00Z dia 12/06/2025



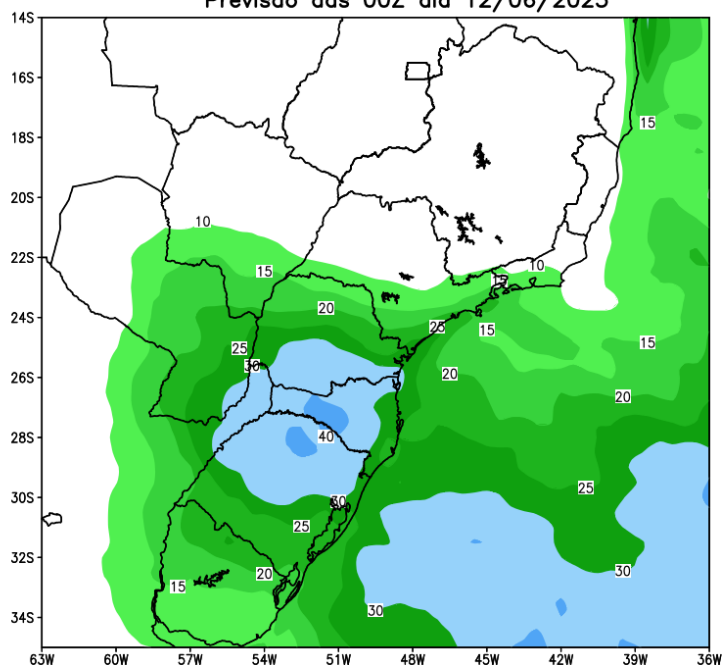
Anomalia de Precipitação BR_SUL (mm)
Período: 2025061200 a 2025061900



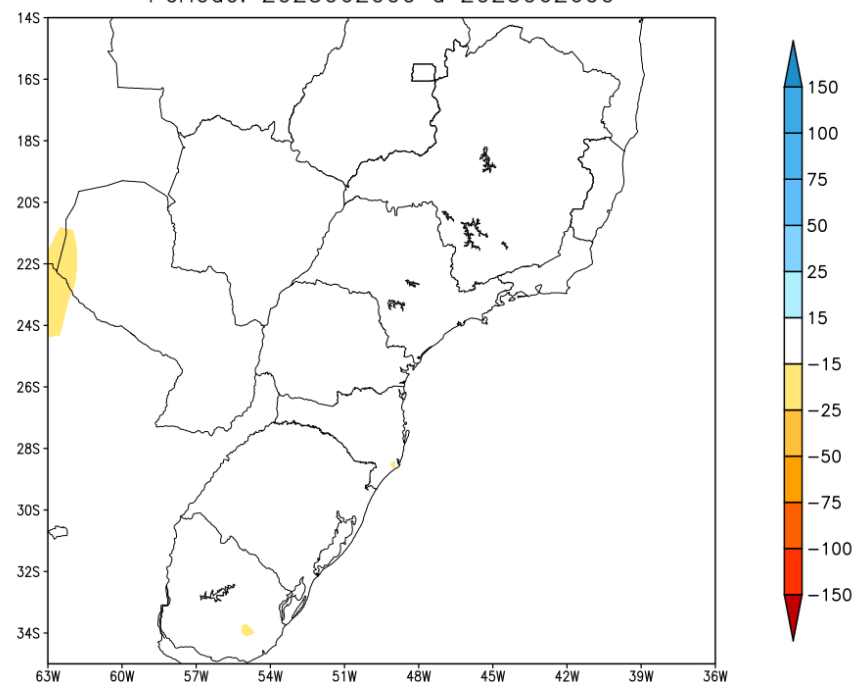
MODELO GEFS

Tendência para a segunda semana

GEFS / BRASIL_SUL
Precipitação acumulada 2aSem (mm)
Previsão das 00Z dia 12/06/2025



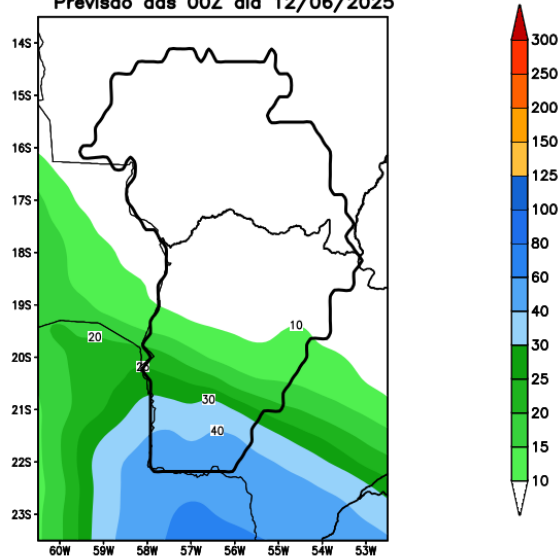
Anomalia de Precipitação BR_SUL (mm)
Período: 2025062000 a 2025062600



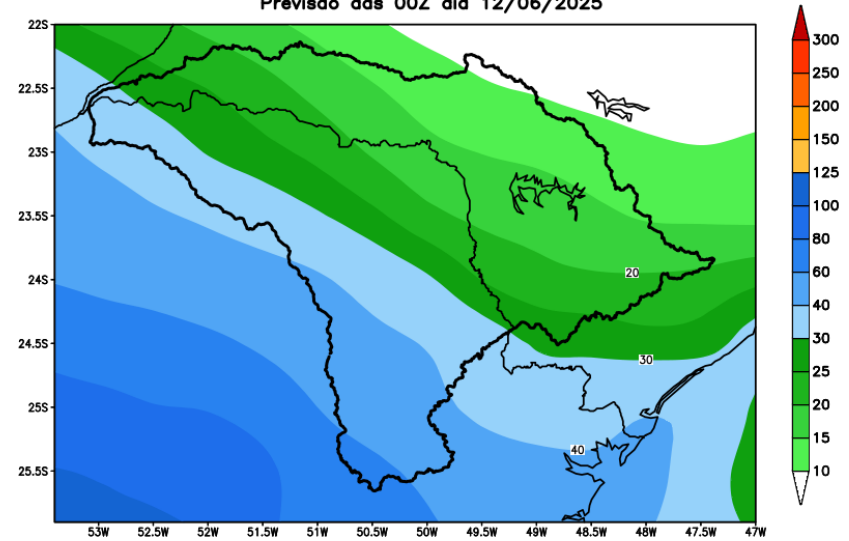
MODELO GEFS

Previsão para as principais bacias

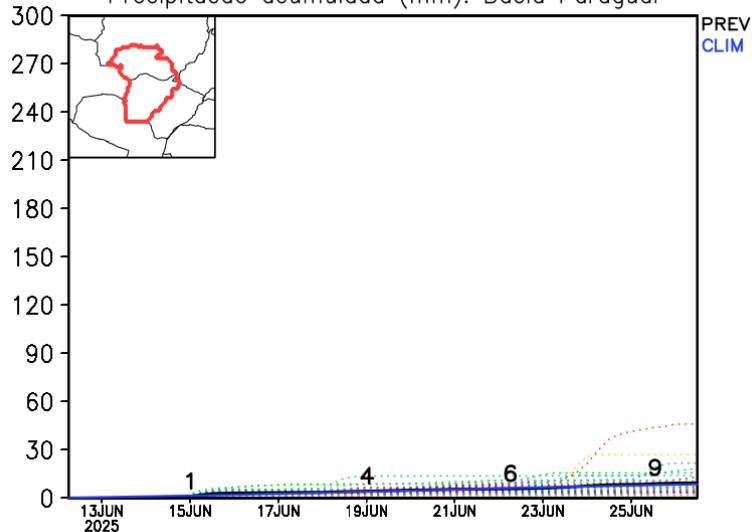
GEFS / Bacia do Rio Paraguai
Precipitação acumulada em 15 dias (mm)
Previsão das 00Z dia 12/06/2025



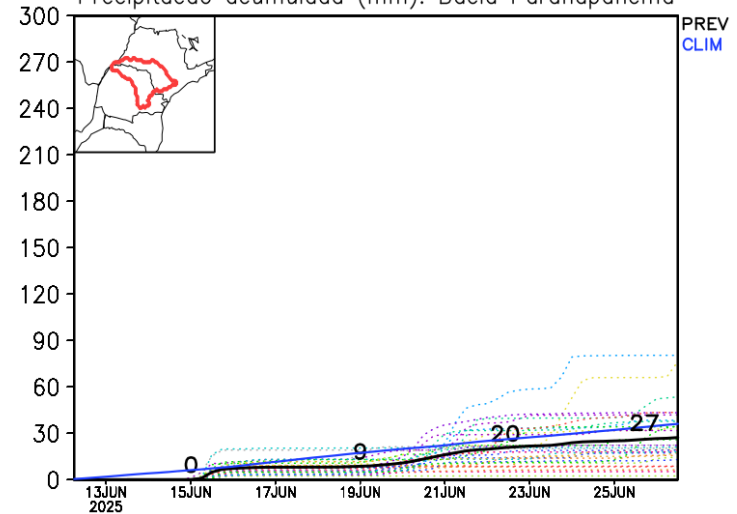
GEFS / Bacia do Rio Paranapanema
Precipitação acumulada em 14 dias (mm)
Previsão das 00Z dia 12/06/2025



Precipitação acumulada (mm): Bacia Paraguai

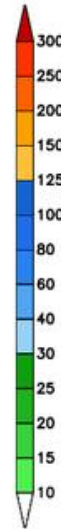
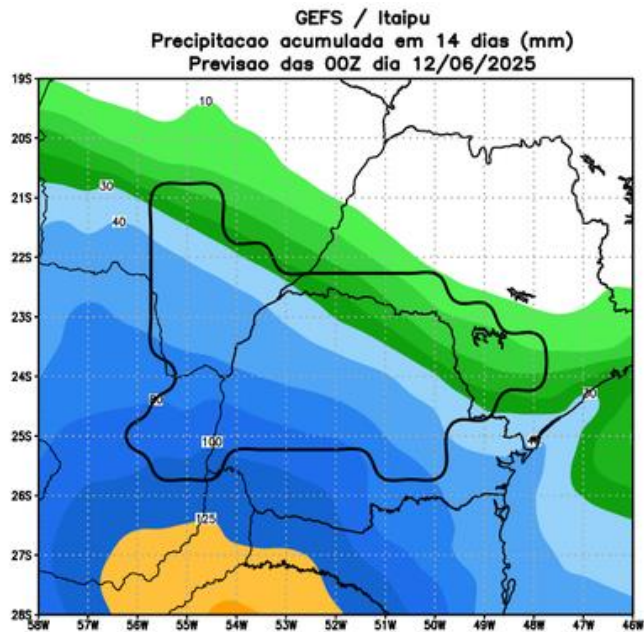


Precipitação acumulada (mm): Bacia Paranapanema

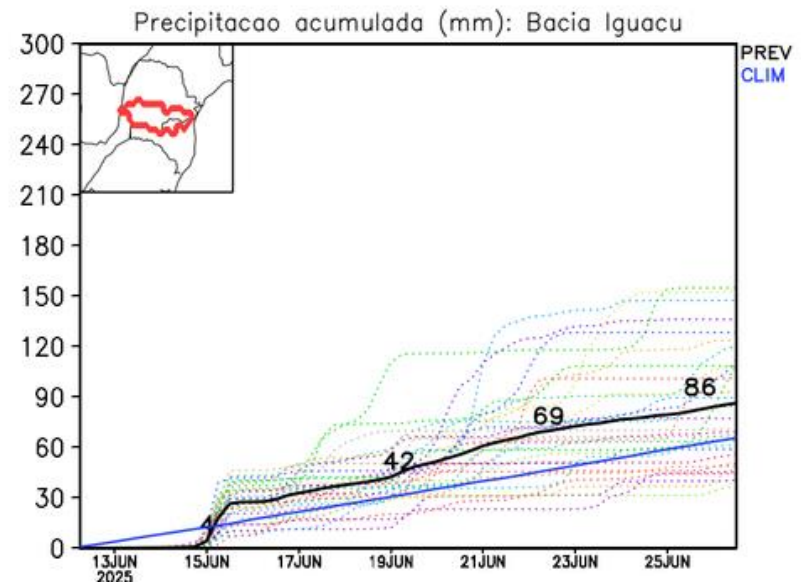
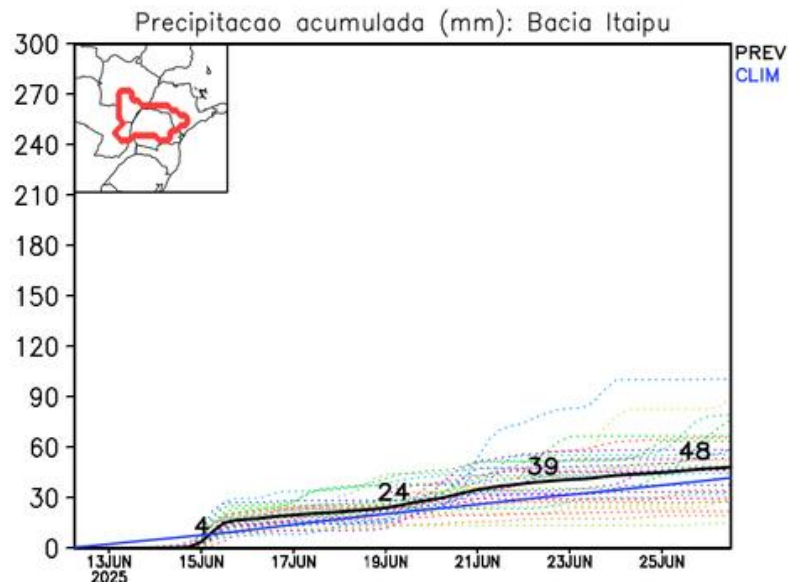
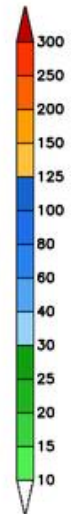
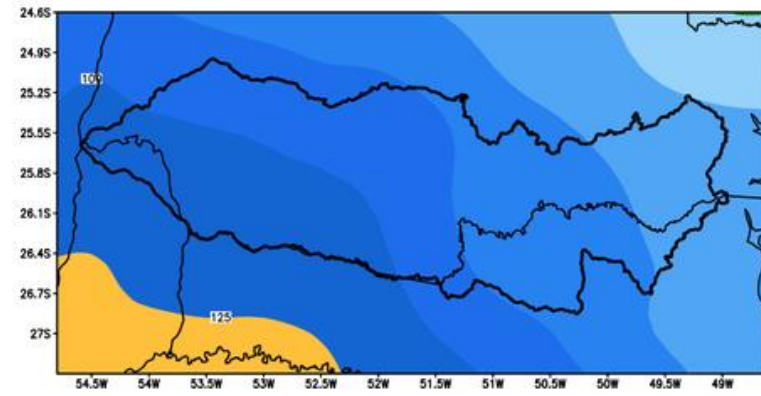


MODELO GEFS

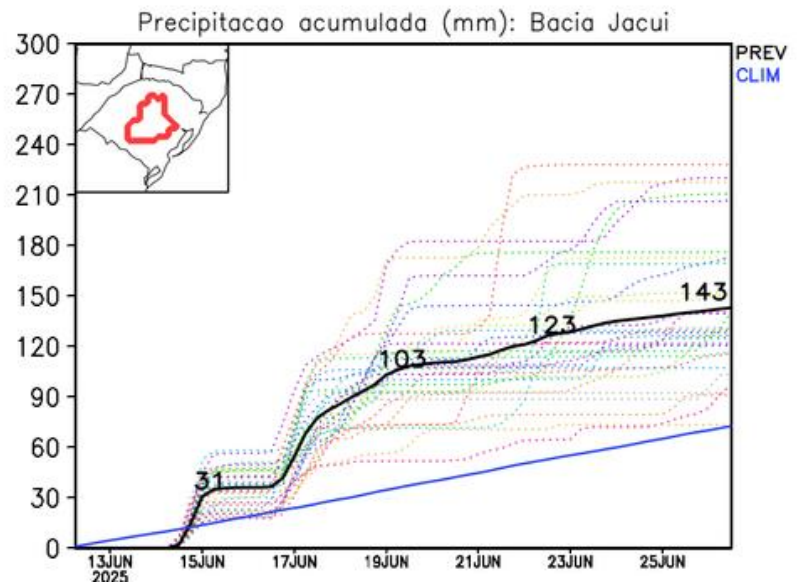
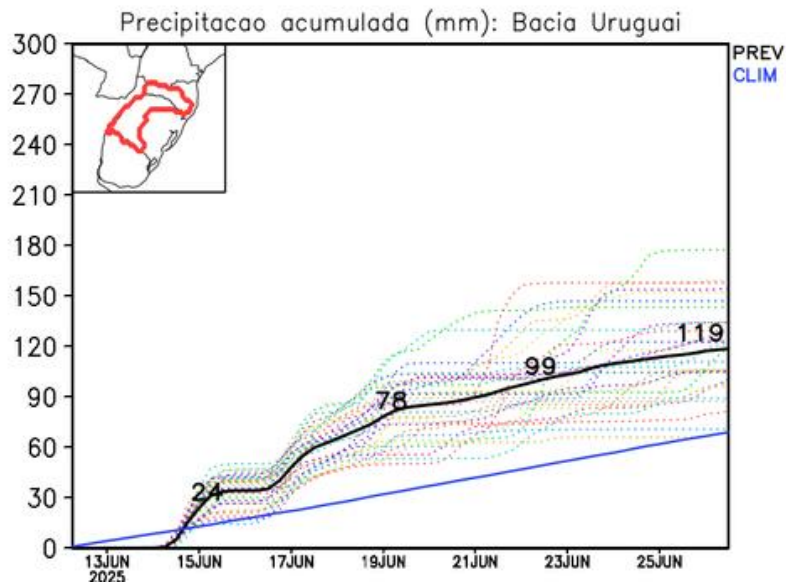
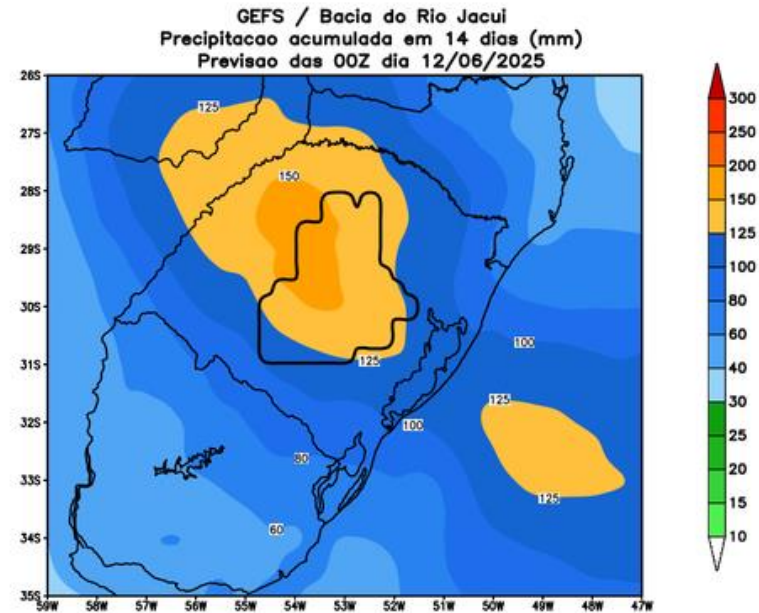
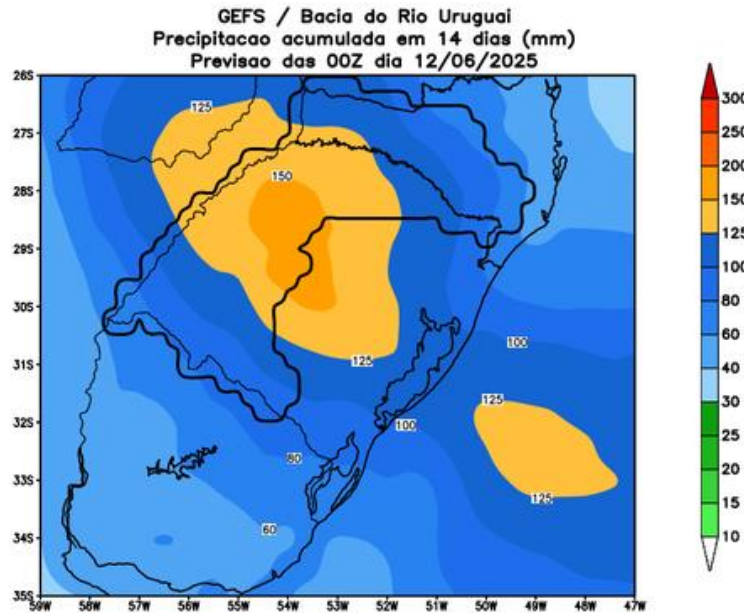
Previsão para as principais bacias



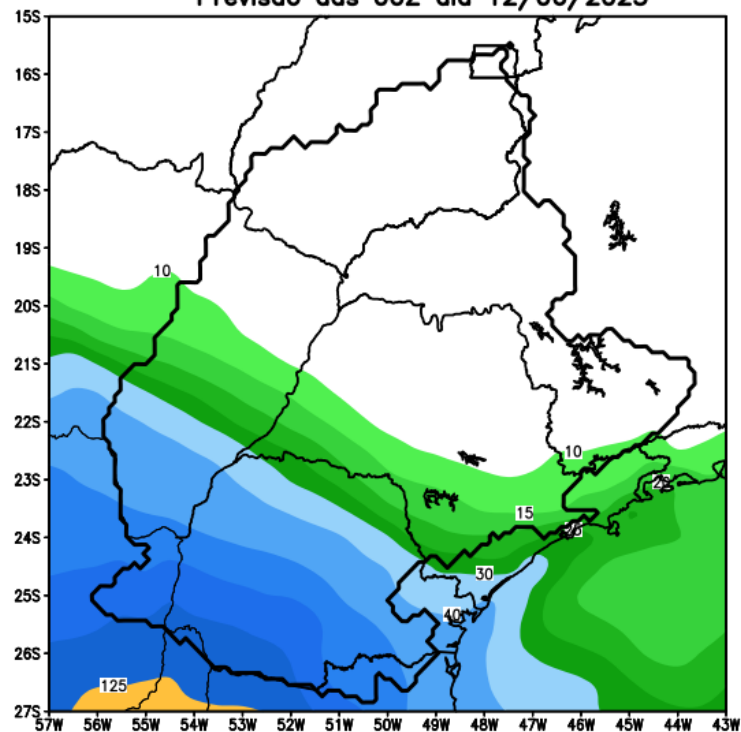
GEFS / Bacia do Rio Iguacu
Precipitacao acumulada em 14 dias (mm)
Previsao das 00Z dia 12/06/2025



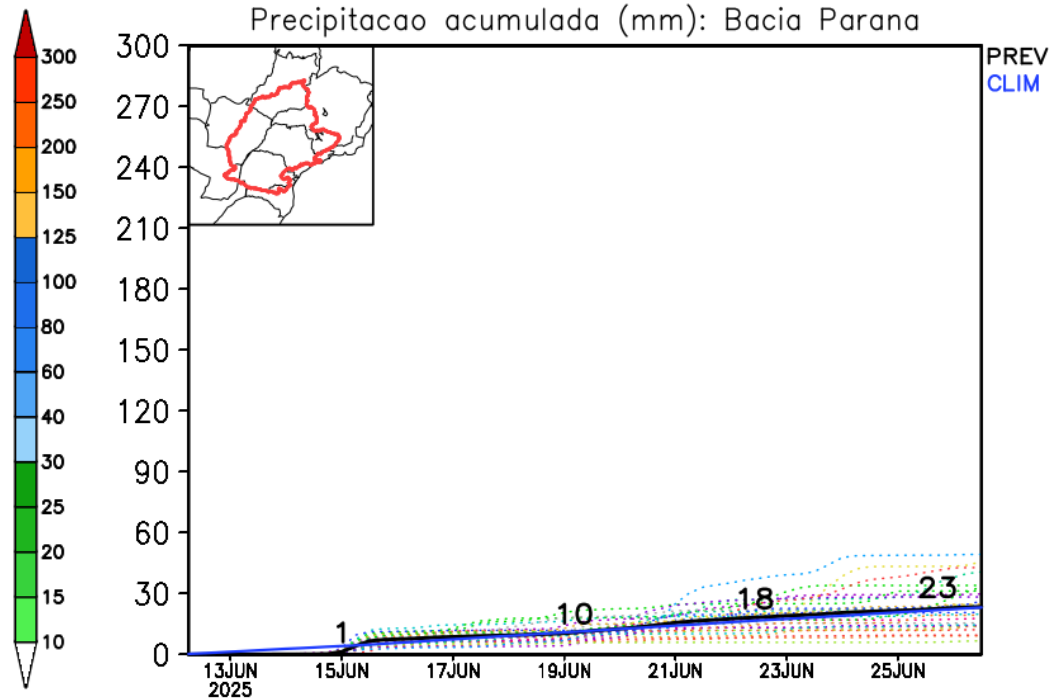
Previsão para as principais bacias



GEFS / Bacia do Parana
Precipitacao acumulada em 14 dias (mm)
Previsao das 00Z dia 12/06/2025

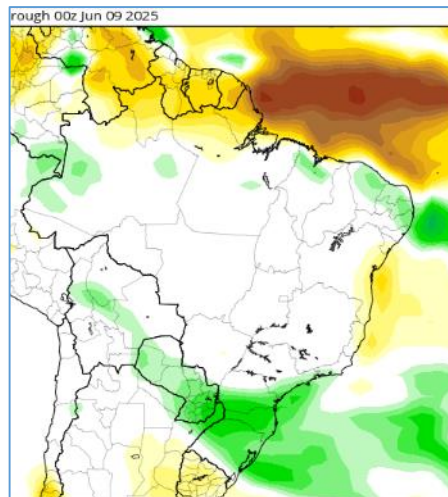


Precipitacao acumulada (mm): Bacia Parana



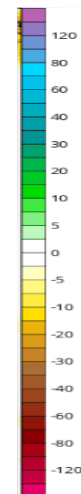
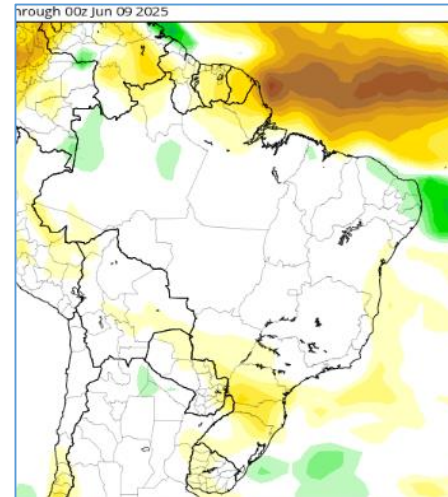
Anomalia de Chuva 3a e 4a semanas

23-30 Junho

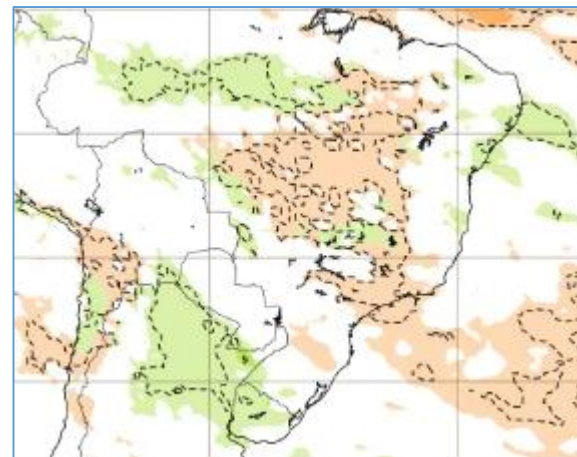
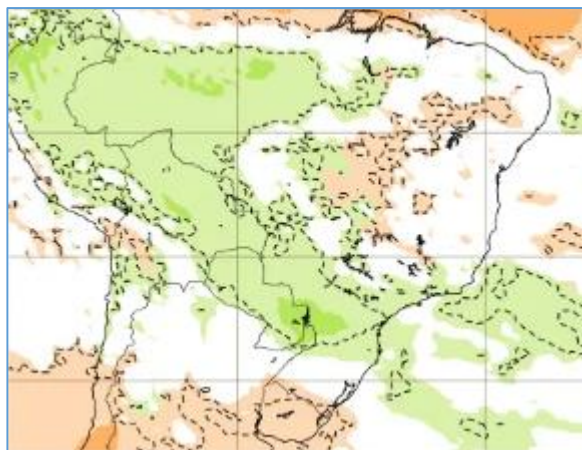


Modelo
Americano
CFS/NOAA

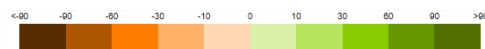
30 Junho – 07 Julho



Modelo Europeu
ECMWF



26 - 01 Junho

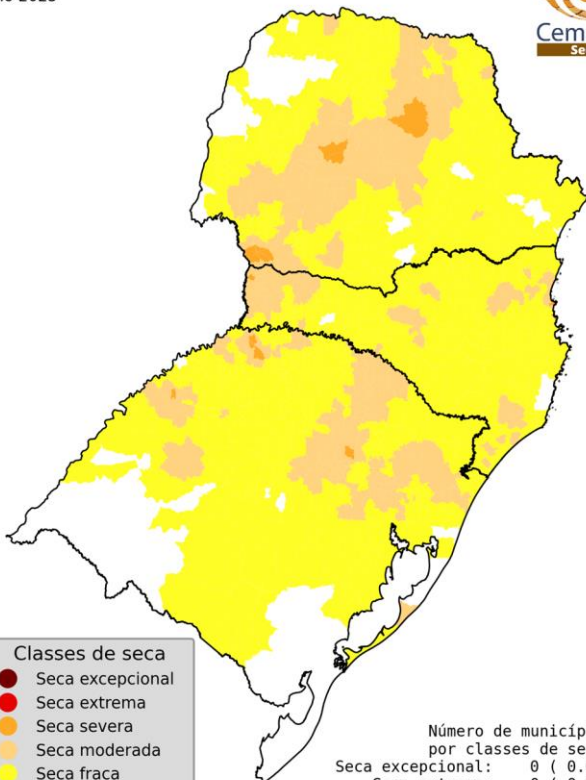


02-08 Junho

ÍNDICE INTEGRADO DE SECA (3 MESES)

**IIS-03
OBSERVADO
MAIO/25**

Índice Integrado de Seca - 3 meses (IIS3: SPI3, US3 VHI3)
Maio 2025



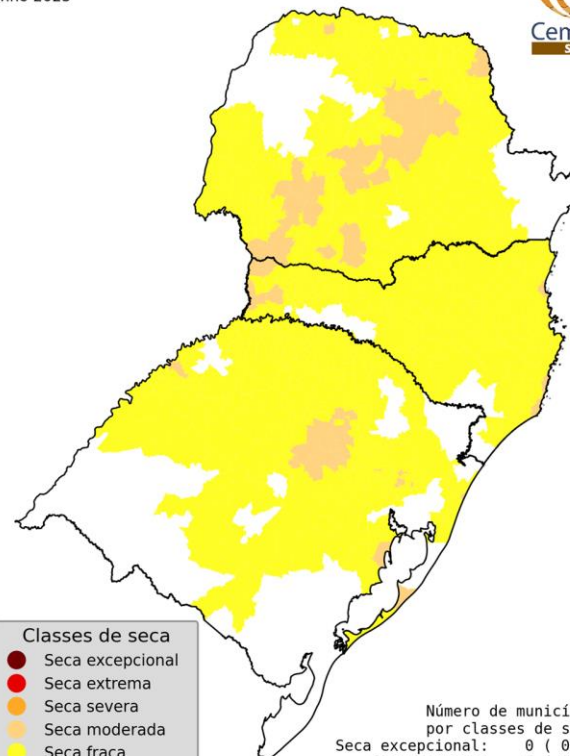
Classes de seca	
●	Seca excepcional
●	Seca extrema
●	Seca severa
●	Seca moderada
●	Seca fraca
●	Condições normais

Número de municípios por classes de seca:	
Seca excepcional:	0 (0.0%)
Seca extrema:	0 (0.0%)
Seca severa:	15 (1.3%)
Seca moderada:	347 (29.1%)
Seca fraca:	745 (62.6%)
Condições normais:	84 (7.1%)

Fonte: Cemaden/MCTI

**IIS-03
OBSERVADO
PREVISÃO 30 DIAS**

Índice Integrado de Seca - 3 meses, previsão (IIS3p: SPI3 previsão, US3, VHI3)
Junho 2025



Classes de seca	
●	Seca excepcional
●	Seca extrema
●	Seca severa
●	Seca moderada
●	Seca fraca
●	Condições normais

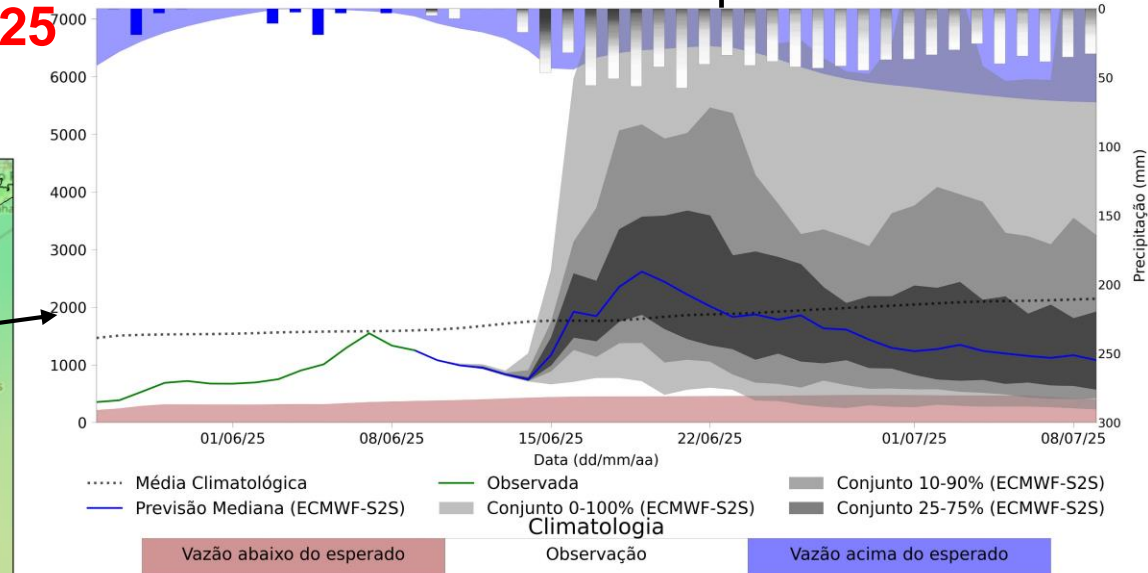
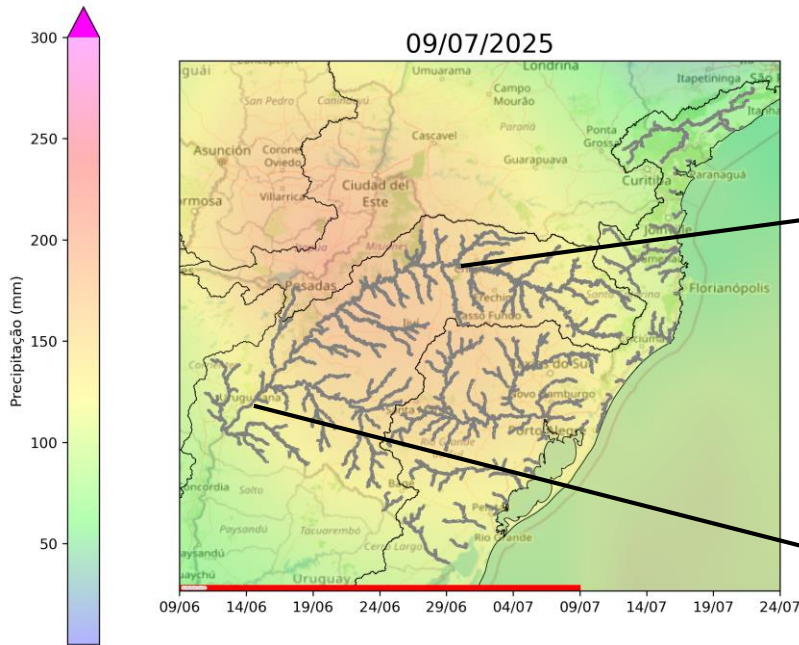
Número de municípios por classes de seca:	
Seca excepcional:	0 (0.0%)
Seca extrema:	0 (0.0%)
Seca severa:	0 (0.0%)
Seca moderada:	113 (9.5%)
Seca fraca:	883 (74.1%)
Condições normais:	195 (16.4%)

Fonte: Cemaden/MCTI

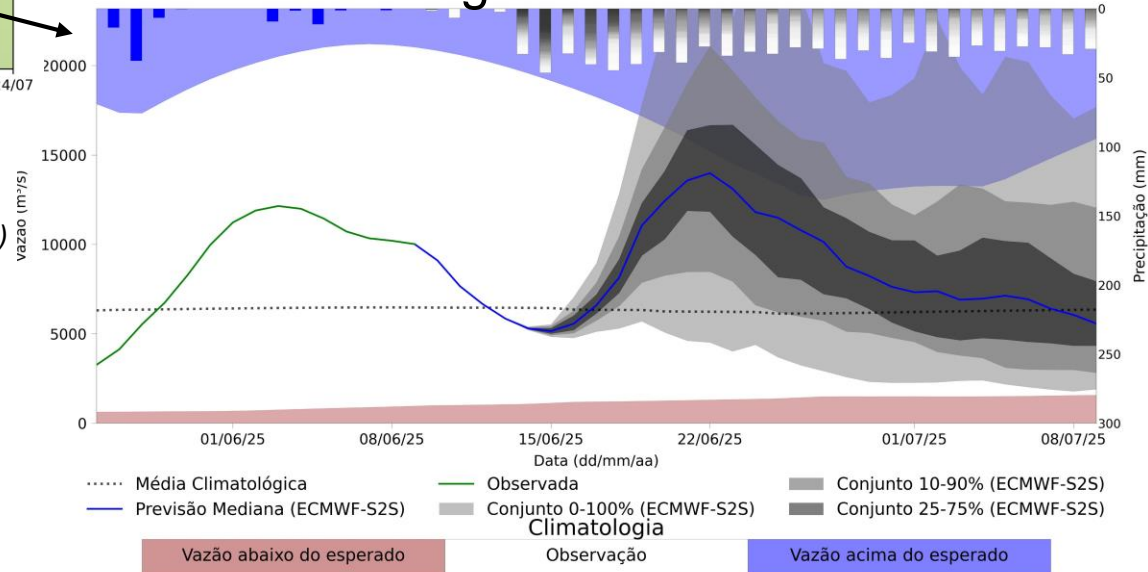
Previsão de vazão natural na Região Sul 30 dias (Modelo hidrológico MHD)

PREVISÃO: 09/06/25 a 09/07/25

UHE Foz do Chapecó



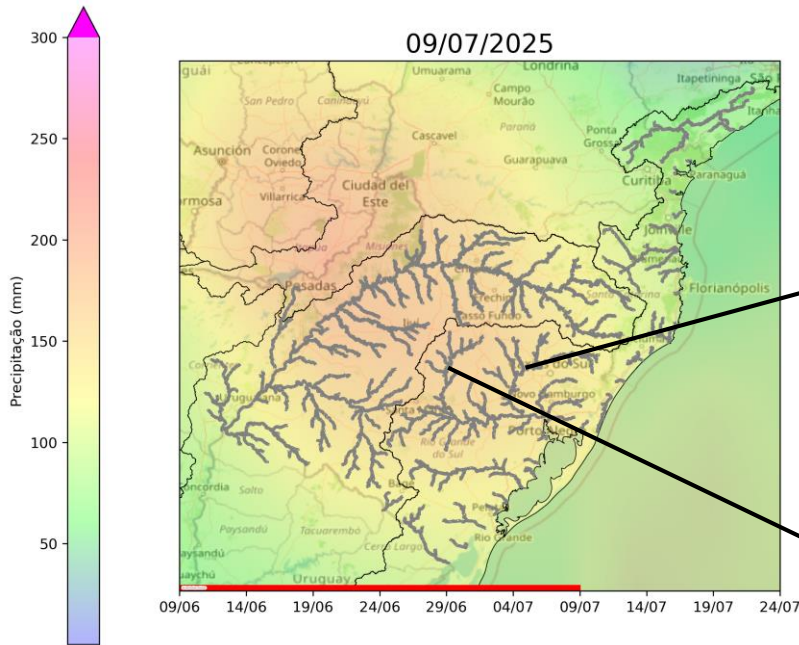
Uruguaiana - RS



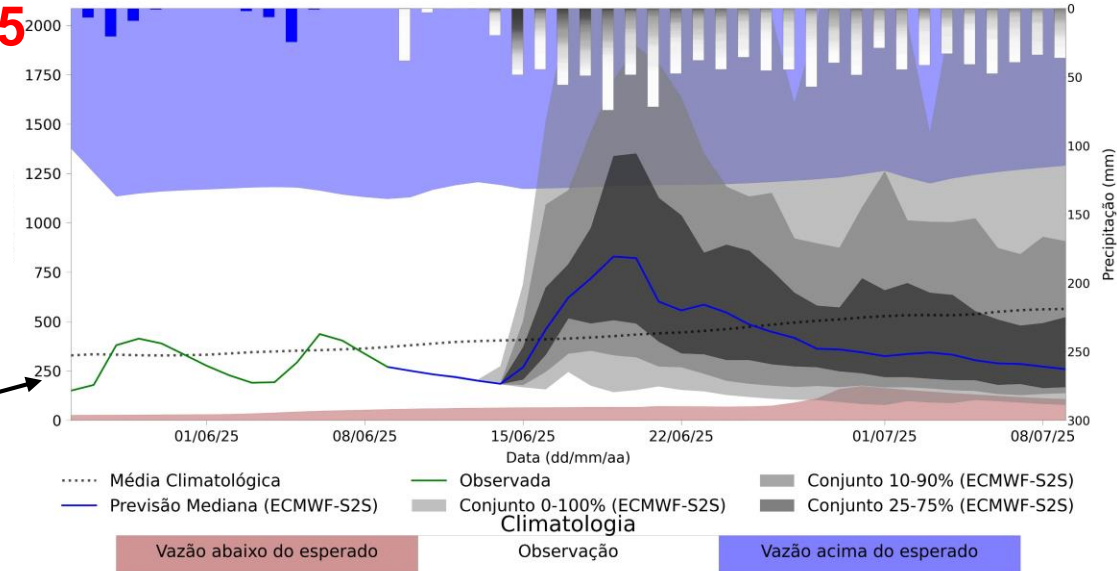
Fonte: Meteorologia (INMET/MERGE); Vazão (ANA/ONS)
MLT: 2003-2024
Previsão Meteorológica: ECMWF

Previsão de vazão natural na Região Sul 30 dias (Modelo hidrológico MHD)

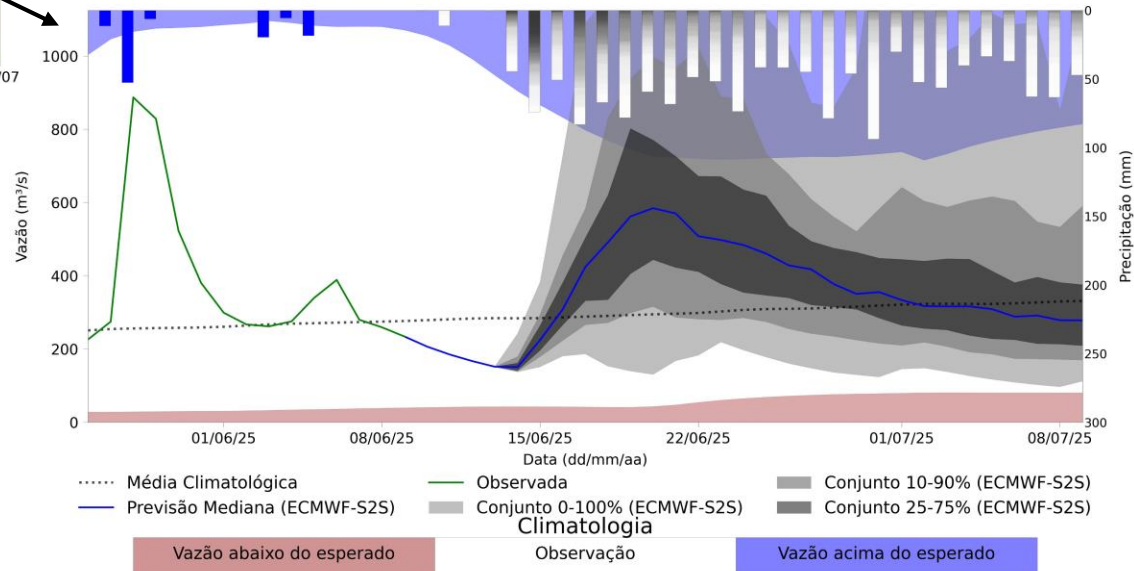
PREVISÃO: 09/06/25 a 09/07/25



UHE 14 de Julho



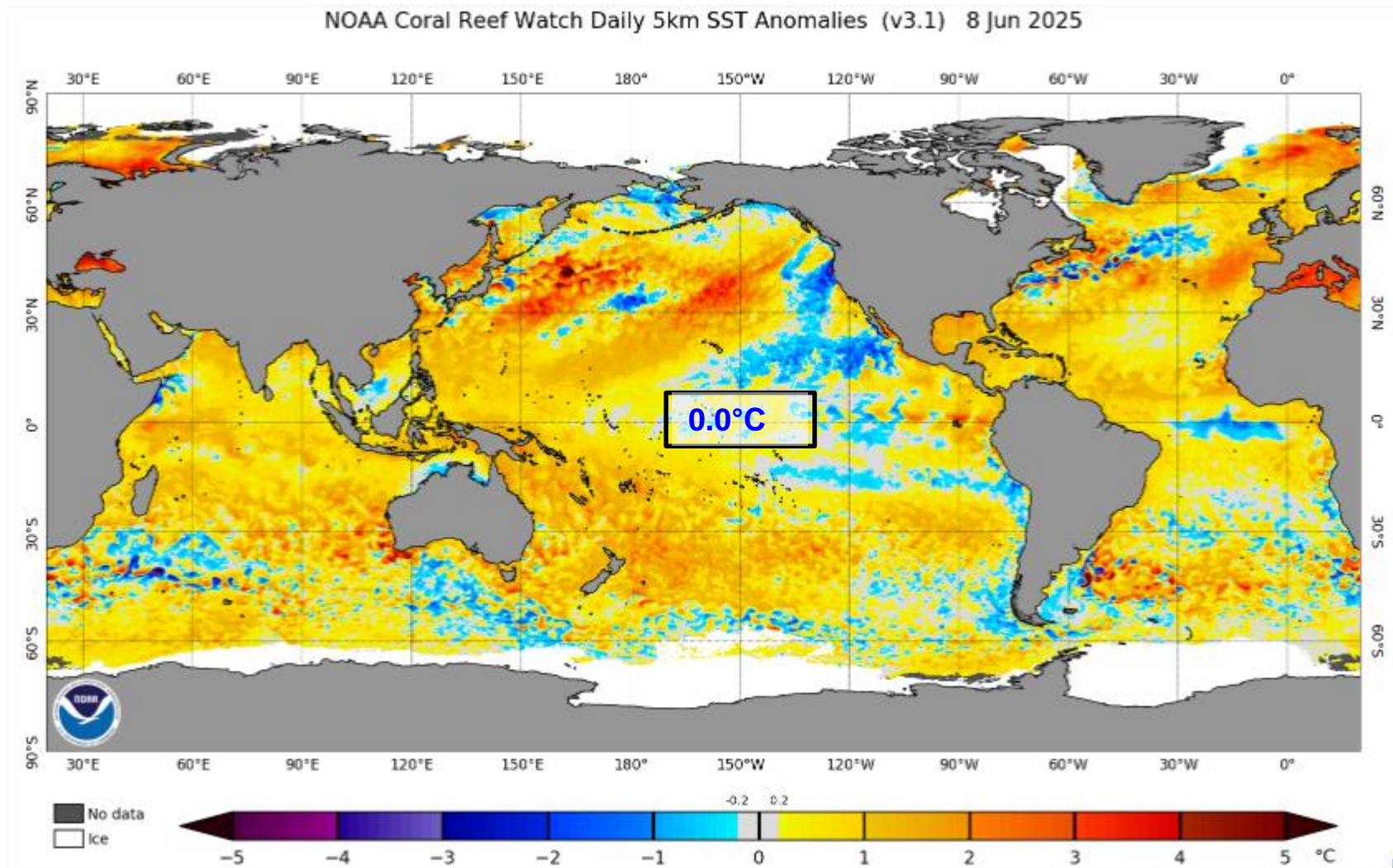
UHE Passo Real



Fonte: Meteorologia (INMET/MERGE); Vazão (ANA/ONS)
MLT: 2003-2024

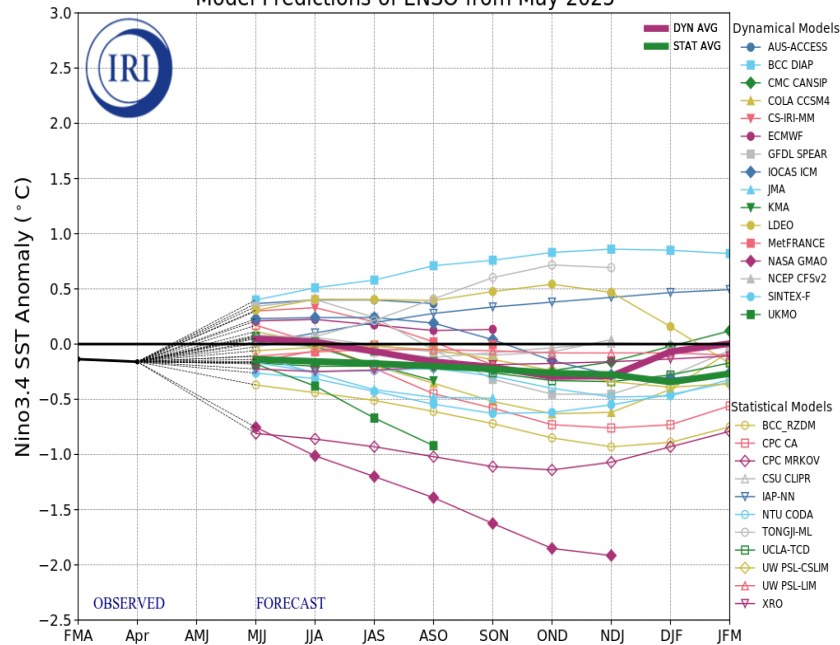
Previsão Meteorológica: ECMWF

Status Atual: **Neutralidade**

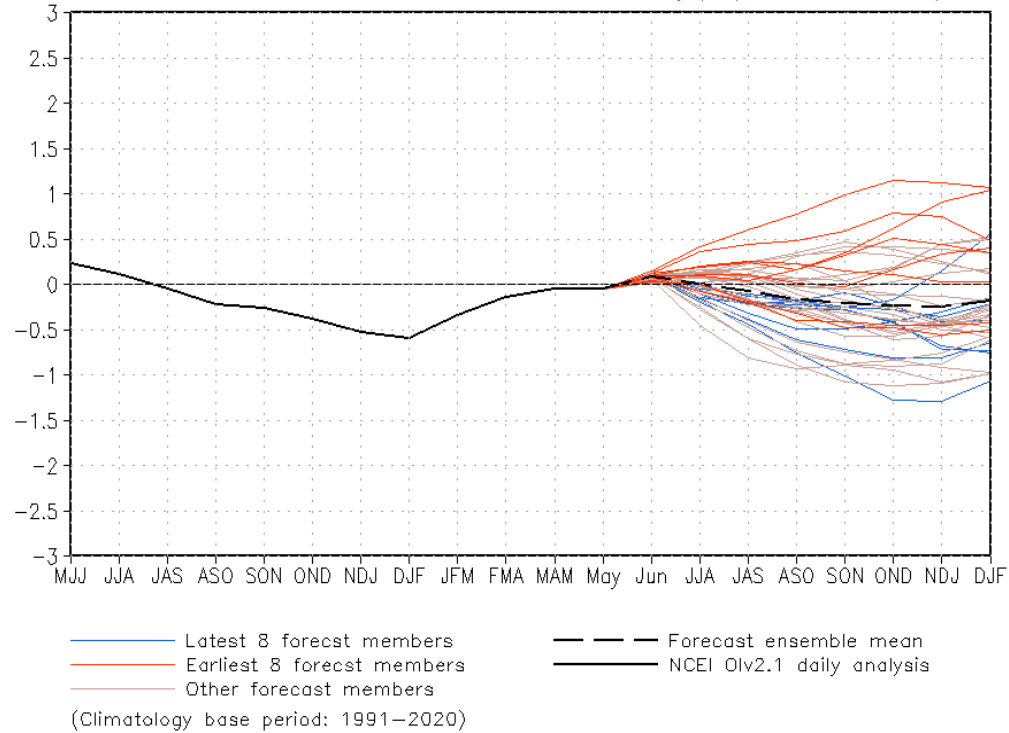


Previsão do “ENSO”

Model Predictions of ENSO from May 2025

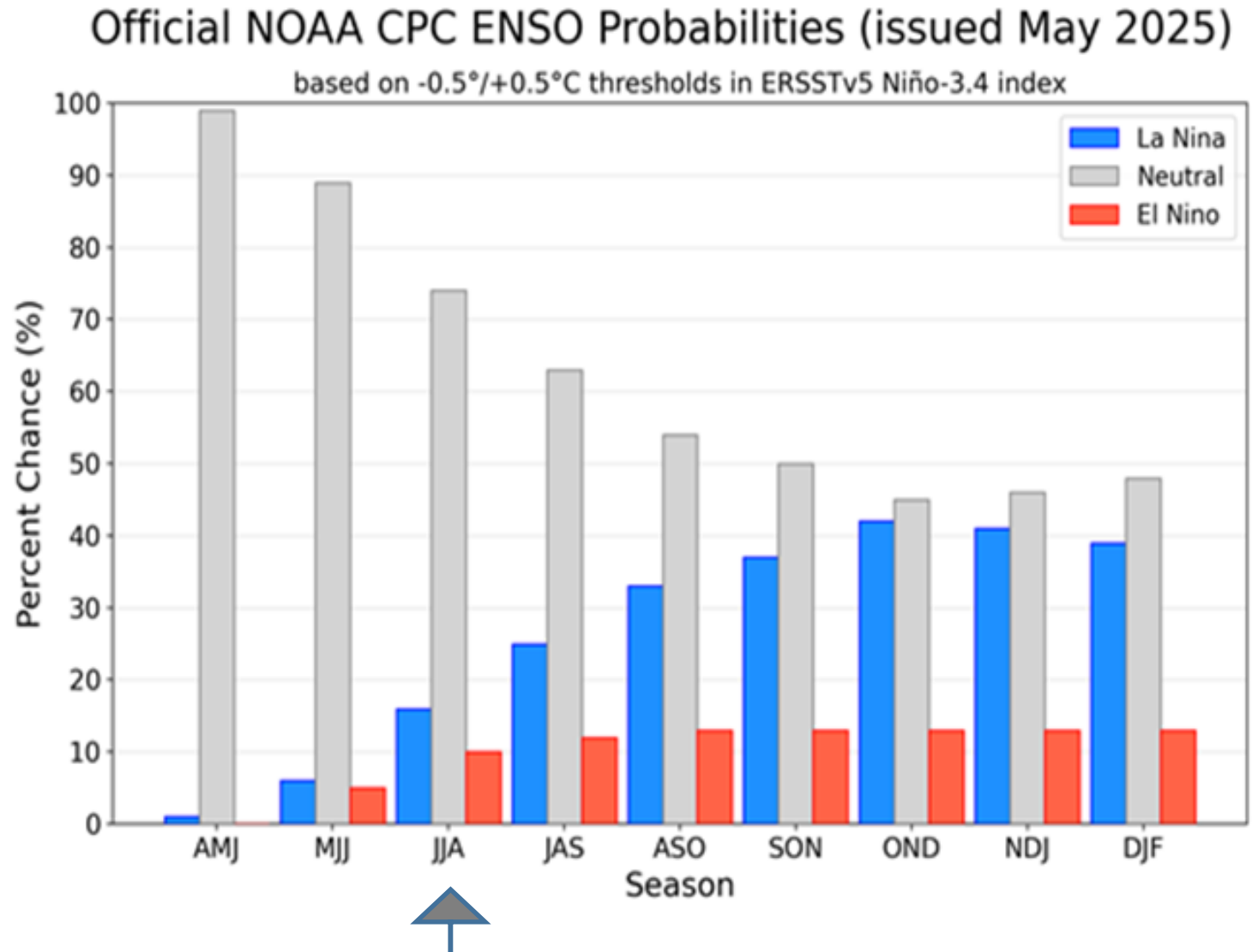


CFSv2 forecast Nino3.4 SST anomalies (K) (PDF corrected)



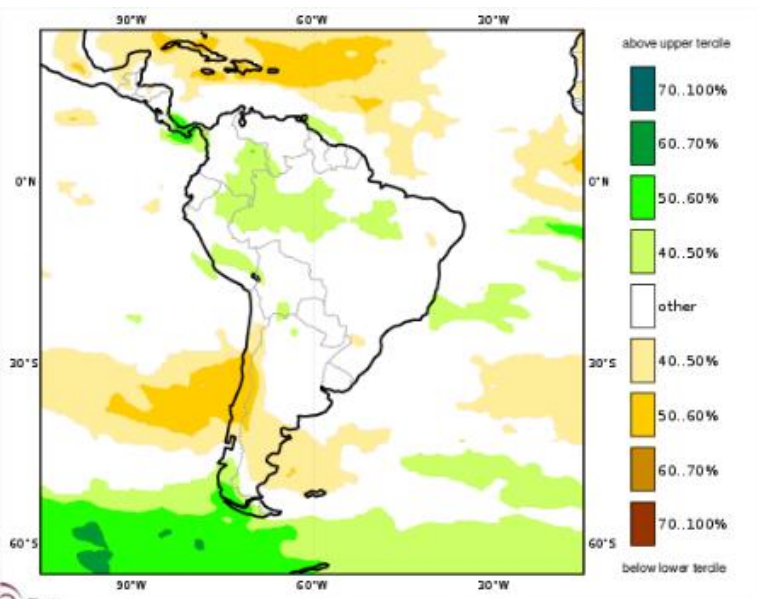
Atualizado em 09 de junho

Previsão do “ENSO”

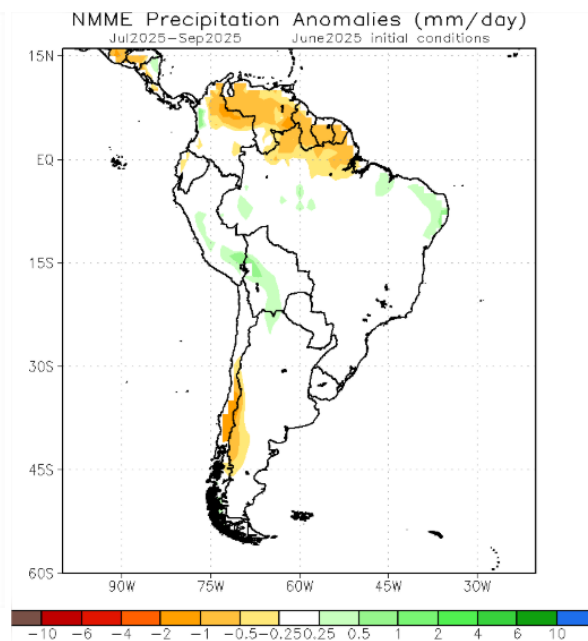


Previsão Sazonal de Chuva Multi-Modelo

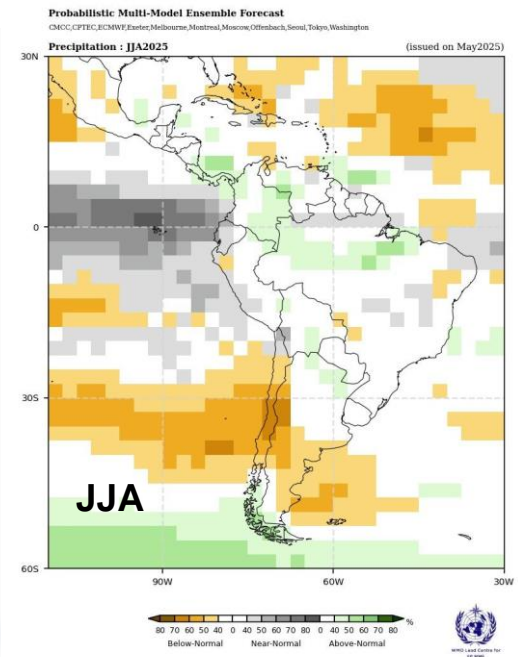
Julho-Agosto-Setembro



Modelos Europeus



Modelos Norte Americanos



Modelos da WMO