



CEMADEN

Centro Nacional de Monitoramento e
Alertas de Desastres Naturais

Sala de Acompanhamento da Região Norte

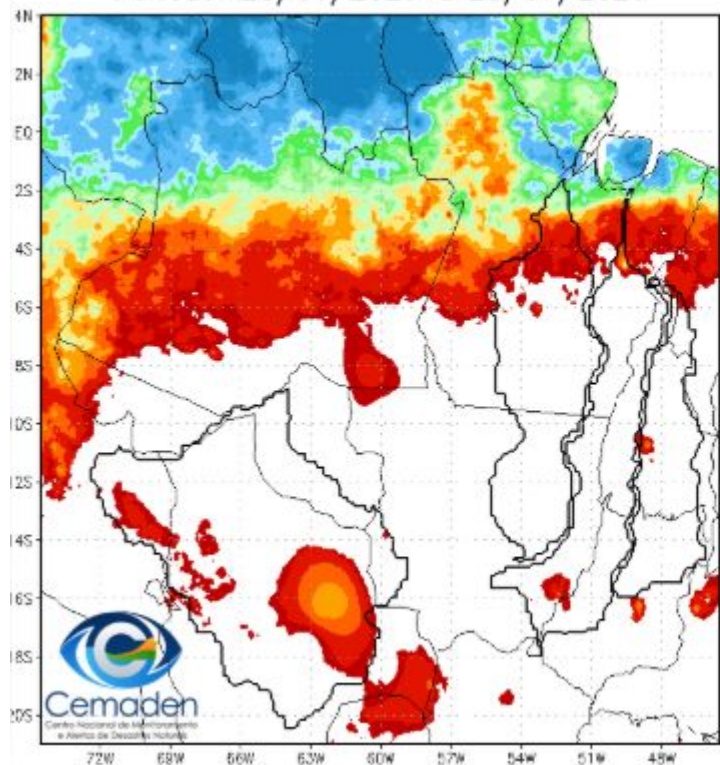
CEMADEN/MCTI

Julho de 2025

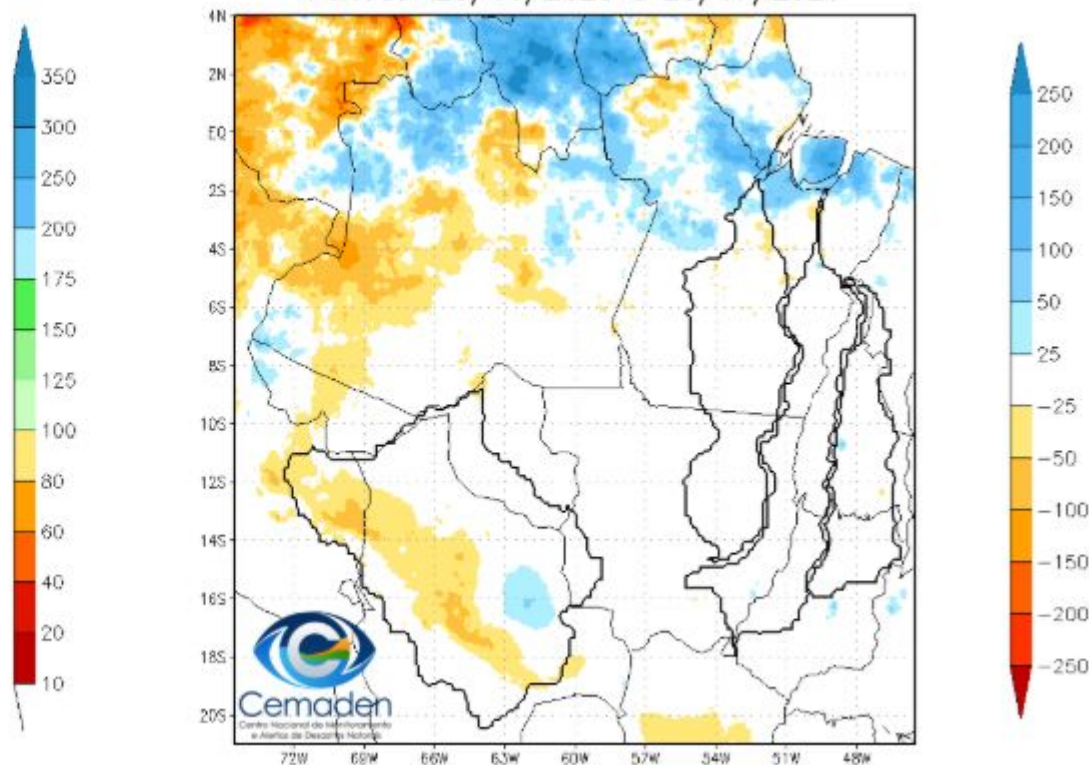


PRECIPITAÇÃO : ÚLTIMOS 30 DIAS

Precipitação Acumulada (mm) A.S.
Período: 28/06/2025 a 28/07/2025

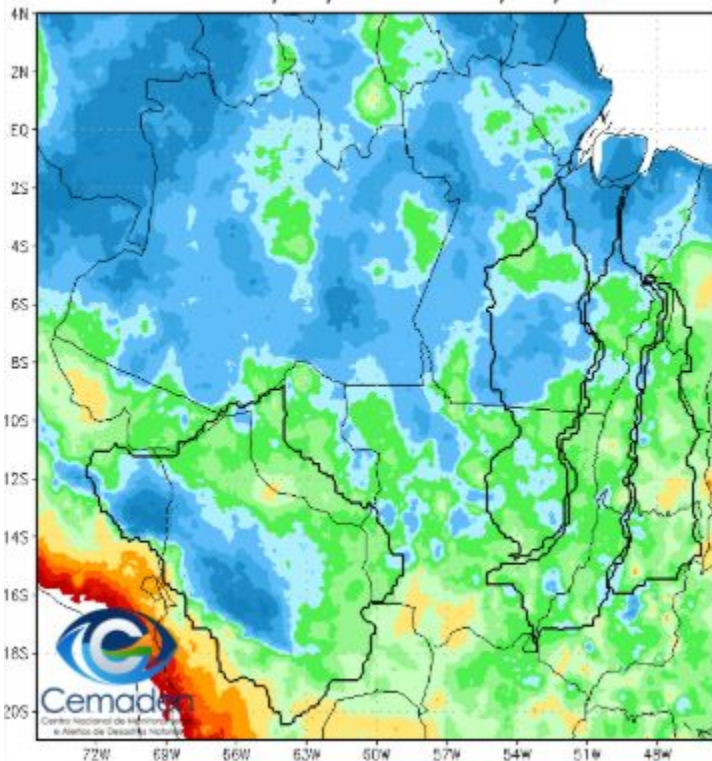


Anomalia de Precipitação (mm) A.S.
Período: 28/06/2025 a 28/07/2025

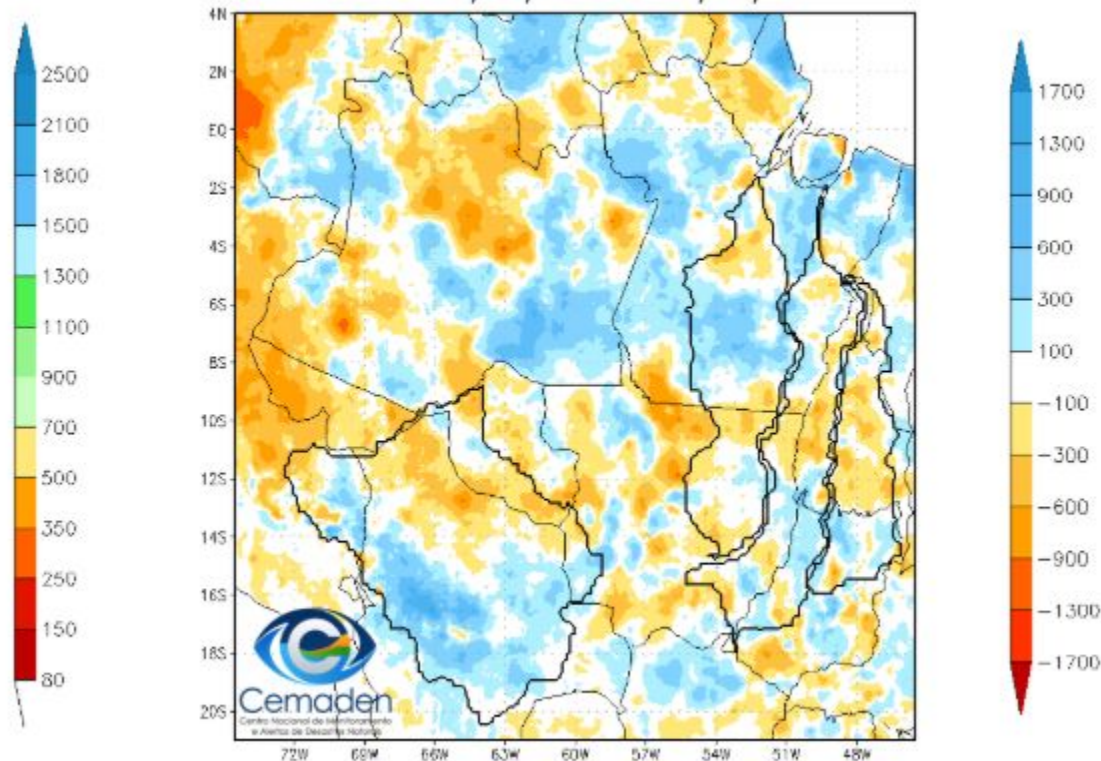


PRECIPITAÇÃO DO ANO HIDROLÓGICO

Precipitação Acumulada (mm) A.S.
Período: 01/10/2024 a 28/07/2025



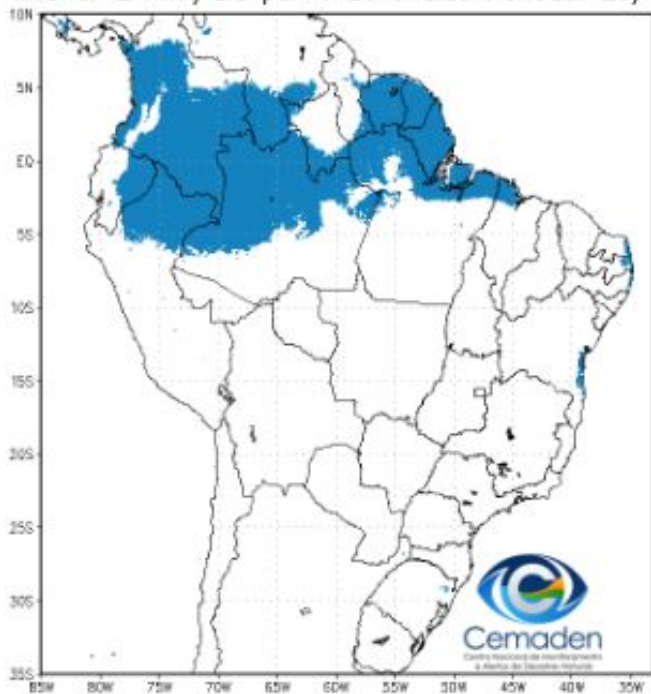
Anomalia de Precipitação (mm) A.S.
Período: 01/10/2024 a 28/07/2025



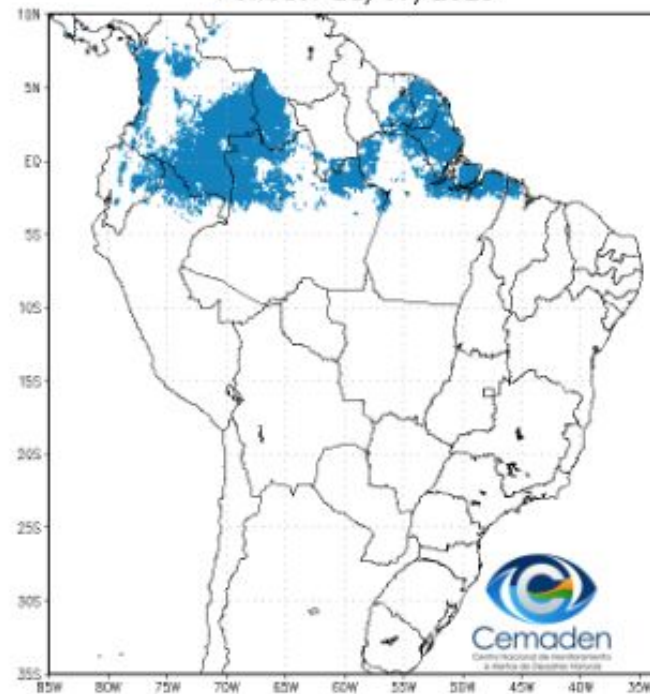
FONTE DOS DADOS: MERGE/INPE

SITUAÇÃO DA ESTAÇÃO CHUVOSA

Climatologia da Precipitação (2001–2024)
Inferior 2 mm/dia por 4 de 5 dias Período: 28/07

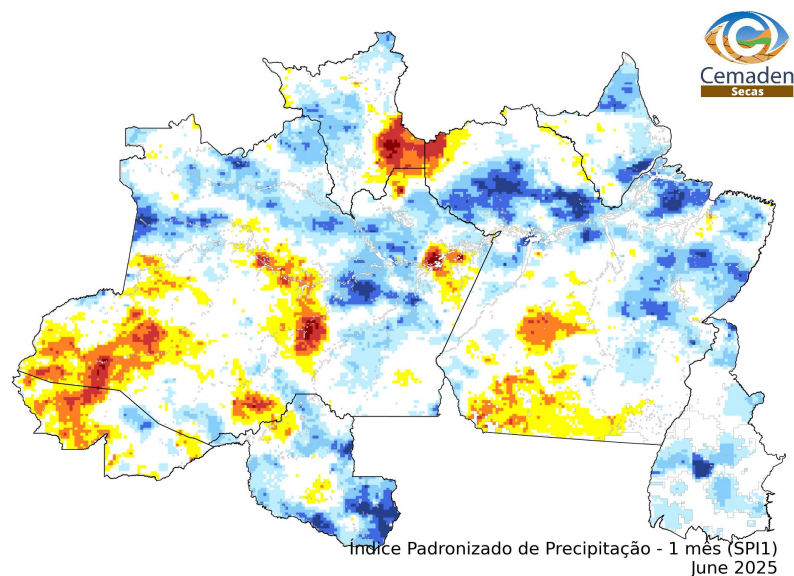


Precipitação Inferior 2 mm/dia por 4 de 5 dias
Período: 28/07/2025

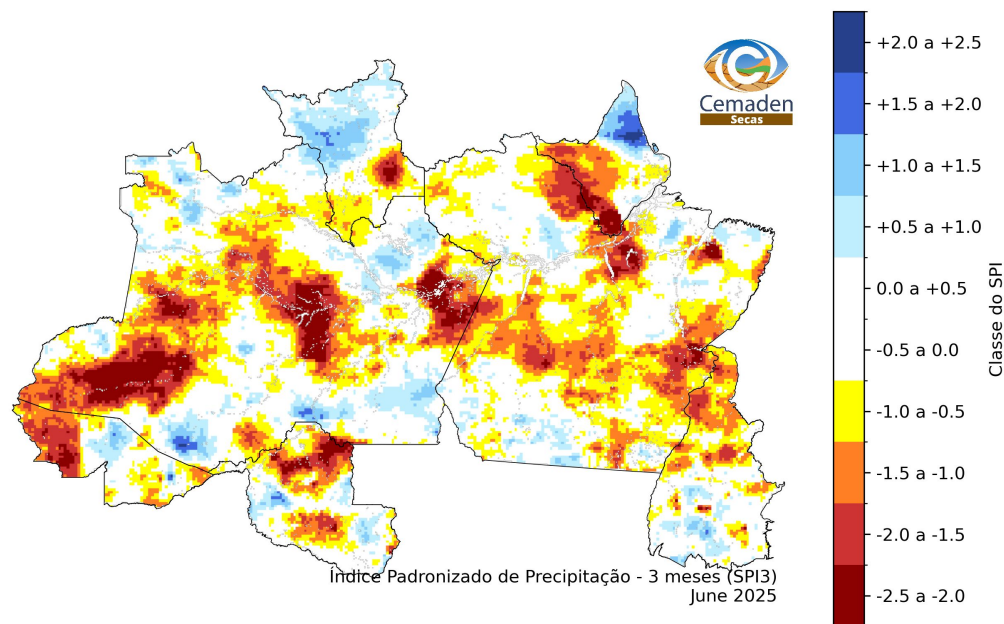


ANOMALIA PADRONIZADA DE PRECIPITAÇÃO : JUNHO/2025

SPI1



SPI3

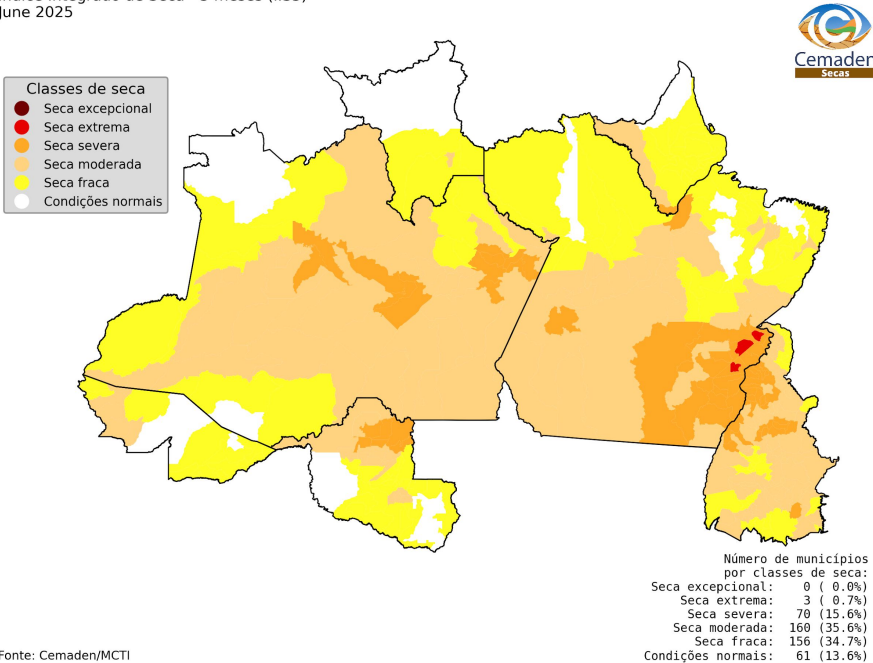


ÍNDICE INTEGRADO DE SECA - IIS

(SPI + VHI + AUS): JUNHO/2025

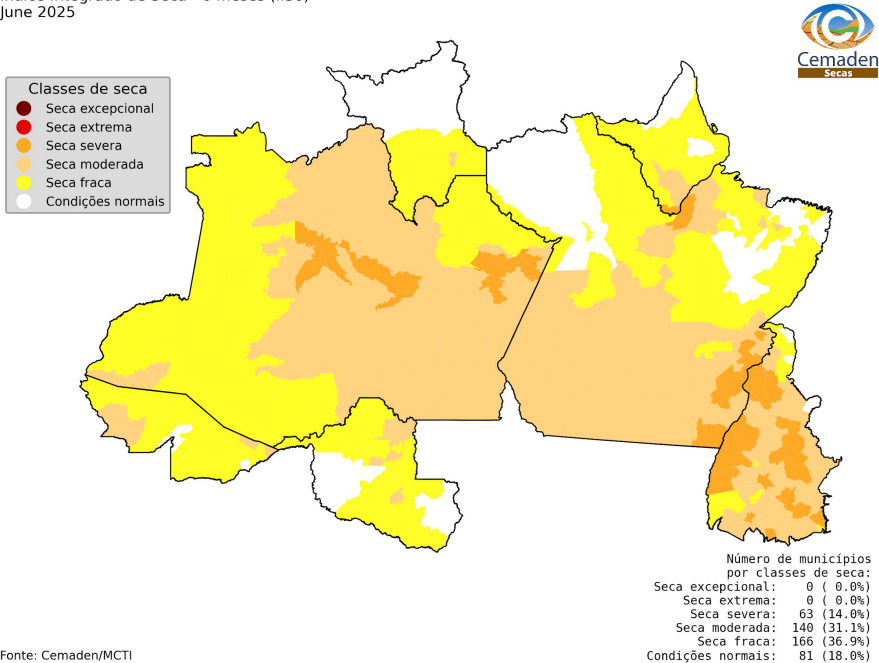
IIS-03

Índice Integrado de Seca - 3 meses (IIS3)
June 2025



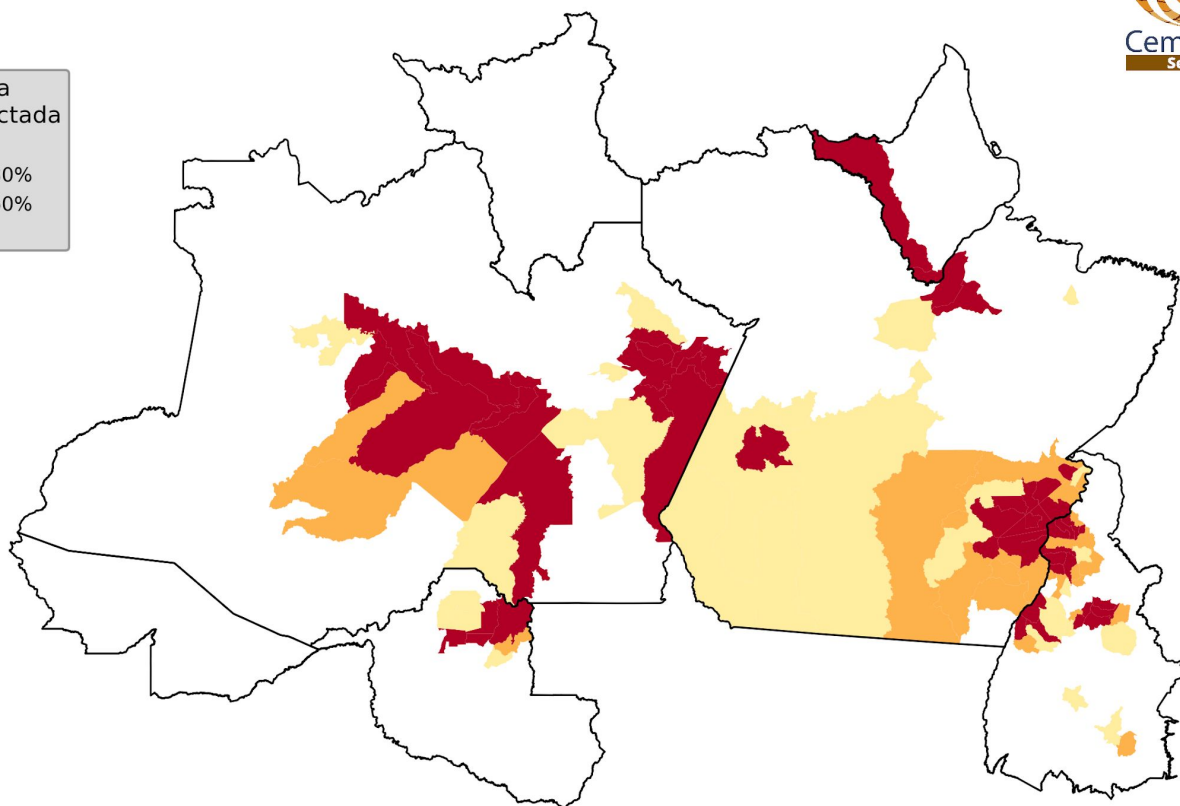
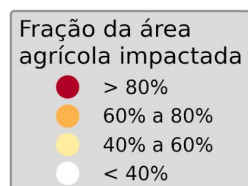
IIS-06

Índice Integrado de Seca - 6 meses (IIS6)
June 2025



ÁREAS DE PASTAGENS E AGRÍCOLAS AFETADAS PELA SECA

Área agro-pastoril municipal afetada pela seca
June 2025

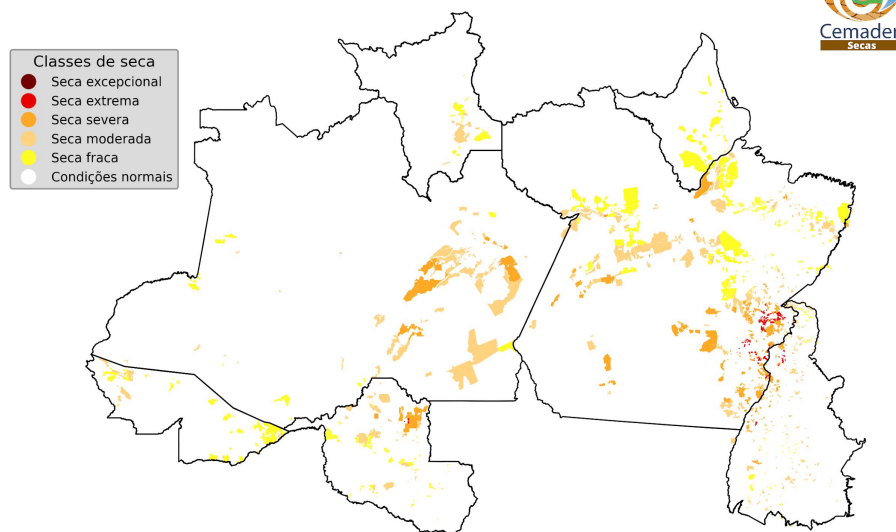


Fonte: Cemaden/MCTI

ÍNDICE INTEGRADO DE SECA (IIS-03)

PROJETOS DE ASSENTAMENTO

Índice Integrado de Seca - 3 meses (IIS3)
June 2025



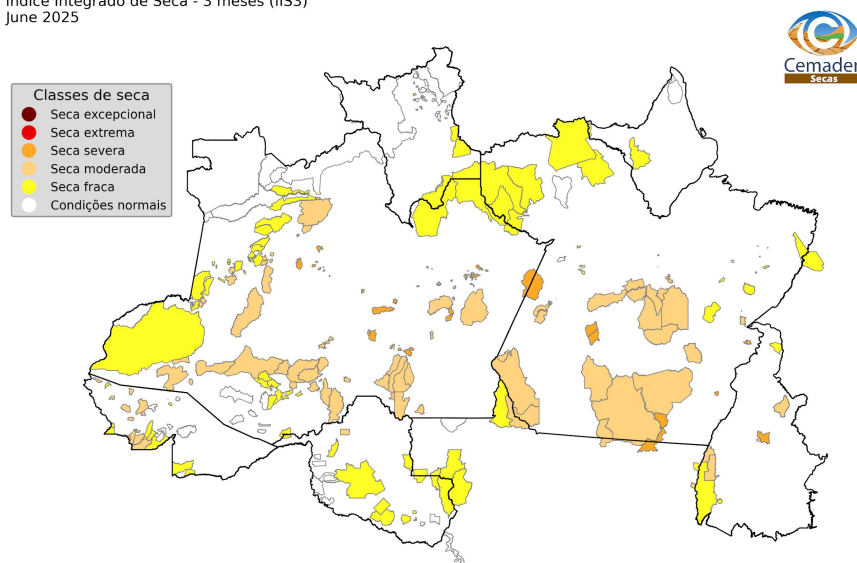
Número de Assentamentos
por classes de seca:

Seca excepcional:	0 (0.0%)
Seca extrema:	90 (1.2%)
Seca severa:	376 (5.1%)
Seca moderada:	670 (9.2%)
Seca fraca:	568 (7.6%)
Condições normais:	174 (2.4%)

Fonte: Cemaden/MCTI

TERRAS INDÍGENAS

Índice Integrado de Seca - 3 meses (IIS3)
June 2025



Número de Terras Indígenas
por classes de seca:

Seca excepcional:	0 (0.0%)
Seca extrema:	1 (0.2%)
Seca severa:	40 (6.3%)
Seca moderada:	114 (18.0%)
Seca fraca:	88 (13.9%)
Condições normais:	63 (10.0%)

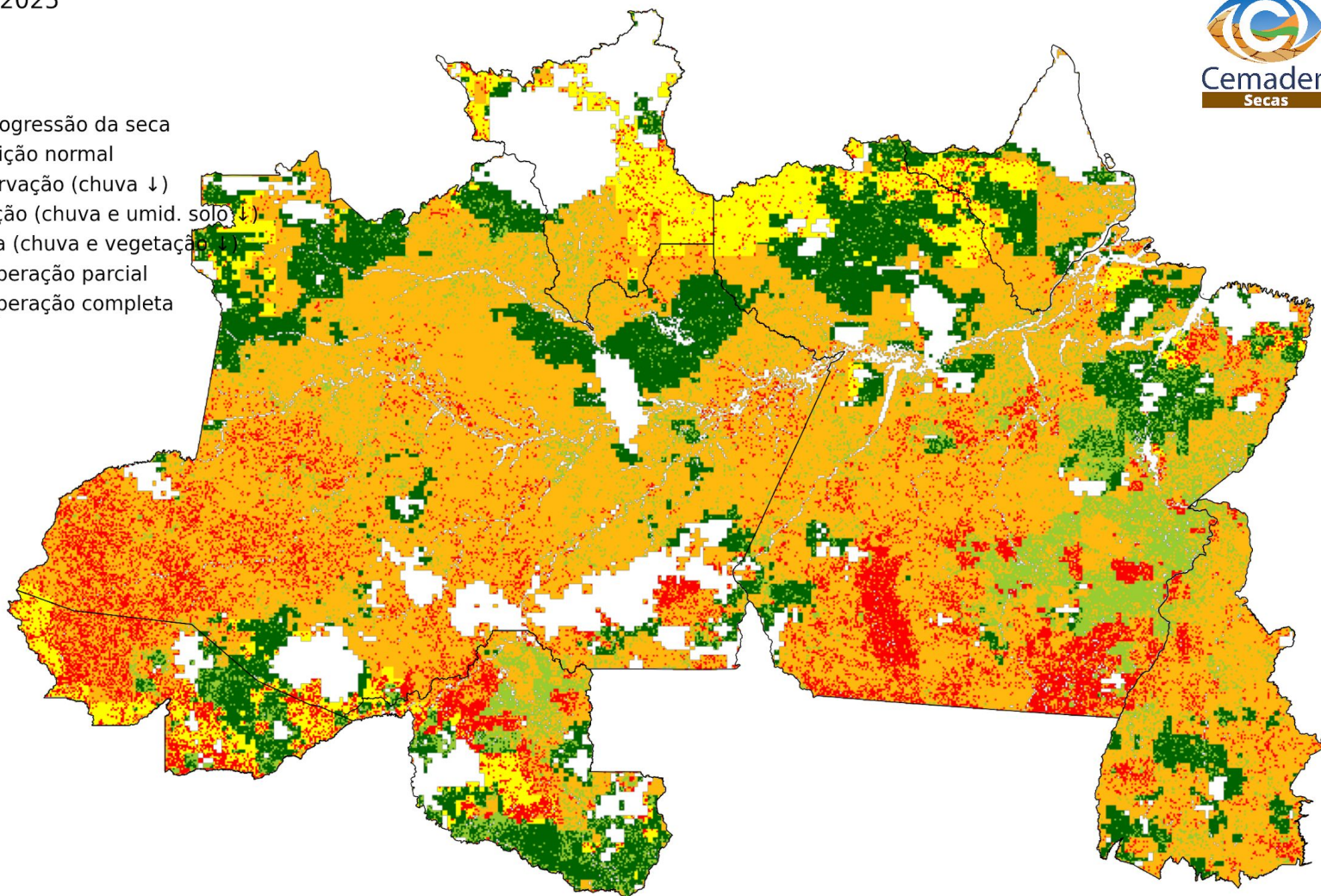
Fonte: Cemaden/MCTI

PROGRESSÃO E INTENSIFICAÇÃO DAS CONDIÇÕES DE SECA (PICS)

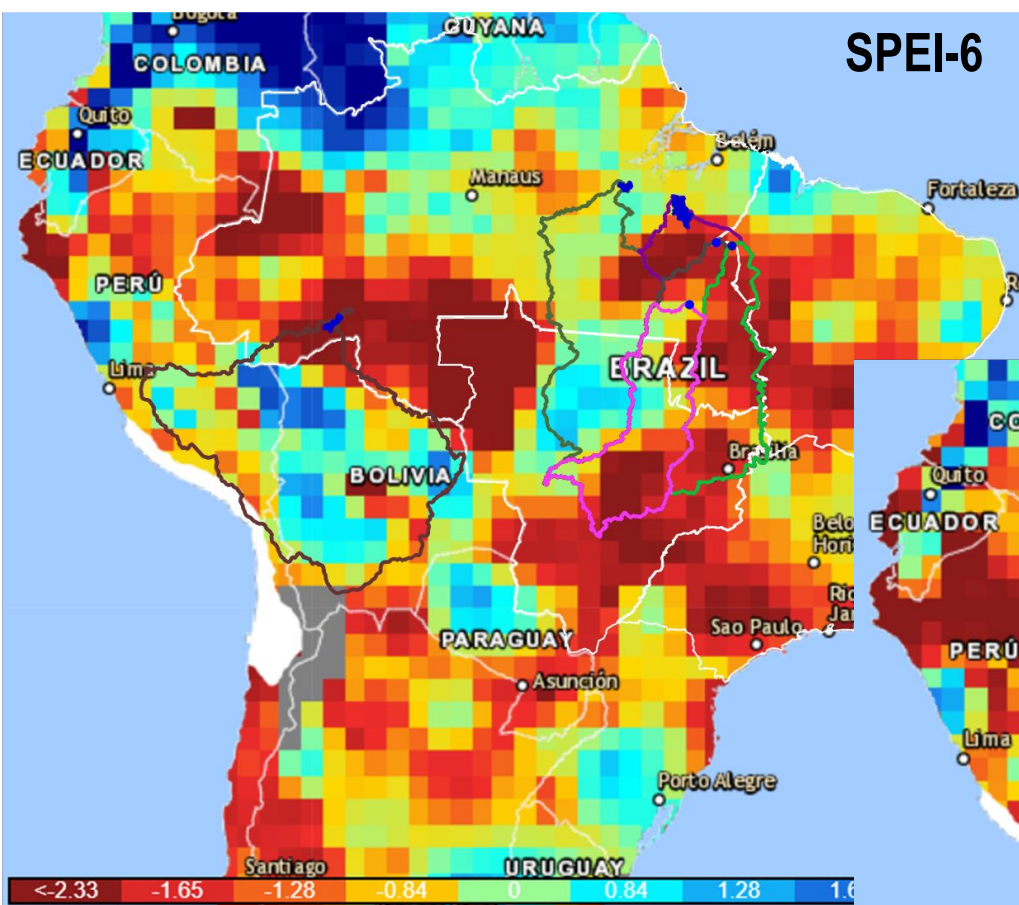
Progressão e Intensificação das Condições de Seca (PICS)
June 2025



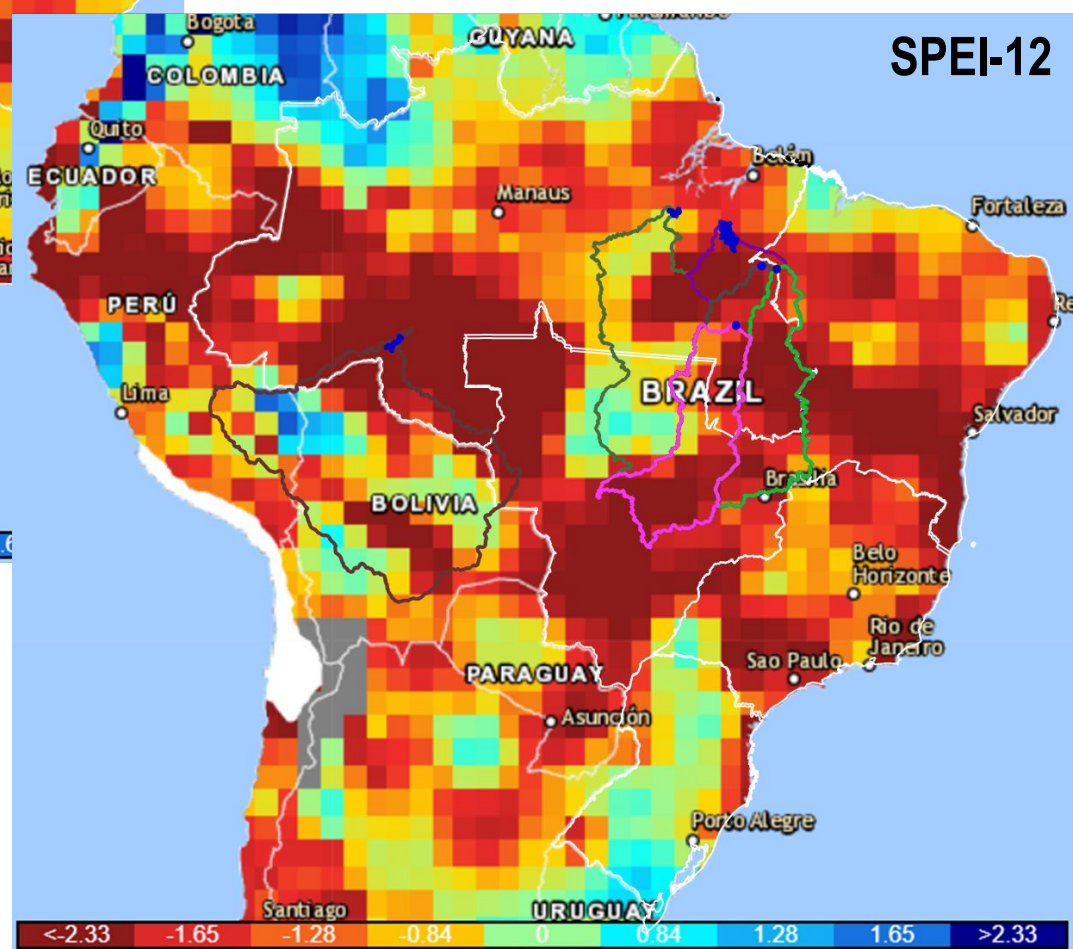
- Progressão da seca
- Condição normal
 - Observação (chuva ↓)
 - Atenção (chuva e umid. solo ↓)
 - Alerta (chuva e vegetação ↓)
 - Recuperação parcial
 - Recuperação completa



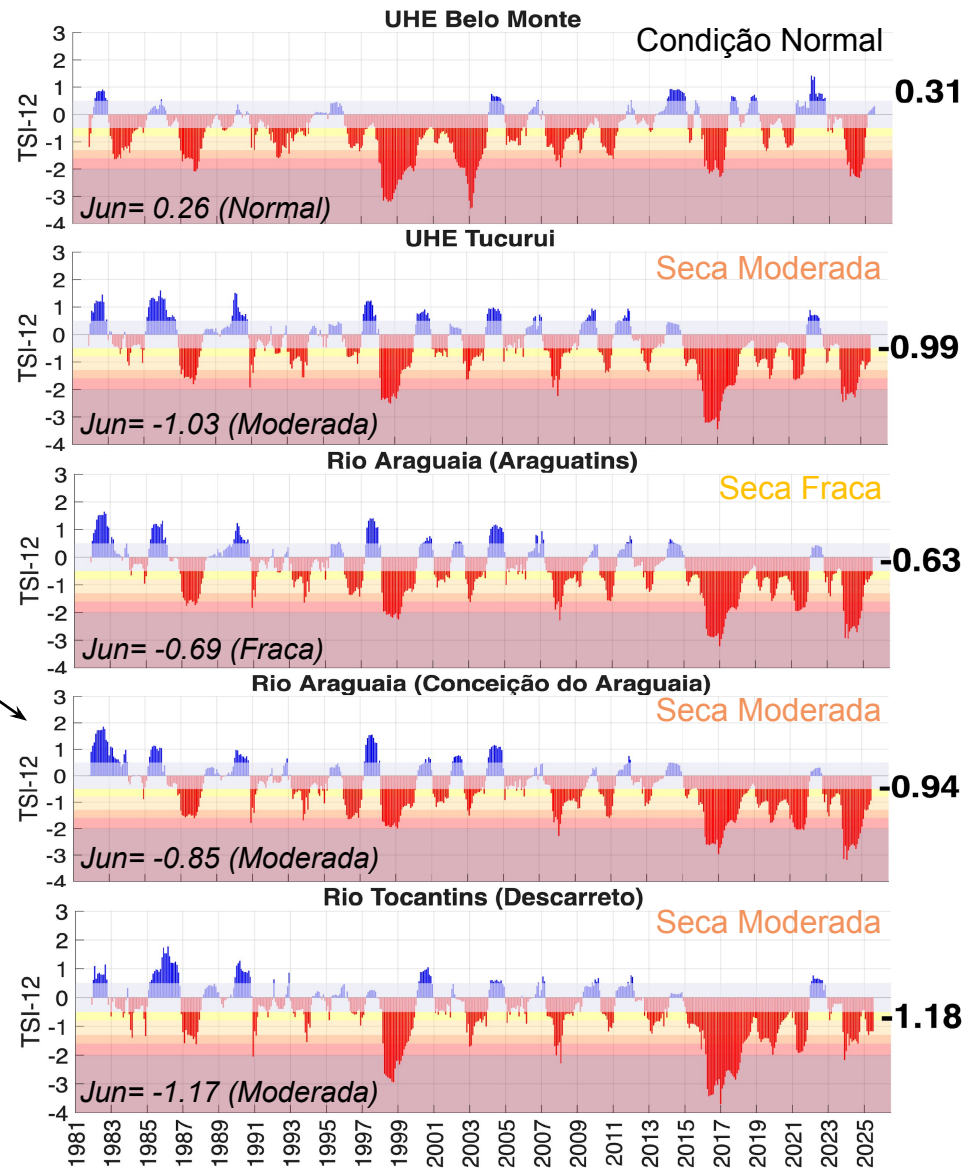
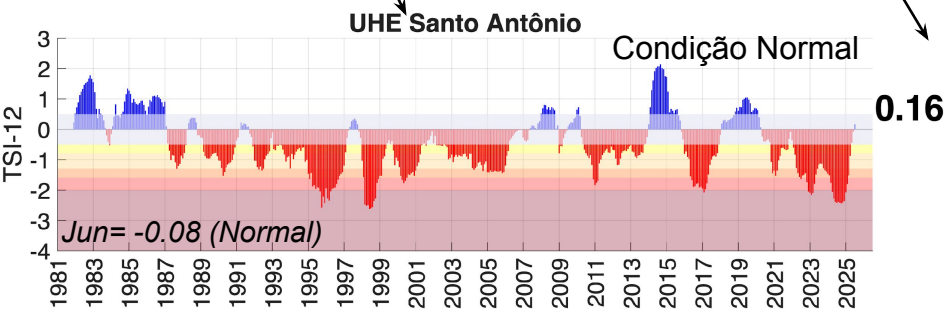
Índice Padronizado de Precipitação – Evapotranspiração Potencial (SPEI)



Junho/2025



Julho/2025

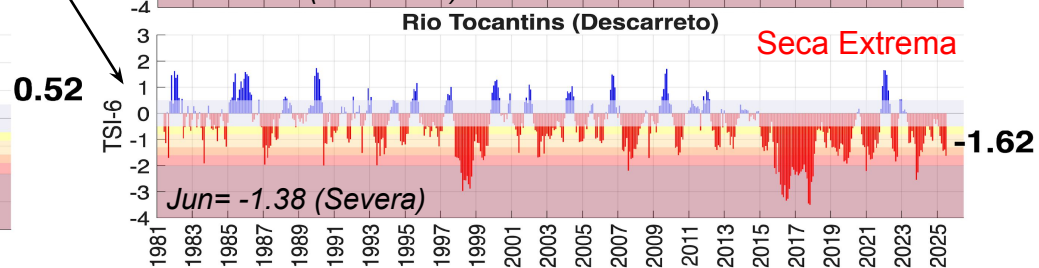
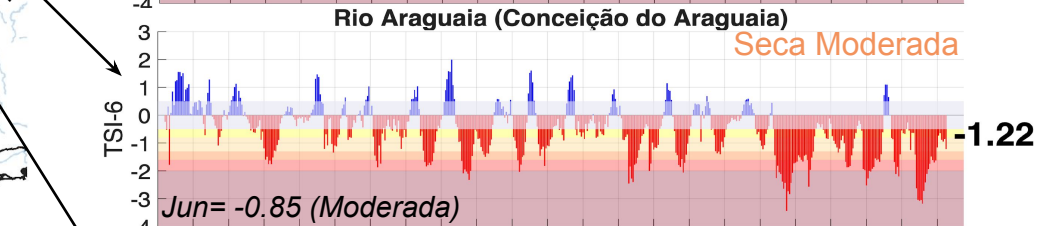
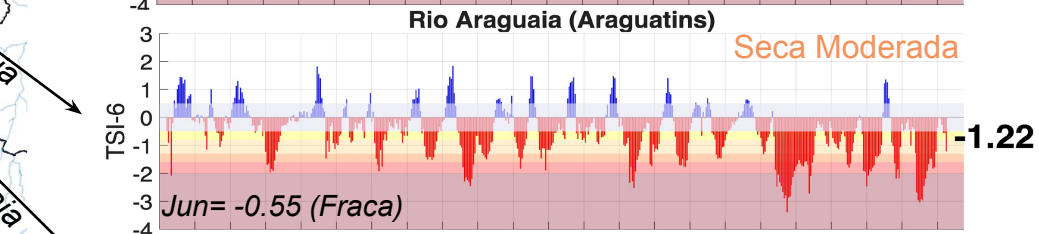
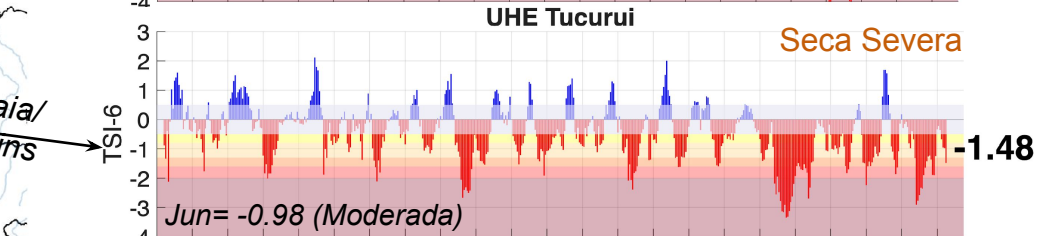
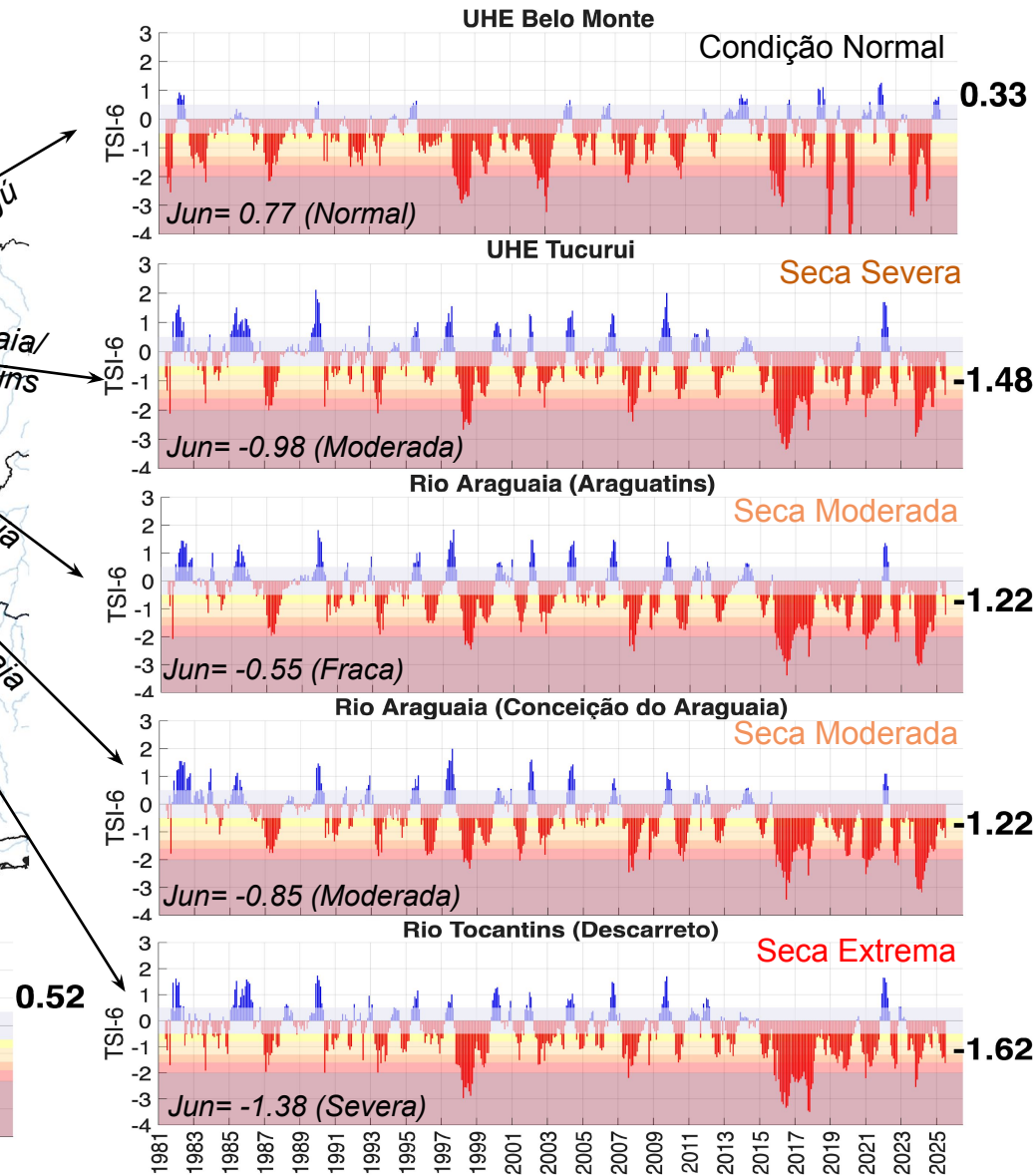
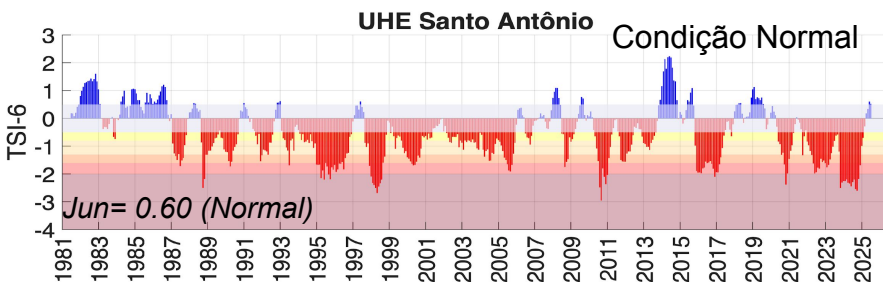
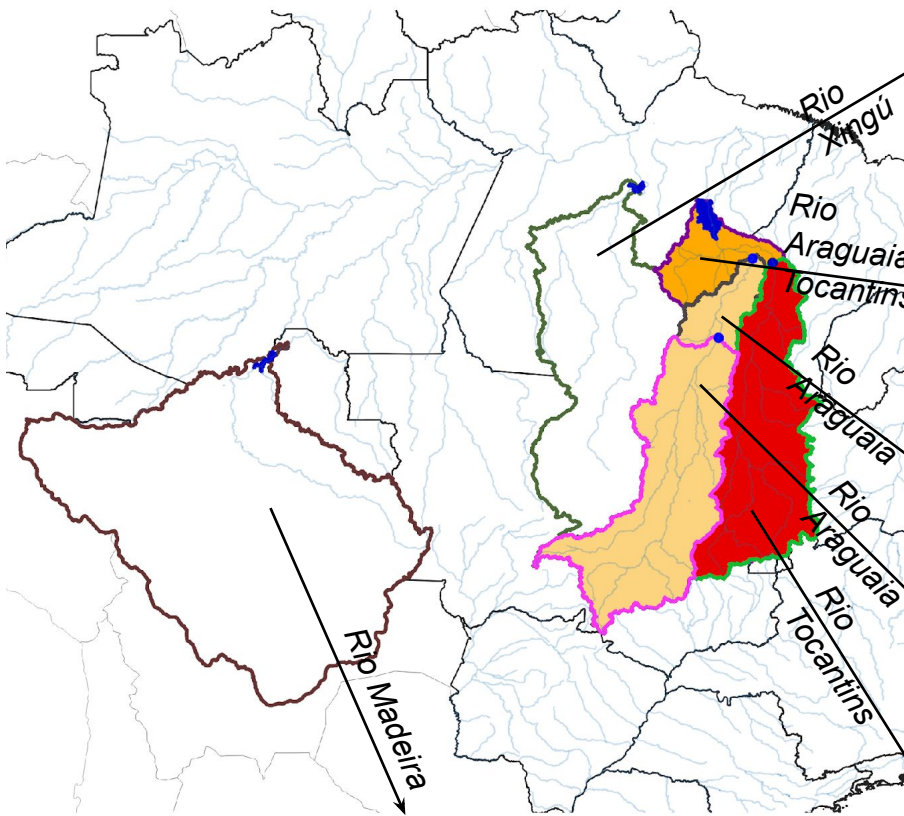


Fonte dos dados: Precipitação (Cemaden/INMET) e Vazão (ONS/ANA) - Jan/1981-Jul/2025. Estimativa TSI e Gráficos: CEMADEN

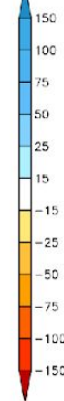
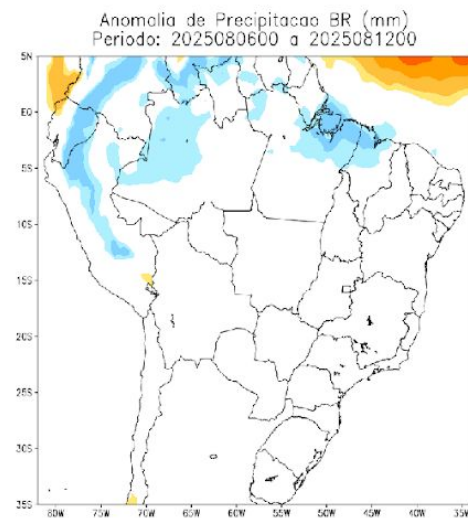
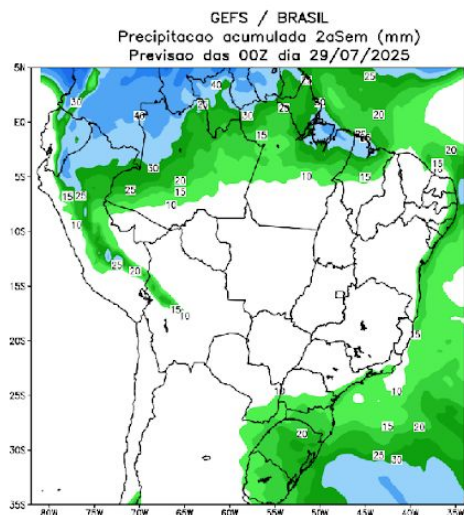
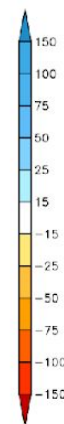
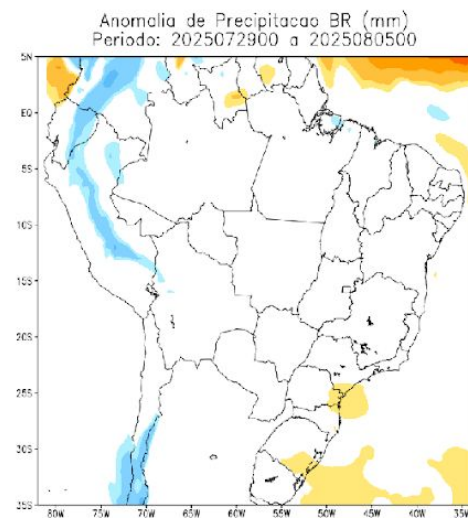
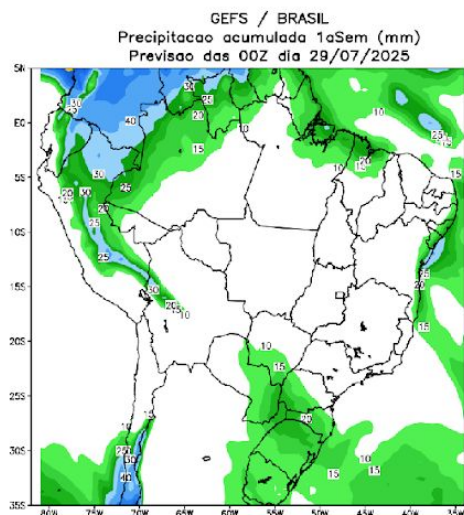
Índice Bivariado de Seca (Precipitação-Cota/Vazão) - TSI

Escala de Curto Prazo: **TSI-6 meses**

Julho/2025



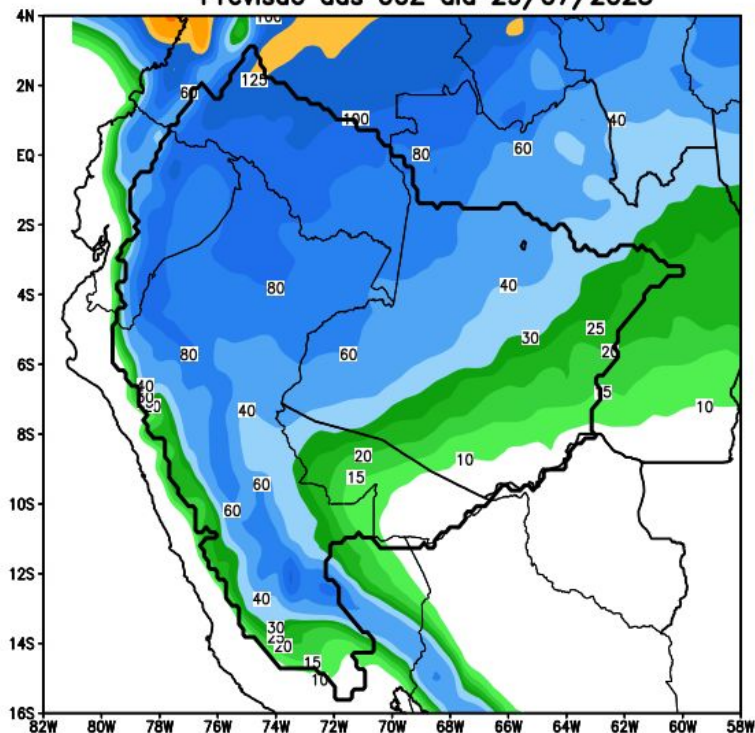
Previsão de chuva próximas duas semanas



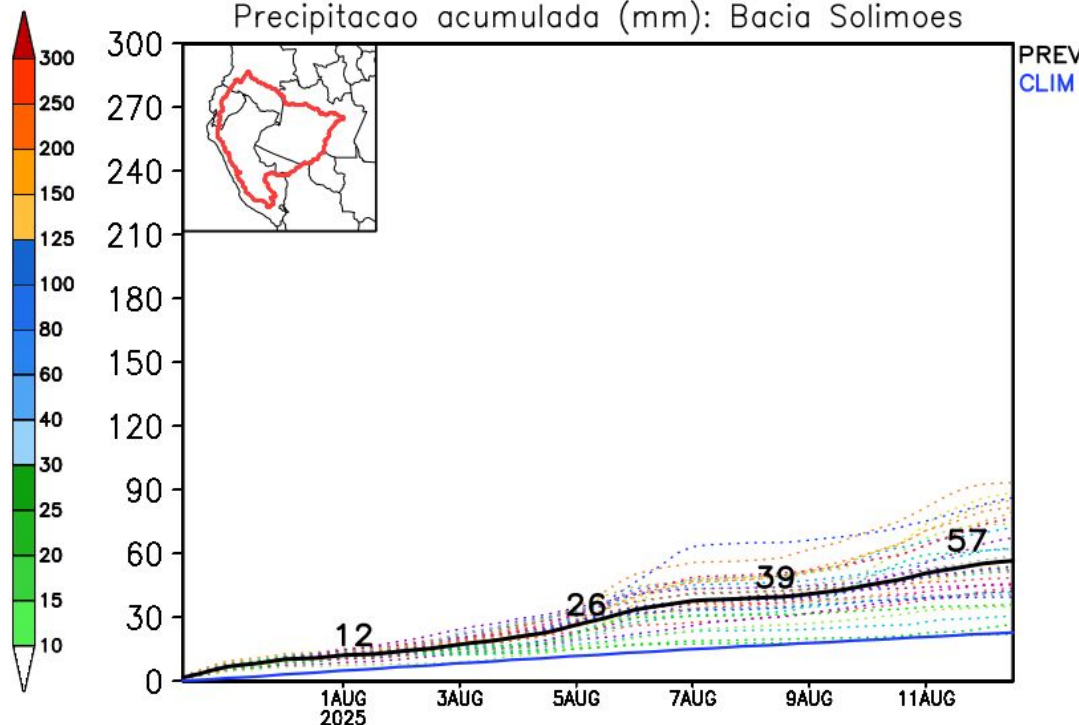
Previsão de chuva próximas duas semanas

Rio Solimões

GEFS / Bacia do Rio Solimões
Precipitação acumulada em 14 dias (mm)
Previsão das 00Z dia 29/07/2025



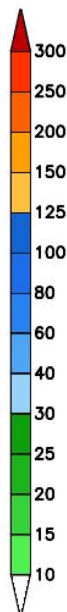
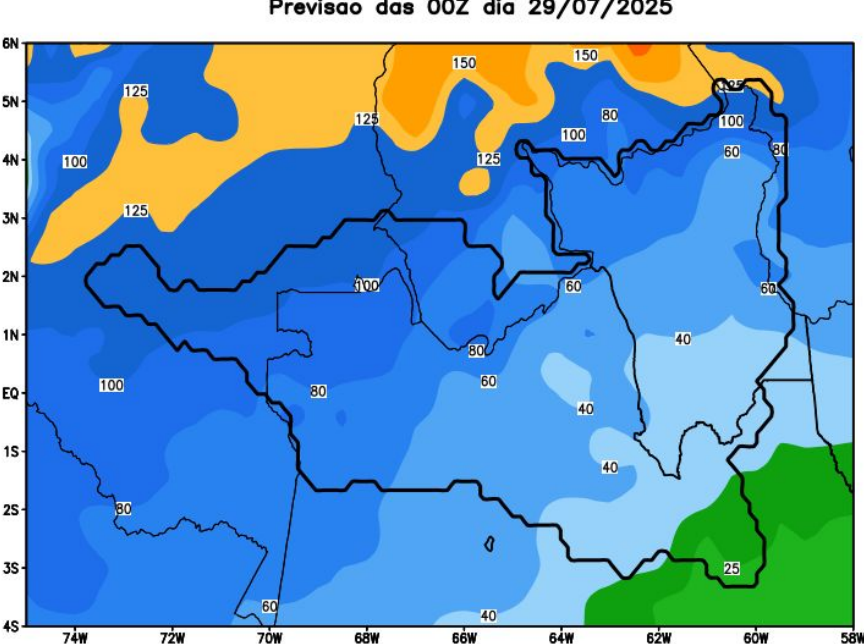
Precipitação acumulada (mm): Bacia Solimões



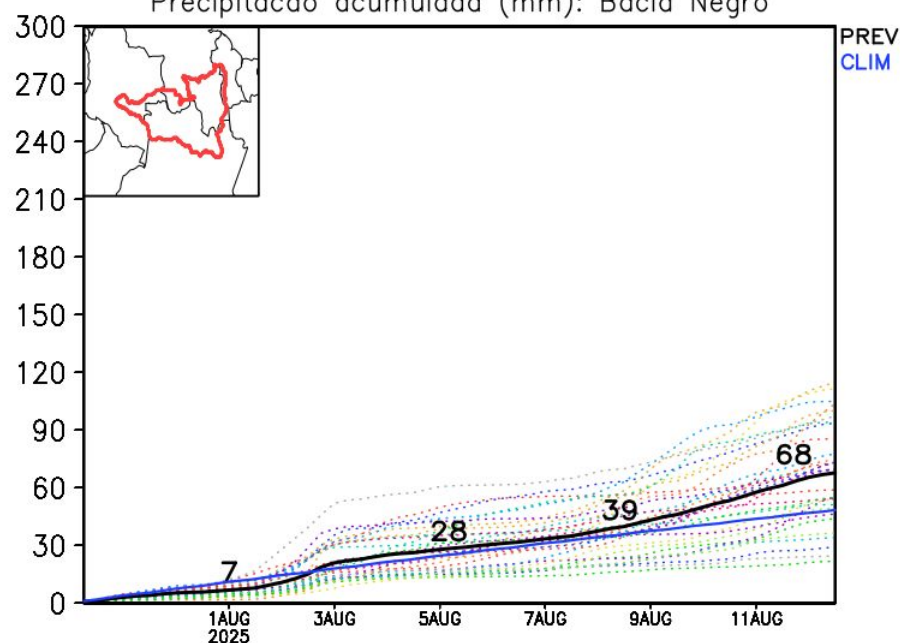
Previsão de chuva próximas duas semanas

Rio Negro

GEFS / Bacia do Rio Negro
Precipitação acumulada em 14 dias (mm)
Previsão das 00Z dia 29/07/2025



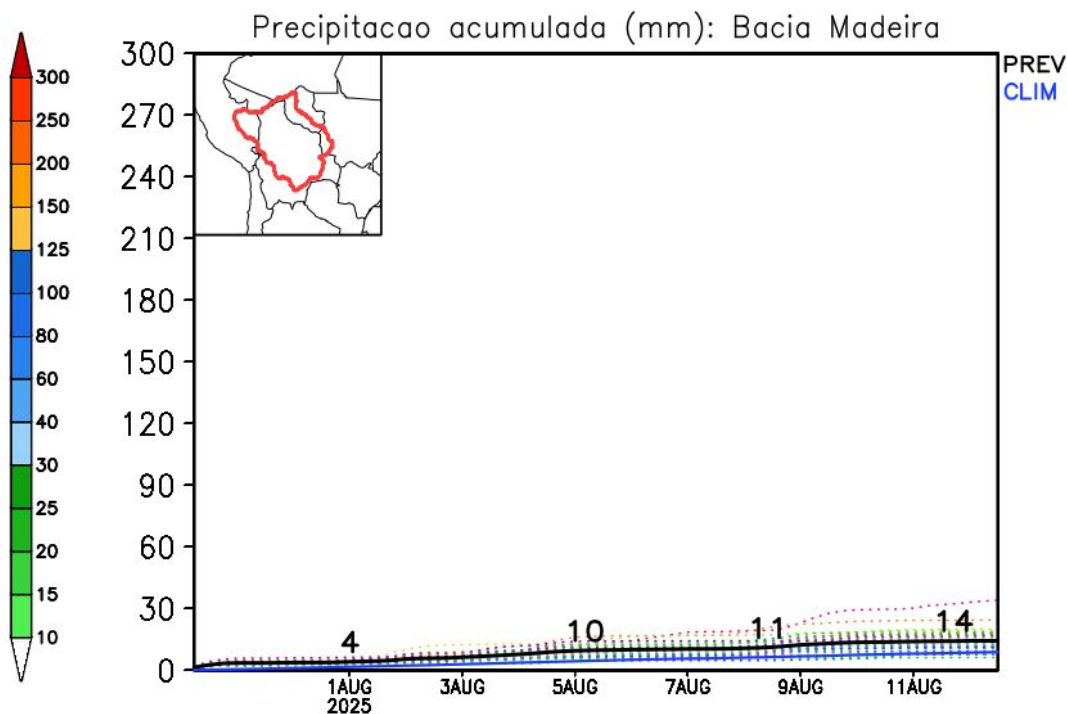
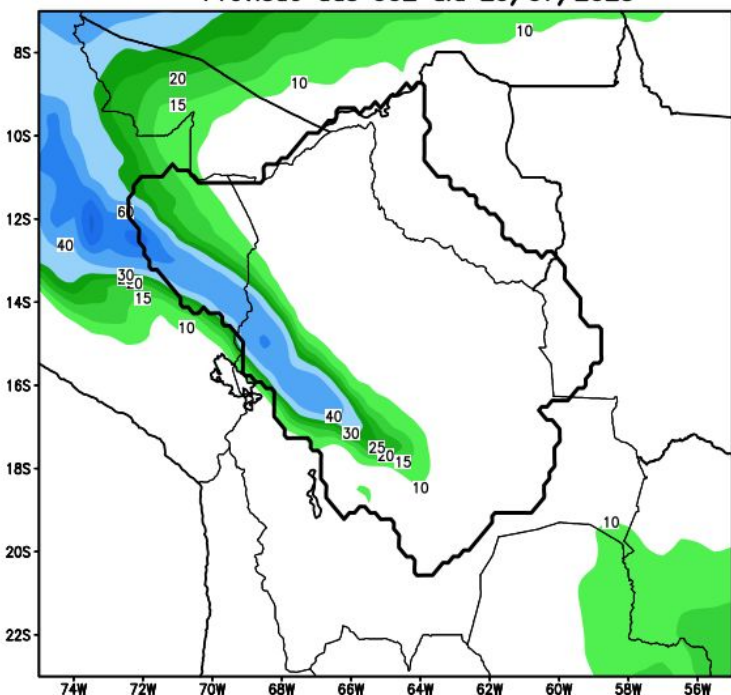
Precipitação acumulada (mm): Bacia Negro



Previsão de chuva próximas duas semanas

Rio Madeira

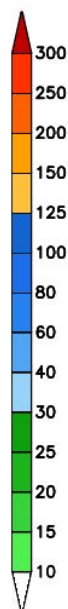
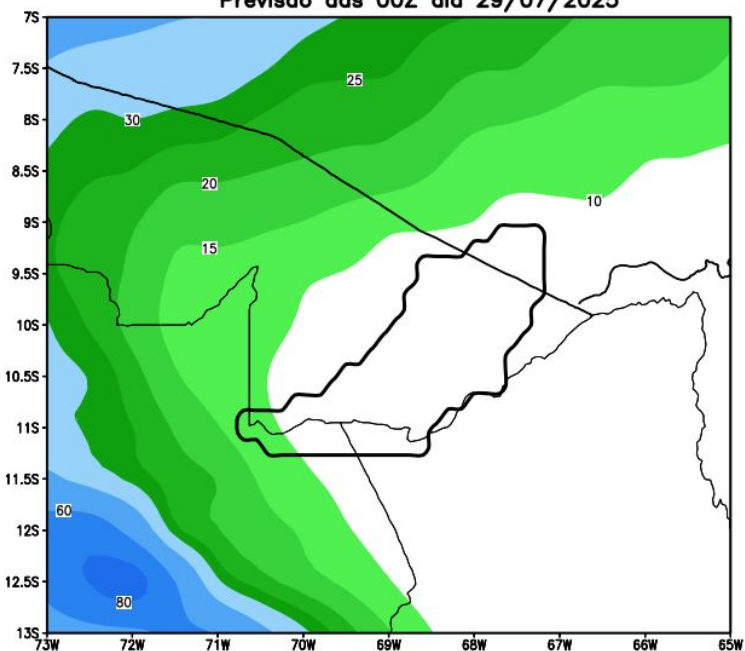
GEFS / Bacia do Rio Madeira
Precipitação acumulada em 14 dias (mm)
Previsão das 00Z dia 29/07/2025



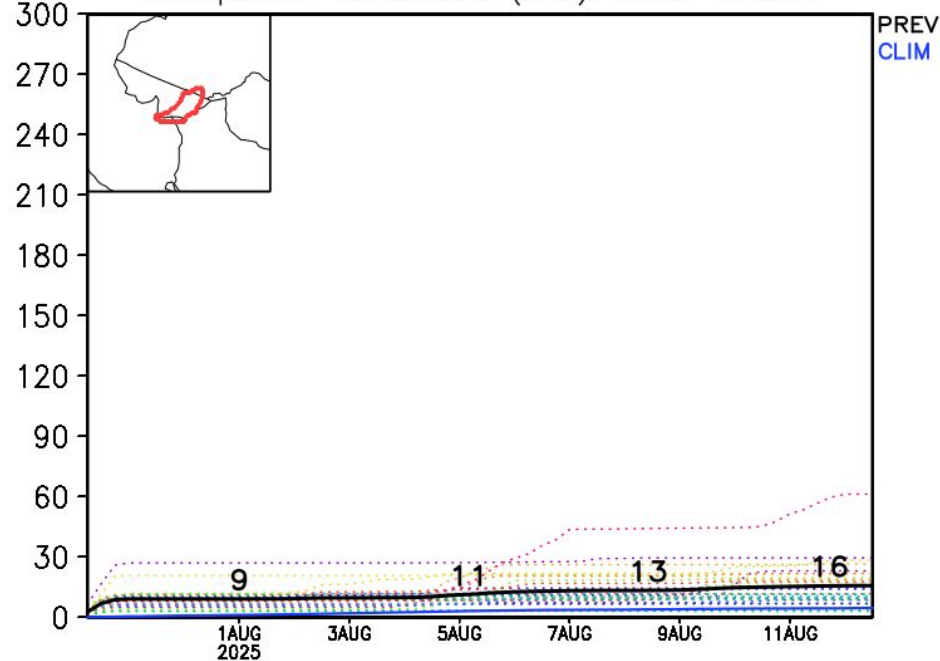
Previsão de chuva próximas duas semanas

Rio Acre

GEFS / Bacia do Rio Acre
Precipitação acumulada em 14 dias (mm)
Previsão das 00Z dia 29/07/2025



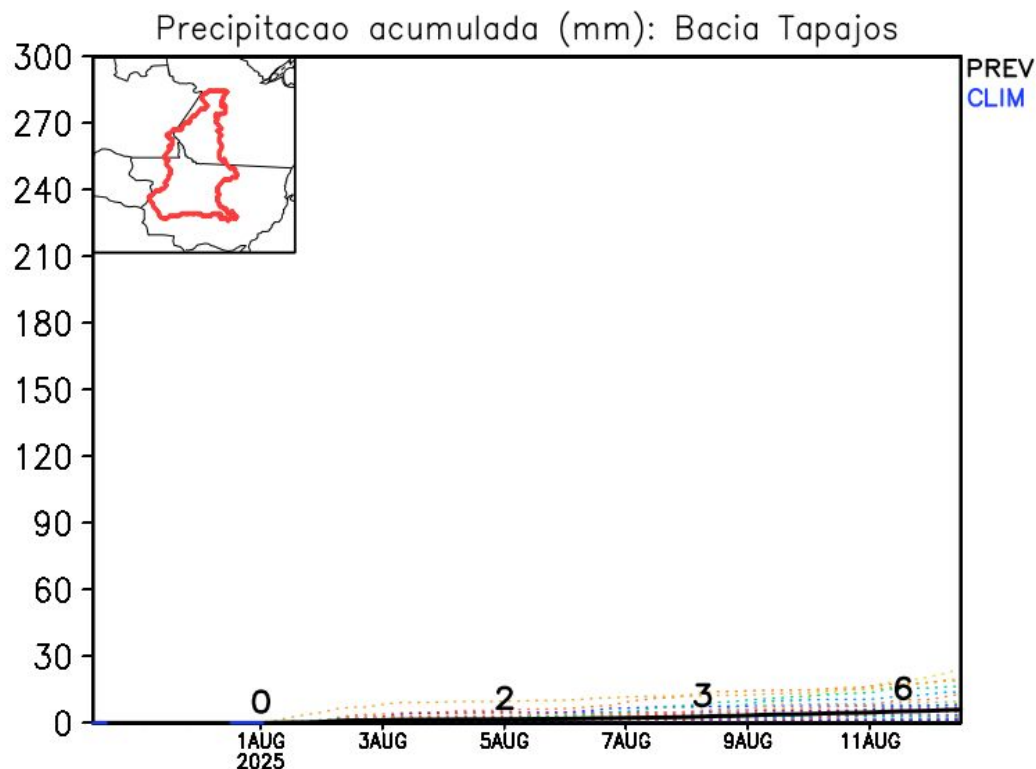
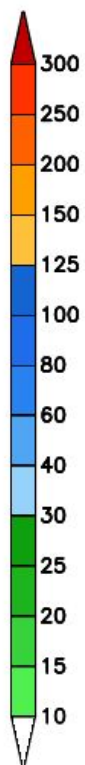
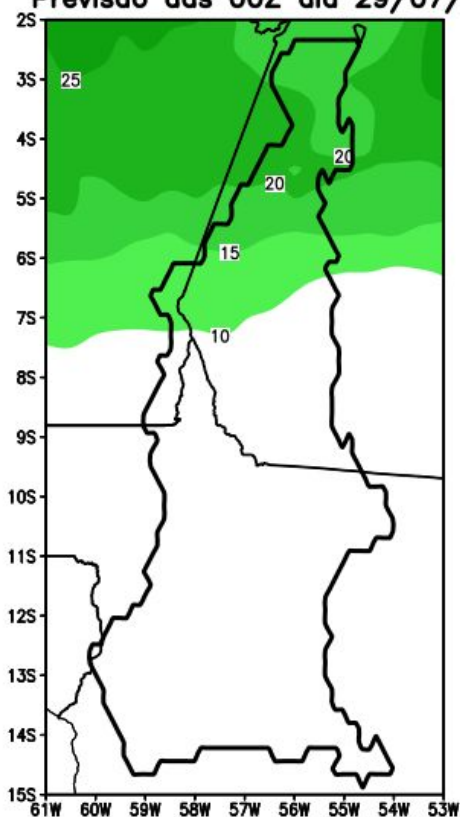
Precipitação acumulada (mm): Bacia RioAcre



Previsão de chuva próximas duas semanas

Rio Tapajós

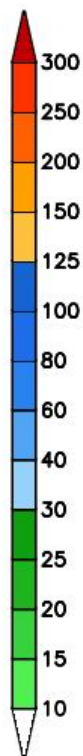
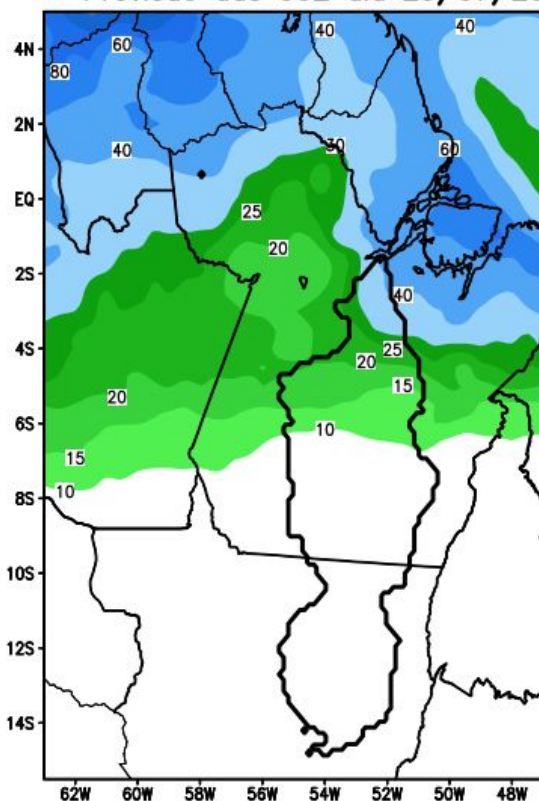
GEFS_50km / Bacia do Rio Tapajós
Precipitação acumulada em 14 dias (mm)
Previsão das 00Z dia 29/07/2025



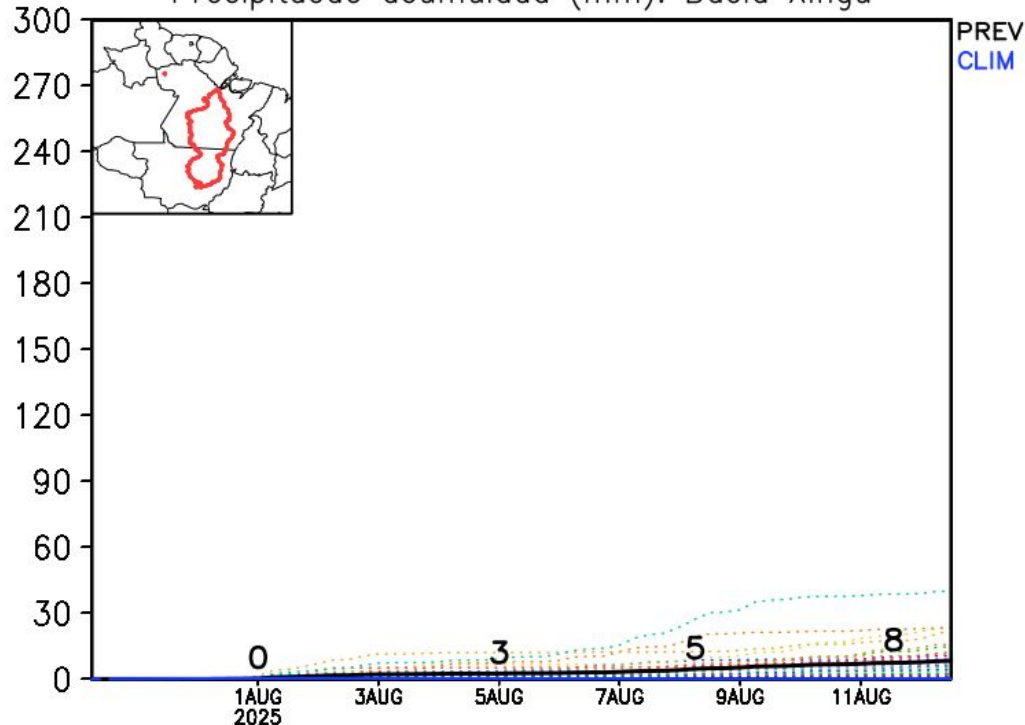
Previsão de chuva próximas duas semanas

Rio Xingu

GEFS / Xingu
Precipitação acumulada em 14 dias (mm)
Previsão das 00Z dia 29/07/2025



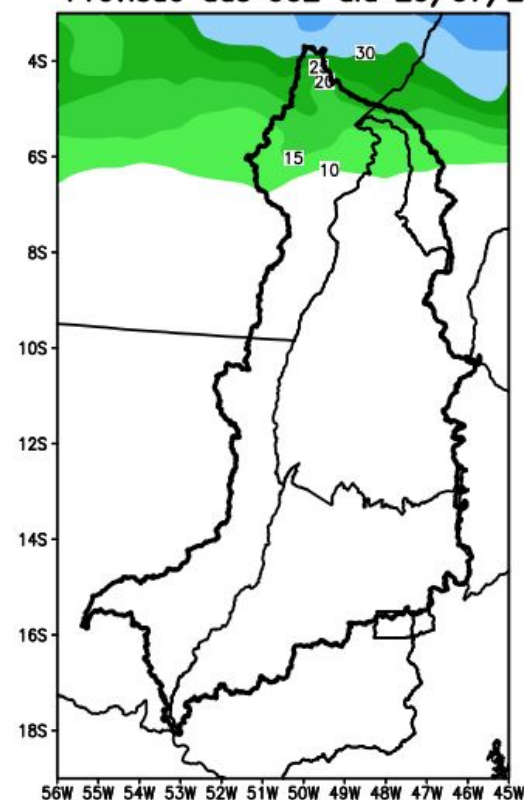
Precipitação acumulada (mm): Bacia Xingu



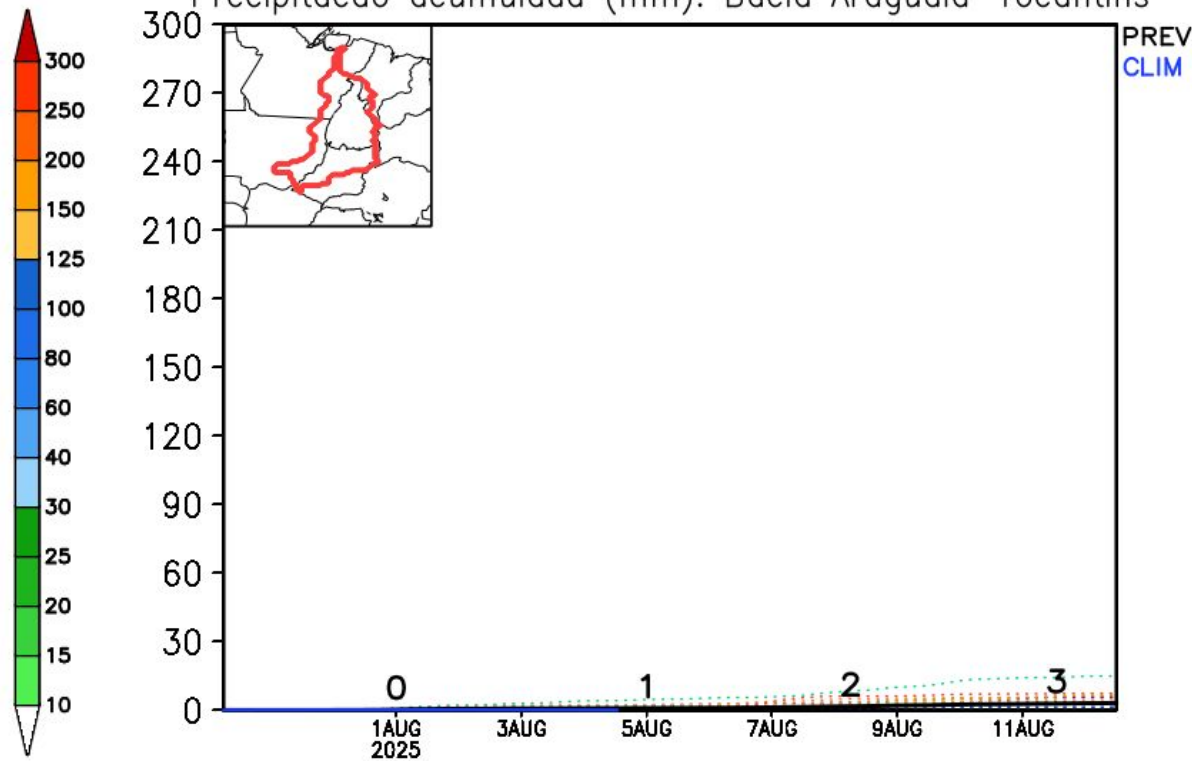
Previsão de chuva próximas duas semanas

Rio Araguaia-Tocantins

GEFS / Bacia Araguaia-Tocantins
Precipitação acumulada em 14 dias (mm)
Previsão das 00Z dia 29/07/2025

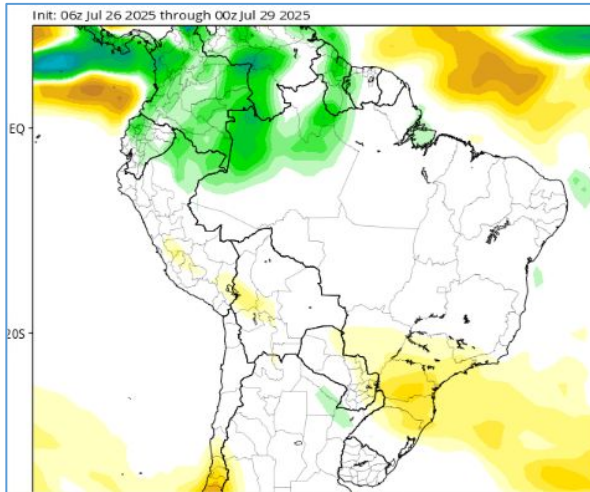


Precipitação acumulada (mm): Bacia Araguaia-Tocantins



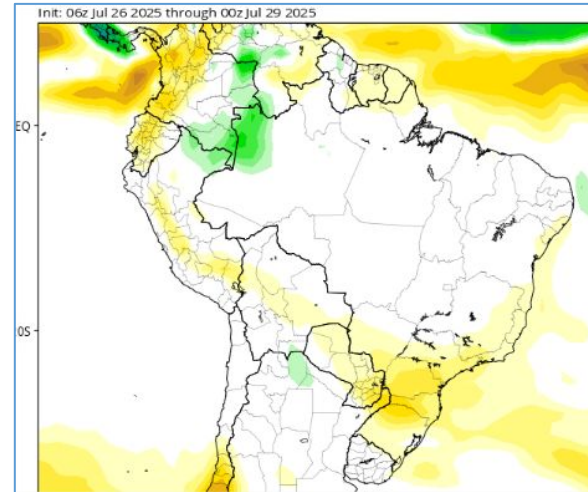
Tendência 3a e 4a semanas

12-19 Ago

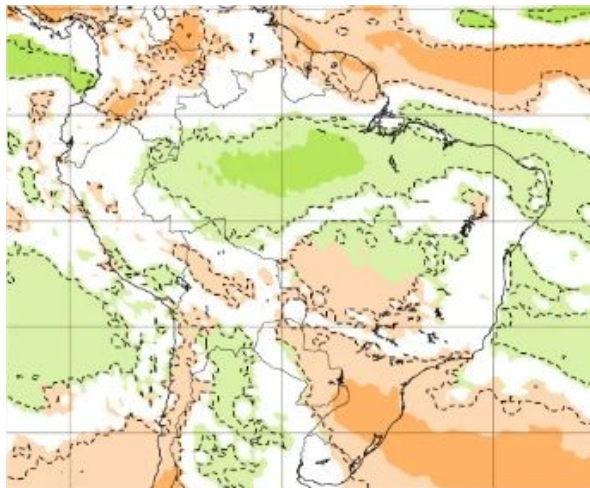


CFS/NOAA

19-26 Ago

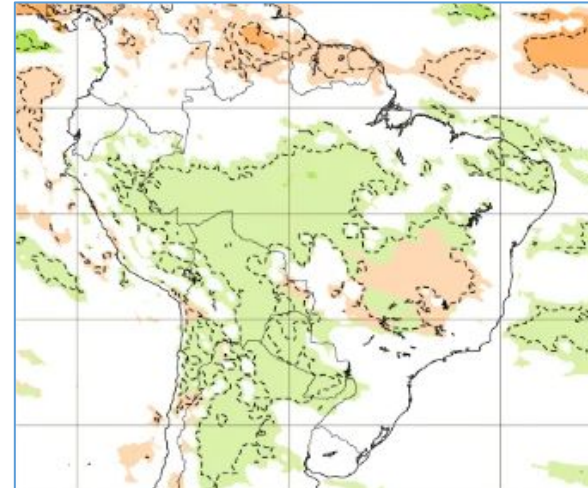


11-18 Ago



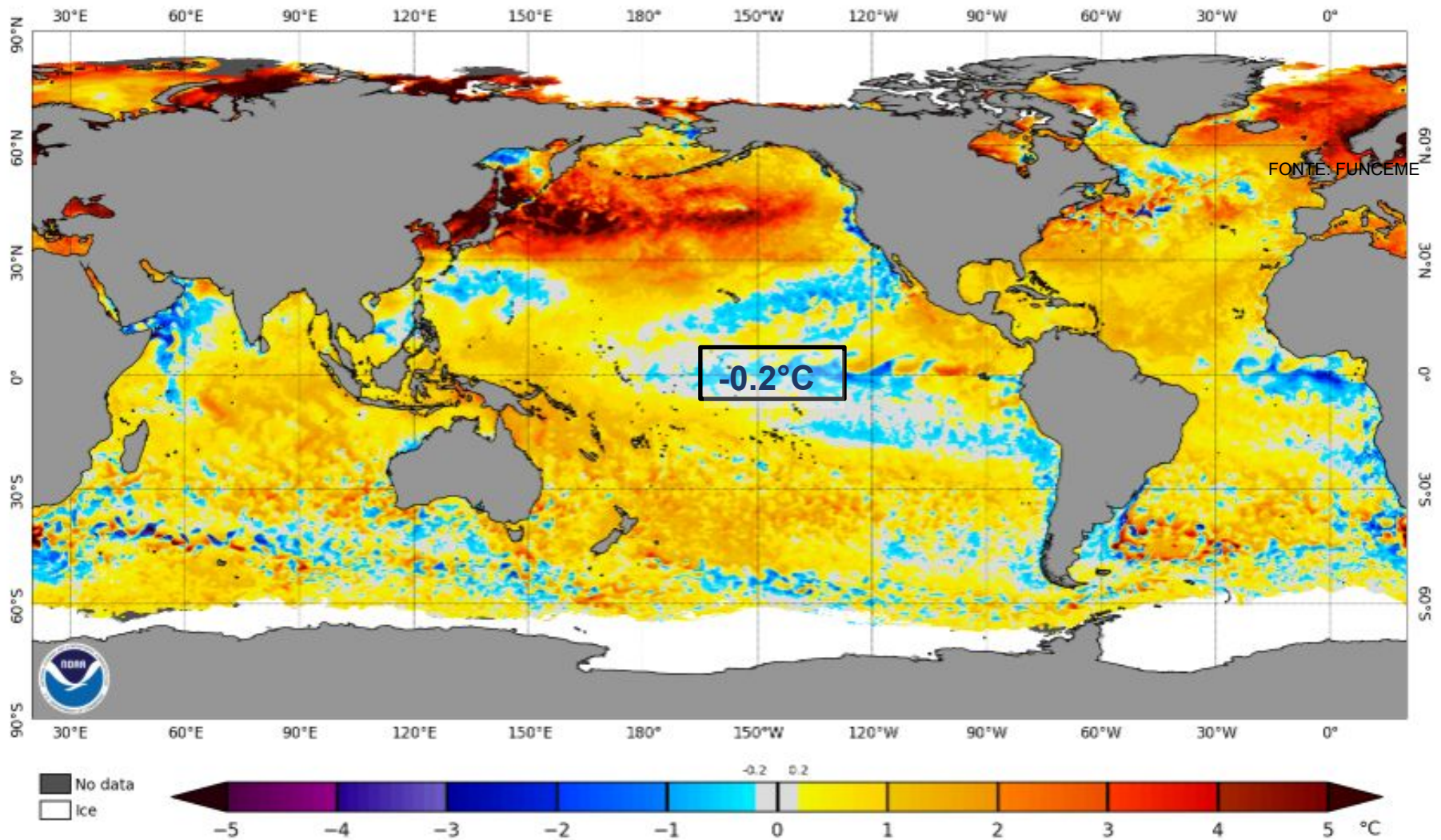
ECMWF

18-25 Ago



Status Atual: **Neutralidade**

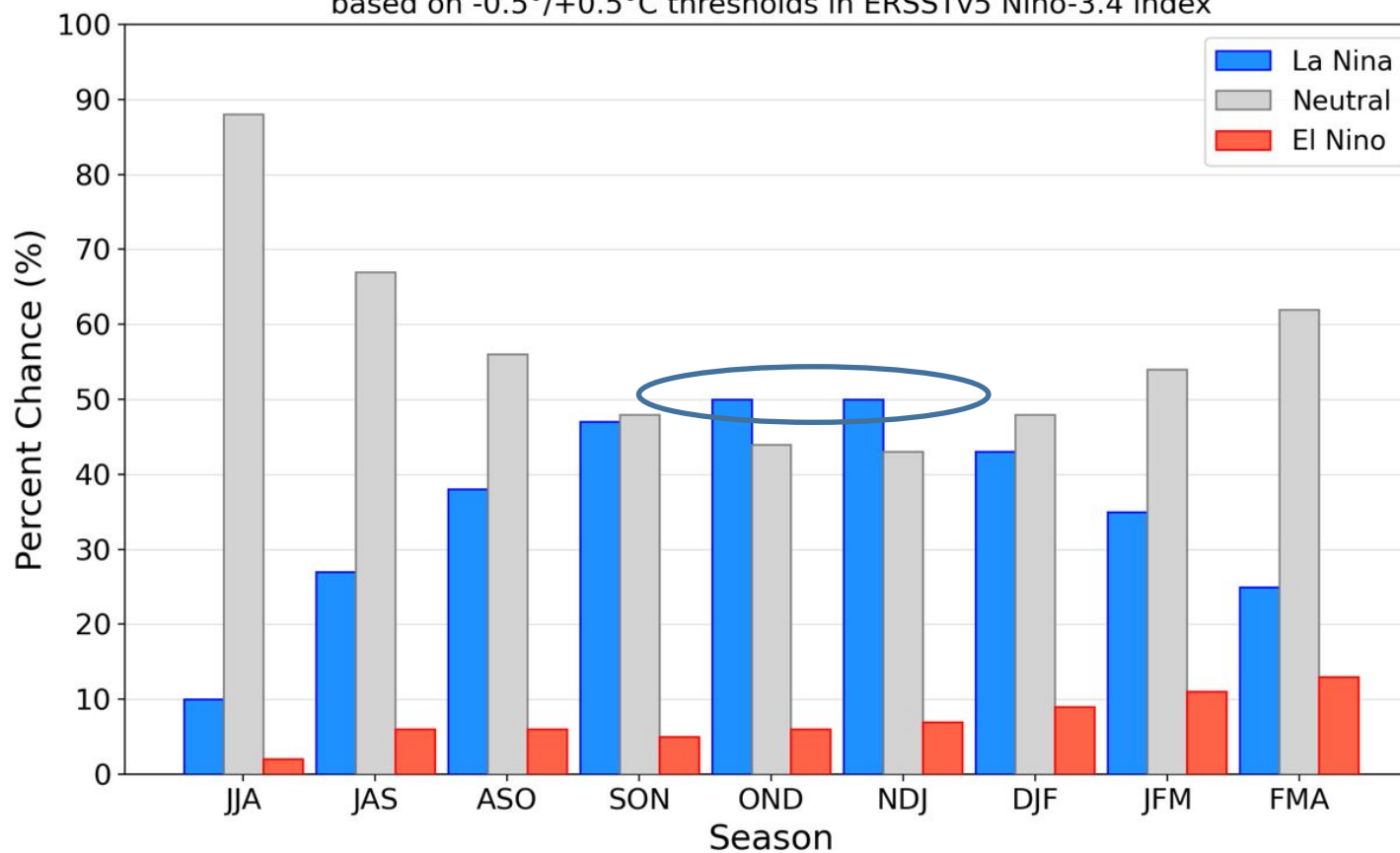
NOAA Coral Reef Watch Daily 5km SST Anomalies (v3.1) 27 Jul 2025



Previsão do “ENSO”

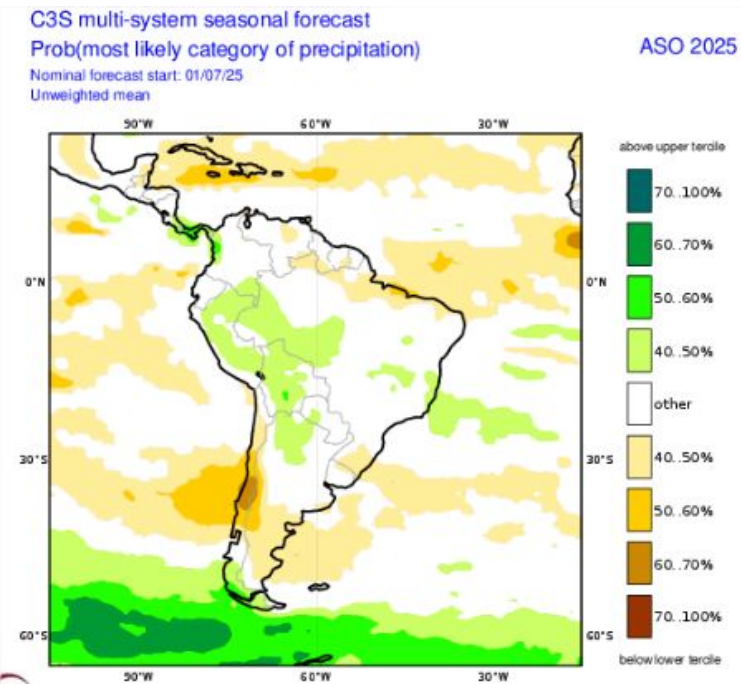
Official NOAA CPC ENSO Probabilities (issued July 2025)

based on $-0.5^{\circ}/+0.5^{\circ}\text{C}$ thresholds in ERSSTv5 Niño-3.4 index

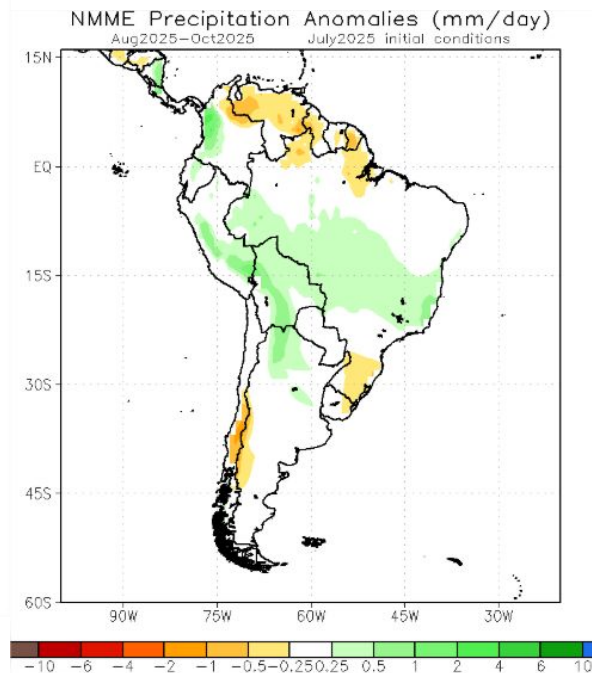


Previsão Sazonal de Chuva Multi-Modelo

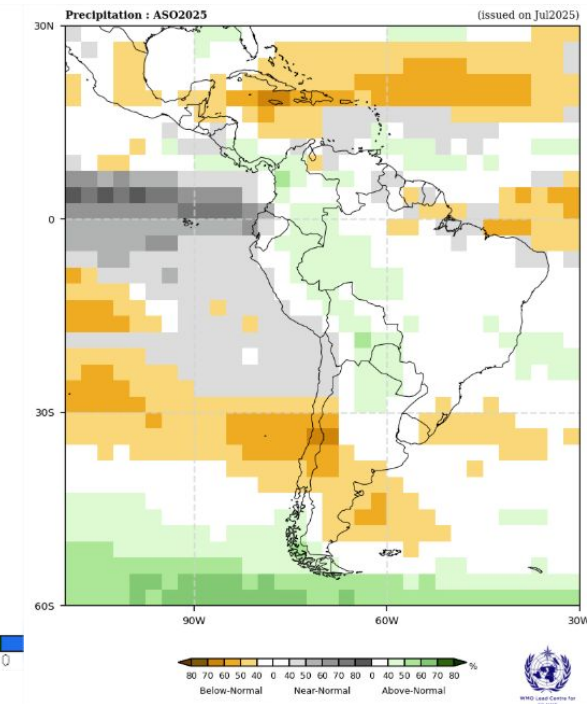
Agosto-Setembro-Outubro



Modelos “Europeus”



Modelos Norte Americanos

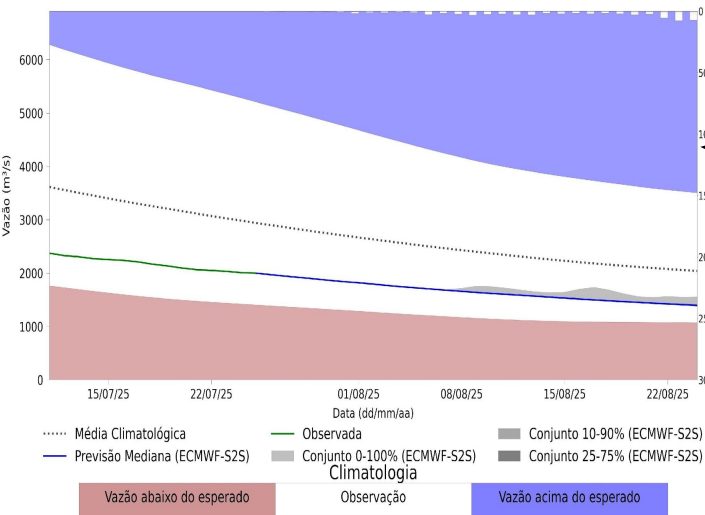


Modelos da WMO

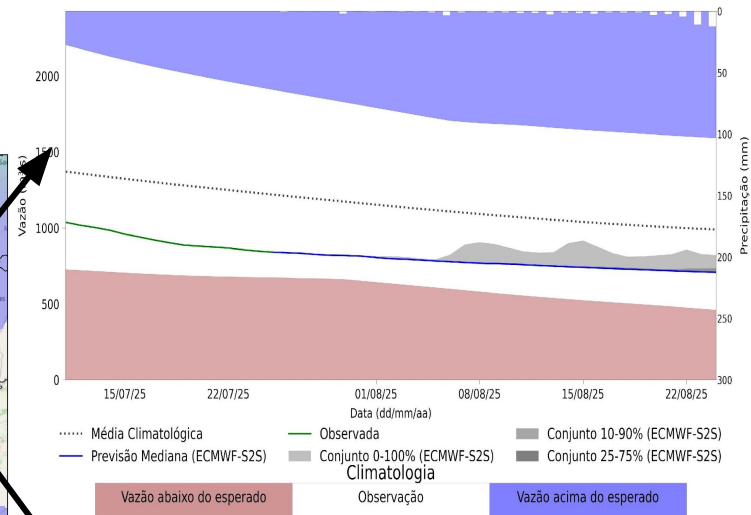
Previsão de vazão natural na Bacia Rio Tocantins-Araguaia 30 dias (Modelo hidrológico MHD)

Previsão: 25/07/2025 a 24/08/2025

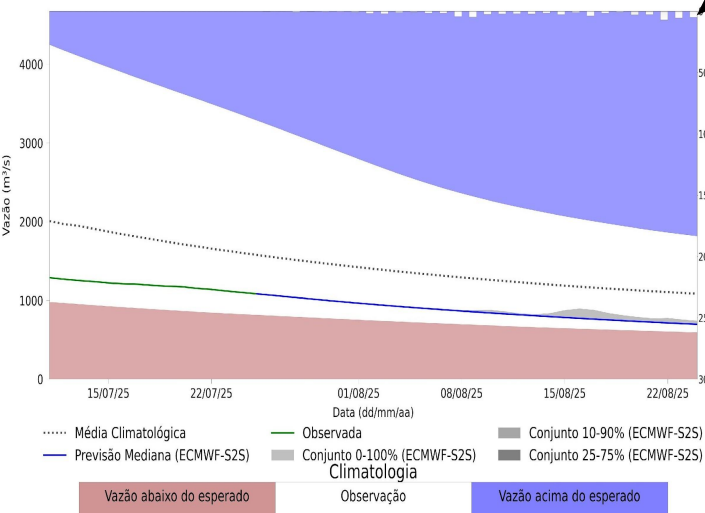
UHE Tucuruí



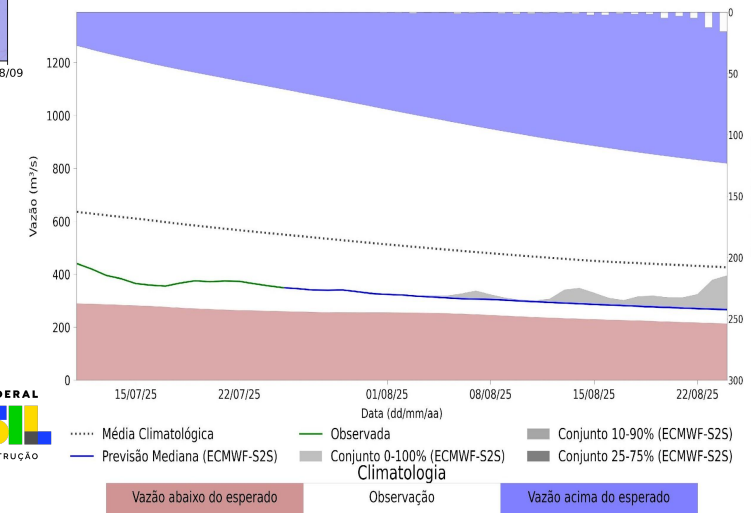
UHE Estreito



Araguatins - TO



UHE Lajeado



Fonte: Meteorologia
(INMET/MERGE); Vazão
(ANA/ONS)
MLT: 1993-2024
Previsão Meteorológica:
ECMWF-S2S



MINISTÉRIO DA
CIÊNCIA, TECNOLOGIA
E INOVAÇÃO



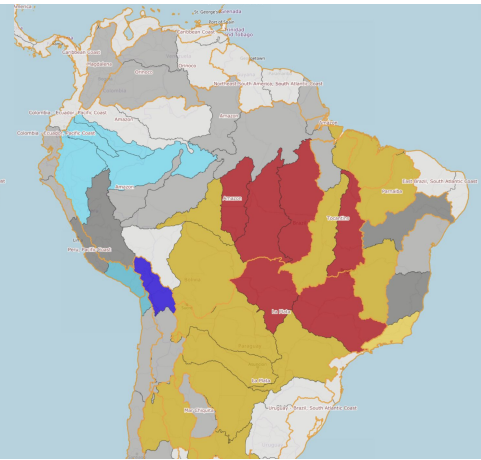
Previsões Hidrológicas para Bacias da Região Norte

Márcio A. E. Moraes
Pesquisador Titular

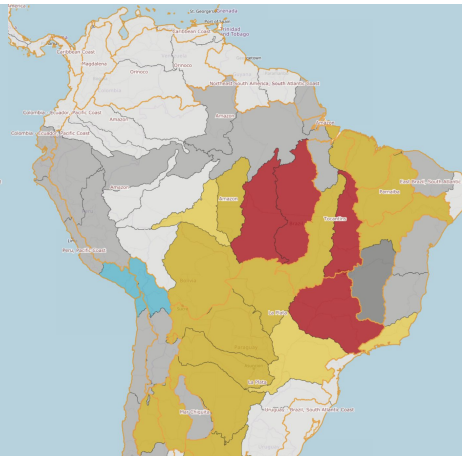


24 de junho de
2025

Setembro



Novembro



Previsão Sazonal

Julho



Agosto



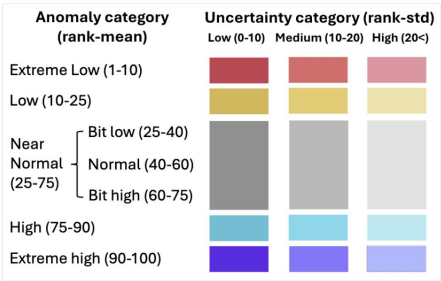
Setembro



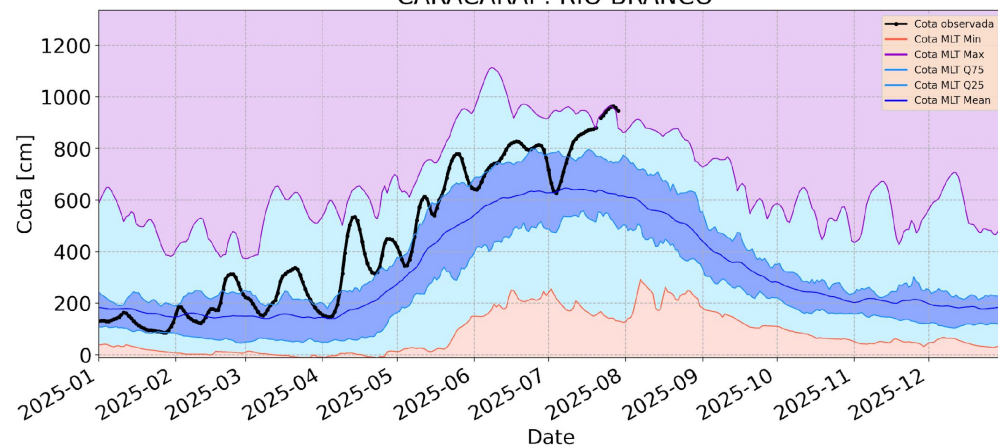
Outubro



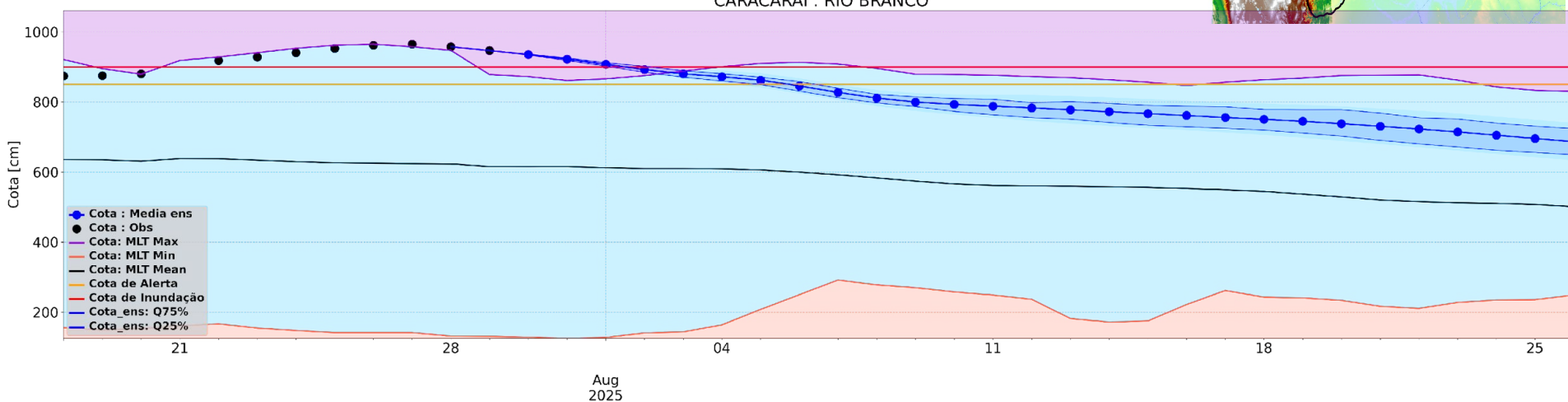
Novembro



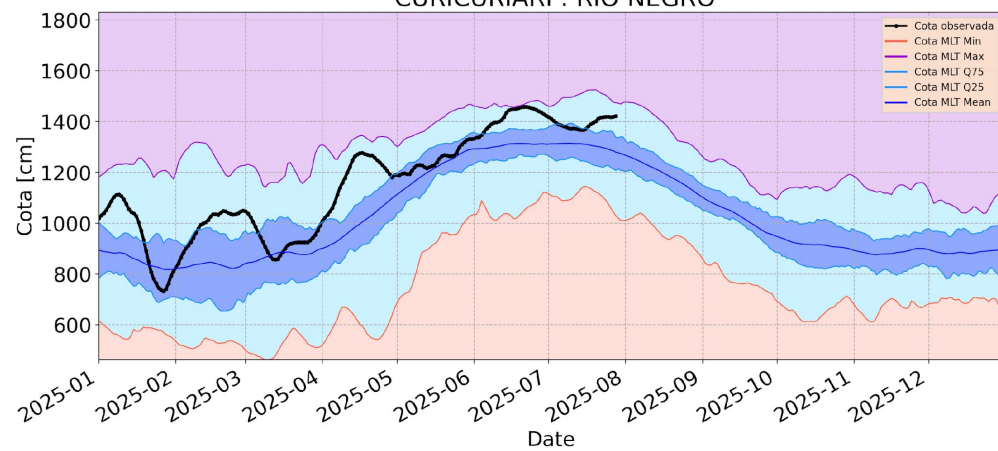
Cota - Climatologia CARACARAI : RIO BRANCO



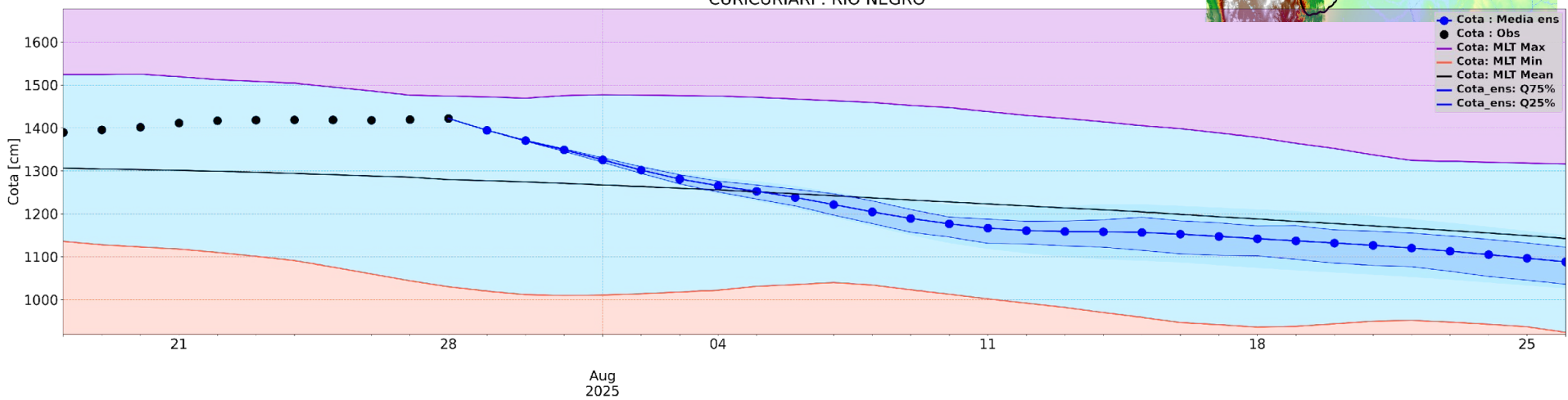
Model Run - 2025-07-28 CARACARAI : RIO BRANCO



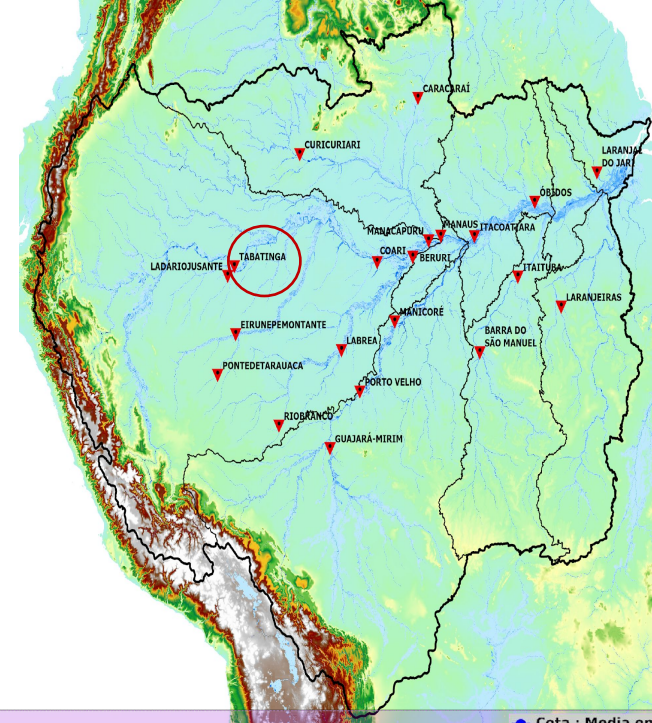
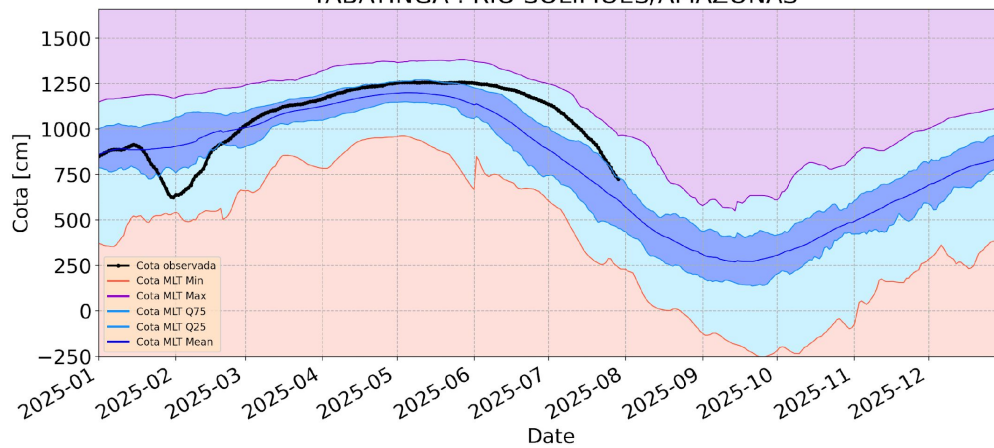
Cota - Climatologia
CURICURIARI : RIO NEGRO



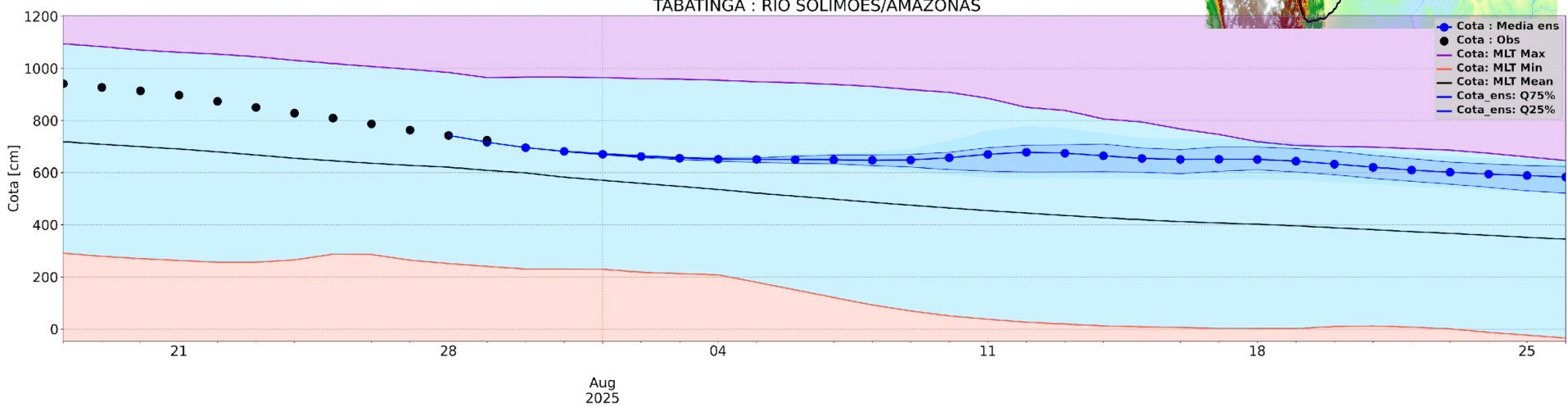
Model Run - 2025-07-28
CURICURIARI : RIO NEGRO



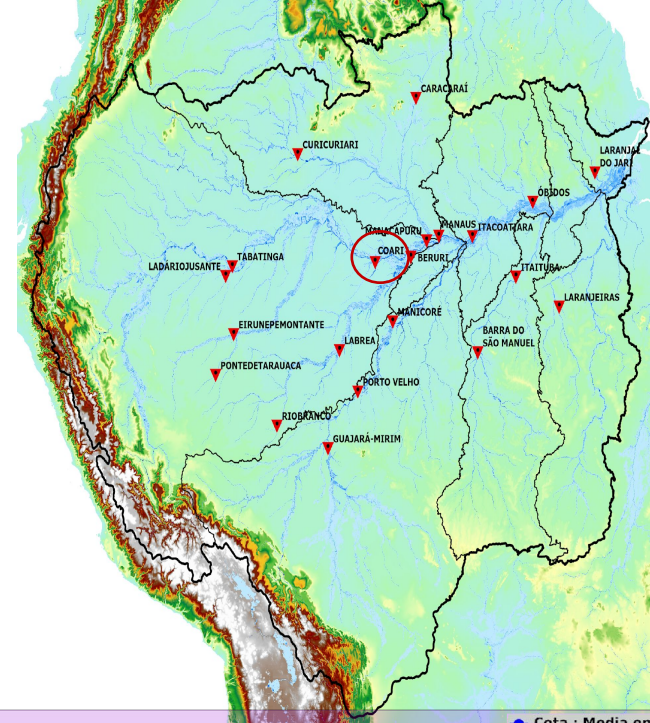
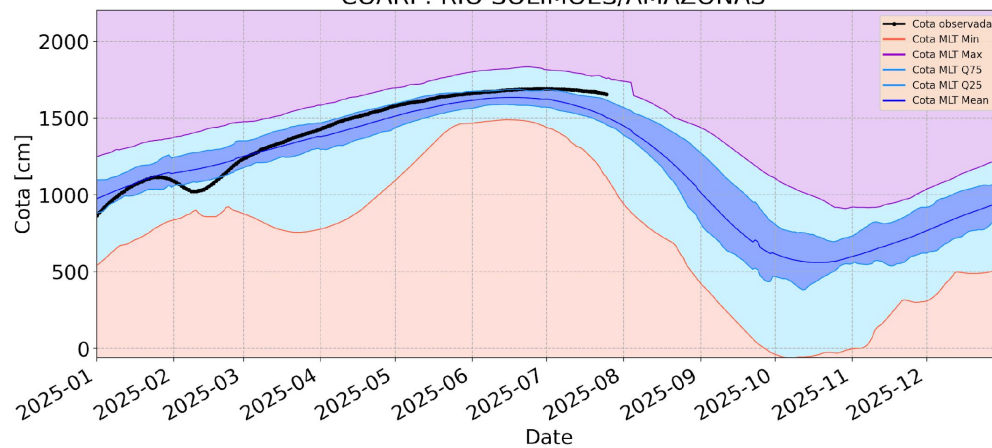
Cota - Climatologia



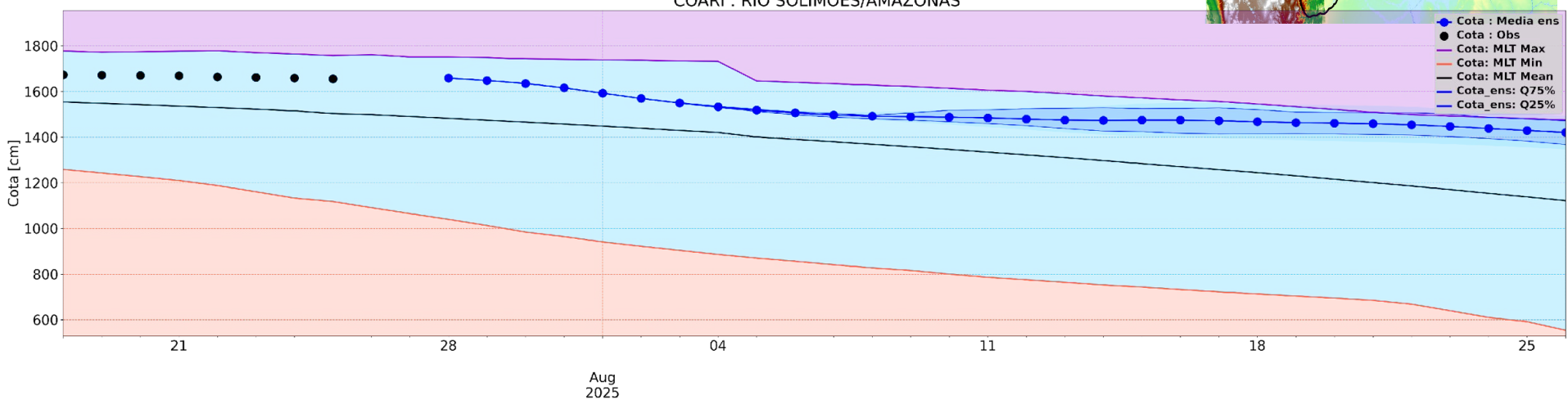
Model Run - 2025-07-28



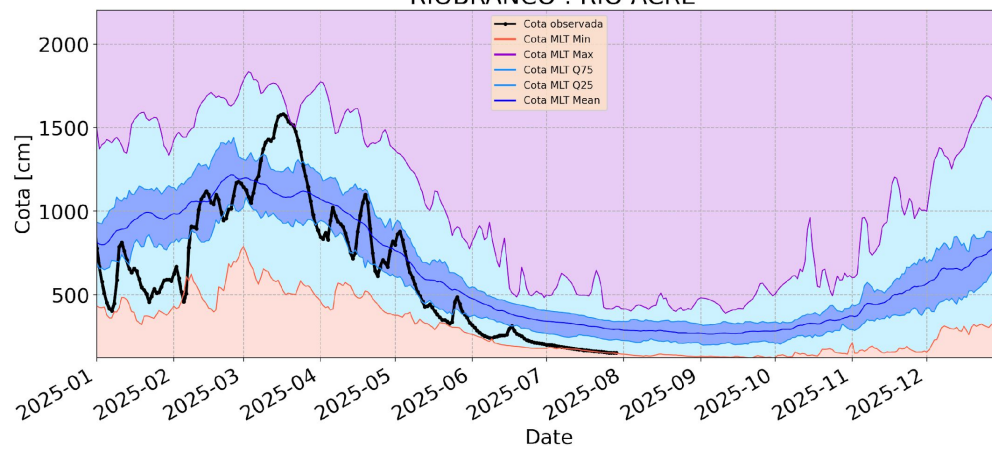
Cota - Climatologia COARI : RIO SOLIMÕES/AMAZONAS



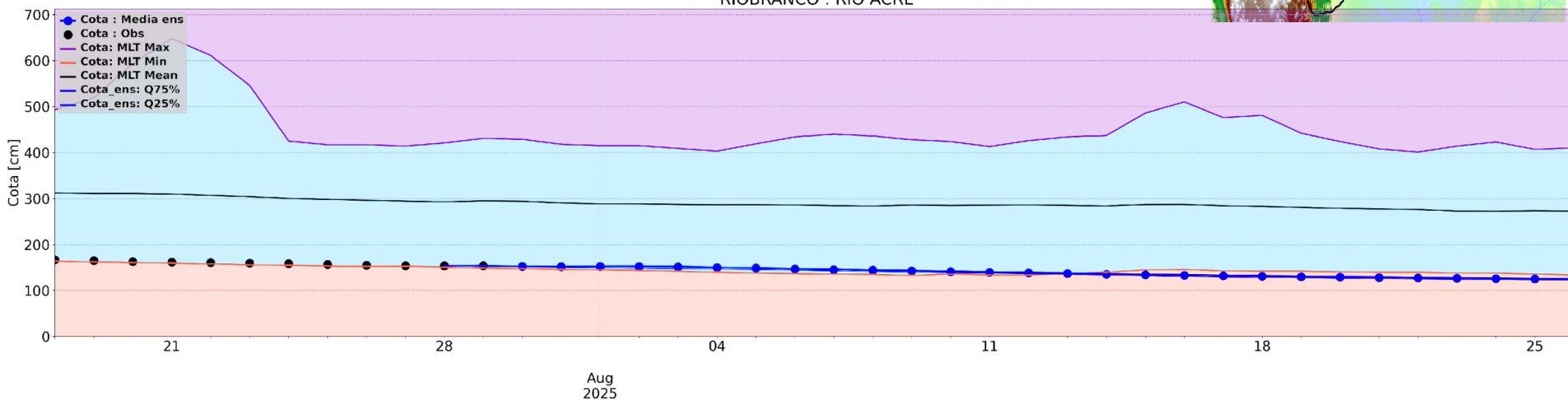
Model Run - 2025-07-28 COARI : RIO SOLIMÕES/AMAZONAS



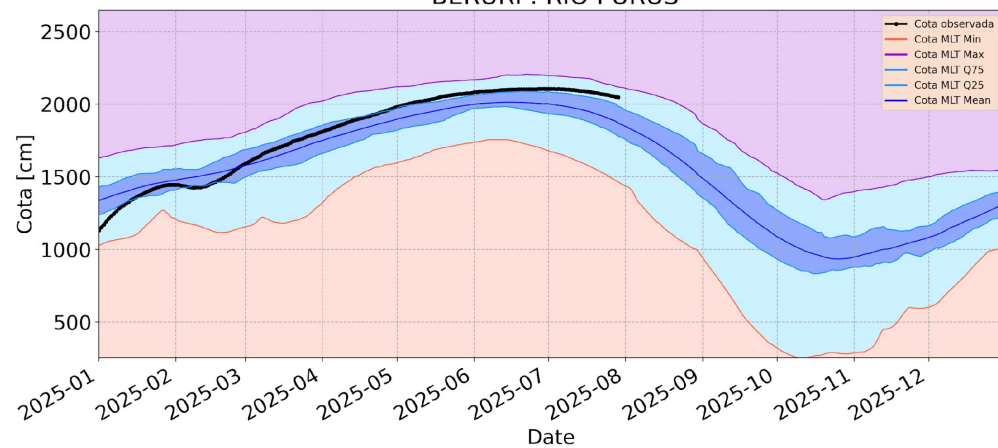
Cota - Climatologia RIOBRANCO : RIO ACRE



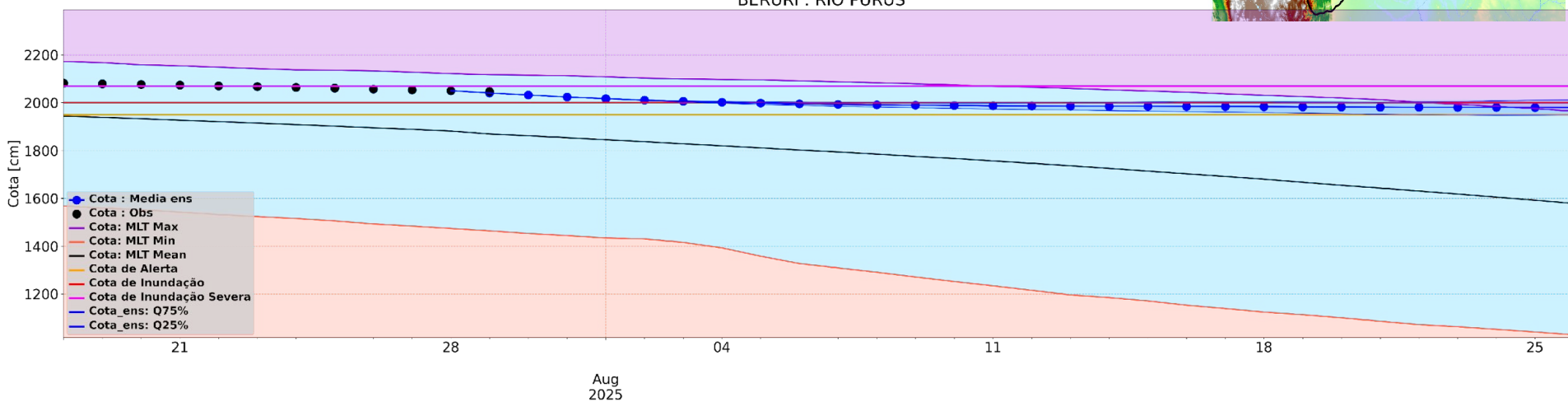
Model Run - 2025-07-28
RIOBRANCO : RIO ACRE



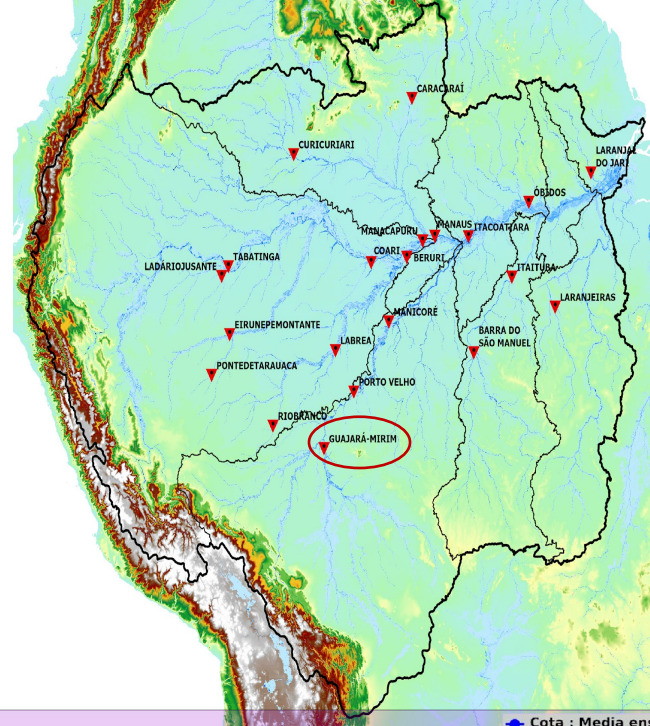
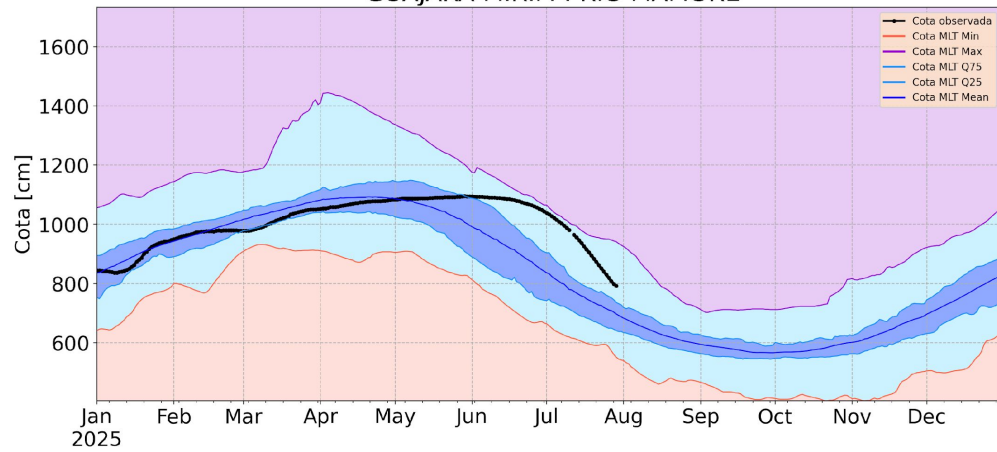
Cota - Climatologia BERURI : RIO PURUS



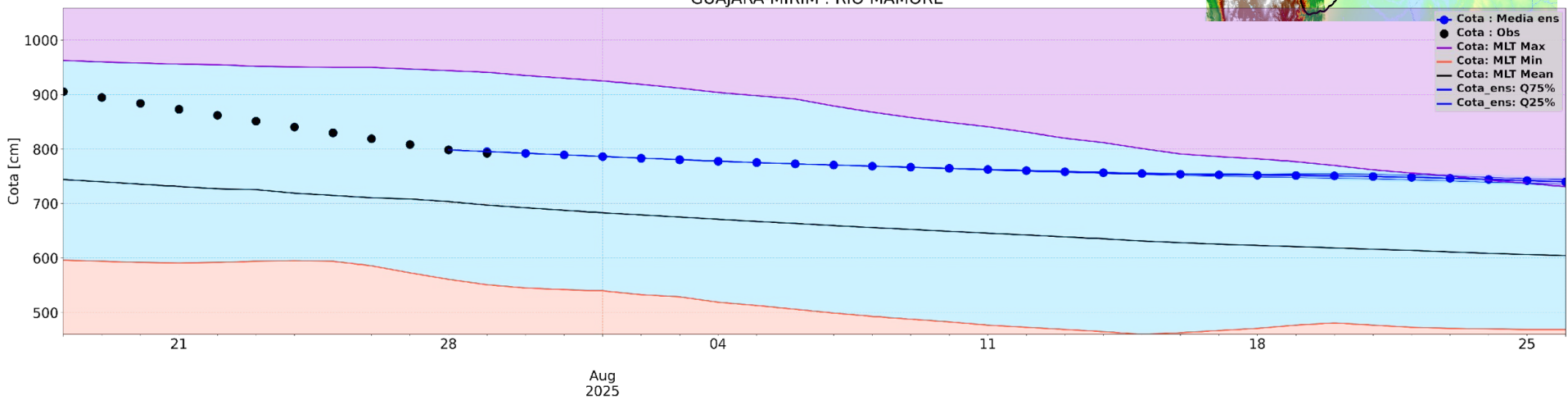
Model Run - 2025-07-28 BERURI : RIO PURUS



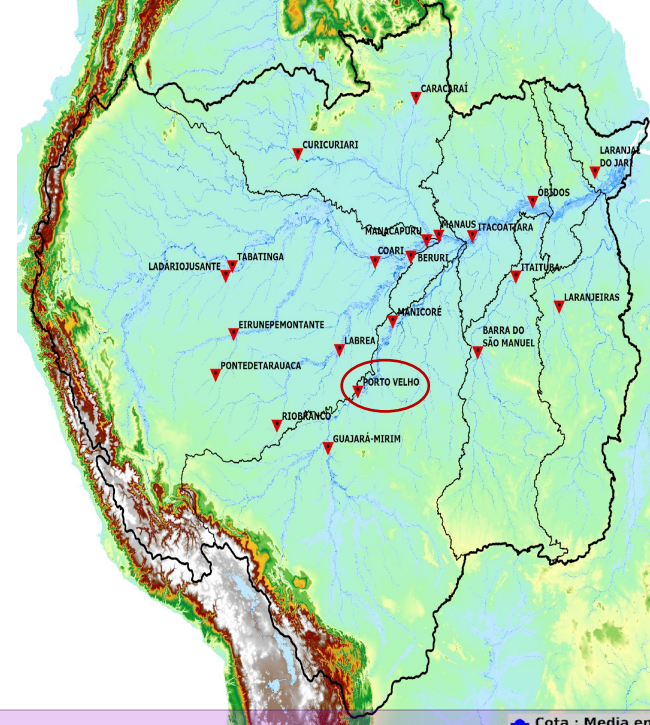
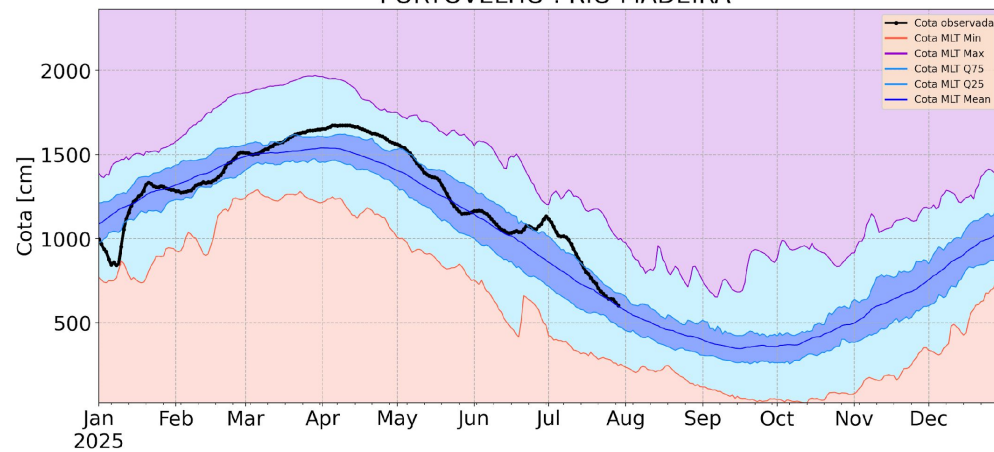
Cota - Climatologia
GUAJARA-MIRIM : RIO MAMORE



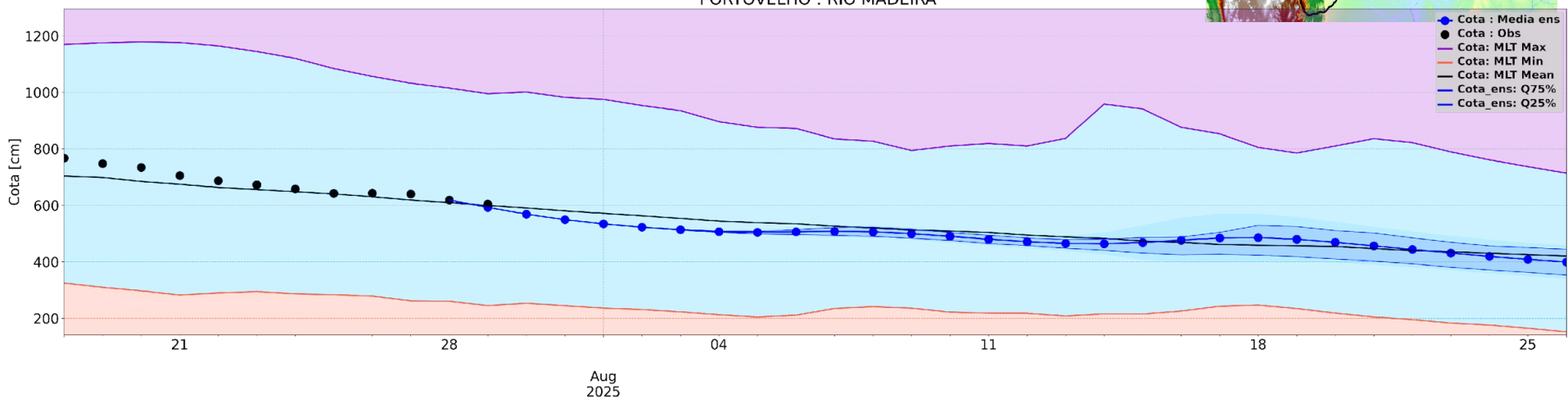
Model Run - 2025-07-28
GUAJARA-MIRIM : RIO MAMORE



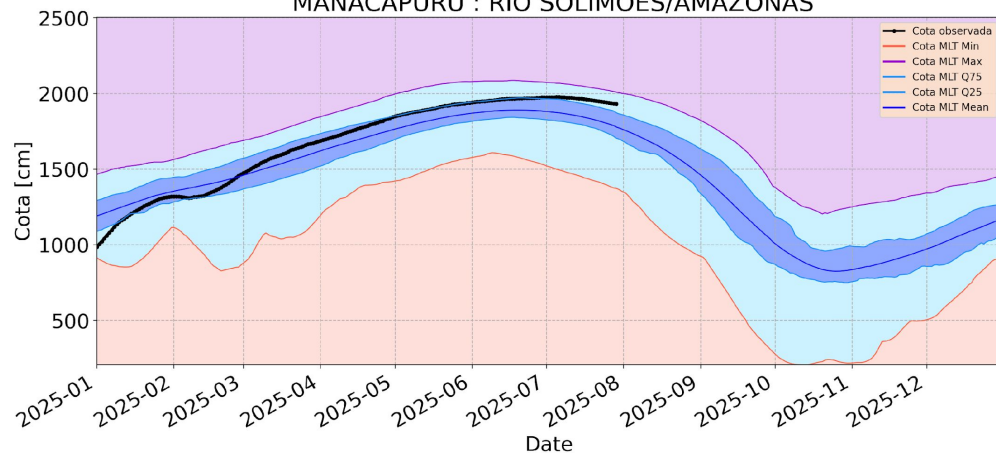
Cota - Climatologia PORTOVELHO : RIO MADEIRA



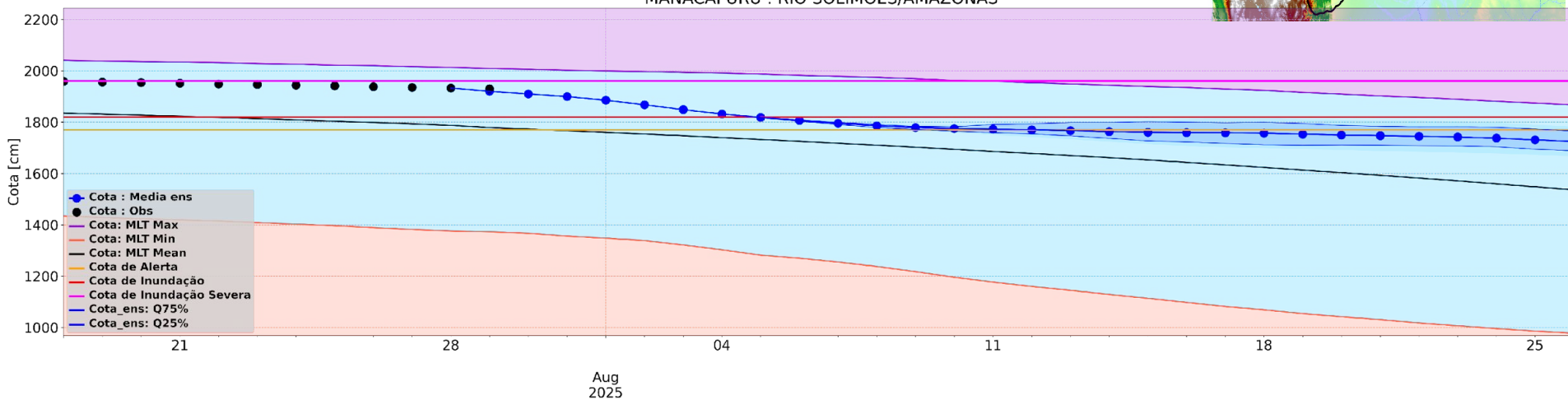
Model Run - 2025-07-28 PORTOVELHO : RIO MADEIRA



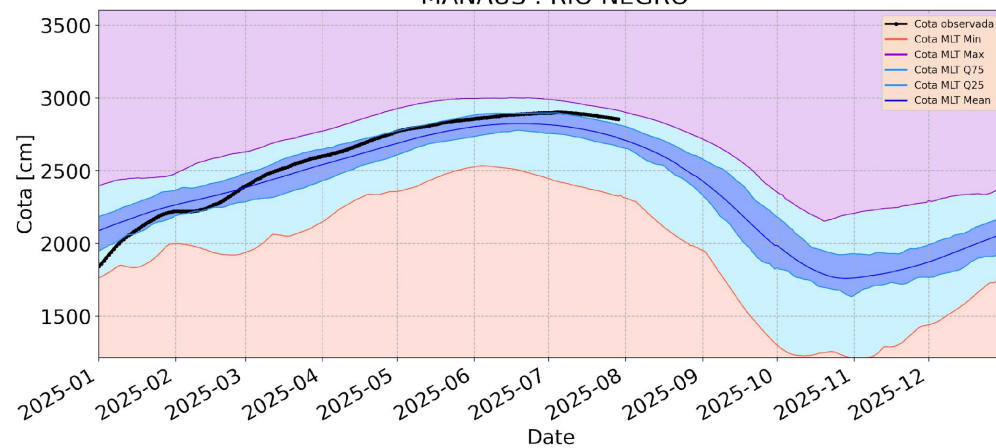
Cota - Climatologia MANACAPURU : RIO SOLIMÕES/AMAZONAS



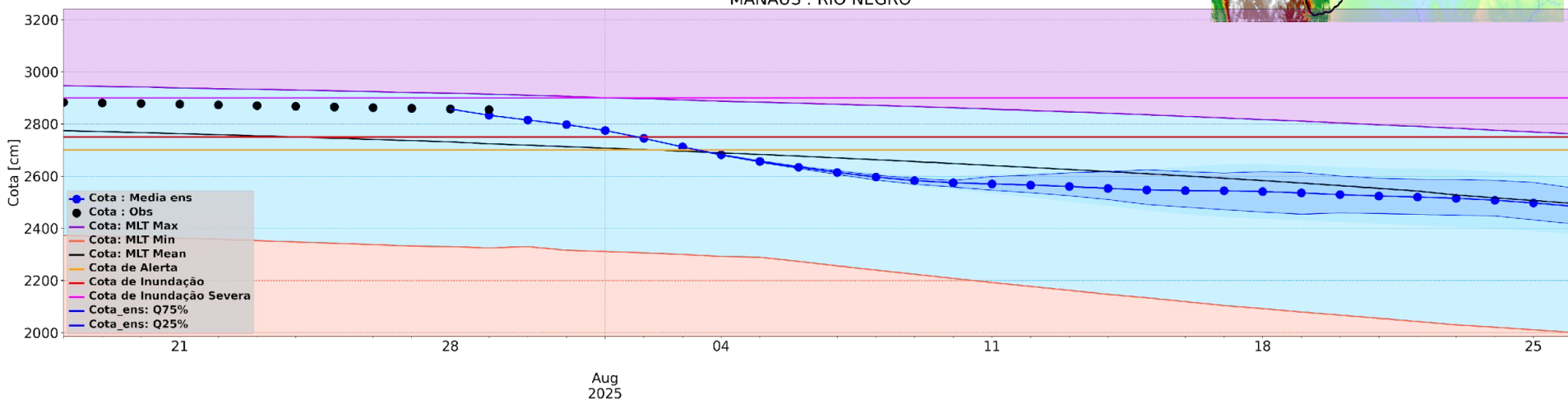
Model Run - 2025-07-28 MANACAPURU : RIO SOLIMÕES/AMAZONAS



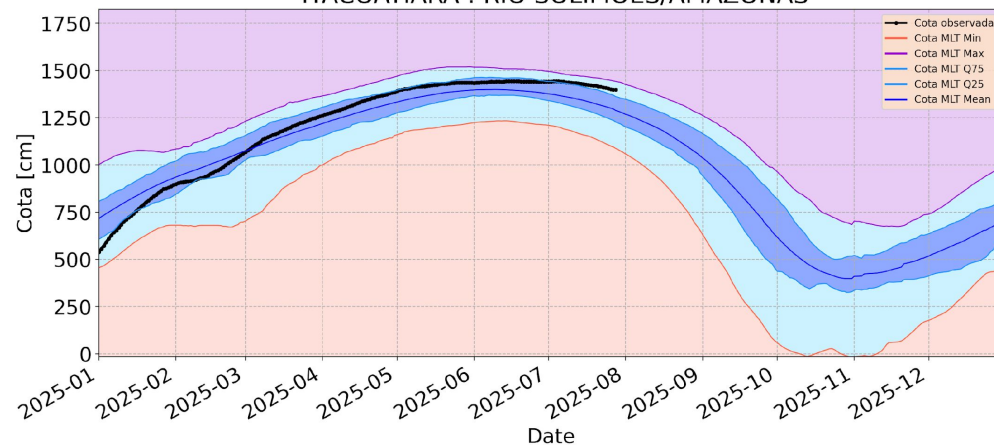
Cota - Climatologia MANAUS : RIO NEGRO



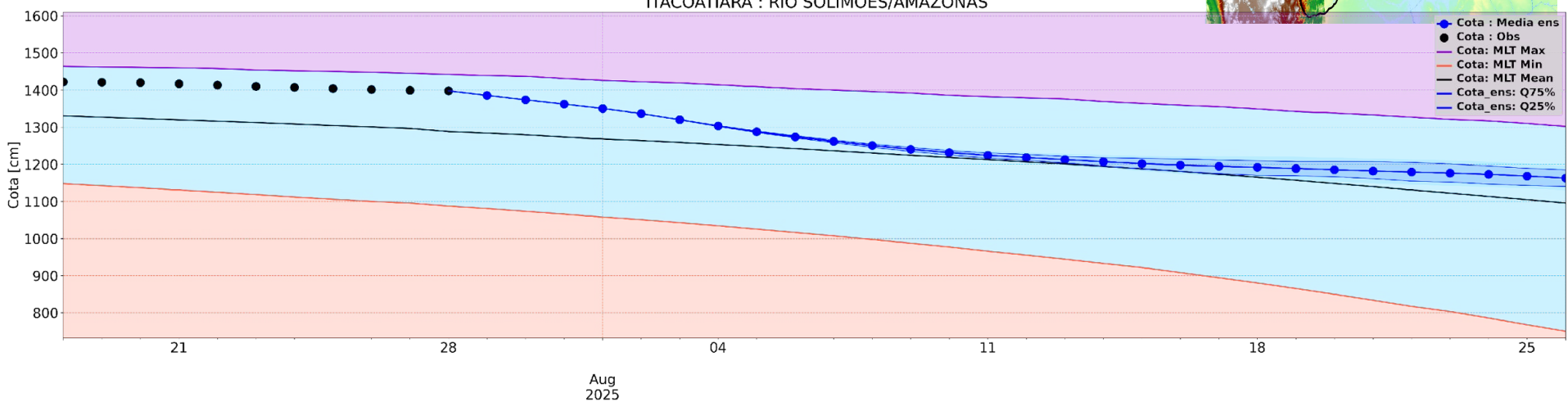
Model Run - 2025-07-28 MANAUS : RIO NEGRO



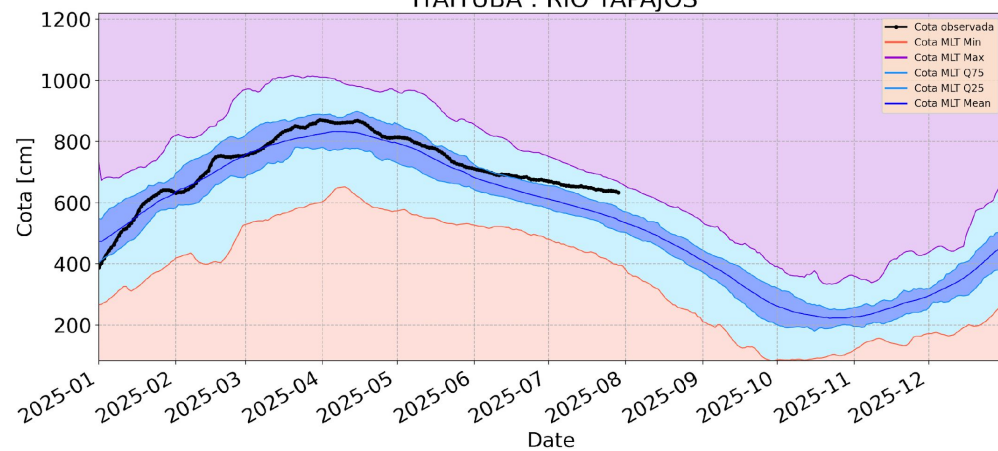
Cota - Climatologia ITACOATIARA : RIO SOLIMÕES/AMAZONAS



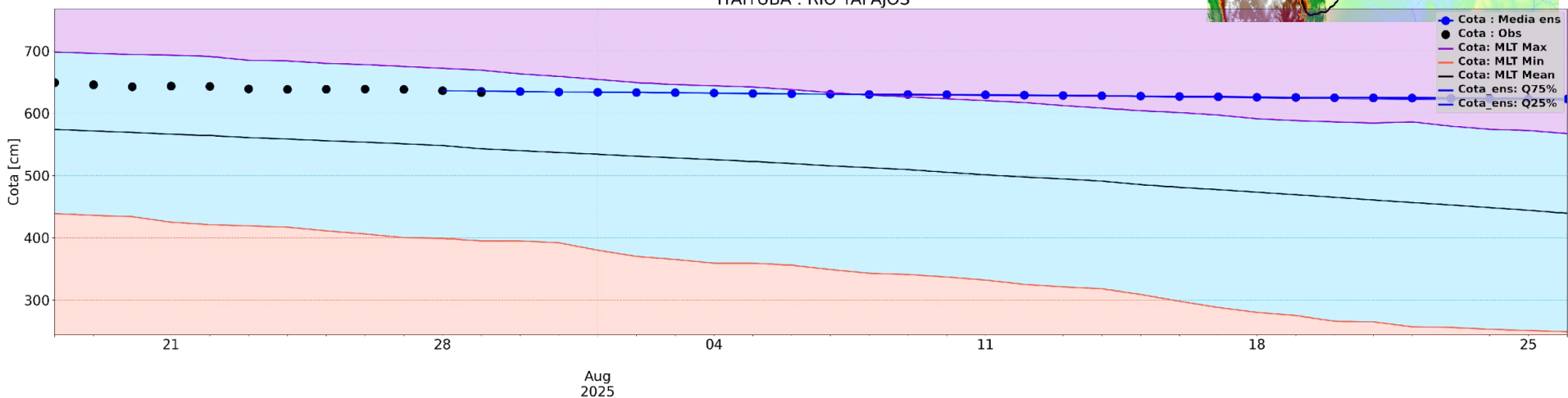
Model Run - 2025-07-28 ITACOATIARA : RIO SOLIMÕES/AMAZONAS



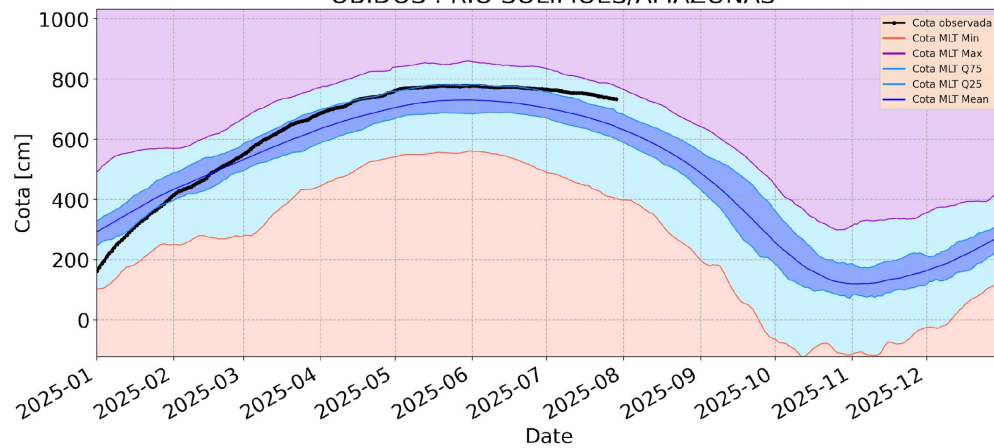
Cota - Climatologia ITAITUBA : RIO TAPAJOS



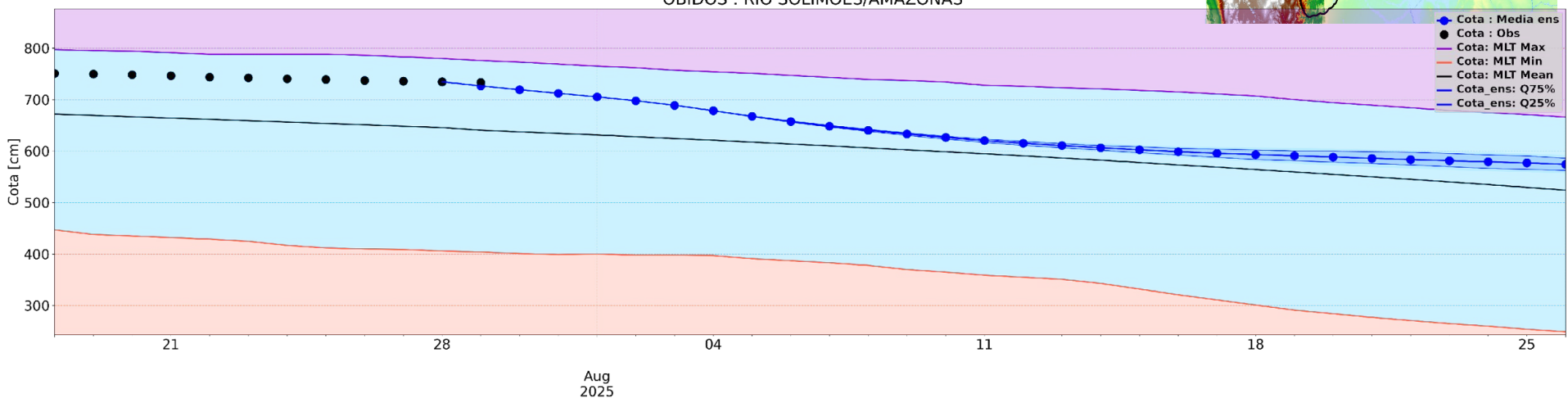
Model Run - 2025-07-28 ITAITUBA : RIO TAPAJOS



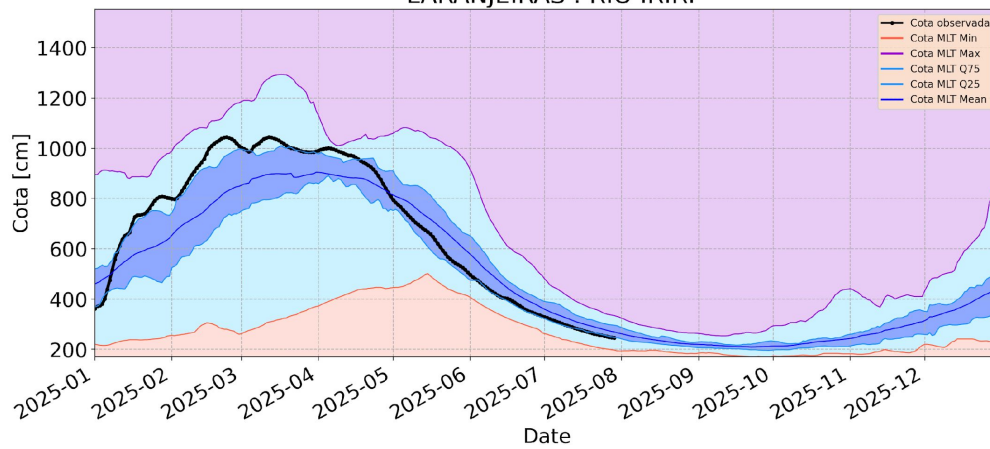
Cota - Climatologia OBIDOS : RIO SOLIMÕES/AMAZONAS



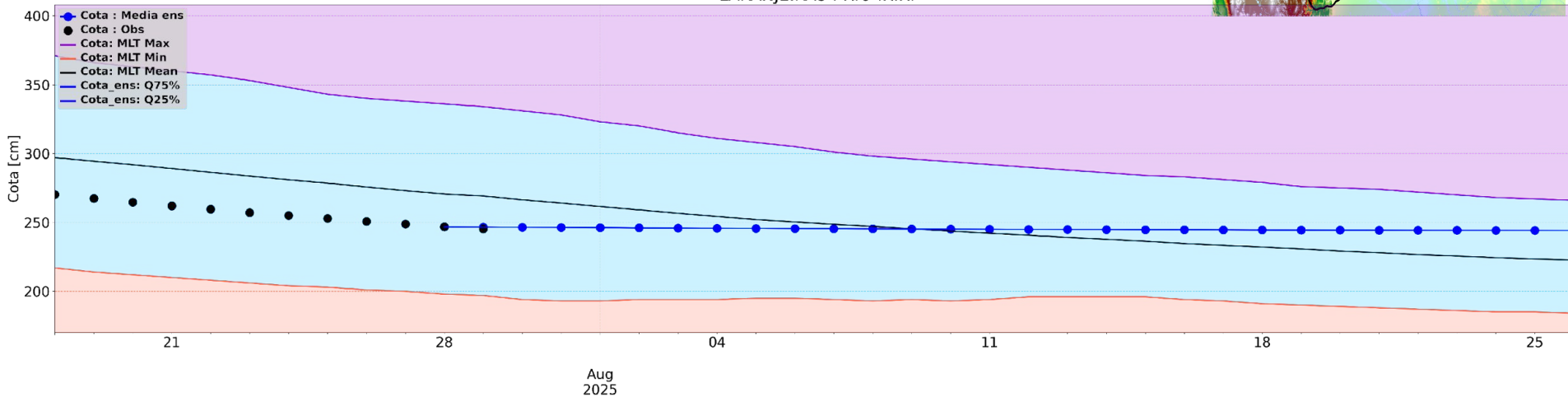
Model Run - 2025-07-28 OBIDOS : RIO SOLIMÕES/AMAZONAS



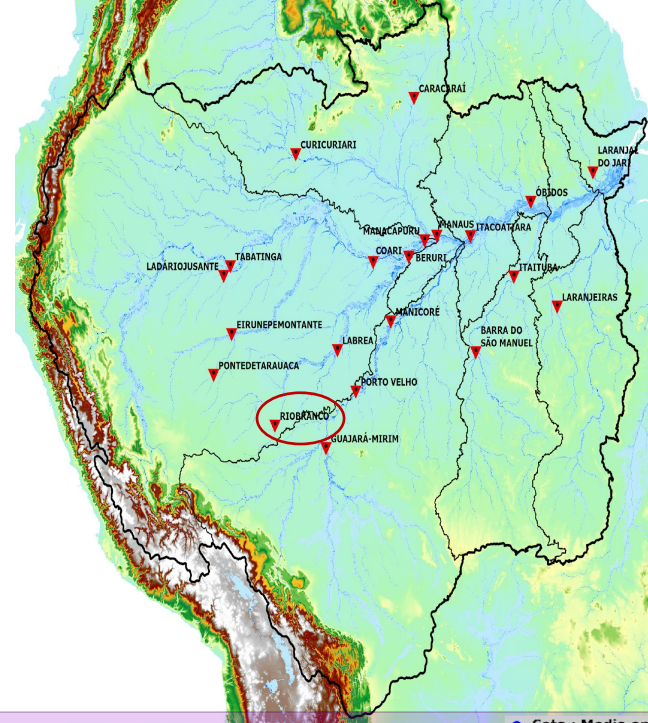
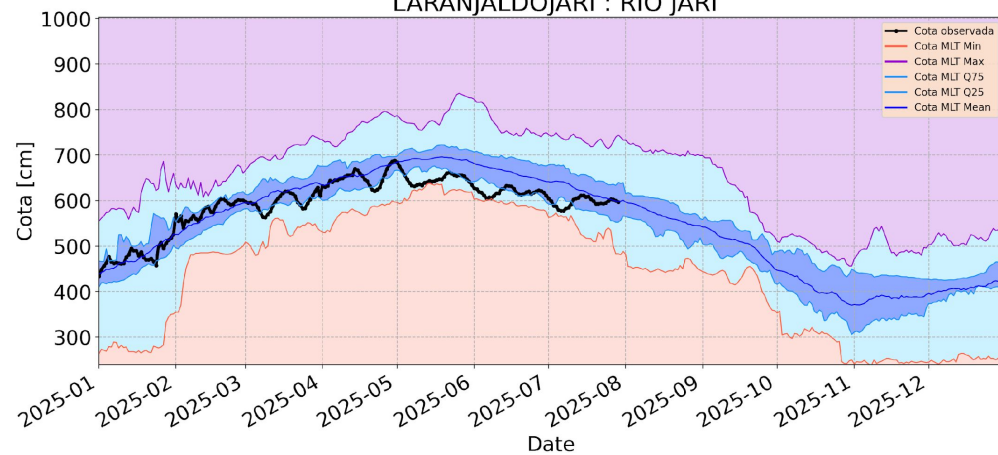
Cota - Climatologia LARANJEIRAS : RIO IRIRI



Model Run - 2025-07-28 LARANJEIRAS : RIO IRIRI



Cota - Climatologia LARANJALDOJARI : RIO JARI



Model Run - 2025-07-28 LARANJALDOJARI : RIO JARI

