



CEMADEN

Centro Nacional de Monitoramento e
Alertas de Desastres Naturais

Sala de Acompanhamento da Região Norte

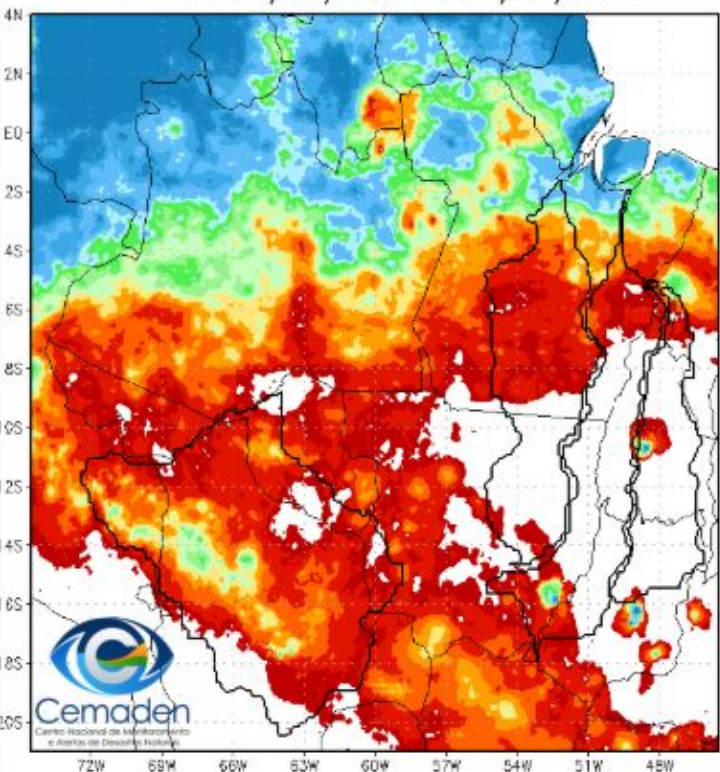
Márcio Moraes
Marcelo Seluchi

CEMADEN/MCTI
Junho de 2025

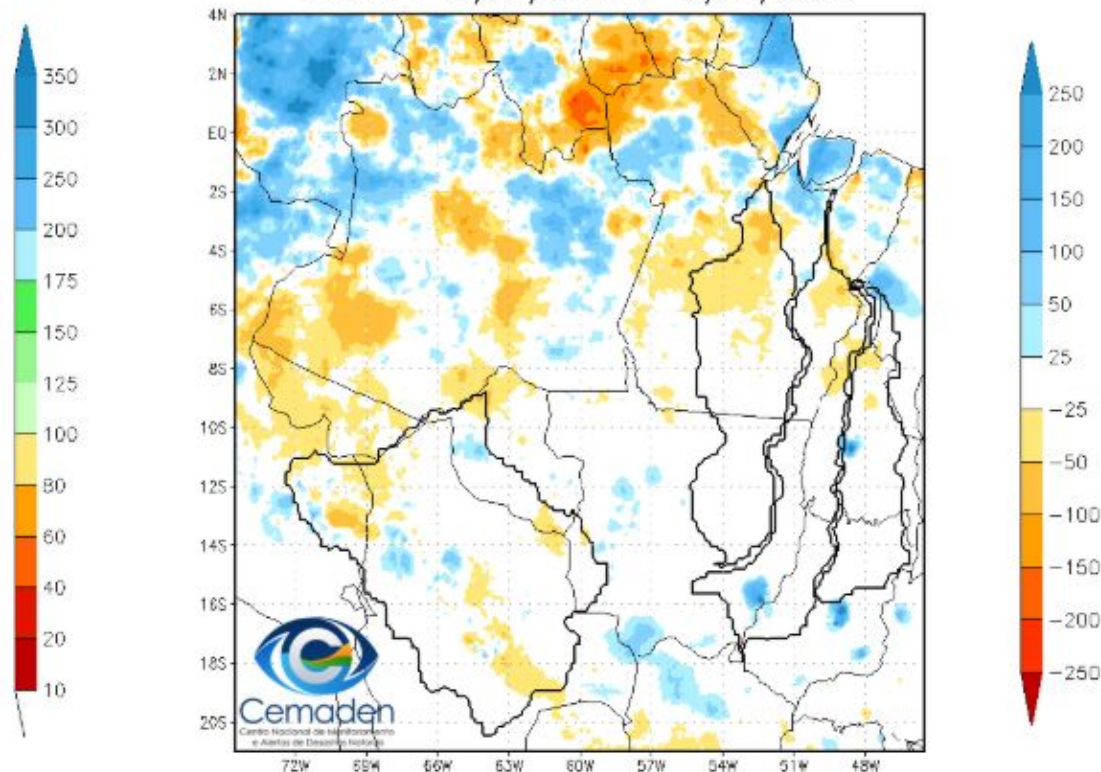


PRECIPITAÇÃO : ÚLTIMOS 30 DIAS

Precipitação Acumulada (mm) A.S.
Período: 24/05/2025 a 23/06/2025

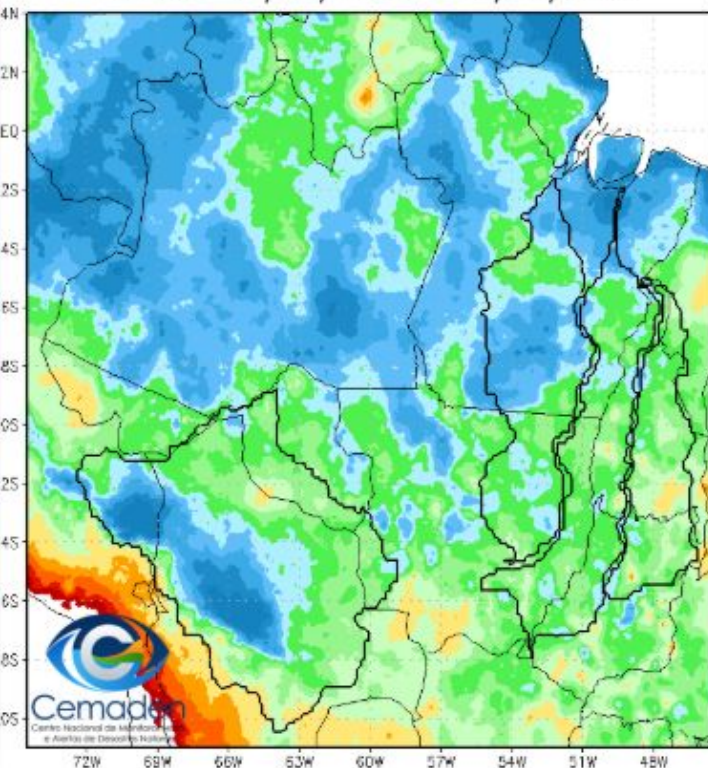


Anomalia de Precipitação (mm) A.S.
Período: 24/05/2025 a 23/06/2025

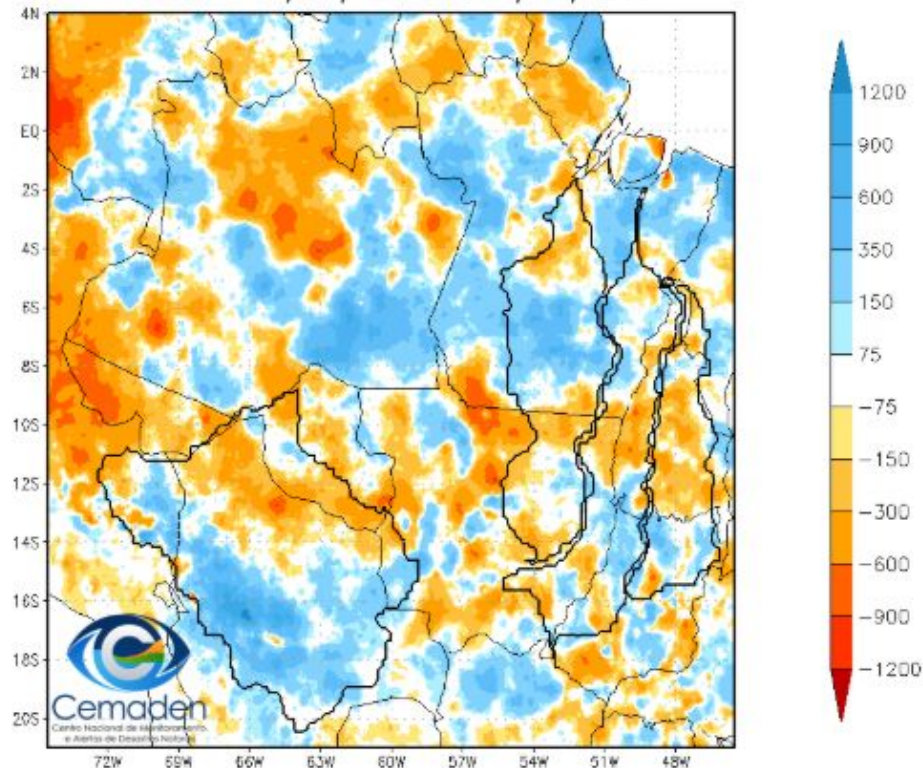


PRECIPITAÇÃO DO ANO HIDROLÓGICO

Precipitação Acumulada (mm) A.S.
Período: 01/10/2024 a 23/06/2025



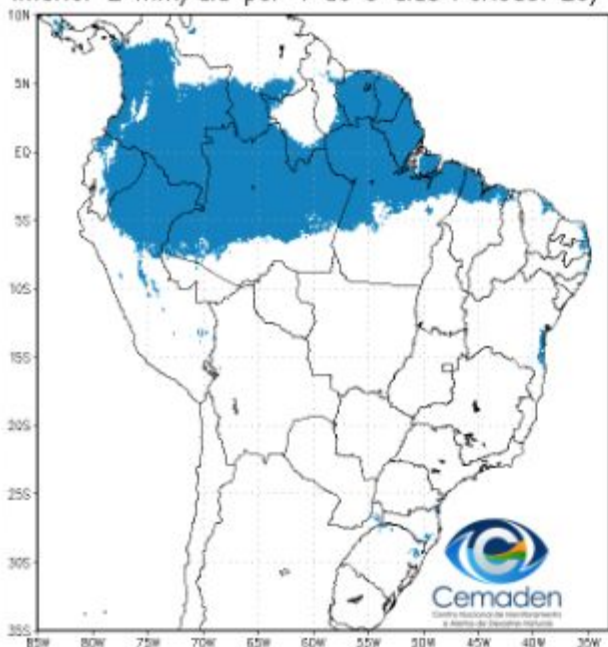
Anomalia de Precipitação (mm) A.S.
Período: 01/10/2024 a 23/06/2025



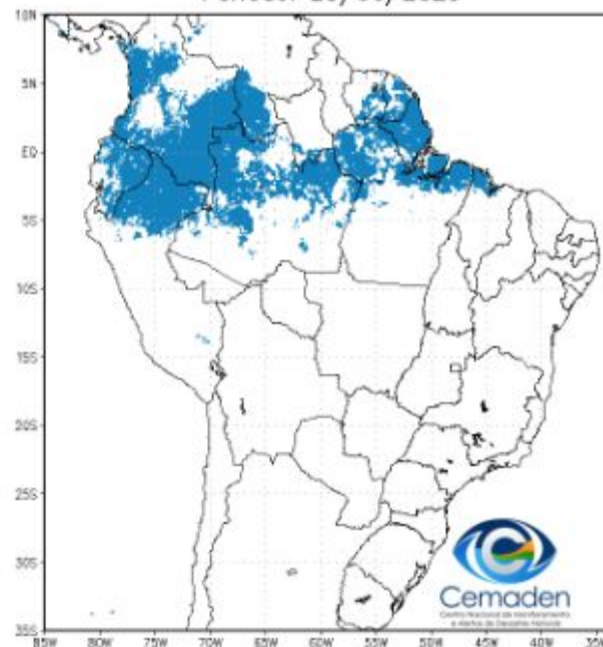
FONTE DOS DADOS: MERGE/INPE

SITUAÇÃO DA ESTAÇÃO CHUVOSA

Climatologia da Precipitação (2001–2024)
Inferior 2 mm/dia por 4 de 5 dias Período: 23/06



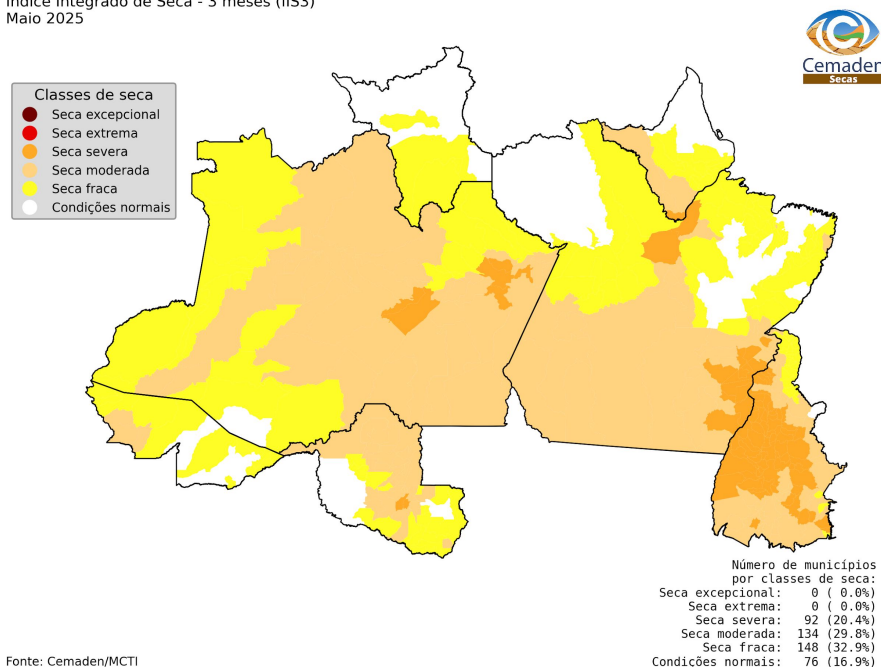
Precipitação Inferior 2 mm/dia por 4 de 5 dias
Período: 23/06/2025



ÍNDICE INTEGRADO DE SECA - IIS (SPI + VHI + AUS): MAIO/2025

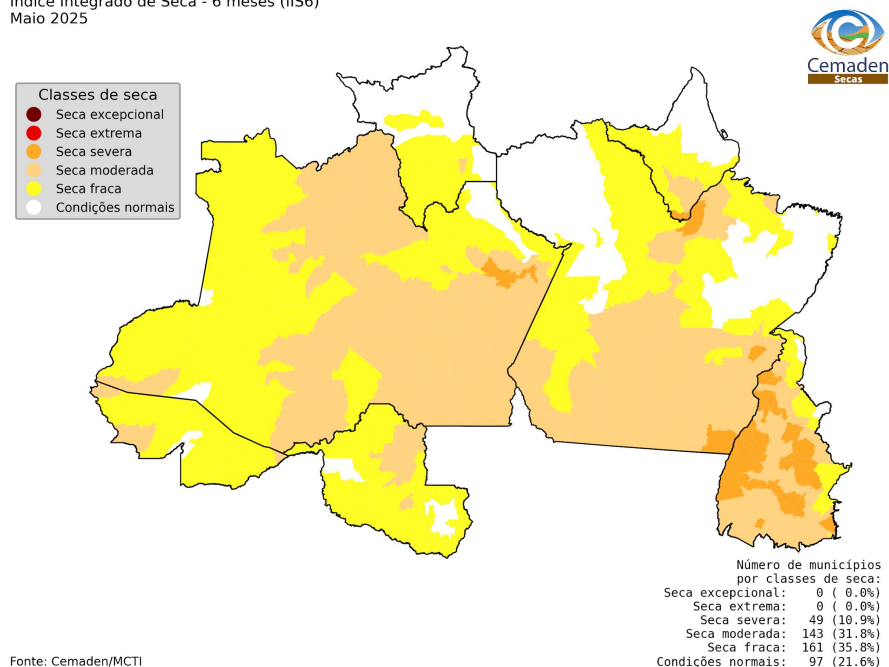
IIS-03

Índice Integrado de Seca - 3 meses (IIS3)
Maio 2025



IIS-06

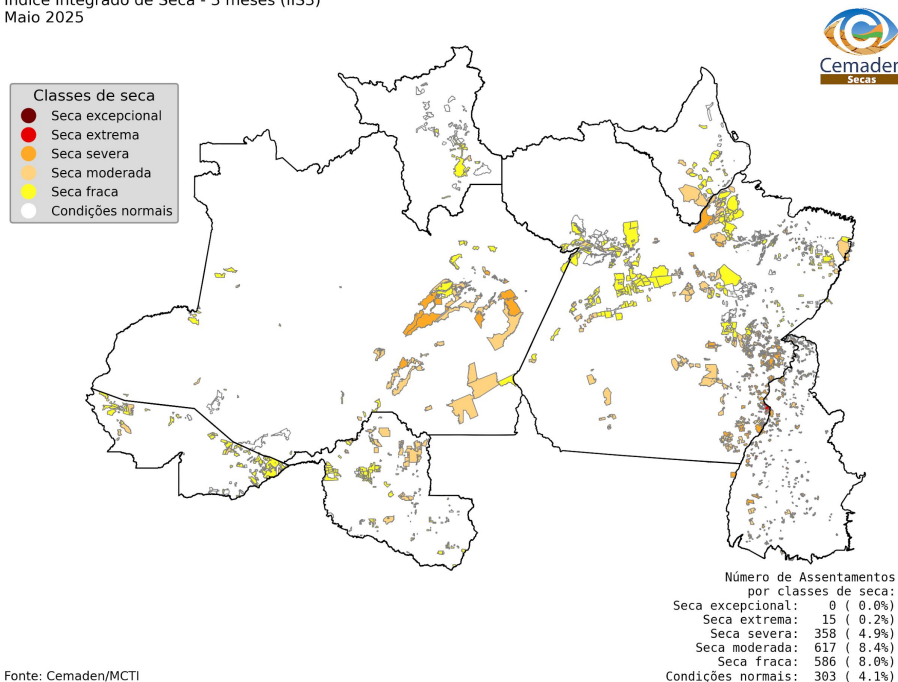
Índice Integrado de Seca - 6 meses (IIS6)
Maio 2025



ÍNDICE INTEGRADO DE SECA (IIS-03)

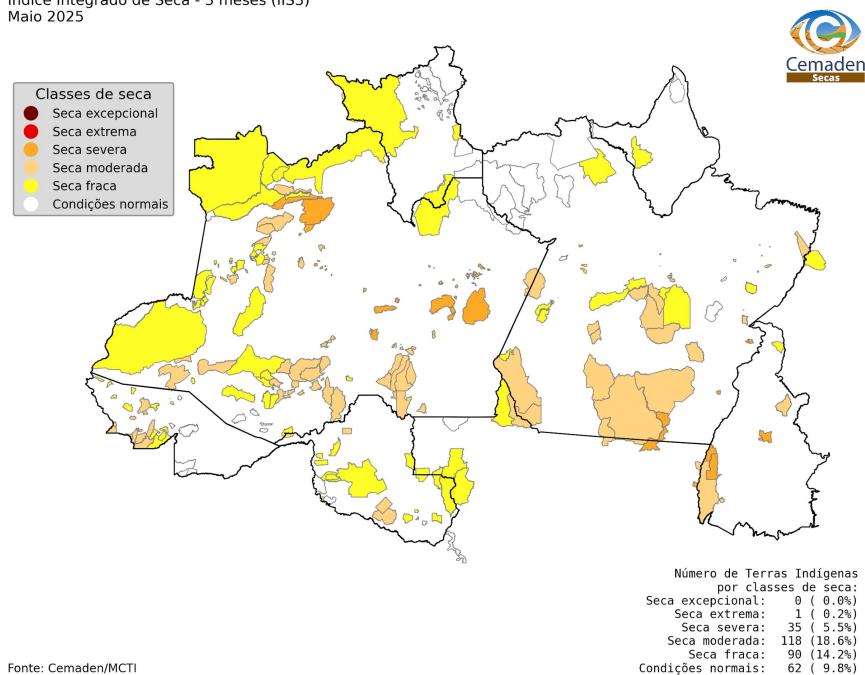
PROJETOS DE ASSENTAMENTO

Índice Integrado de Seca - 3 meses (IIS3)
Maio 2025



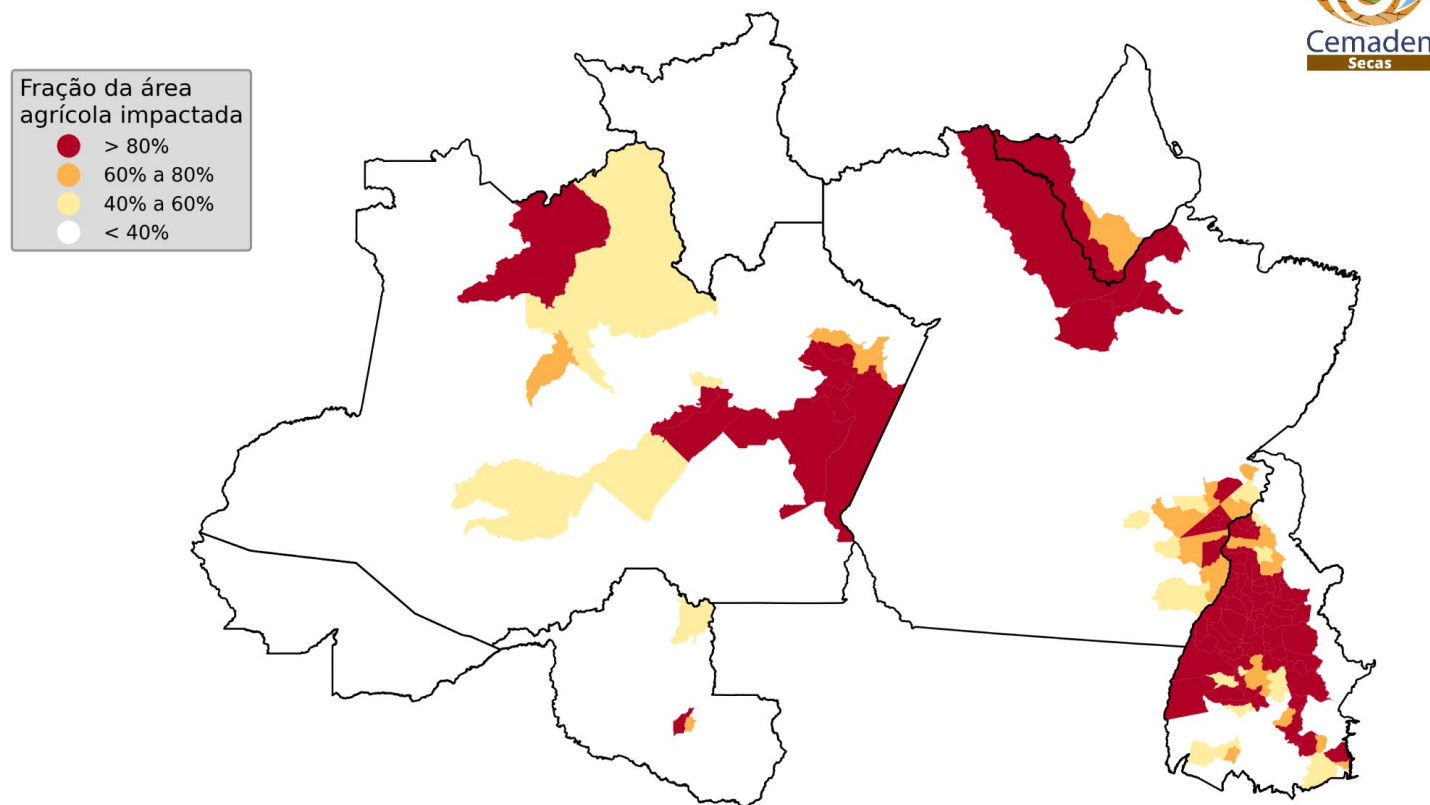
TERRAS INDÍGENAS

Índice Integrado de Seca - 3 meses (IIS3)
Maio 2025



ÁREAS DE PASTAGENS E AGRÍCOLAS AFETADAS PELA SECA

Área agro-pastoril municipal afetada pela seca
Maio 2025



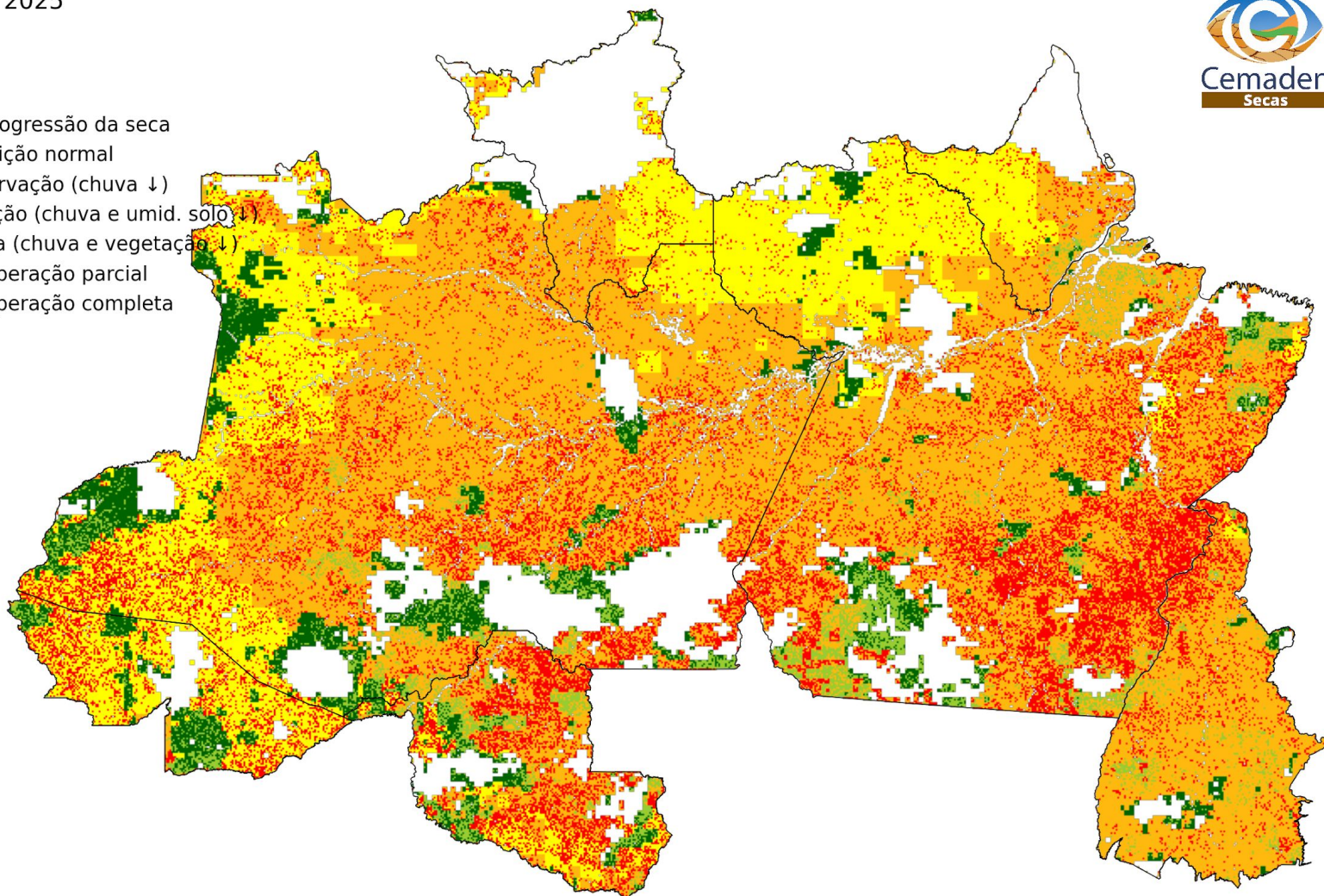
Fonte: Cemaden/MCTI

PROGRESSÃO INCREMENTAL DAS CONDIÇÕES DE SECA (PICS)

Progressão e Intensificação das Condições de Seca (PICS)
Maio 2025

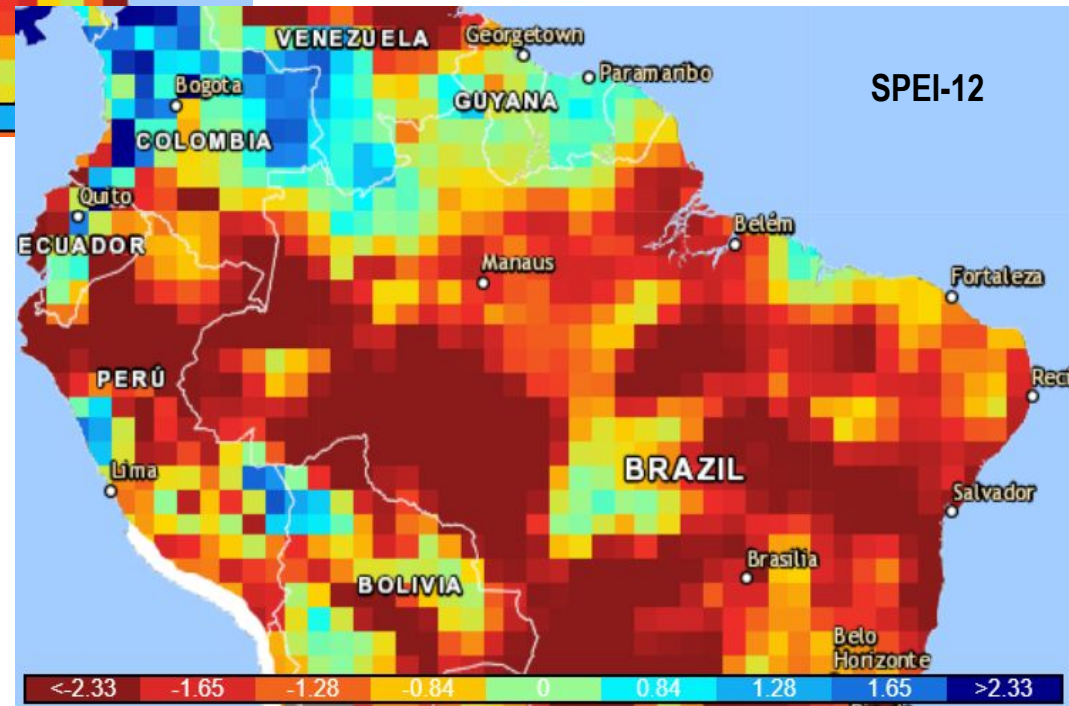
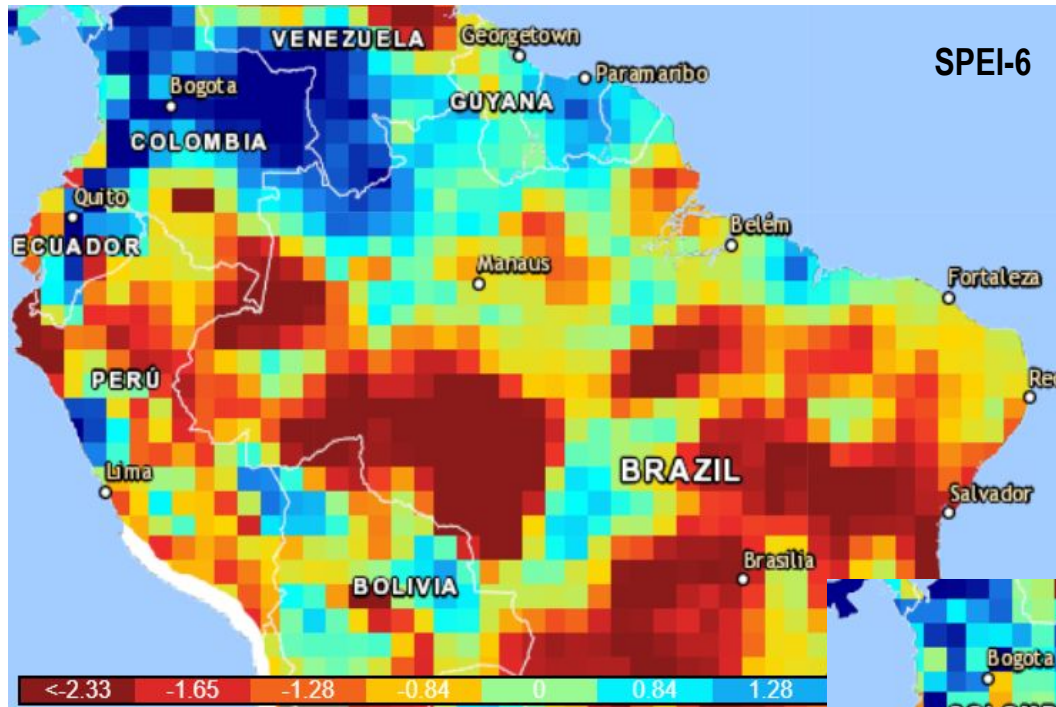


- Progressão da seca
- Condição normal
 - Observação (chuva ↓)
 - Atenção (chuva e umid. solo ↓)
 - Alerta (chuva e vegetação ↓)
 - Recuperação parcial
 - Recuperação completa

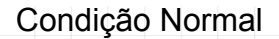


Índice Padronizado de Precipitação – Evapotranspiração Potencial (SPEI)

Maio/2025



Junho/2025

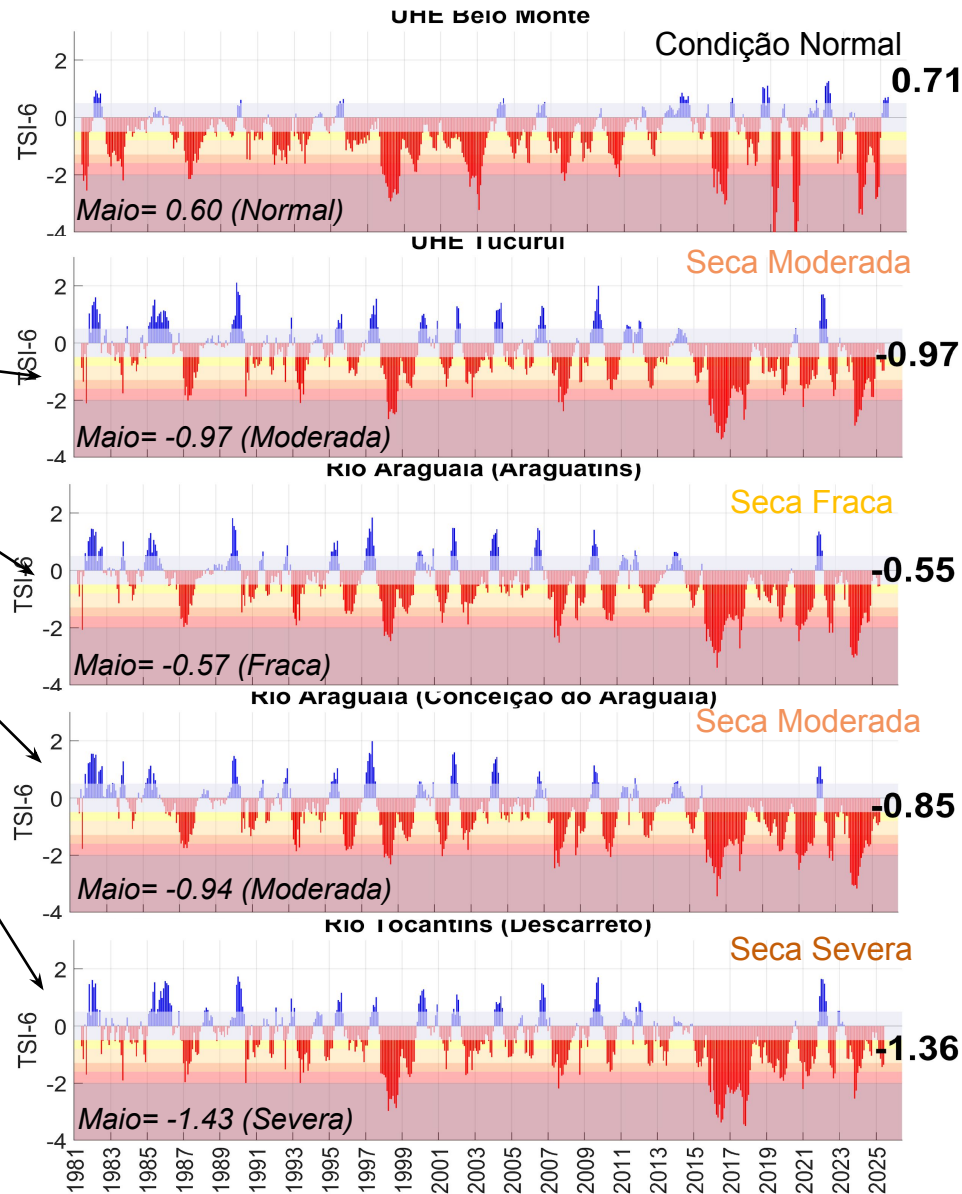
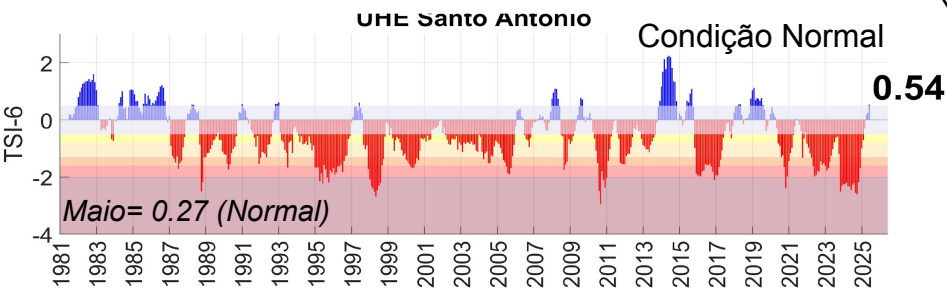
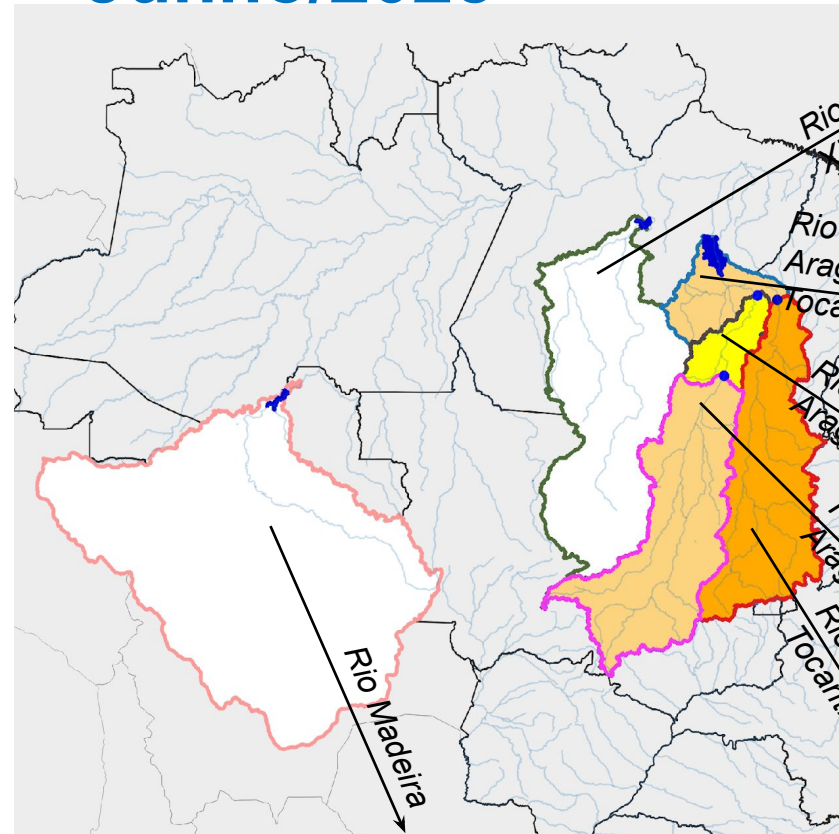


Fonte dos dados: Precipitação (Cemaden/INMET) e Vazão (ONS/ANA) - Jan/1981-Jun/2025. Estimativa TSI e Gráficos: CEMADEN

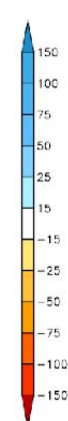
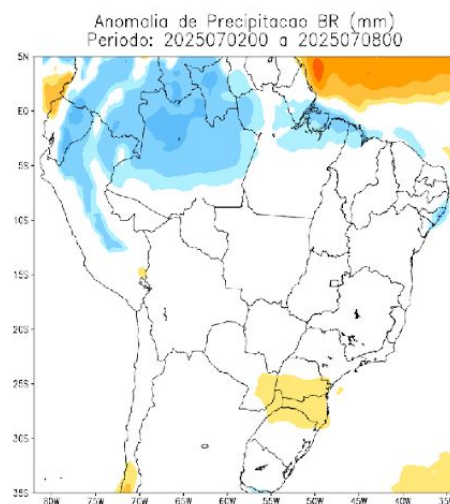
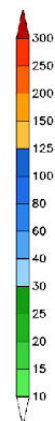
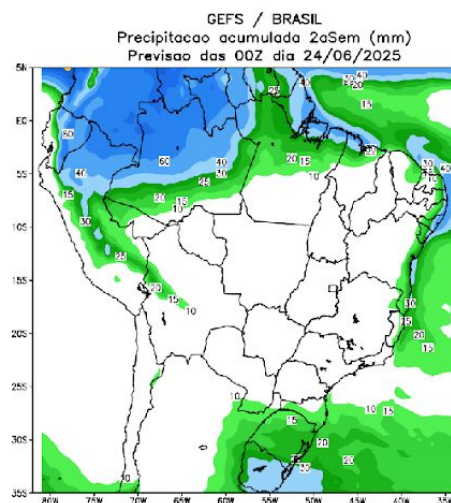
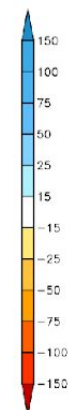
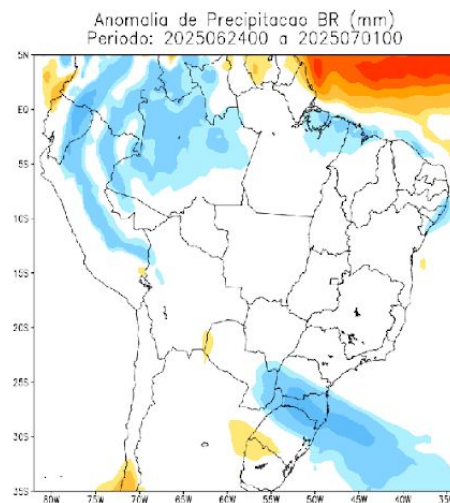
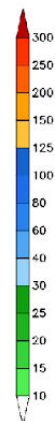
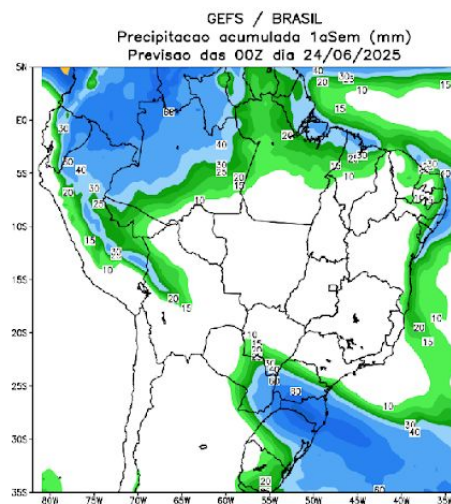
Índice Bivariado de Seca (Precipitação-Cota/Vazão) - TSI

Escala de Curto Prazo: **TSI-6 meses**

Junho/2025



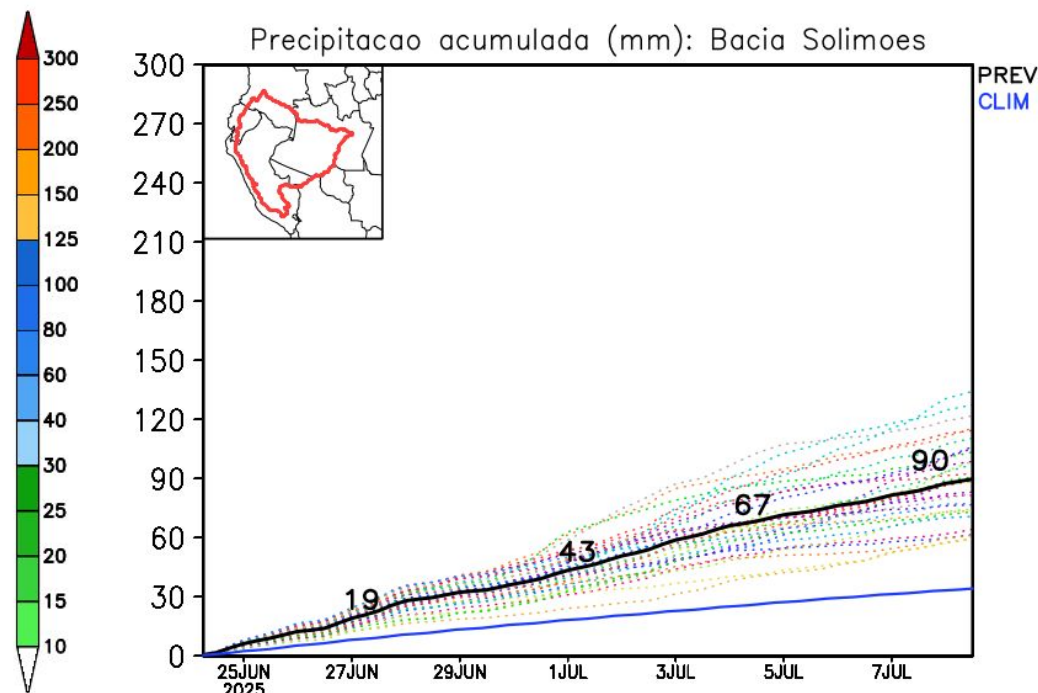
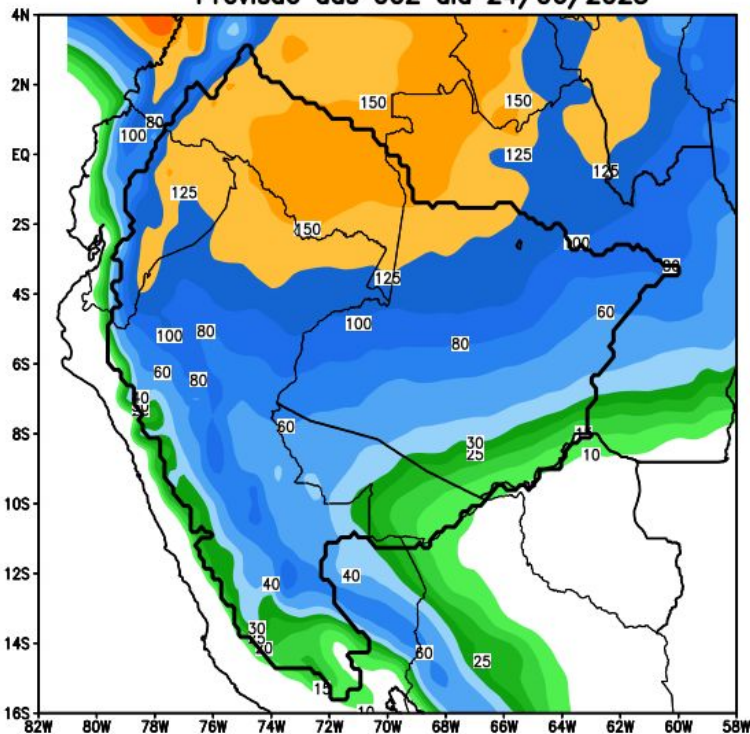
Previsão de chuva próximas duas semanas



Previsão de chuva próximas duas semanas

Rio Solimões

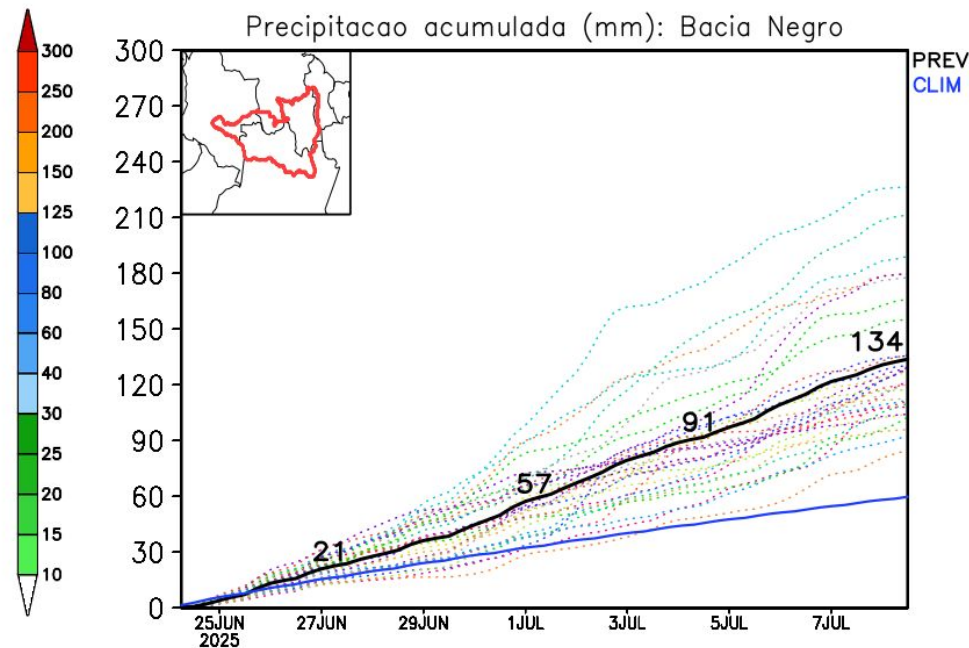
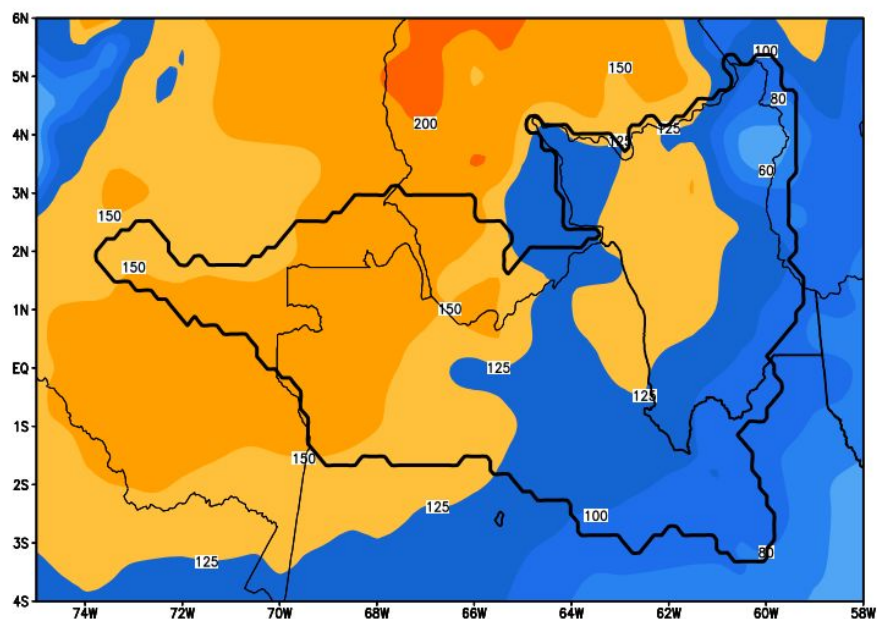
GEFS / Bacia do Rio Solimoes
Precipitacao acumulada em 14 dias (mm)
Previsao das 00Z dia 24/06/2025



Previsão de chuva próximas duas semanas

Rio Negro

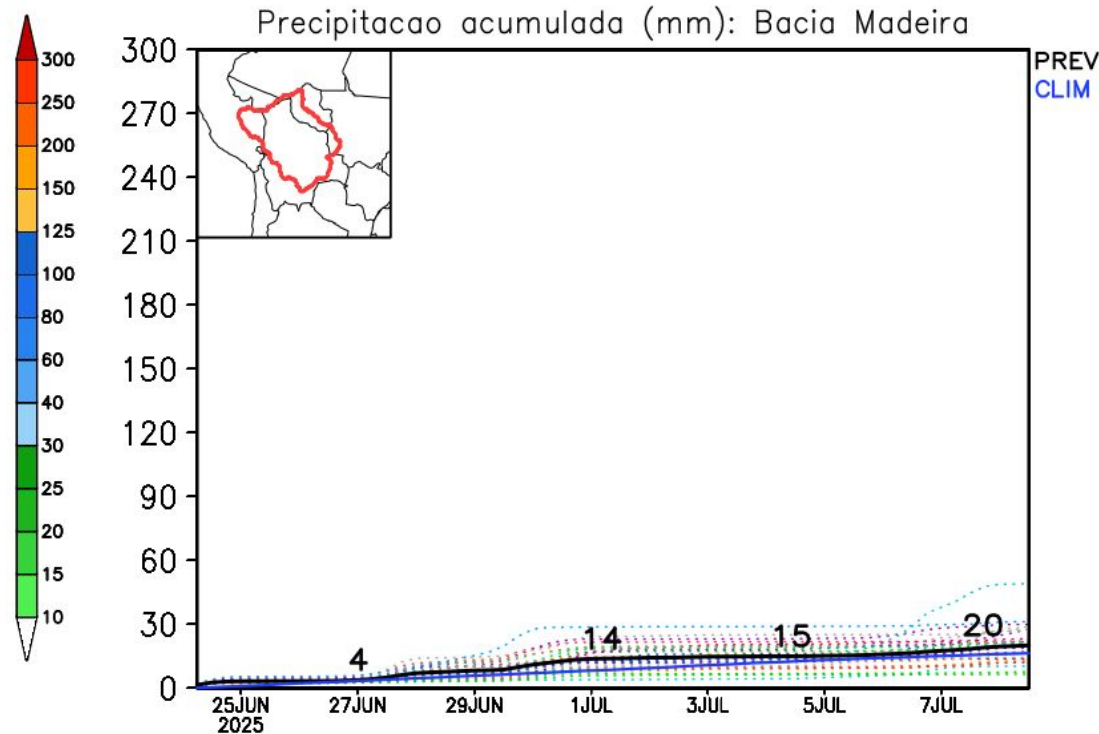
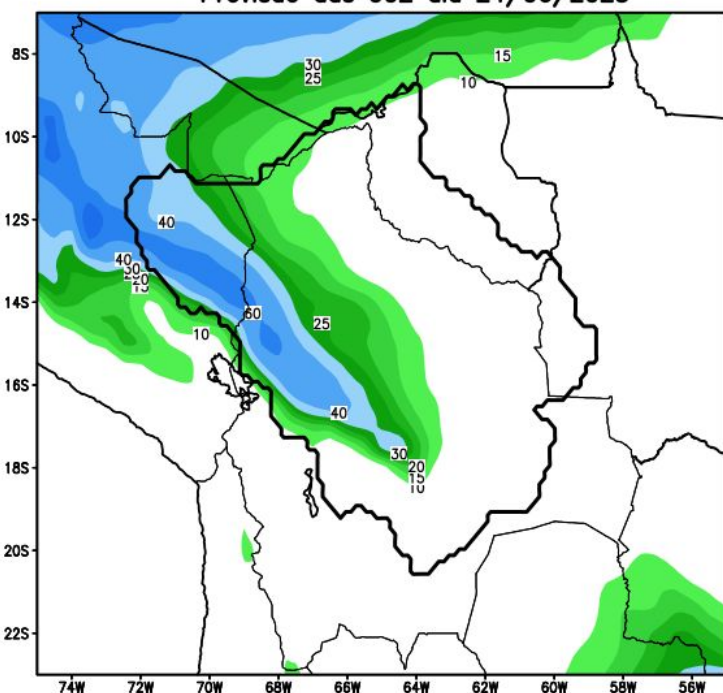
GEFS / Bacia do Rio Negro
Precipitação acumulada em 14 dias (mm)
Previsão das 00Z dia 24/06/2025



Previsão de chuva próximas duas semanas

Rio Madeira

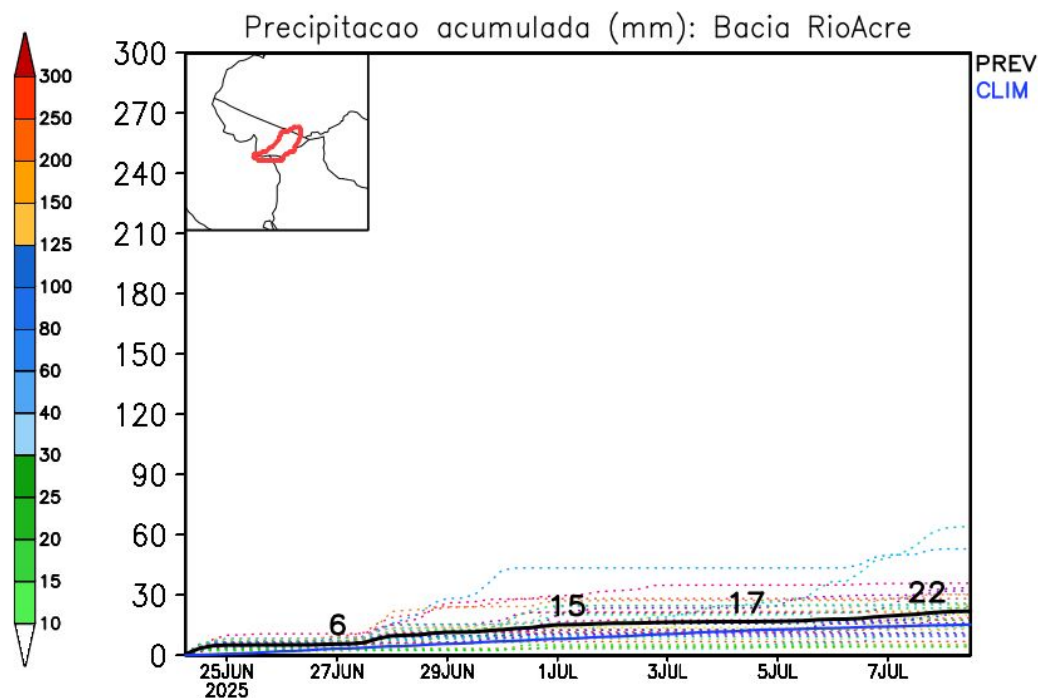
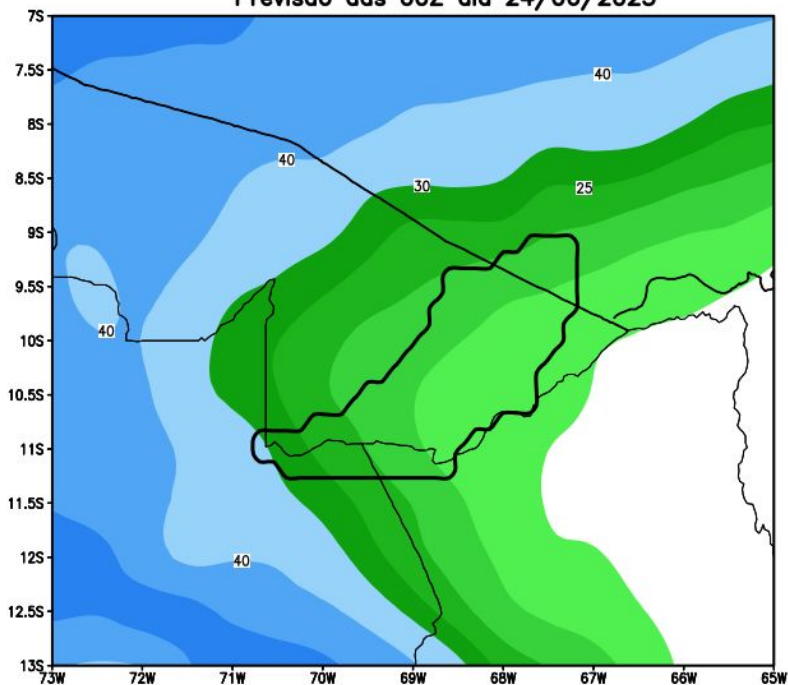
GEFS / Bacia do Rio Madeira
Precipitação acumulada em 14 dias (mm)
Previsão das 00Z dia 24/06/2025



Previsão de chuva próximas duas semanas

Rio Acre

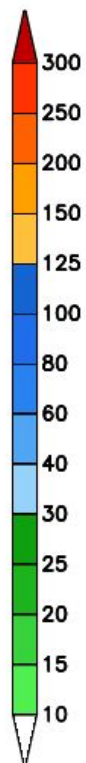
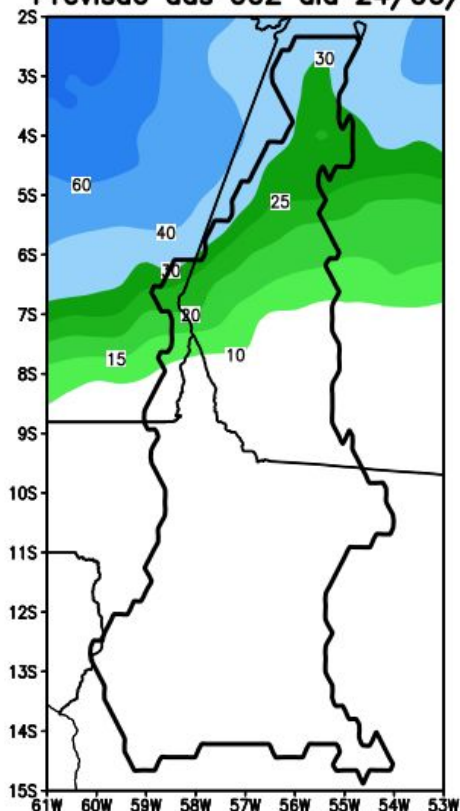
GEFS / Bacia do Rio Acre
Precipitação acumulada em 14 dias (mm)
Previsão das 00Z dia 24/06/2025



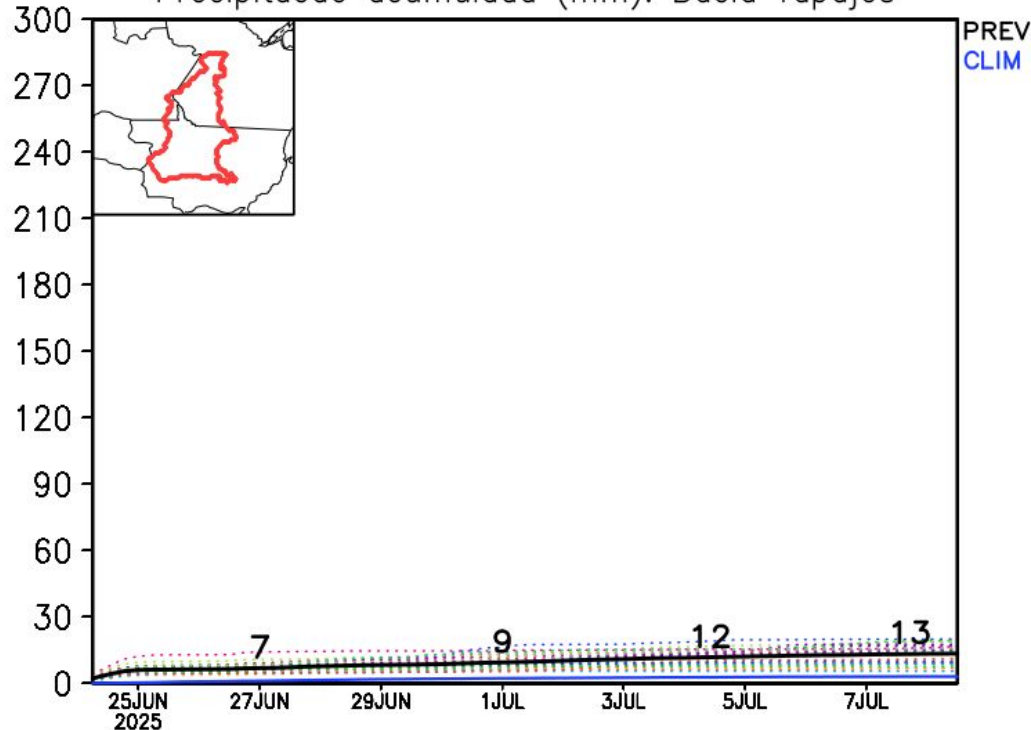
Previsão de chuva próximas duas semanas

Rio Tapajós

GEFS_50km / Bacia do Rio Tapajós
Precipitação acumulada em 14 dias (mm)
Previsão das 00Z dia 24/06/2025



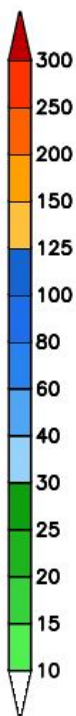
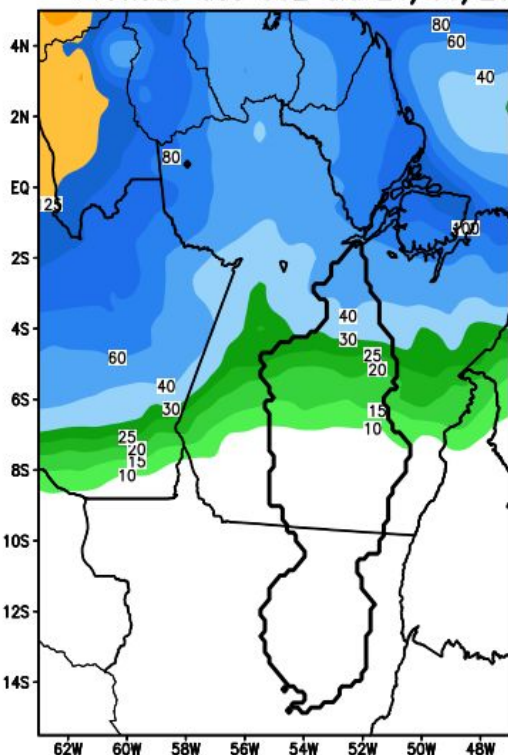
Precipitação acumulada (mm): Bacia Tapajós



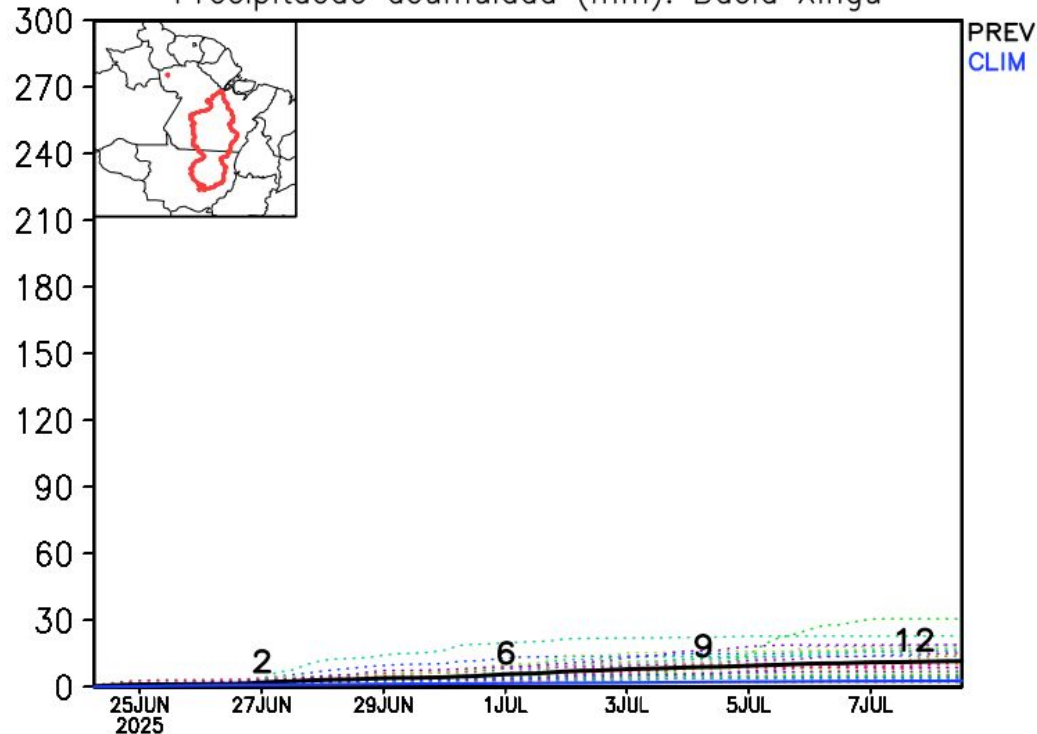
Previsão de chuva próximas duas semanas

Rio Xingu

GEFS / Xingu
Precipitação acumulada em 14 dias (mm)
Previsão das 00Z dia 24/06/2025



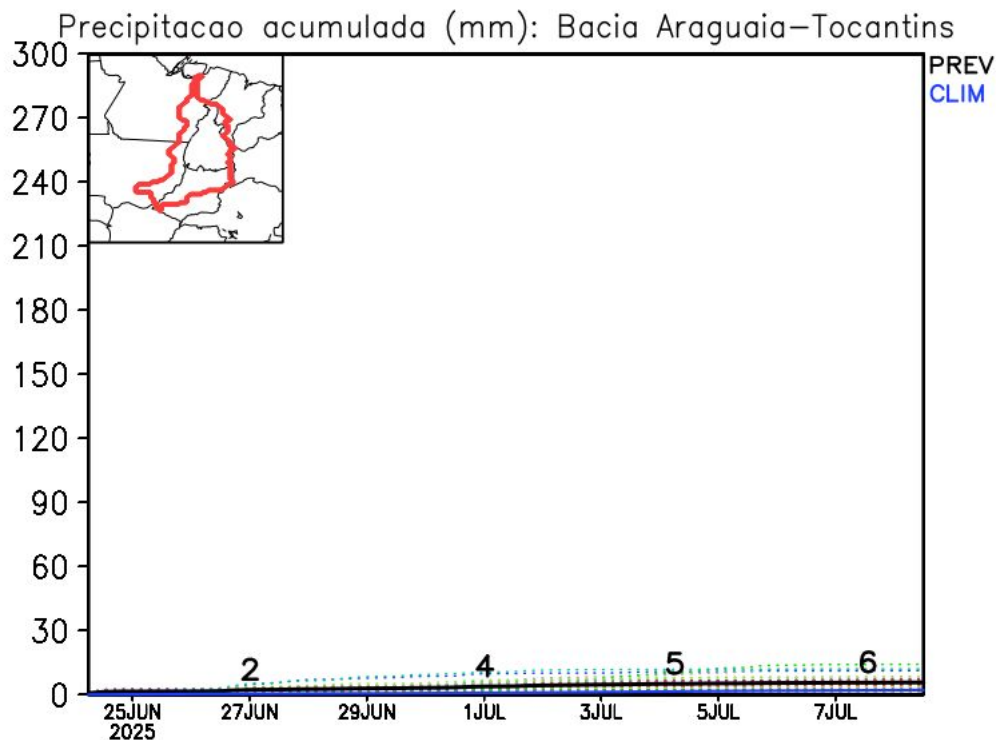
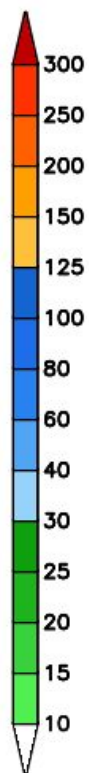
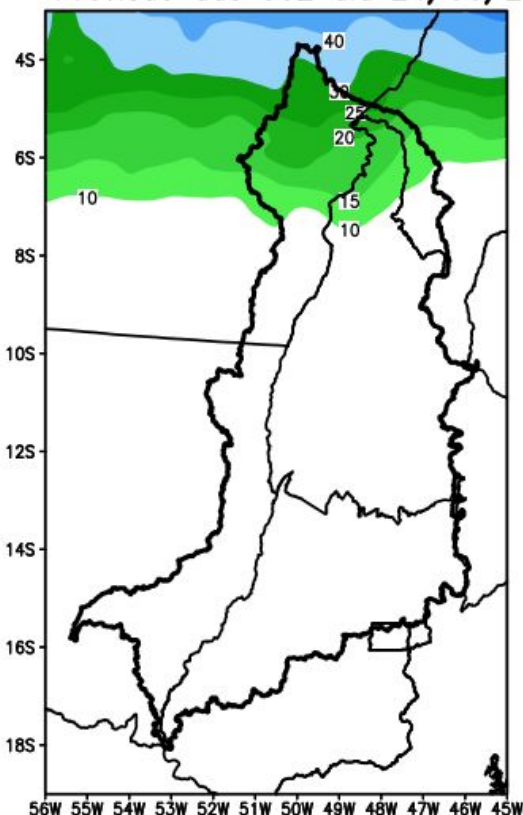
Precipitação acumulada (mm): Bacia Xingu



Previsão de chuva próximas duas semanas

Rio Araguaia-Tocantins

GEFS / Bacia Araguaia-Tocantins
Precipitação acumulada em 14 dias (mm)
Previsão das 00Z dia 24/06/2025

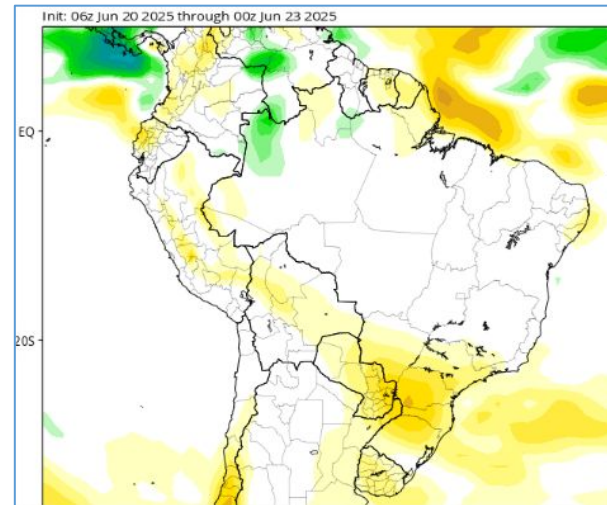
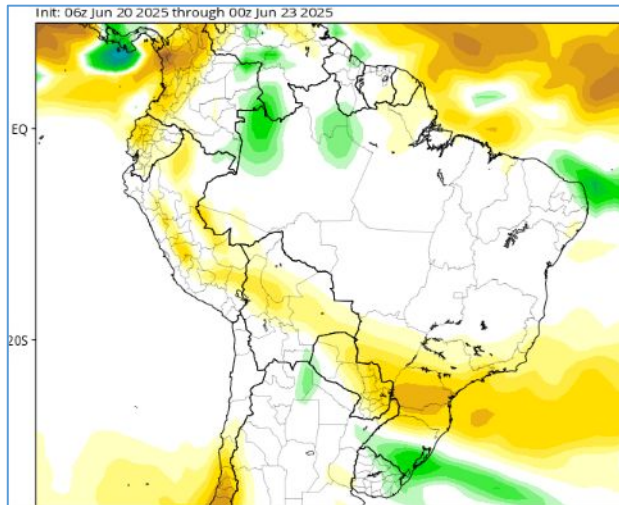


Tendência 3a e 4a semanas

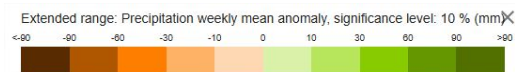
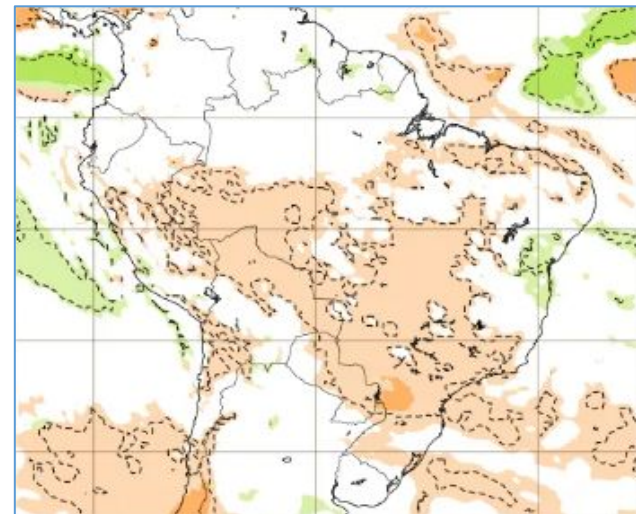
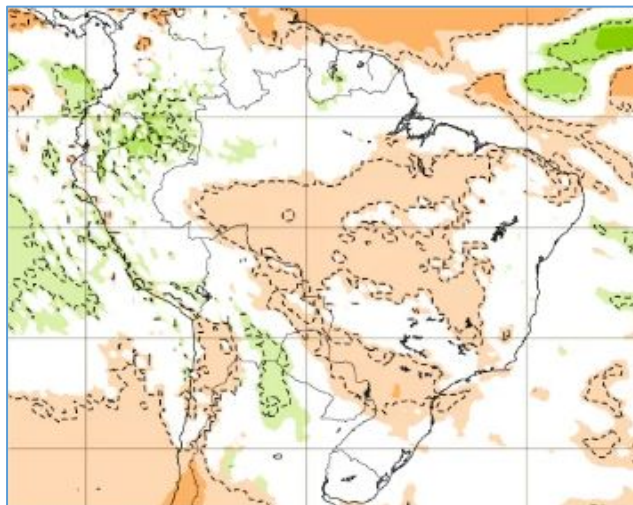
07-14 Jul

14-21 Jul

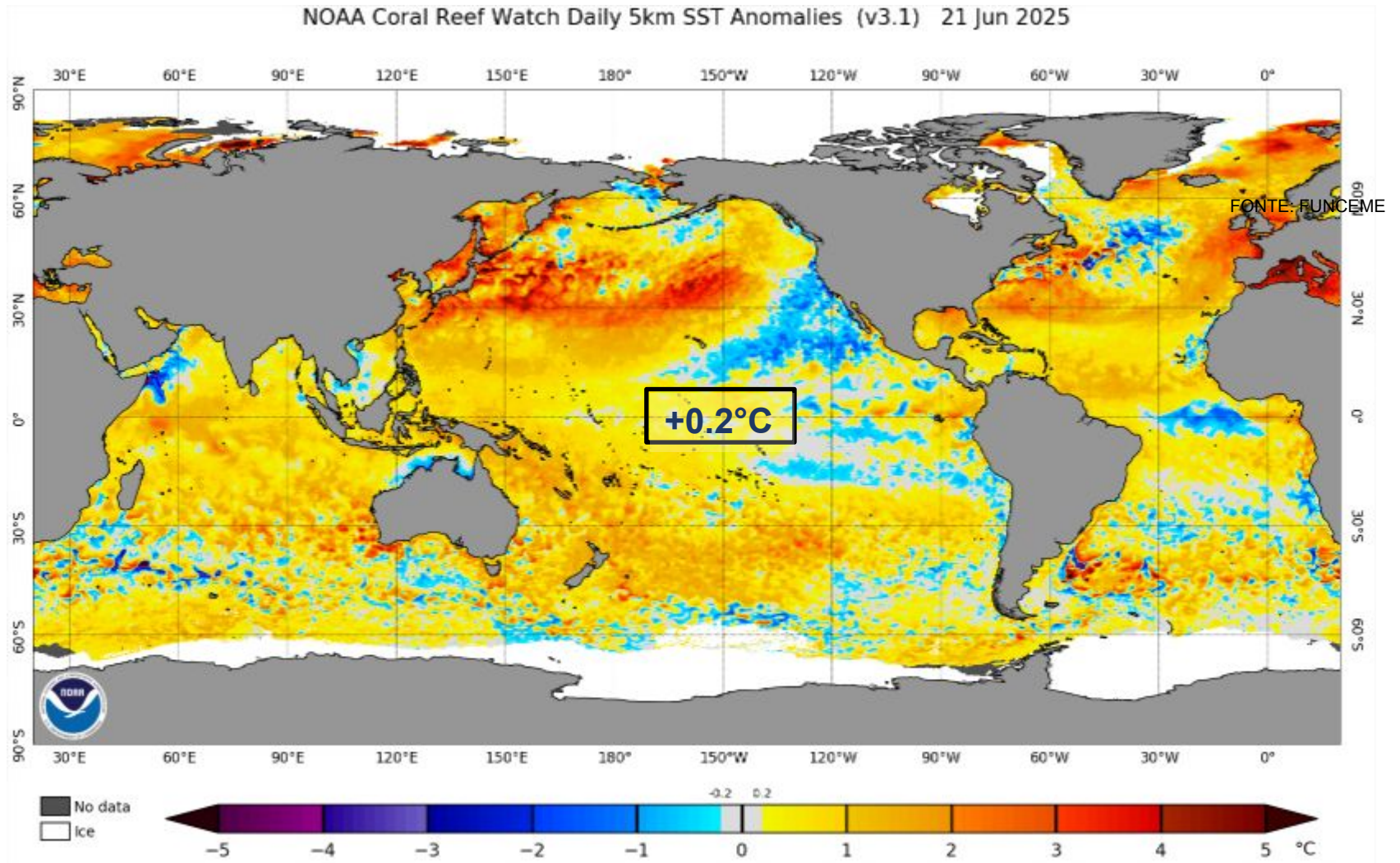
CFS/NOAA



ECMWF



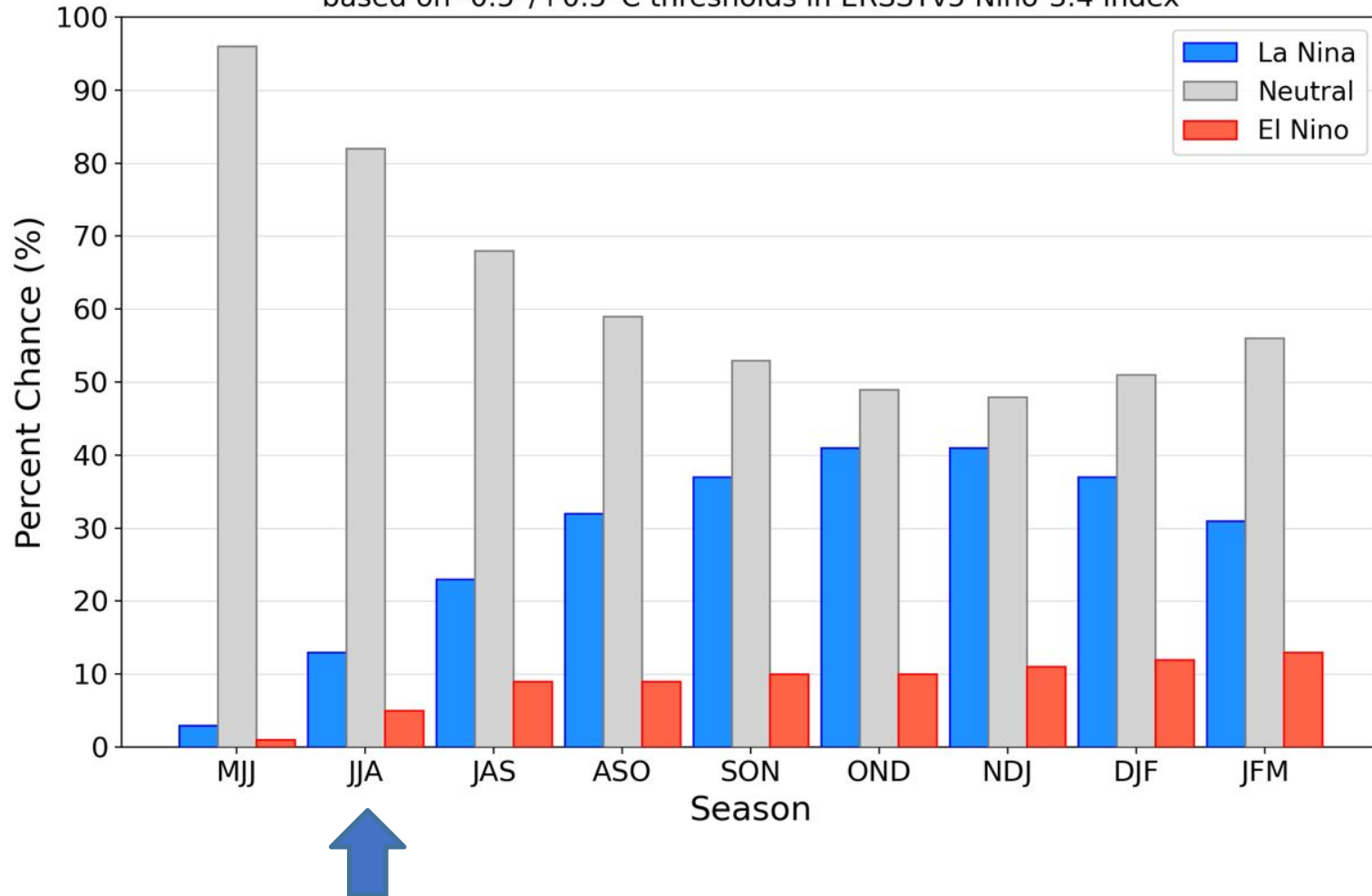
Status Atual: Neutralidade



Previsão do “ENSO”

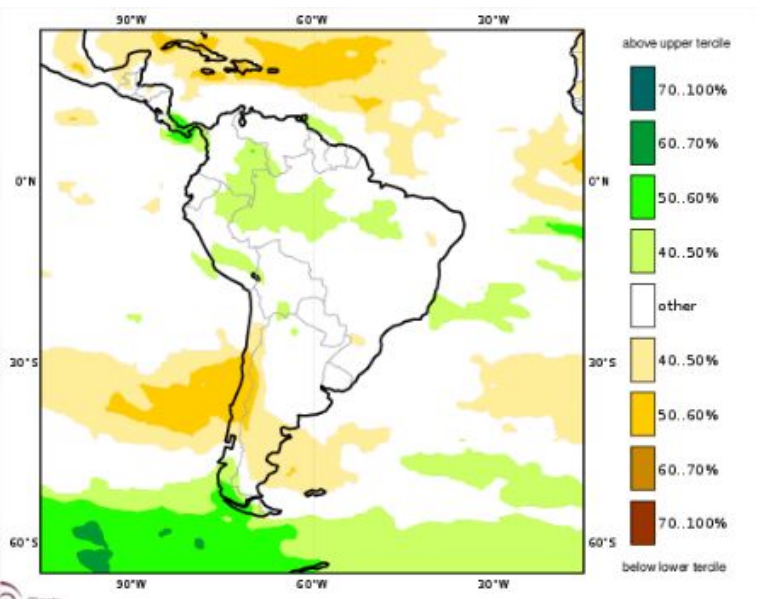
Official NOAA CPC ENSO Probabilities (issued June 2025)

based on $-0.5^{\circ}/+0.5^{\circ}\text{C}$ thresholds in ERSSTv5 Niño-3.4 index

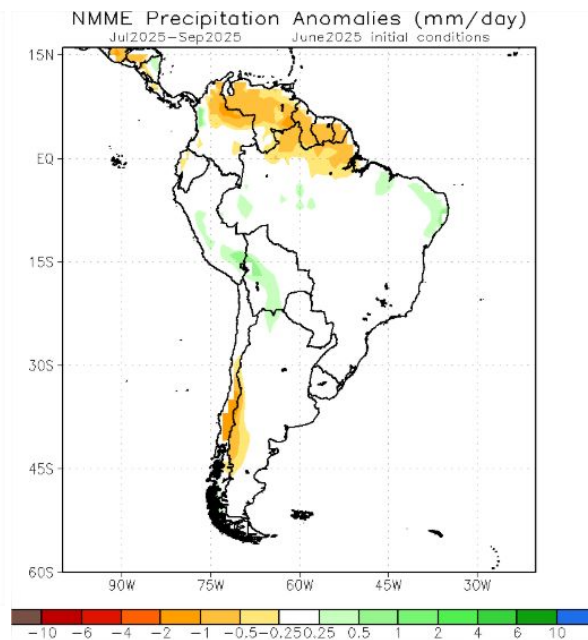


Previsão Sazonal de Chuva Multi-Modelo

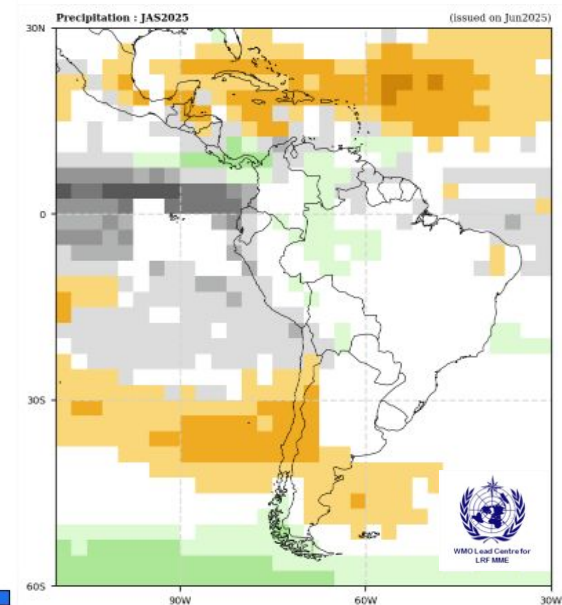
Julho-Agosto-Setembro



Modelos Europeus



Modelos Norte Americanos

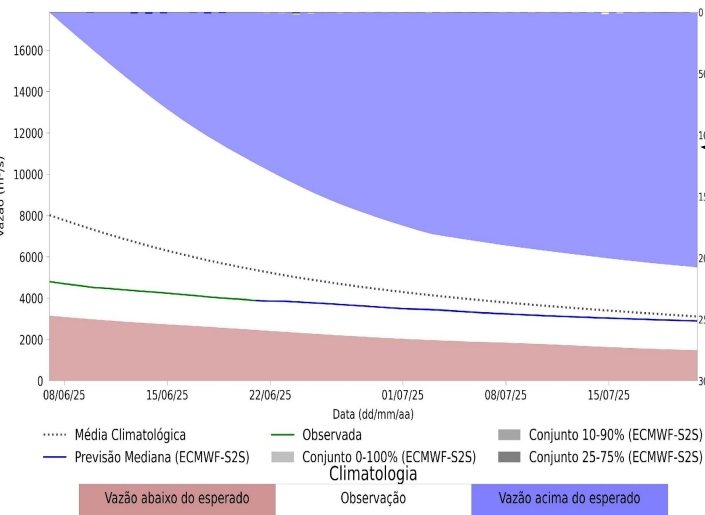


Modelos da WMO

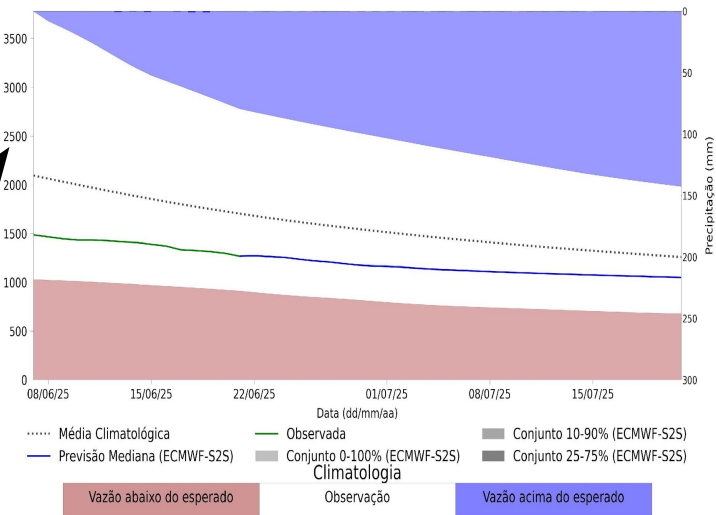
Previsão de vazão natural na Bacia Rio Tocantins-Araguaia 30 dias (Modelo hidrológico MHD)

Previsão: 21/06/2025 a 21/07/2025

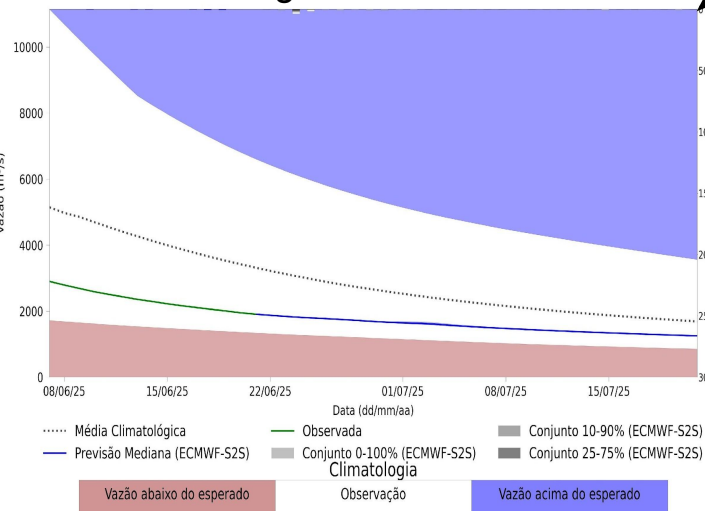
UHE Tucuruí



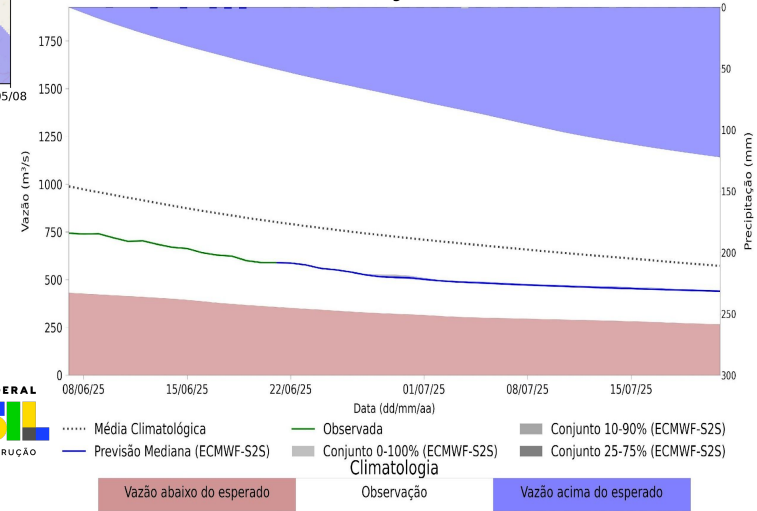
UHE Estreito



Araguatins - TO



UHE Lajeado



Fonte: Meteorologia
(INMET/MERGE); Vazão
(ANA/ONS)
MLT: 1993-2024
Previsão Meteorológica:
ECMWF-S2S

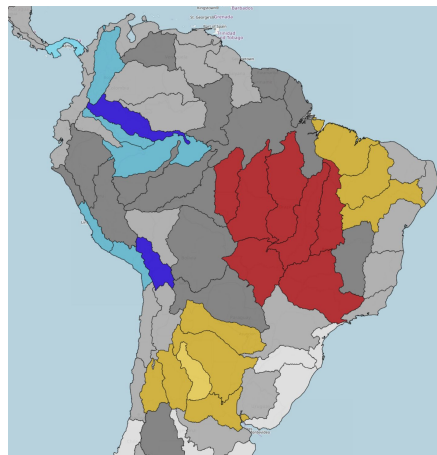


MINISTÉRIO DA
CIÊNCIA, TECNOLOGIA
E INOVAÇÃO

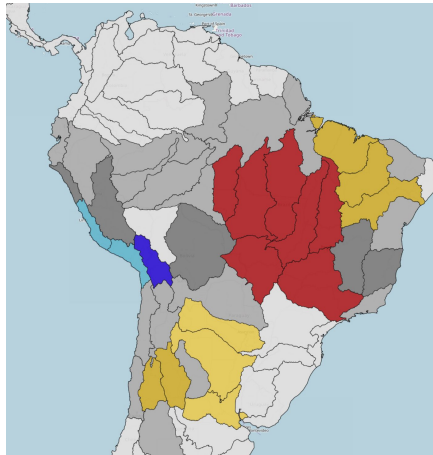


Previsão Sazonal

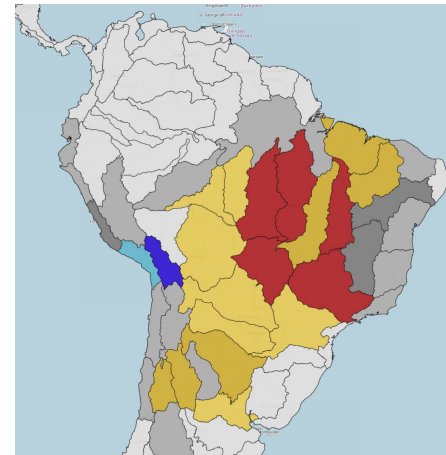
Junho



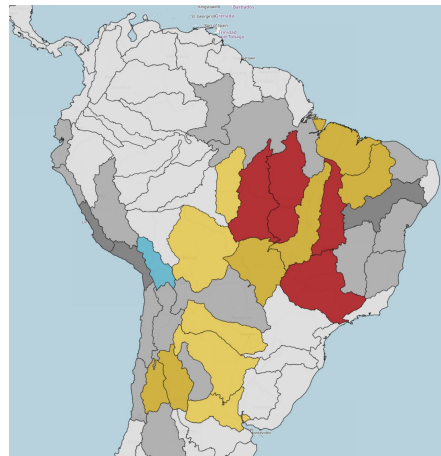
Julho



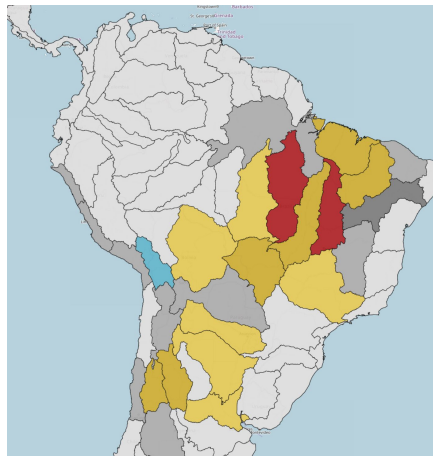
Agosto



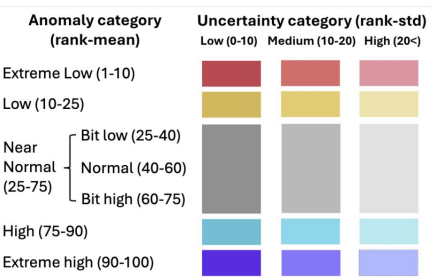
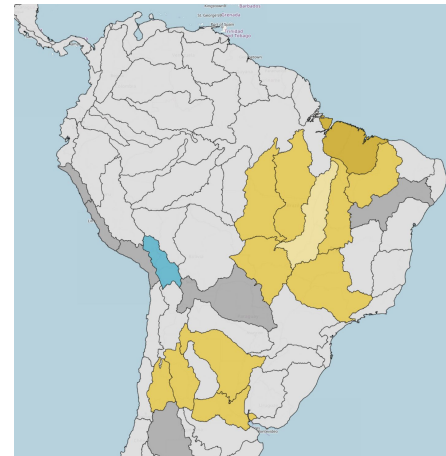
Setembro



Outubro



Novembro



Previsão Sazonal

Junho



Julho



Agosto



Setembro



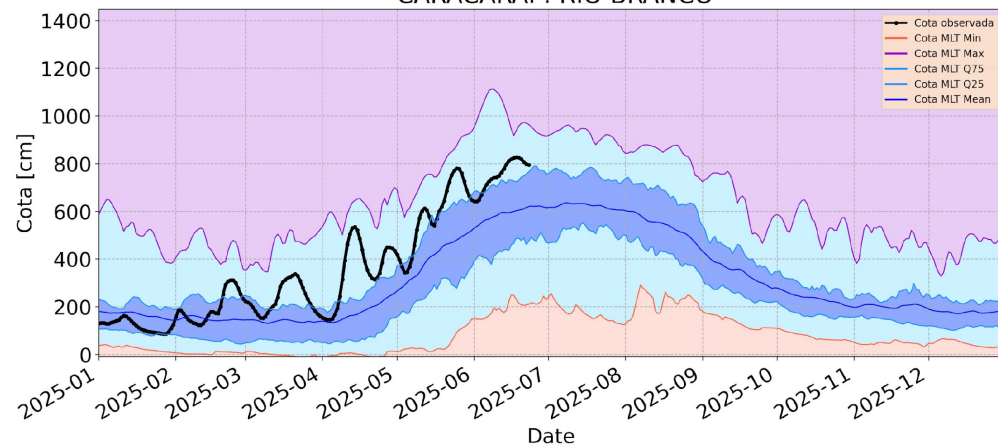
Outubro



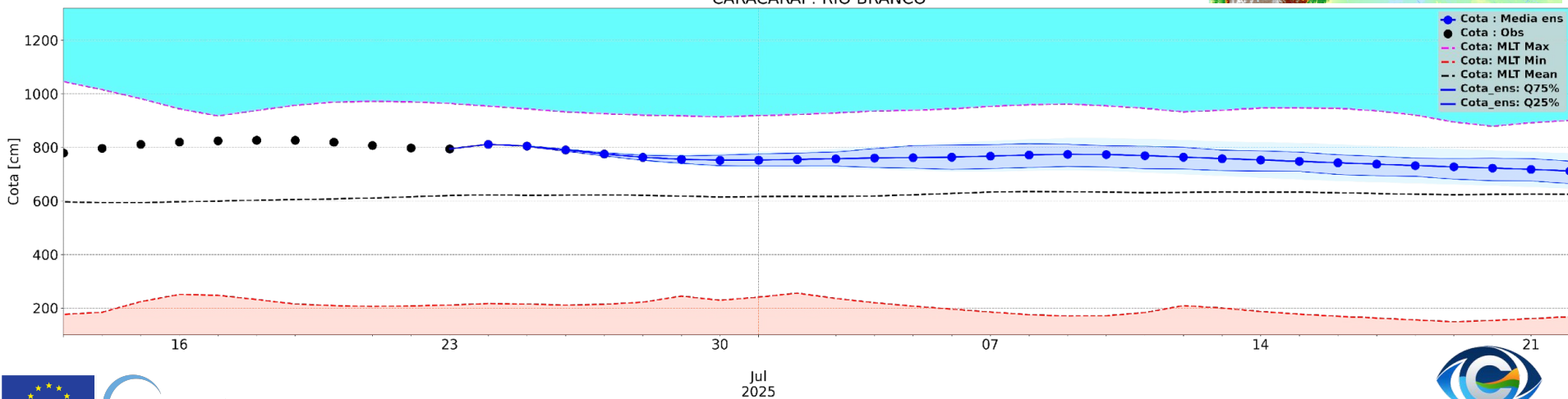
Novembro



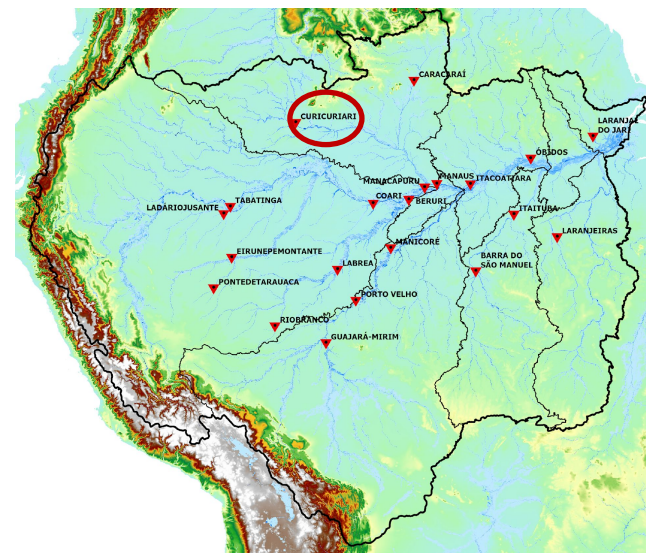
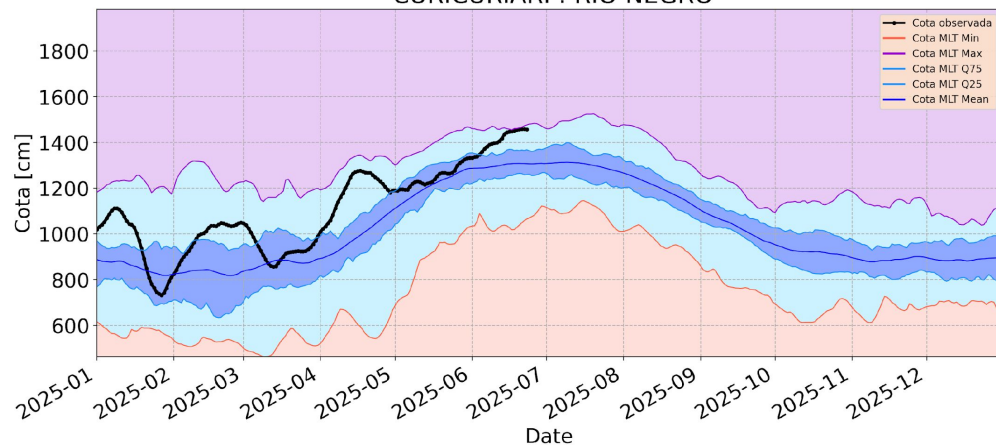
Cota - Climatologia CARACARAI : RIO BRANCO



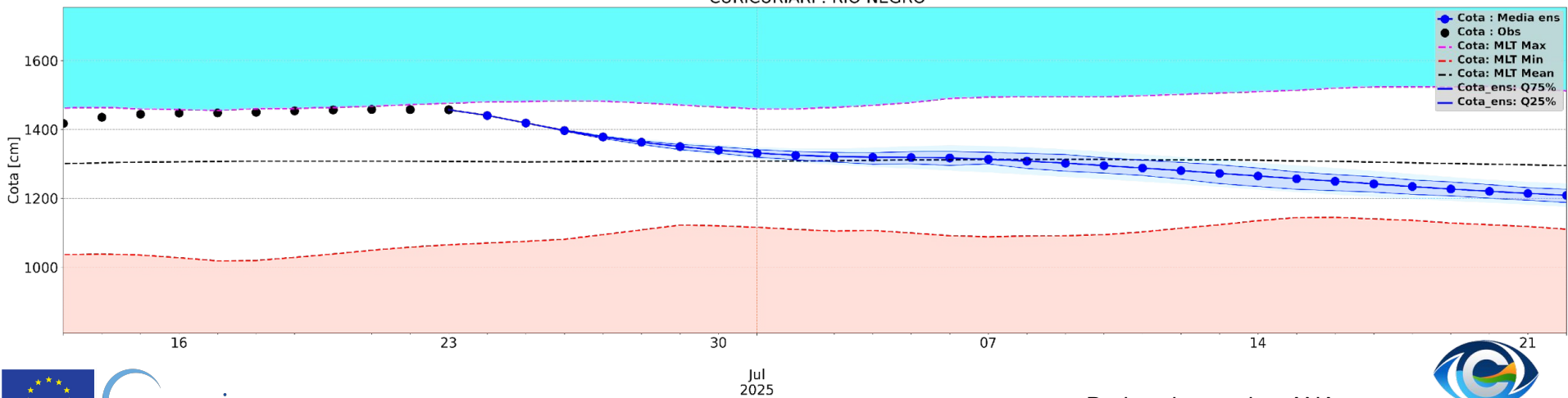
Model Run - 2025-06-23
CARACARAI : RIO BRANCO



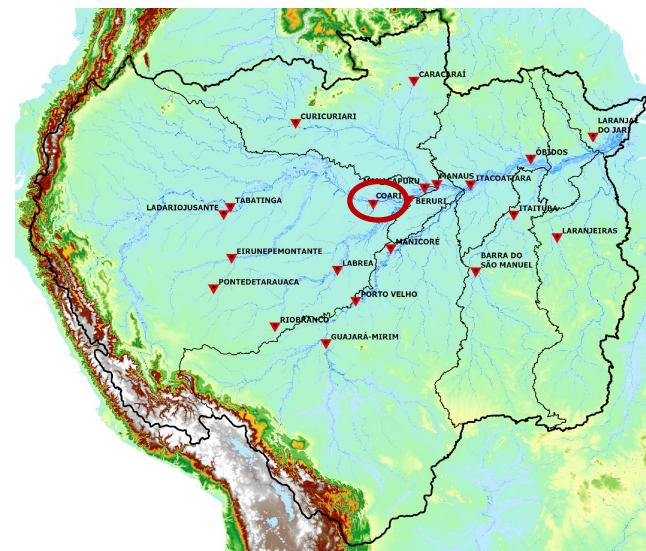
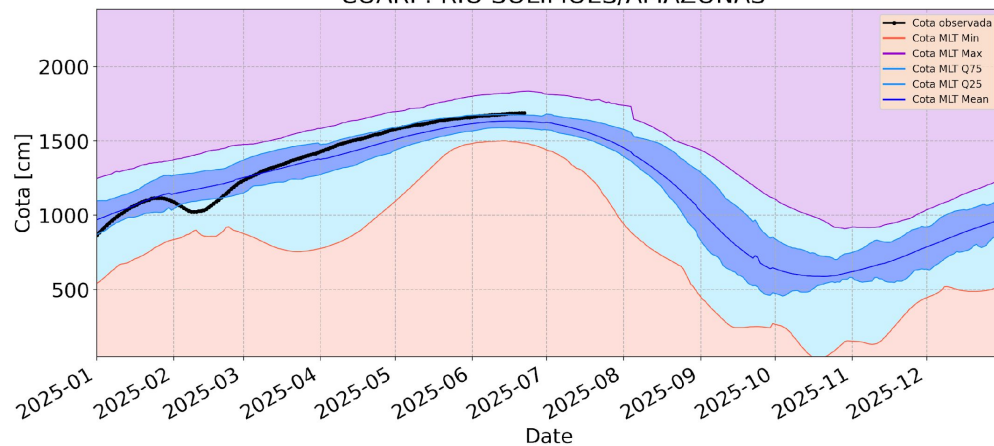
Cota - Climatologia CURICURIARI : RIO NEGRO



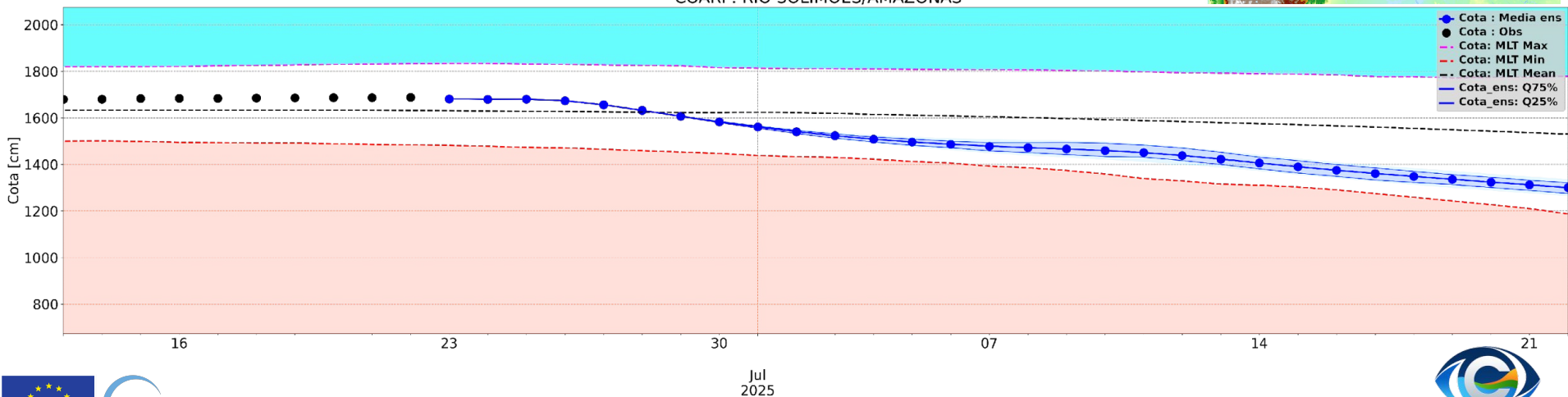
Model Run - 2025-06-23 CURICURIARI : RIO NEGRO



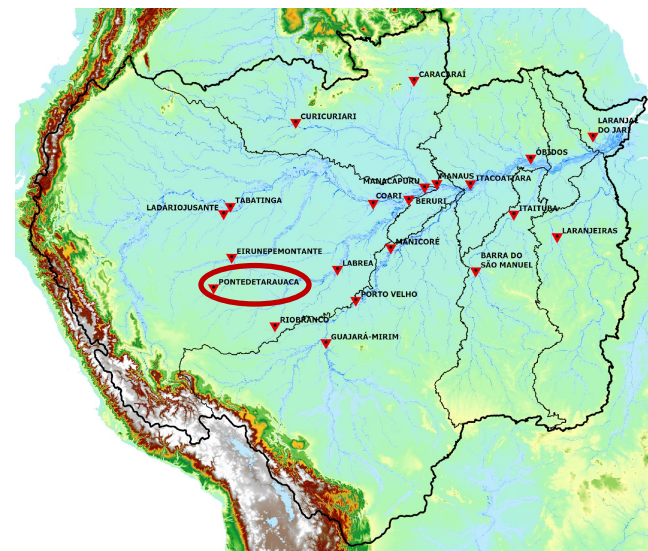
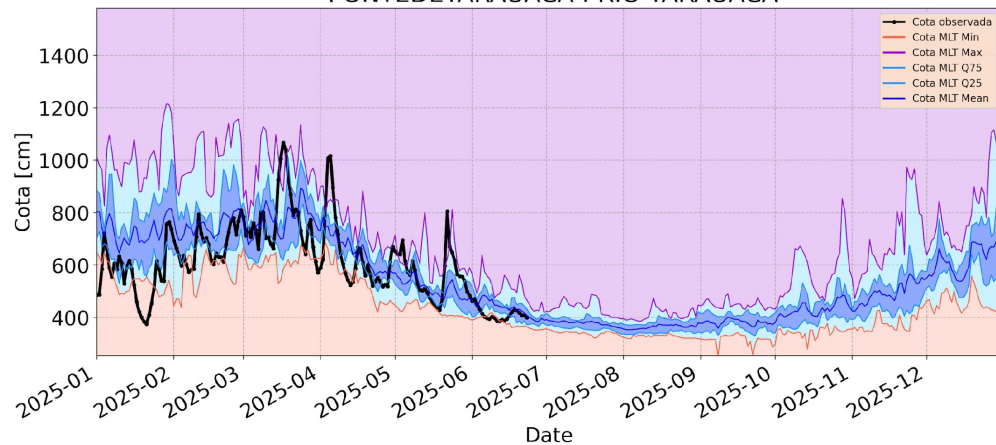
Cota - Climatologia COARI : RIO SOLIMÕES/AMAZONAS



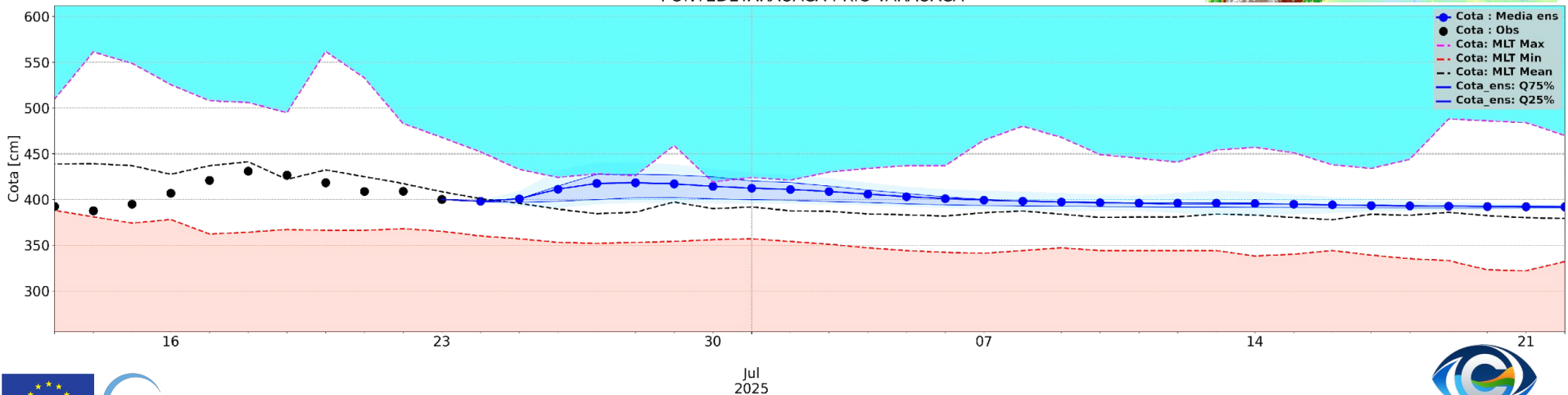
Model Run - 2025-06-23 COARI : RIO SOLIMÕES/AMAZONAS



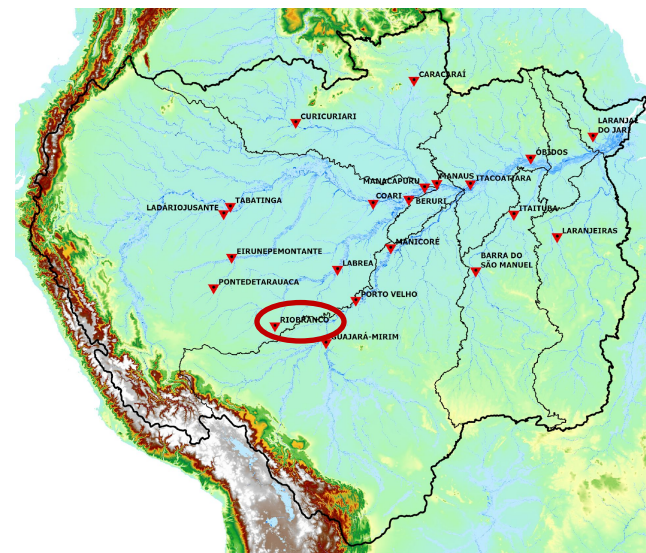
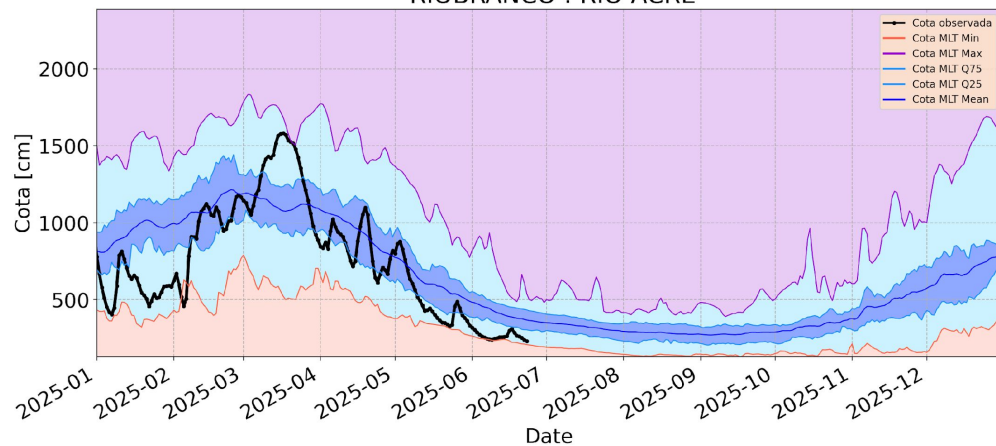
Cota - Climatologia PONTEDETARAUACA : RIO TARAUACA



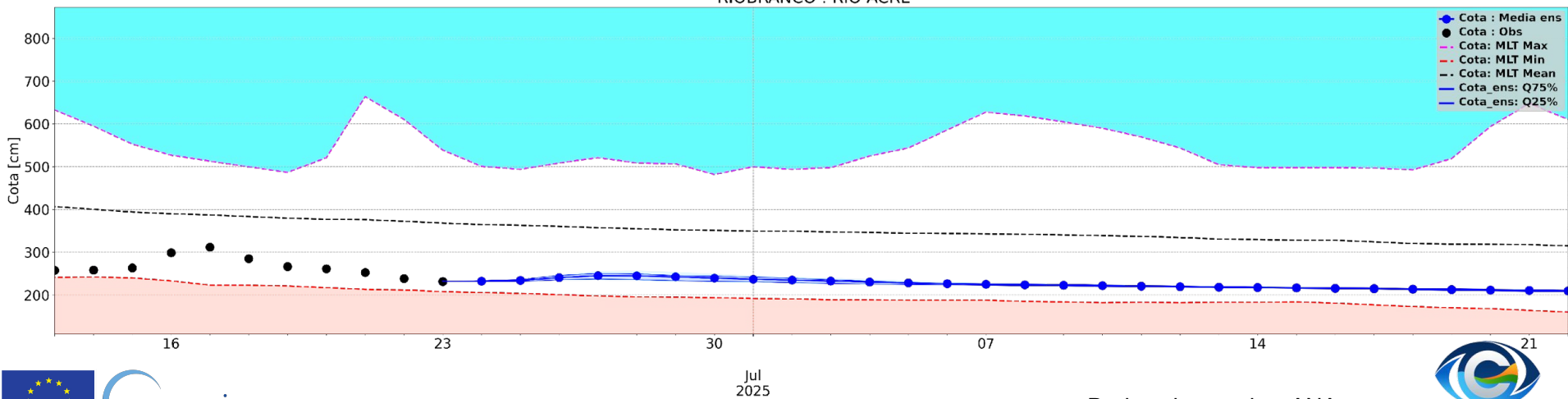
Model Run - 2025-06-23 PONTEDETARAUACA : RIO TARAUACA



Cota - Climatologia RIOBRANCO : RIO ACRE

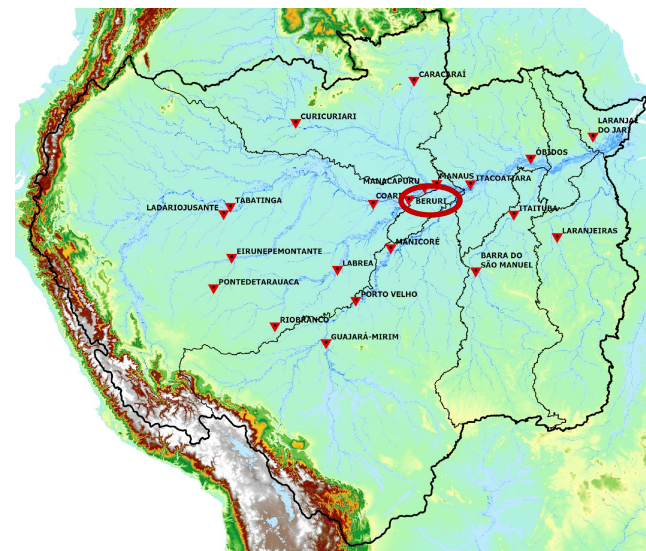
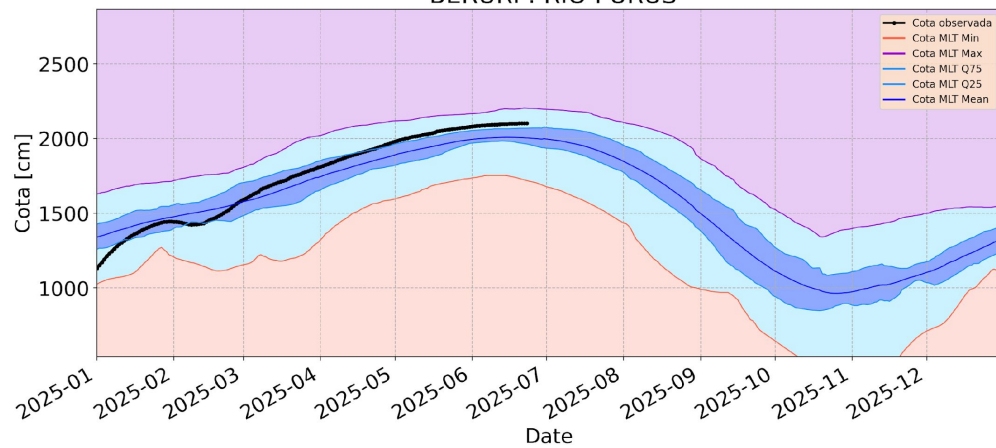


Model Run - 2025-06-23 RIOBRANCO : RIO ACRE

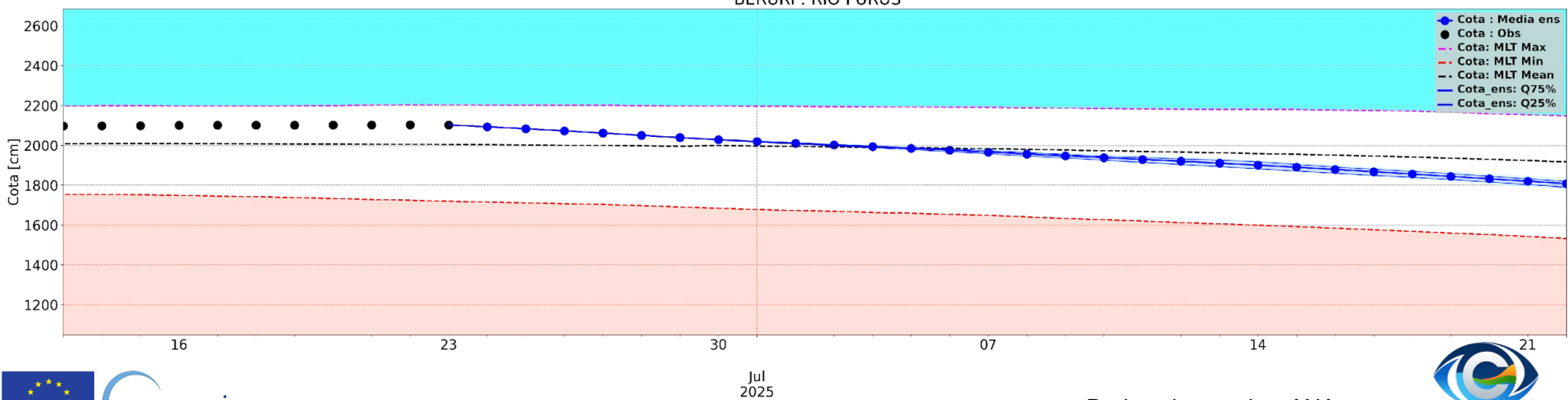


Dados observados: ANA

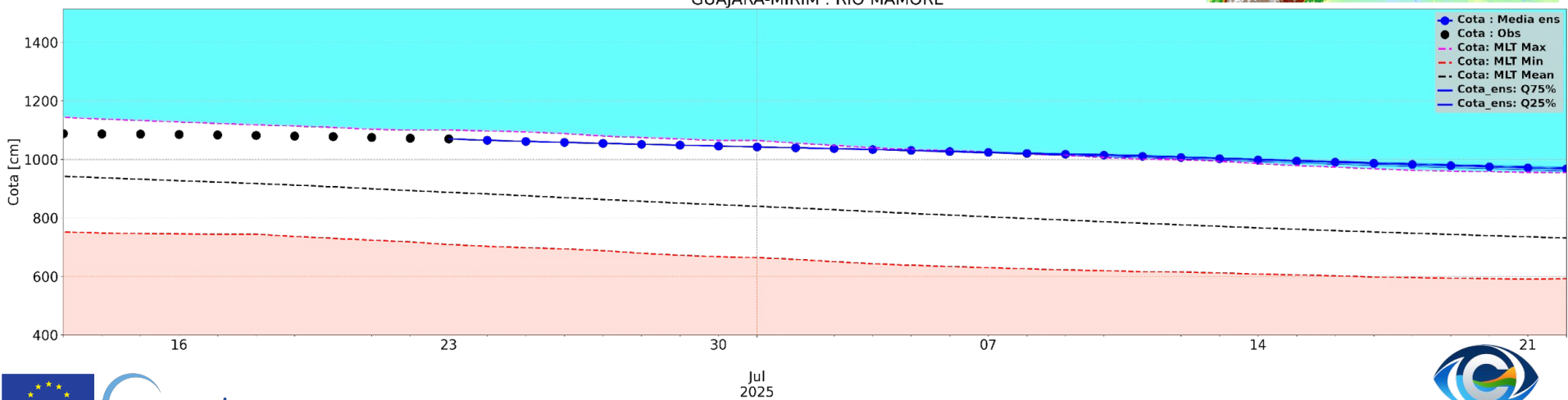
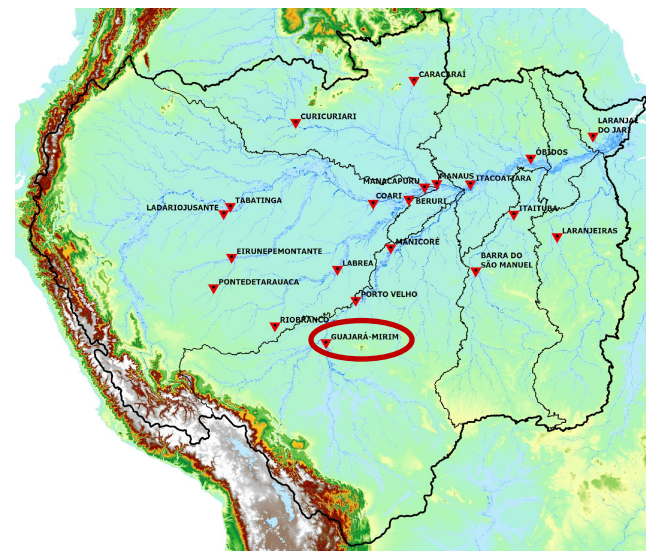
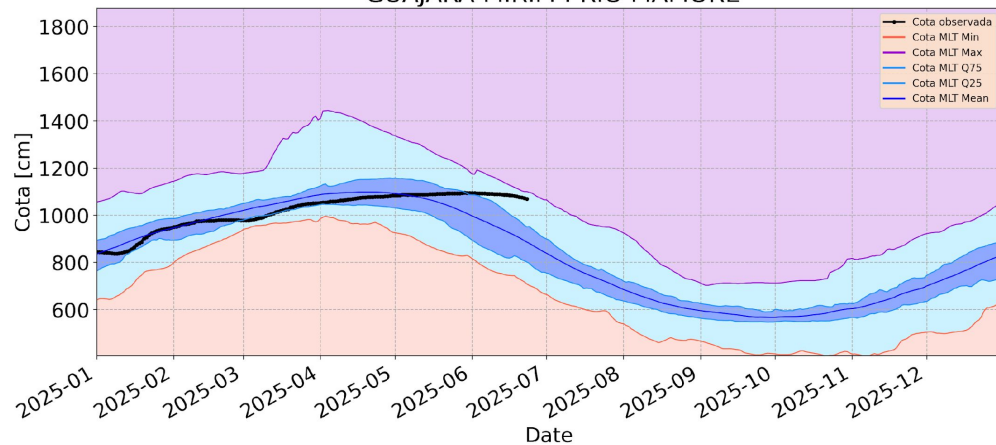
Cota - Climatologia
BERURI : RIO PURUS



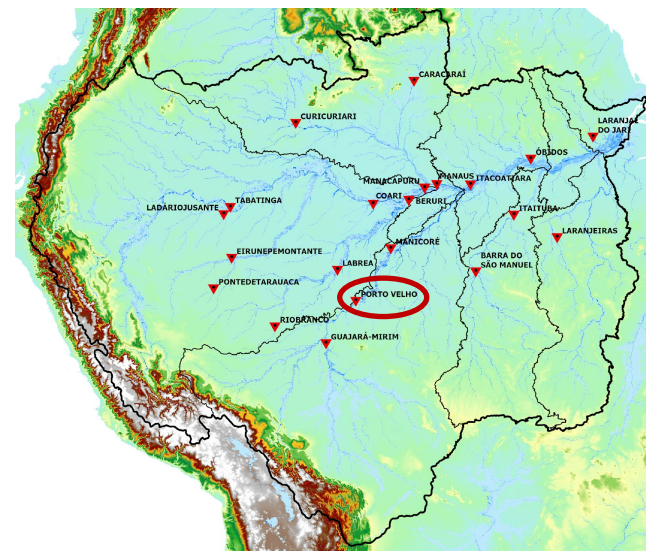
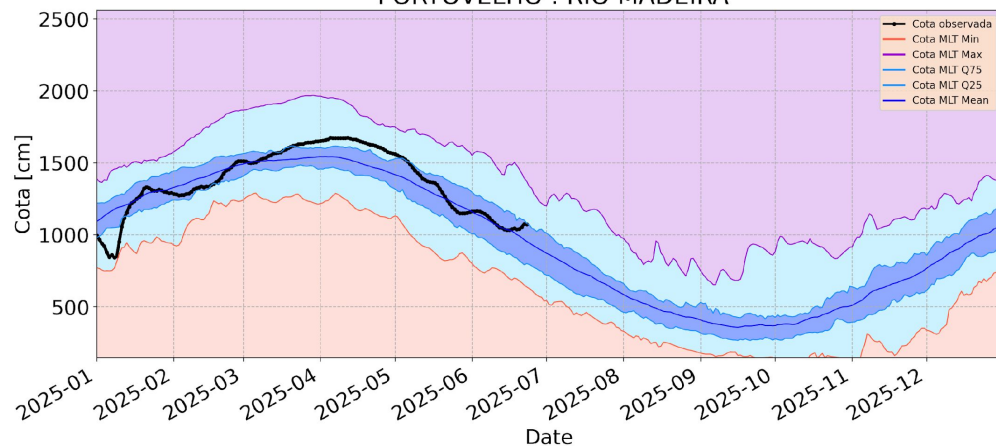
Model Run - 2025-06-23
BERURI : RIO PURUS



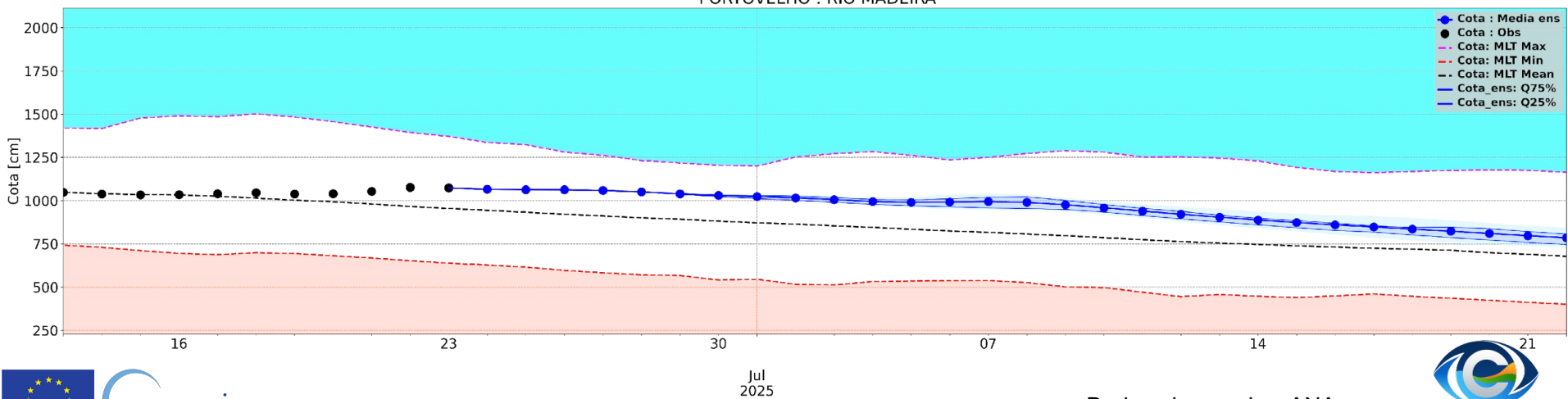
Cota - Climatologia GUAJARA-MIRIM : RIO MAMORE



Cota - Climatologia PORTOVELHO : RIO MADEIRA



Model Run - 2025-06-23 PORTOVELHO : RIO MADEIRA

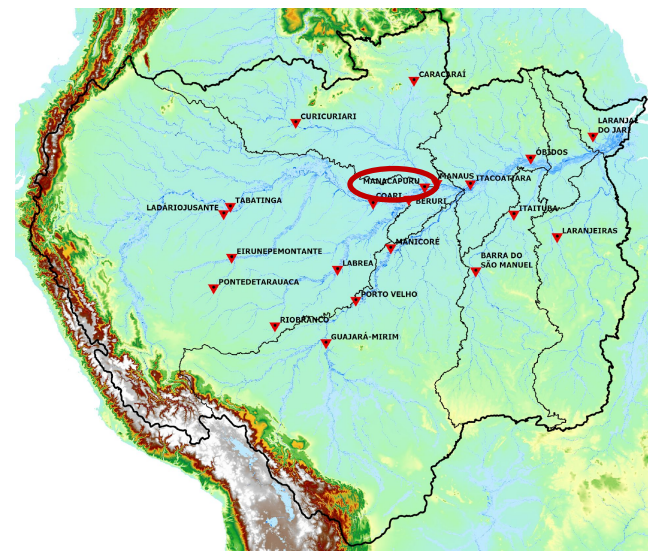
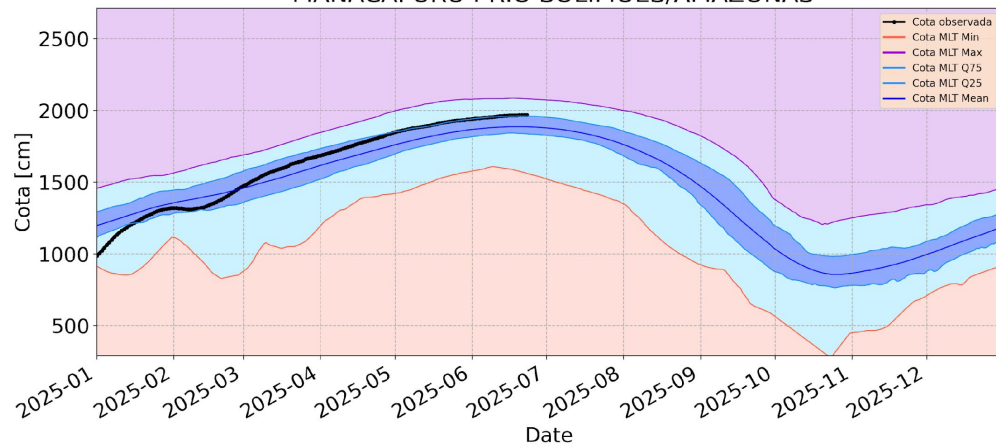


Jul
2025

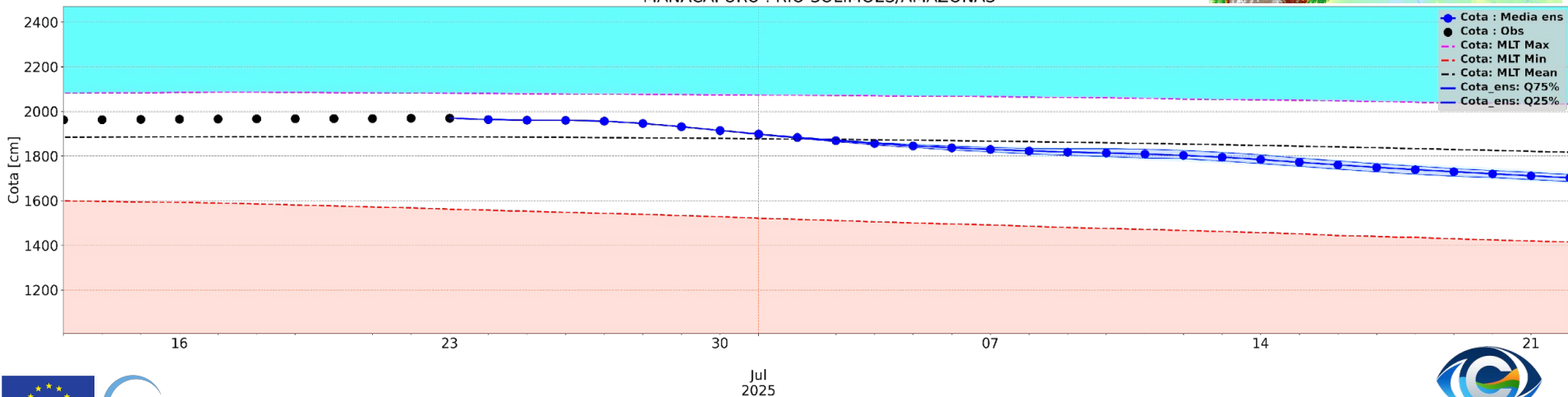
Dados observados: ANA



Cota - Climatologia MANACAPURU : RIO SOLIMÕES/AMAZONAS

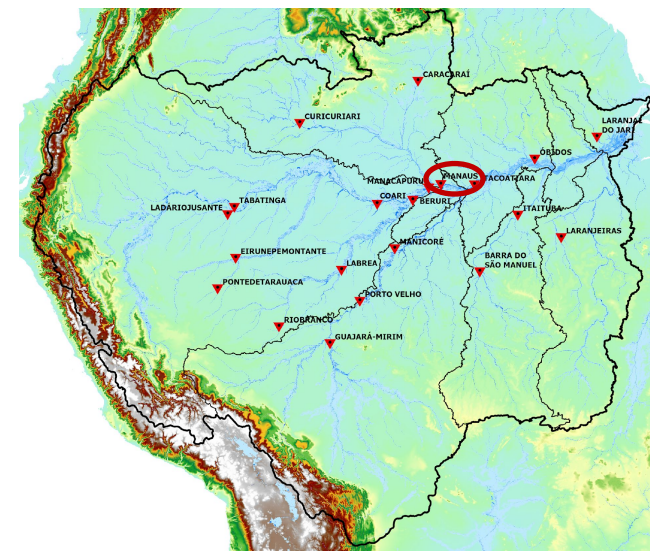
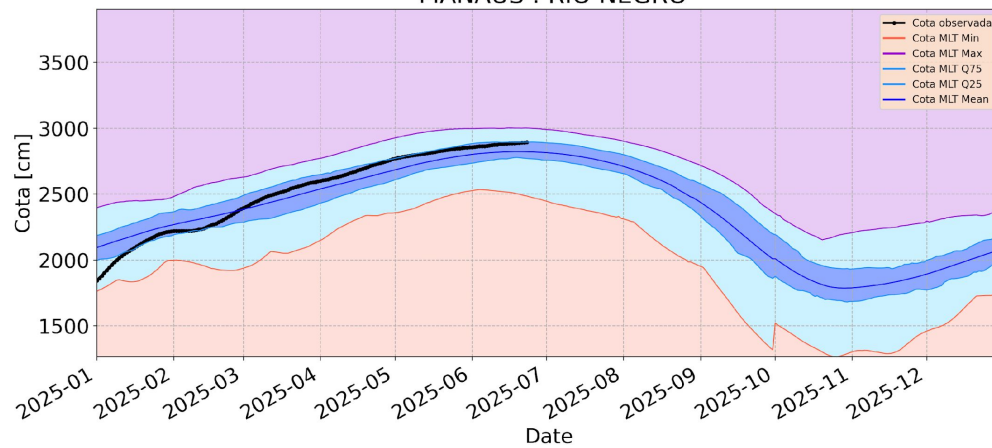


Model Run - 2025-06-23 MANACAPURU : RIO SOLIMÕES/AMAZONAS

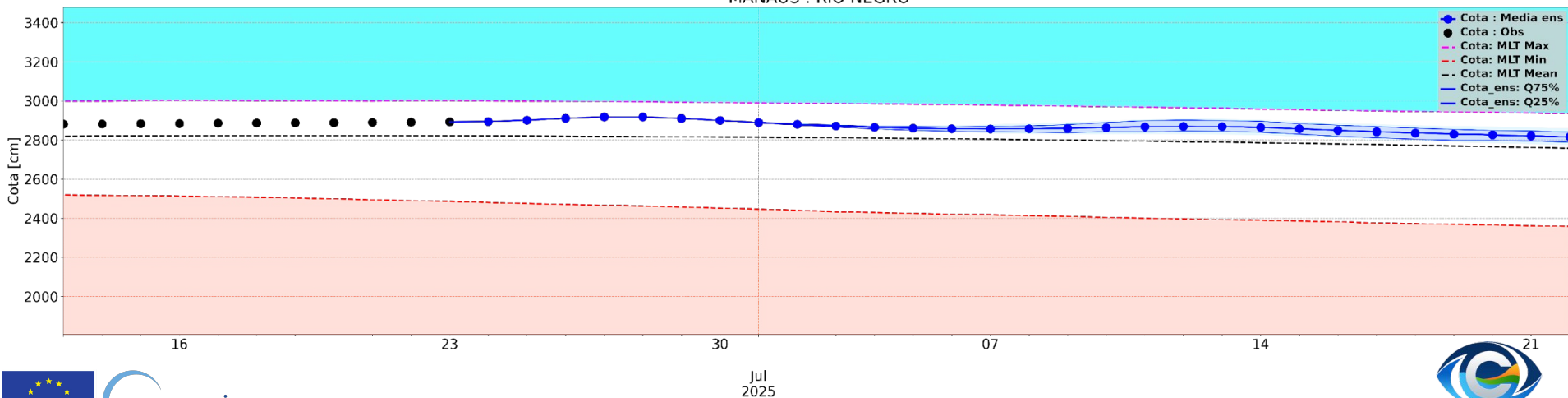


Dados observados: ANA

Cota - Climatologia MANAUS : RIO NEGRO



Model Run - 2025-06-23 MANAUS : RIO NEGRO

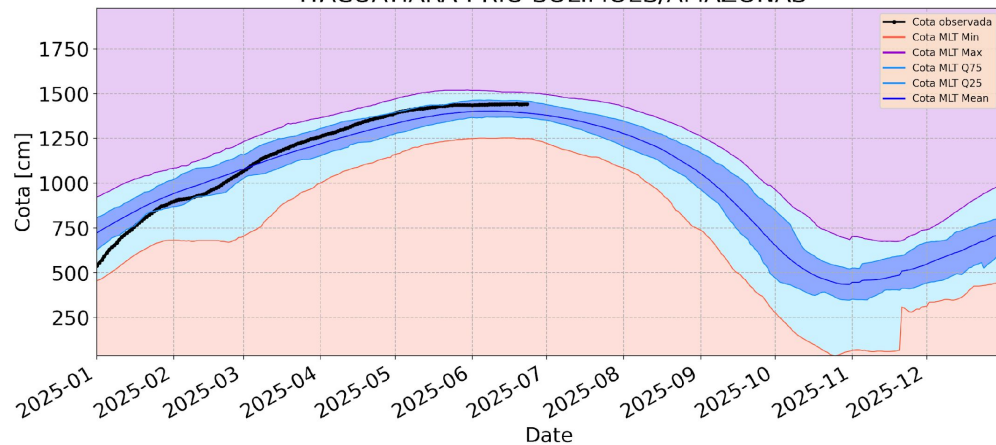


Jul
2025

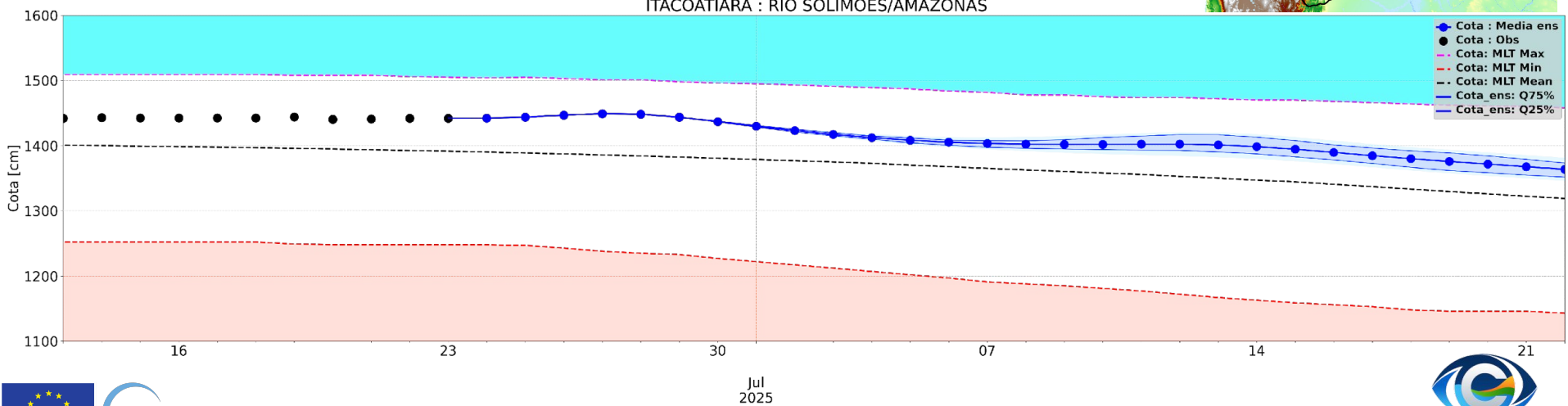
Dados observados: ANA



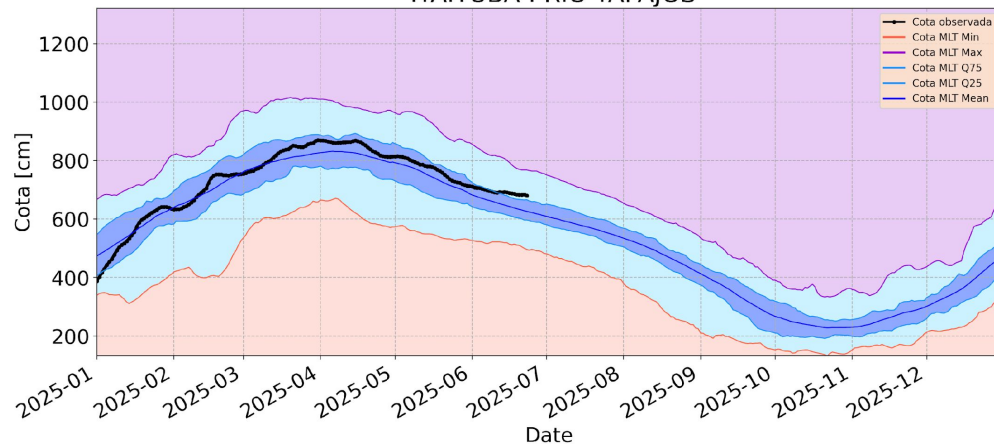
Cota - Climatologia ITACOATIARA : RIO SOLIMÕES/AMAZONAS



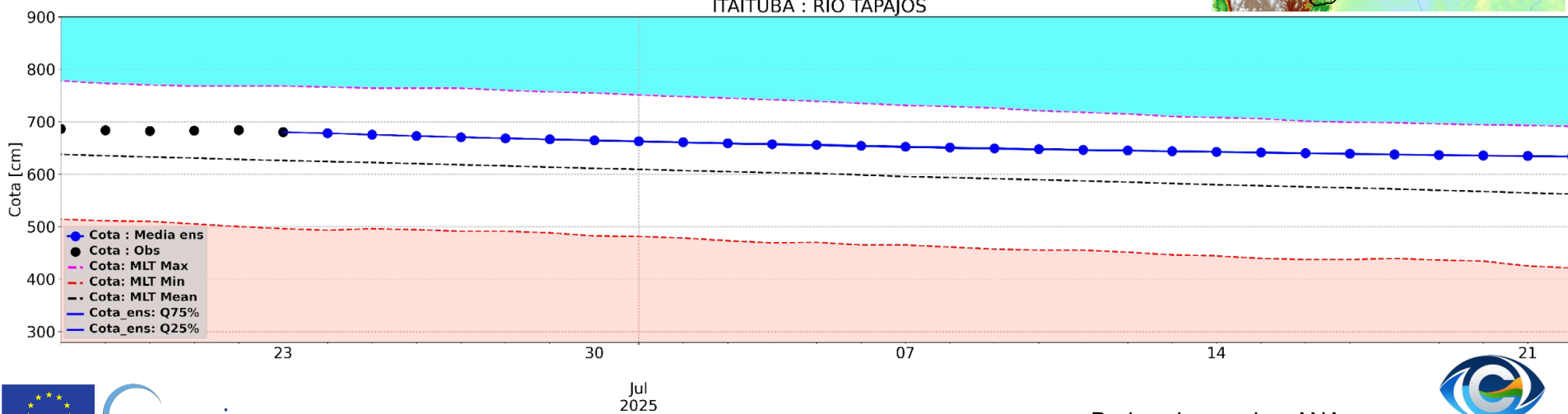
Model Run - 2025-06-23 ITACOATIARA : RIO SOLIMÕES/AMAZONAS



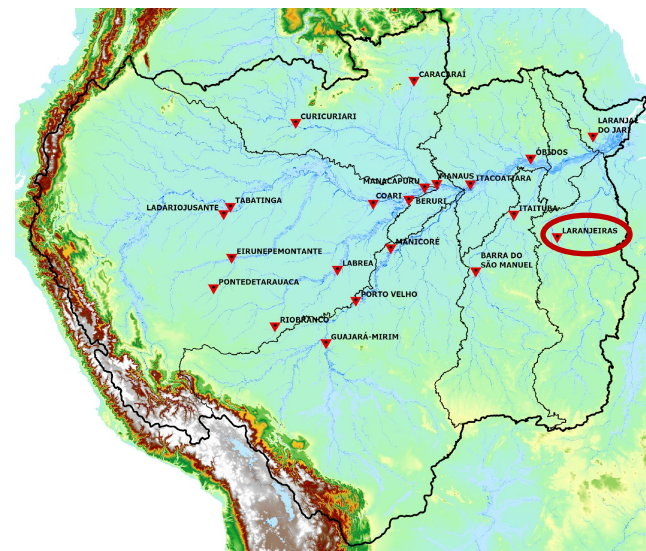
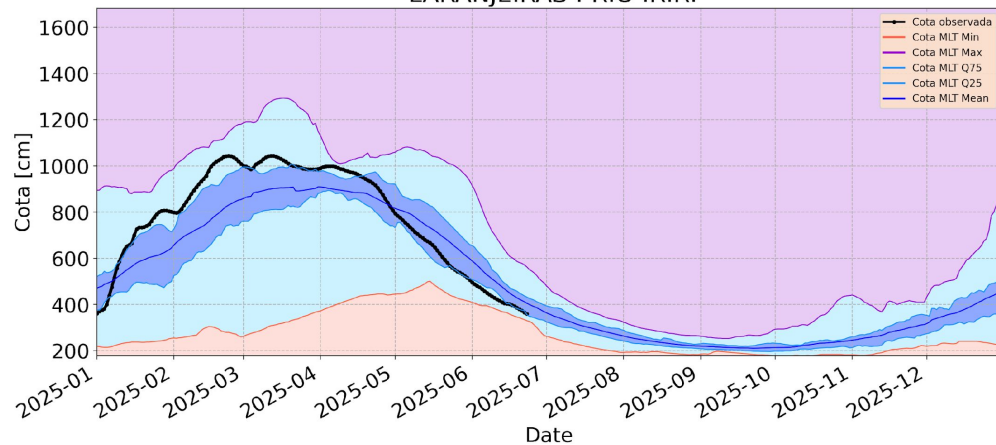
Cota - Climatologia ITAITUBA : RIO TAPAJOS



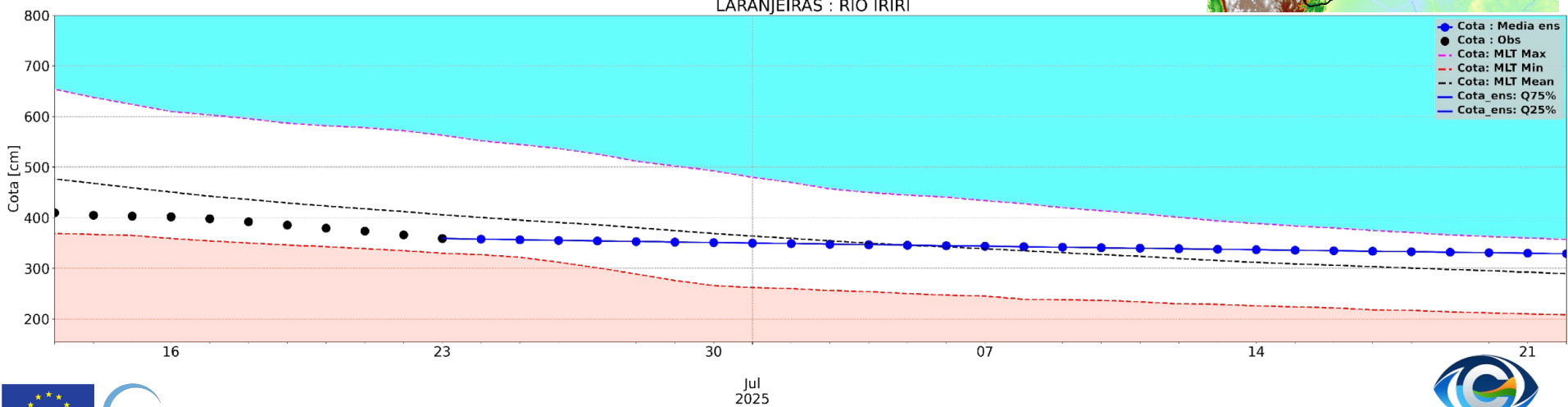
Model Run - 2025-06-23
ITAITUBA : RIO TAPAJOS



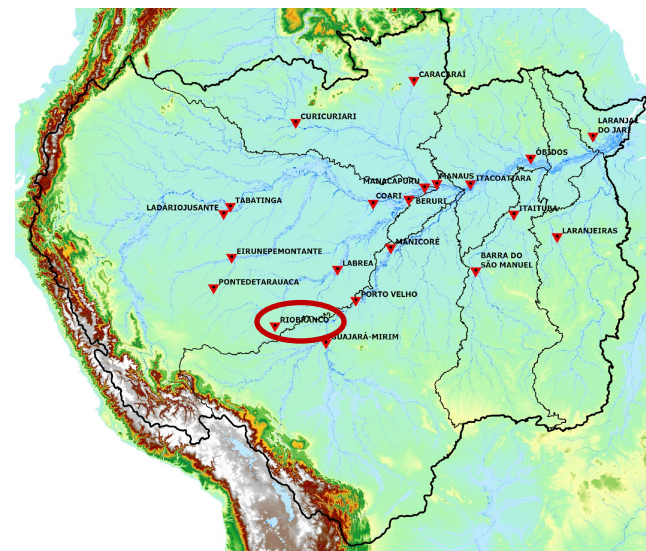
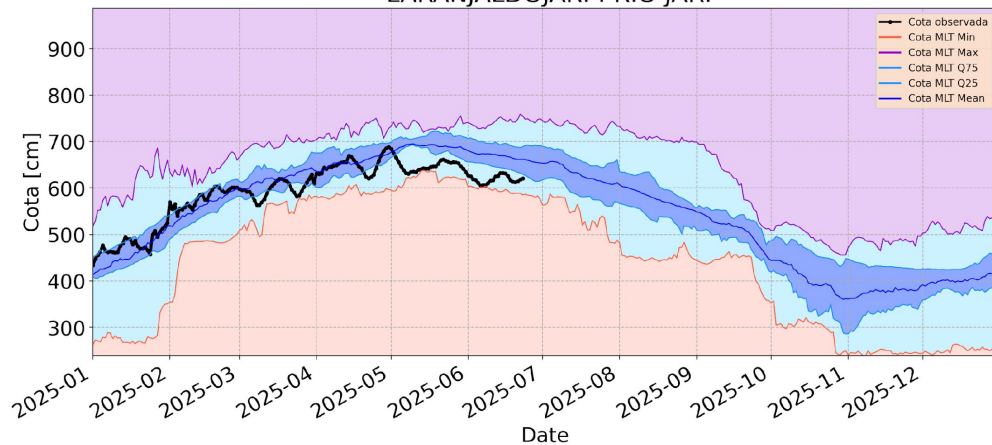
Cota - Climatologia LARANJEIRAS : RIO IRIRI



Model Run - 2025-06-23 LARANJEIRAS : RIO IRIRI



Cota - Climatologia LARANJALDOJARI : RIO JARI



Model Run - 2025-06-23 LARANJALDOJARI : RIO JARI

