



CEMADEN

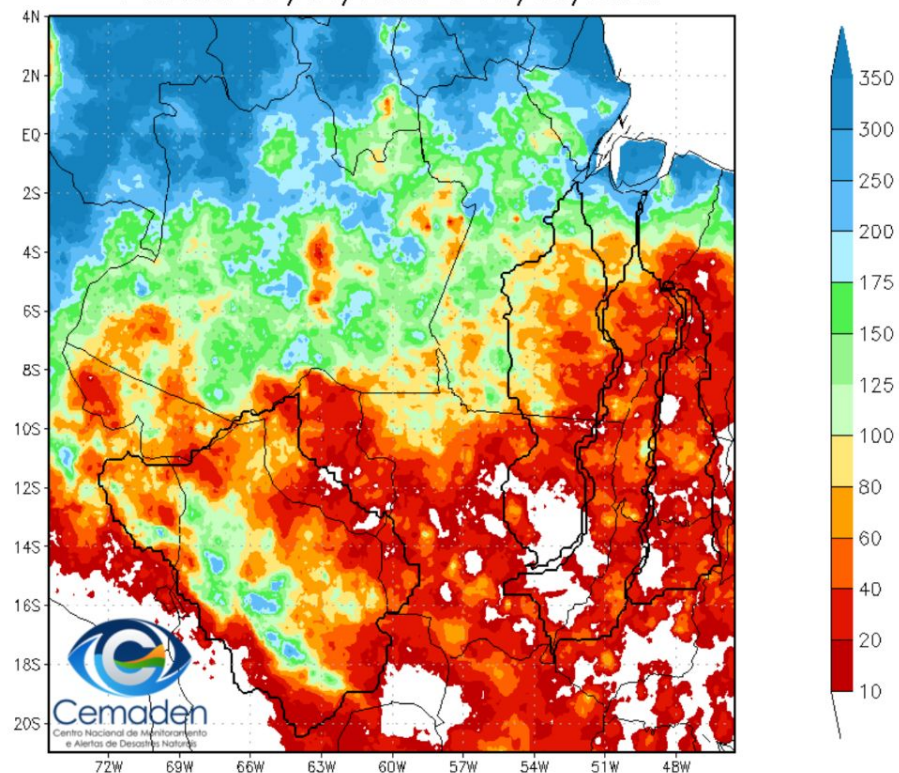
Centro Nacional de Monitoramento e
Alertas de Desastres Naturais

Sala de Crise da Região Norte

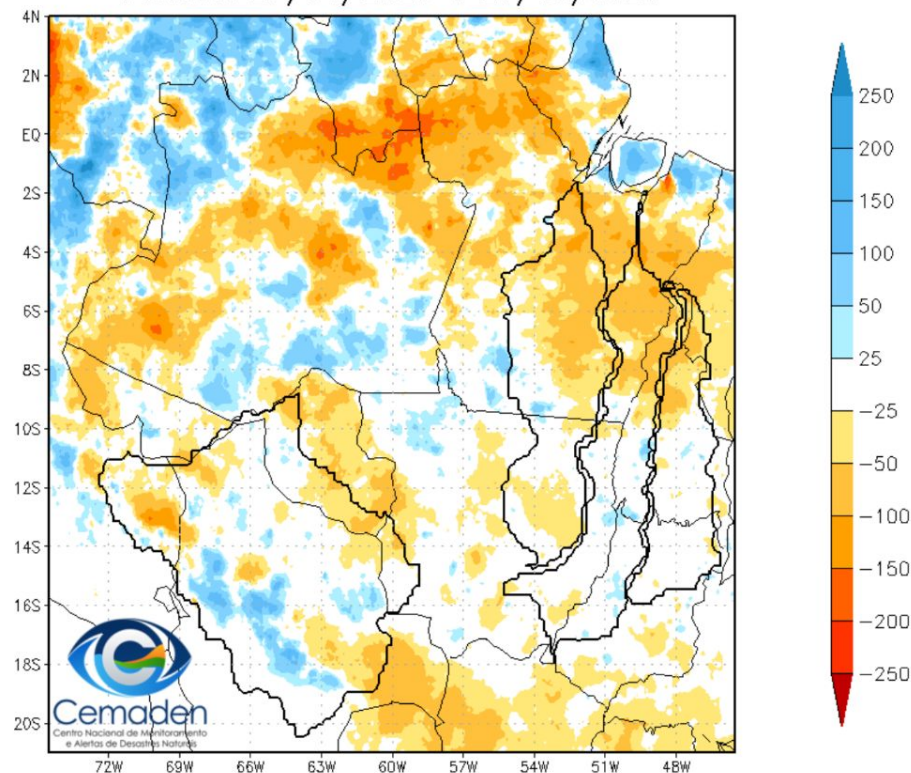
Maio de 2025

PRECIPITAÇÃO : ÚLTIMOS 30 DIAS

Precipitação Acumulada (mm) A.S.
Período: 27/04/2025 a 27/05/2025



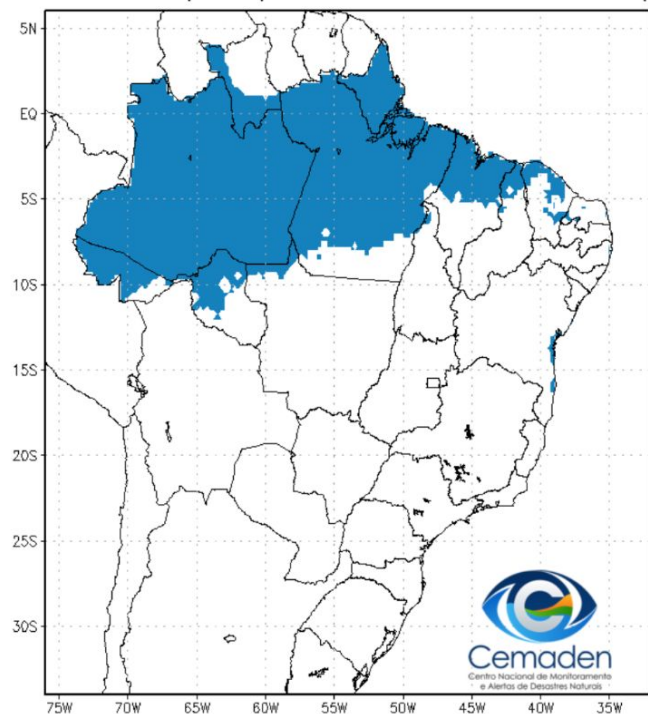
Anomalia de Precipitação (mm) A.S.
Período: 27/04/2025 a 27/05/2025



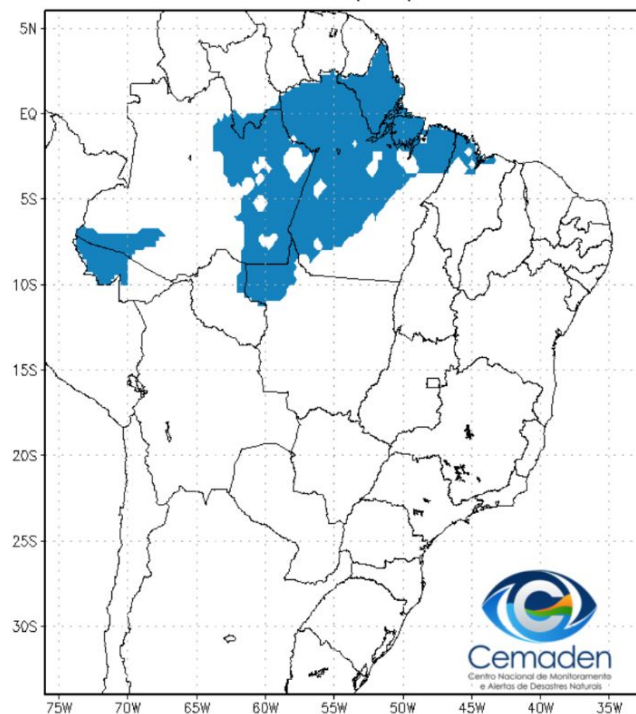
FONTE DOS DADOS: MERGE/INPE

ESTAÇÃO CHUVOSA:

Climatologia da Precipitação (1999–2024)
Inferior 2 mm/dia por 4 de 5 dias Período: 27/05



Precipitação Inferior 2 mm/dia por 4 de 5 dias
Período: 27/05/2025



FONTE DOS DADOS: MERGE/INPE

Monitoramento da situação da seca na Região Norte

MAIO/ 2025



MINISTÉRIO DA
CIÊNCIA, TECNOLOGIA
E INOVAÇÃO

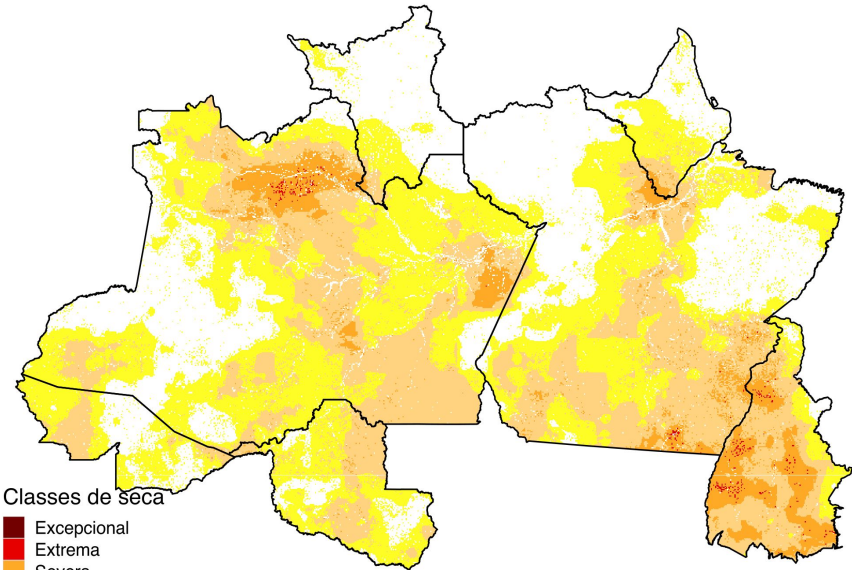


ÍNDICE INTEGRADO DE SECA - IIS

(SPI + VHI + AUS): ABRIL/2024

IIS-03

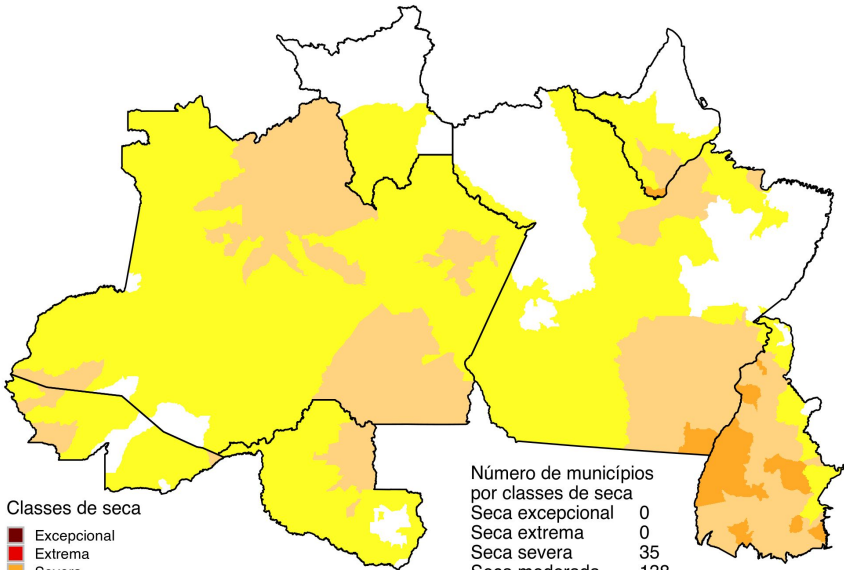
IIS-06



Classes de seca

- Exceptional
- Extrema
- Severa
- Moderada
- Fraca
- Condição normal

Abril 2025
Índice Integrado de Seca (SPI3, VHI, US)
Fonte: Cemaden/MCTI.



Classes de seca

- Exceptional
- Extrema
- Severa
- Moderada
- Fraca
- Normal

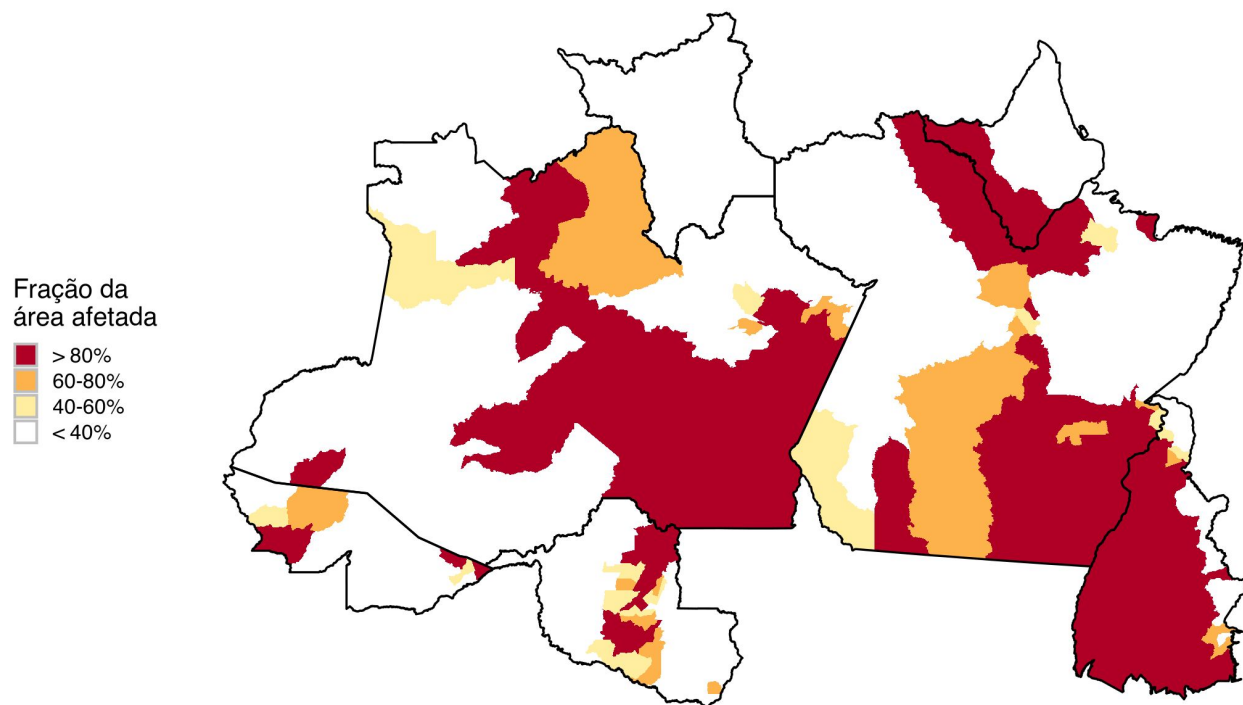
Número de municípios
por classes de seca

Seca excepcional	0
Seca extrema	0
Seca severa	35
Seca moderada	138
Seca fraca	163

Abril 2025
Índice Integrado de Seca (SPI6, VHI, US)
Fonte: Cemaden/MCTI.

ÁREAS DE PASTAGENS E AGRÍCOLAS AFETADAS PELA SECA

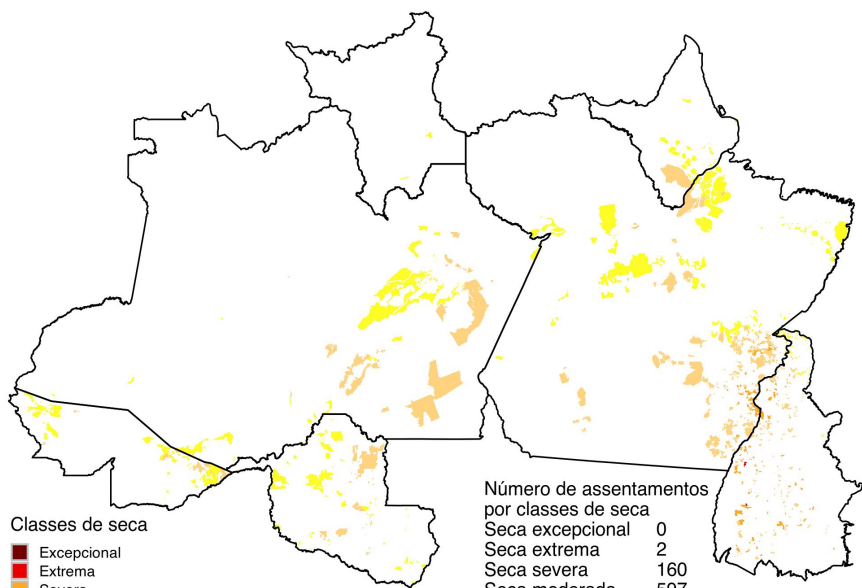
 Cemaden
Secas



Abril 2025
Fração da área agroprodutiva afetada pela seca
Fonte: Cemaden/MCTI.

ÍNDICE INTEGRADO DE SECA (IIS-03)

PROJETOS DE ASSENTAMENTO



Classes de seca

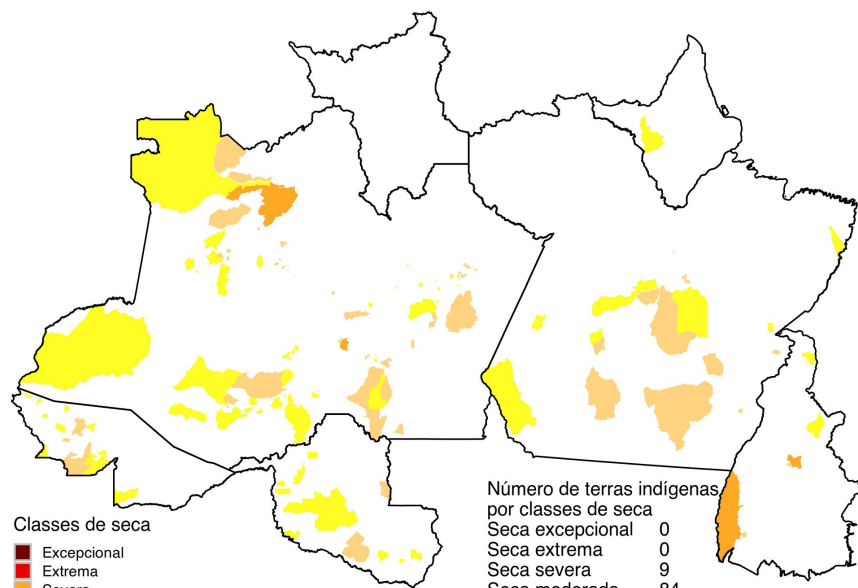
- Excepcional
- Extrema
- Severa
- Moderada
- Fraca
- Normal

Número de assentamentos
por classes de seca

Seca excepcional	0
Seca extrema	2
Seca severa	160
Seca moderada	597
Seca fraca	513

Abril 2025
Índice Integrado de Seca em Projetos de Assentamento (SPI3, VHI3, US3)
Fonte: Cemaden/MCTI.

TERRAS INDÍGENAS



Classes de seca

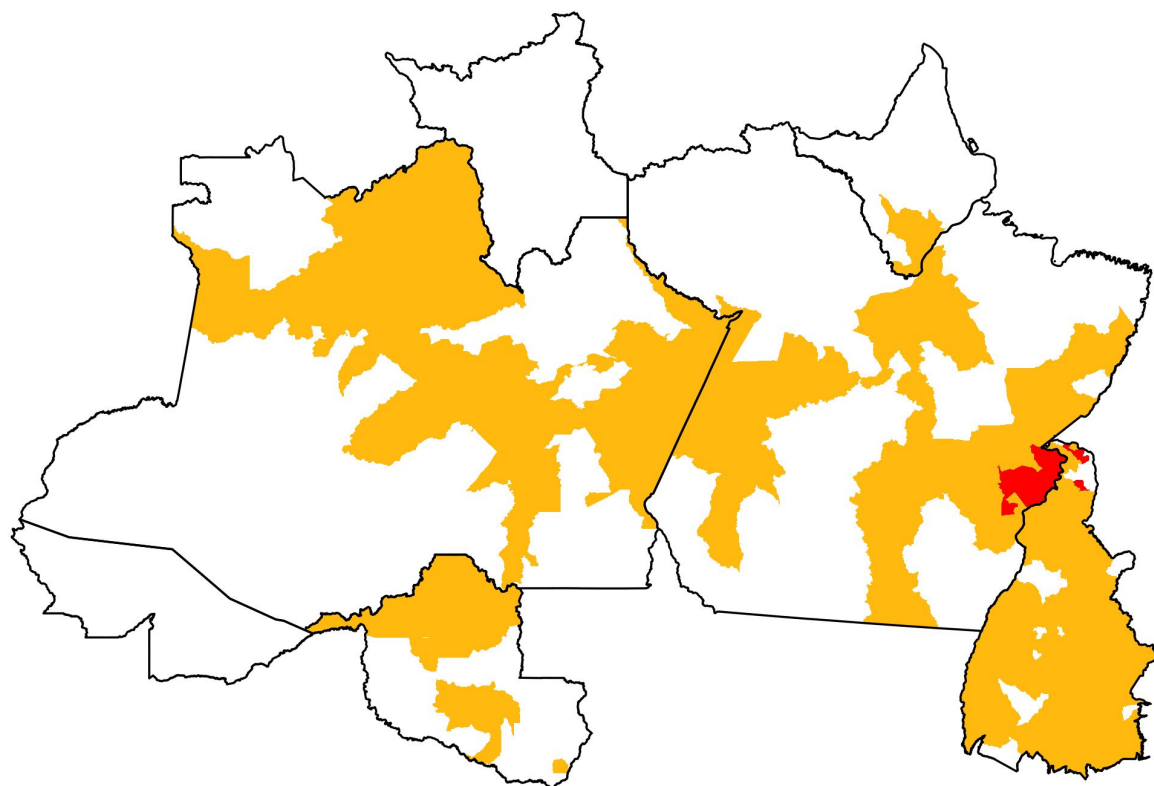
- Excepcional
- Extrema
- Severa
- Moderada
- Fraca
- Normal

Número de terras indígenas
por classes de seca

Seca excepcional	0
Seca extrema	0
Seca severa	9
Seca moderada	84
Seca fraca	96


Abril 2025
Índice Integrado de Seca em Terras Indígenas (SPI3, VHI, US)
Fonte: Cemaden/MCTI.


PROGRESSÃO INCREMENTAL DAS CONDIÇÕES DE SECA (PICS)



Alerta de Seca

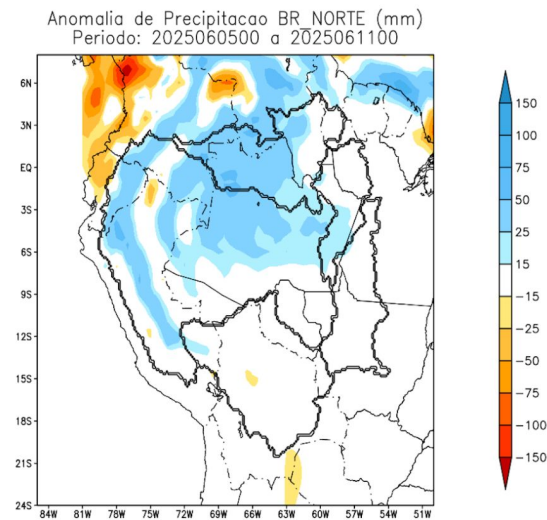
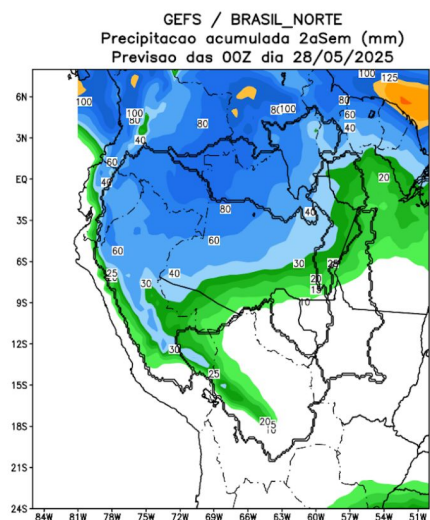
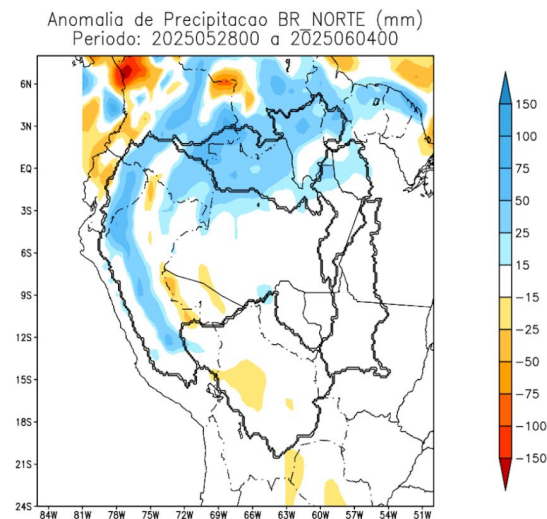
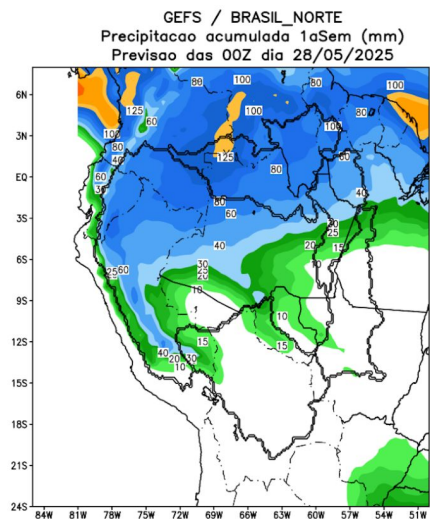
Condição normal

 Atenção - déficit de chuva e umidade do solo

 Alerta - déficit de chuva e stress vegetativo

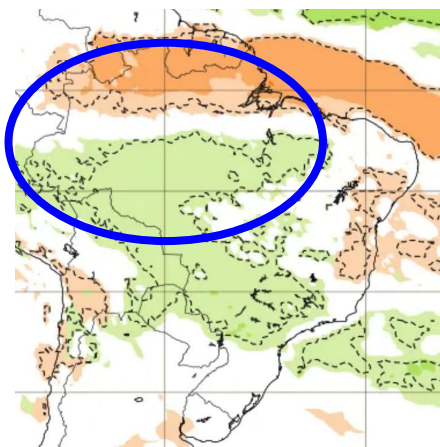
Abril 2025
Propagação Incremental das Condições de Seca (PICS)
Fonte: Cemaden/MCTI.

Previsão de chuva próximas duas semanas



Previsão de chuva para 3a e 4a semanas

16-22 junho

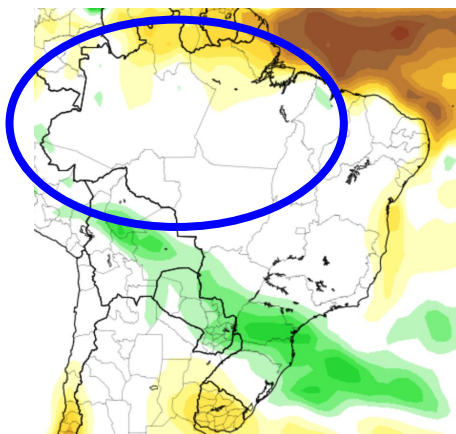


Modelo
Europeu

23-29 junho

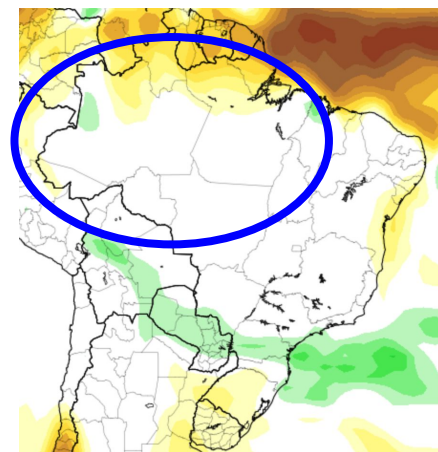


17-23 junho



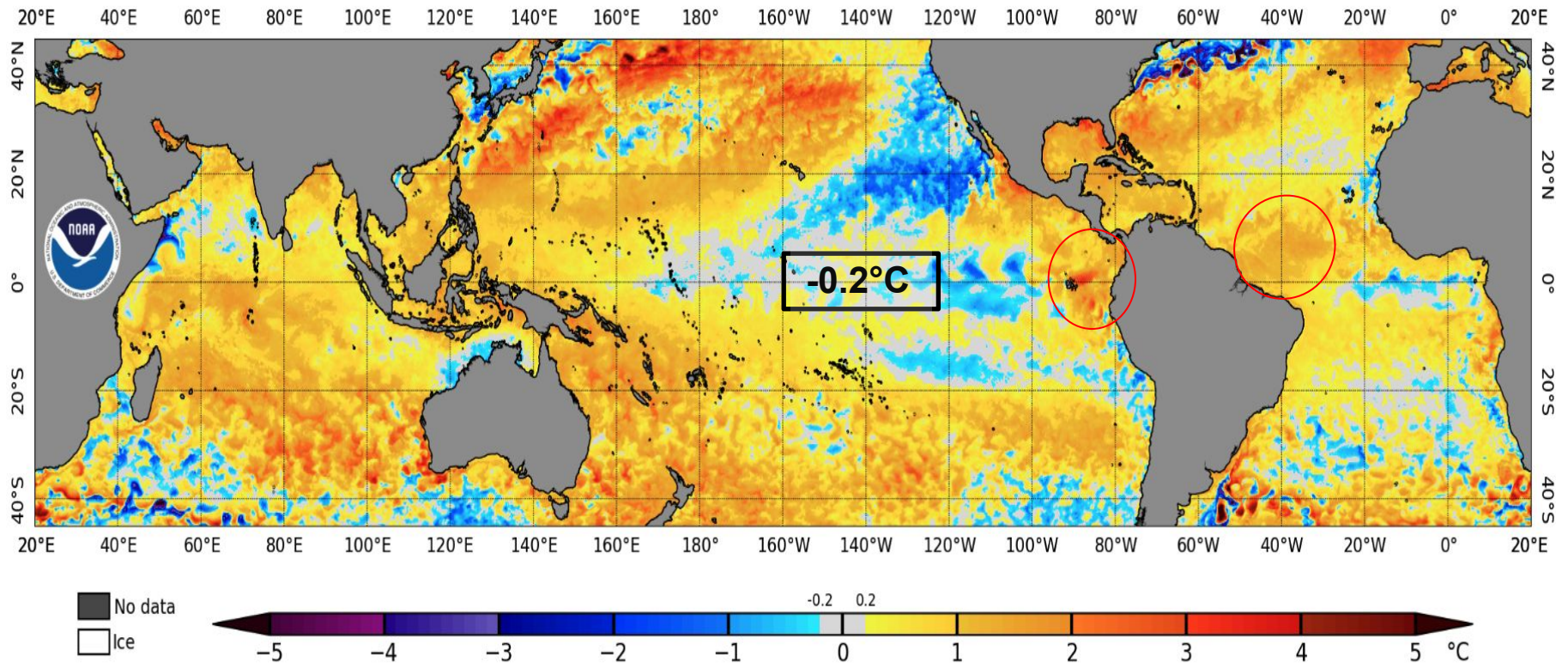
Modelo
Americano

24-30 junho

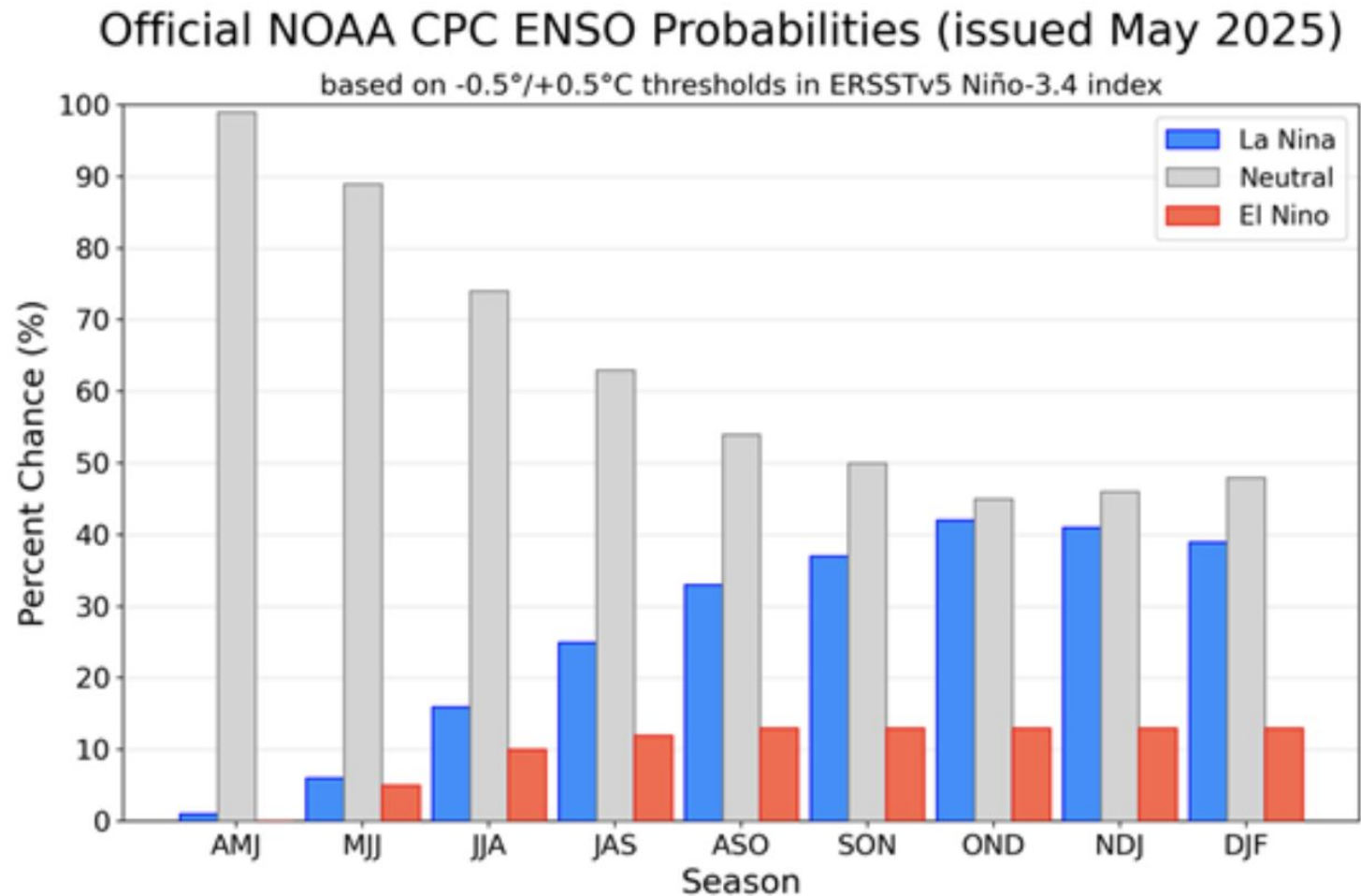


Status Atual: **La Niña Watch**

NOAA Coral Reef Watch Daily 5km SST Anomalies (v3.1) 26 May 2025

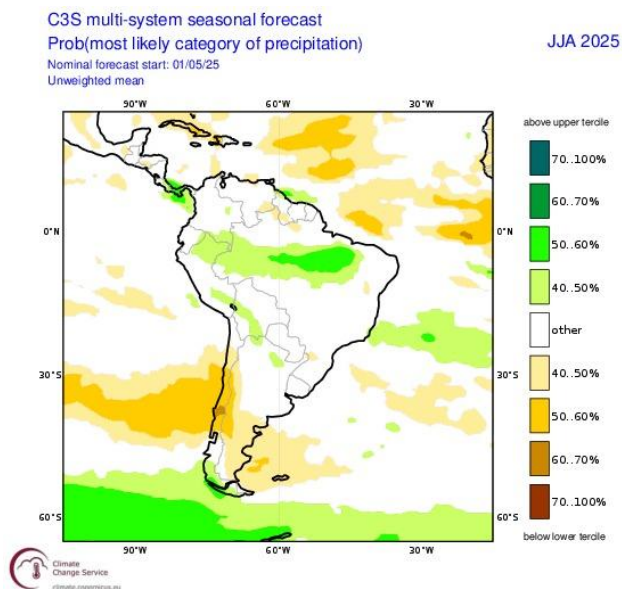


Previsão do “ENSO”

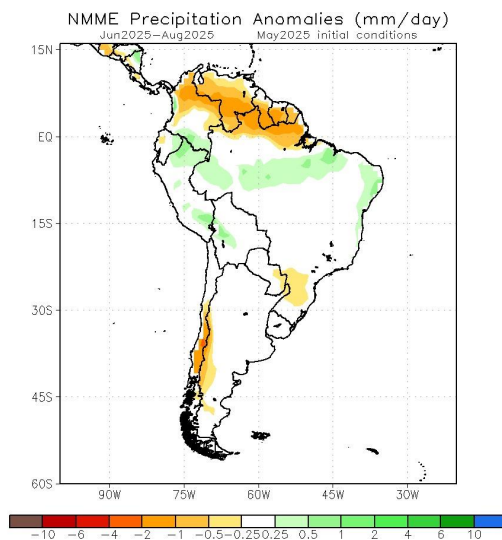


Previsão Sazonal de Chuva Multi-Modelo

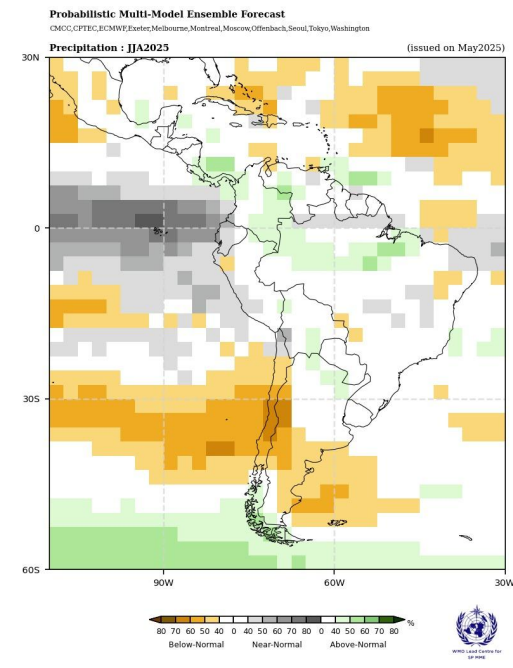
Junho-Julho-Agosto



Modelos Europeus



Modelos Norte Americanos

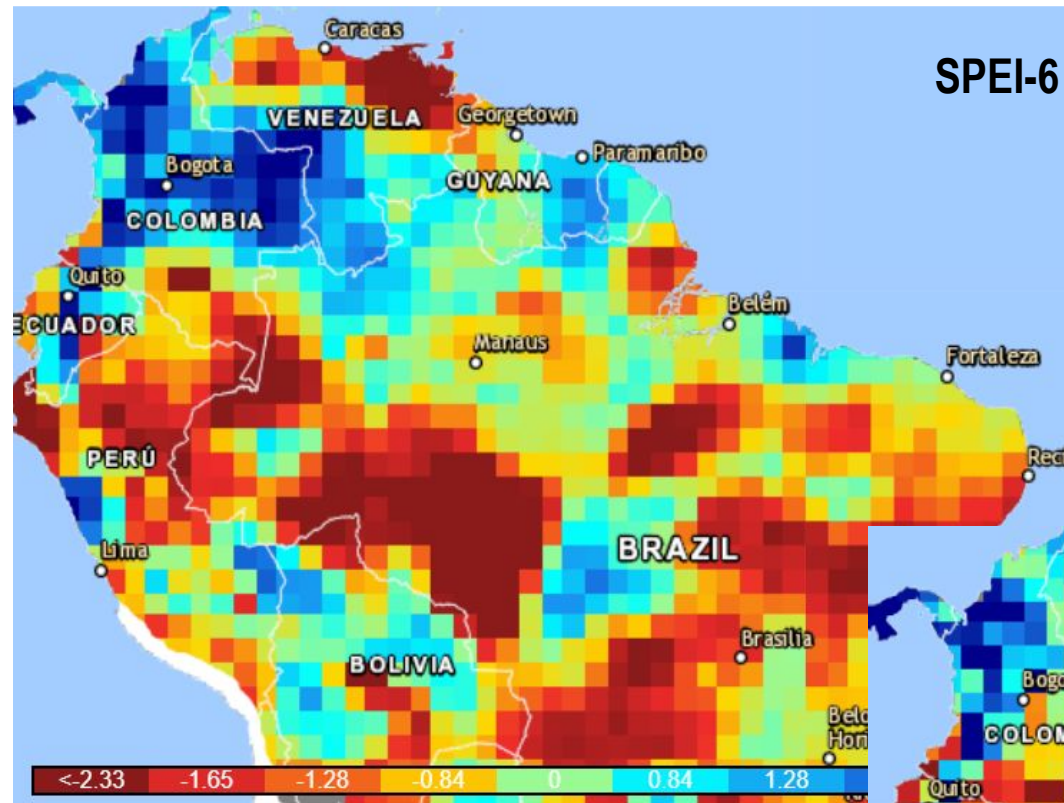


Modelos da WMO

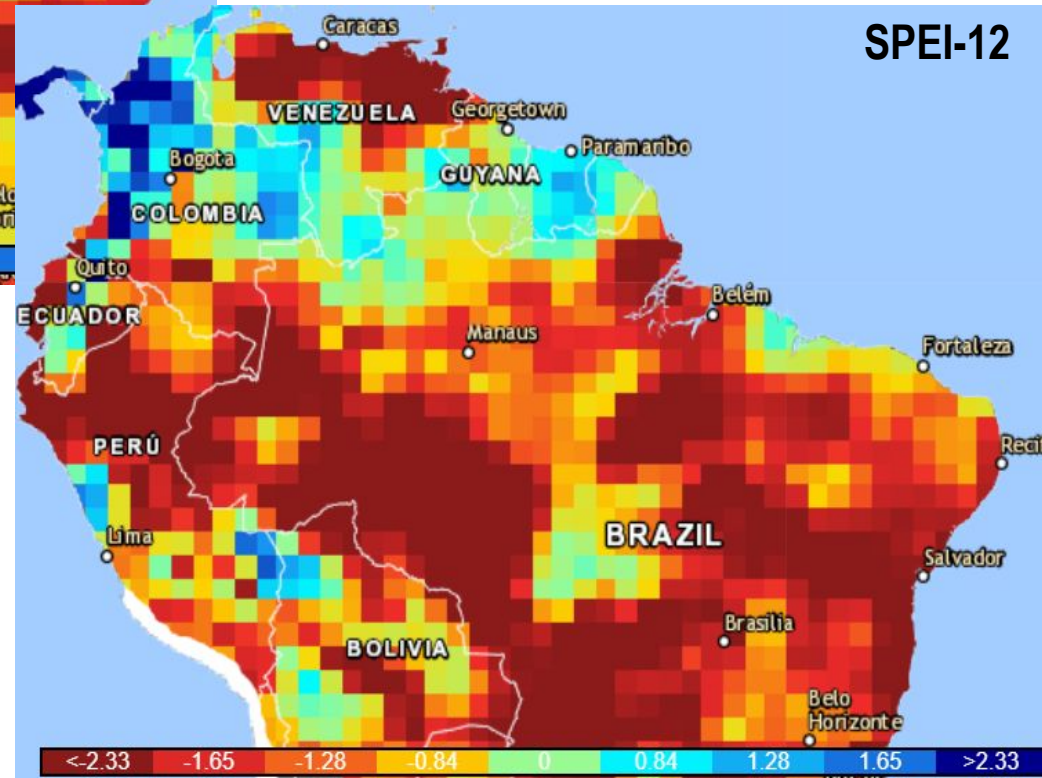
Índice Padronizado de Precipitação – Evapotranspiração Potencial (SPEI)

SPEI-6

Abril/2025



SPEI-12

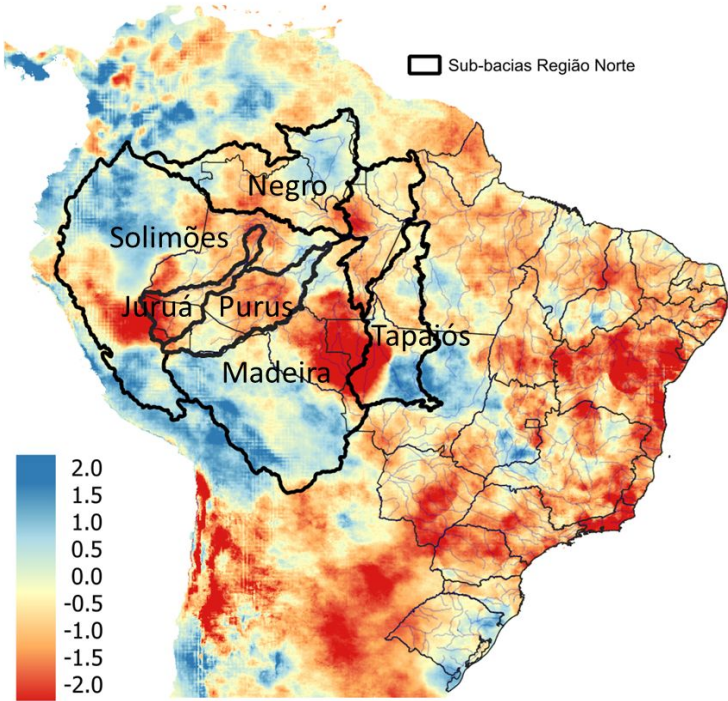


Situação dos rios das regiões Norte e Centro-Oeste no mês de Maio (até dia 26), em comparação a Média de Longo Termo (MLT).

SPI-12 Abril 2025

Situação Parcial em MAIO de 2025

Estação	Rio	MLT Maio	Obs. Maio	Nível em relação MLT
		Nível em metros		
Barcelos	Negro	6,90	7,56	+0,66
Porto de Manaus	Negro	26,99	28,11	+1,12
Manacapuru	Solimões	18,16	18,92	+0,76
Porto Velho	Madeira	12,43	13,73	+1,30
Itamarati	Juruá	18,90	19,09	+0,19
Beruri	Purus	19,76	20,30	+0,54
Santarém	Tapajós	6,35	7,40	+1,05
Óbidos	Amazonas	7,20	7,73	+0,53
Itacoatiara	Amazonas	17,07	14,18	-2,89

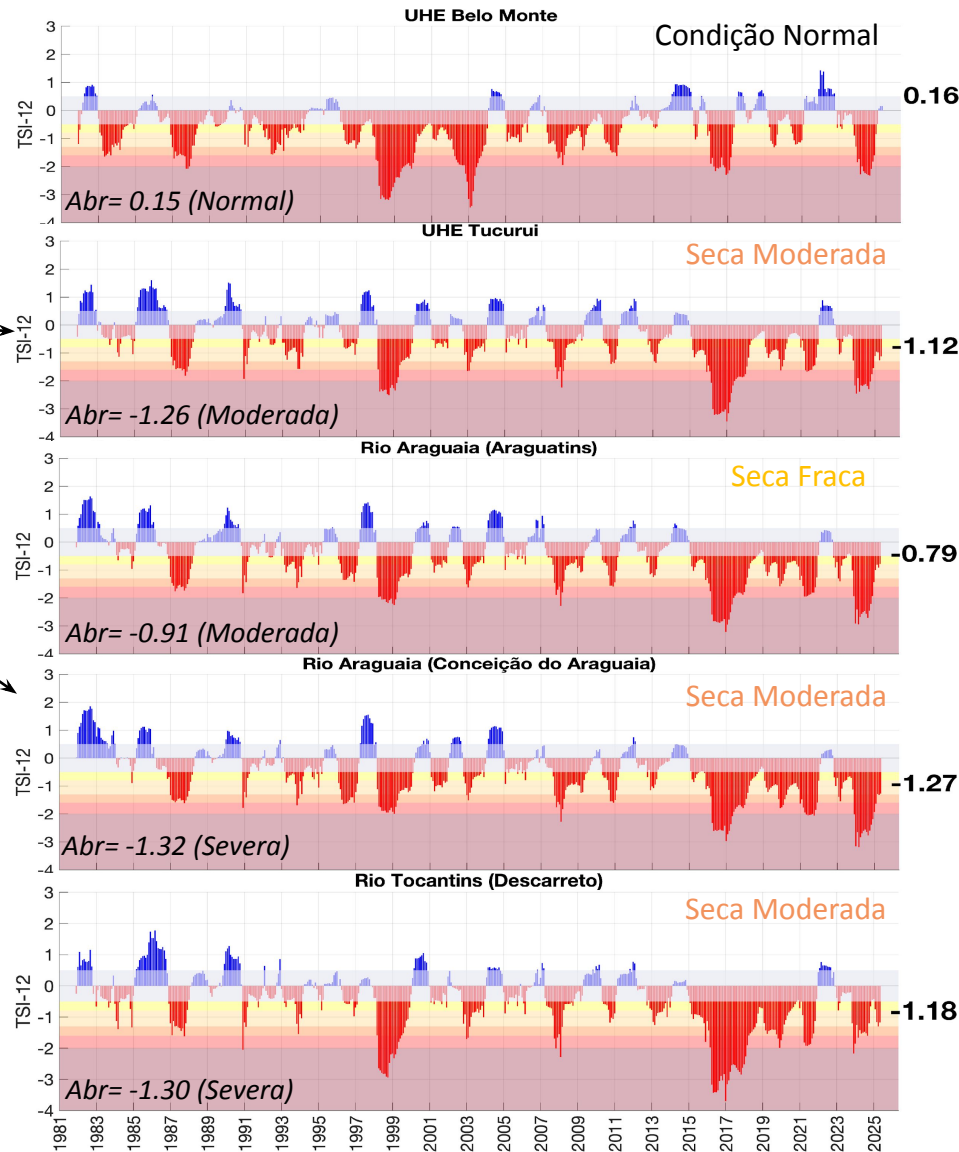
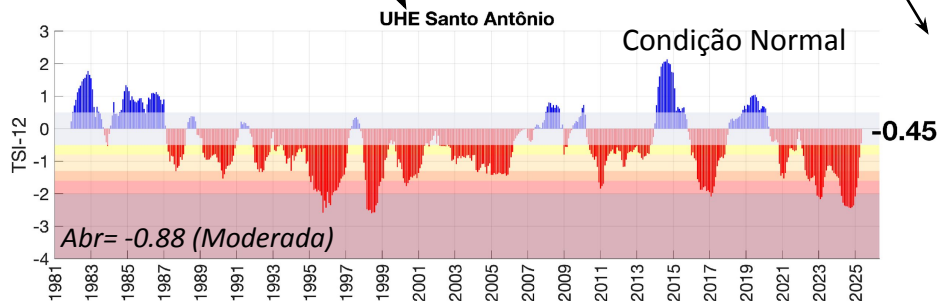
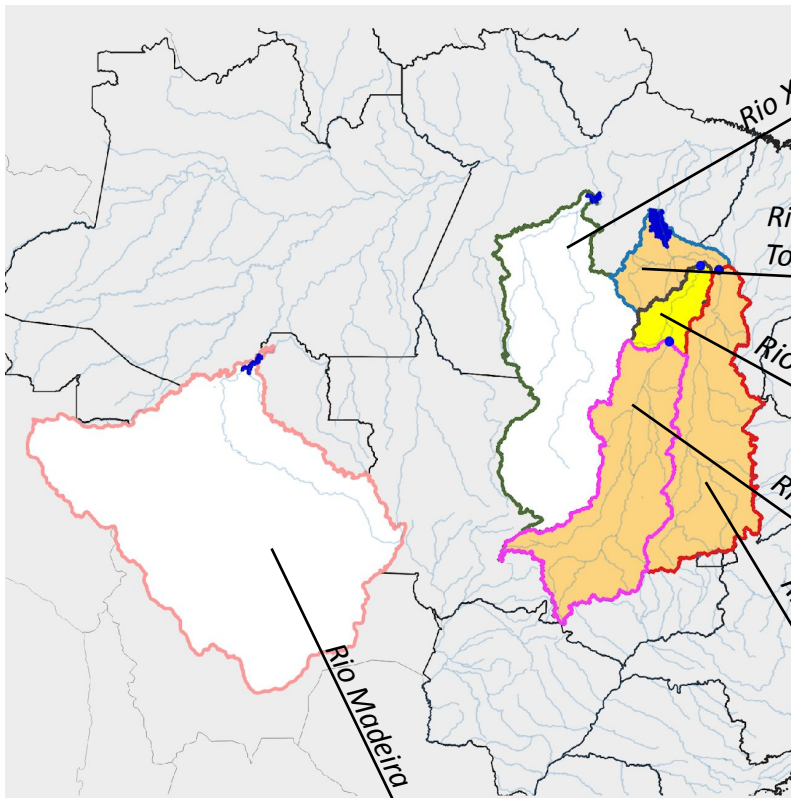


Fonte dos dados: Precipitação (CHIRPS) e Cotas (ANA). Estimativa SPI e Tabelas e Gráficos: CEMADEN

Índice Bivariado de Seca (Precipitação-Cota/Vazão) - TSI

Escala de Longo Prazo: TSI-12 meses

Maio/2025

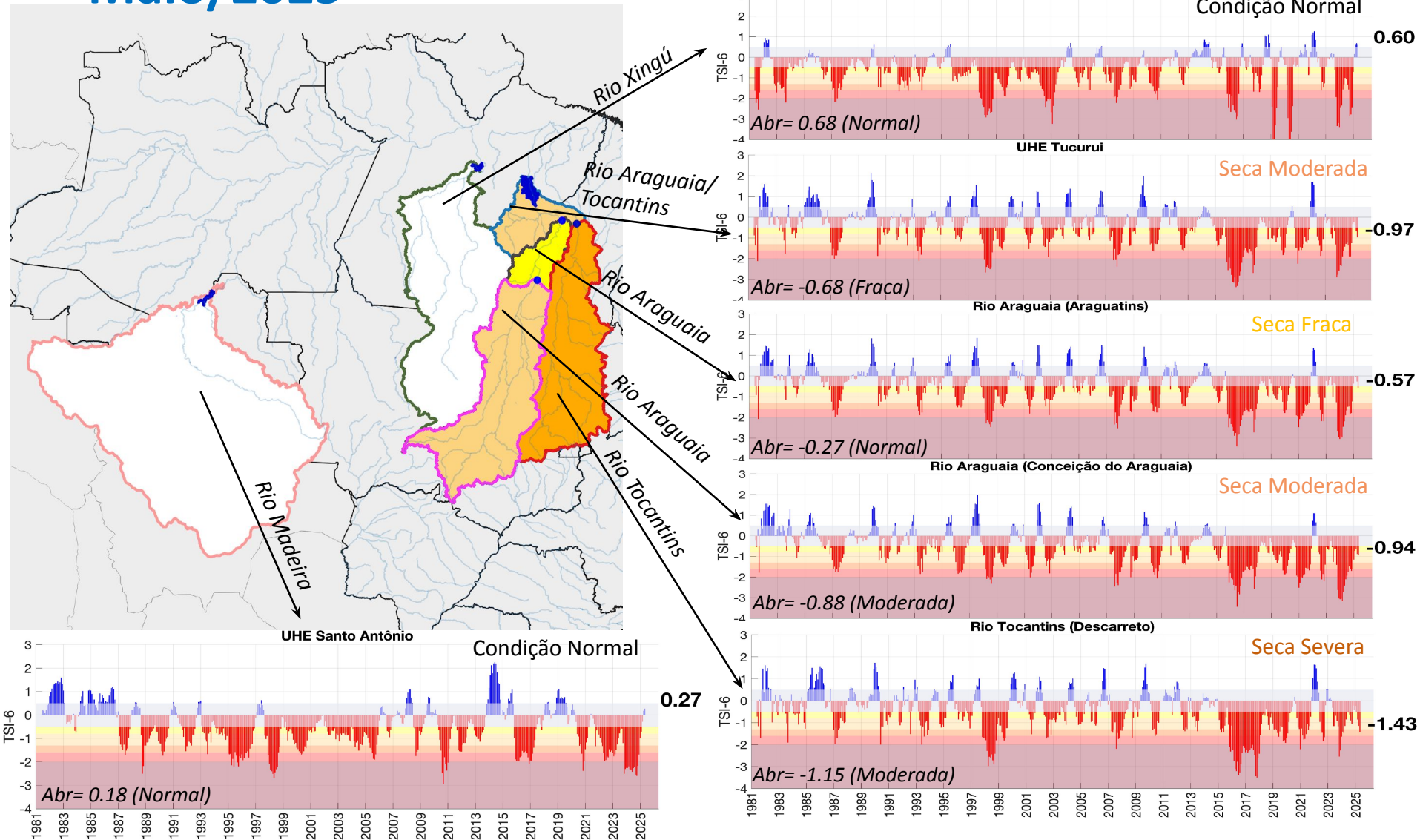


Fonte dos dados: Precipitação (Cemaden/INMET) e Vazão (ONS/ANA) - Jan/1981-Maio/2025. Estimativa TSI e Gráficos: CEMADEN

Índice Bivariado de Seca (Precipitação-Cota/Vazão) - TSI

Escala de Curto Prazo: **TSI-6 meses**

Maio/2025



Fonte dos dados: Precipitação (Cemaden/INMET) e Vazão (ONS/ANA) - Jan/1981-Maio/2025. Estimativa TSI e Gráficos: CEMADEN

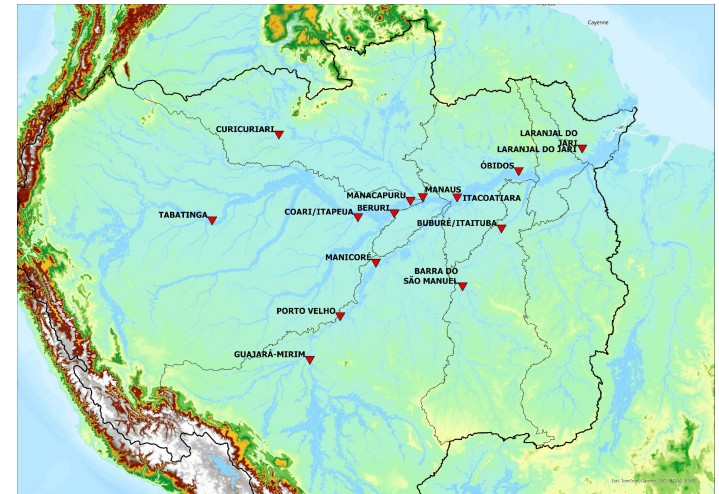
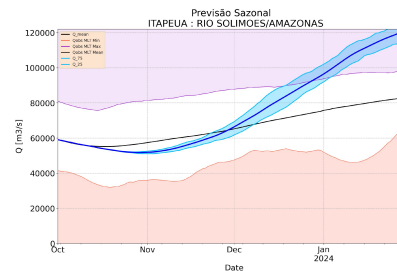
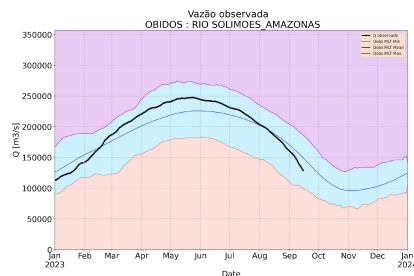
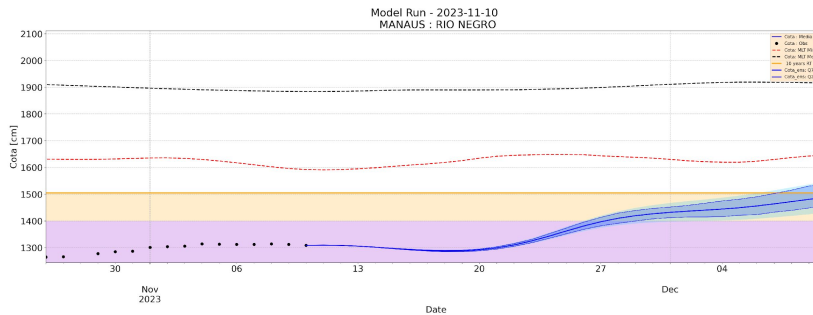
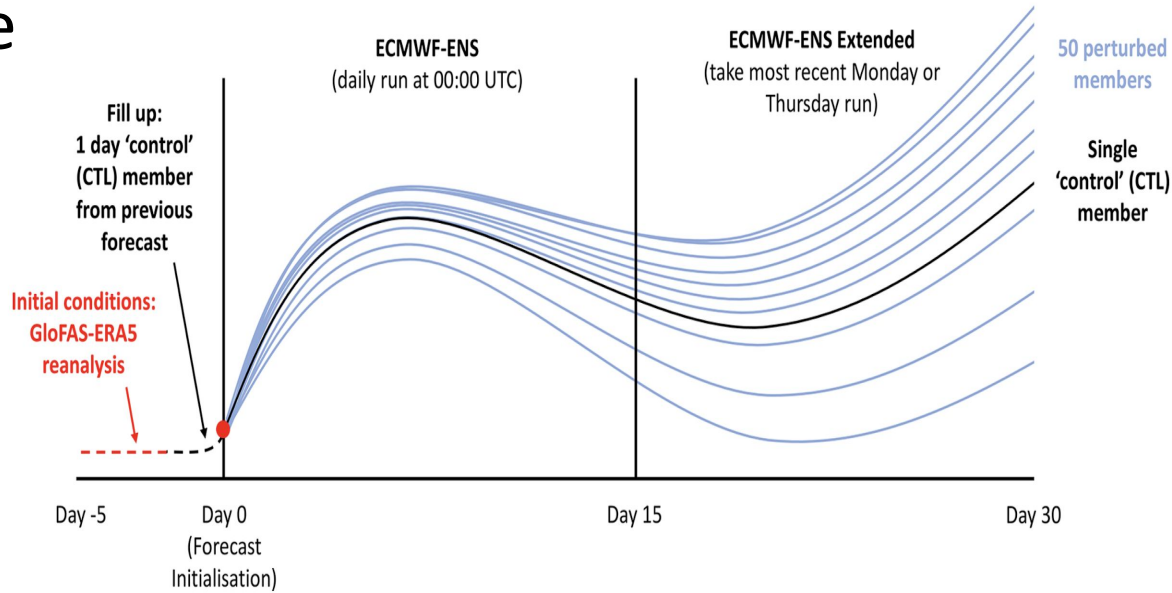
Previsões Hidrológicas para Bacias da Região Norte

Márcio A. E. Moraes
Pesquisador Titular



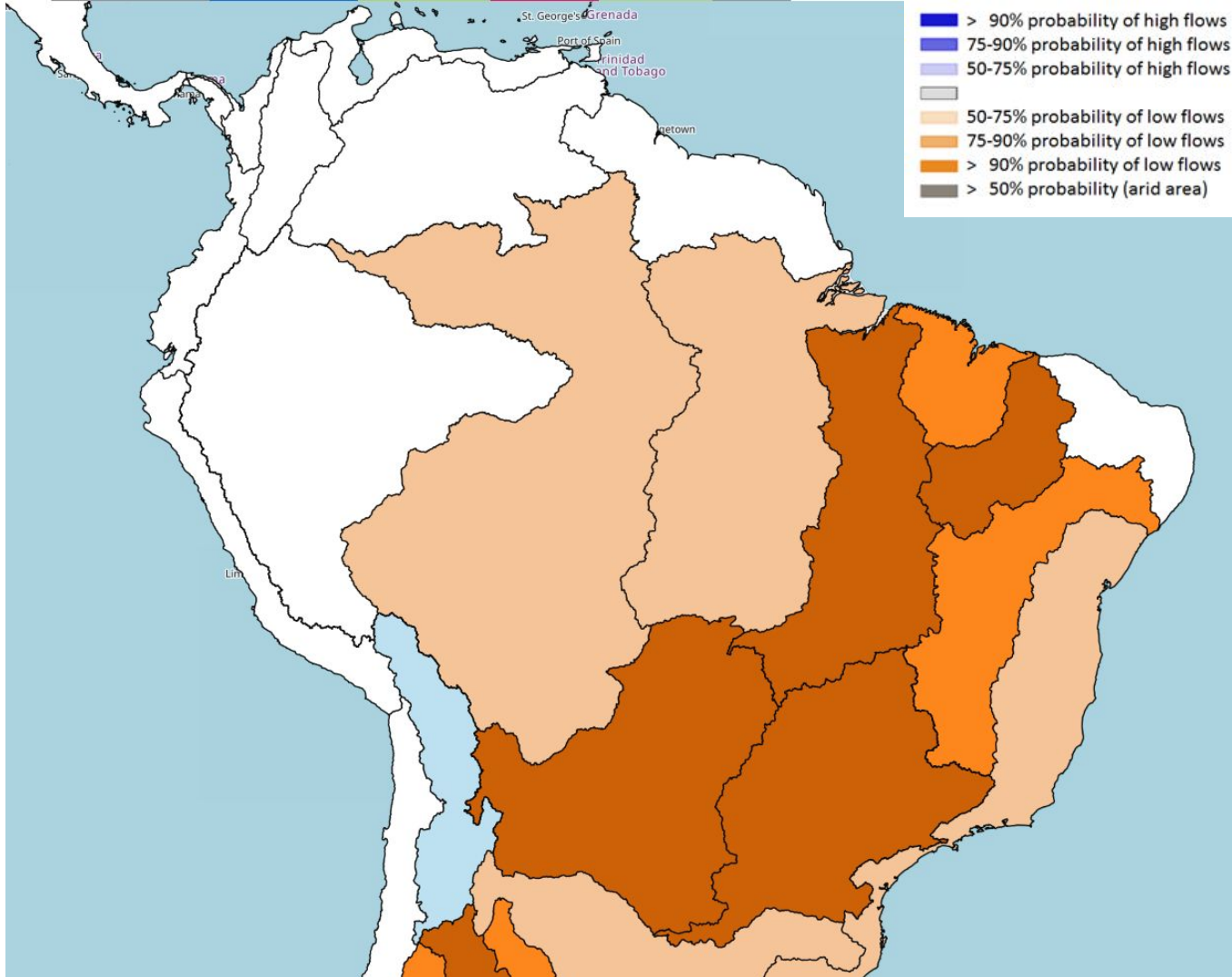
28 de maio de
2025

Previsão de vazão GloFAS 30-dias



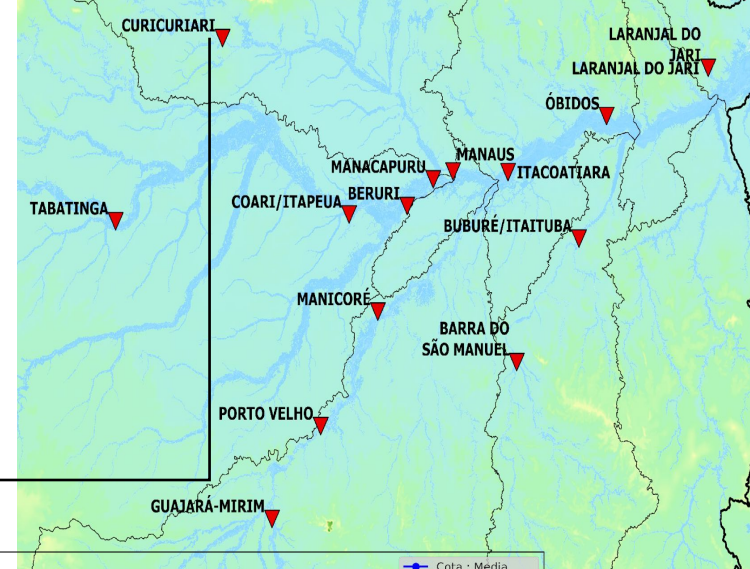
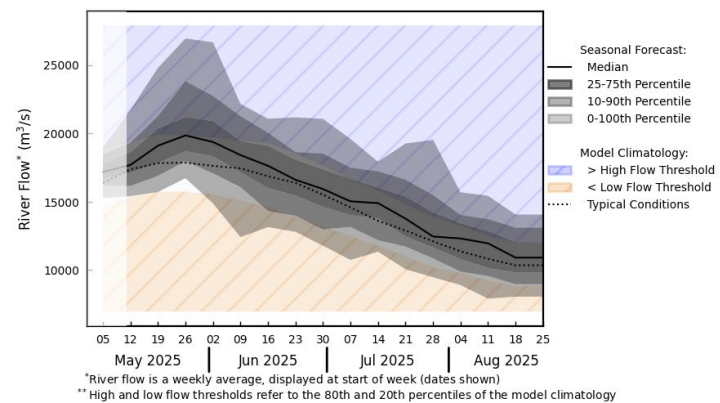
Gráficos e análises: CEMADEN
Previsões: GloFAS

Previsão Sazonal MJJA

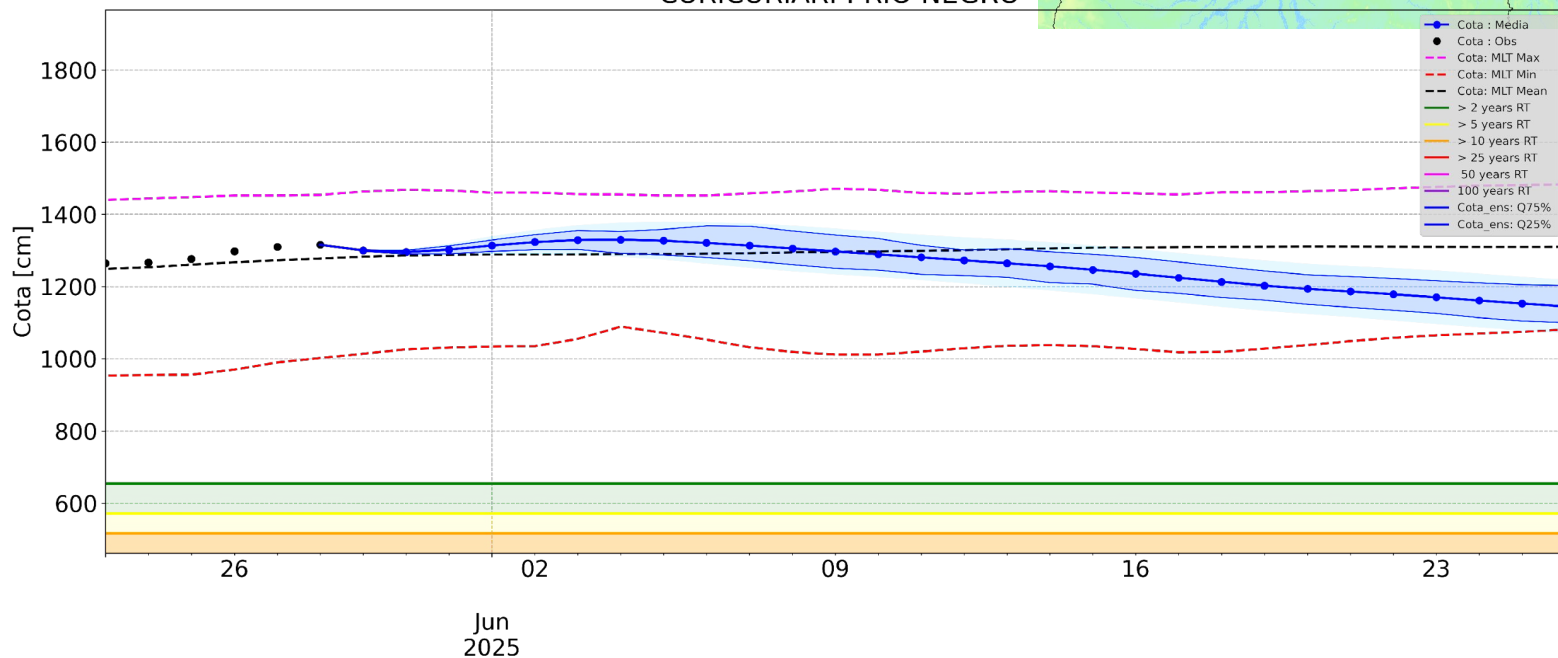


Previsão Sazonal MJJA

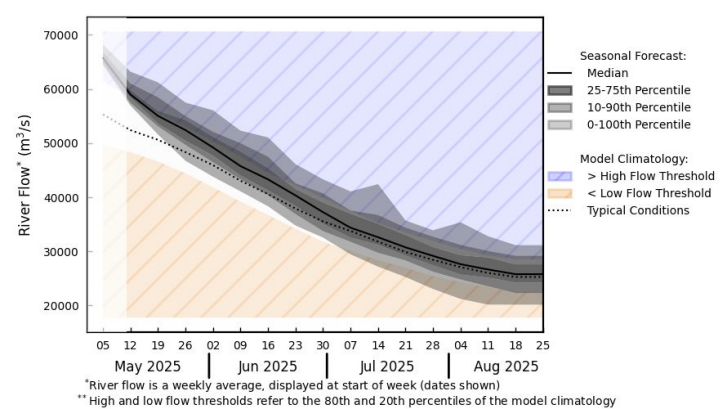




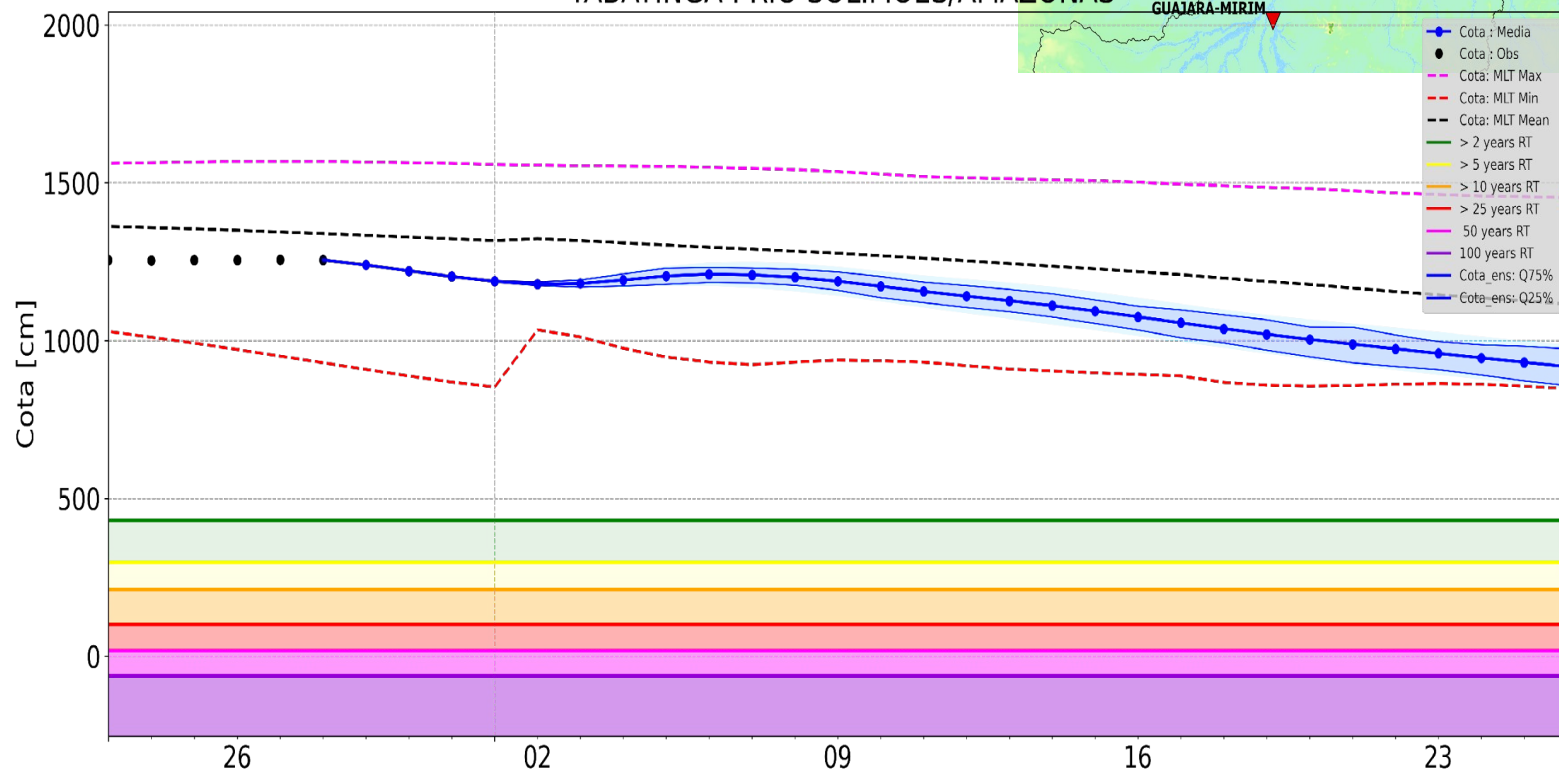
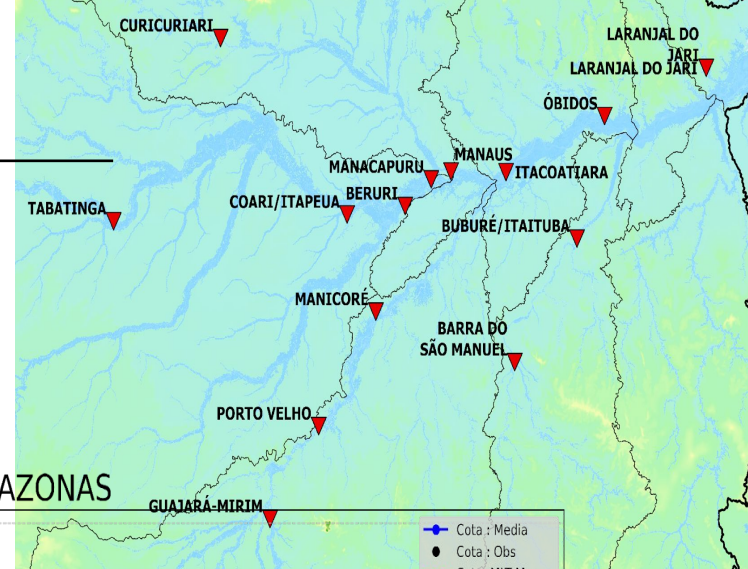
Model Run - 2025-05-28
CURICURIARI : RIO NEGRO

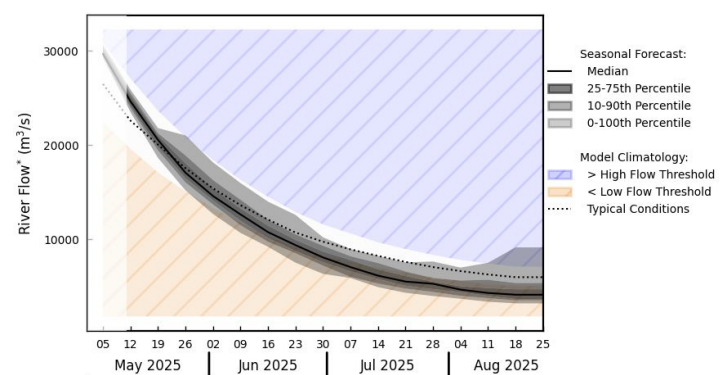


Dados
observados: ANA



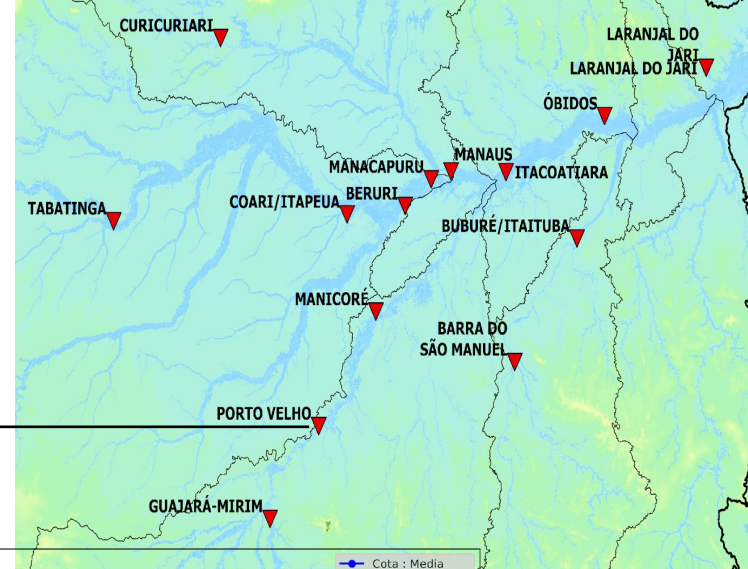
Model Run - 2025-05-28
TABATINGA : RIO SOLIMOE/AMAZONAS



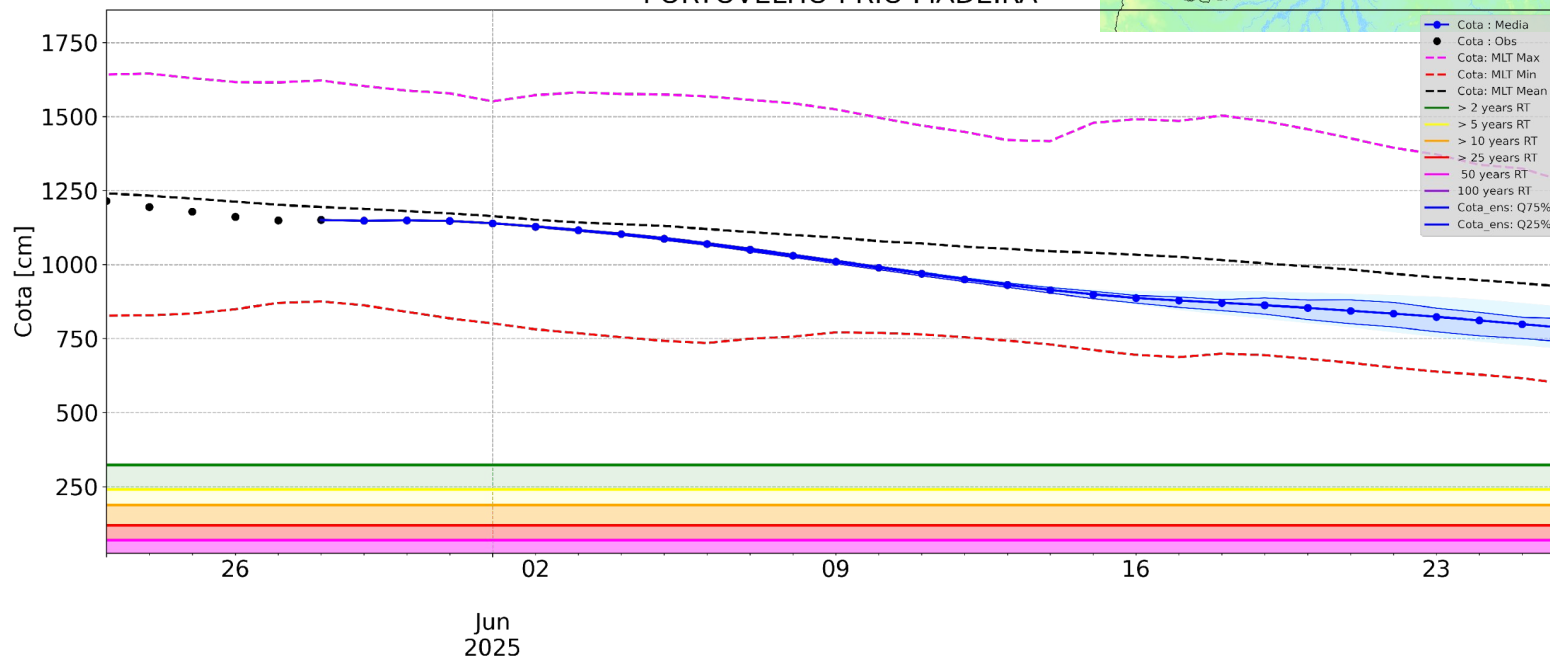


*River flow is a weekly average, displayed at start of week (dates shown)

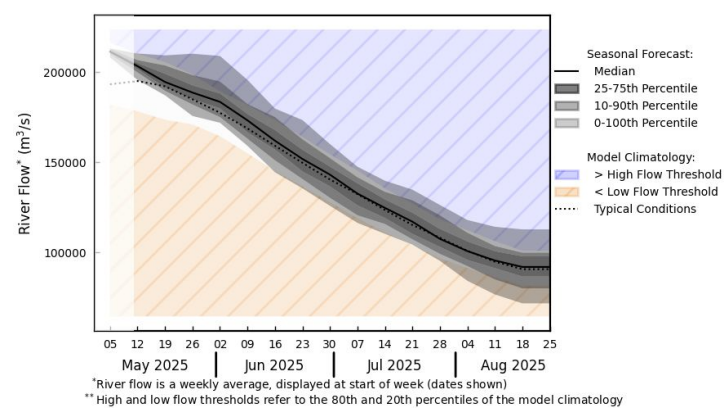
** High and low flow thresholds refer to the 80th and 20th percentiles of the model climatology



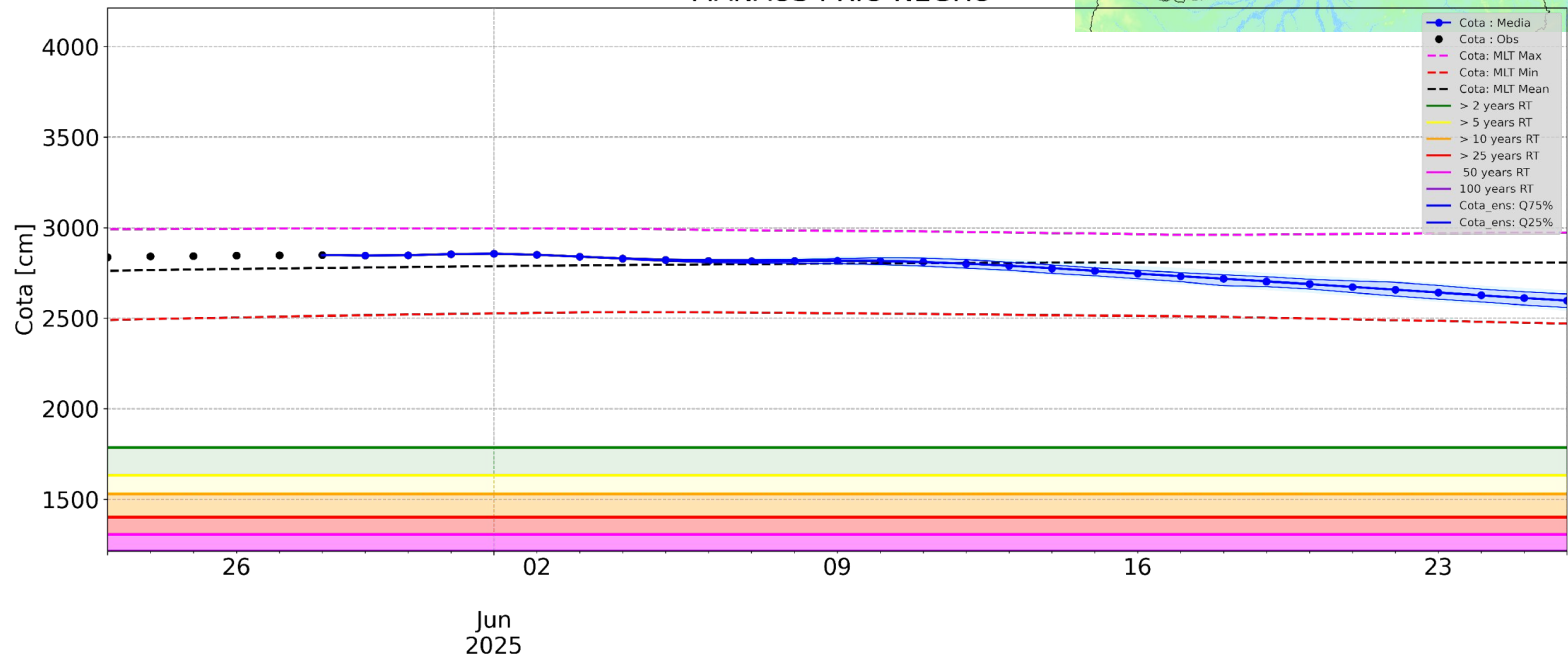
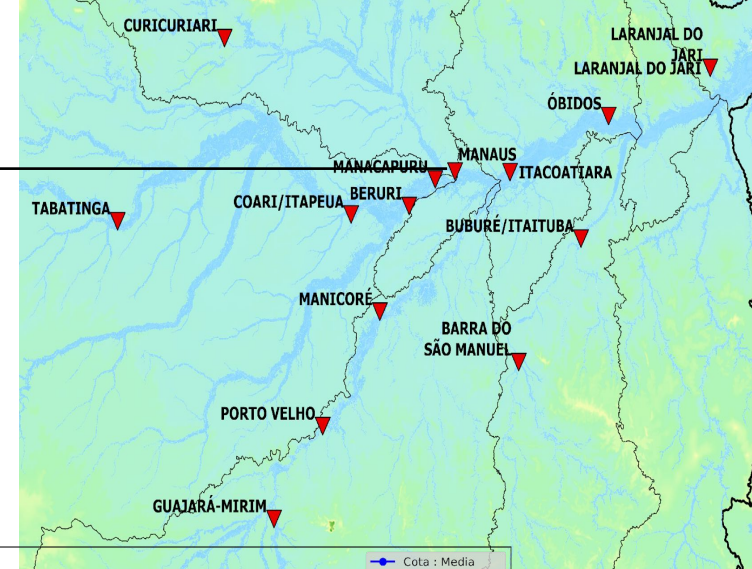
Model Run - 2025-05-28
PORTOVELHO : RIO MADEIRA



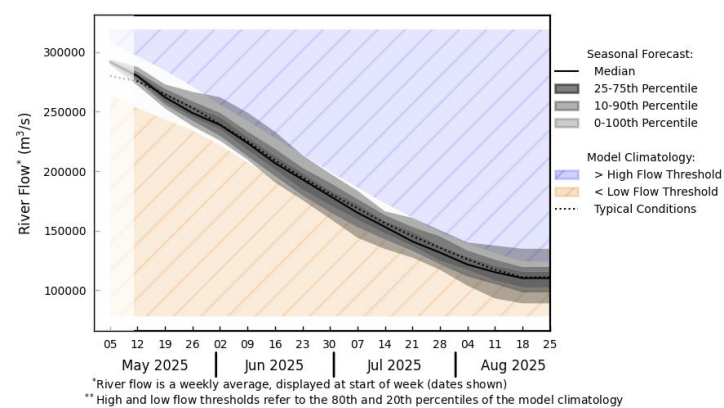
Dados
observados: ANA



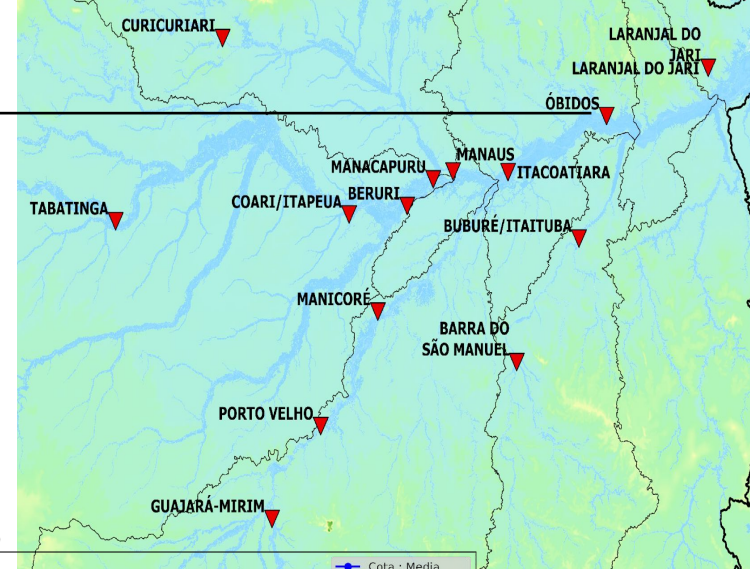
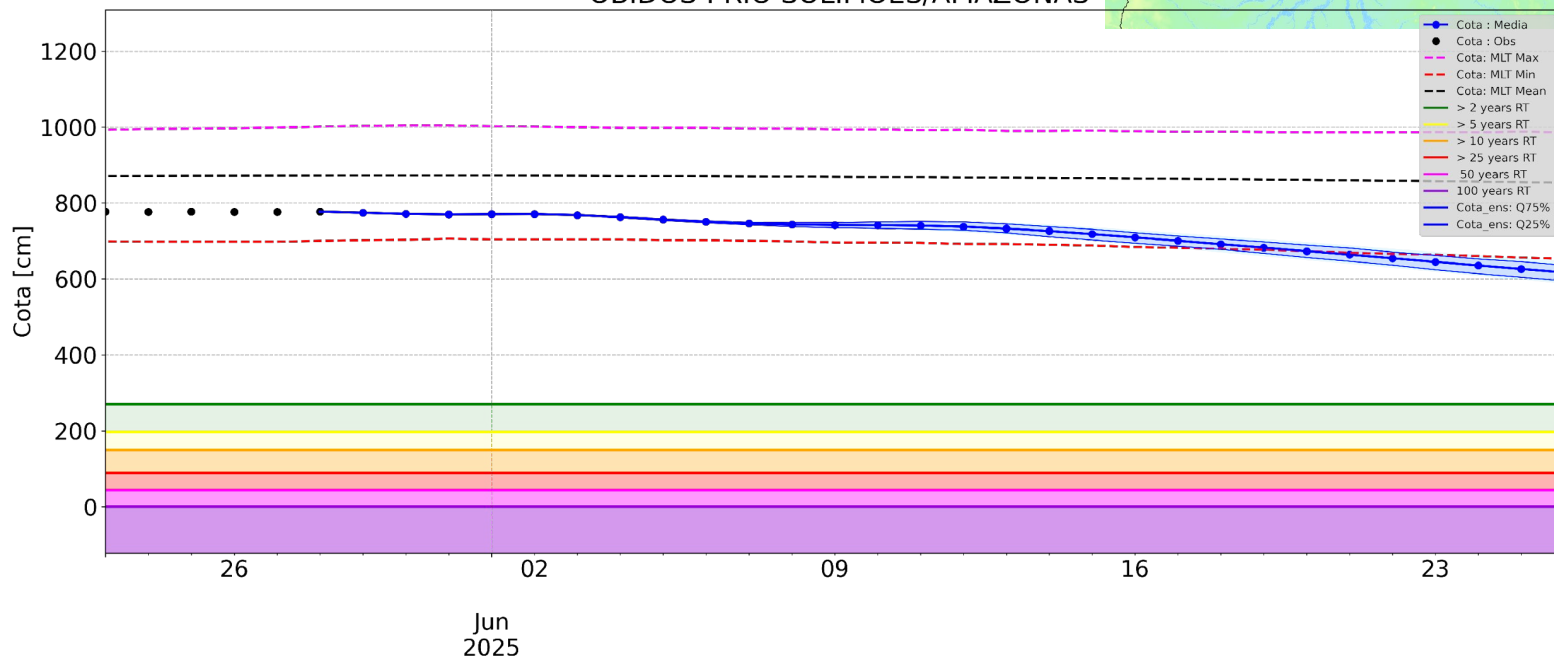
Model Run - 2025-05-28
 MANAUS : RIO NEGRO



Dados
 observados: ANA



Model Run - 2025-05-28
 OBIDOS : RIO SOLIMÕES/AMAZONAS



Dados
 observados: ANA