



# CEMADEN

**Centro Nacional de Monitoramento e  
Alertas de Desastres Naturais**

## **Sala de Acompanhamento da Região Norte**

CEMADEN/MCTI

Novembro de 2025



**Cemaden**  
Centro Nacional de Monitoramento  
e Alertas de Desastres Naturais

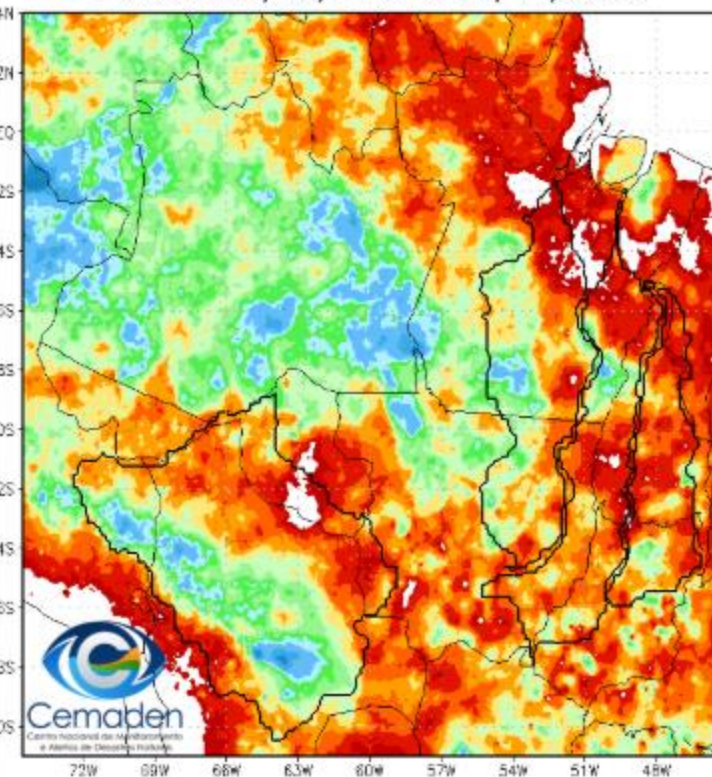
**MINISTÉRIO DA  
CIÊNCIA, TECNOLOGIA  
E INOVAÇÃO**



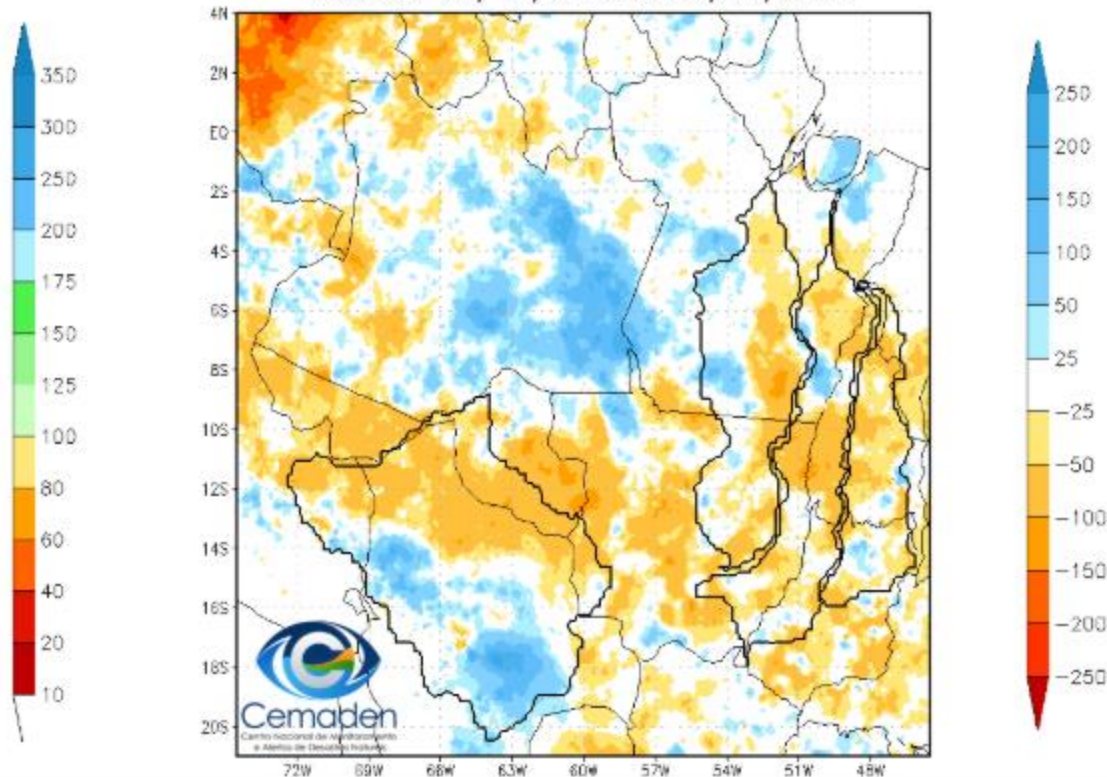
DO LADO DO POVO BRASILEIRO

## PRECIPITAÇÃO: ÚLTIMOS 30 DIAS

Precipitação Acumulada (mm) A.S.  
Período: 06/10/2025 a 05/11/2025



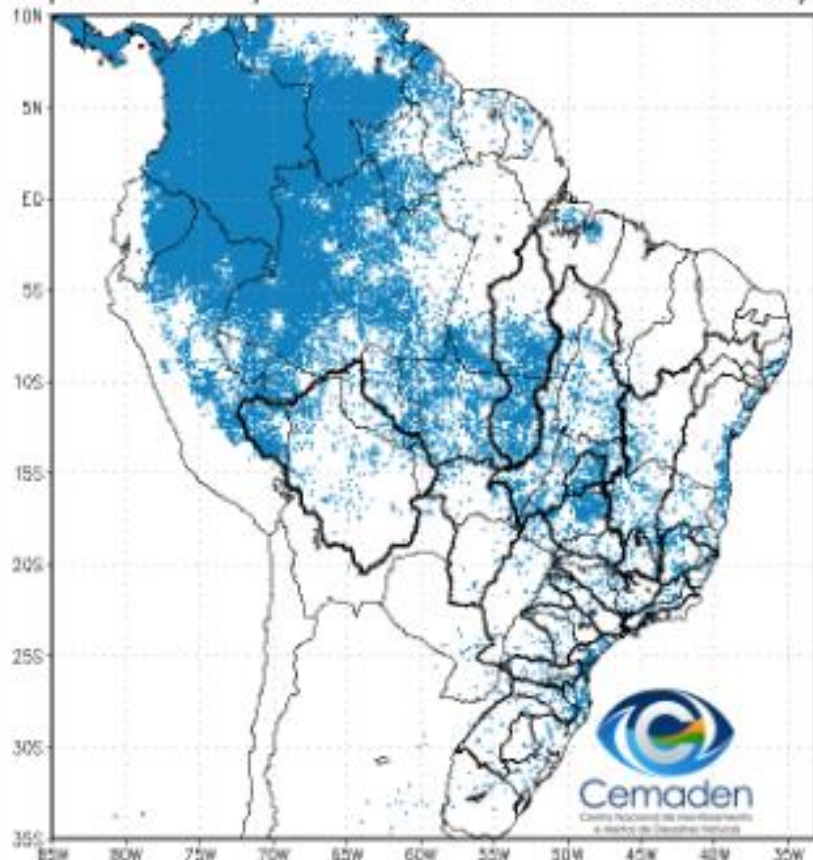
Anomalia de Precipitação (mm) A.S.  
Período: 06/10/2025 a 05/11/2025



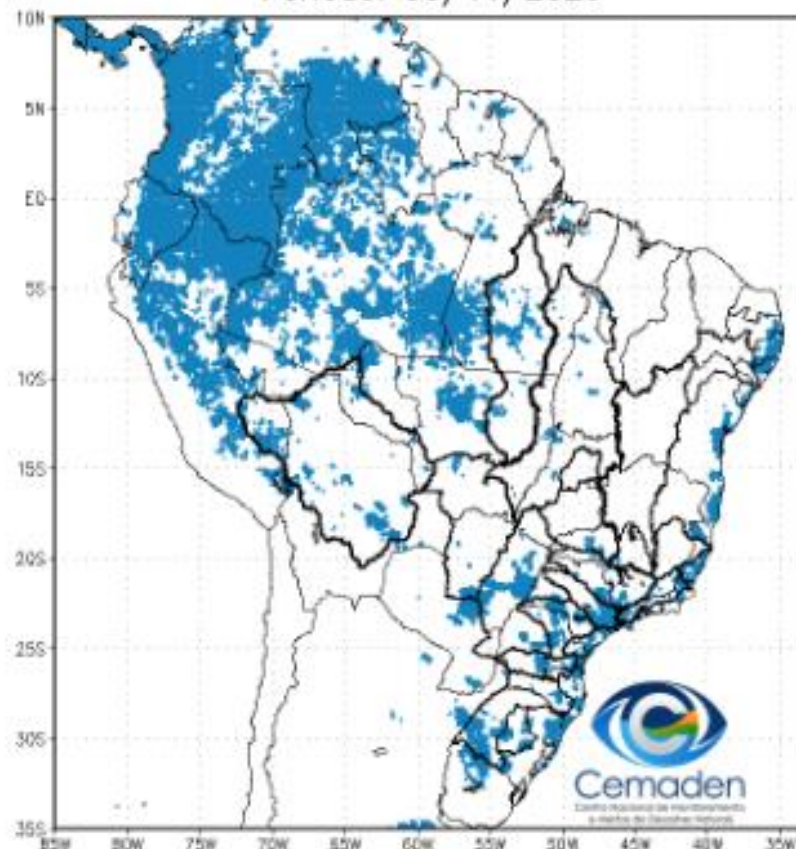


## SITUAÇÃO DA ESTAÇÃO CHUVOSA

Climatologia da Precipitação (2001–2024)  
Superior 3 mm/dia em 4 de 5 dias Período: 05/11

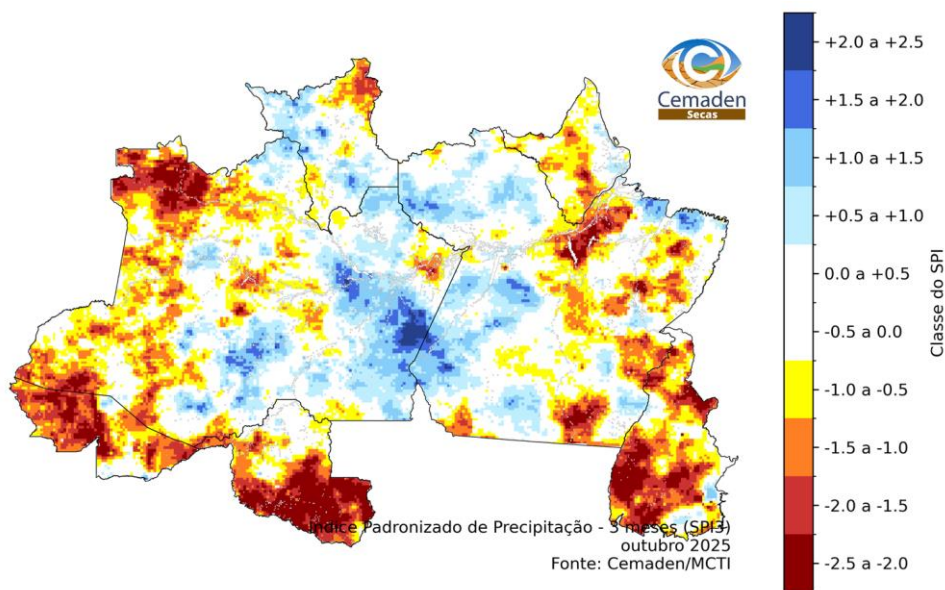


Precipitação A.S. Superior a 3 mm/dia por 4 de 5 dias  
Período: 05/11/2025

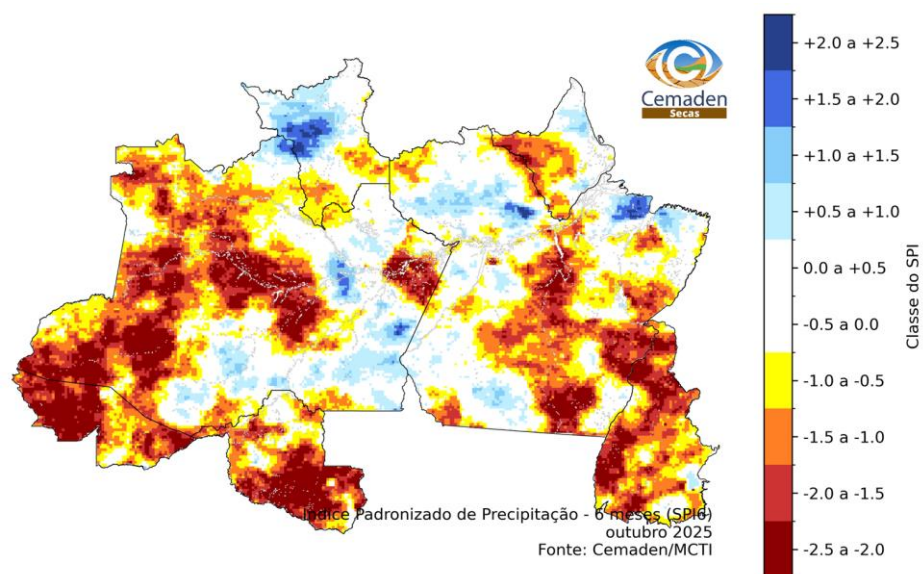


## ANOMALIA PADRONIZADA DE PRECIPITAÇÃO: OUTUBRO/2025

### SPI3



### SPI6



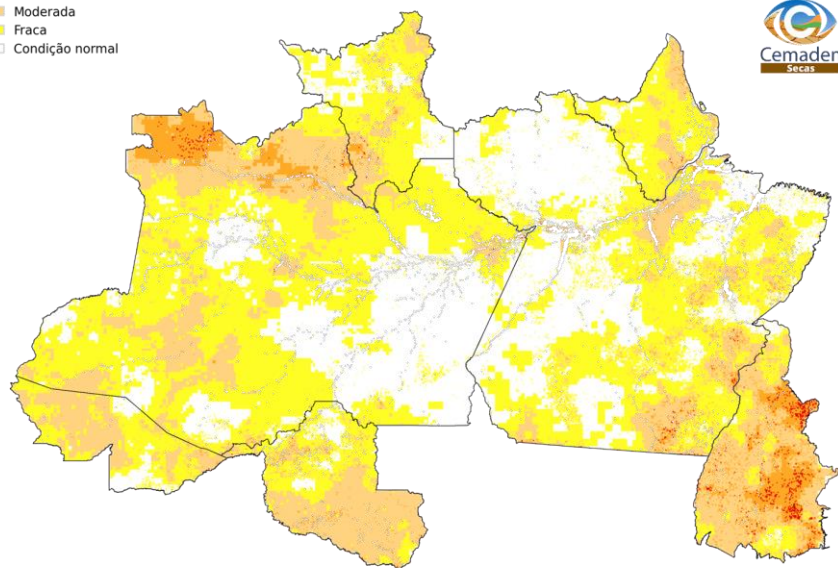


## ÍNDICE INTEGRADO DE SECA - IIS (SPI + VHI + AUS): OUTUBRO/2025

### IIS-03 em ponto de grade

Classes de seca

- Excepcional
- Extrema
- Severa
- Moderada
- Fraca
- Condição normal

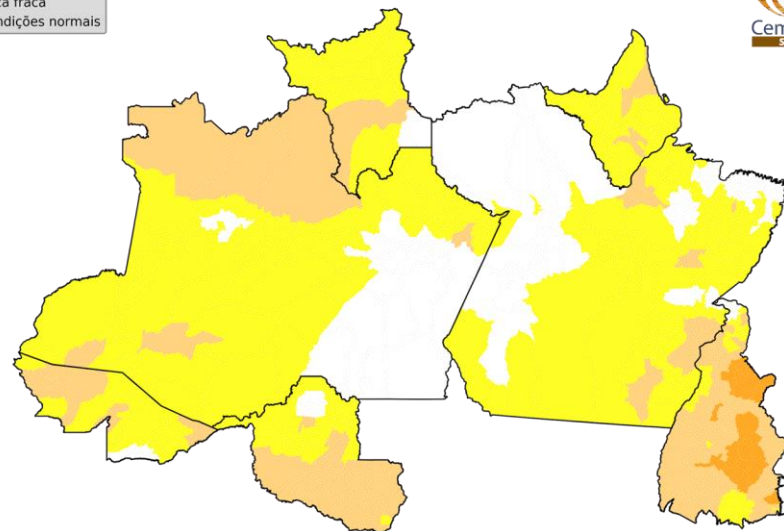


Índice Integrado de Seca - 3 meses (IIS3)  
outubro 2025  
Fonte: Cemaden/MCTI

### IIS-03 município

Classes de seca

- Seca excepcional
- Seca extrema
- Seca severa
- Seca moderada
- Seca fraca
- Condições normais



Número de municípios  
por classes de seca:

Seca excepcional:	0 (0.0%)
Seca extrema:	0 (0.0%)
Seca severa:	27 (6.0%)
Seca moderada:	149 (33.1%)
Seca fraca:	179 (39.8%)
Condições normais:	95 (21.1%)

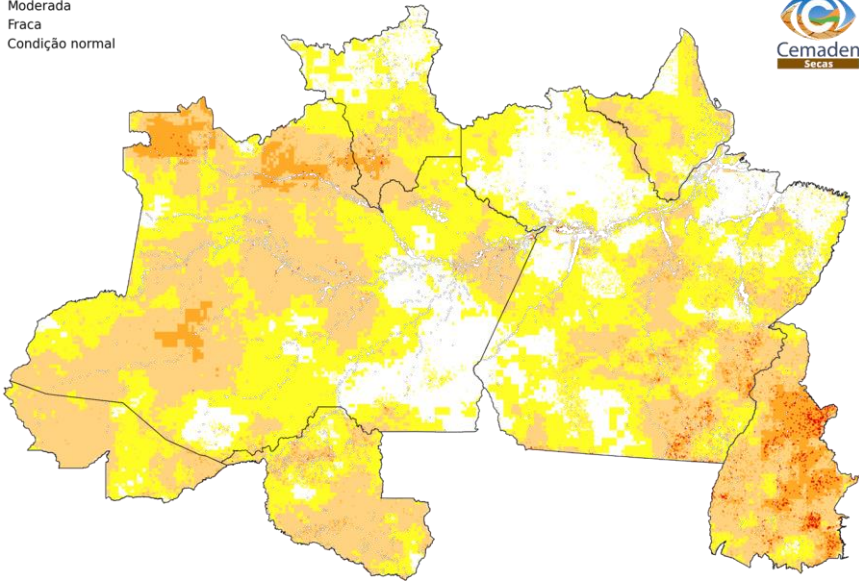
Índice Integrado de Seca - 3 meses (IIS3)  
outubro 2025  
Fonte: Cemaden/MCTI

# ÍNDICE INTEGRADO DE SECA - IIS

(SPI + VHI + AUS): OUTUBRO/2025

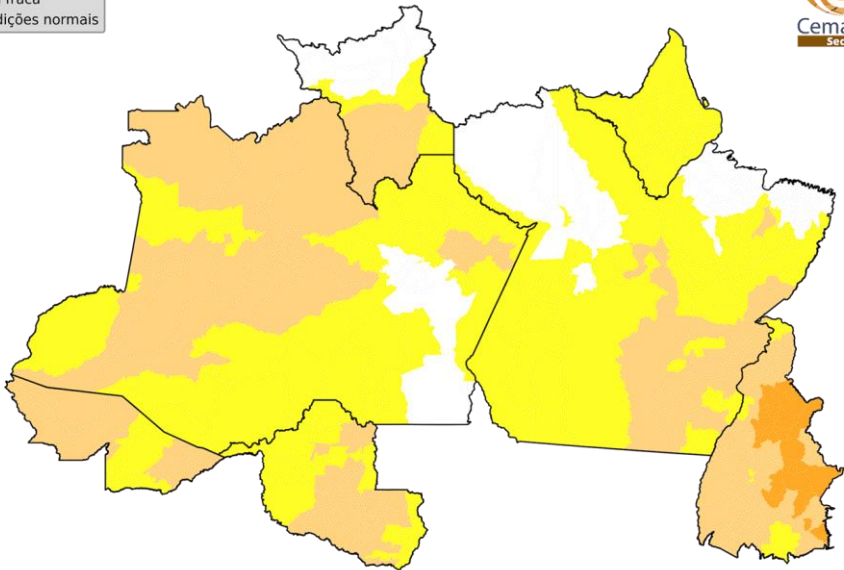
IIS-06 em ponto de grade

- Classes de seca
- Excepcional
  - Extrema
  - Severa
  - Moderada
  - Fraca
  - Condição normal



- Classes de seca
- Seca excepcional
  - Seca extrema
  - Seca severa
  - Seca moderada
  - Seca fraca
  - Condições normais

IIS-06 município



Número de municípios por classes de seca:

Seca excepcional:	0 (0.0%)
Seca extrema:	0 (0.0%)
Seca severa:	38 (8.4%)
Seca moderada:	196 (43.6%)
Seca fraca:	144 (32.0%)
Condições normais:	72 (16.0%)



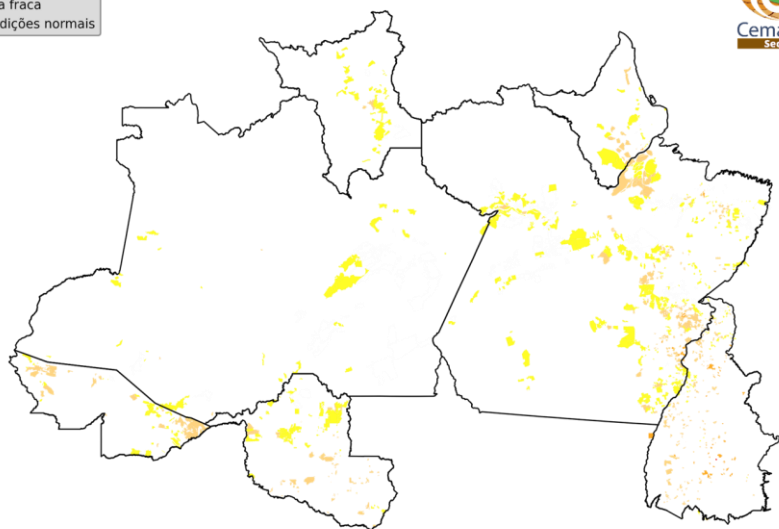
## ÍNDICE INTEGRADO DE SECA (IIS-03)

### PROJETOS DE ASSENTAMENTO

### TERRAS INDÍGENAS

Classes de seca

- Seca excepcional
- Seca extrema
- Seca severa
- Seca moderada
- Seca fraca
- Condições normais



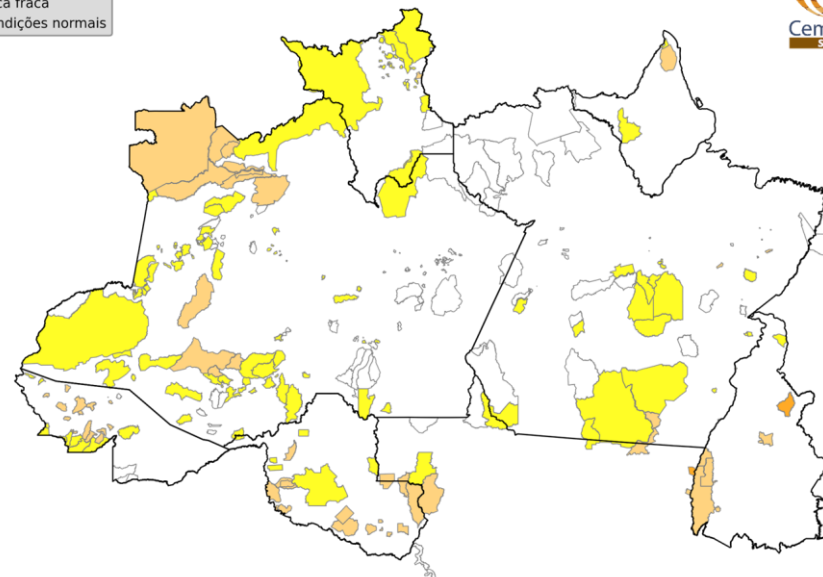
Número de Assentamentos  
por classes de seca:

Seca excepcional:	0 (0.0%)
Seca extrema:	1 (0.0%)
Seca severa:	66 (0.9%)
Seca moderada:	618 (8.4%)
Seca fraca:	725 (9.9%)
Condições normais:	469 (6.4%)

Índice Integrado de Seca - 3 meses (IIS3)  
outubro 2025  
Fonte: Cemaden/MCTI

Classes de seca

- Seca excepcional
- Seca extrema
- Seca severa
- Seca moderada
- Seca fraca
- Condições normais

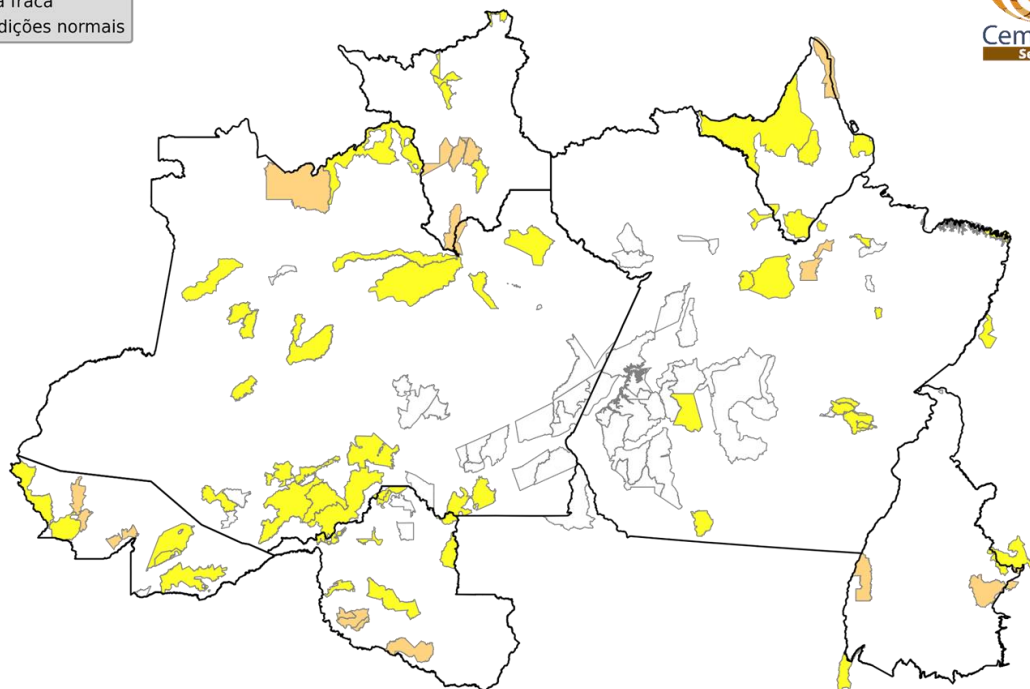


Número de Terras Indígenas  
por classes de seca:

Seca excepcional:	0 (0.0%)
Seca extrema:	0 (0.0%)
Seca severa:	2 (0.3%)
Seca moderada:	66 (10.4%)
Seca fraca:	141 (22.3%)
Condições normais:	97 (15.3%)

Índice Integrado de Seca - 3 meses (IIS3)  
outubro 2025  
Fonte: Cemaden/MCTI

## UNIDADES DE CONSERVAÇÃO



Número de Unidades de Conservação  
por classes de seca:

Seca excepcional:	0 (0.0%)
Seca extrema:	0 (0.0%)
Seca severa:	0 (0.0%)
Seca moderada:	18 (5.3%)
Seca fraca:	59 (17.4%)
Condições normais:	58 (17.1%)

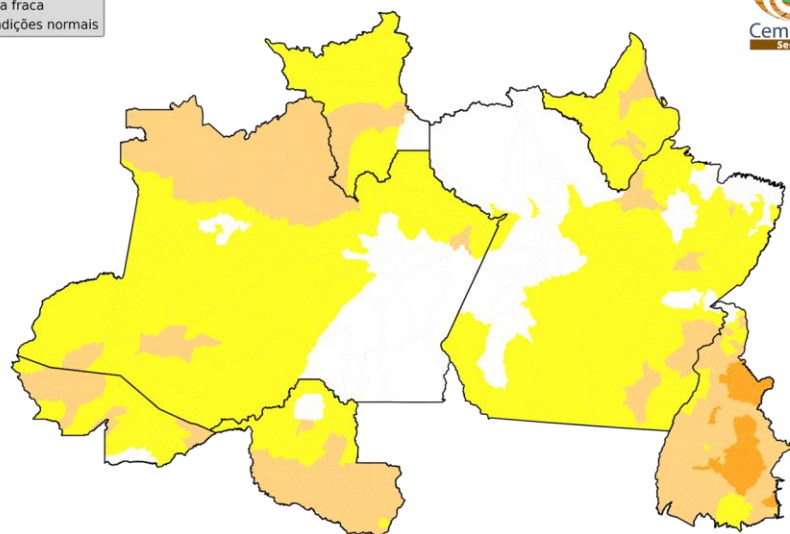
Índice Integrado de Seca - 3 meses (IIS3)  
outubro 2025  
Fonte: Cemaden/MCTI



## ÍNDICE INTEGRADO DE SECA - IIS

### IIS-03 Observado

- Classes de seca
- Seca excepcional
  - Seca extrema
  - Seca severa
  - Seca moderada
  - Seca fraca
  - Condições normais

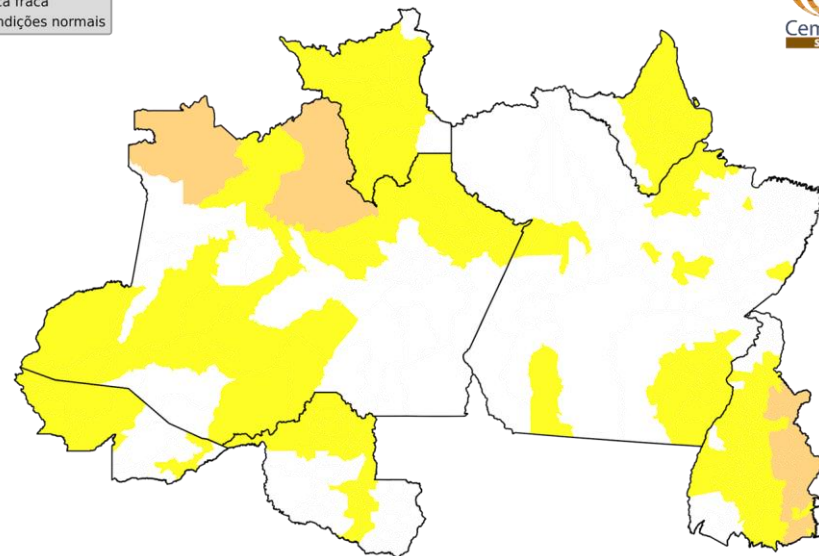


Número de municípios  
por classes de seca:

Seca excepcional:	0 (0.0%)
Seca extrema:	0 (0.0%)
Seca severa:	27 (6.0%)
Seca moderada:	149 (33.1%)
Seca fraca:	179 (39.8%)
Condições normais:	95 (21.1%)

### IIS-03 Previsão 30 dias

- Classes de seca
- Seca excepcional
  - Seca extrema
  - Seca severa
  - Seca moderada
  - Seca fraca
  - Condições normais



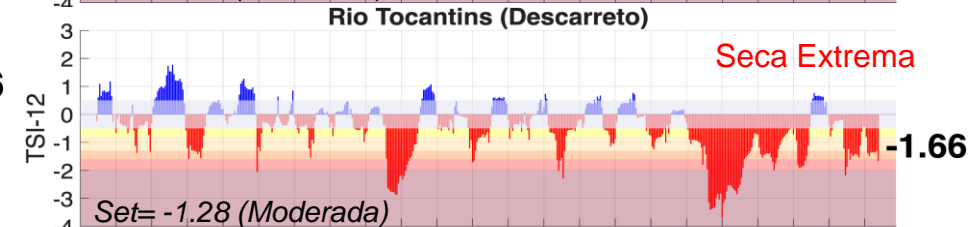
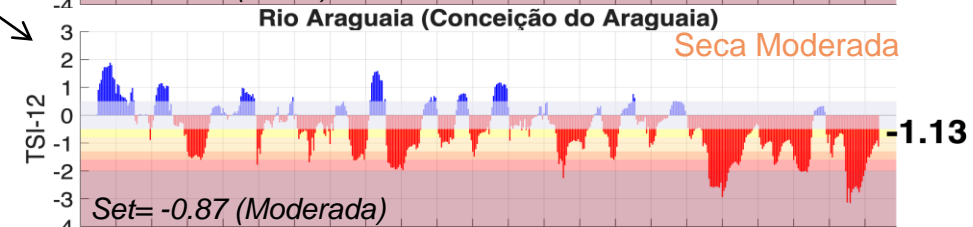
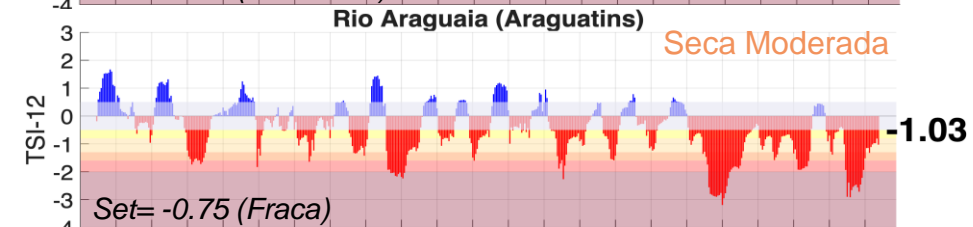
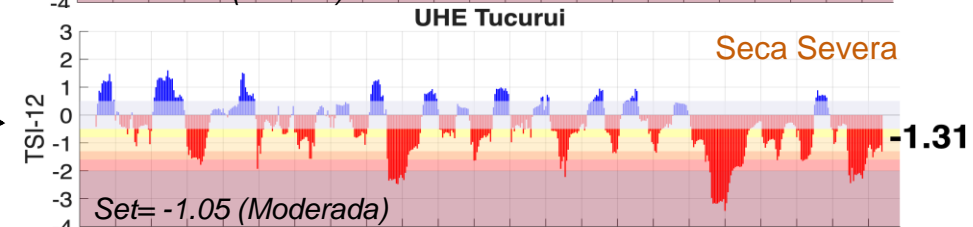
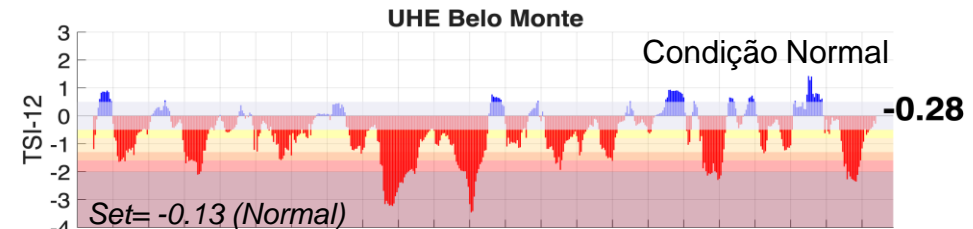
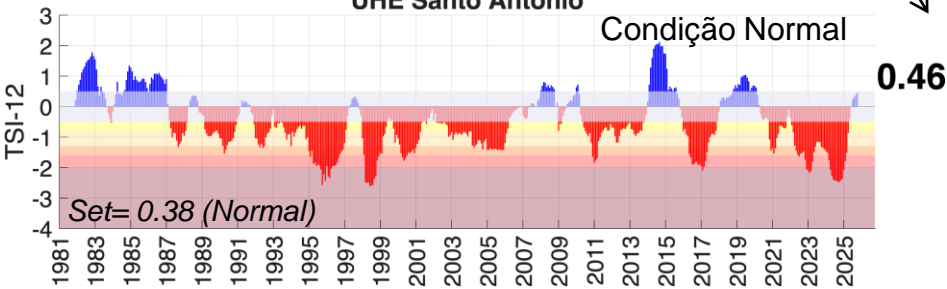
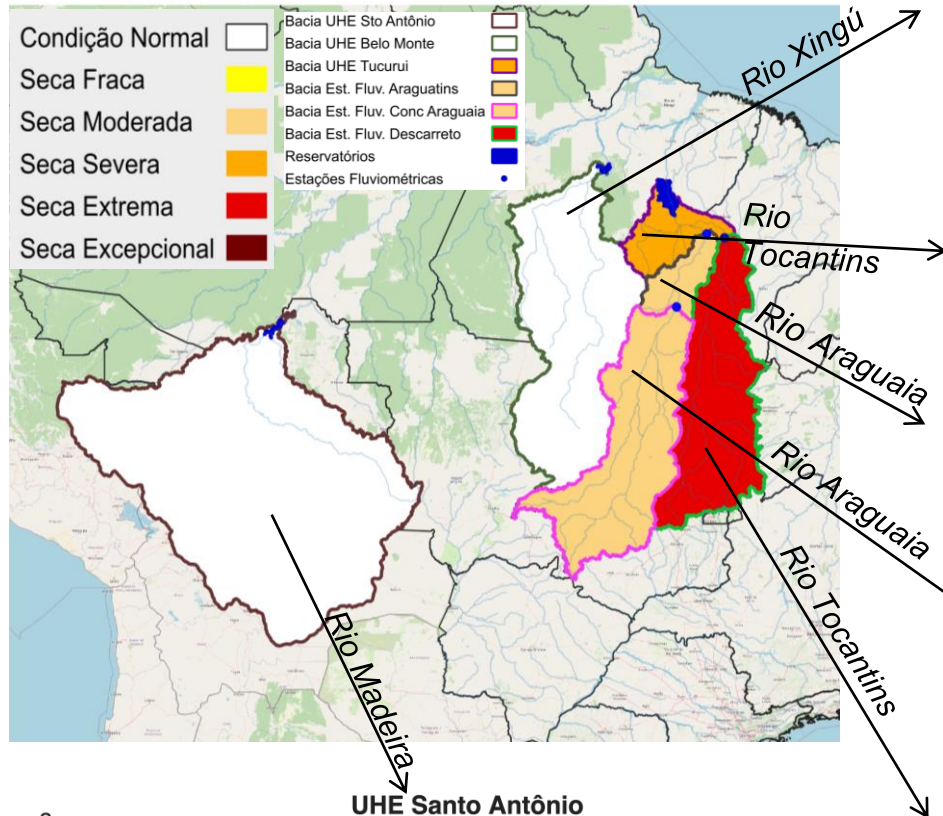
Número de municípios  
por classes de seca:

Seca excepcional:	0 (0.0%)
Seca extrema:	0 (0.0%)
Seca severa:	0 (0.0%)
Seca moderada:	25 (5.6%)
Seca fraca:	200 (44.4%)
Condições normais:	225 (50.0%)

# Índice Bivariado de Seca (Precipitação-Cota/Vazão) - TSI

## Escala de Longo Prazo: **TSI-12 meses**

### Outubro/2025

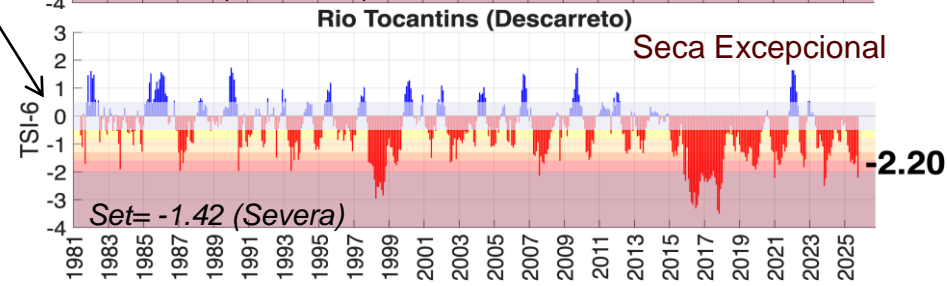
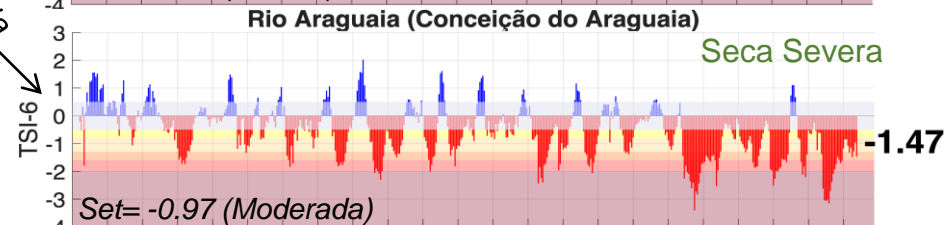
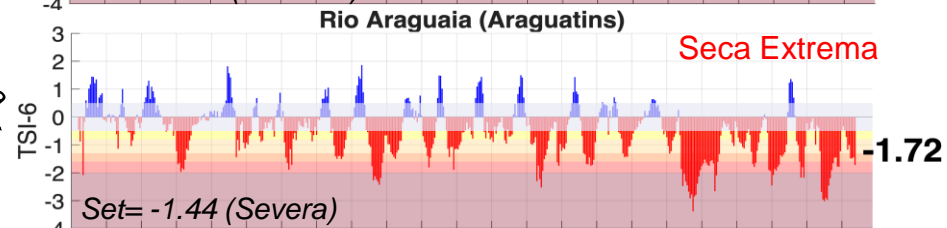
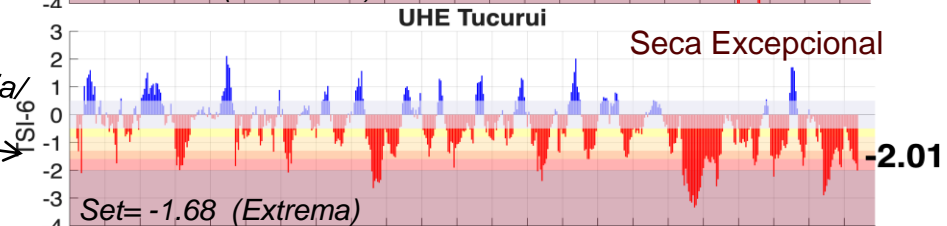
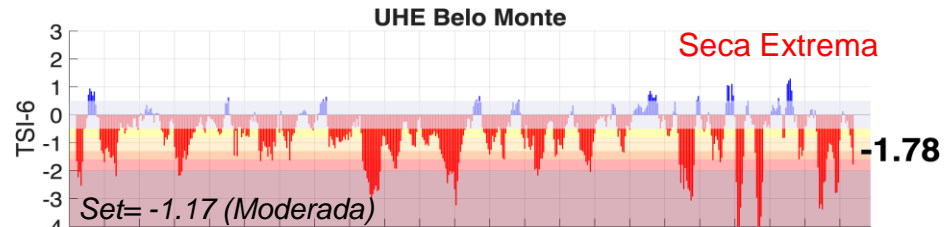
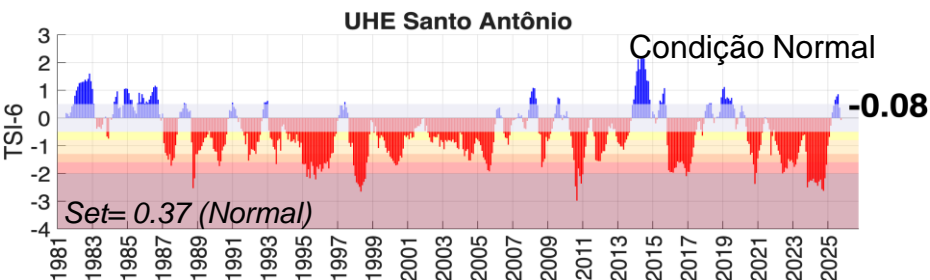
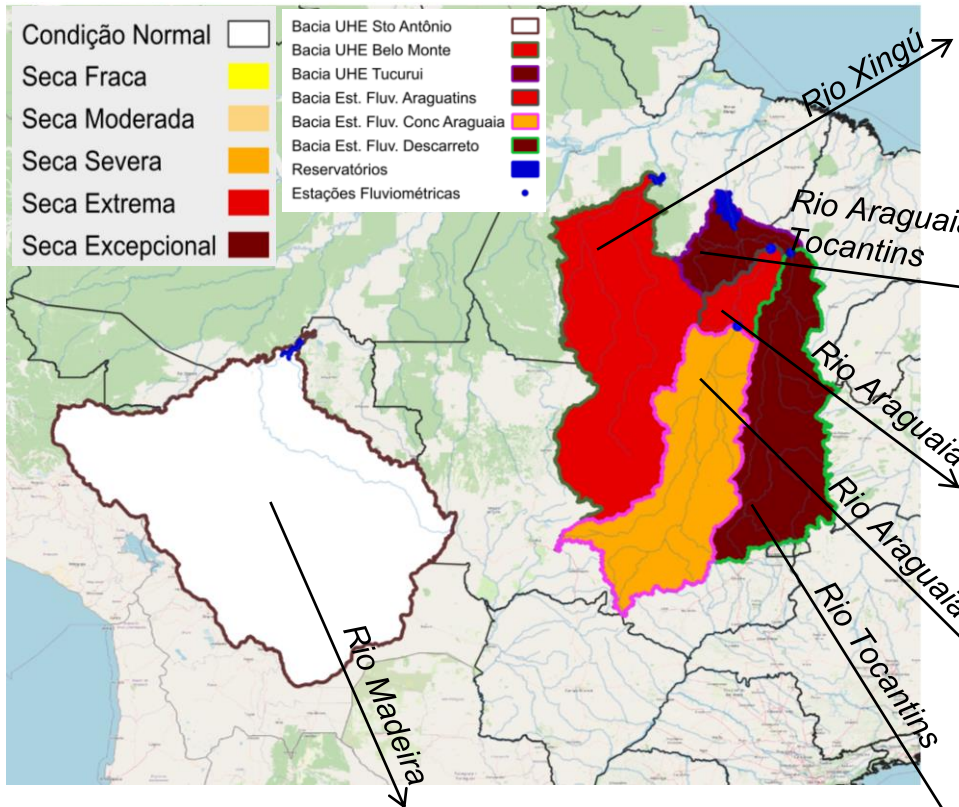




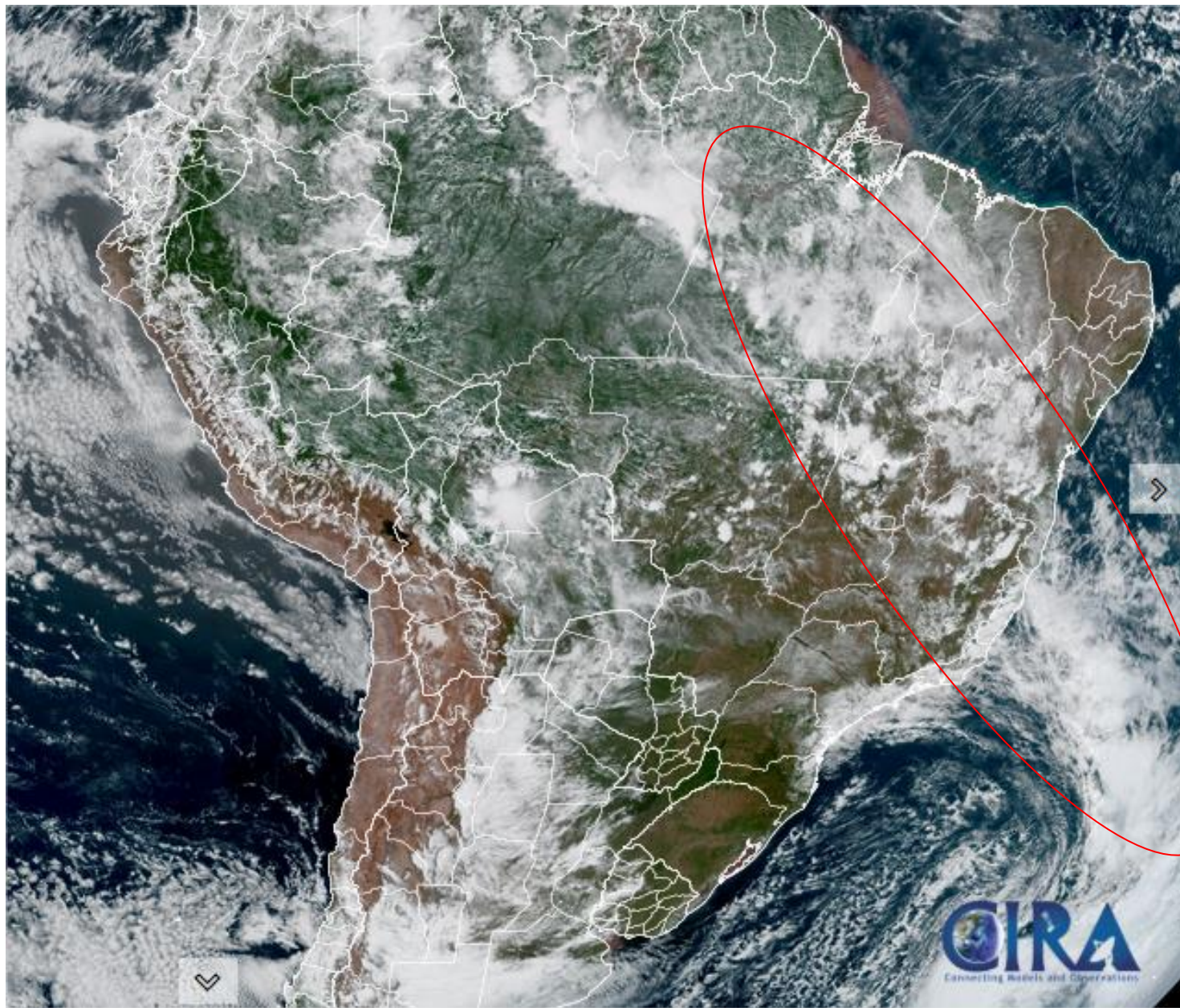
# Índice Bivariado de Seca (Precipitação-Cota/Vazão) - TSI

## Escala de Curto Prazo: TSI-6 meses

**Outubro/2025**

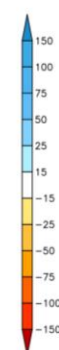
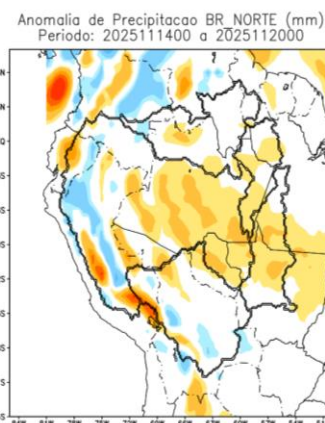
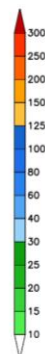
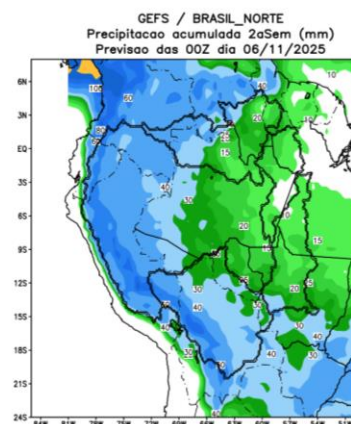
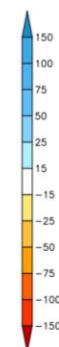
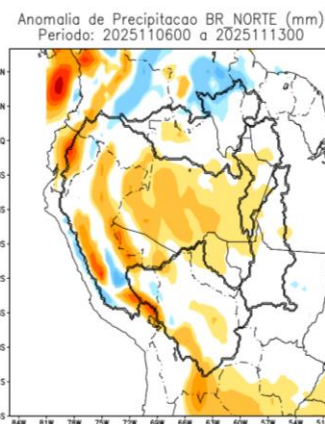
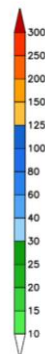
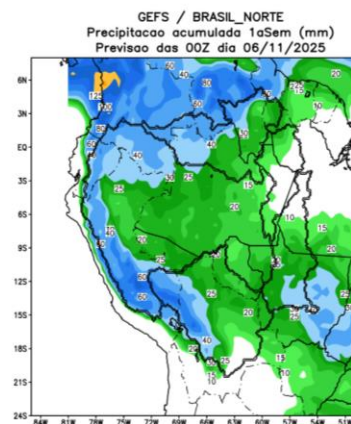


## Situação meteorológica atual





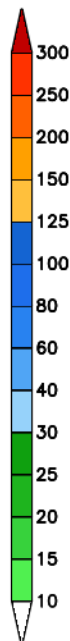
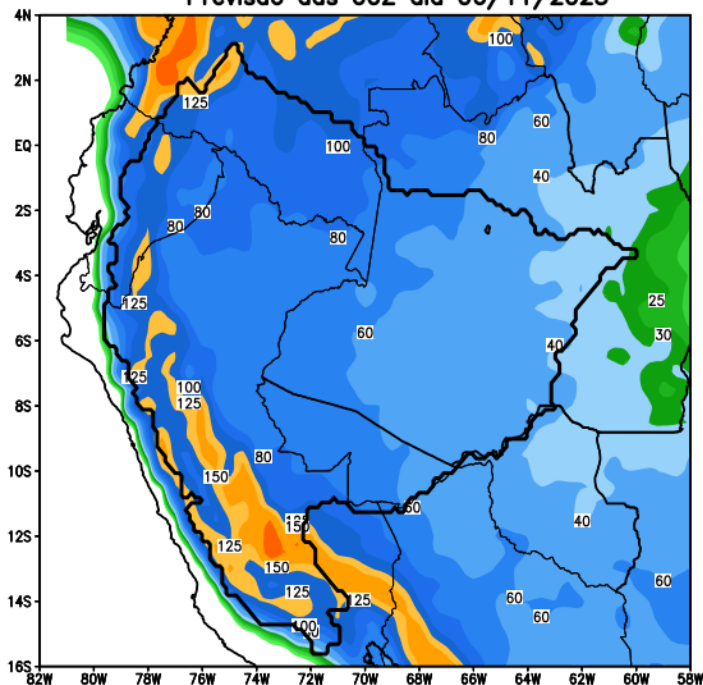
## Previsão de chuva próximas duas semanas



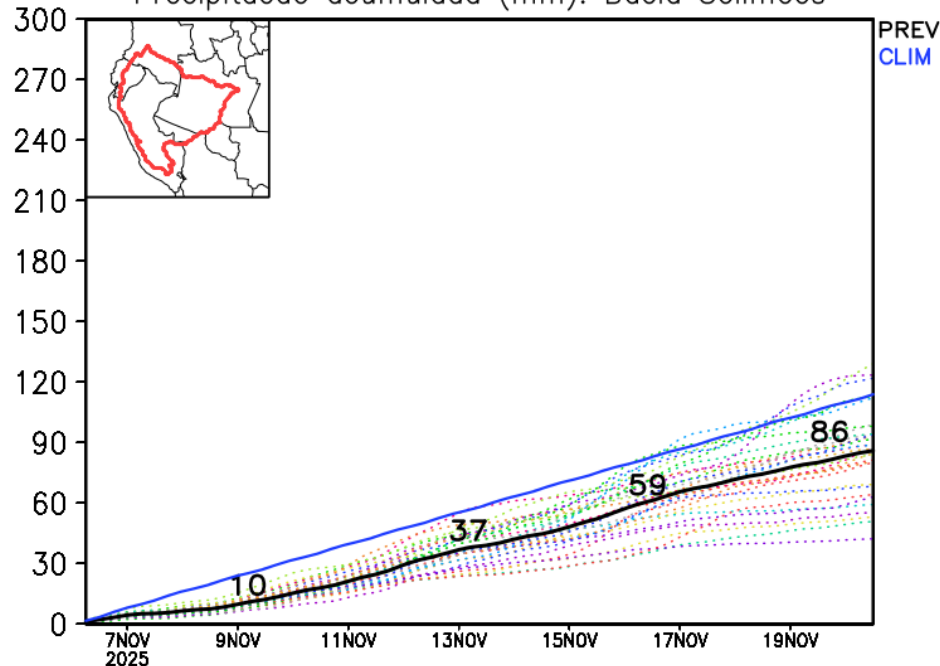
## Previsão de chuva próximas duas semanas

### Rio Solimões

GEFS / Bacia do Rio Solimões  
Precipitação acumulada em 14 dias (mm)  
Previsão das 00Z dia 06/11/2025



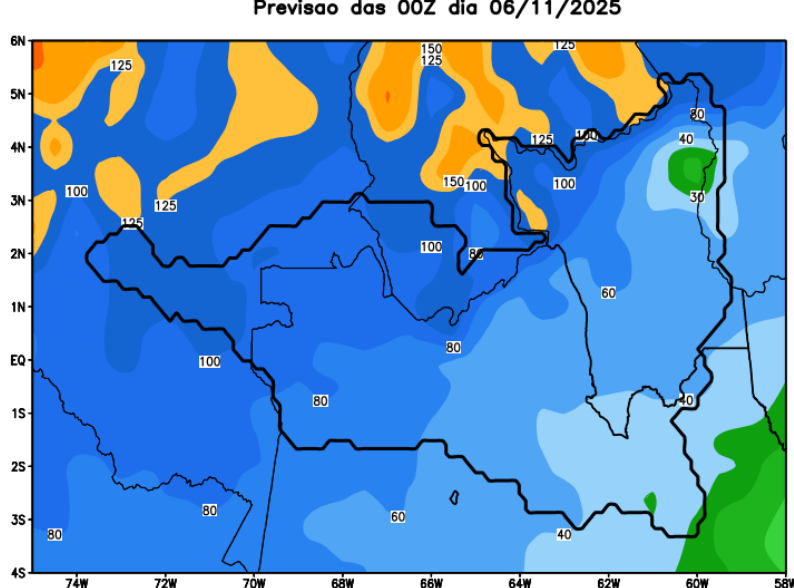
Precipitação acumulada (mm): Bacia Solimões



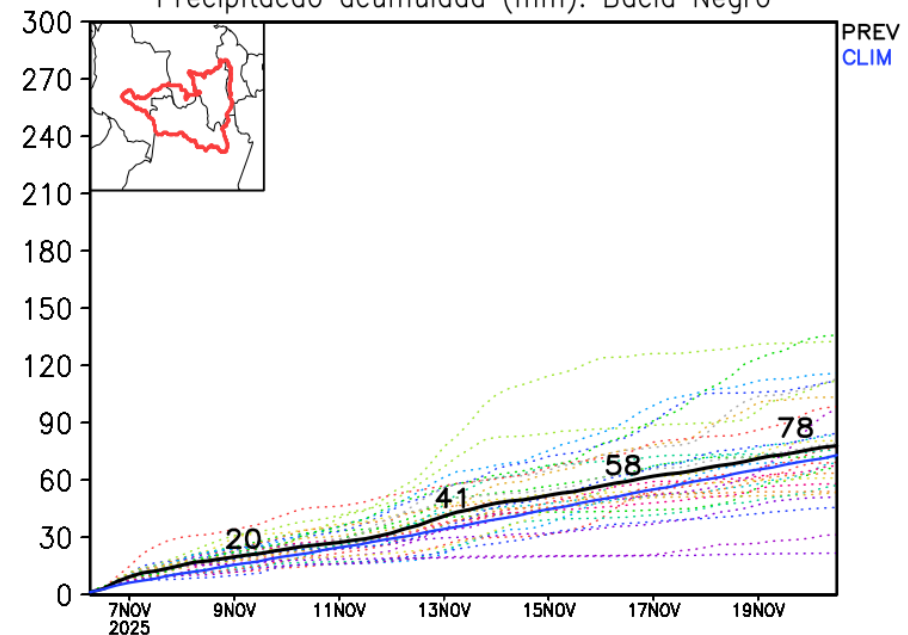
## Previsão de chuva próximas duas semanas

### Rio Negro

GEFS / Bacia do Rio Negro  
Precipitação acumulada em 14 dias (mm)  
Previsão das 00Z dia 06/11/2025



Precipitação acumulada (mm): Bacia Negro

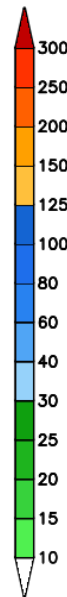
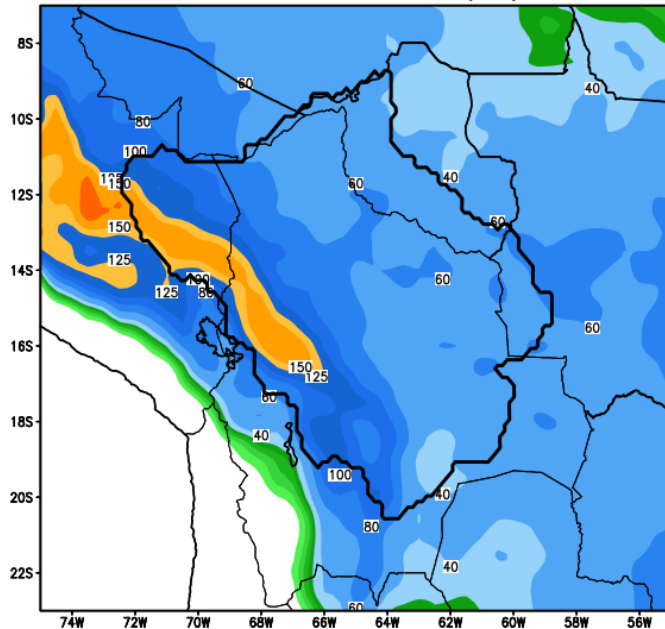




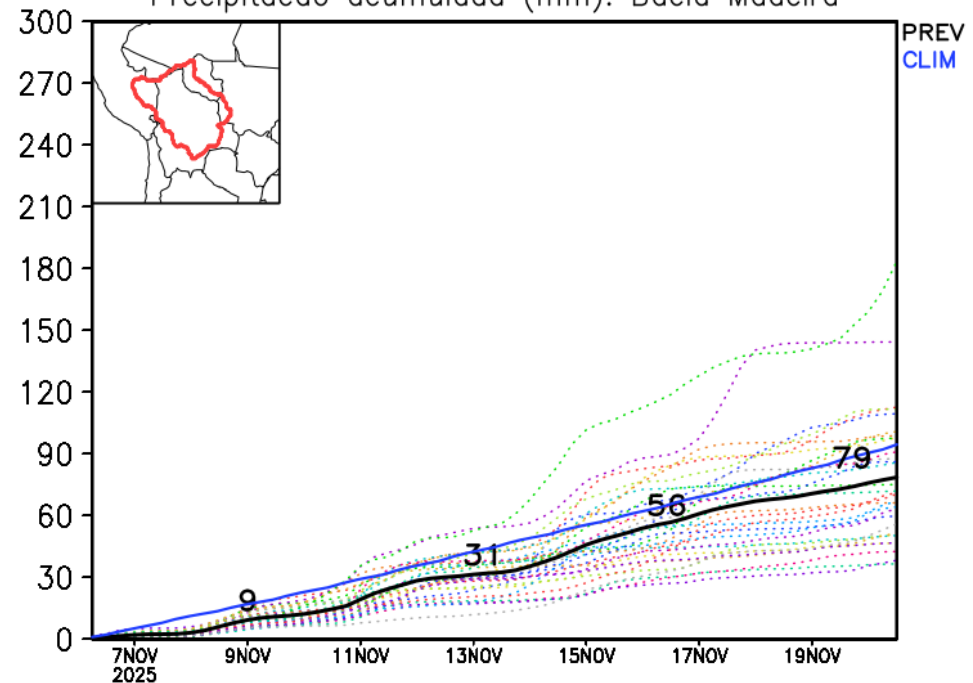
## Previsão de chuva próximas duas semanas

### Rio Madeira

GEFS / Bacia do Rio Madeira  
Precipitação acumulada em 14 dias (mm)  
Previsão das 00Z dia 06/11/2025



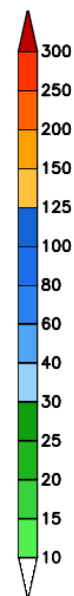
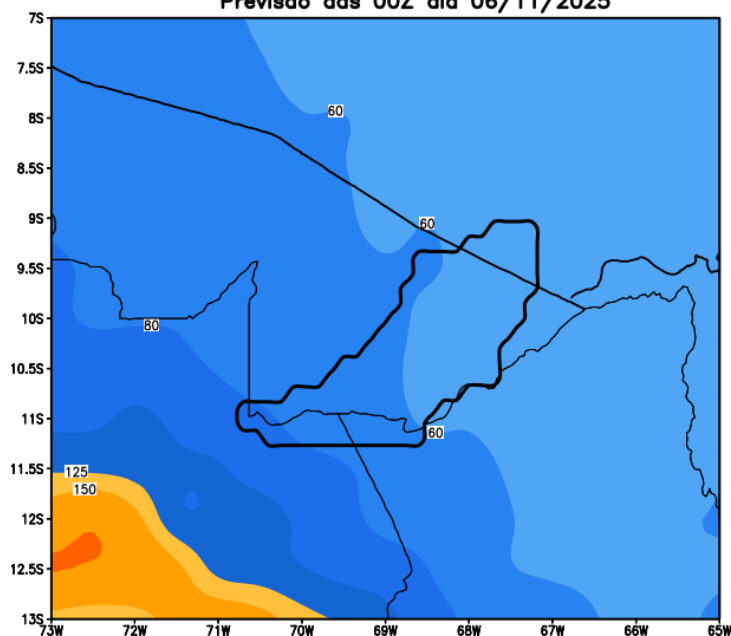
Precipitação acumulada (mm): Bacia Madeira



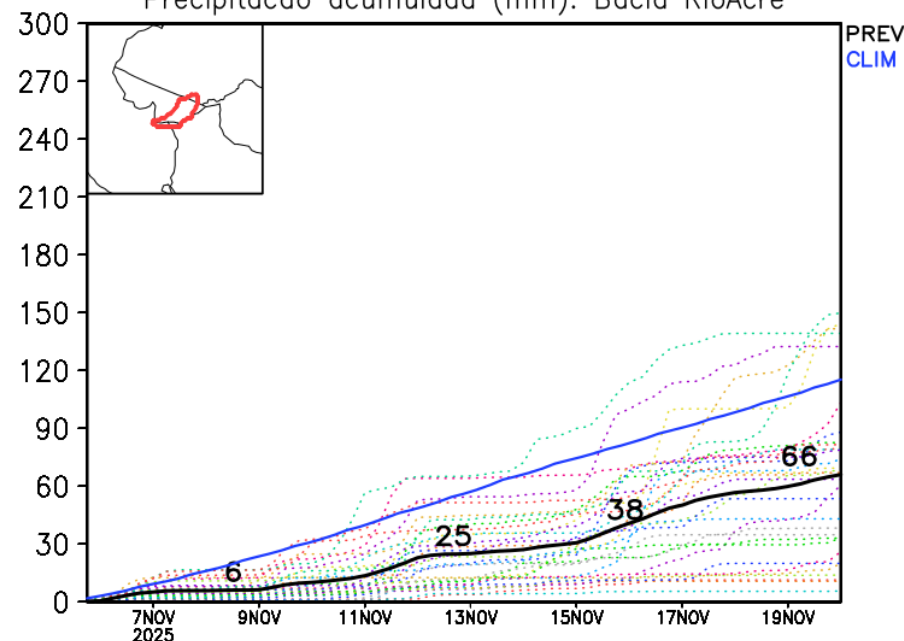
## Previsão de chuva próximas duas semanas

### Rio Acre

GEFS / Bacia do Rio Acre  
Precipitação acumulada em 14 dias (mm)  
Previsão das 00Z dia 06/11/2025



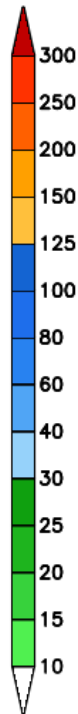
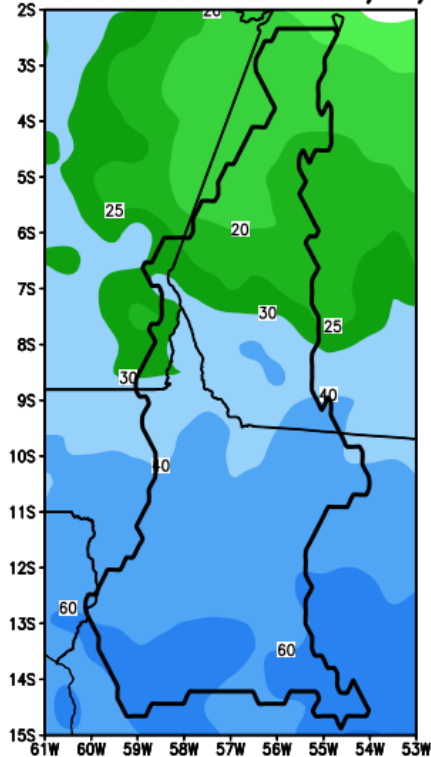
Precipitação acumulada (mm): Bacia RioAcre



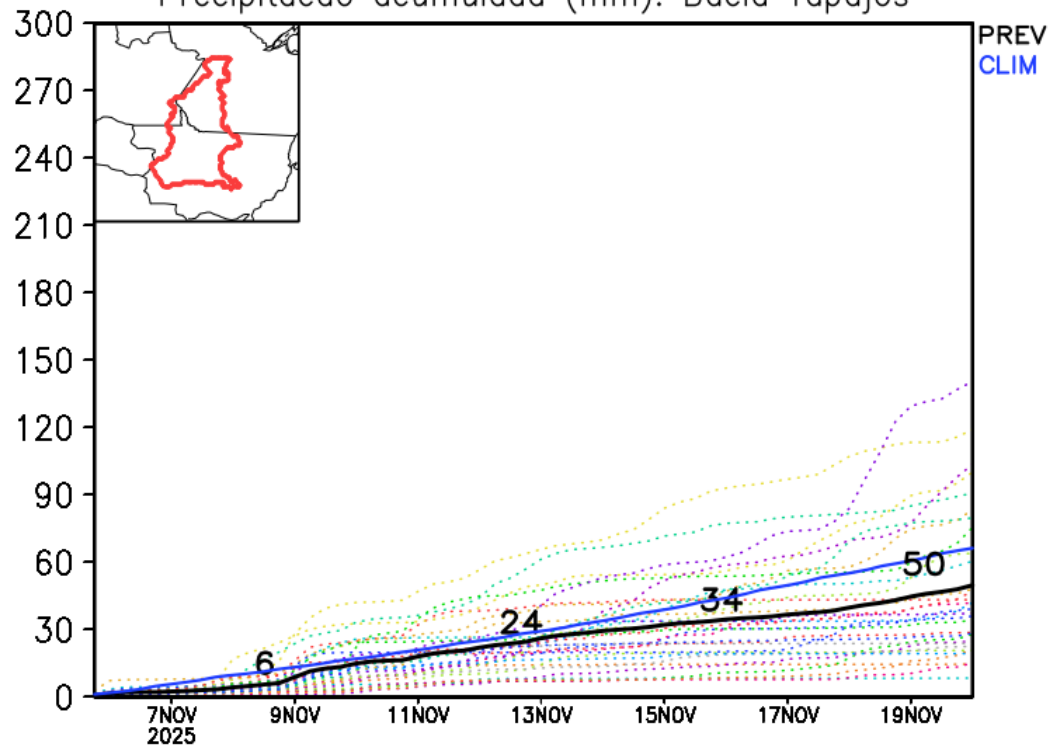
## Previsão de chuva próximas duas semanas

### Rio Tapajós

GEFS\_50km / Bacia do Rio Tapajós  
Precipitação acumulada em 14 dias (mm)  
Previsão das 00Z dia 06/11/2025



Precipitação acumulada (mm): Bacia Tapajós

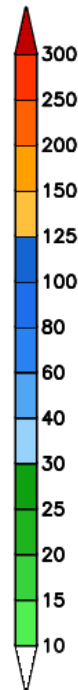
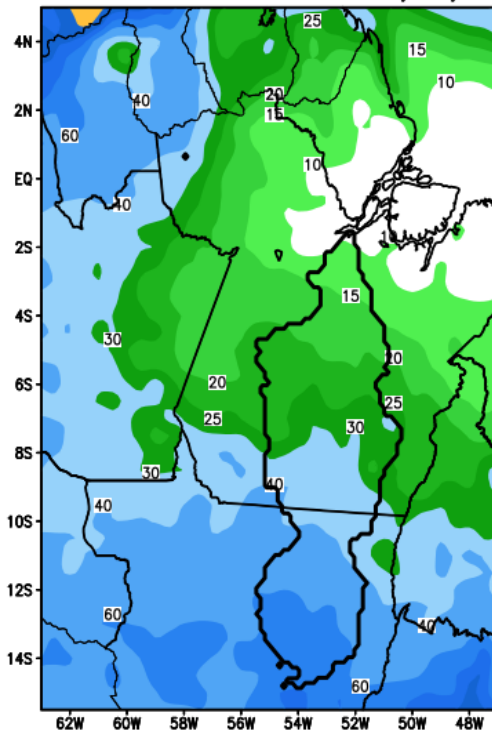




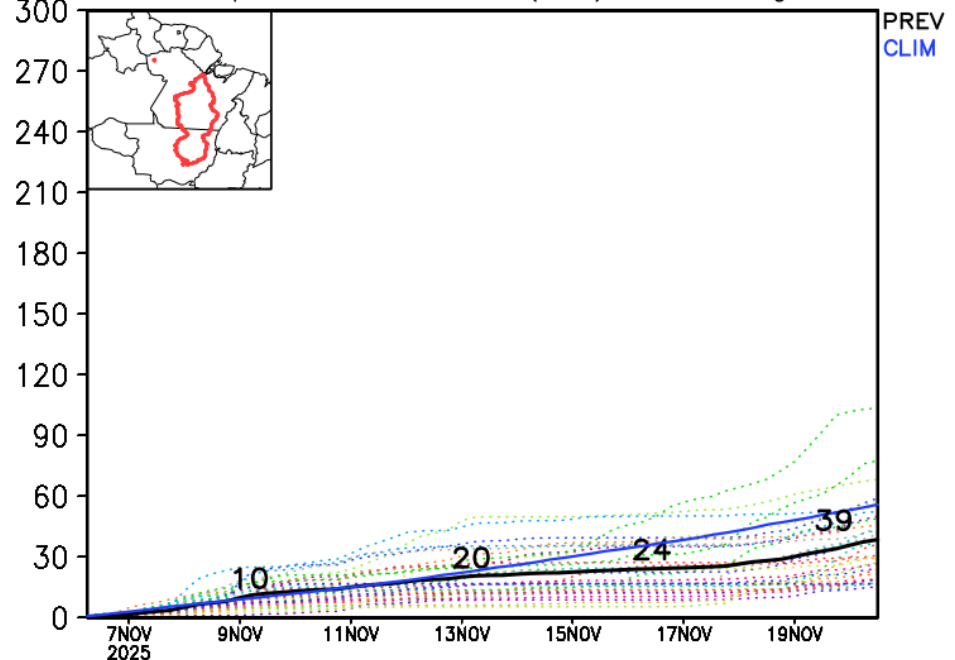
## Previsão de chuva próximas duas semanas

### Rio Xingu

GEFS / Xingu  
Precipitação acumulada em 14 dias (mm)  
Previsão das 00Z dia 06/11/2025



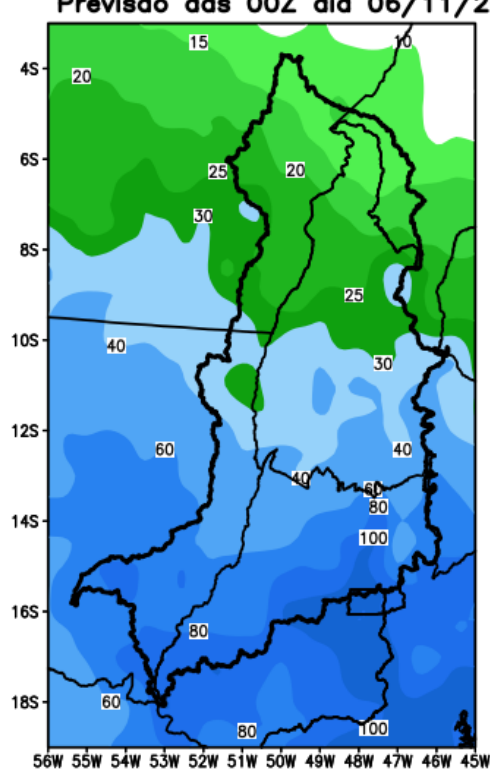
Precipitação acumulada (mm): Bacia Xingu



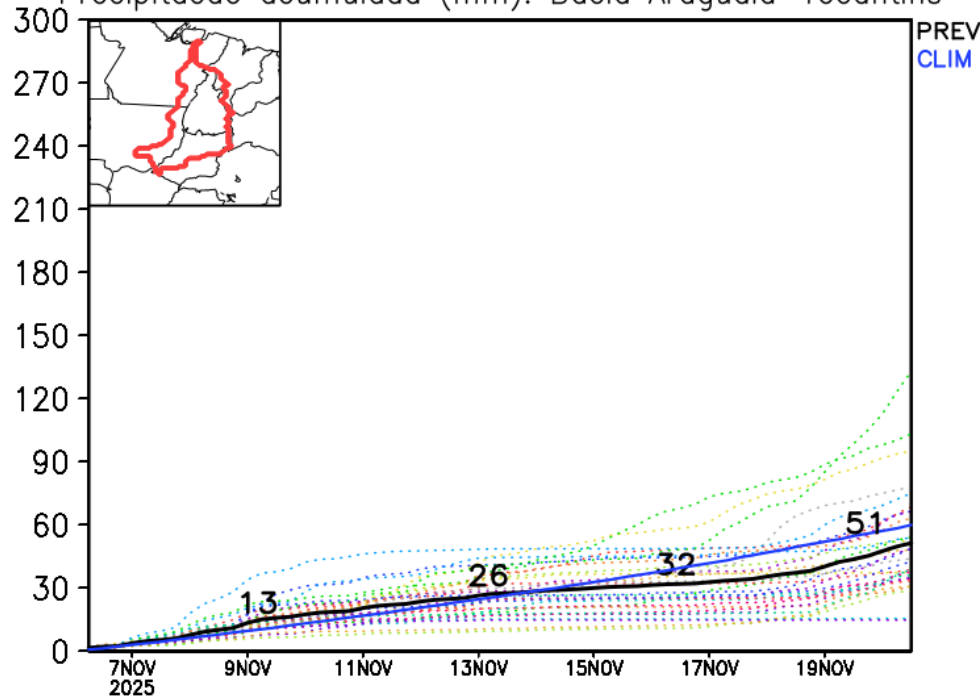
## Previsão de chuva próximas duas semanas

### Rio Araguaia-Tocantins

GEFS / Bacia Araguaia-Tocantins  
Precipitação acumulada em 14 dias (mm)  
Previsão das 00Z dia 06/11/2025



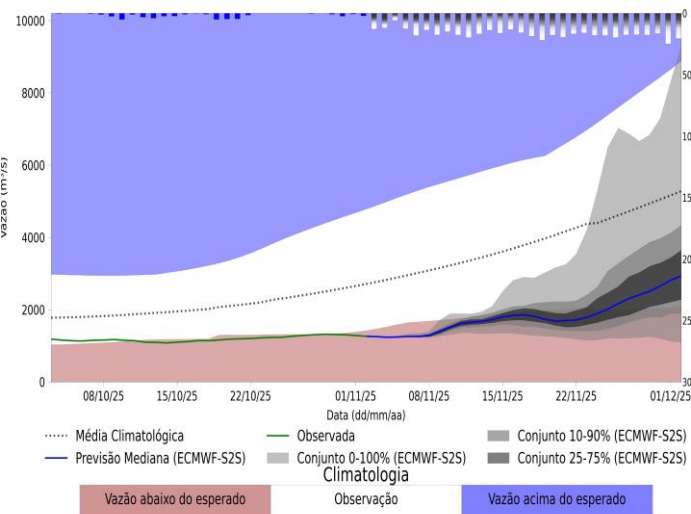
Precipitação acumulada (mm): Bacia Araguaia-Tocantins



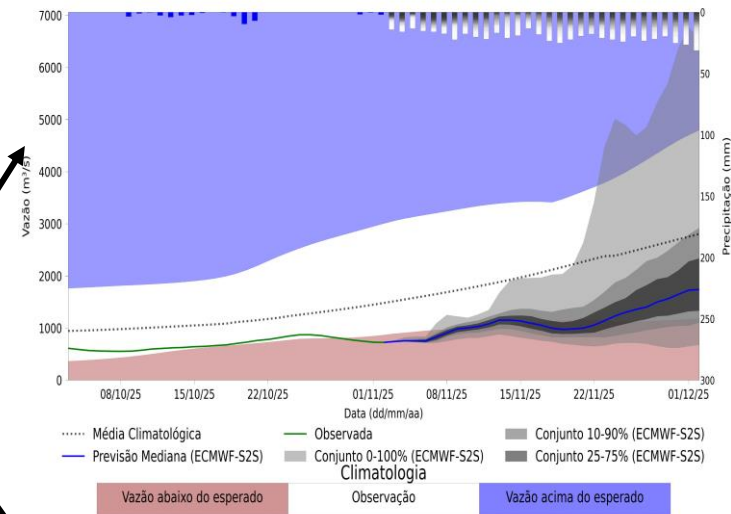
## Previsão de vazão natural na Bacia Rio Tocantins-Araguaia

**Previsão: 02/11/2025 a 02/12/2025**

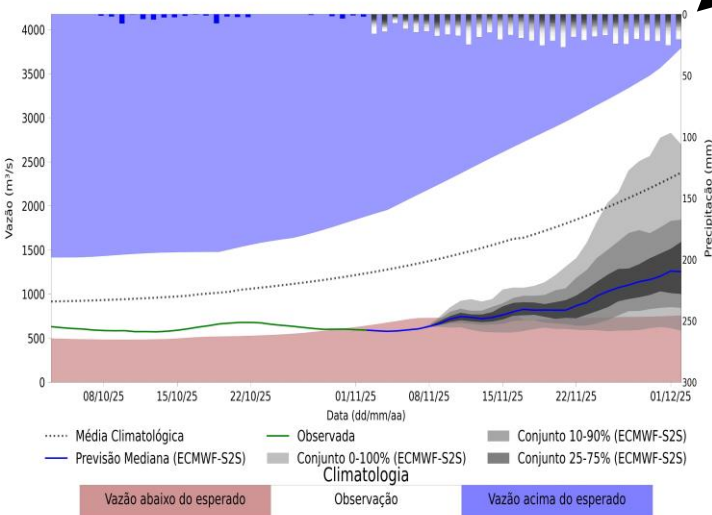
UHE Tucuruí



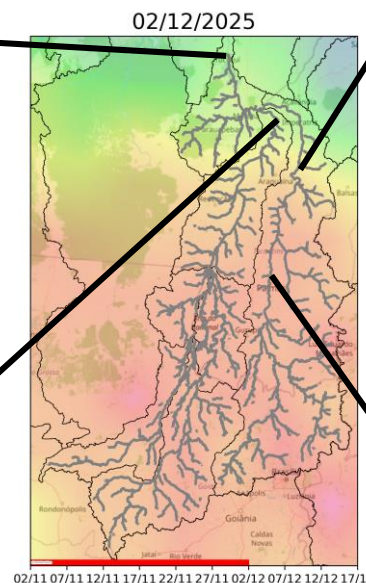
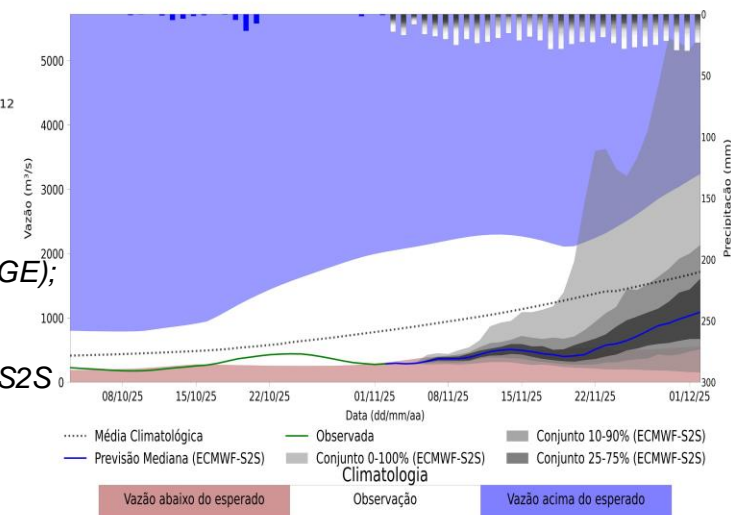
UHE Estreito



Araguatins - TO



UHE Lajeado



Fonte: Meteorologia (INMET/MERGE);  
Vazão (ANA/ONS)

MLT: 1993-2024

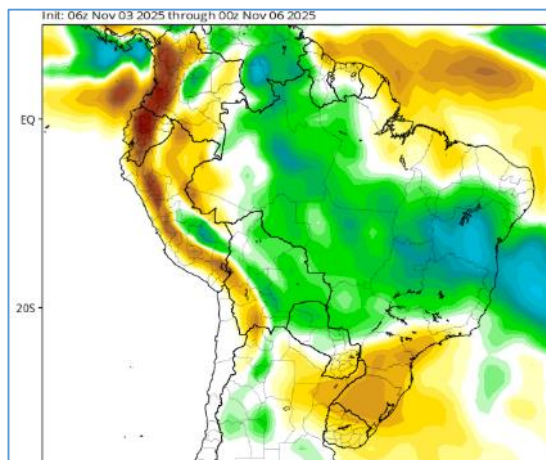
Previsão Meteorológica: ECMWF-S2S



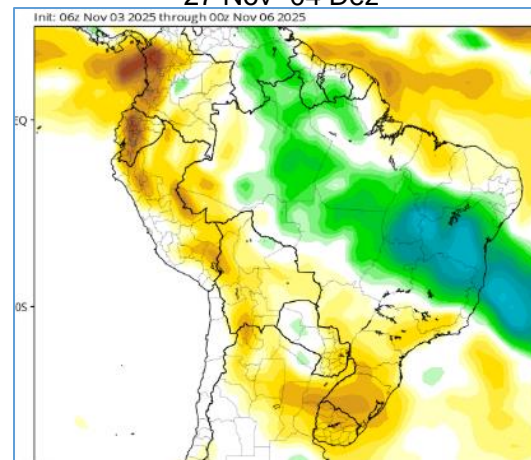
## Tendência 3a e 4a semanas

CFS/NOAA

20-27 Nov

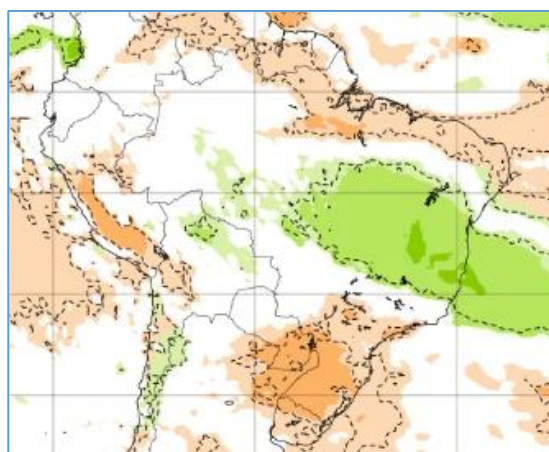


27 Nov- 04 Dez

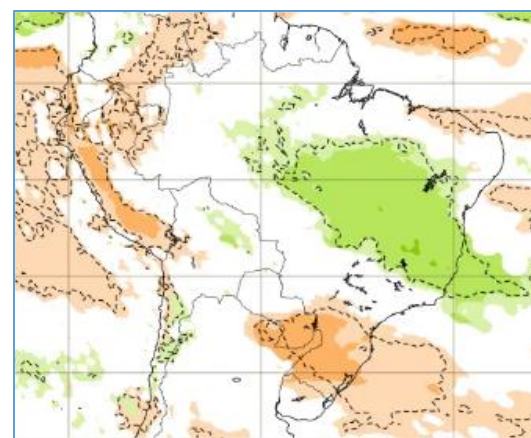


ECMWF

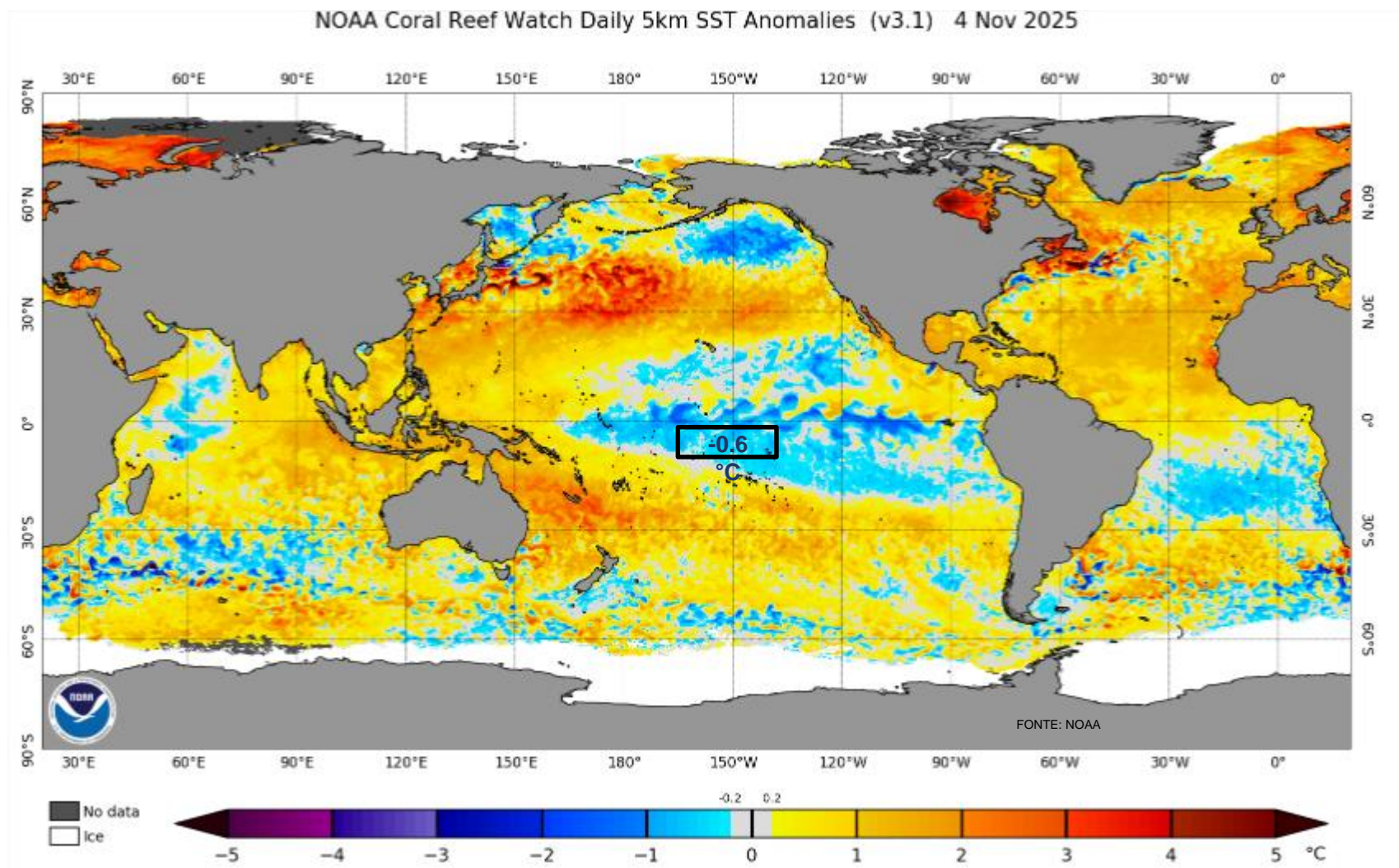
24 Nov – 01 Dez



01-08 Dez



Status Atual: **La Niña**





## Previsão do “ENSO”

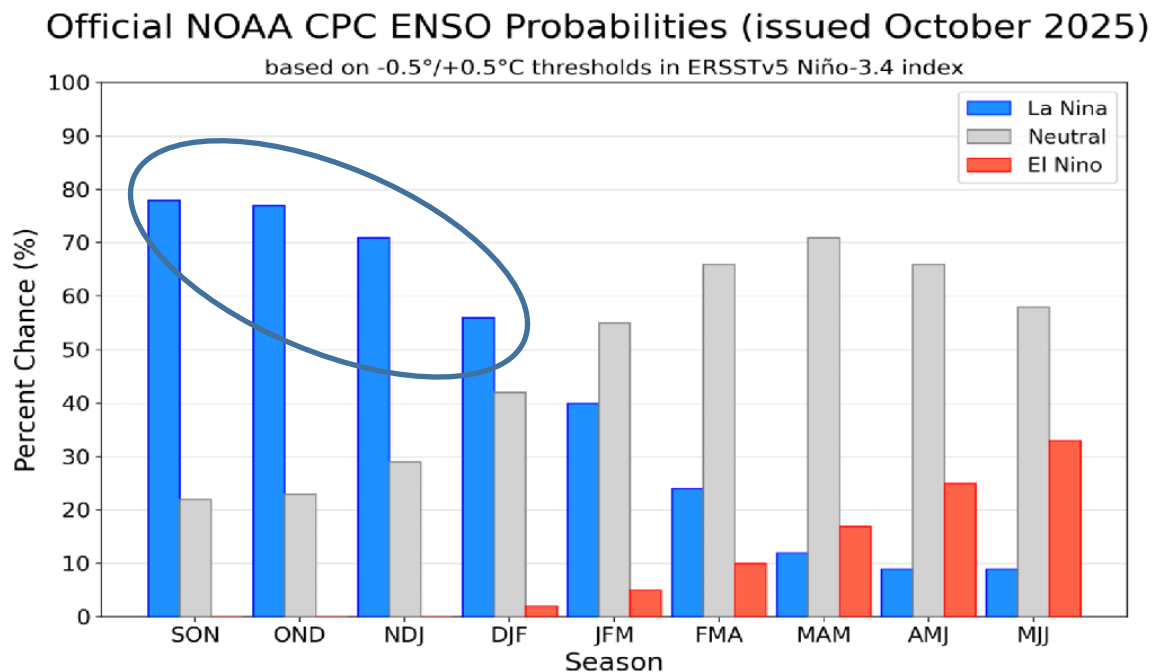
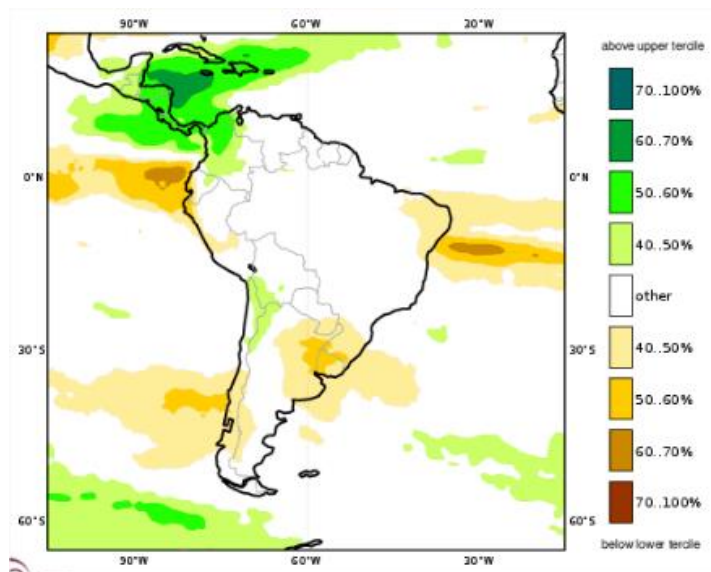


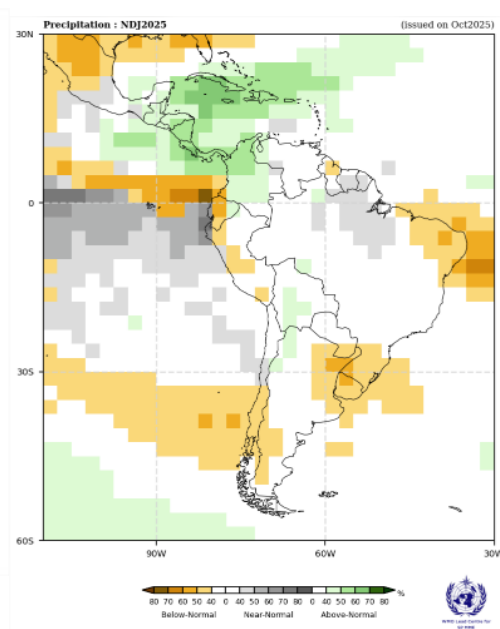
Figure 7. Official ENSO probabilities for the Niño 3.4 sea surface temperature index ( $5^{\circ}\text{N}$ - $5^{\circ}\text{S}$ ,  $120^{\circ}\text{W}$ - $170^{\circ}\text{W}$ ). Figure updated 9 October 2025.

## Previsão Sazonal de Chuva Multi-Modelo

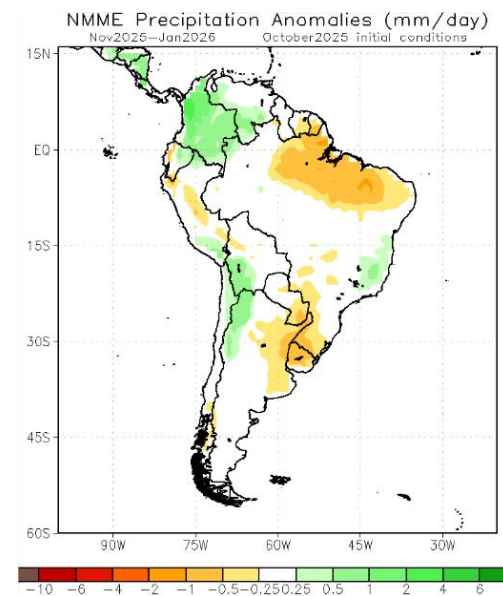
Novembro-Dezembro-Janeiro



Modelos “Europeus”



Modelos da WMO



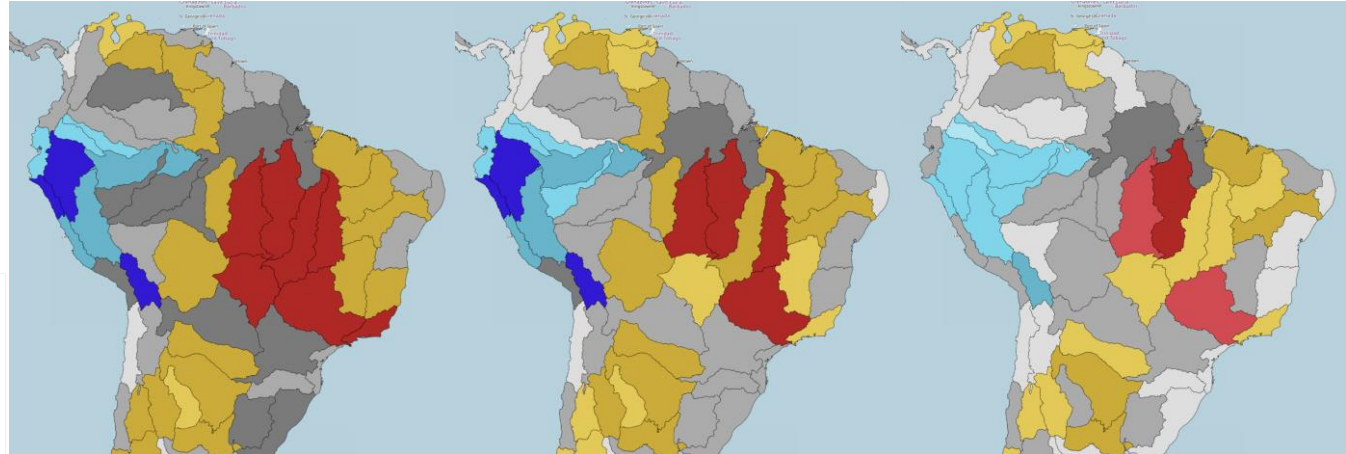
Modelos Norte  
Americanos

## Previsão Subsazonal

Novembro - 10

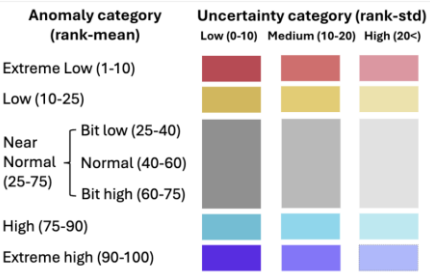
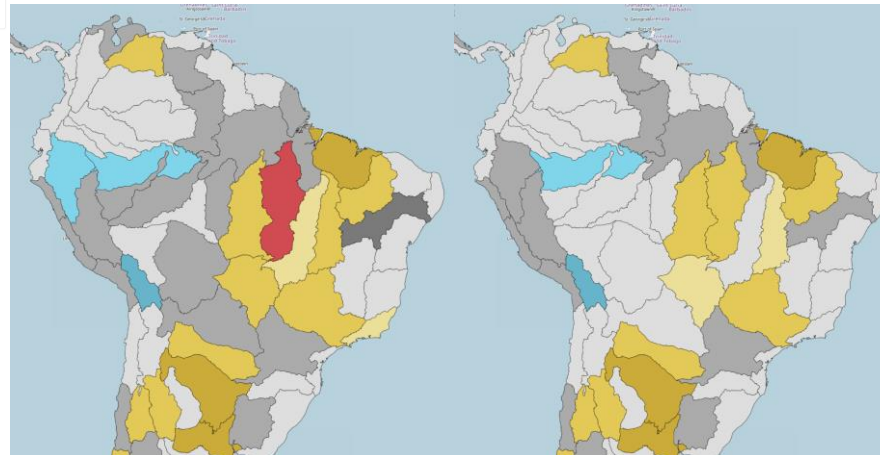
Novembro - 17

Novembro - 24



Dezembro - 01

Dezembro - 08





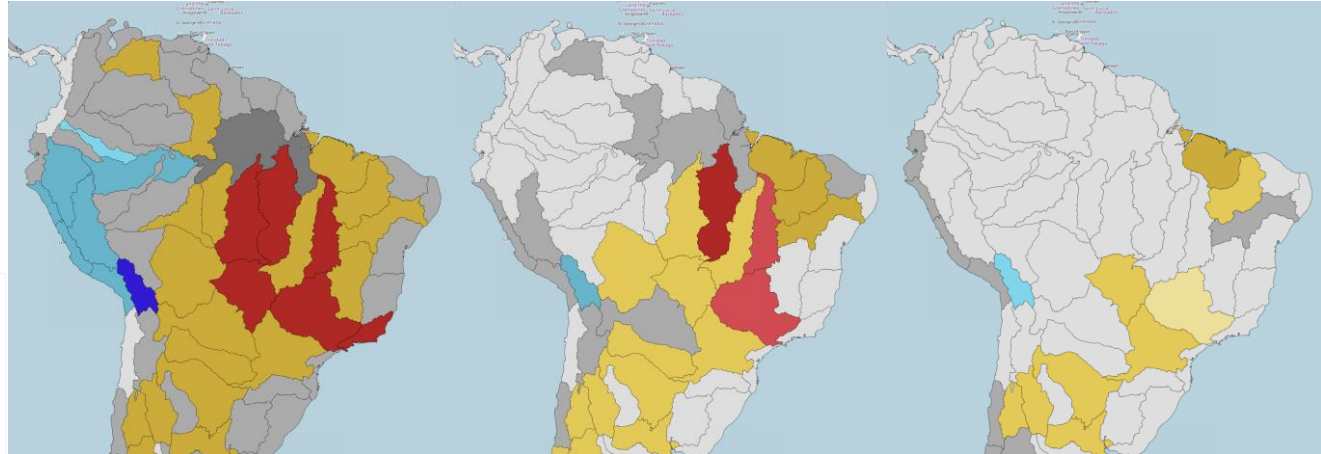
# Monitoramento da situação da seca na Região Norte

## Previsão Sazonal

Novembro

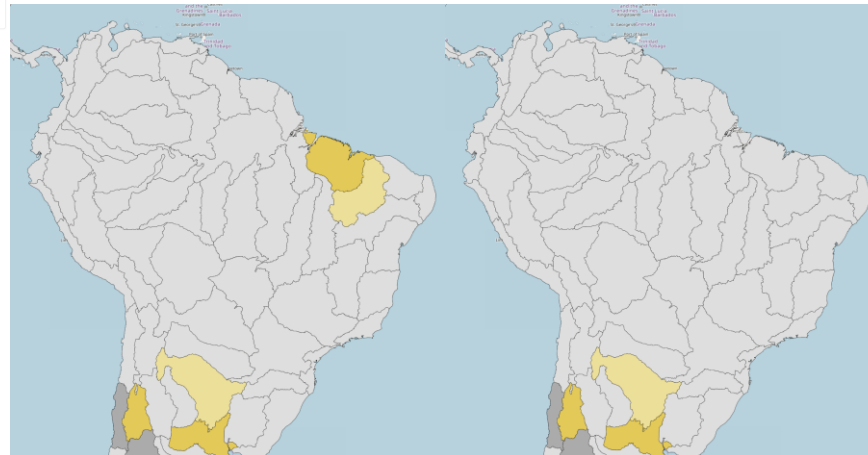
Dezembro

Janeiro



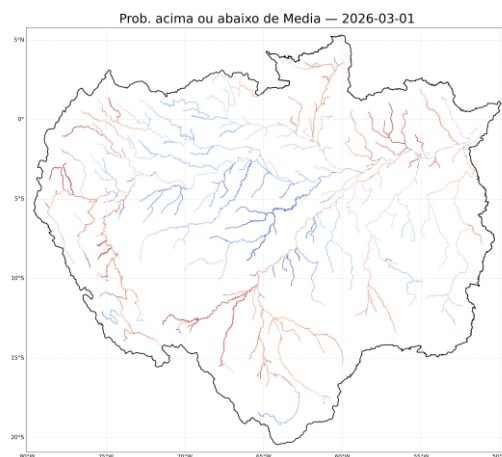
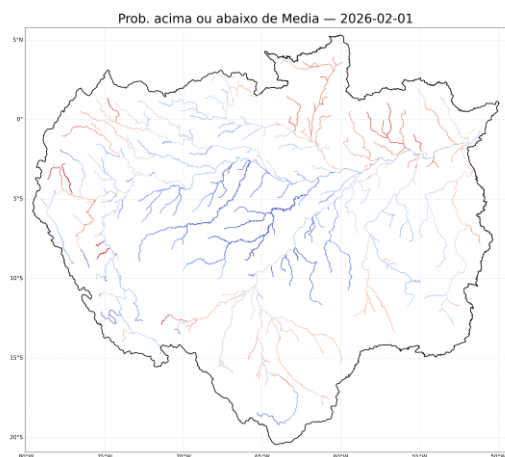
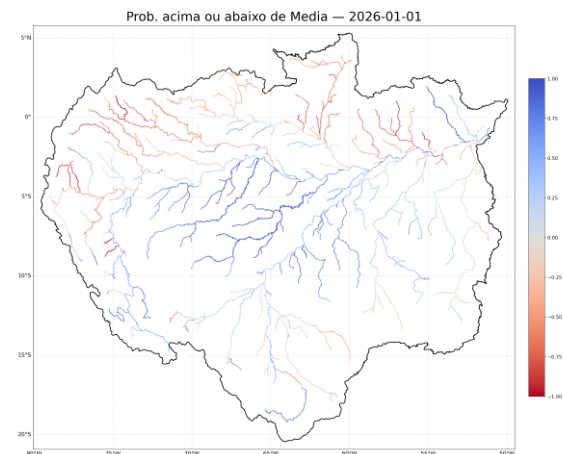
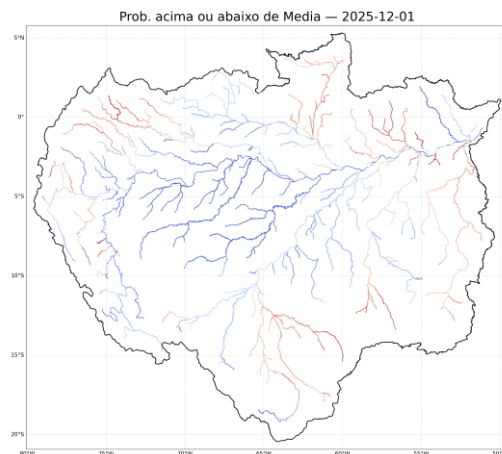
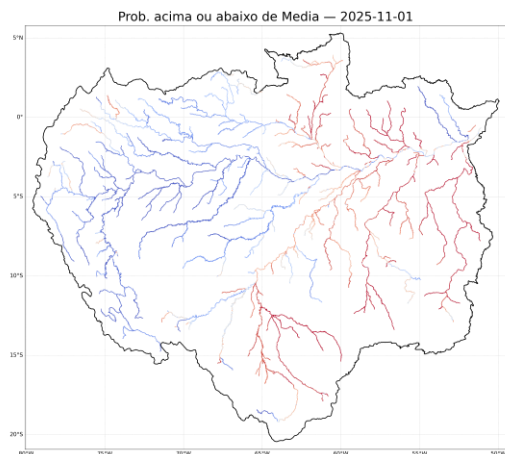
Fevereiro

Março



Anomaly category (rank-mean)	Uncertainty category (rank-std)		
	Low (0-10)	Medium (10-20)	High (20-)
Extreme Low (1-10)			
Low (10-25)			
Near Normal (25-75)	Bit low (25-40)		
	Normal (40-60)		
	Bit high (60-75)		
High (75-90)			
Extreme high (90-100)			

# Monitoramento da situação da seca na Região Norte



Previsão Sazonal  
Novembro a Março/2026

