



# CEMADEN

**Centro Nacional de Monitoramento e  
Alertas de Desastres Naturais**

## **Sala de Acompanhamento da Região Norte**

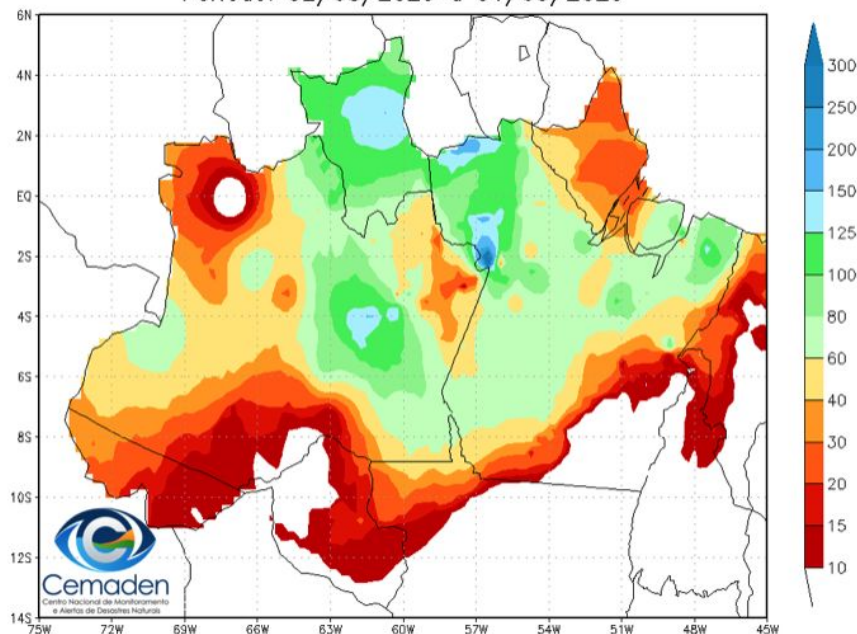
CEMADEN/MCTI

Setembro de 2025

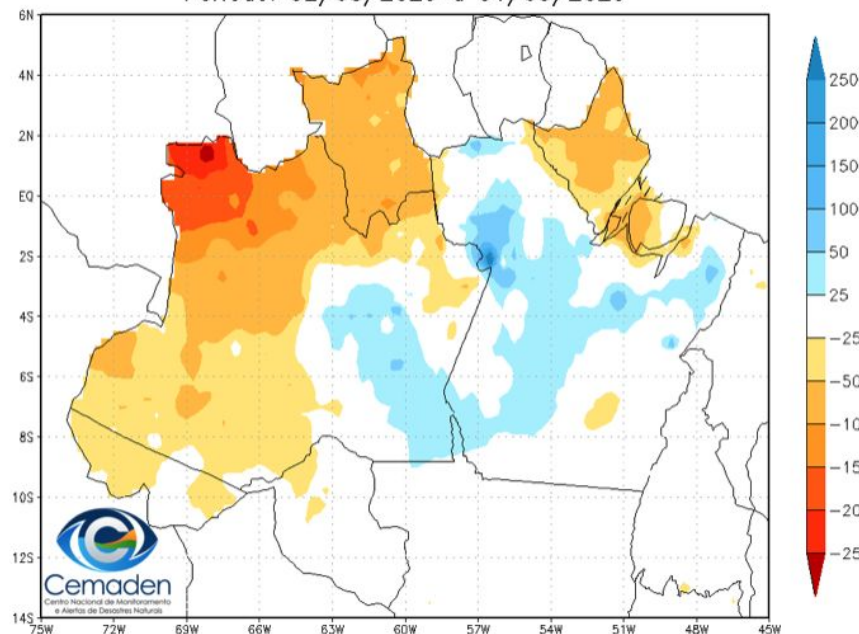


## PRECIPITAÇÃO : ÚLTIMOS 30 DIAS

Precipitação Acumulada (mm)  
Período: 02/08/2025 a 01/09/2025



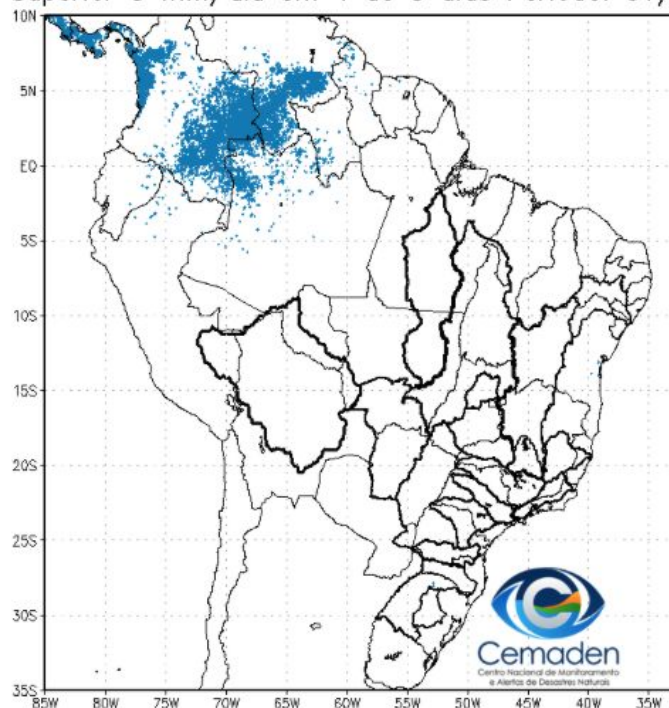
Anomalia de Precipitação (mm)  
Período: 02/08/2025 a 01/09/2025



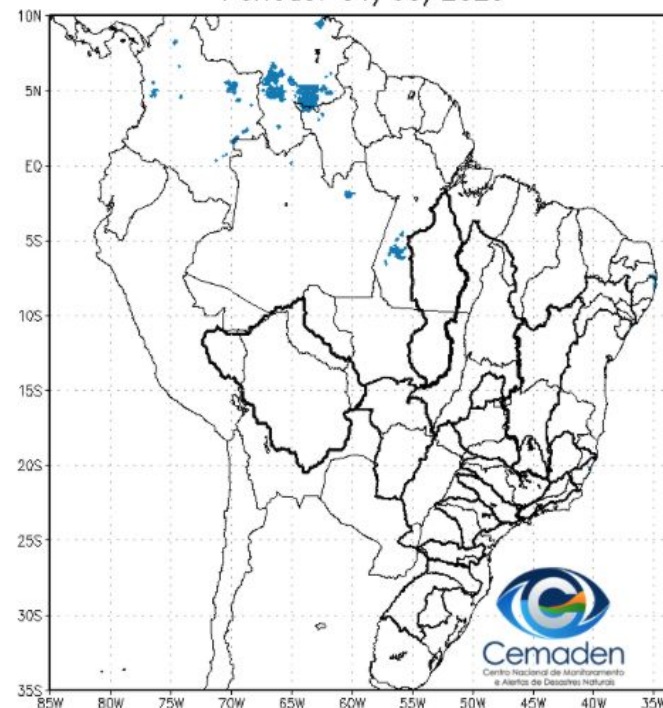


## SITUAÇÃO DA ESTAÇÃO CHUVOSA

Climatologia da Precipitação (2001–2024)  
Superior 3 mm/dia em 4 de 5 dias Período: 01/09

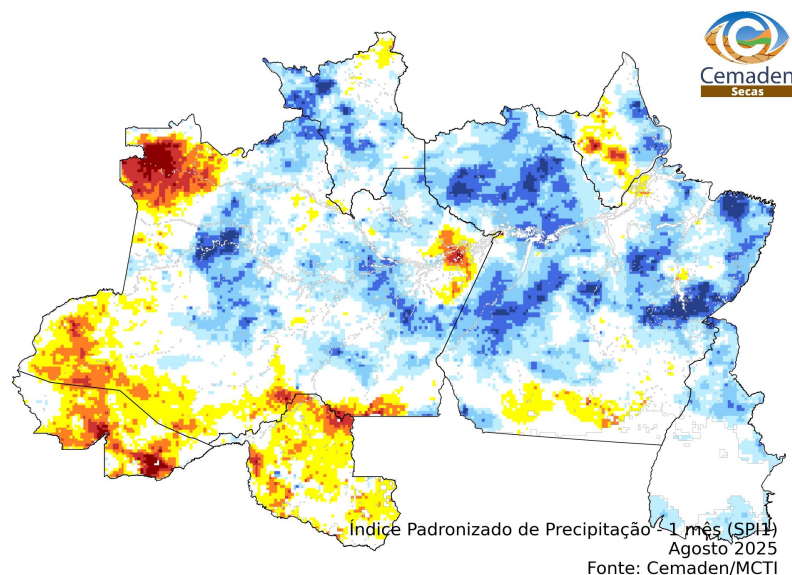


Precipitação A.S. Superior a 3 mm/dia por 4 de 5 dias  
Período: 01/09/2025

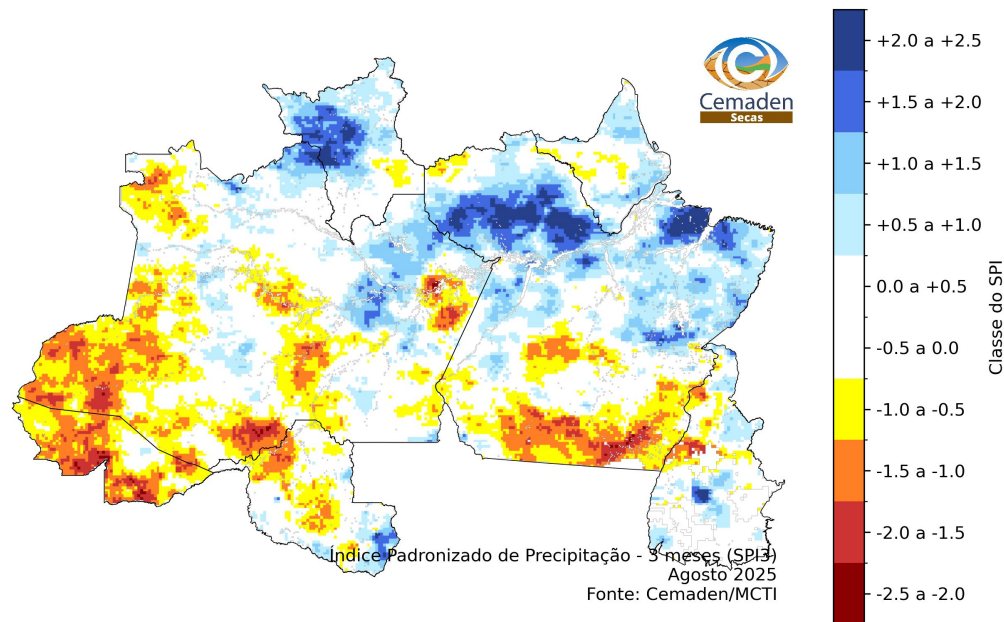


# ANOMALIA PADRONIZADA DE PRECIPITAÇÃO : AGOSTO/2025

**SPI1**



**SPI3**



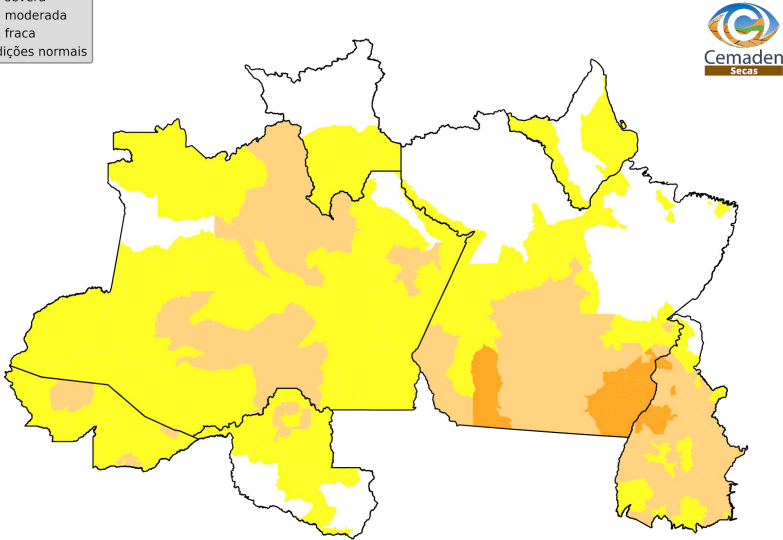


# ÍNDICE INTEGRADO DE SECA - IIS

(SPI + VHI + AUS): AGOSTO/2025

## IIS-03

- Classes de seca
- Seca excepcional
  - Seca extrema
  - Seca severa
  - Seca moderada
  - Seca fraca
  - Condições normais



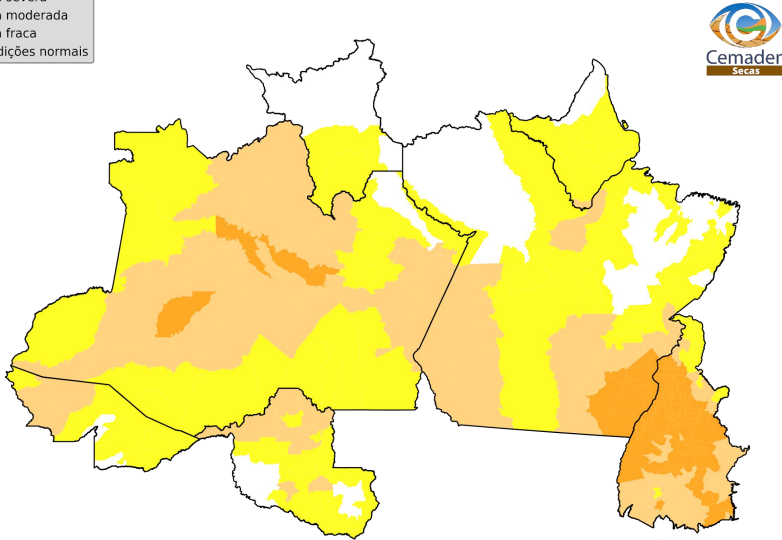
Número de municípios  
por classes de seca:

Seca excepcional:	0 (0.0%)
Seca extrema:	0 (0.0%)
Seca severa:	21 (4.7%)
Seca moderada:	109 (24.2%)
Seca fraca:	178 (39.6%)
Condições normais:	142 (31.6%)

Índice Integrado de Seca - 3 meses (IIS3)  
Agosto 2025  
Fonte: Cemaden/MCTI

## IIS-06

- Classes de seca
- Seca excepcional
  - Seca extrema
  - Seca severa
  - Seca moderada
  - Seca fraca
  - Condições normais



Número de municípios  
por classes de seca:

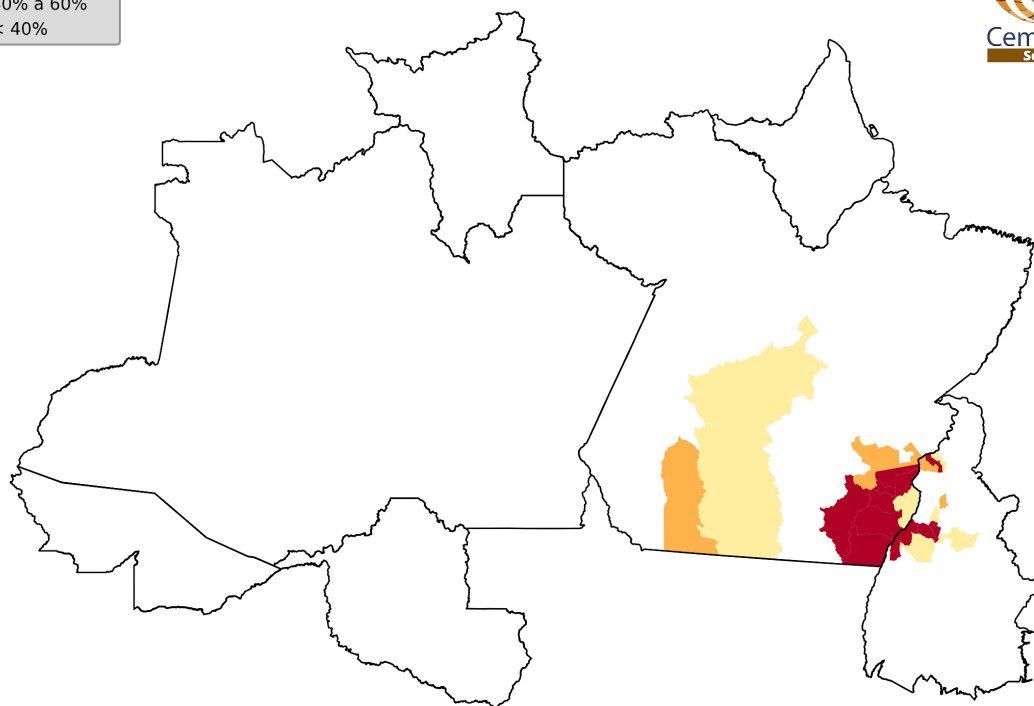
Seca excepcional:	0 (0.0%)
Seca extrema:	0 (0.0%)
Seca severa:	81 (18.0%)
Seca moderada:	115 (25.6%)
Seca fraca:	171 (38.0%)
Condições normais:	83 (18.4%)

Índice Integrado de Seca - 6 meses (IIS6)  
Agosto 2025  
Fonte: Cemaden/MCTI

## ÁREAS DE PASTAGENS E AGRÍCOLAS AFETADAS PELA SECA

Fração da área  
agrícola impactada

- > 80%
- 60% a 80%
- 40% a 60%
- < 40%

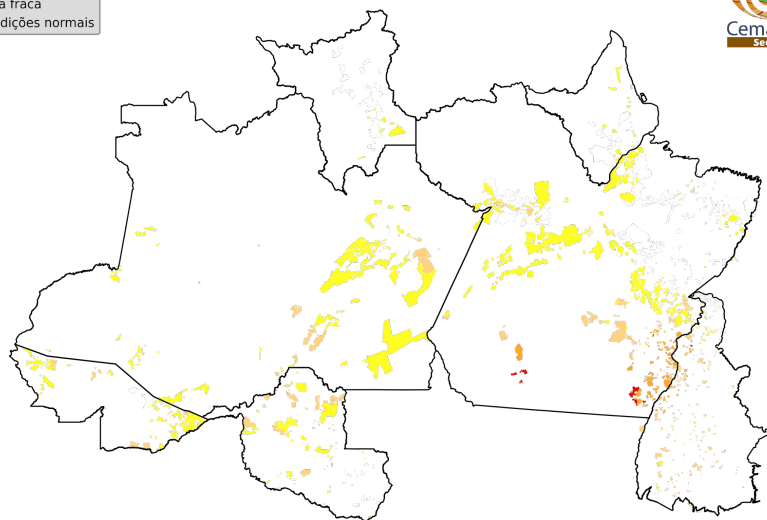


Área agro-pastoril municipal afetada pela seca  
Agosto 2025  
Fonte: Cemaden/MCTI

## ÍNDICE INTEGRADO DE SECA (IIS-03)

### PROJETOS DE ASSENTAMENTO

- Classes de seca
- Seca excepcional
  - Seca extrema
  - Seca severa
  - Seca moderada
  - Seca fraca
  - Condições normais



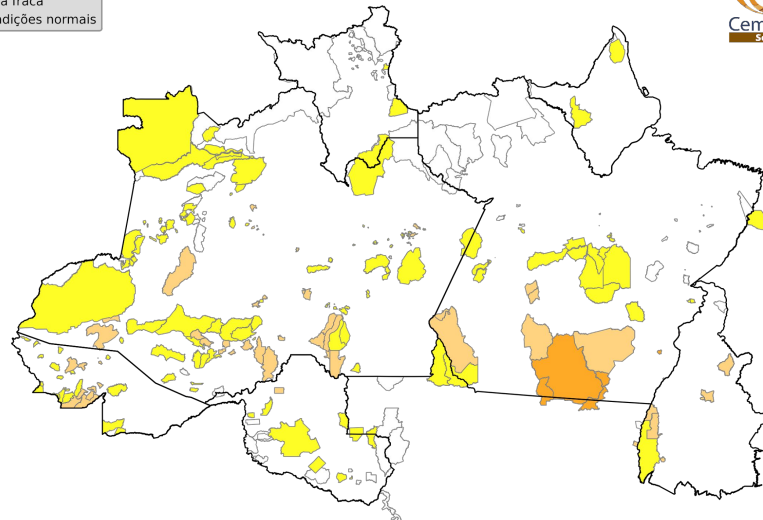
Número de Assentamentos  
por classes de seca:

Seca excepcional:	0 ( 0.0%)
Seca extrema:	16 ( 0.2%)
Seca severa:	156 ( 2.1%)
Seca moderada:	388 ( 5.3%)
Seca fraca:	708 ( 9.7%)
Condições normais:	612 ( 8.4%)

Índice Integrado de Seca - 3 meses (IIS3)  
Agosto 2025  
Fonte: Cemaden/MCTI

### TERRAS INDÍGENAS

- Classes de seca
- Seca excepcional
  - Seca extrema
  - Seca severa
  - Seca moderada
  - Seca fraca
  - Condições normais



Número de Terras Indígenas  
por classes de seca:

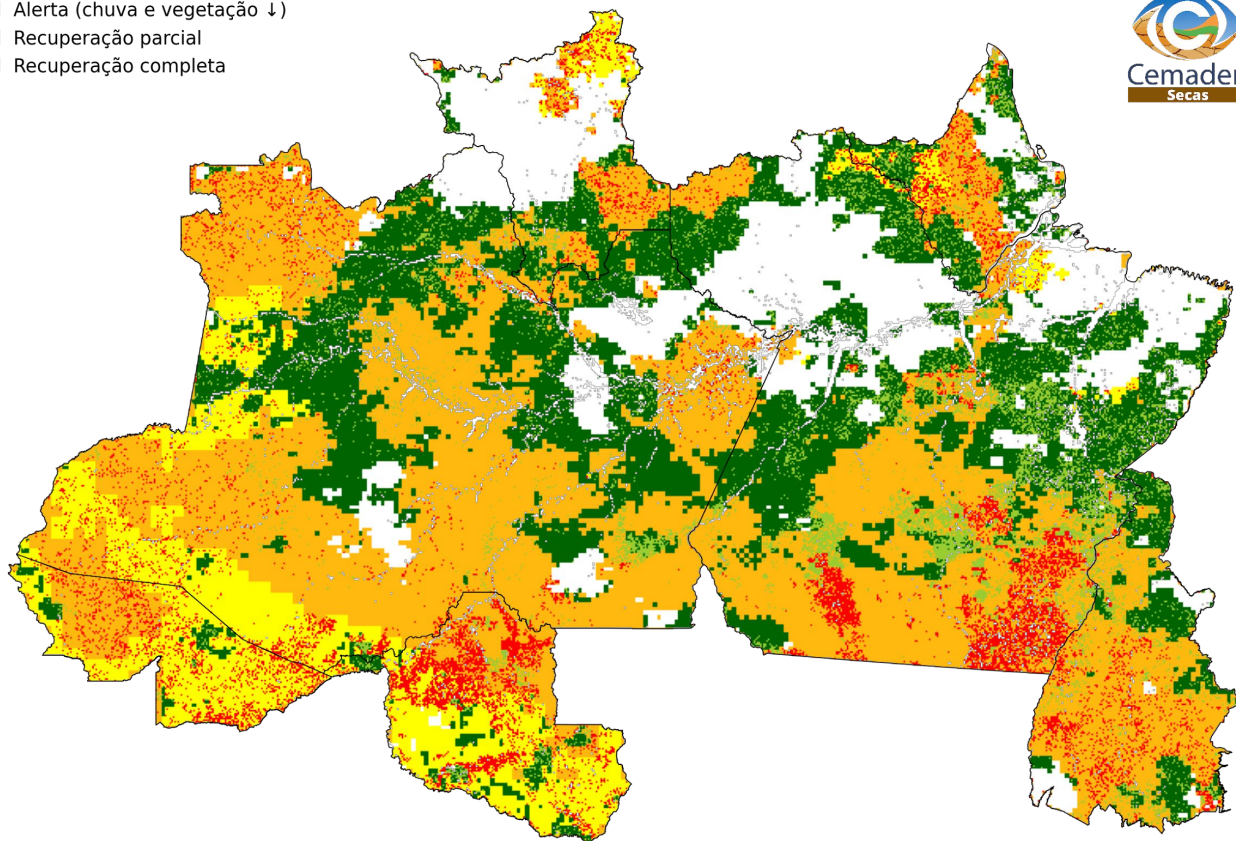
Seca excepcional:	0 ( 0.0%)
Seca extrema:	1 ( 0.2%)
Seca severa:	7 ( 1.1%)
Seca moderada:	63 (10.0%)
Seca fraca:	148 (23.4%)
Condições normais:	87 (13.7%)

Índice Integrado de Seca - 3 meses (IIS3)  
Agosto 2025  
Fonte: Cemaden/MCTI



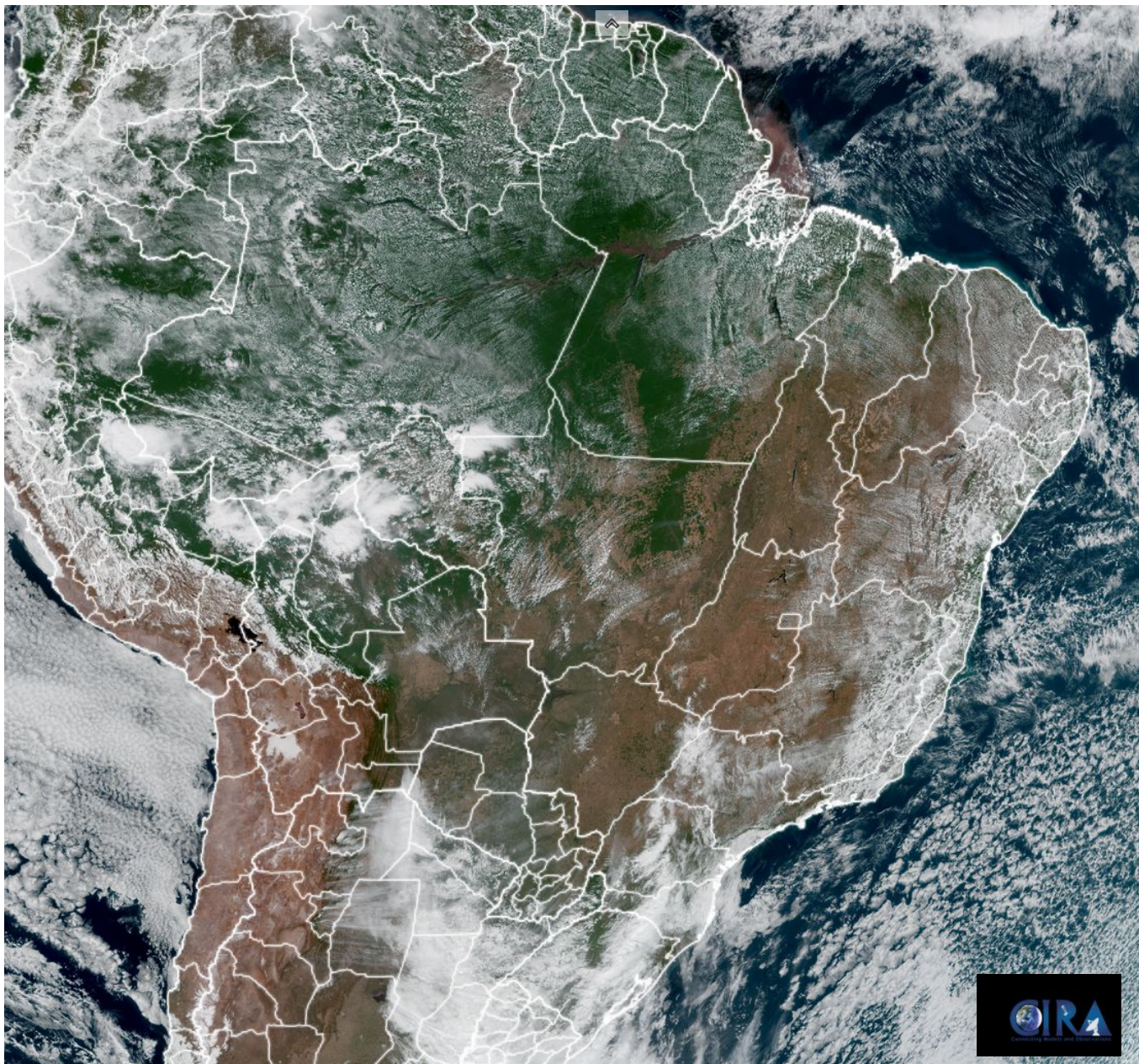
## PROGRESSÃO E INTENSIFICAÇÃO DAS CONDIÇÕES DE SECA (PICS)

- Progressão da seca
- Condição normal
  - Observação (chuva ↓)
  - Atenção (chuva e umid. solo ↓)
  - Alerta (chuva e vegetação ↓)
  - Recuperação parcial
  - Recuperação completa



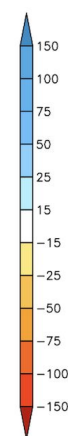
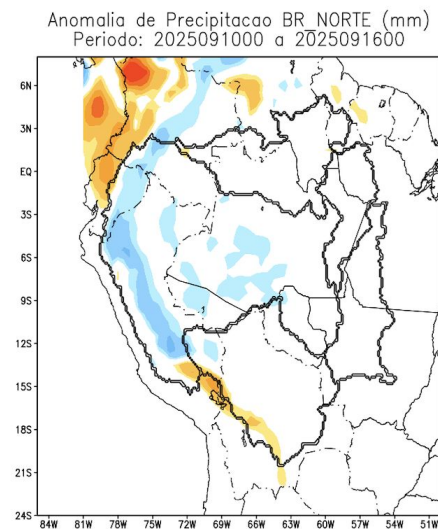
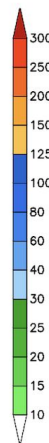
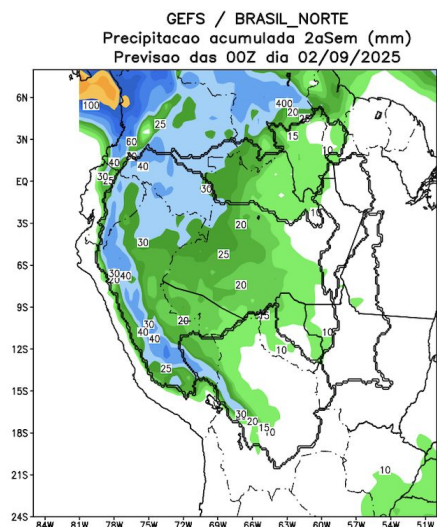
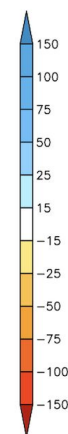
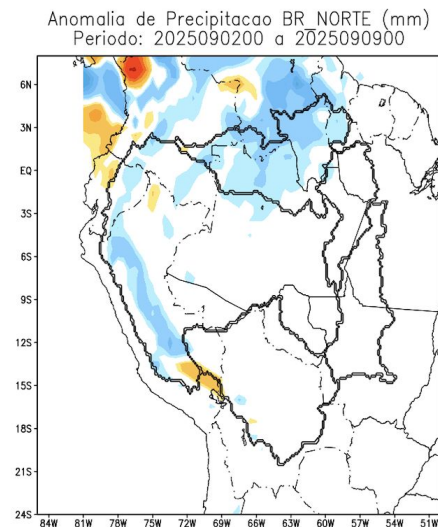
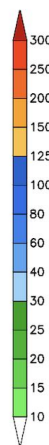
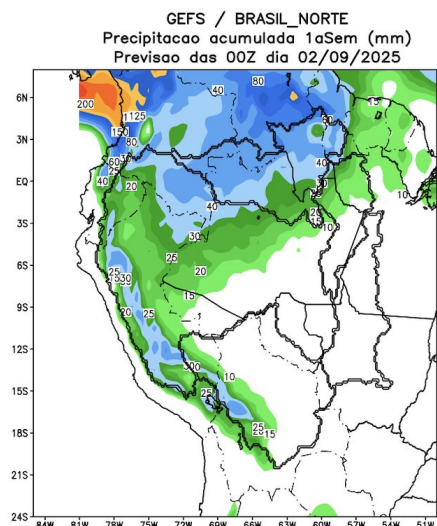


# Situação meteorológica atual





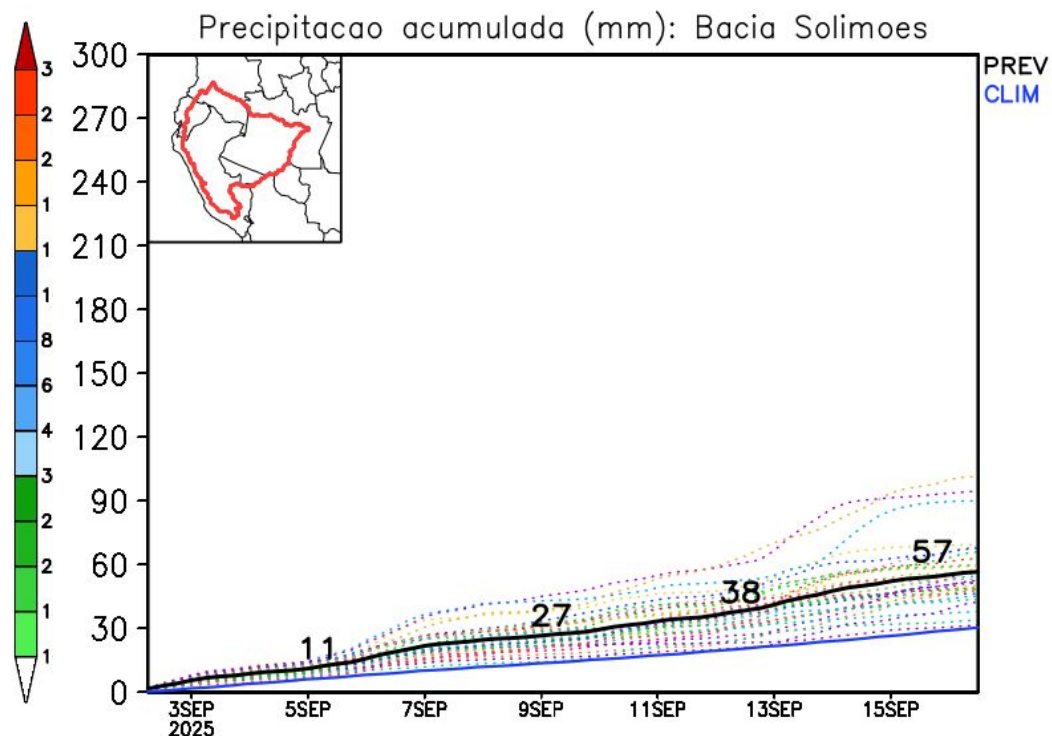
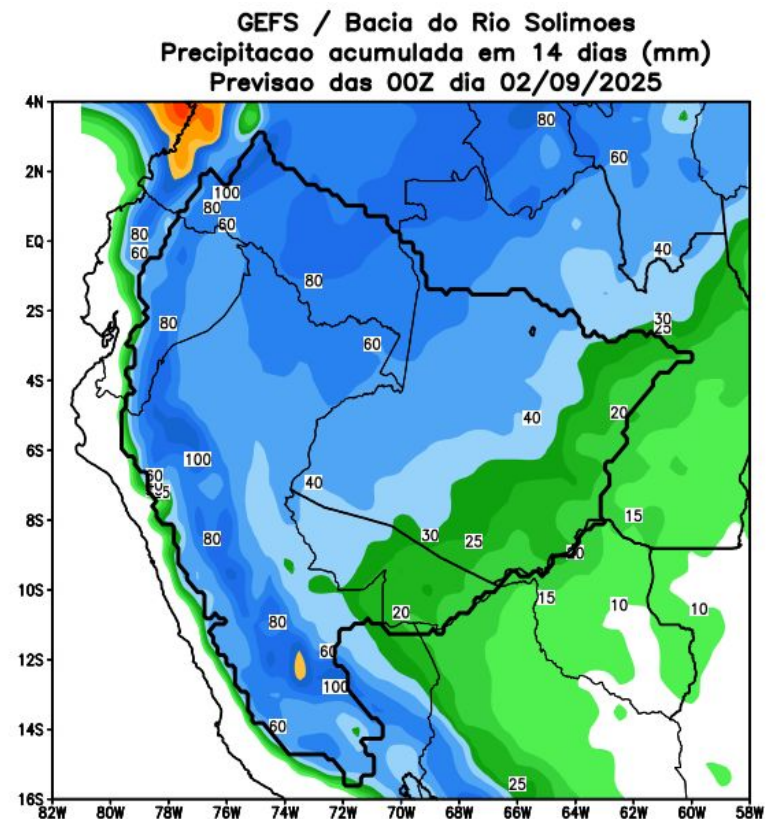
## Previsão de chuva próximas duas semanas





## Previsão de chuva próximas duas semanas

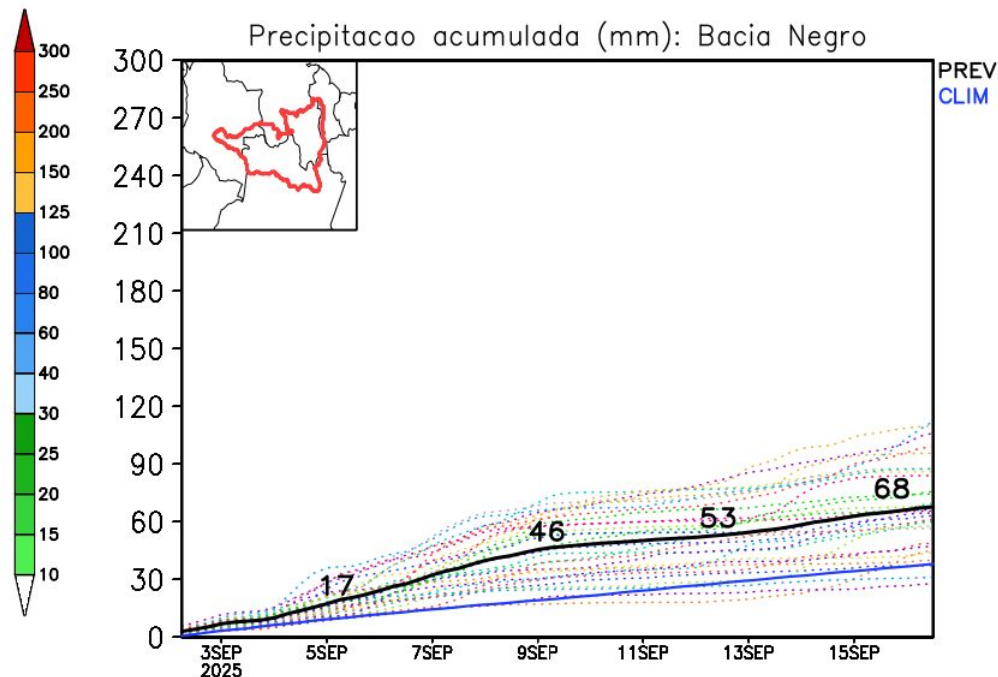
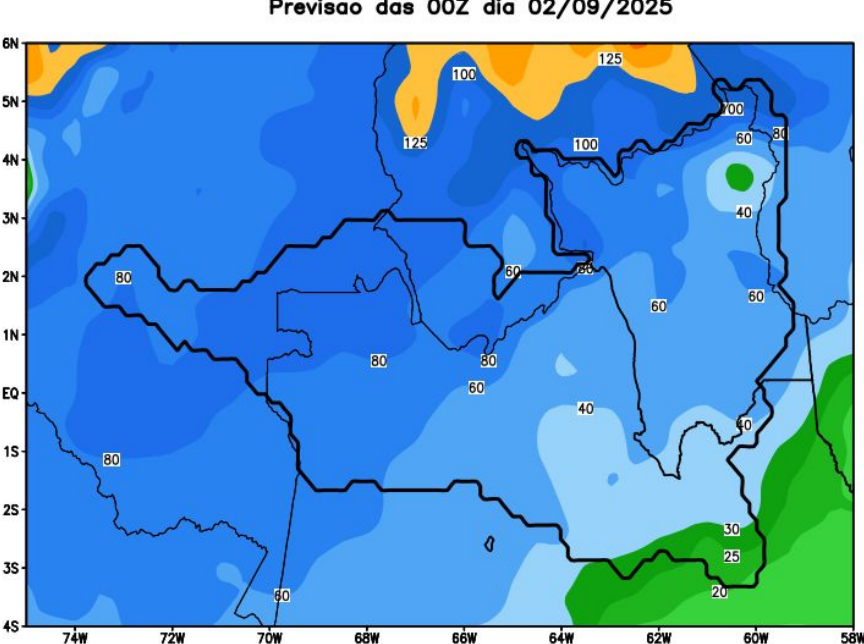
### Rio Solimões



## Previsão de chuva próximas duas semanas

### Rio Negro

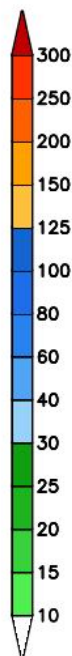
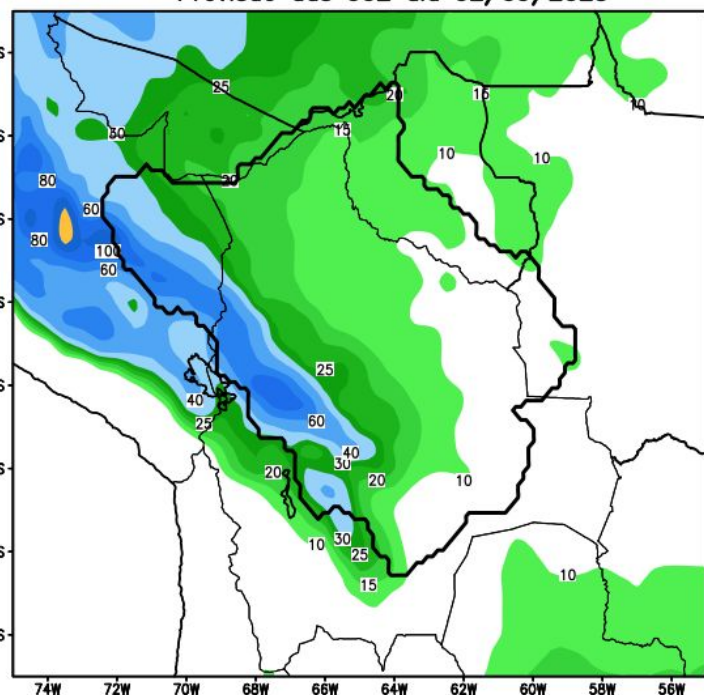
GEFS / Bacia do Rio Negro  
Precipitação acumulada em 14 dias (mm)  
Previsão das 00Z dia 02/09/2025



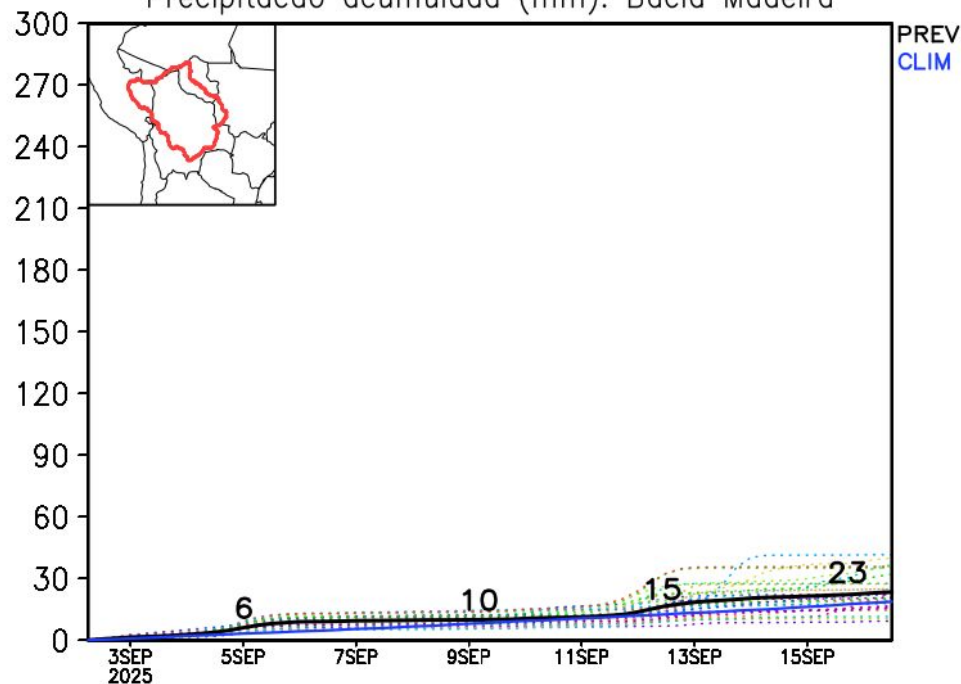
## Previsão de chuva próximas duas semanas

### Rio Madeira

GEFS / Bacia do Rio Madeira  
Precipitação acumulada em 14 dias (mm)  
Previsão das 00Z dia 02/09/2025



Precipitação acumulada (mm): Bacia Madeira

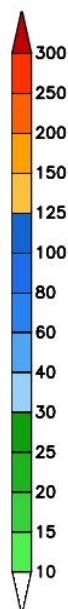
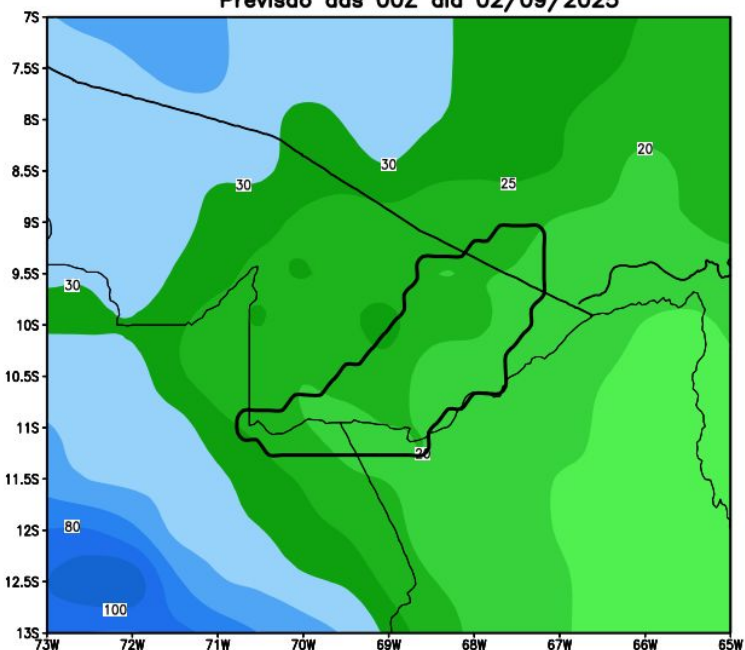




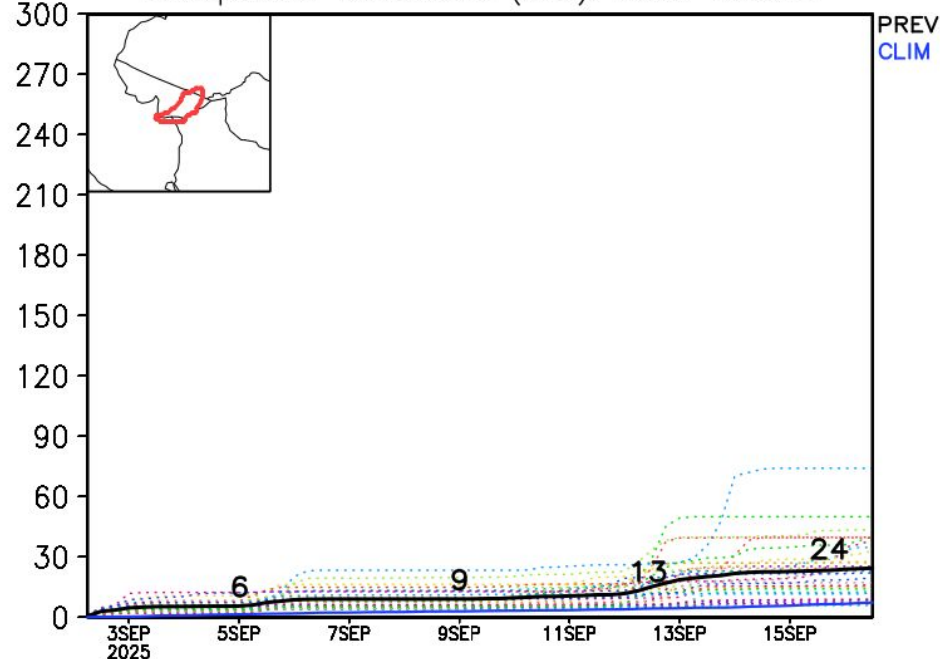
## Previsão de chuva próximas duas semanas

### Rio Acre

GEFS / Bacia do Rio Acre  
Precipitação acumulada em 14 dias (mm)  
Previsão das 00Z dia 02/09/2025



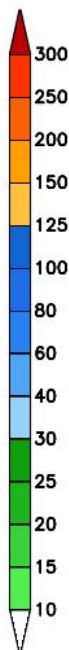
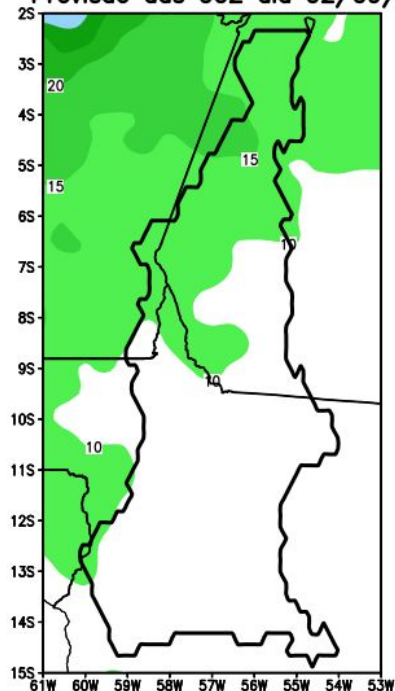
Precipitação acumulada (mm): Bacia RioAcre



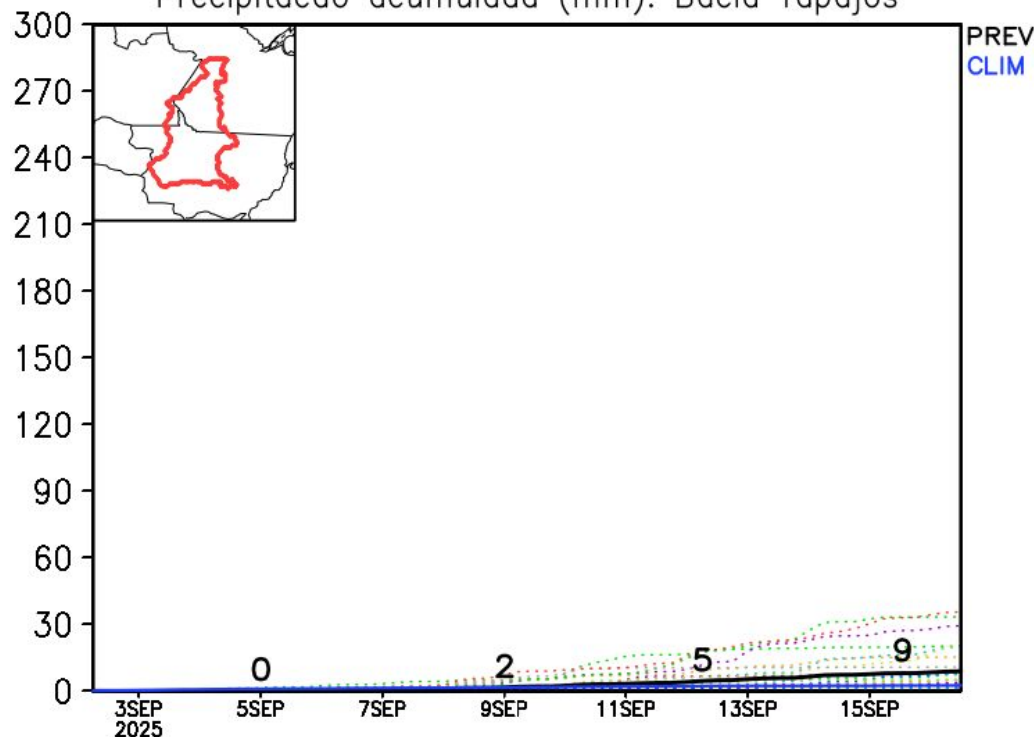
## Previsão de chuva próximas duas semanas

### Rio Tapajós

GEFS\_50km / Bacia do Rio Tapajós  
Precipitação acumulada em 14 dias (mm)  
Previsão das 00Z dia 02/09/2025

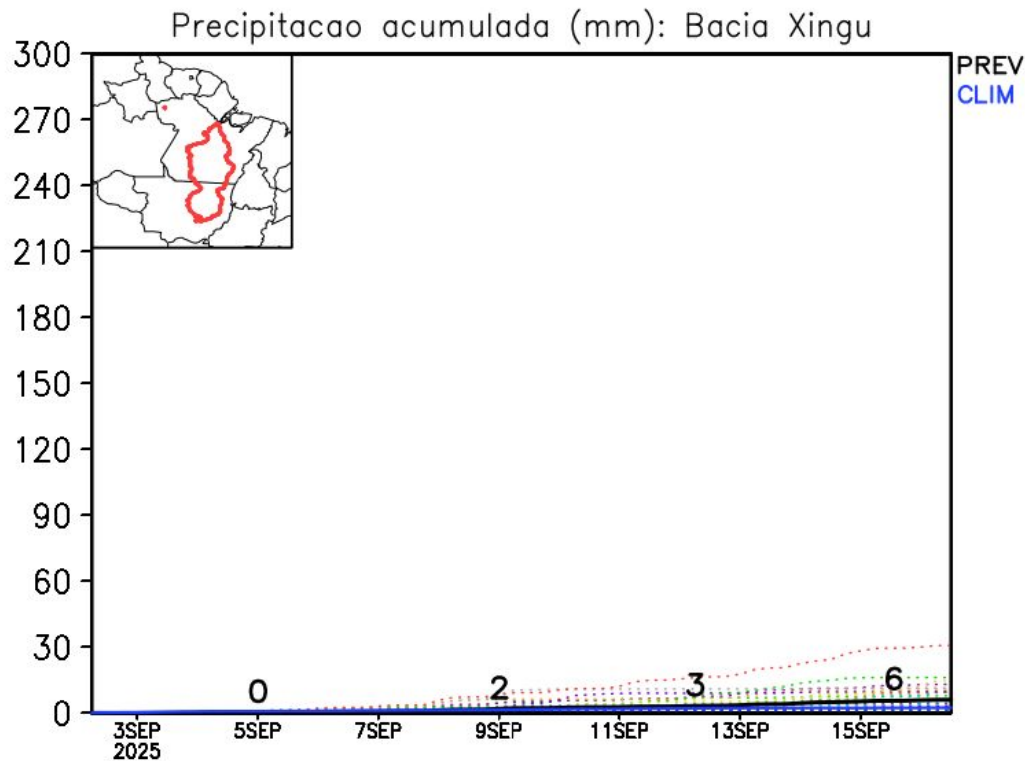


Precipitação acumulada (mm): Bacia Tapajós



## Previsão de chuva próximas duas semanas

## Rio Xingu

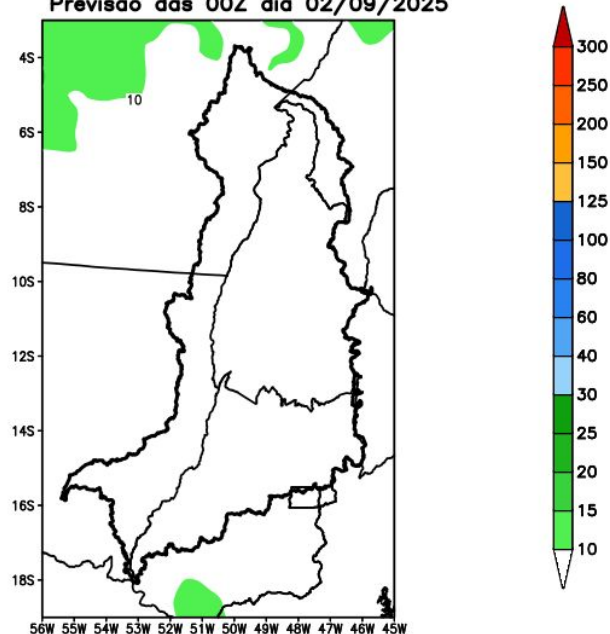




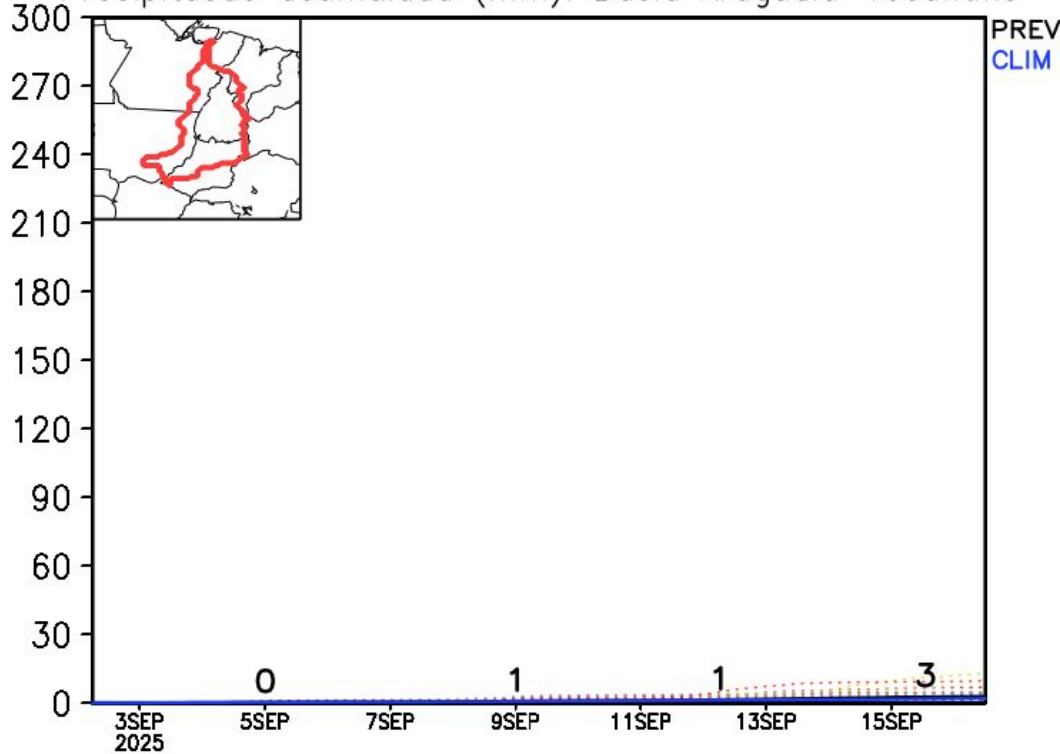
## Previsão de chuva próximas duas semanas

### Rio Araguaia-Tocantins

GEFS / Bacia Araguaia-Tocantins  
Precipitação acumulada em 14 dias (mm)  
Previsão das 00Z dia 02/09/2025



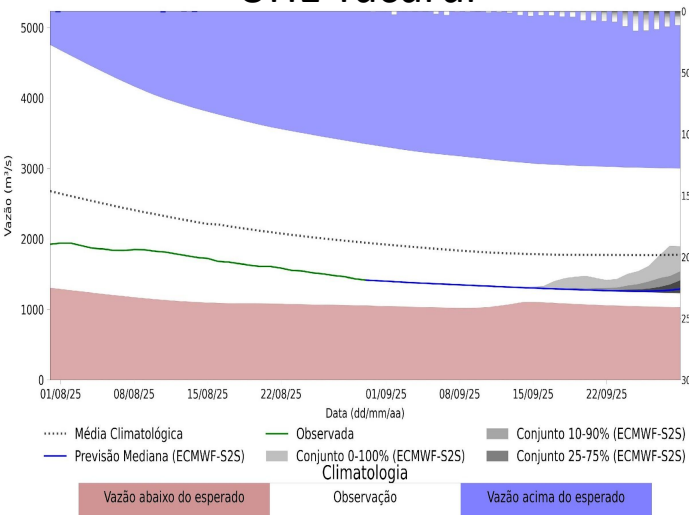
Precipitação acumulada (mm): Bacia Araguaia-Tocantins



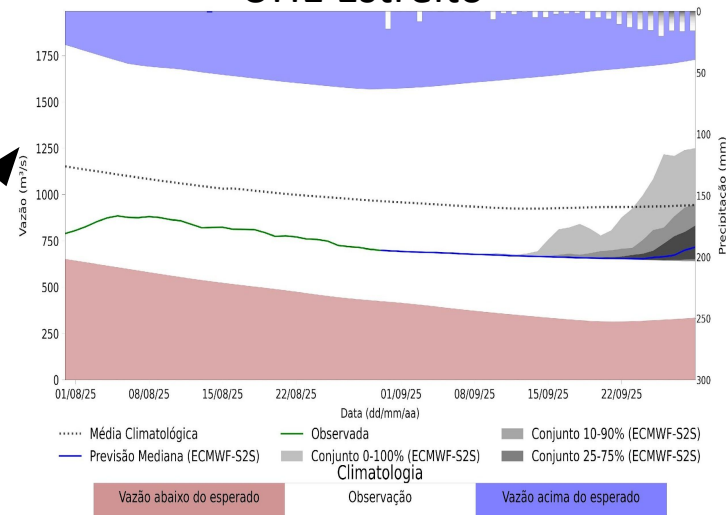
# Previsão de vazão natural na Bacia Rio Tocantins-Araguaia 30 dias (Modelo hidrológico MHD)

Previsão: 30/08/2025 a 29/09/2025

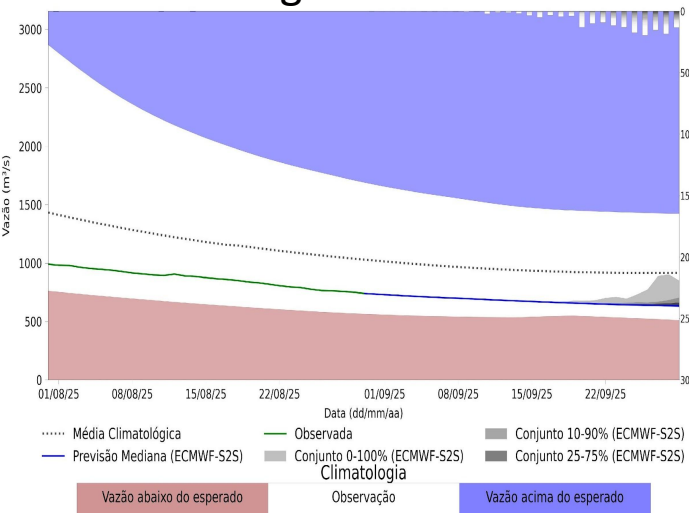
UHE Tucuruí



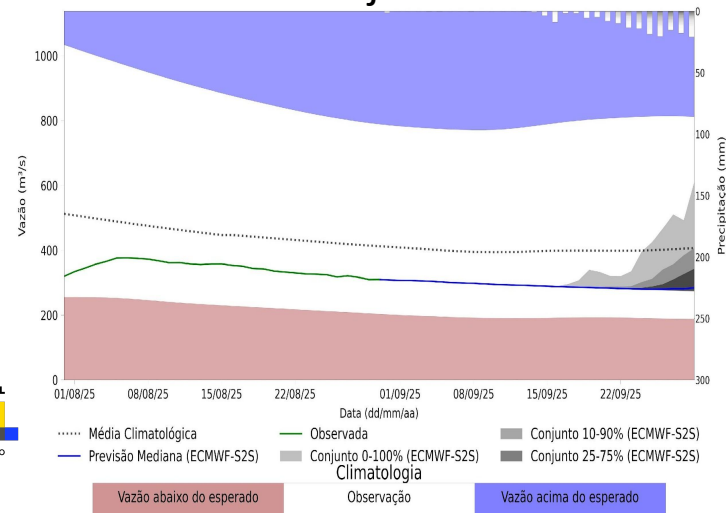
UHE Estreito



Araguatins - TO



UHE Lajeado



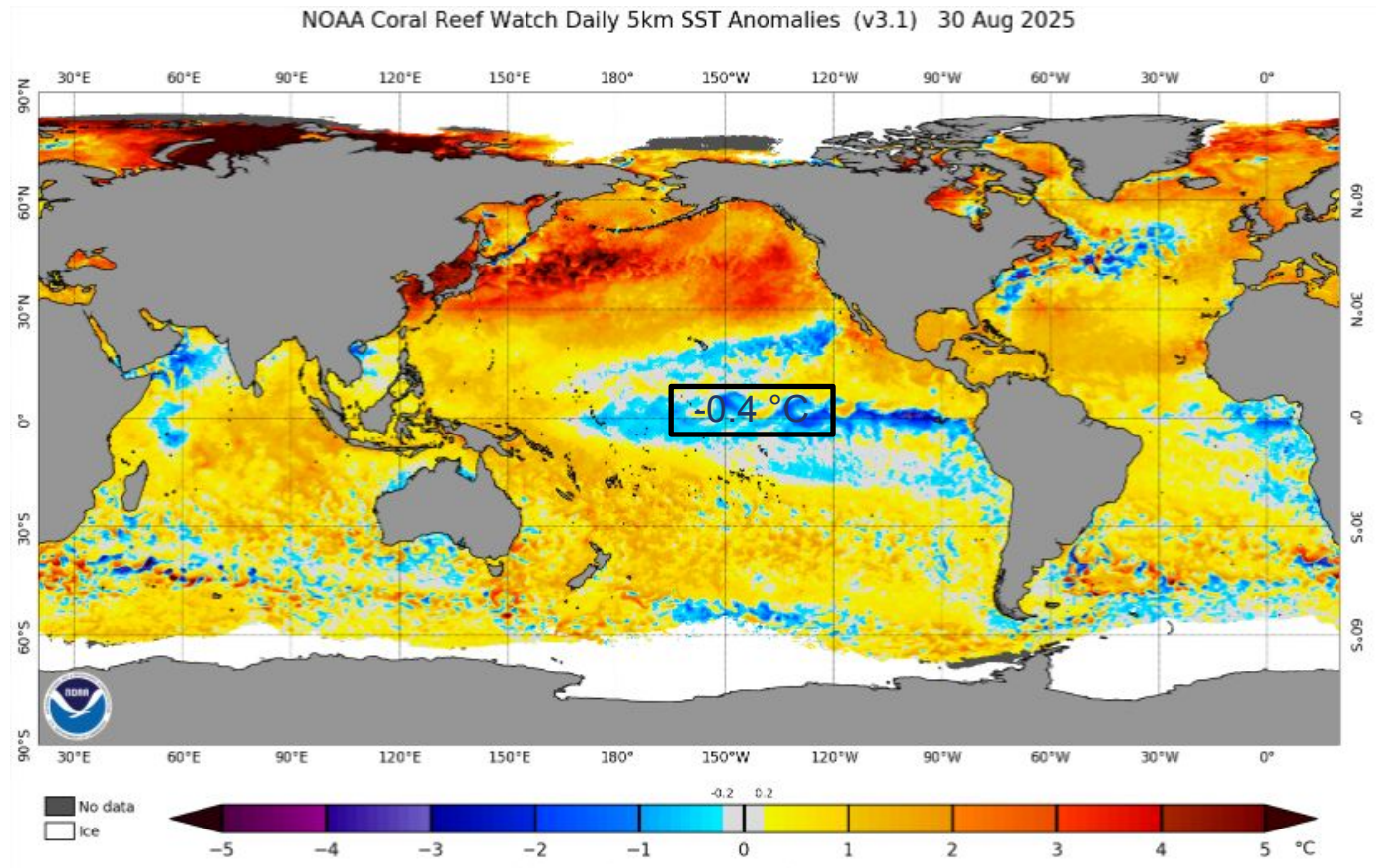
Fonte: Meteorologia (INMET/MERGE);  
Vazão (ANA/ONS)  
MLT: 1993-2024  
Previsão Meteorológica: ECMWF-S2S



MINISTÉRIO DA  
CIÊNCIA, TECNOLOGIA  
E INOVAÇÃO



## Status Atual: **La Niña Watch**



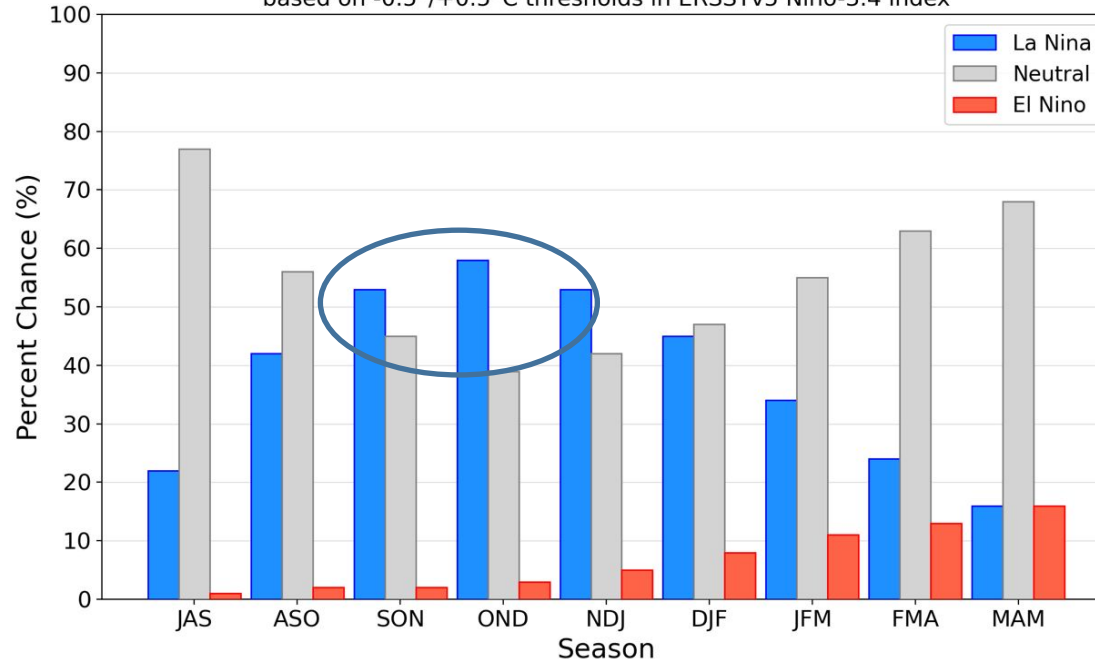
FONTE: NOAA



# Previsão do “ENSO”

## Official NOAA CPC ENSO Probabilities (issued August 2025)

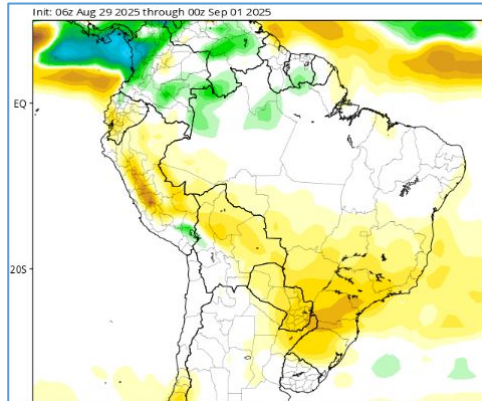
based on  $-0.5^{\circ}/+0.5^{\circ}\text{C}$  thresholds in ERSSTv5 Niño-3.4 index



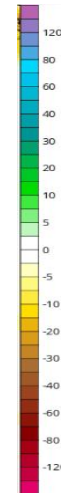
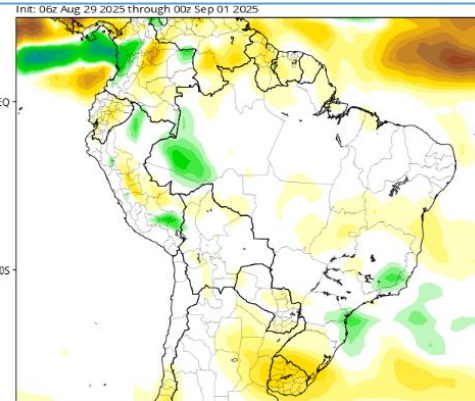
# Anomalia de Chuva 3a e 4a semanas

CFS/NOAA

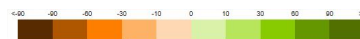
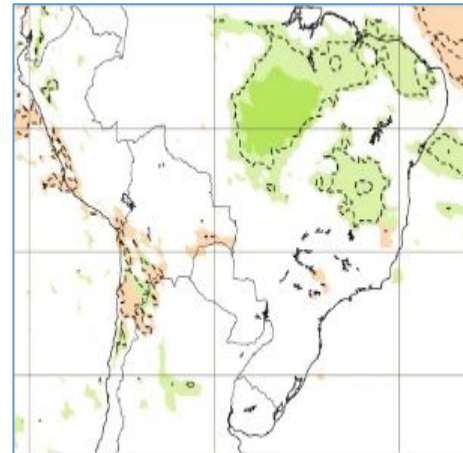
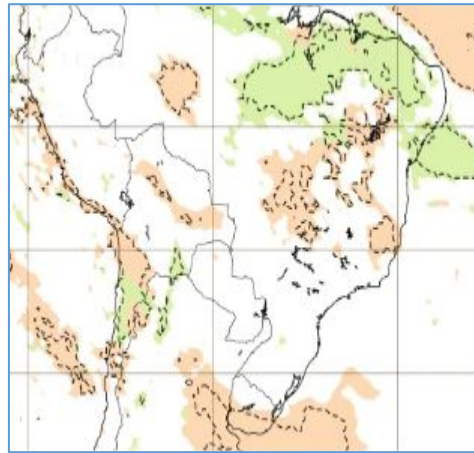
15-22 Set



22-29 Set

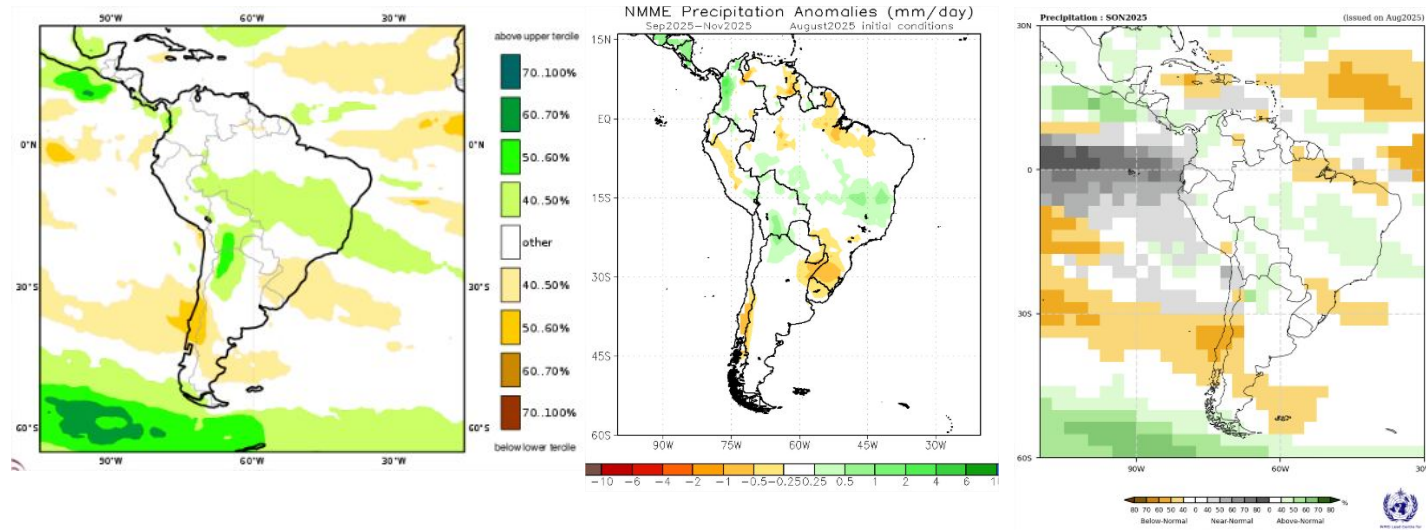


ECMWF



# Previsão Sazonal de Chuva Multi-Modelo

Setembro-Outubro-Novembro



Modelos  
“Europeus”

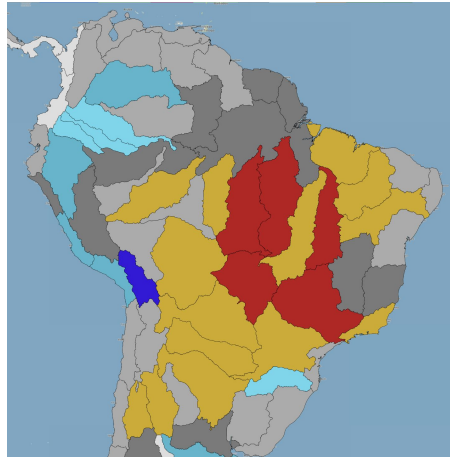
Modelos Norte  
Americanos

Modelos da  
WMO

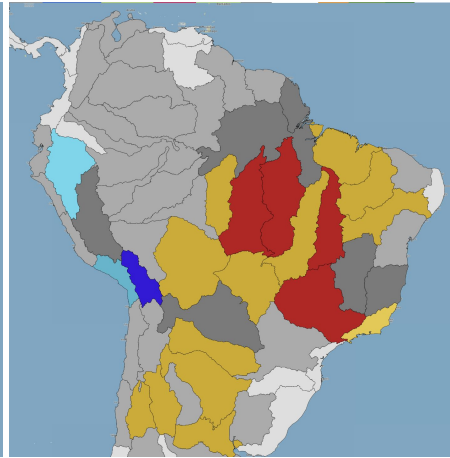


# Previsão Sazonal

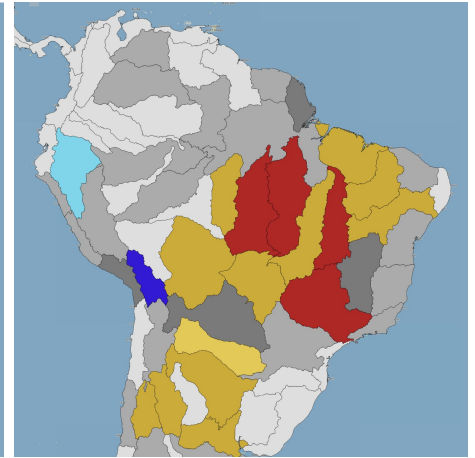
Setem



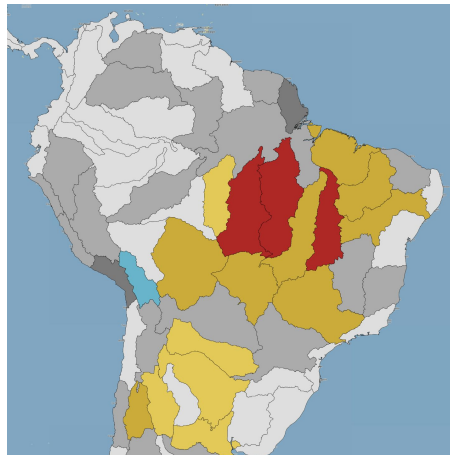
Outubr



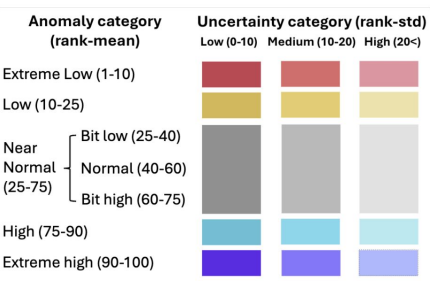
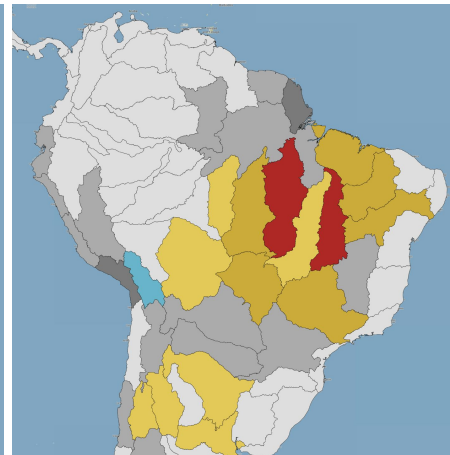
Novem

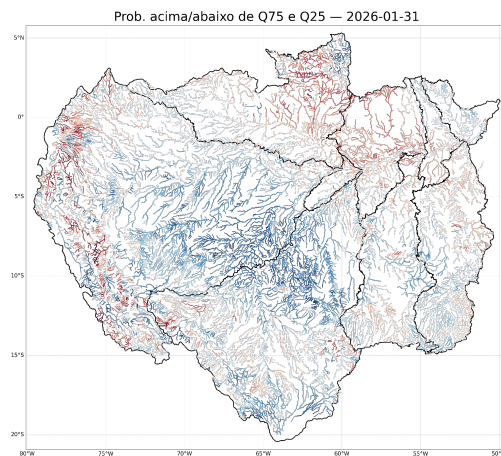
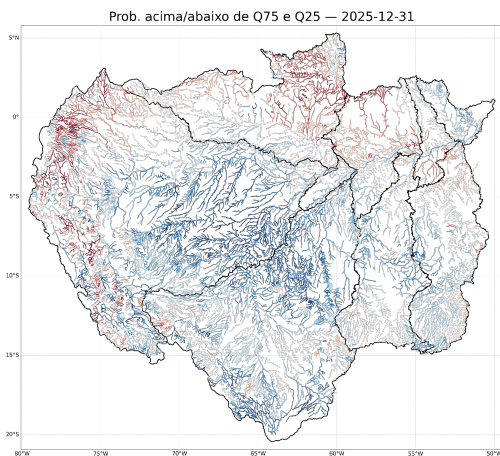
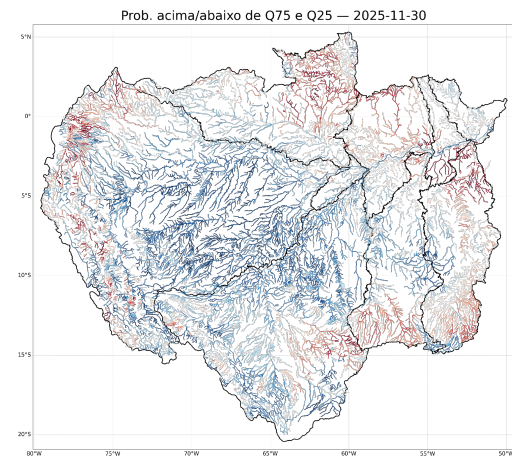
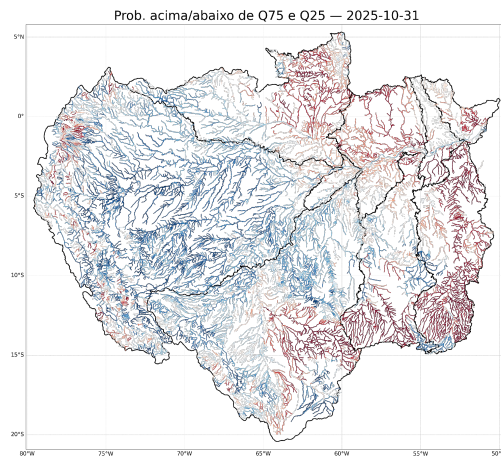
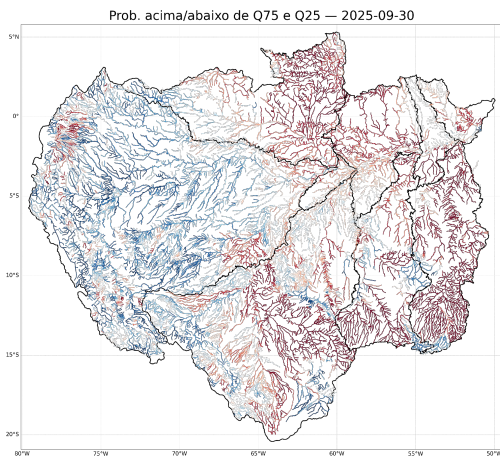


Dezem



Janeiro





# Previsão Sazonal Setembro a Janeiro/2026

