

Monitoramento e Previsões para a Bacia do rio Tocantins

MARÇO 2024

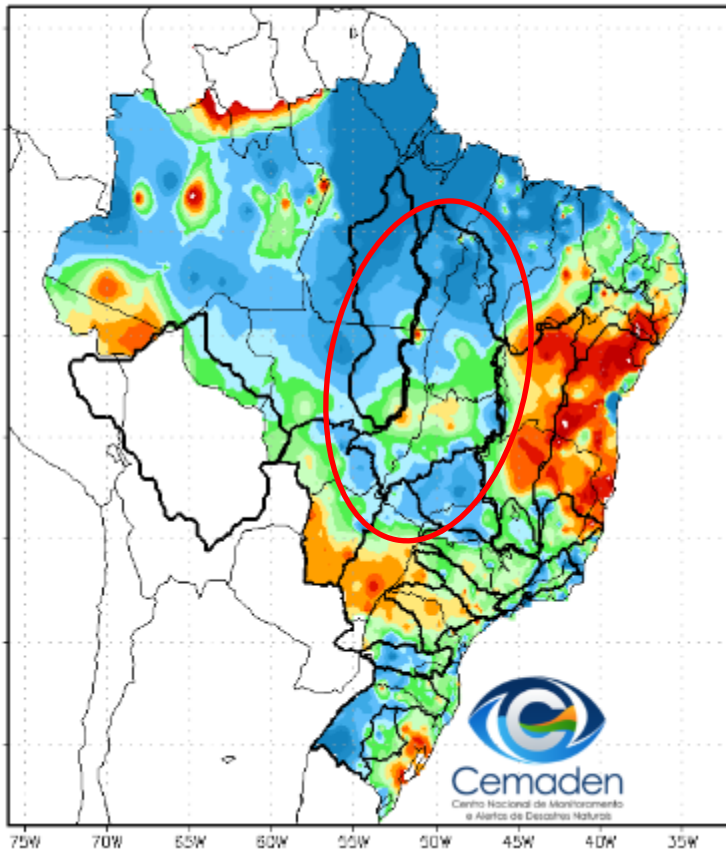


MINISTÉRIO DA
**CIÊNCIA, TECNOLOGIA
E INOVAÇÃO**

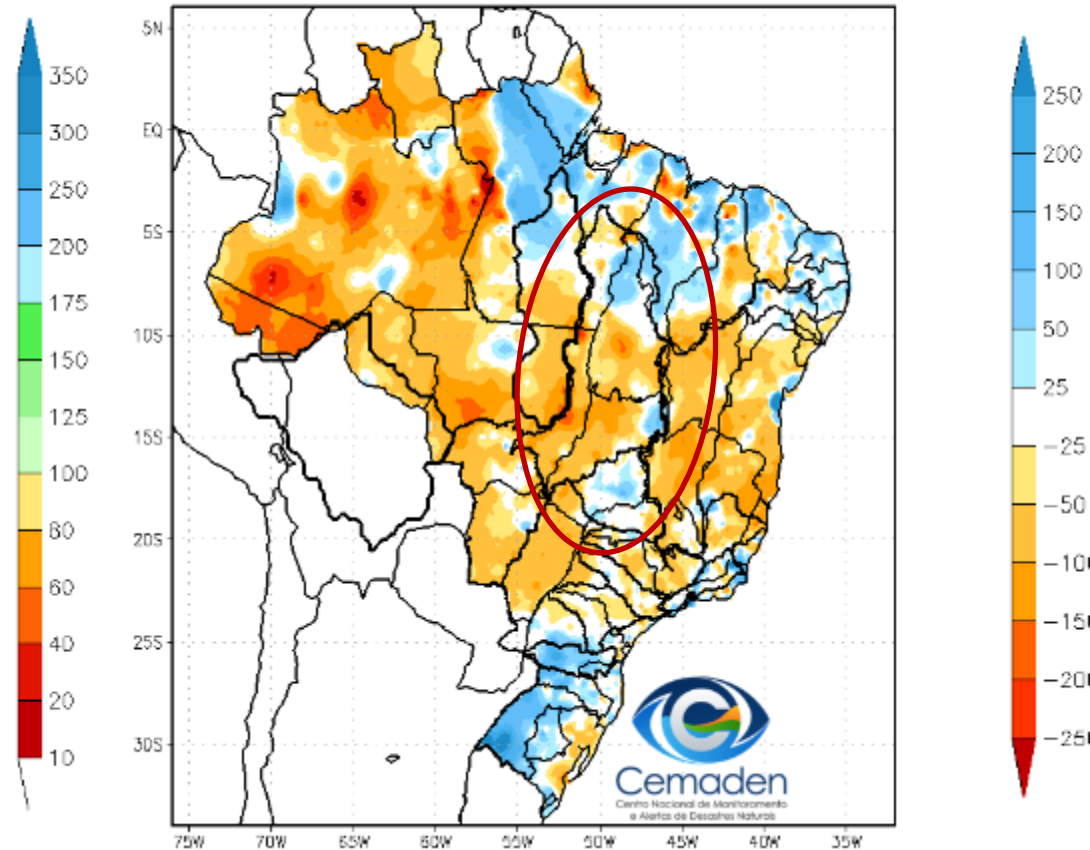


Precipitação acumulada nos últimos 30 dias

Precipitação Acumulada (mm) A.S.
Período: 25/02/2024 a 26/03/2024

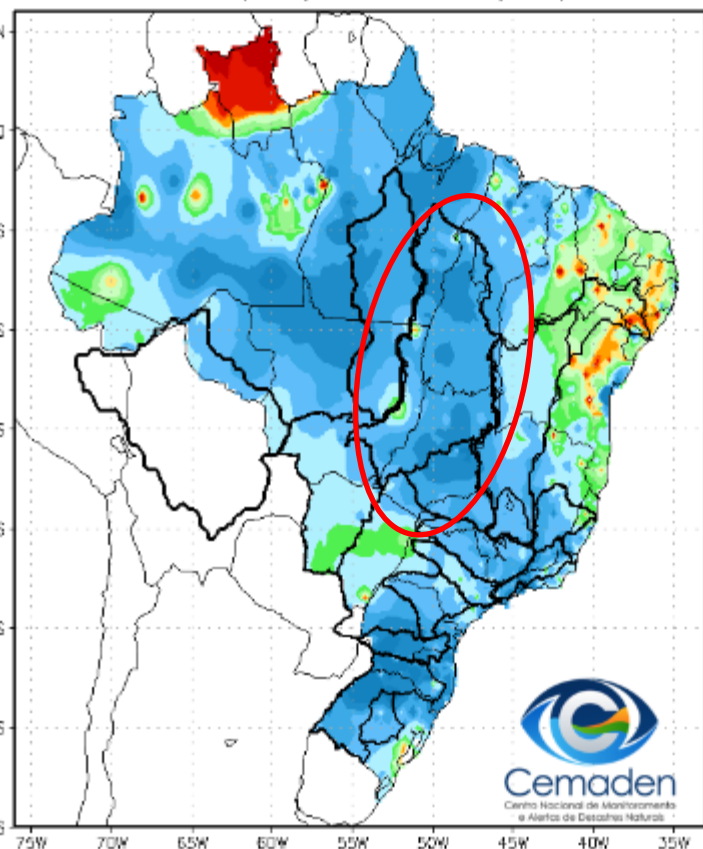


Anomalia de Precipitação (mm) A.S.
Período: 25/02/2024 a 26/03/2024

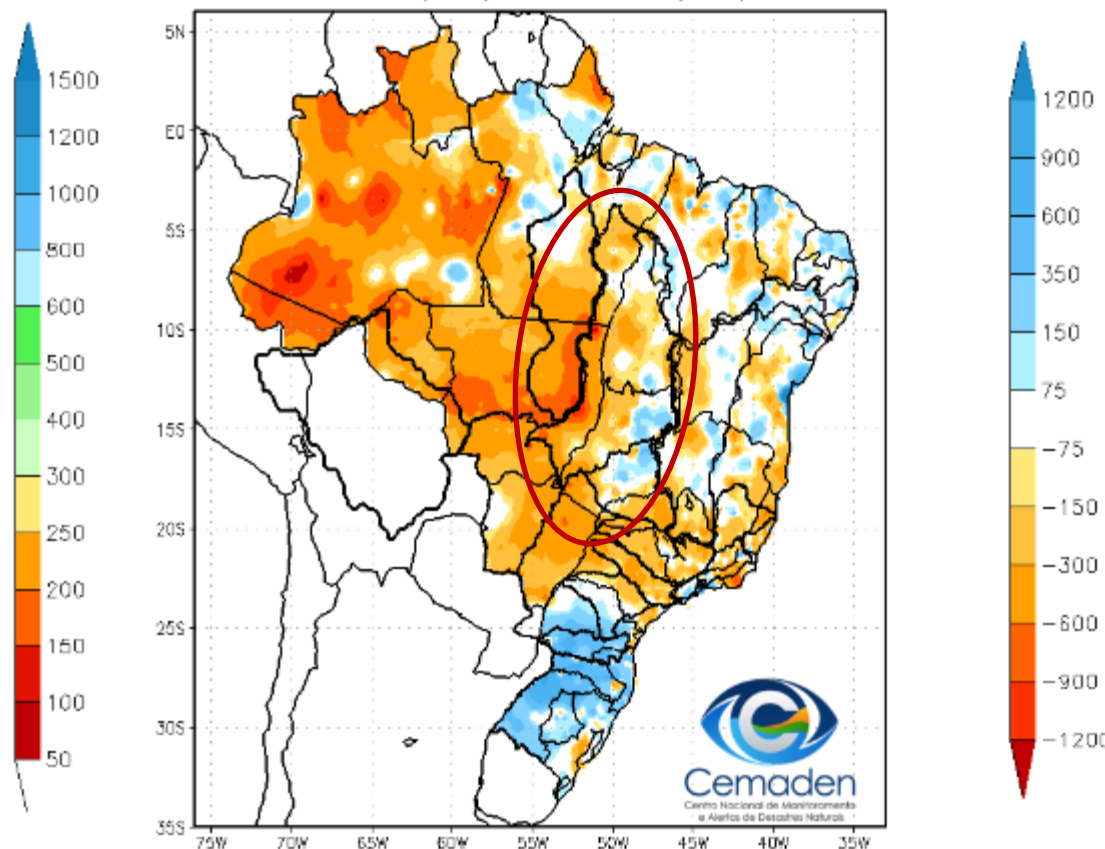


Precipitação acumulada no Ano Hidrológico

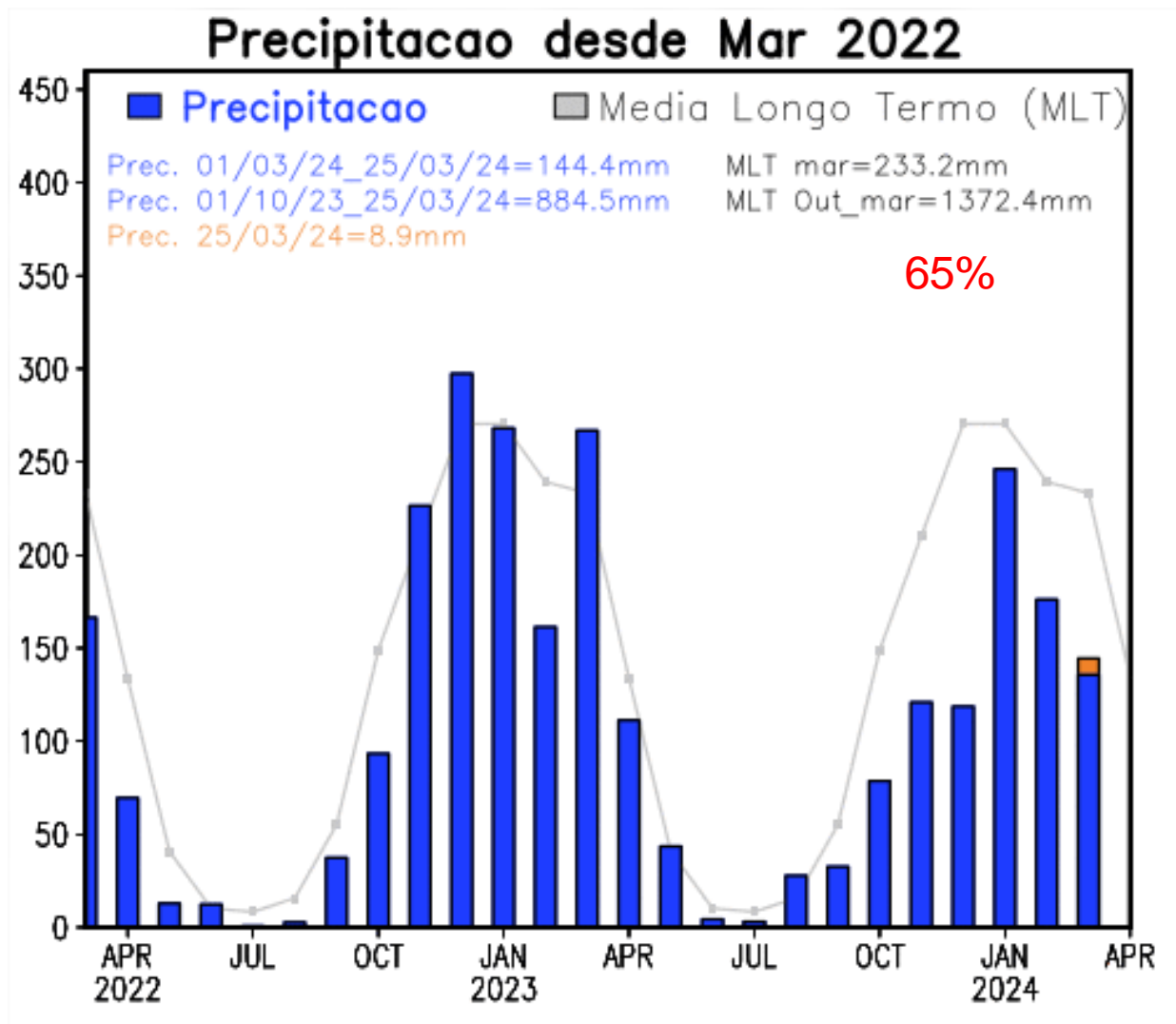
Precipitação Acumulada (mm) A.S.
Período: 01/10/2023 a 26/03/2024



Anomalia de Precipitação (mm) A.S.
Período: 01/10/2023 a 26/03/2024

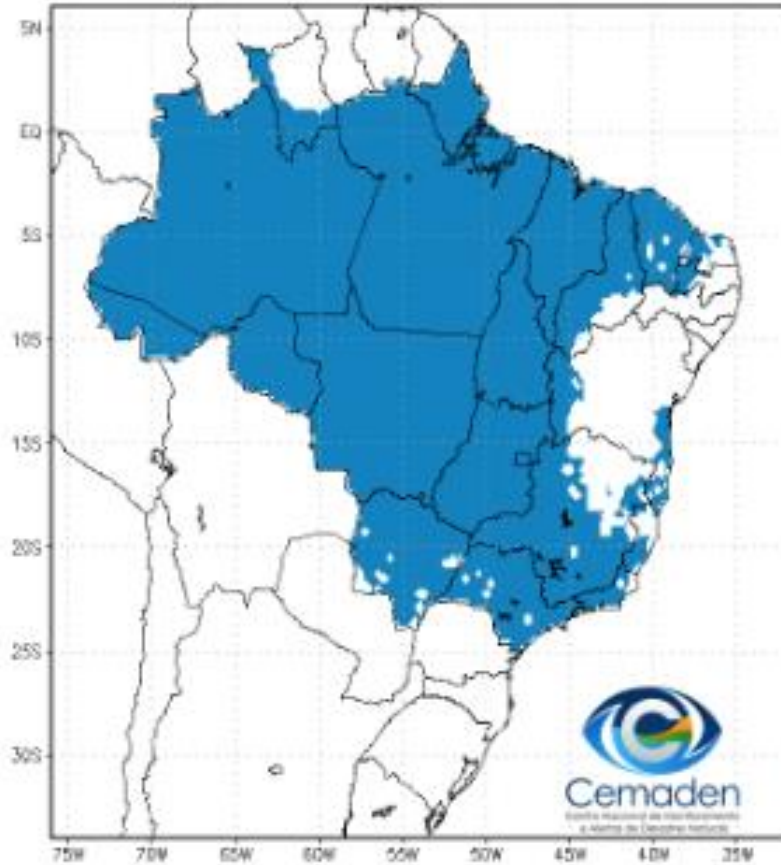


Evolução da Precipitação

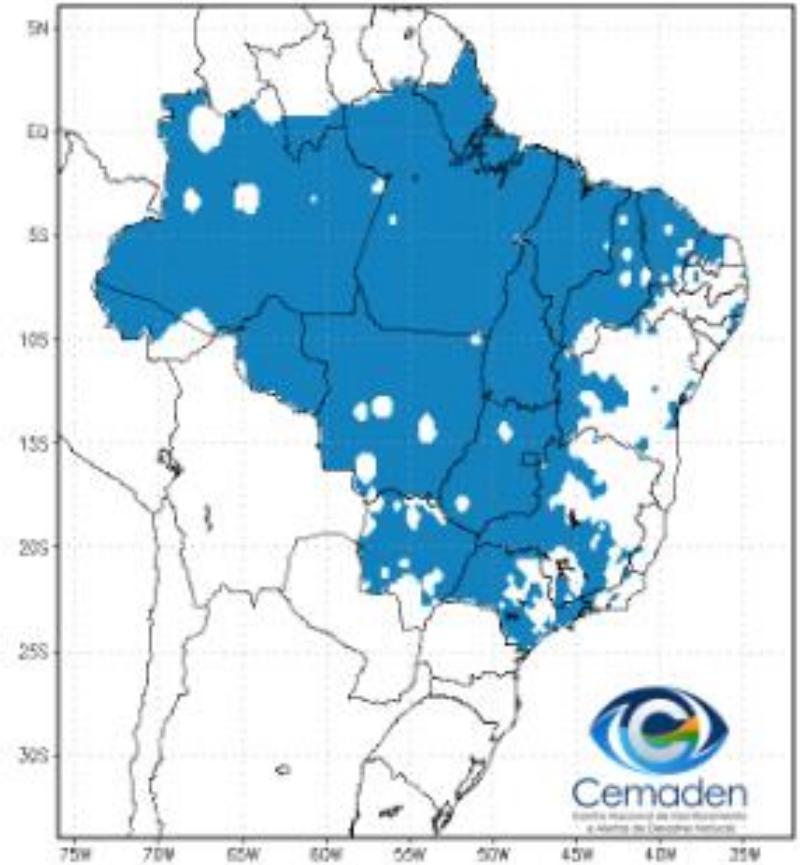


Situação da Estação Chuvosa

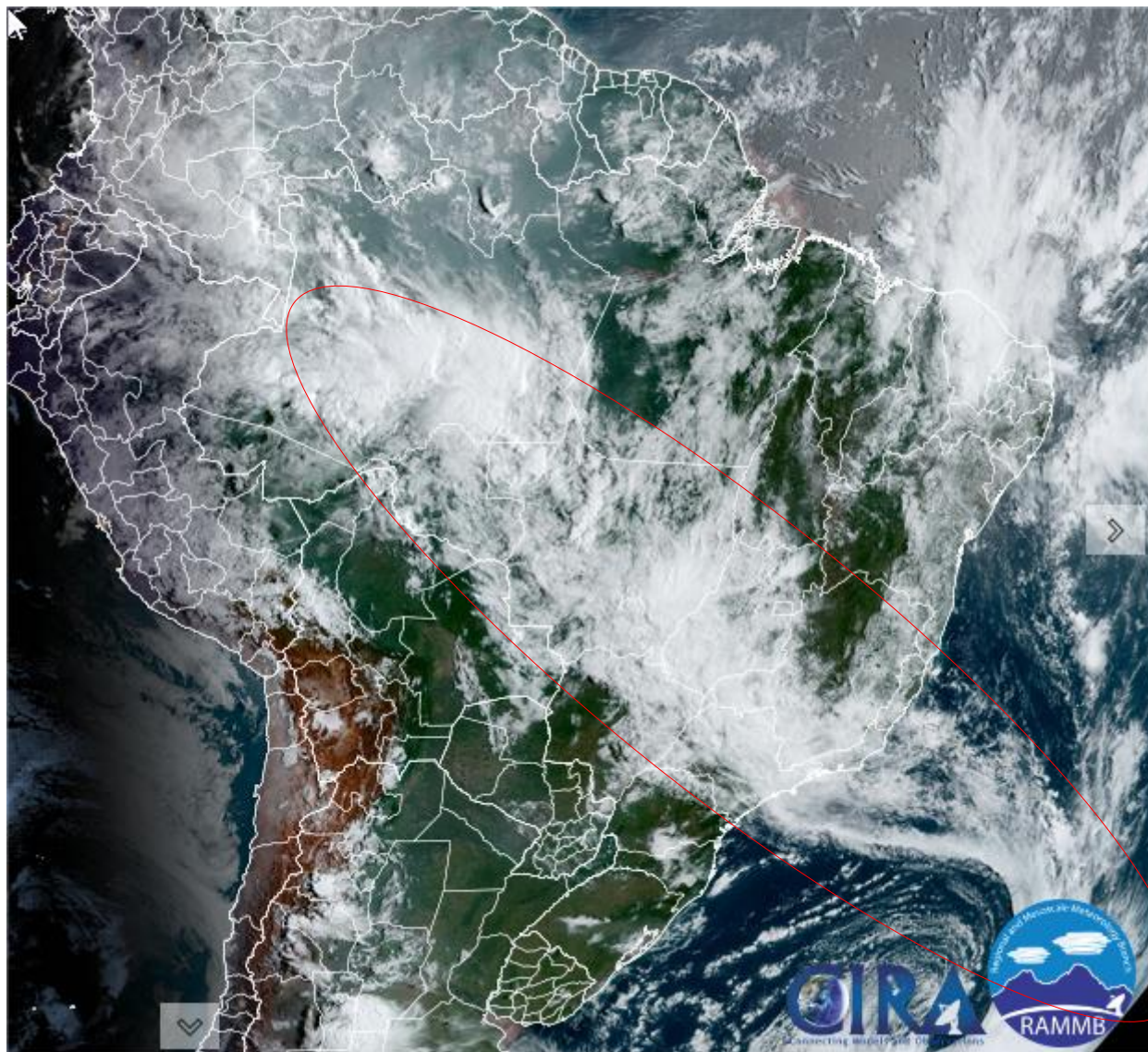
Climatologia da Precipitação (1999–2023)
Inferior 2 mm/dia por 4 de 5 dias Período: 26/03



Precipitação Inferior 2 mm/dia por 4 de 5 dias
Período: 26/03/2024

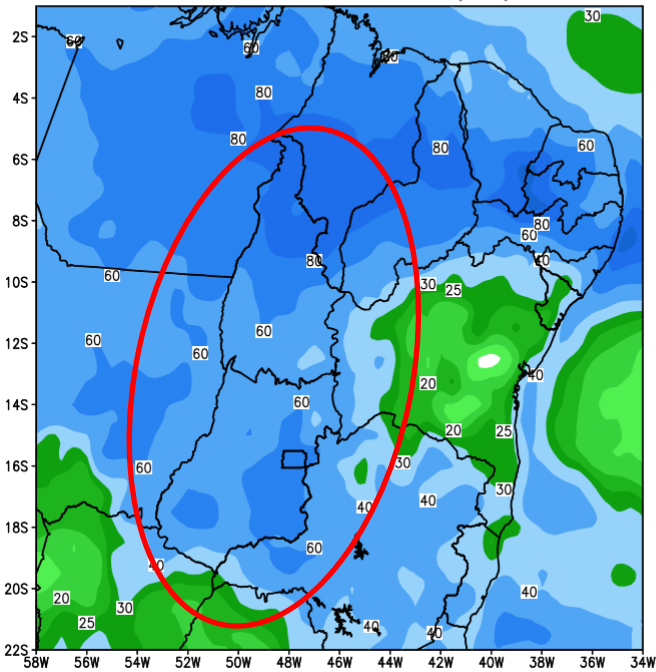


Situação meteorológica atual

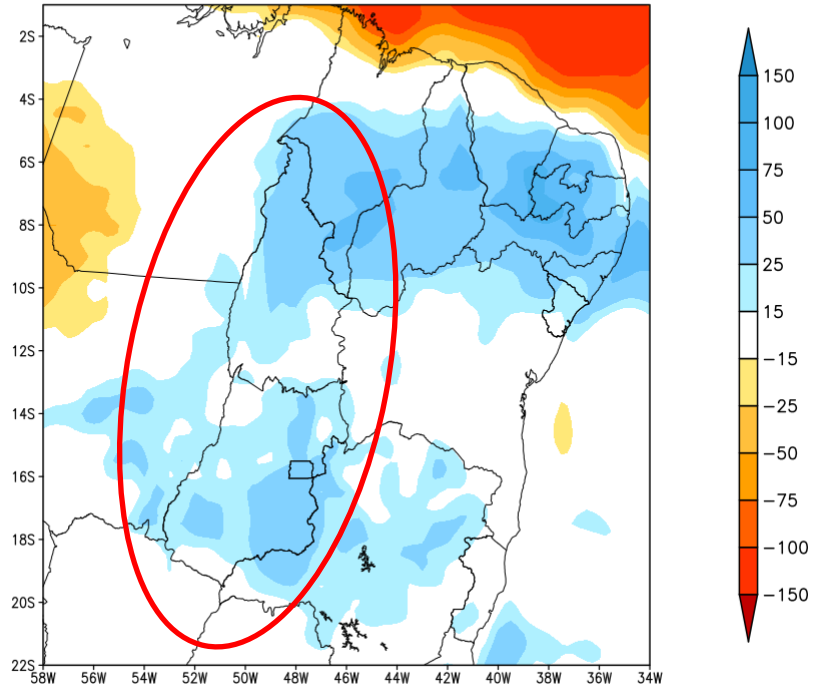


Previsão de chuva próximos 7 dias

GEFS / BRASIL_NE
Precipitacao acumulada 1aSem (mm)
Previsao das 00Z dia 27/03/2024



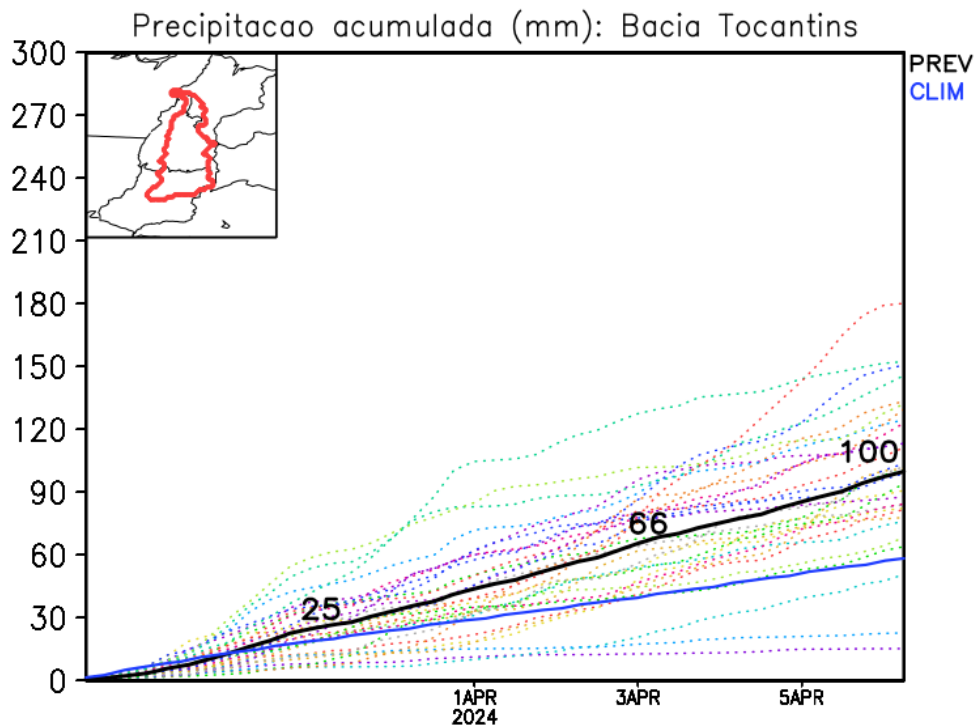
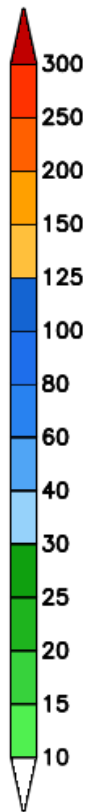
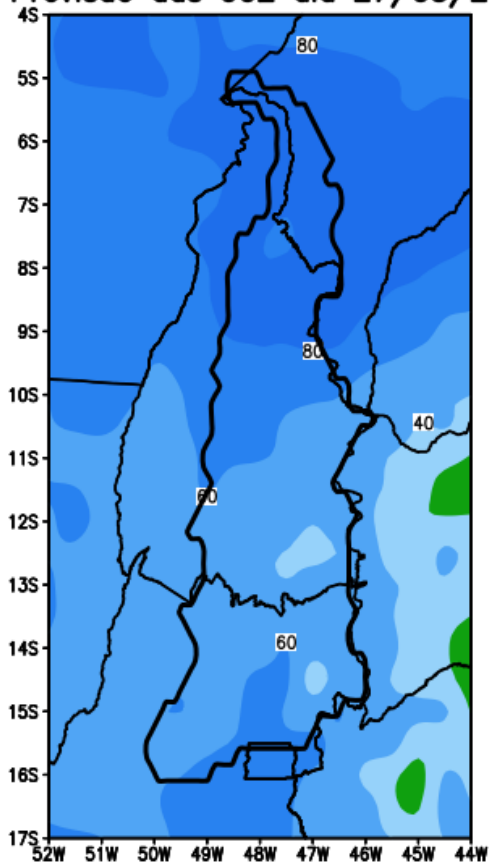
Anomalia de Precipitacao BR_NE (mm)
Periodo: 2024032700 a 2024040300



Fonte: GEFS/NOAA

Previsão Bacia Rio Tocantins

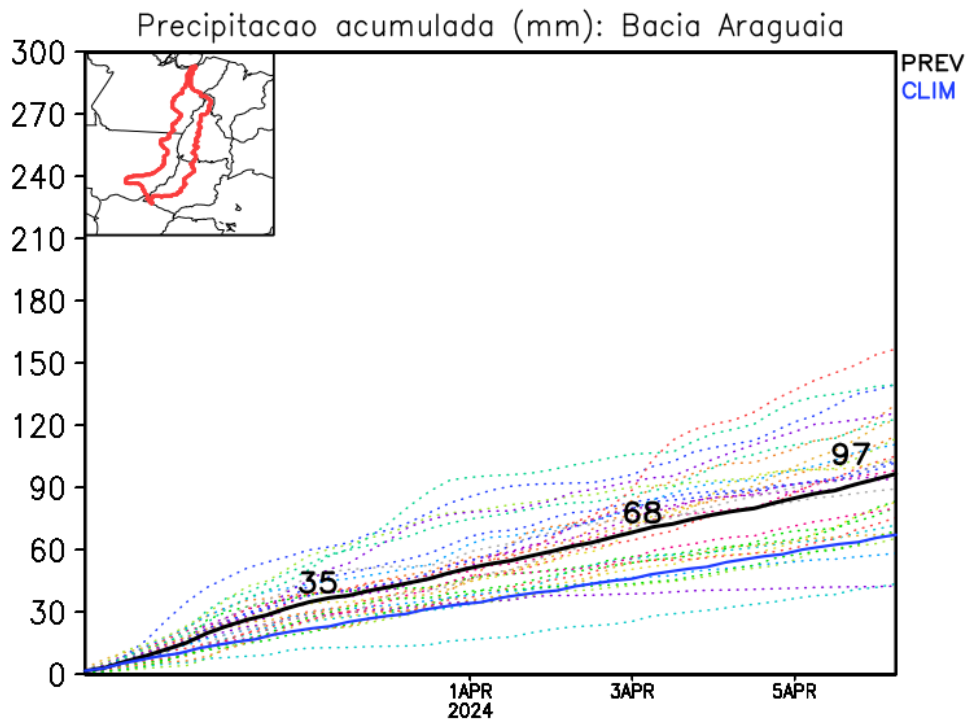
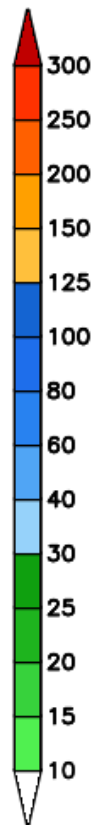
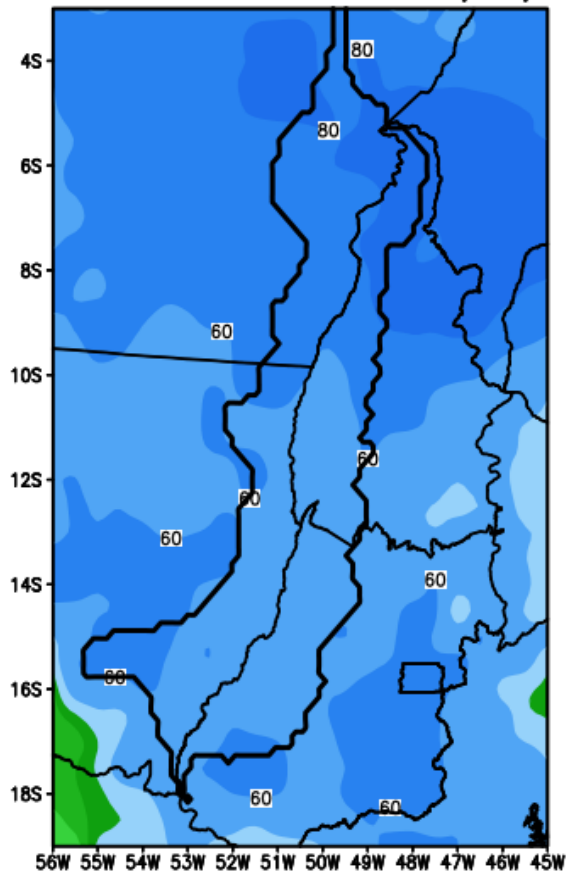
GEFS / Bacia Tocantins
Precipitação acumulada em 7 dias (mm)
Previsão das 00Z dia 27/03/2024



Fonte: GEFS/NOAA

Previsão Bacia Rio Araguaia

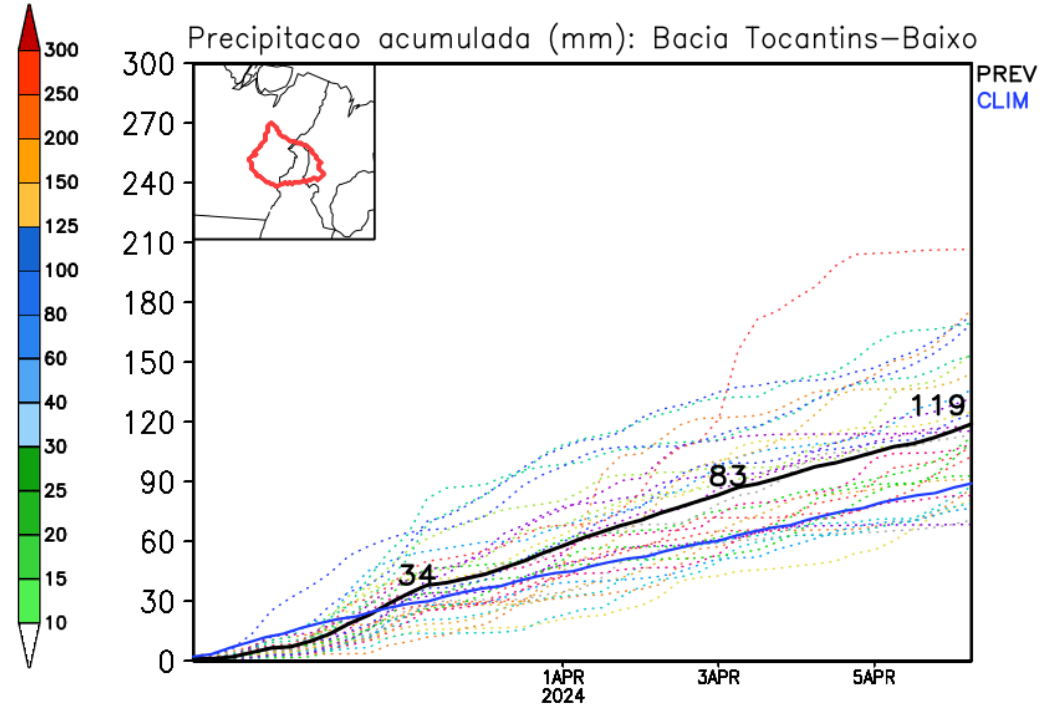
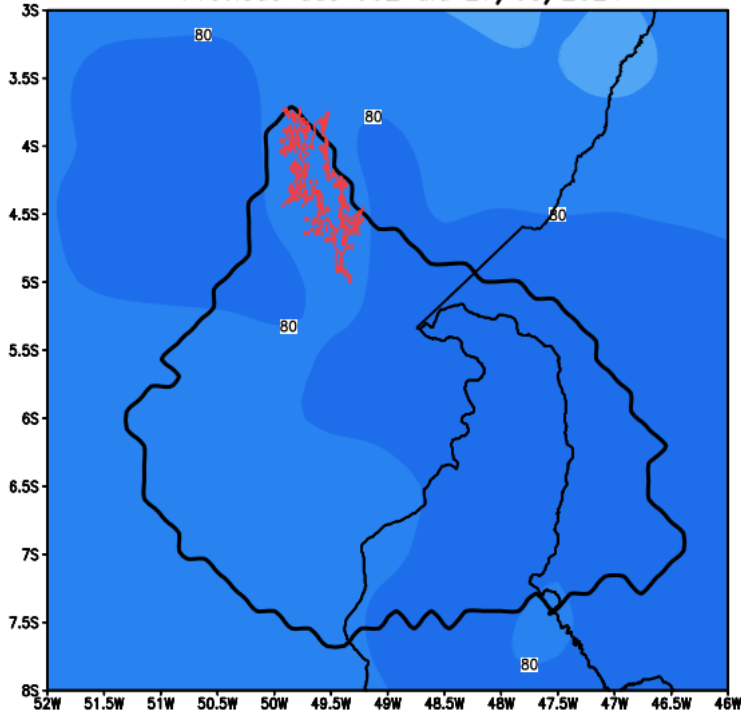
GEFS / Bacia do Rio Araguaia
Precipitação acumulada em 7 dias (mm)
Previsão das 00Z dia 27/03/2024



Fonte: GEFS/NOAA

Previsão Bacia Tocantins (Baixo)

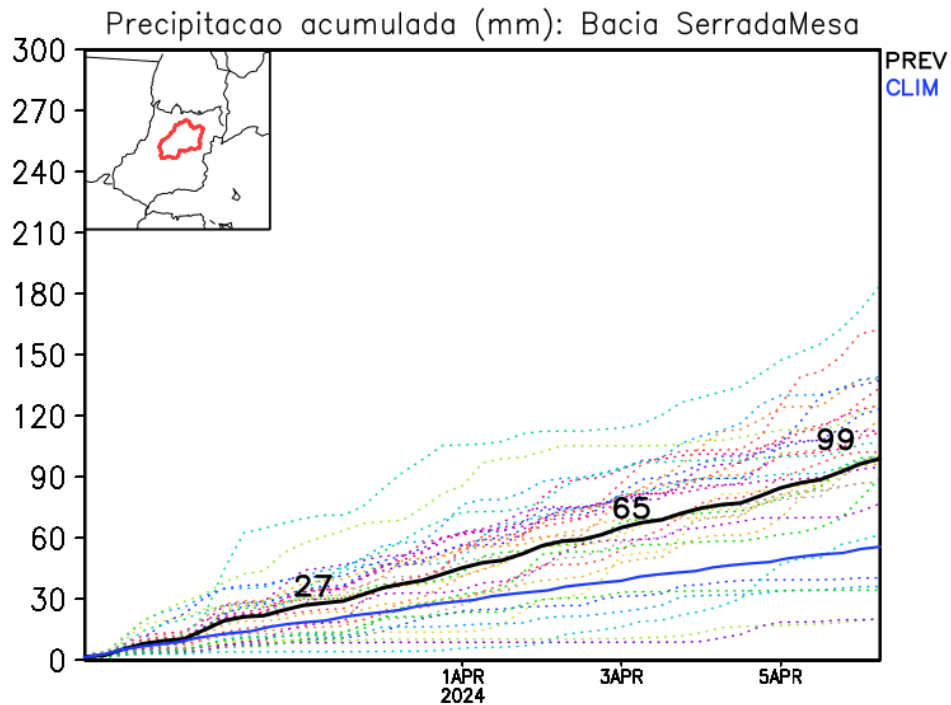
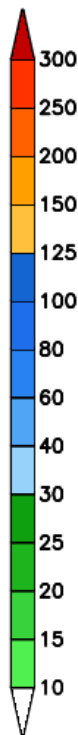
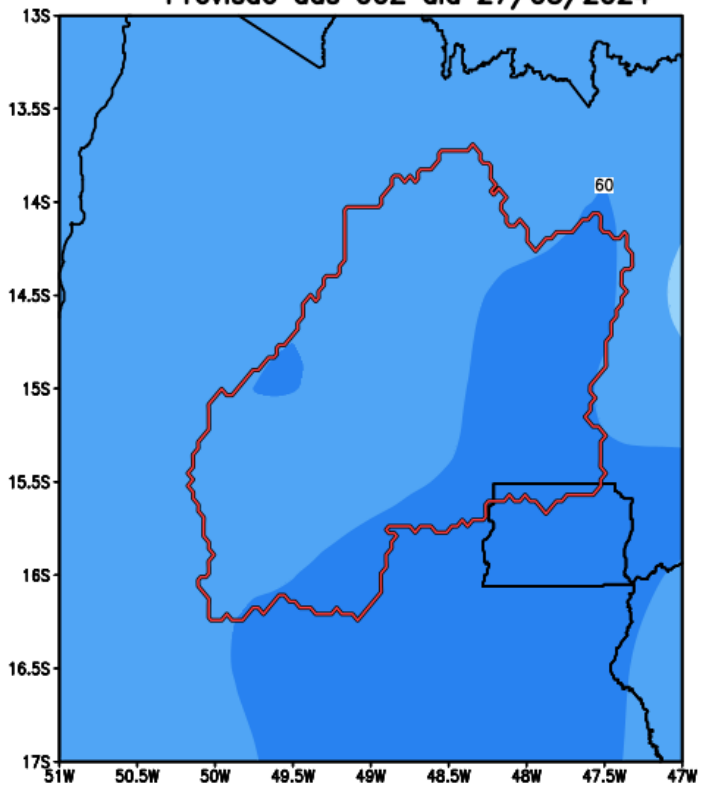
GEFS / Bacia Baixo Tocantins
Precipitacao acumulada em 7 dias (mm)
Previsao das 00Z dia 27/03/2024



Fonte: GEFS/NOAA

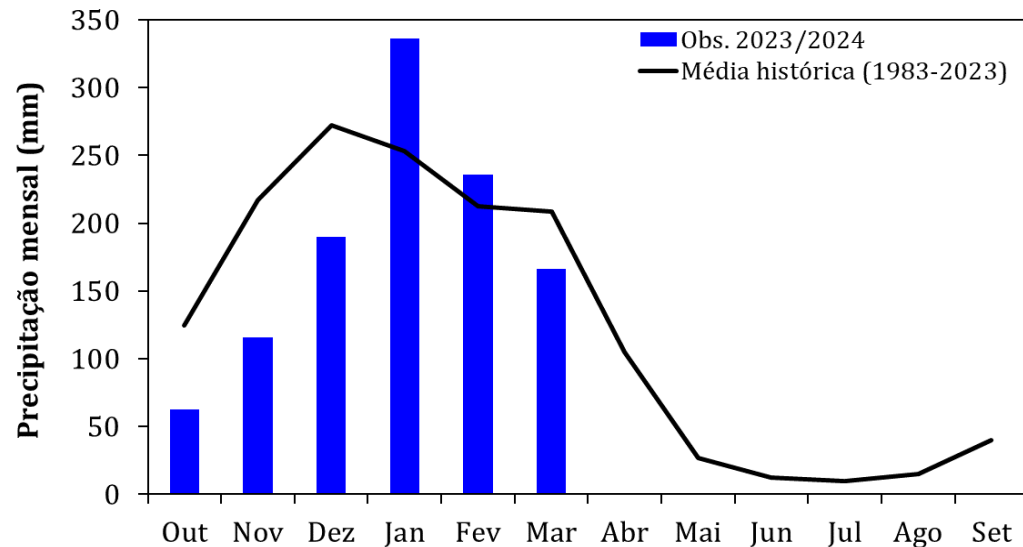
Previsão Bacia Serra da Mesa

GEFS / Bacia Serra da Mesa
Precipitacao acumulada em 7 dias (mm)
Previsao das 00Z dia 27/03/2024



Fonte: GEFS/NOAA

Monitoramento UHE Serra da Mesa



Precipitação

Estação Chuvosa - Out a Abr – 1392 mm

2022/2023: 1358 mm **(98% da MLT)**

2023/2024*: 1106 mm **(95% da MLT PARCIAL)**

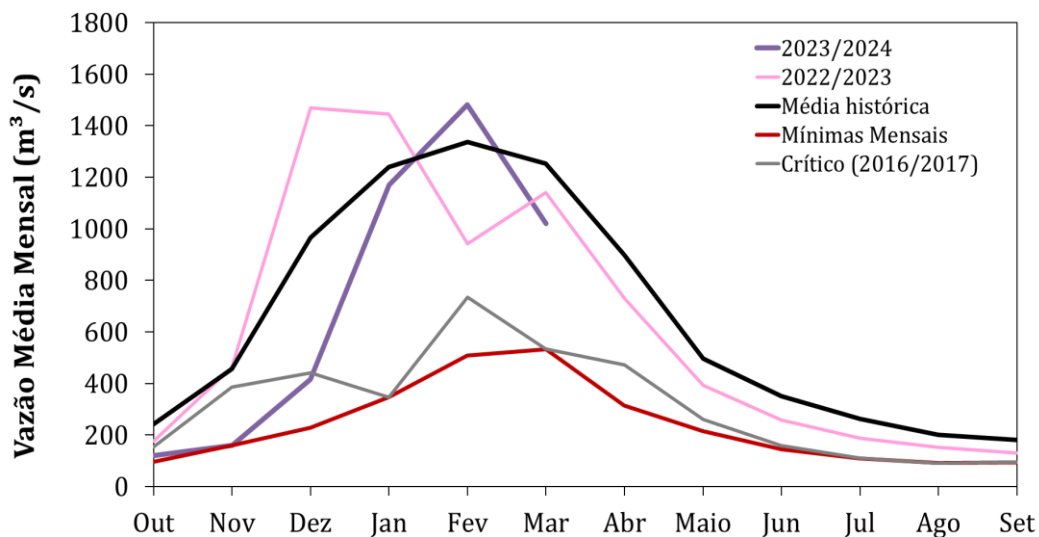
Estação Seca - Maio a Set – 105 mm

2022: 54 mm **(51% da MLT)**

2023: 57 mm **(54% da MLT)**

Março/2024*: 166 mm **(80% da MLT)**

*Até 25/03/2024



Vazão

Estação Chuvosa - Out a Abr – 913 m³/s

2022/2023: 909 m³/s **(100% da MLT)**

2023/2024*: 728 m³/s **(80% da MLT)**

Estação Seca - Maio a Set – 298 m³/s

2022: 231 m³/s **(78% da MLT)**

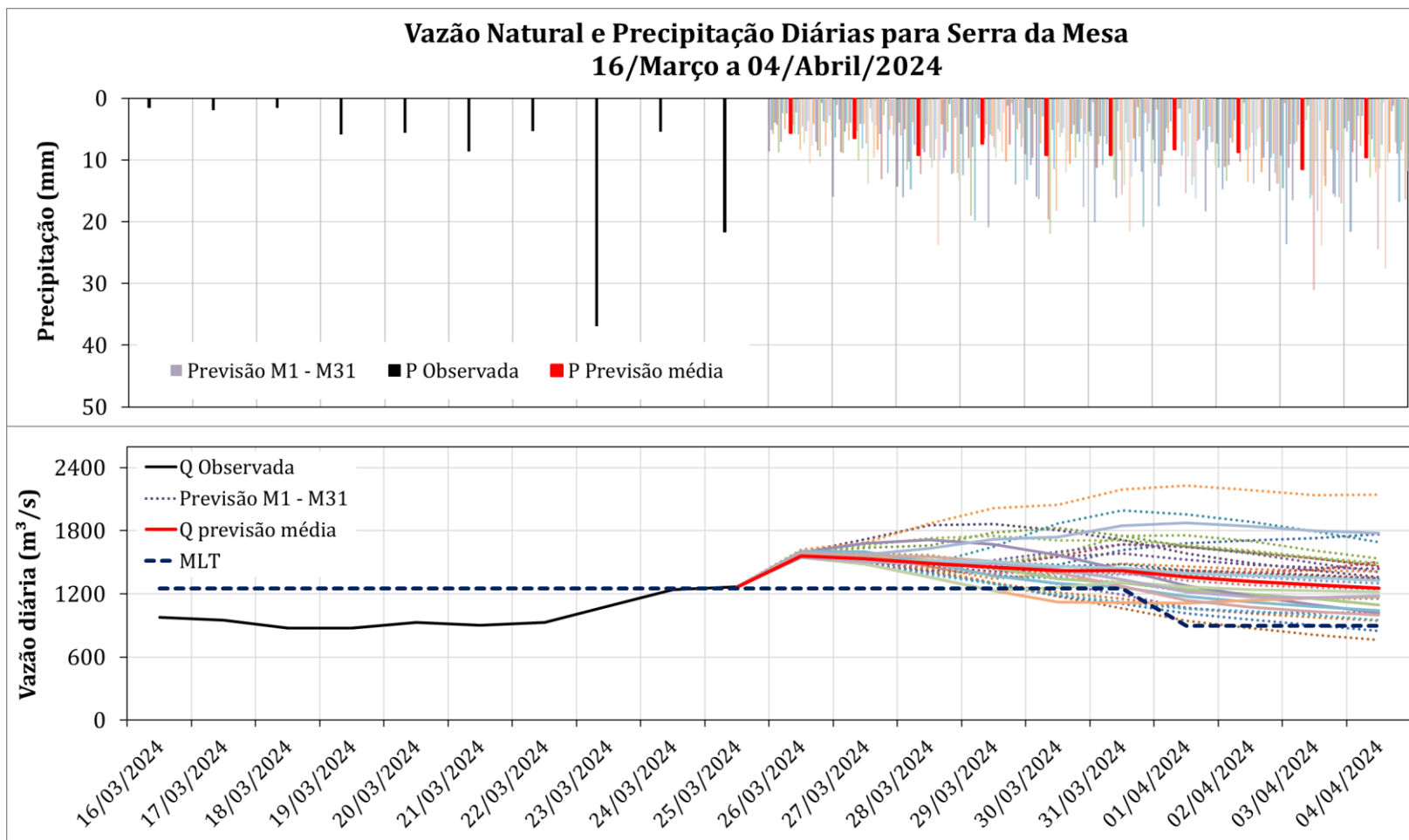
2023: 224 m³/s **(75% da MLT)**

Março/2024*: 1020 m³/s **(82% da MLT)**

25/Mar/2024: 1267 m³/s **(101% da MLT)**

*Até 25/03/2024

Serra da Mesa: Previsão de Vazão (modelo hidrológico PDM-CEMADEN)



Dados **observados de precipitação** (barras pretas) para o período 16 a 25/03 e **previsão** para o período de 26/03 a 04/04/24.

Dados **observados de vazão** (linha preta) para o período 16 a 25/03 e **previsão** para o período de 26/03 a 04/04/24.

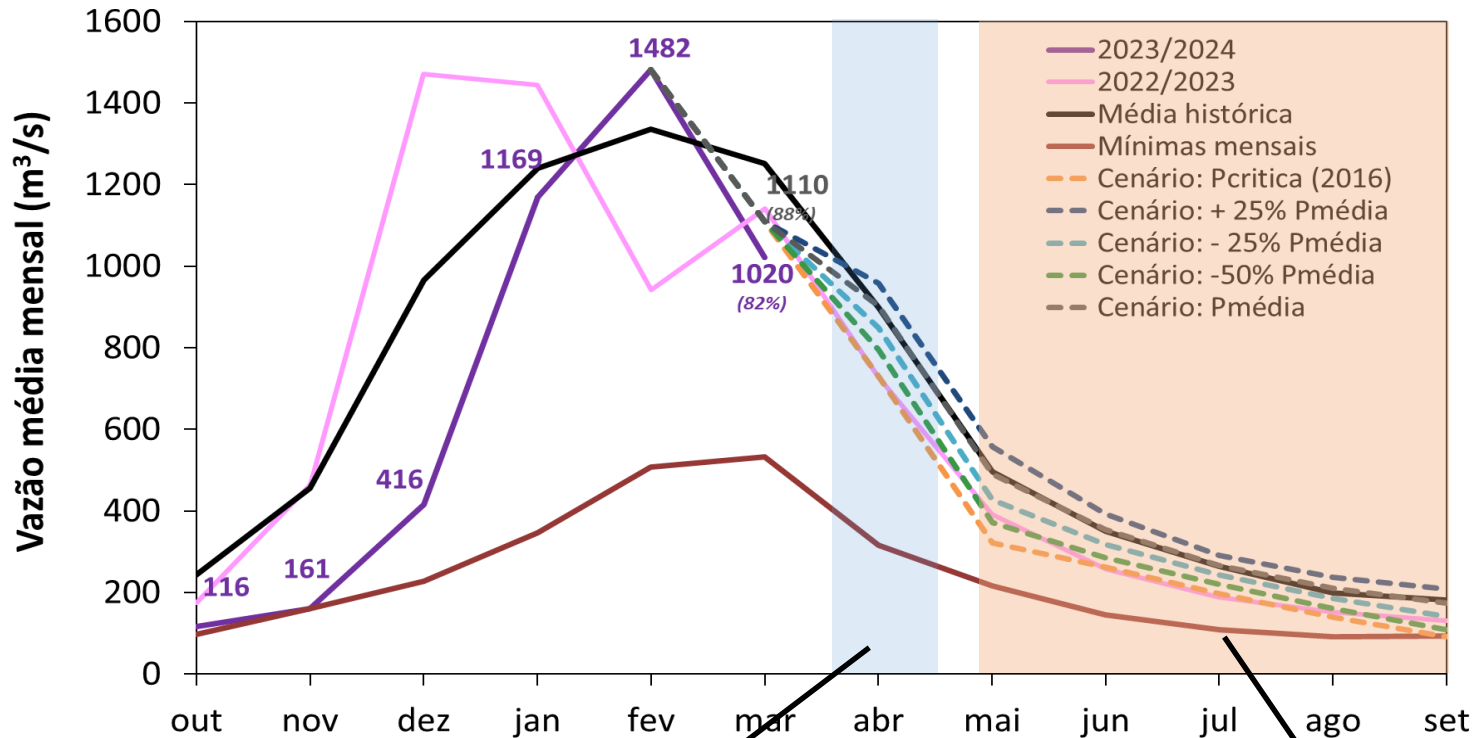
As barras coloridas correspondem às previsões da chuva para os 31 membros GEFS/NOAA e à média destes membros.

As linhas coloridas representam os membros de previsão de vazão.

Previsão média para os próximos 10 dias: 1410 m³/s

Valor superior à MLT de Março (1252 m³/s) e Abril (899 m³/s)

Serra da Mesa: Projeção de Vazão (modelo hidrológico PDM-CEMADEN)



Abr (Mes chuvoso)
MLT: 899 m³/s

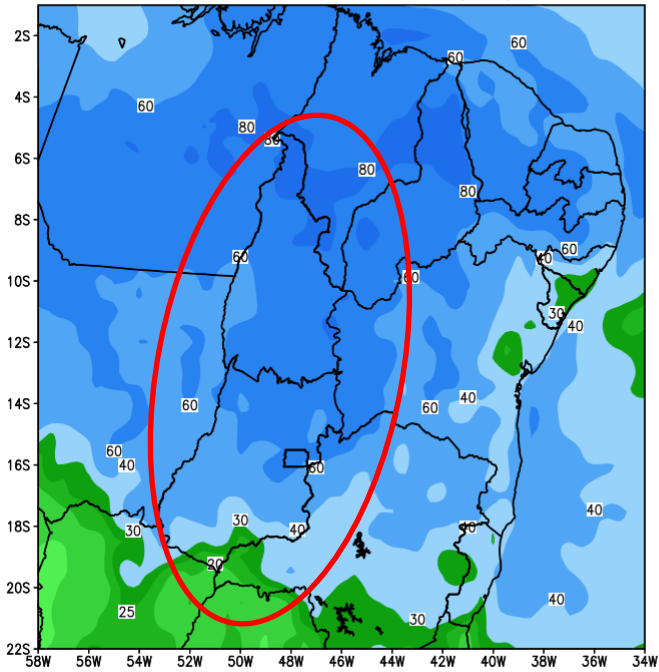
Vazão	% MLT
959 m³/s	107%
903 m³/s	100%
848 m³/s	94%
730 m³/s	81%

Maio-Set (Meses secos)
MLT: 298 m³/s

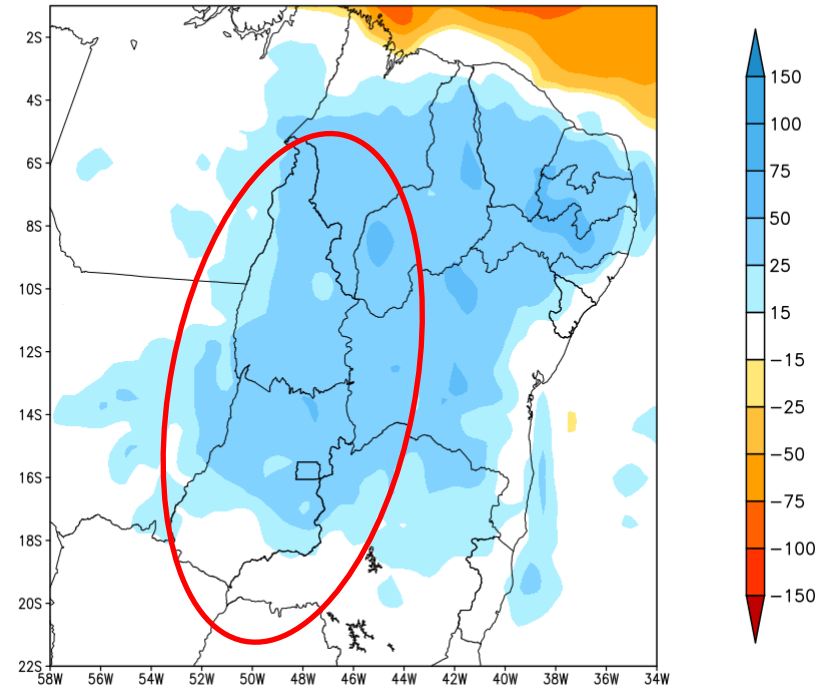
Vazão	% MLT
338 m³/s	113%
299 m³/s	100%
262 m³/s	88%
202 m³/s	68%

Tendência para a 2a Semana

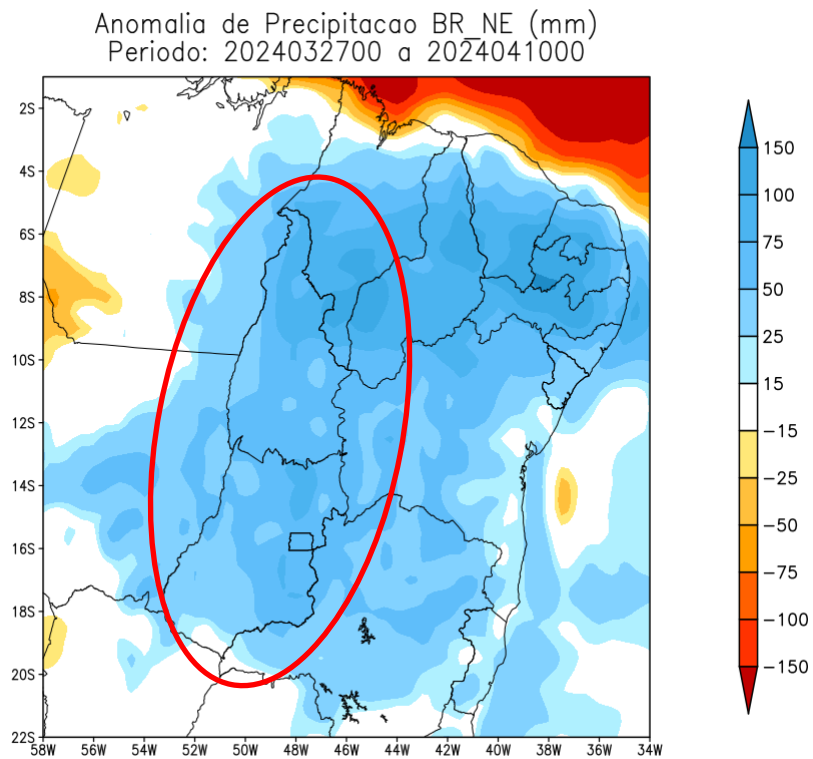
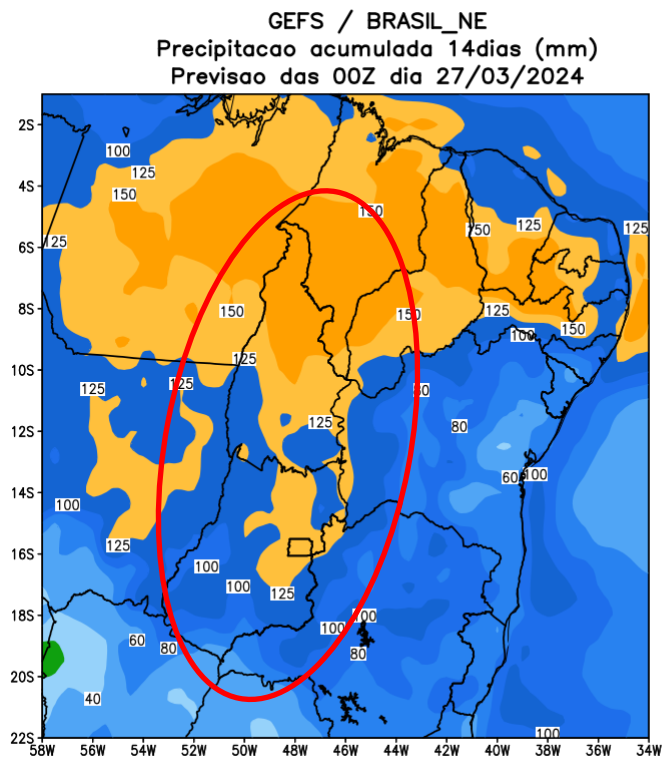
GEFS / BRASIL_NE
Precipitacao acumulada 2aSem (mm)
Previsao das 00Z dia 27/03/2024



Anomalia de Precipitacao BR NE (mm)
Periodo: 2024040400 a 2024041000

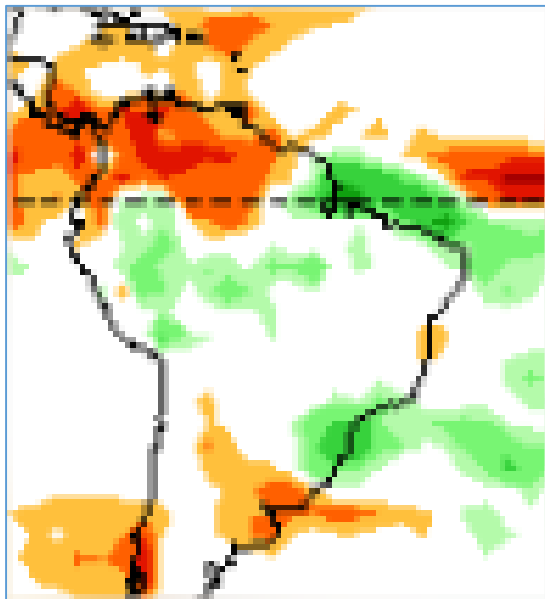


Tendência para as próximas duas semanas

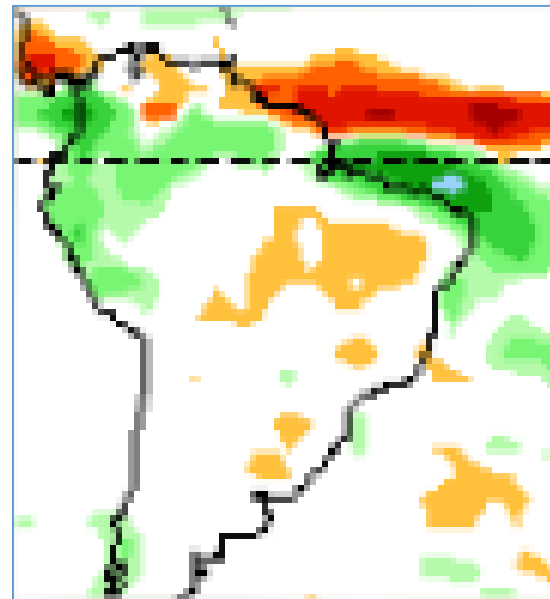


Tendência 3a e 4a semanas

10-16 Abr

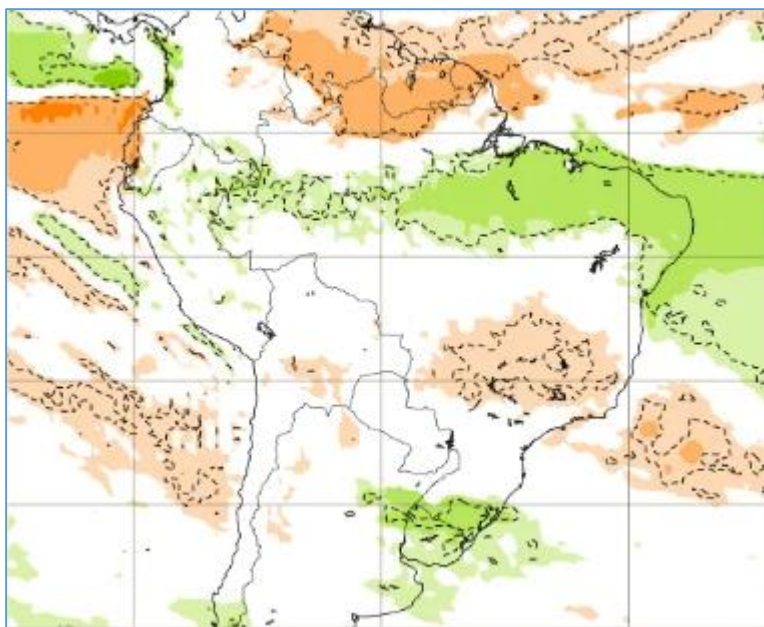


17-23 Abr

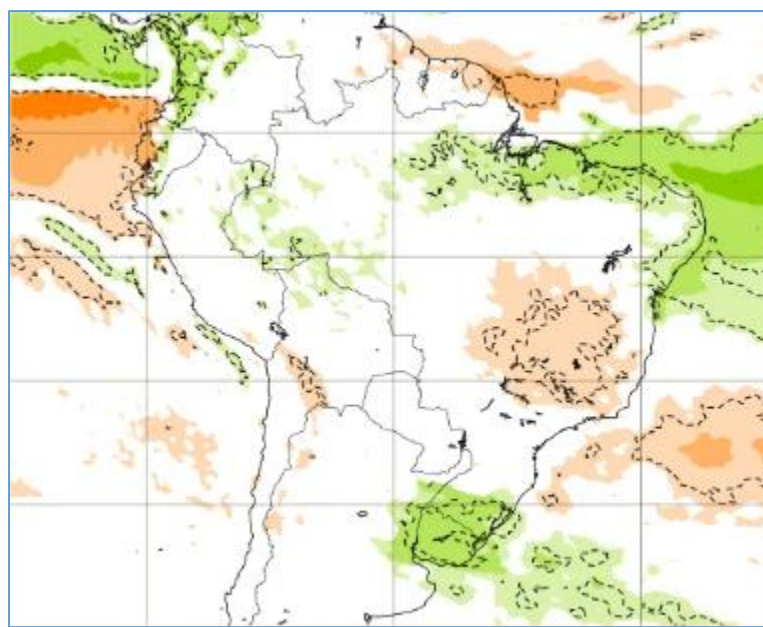


Tendência para 3ª e 4ª semanas

15-22 ABR

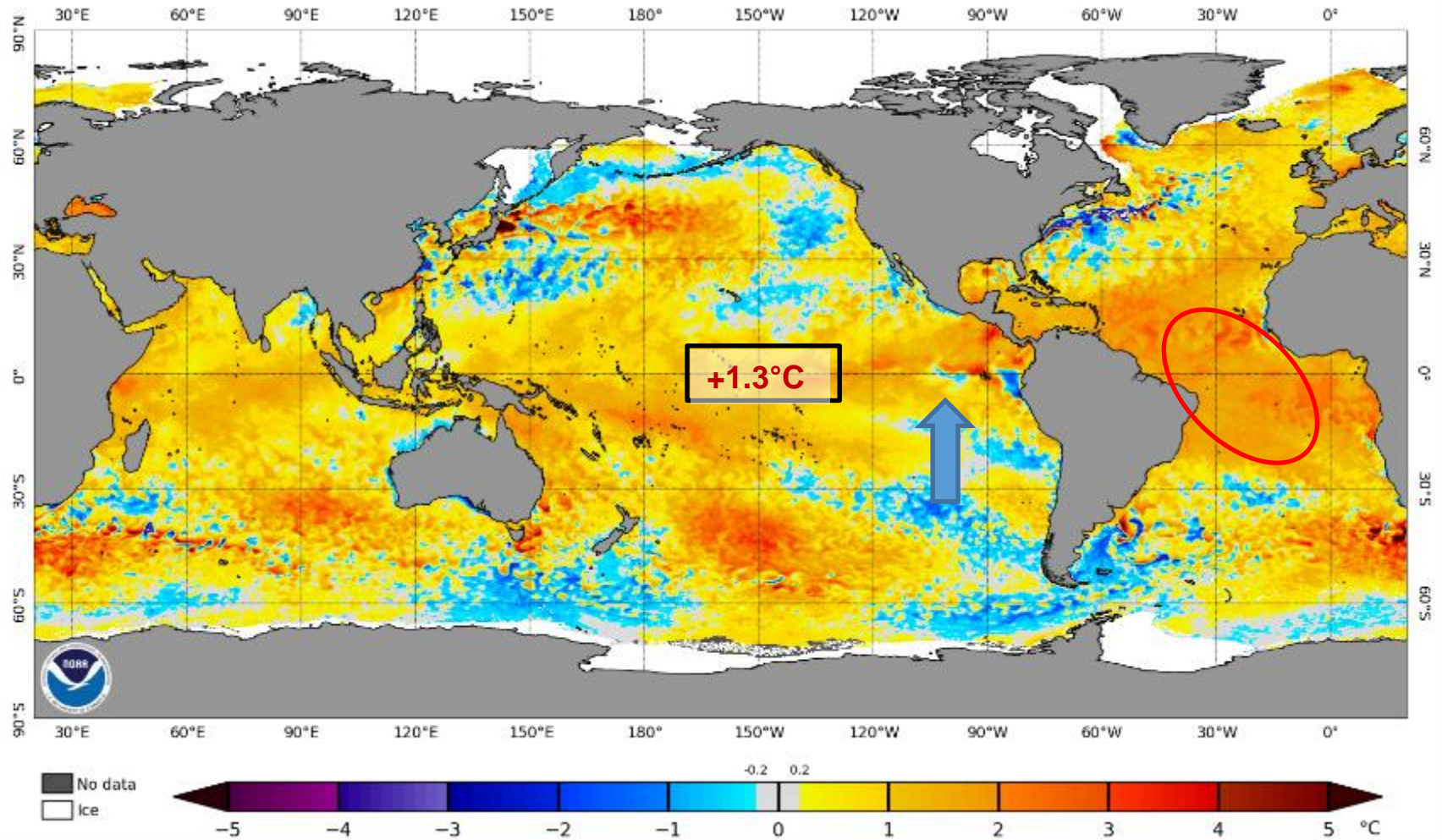


22-29 ABR

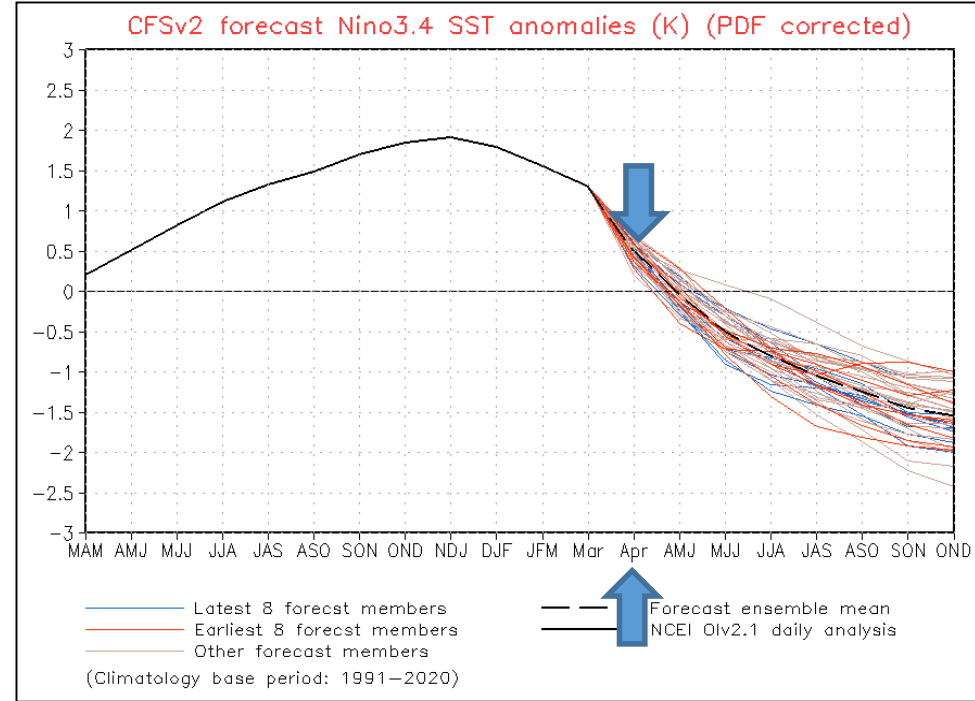
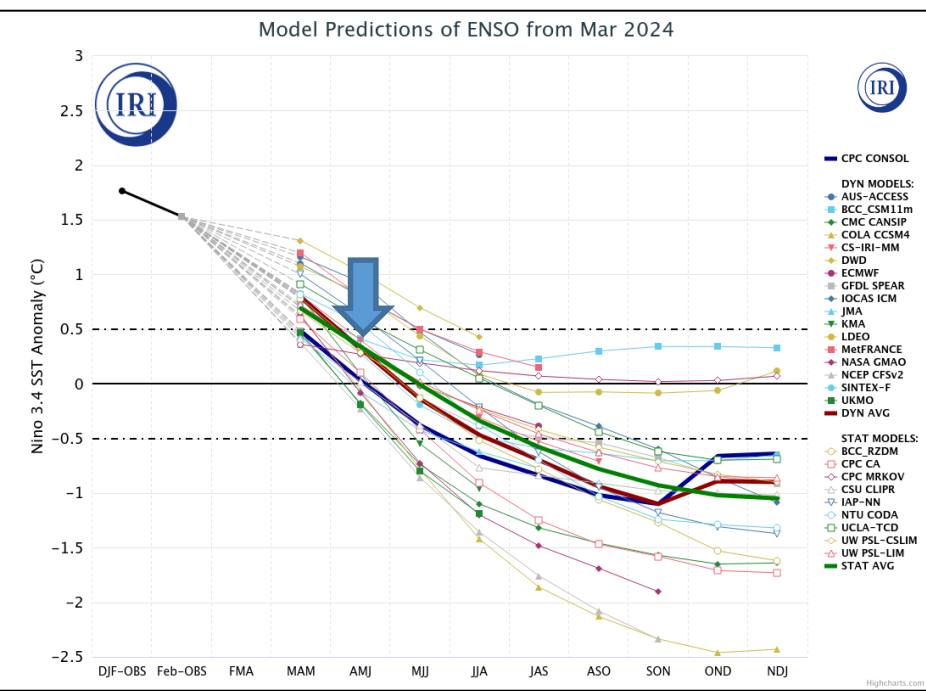


Status Atual: **El Niño/** La Niña Watch

NOAA Coral Reef Watch Daily 5km SST Anomalies (v3.1) 25 Mar 2024



Previsão do “ENSO”

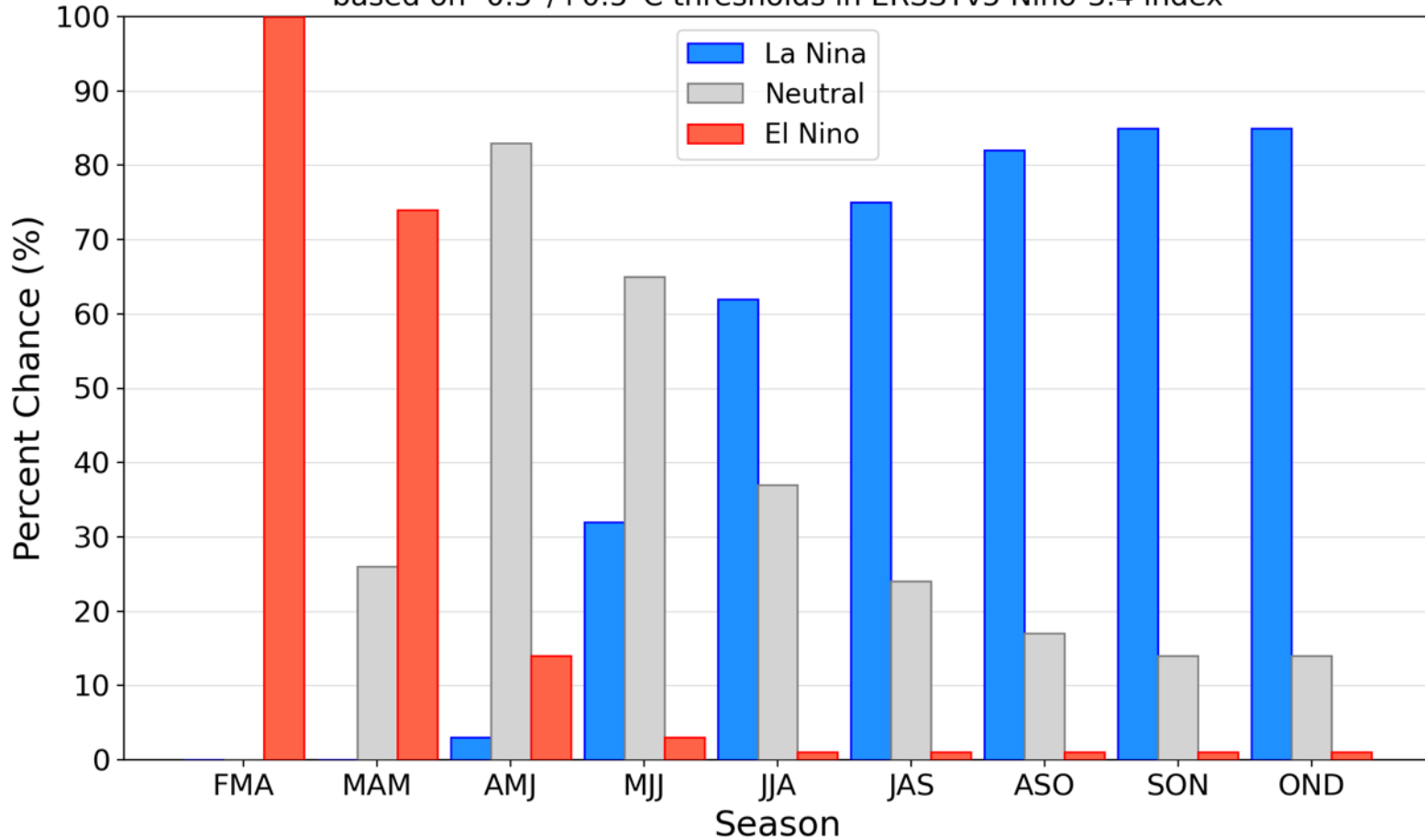


Atualizado 25 de março

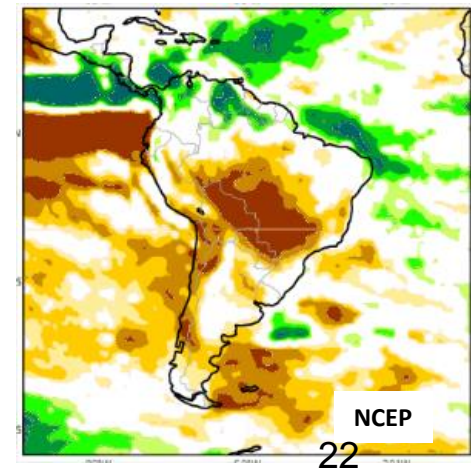
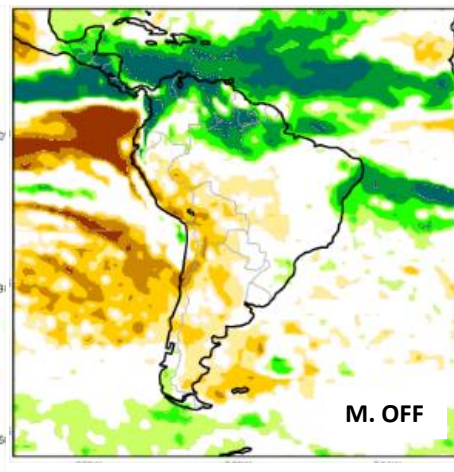
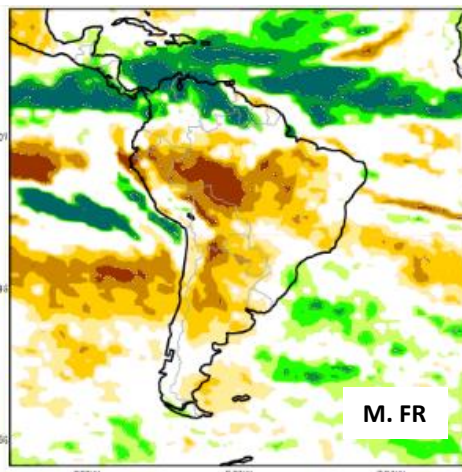
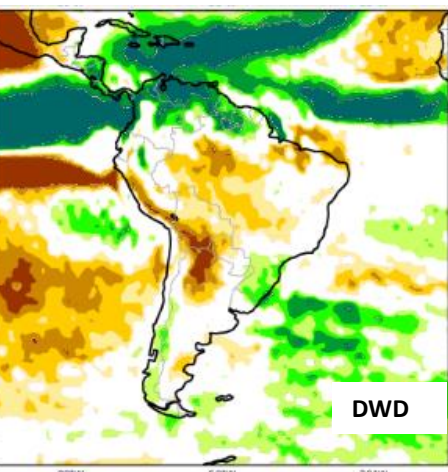
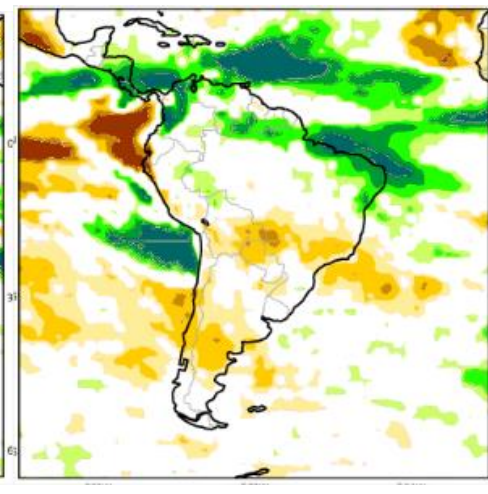
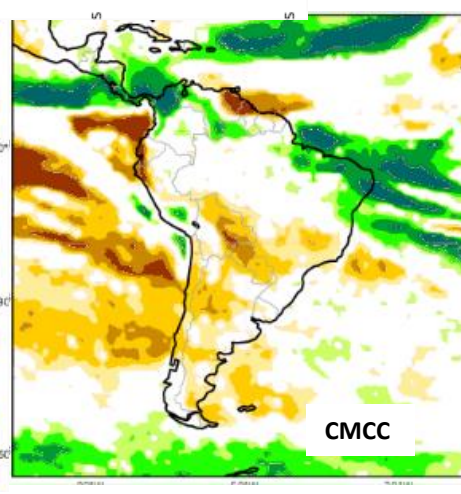
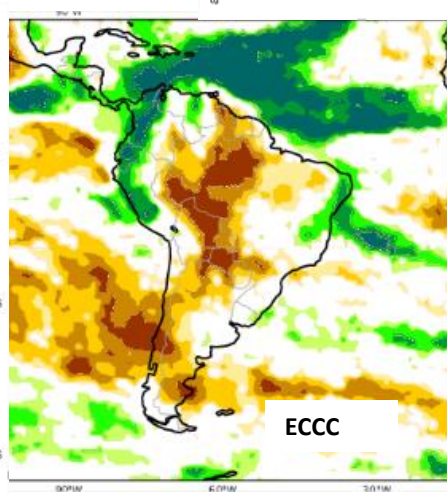
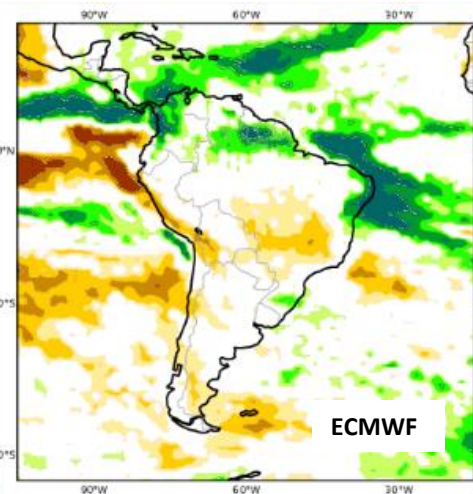
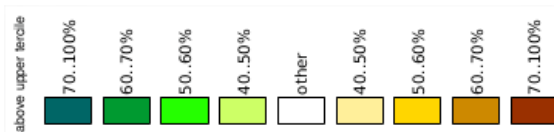
Previsão do “ENSO”

Official NOAA CPC ENSO Probabilities (issued Mar. 2024)

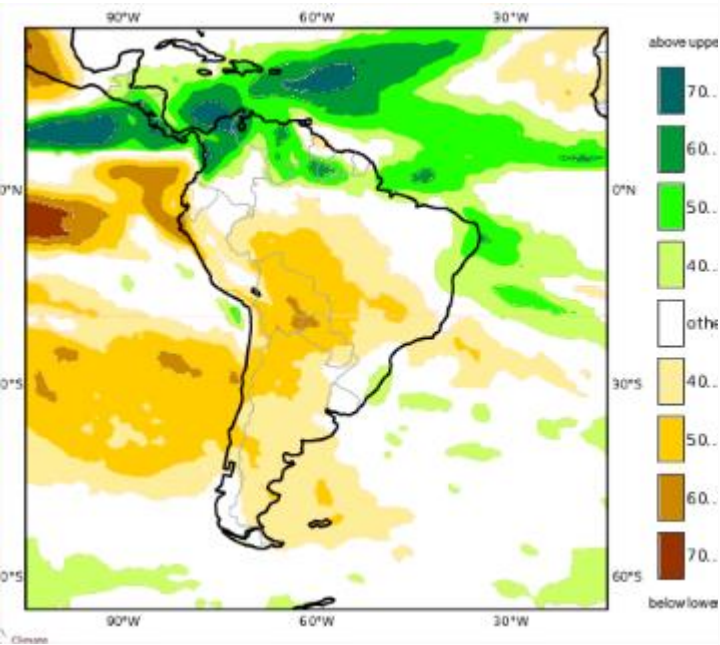
based on $-0.5^{\circ}/+0.5^{\circ}\text{C}$ thresholds in ERSSTv5 Niño-3.4 index



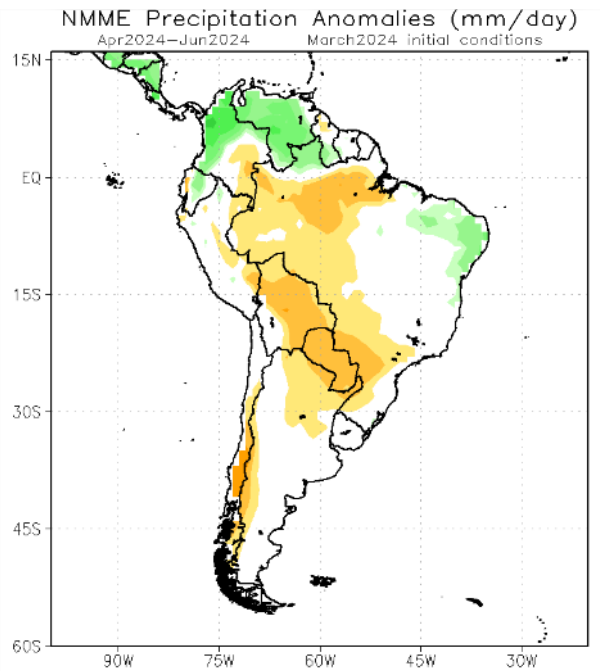
Previsão Sazonal de Chuva AMJ



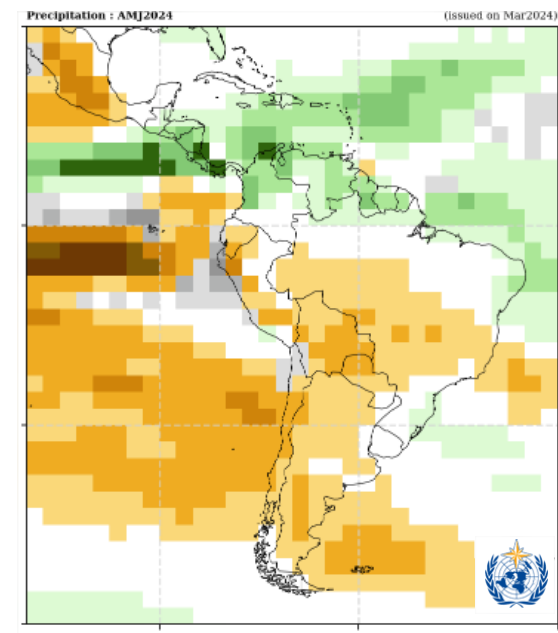
Previsão Sazonal de Chuva Multi-Modelo para AMJ



Modelos Europeus



Modelos Americanos



Modelos da Organização Meteorológica Mundial