

Monitoramento e Previsões para a Bacia do rio Araguaia-Tocantins

AGOSTO 2025

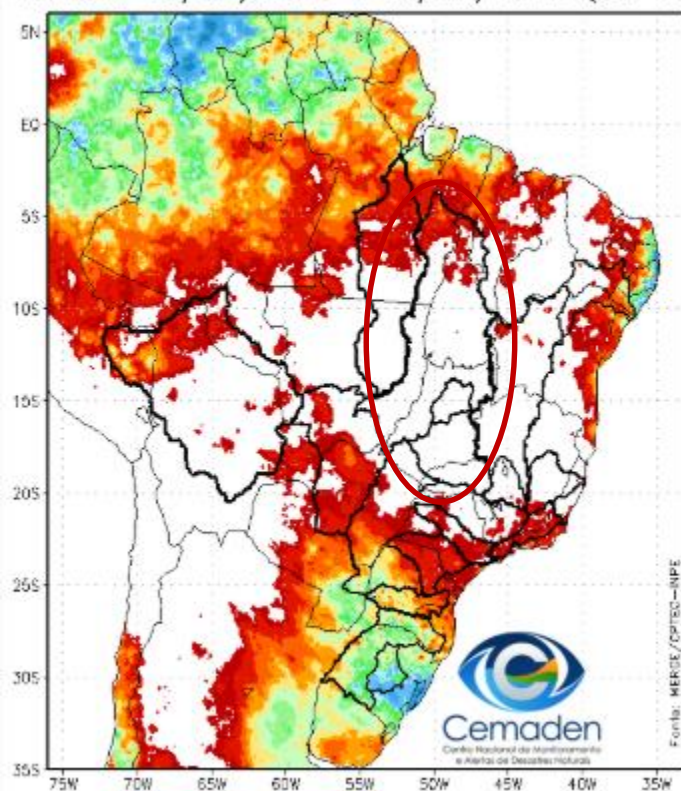


MINISTÉRIO DA
CIÊNCIA, TECNOLOGIA
E INOVAÇÃO

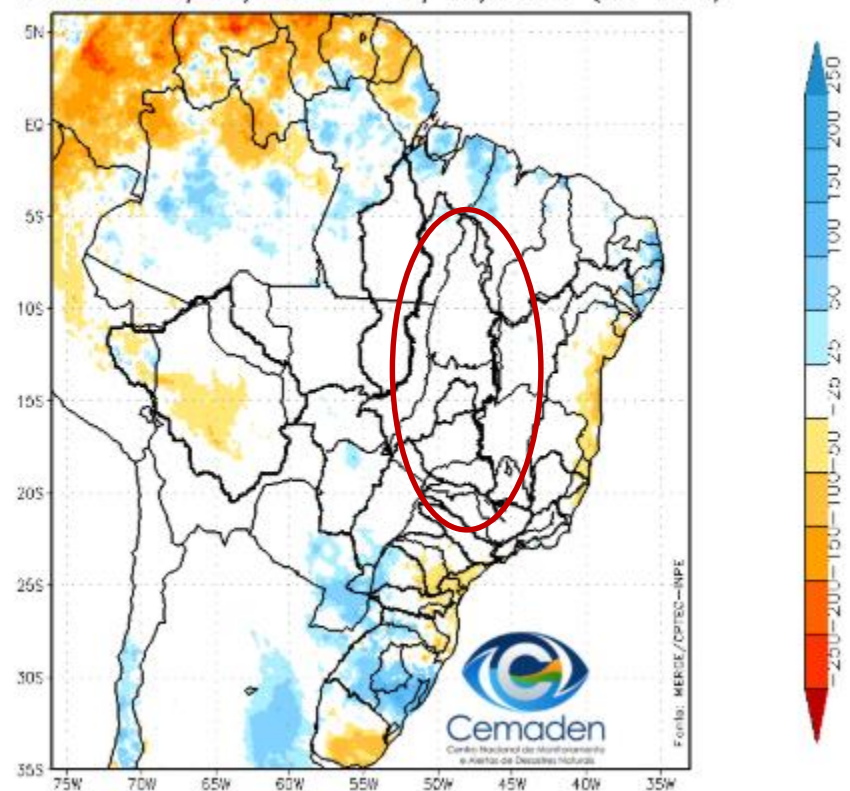


Precipitação acumulada nos últimos 30 dias

Precipitação Acumulada (mm) A.S.
Período: 26/07/2025 a 25/08/2025 (30 dias)



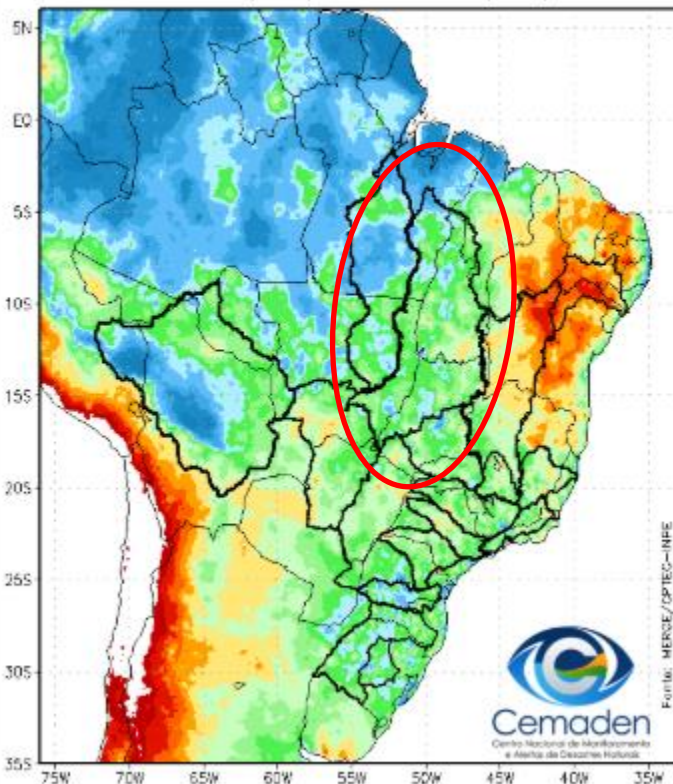
Anomalia de Precipitação (mm) A.S.
Período: 26/07/2025 a 25/08/2025 (30 dias)



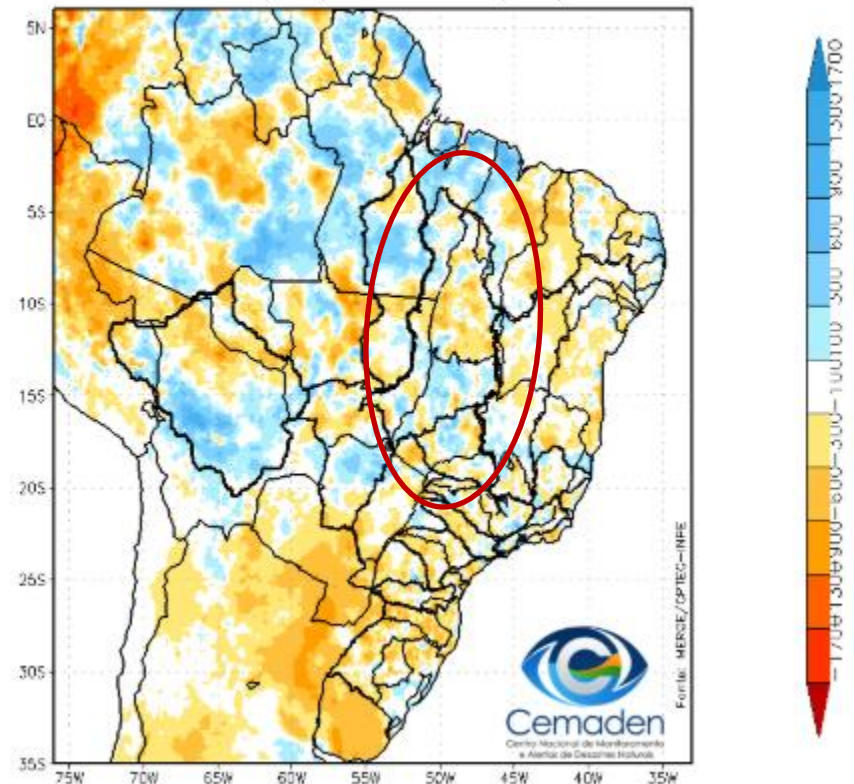
Fonte dos dados: Merge/INPE

Precipitação acumulada no Ano Hidrológico

Precipitação Acumulada (mm) Ano Hidrológico
Período: 01/10/2024 a 25/08/2025



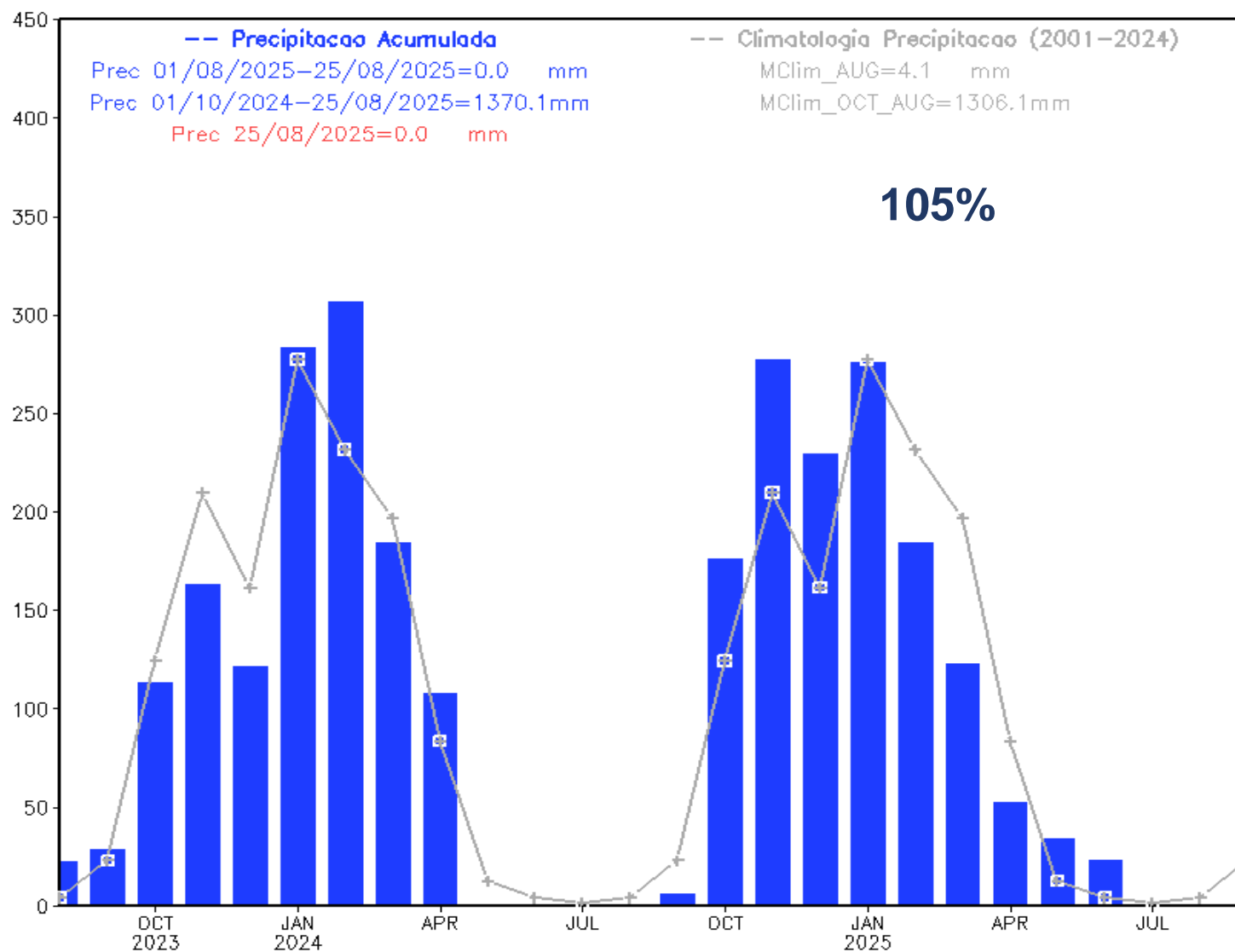
Anomalia de Precipitação (mm) Ano Hidrológico
Período: 01/10/2024 a 25/08/2025



Fonte dos dados: Merge/INPE

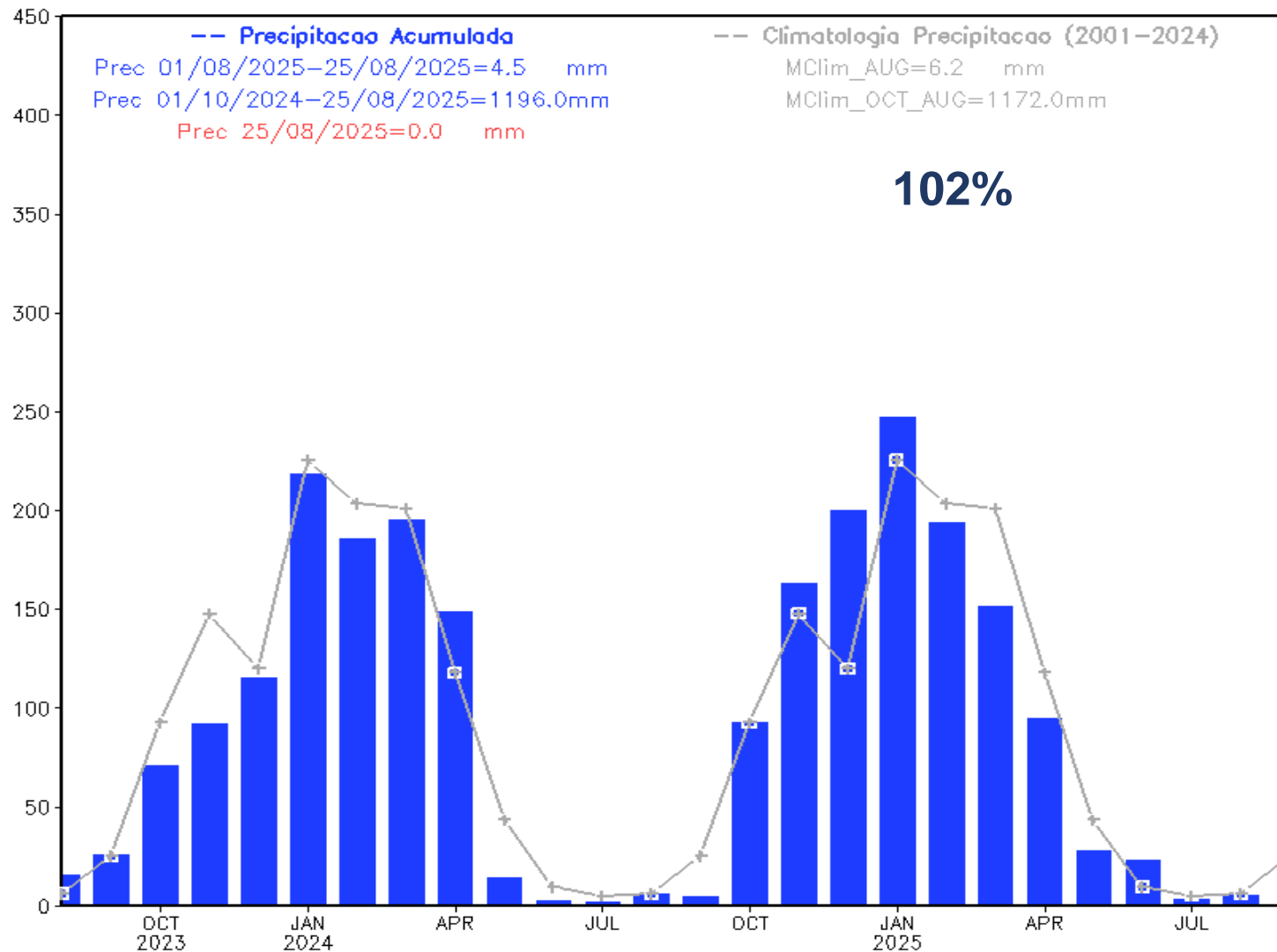
Precipitação Acumulada nos últimos Dois Anos

Precipitacao Bacia do Rio Tocantins desde AUG 2023

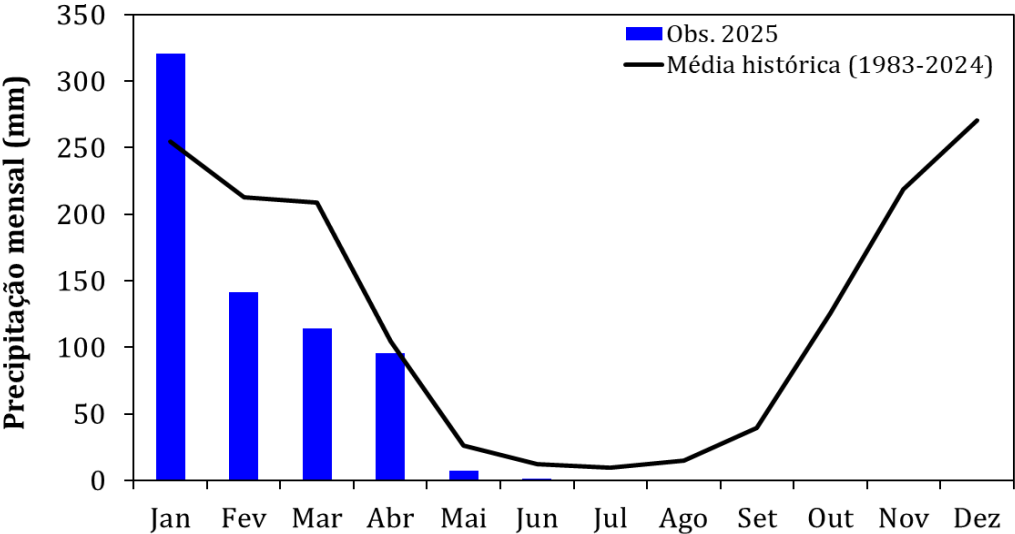


Precipitação Acumulada nos últimos Dois Anos

Precipitação Bacia do Rio Araguaia desde AUG 2023



Monitoramento UHE Serra da Mesa



Precipitação

Estação Chuvosa - Out a Abr – 1396 mm

2023/2024: 1245 mm (**89% da MLT**)

2024/2025: 1355 mm (**97% da MLT**)

Estação Seca - Maio a Set – 102 mm

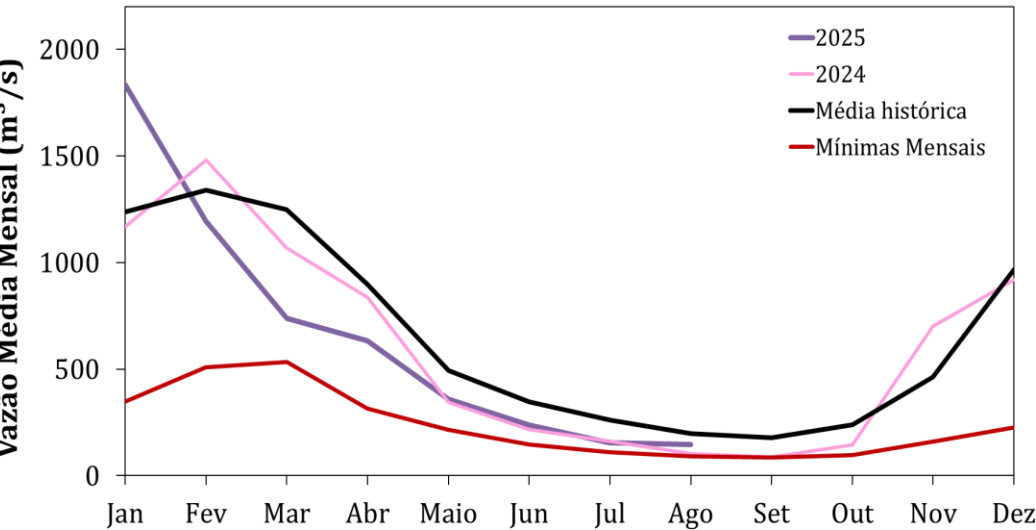
2024: 2 mm (**2% da MLT**)

2025*: 9 mm (**12% da MLT PARCIAL**)

Jul/2025: 0.2 mm (MLT = 10 mm)

Ago/2025*: 0.0 mm (MLT = 15 mm)

*Até 24/08/2025



Vazão

Estação Chuvosa - Out a Abr – 913 m³/s

2023/2024: 751 m³/s (**82% da MLT**)

2024/2025: 881 m³/s (**97% da MLT**)

Estação Seca - Maio a Set – 295 m³/s

2024: 183 m³/s (**62% da MLT**)

2025**: 225 m³/s (**76% da MLT**)

Jul/25: 154 m³/s (**59% da MLT**)

Ago/25**: 146 m³/s (**74% da MLT**)

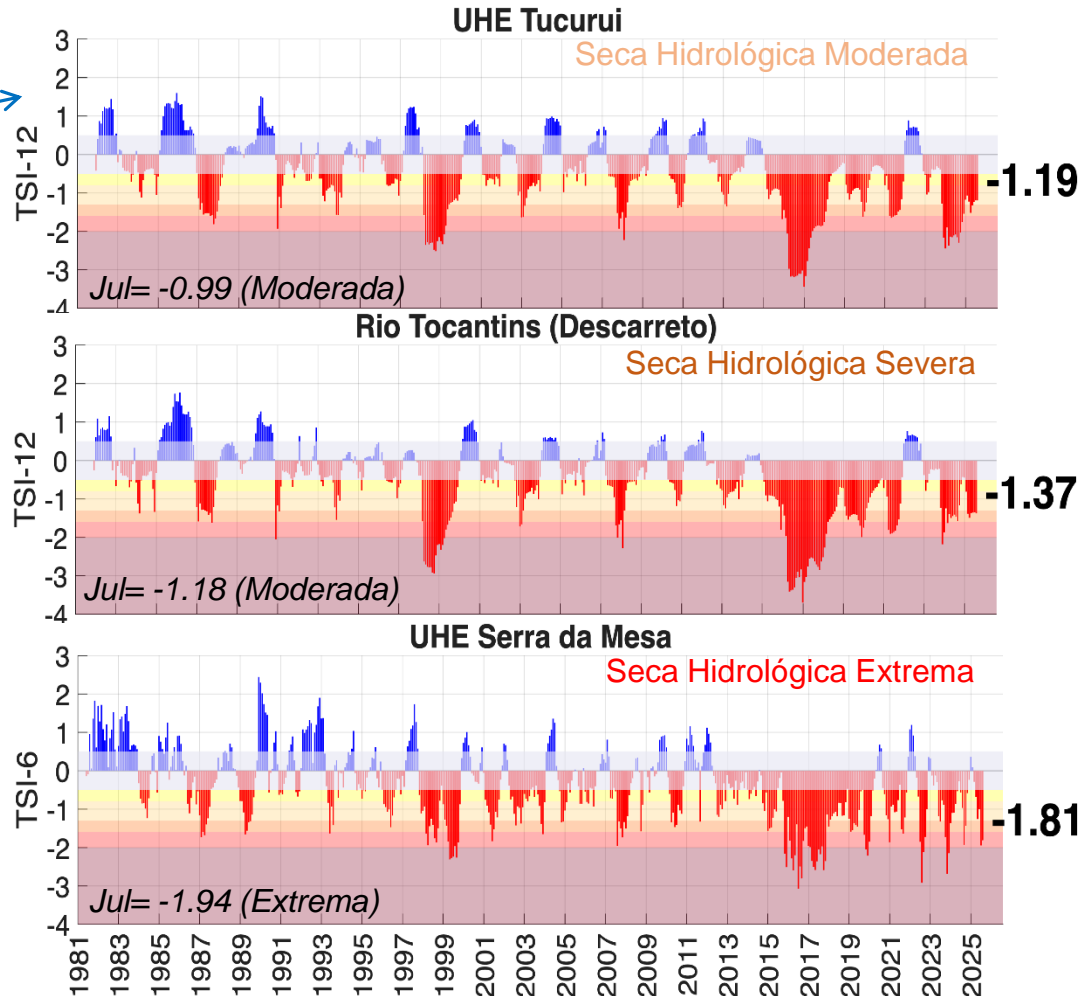
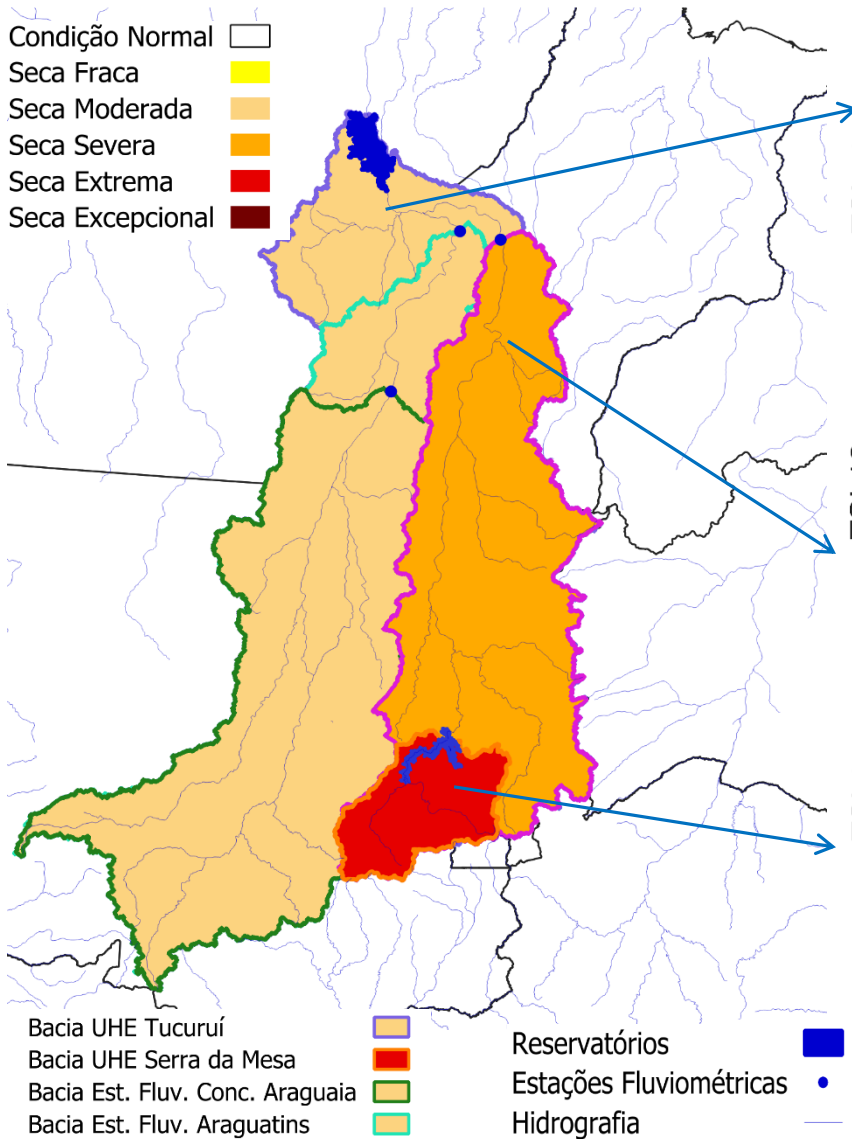
24/Ago/25: 135 m³/s (**68% da MLT**)

**Até 24/08/2025

Índice Bivariado de Seca (Precipitação-Cota/Vazão) - TSI

Escala de longo prazo

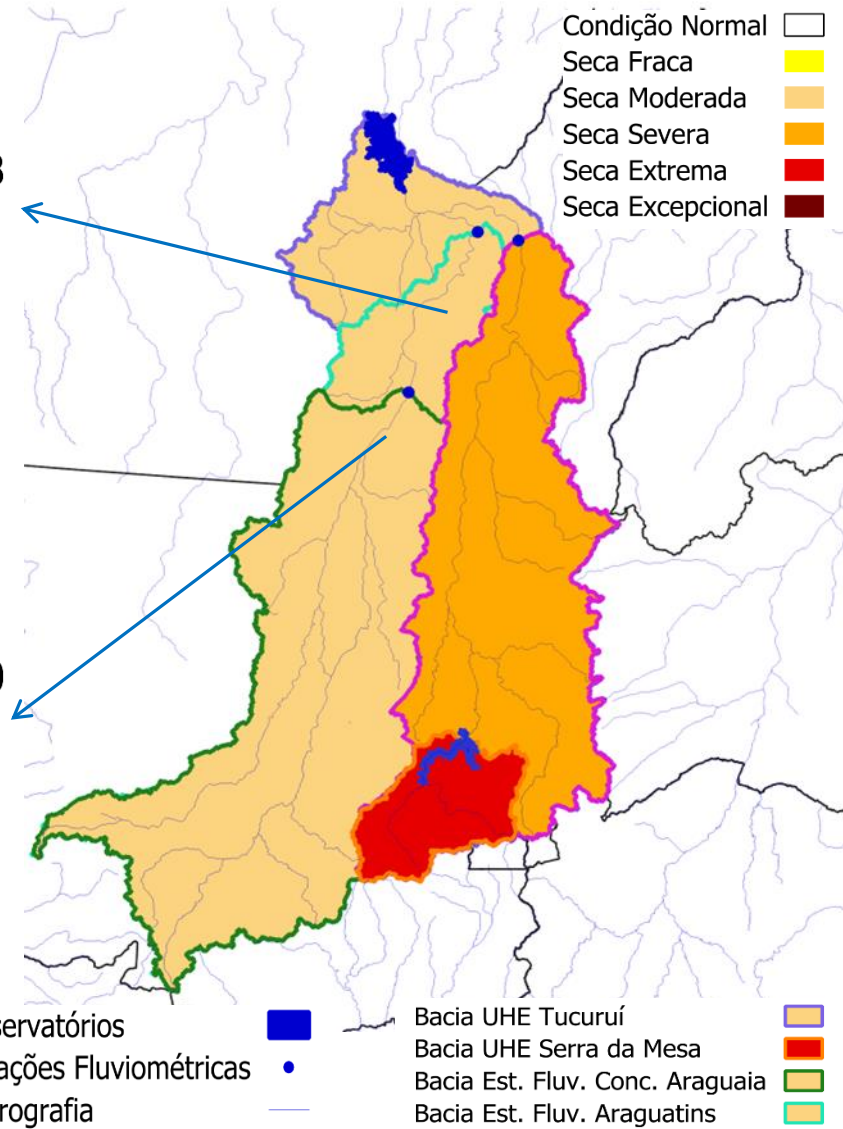
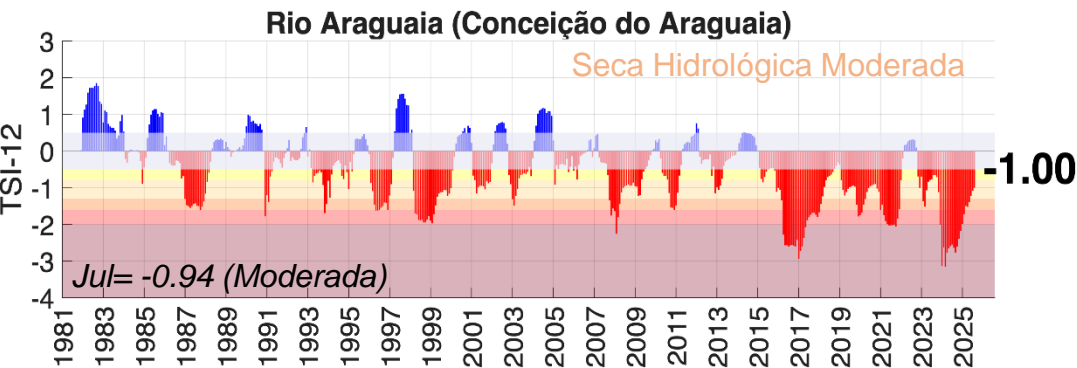
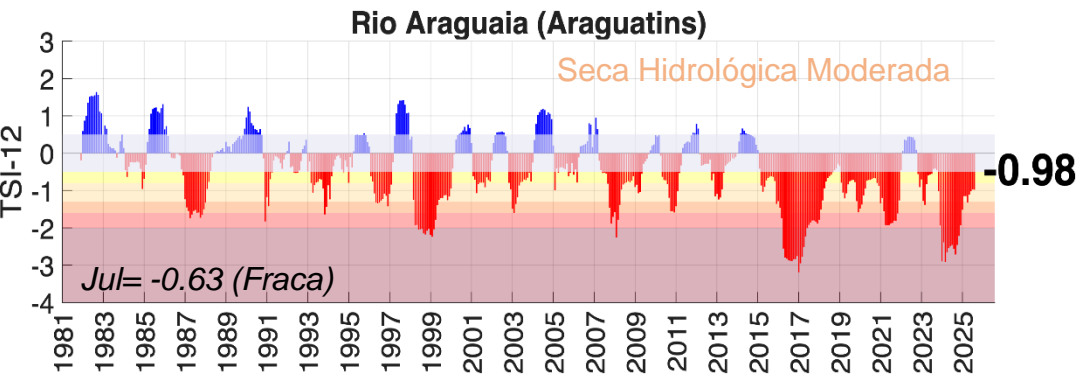
Agosto/2025



Índice Bivariado de Seca (Precipitação-Cota/Vazão) - TSI

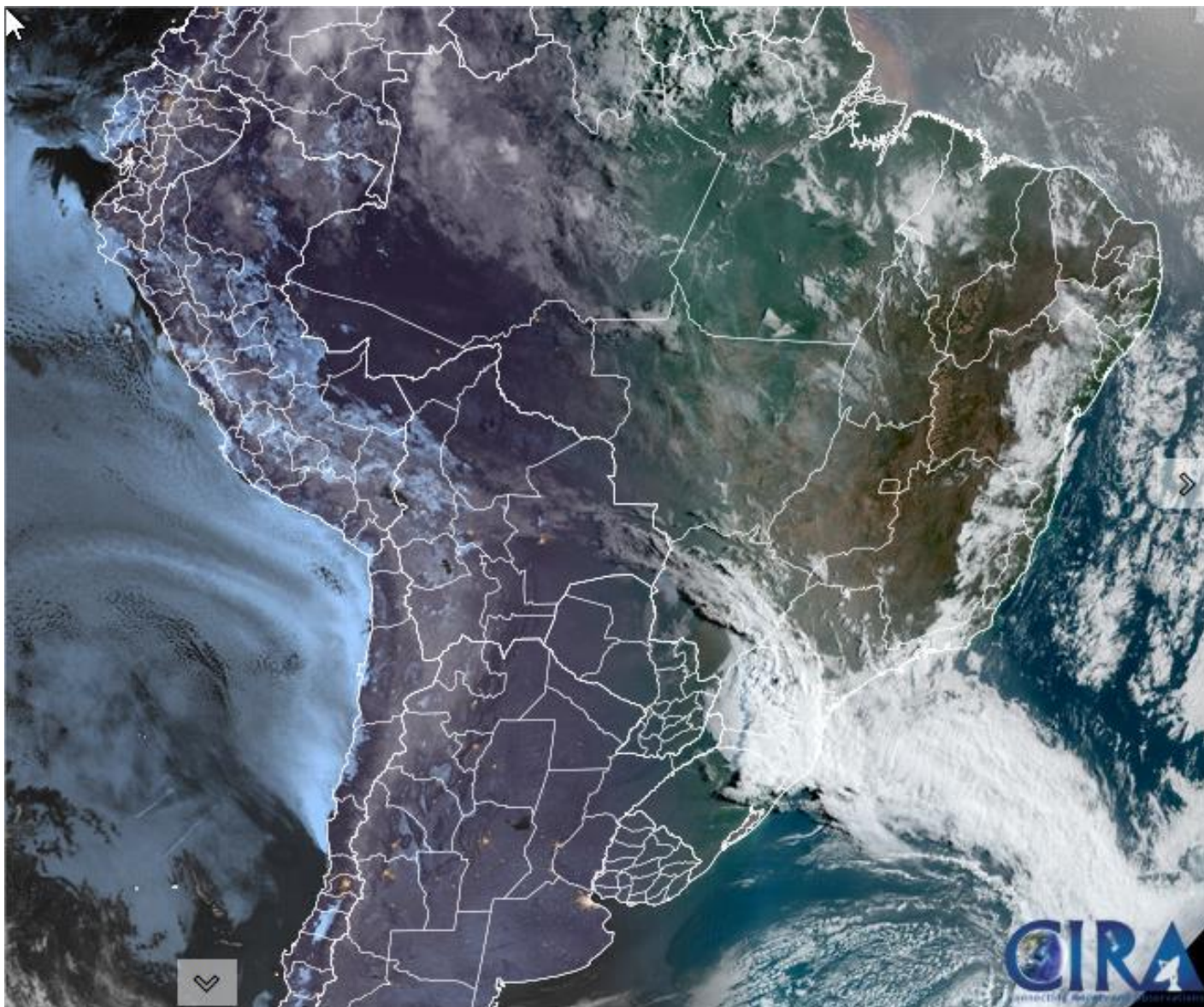
Escala de longo prazo

Agosto/2025

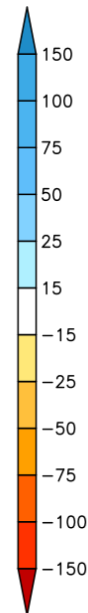
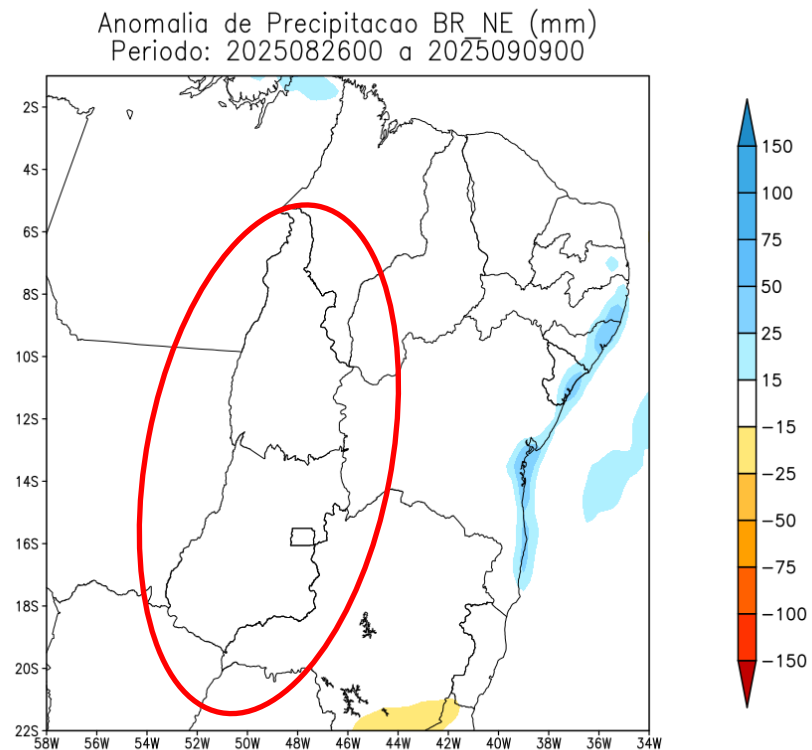
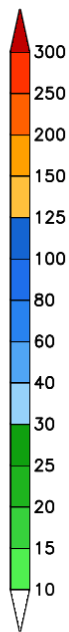
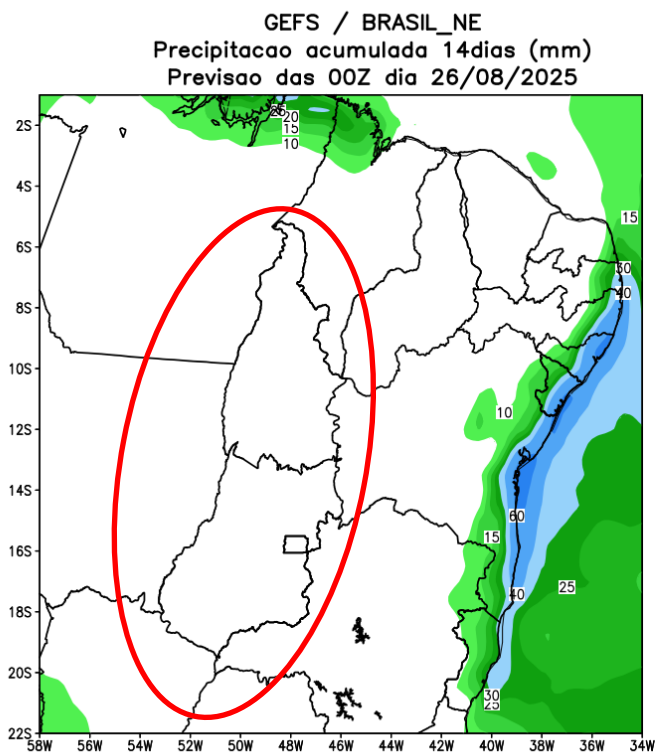


Fonte: CEMADEN
Dados: Precipitação (Cemaden/INMET/CHIRPS) e
Vazão (ONS/ANA) - Jan/1981-Ago/2025.

Situação meteorológica atual

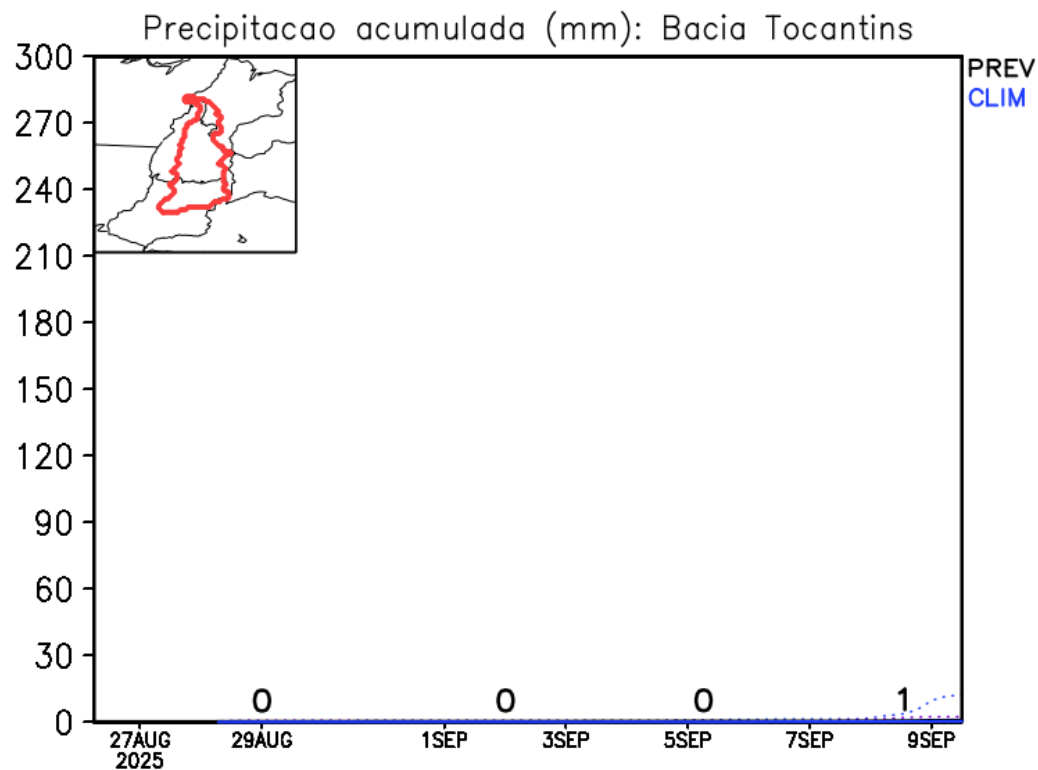
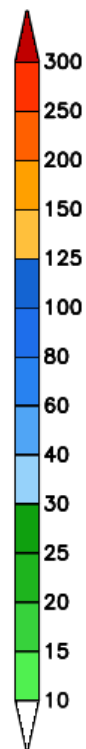
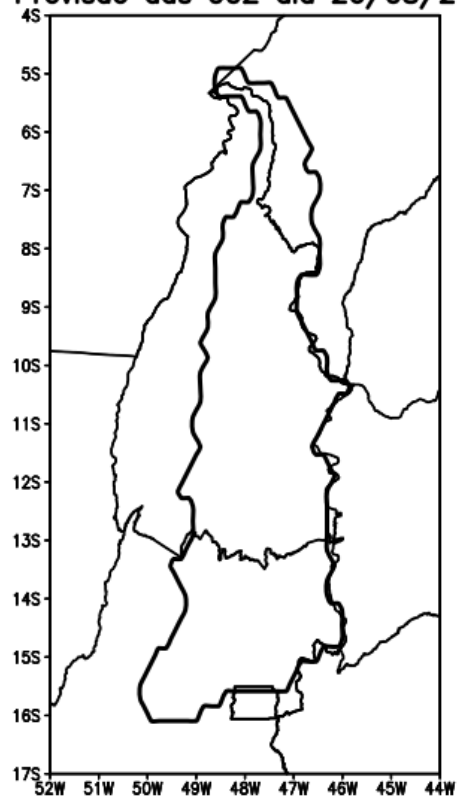


Previsão de chuva - acumulada 2 semanas



Previsão Bacia Rio Tocantins

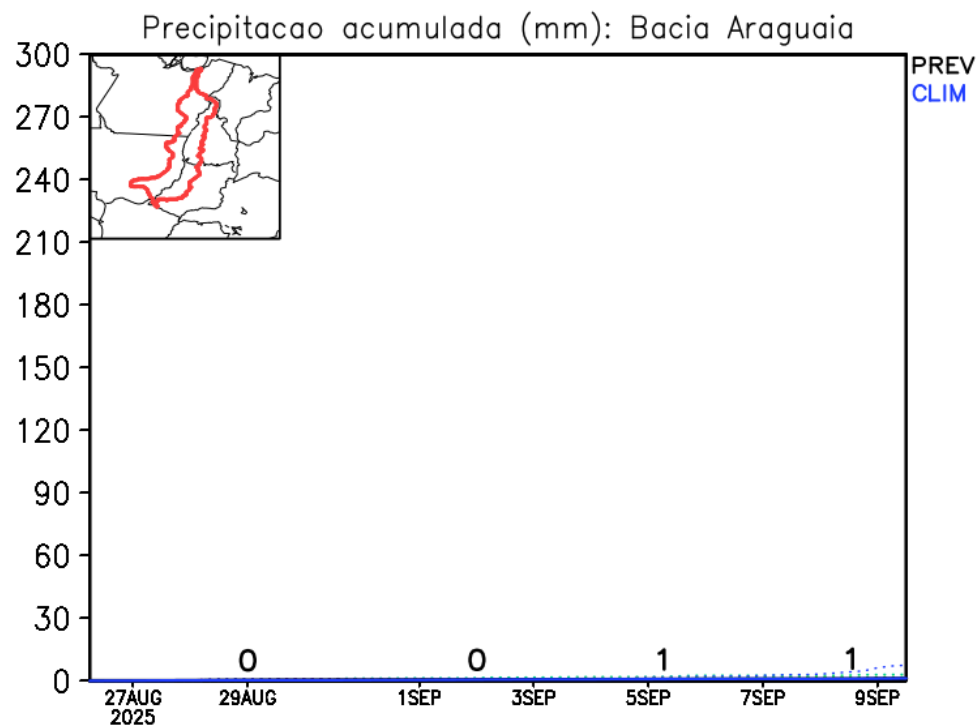
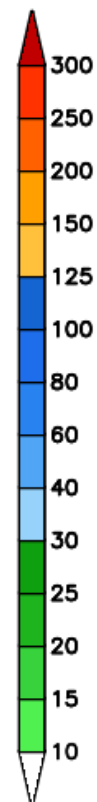
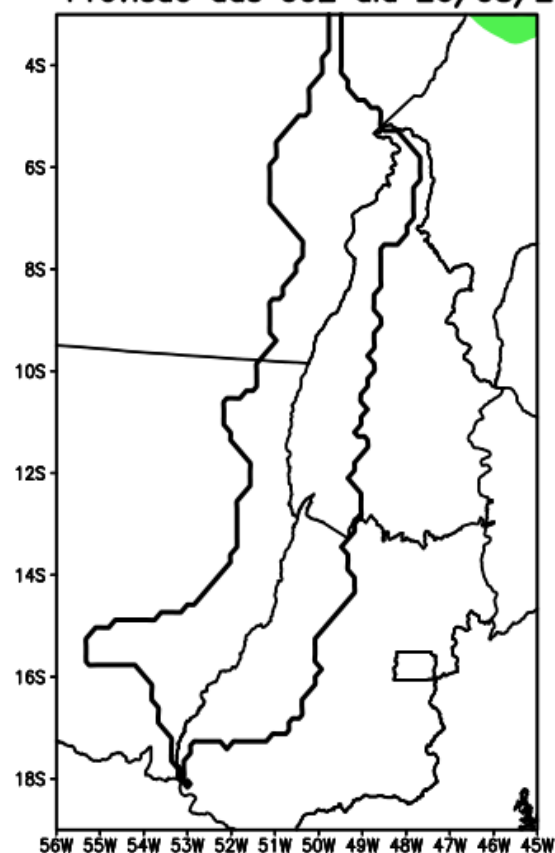
GEFS / Bacia Tocantins
Precipitacao acumulada em 14 dias (mm)
Previsao das 00Z dia 26/08/2025



Fonte: GEFS/NOAA

Previsão Bacia Rio Araguaia

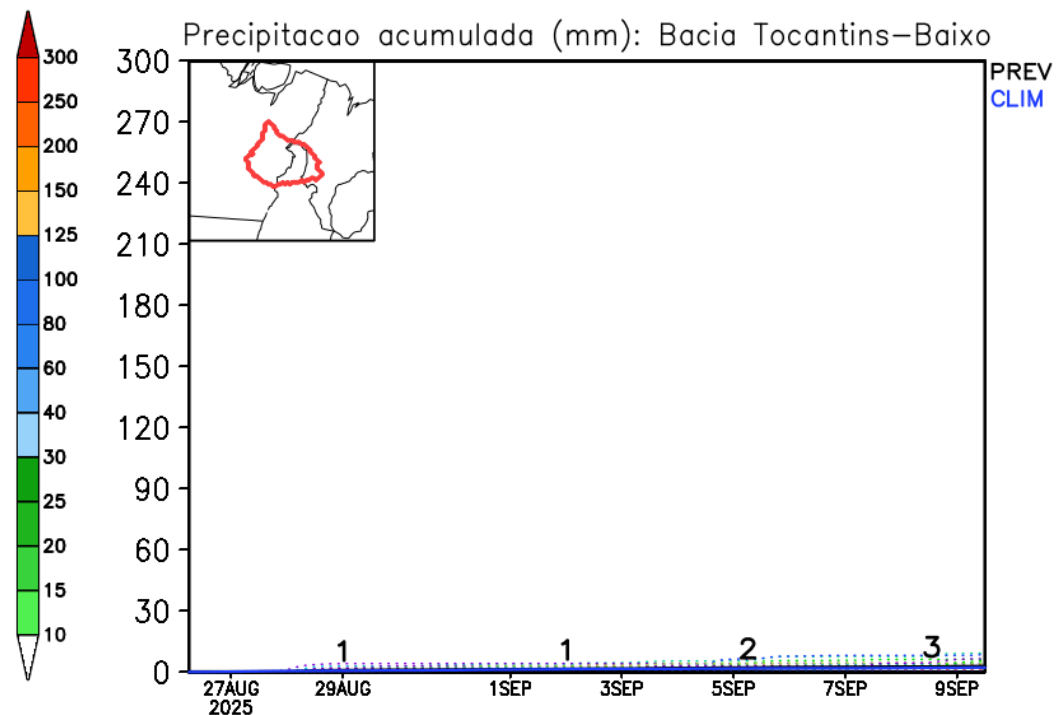
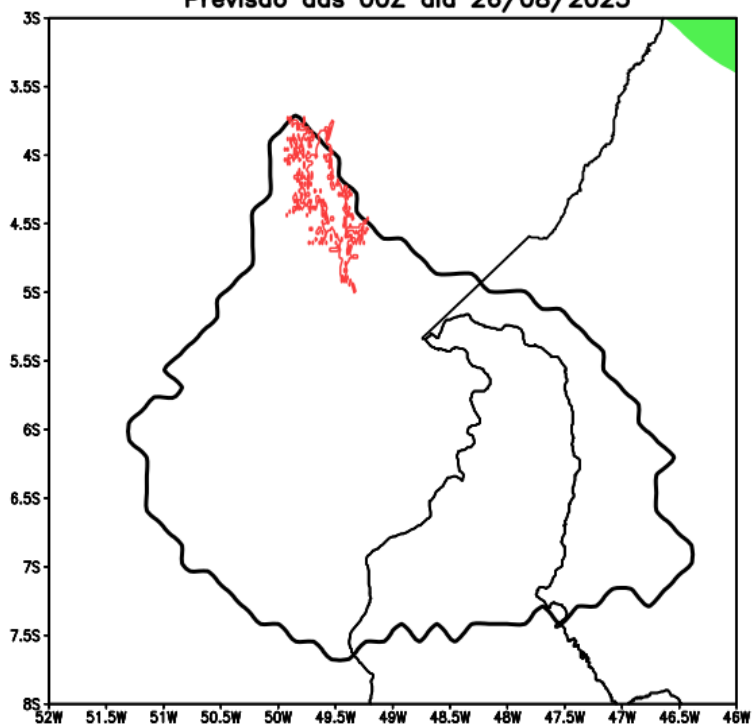
GEFS / Bacia do Rio Araguaia
Precipitação acumulada em 14 dias (mm)
Previsão das 00Z dia 26/08/2025



Fonte: GEFS/NOAA

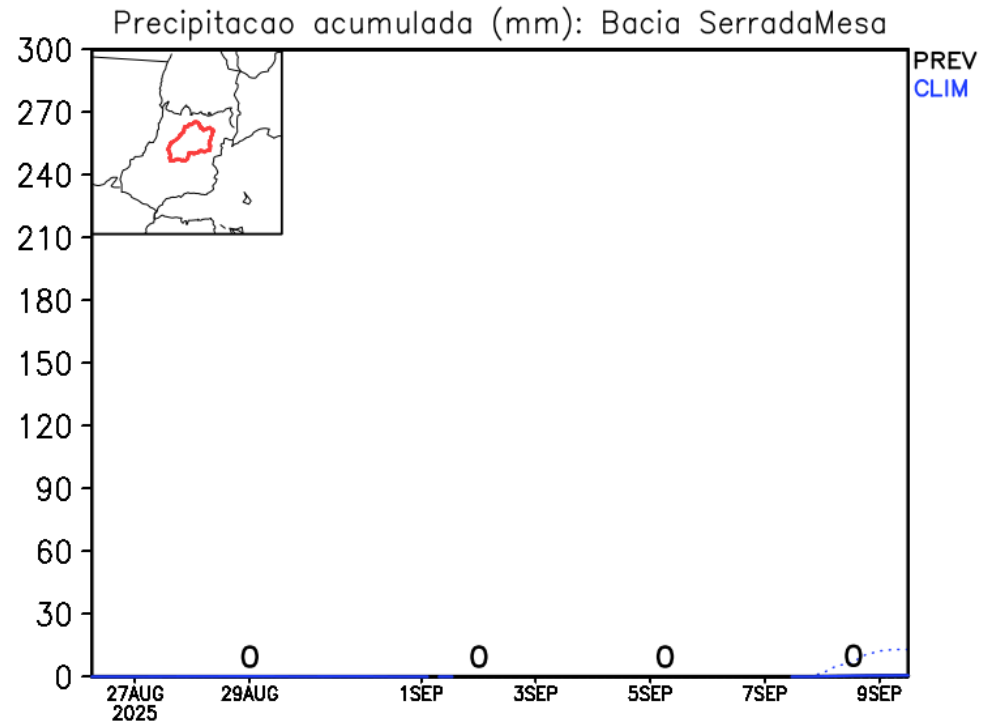
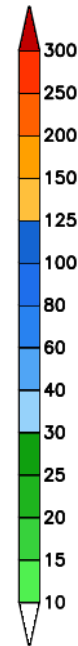
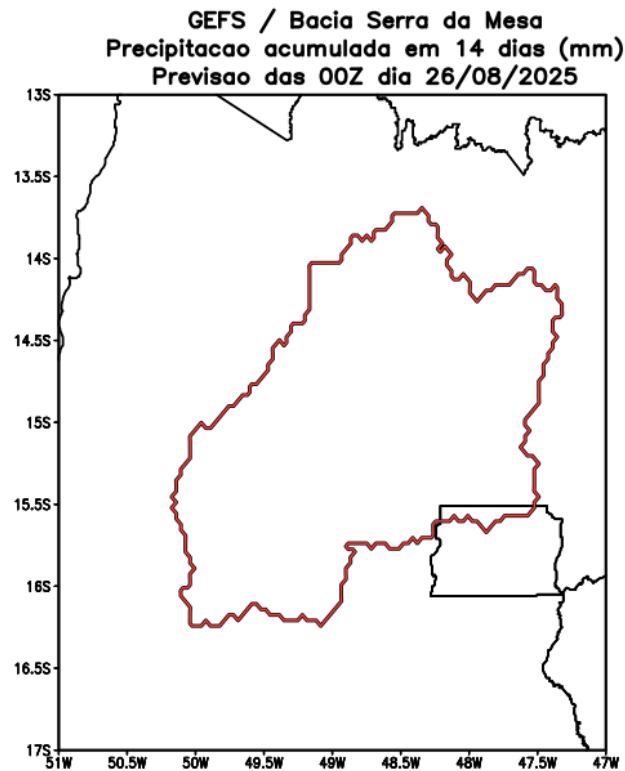
Previsão Bacia Tocantins (Baixo)

GEFS / Bacia Baixo Tocantins
Precipitacao acumulada em 14 dias (mm)
Previsao das 00Z dia 26/08/2025



Fonte: GEFS/NOAA

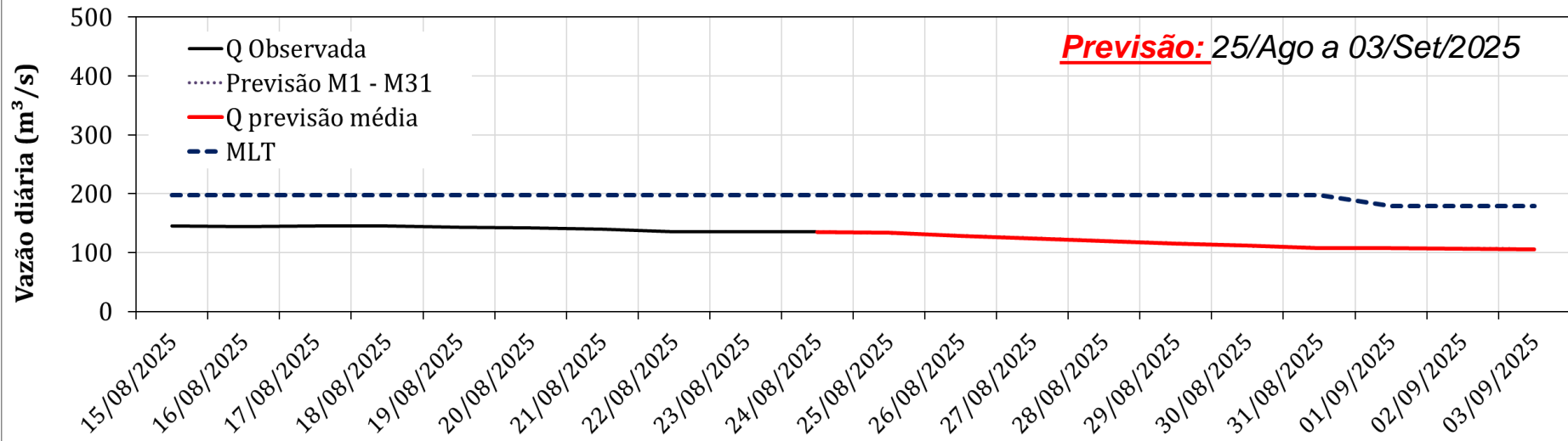
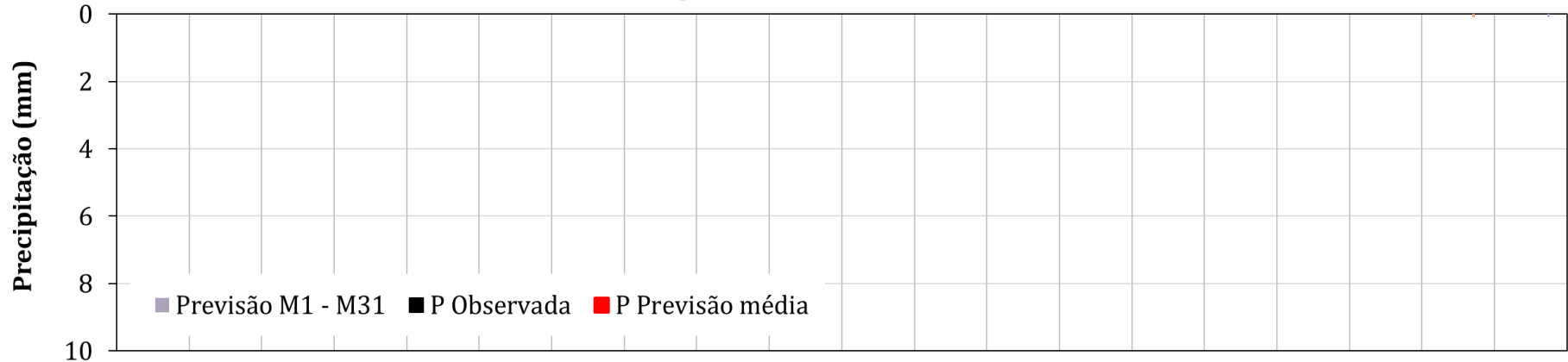
Previsão Bacia Serra da Mesa



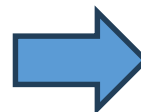
Fonte: GEFS/NOAA

Serra da Mesa: Previsão de Vazão (modelo hidrológico PDM-CEMADEN)

Vazão Natural e Precipitação Diárias para Serra da Mesa
15/Ago a 03/Set/2025



Previsão média para
os próximos 10 dias: **116 m³/s**

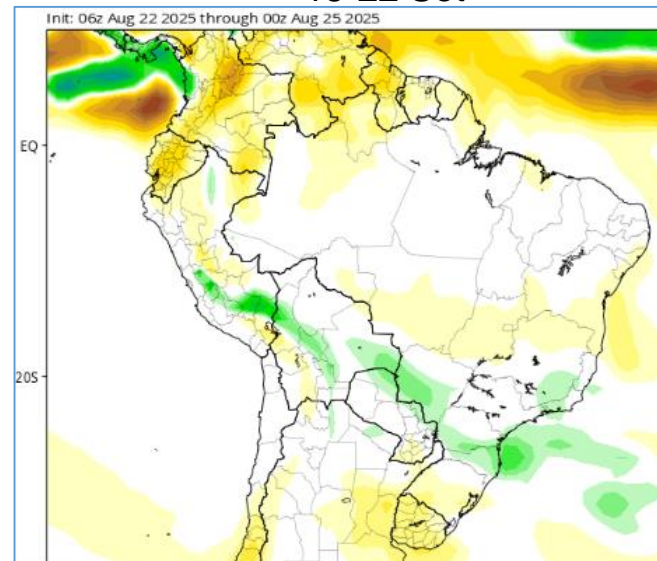
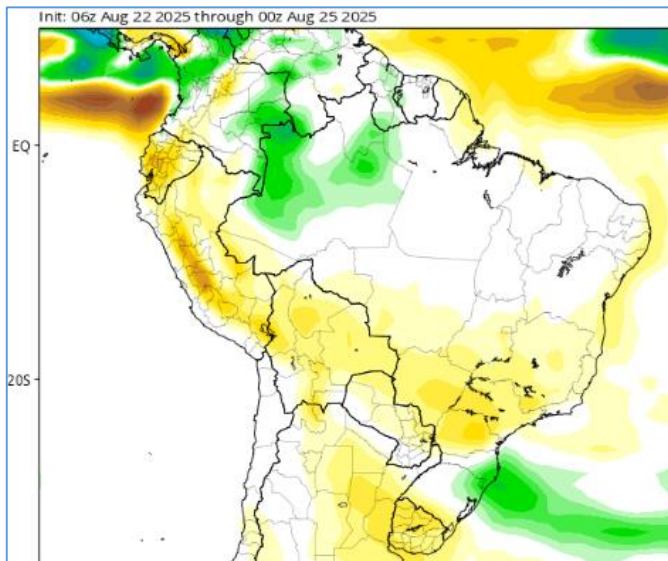


59% da MLT de Agosto
65% da MLT Setembro

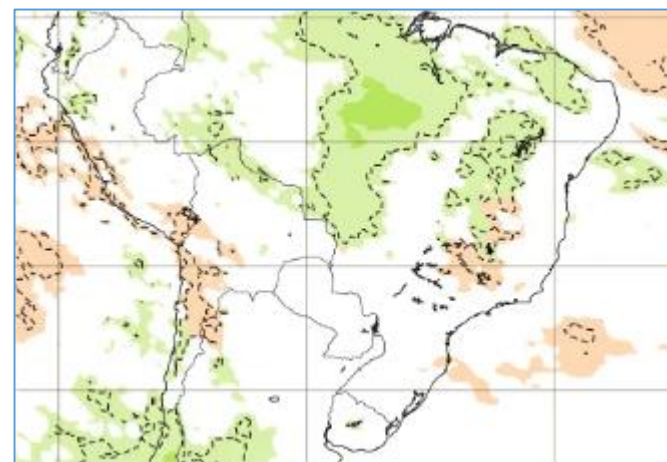
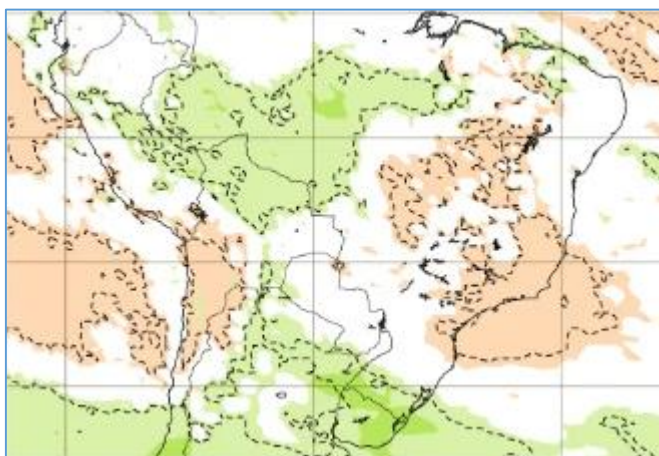
Tendência 3a e 4a semanas

08-15 Set

15-22 Set



CFS/NOAA



ECMWF

08-15 Set

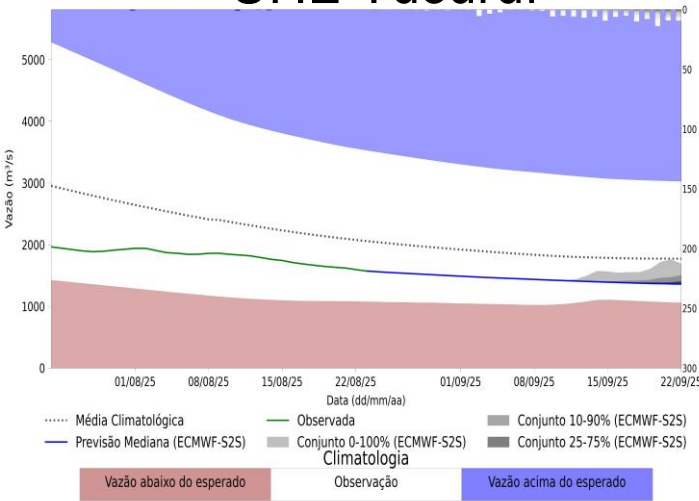
15-22 Set



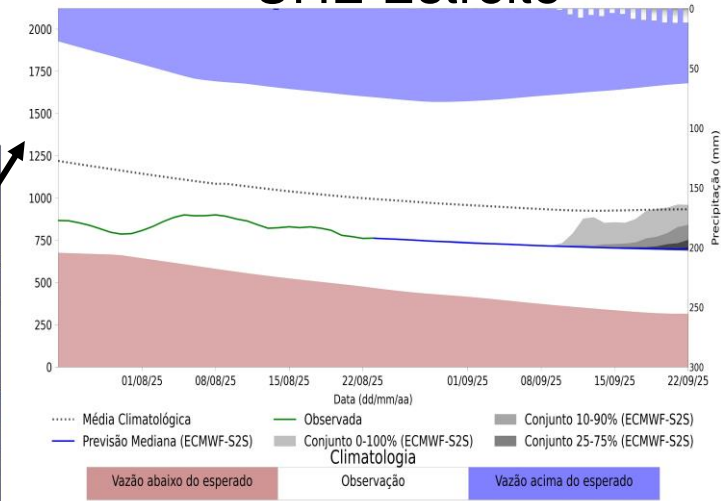
Previsão de vazão natural na Bacia Rio Tocantins-Araguaia 30 dias (Modelo hidrológico MHD)

Previsão: 23/08/2025 a 22/09/2025

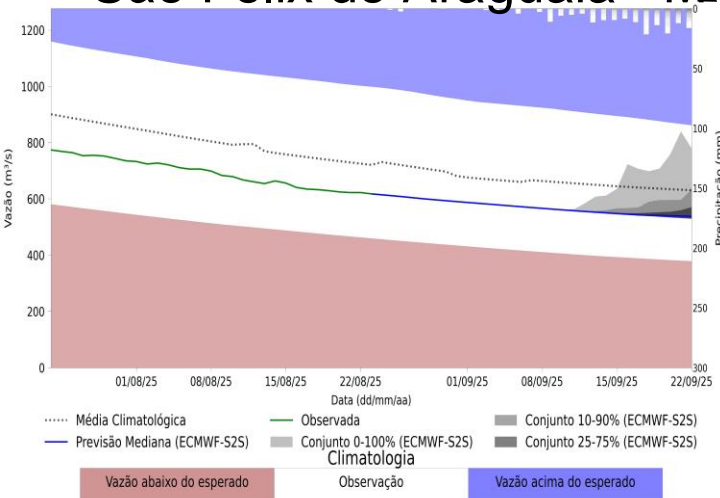
UHE Tucuruí



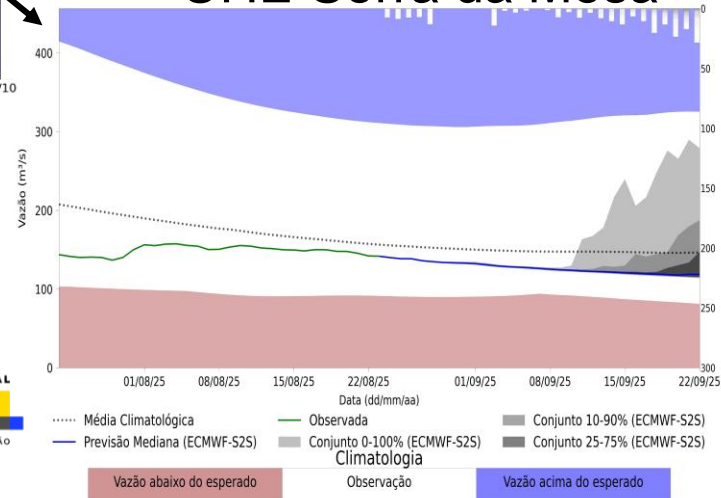
UHE Estreito



São Felix do Araguaia - MT



UHE Serra da Mesa



Fonte: Meteorologia
(INMET/MERGE); Vazão
(ANA/ONS)
MLT: 1993-2024
Previsão Meteorológica: ECMWF-S2S

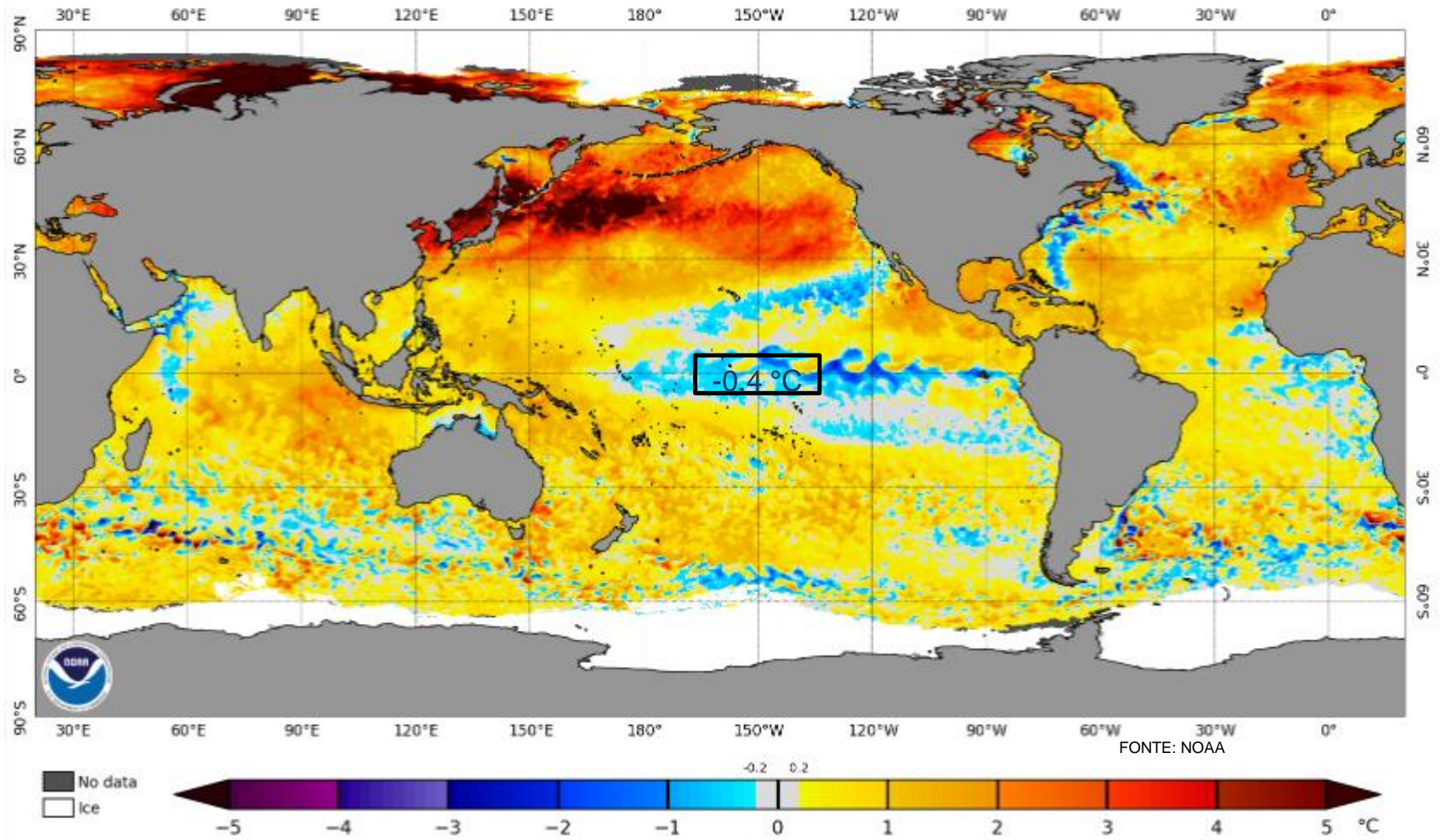


MINISTÉRIO DA
CIÊNCIA, TECNOLOGIA
E INOVAÇÃO



Status Atual: **La Niña Watch**

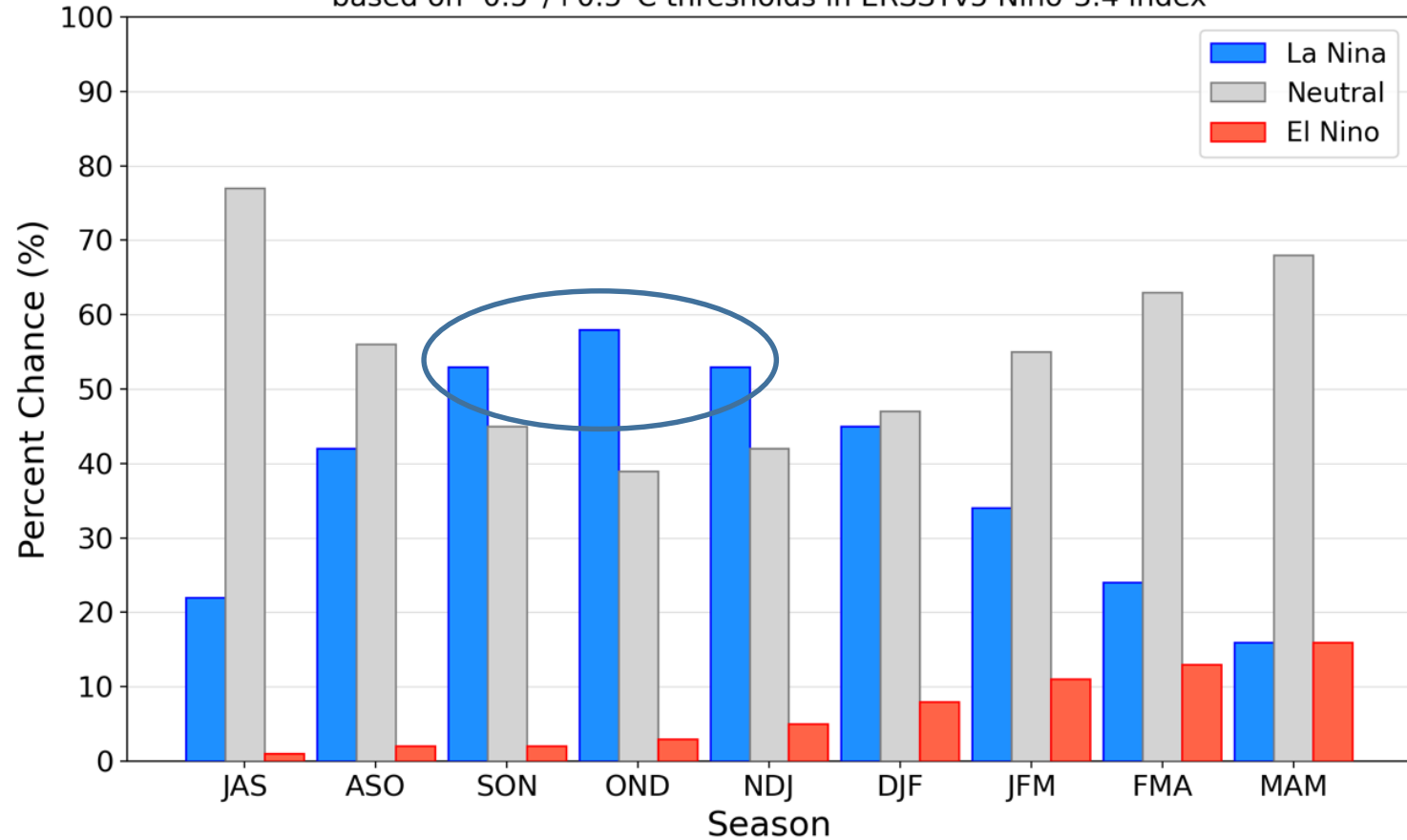
NOAA Coral Reef Watch Daily 5km SST Anomalies (v3.1) 23 Aug 2025



Previsão do “ENSO”

Official NOAA CPC ENSO Probabilities (issued August 2025)

based on $-0.5^{\circ}/+0.5^{\circ}\text{C}$ thresholds in ERSSTv5 Niño-3.4 index



Previsão do “ENSO”

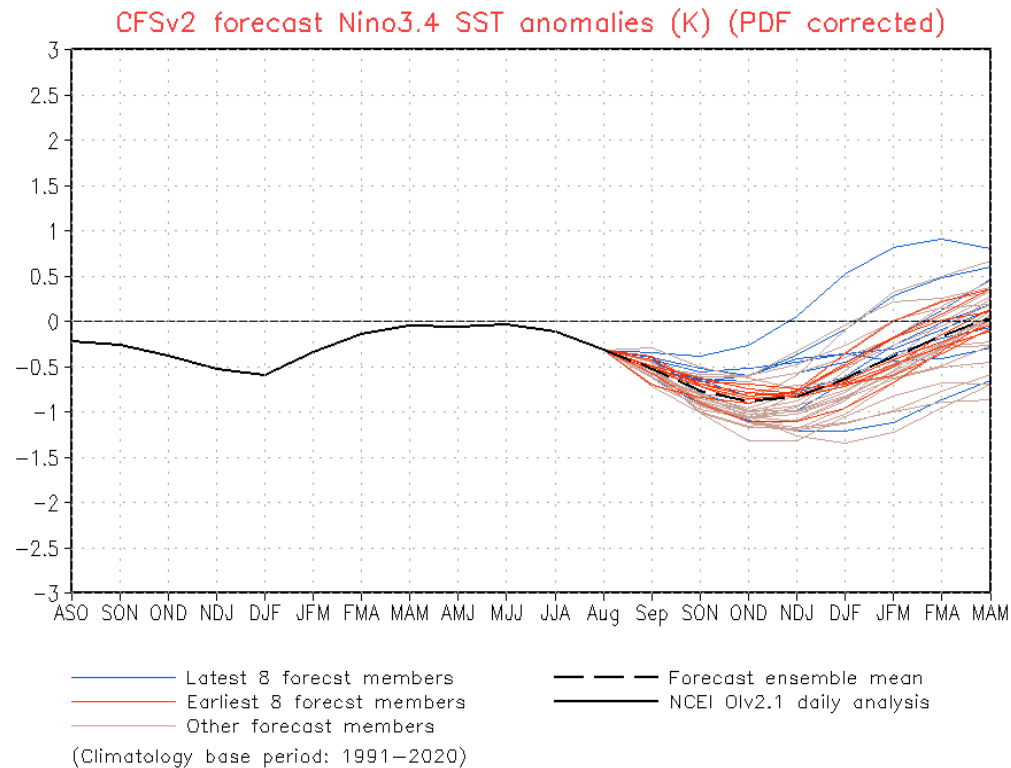
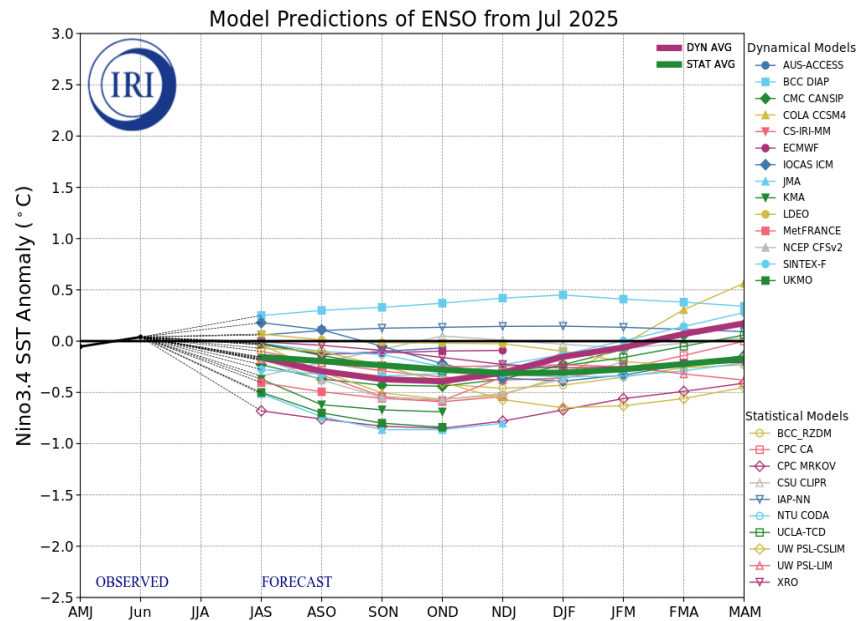
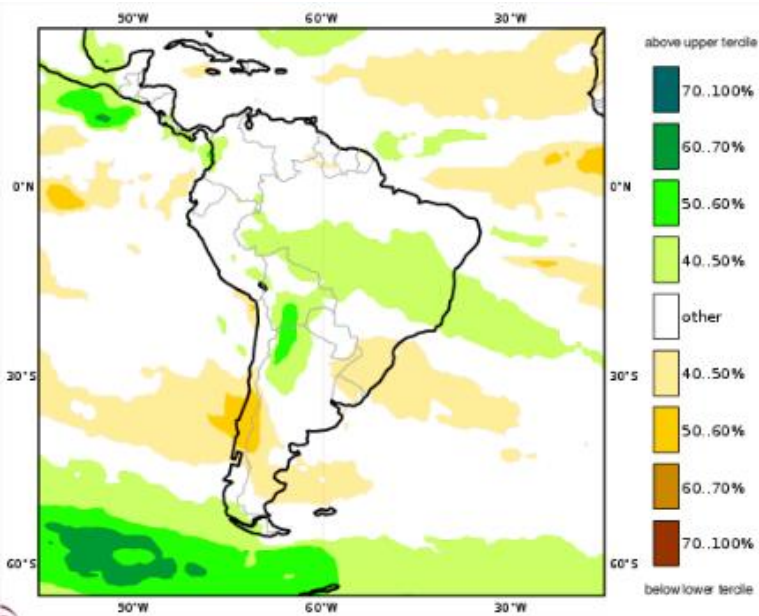


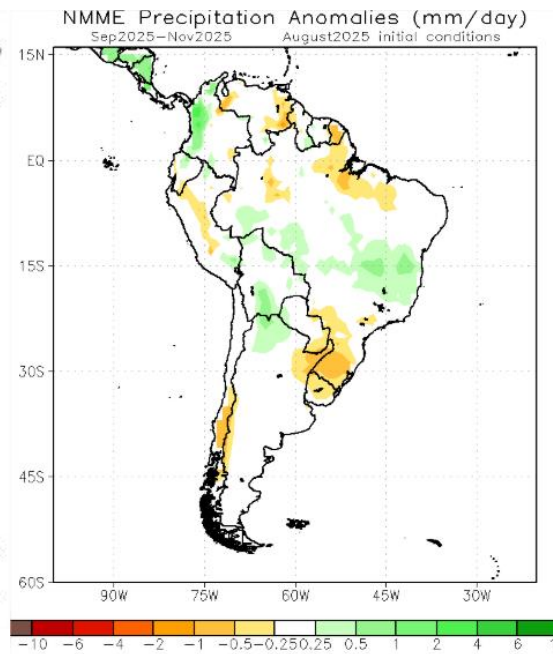
Figure provided by the International Research Institute (IRI) for Climate and Society (updated 18 July 2025).

Previsão Sazonal de Chuva Multi-Modelo

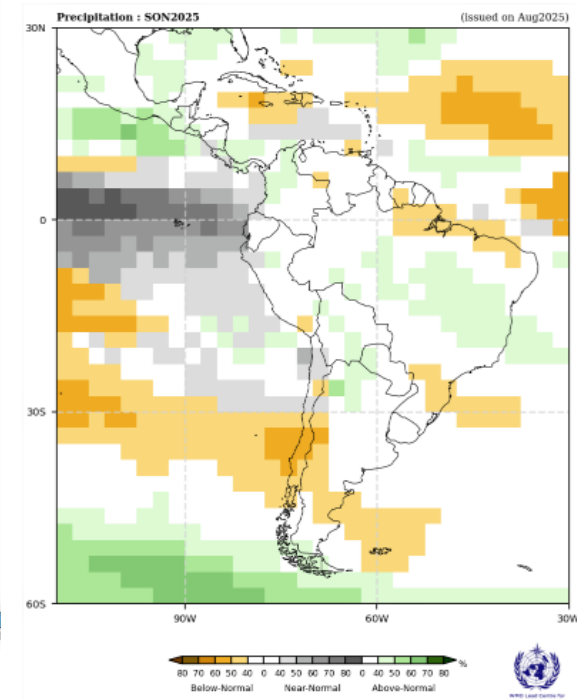
Setembro-Outubro-Novembro



Modelos “Europeus”

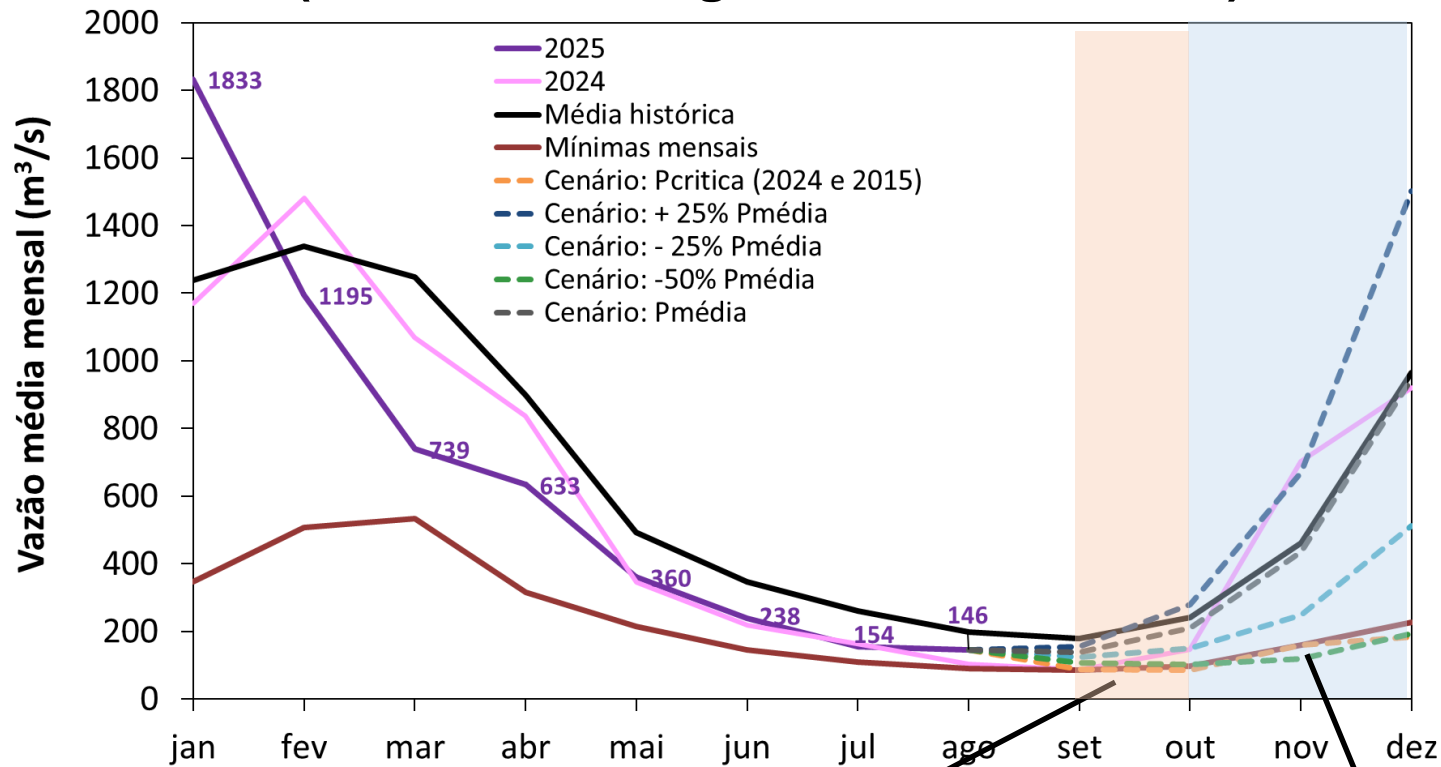


Modelos Norte Americanos



Modelos da WMO

Serra da Mesa: Projeção de Vazão (modelo hidrológico PDM-CEMADEN)



Setembro (Mes seco)

MLT: 179 m³/s

Vazão	% MLT
156 m³/s	87%
139 m³/s	78%
123 m³/s	68%
2024 → 89 m³/s	49%

Out-Dez (Meses Chuvosos)

MLT: 556 m³/s

Vazão	% MLT
817 m³/s	147%
530 m³/s	95%
303 m³/s	54%
2015 → 143 m³/s	26%