

# Monitoramento e Previsões para a Bacia do rio Araguaia-Tocantins

**MARÇO 2026**

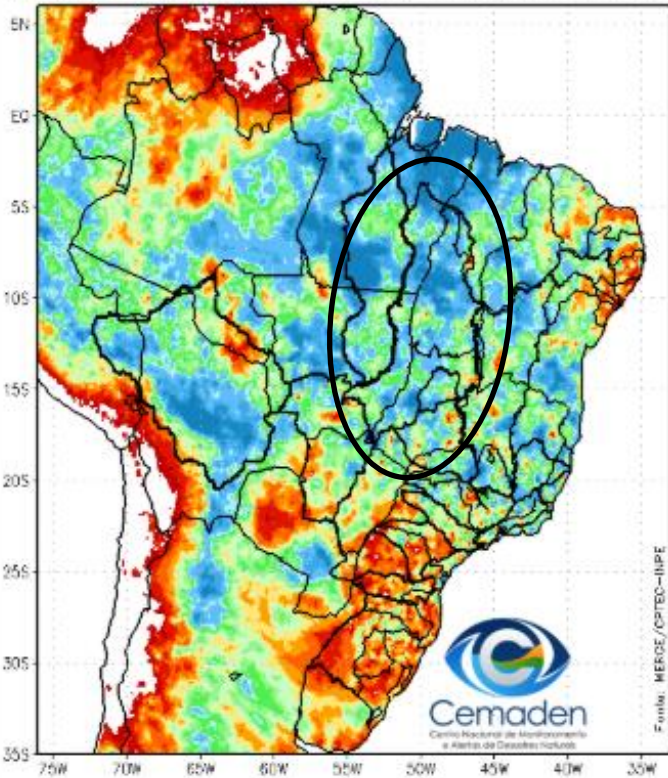


MINISTÉRIO DA  
**CIÊNCIA, TECNOLOGIA  
E INOVAÇÃO**

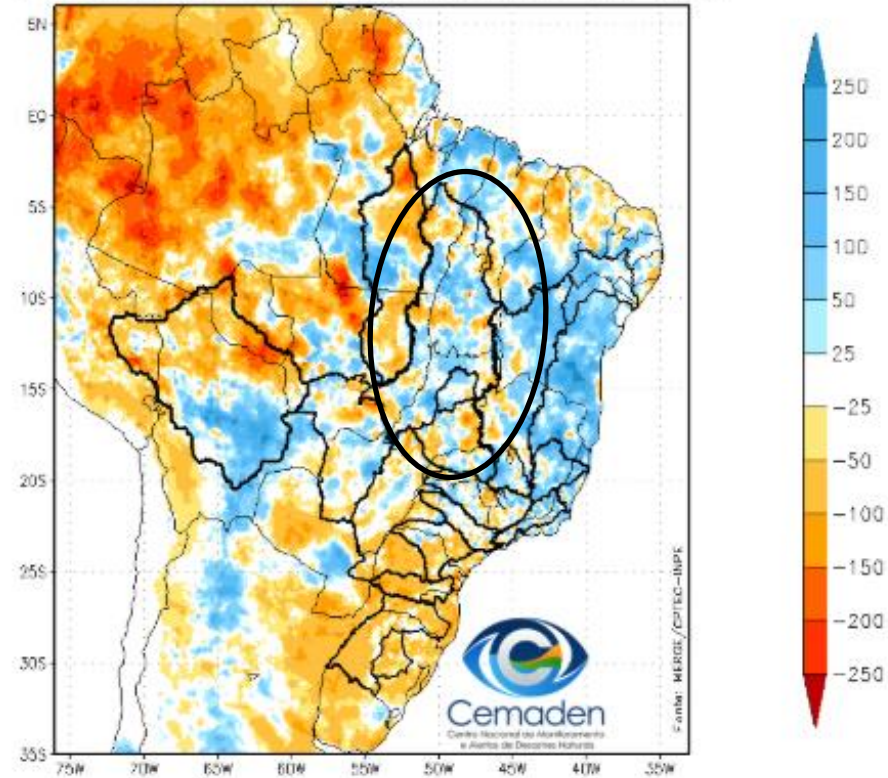


# Precipitação acumulada últimos 30 dias

Precipitação Acumulada (mm) A.S.  
Período: 21/02/2026 a 23/03/2026 (30 dias)



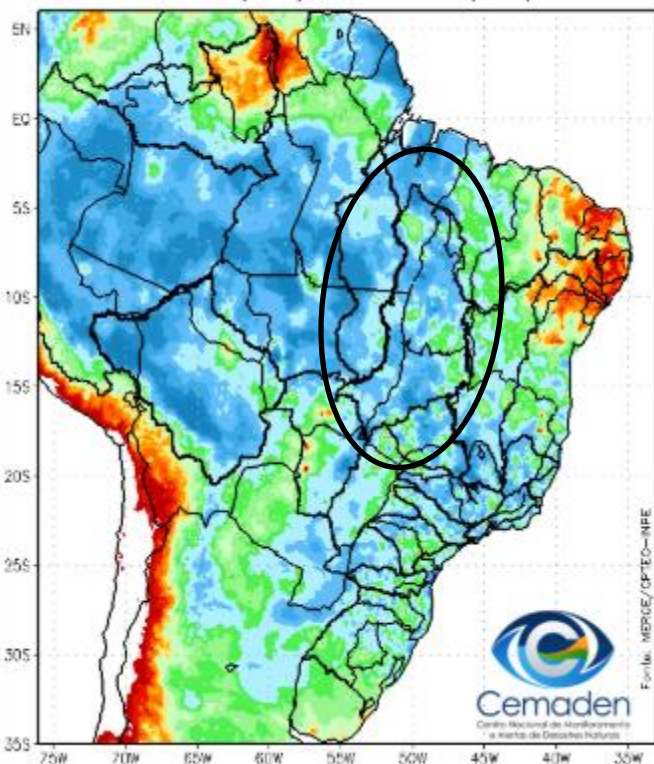
Anomalia de Precipitação (mm) A.S.  
Período: 21/02/2026 a 23/03/2026 (30 dias)



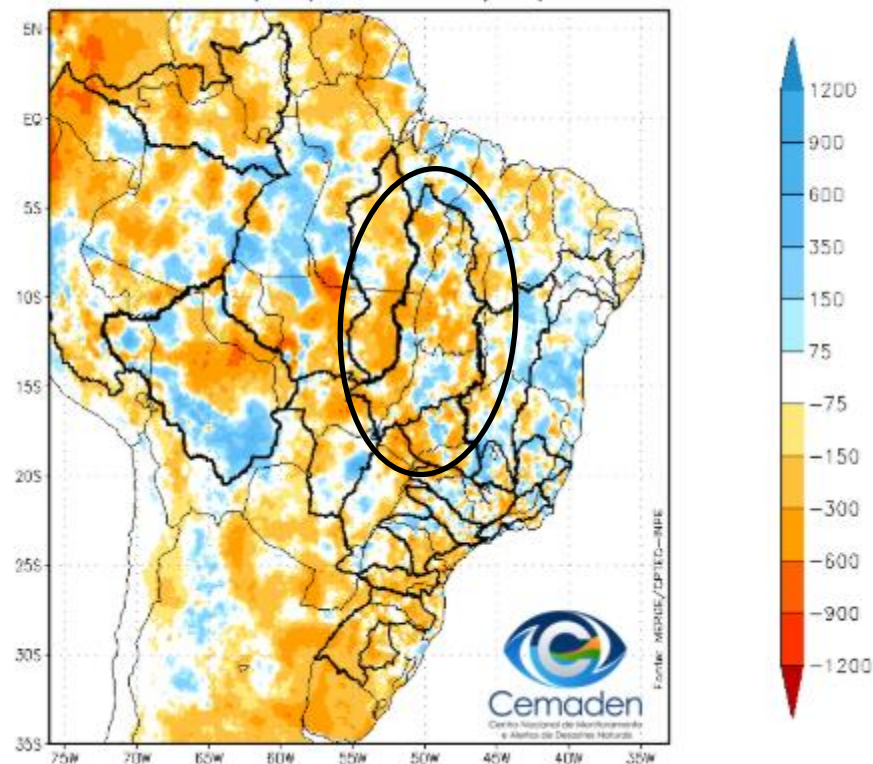
Fonte dos dados: Merge/INPE

# Precipitação acumulada no Ano Hidrológico desde 01 de outubro

Precipitação Acumulada (mm) Ano Hidrológico  
Período: 01/10/2025 a 23/03/2026



Anomalia de Precipitação (mm) Ano Hidrológico  
Período: 01/10/2025 a 23/03/2026



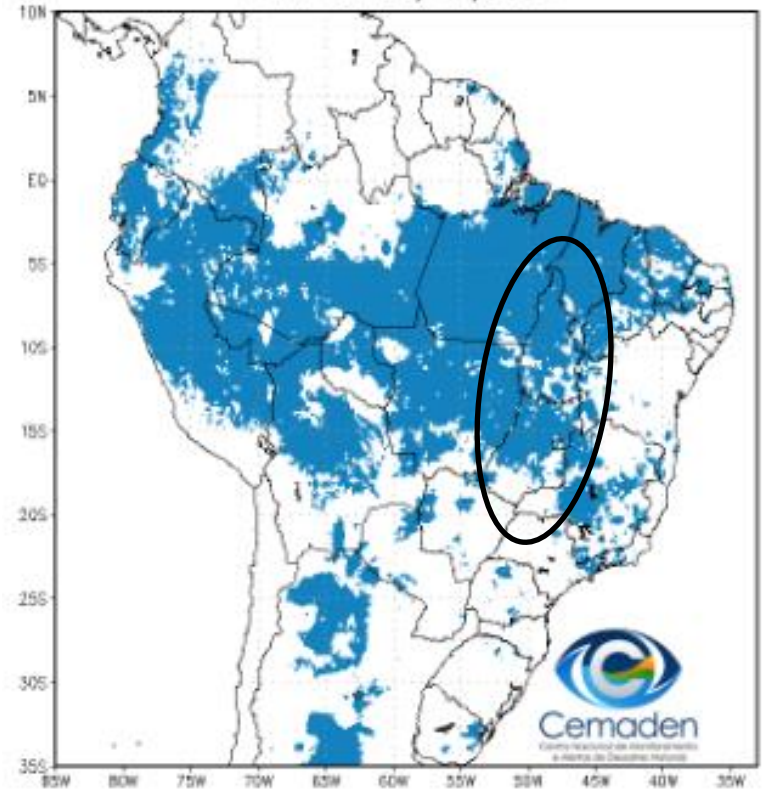
Fonte dos dados: Merge/INPE

# Situação da Estação Chuvosa

Climatologia da Precipitação (2001–2025)  
Inferior 2 mm/dia por 4 de 5 dias Período: 23/03

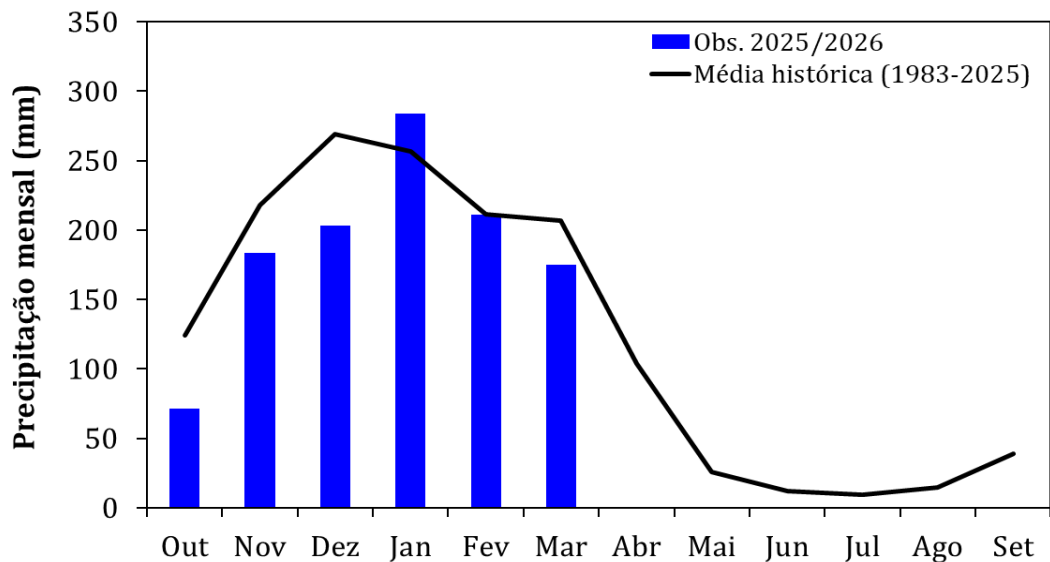


Precipitação Inferior 2 mm/dia por 4 de 5 dias  
Período: 23/03/2026



Fonte dos dados: Merge/INPE

# Monitoramento UHE Serra da Mesa



## Precipitação

**Estação Chuvosa - Out a Abr – 1390 mm**

2024/2025: 1355 mm (**97% da MLT**)

2025/2026\*: 1128 mm (**99% da MLT PARCIAL**)

**Estação Seca - Maio a Set – 100 mm**

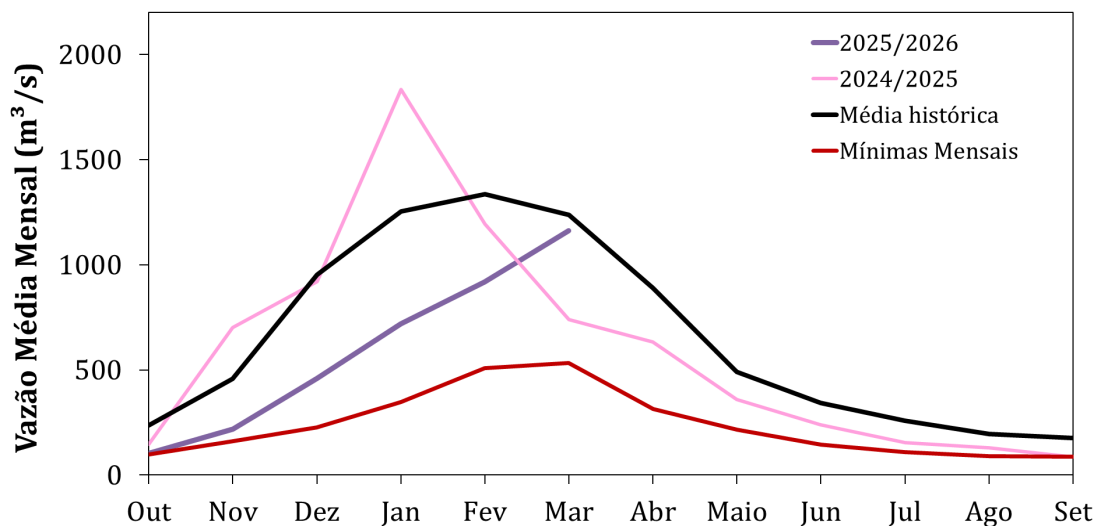
2024: 2 mm (**2% da MLT**)

2025: 24 mm (**23% da MLT**)

**Fev/2026: 211 mm (100% da MLT)**

**Mar/2026\*: 175 mm (85% PARCIAL)**

\*Até 23/03/2026



## Vazão

**Estação Chuvosa - Out a Abr – 909 m³/s**

2024/2025: 881 m³/s (**97% da MLT**)

2025/2026\*\*: 597 m³/s (**66% da MLT**)

**Estação Seca - Maio a Set – 293 m³/s**

2024: 183 m³/s (**62% da MLT**)

2025: 194 m³/s (**66% da MLT**)

**Mar/26\*\*: 919 m³/s (69% da MLT)**

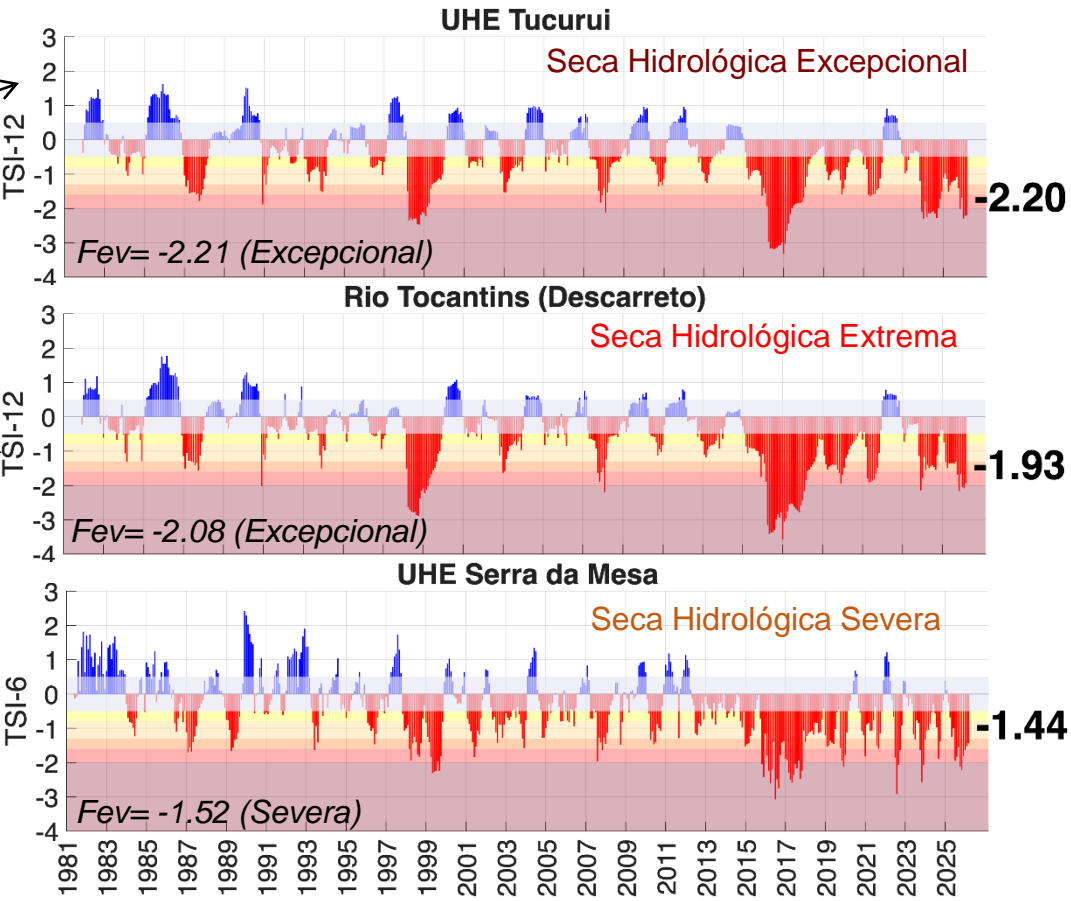
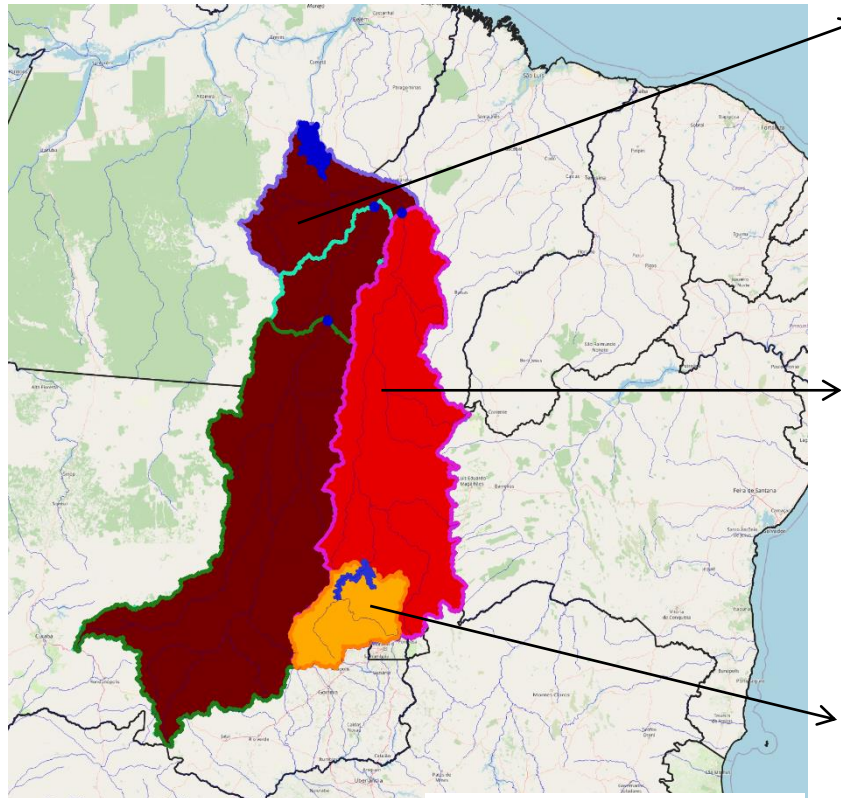
**23/Mar: 1162 m³/s (94% da MLT)**

\*\*Até 23/03/2026

# Índice Bivariado de Seca (Precipitação-Cota/Vazão) - TSI

## Escala de longo prazo

Mar/2026- Parcial

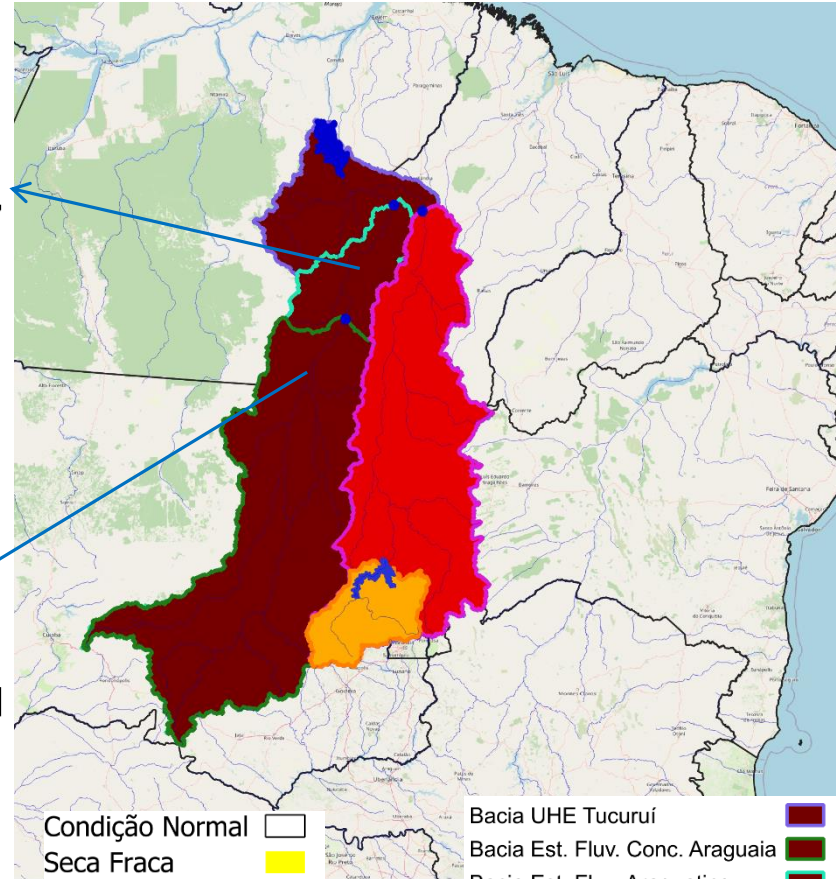
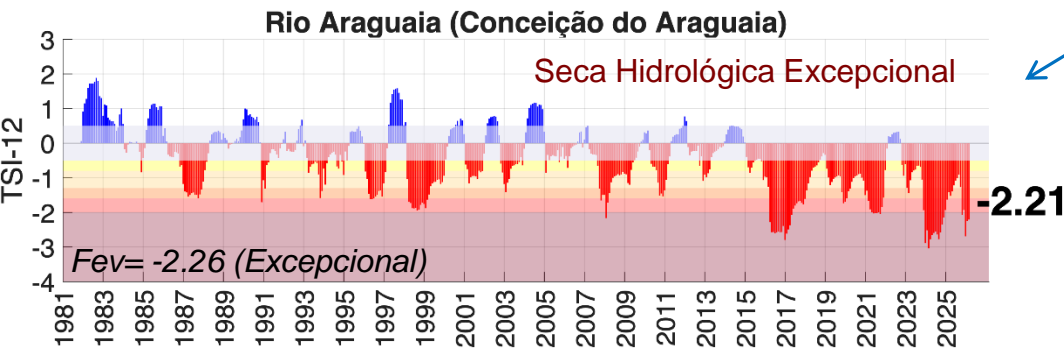
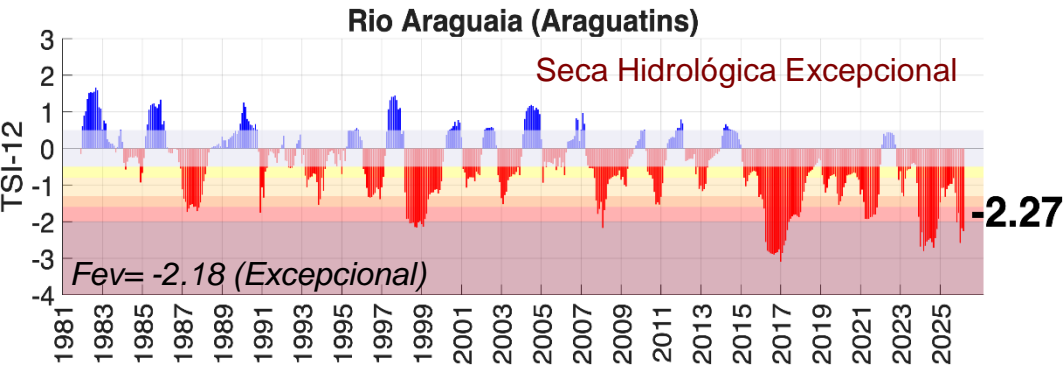


Fonte: CEMADEN  
 Dados: Precipitação (Cemaden/INMET/CHIRPS) e Vazão (ONS/ANA) - Jan/81-Mar/26.

# Índice Bivariado de Seca (Precipitação-Cota/Vazão) - TSI

## Escala de longo prazo

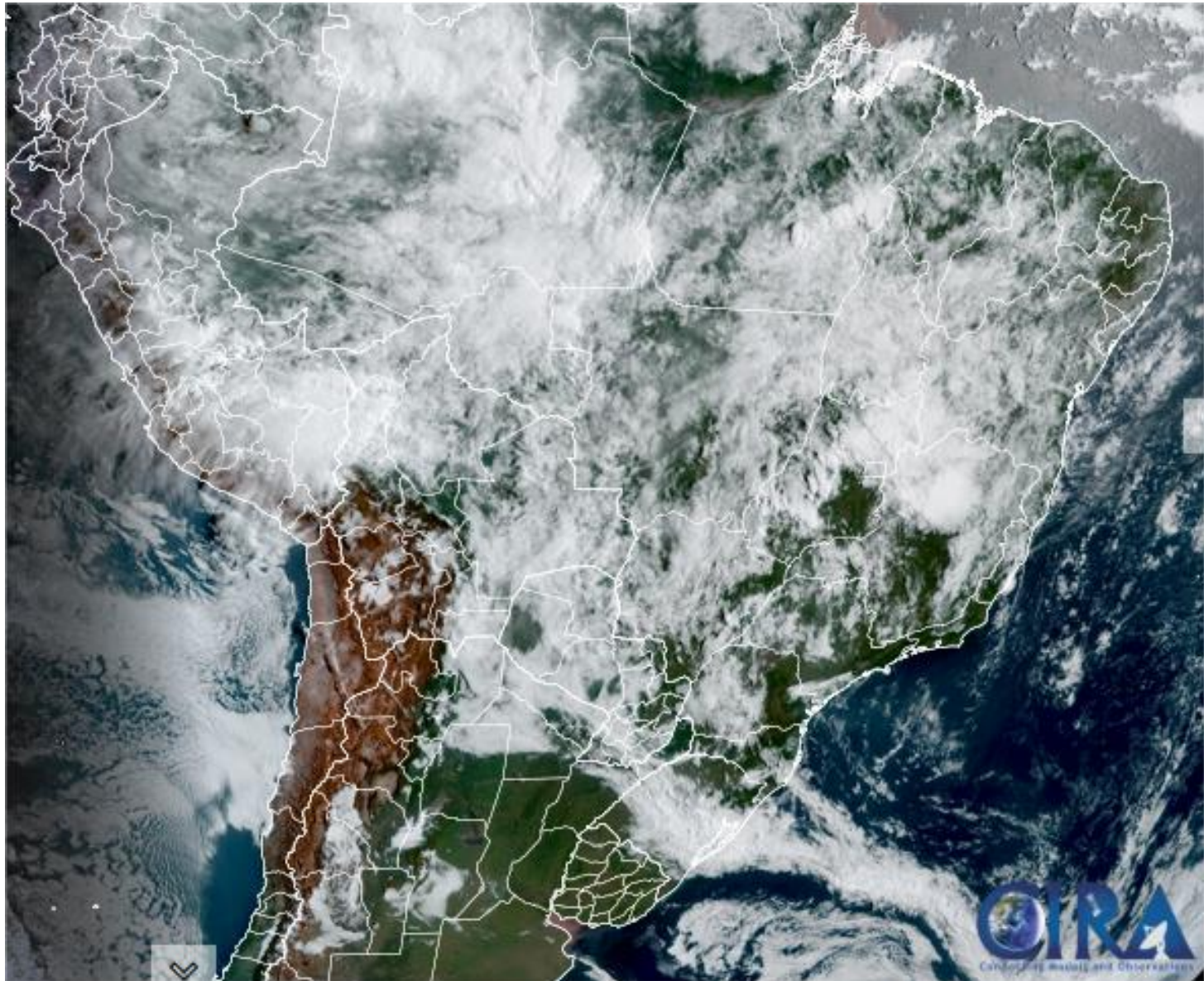
Mar/2026- Parcial



- |                  |  |                                 |  |
|------------------|--|---------------------------------|--|
| Condição Normal  |  | Bacia UHE Tucuruí               |  |
| Seca Fraca       |  | Bacia Est. Fluv. Conc. Araguaia |  |
| Seca Moderada    |  | Bacia Est. Fluv. Araguaia       |  |
| Seca Severa      |  | Bacia Est. Fluv. Descarreto     |  |
| Seca Extrema     |  | Bacia UHE Serra da Mesa         |  |
| Seca Excepcional |  | Reservatórios                   |  |
|                  |  | Estações Fluviométricas         |  |
|                  |  | Hidrografia                     |  |

Fonte: CEMADEN  
 Dados: Precipitação (Cemaden/INMET/CHIRPS) e  
 Vazão (ONS/ANA) - Jan/1981-Mar/2026.

# Situação meteorológica atual

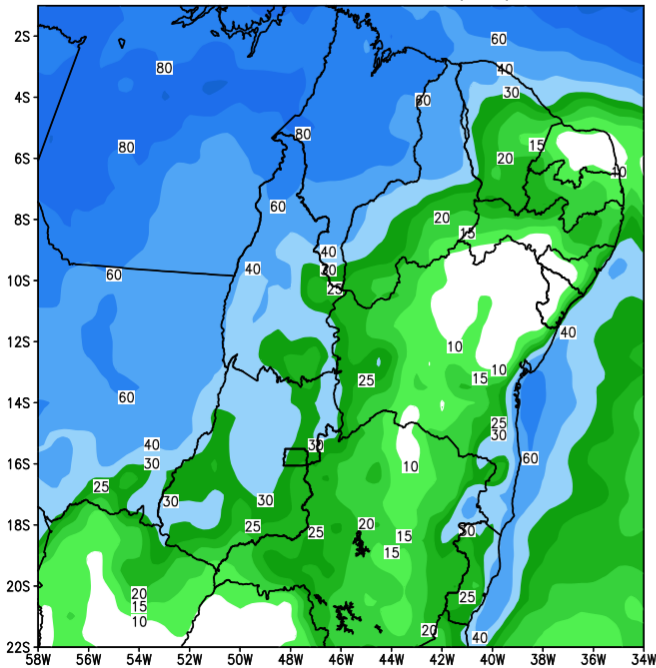


# Previsão de chuva para a 1a semana

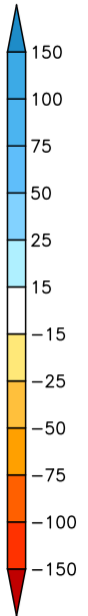
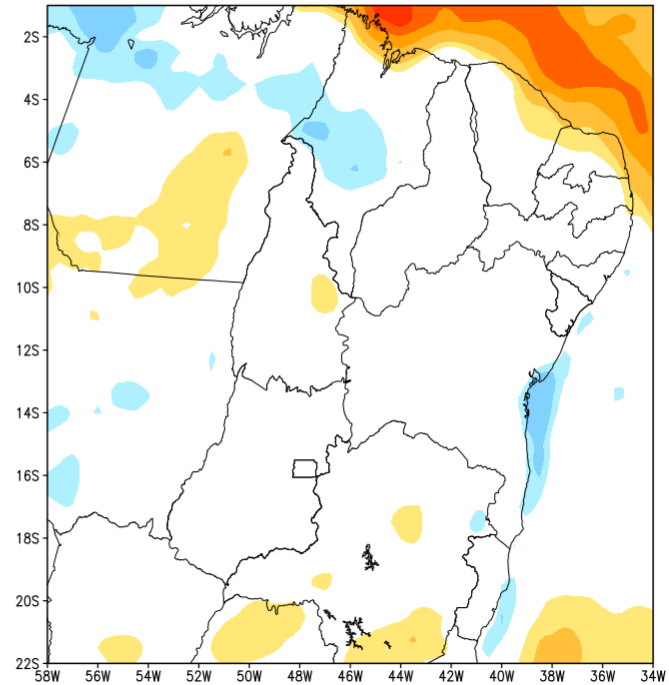
chuva

anomalia

GEFS / BRASIL\_NE  
Precipitacao acumulada 1aSem (mm)  
Previsao das 00Z dia 25/03/2026



Anomalia de Precipitacao BR\_NE (mm)  
Periodo: 2026032500 a 2026040100

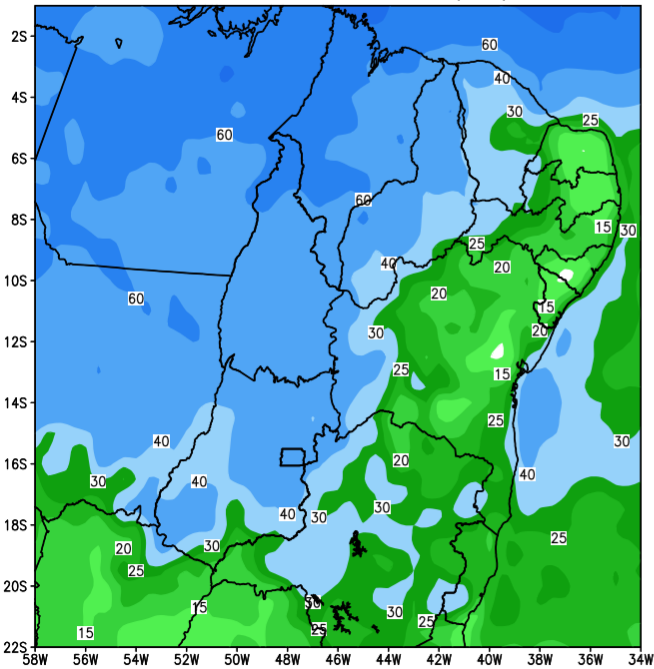


# Previsão de chuva para a 2a semana

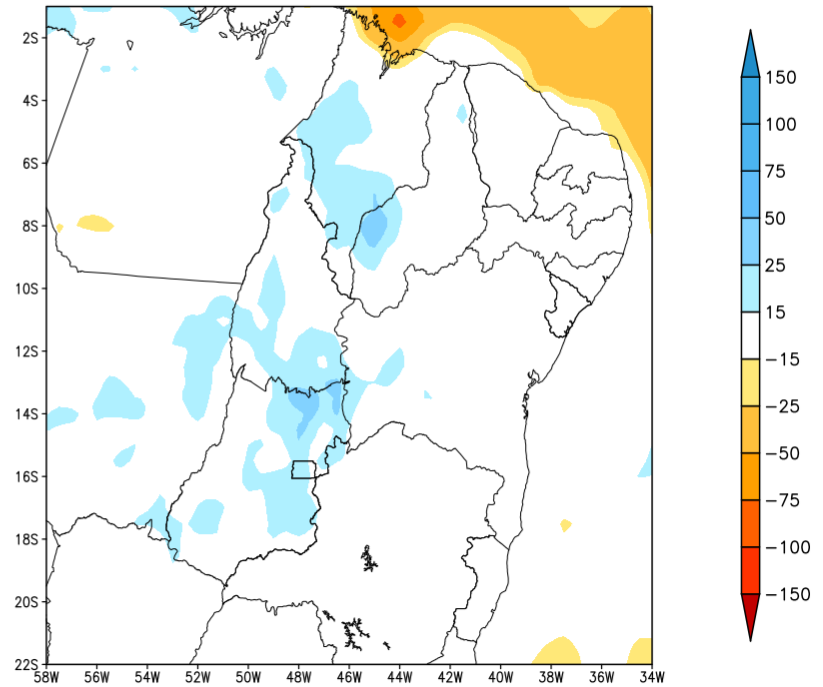
chuva

anomalia

GEFS / BRASIL\_NE  
Precipitacao acumulada 2aSem (mm)  
Previsao das 00Z dia 25/03/2026



Anomalia de Precipitacao BR\_NE (mm)  
Periodo: 2026040200 a 2026040800

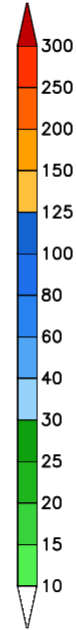
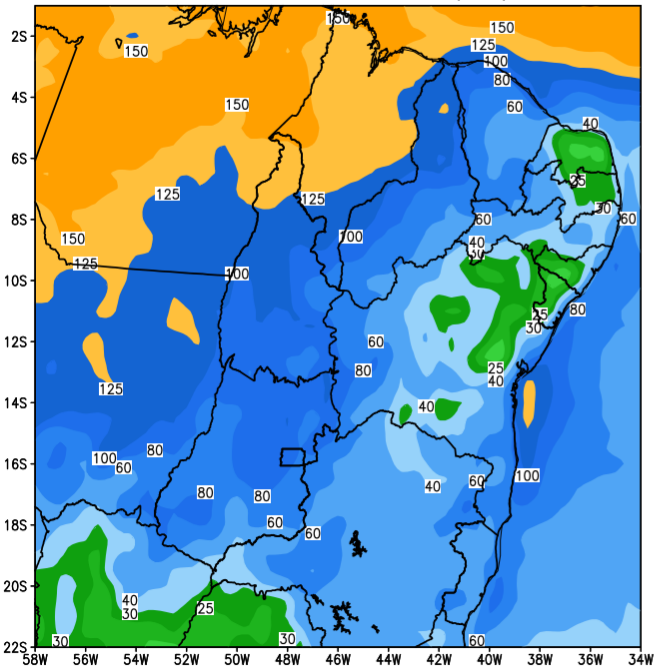


# Previsão de chuva para as duas próximas semanas

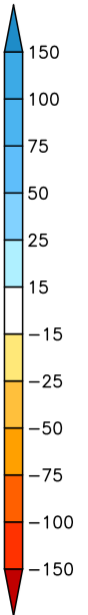
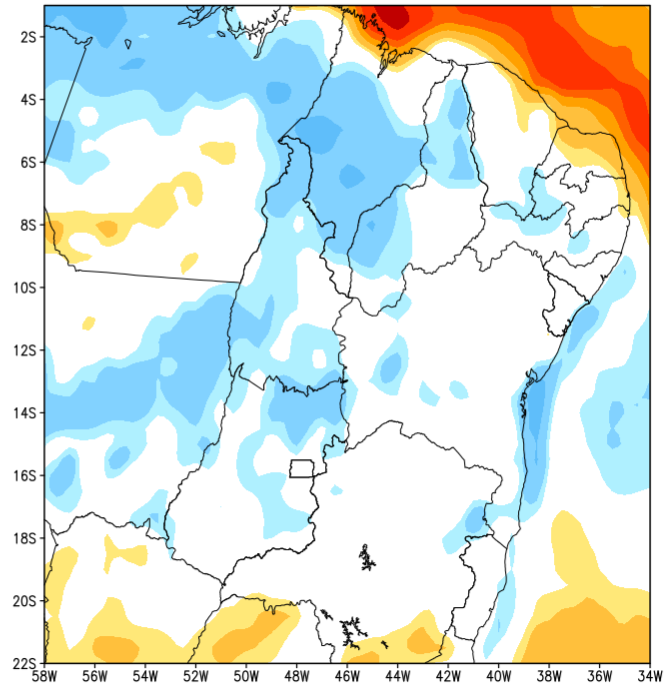
chuva

anomalia

GEFS / BRASIL\_NE  
Precipitacao acumulada 14dias (mm)  
Previsao das 00Z dia 25/03/2026

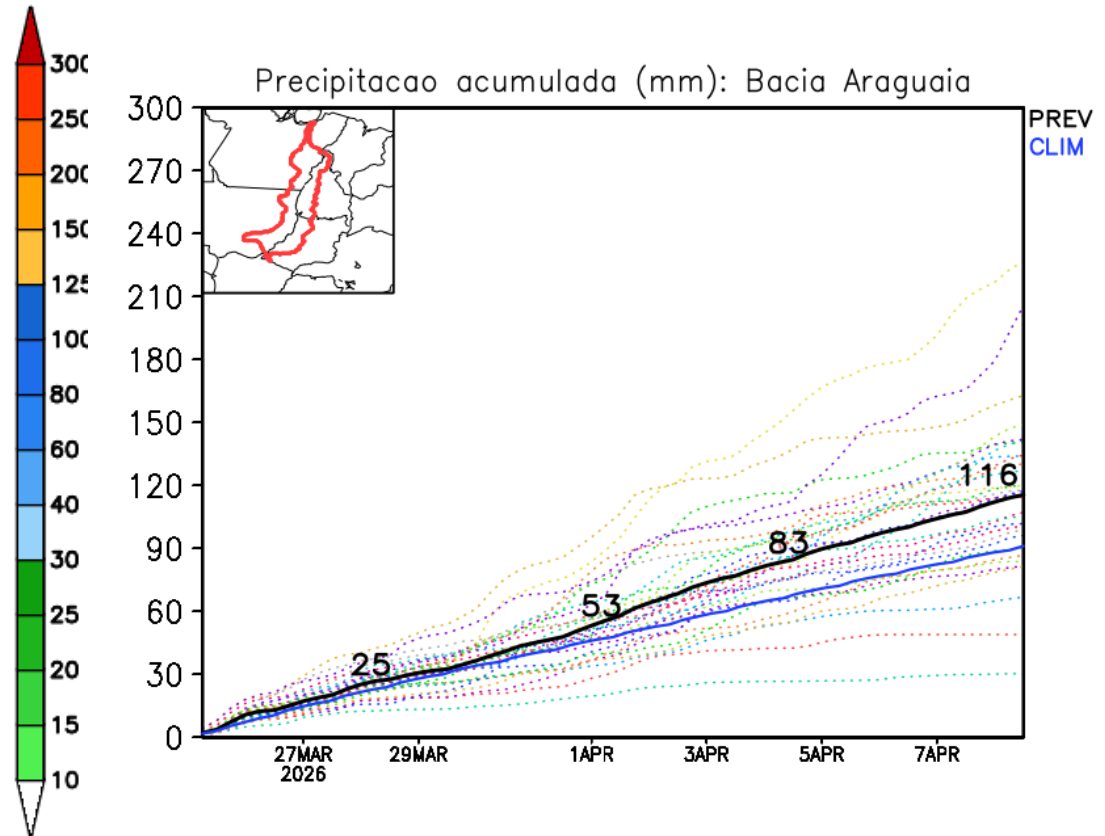
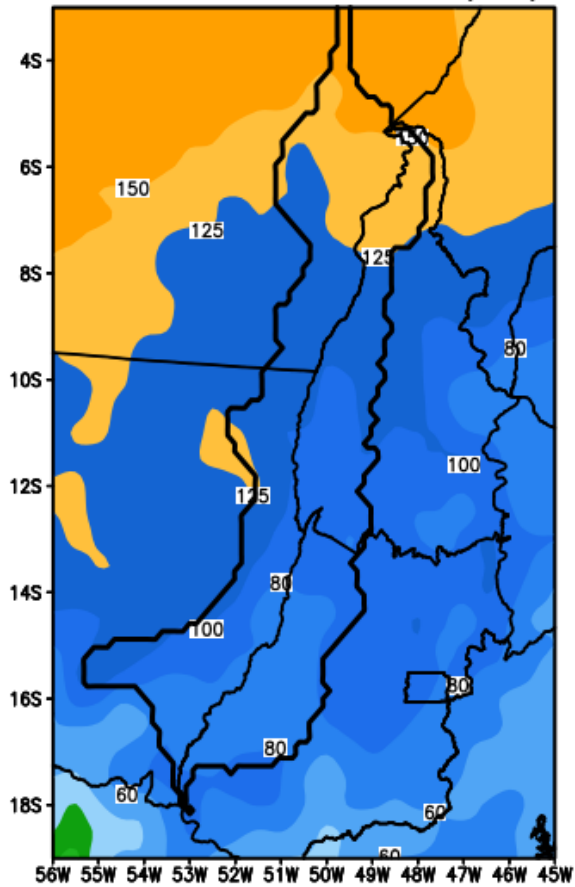


Anomalia de Precipitacao BR NE (mm)  
Periodo: 2026032500 a 2026040800



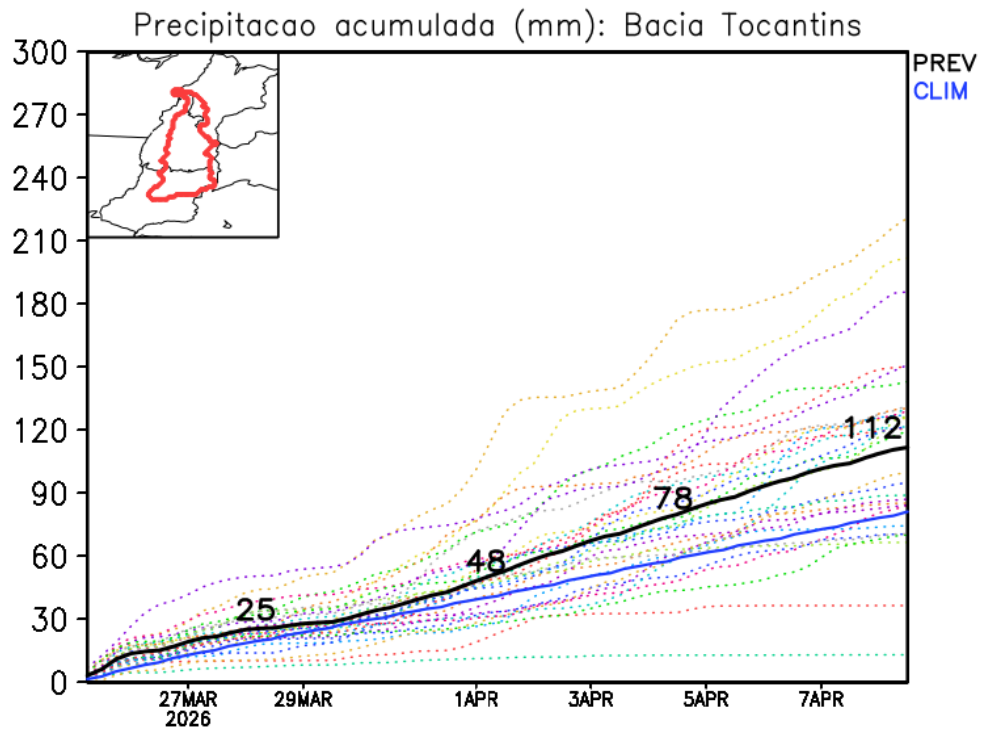
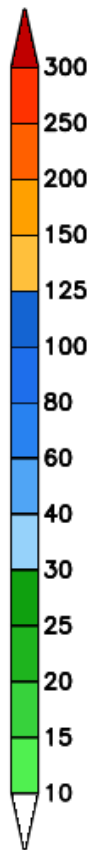
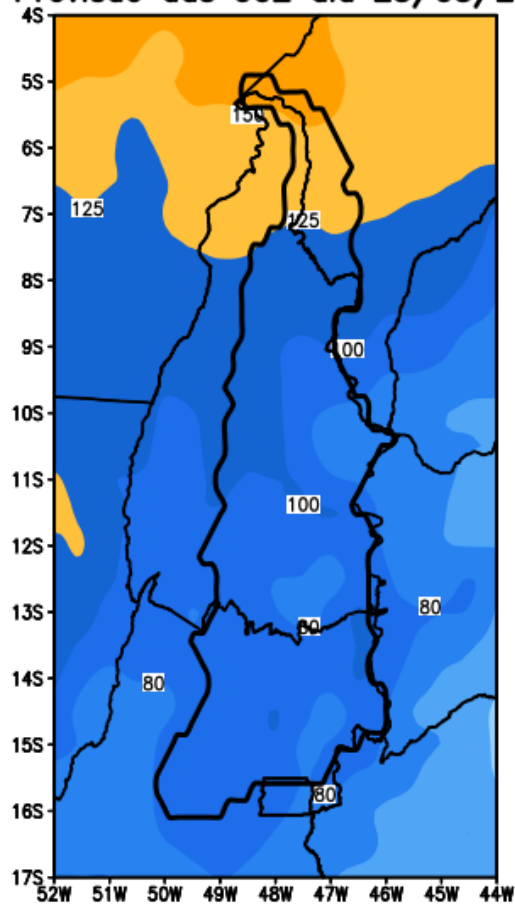
# Previsão Bacia Araguaia

GEFS / Bacia do Rio Araguaia  
Precipitacao acumulada em 14 dias (mm)  
Previsao das 00Z dia 25/03/2026



# Previsão Bacia Rio Tocantins

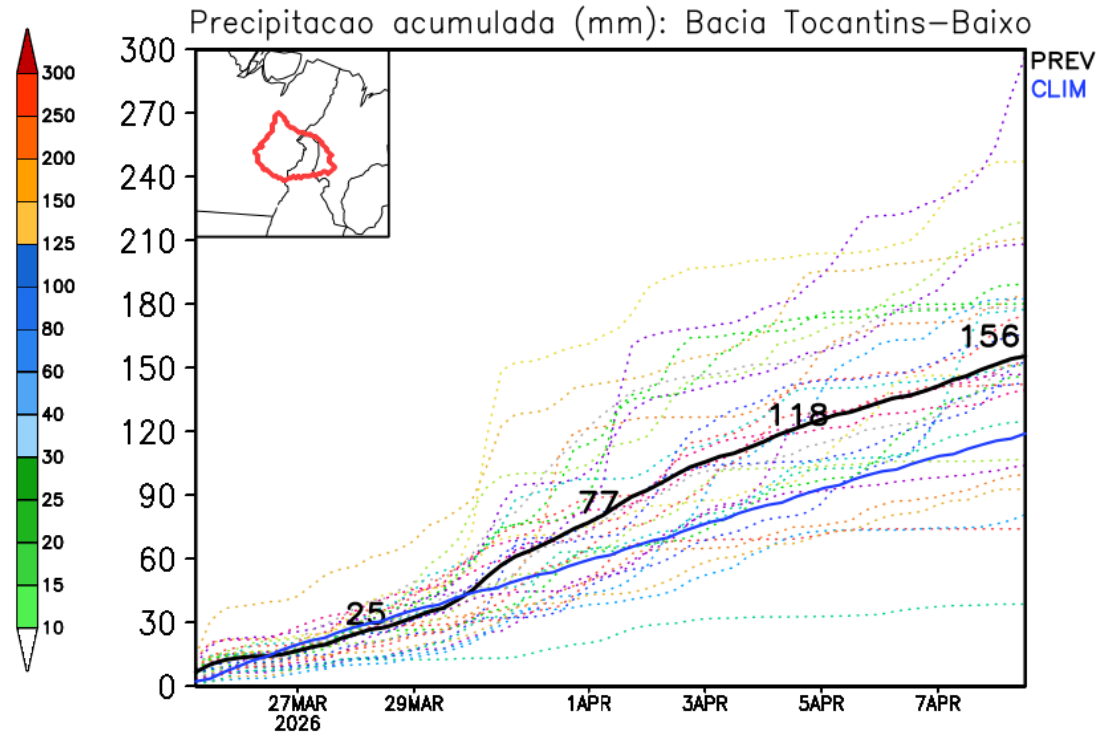
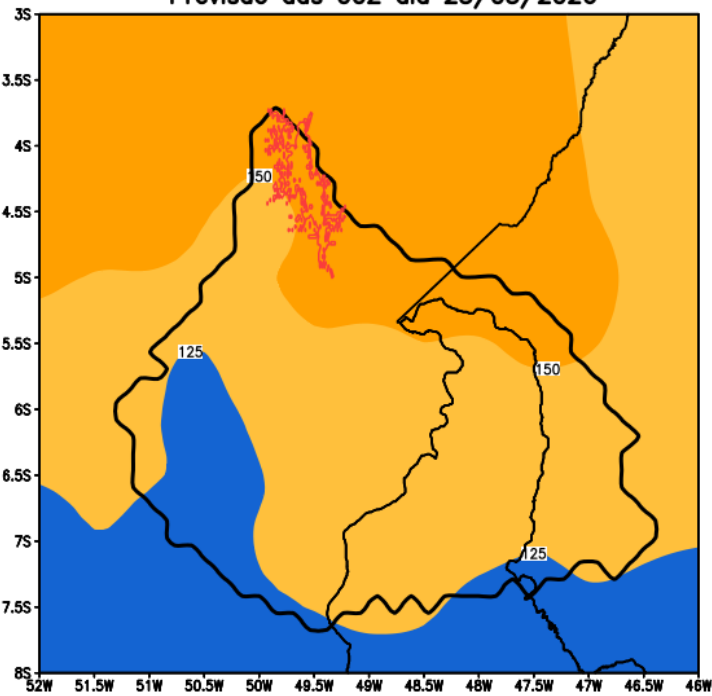
GEFS / Bacia Tocantins  
Precipitação acumulada em 14 dias (mm)  
Previsão das 00Z dia 25/03/2026



Fonte: GEFS/NOAA

# Previsão Bacia Tocantins (Baixo)

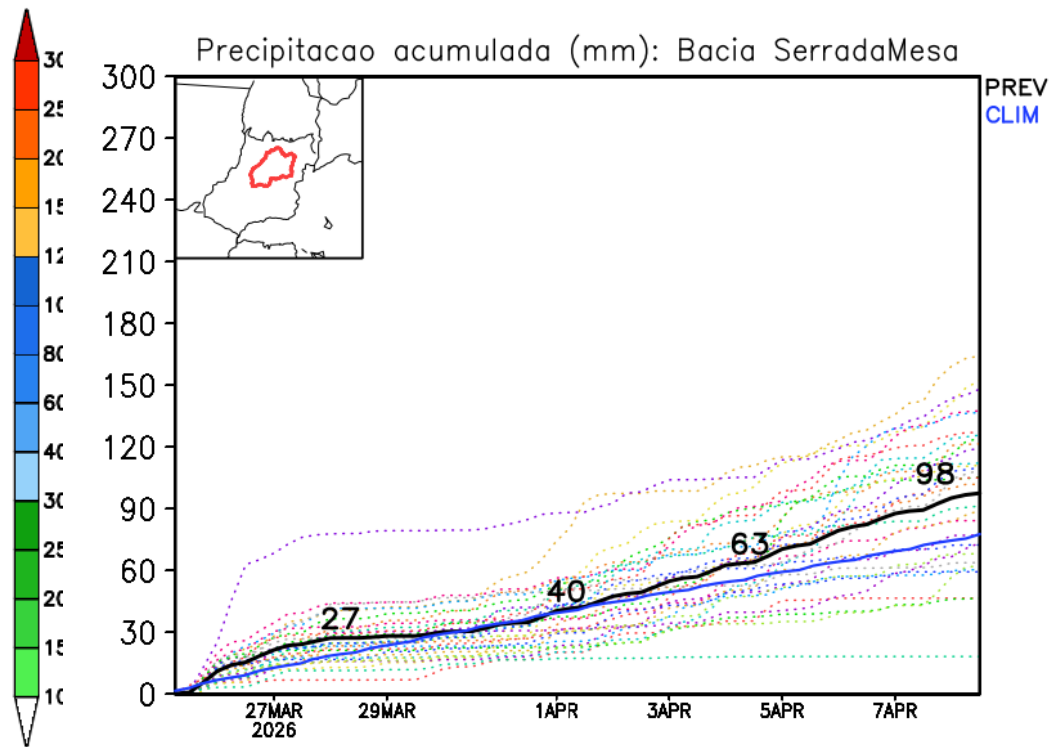
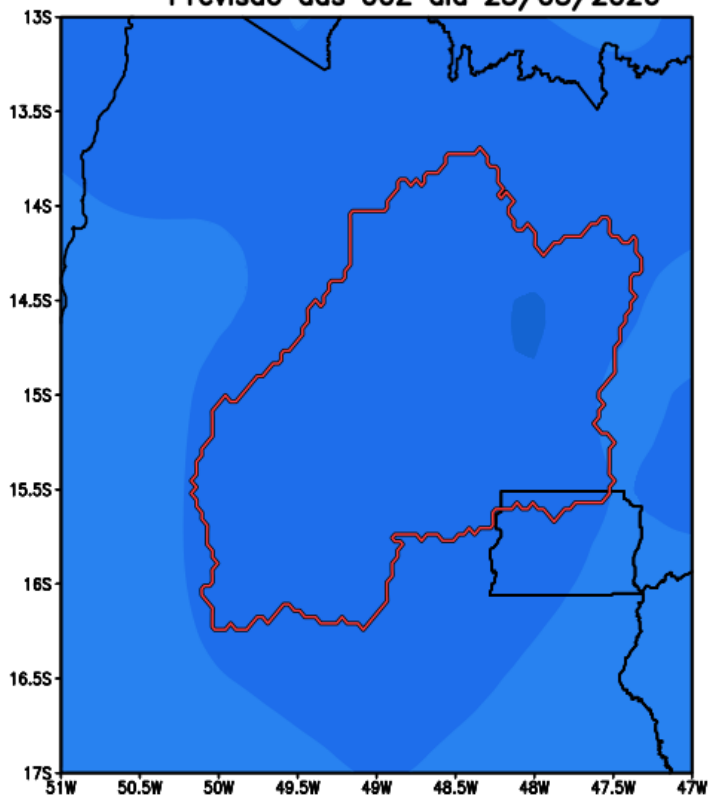
GEFS / Bacia Baixo Tocantins  
Precipitacao acumulada em 14 dias (mm)  
Previsao das 00Z dia 25/03/2026



Fonte: GEFS/NOAA

# Previsão Bacia Serra da Mesa

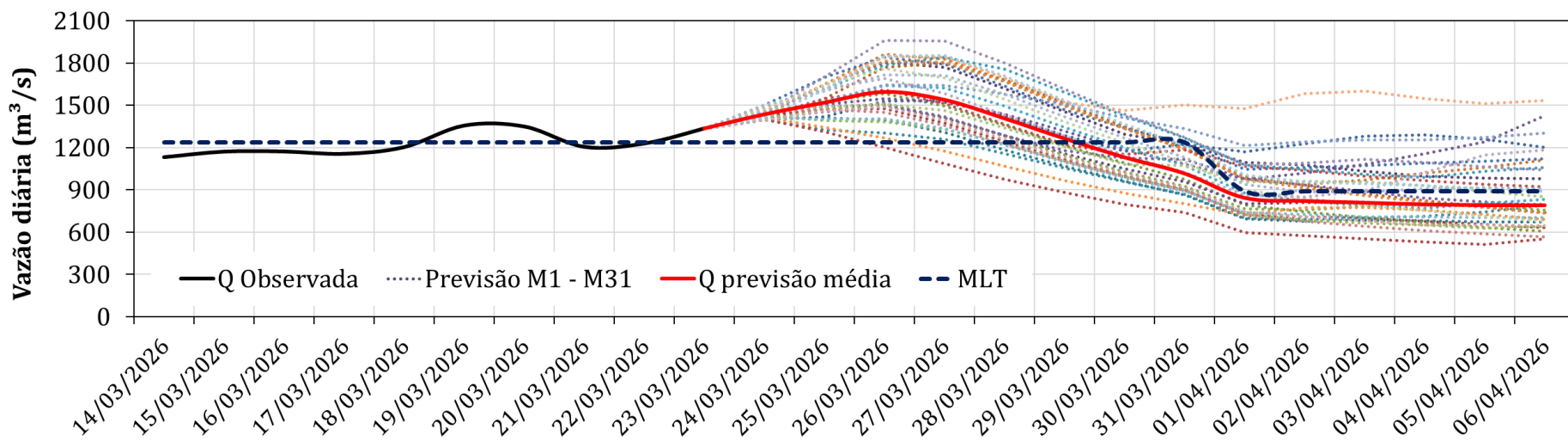
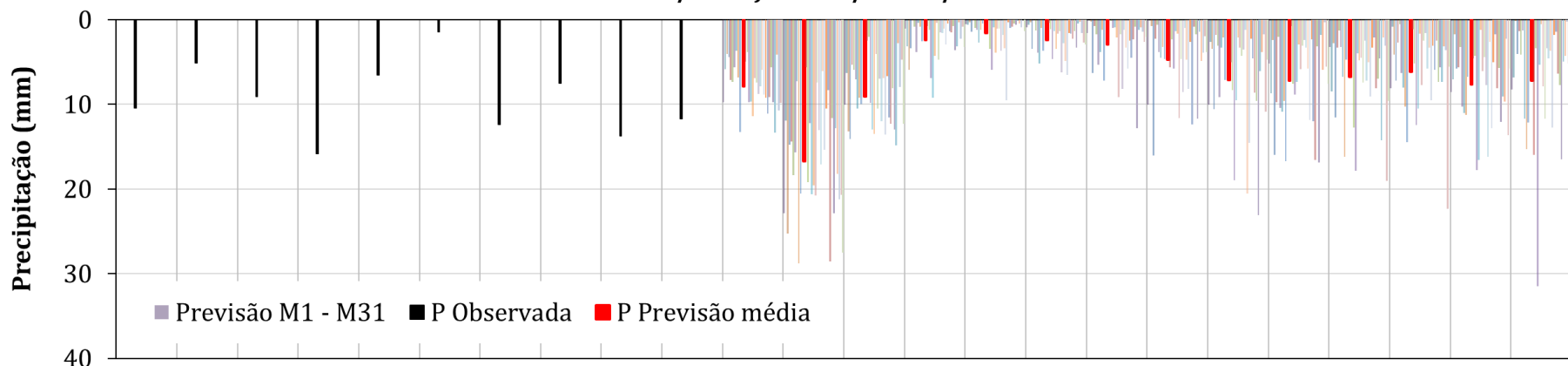
GEFS / Bacia Serra da Mesa  
Precipitacao acumulada em 14 dias (mm)  
Previsao das 00Z dia 25/03/2026



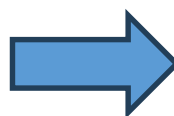
Fonte: GEFS/NOAA

# Serra da Mesa: Previsão de Vazão (modelo hidrológico PDM-CEMADEN)

Vazão Natural e Precipitação Diárias para Serra da Mesa  
14/Março a 06/Abril/2026



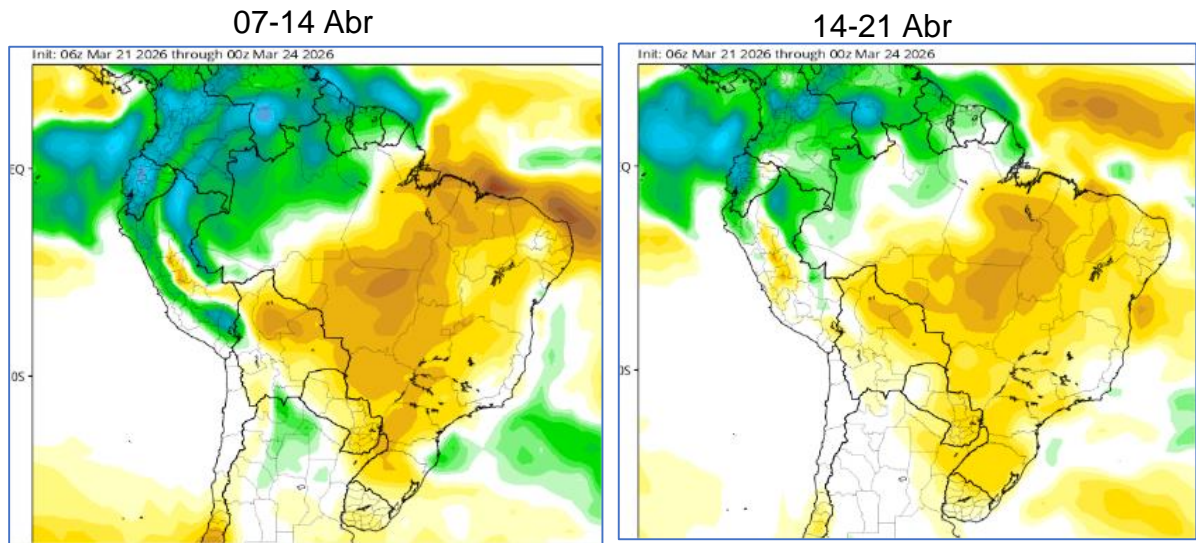
Previsão média para  
os próximos 14 dias: **1126 m³/s**



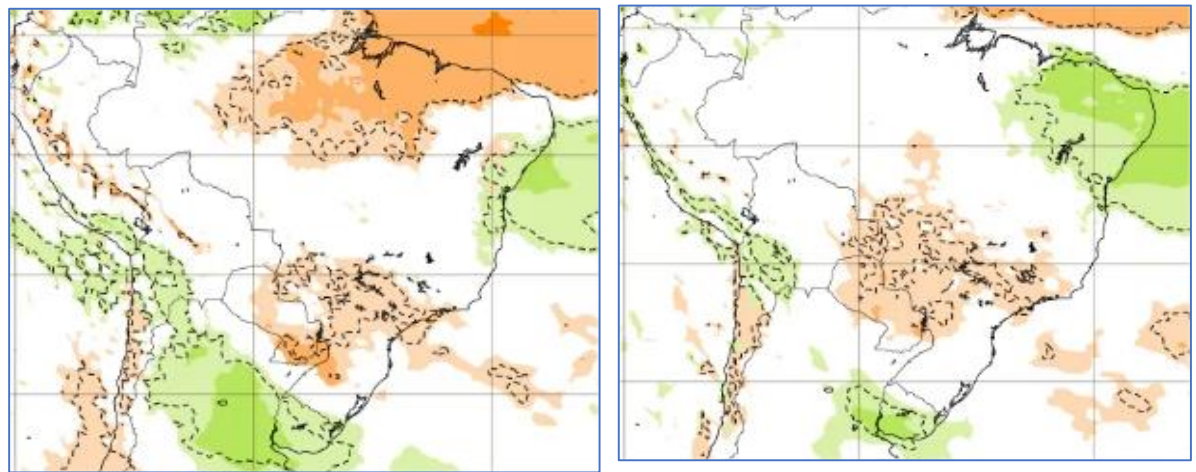
91% da MLT Março  
126% da MLT Abril

# Tendência 3a e 4a semanas

CFS/NOAA



ECMWF



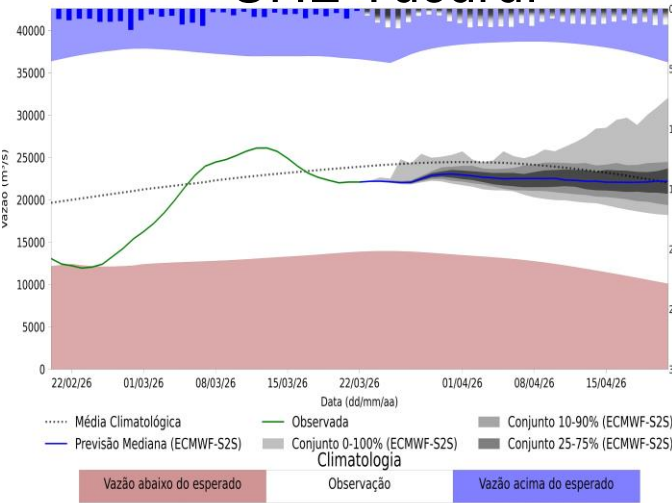
Extended range: Precipitation weekly mean anomaly, significance level: 10 % (mm)X

<-90 -60 -30 -10 0 10 30 60 90 >90

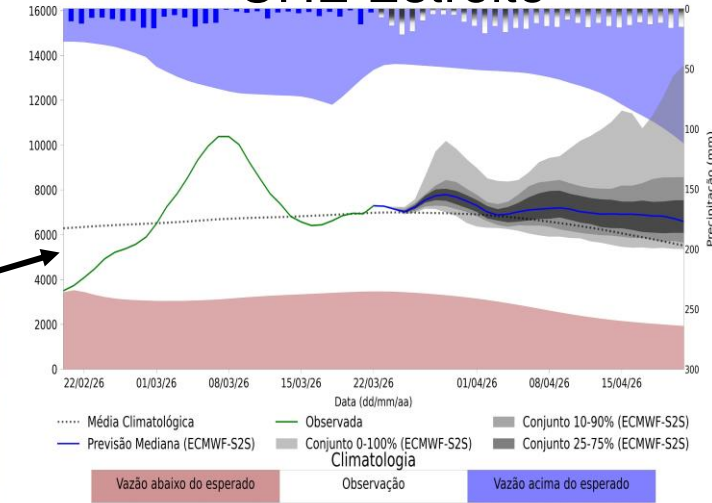
## Previsão de vazão natural na Bacia Rio Tocantins-Araguaia

**Previsão: 22/03/2026 a 21/04/2026**

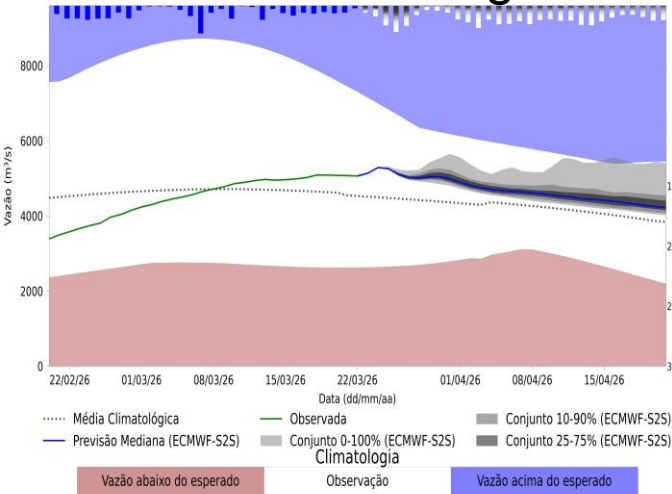
### UHE Tucuruí



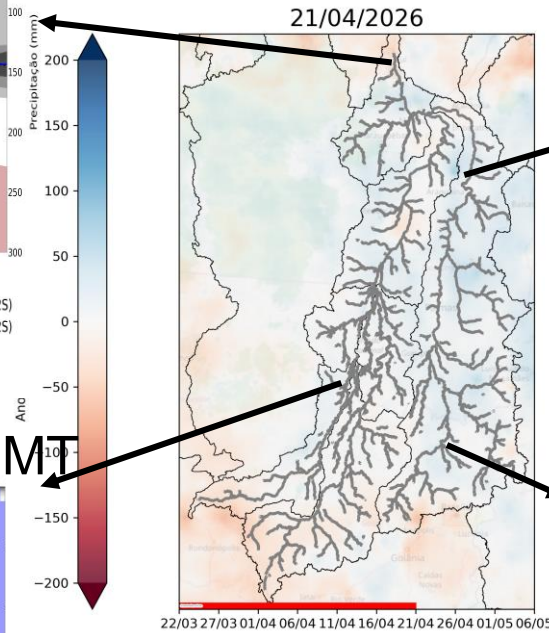
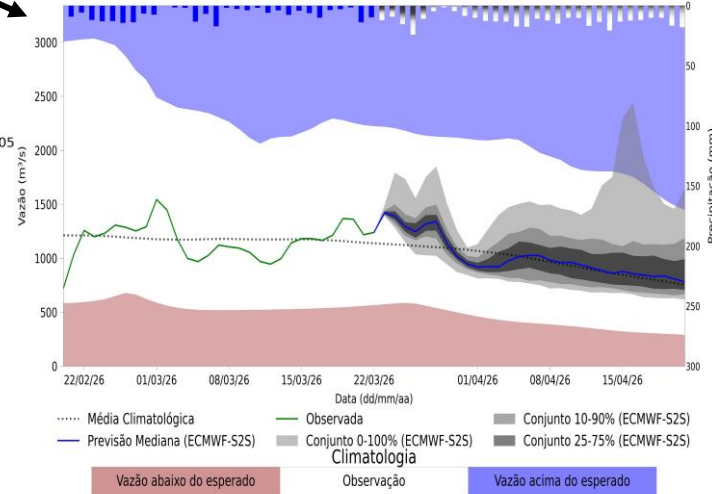
### UHE Estreito



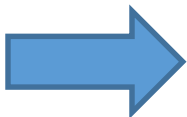
### São Felix do Araguaia - MT



### UHE Serra da Mesa

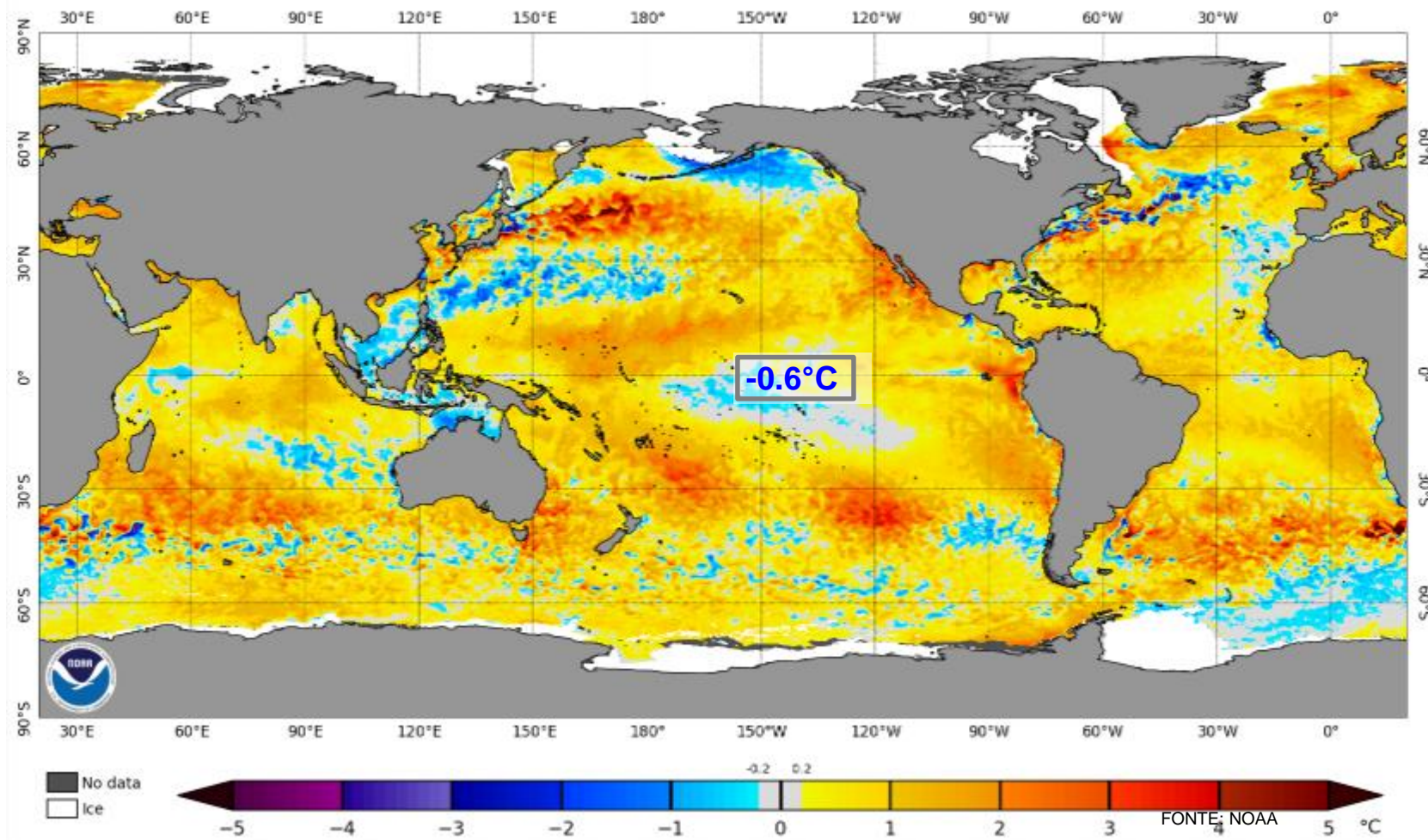


**Fonte: Meteorologia (INMET/MERGE); Vazão (ANA/ONS)**  
**MLT: 1993-2024**  
**Previsão Meteorológica: ECMWF-S2S**



Status Atual: **La Niña Advisory** / **El Niño Watch**

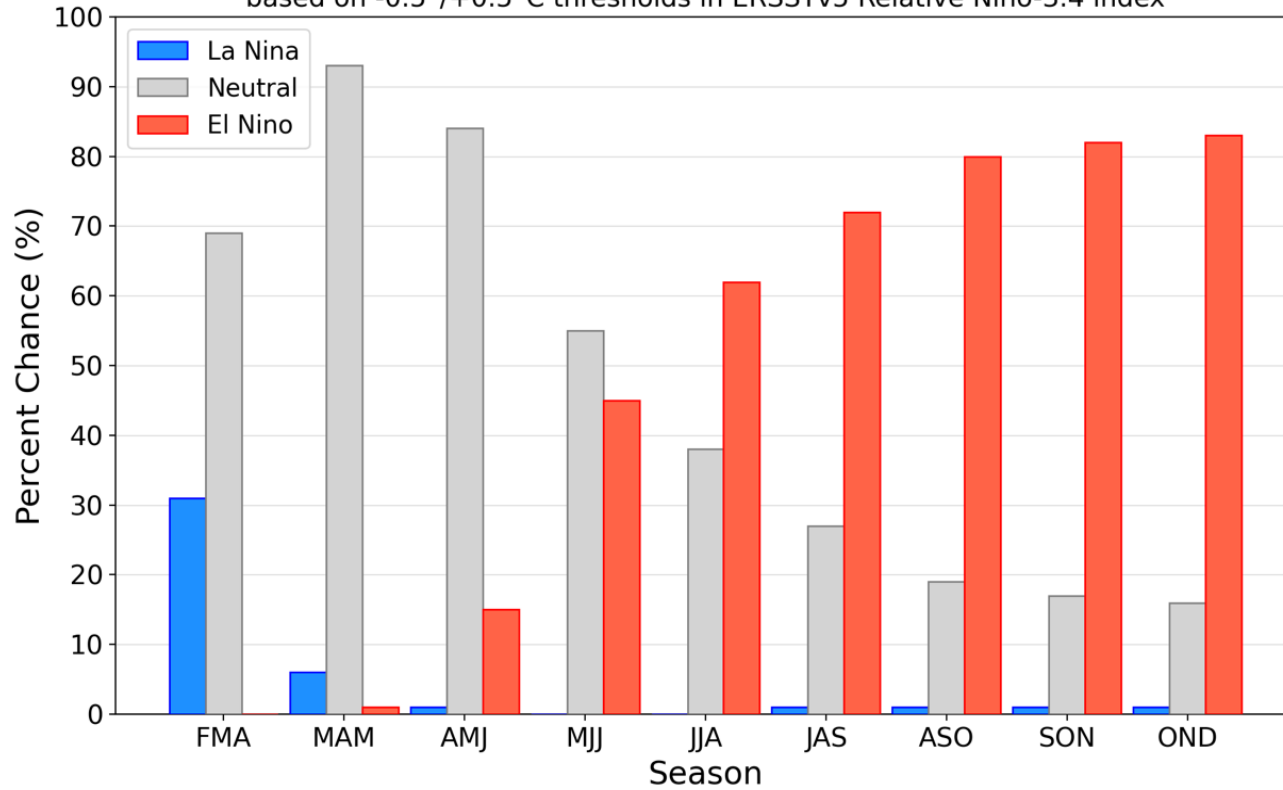
NOAA Coral Reef Watch Daily 5km SST Anomalies (v3.1) 23 Mar 2026



# Previsão do “ENSO”

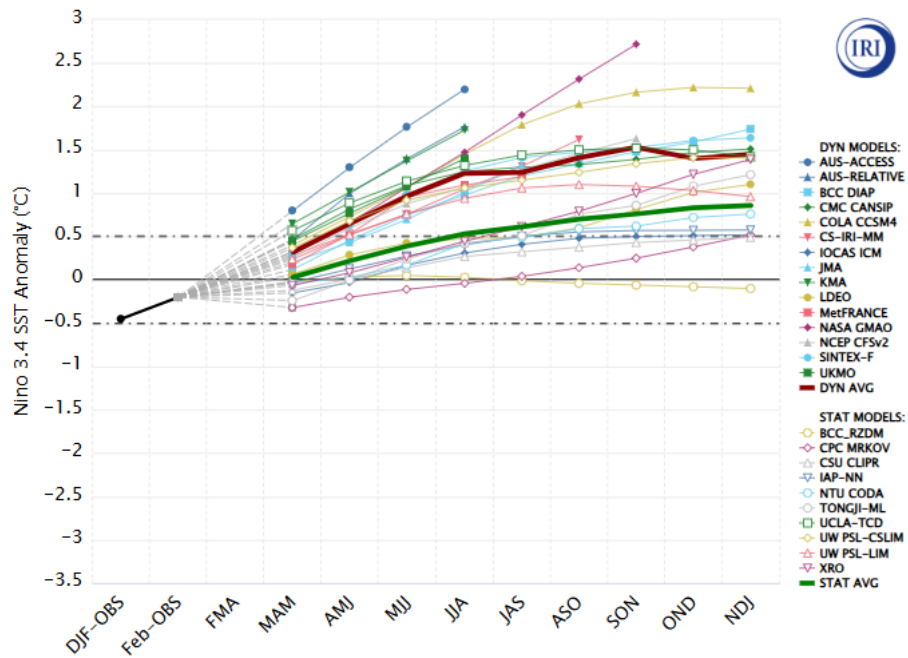
## Official NOAA CPC ENSO Probabilities (issued March 2026)

based on  $-0.5^{\circ}/+0.5^{\circ}\text{C}$  thresholds in ERSSTv5 Relative Niño-3.4 index

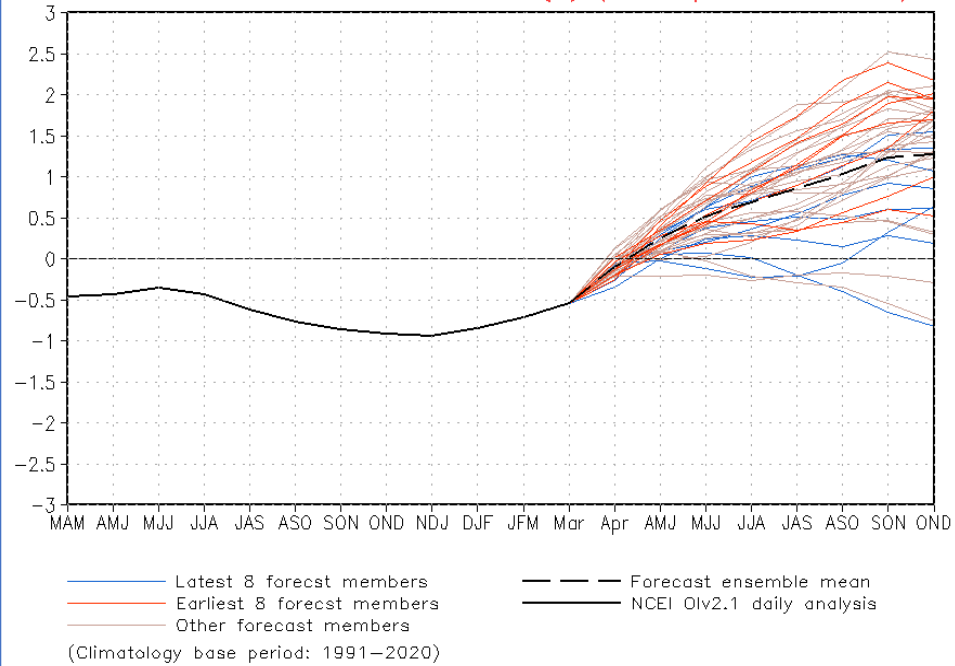


# Previsão do “ENSO”

Model Predictions of ENSO from Mar 2026



CFSv2 relative Nino3.4 anomalies (K) (PDF&Spread corrected)



# Previsão Sazonal de Chuva Multi-Modelo

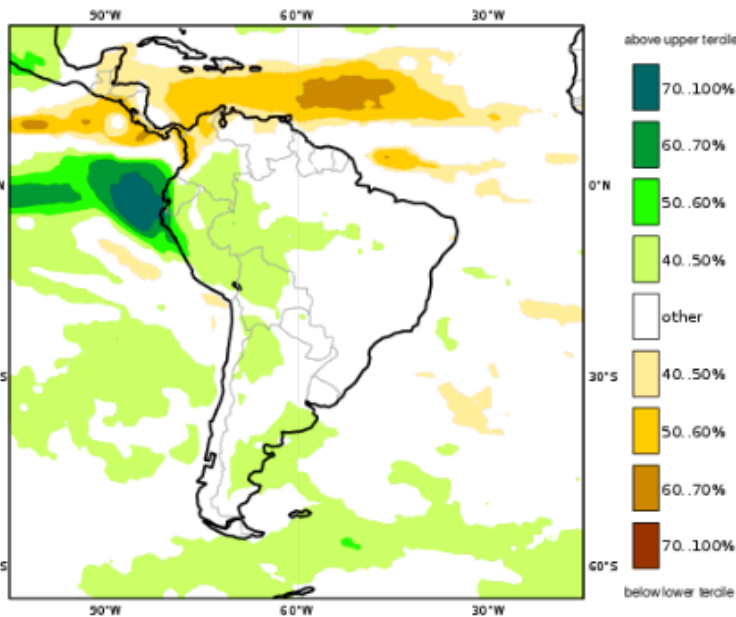
## Abril-Maio-Junho

Prob(most likely category of precipitation)

Nominal forecast start: 01/03/26

Unweighted mean

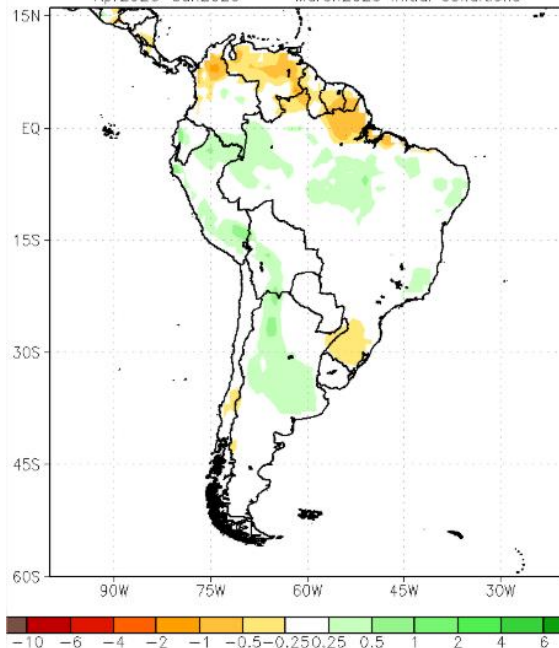
AMJ 2026



Modelos "Europeus"

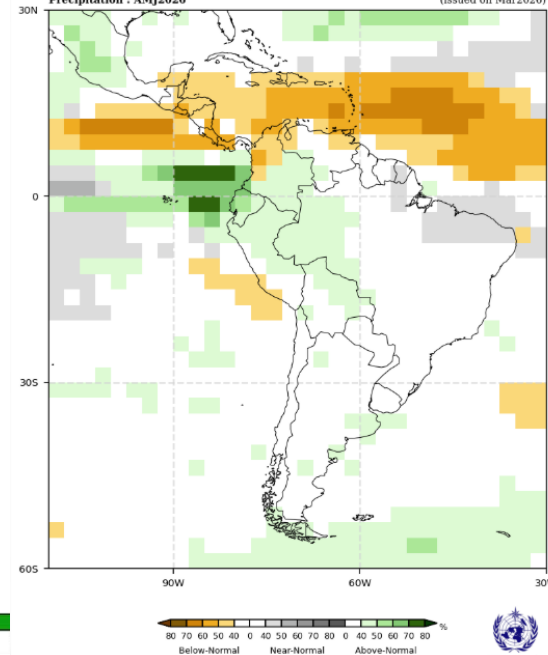
NMME Precipitation Anomalies (mm/day)

Apr2026-Jun2026 March2026 initial conditions



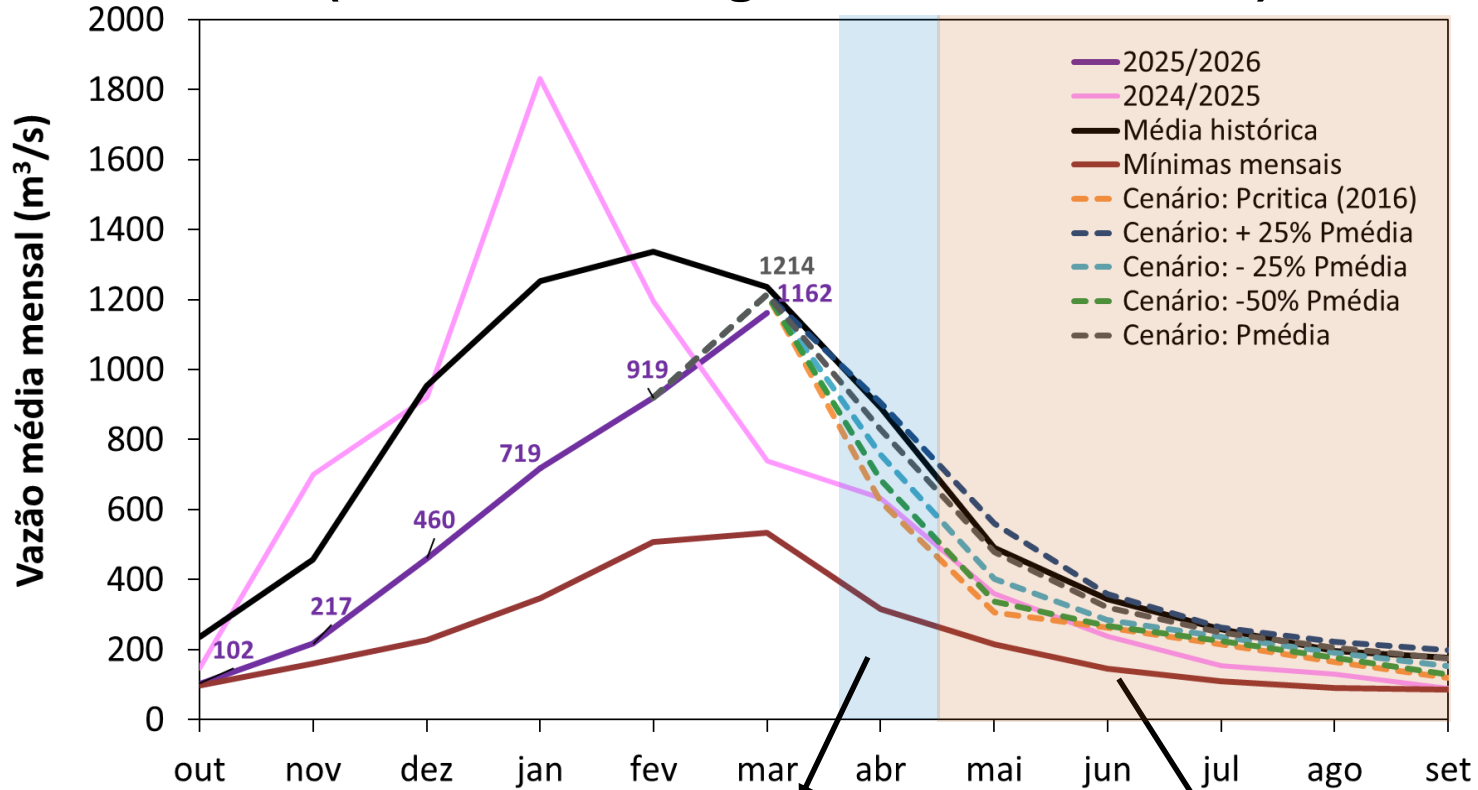
Modelos Norte Americanos

Precipitation : AMJ2026 (Issued on Mar2026)



Modelos da WMO

# Serra da Mesa: Projeção de Vazão (modelo hidrológico PDM-CEMADEN)



**Abr (Mês Chuvoso)**

**MLT: 891 m³/s**

Vazão	% MLT
905 m³/s	102%
829 m³/s	93%
756 m³/s	85%
623 m³/s	70%

**Mai-Set (Meses Secos)**

**MLT: 293 m³/s**

Vazão	% MLT
320 m³/s	109%
286 m³/s	98%
253 m³/s	86%
212 m³/s	72%