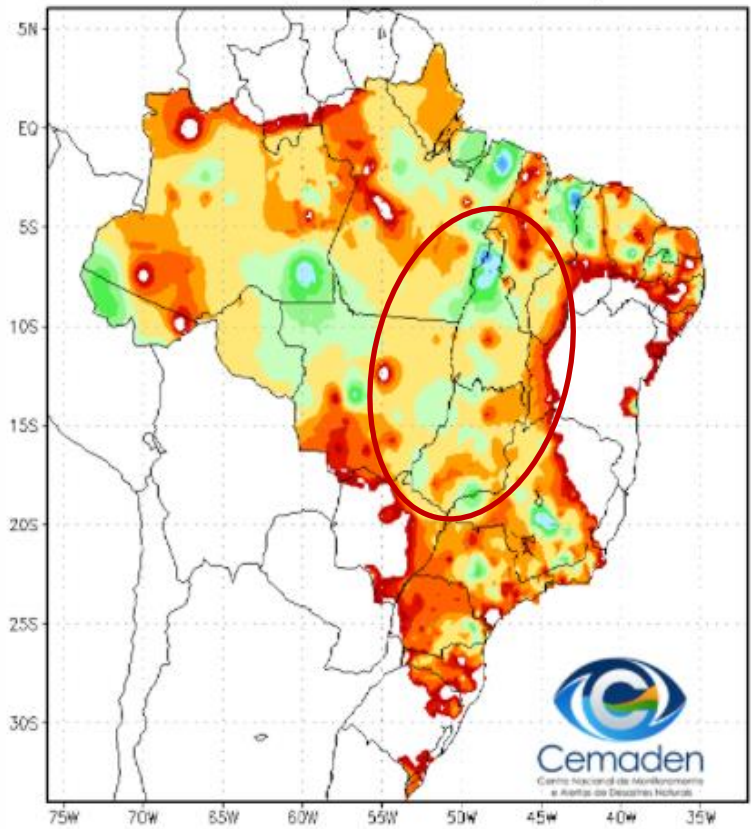


Monitoramento e Previsões para a Bacia do rio Tocantins

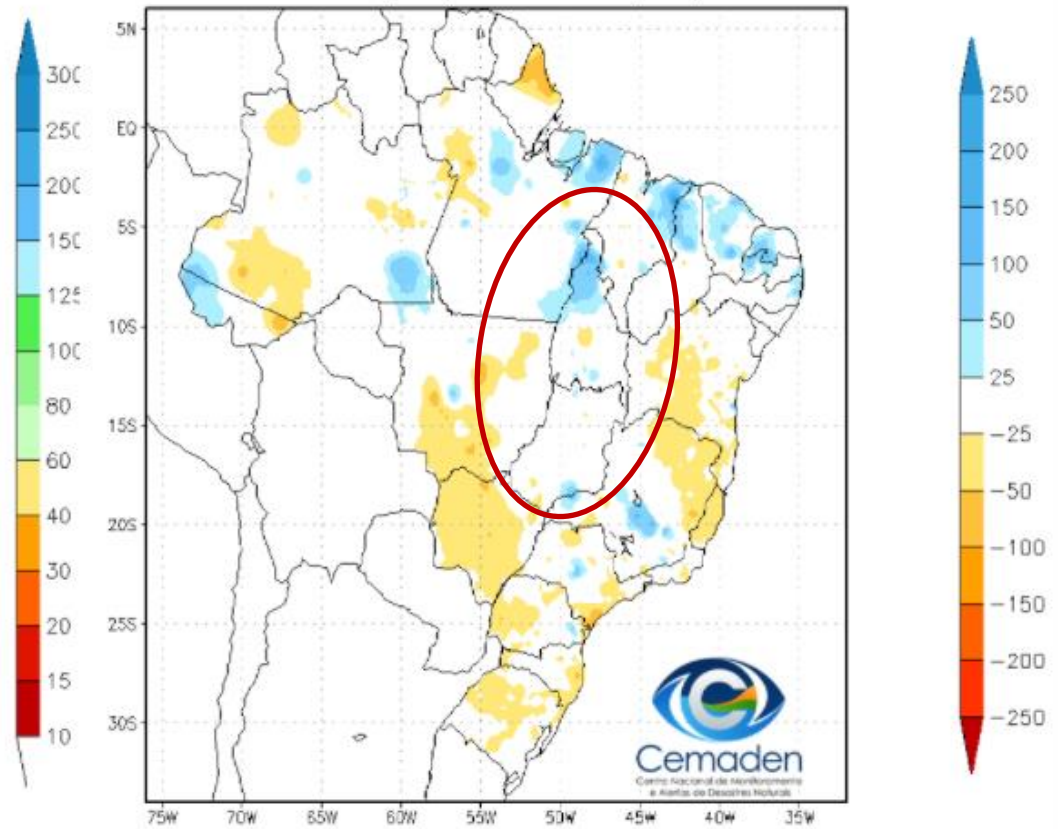


Precipitação acumulada nos últimos 5 dias

Precipitação Acumulada (mm)
Período: 11/01/2022 a 16/01/2022

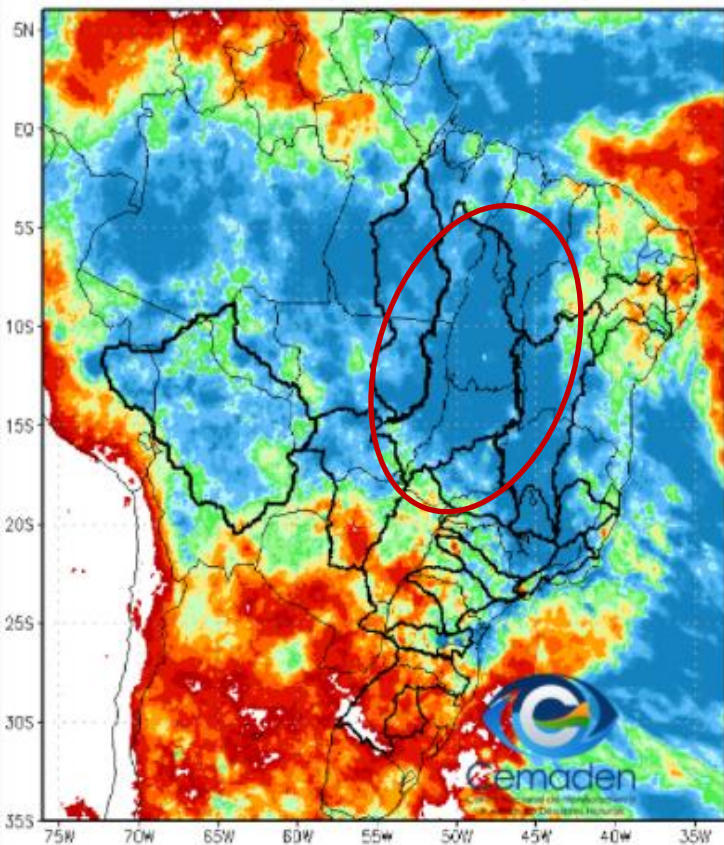


Anomalia de Precipitação (mm)
Período: 11/01/2022 a 16/01/2022

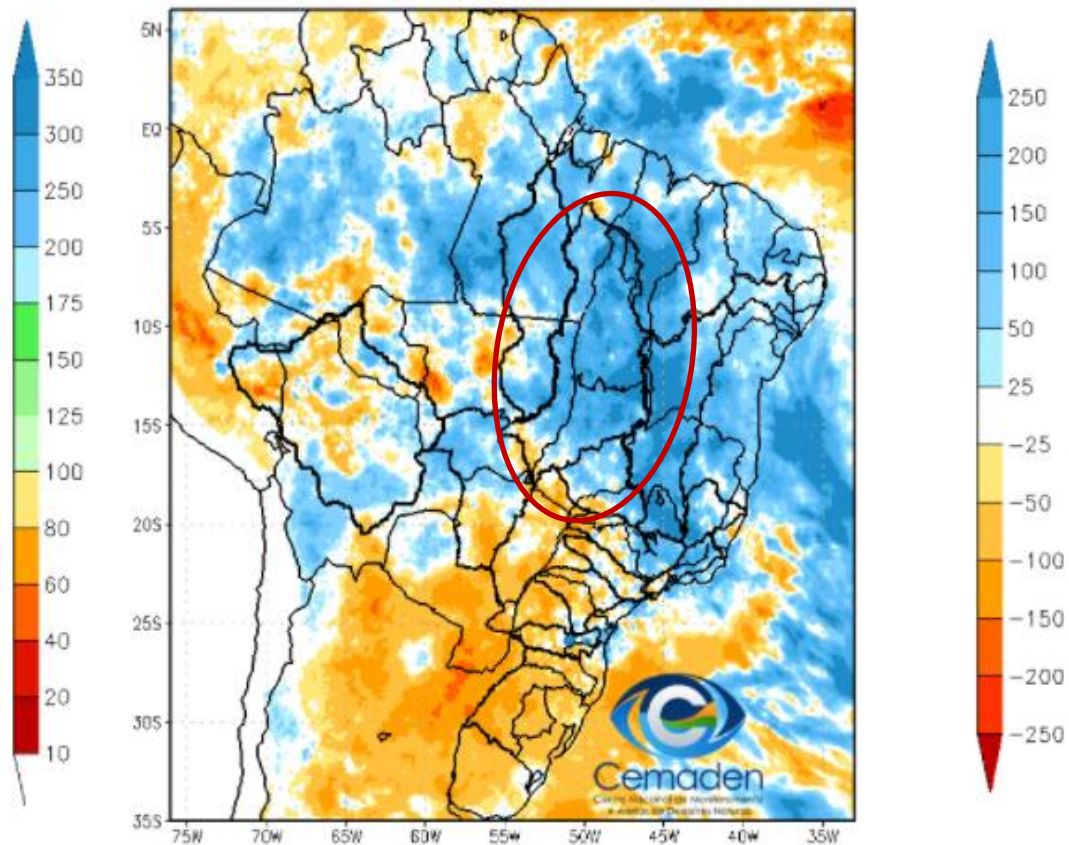


Precipitação acumulada nos últimos 30 dias

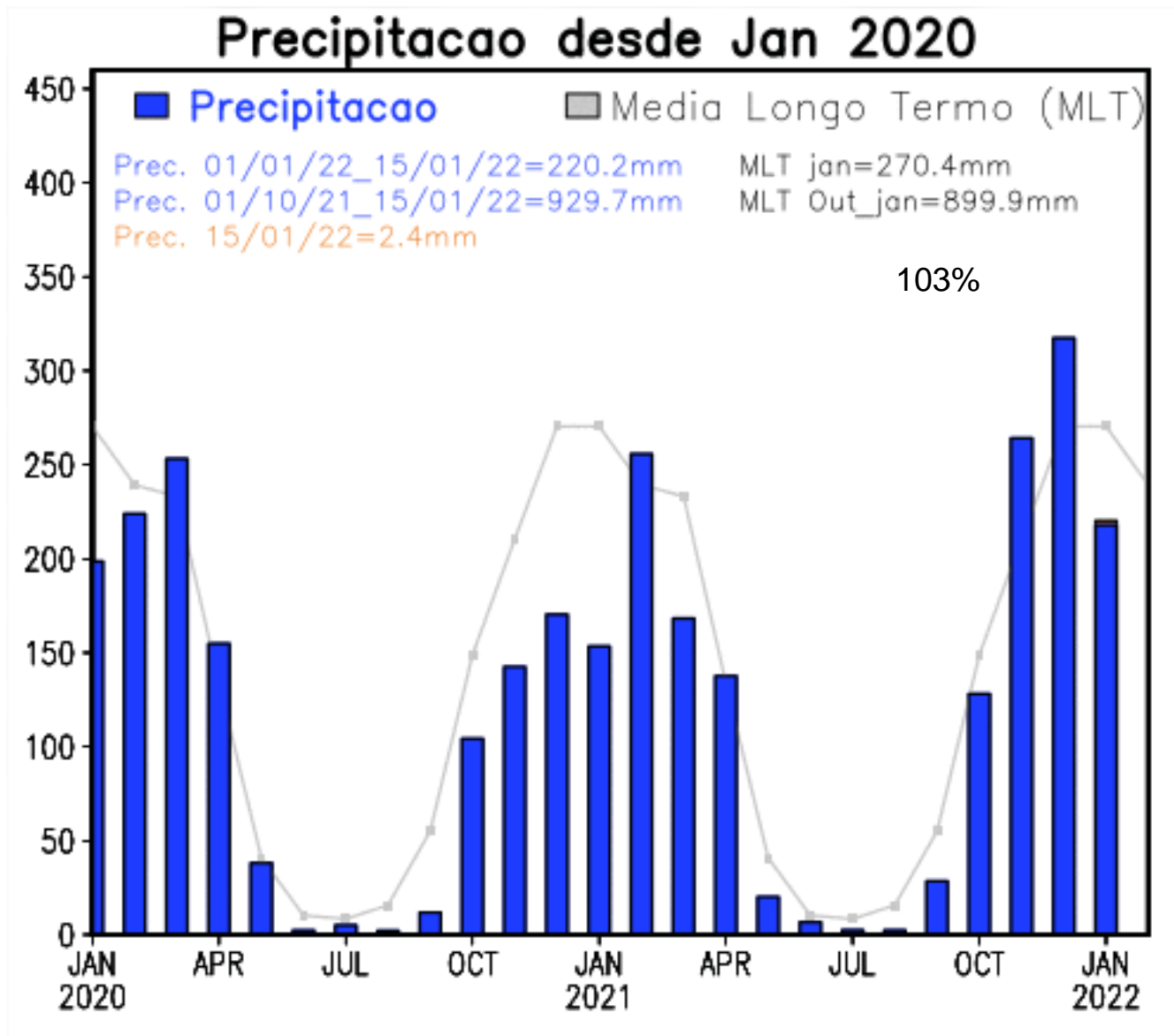
Precipitação Acumulada (mm) A.S.
Período: 17/12/2021 a 16/01/2022



Anomalia de Precipitação (mm) A.S.
Período: 17/12/2021 a 16/01/2022

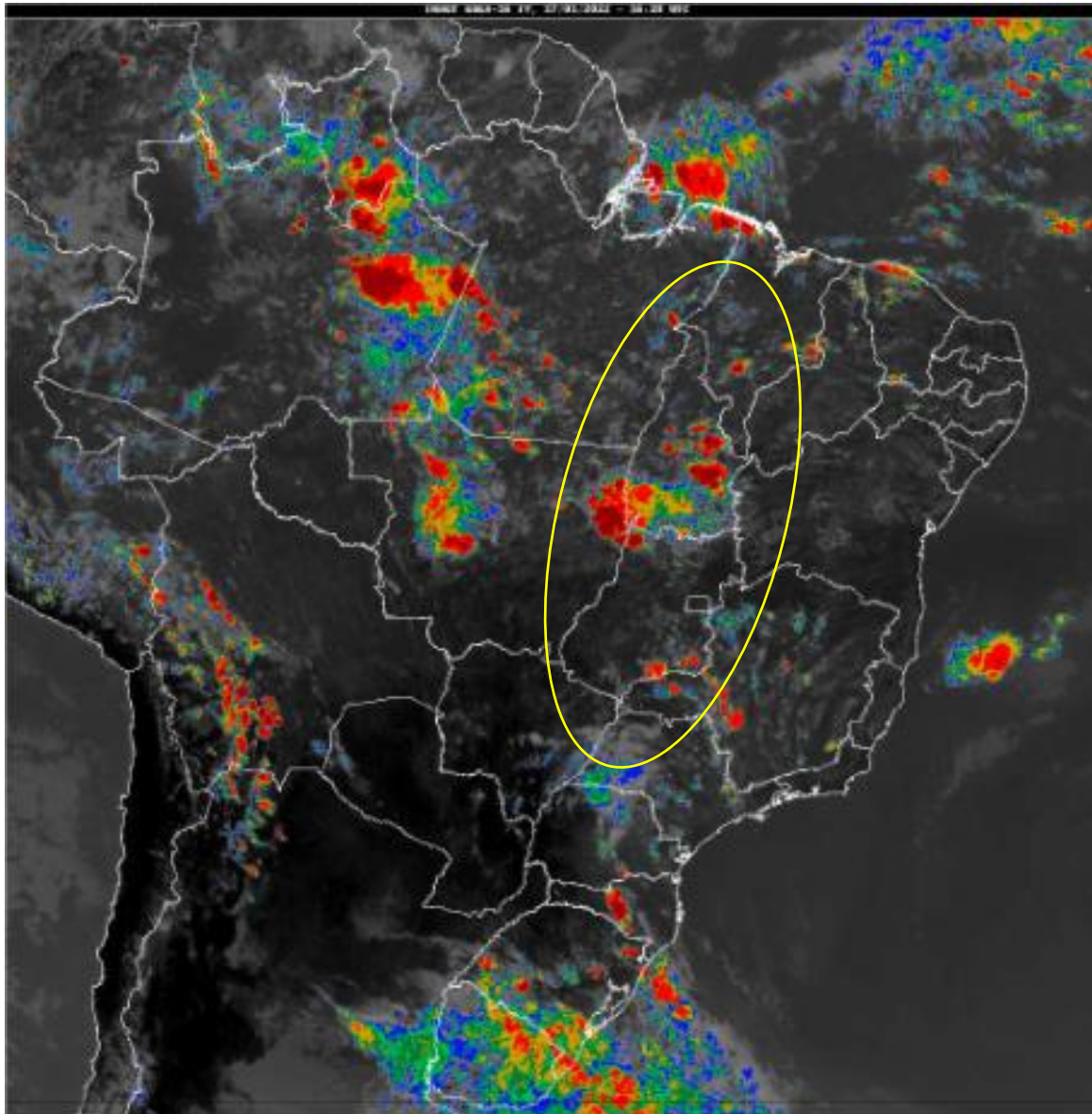


Evolução da Precipitação



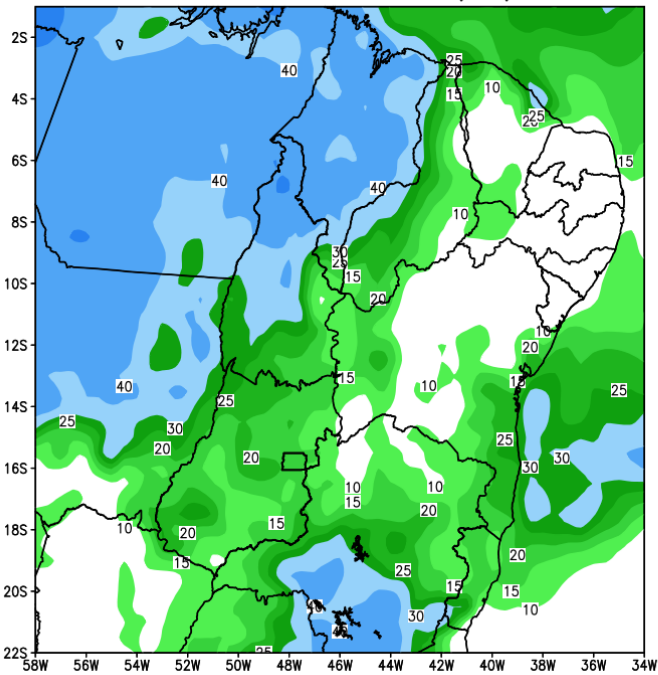
FONTE:
INPE

Situação meteorológica atual

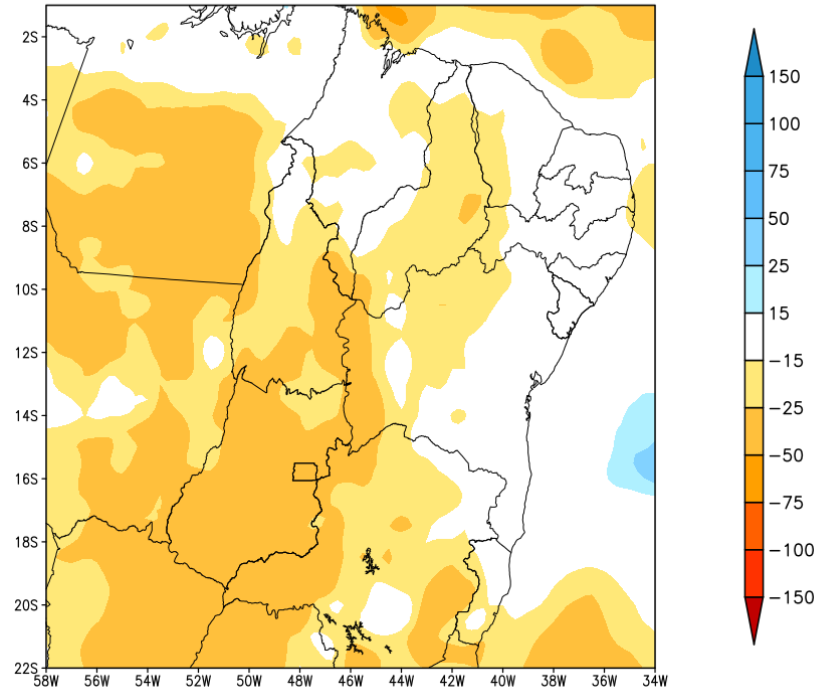


Previsão de chuva próximos 7 dias

GEFS / BRASIL_NE
Precipitacao acumulada 1aSem (mm)
Previsao das 00Z dia 17/01/2022



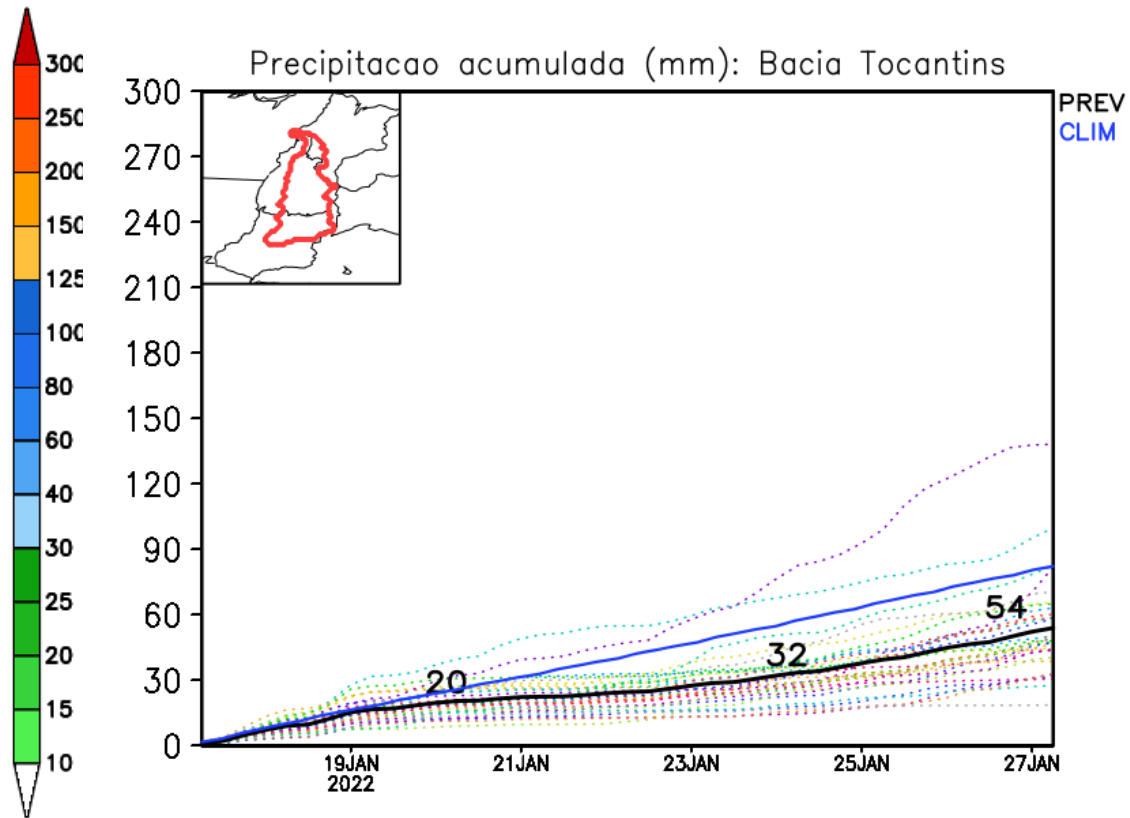
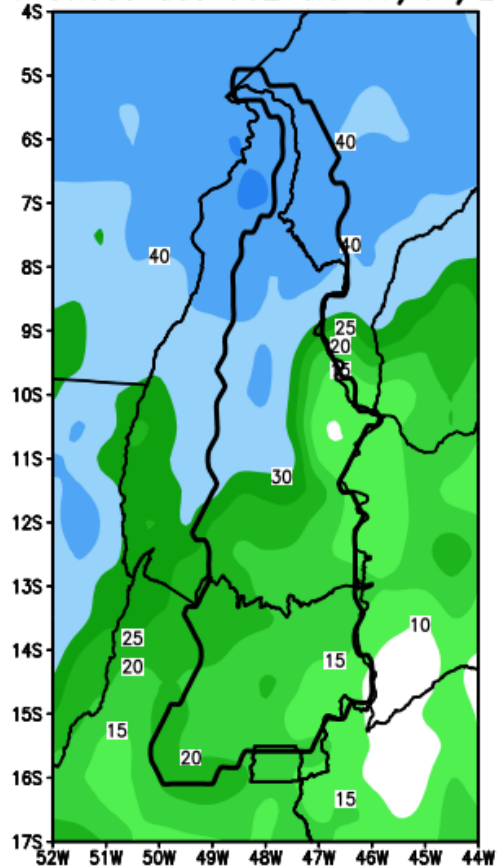
Anomalia de Precipitacao BR NE (mm)
Periodo: 2022011700 a 2022012400



Fonte: GFS/NOAA

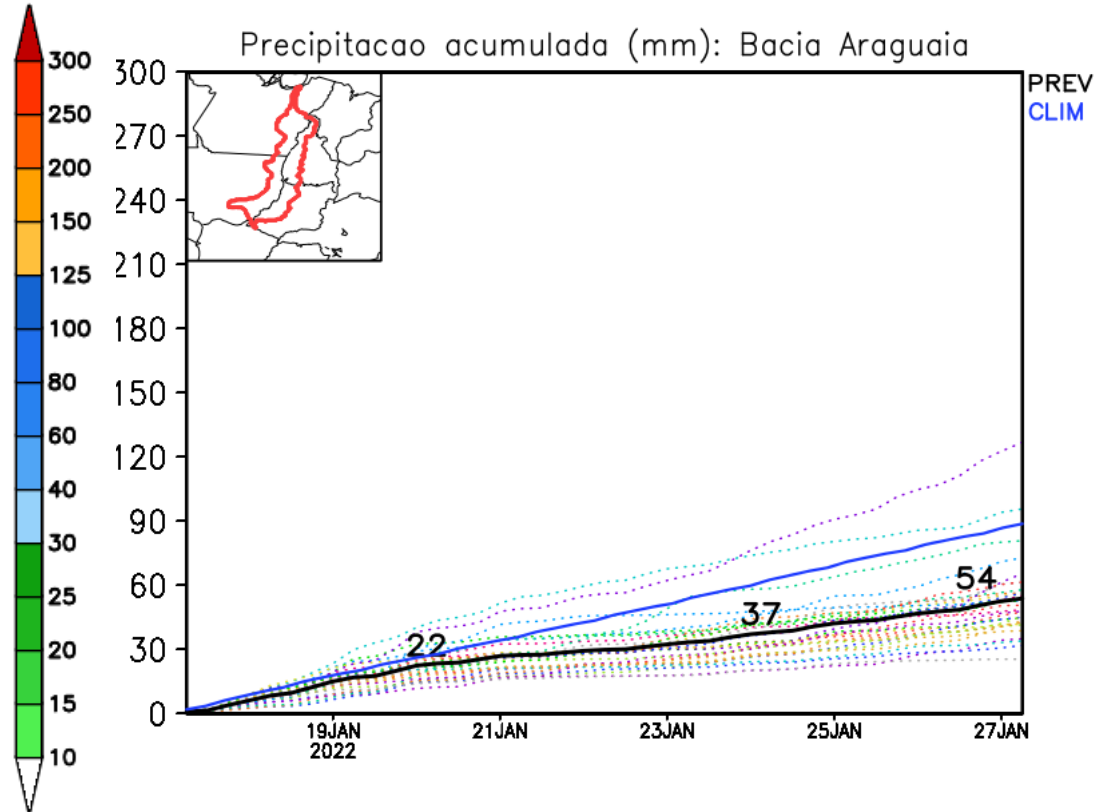
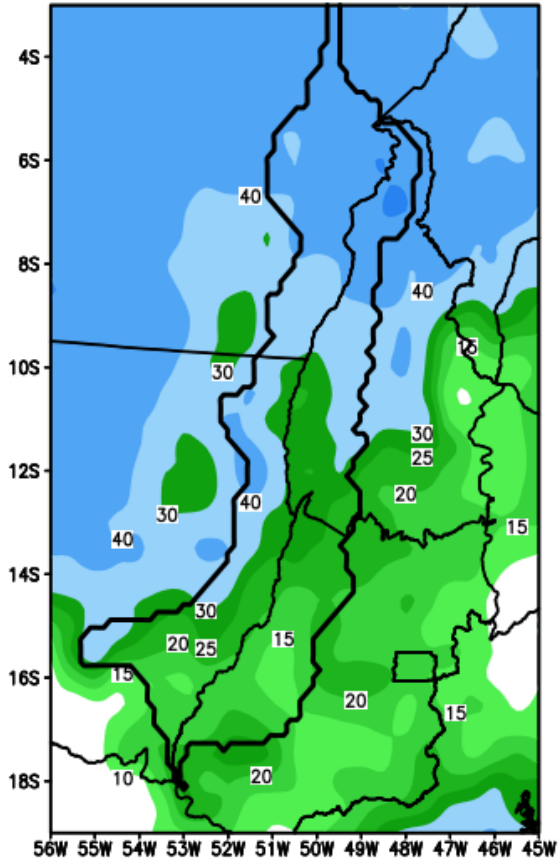
Previsão Bacia Rio Tocantins

GEFS / Bacia Tocantins
Precipitacao acumulada em 7 dias (mm)
Previsao das 00Z dia 17/01/2022

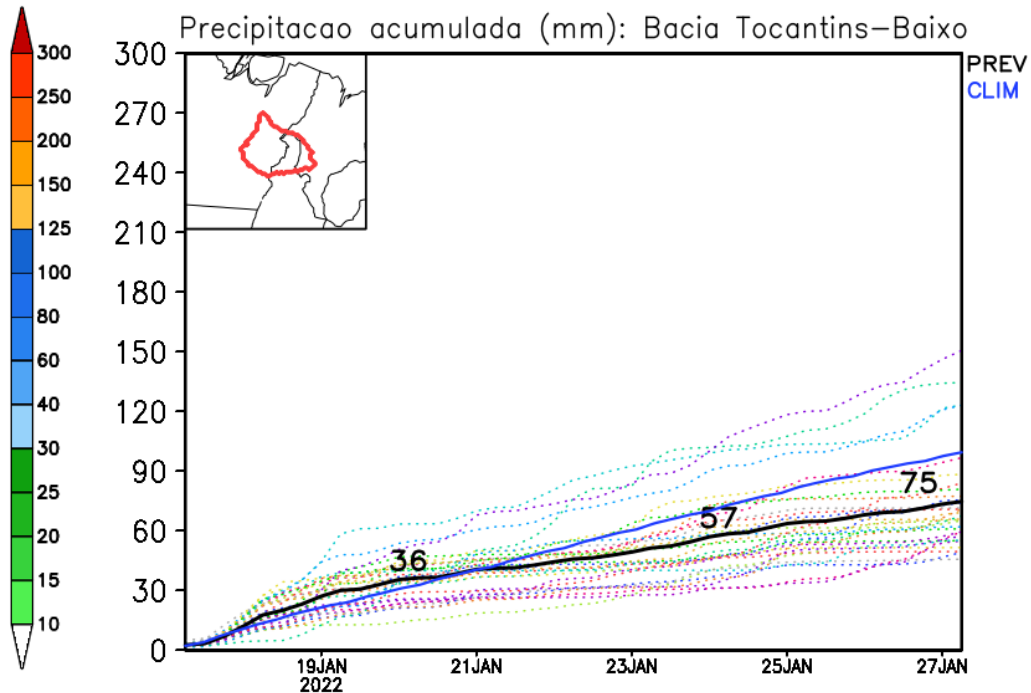
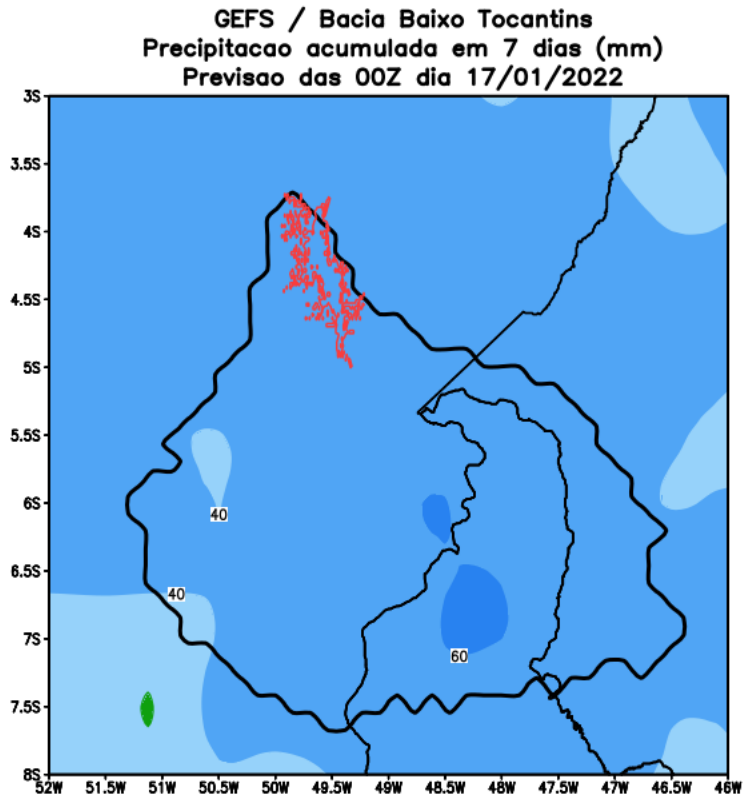


Previsão Bacia Rio Araguaia

GEFS / Bacia do Rio Araguaia
Precipitacao acumulada em 7 dias (mm)
Previsao das 00Z dia 17/01/2022

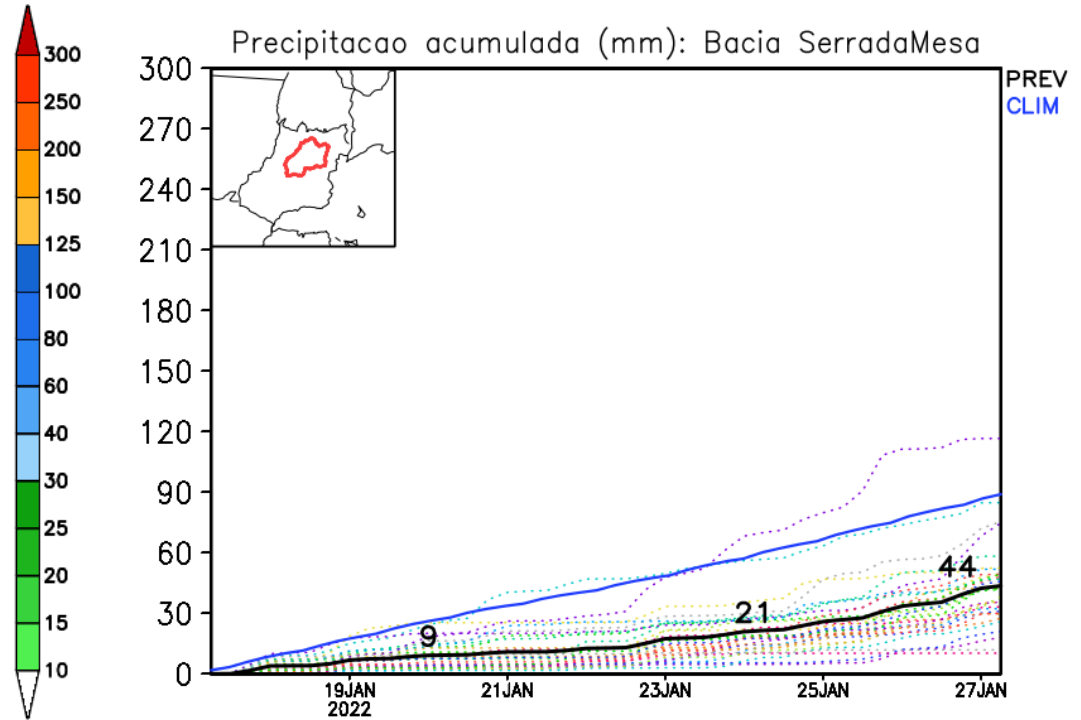
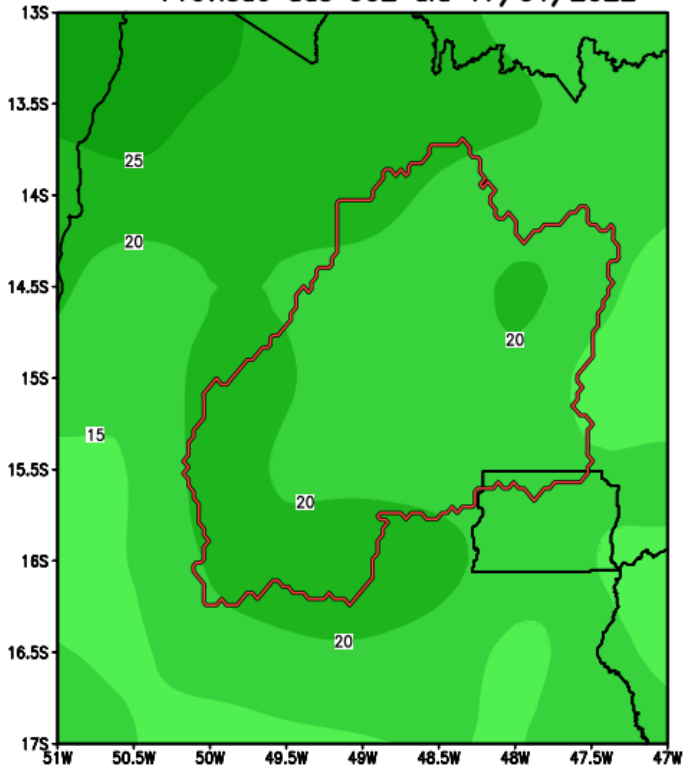


Previsão Bacia Tocantins-Araguaia (Baixo)



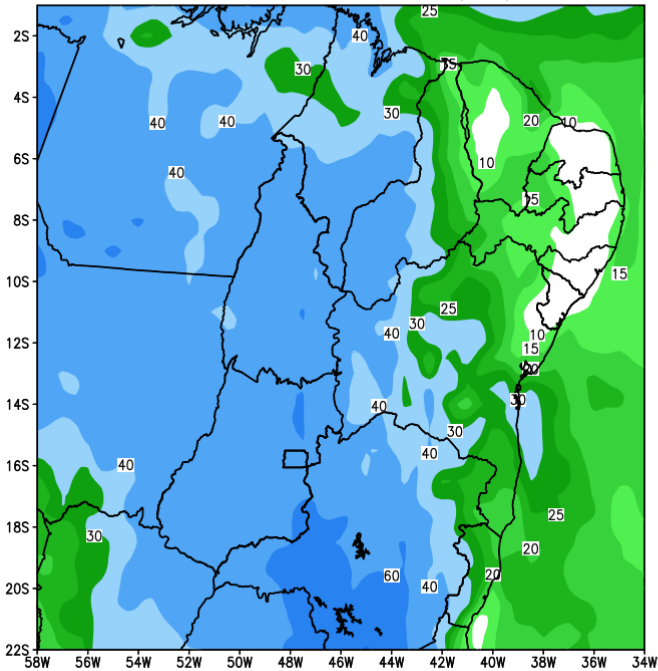
Previsão Bacia Serra da Mesa

GEFS / Bacia Serra da Mesa
Precipitacao acumulada em 7 dias (mm)
Previsao das 00Z dia 17/01/2022

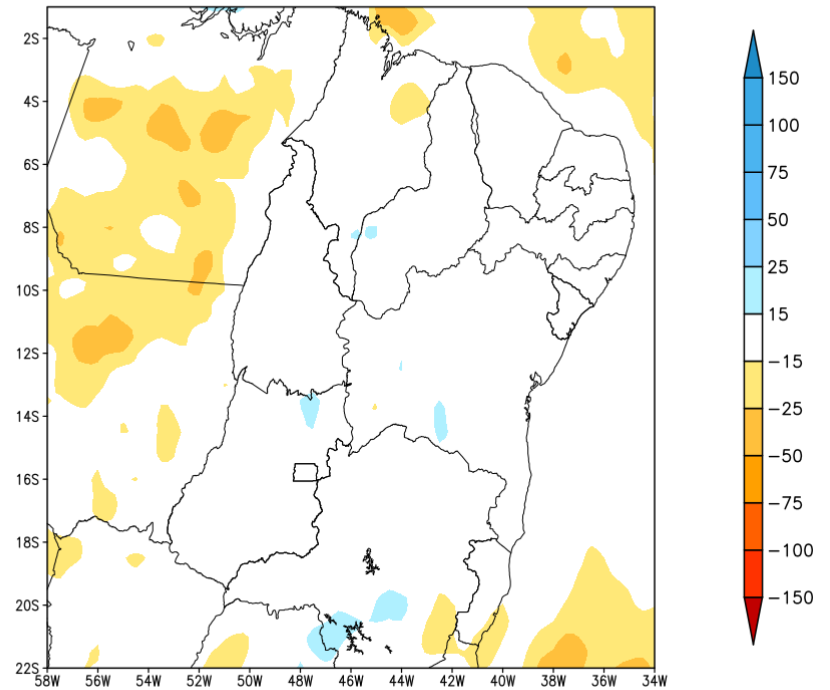


Tendência para a 2a Semana

GEFS / BRASIL_NE
Precipitacao acumulada 2aSem (mm)
Previsao das 00Z dia 17/01/2022

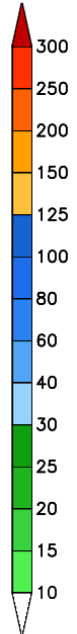
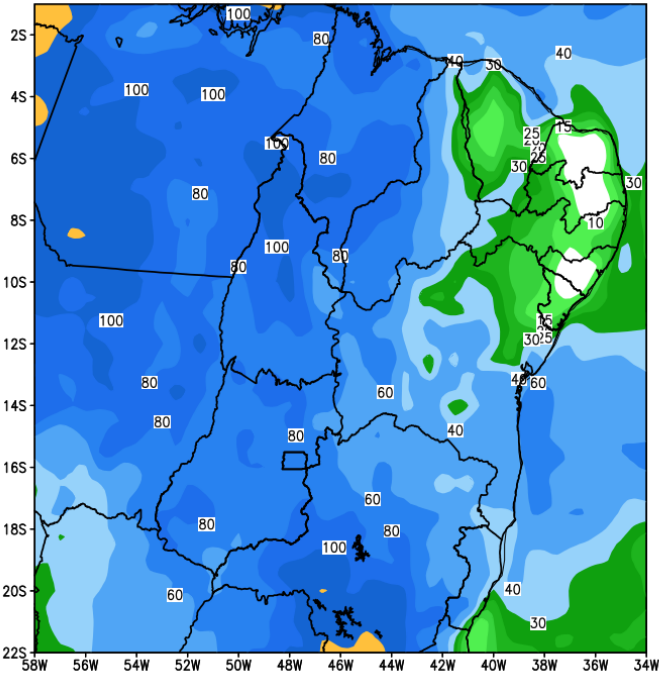


Anomalia de Precipitacao BR_NE (mm)
Periodo: 2022012500 a 2022013100

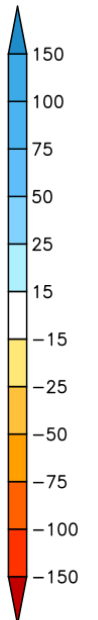
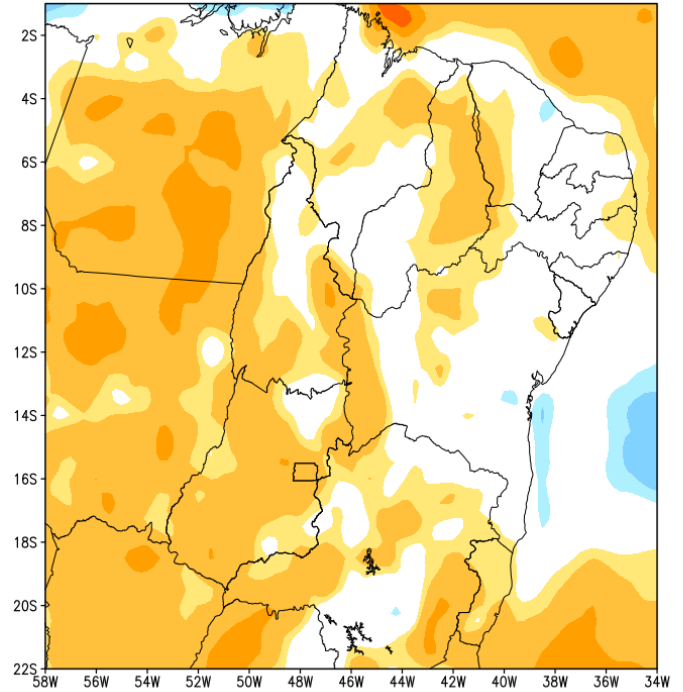


Tendência para as próximas duas semanas

GEFS / BRASIL_NE
Precipitacao acumulada 14 dias (mm)
Previsao das 00Z dia 17/01/2022



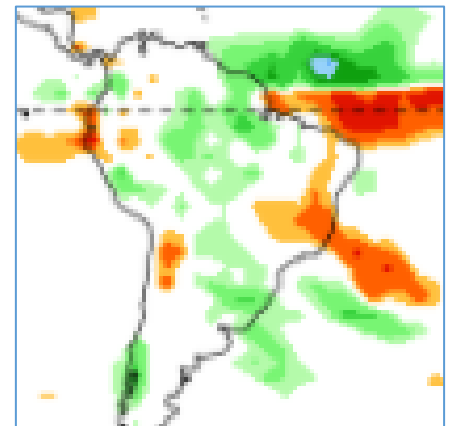
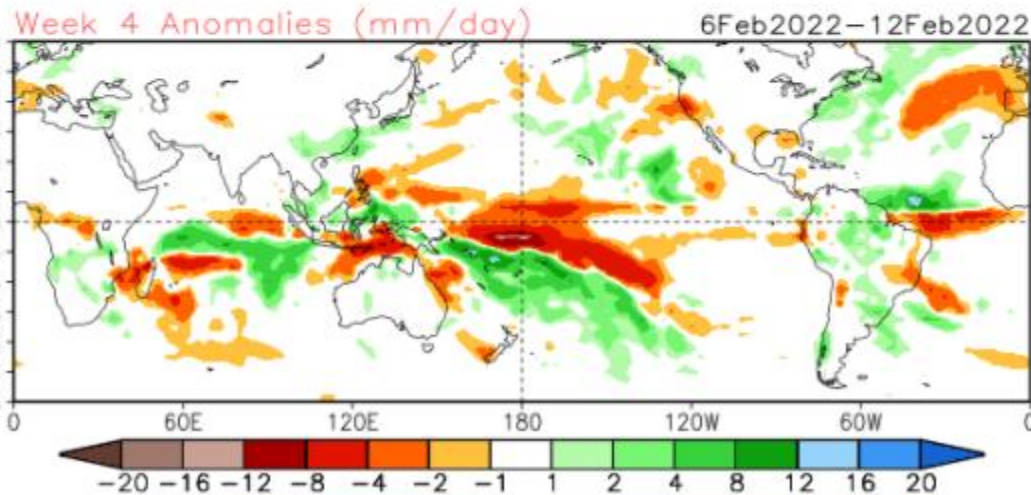
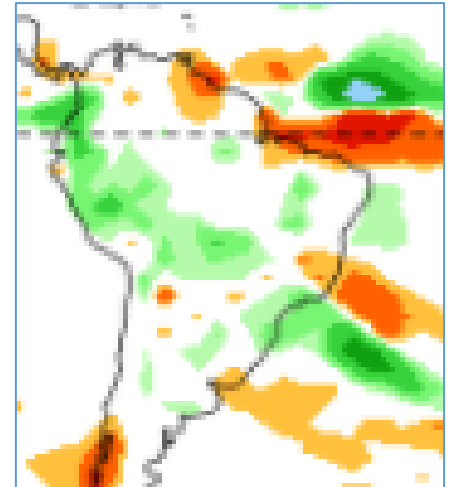
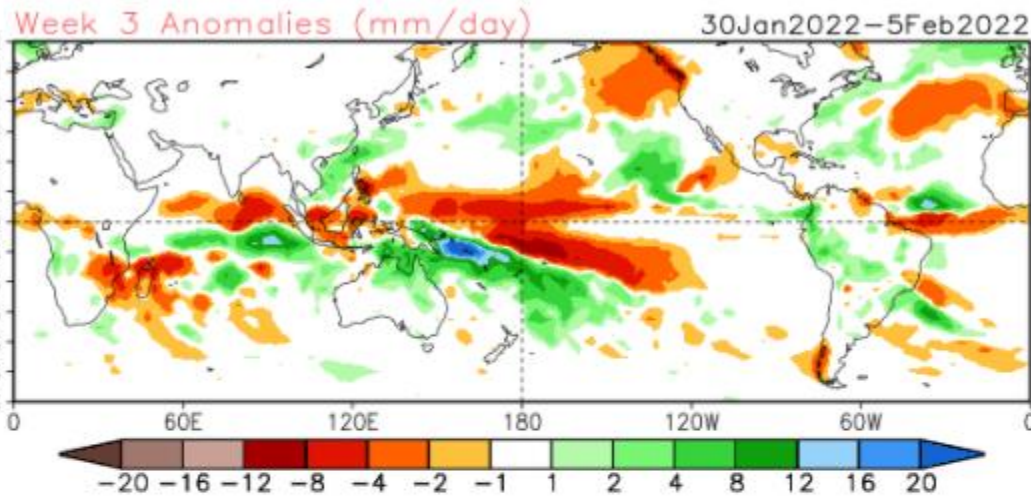
Anomalia de Precipitacao BR_NE (mm)
Periodo: 2022011700 a 2022013100



Fonte: GFS/NOAA

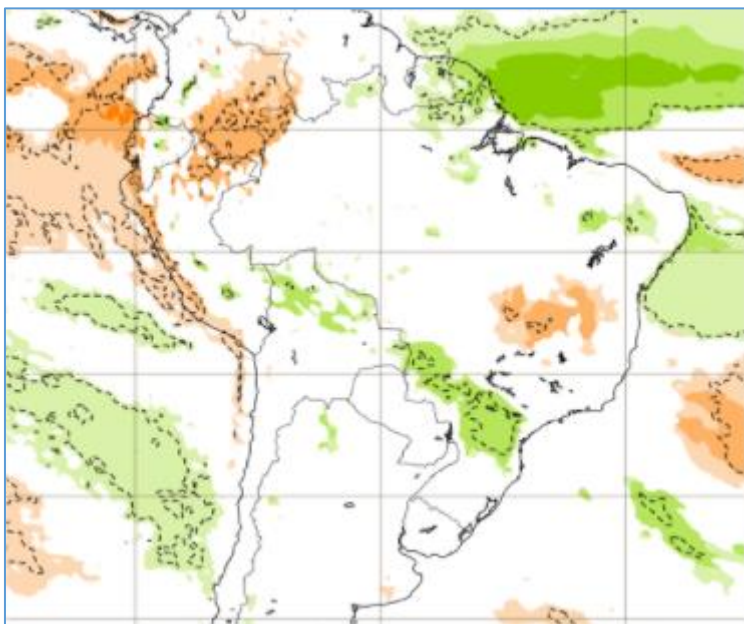
Tendência para 3ª e 4ª semanas

16 Member Ensemble Mean Forecast from 15Jan2022

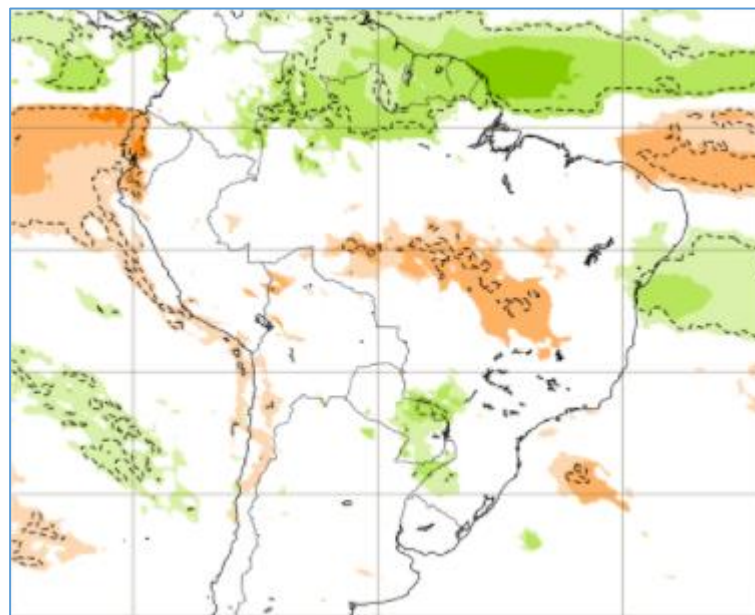


Tendência para 3ª e 4ª semanas

31/01-07/02



07-14/02



Previsão Sazonal de chuva (FMA)

