

Monitoramento e Previsões para a Bacia do rio Araguaia-Tocantins

OUTUBRO 2025

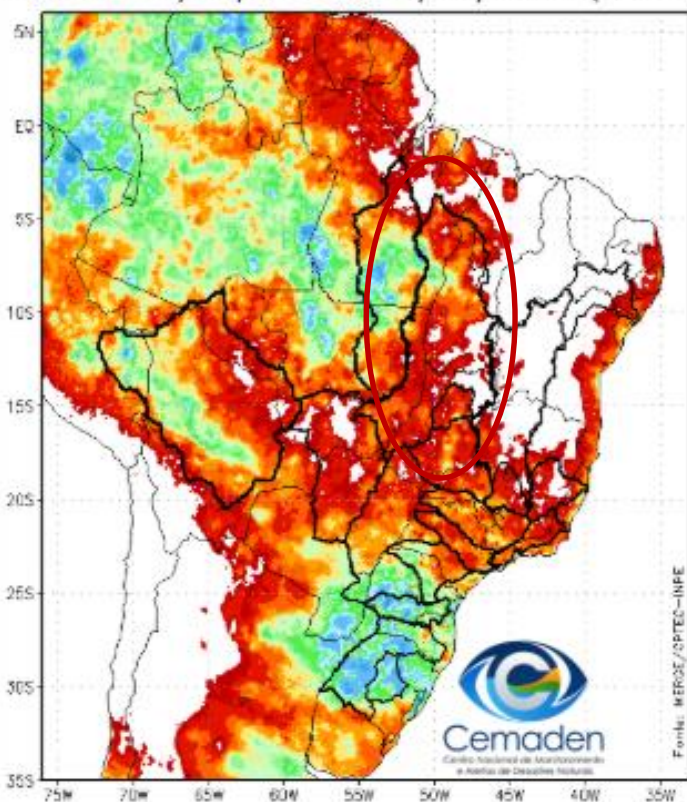


MINISTÉRIO DA
CIÊNCIA, TECNOLOGIA
E INOVAÇÃO

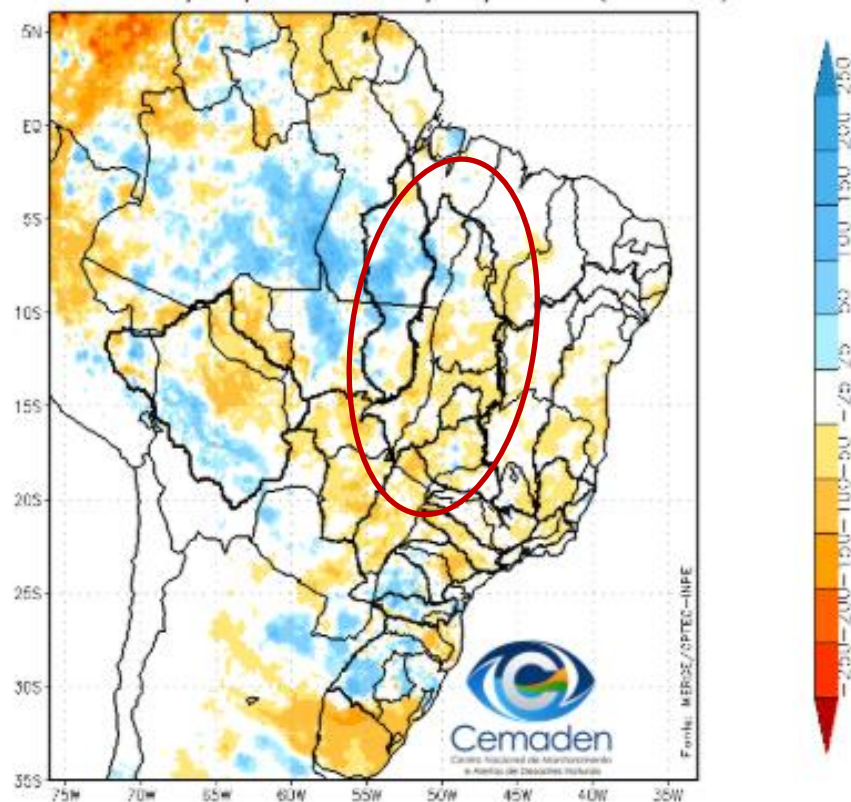


Precipitação acumulada nos últimos 30 dias

Precipitação Acumulada (mm) A.S.
Período: 14/09/2025 a 14/10/2025 (30 dias)



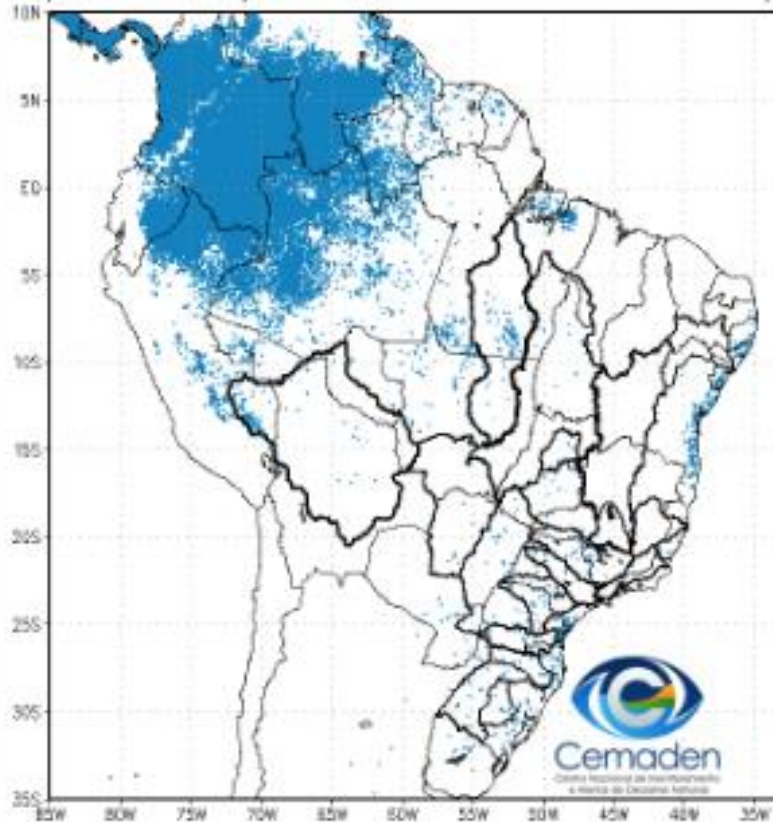
Anomalia de Precipitação (mm) A.S.
Período: 14/09/2025 a 14/10/2025 (30 dias)



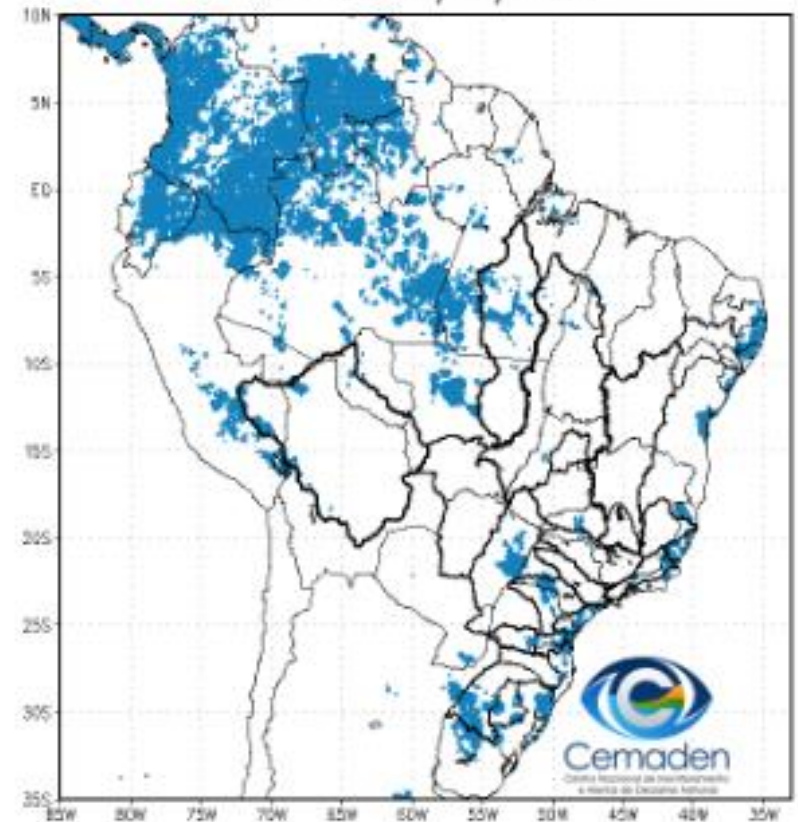
Fonte dos dados: Merge/INPE

Situação da Estação Chuvosa

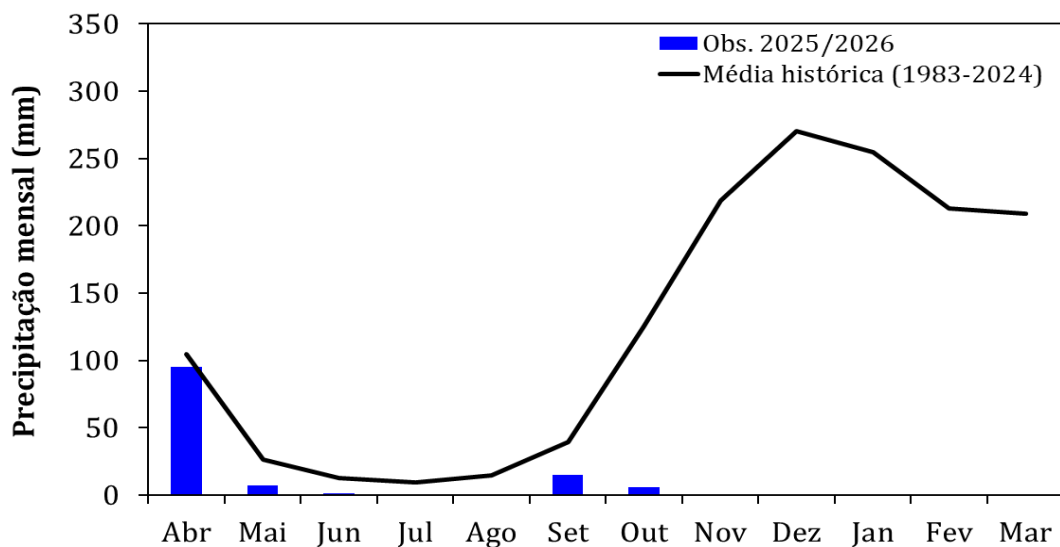
Climatologia da Precipitação (2001–2024)
Superior 3 mm/dia em 4 de 5 dias Período: 14/10



Precipitação A.S. Superior a 3 mm/dia por 4 de 5 dias
Período: 14/10/2025



Monitoramento UHE Serra da Mesa



Precipitação

Estação Chuvosa - Out a Abr – 1396 mm

2023/2024: 1245 mm (**89% da MLT**)

2024/2025: 1355 mm (**97% da MLT**)

Estação Seca - Maio a Set – 102 mm

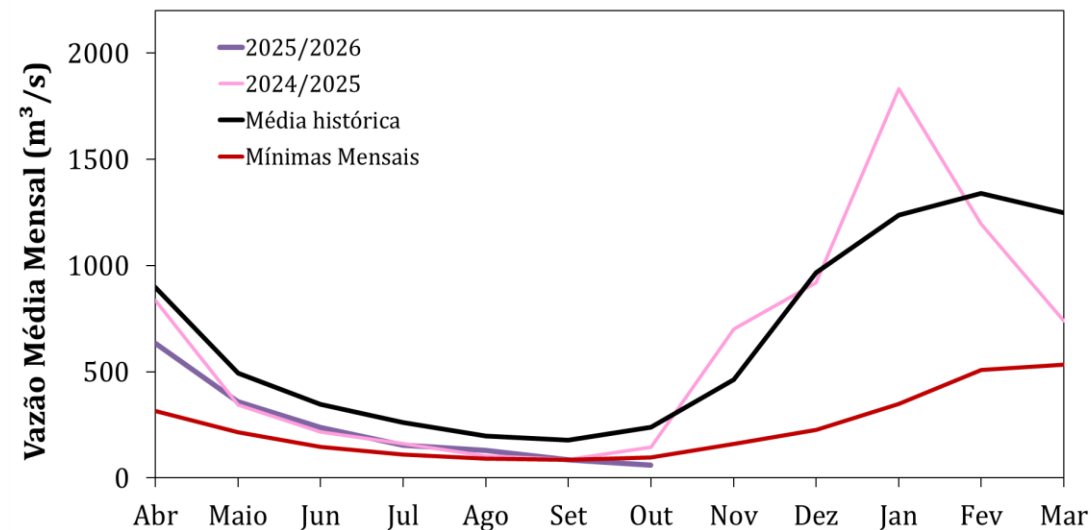
2024: 2 mm (**2% da MLT**)

2025: 24 mm (**23% da MLT**)

Set/2025: 15 mm (**38% da MLT**)

Out/2025*: 6 mm (**11% da MLT Parcial**)

*Até 13/10/2025



Vazão

Estação Chuvosa - Out a Abr – 913 m^3/s

2023/2024: 751 m^3/s (**82% da MLT**)

2024/2025: 881 m^3/s (**97% da MLT**)

Estação Seca - Maio a Set – 295 m^3/s

2024: 183 m^3/s (**62% da MLT**)

2025: 194 m^3/s (**66% da MLT**)

Set/25: 86 m^3/s (**48% da MLT**)

Out/25**: 61 m^3/s (**25% da MLT**)

13/Out/25: 57 m^3/s (**24% da MLT**)

**Até 13/10/2025

Média de Longo Termo – MLT = 1983-2024

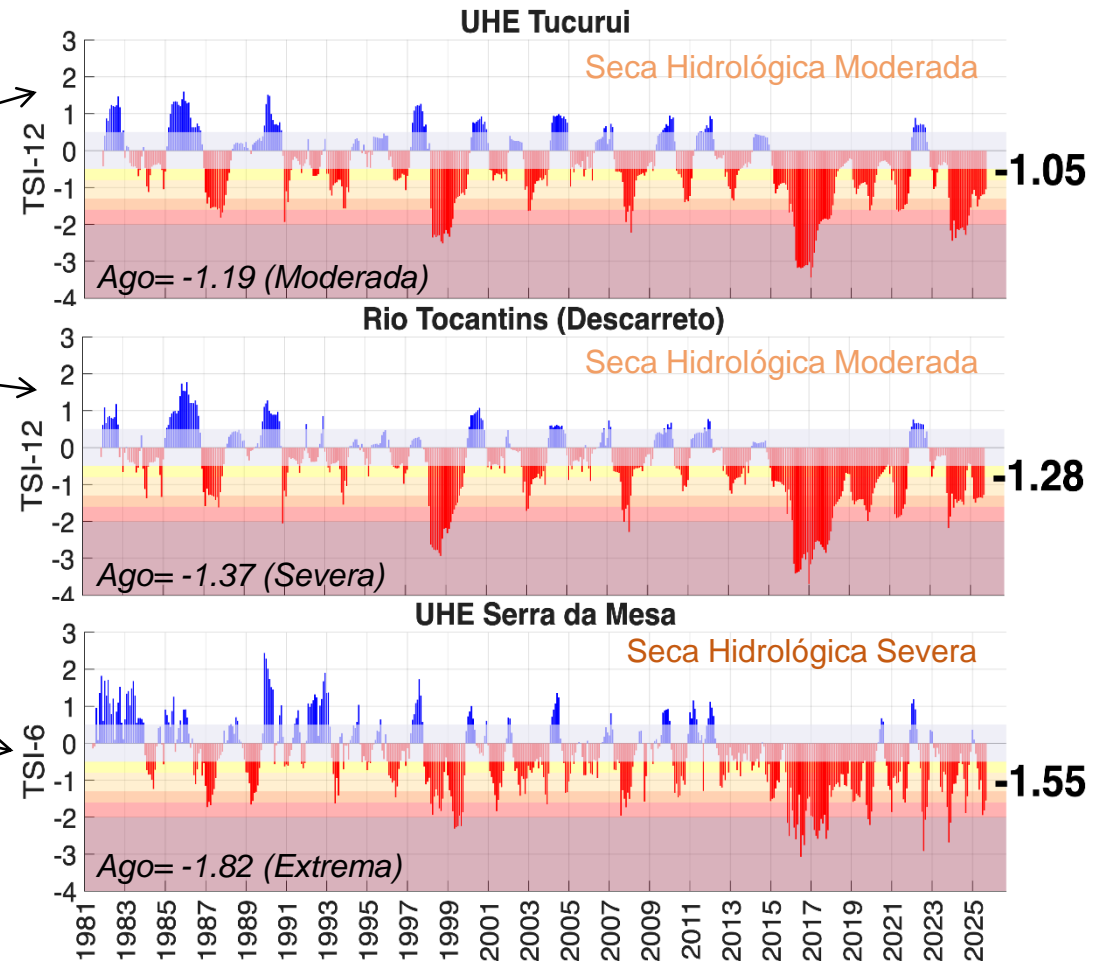
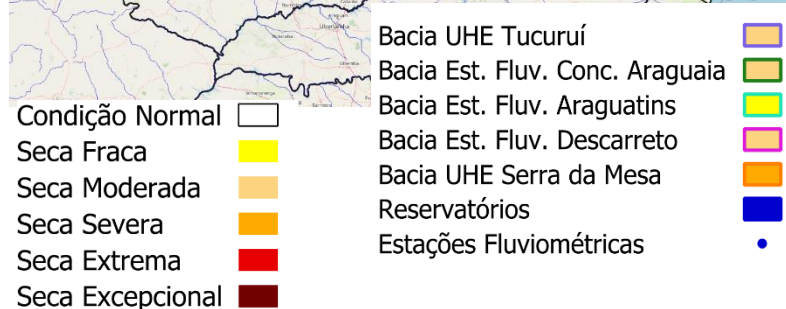
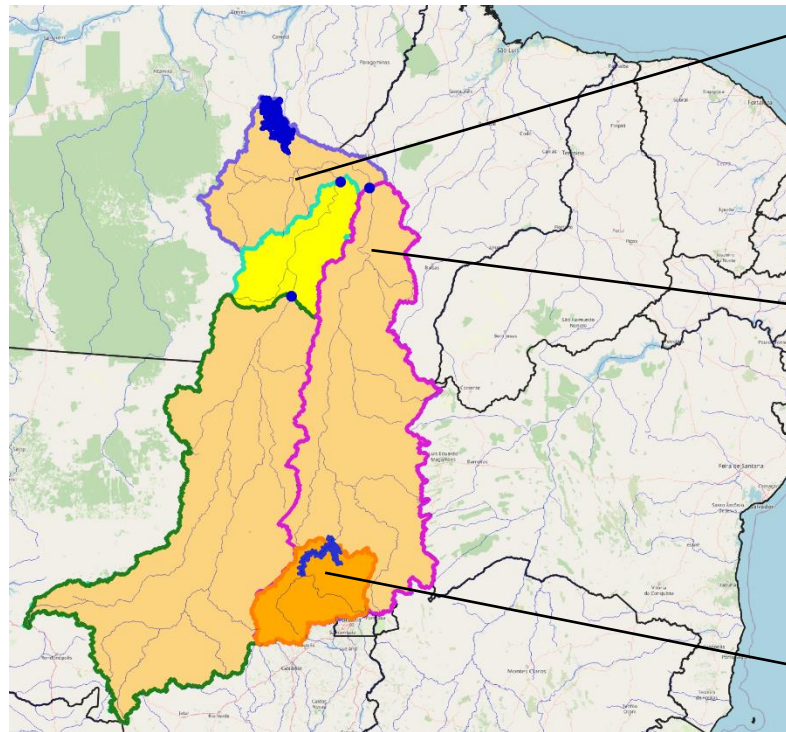
Dados de precipitação: INMET, ANA, CEMADEN

Dados de vazão: ONS e ANA

Índice Bivariado de Seca (Precipitação-Cota/Vazão) - TSI

Escala de longo prazo

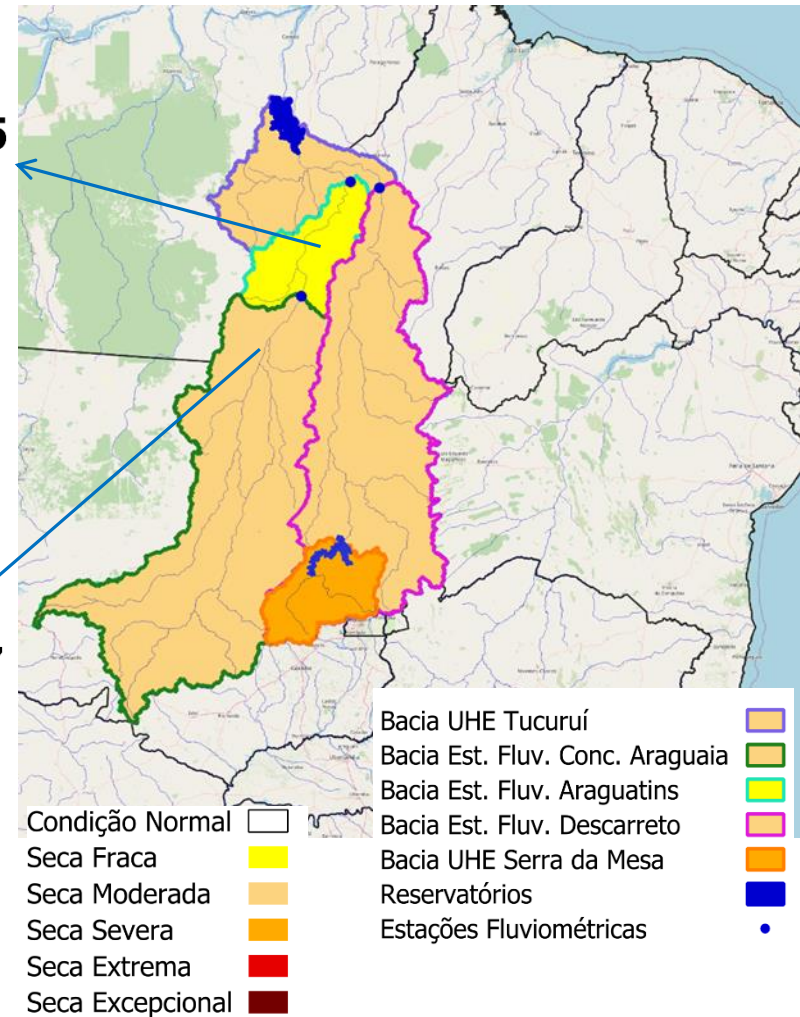
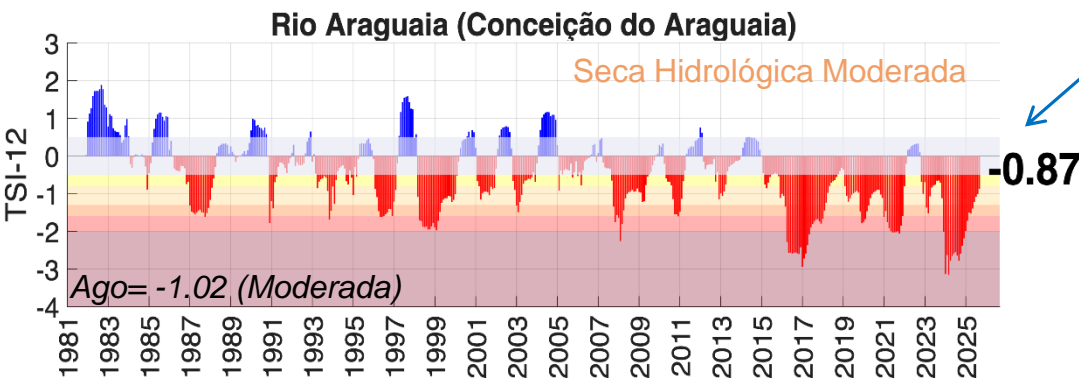
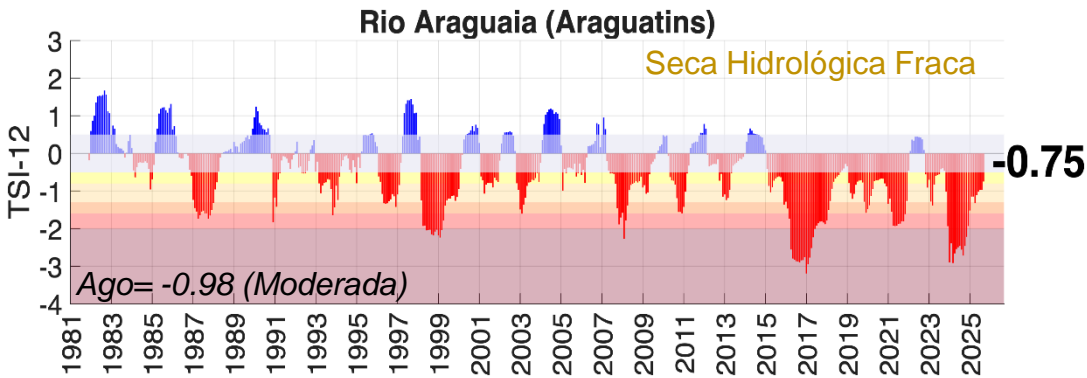
Setembro/2025



Índice Bivariado de Seca (Precipitação-Cota/Vazão) - TSI

Escala de longo prazo

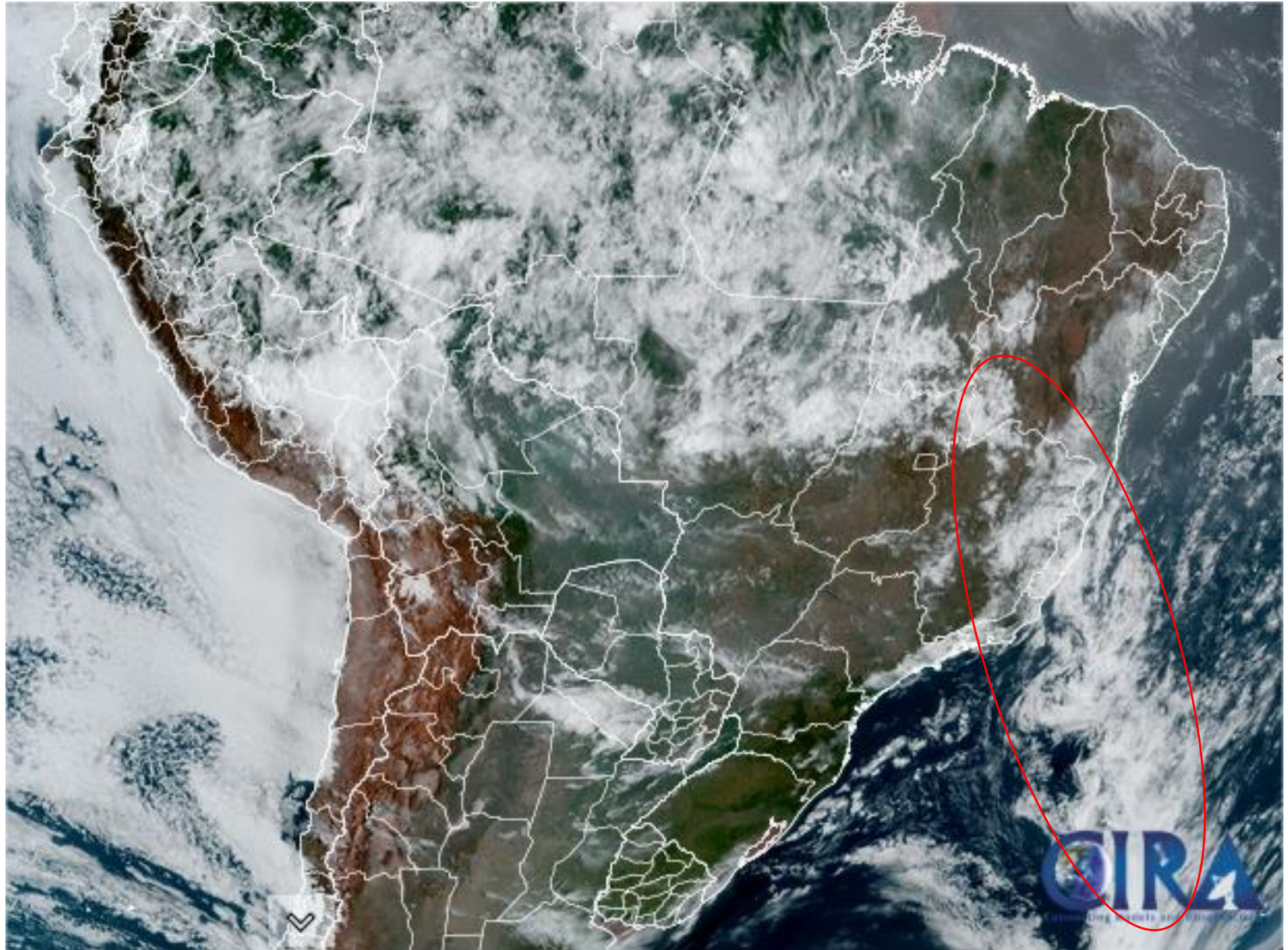
Setembro/2025



Fonte: CEMADEN

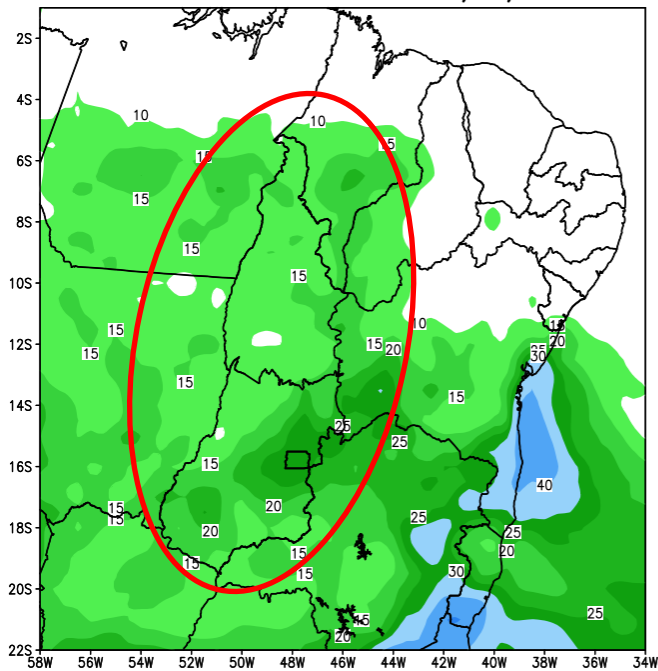
Dados: Precipitação (Cemaden/INMET/CHIRPS) e
Vazão (ONS/ANA) - Jan/1981-Set/2025.

Situação meteorológica atual

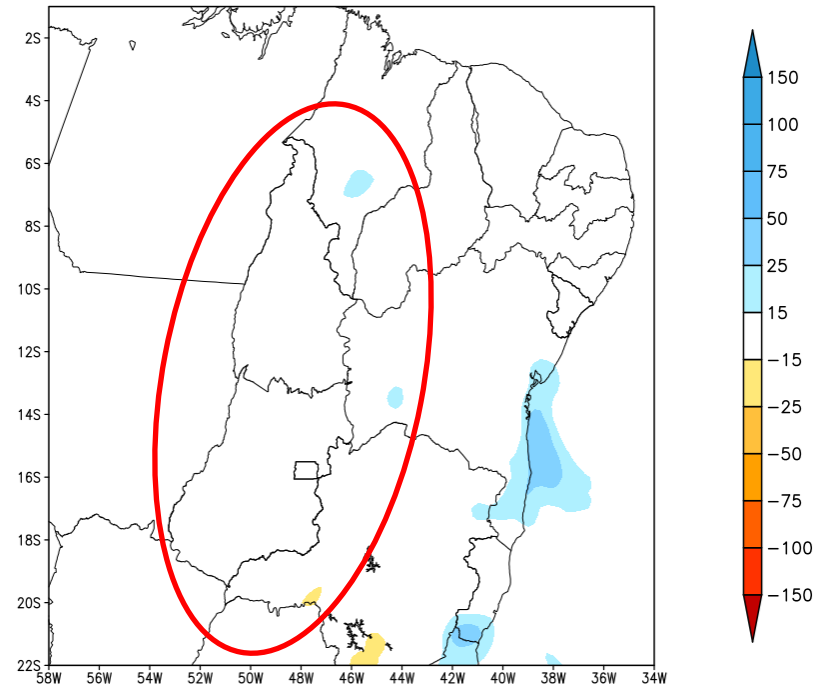


Previsão de chuva - 1a Semana

GEFS / BRASIL_NE
Precipitacao acumulada 1aSem (mm)
Previsao das 00Z dia 15/10/2025



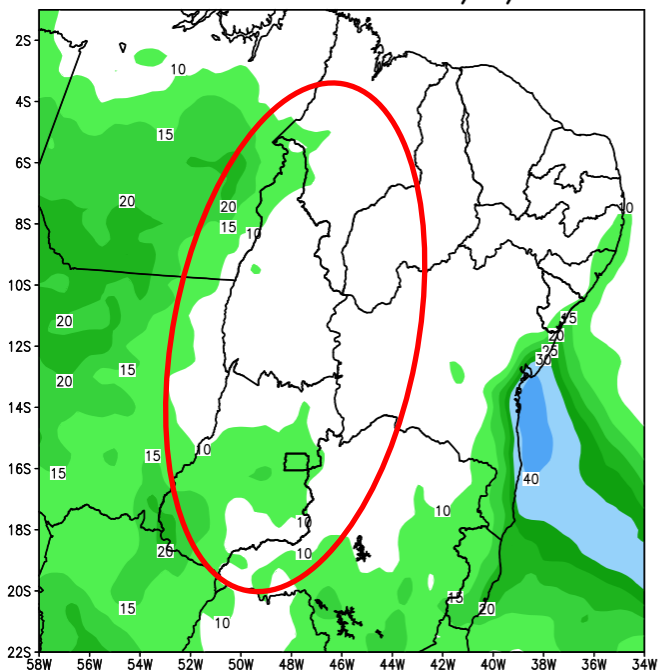
Anomalia de Precipitacao BR NE (mm)
Periodo: 2025101500 a 2025102200



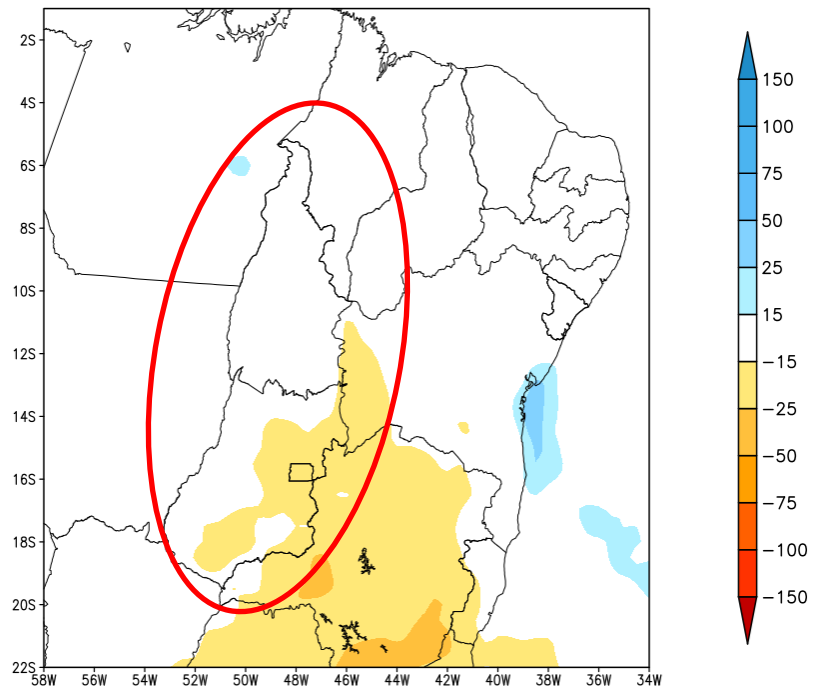
Fonte: GEFS/NOAA

Previsão de chuva - 2a Semana

GEFS / BRASIL_NE
Precipitacao acumulada 2aSem (mm)
Previsao das 00Z dia 15/10/2025

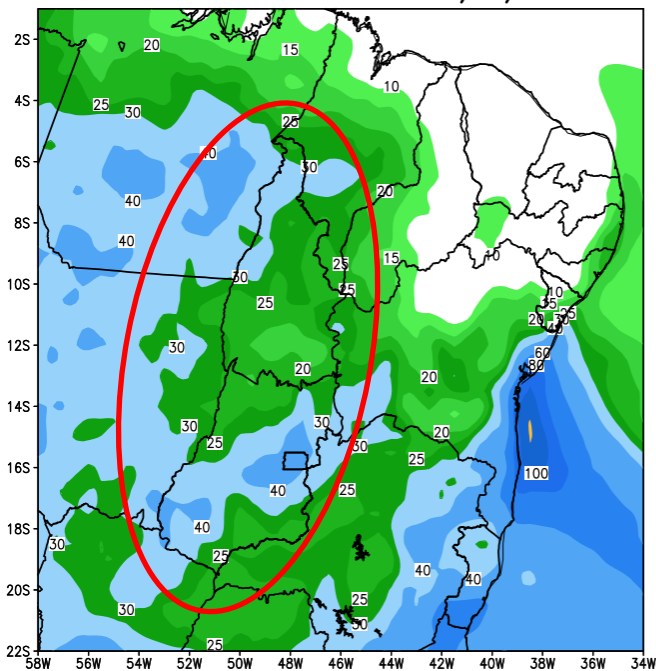


Anomalia de Precipitacao BR_NE (mm)
Periodo: 2025102300 a 2025102900

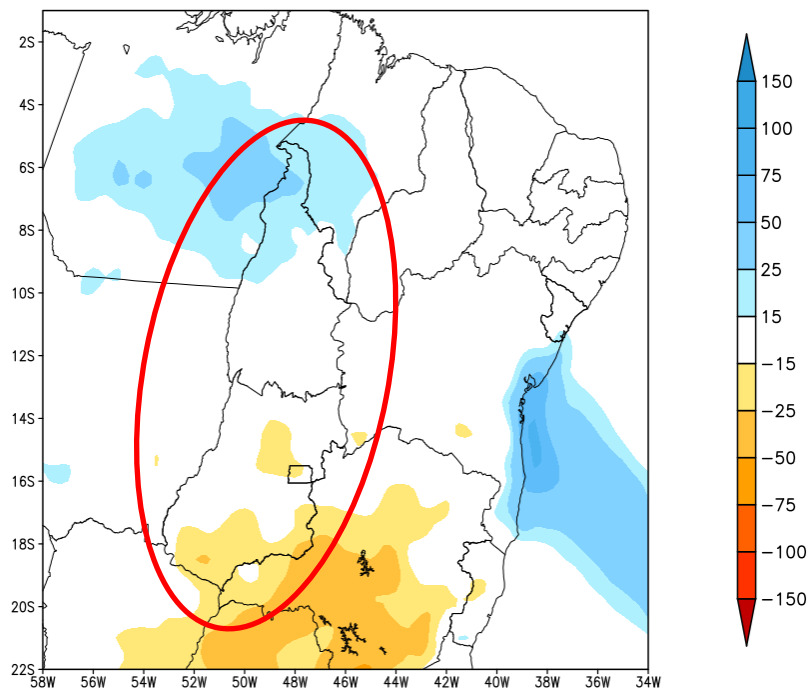


Previsão de chuva - acumulada 2 semanas

GEFS / BRASIL_NE
Precipitacao acumulada 14 dias (mm)
Previsao das 00Z dia 15/10/2025

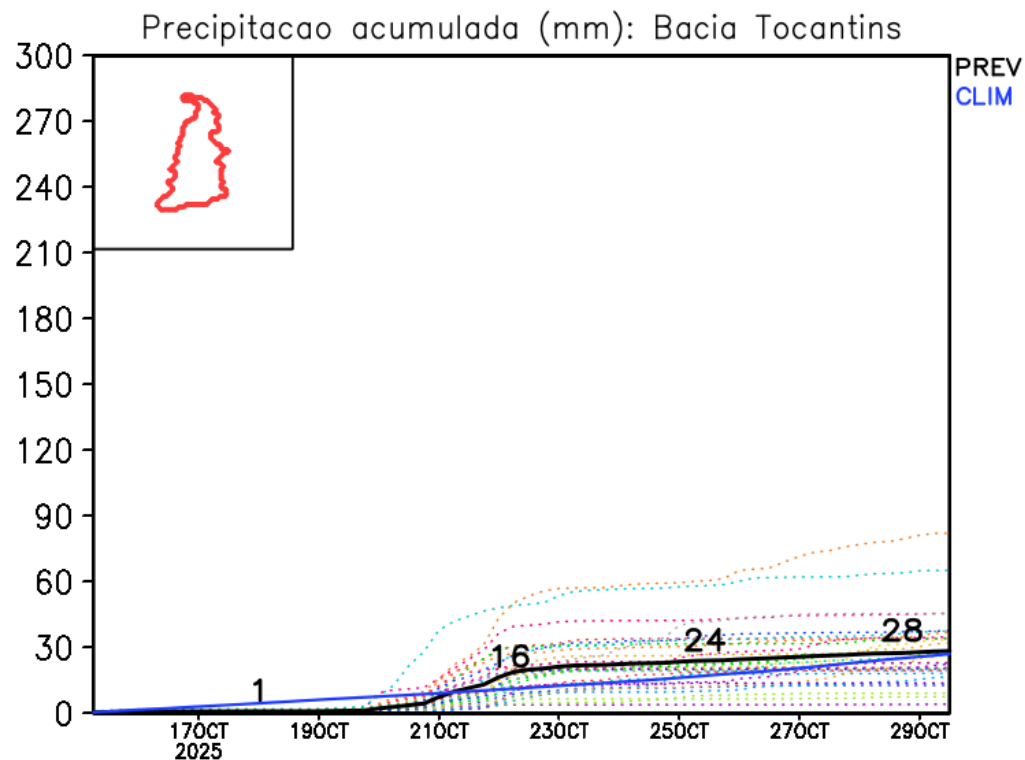
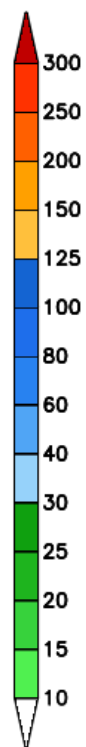
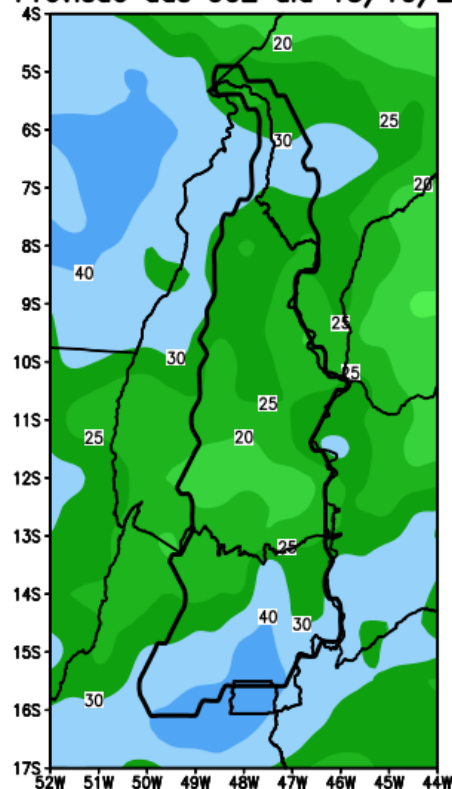


Anomalia de Precipitacao BR NE (mm)
Periodo: 2025101500 a 2025102900



Previsão Bacia Rio Tocantins

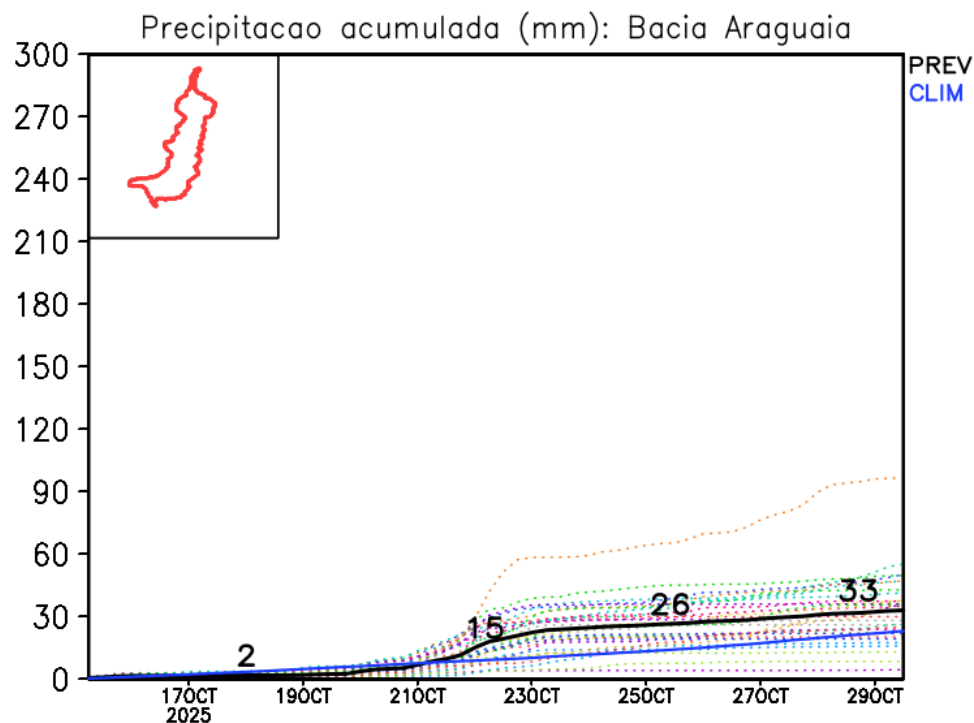
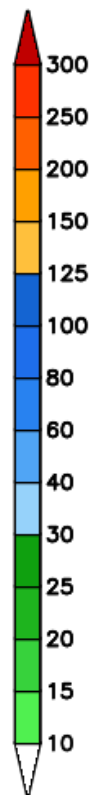
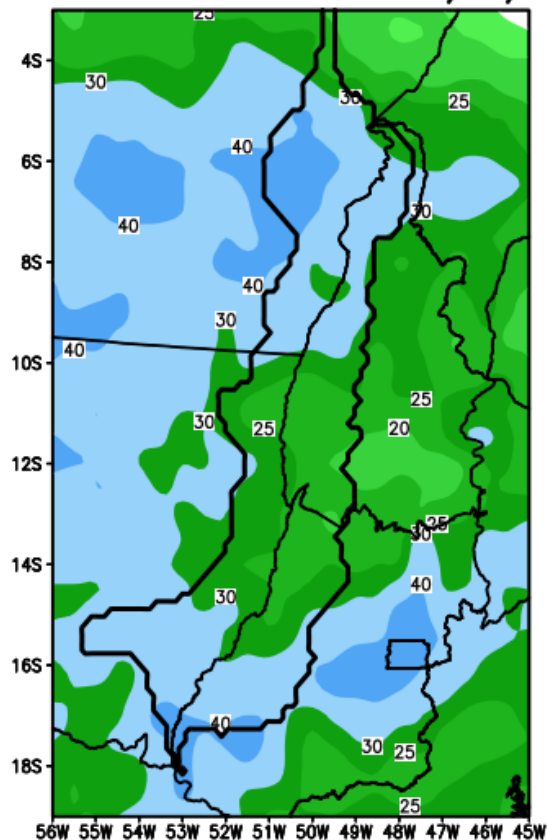
GEFS / Bacia Tocantins
Precipitação acumulada em 14 dias (mm)
Previsão das 00Z dia 15/10/2025



Fonte: GEFS/NOAA

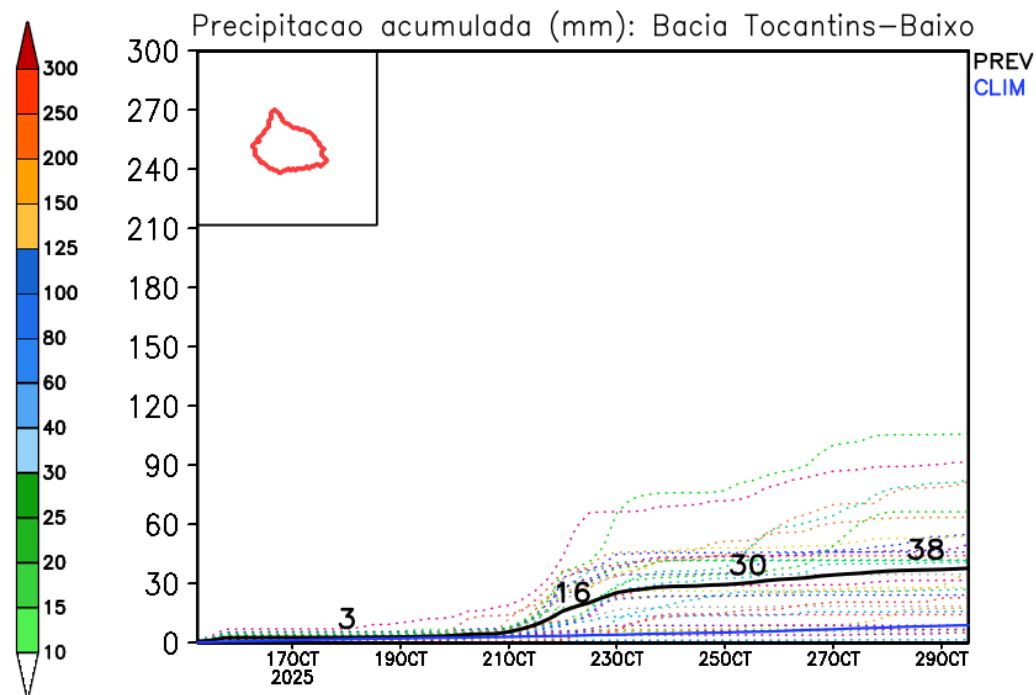
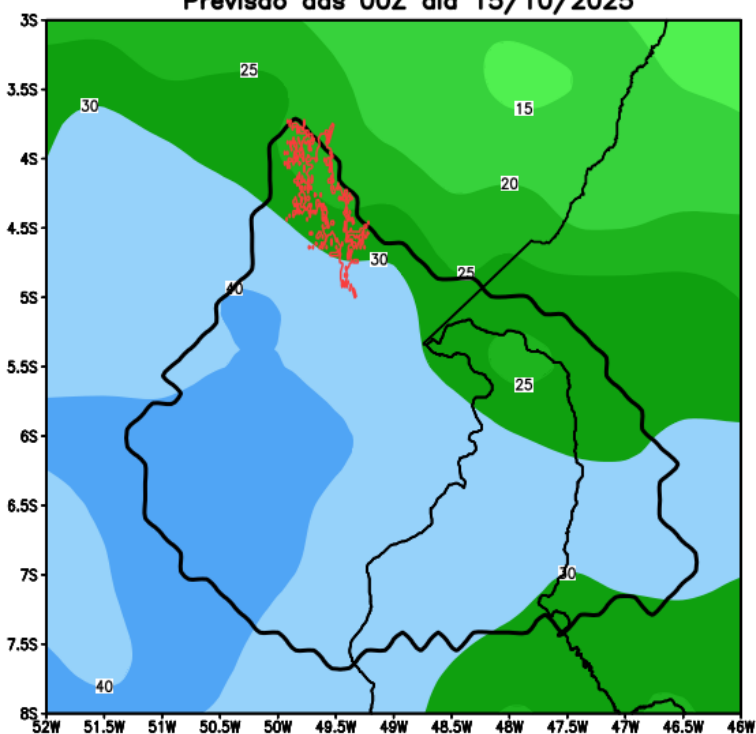
Previsão Bacia Rio Araguaia

GEFS / Bacia do Rio Araguaia
Precipitação acumulada em 14 dias (mm)
Previsão das 00Z dia 15/10/2025



Previsão Bacia Tocantins (Baixo)

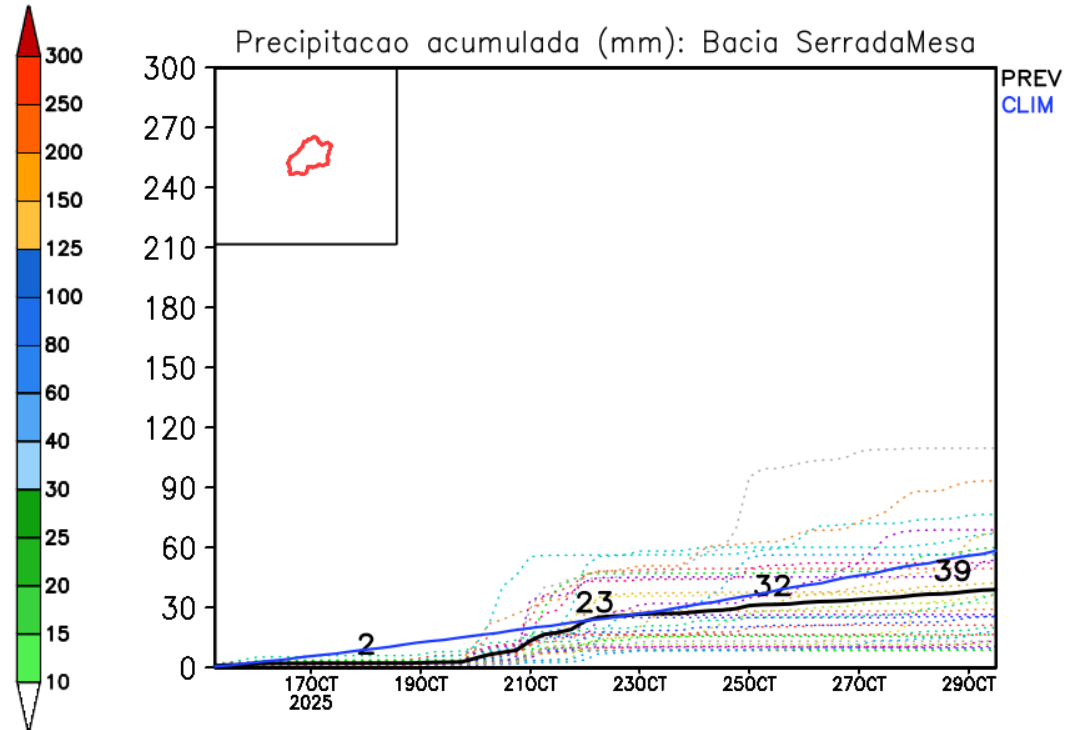
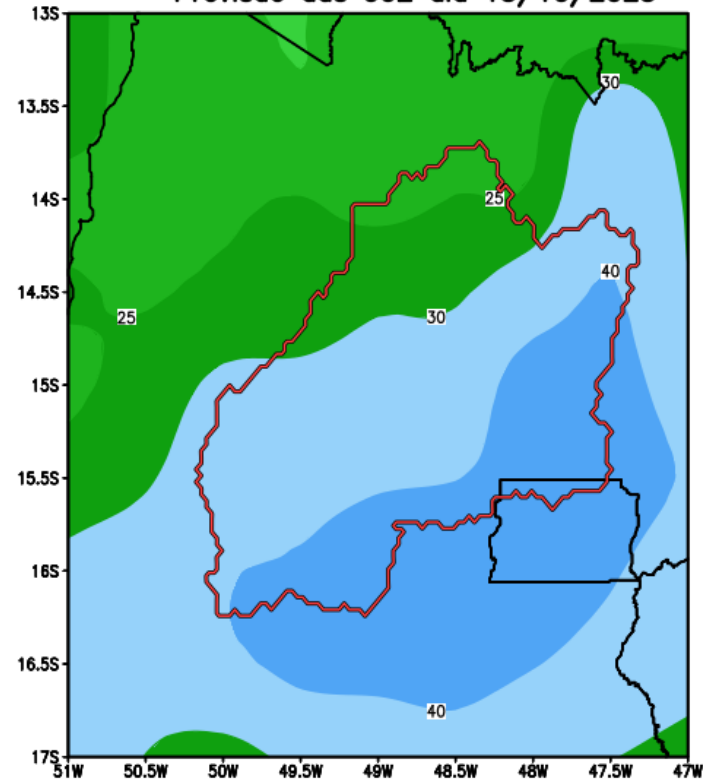
GEFS / Bacia Baixo Tocantins
Precipitação acumulada em 14 dias (mm)
Previsão das 00Z dia 15/10/2025



Fonte: GEFS/NOAA

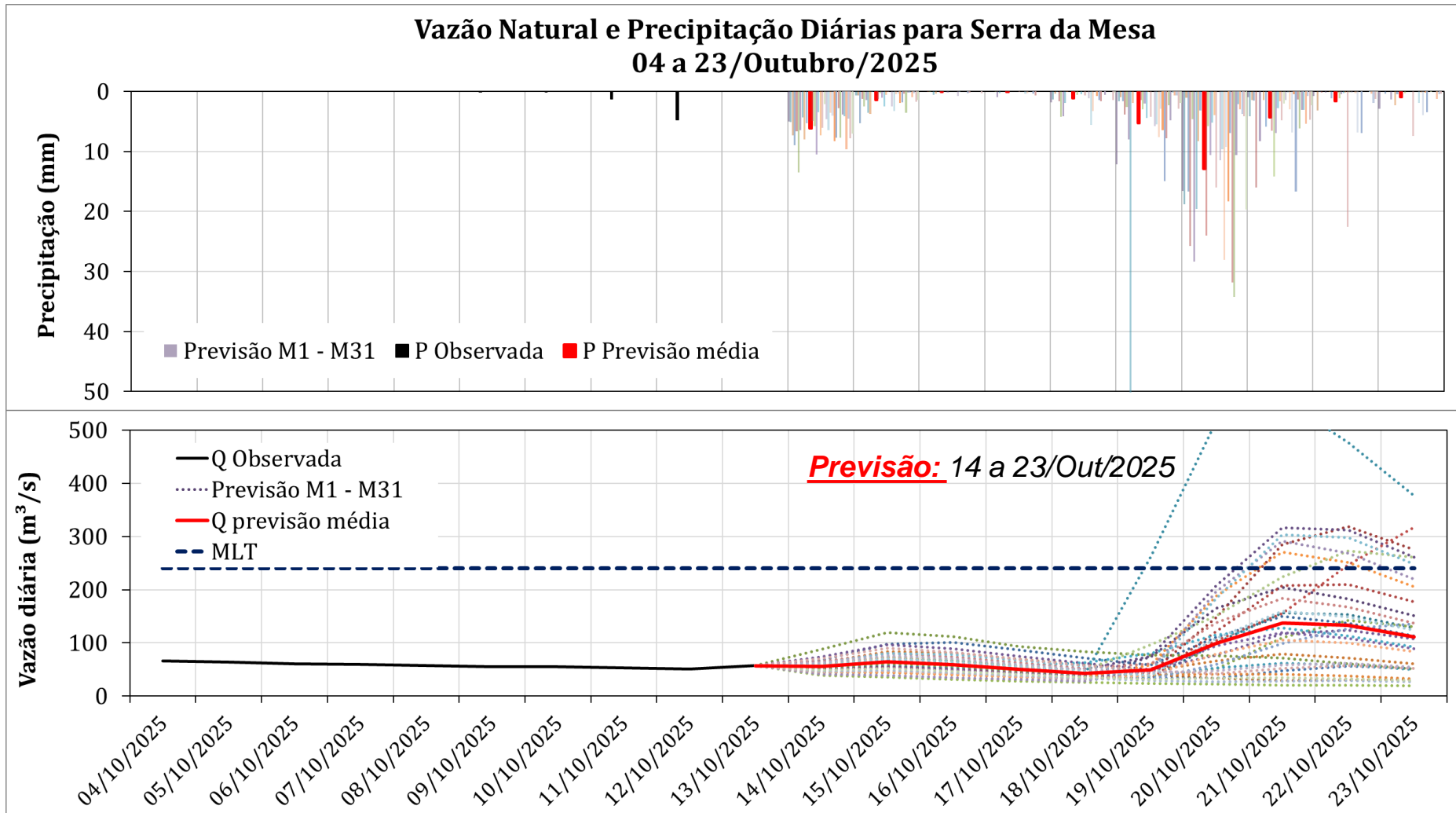
Previsão Bacia Serra da Mesa

GEFS / Bacia Serra da Mesa
Precipitacao acumulada em 14 dias (mm)
Previsao das 00Z dia 15/10/2025

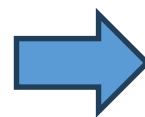


Fonte: GEFS/NOAA

Serra da Mesa: Previsão de Vazão (modelo hidrológico PDM-CEMADEN)



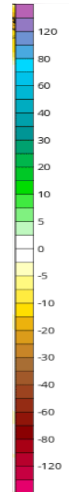
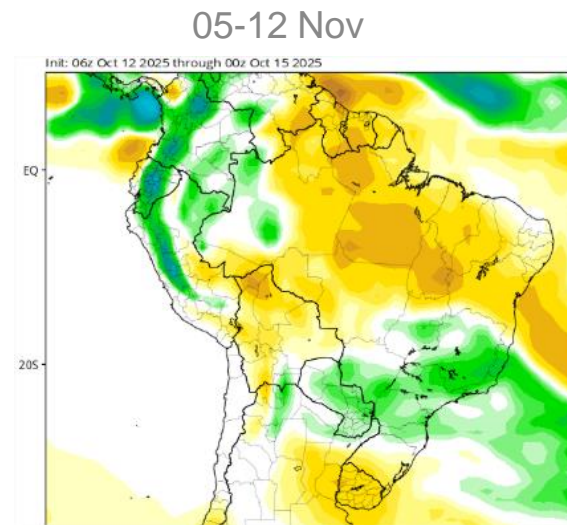
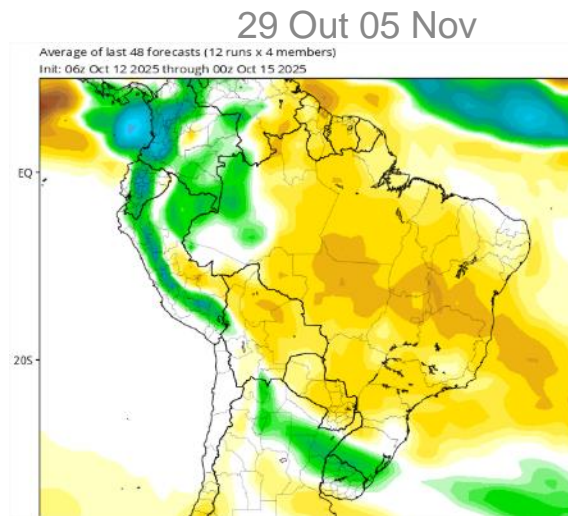
**Previsão média para
os próximos 10 dias: 80 m³/s**



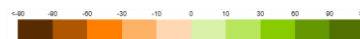
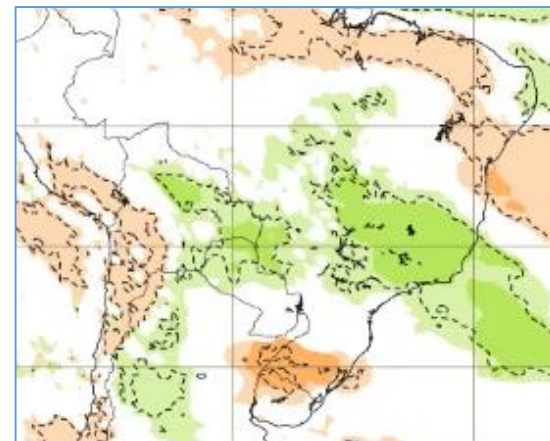
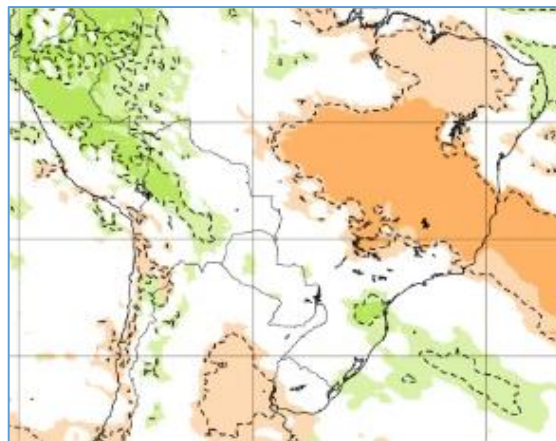
33% da MLT Outubro

Anomalia de Chuva 3a e 4a semanas

CFS/NOAA



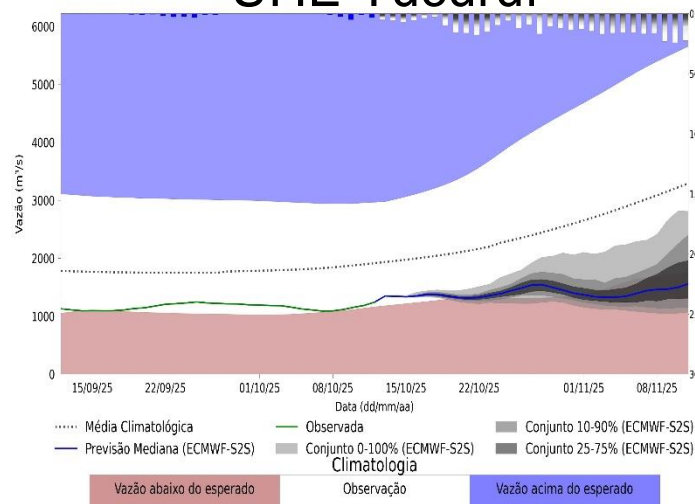
ECMWF



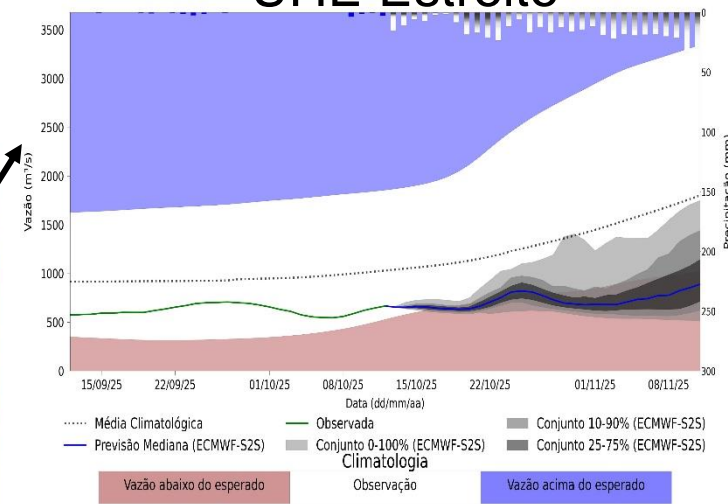
Previsão de vazão natural na Bacia Rio Tocantins-Araguaia

Previsão: 12/10/2025 a 11/11/2025

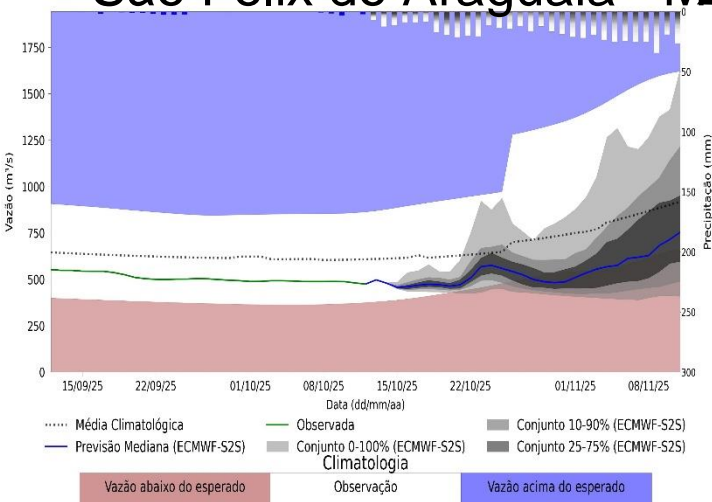
UHE Tucuruí



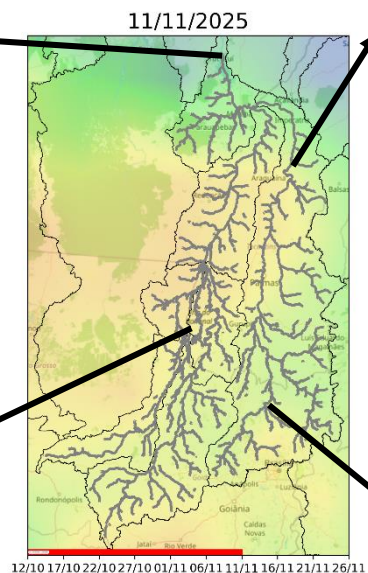
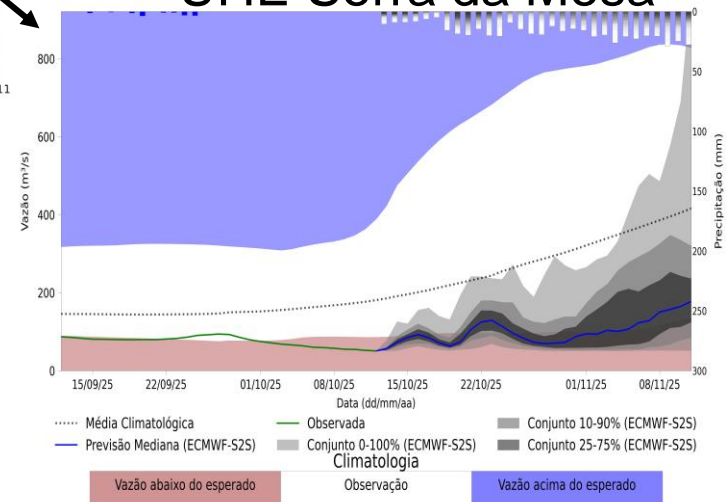
UHE Estreito



São Felix do Araguaia - MT



UHE Serra da Mesa



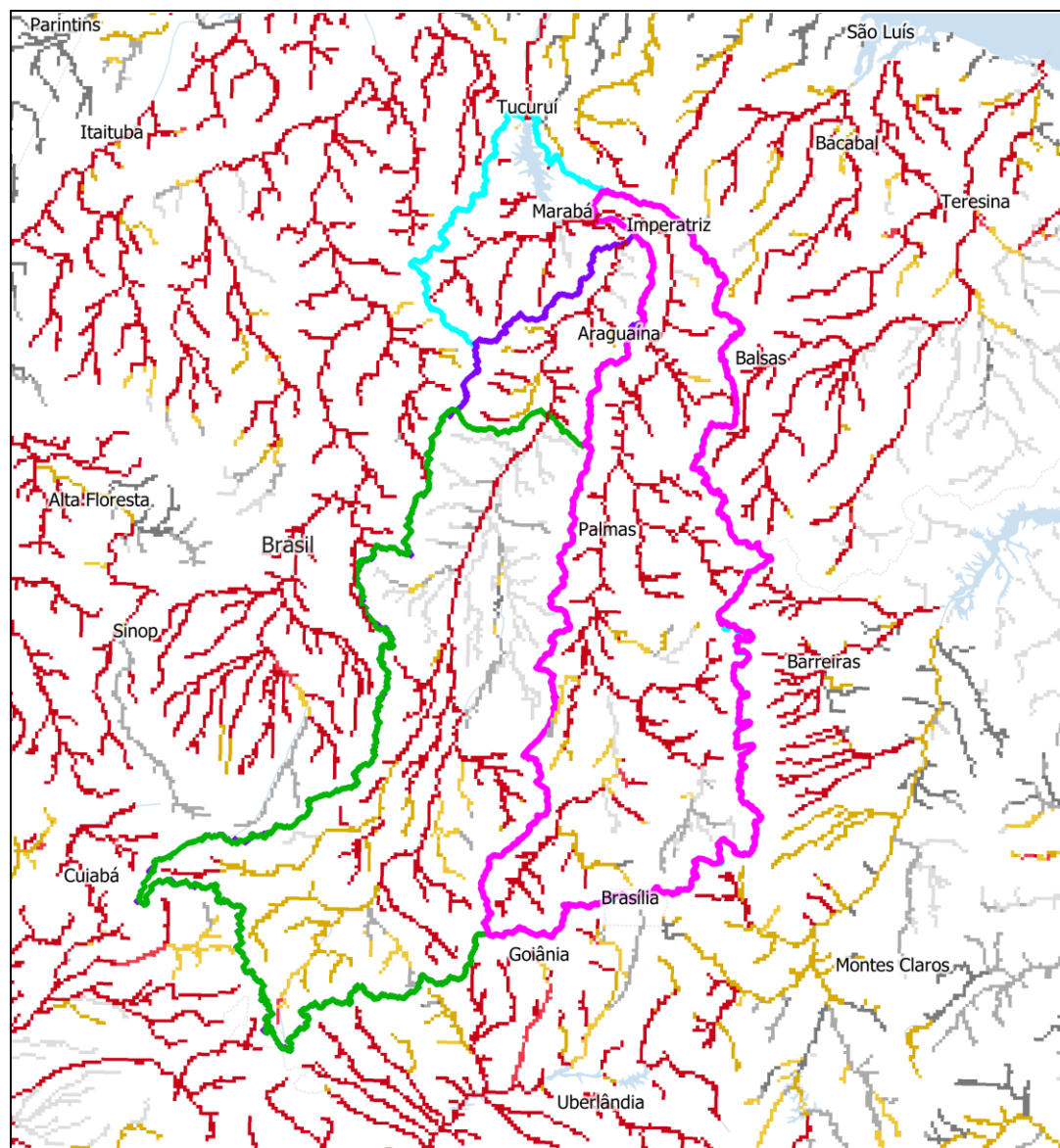
**Fonte: Meteorologia
(INMET/MERGE); Vazão
(ANA/ONS)**

MLT: 1993-2024

**Previsão Meteorológica:
ECMWF-S2S**

Previsão Sub-sazonal (45 dias) para a Bacia Rio Tocantins-Araguaia (Sistema Global de Previsão de Vazão - GloFAS)

Previsão: 14/10/2025 –



- Bacia Tocantins
- Bacia Conceição do Araguaia
- Bacia Araguaatins
- Bacia UHE Tucuruí

Categoria de anomalia para as vazões (percentil)

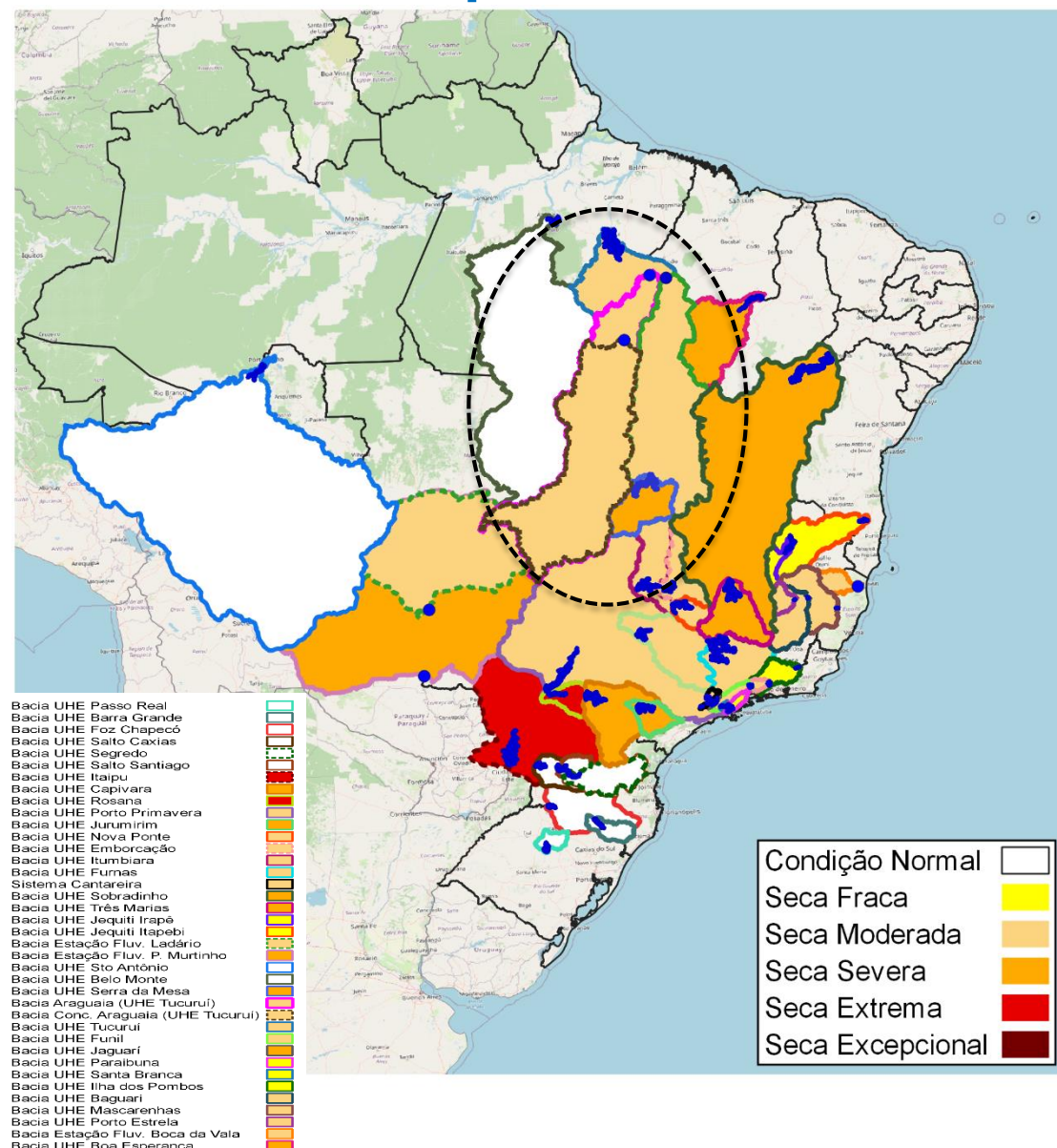
- Muito abaixo (1-10)
- Abaixo (10-25)
- Próximo da média (25-75)
- Acima (75-90)
- Muito acima (90-100)

Fonte: Previsão Meteorológica: ECMWF
Previsão de vazão: Lisflood/GloFAS Forecast
<https://www.globalfloods.eu/glofas-forecasting/>



Índice Bivariado de Seca (Precipitação-Cota/Vazão) - TSI

Previsão para 30 dias



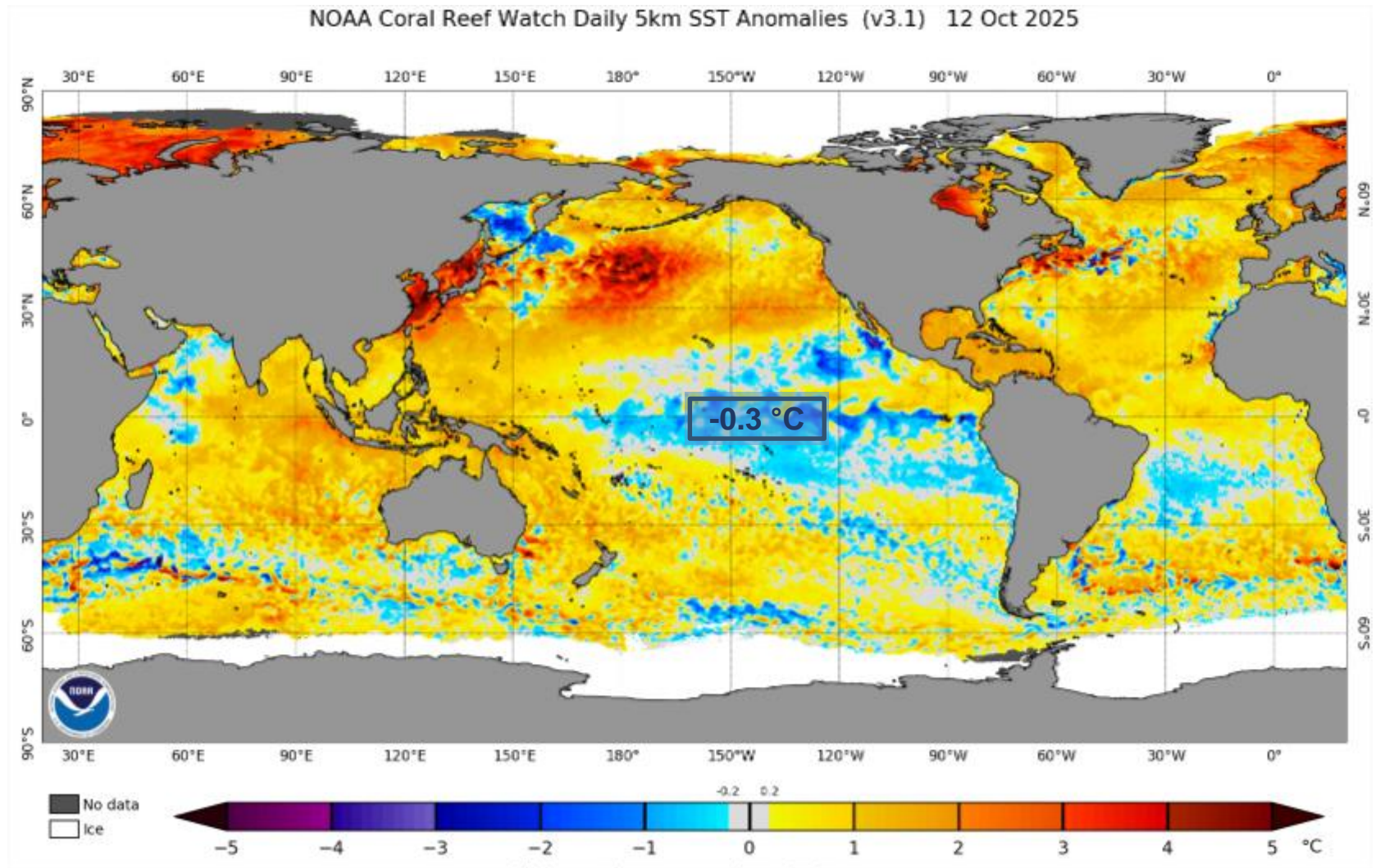
Estabilidade:

- Tucuruí (Moderada)
- Serra da Mesa (Severa)
- Conc. Araguaia (Moderada)
- Descarreto (Moderada)

Intensificação da seca:

- Araguatins (Moderada)

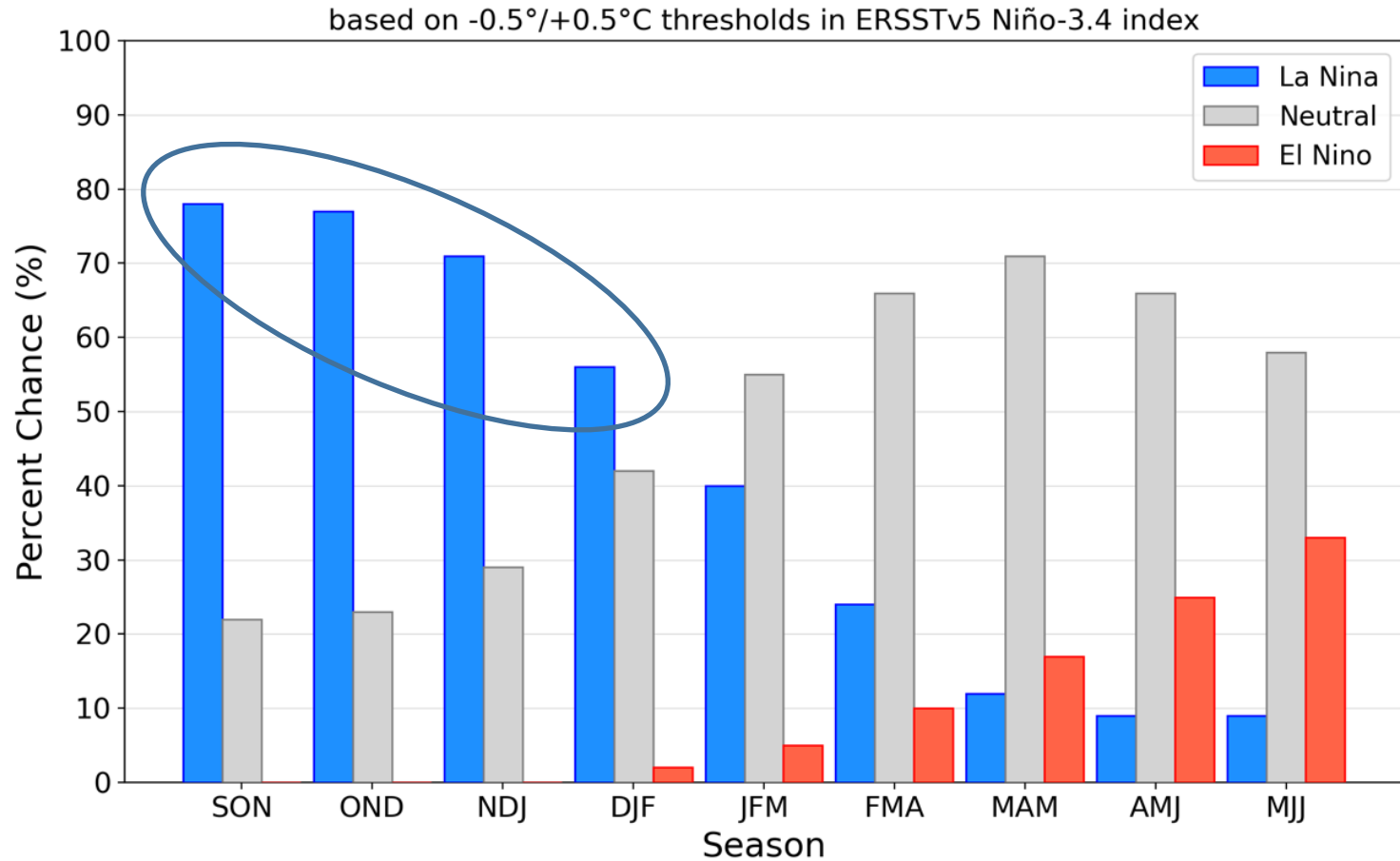
Status Atual: La Niña



FONTE: NOAA

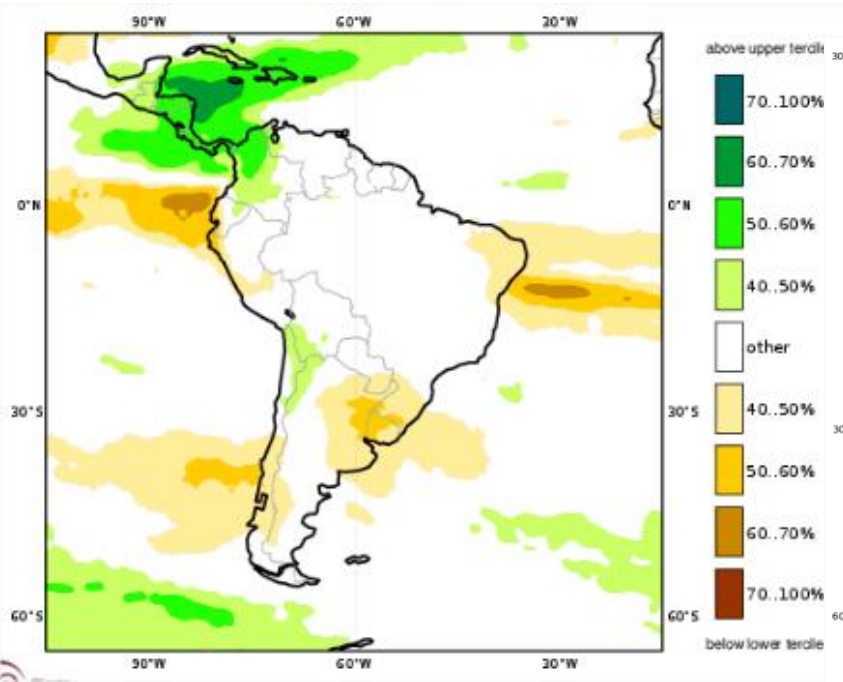
Previsão do “ENSO”

Official NOAA CPC ENSO Probabilities (issued October 2025)

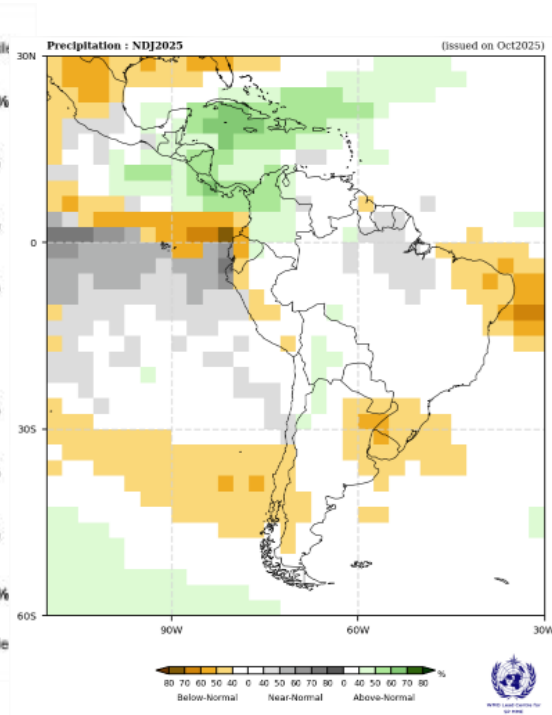


Previsão Sazonal de Chuva Multi-Modelo

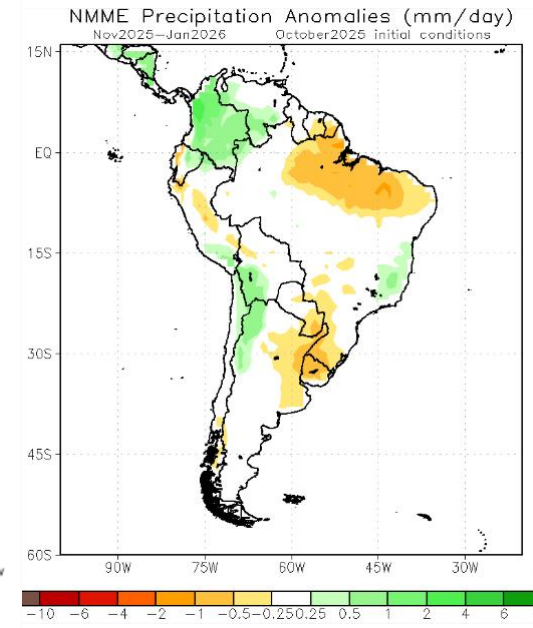
Novembro-Dezembro-Janeiro



Modelos “Europeus”

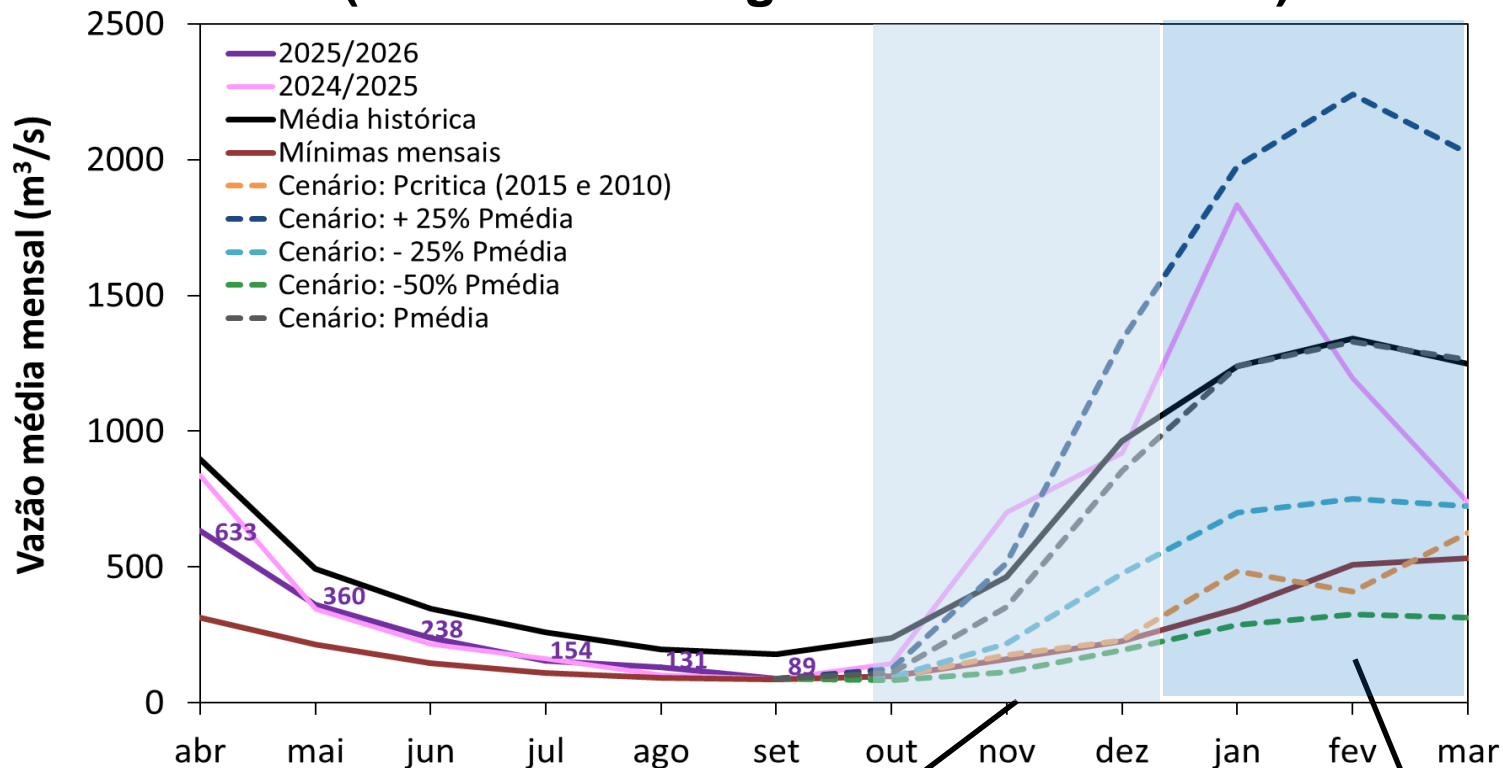


Modelos da WMO



Modelos Norte Americanos

Serra da Mesa: Projeção de Vazão (modelo hidrológico PDM-CEMADEN)



Out-Dez (Meses Chuvosos)

MLT: **556 m³/s**

Vazão	% MLT
659 m³/s	119%
439 m³/s	79%
263 m³/s	47%

2015 → **167 m³/s** **30%**

Jan-Mar (Meses Chuvosos)

MLT: **1275 m³/s**

Vazão	% MLT
2080 m³/s	163%
1277 m³/s	100%
725 m³/s	57%

2010 → **507 m³/s** **40%**