

Monitoramento da situação da seca na Região Sul

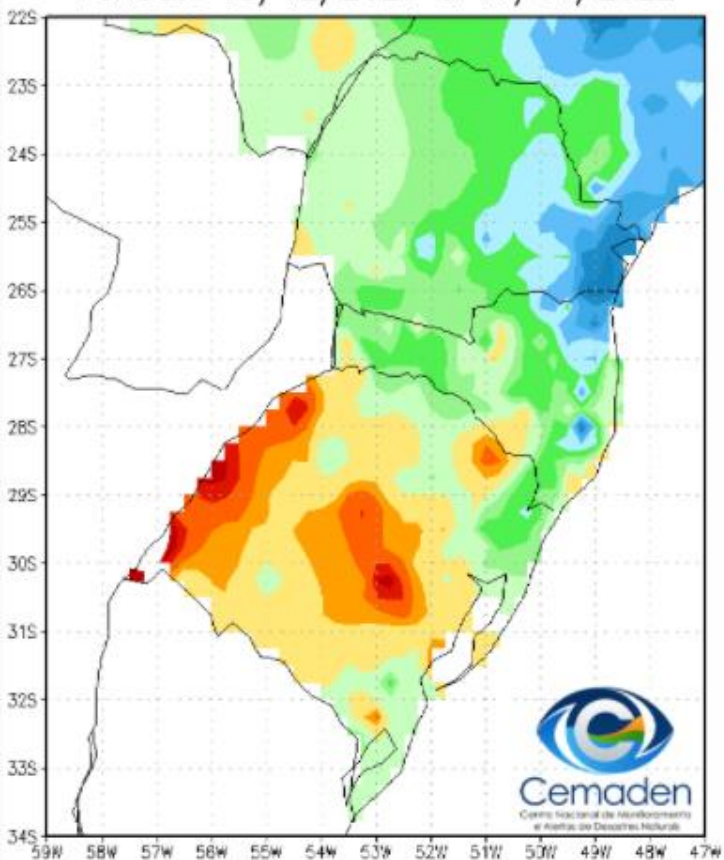


Cemaden
Centro Nacional de Monitoramento
e Alertas de Desastres Naturais

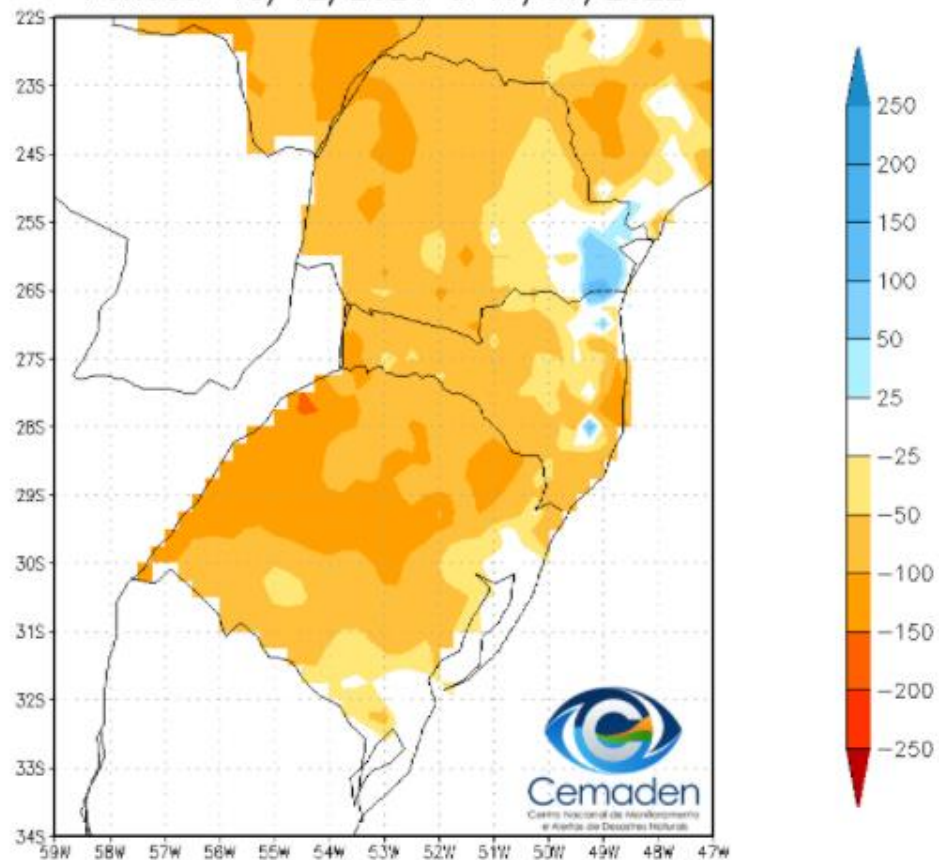
18 de Janeiro de 2022

Precipitação nos últimos 30 dias

Precipitação Acumulada (mm)
Período: 18/12/2021 a 17/01/2022

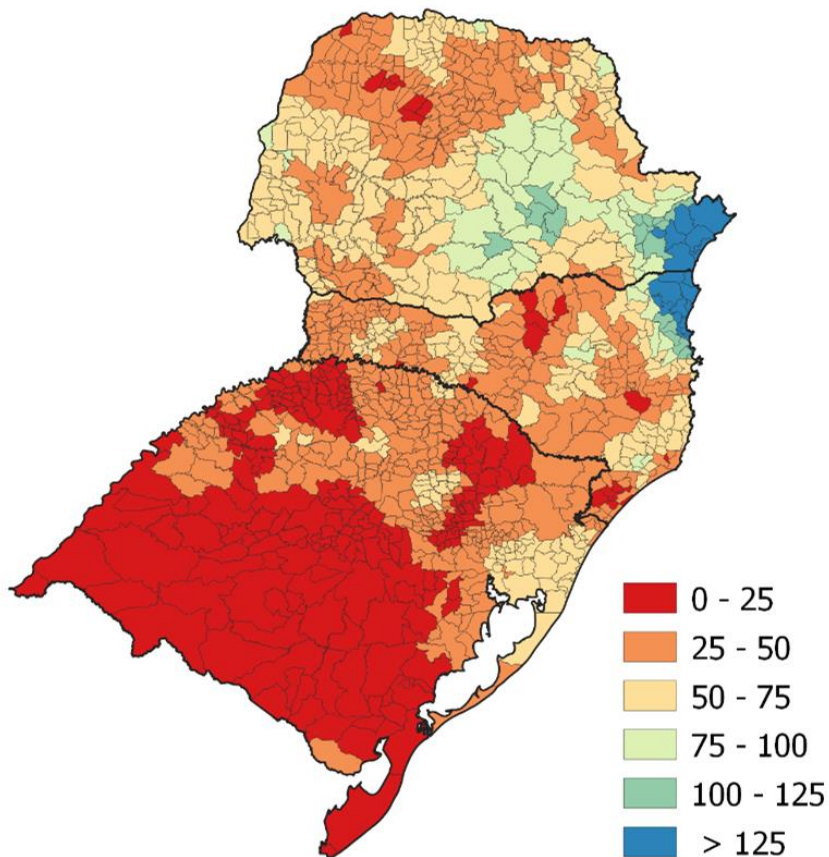


Anomalia de Precipitação (mm)
Período: 18/12/2021 a 17/01/2022

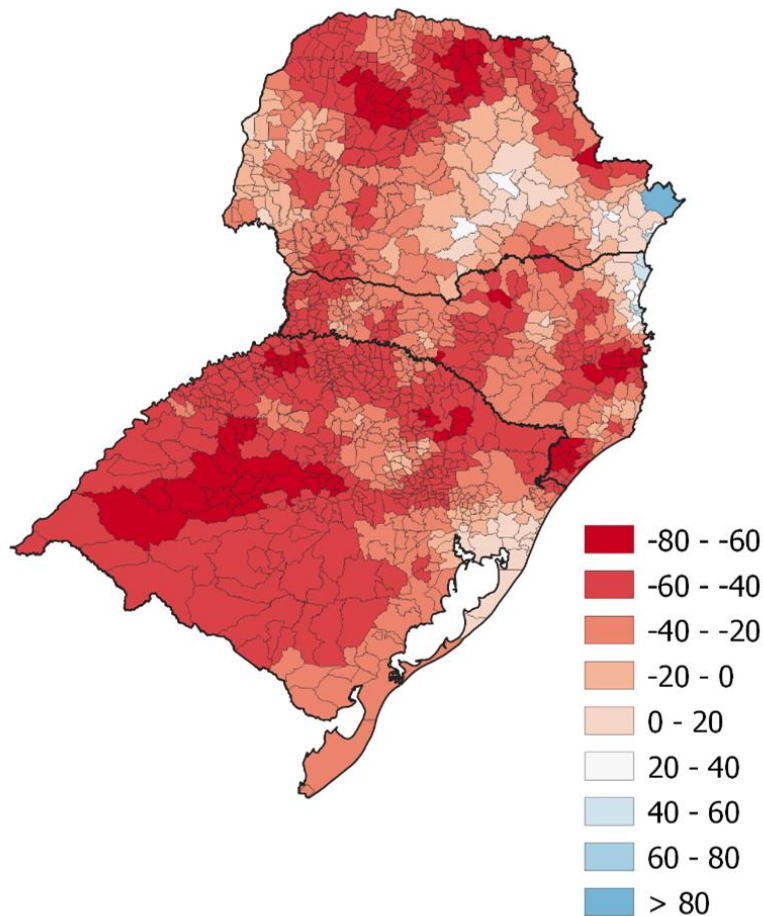


Precipitação – Região Sul: **Janeiro/2022**(até dia 15/01)

Chuva acumulada (mm)



Anomalia em mm

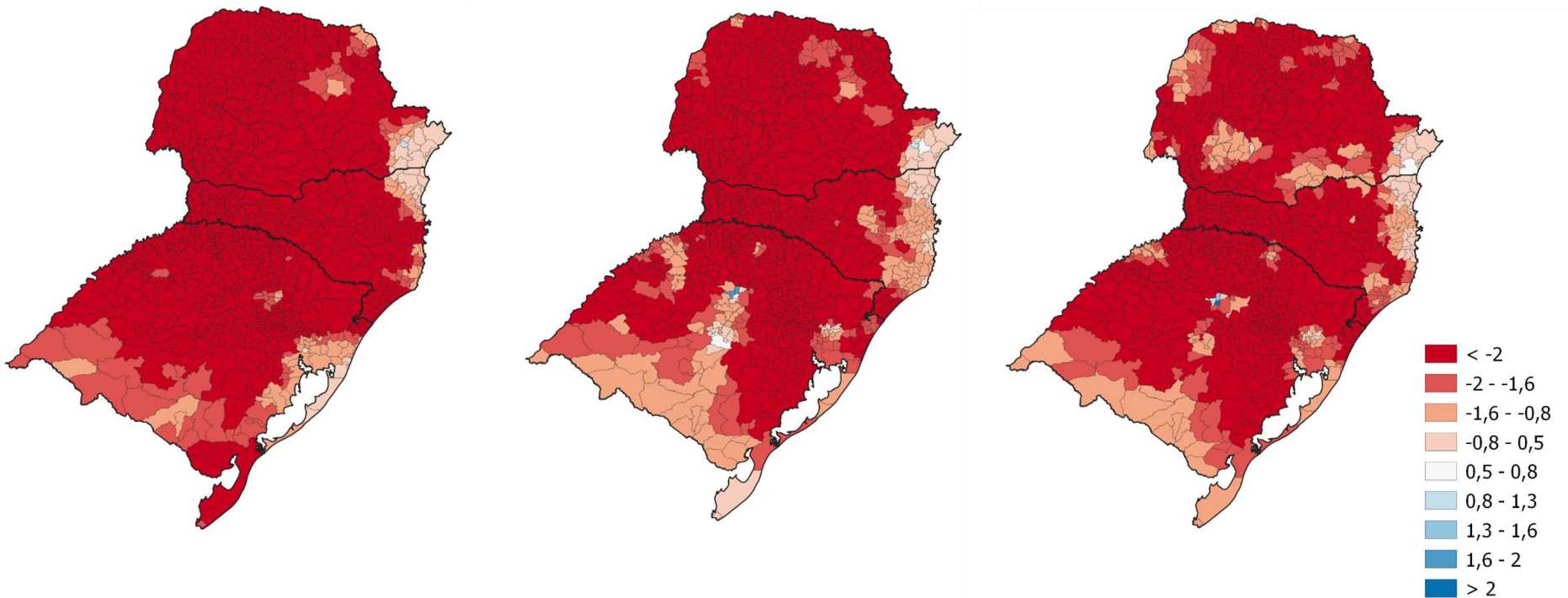


SPI: Janeiro de 2022

SPI03

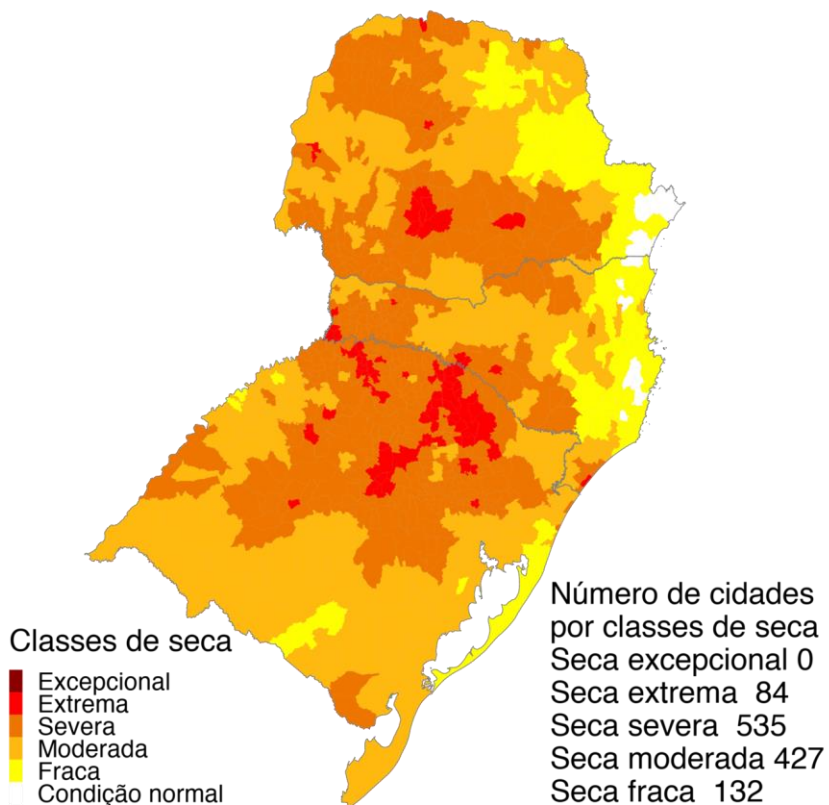
SPI12

SPI24



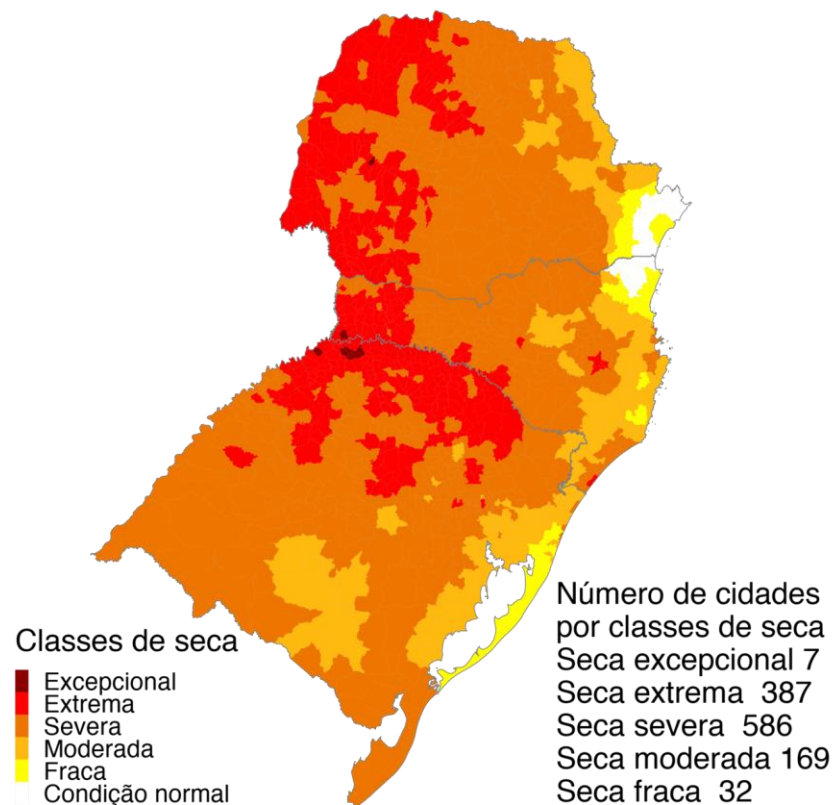
Índice Integrado de Seca – IIS (SPI, VHI, AUS)

01 de janeiro de 2022



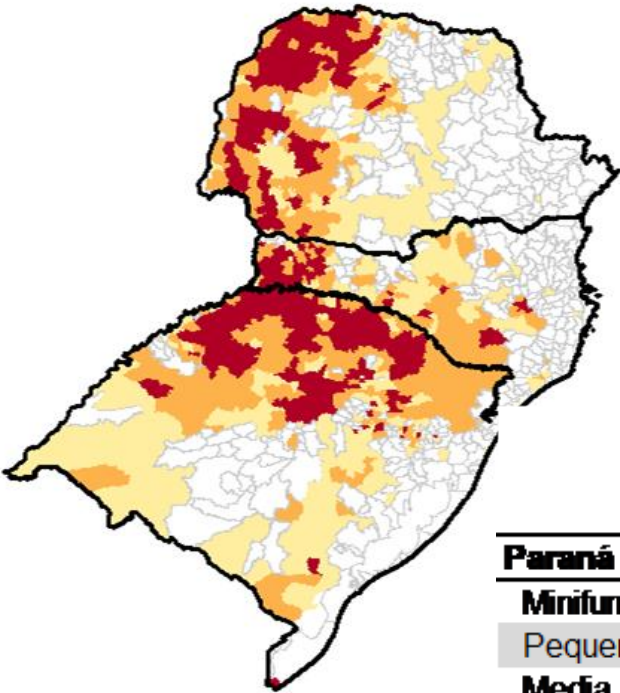
Dezembro 2021
Índice Integrado de Seca (SPI3, VHI, AUS)
Dados: CPTEC/INPE - NOAA - NASA / Preparação: Cemaden/MCTI

15 de janeiro de 2022



Janeiro 2022
Índice Integrado de Seca (SPI3, VHI, AUS)
Dados: CPTEC/INPE - NOAA - NASA / Preparação: Cemaden/MCTI

Áreas Agroprodutivas afetadas pela seca – Região Sul: 14/01



Imóveis Rurais Impactados > 40%	
138704	(53%)
69293	(54%)
16527	(61%)
32584	(14%)
14097	(17%)
2402	(24%)
105540	(29%)
41665	(30%)
6529	(26%)

	40 a 60%	60 - 80%	> 80%	Imóveis Rurais Impactados > 40%
Paraná				
Minifúndio	52610 (20%)	57453 (22%)	50645 (19%)	160708 (61%)
Pequena Propriedade	27459 (22%)	27143 (21%)	24356 (19%)	78958 (62%)
Media Propriedade	5528 (21%)	4589 (17%)	4407 (16%)	14524 (54%)
Santa Catarina				
Minifúndio	42164 (18%)	48102 (21%)	39187 (17%)	129453 (56%)
Pequena Propriedade	15238 (19%)	16311 (20%)	8269 (10%)	39818 (48%)
Media Propriedade	2406 (24%)	2412 (17%)	487 (5%)	5305 (53%)
Rio Grande do Sul				
Minifúndio	81469 (22%)	72578 (20%)	126465 (34%)	280512 (76%)
Pequena Propriedade	29454 (21%)	33037 (24%)	39785 (29%)	102276 (74%)
Media Propriedade	6639 (27%)	7133 (29%)	3504 (14%)	17276 (70%)

*Estimativa a partir dos dados do Cadastro Ambiental Rural para minifúndios, pequenas e médias propriedades e VHI (Satélite)

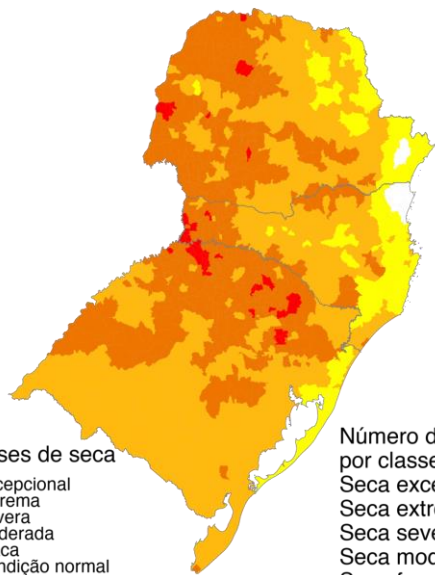
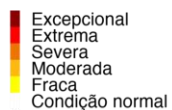
Cenários IIS: Região Sul: Fevereiro/22

Chuva 30% ACIMA da média

Chuva 30% ABAIXO da média

IIS6 observado (15 de janeiro)

Classes de seca



Número de cidades por classes de seca
 Seca excepcional 0
 Seca extrema 49
 Seca severa 519
 Seca moderada 475
 Seca fraca 135

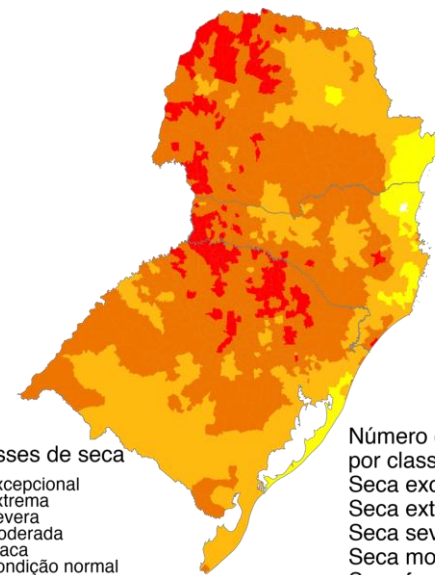
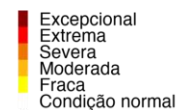
Janeiro 2022

Índice Integrado de Seca (SPI6, VHI)

Cenário: Chuva + 30%

Dados: CPTEC/INPE - NOAA - NASA / Preparação: Cemaden/MCTI

Classes de seca



Número de cidades por classes de seca
 Seca excepcional 0
 Seca extrema 207
 Seca severa 626
 Seca moderada 302
 Seca fraca 55

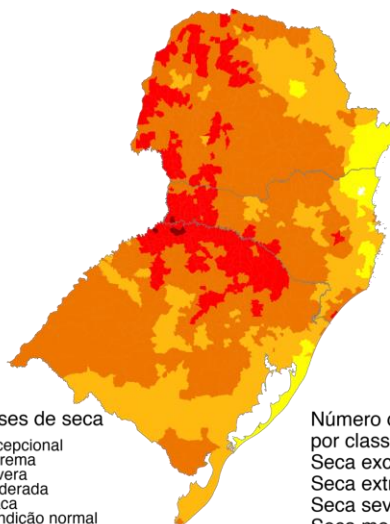
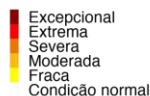
Janeiro 2022

Índice Integrado de Seca (SPI6, VHI)

Cenário: Chuva - 30%

Dados: CPTEC/INPE - NOAA - NASA / Preparação: Cemaden/MCTI

Classes de seca



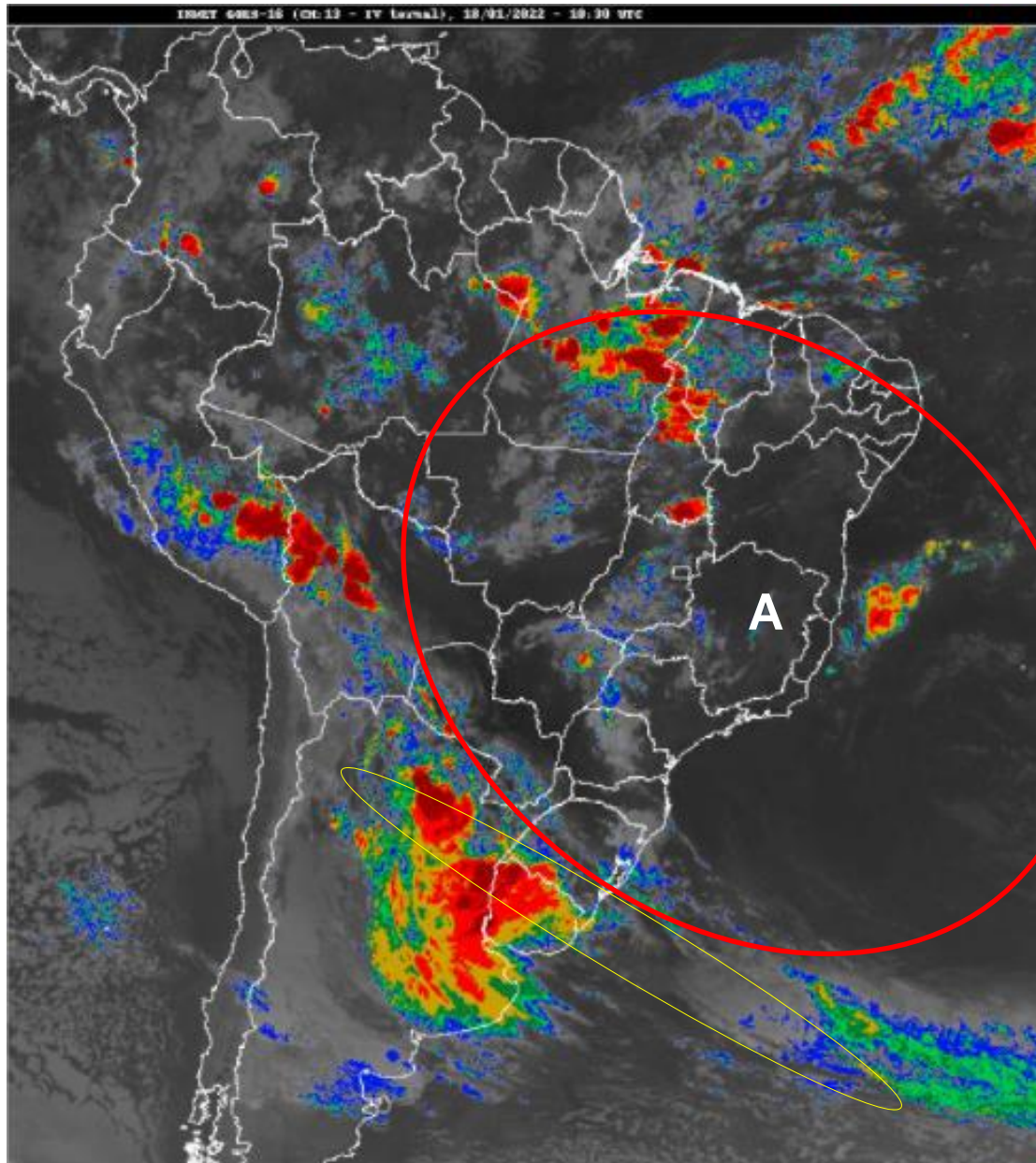
Número de cidades por classes de seca
 Seca excepcional 6
 Seca extrema 297
 Seca severa 561
 Seca moderada 274
 Seca fraca 52

Janeiro 2022

Índice Integrado de Seca (SPI6, VHI, AUS)

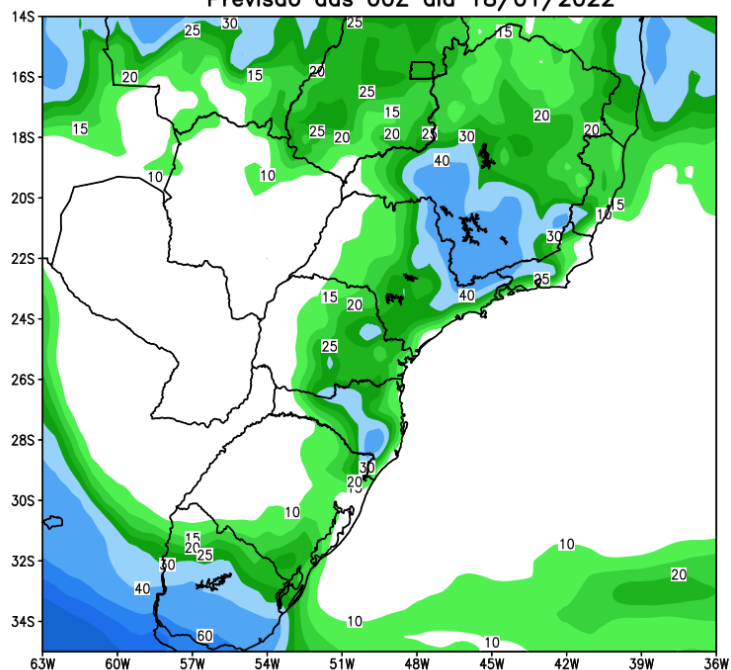
Dados: CPTEC/INPE - NOAA - NASA / Preparação: Cemaden/MCTI

Situação meteorológica atual

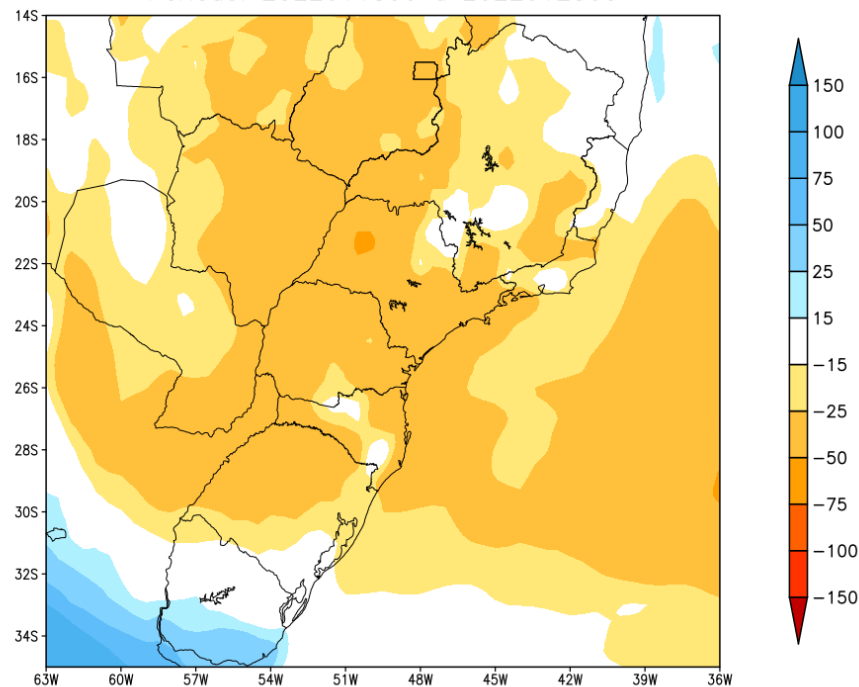


Previsão de chuva próximos 7 dias

GEFS / BRASIL_SUL
Precipitação acumulada 1aSem (mm)
Previsão das 00Z dia 18/01/2022



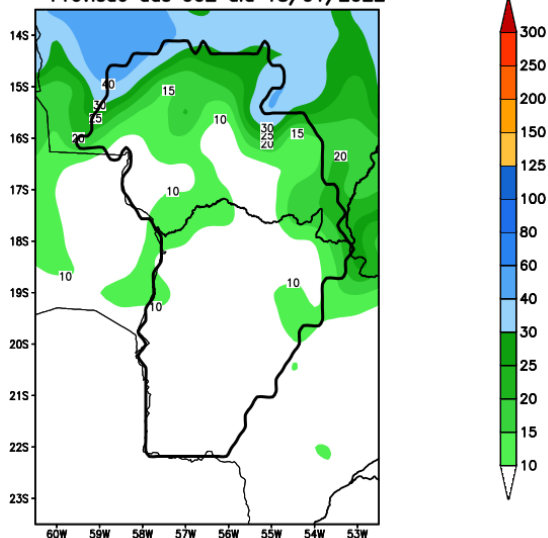
Anomalia de Precipitação BR_SUL (mm)
Período: 2022011800 a 2022012500



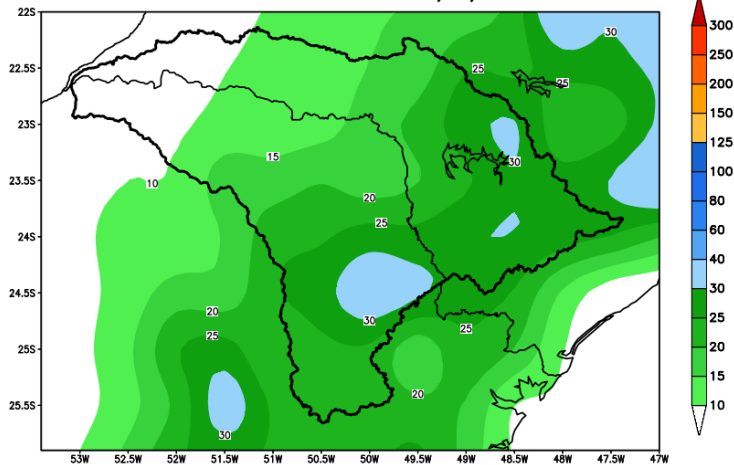
MODELO GFS

Previsão para as principais bacias

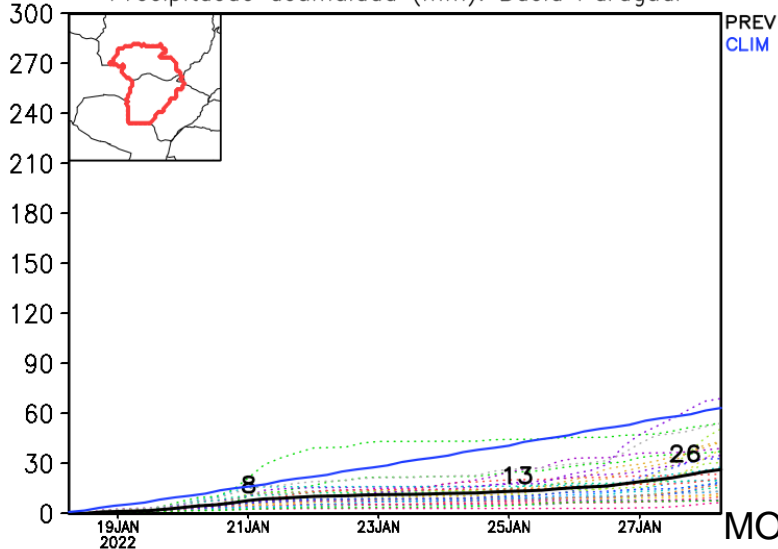
GEFS / Bacia do Rio Paraguai
Precipitação acumulada em 7 dias (mm)
Previsão das 00Z dia 18/01/2022



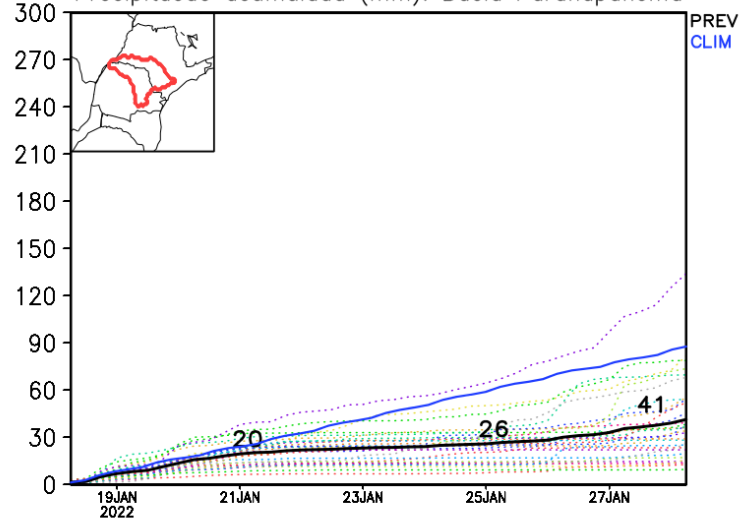
GEFS / Bacia do Rio Paranapanema
Precipitação acumulada em 7 dias (mm)
Previsão das 00Z dia 18/01/2022



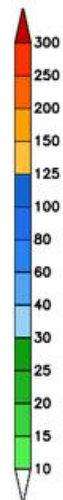
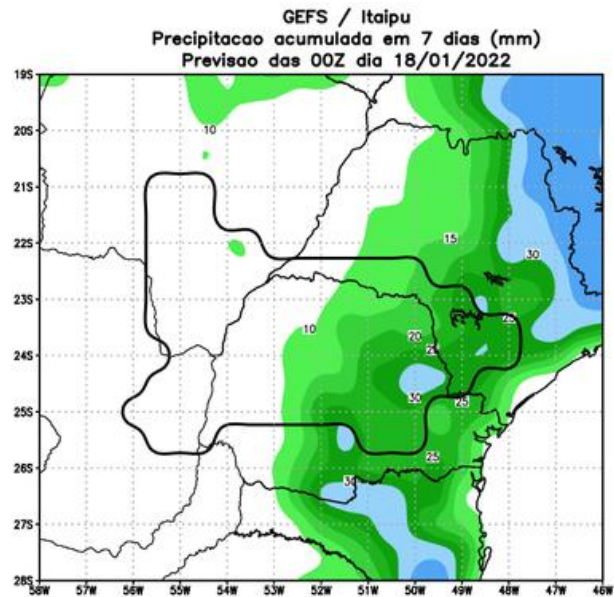
Precipitação acumulada (mm): Bacia Paraguai



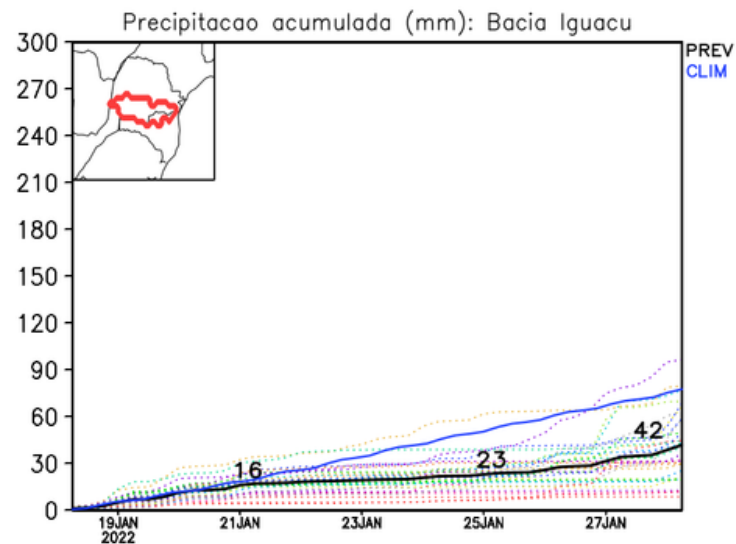
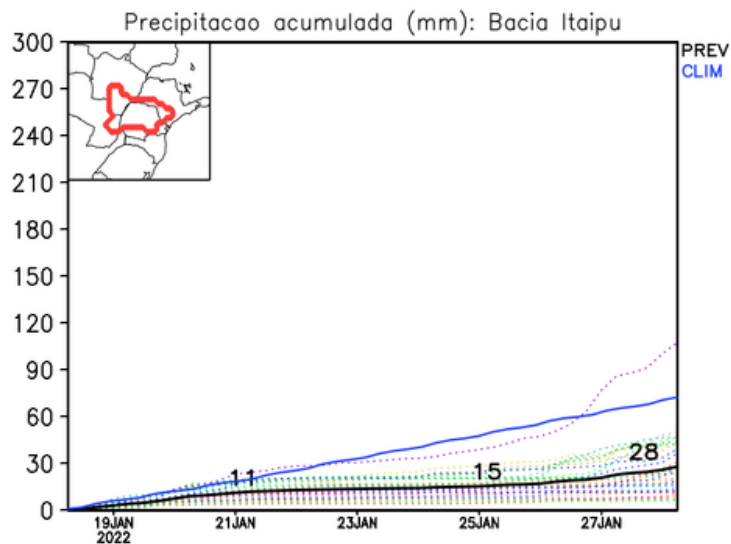
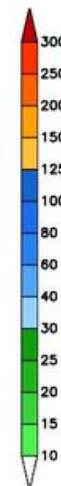
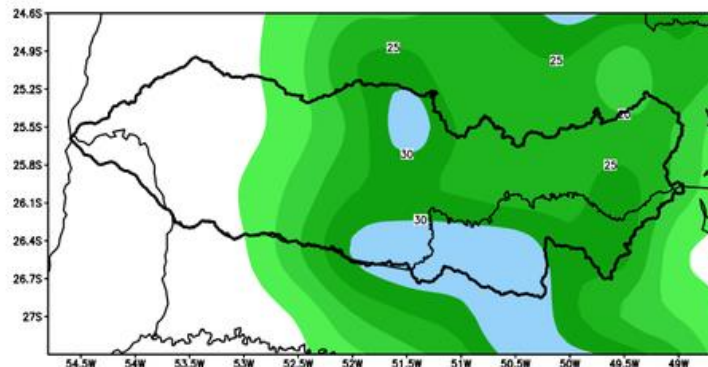
Precipitação acumulada (mm): Bacia Paranapanema



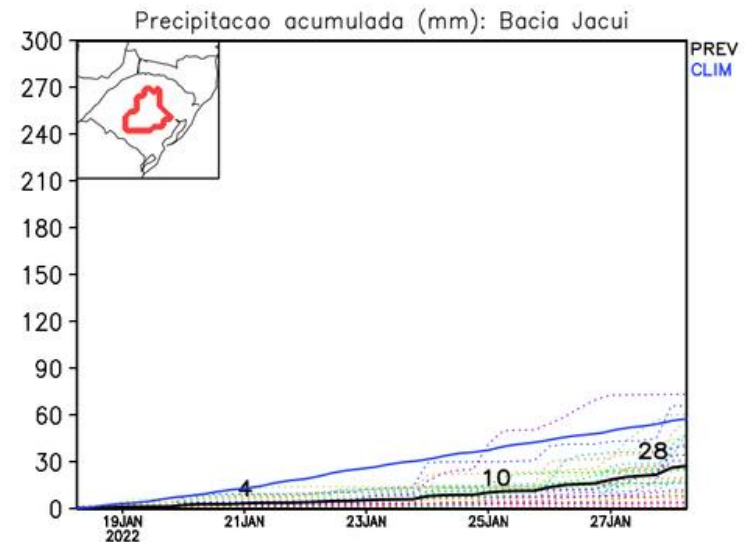
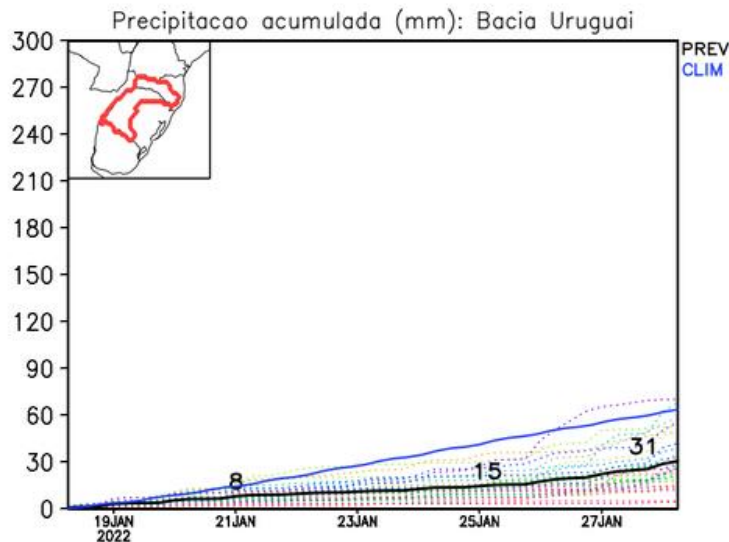
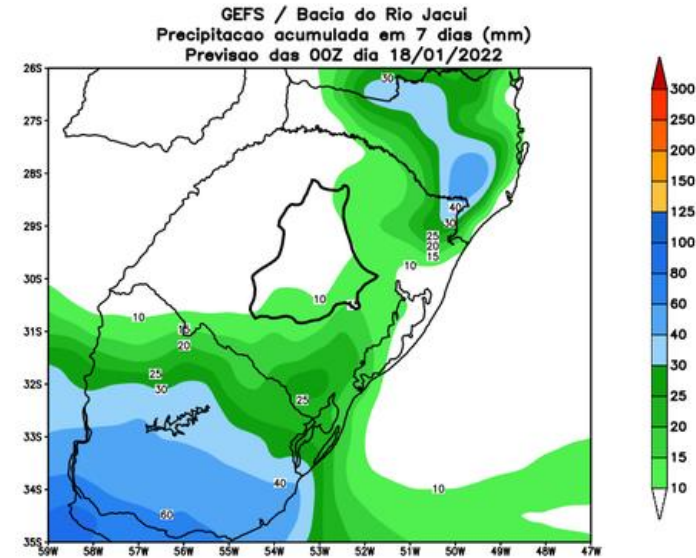
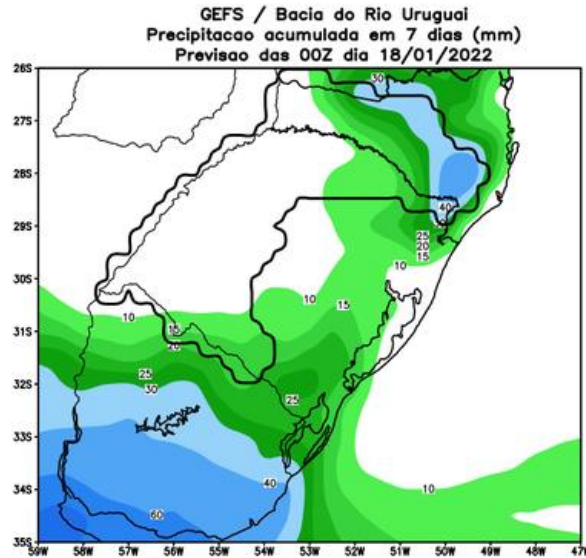
Previsão para as principais bacias



GEFS / Bacia do Rio Iguacu
Precipitação acumulada em 7 dias (mm)
Previsão das 00Z dia 18/01/2022

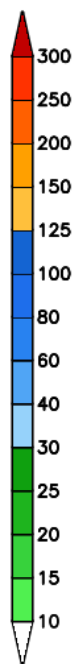
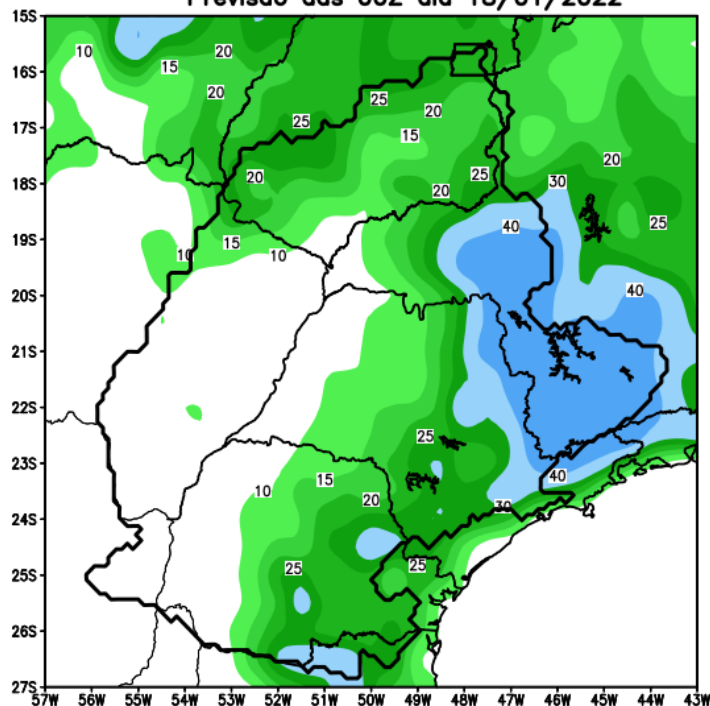


Previsão para as principais bacias

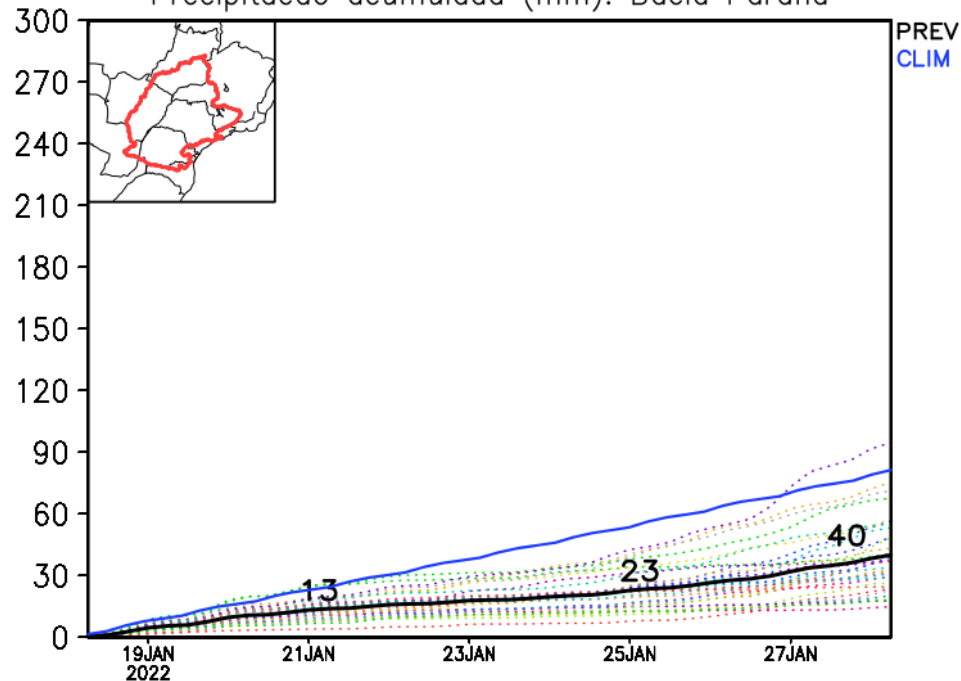


Previsão para as principais bacias

GEFS / Bacia do Parana
Precipitacao acumulada em 7 dias (mm)
Previsao das 00Z dia 18/01/2022

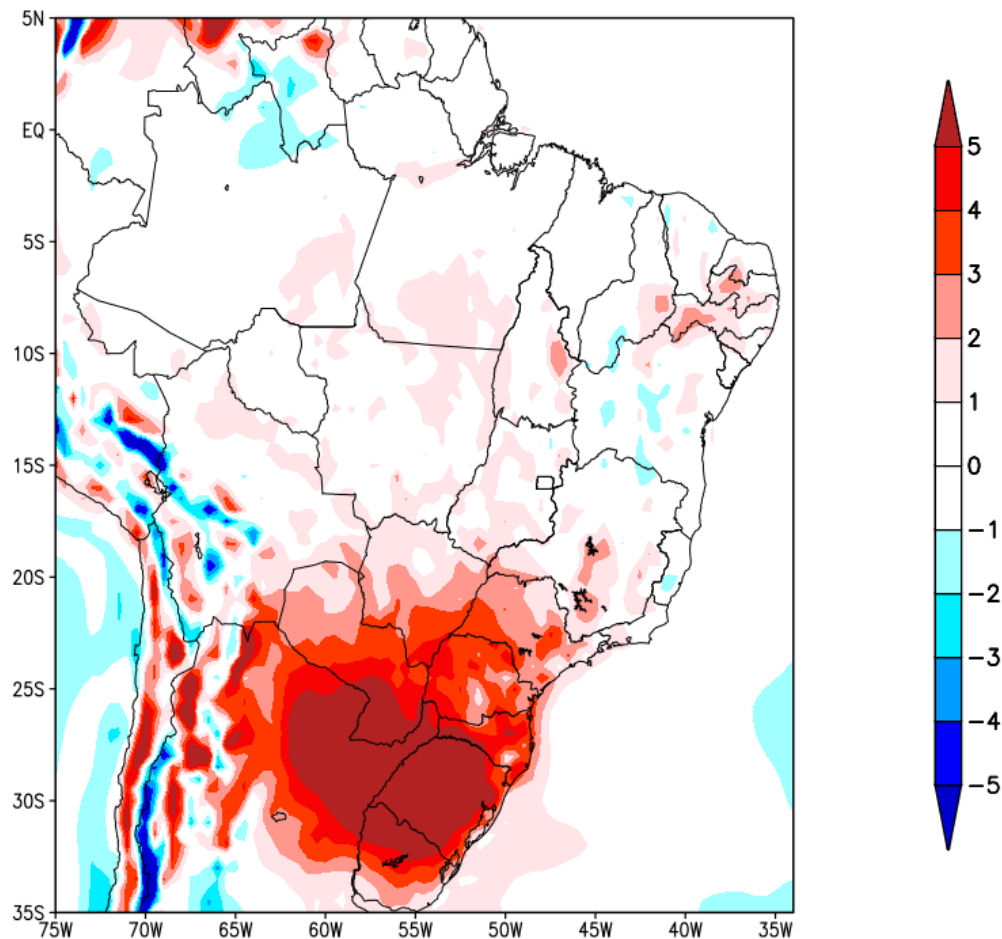


Precipitacao acumulada (mm): Bacia Parana



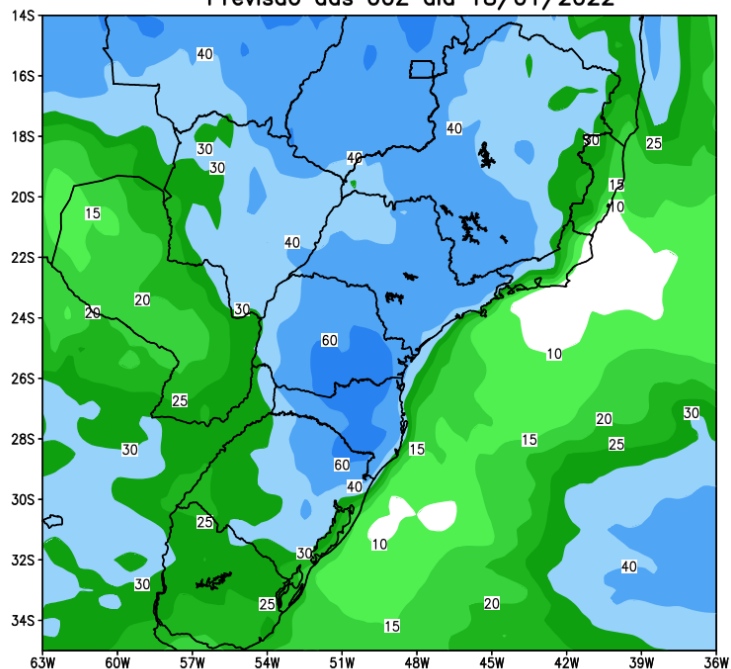
Previsão de Temperatura

Anomalia de Temperatura BR (C)
Período: 2022011800 a 2022012500

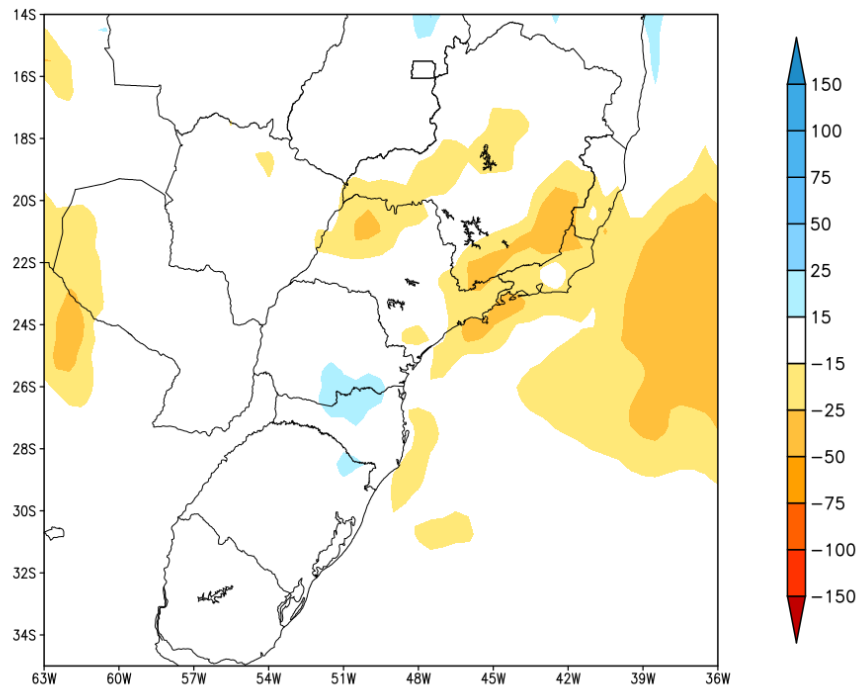


Tendência para a segunda semana

GEFS / BRASIL_SUL
Precipitacao acumulada 2aSem (mm)
Previsao das 00Z dia 18/01/2022



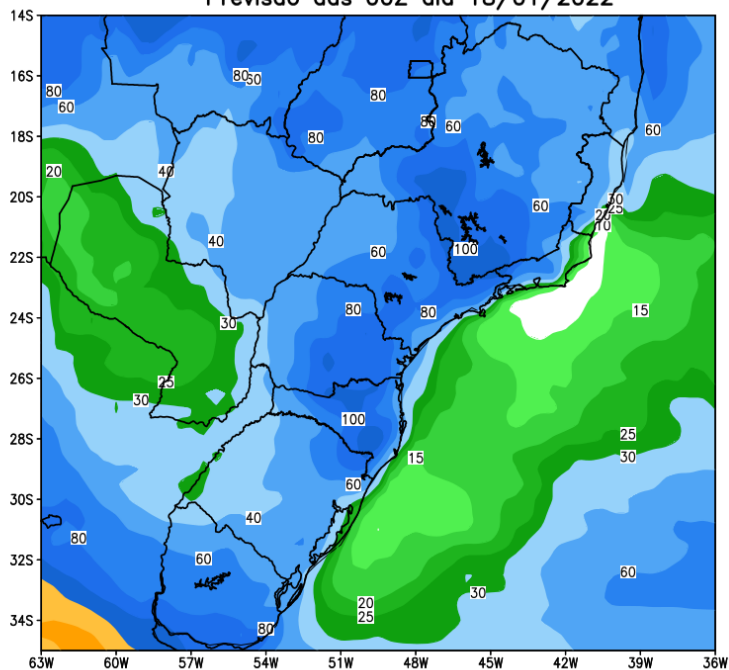
Anomalia de Precipitacao BR_SUL (mm)
Periodo: 2022012600 a 2022020100



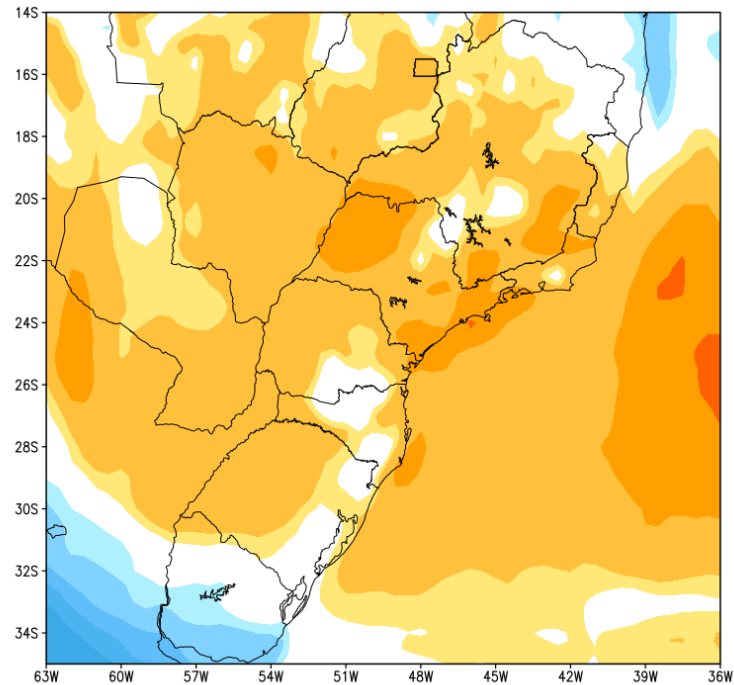
MODELO GFS

Tendência para as duas próximas semanas

GEFS / BRASIL_SUL
Precipitação acumulada 14 dias (mm)
Previsão das 00Z dia 18/01/2022



Anomalia de Precipitação BR_SUL (mm)
Período: 2022011800 a 2022020100



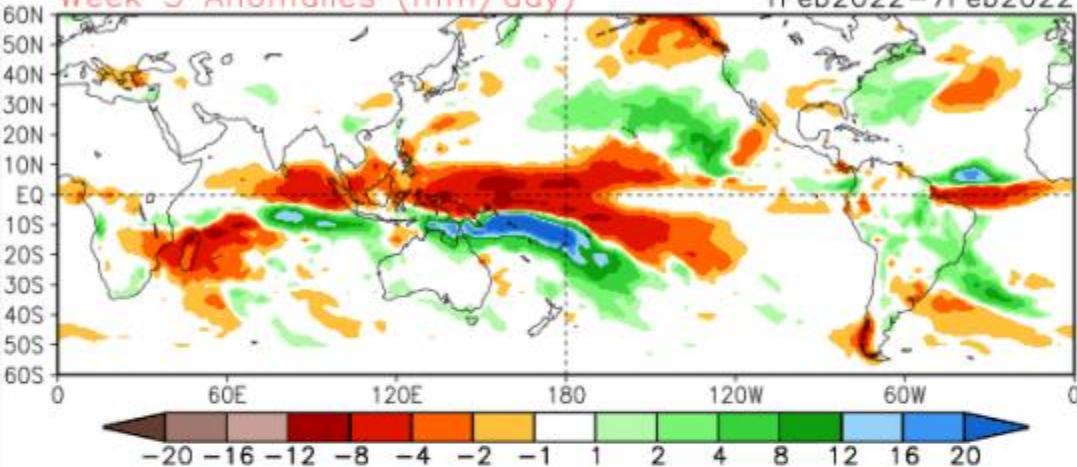
MODELO GFS

Tendência 3a e 4a semanas

16 Member Ensemble Mean Forecast from 17Jan2022

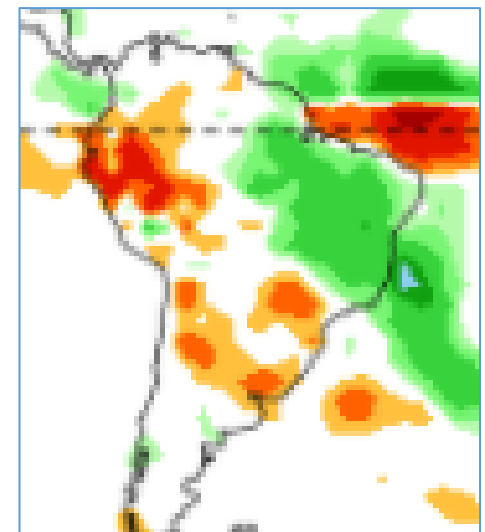
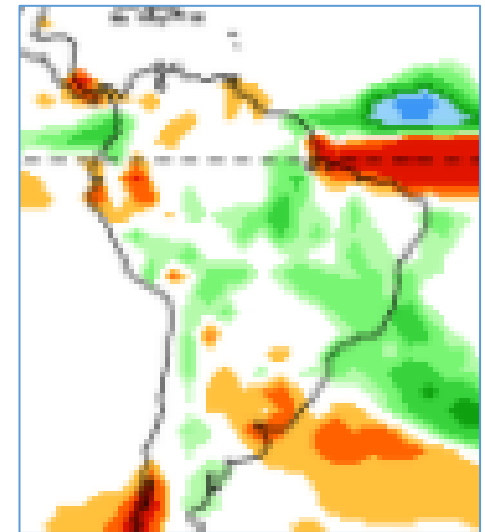
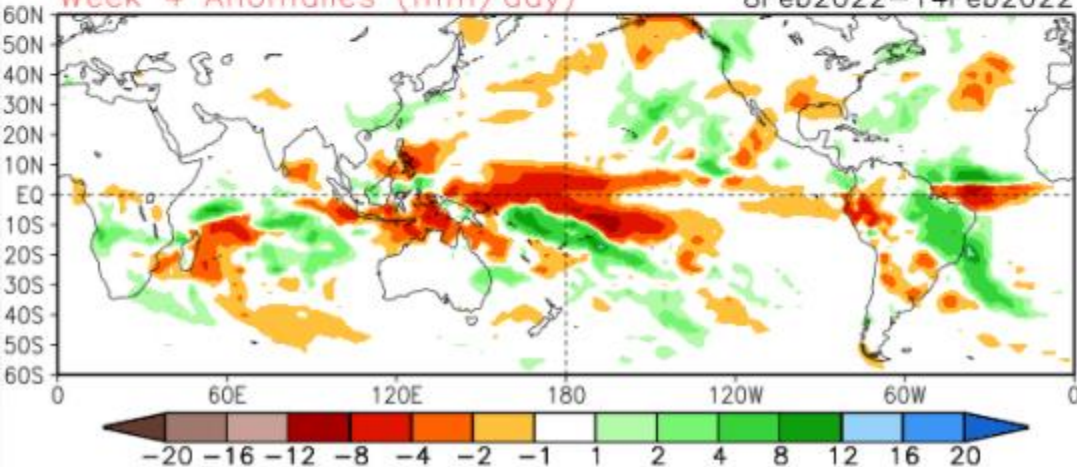
Week 3 Anomalies (mm/day)

1Feb2022-7Feb2022



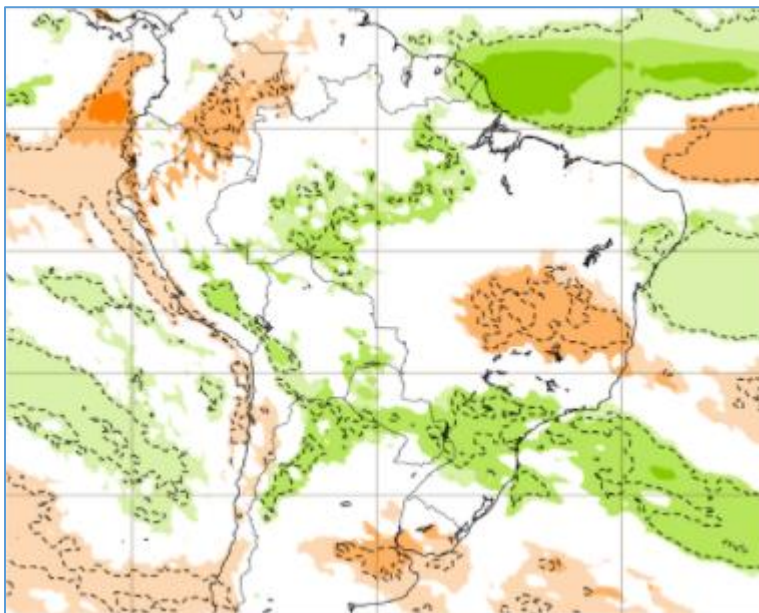
Week 4 Anomalies (mm/day)

8Feb2022-14Feb2022

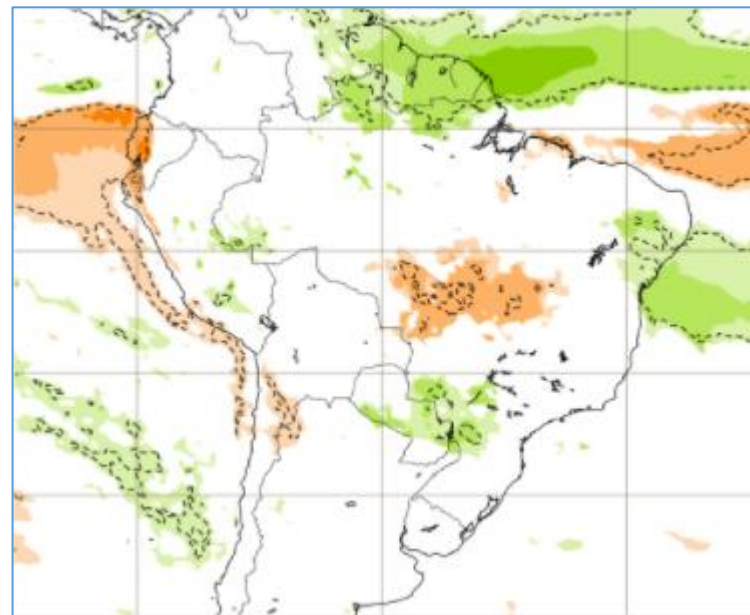


Tendência para 3ª e 4ª semanas

31/01-07/02

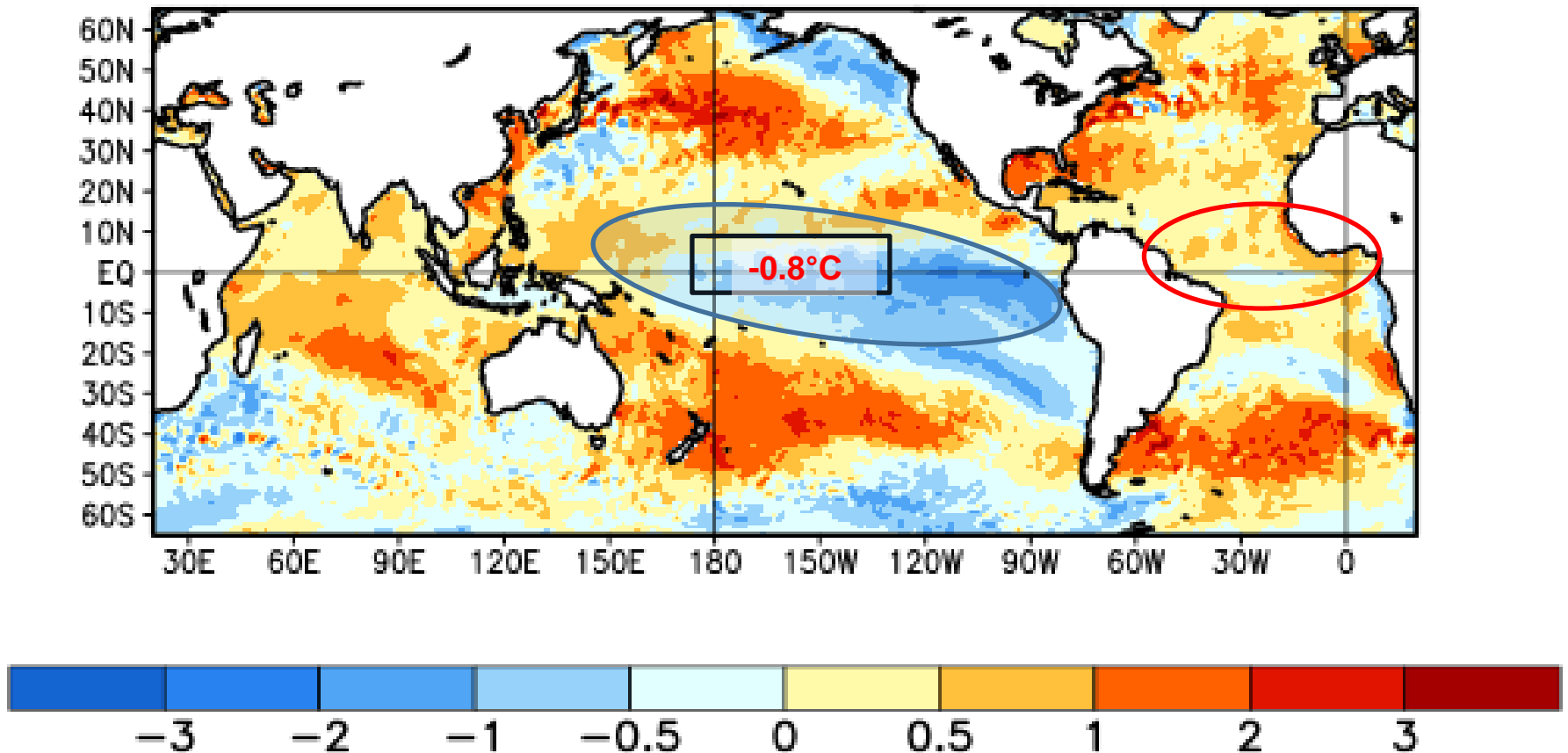


07-14/02



Status Atual: **La Niña**

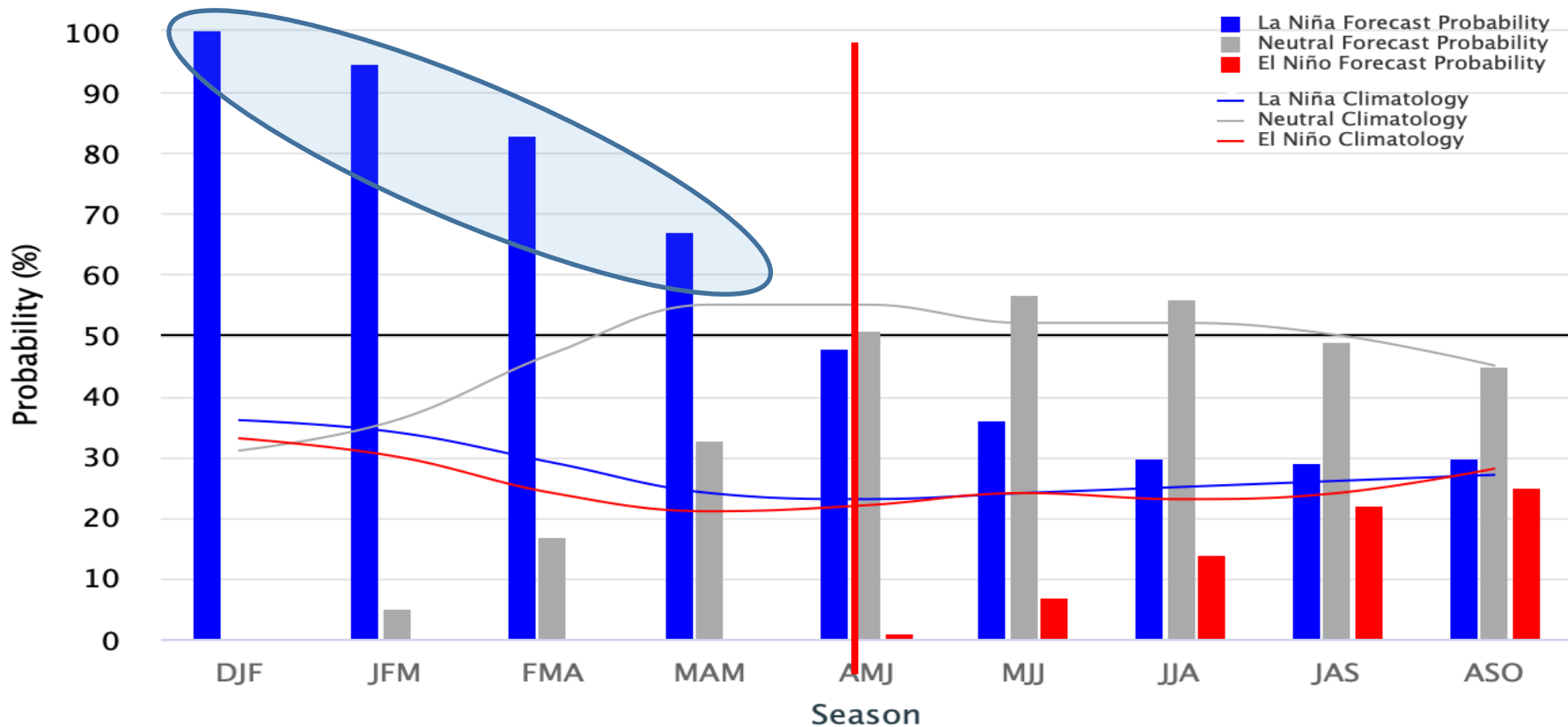
Average SST Anomalies 19 DEC 2021 – 15 JAN 2022



Previsão do “La Niña”

Early-January 2022 CPC/IRI Official Probabilistic ENSO Forecasts

ENSO state based on NINO3.4 SST Anomaly
Neutral ENSO: $-0.5\text{ }^{\circ}\text{C}$ to $0.5\text{ }^{\circ}\text{C}$



Status Atual: **La Niña**

FONTE: NOAA

Previsão Sazonal de chuva (FMA)

