



CEMADEN

**Centro Nacional de Monitoramento e
Alertas de Desastres Naturais**

Monitoramento,
Previsões e
Projeções para a
Bacia do Rio São
Francisco

06 de Maio de 2025

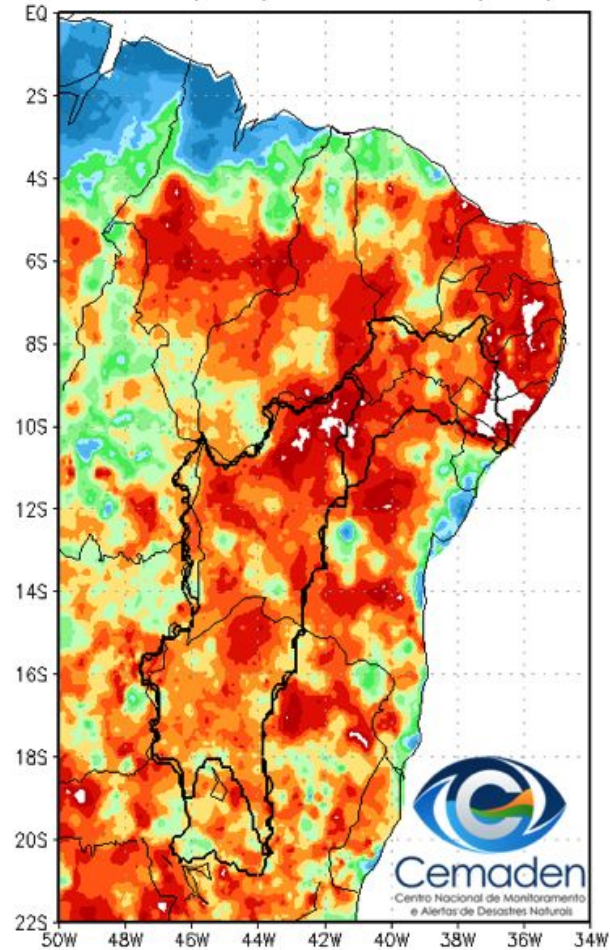


MINISTÉRIO DA
CIÊNCIA, TECNOLOGIA
E INOVAÇÃO

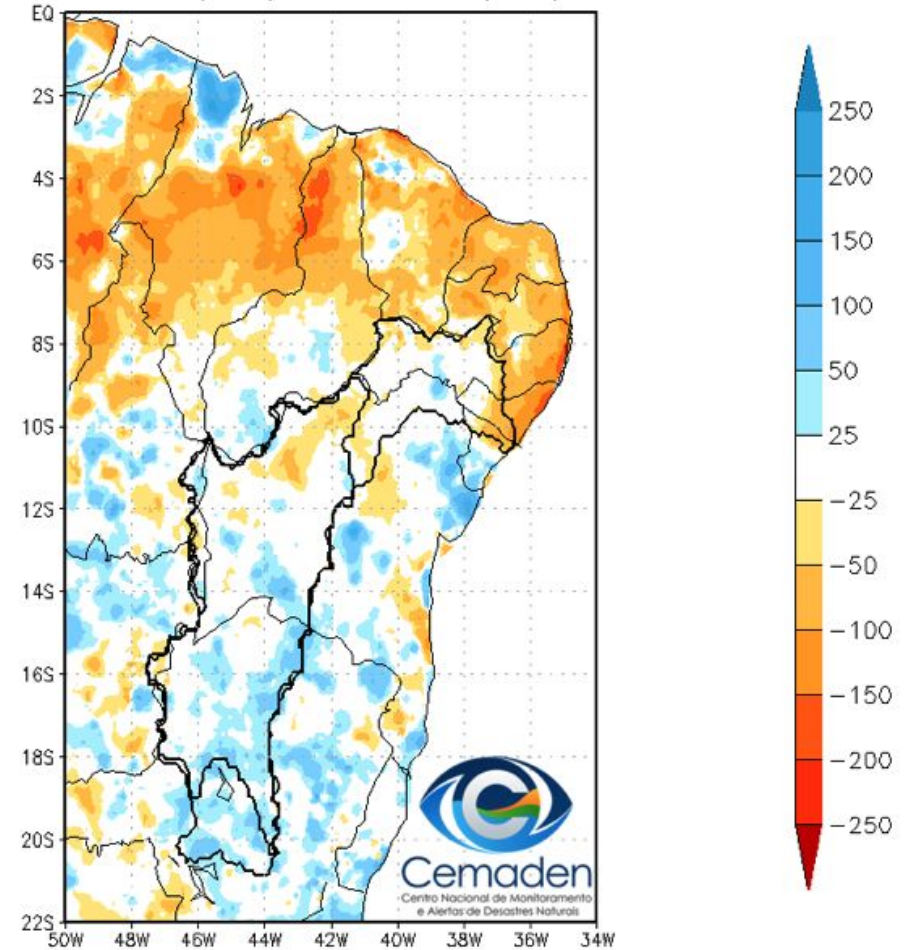


Chuva dos últimos 30 dias

Precipitacao Acumulada (mm) A.S.
Período: 05/04/2025 a 05/05/2025

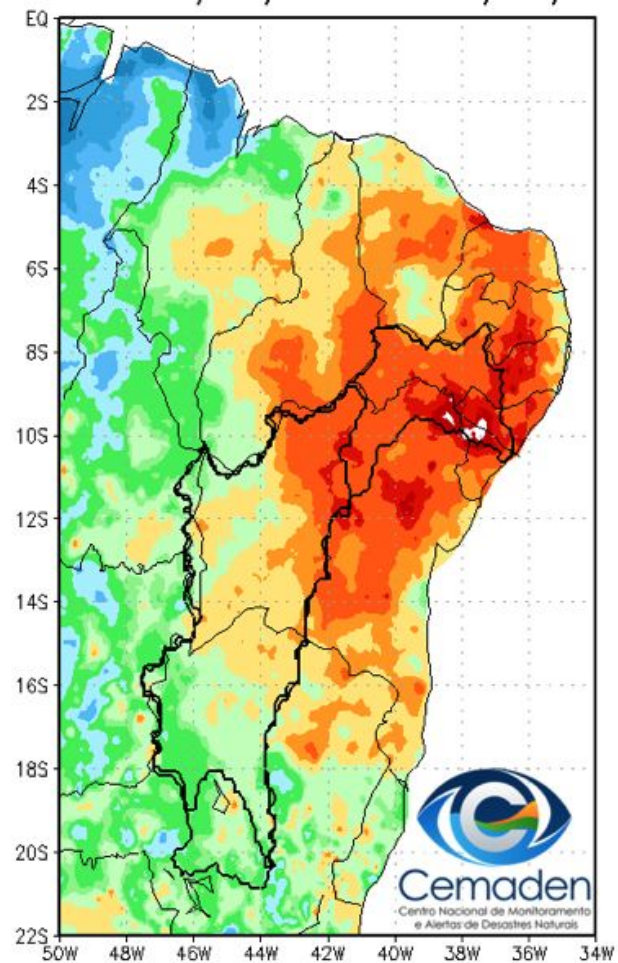


Anomalia de Precipitacao (mm) A.S.
Período: 05/04/2025 a 05/05/2025

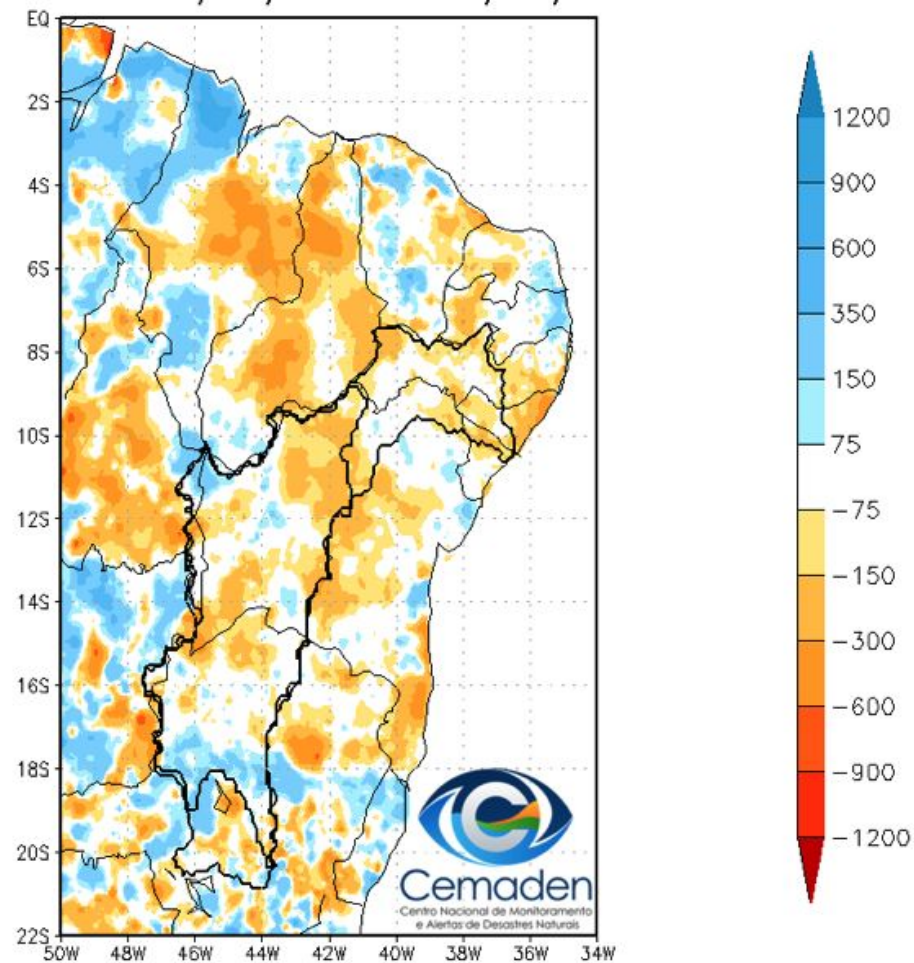


Chuva no Ano Hidrológico - desde 01/10/2024

Precipitacao Acumulada (mm) A.S.
Período: 01/10/2024 a 05/05/2025

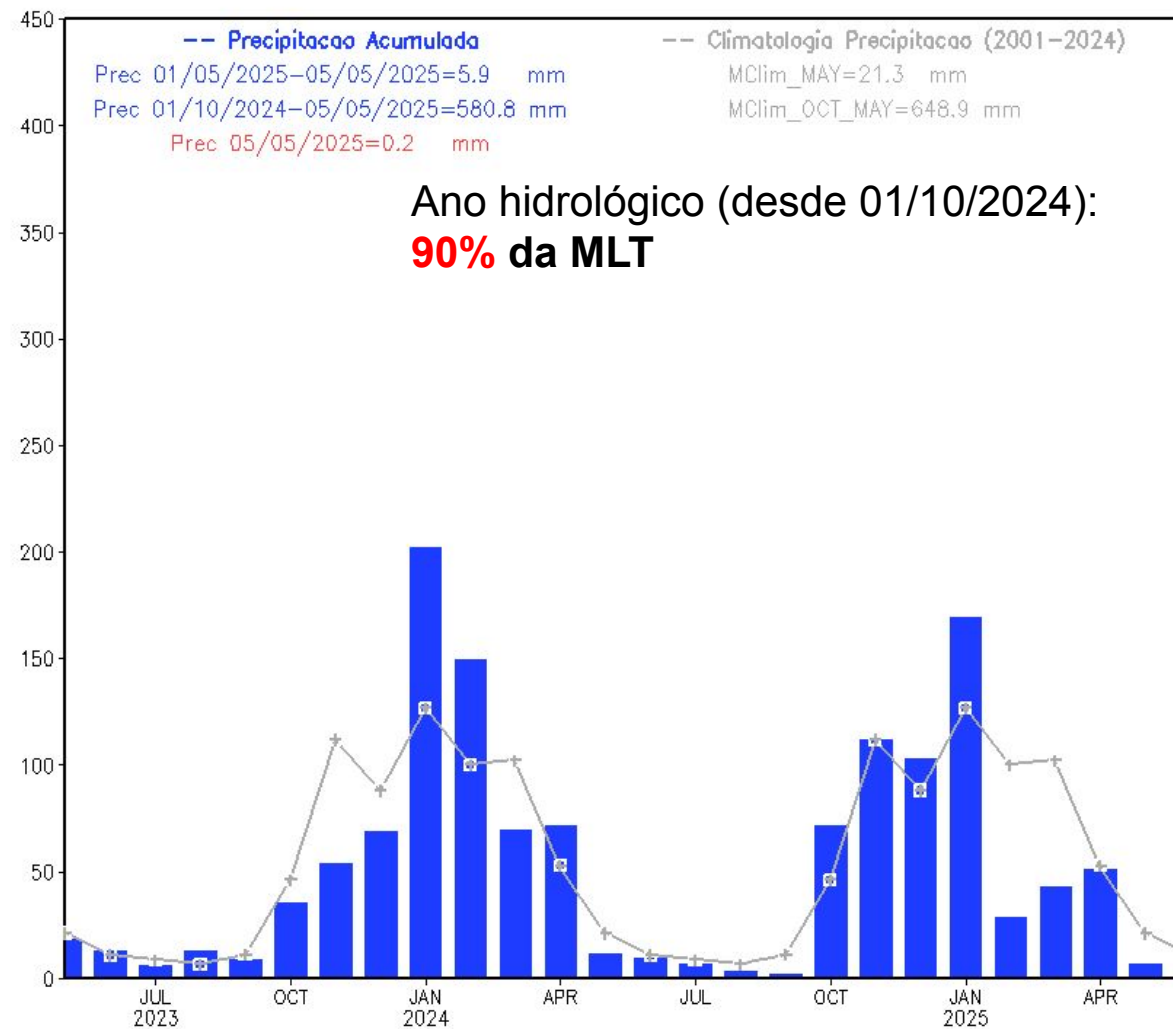


Anomalia de Precipitacao (mm) A.S.
Período: 01/10/2024 a 05/05/2025



Chuva dos últimos dois anos

Precipitacao Bacia do Rio Sao_Francisco
desde MAY 2023



Monitoramento UHE Três Marias

Precipitação

Estação Chuvosa - Out a Mar - 1208 mm

2023/2024: 1057 mm (87% da MLT)

2024/2025: 1124 mm (93% da MLT)

Estação Seca - Abr a Set – 175 mm

2024: 57 mm (32% da MLT)

2025*: 118 mm (369% da MLT PARCIAL)

Abr/25*: 118 mm (189% da MLT)

Maio/25*: 0 mm (MLT = 33 mm)

*Até 04/05/2025

Vazão

Estação Chuvosa - Out a Mar - 908 m³/s

2023/2024: 408 m³/s (45% da MLT)

2024/2025: 691 m³/s (76% da MLT)

Estação Seca - Abr a Set - 325 m³/s

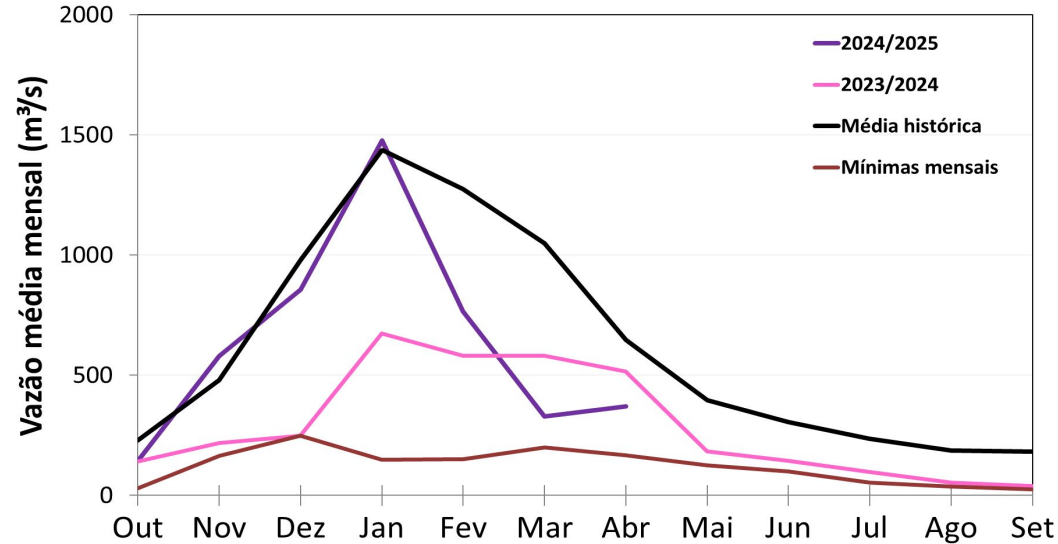
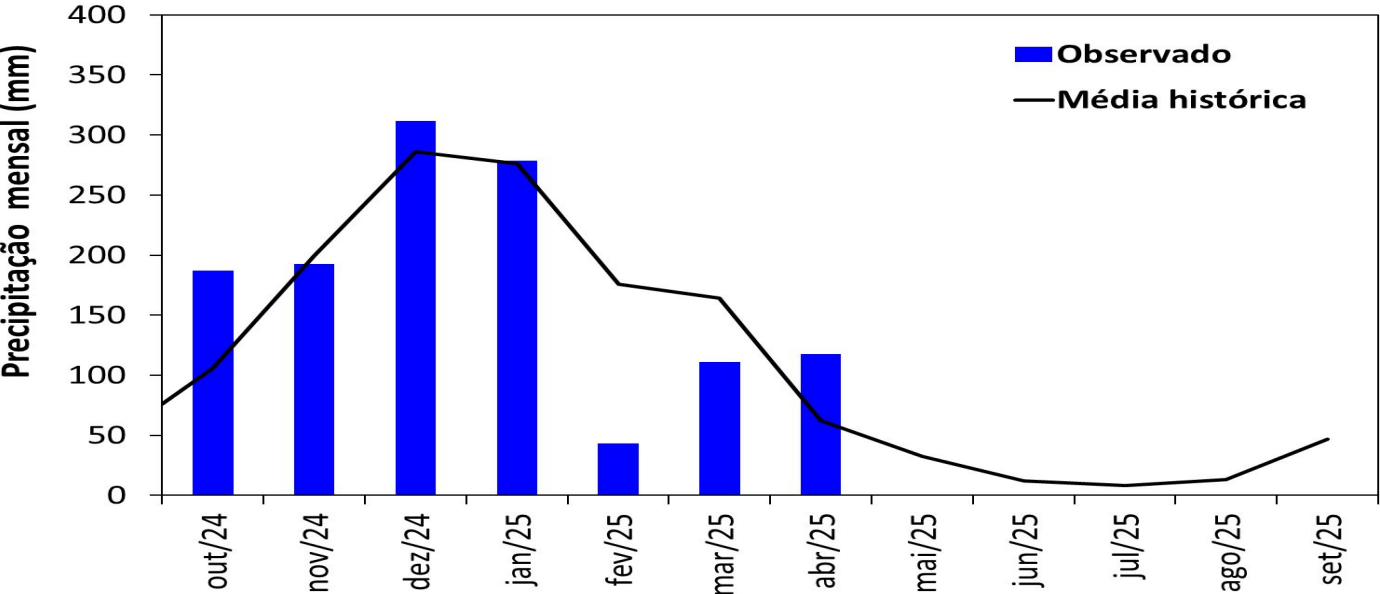
2024: 172 m³/s (53% da MLT)

2025*: 370 m³/s (114% da MLT)

Abr/25: 369 m³/s (57% da MLT)

04/Maio/25: 308 m³/s (78% da MLT)

**Até 04/05/2025

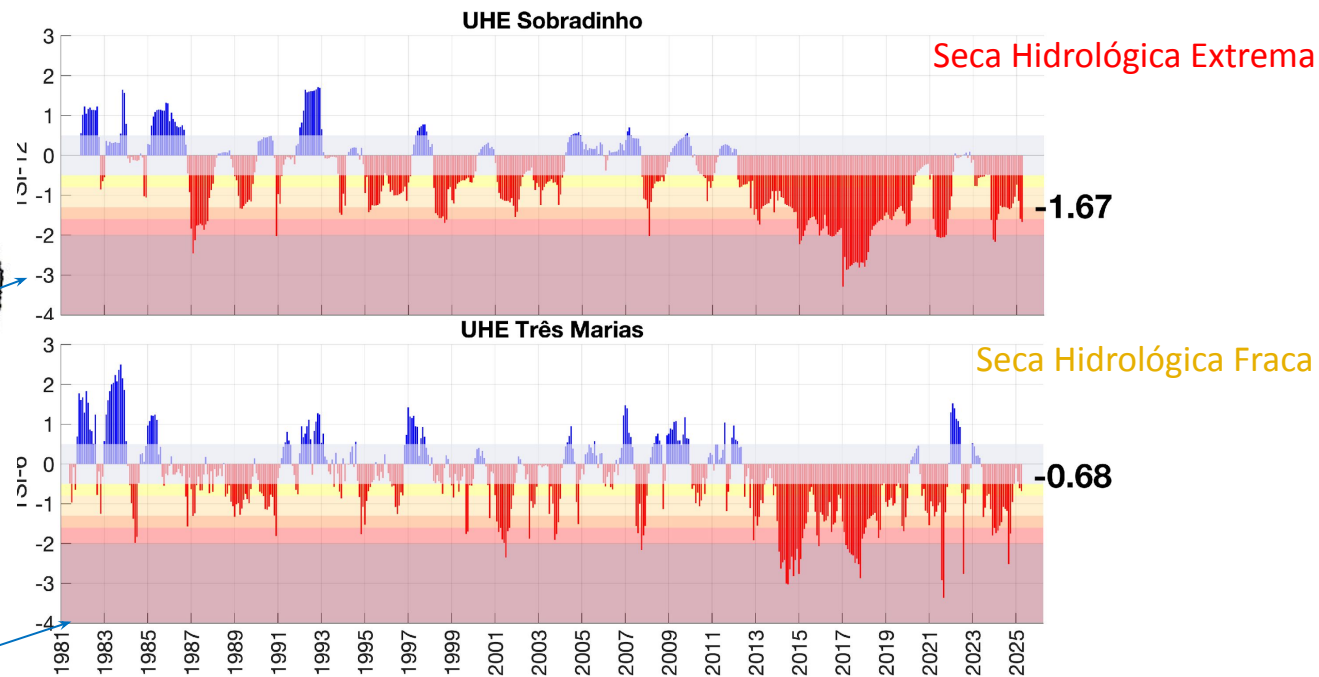
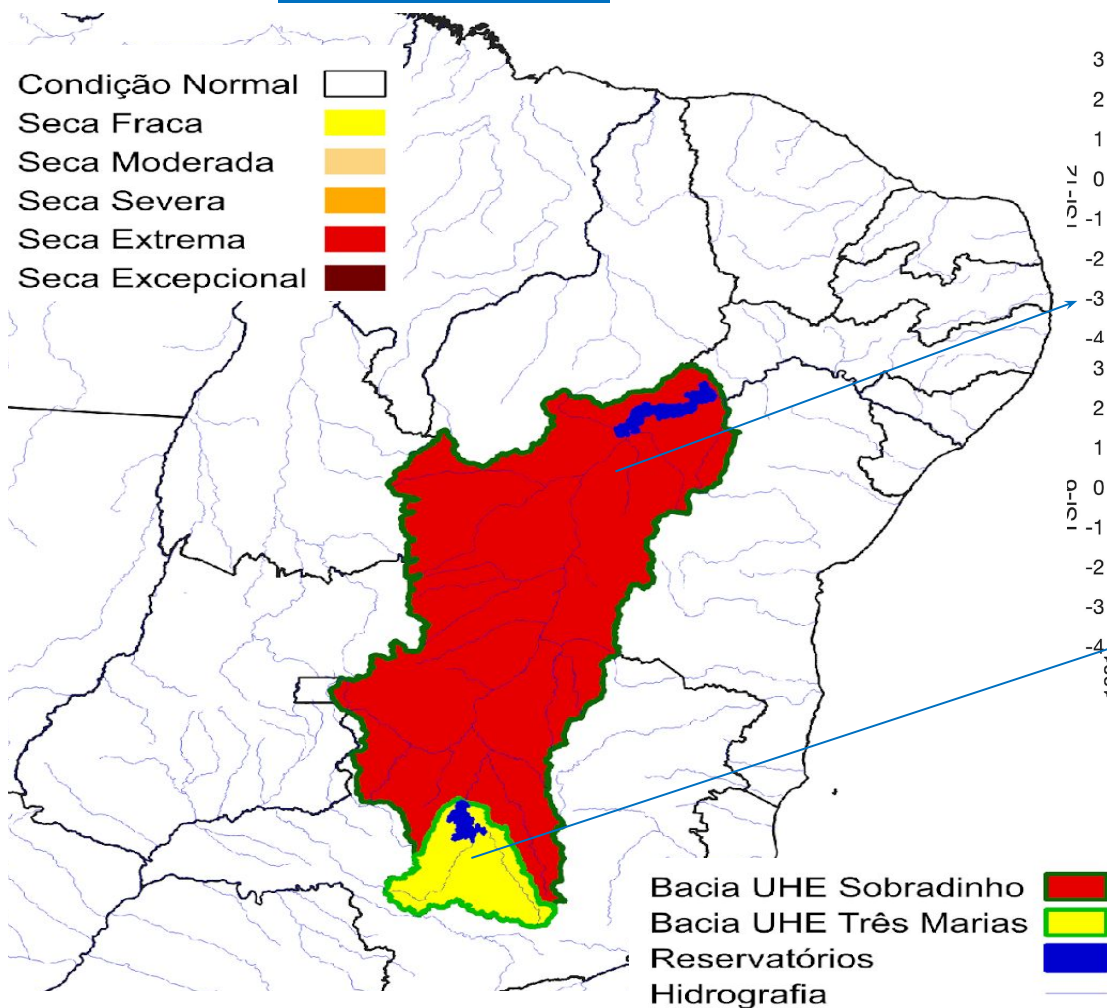


MLT: Média de Longo Termo (1983-2024)

Monitoramento UHE Três Marias e Sobradinho

Índice Padronizado Bivariado (Chuva-Vazão) – TSI: [Longo Prazo](#)

Abril/2025

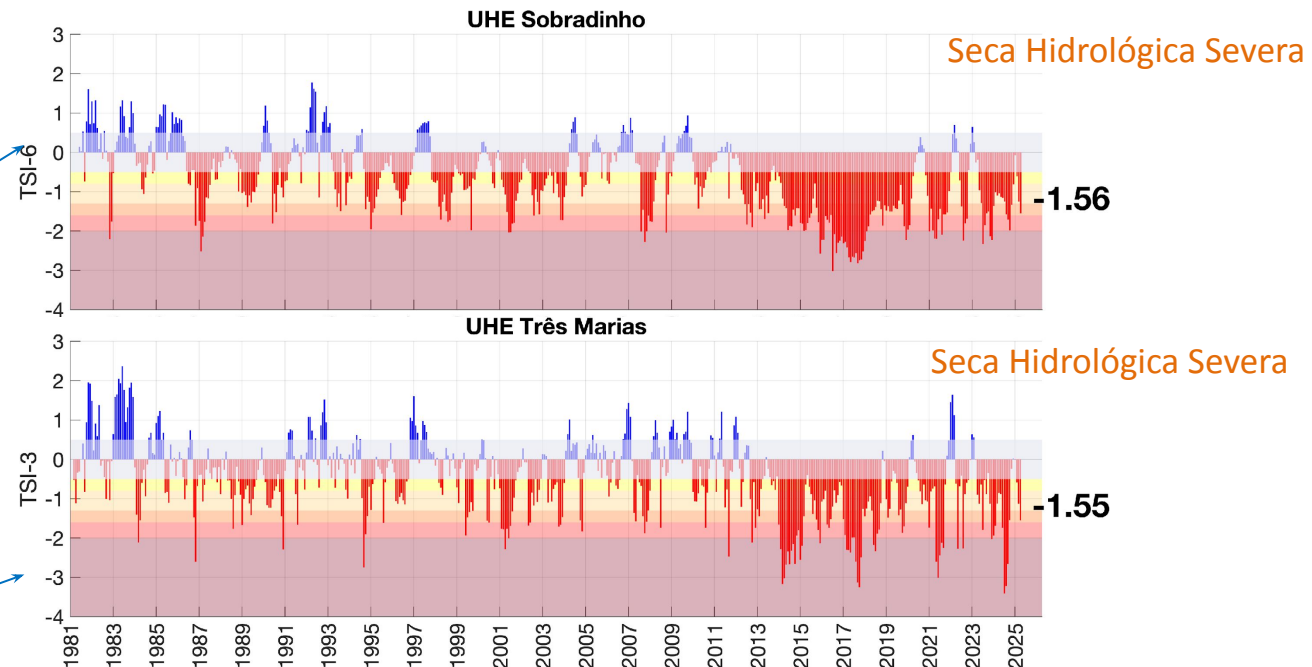
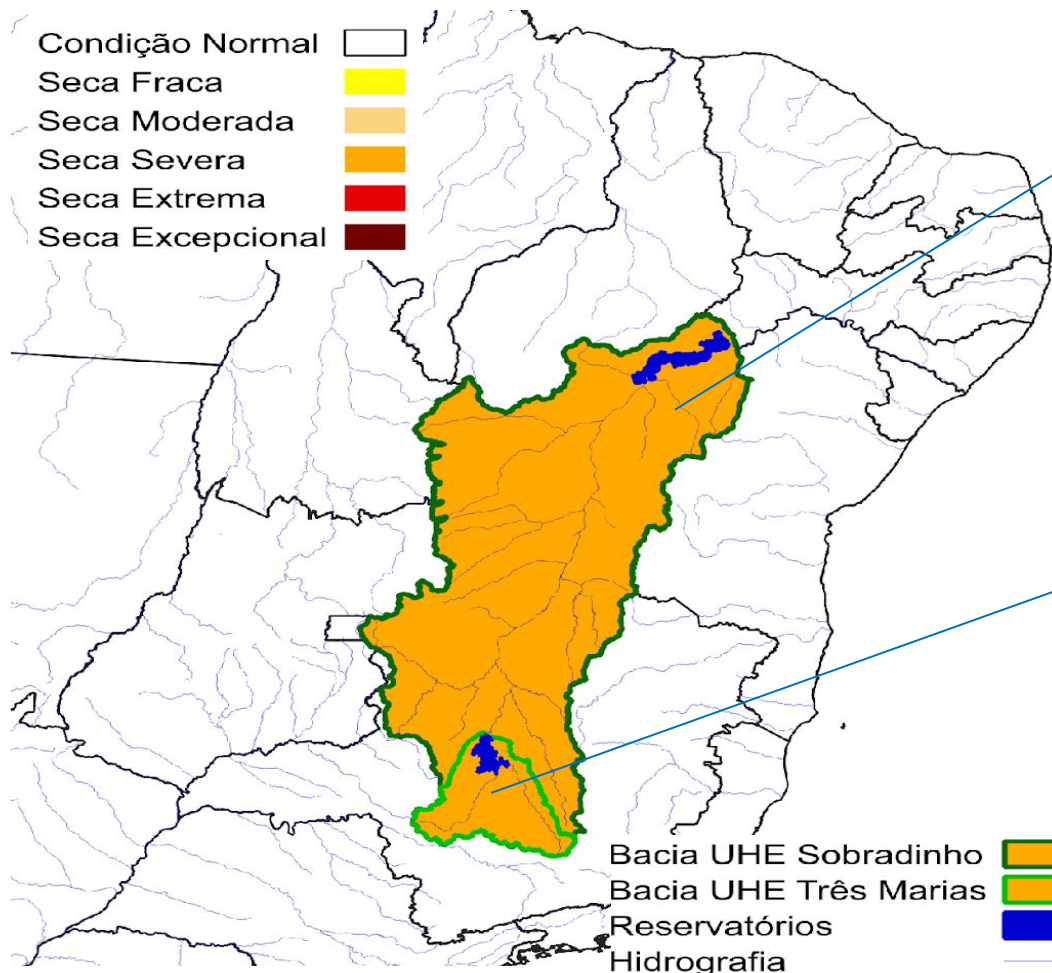


Bacia afluyente à UHE:	TSI-Mar	TSI-Abr
Sobradinho	Severa (-1.60)	Extrema (-1.67)
Três Marias	Fraca (-0.62)	Fraca (-0.68)

Monitoramento UHE Três Marias e Sobradinho

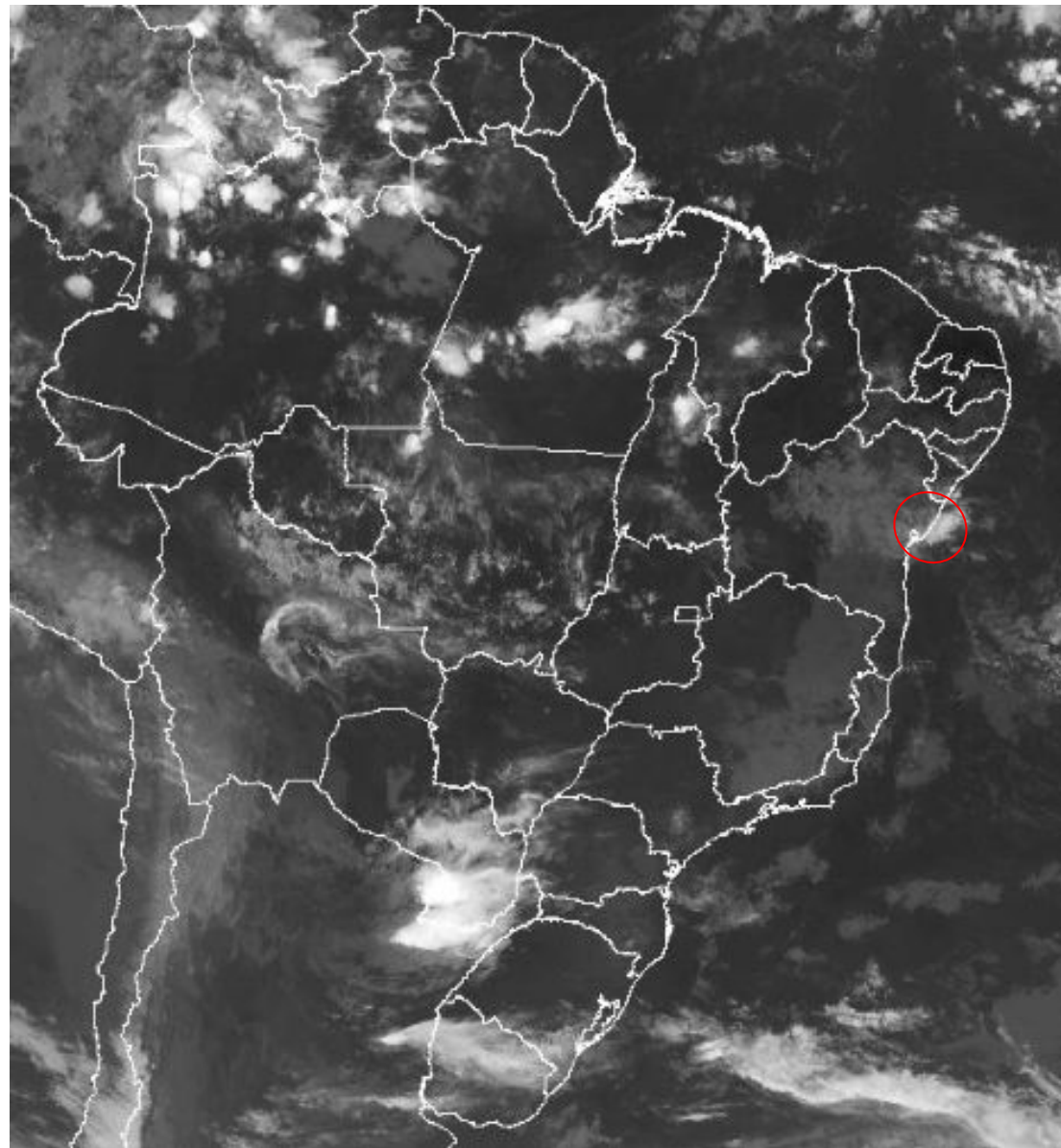
Índice Padronizado Bivariado (Chuva-Vazão) – TSI: [Curto Prazo](#)

Abril/2025



Bacia afluente à UHE:	TSI-Mar	TSI-Abr
Sobradinho	Moderada (-1.25)	Severa (-1.56)
Três Marias	Moderada (-1.13)	Severa (-1.55)

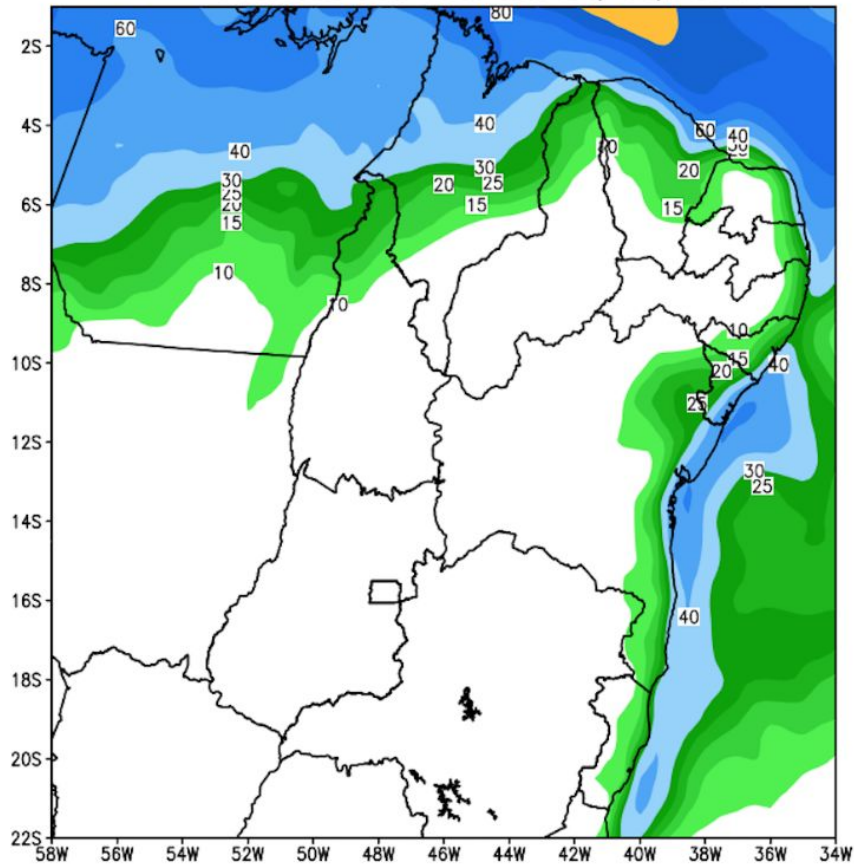
Situação meteorológica atual



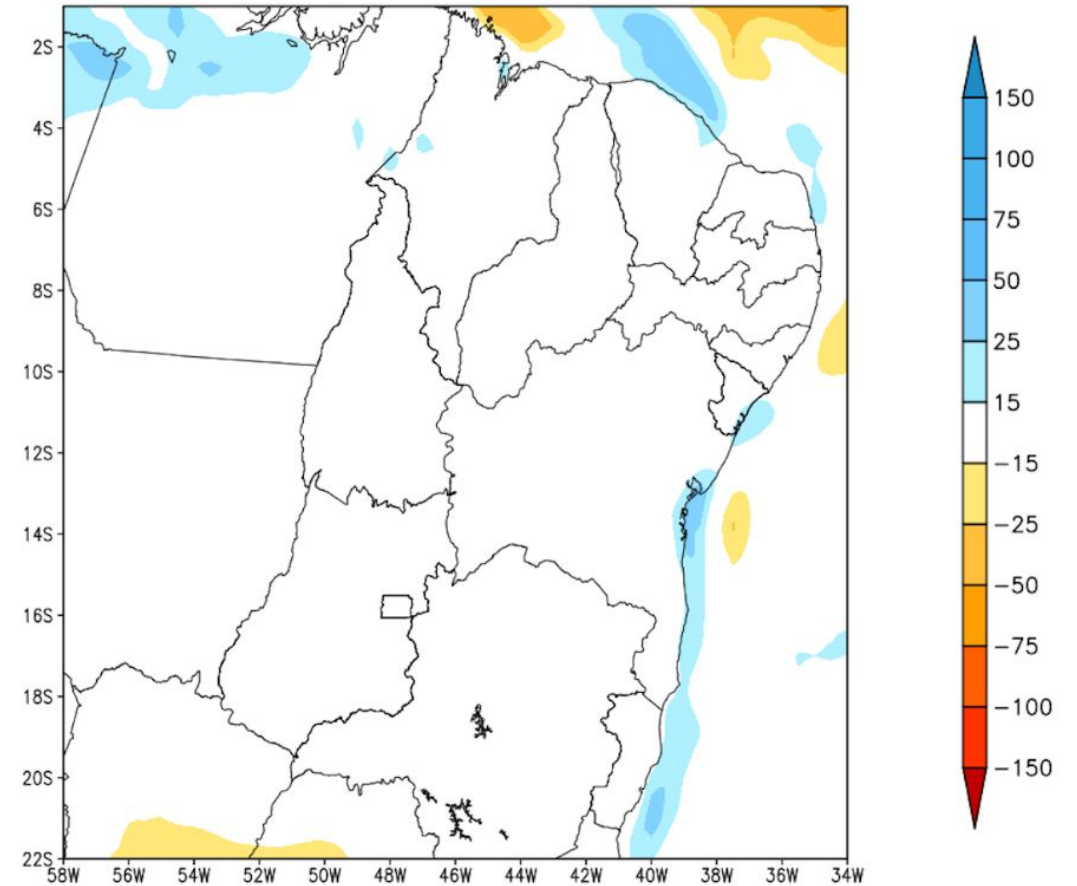
Fonte: INMET

Previsão de chuva próximos 7 dias

GEFS / BRASIL_NE
Precipitacao acumulada 1aSem (mm)
Previsao das 00Z dia 06/05/2025



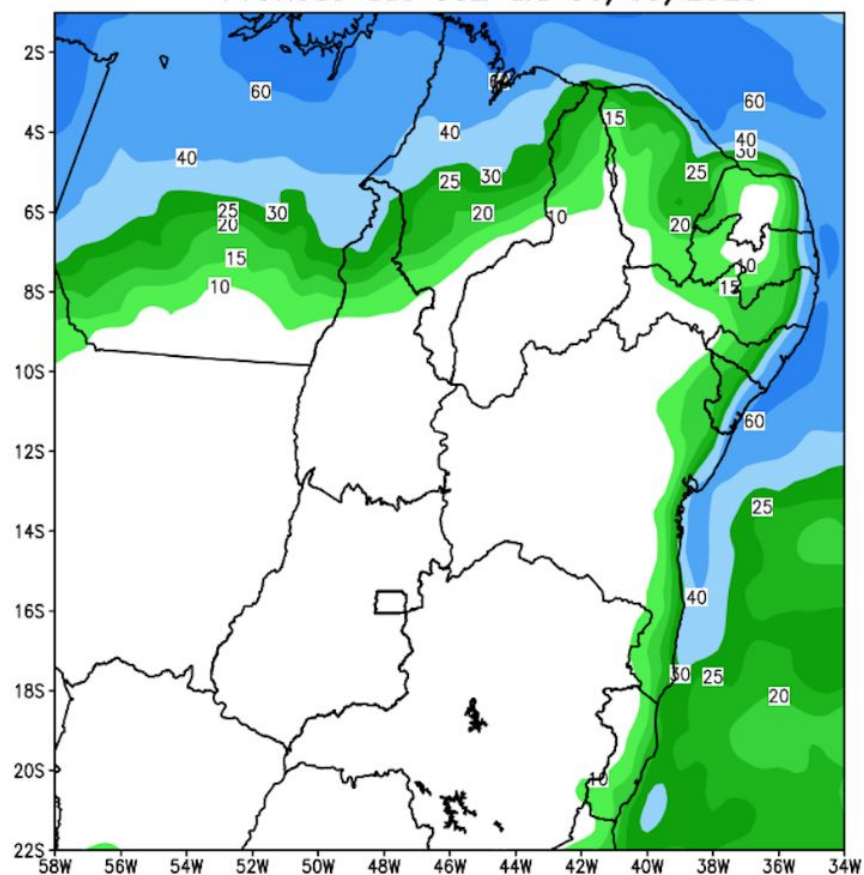
Anomalia de Precipitacao BR NE (mm)
Periodo: 2025050600 a 2025051300



Fonte: GEFS/NOAA

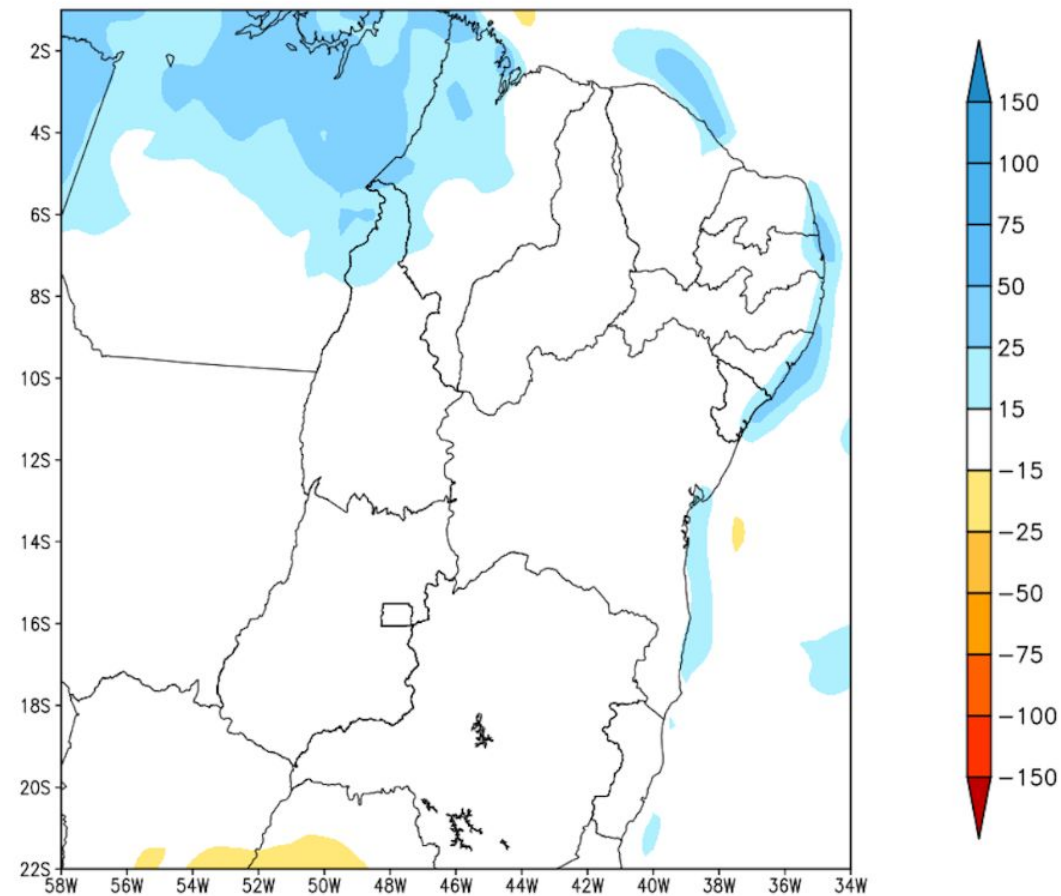
Tendência para a 2a semana

GEFS / BRASIL_NE
Precipitacao acumulada 2aSem (mm)
Previsao das 00Z dia 06/05/2025



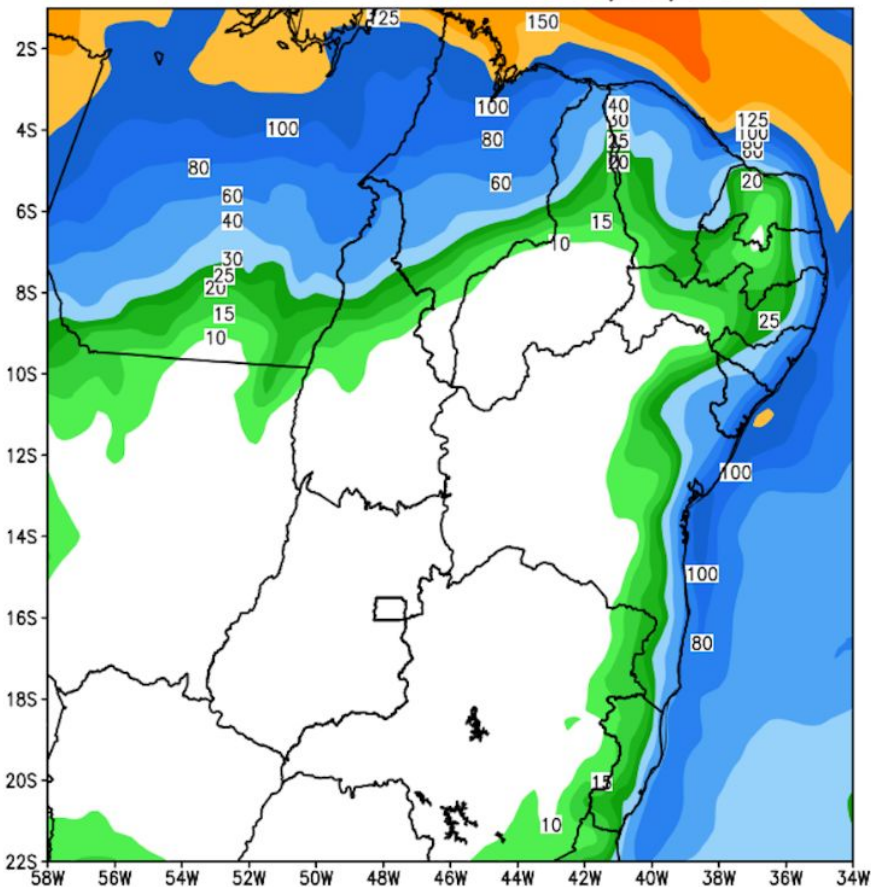
Modelo GFS/NOAA

Anomalia de Precipitacao BR_NE (mm)
Periodo: 2025051400 a 2025052000



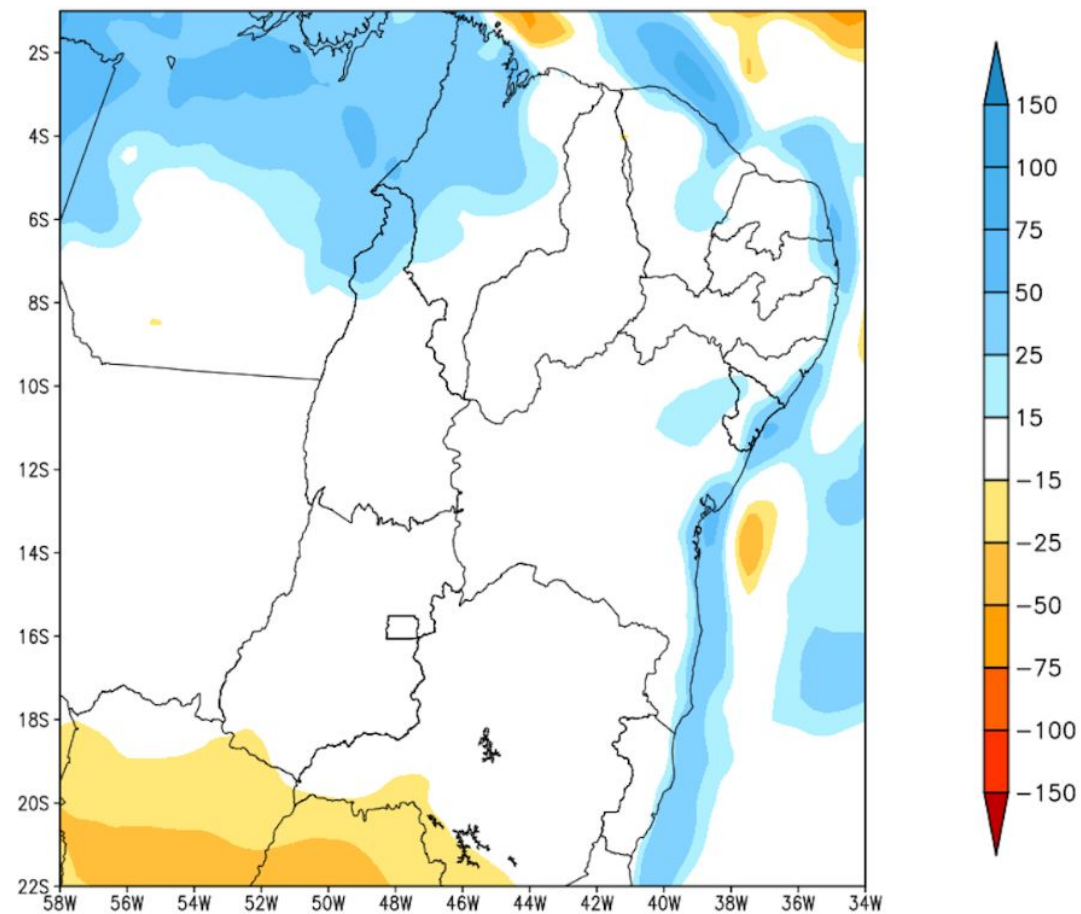
Tendência para as duas próximas semanas

GEFS / BRASIL_NE
Precipitacao acumulada 14dias (mm)
Previsao das 00Z dia 06/05/2025



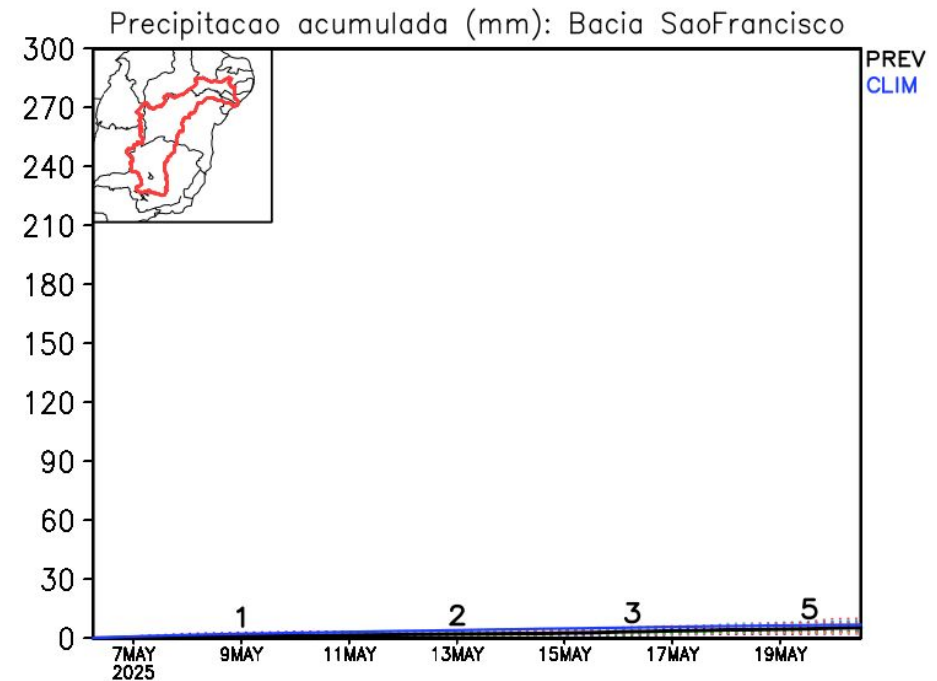
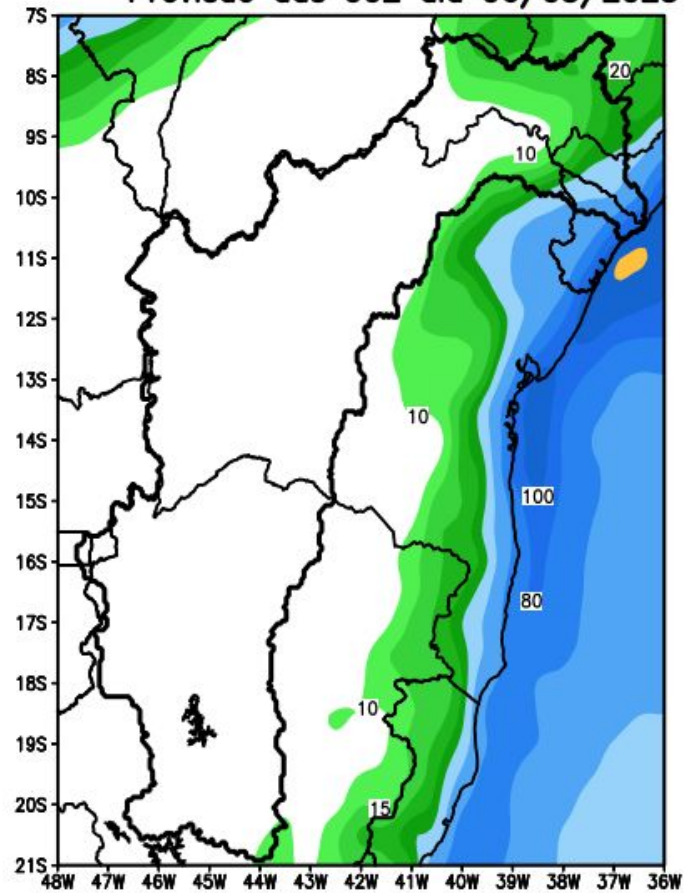
Modelo GFS/NOAA

Anomalia de Precipitacao BR_NE (mm)
Periodo: 2025050600 a 2025052000



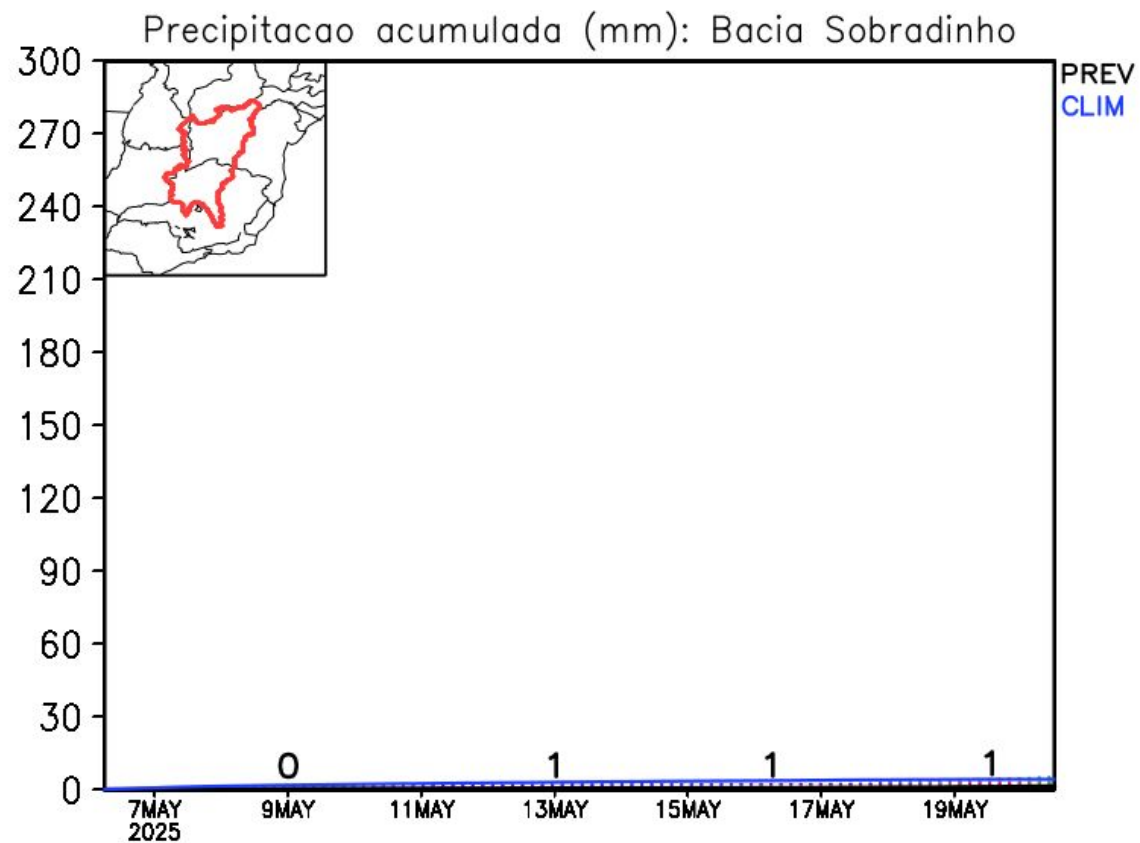
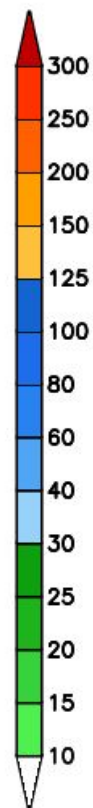
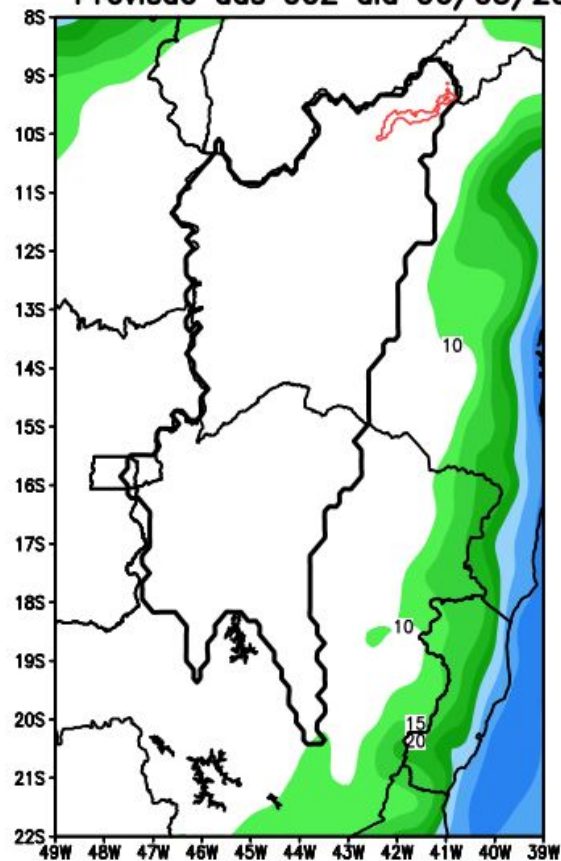
Bacia do rio São Francisco

GEFS / Bacia do Rio Sao Francisco
Precipitacao acumulada em 14 dias (mm)
Previsao das 00Z dia 06/05/2025

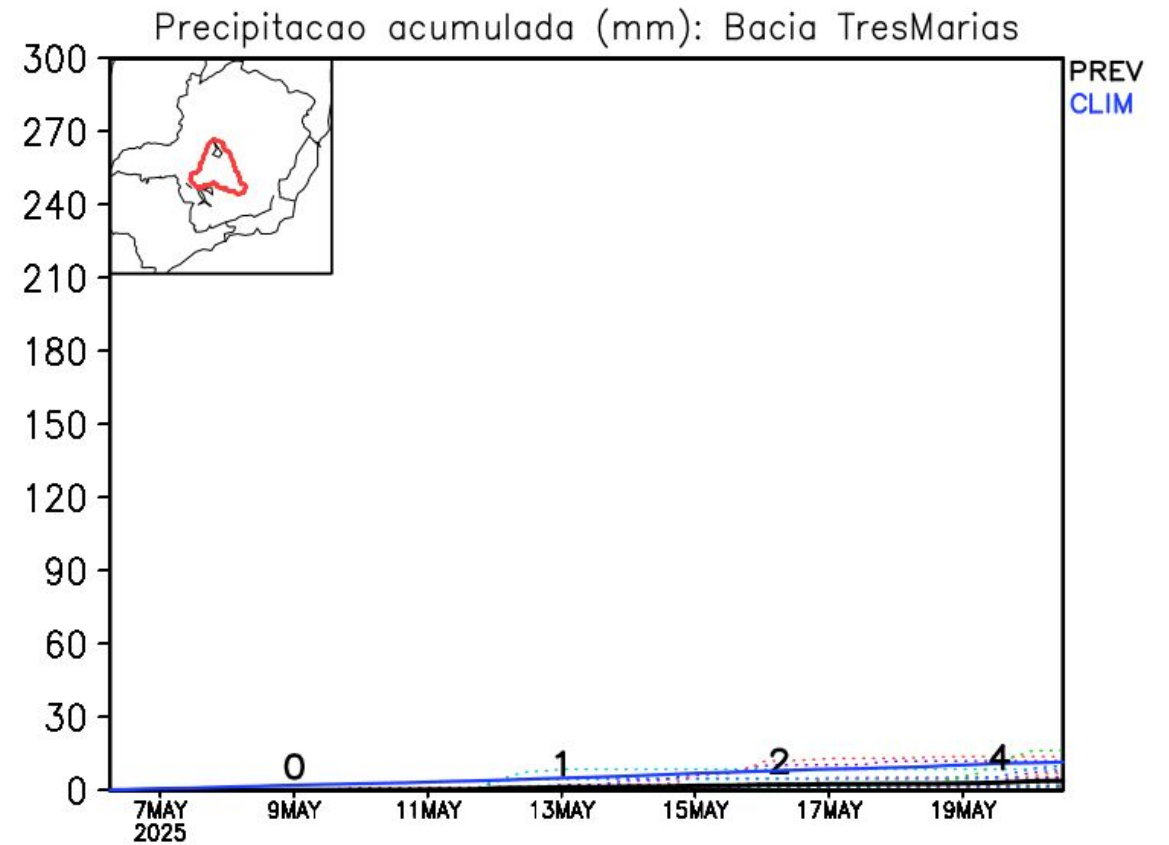
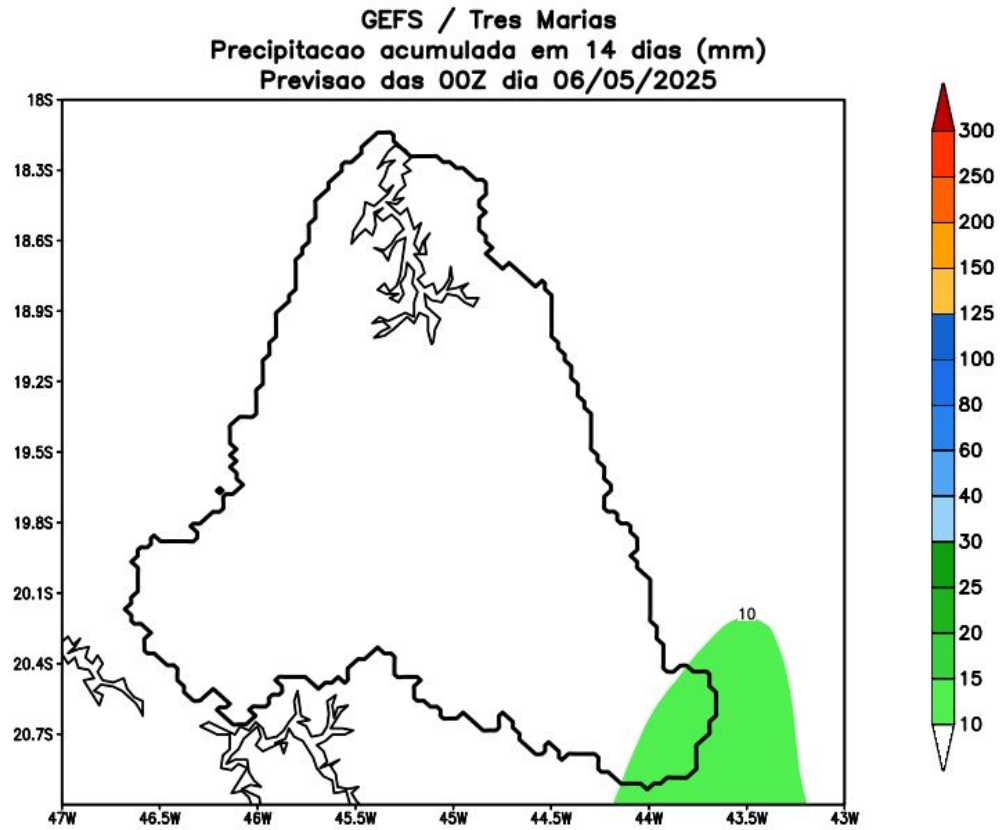


Bacia de Sobradinho

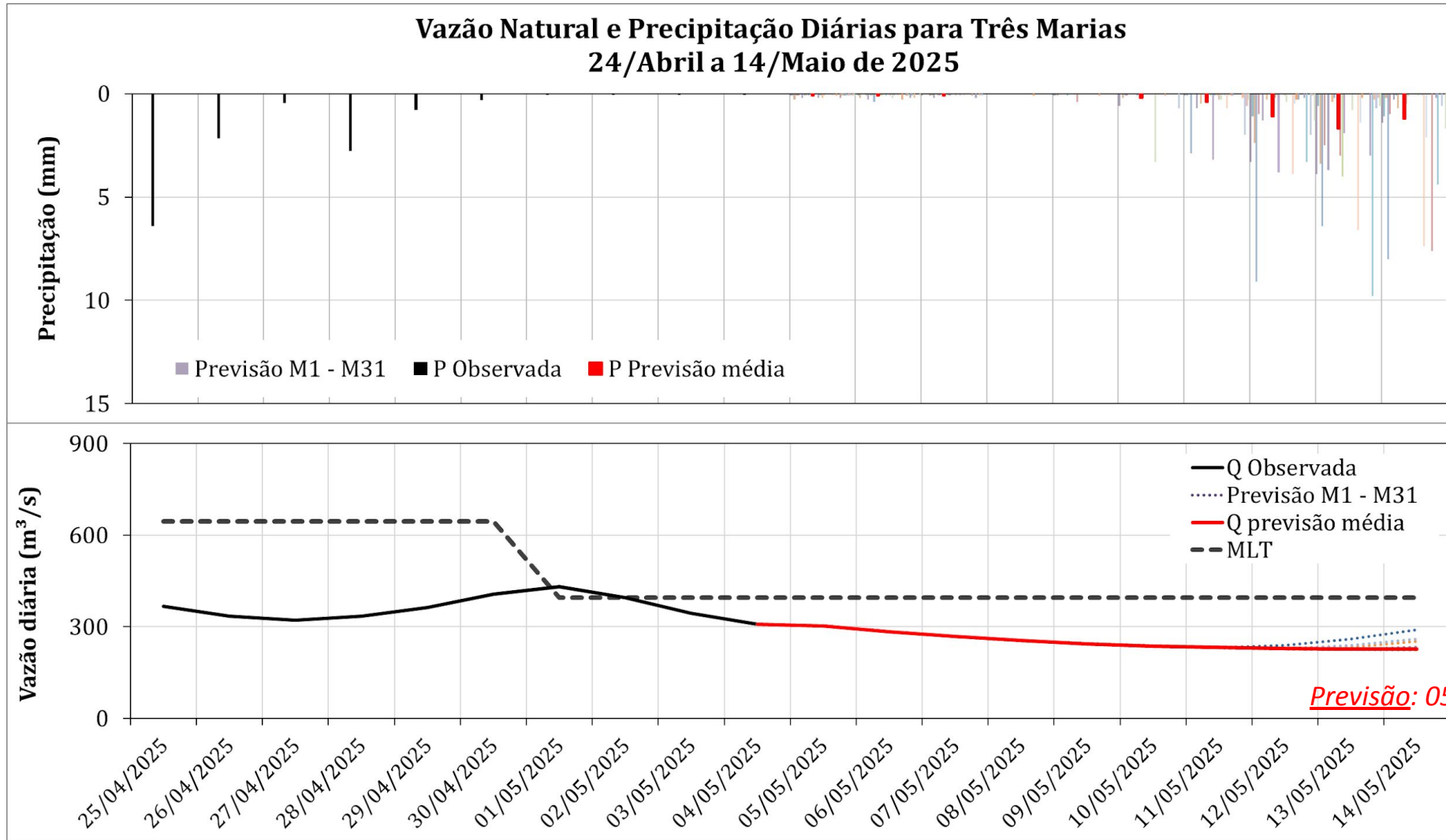
GEFS / Sobradinho
Precipitacao acumulada em 14 dias (mm)
Previsao das 00Z dia 06/05/2025



Bacia de Três Marias



UHE Três Marias: Previsão de Vazão (modelo PDM/CEMADEN)



**Previsão média para
os próximos 10 dias: 251 m³/s**



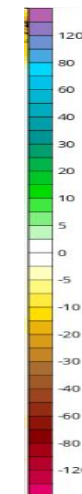
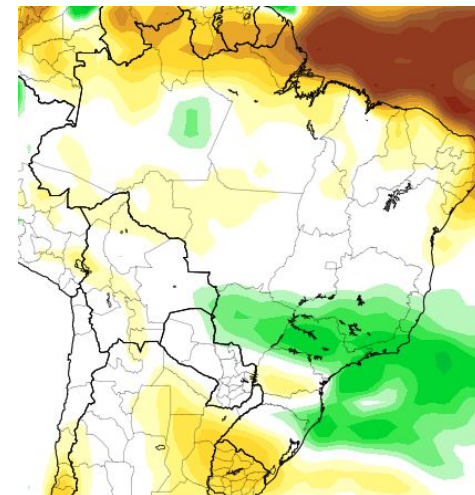
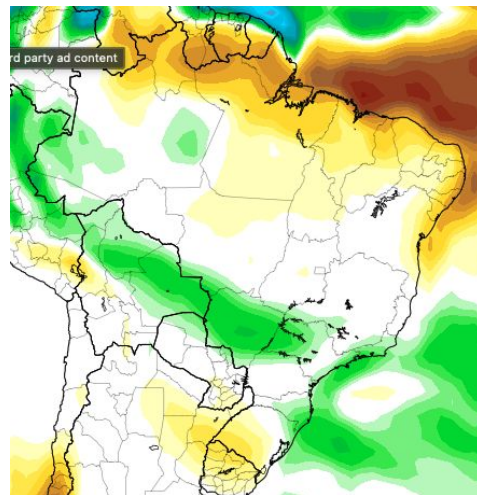
63% da MLT de Maio

Anomalia de Chuva 3a e 4a semanas

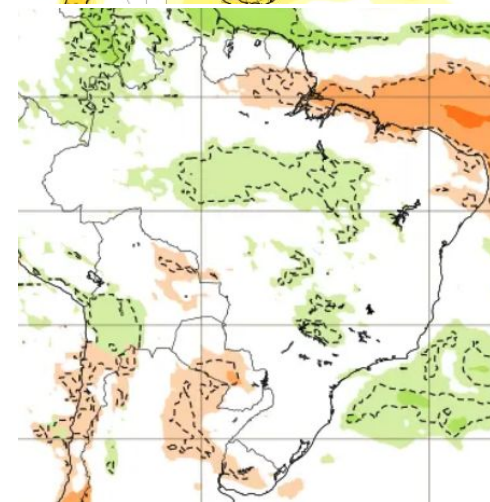
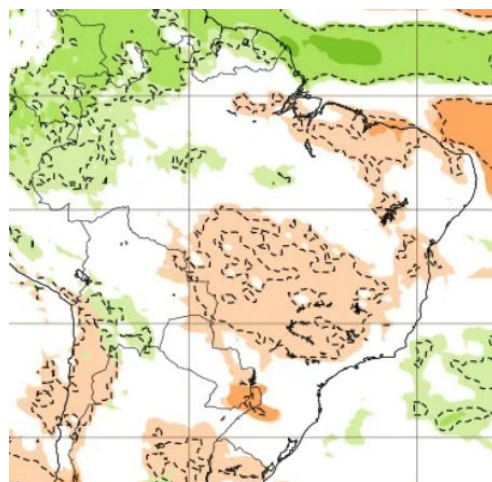
19-25 Maio

26-01 Junho

CFS/NOAA

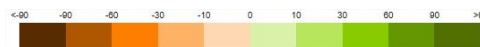


ECMWF



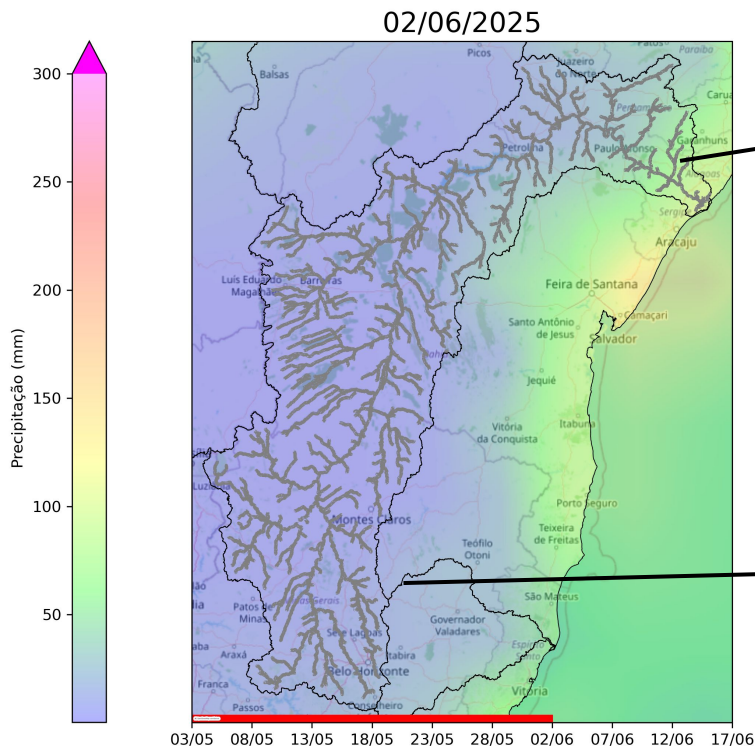
19-25 Maio

26-01 Junho



Previsão de vazão natural na Bacia Rio São Francisco (Modelo hidrológico MHD)

Previsão: 03/05/2025 a 02/06/2025



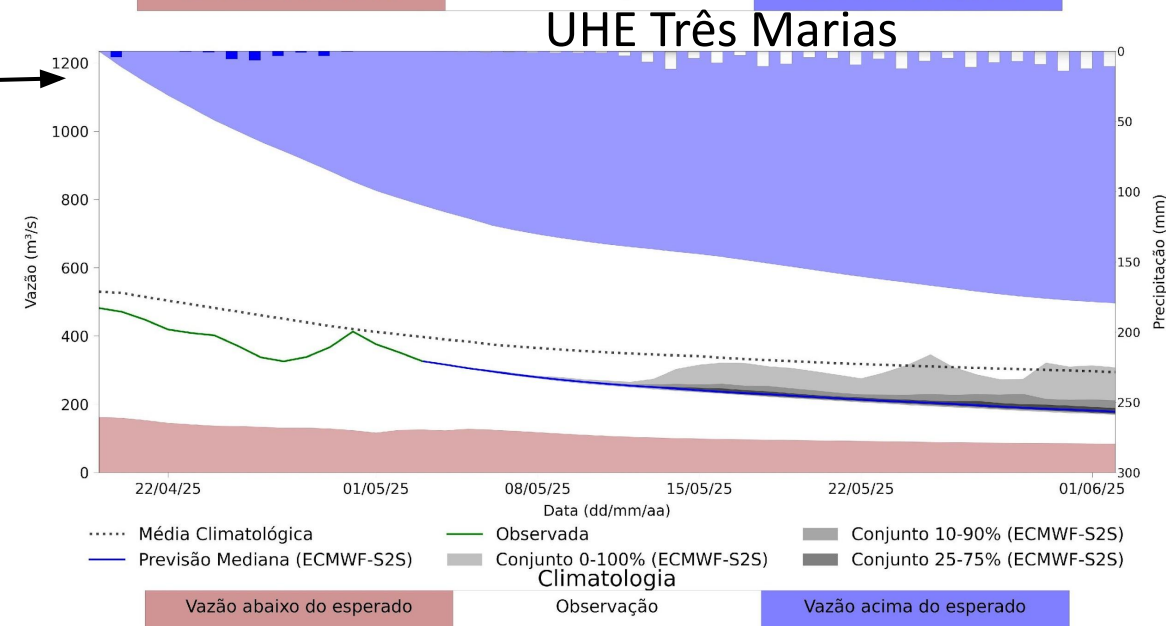
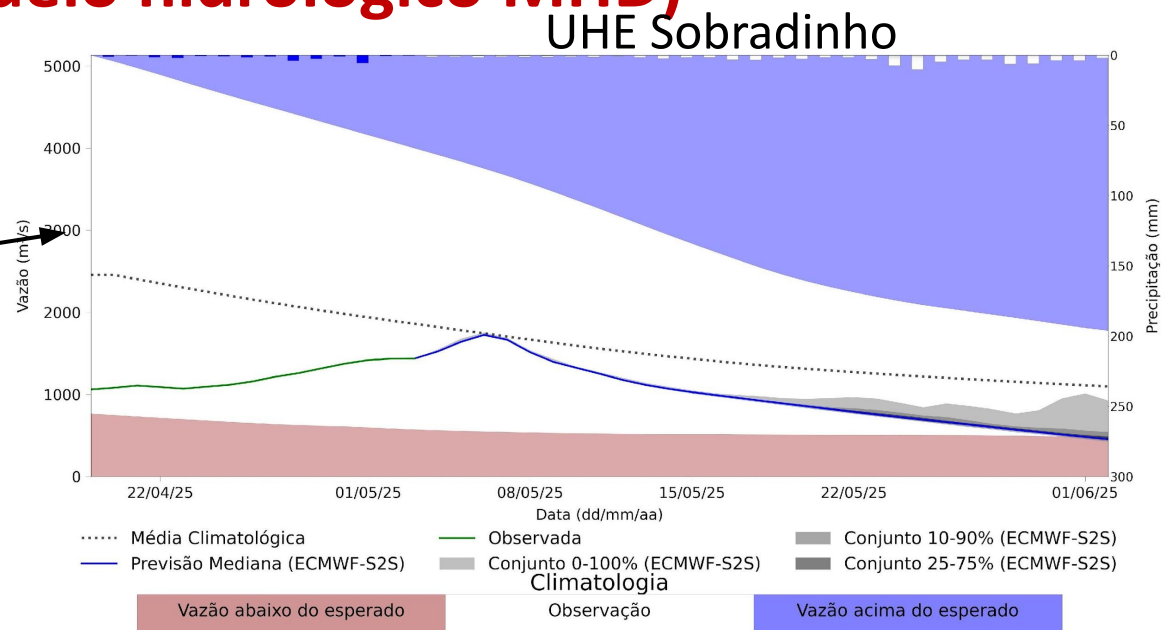
Fonte: Meteorologia (INMET/MERGE); Vazão
(ANA/ONS)

MLT: 1993-2023

Previsão Meteorológica: ECMWF-S2S

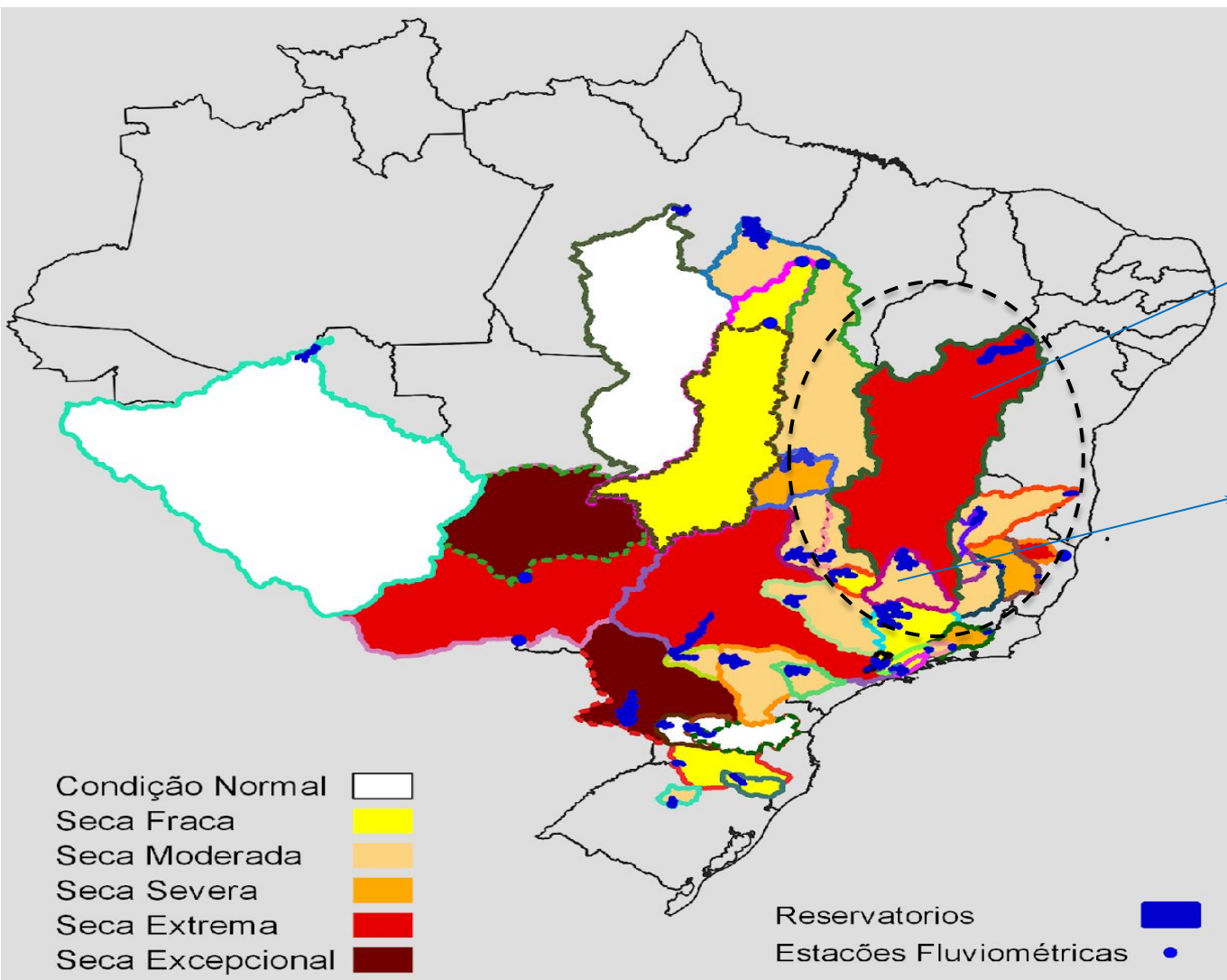


MINISTÉRIO DA
CIÊNCIA, TECNOLOGIA
E INOVAÇÃO



Índice Bivariado de Seca (Precipitação-Cota/Vazão) - TSI

Previsão para os próximos 30 dias



Estabilidade da Seca:

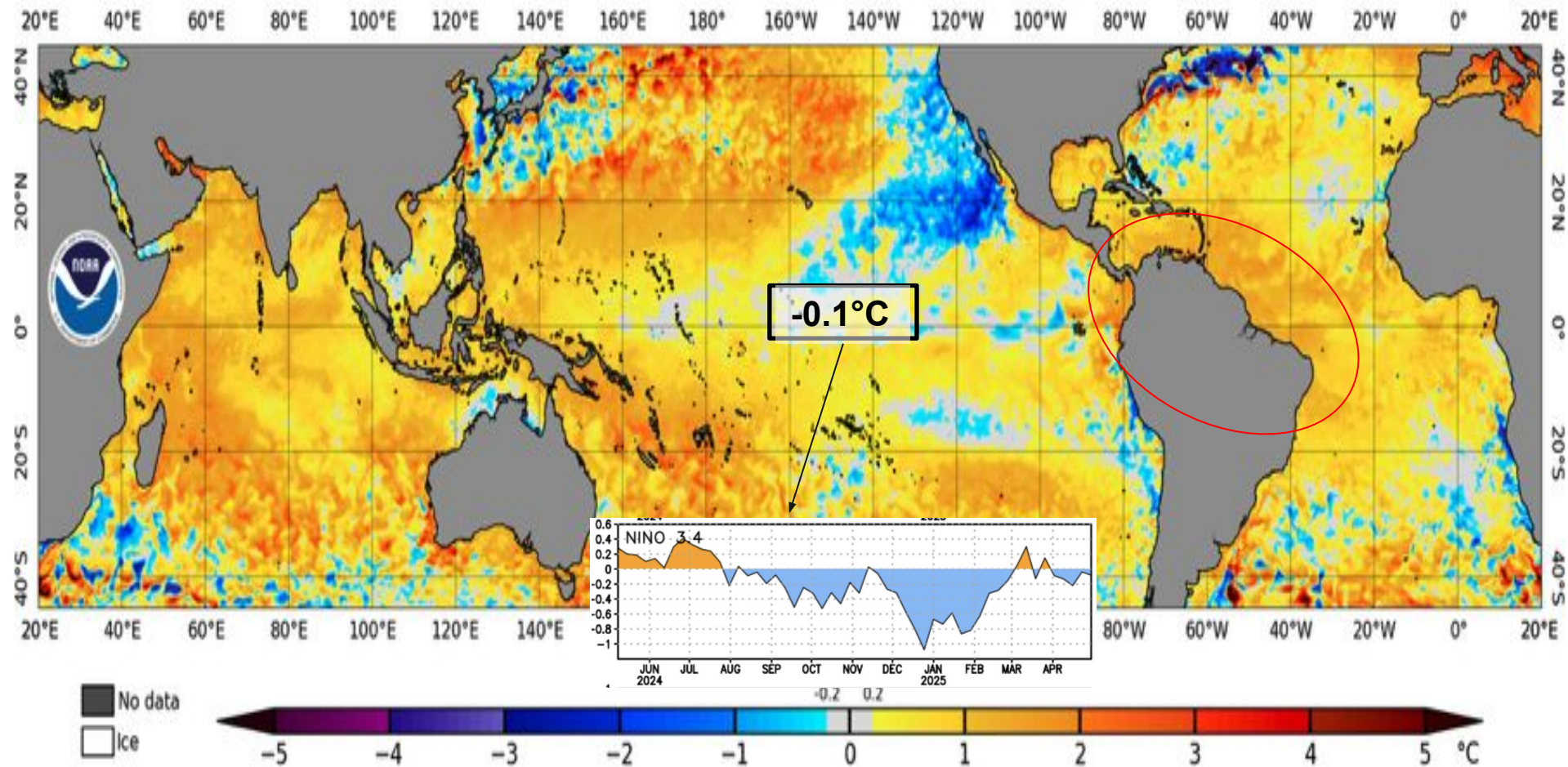
☐ Sobradinho (extrema)

Intensificação da seca:

☐ Três Marias (fraca para moderada)

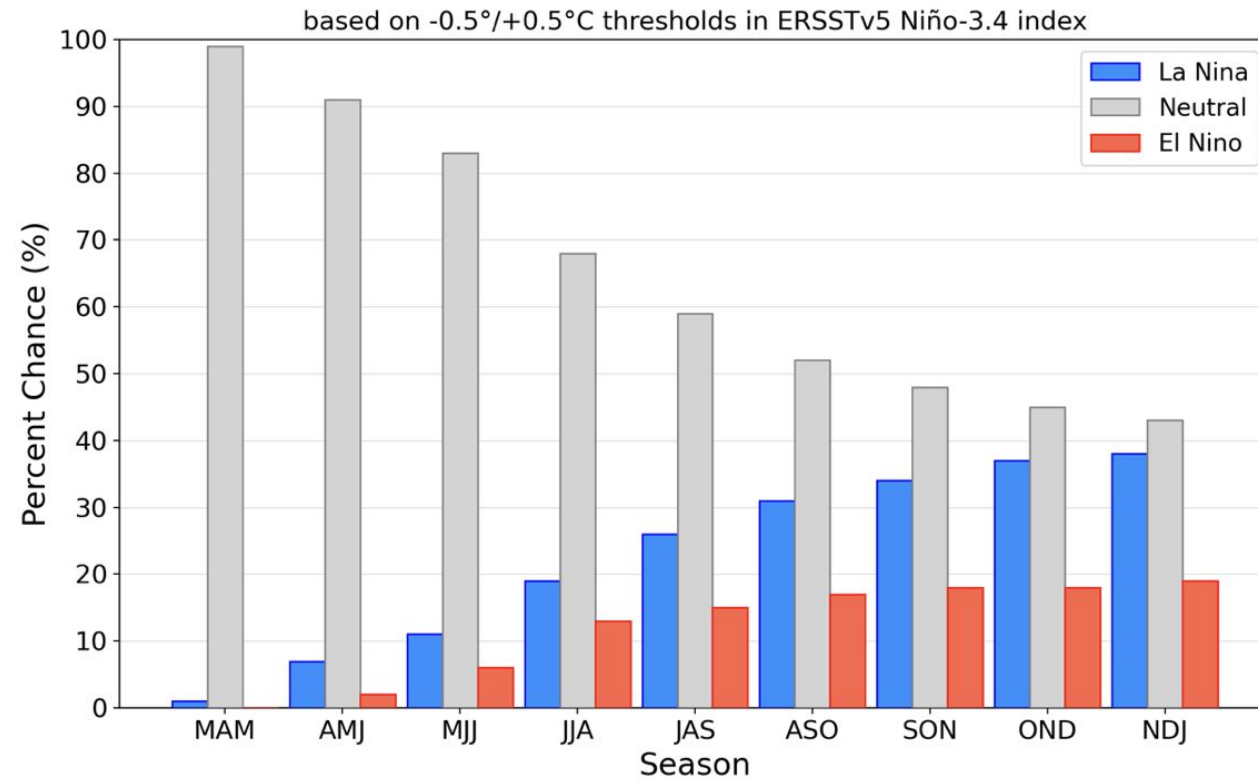
Status Atual: La Niña

NOAA Coral Reef Watch Daily 5km SST Anomalies (v3.1) 4 May 2025



Previsão do “ENSO”

Official NOAA CPC ENSO Probabilities (issued April 2025)

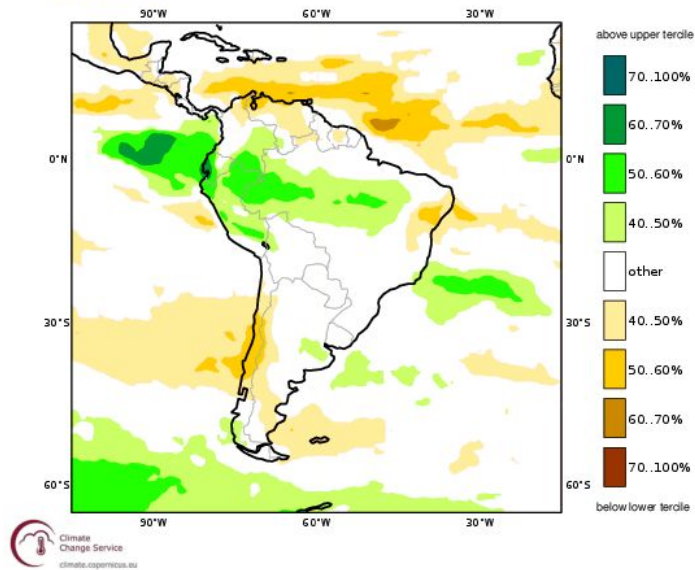


Previsão Sazonal de Chuva Multi-Modelo

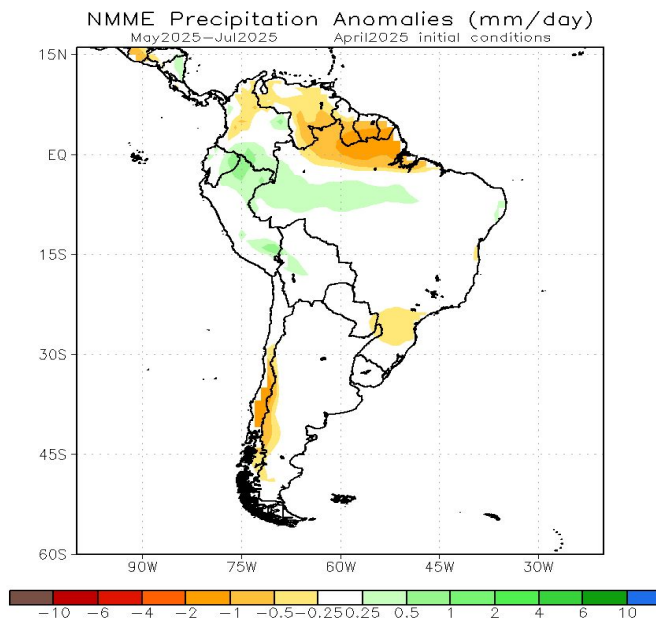
Maio-Junho-Julho

C3S multi-system seasonal forecast
Prob(most likely category of precipitation)
Nominal forecast start: 01/04/25
Unweighted mean

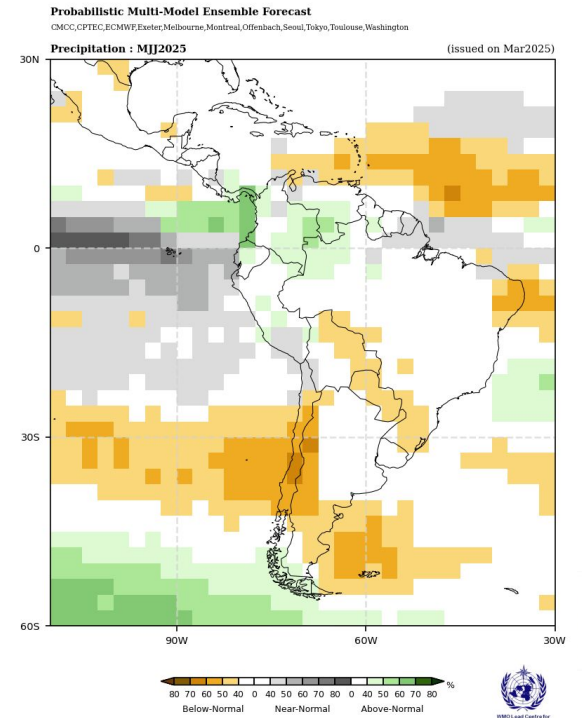
MJJ 2025



Modelos Europeus

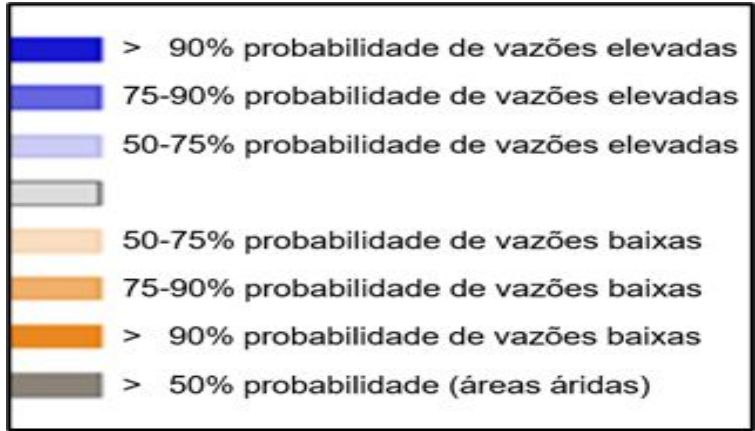
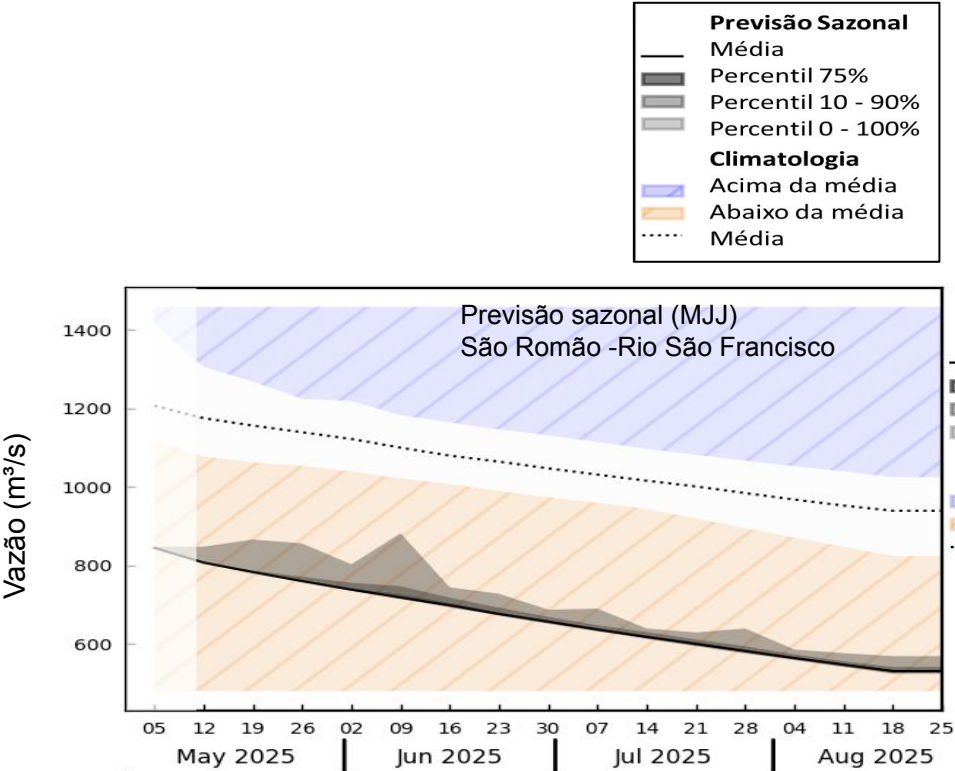
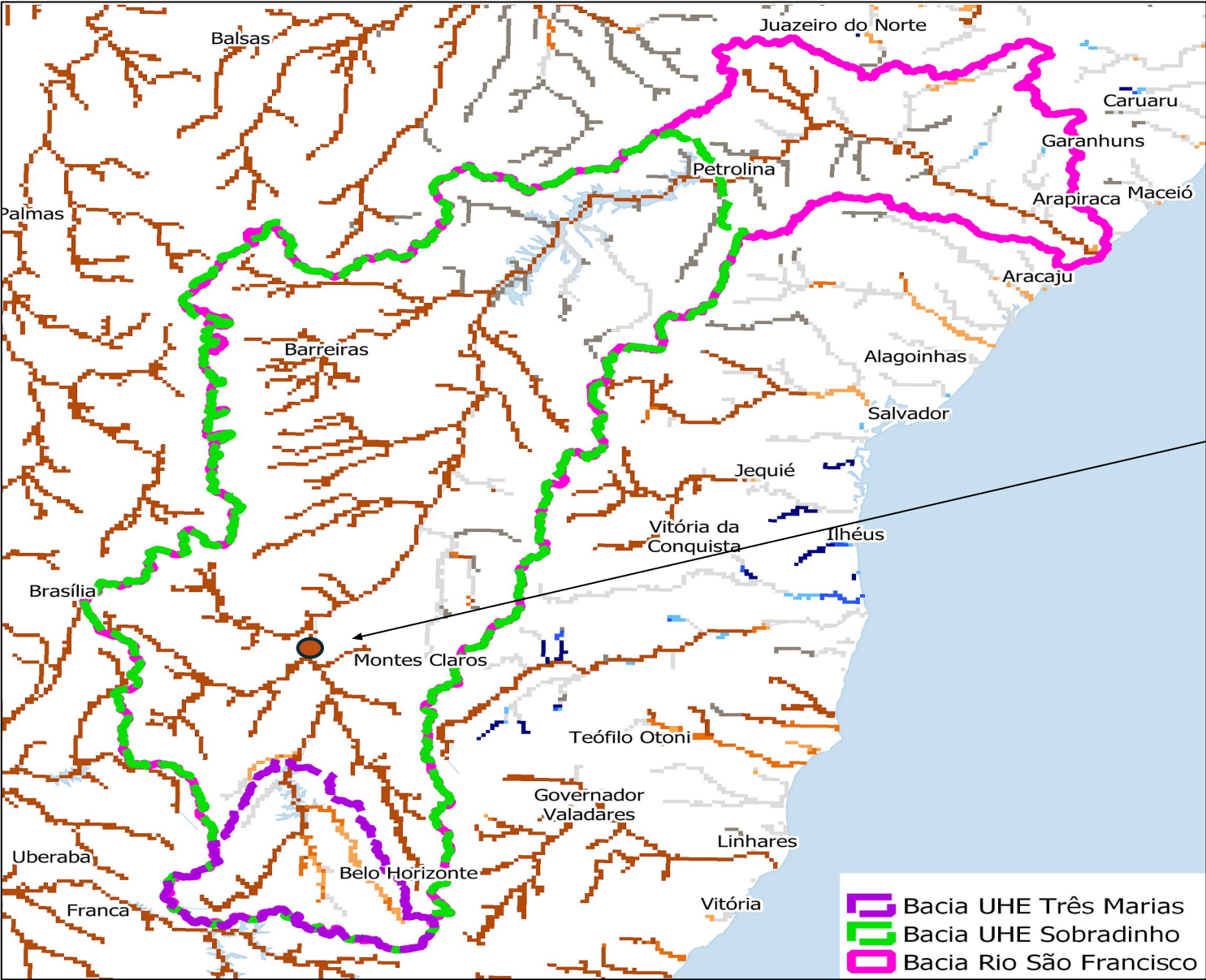


Modelos Norte Americanos

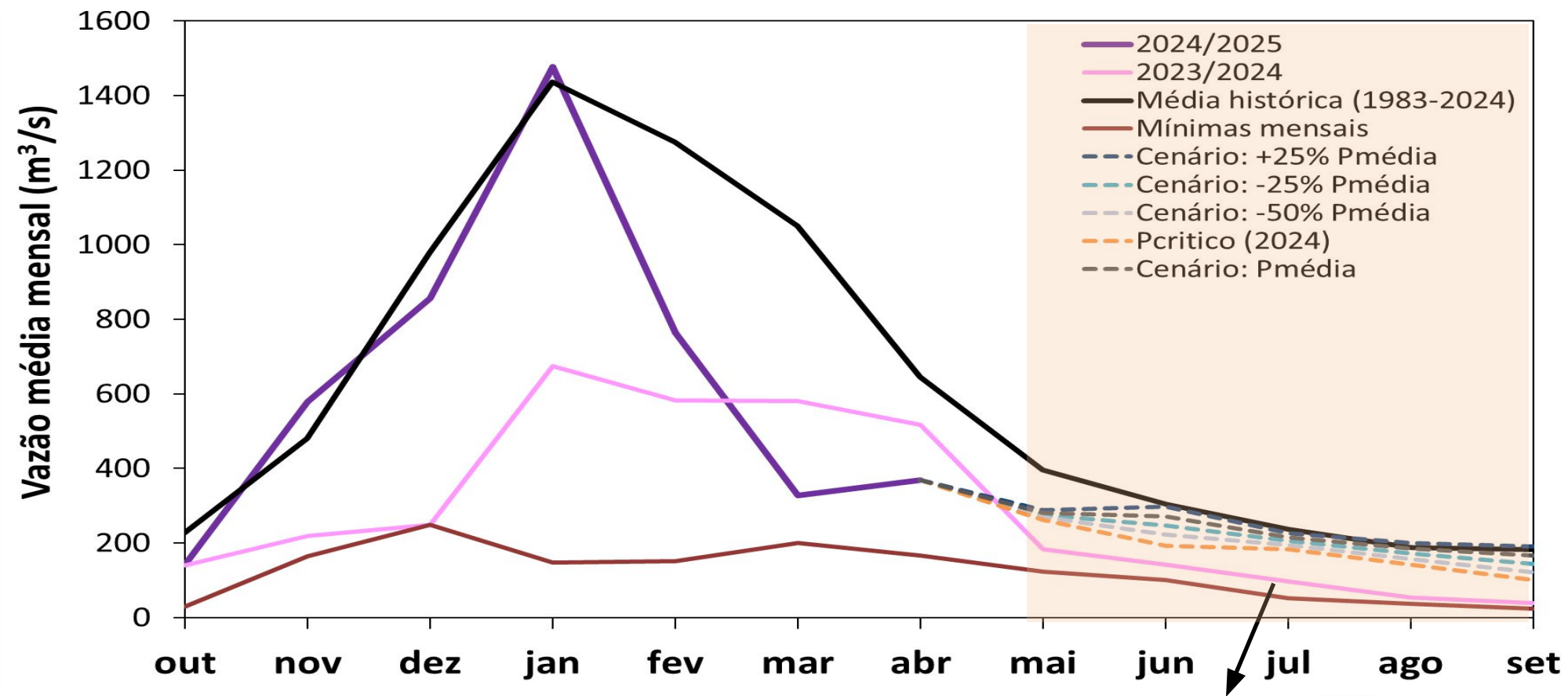


Modelos da WMO

Previsão Sazonal de Vazão (maio, junho e julho-MJJ) do Sistema global de previsão de vazão (Global Flood Awareness System-GloFAS) para a Bacia do Rio São Francisco



Três Marias: Projeção de Vazão (Modelo hidrológico PDM-CEMADEN)



Maio-Set (Meses secos 2025)
MLT: 261 m³/s

Vazão	% MLT
240 m³/s	92%
224 m³/s	86%
209 m³/s	80%
193 m³/s	74%
176 m³/s	67%