



CEMADEN

**Centro Nacional de Monitoramento e
Alertas de Desastres Naturais**

Monitoramento, Previsões e Projeções para a Bacia do Rio São Francisco

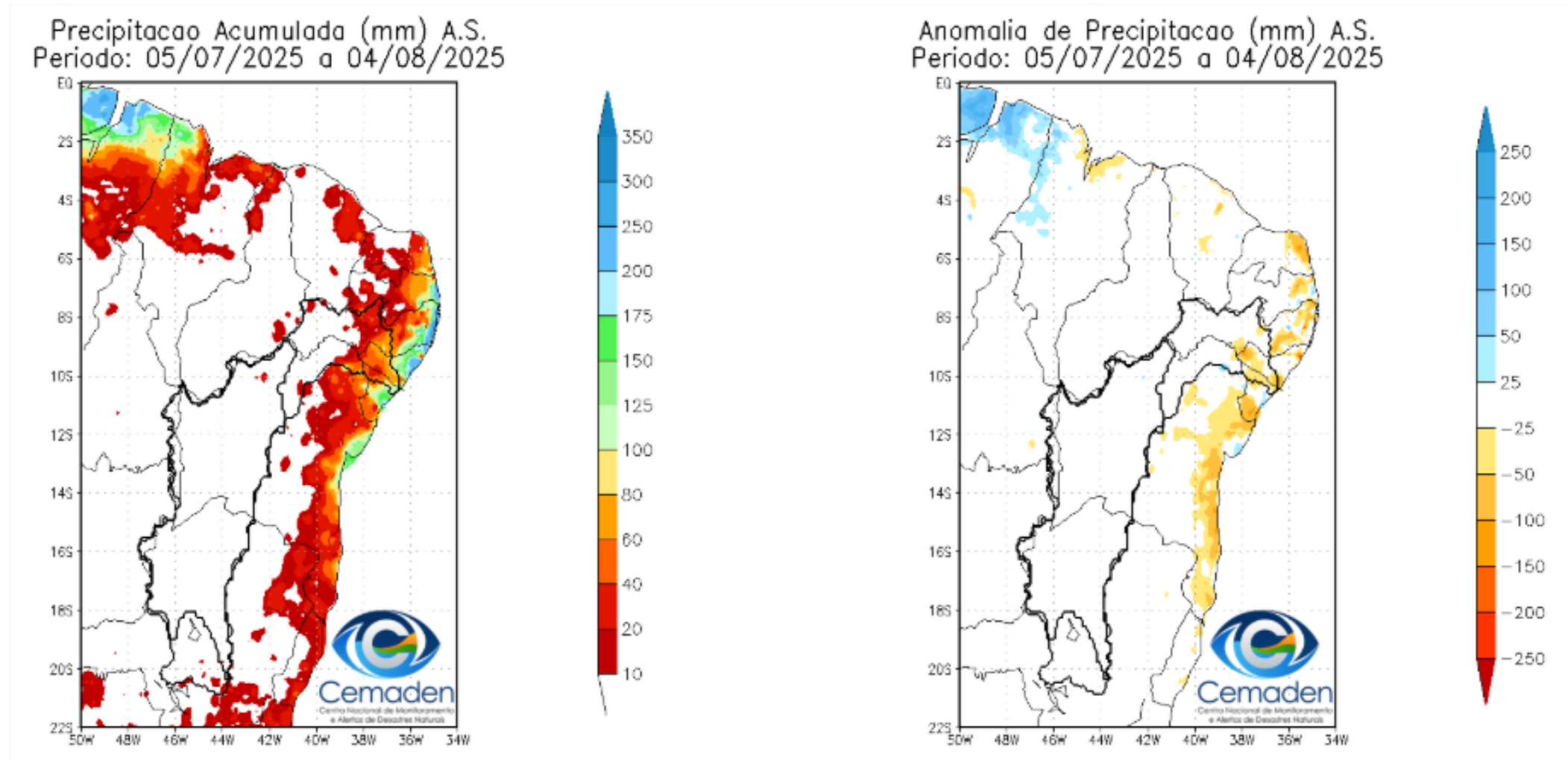
05 de agosto de 2025



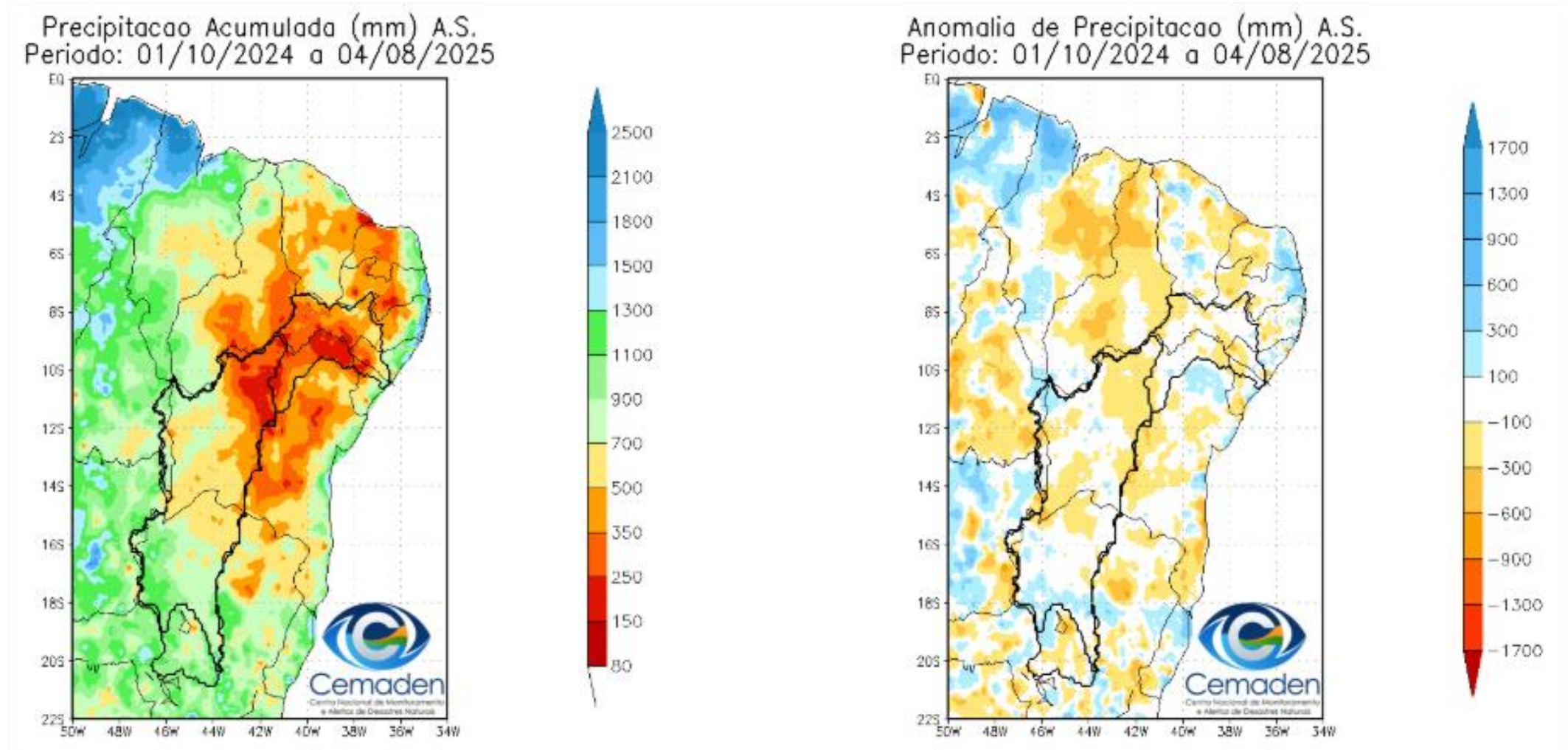
MINISTÉRIO DA
CIÊNCIA, TECNOLOGIA
E INOVAÇÃO



Chuva dos últimos 30 dias

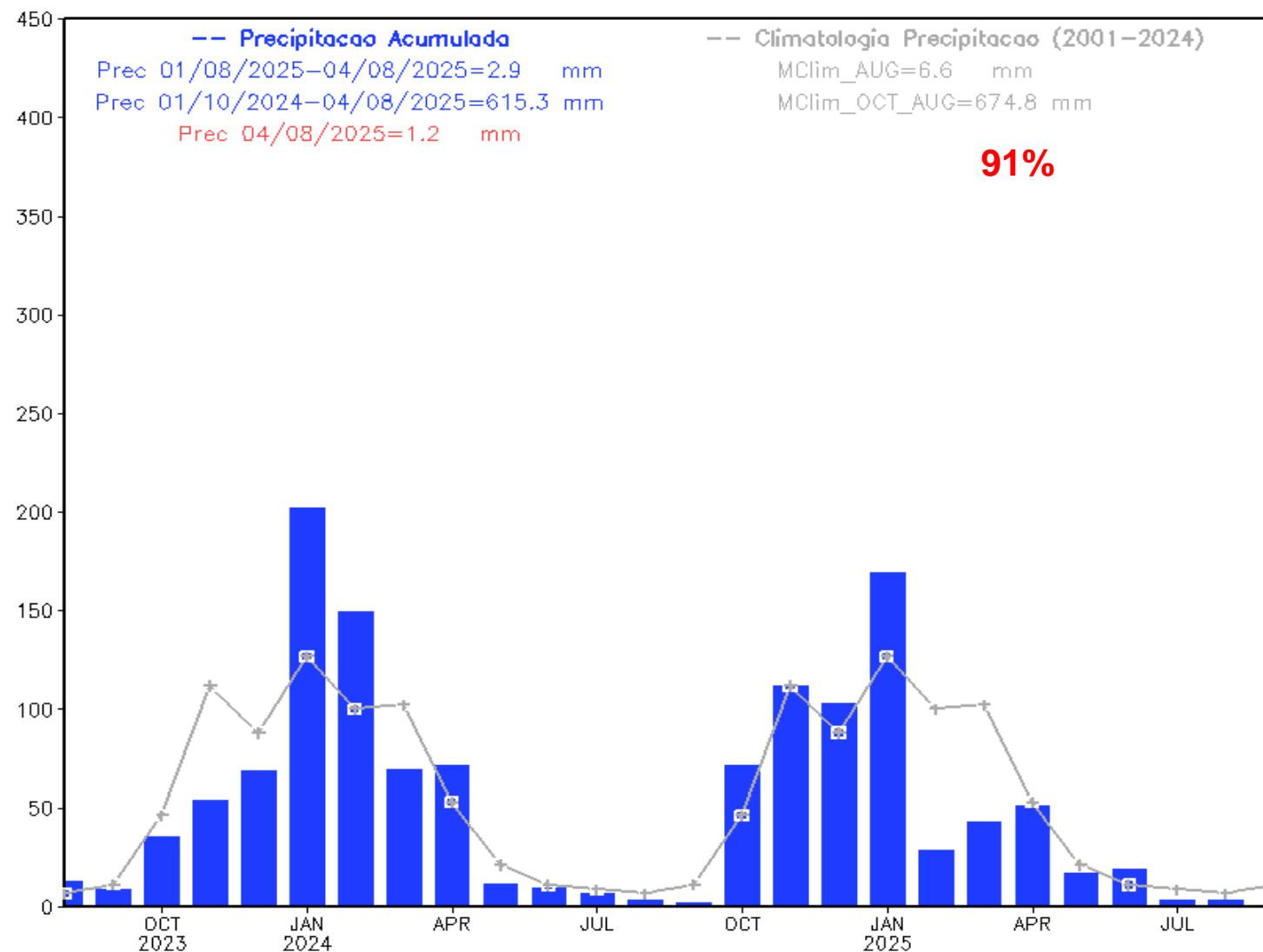


Chuva no Ano Hidrológico - desde 01/10/2024



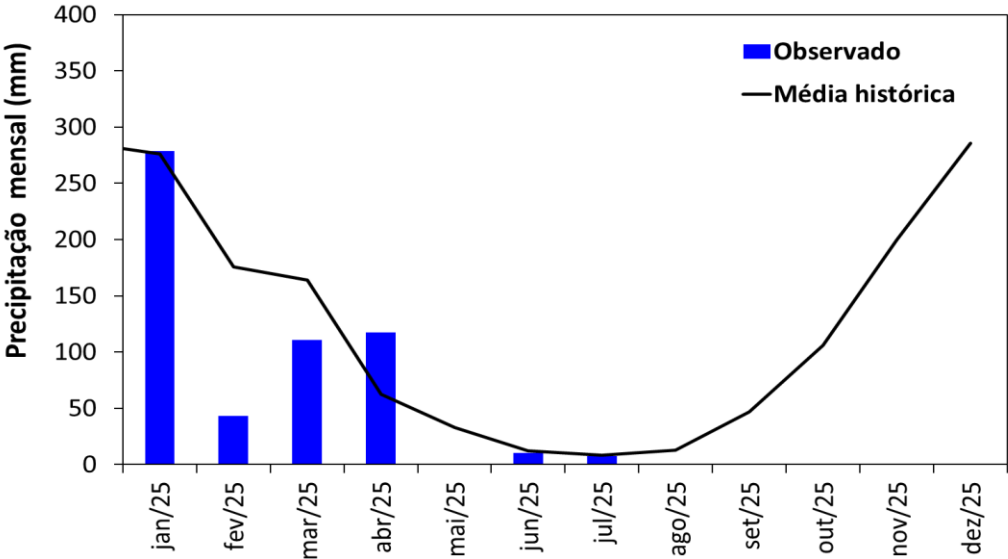
Chuva dos últimos dois anos

Precipitacao Bacia do Rio Sao_Francisco desde AUG 2023



Monitoramento UHE Três Marias

Precipitação



Estação Chuvosa - Out a Mar - 1208 mm

2023/2024: 1057 mm (87% da MLT)

2024/2025: 1124 mm (93% da MLT)

Estação Seca - Abr a Set - 175 mm

2024: 57 mm (32% da MLT)

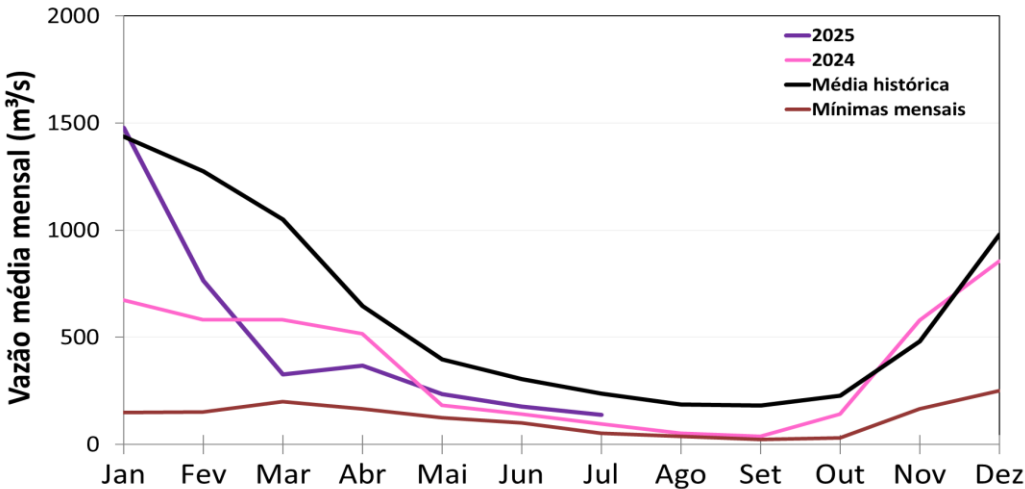
2025*: 136 mm (110% da MLT PARCIAL)

Jul/25*: 7 mm (88% da MLT)

Ago/25*: 0 mm (MLT = 13 mm)

*Até 03/08/2025

Vazão



Estação Chuvosa - Out a Mar - 908 m³/s

2023/2024: 408 m³/s (45% da MLT)

2024/2025: 691 m³/s (76% da MLT)

Estação Seca - Abr a Set - 325 m³/s

2024: 172 m³/s (53% da MLT)

2025*: 207 m³/s (64% da MLT)

Jul/25: 138 m³/s (59% da MLT)

03/Ago/25: 120 m³/s (64% da MLT)

**Até 03/08/2025

MLT: Média de Longo Termo (1983-2024)

Dados de precipitação: INMET, ANA, CEMADEN.

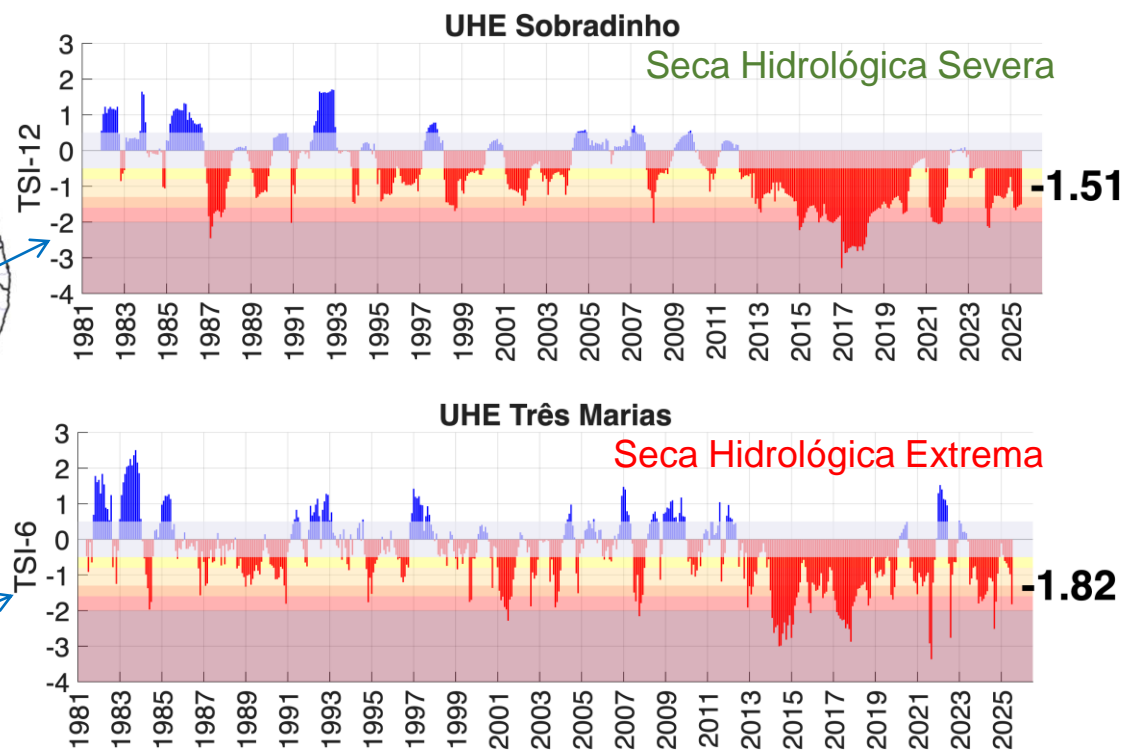
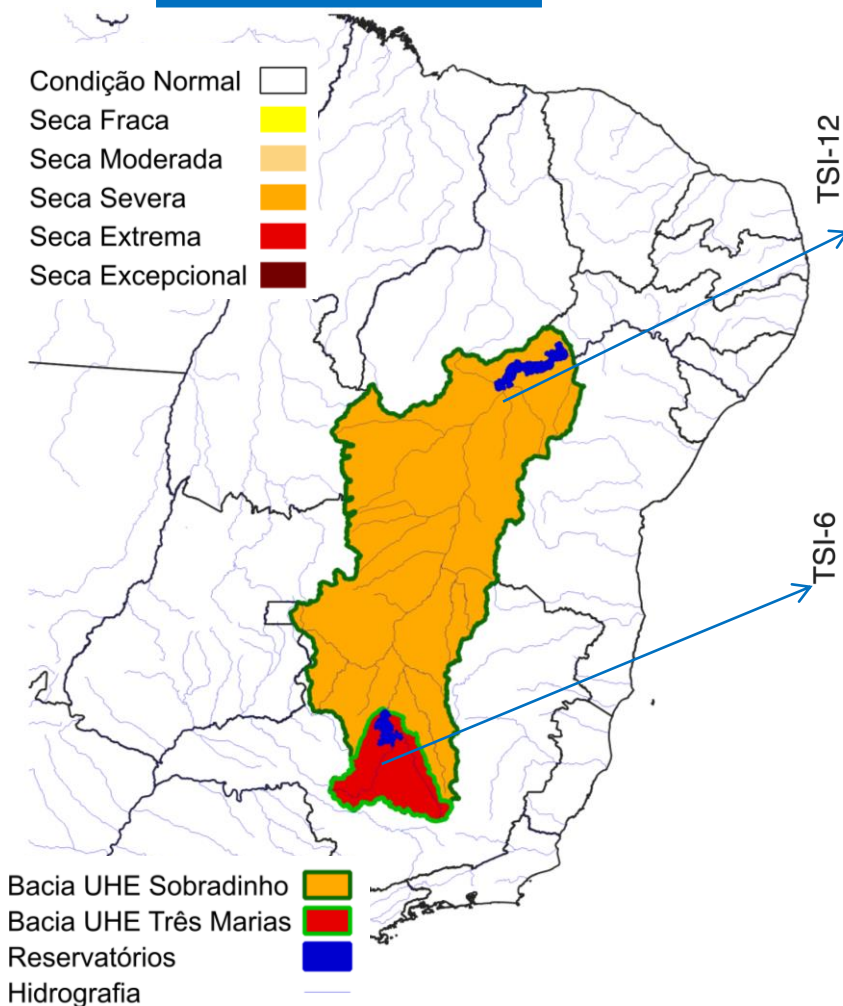
Dados de vazão: ONS e ANA.

Monitoramento UHE Três Marias e Sobradinho

Índice Padronizado Bivariado (Chuva-Vazão) – TSI:

Julho/2025

Longo Prazo



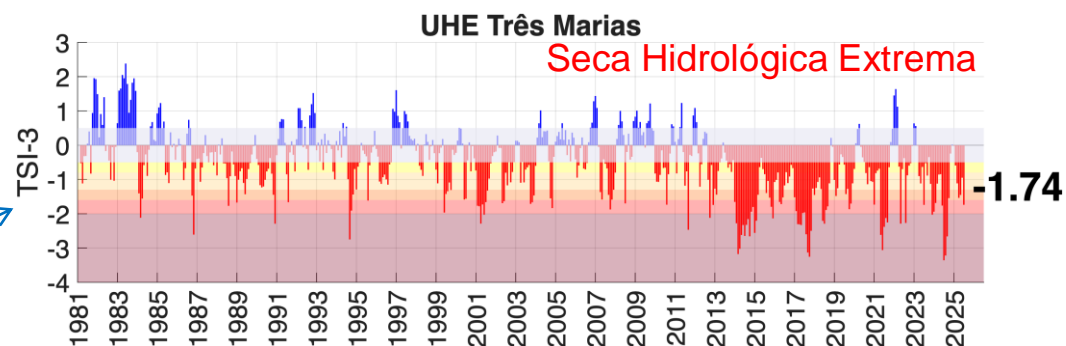
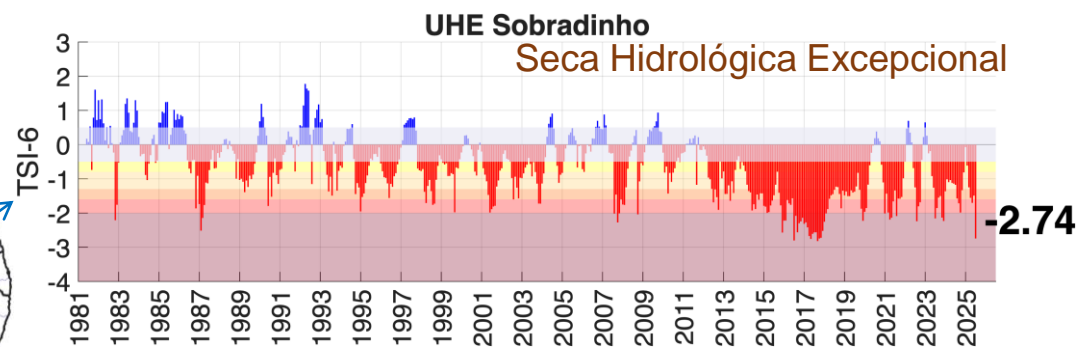
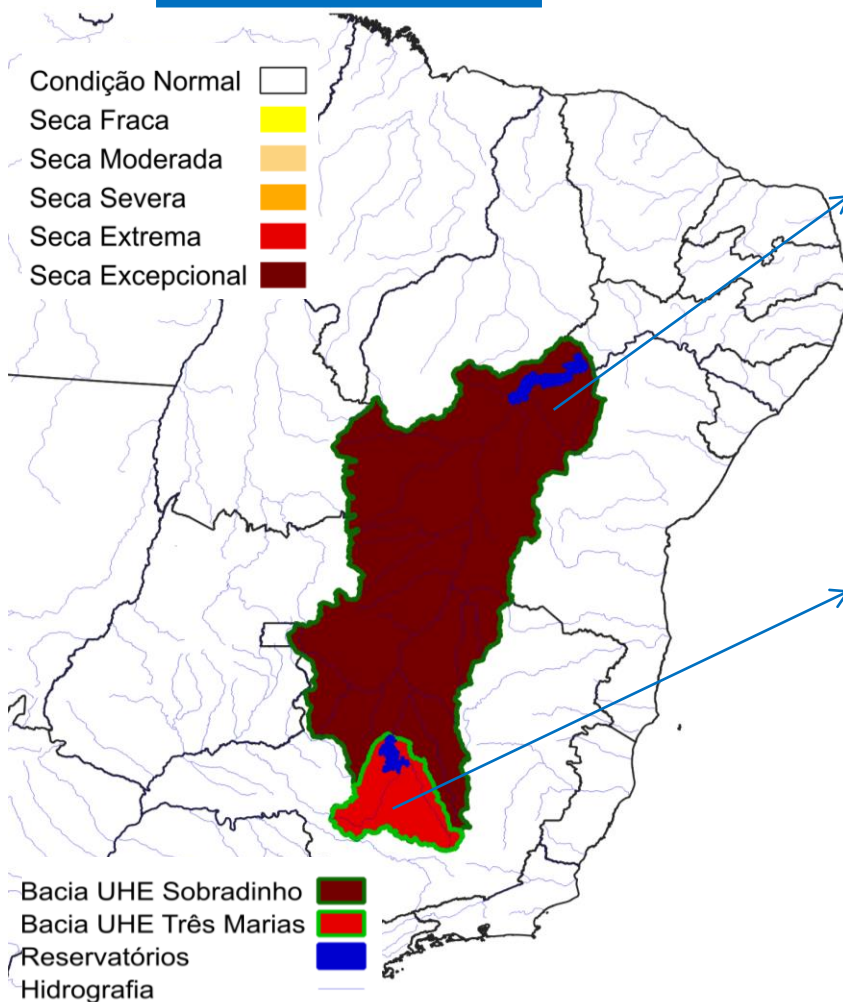
| Bacia afluenta à UHE: | TSI-Junho | TSI-Julho |
|-----------------------|------------------|-----------------|
| Sobradinho | Severa (-1.53) | Severa (-1.51) |
| Três Marias | Moderada (-0.98) | Extrema (-1.82) |

Monitoramento UHE Três Marias e Sobradinho

Índice Padronizado Bivariado (Chuva-Vazão) – TSI:

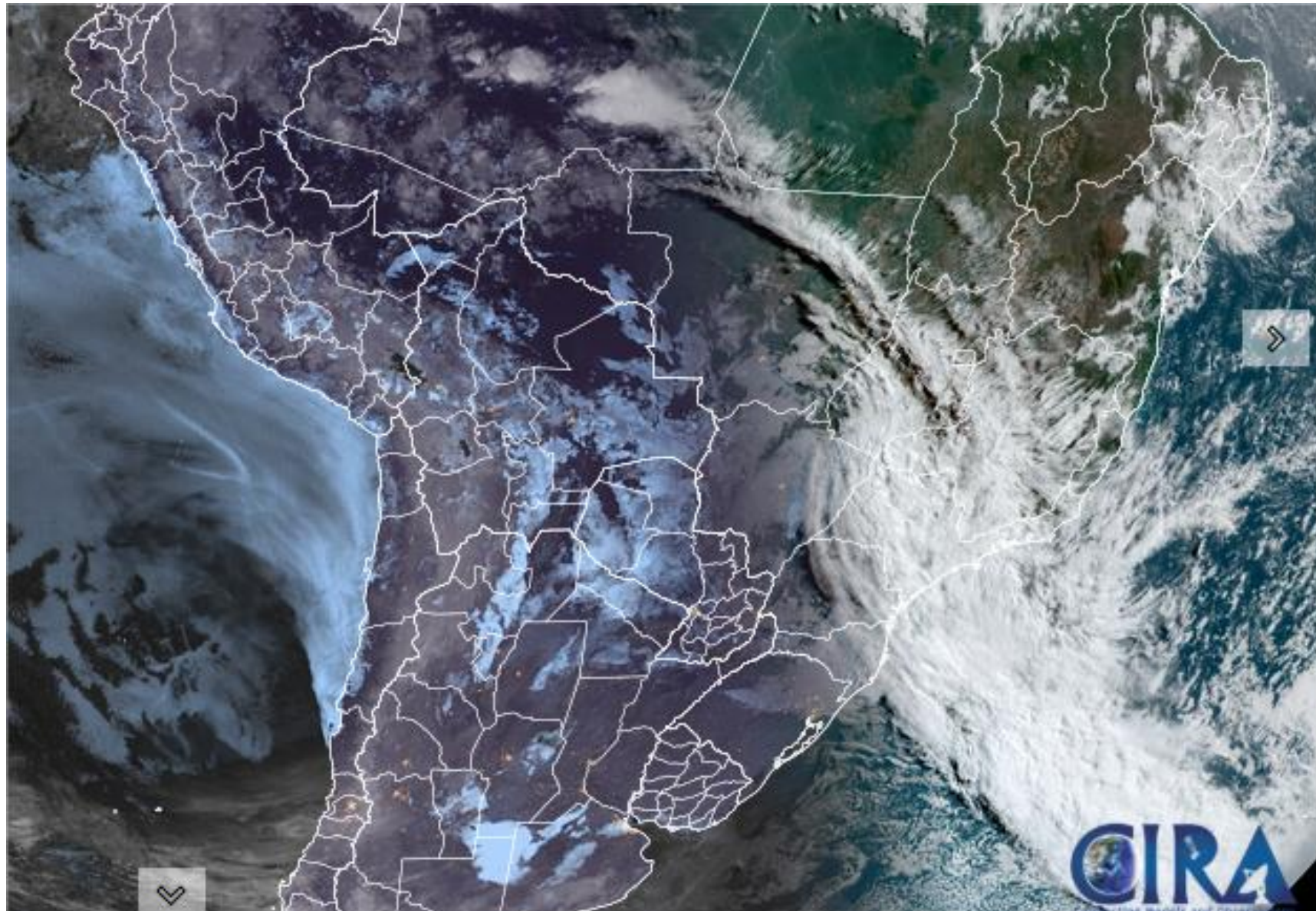
Curto Prazo

Julho/2025

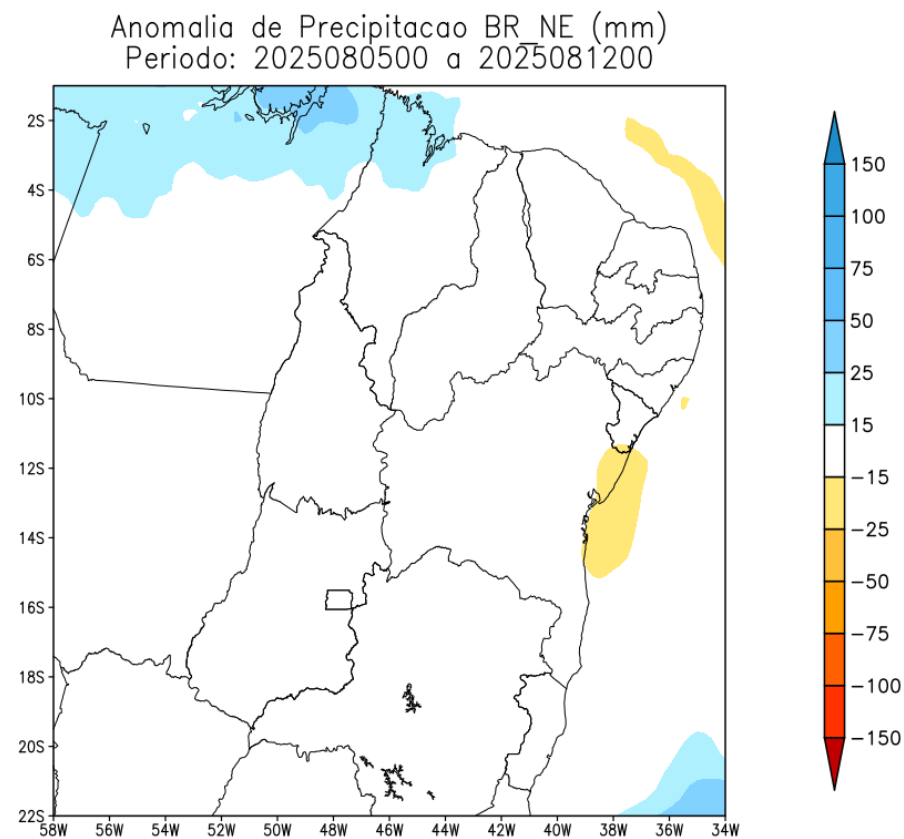
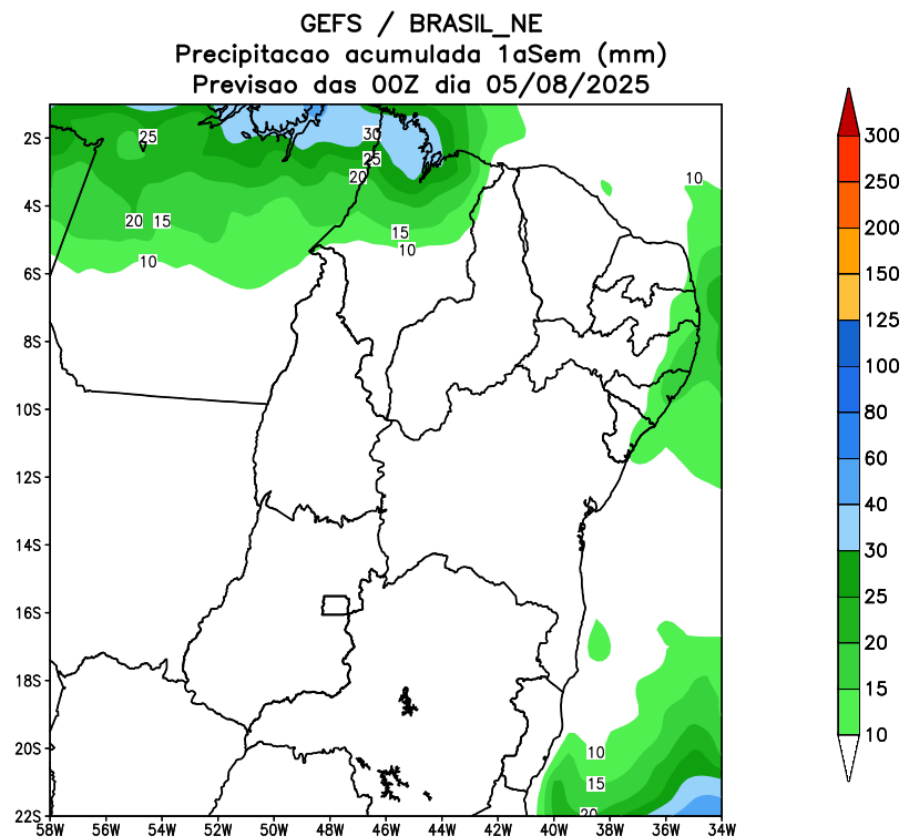


| Bacia afluenta à UHE: | TSI-Junho | TSI-Julho |
|-----------------------|------------------|---------------------|
| Sobradinho | Severa (-1.49) | Excepcional (-2.74) |
| Três Marias | Moderada (-0.95) | Extrema (-1.74) |

Situação meteorológica atual

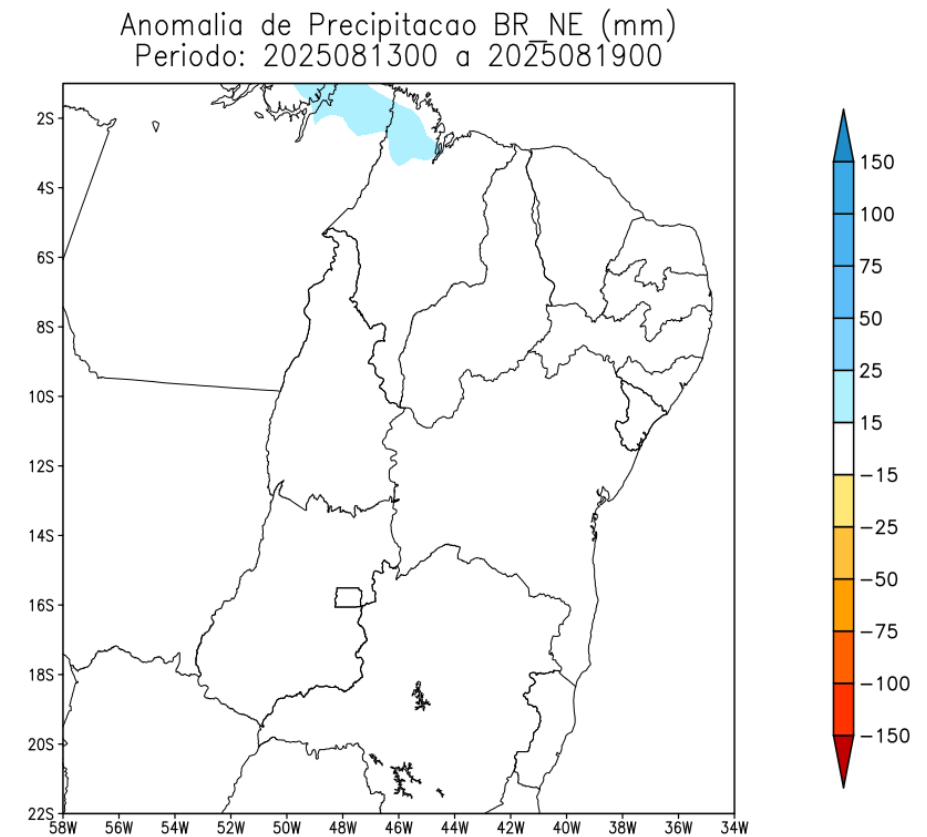
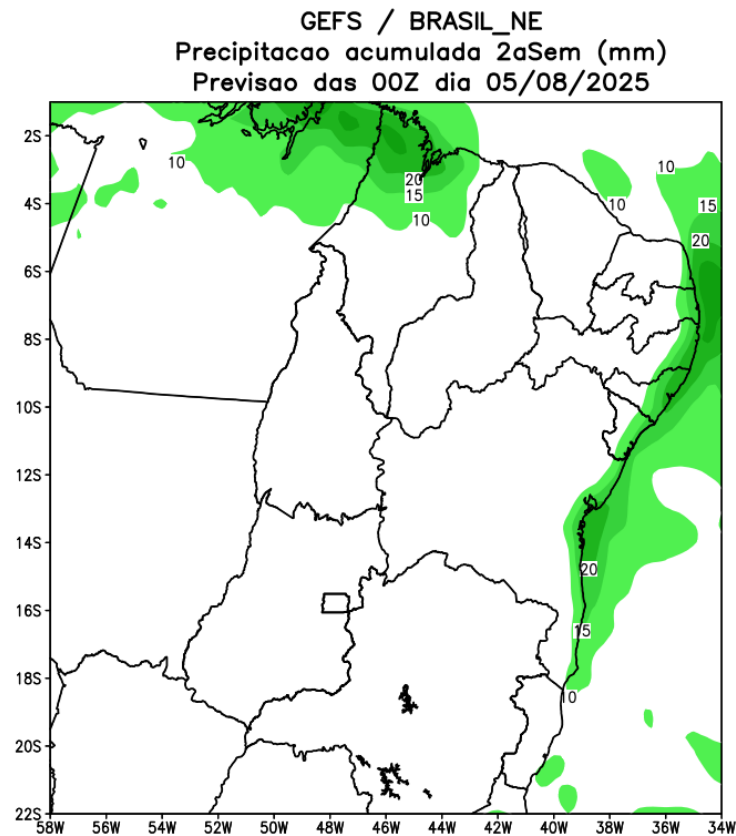


Previsão de chuva próximos 7 dias



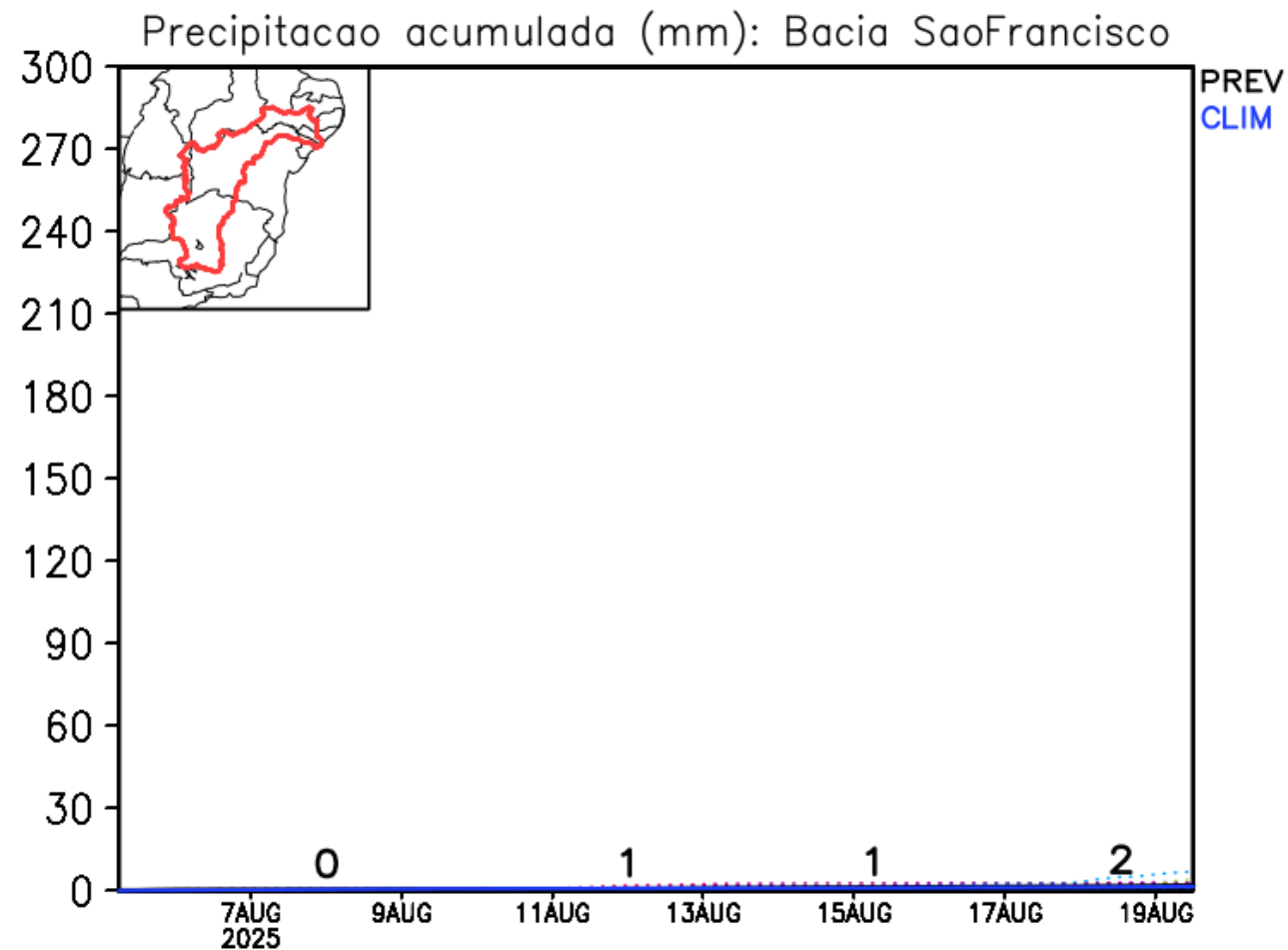
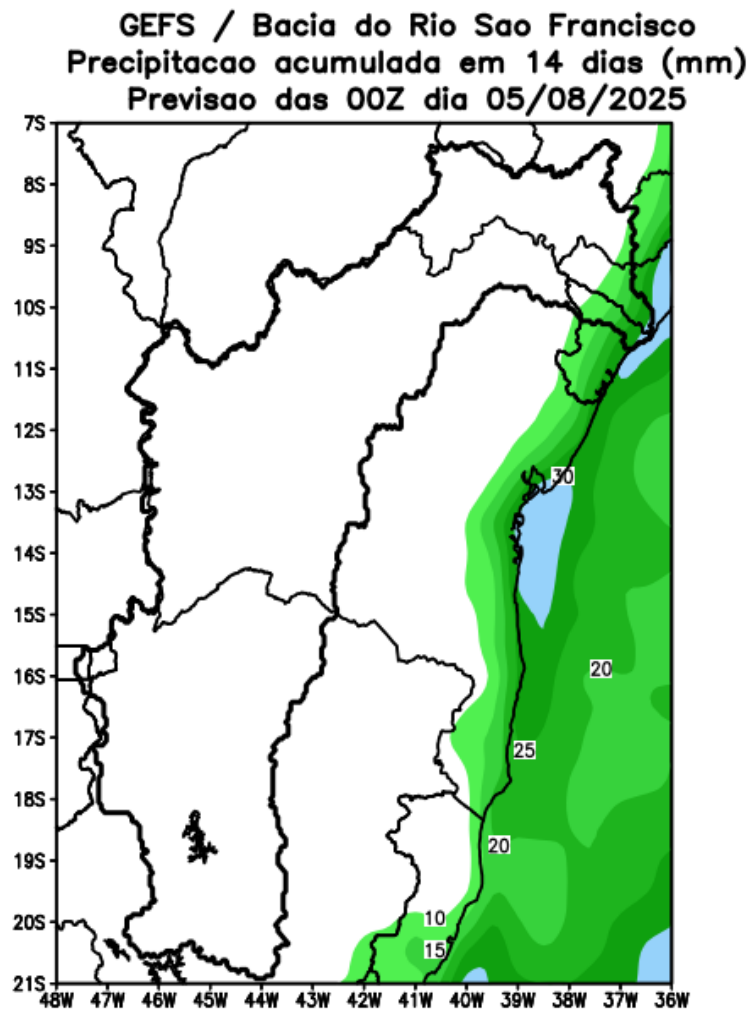
Fonte: GEFS/NOAA

Tendência para a 2a semana



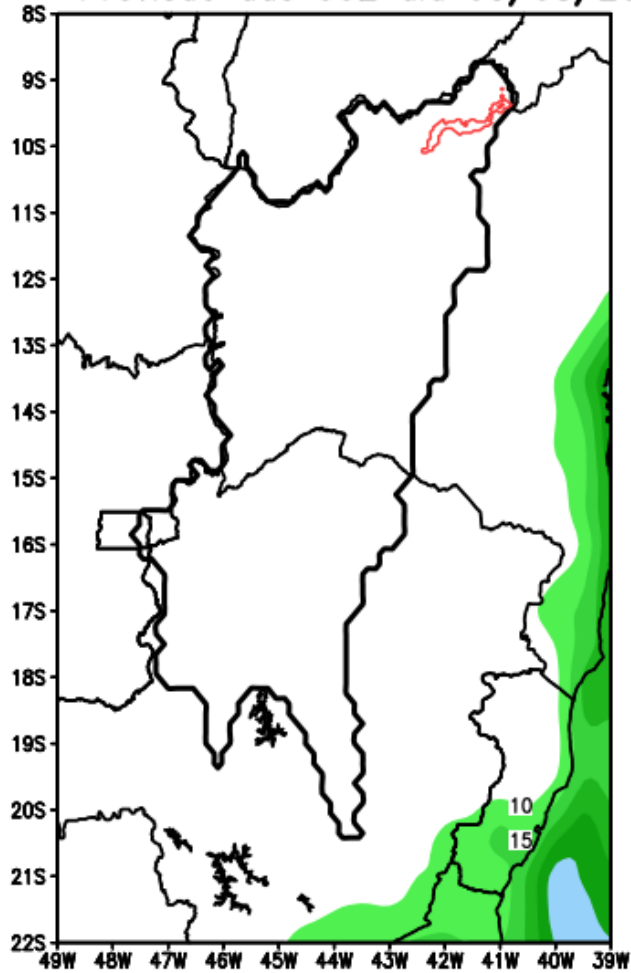
Modelo GFS/NOAA

Bacia do rio São Francisco



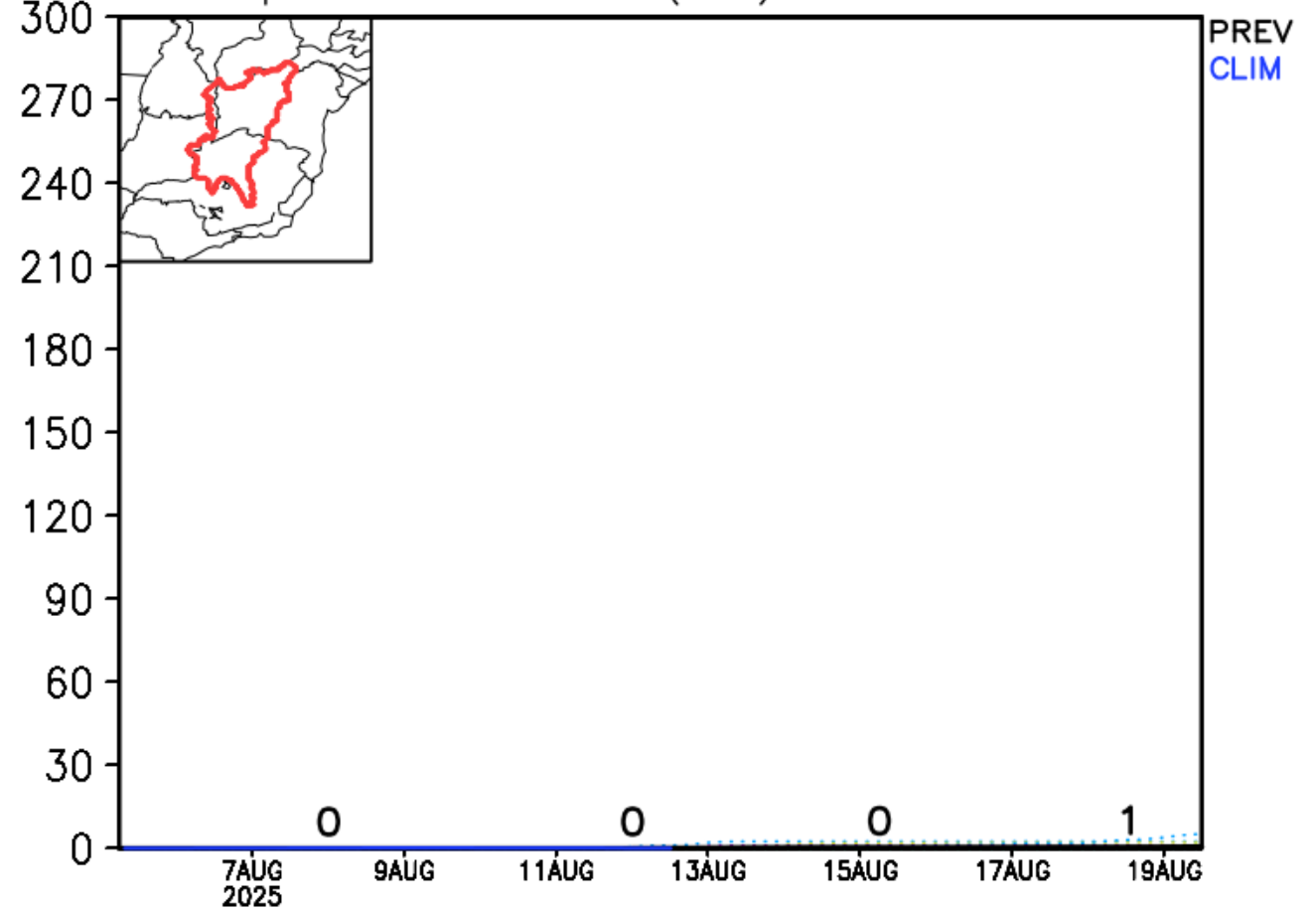
Bacia de Sobradinho

GEFS / Sobradinho
Precipitacao acumulada em 14 dias (mm)
Previsao das 00Z dia 05/08/2025

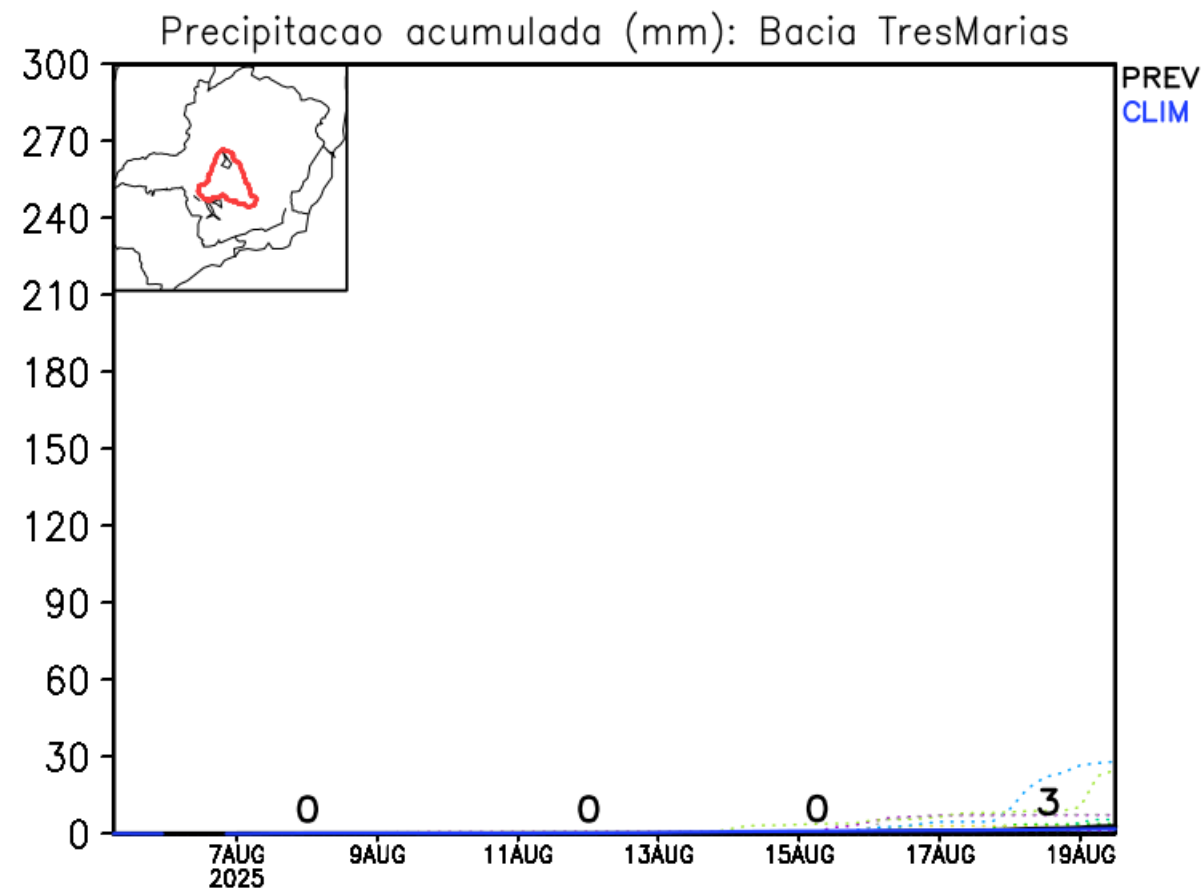
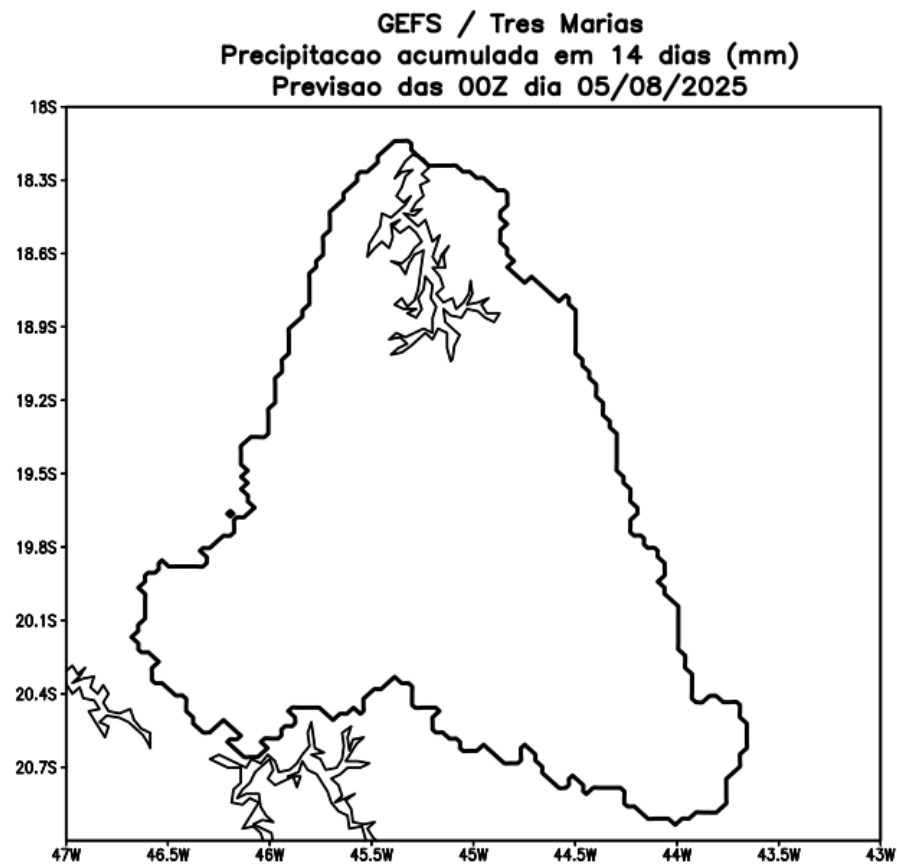


Modelo GFS/NOAA

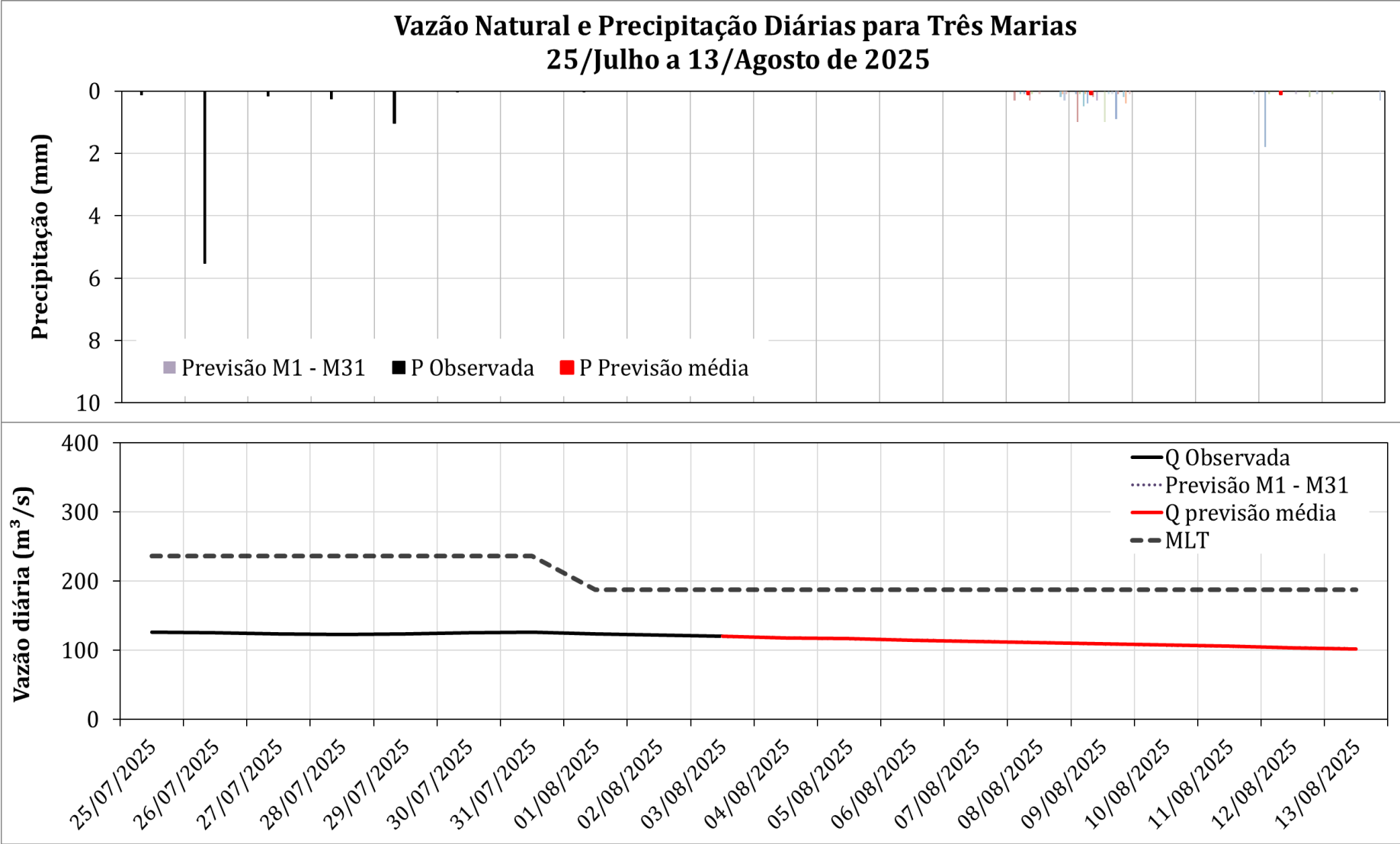
Precipitacao acumulada (mm): Bacia Sobradinho



Bacia de Três Marias



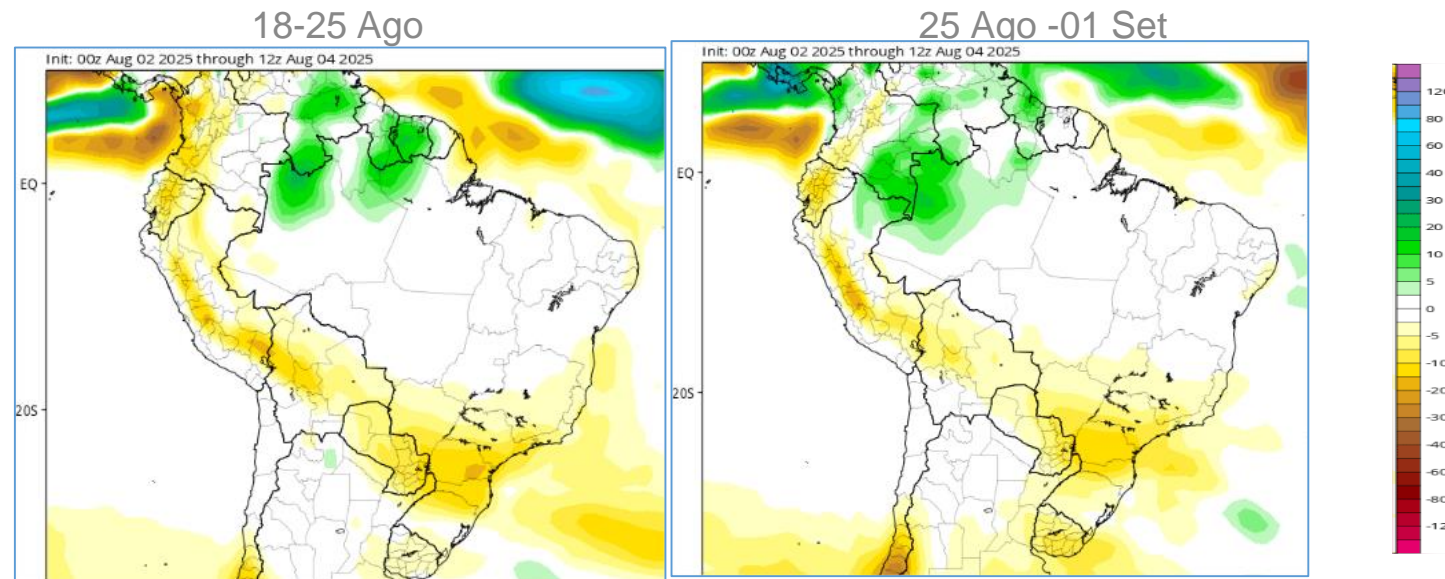
UHE Três Marias: Previsão de Vazão (modelo PDM/CEMADEN)



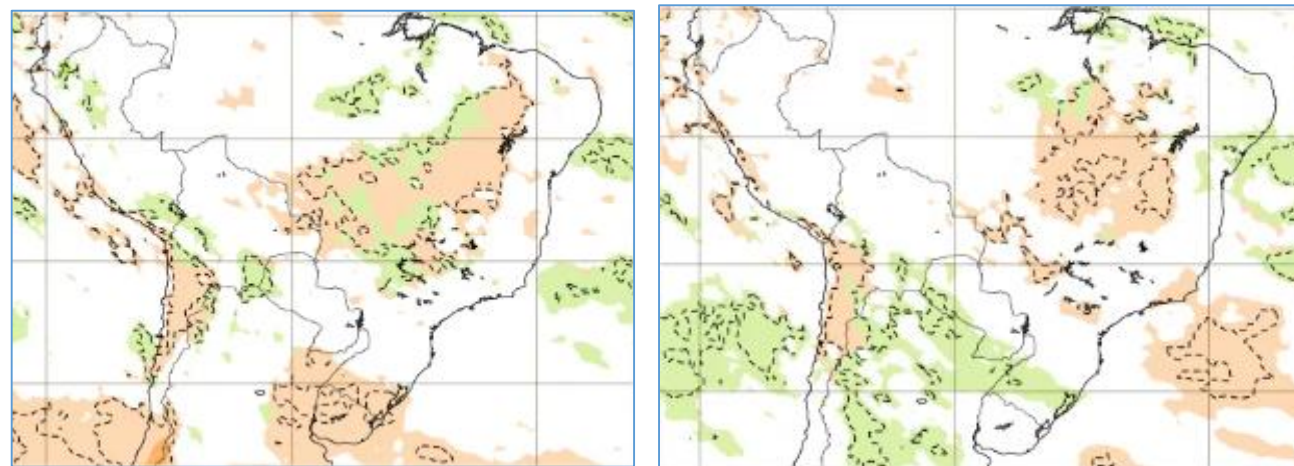
Previsão média para os próximos 10 dias: 110 m³/s ➡ **59% da MLT de Agosto**

Anomalia de Chuva 3a e 4a semanas

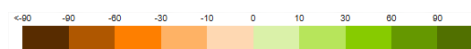
CFS/NOAA



ECMWF



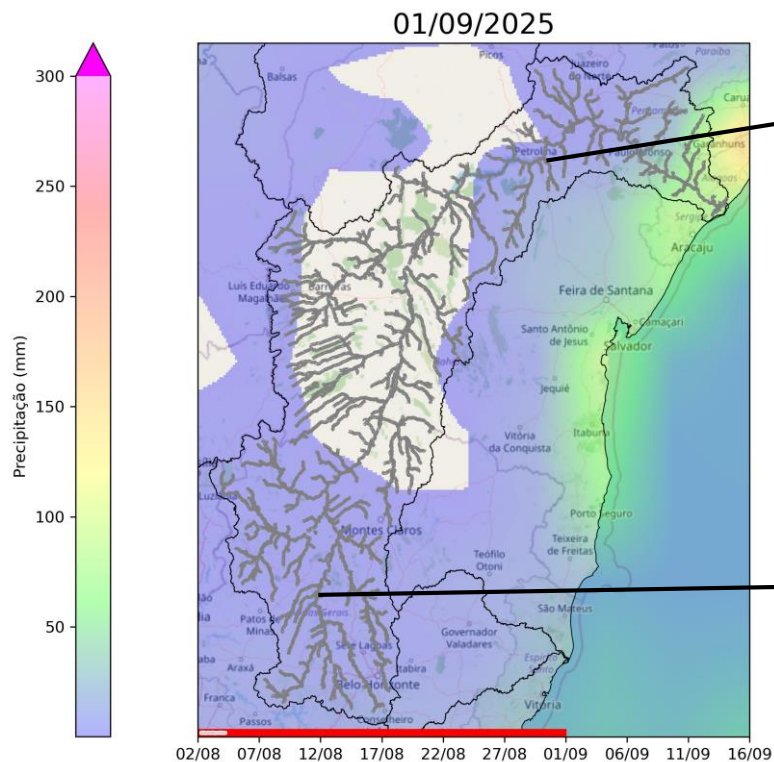
18-25 Ago



25 Ago- 01 Set

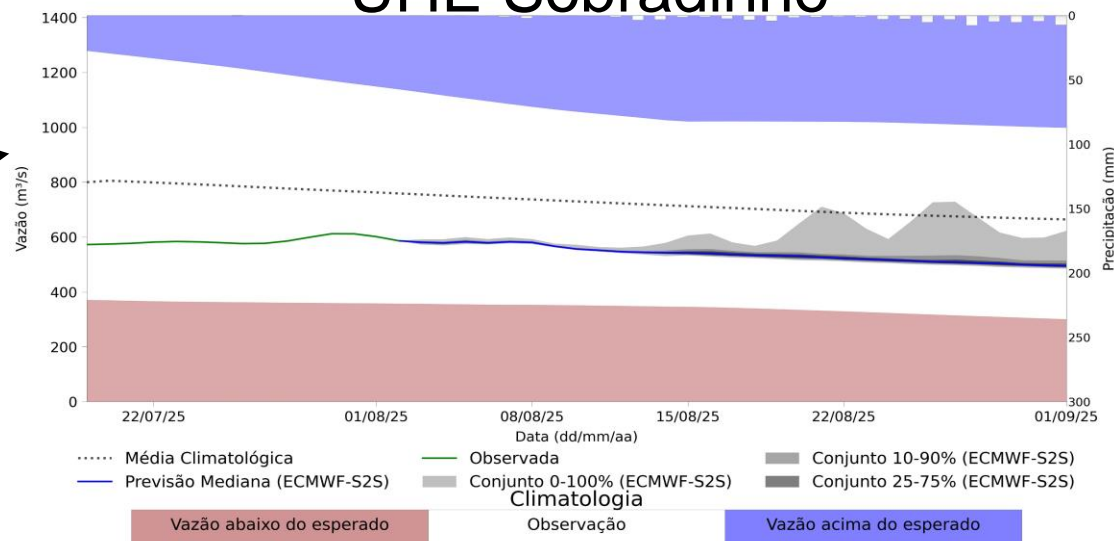
Previsão de vazão natural na Bacia Rio São Francisco (Modelo hidrológico MHD)

Previsão: 02/08/2025 a 01/09/2025

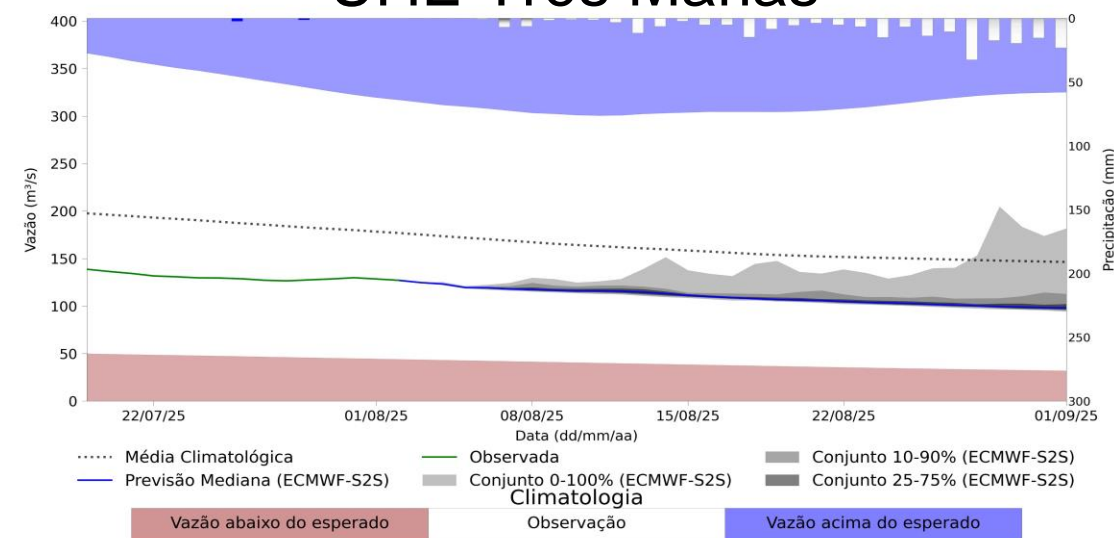


Fonte: Meteorologia (INMET/MERGE);
Vazão (ANA/ONS)
MLT: 1993-2024
Previsão Meteorológica: ECMWF-S2S

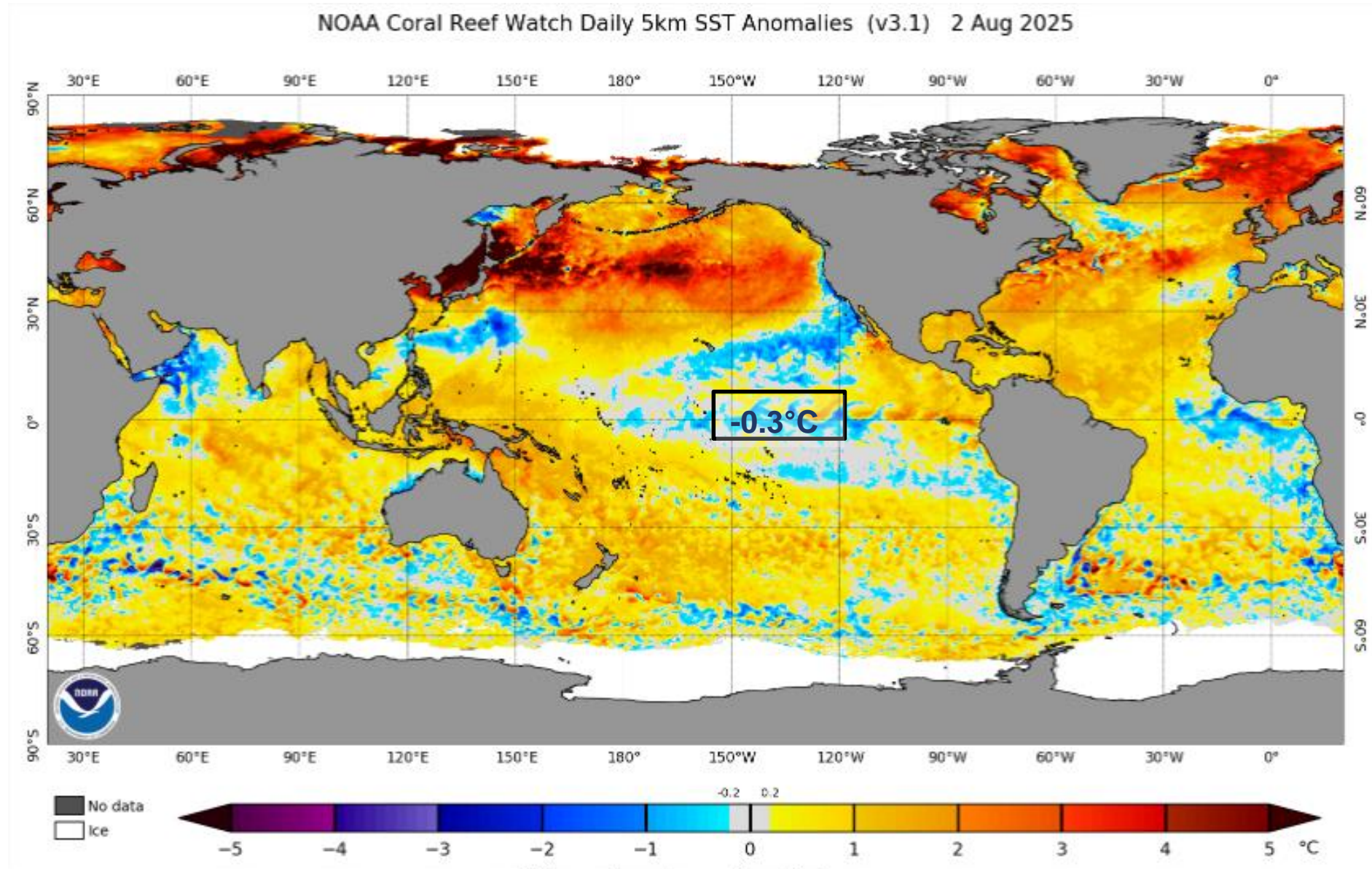
UHE Sobradinho



UHE Três Marias



Status Atual: **Neutralidade**



Previsão do “ENSO”

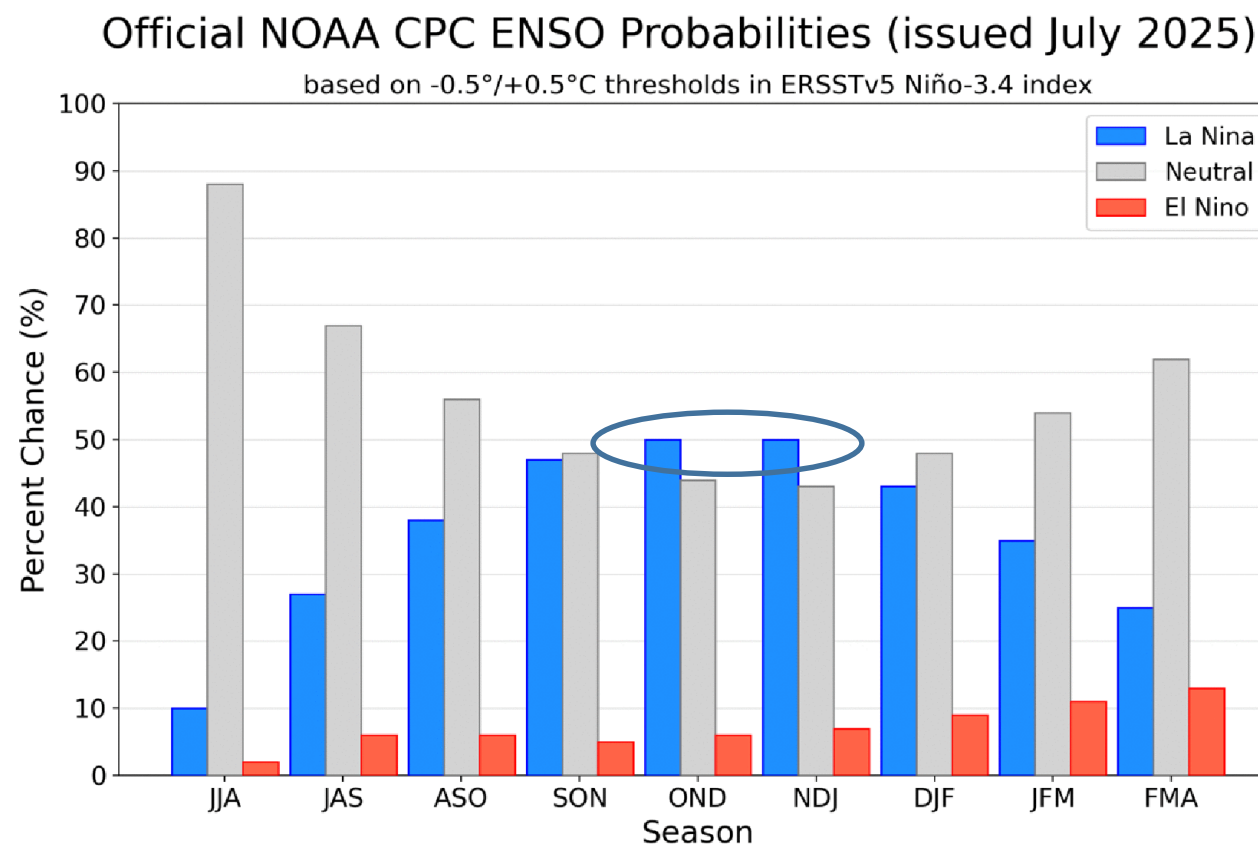


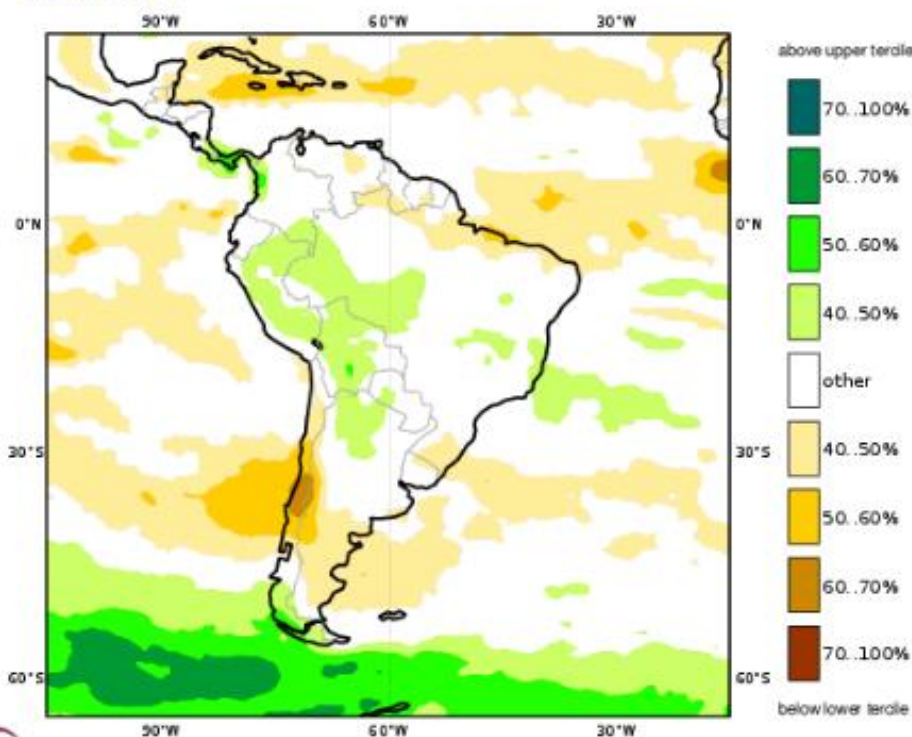
Figure 7. Official ENSO probabilities for the Niño 3.4 sea surface temperature index (5°N - 5°S , 120°W - 170°W). Figure updated 10 July 2025.

Previsão Sazonal de Chuva Multi-Modelo

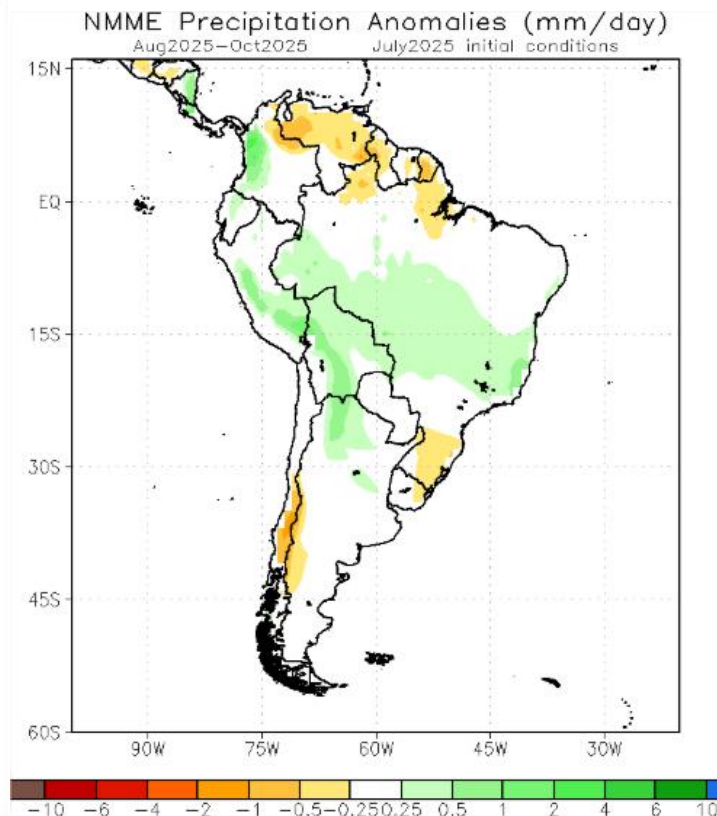
Agosto-Setembro-Outubro

C3S multi-system seasonal forecast
Prob(most likely category of precipitation)
Nominal forecast start: 01/07/25
Unweighted mean

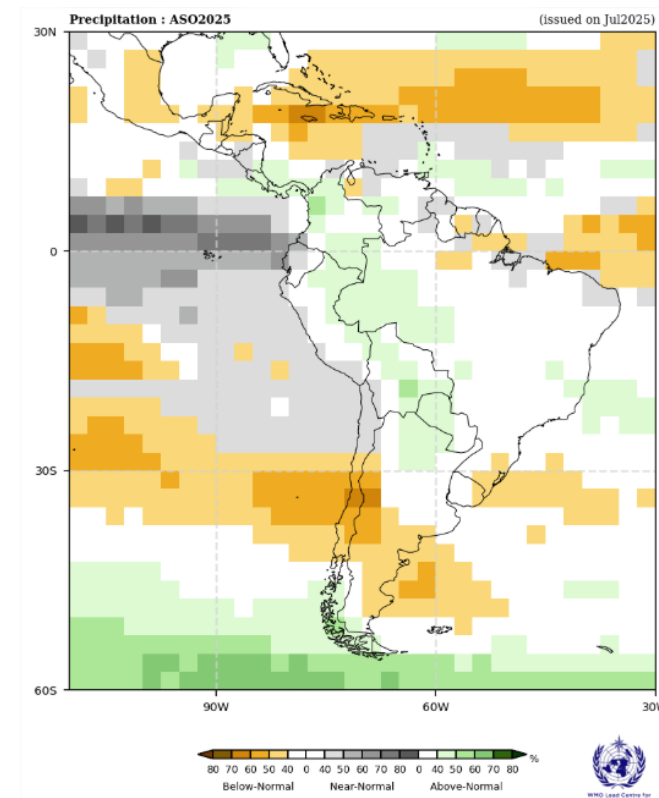
ASO 2025



Modelos “Europeus”

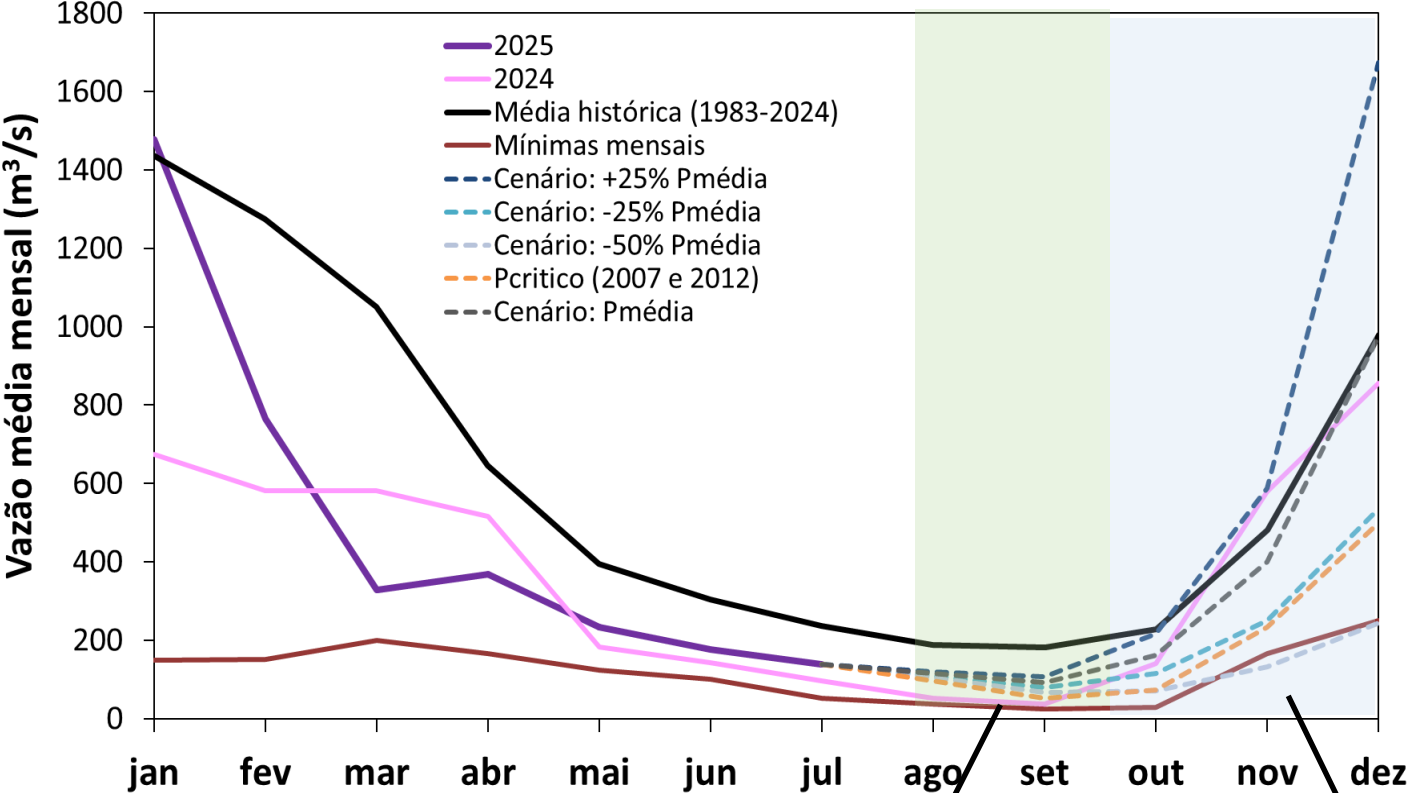


Modelos Norte Americanos



Modelos da WMO

Três Marias: Projeção de Vazão (Modelo hidrológico PDM-CEMADEN)



Ago-Set (Meses Secos)

MLT: 184 m³/s

| Vazão | % MLT |
|----------|-------|
| 114 m³/s | 62% |
| 104 m³/s | 56% |
| 95 m³/s | 51% |
| 75 m³/s | 41% |

Out-Dez (Meses Chuvosos)

MLT: 563 m³/s

| Vazão | % MLT |
|----------|-------|
| 826 m³/s | 147% |
| 513 m³/s | 91% |
| 300 m³/s | 53% |
| 269 m³/s | 48% |