



CEMADEN

**Centro Nacional de Monitoramento e
Alertas de Desastres Naturais**

Monitoramento, Previsões e Projeções para a Bacia do Rio São Francisco

02 de setembro de 2025

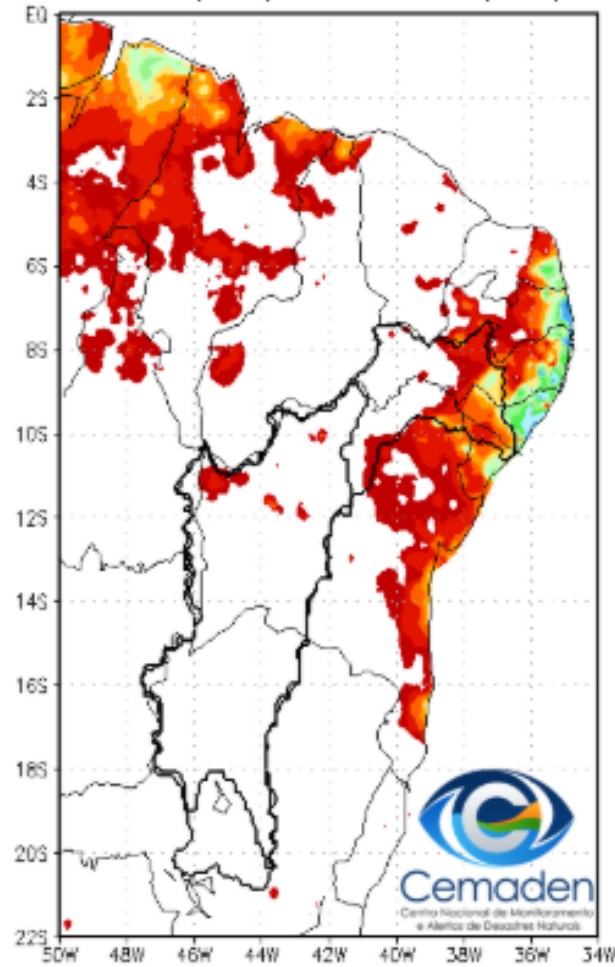


MINISTÉRIO DA
**CIÊNCIA, TECNOLOGIA
E INOVAÇÃO**

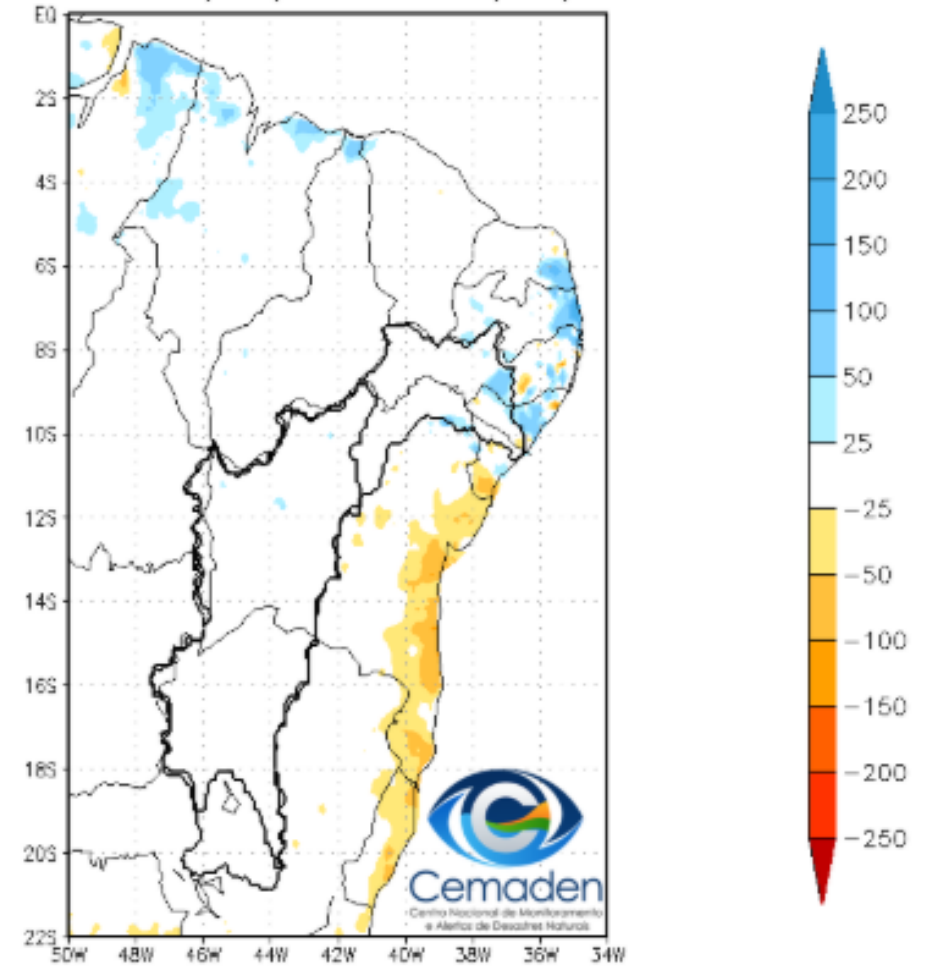


Chuva dos últimos 30 dias

Precipitacao Acumulada (mm) A.S.
Período: 01/08/2025 a 31/08/2025

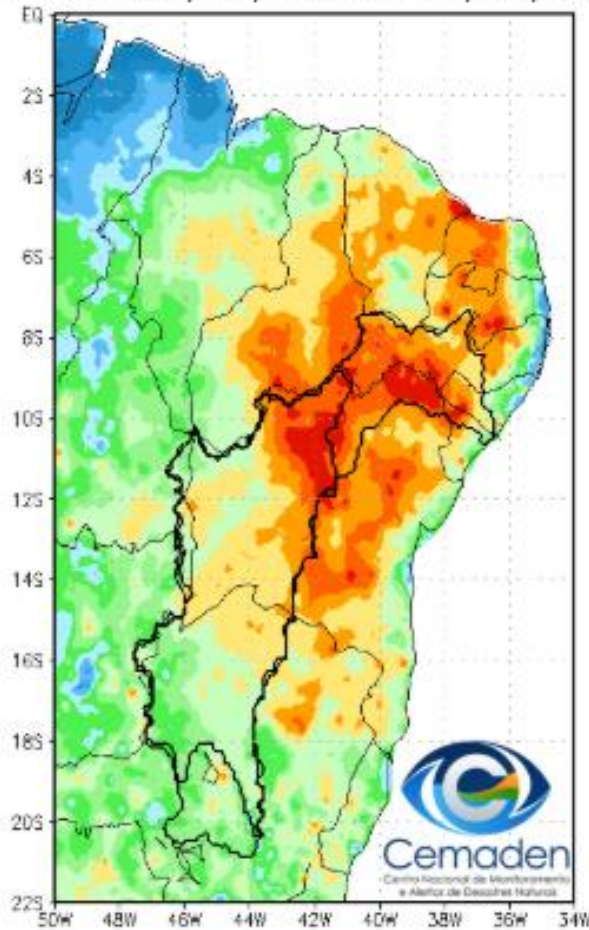


Anomalia de Precipitacao (mm) A.S.
Período: 01/08/2025 a 31/08/2025

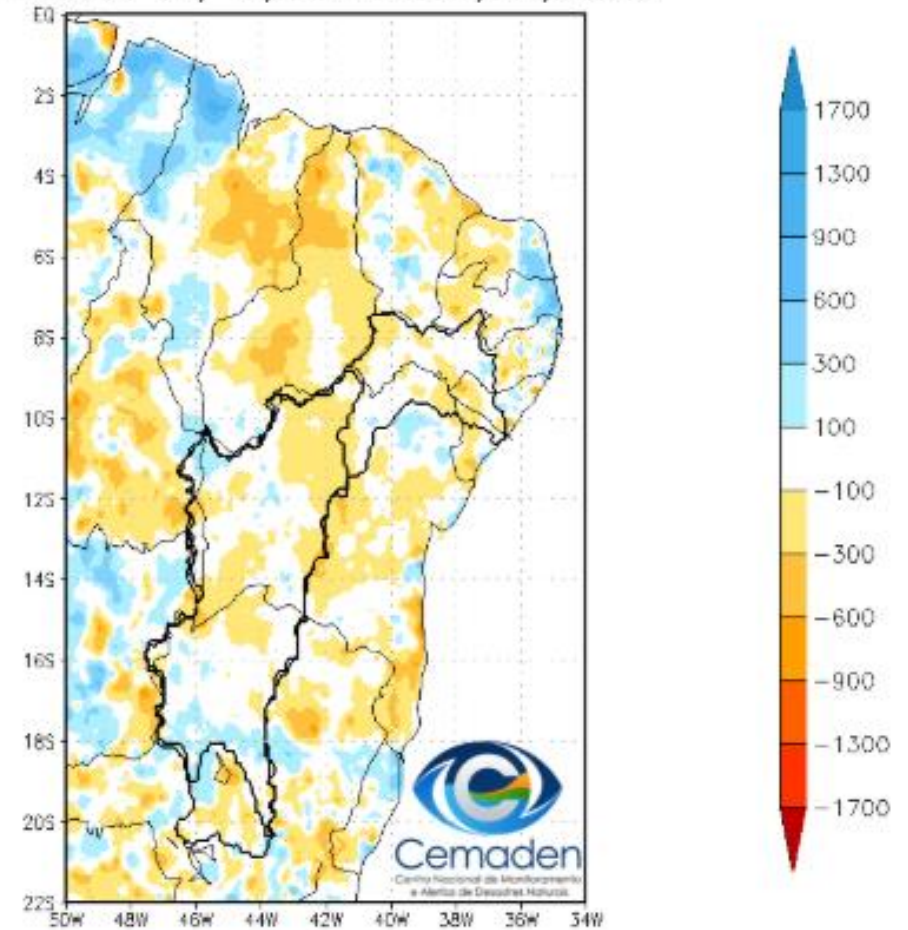


Chuva no Ano Hidrológico - desde 01/10/2024

Precipitação Acumulada (mm) A.S.
Período: 01/10/2024 a 31/08/2025

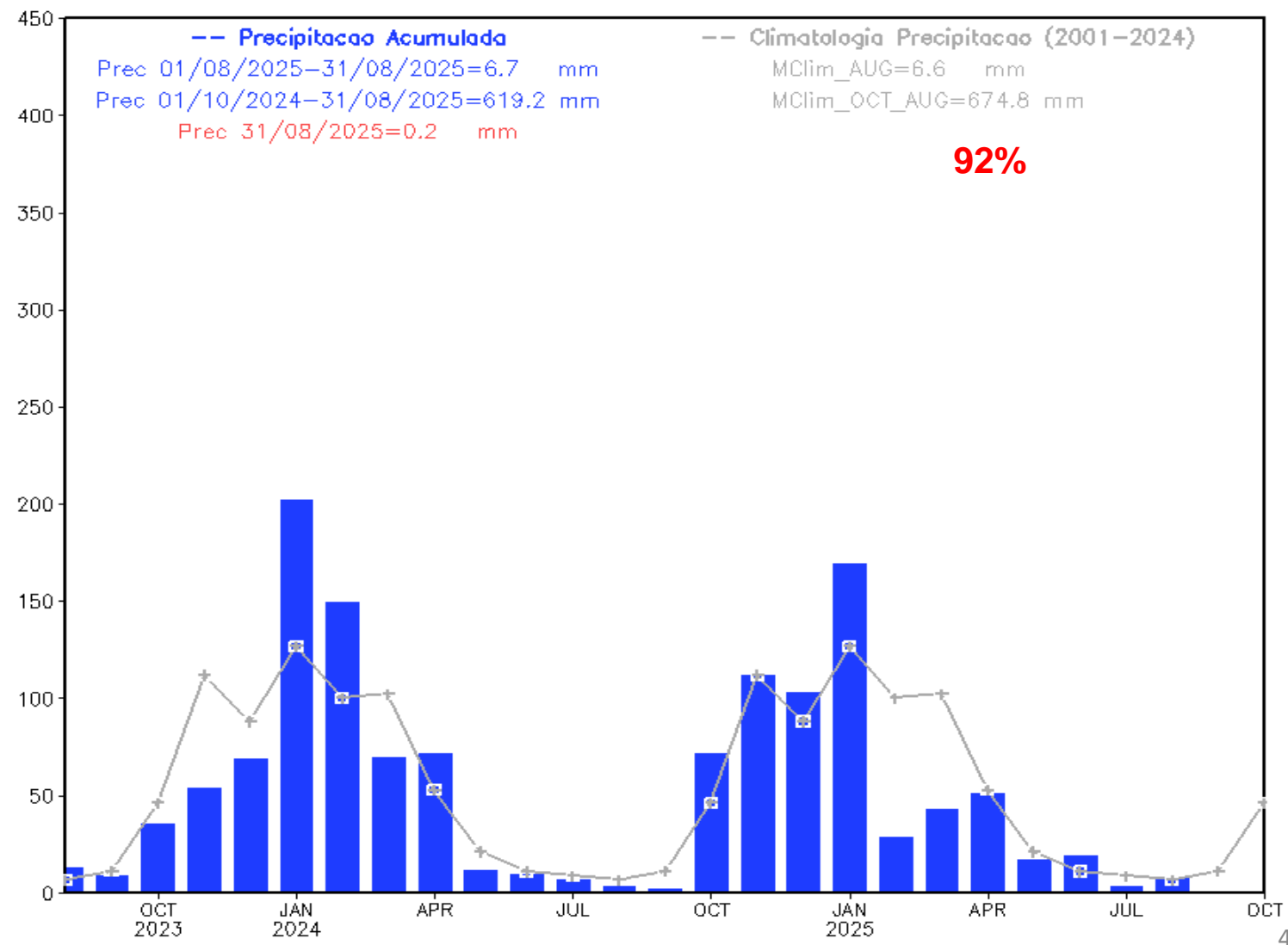


Anomalia de Precipitação (mm) A.S.
Período: 01/10/2024 a 31/08/2025



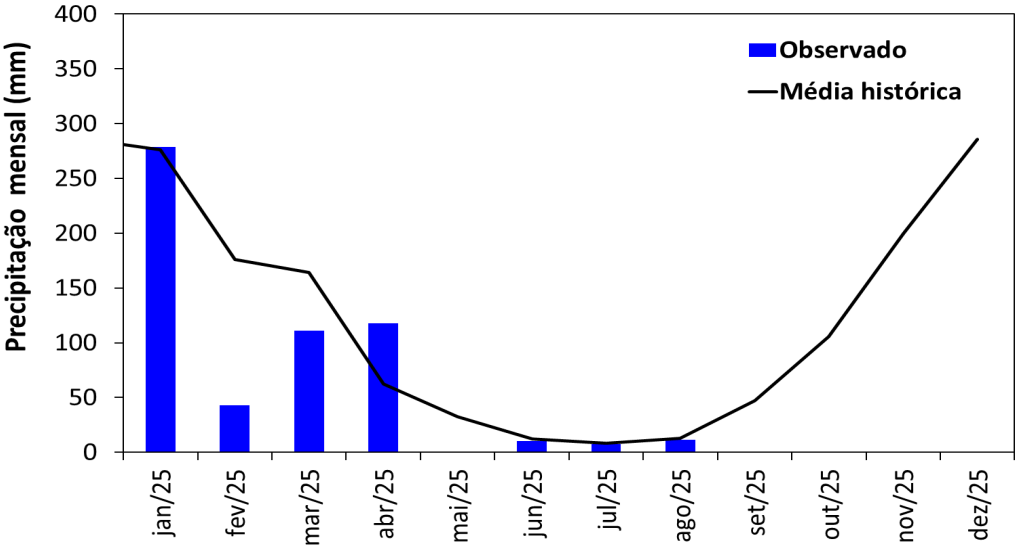
Chuva dos últimos dois anos

Precipitacao Bacia do Rio Sao_Francisco
desde AUG 2023



Monitoramento UHE Três Marias

Precipitação



Estação Chuvosa - Out a Mar - 1208 mm

2023/2024: 1057 mm (87% da MLT)

2024/2025: 1124 mm (93% da MLT)

Estação Seca - Abr a Set – 175 mm

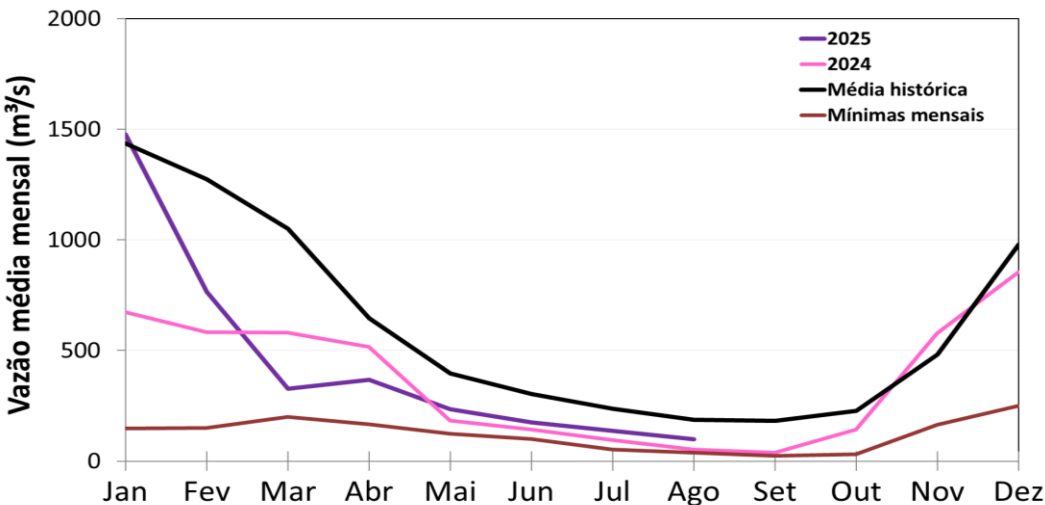
2024: 57 mm (32% da MLT)

2025*: 148 mm (101% da MLT PARCIAL)

Ago/25*: 11 mm (89% da MLT)

*Até 31/08/2025

Vazão



Estação Chuvosa - Out a Mar - 908 m³/s

2023/2024: 408 m³/s (45% da MLT)

2024/2025: 691 m³/s (76% da MLT)

Estação Seca - Abr a Set - 325 m³/s

2024: 172 m³/s (53% da MLT)

2025*: 203 m³/s (62% da MLT)

Ago/25: 98 m³/s (52% da MLT)

31/Ago/25: 82 m³/s (44% da MLT)

**Até 31/08/2025

MLT: Média de Longo Termo (1983-2024)

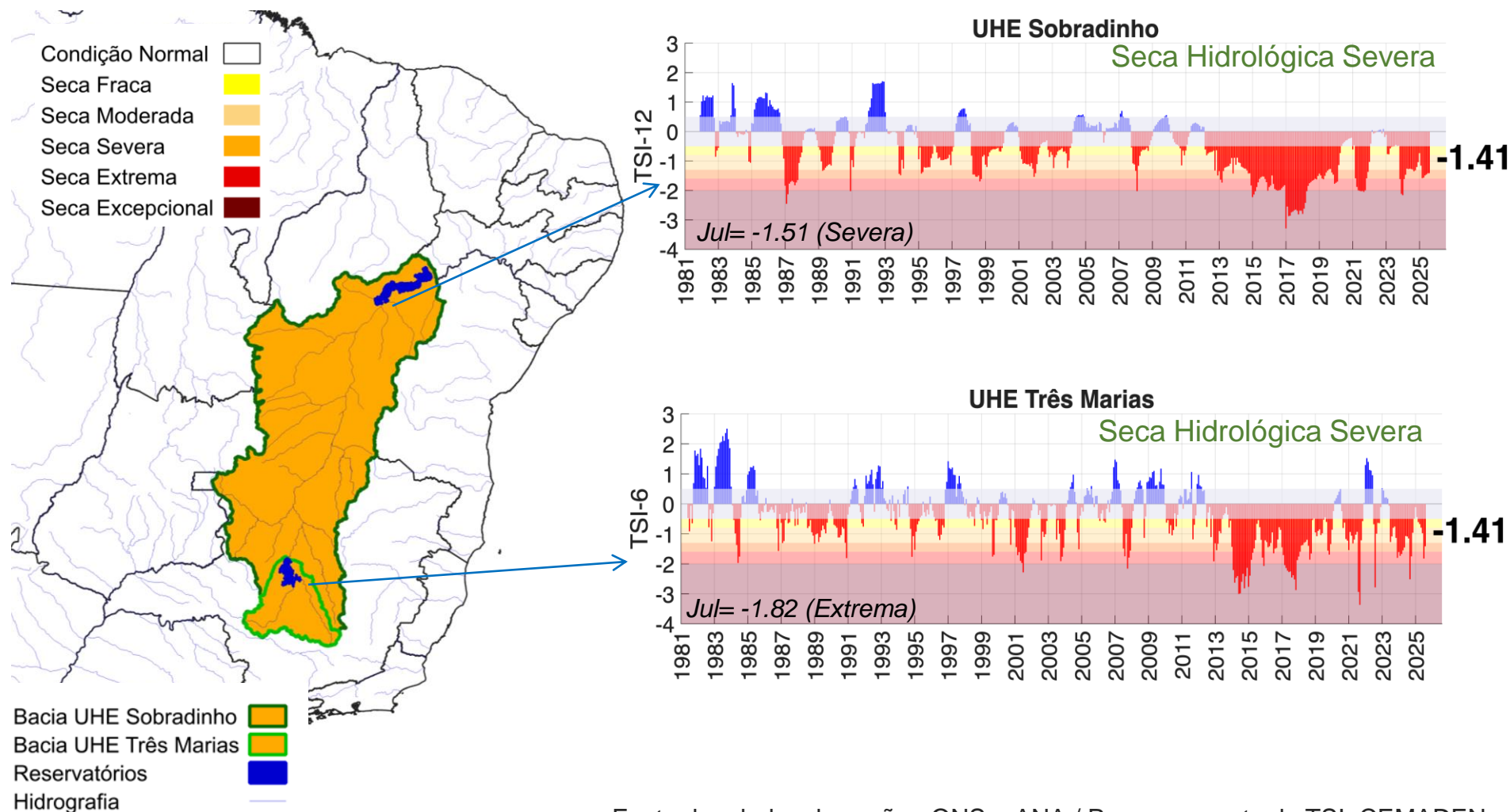
Dados de precipitação: INMET, ANA, CEMADEN.

Dados de vazão: ONS e ANA.

Monitoramento UHE Três Marias e Sobradinho

Índice Bivariado de Seca (Chuva-Vazão) – TSI: Longo Prazo

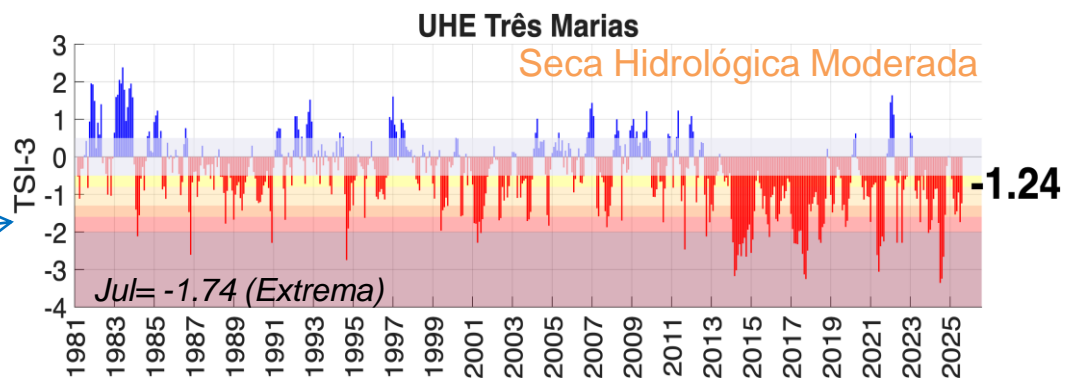
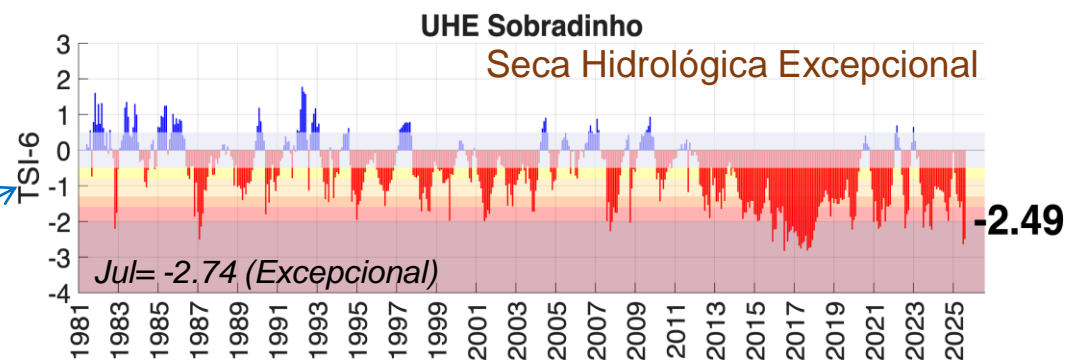
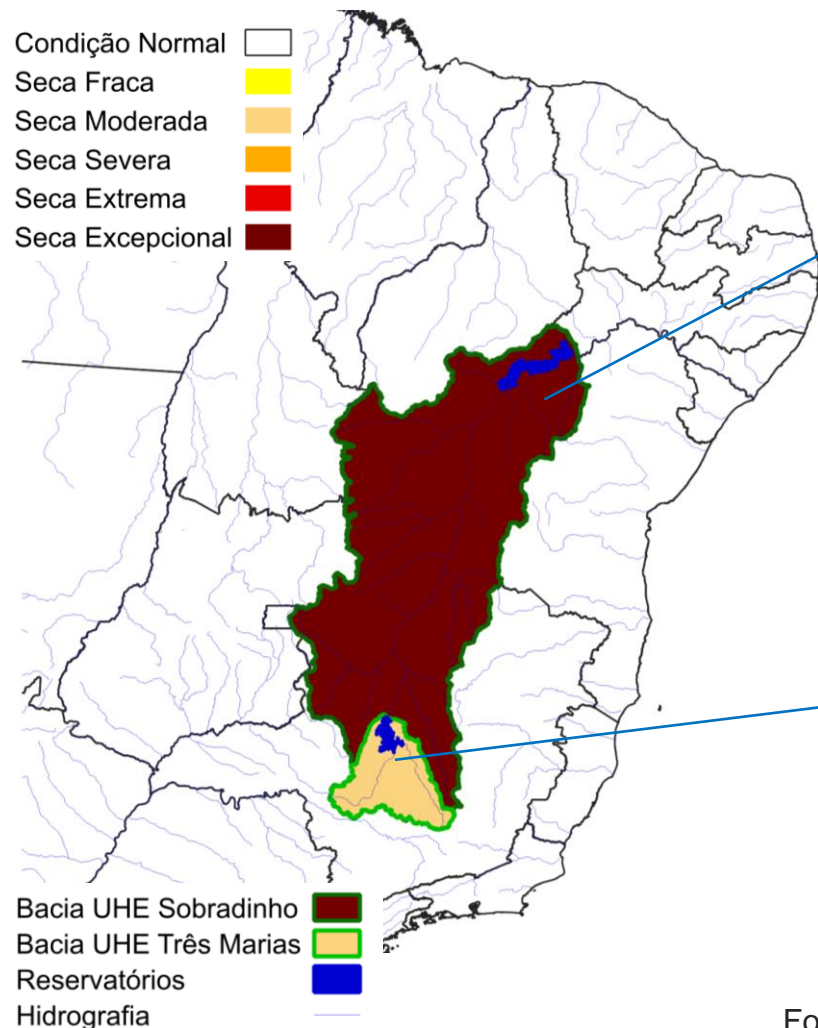
Agosto/2025



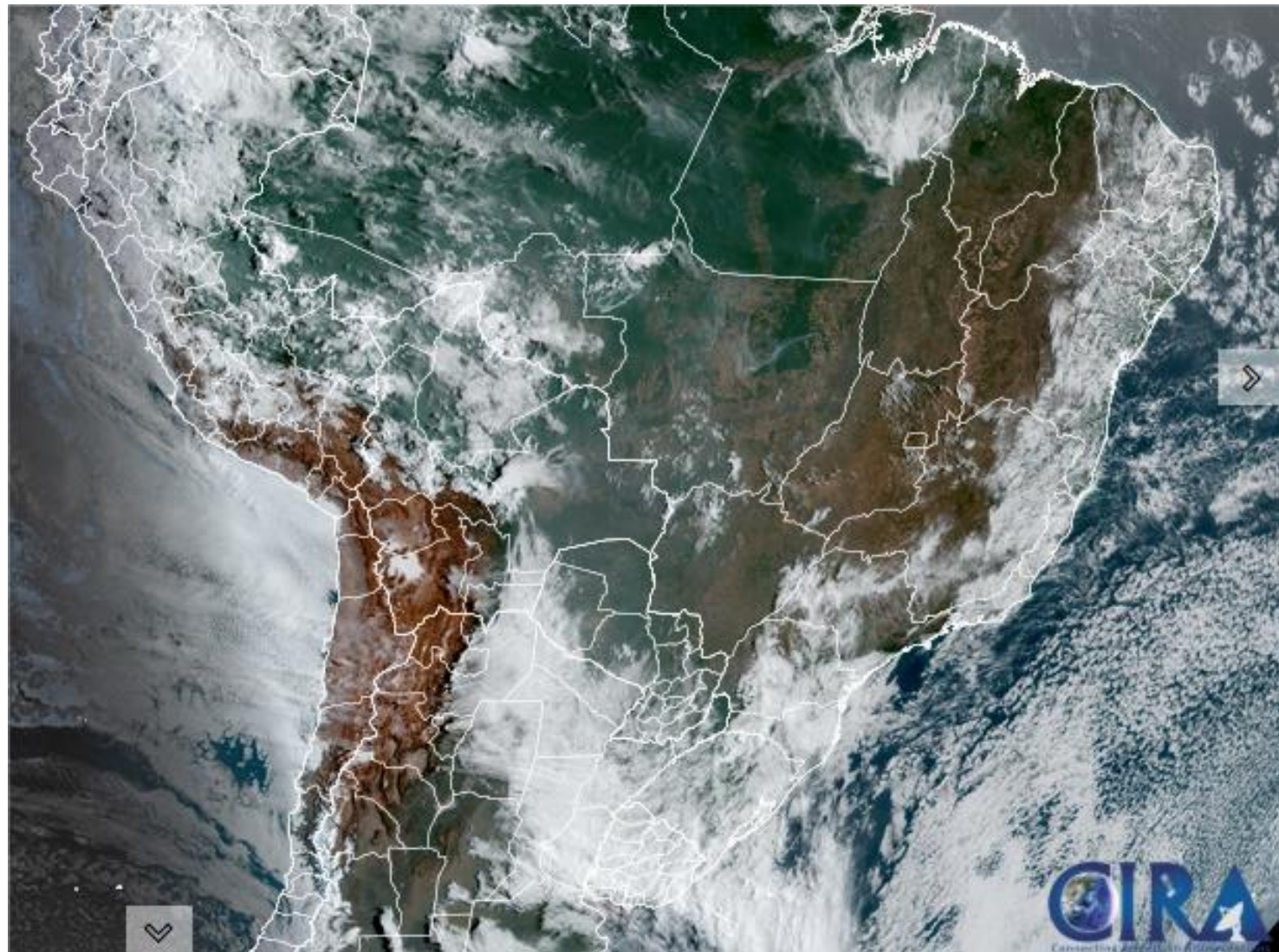
Monitoramento UHE Três Marias e Sobradinho

Índice Bivariado de Seca (Chuva-Vazão) – TSI: Curto Prazo

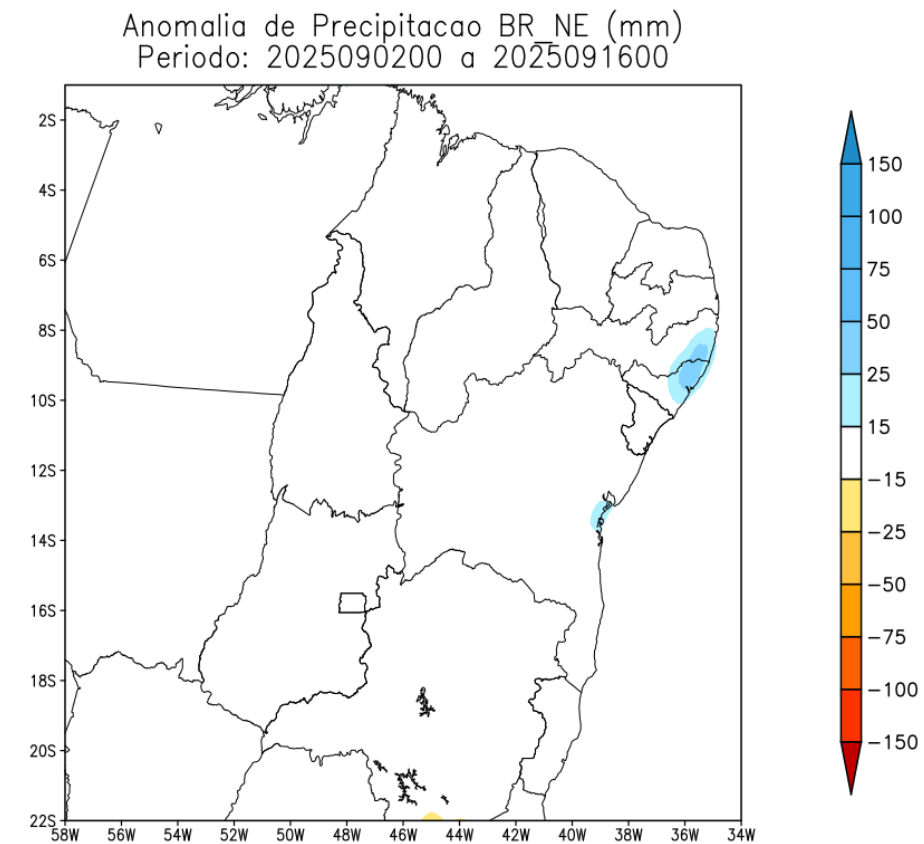
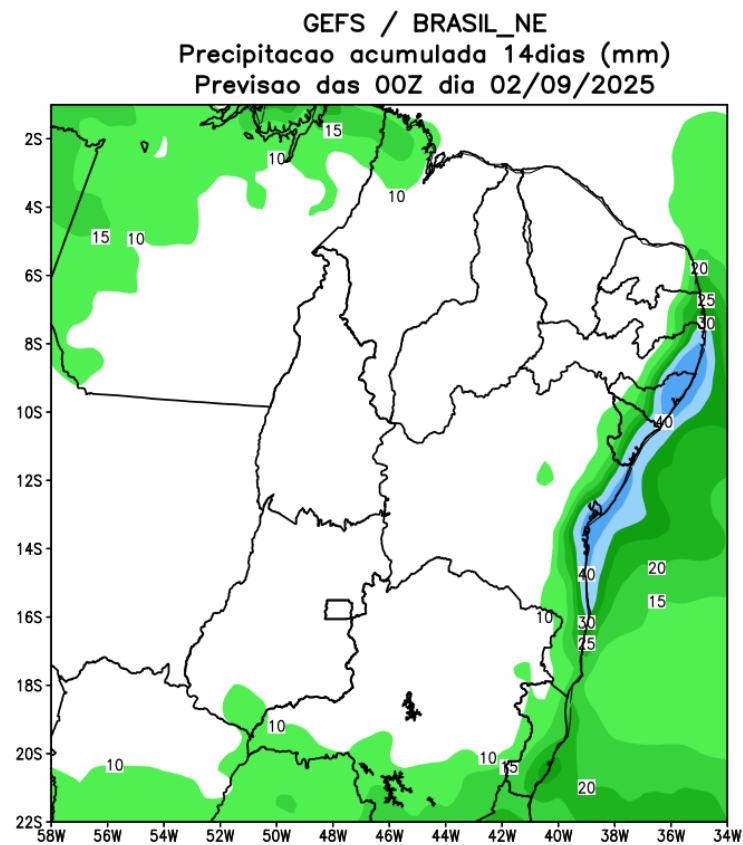
Agosto/2025



Situação meteorológica atual



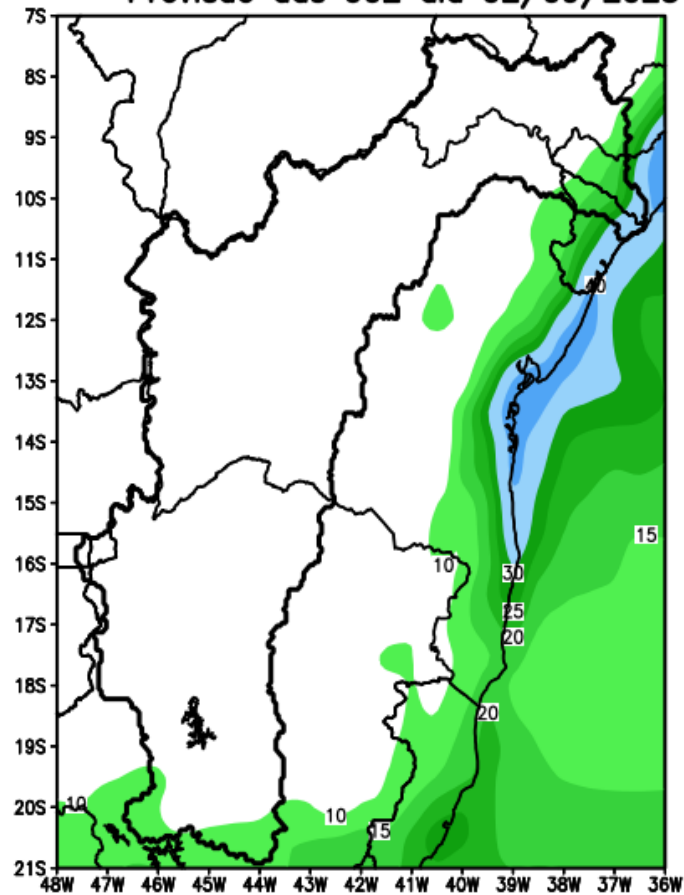
Tendência para as duas próximas semanas



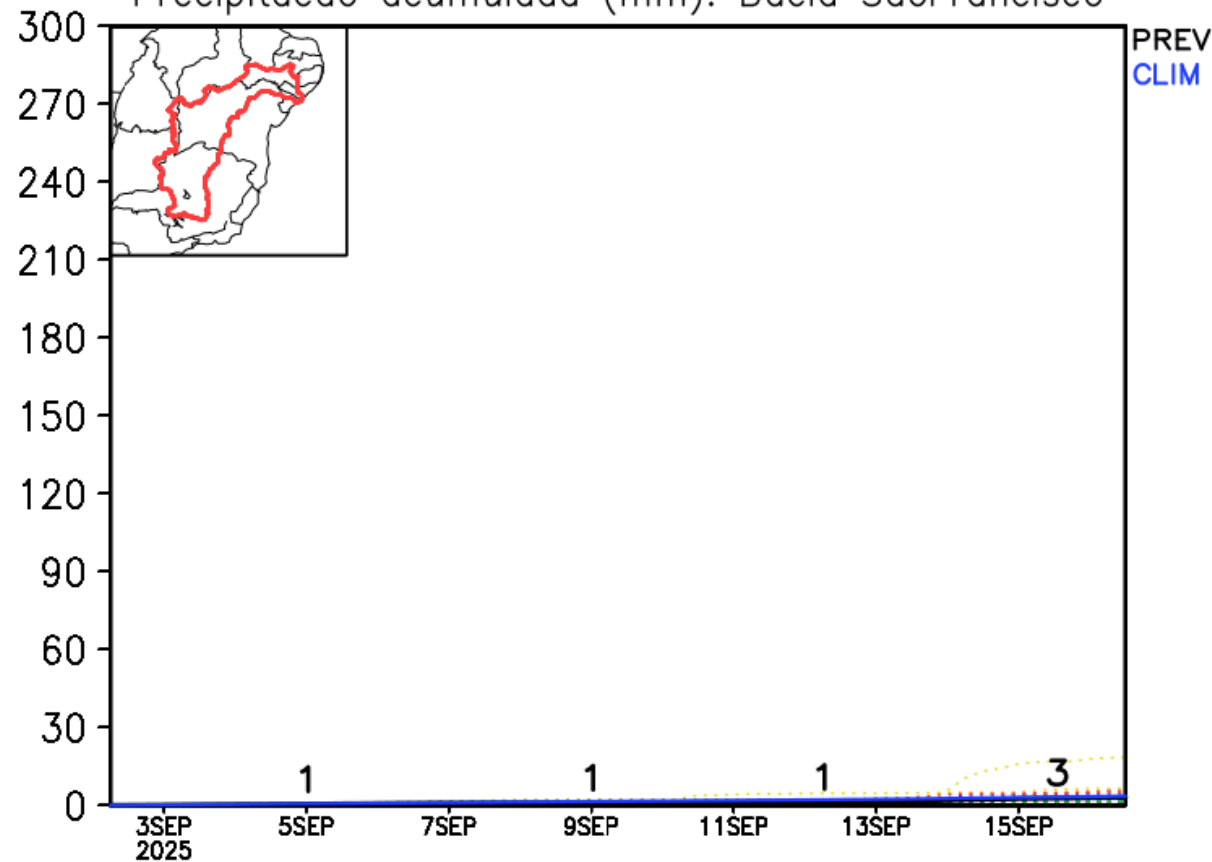
Modelo GFS/NOAA

Bacia do rio São Francisco

GEFS / Bacia do Rio Sao Francisco
Precipitacao acumulada em 14 dias (mm)
Previsao das 00Z dia 02/09/2025

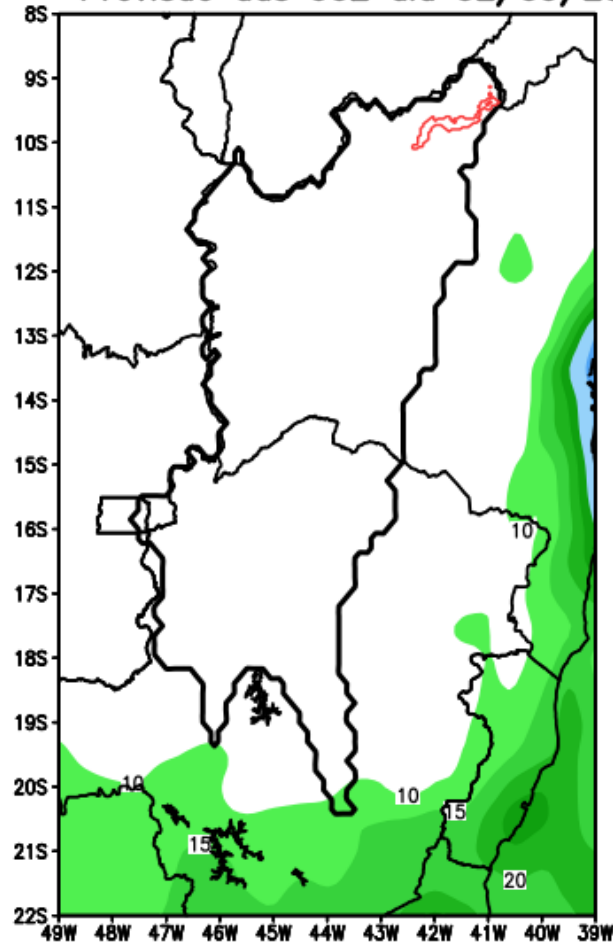


Precipitacao acumulada (mm): Bacia SaoFrancisco

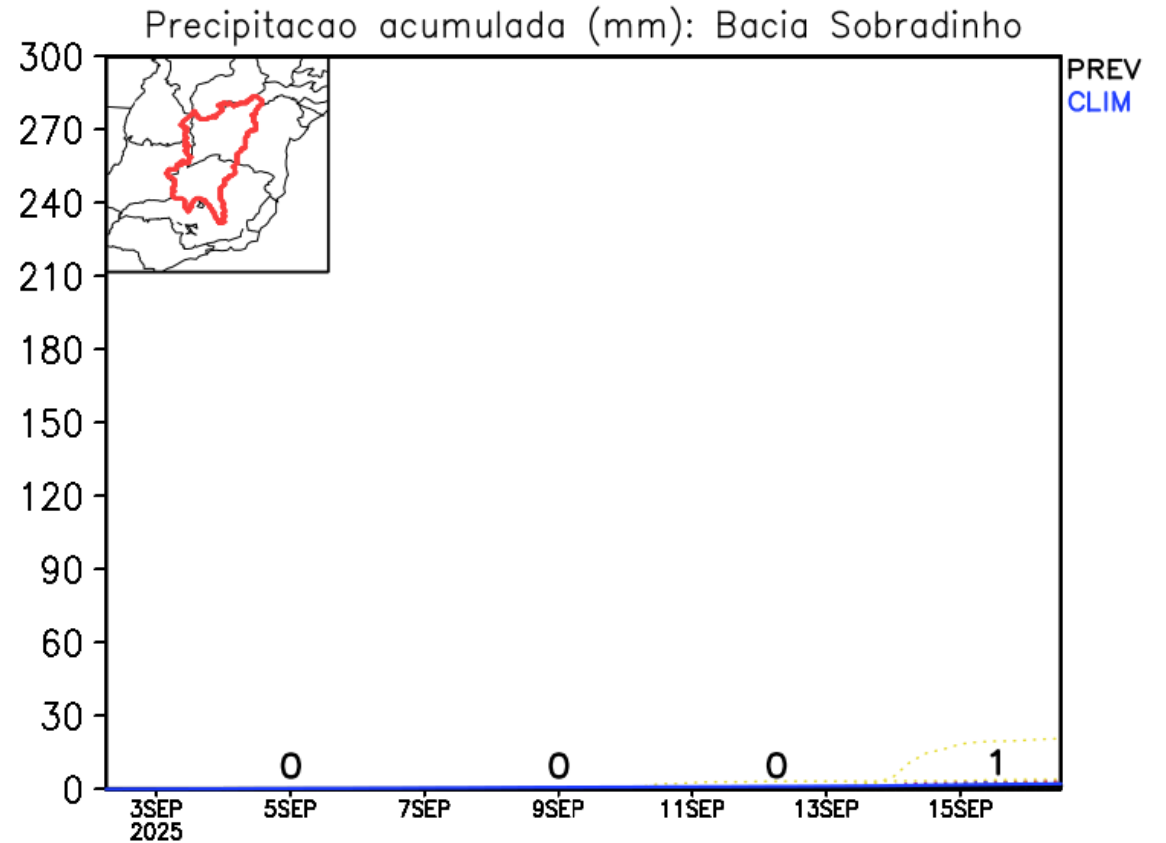


Bacia de Sobradinho

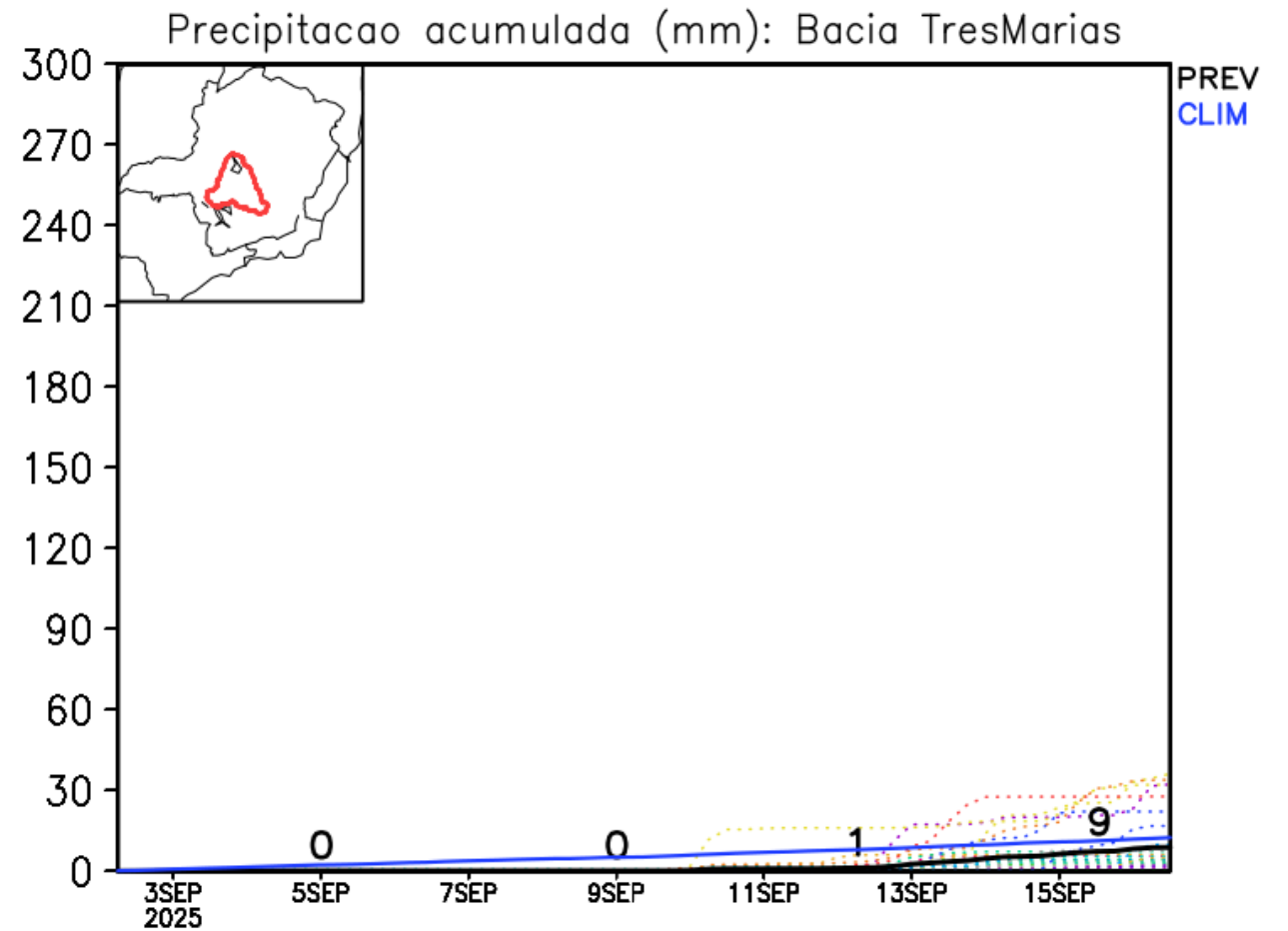
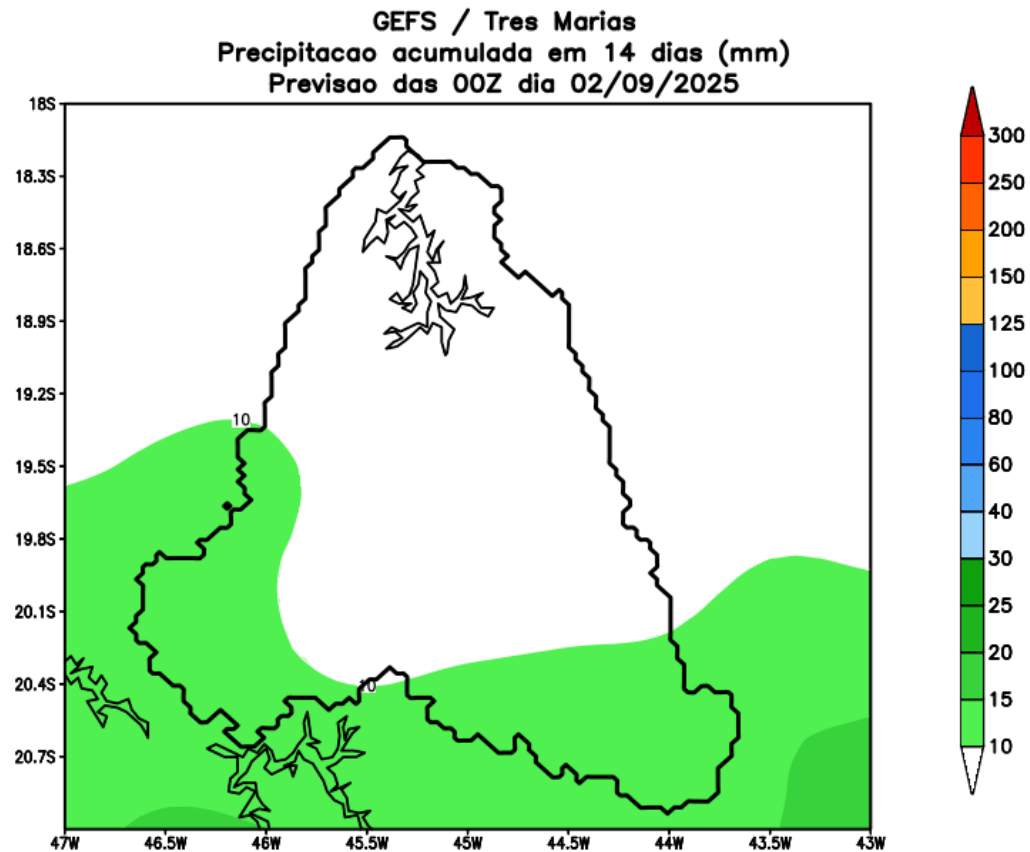
GEFS / Sobradinho
Precipitacao acumulada em 14 dias (mm)
Previsao das 00Z dia 02/09/2025



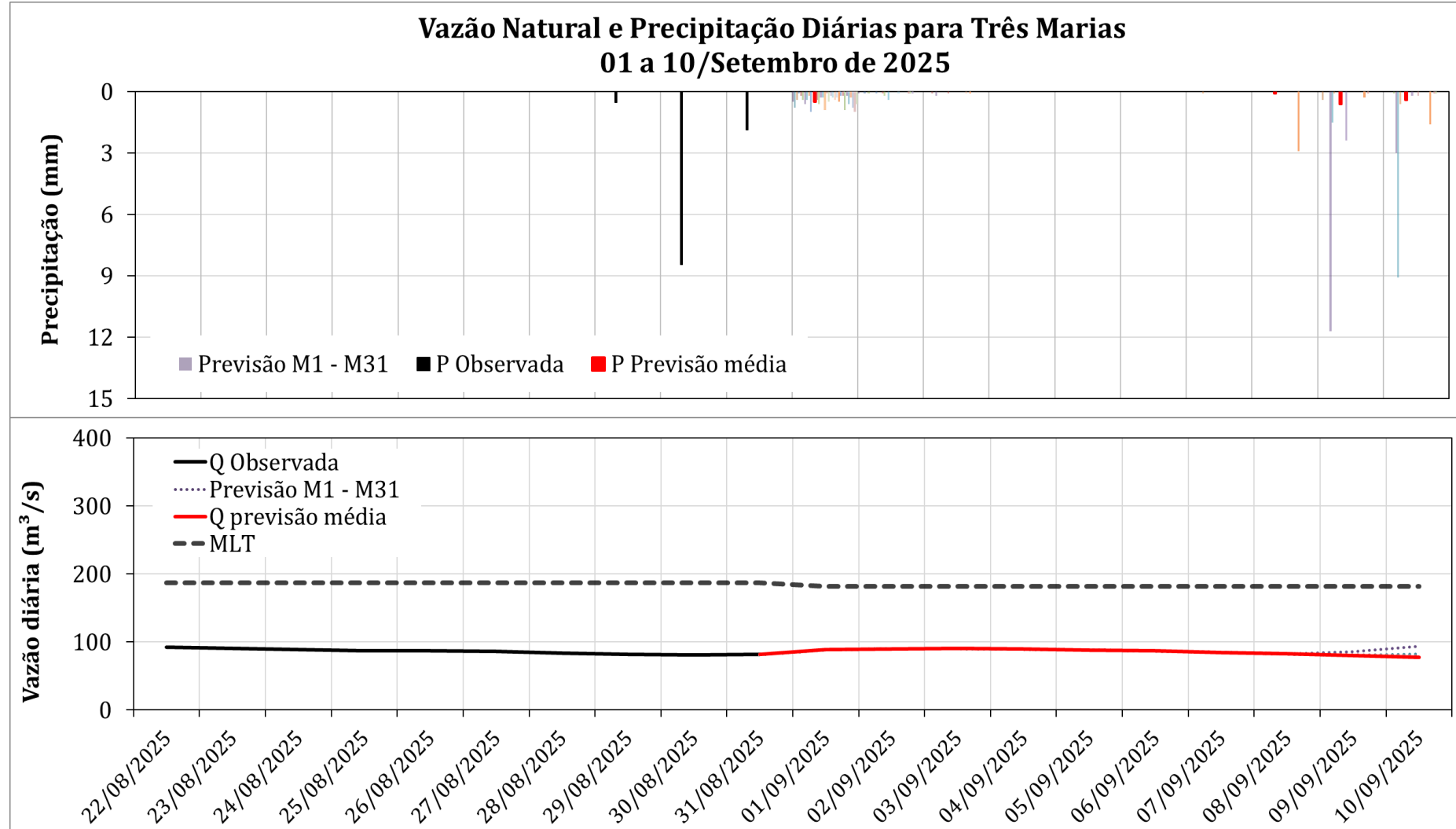
Modelo GFS/NOAA



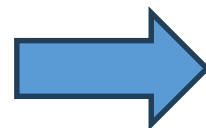
Bacia de Três Marias



UHE Três Marias: Previsão de Vazão (modelo PDM/CEMADEN)



**Previsão média para
os próximos 10 dias: 86 m³/s**

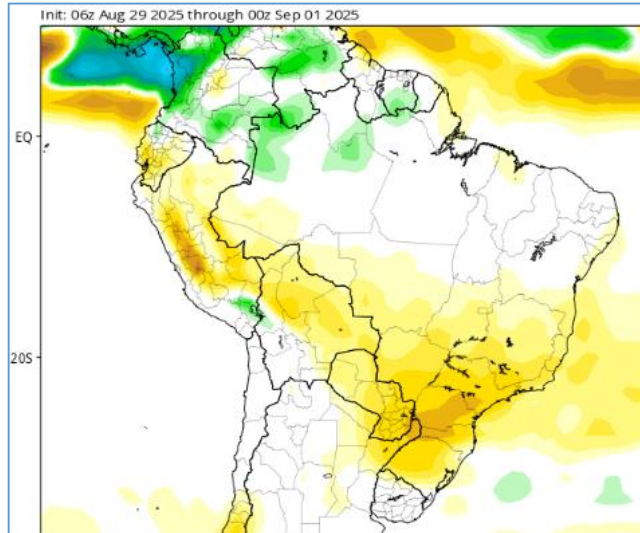


47% da MLT de Setembro

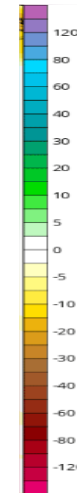
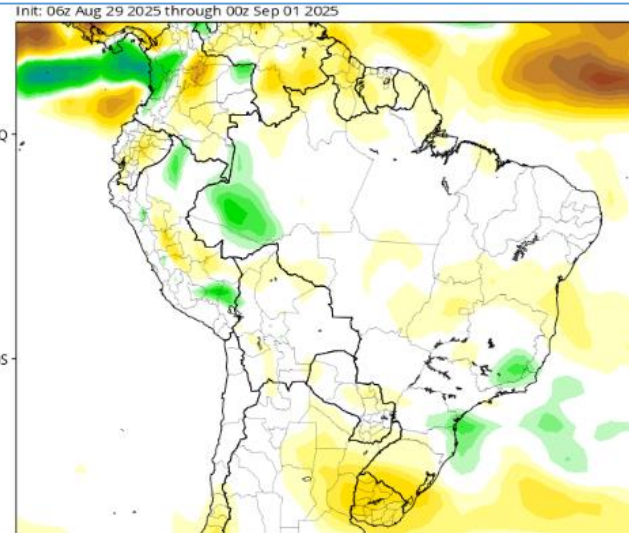
Anomalia de Chuva 3a e 4a semanas

CFS/NOAA

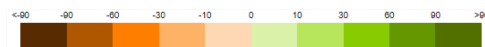
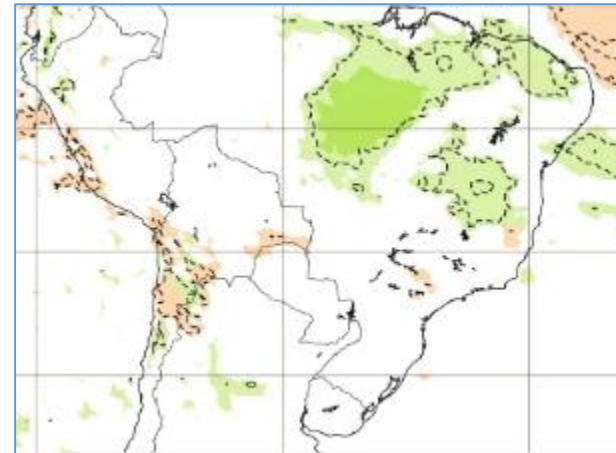
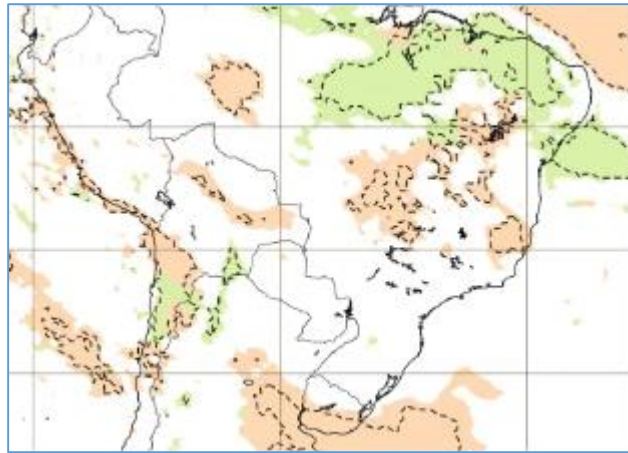
15-22 Set



22-29 Set

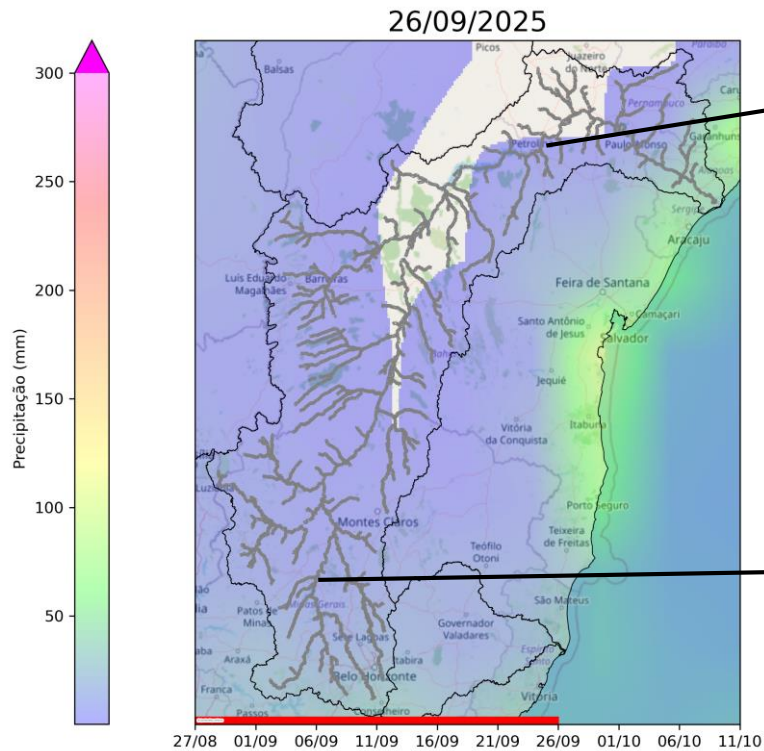


ECMWF

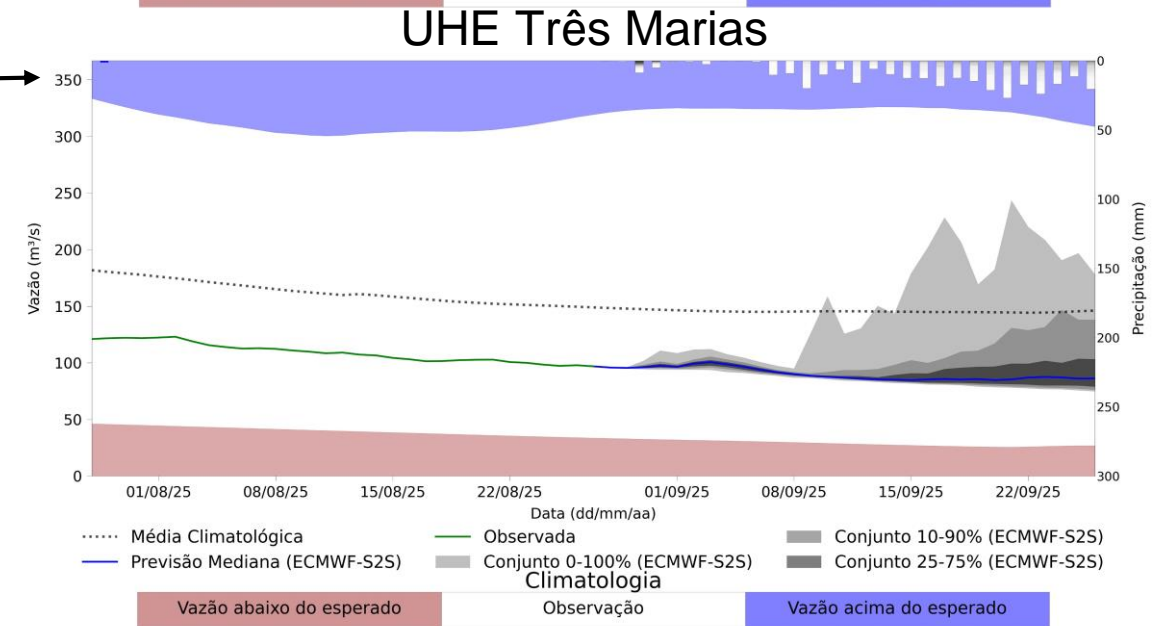
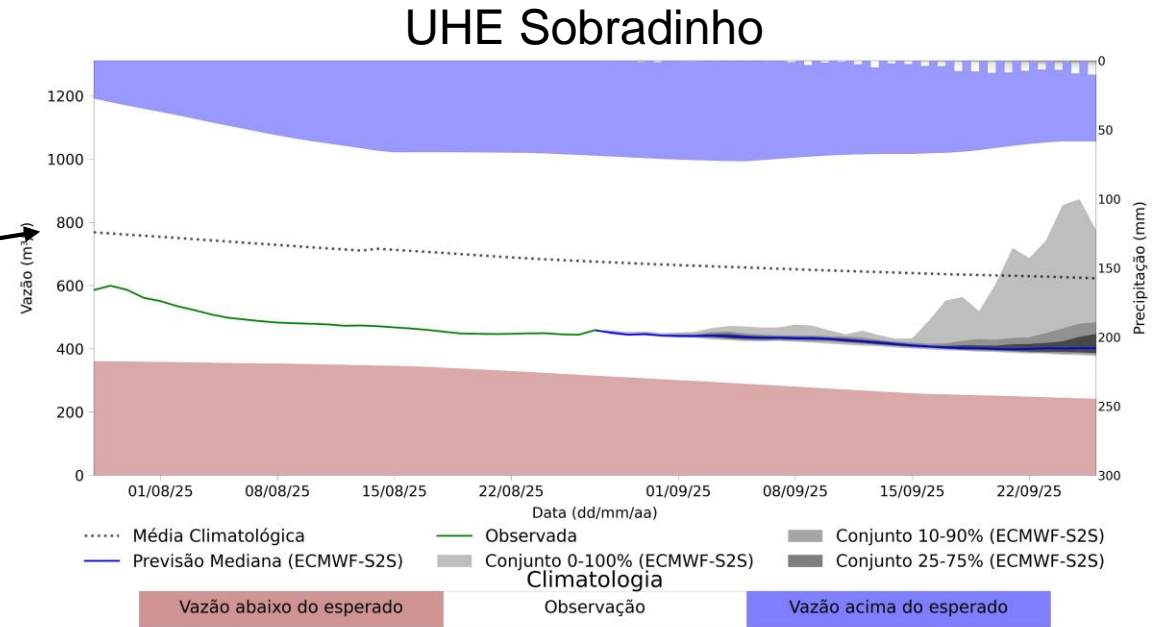


Previsão de vazão natural na Bacia Rio São Francisco (Modelo hidrológico MHD)

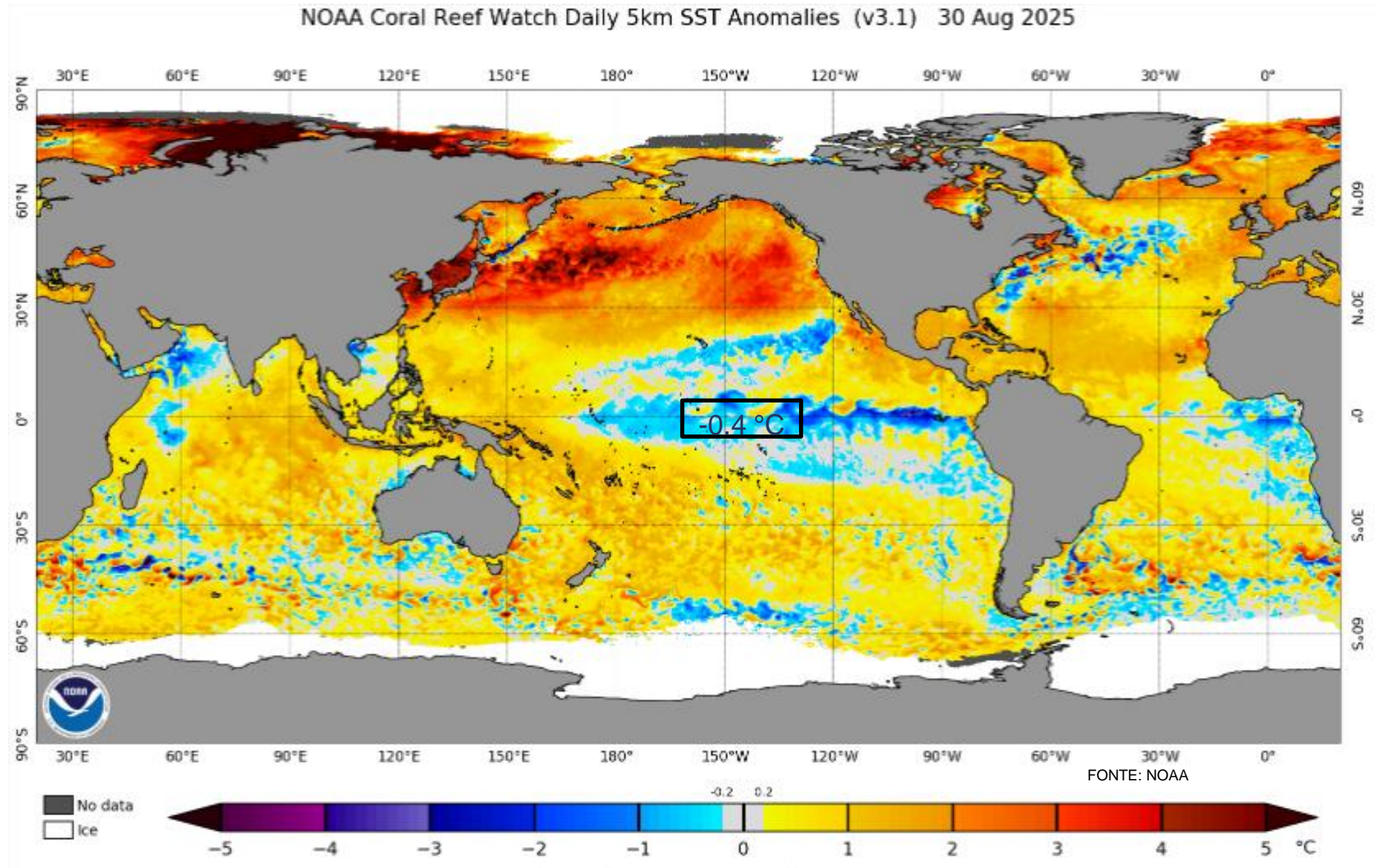
Previsão: 27/08/2025 a 26/09/2025



Fonte: Meteorologia (INMET/MERGE);
Vazão (ANA/ONS)
MLT: 1993-2024
Previsão Meteorológica: ECMWF-S2S



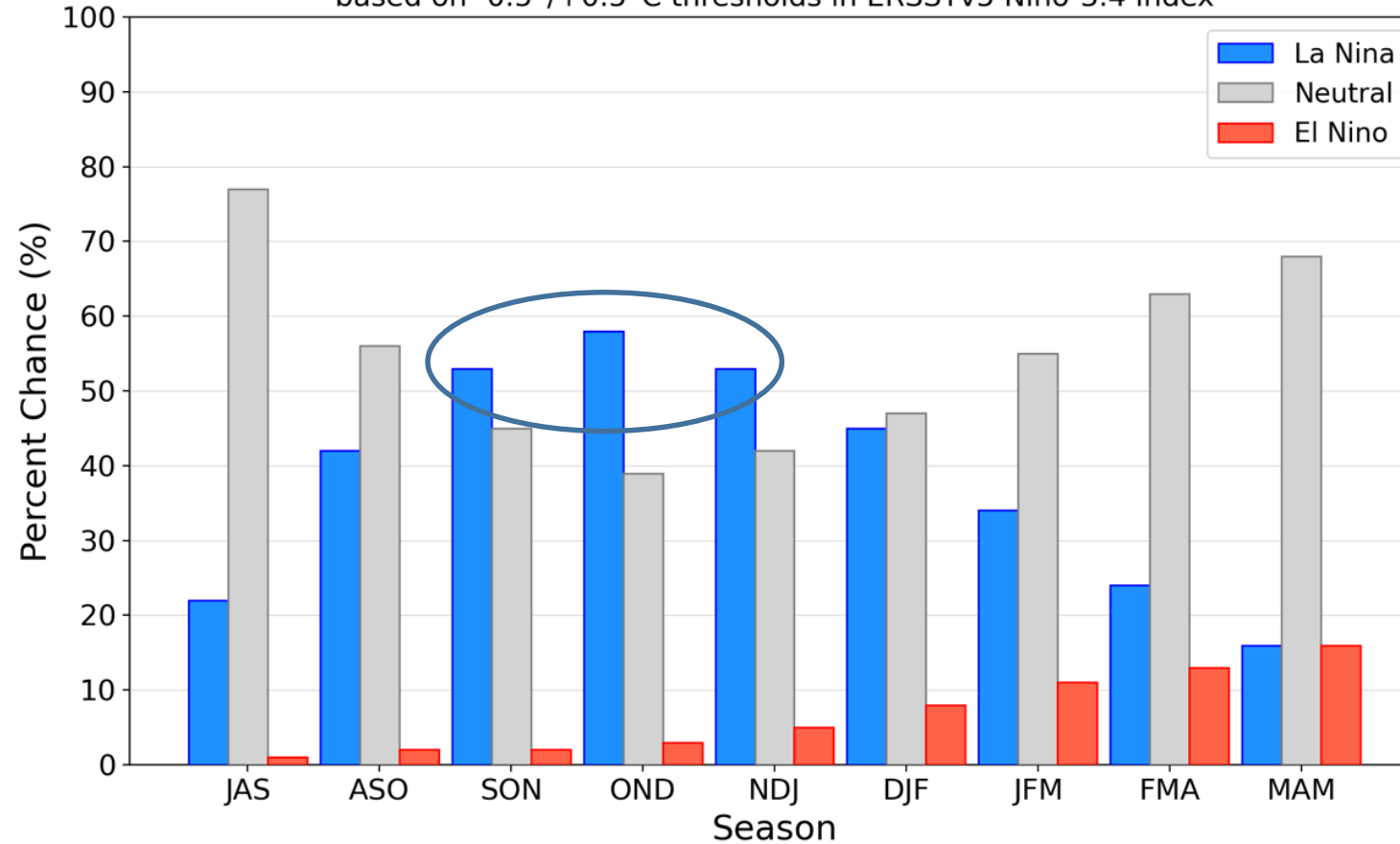
Status Atual: **La Niña Watch**



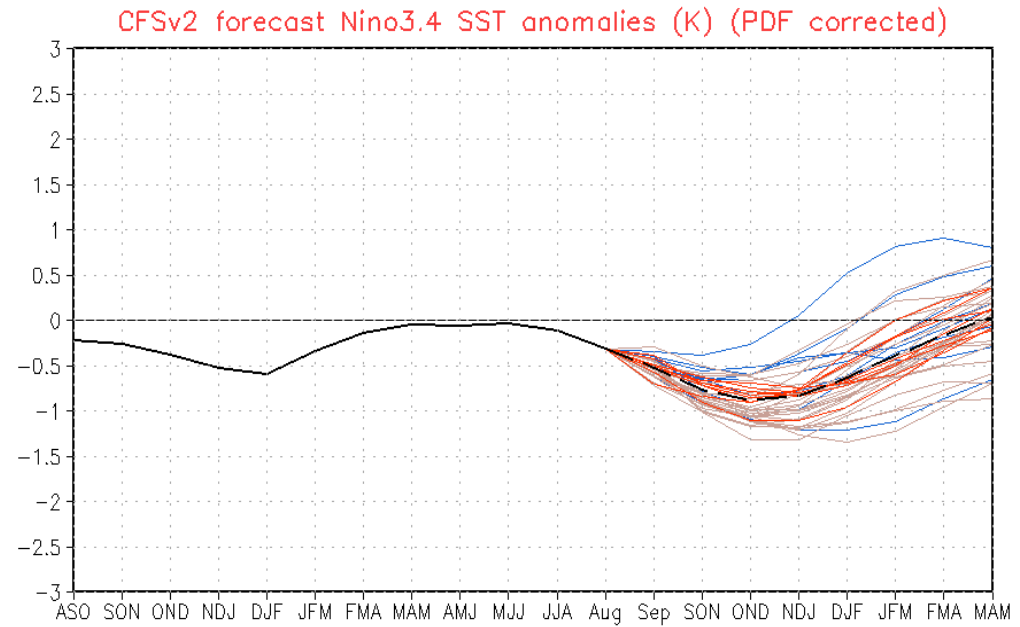
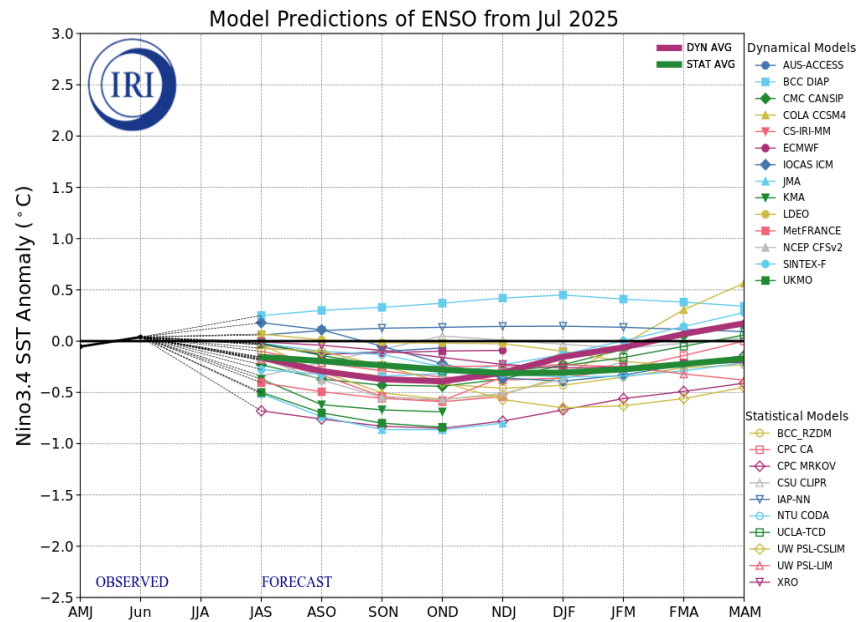
Previsão do “ENSO”

Official NOAA CPC ENSO Probabilities (issued August 2025)

based on $-0.5^{\circ}/+0.5^{\circ}\text{C}$ thresholds in ERSSTv5 Niño-3.4 index



Previsão do “ENSO”

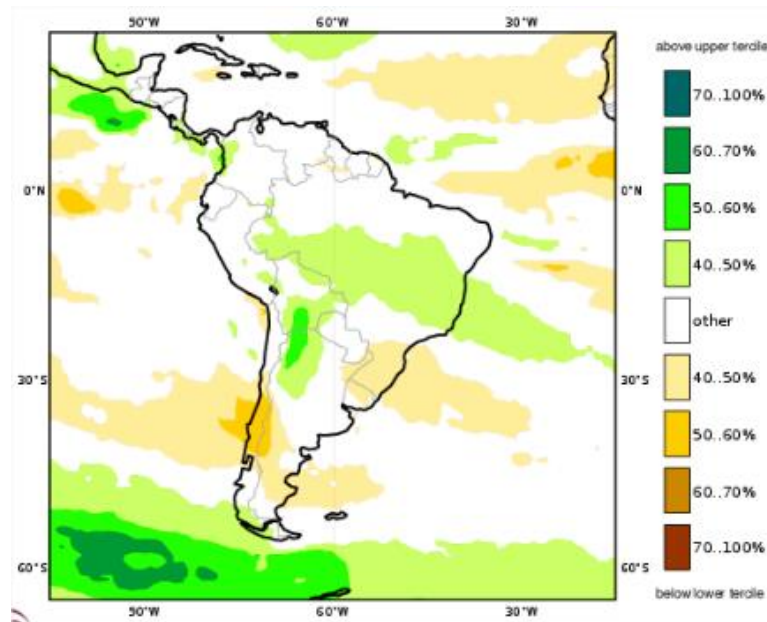


— Latest 8 forecast members
 — Earliest 8 forecast members
 — Other forecast members
 - - - Forecast ensemble mean
 — NCEI Olv2.1 daily analysis
 (Climatology base period: 1991–2020)

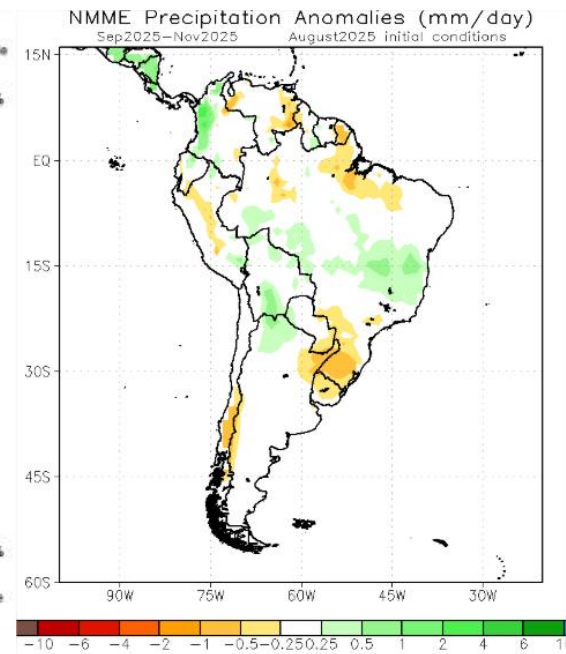
Figure provided by the International Research Institute (IRI) for Climate and Society (updated 18 July 2025).

Previsão Sazonal de Chuva Multi-Modelo

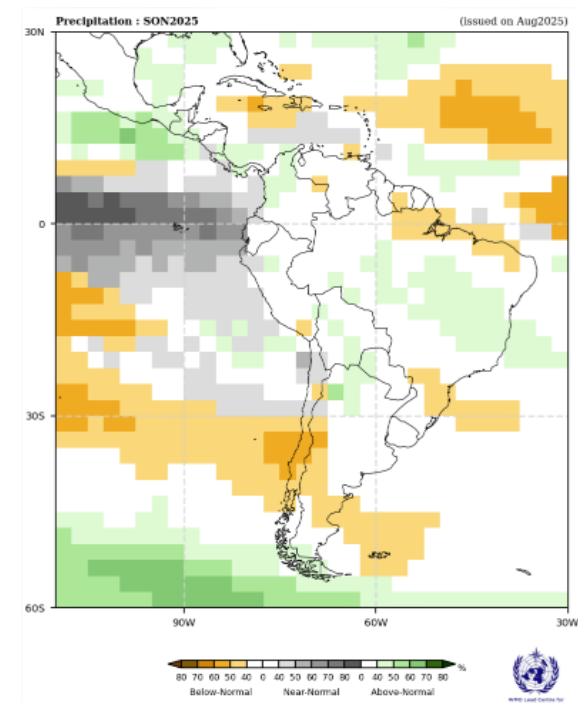
Setembro-Outubro-Novembro



Modelos “Europeus”



Modelos Norte Americanos



Modelos da WMO

Previsão Sub-sazonal (45 dias) para a Bacia do São Francisco

Sistema Global de Previsão de Vazão - GloFAS

Previsão: 01/09/2025 – 13/10/2025

Categoria de anomalia para as vazões (percentil)

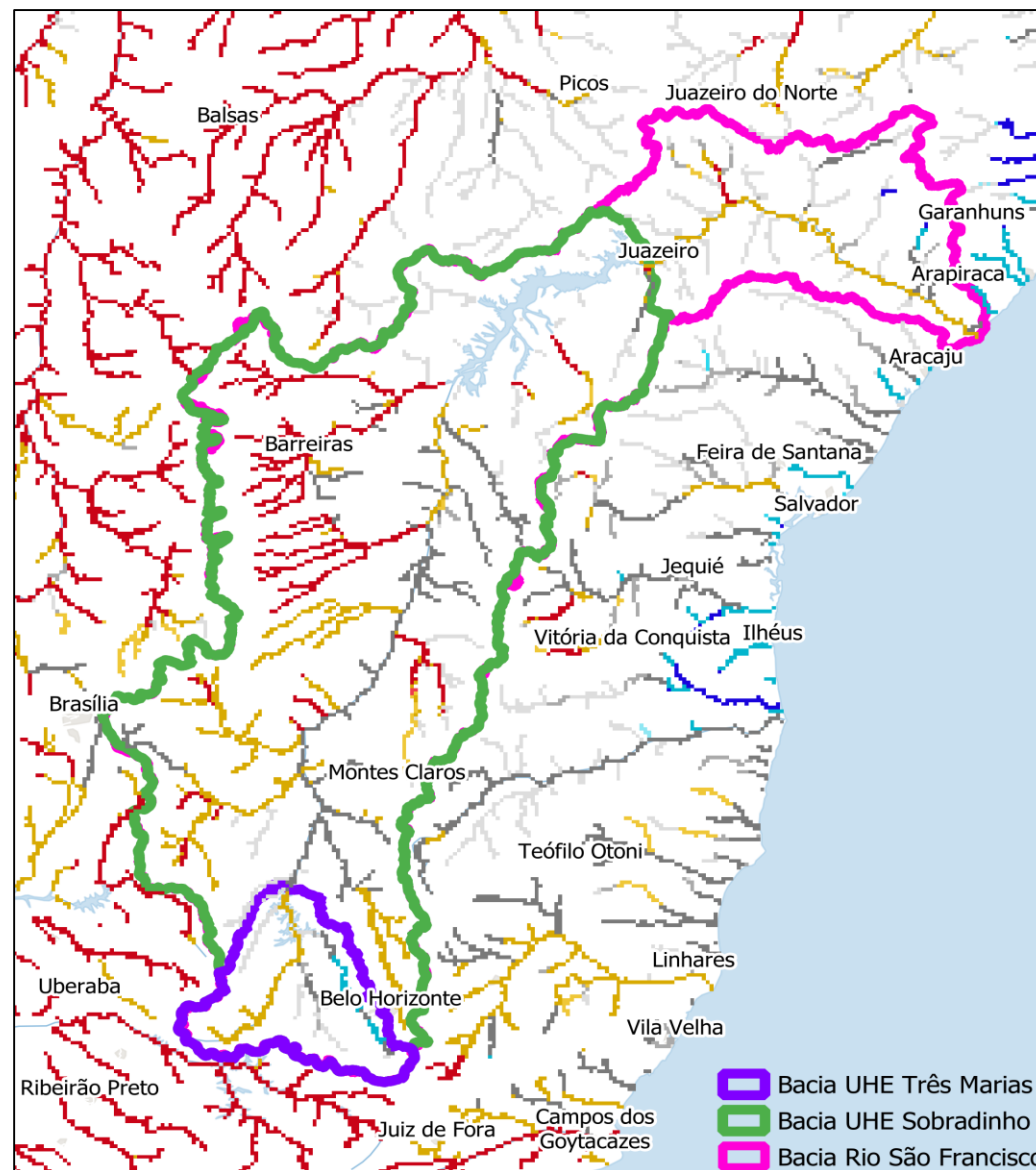


Fonte:

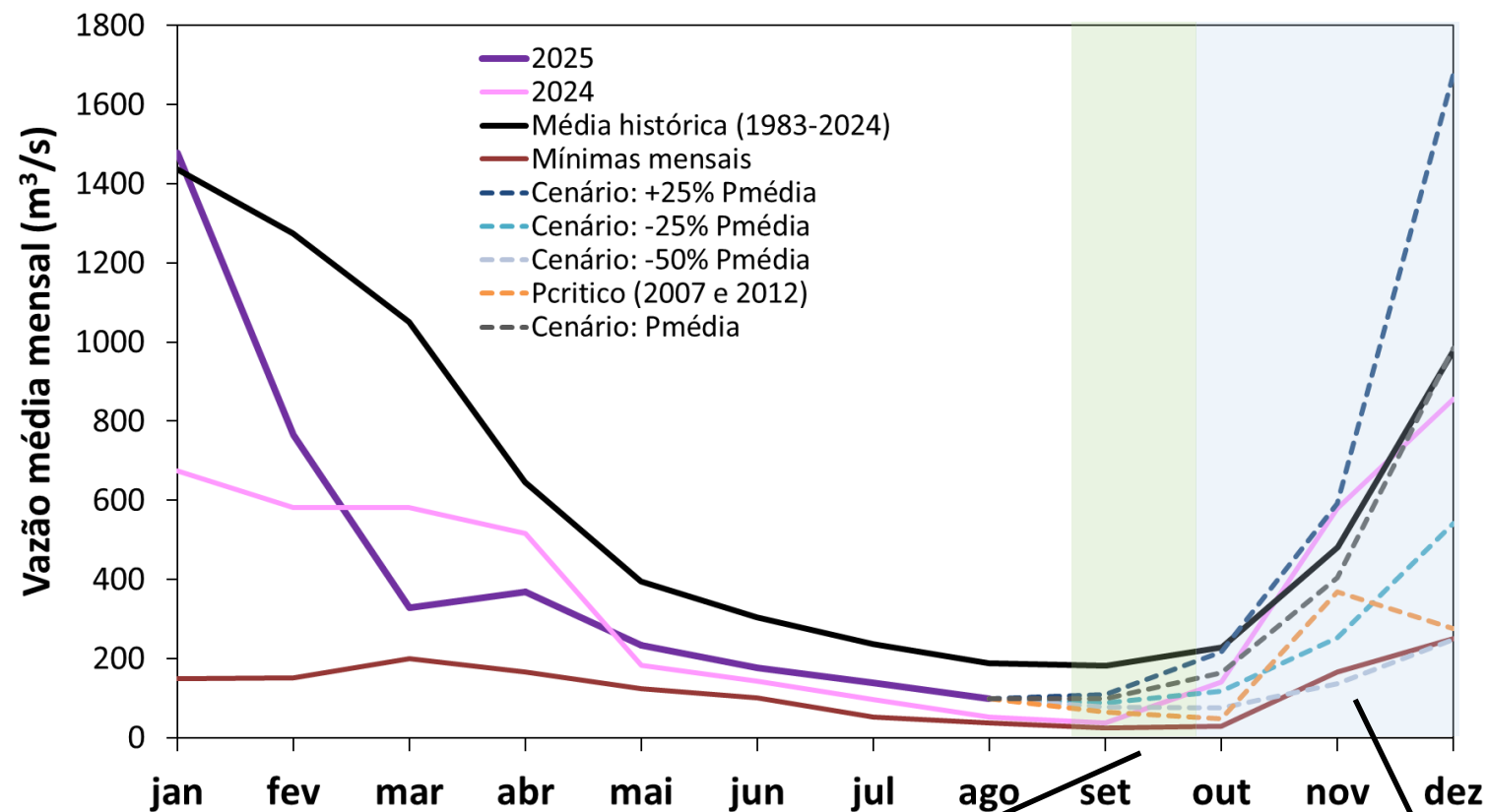
Previsão Meteorológica: ECMWF

Previsão de vazão: Lisflood/GloFAS Forecast

<https://www.globalfloods.eu/glofas-forecasting/>



Três Marias: Projeção de Vazão (Modelo hidrológico PDM-CEMADEN)



Set (Mês Seco)

MLT: 182 m³/s

Vazão	% MLT
109 m³/s	60%
99 m³/s	54%
88 m³/s	49%
66 m³/s	36%

Out-Dez (Meses Chuvosos)

MLT: 563 m³/s

Vazão	% MLT
829 m³/s	147%
518 m³/s	92%
305 m³/s	54%
231 m³/s	41%