



CEMADEN

**Centro Nacional de Monitoramento e
Alertas de Desastres Naturais**

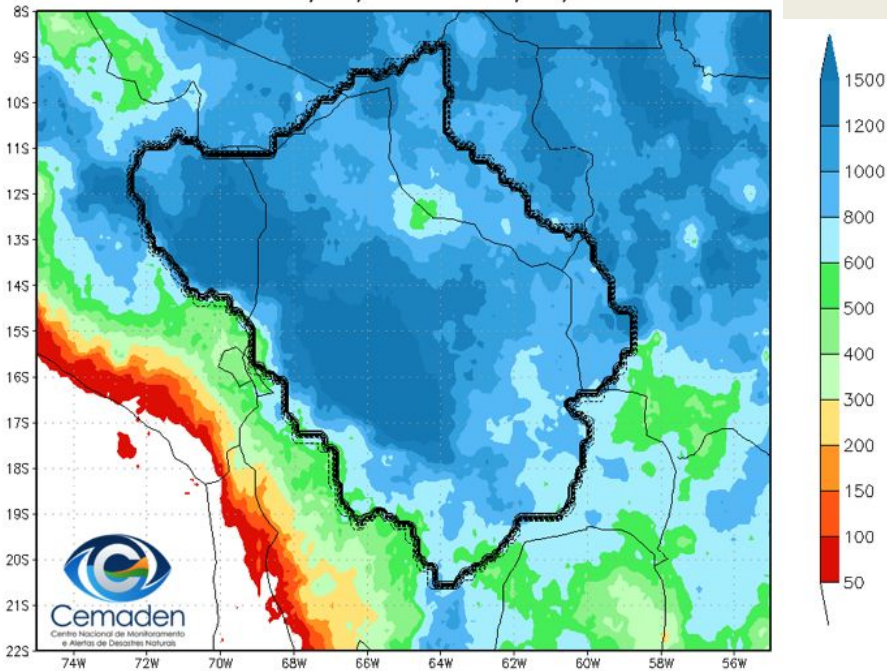
Monitoramento e Previsões de Chuva para a Bacia do Rio Madeira

14 de Abril de 2025



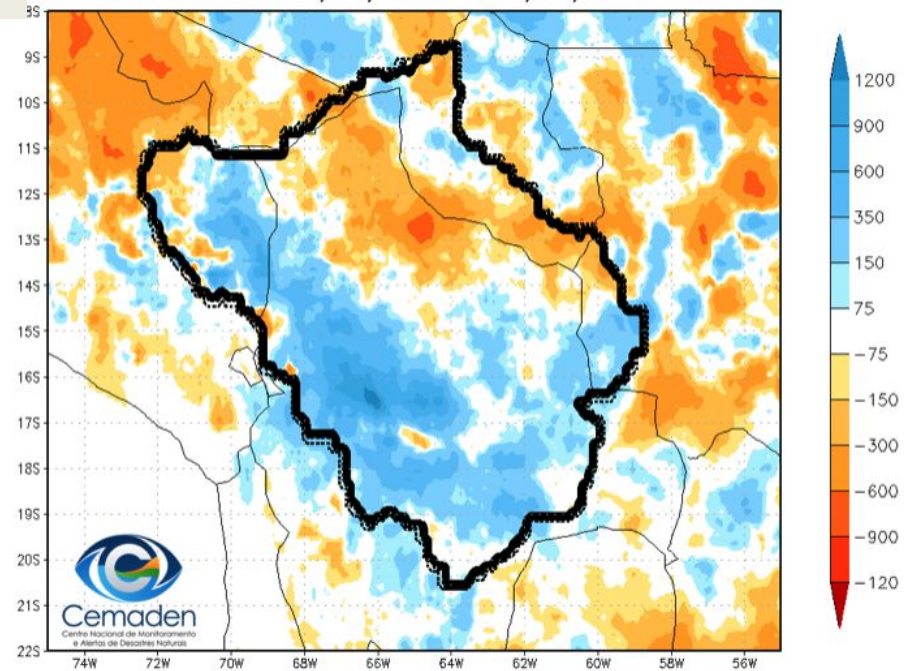
Precipitação Acumulada no Ano Hidrológico

Precipitação Acumulada (mm)
Período: 01/10/2024 – 11/04/2025

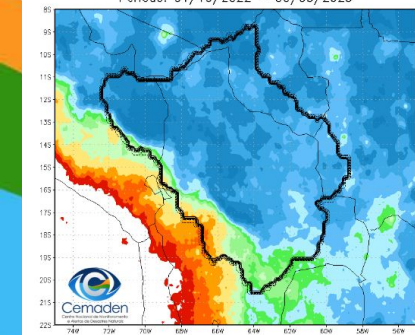


2024/25

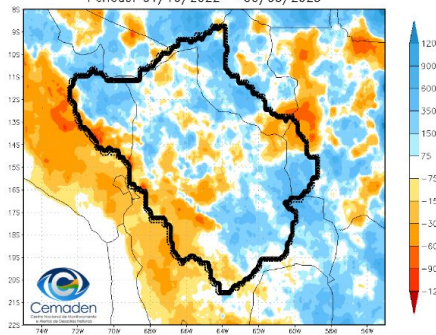
Anomalia de Precipitação Média (mm)
Período: 01/10/2024 – 11/04/2025



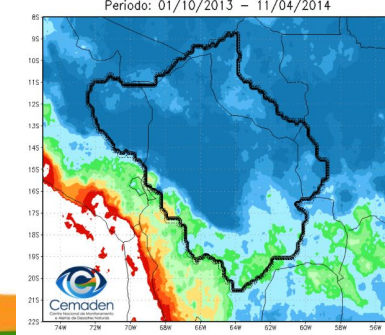
Precipitação Acumulada (mm)
Período: 01/10/2022 – 30/03/2023



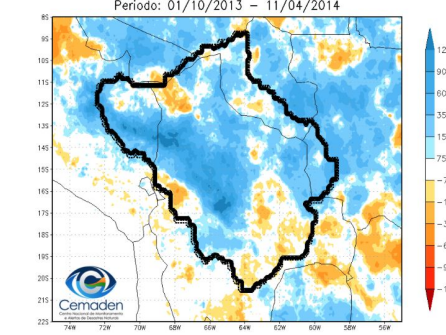
Anomalia de Precipitação Média (mm)
Período: 01/10/2022 – 30/03/2023



Precipitação Acumulada (mm)
Período: 01/10/2013 – 11/04/2014



Anomalia de Precipitação Média (mm)
Período: 01/10/2013 – 11/04/2014



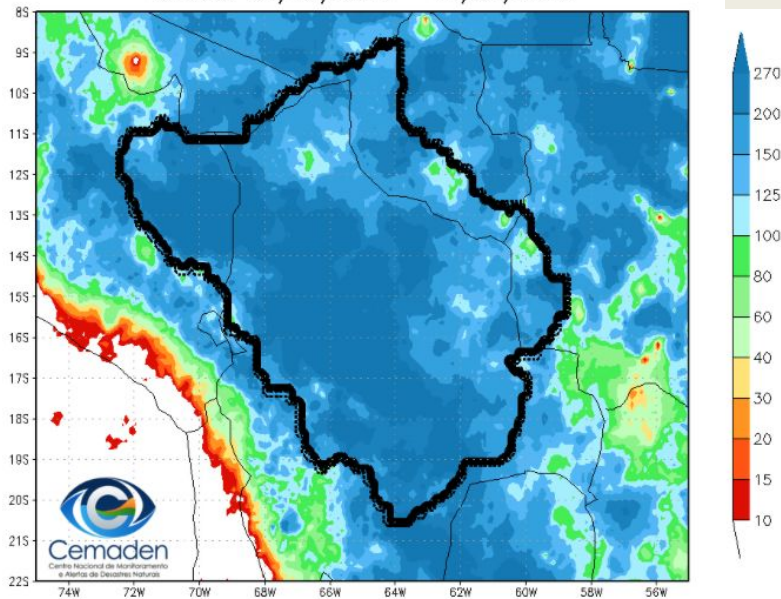
2022/23

2013/14

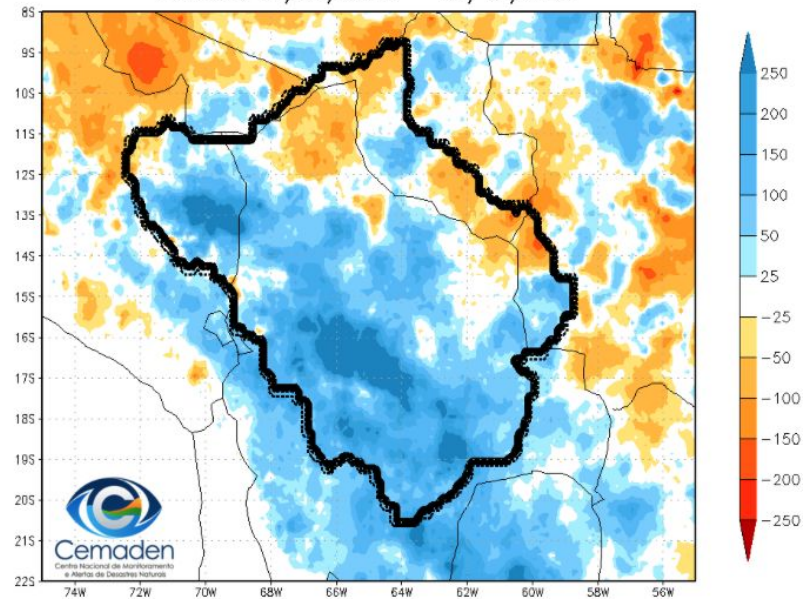
Precipitação Acumulada no mês de Março

2025

Precipitação Acumulada (mm)
Período: 01/03/2025 – 31/03/2025

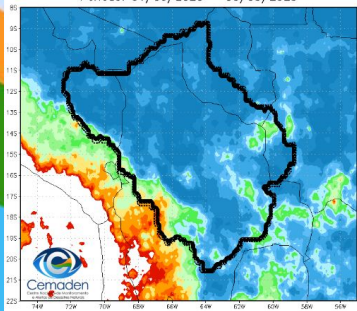


Anomalia de Precipitação Média (mm)
Período: 01/03/2025 – 31/03/2025

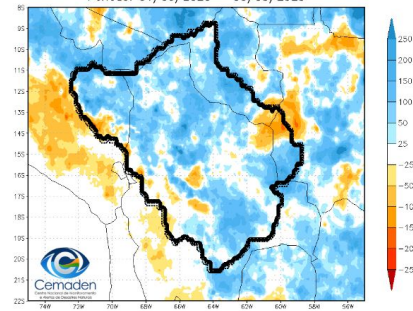


2023

Precipitação Acumulada (mm)
Período: 01/03/2023 – 30/03/2023

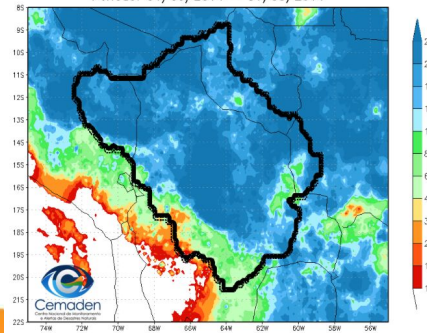


Anomalia de Precipitação Média (mm)
Período: 01/03/2023 – 30/03/2023

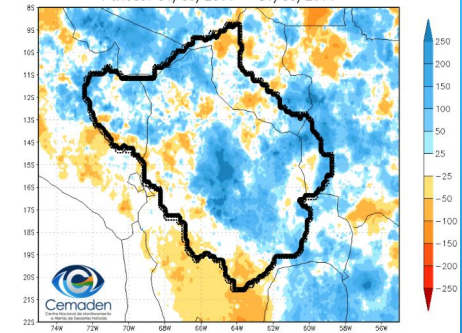


2014

Precipitação Acumulada (mm)
Período: 01/03/2014 – 31/03/2014



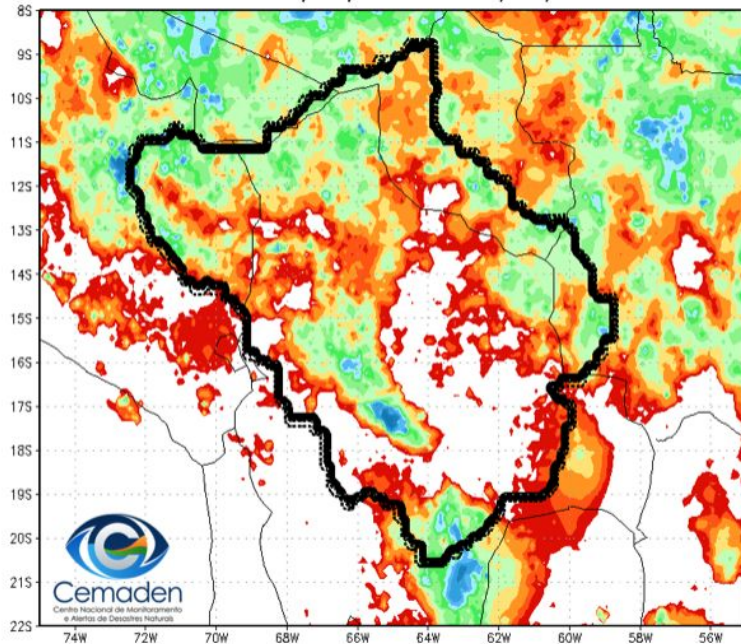
Anomalia de Precipitação Média (mm)
Período: 01/03/2014 – 31/03/2014



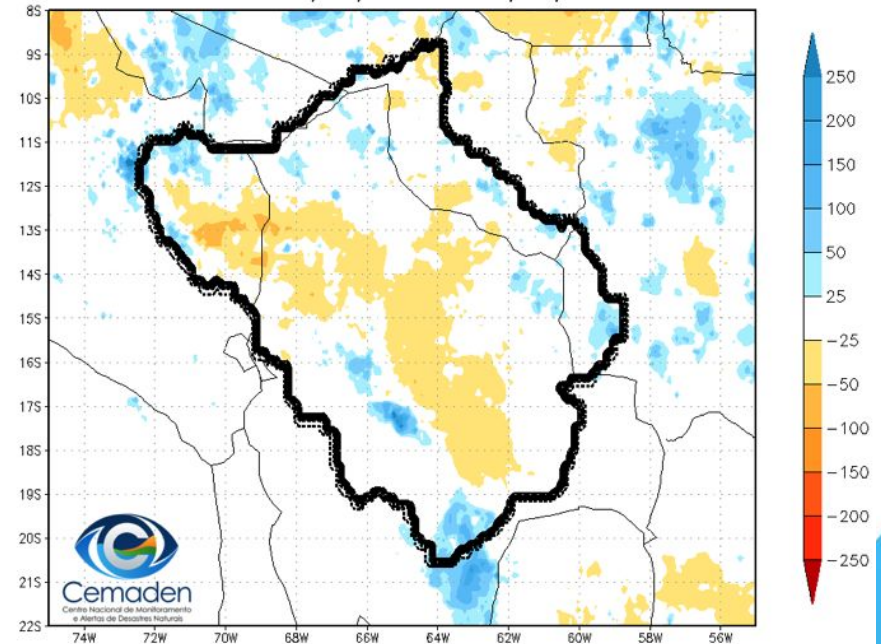
Precipitação Acumulada no mês de Abril

2025

Precipitacao Acumulada (mm)
Período: 01/04/2014 – 11/04/2014



Anomalia de Precipitacao Media (mm)
Período: 01/04/2014 – 11/04/2014

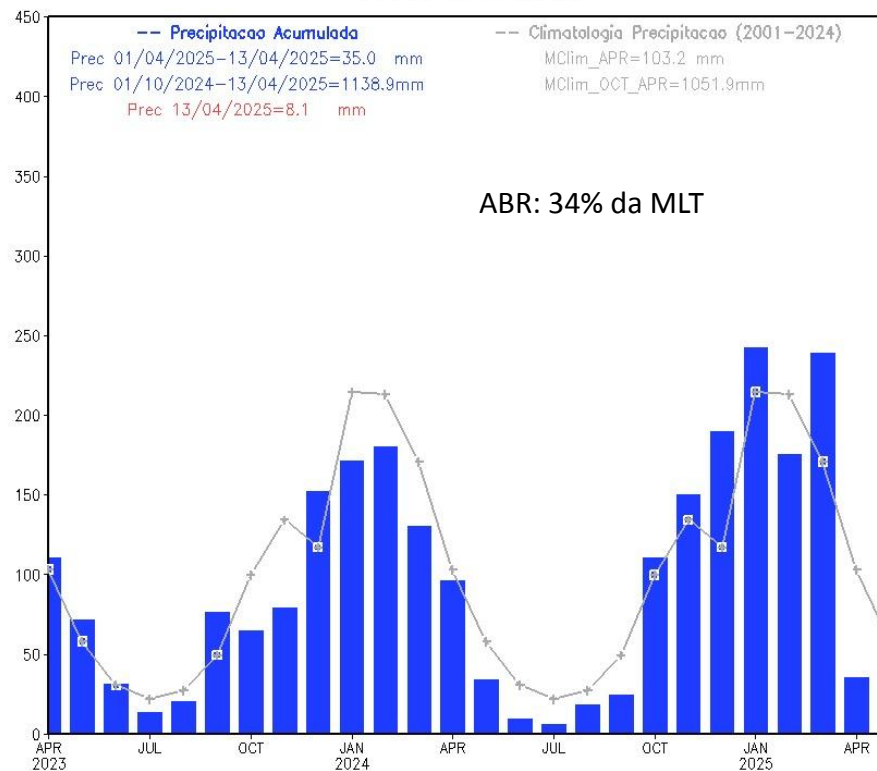


Cemaden
Centro Nacional de Monitoramento
e Alertas de Desastres Naturais

Fonte dos dados: CPTEC/INPE

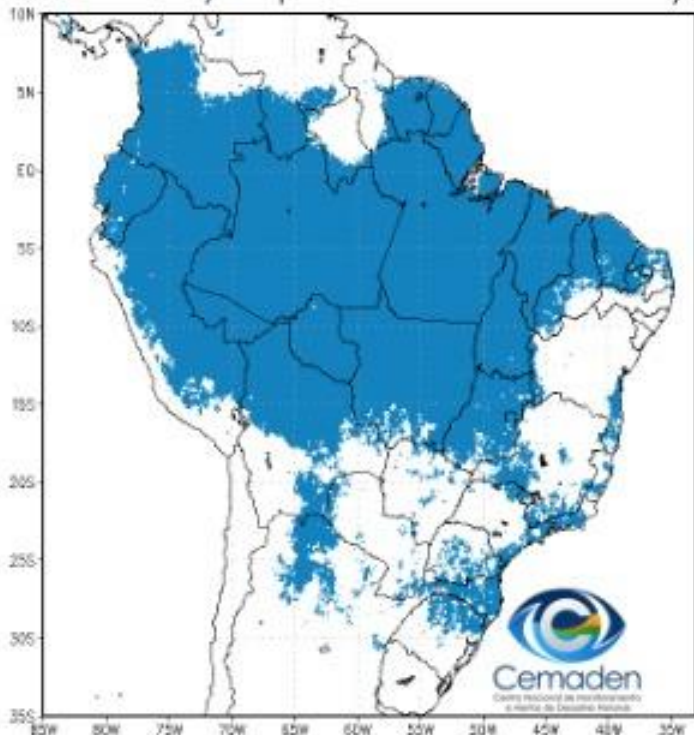
Evolução da precipitação

Precipitação Bacia do Rio Madeira
desde APR 2023

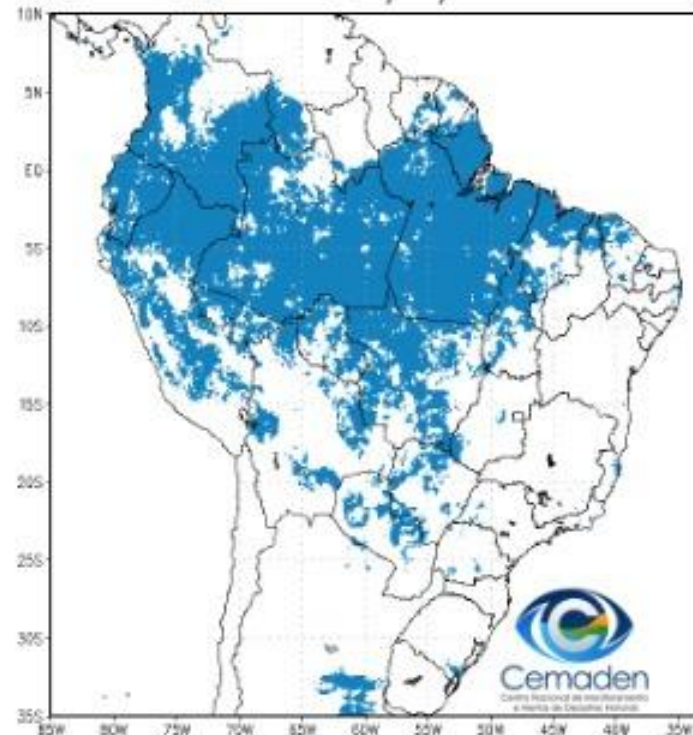


Situação da Estação Chuvosa

Climatologia da Precipitação (2001–2024)
Inferior 2 mm/dia por 4 de 5 dias Período: 13/04



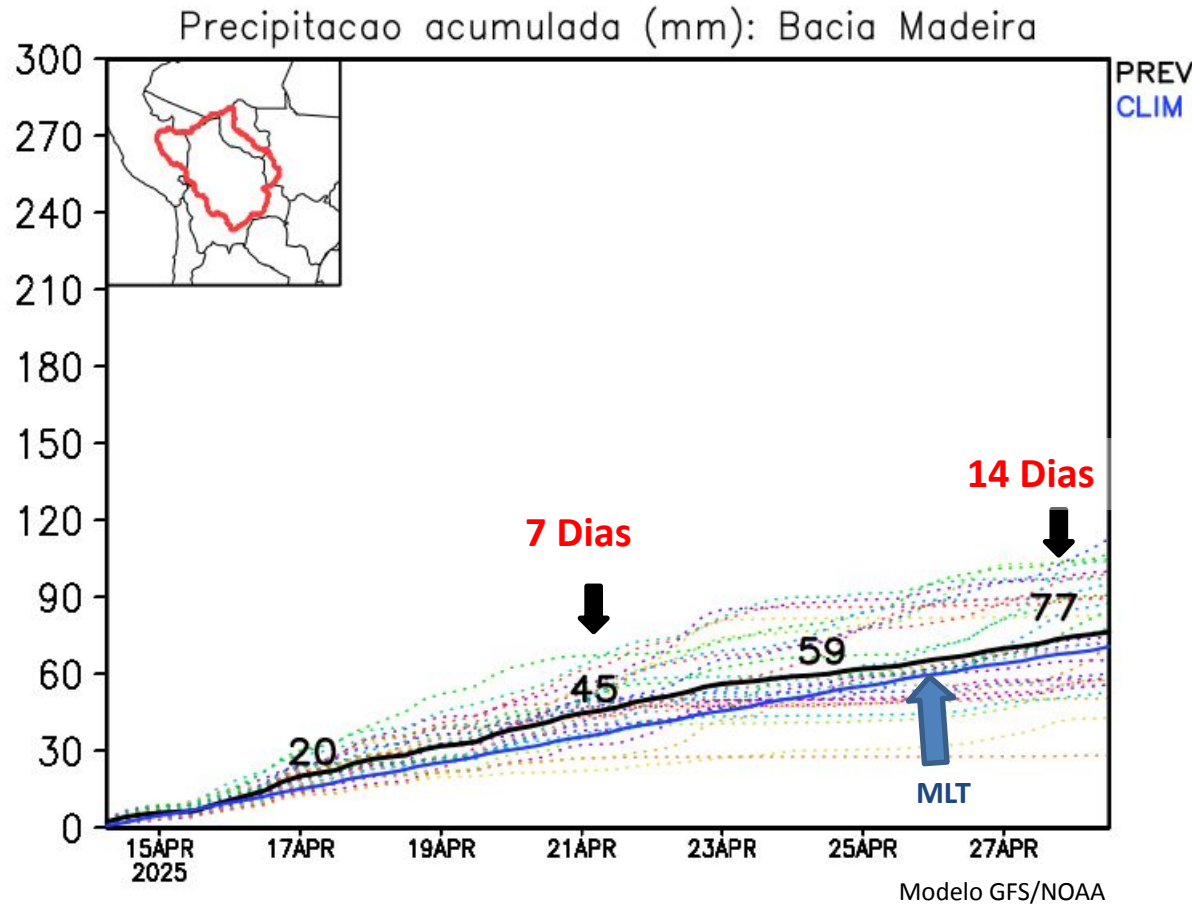
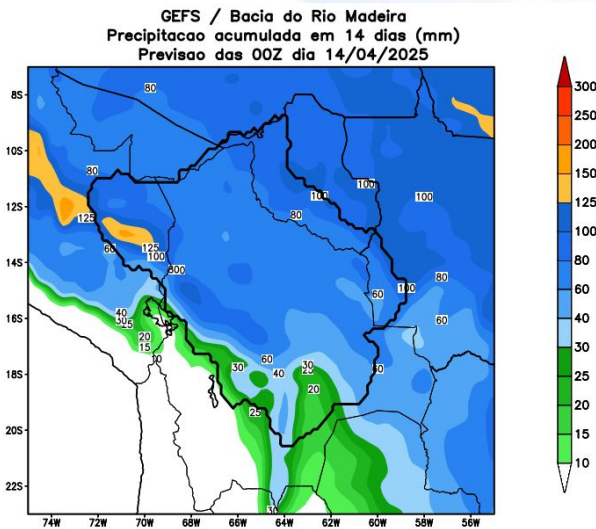
Precipitação Inferior 2 mm/dia por 4 de 5 dias
Período: 13/04/2025



Situação meteorológica atual



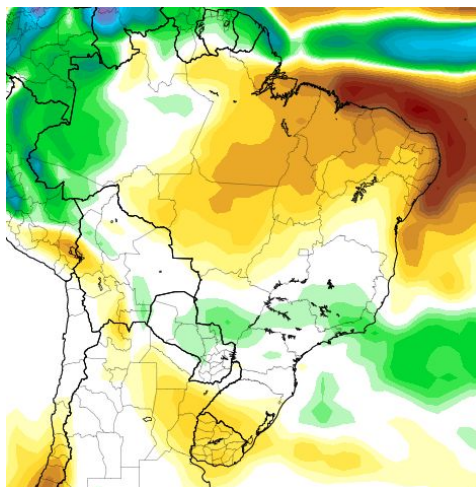
Previsão de chuva para o Rio Madeira 2 semanas



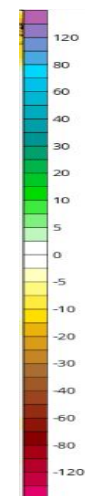
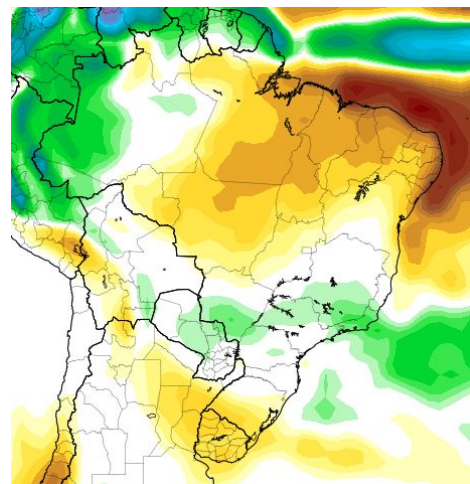
Anomalia de Chuva 3a e 4a semanas

CFS/NOAA
americano

28 – 04 Maio

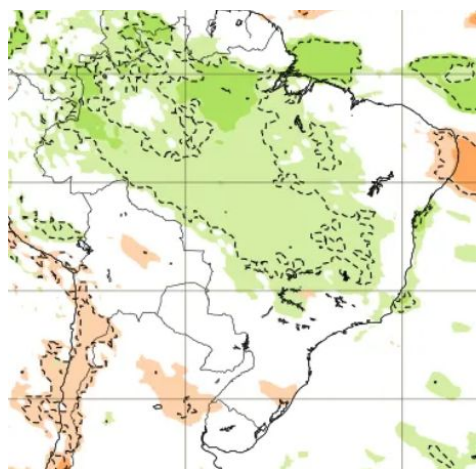


05-11 Maio

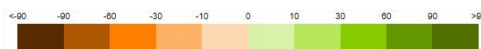
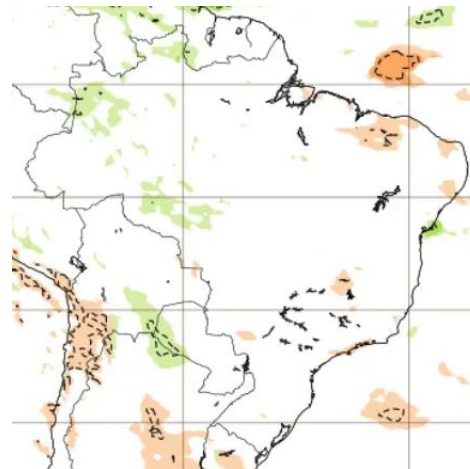


ECMWF
europeu

28 – 04 Maio



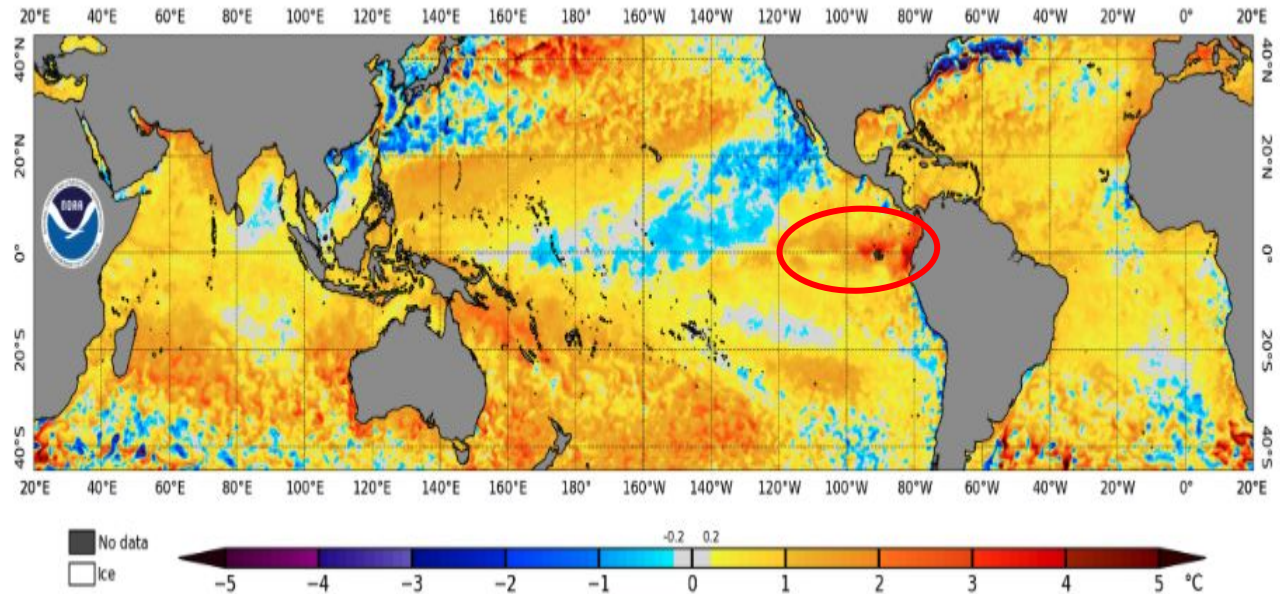
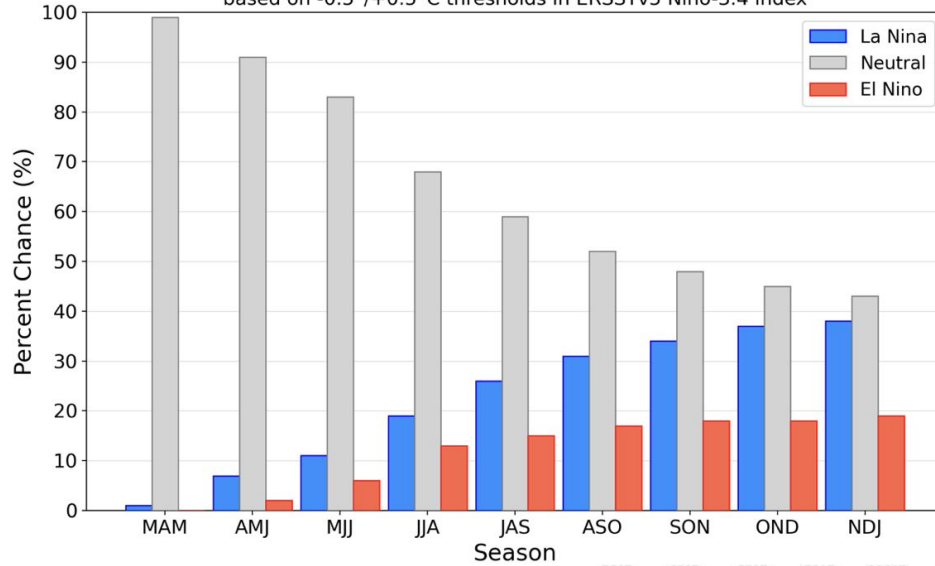
05-11 Maio



El Niño / La Niña: NEUTRALIDADE

Official NOAA CPC ENSO Probabilities (issued April 2025)

based on $-0.5^{\circ}/+0.5^{\circ}\text{C}$ thresholds in ERSSTv5 Niño-3.4 index



Previsão Sazonal de Chuva Multi-Modelo

Maio-Junho-Julho

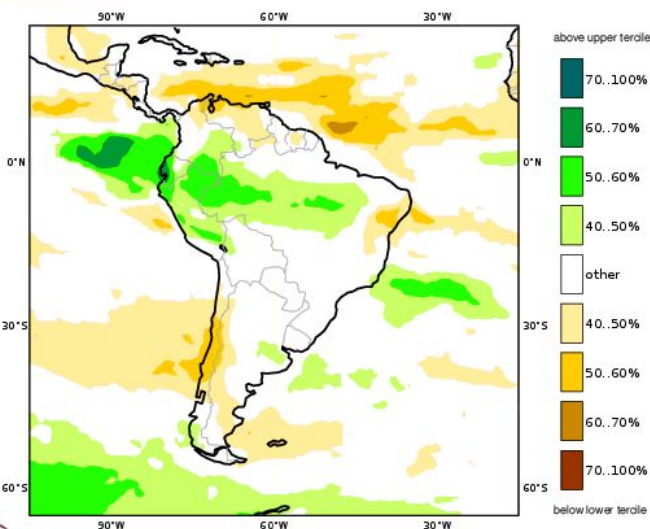
C3S multi-system seasonal forecast

Prob(most likely category of precipitation)

Nominal forecast start: 01/04/25

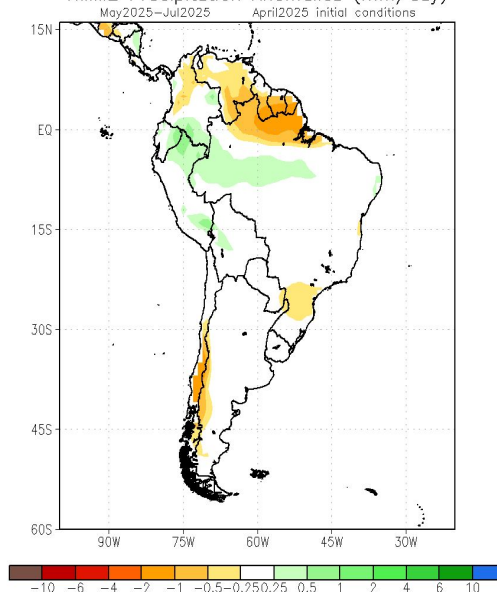
Unweighted mean

MJJ 202



Modelos Europeus

NMME Precipitation Anomalies (mm/day)



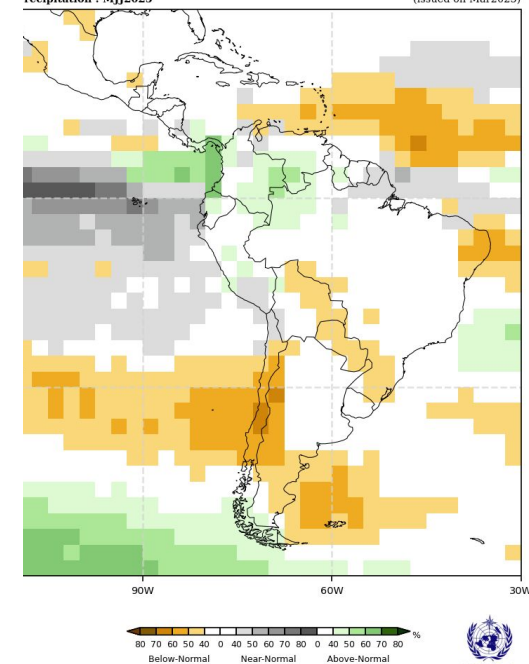
Modelos Norte Americanos

Probabilistic Multi-Model Ensemble Forecast

CMCC, CTEC, ECMWF, Easeter, Melbourne, Montreal, Offenbach, Seoul, Toulouse, Washington

precipitation : MJJ2025

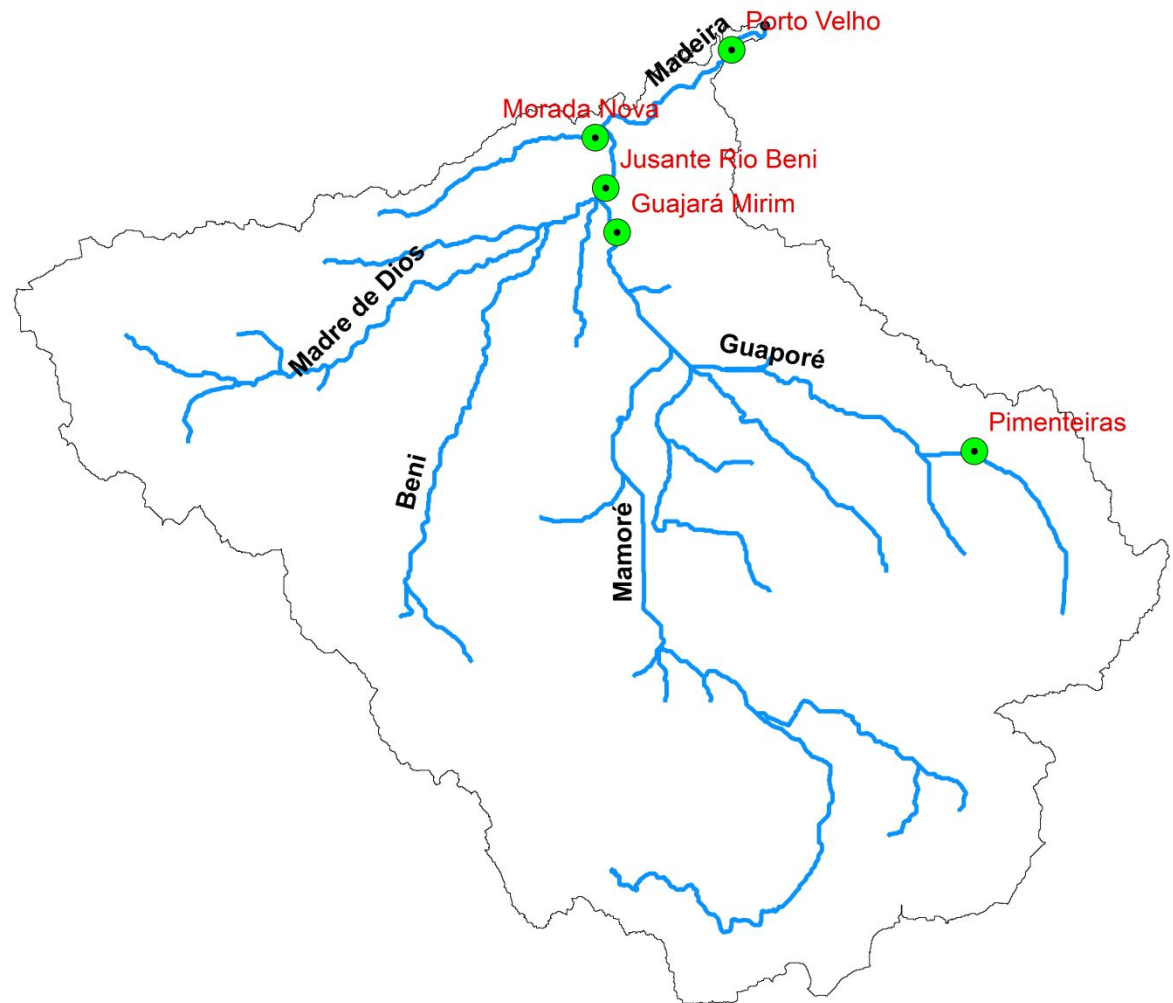
(issued on Mar2025)



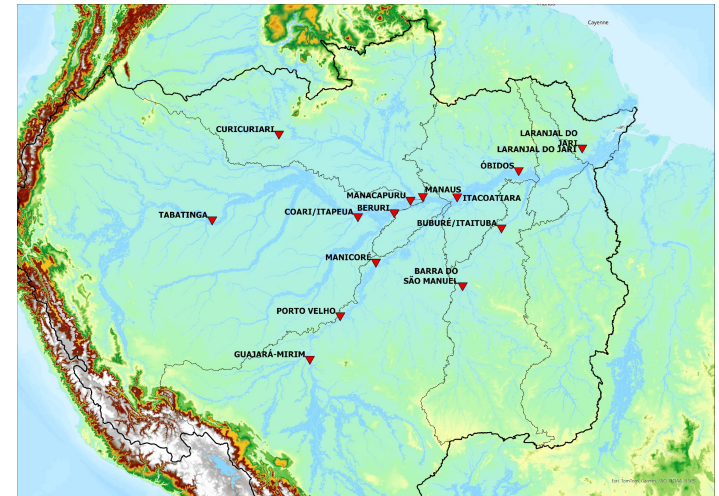
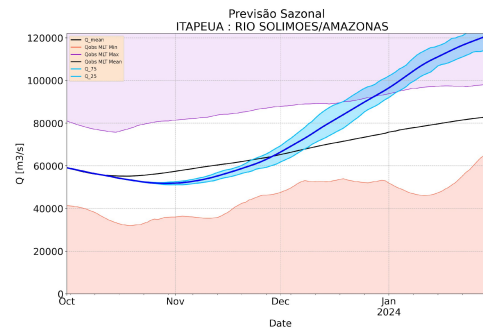
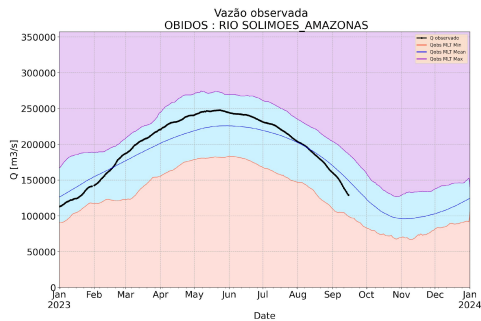
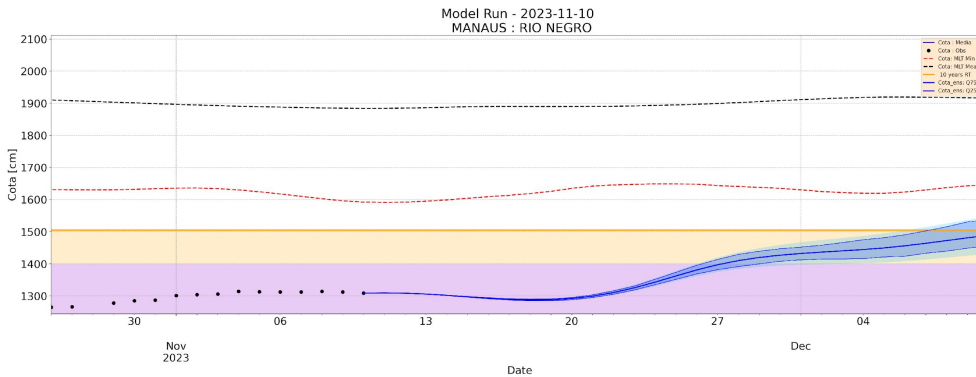
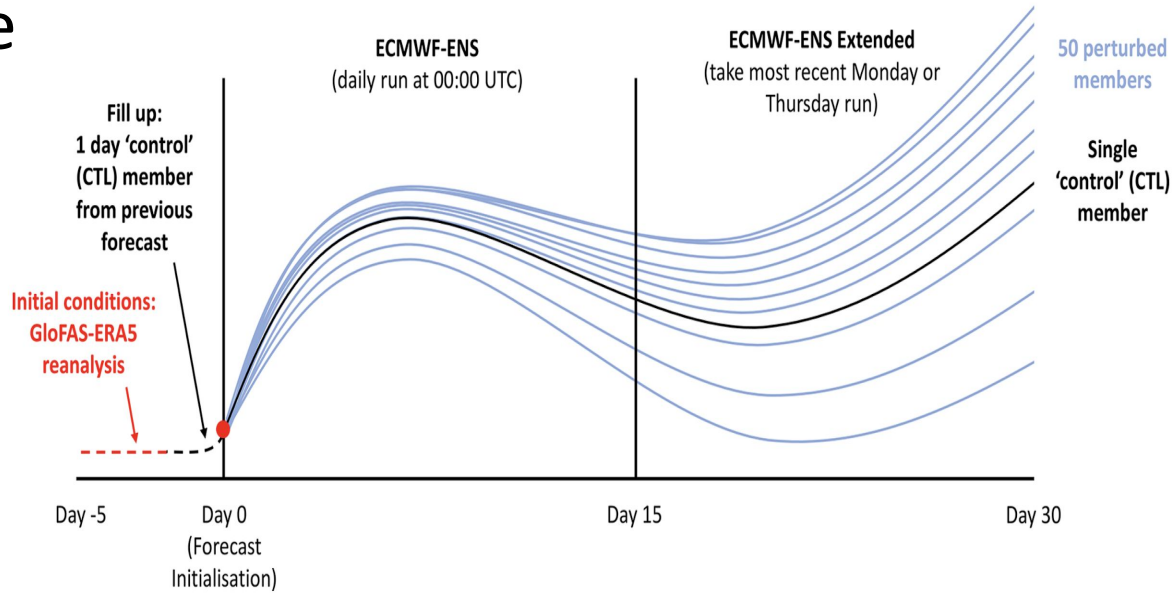
Modelos da WMO

Previsão Hidrológica: Bacia do Rio Madeira

Previsão de vazão realizada por meio do Modelo Hidrológico Distribuído – Lisflood/GLOFAS (Chuva-Vazão), usando como entradas as previsões de precipitação fornecidas pelo modelo por conjunto ECMWF (Centro Europeu)



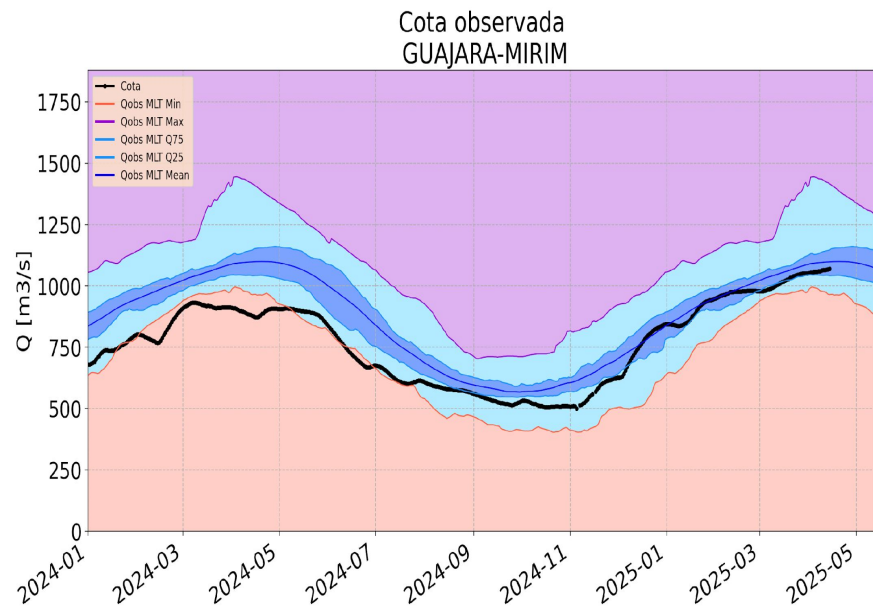
Previsão de vazão GloFAS 30-dias



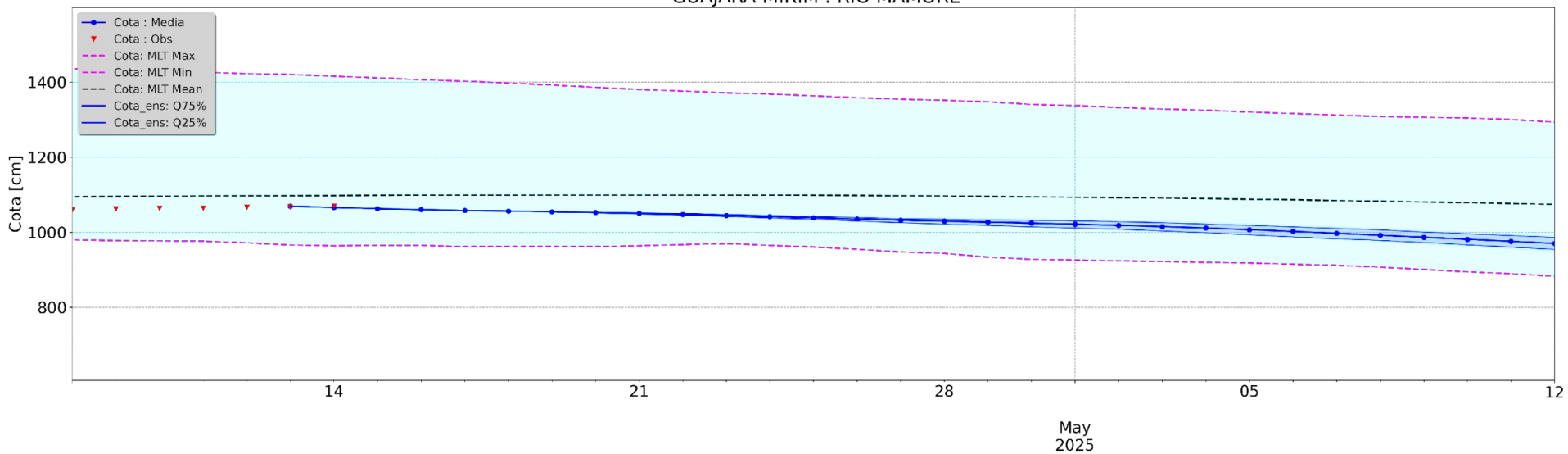
Gráficos e análises: CEMADEN
Previsões: GloFAS



Dados
observados: ANA

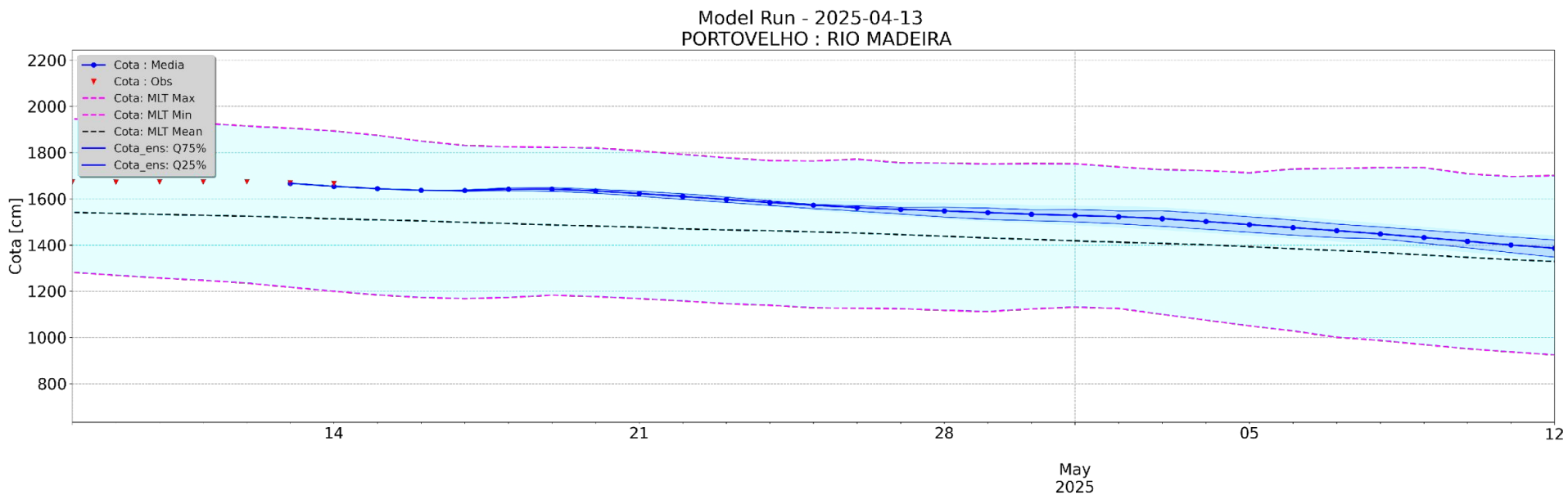
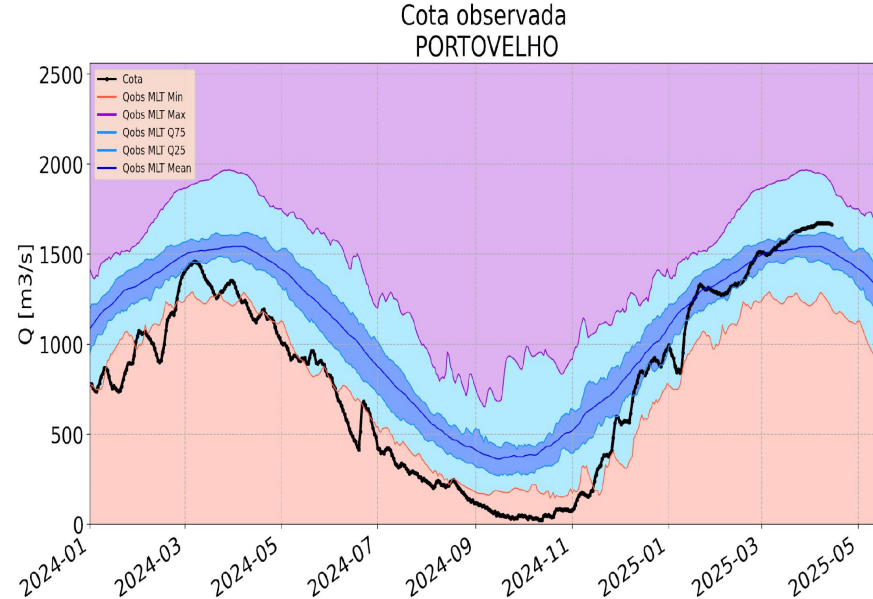


Model Run - 2025-04-13
GUAJARA-MIRIM : RIO MAMORE





Dados
observados: ANA



Previsão Sazonal AMJJ

