

Sala de Crise da Região Sul

24 de Janeiro de 2024

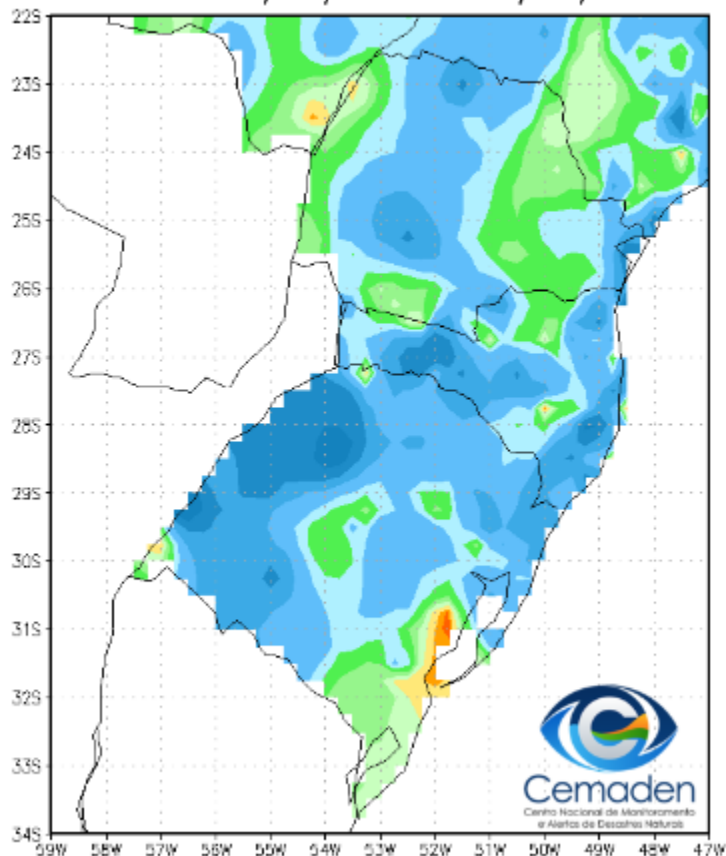


MINISTÉRIO DA
CIÊNCIA, TECNOLOGIA
E INOVAÇÃO

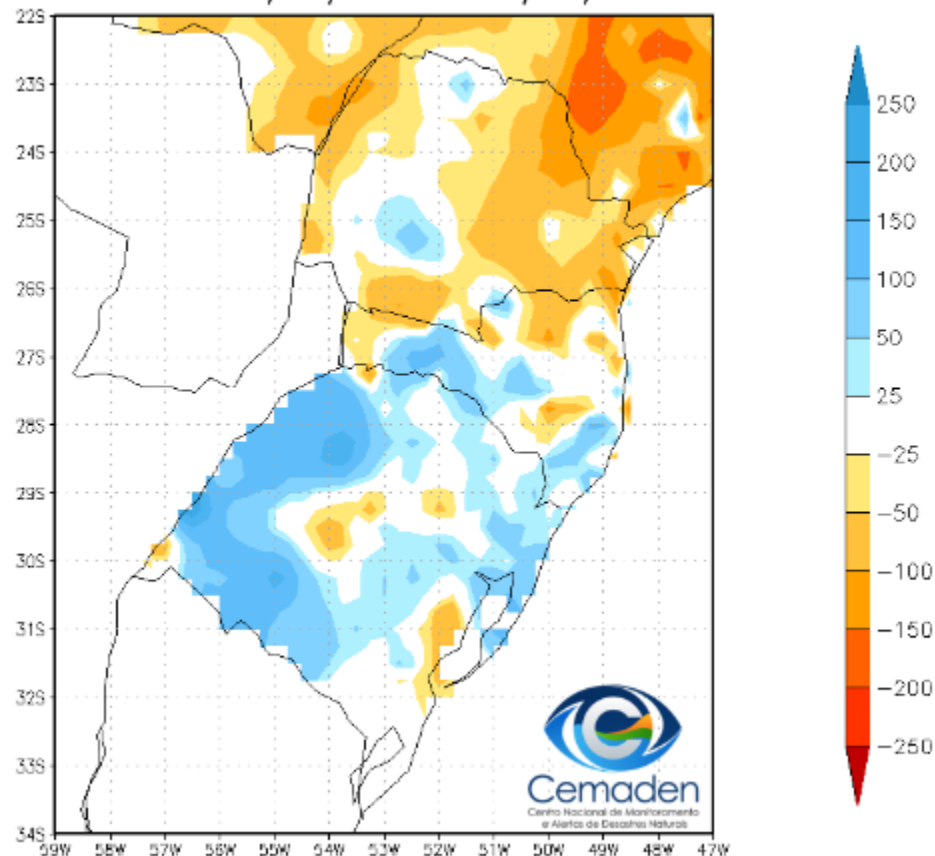


Precipitação nos últimos 30 dias

Precipitação Acumulada (mm)
Período: 23/12/2023 a 22/01/2024

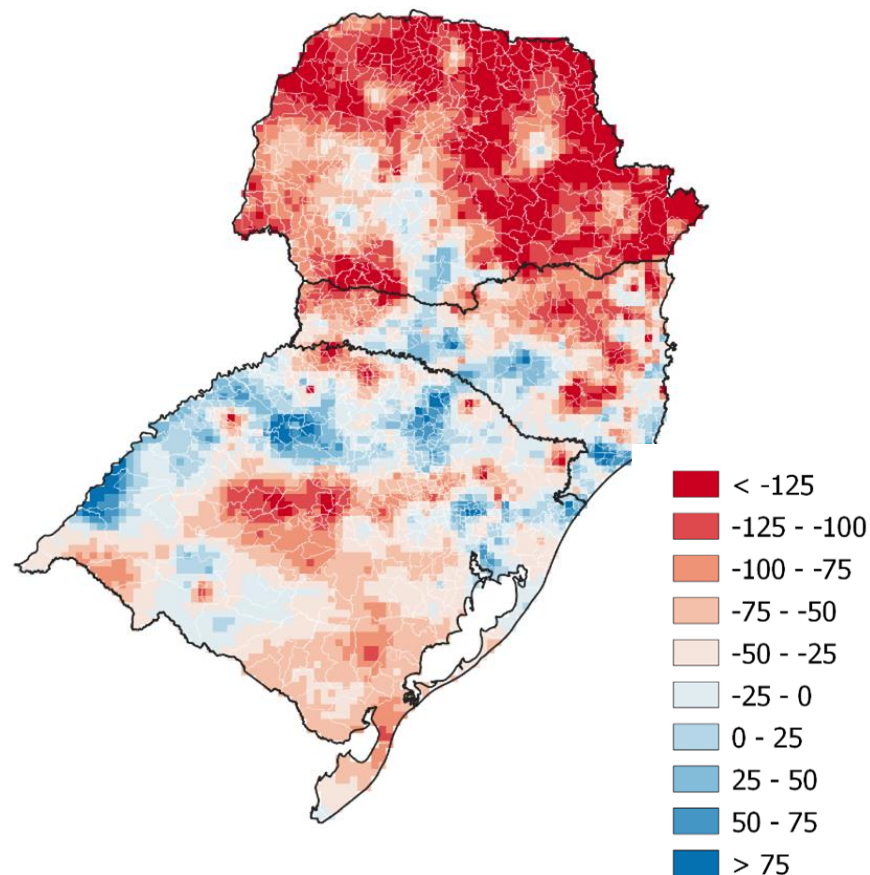
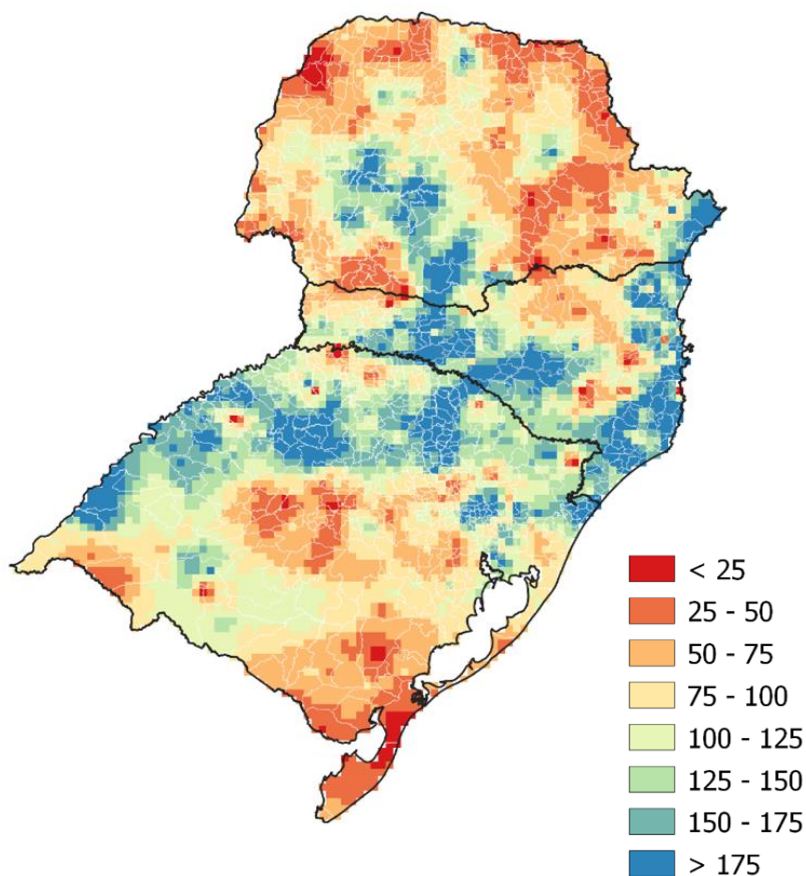


Anomalia de Precipitação (mm)
Período: 23/12/2023 a 22/01/2024



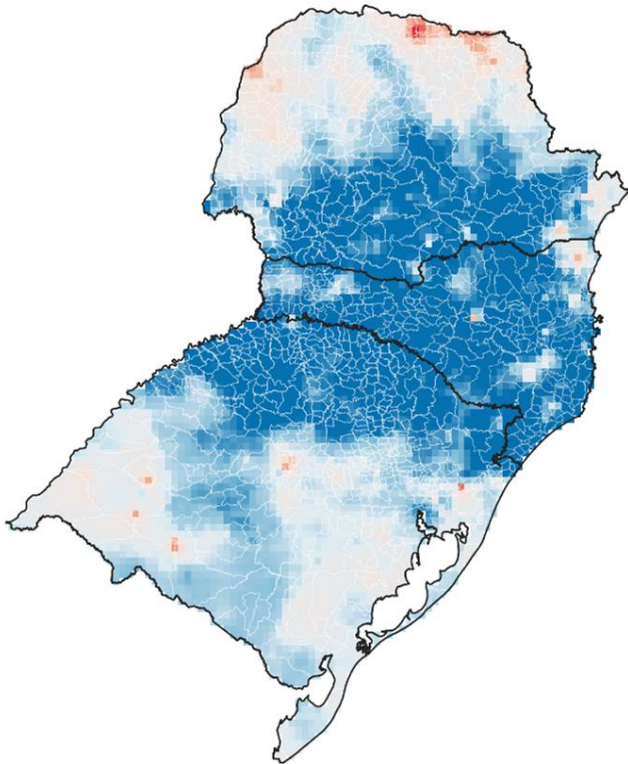
PRECIPITAÇÃO: JANEIRO 2023 (ATÉ 22/01)

Acumulado (mm)

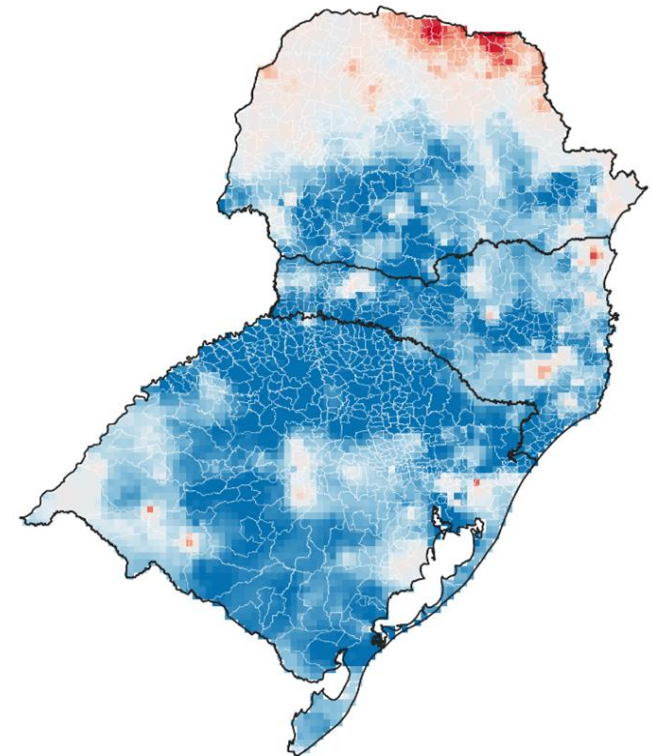


SPI: DEZEMBRO 2023

SPI 03

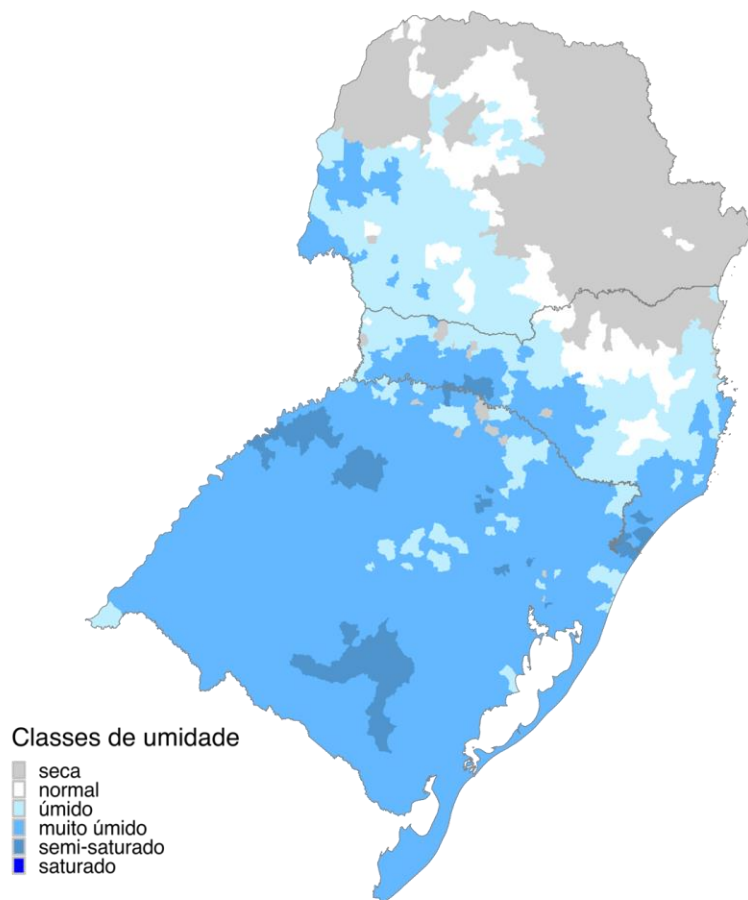


SPI 06



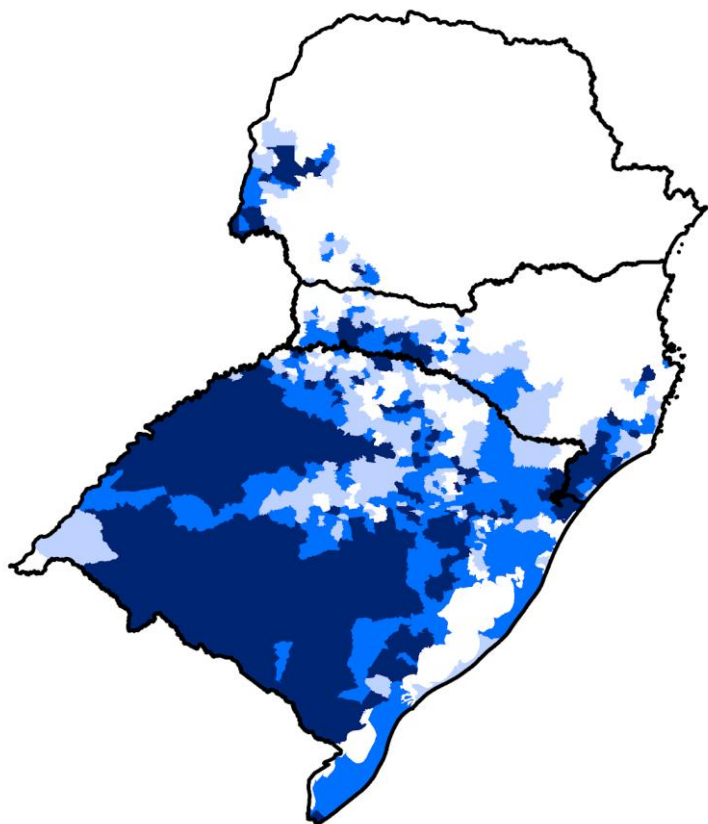
IARA (SPI, SM, VHI)

OBSERVADO: JANEIRO/24



ESTIMATIVA DE ÁREAS DE PASTAGENS E AGRÍCOLAS AFETADAS PELO EXCESSO DE CHUVA

OBSERVADO: JAN/24

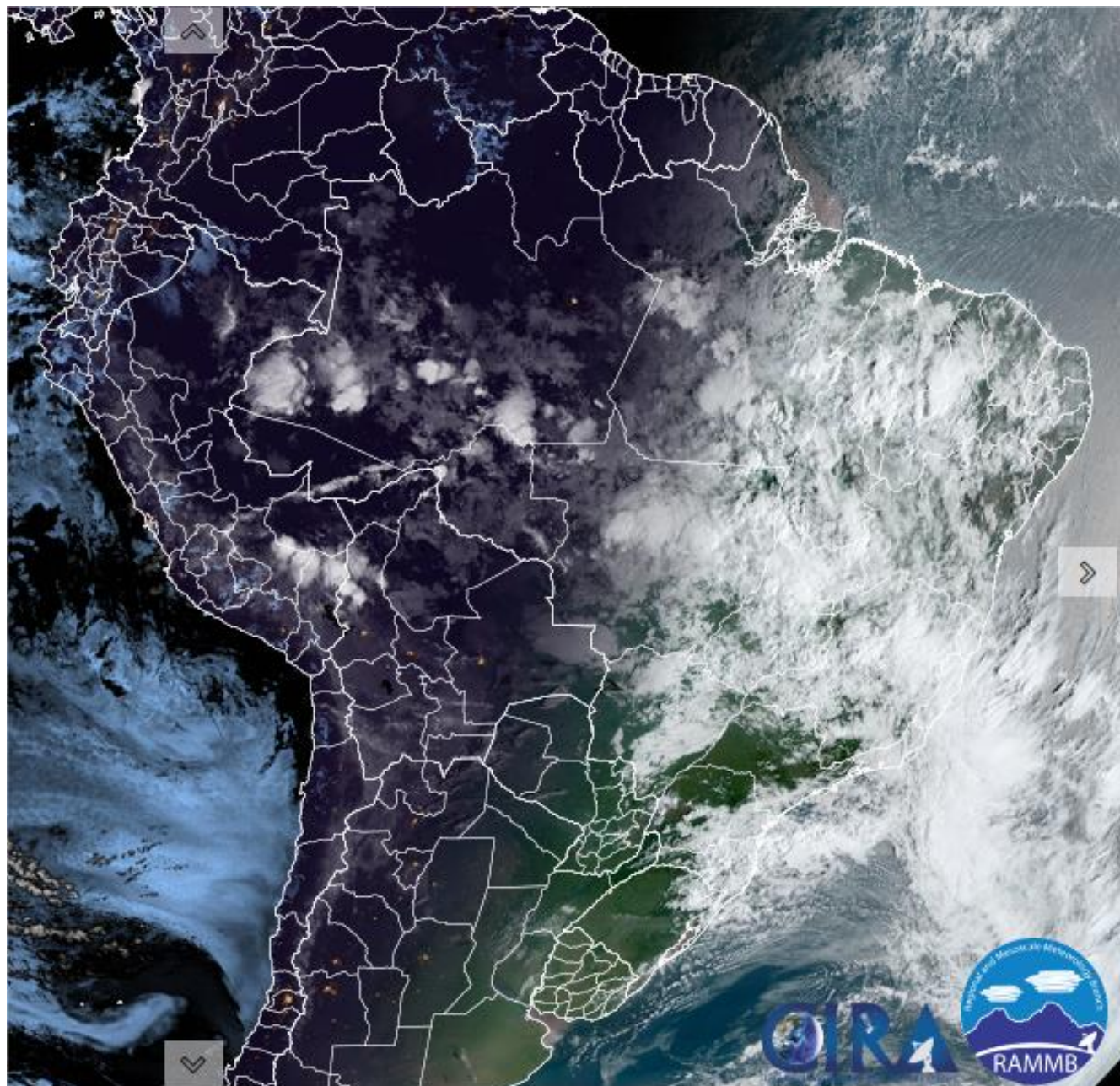


Impacto: Muito úmido à saturado.

UF	40 a 60%	60 - 80%	> 80%
PR	14	10	10
SC	41	46	38
RS	94	144	199

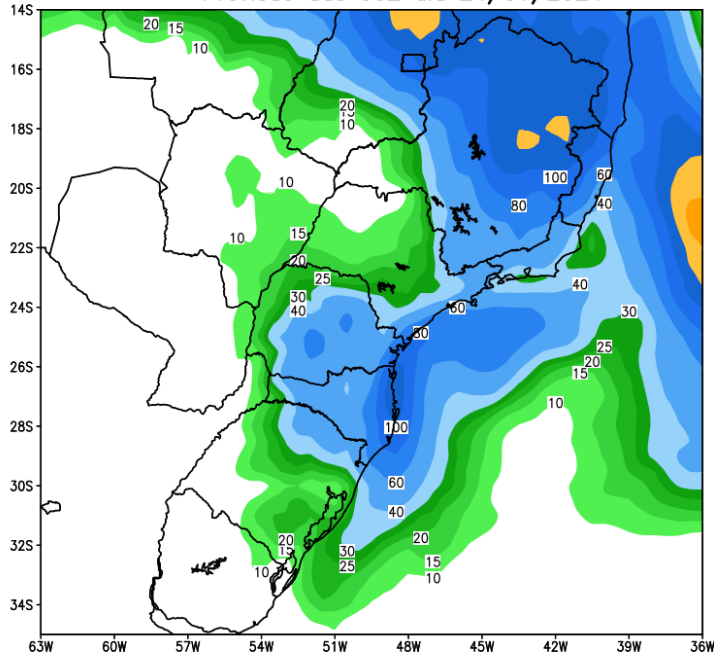
	40 a 60%	60 - 80%	> 80%	Imóveis Rurais Impactados > 40%
Paraná				
Minifundio	13627 (5%)	9171 (4%)	10274 (4%)	33072 (13%)
Pequena Propriedade	5951 (5%)	3544 (3%)	4637 (4%)	14132 (11%)
Media Propriedade	742 (3%)	331 (1%)	475 (2%)	1548 (6%)
Santa Catarina				
Minifundio	28792 (12%)	42328 (18%)	41426 (18%)	112546 (49%)
Pequena Propriedade	9659 (12%)	11106 (14%)	11106 (10%)	29307(36%)
Media Propriedade	1738 (17%)	748 (8%)	327 (3%)	2813 (28%)
Rio Grande do Sul				
Minifundio	61625 (17%)	109430 (30%)	166525 (45%)	337580 (92%)
Pequena Propriedade	3330 (17%)	6877 (29%)	13018 (45%)	124894 (91%)
Media Propriedade	3330 (13%)	6877 (28%)	13018 (53%)	23225 (94%)

Situação meteorológica atual

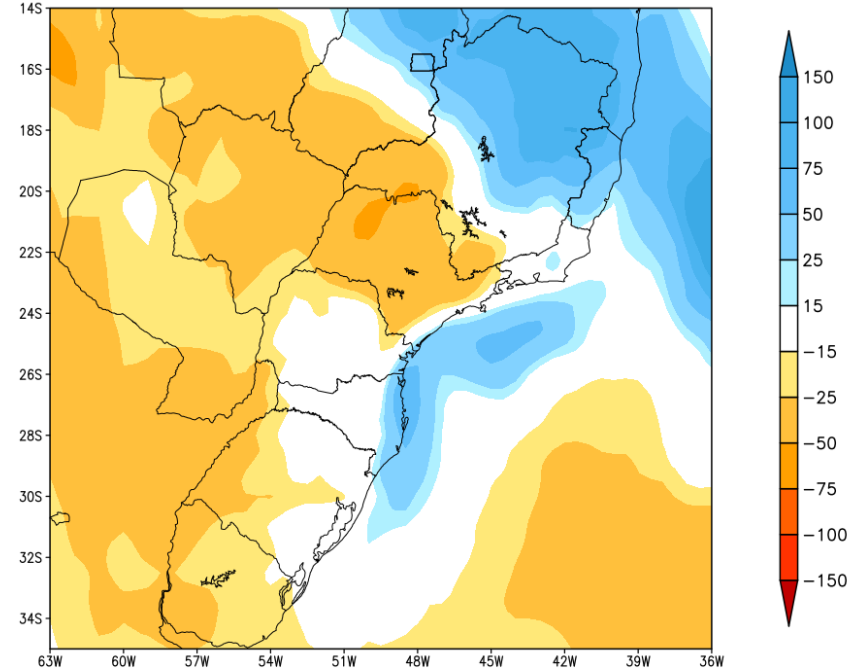


Previsão de chuva próximos 7 dias

GEFS / BRASIL_SUL
Precipitação acumulada 1aSem (mm)
Previsão das 00Z dia 24/01/2024



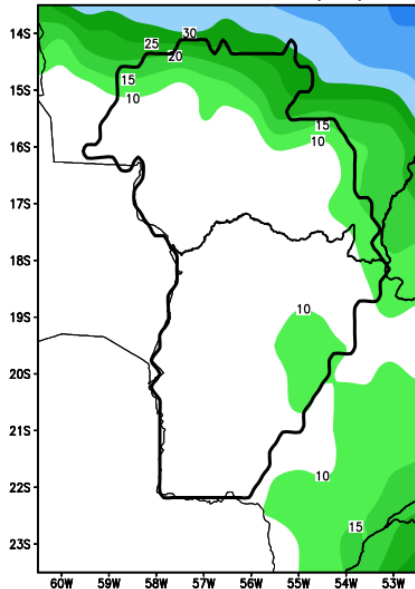
Anomalia de Precipitação BR_SUL (mm)
Período: 2024012400 a 2024013100



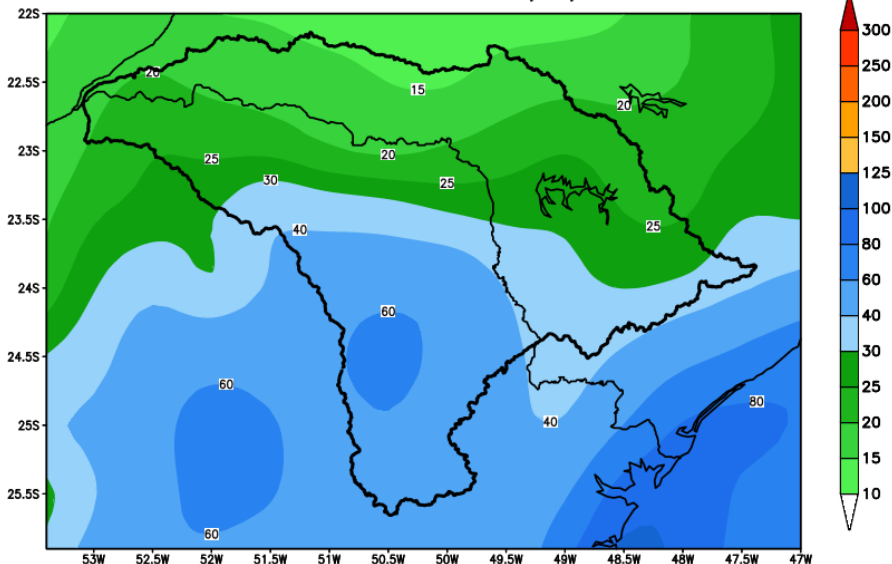
MODELO GFS

Previsão para as principais bacias

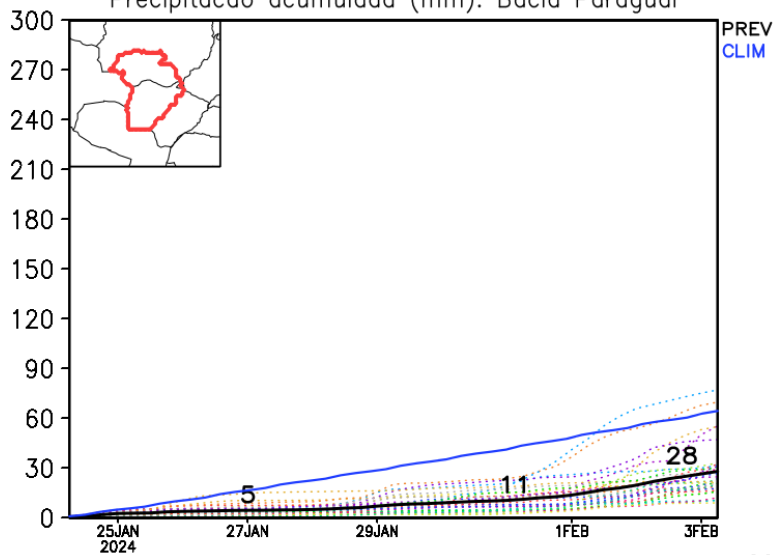
GEFS / Bacia do Rio Paraguai
Precipitacao acumulada em 7 dias (mm)
Previsao das 00Z dia 24/01/2024



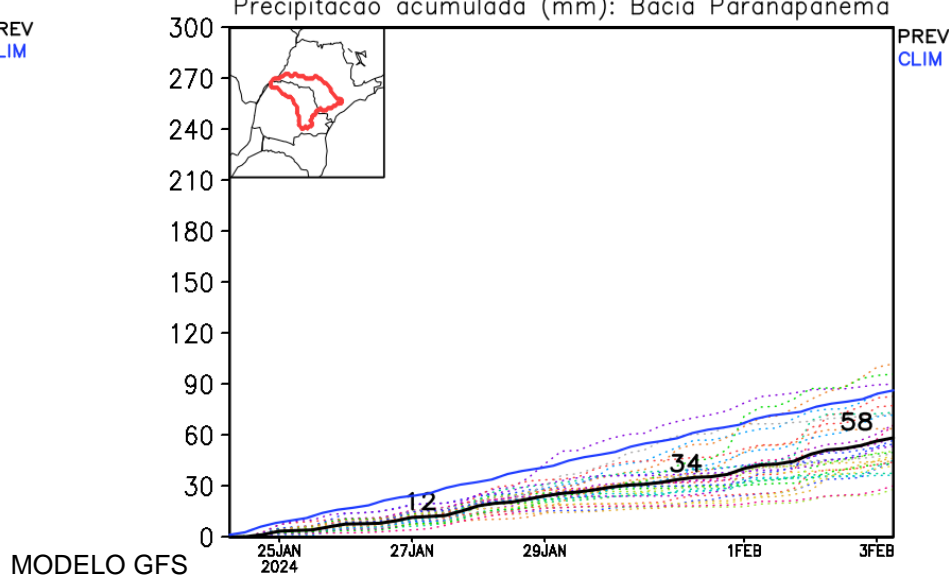
GEFS / Bacia do Rio Paranapanema
Precipitacao acumulada em 7 dias (mm)
Previsao das 00Z dia 24/01/2024



Precipitacao acumulada (mm): Bacia Paraguai

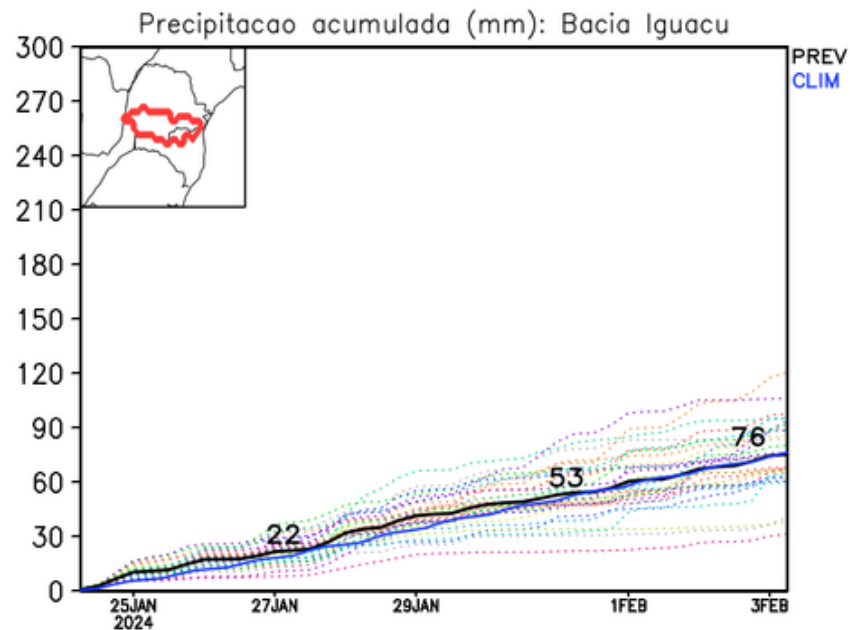
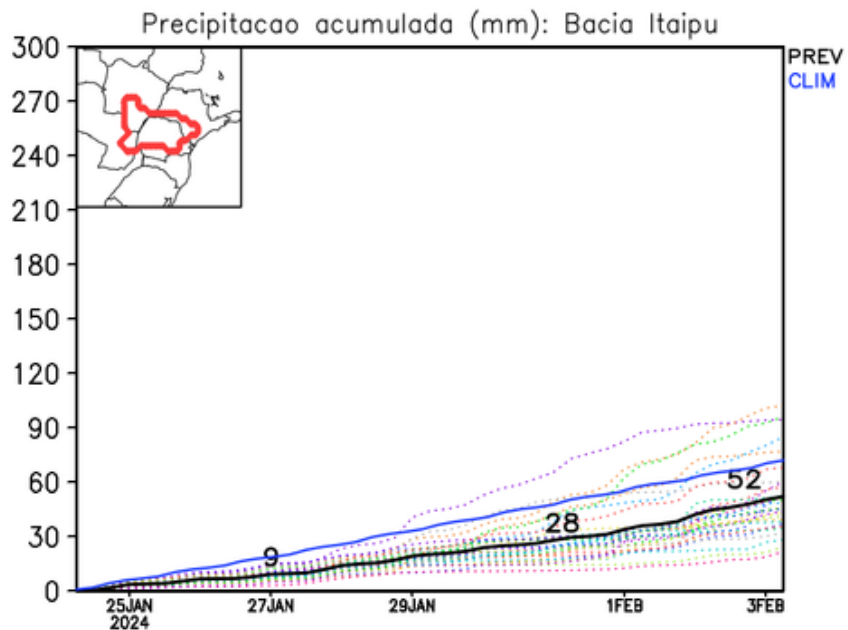
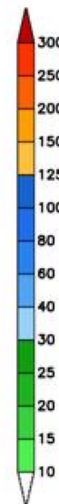
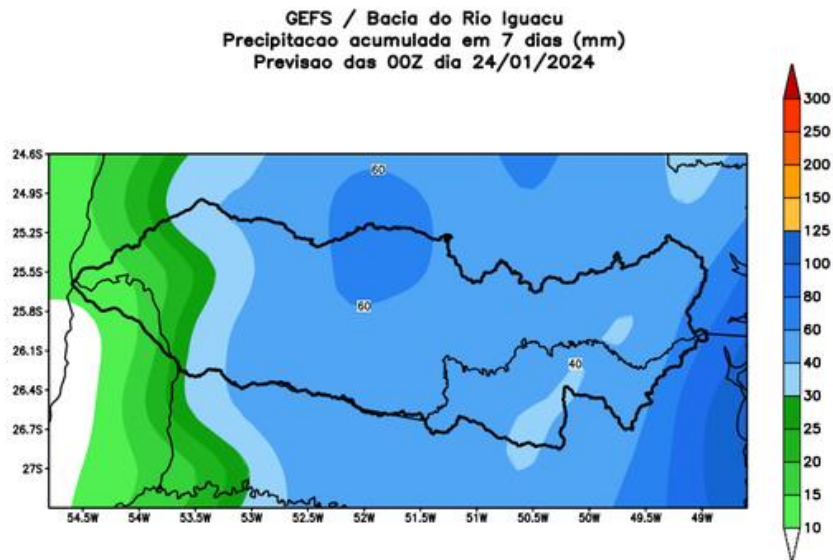
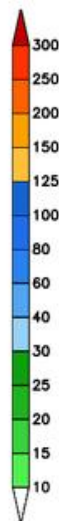
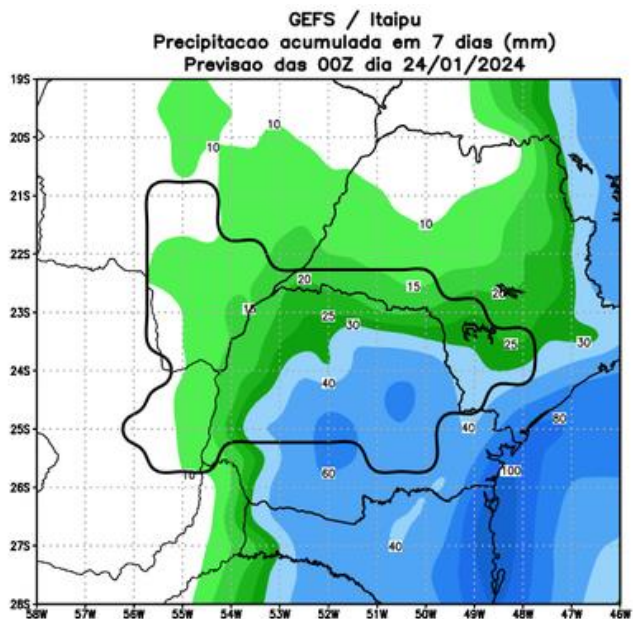


Precipitacao acumulada (mm): Bacia Paranapanema



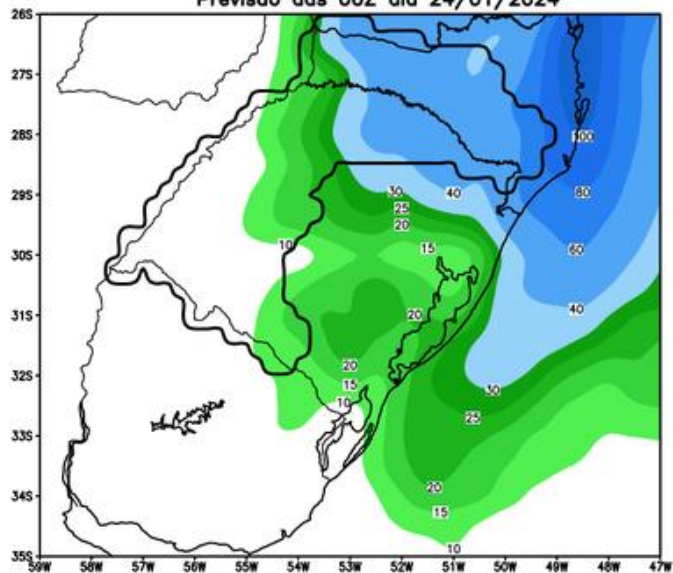
MODELO GFS

Previsão para as principais bacias

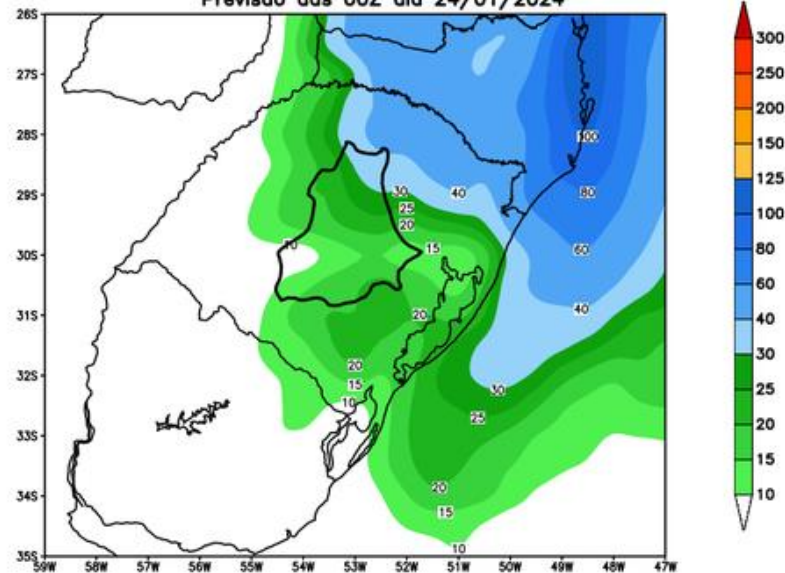


Previsão para as principais bacias

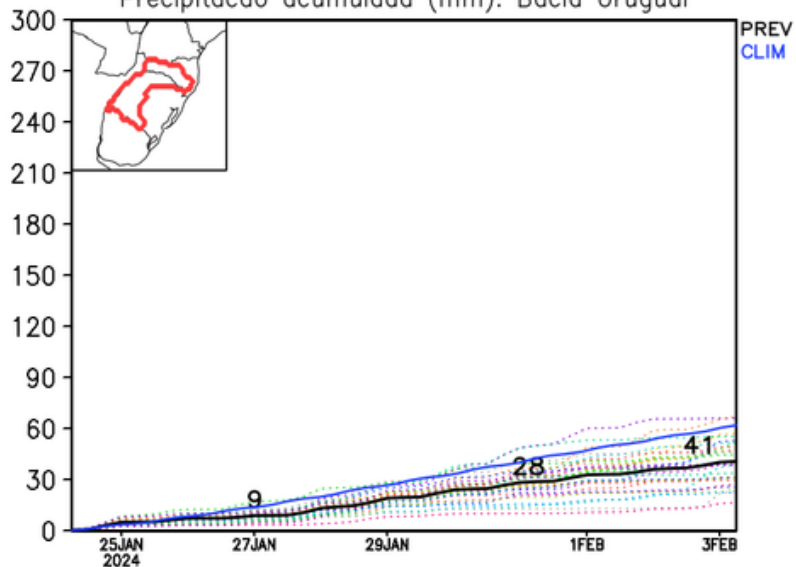
GEFS / Bacia do Rio Uruguai
Precipitação acumulada em 7 dias (mm)
Previsão das 00Z dia 24/01/2024



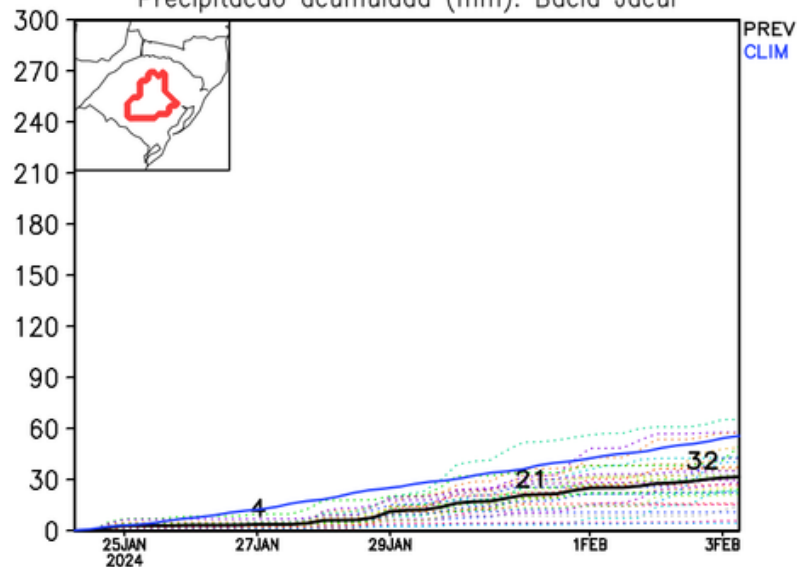
GEFS / Bacia do Rio Jacui
Precipitação acumulada em 7 dias (mm)
Previsão das 00Z dia 24/01/2024



Precipitação acumulada (mm): Bacia Uruguai

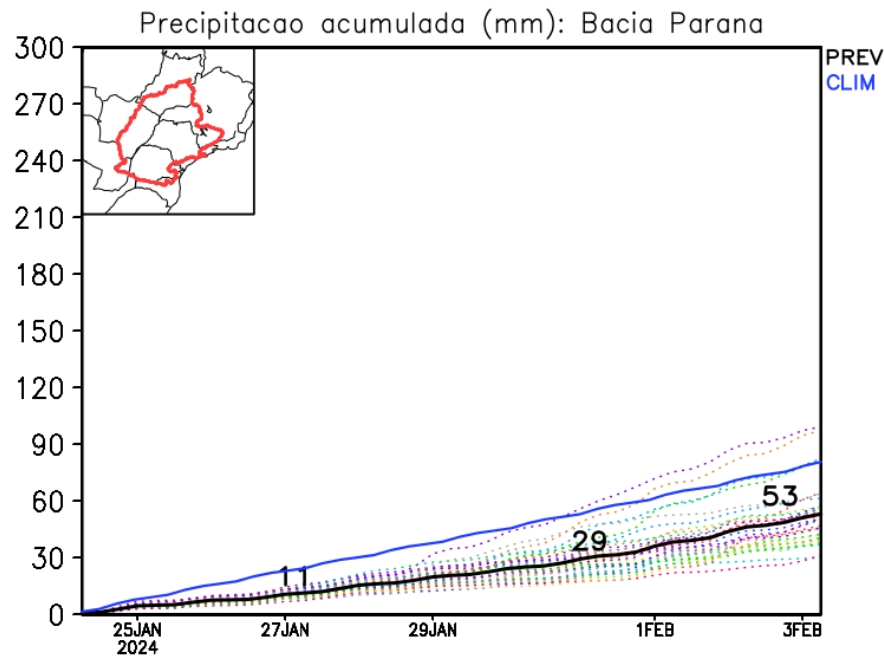
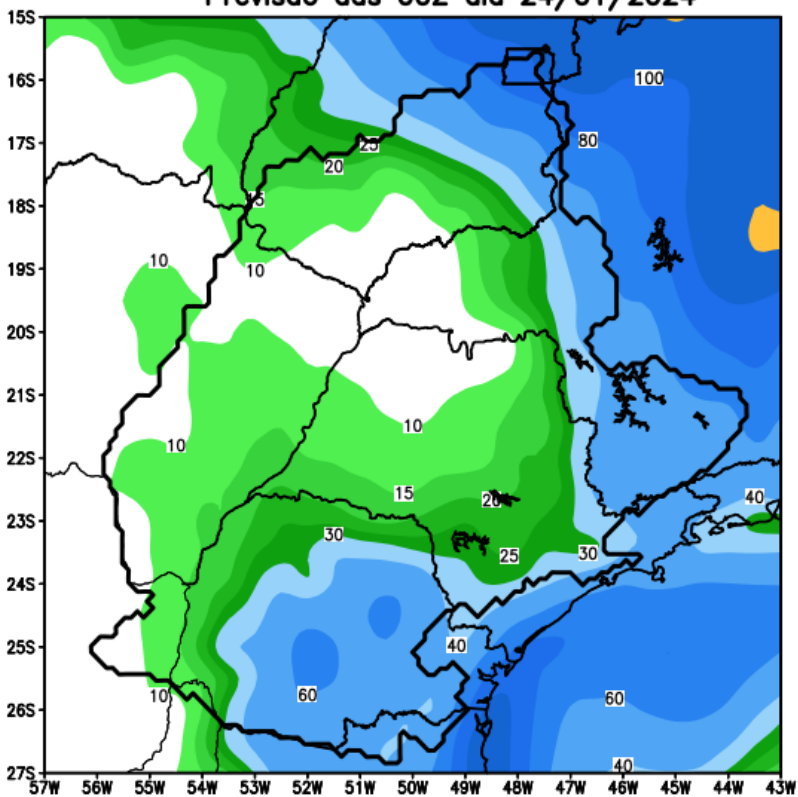


Precipitação acumulada (mm): Bacia Jacui



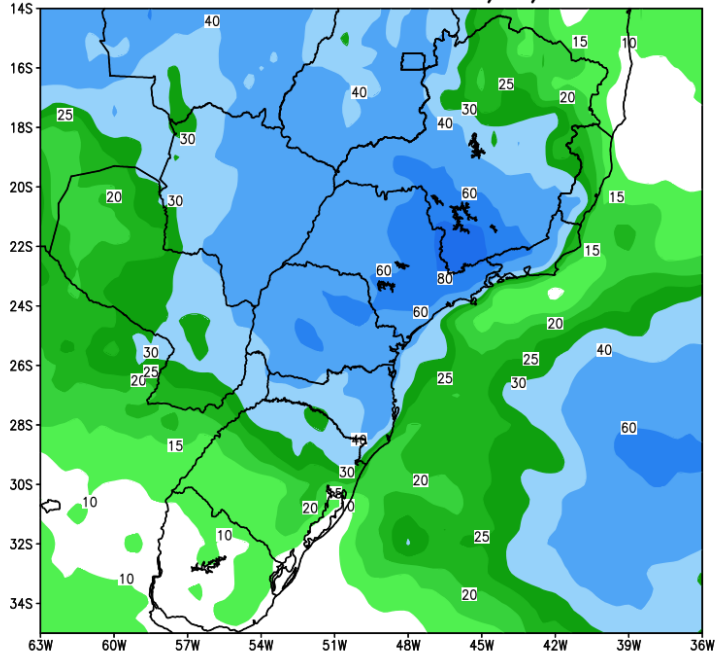
Previsão para as principais bacias

GEFS / Bacia do Parana
Precipitacao acumulada em 7 dias (mm)
Previsao das 00Z dia 24/01/2024

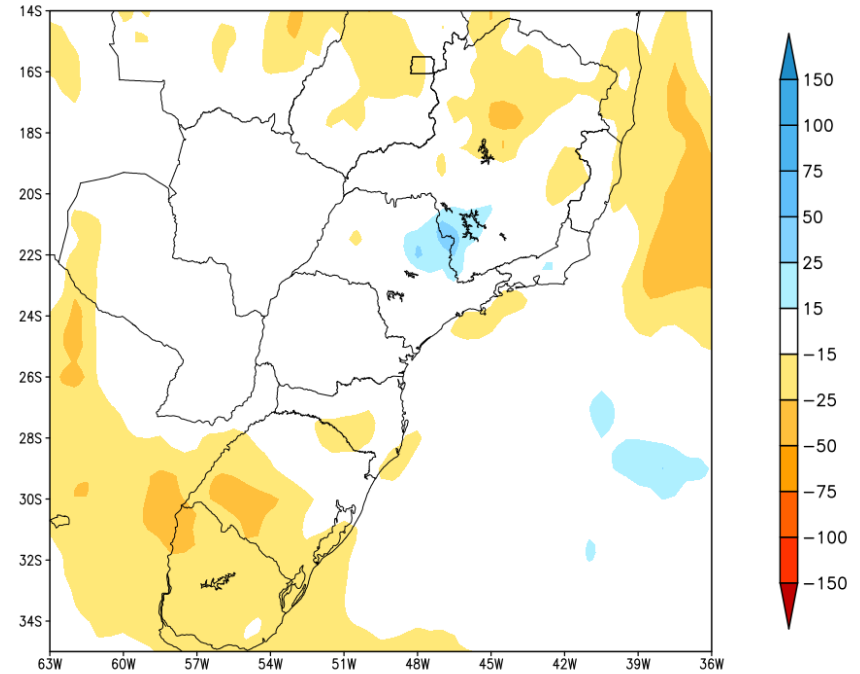


Tendência para a segunda semana

GEFS / BRASIL_SUL
Precipitação acumulada 2aSem (mm)
Previsão das 00Z dia 24/01/2024



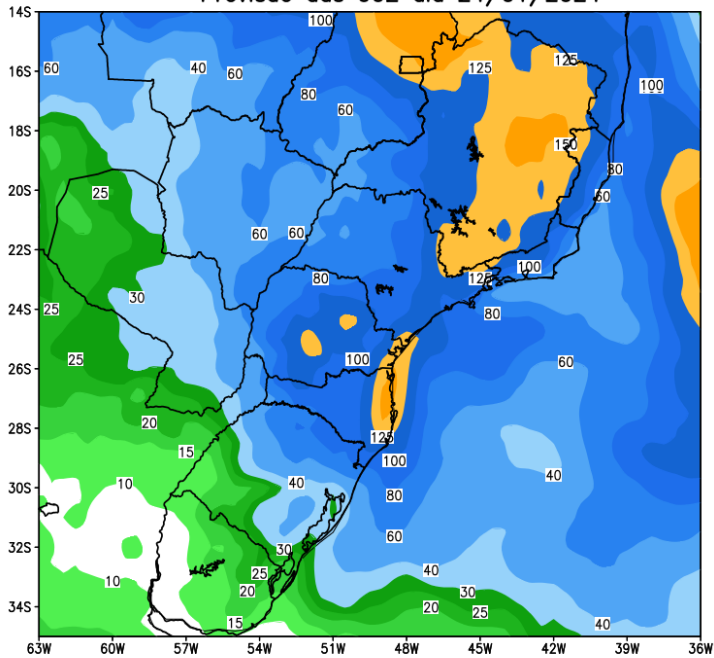
Anomalia de Precipitação BR SUL (mm)
Período: 2024020100 a 2024020700



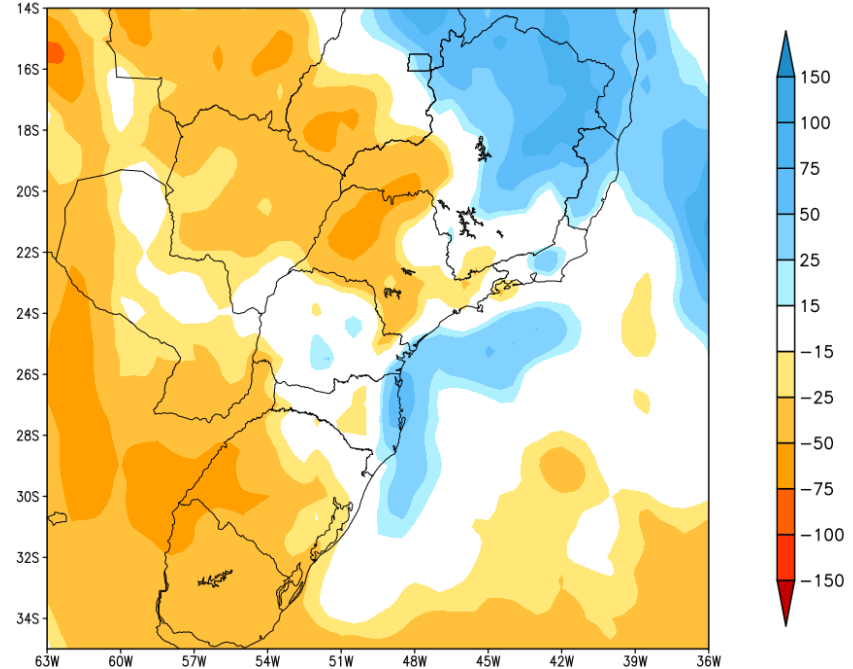
MODELO GFS

Tendência para as duas próximas semanas

GEFS / BRASIL_SUL
Precipitação acumulada 14 dias (mm)
Previsão das 00Z dia 24/01/2024



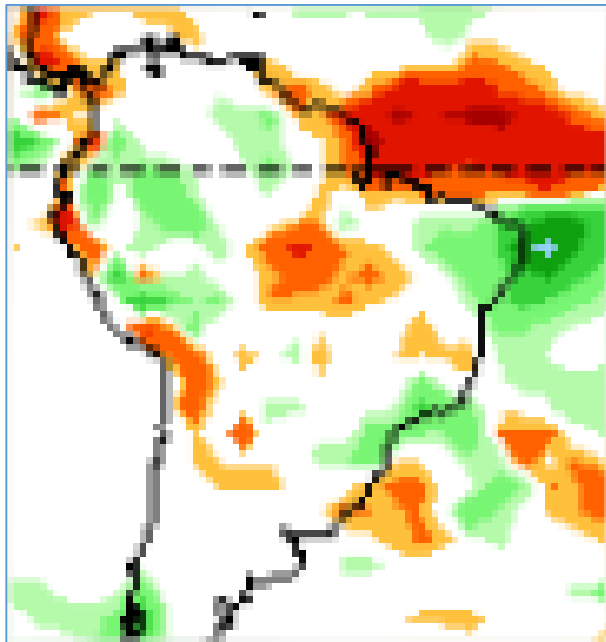
Anomalia de Precipitação BR_SUL (mm)
Período: 2024012400 a 2024020700



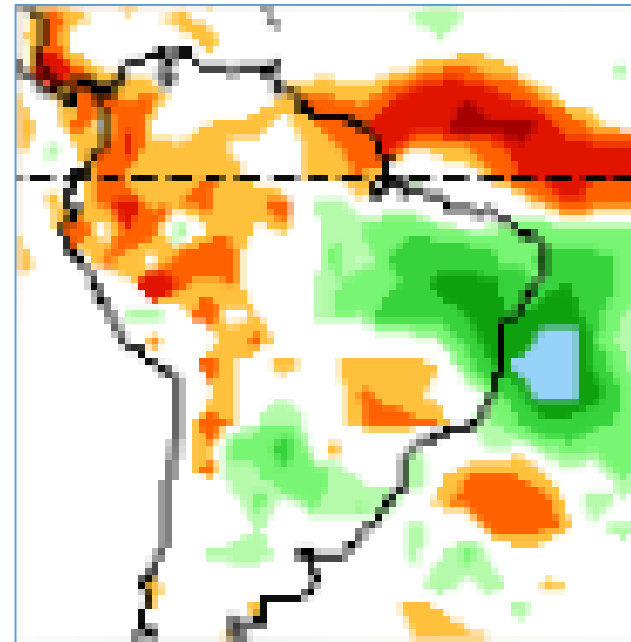
MODELO GFS

Tendência 3a e 4a semanas

07-13/02



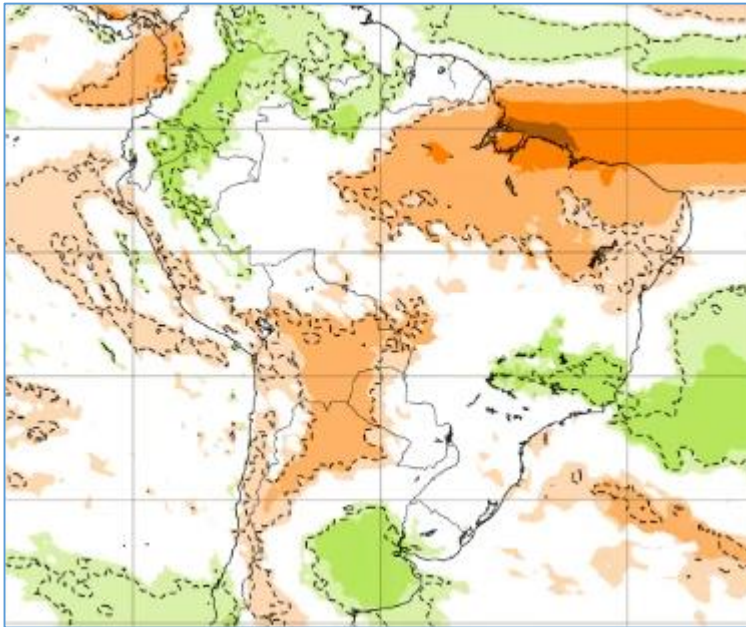
14-20/02



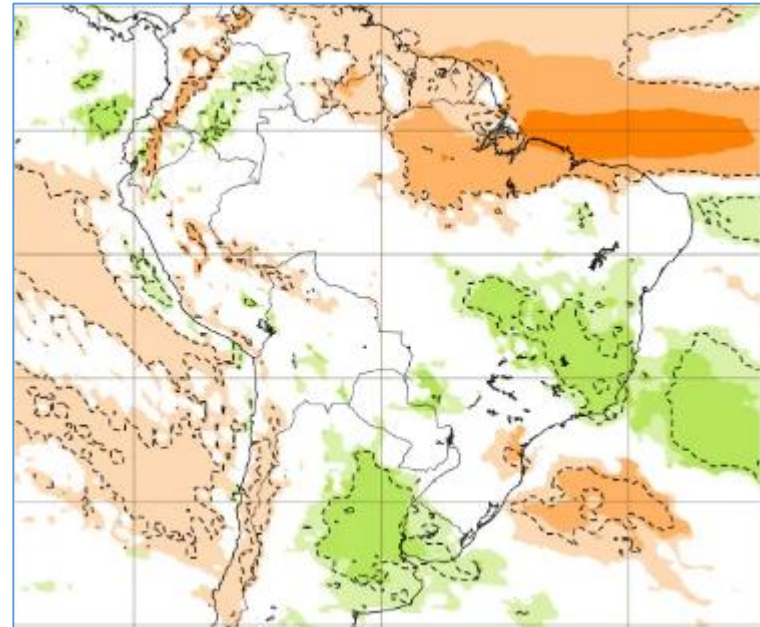
Tendência para 3ª e 4ª semanas

v

05-12/02

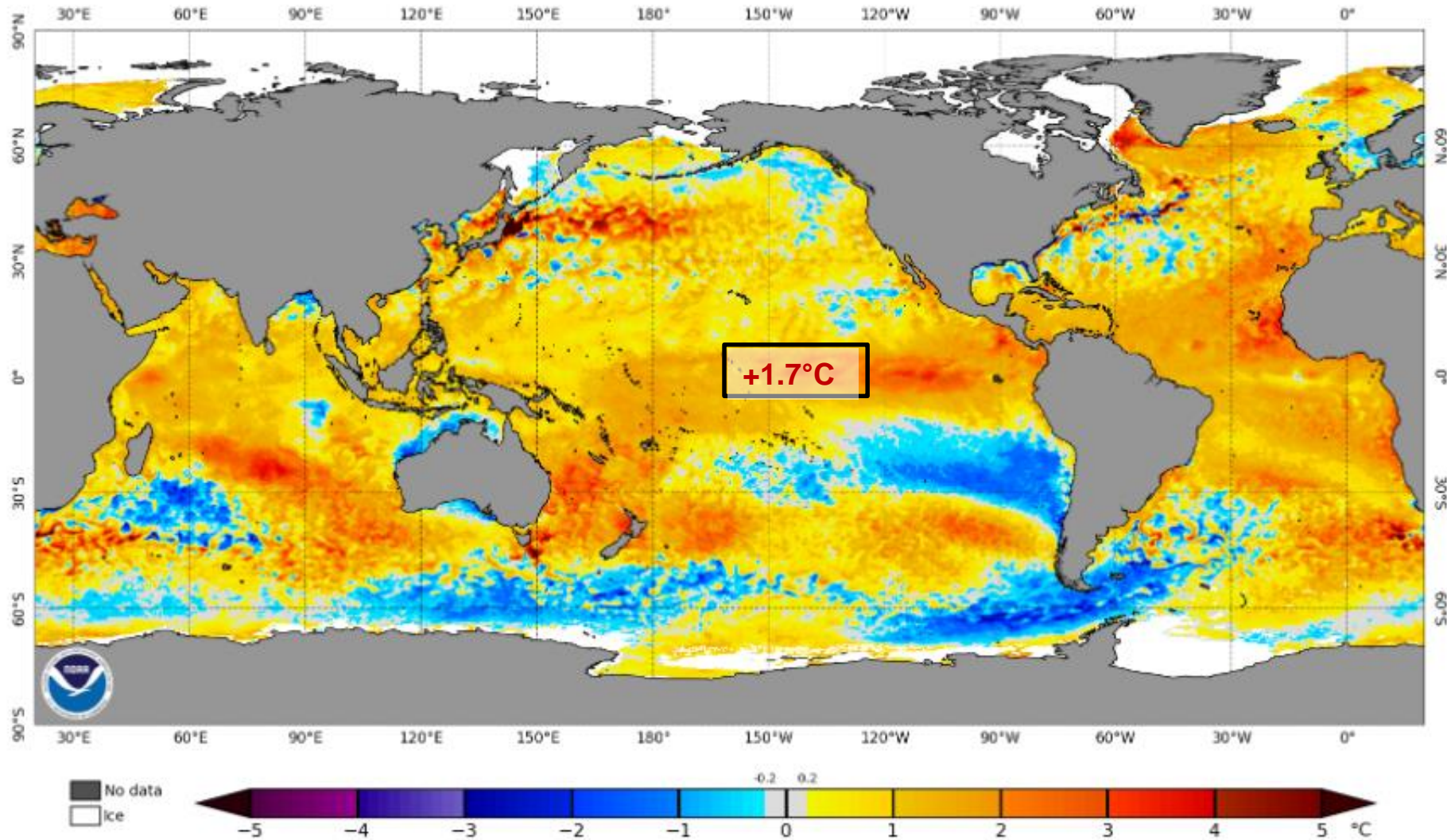


12-19/02



Status Atual: El Niño

NOAA Coral Reef Watch Daily 5km SST Anomalies (v3.1) 21 Jan 2024



Previsão do “ENSO”

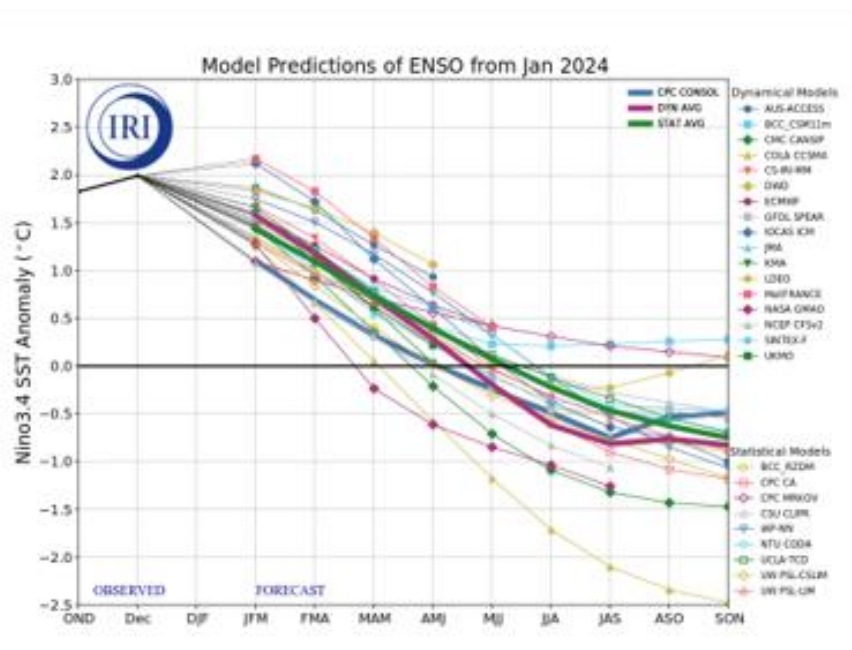
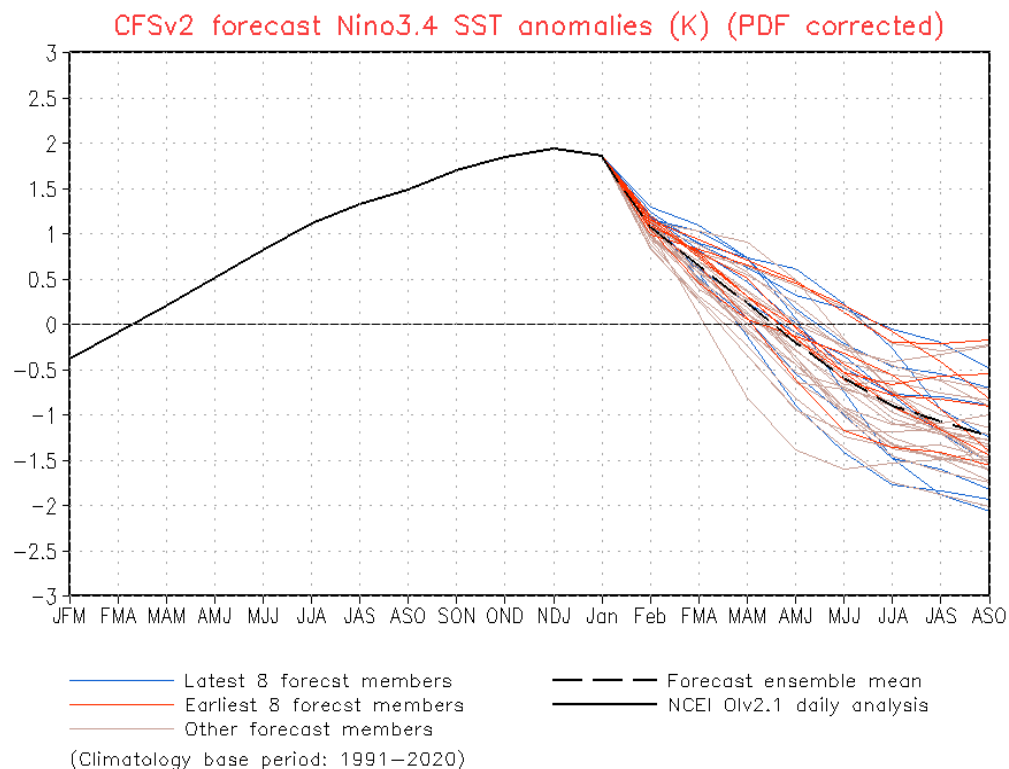


Figure provided by the International Research Institute (IRI) for Climate and Society (updated 19 January 2024).

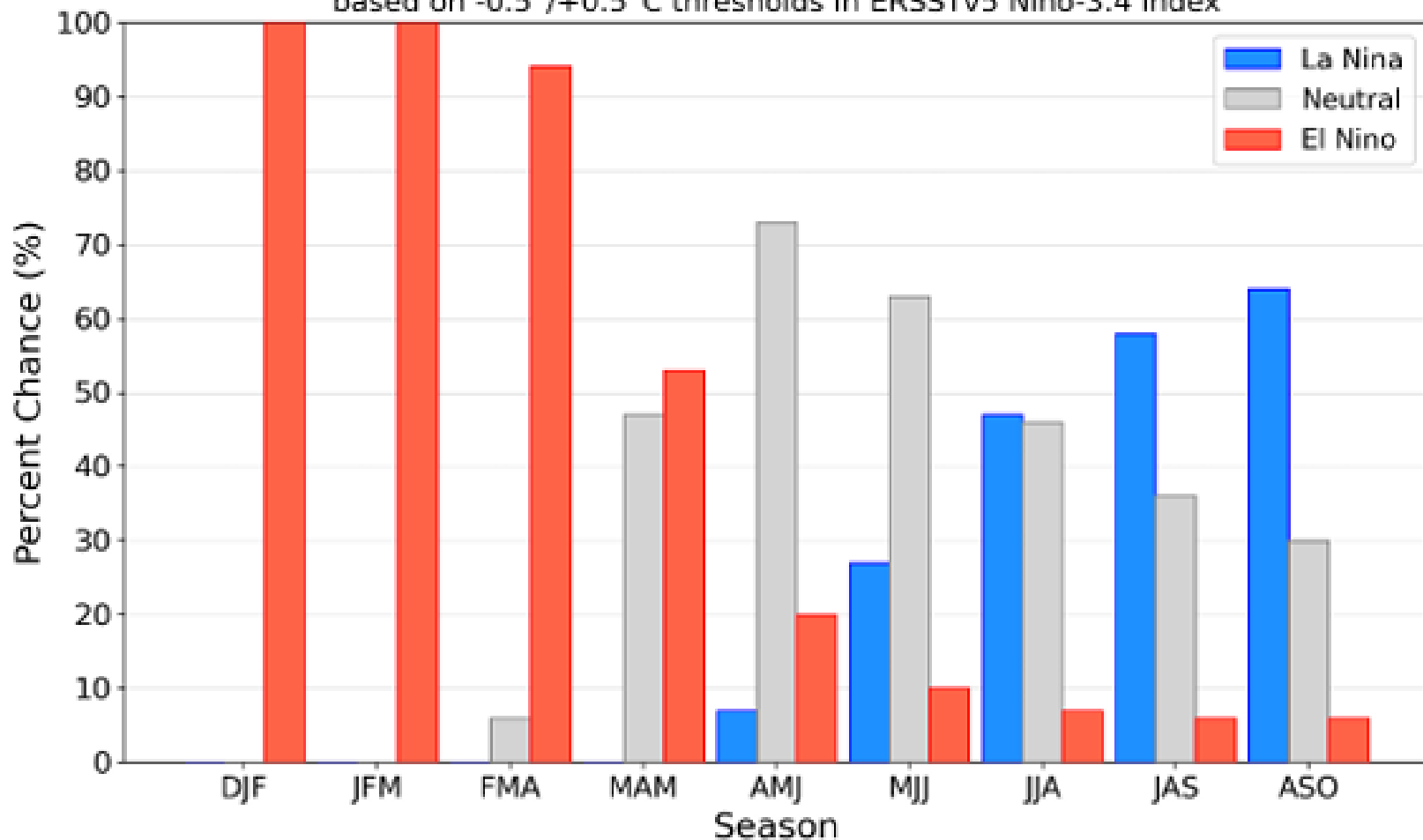


Atualizado 22 de janeiro

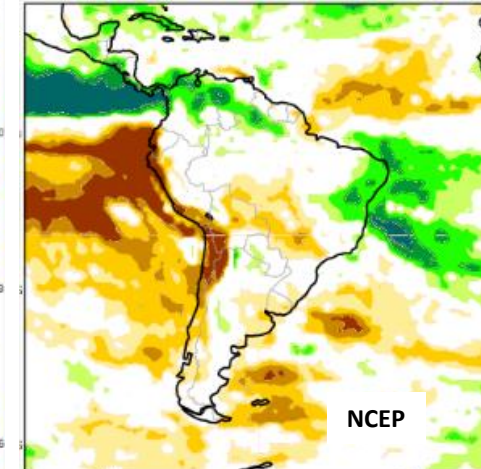
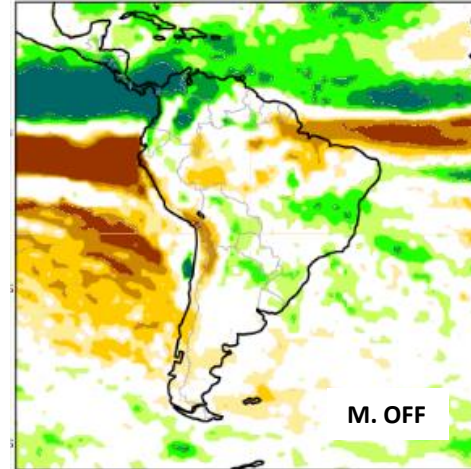
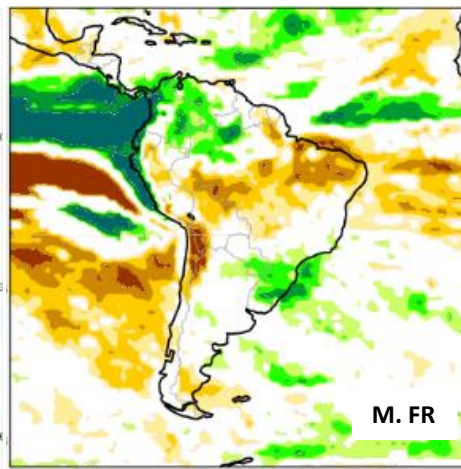
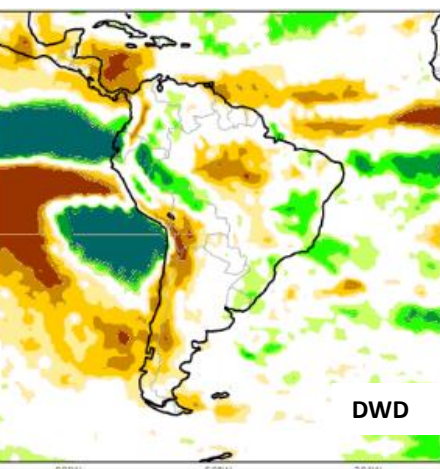
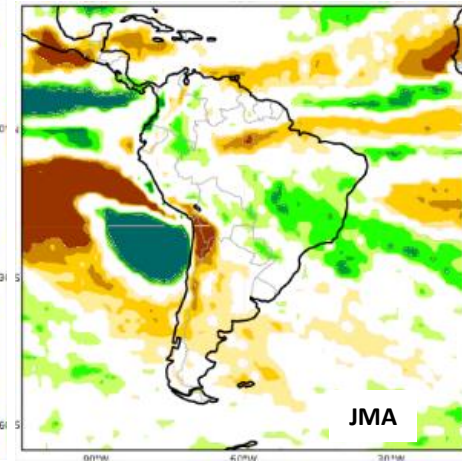
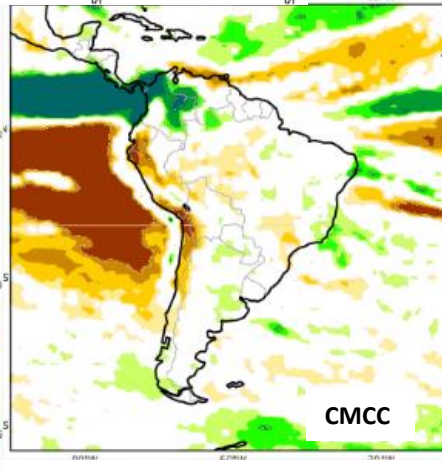
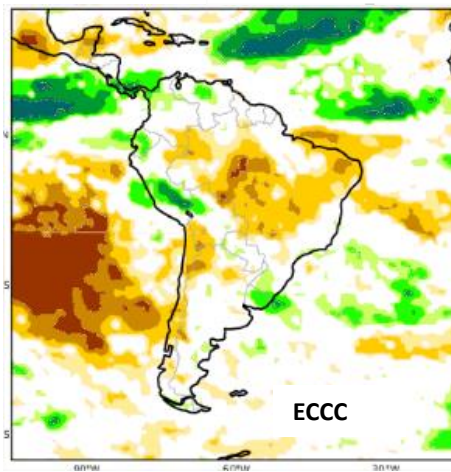
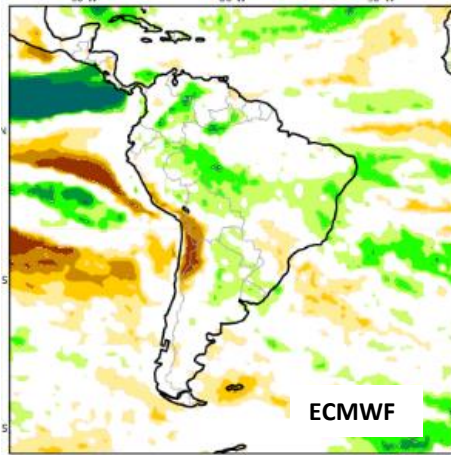
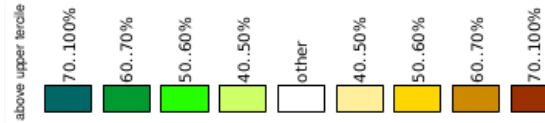
Previsão do “ENSO”

Official NOAA CPC ENSO Probabilities (issued Jan. 2024)

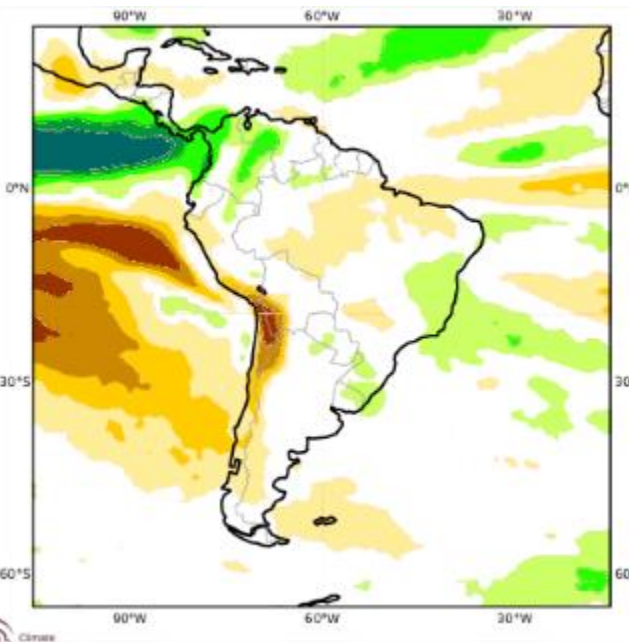
based on $-0.5^{\circ}/+0.5^{\circ}\text{C}$ thresholds in ERSSTv5 Niño-3.4 index



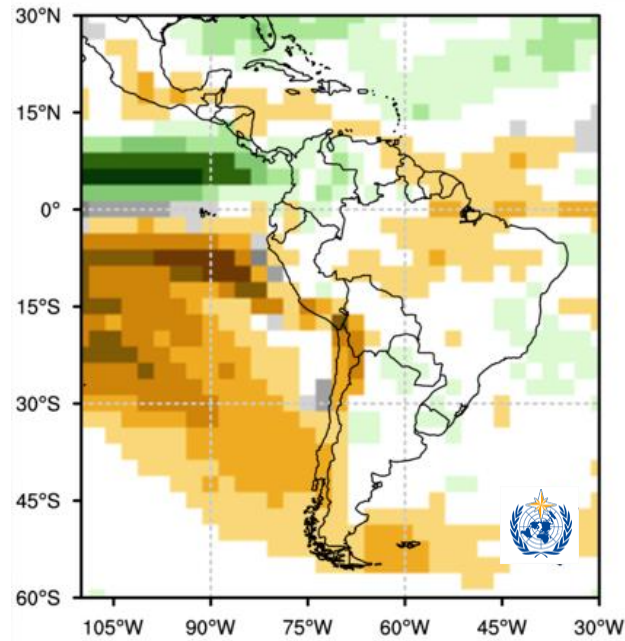
Previsão Sazonal de Chuva FMA



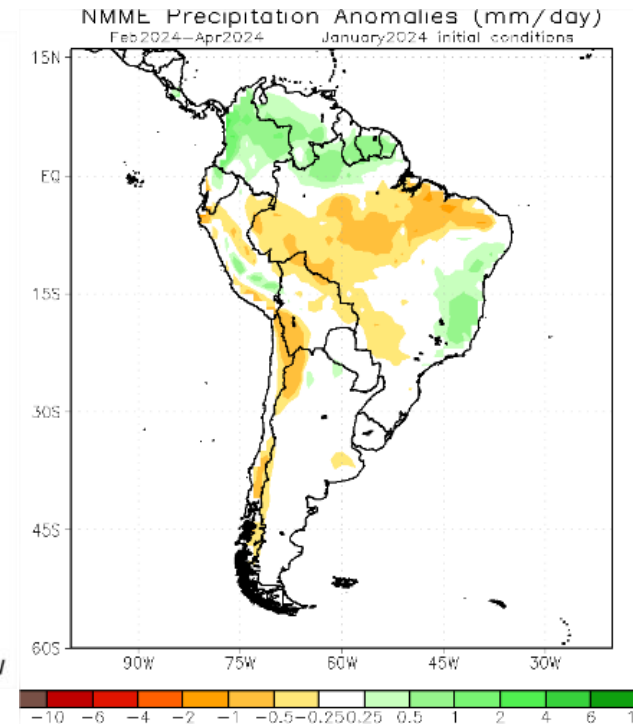
Previsão Sazonal de Chuva Multi-Modelo para FMA



Modelos Europeus



Modelos da Organização
Meteorológica Mundial



Modelos Americanos