

Sala de Crise da Região Sul

20 de Março de 2024

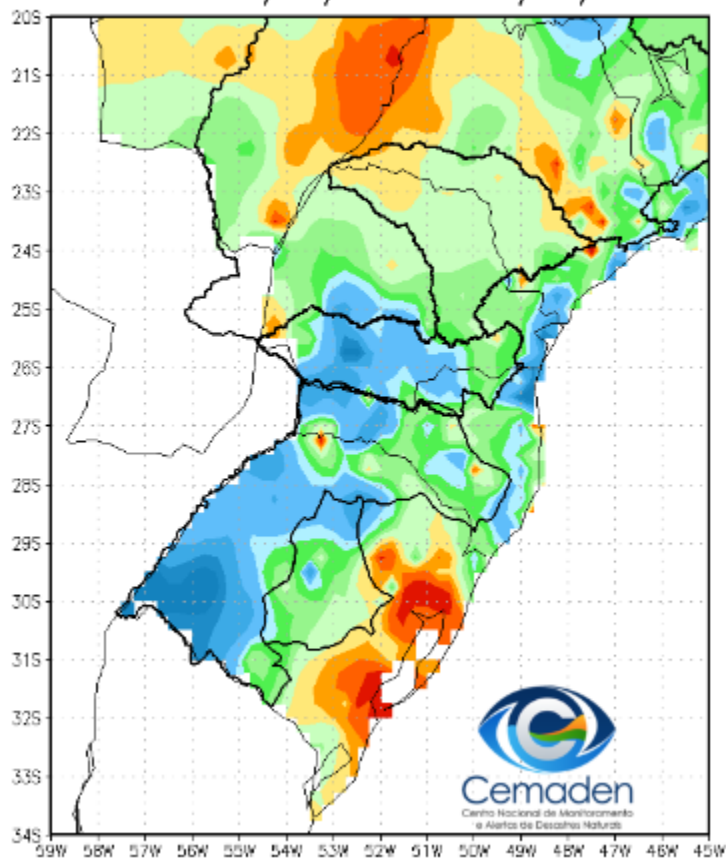


MINISTÉRIO DA
CIÊNCIA, TECNOLOGIA
E INOVAÇÃO

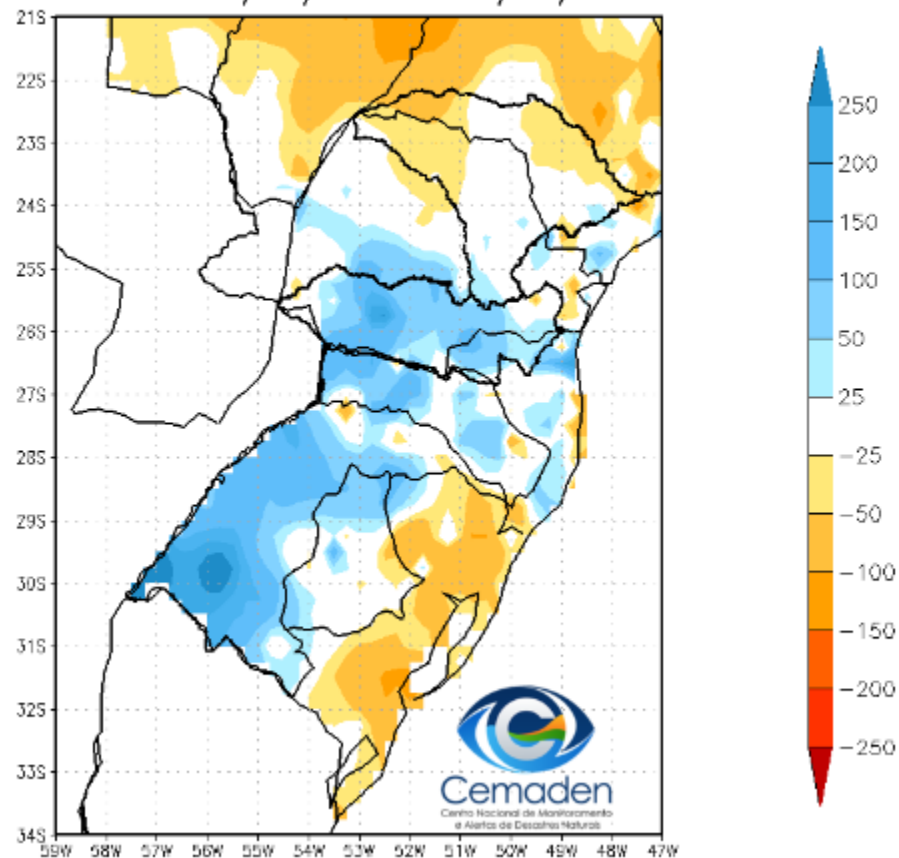


Precipitação nos últimos 30 dias

Precipitação Acumulada (mm) A.S.
Período: 18/02/2024 a 19/03/2024

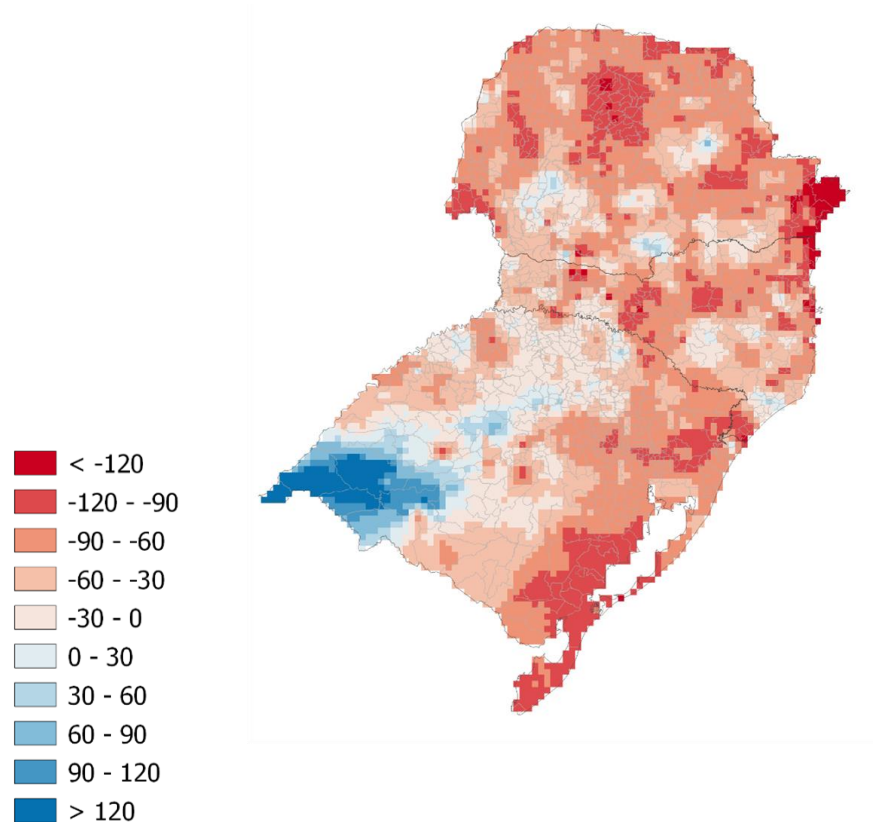


Anomalia de Precipitação (mm) A.S.
Período: 18/02/2024 a 19/03/2024

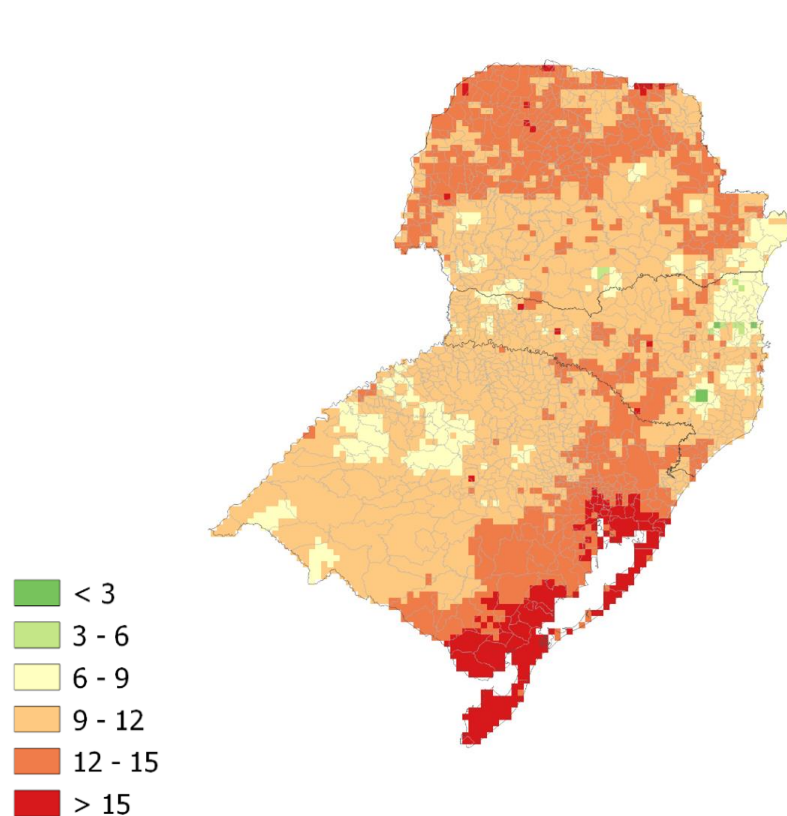


PRECIPITAÇÃO: MARÇO 2024 (ATÉ 18/03)

Anomalia (mm)

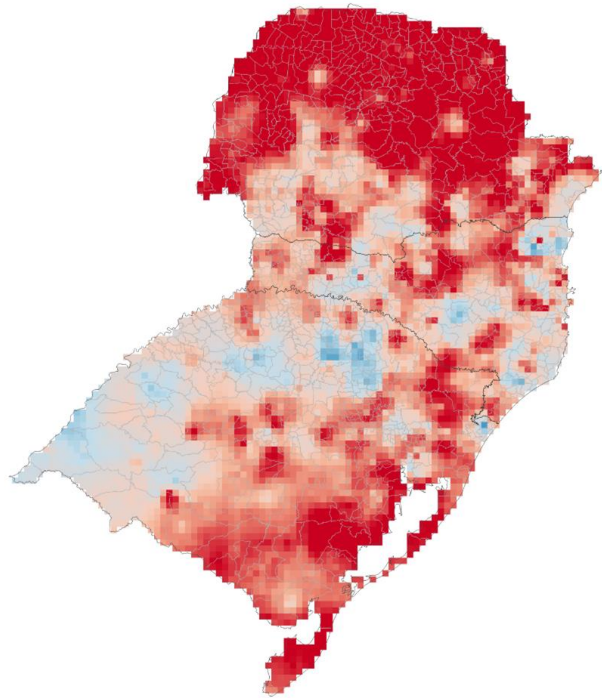


Total de dias sem precipitação

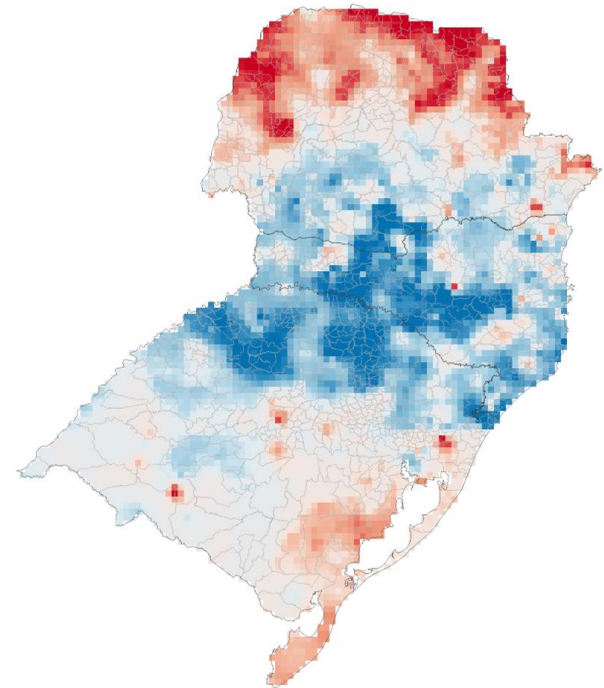


SPI: MARÇO 2023

SPI 03

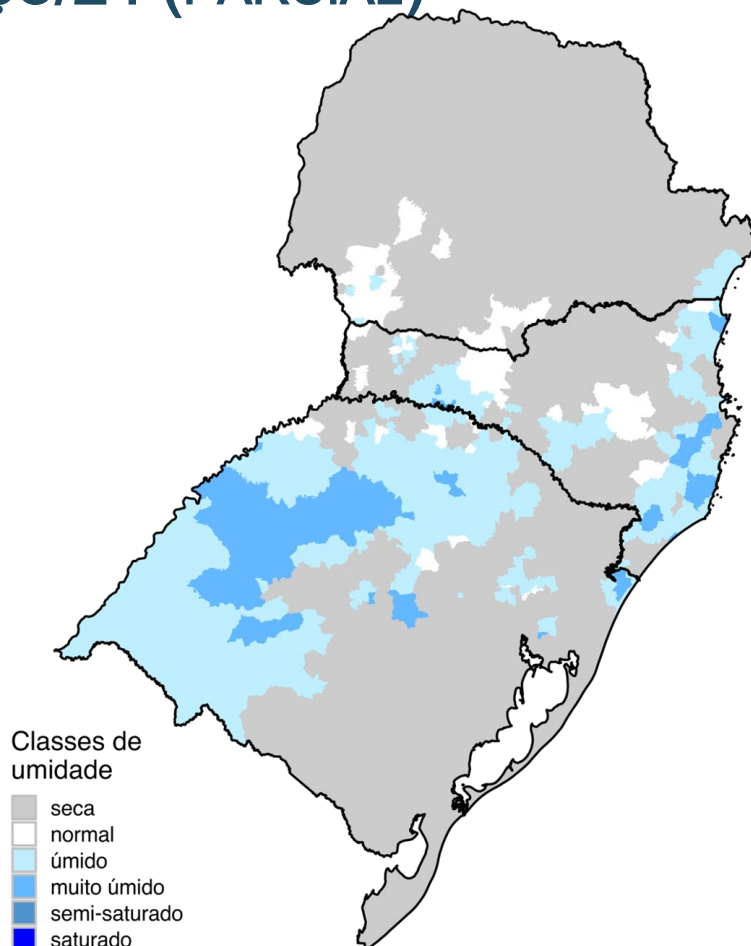


SPI 06

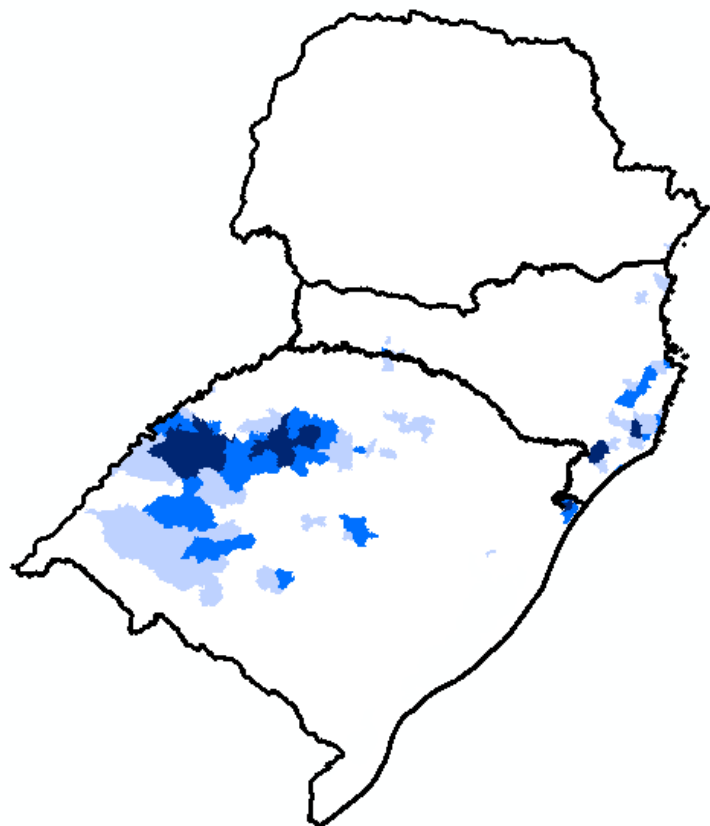


IARA (SPI, SM, VHI)

OBSERVADO: MARÇO/24 (PARCIAL)



ESTIMATIVA DE ÁREAS DE PASTAGENS E AGRÍCOLAS AFETADAS PELO EXCESSO DE CHUVA



UF	40 a 60%	60 - 80%	> 80%
PR	1		
SC	17	9	5
RS	31	25	13

	40 a 60%	60 - 80%	> 80%	Imóveis Rurais Impactados > 40%
Paraná				
Minifundio	13 (*)	-	-	13 (*)
Pequena Propriedade	13 (*)	-	-	13 (*)
Media Propriedade	6 (*)	-	-	6 *
Santa Catarina				
Minifundio	13591 (6%)	4690 (2%)	5081 (2%)	23362 (10%)
Pequena Propriedade	4219 (5%)	1643 (2%)	1643 (2%)	7209(9%)
Media Propriedade	339 (3%)	146 (1%)	49 (*)	534 (5%)
Rio Grande do Sul				
Minifundio	20120 (5%)	19573 (5%)	11387 (3%)	51080 (14%)
Pequena Propriedade	2347 (7%)	2152 (6%)	1270 (4%)	22574 (16%)
Media Propriedade	2347 (9%)	2152 (9%)	1270 (5%)	5769 (23%)

Impacto: Muito úmido à saturado.

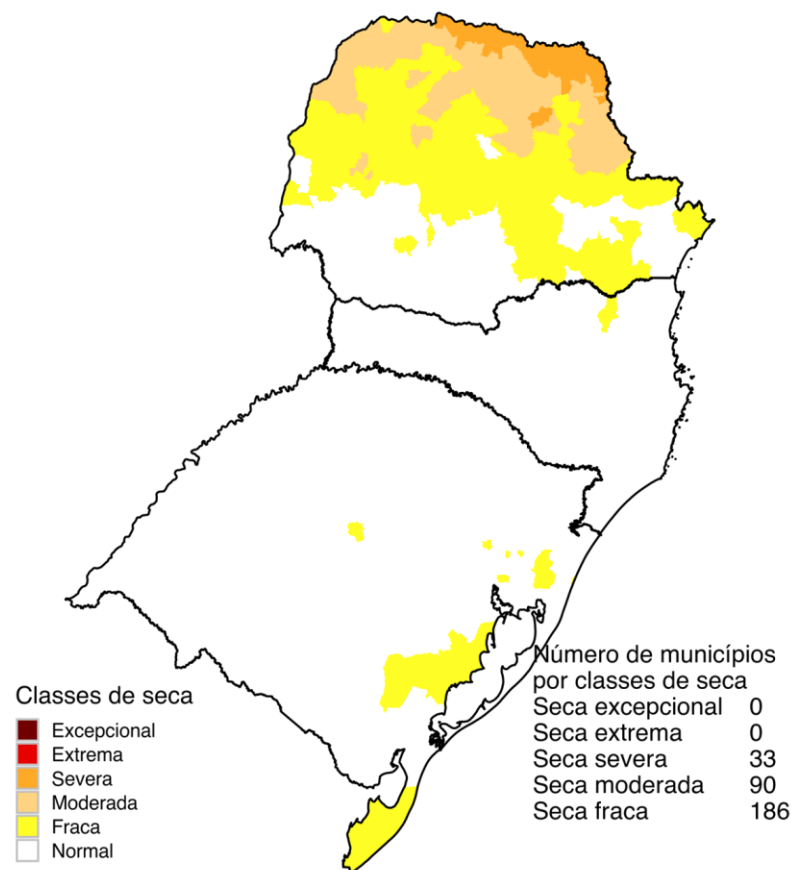
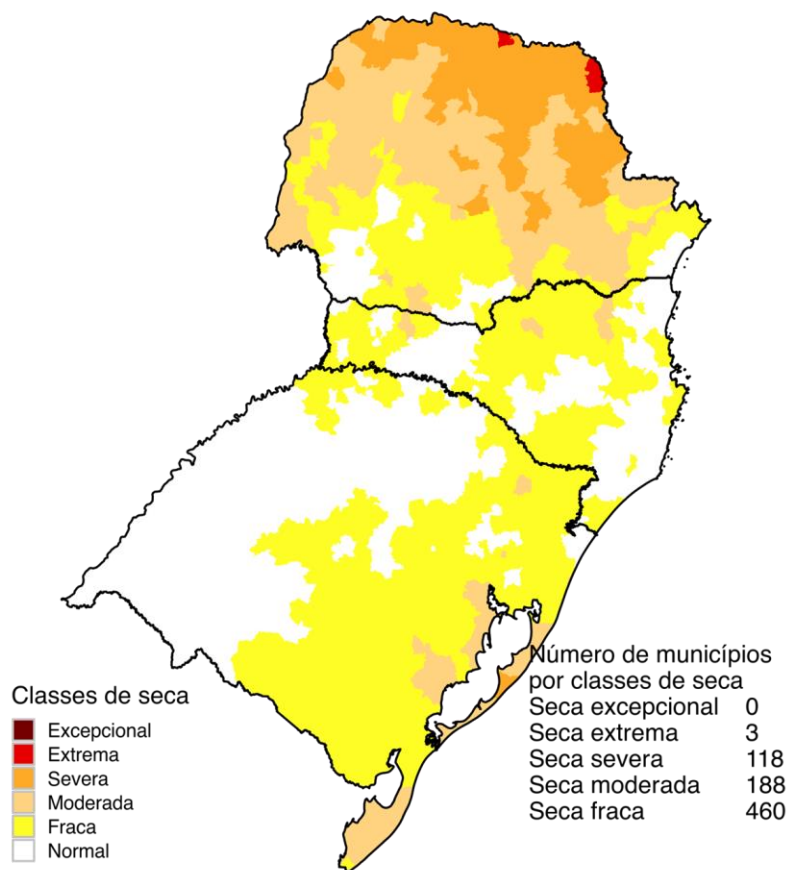
(*) Porcentagem inferior a 1%.

ÍNDICE INTEGRADO DE SECA - IIS

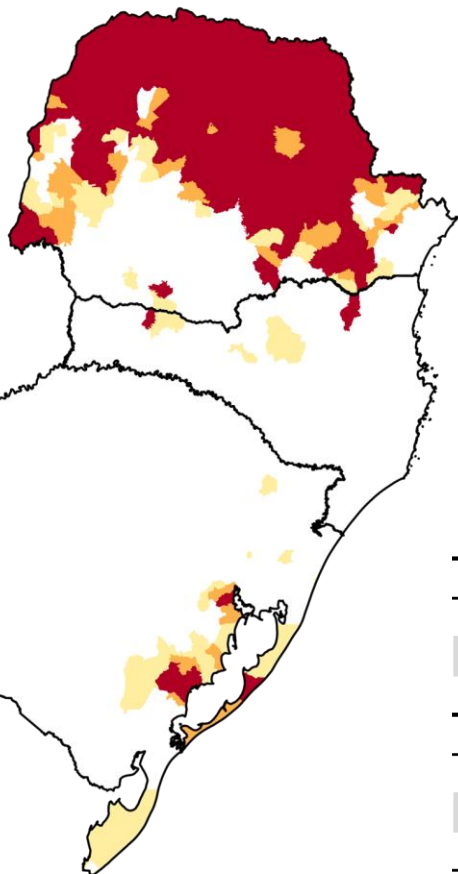
(SPI3 E 6 + VHI + AUS): MARÇO/2024

IIS 3 MESES

IIS 6 MESES



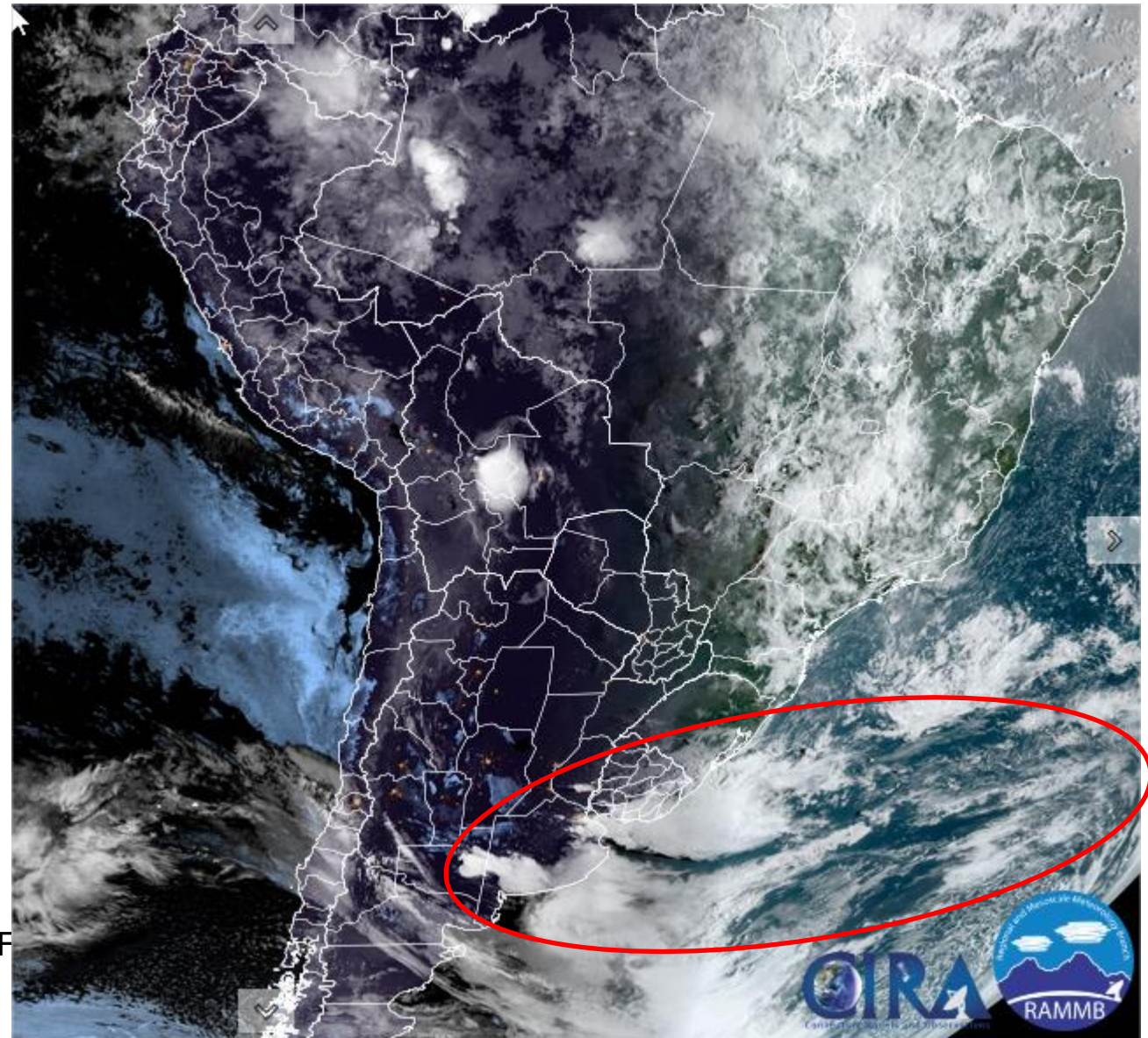
ÁREAS DE PASTAGENS E AGRÍCOLAS AFETADAS PELA SECA MAR/24



UF	40 a 60%	60 - 80%	> 80%
PR	75	50	247
SC	21		2
RS	36	12	3

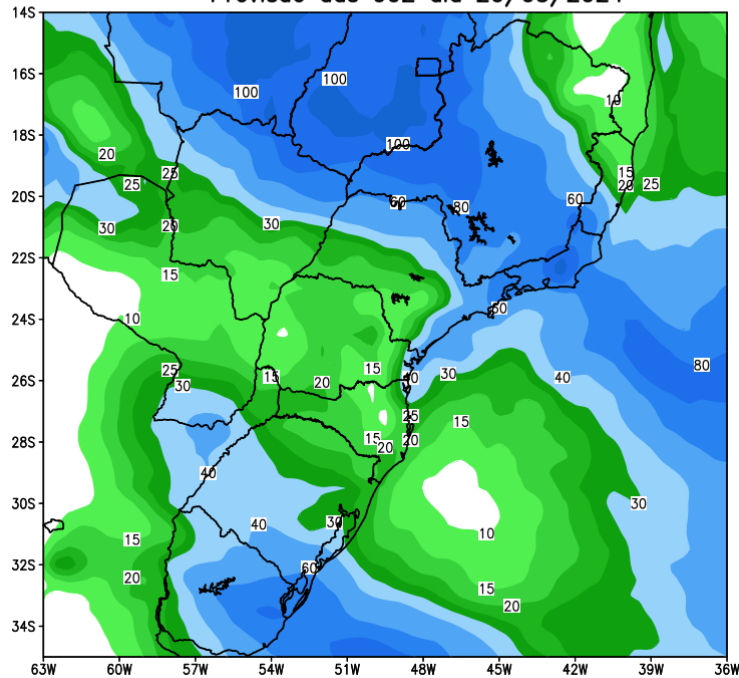
	40 a 60%	60 - 80%	> 80%	Imóveis Rurais Impactados > 40%
Paraná				
Minifundio	24758 (9%)	21404 (8%)	134459 (51%)	180621 (69%)
Pequena Propriedade	10463 (8%)	9468 (7%)	70565 (55%)	90496 (71%)
Media Propriedade	1860 (7%)	1619 (6%)	17135 (64%)	20614 (77%)
Santa Catarina				
Minifundio	3567 (2%)	-	1926 (1%)	5493 (2%)
Pequena Propriedade	2253 (3%)	-	1013 (1%)	3266 (4%)
Media Propriedade	554 (6%)	-	183 (2%)	737 (7%)
Rio Grande do Sul				
Minifundio	14651 (4%)	2693 (1%)	3830 (1%)	21174 (6%)
Pequena Propriedade	1300 (5%)	337 (1%)	287 (2%)	10837 (8%)
Media Propriedade	1300 (5%)	337 (1%)	287 (1%)	1924 (8%)

Situação meteorológica atual

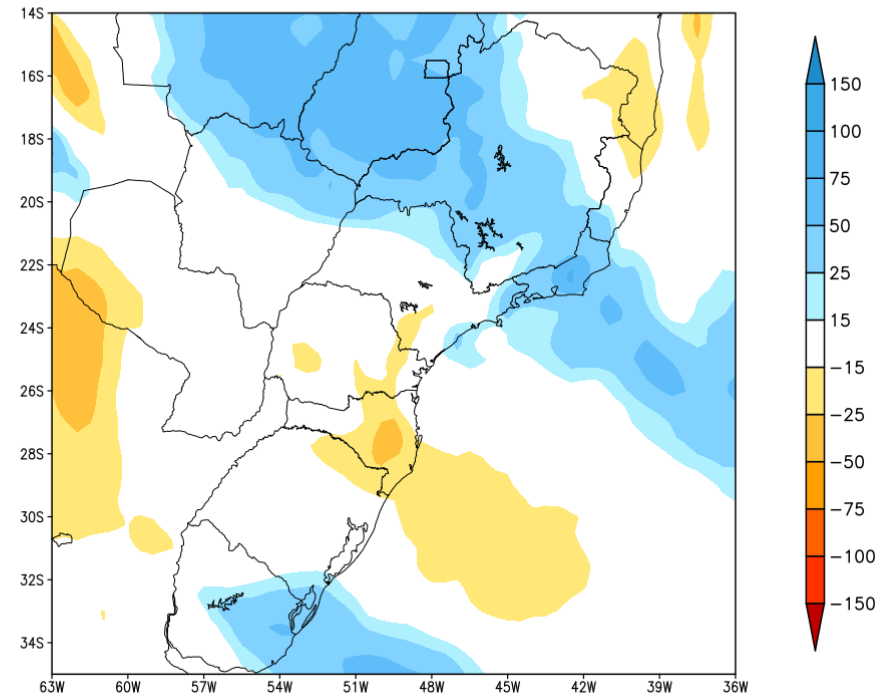


Previsão de chuva próximos 7 dias

GEFS / BRASIL_SUL
Precipitação acumulada 1aSem (mm)
Previsão das 00Z dia 20/03/2024



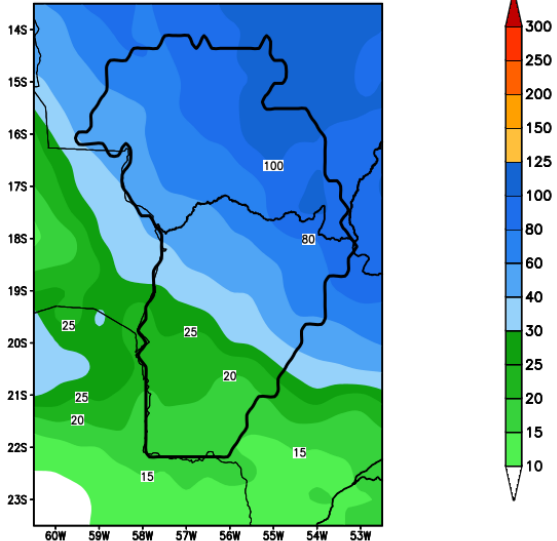
Anomalia de Precipitação BR_SUL (mm)
Período: 2024032000 a 2024032700



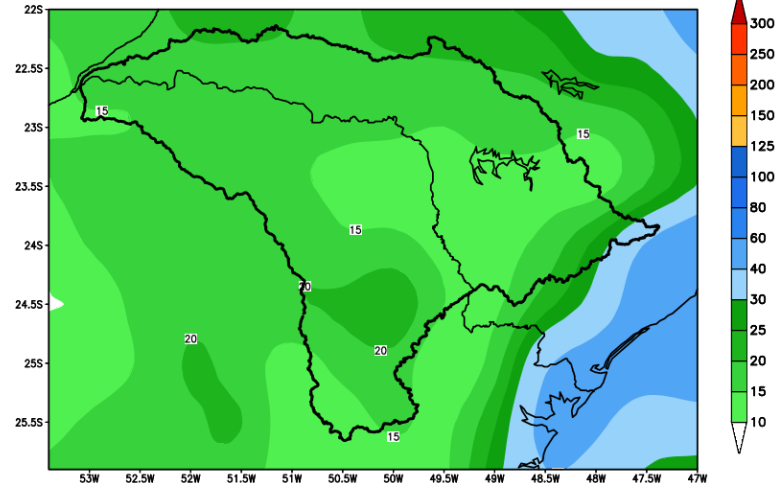
MODELO GFS

Previsão para as principais bacias

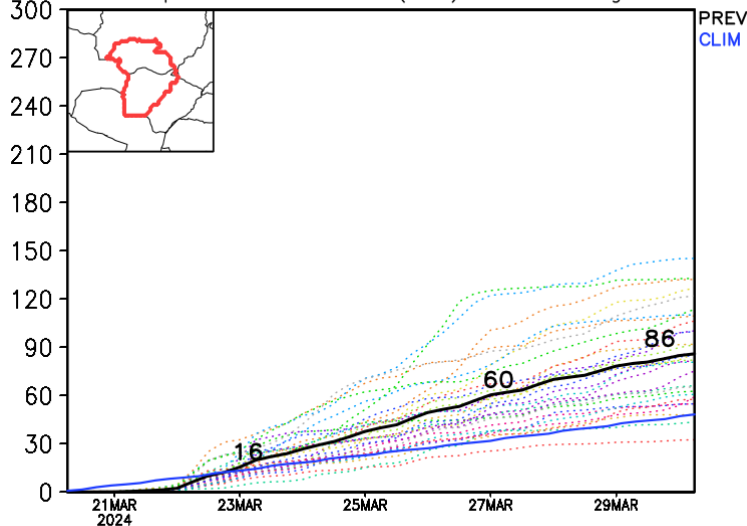
GEFS / Bacia do Rio Paraguai
Precipitacao acumulada em 7 dias (mm)
Previsao das 00Z dia 20/03/2024



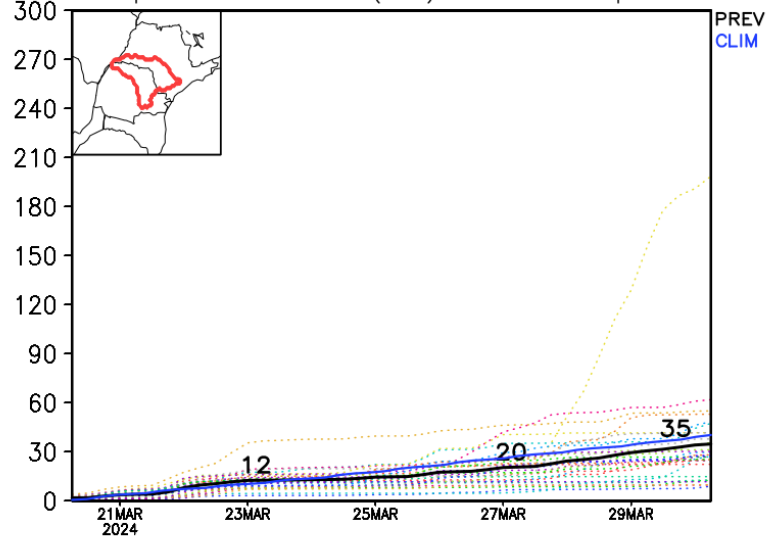
GEFS / Bacia do Rio Paranapanema
Precipitacao acumulada em 7 dias (mm)
Previsao das 00Z dia 20/03/2024



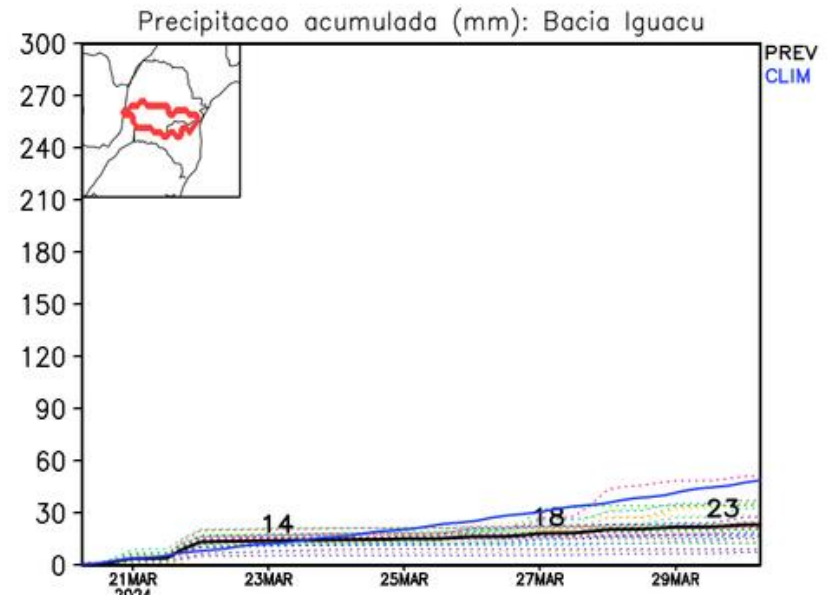
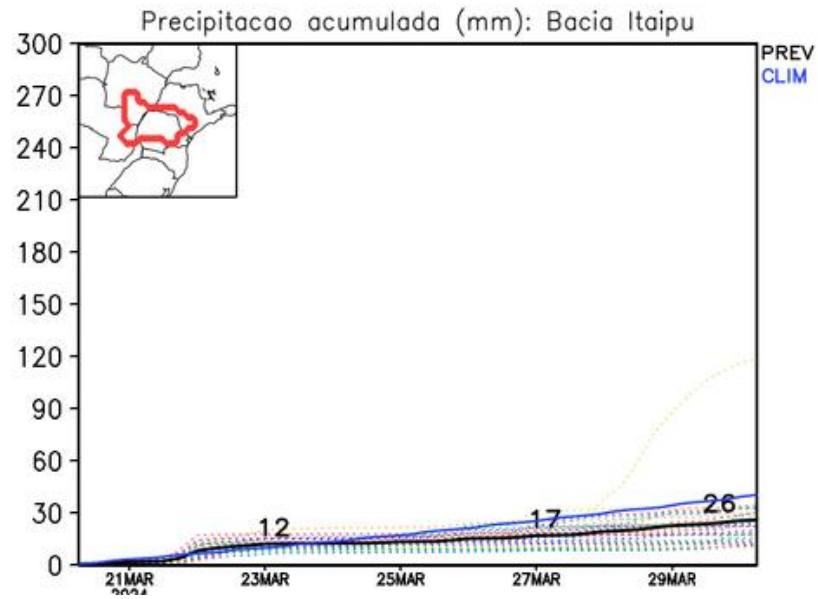
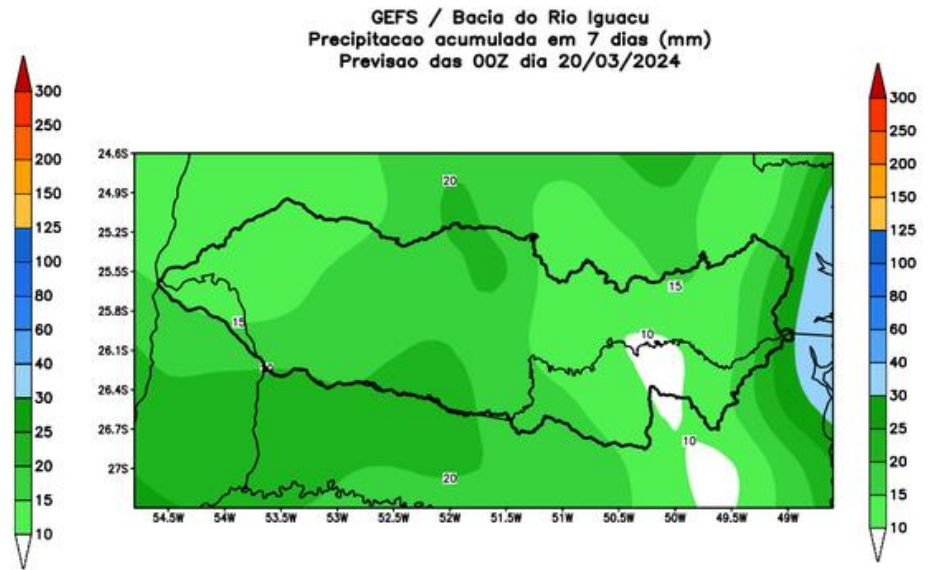
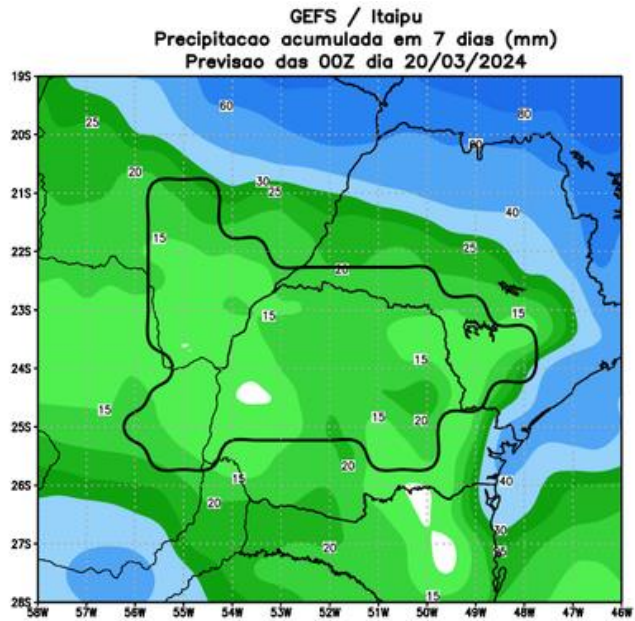
Precipitacao acumulada (mm): Bacia Paraguai



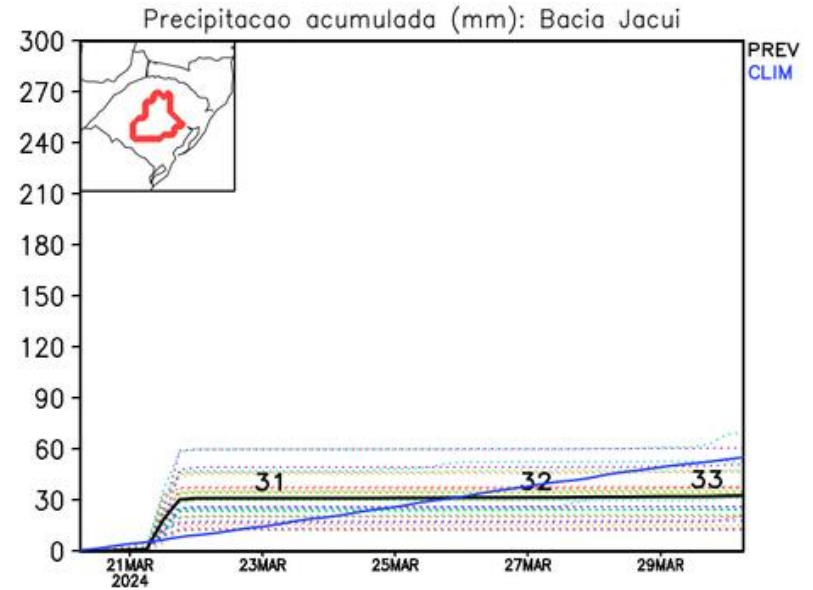
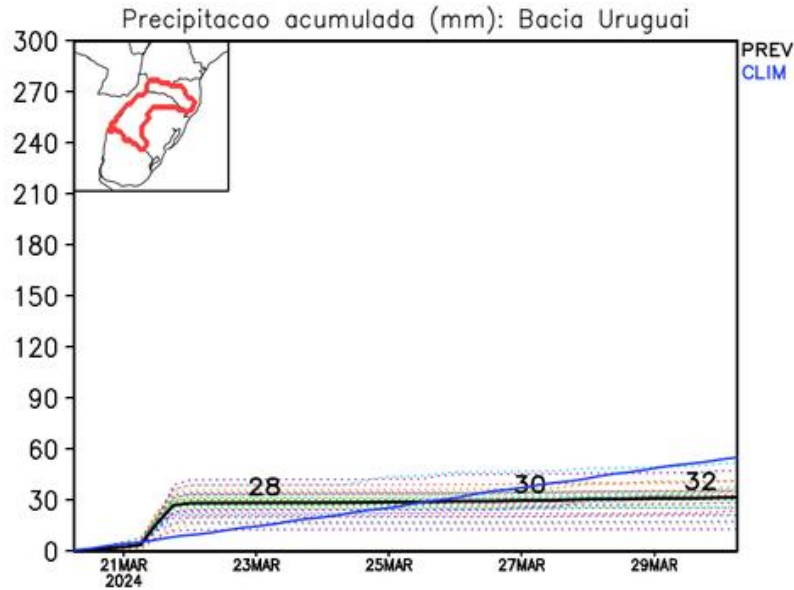
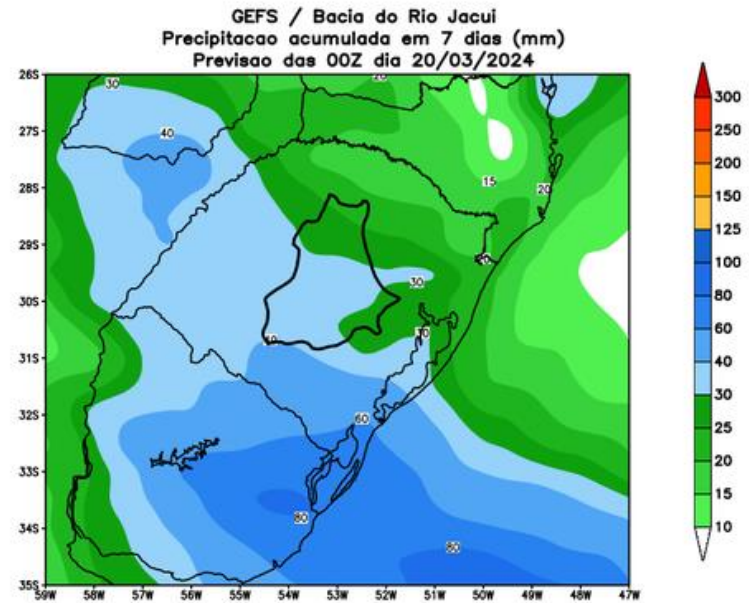
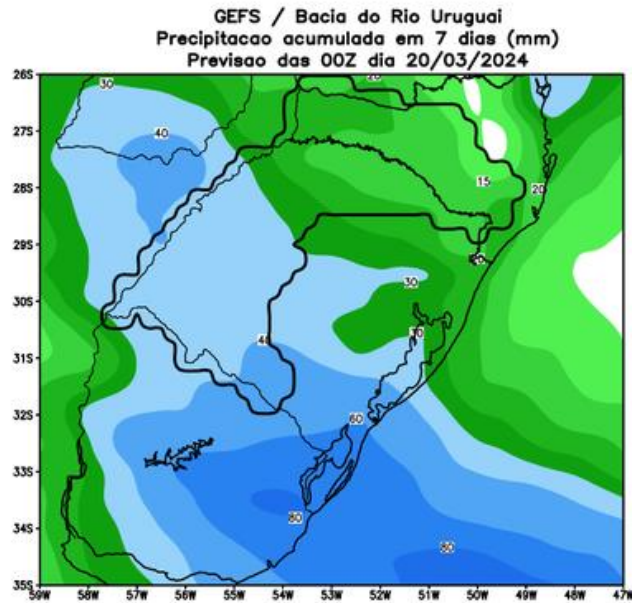
Precipitacao acumulada (mm): Bacia Paranapanema



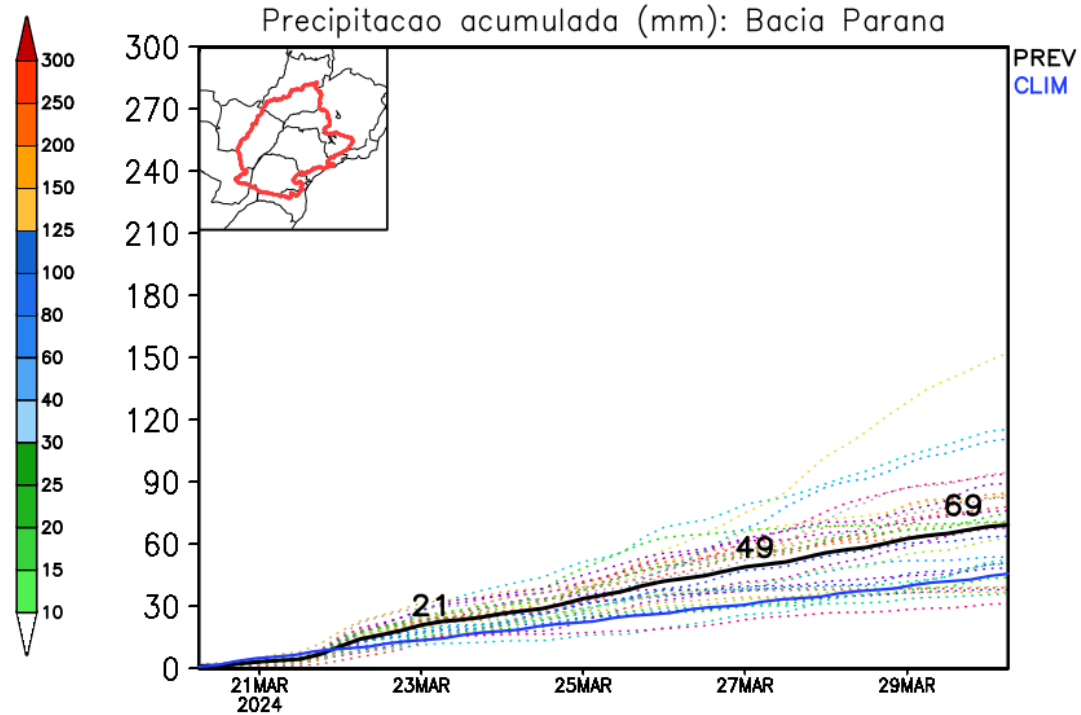
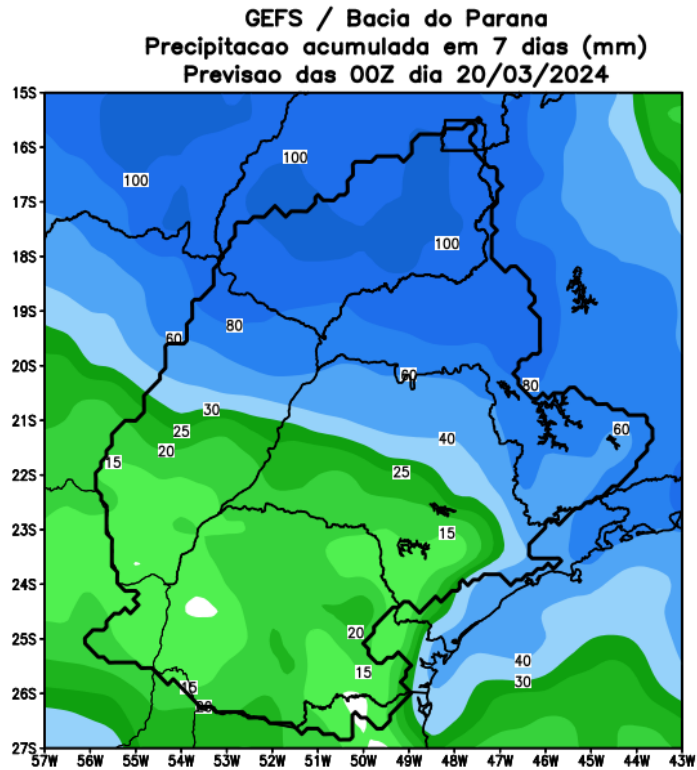
Previsão para as principais bacias



Previsão para as principais bacias

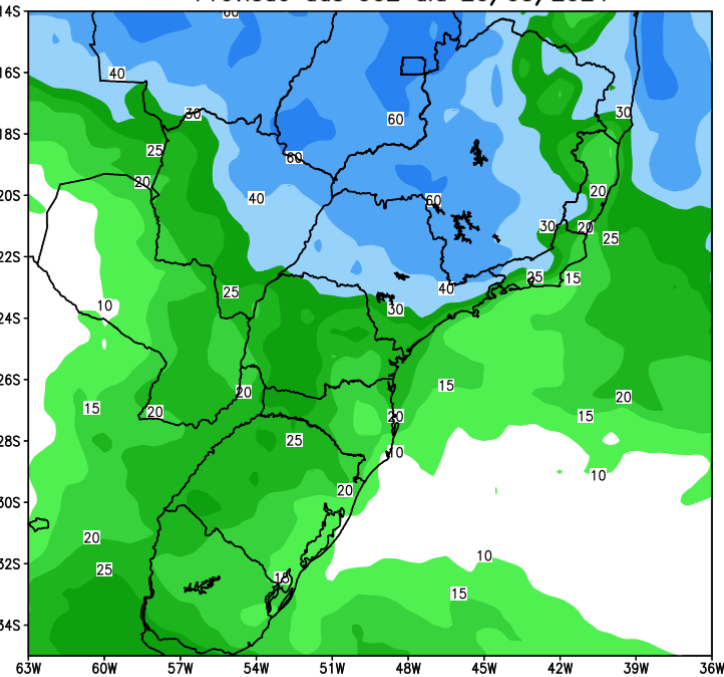


Previsão para as principais bacias

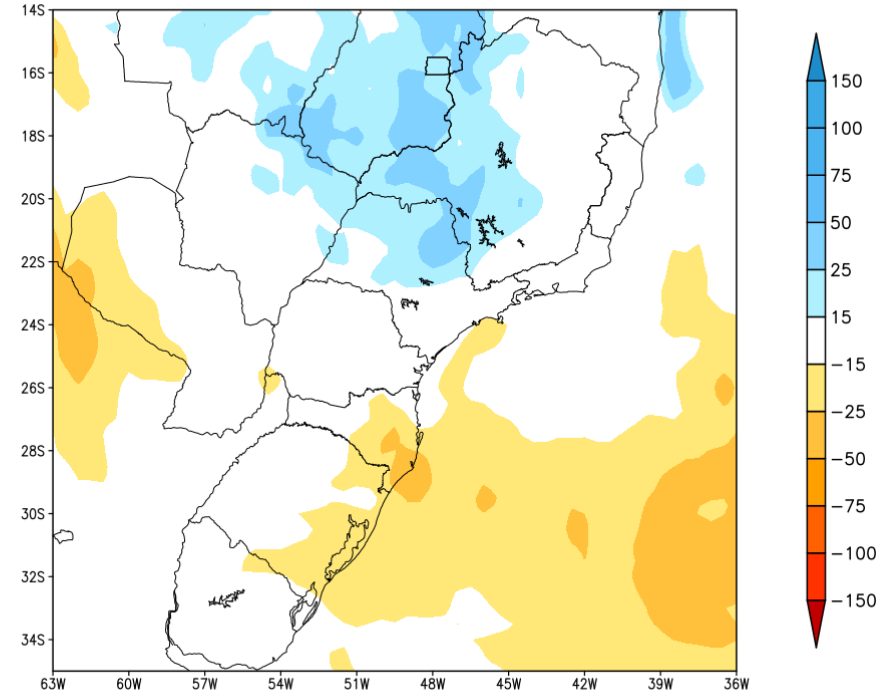


Tendência para a segunda semana

GEFS / BRASIL_SUL
Precipitação acumulada 2aSem (mm)
Previsão das 00Z dia 20/03/2024



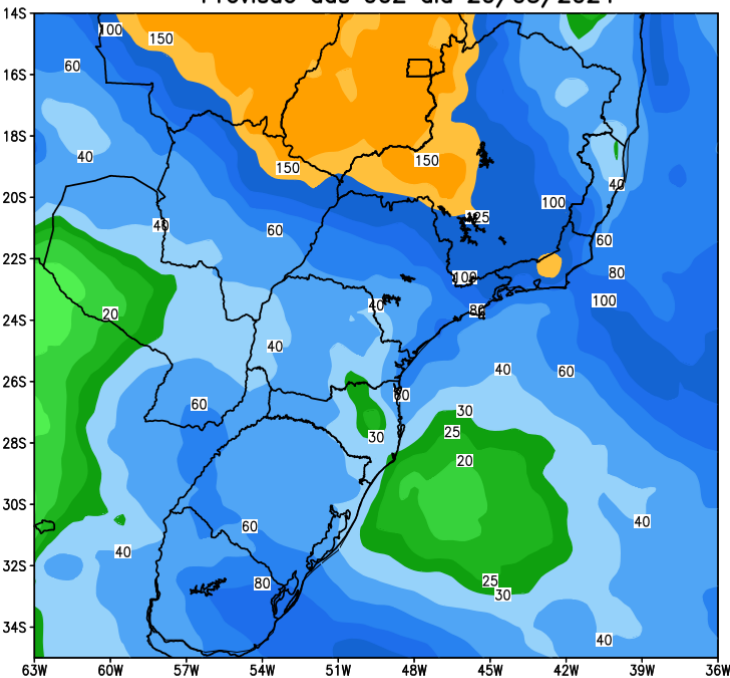
Anomalia de Precipitação BR_SUL (mm)
Período: 2024032800 a 2024040300



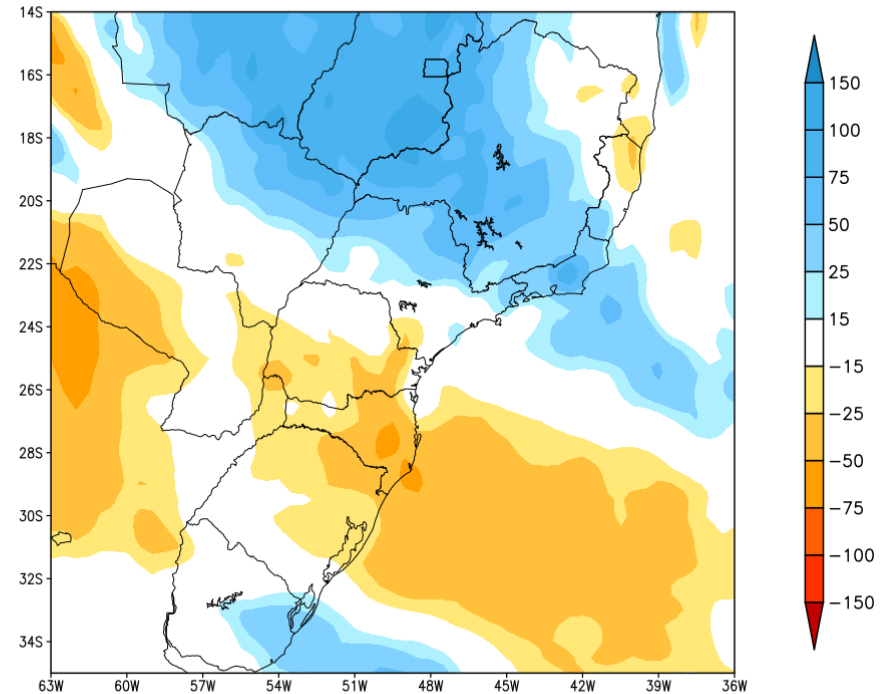
MODELO GFS

Tendência para as duas próximas semanas

GEFS / BRASIL_SUL
Precipitação acumulada 14 dias (mm)
Previsão das 00Z dia 20/03/2024



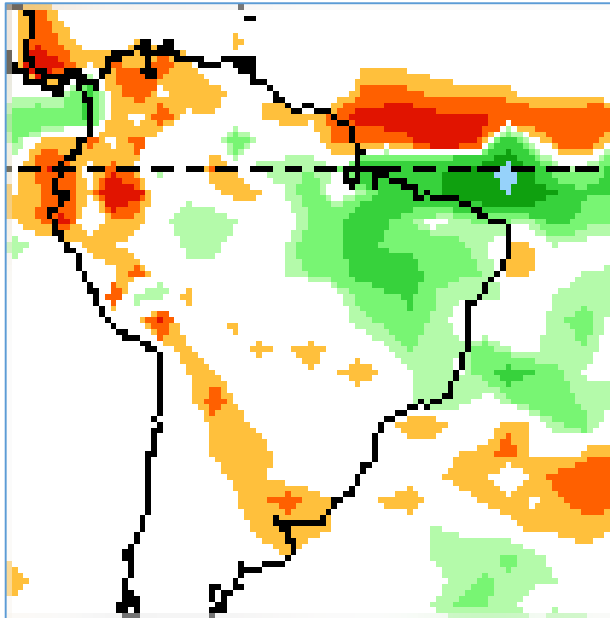
Anomalia de Precipitação BR SUL (mm)
Período: 2024032000 a 2024040300



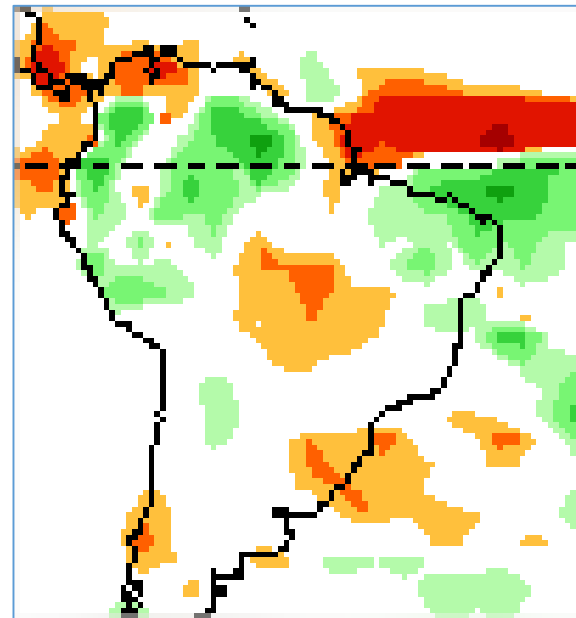
MODELO GFS

Tendência 3a e 4a semanas

03-09 ABR

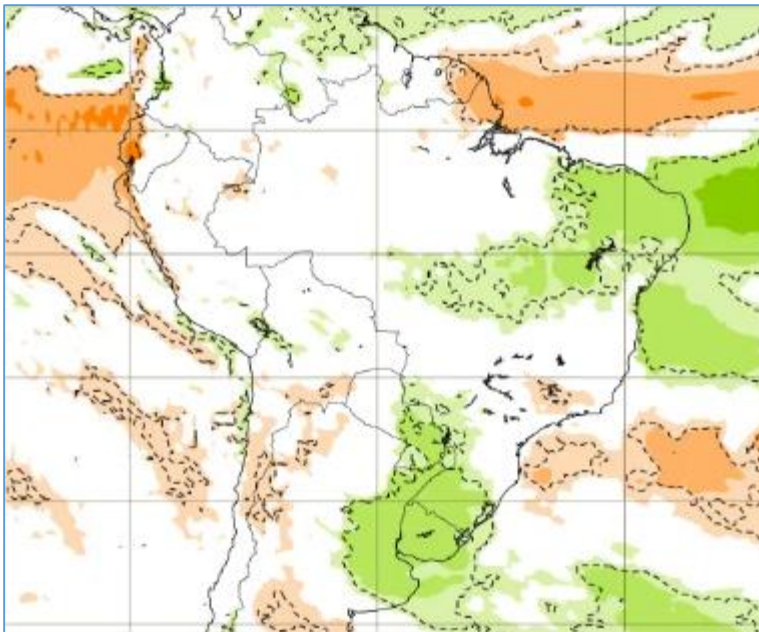


10-16 ABR

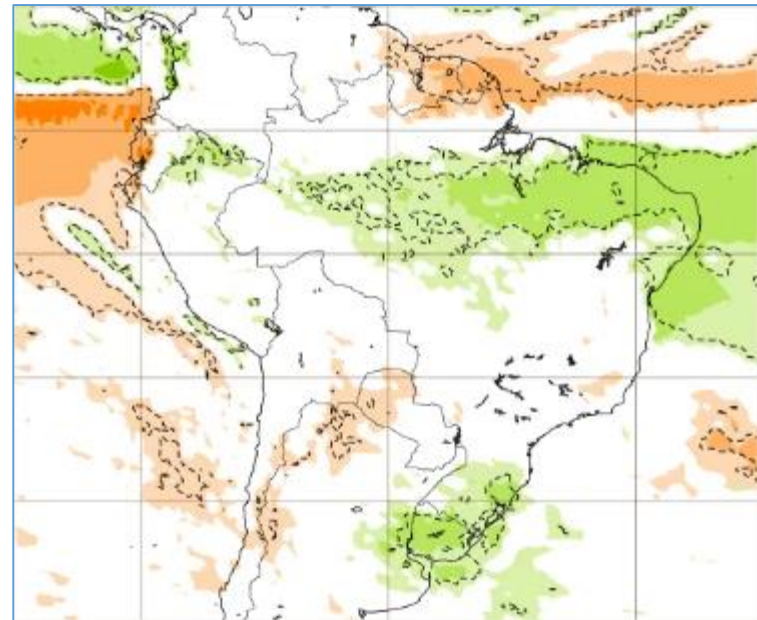


Tendência para 3^a e 4^a semanas

01-08 ABR

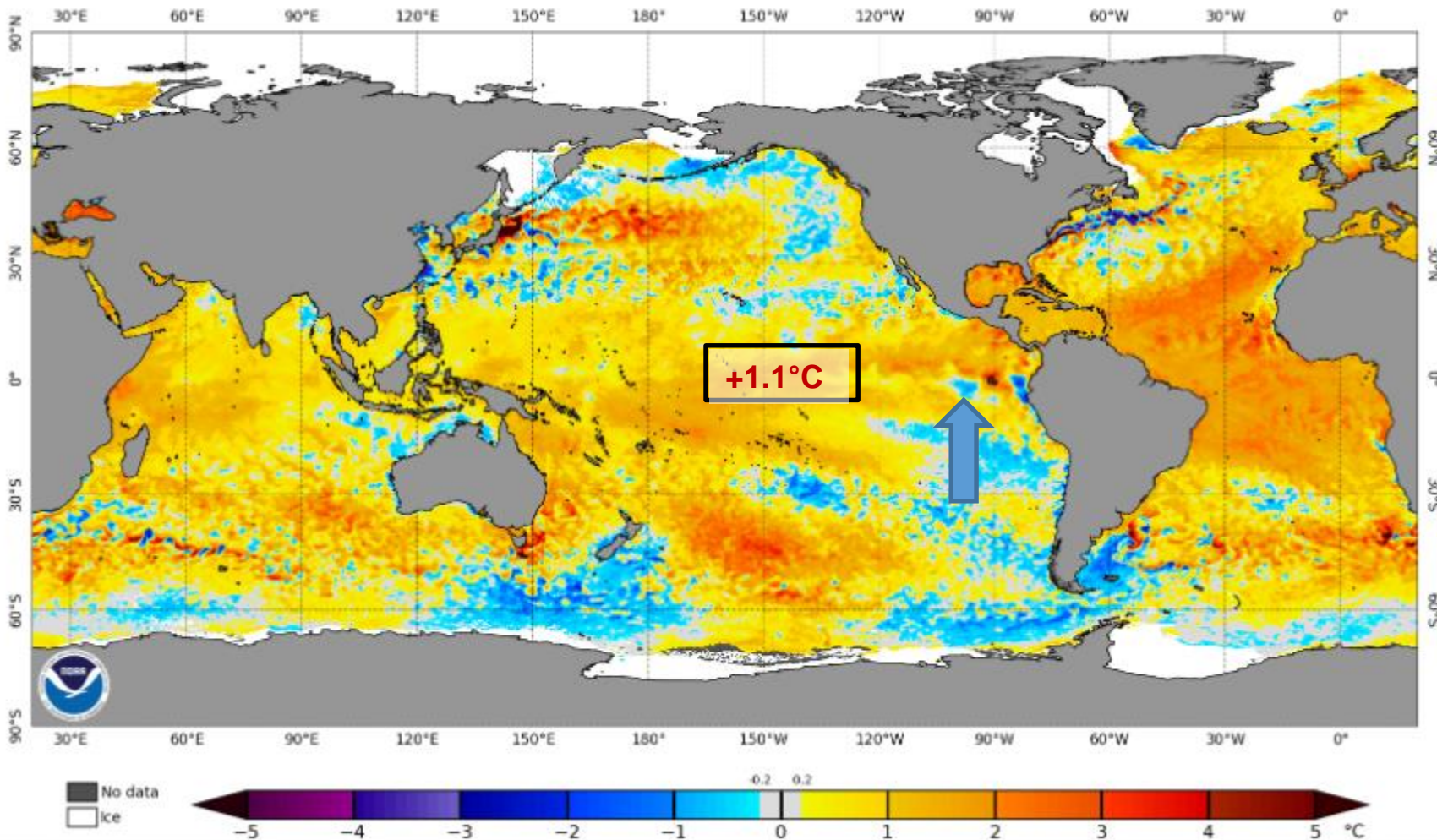


08-15 ABR



Status Atual: **El Niño/ La Niña Watch**

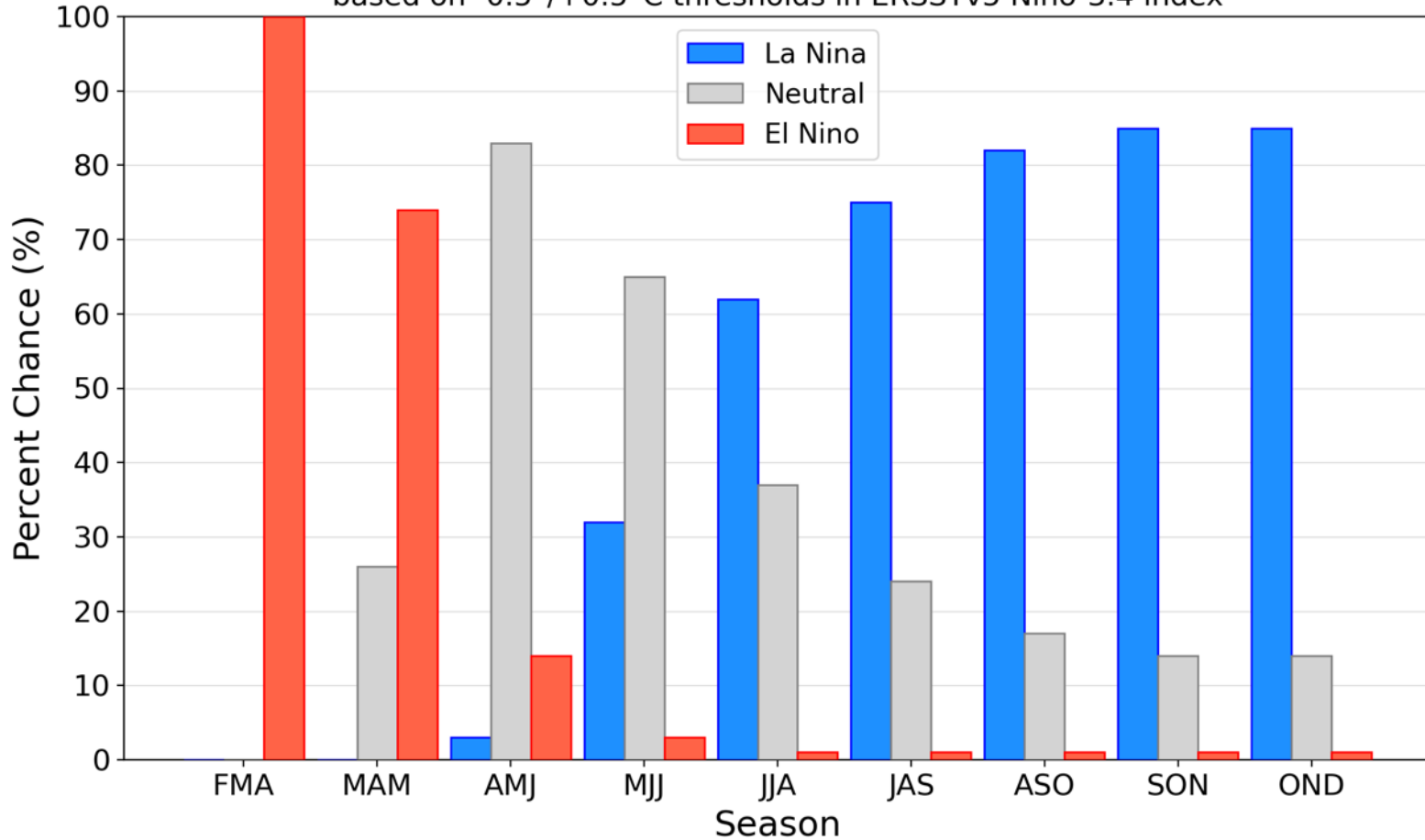
NOAA Coral Reef Watch Daily 5km SST Anomalies (v3.1) 18 Mar 2024



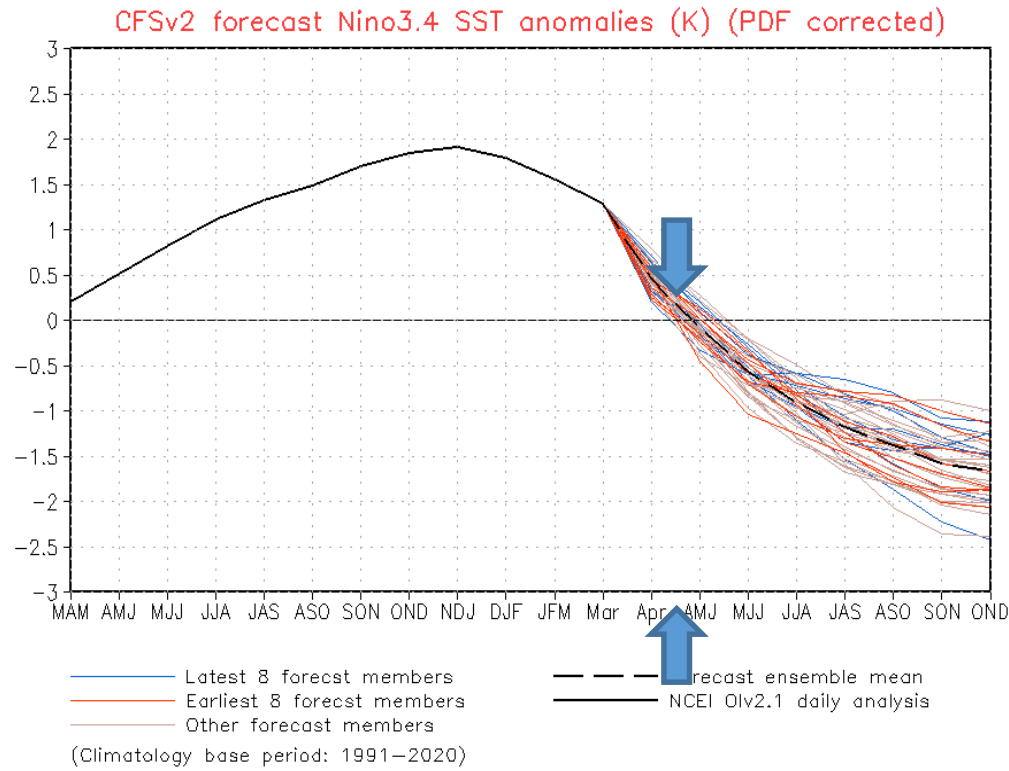
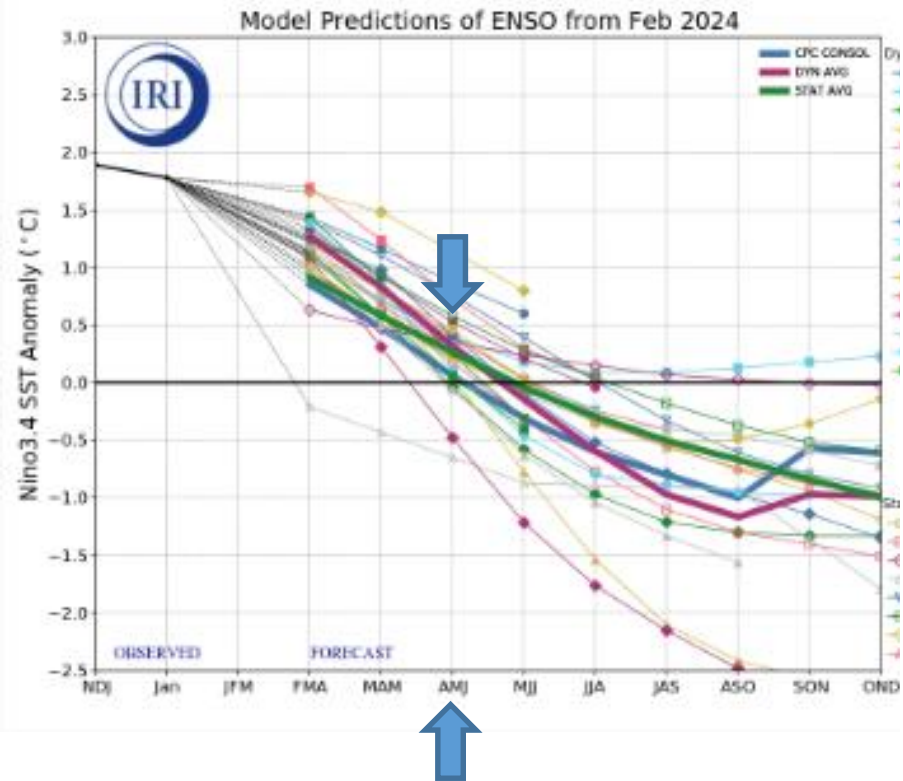
Previsão do “ENSO”

Official NOAA CPC ENSO Probabilities (issued Mar. 2024)

based on $-0.5^{\circ}/+0.5^{\circ}\text{C}$ thresholds in ERSSTv5 Niño-3.4 index

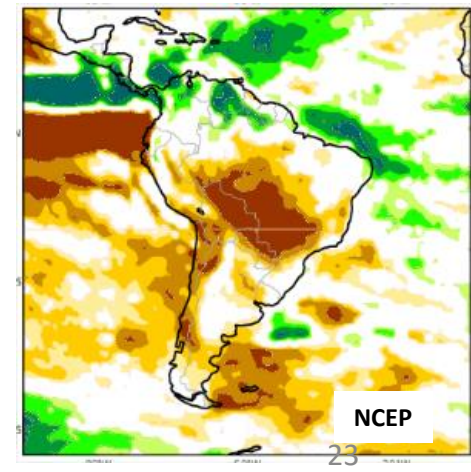
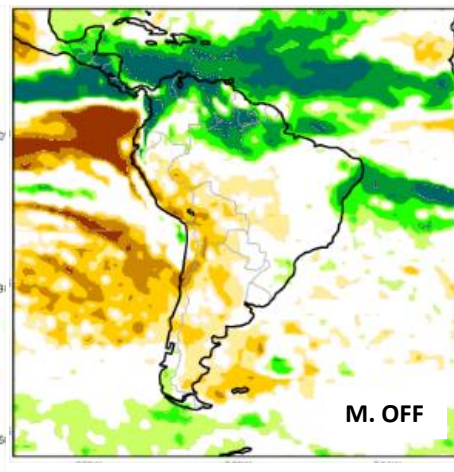
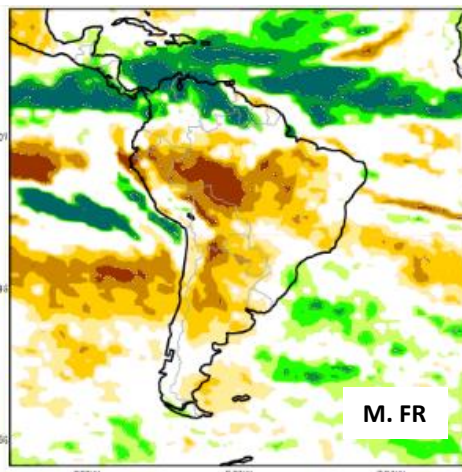
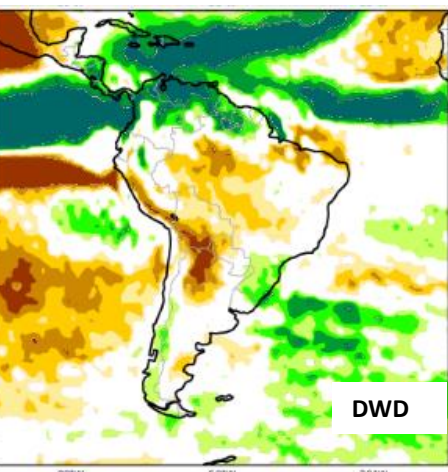
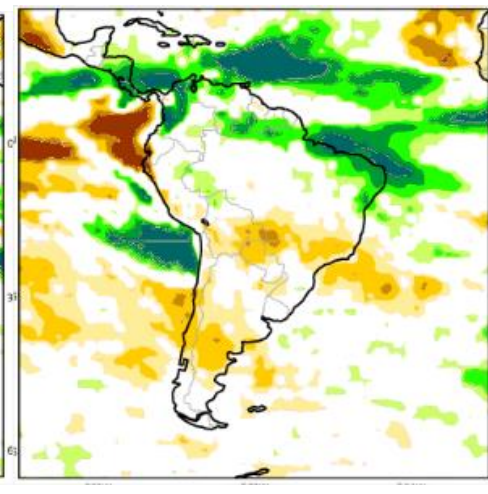
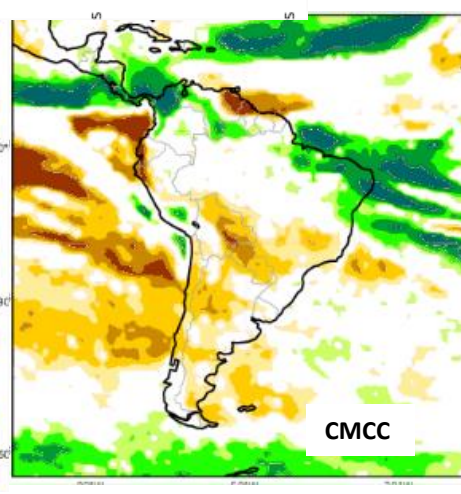
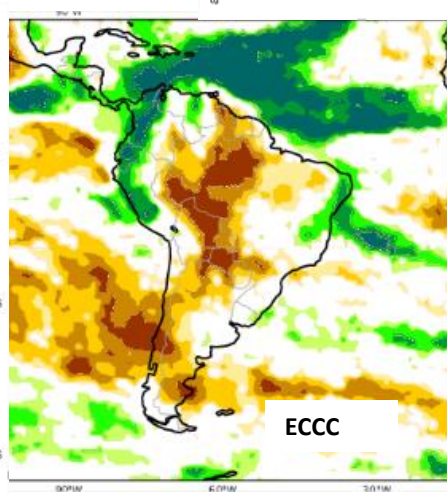
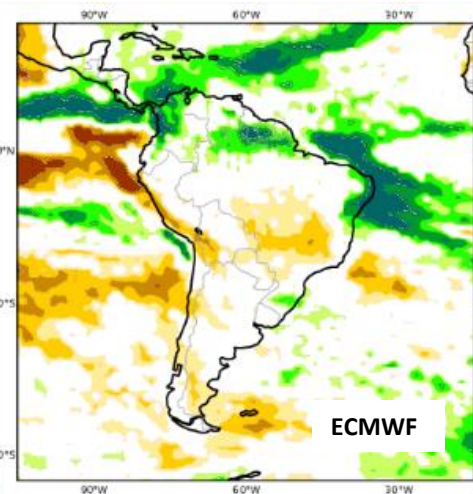
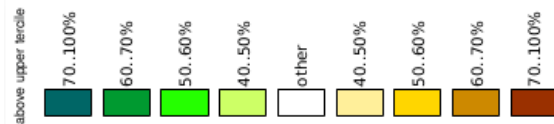


Previsão do “ENSO”

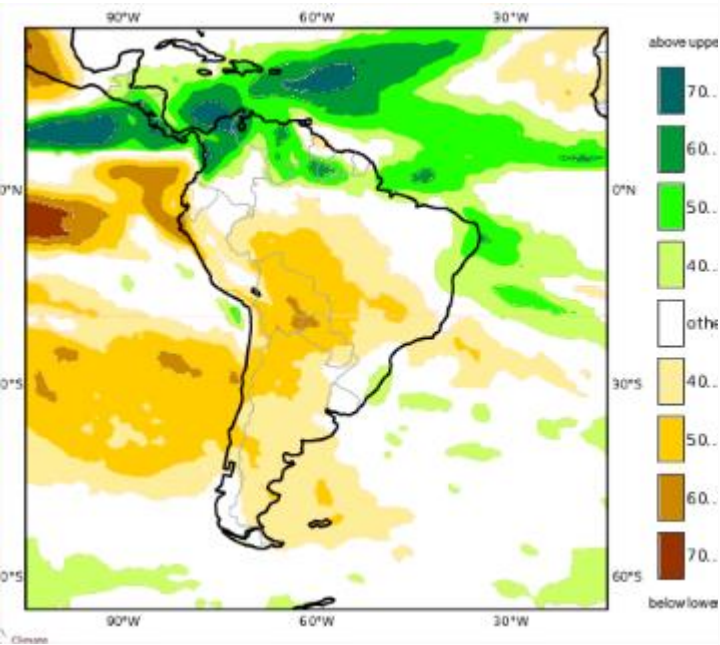


Atualizado 11 de março

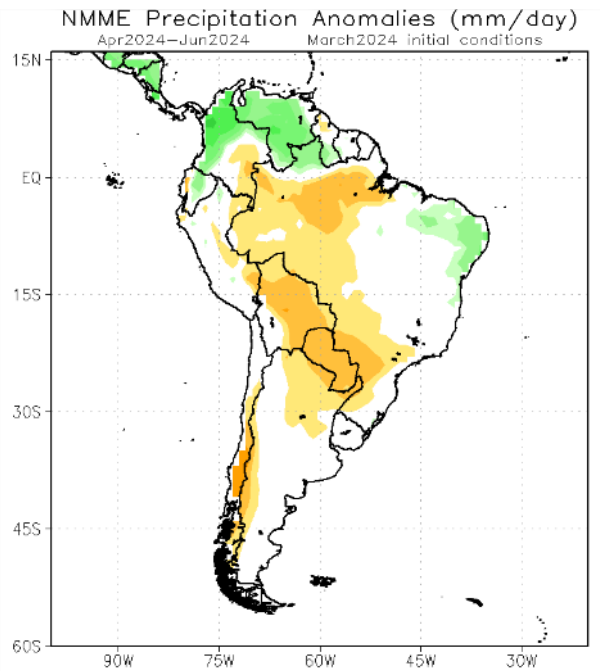
Previsão Sazonal de Chuva AMJ



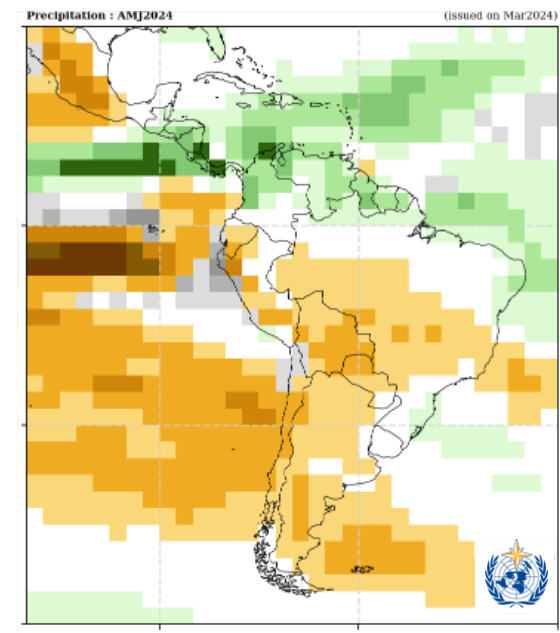
Previsão Sazonal de Chuva Multi-Modelo para AMJ



Modelos Europeus



Modelos Americanos



Modelos da Organização Meteorológica Mundial