

Monitoramento da situação da seca na Região Nordeste

MARÇO 2024

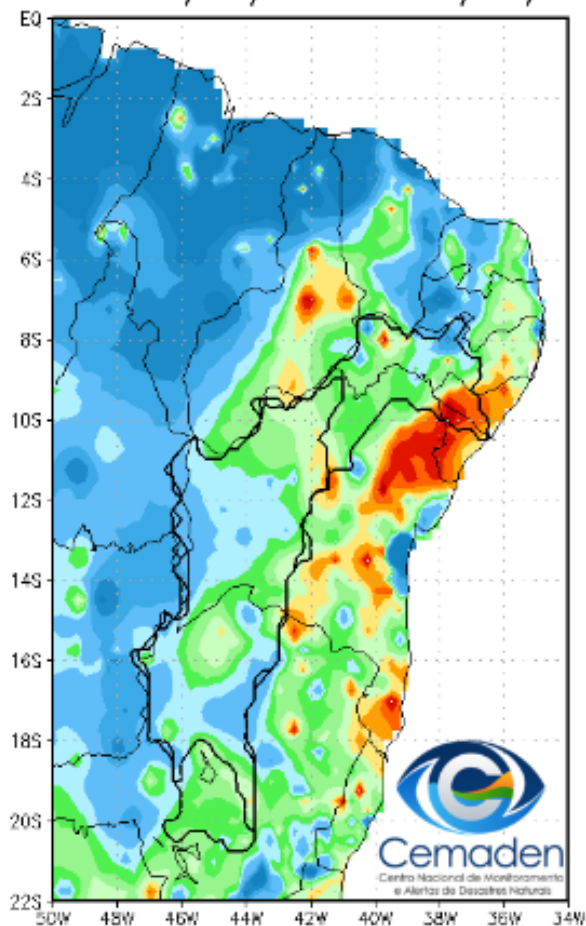


MINISTÉRIO DA
CIÊNCIA, TECNOLOGIA
E INOVAÇÃO

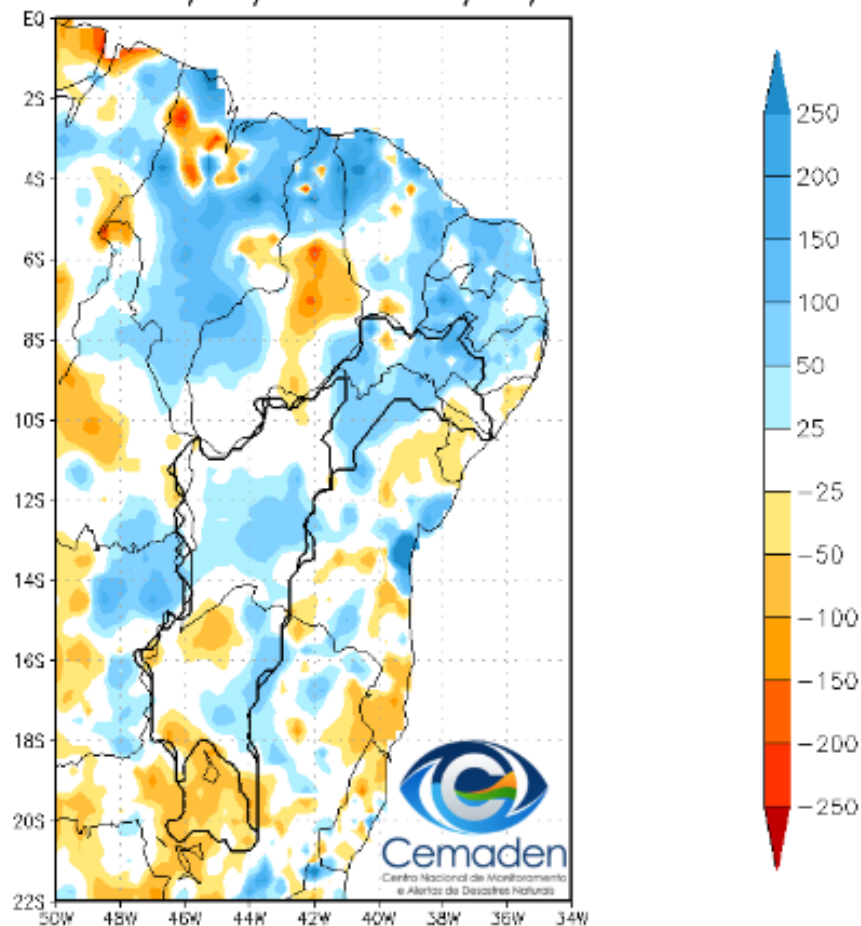


Chuva dos últimos 30 dias

Precipitação Acumulada (mm) A.S.
Período: 19/02/2024 a 20/03/2024

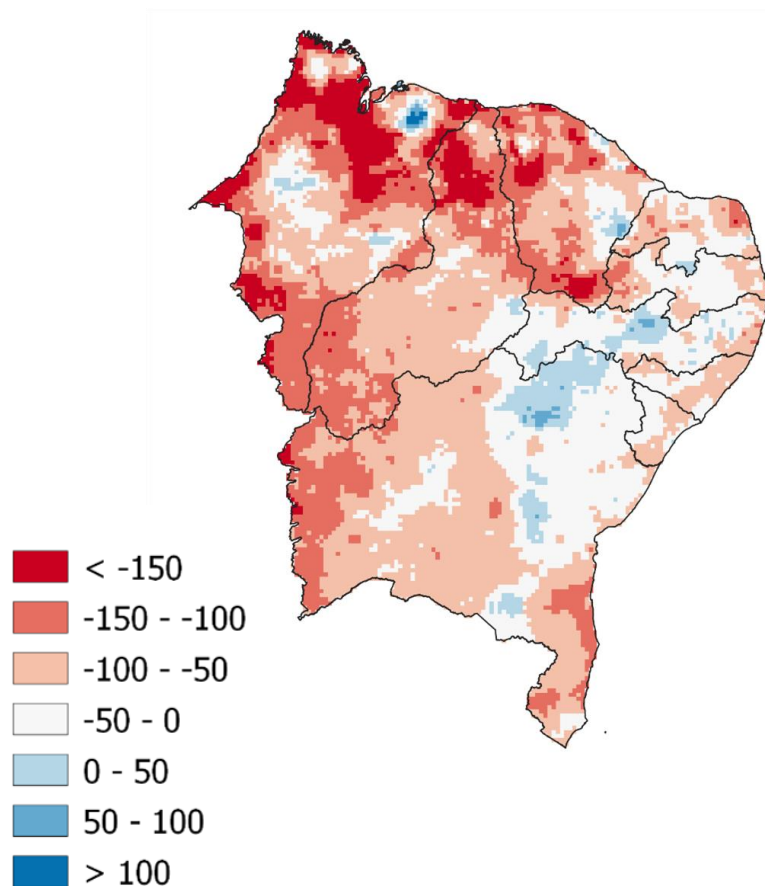


Anomalia de Precipitação (mm) A.S.
Período: 19/02/2024 a 20/03/2024

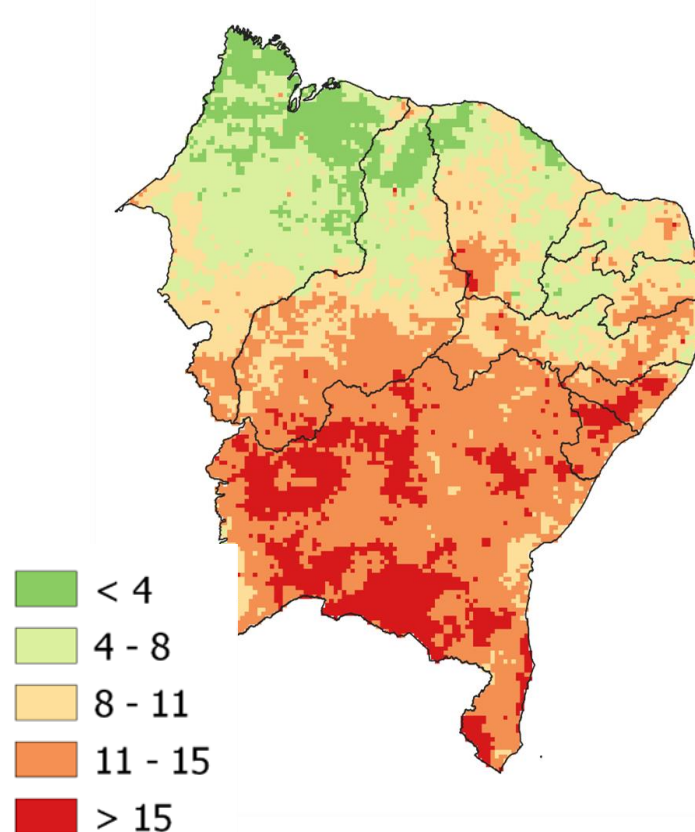


PRECIPITAÇÃO: MARÇO 2024 (ATÉ 19/03)

Anomalia (mm)

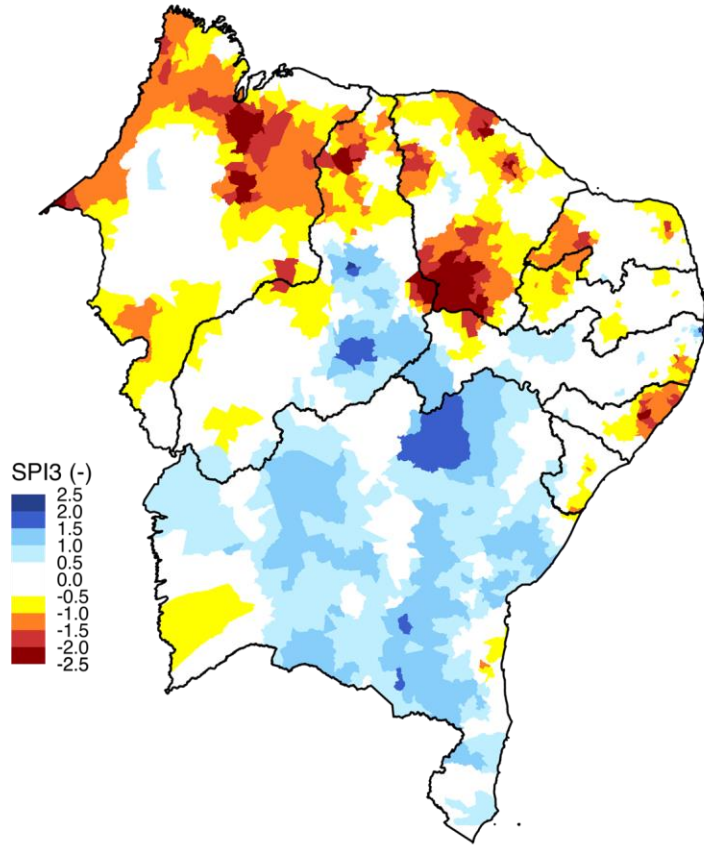


Total de dias sem chuva



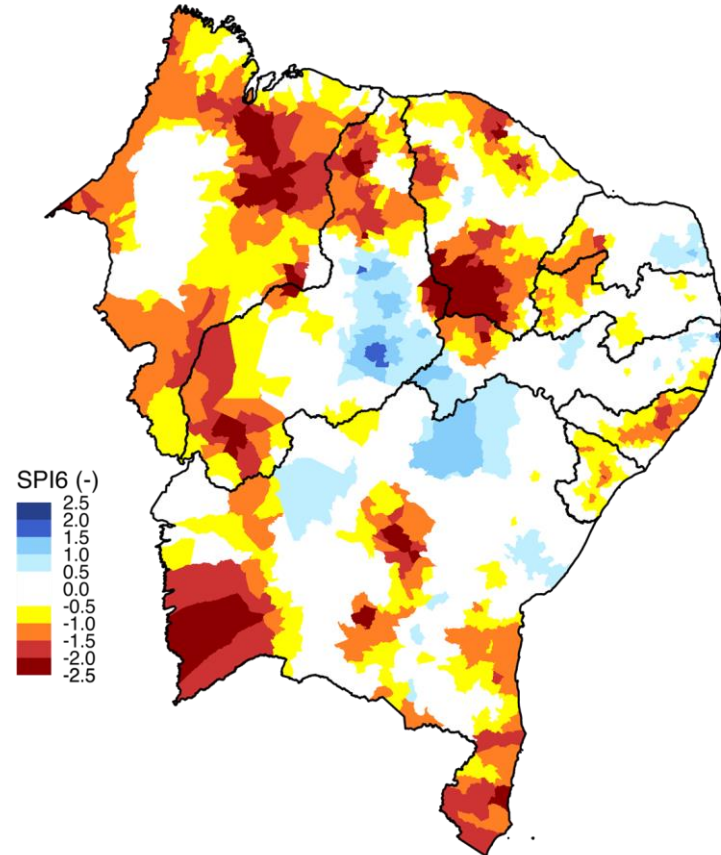
SPI's

SPI 03



Março 2024
Índice Padronizado de Precipitação (SPI, 3 meses)
Concepção e preparação: Cemaden/MCTI. Dados: CPTEC/INPE, NOAA, NASA.

SPI 06

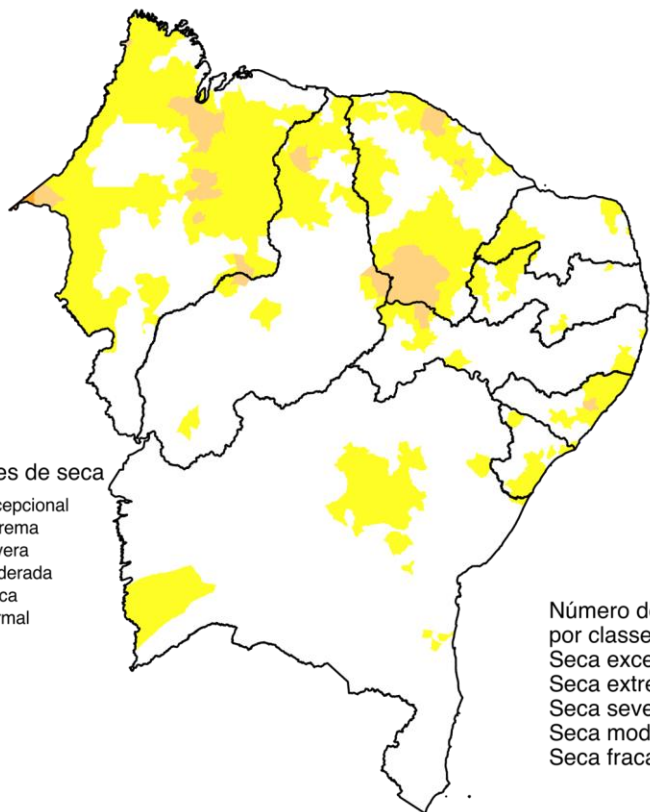


Março 2024
Índice Padronizado de Precipitação (SPI, 6 meses)
Concepção e preparação: Cemaden/MCTI. Dados: CPTEC/INPE, NOAA, NASA.

ÍNDICE INTEGRADO DE SECA - IIS

(SPI + VHI + AUS): MARÇO/2024 (PARCIAL)

IIS-03



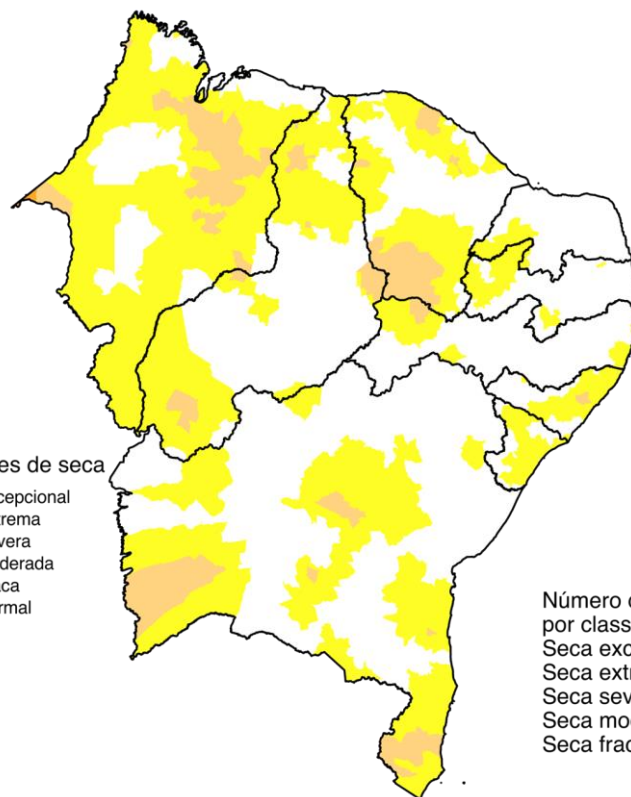
Classes de seca

- Exceptional
- Extrema
- Severa
- Moderada
- Fraca
- Normal

Número de municípios por classes de seca

Seca excepcional	0
Seca extrema	0
Seca severa	1
Seca moderada	62
Seca fraca	492

IIS-06



Classes de seca

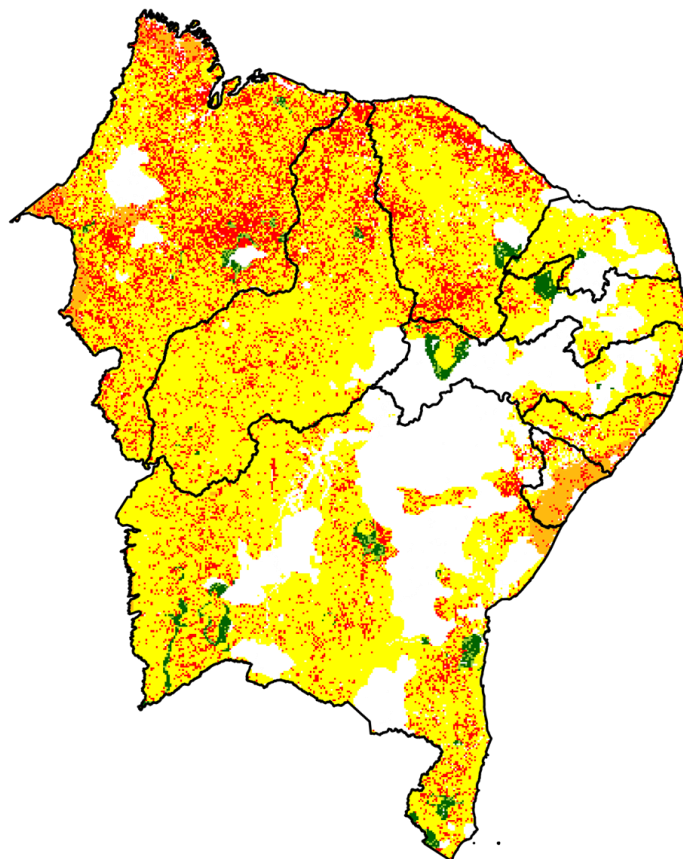
- Exceptional
- Extrema
- Severa
- Moderada
- Fraca
- Normal

Número de municípios por classes de seca

Seca excepcional	0
Seca extrema	0
Seca severa	1
Seca moderada	112
Seca fraca	661

PROGRESSÃO DAS CONDIÇÕES DE SECA (PCS)

Propagação Incremental das Condições de Seca (PICS)
Março 2024



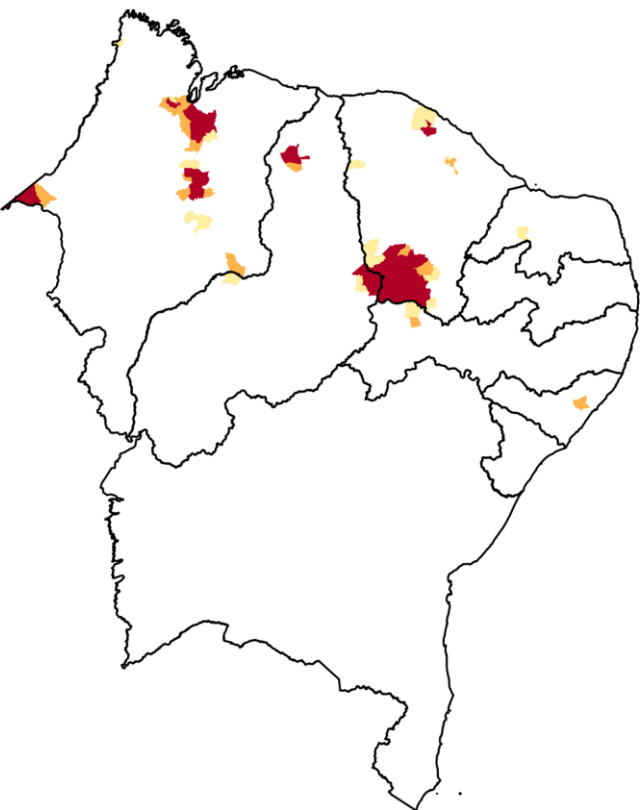
Condição da seca

Condição normal
Observação - chuva abaixo da média (SPI ↓)

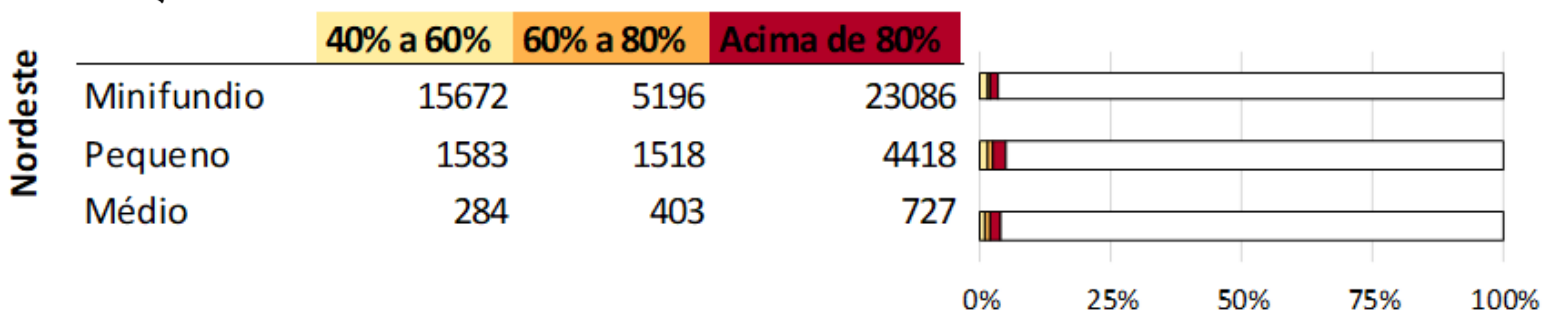
Atenção - déficit de chuva e umidade do solo (SPI ↓ & US ↓)
Alerta - chuva abaixo da média e stress vegetativo (SPI ↓ & VHI ↓)

Stress vegetativo & tendência de melhora na chuva (VHI ↓ & SPI ↓↑)
Em recuperação (SPI ↓↑)

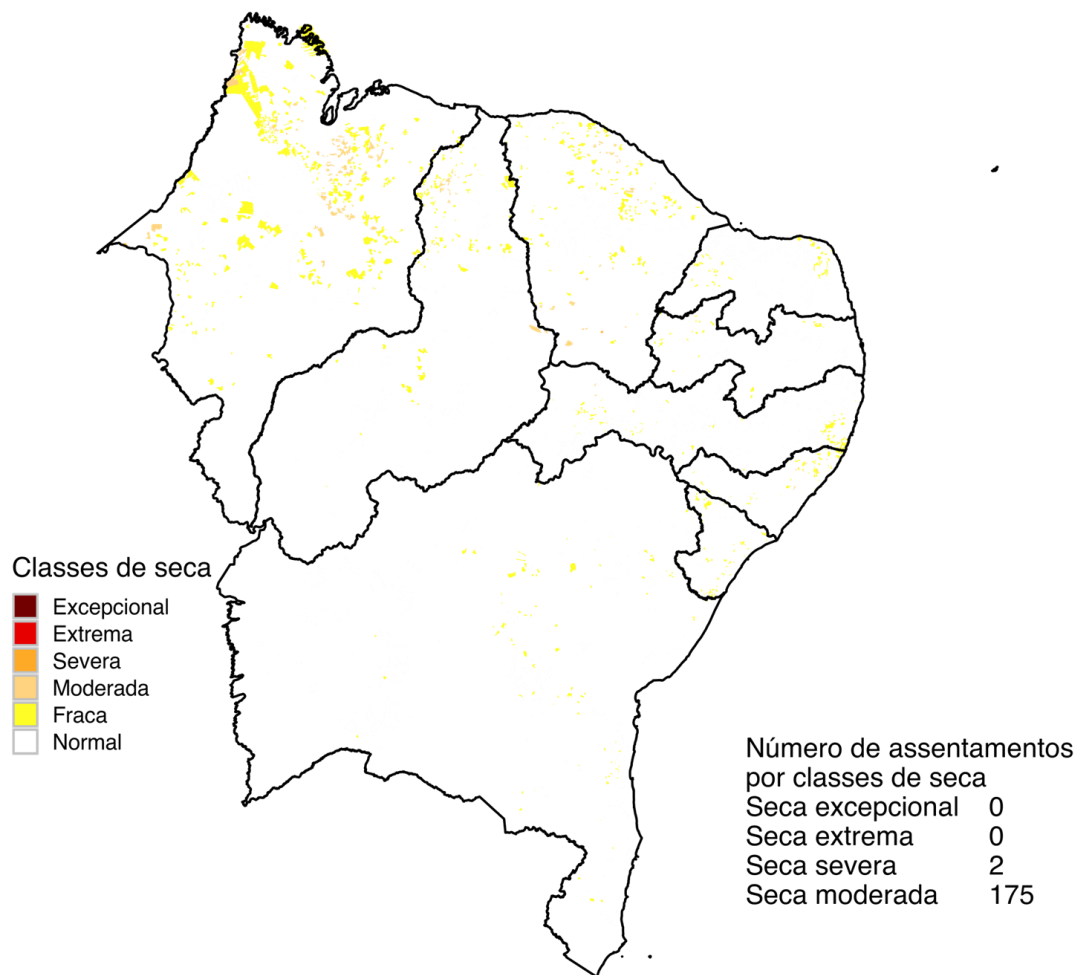
ÁREAS DE PASTAGENS E AGRÍCOLAS AFETADAS PELA SECA MARÇO/2024 (PARCIAL)



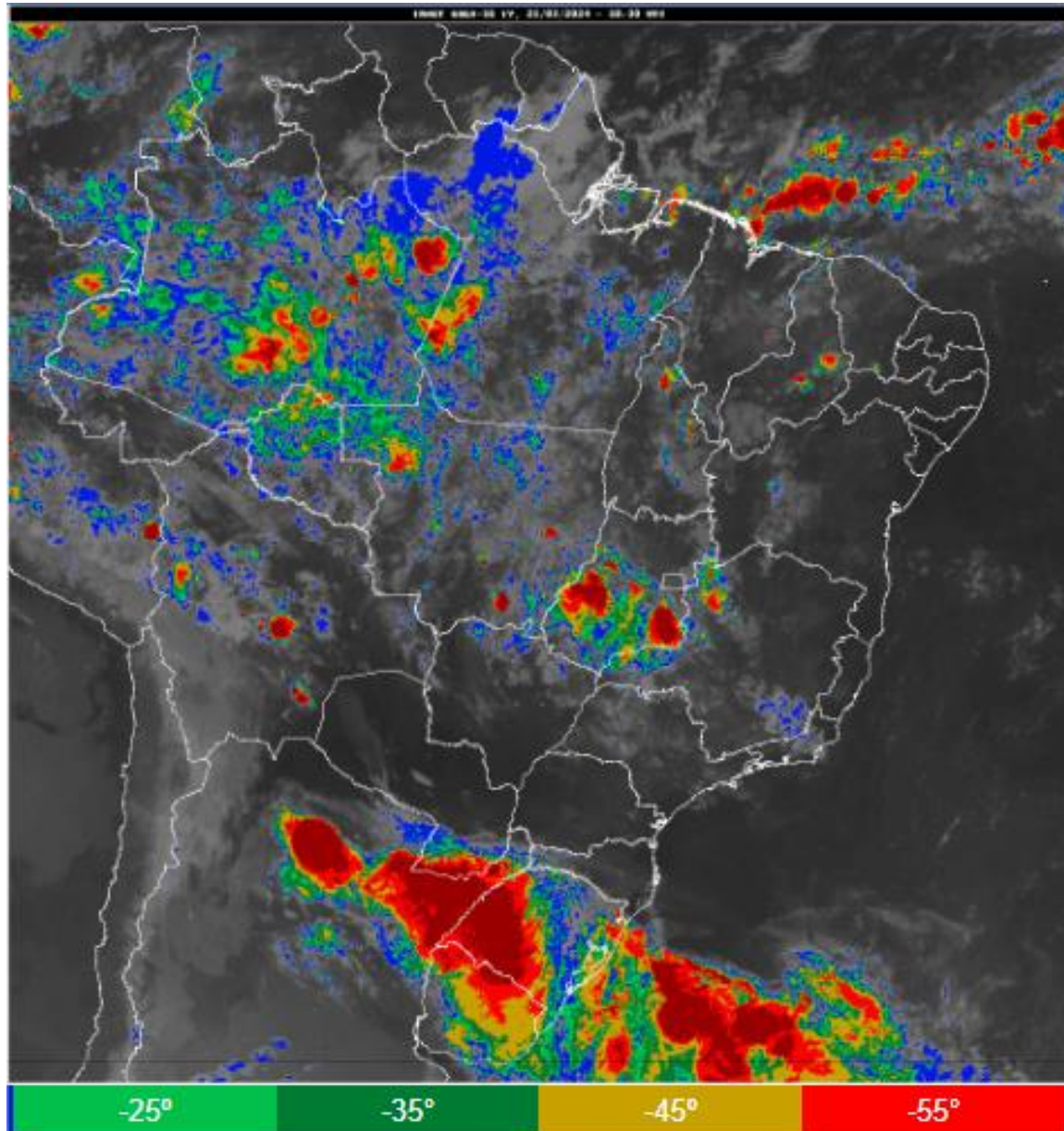
UF	40 a 60%	60 - 80%	> 80%
AL		2	
CE	7	4	20
MA	6	9	15
PE	1	1	
PI	3	1	3
RN	1		



ÍNDICE INTEGRADO DE SECA (IIS-01) EM PROJETOS DE ASSENTAMENTO:



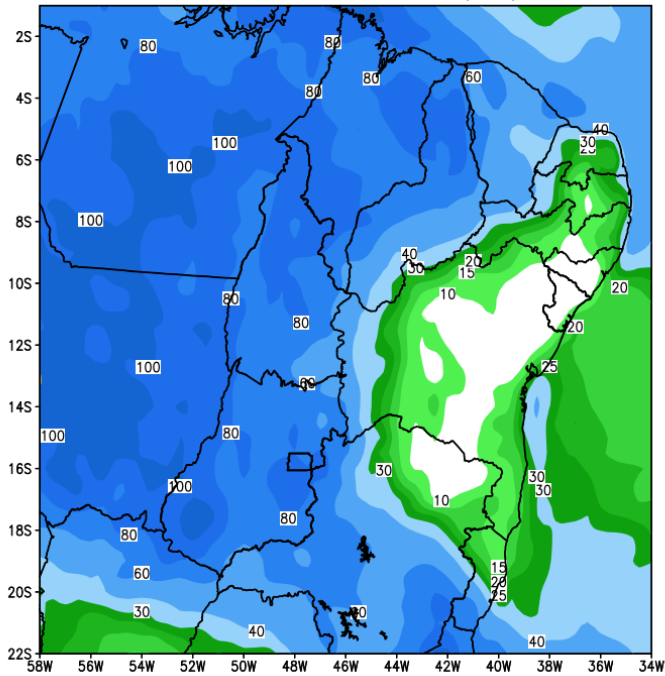
Situação meteorológica atual



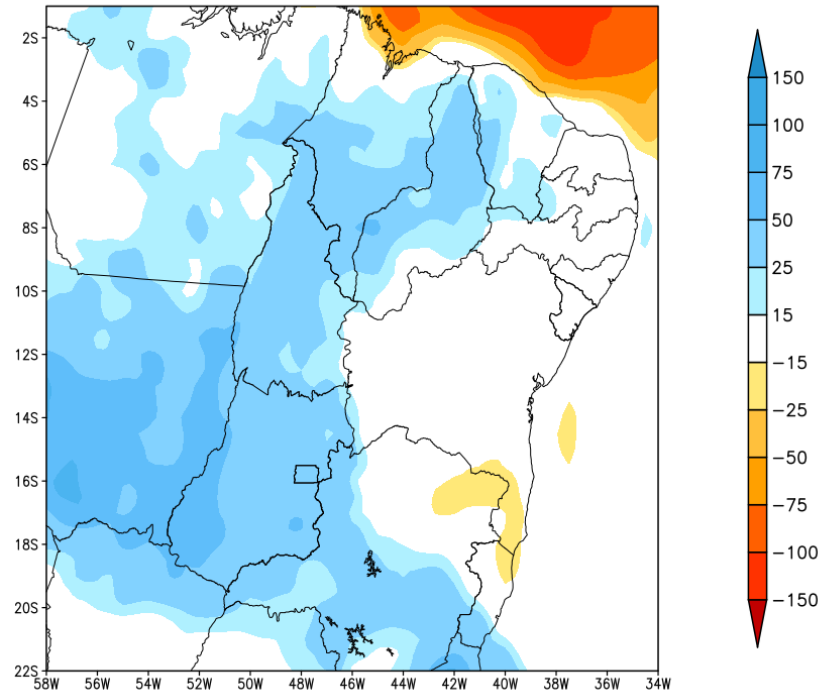
Fonte: INMET

Previsão de chuva os próximos 7 dias

GEFS / BRASIL_NE
Precipitação acumulada 1aSem (mm)
Previsão das 00Z dia 21/03/2024



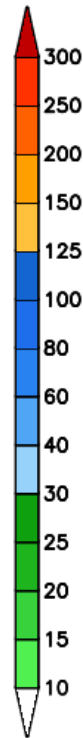
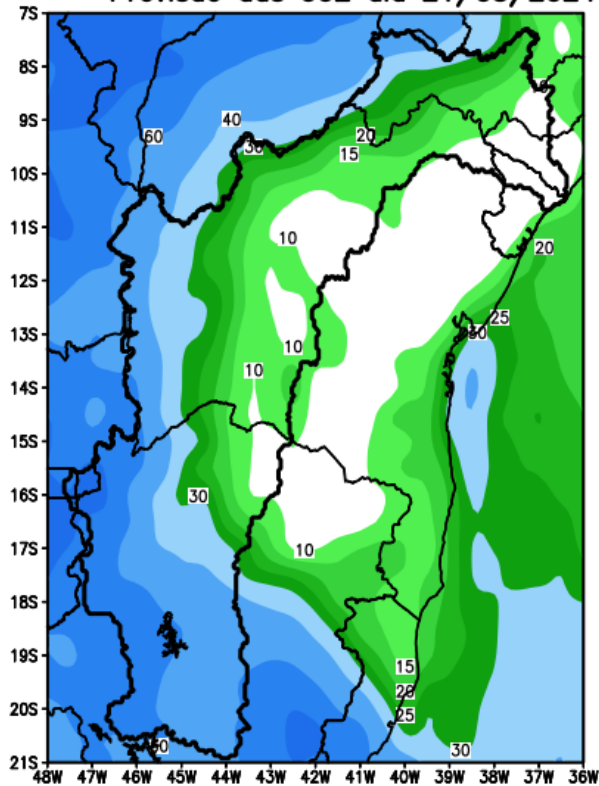
Anomalia de Precipitação BR_NE (mm)
Período: 2024032100 a 2024032800



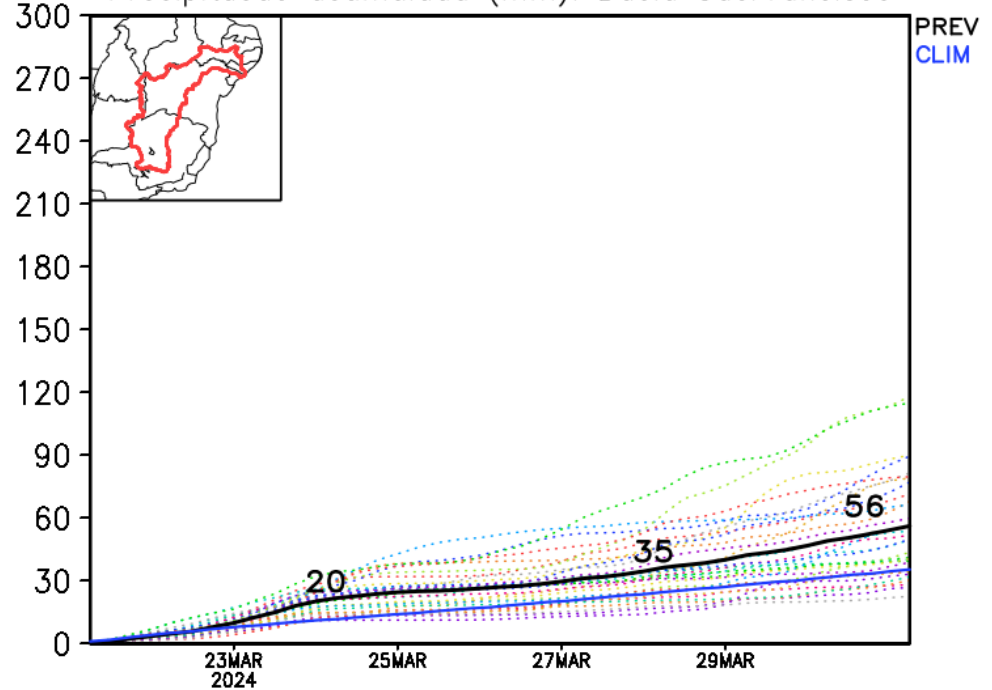
Fonte: GEFS/NOAA

Bacia do rio São Francisco

GEFS / Bacia do Rio Sao Francisco
Precipitacao acumulada em 7 dias (mm)
Previsao das 00Z dia 21/03/2024



Precipitacao acumulada (mm): Bacia SaoFrancisco

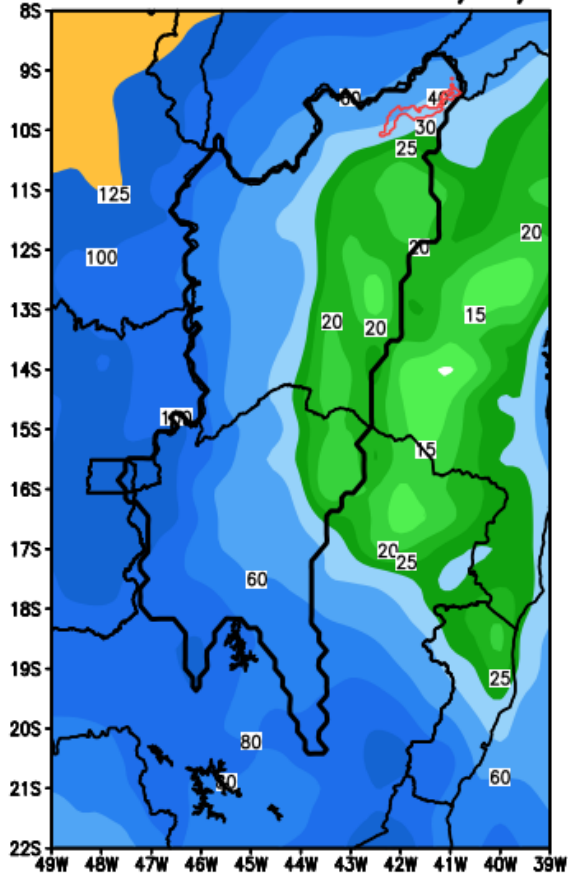


Bacia de Sobradinho

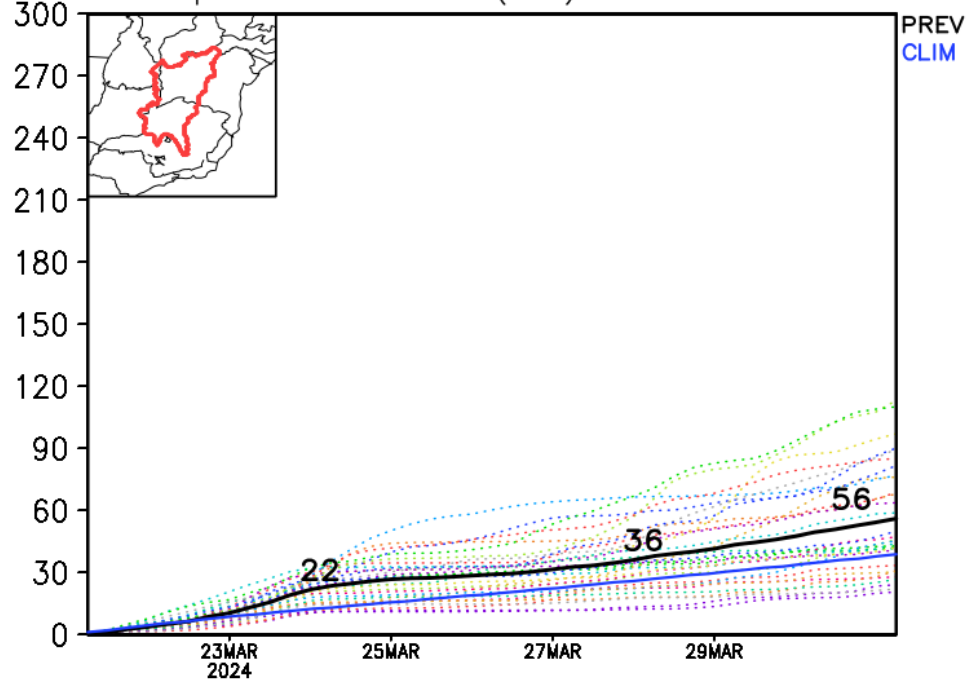
GEFS / Sobradinho

Precipitacao acumulada em 10 dias (mm)

Previsao das 00Z dia 21/03/2024

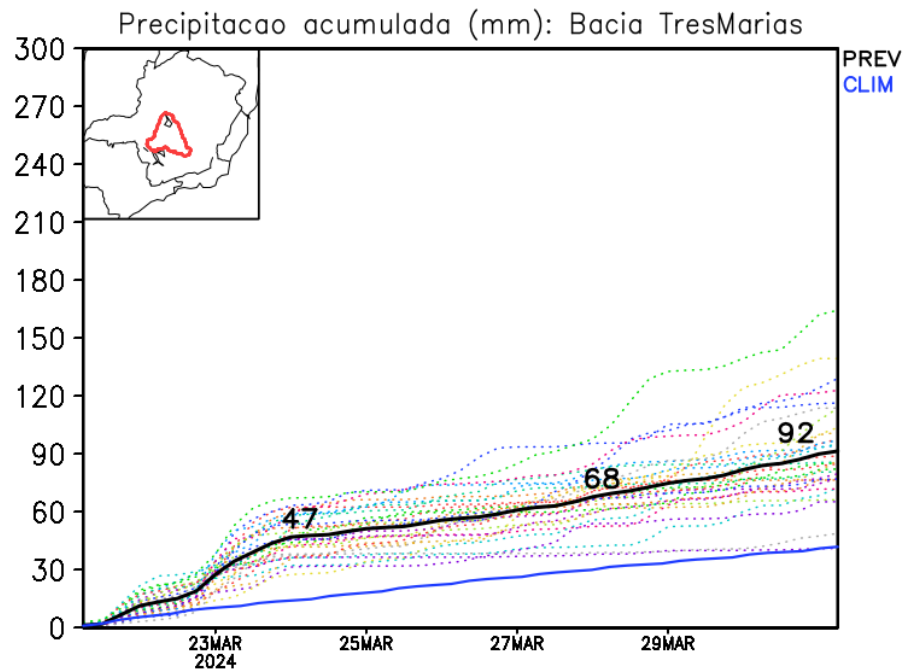
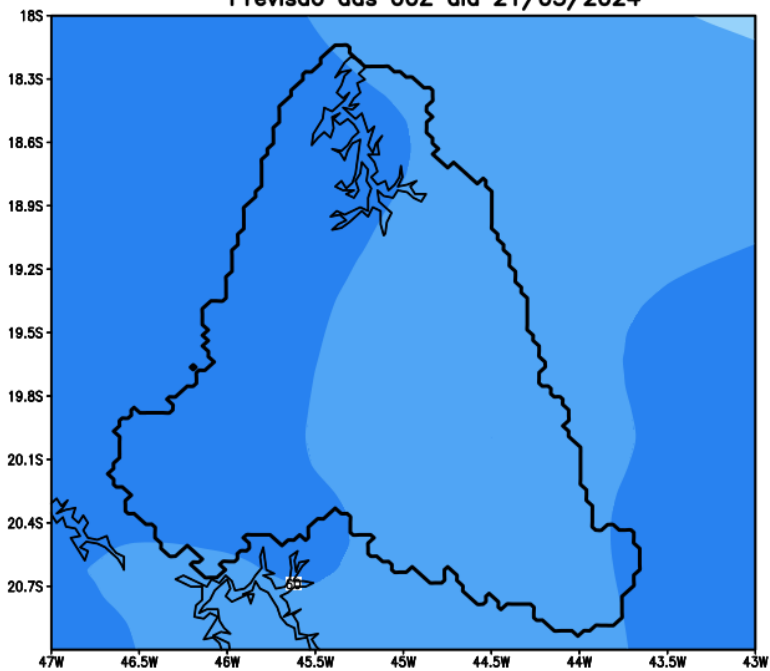


Precipitacao acumulada (mm): Bacia Sobradinho

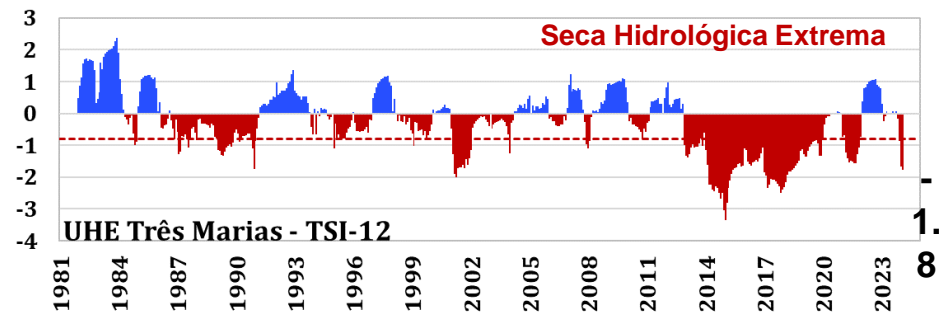
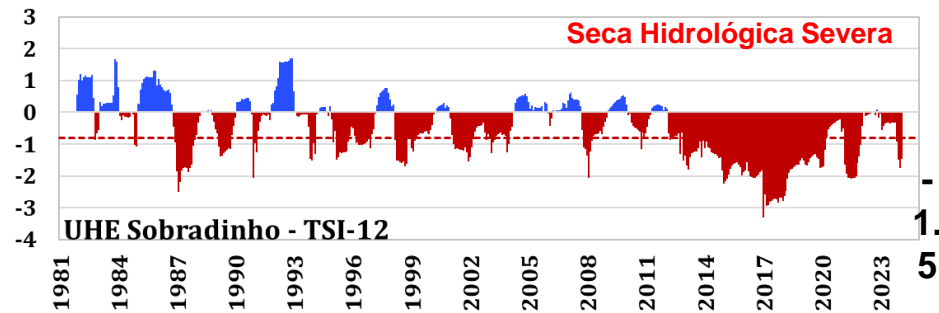
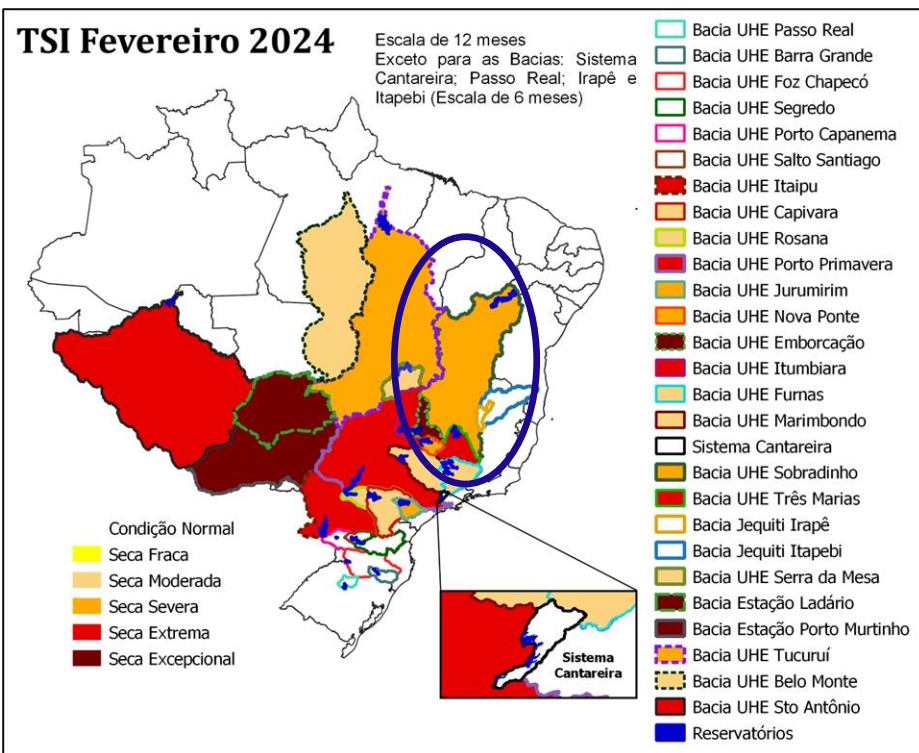


Bacia de Três Marias

GEFS / Tres Marias
Precipitacao acumulada em 7 dias (mm)
Previsao das 00Z dia 21/03/2024



Índice Padronizado Bivariado (Chuva-Vazão) - TSI (Two-variate Standardized Index – Escala de 12 meses)

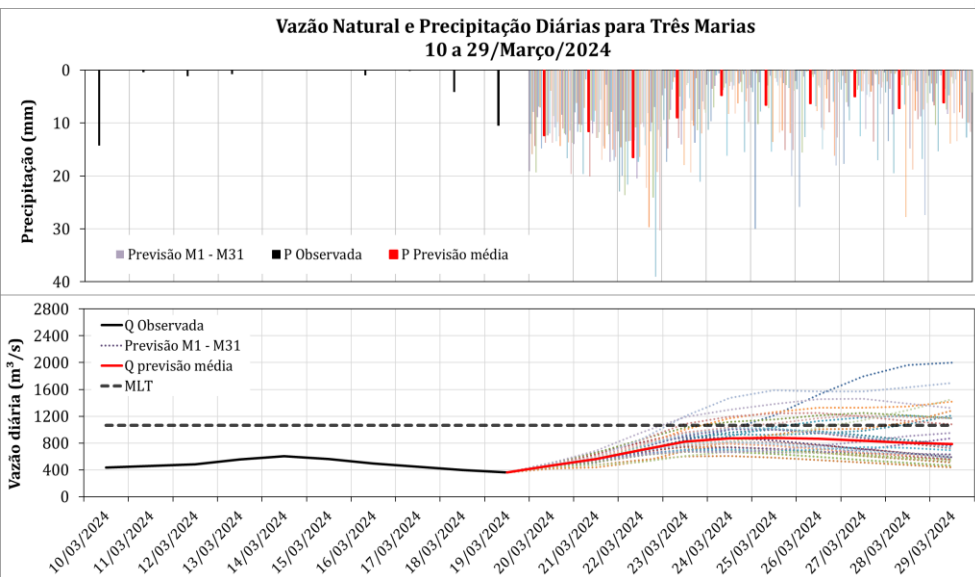


Fonte dos dados: CHIRPS (Precipitação) e ONS (Vazão) - Jan/1981-Fev/2024

Estimativa TSI e Gráficos: CEMADEN

Previsão hidrológica UHE Três Marias

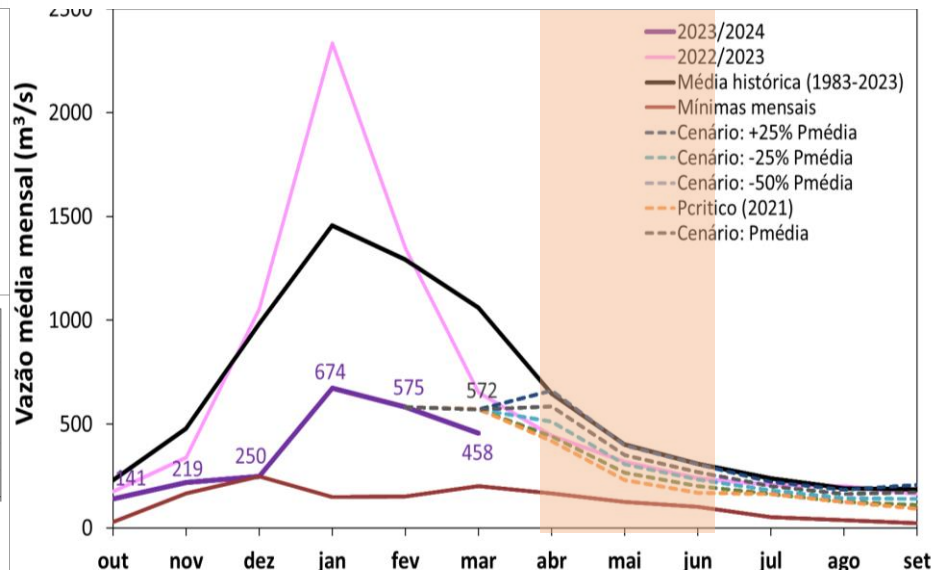
Próximos 10 dias



Previsão média para os próximos 10 dias: **758 m³/s**
70% da MLT de Março

Projeções hidrológicas UHE Três Marias

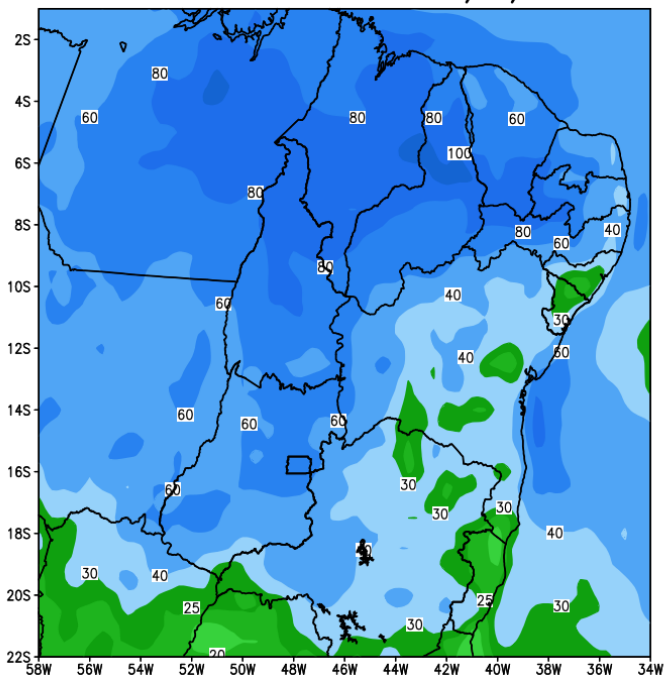
Trimestre AMJ



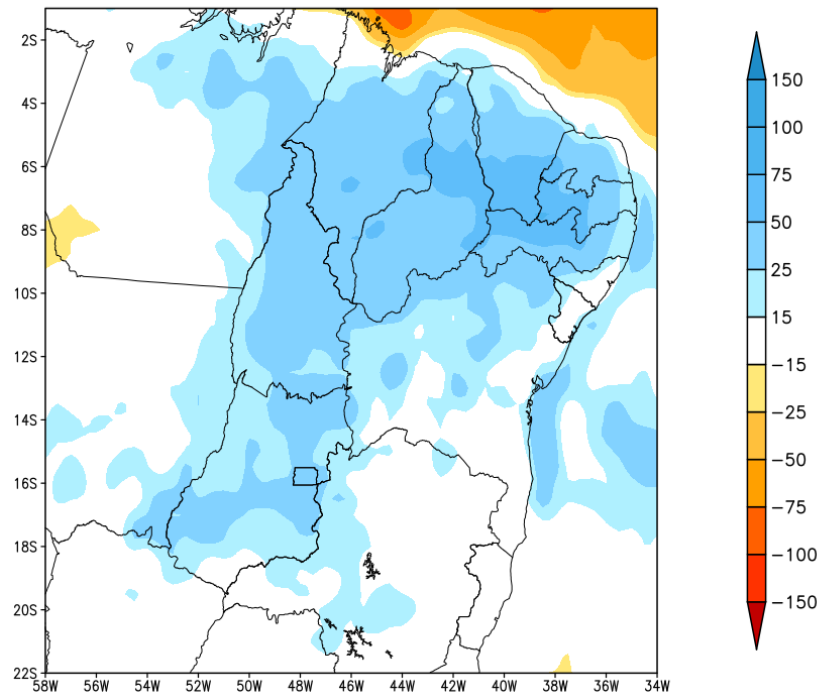
Condições Atuais – Março/24 (Até dia 19)			Projeções – AMJ/24
			Cenários: <u>P25% Abaixo da média</u> ; <u>P Média</u> ; e <u>P25% Acima da Média</u>
Precip (% MLT)	Vazão (% MLT)	Volume % (19/Mar)	Vazão (% MLT)
84 mm (51%)	458 m³/s (43%)	61%	77% - 89% - 101%

Tendência para a 2a semana

GEFS / BRASIL_NE
Precipitacao acumulada 2aSem (mm)
Previsao das 00Z dia 21/03/2024



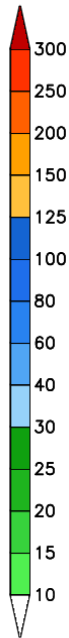
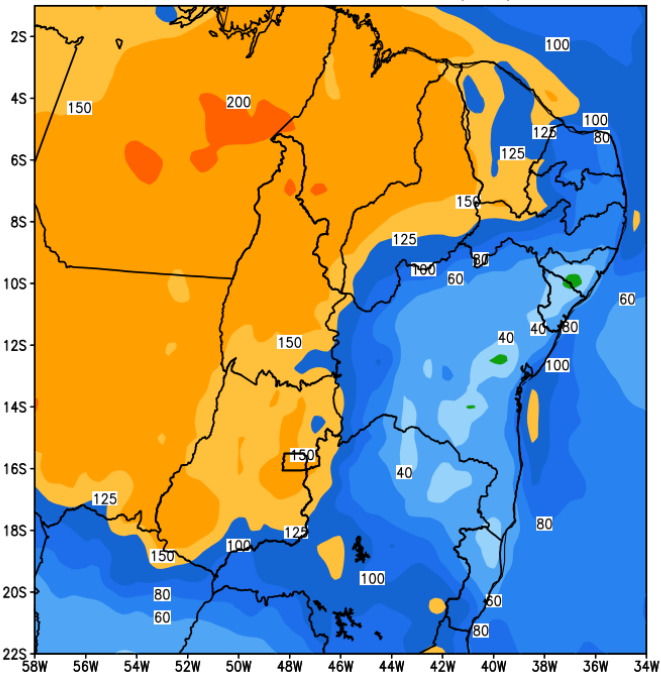
Anomalia de Precipitacao BR NE (mm)
Periodo: 2024032900 a 2024040400



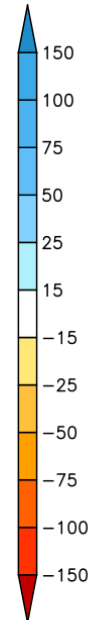
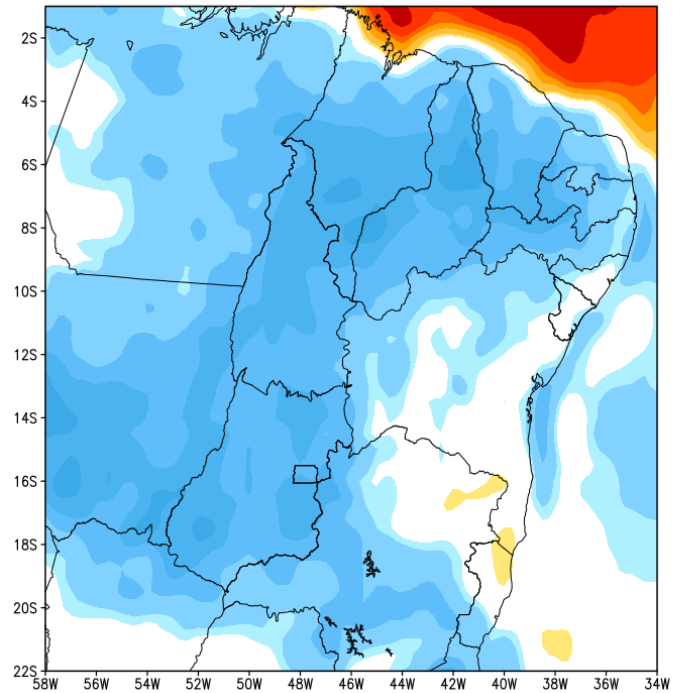
Modelo GFS/NOAA

Tendência para as duas próximas semanas

GEFS / BRASIL_NE
Precipitacao acumulada 14dias (mm)
Previsao das 00Z dia 21/03/2024



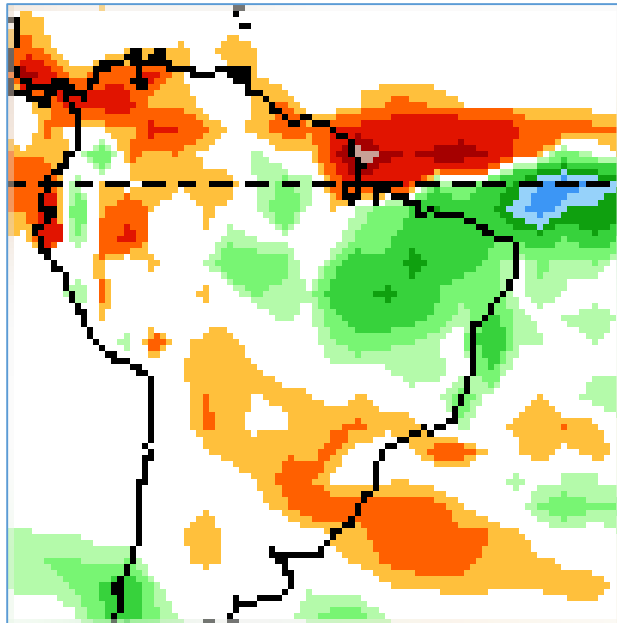
Anomalia de Precipitacao BR_NE (mm)
Periodo: 2024032100 a 2024040400



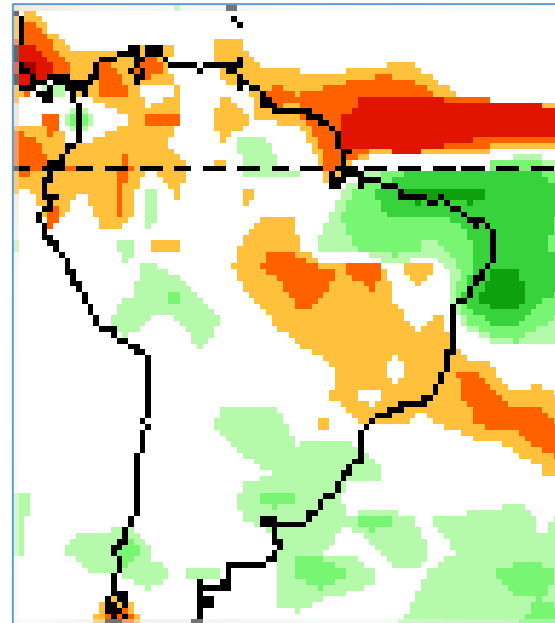
Modelo GFS/NOAA

Tendência 3a e 4a semanas

04-10 ABR

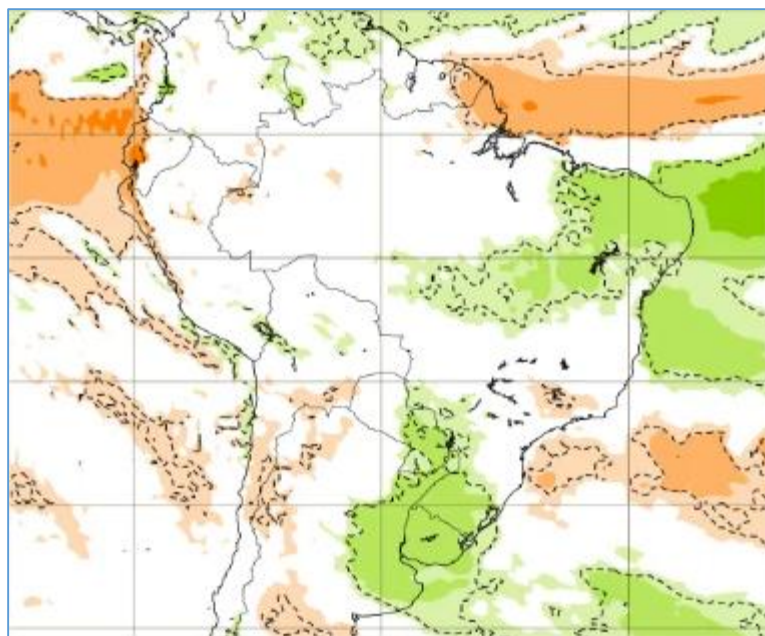


11-17 ABR

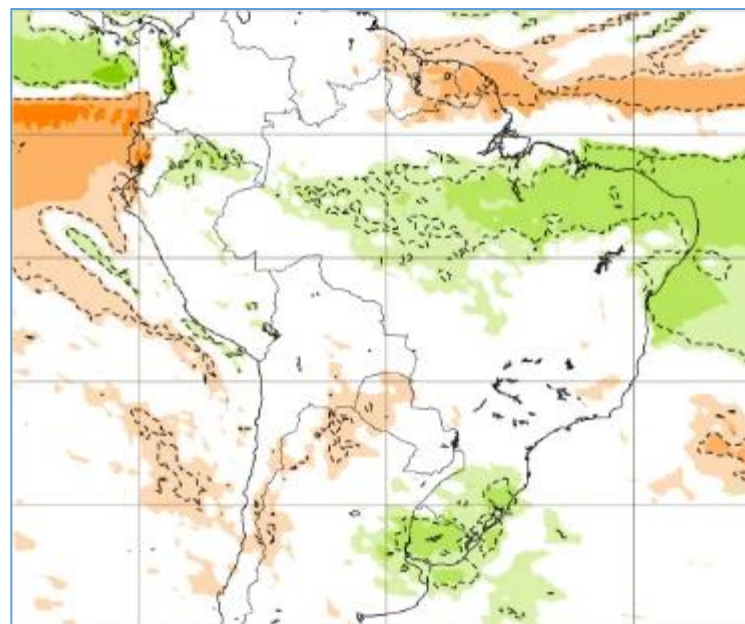


Tendência para 3ª e 4ª semanas

01-08 ABR

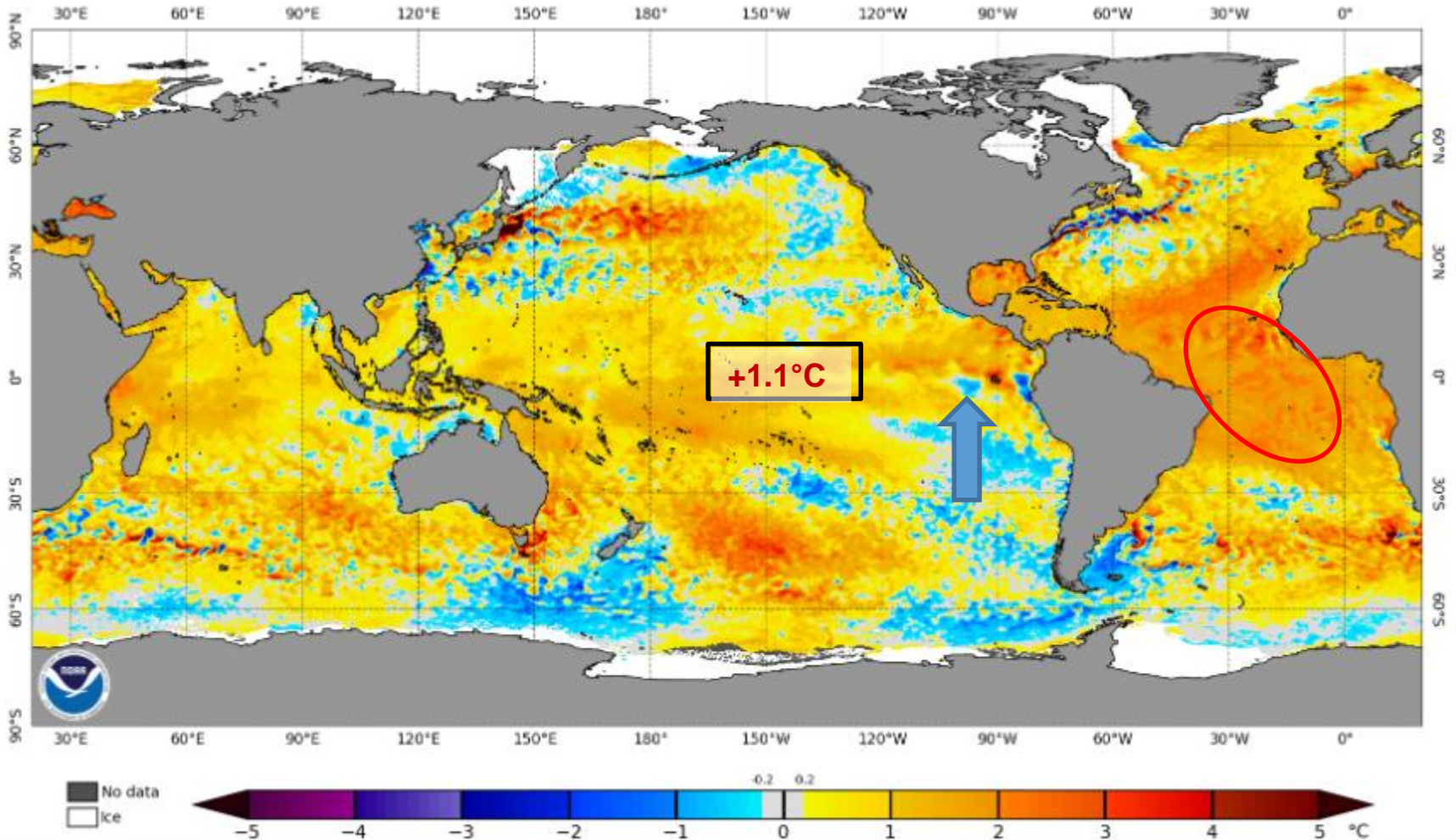


08-15 ABR

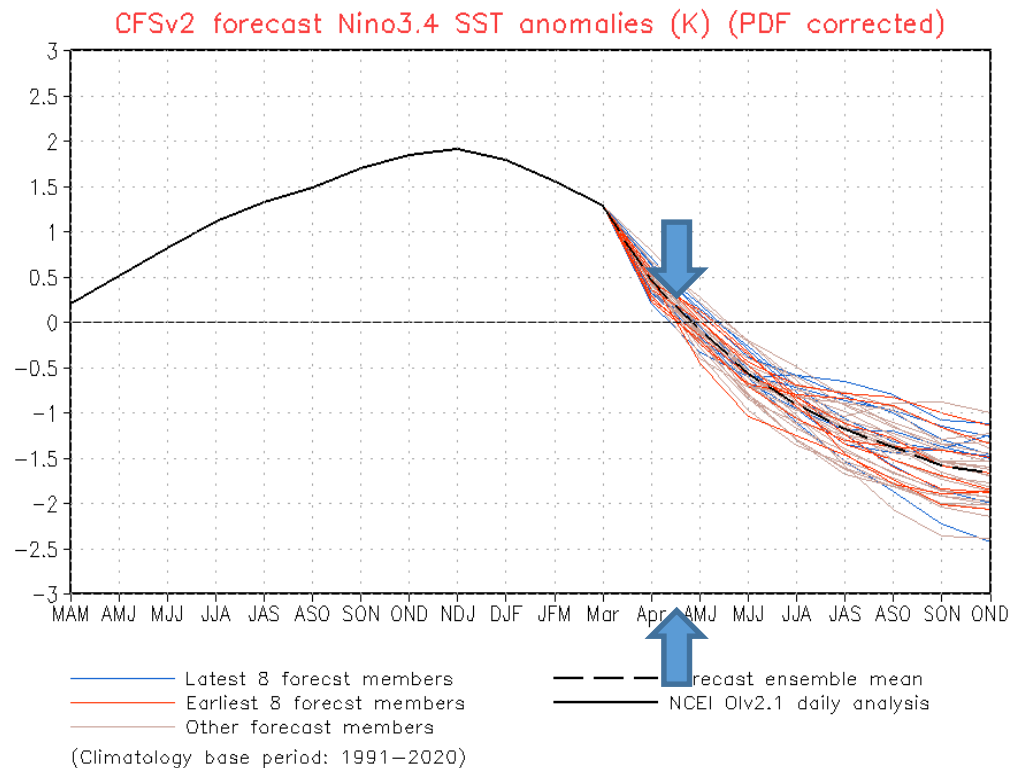
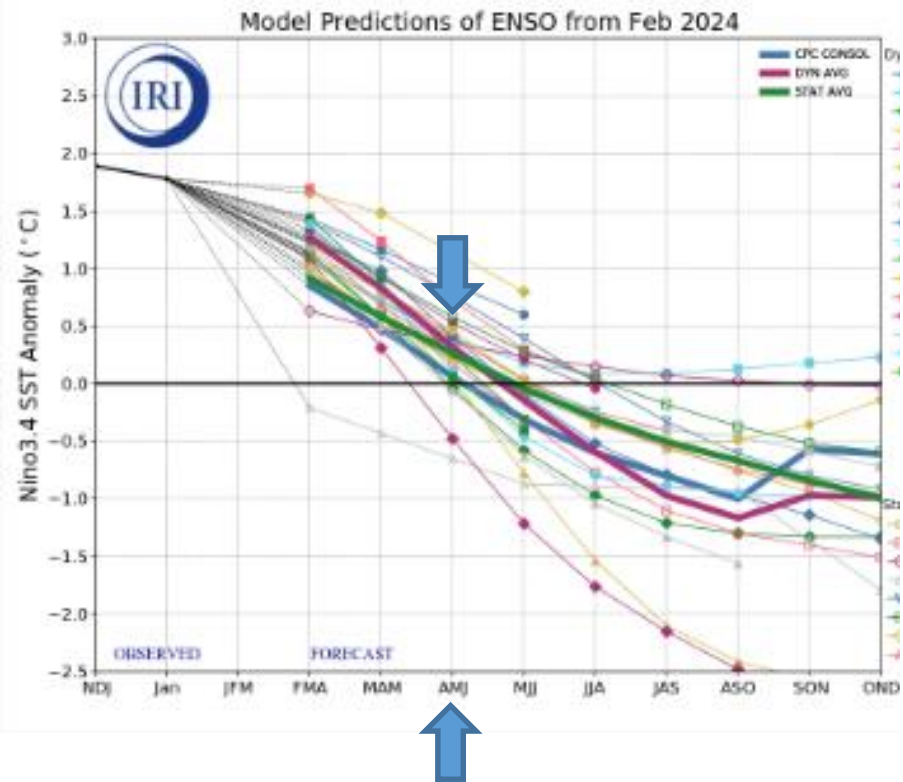


Status Atual: **El Niño/** La Niña Watch

NOAA Coral Reef Watch Daily 5km SST Anomalies (v3.1) 18 Mar 2024



Previsão do “ENSO”

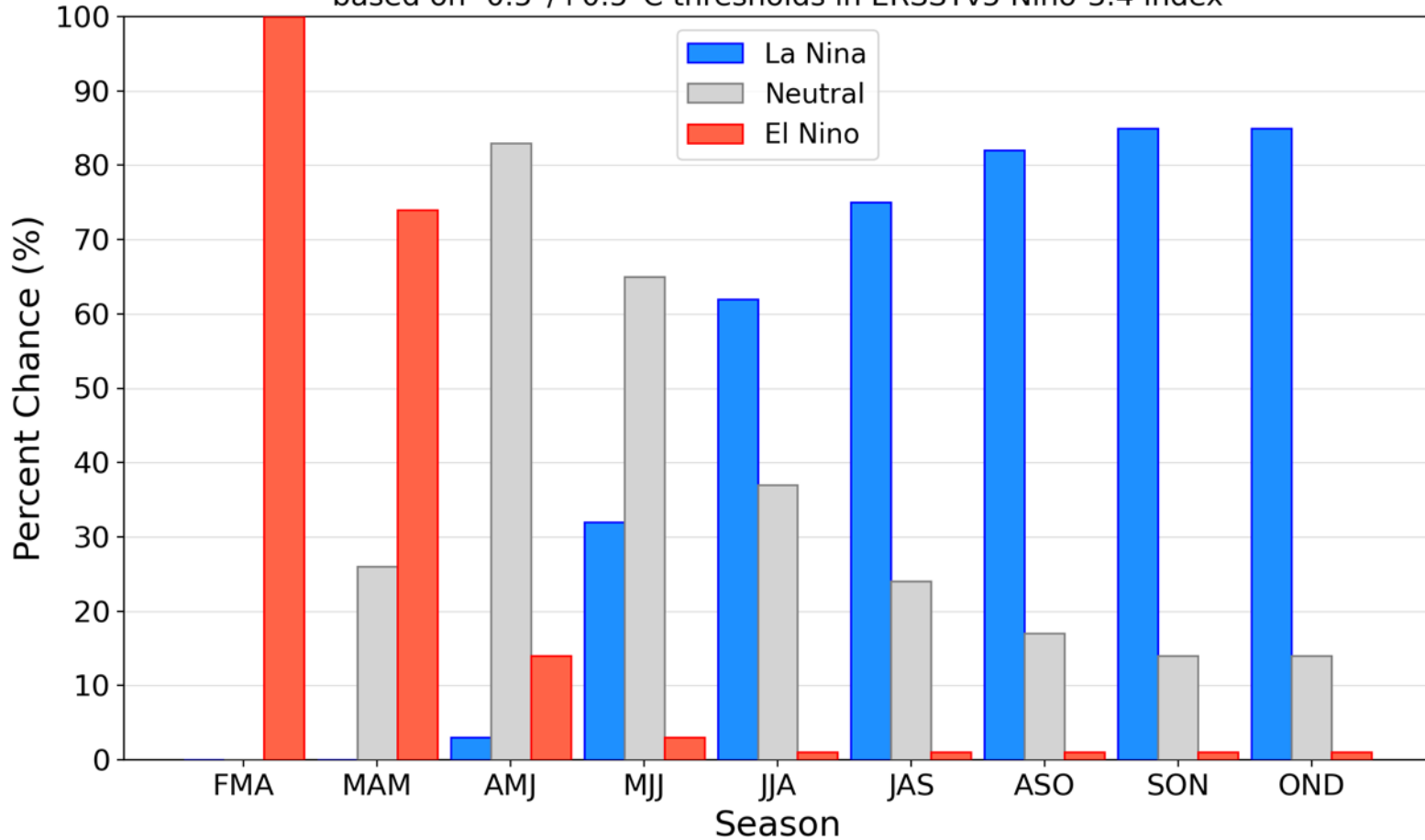


Atualizado 11 de março

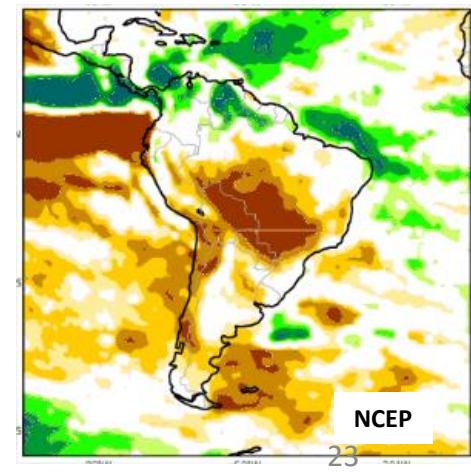
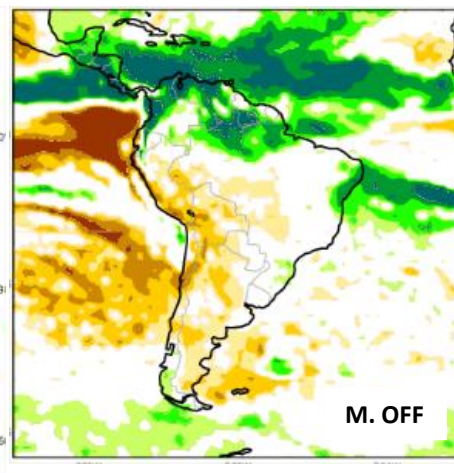
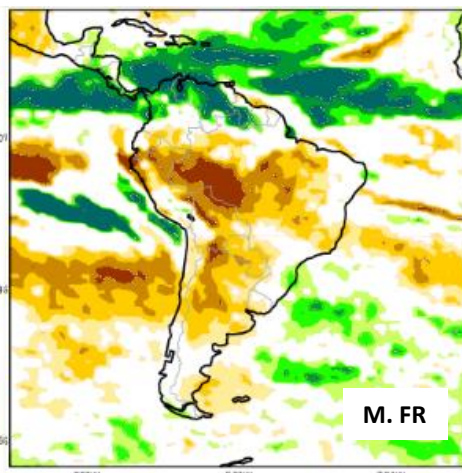
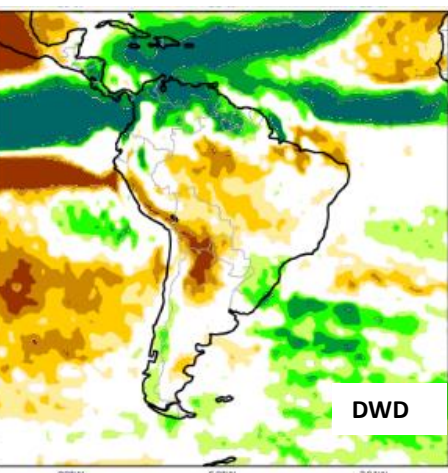
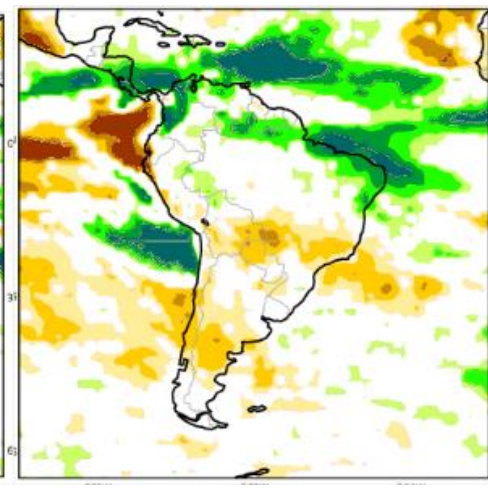
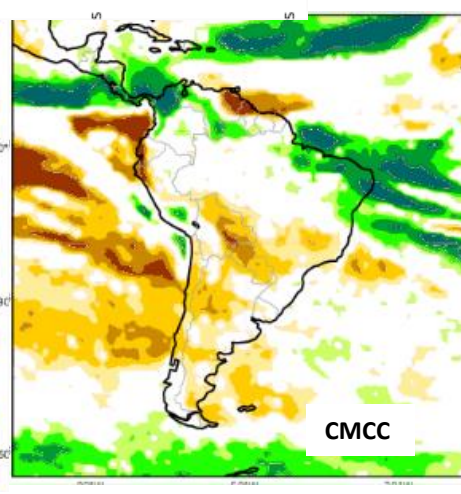
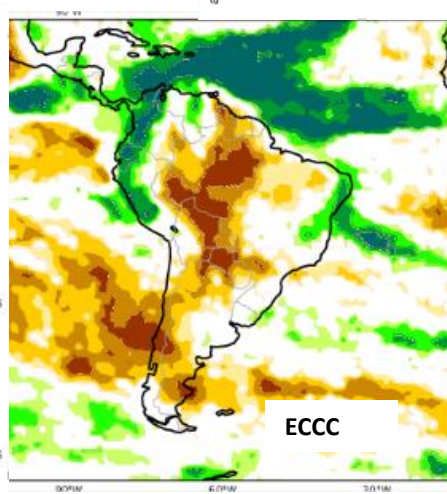
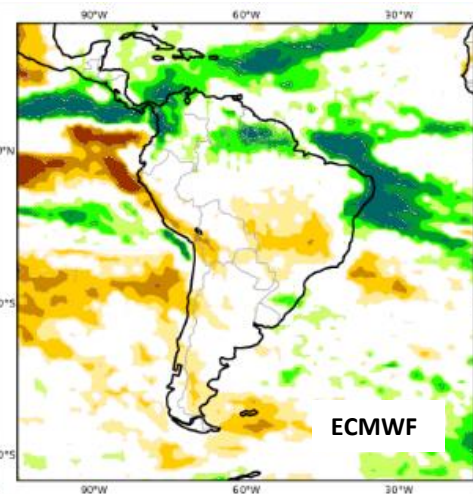
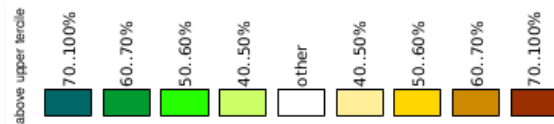
Previsão do “ENSO”

Official NOAA CPC ENSO Probabilities (issued Mar. 2024)

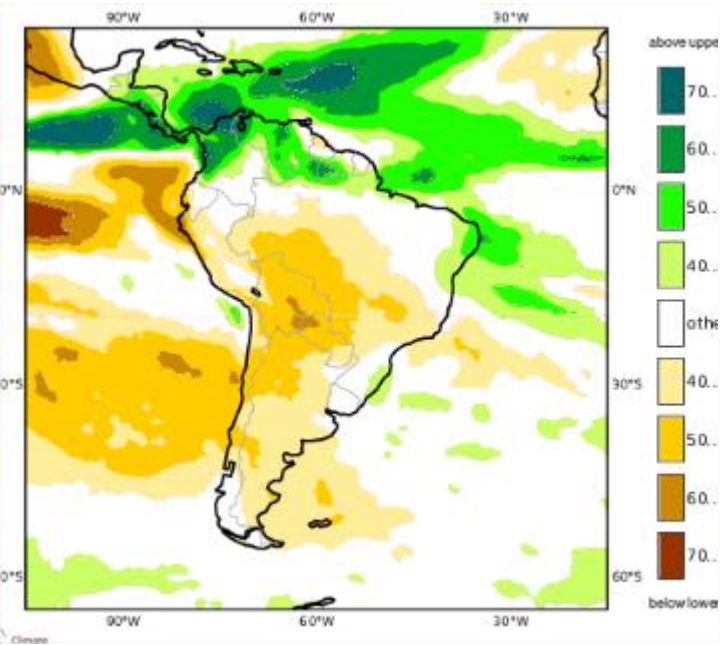
based on $-0.5^{\circ}/+0.5^{\circ}\text{C}$ thresholds in ERSSTv5 Niño-3.4 index



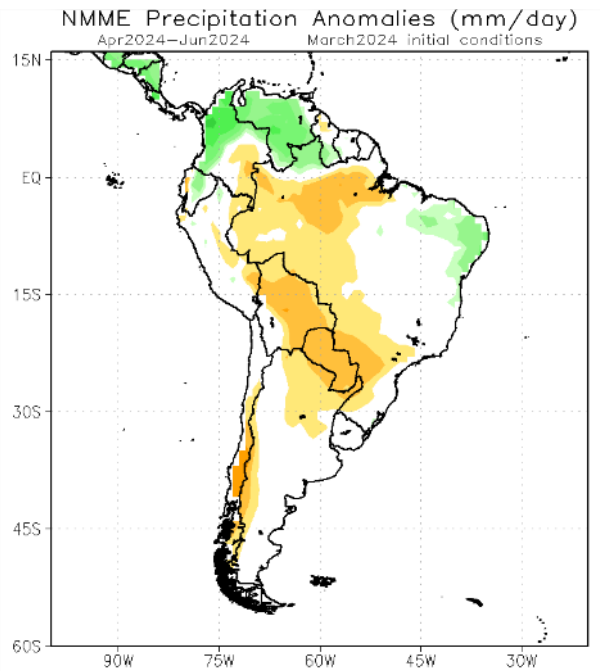
Previsão Sazonal de Chuva AMJ



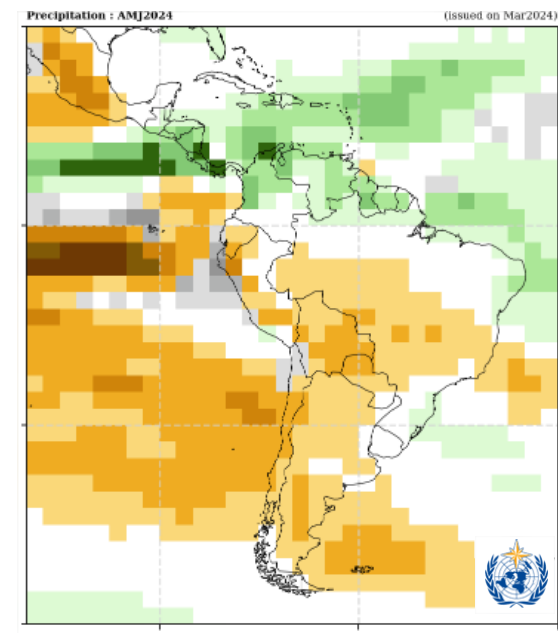
Previsão Sazonal de Chuva Multi-Modelo para AMJ



Modelos Europeus



Modelos Americanos



Modelos da Organização Meteorológica Mundial