

Monitoramento da situação da seca na Região Nordeste

DEZEMBRO/ 2023

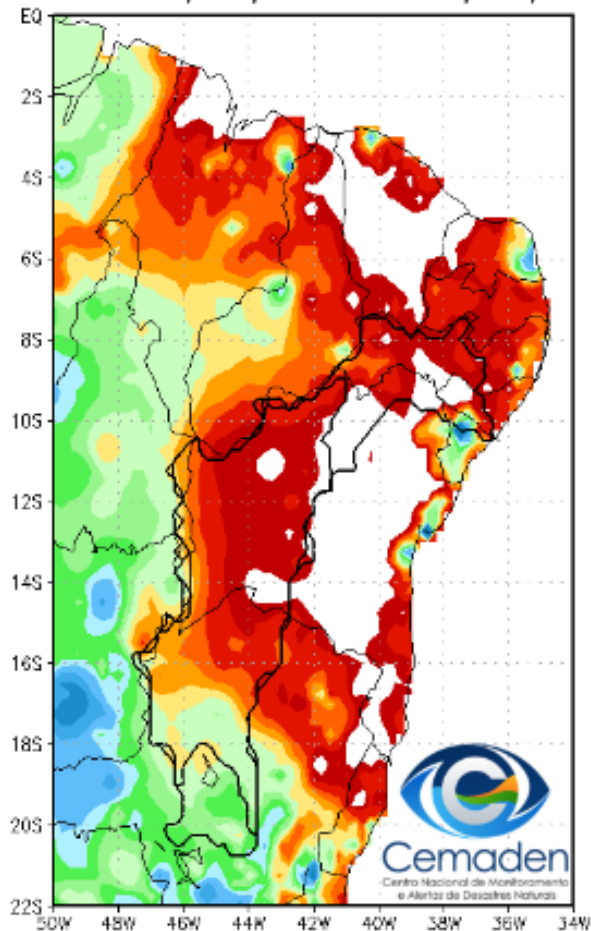


MINISTÉRIO DA
CIÊNCIA, TECNOLOGIA
E INOVAÇÃO

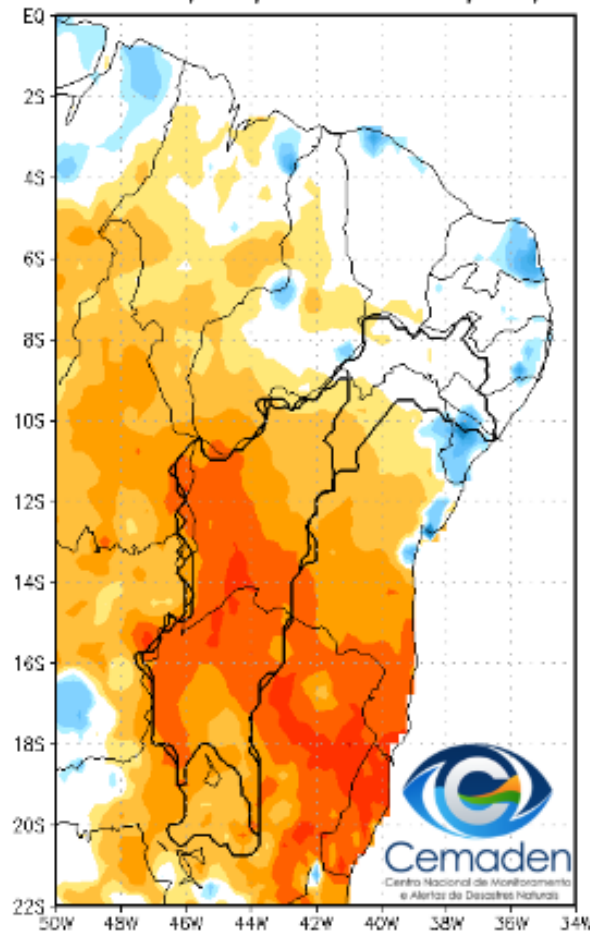


Chuva dos últimos 30 dias

Precipitação Acumulada (mm) A.S.
Período: 13/11/2023 a 13/12/2023

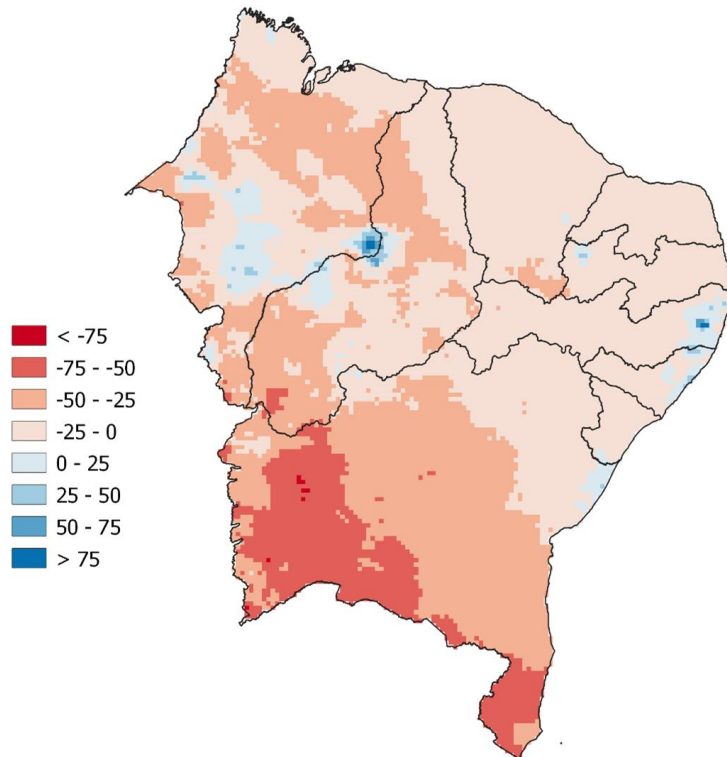


Anomalia de Precipitação (mm) A.S.
Período: 13/11/2023 a 13/12/2023

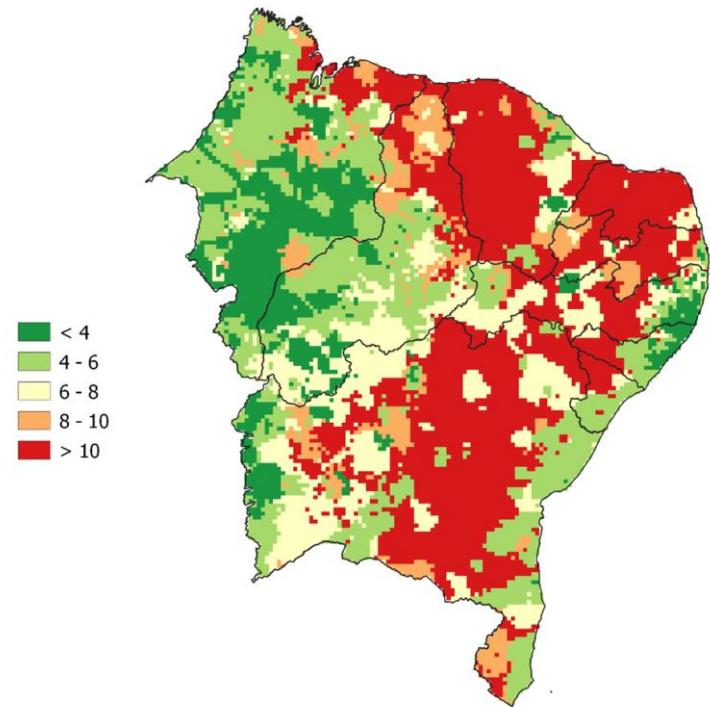


PRECIPITAÇÃO: DEZEMBRO 2023

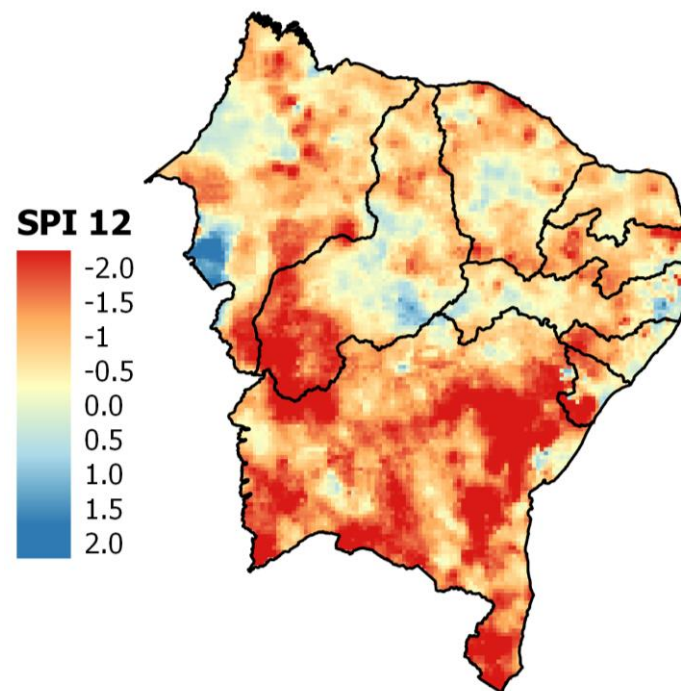
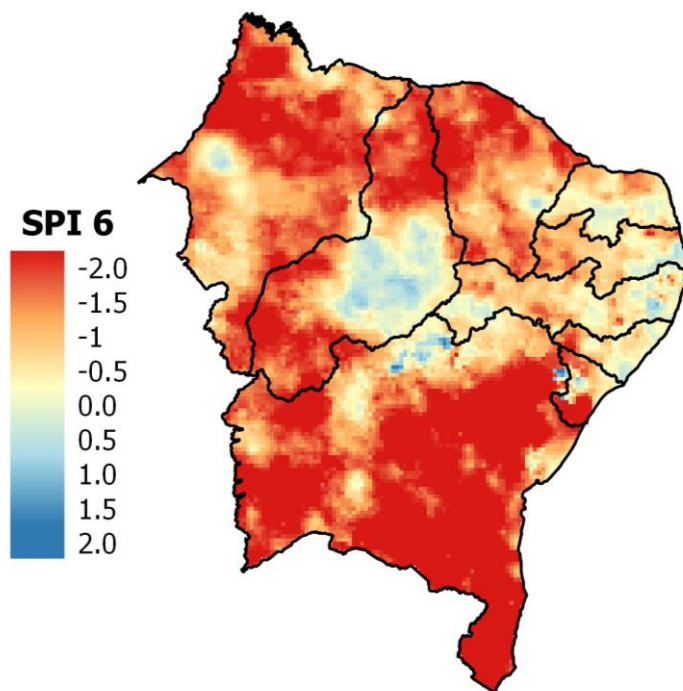
Anomalia (mm)



Máximo de dias consecutivos sem chuva



Índice Padronizado de Precipitação – SPI (Escala de 6 e 12 meses)



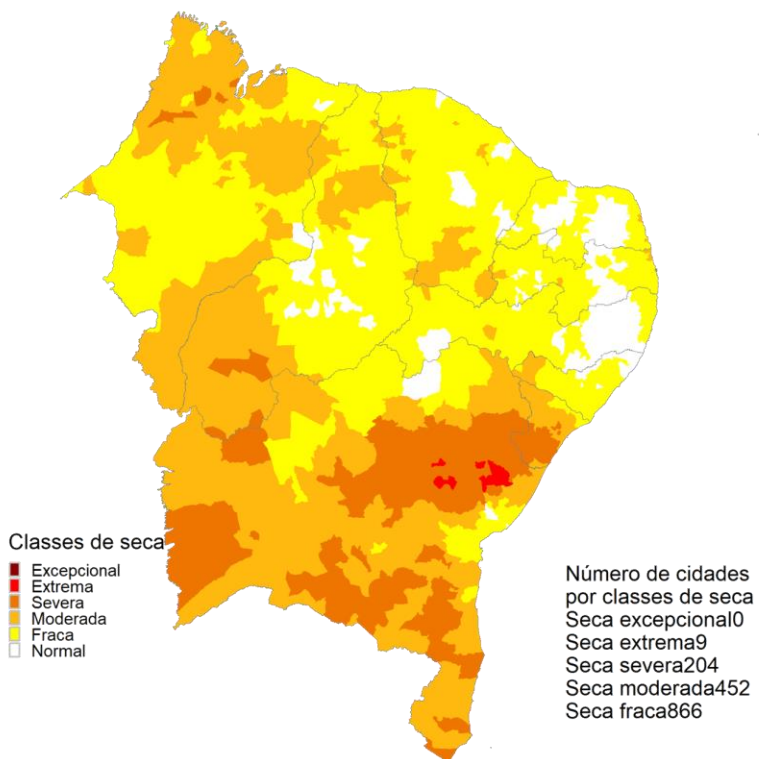
Fonte dos dados: MERGE/ INPE

Estimativa do SPI: Cemaden

ÍNDICE INTEGRADO DE SECA - IIS

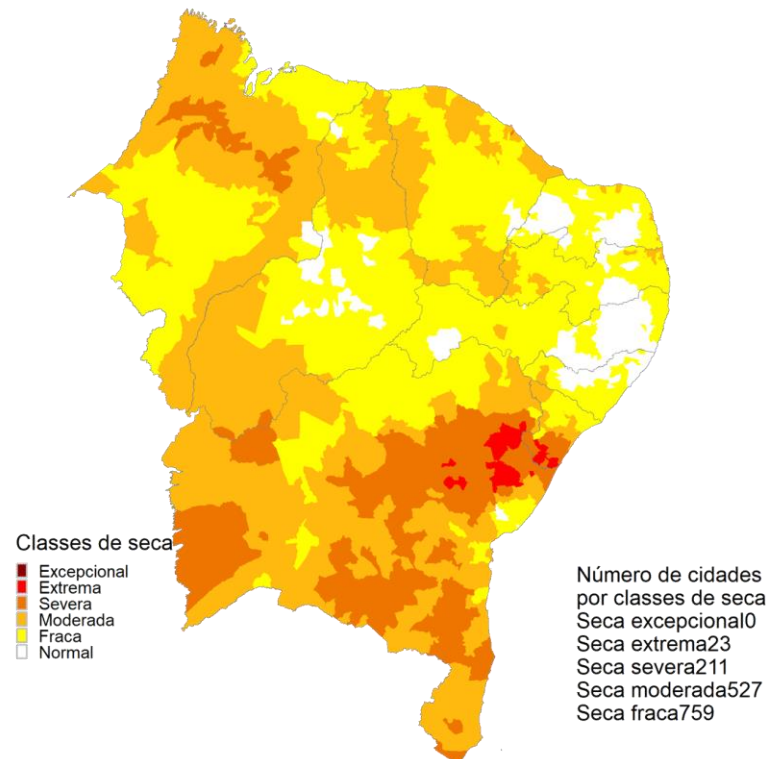
(SPI1 + VHI + AUS): NOVEMBRO/2023

IIS-3



novembro 2023
Índice Integrado de Seca (SPI3, VHI, US)
Dados: CPTEC/INPE - NOAA - NASA / Preparação: Cemaden/MCTI

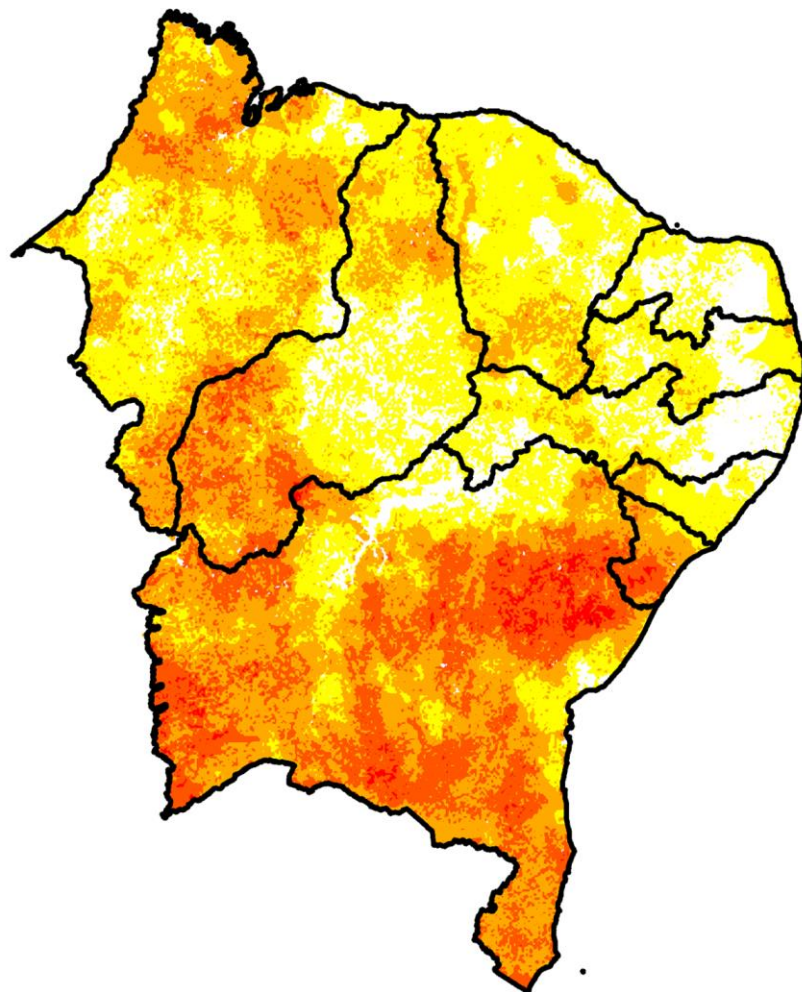
IIS-6



novembro 2023
Índice Integrado de Seca (SPI6, VHI, US)
Dados: CPTEC/INPE - NOAA - NASA / Preparação: Cemaden/MCTI

ÍNDICE INTEGRADO DE SECA - IIS

(SPI3 + VHI + AUS): DEZEMBRO/2023



**POPULAÇÃO
POTENCIALMENTE
AFETADA
(SECA EXTREMA/SEVERA)**

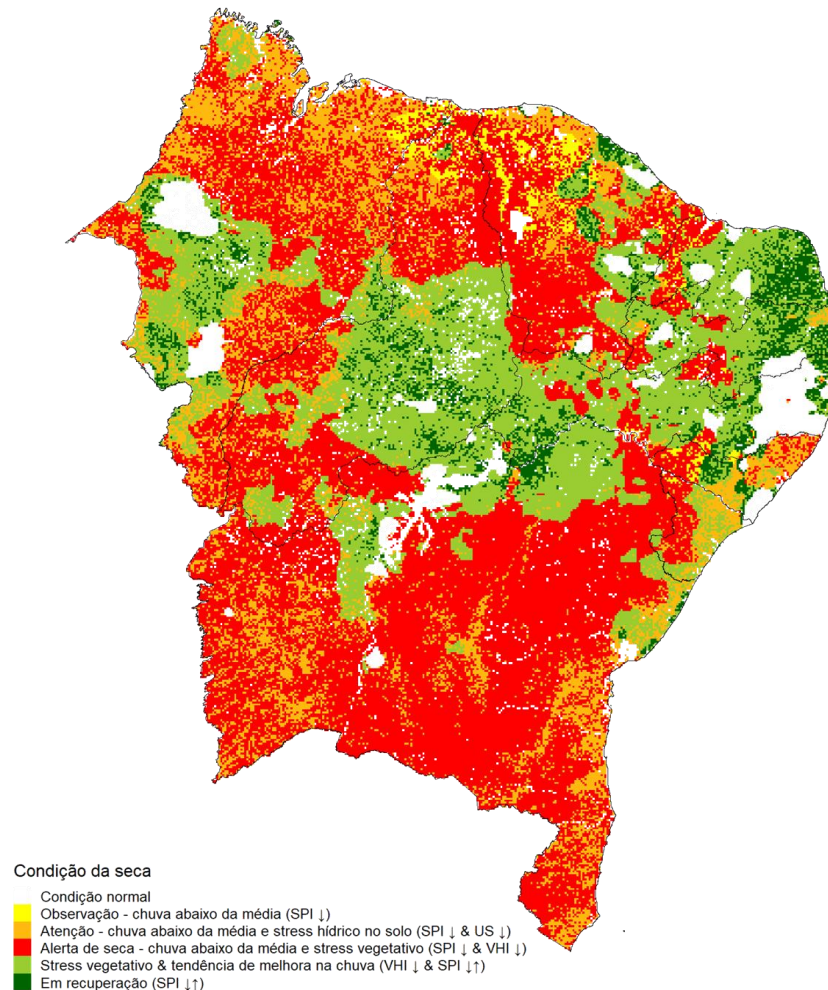
5.173.083

CLASSE DE SECA

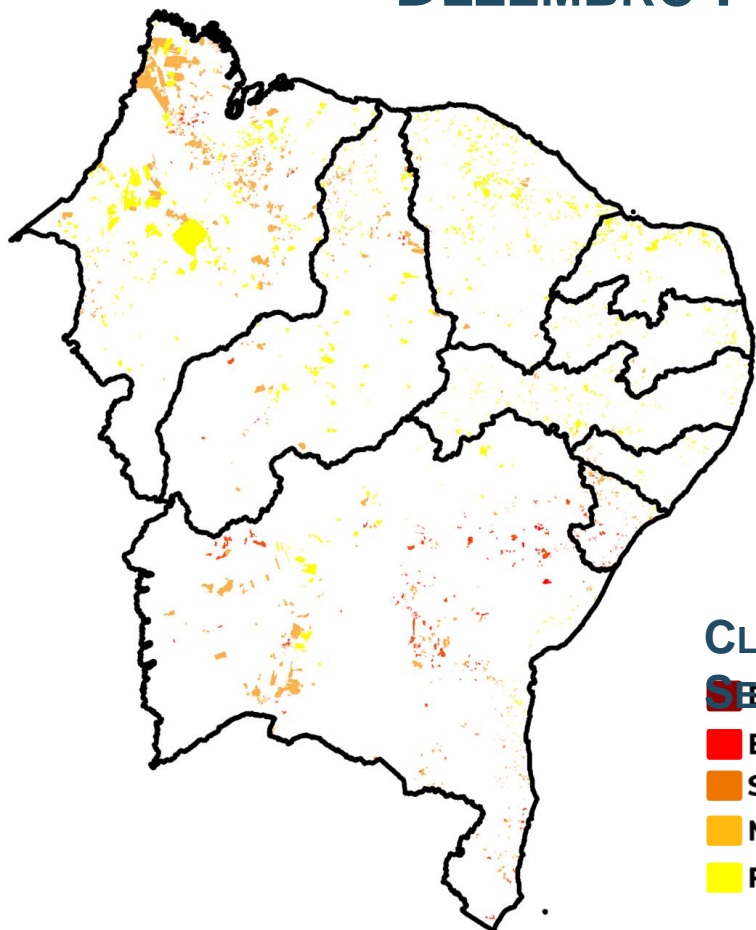
- Excepcional
- Extrema
- Severa
- Moderada
- Fraca

PROGRESSÃO DAS CONDIÇÕES DE SECA (PCS)

Propagação Incremental das Condições de Seca (PICS)
novembro 2023



ÍNDICE INTEGRADO DE SECA (IIS-01) EM PROJETOS DE ASSENTAMENTO: DEZEMBRO PARCIAL (ATÉ 11/12) 2023



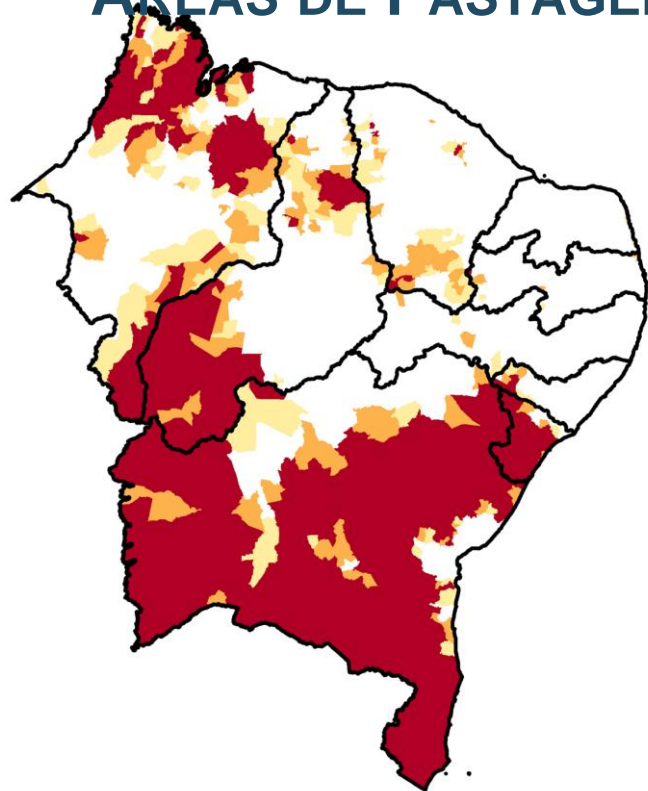
CLASSE DE SECA

- Excepcional
- Extrema
- Severa
- Moderada
- Fraca

NÚMERO DE FAMÍLIAS EM PROJETO DE ASSENTAMENTO POR CATEGORIA DE SECA

	Extrema	Severa	Moderada
AL			819
BA	736	10537	19972
CE		49	969
MA		2203	42035
PB			360
PE			925
PI		542	6468
RN			65
SE	158	2027	5018

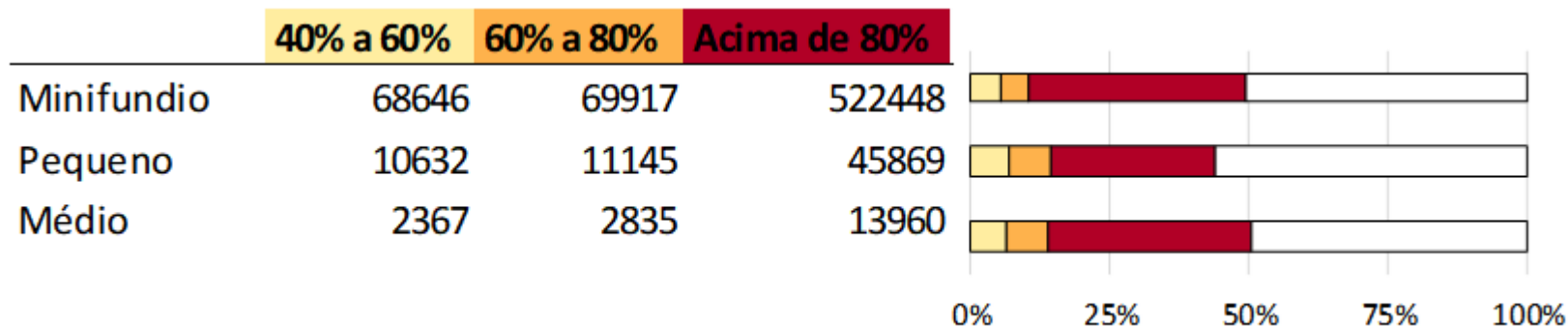
ÁREAS DE PASTAGENS E AGRÍCOLAS AFETADAS PELA SECA DEZ (PARCIAL - 11/12)/23



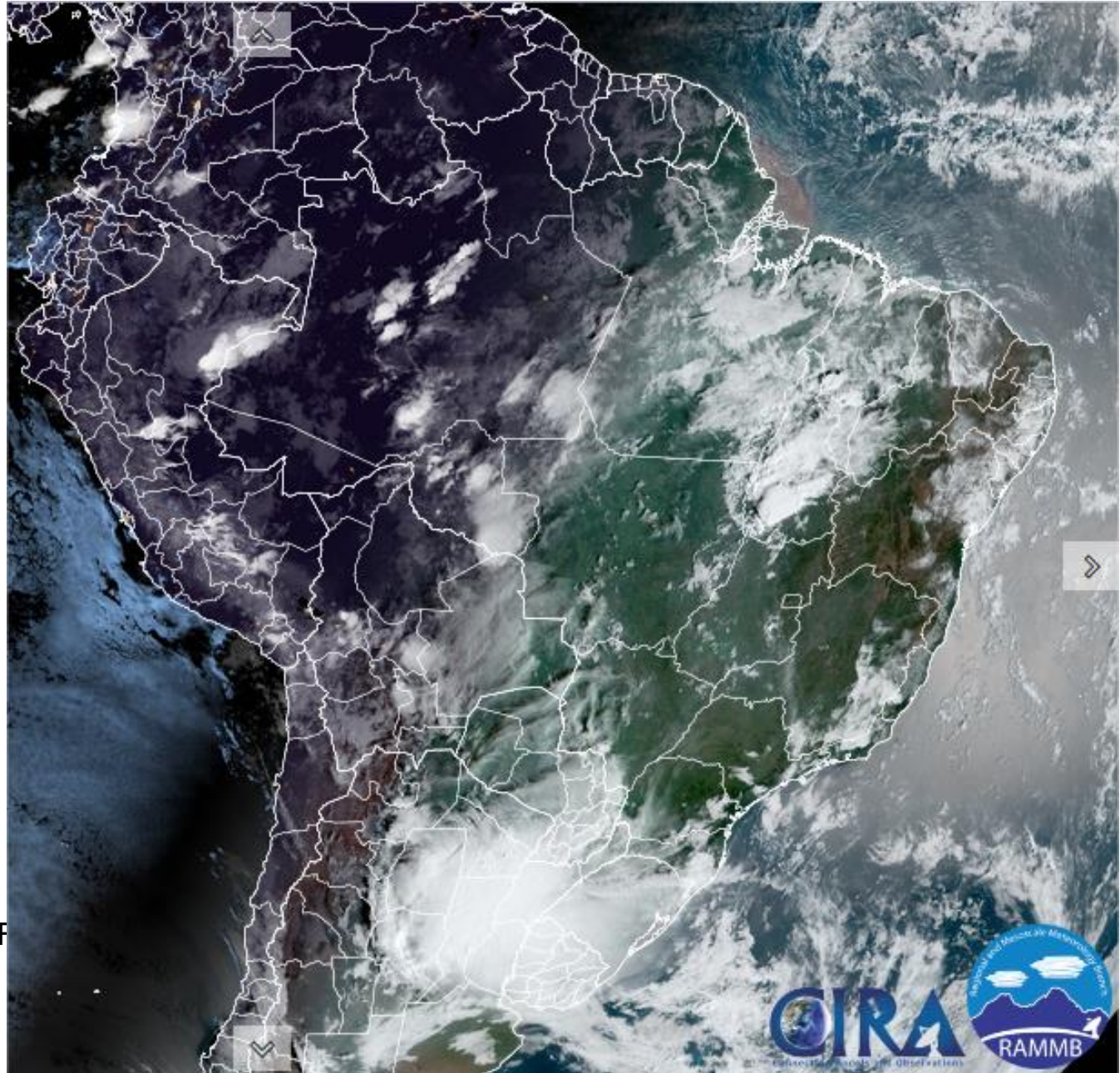
UF	40 a 60%	60 - 80%	> 80%
AL	2	2	4
BA	14	23	320
MA	31	29	70
PB	3	4	1
PE	3	2	
PI	16	19	35
RN	2		
SE	2	4	55

NE

Nordeste

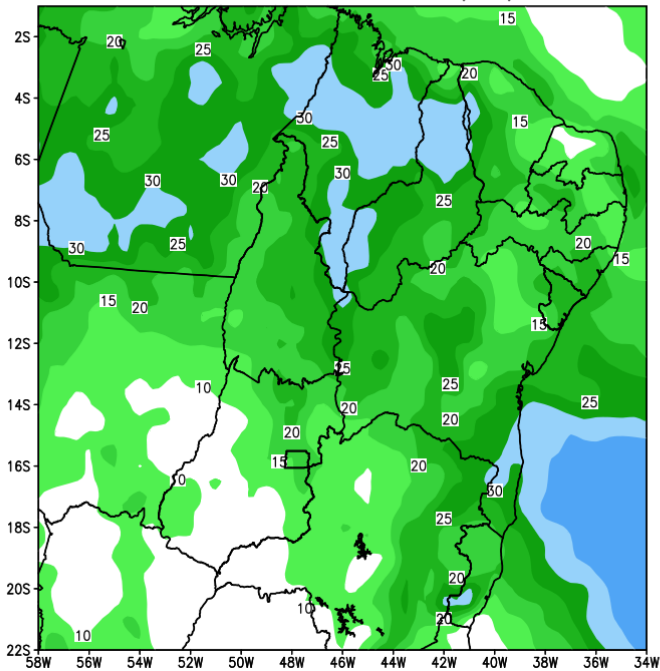


Situação meteorológica atual

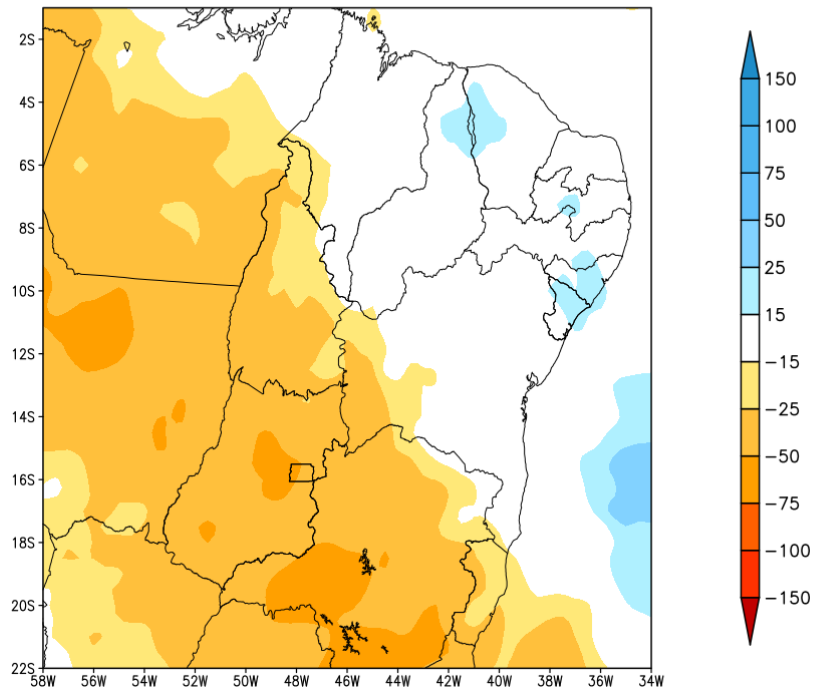


Previsão de chuva próximos 7 dias

GEFS / BRASIL_NE
Precipitacao acumulada 1aSem (mm)
Previsao das 00Z dia 14/12/2023



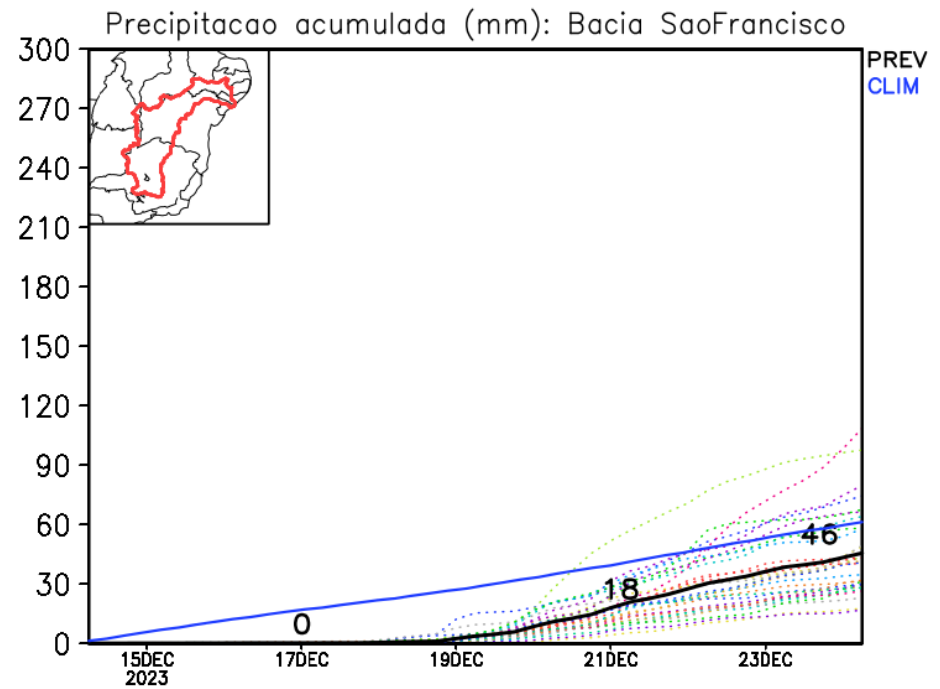
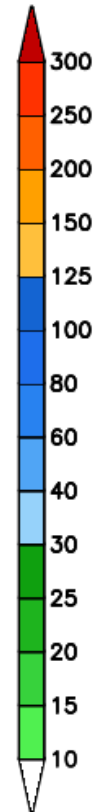
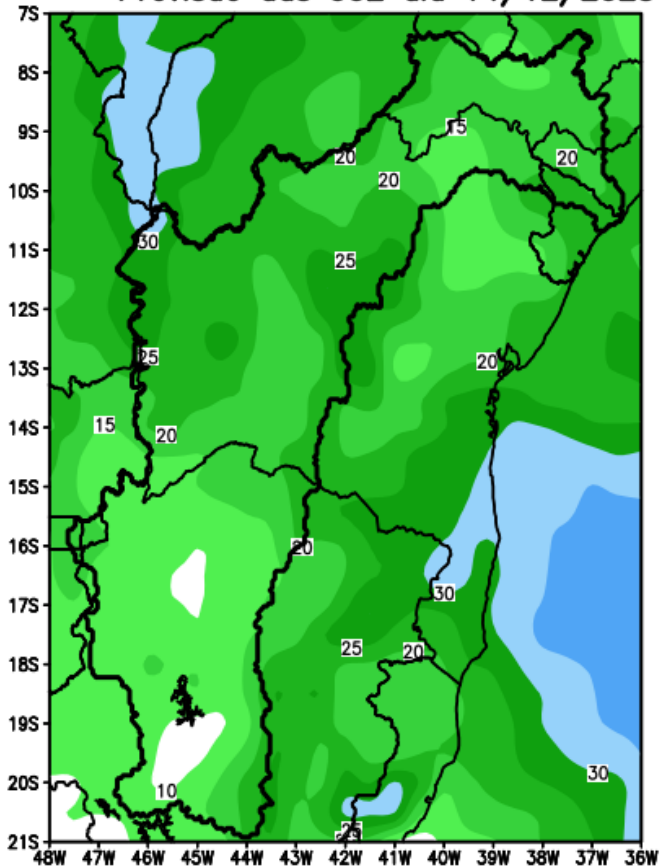
Anomalia de Precipitacao BR NE (mm)
Periodo: 2023121400 a 2023122100



Fonte: GEFS/NOAA

Bacia do rio São Francisco

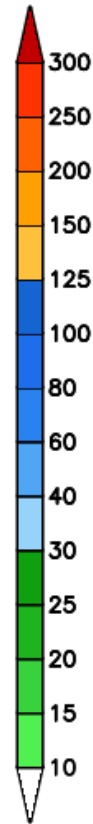
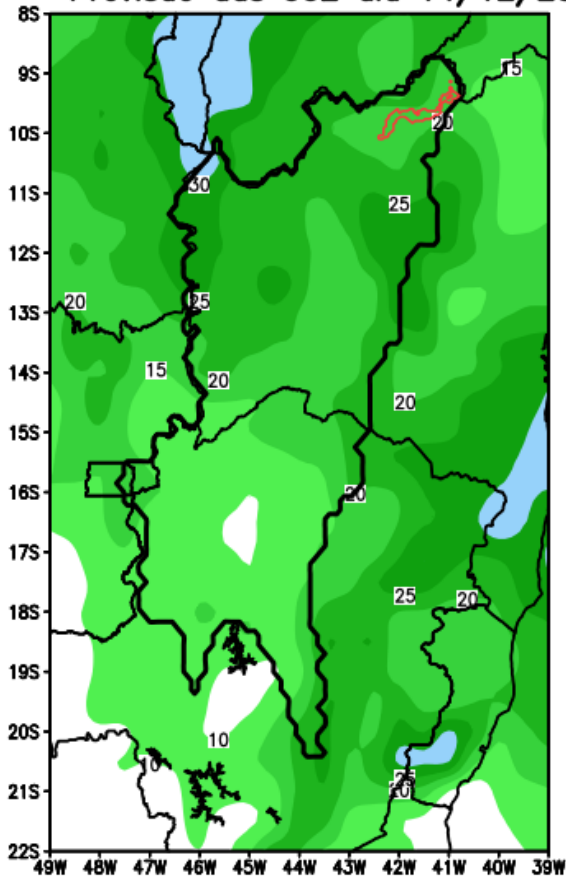
GEFS / Bacia do Rio Sao Francisco
Precipitacao acumulada em 7 dias (mm)
Previsao das 00Z dia 14/12/2023



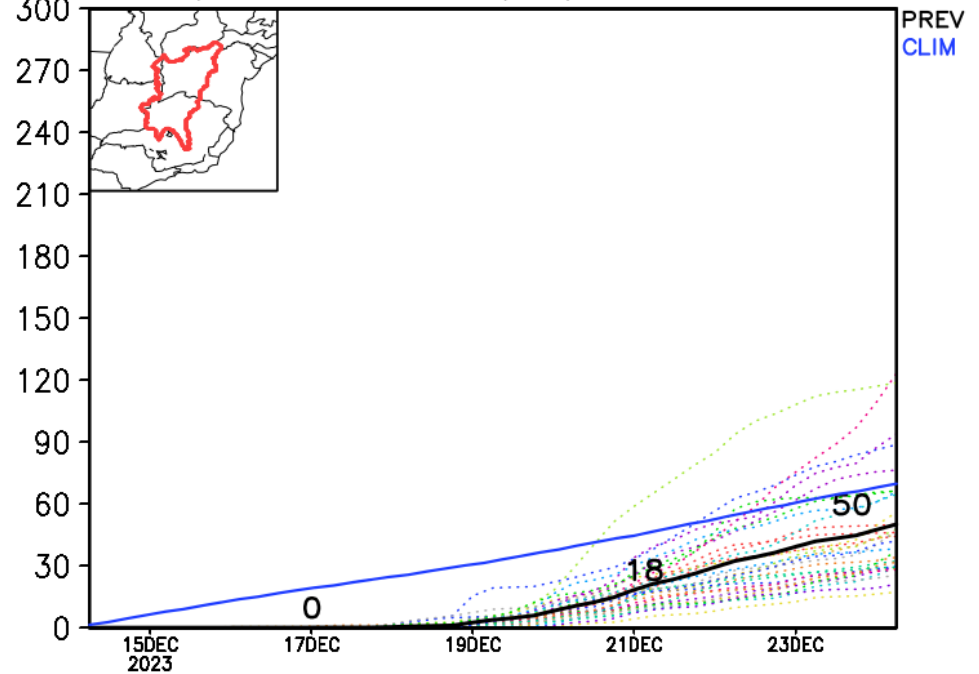
Bacia de Sobradinho

GEFS / Sobradinho

Precipitacao acumulada em 7 dias (mm)
Previsao das 00Z dia 14/12/2023

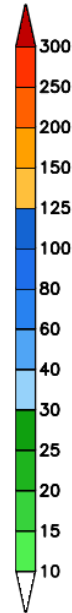
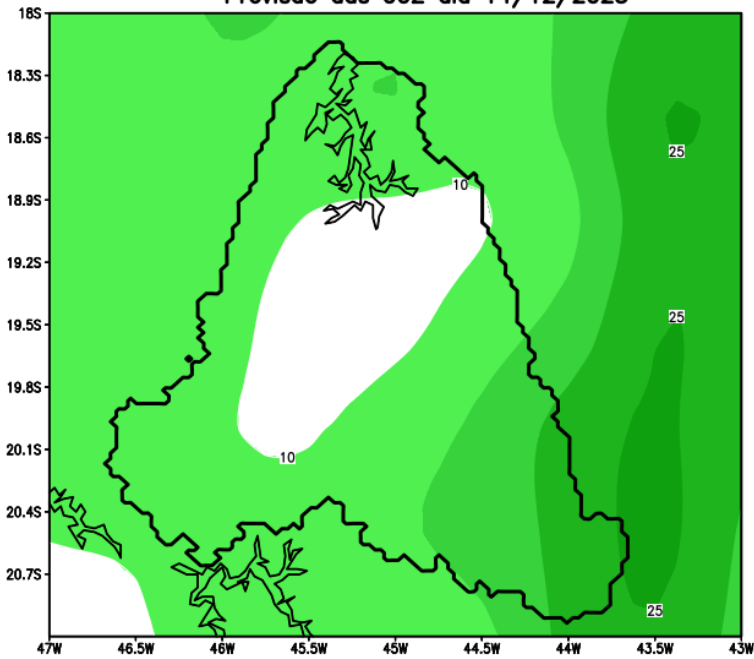


Precipitacao acumulada (mm): Bacia Sobradinho

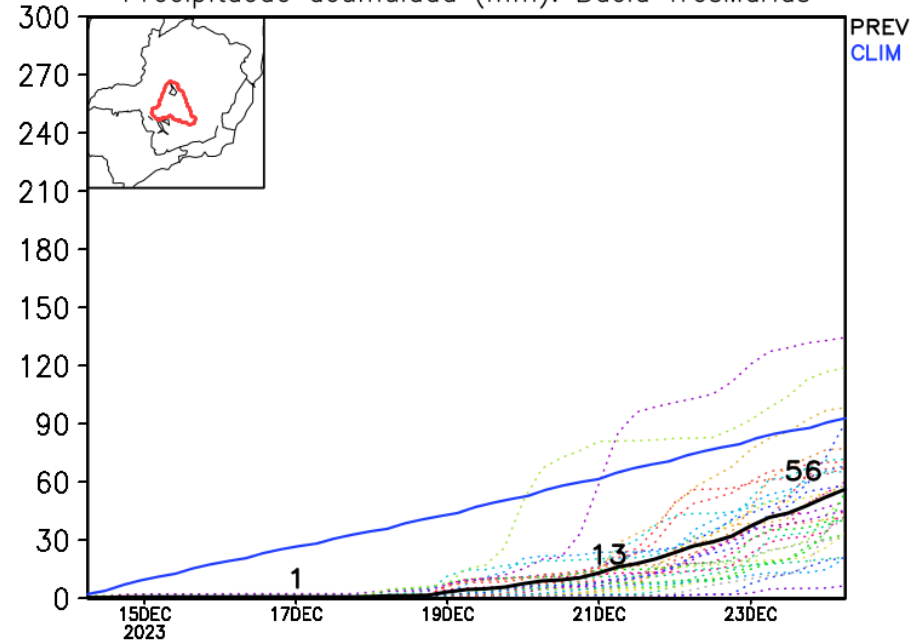


Bacia de Três Marias

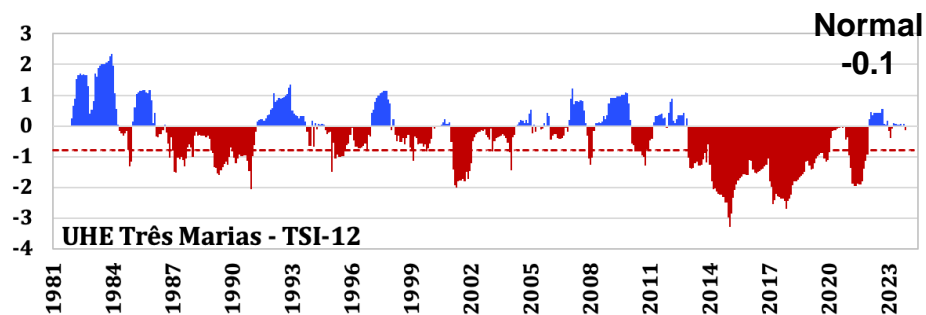
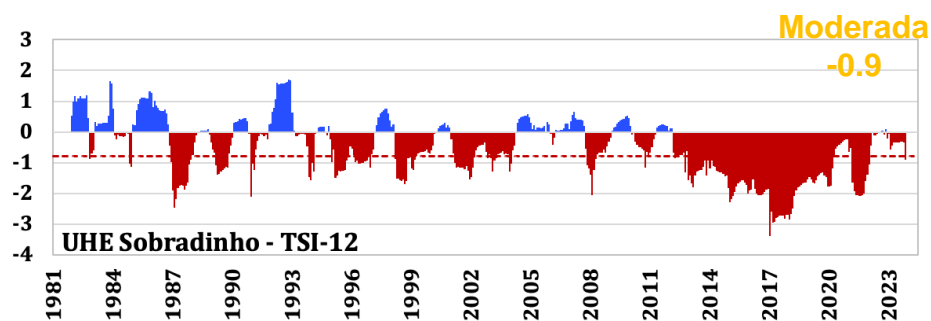
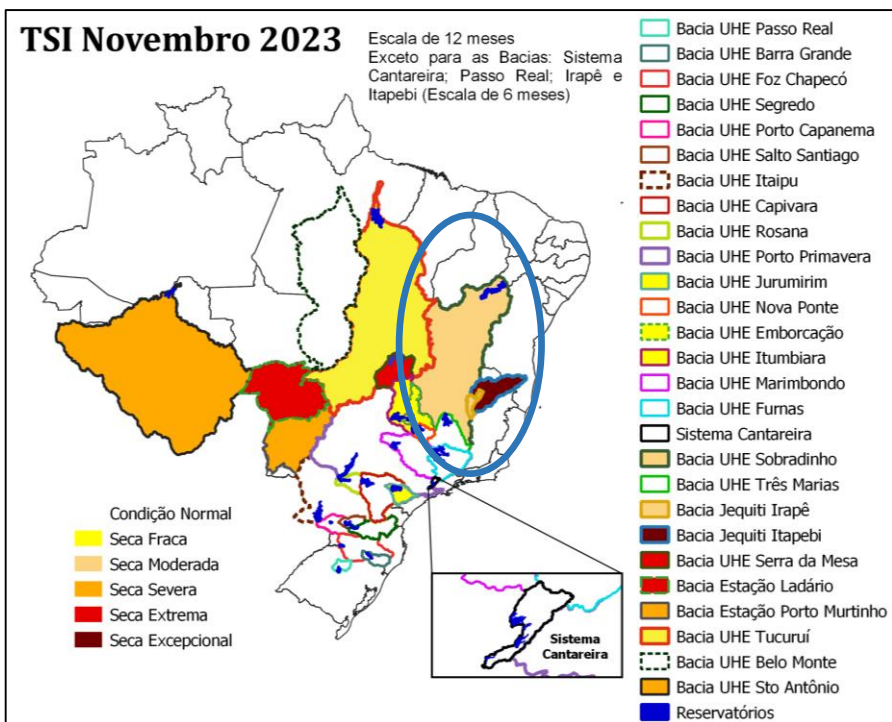
GEFS / Tres Marias
Precipitacao acumulada em 7 dias (mm)
Previsao das 00Z dia 14/12/2023



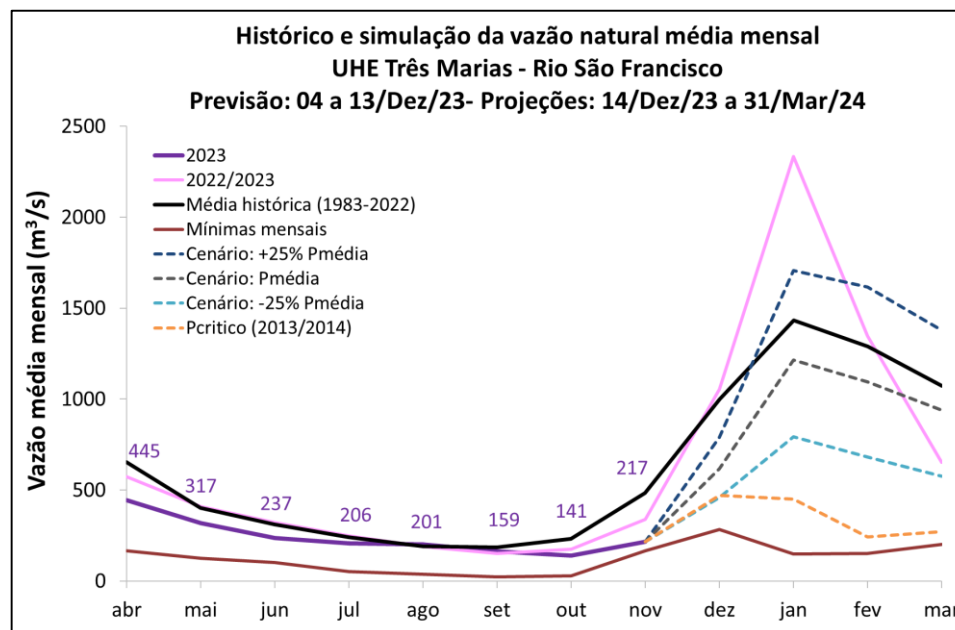
Precipitacao acumulada (mm): Bacia TresMarias



Índice Padronizado Bivariado (Chuva-Vazão) - TSI (Two-variate Standardized Index – Escala de 12 meses)



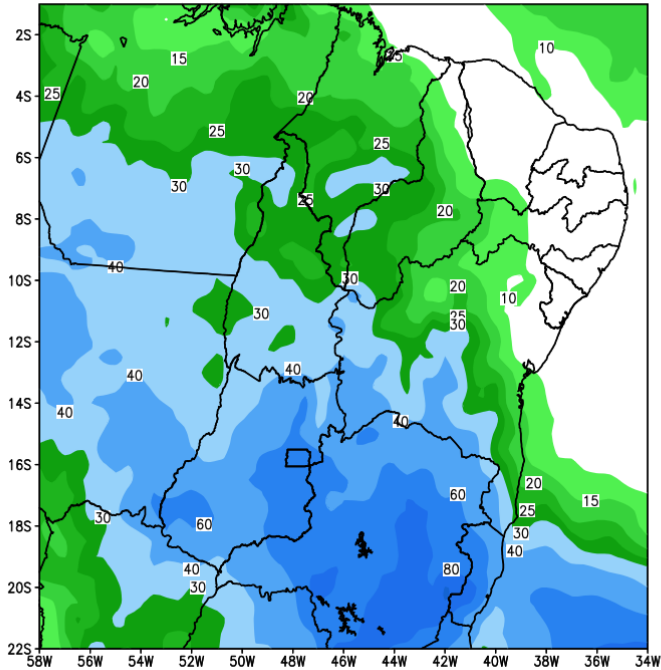
Projeções hidrológicas UHE Três Marias Trimestre DJF



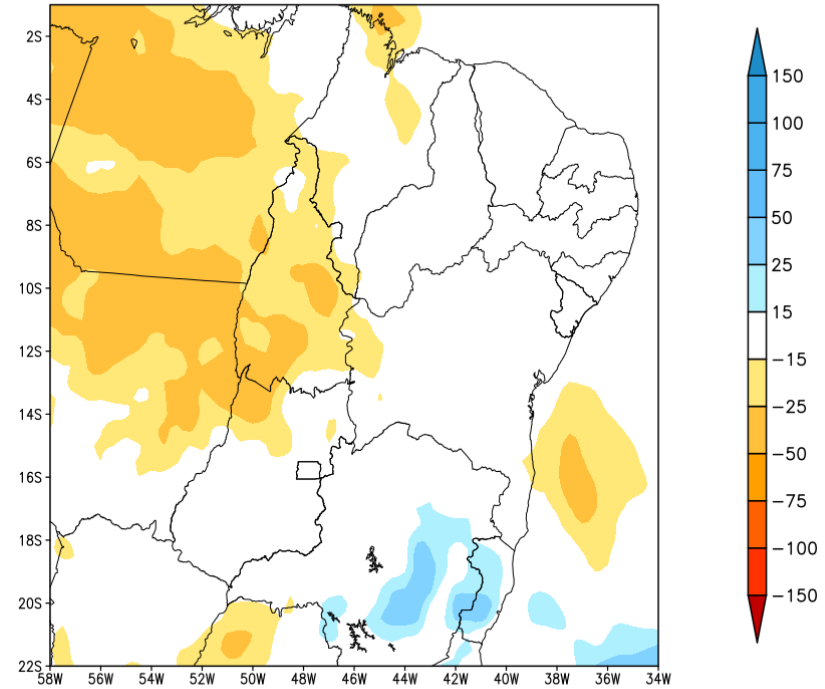
Bacias Afluentes às UHEs:	Condições Atuais – Novembro/23			Projeções – DJF/23
	Precip (% MLT)	Vazão (% MLT)	Volume % (30/Nov/23)	Cenários: P25% Abaixo/Acima da Média Vazão (% MLT)
Três Marias	63%	45%	51%	52% - 110%

Tendência para a 2a semana

GEFS / BRASIL_NE
Precipitacao acumulada 2aSem (mm)
Previsao das 00Z dia 14/12/2023

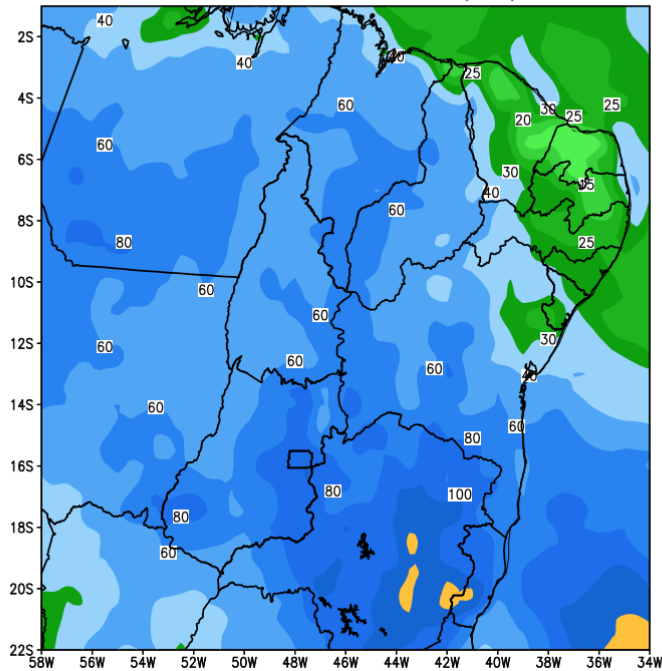


Anomalia de Precipitacao BR_NE (mm)
Periodo: 2023122200 a 2023122800

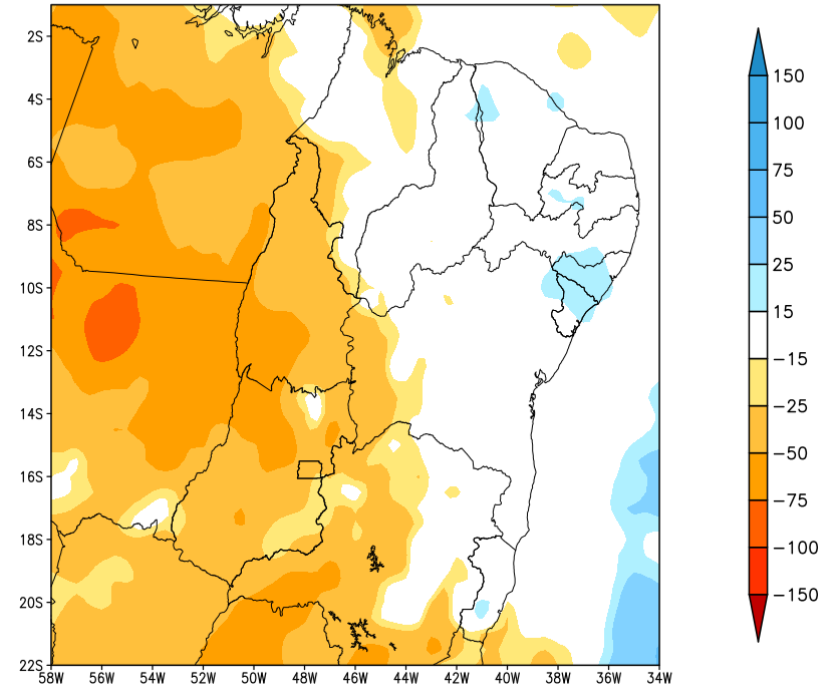


Tendência para as duas próximas semanas

GEFS / BRASIL_NE
Precipitacao acumulada 14dias (mm)
Previsao das 00Z dia 14/12/2023

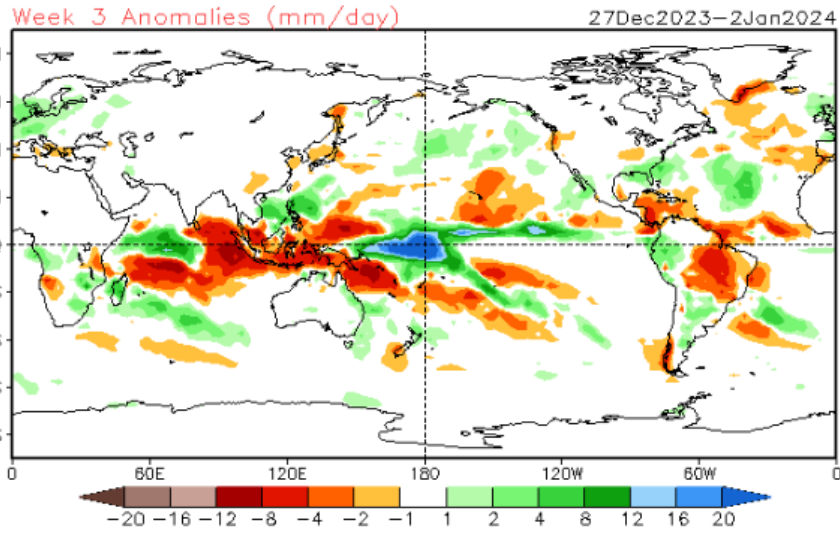


Anomalia de Precipitacao BR_NE (mm)
Periodo: 2023121400 a 2023122800

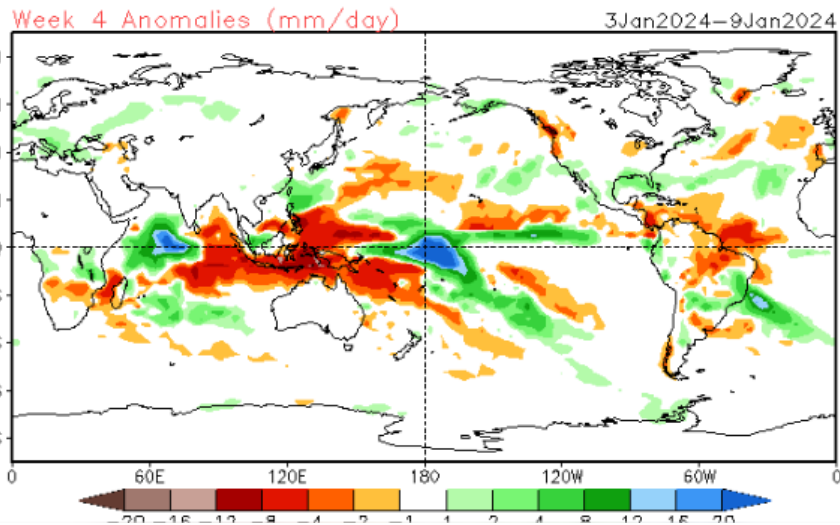
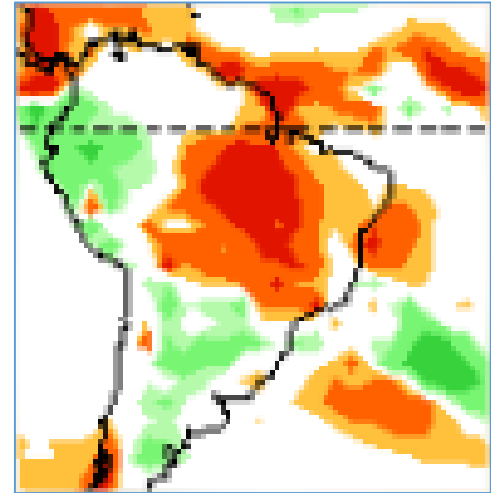


Modelo GFS/NOAA

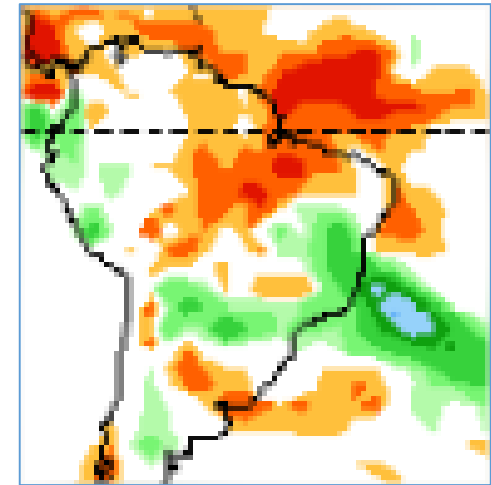
Tendência 3a e 4a semanas



2712-02/01

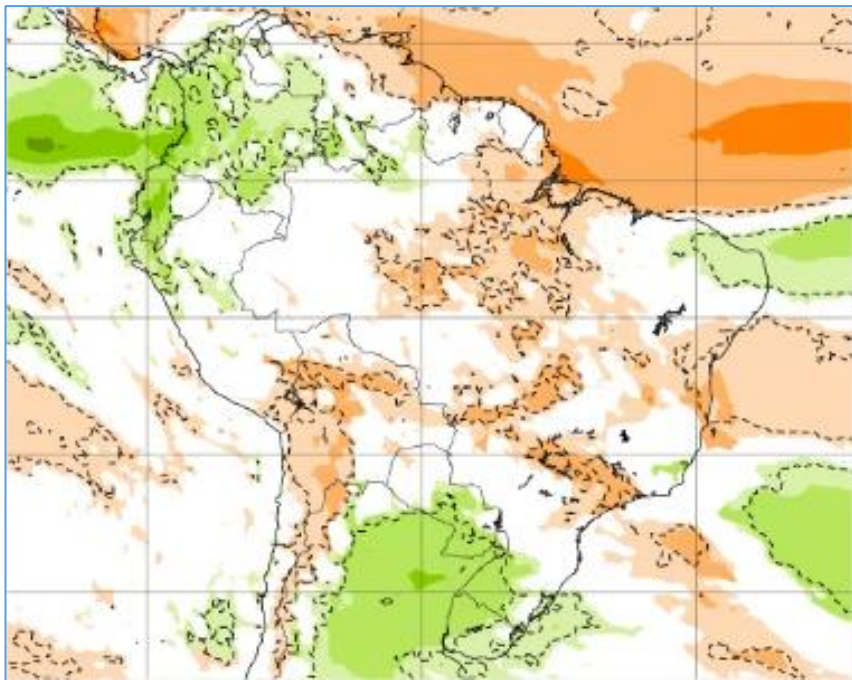


03-09/01

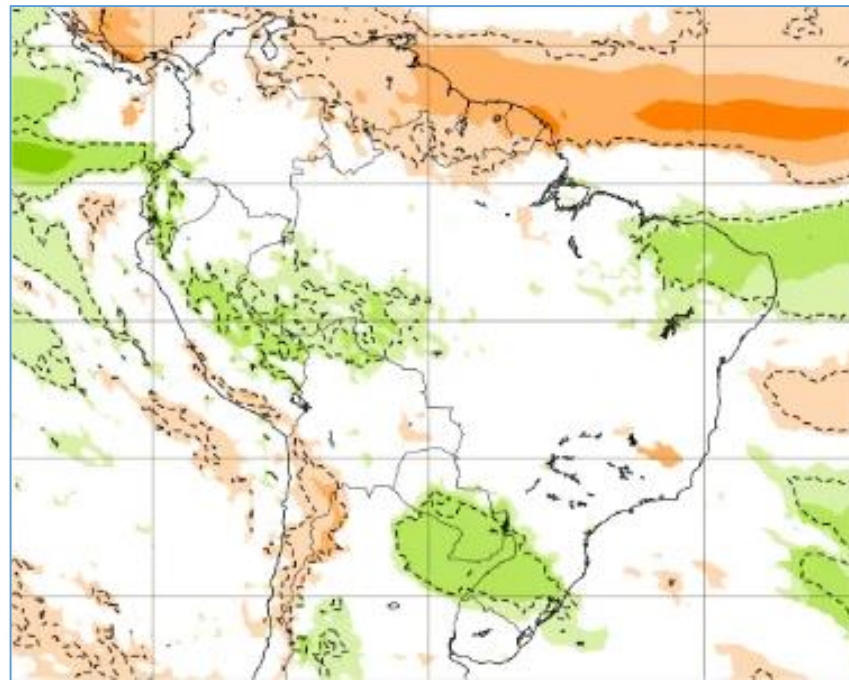


Tendência para 3ª e 4ª semanas

25-01/01

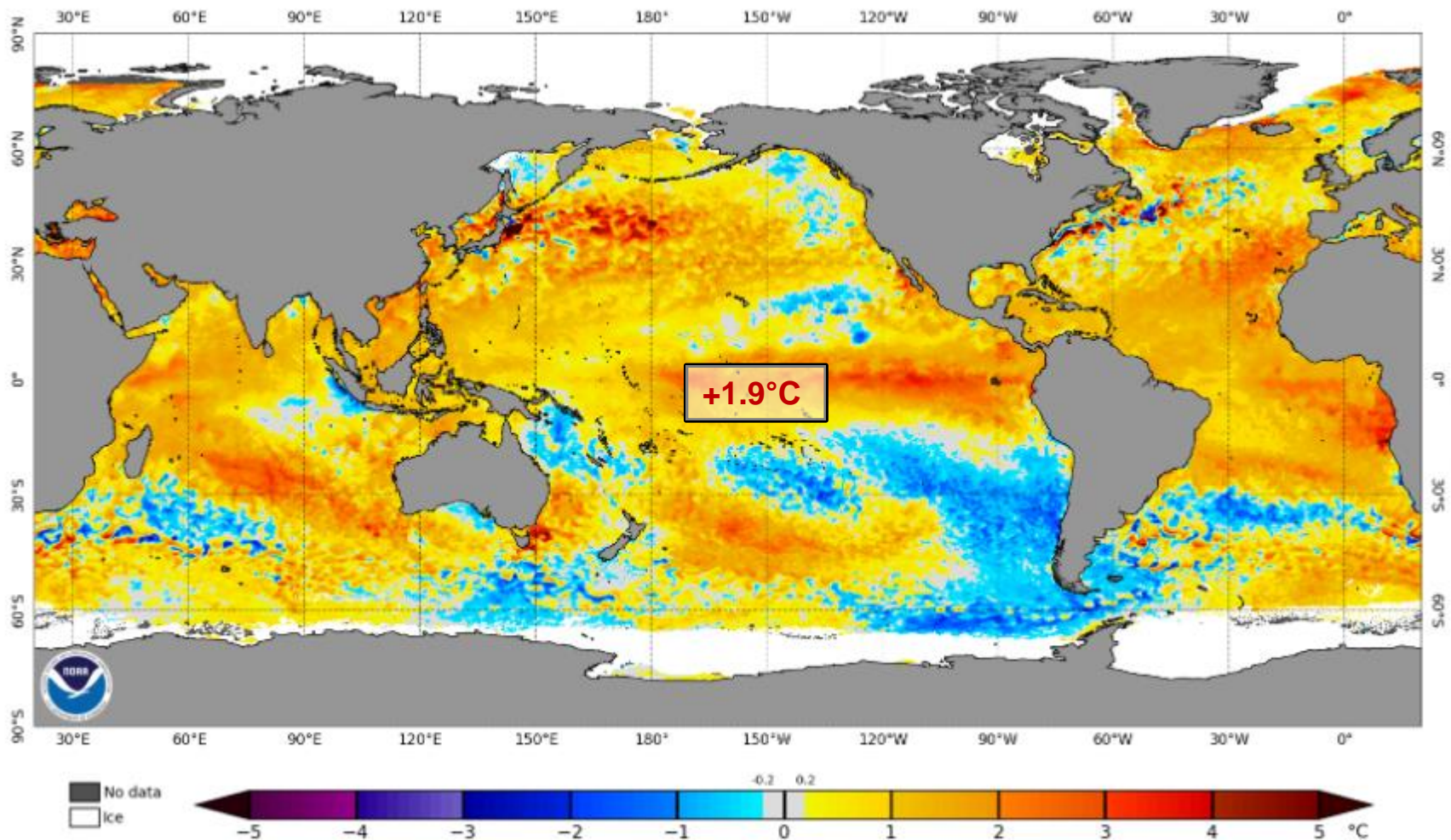


01/08/12



Status Atual: **El Niño**

NOAA Coral Reef Watch Daily 5km SST Anomalies (v3.1) 11 Dec 2023



Previsão do “ENSO”

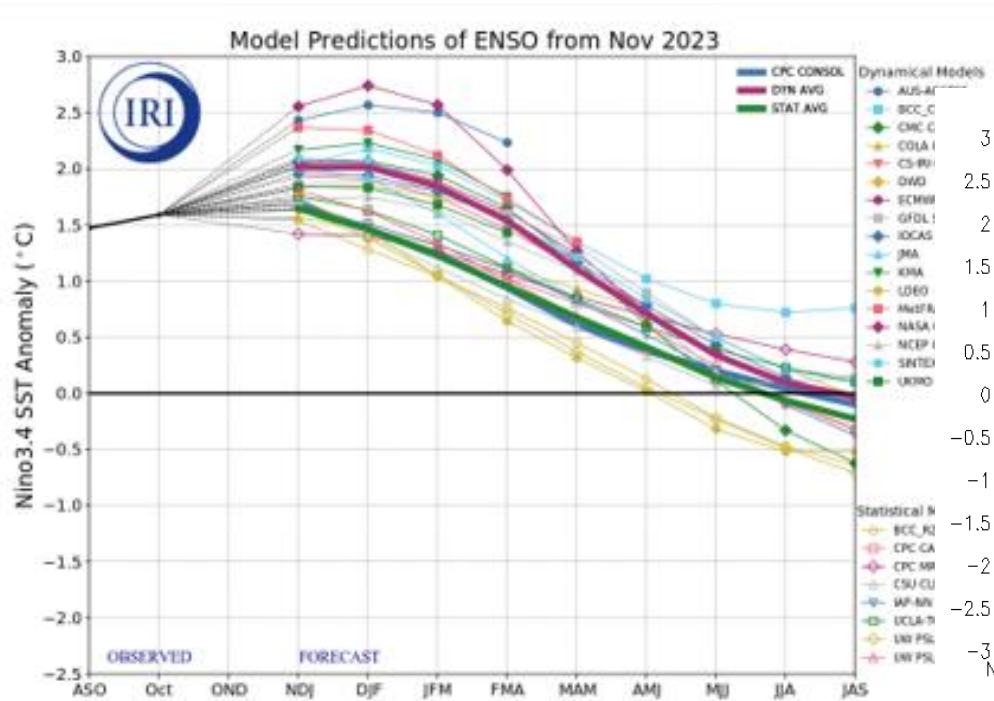
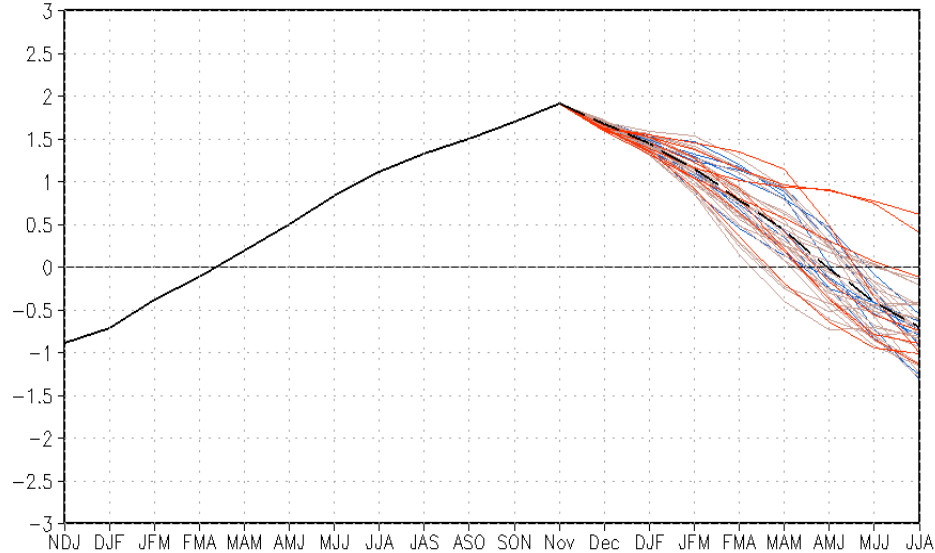


Figure provided by the International Research Institute (IRI) for Climate and Society (updated 20 November 2023).

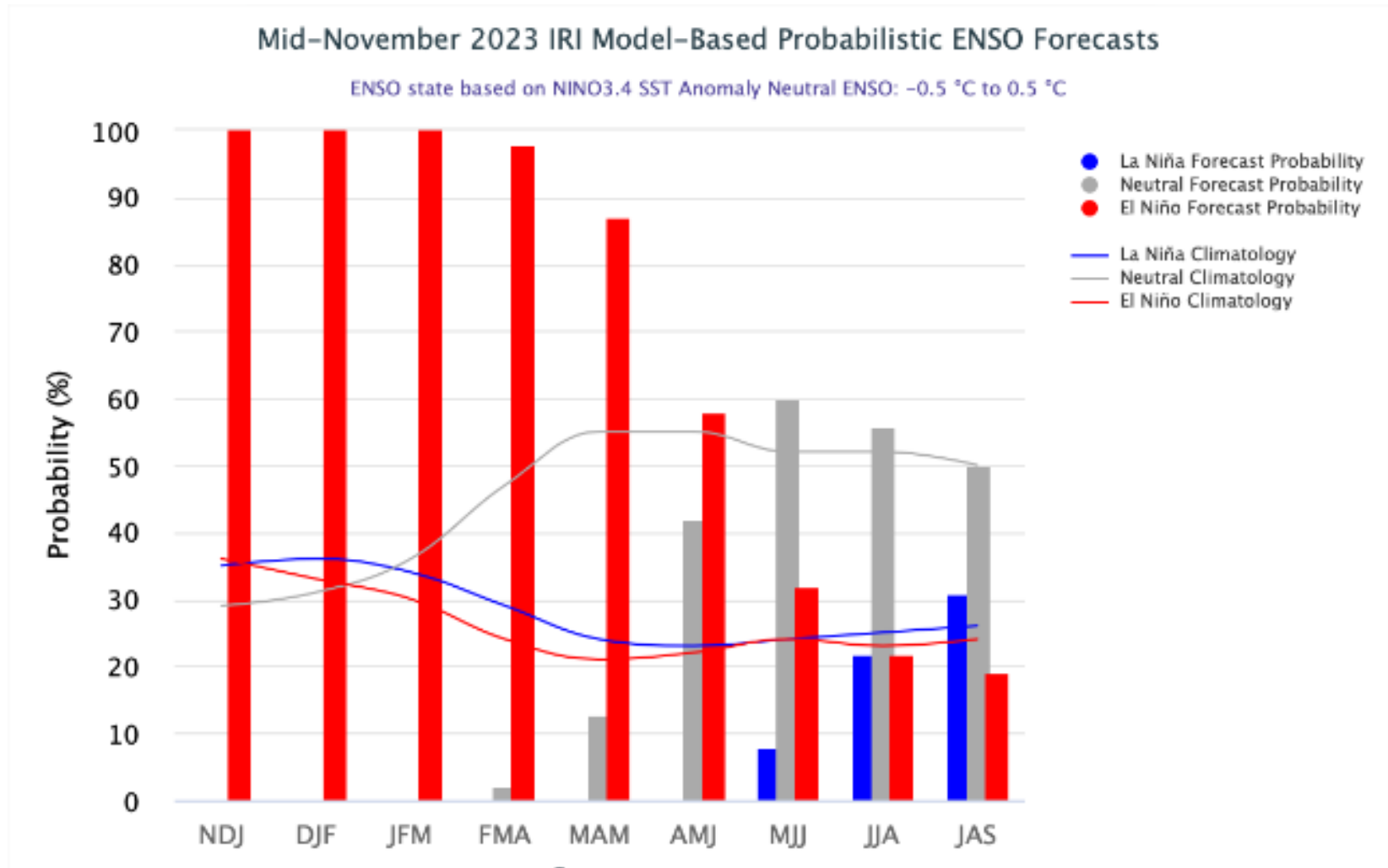
CFSv2 forecast Niño3.4 SST anomalies (K) (PDF corrected)



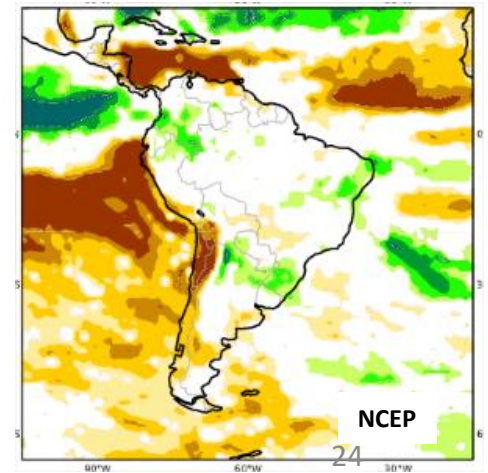
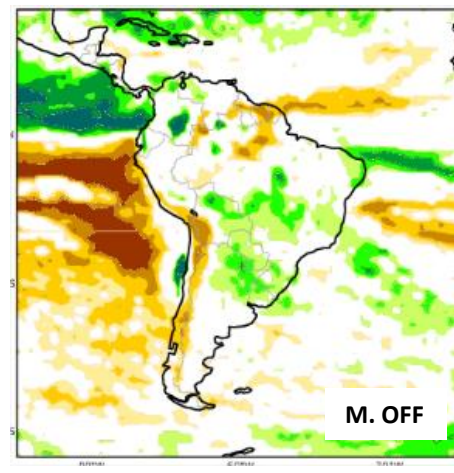
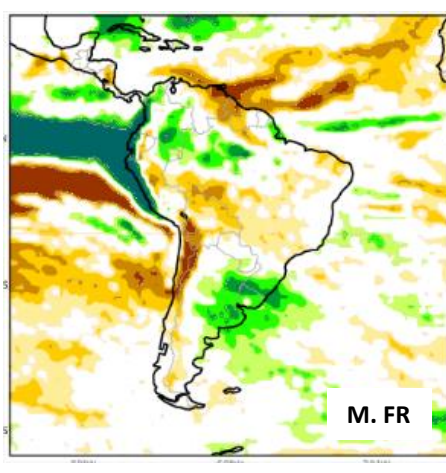
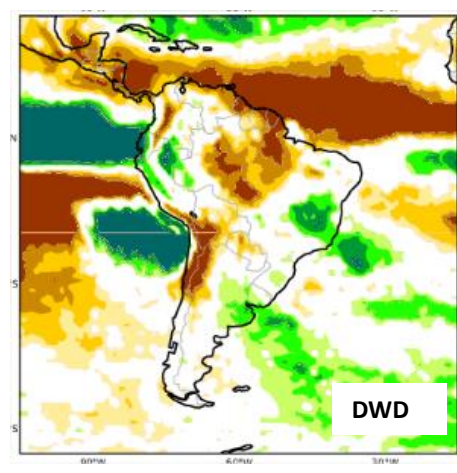
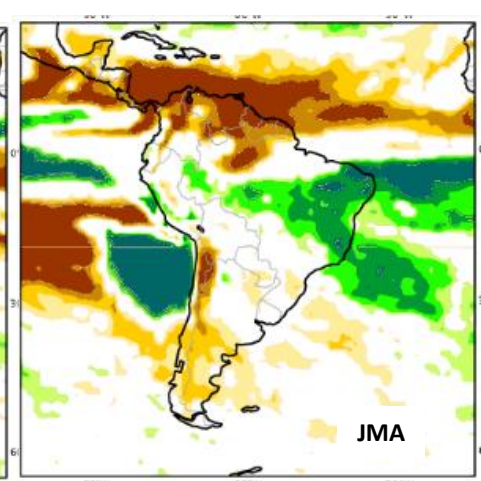
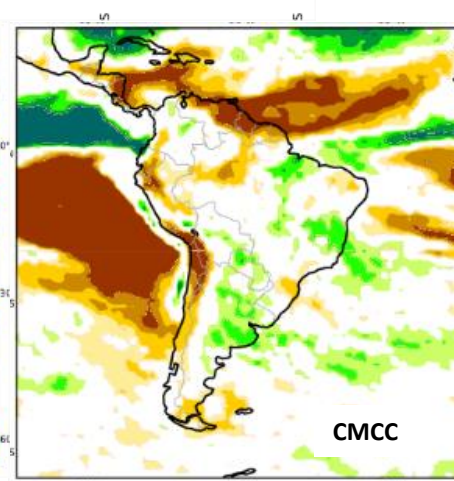
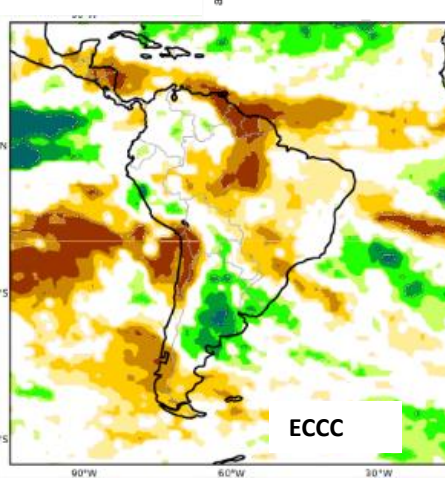
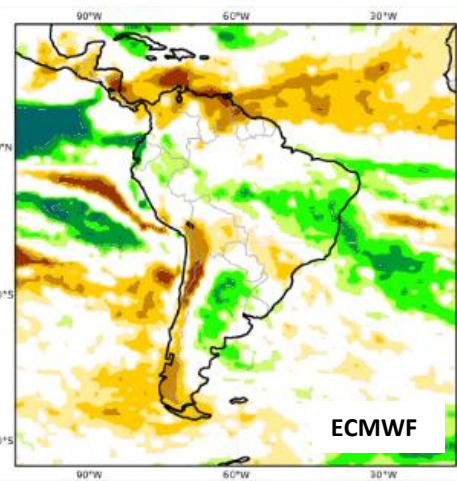
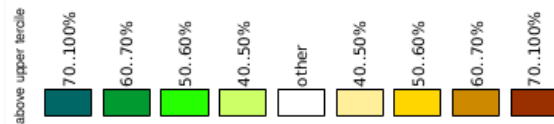
— Latest 8 forecast members
 — Earliest 8 forecast members
 — Other forecast members
 — Forecast ensemble mean
 — NCEI Olv2.1 daily analysis
 (Climatology base period: 1991–2020)

Atualizado 11 de dezembro

Previsão do “ENSO”

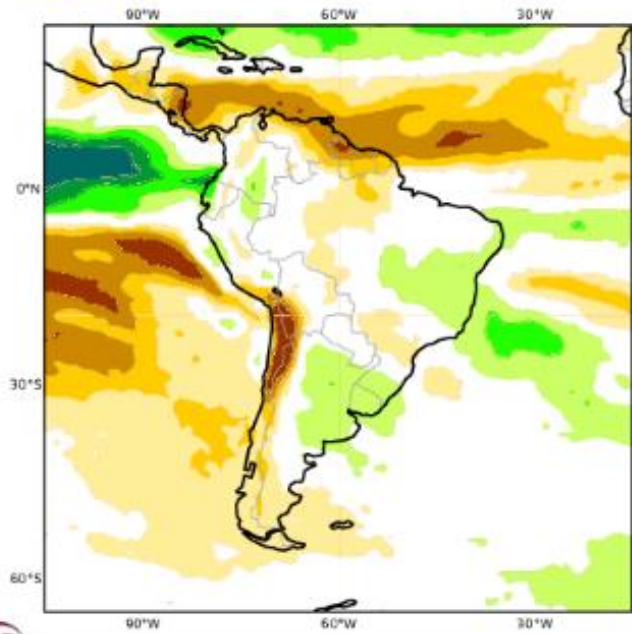


Previsão Sazonal de Chuva JFM

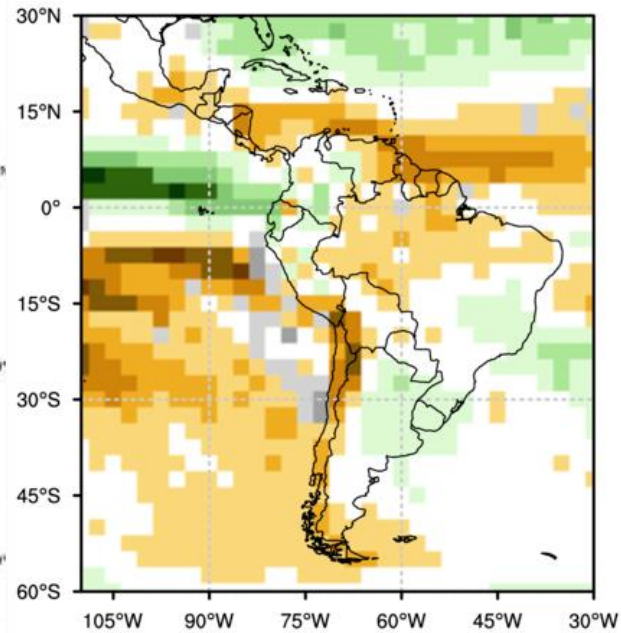


Previsão Sazonal de Chuva Multi-Modelo para JFM

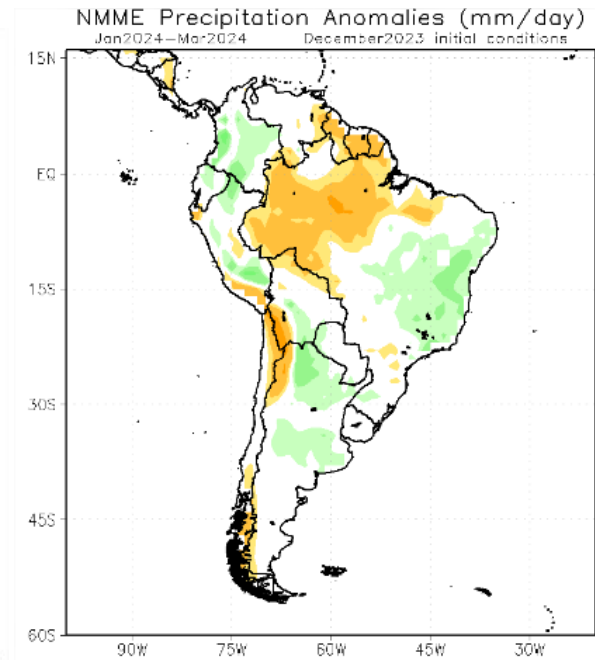
C3S multi-system seasonal forecast
Prob(most likely category of precipitation)
Nominal forecast start: 01/12/23
Unweighted mean



Modelos Europeus

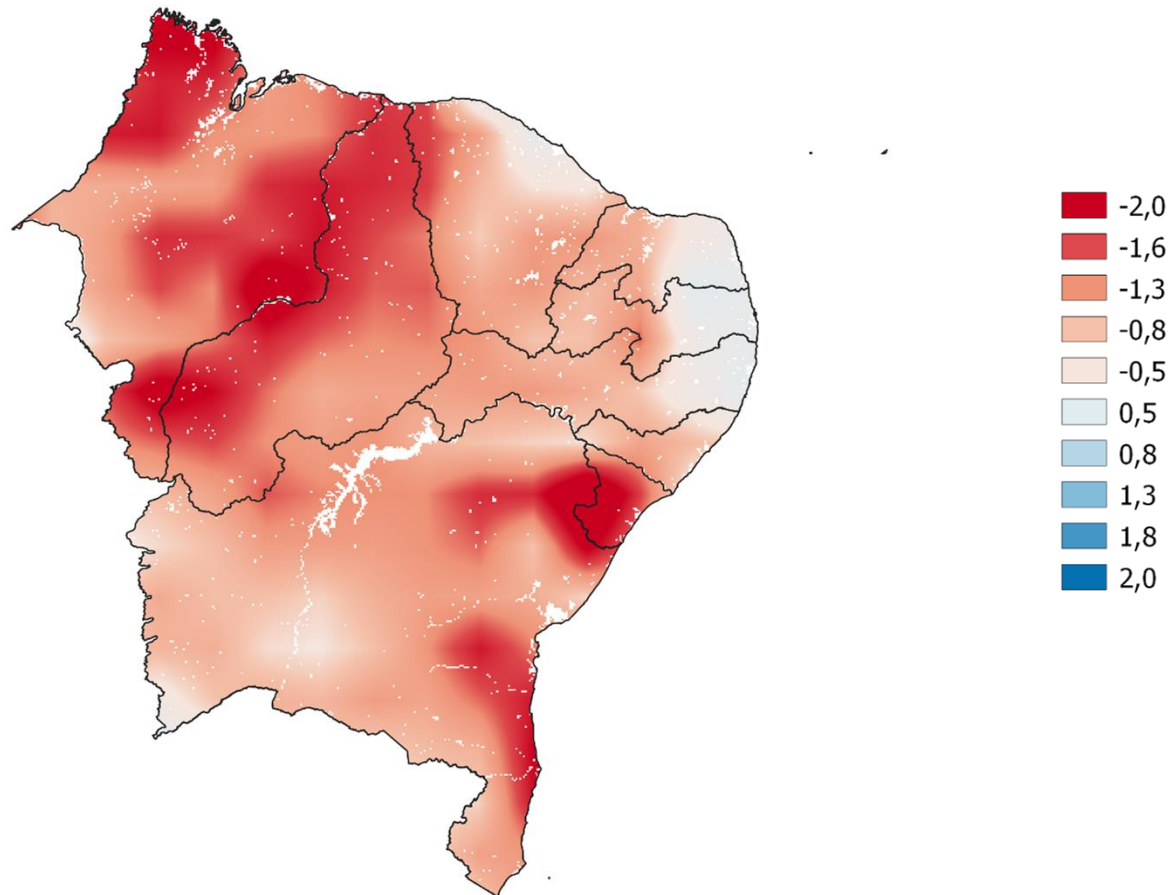


Modelos da Organização Meteorológica Mundial

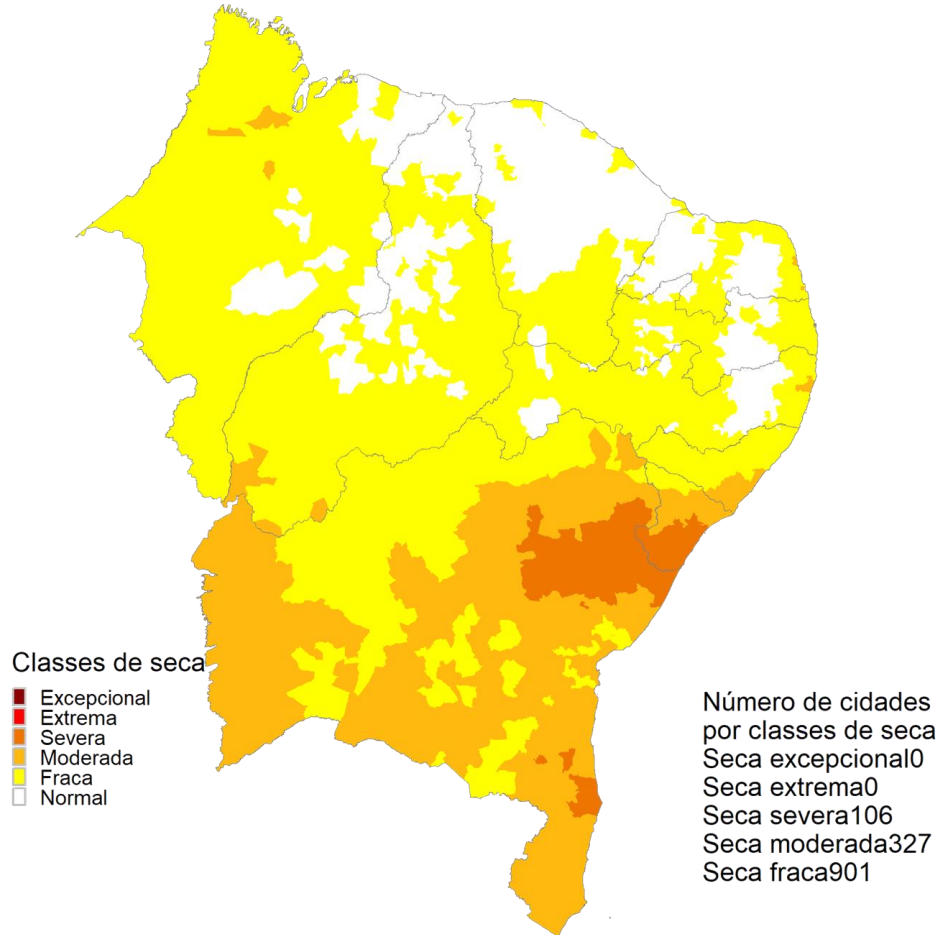


Modelos Americanos

SPI 03 Previsto Dezembro

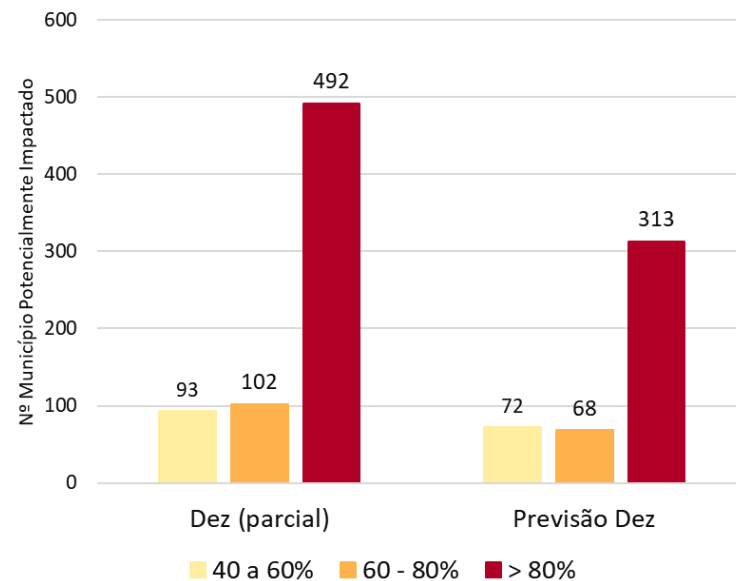
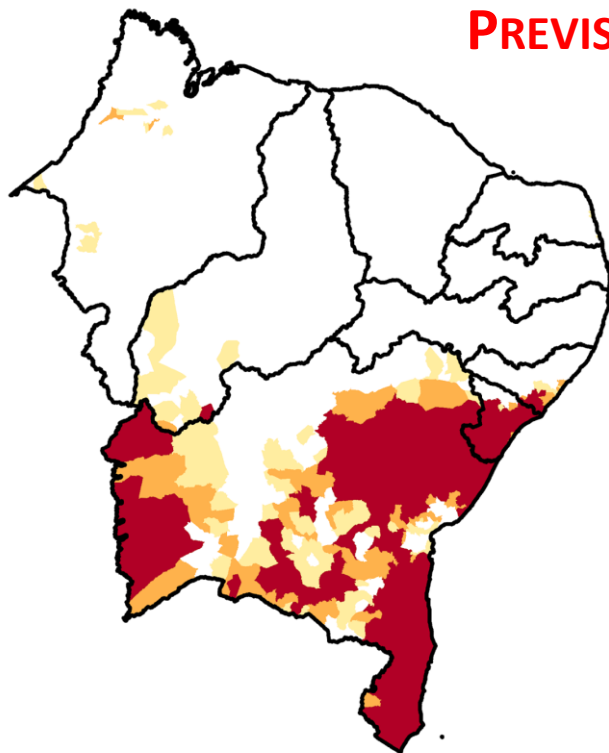


IIS-3 PREVISTO DEZEMBRO 2023

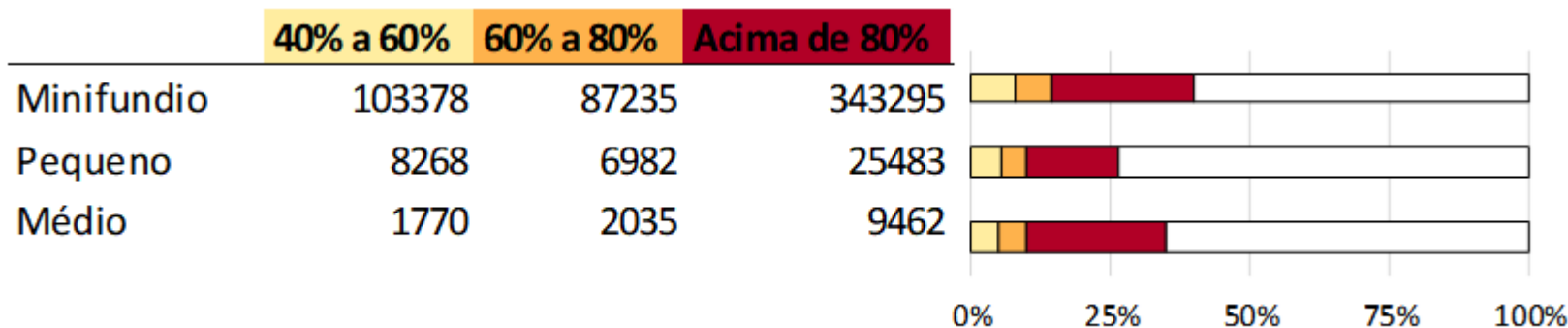


ÁREAS DE PASTAGENS E AGRÍCOLAS AFETADAS PELA SECA

PREVISÃO DEZEMBRO/23

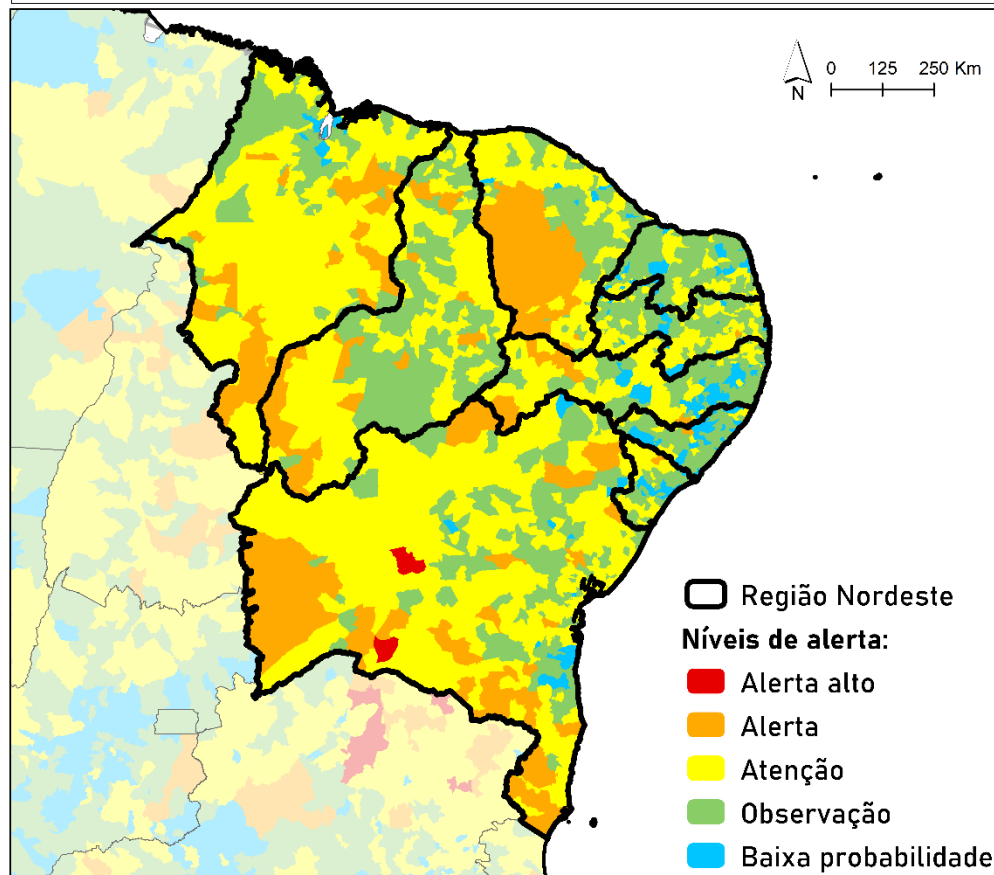


Nordeste

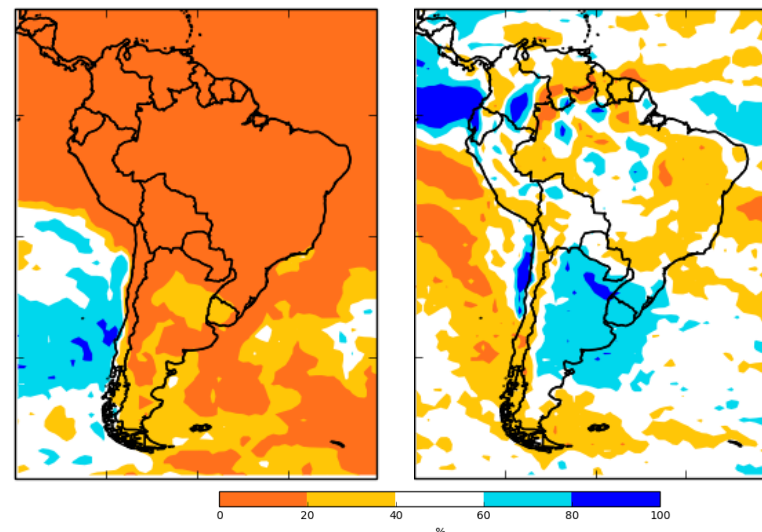


Previsão de Probabilidade de Fogo (DFJ)

Previsão da Probabilidade de Fogo para a região Nordeste para o período de Dezembro (2023) e Janeiro e Fevereiro de 2024



GloSea6 / MetOffice



Resultados dos níveis de alerta para municípios do nordeste:

Nível de Alerta	Número de municípios	Área (km ²)
Alerta alto	2	5,873
Alerta	139	283,772
Atenção	723	798,038
Observação	748	419,899
Baixa probabilidade	182	44,593