

Monitoramento da situação da seca na bacia do rio Paranapanema

NOVEMBRO/2023



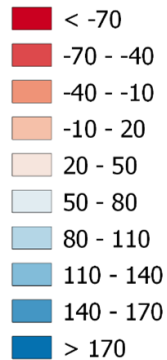
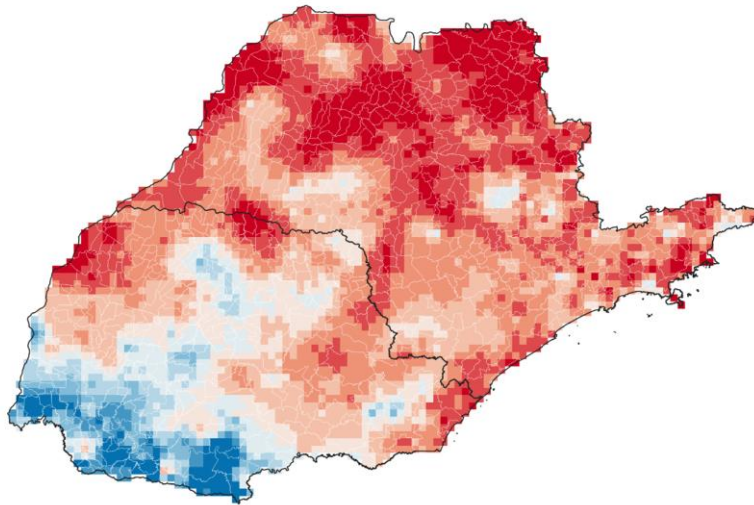
MINISTÉRIO DA
CIÊNCIA, TECNOLOGIA
E INOVAÇÕES



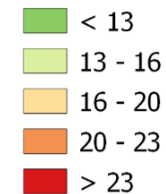
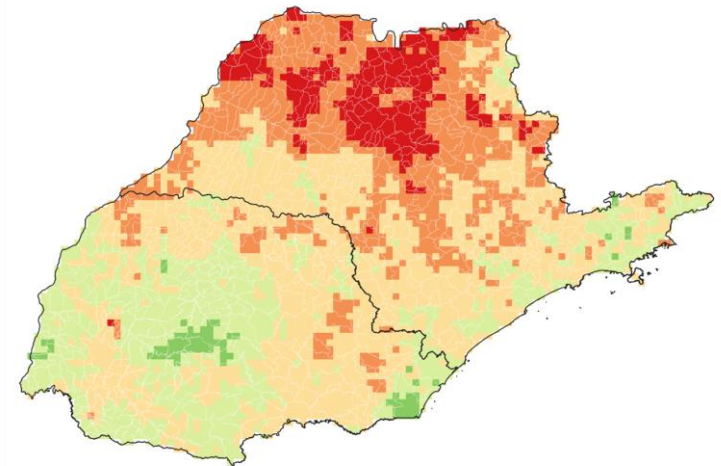


PRECIPITAÇÃO: NOVEMBRO 2023

Anomalia (mm)

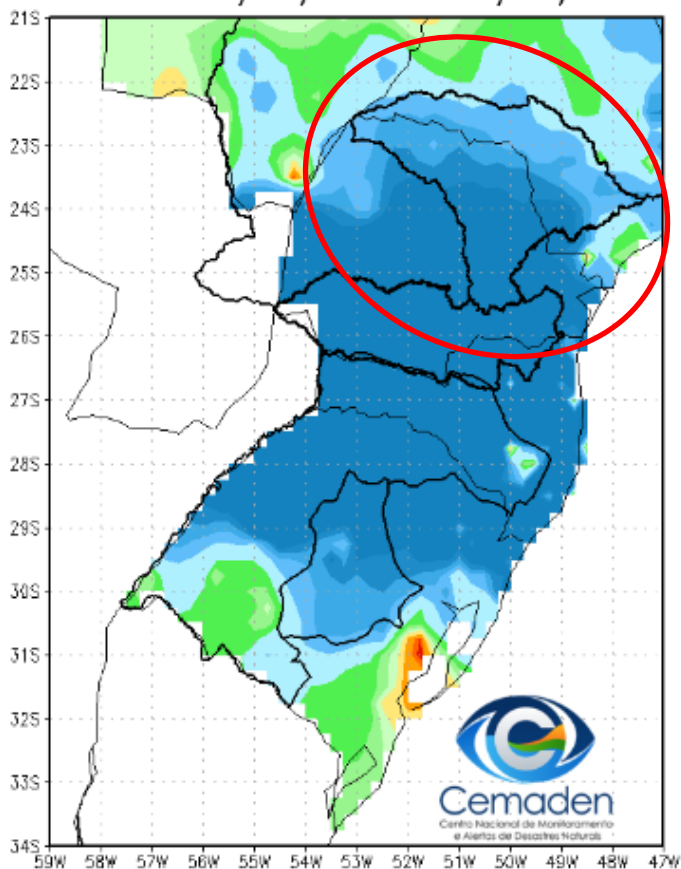


Total de dias sem chuva

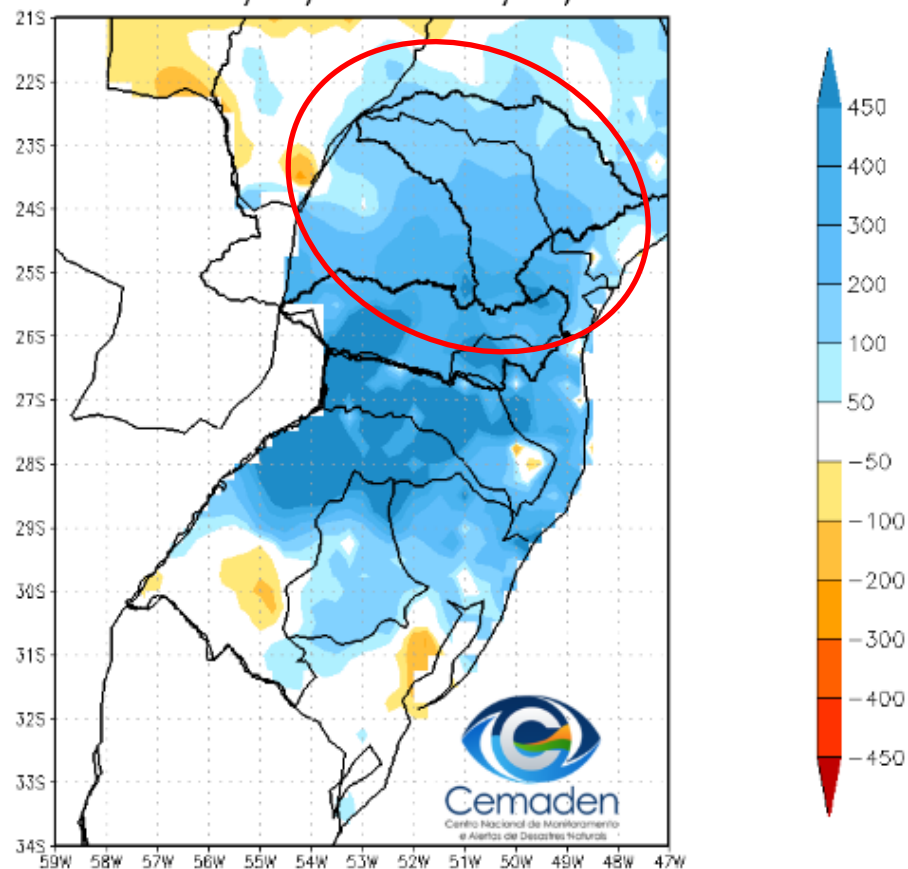


Precipitação acumulada Ano Hidrológico

Precipitação Acumulada (mm) A.S.
Período: 01/10/2023 a 29/11/2023

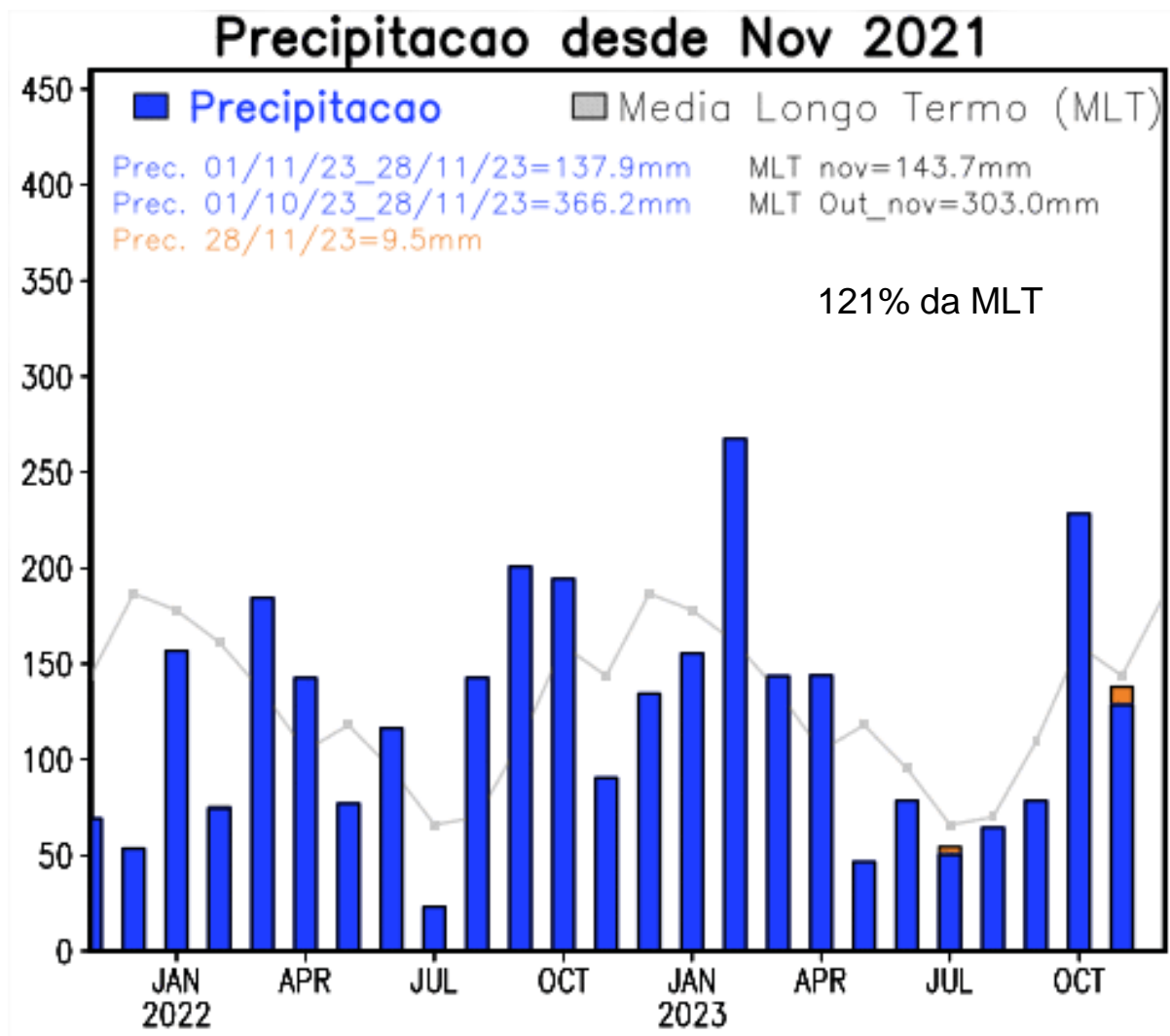


Anomalia de Precipitação (mm) A.S.
Período: 01/10/2023 a 29/11/2023





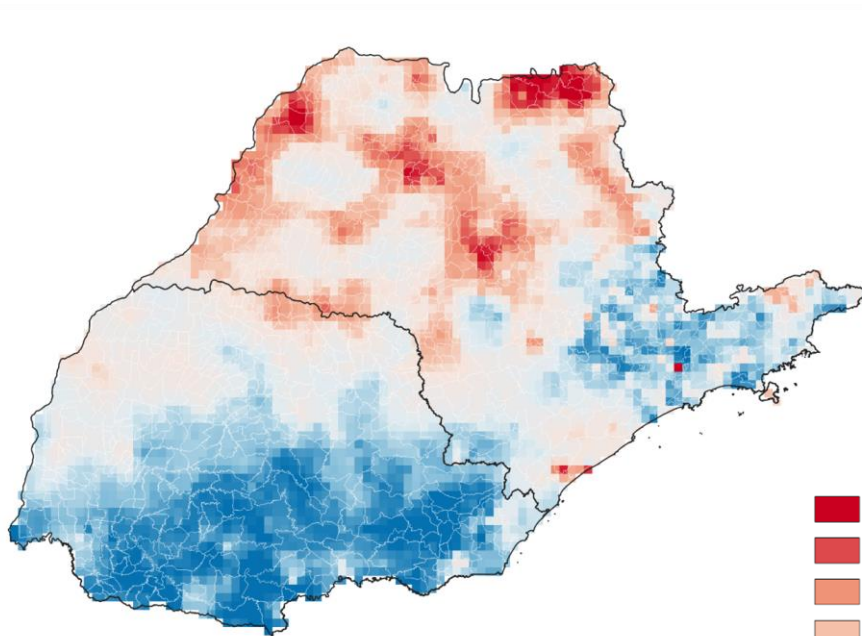
Evolução temporal da precipitação



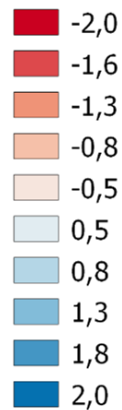
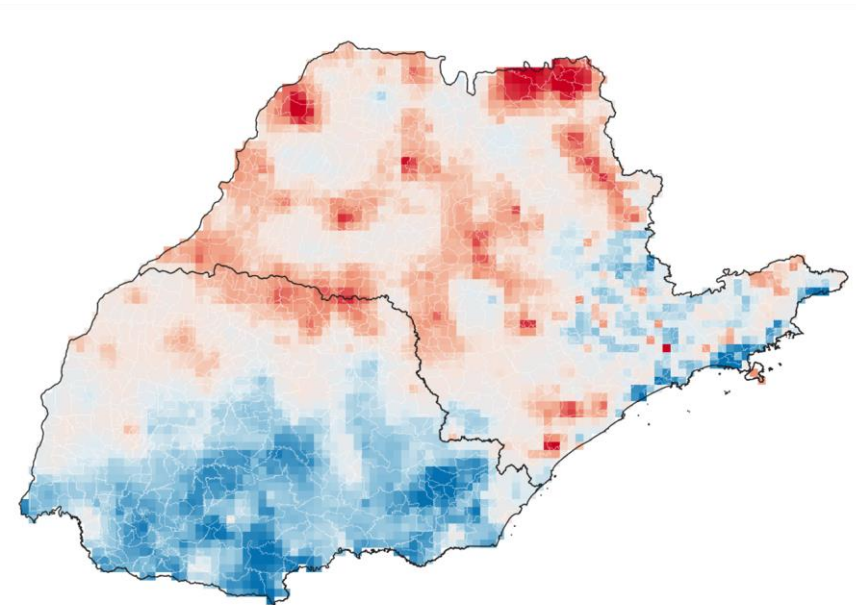


SPI: NOVEMBRO 2023

SPI03



SPI06

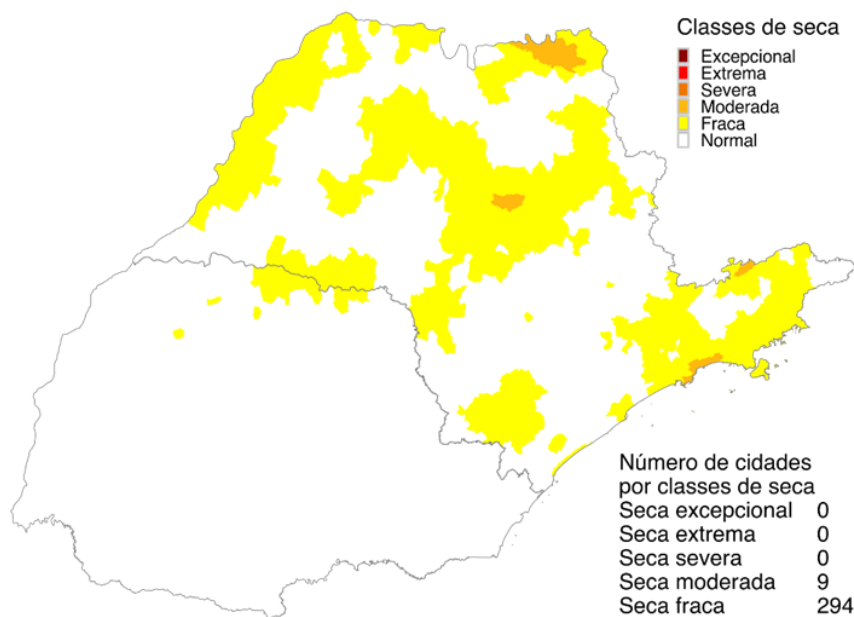




ÍNDICE INTEGRADO DE SECA - IIS

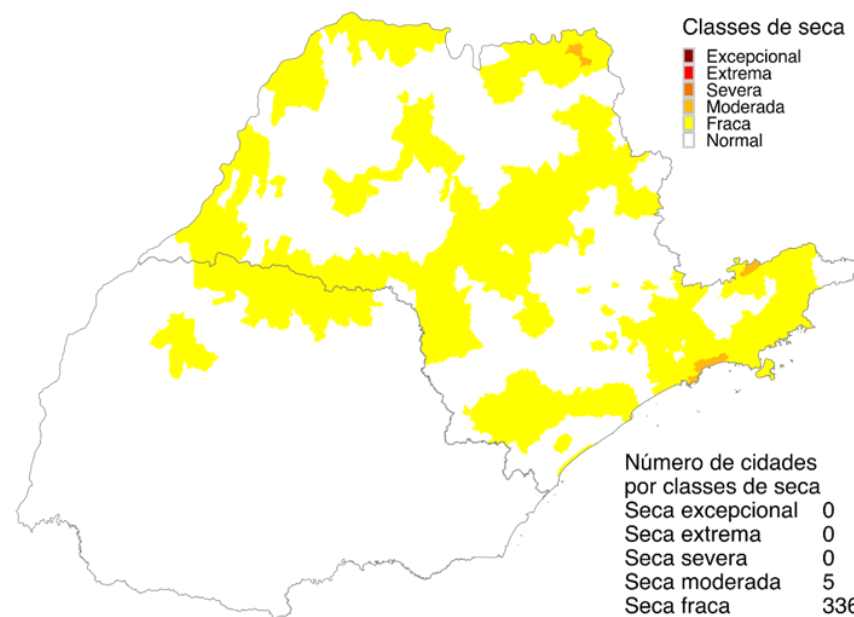
(SPI3 E 6 + VHI + AUS): NOVEMBRO/2023

IIS 3 MESES



Novembro 2023
Índice Integrado de Seca (SPI3, VHI, US)
Dados: CPTEC/INPE - NOAA - NASA / Preparação: Cemaden/MCTI

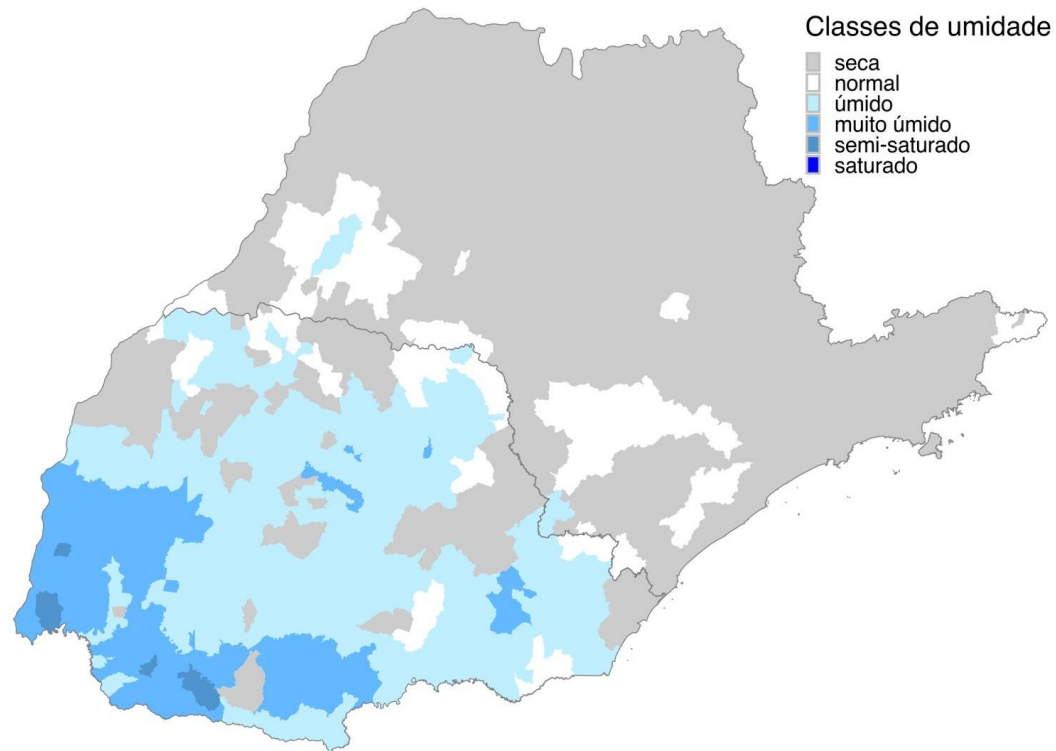
IIS 6 MESES



Novembro 2023
Índice Integrado de Seca (SPI6, VHI, US)
Dados: CPTEC/INPE - NOAA - NASA / Preparação: Cemaden/MCTI

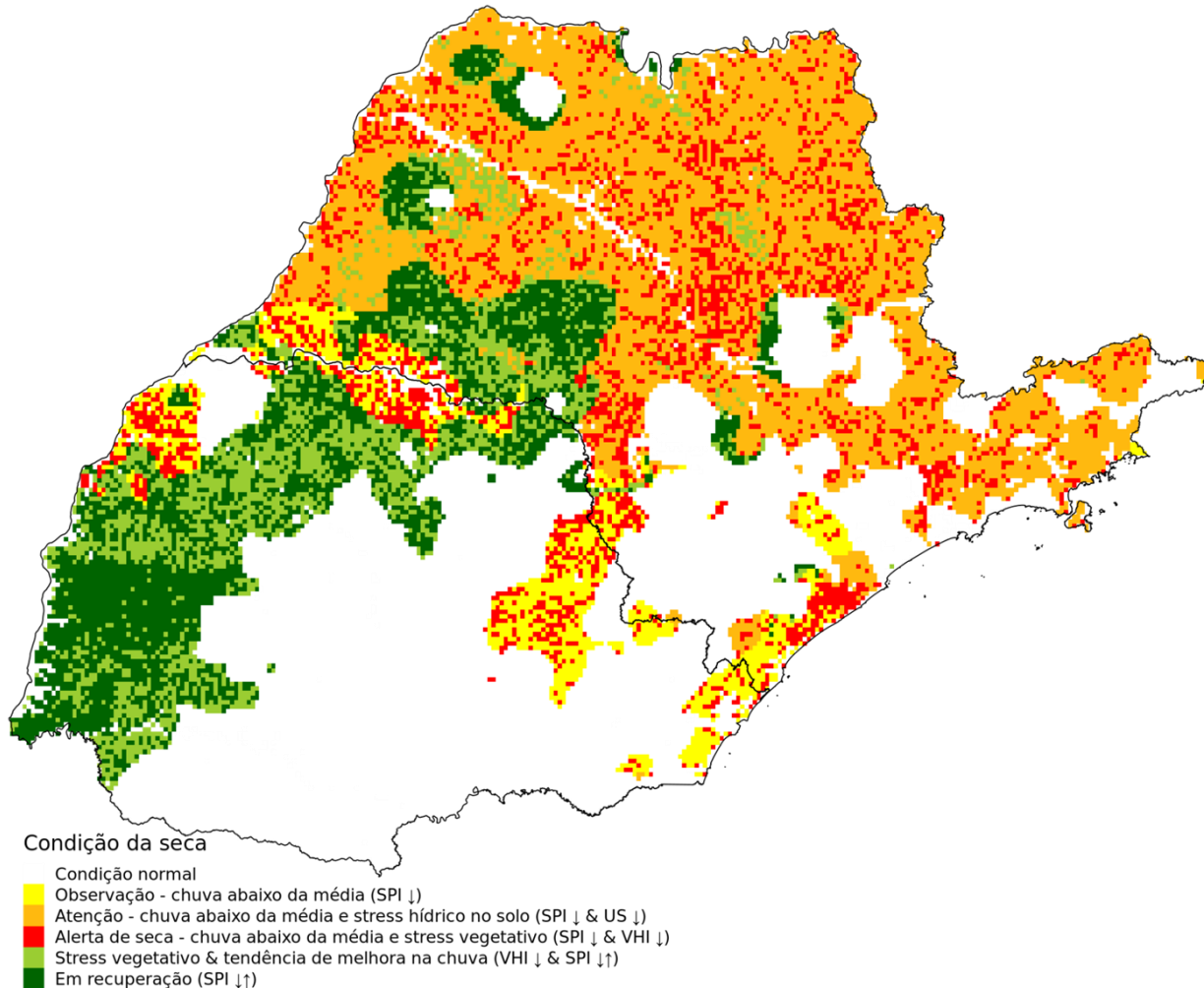


IARA (SPI1, SM, VHI)

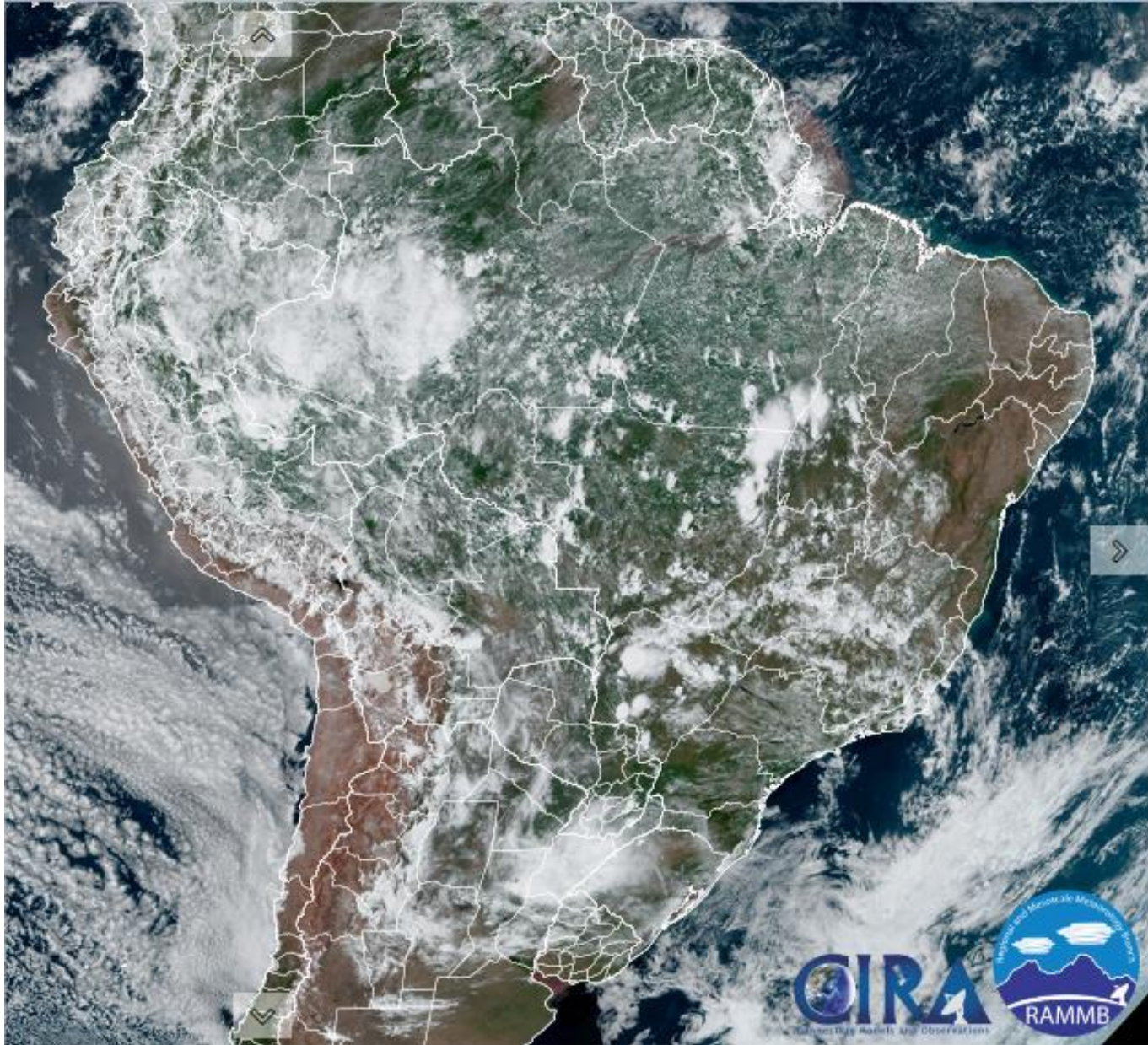




PROGRESSÃO INCREMENTAL DAS CONDIÇÕES DE SECA (PICS) NOVEMBRO 2023



Situação meteorológica atual

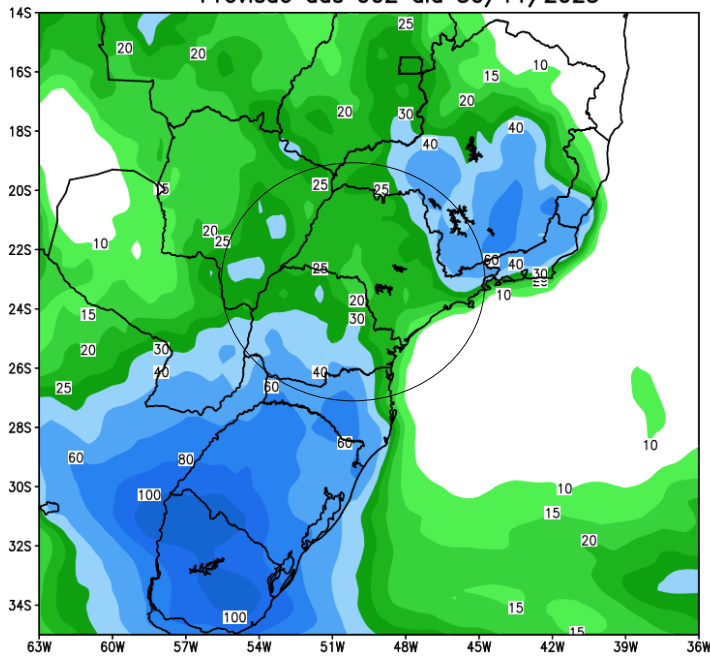


Fonte: INMET

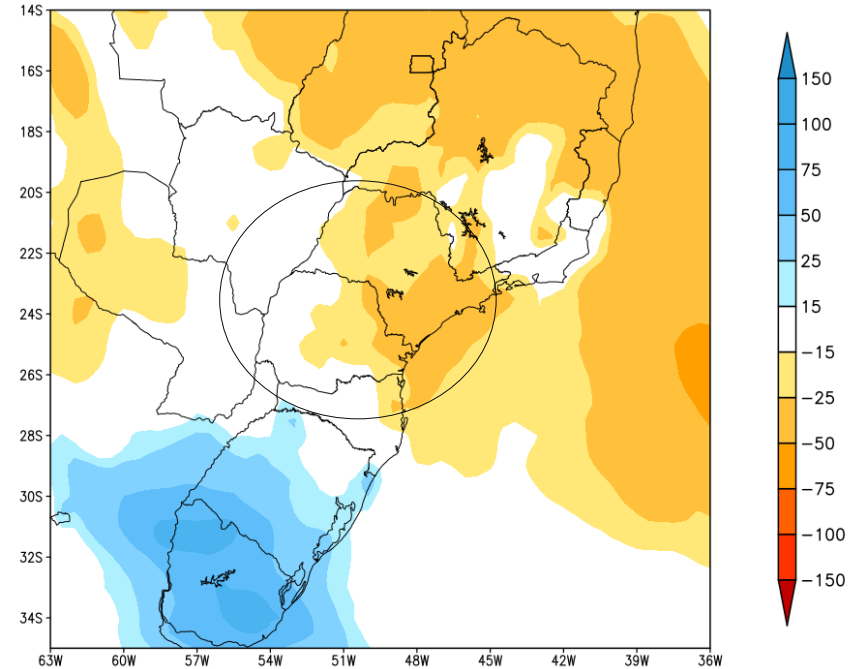


Previsão de chuva próximos 7 dias

GEFS / BRASIL_SUL
Precipitação acumulada 1aSem (mm)
Previsão das 00Z dia 30/11/2023



Anomalia de Precipitação BR_SUL (mm)
Período: 2023113000 a 2023120700

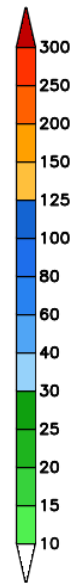
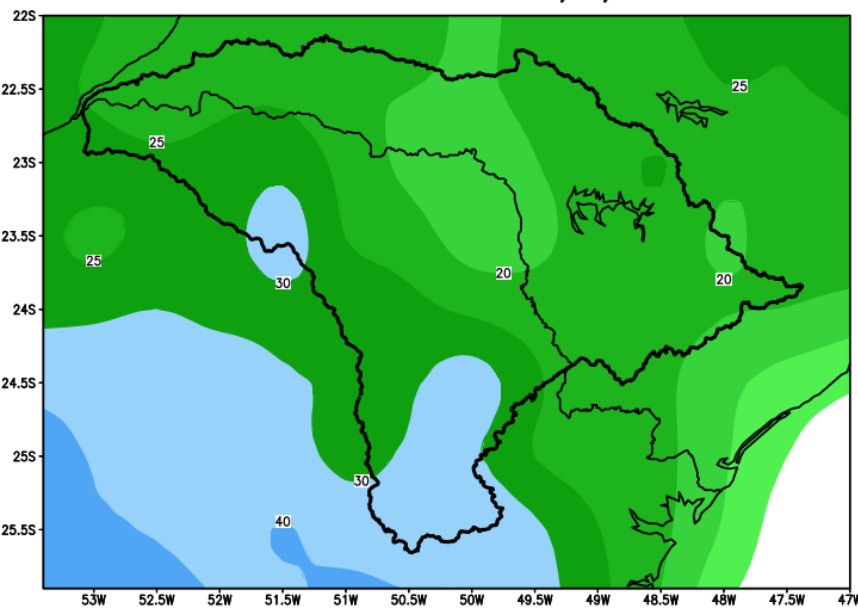


MODELO GFS

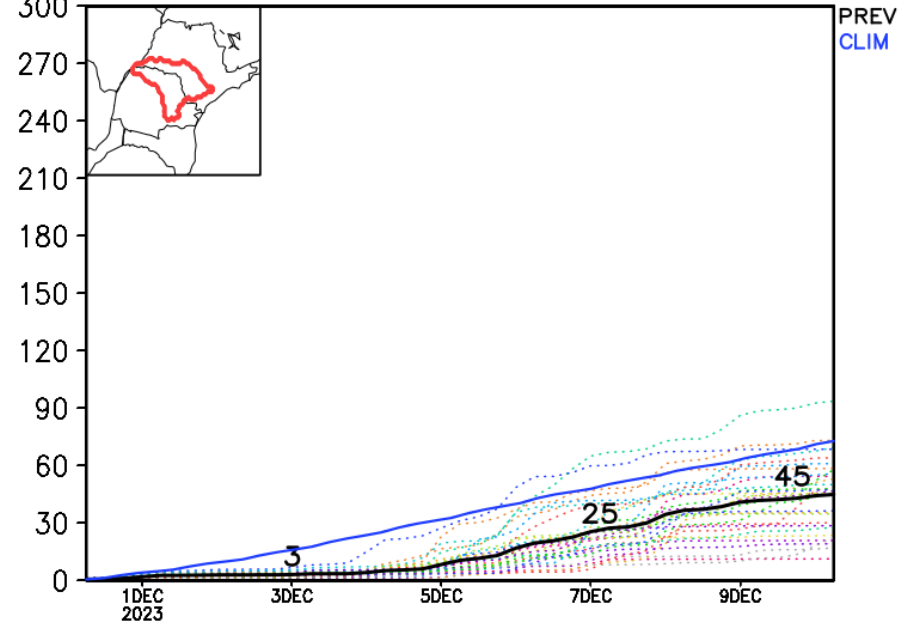


Previsão para a bacia do rio Paranapanema

GEFS / Bacia do Rio Paranapanema
Precipitação acumulada em 7 dias (mm)
Previsão das 00Z dia 30/11/2023



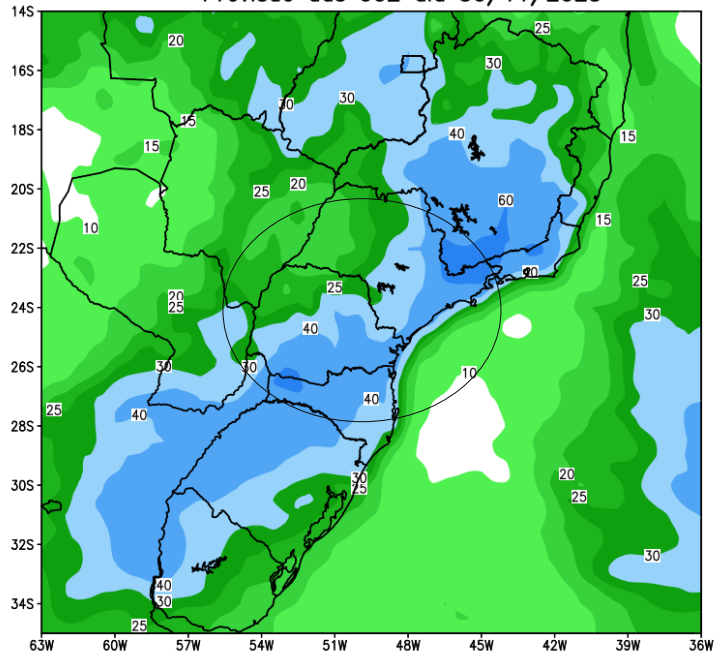
Precipitação acumulada (mm): Bacia Paranapanema



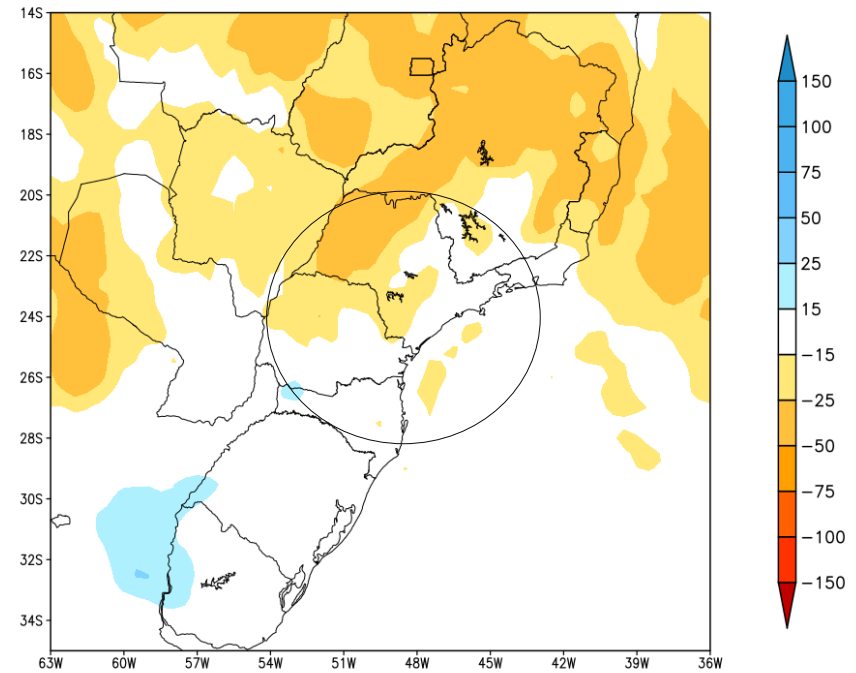


Tendência para a segunda semana

GEFS / BRASIL_SUL
Precipitação acumulada 2aSem (mm)
Previsão das 00Z dia 30/11/2023



Anomalia de Precipitação BR_SUL (mm)
Período: 2023120800 a 2023121400

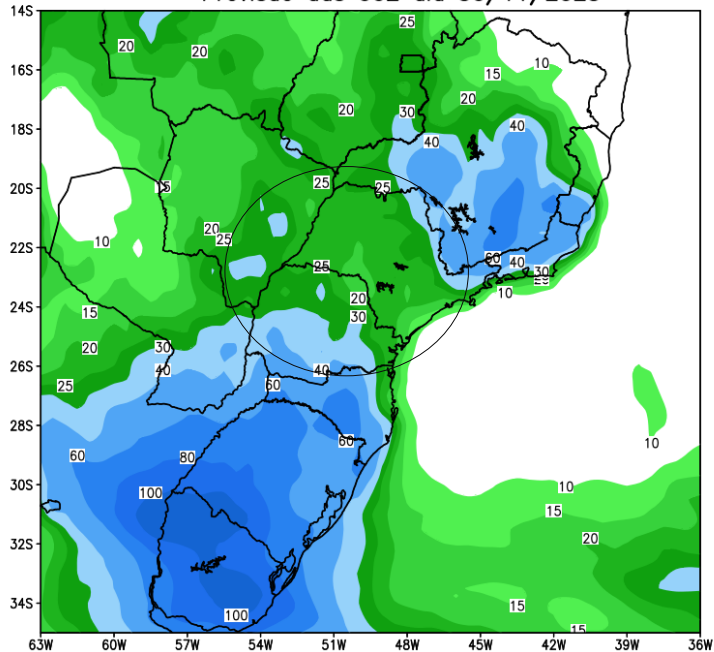


MODELO GFS

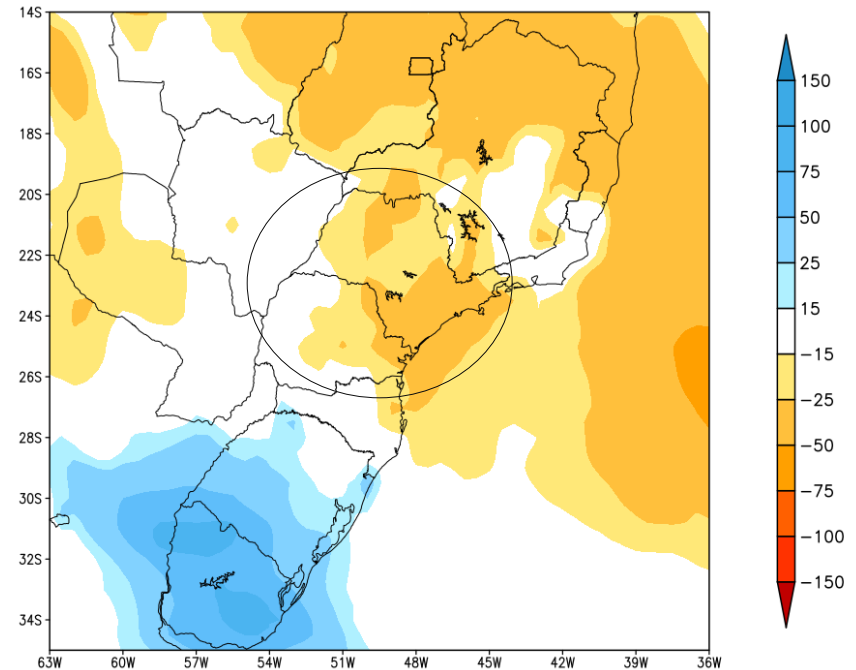


Tendência para as duas próximas semanas

GEFS / BRASIL_SUL
Precipitação acumulada 1aSem (mm)
Previsão das 00Z dia 30/11/2023



Anomalia de Precipitação BR_SUL (mm)
Período: 2023113000 a 2023120700

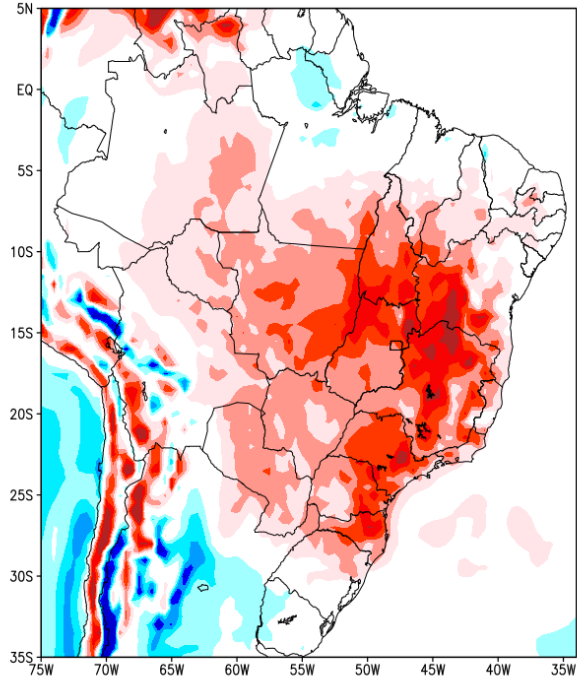


MODELO GFS

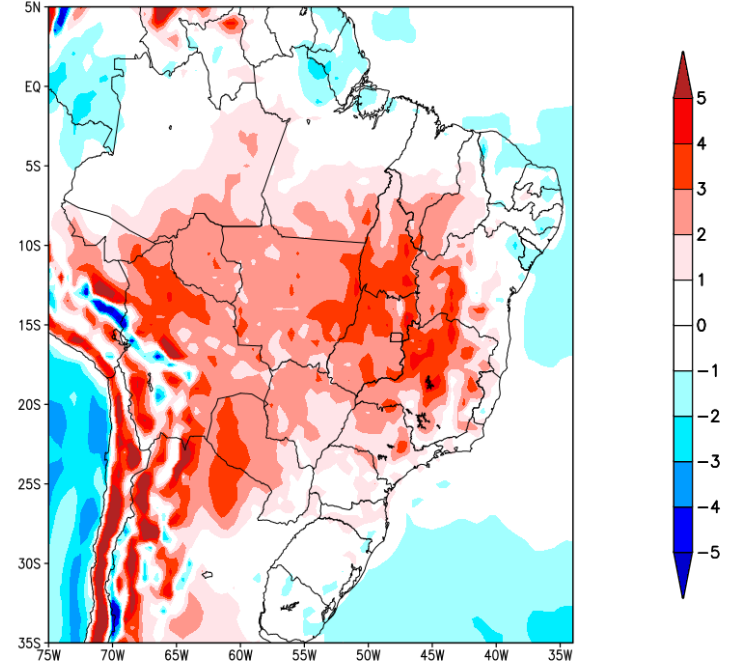


Previsão de Temperatura

Anomalia de Temperatura BR (C)
Período: 2023113000 a 2023120700



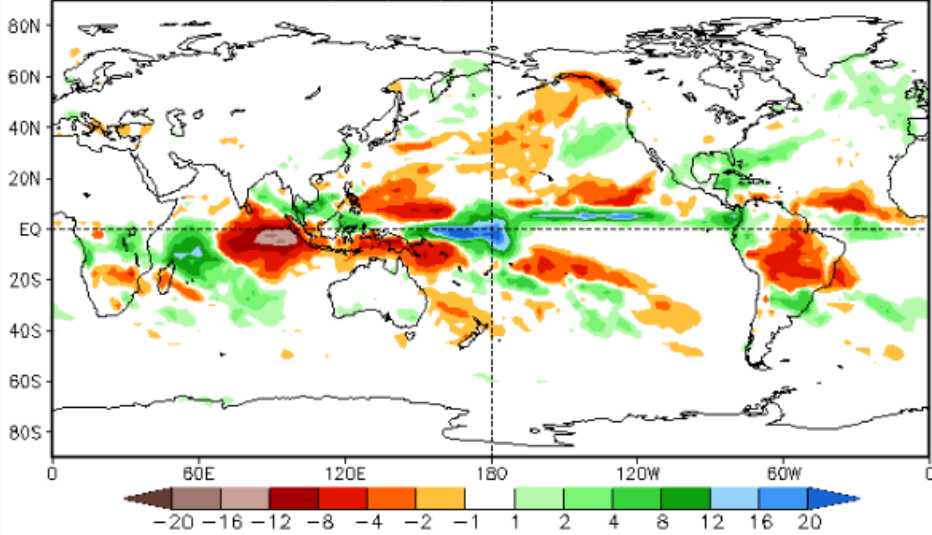
Anomalia de Temperatura BR (C)
Período: 2023120800 a 2023121400



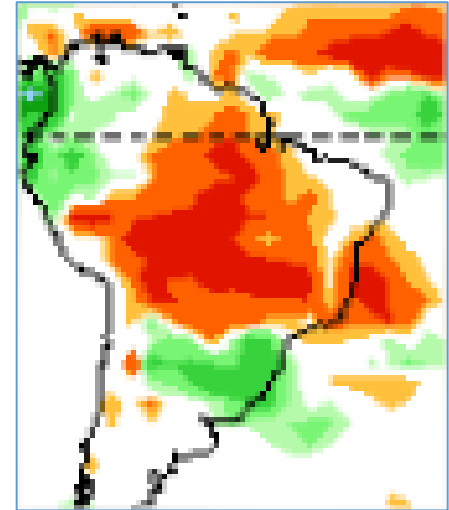
Tendência 3a e 4a semanas

Week 3 Anomalies (mm/day)

13Dec2023-19Dec2023

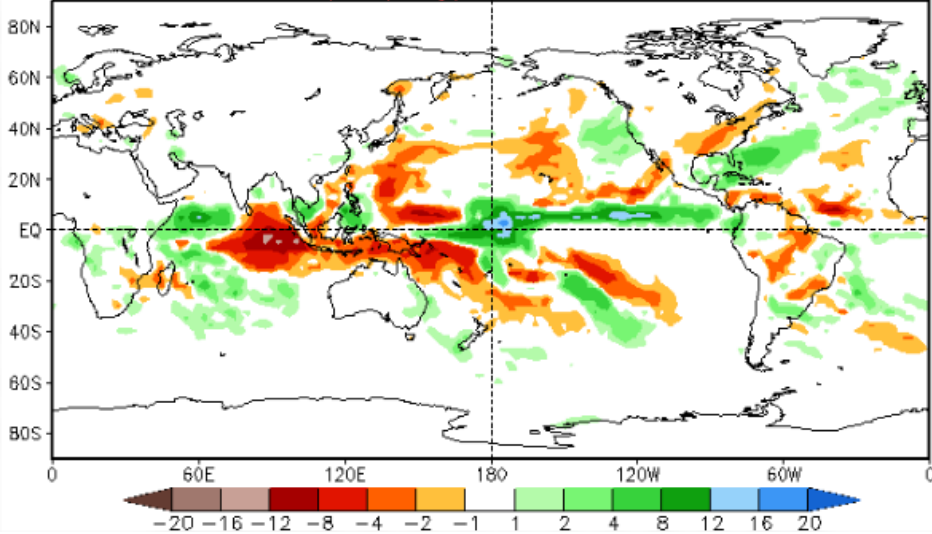


13-19/12

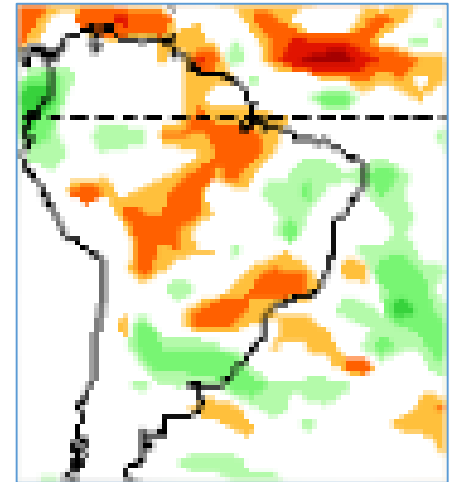


Week 4 Anomalies (mm/day)

20Dec2023-26Dec2023



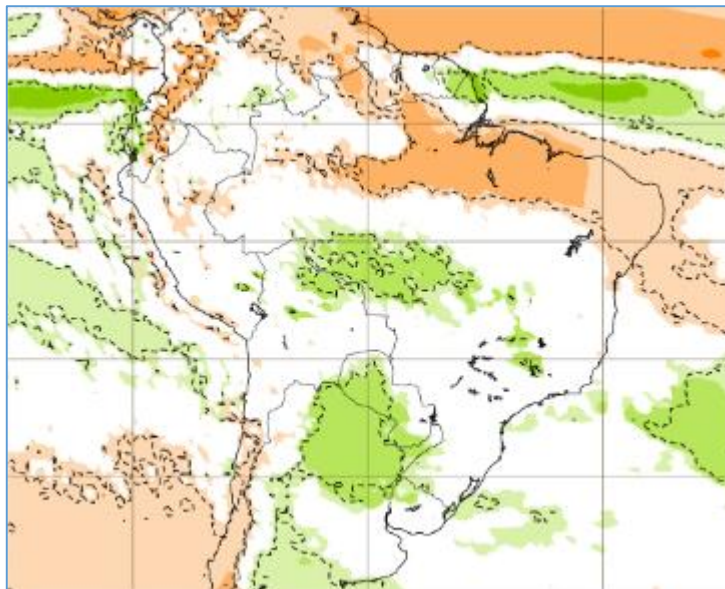
20-26/12



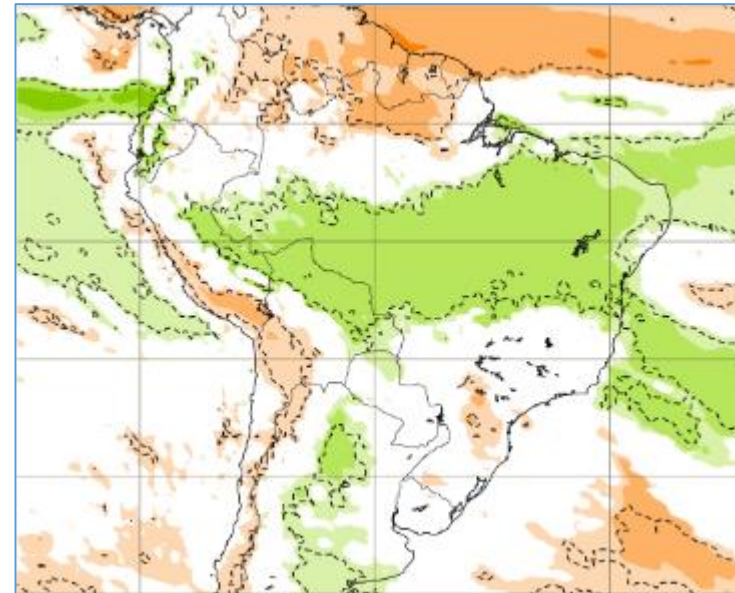


Tendência para 3^a e 4^a semanas

11-18 Dezembro



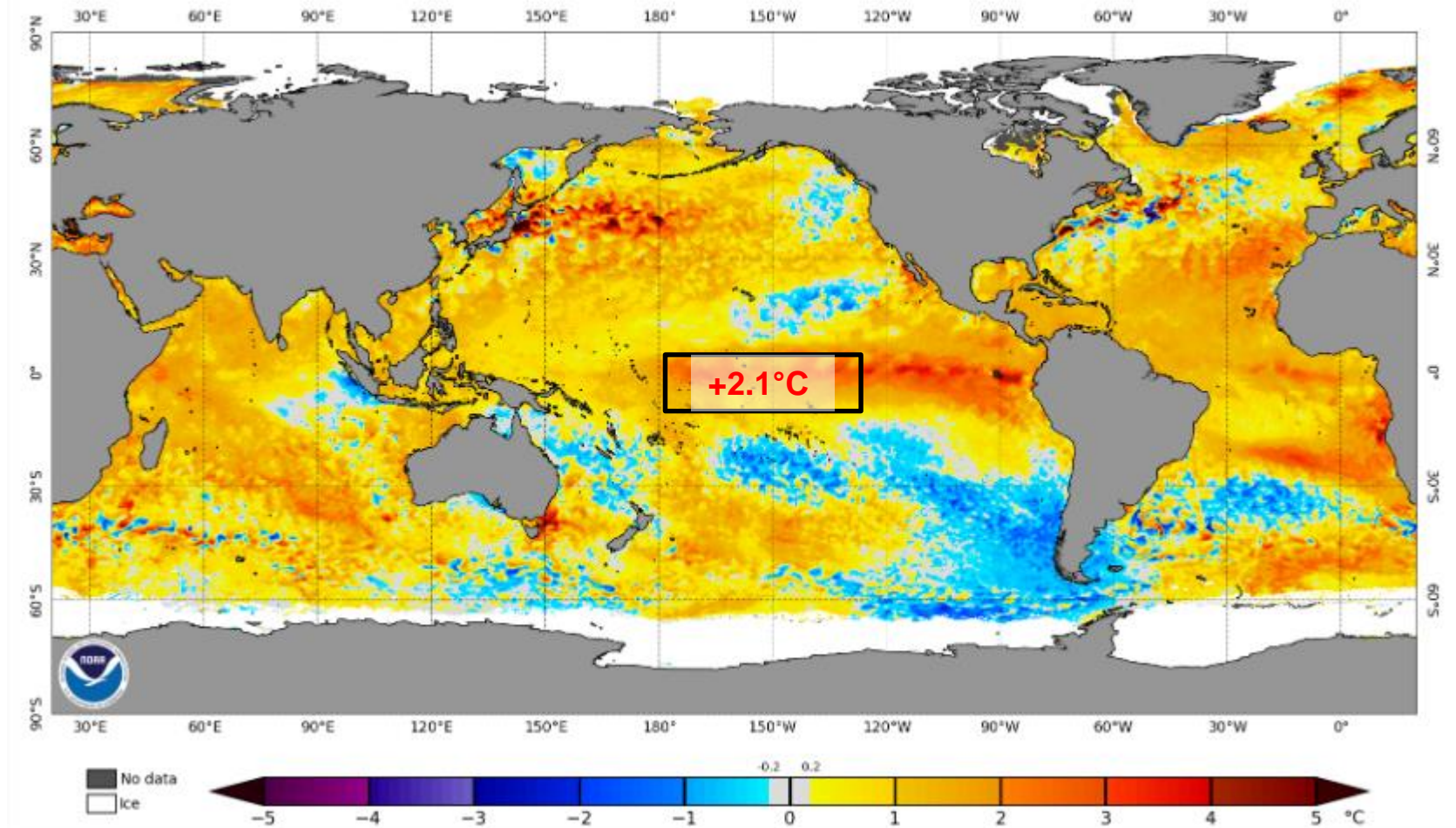
18-25 Dezembro





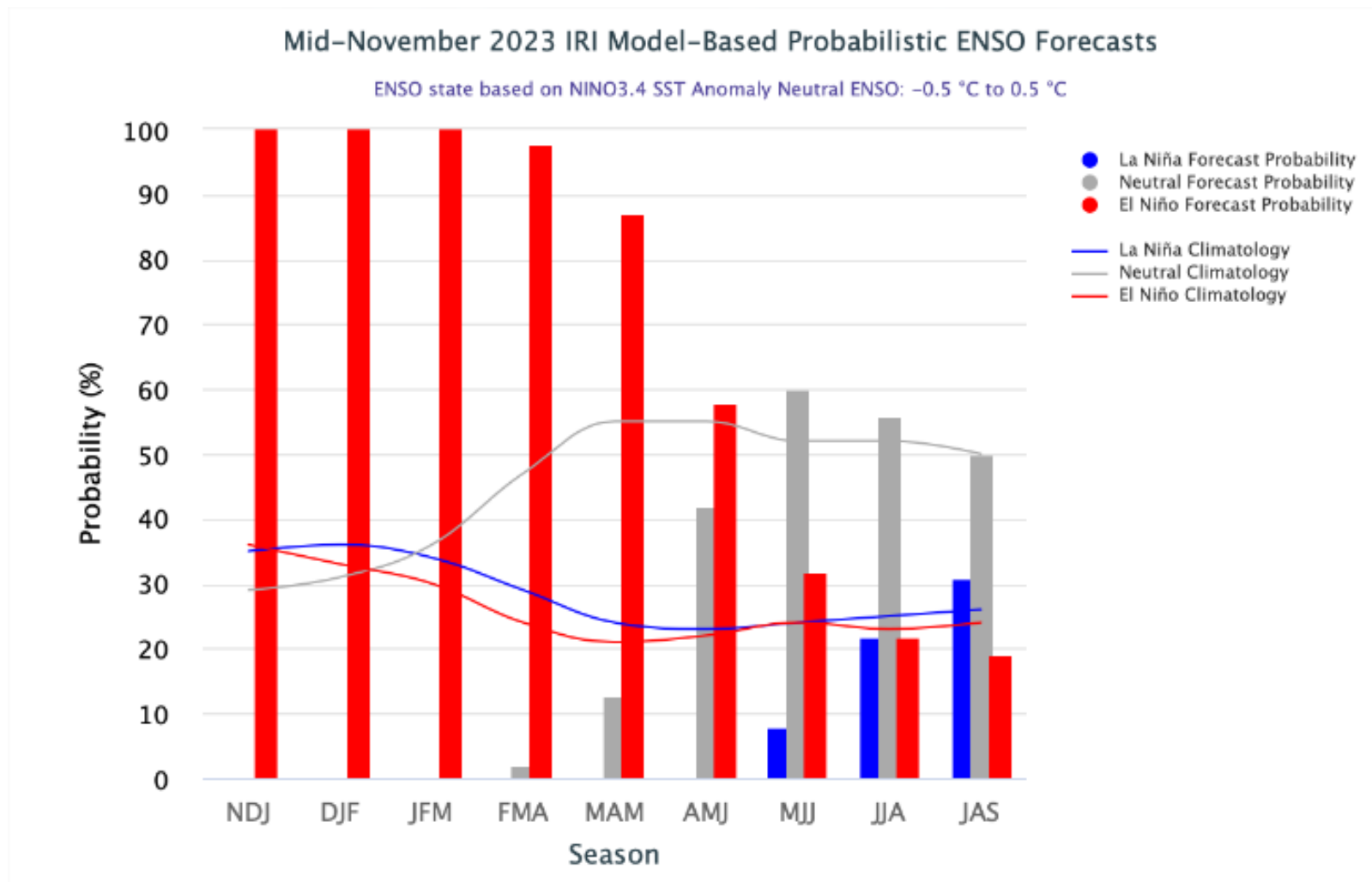
Status Atual: **El Niño**

NOAA Coral Reef Watch Daily 5km SST Anomalies (v3.1) 27 Nov 2023





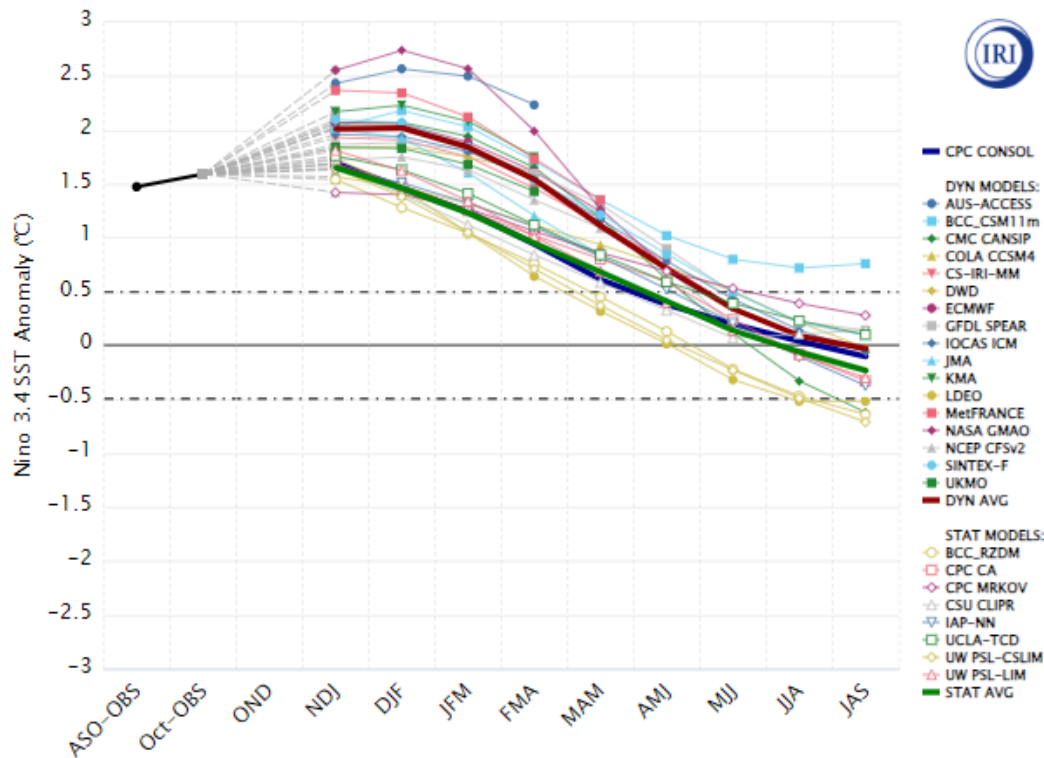
Previsão do “ENSO”



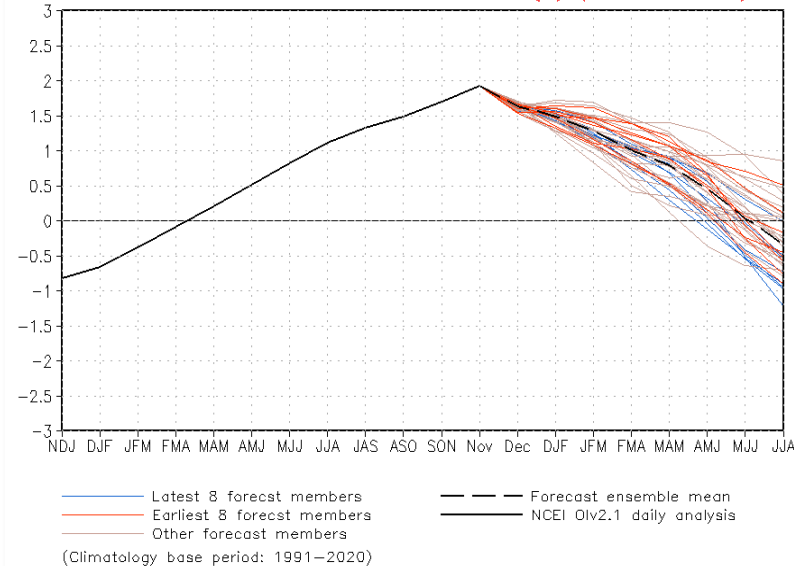


Previsão do “ENSO”

Model Predictions of ENSO from Nov 2023



CFSv2 forecast Nino3.4 SST anomalies (K) (PDF corrected)

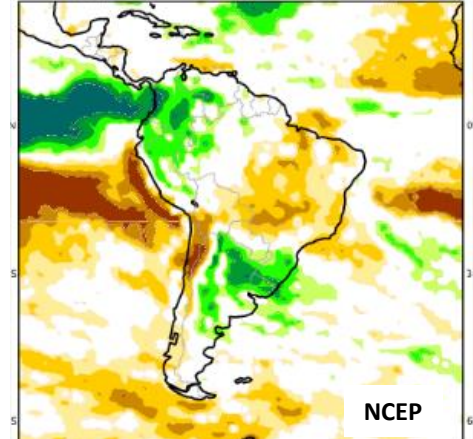
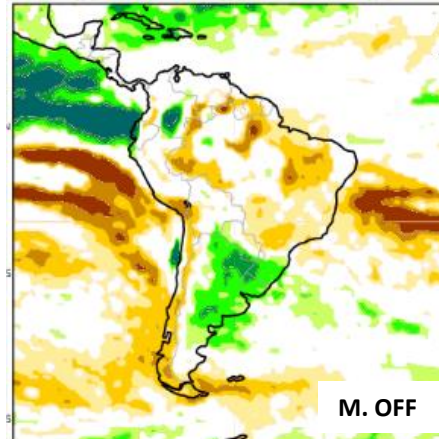
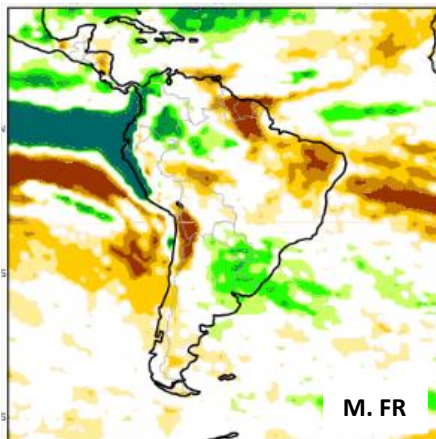
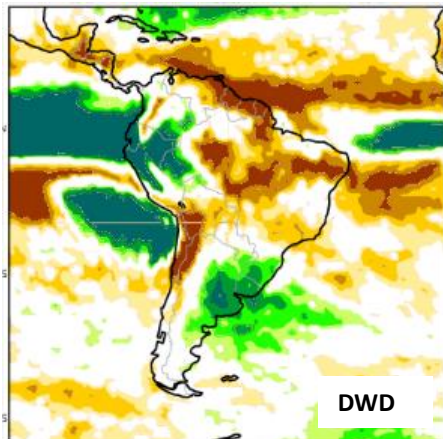
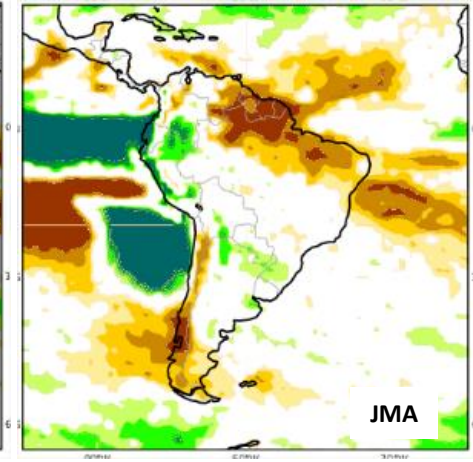
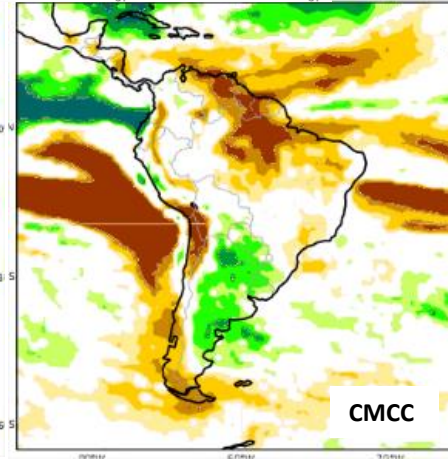
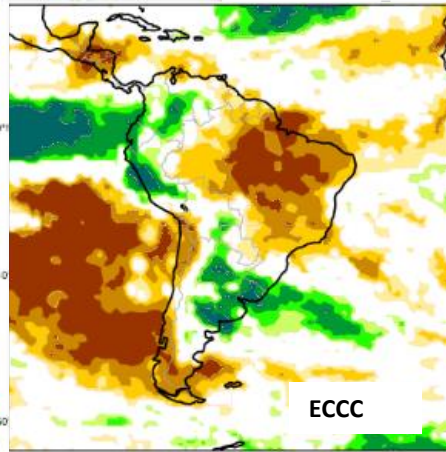
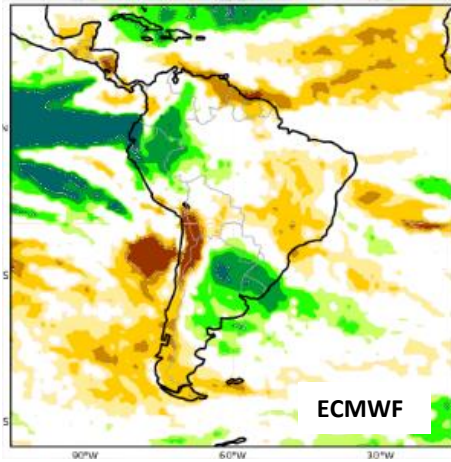
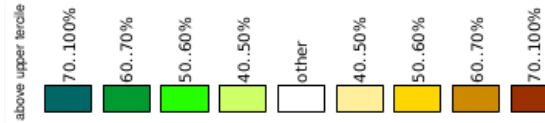


Atualizado 27 de novembro

FONTE: NOAA



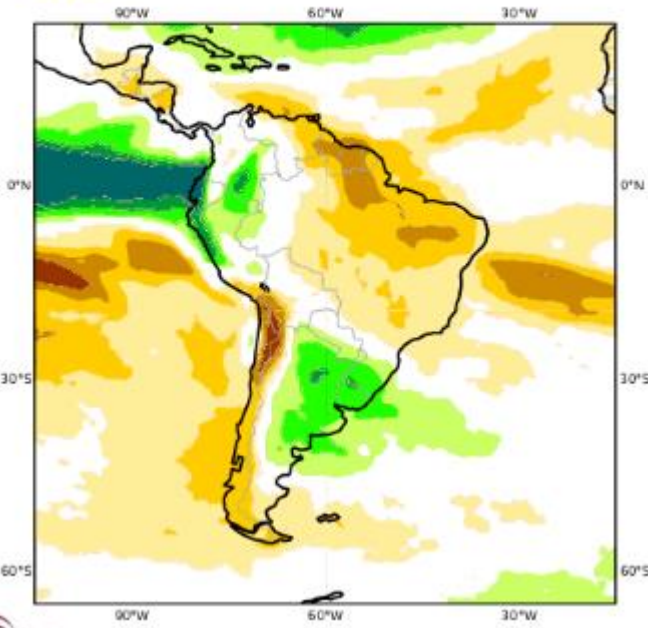
Previsão Sazonal de Chuva DJF



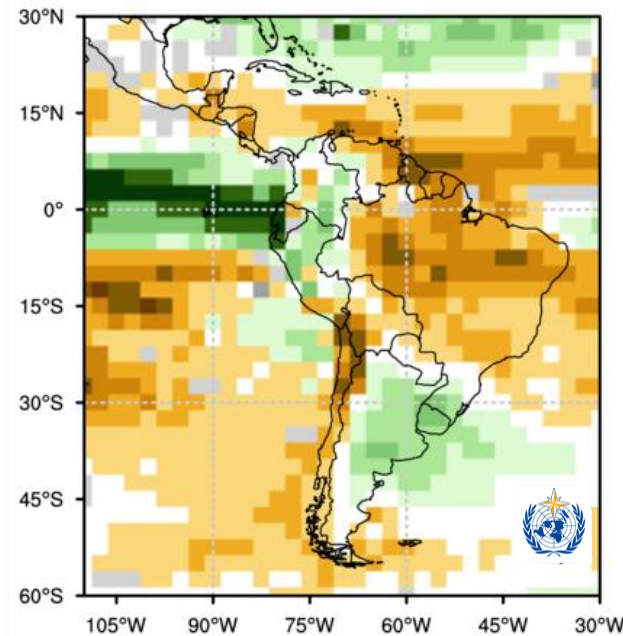


Previsão Sazonal de Chuva Multi-Modelo para DJF

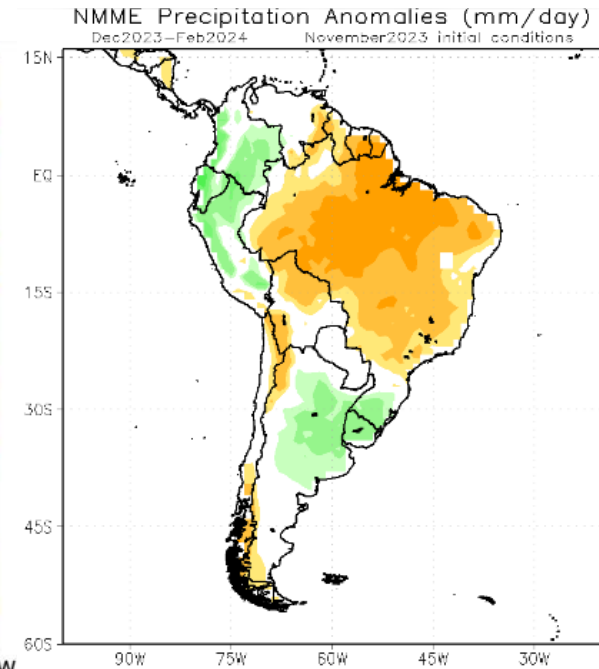
C3S multi-system seasonal forecast
Prob(most likely category of precipitation)
Nominal forecast start: 01/11/23
Unweighted mean



Modelos Europeus



Modelos da Organização
Meteorológica Mundial



Modelos Americanos