

Monitoramento da bacia do rio Paranapanema

NOVEMBRO/2025



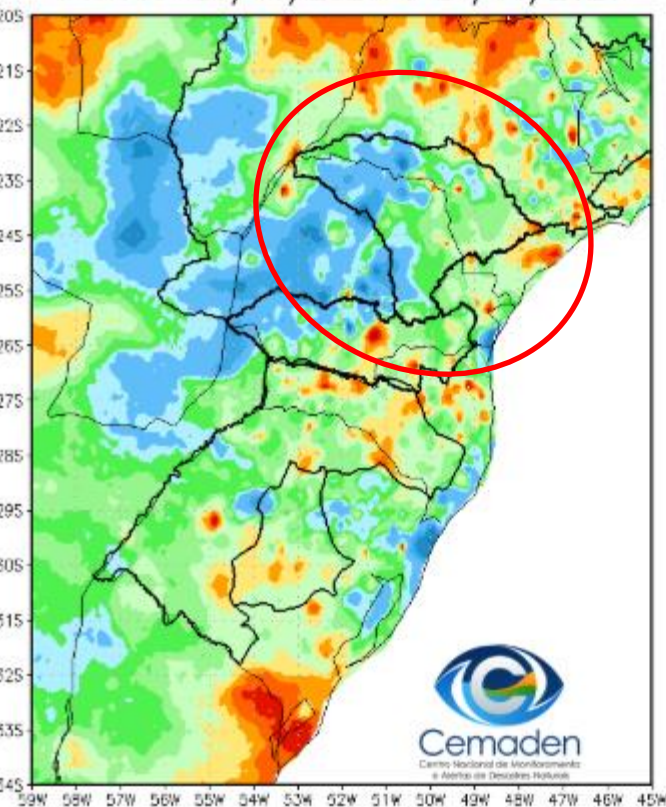
MINISTÉRIO DA
CIÊNCIA, TECNOLOGIA
E INOVAÇÃO

GOVERNO DO
BRASIL
DO LADO DO POVO BRASILEIRO

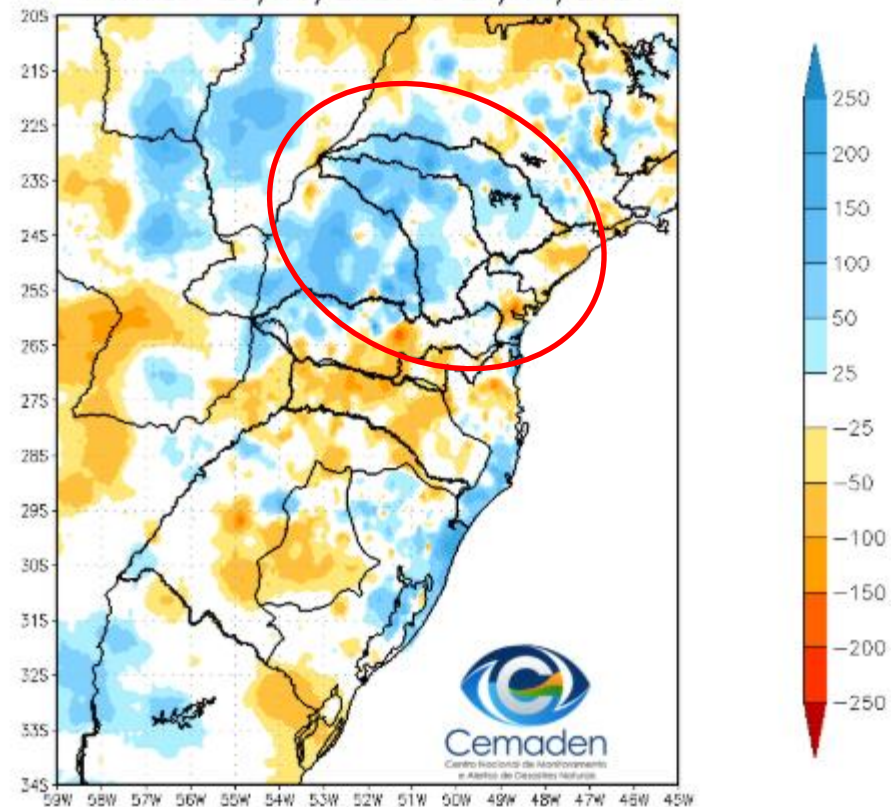


Precipitação acumulada nos últimos 30 dias

Precipitação Acumulada (mm) A.S.
Período: 25/10/2025 a 24/11/2025

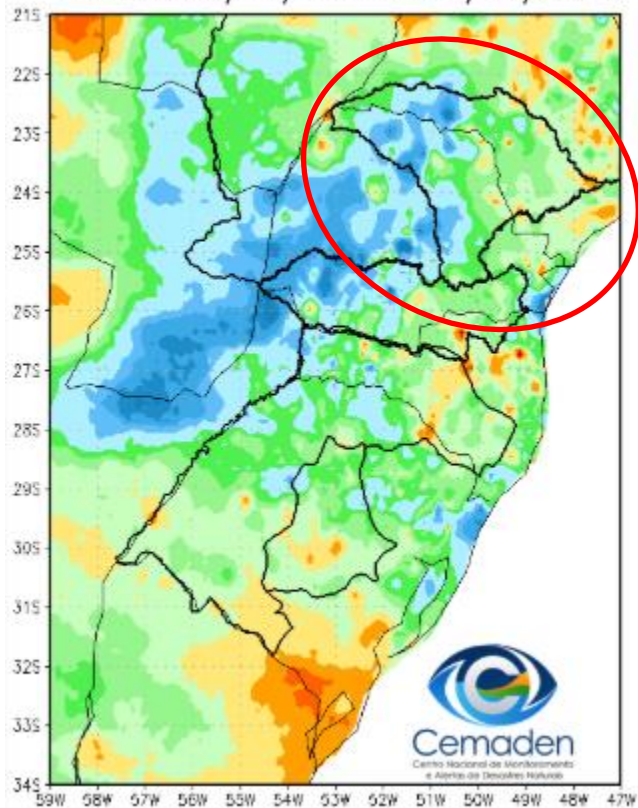


Anomalia de Precipitação (mm) A.S.
Período: 25/10/2025 a 24/11/2025

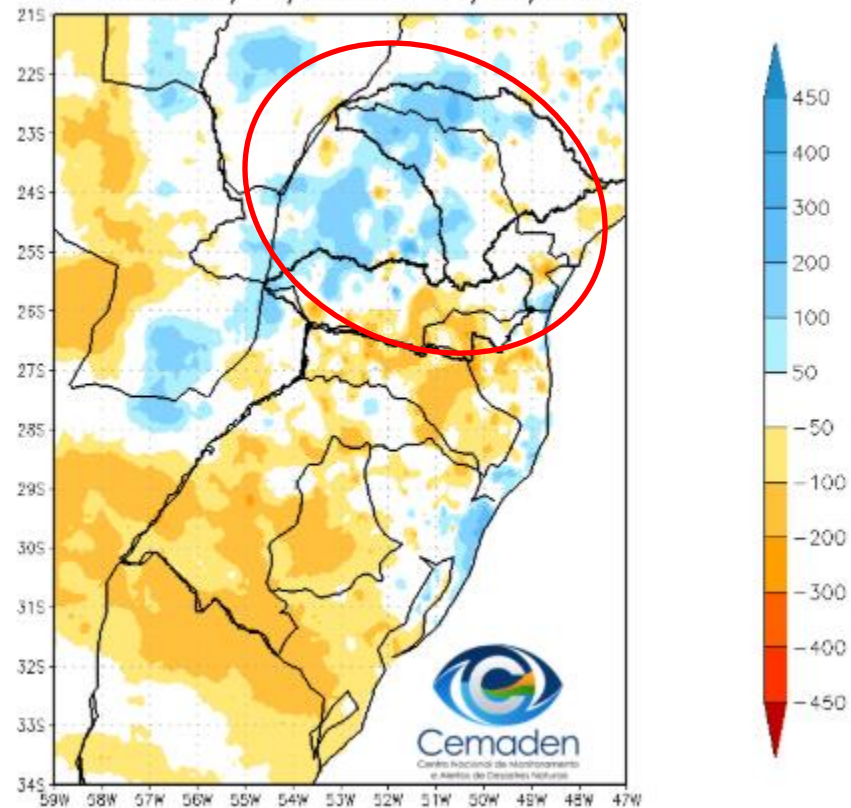


Precipitação no Ano Hidrológico

Precipitação Acumulada (mm) A.S.
Período: 01/10/2025 a 24/11/2025

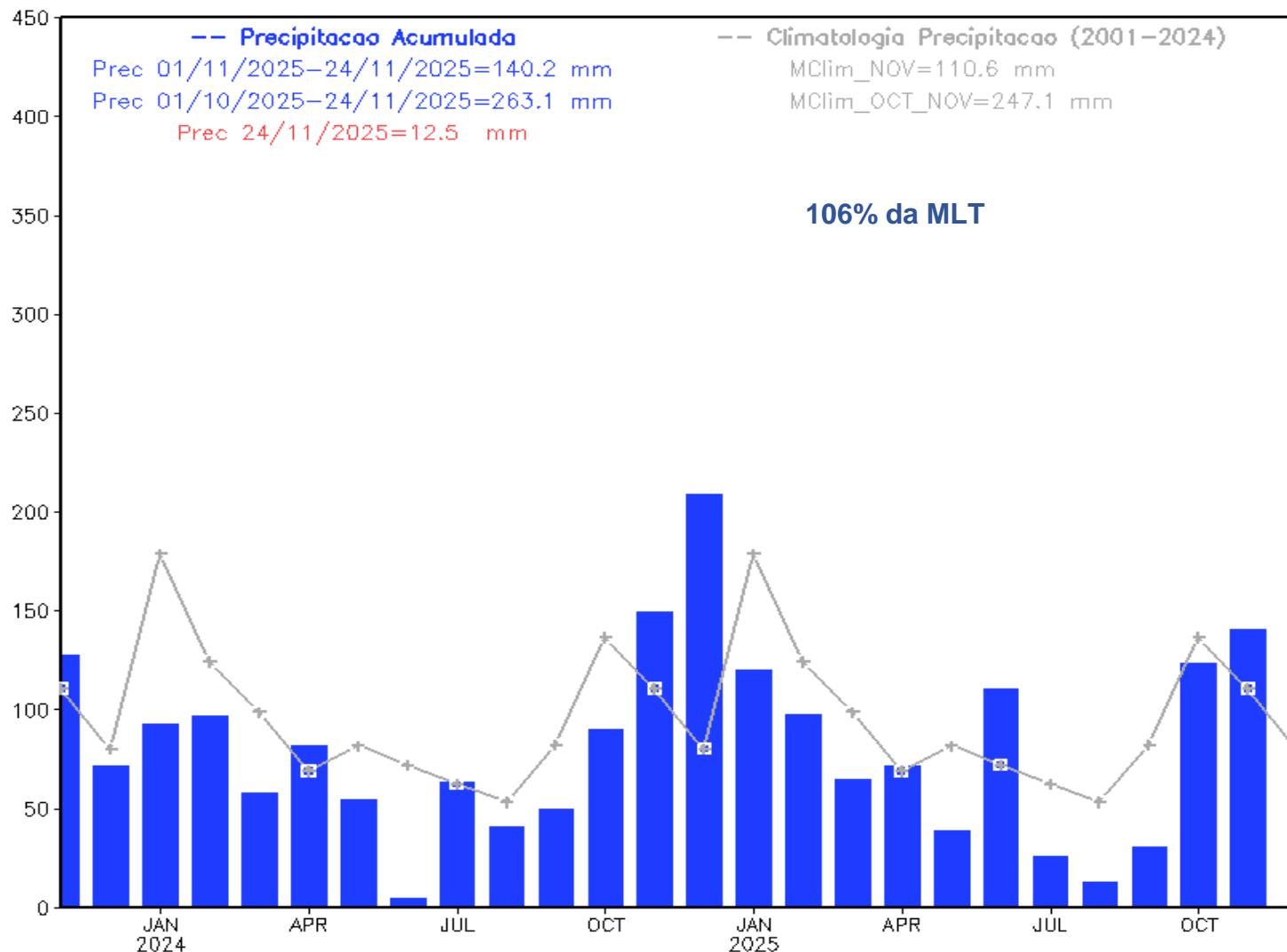


Anomalia de Precipitação (mm) A.S.
Período: 01/10/2025 a 24/11/2025



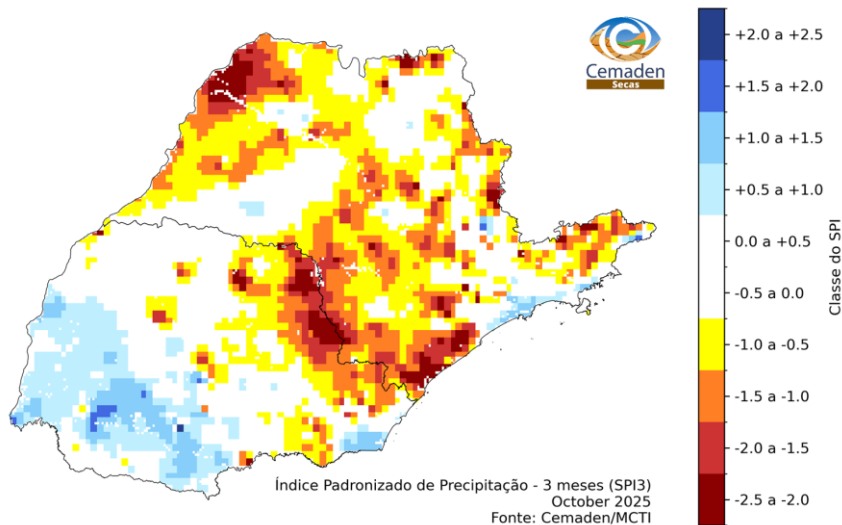
Evolução Temporal da Precipitação

Precipitação Bacia do Rio Paranapanema desde NOV 2023

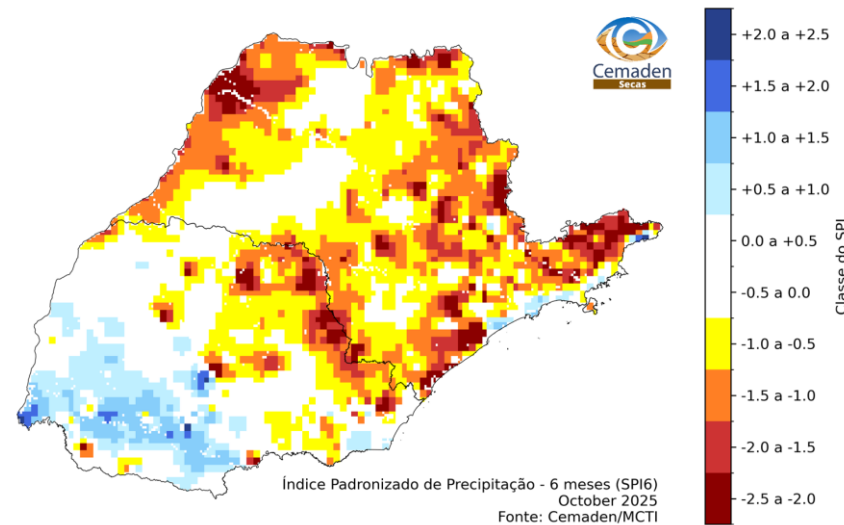


SPI: OUTUBRO 2025

SPI-03

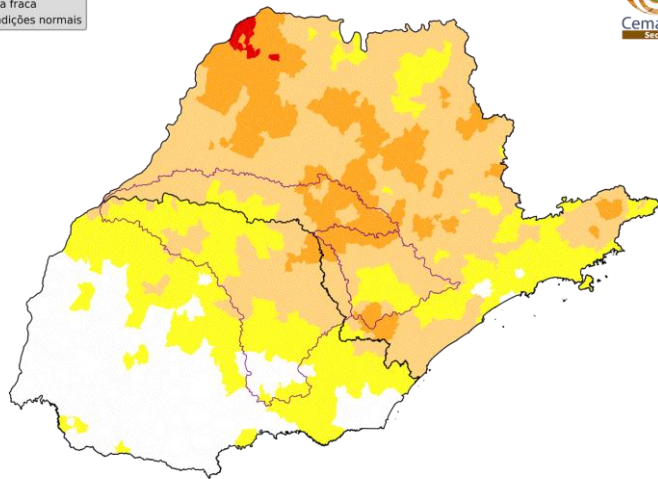


SPI-06



ÍNDICE INTEGRADO DE SECA: ANÁLISE POR MUNICÍPIOS

IIS-03 OBSERVADO

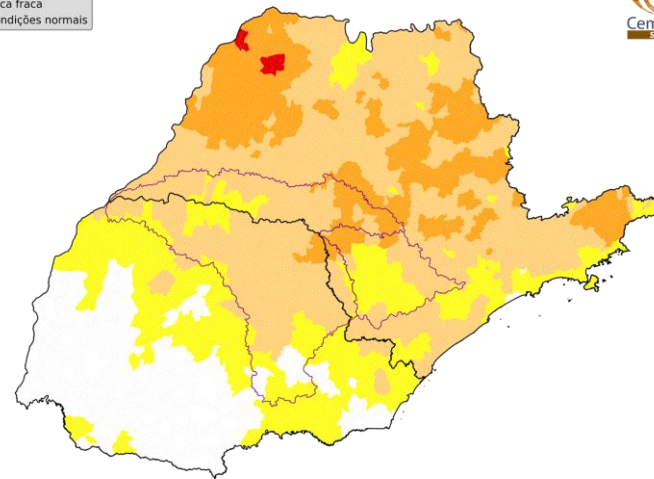


Número de municípios
por classes de seca:

Seca excepcional:	0 (0.0%)
Seca extrema:	0 (0.0%)
Seca severa:	54 (18.9%)
Seca moderada:	136 (47.7%)
Seca fraca:	87 (30.5%)
Condições normais:	8 (2.8%)

Índice Integrado de Seca - 3 meses (IIS3)
October 2025
Fonte: Cemaden/MCTI

IIS-06 OBSERVADO



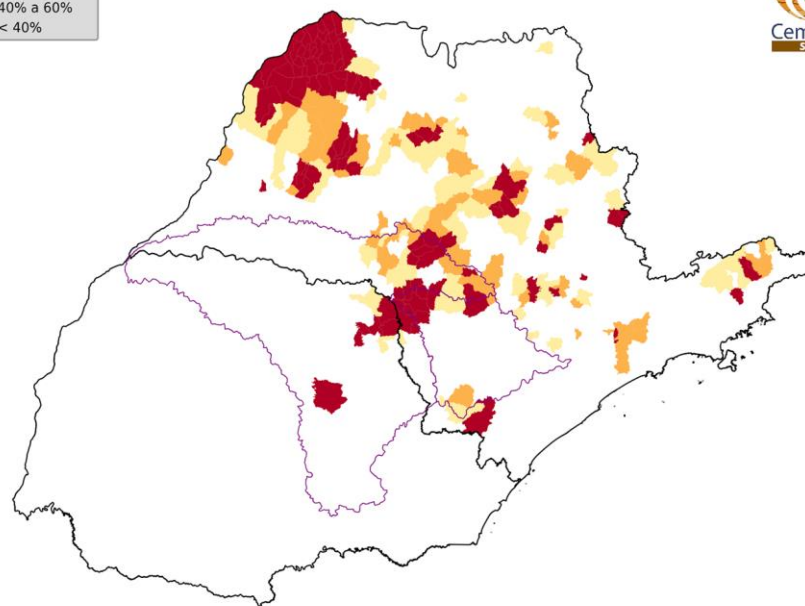
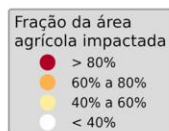
Número de municípios
por classes de seca:

Seca excepcional:	0 (0.0%)
Seca extrema:	0 (0.0%)
Seca severa:	41 (14.4%)
Seca moderada:	175 (61.4%)
Seca fraca:	63 (22.1%)
Condições normais:	6 (2.1%)

Índice Integrado de Seca - 6 meses (IIS6)
October 2025
Fonte: Cemaden/MCTI

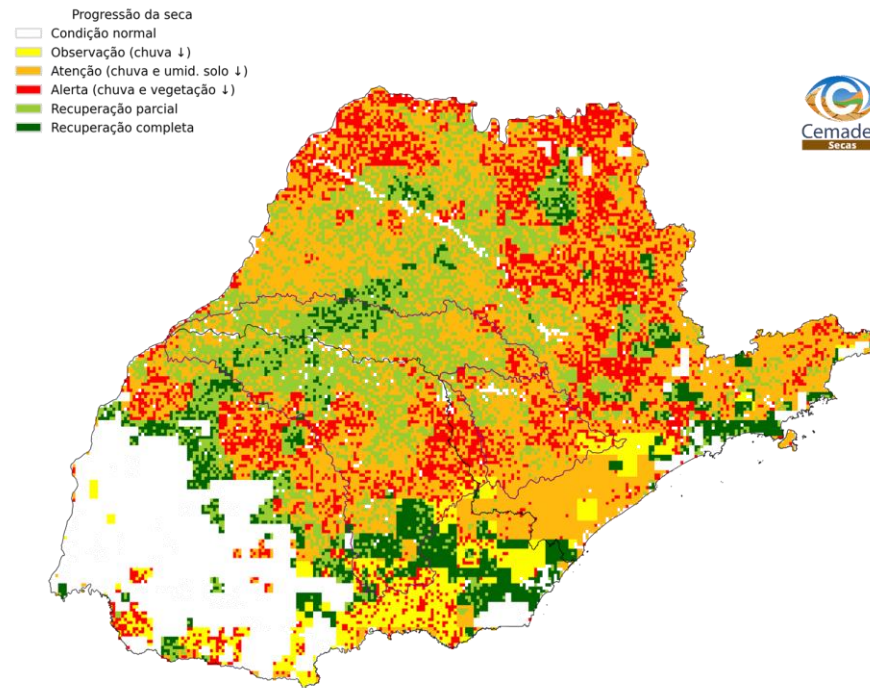
ÁREAS DE PASTAGENS E AGRÍCOLAS AFETADAS PELA SECA

OUTUBRO



Área agro-pastoril municipal afetada pela seca
October 2025
Fonte: Cemaden/MCTI

PROGRESSÃO DAS CONDIÇÕES DE SECA (PCS)

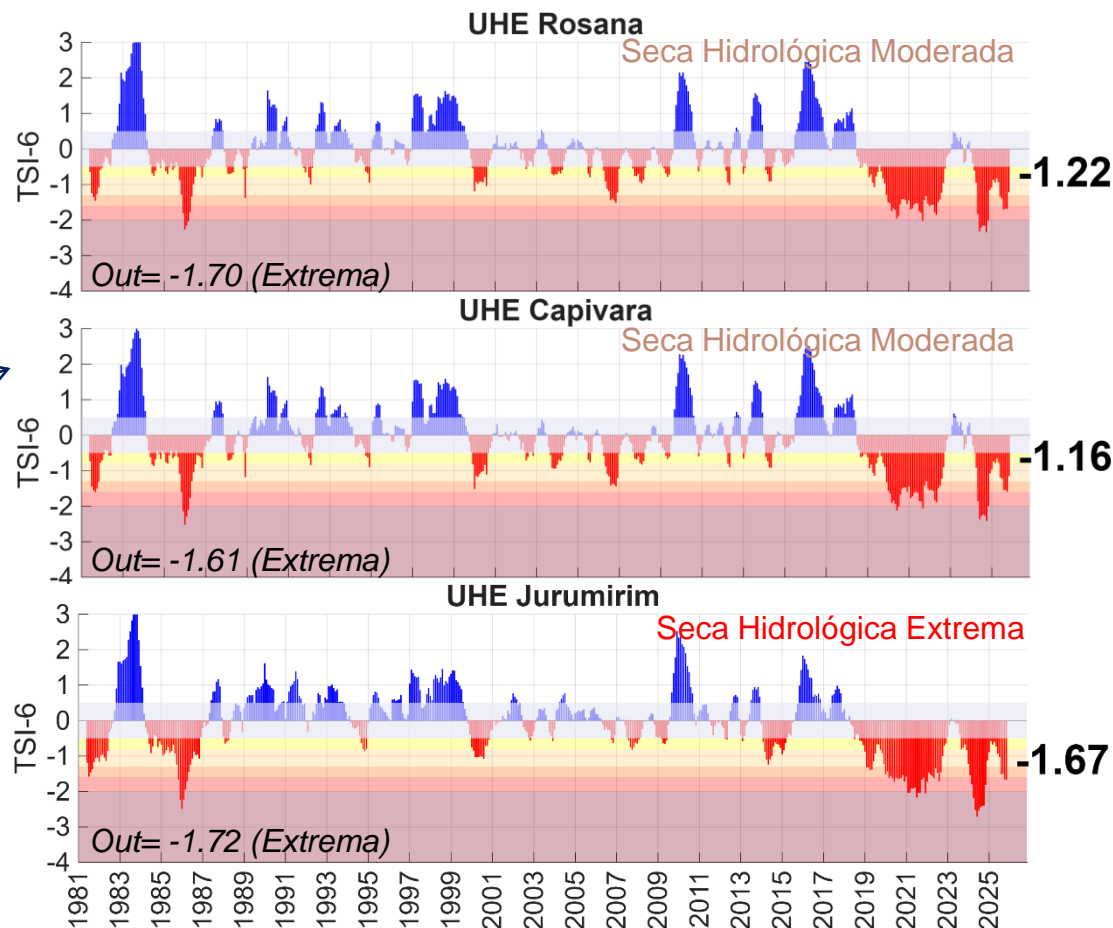
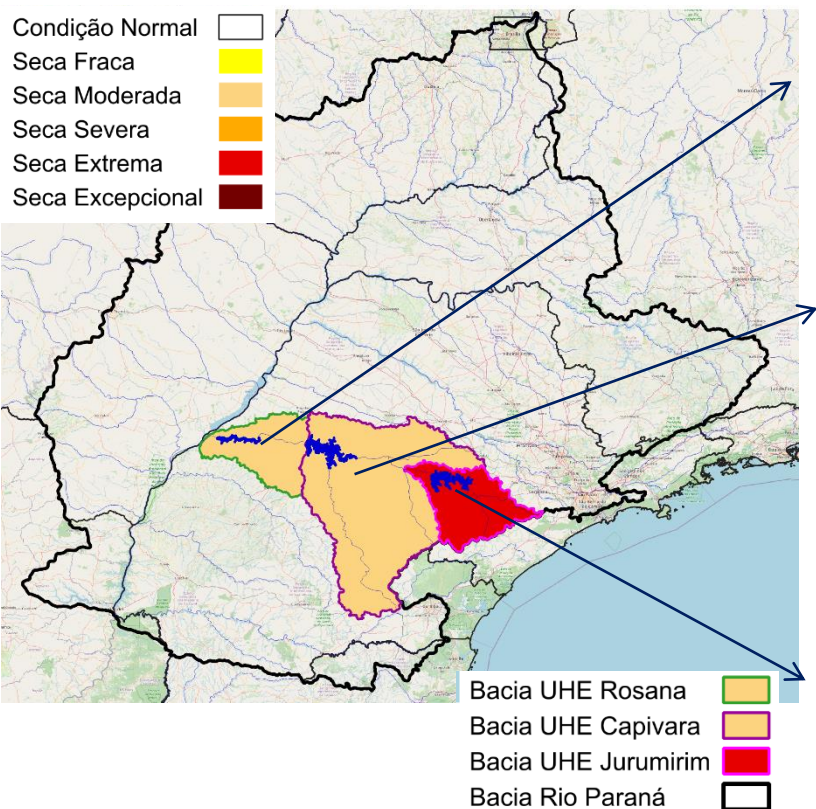


Progressão e Intensificação das Condições de Seca (PICS)
October 2025
Fonte: Cemaden/MCTI

Índice Bivariado de Seca (Precipitação-Vazão) - TSI

Escala de Longo Prazo: **TSI-6 meses**

Nov/2025 - Parcial









Fonte: CEMADEN

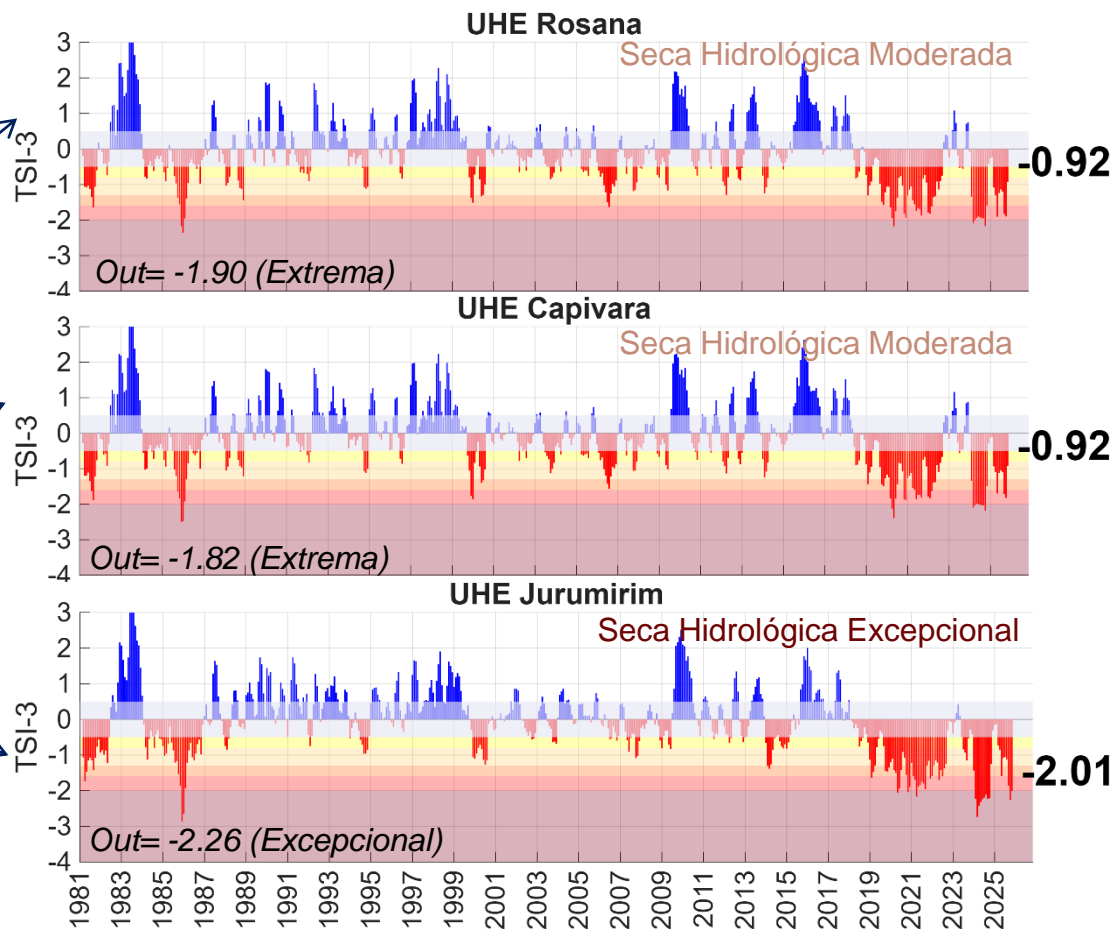
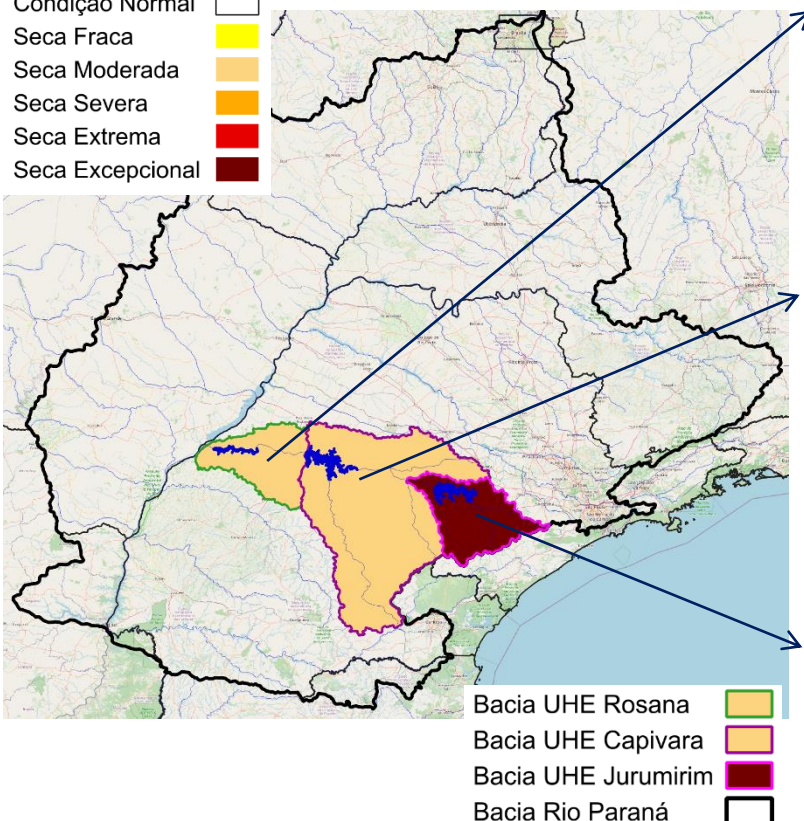
Dados: Precipitação (Cemaden/INMET/CHIRPS) e
Vazão (ONS/ANA) - Jan/1981-Nov/2025.

Índice Bivariado de Seca (Precipitação-Vazão) - TSI

Escala de Curto Prazo: **TSI-3 meses**

Nov/2025 - Parcial

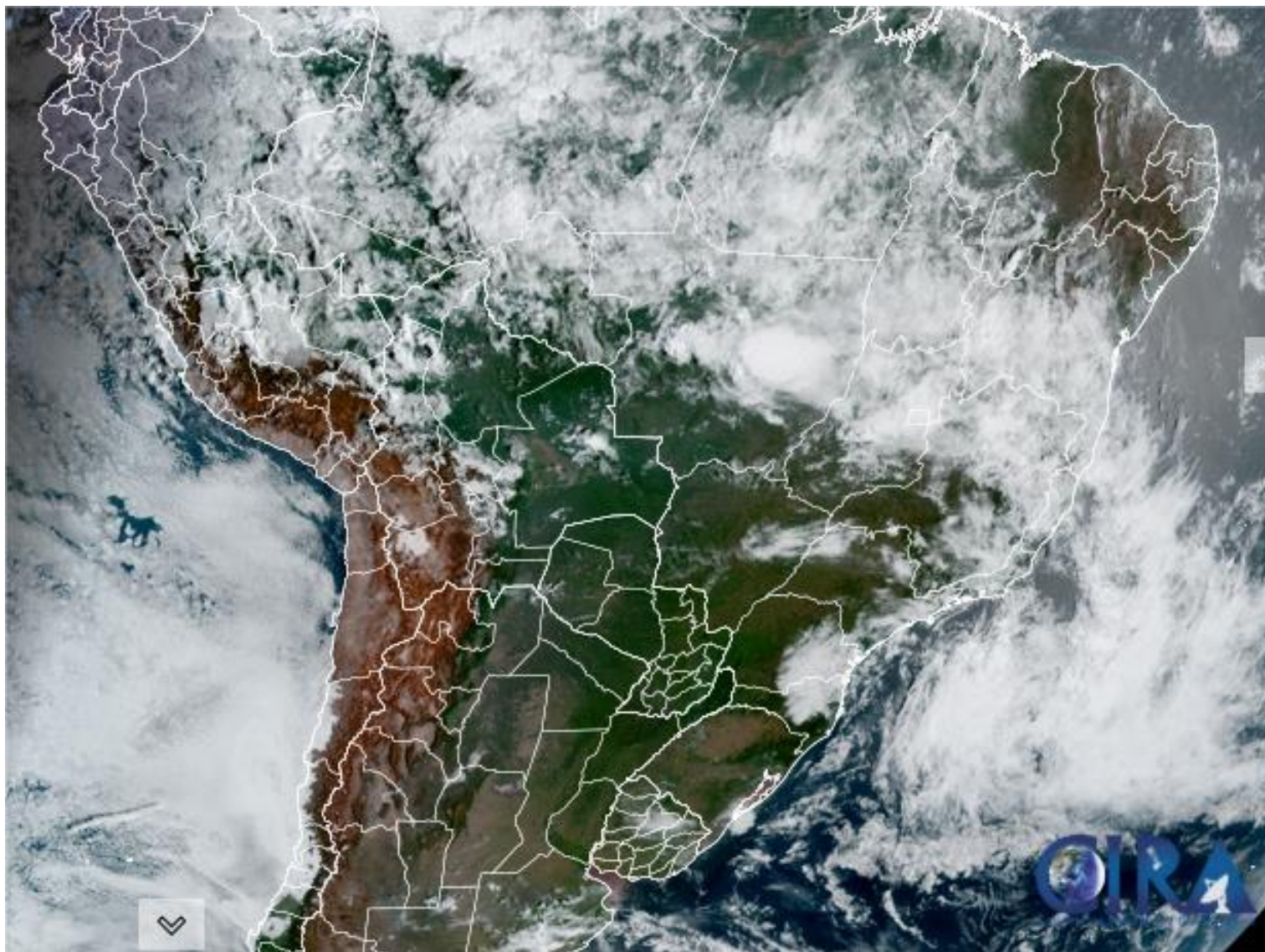
Condição Normal 
Seca Fraca 
Seca Moderada 
Seca Severa 
Seca Extrema 
Seca Excepcional 



Fonte: CEMADEN

Dados: Precipitação (Cemaden/INMET/CHIRPS) e
Vazão (ONS/ANA) - Jan/1981-Nov/2025.

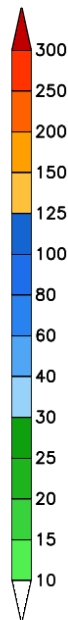
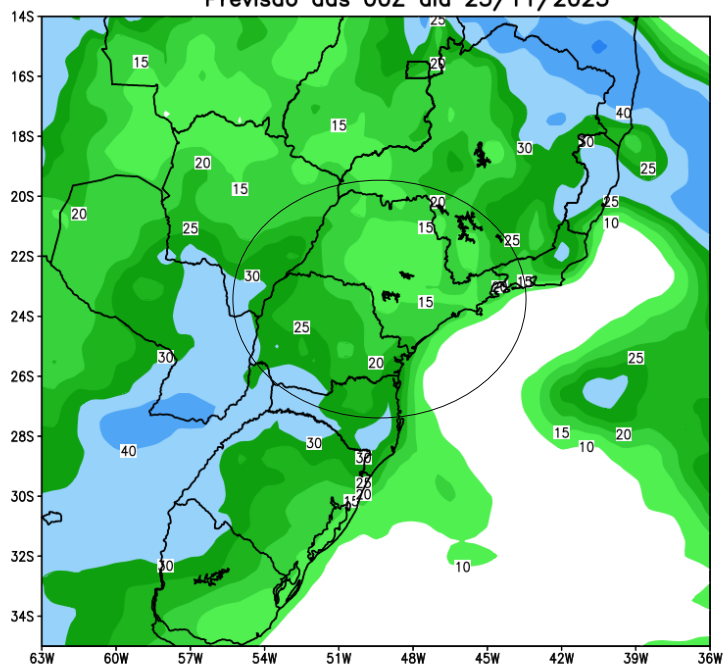
Situação meteorológica atual



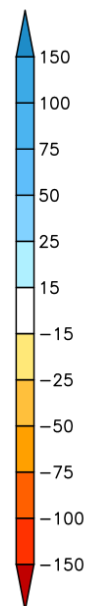
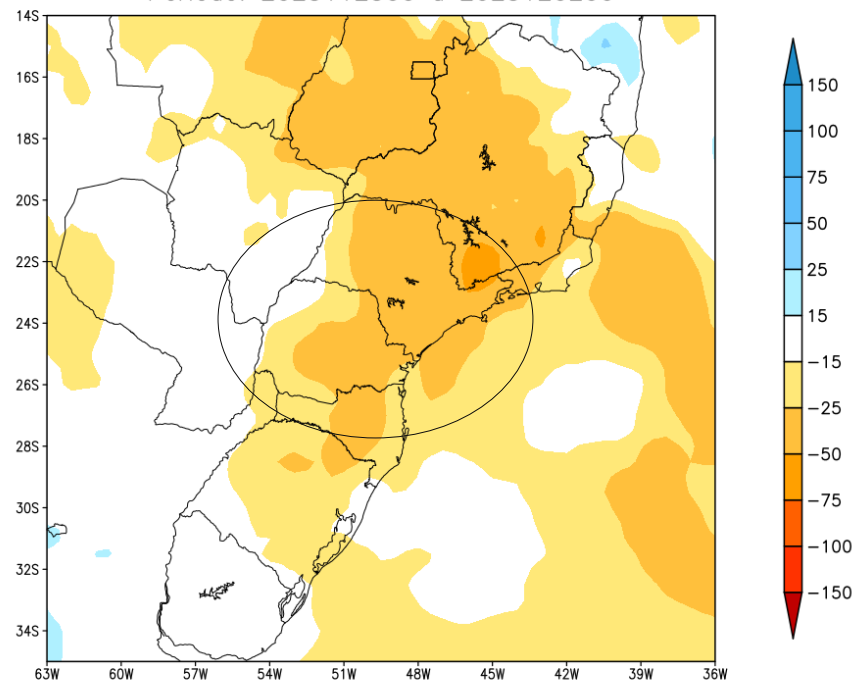
Fonte: INMET

Previsão de chuva próximos 7 dias

GEFS / BRASIL_SUL
Precipitacao acumulada 1aSem (mm)
Previsao das 00Z dia 25/11/2025



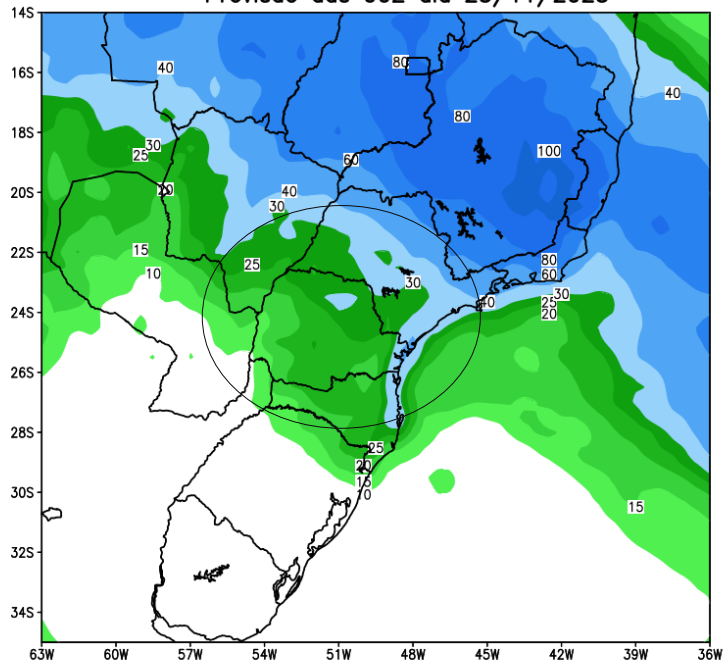
Anomalia de Precipitacao BR_SUL (mm)
Periodo: 2025112500 a 2025120200



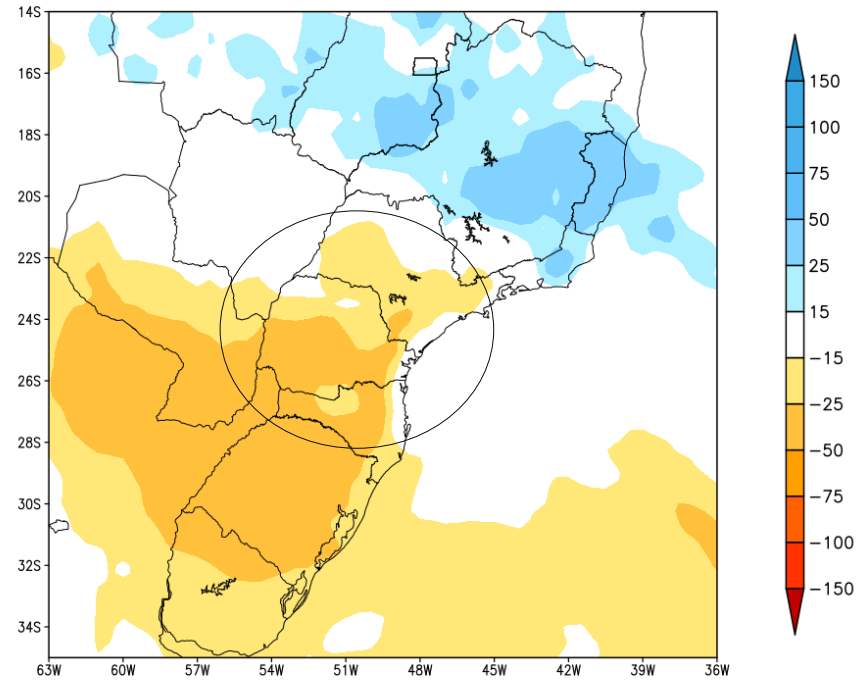
MODELO GEFS

Tendência para a segunda semana

GEFS / BRASIL_SUL
Precipitacao acumulada 2aSem (mm)
Previsao das 00Z dia 25/11/2025



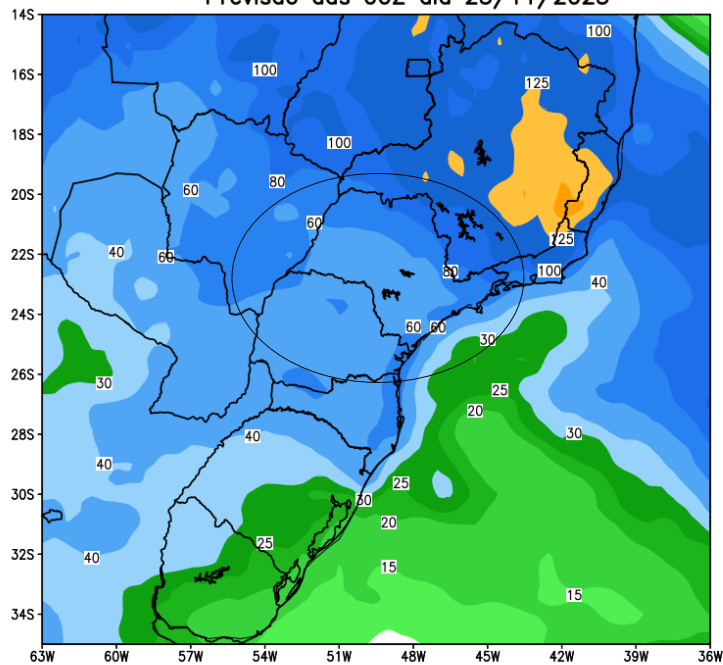
Anomalia de Precipitacao BR_SUL (mm)
Periodo: 2025120300 a 2025120900



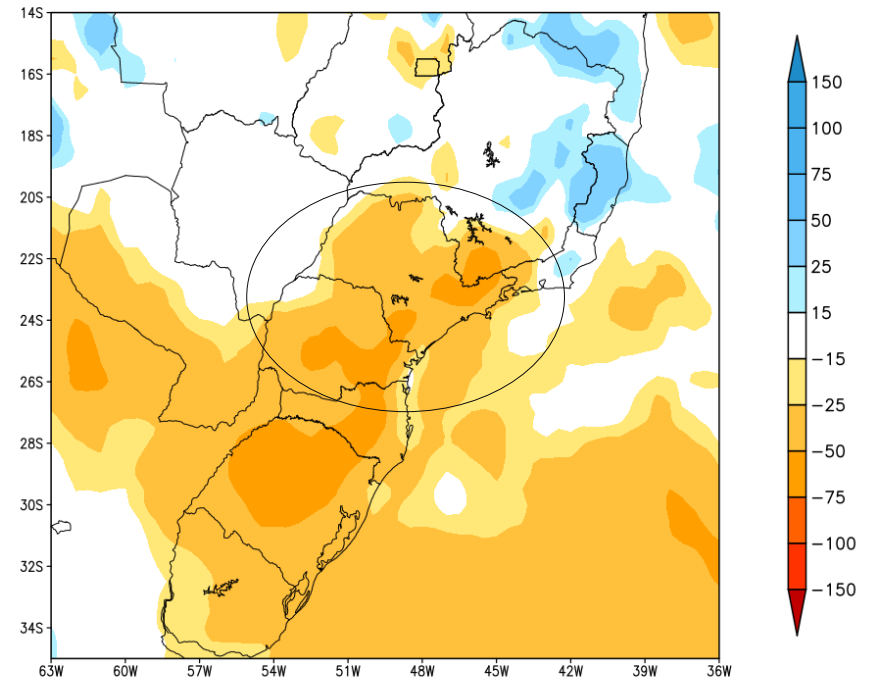
MODELO GEFS

Tendência para as duas próximas semanas

GEFS / BRASIL_SUL
Precipitacao acumulada 14dias (mm)
Previsao das 00Z dia 25/11/2025



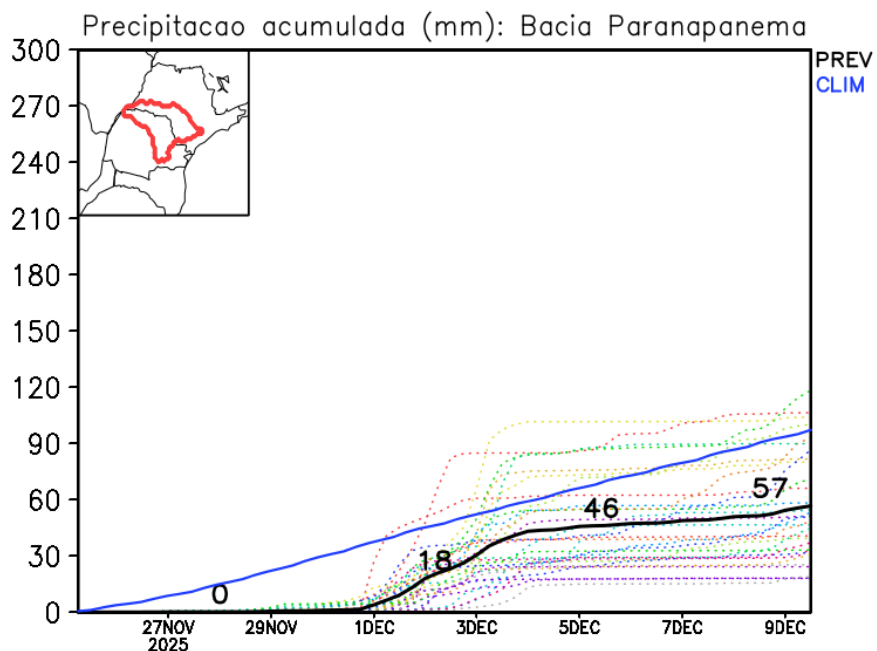
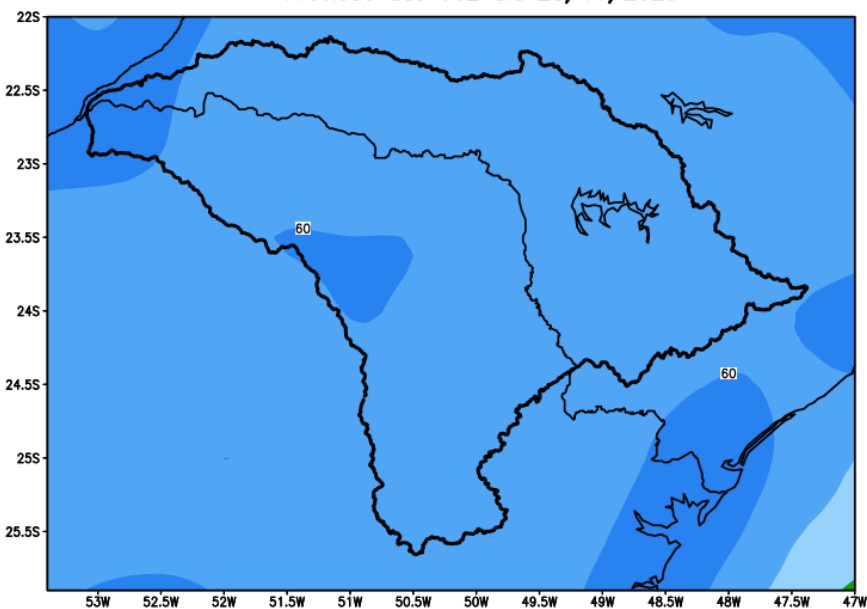
Anomalia de Precipitacao BR_SUL (mm)
Periodo: 2025112500 a 2025120900



MODELO GEFS

Previsão para a bacia do rio Paranapanema

GEFS / Bacia do Rio Paranapanema
Precipitação acumulada em 14 dias (mm)
Previsão das 00Z dia 25/11/2025

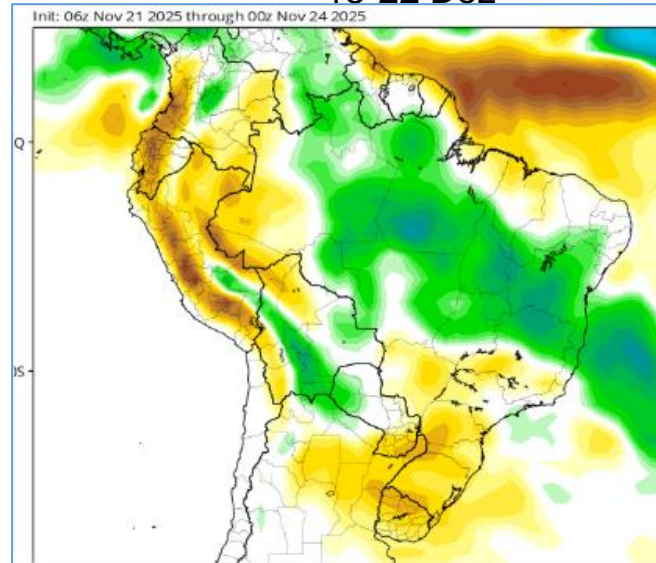
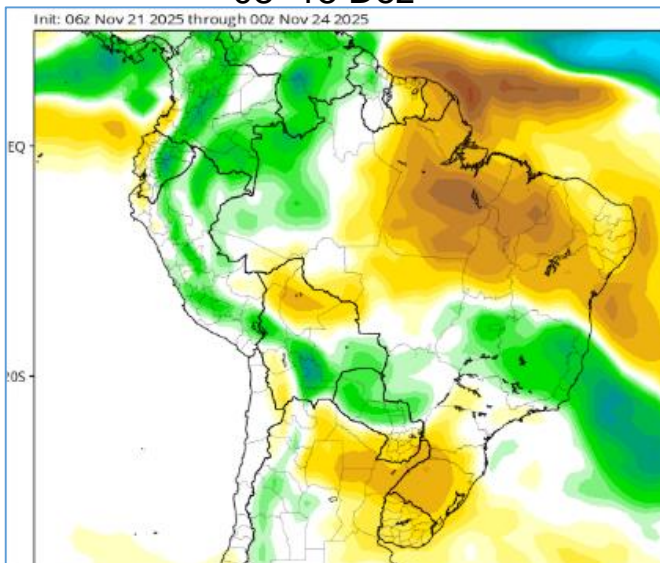


Tendência 3a e 4a semanas

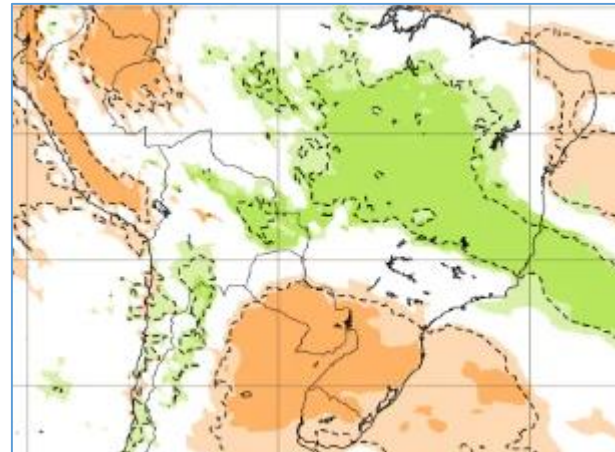
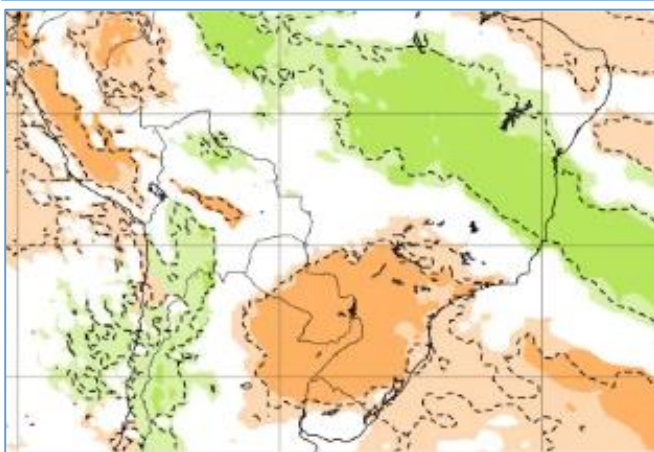
08- 15 Dez

15-22 Dez

CFS/NOAA



ECMWF



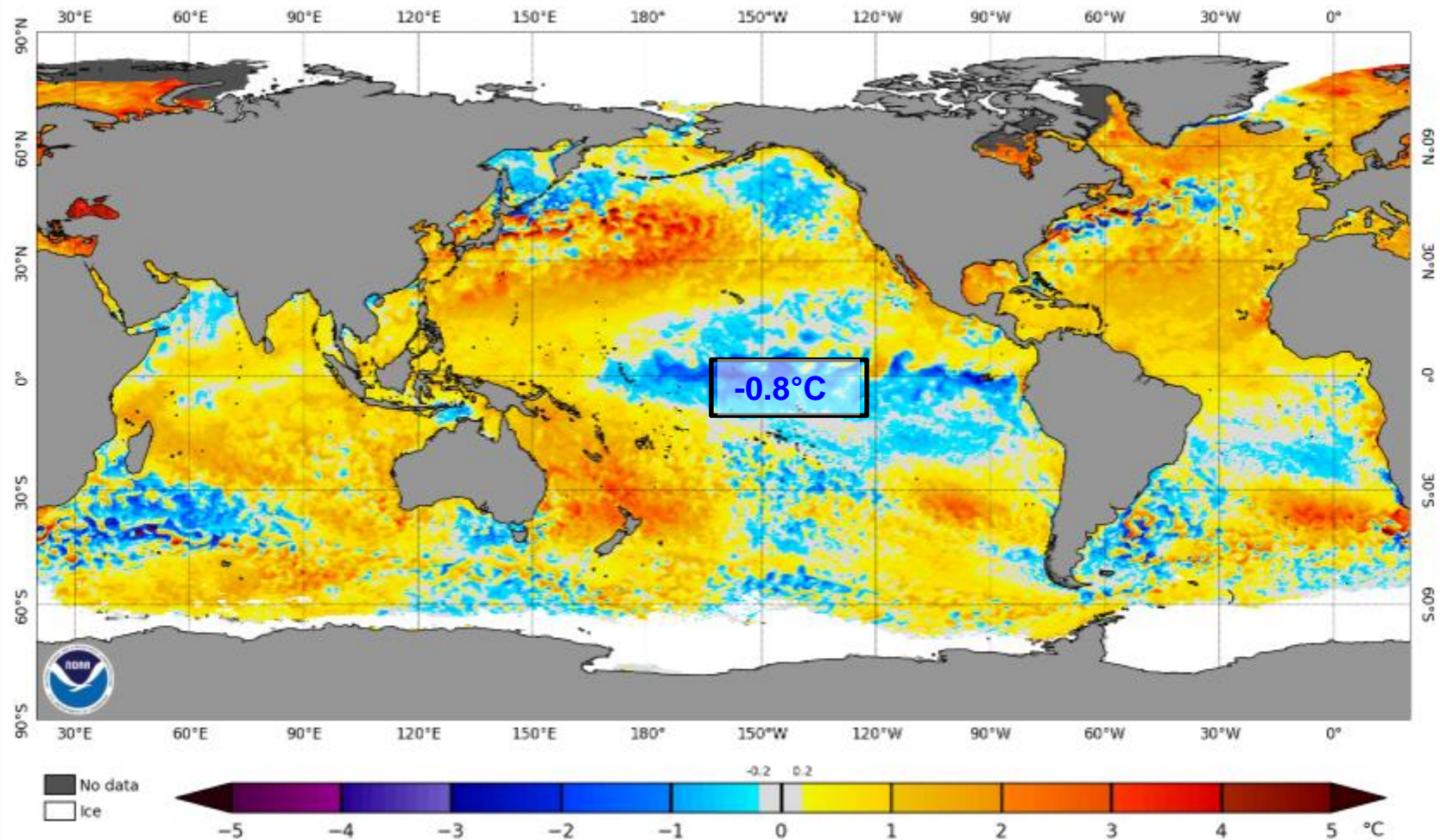
08- 15 Dez

15-22 Dez



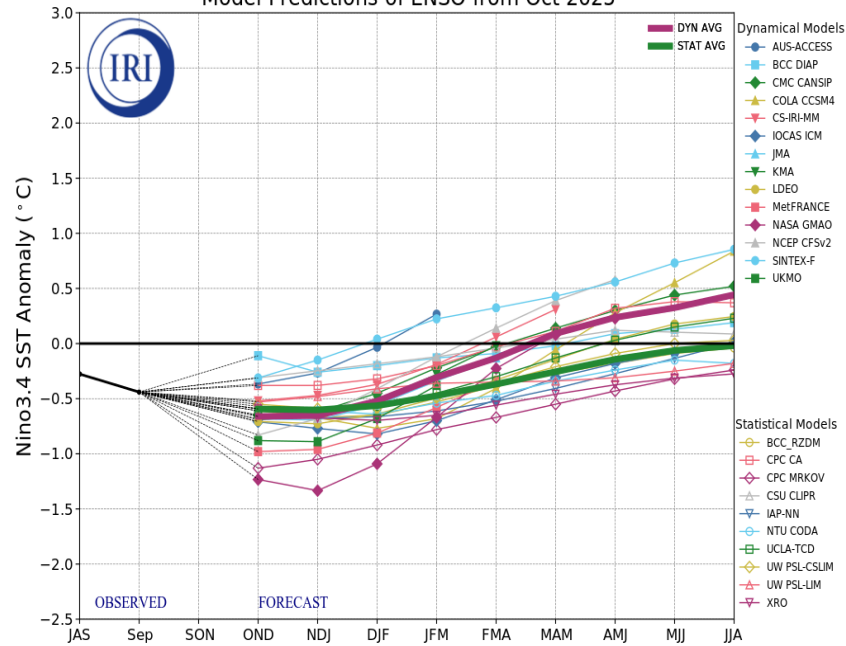
Status Atual: La Niña

NOAA Coral Reef Watch Daily 5km SST Anomalies (v3.1) 23 Nov 2025

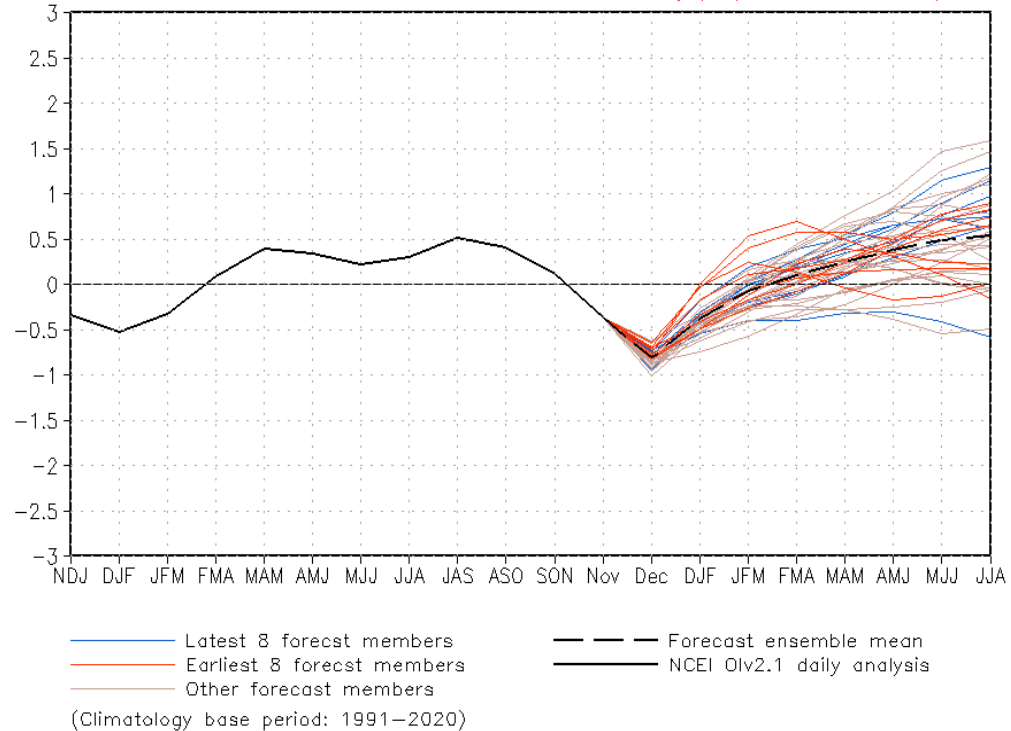


Previsão do “ENSO”

Model Predictions of ENSO from Oct 2025

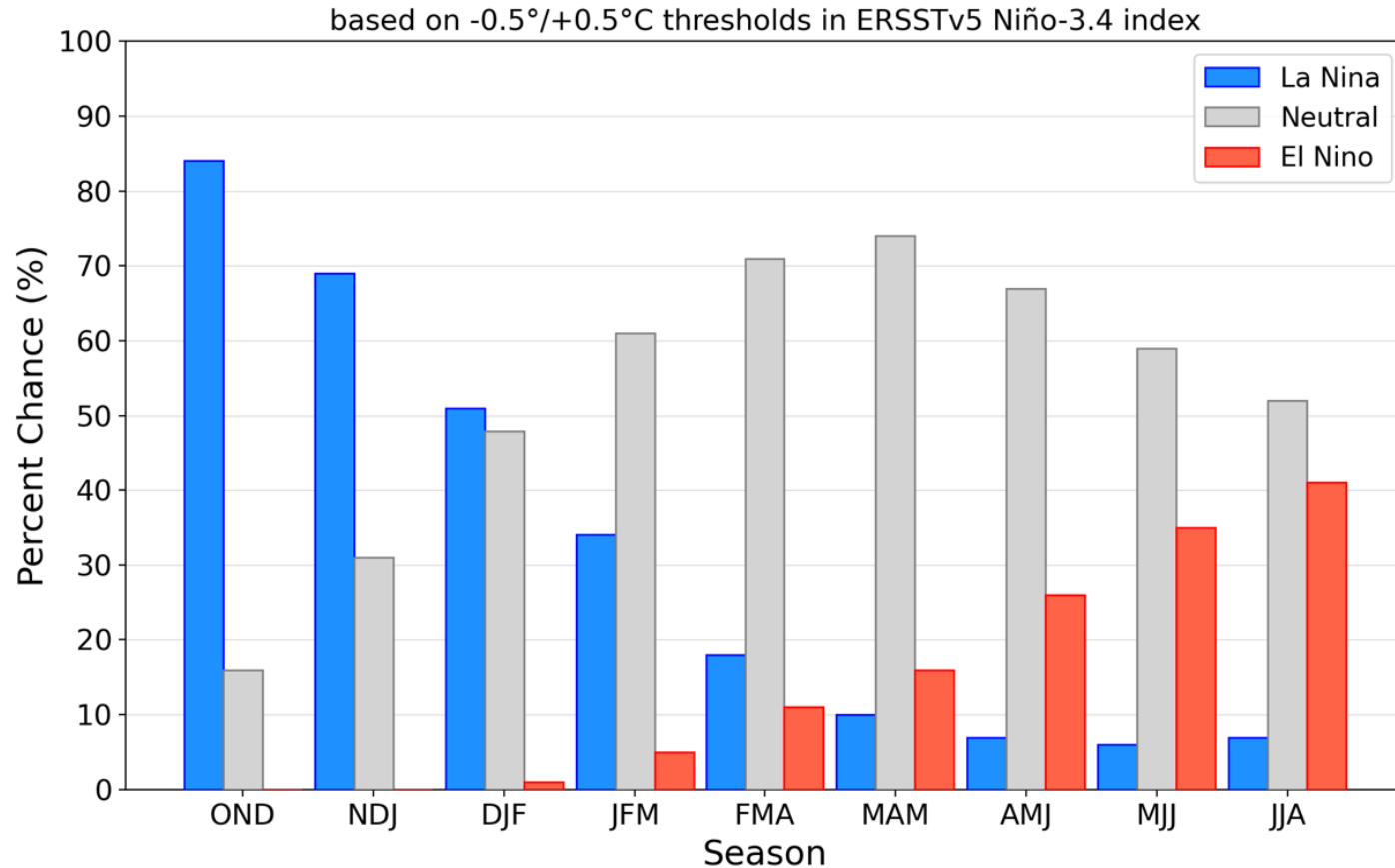


CFSv2 forecast Nino3.4 SST anomalies (K) (PDF corrected)



Previsão do “ENSO”

Official NOAA CPC ENSO Probabilities (issued November 2025)

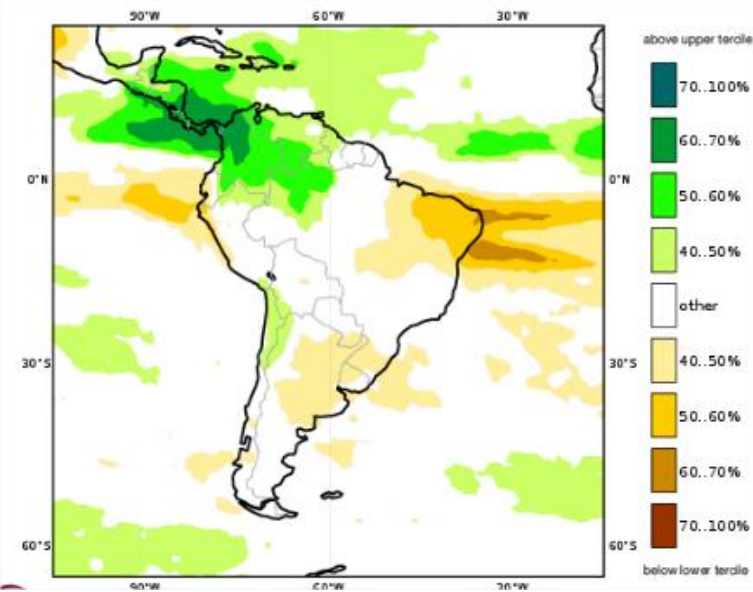


Previsão Sazonal de Chuva Multi-Modelo

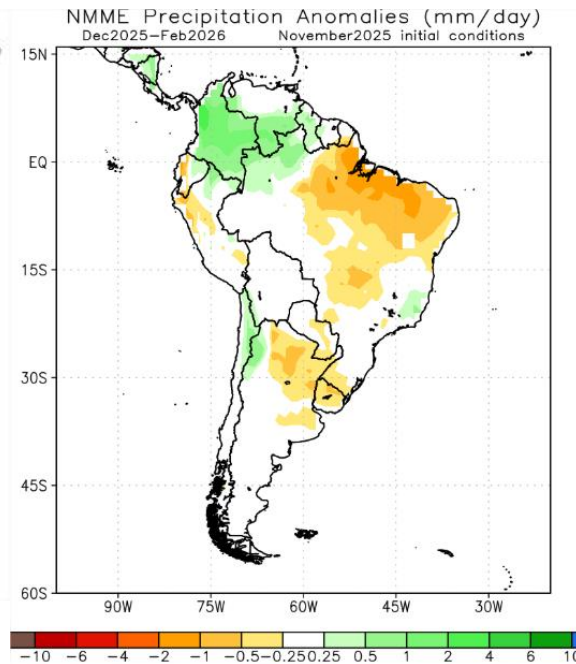
Dezembro-Janeiro-Fevereiro

Previsão Sazonal de Chuva Multi-Modelo

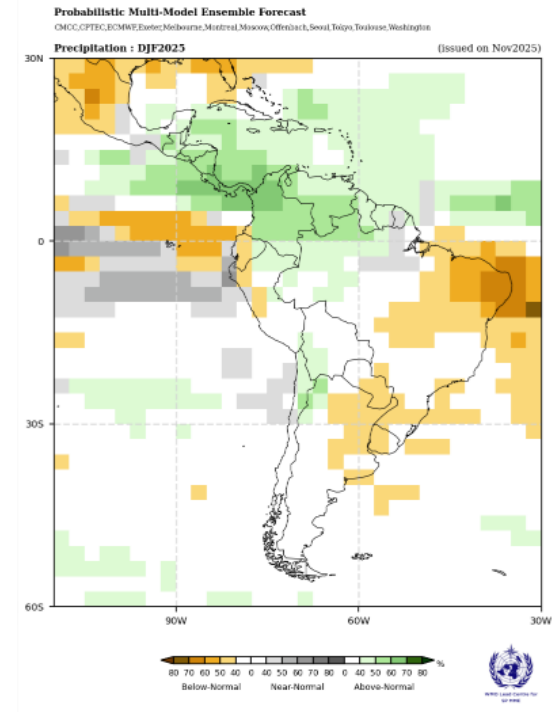
Dezembro-Janeiro-Fevereiro



Modelos Europeus



Modelos Norte Americanos



Modelos da WMO