

Monitoramento da bacia do rio Paranapanema

OUTUBRO/2025

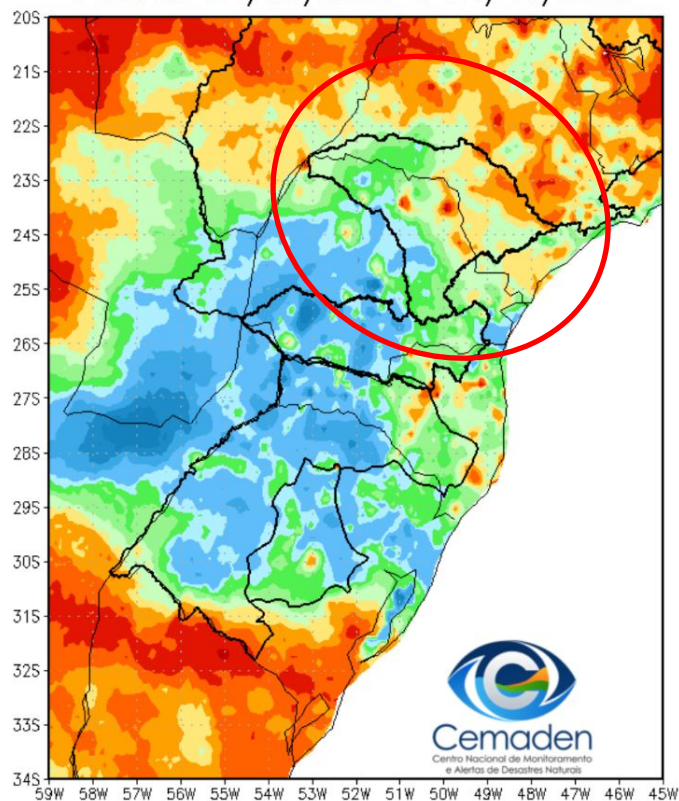


MINISTÉRIO DA
CIÊNCIA, TECNOLOGIA
E INOVAÇÃO

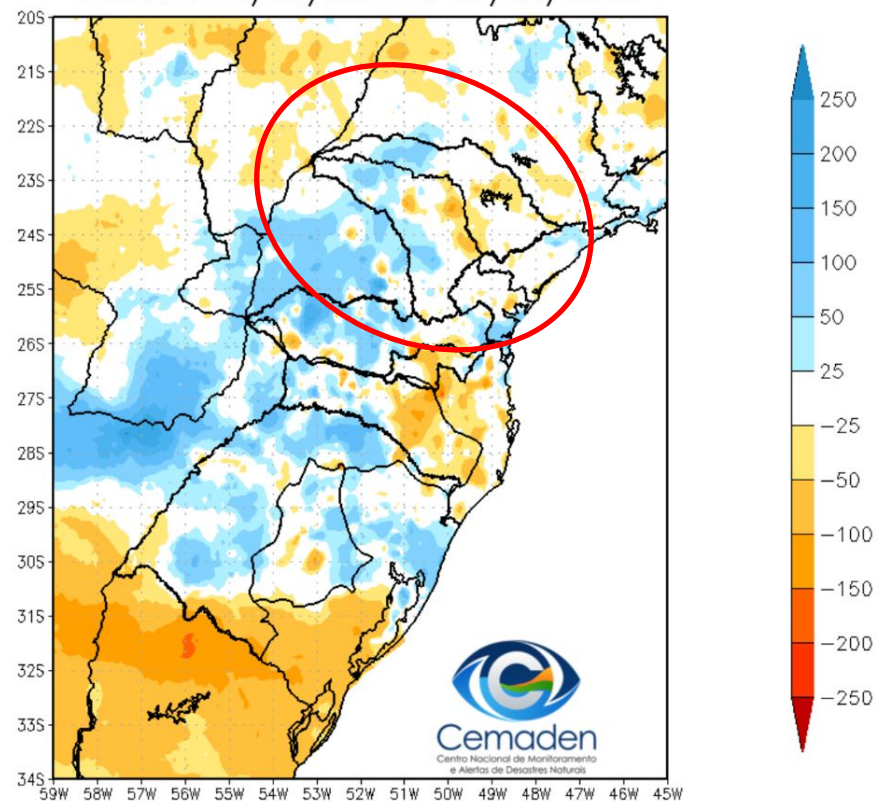


Precipitação acumulada nos últimos 30 dias

Precipitação Acumulada (mm) A.S.
Período: 21/09/2025 a 21/10/2025

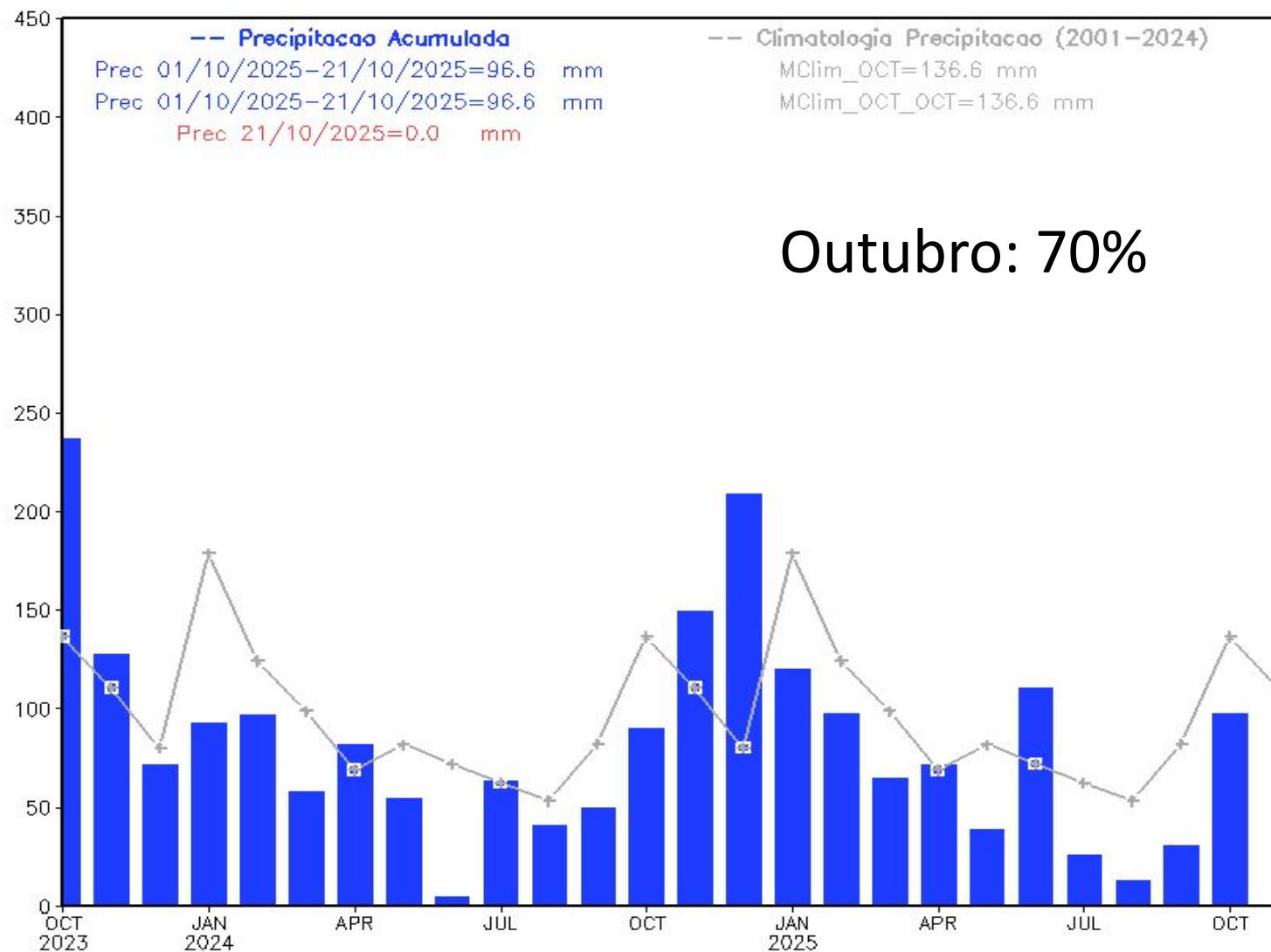


Anomalia de Precipitação (mm) A.S.
Período: 21/09/2025 a 21/10/2025



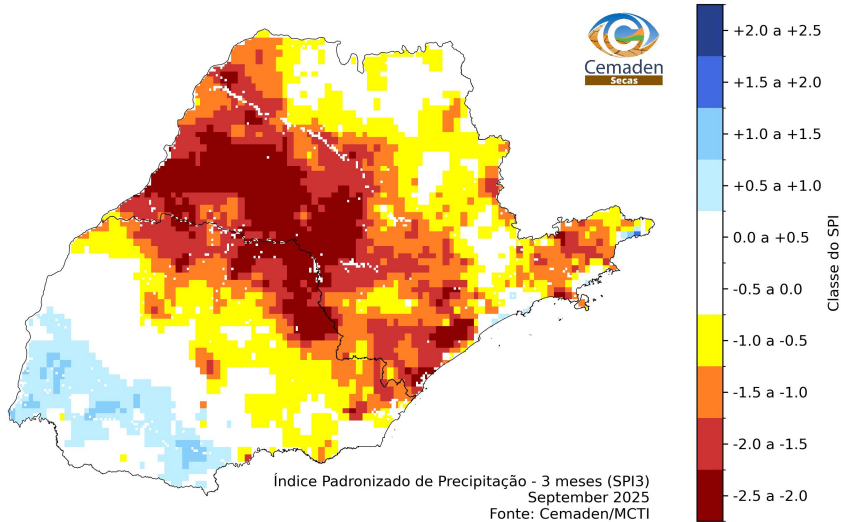
Evolução Temporal da Precipitação

Precipitacao Bacia do Rio Paranapanema
desde OCT 2023

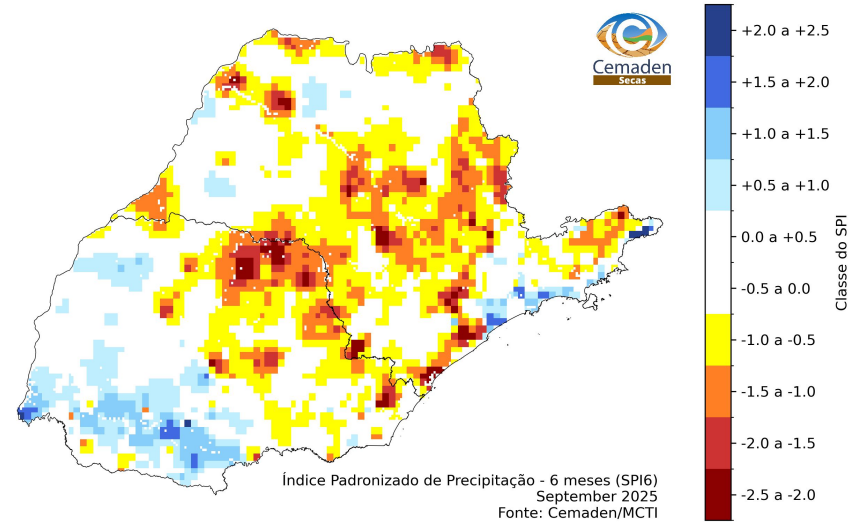


SPI: SETEMBRO 2025

SPI-03



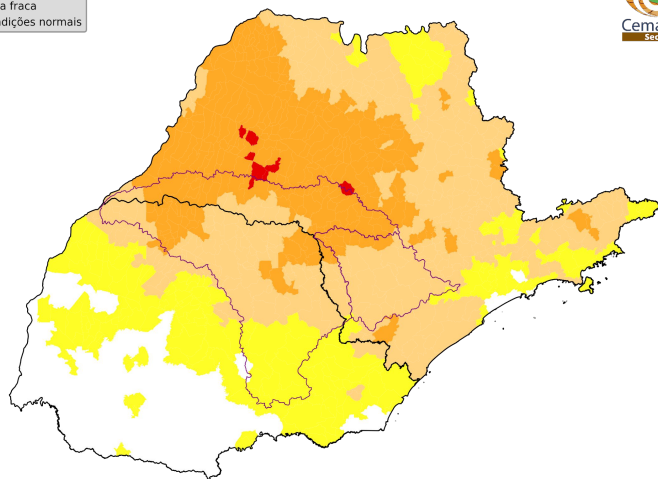
SPI-06



ÍNDICE INTEGRADO DE SECA: ANÁLISE POR MUNICÍPIOS

IIS-03 OBSERVADO

Classes de seca
● Seca excepcional
● Seca extrema
● Seca severa
● Seca moderada
● Seca fraca
● Condições normais

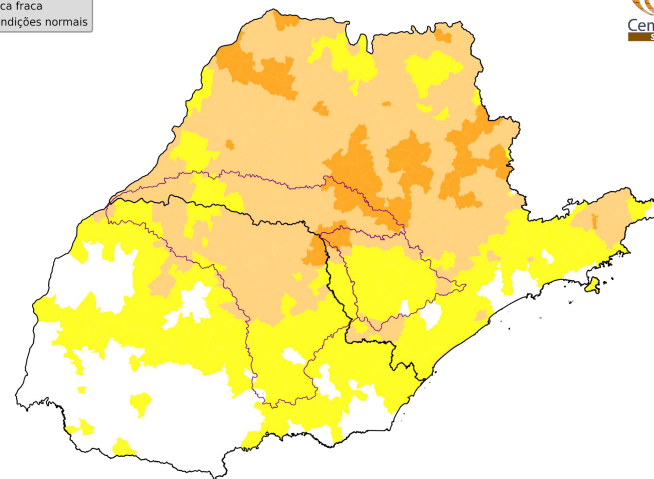


Número de municípios
por classes de seca:
Seca excepcional: 0 (0.0%)
Seca extrema: 3 (1.1%)
Seca severa: 119 (41.8%)
Seca moderada: 136 (47.7%)
Seca fraca: 25 (8.8%)
Condições normais: 2 (0.7%)

Índice Integrado de Seca - 3 meses (IIS3)
September 2025
Fonte: Cemaden/MCTI

IIS-06 OBSERVADO

Classes de seca
● Seca excepcional
● Seca extrema
● Seca severa
● Seca moderada
● Seca fraca
● Condições normais



Número de municípios
por classes de seca:
Seca excepcional: 0 (0.0%)
Seca extrema: 0 (0.0%)
Seca severa: 33 (11.6%)
Seca moderada: 156 (54.7%)
Seca fraca: 90 (31.6%)
Condições normais: 6 (2.1%)

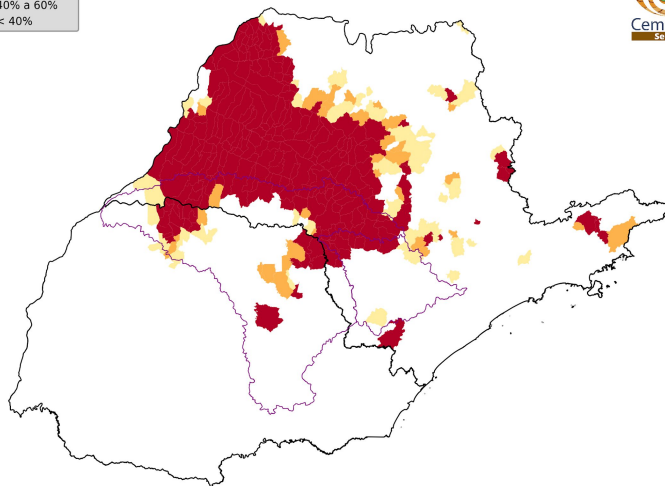
Índice Integrado de Seca - 6 meses (IIS6)
September 2025
Fonte: Cemaden/MCTI

ÁREAS DE PASTAGENS E AGRÍCOLAS AFETADAS PELA SECA

SETEMBRO

Fração da área
agrícola impactada

- > 80%
- 60% a 80%
- 40% a 60%
- < 40%

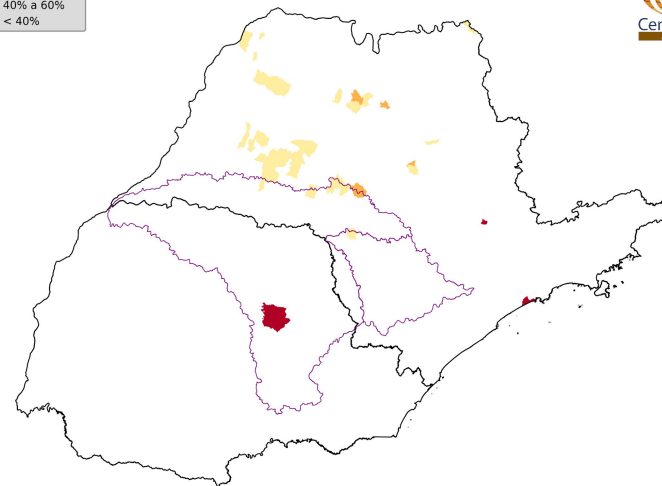


Área agro-pastoril municipal afetada pela seca
September 2025
Fonte: Cemaden/MCTI

OUTUBRO PREVISÃO

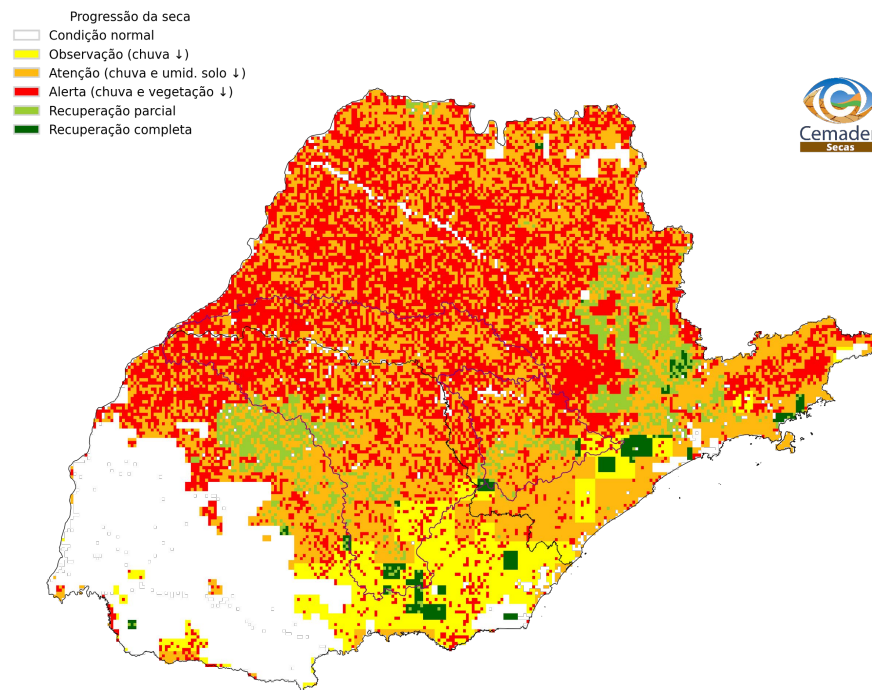
Fração da área
agrícola impactada

- > 80%
- 60% a 80%
- 40% a 60%
- < 40%



Área agro-pastoril municipal afetada pela seca - previsão
October 2025
Fonte: Cemaden/MCTI

PROGRESSÃO DAS CONDIÇÕES DE SECA (PCS)

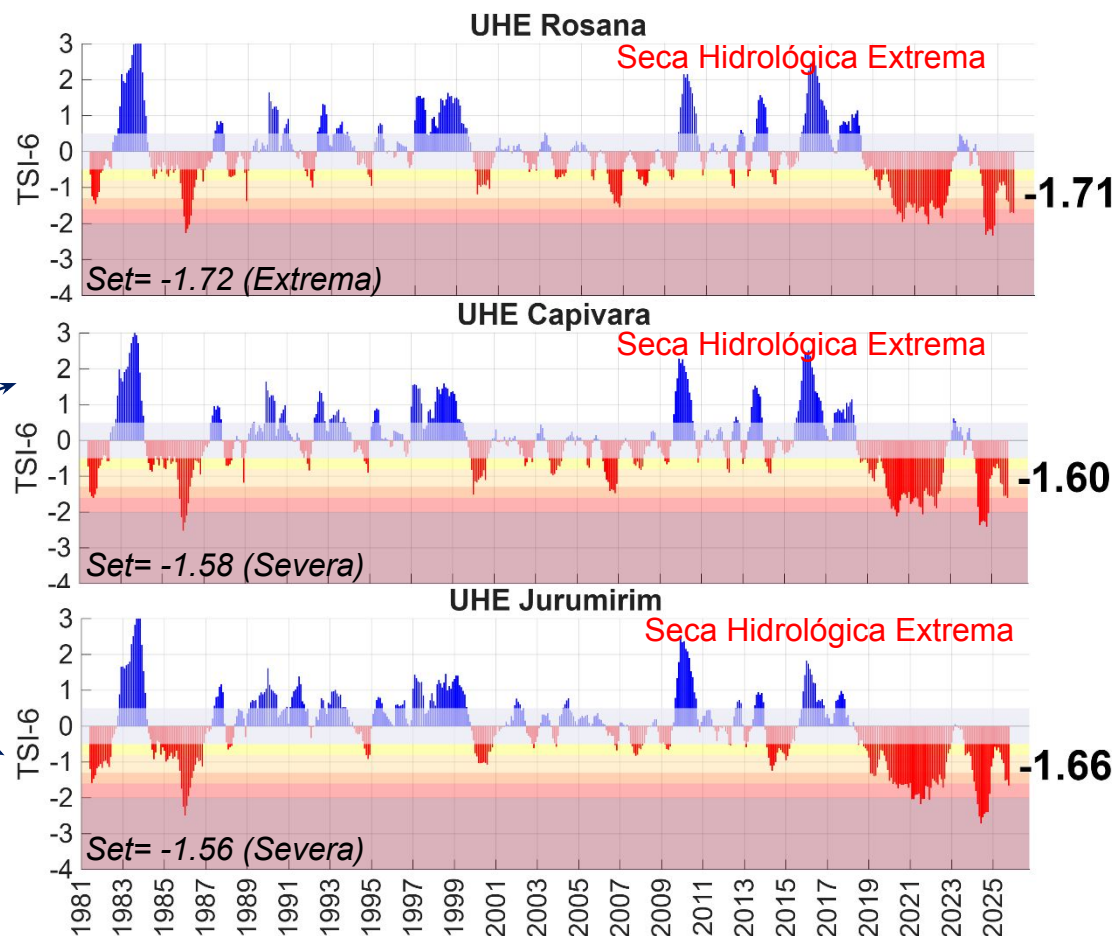
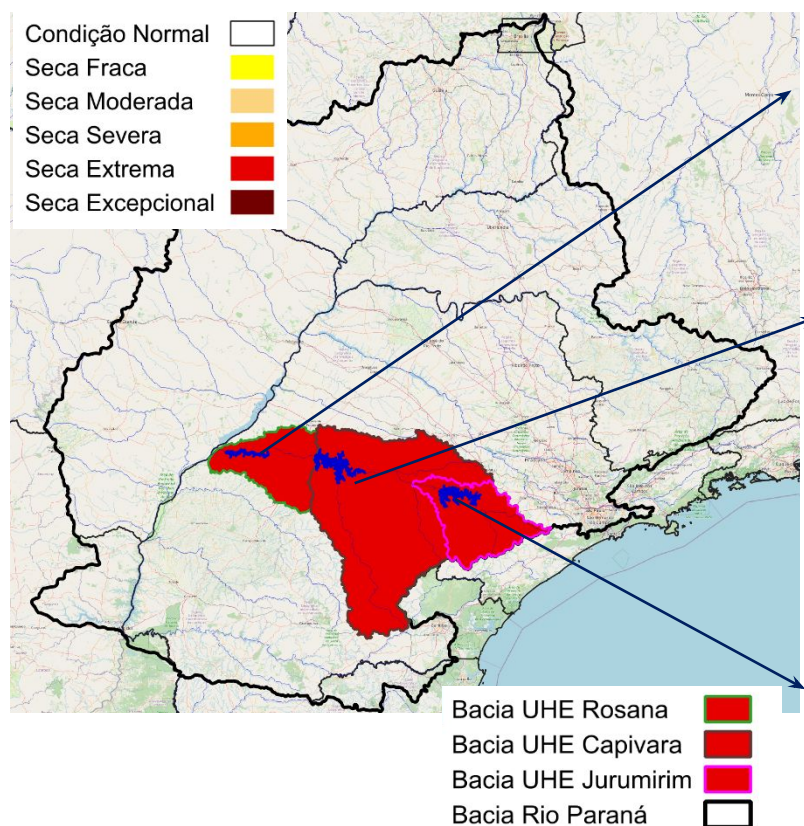


Progressão e Intensificação das Condições de Seca (PICS)
September 2025
Fonte: Cemaden/MCTI

Índice Bivariado de Seca (Precipitação-Vazão) - TSI

Escala de Longo Prazo: **TSI-6 meses**

Out/2025 - Parcial



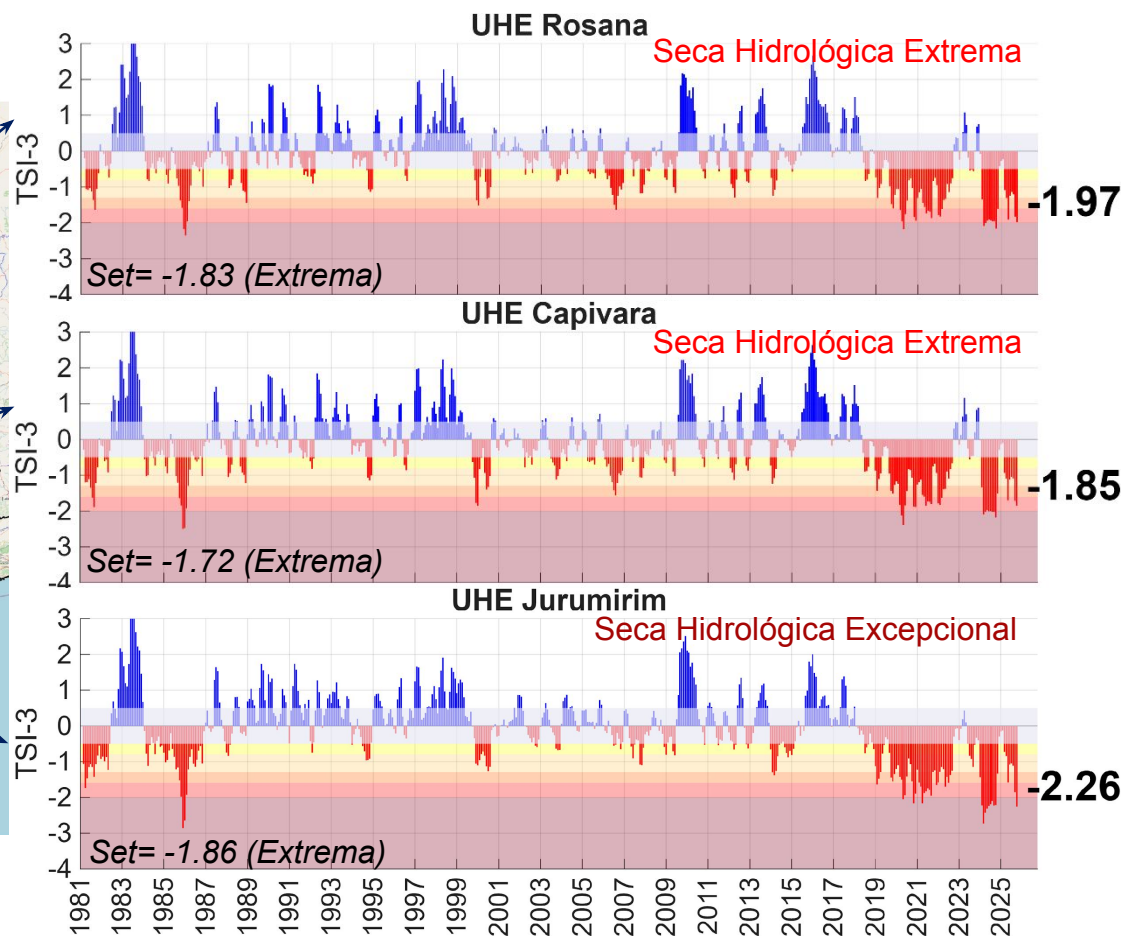
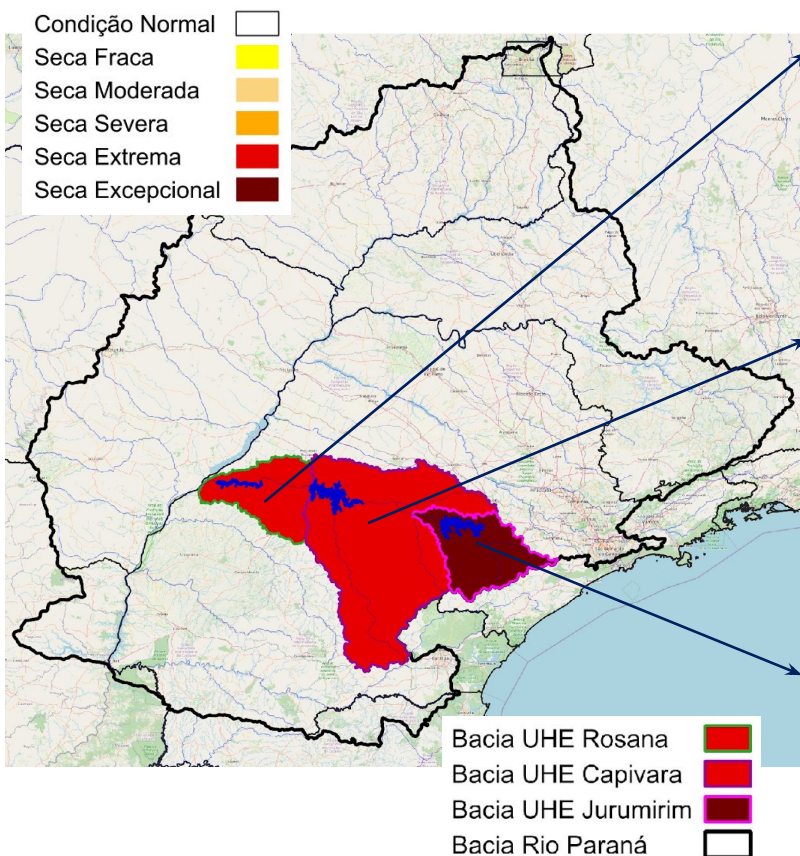
Fonte: CEMADEN

Dados: Precipitação (Cemaden/INMET/CHIRPS) e
Vazão (ONS/ANA) - Jan/1981-Out/2025.

Índice Bivariado de Seca (Precipitação-Vazão) - TSI

Escala de Curto Prazo: **TSI-3 meses**

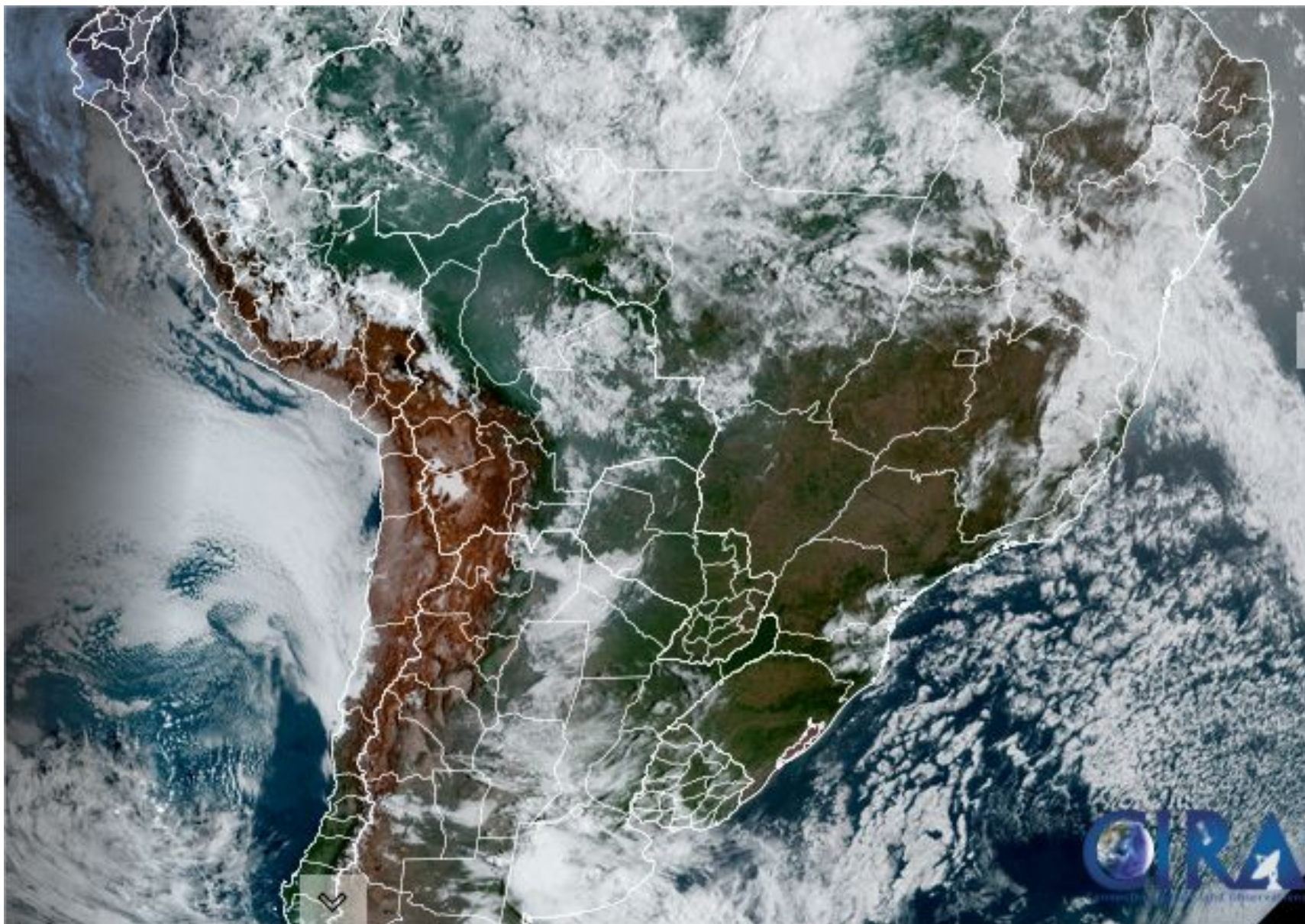
Out/2025 - Parcial



Fonte: CEMADEN

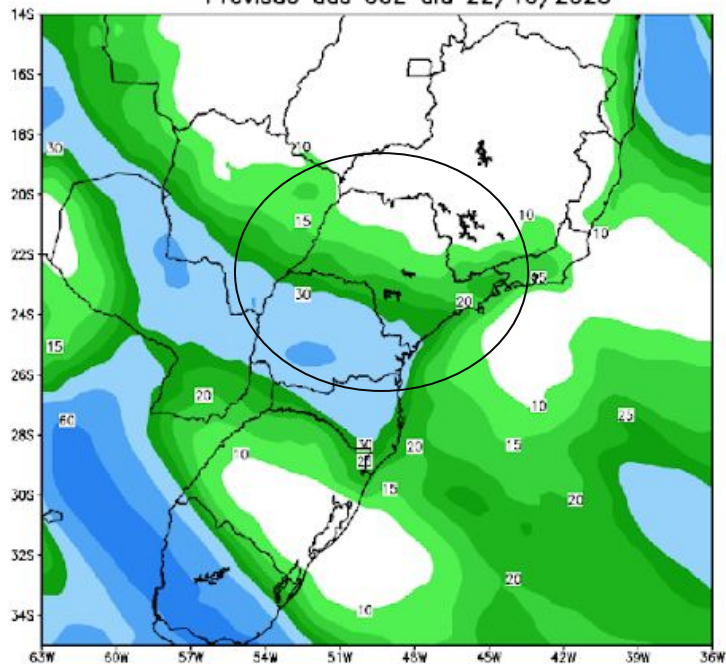
Dados: Precipitação (Cemaden/INMET/CHIRPS) e
Vazão (ONS/ANA) - Jan/1981-Out/2025.

Situação meteorológica atual

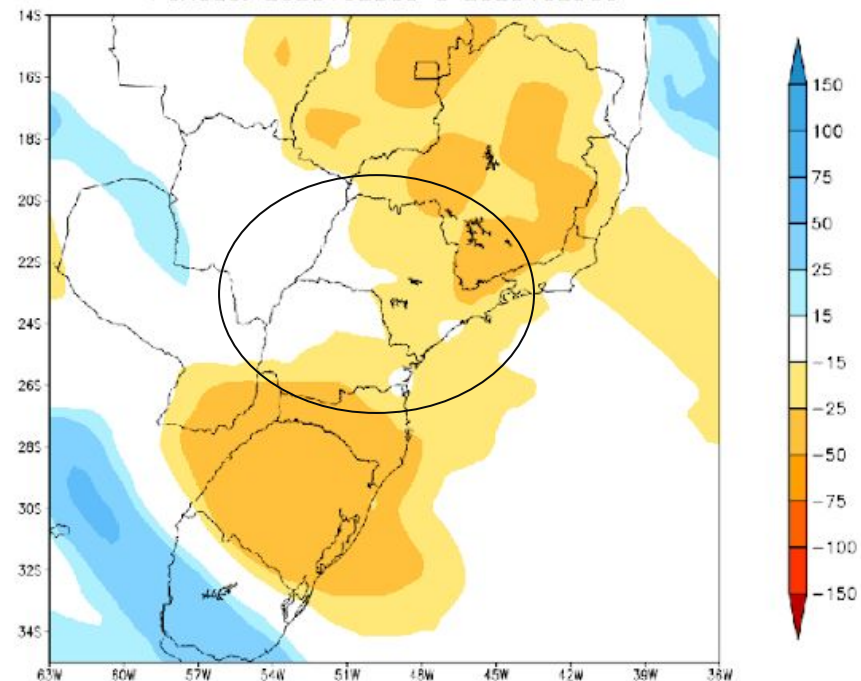


Previsão de chuva próximos 7 dias

GEFS / BRASIL_SUL
Precipitacao acumulada 1aSem (mm)
Previsao das 00Z dia 22/10/2025



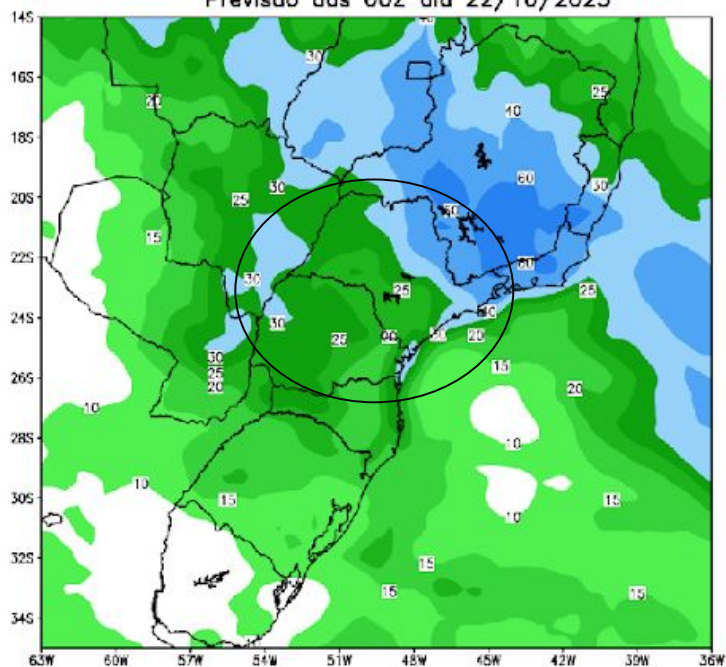
Anomalia de Precipitacao BR_SUL (mm)
Periodo: 2025102200 a 2025102900



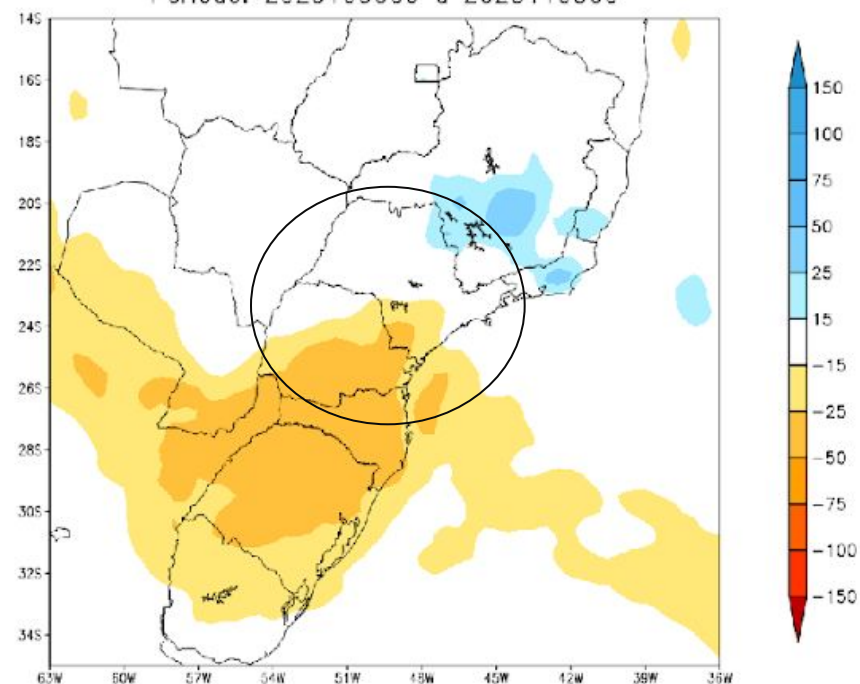
MODELO GEFS

Tendência para a segunda semana

GEFS / BRASIL_SUL
Precipitacao acumulada 2aSem (mm)
Previsao das 00Z dia 22/10/2025



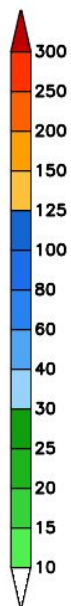
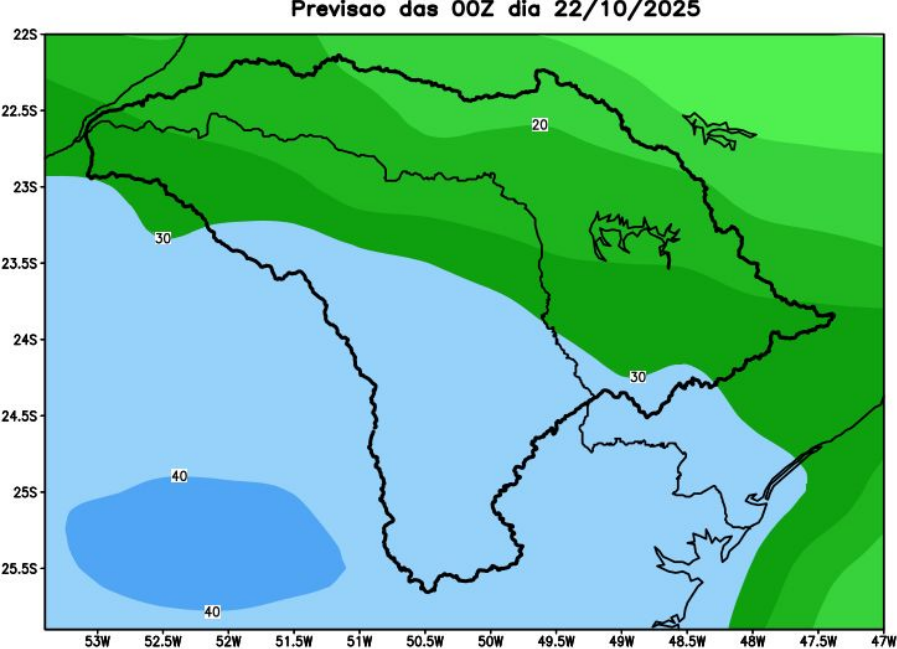
Anomalia de Precipitacao BR_SUL (mm)
Periodo: 2025103000 a 2025110500



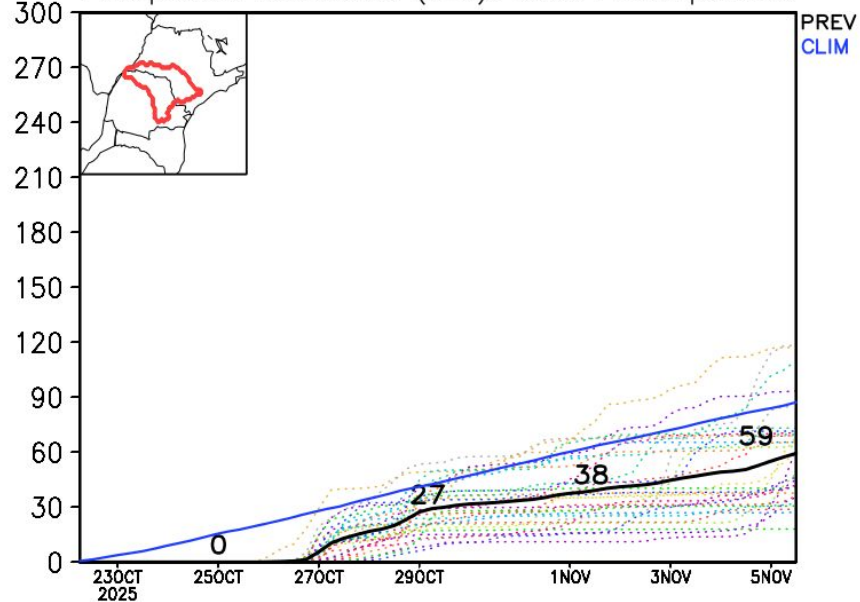
MODELO GEFS

Previsão para a bacia do rio Paranapanema

GEFS / Bacia do Rio Paranapanema
Precipitação acumulada em 7 dias (mm)
Previsão das 00Z dia 22/10/2025



Precipitação acumulada (mm): Bacia Paranapanema

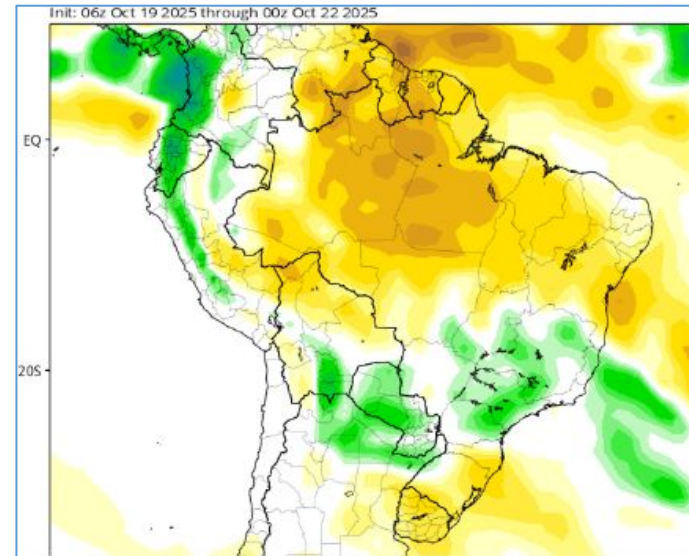
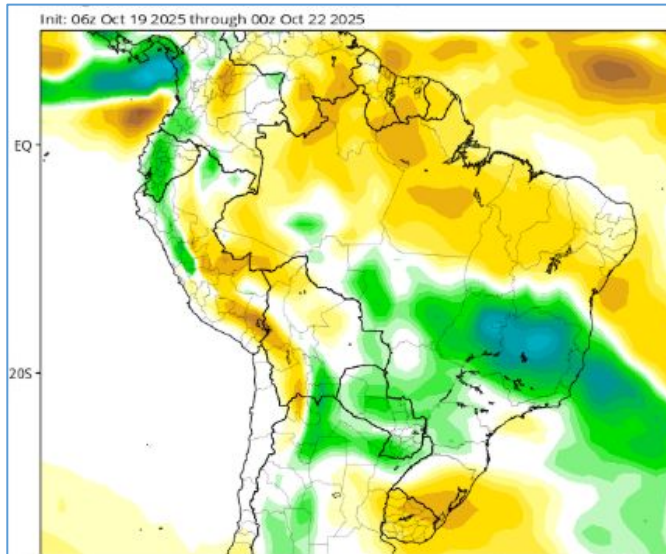


Tendência 3a e 4a semanas

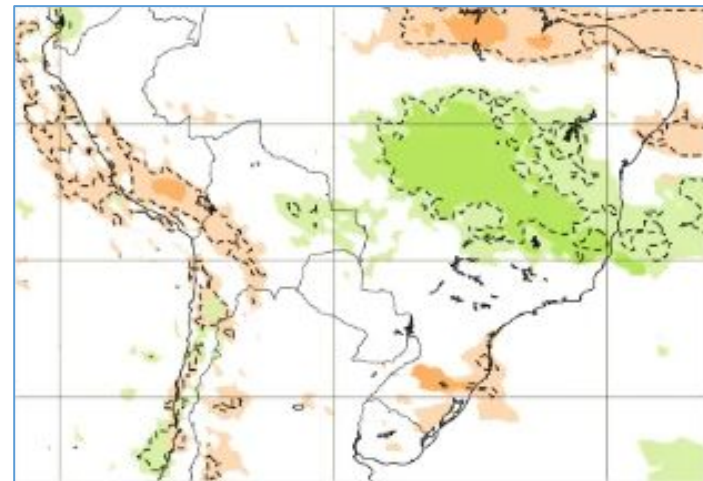
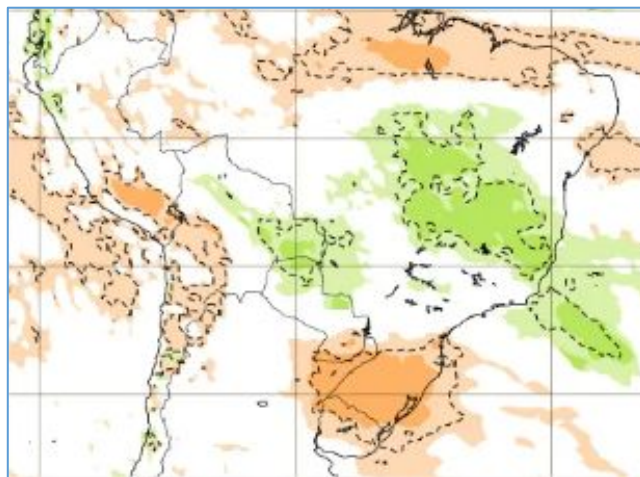
05-12 Nov

12-19 Nov

CFS/NOAA



ECMWF



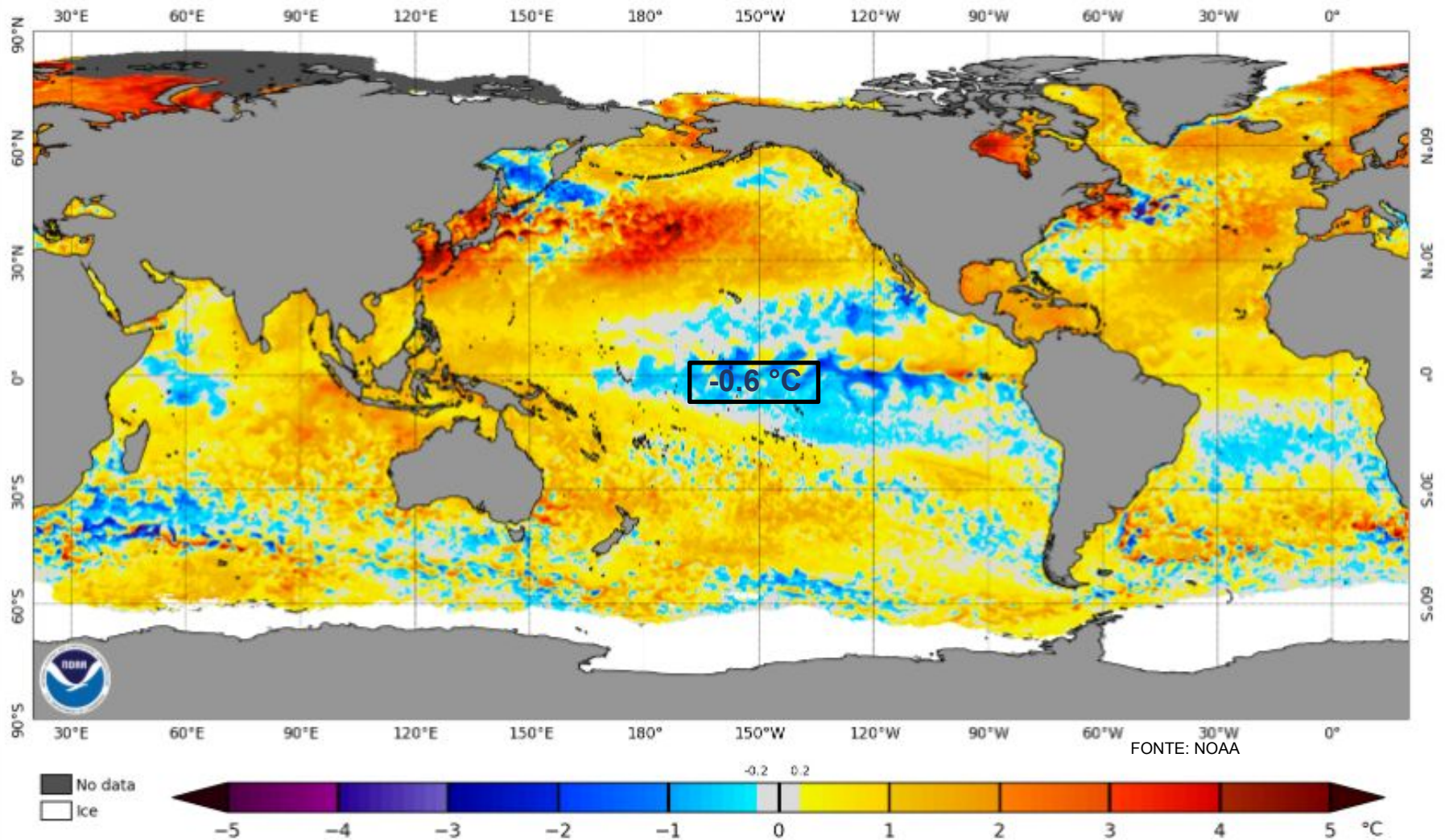
10-17 Nov

17-24 Nov



Status Atual: La Niña

NOAA Coral Reef Watch Daily 5km SST Anomalies (v3.1) 20 Oct 2025



Previsão do “ENSO”

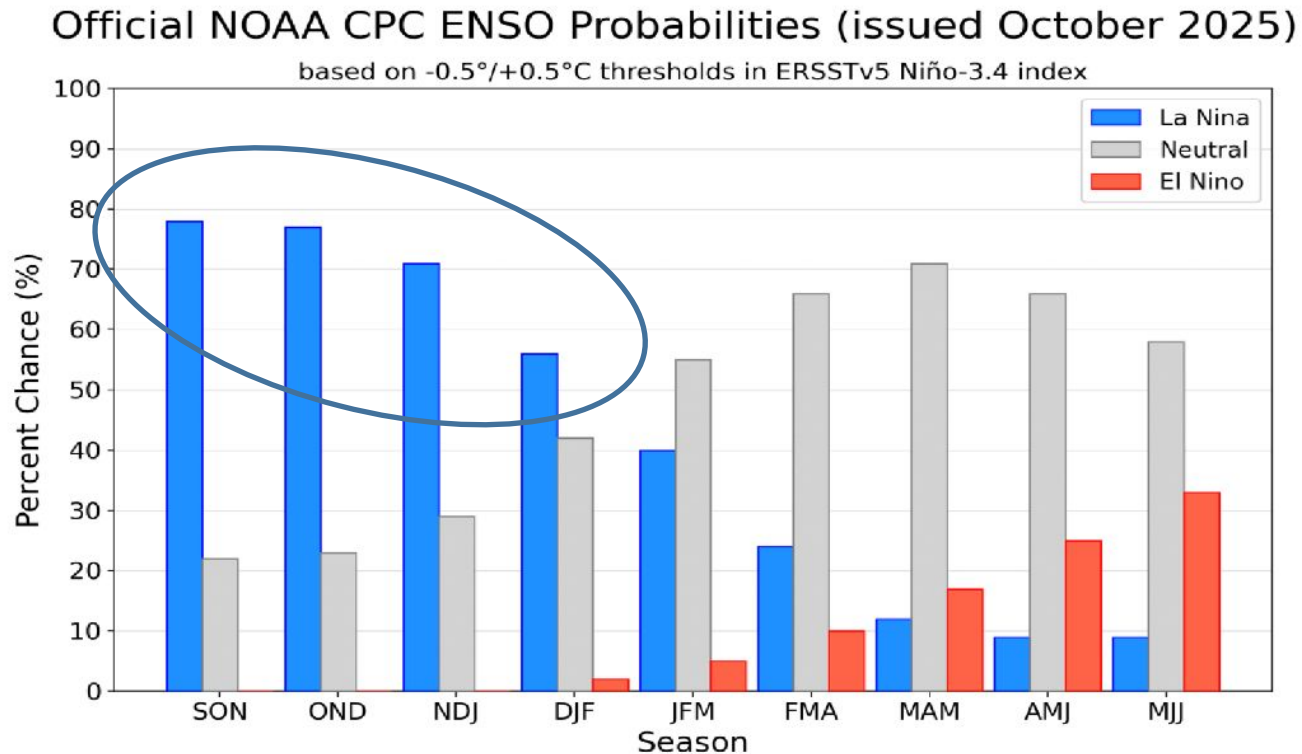
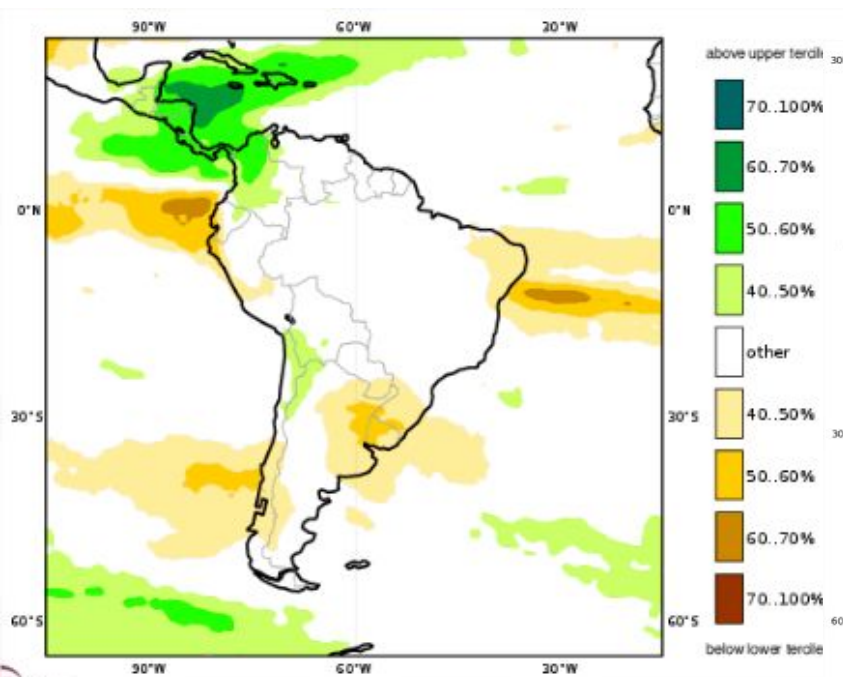


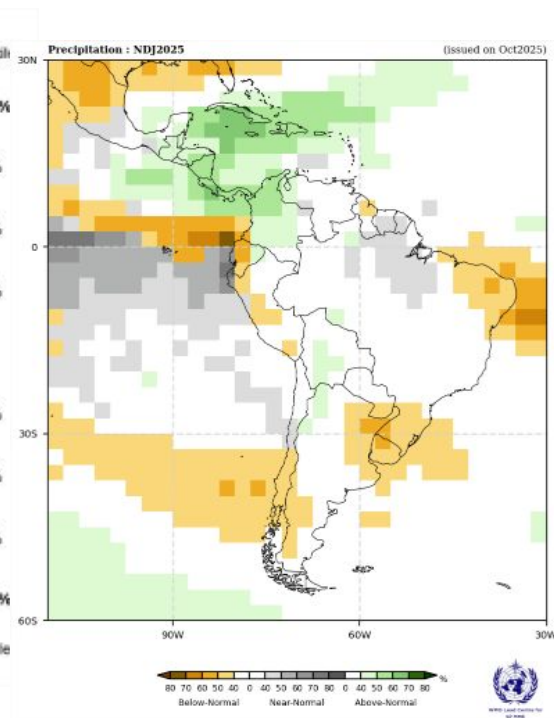
Figure 7. Official ENSO probabilities for the Niño 3.4 sea surface temperature index (5°N - 5°S , 120°W - 170°W). Figure updated 9 October 2025.

Previsão Sazonal de Chuva Multi-Modelo

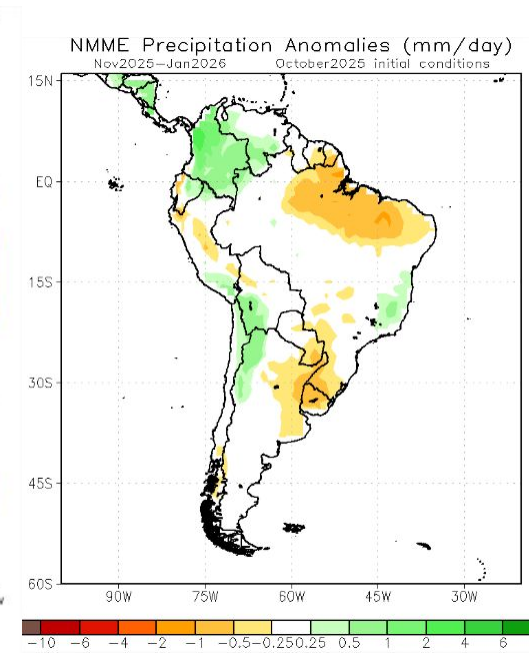
Novembro-Dezembro-Janeiro



Modelos “Europeus”



Modelos da WMO



Modelos Norte Americanos