

Monitoramento da bacia do rio Paranapanema

AGOSTO/2025

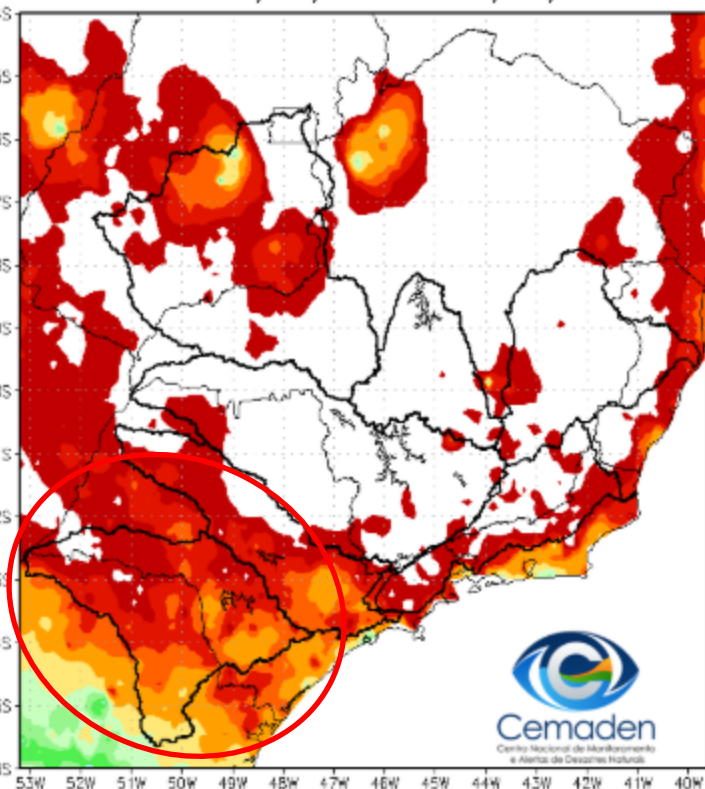


MINISTÉRIO DA
CIÊNCIA, TECNOLOGIA
E INOVAÇÃO

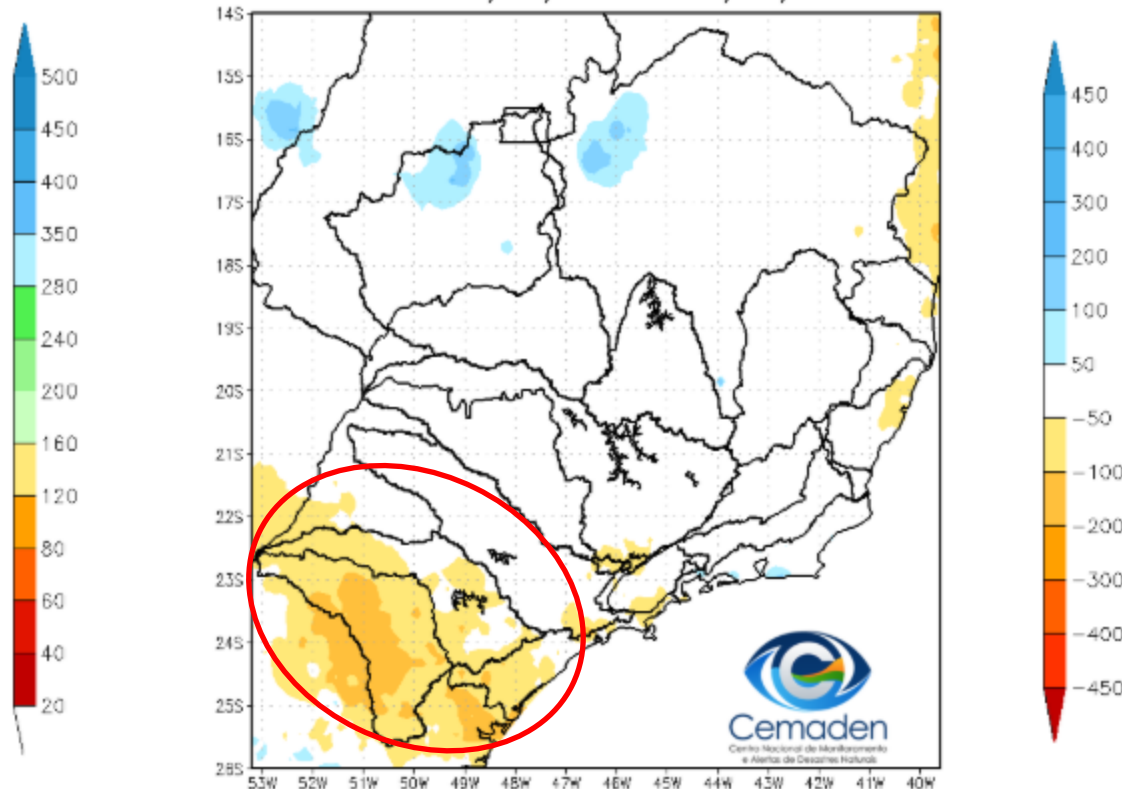


Precipitação acumulada nos últimos 30 dias

Precipitação Acumulada (mm) A.S.
Período: 20/06/2025 a 19/08/2025

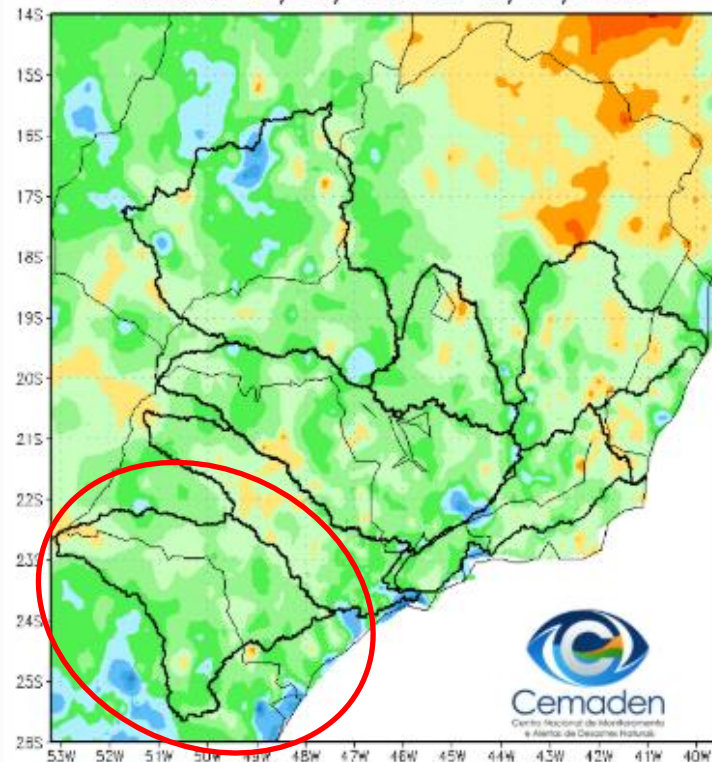


Anomalia de Precipitação (mm) A.S.
Período: 20/06/2025 a 19/08/2025

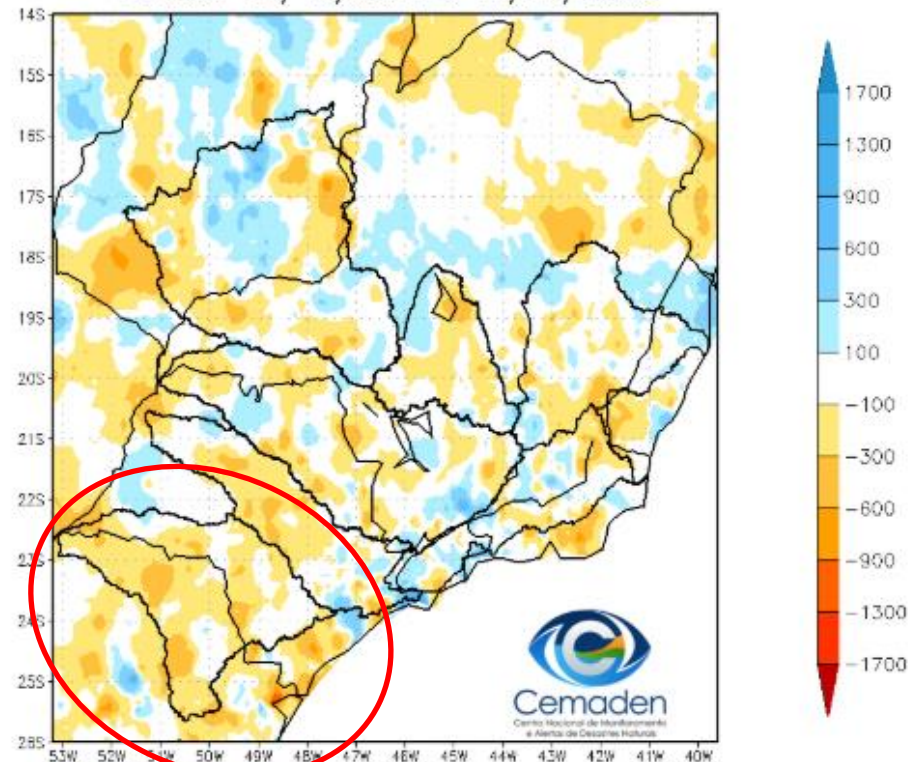


Precipitação no Ano Hidrológico

Precipitação Acumulada (mm) A.S.
Período: 01/10/2024 a 19/08/2025

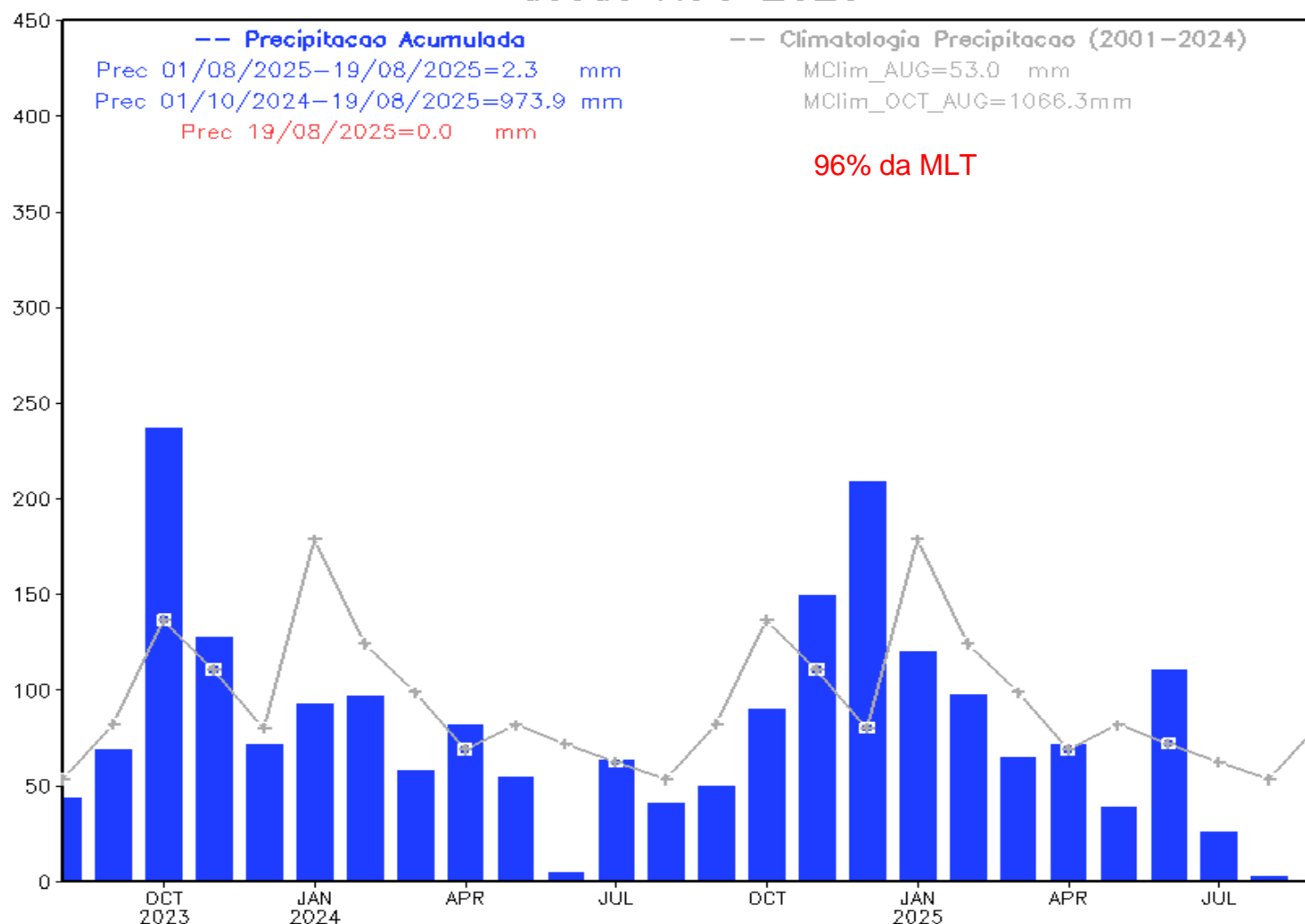


Anomalia de Precipitação (mm) A.S.
Período: 01/10/2024 a 19/08/2025



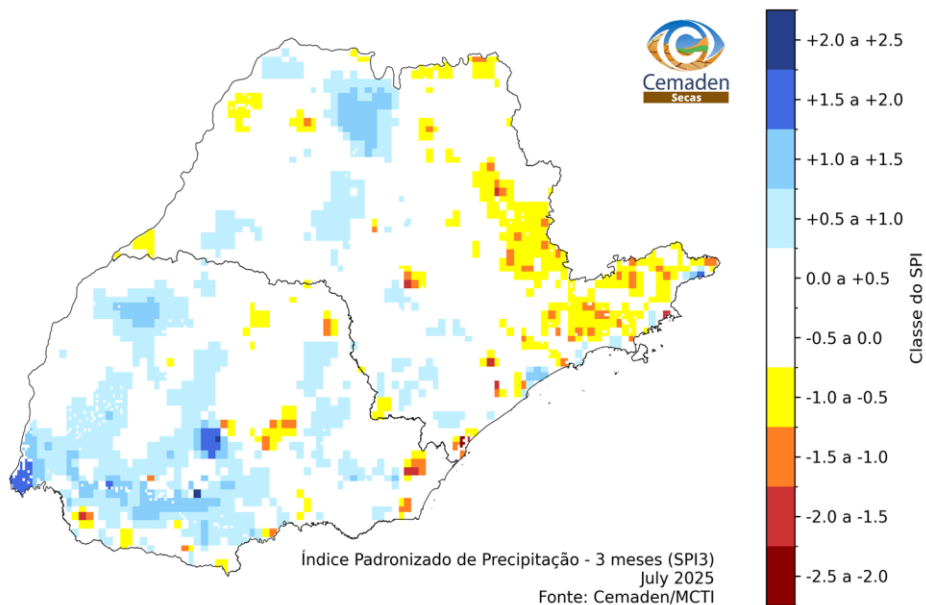
Evolução Temporal da Precipitação

Precipitação Bacia do Rio Paranapanema desde AUG 2023

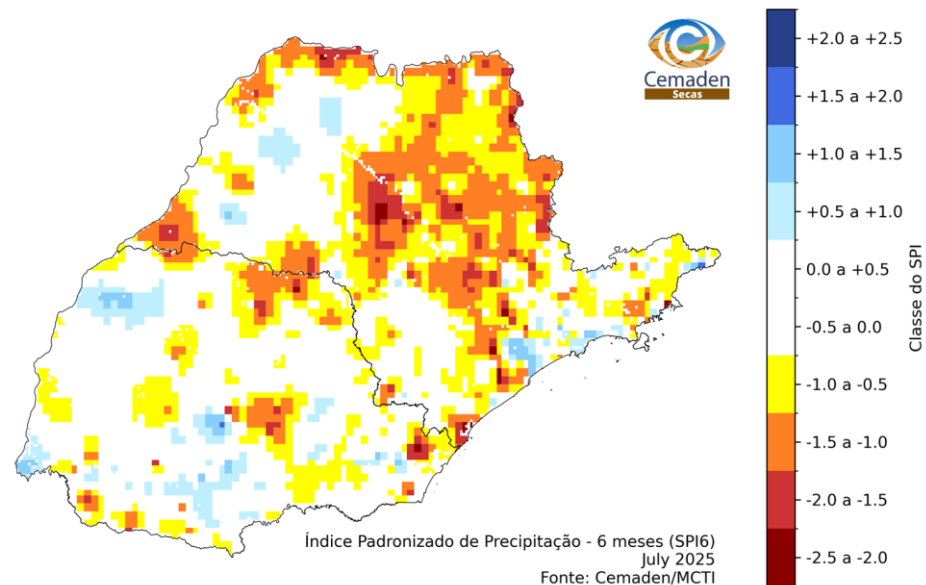


SPI: JULHO 2025

SPI-03

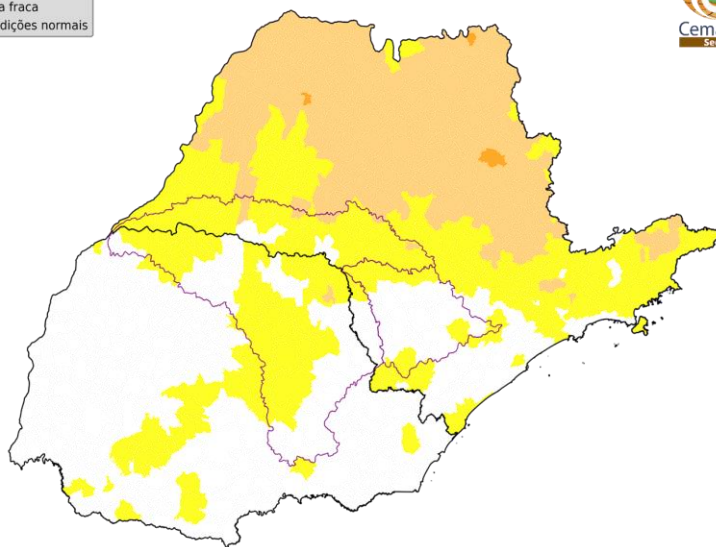


SPI-06



ÍNDICE INTEGRADO DE SECA: ANÁLISE POR MUNICÍPIOS

IIS-03 OBSERVADO

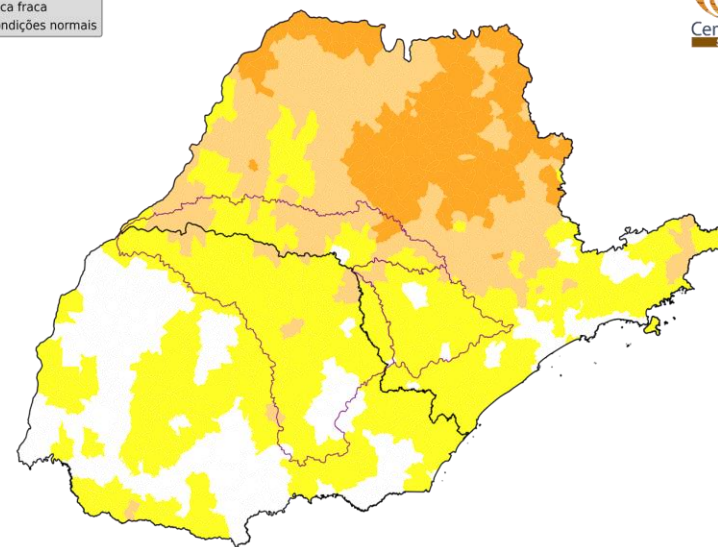


Número de municípios
por classes de seca:

Seca excepcional:	0 (0.0%)
Seca extrema:	0 (0.0%)
Seca severa:	0 (0.0%)
Seca moderada:	11 (3.9%)
Seca fraca:	166 (58.2%)
Condições normais:	108 (37.9%)

Índice Integrado de Seca - 3 meses (IIS3)
July 2025
Fonte: Cemaden/MCTI

IIS-06 OBSERVADO



Número de municípios
por classes de seca:

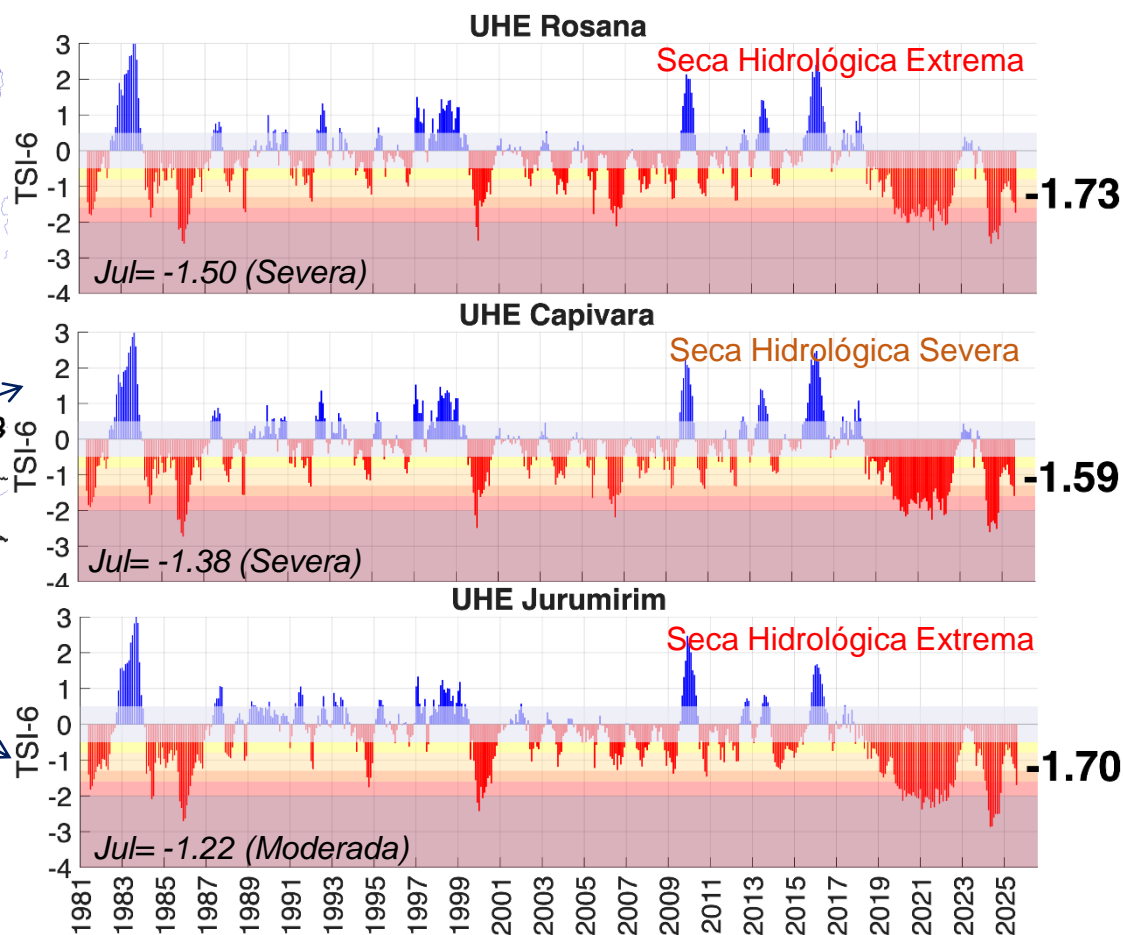
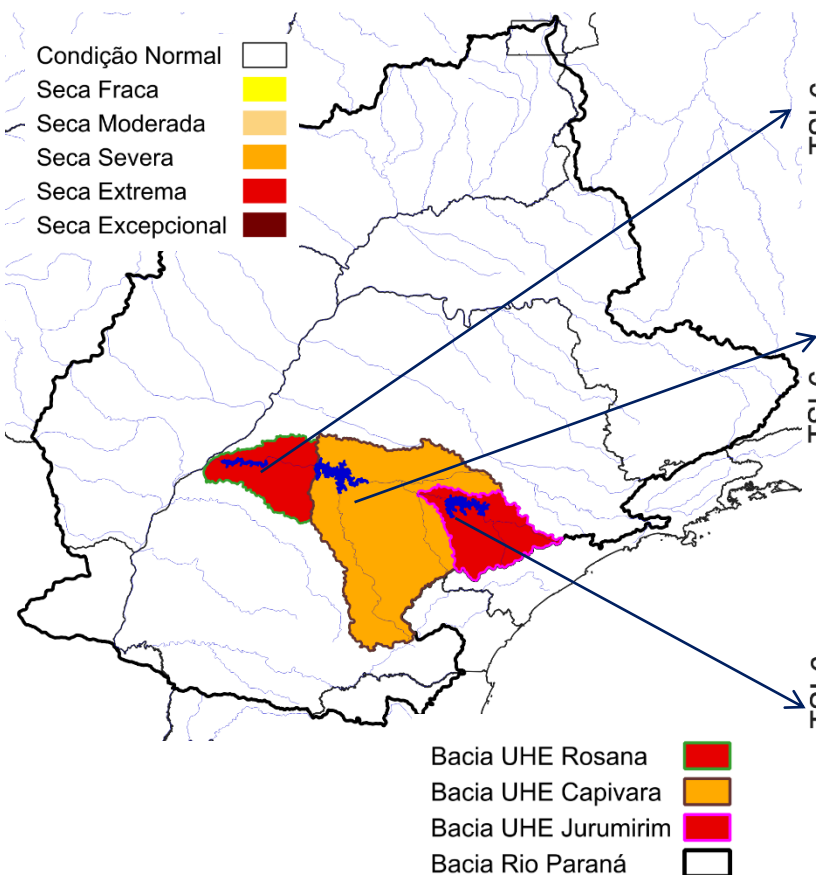
Seca excepcional:	0 (0.0%)
Seca extrema:	0 (0.0%)
Seca severa:	3 (1.1%)
Seca moderada:	71 (24.9%)
Seca fraca:	199 (69.8%)
Condições normais:	12 (4.2%)

Índice Integrado de Seca - 6 meses (IIS6)
July 2025
Fonte: Cemaden/MCTI

Índice Bivariado de Seca (Precipitação-Vazão) - TSI

Escala de Longo Prazo: **TSI-6 meses**

Agosto/2025



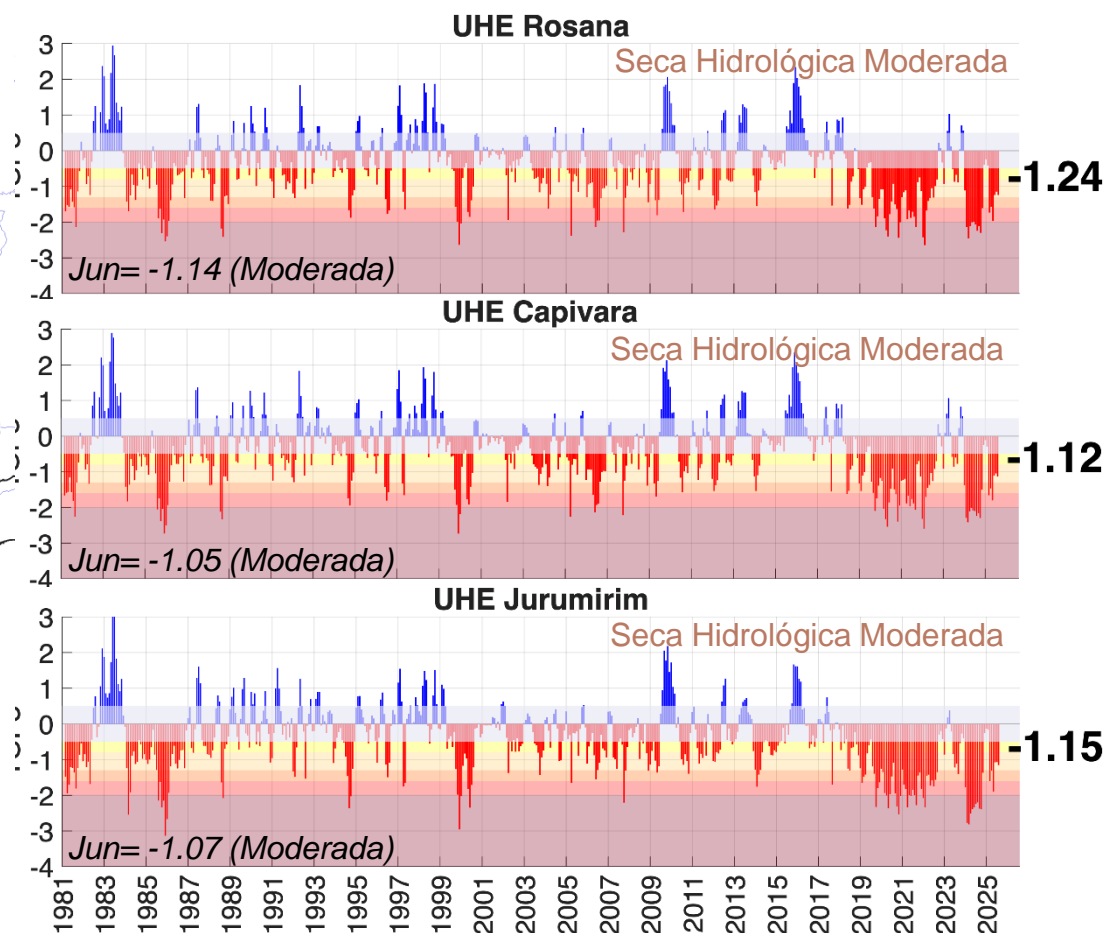
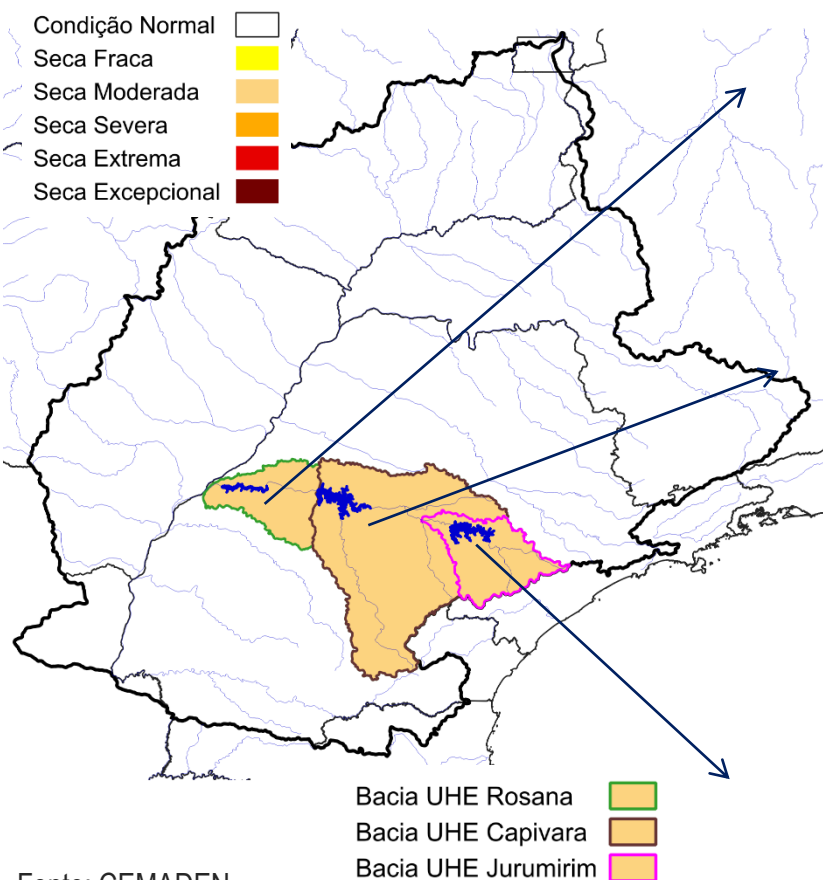
Fonte: CEMADEN

Dados: Precipitação (Cemaden/INMET/CHIRPS) e Vazão (ONS/ANA) - Jan/1981-Ago/2025.

Índice Bivariado de Seca (Precipitação-Vazão) - TSI

Escala de Curto Prazo: **TSI-3 meses**

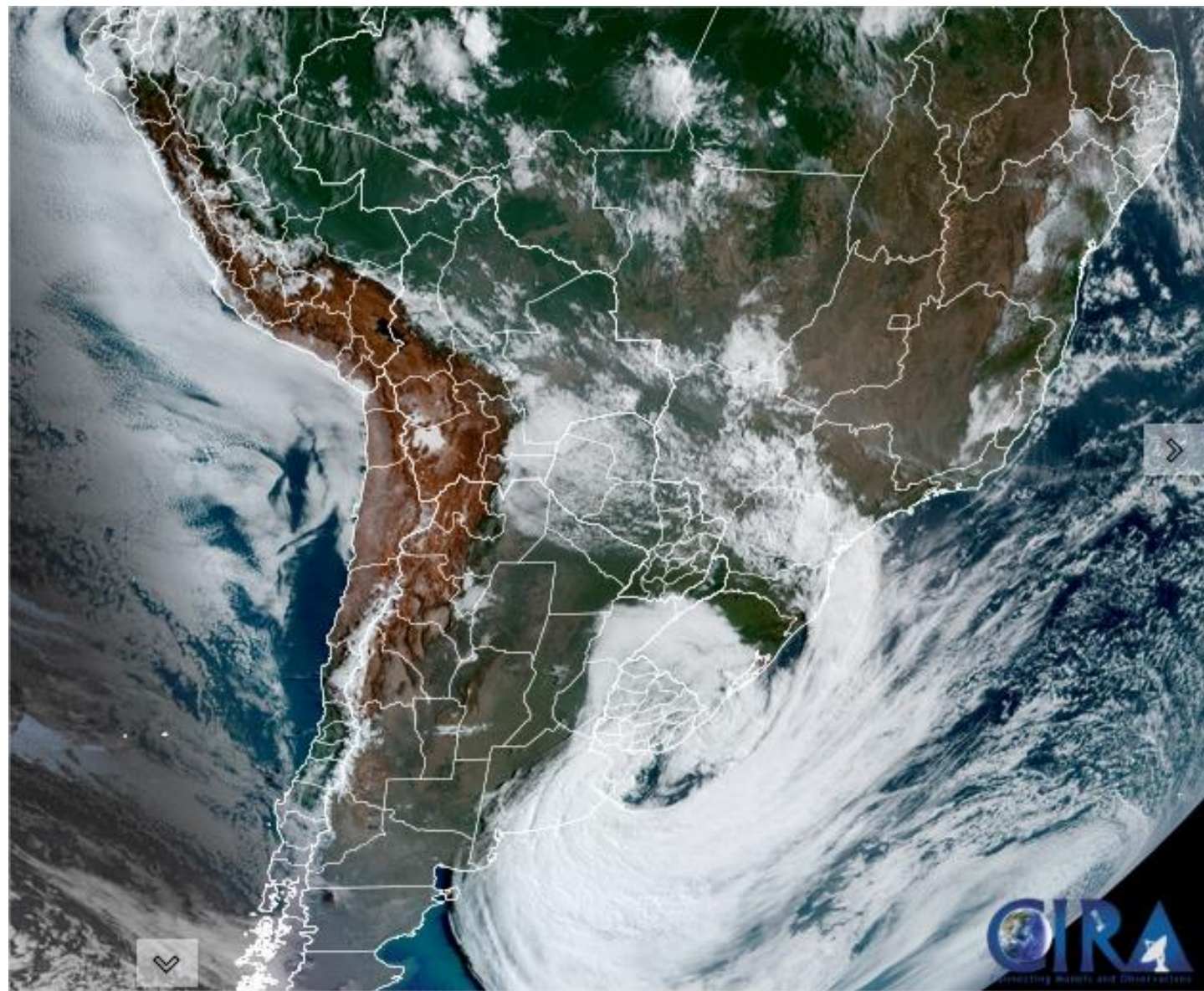
Agosto/2025



Fonte: CEMADEN

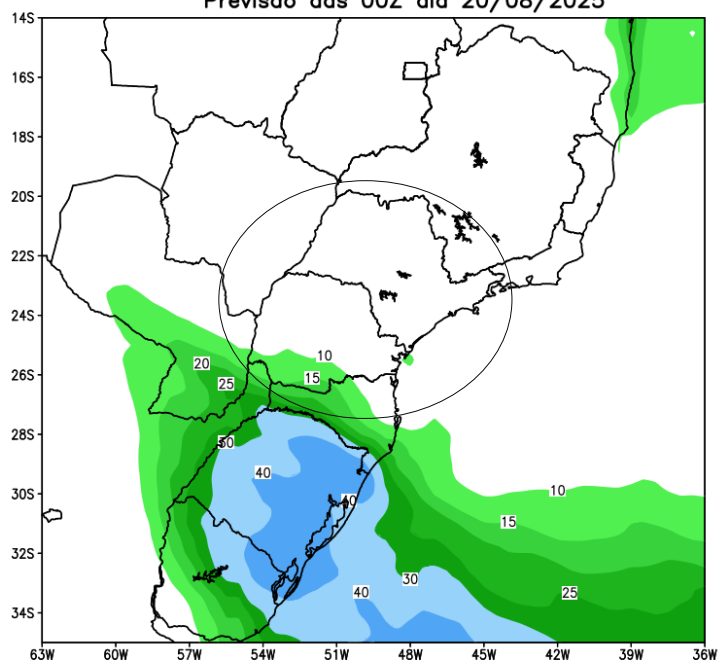
Dados: Precipitação (Cemaden/INMET/CHIRPS) e Vazão (ONS/ANA) - Jan/1981-Ago/2025.

Situação meteorológica atual

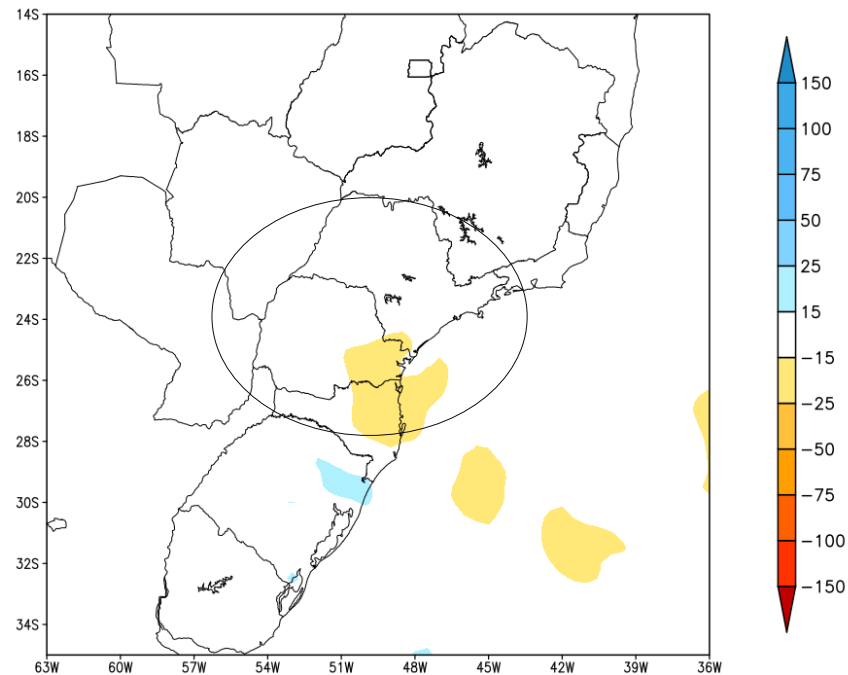


Previsão de chuva próximos 7 dias

GEFS / BRASIL_SUL
Precipitação acumulada 1aSem (mm)
Previsão das 00Z dia 20/08/2025



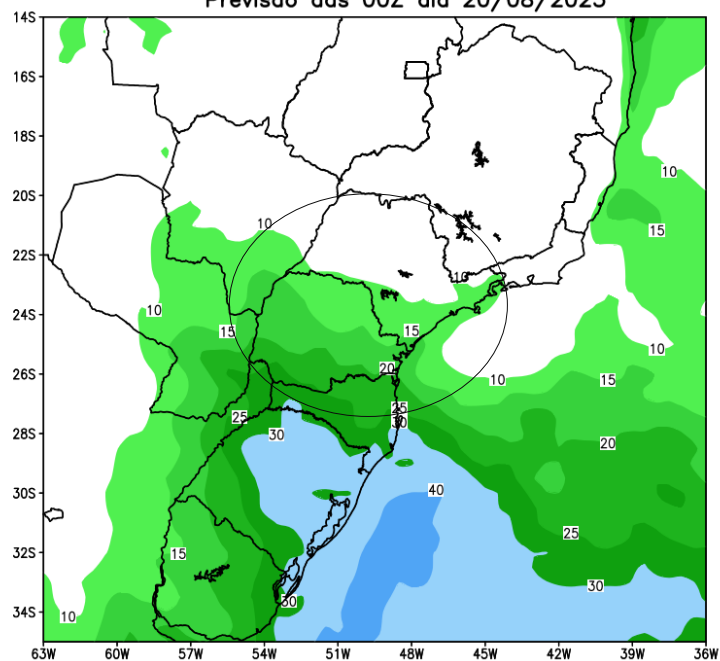
Anomalia de Precipitação BR_SUL (mm)
Período: 2025082000 a 2025082700



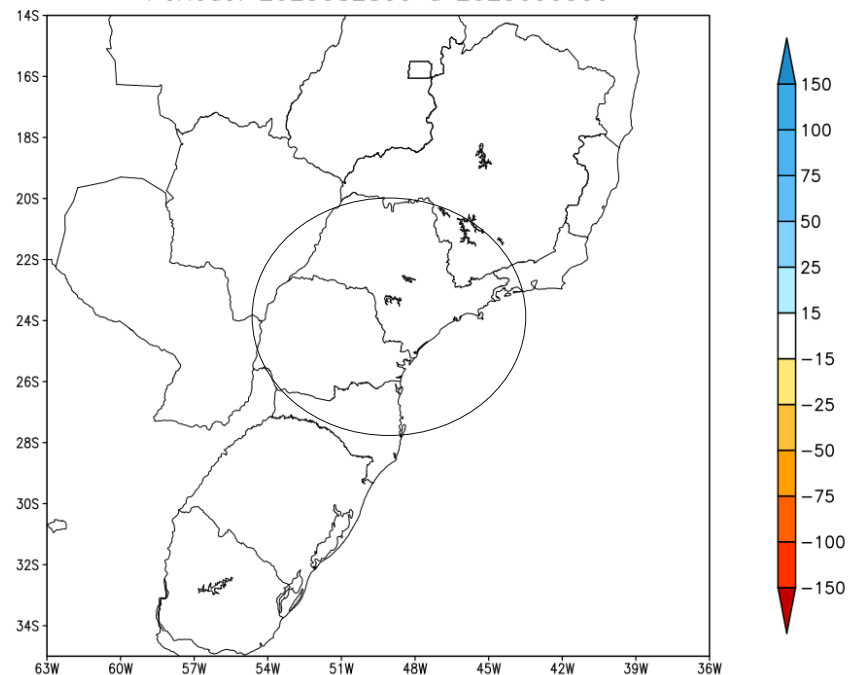
MODELO GEFS

Tendência para a segunda semana

GEFS / BRASIL_SUL
Precipitação acumulada 2aSem (mm)
Previsão das 00Z dia 20/08/2025



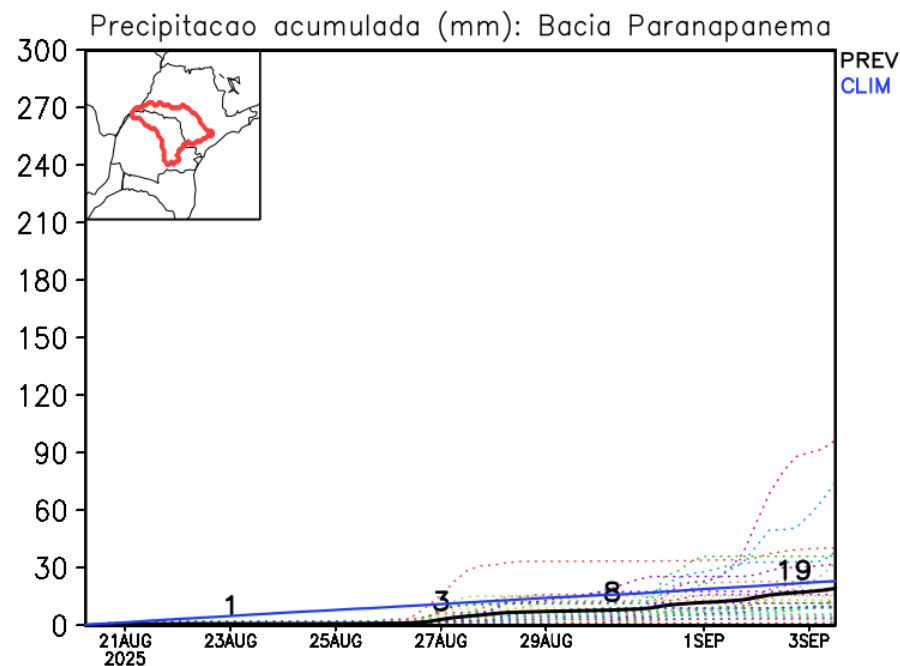
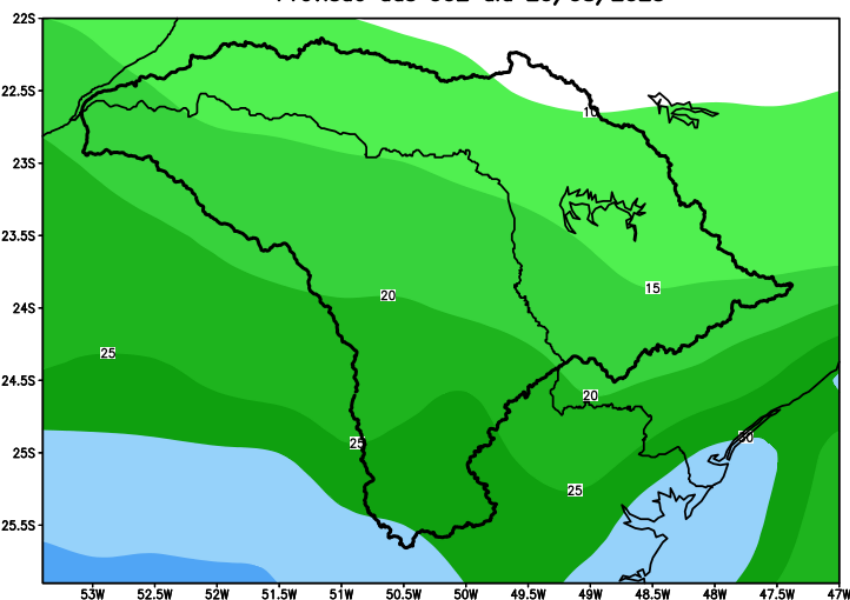
Anomalia de Precipitação BR_SUL (mm)
Período: 2025082800 a 2025090300



MODELO GEFS

Previsão para a bacia do rio Paranapanema

GEFS / Bacia do Rio Paranapanema
Precipitação acumulada em 14 dias (mm)
Previsão das 00Z dia 20/08/2025

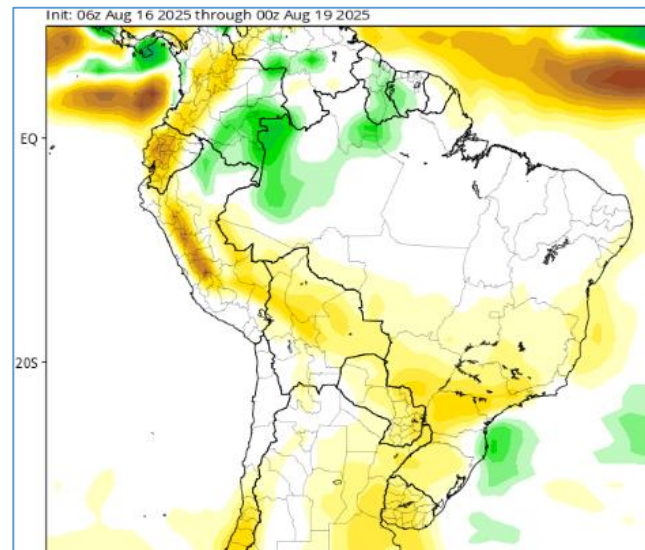
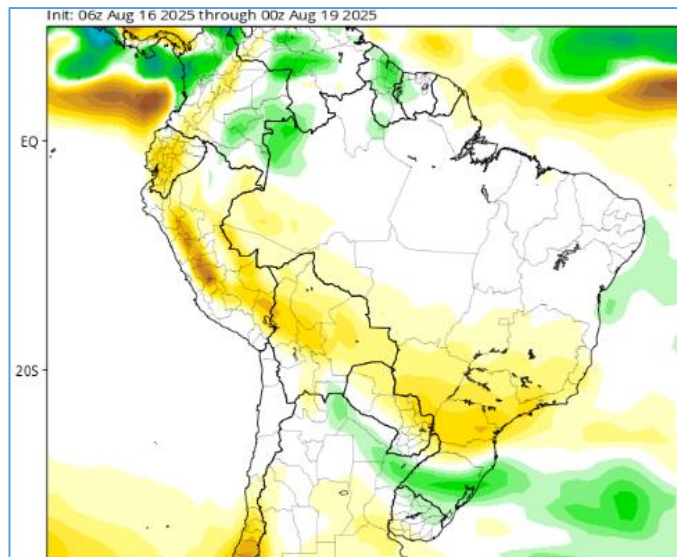


Tendência 3a e 4a semanas

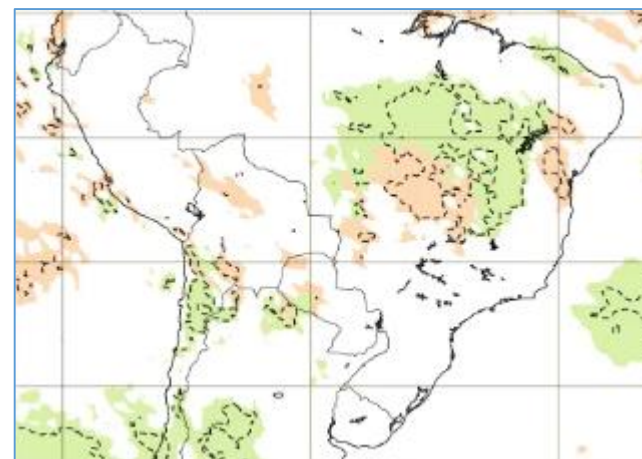
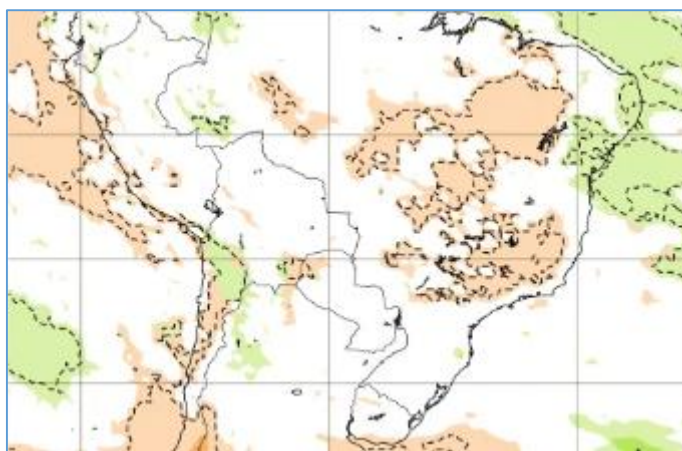
02-09 Set

09-16 Set

CFS/NOAA



ECMWF

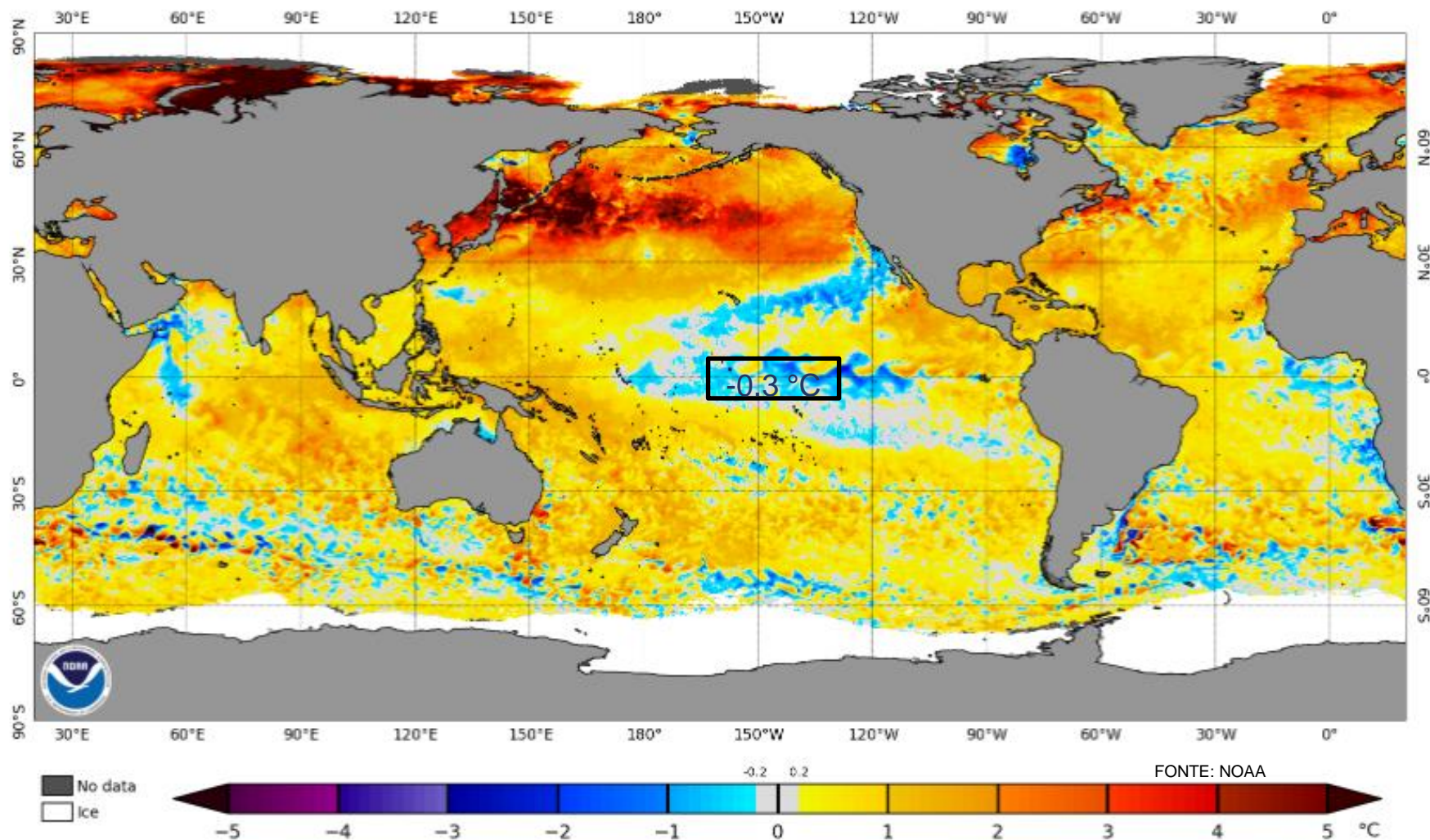


01-08 Set

08-15 Set

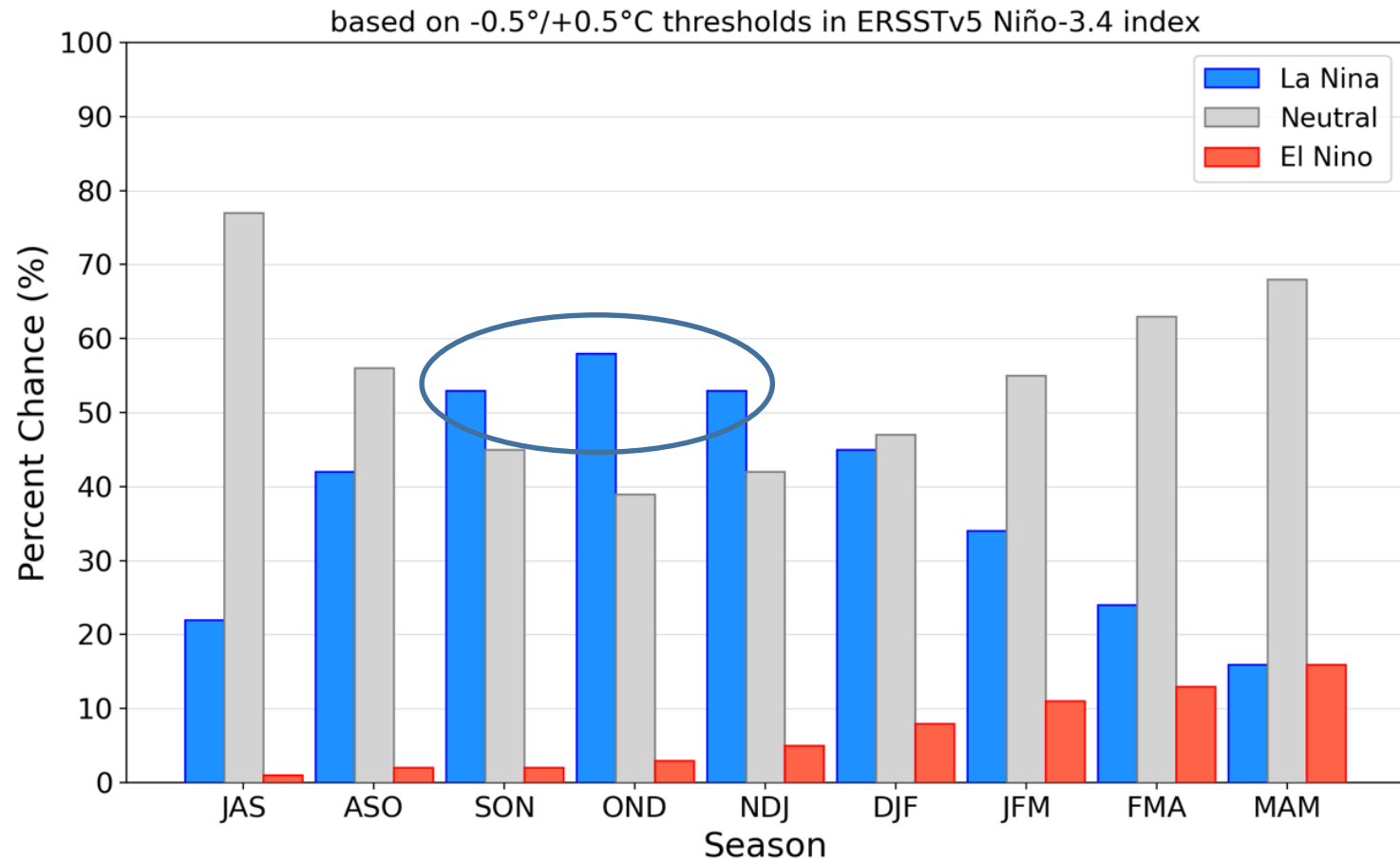


Status Atual: **La Niña Watch**



Previsão do “ENSO”

Official NOAA CPC ENSO Probabilities (issued August 2025)



Previsão do “ENSO”

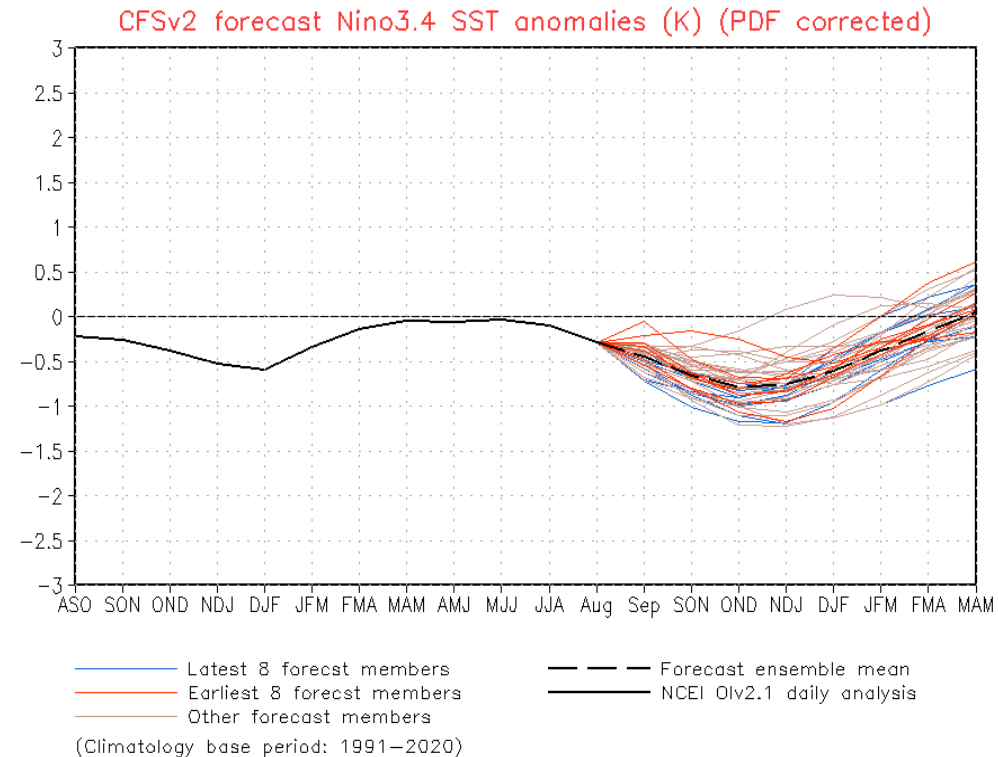
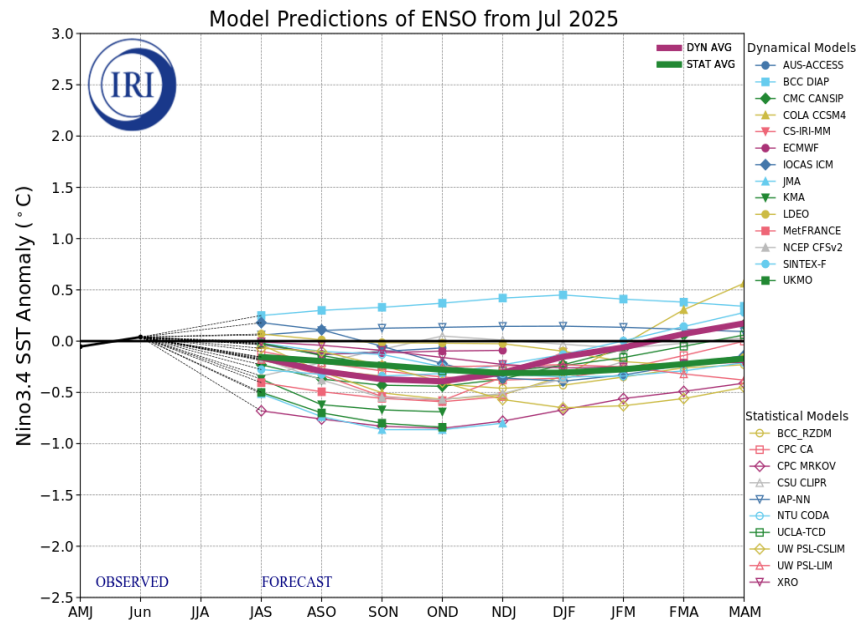
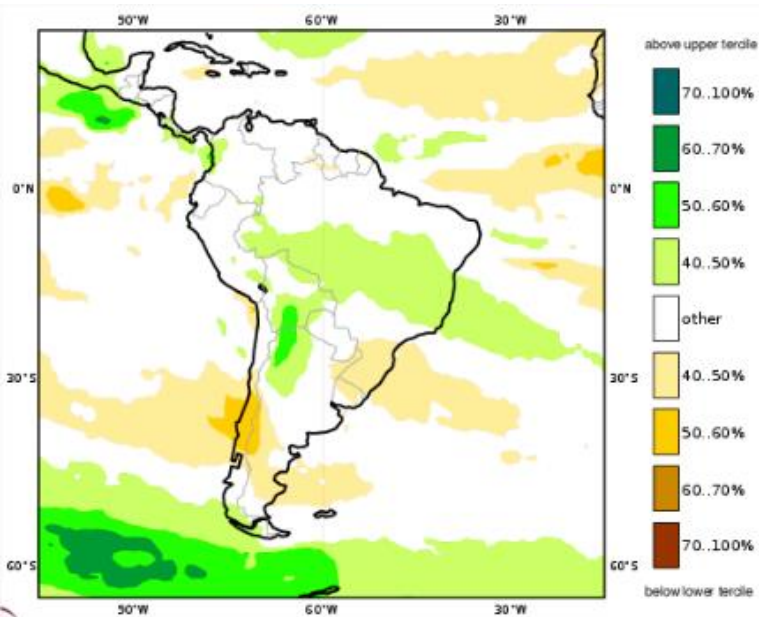


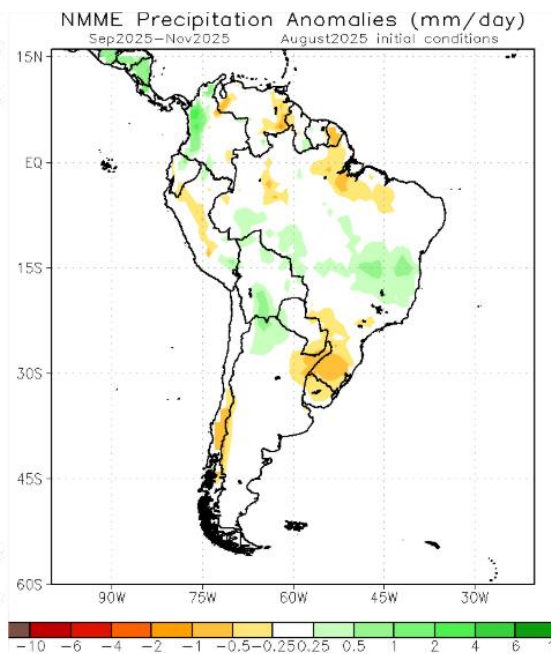
Figure provided by the International Research Institute (IRI) for Climate and Society (updated 18 July 2025).

Previsão Sazonal de Chuva Multi-Modelo

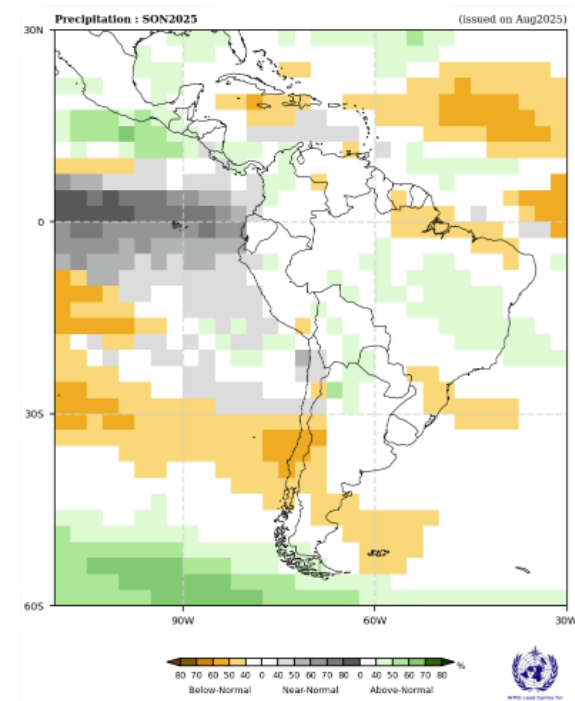
Setembro-Outubro-Novembro



Modelos “Europeus”



Modelos Norte Americanos



Modelos da WMO