

Monitoramento e Previsões de chuva para a Bacia do Rio Paranapanema

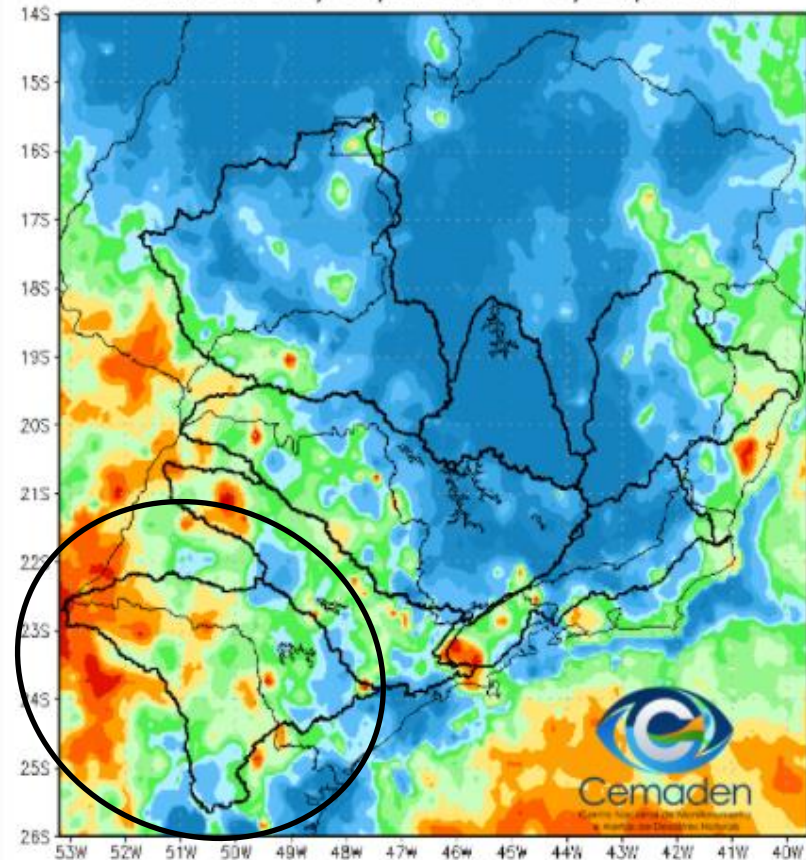


Cemaden
Centro Nacional de Monitoramento
e Alertas de Desastres Naturais

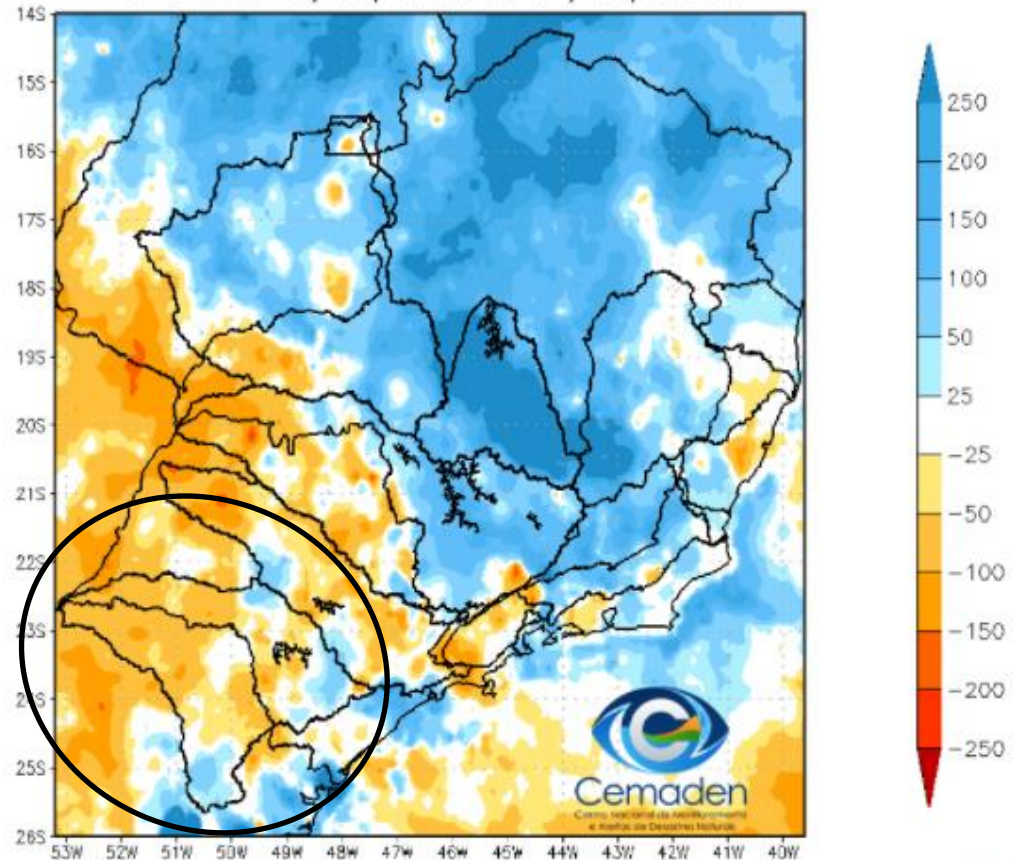
20 de Janeiro de 2022

Precipitação acumulada nos últimos 30 dias

Precipitação Acumulada (mm) A.S.
Período: 20/12/2021 a 19/01/2022

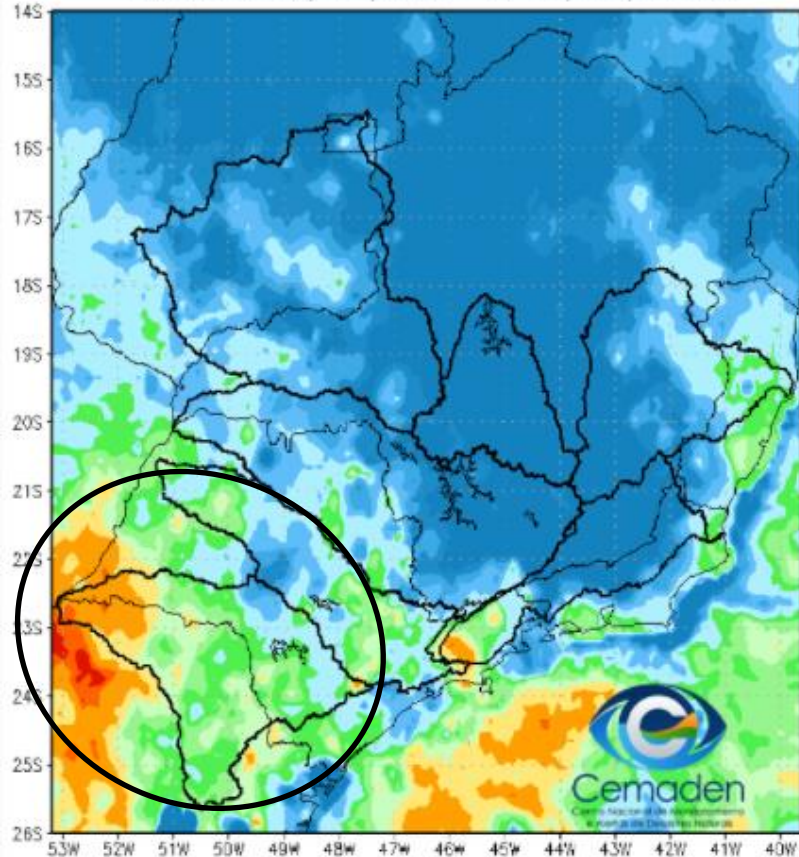


Anomalia de Precipitação (mm) A.S.
Período: 20/12/2021 a 19/01/2022

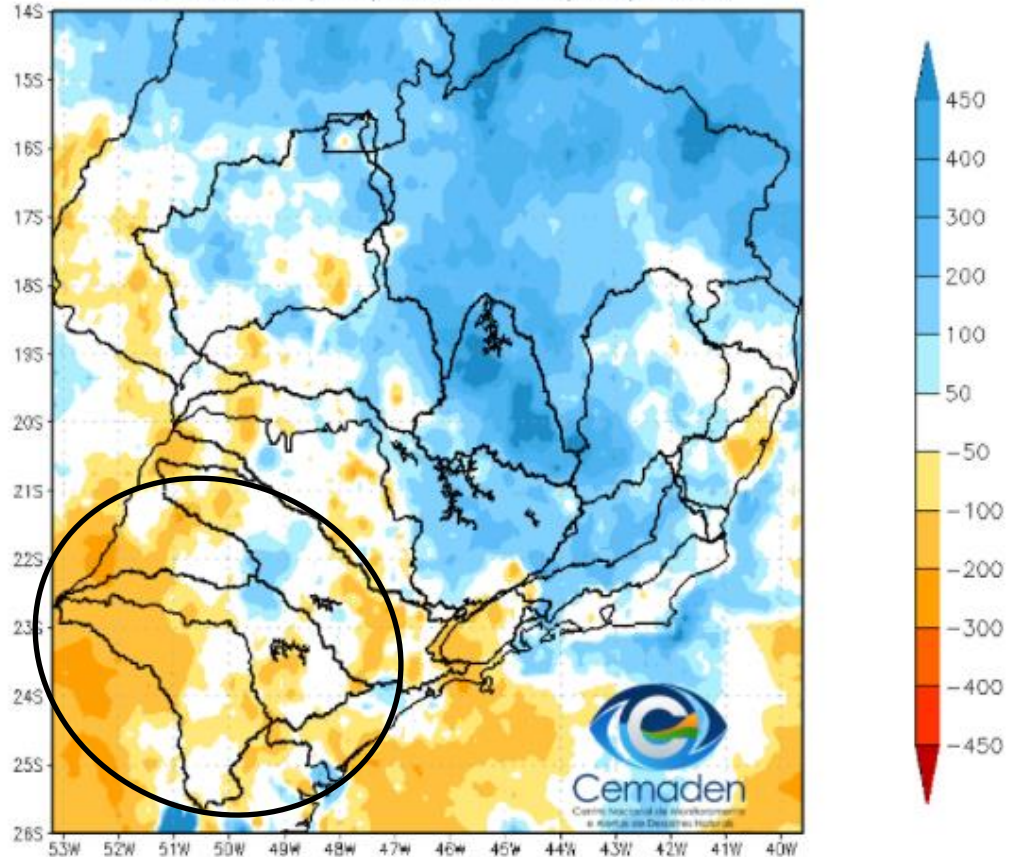


Precipitação acumulada nos últimos 60 dias

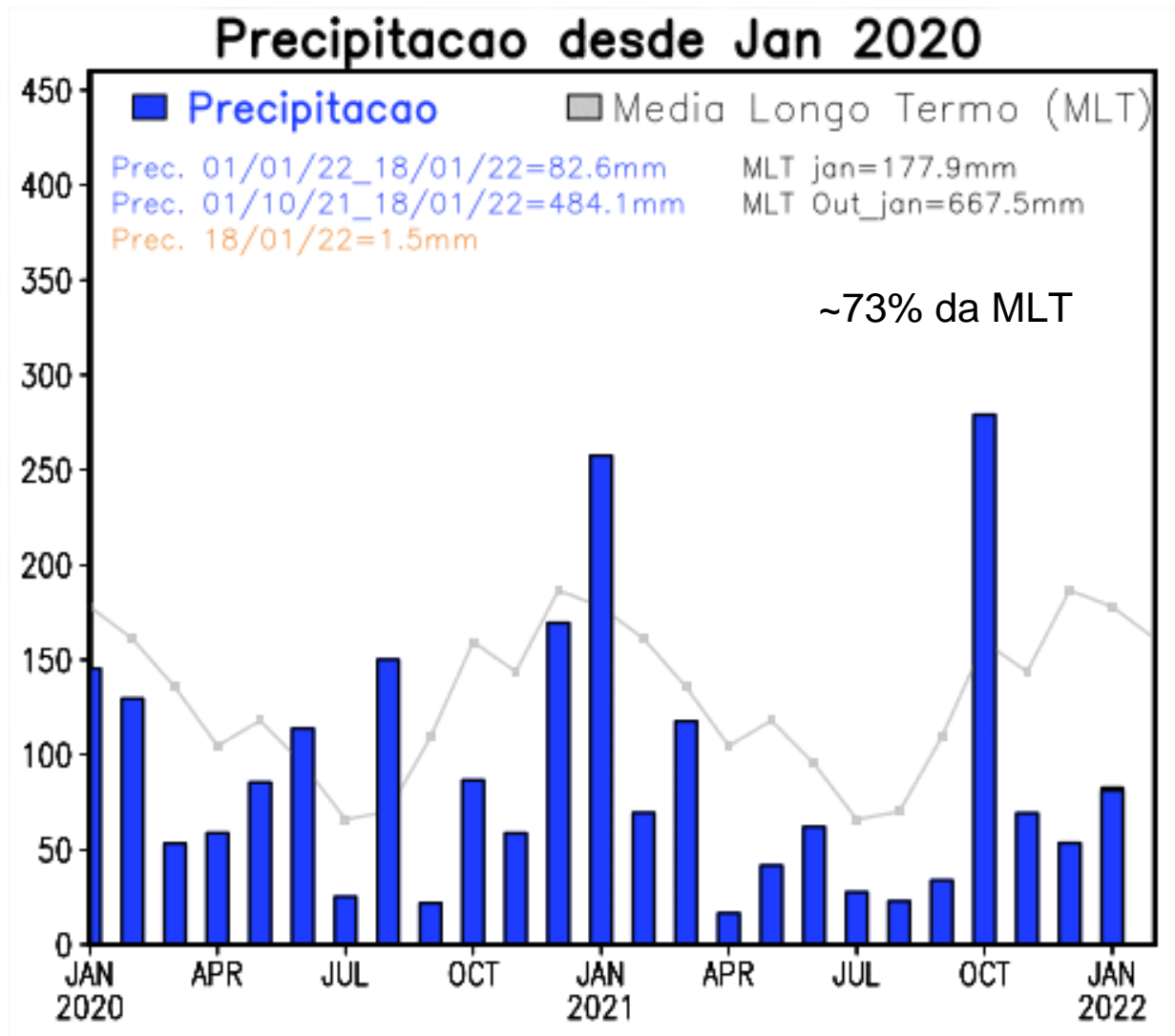
Precipitação Acumulada (mm) A.S.
Período: 20/11/2021 a 19/01/2022



Anomalia de Precipitação (mm) A.S.
Período: 20/11/2021 a 19/01/2022

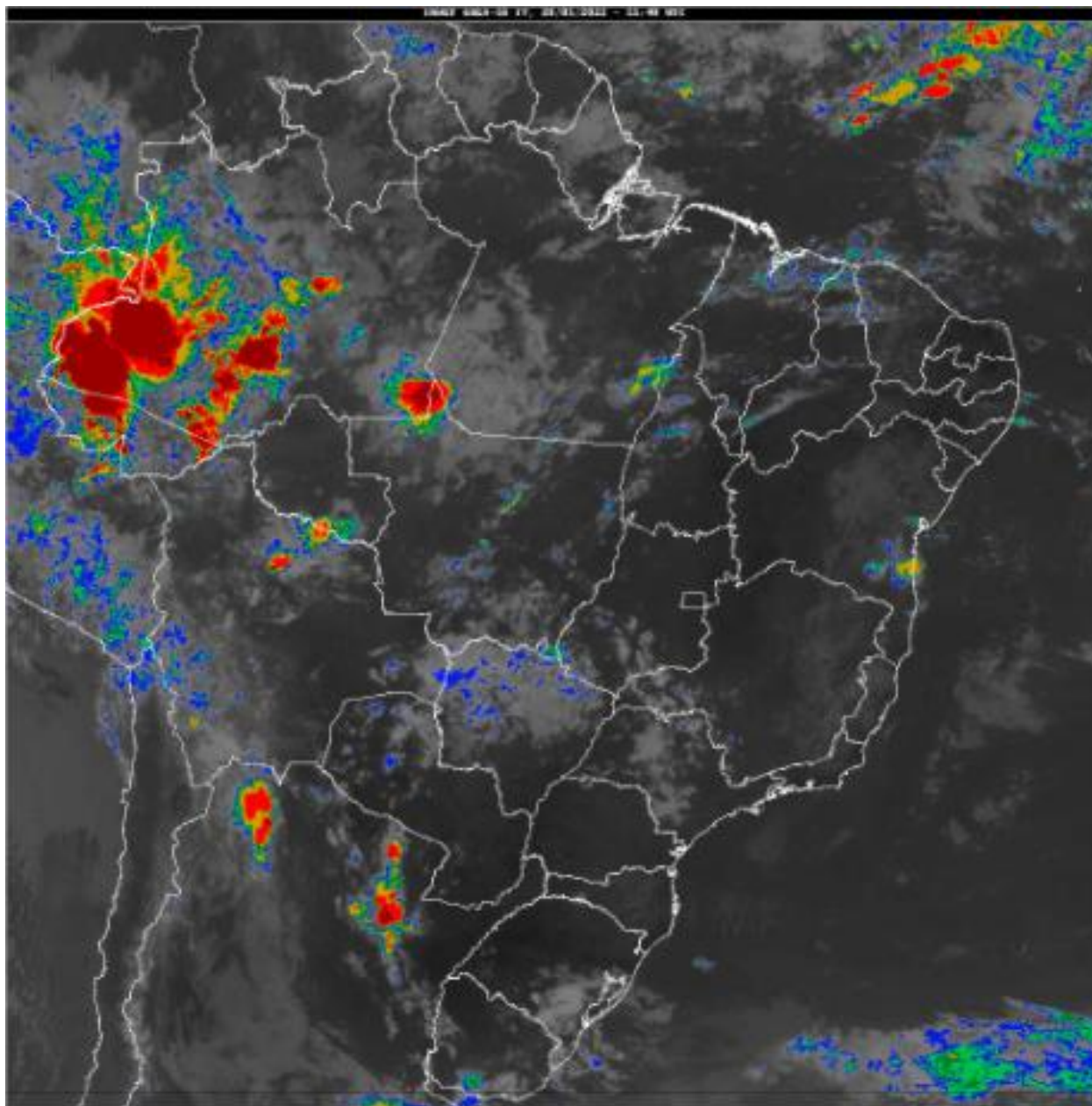


Evolução temporal da precipitação



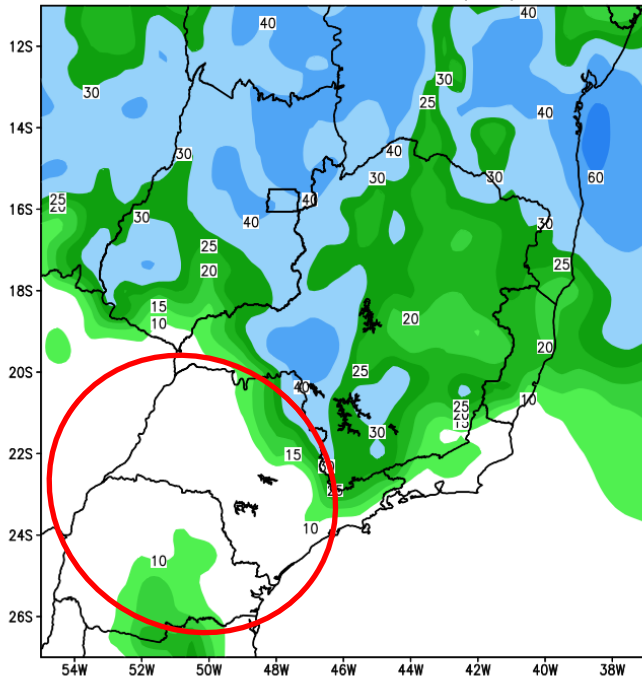
FONTE:
INPE

Situação Meteorológica Atual

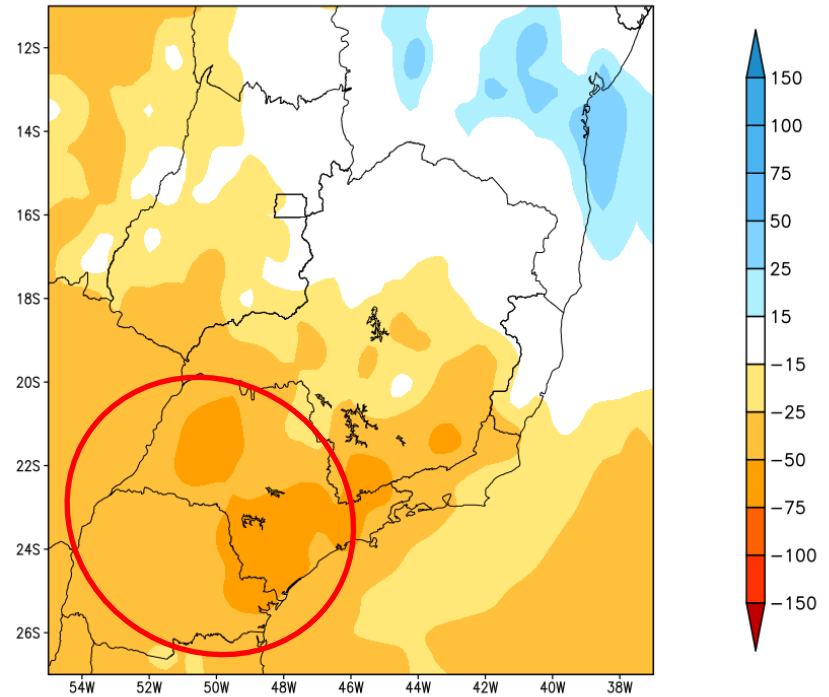


Previsão de chuva para os próximos 7 dias

GEFS / BRASIL_SE
Precipitacao acumulada 1aSem (mm)
Previsao das 00Z dia 20/01/2022



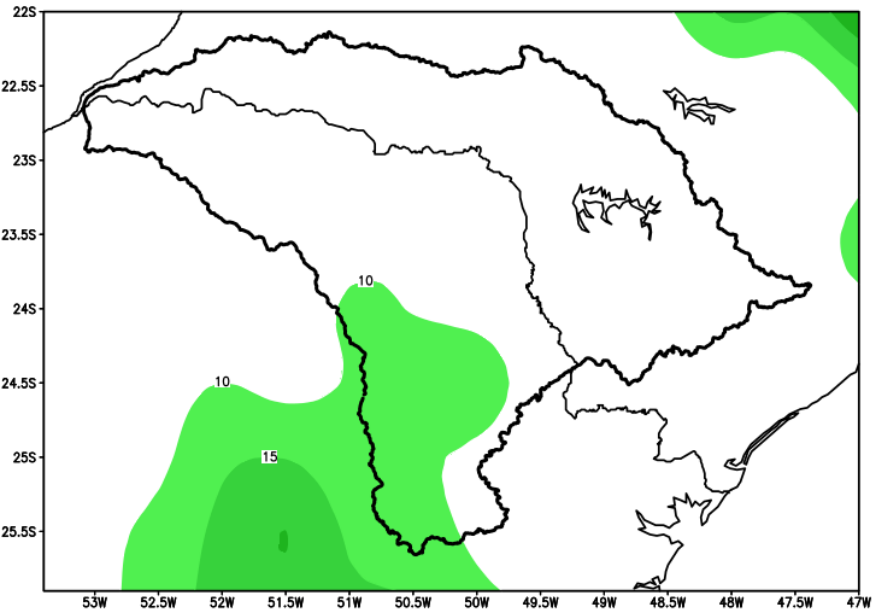
Anomalia de Precipitacao BR_SE (mm)
Periodo: 2022012000 a 2022012700



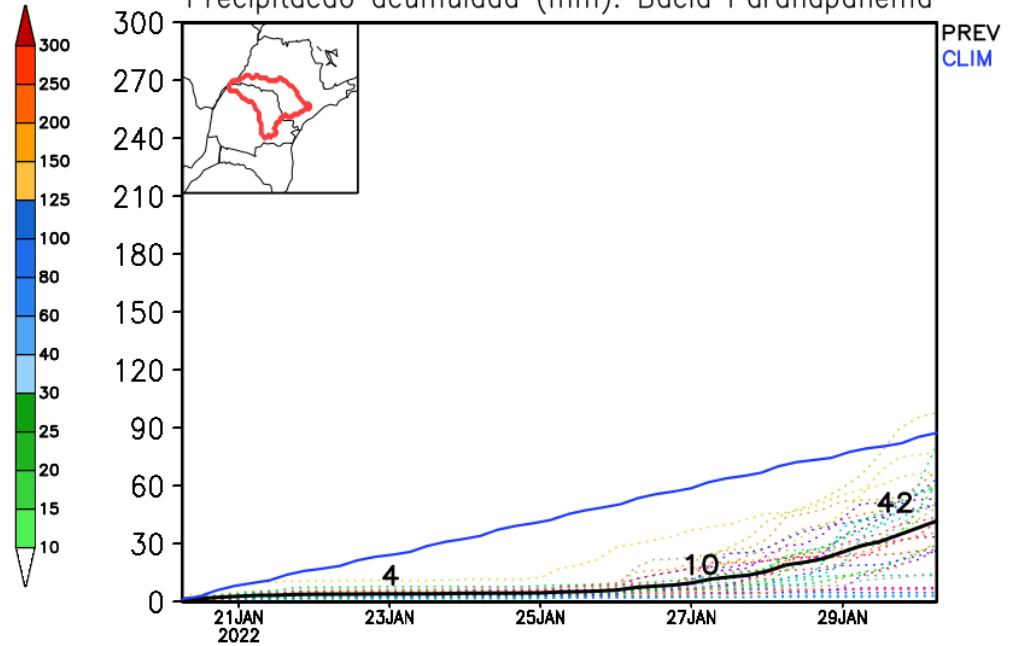
Fonte: GFS/NOAA

Bacia do rio Paranapanema

GEFS / Bacia do Rio Paranapanema
Precipitacao acumulada em 7 dias (mm)
Previsao das 00Z dia 20/01/2022

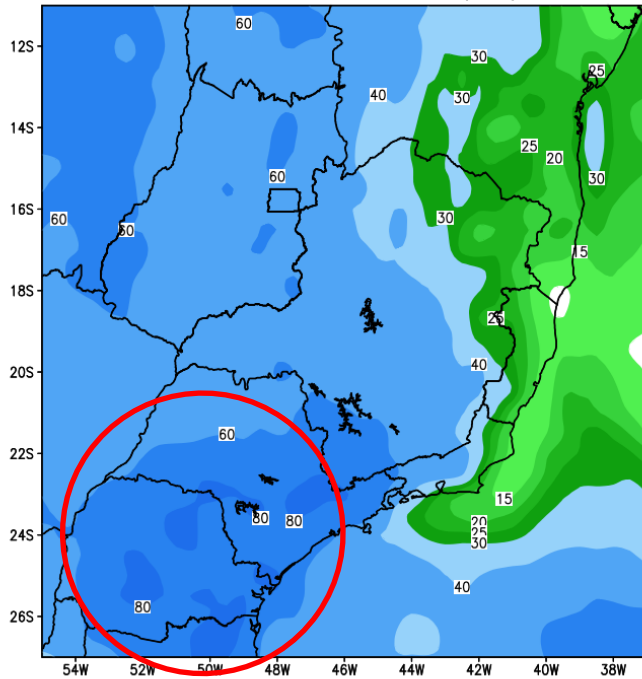


Precipitacao acumulada (mm): Bacia Paranapanema

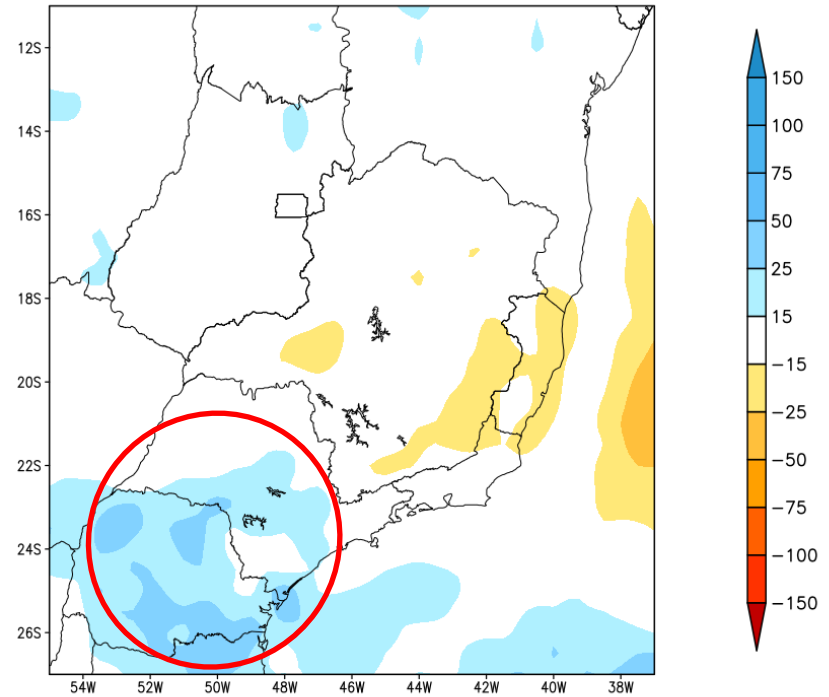


Tendência para a 2ª Semana

GEFS / BRASIL_SE
Precipitacao acumulada 2aSem (mm)
Previsao das 00Z dia 20/01/2022

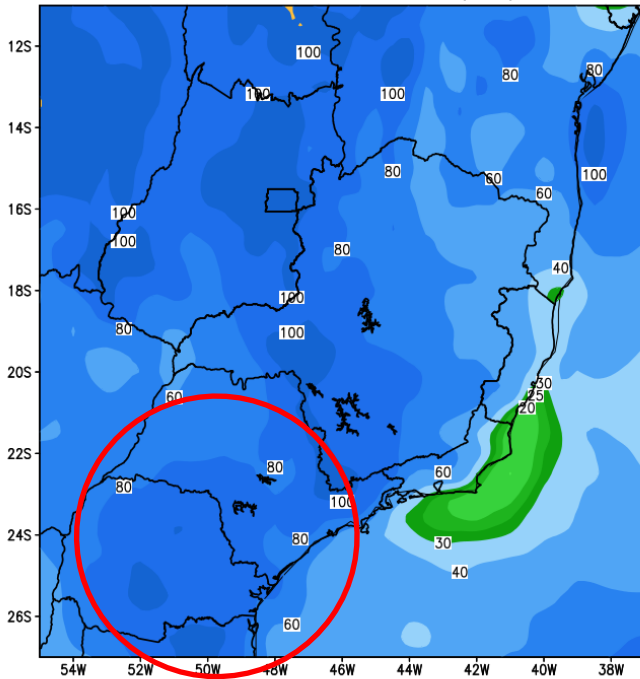


Anomalia de Precipitacao BR SE (mm)
Periodo: 2022012800 a 2022020300

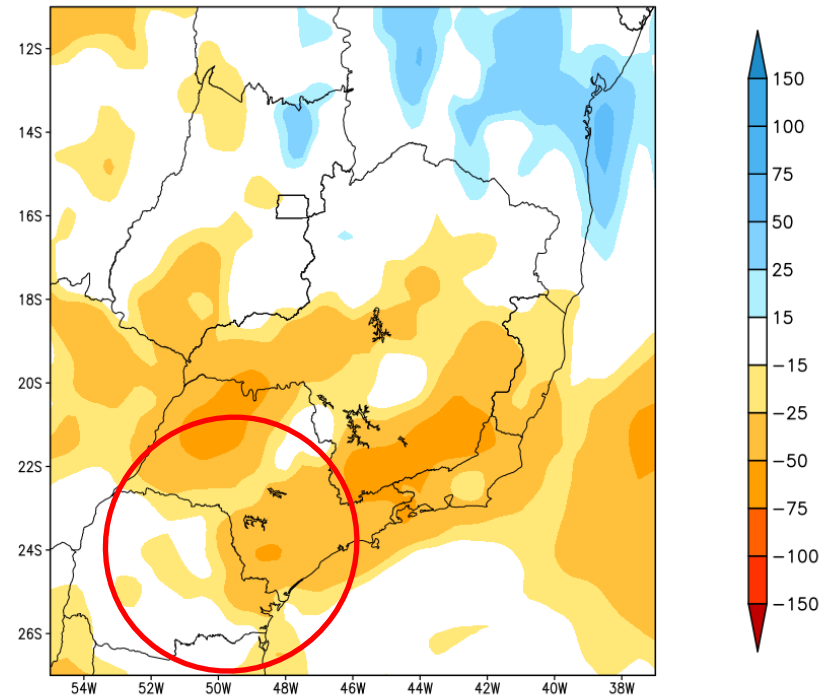


Tendência para as duas próximas semanas

GEFS / BRASIL_SE
Precipitacao acumulada 14 dias (mm)
Previsao das 00Z dia 20/01/2022

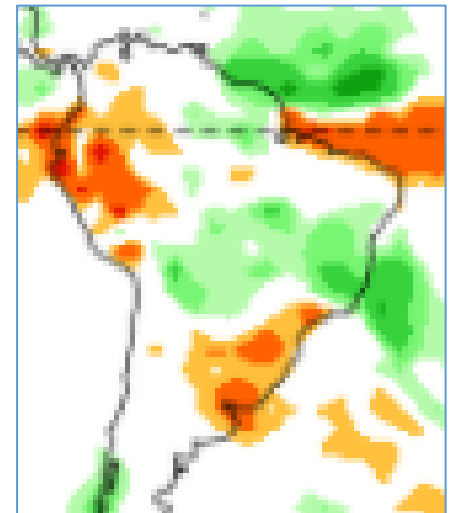
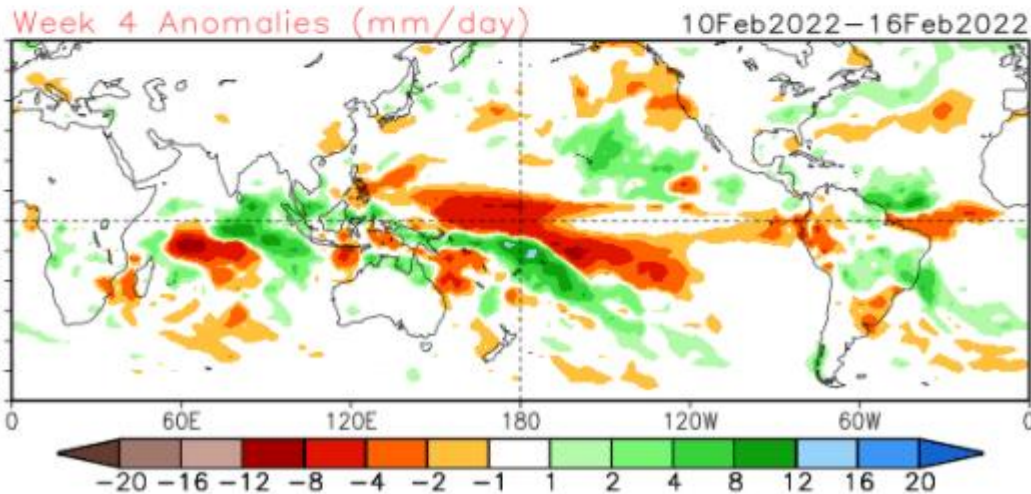
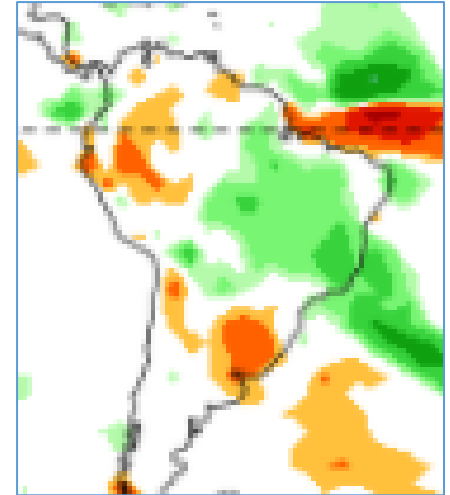
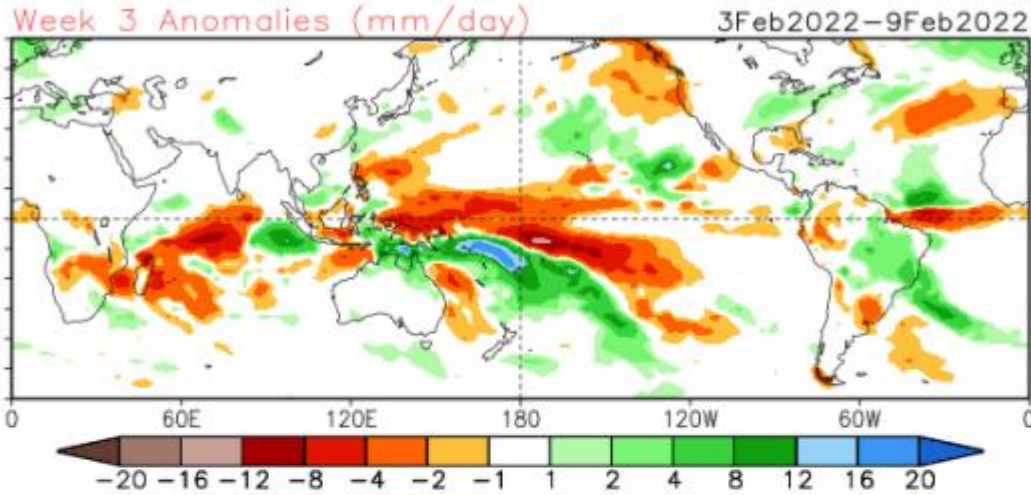


Anomalia de Precipitacao BR SE (mm)
Periodo: 2022012000 a 2022020300



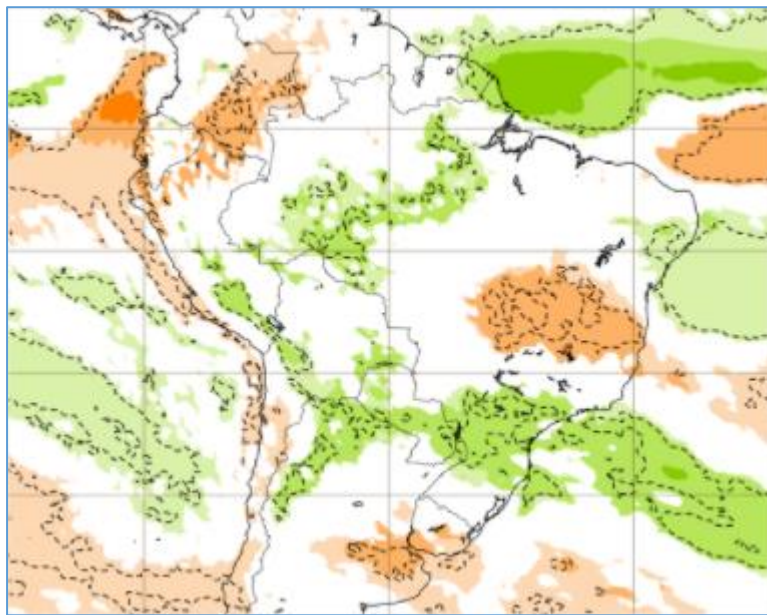
Tendência 3a e 4a semanas

16 Member Ensemble Mean Forecast from 19Jan2022

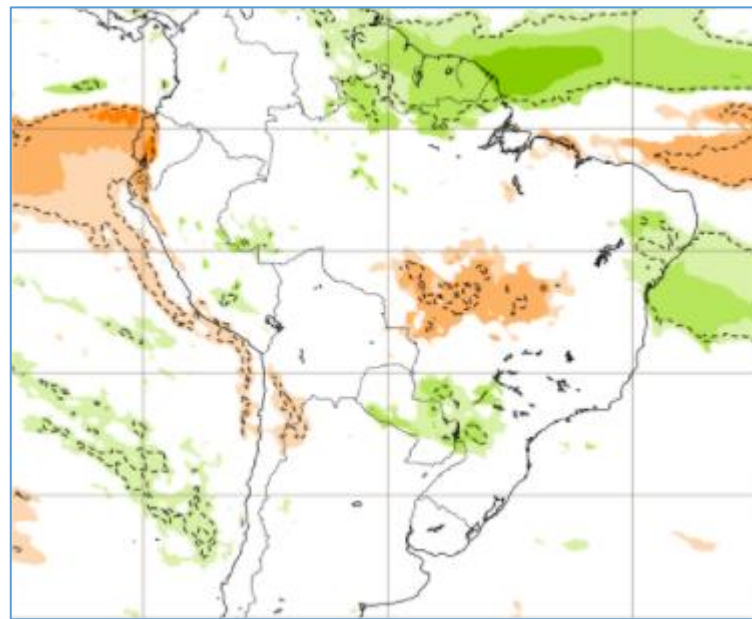


Tendência para 3ª e 4ª semanas

31/01-07/02

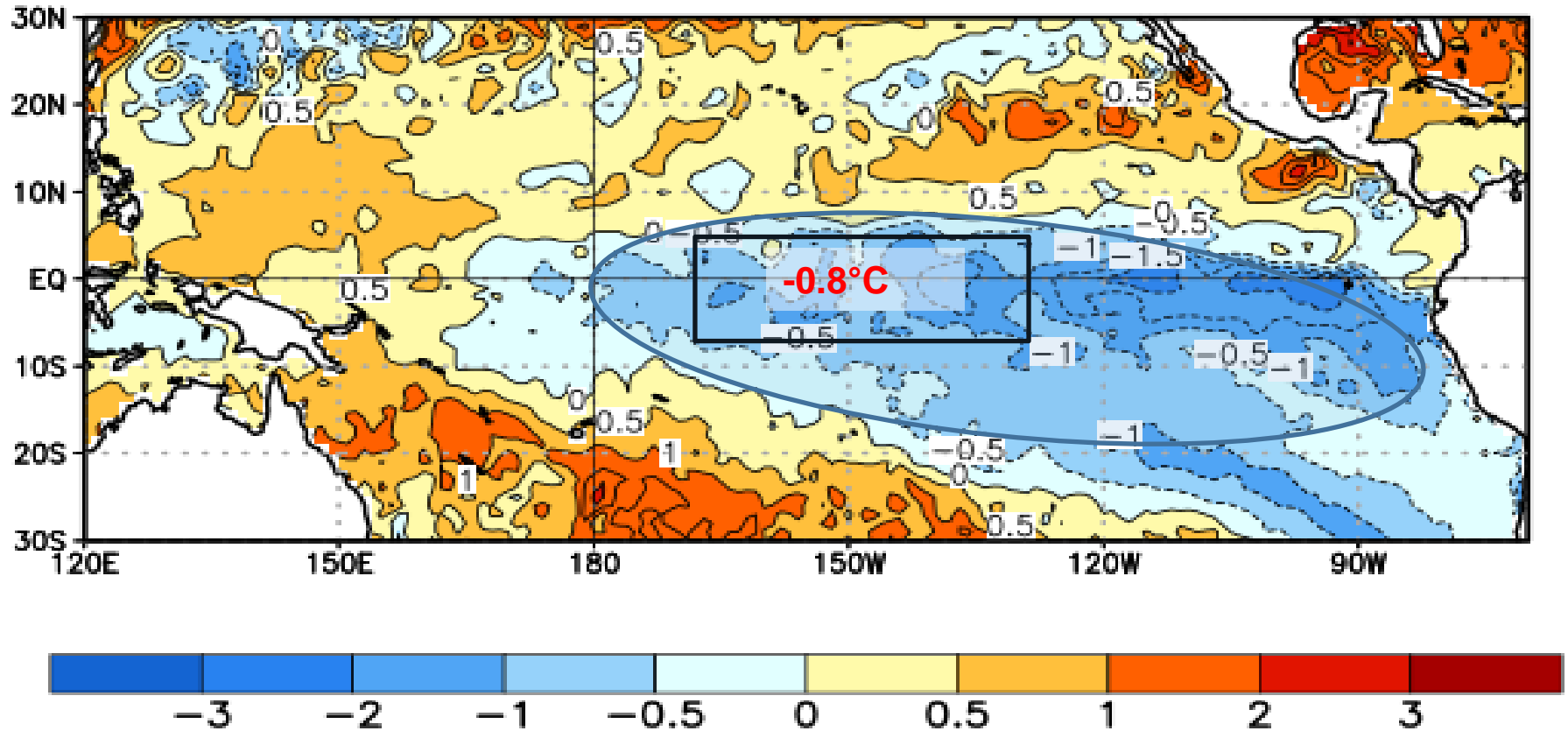


07-14/02



Status Atual: **La Niña**

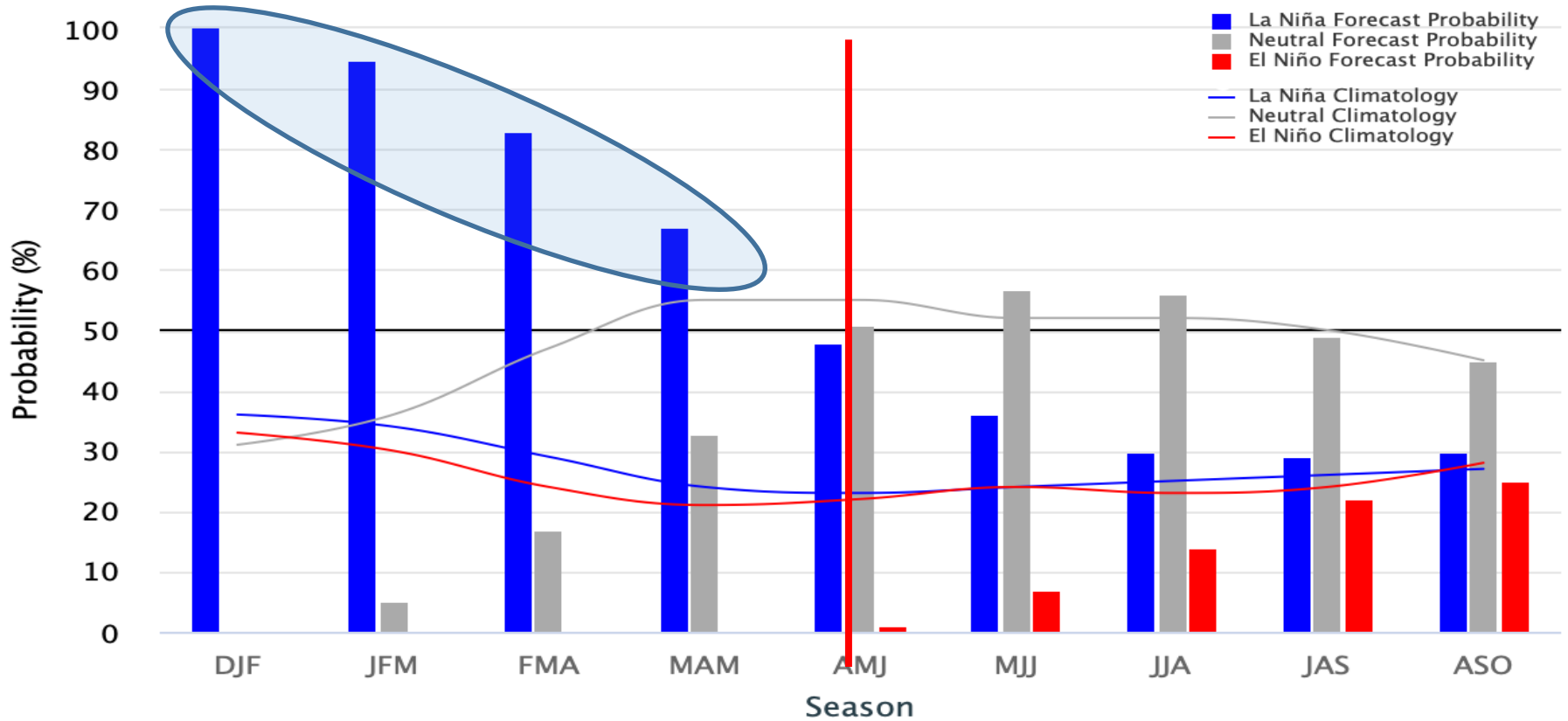
Average SST Anomalies
19 DEC 2021 – 15 JAN 2022



Previsão do “La Niña”

Early-January 2022 CPC/IRI Official Probabilistic ENSO Forecasts

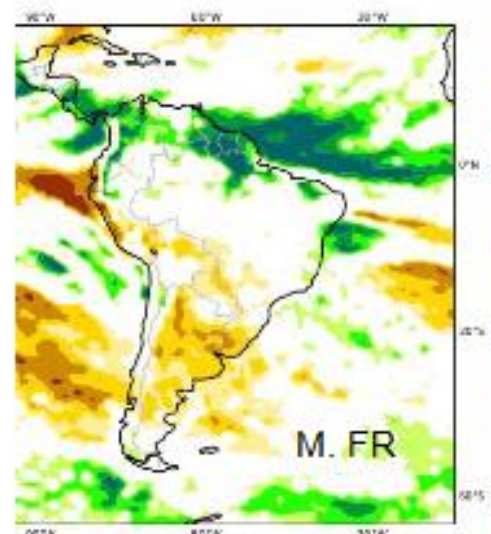
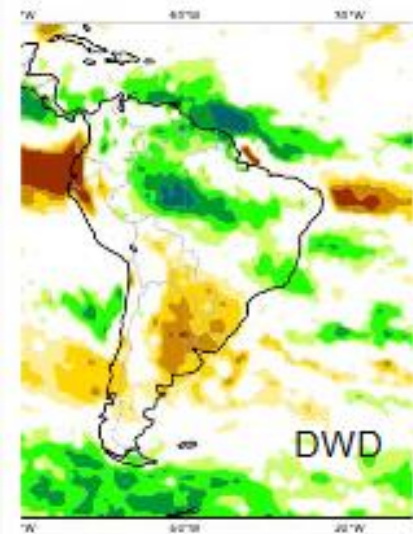
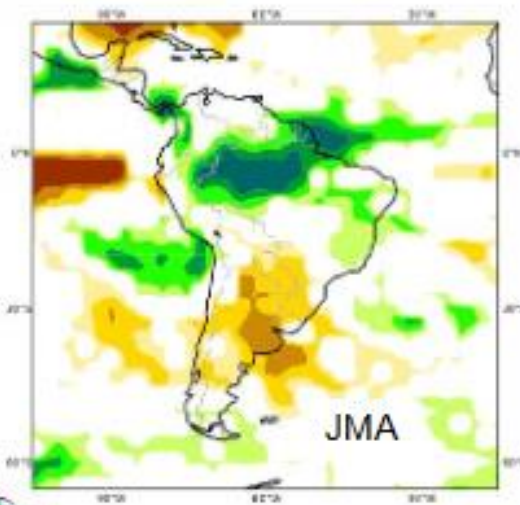
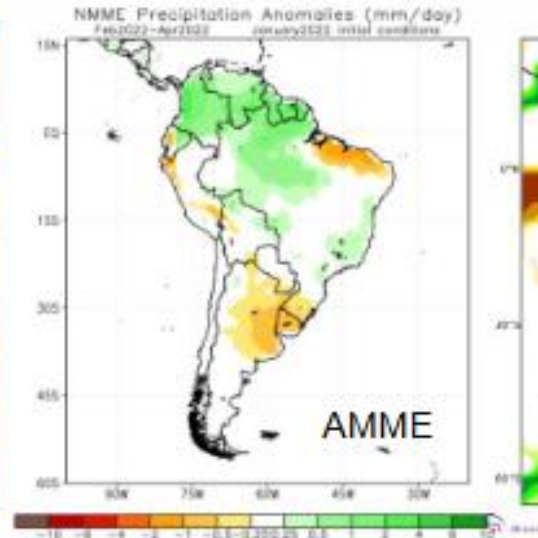
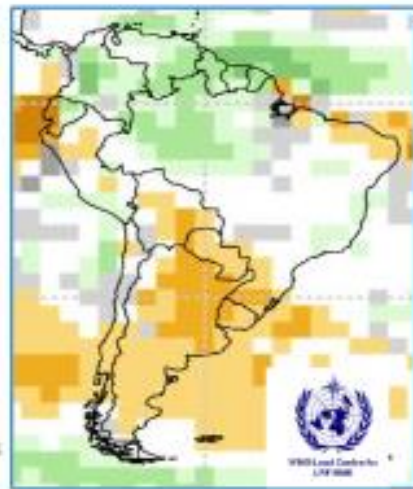
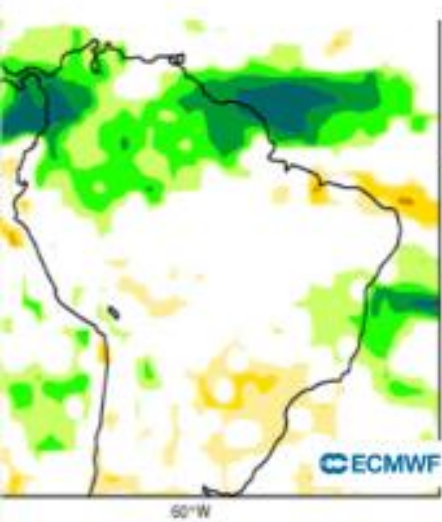
ENSO state based on NINO3.4 SST Anomaly
Neutral ENSO: $-0.5\text{ }^{\circ}\text{C}$ to $0.5\text{ }^{\circ}\text{C}$



Status Atual: **La Niña**

FONTE: NOAA

Previsão Sazonal de chuva (FMA)



Feb-Apr 2022 IRI Seasonal Precipitation Forecast issued Jan 2022

