

Monitoramento da bacia do rio Paranapanema

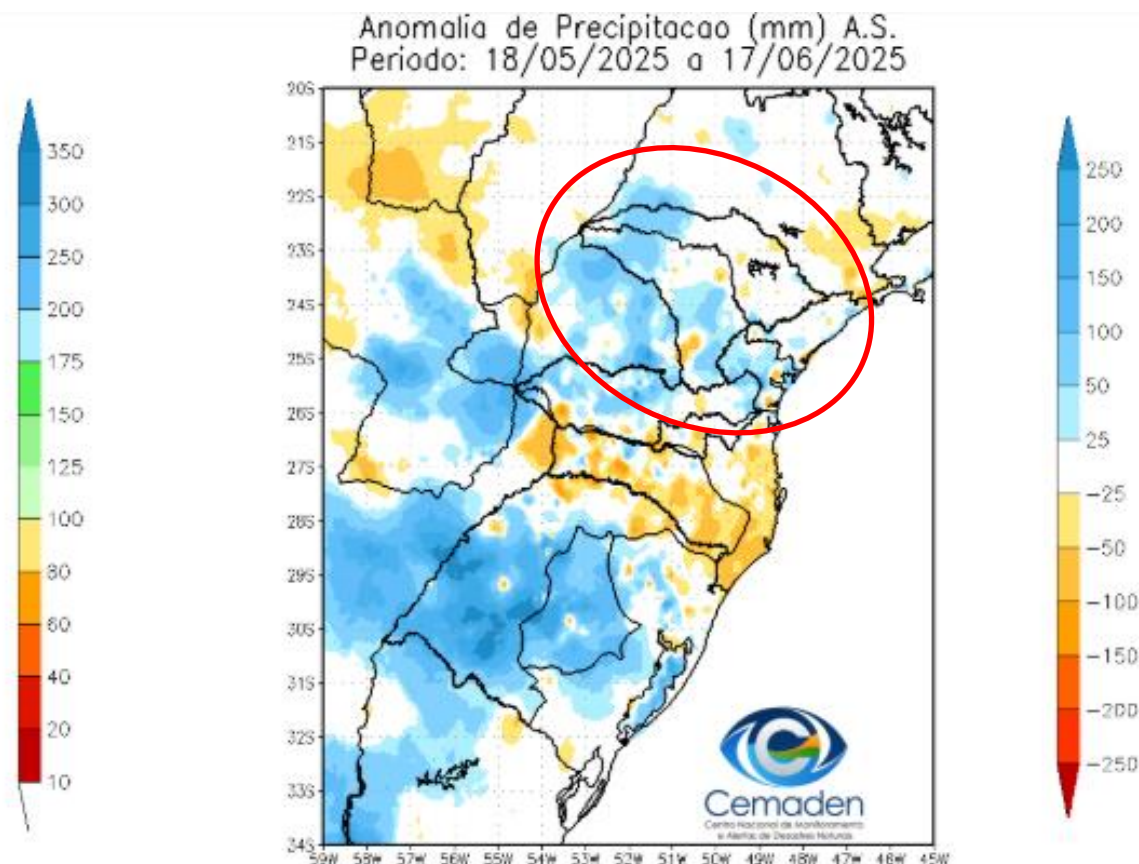
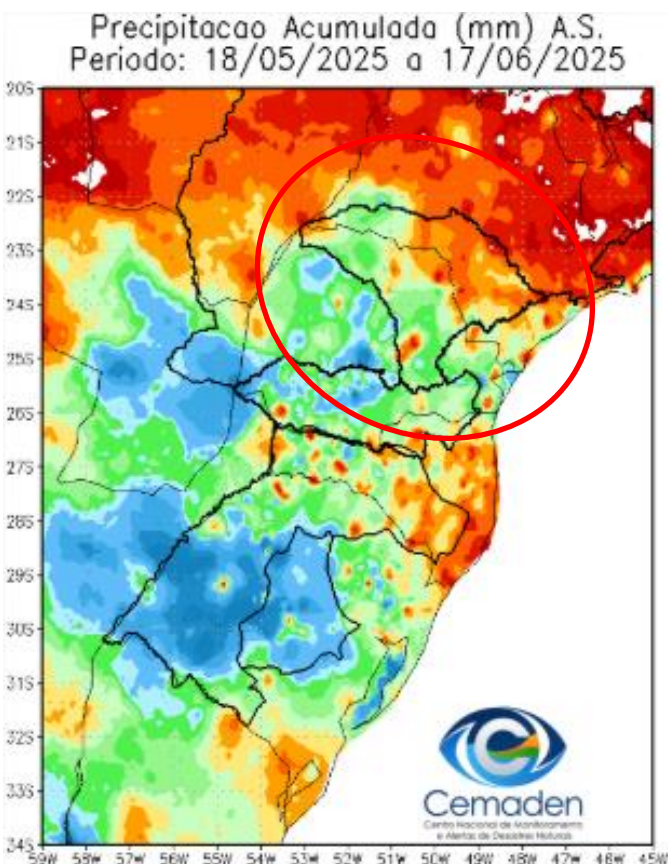
JUNHO/2025



MINISTÉRIO DA
CIÊNCIA, TECNOLOGIA
E INOVAÇÃO

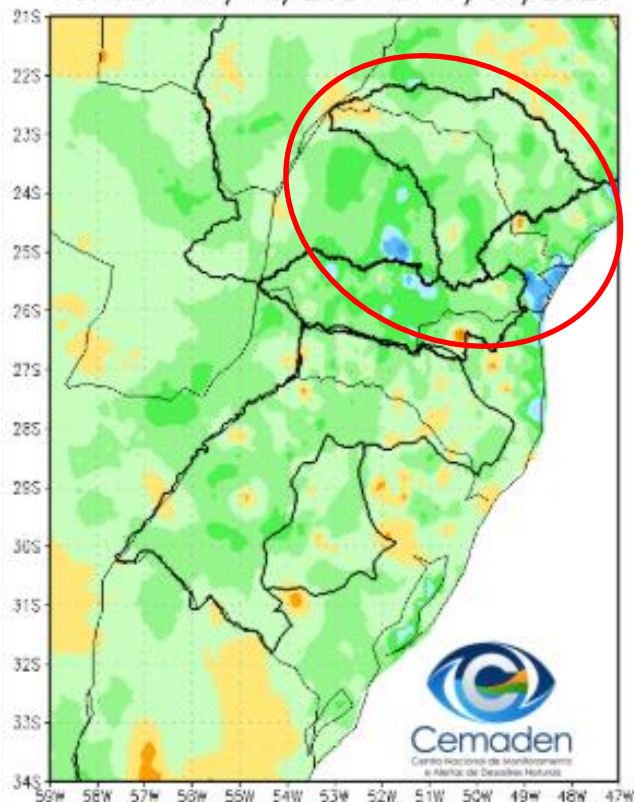


Precipitação acumulada nos últimos 30 dias

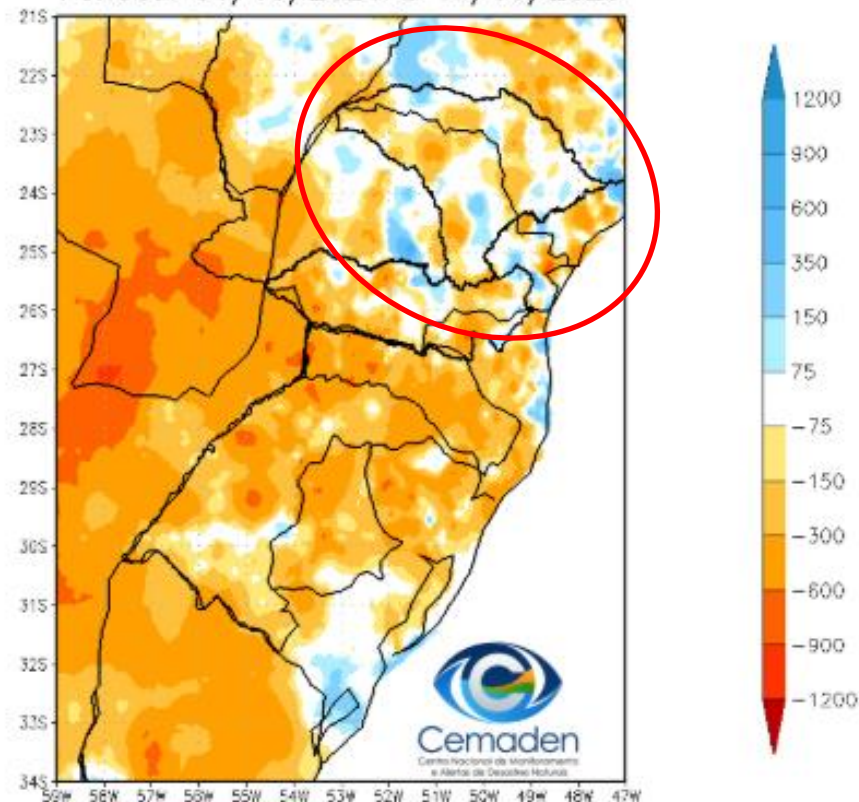


Precipitação no Ano Hidrológico

Precipitação Acumulada (mm) A.S.
Período: 01/10/2024 a 17/06/2025

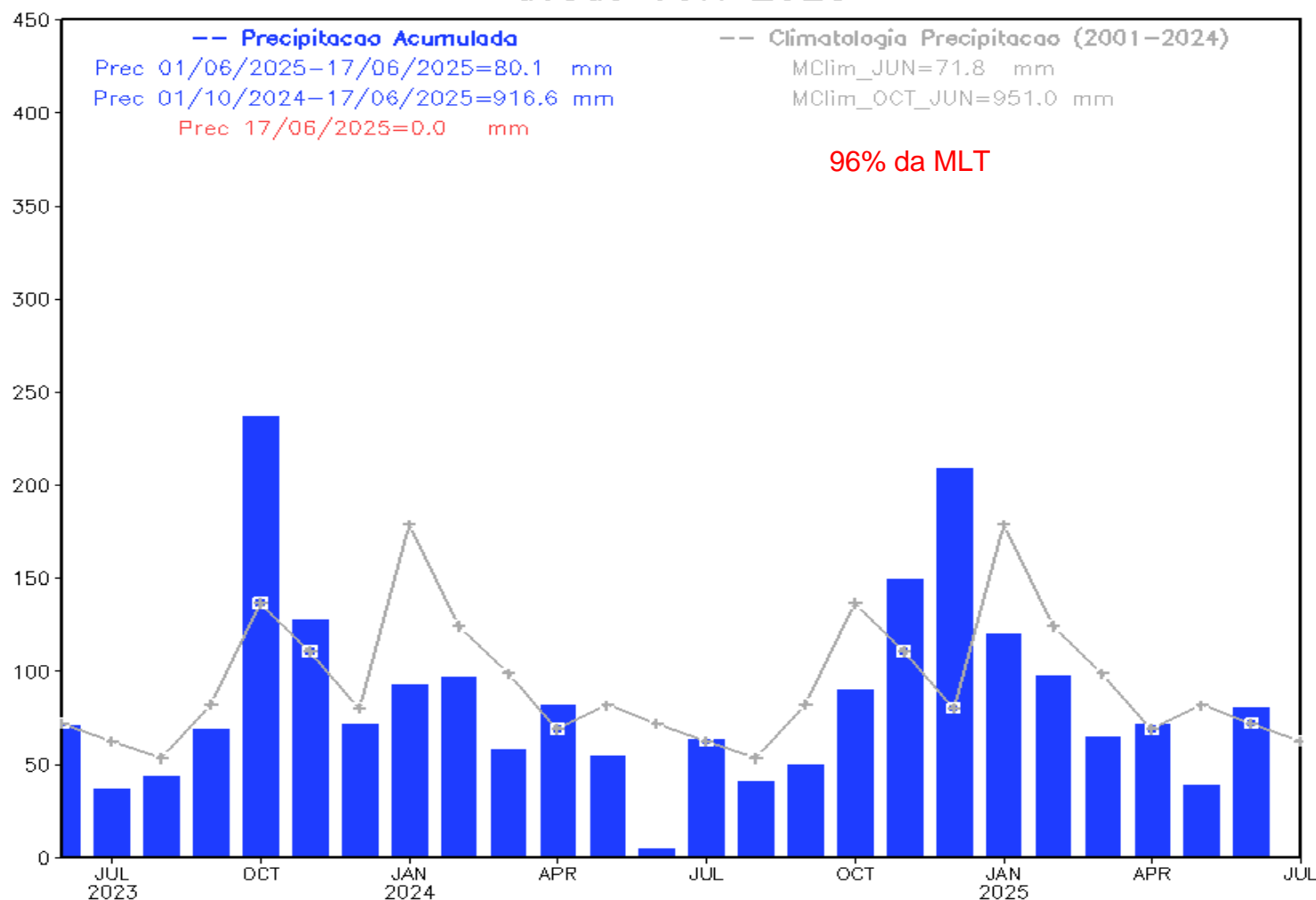


Anomalia de Precipitação (mm) A.S.
Período: 01/10/2024 a 17/06/2025



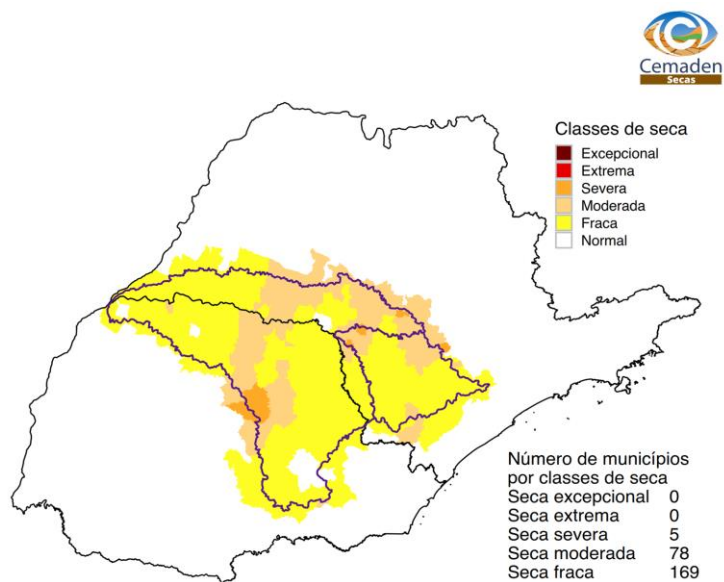
Evolução Temporal da Precipitação

Precipitação Bacia do Rio Paranapanema desde JUN 2023



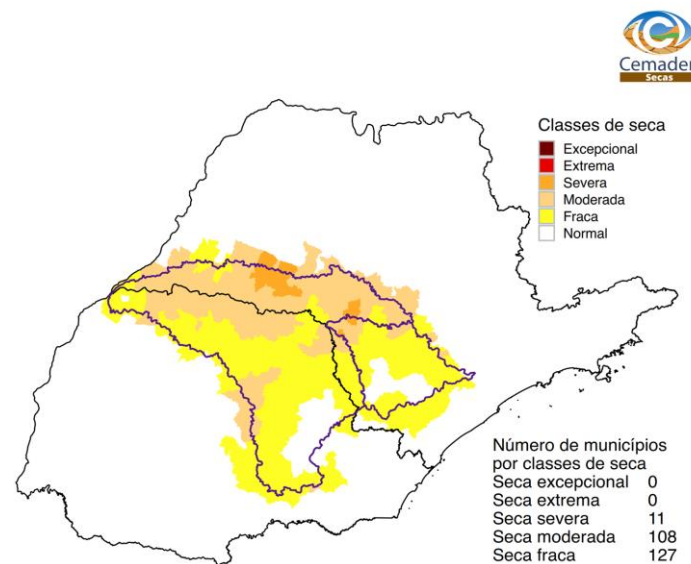
ÍNDICE INTEGRADO DE SECA: ANÁLISE POR **MUNICÍPIOS**

IIS-03 OBSERVADO



Maio 2025
Índice Integrado de Seca (SPI3, VHI, US)
Fonte: Cemaden/MCTI.

IIS-06 OBSERVADO

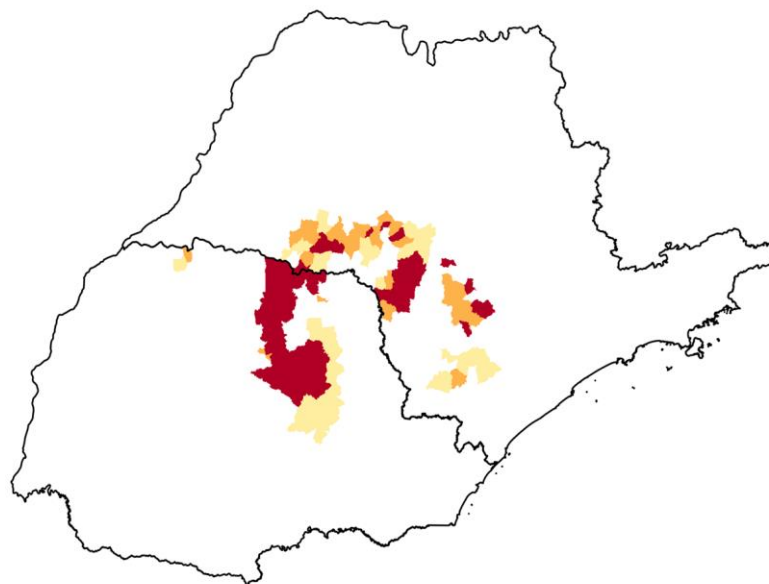
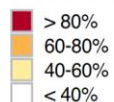


Maio 2025
Índice Integrado de Seca (SPI6, VHI, US)
Fonte: Cemaden/MCTI.

ÁREAS DE PASTAGENS E AGRÍCOLAS AFETADAS PELA SECA



Fração da
área afetada

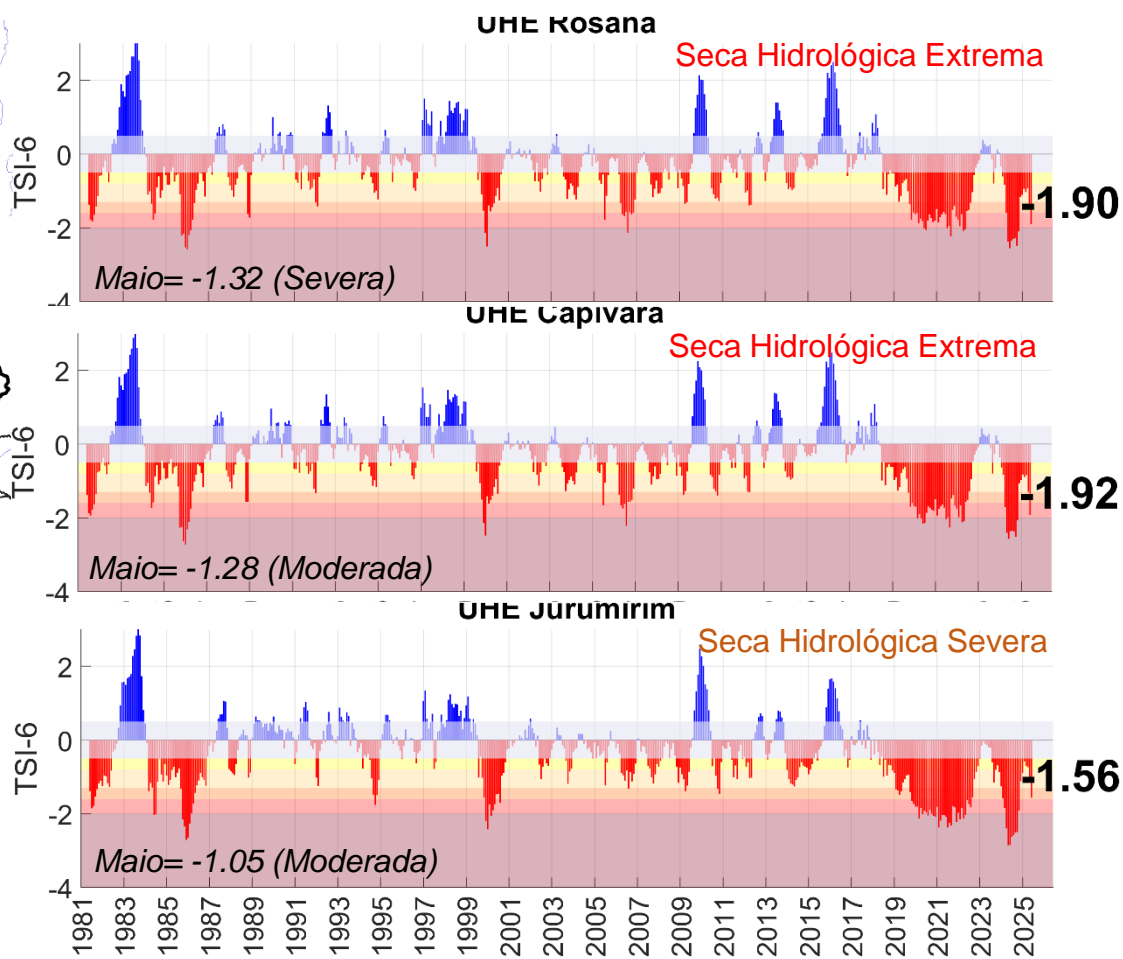
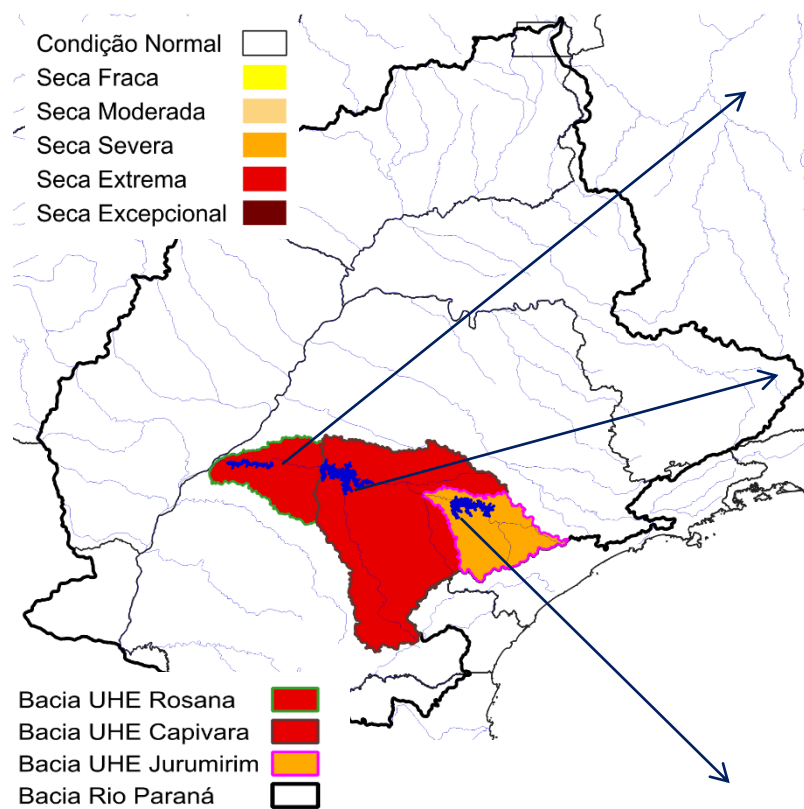


Maio 2025
Fração da área agroprodutiva afetada pela seca
Fonte: Cemaden/MCTI.

Índice Bivariado de Seca (Precipitação-Vazão) - TSI

Escala de Longo Prazo: **TSI-6 meses**

Junho/2025 - Parcial









Fonte: CEMADEN

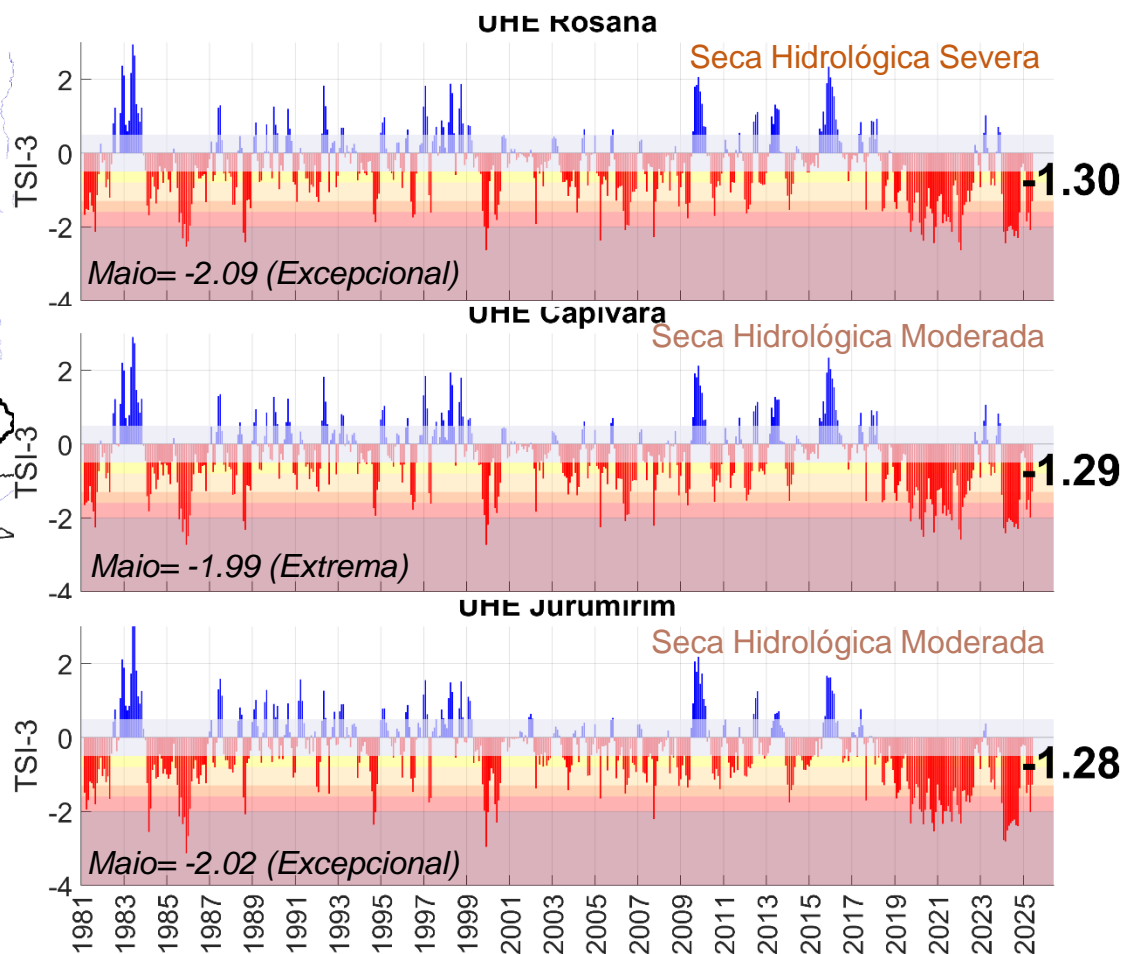
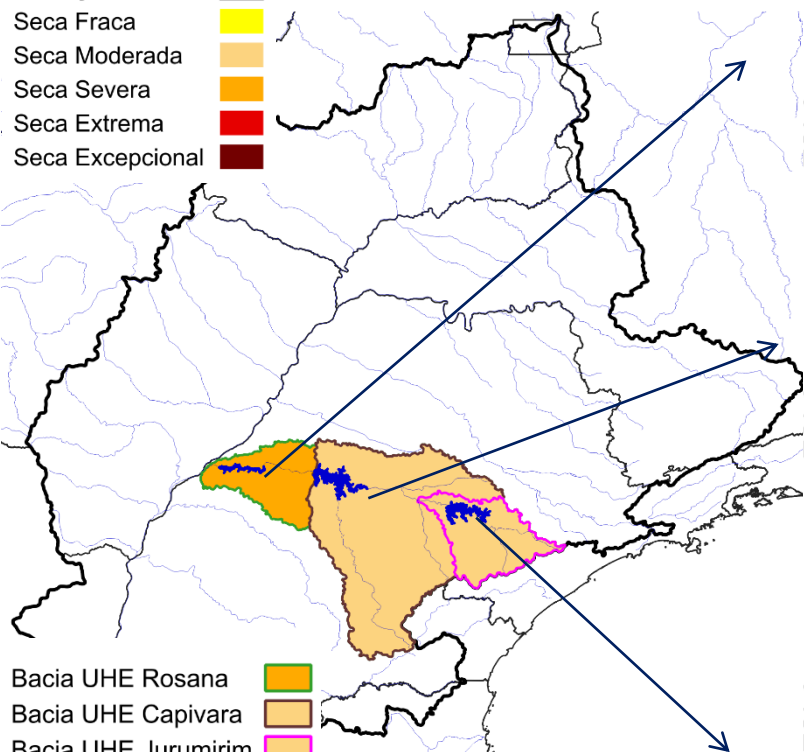
Dados: Precipitação (Cemaden/INMET/CHIRPS) e Vazão (ONS/ANA) - Jan/1981-Jun/2025.

Índice Bivariado de Seca (Precipitação-Vazão) - TSI

Escala de Curto Prazo: **TSI-3 meses**

Junho/2025 - Parcial

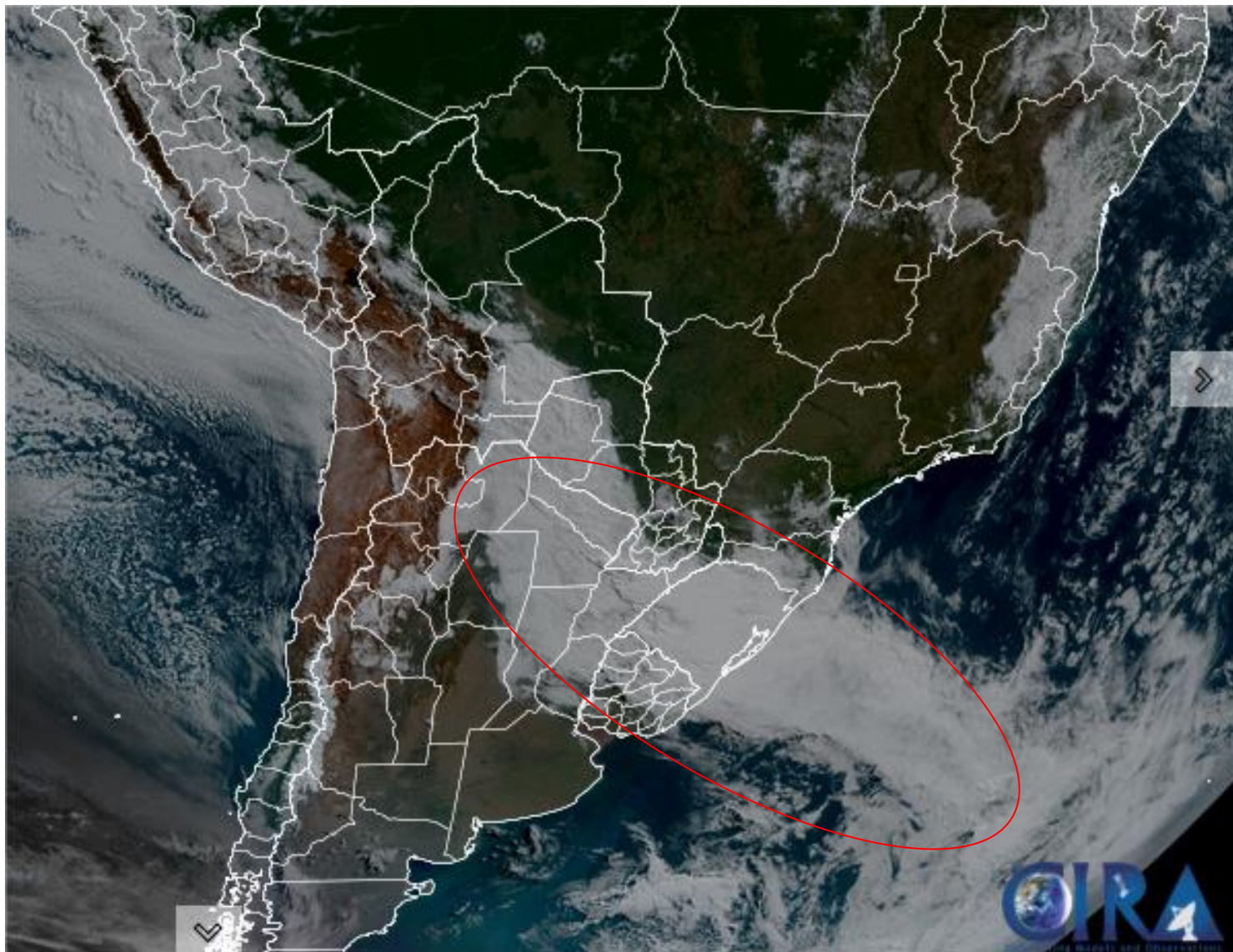
Condição Normal 
Seca Fraca 
Seca Moderada 
Seca Severa 
Seca Extrema 
Seca Excepcional 



Fonte: CEMADEN

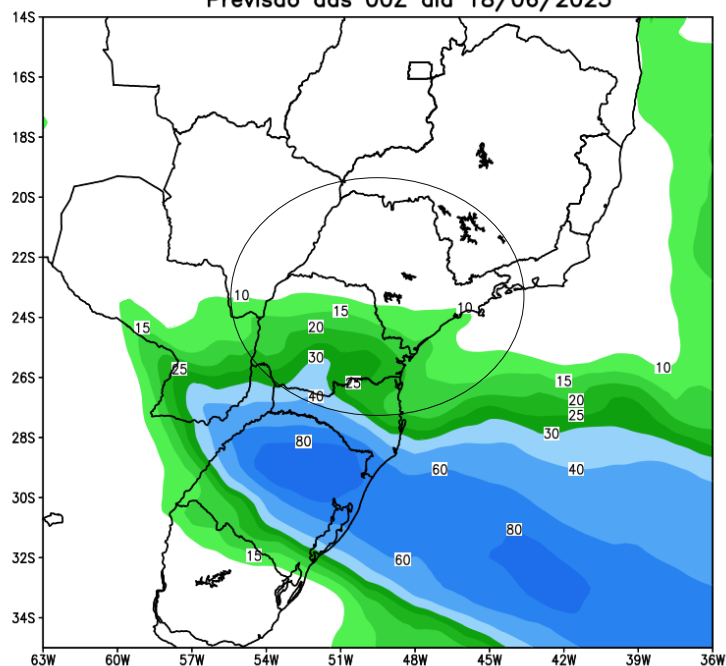
Dados: Precipitação (Cemaden/INMET/CHIRPS) e
Vazão (ONS/ANA) - Jan/1981-Jun/2025.

Situação meteorológica atual

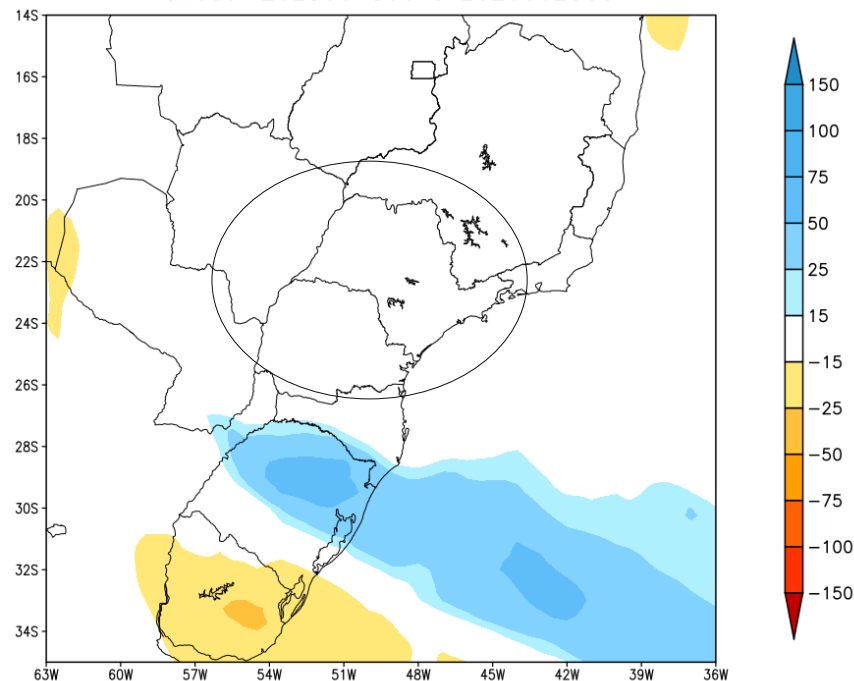


Previsão de chuva próximos 7 dias

GEFS / BRASIL_SUL
Precipitacao acumulada 1aSem (mm)
Previsao das 00Z dia 18/06/2025



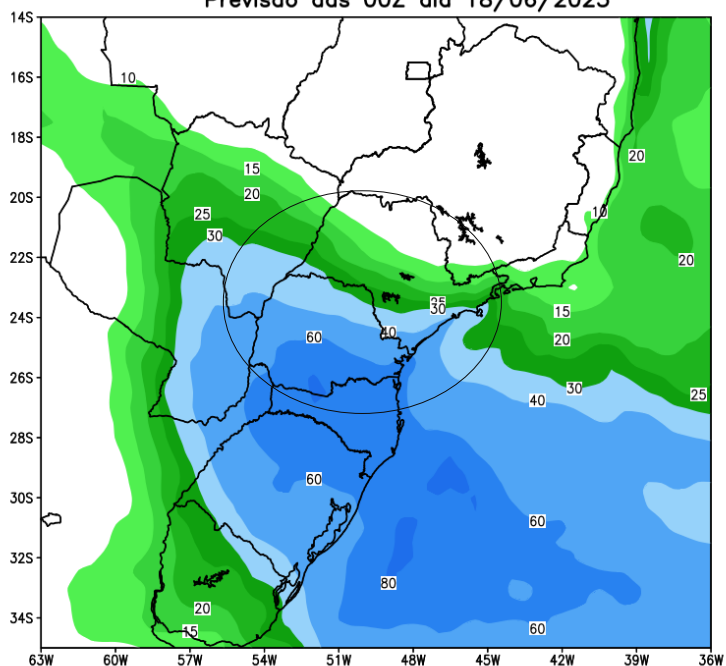
Anomalia de Precipitacao BR_SUL (mm)
Periodo: 2025061800 a 2025062500



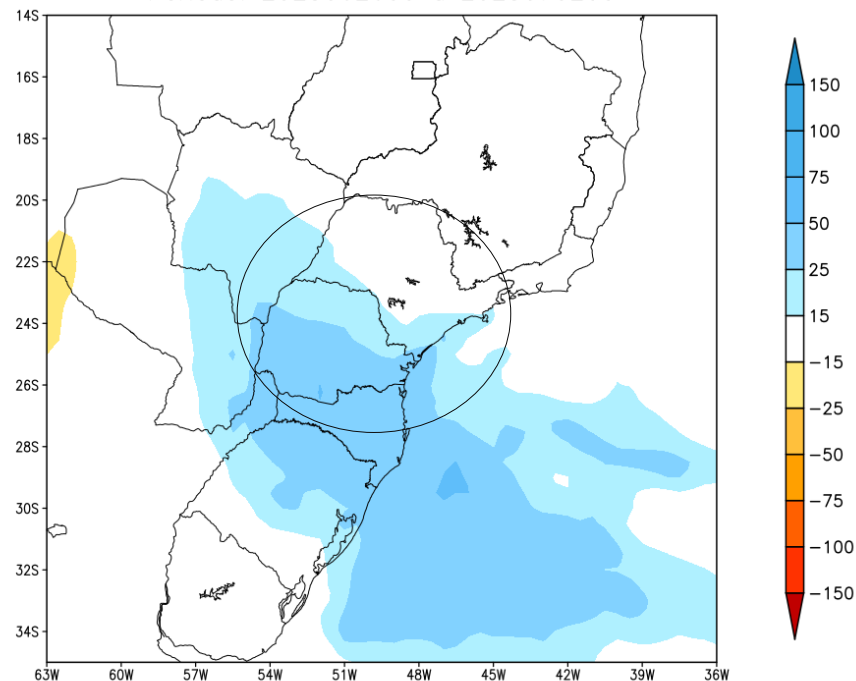
MODELO GEFS

Tendência para a segunda semana

GEFS / BRASIL_SUL
Precipitação acumulada 2aSem (mm)
Previsão das 00Z dia 18/06/2025



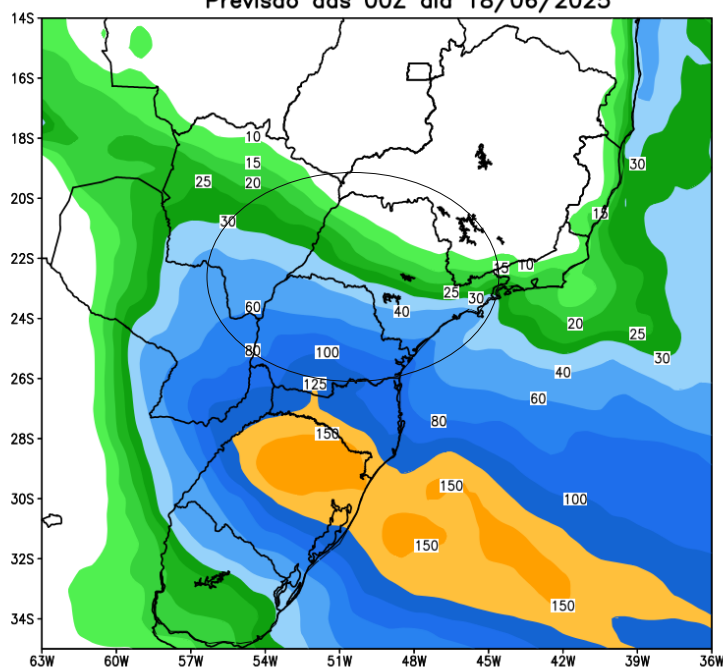
Anomalia de Precipitação BR_SUL (mm)
Período: 2025062600 a 2025070200



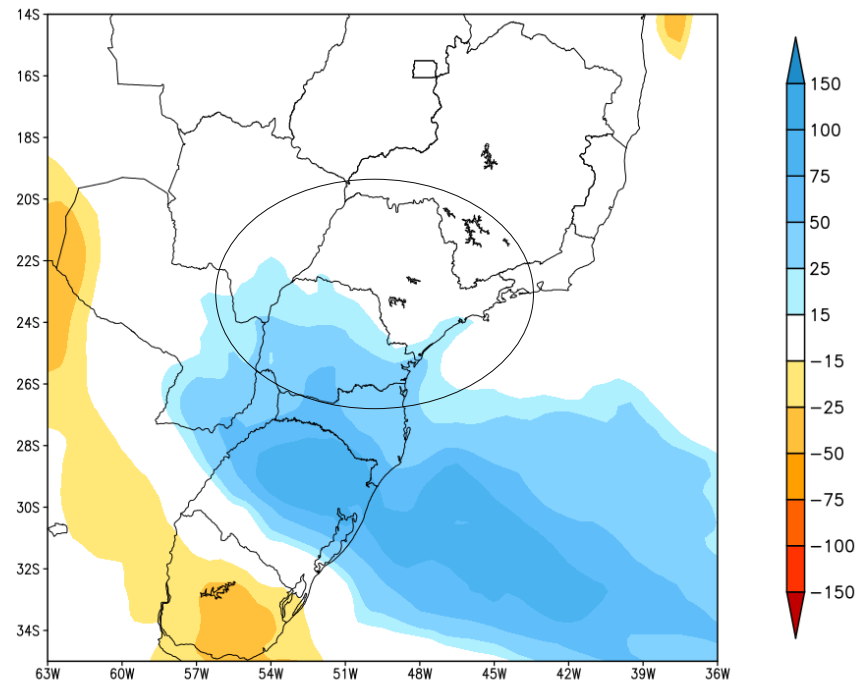
MODELO GEFS

Tendência para as duas próximas semanas

GEFS / BRASIL_SUL
Precipitação acumulada 14 dias (mm)
Previsão das 00Z dia 18/06/2025



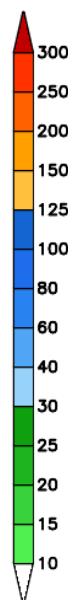
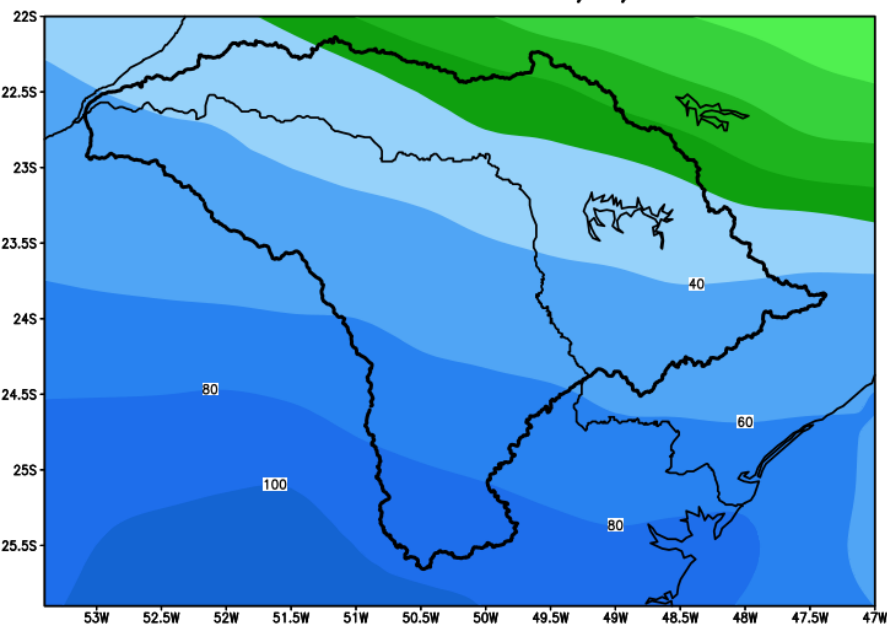
Anomalia de Precipitação BR_SUL (mm)
Período: 2025061800 a 2025070200



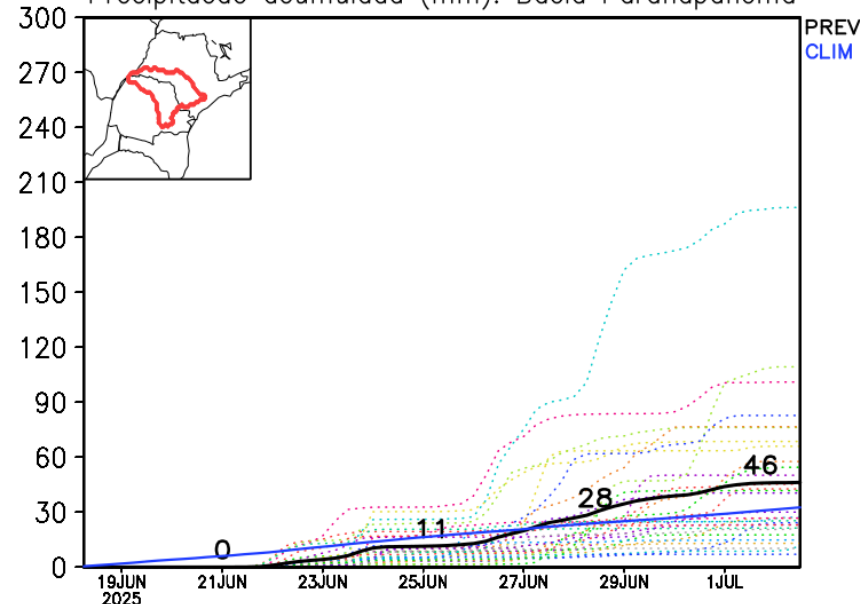
MODELO GEFS

Previsão para a bacia do rio Paranapanema

GEFS / Bacia do Rio Paranapanema
Precipitação acumulada em 14 dias (mm)
Previsão das 00Z dia 18/06/2025

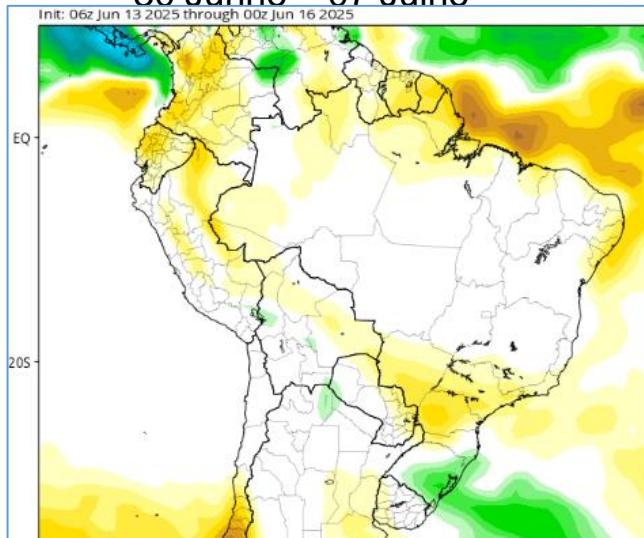


Precipitação acumulada (mm): Bacia Paranapanema

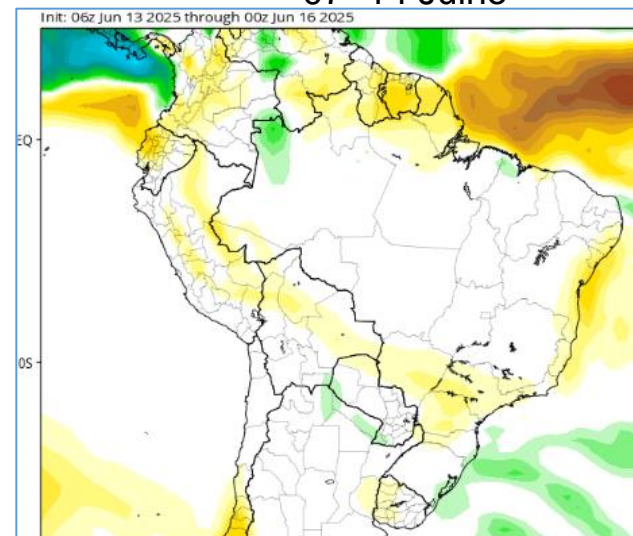


Tendência 3a e 4a semanas

30 Junho – 07 Julho

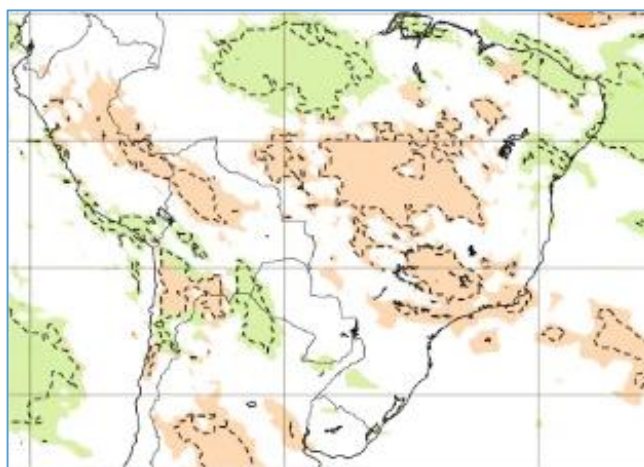


07- 14 Julho

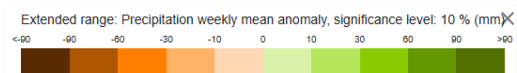
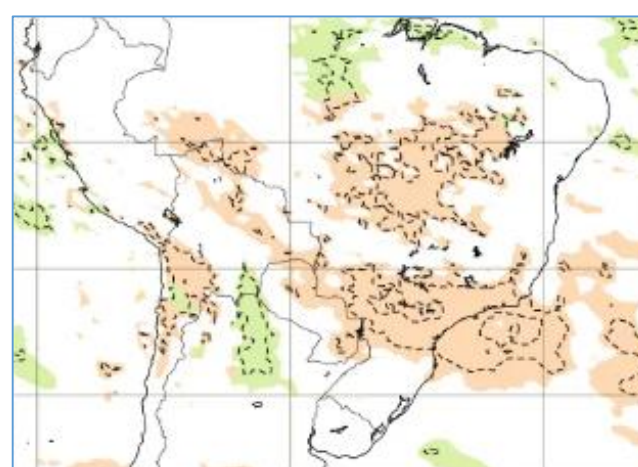


CFS/NOAA

02-09 Junho



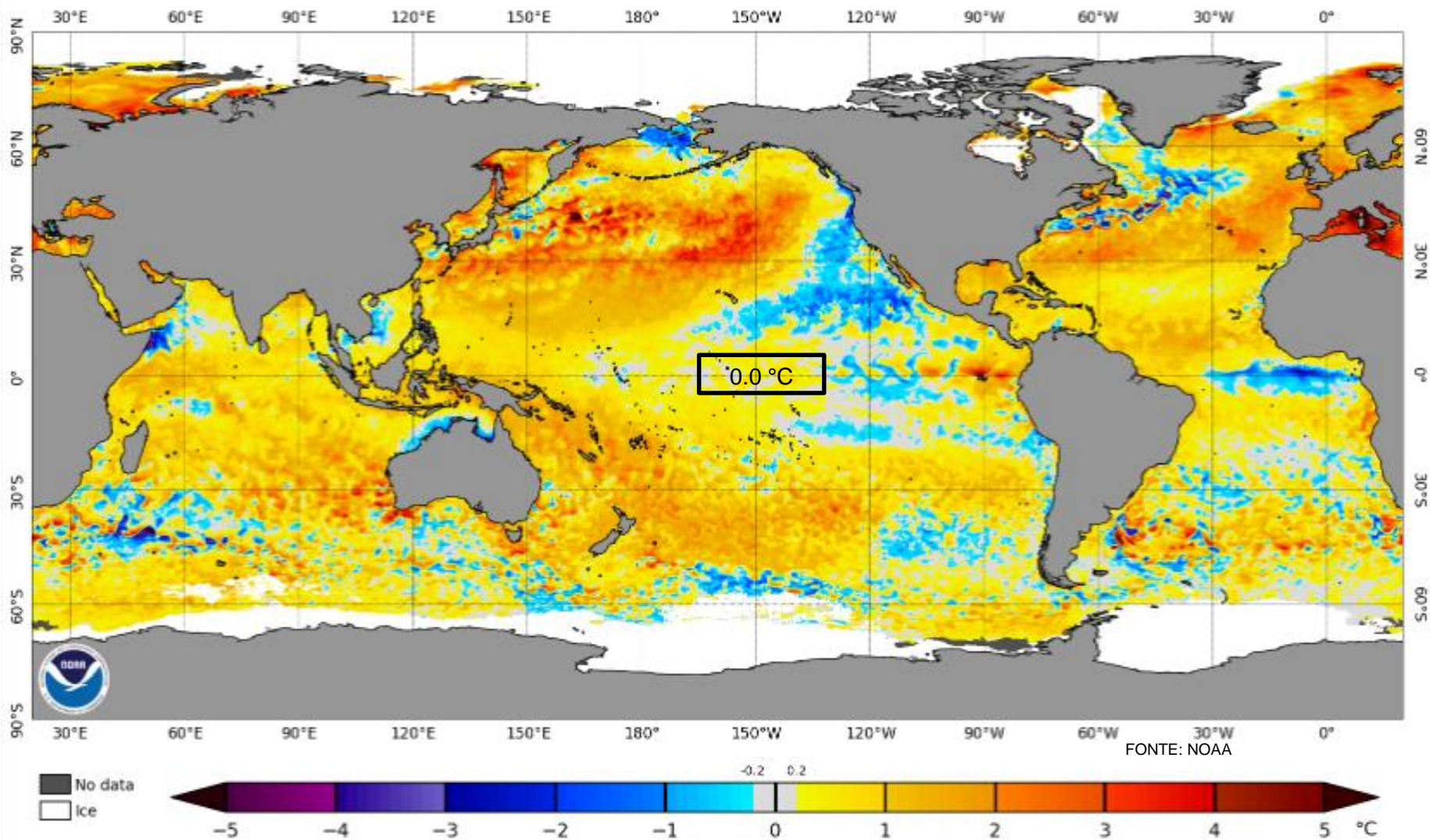
09-16 Junho



ECMWF

Status Atual: Neutralidade

NOAA Coral Reef Watch Daily 5km SST Anomalies (v3.1) 15 Jun 2025



Previsão do “ENSO”

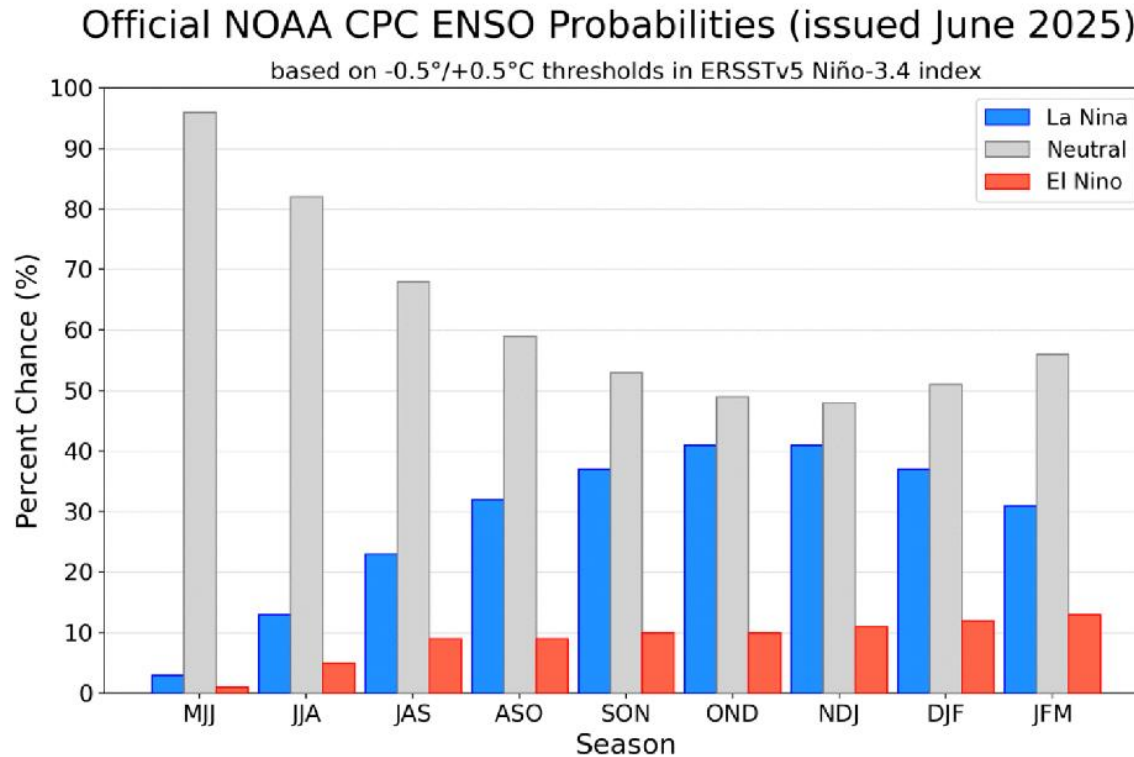
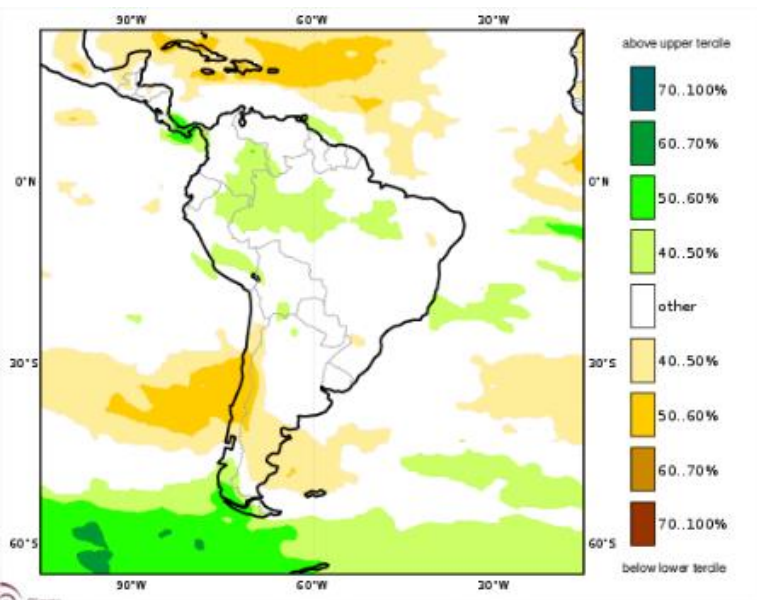


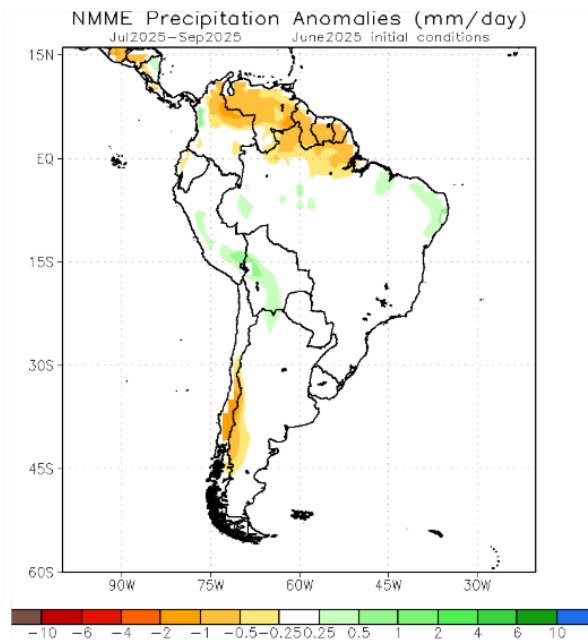
Figure 7. Official ENSO probabilities for the Niño 3.4 sea surface temperature index (5°N - 5°S , 120°W - 170°W). Figure updated 12 June 2025.

Previsão Sazonal de Chuva Multi-Modelo

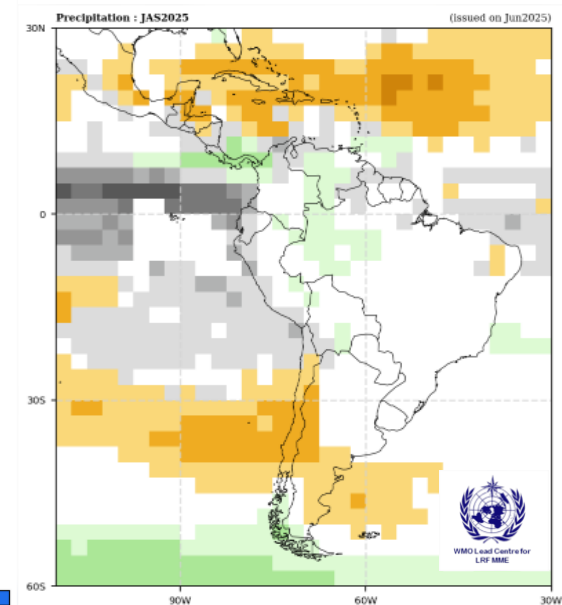
Julho-Agosto-Setembro



Modelos Europeus



Modelos Norte Americanos



Modelos da WMO