

Monitoramento da bacia do rio Paranapanema

SETEMBRO/2025



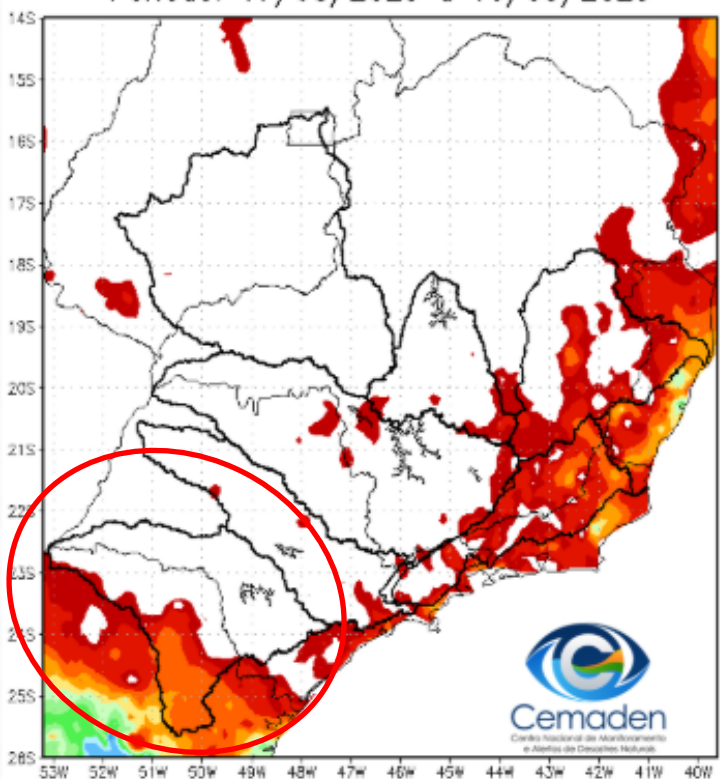
MINISTÉRIO DA
CIÊNCIA, TECNOLOGIA
E INOVAÇÃO

GOVERNO DO
BRASIL
DO LADO DO POVO BRASILEIRO

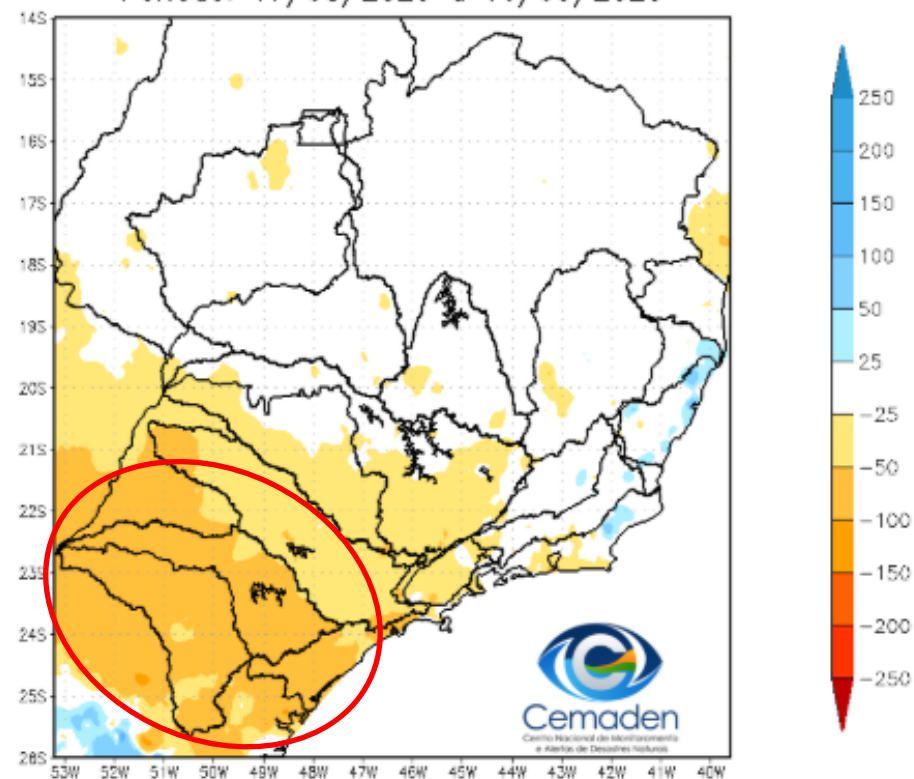


Precipitação acumulada nos últimos 30 dias

Precipitação Acumulada (mm) A.S.
Período: 17/08/2025 a 16/09/2025

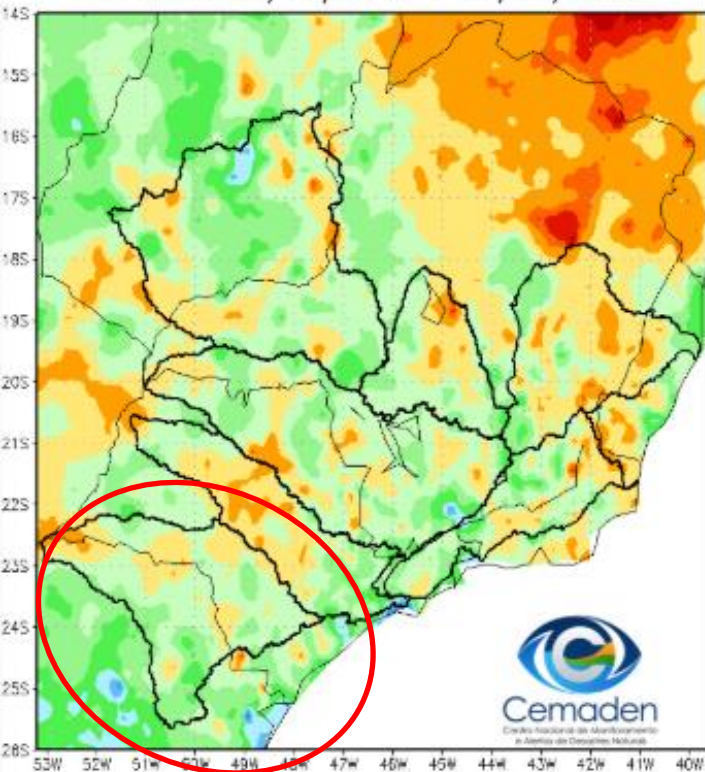


Anomalia de Precipitação (mm) A.S.
Período: 17/08/2025 a 16/09/2025

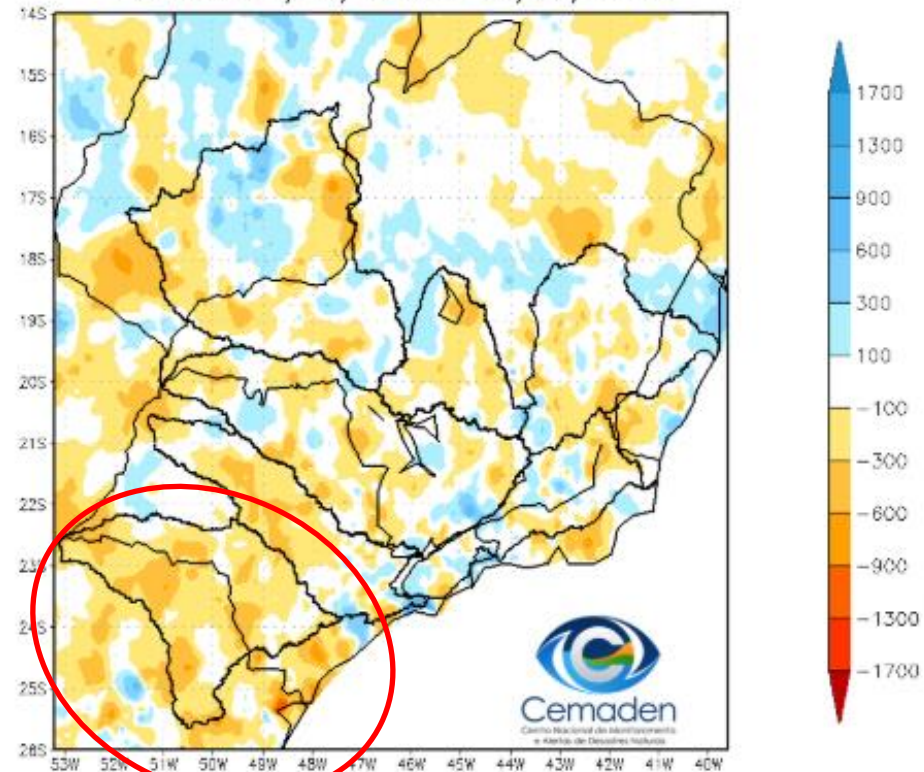


Precipitação no Ano Hidrológico

Precipitação Acumulada (mm) A.S.
Período: 01/10/2024 a 16/09/2025

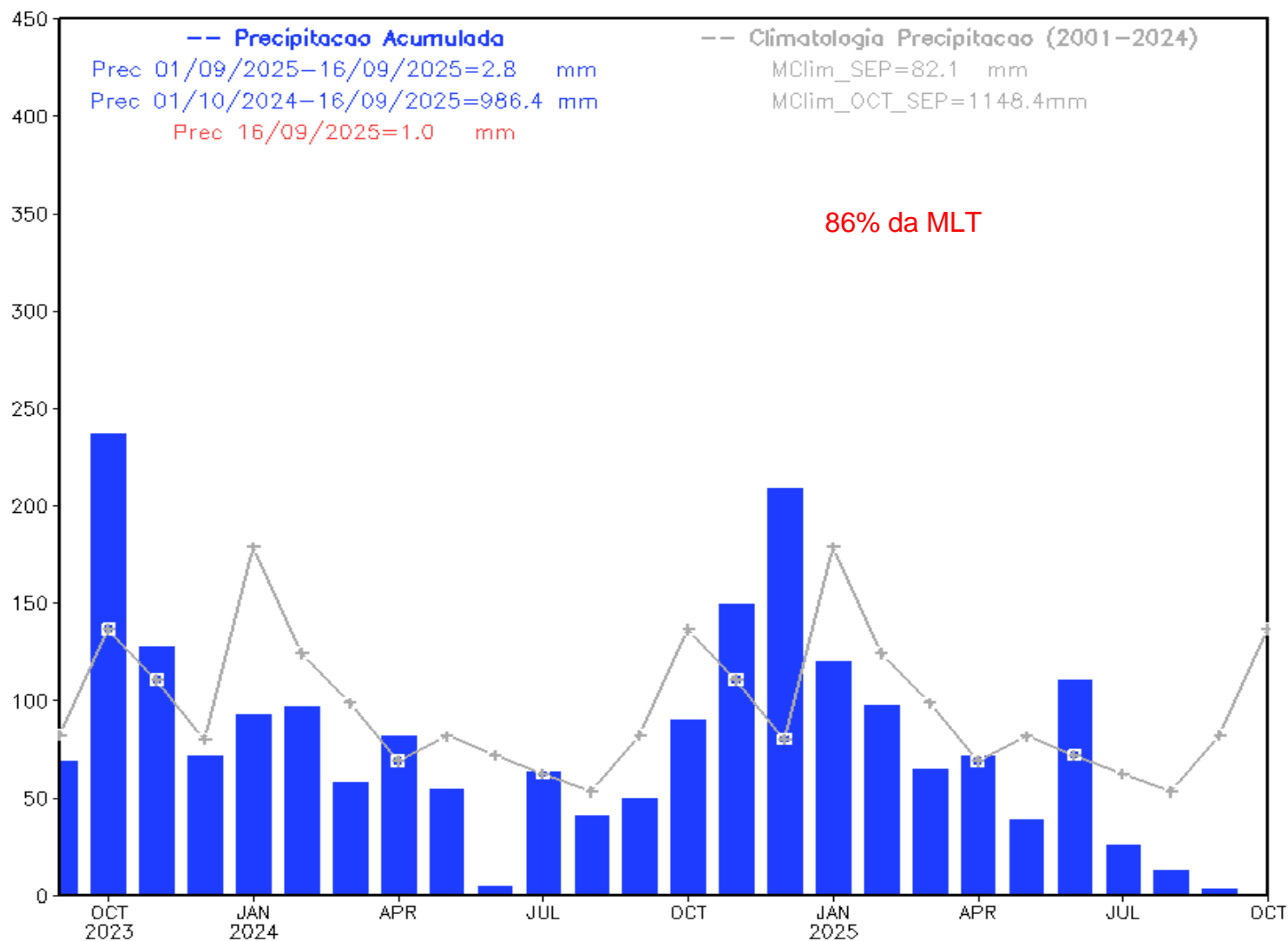


Anomalia de Precipitação (mm) A.S.
Período: 01/10/2024 a 16/09/2025



Evolução Temporal da Precipitação

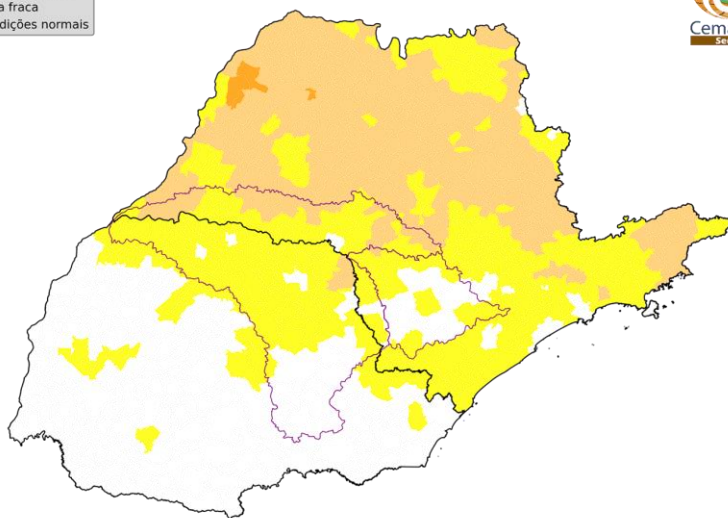
Precipitacao Bacia do Rio Paranapanema
desde SEP 2023



ÍNDICE INTEGRADO DE SECA: ANÁLISE POR **MUNICÍPIOS**

IIS-03 OBSERVADO

- Classes de seca**
- Seca excepcional
 - Seca extrema
 - Seca severa
 - Seca moderada
 - Seca fraca
 - Condições normais



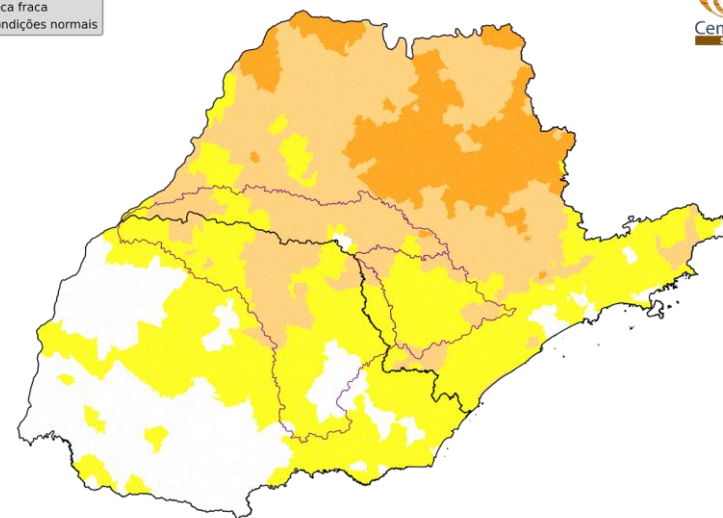
Número de municípios
por classes de seca:

| | |
|--------------------|-------------|
| Seca excepcional: | 0 (0.0%) |
| Seca extrema: | 0 (0.0%) |
| Seca severa: | 0 (0.0%) |
| Seca moderada: | 39 (13.7%) |
| Seca fraca: | 197 (69.1%) |
| Condições normais: | 49 (17.2%) |

Índice Integrado de Seca - 3 meses (IIS3)
August 2025
Fonte: Cemaden/MCTI

IIS-06 OBSERVADO

- Classes de seca**
- Seca excepcional
 - Seca extrema
 - Seca severa
 - Seca moderada
 - Seca fraca
 - Condições normais

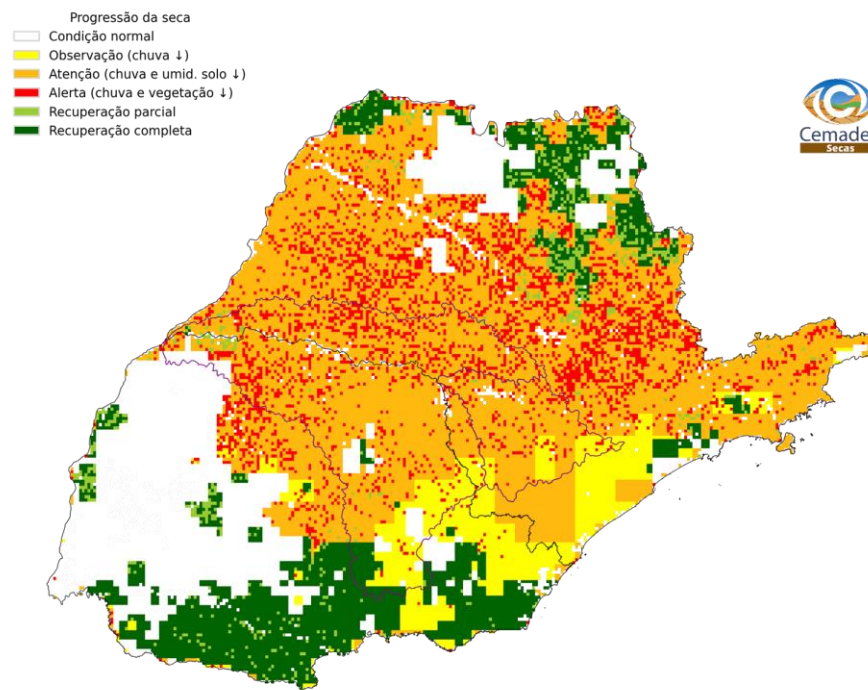


Número de municípios
por classes de seca:

| | |
|--------------------|-------------|
| Seca excepcional: | 0 (0.0%) |
| Seca extrema: | 0 (0.0%) |
| Seca severa: | 1 (0.4%) |
| Seca moderada: | 132 (46.3%) |
| Seca fraca: | 145 (50.9%) |
| Condições normais: | 7 (2.5%) |

Índice Integrado de Seca - 6 meses (IIS6)
August 2025
Fonte: Cemaden/MCTI

PROGRESSÃO DAS CONDIÇÕES DE SECA (PCS)

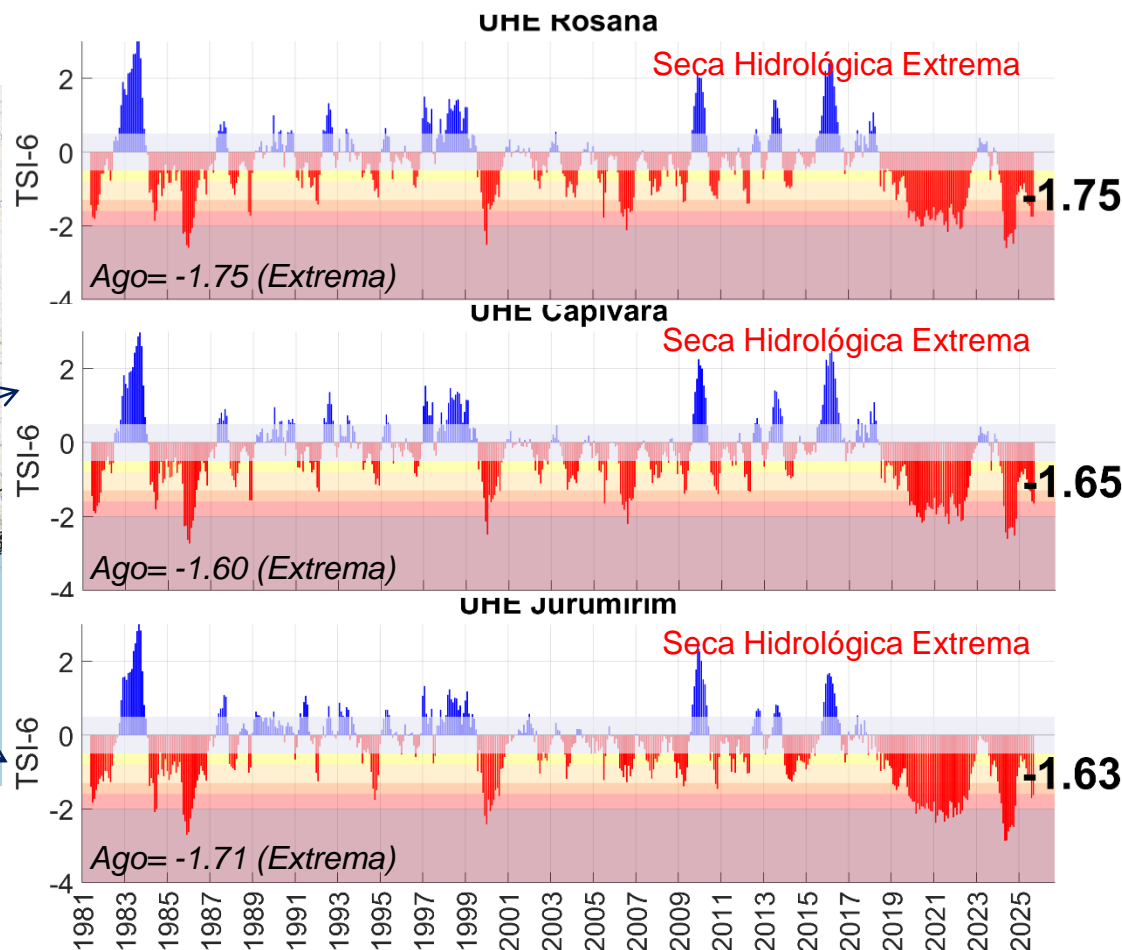
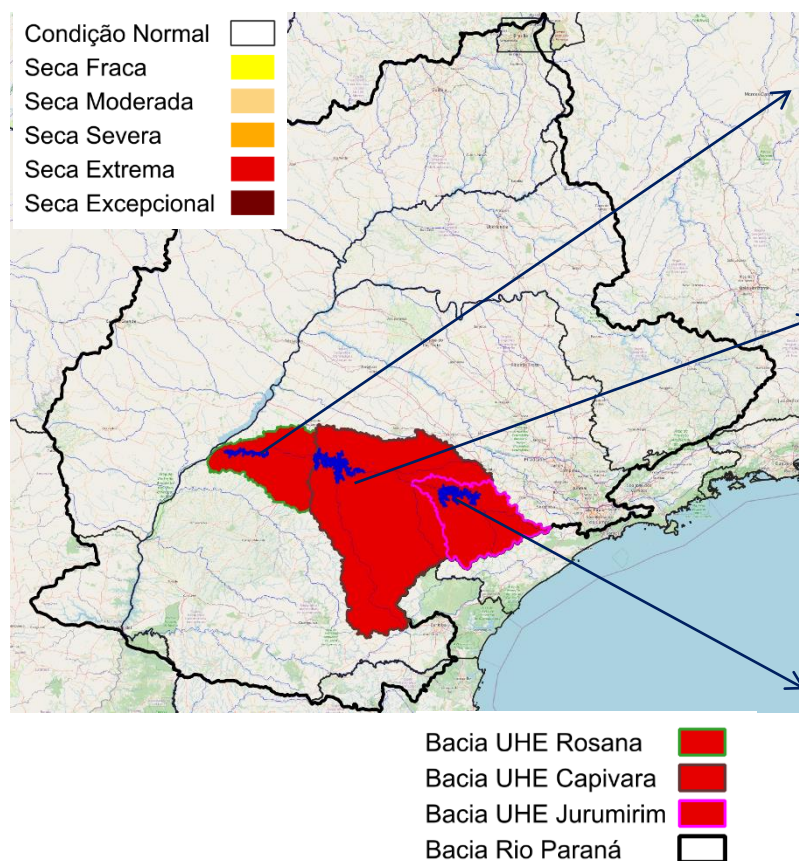


Progressão e Intensificação das Condições de Seca (PICS)
August 2025
Fonte: Cemaden/MCTI

Índice Bivariado de Seca (Precipitação-Vazão) - TSI

Escala de Longo Prazo: **TSI-6 meses**

Set/2025 - Parcial



Fonte: CEMADEN

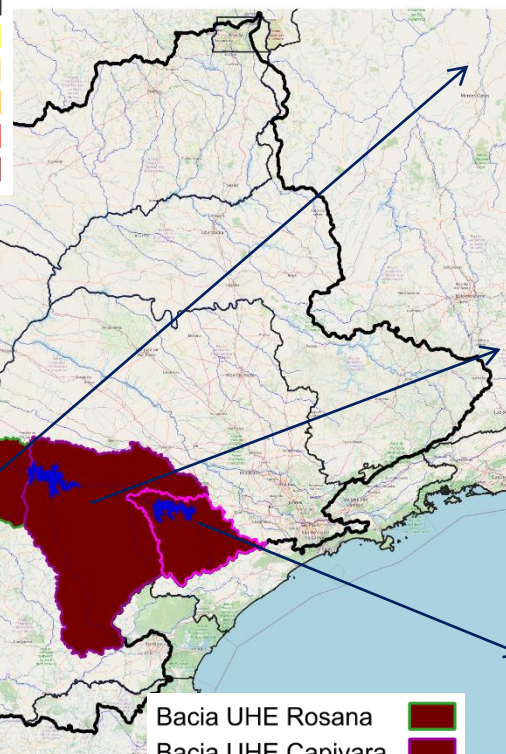
Dados: Precipitação (Cemaden/INMET/CHIRPS) e
Vazão (ONS/ANA) - Jan/1981-Set/2025.

Índice Bivariado de Seca (Precipitação-Vazão) - TSI

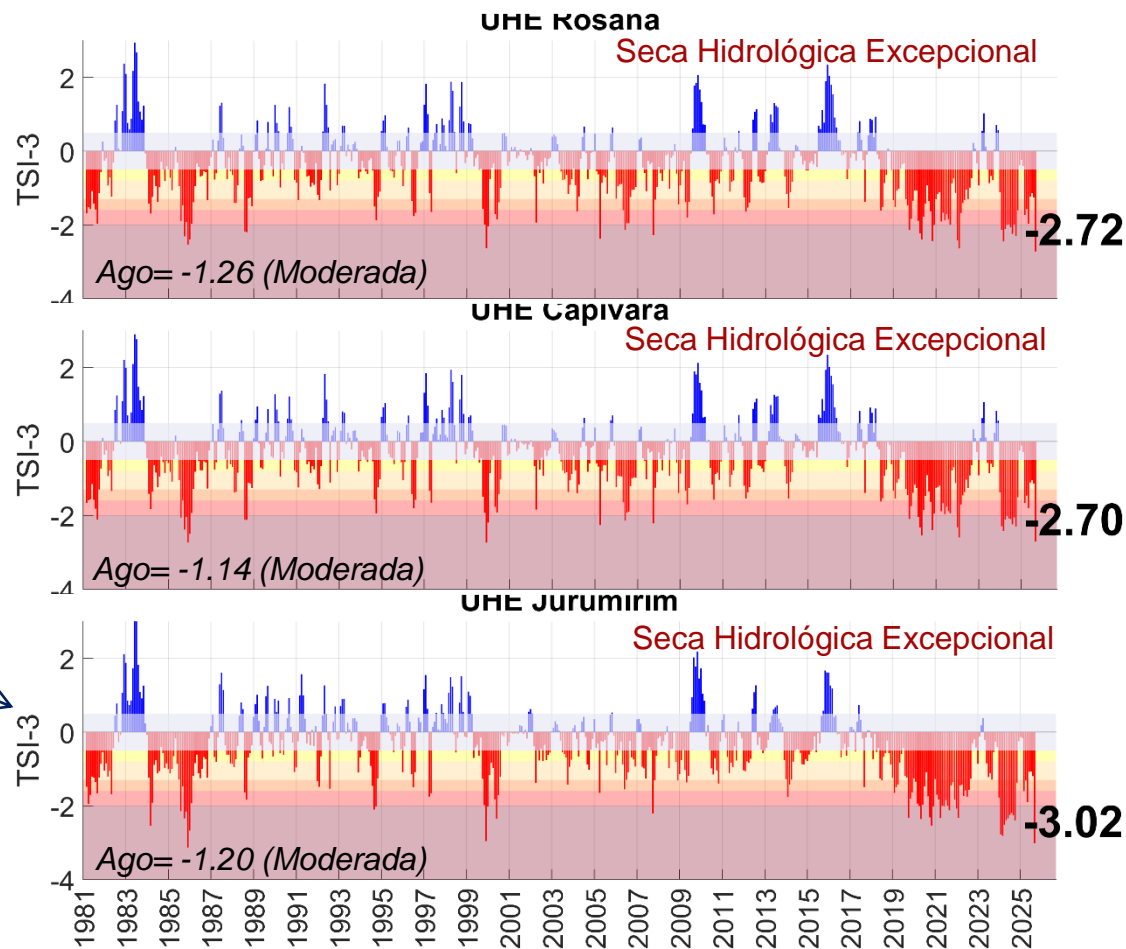
Escala de Curto Prazo: **TSI-3 meses**

Set/2025 - Parcial

Condição Normal
Seca Fraca
Seca Moderada
Seca Severa
Seca Extrema
Seca Excepcional



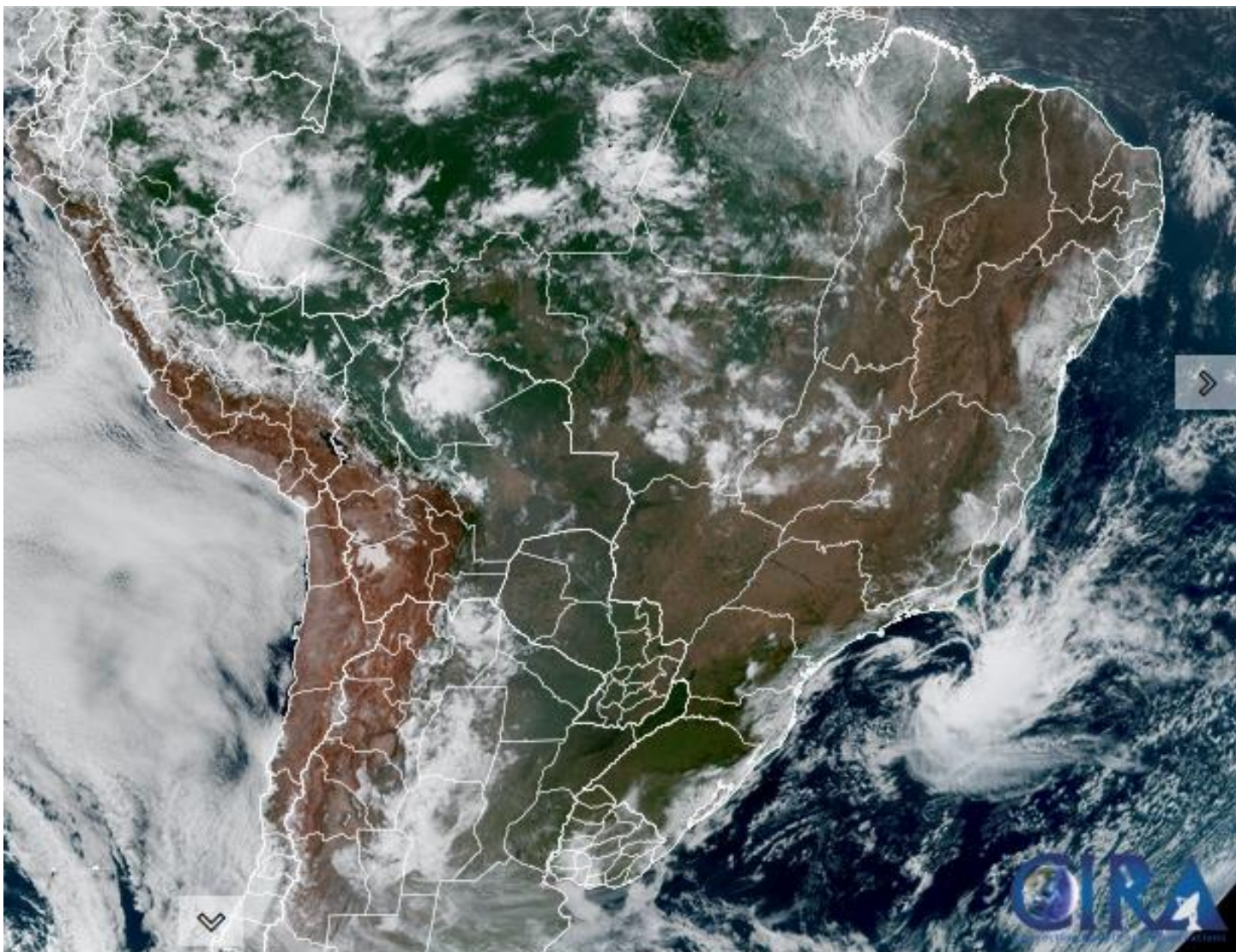
Bacia UHE Rosana
Bacia UHE Capivara
Bacia UHE Jurumirim
Bacia Rio Paraná



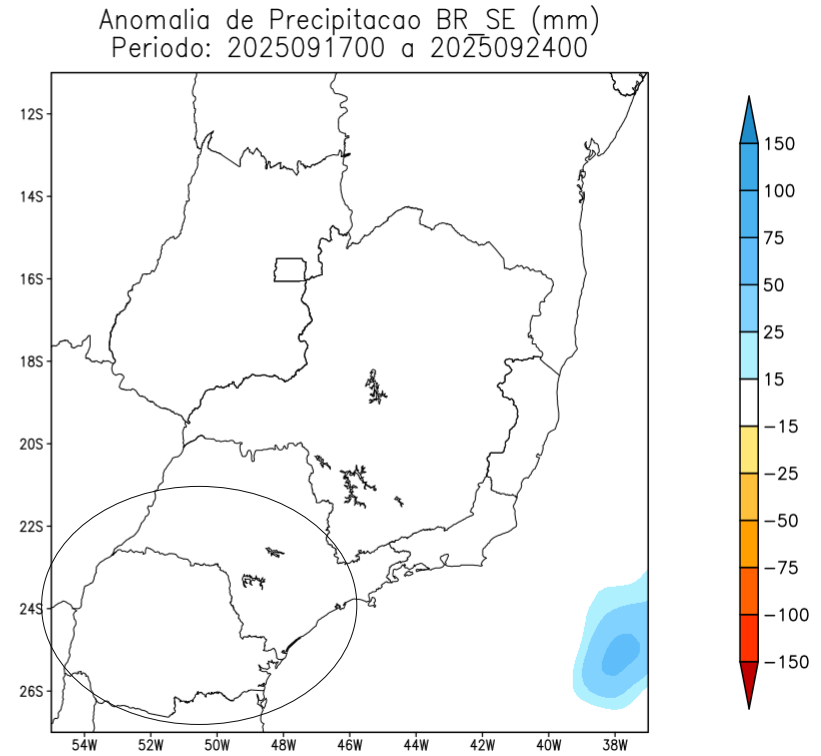
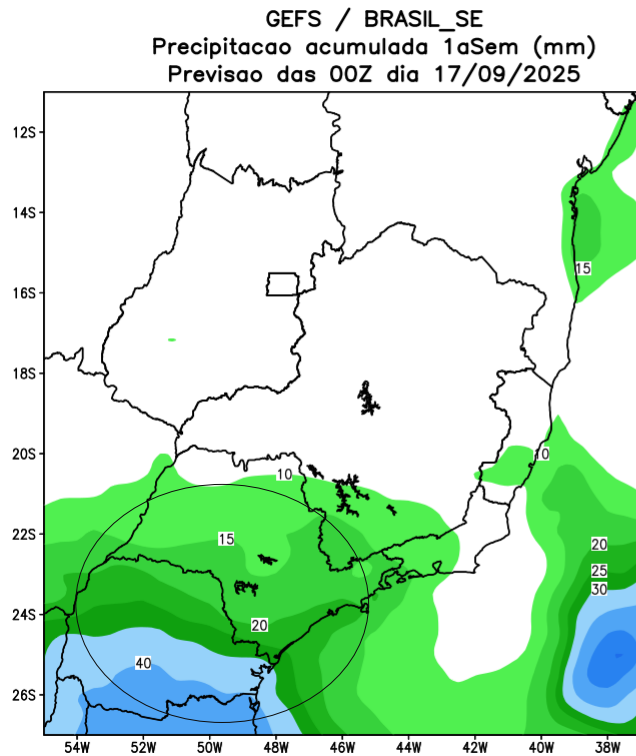
Fonte: CEMADEN

Dados: Precipitação (Cemaden/INMET/CHIRPS) e Vazão (ONS/ANA) - Jan/1981-Set/2025.

Situação meteorológica atual



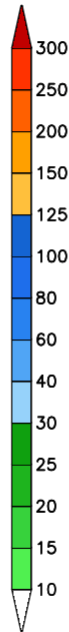
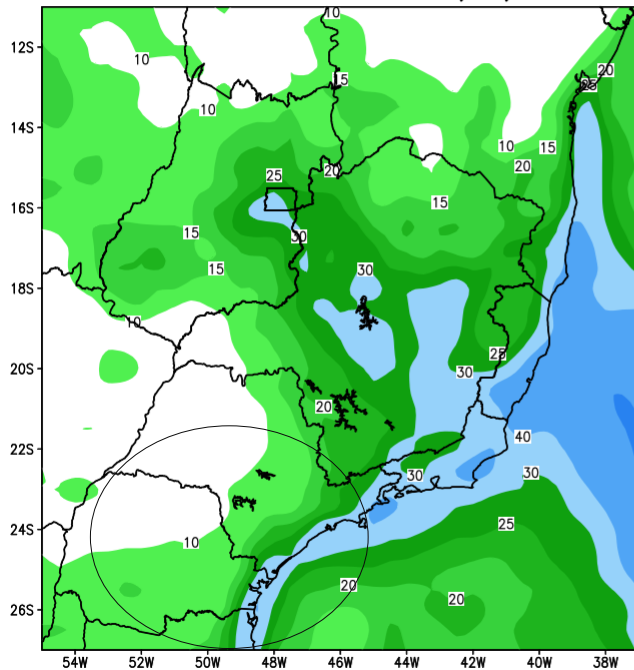
Previsão de chuva próximos 7 dias



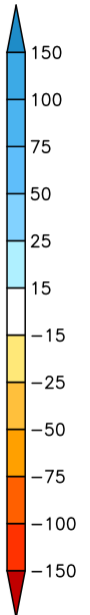
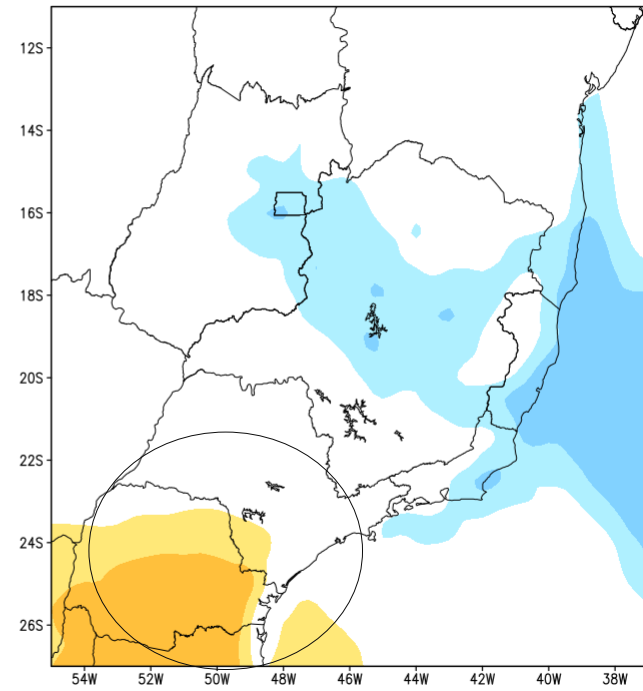
MODELO GEFS

Tendência para a segunda semana

GEFS / BRASIL_SE
Precipitacao acumulada 2aSem (mm)
Previsao das 00Z dia 17/09/2025



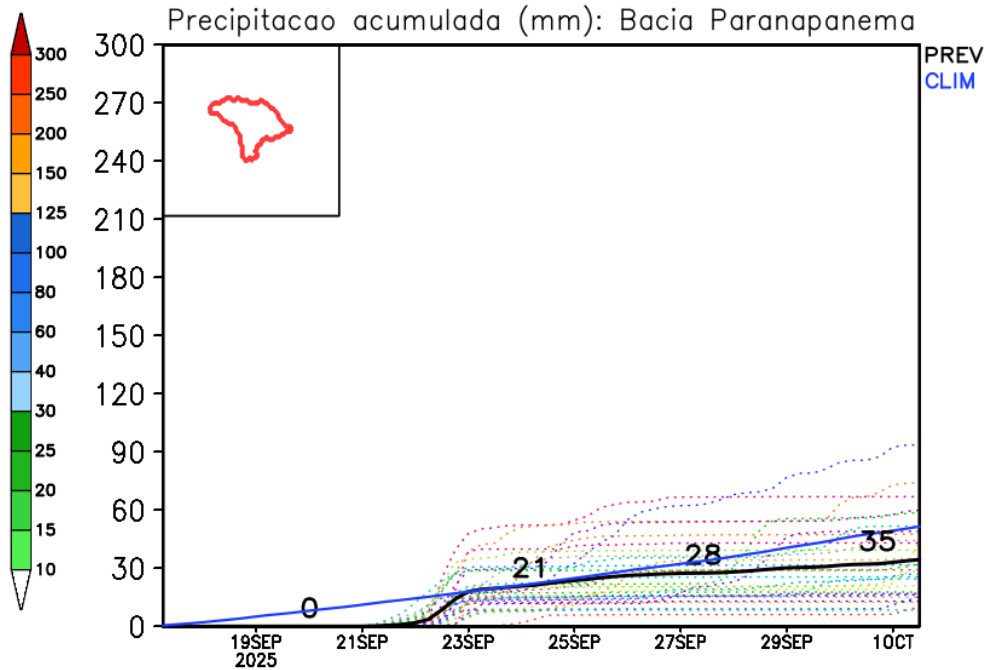
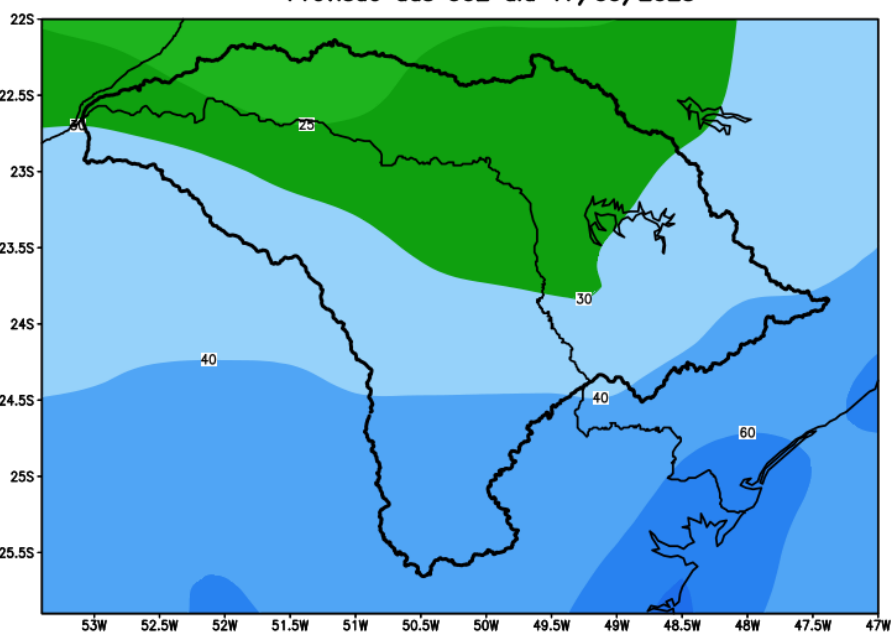
Anomalia de Precipitacao BR_SE (mm)
Periodo: 2025092500 a 2025100100



MODELO GEFS

Previsão para a bacia do rio Paranapanema

GEFS / Bacia do Rio Paranapanema
Precipitação acumulada em 14 dias (mm)
Previsão das 00Z dia 17/09/2025

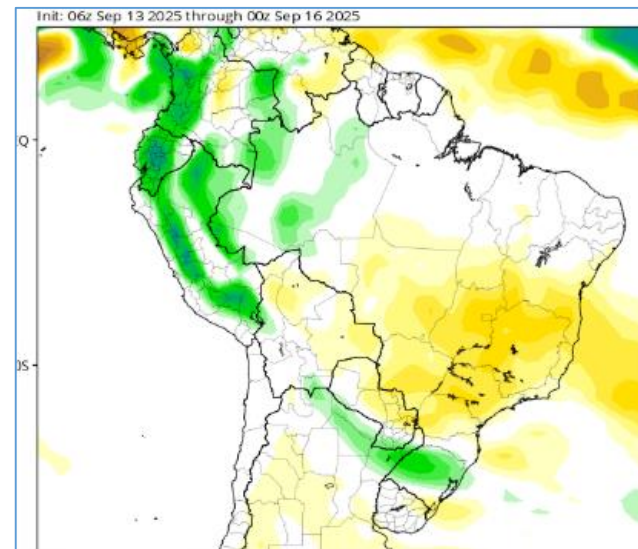
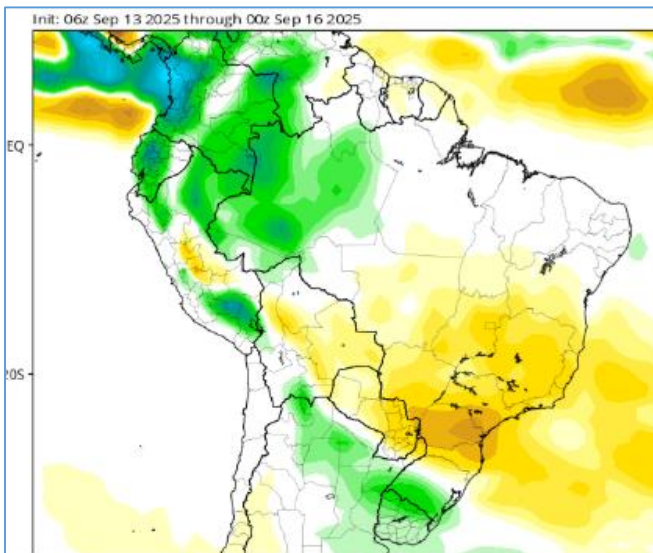


Tendência 3a e 4a semanas

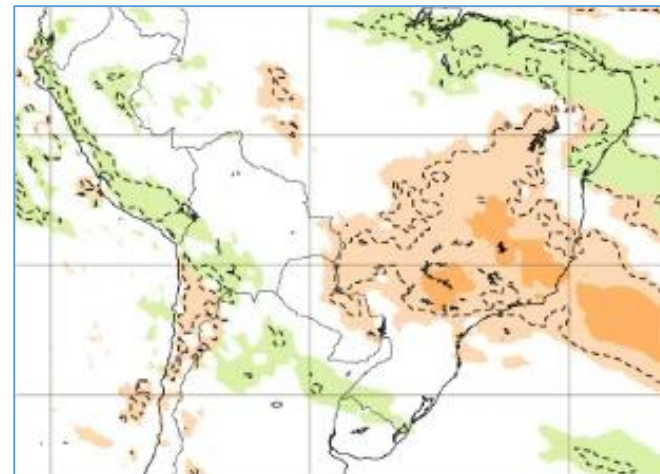
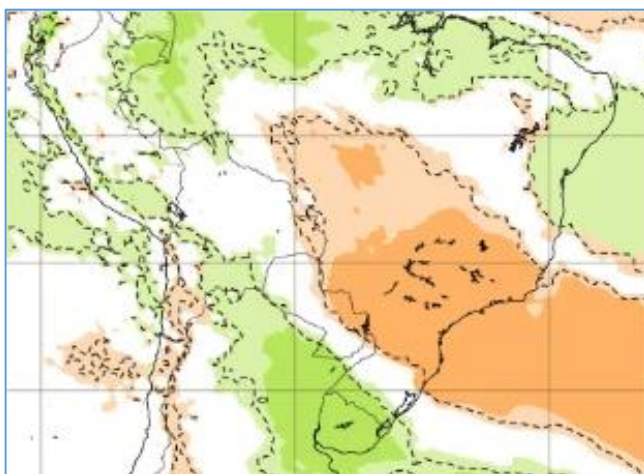
30 Set – 07 Out

07-14 Out

CFS/NOAA



ECMWF



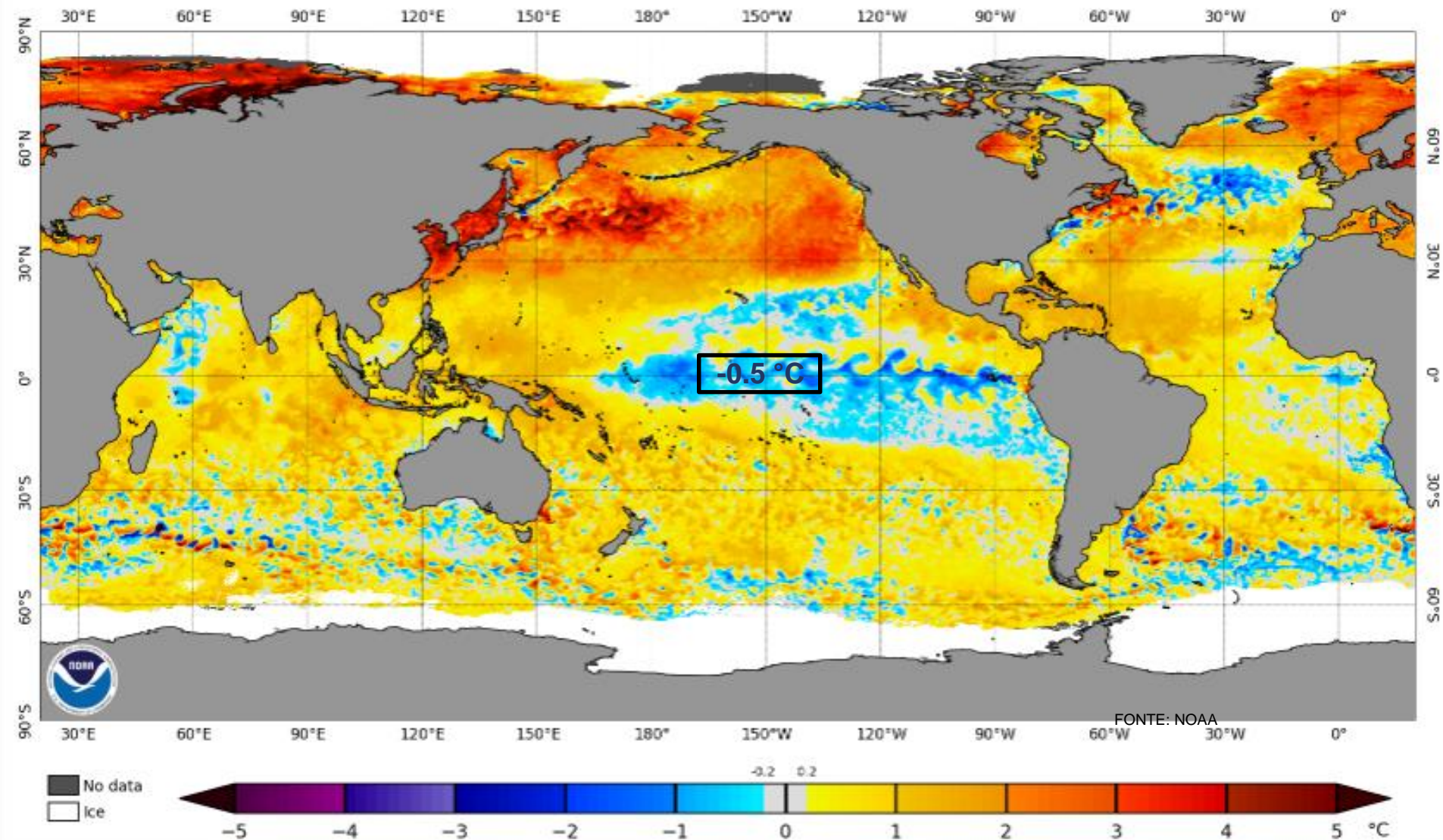
29 Set – 06 Out

06-13 Out



Status Atual: **La Niña Watch**

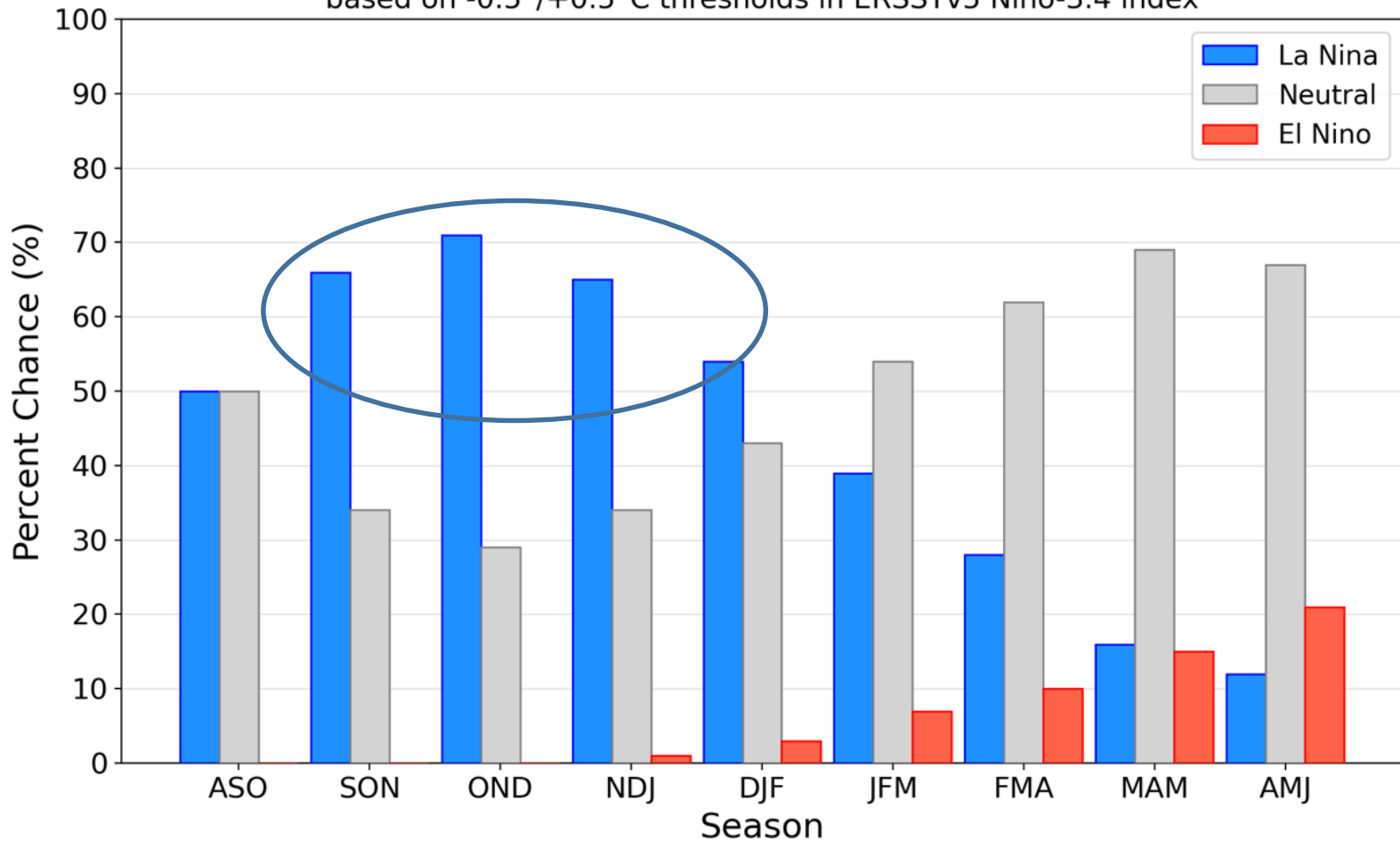
NOAA Coral Reef Watch Daily 5km SST Anomalies (v3.1) 15 Sep 2025



Previsão do “ENSO”

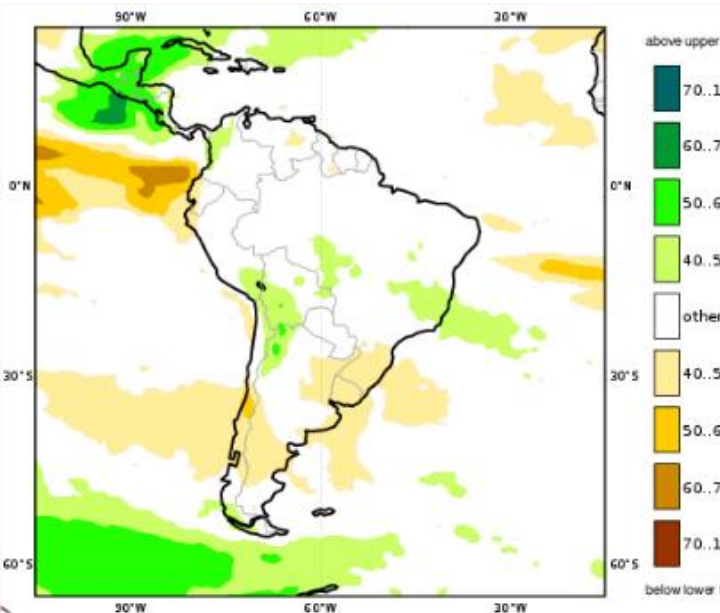
Official NOAA CPC ENSO Probabilities (issued September 2025)

based on $-0.5^{\circ}/+0.5^{\circ}\text{C}$ thresholds in ERSSTv5 Niño-3.4 index

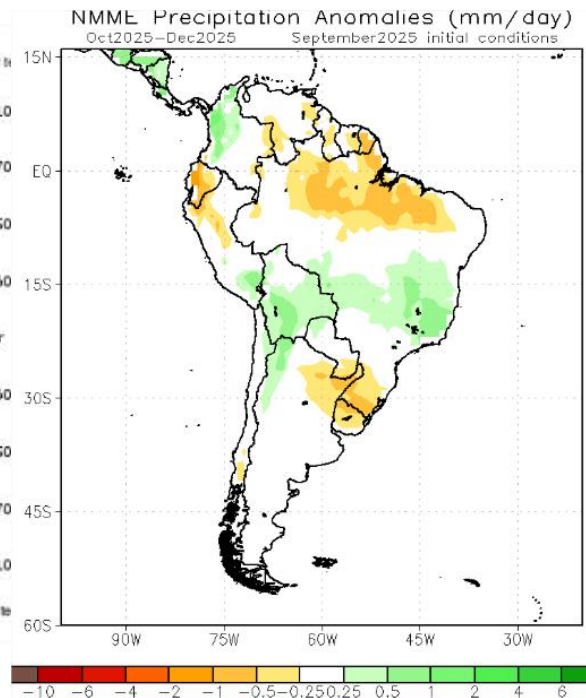


Previsão Sazonal de Chuva Multi-Modelo

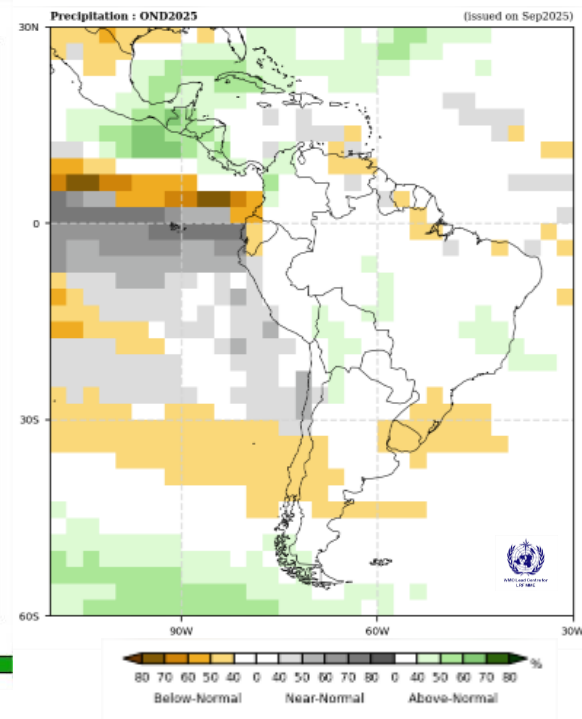
Outubro-Novembro-Dezembro



Modelos “Europeus”



Modelos Norte Americanos



Modelos da WMO