



CEMADEN

**Centro Nacional de Monitoramento e
Alertas de Desastres Naturais**

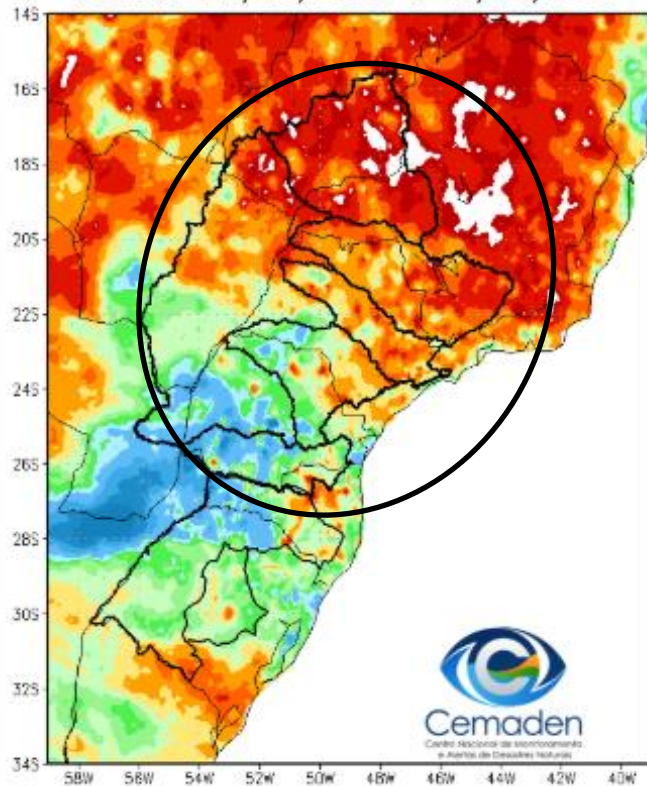
Monitoramento e Previsões para a Bacia do rio Paraná

Outubro de 2025

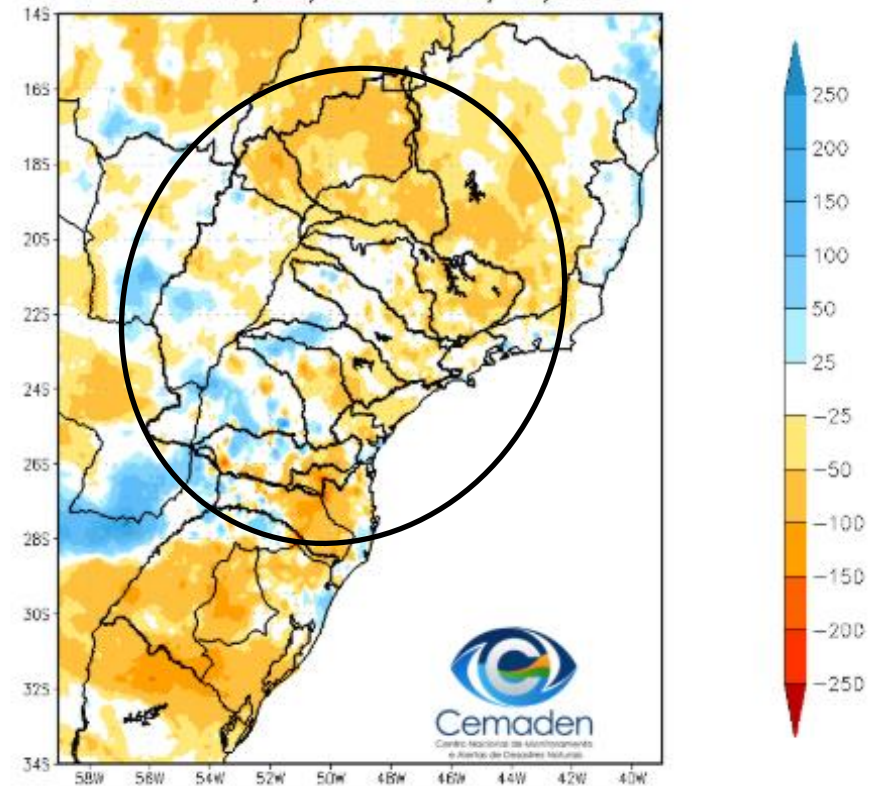


Precipitação acumulada nos últimos 30 dias

Precipitação Acumulada (mm) A.S.
Período: 29/09/2025 a 29/10/2025

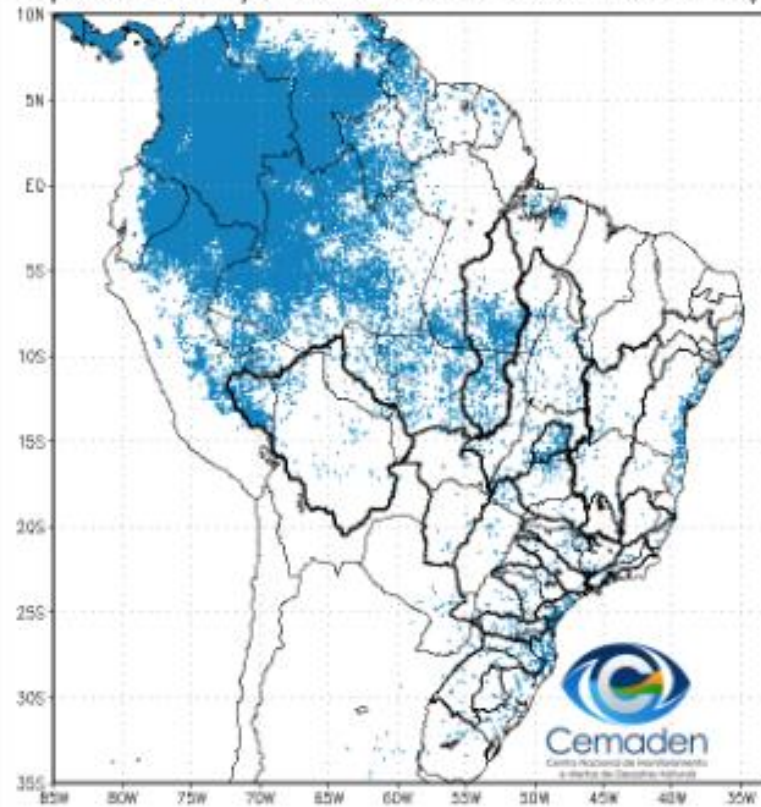


Anomalia de Precipitação (mm) A.S.
Período: 29/09/2025 a 29/10/2025

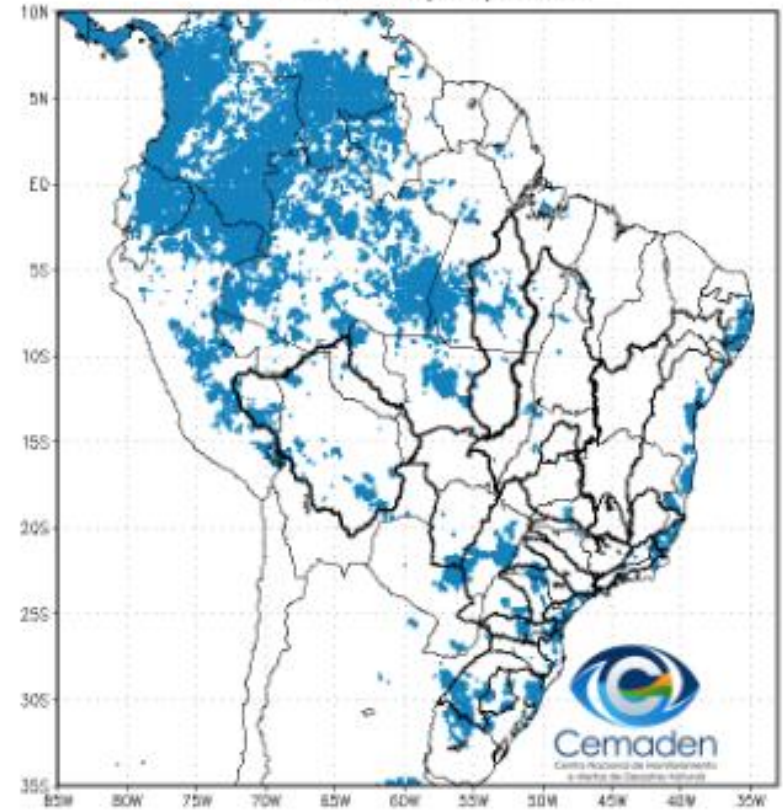


Situação da Estação Chuvosa

Climatologia da Precipitação (2001–2024)
Superior 3 mm/dia em 4 de 5 dias Período: 29/10

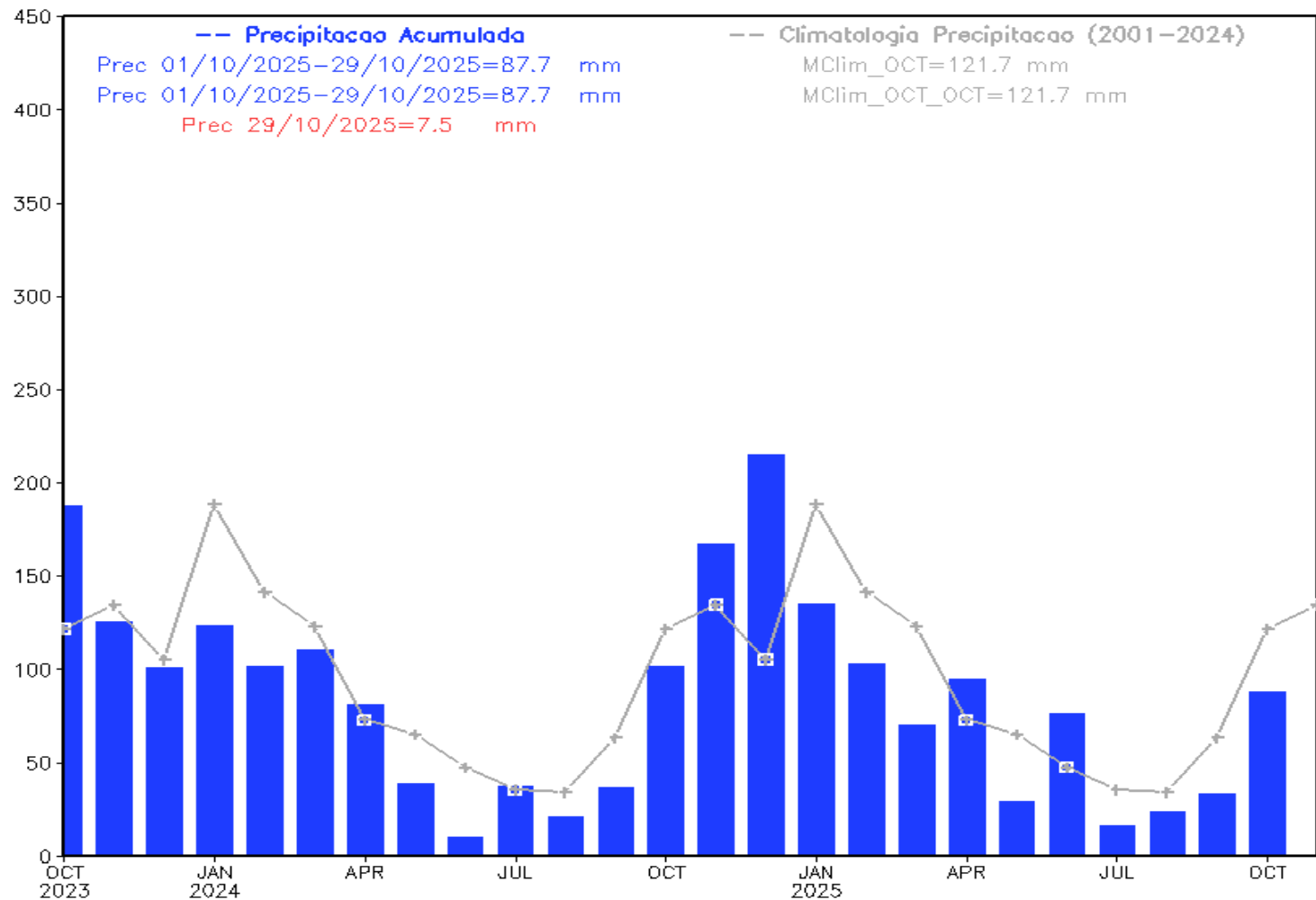


Precipitação A.S. Superior a 3 mm/dia por 4 de 5 dias
Período: 29/10/2025

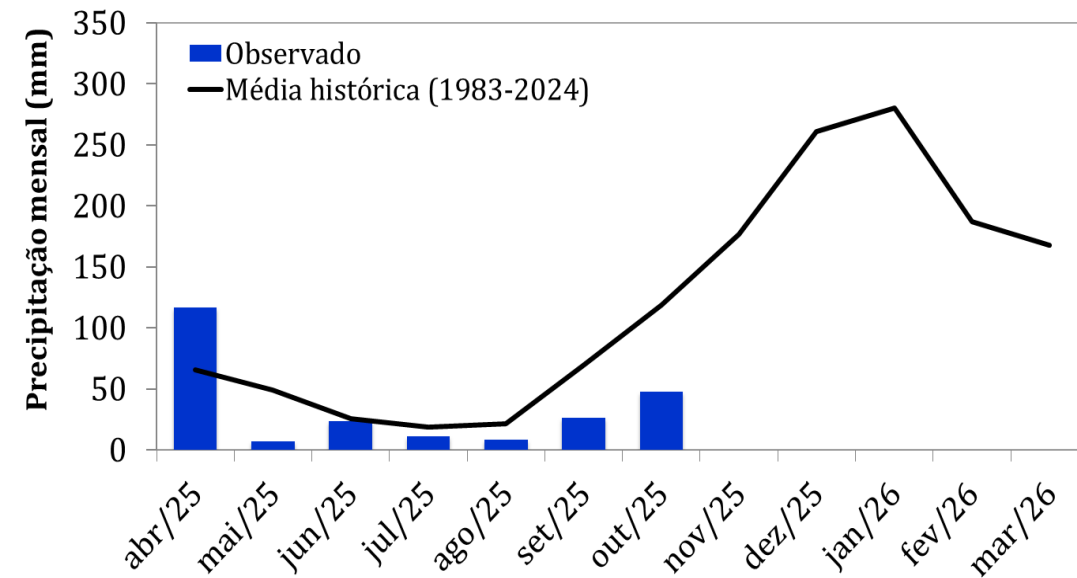


Precipitação acumulada nos últimos 24 meses

Precipitacao Bacia do Rio Parana desde OCT 2023



Monitoramento UHE Furnas



Precipitação

Estação Chuvosa - Out a Mar – 1192 mm

2023/2024: 1088 mm (**91% da MLT**)

2024/2025: 1148 mm (**96% da MLT**)

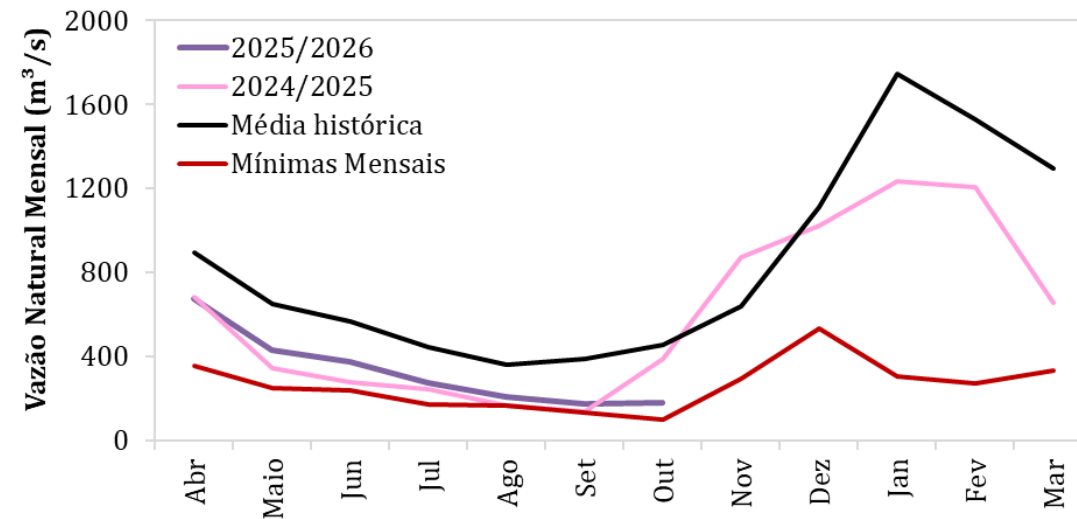
Estação Seca - Abr a Set – 250 mm

2024: 102 mm (**41% da MLT**)

2025: 193 mm (**77% da MLT**)

Out/2025*: 48 mm (**40% da MLT**)

*Até 27/10/2025



Vazão

Estação Chuvosa - Out a Mar – 1130 m³/s

2023/2024: 716 m³/s (**63% da MLT**)

2024/2025: 897 m³/s (**79% da MLT**)

Estação Seca - Abr a Set – 551 m³/s

2024: 309 m³/s (**56% da MLT**)

2025: 356 m³/s (**65% da MLT**)

Out/25**: 180 m³/s (**40% da MLT**)

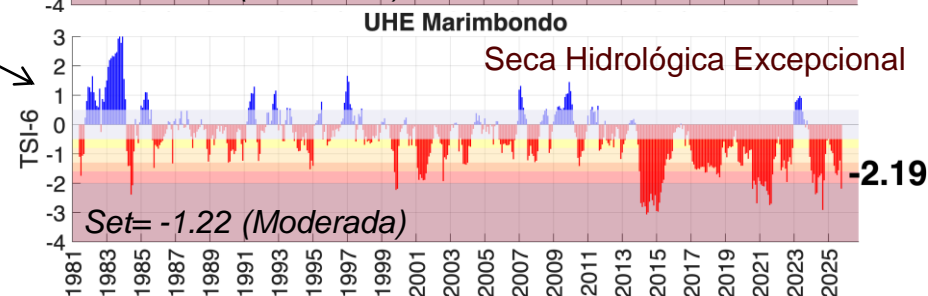
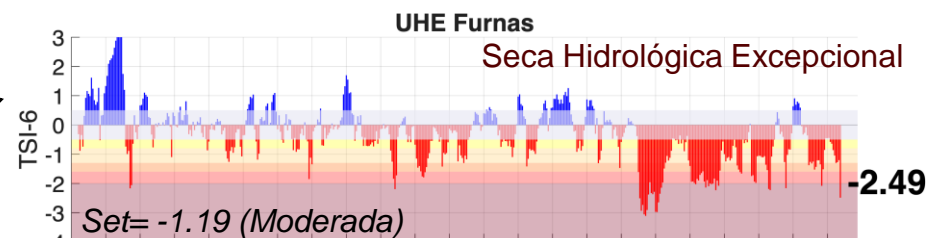
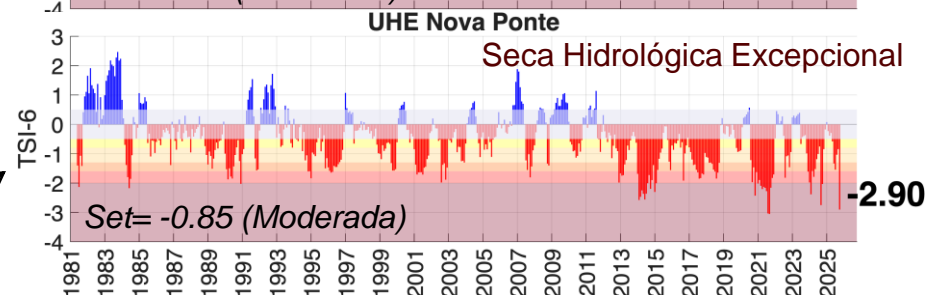
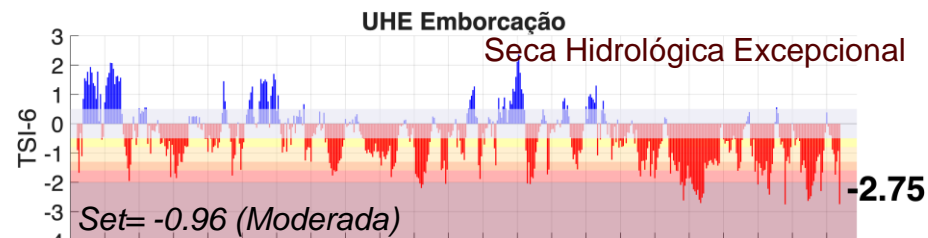
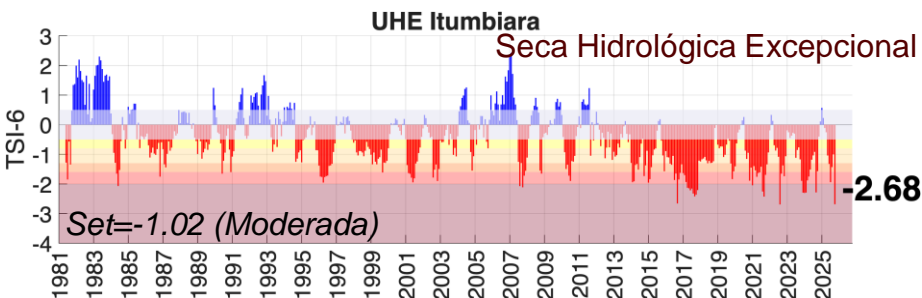
27/Out/25: 146 m³/s (**32% da MLT**)

**Até 27/10/2025

BACIA DO RIO PARANÁ

Índice de Seca Bivariado (Chuva-Vazão) – TSI 6

Outubro/2025



Condição Normal

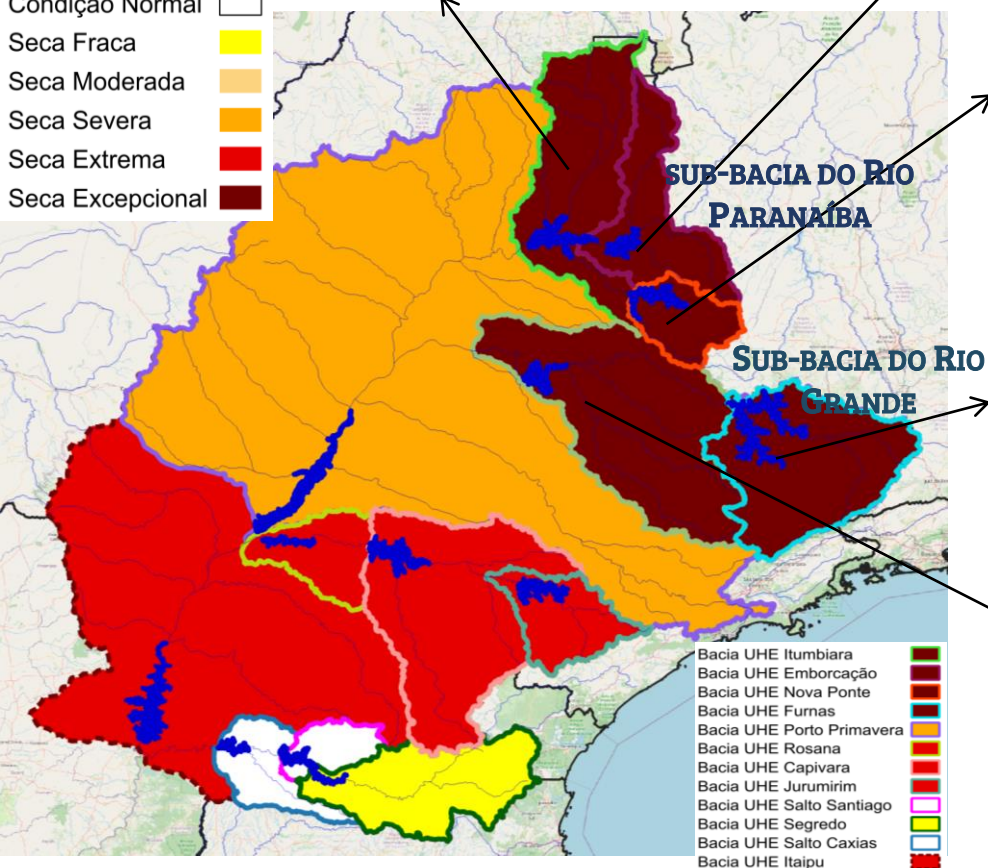
Seca Fraca

Seca Moderada

Seca Severa

Seca Extrema

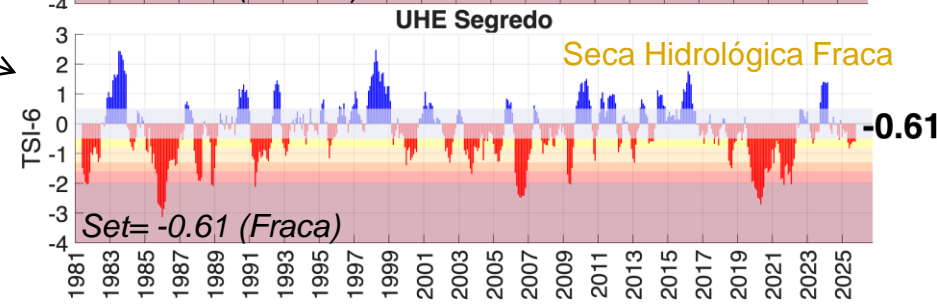
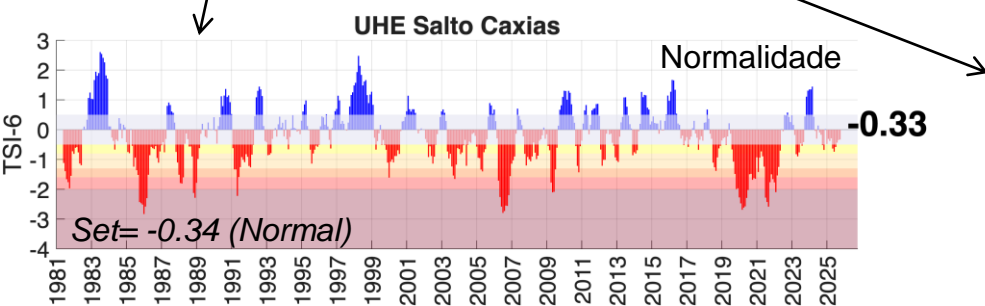
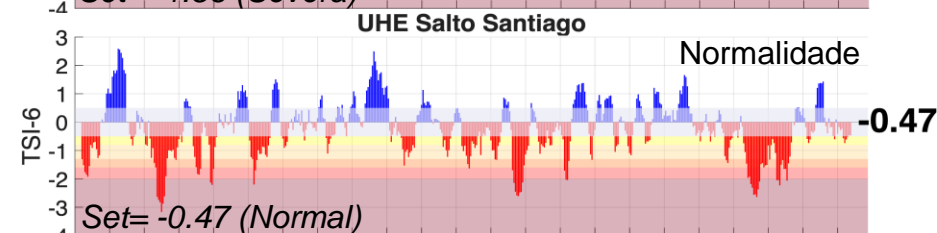
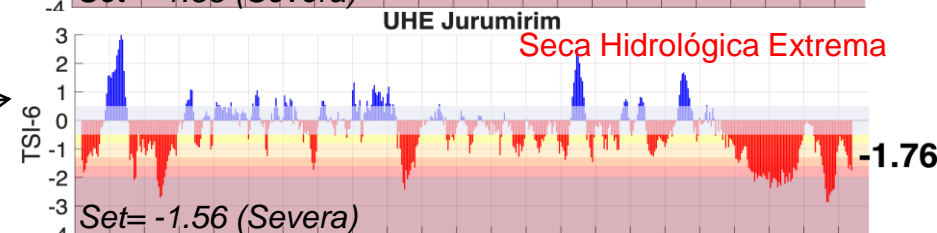
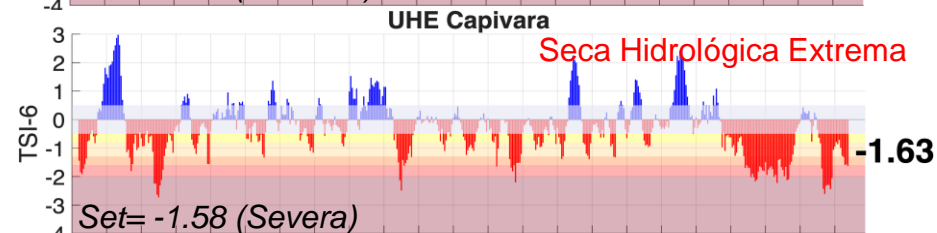
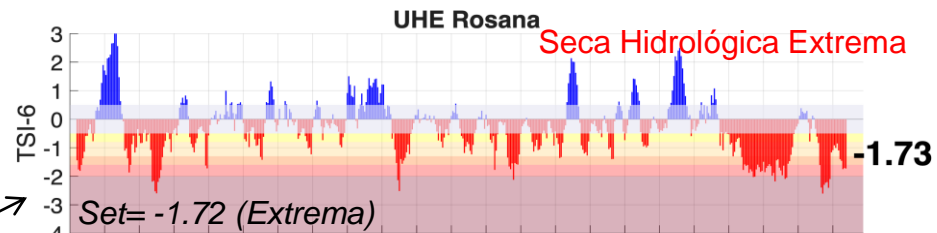
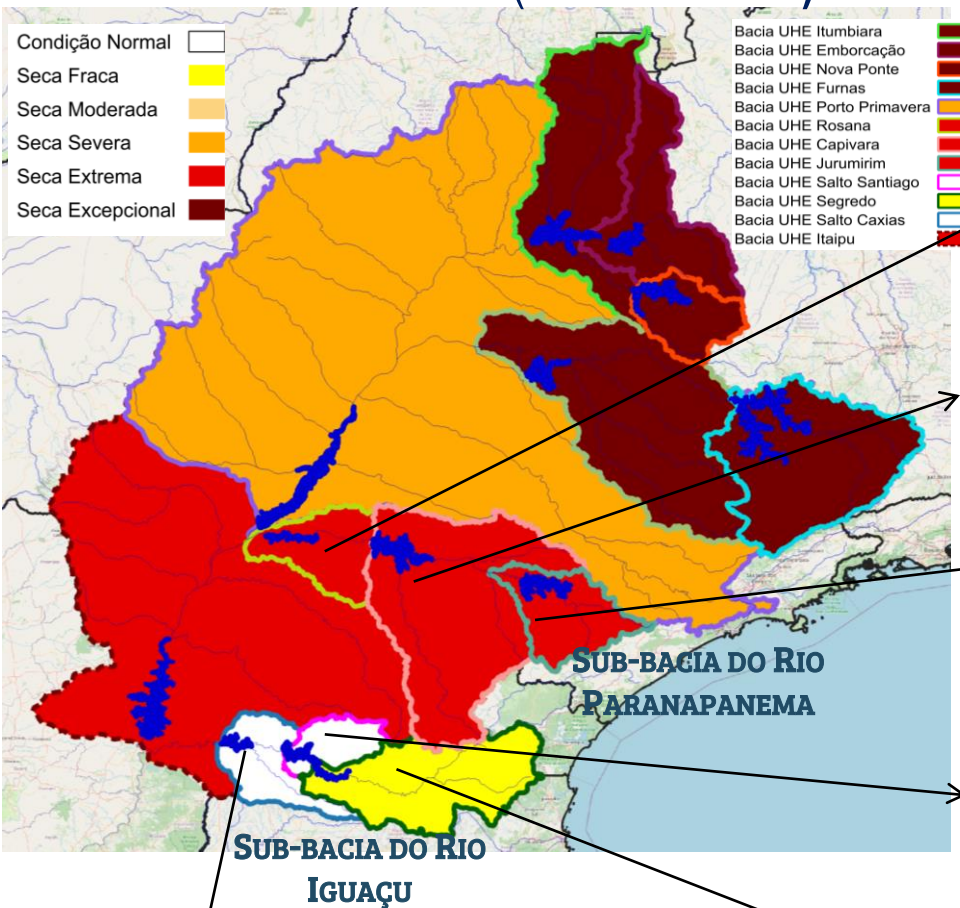
Seca Excepcional



BACIA DO RIO PARANÁ

Índice de Seca Bivariado (Chuva-Vazão) – TSI 6

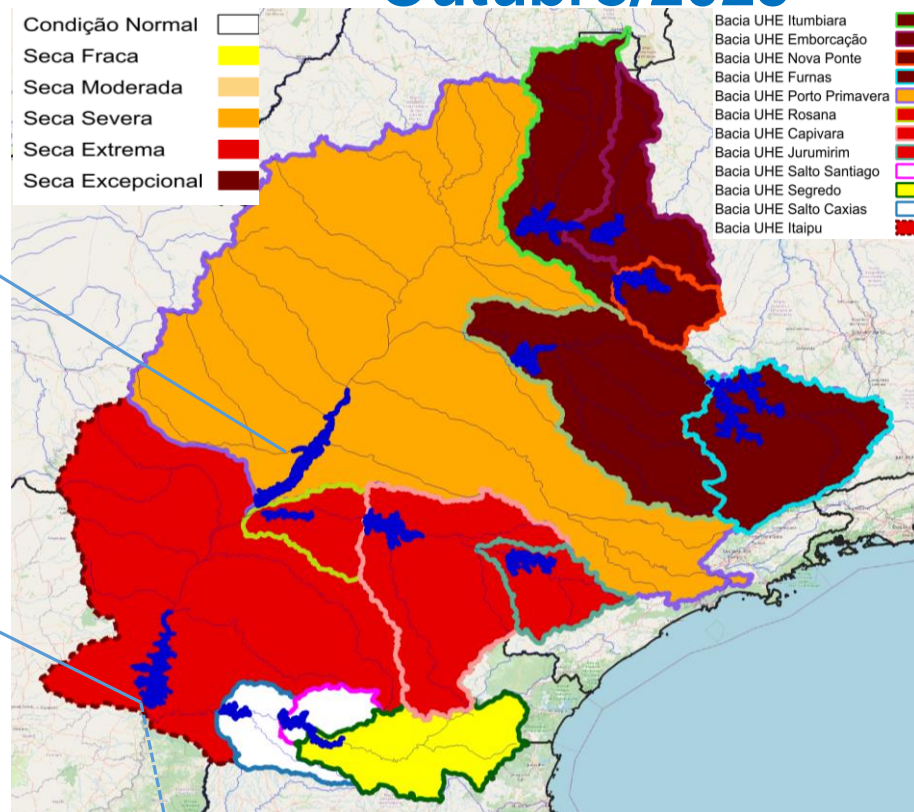
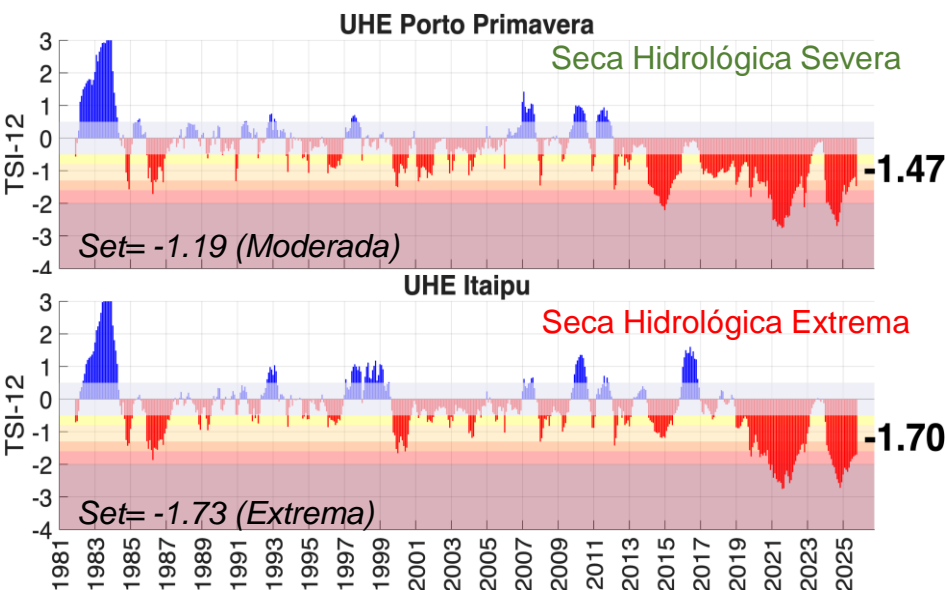
Outubro/2025



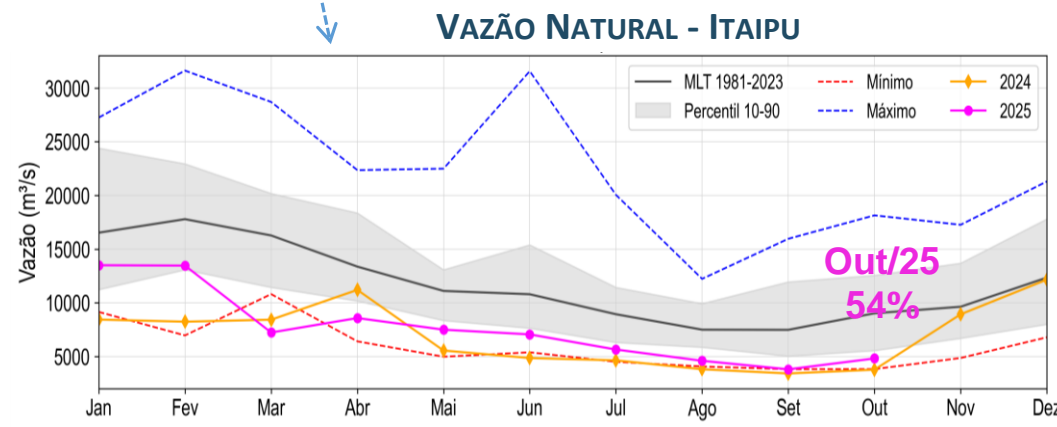
BACIA DO RIO PARANÁ

Outubro/2025

Índice de Seca Bivariado (Chuva-Vazão) – TSI 12



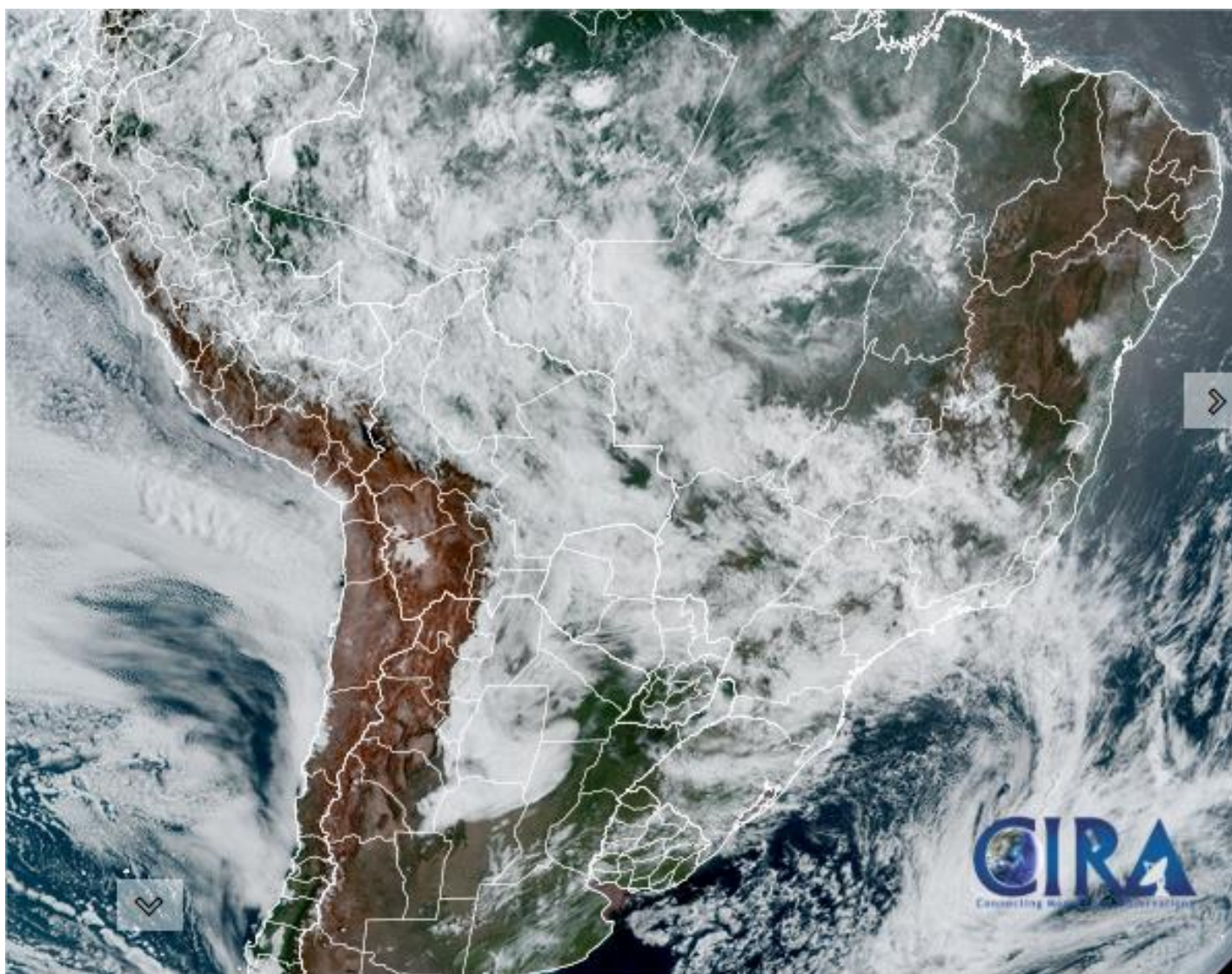
Série de dados = Jan/1981- Outubro/2025



Fonte: CEMADEN/MCTI

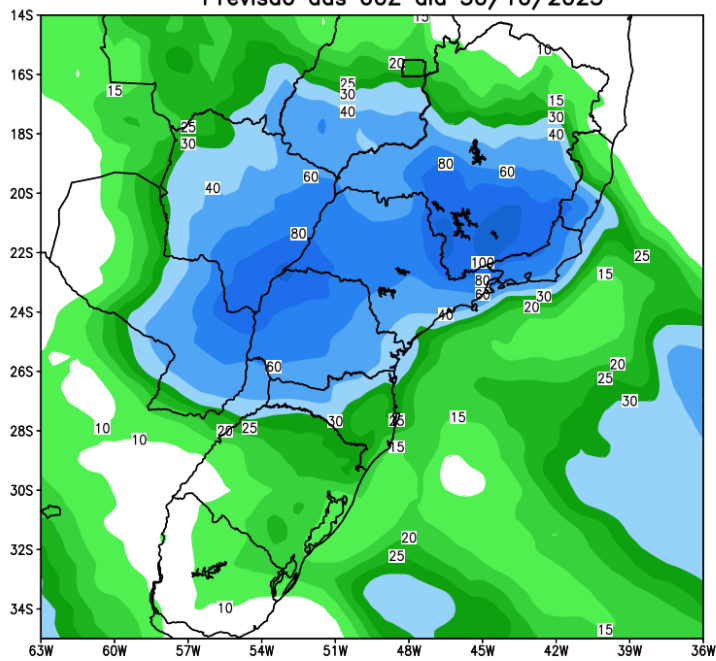
Dados: Precipitação (CHIRPS) e Vazão (ONS e ANA)

Situação meteorológica atual

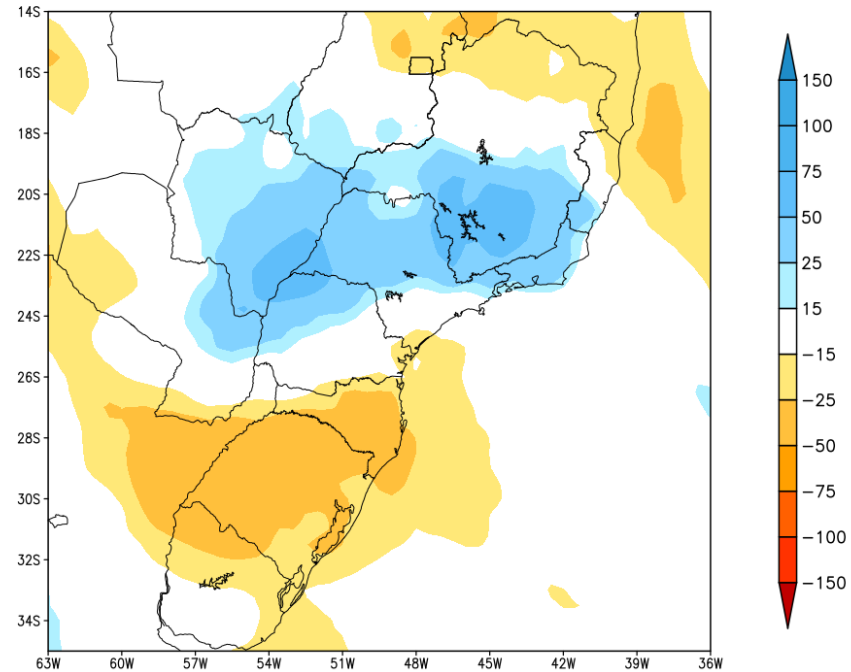


Previsão de chuva para os próximos 7 dias

GEFS / BRASIL_SUL
Precipitação acumulada 1aSem (mm)
Previsão das 00Z dia 30/10/2025



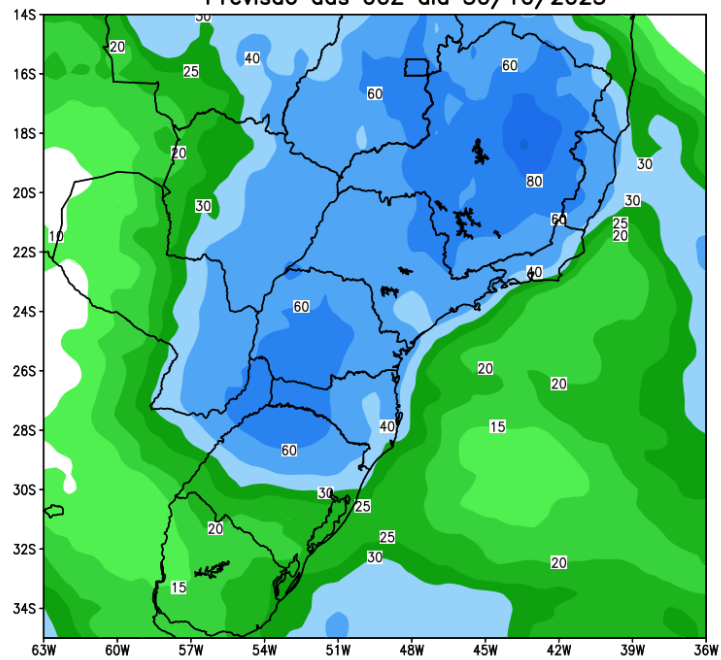
Anomalia de Precipitação BR_SUL (mm)
Período: 2025103000 a 2025110600



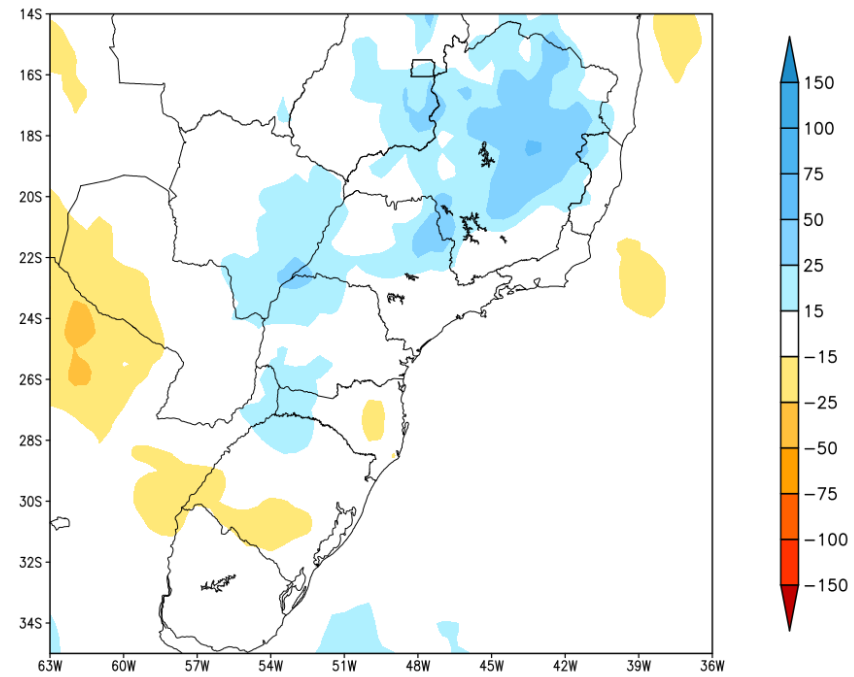
Fonte: GEFS/NOAA

Tendência para a 2ª Semana

GEFS / BRASIL_SUL
Precipitação acumulada 2aSem (mm)
Previsão das 00Z dia 30/10/2025

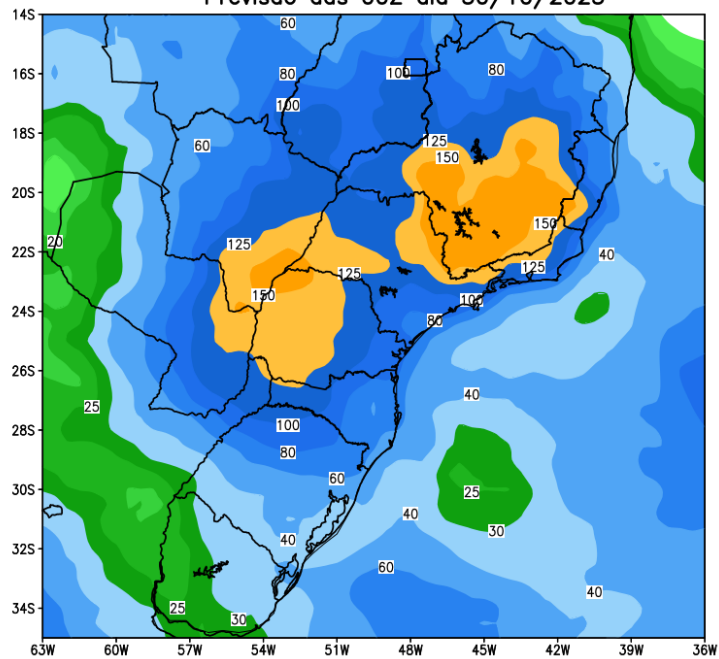


Anomalia de Precipitação BR_SUL (mm)
Período: 2025110700 a 2025111300

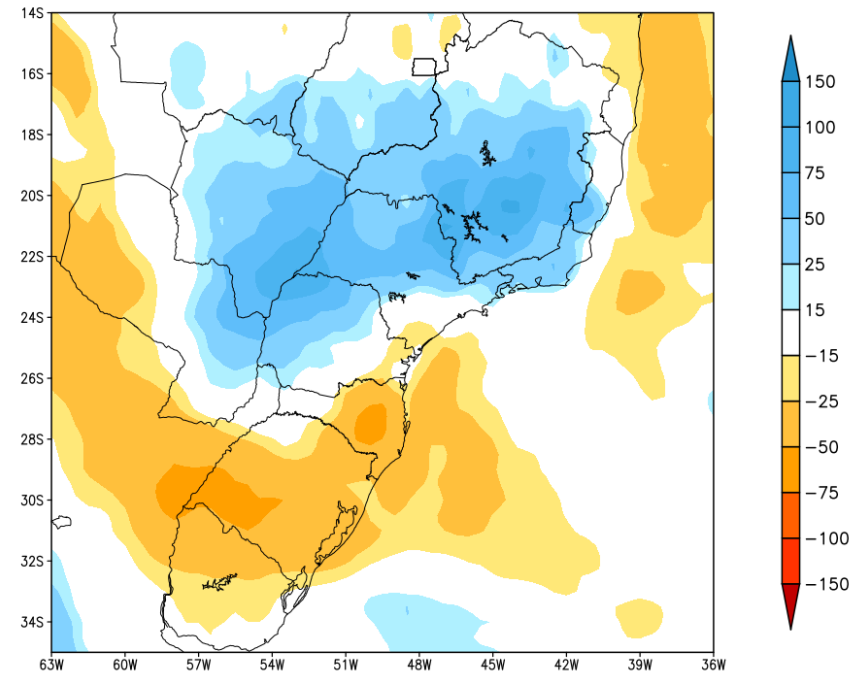


Acumulado para as duas próximas semanas

GEFS / BRASIL_SUL
Precipitacao acumulada 14dias (mm)
Previsao das 00Z dia 30/10/2025

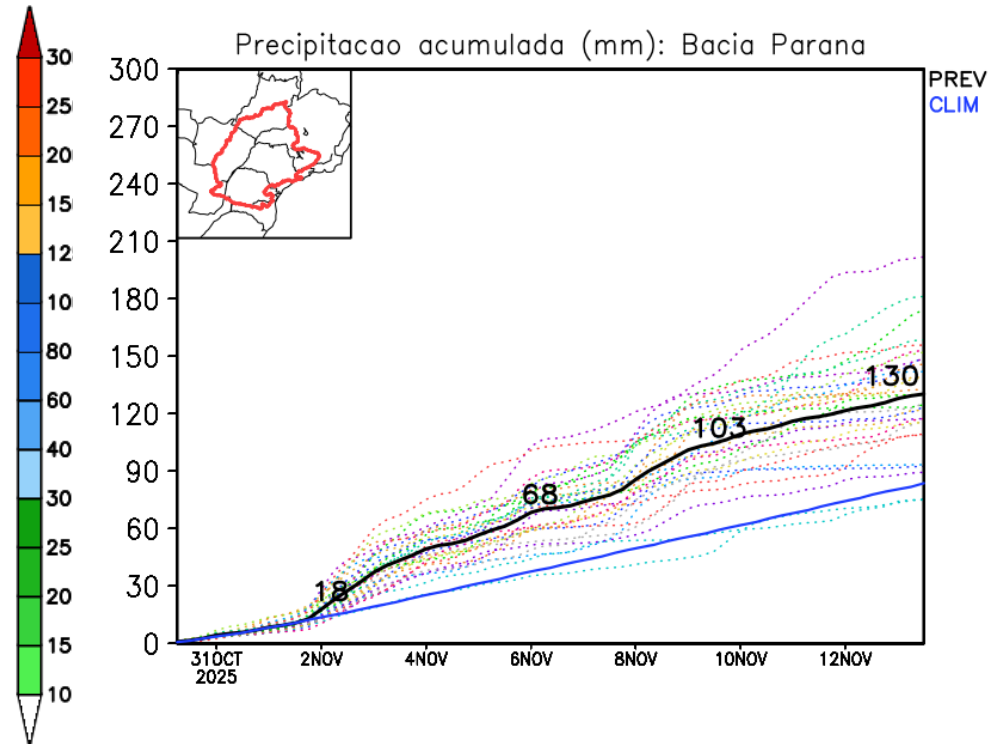
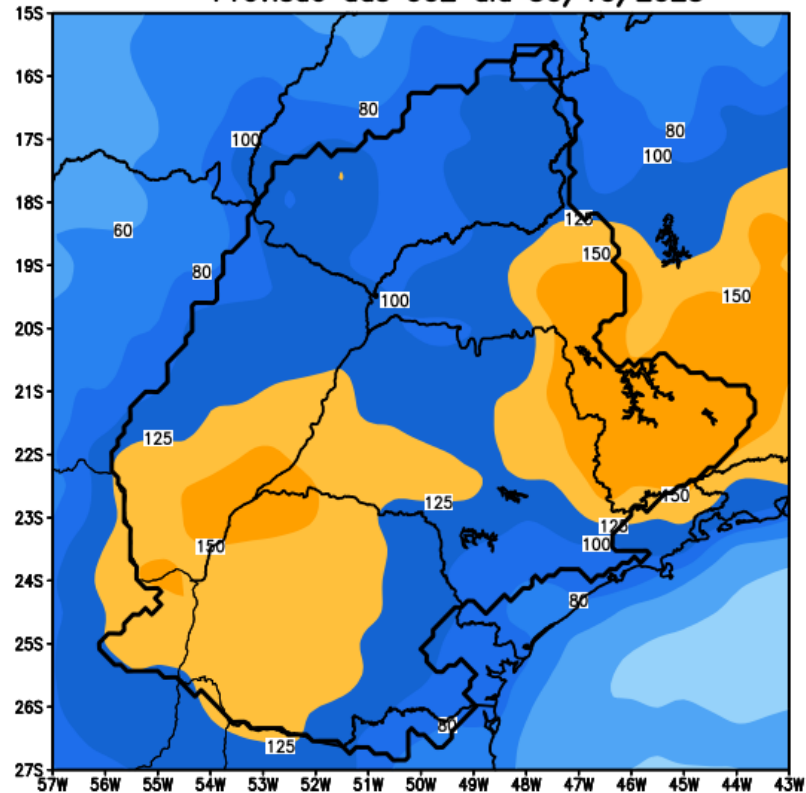


Anomalia de Precipitacao BR SUL (mm)
Periodo: 2025103000 a 2025111300



Previsão de chuva para os próximos 14 dias

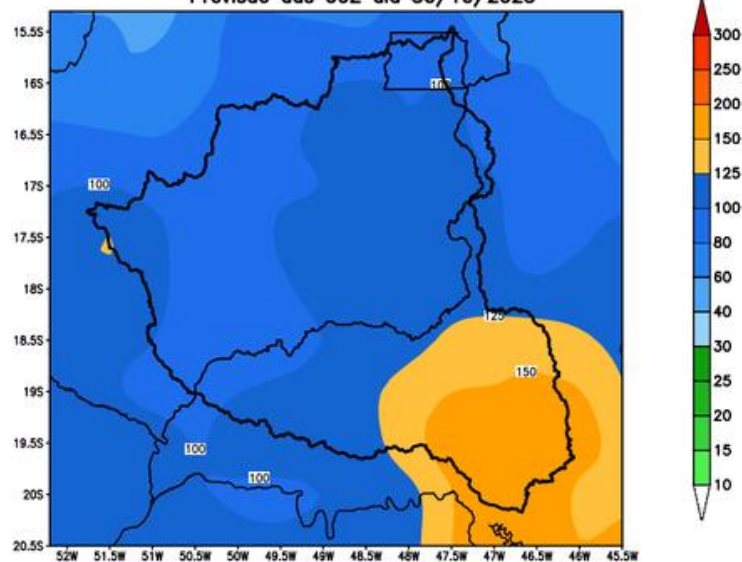
GEFS / Bacia do Parana
Precipitacao acumulada em 14 dias (mm)
Previsao das 00Z dia 30/10/2025



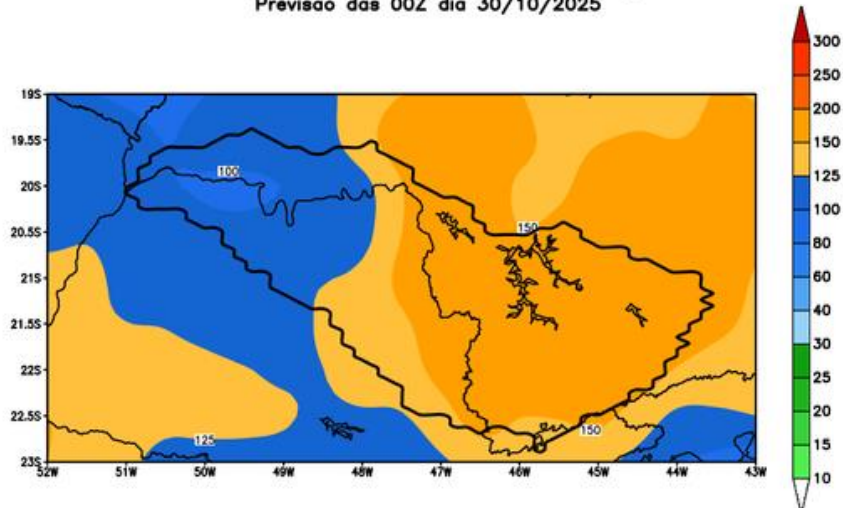
Fonte: GEFS/NOAA

Bacia do rios Paranaíba e Grande

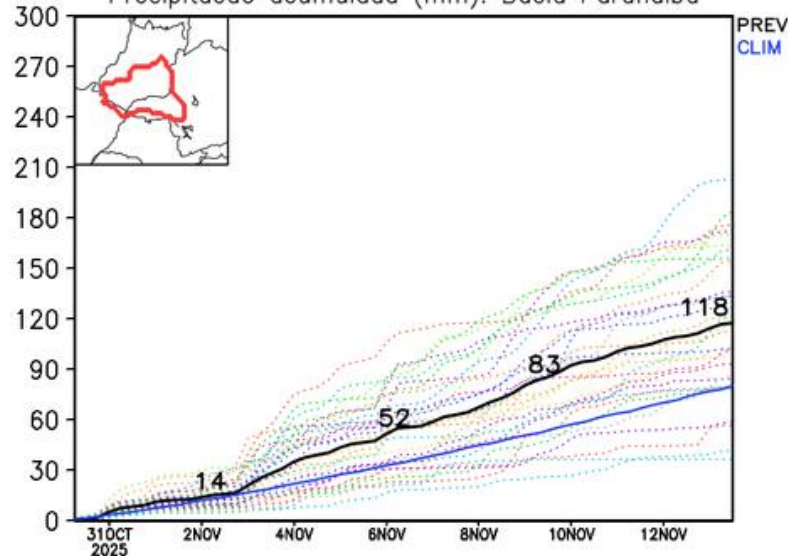
GEFS / Bacia do Rio Paranaíba
Precipitação acumulada em 14 dias (mm)
Previsão das 00Z dia 30/10/2025



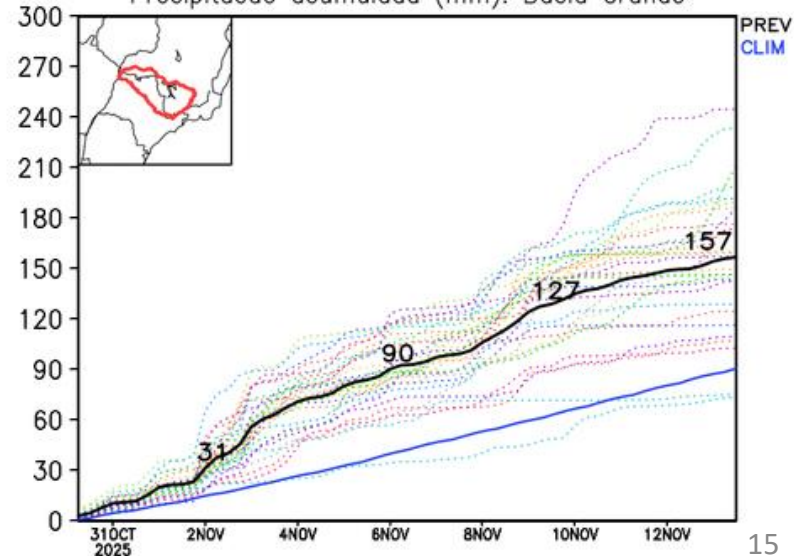
GEFS / Bacia do Rio Grande
Precipitação acumulada em 14 dias (mm)
Previsão das 00Z dia 30/10/2025



Precipitação acumulada (mm): Bacia Paranaíba

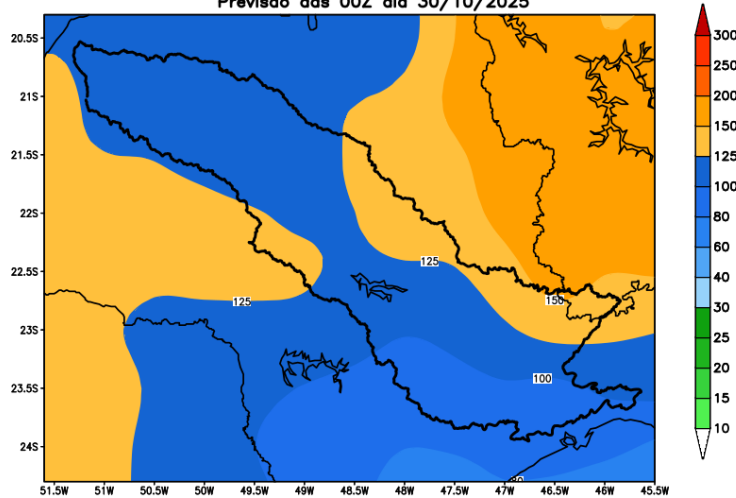


Precipitação acumulada (mm): Bacia Grande

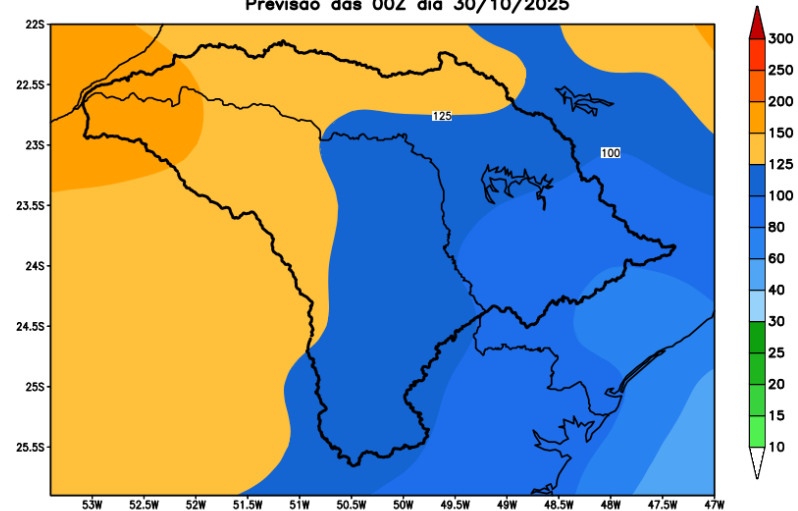


Bacia do rios Tietê e Paranapanema

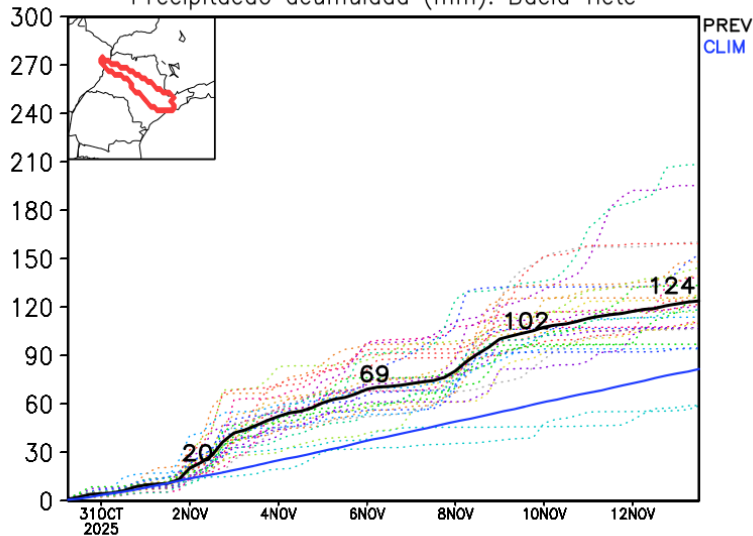
GEFS / Bacia do Rio Tiete
Precipitacao acumulada em 14 dias (mm)
Previsao das 00Z dia 30/10/2025



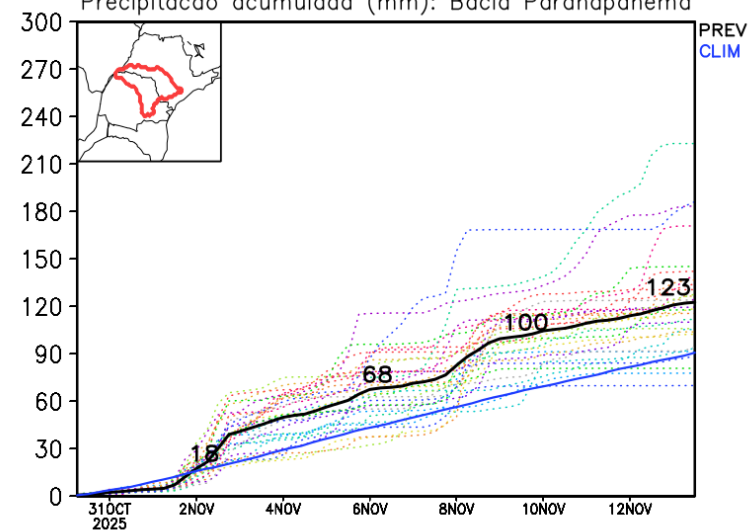
GEFS / Bacia do Rio Paranapanema
Precipitacao acumulada em 14 dias (mm)
Previsao das 00Z dia 30/10/2025



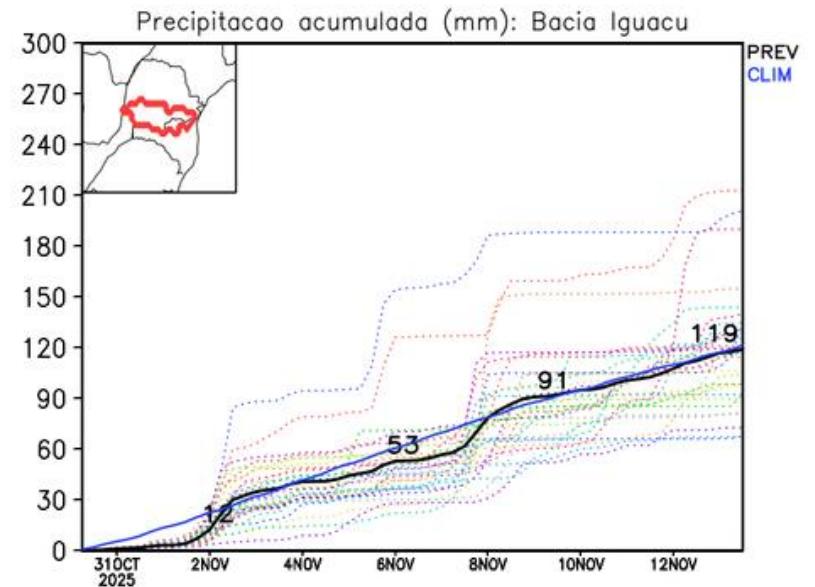
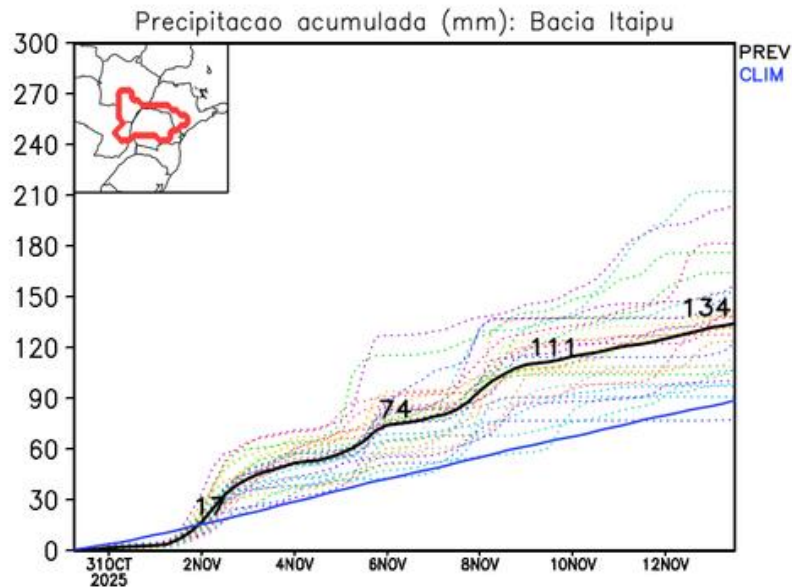
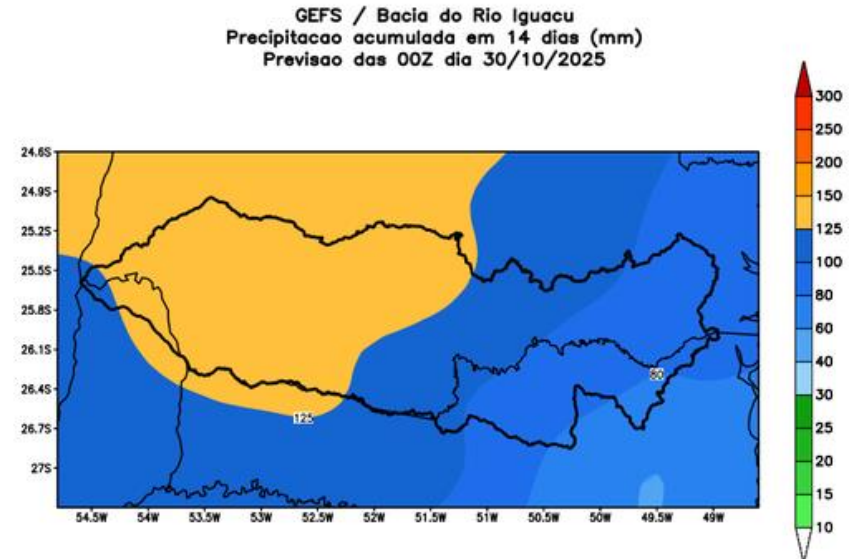
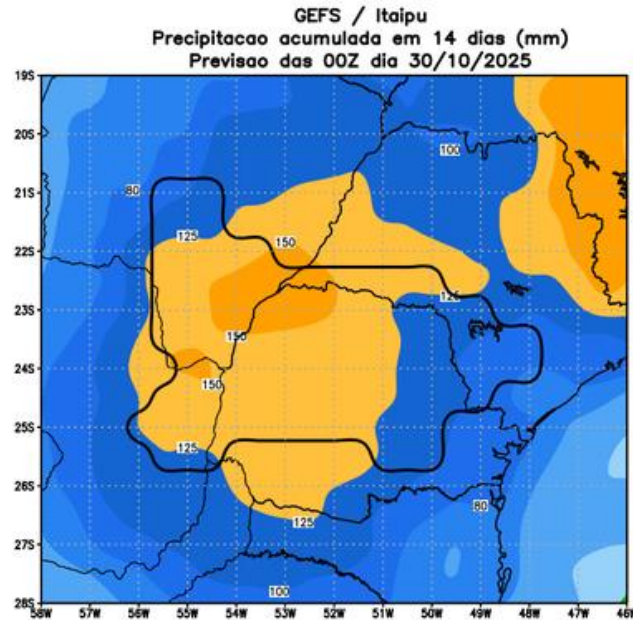
Precipitacao acumulada (mm): Bacia Tiete



Precipitacao acumulada (mm): Bacia Paranapanema

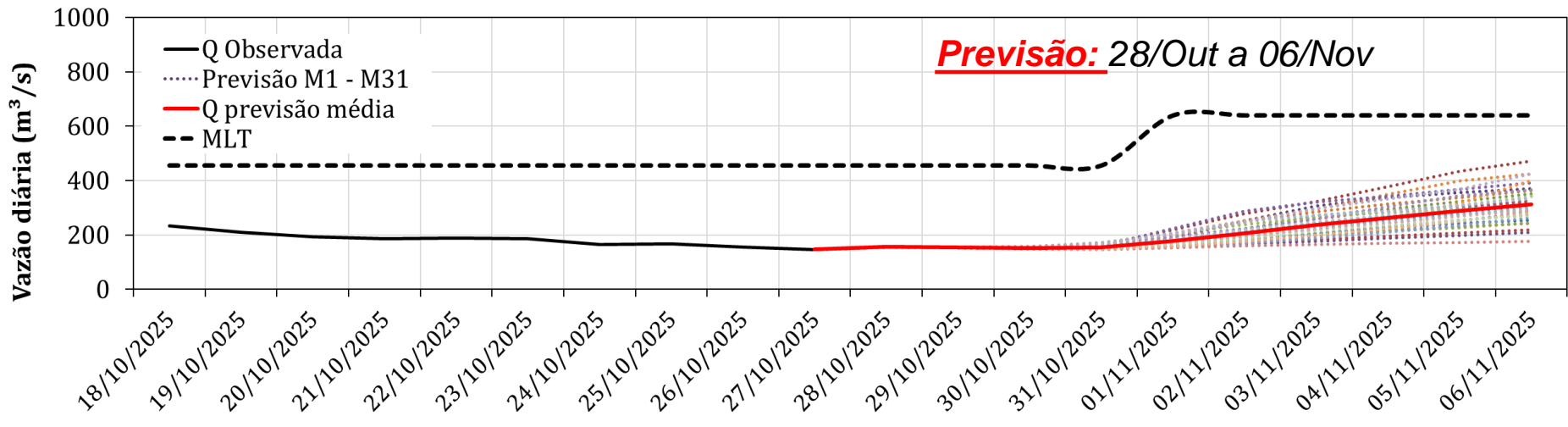
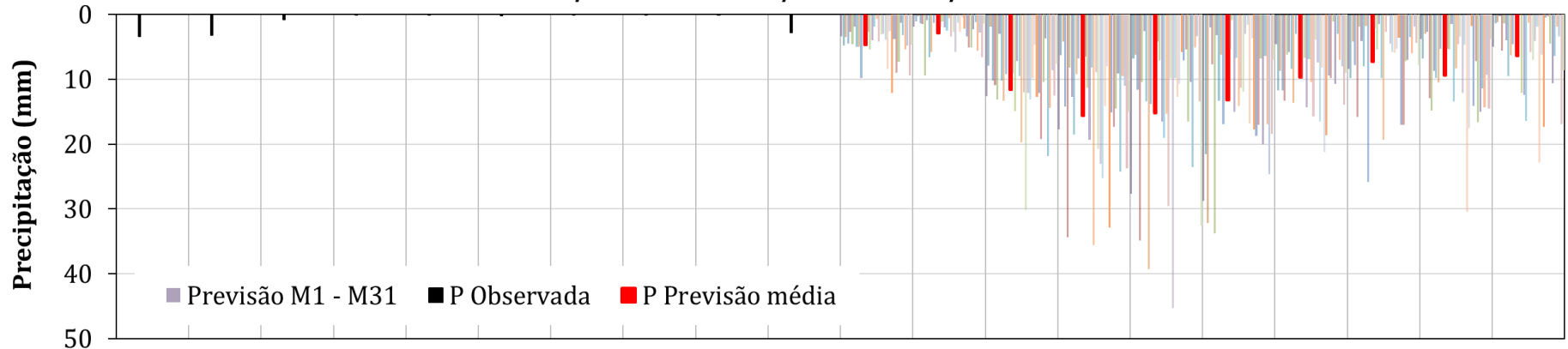


Bacia do Itaipu e Iguaçu



Furnas: Previsão de Vazão (modelo hidrológico PDM-CEMADEN)

Vazão Natural e Precipitação Diárias para Furnas
18/Outubro a 06/Novembro/2025



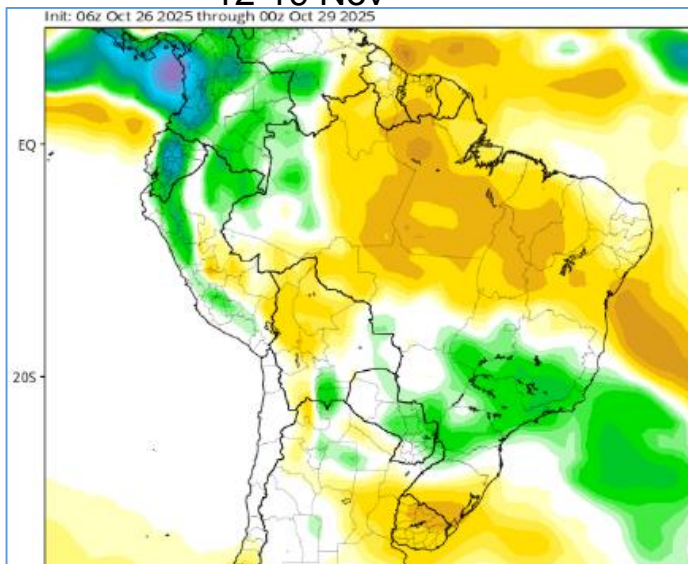
Previsão média para os
próximos 10 dias: **210 m^3/s**



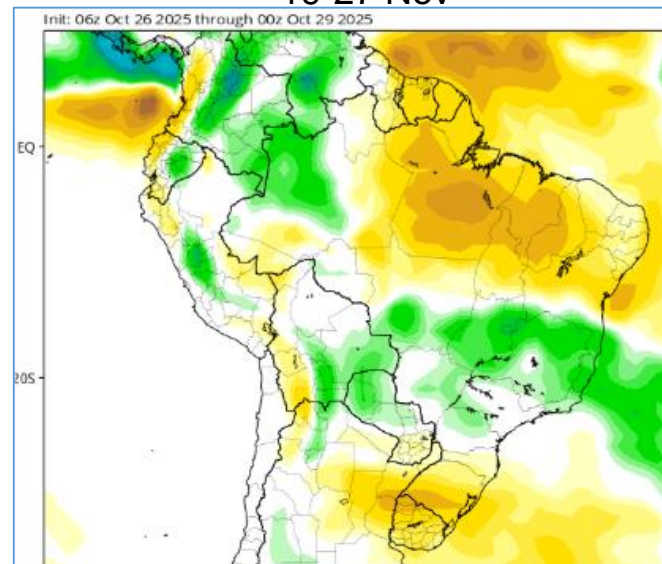
46% MLT Outubro
33% MLT Novembro

Tendência 3a e 4a semanas

12-19 Nov

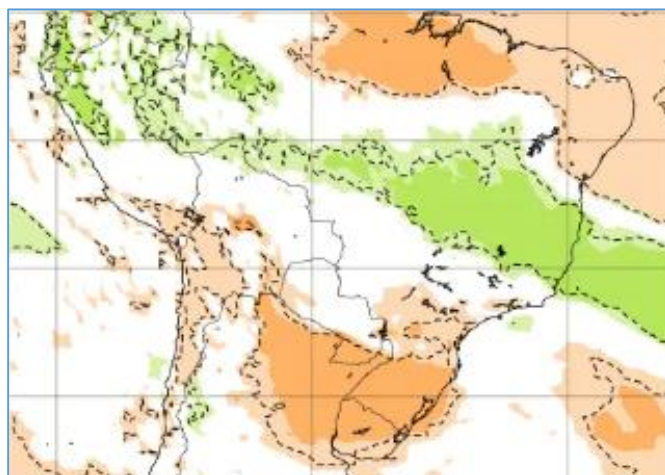


19-27 Nov

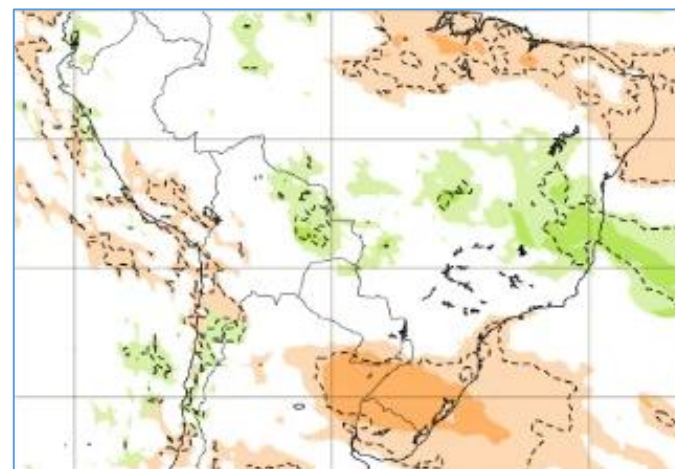


CFS/NOAA

ECMWF



10-17 Nov

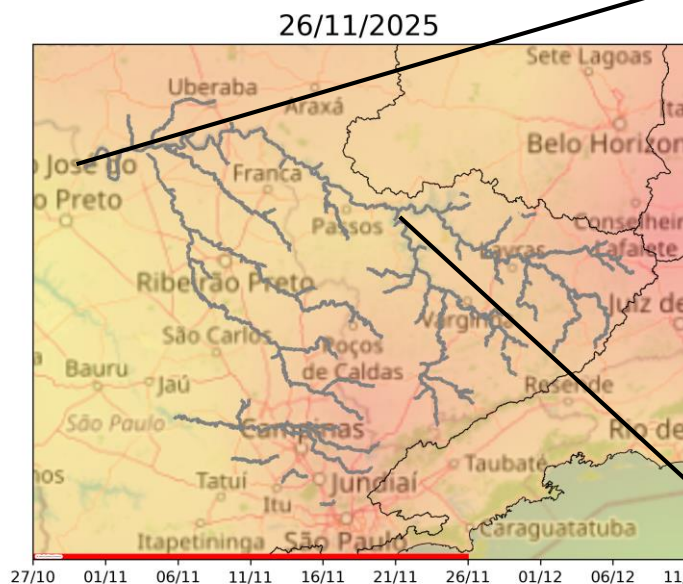
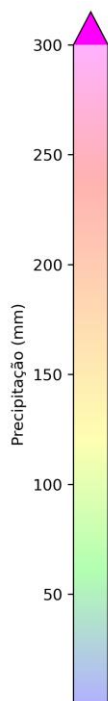


17-24 Nov

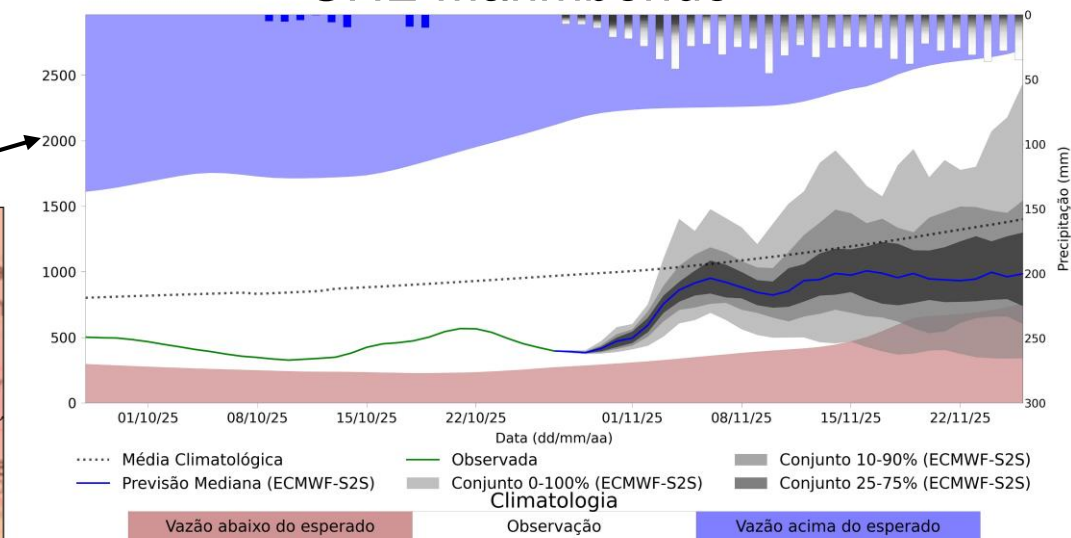


Previsão de vazão natural na Bacia do Rio Grande

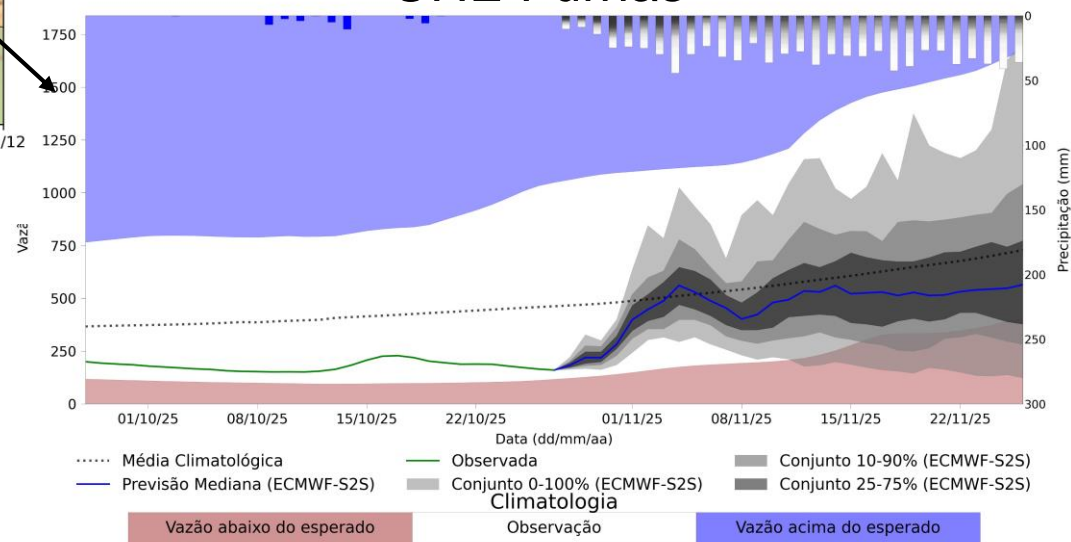
PREVISÃO: 27/10/25 a 26/11/25



UHE Marimbondo



UHE Furnas



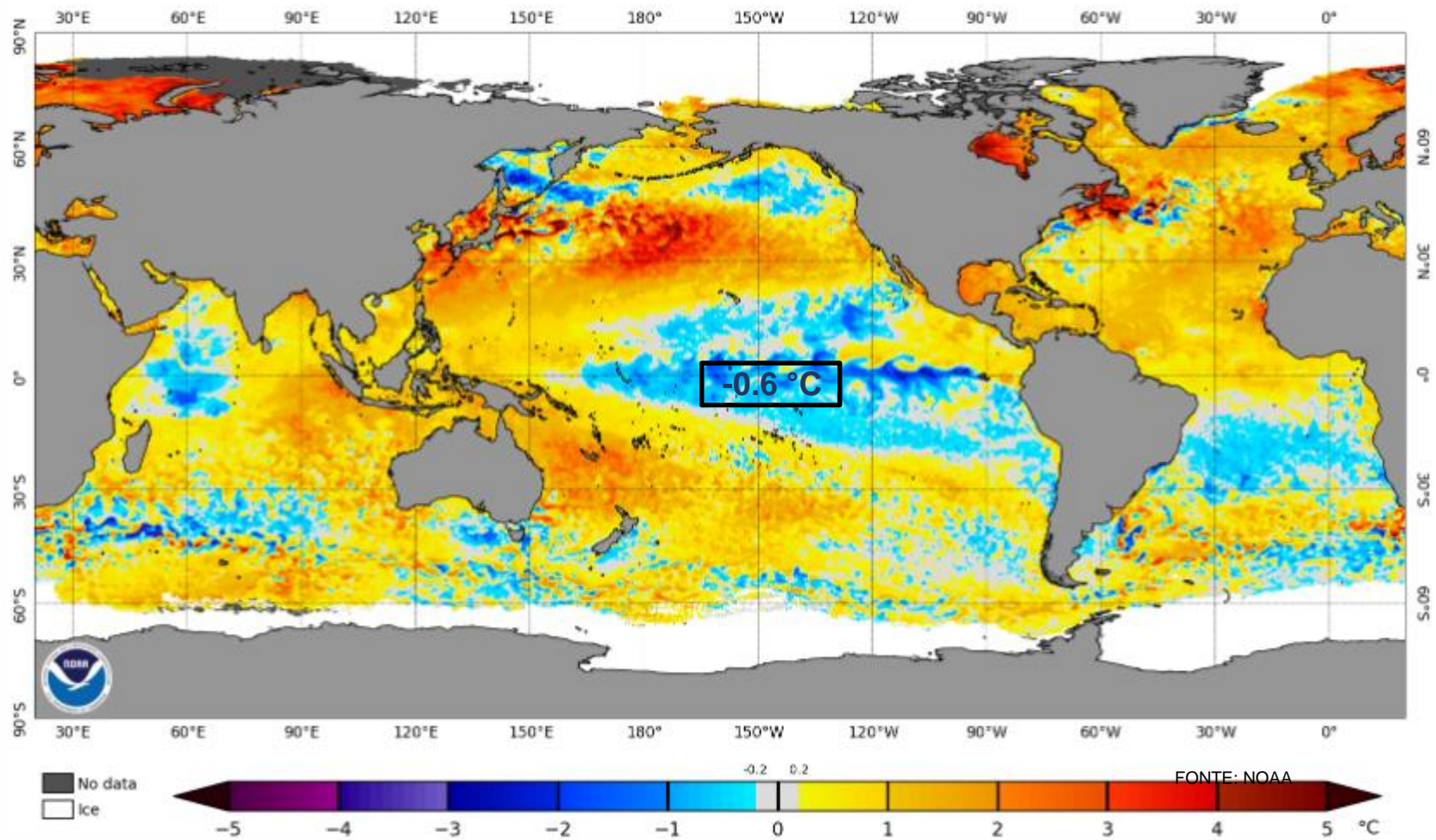
Fonte: Meteorologia (INMET/MERGE); Vazão (ANA/ONS)

MLT: 1993-2024

Previsão Meteorológica: ECMWF-S2S

Status Atual: La Niña

NOAA Coral Reef Watch Daily 5km SST Anomalies (v3.1) 27 Oct 2025



Previsão do “ENSO”

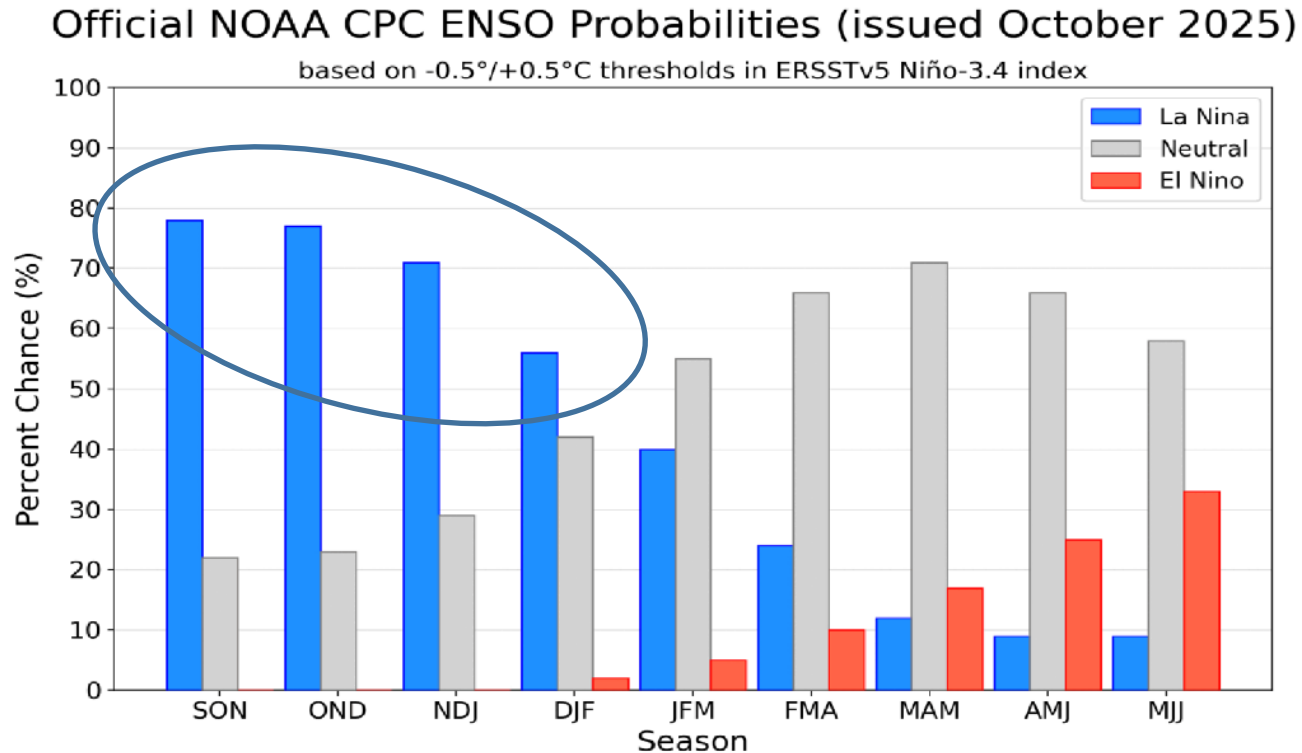
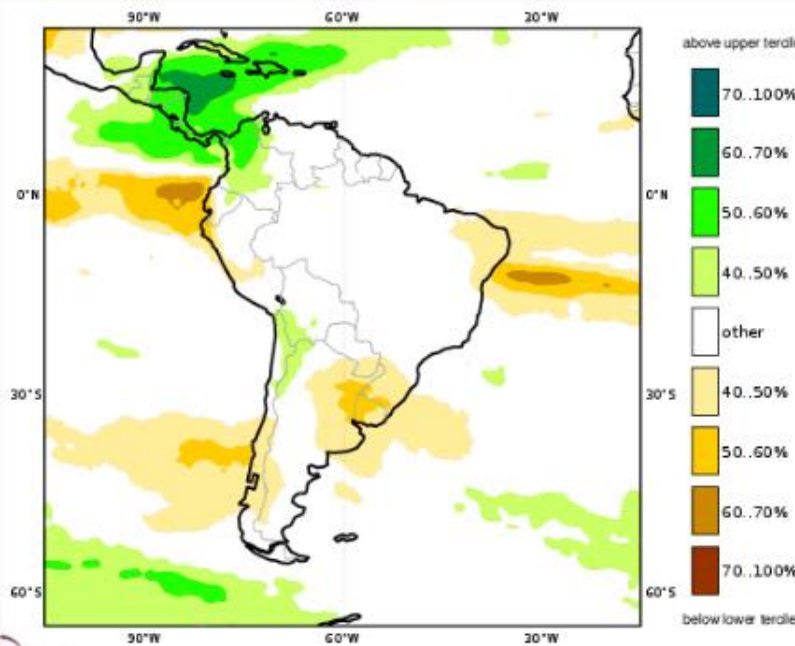


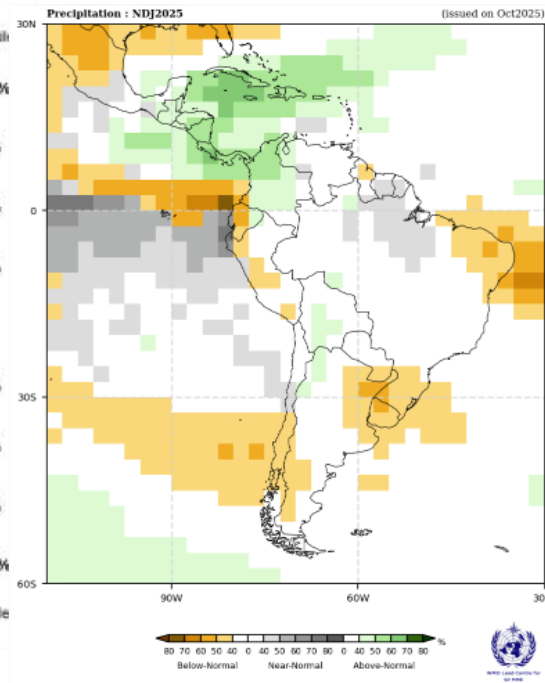
Figure 7. Official ENSO probabilities for the Niño 3.4 sea surface temperature index (5°N - 5°S , 120°W - 170°W). Figure updated 9 October 2025.

Previsão Sazonal de Chuva Multi-Modelo

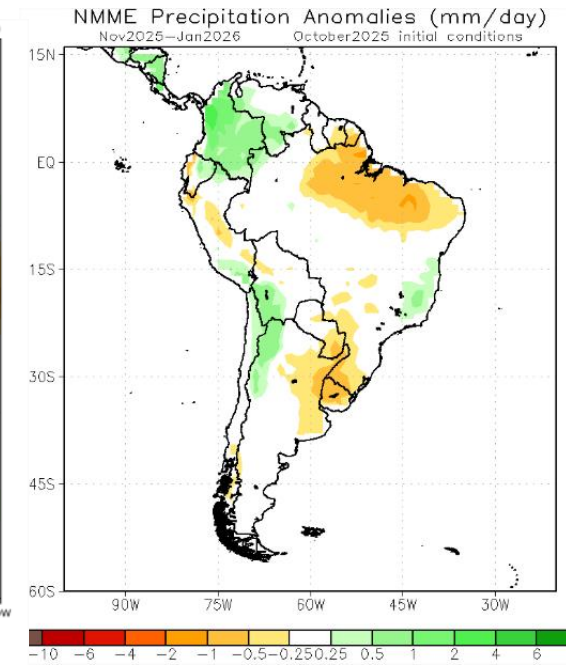
Novembro-Dezembro-Janeiro



Modelos “Europeus”



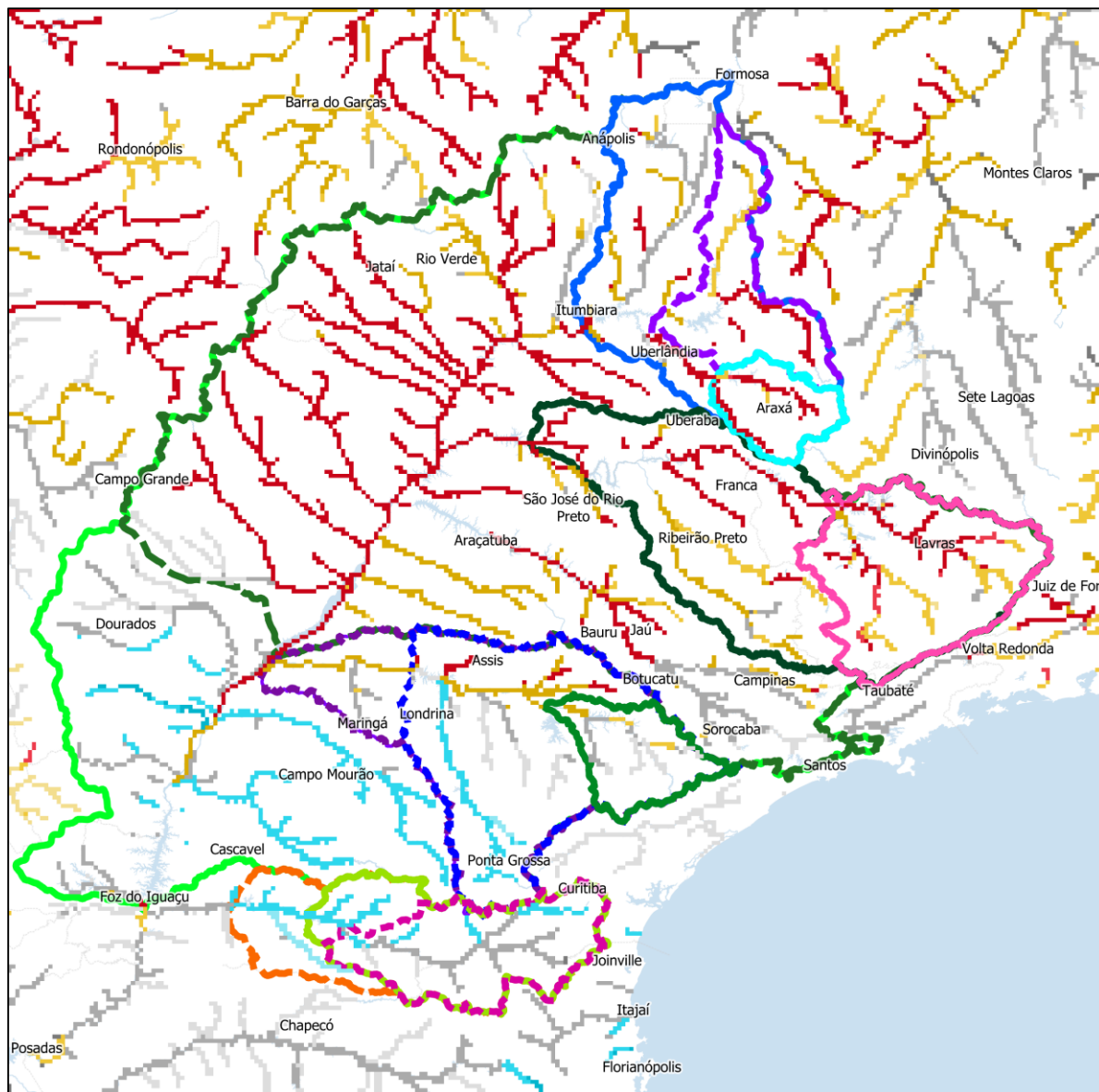
Modelos da WMO



Modelos Norte Americanos

Previsão Sub-sazonal (45 dias) para a Bacia do Paraná (Sistema Global de Previsão de Vazão - GloFAS)

Previsão: 29/10/2025 – 08/12/2025

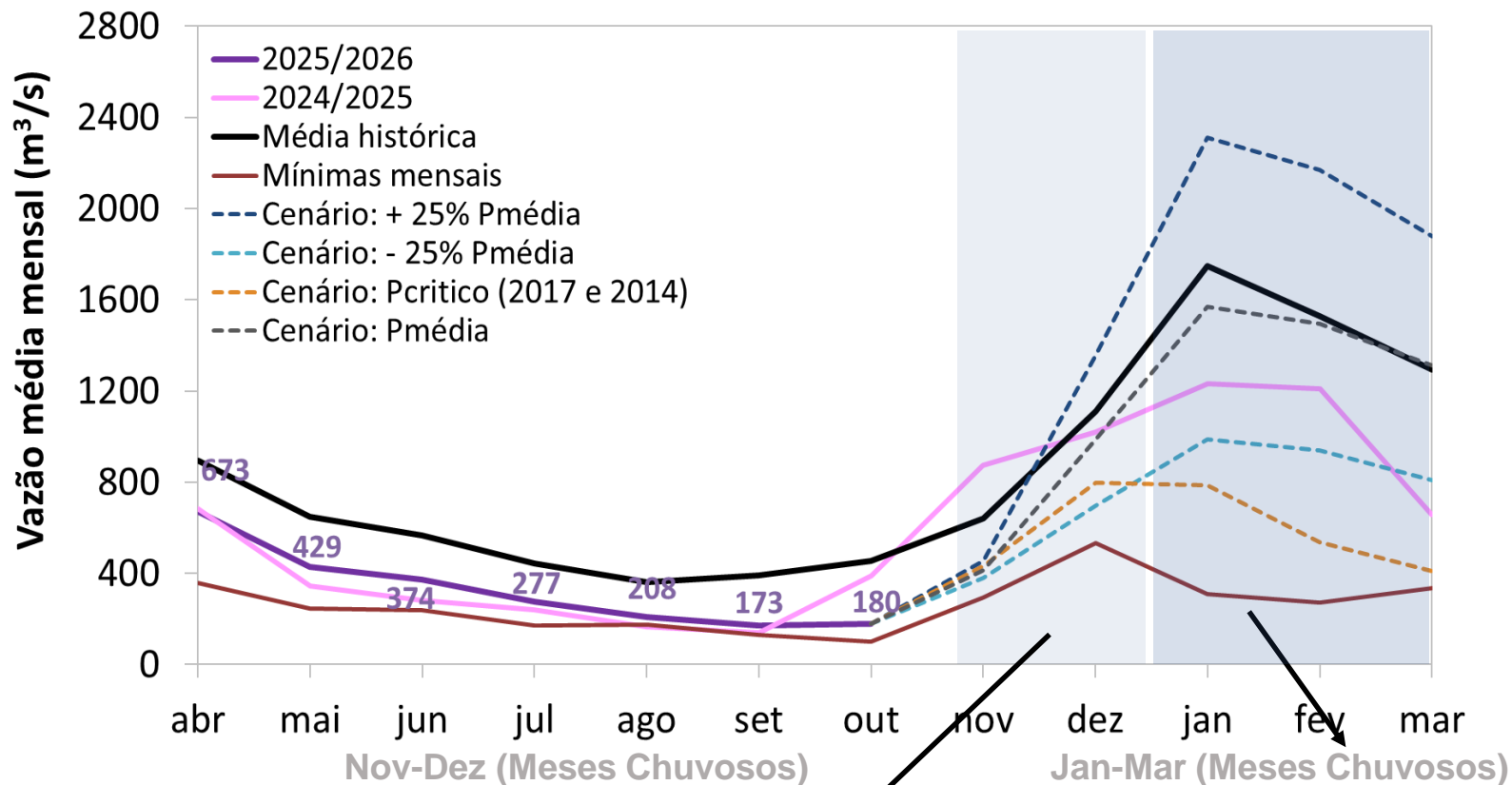


- Bacia UHE Jurumirim
- Bacia UHE Nova_Ponte
- Bacia UHE Furnas
- Bacia UHE Segredo
- Bacia UHE Marimbondo
- Bacia UHE Emborcação
- Bacia UHE Salto Santiago
- Bacia UHE Capivara
- Bacia UHE Salto Caxias
- Bacia UHE Rosana
- Bacia UHE Itumbiara
- Bacia UHE Porto Primavera
- Bacia UHE Itaipu

Categoria de anomalia para as vazões (percentil)

- Muito abaixo (1-10)
- Abaixo (10-25)
- Próximo da média (25-75)
- Acima (75-90)
- Muito acima (90-100)

Furnas: Projeção de Vazão (modelo hidrológico PDM-CEMADEN)



Nov-Dez (Meses Chuvosos) MLT: 876 m³/s		Jan-Mar (Meses Chuvosos) MLT: 1524 m³/s	
Vazão	% MLT	Vazão	% MLT
906 m³/s	103%	2120 m³/s	139%
701 m³/s	80%	1458 m³/s	96%
538 m³/s	61%	911 m³/s	60%
2017 → 614 m³/s (75% MLT)	70%	2014 → 576 m³/s (60% MLT)	38%