



# CEMADEN

**Centro Nacional de Monitoramento e  
Alertas de Desastres Naturais**

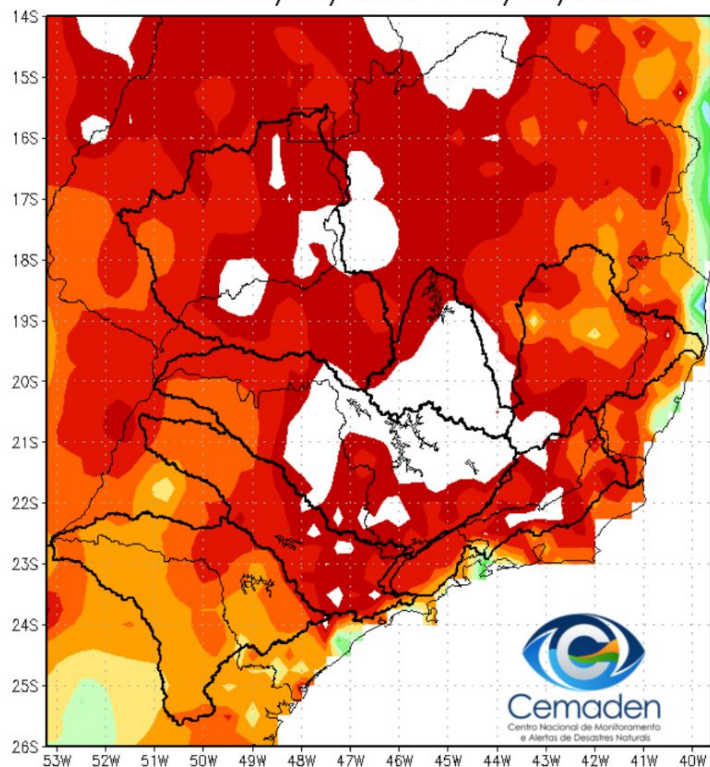
## Monitoramento e Previsões para a Bacia do rio Paraná

**29 de Maio de 2025**

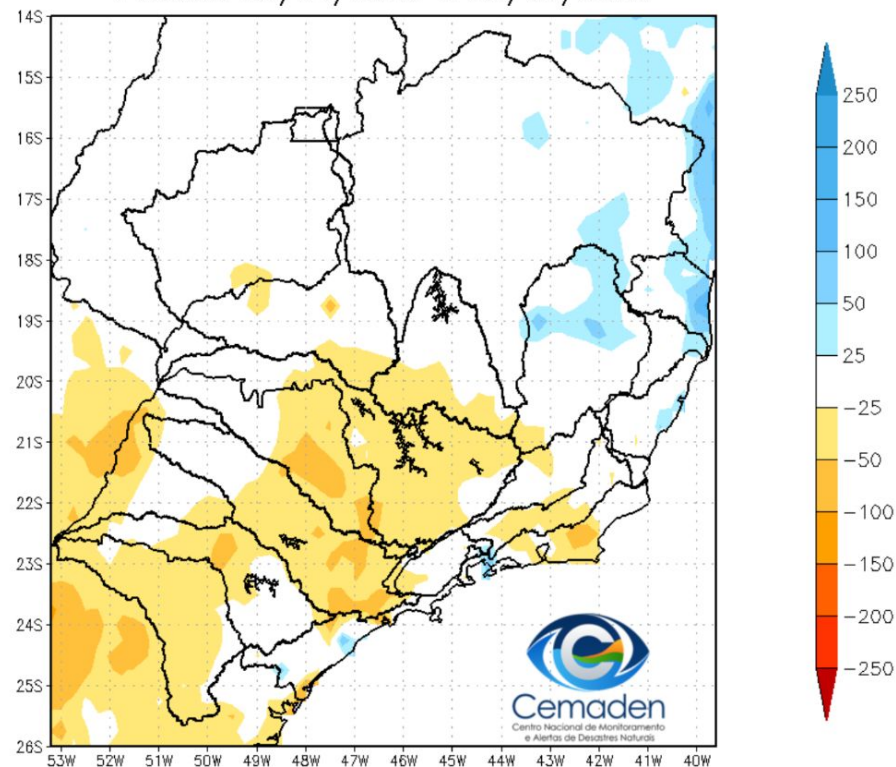


## Precipitação acumulada nos últimos 30 dias

Precipitação Acumulada (mm) A.S.  
Período: 28/04/2025 a 28/05/2025



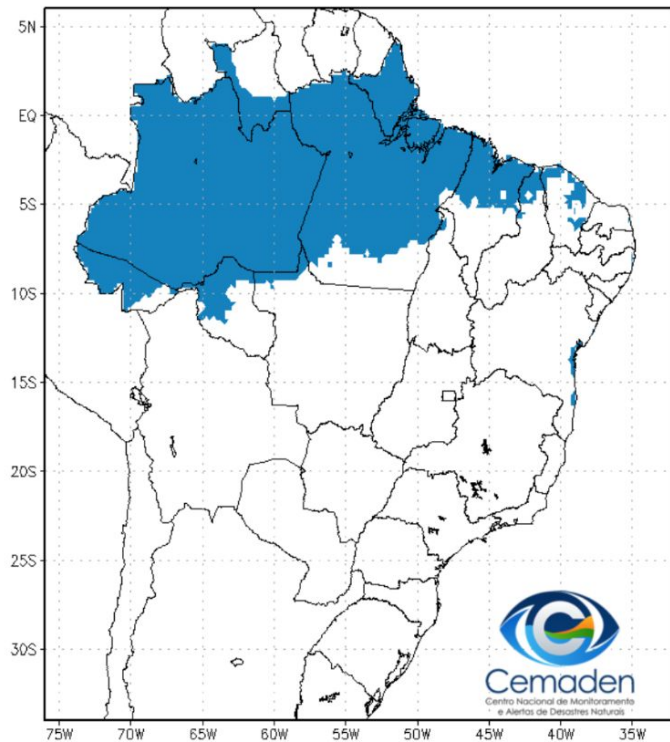
Anomalia de Precipitação (mm) A.S.  
Período: 28/04/2025 a 28/05/2025



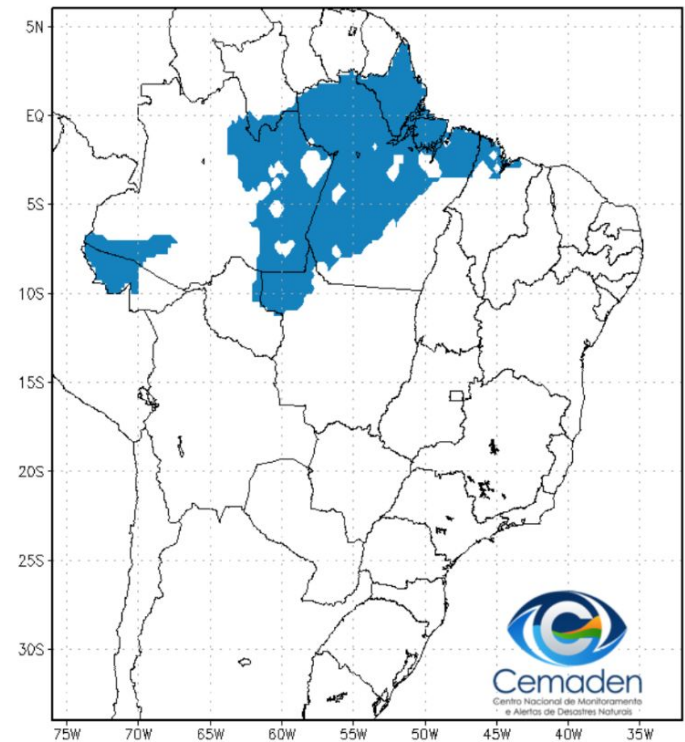


# Situação da Estação Chuvosa

Climatologia da Precipitação (1999–2024)  
Inferior 2 mm/dia por 4 de 5 dias Período: 28/05

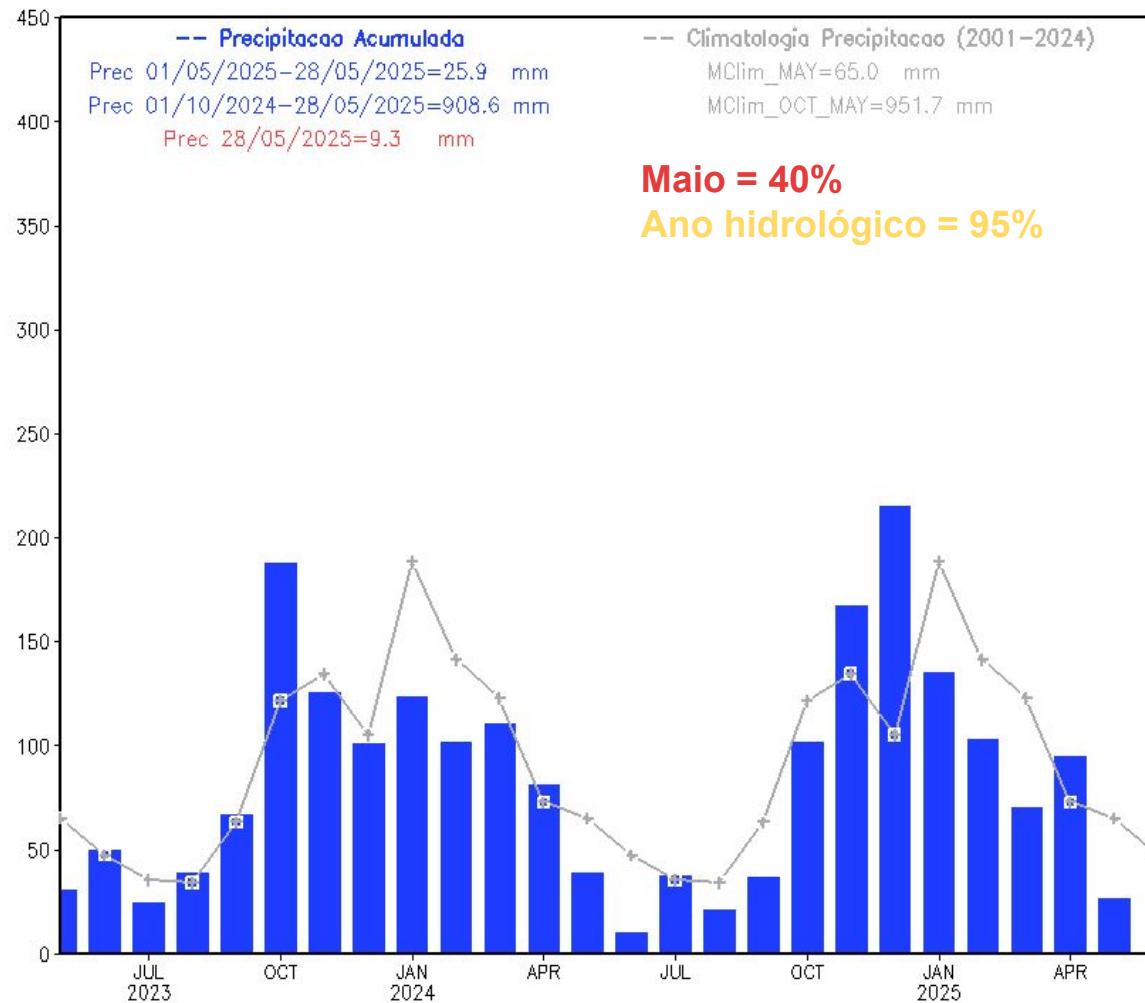


Precipitação Inferior 2 mm/dia por 4 de 5 dias  
Período: 28/05/2025



# Precipitação acumulada nos últimos 24 meses

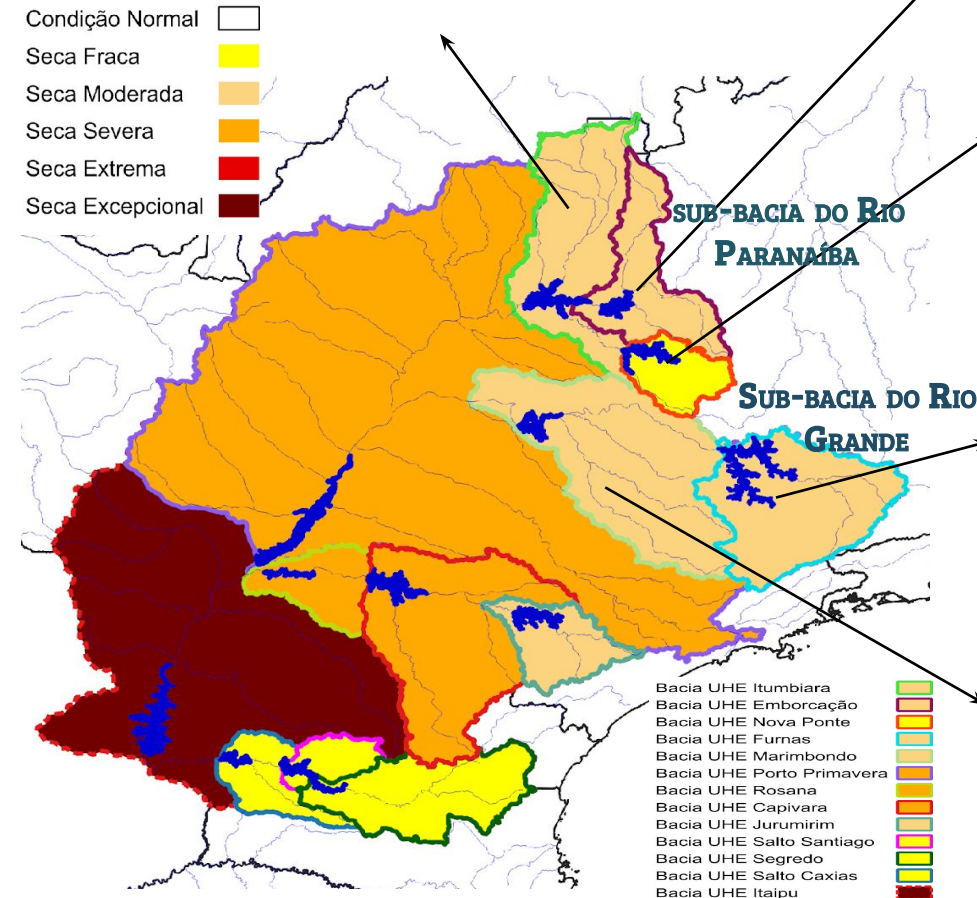
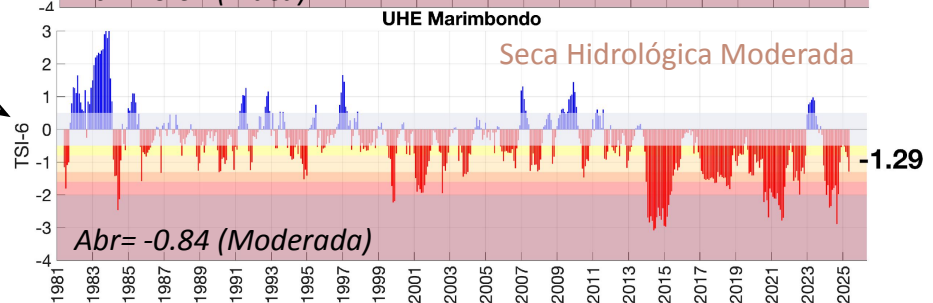
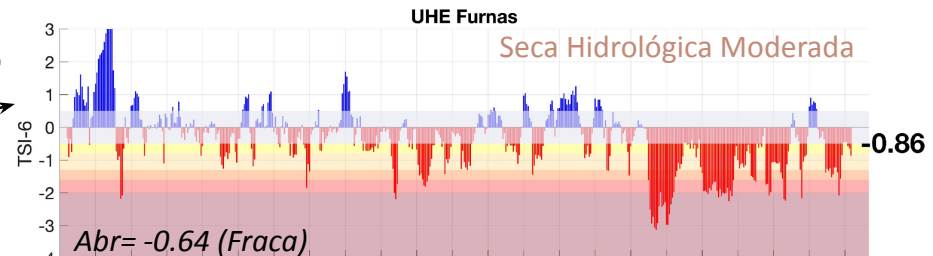
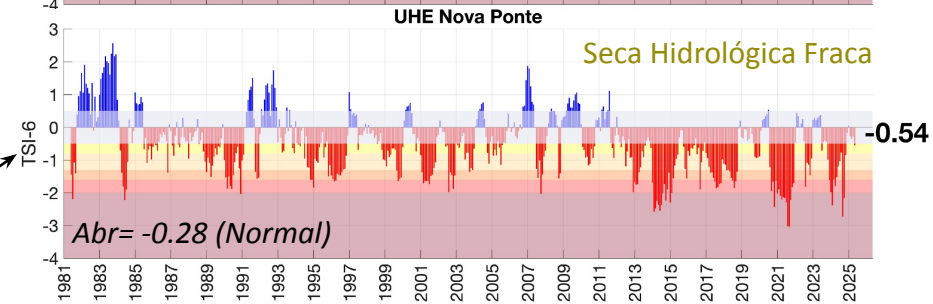
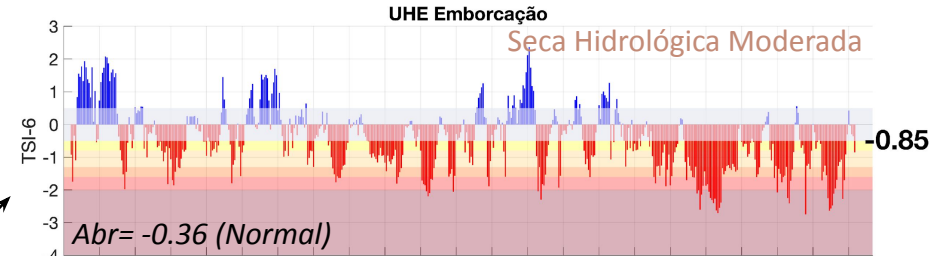
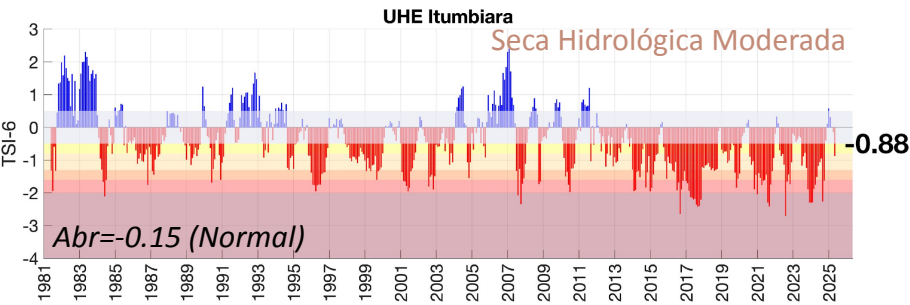
## Precipitação Bacia do Rio Parana desde MAY 2023





# BACIA DO RIO PARANÁ

Maio/2025

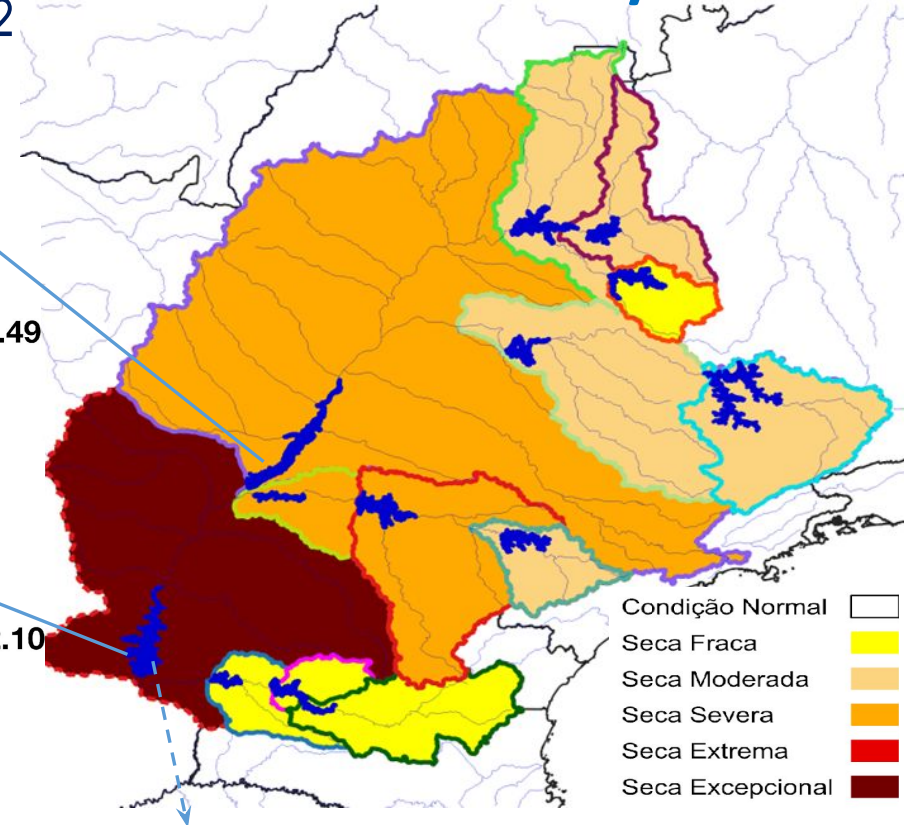
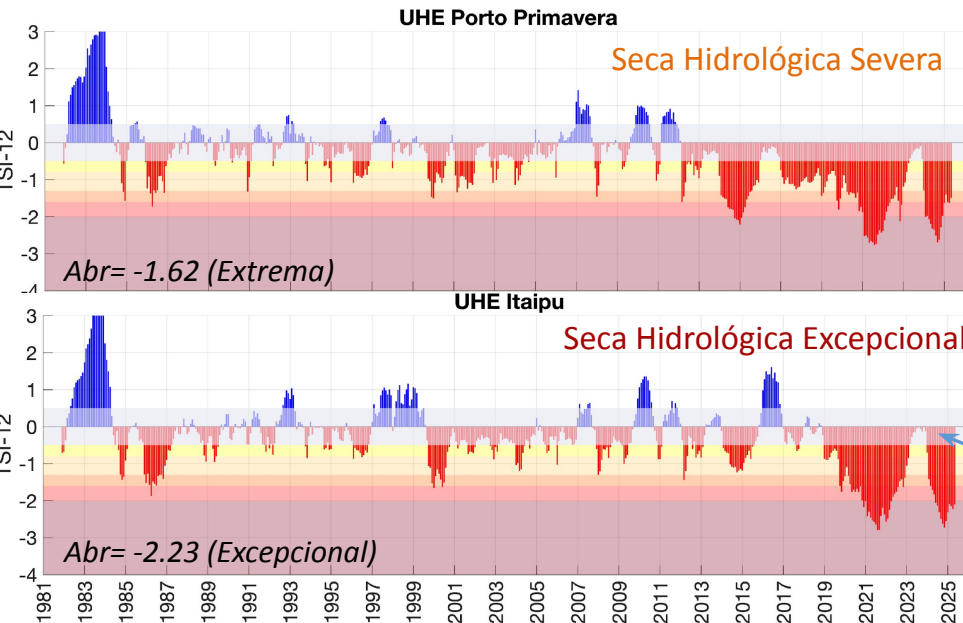




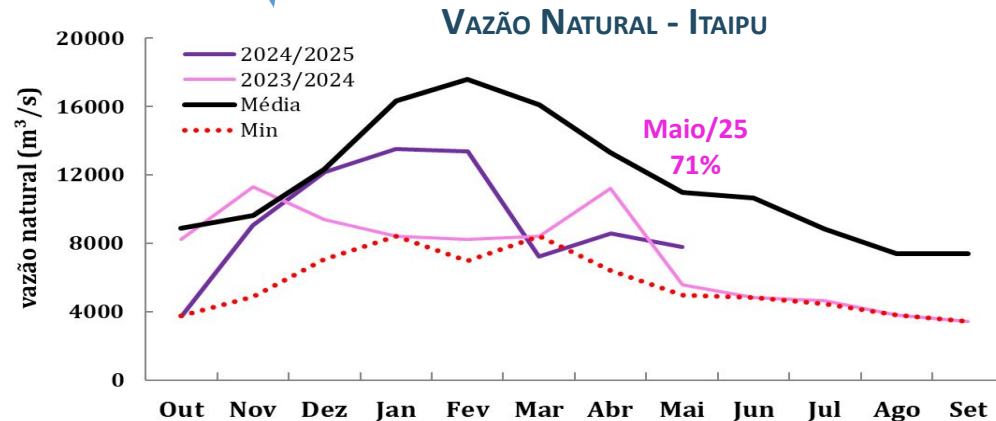
# BACIA DO RIO PARANÁ

Maio/2025

Índice de Seca Bivariado (Chuva-Vazão) – TSI 12



Série de dados = Jan/1981- Maio/2025



Fonte: CEMADEN/MCTI

Dados: Precipitação (CHIRPS) e Vazão (ONS e ANA)



# Monitoramento UHE Furnas

## Precipitação

### Estação Chuvosa - Out a Mar – 1192 mm

2023/2024: 1088 mm (**91% da MLT**)

2024/2025: 1148 mm (**96% da MLT**)

### Estação Seca - Abr a Set – 250 mm

2024: 102 mm (**41% da MLT**)

2025\*: 123 mm (**158% da MLT PARCIAL**)

**Abr//2025:** 117 mm (**178% da MLT**)

**Mai/2025\*:** 7 mm (**14% da MLT**)

\*Até 27/05/2025

## Vazão

### Estação Chuvosa - Out a Mar – 1130 m³/s

2023/2024: 716 m³/s (**63% da MLT**)

2024/2025: 906 m³/s (**80% da MLT**)

### Estação Seca - Abr a Set – 551 m³/s

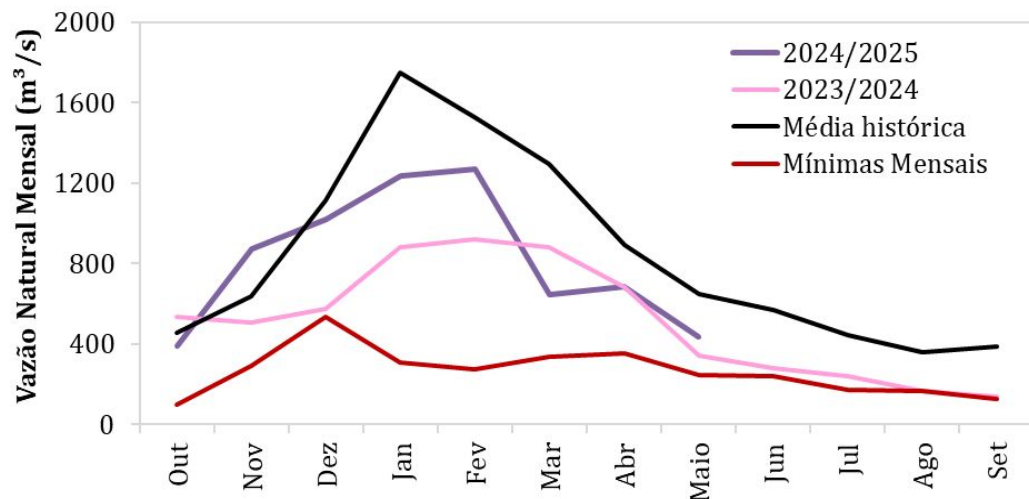
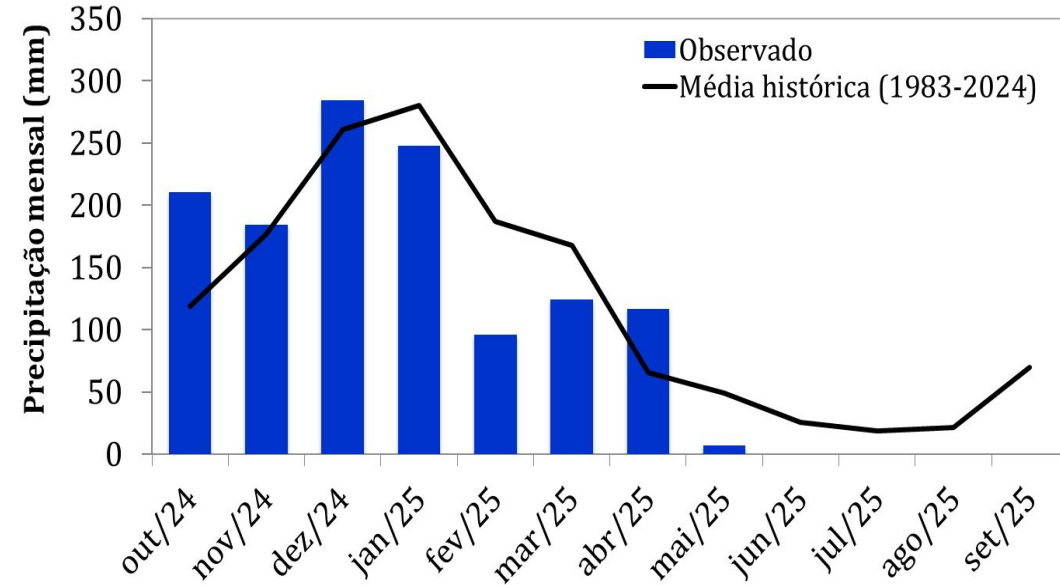
2024: 309 m³/s (**56% da MLT**)

2025: 559 m³/s (**101% da MLT**)

**Mai/25\*\*:** 434 m³/s (**67% da MLT**)

**27/Mai/25:** 357 m³/s (**55% da MLT**)

\*\*Até 27/05/2025

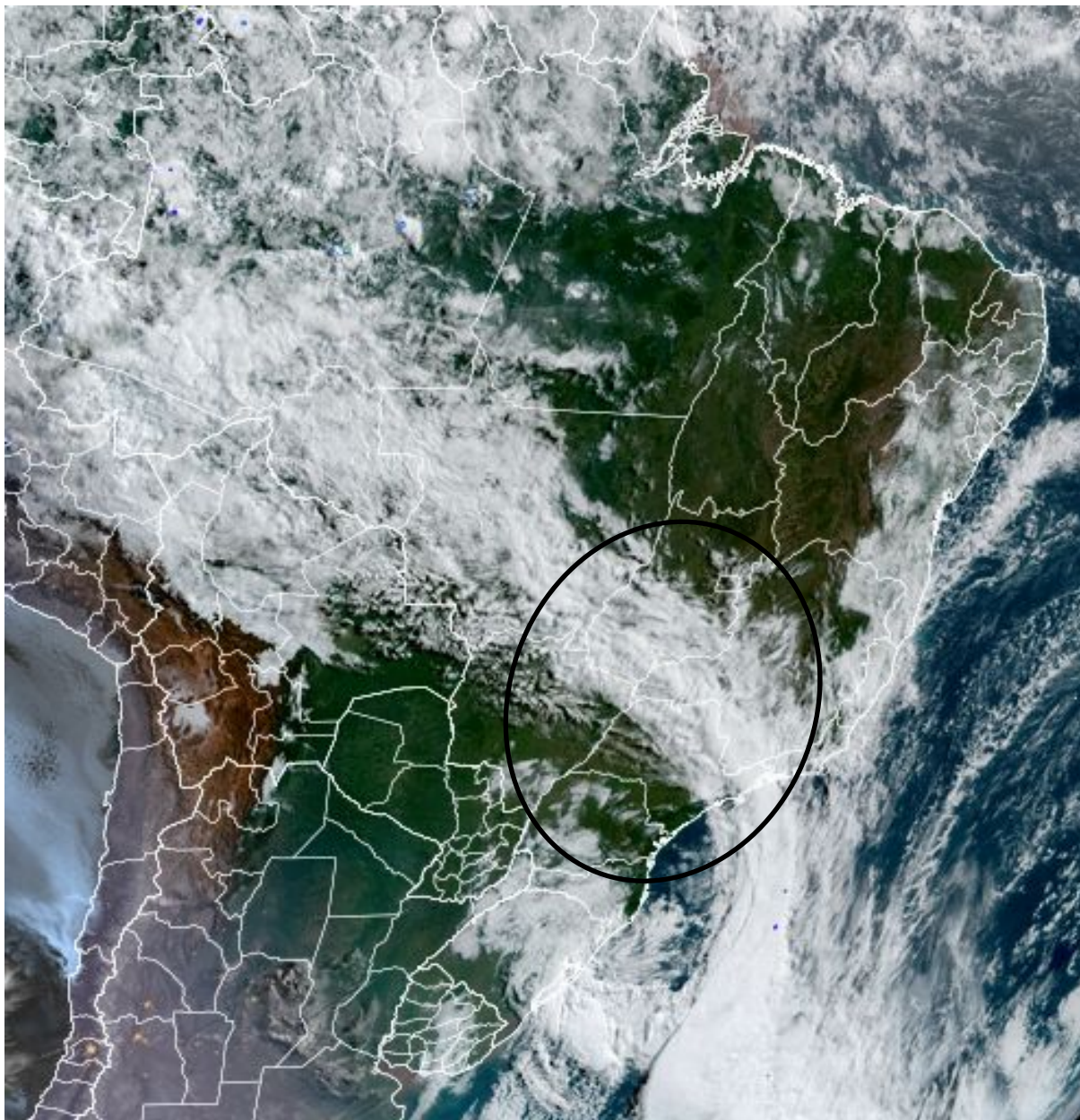


Média de Longo Termo – MLT = 1983-2024

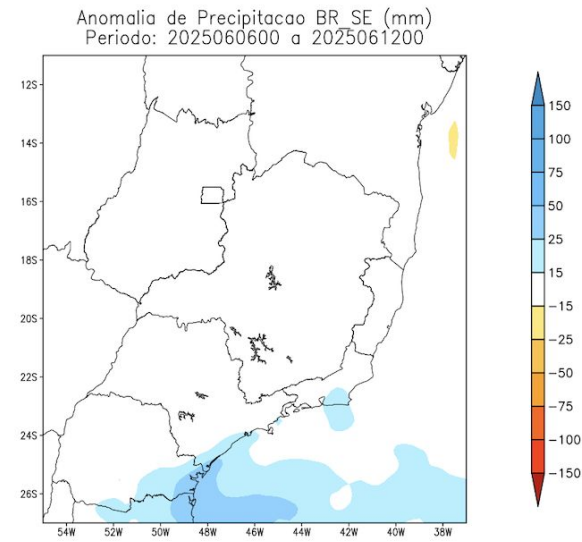
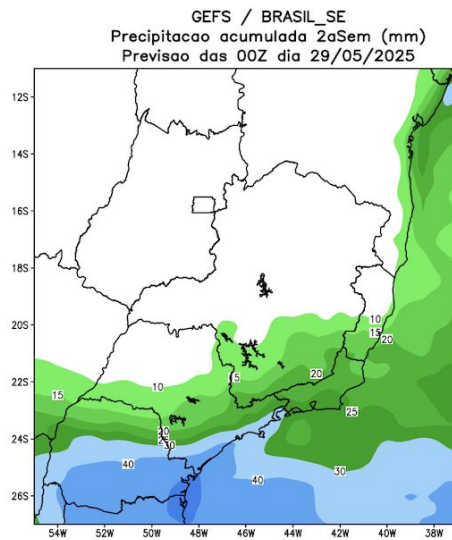
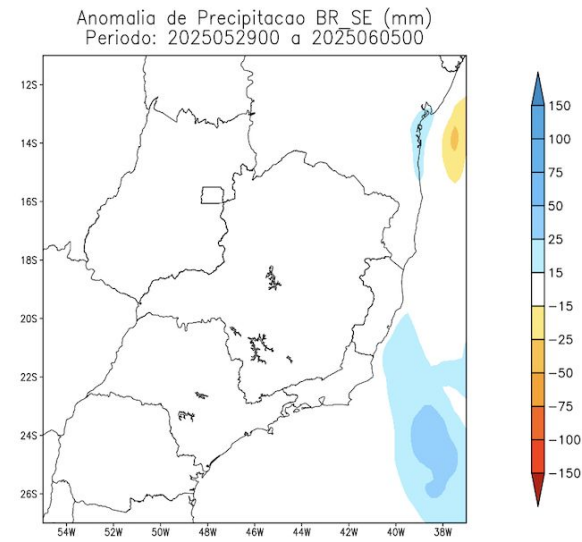
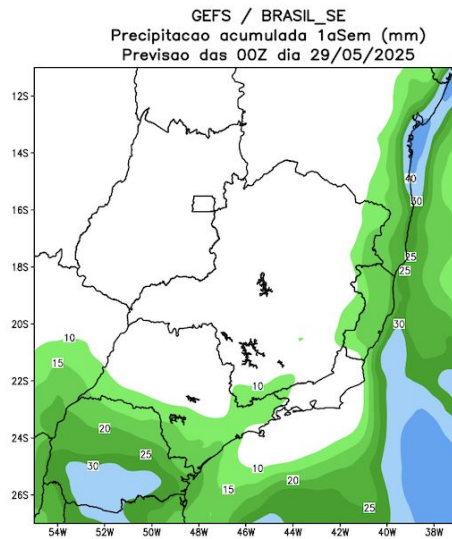
Dados de precipitação: INMET, ANA, CEMADEN

Dados de vazão: ONS e ANA

## Situação meteorológica atual



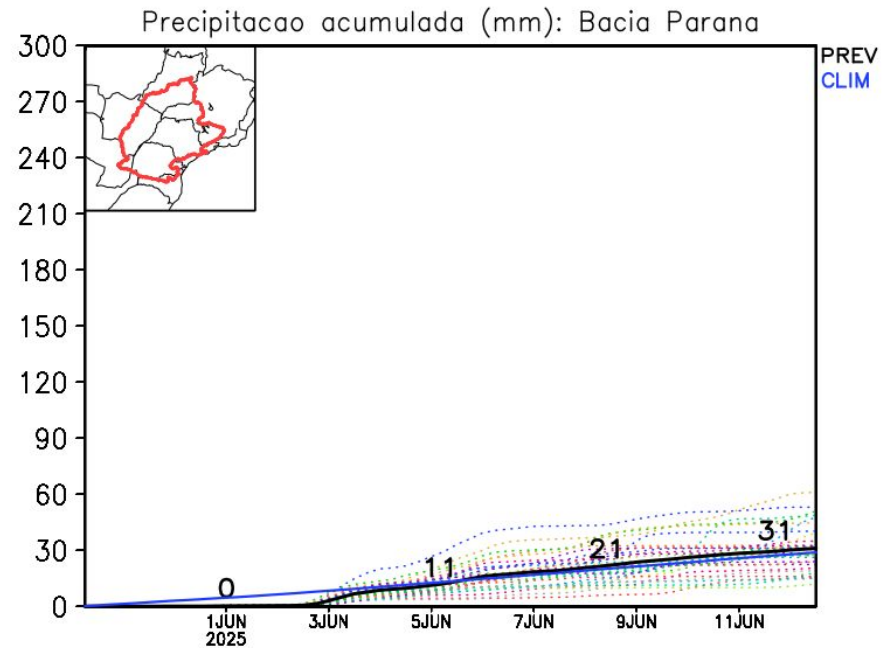
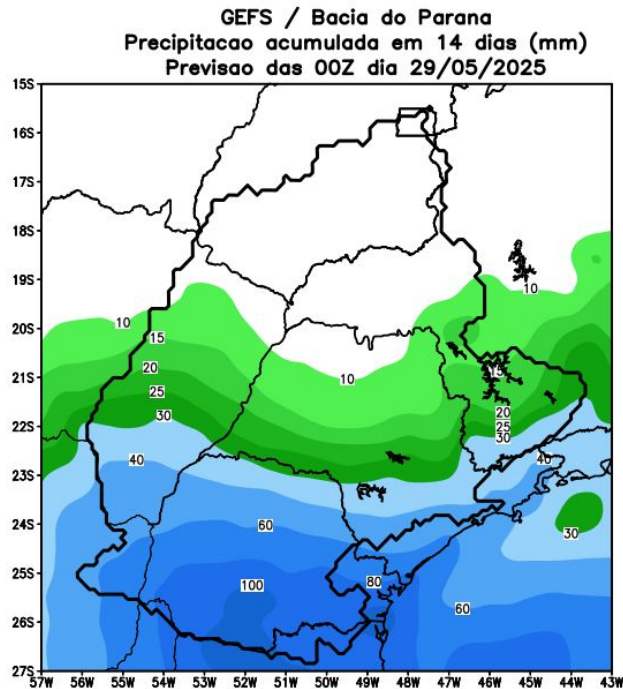
# Acumulado para as duas próximas semanas



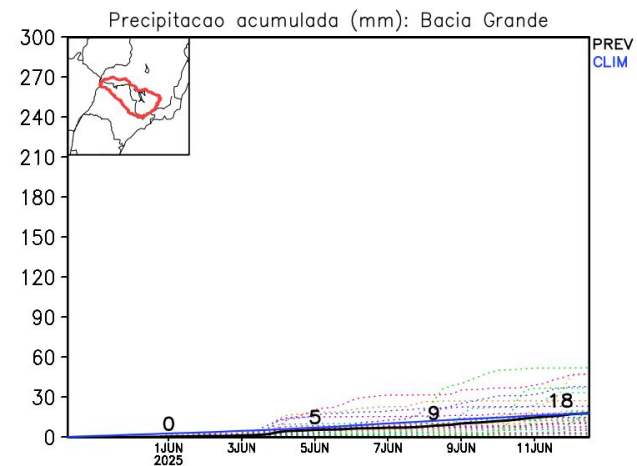
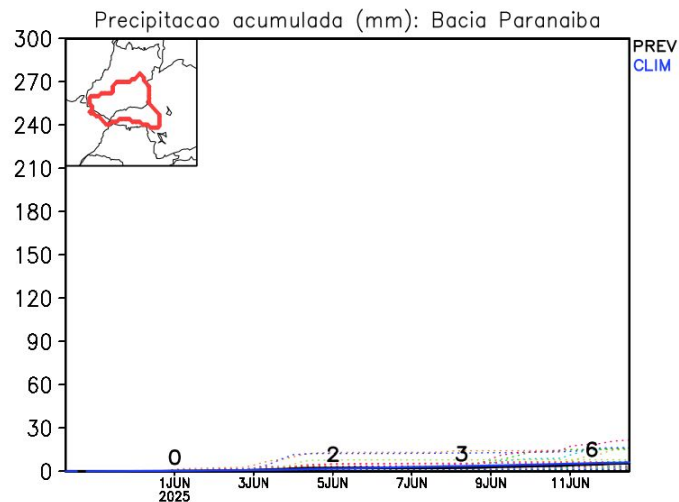
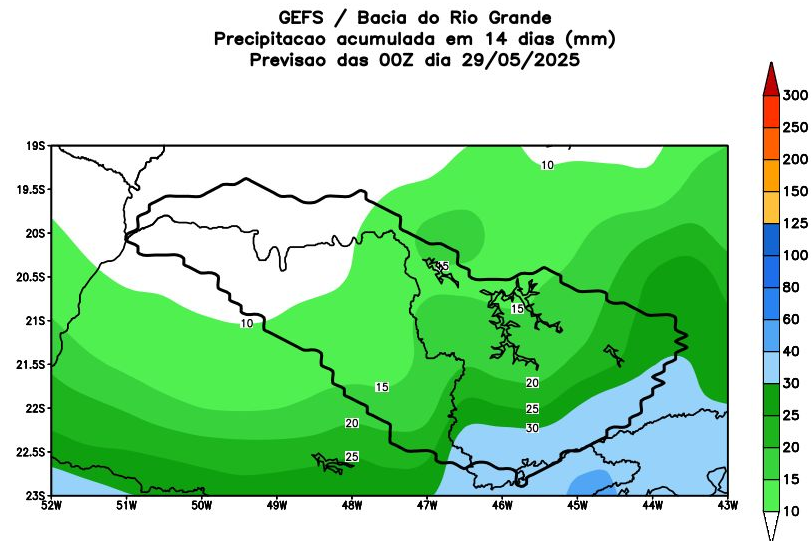
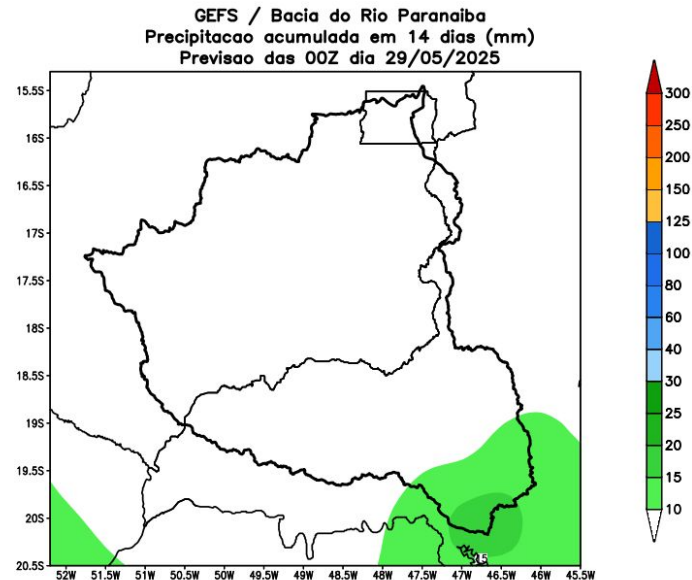
Fonte: GEFS/NOAA



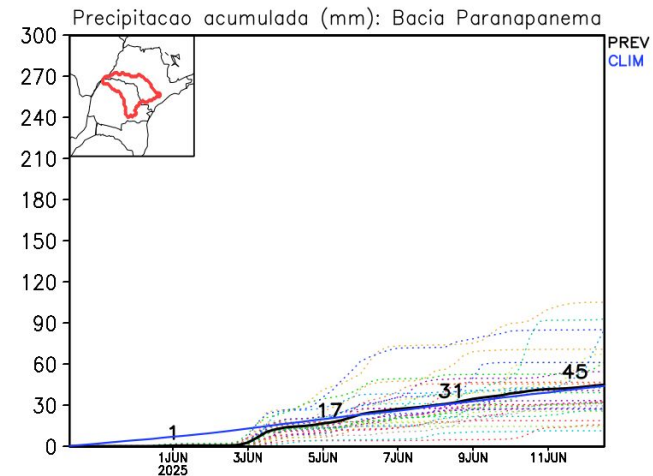
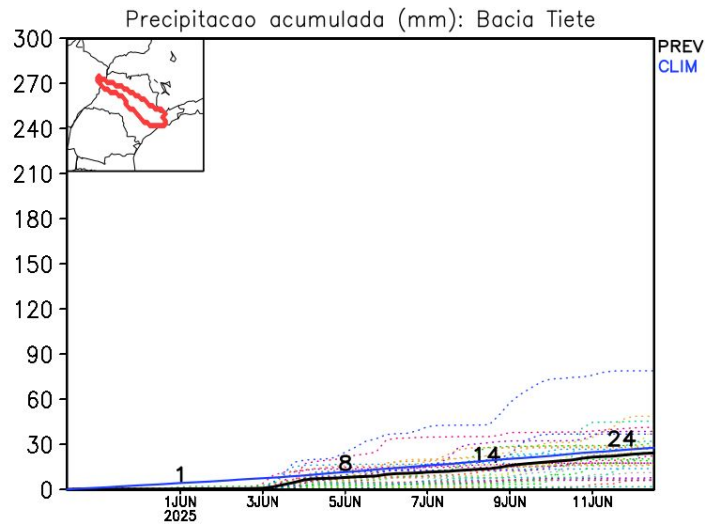
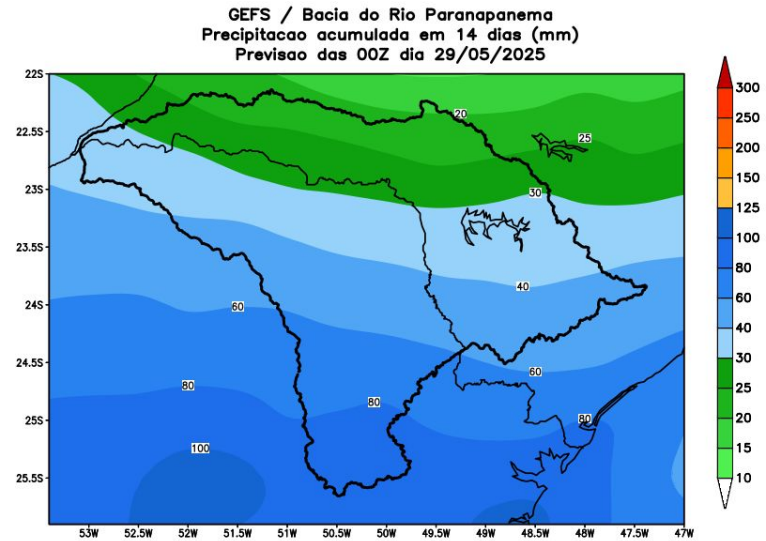
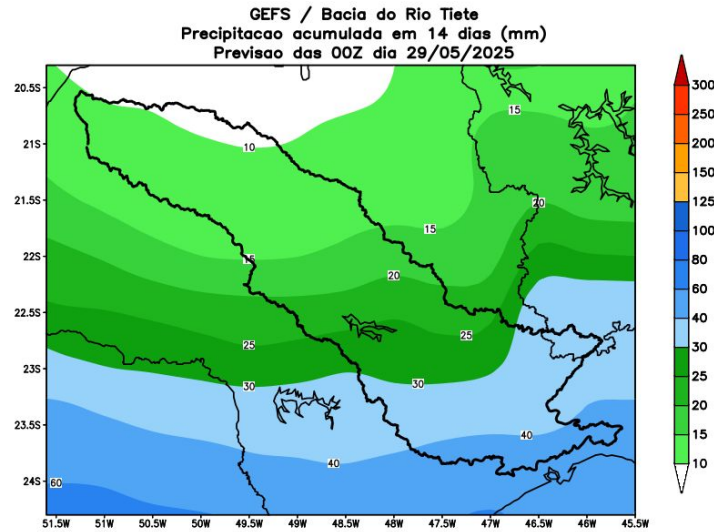
# Previsão de chuva para os próximos 7 dias



# Bacia do rios Paranaíba e Grande



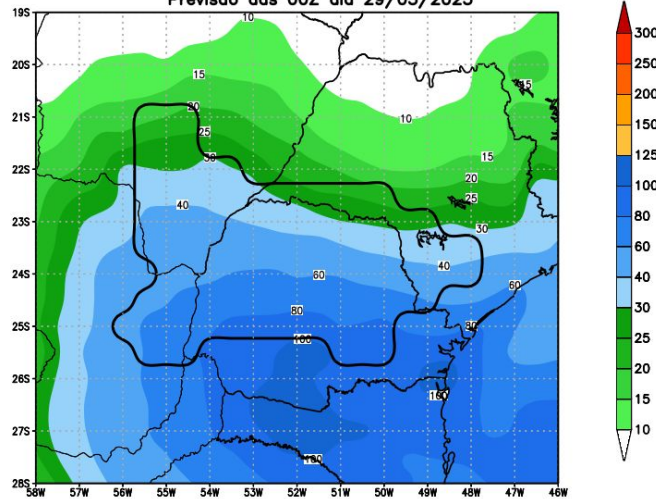
# Bacia do rios Tietê e Paranapanema



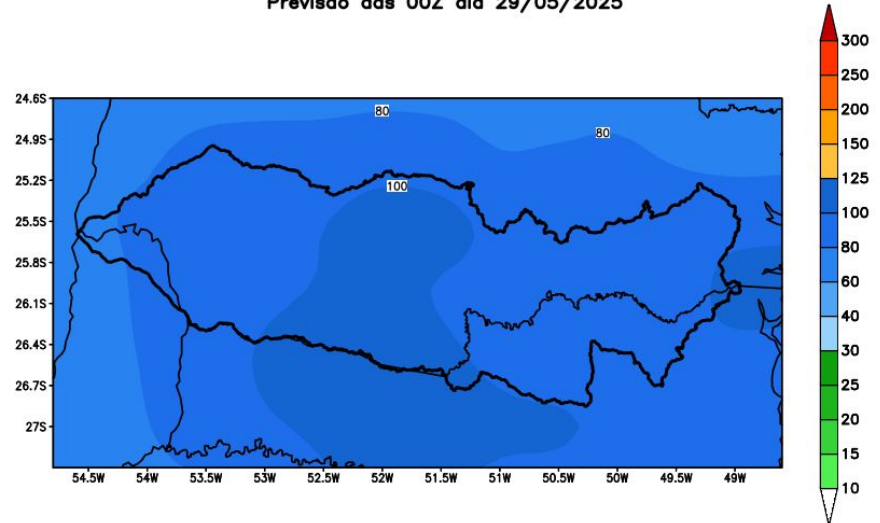


# Bacia do Itaipu e Iguaçu

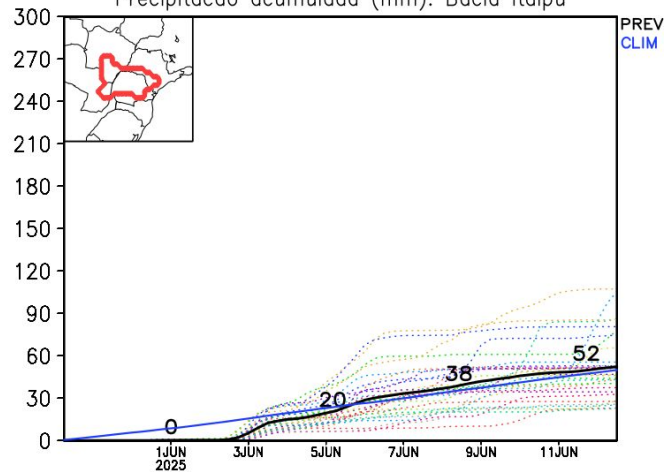
GEFS / Itaipu  
Precipitação acumulada em 14 dias (mm)  
Previsão das 00Z dia 29/05/2025



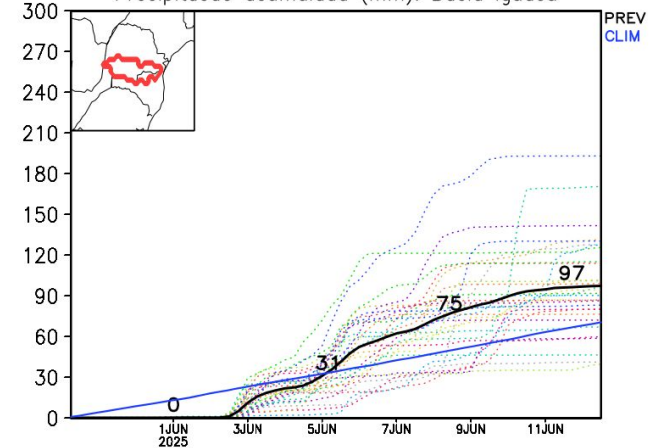
GEFS / Bacia do Rio Iguaçu  
Precipitação acumulada em 14 dias (mm)  
Previsão das 00Z dia 29/05/2025



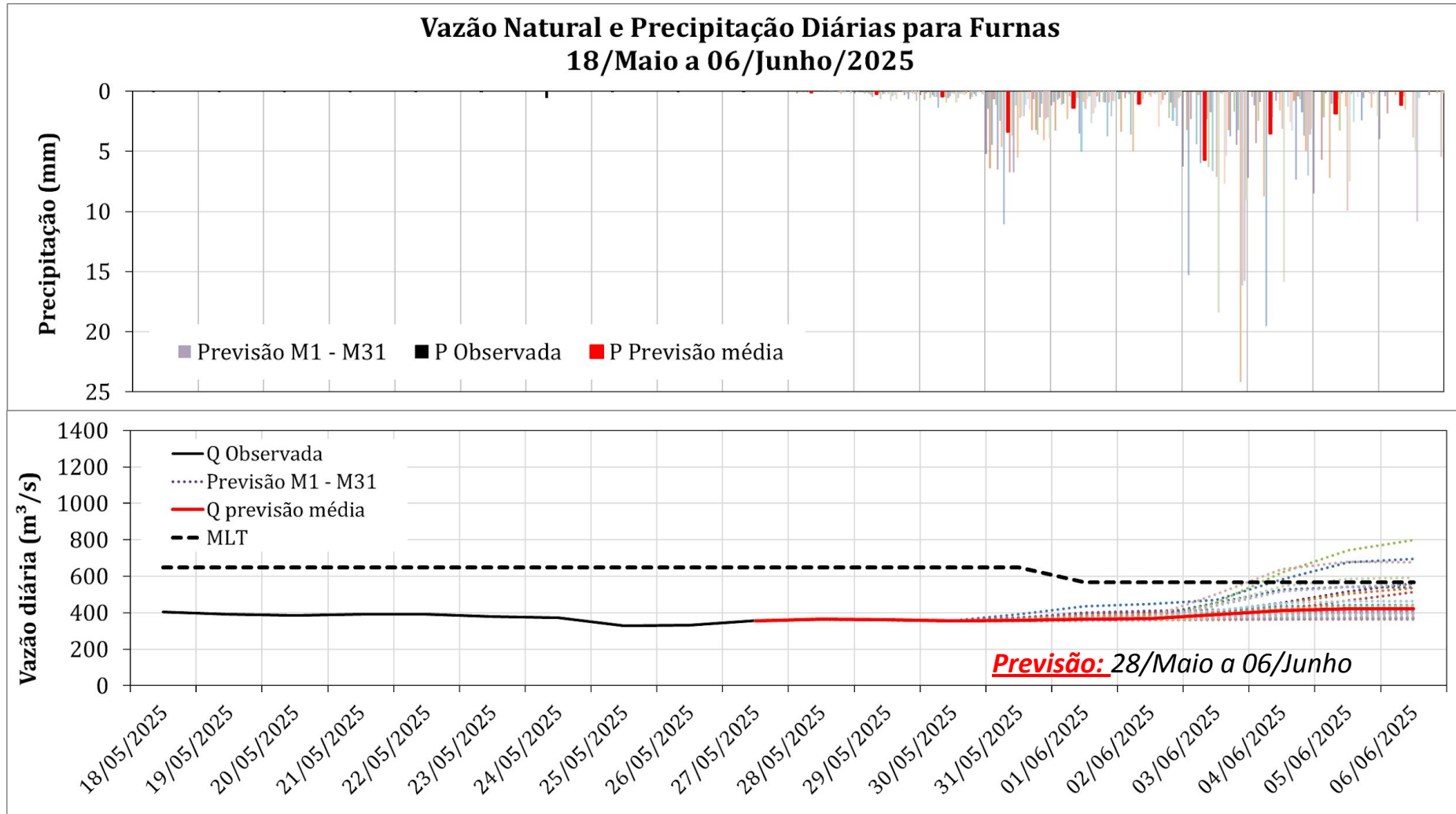
Precipitação acumulada (mm): Bacia Itaipu



Precipitação acumulada (mm): Bacia Iguaçu



# Furnas: Previsão de Vazão (modelo hidrológico PDM-CEMADEN)



**Previsão média para os próximos 10 dias: 382 m<sup>3</sup>/s**  
**(MLT Maio= 650 m<sup>3</sup>/s; MLT Junho = 568 m<sup>3</sup>/s)**

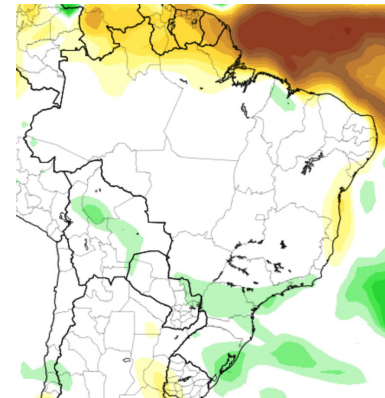
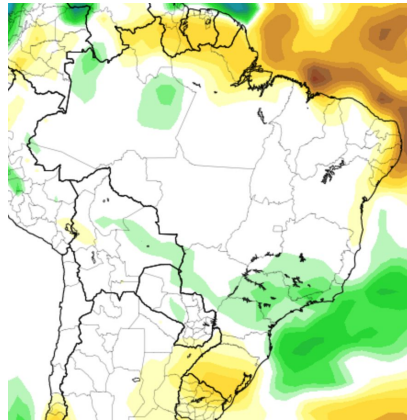
# Anomalia de Chuva

3a e 4a semanas

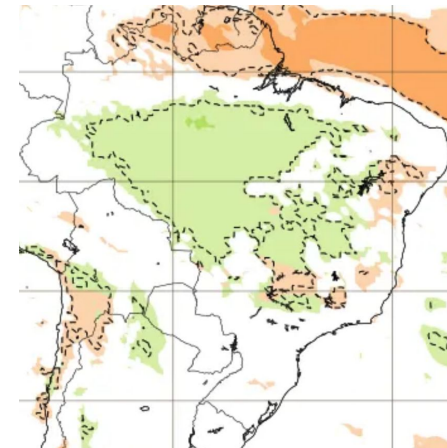
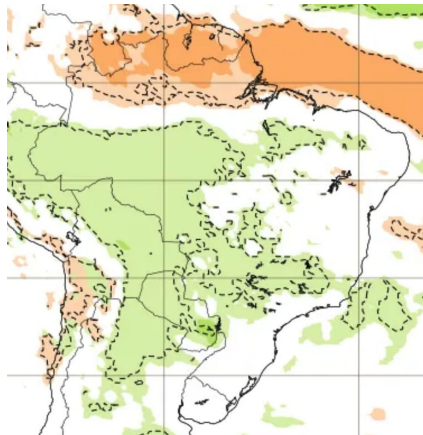
12-18 junho

19-25 junho

CFS/NOAA



ECMWF



16-22 junho

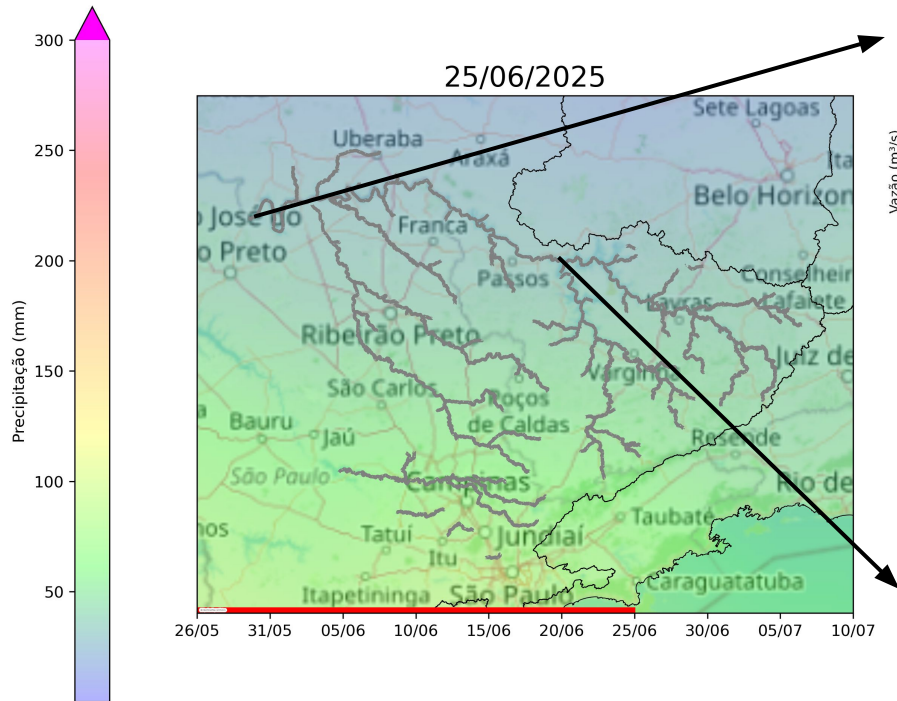
23-29 junho

CFSv2 Accumulated Precip. Anomaly (mm)

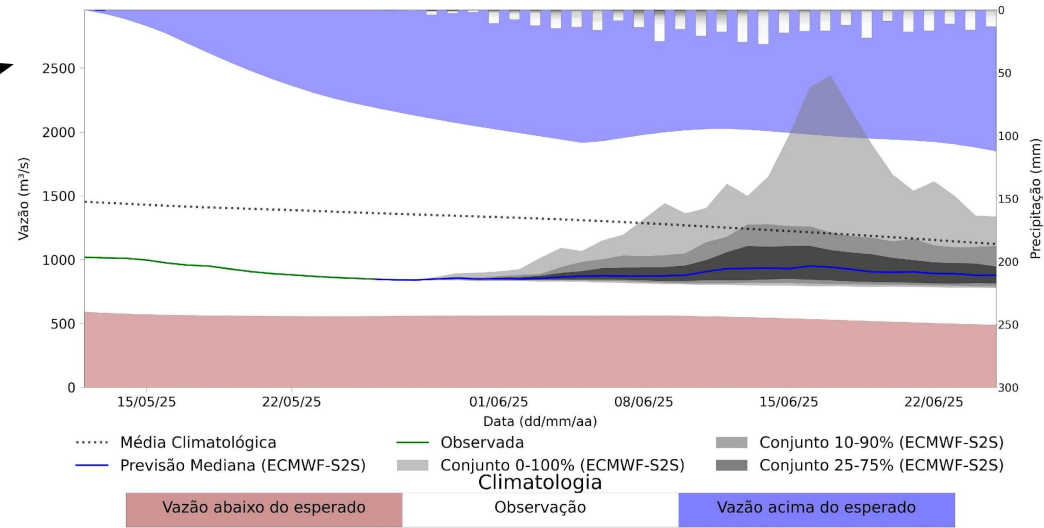


# Previsão de vazão natural na Bacia do Rio Grande 30 dias (Modelo hidrológico MHD)

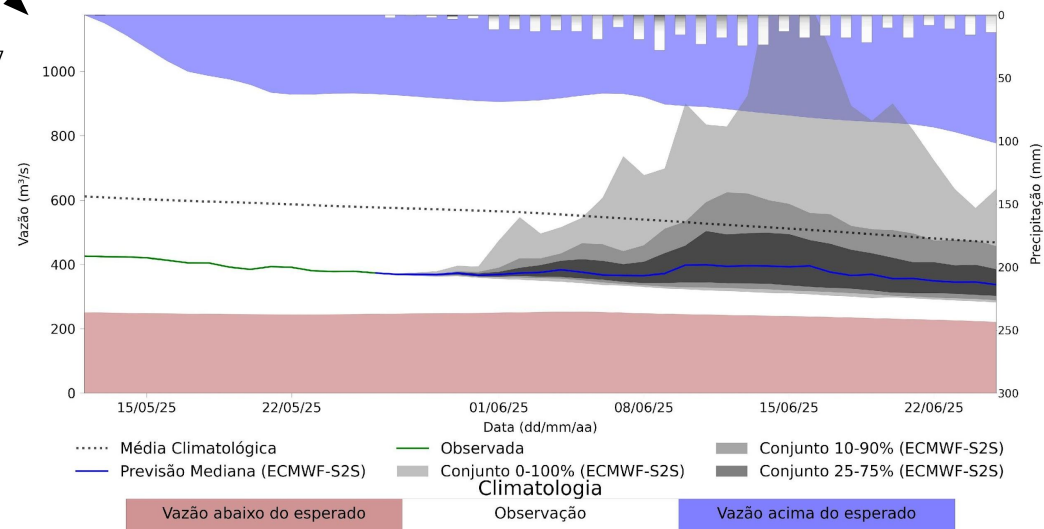
**PREVISÃO: 26/05/25 a 25/06/25**



## UHE Marimbondo

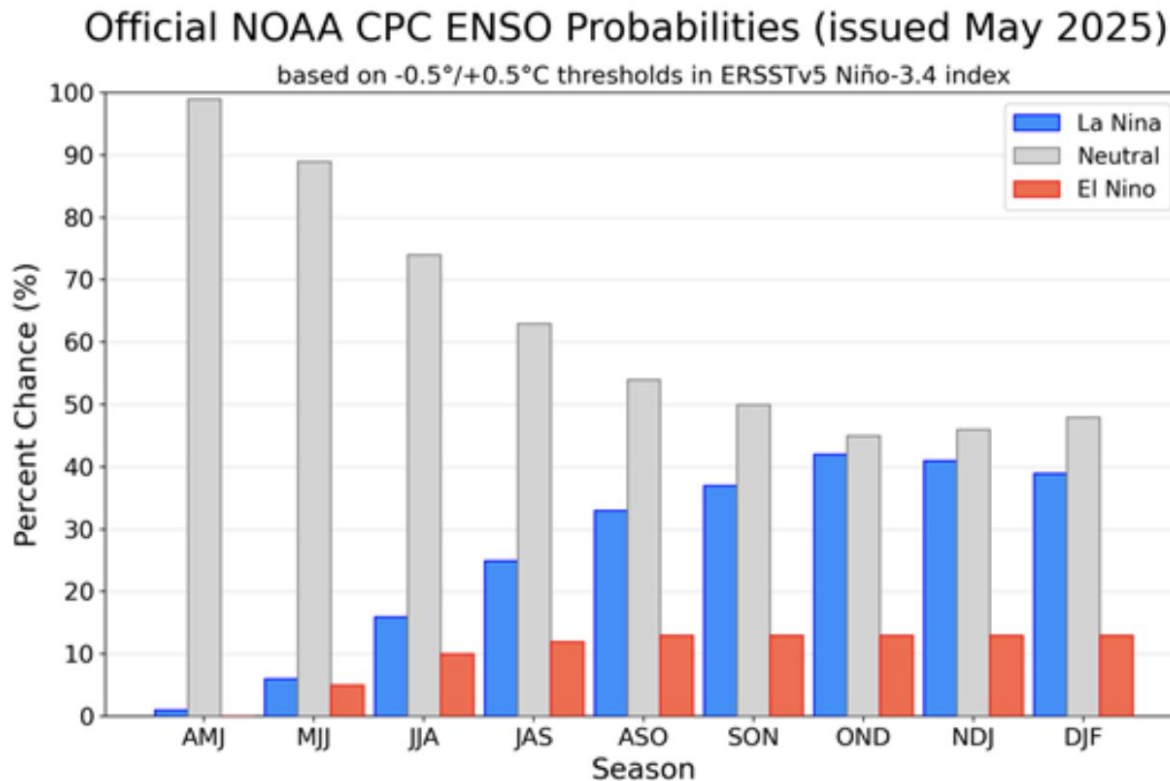


## UHE Furnas



Fonte: Meteorologia (INMET/MERGE); Vazão (ANA/ONS)  
MLT: 1993-2024  
Previsão Meteorológica: ECMWF-S2S

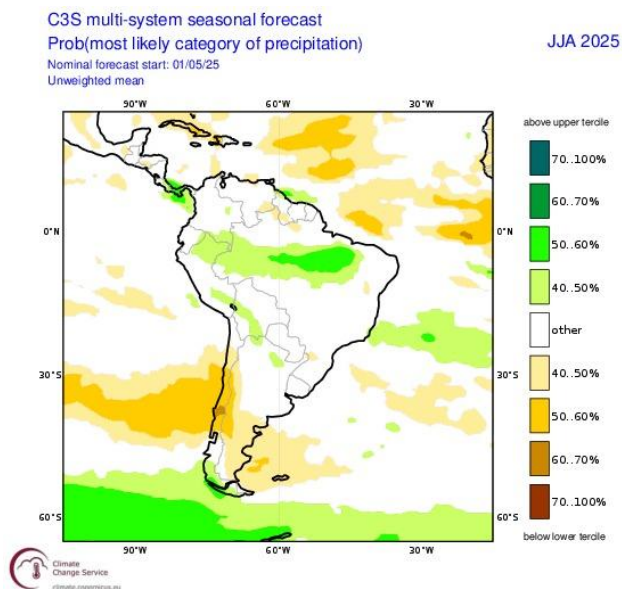
# Previsão do “ENSO”



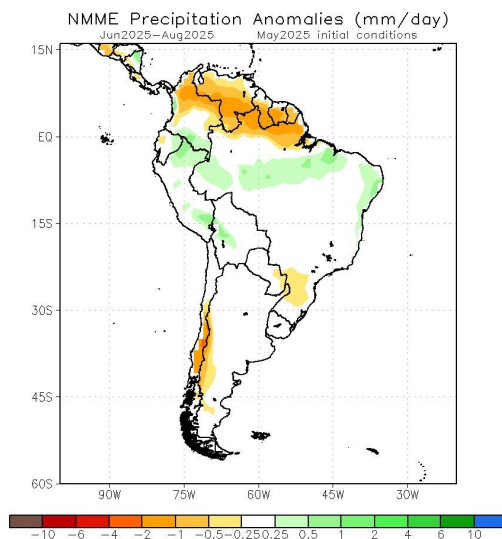
Situação => NEUTRALIDADE

# Previsão Sazonal de Chuva Multi-Modelo

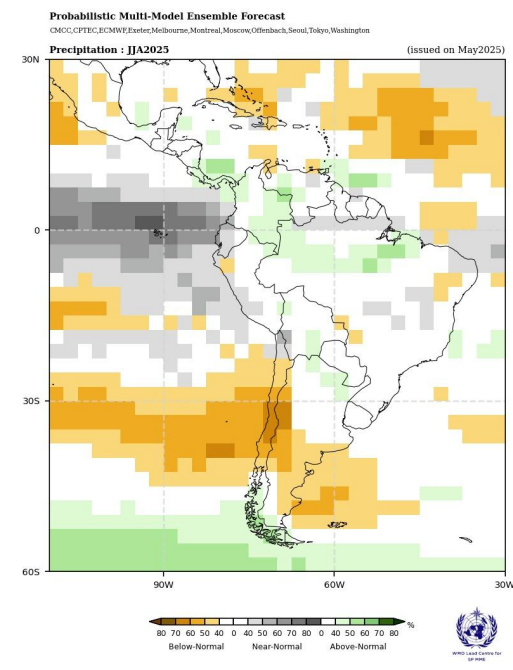
## Junho-Julho-Agosto



Modelos Europeus



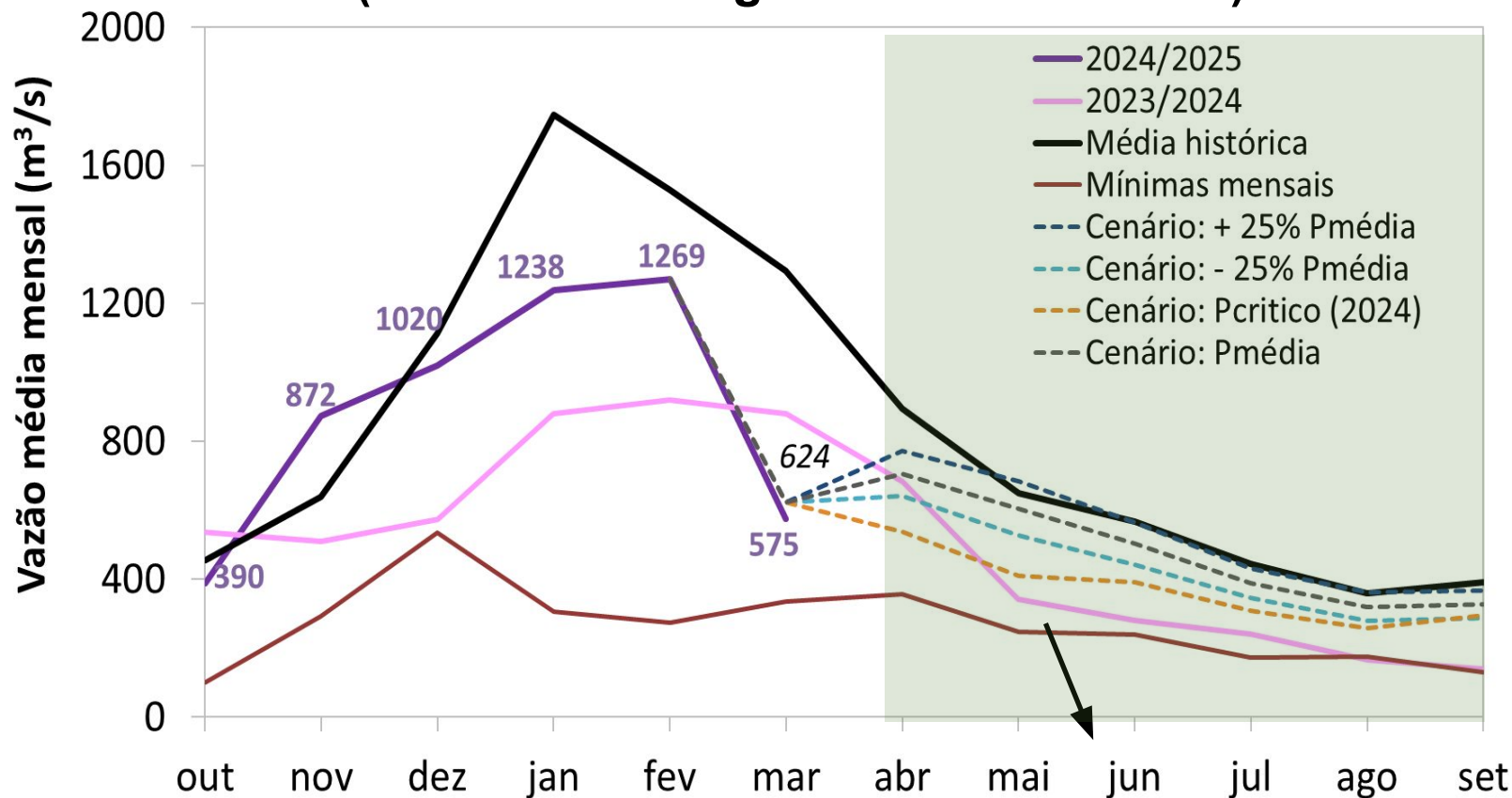
Modelos Norte Americanos



Modelos da WMO



## Furnas: Projeção de Vazão (modelo hidrológico PDM-CEMADEN)

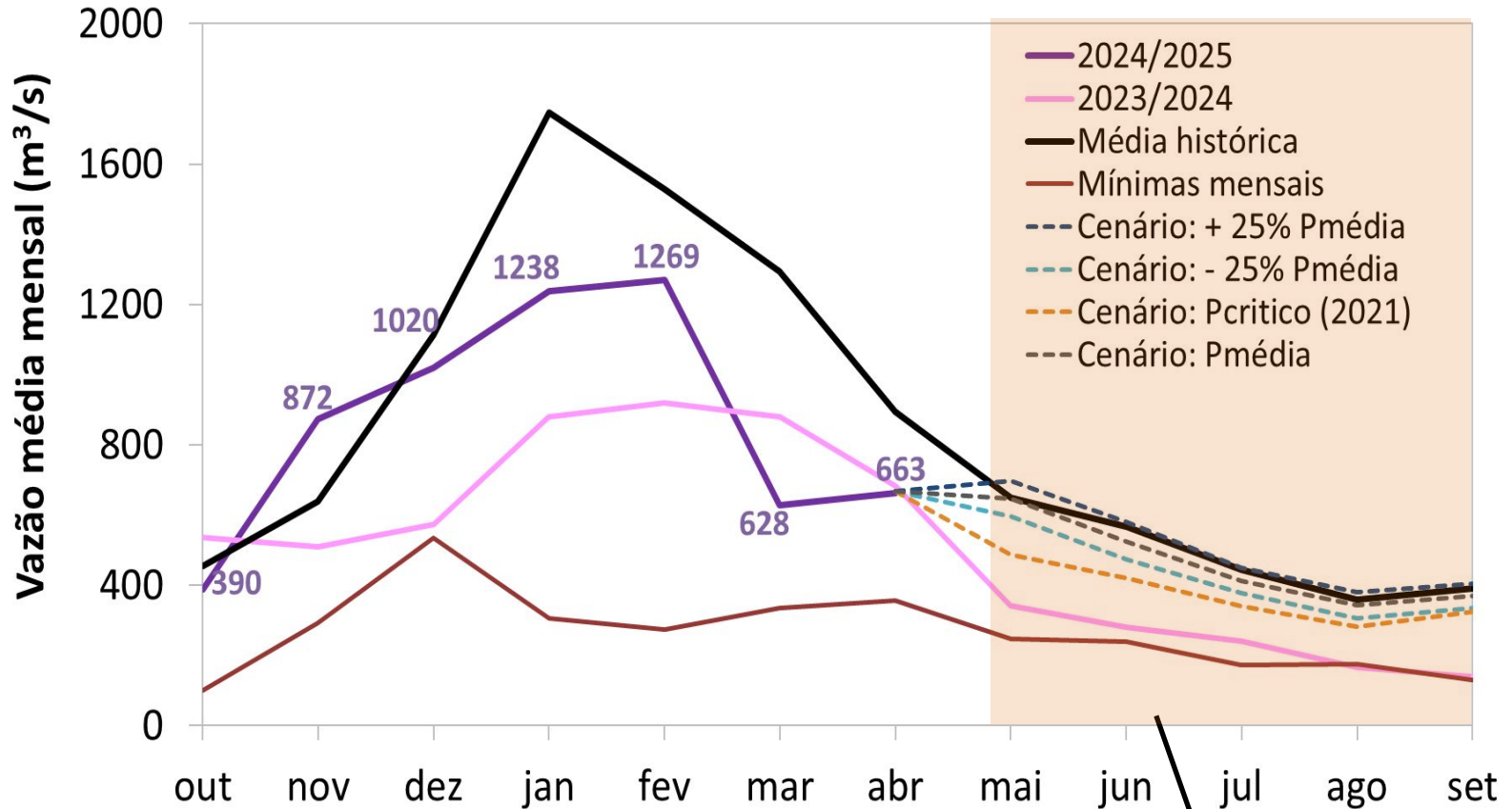


**Abril-Setembro (Meses Secos)**

**MLT: 551  $\text{m}^3/\text{s}$**

Vazão	% MLT
530 $\text{m}^3/\text{s}$	96%
475 $\text{m}^3/\text{s}$	86%
421 $\text{m}^3/\text{s}$	76%
367 $\text{m}^3/\text{s}$	67%

## Furnas: Projeção de Vazão (modelo hidrológico PDM-CEMADEN)

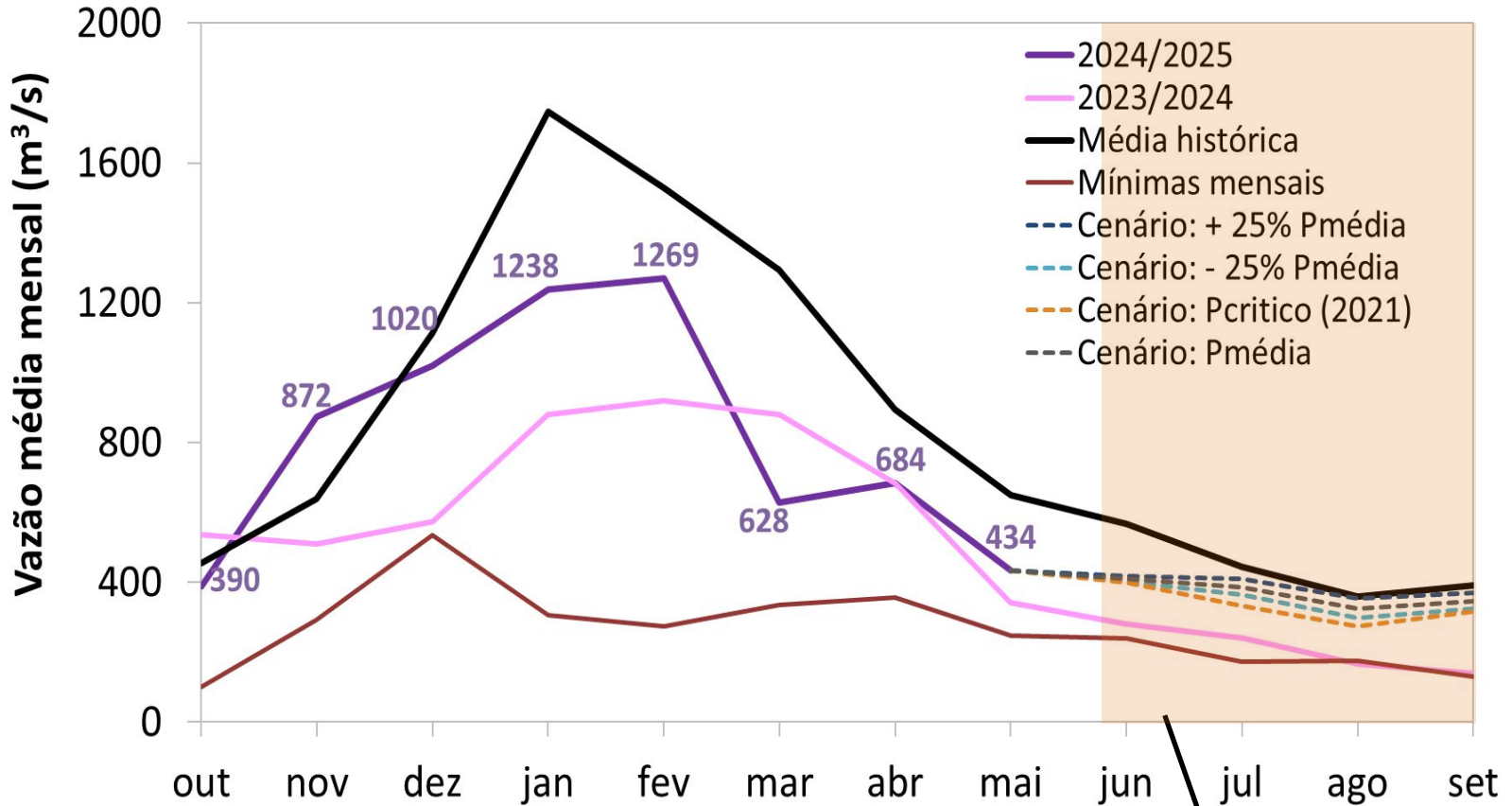


**Maio-Setembro (Meses Secos)**

**MLT: 482 m³/s**

Vazão	%
<b>503 m³/s</b>	<b>MLT 104%</b>
460 m³/s	95%
<b>418 m³/s</b>	<b>87%</b>
<b>371 m³/s</b>	<b>77%</b>

# Furnas: Projeção de Vazão (modelo hidrológico PDM-CEMADEN)



Vazão	%
<b>388 m³/s</b>	<b>MLT 88%</b>
367 m³/s	83%
347 m³/s	79%
331 m³/s	75%