



CEMADEN

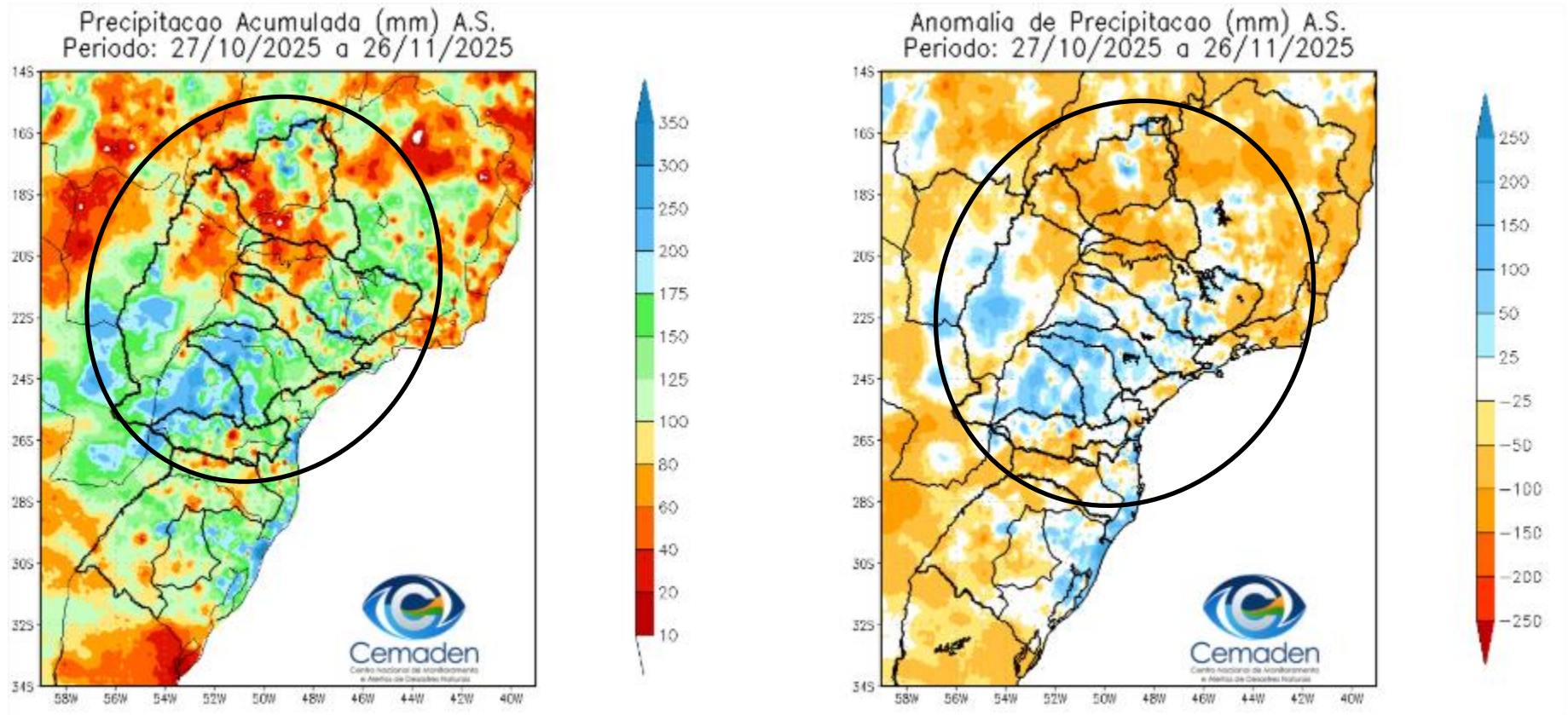
**Centro Nacional de Monitoramento e
Alertas de Desastres Naturais**

Monitoramento e Previsões para a Bacia do rio Paraná

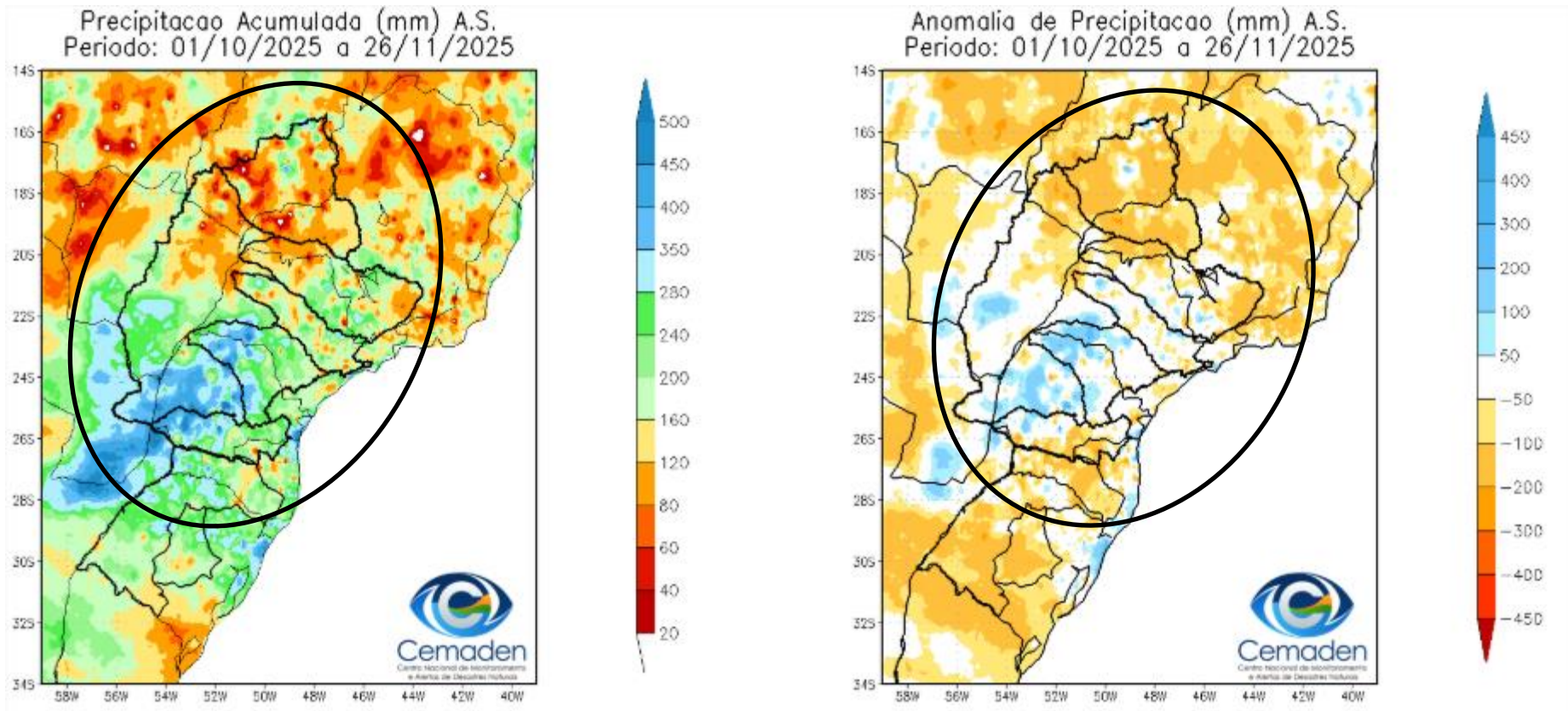
Novembro de 2025



Precipitação acumulada nos últimos 30 dias

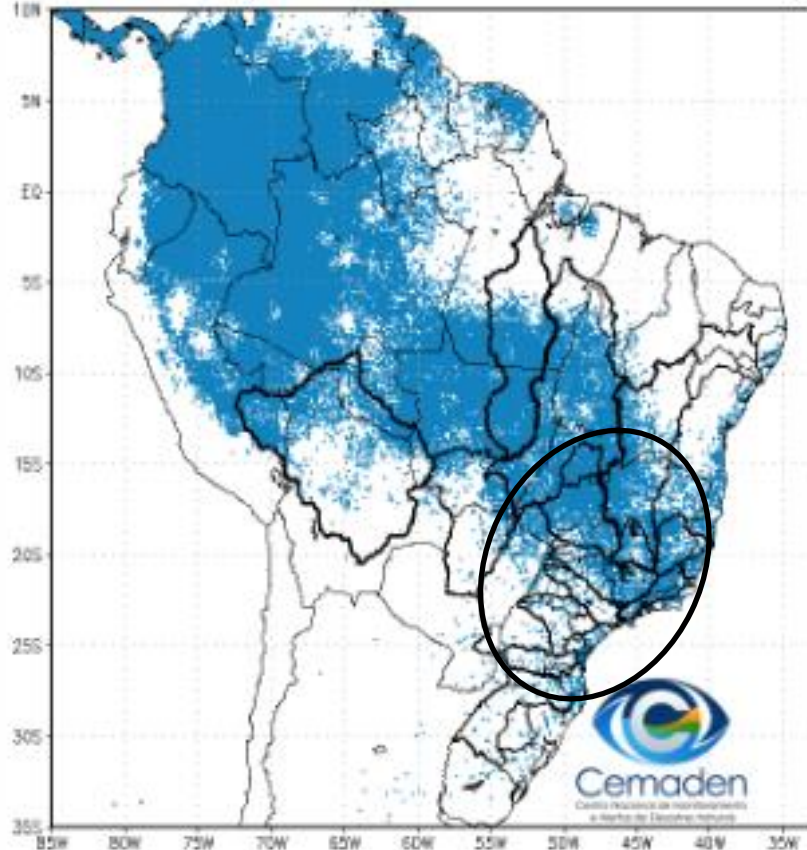


Precipitação acumulada no ano hidrológico

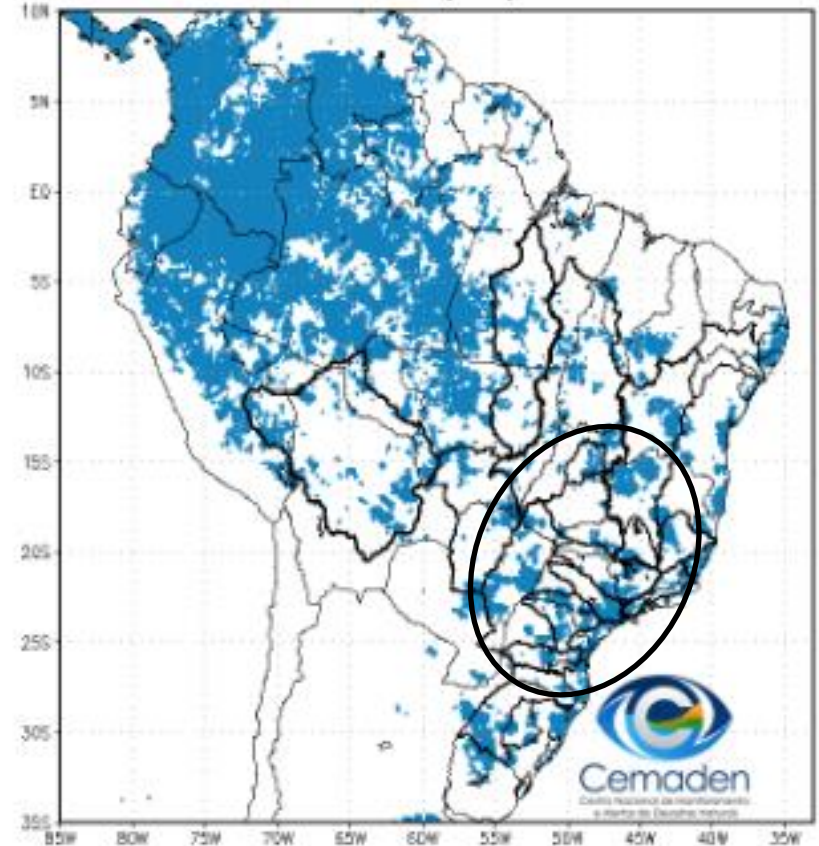


Situação da Estação Chuvosa

Climatologia da Precipitação (2001–2024)
Superior 3 mm/dia em 4 de 5 dias Período: 26/11

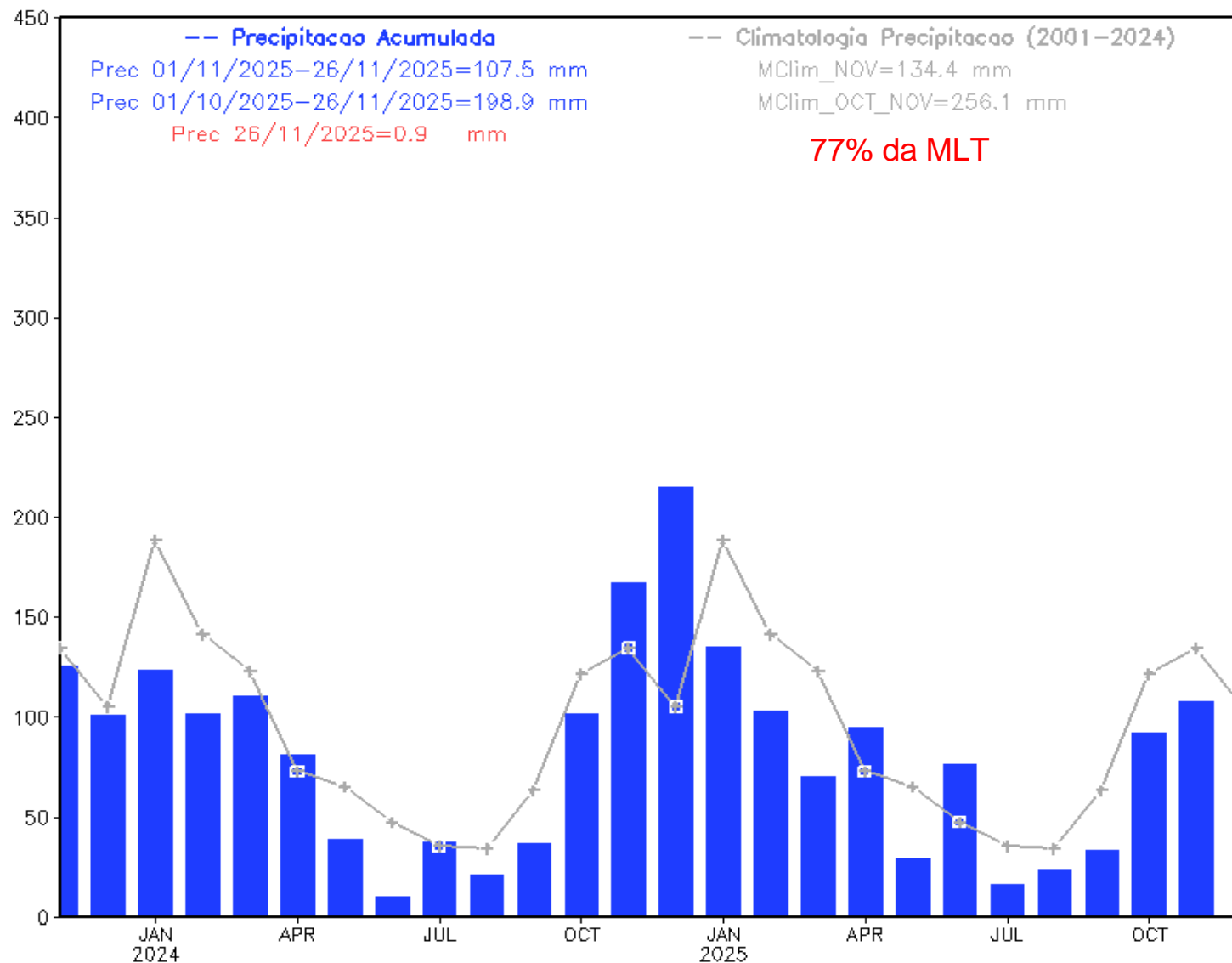


Precipitação A.S. Superior a 3 mm/dia por 4 de 5 dias
Período: 26/11/2025

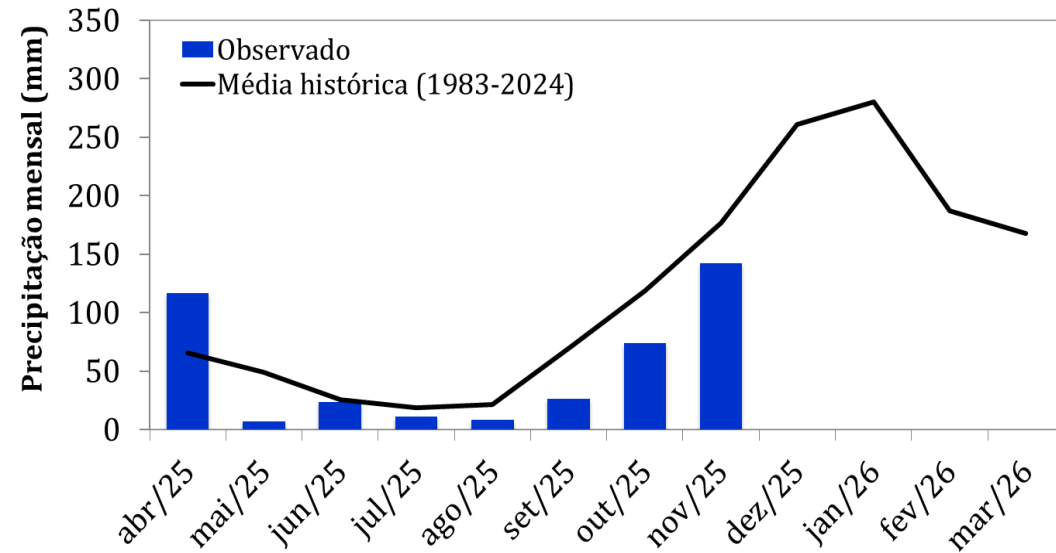


Precipitação acumulada nos últimos 24 meses

Precipitacao Bacia do Rio Parana desde NOV 2023



Monitoramento UHE Furnas



Precipitação

Estação Chuvosa - Out a Mar – 1192 mm

2024/2025: 1148 mm (**96% da MLT**)

2025/2026*: 216 mm (**60% da MLT PARCIAL**)

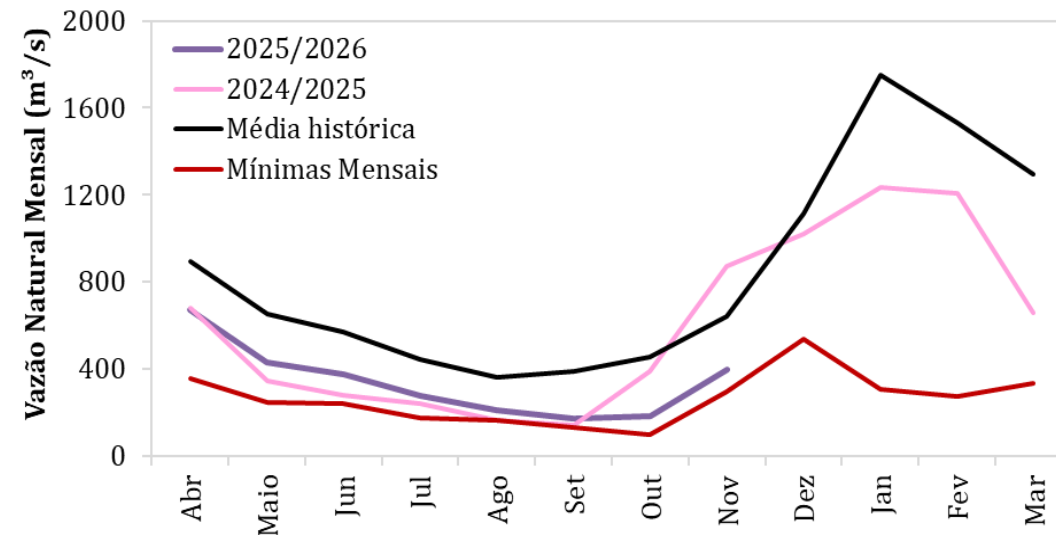
Estação Seca - Abr a Set – 250 mm

2024: 102 mm (**41% da MLT**)

2025: 193 mm (**77% da MLT**)

Nov/2025*: 142 mm (**80% da MLT**)

*Até 24/11/2025



Vazão

Estação Chuvosa - Out a Mar – 1130 m³/s

2024/2025: 897 m³/s (**79% da MLT**)

2025/2026**: 289 m³/s (**29% da MLT**)

Estação Seca - Abr a Set – 551 m³/s

2024: 309 m³/s (**56% da MLT**)

2025: 356 m³/s (**65% da MLT**)

Nov/25**: 396 m³/s (**62% da MLT**)

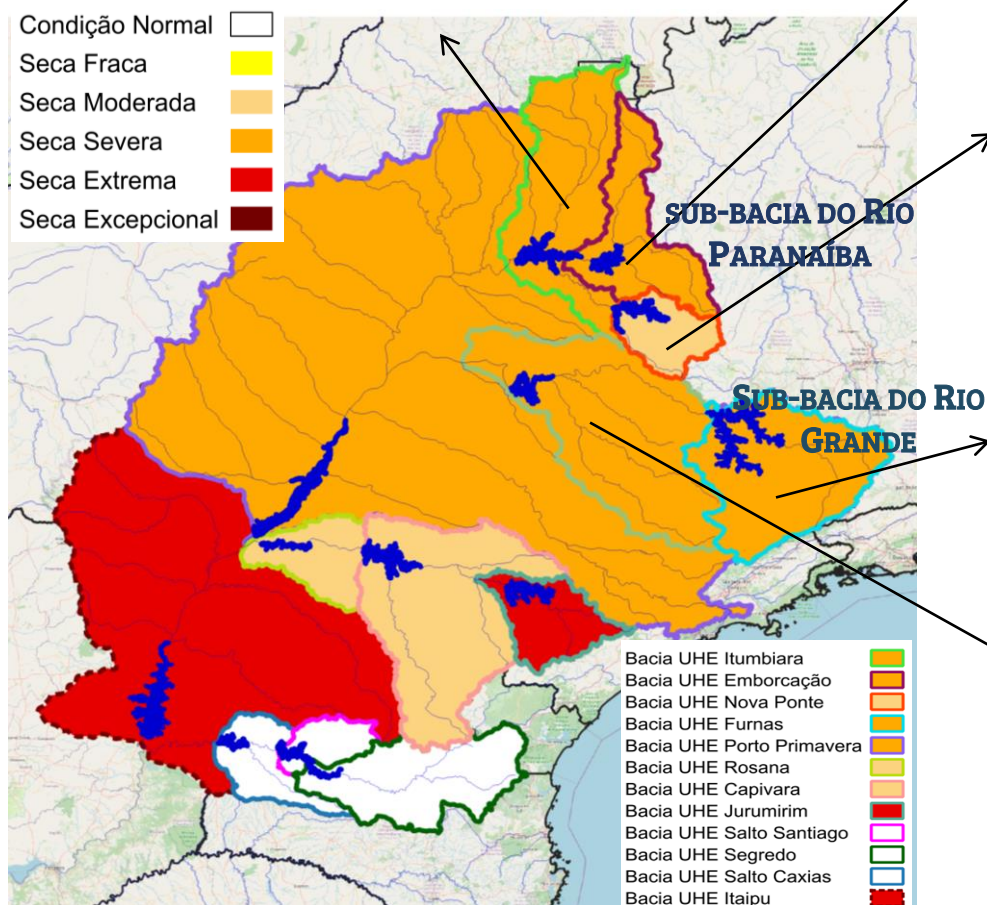
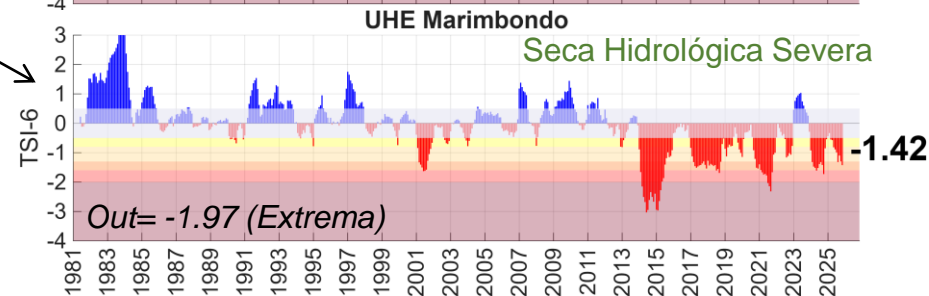
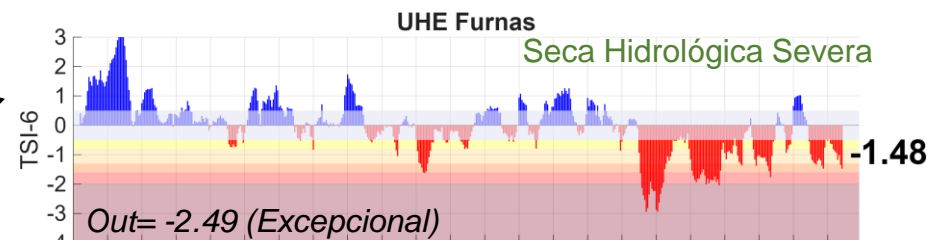
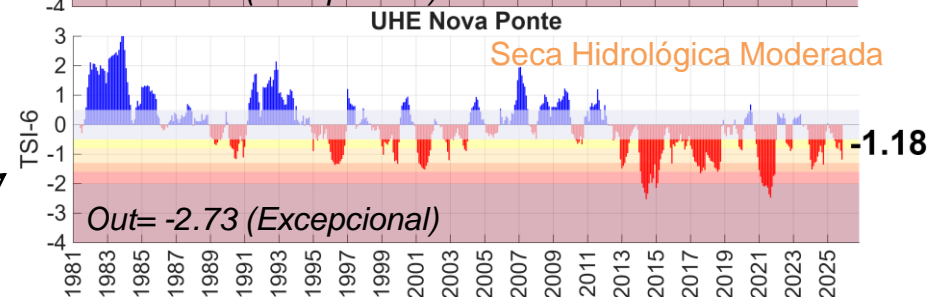
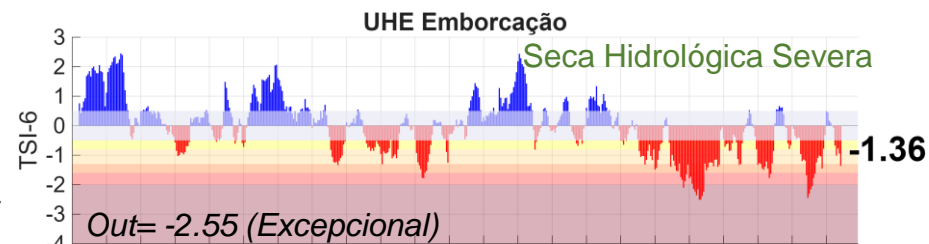
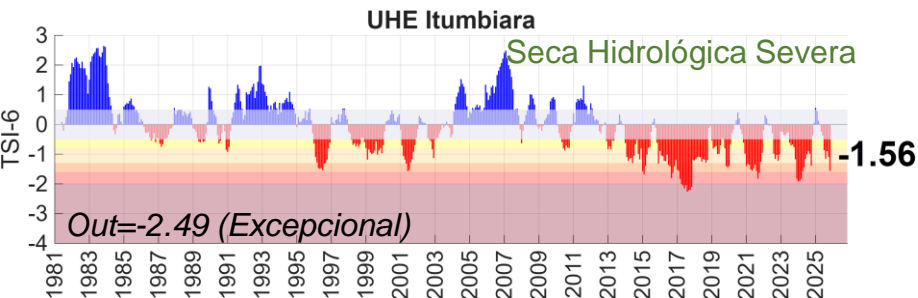
24/Nov/25: 336 m³/s (**53% da MLT**)

**Até 24/11/2025

BACIA DO RIO PARANÁ

Índice de Seca Bivariado (Chuva-Vazão) – TSI 6

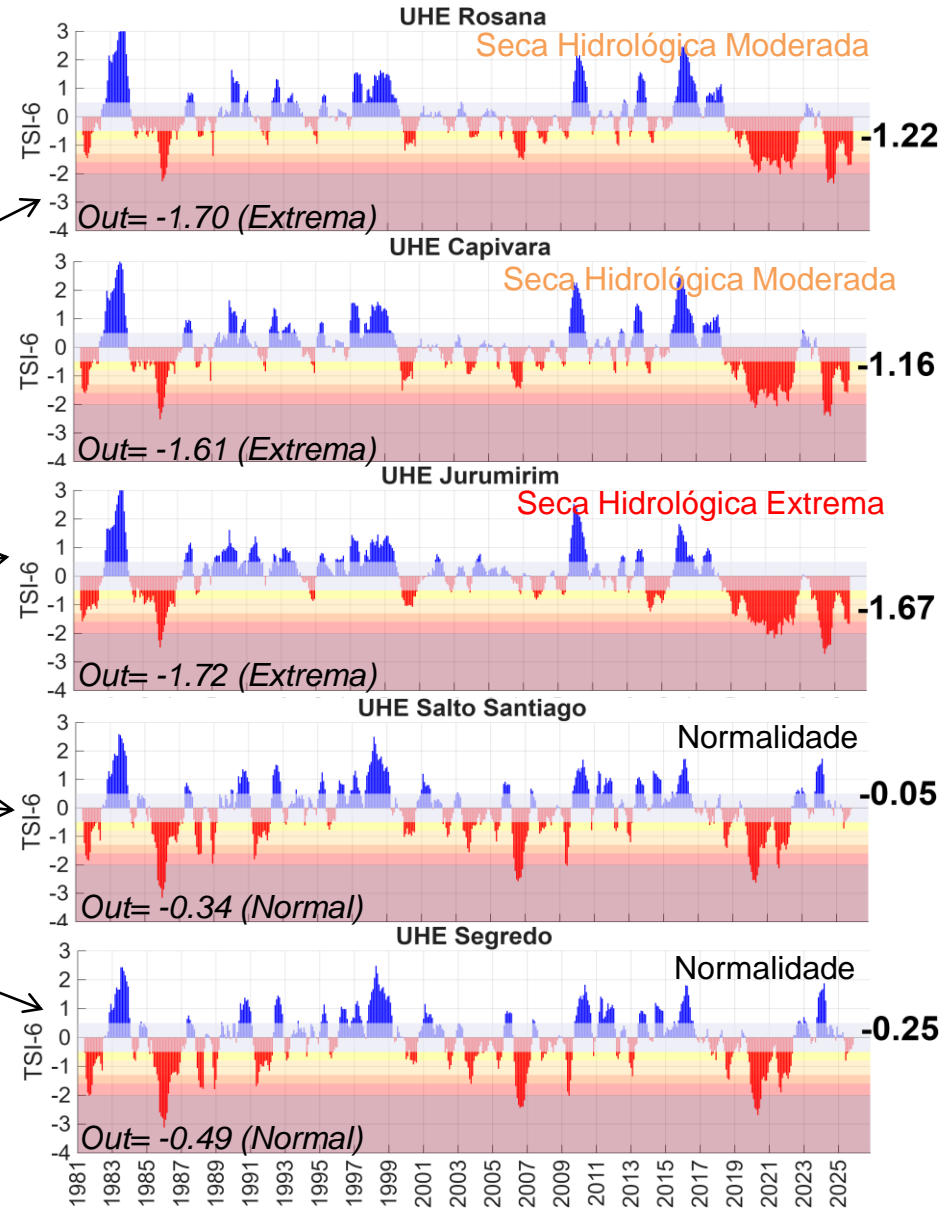
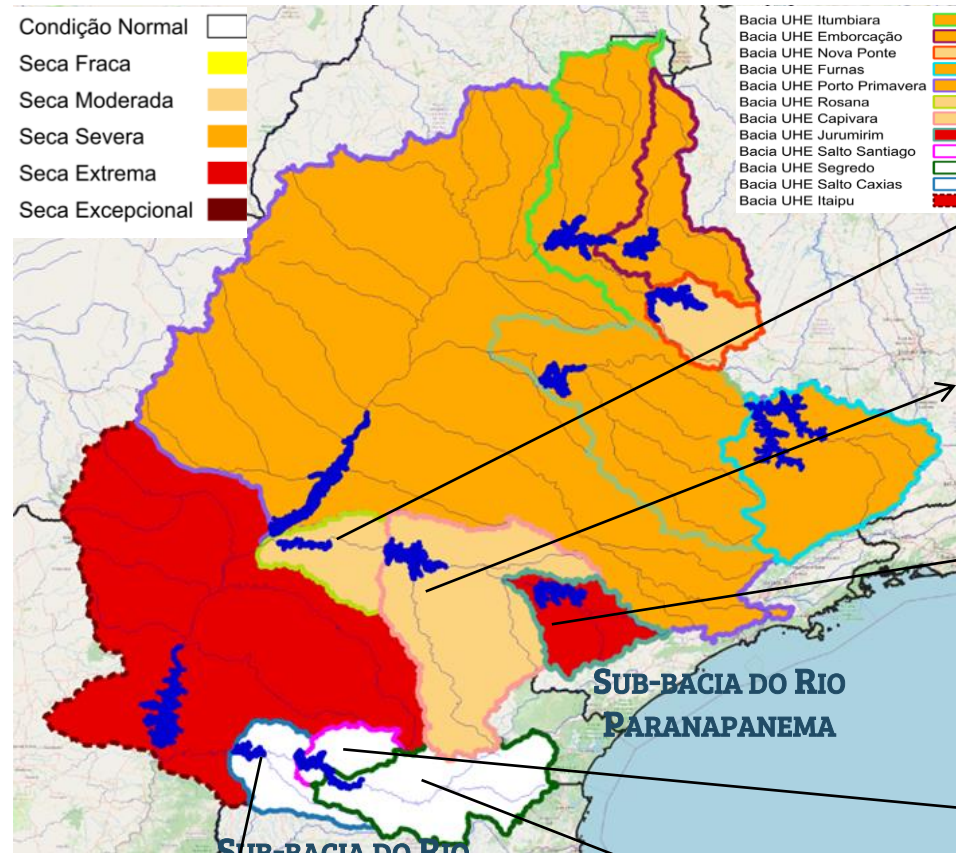
Novembro/2025



BACIA DO RIO PARANÁ

Novembro/2025

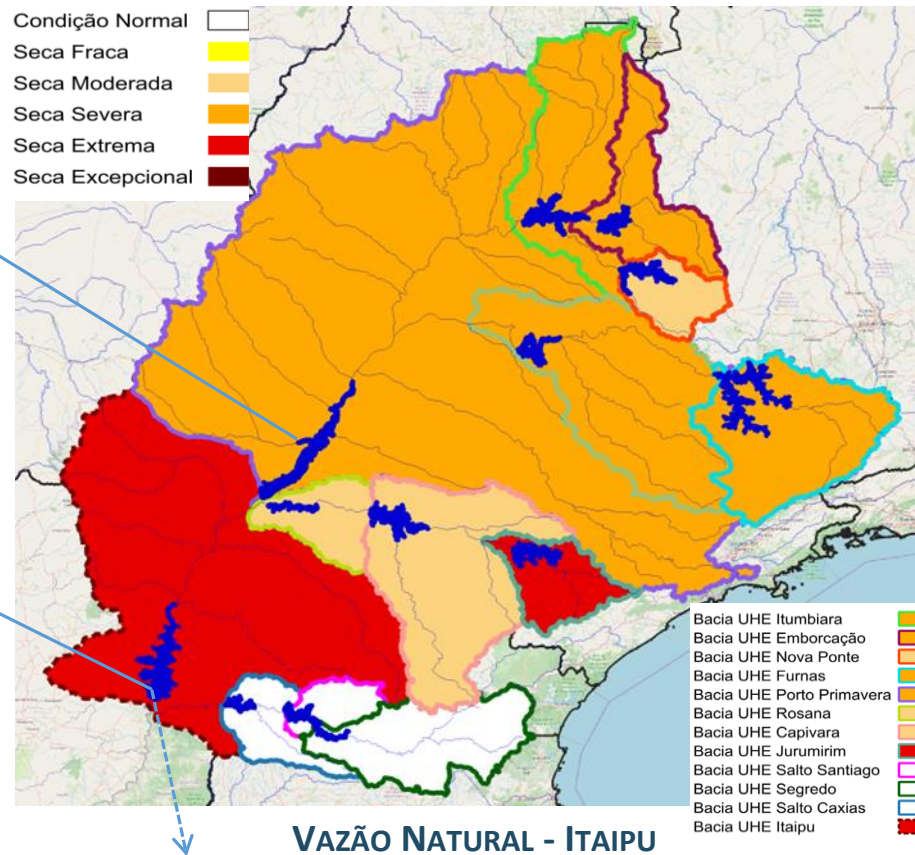
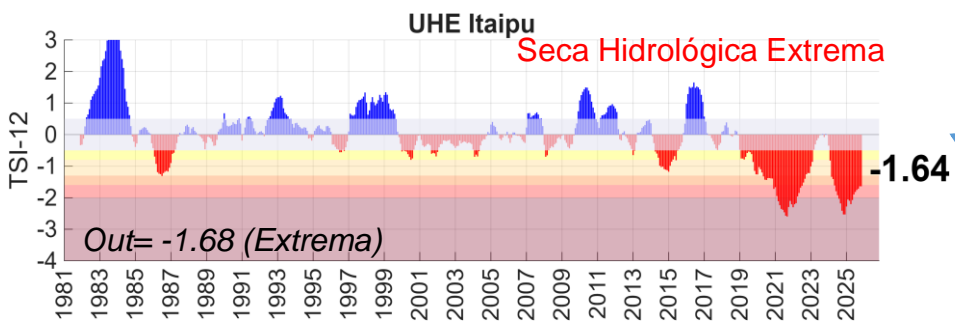
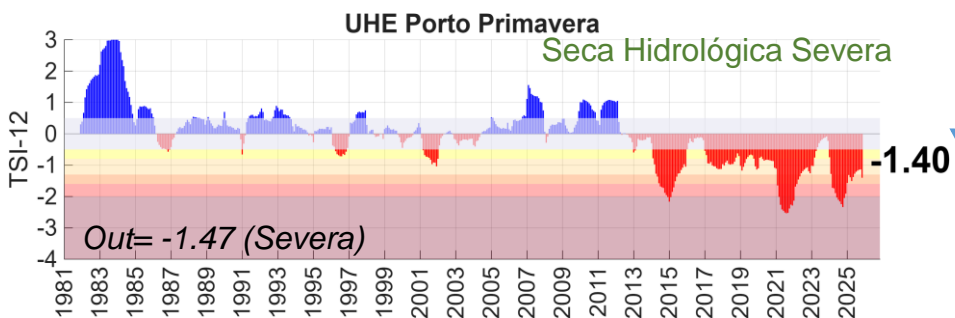
Índice de Seca Bivariado (Chuva-Vazão) – TSI 6



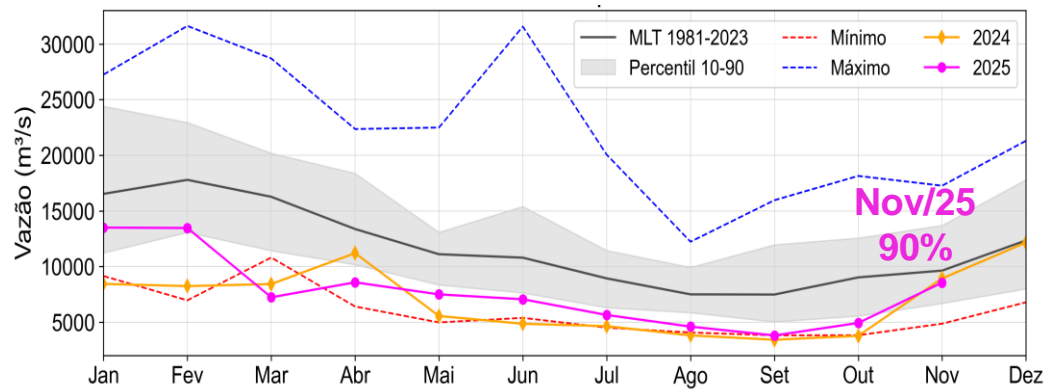
BACIA DO RIO PARANÁ

Novembro/2025

Índice de Seca Bivariado (Chuva-Vazão) – TSI 12



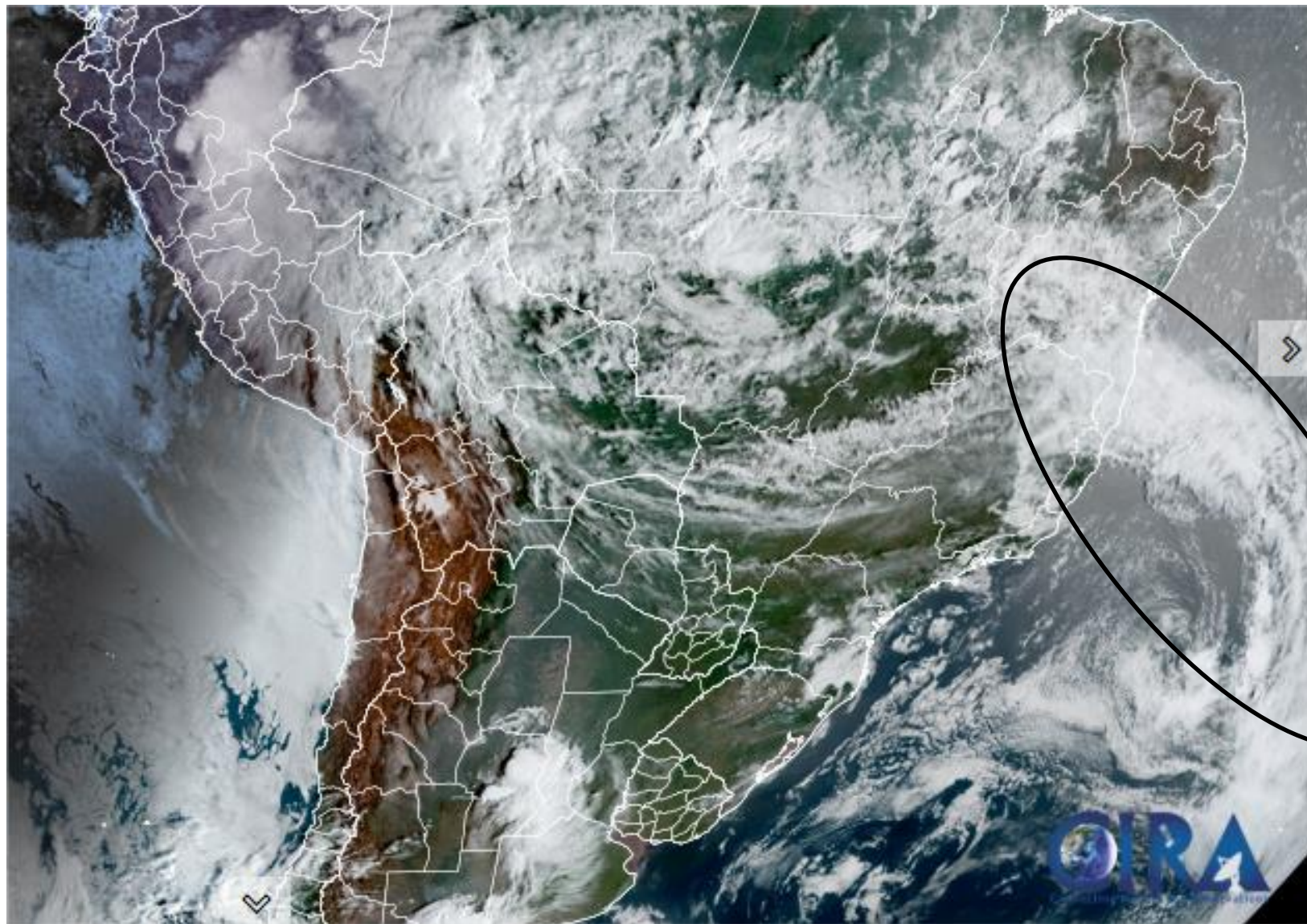
Série de dados = Jan/1981- Nov/2025



Fonte: CEMADEN/MCTI

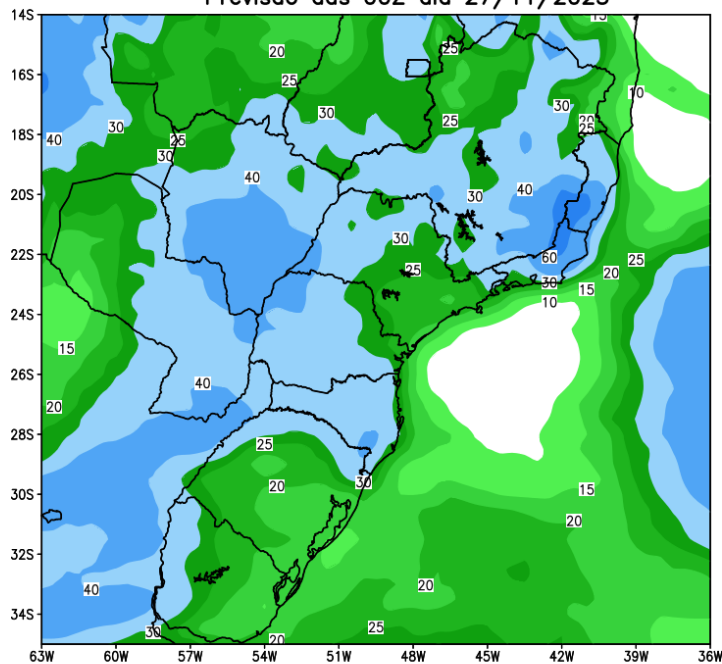
Dados: Precipitação (CHIRPS) e Vazão (ONS e ANA)

Situação meteorológica atual

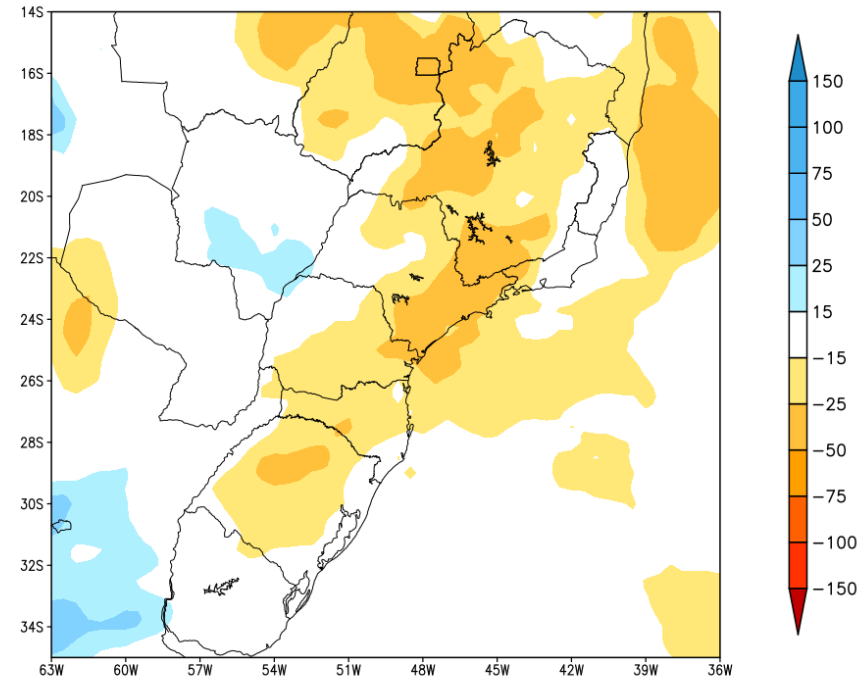


Previsão de chuva para os próximos 7 dias

GEFS / BRASIL_SUL
Precipitação acumulada 1aSem (mm)
Previsão das 00Z dia 27/11/2025



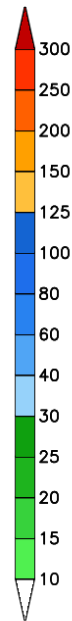
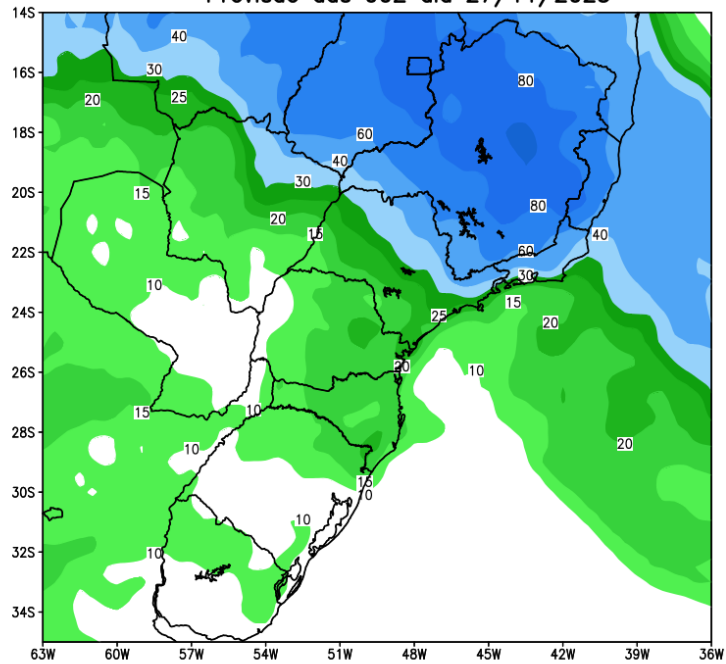
Anomalia de Precipitação BR SUL (mm)
Período: 2025112700 a 2025120400



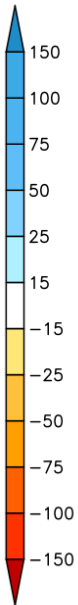
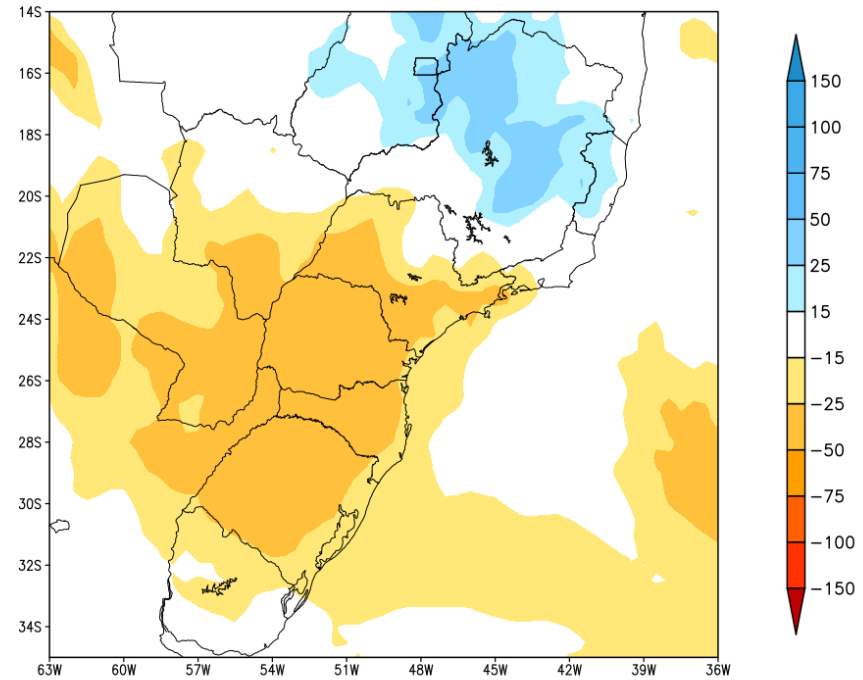
Fonte: GEFS/NOAA

Tendência para a 2ª Semana

GEFS / BRASIL_SUL
Precipitacao acumulada 2aSem (mm)
Previsao das 00Z dia 27/11/2025

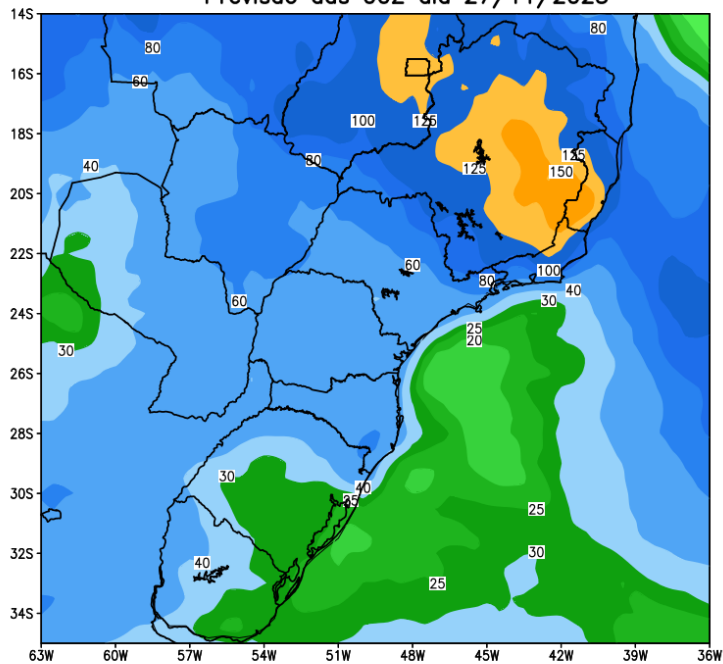


Anomalia de Precipitacao BR_SUL (mm)
Período: 2025120500 a 2025121100

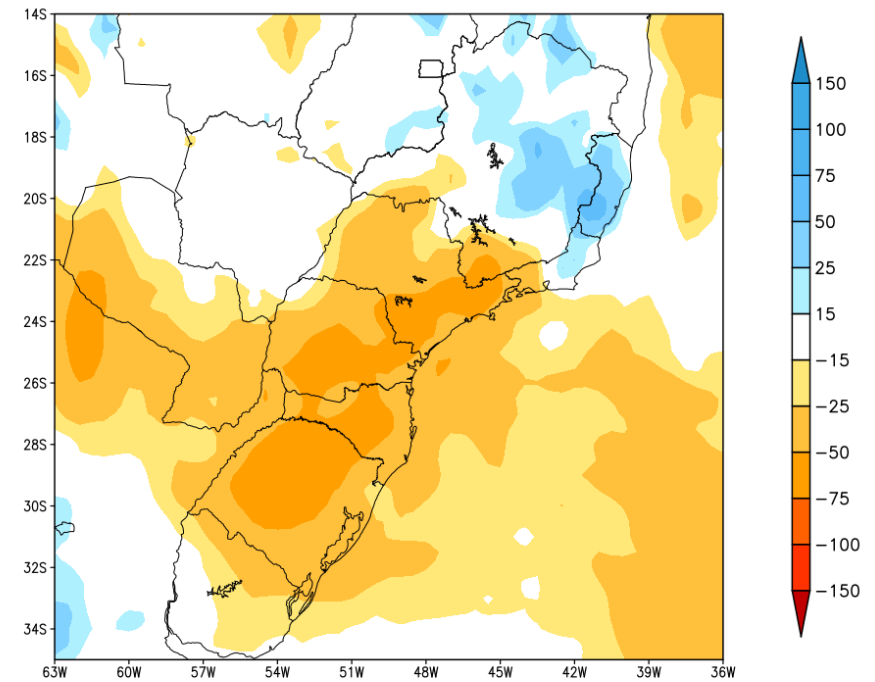


Acumulado para as duas próximas semanas

GEFS / BRASIL_SUL
Precipitacao acumulada 14 dias (mm)
Previsao das 00Z dia 27/11/2025

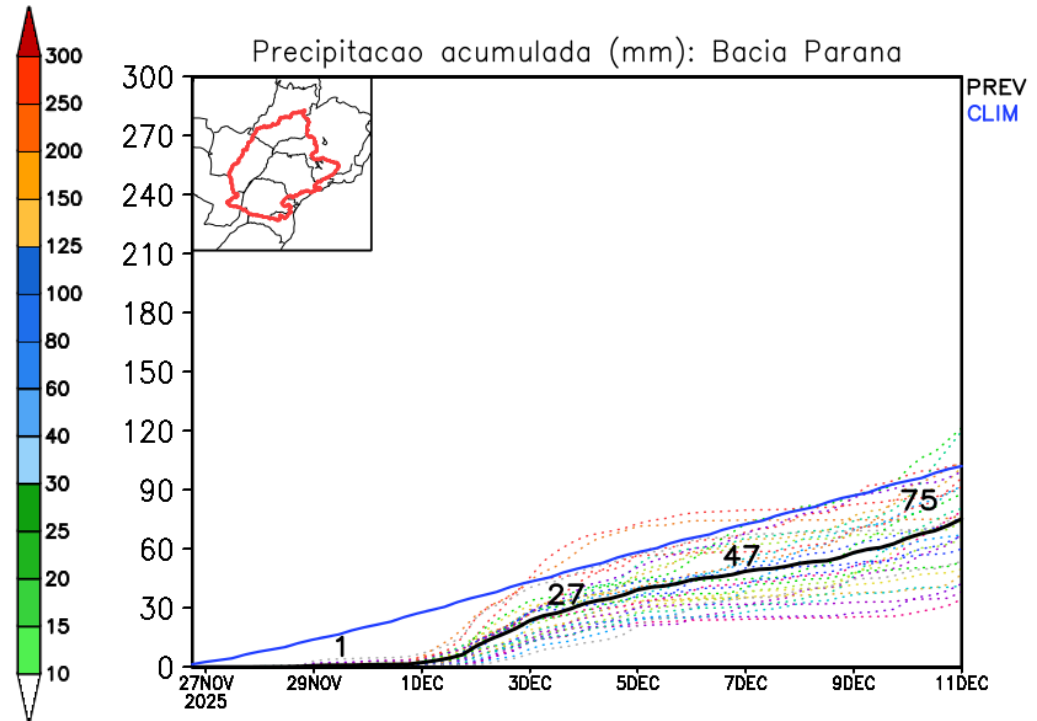
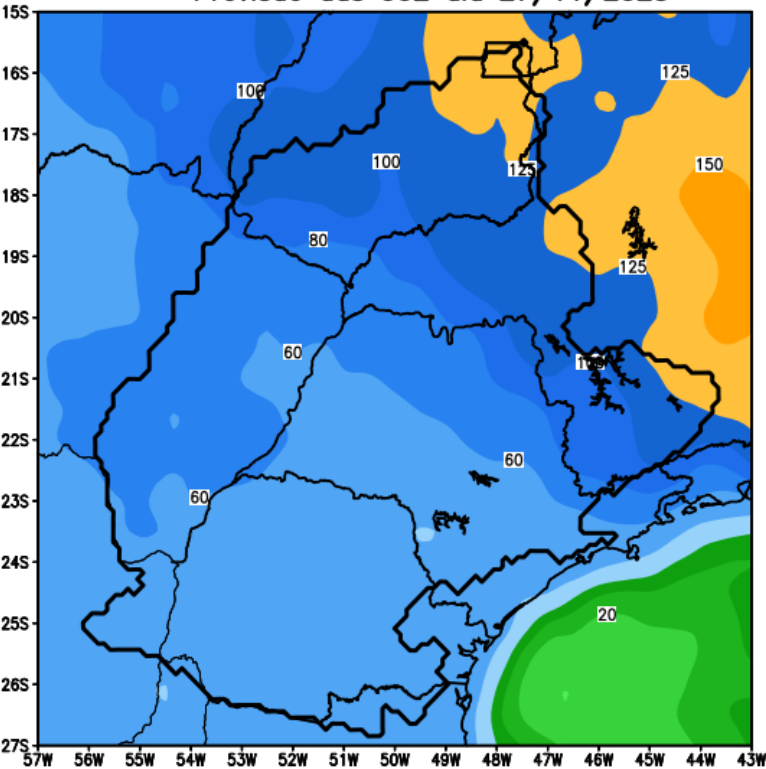


Anomalia de Precipitacao BR_SUL (mm)
Periodo: 2025112700 a 2025121100



Previsão de chuva para os próximos 14 dias

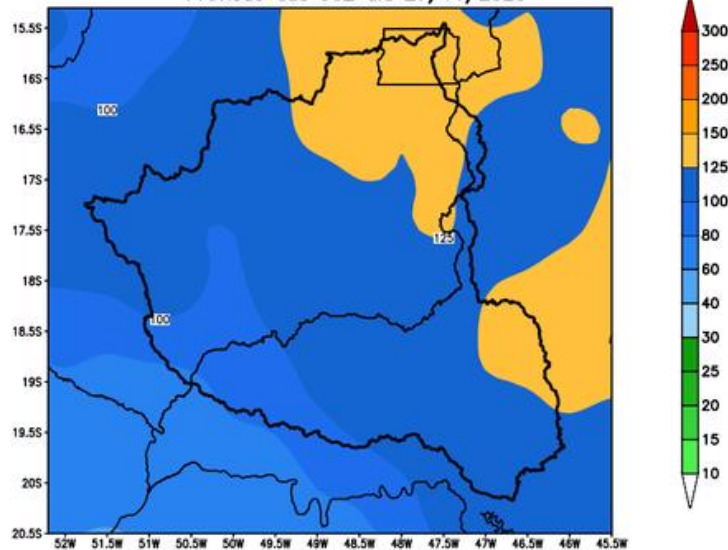
GEFS / Bacia do Parana
Precipitacao acumulada em 14 dias (mm)
Previsao das 00Z dia 27/11/2025



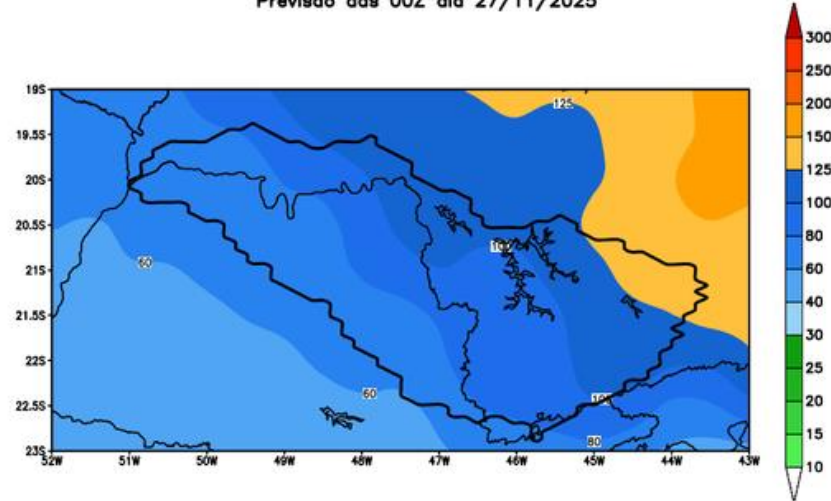
Fonte: GEFS/NOAA

Bacia do rios Paranaíba e Grande

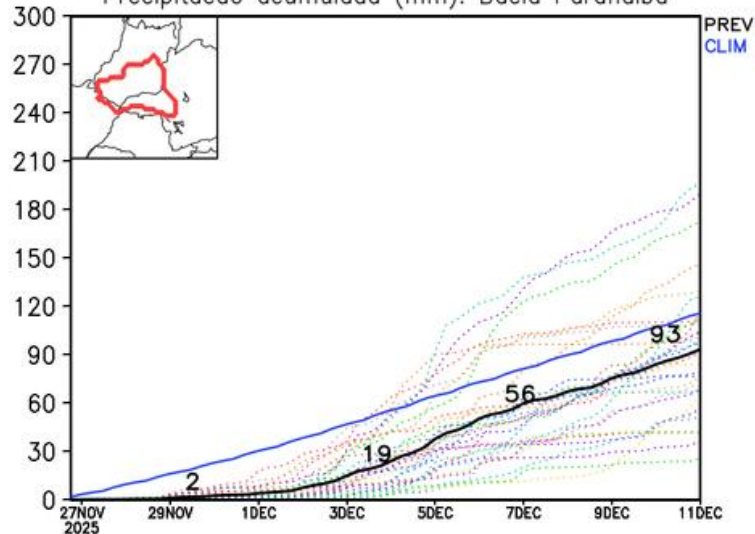
GEFS / Bacia do Rio Paranaíba
Precipitação acumulada em 14 dias (mm)
Previsão das 00Z dia 27/11/2025



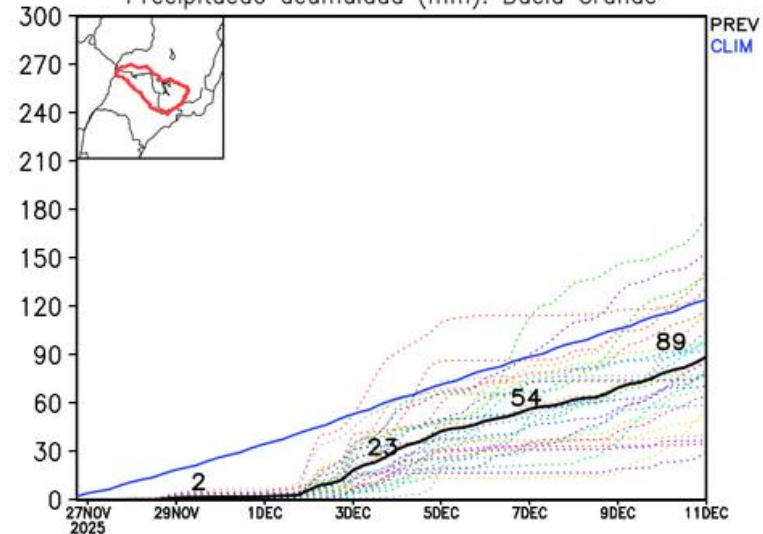
GEFS / Bacia do Rio Grande
Precipitação acumulada em 14 dias (mm)
Previsão das 00Z dia 27/11/2025



Precipitação acumulada (mm): Bacia Paranaíba

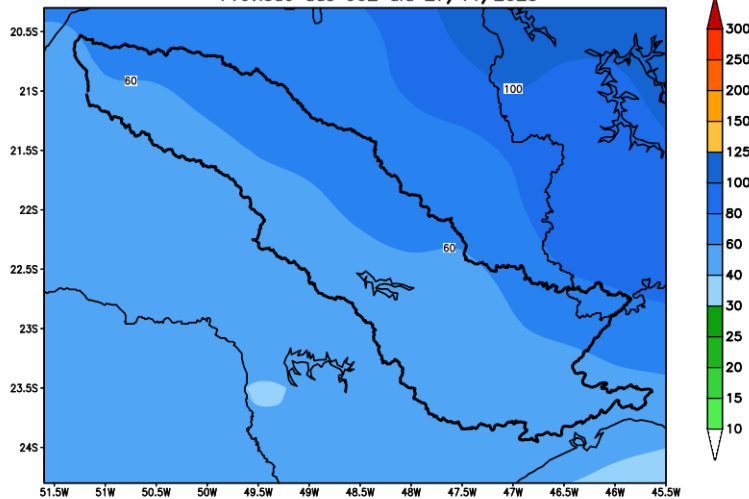


Precipitação acumulada (mm): Bacia Grande

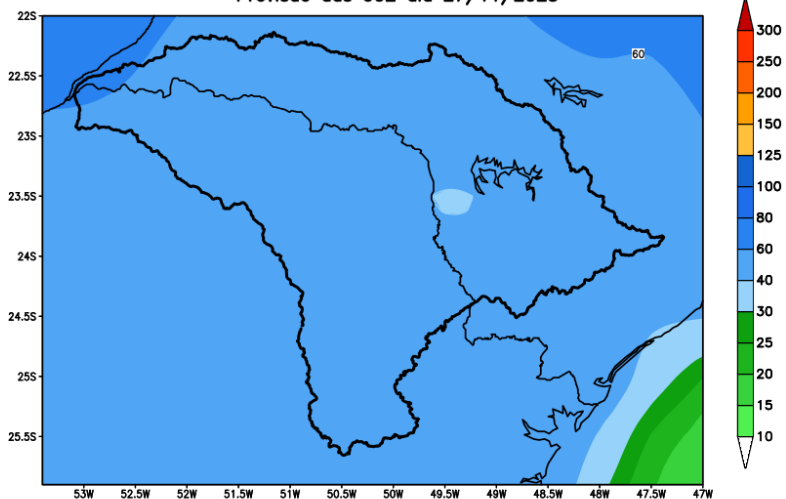


Bacia do rios Tietê e Paranapanema

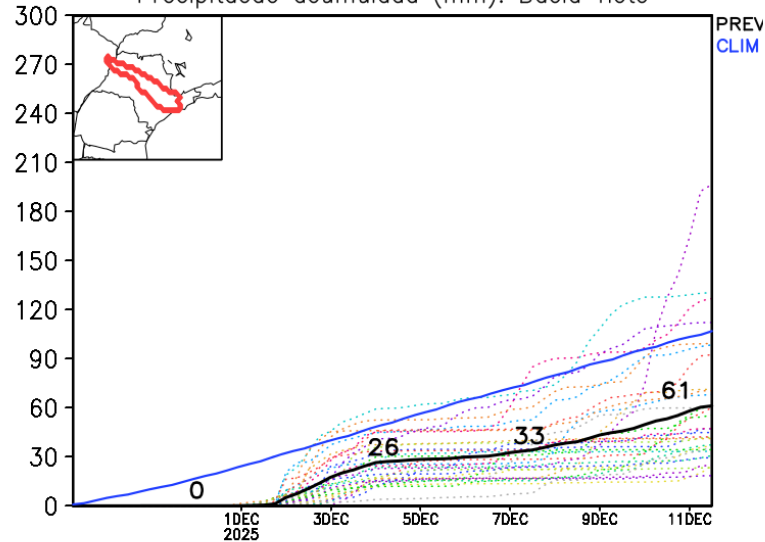
GEFS / Bacia do Rio Tiete
Precipitacao acumulada em 14 dias (mm)
Previsao das 00Z dia 27/11/2025



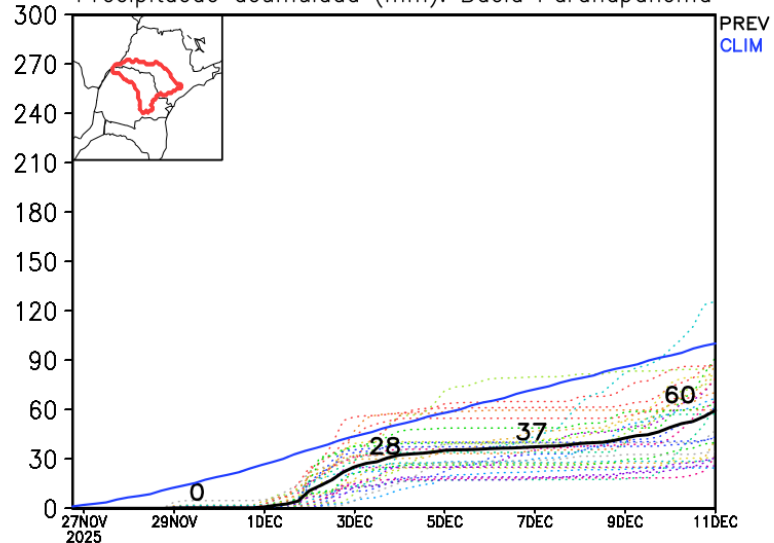
GEFS / Bacia do Rio Paranapanema
Precipitacao acumulada em 14 dias (mm)
Previsao das 00Z dia 27/11/2025



Precipitacao acumulada (mm): Bacia Tiete

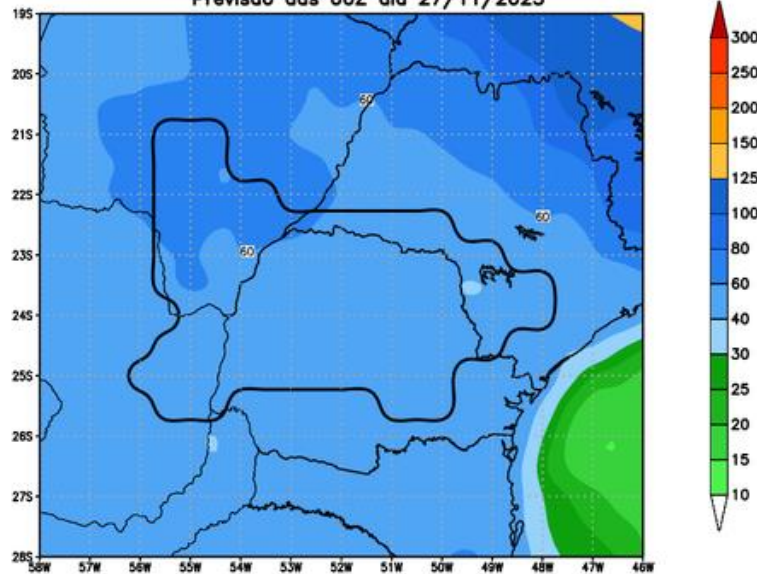


Precipitacao acumulada (mm): Bacia Paranapanema

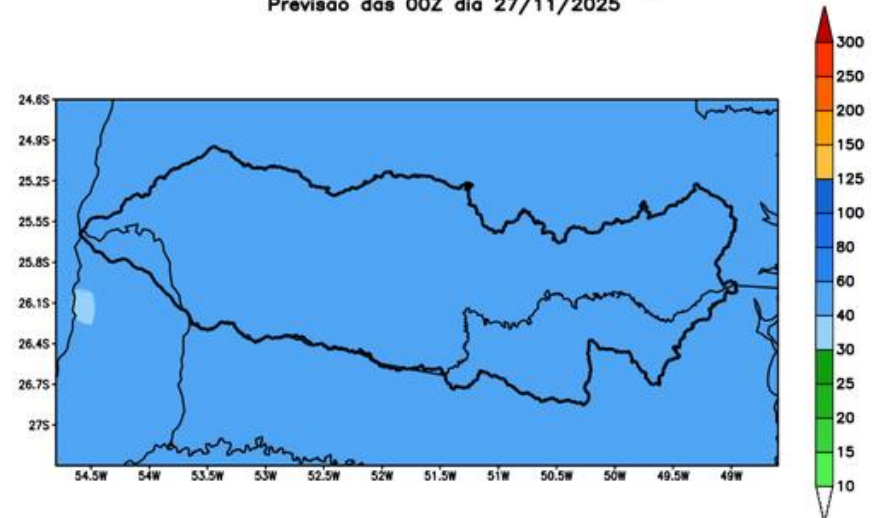


Bacia do Itaipu e Iguaçu

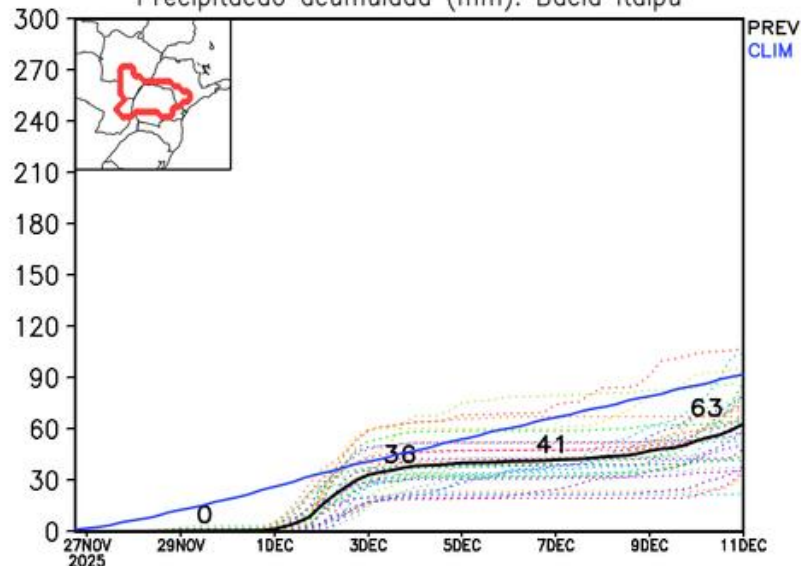
GEFS / Itaipu
Precipitação acumulada em 14 dias (mm)
Previsão das 00Z dia 27/11/2025



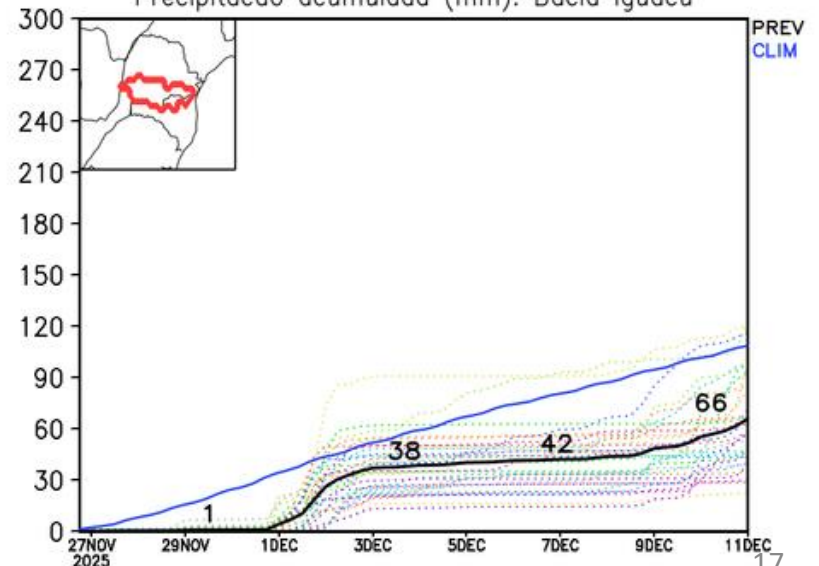
GEFS / Bacia do Rio Iguaçu
Precipitação acumulada em 14 dias (mm)
Previsão das 00Z dia 27/11/2025



Precipitação acumulada (mm): Bacia Itaipu

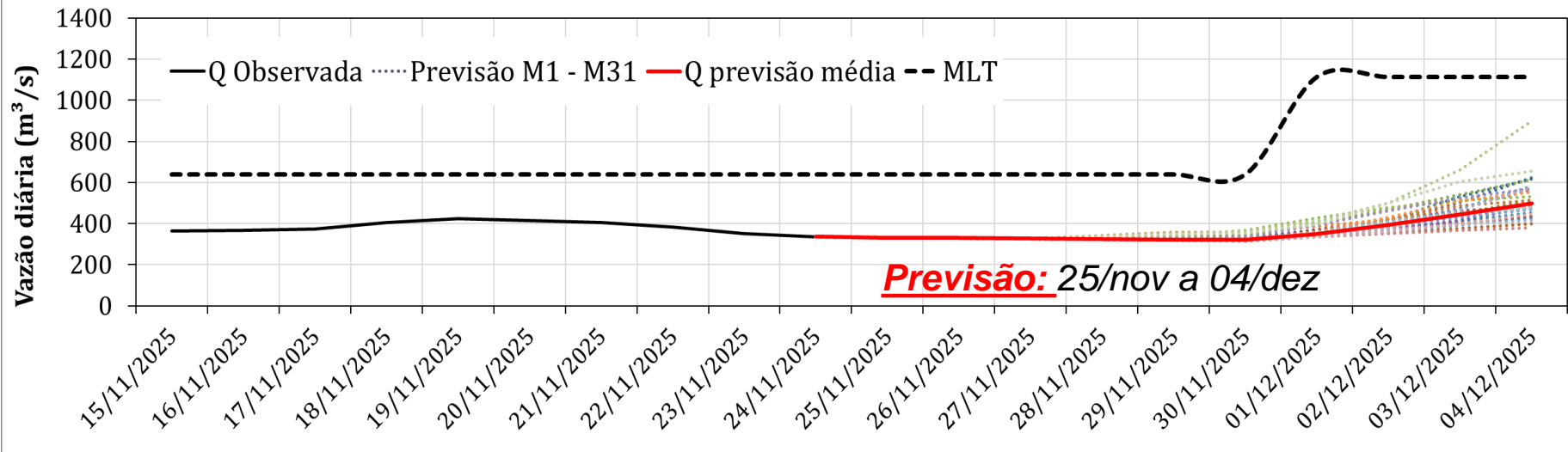
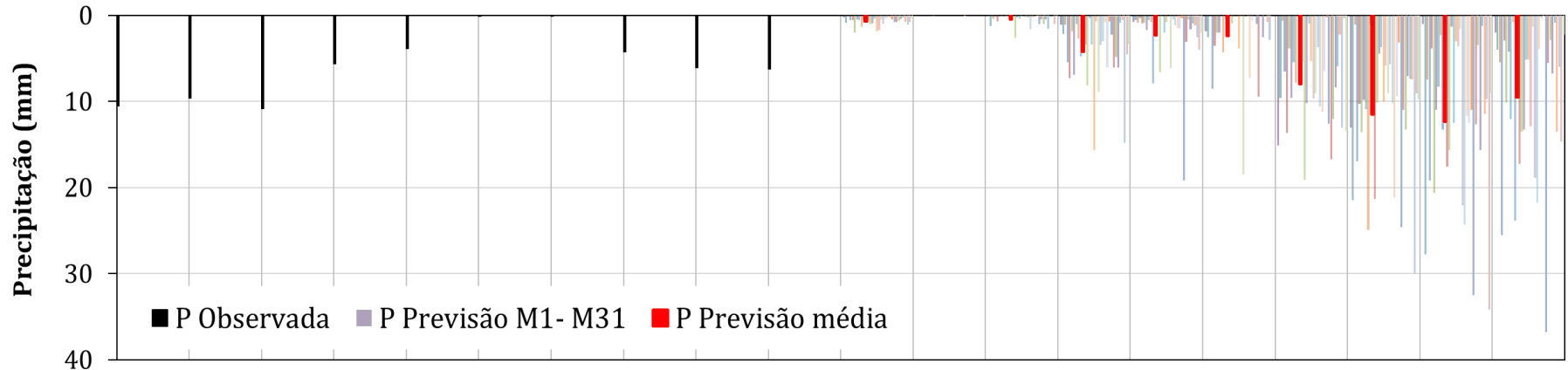


Precipitação acumulada (mm): Bacia Iguaçu

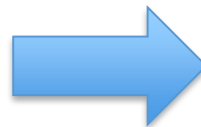


Furnas: Previsão de Vazão (modelo hidrológico PDM-CEMADEN)

Vazão Natural e Precipitação Diárias para Furnas
15/Novembro a 04/Dezembro/2025



Previsão média para os
próximos 10 dias: **364 m³/s**



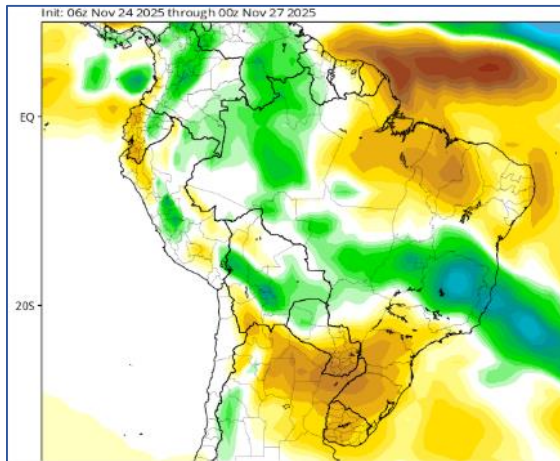
57% MLT Novembro
33% MLT Dezembro

Anomalia de Chuva

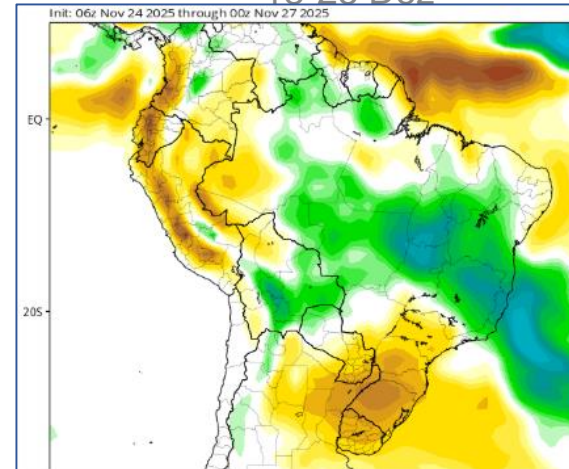
3a e 4a semanas

CFS/NOAA

11-18 Dez

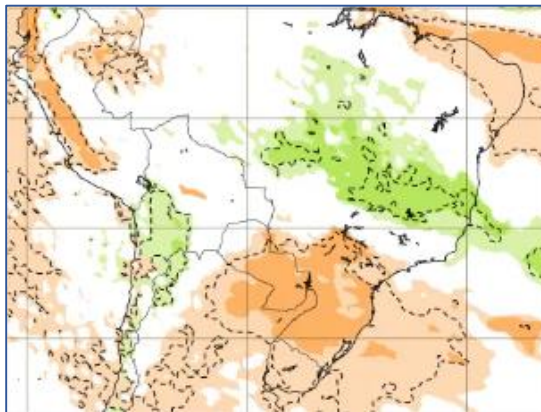


18-25 Dez

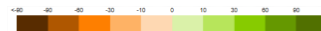
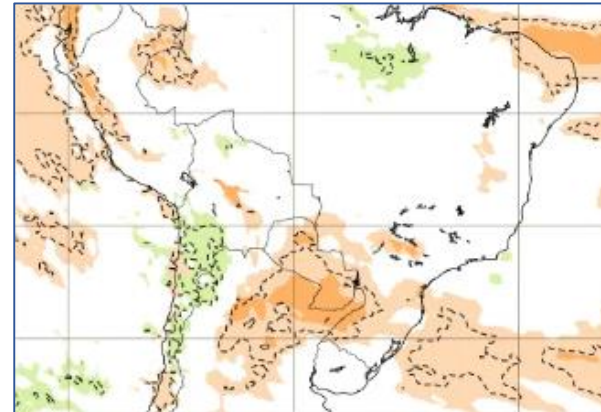


ECMWF

15-22 Dez

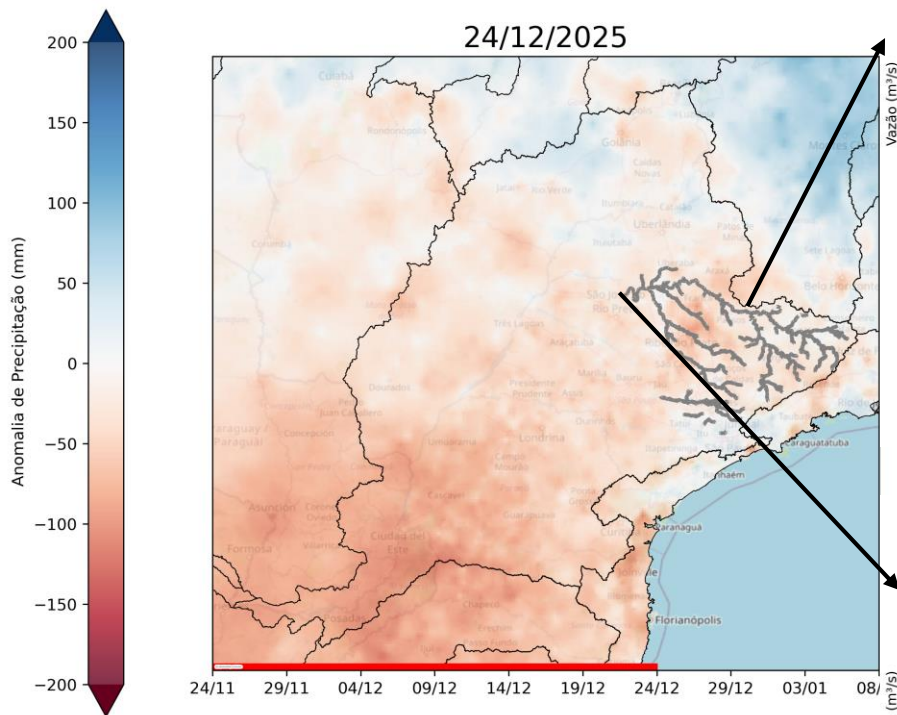


22-29 Dez

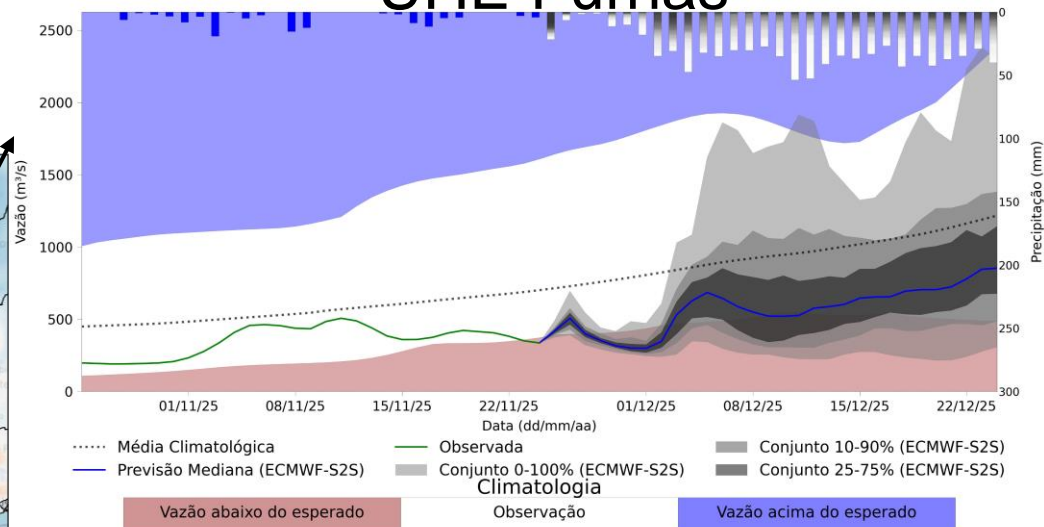


Previsão de vazão natural na Bacia do Rio Grande

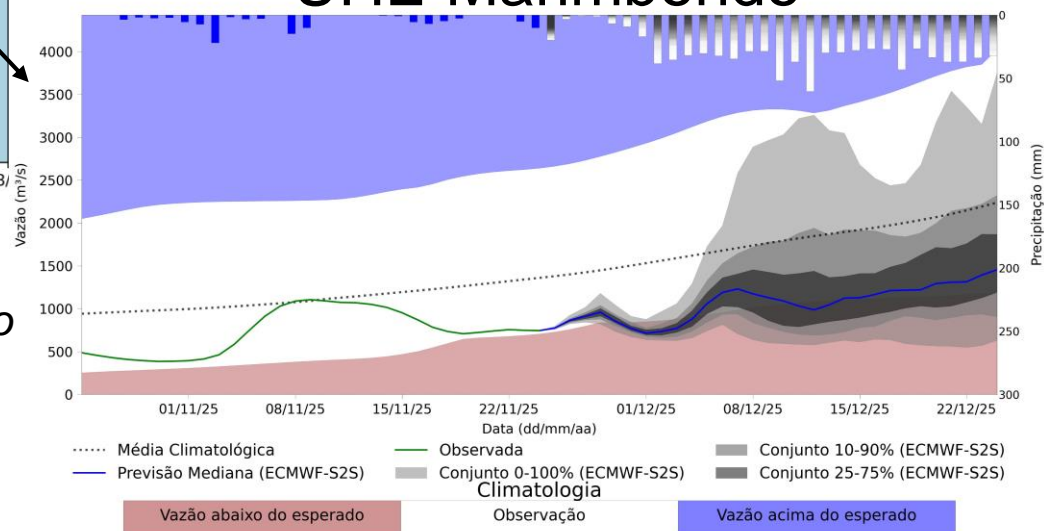
PREVISÃO: 24/11/25 a 24/12/25



UHE Furnas



UHE Marimbondo

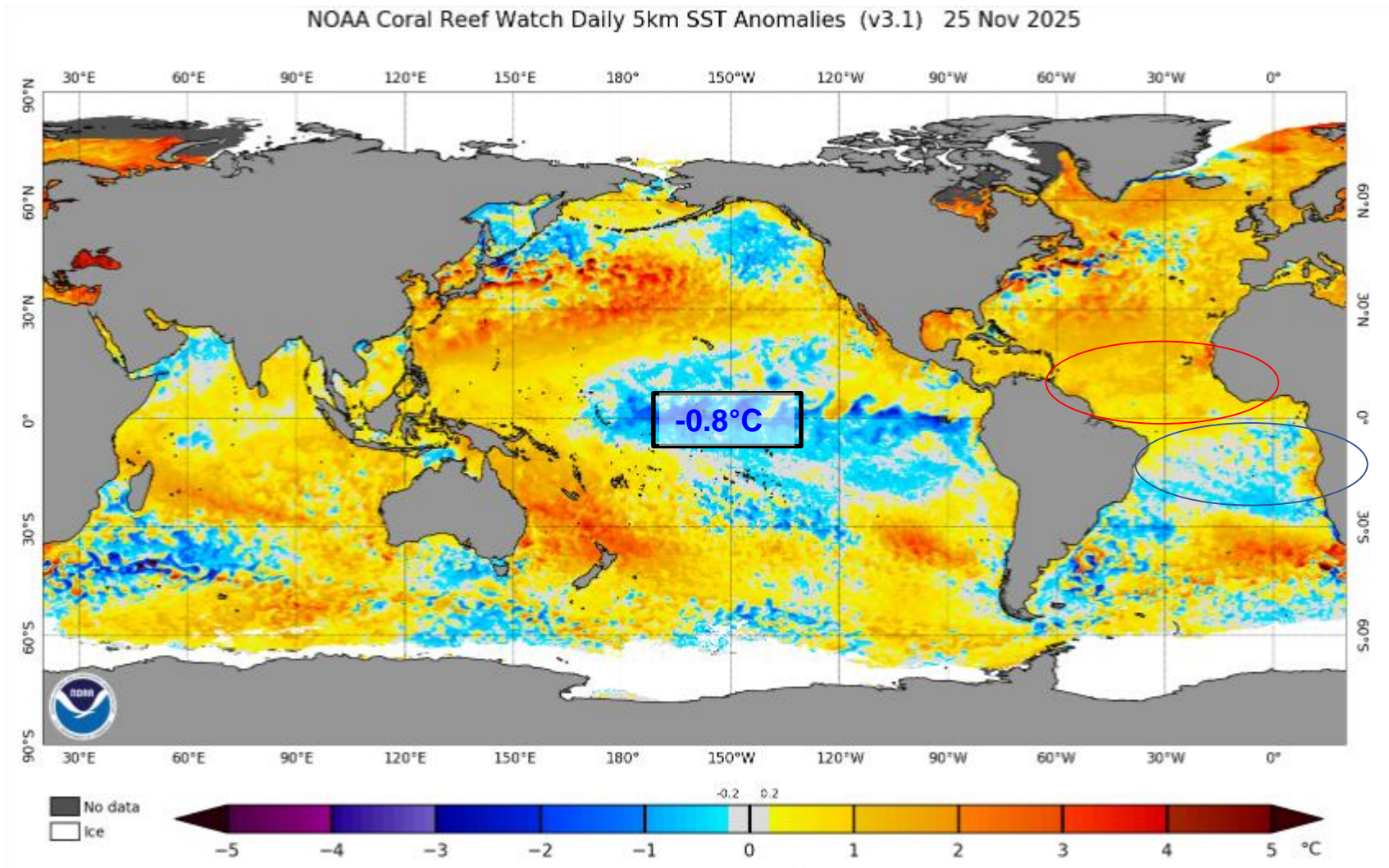


Fonte: Meteorologia (INMET/MERGE); Vazão (ANA/ONS)

MLT: 1993-2024

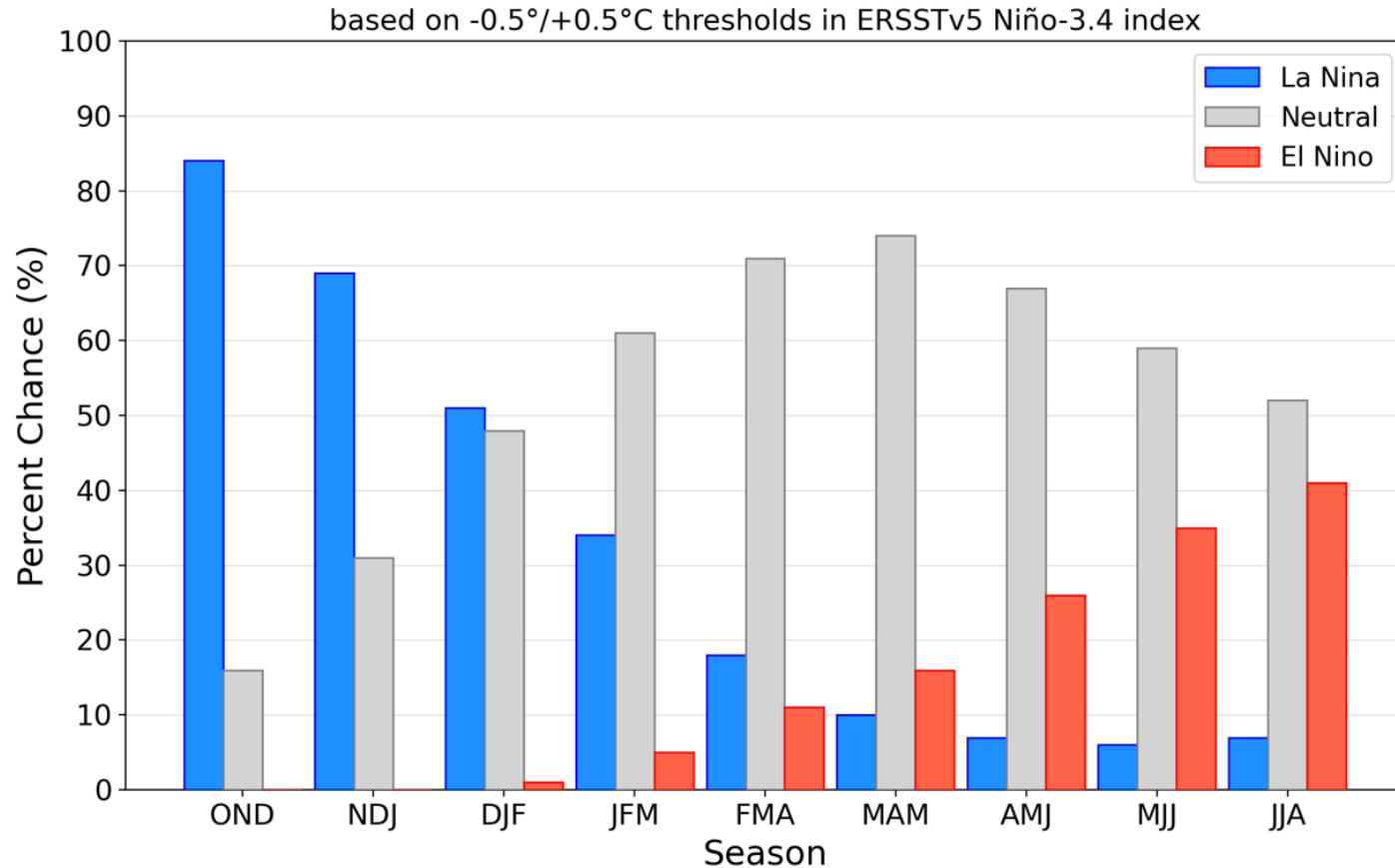
Previsão Meteorológica: ECMWF-S2S

Status Atual: La Niña



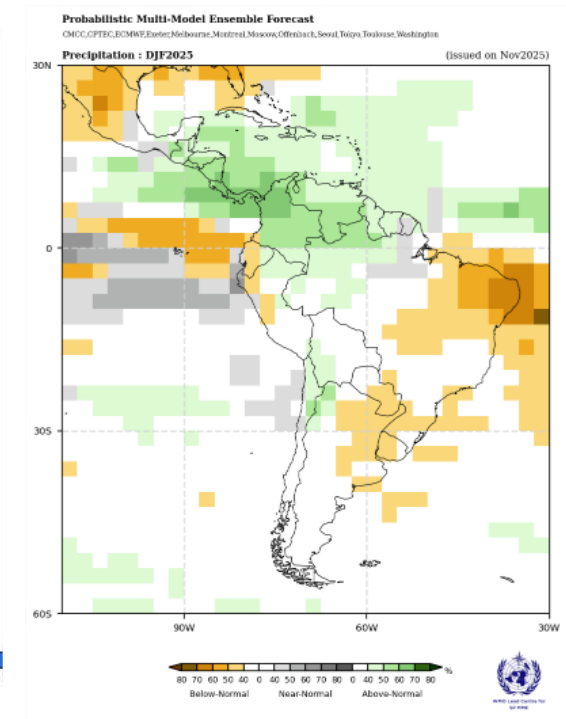
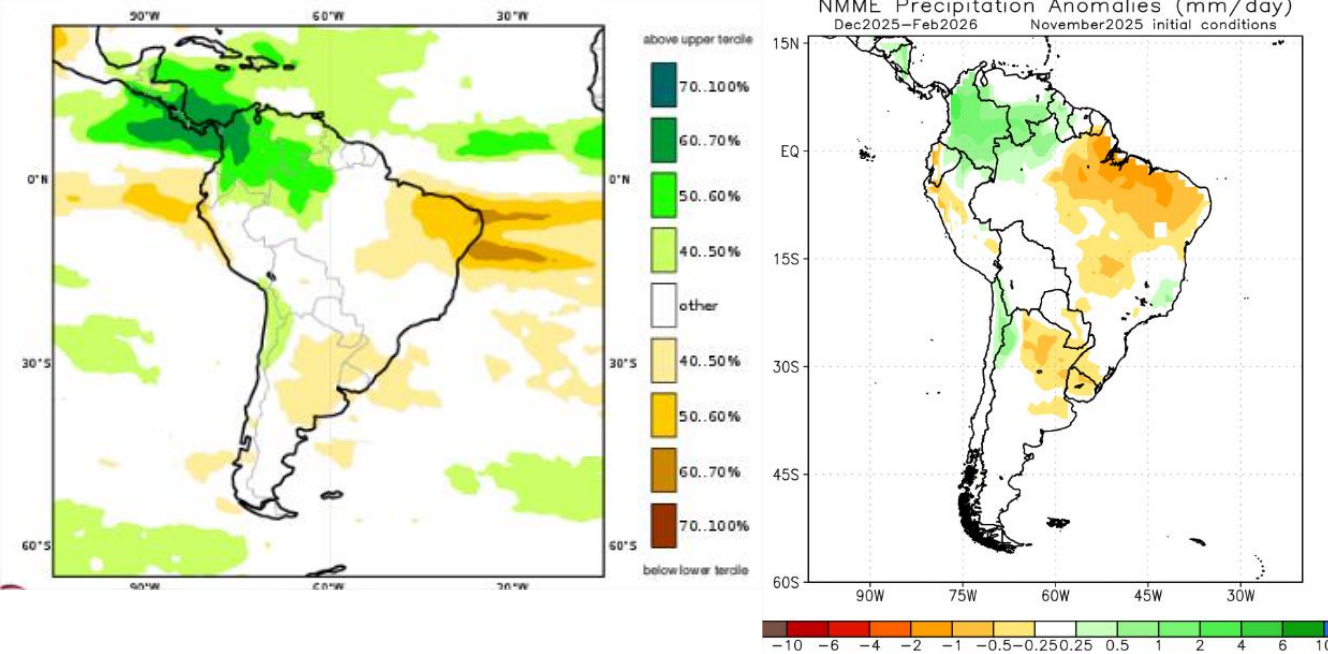
Previsão do “ENSO”

Official NOAA CPC ENSO Probabilities (issued November 2025)



Previsão Sazonal de Chuva Multi-Modelo

Dezembro-Janeiro-Fevereiro



Modelos Europeus

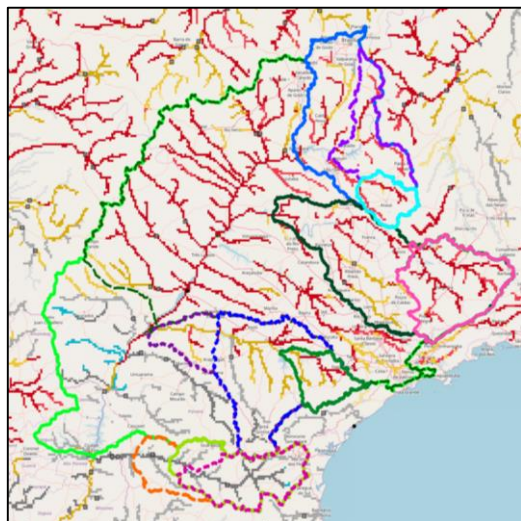
Modelos Norte Americanos

Modelos da WMO

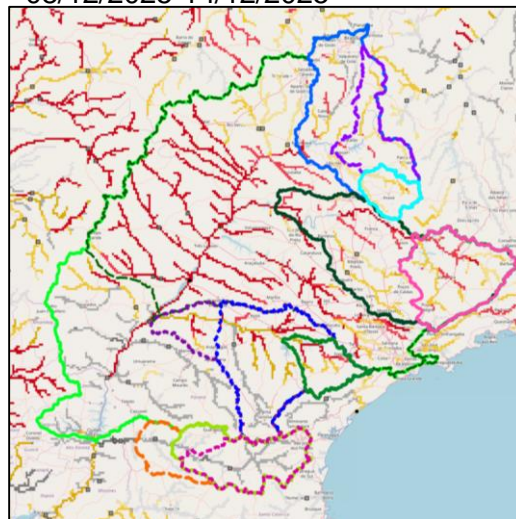
Previsão Sub-sazonal (45 dias) para a Bacia do Rio Paraná (Sistema Global de Previsão de Vazão - GloFAS)

Previsão: 26/11/2025 – 05/01/2026

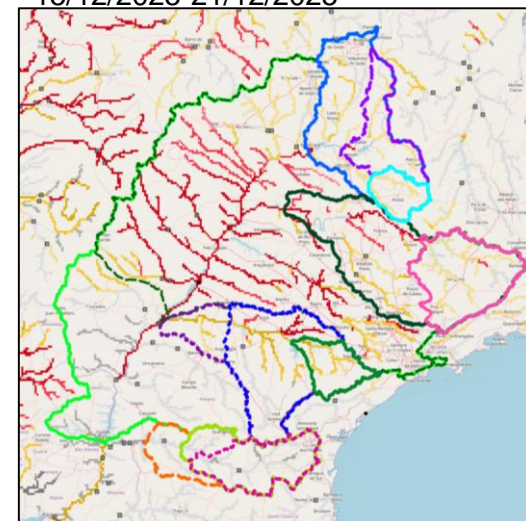
01/12/2025-07/12/2025



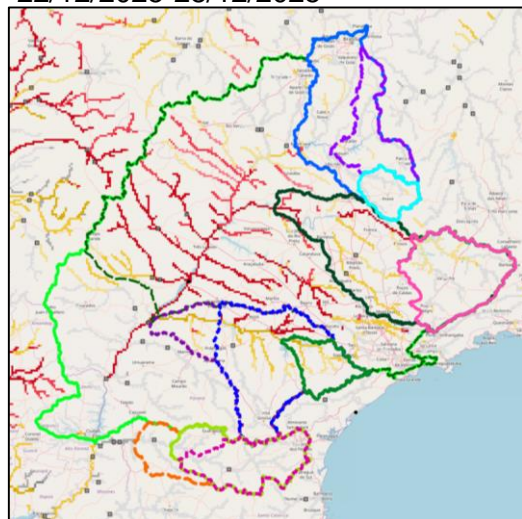
08/12/2025-14/12/2025



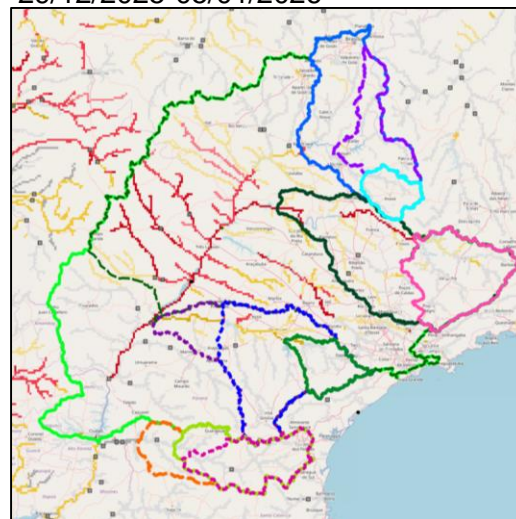
15/12/2025-21/12/2025



22/12/2025-28/12/2025



29/12/2025-05/01/2026



- Bacia UHE Jurumirim
- Bacia UHE Nova Ponte
- Bacia UHE Furnas
- Bacia UHE Segredo
- Bacia UHE Marimbondo
- Bacia UHE Emborcação
- Bacia UHE Salto Santiago
- Bacia UHE Capivara
- Bacia UHE Salto Caxias
- Bacia UHE Rosana
- Bacia UHE Itumbiara
- Bacia UHE Porto Primavera
- Bacia UHE Itaipu

Categoria de anomalia de vazões (percentil)	Categoria de incerteza		
	Baixa (0-10)	Média (10-20)	Alta (<20)
Muito abaixo (1-10)			
Abaixo (10-25)			
Média (25-75)			
Acima (75-90)			
Muito acima (90-100)			

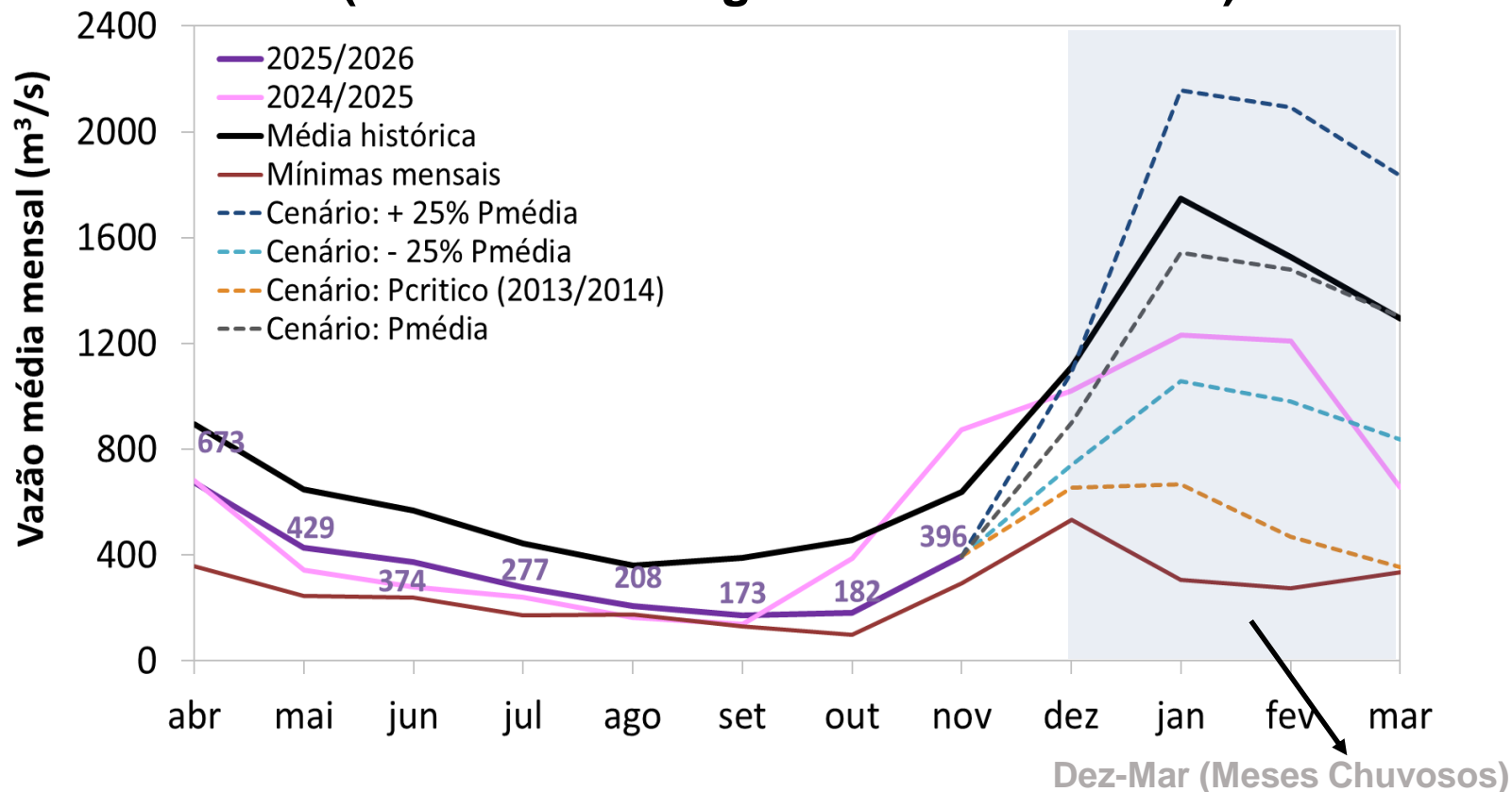
Fonte: Previsão Meteorológica: ECMWF

Previsão de vazão: Lisflood/GloFAS Forecast

<https://www.globalfloods.eu/glofas-forecasting/>



Furnas: Projeção de Vazão (modelo hidrológico PDM-CEMADEN)



MLT: 1421 m^3/s

Vazão	% MLT
1794 m^3/s	126%
1307 m^3/s	92%
904 m^3/s	64%
536 m^3/s	38%

2013/2014
(49% MLT)