



CEMADEN

**Centro Nacional de Monitoramento e
Alertas de Desastres Naturais**

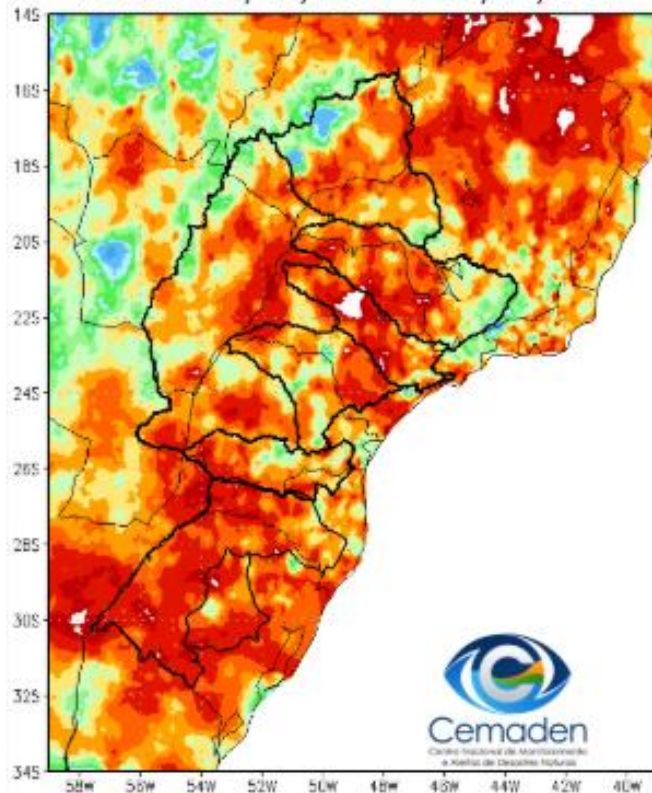
Monitoramento e Previsões para a Bacia do rio Paraná

27 de março de 2025

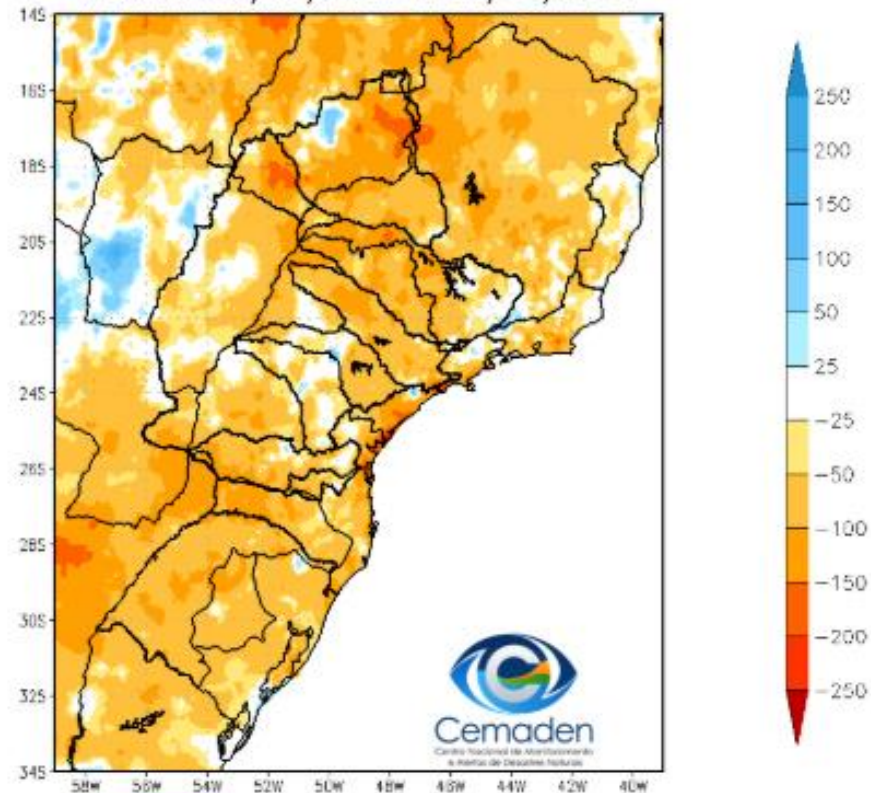


Precipitação acumulada nos últimos 30 dias

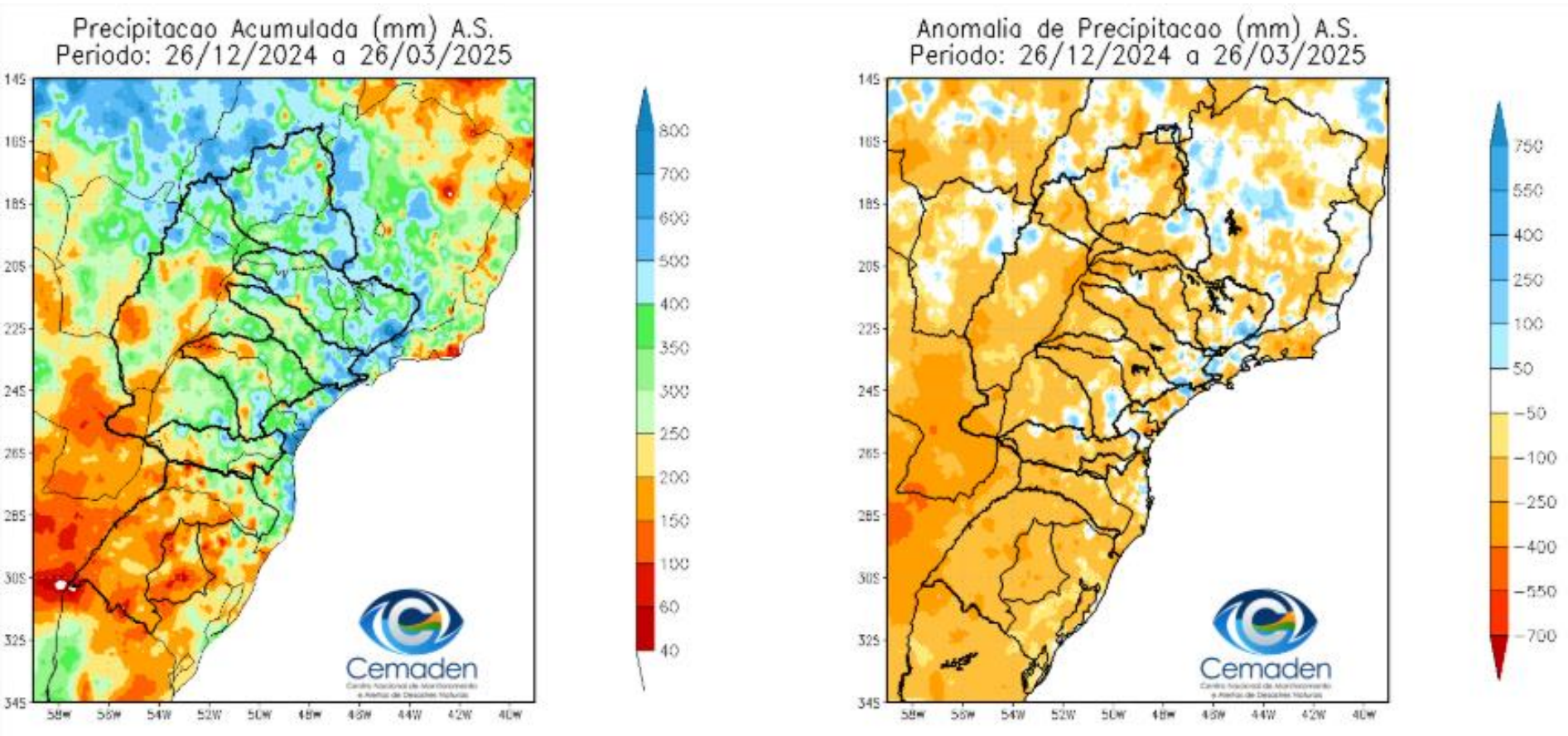
Precipitacao Acumulada (mm) A.S.
Período: 24/02/2025 a 26/03/2025



Anomalia de Precipitacao (mm) A.S.
Período: 24/02/2025 a 26/03/2025



Precipitação acumulada nos últimos 90 dias

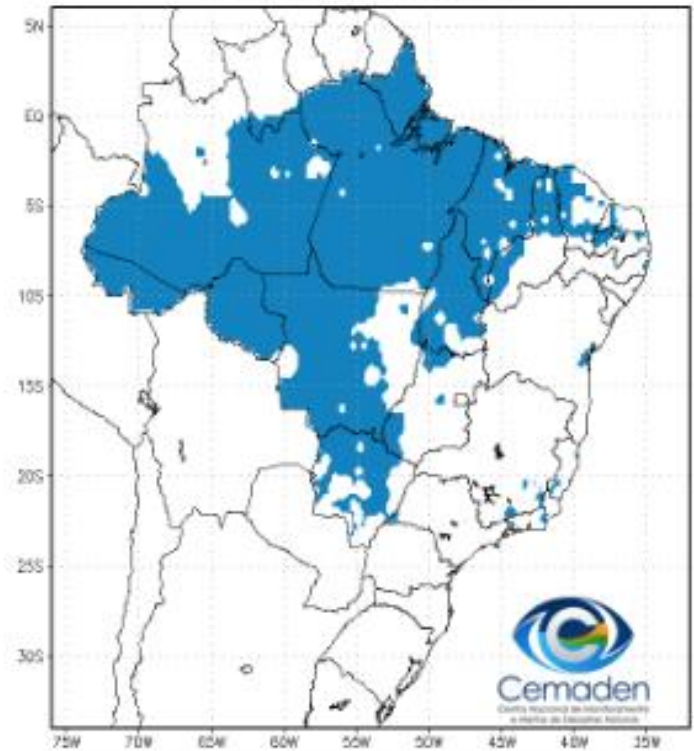


Situação da Estação Chuvosa

Climatologia da Precipitação (1999–2024)
Inferior 2 mm/dia por 4 de 5 dias Período: 26/03

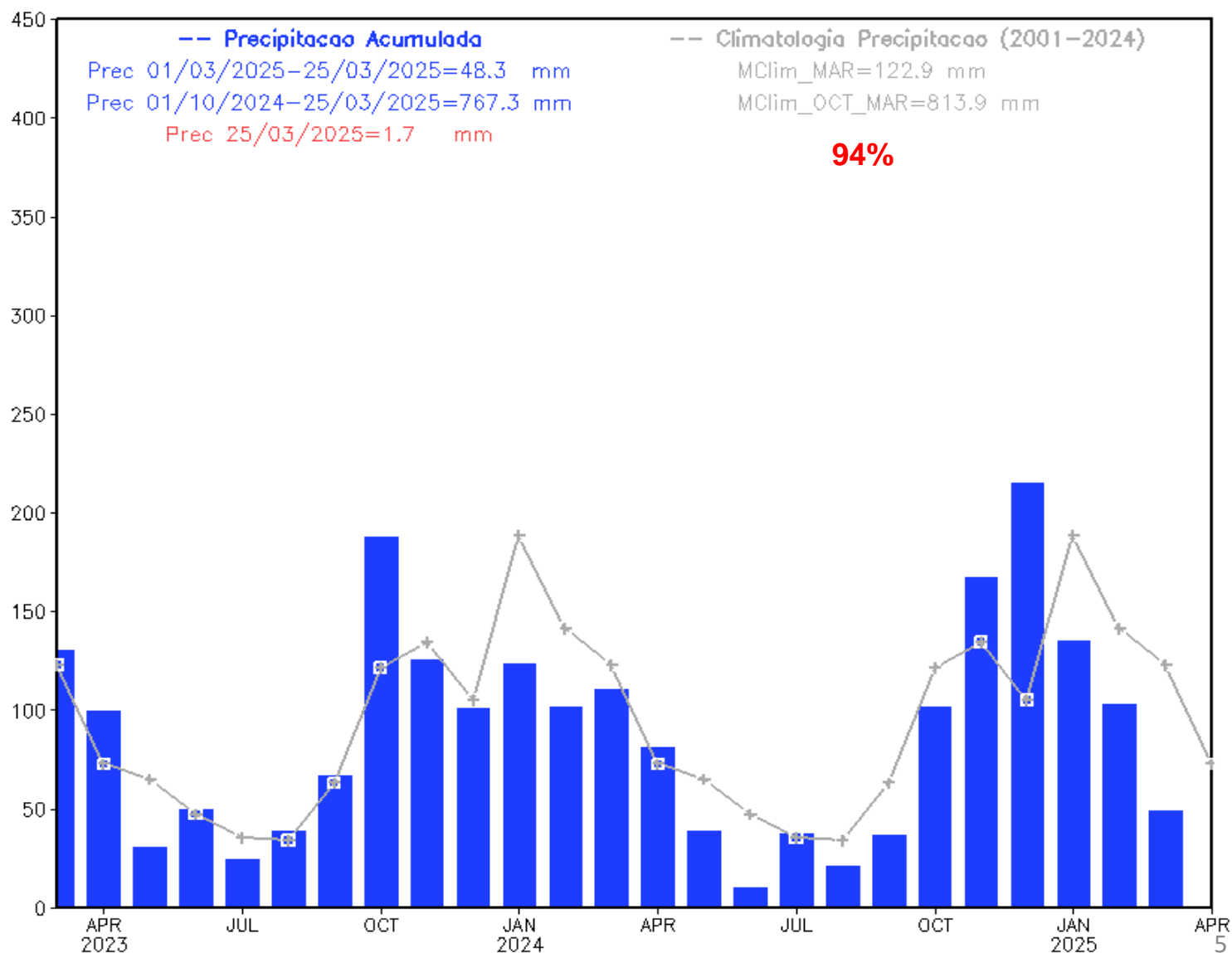


Precipitação Inferior 2 mm/dia por 4 de 5 dias
Período: 26/03/2025



Precipitação acumulada nos últimos 24 meses

Precipitacao Bacia do Rio Parana desde MAR 2023



Monitoramento UHE Furnas

Precipitação

Estação Chuvosa - Out a Mar – 1192 mm

2023/2024: 1088 mm (**91% da MLT**)

2024/2025*: 1135 mm (**95% da MLT**)

Estação Seca - Abr a Set – 250 mm

2023: 224 mm (**90% da MLT**)

2024: 102 mm (**41% da MLT**)

Fev//2025: 96 mm (**51% da MLT**)

Mar/2025*: 112 mm (**67% da MLT**)

*Até 25/03/2025

Vazão

Estação Chuvosa - Out a Mar – 1130 m³/s

2023/2024: 716 m³/s (**63% da MLT**)

2024/2025**: 894 m³/s (**79% da MLT**)

Estação Seca - Abr a Set – 551 m³/s

2023: 495 m³/s (**108% da MLT**)

2024: 309 m³/s (**56% da MLT**)

Fev/25: 1269 m³/s (**83% da MLT**)

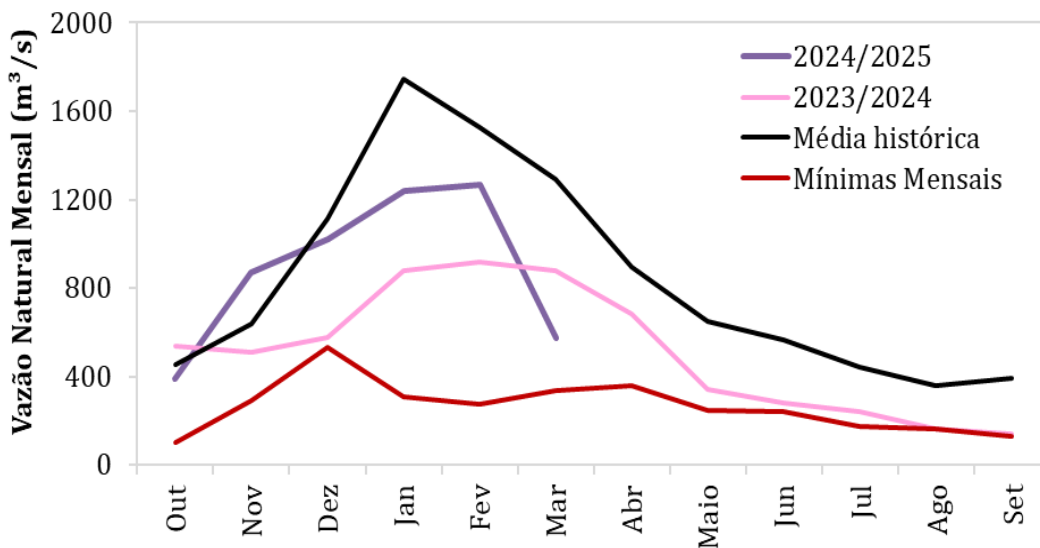
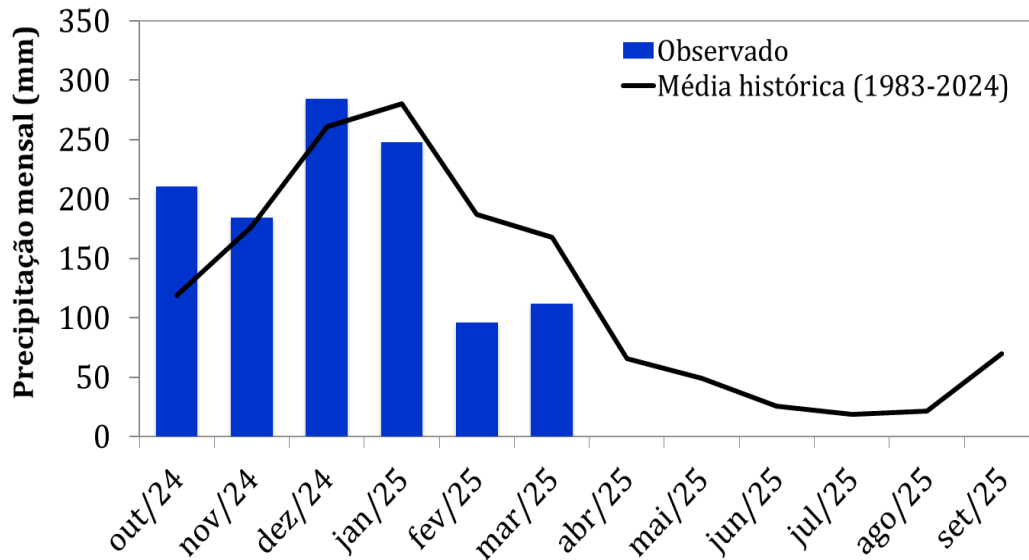
Mar/25**: 575 m³/s (**44% da MLT**)

25/Mar/25: 746 m³/s (**58% da MLT**)

**Até 25/03/2025

Dados de precipitação: INMET, ANA, CEMADEN

Dados de vazão: ONS e ANA

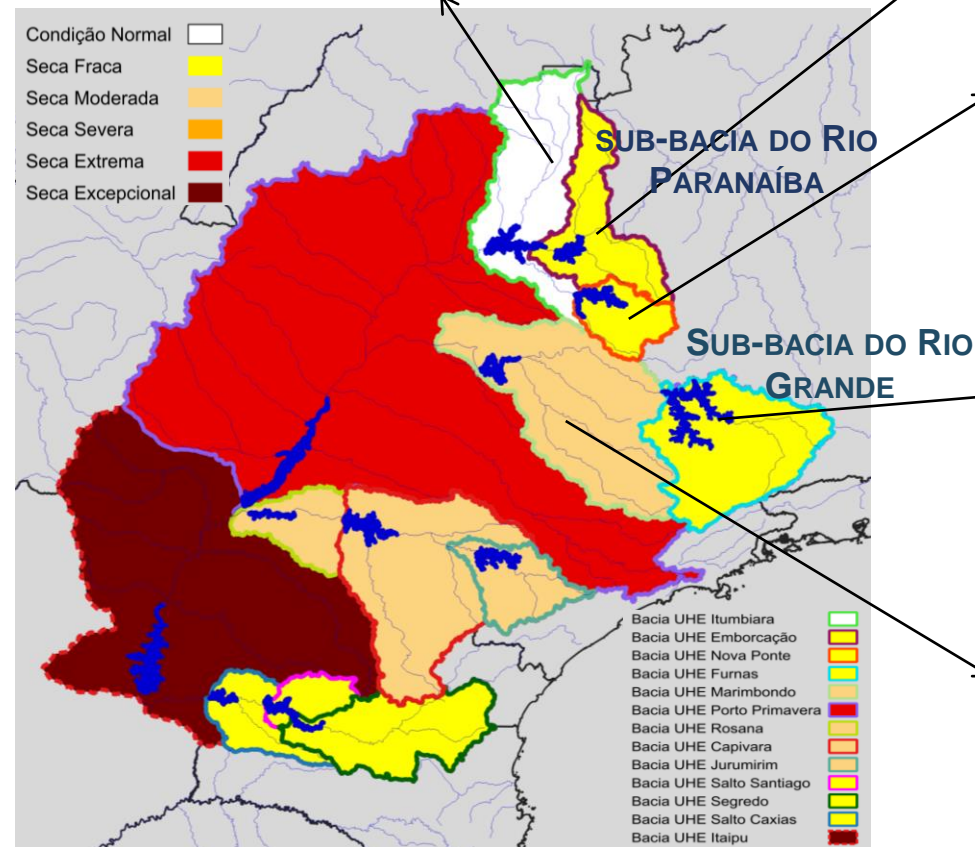
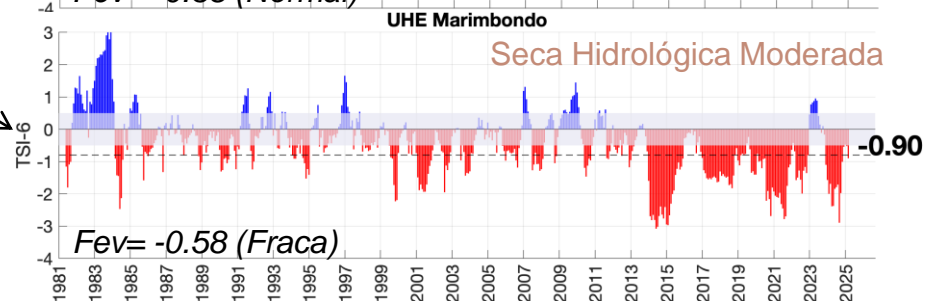
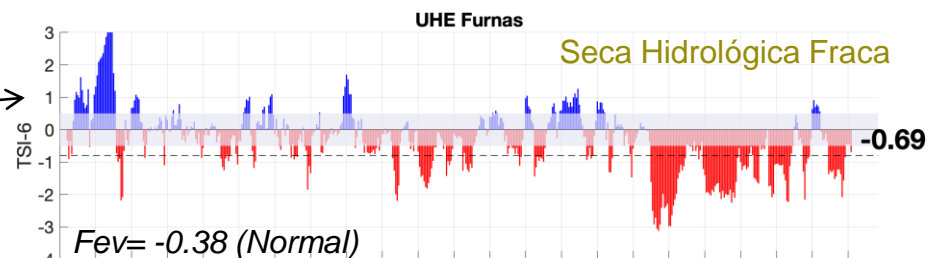
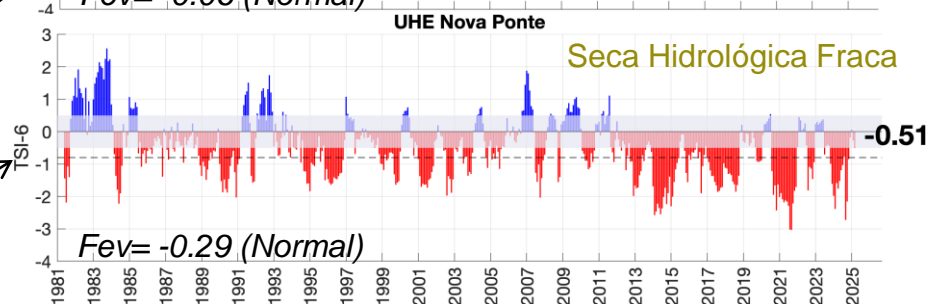
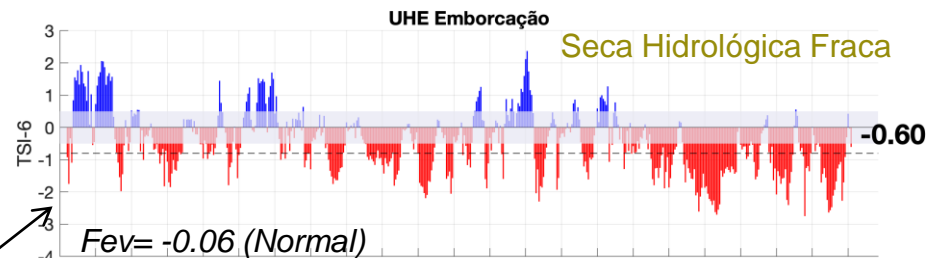
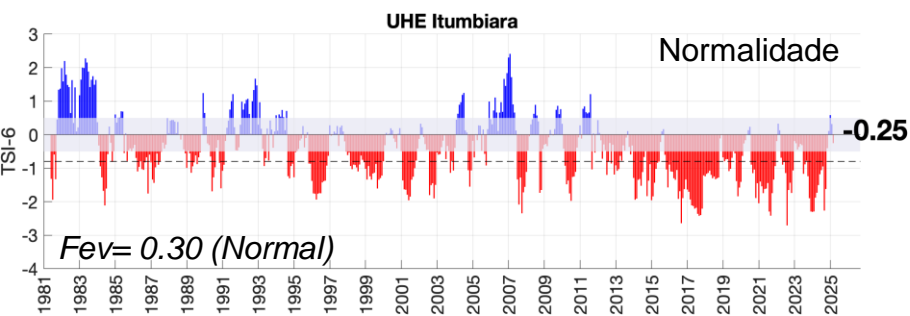


Média de Longo Termo – MLT = 1983-2024

BACIA DO RIO PARANÁ

Março/2025

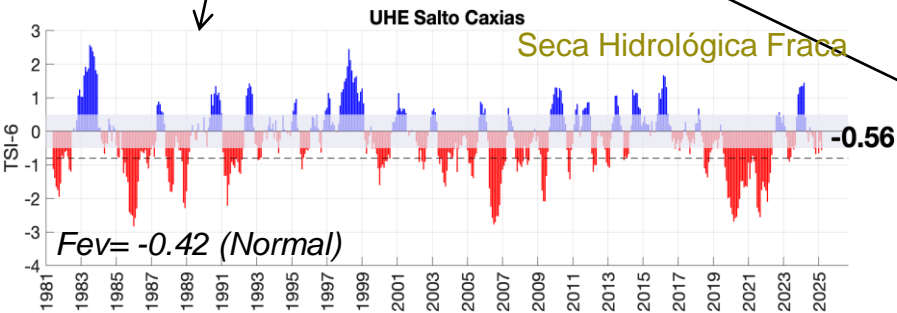
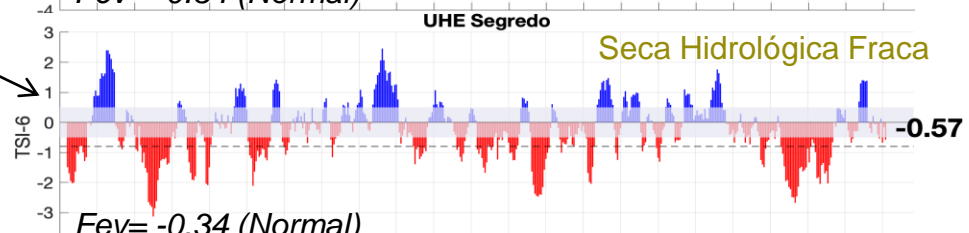
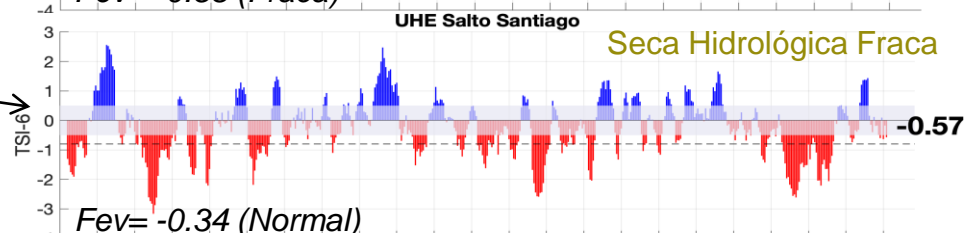
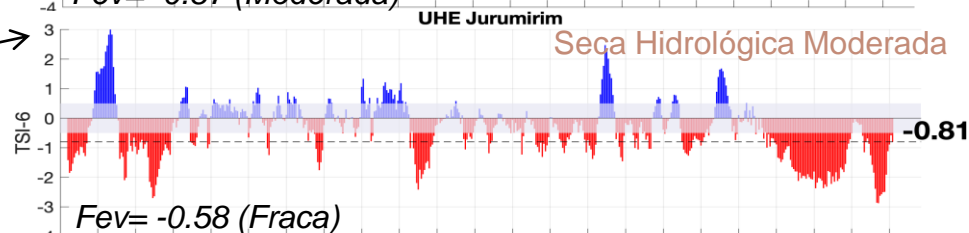
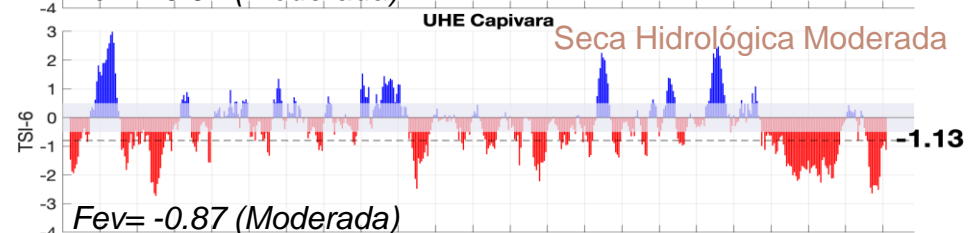
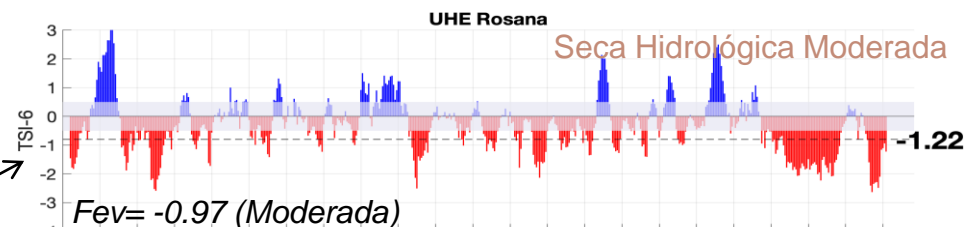
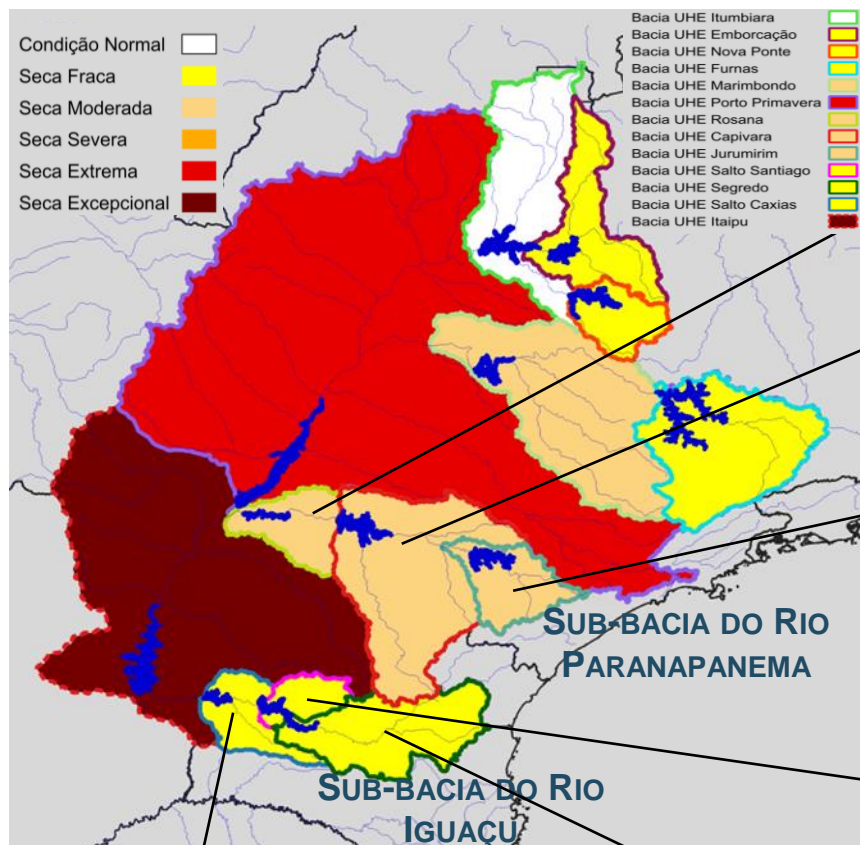
Índice de Seca Bivariado (Chuva-Vazão) – TSI 6



BACIA DO RIO PARANÁ

Março/2025

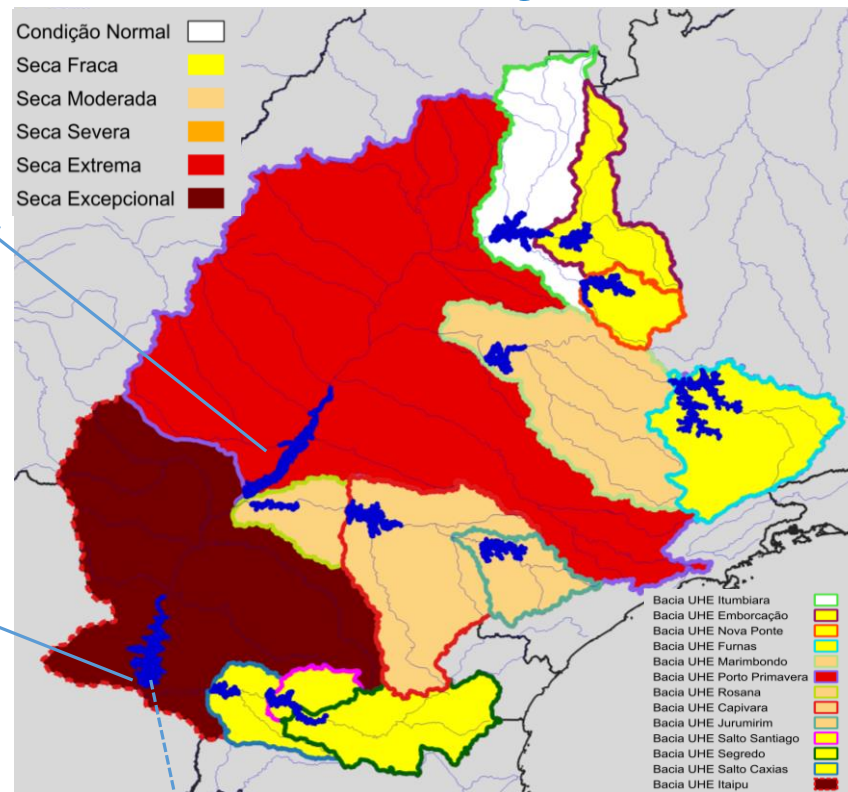
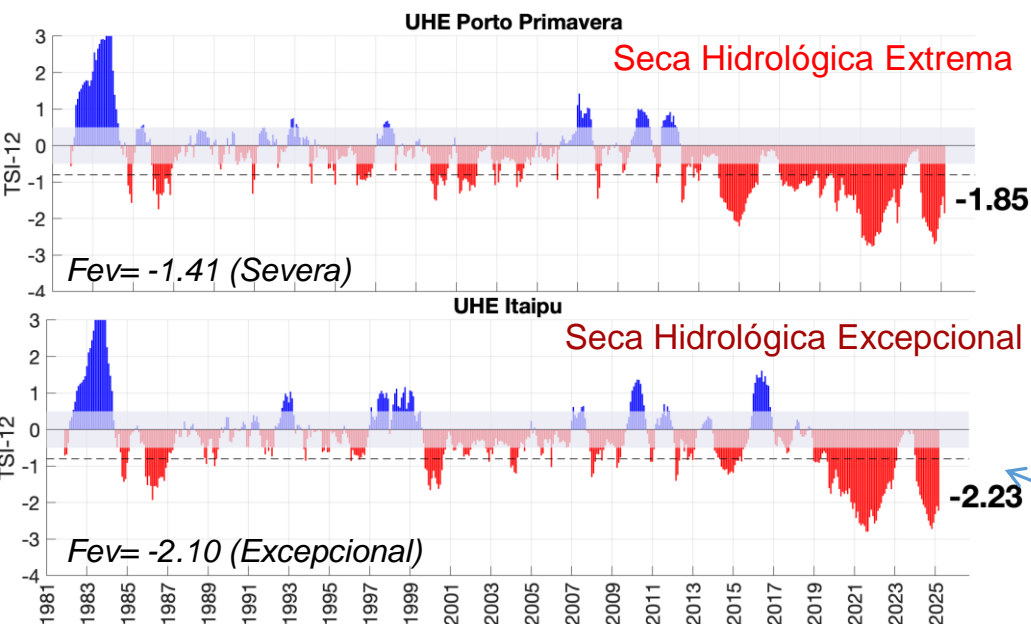
Índice de Seca Bivariado (Chuva-Vazão) – TSI 6



BACIA DO RIO PARANÁ

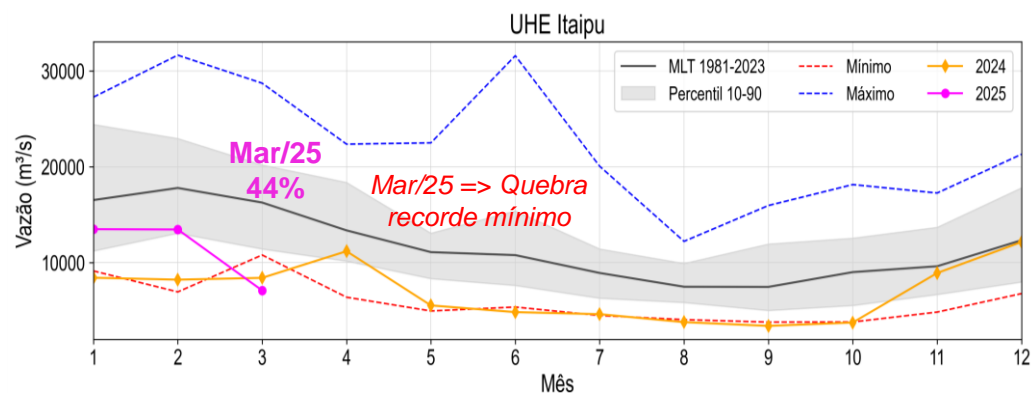
Março/2025

Índice de Seca Bivariado (Chuva-Vazão) – TSI 12



VAZÃO NATURAL - ITAIPU

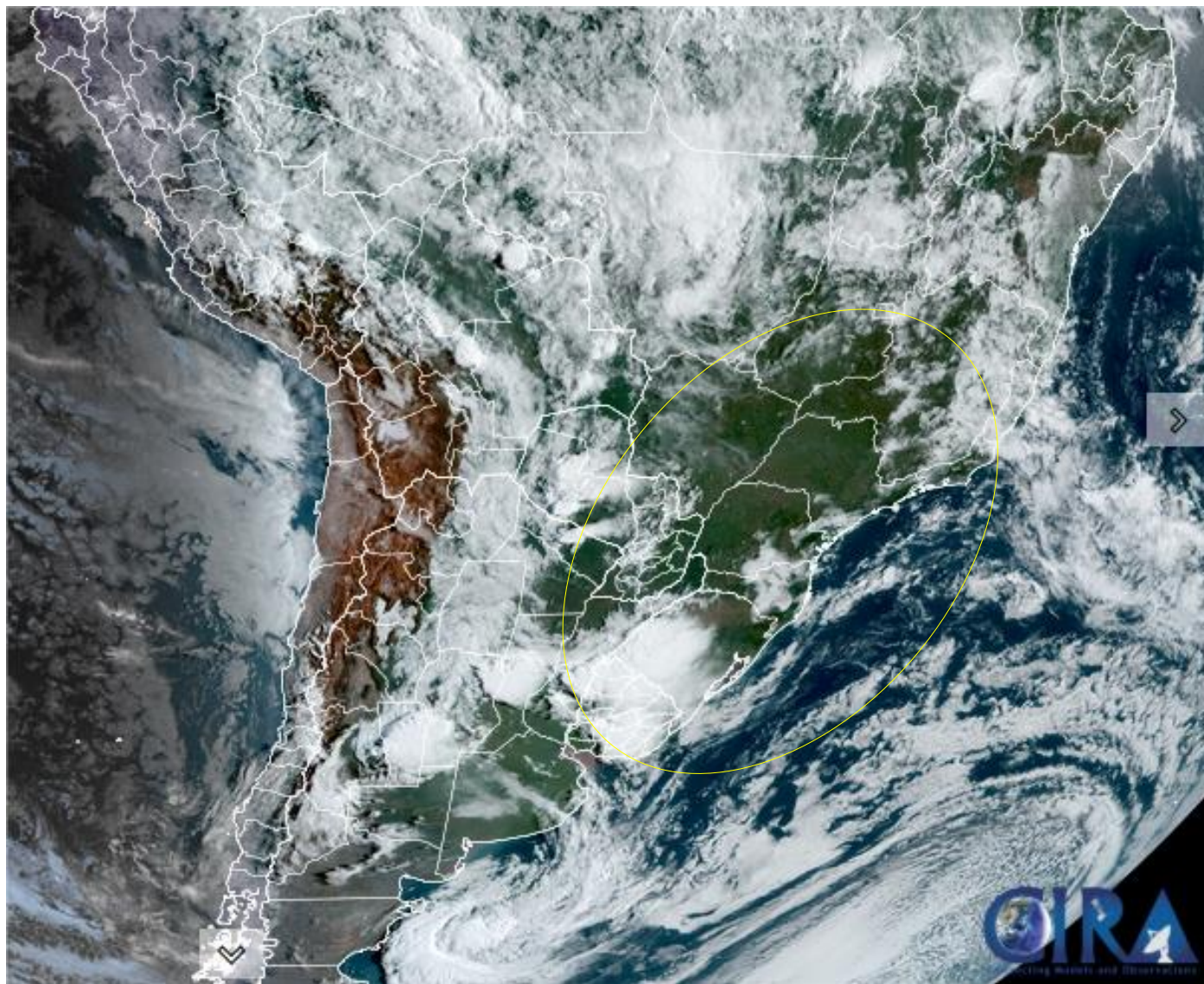
Série de dados = Jan/1981- Mar/2025



Fonte: CEMADEN/MCTI

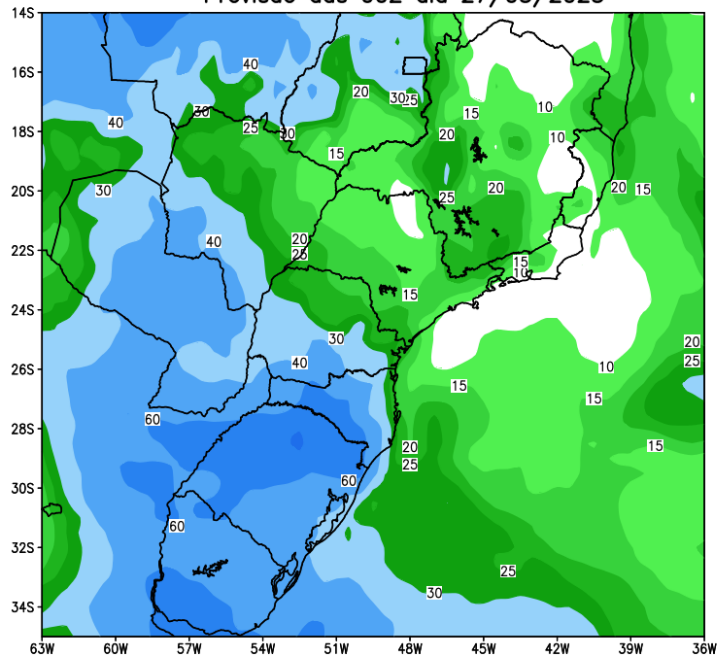
Dados: Precipitação (CHIRPS) e Vazão (ONS e ANA)

Situação meteorológica atual

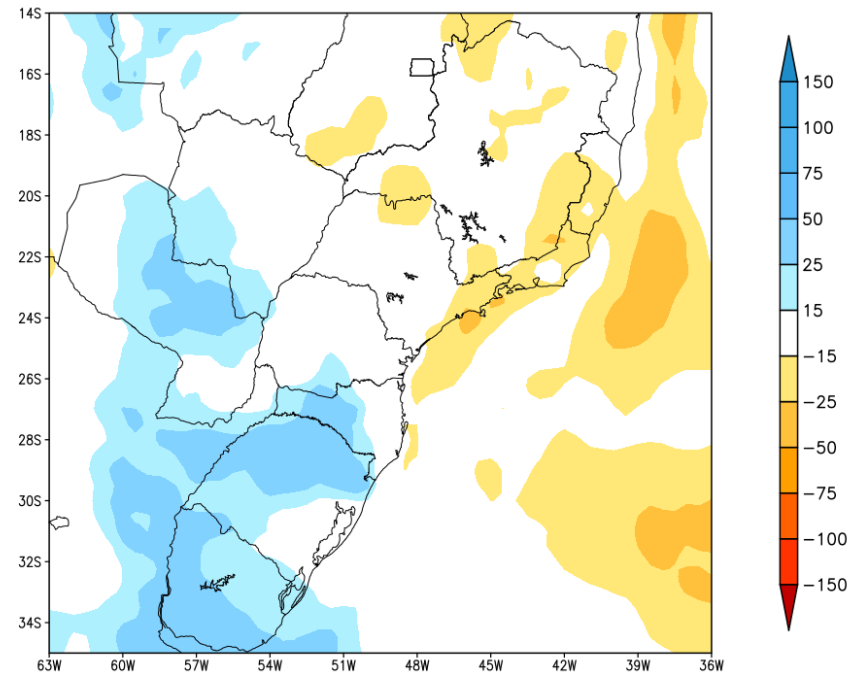


Previsão de chuva para os próximos 7 dias

GEFS / BRASIL_SUL
Precipitação acumulada 1aSem (mm)
Previsão das 00Z dia 27/03/2025



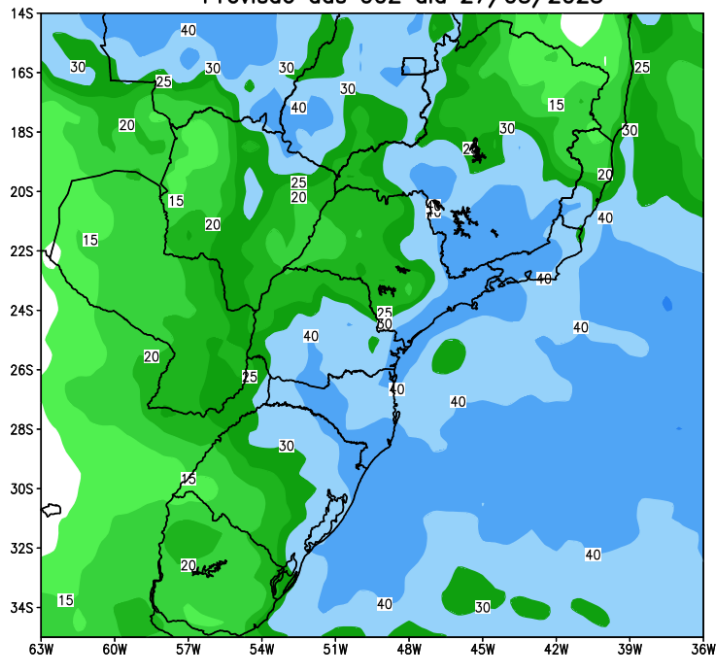
Anomalia de Precipitação BR_SUL (mm)
Período: 2025032700 a 2025040300



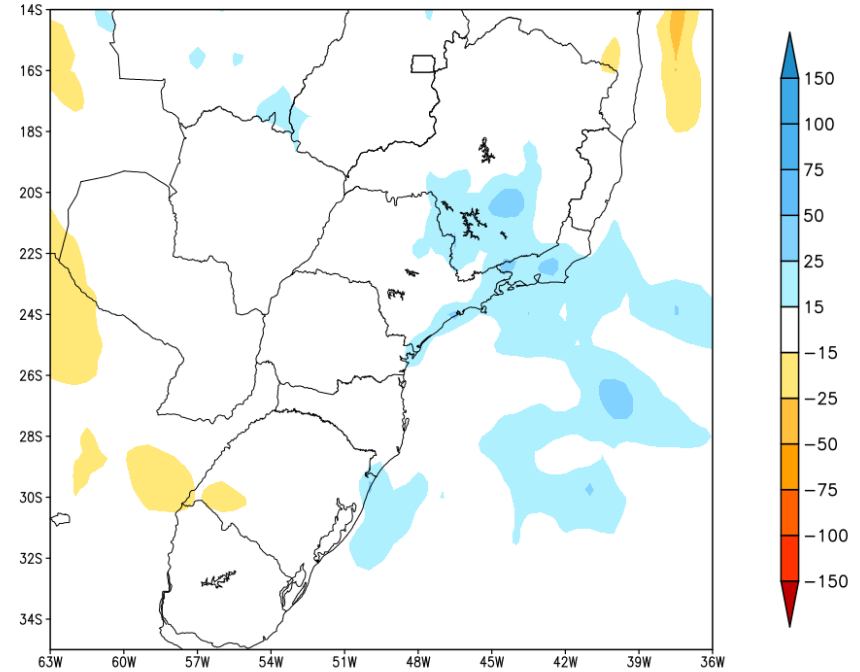
Fonte: GEFS/NOAA

Tendência para a 2ª Semana

GEFS / BRASIL_SUL
Precipitação acumulada 2aSem (mm)
Previsão das 00Z dia 27/03/2025

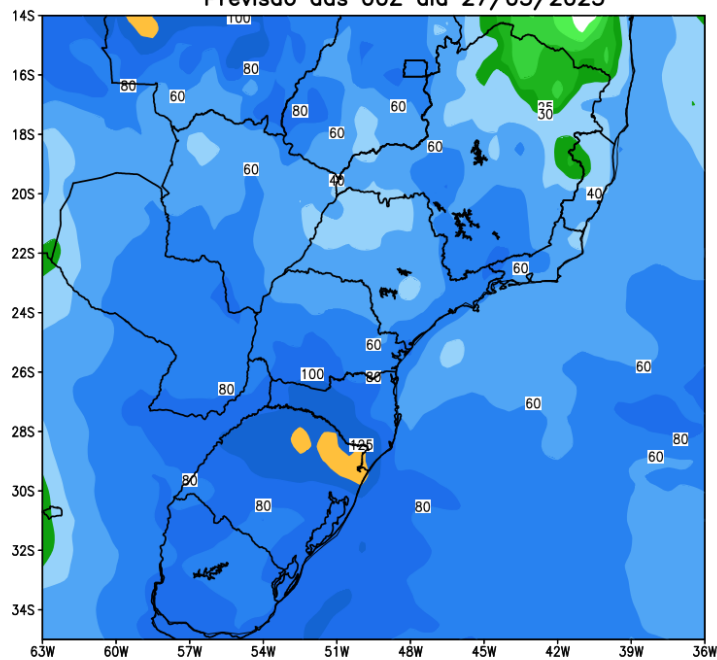


Anomalia de Precipitação BR_SUL (mm)
Período: 2025040400 a 2025041000

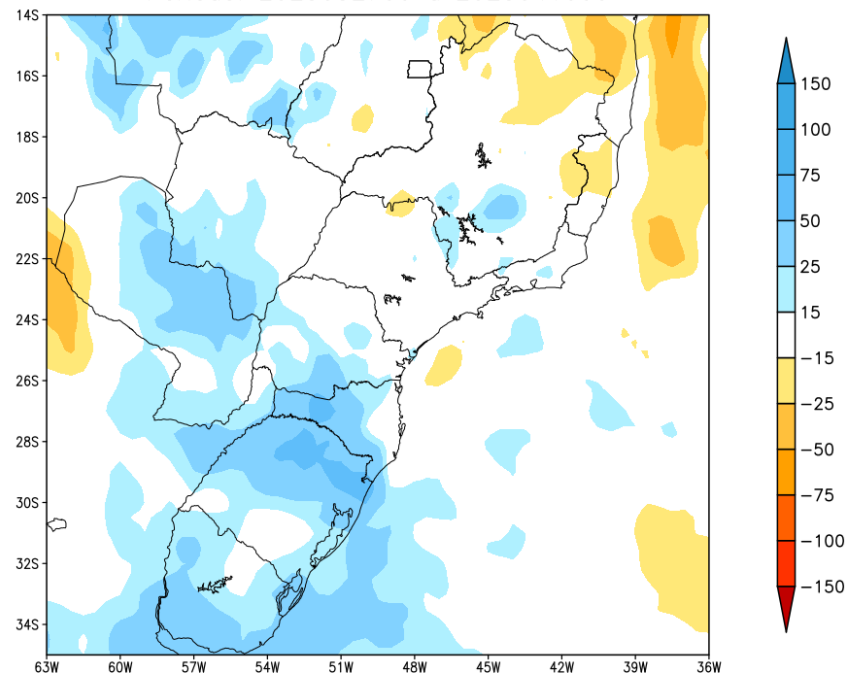


Tendência para as duas próximas semanas

GEFS / BRASIL_SUL
Precipitacao acumulada 14dias (mm)
Previsao das 00Z dia 27/03/2025

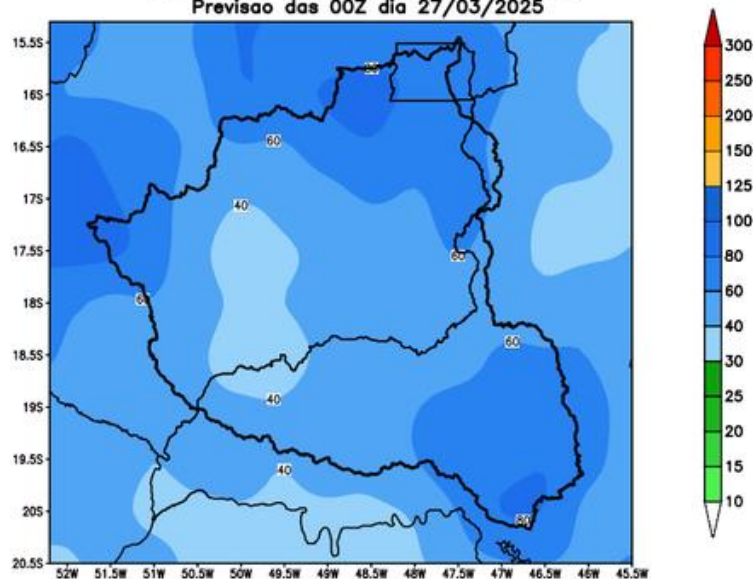


Anomalia de Precipitacao BR_SUL (mm)
Periodo: 2025032700 a 2025041000

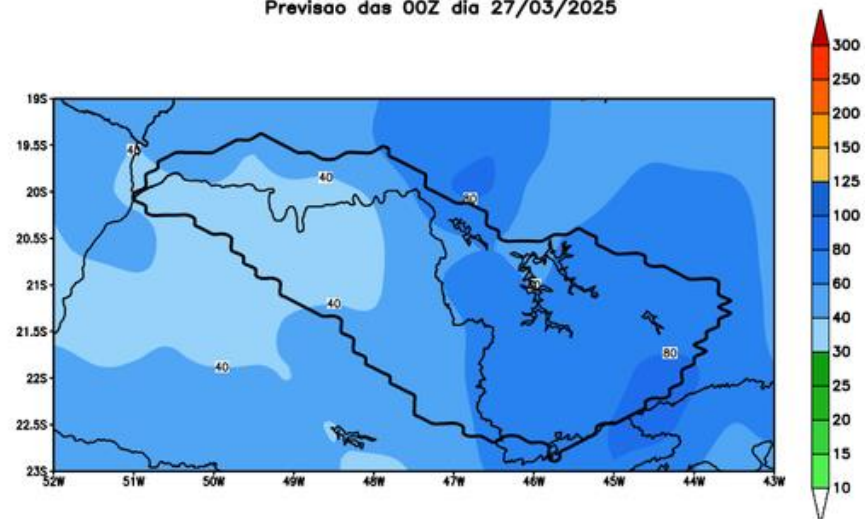


Bacia do rios Paranaíba e Grande

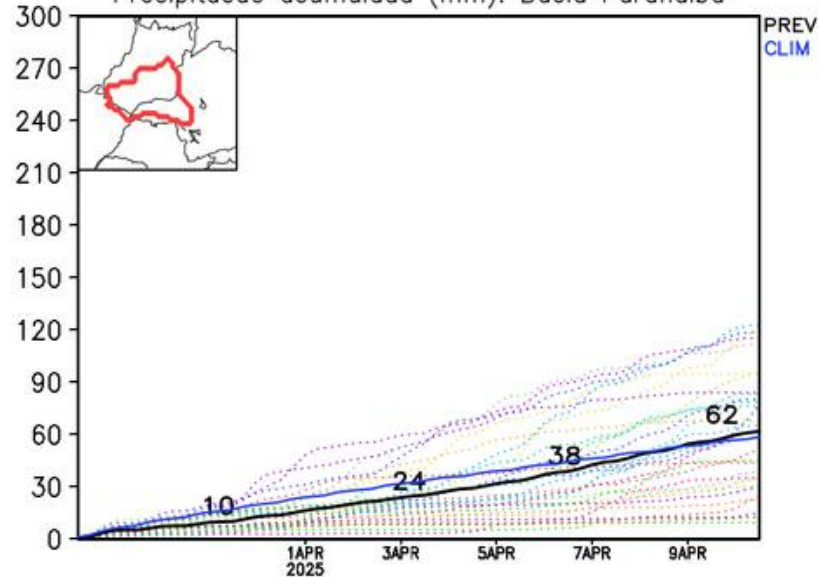
GEFS / Bacia do Rio Paranaíba
Precipitação acumulada em 14 dias (mm)
Previsão das 00Z dia 27/03/2025



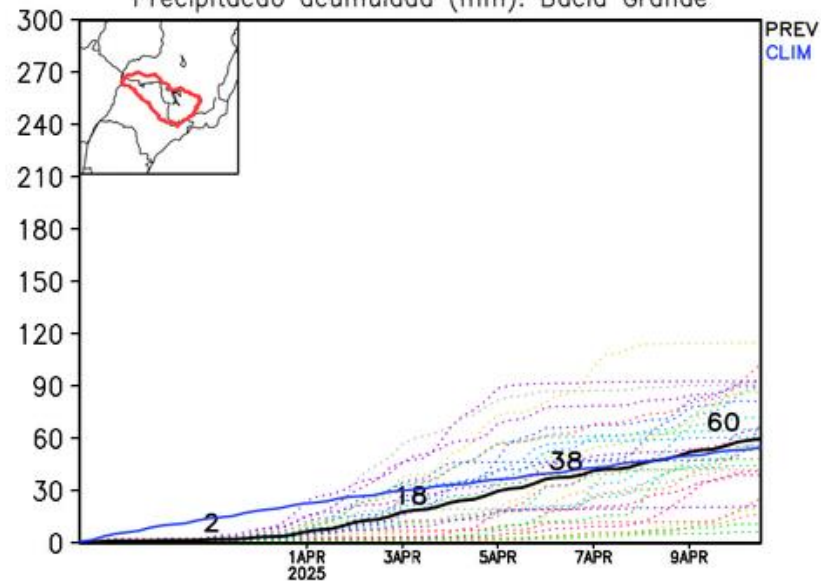
GEFS / Bacia do Rio Grande
Precipitação acumulada em 14 dias (mm)
Previsão das 00Z dia 27/03/2025



Precipitação acumulada (mm): Bacia Paranaíba

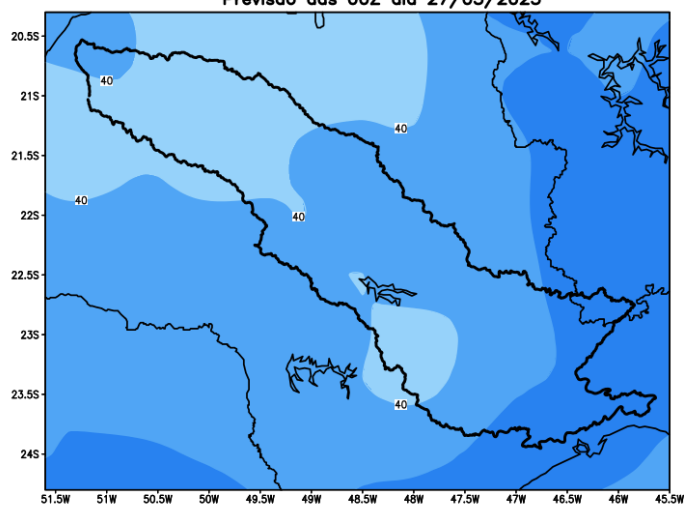


Precipitação acumulada (mm): Bacia Grande

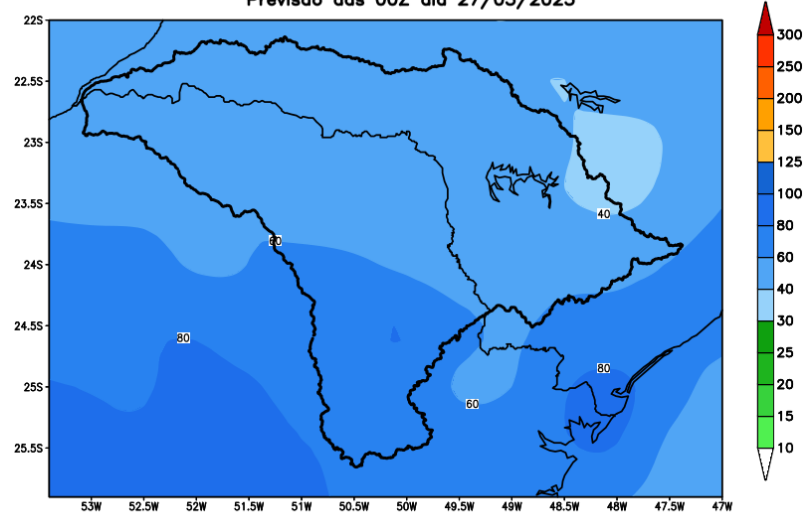


Bacia do rios Tietê e Paranapanema

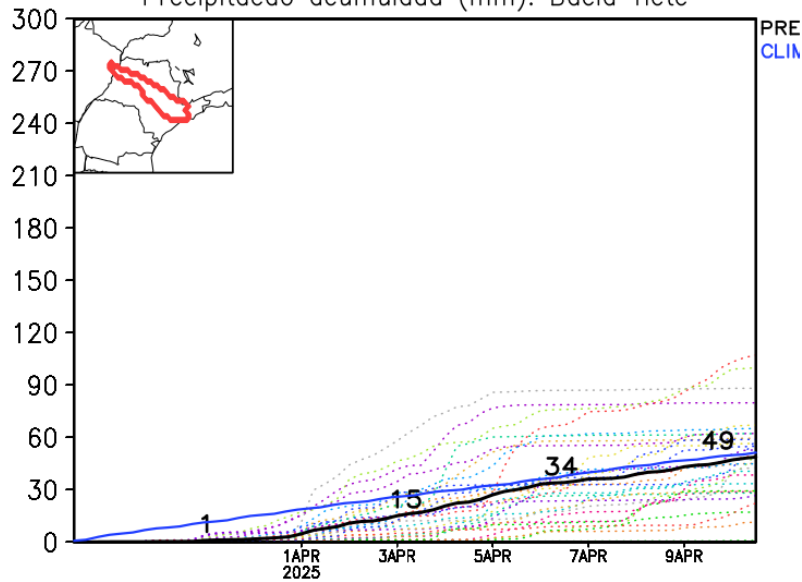
GEFS / Bacia do Rio Tietê
Precipitação acumulada em 14 dias (mm)
Previsão das 00Z dia 27/03/2025



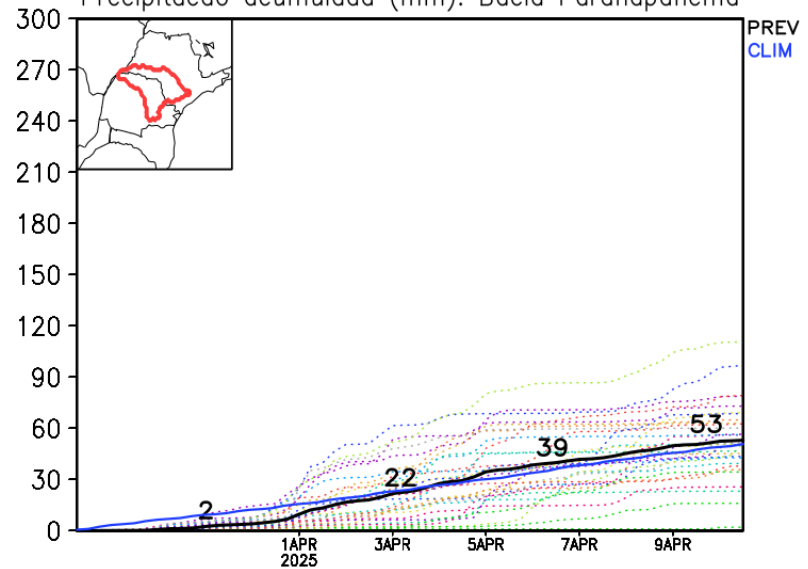
GEFS / Bacia do Rio Paranapanema
Precipitação acumulada em 14 dias (mm)
Previsão das 00Z dia 27/03/2025



Precipitação acumulada (mm): Bacia Tietê

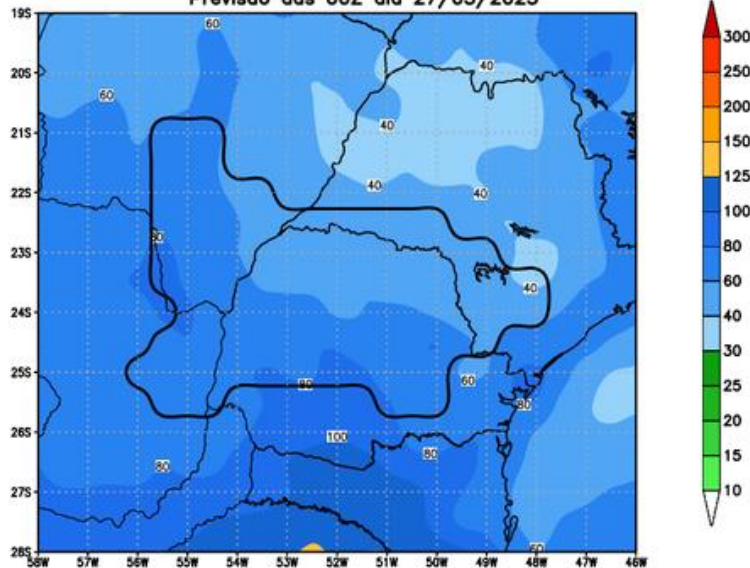


Precipitação acumulada (mm): Bacia Paranapanema

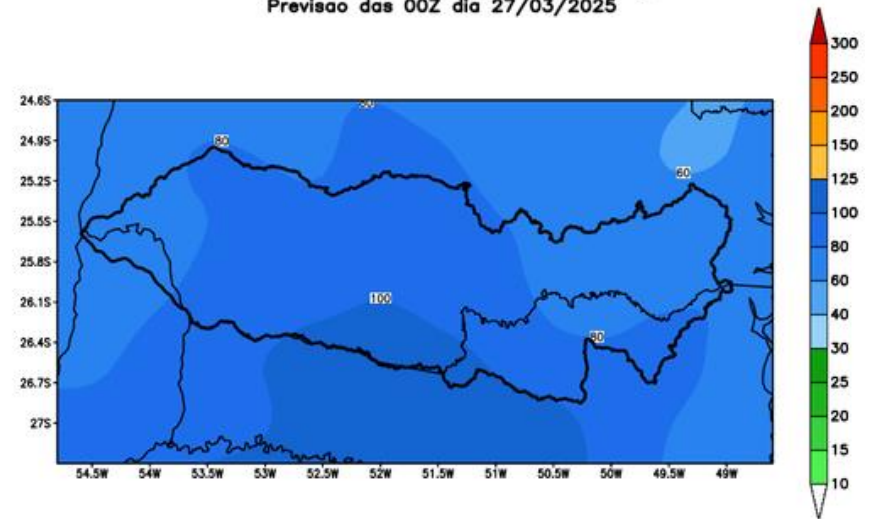


Bacia do Itaipu e Iguaçu

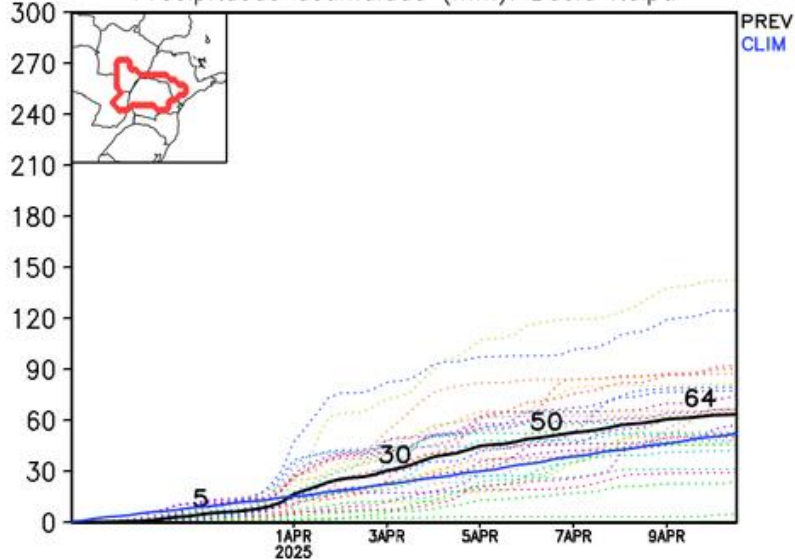
GEFS / Itaipu
Precipitação acumulada em 14 dias (mm)
Previsão das 00Z dia 27/03/2025



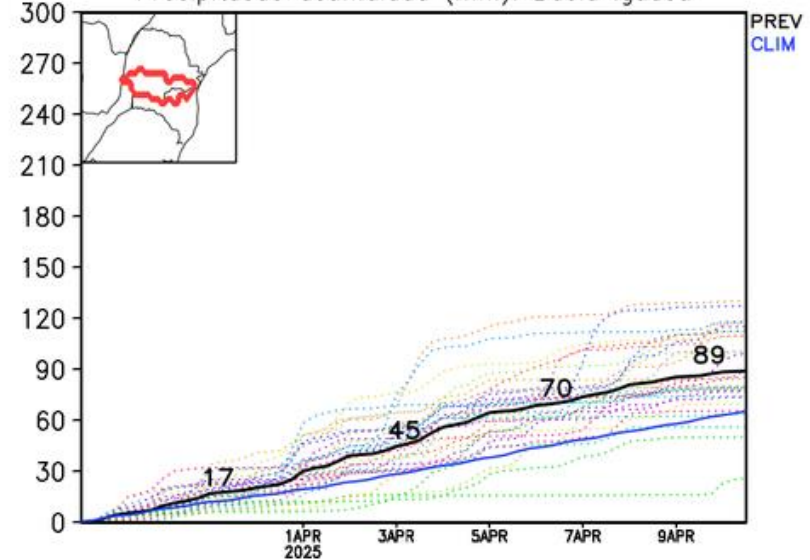
GEFS / Bacia do Rio Iguaçu
Precipitação acumulada em 14 dias (mm)
Previsão das 00Z dia 27/03/2025



Precipitação acumulada (mm): Bacia Itaipu

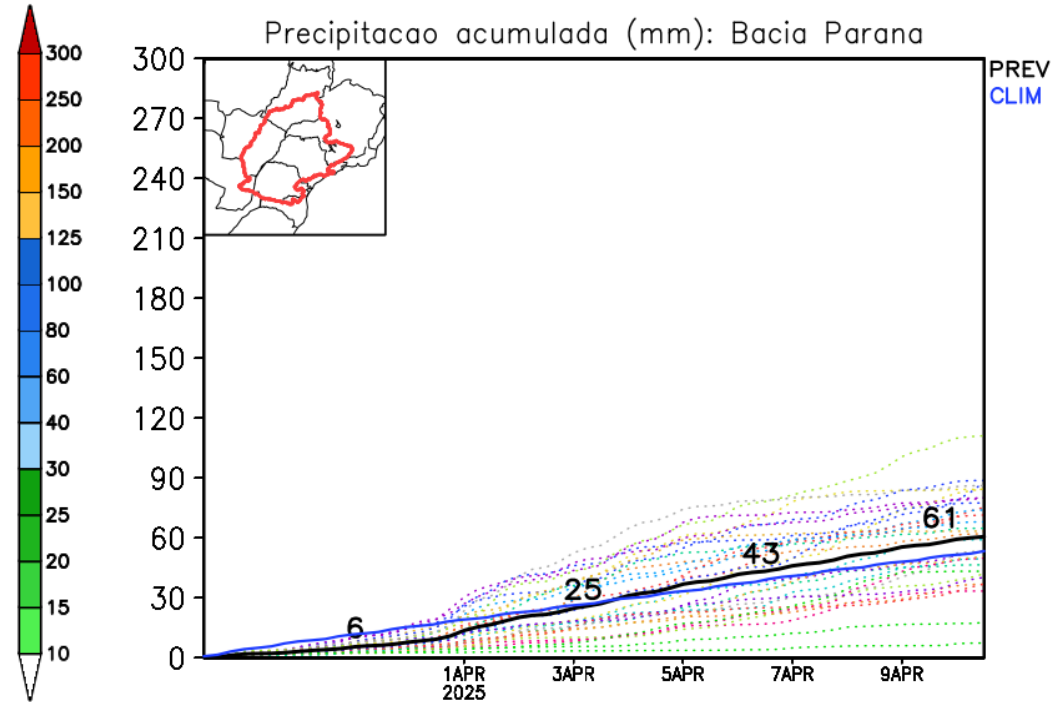
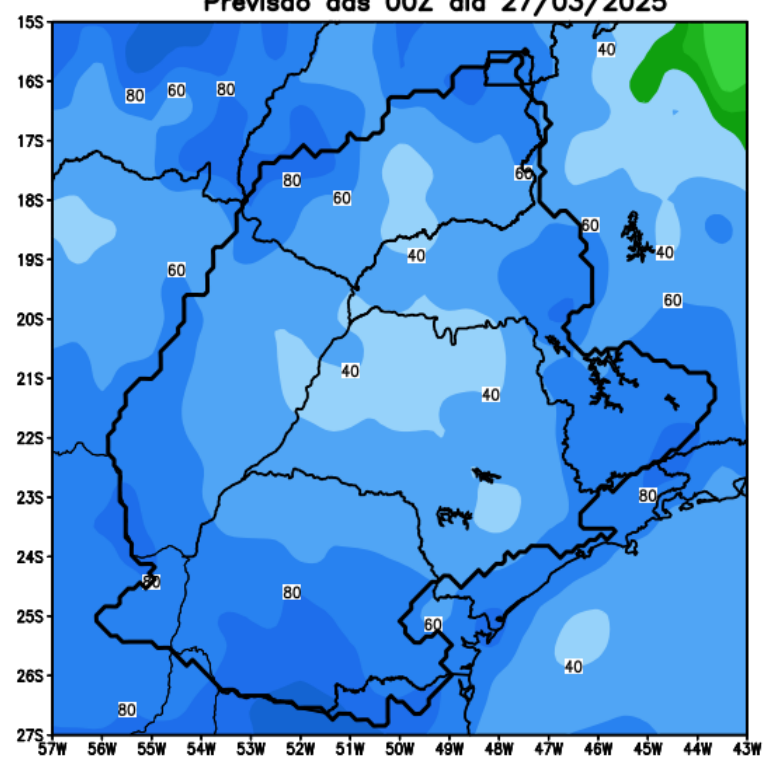


Precipitação acumulada (mm): Bacia Iguaçu

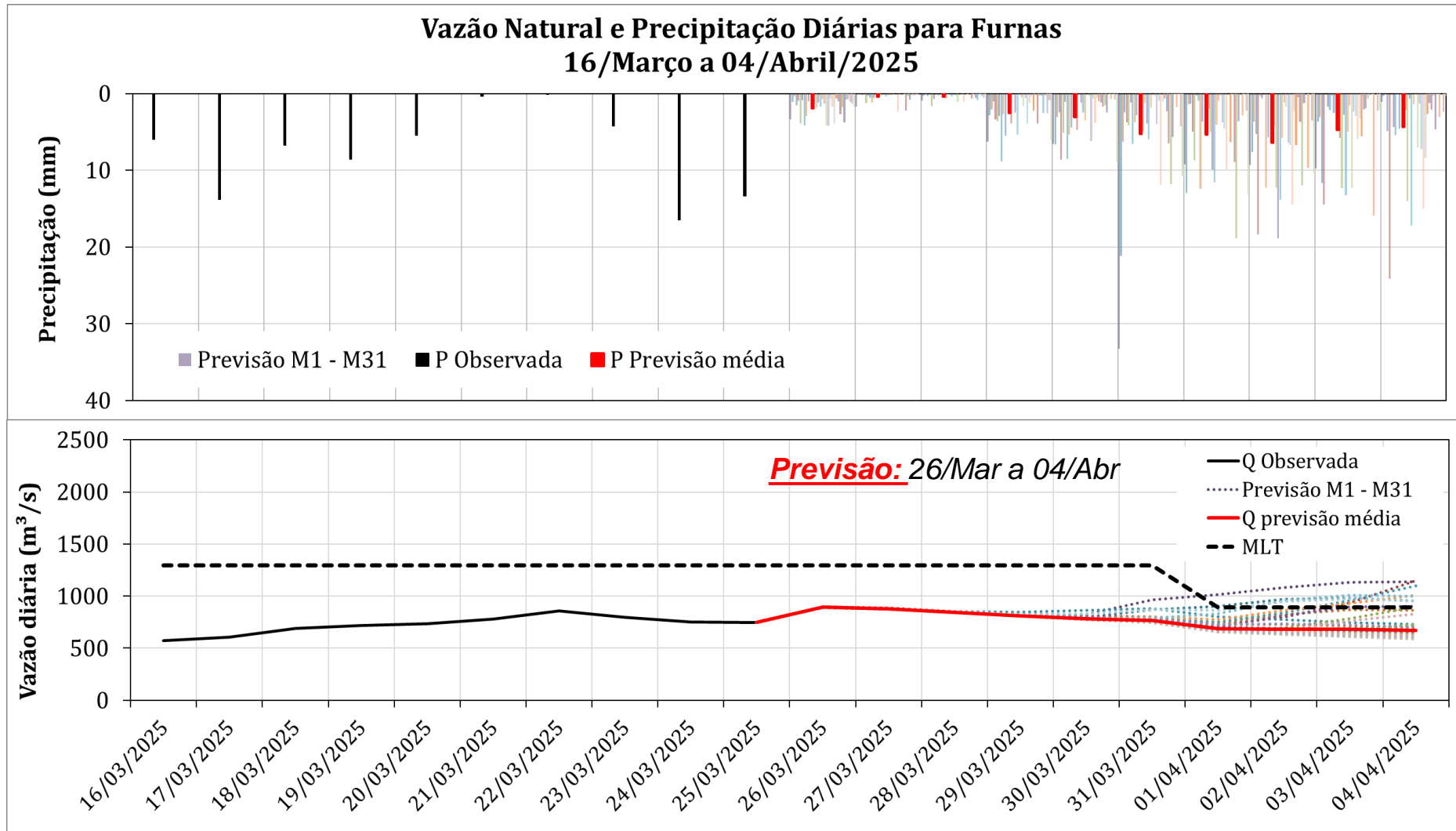


Previsão de chuva para os próximos 7 dias

GEFS / Bacia do Parana
Precipitacao acumulada em 14 dias (mm)
Previsao das 00Z dia 27/03/2025



Furnas: Previsão de Vazão (modelo hidrológico PDM-CEMADEN)



Previsão média para os próximos 10 dias: 770 m³/s
(MLT Mar= 1295 m³/s; MLT Abr = 894 m³/s)

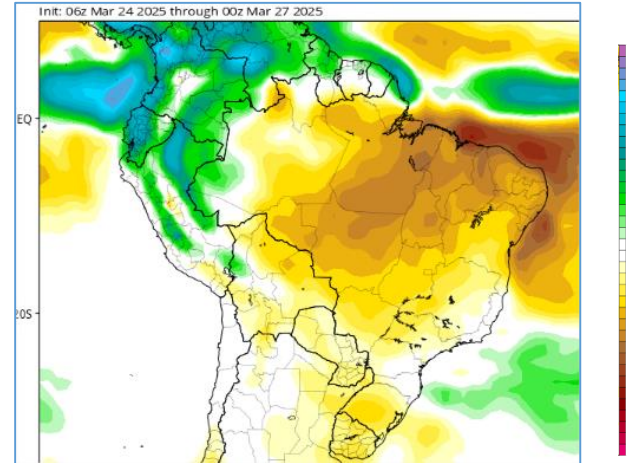
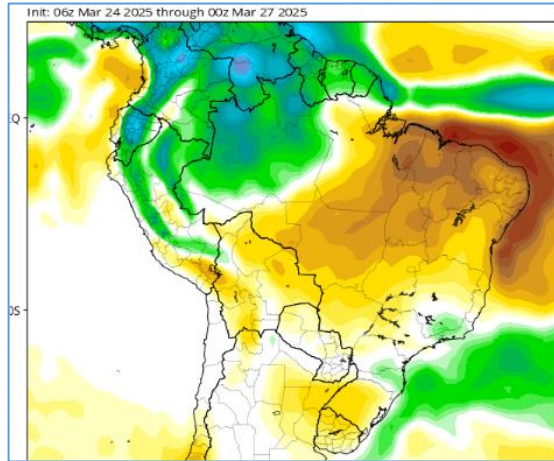
Anomalia de Chuva

3a e 4a semanas

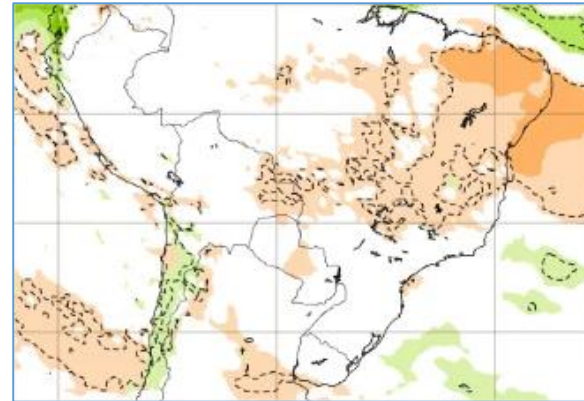
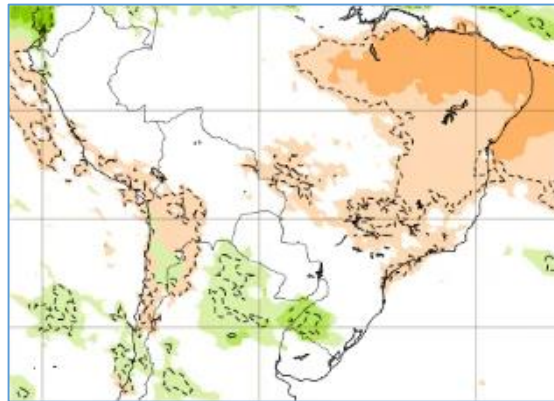
10-17 Abr

17-24 Abr

CFS/NOAA



ECMWF



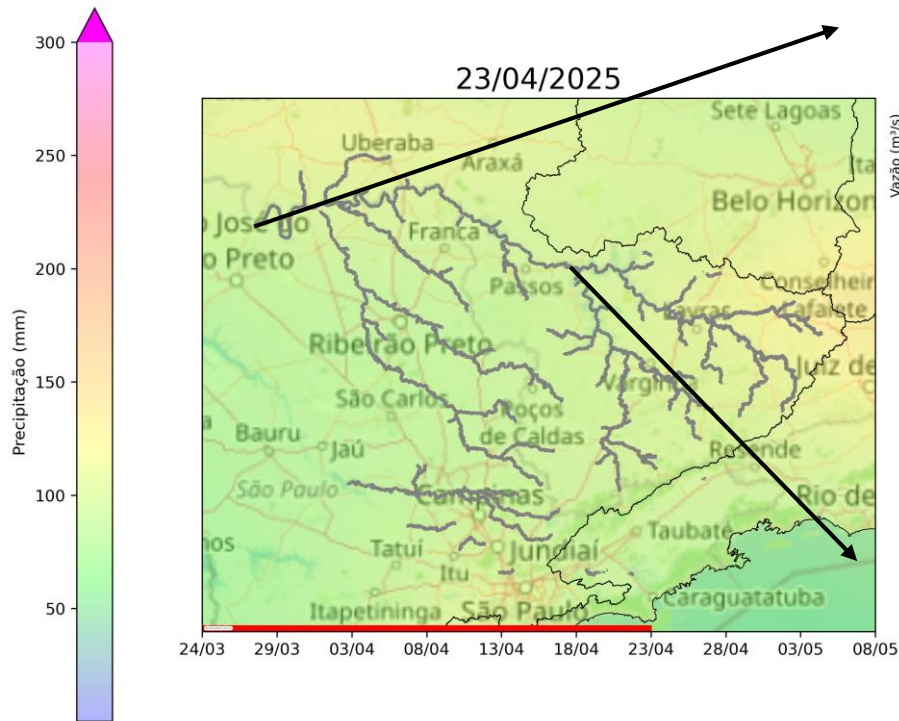
14-21 Abr

21-28 Abr

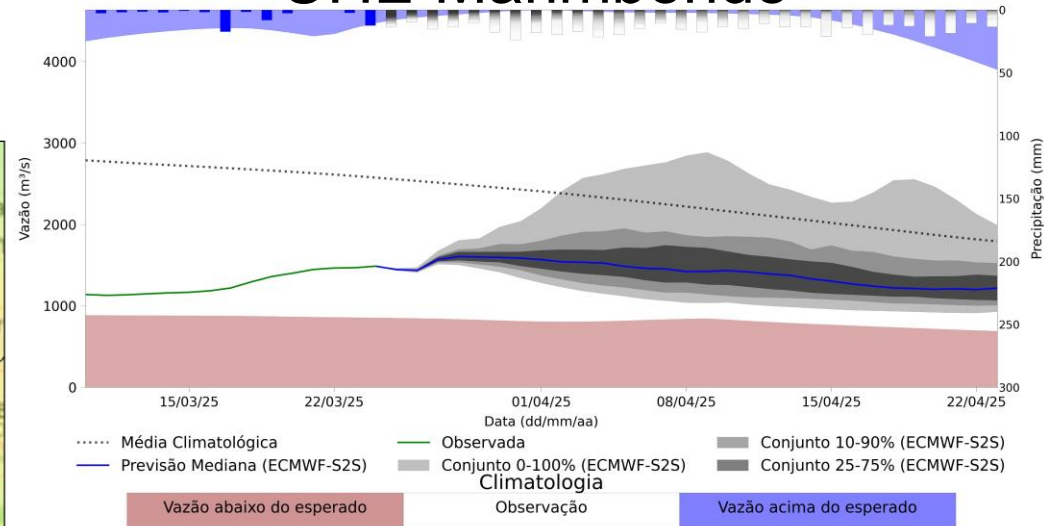
CFSv2 Accumulated Precip. Anomaly (mm)

Previsão de vazão natural na Bacia do Rio Grande 30 dias (Modelo hidrológico MHD)

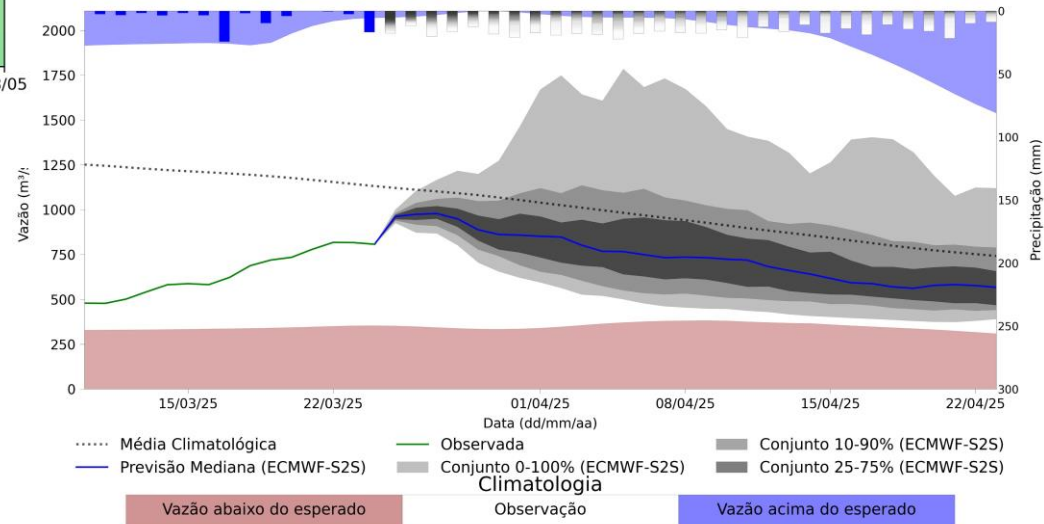
PREVISÃO: 24/03/25 a 23/04/25



UHE Marimbondo



UHE Furnas

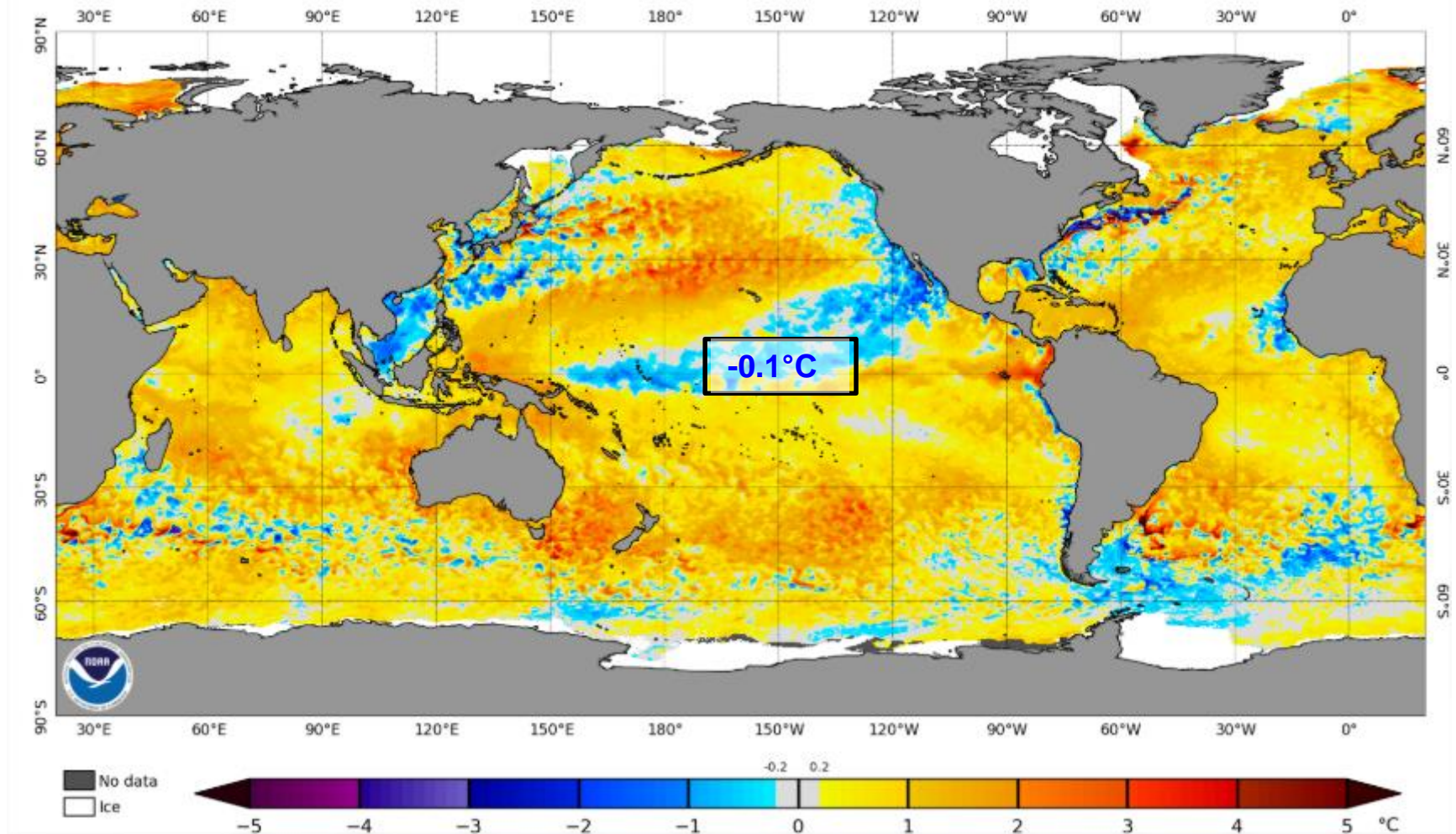


Fonte: Meteorologia (INMET/MERGE); Vazão (ANA/ONS)
MLT: 1993-2023

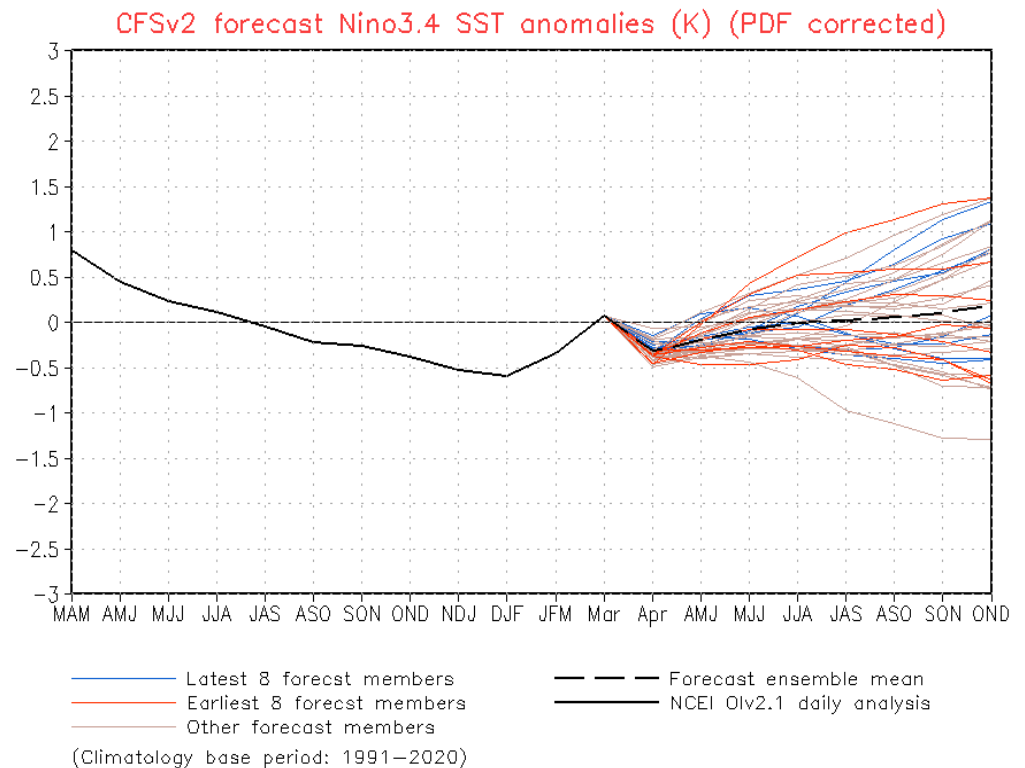
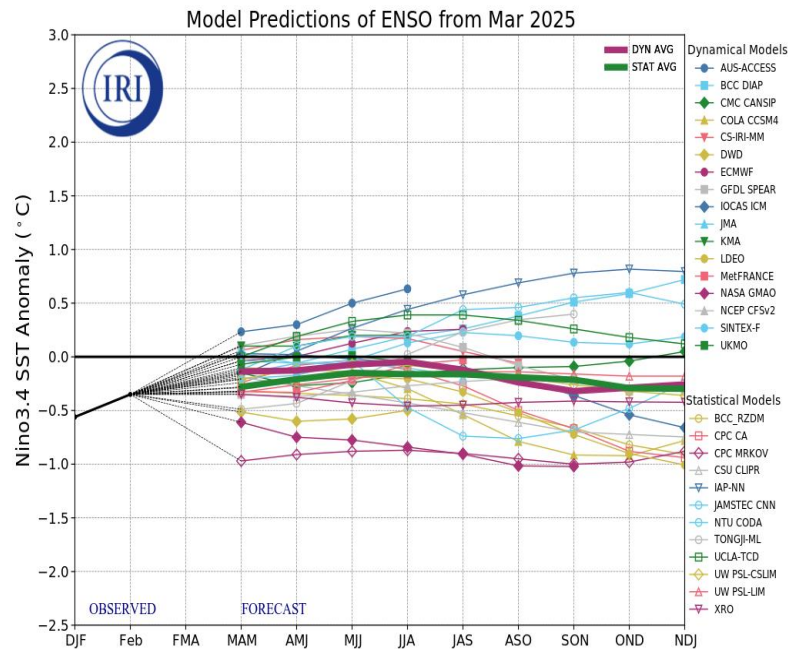
Previsão Meteorológica: ECMWF-S2S

Status Atual: Transição para Neutralidade

NOAA Coral Reef Watch Daily 5km SST Anomalies (v3.1) 23 Mar 2025



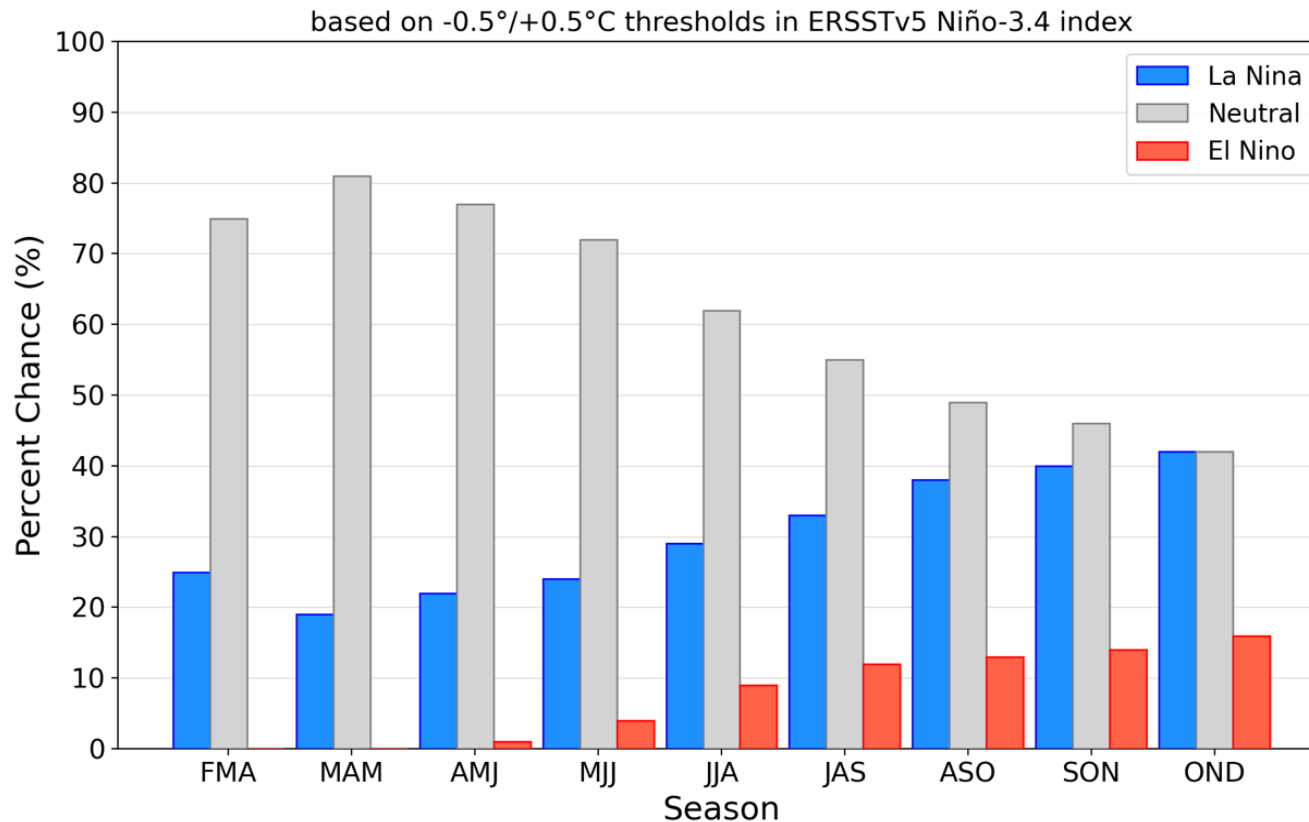
Previsão do “ENSO”



Atualizado em 24 de Março

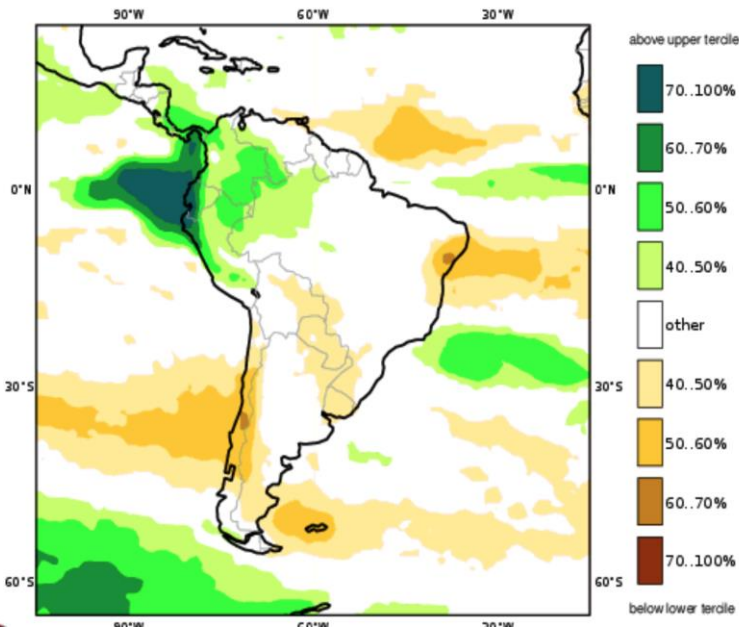
Previsão do “ENSO”

Official NOAA CPC ENSO Probabilities (issued March 2025)

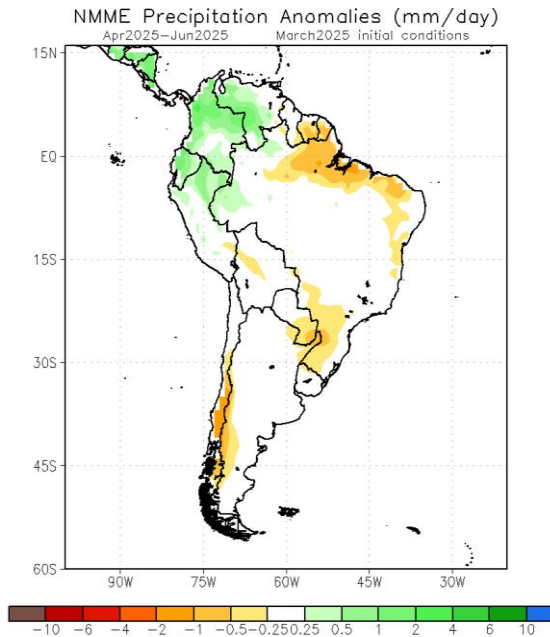


Previsão Sazonal de Chuva Multi-Modelo

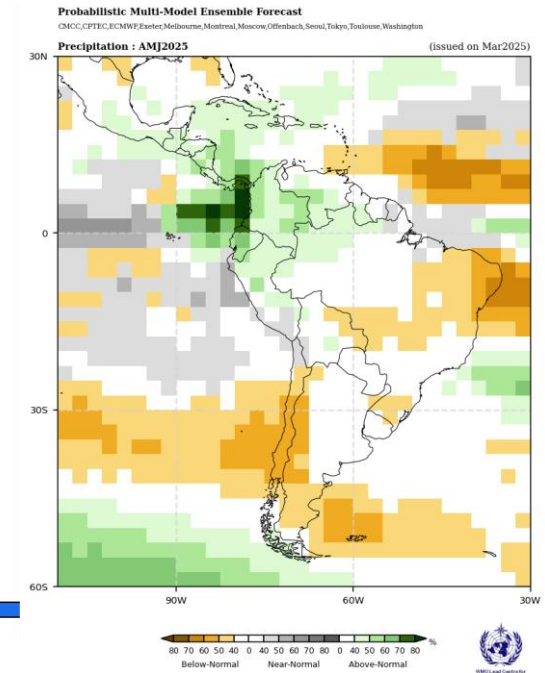
Abril-Maio-Junho



Modelos Europeus

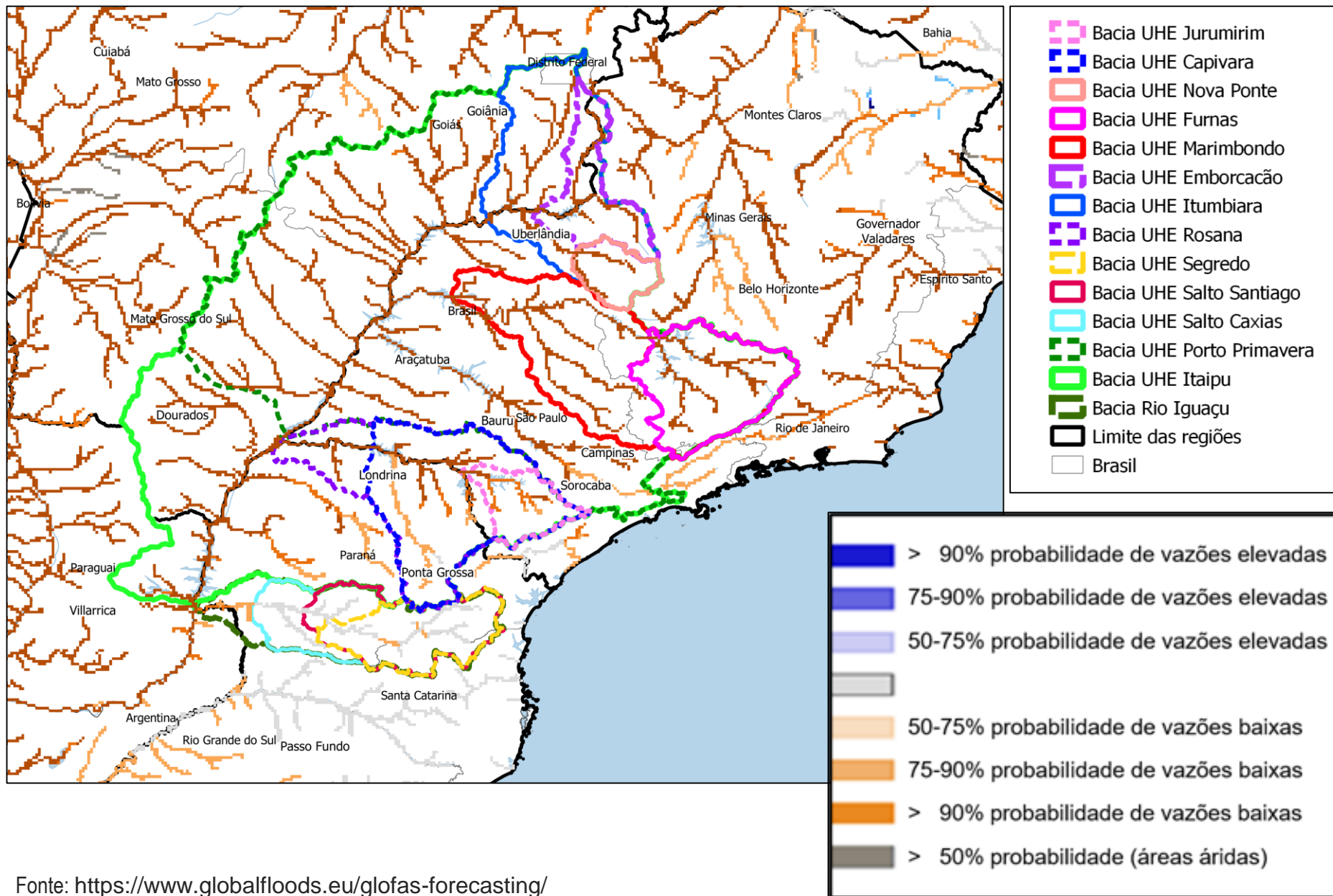


Modelos Norte Americanos

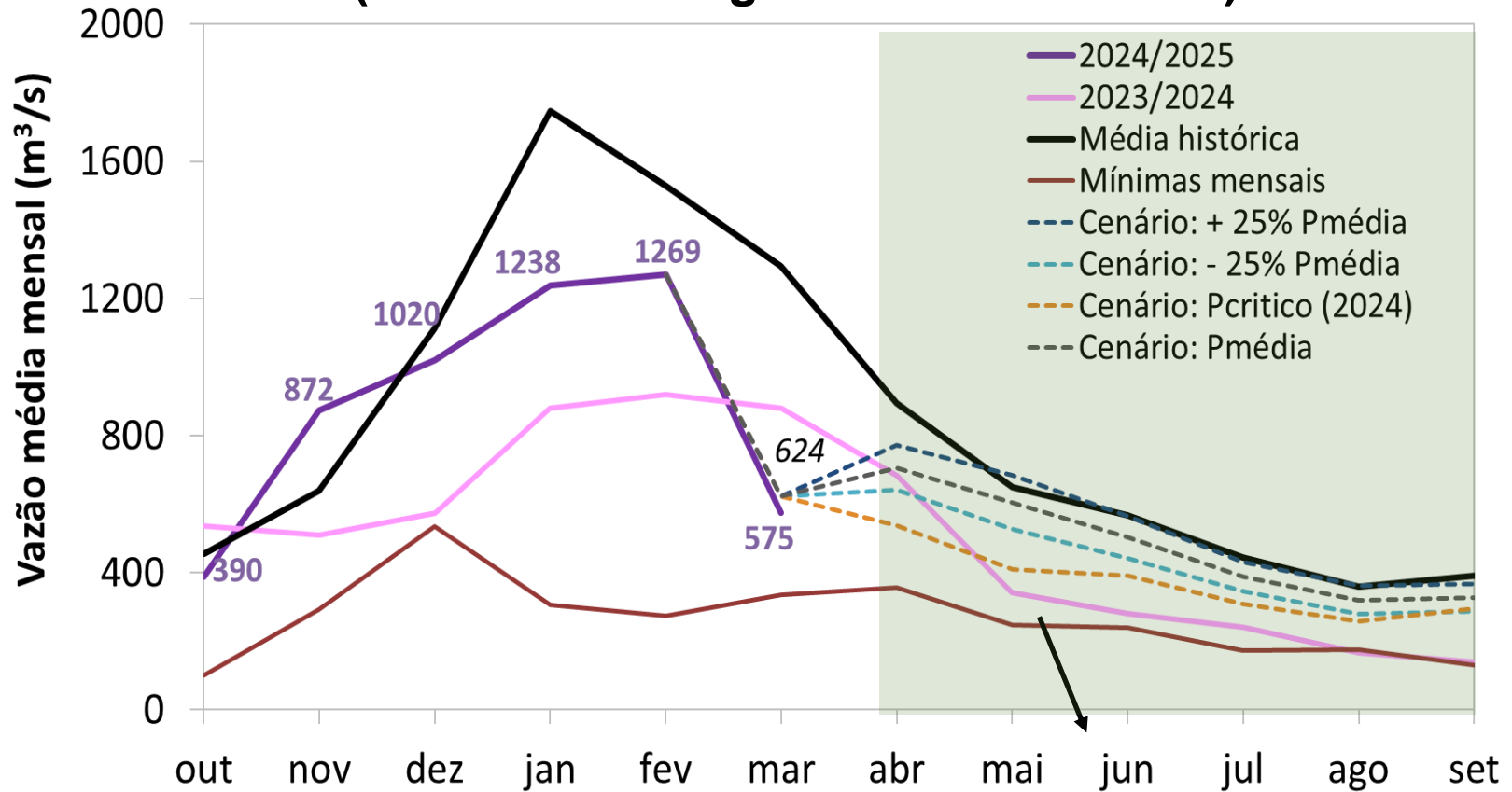


Modelos da WMO

Previsão Sazonal de Vazão (Março, Abril e Maio-MAM) do Sistema global de previsão de vazão (Global Flood Awareness System-GloFAS) para a Bacia do Rio Paraná



Furnas: Projeção de Vazão (modelo hidrológico PDM-CEMADEN)



Abril-Setembro (Meses Secos)

MLT: 551 m³/s

Vazão	% MLT
530 m³/s	96%
475 m³/s	86%
421 m³/s	76%
367 m³/s	67%