



CEMADEN

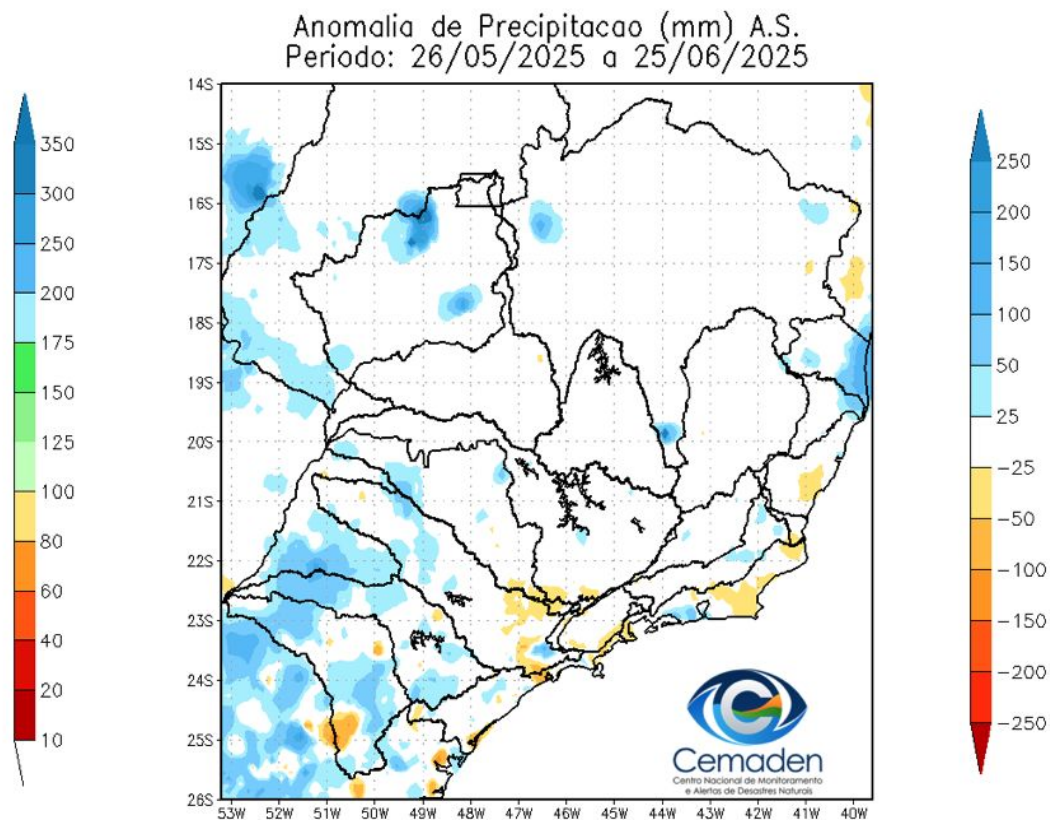
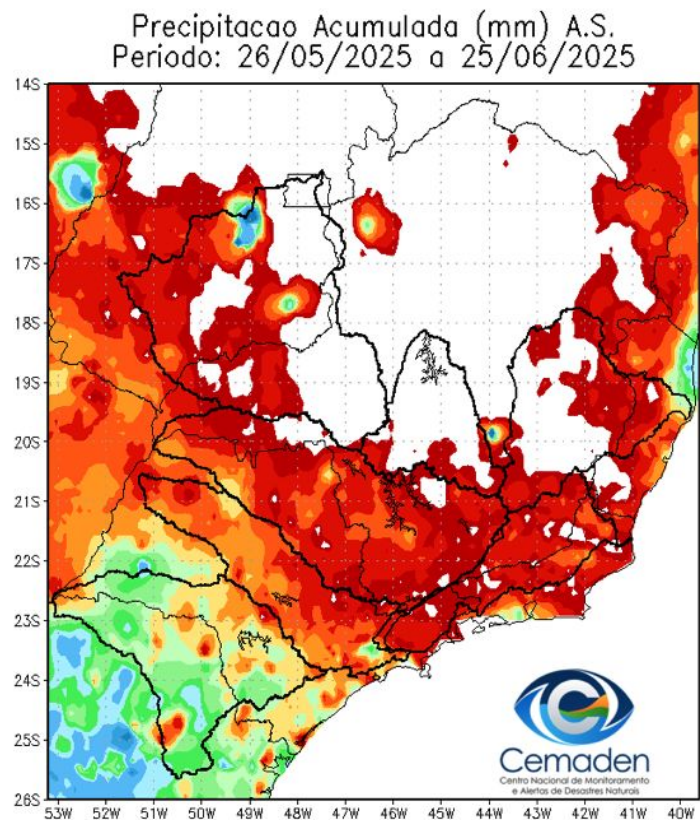
**Centro Nacional de Monitoramento e
Alertas de Desastres Naturais**

Monitoramento e Previsões para a Bacia do rio Paraná

26 de Junho de 2025

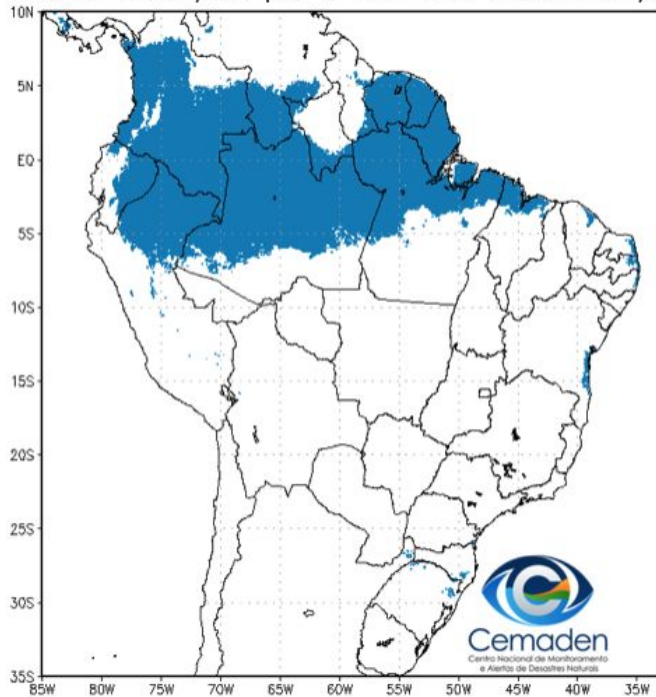


Precipitação acumulada nos últimos 30 dias

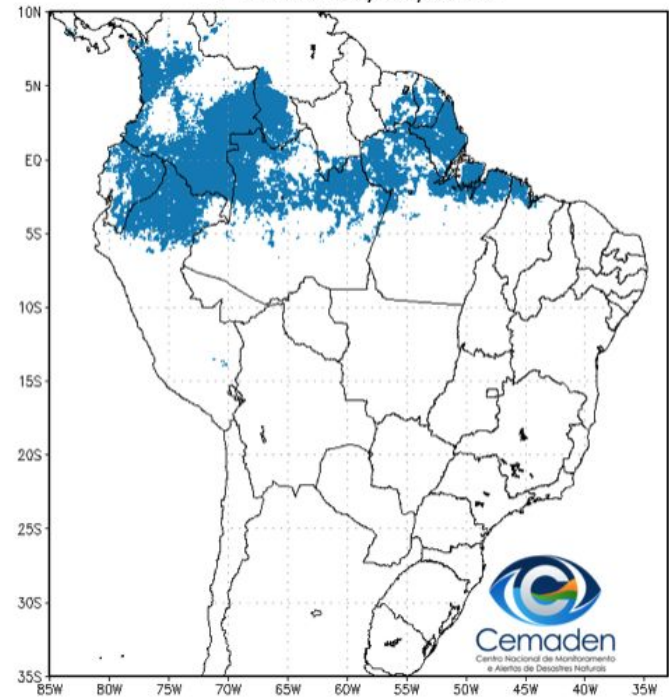


Situação da Estação Chuvosa

Climatologia da Precipitação (2001–2024)
Inferior 2 mm/dia por 4 de 5 dias Período: 25/06

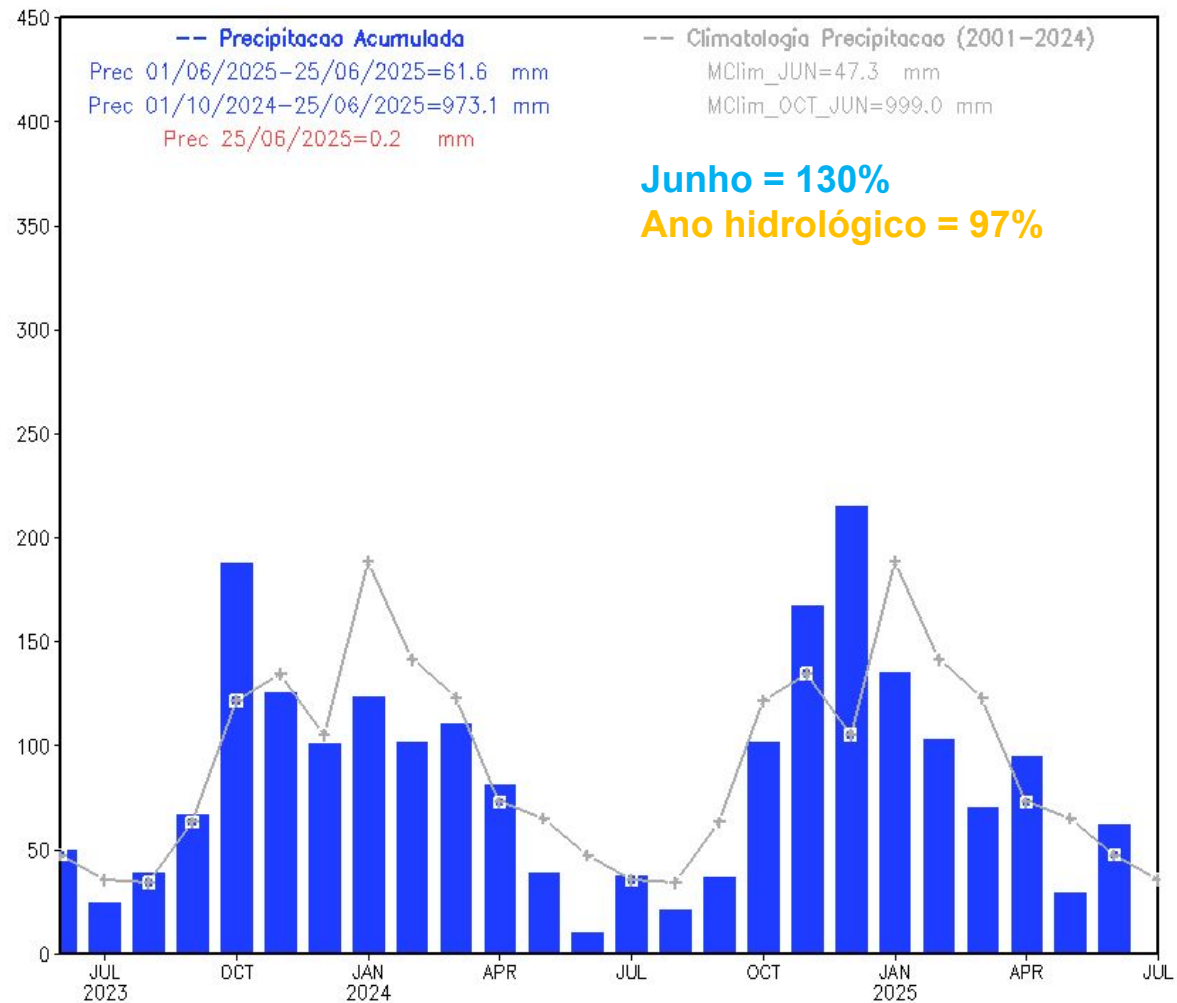


Precipitação Inferior 2 mm/dia por 4 de 5 dias
Período: 25/06/2025



Precipitação acumulada nos últimos 24 meses

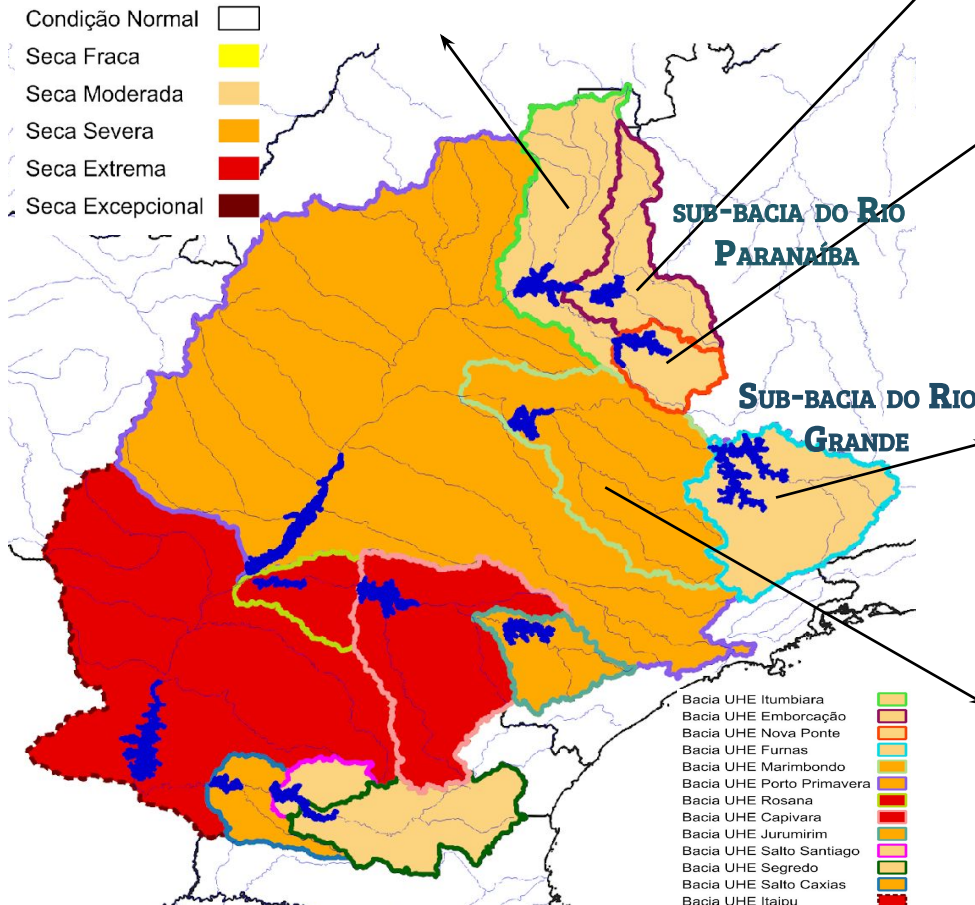
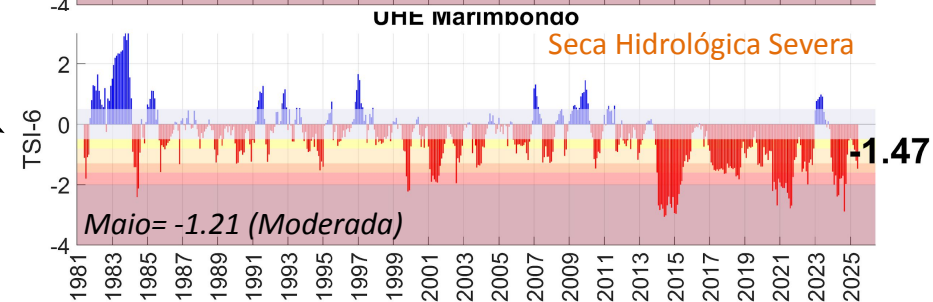
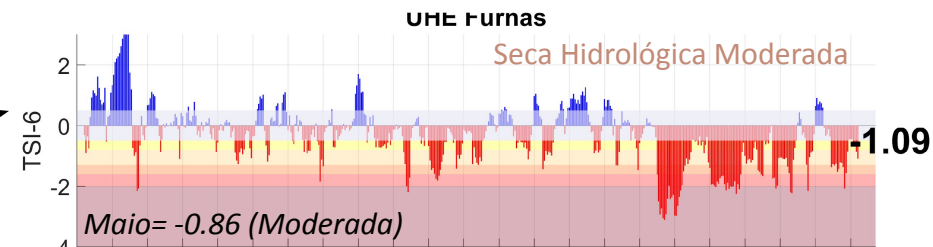
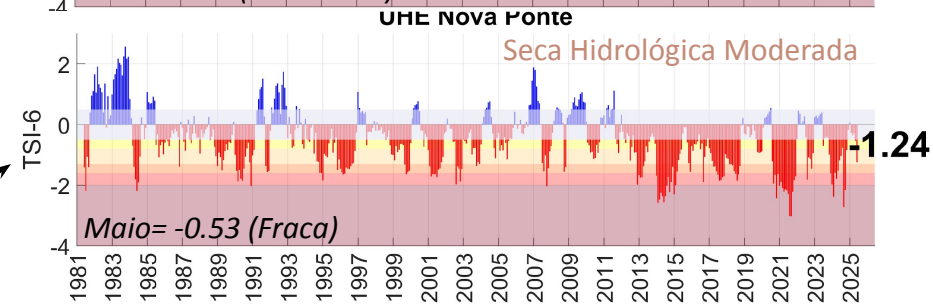
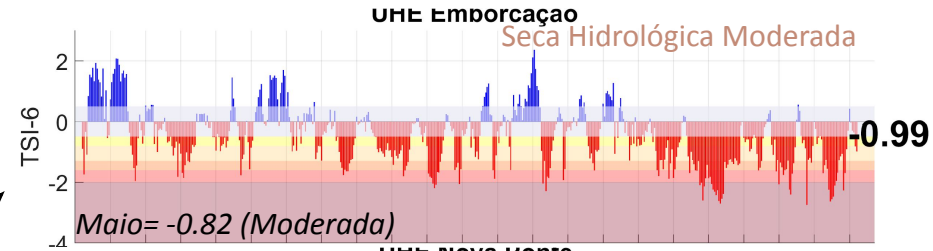
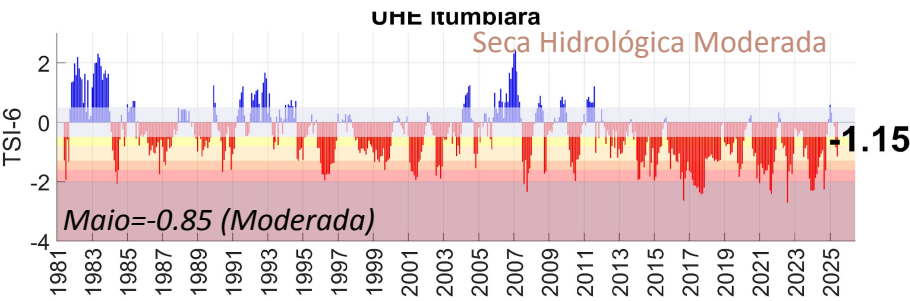
Precipitação Bacia do Rio Parana desde JUN 2023



BACIA DO RIO PARANÁ

Índice de Seca Bivariado (Chuva-Vazão) – TSI 6

Junho/2025- Parcial

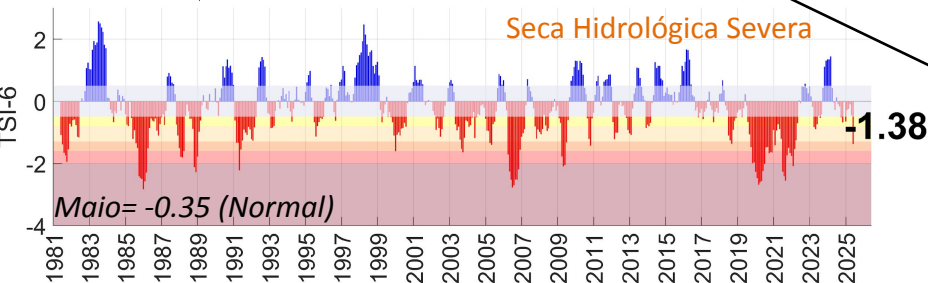
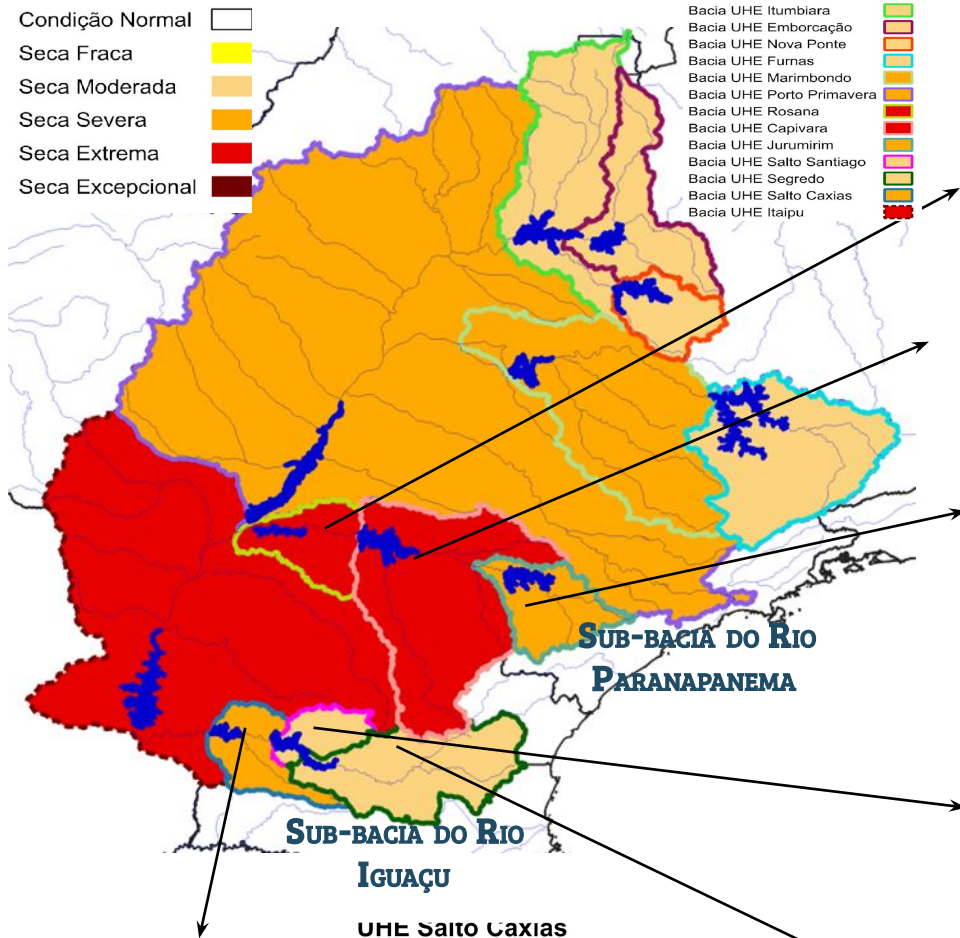


BACIA DO RIO PARANÁ

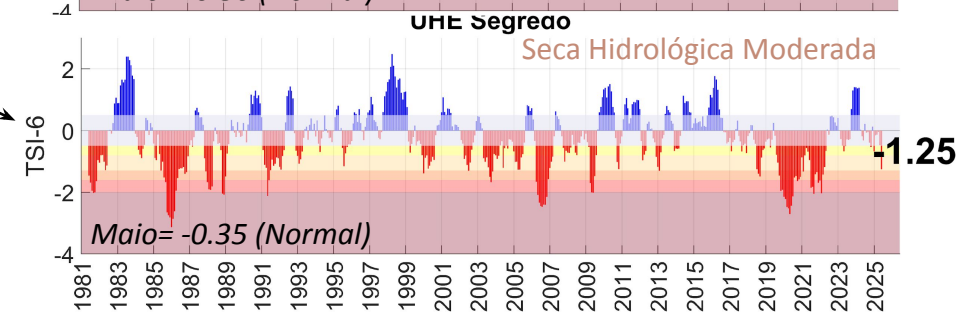
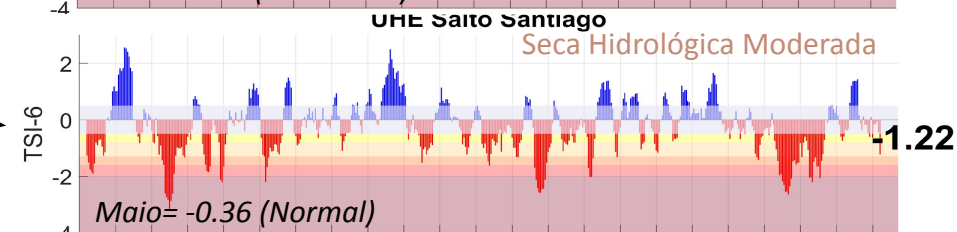
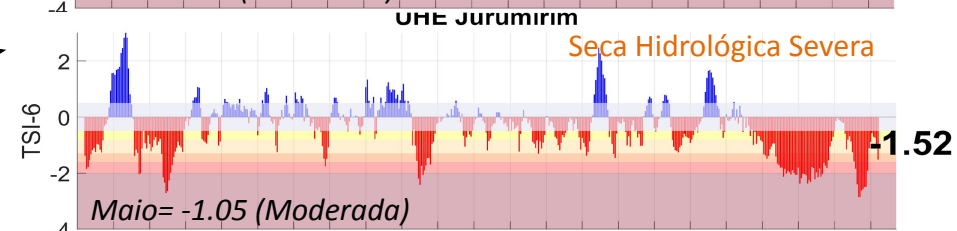
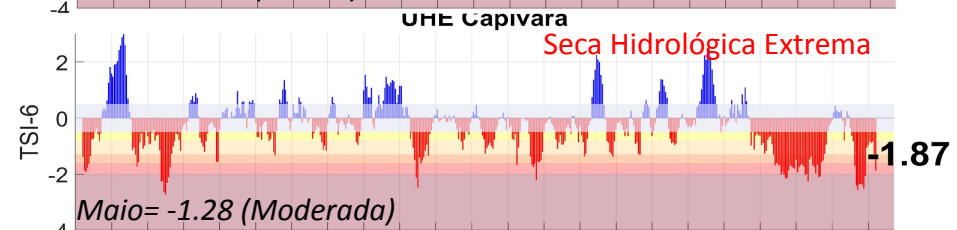
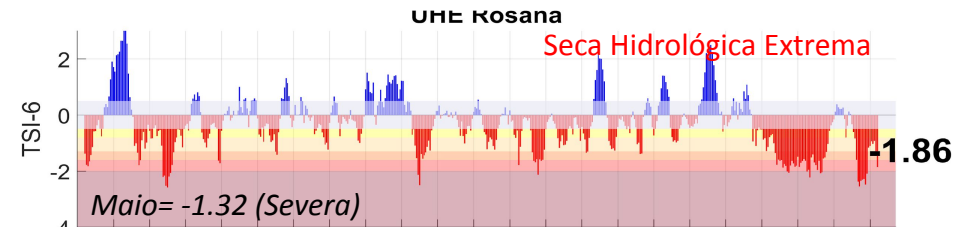
Índice de Seca Bivariado (Chuva-Vazão) – TSI 6

Condição Normal
Seca Fraca
Seca Moderada
Seca Severa
Seca Extrema
Seca Excepcional

Bacia UHE Itumbiara
Bacia UHE Emborcação
Bacia UHE Nova Ponte
Bacia UHE Furnas
Bacia UHE Marimbondo
Bacia UHE Porto Primavera
Bacia UHE Rosana
Bacia UHE Capivara
Bacia UHE Jurumirim
Bacia UHE Salto Santiago
Bacia UHE Segredo
Bacia UHE Salto Caxias
Bacia UHE Itaipu



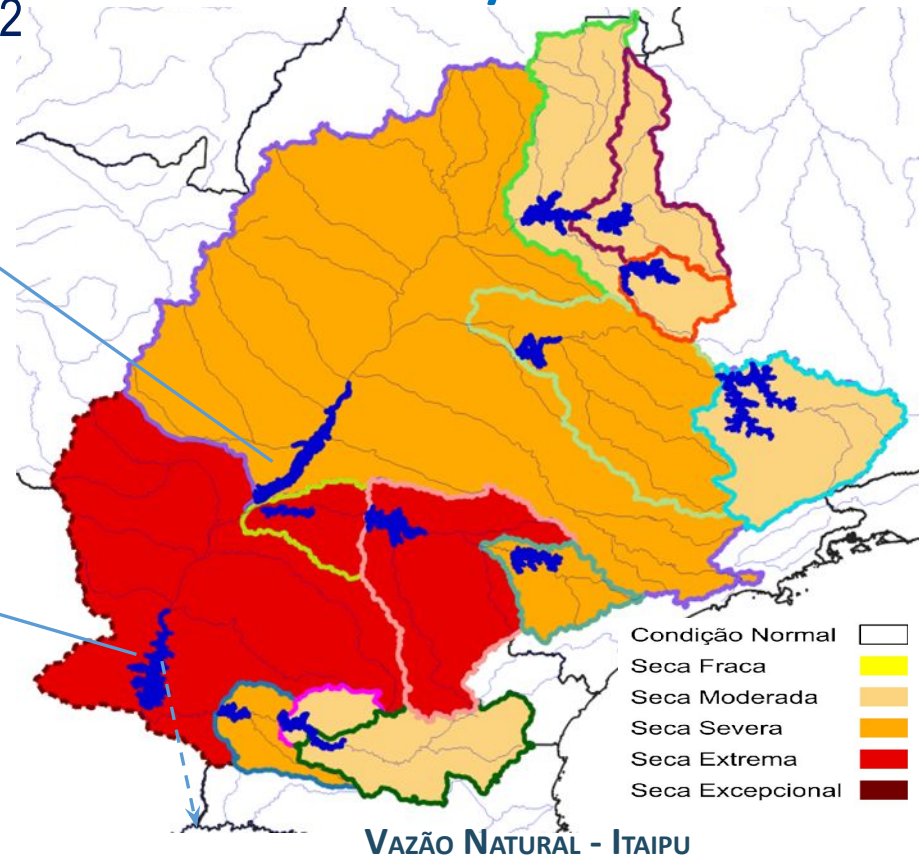
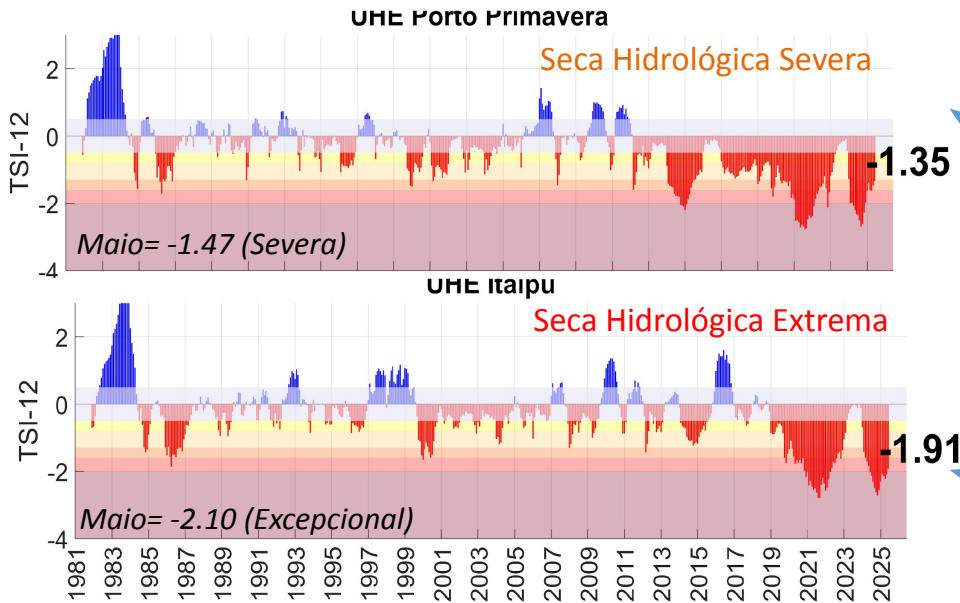
Junho/2025- Parcial



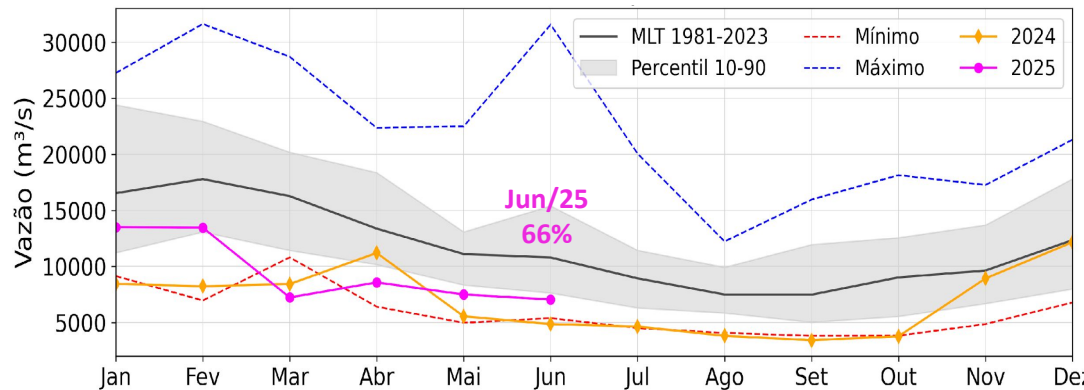
BACIA DO RIO PARANÁ

Junho/2025- Parcial

Índice de Seca Bivariado (Chuva-Vazão) – TSI 12



Série de dados = Jan/1981- Junho/2025



Fonte: CEMADEN/MCTI

Dados: Precipitação (CHIRPS) e Vazão (ONS e ANA)

Monitoramento UHE Furnas

Precipitação

Estação Chuvosa - Out a Mar – 1192 mm

2023/2024: 1088 mm (**91% da MLT**)

2024/2025: 1148 mm (**96% da MLT**)

Estação Seca - Abr a Set – 250 mm

2024: 102 mm (**41% da MLT**)

2025*: 147 mm (**127% da MLT PARCIAL**)

Maio/2025: 7 mm (**14% da MLT**)

Jun/2025*: 23 mm (**92% da MLT**)

*Até 24/06/2025

Vazão

Estação Chuvosa - Out a Mar – 1130 m³/s

2023/2024: 716 m³/s (**63% da MLT**)

2024/2025: 906 m³/s (**80% da MLT**)

Estação Seca - Abr a Set – 551 m³/s

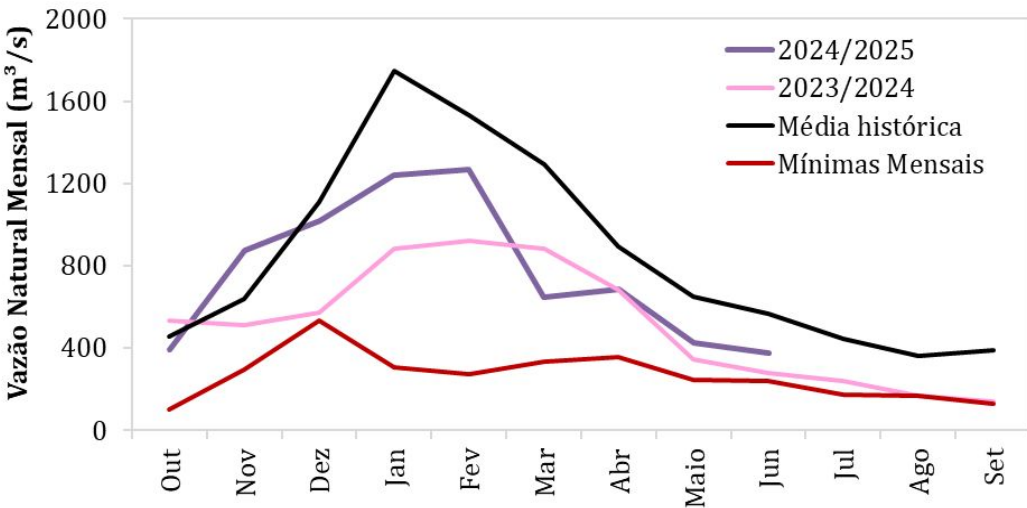
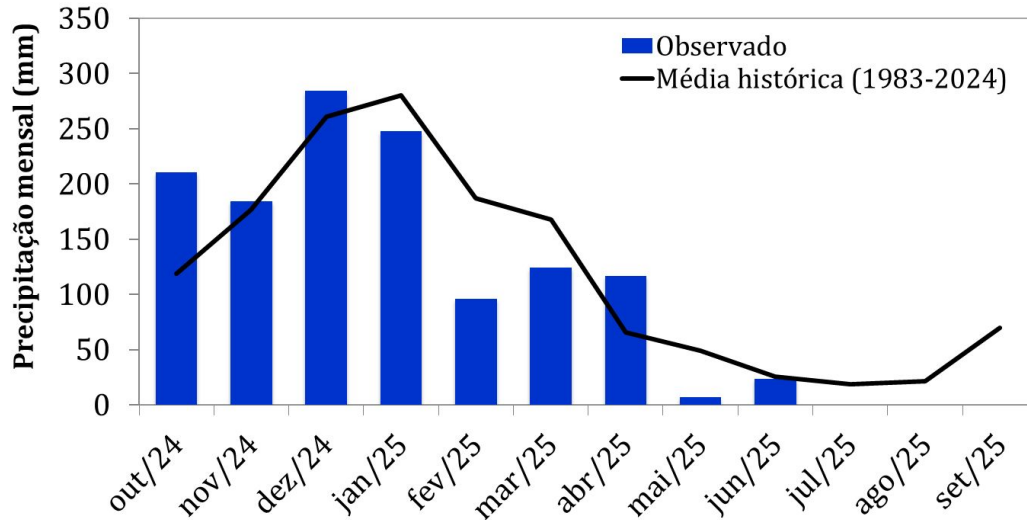
2024: 309 m³/s (**56% da MLT**)

2025: 495 m³/s (**90% da MLT**)

Jun/25:** 377 m³/s (**66% da MLT**)

24/jun/25: 356 m³/s (**63% da MLT**)

**Até 24/06/2025

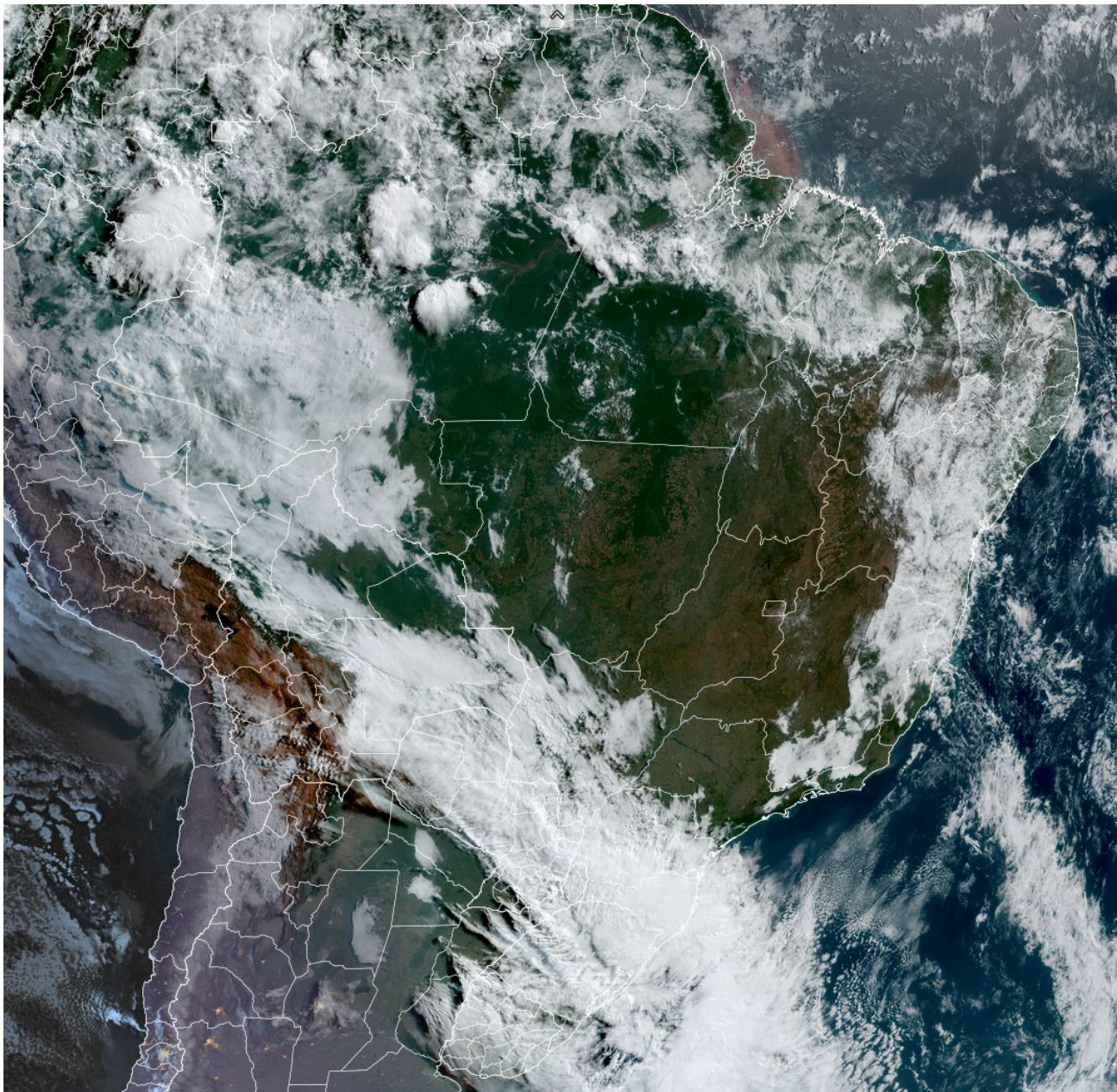


Média de Longo Termo – MLT = 1983-2024

Dados de precipitação: INMET, ANA, CEMADEN

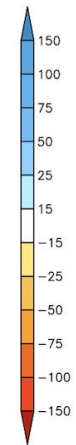
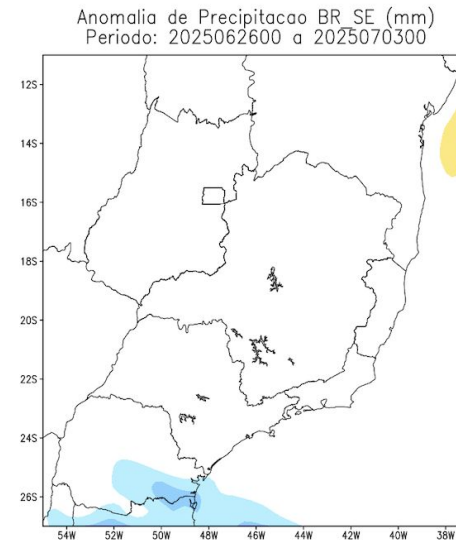
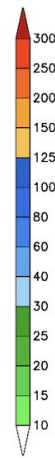
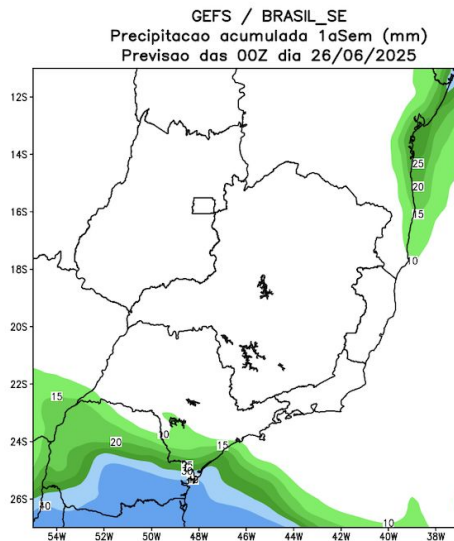
Dados de vazão: ONS e ANA

Situação meteorológica atual

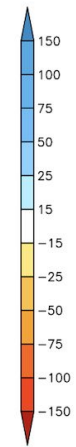
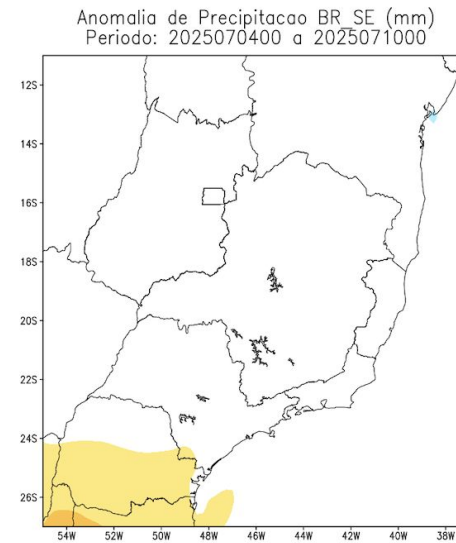
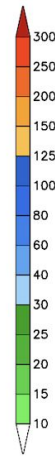
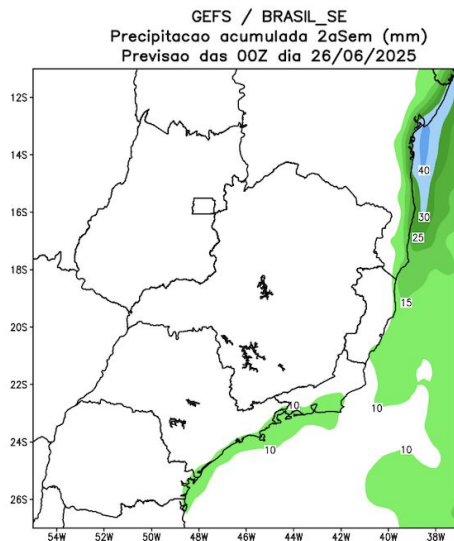


Acumulado para as duas próximas semanas

Semana 1

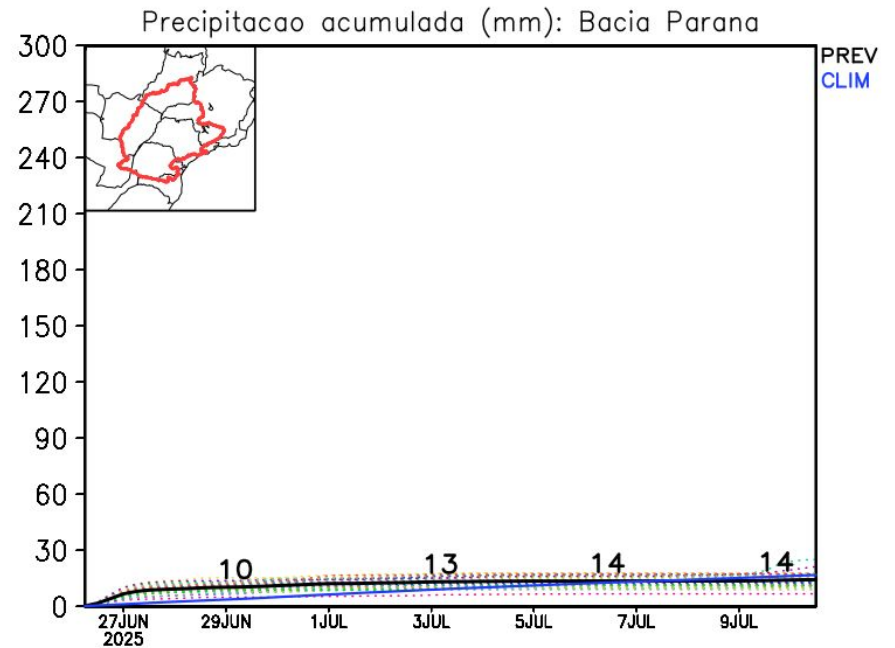
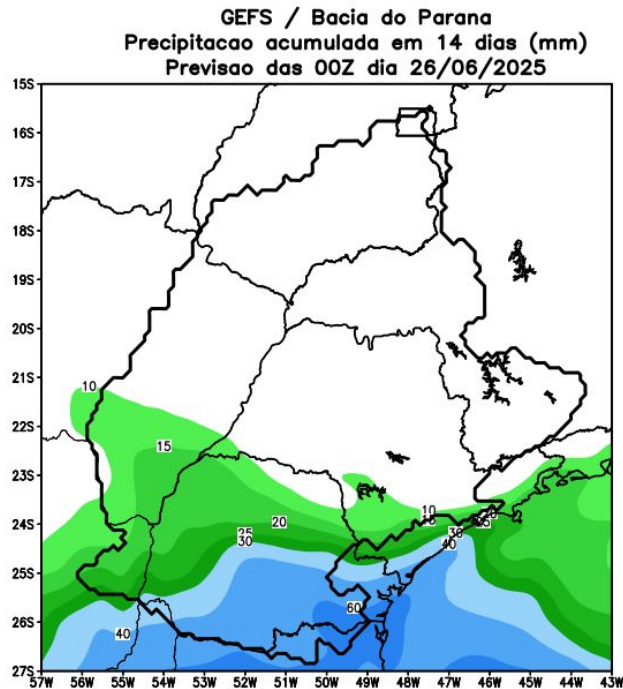


Semana 2



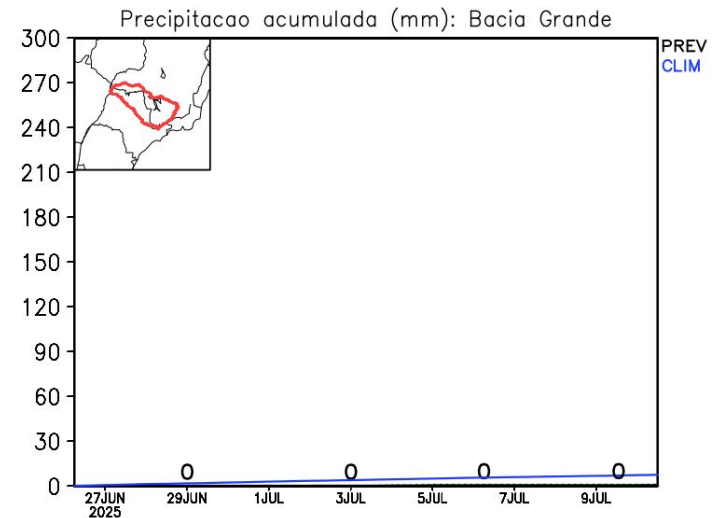
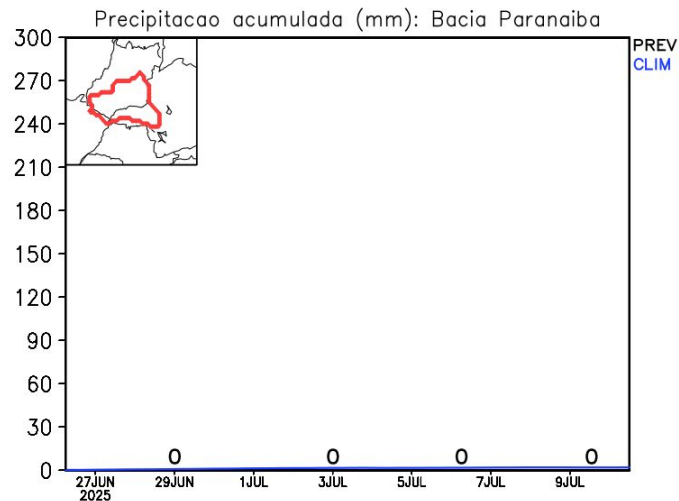
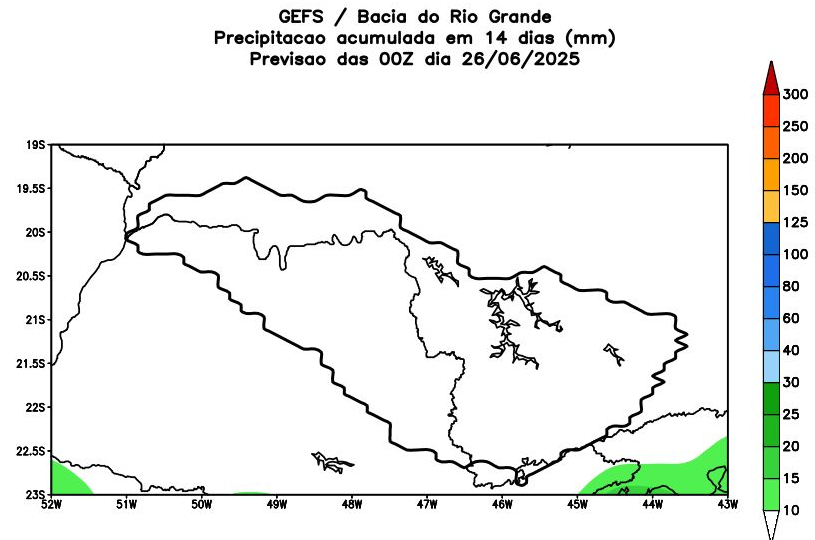
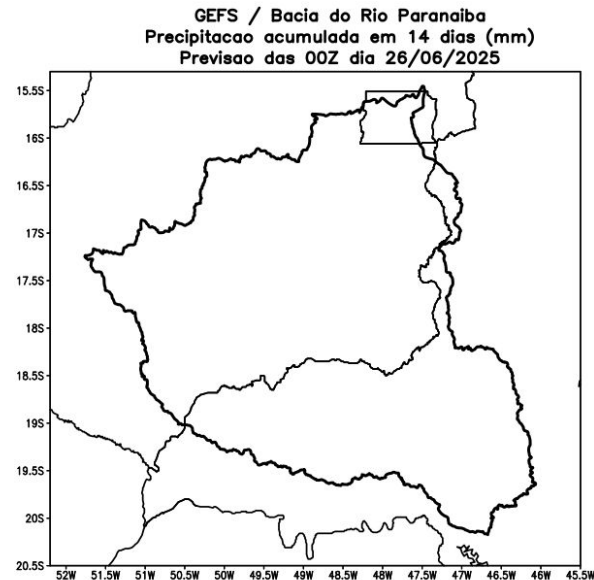
Fonte: GEFS/NOAA

Previsão de chuva para os próximos 7 dias



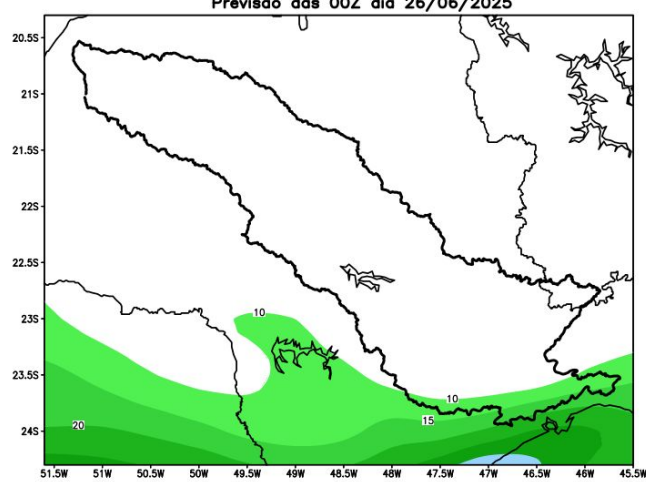
Fonte: GEFS/NOAA

Bacia do rios Paranaíba e Grande

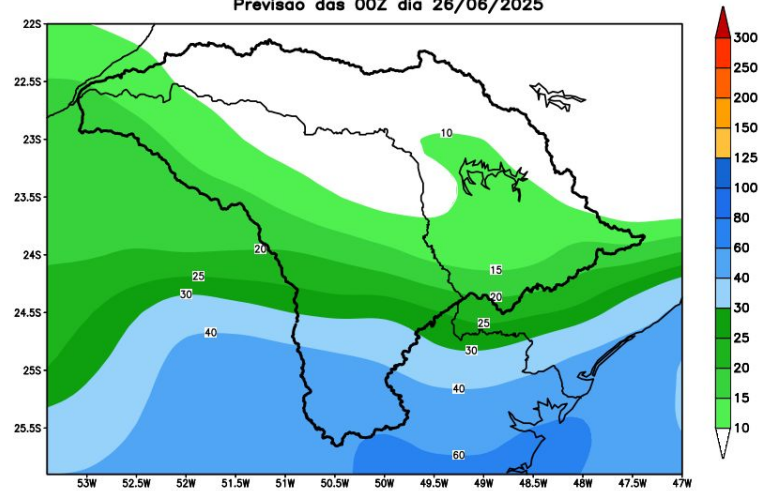


Bacia do rios Tietê e Paranapanema

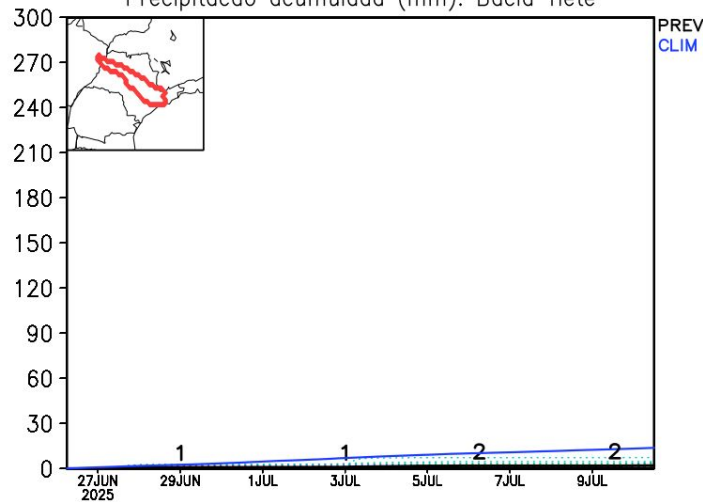
GEFS / Bacia do Rio Tiete
Precipitacao acumulada em 14 dias (mm)
Previsao das 00Z dia 26/06/2025



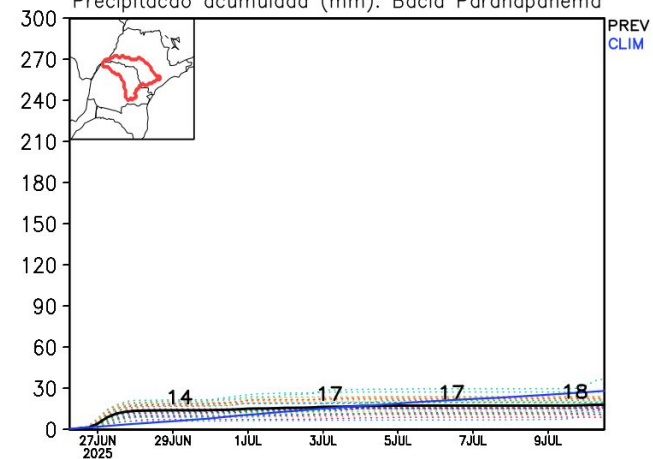
GEFS / Bacia do Rio Paranapanema
Precipitacao acumulada em 14 dias (mm)
Previsao das 00Z dia 26/06/2025



Precipitacao acumulada (mm): Bacia Tiete

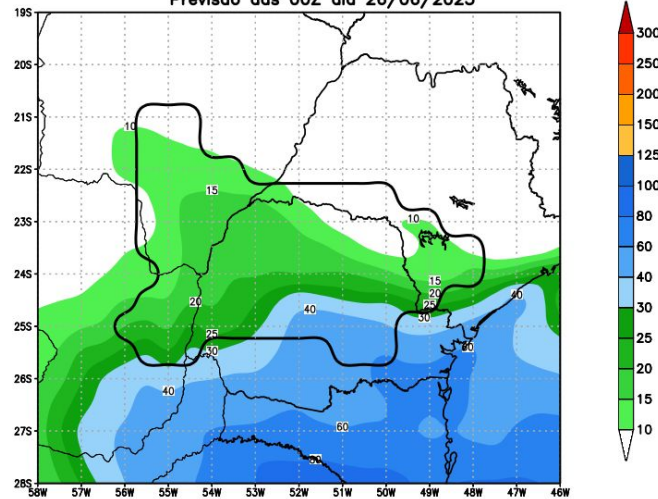


Precipitacao acumulada (mm): Bacia Paranapanema

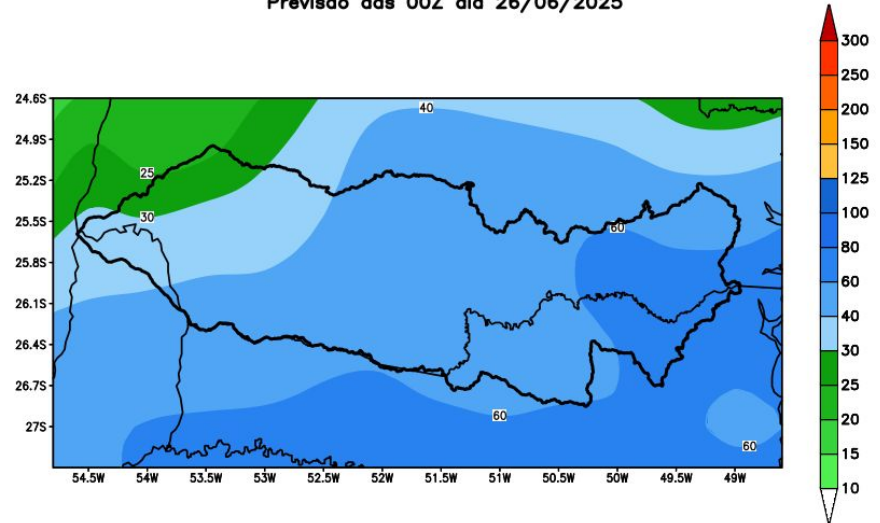


Bacia do Itaipu e Iguaçu

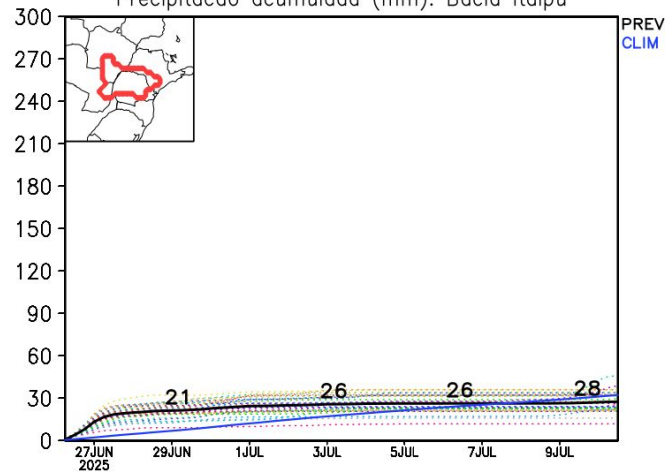
GEFS / Itaipu
Precipitação acumulada em 14 dias (mm)
Previsão das 00Z dia 26/06/2025



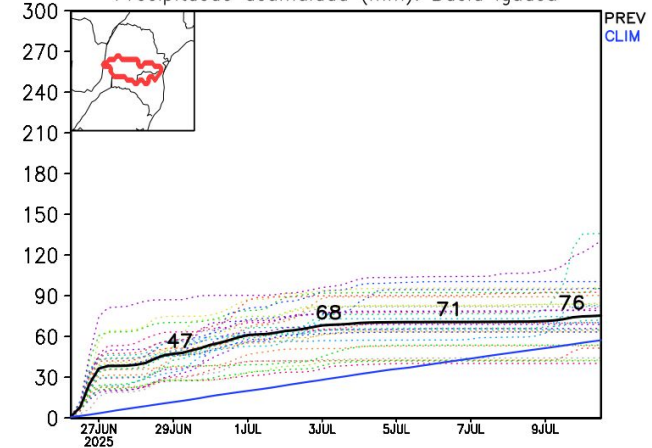
GEFS / Bacia do Rio Iguaçu
Precipitação acumulada em 14 dias (mm)
Previsão das 00Z dia 26/06/2025



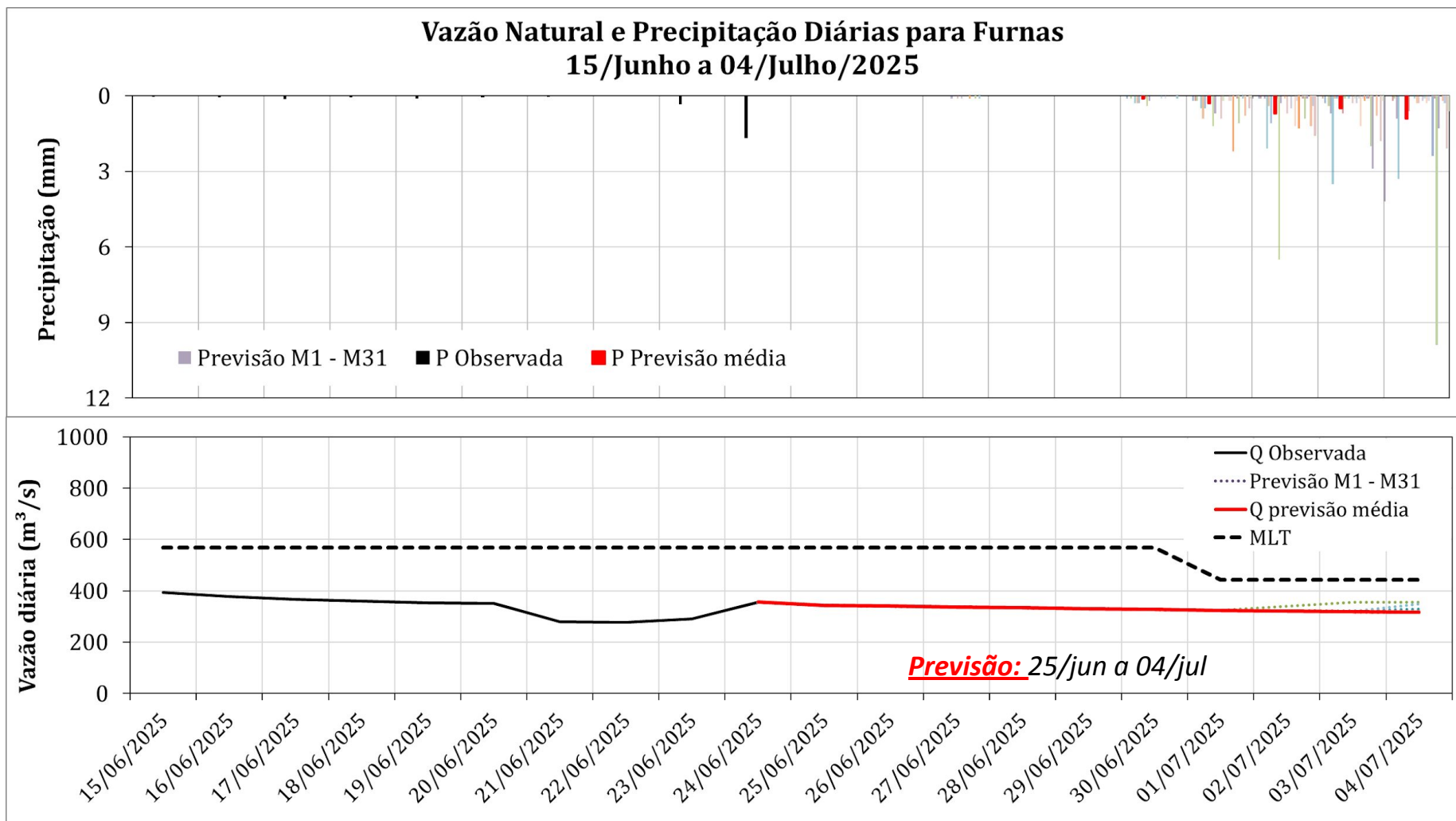
Precipitação acumulada (mm): Bacia Itaipu



Precipitação acumulada (mm): Bacia Iguaçu



Furnas: Previsão de Vazão (modelo hidrológico PDM-CEMADEN)



Previsão média para os próximos 10 dias: 329 m³/s
(58% da MLT Junho e 74% da MLT Julho)

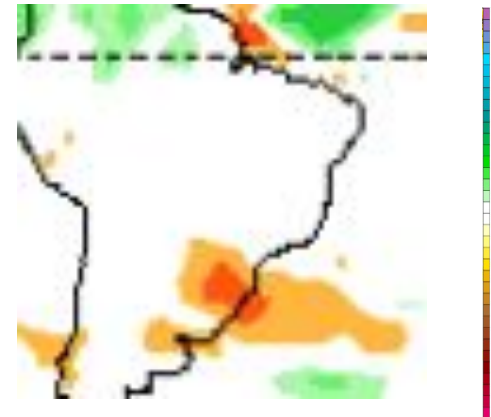
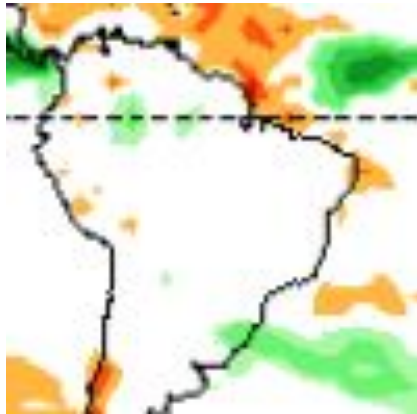
Anomalia de Chuva

3a e 4a semanas

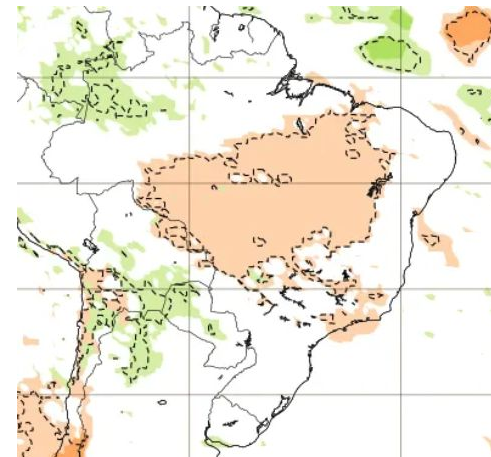
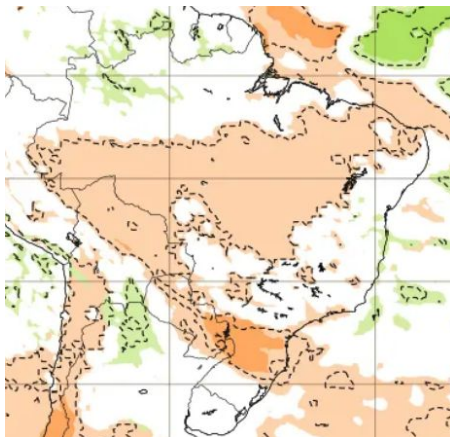
10-16 julho

17-23 julho

CFS/NOAA



ECMWF



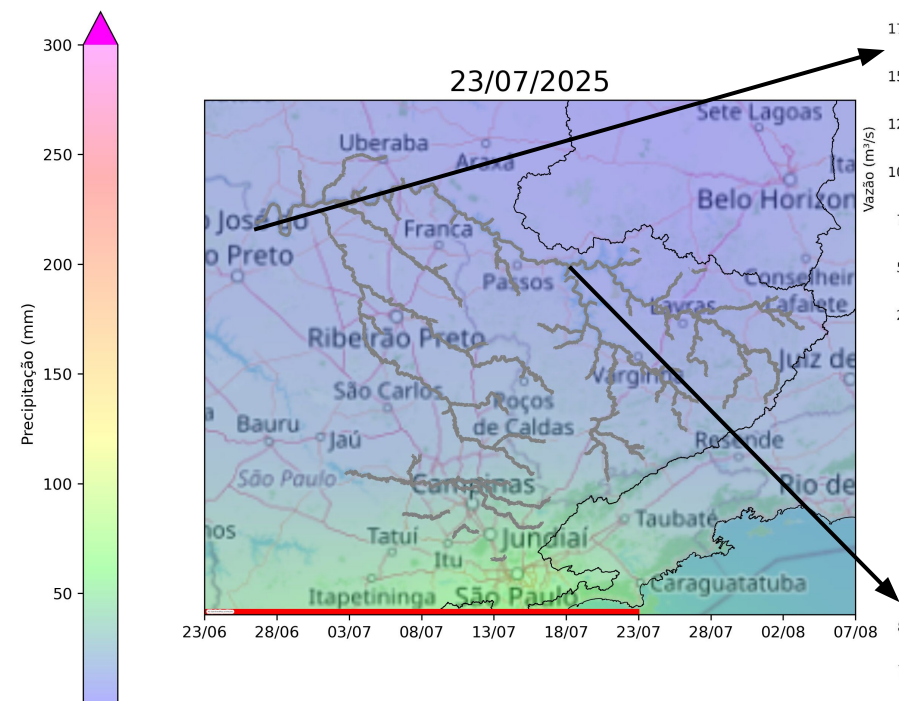
14-20 julho

21-27 julho

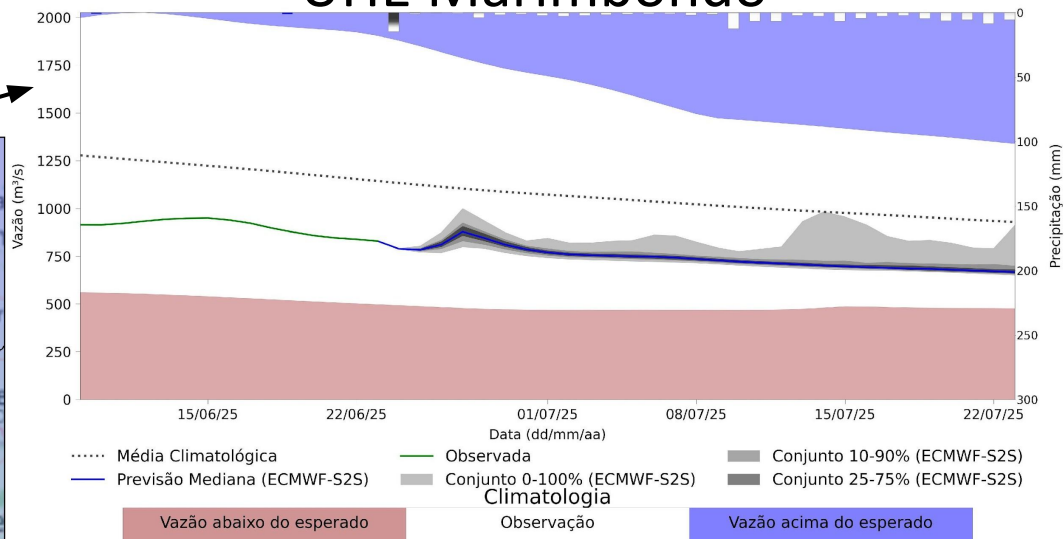
CFSv2 Accumulated Precip. Anomaly (mm)

Previsão de vazão natural na Bacia do Rio Grande 30 dias (Modelo hidrológico MHD)

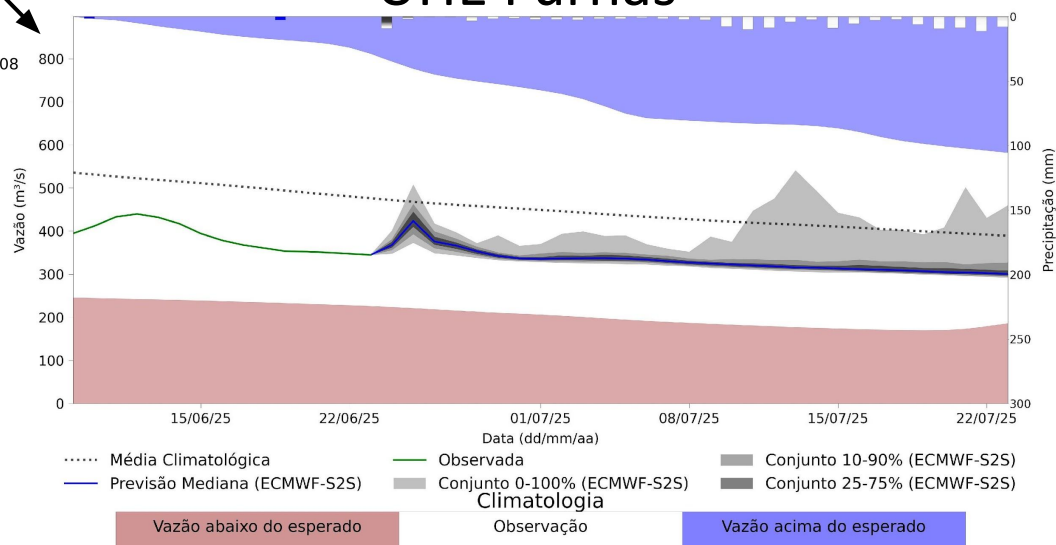
PREVISÃO: 23/06/25 a 23/07/25



UHE Marimbondo



UHE Furnas



Fonte: Meteorologia (INMET/MERGE); Vazão (ANA/ONS)

MLT: 1993-2024

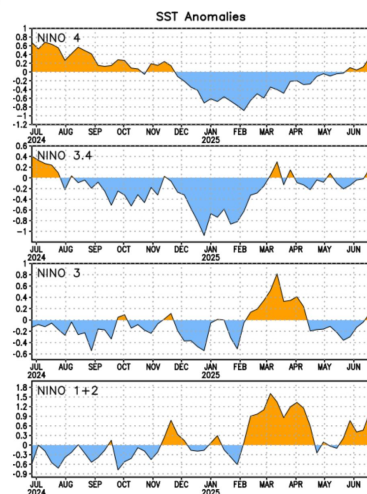
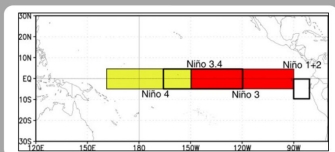
Previsão Meteorológica: ECMWF-S2S

Status Atual El Niño/La Niña: Fase Neutra

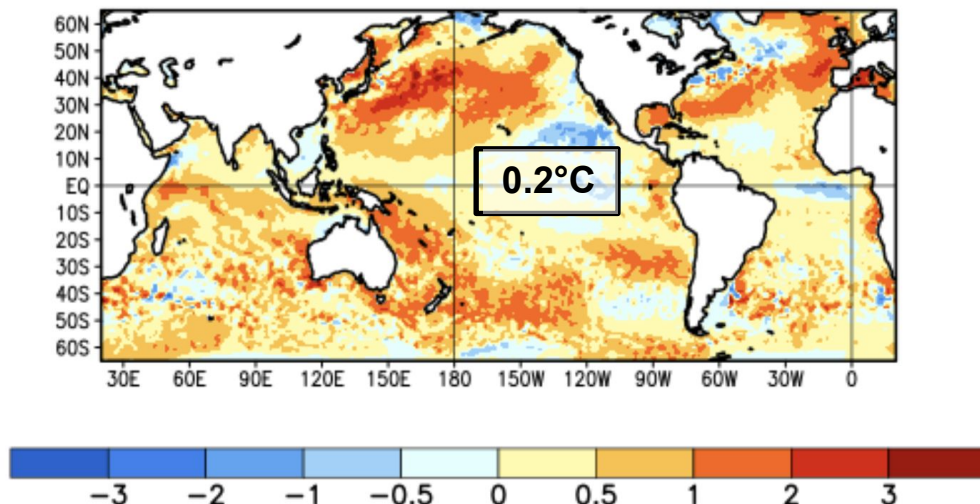
Niño Region SST Departures (°C) Recent Evolution

The latest weekly SST departures are:

Niño 4	0.3°C
Niño 3.4	0.2°C
Niño 3	0.1°C
Niño 1+2	1.0°C

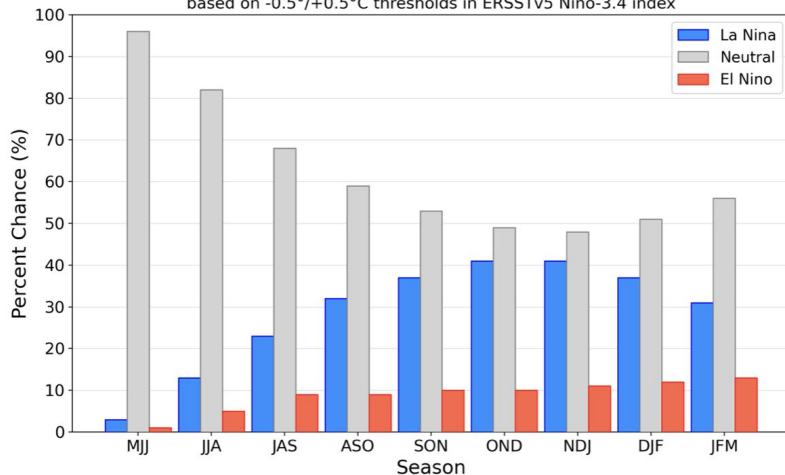


Average SST Anomalies 25 MAY 2025 – 21 JUN 2025



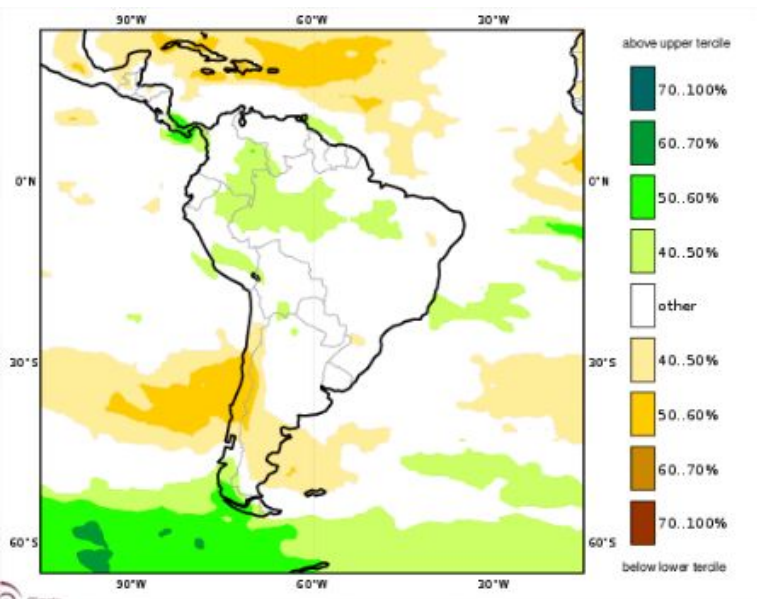
Official NOAA CPC ENSO Probabilities (issued June 2025)

based on $-0.5^{\circ}/+0.5^{\circ}$ thresholds in ERSSTv5 Niño-3.4 index

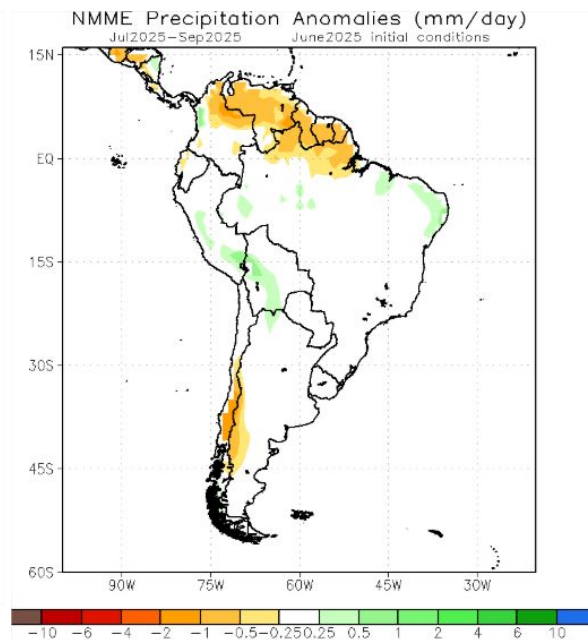


Previsão Sazonal de Chuva Multi-Modelo

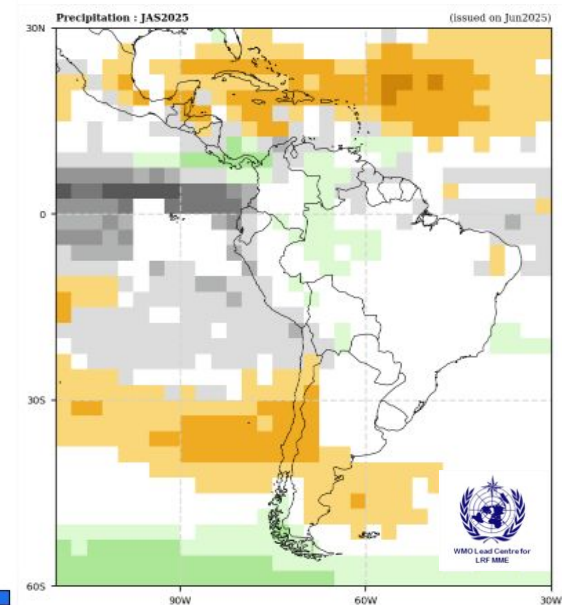
Julho-Agosto-Setembro



Modelos Europeus

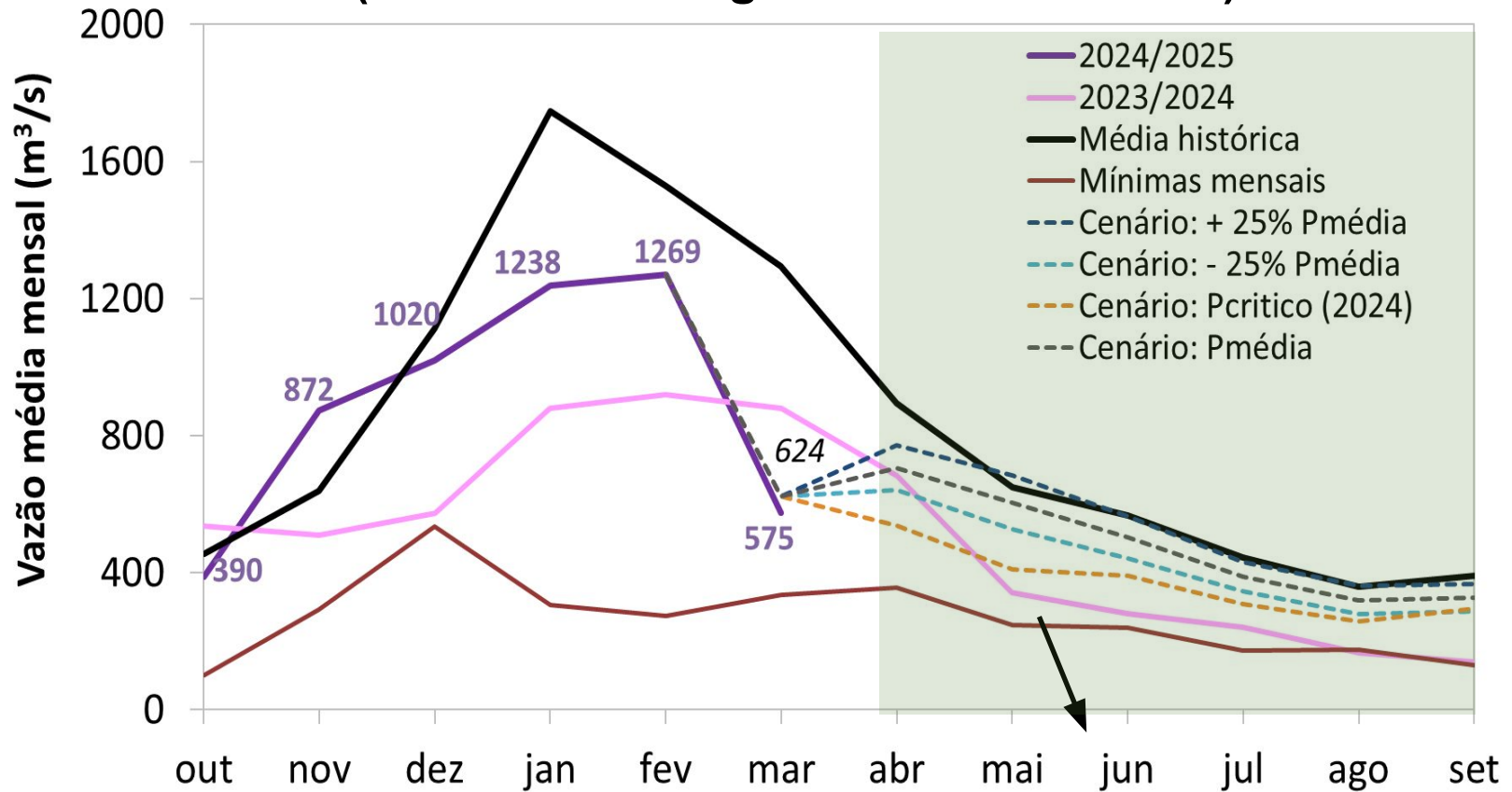


Modelos Norte Americanos



Modelos da WMO

Furnas: Projeção de Vazão (modelo hidrológico PDM-CEMADEN)

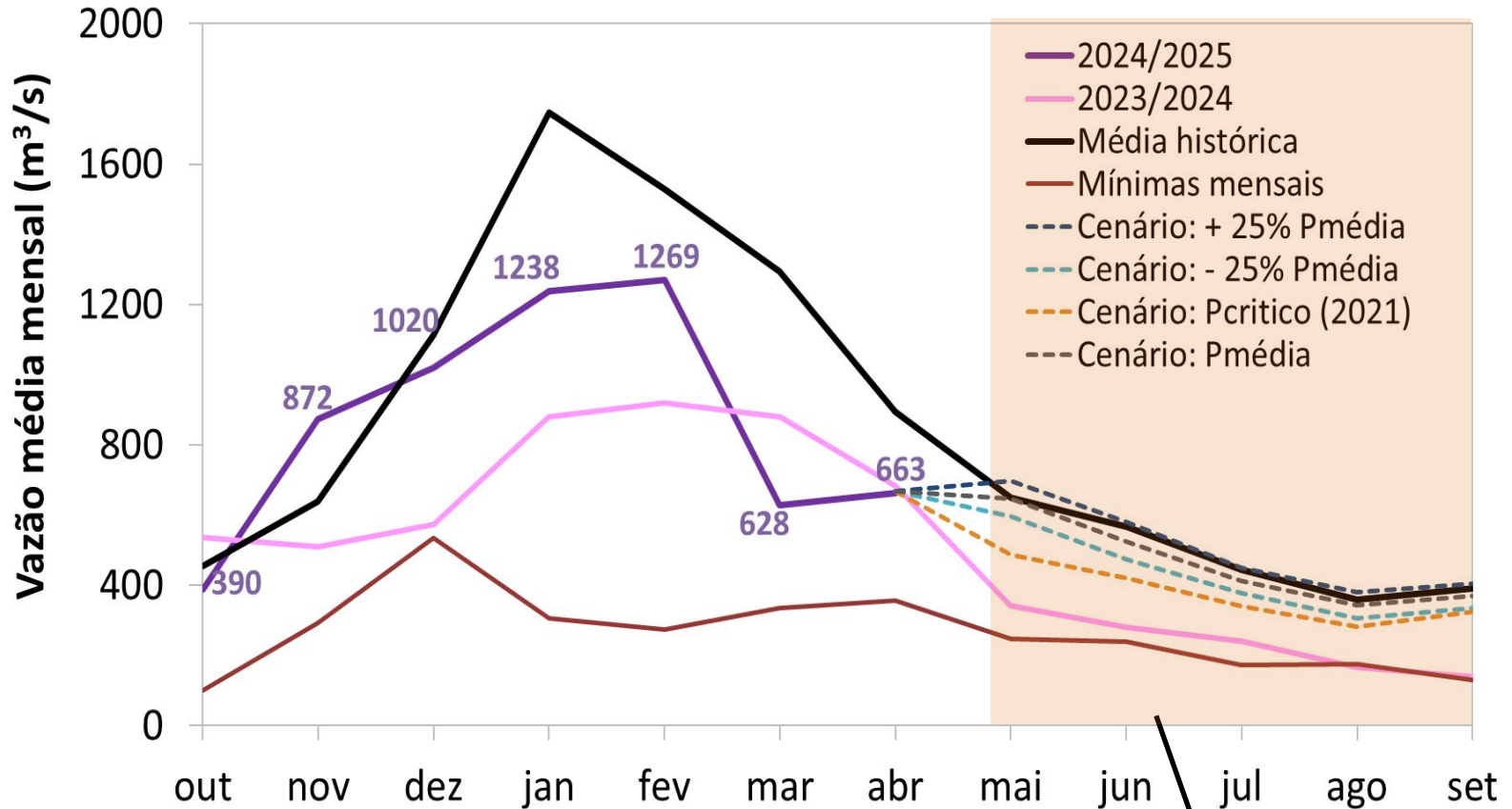


Abril-Setembro (Meses Secos)

MLT: 551 m³/s

Vazão	% MLT
530 m³/s	96%
475 m³/s	86%
421 m³/s	76%
367 m³/s	67%

Furnas: Projeção de Vazão (modelo hidrológico PDM-CEMADEN)

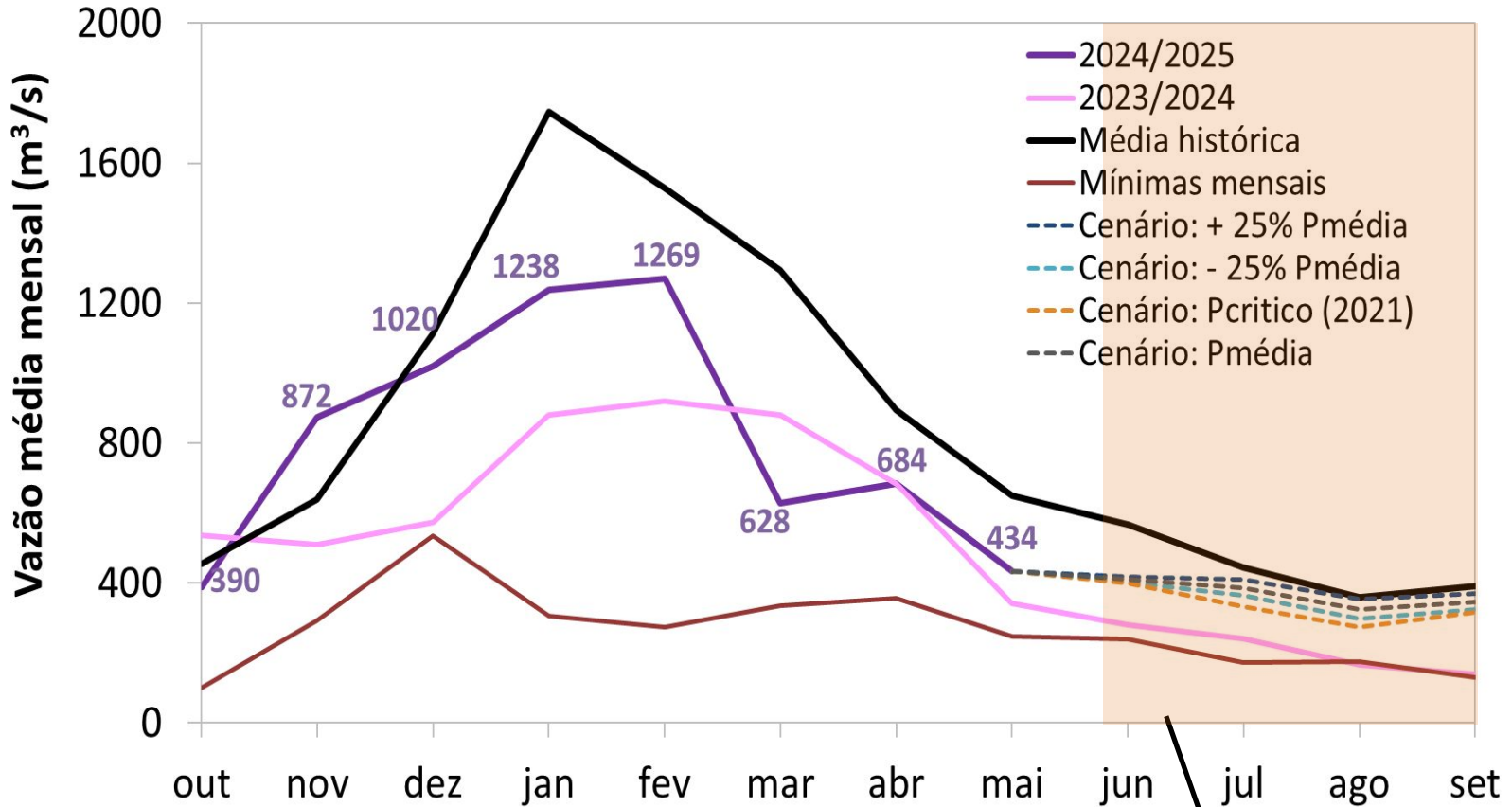


Maio-Setembro (Meses Secos)

MLT: 482 m³/s

Vazão	%
503 m³/s	MLT 104%
460 m³/s	95%
418 m³/s	87%
371 m³/s	77%

Furnas: Projeção de Vazão (modelo hidrológico PDM-CEMADEN)

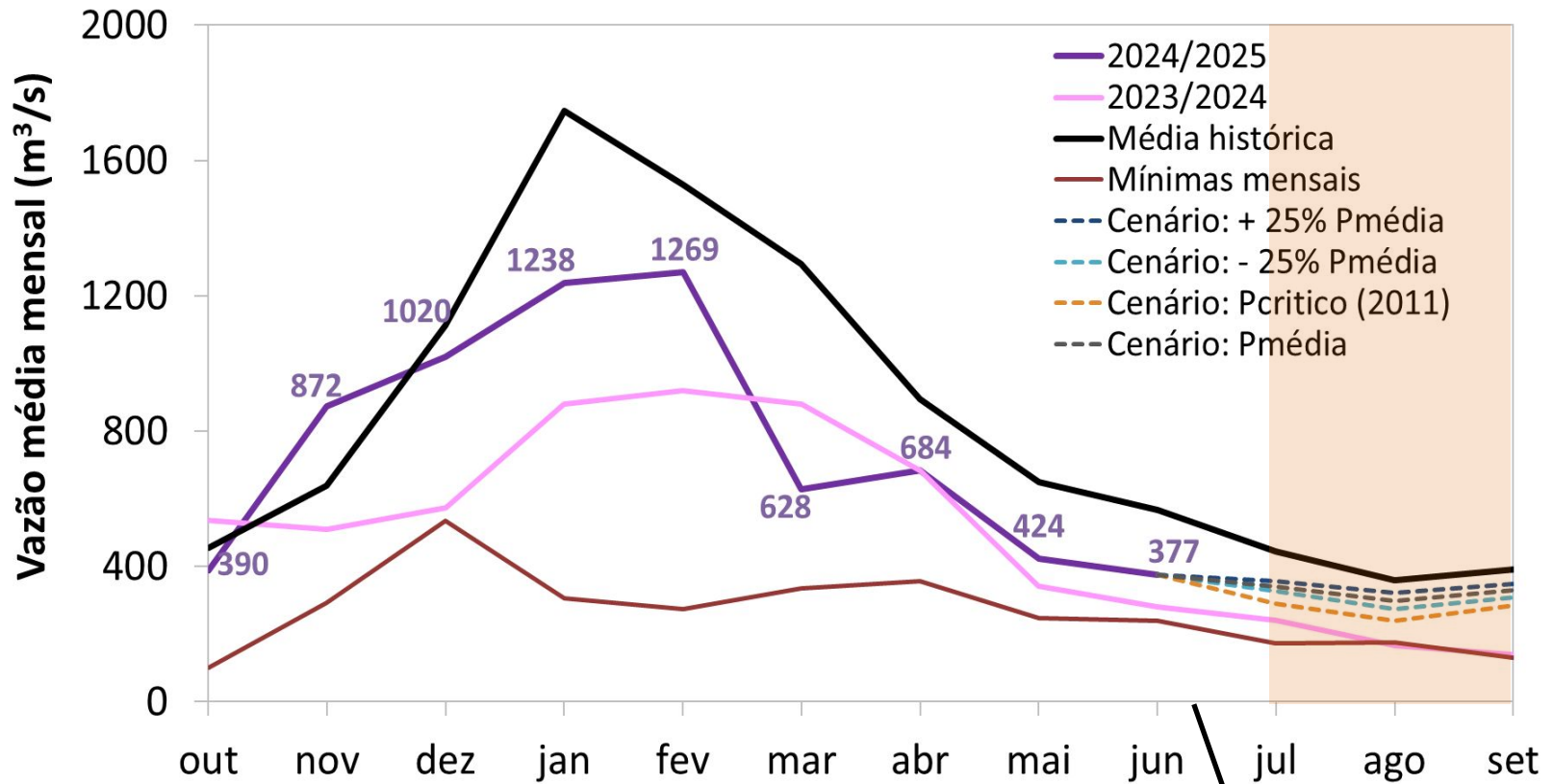


Junho-Setembro (Meses Secos)

MLT: 440 m³/s

Vazão	%
388 m³/s	MLT 88%
367 m³/s	83%
347 m³/s	79%
331 m³/s	75%

Furnas: Projeção de Vazão (modelo hidrológico PDM-CEMADEN)



JUL-SET (Meses Secos)

MLT: 398 m³/s

Vazão	%
343 m³/s	86%
323 m³/s	81%
303 m³/s	76%
271 m³/s	68%